

NAME EUCLID DIVISION

Class _____ Course _____ Party _____

BM & Check Levels.

Extra X-Sections

RETURN TO
Watson, Valle & Gough, Inc.
508 Soreckels Bldg
San Diego, Calif.

1889

281
FIELD NOTES

No. 403P

**ESPECIALLY ADAPTED
TO THE USE OF
ENGINEERING STUDENTS**

EUGENE DIETZGEN Co.

MANUFACTURERS

**DRAWING MATERIALS
MATHEMATICAL AND SURVEYING INSTRUMENTS
MEASURING TAPES**

CHICAGO SAN FRANCISCO NEW YORK
NEW ORLEANS PITTSBURGH

MICROFILMED

DEC 30 1964

INDEX:

Check Levels	2
Bench Levels	3-4
Re. x-section Sta. 12+00 - 17+00	5-8
" " " " 23+75 - 24+80	9-10
Intersection Euclid Div. & National Ave	11
Re. x-section Sta. 39+00 - 40+00	12-13
" " " " 50+00 - 52+00	14-15-16
Intersection Euclid & Division	17

		185.19	B.M.	
4.27	189.46			
		3.67	185.79	B.M.
5.93	191.72			
		11.49	180.23	

1

Spike in P. Pole N. Side Imperial Ave near Jct. with
Churchward St.

Set Spike in Cor. Fence post 55' Rt. Sta. 0+30

CHECK LEVELS
EUCLID DIVISION.

		185.79	B.M.
5.61	191.90		
		9.37	182.03
2.82	189.85		
		11.88	172.97
2.09	175.06		
		11.87	163.19
7.59	170.78		
		10.79	159.99
10.04	170.03		
		8.29	161.74 T.P.-
0.902	162.642		
		11.992	150.650
1.077	151.727		
		10.995	140.732
10.108	150.840		
		1.958	148.882 B.M.

EP Chilton
E. Rodier
J. Thompson
Feb. 3, 1927.

Spika in Cor. Post 55' Rt. 0+30

On R.P. P.O.T., 6+65⁹⁵, Marked T.P.

1x2 stake 60' Lt. Sta. 10+50

BENCH LEVELS
EUCLID DIVISION.

+	H.I.	-	Elev.	
			191.31	B.M.
			<u>-6.12</u>	
			185.19	City Datum
4.176	189.666			
		3.870	185.796	B.M.
4.997	190.793			
		11.680	179.113	
0.248	179.361			
		11.943	167.418	
4.400	171.818			
		10.070	161.748	T.R.
1.309	163.057			
		11.260	151.797	
4.285	156.082			
		7.200	148.882	B.M.
3.755	152.637			
		11.535	141.102	
0.897	141.999			
		11.787	130.212	
0.753	130.965			
		9.913	121.052	
9.126	130.178			
		1.555	128.623	B.M.
10.891	139.454			
		0.663	138.791	

E.P. Chilton
E. Redier
J. Thompson
Feb. 3, 1927.

3

Nail in P. Pole N. Side Imperial Ave, Near Churchward.

Set nail in Cor. Post 55' Rt. 0+30

on R.P.-P.O.T. 6+65²⁵, Marked T.R.

1x2 stake 60' Lt. Sta. 10+50 = 148.882 - Page 2.

Set 2x2 60' Lt. 17+30

+	H.I.	-	Elev.
			138.791
11.180	149.971		
		0.253	149.718
8.960	158.678		
		1.890	156.788 B.M.
1.890	158.678		
		11.994	146.684
1.030	147.714		
		9.654	138.060
1.285	139.395		
		6.840	132.505
6.600	139.105		
		6.293	132.812
1.807	134.619		
		11.597	123.022
3.200	126.222		
		0.88	125.34 B.M.
0.88	126.222		
		7.425	118.797
11.000	129.797		
		2.124	127.673 B.M.

R.P. P.O.T. 19750 out 100° Lt - 1x2

National Ave

R.P. P.O.T. Sta. 25+60³⁰ - 2x2 out 49° 27' - 40' Lt. Sta. 25+90

50' North "G" 34+90 - Elev. 131.26 - 6.12 = 125.14

Set 2x2 App 75' Rt. Sta. 30+50 on knoll

Feb. 3, 1927

CH

EUCLID DIVISION

Re- X Section 12+00 - 17+00

148.88 E.M.

1.50 150.38

12.03 138.35 T.P.

327 141.62

12+00

12+40

12+68

12+84

13+20

13+35

13+75

E.P. Chilton
E. Pochler
J. Thompson
Feb 28, 1927

5

1x2 stake 60' Lt. 5+0 10+50

K 141.62 ✓

138.9	137.3	136.9	136.7	136.7	136.2	134.5	134.1	134.6
27	42	42	42	55	54	71	75	68
35°	30°	25°	20°		2°	9°	25°	50°
137.9	136.5	136.2	134.82	134.9	132.9	131.5	131.3	132.4
32	42	54	68	67	87	101	108	92
35°	31°	25°		3°	9°	25°	39°	50°
138.5	138.9	137.0	136.32	136.2	131.0	128.3	129.6	
31	28	27	46	54	54	106	132	128
35°	25°	19°	17°	5°	5°	25°	45°	63°
138.3	137.6	136.7	136.42	136.3	134.1	132.8	127.6	
32	42	42	52	52	75	88	142	
35°	25°	15°		4°	11°	25°	60°	
140.3	138.9	137.8	137.62	138.3	137.9	137.1	134.0	
12	27	38	42	33	37	45	76	
35°	25°	17°		1°	20°	25°	35°	
142.1	139.7	137.0	136.4	136.32	137.0	136.3	133.6	
702	12	46	52	53	46	52	82	
35°	25°	15°	10°		14°	25°	35°	
138.5	135.8		134.82					
31	58		98		131	131		
35°	25°				25°	35°		

14+00

11.40 130.22 T.P.

3.77 133.99

14+25

14+50

14+80

11.73 122.26 T.P.

5.03 127.29

15+00

15+20

10.05 117.24 T.P.

0.77 118.01

15+50

15+70

8.83 109.18 T.P.

135.0	134.7	132.3	131.02	127.3	126.3	
58	69	90	100	143	152	
35°	25°	15°		25°	35°	0.6.
132.4	131.7	130.2	129.1	127.3	126.3	
10	20	30	39	47	55	122.5
25°	25°	15°	40	16°	25°	60°
					Est.	Est.
120.3	127.5	127.5	125.5	125.1	123.1	122.6
57	65	65	85	89	110	120
35°	25°	19°		5°	25°	35°
				0.6.	Est.	Est.
125.2	123.8	123.2	123.2	123.4	121.0	119.0
88	102	108	108	108	130	150
35°	25°	20°		6°	25°	35°
				0.6.	Est.	Est.
122.2	119.5	119.2	119.9	119.0	116.3	
74	78	81	74	60	59	110
35°	31°	25°	12°	7°	12.5°	35°
					Est.	Est.
116.5	115.8	115.6	119.0	119.3	119.8	120.6
108	115	107	87	80	75	62
35°	25°	17°	10°		3°	4°
					0.6.	Est.
					Est.	Est.
112	111.7	112.1	112.5	112.4	114	115.1
60	62	58	55	36	40	65
50°	40°	25°	22°	10°		25°
						Est.
						Est.
111.5	109.9	109.4	109.6	110.0	111.0	111.4
65	84	86	84	80	70	66
100°	80°	50°	25°	17°	8°	
						40°
						0.6.
						0.6.

4.85 114.03

15+92

15+94

15+97

16+00

16+07

16+15

16+19

16+22

110.4	109.7	109.0	108.4	114.03	117.4	109.1	107.7	108.1	112.1
36	43	50	56	108.03	68	69	68	59	19
100°	92°	50°	25°	63	25°	50°	63°	75°	90°

110.4	109.7	109.0	108.4	107.8	106.4	106.23	106.1	105.7	105.4	107.2	107.1	111.6
36	43	50	58	63	73	78	79	83	86	68	63	24
100°	94°	50°	25°	8°	4°	25°	50°	63°	63°	75°	90°	

109.4	109.2	108.4	107.8	106.5	106.33	105.9	105.8	105.6	105.4	106.7	106.7	111.0
46	48	56	63	72	77	84	82	81	86	73	73	30
100°	50°	25°	15°	10°	7°	25°	34°	50°	60°	71°	80°	90°

109.6	109.0	108.7	108.2	106.4	106.4	107.23	107.2	107.8	105.8	105.4	106.7	110.7
42	50	53	58	70	75	68	63	63	82	84	86	33
100°	50°	25°	17°	13°	5°	25°	34°	35°	50°	72°	82°	90°

109.7	109.1	109.0	108.5	106.4	108.3	108.83	108.5	109.5	109.0	107.6	105.2	105.3	106.8	110.0
43	49	50	75	76	57	53	55	45	50	63	88	87	73	40
100°	50°	25°	19°	13°	12°	25°	27°	50°	73°	75°	86°	92°	100°	

109.3	109.1	107.3	106.9	109.0	108.7	106.8	106.7	108.7	108.83	109.1	108.5	109.9	109.0	106.3	106.3	107.9	105.2	105.9
42	61	62	51	50	53	72	72	53	52	42	35	41	70	77	77	66	88	81
100°	86°	75°	70°	50°	44°	35°	25°	20°	17°	22°	25°	38°	50°	65°	75°	76°	100°	

109.2	108.4	108.0	107.2	106.3	106.8	108.8	108.83	109.3	110.6	109.8	106.7	106.2	106.0	105.4	110.0
48	56	60	68	72	53	53	53	42	38	43	73	78	80	84	42
100°	124°	100°	50°	34°	30°	25°	16°	21°	25°	37°	75°	76°	100°	107°	

109.2	108.2	106.9	108.9	108.8	108.83	109.3	110.6	109.8	106.6	105.8	105.1	104.9	109.3
48	58	71	51	53	51	47	38	42	79	82	82	92	47
110°	100°	46°	35°	25°	16°	21°	25°	37°	75°	76°	101°	106°	

16+25

109.2 118.3 108.1 108.5 108.8 109.0 109.0³ 109.0 110.1 109.7 106.4 105.5 105.0 104.6 109.3
 48 57 52 52 52 52 52 52 32 42 72 85 92 92 42
 115° 110° 96° 90° 50° 25° 16° 22° 25° 37° 74° 75° 101° 106°

16+50

110.0 109.6 109.0 108.4³ 108.2 107.2 106.6 105.9 105.1 104.6 103.9 104.4
 42 42 52 56 58 68 72 82 82 92 102 102
 100° 50° 25° 19° 25° 29° 52° 53° 82° 85° 90°
 106.6 109.4
 72 48
 92° 100°

16+65

110.3 110.1 110.1 109.0 108.2³ 108.3 108.9 106.4 104.8 103.8 109.1
 32 32 32 52 58 52 52 76 92 102 42
 100° 50° 43° 25° 42 82 25° 50° 81° 92°

16+80

112.6 111.1 109.6 108.9 108.2³ 108.3 108.7 109.2 108.0 103.4 103.0
 09 22 42 52 52 52 52 48 62 102 112
 70° 50° 25° 18° 18° 25° 50° 71° 80° 100°

17+00

113.1 110.8 110.0² 109.5 109.1 108.9
 09 32 42 42 42 52
 25° 10° 25° 50° 70°

Rod 4² — Flood water rose to App. Elev 110² along & from
 Sta. 15+90 - 17+00, Evidenced by drifts.

E.P. Chilton

		0.40	112.63	T.P.
10.60	124.23			
		3.49	120.74	T.P.
8.46	129.20			
		0.62	128.58	
			128.62	B.M.

2x2 60 Lt 17+30.

Re-X Section Sta 23+75 - 24+80

		132.81	B.M.
4.11	136.92		
		12.02	124.90 T.P.
0.60	125.50		
		11.36	114.14 T.P.
4.39	118.53		

23+75

24+00

24+17

24+25

24+26

24+33

E.P. Chilton
E. Radler
J. Thompson
Feb 28, 1927

9

R.P. P.O.T. 90' L.H. Sta 25+90

114.1 112.2 110.5 108.2 111.9 112.6 118.53 115.1 116.6
 42 63 82 83 60 58 52 31 27 32 12
 100° 88° 81° 72° 70° 50° 25° 7° 25° 50°

117.5 114.3 112.5 109.8 109.8 112 112.73 112.5 112.7 113.0 115.2 114.5 117.0
 12 42 6 87 87 72 58 62 52 52 32 42 15
 100° 80° 54° 50° 32° 25° 25° 41° 50° 72° 86° 100°

117.8 113.9 112.7 112.1 109.6 109.5 109.3 111.13 111.4 111.4 112.3 112.2 110.6 110.2
 02 46 58 62 82 9 92 71 71 71 62 63 72 83
 100° 75° 50° 37° 36° 25° 16° 25° 41° 52° 59° 75° 100°

118.3 115.4 114.1 113.1 112.1 110.5 109.3 109.13 110.4 111.1 111.1 111.4 110.5 109.9
 82 31 42 52 62 82 92 92 81 74 74 71 82 86
 90° 80° 70° 50° 29° 28° 25° 8° 20° 25° 50° 72° 100°

118.5 115.5 114.3 113.2 112.1 110.6 109.2 109.13 110.3 111.1 111.1 111.4 110.5 109.9
 02 32 42 52 62 72 92 92 82 72 72 71 82 86
 90° 80° 70° 50° 25° 11° 10° 8° 20° 25° 50° 73° 100°

118.5 116.8 114.8 114.0 113.9 113.0 112.1 111.3 109.8 109.03 108.9 110.5 110.8 109.6
 02 12 37 45 42 55 64 72 87 92 92 82 72 82
 90° 85° 75° 62° 50° 42° 25° 30° 21° 18° 25° 50° 100°

24+36

118.5 116.2 115.3 115.9 112.7 112.1 111.83 109.2 108.8 108.9 110.7 110.7 109.2
 0° 23° 32° 26° 58° 63° 72° 93° 91° 96° 78° 78° 93°
 87° 77° 62° 45° 33° 25° 3° 25° 29° 34° 50° 100°

24+45

116.5 116.2 116.5 113.9 112.8 111.73 110.7 108.7 108.5 110.1 110.4 109.2 108.7
 0° 23° 22° 52° 57° 68° 78° 98° 10° 82° 81° 93° 98° 111°
 89° 67° 46° 32° 25° 25° 32° 42° 43° 50° 100° 120° 130°

24+50

118.5 116.8 116.1 114.5 114.6 112.43 110.6 110.3 108.6 108.5 109.9 110.4 109.2 109.2
 0° 17° 24° 4° 42° 61° 72° 82° 92° 102° 86° 84° 93° 92° 110°
 69° 61° 46° 35° 25° 25° 27° 33° 45° 50° 56° 100° 110° 125°

24+60

120.1 117.3 116.1 117.3 117.6 113.3 112.98 111.5 110.7 108.4 108.3 109.7 109.5 107.4 107.4
 26° 54° 66° 54° 51° 96° 97° 113° 120° 143° 144° 130° 133° 153° 153°
 70° 50° 40° 25° 20° 30° 25° 41° 58° 59° 59° 100° 117° 132°

24+75

120.5 119.7 120.0 117.2 116.58 117.5 114.6 111.9 110.2 108.3 108.0 107.7
 2° 3° 27° 23° 41° 53° 82° 108° 125° 142° 147° 152°
 50° 31° 25° 20° 10° 25° 50° 62° 65° 100° 120°

24+80

122.6 120.78 120.3 117.7 115.9 113.4 110.7 110.9 107.8 107.9
 0° 12° 29° 50° 68° 93° 12° 118° 128° 148° 118°
 25° 8° 12° 25° 50° 65° 81° 87° 102° 115°

6.33 122.68

2.18 116.35

Red 10th Flood Water Elev. Appr. 112[±] along & as evidenced by drifts
epichilton

11.58 133.83

0.43 122.25 T.P.

1.08 132.75 T.P.

6.01 138.76

5.92 132.84

132.81 B.M.

R.P. R.O.T. 40' Lt. Sta. 25+90

INTERSECTION
EUCLID DIVISION & NATIONAL AVE.

132.81 B.M.

5.08 . 137.89

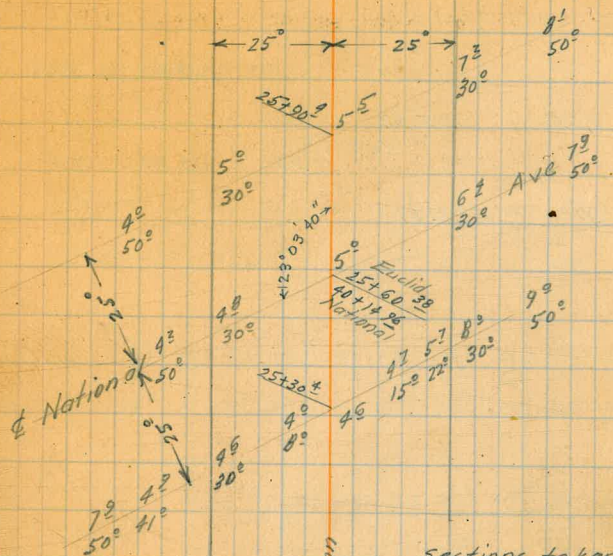
25+30⁴ N. Line National Ave

25+60³⁸ = 40+14²⁶ National Ave

25+90⁹ S. Line National

5.08 132.81

E.P. Chilton
E. Radier
J. Thompson
Feb 28, 1927



Euclid Division

sections taken parallel
to National Ave.

Re-X-Section Sta. 39+00-40+00

12
E. P. Chilton
E. Radner
J. Thompson
Feb 28 1927

125.22 B.M.
0.65 125.87
12.03 113.84 T.P.
1.97 115.81

39+00

39+25

39+50

39+69

39+72

39+79

39+83

2 x 2 75' Lt. Sta. 39+00

T 115.81 ✓

118.2 114.7 114.5 113.3 112.3 112.11 111.0 111.2 109.1 108.3
0⁵ 1² 1³ 2⁵ 3⁵ 3⁷ 4⁸ 4⁹ 6² 7⁵
100° 88° 63° 50° 25° 18° 25° 50° 100°

112.2 112.9 111.6 110.7 110.81 110.1 109.8 109.3 109.6 108.8
3⁶ 2⁹ 4³ 5² 5⁰ 5² 6⁰ 6⁵ 6³ 7⁰
100° 68° 50° 25° 6° 25° 38° 50° 100°

111.6 111.0 110.9 110.91 110.3 109.9 109.3 108.8 105.8 104.8 108.8
4³ 4⁸ 4⁹ 4² 5⁵ 5² 6⁵ 7⁰ 10² 11⁰ 7⁰
100° 50° 25° 5° 25° 50° 77° 92° 111° 115°
4:00 P.M. 2-28-27

111.6 T 117.21 ✓ 3-1-27 109.5
5⁹ 110.2 109.2 109.41 109.2 106.6 105.7 106.0 105.4 109.9
6² 7² 7⁸ 8⁰ 10⁶ 11⁵ 11⁷ 11³ 7³ 7²
100° 50° 25° 5° 8° 19° 25° 59° 66° 100°

111.1 110.3 109.9 109.7 106.3 106.0 106.3 105.6 109.4 110.4 109.7
6² 6³ 7³ 7⁵ 10³ 11³ 10⁹ 11⁸ 7⁸ 6⁸ 7⁵
100° 50° 25° 18° 9° 25° 46° 49° 60° 100°

111.2 110.7 106.8 106.4 105.8 111.7 110.8 111.0 112.2 110.8 109.7
6⁰ 6⁵ 10⁴ 10⁸ 11⁴ 5⁵ 6⁴ 6³ 5⁰ 6⁴ 7⁵
100° 75° 50° 25° 18° 25° 44° 50° 65° 100°

107.5 106.6 108.5 109.6 110.3 112.5 111.6 112.5 112.1 110.8 110.4
9⁷ 10⁶ 8⁷ 7⁶ 6³ 4⁷ 5⁶ 4⁷ 5² 6⁴ 6⁸
100° 38° 25° 22° 15° 25° 50° 63° 70° 100°

39+88

39+96

40+00

39+96

40+00

10.18

125.19

220

115.01

T.P.

0.00

125.19

125.22 B.M. started from

108.0 107.1 107.3 108.4 111.1 112.0 116.2 116.6 112.7 112.8 112.3 110.7 110.2
 9° 10° 9° 9° 6° 5° 1° 0° 4° 4° 4° 6° 7°
 100° 61° 50° 39° 28° 25° 5° 25° 50° 64° 71° 111°

108.7 108.4 111.7 112.6 114.7 115.7
 8° 9° 5° 4° 2° 1°
 100° 80° 70° 49° 25° 20°

112.4 113.1 116.6
 4° 4° 0°
 100° 50° 25°

Rod 6⁶ - Elev. 110⁶ App. Elev. flood water along
 & as evidenced by drifts.

125.19 ✓

120.4 120.3 114.4 113.0 113.2 112.9 111.2 111.9
 4° 4° 10° 12° 12° 12° 14° 13°
 5° 25° 39° 50° 62° 78° 110°

120.9 121.4 121.0 115.7 113.2 113.2 112.0 112.6
 4° 3° 4° 9° 12° 12° 13° 12°
 5° 25° 25° 44° 50° 75° 100°

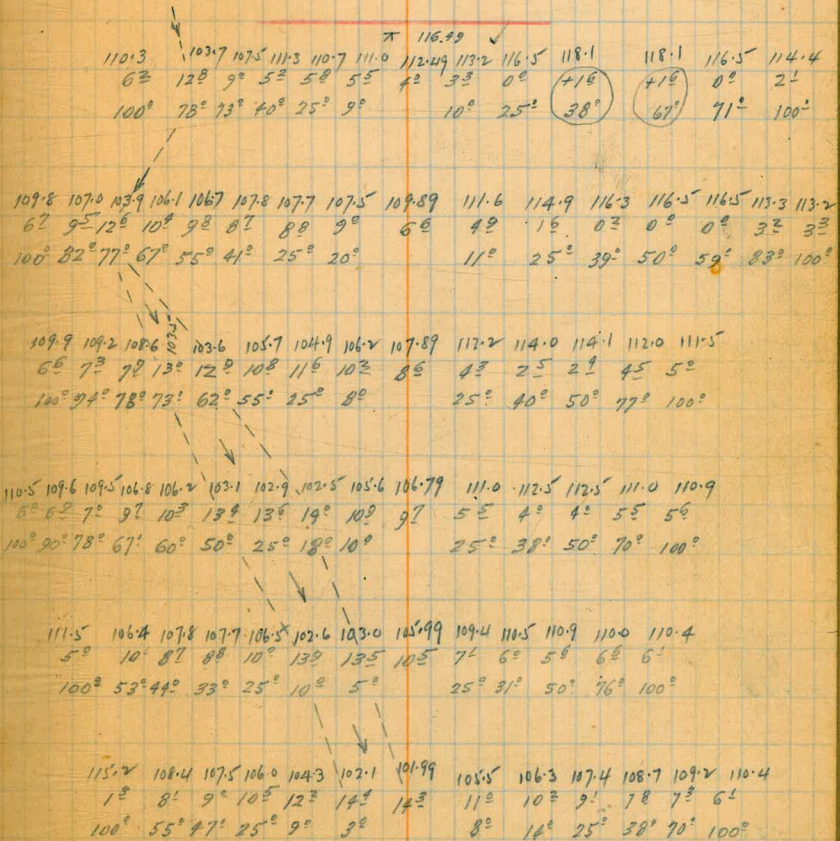
E.P. Chilton
 J. Thompson
 W. Bunker
 Mar. 1-1927

RE X-SECTION STA 50+00-52+00

E.P. Chiffon
J. Thompson
W. Binker
Mar. 1-27 14

			124.29	B.M.
6.18	130.47			
		11.58	118.89	T.P.
1.17	120.06			
		9.94	110.12	T.P.
6.37	116.49			
50+00				
50+20				
50+32				
50+40				
50+50				
50+65				

2 x 2 75' SW of Angle & Euclid produced



50+73

114.9 111.7 108.1 106.0 104.2 102.19 102.2 104.8 105.8 106.5 108.0 108.2 110.5
 7⁵ 4⁸ 8⁸ 10⁵ 12³ 14² 14² 11⁷ 10⁷ 10⁸ 8⁵ 8³ 6²
 100° 71° 50° 25° 3° 2° 11° 15° 25° 40° 50° 100°

50+76

117.9 113.4 112.3 107.4 106.1 103.89 102.0 101.8 105.4 106.0 107.8 108.6 110.3
 0⁶ 3² 4³ 9¹ 10² 12⁶ 14⁵ 14⁷ 11² 10⁵ 8⁷ 7⁹ 6³
 100° 82° 61° 43° 25° 2° 7° 16° 25° 4° 69° 100°

50+96

116.2 113.7 114.2 113.7 107.5 107.5 107.7 104.89 103.5 102.4 101.5 101.5 104.4 106.0 109.3
 0³ 2⁸ 2³ 2⁸ 9⁰ 9⁰ 8⁸ 11⁶ 13⁰ 14² 15⁰ 15⁰ 12² 10⁵ 7²
 100° 80° 69° 56° 34° 25° 21° 7° 14° 19° 21° 25° 50° 100°

51+06

117.0 114.2 113.3 107.8 106.7 106.19 103.1 102.8 101.1 104.2 104.7 109.8
 40⁵ 2³ 3³ 8⁷ 9⁸ 10² 13² 13² 15⁴ 12³ 11⁸ 6⁷
 100° 77° 55° 30° 25° 10° 16° 20° 25° 38° 100°

51+20

116.5 114.1 116.6 106.6 105.79 103.4 100.7 100.7 104.2 104.0 106.6 106.7
 0⁰ 2⁴ 5⁹ 9² 10⁷ 13¹ 15³ 15³ 12² 12⁵ 9⁹ 9⁹
 87° 65° 50° 25° 7° 14° 17° 25° 50° 89° 100°

51+28

115.6 112.7 107.1 104.8 103.0 100.7 100.7 103.2 104.0 104.2 107.5 108.0
 0³ 3⁸ 9⁹ 11⁷ 13² 15⁸ 15⁸ 13³ 12⁵ 12² 9⁰ 8⁵
 70° 42° 25° 11° 14° 17° 21° 25° 50° 86° 100°

51+40

116.5 116.5 109.8 108.9 107.09 103.8 100.4 100.5 101.5 103.3 103.1 109.8 106.0
 0⁰ 0⁰ 6⁷ 7⁶ 9² 12² 16⁴ 16⁰ 15⁹ 13² 13² 12² 10⁵
 68° 43° 25° 22° 14° 21° 25° 28° 36° 50° 65° 100°

51+50

117.5 116.5 111.0 109.5 108.0 108.0 107.8 107.0 103.4 102.5 100.9 100.7 102.9 102.9
 41⁰ 0⁰ 5⁵ 7⁰ 8⁵ 8⁵ 8⁷ 9⁵ 13² 14⁰ 15⁸ 15⁸ 13⁶ 13⁶
 83° 42° 25° 22° 7° 7° 14° 25° 30° 36° 42° 50° 62°
 105.0
 115°
 100°

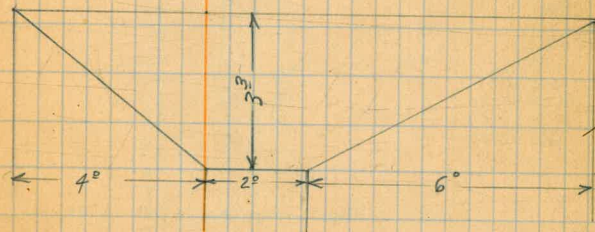
51+75

52+00

		2.41	114.08	T.P.
10.38	124.46			
		174	122.72	T.P.
9.57	132.29			
		8.01	124.28	
			129.29	R.M. started from

117.6	116.5	114.7	109.19	107.4	105.5	103.2	102.5	99.0	102.1	102.9
47.2	0°	18	7°	9°	11°	13°	14°	17°	14°	13°
50°		25°		14°	25°	42°	58°	66°	79°	100°

122.6	118.6	116.19	111.9	108.5	106.9	103.7	98.3	101.0	100.1
46.2	42.2	0°	4°	8°	9°	12°	18°	15°	16°
50°	25°		25°	50°	61°	100°	117°	129°	145°



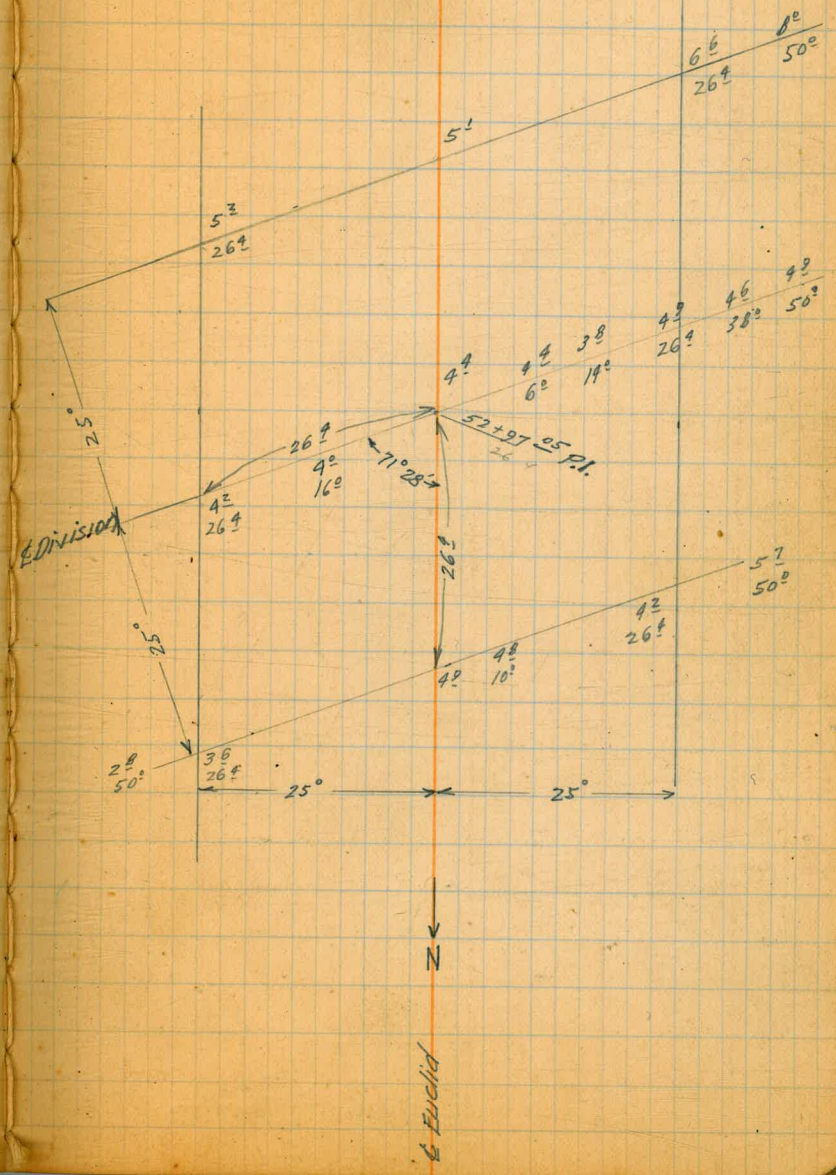
Appr. section of ditch which carried
flood waters Feb 14-16, Near Sta. 50+65

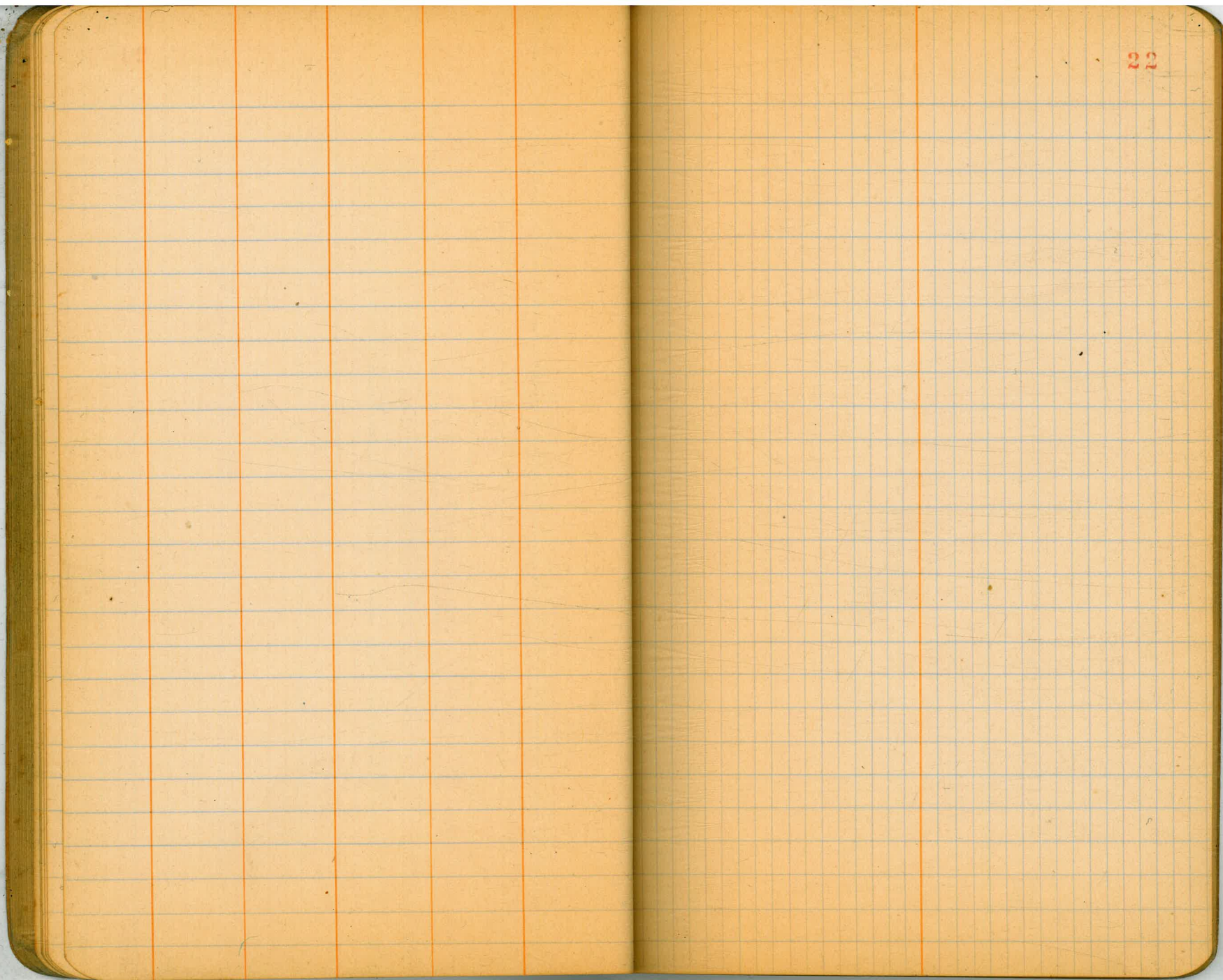
INTERSECTION
EUCLID AND DIVISION

12429 EM

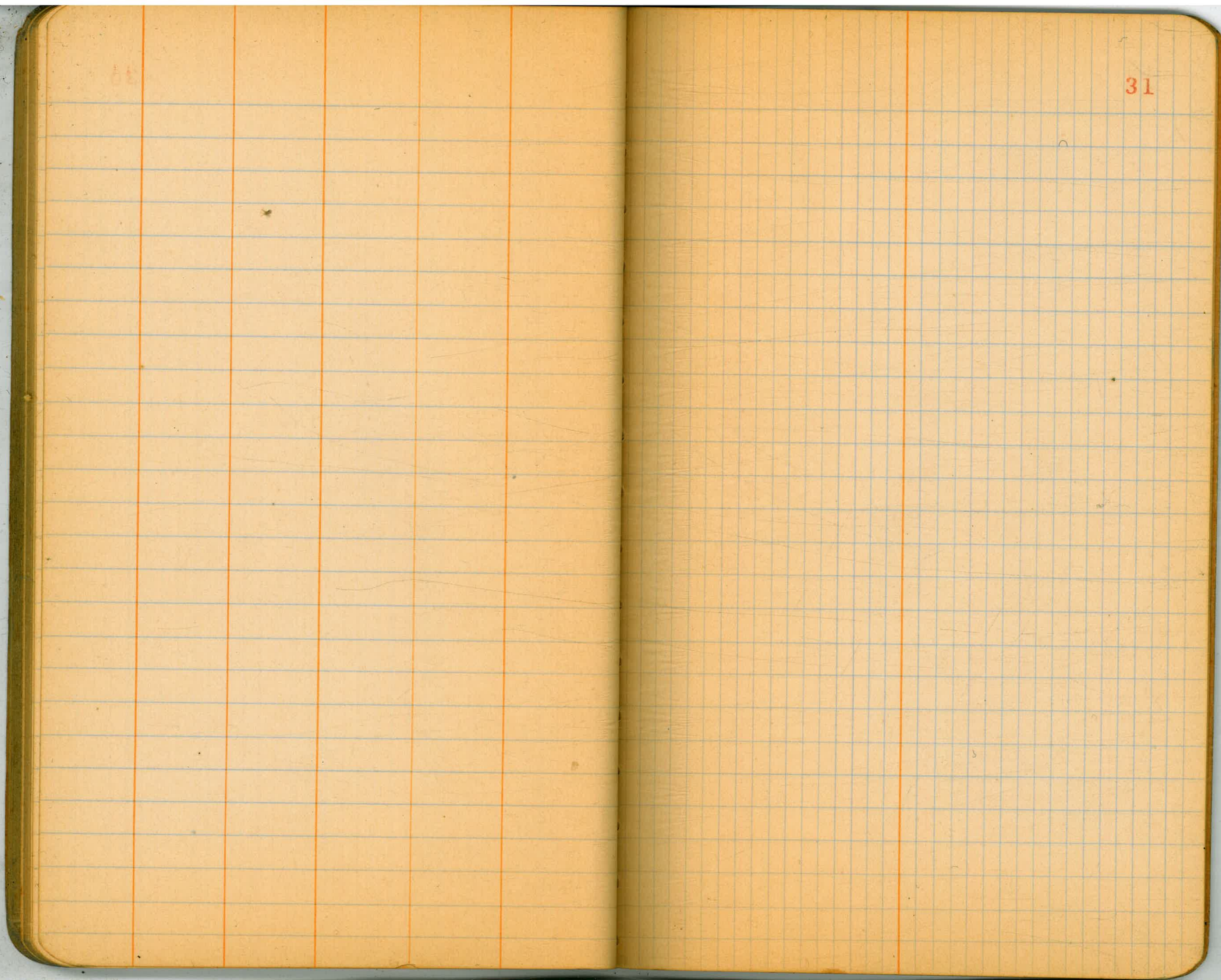
8.01 132.30

E. P. Chilton
 J. Thompson
 W. Bunker
 Mar. 1, 1927





22



31

