

NAME FAIRMOUNT AVE.

BOOK #1

Class _____ Course _____ Party _____

Alignment.

#58

1892

FIELD NOTES

No. 403P

ESPECIALLY ADAPTED
TO THE USE OF
ENGINEERING STUDENTS

EUGENE DIETZGEN Co.

MANUFACTURERS

DRAWING MATERIALS

MATHEMATICAL AND SURVEYING INSTRUMENTS

MEASURING TAPES

CHICAGO SAN FRANCISCO NEW YORK
NEW ORLEANS PITTSBURGH

FAIRMOUNT AVE.

Book #1

MICROFILMED

DEC 30 1964

Property of
Watson-Valle & Gough
508 Spreckles Bldg.
San Diego, Calif.

INDEX -

FAIRMOUNT AVENUE
SURVEY.

	Page -
Alignment "A" Line 0+00 to	1 - 10
" " "B" Line	11 - 13
" " "X" Line	14 - 16
" " "F" Line	20 -
PROFILE "F" Line	21 - 22

Sta.	Dist.	Angles Azimuth	Def.	Ties
------	-------	-------------------	------	------

7+76.65	X	200° 22'	20° 22' R	
		+ 40° 44'		



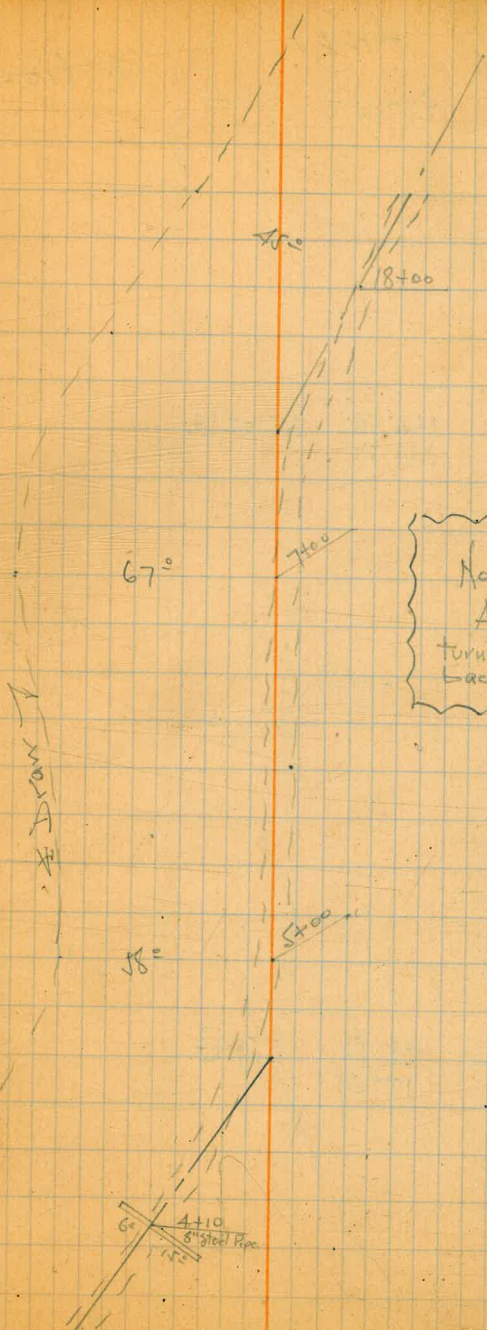
296.93

276.93

4+79.72 P.I.	X	170° 09'	9° 51' L	
		34° 17'		

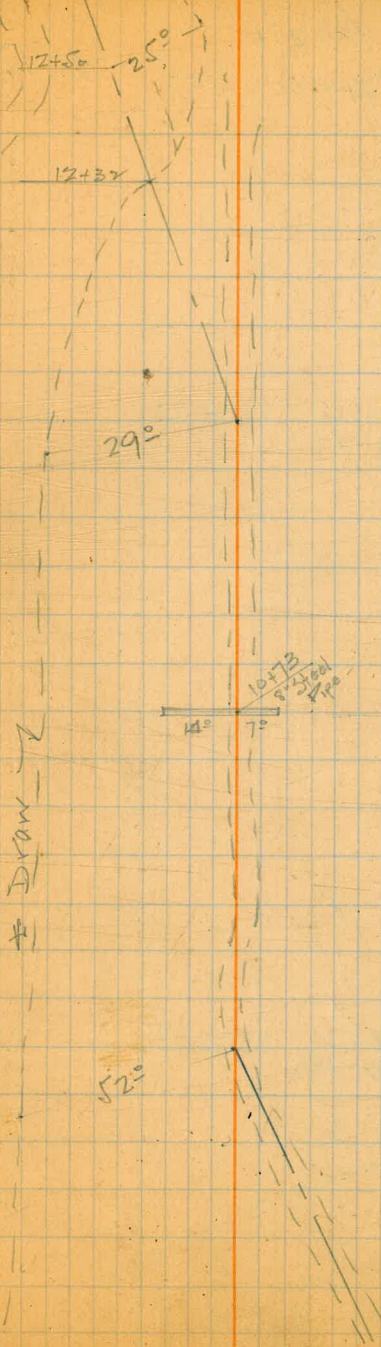
167.02

27



Note:
All azimuth angles
turned clockwise from
back sight.

Sta.	Dist.	Angle Azimuth Def.	Ties -
11+59.67 R.I.	157.67'	144°58' 289°57'	35°02' Lt.
10+02.00	225.35'	188°59' 17°59'	8°59' Rt.



Sta.	Dist	Angle Azimuth	Def	± Ties -
------	------	------------------	-----	----------

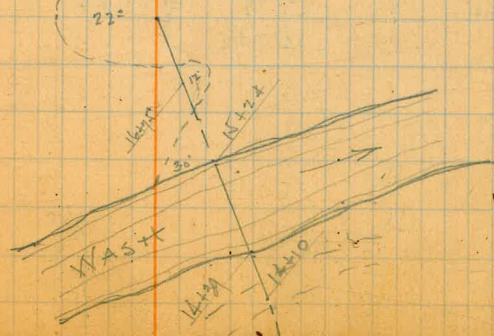
18+88.35 P.I.	103.67	197° 14' +34° 27'	17° 14' Rt.	
------------------	--------	----------------------	-------------	--

17+84.68 P.I.	625.01	205° 25' +50° 49½'	25° 25' Rt.	
------------------	--------	-----------------------	-------------	--

4

Heavy
Brush

MARK



Sta.	Dist.	Angle	Def.	Tie-
------	-------	-------	------	------

25+92.42
 21+92.42 =
 P.O.T.
 ↓

Equation -

23+29.14
 P.O.T.

537.66

21+60.00
 P.O.T.

20+29.40
 P.T.

141.05

187°17'
 + 14°34'
 7.17 Rt.

Summit -

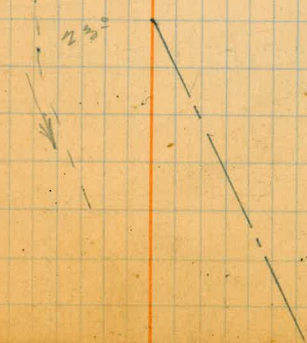
Heavy Brush -

X Line
 See Pg. 14

21+00
 P.O.T.

Escarpment

25°



Sta	Dist.	Angles		Ties
		Az.	Def.	
37+53.89 P.I.	X	213° 05' + 68° 09'	33° 05' R.	

209.34
208.20 Re-chained

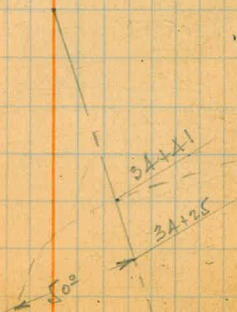
35+44.55 P.I.	X	194° 19' + 29° 38'	14° 19' R.	
------------------	---	-----------------------	------------	--

465.94

Water coming down
small wash at 40+28
should be cut off where
it leaves main wash -
No Culvert Required.

Brush

Install 18" Pipe
Sta. 34+40



Sta.	Dist	Angle		± Ties -
		Az	Def	

48+41.58 P.I.	134°38'	15°22'±	
	269°16'±		

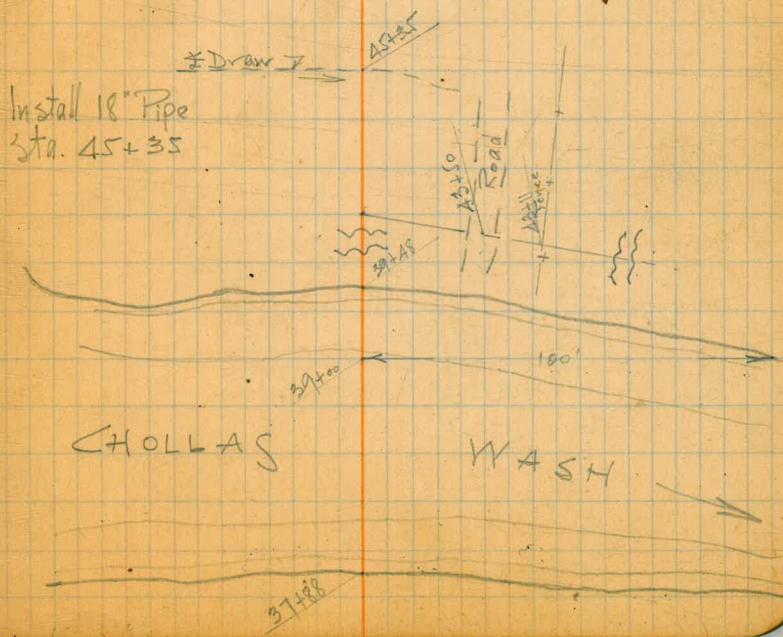
45+24.58
P.O.T.

458.58

43+83.00 P.I.	282°38'	102°38'±	
	+205°17'		

629.11

8.



Sta. Dist. Angle Az. Def. # Ties -

53+46.45
P.I. | 216° 49' + 73° 37' | 36° 29' R.

52+71 ±
P.O.T.

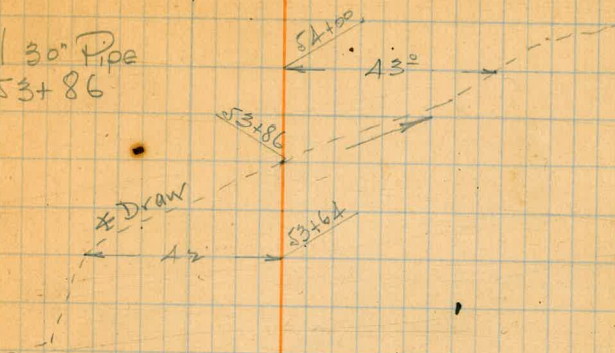
196.45'

51+50.00
P.I. | 156° 25' + 312° 50' | 23° 35' L.

308.42'

9

Install 30" Pipe
Sta 53+86



Found old 2x2
hub with tick

Saddle -



56+6083



55+85.75
P.O.T.

164.38

314.38

Road

Traveled

Lt

14

13

Found 2 x 2 3/4" stick standing
high -
No tack -

54.50

Grove Road

Old Lemon

Sta. Dist. Angle Az. Def. Tres-

3+75.10
P.I. 17° 13' 9" 47' Lt.
340° 27'

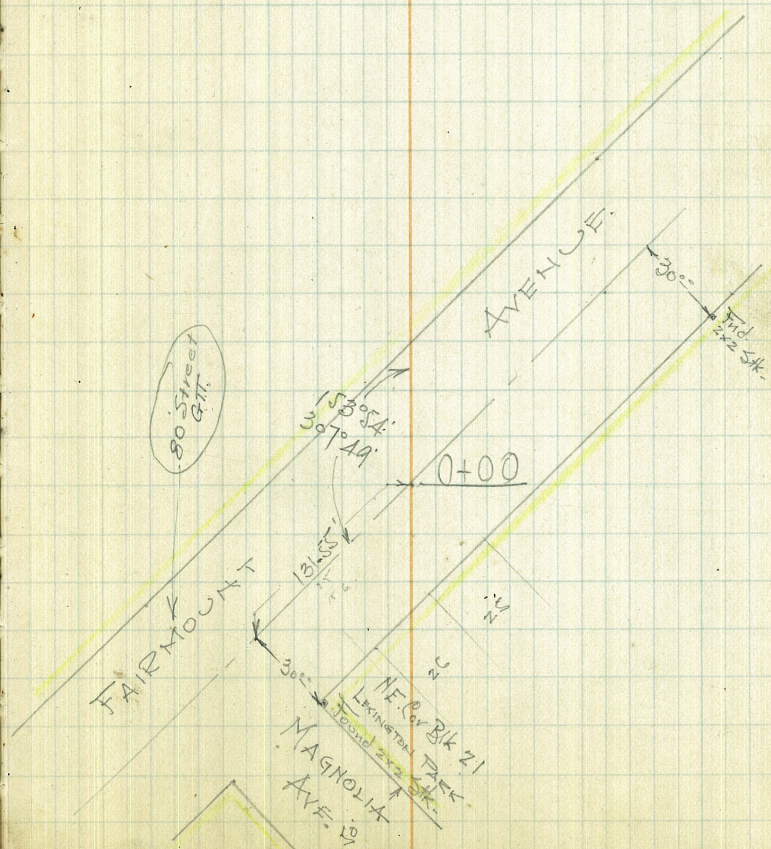
375.10

6/5/26,
Coote
Giffon
Key
Spansel

0+00 153° 54' 26" 06' Lt.
307° 49'

FAIRMOUNT AVENUE.

"B" Line -



Sta. Dist. Angle
Az. Def. Ties -

12

14+22.65
P.O.T.

791.46

11+91.65
P.O.T.

8+46.80

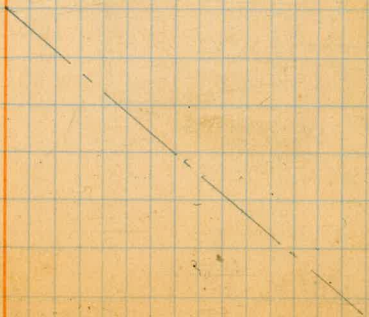
Y

212°59'
+65°57'

32°59' R.

+

471.70



Sta.	Dist.	Angle	Def.	Ties-
		Az.		

A Line ↑				
14 + 15 = 10	↑	122° 49'	57° 11' Lt.	+
16 + 38.26 =	↑	245° 37½'		
↓				

Sta.	Dist.	Angle		Ties
		Az.	Def.	

25+50.00 P.I.	X	162° 37'	17° 23' Lt.	
		325° 14'		

24+00
P.O.T.

450.00

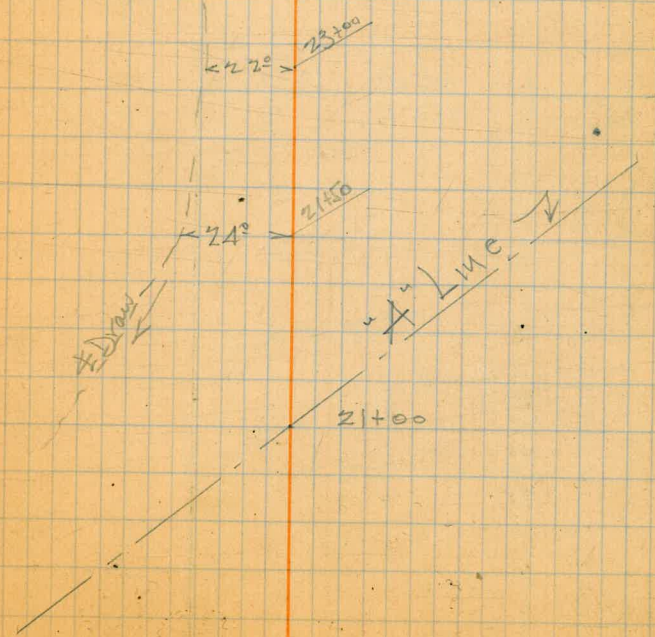
21+00.00 P.I.	Y	140° 00'	40° 00' Lt.	
		280° 01'		

X Line

20+29.40
P.I.

14

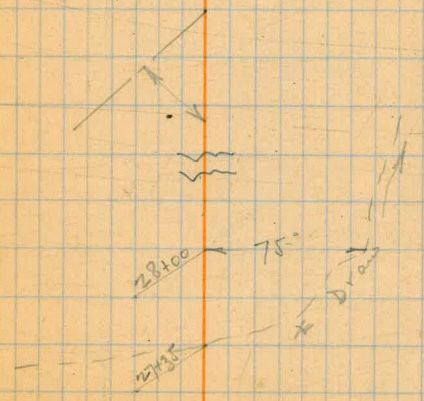
Saddle -



Sta.	Dist.	Angle		Ties
		Az.	Def.	

3145.00 P.I.	196.43	238° 12'	18° 12' R.	
		+116° 25'		

2948.57 P.I.	368.57	126° 08'	53° 52' Lt.	
		252° 16'		



Sta Dist

Angle
AZ. Def.

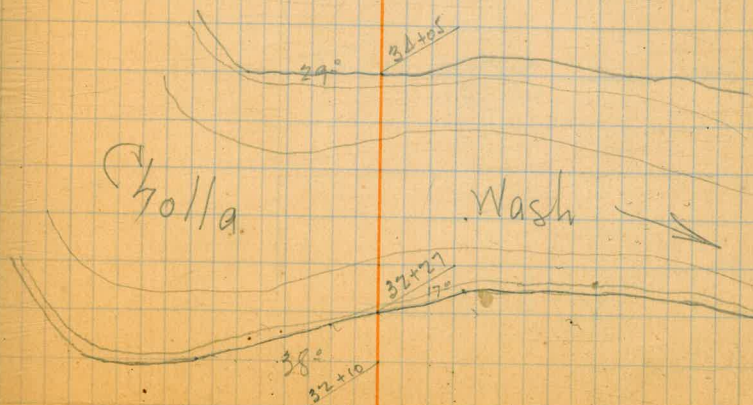
16

45+84.58
P.O.T.

↑
43+83.00
39+44.75 =
P.I.
↓

274° 31' 94° 31' R.
+189° 02'

729.75



Sta	Dist	Angle	Def.	Ties
		Az.		

28+87.95
P.O.T.

28+35.90 P.I.		243°36'	63°36' Rt.	
		+127°12'		

6/8/26
Coote
Clifton
Key
Spanse

285

25+50.00 P.I. X-Line		200°54'	20°54' Rt.	
		+41°48'		

24+00

Y-Line

Sta	Dist	Angle		Tie-
		Az.	Def.	

36+81.00	—	89° 22'	90° 38' L	
P.I.		178° 45'		

846

32+18.00
P.O.T.

19

STA	DIST	ANGLE	DEF.	F Line	TIES
-----	------	-------	------	--------	------

8+42.64		150°38'	29°22' L		
0+00.32	162.47	301°16'			

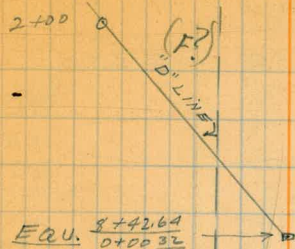
6+80.17		P.O.T.	FD. CON. MON.		
---------	--	--------	---------------	--	--

680.17

0+00			FD. CON. MON.		
------	--	--	---------------	--	--

7/15/26
 TREADWELL
 PART }
 ROODIER
 RUPLINGER
 GLOVER

20



MADE INT. WITH 0+00
 "D"LINE

LAUREL

6+80.17 @ 40.10

50.0 PINE ST.

FAIRMOUNT AVE.

FAIRMOUNT AVE.

MAPLE

HUB

SUMAC

0+00 @ 40.20

500 MAGNOLIA DRIVE

HUB

PROFILE "F" LINE

STA +S T -S Elev.

4+00

+50

3+00

+50

2+00

+80

+70

+50

1+00

+50

0+00

B.M. A.12

281.60 T

277.48

7/15/26
PARTY
TREADWELL
ROODIER
RUPLINGER T
GROVER

E.
11.8
15

64.3
17.3
15

61.9
19.7
15

61.2
20.4
10

64.9
16.7
10

74.7
6.9
15

75.0
6.6
15

281.6

W.
11.9
9.7

70.0
11.6

66.5
15.1

66.4
15.2

70.7
10.9

72.0
9.6

76.3
5.3

71.0
4.6

78.2
3.4

79.7
1.9

80.6
1.0

W.
8.2
15

73.6
8.0
15

73.8
7.8
15

74.3
7.3
15

75.6
6.0
7.0

76.2
5.4
12

76.5
5.1
15

(E) ♀ (W)

NOTE

CROSSSECTION
FROM STA. 1+70
TO STA. 5+00

21

35' LEFT STA. 0+00 "B" LINE

14264 = 0+00 32" D" LINE

8500

+50

7400

7801² com. Mon. 5.39 \checkmark 572.43

+50

6400

+50

5400

4450

4.46

277.82 \checkmark

8.24 273.36 \checkmark

281.60 \checkmark

277.8

22

262.5
15.3
562.5 \checkmark
10.4

70.8
7.0

72.3
5.5

72.4
5.4

72.5
5.3

71.5
6.3

71.4
6.40

71.3
6.5

71.0
6.80

SET. B.M.

¢ PINE ST.

69.0
8.8
15

68.2
9.6
15

E

¢

72.3
5.5
12

72.9
4.90
15

W

STADIA TO SHOW CANYON BEYOND
"F" LINE PRODUCED

STA. HORIZ. VERT. R.I.R. DIST. ELEV.

③	0°00'	-11°5'	2.92	2.68.0	-56'
④	6°14'	-17°00'	2.66		
⑤	7°48'LT	-16°02'	2.06		
⑥	6°11'LT	-23°15'	0.70		
⑦	21°11'RT	-10°45'	0.70	65.0	10.3
8+72		HI =	⑤65.20		
			v		

8+42⁶⁹ POT.

0+00

ON OLD ROAD WHERE "A" LINE RUNS

8+72

0°00'

0+00

24

25

26

27

- 29

30

31

32

34

35

8142.64

6780.17

1462.47

442.64

130.27

1.28

131.55

153-58

307-49

307-49

H. E. C. after

40+29

13.89

3.60

10.29

1.81

5.06

3x3 SA Hunter Kelly Dr on North + 14(?) on East.

ag-22-36

211-09

418-38

16

78-33

53+46.45

80

54+26.45

56+60.33

53+26.45

3.74.38

35.55

260

695-55

218-46

127-14

10

46.75

25

3+12.70

4+19.72

32.98

1.67.02

48 21 54

53+86 2

53+65 1102

4+19.72

2+26.25

4 96.93

10+02.00

2 25.35

11+59.67

1 37.67

17+84.68

6 25.01

11+81.35

1 03.67

20+29.10

1 41.05

22+29.14

2 99.74

20+29.10

26+67.06

6 37.66

29+25.38

3 17.30

30+78.61

1 00.25

3+15.10

8+26.80

4 71.70

16+38.26

7 91.46

21+00

20+50

1.50

29+16.57

3 68.57

31+15.00

1 96.43

29+44.75

7 29.75

30+78.61

35+24.55

4 15.94

37+53.89

4 09.34

43+53.00

6 29.11

18+21.55

4 53.58

51+50.00

3 06.42

53+46.45

1 96.45

56+60.33

2 64.38