

NAME FAIRMOUNT AVE

Book # 2

Class _____ Course _____ Party _____

BMS

59

1893

59

FIELD NOTES

No. 403P

ESPECIALLY ADAPTED

TO THE USE OF

ENGINEERING STUDENTS

EUGENE DIETZGEN Co.

MANUFACTURERS

DRAWING MATERIALS

MATHEMATICAL AND SURVEYING INSTRUMENTS

MEASURING TAPES

CHICAGO SAN FRANCISCO NEW YORK
NEW ORLEANS PITTSBURGH

FAIRMOUNT AVE.

BMS -

Book # 2

MICROFILMED

DEC 30 1964

Property of
Watson-Valle & Gough
508 Spreckles Bldg
San Diego -

- INDEX -

Survey of
FAIRMOUNT AVENUE.

	Page
Bench Levels "A" Line	1-4
" " "X" "	5
" " "B" "	6-7
Profile "B" Line -	9-12
" " "X" "	13-19
"D" Line &	20
Profile "D" Line	21-25

"A" Line -

Sta	+	H.I	-	Elev.
B.M.	5.05	363.35		358.30
	4.46	363.41	4.40	358.95
	4.70	363.97	4.14	359.27
	4.31	362.70	5.58	358.39
	2.52	359.17	6.05	356.65
	0.86	352.70	7.33	351.84
	1.57	347.64	6.63	346.07
	0.30	339.18	8.76	338.88
	0.17	327.65	11.70	327.48
	1.50	319.45	9.70	317.95
	0.34	308.83	10.96	308.49
	4.02	303.57	9.28	299.55
	2.05	298.53	7.09	296.48
	0.46	287.07	11.92	286.61
	4.32	284.51	6.88	280.19
	1.43	275.23	10.71	273.80
	1.70	266.28	10.65	264.58
B.M.	2.77	264.56	4.49	261.79
	1.00	253.91	11.65	252.91
	0.34	242.69	11.56	242.35
	0.10	232.20	10.59	232.10
	0.18	221.71	10.67	221.53
	0.22	210.02	11.91	209.80
	0.13	199.17	10.98	199.04
	2.56	190.46	11.27	187.90

June - 4 - 1926

Clifton - Inst
Key - Rock

N.W.
City B.M. ^{N.W.} Cor. Orange & Fairmont ✓

On curb across street from store.

B.M. 25' Pt. Sta. 0+00. A. Line

Sta	+	H.I	-	Elev.
		190.46		
B.M.	2.02	187.91	4.57	185.89
	0.12	179.43	8.60	179.31 ✓
	0.17	168.33	11.27	168.16
	0.16	157.17	11.32	157.01
B.M. #19	3.69	150.06	10.80	146.37
	9.59	155.30	4.35	145.71
	10.12	164.42	1.00	154.30
	10.90	174.02	1.30	163.12
	7.10	180.55	0.57	173.45
B.M. #18	9.91	186.69	3.77	176.78
	10.10	195.59	1.20	185.49
	11.00	205.86	0.73	194.86
B.M.	11.71	216.79	0.78	205.08
	10.97	227.19	0.57	216.22
	11.34	238.11	0.47	226.77
	10.00	247.73	0.38	237.73
B.M. #17	0.72	241.42	7.03	240.70 ✓
	2.01	232.37	11.06	230.36
	0.44	222.29	10.52	221.85
	0.12	210.34	12.07	210.22
B.M. #16			8.72	201.62 ✓

B.M. on 8" Iron Pipe L. Sta 9+4 Line

B.M. { on end of hub. N.W. Cor
Cal. White mixing machine

B.M. on P.I. Hub. Sta 17+84 ⁶⁸

B.M. on P.I. Hub. Sta. 21+00

B.M. on P.O.T Hub Sta 24+92 ⁹²

B.M. on P.I Hub Sta 29+78 ³⁶

Sta	+	H-I	-	Elev
	3.66	205.28		201.62
	1.68	196.25	10.71	184.57
	1.15	186.67	10.73	185.52
	0.96	177.29	10.34	176.33
B.M.			8.32	168.97

June 5-1926

B.M	0.10	169.07		168.97
	0.87	158.33	11.61	157.46
	0.38	148.81	9.90	148.43
	6.25	149.26	5.80	143.01
B.M.#15	2.98	149.26	2.98	146.28
	3.89	141.05	12.10	137.16
	8.27	148.92	0.40	140.65
B.M.#14	9.98	151.60	7.30	141.62
	8.48	159.95	0.13	151.47
	10.72	169.49	1.18	158.77
	10.39	178.00	1.88	167.61
	10.97	188.41	0.56	177.44
	11.41	199.50	0.32	188.09
	11.84	210.86	0.48	199.02
	8.39	218.07	1.18	209.68
B.M	6.70	216.42	8.35	209.72

M.B. on P.I. hub Sta 35+44.55

Sta - 35+44.55 New Sta
 2x2 Hub on E 147+53.38

B.M. Hub 40' L Sta ^{PI} 37+53.89

B.M. Hub. 40' L P.I. Sta 43+83.2

B.M. 40' R. Sta 52+50

Sta	+	H.I	-	Elev
12.19		216.42	0.74	215.68 ✓
12.19		227.87	1	
10.85		237.67	1.05	226.82
2.00		232.91	6.76	230.91
			7.70	225.21

224.31

4

Elev. on Bk = 224.31 Bk# 72/12

Checked twice & find Elev. to be 225.21

This Bk is on Mason's Road -

6/9/26

This Bk. is not correct
See check on Euclid Ave
Bk# 13. See Bk# 1, Pg. 19

Sta	X	Line	H.I.	-	Elev.
B.M.	7.62		212.70		205.08
	11.63		222.47	1.86	210.84
	10.95		232.65	0.77	221.70
	10.92		242.43	1.14	231.51
	5.51		247.94	0.00	242.43
B.M.	1.80		244.07	5.67	242.27
	0.94		233.64	11.37	232.70
	0.68		222.79	11.53	222.11
	0.07		211.55	11.31	211.48
	0.69		200.59	11.62	199.93
B.M.	0.06		197.35	3.30	197.29
	1.29		187.21	11.43	185.92
	0.91		176.88	11.24	175.97
	1.30		167.69	10.49	166.39
	0.36		157.47	10.58	157.11
Btu				11.20	146.27 146.28

B.M. Sta 21. F⁰⁰ - Page 2

B.M. P.I. Hub. Sta. 25+50

B.M. P.I. Hub 29+18.52

On Hub 40' H. 43+83 = (From P₀. 3)
(-A Line)

41.62

" B Line B.M.S

	+	Hl.	-	El.
Btu				261.79
	8.78	270.57	0.15	270.42
	10.46	280.88		
Btu #21			3.40	277.48
	7.89	285.37	0.50	275.87
	2.55	278.42	11.87	266.55
	0.54	267.09	11.54	255.55
	0.41	255.96	11.45	244.51
	0.22	244.73	11.51	233.22 ✓
	0.32	233.54	11.51	222.03
	0.25	222.28	11.02	211.26
	2.86	214.12		
Btu			6.42	207.70
	1.61	209.31		

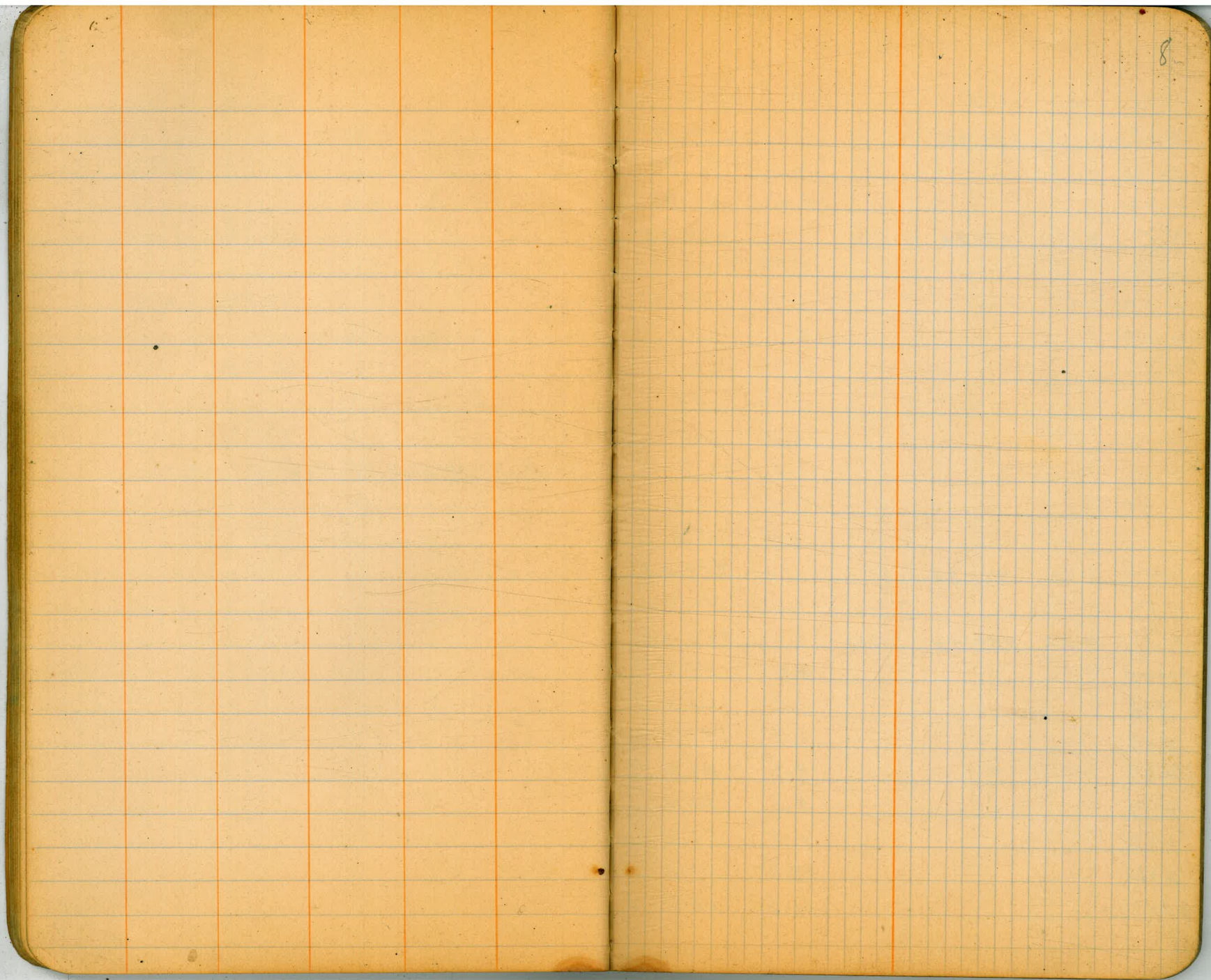
25' Rt. 0+00 "A" Line - @ Hub

On Hub 35' Lt. 0+00 "B" Line -

On Hub ± 8+46.80

209.31
0.89 198.19
0.67 187.42
0.94 177.26
1.91 167.76
0.35 157.24
12.01 197.30
11.44 186.75
11.10 176.32
11.41 165.85
10.87 156.89
11.17 146.07 146.37

7
On B.M. on Hub of Mixing Machine



Profile of "B" Line

Sta	+ H.I	- Int.	Elev.	
B.M	3.74	281.22	277.48	
0+00		4.3	76.9	
+ 22		5.4	75.8	
T.P	2.51	271.84	11.89	269.33
+ 41		6.1	65.7	
+ 50		6.7	65.1	
+ 68		7.1	64.7	
+ 86		4.7	67.1	
1+00		6.0	65.8	
1+14		10.0	61.8	
+ 20		16.3	55.5	
+ 39		11.3	60.5	
+ 50		13.5	58.3	
T.P	0.94	261.37	11.41	260.43
+ 71		1.4	59.9	
T.P	3.20	259.54	5.03	256.34
2+00		3.2	56.3	
+ 08		5.0	54.5	
+ 13		7.7	51.8	
+ 27		3.3	56.2	
+ 50		9.6	49.9	
+ 78		9.5	50.0	
+ 86		12.2	47.3	
3+00		11.0	48.5	

B.M. on Hub 35' L Sta 00 B Line

Sta	+	H.I	-	Int	Elev
3+50		259.54		9.4	50.1
T.H.75				11.0	48.5
T.P	0.86	249.30	11.10		248.44
4+00				4.2	45.1
+14				6.3	43.0
T.P	0.72	238.68	11.34		237.96
4+50				7.4	31.2
+64				14.8	23.8
+92				8.6	30.0
5+00				10.2	28.4
+17				13.8	24.8
+41				12.7	25.9
T.P	0.84	228.44	11.08		227.60
5+50				4.2	24.2
+67				7.7	20.7
+90				5.4	23.0
6+00				5.6	22.8
+50				10.7	17.7
+58				13.3	15.1
T.P	1.75	218.82	11.37		217.07
7+00				6.3	12.5
+07				6.2	12.6
+10				9.0	9.8
+20				5.0	13.8

✓

Sta	+	H.I	-	Int	Elev
7+50		218.82		8.1	10.7
+71				11.9	206.9
+83				11.9	6.9
8+00				13.9	4.9
+10				14.0	4.8
+17				15.4	3.4
+32				10.5	8.3
8+46.80				11.1	207.7
T.P.	1.49	209.15	11.16		207.66
8+89				11.7	197.4
9+00				11.4	97.7
+10				10.1	99.0
T.P.	0.16	197.65	11.66		197.49
9+37				8.3	89.3
9+50				10.6	87.0
+66				7.1	90.5
10+00				7.0	90.6
+27				12.4	85.2
+50				10.8	86.8
+76				13.1	84.5
T.P.	0.74	186.97	11.42		186.23
11+00				8.1	78.8
+22				5.0	81.9
11+50				9.6	77.3

CK: on B.M. 8+46.80 Elev. 207.70

Sta	+	H.I	-	Int.	Elev
11+74		186.97		7.5	79.4
12+00				9.7	77.2
T.P	1.26	176.67	11.56		175.41
12+50				5.3	72.3
+ 80				6.8	69.8
13+00				9.8	66.8
T.P	2.22	167.31	11.58		165.09
13+43				7.9	59.4
+46				9.7	57.6
+50				8.1	59.2
+90				5.5	61.8
14+10				2.8	64.5
+32				3.3	62.0
+41				4.9	62.4
T.P	0.84	156.49	11.66		155.65
+71				3.3	58.1
15+00				8.5	47.9
+50				10.0	46.4
16+00				11.5	44.9
+38 ³⁶				13.0	43.5
T.P	4.88	156.54	4.83		151.66
B.M			10.25		146.29

A 14+15.40

G.T.T.

B.M. on Hub. of Mixing Machine
Elev 146.37

"X" LINE.

1 Btu

12.16 217.24

205.08 ✓

21+40

22

9.96 226.77

0.43 216.81 ✓

+50

23

11.54 237.89

0.42 226.35 ✓

+50

11.12 248.69

0.32 237.57 ✓

24

+50

Btu ent Hub 21400 X "A" Line - Bk 2, Pg 2

217.2

6/10/26
 Coate
 Clifton
 Kay
 Spausel-

203.9

13.3

210.3

6.9

217.7

9.1

226.2

0.6

233.9

4.0

238.3

10.4

242.0

6.7

226.8

237.9

248.7

218.69

24+86

B

25

Z

+50

Btu

6.40 247.79 242.27 On Hub ± 25+50

+80

+

0.00

237.15 ✓

11.54 237.15 ✓

26

+18

+

0.48

226.01 ✓

11.62 225.53 ✓

+50

0.62

214.92 ✓

11.91 214.10 ✓

0.68

203.39 ✓

12.01 202.71 ✓

4.3 2444

248.7

14

4.4 2443

6.4 2423

10.1 238.6

237.2

4.0 233.2

9.8 227.4

226.0

12.5 213.5

2A 27

203.39

0.39

✓ 191.88

11.90

✓ 191.49 ✓

+15

+34

B

+50

+

28

Z

11.36

✓ 202.39

0.85

✓ 191.03 ✓

+19

+1

+50

+

+95

192.2

11.2

186.3

✓ 5

177.7

14.2

180.7

11.2

191.8

0.80

194.5

7.9

196.6

5.8

201.6

0.8

203.4

15

191.9

202.4

Blu 202.39 ✓ 497 197.42 ✓ 197.29 Hub # 29+18.57

1.10 198.39
29+18.57

+50

+66

1.86 188.12 ✓ 12.13 186.26 ✓

30

0.16 176.03 12.25 175.87 ✓

+50

+73

1.20 165.31 ✓ 11.92 164.11 ✓

31+15
P.I.

See Pg 5

198.4

1.1 197.3

4.1 194.3

7.4 191.0

7.0 180.1

4.0 184.1

7.7 180.4

3.3 162.0

188.1

165.3

731+50
165.31
-
✓
0.92 ✓ 154.29
32 11.94 153.37 ✓

+25
Bm

1.60 149.88
5.08 141.28

+41

+56

33

+14

8.03 146.26 146.28
11.68 136.20

Autub. 40 Lt 37+3889

156.9
84
165.3
17

27 151.6
149.4

1.9
"A" line

GTI.

70

100

81

77

141.28

333+19

+50

+60

+93

34+04

+11

+50

4.30 140.73

+96

4.85 136.43

97

98

71

73

87

55

47

45

14073

35+07

+14

+50

36

+50

5.11 142.39

3.45 137.28

37

+50

38

+14.75
-23.42
Bll

0.73 141.66 141.67

~~72~~

~~54~~

~~51~~

~~43~~

~~42~~

~~56~~

~~52~~

~~39~~

13

Sta.	Dist.	Angle Az. Def.	Notes
------	-------	-------------------	-------

14+01.997
9+39.20D

7+22.00
P.O.T.

2+05.55
P.O.T.

0+00

150°36'
301°15' 29°24' Lt

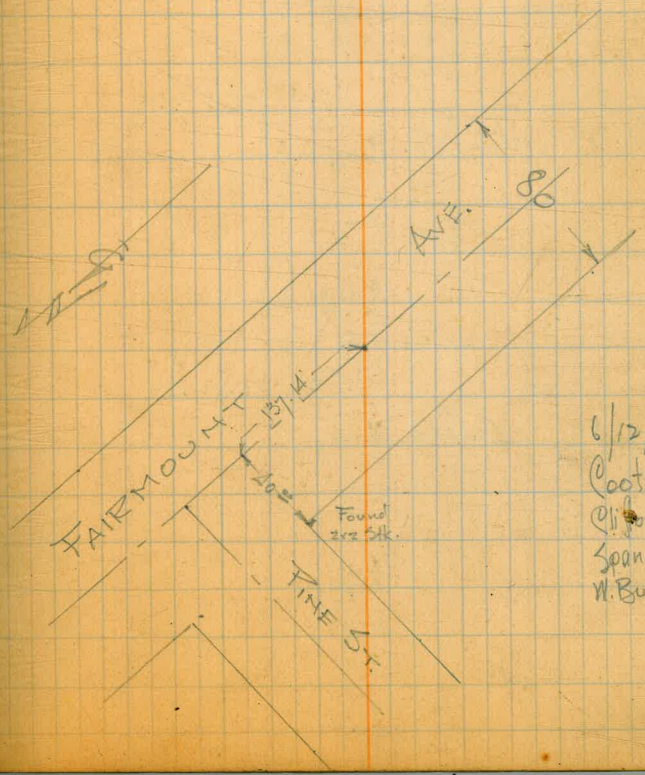
"D" LINE.

Farmount Ave to Sta

Profile:
* Sees on Pg 21

14+01.997
9+39.20D

7+22.00
P.O.T.



6/12/26
Coote
Oliver
Spansel
W. Bunker

D LINE - Profile

21

14
9 Bm

277.48 Outflow 35' Lt. 0+00 B Line -

3.48 280.96

9.00 271.96

198 273.94

0-250

2.3

-200

1.6

-150

1.5

-100

2.8

-50

5.9

0+00

2

1.38 263.58

11.74 262.20

+30

0 +50

0.18 254.24

11.52 252.06

+70

1+09

on ± Fairmount

6.4
11.4

60.9
2.7

54.3
9.3

246.0
6.2

234.3
17.9

1+50

252.24

1+66

0.46 241.03 ✓

11.67 240.57 ✓

1+91

2+08

+28

1.07 230.26 ✓

11.79 229.74 ✓

+50

+63

3

0.52 218.56 ✓

12.22 218.04 ✓

40.4

11.8

42.0

10.2

38.0

3.0

37.6

3.4

32.2

8.8

27.8

2.5

24.8

5.5

218.2

12.1

3+50

218.52

11.77 206.79 ✓

0.7 ✓ 207.51

4

+50

11.77 195.74 ✓

1.35 197.09

5

+15

+50

6

11.67 185.4 ✓

0.07 185.49

+50

210.6

8.0

199.6

7.9

196.2

11.3

91.2

1.9

89.7

7.4

89.6

1.5

89.3

7.8

84.3

1.2

185.49

7

+16

+22

0.87

174.35 ✓

12.01 173.48 ✓

+31

+35

+51

+73

0.47

163.16 ✓

11.66 162.69 ✓

8

1.81

153.63 ✓

11.34 151.82 ✓

24

78.9

5.6

76.2

0.3

78.5

7.0

71.6

2.8

70.7

3.7

72.2

2.2

63.8

10.6

55.6

7.6

143.63

8+13

8+50

9

+39.20 =

14+01.99

10.1 143.5 435

Check on Sta. 16+38.26 - B-Line -

242.0

11.6

49.5

41

10.1

55

44.9

8.7



28

29



30

31

32

33

34

U

M.I

12.26	219.80		209.35
0.64	209.94	10.50	209.30
1.68	200.32	11.30	298.64
0.26	189.58	17.00	189.32
1.81		10.77	178.81
		3.56	

35



$$\begin{array}{r} 218.82 \\ 10.00 \\ \hline 208.82 \end{array}$$

$$\begin{array}{r} 146.57 \\ 37.00 \\ \hline 109.57 \end{array}$$

$$\begin{array}{r} 154.54 \\ 10.25 \\ \hline 144.29 \end{array}$$



75
 60
 138
 202.86
 6.12
 196.74
 - 0.86
 138.00
 137.14
 150-36
 30-13
 30-43
 61-25
 PARTIES
 regulations now posted on the
 work.

Prof. B. Linn

X

Y + X
J. J. J. J.

~~NOTICE~~

ALL CHIEFS OF PARTIES

Your attention is called to the regulations now posted on the
Bulletin Board governing field work.

30-03
61-28

150-26
301-13

137.14
— 0.86
138.00

196.74
— 2.12
198.86

138
75

64

Plat of Lexington

Map # 1696. Park

B.M. So. End of
Sacramento Ave

Unv. + Fairmont 359.00 950
Elect pole. spike. City Datum

Orange Fairmont 358.3 NE spike in
return. City Datum.

There are only one City has
County has none near Fairmont
West

218.87
111.14
207.56

146.57
39
109

154.25
10
144.29

Blw#17 Bdey Est.
El = 202.86