

NAME Rolando #6

Class \_\_\_\_\_ Course \_\_\_\_\_ Party \_\_\_\_\_

Cross-Sections

RETURN TO  
Watson, Valle & Gough, Inc.  
508 Spreckels Bldg.  
San Diego, Calif.

1912

313

# FIELD NOTES

No. 403P

ESPECIALLY ADAPTED  
TO THE USE OF  
ENGINEERING STUDENTS

---

---

**EUGENE DIETZGEN Co.**

MANUFACTURERS

DRAWING MATERIALS

MATHEMATICAL AND SURVEYING INSTRUMENTS

MEASURING TAPES

CHICAGO    SAN FRANCISCO    NEW YORK  
NEW ORLEANS    PITTSBURGH

MICROFILMED

DEC 30 1964

## INDEX

	Page
X-Sec. Santo Domingo Dr.	1-11
Tarragona Dr	12-13
Alley Block 45	14
University Ave W. of W. Boundary Line	15
Alley - Block 50	16-17
Alley - Block 49	18-20
Alley - Block 47	21

SANTO DOMINGO DR.

E.P. Chilton  
 J. Thompson 1  
 W. Bunker  
 4-6-1927

468.58 B.M.

Hub SW Cor. Blk 93

570 474.36

10.53 463.83

2.69 466.52

10.84 455.58 T.P.

Hub NE Cor. Block 93

2.51 458.09

π 458.09

0-250

6<sup>2</sup>

0-200

11<sup>6</sup>

0-167

13<sup>0</sup>

0-150

12<sup>0</sup>

0-100

8<sup>6</sup>

0-50

4<sup>4</sup>  
20

5<sup>5</sup>

6<sup>6</sup>  
20

0+00

4<sup>4</sup>  
20

0<sup>8</sup>

2<sup>5</sup>  
20

2.51 455.58 T.P.

π 467.39

11.81 467.39

0+15

6<sup>6</sup>  
20

8<sup>2</sup>

9<sup>3</sup>  
4

10<sup>4</sup>  
20

0+29

0+50

0+80

0+84<sup>72</sup>

1+00

1+10

1+22

1+32

285

474.91

233

465.06

π46739

6<sup>3</sup>  
20

8<sup>6</sup>

9<sup>2</sup>  
20

5<sup>1</sup>  
20

5<sup>3</sup>

6<sup>6</sup>  
7

7<sup>1</sup>  
20

5<sup>4</sup>  
30

5<sup>7</sup>  
20

5<sup>5</sup>

5<sup>8</sup>  
20

6<sup>7</sup>  
30

5<sup>3</sup>  
30

5<sup>4</sup>  
20

5<sup>8</sup>

5<sup>1</sup>  
20

6<sup>4</sup>  
30

Ref

2<sup>1</sup>  
30

2<sup>7</sup>  
20

4<sup>2</sup>

4<sup>2</sup>  
20

0<sup>4</sup>  
30

0<sup>9</sup>  
20

2<sup>8</sup>  
12

3<sup>4</sup>

5<sup>5</sup>  
13

5<sup>8</sup>  
20

π47491

7<sup>6</sup>  
30

8<sup>4</sup>  
20

10<sup>2</sup>  
14

10<sup>3</sup>

9<sup>8</sup>  
13

10<sup>8</sup>  
20

7<sup>1</sup>  
30

7<sup>9</sup>  
25

9<sup>3</sup>  
20

10<sup>3</sup>  
6

9<sup>3</sup>

9<sup>3</sup>  
12

9<sup>8</sup>  
20

1+42

$8^{\frac{1}{30}}$   $9^{\frac{1}{20}}$   $9^{\frac{6}{12}}$   $9^{\frac{5}{12}}$   $11^{\frac{0}{20}}$

1+50

$8^{\frac{2}{30}}$   $8^{\frac{1}{20}}$   $7^{\frac{7}{9}}$   $8^{\frac{7}{10}}$   $10^{\frac{6}{10}}$   $11^{\frac{1}{20}}$

1+66<sup>20</sup>

$8^{\frac{2}{30}}$   $6^{\frac{6}{20}}$   $6^{\frac{6}{7}}$   $7^{\frac{5}{10}}$   $9^{\frac{9}{10}}$   $10^{\frac{9}{20}}$   
Ret.

1+80

$7^{\frac{3}{30}}$   $7^{\frac{7}{20}}$   $8^{\frac{9}{20}}$   $9^{\frac{5}{20}}$   $9^{\frac{6}{30}}$

1+98<sup>20</sup>

$6^{\frac{1}{30}}$   $6^{\frac{6}{20}}$   $7^{\frac{9}{15}}$   $9^{\frac{0}{13}}$   $8^{\frac{6}{13}}$   $7^{\frac{7}{20}}$   $7^{\frac{1}{30}}$

2+00

$7^{\frac{1}{30}}$   $7^{\frac{7}{20}}$   $8^{\frac{9}{3}}$   $8^{\frac{9}{3}}$   $7^{\frac{0}{20}}$   $6^{\frac{8}{30}}$

2+20

$5^{\frac{4}{30}}$   $4^{\frac{8}{20}}$   $4^{\frac{9}{11}}$   $7^{\frac{5}{11}}$   $8^{\frac{5}{3}}$   $8^{\frac{6}{11}}$   $7^{\frac{5}{20}}$   $7^{\frac{6}{30}}$

2+30

$6^{\frac{2}{30}}$   $5^{\frac{1}{20}}$   $7^{\frac{1}{4}}$   $7^{\frac{5}{17}}$   $7^{\frac{9}{17}}$   $8^{\frac{1}{20}}$   $9^{\frac{3}{30}}$

2+42

$\frac{6^2}{30}$   $\frac{6^2}{20}$   $\frac{6^2}{6^3}$   $6^0$   $\frac{6^4}{11}$   $\frac{7^2}{20}$   $\frac{8^2}{30}$

2+60

$\frac{6^0}{30}$   $\frac{6^2}{20}$   $\frac{6^8}{15}$   $\frac{5^2}{7}$   $5^2$   $\frac{5^2}{20}$   $\frac{7^2}{30}$

2+73

$\frac{6^3}{30}$   $\frac{6^2}{20}$   $\frac{6^8}{16}$   $\frac{5^3}{8}$   $5^3$   $\frac{7^4}{20}$   $\frac{7^5}{30}$

2+85

$\frac{6^2}{30}$   $\frac{6^2}{20}$   $7^2$   $\frac{7^2}{13}$   $\frac{6^8}{20}$   $\frac{6^2}{30}$

3+03

$\frac{2^2}{30}$   $\frac{3^4}{20}$   $\frac{3^7}{13}$   $\frac{6^2}{3}$   $7^0$   $\frac{7^2}{10}$   $\frac{5^2}{20}$   $\frac{5^5}{30}$

3+15

$\frac{3^7}{30}$   $\frac{3^7}{20}$   $\frac{6^2}{5}$   $6^5$   $\frac{6^4}{20}$   $\frac{6^2}{30}$

3+34

$\frac{6^0}{30}$   $\frac{6^2}{20}$   $\frac{6^5}{7}$   $5^5$   $\frac{4^2}{7}$   $\frac{2^2}{20}$   $\frac{5^2}{30}$

3+42<sup>15</sup>

$\frac{6^2}{30}$   $\frac{6^4}{20}$   $\frac{6^4}{7}$   $5^4$   $\frac{4^4}{5}$   $\frac{4^5}{20}$   $\frac{6^2}{30}$   
Ret Ret

628 468.63 = 468.58

B.M. - Hub. S.W. Cor. B/L 93

435 472.93

3+62 NL Cartagena

3 <sup>2</sup>	3 <sup>7</sup>	3 <sup>6</sup>	2 <sup>9</sup>	3 <sup>1</sup>	5 <sup>0</sup>	5 <sup>1</sup>	4 <sup>7</sup>
30	30	20	5		20	30	40
Ret					Fl		Ret

3+73

3 <sup>2</sup>	3 <sup>3</sup>	3 <sup>2</sup>	3 <sup>7</sup>	4 <sup>8</sup>	5 <sup>0</sup>	4 <sup>7</sup>
30	20	7		13	20	30

4+02 S.L. Cartagena

4 <sup>5</sup>	4 <sup>5</sup>	5 <sup>1</sup>	6 <sup>0</sup>	5 <sup>0</sup>	4 <sup>5</sup>	4 <sup>8</sup>	5 <sup>2</sup>
41	30	20	5		20	30	40
Ret					Fl		Ret

4+22<sup>13</sup>

5 <sup>0</sup>	5 <sup>7</sup>	6 <sup>5</sup>	6 <sup>4</sup>	5 <sup>0</sup>	6 <sup>0</sup>
30	20	6		20	30
	Ret			Ret	

4+42

11.84 461.09

7 <sup>2</sup>	7 <sup>5</sup>	8 <sup>2</sup>	7 <sup>6</sup>	7 <sup>2</sup>	7 <sup>5</sup>	7 <sup>5</sup>
30	20	11		11	20	30

0.55 461.64

π 461.64

4+60

4 <sup>2</sup> <sup>3</sup>	4 <sup>6</sup>	0 <sup>0</sup>	0 <sup>0</sup>	4 <sup>0</sup> <sup>8</sup>
30	30		20	30

4+86<sup>18</sup> P.C.

3 <sup>2</sup>	4 <sup>1</sup>	5 <sup>6</sup>	5 <sup>2</sup>	4 <sup>2</sup>	3 <sup>0</sup>
30	20	6		20	30

5+00

11.70 449.94

4 <sup>6</sup>	6 <sup>1</sup>	8 <sup>6</sup>	8 <sup>8</sup>	8 <sup>1</sup>	6 <sup>0</sup>
30	20	8		20	30

0.54 450.48

5+20

$$\pi 450.48$$

$0^{\circ}$ 30	$1^{\circ}$ 20	$2^{\circ}$ 15	$2^{\circ}$ 15	$1^{\circ}$ 20	$1^{\circ}$ 30
-------------------	-------------------	-------------------	-------------------	-------------------	-------------------

5+40

11.62 438.86

$4^{\circ}$ 30	$4^{\circ}$ 20	$6^{\circ}$ 15	$7^{\circ}$ 8	$7^{\circ}$ 20	$5^{\circ}$ 30
-------------------	-------------------	-------------------	------------------	-------------------	-------------------

1.36 440.22

 $\pi 440.22$ 

5+75

$1^{\circ}$ 30	$3^{\circ}$ 20	$5^{\circ}$ 17	$5^{\circ}$ 15	$6^{\circ}$ 10	$8^{\circ}$ 14	$7^{\circ}$ 20	$7^{\circ}$ 25	$5^{\circ}$ 30
-------------------	-------------------	-------------------	-------------------	-------------------	-------------------	-------------------	-------------------	-------------------

5+95

$1^{\circ}$ 30	$5^{\circ}$ 20	$8^{\circ}$ 8	$11^{\circ}$ 17	$12^{\circ}$ 13	$14^{\circ}$ 18	$13^{\circ}$ 20	$10^{\circ}$ 30
-------------------	-------------------	------------------	--------------------	--------------------	--------------------	--------------------	--------------------

6+09

$2^{\circ}$ 30	$6^{\circ}$ 20	$9^{\circ}$ 10	$11^{\circ}$ 17	$13^{\circ}$ 7	$15^{\circ}$ 13	$17^{\circ}$ 18	$16^{\circ}$ 20	$13^{\circ}$ 30
-------------------	-------------------	-------------------	--------------------	-------------------	--------------------	--------------------	--------------------	--------------------

6+25

$3^{\circ}$ 30	$7^{\circ}$ 20	$11^{\circ}$ 17	$18^{\circ}$ 20	$20^{\circ}$ 23	$18^{\circ}$ 30
-------------------	-------------------	--------------------	--------------------	--------------------	--------------------

6+48<sup>25</sup> P.T.

$5^{\circ}$ 30	$7^{\circ}$ 20	$13^{\circ}$ 17	$14^{\circ}$ 6	$21^{\circ}$ 20	$24^{\circ}$ 25	$22^{\circ}$ 30
-------------------	-------------------	--------------------	-------------------	--------------------	--------------------	--------------------

6+68<sup>57</sup>

11.69 428.53

$1^{\circ}$ 30	$9^{\circ}$ 20	$16^{\circ}$ 17	$24^{\circ}$ 20	$26^{\circ}$ 25	$28^{\circ}$ 28	$25^{\circ}$ 30
-------------------	-------------------	--------------------	--------------------	--------------------	--------------------	--------------------



5.87

434.40

6+93

$$\begin{array}{cccccccc} 3^{\text{E}} & 5^{\text{E}} & 8^{\text{A}} & 13^{\text{E}} & 20^{\text{I}} & 22^{\text{B}} & 28^{\text{E}} & 19^{\text{B}} \\ 30 & 20 & 12 & & 20 & 27 & 30 & 40 \end{array}$$

7+00

$$\begin{array}{ccccccc} 2^{\text{E}} & 4^{\text{E}} & 12^{\text{E}} & 21^{\text{E}} & 25^{\text{I}} & 18^{\text{B}} \\ 30 & 20 & & 20 & 30 & 48 \\ & & & & & \text{Ret} \end{array}$$

7+13

$$\begin{array}{cccccccc} 2^{\text{E}} & 3^{\text{B}} & 4^{\text{E}} & 11^{\text{B}} & 20^{\text{E}} & 29^{\text{A}} & 27^{\text{E}} & 22^{\text{E}} \\ 30 & 20 & 17 & & 20 & 30 & 39 & 50 \end{array}$$

7+30

$$\begin{array}{ccccccc} 3^{\text{E}} & 4^{\text{B}} & 6^{\text{E}} & 11^{\text{I}} & 18^{\text{B}} & 28^{\text{E}} & 25^{\text{I}} \\ 30 & 20 & 14 & & 20 & 46 & 55 \end{array}$$

7+39

$$\begin{array}{ccccccc} 3^{\text{B}} & 5^{\text{I}} & 10^{\text{E}} & 18^{\text{E}} & 29^{\text{E}} & 27^{\text{E}} \\ 30 & 20 & & 20 & 50 & 56 \\ & & & & & \text{Ret} \end{array}$$
7+68<sup>14</sup>

$$\begin{array}{ccccccc} 2^{\text{E}} & 4^{\text{E}} & 8^{\text{I}} & 17^{\text{I}} & 20^{\text{B}} & 55 & 30 \\ 30 & 20 & & 20 & 30 & & \\ & & & \text{Ret} & & & \end{array}$$

7+84

$$\begin{array}{ccccccc} 2^{\text{B}} & 3^{\text{E}} & 4^{\text{B}} & 6^{\text{E}} & 7^{\text{E}} & 15^{\text{B}} & 19^{\text{E}} & 55 & 30 \\ 30 & 20 & 15 & 10 & & 20 & 30 & & \end{array}$$

7+98

$$\begin{array}{ccccccc} 2^{\text{E}} & 4^{\text{E}} & 8^{\text{E}} & 15^{\text{I}} & 19^{\text{E}} & 55 & 50 \\ 30 & 20 & & 20 & 30 & & \end{array}$$

8+15

26	4 <sup>4</sup>	7 <sup>2</sup>	15 <sup>-1</sup>	18 <sup>0</sup>
30	20		20	30

8+40

27	4 <sup>6</sup>	8 <sup>2</sup>	11 <sup>2</sup>	12 <sup>6</sup>	15 <sup>8</sup>
30	20		16	20	30

8+55<sup>78</sup>

P.C.

27	4 <sup>4</sup>	7 <sup>2</sup>	9 <sup>5</sup>	12 <sup>0</sup>	15 <sup>0</sup>
30	20		11	20	30

8+67

3 <sup>4</sup>	4 <sup>8</sup>	5 <sup>2</sup>	7 <sup>2</sup>	9 <sup>5</sup>	11 <sup>9</sup>	15 <sup>8</sup>
30	20	11		12	20	30

8+85

3 <sup>2</sup>	5 <sup>2</sup>	8 <sup>4</sup>	12 <sup>6</sup>	15 <sup>7</sup>
30	20		20	30

9+11

3 <sup>4</sup>	4 <sup>8</sup>	7 <sup>2</sup>	9 <sup>6</sup>	12 <sup>2</sup>	15 <sup>0</sup>
30	20		9	20	30

9+25

6.32

428.08

T.P.

3 <sup>5</sup>	5 <sup>4</sup>	7 <sup>8</sup>	11 <sup>6</sup>	13 <sup>8</sup>
30	20		20	30

Herb. F.Ta - Cor. lots 8 & 9 B/LK. 45  
7428.83

0.75

428.83

9+60

4 <sup>1/2</sup>	10 <sup>5</sup>	2 <sup>8</sup>	3 <sup>4</sup>	9 <sup>4</sup>	11 <sup>7</sup>
30	20	4		20	30

9+89<sup>89</sup>

P.T.

10+00

10+18

10+52

11+00

0.35

417.43

11+35

11+65

850

408.93

T.P.

Hub lots 11 &amp; 12

 $\frac{40^8}{30}$  $\frac{0^7}{20}$ 4<sup>1</sup> $\frac{11^9}{20}$  $\frac{14^6}{30}$  $\frac{40^2}{30}$  $\frac{1^1}{20}$ 3<sup>9</sup> $\frac{11^1}{20}$  $\frac{15^2}{30}$  $\frac{0^4}{30}$  $\frac{1^8}{20}$ 5<sup>9</sup> $\frac{7^6}{7}$  $\frac{12^8}{20}$  $\frac{16^8}{30}$  $\frac{1^6}{30}$  $\frac{3^5}{20}$ 7<sup>2</sup> $\frac{16^7}{20}$  $\frac{20^5}{30}$  $\frac{4^8}{30}$  $\frac{7^6}{20}$ 15<sup>3</sup> $\frac{23^8}{20}$  $\frac{26^5}{30}$ 

---

 $\pi 417.43$  $\frac{4^9}{30}$  $\frac{1^8}{20}$ 9<sup>2</sup> $\frac{16^2}{20}$  $\frac{20^2}{30}$  $\frac{2^7}{30}$  $\frac{5^8}{20}$ 12<sup>2</sup> $\frac{19^7}{20}$  $\frac{22^6}{30}$ E. P. Dutton  
4-6-1927

0.21 409.14 408.93

On bub Lot 11-12 - See page 9

March-9-27

H.I. 409.1

Clark  
Lacey  
Ryan

11+87

$\frac{+3.2}{30}$   $\frac{0.7}{20}$  7.3  $\frac{14.1}{20}$   $\frac{15.7}{30}$

12+12

$\frac{+1.1}{30}$   $\frac{2.5}{20}$  10.4  $\frac{15.7}{20}$   $\frac{17.2}{30}$

12+35

$\frac{1.6}{30}$   $\frac{5.2}{20}$  11.4  $\frac{17.7}{20}$   $\frac{20.0}{30}$

6.4  
91.6

12+50

$\frac{3.4}{30}$   $\frac{7.3}{20}$  13.2  $\frac{18.7}{20}$   $\frac{21.5}{30}$

12+70<sup>05</sup>

$\frac{4.5}{30}$   $\frac{8.4}{20}$  15.4  $\frac{20.7}{20}$   $\frac{24.1}{30}$

12+85

$\frac{6.0}{30}$   $\frac{9.6}{20}$  16.2  $\frac{22.1}{20}$   $\frac{24.7}{30}$

13+00

$\frac{7.2}{30}$   $\frac{10.5}{20}$  17.0  $\frac{22.4}{20}$   $\frac{25.6}{30}$

0.54 396.60 13.08 396.06

H.I. 398.0

0.86 409.79 408.93 13+28 47=

$\frac{+3.1}{30}$   $\frac{0.5}{20}$  6.4  $\frac{13.6}{20}$   $\frac{16.7}{30}$

0.55 397.98 12.36 397.43 7+88 63  
Tarragona

$\frac{+0.5}{30}$   $\frac{2.4}{20}$  9.2  $\frac{16.1}{20}$   $\frac{19.1}{30}$

13+50

$\frac{4.4}{30}$   $\frac{4.2}{20}$  11.2  $\frac{18.3}{20}$   $\frac{20.6}{30}$

13+70

397.98

14+00

Lt                      #                      Rt  
H.I. 398.0

$\frac{5.5}{30}$     $\frac{8.6}{20}$    14.3    $\frac{21.0}{20}$     $\frac{22.9}{30}$

14+35

$\frac{10.6}{30}$     $\frac{13.2}{20}$    18.2    $\frac{23.9}{20}$     $\frac{25.8}{30}$

0.78   386.22   12.54   385.44

H.I. 386.2

14+57 1/2

$\frac{2.5}{30}$     $\frac{4.5}{20}$    9.3    $\frac{13.7}{20}$     $\frac{15.6}{30}$

15+00

$\frac{7.6}{30}$     $\frac{9.7}{20}$    12.6    $\frac{15.3}{20}$     $\frac{16.6}{30}$

0.37   373.79   12.80   373.42

H.I. = 373.8

15+27 1/2

$\frac{10.7}{30}$     $\frac{1.0}{20}$    3.5    $\frac{4.9}{20}$     $\frac{6.2}{30}$

15+50

$\frac{3.0}{30}$     $\frac{4.3}{20}$    5.4    $\frac{7.2}{20}$     $\frac{8.0}{30}$

16+00

$\frac{8.5}{30}$     $\frac{9.3}{20}$    10.5    $\frac{11.7}{20}$     $\frac{12.4}{30}$

0.55   361.38   12.96   360.83

H.I. = 361.4

16+50

$\frac{11}{30}$     $\frac{1.5}{20}$    2.3    $\frac{2.8}{20}$     $\frac{3.2}{30}$

17+00

$\frac{5.0}{30}$     $\frac{5.4}{20}$    5.6    $\frac{6.1}{20}$     $\frac{6.6}{30}$

2.06   351.00   12.44   348.94

17+34 9/8

$\frac{7.4}{30}$     $\frac{7.9}{20}$    8.2    $\frac{8.9}{20}$     $\frac{9.5}{30}$

B.M.

8.18   342.82

R.C.C. Hub Block 49   See Book 245 Page 11  
Elev = 342.91

Tarragona Drive

0.65 409.58 408.93

0.96 397.95 12.59 396.99

7+8863=  
13+2847  
Santo Domingo Dr

8+00

8+50

9+00

9+50

1.38 394.51 4.82 393.13 10+00

10+50

10+75

11+00

11+50

12+00

0.79 382.62 12.68 381.83

On hub Lot 11-12 - See Page 9

H.I. = 398.0

$\frac{+3.2}{30}$   $\frac{0.9}{20}$  7.1  $\frac{14.7}{20}$   $\frac{17.8}{30}$

$\frac{+4.8}{30}$   $\frac{3.2}{20}$  9.9  $\frac{16.8}{20}$   $\frac{19.9}{30}$

$\frac{2.6}{30}$   $\frac{5.1}{20}$  10.8  $\frac{17.1}{20}$   $\frac{19.6}{30}$

$\frac{4.2}{30}$   $\frac{6.9}{20}$  12.9  $\frac{17.6}{20}$   $\frac{20.0}{30}$

$\frac{4.8}{30}$   $\frac{7.8}{20}$  13.2  $\frac{18.1}{20}$   $\frac{20.4}{30}$

H.I. = 394.5

$\frac{1.7}{30}$   $\frac{4.5}{20}$  9.4  $\frac{13.9}{20}$   $\frac{16.1}{30}$

$\frac{1.6}{30}$   $\frac{4.8}{20}$  10.3  $\frac{14.3}{20}$   $\frac{15.9}{30}$

$\frac{3.4}{30}$   $\frac{5.9}{20}$  11.4  $\frac{15.5}{20}$   $\frac{17.7}{30}$

$\frac{7.8}{30}$   $\frac{10.0}{20}$  14.4  $\frac{18.2}{20}$   $\frac{19.8}{30}$

$\frac{12.0}{30}$   $\frac{14.4}{20}$  18.0  $\frac{20.8}{20}$   $\frac{22.2}{30}$

382.62

Lt

±

Rt

H.I. = 382.6

B.M.

6.40 376.22

12+50

 $\frac{3.0}{30}$  $\frac{4.8}{20}$ 

8.0

 $\frac{10.9}{20}$  $\frac{12.2}{30}$ 

On Lot hub SW Cor Lot 19 Block 45

13+00

 $\frac{4.5}{30}$  $\frac{6.5}{20}$ 

9.2

 $\frac{11.8}{20}$  $\frac{13.1}{30}$ 

13+50

 $\frac{6.0}{30}$  $\frac{7.0}{20}$ 

9.3

 $\frac{11.4}{20}$  $\frac{12.8}{30}$ 

14+00

 $\frac{8.9}{30}$  $\frac{9.9}{20}$ 

11.6

 $\frac{14.0}{20}$  $\frac{15.1}{30}$ 

1.54

371.75

12.41

370.21

H.I. = 371.8

B.M.

7.50 364.25

14+37<sup>06</sup> $\frac{1.3}{30}$  $\frac{2.5}{20}$ 

5.0

 $\frac{6.9}{20}$  $\frac{8.0}{30}$ On P.R.C. Hub Lot 1 Blk 36 Elev 364.30  
See Book 240 Page 8

Alley - Block 45

12.84 389.06 376.22

On hub SW. Cor Lot 39  
Sec page 13

Lt ♀

H.I. = 389.1

SW. Cor Lot 19 = 0+00

$\frac{12.3}{10}$  12.8

0+37

$\frac{5.5}{10}$  6.1

0+60

$\frac{0.4}{10}$  0.9

11.58 401.38 0.26 389.80

H.I. = 401.4

1+02

$\frac{0.9}{10}$  1.8

B.M. 12.63 413.94 0.07 401.31

On hub Lot 18-41-Alley

H.I. = 413.9

1+22

$\frac{11.3}{10}$  12.1

1+52

$\frac{5.0}{10}$  6.9

1+72

$\frac{1.8}{10}$  4.6

7.82 419.74 2.02 411.92

H.I. = 419.7

1+89

$\frac{5.0}{10}$  7.5

NW. Cor Lot 40 = 1+96.65

$\frac{4.2}{10}$  6.6

B.M. 1.54 418.20

On Radius Hub Paloma Place

March-9-27  
Clark

0.09 407.16 12.67 407.07

0.44 394.61 12.99 394.17

2.92 385.05 12.48 382.13

8.85 376.20

On hub SW. Cor Lot 39.

East side of Alley = 0+00 of sections



University Ave  
West of West Boundary Line

BM 3.02 330.31 327.29

BM 302 327.29

-0+50

-1+00

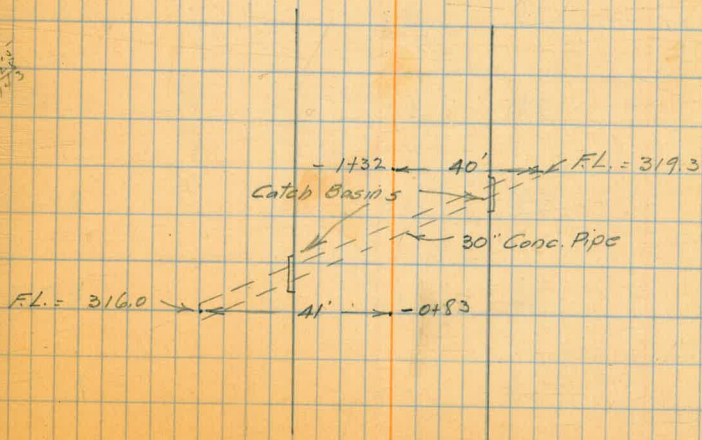
-1+50

-2+00

South = Lt      E      Rt = North  
Nail in Tel. Pole - SW. Cor Blk 50  
See Book 245 Page 1  
H.I. = 330.3

March 11-27  
Clark  
Lacey  
Ryan

$\frac{5.2}{28}$	$\frac{5.39}{17}$ Curb	$\frac{6.04}{19}$	4.91	$\frac{5.07}{22}$	$\frac{4.20}{22}$ Curb	$\frac{4.1}{32}$
$\frac{4.9}{30}$	$\frac{4.93}{19}$ Curb	$\frac{5.75}{19}$	4.55	$\frac{4.58}{21}$	$\frac{3.82}{21}$ Curb	$\frac{3.5}{29}$
$\frac{4.2}{33}$	$\frac{4.32}{20}$ Curb	$\frac{4.92}{20}$	3.79	$\frac{4.05}{19}$	$\frac{3.23}{19}$ Curb	$\frac{2.7}{30}$
$\frac{3.8}{34}$	$\frac{3.76}{22}$ Curb	$\frac{4.45}{22}$	3.29	$\frac{3.55}{18}$	$\frac{2.80}{18}$ Curb	$\frac{2.1}{30}$



Alley - Block 50

B.M. 4.17 351.99 34782

On hub N. Side Alley - N. End Blk 50  
See Book 245 Page 1

± South

H.I. = 352.0

SW. Cor. Lot 18 = 0+00

4.2  $\frac{6.2}{20}$

0+25

1.5  $\frac{4.4}{20}$

0+50

3.2  $\frac{5.9}{20}$

1+00

7.7  $\frac{10.7}{20}$

1+50

11.5  $\frac{14.0}{20}$

5.73 345.32 12.40 339.59

H.I. = 345.3

2+00

6.8  $\frac{9.6}{20}$

2+50

7.9  $\frac{10.0}{20}$

3+00

7.9  $\frac{10.2}{20}$

3+50

6.9  $\frac{8.9}{20}$

3+90

4.7  $\frac{7.1}{20}$

N. Side of Alley = 0+00 of sections

240  
342.92

345.32

E South

HI = 345.3

4+08

5.5  $\frac{7.7}{20}$

4+35

4.2  $\frac{7.0}{20}$

4+50

4.8  $\frac{7.3}{20}$

4+78

6.0  $\frac{8.5}{20}$

5+10

4.7  $\frac{7.6}{20}$

SE Cor Lot 37 = 514584

7.6  $\frac{11.1}{20}$

B.M.

2.40 342.92

On P.C.C. Hub Blk 49 - Sec Book 245 Page 11  
Elev = 342.91

Alley - Block 49

B.M. 9.07 351.98 342.91

£ South  
On P.C.C. hub B/k 49 - See Book 245 Page 11  
H.I. = 352.0

S.W. Cor Lot 11 = 0+00

13.4  $\frac{14.2}{20}$

0+41

9.6  $\frac{10.5}{20}$

0+91

8.7  $\frac{9.7}{20}$

1+41

6.1  $\frac{8.1}{20}$

1+50

5.8  $\frac{7.9}{20}$

2+00

4.9  $\frac{6.9}{20}$

2+17

5.1  $\frac{6.4}{20}$

2+67

3.3  $\frac{5.4}{20}$

3+07

3.0  $\frac{4.7}{20}$

3+30

2.1  $\frac{4.3}{20}$

3+50

2.5  $\frac{3.8}{20}$

N. Side of Alley = 0+00 of sections

351.98

3+68

3+82

4+04

2.38 351.78 2.58 349.40

4+24

4+40

4+77

5+00

5+32

5+50

5+57

5+74

10.14 359.83 2.09 349.69 6+00

± South

H.I. = 352.0

1.0  $\frac{3.1}{20}$

1.7  $\frac{3.0}{20}$

0.8  $\frac{2.9}{20}$

H.I. = 351.8

1.3  $\frac{2.5}{20}$

0.6  $\frac{2.7}{20}$

2.7  $\frac{4.8}{20}$

5.7  $\frac{8.2}{20}$

11.1  $\frac{12.2}{7}$   $\frac{13.1}{17}$   $\frac{11.9}{20}$

11.8  $\frac{12.7}{2}$   $\frac{12.7}{6}$   $\frac{10.4}{14}$   $\frac{10.0}{20}$

12.9  $\frac{10.2}{10}$   $\frac{9.5}{20}$

8.1  $\frac{8.2}{20}$

3.6  $\frac{3.3}{20}$

7+28  
346.41

20

359.83

H.I. = 359.8

6+50

6.2

$\frac{6.5}{2.0}$

7+00

3.2

$\frac{3.5}{2.0}$

7+16

2.0

$\frac{2.4}{2.0}$

SE Cor Lot 1 = 7437°3

0.7

$\frac{2.0}{2.0}$

B.M

13.43

346.40

Nail in Tel. Pole - S.E. Cor Blk 49 - See Book 240 - Page 1  
Elev = 346.41

Alley - Block 47

B.M.	11.44	379.62		368.18
	12.80	391.92	0.50	379.12
B.M.			8.03	383.89
			S.E. Cor Lot 23 = 0+00	
	13.27	405.15	0.04	391.88
				0+39
				0+61
				Lot 9-23 Alley = 0+91 <sup>28</sup>
B.M.	12.60	417.75	0.00	405.15
				1+10
				1+27
	12.26	429.65	0.36	417.39
				1+44
				S.W. Cor Lot 9 = 1+85 <sup>56</sup>
	5.77	432.77	2.65	427.00
B.M.			6.88	425.89

South #

On P.C.C. hub Blk 50 - See Book 245 - Page 9

On hub S.E. Cor Lot 23 H.I. = 391.9

$\frac{8.6}{10}$  8.0

H.I. = 405.2

$\frac{10.4}{10}$  10.3

$\frac{6.6}{10}$  6.7

$\frac{0.7}{10}$  0.0

On hub Lot 9-23 Alley

H.I. = 417.8

$\frac{7.3}{10}$  7.2

$\frac{0.9}{10}$  0.2

H.I. = 429.7

$\frac{8.1}{10}$  8.0

$\frac{3.0}{10}$  3.1

On P.C.C. hub Blk 46 Lot 17 - See Book 245 - Page 14  
Elev = 425.91

N. Line of Alley = 0+00 of Sections

Tarragona Dr.  
West of West Boundary Line

22

B.M. 0.78 371.96 371.18

Lt=South E Rt=North  
On hub SW. Cor Blk 47

H.I. = 372.0

-0+30

$\frac{7.9}{30}$   $\frac{7.0}{20}$  4.3  $\frac{3.5}{20}$   $\frac{2.2}{30}$

-0+50

$\frac{12.2}{30}$   $\frac{10.8}{20}$  9.2  $\frac{6.9}{20}$   $\frac{5.2}{30}$

0.09 359.55 12.50 359.46

H.I. = 359.6

-1+00

$\frac{11.5}{30}$   $\frac{10.7}{20}$  9.1  $\frac{6.1}{20}$   $\frac{5.0}{30}$

-1+10

$\frac{14.0}{30}$   $\frac{13.3}{20}$  12.0  $\frac{9.5}{20}$   $\frac{8.0}{30}$

Road

1+23

$\frac{14.3}{30}$   $\frac{13.5}{20}$  12.0  $\frac{9.1}{20}$   $\frac{7.5}{30}$

1+42

$\frac{18.2}{30}$   $\frac{17.6}{20}$  15.2  $\frac{14.0}{20}$   $\frac{13.3}{30}$

1+57

$\frac{20.7}{30}$   $\frac{19.5}{20}$  19.0  $\frac{17.6}{20}$   $\frac{16.9}{30}$

1+65

$\frac{25.5}{30}$   $\frac{25.2}{20}$  24.6  $\frac{23.4}{20}$   $\frac{23.0}{30}$

Wash

1+71

$\frac{20.2}{30}$   $\frac{20.4}{20}$  19.6  $\frac{18.4}{20}$   $\frac{18.1}{30}$

2+00

$\frac{14.0}{30}$   $\frac{15.2}{20}$  15.7  $\frac{14.4}{20}$   $\frac{14.0}{30}$

12.34 371.62 0.27 359.28

B.M.

0.42 371.20

Elev 371.18



B.M. 0.64 426.55 425.91

-0+34

0.23 413.87 12.91 413.64

-0+66

0.16 401.26 12.77 401.10

-0+96

-1+25

12.99 0.16 401.10

12.95 0.46

0.65

South ± Rt - North

On P.C.C. hub B/K 46-Lot 17- See Book 245-Page 14

H.I. = 426.6

$\frac{14.0}{30}$   $\frac{12.9}{20}$  10.3  $\frac{8.9}{20}$   $\frac{8.7}{30}$

H.I. = 413.9

$\frac{14.1}{30}$   $\frac{12.6}{20}$  10.0  $\frac{2.6}{20}$   $\frac{5.9}{30}$

H.I. = 401.3

$\frac{10.1}{30}$   $\frac{10.1}{20}$  9.2  $\frac{9.0}{8}$   $\frac{11.3}{75}$   $\frac{11.5}{20}$   $\frac{9.1}{30}$

$\frac{23.0}{30}$   $\frac{23.0}{20}$  25.6  $\frac{25.0}{20}$   $\frac{30}{30}$

Los Gatos Drive  
cont from book

Treadwell  
Reed 24  
Tighe  
April 27, 1927

B.M

467 435.31

430.64 430.64

B.M. P.C.C. sta 4+99.06 BIK 46

sta West  $\Phi$  East

P.C.C. 4+99.06

$\frac{3.6}{30}$	$\frac{4.7}{20}$	435.31	$\frac{9.5}{20}$	$\frac{12.1}{35}$	$\frac{13.3}{40}$
		7.3			

428.0

445.8

423.2

422.0

5+50

$\frac{2.3}{40}$

$\frac{3.9}{20}$

$\frac{5.5}{70}$

6.9

$\frac{10.4}{20}$

423.2

$\frac{14.2}{40}$

Note  
Cont from book 245  
Page 15.

6+00

$\frac{1.9}{40}$

$\frac{5.1}{20}$

7.7

$\frac{10.6}{20}$

$\frac{12.0}{30}$

$\frac{14.5}{40}$

+50

$\frac{2.1}{40}$

$\frac{4.8}{20}$

$\frac{6.0}{15}$

7.7

$\frac{9.9}{15}$

$\frac{11.1}{20}$

$\frac{13.7}{30}$

P.C.C. 7+04.63

$\frac{2.0}{40}$

$\frac{5.8}{20}$

$\frac{6.7}{16}$

8.8

$\frac{11.5}{20}$

$\frac{14.7}{28}$

$\frac{18.7}{40}$

+35

$\frac{2.7}{40}$

$\frac{3.6}{30}$

$\frac{6.0}{20}$

$\frac{7.6}{15}$

9.9

$\frac{11.4}{10}$

$\frac{13.9}{20}$

$\frac{15.7}{27}$

$\frac{21.0}{40}$

+50

$\frac{2.3}{40}$

$\frac{4.1}{30}$

$\frac{6.5}{20}$

9.9

$\frac{12.0}{11}$

$\frac{14.1}{20}$

$\frac{16.7}{30}$

$\frac{20.3}{40}$

10.73 424.58

441 428.99 X

+75

429.0 X

+75

$\frac{0.0}{23}$

$\frac{0.5}{20}$

4.1

$\frac{6.2}{80}$

$\frac{9.1}{16}$

$\frac{10.6}{20}$

$\frac{15.2}{30}$

$\frac{18.9}{40}$

8+00

$\frac{0.1}{28}$

$\frac{2.4}{20}$

$\frac{4.6}{90}$

6.8

$\frac{9.8}{90}$

$\frac{13.2}{20}$

$\frac{15.2}{27}$

$\frac{17.6}{40}$

+25

$\frac{4.1}{30}$

$\frac{6.0}{20}$

$\frac{7.6}{14}$

12.2

$\frac{17.3}{15}$

$\frac{18.1}{26}$

$\frac{20.2}{30}$

$\frac{23.1}{40}$

+42

bottom of Wash +50

$\frac{6.8}{40}$

$\frac{11.4}{20}$

$\frac{12.1}{18}$

$\frac{18.5}{90}$

16.6

$\frac{19.7}{90}$

$\frac{20.1}{20}$

$\frac{22.7}{40}$

$\frac{25.3}{40}$

+61

$\frac{9.7}{40}$

Wash

428.99

P.C.C. 8+65 03

$\frac{6.0}{40}$

$\frac{8.3}{20}$

429.00X

10.3

$\frac{14.3}{20}$

$\frac{16.8}{30}$

$\frac{19.1}{40}$

+75

$\frac{2.6}{40}$

$\frac{4.8}{20}$

7.2

$\frac{9.1}{15}$

$\frac{10.4}{20}$

$\frac{13.5}{30}$

$\frac{16.3}{40}$

9+00

$\frac{0.0}{30}$

$\frac{0.8}{20}$

3.8

$\frac{6.2}{20}$

$\frac{7.5}{26}$

$\frac{14.6}{40}$

+25

$\frac{+2.8}{40}$

$\frac{0.5}{20}$

3.8

$\frac{7.9}{20}$

$\frac{11.0}{31}$

+50

$\frac{0.1}{28}$

$\frac{1.6}{20}$

5.4

$\frac{8.2}{13}$

$\frac{11.9}{20}$

$\frac{15.4}{30}$

5.35

423.64

6.03

429.67

429.7X

+75

$\frac{0.7}{40}$

$\frac{5.3}{20}$

11.3

$\frac{18.2}{20}$

$\frac{22.0}{30}$

$\frac{26.0}{40}$  bottom of wash

10+00

$\frac{10.2}{40}$

$\frac{13.7}{20}$

$\frac{18.9}{20}$

$\frac{22.9}{20}$

$\frac{24.3}{30}$

$\frac{22.3}{40}$

Ret.

10+02.40

$\frac{13.6}{20}$

in intersection

10+11

$\frac{23.3}{20}$

+23

$\frac{20.9}{18}$

in intersection

+25

$\frac{17.9}{40}$

$\frac{17.9}{30}$

$\frac{18.8}{40}$

17.0

$\frac{16.4}{20}$

$\frac{16.0}{30}$

3.12

426.55

10.67

437.22

6.52

430.70

430.64 Page 24



163

164

430.64
<u>467</u>
435.31
<u>1073</u>
424.58
<u>4.41</u>
428.99







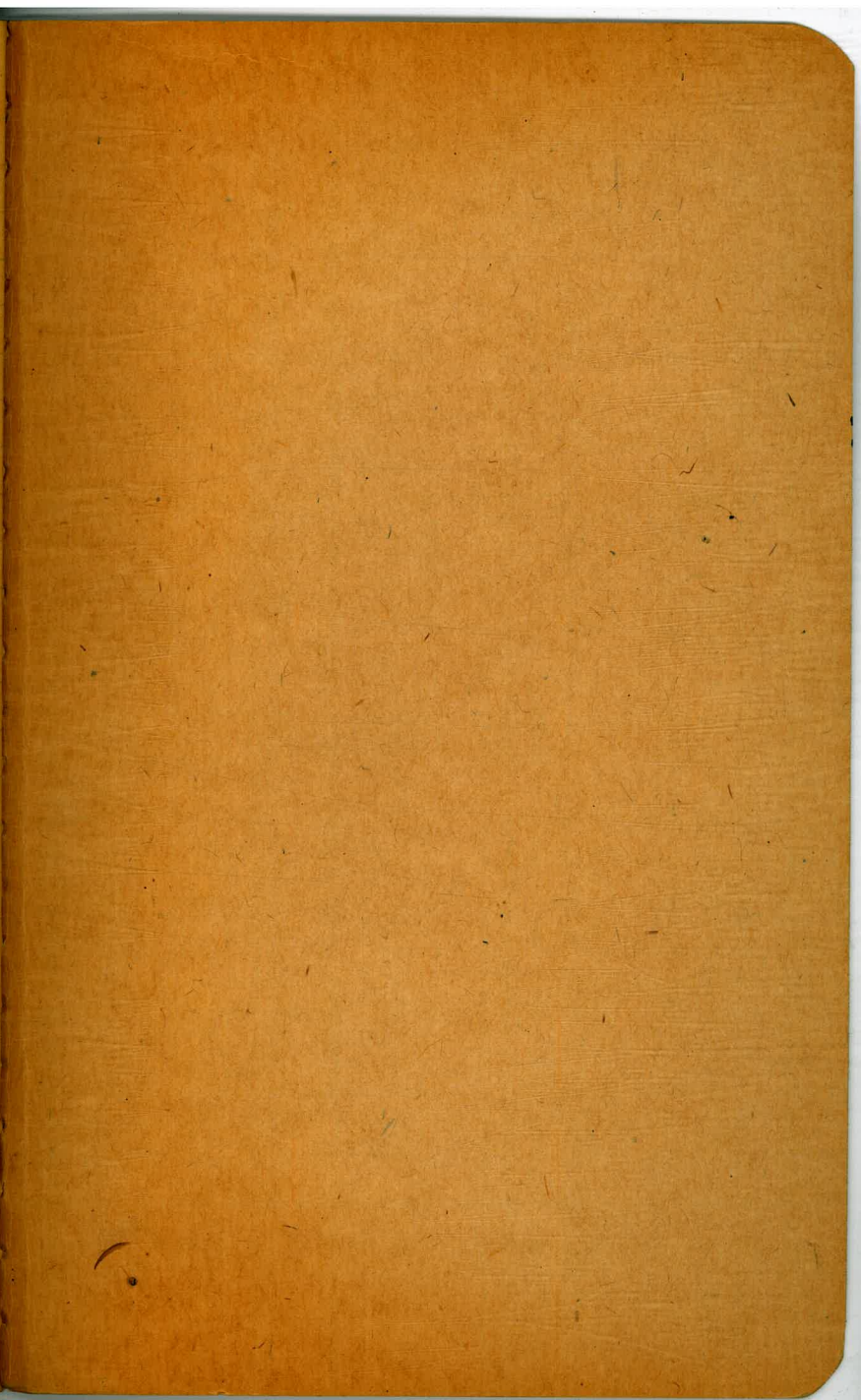
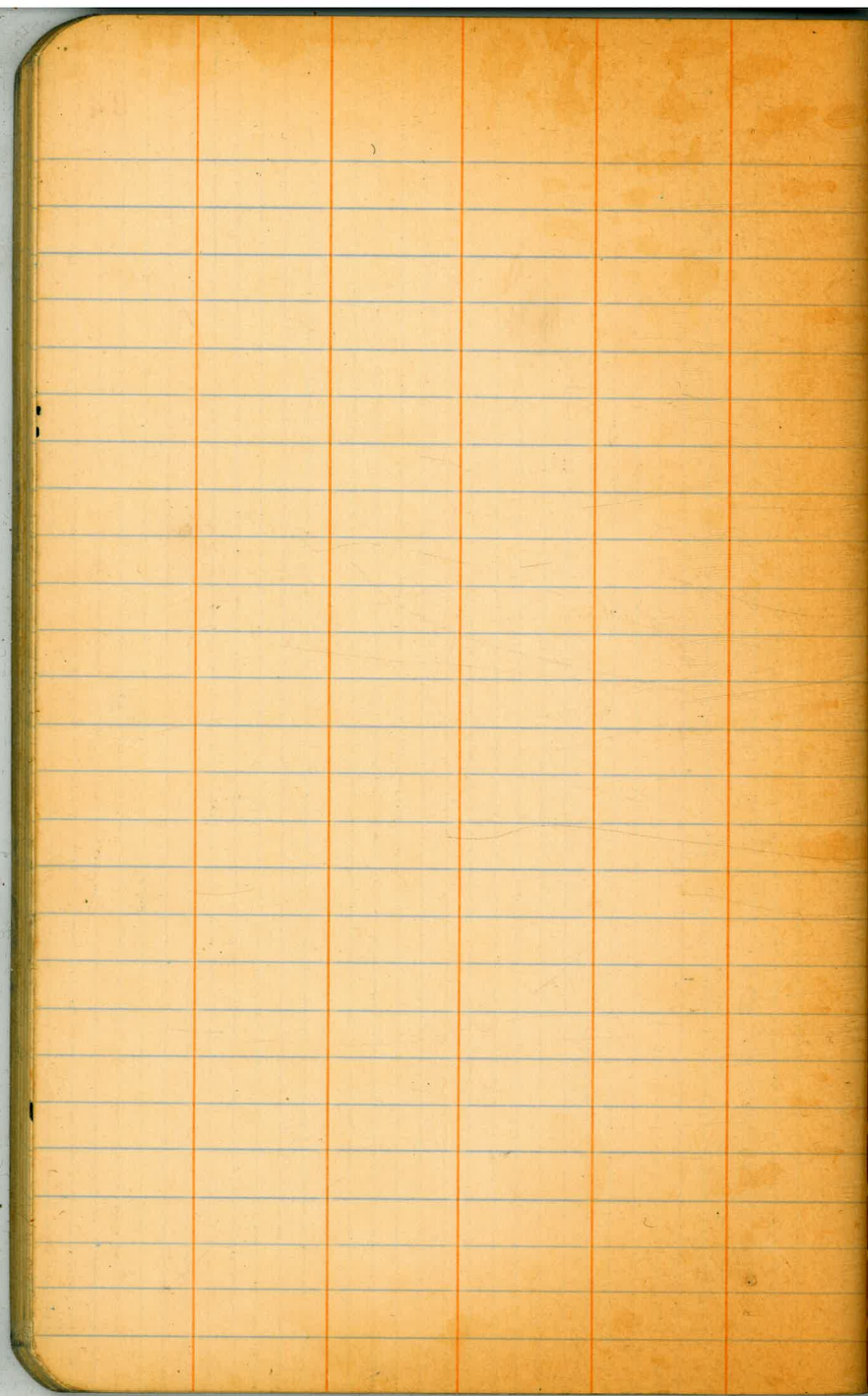












13.5

1893

WATSON, VALLE & GOUEN