

NAME

PACIFIC AVE

Class

Course

Party

X-Sections.

WATSON, VALLE & GOUGH

WATSON, VALLE & GOUGH

479

(939)

# FIELD NOTES

No. 403P

ESPECIALLY ADAPTED

TO THE USE OF

ENGINEERING STUDENTS

EUGENE DIETZGEN Co.

MANUFACTURERS

DRAWING MATERIALS

MATHEMATICAL AND SURVEYING INSTRUMENTS

MEASURING TAPES

CHICAGO SAN FRANCISCO NEW YORK  
NEW ORLEANS PITTSBURGH

MICROFILMED  
DEC 30 1964

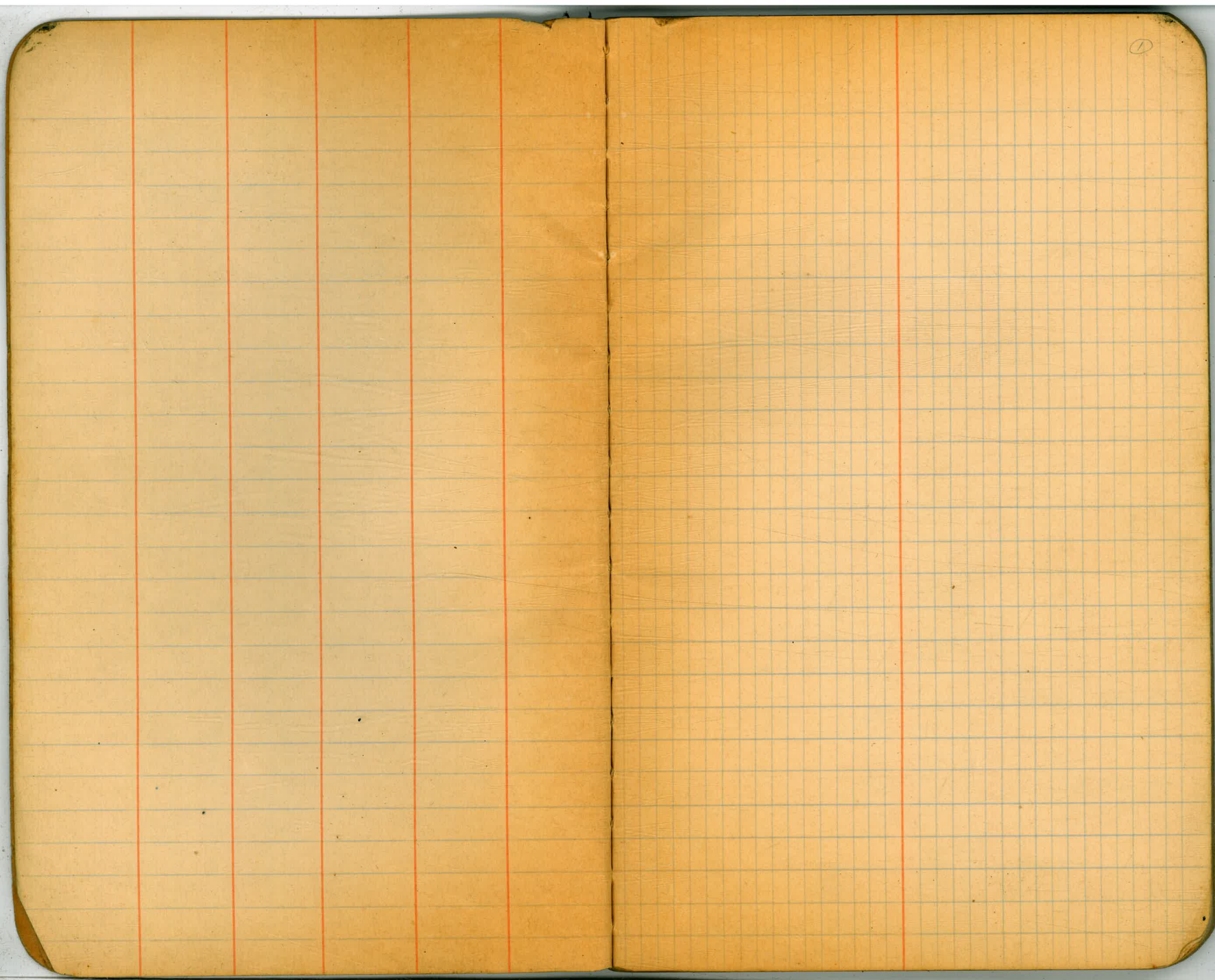
INDEX -

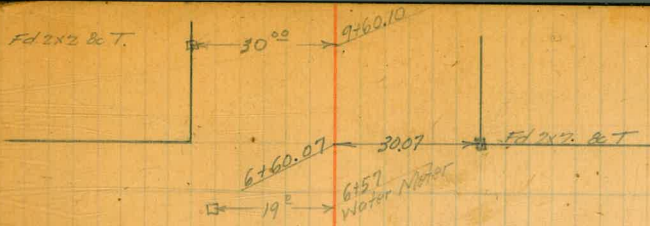
Pg.

"ESTRELLA PL." (Oct 15/28) 16-

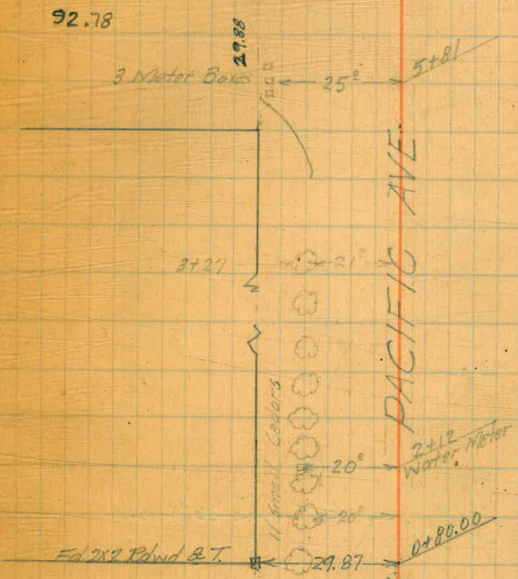
FRONTIER Drainage - 20 - 25

Beach Marks 11 - 13



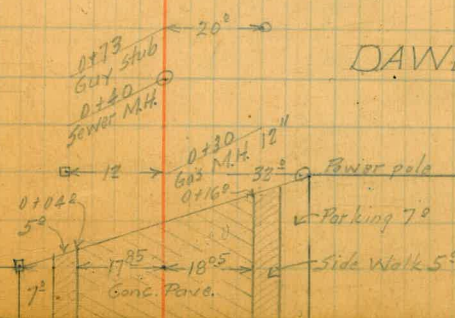


EVERTS ST.



DAWES

DAWES ST.

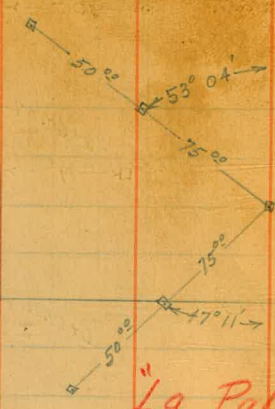


Fd 2x2 Rdwd & Tack  
29.85 Lt. 0+00

Side Walk 5'



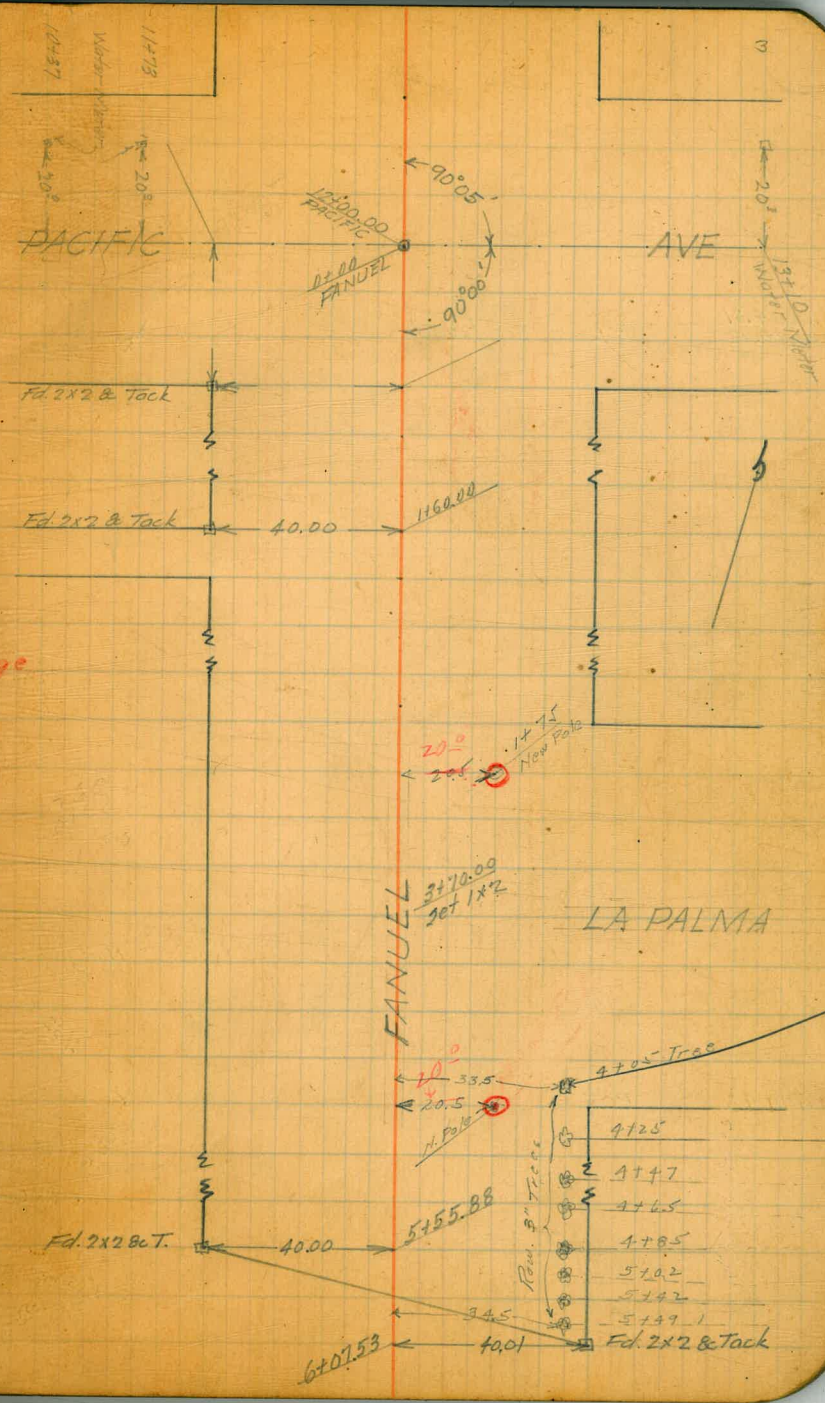
"Fanoel"



"La Palma"

Entrance to Garage

Tie-in of Garage Entrance



26+84.31  
20+70.12

P.I. Set 1x2



Fd Iron Pin  
(Mr. Hume states  
this pin set  
about a year ago  
by City Engrs)

26+10.12  
PACIFIC

26+34.31  
FRONTERA

FRONTERA

26.51

20+60.53

90°01'

Nail in T.&P.  
Pole

41.32

17+79.98

POI

50°

51k Cor.

25°

43°08'

50°

GRESHAM

18+08  
T&R Pole

31

17+79.98  
50' 112

ST

17+44

18°

Three Water  
Meters

17+39.98

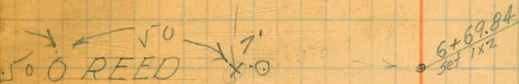
3000

Fd 2x2 & Tack

PACIFIC

Hume

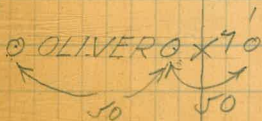
6+69.84 P.O.T.



ST.



3+19.92 P.O.T.



3+19.92  
SET 1x2

ST.

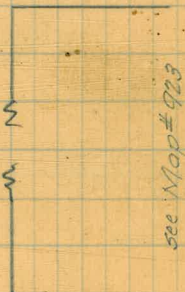
see Map # 946

6+30



FANUEL

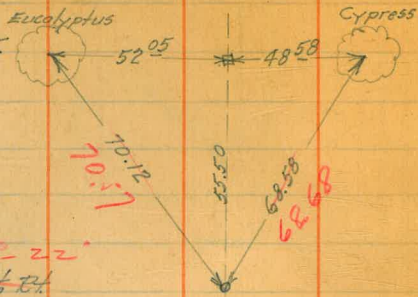
see Map # 923



14+47.68  
Assumed

7' Tie Pt.

P.O.T.



13+92.18

P.I.

180°-22'  
180°-07 1/2' R/L

10+19.76

P.O.T.



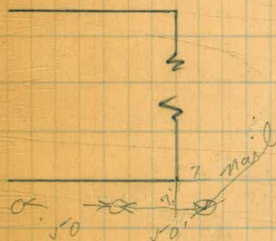
14+47.68 Assumed

14+58 ← 27° → 2" Fire Plug

14+47.68  
Fd. Conc. Nail  
L. B.T.

GRAND

AVE



FANUEL

THOMAS

10+19.76  
50' 1x2

ST.



20+72.85  
20+72.99

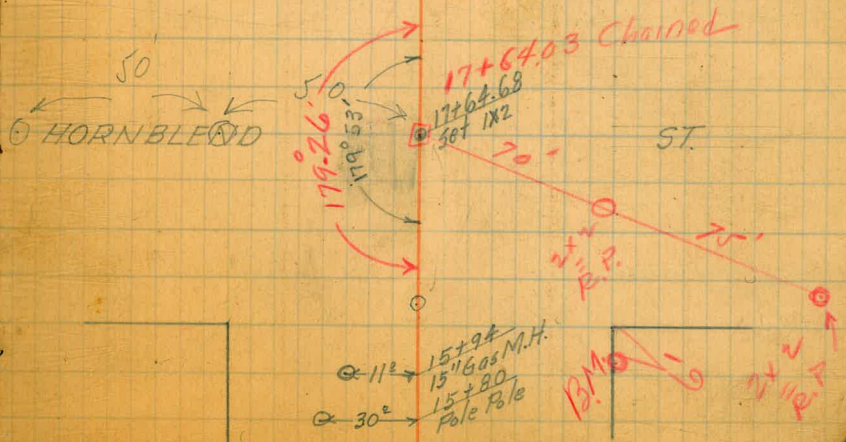
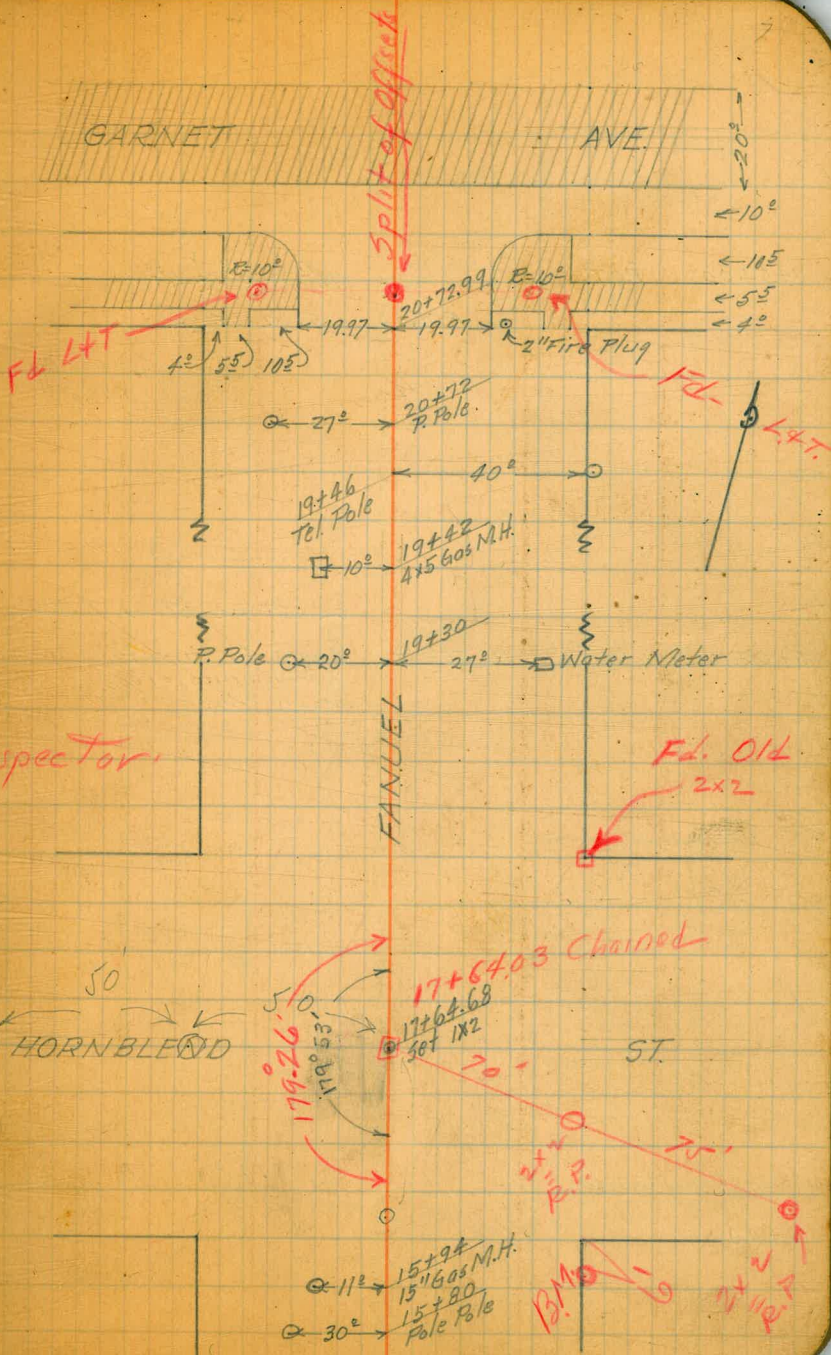
S.P.L. Garnet (From Curbs)

- Note -

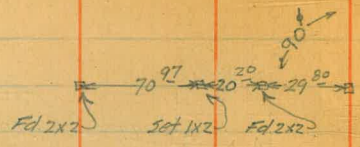
The Hub is found at  
N.E. Cor. of "Hornblend"  
and "Faniel" - Makes  
the Water Line Stub  
ends - 1.0' too far  
North - ? - O.K. per Inspector  
April 18-1929  
JF

17+64.03  
17+64.68

177° 26'  
179° 53' Rt.



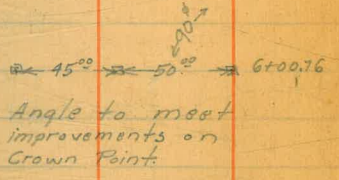
9+54.00 P.O.T.



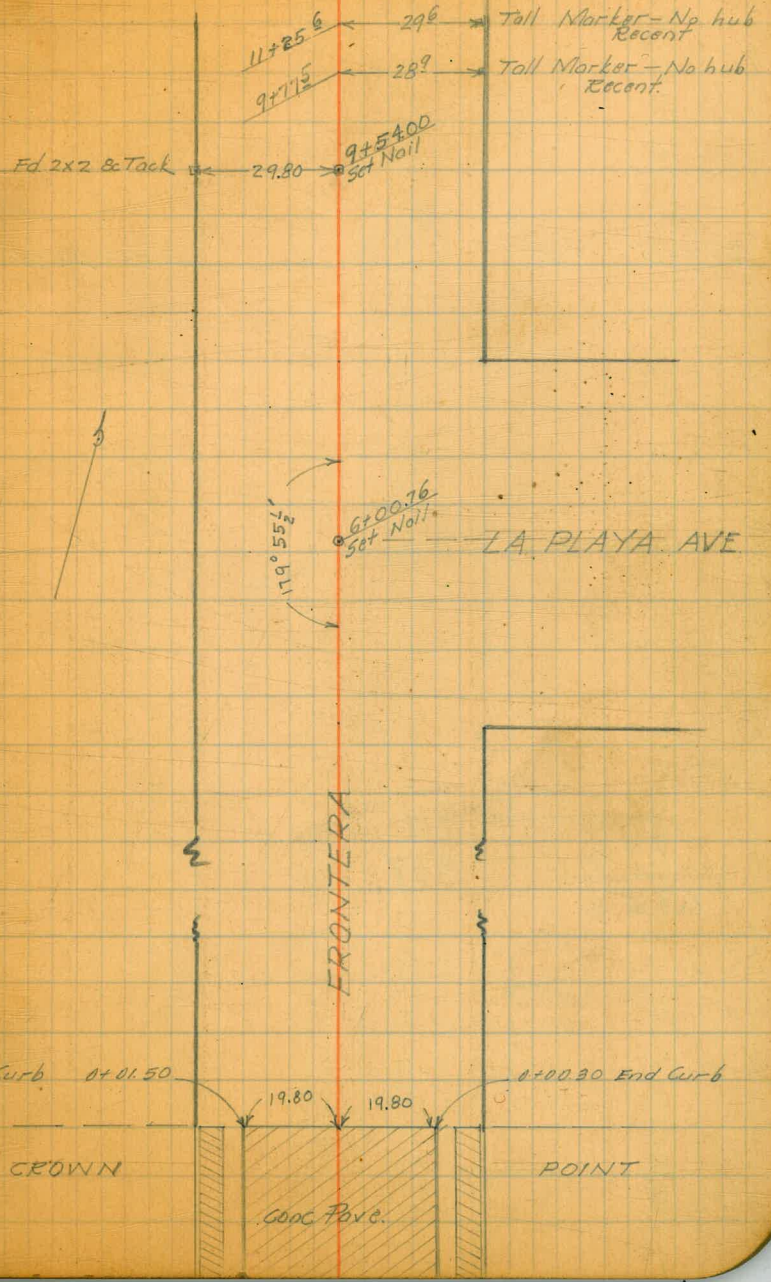
6+00.76

P.I.

179° 55 1/2° Rt.



0+00



15+44.10 POT

50° ← → 50°

Fd 2x2 & Tack 29.80

1544.10  
3rd Nail

ESTRELLA PL.

Fd 2x2 & Tack

14788

29.8

Old White Marker

FRONTIERA

ROOSEVELT

1544  
190  
-----  
1354

9.1  
9.08

Ed. Iron No. 2651

PACIFIC

20° 70.12' PACIFIC  
26134.31 FRONTERA

PACIFIC

Ed. 2x2 & Tack

24132'

30°

Ed. old White Marker

2980

27104.32'

Ed. Old Marker - No hub

19+86'

29'

FRONTERA

SUNSET

E. P. Chilton  
 Eged  
 Cavis  
 6-7-1928

BENCH LEVELS

City B.M.				
	4610	56.514	2.886	51.844
	5905	59.533		
City B.M.			2.694	55.839 Elev?
	5705	61.544		
			4.546	56.998
	4248	61.246		
			6.415	54.831
	3203	58.034		
			7.640	50.394
	1990	52.384		
			7.610	44.774
	1770	46.544		
			8.380	38.164
	2042	40.206		
B.M. #1			4.255	35.951
	1020	36.971		
			5.576	31.395
	4115	35.510		
B.M. #2			6.150	29.360
	2540	32.900		
B.M. #3			6.502	26.398
	3852	30.250		
B.M. #4			8.285	21.965

Brass Plug in North Ret. at N.W. Cor. Jewell & Grand.

Brass Plug on Ingraham at N.E. Cor. Ingraham & Grand.

35.95

Nail in N.W. base of Eucalyptus tree, N.W. Cor. Grand & Fanuel

on E.P. 75° SW Thomas & Fanuel

" " 75° NW Eged & Fanuel

" " 75° N.W. Oliver & Fanuel

C	2747	24.712			
BM #5			92.82	15.430	on R.P. 75° NW Pacific & Faniel
	6502	21.932			
			1.975	19.957	
C	5660	25.617			
BM #6			2.005	23.612	Nail in N. Side P. & T. Pole S.E. Cor. Pacific & Gresham.
	6315	29.927			
			0.560	29.367	
	5230	34.597			
			4.322	30.275	
	2390.	32.665			
			6.378	26.287	
	0.995	27.282			
			8.630	18.652	
	0.456	19.108			
BM #7			2.365	16.743	on R.P. 100° Bl. 15444.10 P.O.T. Frontera
	5300	22.043			
			5.600	16.443	
	11530	27.973			
BM #8			7.244	20.729	on R.P. 50° Lt. 9154.00 P.O.T. Frontera
	5374	26.103			
			6.140	19.963	
	3248	23.211			
			5.139	18.072	
	3306	21.378			
BM #9			3.190	18.188	End Curb East Side Frontera & Boundary Crown H.

CITY B.M.

		51.844	
4630	56.474		
		2.470	54.004
5348	59.352		
		2.652	56.700
5230	61.930		
		6.397	55.533
2025	57.558		
		7.500	50.058
0408	50.466		
		8.156	42.310
2090	42.400		
		5.780	36.670
3762	40.432		
		4.526	35.906

Cross Plug in N. Ret. at N.W. Cor. Jewell & Grand

B  
B.M #5

		15.43	
2.22	17.65		
		6.43	11.22
1.36	12.58		
		9.87	2.71
1.88	4.59		

On R.P. 75° N.W. Pacific + Fannell.

B.M

		4.50	0.09
		1.26	3.33
10.70	14.03		

Tip. End  
On S. side of South side

City

1403

232

11.71

835

20.06

464

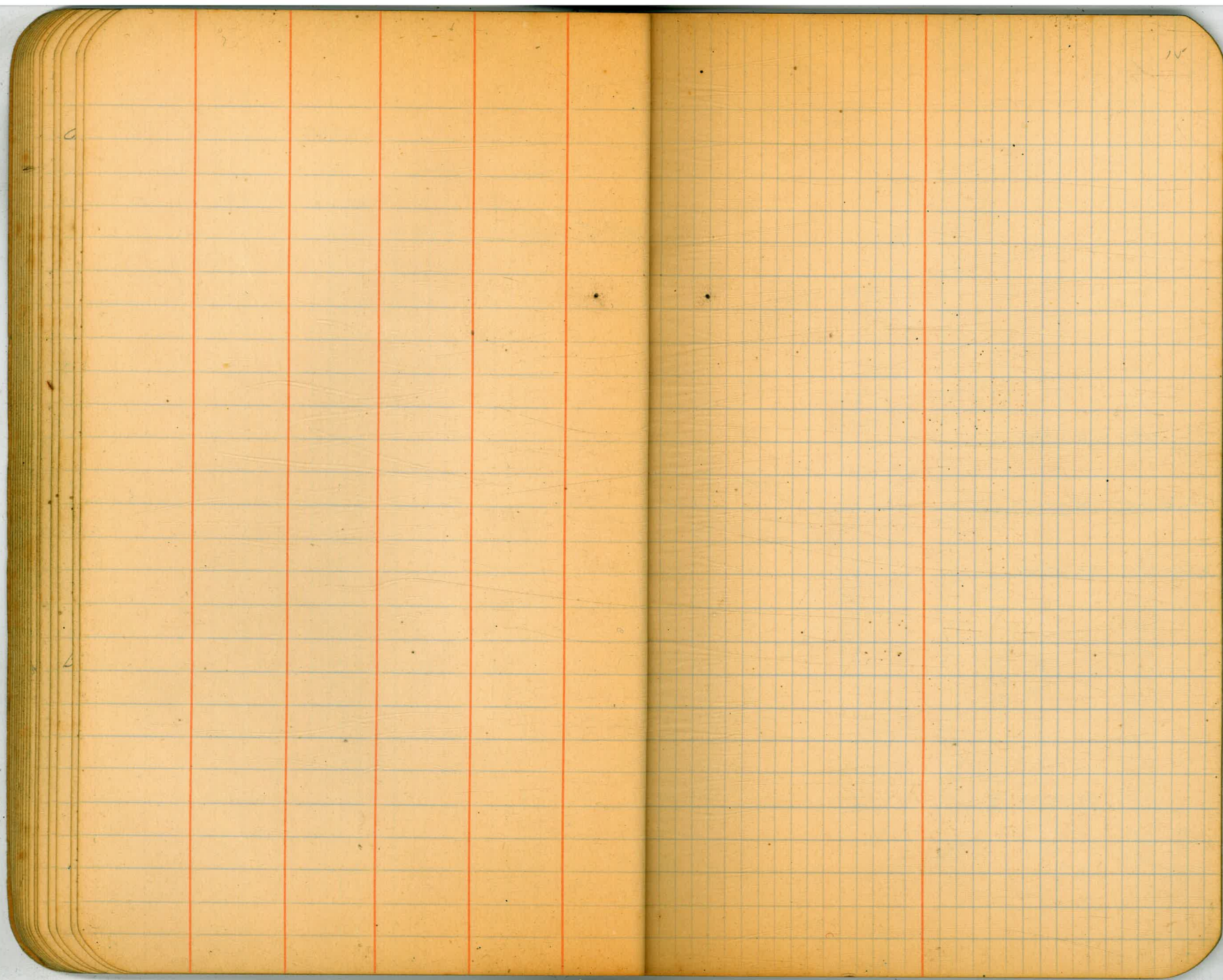
15.42

15.4 M<sup>#</sup> 5

B.A.

B.





ESTRELLA PLACE

3+30.35 W. Prop.

2+90.35  $\pm$  St.

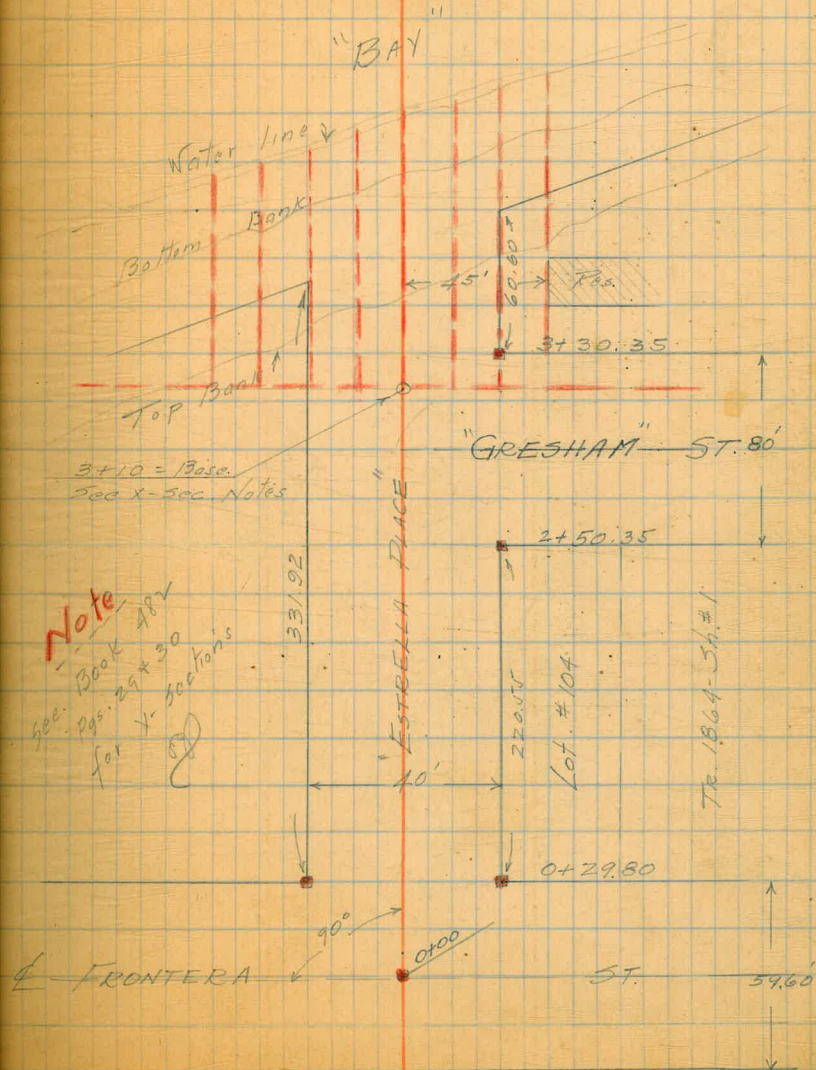
2+50.35 E. Prop.

0+00

Note

Red Points indicate  
2x2 Hubs 7L

Oct. 1st. 1928  
S.O.T.  
E.A.A. (18)  
I.D.  
Allenbaugh



Note  
see Book 48 v  
pgs. 29 + 30  
for X-sections

FRONTIER - DRAINAGE  
 Across "Moorland"

See following Page  
 for profile & Elevations

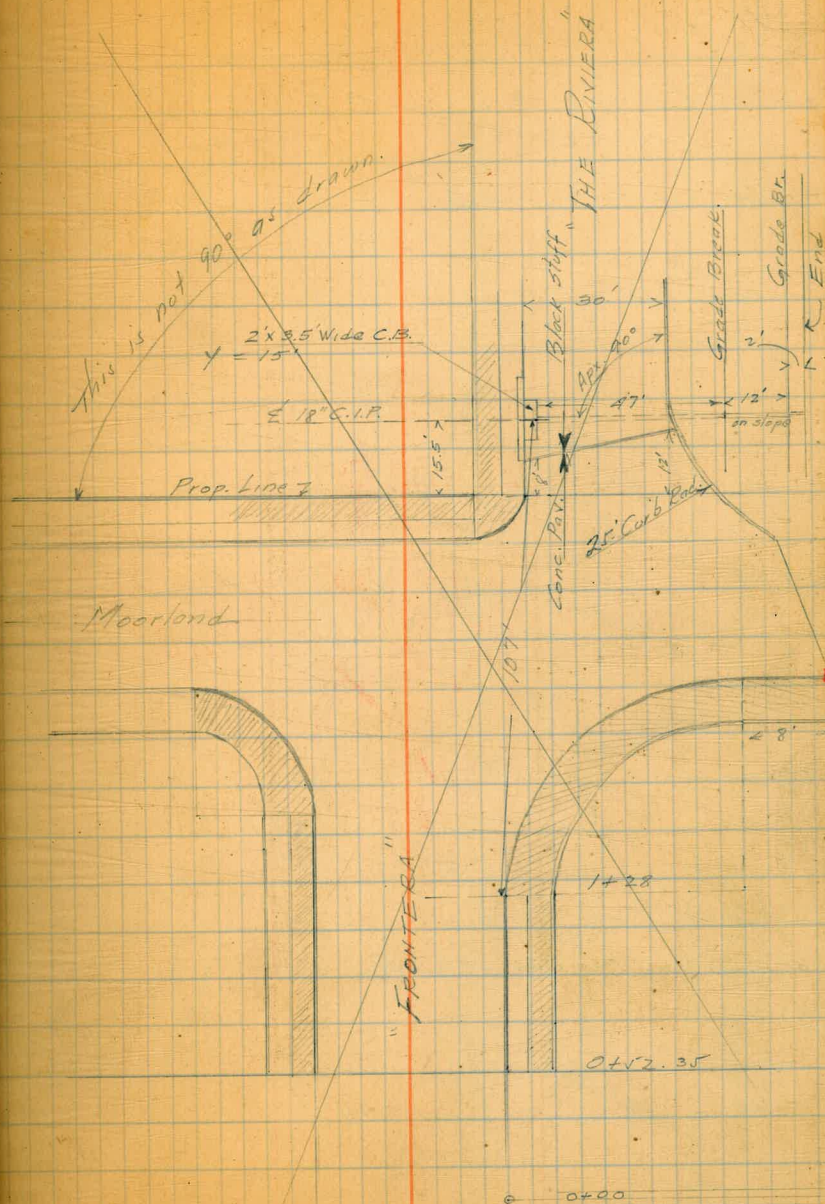
2+35 = End Pipe

*Void*  
 See Pas - 20-25

1+28 = Apx. Ret.

0+52.35 = Begin Imp.

0+00



Profile Frontera.  
 Culvert # 1 to C.B. on "Riviera"

Sta. + H.I. -

1428

1400

0452.35 = Beginning Curb & Walk

0400

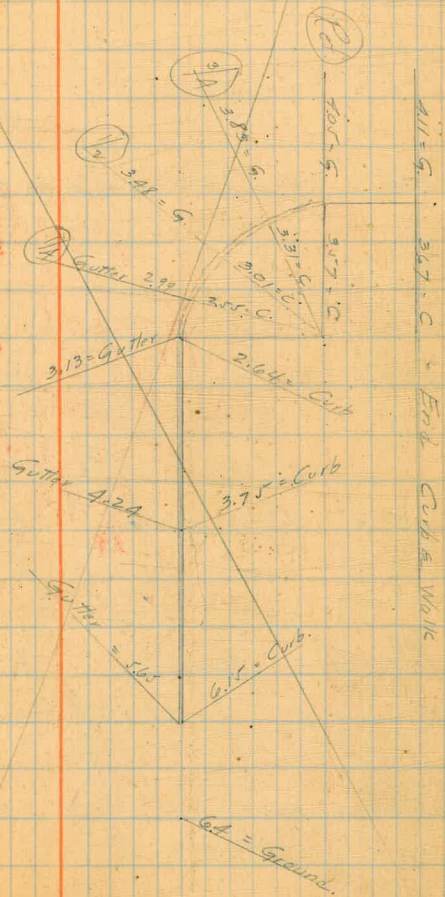
64

4.67 22.86

B.M. #9

18.19

~~Void~~  
 See Pgs. 20-25



2135 = Top Grating above  $\phi$  of Pipe.

2127 =

6.09

2120 =

3. Prop. produced

5.52

1194 =

$\phi$  Moorland

3.94

22.86

1181 =

3.38

1150

3.00

Bottom C.B.

18" C.I.P.

Top Curb 5.15

6.21 = Top Grating



C = 5.12 + 6.09 - 9 Sta. 2127

1.03 = 4.01 - C

0.89

5.25

GENERAL DETAILS

Intersection of Fronteca  
and Moorland

- Note -

Profile line designated by Red

2+35.17 - End Profile line at Catch Basin

1+79.97 Intersection of Profile lines

1+40.67 = Prof. Angle Point

1+28 = Actual Curb Ret.

0+53.90 = Boundary = Begin Imp.

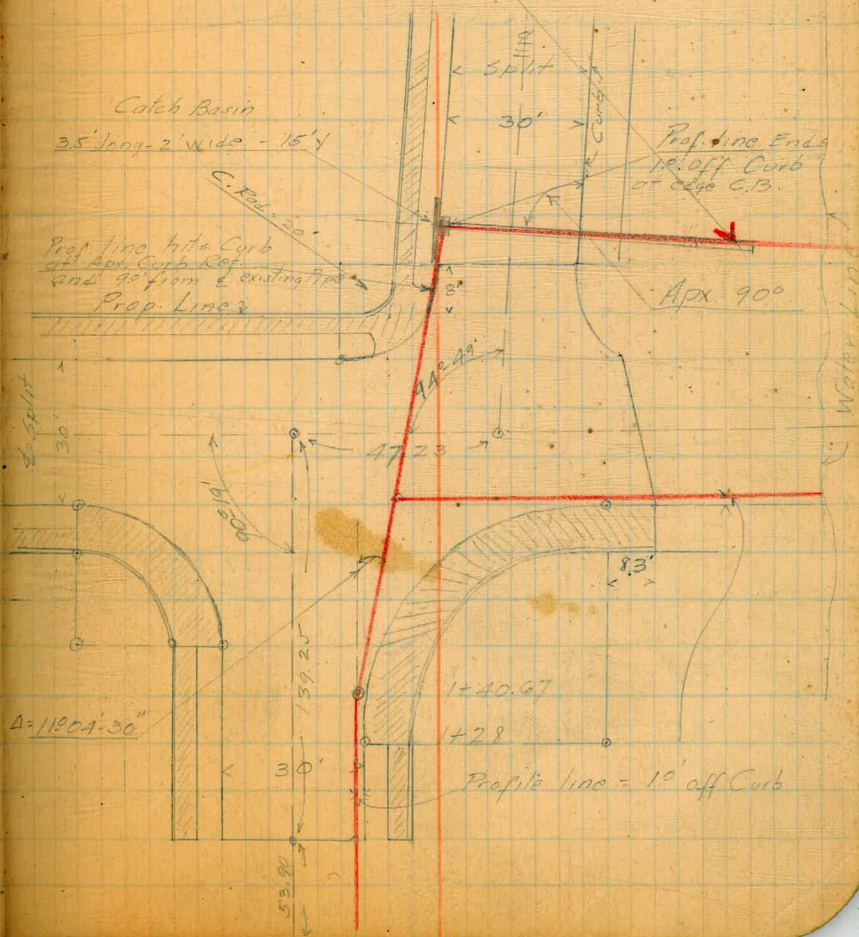
0+00 = EASEMENT

Oct. 6 - 1928

Shimizu  
Anderson  
de la Bana  
Reed

- Note -

No support  
for end of pipe  
or at angle point. (Except dirt)



## FRONTERA Profile on Curb Line

Sta.	+	H.I.	Elev	
2+27.17			7.43 8.38	17.72 16.77
				Curb Gutter
				Intersection Curb line and Profile line
1+79.97			5.64	19.51
				Prof. Intersection
1+40.67			5.18	19.97
				actual prof. Angle Point
		(25.15)		
1+29.87			4.95 5.41	20.20 19.74
				Curb Gutter
1+00			6.06 6.56	19.09 18.59
				Curb Gutter
0+75			7.04 7.56	18.11 17.59
				Curb Gutter
0+52.35			7.95 8.45	17.20 16.70
				Curb Gutter
0+00			8.6	16.6
				N.S.
		6.96	25.15	
B.M. # 9				18.19

Profile Ground line  
above Culvert

22

Sta. + H.I. - Elev.

0+63 27.7 -2.0

Ground Elev. directly below End of Pipe

(25.15)

0+50 14.1 11.1

Angle to Pipe

0+42 6.8 18.4

Shoulder

0+30 7.15 18.00  
7.90 17.25

Curb  
Gutter

0+00 8.52 16.63

Curb line (Top of Grating)



Profile of Flow line  
of Culvert

Sta. + H.I. - Elev.

25.15

0+63

27.2

3.0

End of Pipe - Flow

0+61

22.3

2.9

Angle in Pipe = Flow

0+59

14.1

11.1

Angle in Pipe = Flow

0+00 =

13.74

11.41

Curb line (at Flow line bottom of C.B.)

PROFILE of MOORELAND

24

From Intersection of Profile lines

to Beach - 0+00 = Intersection

= Profile line = 10' off North Curb.

Sta.	+ HI.	- Elev
1+17.0	30.4	-5.2
0+72	27.00	-1.8
0+60	19.5	14.7
0+59	(25.15)	8.5
0+52	5.99 6.43	19.16 18.72
0+21	6.14	19.01
0+00	5.64	19.51

Water Elev. at 8:30 am Oct. 6-28

Toe of Slope

Top of Bank

Break in Ground Profile.

Curb Gutter = End of Improvement

Apex of Riviera Produced

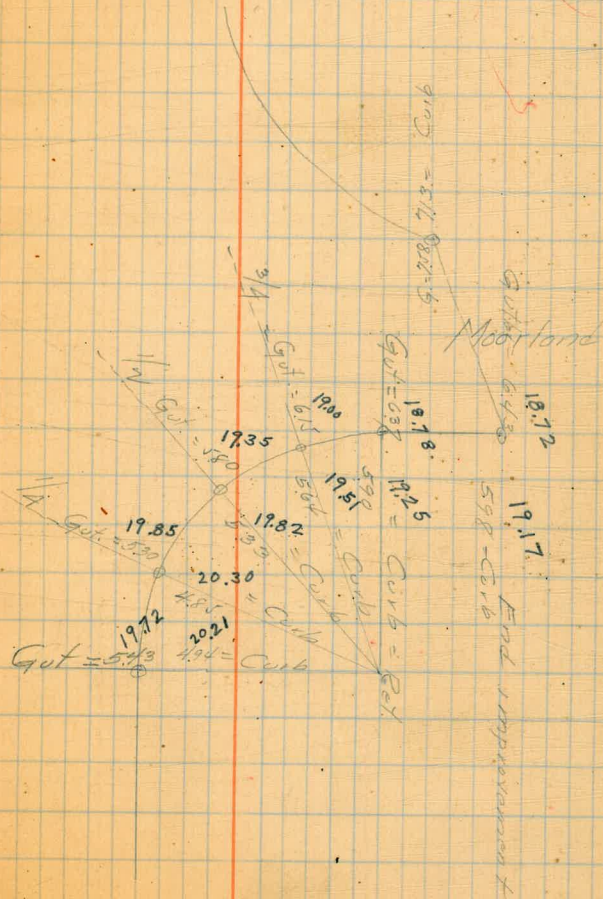
Intersection Profile lines

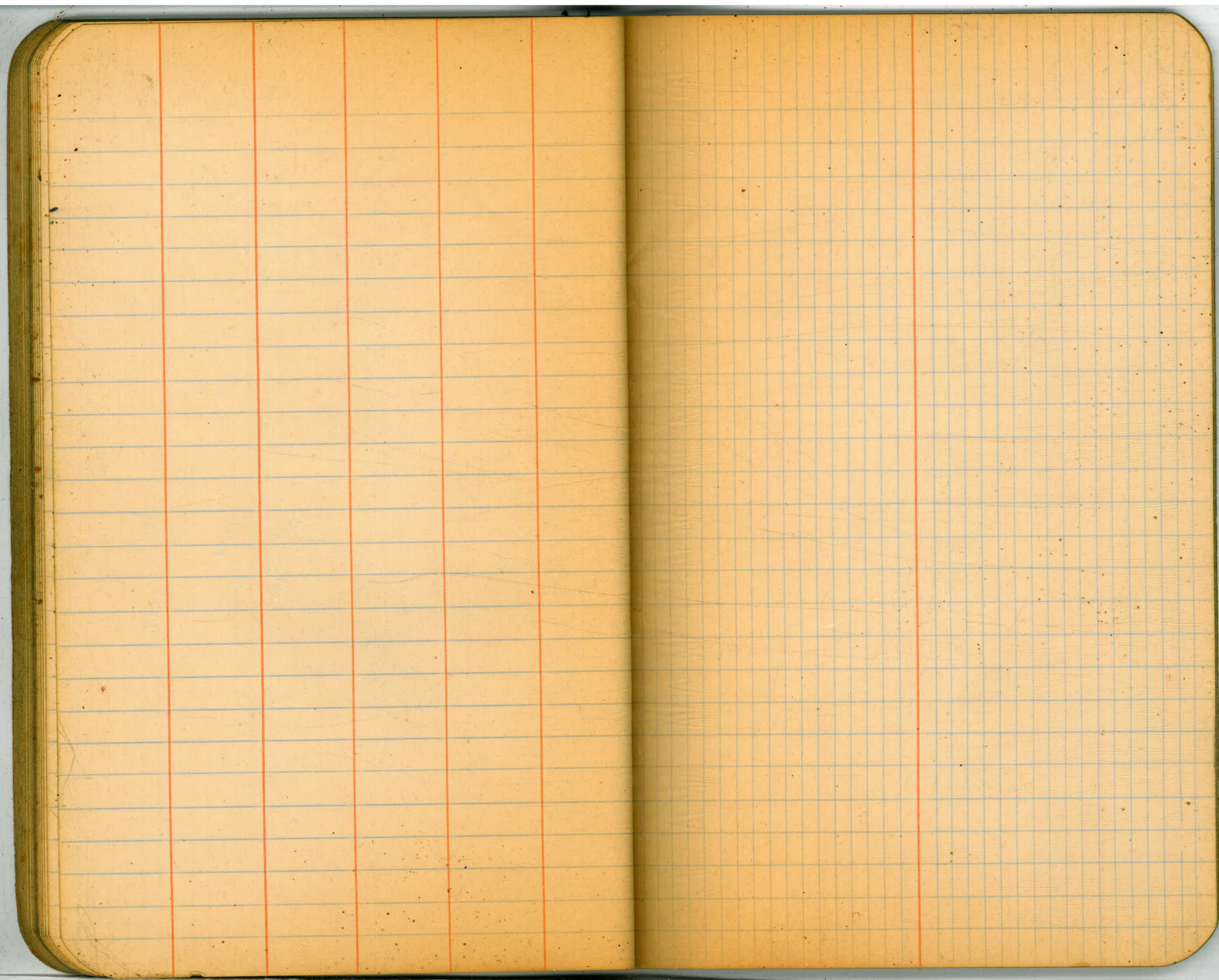
Additional Elevations  
on Return & Etc.

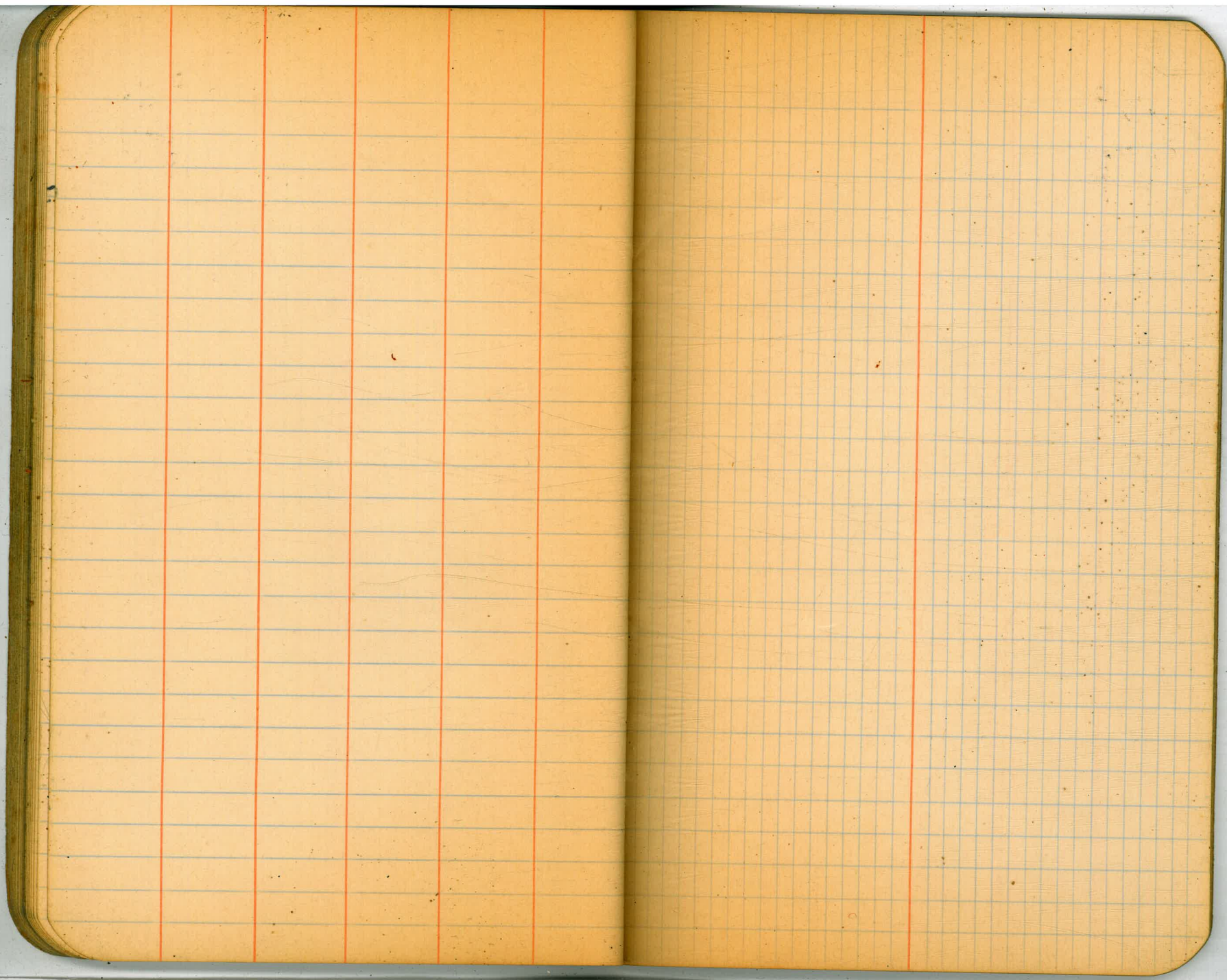
25

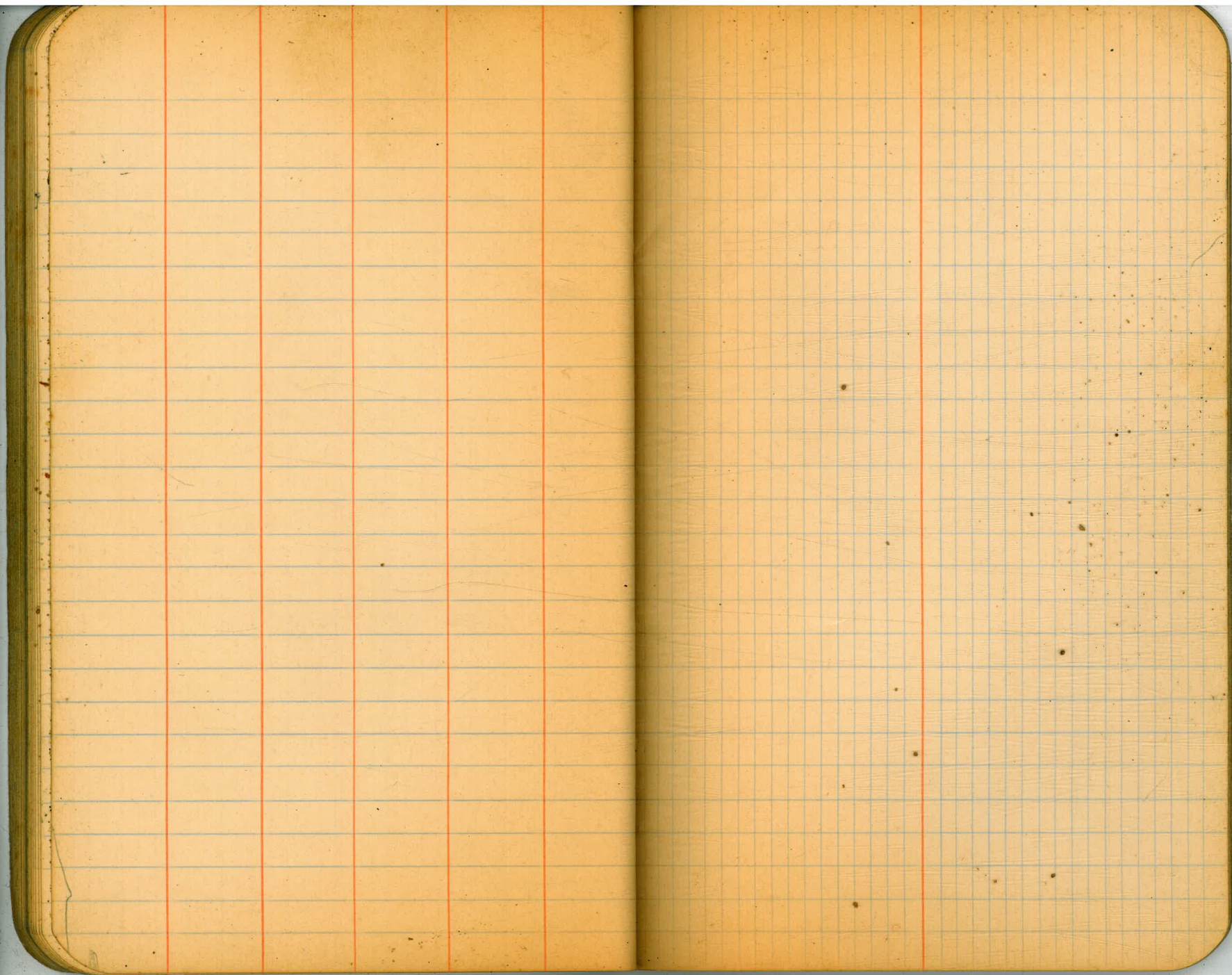
Sta.    t.    H.I.    -    Elev.

25.15









35.95

9.14

40.09

40.09  
4.11  
35.98

35.98  
0.04  
36.02

18'-00" = Edge Cont.

2'-6" = P.T. Walk

1'-4" = Gut Meter

1" = In Meter

3" = Clearance

21'-2" = From St.

24'-2" = 24.17 = 3'-off

90.01

0200

58170  
2353  
57837

58170  
2353  
57837

2072.99  
144768  
64083

354

316.30  
308.80  
625.10

045390  
13925  
19815  
14723  
4038

