

NAME Pacific Ave

Class X-sections. Course Party

WATSON, VALLE & GOUGH

482

1940

FIELD NOTES

No. 403 P

ESPECIALLY ADAPTED
TO THE USE OF
ENGINEERING STUDENTS

EUGENE DIETZGEN Co.

MANUFACTURERS

DRAWING MATERIALS
MATHEMATICAL AND SURVEYING INSTRUMENTS
MEASURING TAPES

CHICAGO SAN FRANCISCO NEW YORK
NEW ORLEANS PITTSBURGH

MICROFILMED

DEC 30 1964

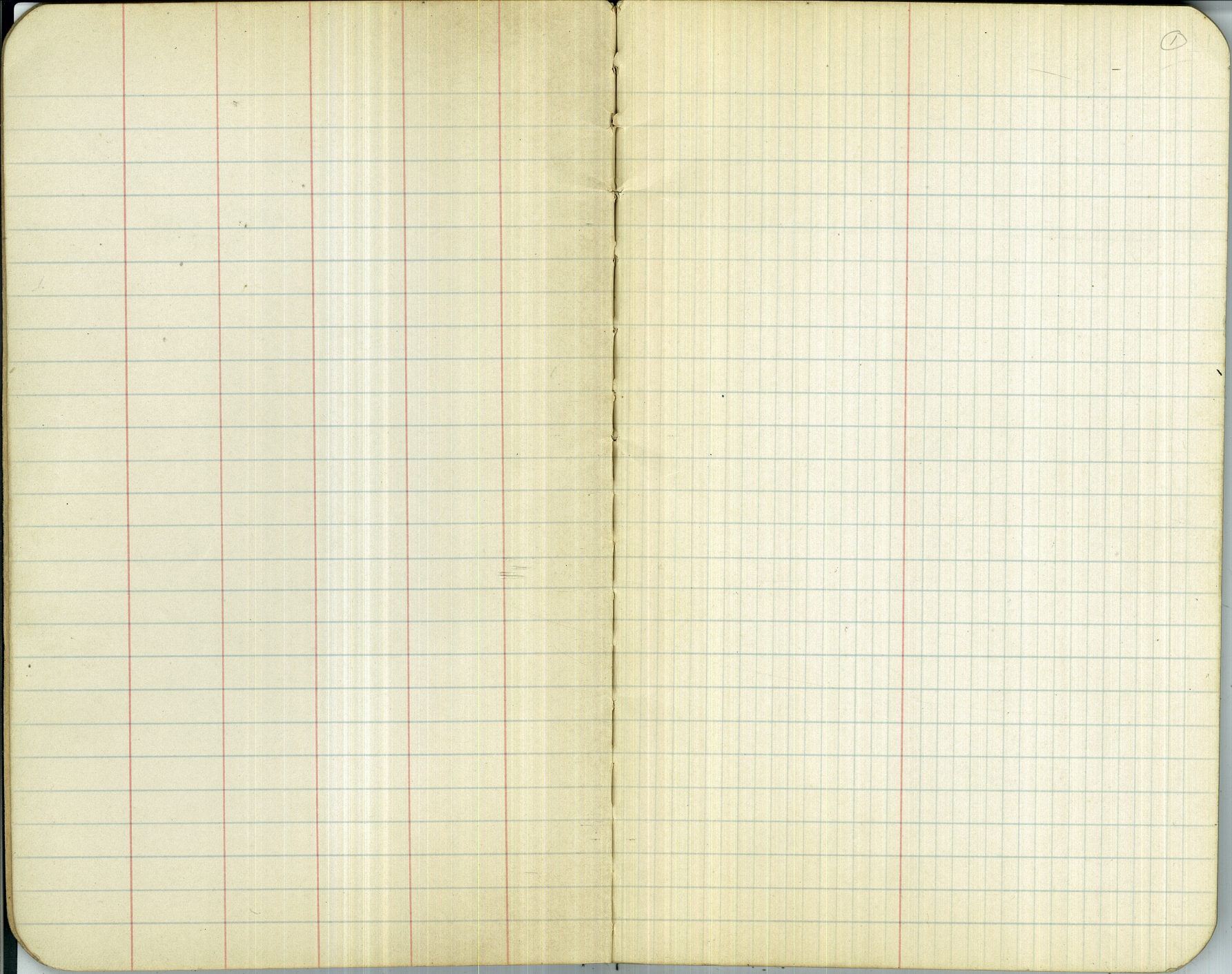
Index

Page

FANUEL - X-sec. - Pac. Southcoast - 2-3

ESTRELLA Place (Oct. 1st. 1928) . 29-30

FANUEL X-sec. (Bay End only Oct. 1st.) - 31



X-Sections

Fanuel Southerly.

(2)

Sta.	H.T.
3+70 & Street	10.79 ✓
3+00	
2+50	
2+00	
1+50	
1+00	
150	1543 = 13M. +965 <u>20.08</u> -11.52
0+30	08.56 223 10.79
0+00 = & Pacific	

Left.	±	Right
$\frac{68}{40}$ 40	$\frac{68}{40}$ 40	$\frac{66}{40}$ 40
$\frac{88}{11.3}$ 40	$\frac{86}{11.5}$	$\frac{85}{11.6}$ 40
$\frac{101}{10.0}$ 40	$\frac{99}{10.2}$	$\frac{91}{10.4}$ 40
$\frac{112}{8.9}$ 40	$\frac{112}{8.9}$	$\frac{109}{9.2}$ 40
$\frac{121}{7.4}$ 40	$\frac{124}{7.7}$	$\frac{120}{8.1}$ 40
$\frac{141}{6.0}$ 40	$\frac{135}{6.6}$	$\frac{130}{7.1}$ 40
$\frac{161}{5.0}$ 40	$\frac{146}{5.5}$	$\frac{140}{6.1}$ 40
$\frac{160}{4.1}$ 40	$\frac{147}{5.4}$	$\frac{142}{5.9}$ 40
	$\frac{151}{5.0}$	$\frac{146}{5.5}$ 40

(CK) (X)

Fanuel Southerly

Sta.

H.I.

6+07.53

5+55

5+50

5+44

5+34

5+22

5+00

4+50

4+10

10.79

Left

±

Right ③

-45
153
40

19 15
89 93
40 31
21

87
40

24
84
40

23
85
40

25
83
40

31
77
40

47
61
40

55
13
40

-20
128
13
25
83
17

-52
160

-26
134
-18
12.6

27
81

26
82

27
8.1

33
7.5

46
6.2

53
7

-58
16.6
40

-46
15.4
40
-44
15.2
40

-14
12.2
10

28
8.0
15

-21
12.9
3.2

29
7.9
40

39
7.4
40

47
6.1
40

57
5.1
40

-33
14.1
40

-20
12.8
40

29
7.9
40

39
7.4
40

47
6.1
40

57
5.1
40

④

Fanuel Northerly

Sta.

H.I.

3+19.9

28.36 ✓

2+80

2+50

2+00

1+50

1+00

0+30

0+00

19.91
- 1.07
18.84
9.52
28.36

Left

Z

Flight ④

21^L
73
40

21^L
68

22^L
60
40

20⁰
84
40

20^Z
77

21^L
70

19⁵
89
40

20^Z
81

20^Z
77
40

18³
16
40

19^L
08

19^L
05
40

17^Z
27
40

17^Z
20

18⁵
14
40

16³
36
40

17⁰
29

17⁸
21
40

15³
46
40

16^L
38

16⁹
30
40

⊗

Fanuel Noth

Sta. H.I.

7+10 34.34 ✓

6+70

6+30

5+50

5+00

4+50

2836 ✓

-161
2675
759

3434

4+00

3+60

Left

4

Right

(5)

26³
8.0
40

26⁷
7.6

27³
7.0
40

26³
2.1
40

26⁸
1.6

27⁰
1.4
40

25⁵
2.9
40

26¹
2.3

26⁸
1.6
40

24⁰
4.0
40

24⁷
3.7

25⁷
2.7
40

23⁶
4.8
40

24⁰
4.4

24⁹
3.5
40

23¹
5.3
40

23⁵
4.9

24⁹
4.0
40

22³
6.1
40

22⁸
5.6

23⁸
4.6
40

21⁵
6.9
40

22¹
6.3

22⁹
5.5
40

(X)

Fanuel Northery

H.I.

Sta.

11+00

10+60

10+19.76

9+80

9+50

9+00

8+50

8+00

7+50

34.34

Left

2

Right (6)

40 $\frac{30^3}{40}$

44 $\frac{29^9}{40}$

45 $\frac{29^8}{40}$

49 $\frac{29^7}{40}$

51 $\frac{29^2}{40}$

56 $\frac{28^7}{40}$

64 $\frac{27^9}{40}$

69 $\frac{27^4}{40}$

74 $\frac{26^9}{40}$

35 $\frac{30^8}{40}$

39 $\frac{30^4}{40}$

40 $\frac{30^3}{40}$

45 $\frac{29^8}{40}$

46 $\frac{29^7}{40}$

53 $\frac{29^0}{40}$

60 $\frac{28^3}{40}$

67 $\frac{27^6}{40}$

72 $\frac{27^1}{40}$

29 $\frac{31^4}{40}$

34 $\frac{30^9}{40}$

32 $\frac{31^1}{40}$

39 $\frac{30^7}{40}$

43 $\frac{30^0}{40}$

50 $\frac{29^3}{40}$

55 $\frac{28^8}{40}$

62 $\frac{28^1}{40}$

68 $\frac{27^5}{40}$

(7)

Fanuel North

Sta. + H.I. - Elev.

14+55

14+28

13+94.18

13+50

40.34

13+31

13+18

12+50

12+00

11+50

3434

404

30.50

1004

40.34

40

Left

2

Right

(7)

4.7 35.6
40

5.8 34.5
40

5.8 34.5
100

5.0 35.3
50

5.8 34.5
40

1.7 35.6
40

5.7 34.6
18

8.1 32.2
40

9.1 31.2
40

9.4 30.9
40

9.7 30.6
40

4.9 35.4

5.0 35.3

4.0 36.3

5.5 35.0

35.1

32.7

8.6 31.7

9.0 31.3

3.3 31.1

4.5 35.8
18

4.0 36.3
22

3.6 36.7
50

5.0 35.3
14

8.3 32.0

8.5 31.8
40

3.0 31.3
40

(7)

36.3
40
40

37.3
100

35.8
40

36.3
40
40

33.4
40

32.0
40

31.8
40

31.3
40

Fanuel North

Sta. R.R. H.I. RR. Elev.

17+85

17+65

49.34 ✓

17+25

17+00

16+50

16+00

15+50

15+00

40.34

- 0.73

39.61

+ 9.71

49.34

Left

41.3
80
50

41.6
77
100

42.2
71
50

41.6
77
40

41.2
8.1
40

8.8 40.5
40

1.0 39.3
40

2.0 38.3
40

3.5 36.8
40

41.9
74

42.5
68

41.6
7.7

41.6
77

40.5
8.8

39.4
0.9

38.1
2.2

36.6
3.1

Right (8)

42.8
6.5
36

42.5
6.8
50

42.8
6.5
50

42.9
6.2
100

41.3
80
25

41.0
8.3
2.1

41.9
7.4
40

41.5
7.8
40

40.7
8.6
40

38.6
1.7
40

37.4
2.9
40

36.4
3.9
40

(8)

Fenwick North

H.I.

5th

20+72.99

20+68

20+00

4937

19+50

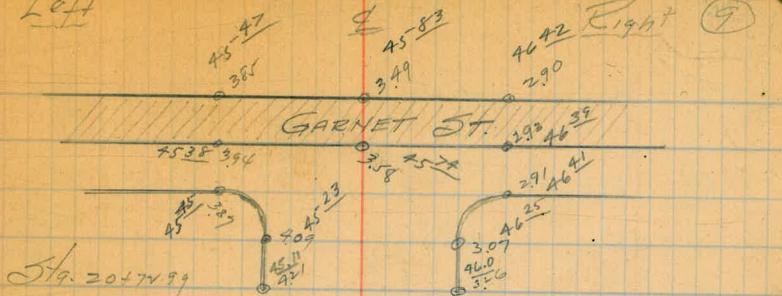
19+00

18+50

18+05

Left

Right (9)



45 ⁶ 3.7 4.0	End Curb 45.11 4.21 19.97	45 ² 4.1	End Curb 46.06 3.26 19.97	46 ⁶⁷ 2.65 4.0
44 ² 5.1 4.0	44 ⁸ 4.5 2.2	45 ¹ 4.2	45 ⁴ 3.9 4.0	
43 ⁹ 5.4 4.0		44 ⁴ 4.9	44 ⁴ 7	44 ⁹ 4.4 1.3
				44 ⁷ 2.6 4.0
43 ⁷ 5.6 4.0		44 ⁰ √3	44 ⁰ √3	44 ⁴ 4.9 2.0
				44 ⁶ 4.7 4.0
43 ¹ 6.2 4.0		43 ⁴ 5.9	43 ⁷ 5.6 2.3	44 ¹ 5.2 2.7
				44 ¹ 5.2 4.0
42 ⁸ 6.5 4.0		43 ¹ 6.2	43 ² 6.1 3.2	43 ⁹ 5.4 4.0
42 ¹ 7.2 4.0		42 ³ 7.0	42 ⁶ 6.7 3.6	43 ¹ 6.2 4.0

(1)

PACIFIC Ave.

Sta.	H.I.
1484	
1450	
1400	
0480	
0450	
0400	

04.59

Left

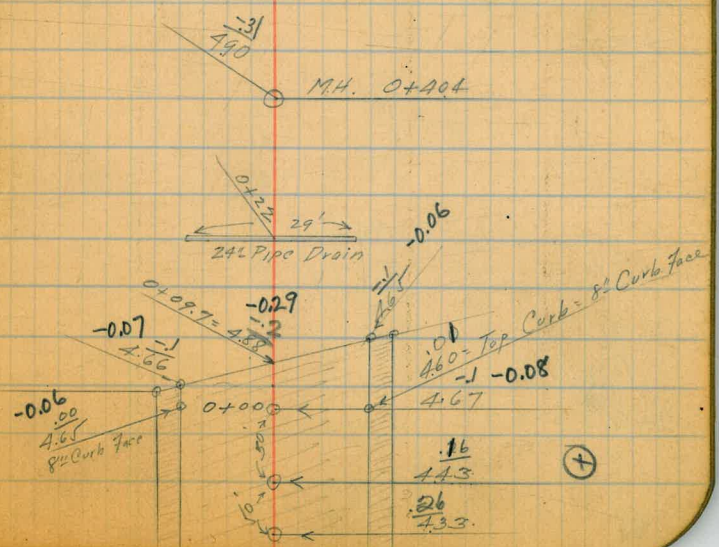
5.1 30	5.4 15	5.8 13	5.4 30
5.5 30	5.3 12	6.0 13	5.0 30
5.7 30	5.6 11	5.8 13	5.1 30
5.7 30			5.5 30
4.6 30	4.9 30	5.3 12	5.2 30

≠

5.4 30	5.9 13	5.0 30	6.0 14
5.9 12	5.9 12	5.5 30	5.5 30
5.1 30	5.0 12		

Right (10)

5.8 30	5.8 30	5.6 17	5.8 30
5.9 30	5.9 30	5.6 17	5.8 30
5.6 17	5.6 17	5.6 17	5.8 30



PACIFIC AVE

H.I.

5+50

6+20

6+00

5+50

5+00

4+50

4+00

3+50

3+00

2+50

14.03 ✓

04.59
-1.26
03.33
10.70
14.03

Left

W

Et.

(11)

9 48 30 5.4	8 19 5.7	8 18 6.2	8 17 6.7	8 17 6.7	8 17 6.7	8 17 6.7	8 17 6.7	8 17 6.7	8 17 6.7
7 6.6	7 6.6	7 6.6	7 6.6	7 6.6	7 6.6	7 6.6	7 6.6	7 6.6	7 6.6
6 7.6	6 7.9	6 8.6	6 8.6	6 8.6	6 8.6	6 8.6	6 8.6	6 8.6	6 8.6
5 8.5	5 9.0	5 9.7	5 9.8	5 9.8	5 9.8	5 9.8	5 9.8	5 9.8	5 9.8
4 9.3	4 9.8	4 10.3	4 10.3	4 10.3	4 10.3	4 10.3	4 10.3	4 10.3	4 10.3
3 10.3	3 10.3	3 10.3	3 10.3	3 10.3	3 10.3	3 10.3	3 10.3	3 10.3	3 10.3
2 11.6	2 11.6	2 11.6	2 11.6	2 11.6	2 11.6	2 11.6	2 11.6	2 11.6	2 11.6
1 12.9	1 12.9	1 12.9	1 12.9	1 12.9	1 12.9	1 12.9	1 12.9	1 12.9	1 12.9
0 14.2	0 14.2	0 14.2	0 14.2	0 14.2	0 14.2	0 14.2	0 14.2	0 14.2	0 14.2

(7)

PACIFIC AVE

Sta.

H.I.

90400

20.06

9+50

9+00

8+50

8+00

7+50

7+00

6+60

14.03

$$\begin{array}{r} 14.03 \\ - 2.32 \\ \hline 11.71 \\ + 8.35 \\ \hline 20.06 \end{array}$$

Left

Q

Rt (12)

13 1/2	12 5/8	12 0/10	11 2/3	11 5/8	11 5/8	11 5/8
70 30	73 18	81 17	82	86 13	83 16	80 10
12 5/8	12 5/8	11 5/8	11 5/8	11 5/8	11 5/8	11 5/8
73 36	75 18	83 17	83	88 16	89	89 30
12 5/8	12 1/2	11 5/8	11 5/8	10 7/8	11 0/10	10 9/10
16 30	19 19	27 18	27	30 15	30 18	31 30
11 5/8	11 5/8	10 6/10	10 7/8	10 1/2	10 5/8	10 5/8
22 30	25 18	34 18	33	39 15	35 20	40 30
11 0/10	10 8/10	10 0/10	10 2/3	9 7/8	9 7/8	9 7/8
30 30	32 19	40 18	38	43 16	46 30	
10 5/8	10 5/8	9 7/8	9 5/8	9 5/8	9 5/8	9 5/8
32 30	36 18	43 17	42	48 17	45 20	48 30
10 1/2	10 1/2	9 5/8	9 5/8	8 5/8	9 0/10	8 5/8
31 30	39 17	46 17	45	50 17	50	51 30
9 2/3	9 5/8	9 0/10	8 9/10	8 2/3	8 2/3	8 2/3
41 30	44 18	50 16	51	58 17	56 30	

(X)

Pacific Ave

Sta.	H.I.
14400	26.57 ✓
13750	
13400	
12740	
12400	
1160	20.06 - 2.33 ----- 17.73 8.79 ----- 26.52
11400	
10+50	

Left

192	19.8	18.8	18.2	17.7	18.2	17.7	17.7
6.6	6.7	7.7	8.4	9.1	8.4	8.9	8.9
30	19	17	24	17	18	30	30
19.7	18.7	18.1	17.7	17.7	17.7	17.7	17.7
0.7	1.4	2.0	2.6	3.0	3.0	3.0	3.0
3	3	3	3	3	3	3	3
18	18	18	17	16	16	16	16
30	18	17	3.0	3.0	3.0	3.0	3.0
16.9	16.7	15.8	15.2	15.2	15.2	15.2	15.2
3.7	3.4	4.3	4.2	4.5	4.5	4.5	4.5
30	19	18	4.2	14	18	3.0	3.0
16.3	15.9	15.3	15.1	14.7	15.0	14.7	14.7
3.8	4.1	4.8	5.0	5.4	5.4	5.4	5.4
30	20	20	5.0	17	20	3.0	3.0
15.3	15.7	14.6	14.6	14.2	14.5	14.1	14.1
4.8	4.7	5.8	5.5	5.9	5.5	6.0	6.0
30	18	17	5.5	18	18	3.0	3.0
14.1	14.2	13.7	13.5	13.2	13.2	13.2	13.2
6.0	6.0	6.7	6.6	6.9	6.9	6.9	6.9
30	18	17	6.6	19	19	30	30
13.7	13.2	12.7	12.2	12.3	12.2	12.2	12.2
6.7	6.9	7.7	7.7	7.8	7.8	8.0	8.0
30	18	15	7.7	14	14	30	30

Right (13)

192	18.1	17.5	17.2	17.1	17.1	17.1	17.1
6.6	6.7	7.7	8.4	9.1	8.4	8.9	8.9
30	19	17	24	17	18	30	30
19.7	18.7	18.1	17.7	17.7	17.7	17.7	17.7
0.7	1.4	2.0	2.6	3.0	3.0	3.0	3.0
3	3	3	3	3	3	3	3
18	18	18	17	16	16	16	16
30	18	17	3.0	3.0	3.0	3.0	3.0
16.9	16.7	15.8	15.2	15.2	15.2	15.2	15.2
3.7	3.4	4.3	4.2	4.5	4.5	4.5	4.5
30	19	18	4.2	14	18	3.0	3.0
16.3	15.9	15.3	15.1	14.7	15.0	14.7	14.7
3.8	4.1	4.8	5.0	5.4	5.4	5.4	5.4
30	20	20	5.0	17	20	3.0	3.0
15.3	15.7	14.6	14.6	14.2	14.5	14.1	14.1
4.8	4.7	5.8	5.5	5.9	5.5	6.0	6.0
30	18	17	5.5	18	18	3.0	3.0
14.1	14.2	13.7	13.5	13.2	13.2	13.2	13.2
6.0	6.0	6.7	6.6	6.9	6.9	6.9	6.9
30	18	17	6.6	19	19	30	30
13.7	13.2	12.7	12.2	12.3	12.2	12.2	12.2
6.7	6.9	7.7	7.7	7.8	7.8	8.0	8.0
30	18	15	7.7	14	14	30	30

(X)

Pacific Ave

Sta.

H.I.

17+80

17+40

17+00

16+50

16+00

15+50

15+00

14+50

26.52
- 2.91

23.61
11.52
35.13

B.M.

5460.26
81
5451.26

Left

4

Right

(14)

25.1	22.4	22.4	21.8	21.7	21.5	21.1
36	41	41	47	48	50	54
100	50	30	20	21.7	30	100
44	44	44	52	52	60	60
30	21	21	20	21.9	13	14
46	44	44	54	59	64	68
30	21	21	17	20.5	17	17
49	46	46	50	62.03	67	70
30	19	19	19	2	19	19
40	40	40	49	66	74	80
30	19	19	19	19.2	18	18
52	52	52	59	69	74	79
30	20	20	20	19.4	19	30
55	55	55	59	9.193	77	73
30	20	20	20	19.3	18.8	19.2
76	76	76	76	76	84	80
30	19	19	19	18.2	18.1	18.5
19	19	19	19	19.3	18.8	18.3
17	17	17	17	19.4	19.1	19.2
76	76	76	76	76	84	80
30	19	19	19	18.2	18.1	18.3

(14)

PACIFIC AVE

Sta.

H.I.

26+34.31
 $\overline{20+40.14}$
 Equation
 Fwd.
 Back

20+40

20+00

19+50

35.13

19+00

18+50

18+20

Left

4

Right

70

31	31	30	30	30	30	30	30
40	4.0	4.1	4.7	5.0	4.5	5.0	4.5
30	10	20		16	10	16	10
29	29	28	28	28	28	29	29
6.1	5.9	6.3	6.3	6.4	6.0	6.0	6.0
30	23	22	13	13	13	13	10
27	27	27	27	27	26	26	27
77	78	81	81	84	84	84	80
30	20	19	11	14	14	14	13
25	25	25	25	25	25	25	25
9.5	9.4	9.6	9.6	10.1	9.3	9.3	9.3
30	20	20	14	14	14	14	30
24	24	24	24	287	242	242	240
105	106	110	11.0	114	109	109	11.0
30	18	18	11.0	14	16	16	30
23	23	23	23	22	23	23	23
11.6	11.5	10.9	11.8	12.3	11.8	11.8	11.5
30	20	20	8	13	16	16	30
23	22	22	22	22	22	22	22
12.7	12.4	12.6	12.6	14	18	18	12.4
14	18	20	14	14	18	18	14

(X)

(X)

FRONTERA ST.

East

West

(17)

Sta.

H.I.

Elev.

Temp B.M.

22.93

30' Et = West 20400

19+50

9.1	24.8	10.0	24.3	11.0	23.3
30		21		21	

12.1	21.9
30	

20+00

8.4	25.2	9.0	25.3	10.0	24.3
30		22		22	

11.1	22.8
30	

20+50

7.6	26.7	8.3	26.0	9.0	25.3
30		22		22	

3.0	23.8
30	

21+00

6.6	27.7	7.2	27.1	8.1	26.2
30		22		22	

9.4	24.9
30	

21+50

34.28
 11.33
 22.93
 49.2
 17.85

5.4	28.9	6.0	28.3	7.0	27.3
30		22		22	

8.3	26.0
30	

22+00

4.1	29.8	4.8	29.5	5.9	28.9
30		22		22	

5.6	26.7
30	

22+50

3.0	31.3	4.0	30.3	4.8	29.5
30		23		23	

5.0	27.5
30	

8

FRONTERA St

East

West (18)

Sta.

H.I.

15+44.10

18.28 ✓

16+00

16+50

17+00

17+50

18+00

27.85 ✓

12.32
 $\frac{15.53}{+2.75}$
 18.28

18+50

19+00

5.7 30	5.12 6	5.12 20	5.12 20	7.1
4.4 30	13.2 4	13.4 20	12.6 20	5.12 5.8
2.7 20	15.2 4	14.8 20	13.8 20	4.5
10.8 30	17.1 4	11.6 19	12.5 19	12.5
9.0 30	18.2 4	9.9 20	10.6 20	10.8
7.1 30	20.4 4	7.9 20	8.8 20	9.0
5.4 30	22.5 4	6.3 21	7.3 21	7.4
4.2 30	23.7 4	5.0 20	5.8 20	6.2

8.0
10.3

7.4
6.7
3.0

13.2
1.1
3.0

13.5
1.0

16.5
11.4
3.0

17.8
10.1
3.0

19.9
8.0
3.0

20.7
7.2
3.0

(X)

5/6

H.I.

11+50

28.40

12+00

12+50

13+00

13+50

14+00

14+50

15+00 -

23.7

4.7
30

20.9

7.5
30

16.9

1.4
30

14.1

4.1
30

11.8

6.1
30

10.2

7.4
30

11.1

7.1
30

5.12

3.2
30

22.4

6.0
30

19.3

9.1
30

15.2

3.3
30

13.2

5.0
30

10.9

7.6
30

10.2

8.3
30

10.8

7.9
30

5.11

3.5
30

21.1

7.3
30

17.9

10.8
17

13.2

4.6
30

12.1

6.1
30

9.8

8.5
30

9.1

9.1
30

9.8

8.9
30

10.8

7.9
30

20.0

8.4
30

16.5

11.9
30

12.2

5.6
30

11.2

5.4
30

9.1

9.1
30

8.2

9.6
30

9.4

8.9
30

10.3

8.0
30

16.4

12.0
30

12.9

15.2
30

16.4

18.0
30

10.8

10.1
30

7.3

11.0
30

7.5

10.8
30

8.5

9.8
30

9.3

3.0
30

FRONTERA ST.

H.I.

5/9

7450

8400

8450

9400

9450

10400

10450

11400

28.40
- 8.55

19.85
429

241.4

East

2

West

(20)

216

6.8
30

223

6.1
30

229

5.1
30

237

4.7
30

244

4.0
30

251

3.5
30

253

3.0
30

252

2.0
30

211

7.0
19

219

6.5
18

224

6.0
19

231

5.0
18

239

4.5
20

246

3.8
19

246

3.8
18

240

4.4
17

204

8.0

211

7.3

218

6.6

223

6.1

230

5.4

236

4.8

235

4.9

231

5.3

205

7.9

211

7.5

217

6.7

224

6.0

230

5.4

234

5.0

234

5.0

225

5.9

198

8.6
30

203

8.1
30

208

7.6
30

214

7.0
30

220

6.6
30

223

6.1
30

215

6.9
30

200

8.4
30

(*)

FRONTERA 31

East

d

West

(21)

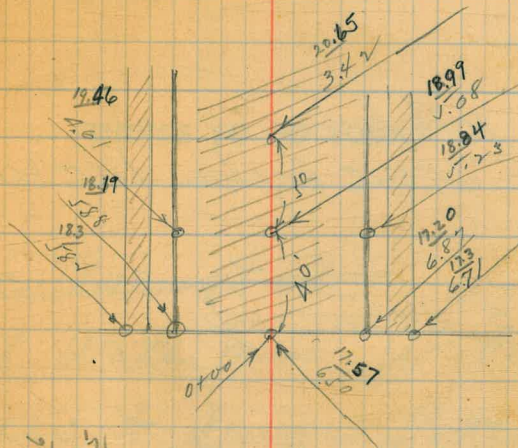
Sta	H.I.						
3+00		182 5.9 30	181 6.0 23	175 6.6 20	6.123 8	6.173 73	11.8 73 30
3+50		187 5.4 30	183 5.8 20	176 6.5 20	6.126 5	6.169 30	16.9 30
4+00		191 5.0 20	188 5.3 20	181 6.0 19	6.179 1	6.173 30	17.3 30
4+50		191 5.0 30	188 5.3 20	182 5.9 20	6.180 1	6.154 30	15.4 30
5+00		199 4.7 30	191 5.0 22	184 5.7 19	6.183 8	6.178 30	17.8 30
5+60		196 4.1 30	193 4.8 20	187 5.4 20	6.185 6	6.180 30	18.0 30
6+00 ⁷⁹	24.14	217 2.4 100	201 4.0 50	189 4.4 30	187 5.6 20	189 5.2 30	18.2 5.9 30
6+40		223 3.8 30	199 4.2 20	191 5.0 20	193 4.8 30	185 5.6 30	18.5 5.6 30
7+00		209 3.7 30	204 3.7 18	187 4.4 18	193 4.9 30	191 5.0 30	19.1 5.0 30

⊕

Sta.

H.I.

6" Cut Face



0+00 Su Sketch

0+50

1+00

2407

1+50

2+00

2+50

2414
- 7.18

1696
711

2407

191	186	175	173	161
50	55	66	68	80
30	20	20	6.8	60
181	175	168	167	160
60	66	73	74	81
30	20	20	7.4	30
175	173	165	167	161
63	68	76	74	80
30	19	19	7.4	30
178	175	167	168	164
63	66	74	73	77
30	19	19	7.3	30
179	177	171	171	166
62	64	70	70	75
30	20	20	7.0	30

(+)

Frontera St.
Sta. 1+03.90

10ft. below
10+00 - serve by low line W side
12+50 -
12+50 5' below curb.

14+00 50 W. of # - 2'

Lot 94 - 50 Tiffle no sewers
" 104 " "

Check on water serv
field book.

23

THINGS TO DO TODAY

10' Curb Inlet,
18" C.I.P.

~~Pac. Ave. Stal~~
Set Water Main, Water
Services, & Sewer Lateral
Stakes on Pac. Ave. only.
Mar. 12/29
Water Main Only
Sew Lateral on Fr. only

MONDAY, MARCH 11, 1929

FEBRUARY

Su	Mo	Tu	We	Th	Fr	Sa
					1	2
3	4	5	6	7	8	9
10	11	12	13	14	15	16
17	18	19	20	21	22	23
24	25	26	27	28		

MARCH

SUN	MON	TUE	WED	THU	FRI	SAT
					1	2
3	4	5	6	7	8	9
10	11	12	13	14	15	16
17	18	19	20	21	22	23
24	25	26	27	28	29	30

APRIL

Su	Mo	Tu	We	Th	Fr	Sa
1	2	3	4	5	6	
7	8	9	10	11	12	13
14	15	16	17	18	19	20
21	22	23	24	25	26	27
28	29	30				

PATENTED

Yearly Calendars 1928-1929 on Last Sheets

APRIL 11, 1929

35

8234'
4-17

Versine = .00279

$$\begin{array}{r} .01116 \\ \underline{} \\ 1132 \end{array}$$

$$\begin{array}{r} 63091 \\ \underline{} \\ 618 \end{array}$$

$$\begin{array}{r} 126 \\ \underline{} \\ 378 \end{array}$$

$$\begin{array}{r} 1220 \\ \underline{} \\ 1134 \\ \\ 860 \\ \underline{} \\ 756 \\ \\ 1040 \\ \\ 08 \end{array}$$

$$\begin{array}{r} 44 \\ \underline{} \\ 63968 \\ \\ 36 \end{array}$$

MONDAY, MARCH 11, 1958

$$\begin{array}{r} 23808 \\ \underline{} \\ 11904 \\ \underline{} \\ 1448480 \\ \\ 268 \end{array}$$

1	2	3	4	5	6	7	8	9	10
11	12	13	14	15	16	17	18	19	20
21	22	23	24	25	26	27	28	29	30
31	32	33	34	35	36	37	38	39	40
41	42	43	44	45	46	47	48	49	50
51	52	53	54	55	56	57	58	59	60
61	62	63	64	65	66	67	68	69	70
71	72	73	74	75	76	77	78	79	80
81	82	83	84	85	86	87	88	89	90
91	92	93	94	95	96	97	98	99	100

1	2	3	4	5	6	7	8	9	10
11	12	13	14	15	16	17	18	19	20
21	22	23	24	25	26	27	28	29	30
31	32	33	34	35	36	37	38	39	40
41	42	43	44	45	46	47	48	49	50
51	52	53	54	55	56	57	58	59	60
61	62	63	64	65	66	67	68	69	70
71	72	73	74	75	76	77	78	79	80
81	82	83	84	85	86	87	88	89	90
91	92	93	94	95	96	97	98	99	100

1	2	3	4	5	6	7	8	9	10
11	12	13	14	15	16	17	18	19	20
21	22	23	24	25	26	27	28	29	30
31	32	33	34	35	36	37	38	39	40
41	42	43	44	45	46	47	48	49	50
51	52	53	54	55	56	57	58	59	60
61	62	63	64	65	66	67	68	69	70
71	72	73	74	75	76	77	78	79	80
81	82	83	84	85	86	87	88	89	90
91	92	93	94	95	96	97	98	99	100

Yearly Calendar 1958-1959 on Last Sheet

Frantera St.
Sta. 1+03.90

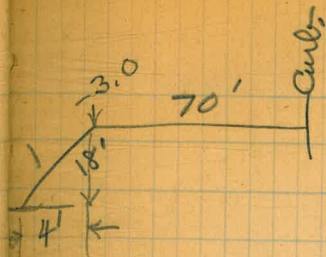
10ft. below
10+00 - serve by low line W side.
12+50 -

12+50 5' below curb.

14+00 50 W. of #2'

Lot 94 - 50 Tifle no sewers nor laterals.
" 104 " " " "

Check on water services in
field book.



23
10' Curb Inlet,
18" C.I.P.

10' Curb Inlet
18" C.I.P.

Pacific Ave

sta. + HI. - Elev

Left

2

Eight 24

0 10.70 41.10
1.56 30.40

20+10.44 Middle Curve

19+69.49 132

19+50

31.96

19+00

18+50

18+20 East Prop.

17+79.98

8.35

31.96

23.61

B.M.

Gresham + Pac. - See Book 479

28.3

3.7

5.0

26.1

5.9

3.0

28.7

3.3

3.1

26.3

5.7

2.0

27.9

4.1

3.0

25.8

5.2

1.9

27.2

4.8

5.1

26.0

6.0

2.0

26.9

5.1

5.1

25.5

6.5

1.3

27.0

5.0

2.0

26.2

5.8

1.6

25.9

6.1

3.0

Garage
Door.

July-31-28

O.T.
And
I.D.
Con

25.6

6.4

24.2

7.8

23.4

8.6

23.1

8.9

3.0

22.7

9.3

2.0

22.6

9.4

1.9

22.5

9.5

9.5

22.4

9.6

1.3

22.8

9.2

1.7

22.8

9.2

3.0

21.7

10.3

Pacific Arc

Sta. + HI. - Elev.

24+21.44 East Prop.

"Haines"

23+41.44 West Prop.

8.91 (60.79)

0.14 51.88

23+00

22+50

11.77 (57.07)

0.35 40.75

22+00

21+72.98 E.C.

21+12.19 Middle Curve

(41.10)

20+51.39 P.R.C.

Left

±

Right 25

55.7 5.1 50	56.1 4.7 28	55.7 5.1 27	56.1 4.7	55.6 5.1 12	56.0 4.8 13	55.8 5.0 5.0
-------------------	-------------------	-------------------	-------------	-------------------	-------------------	--------------------

51.4 9.2 50	51.5 9.3 23	52.4 8.4	52.6 8.2 14	53.0 7.8 50
-------------------	-------------------	-------------	-------------------	-------------------

46.9 5.1 50	46.4 5.6 33	47.6 4.2 15	48.1 3.4	48.4 3.5 14	48.9 3.1 5.1	49.3 2.7 50
-------------------	-------------------	-------------------	-------------	-------------------	--------------------	-------------------

41.6 10.4 50	42.2 9.8 19	42.9 9.1	42.5 9.5 15	43.0 9.0 16	43.7 8.3 50
--------------------	-------------------	-------------	-------------------	-------------------	-------------------

38.0 3.1 50	38.8 2.3 37	38.3 2.8 21	38.8 2.3	38.1 3.0 16	38.9 2.2 16	39.2 1.9 50
-------------------	-------------------	-------------------	-------------	-------------------	-------------------	-------------------

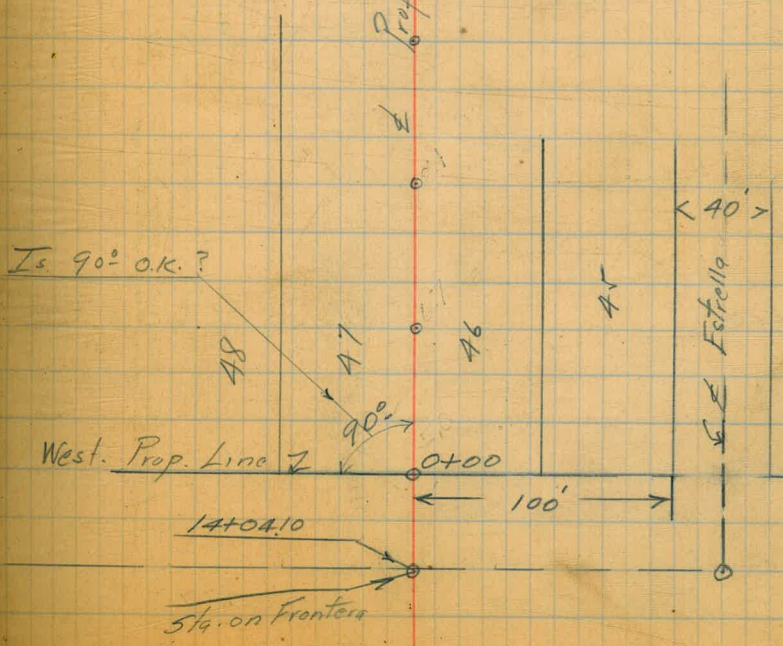
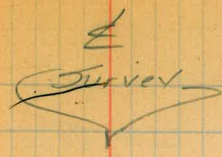
36.3 4.8 50	36.0 5.1 24	36.4 4.7	36.0 5.1 16	36.4 4.7 17	36.7 4.4 50
-------------------	-------------------	-------------	-------------------	-------------------	-------------------

33.6 7.5 50	32.9 8.2 17	32.2 8.9 15	32.1 9.0	31.3 9.8 23	31.0 10.1 50
-------------------	-------------------	-------------------	-------------	-------------------	--------------------

30.6 5.0 50	29.1 7.0 17	29.9 11.2 18	29.0 12.1	28.1 13.0 30
-------------------	-------------------	--------------------	--------------	--------------------

Profile - Lot Line [46-47]

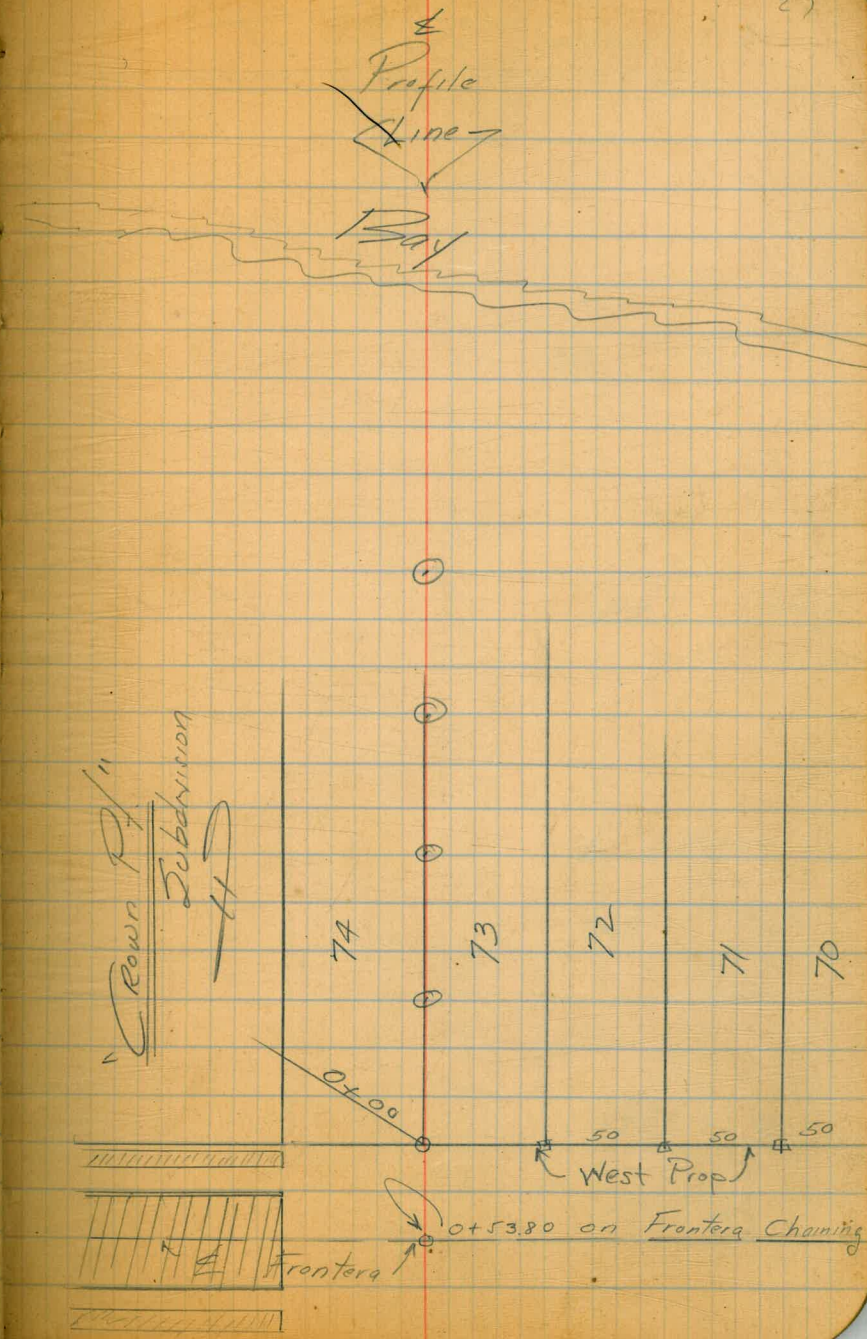
Sta.	+	H.I.	-	Elev
2+75	Water Line	17.3	(-04.8)	
2+50		16.0	(-03.5)	
2+22		14.2	(-01.7)	
2+17		10.0	02.5	
2+00		8.7	03.8	
1+50		8.7	03.8	
1+00		8.1	04.4	
0+50		6.7	05.8	
0+00		5.0	07.5	
	3.8	(12.5)		08.7



Profile Lot Line - [73-74]

Sta. + HI. - Elev.

Sta.	+	HI.	-	Elev.
1+13	Water Line	26.00	(-5.0)	
0+77		23.00	(-2.0)	
0+61	(21.0)	6.1	14.8	
0+50		6.1	14.9	
0+00	3.40	(20.99)	5.0	16.0
see sketch Pg. 26				17.57 on ϕ Pav.



Dope on Use Locations
along - Frontera St.

²⁸
Crown Pt

Sub.



(68)

z

Frontera z

(54)



z Estrella z



(104)

(103)

(96)



(74)



N

"ESTRELLA PLACE"

Sta + H.T. - Elev.

2+50.35 E. Prop. "Graham"

2+00

1+50

3.47

11.05 ✓

11.37 07.58

1+00

18.95 ✓

0+50

0+29.80 = W. Prop. "Frontier"

0+00 = "Frontier"

2.21

18.95

B.M. #7

16.743

See Book #479 - Pg. 16

Left.

5.0
5.1

5.8
5.3

5.4
5.7

6.4
12.5

7.8
11.1

8.7
10.2

9.7
5.0

5.7
5.4

5.7
5.4

6.3
4.8

7.1
11.8

8.8
10.1

9.1
9.8

10.3
8.6

6.2
4.9

6.1
5.0

6.8
4.3

7.5
11.4

8.8
10.1

9.8
9.1

10.7
8.2

6.5
4.6

6.5
4.6

7.0
4.1

8.0
13.9

9.6
9.3

10.2
8.7

11.1
7.8

7.1
5.0

7.2
5.0

7.8
5.8

8.4
10.5

10.3
8.6

10.8
8.1

11.7
5.0

100' Rt. 15+44.10 - P.O.T. "FRONTIER" (See Book 479-12)

"ESTRELLA PLACE"

Sta. + H.I. - Elev.

Oct. 1st, 1928
 (copy)
 daily
 single
 cell

Time = 9:30 a.m.
 Oct. 1st, 1928

11.05

- Note -

Assuming 3+10 as Base line
 sections were taken at 90° therefrom
 and noted on opposite page
 at 90° from Normal

Rt. = Up page
 Lt. = Down page

3+10 = (Base line)

11.05

3+80.35 & "Gresham"

14.6	14.4	14.0	12.8	12.7	11.8	10.0	9.5	7.7	7.7	5.9	5.3	6.0	6.1	6.0	6.0	5.0	5.1	6.0	5.0	5.0	6.1	5.0	6.5	6.2	6.5	6.7
83	70	60	50	44	44	40	35	35	30	30	28	20	20	10	51	10	10	51	10	20	20	10	20	20	30	40
4.7	2.9	2.9	-1.7	-1.6	-1.7	-1.7	-1.7	4.2	1.4	1.4	1.4	1.4	1.4	1.4	1.4	1.4	1.4	1.4	1.4	1.4	1.4	1.4	1.4	1.4	1.4	1.4
-6.0	8.9	12.2	-13	-11	-7																					

Left

Boy

Water line

Top Book

Top Book

"Estrella"

Right
 3.4
 14.4
 7.5
 81
 14.4
 3.3
 30

House

14.4
 3.3
 6.6

Top Book
 4.7
 7.0
 60

3.3
 6.8

7.9
 3.7
 7.4

14.4
 3.3
 9.0

"FANUEL"

Sta. + H.I. - Elev.

These sections taken at 11:00 am. Oct. 1928

Oct. 1st. 28
 Thompson

07.58

Direction of
 Notes Distances

5+00 = (Base line) = 0+00

3.04	07.58	
11.78	04.54	
0.89	16.32	
B.M.#5		15.43

2.91
 60/12
 143
 2.7
 70
 76

3.1
 45
 40

40

10.2
 2.6
 90
 95
 63

3.2
 44
 30

30

Left
 10.5
 2.9
 72
 95
 1.9
 65
 2.9

3.3
 43
 20

20

10.5
 2.9
 63
 95
 1.9
 55
 2.9

3.2
 44
 10

10

10.5
 2.9
 58
 95
 1.9
 50
 2.9

3.2
 44
 20

20

10.5
 2.9
 43
 95
 1.9
 45
 2.9

3.3
 43
 30

30

10.5
 2.9
 36
 95
 1.9
 31
 2.9

3.2
 44
 40

40

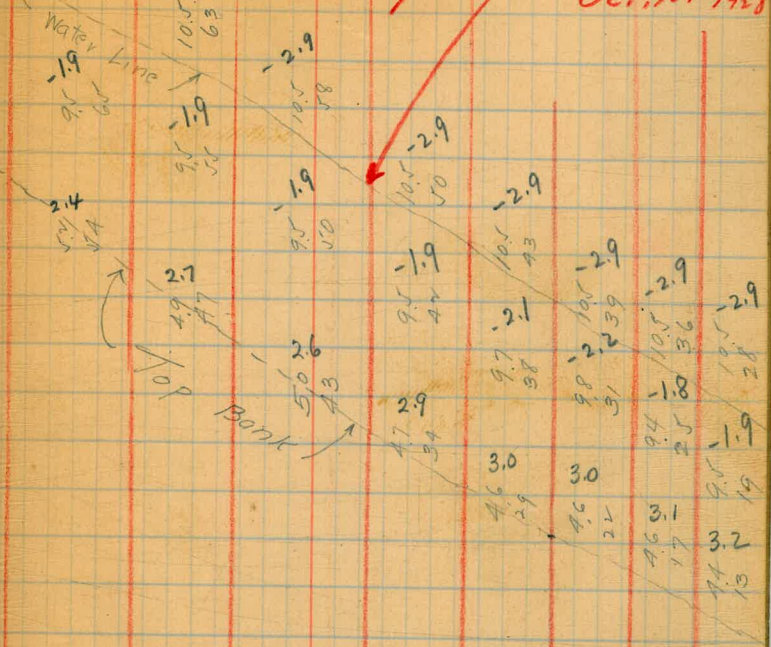
10.5
 2.9
 28
 95
 1.9
 25
 2.9

3.2
 44
 50

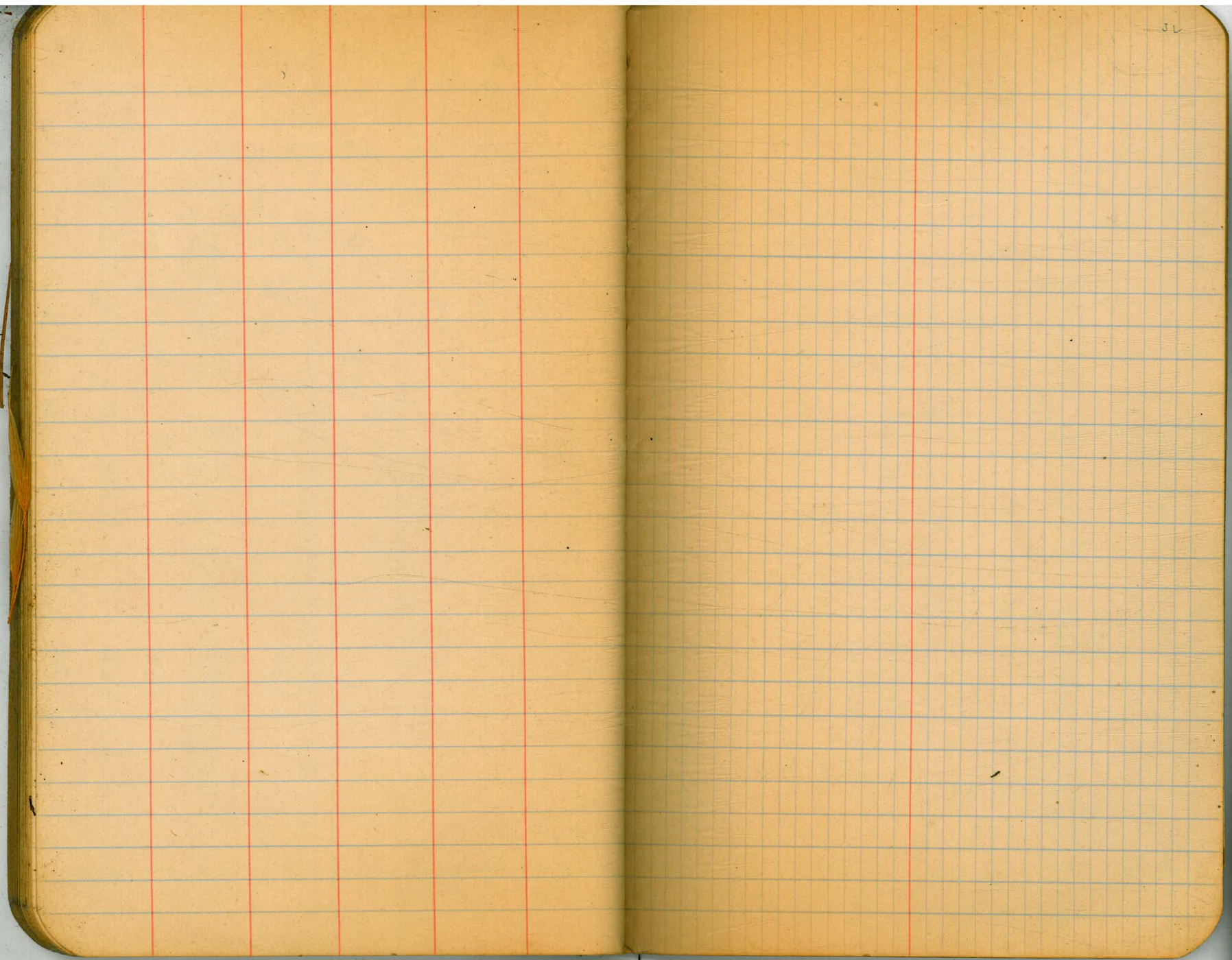
50

"Bay"

Time 11.00 am
 Oct. 1st 1928



70° N.W. Pacific & Fanuel - See Book 479-13



10460 - N. Line Thinner

11400

12400

13400

14400

15400

18405.00

17464.60

4032

13425 - F.H. East

13430 - ~~Empty~~ Sale

13440.5 - 8" x 10" Crane

14455 - ~~Empty~~ Sale

15400

14455.00

13492.18

62.82

15450

2.94

3.94

16400

4.74

3.35

16450

4.44

4.14

17420 - F.H. East

Both ways

17455

6" x 8" Crane

Let Plug on Prop.

18405

N. Line of Kumbled

18450

19400

19450

20400

20450

4.90
6.49
5.36
6.31
5.50
5.50

17455 - Empty Sale

Journal Water - North

4.85

0400 - Pacific Both Ways

0430 - Gate Valve. 5.15

1400 4.68

1450 3.68

2400

2430 - Easting Gate. 2.48

3400 - " " 2.63

4400 3.78

4400 1.81 2.81

5400 1.49 2.17

6400 2.19 1.19

6420 - 7.14. East

to Prep Both Ways

6460 - 6" Gate - Set 6" x 2" Plug on Prep.

7410 - H. Line of Reed

7450 0.91

8400 6.21 1.91

8450 1.66

9400 0.66

9450 1.42

9475 - 7.14. East

to Prep Both Ways

6" Gate (Set 6" x 2" Plug on Prep)

