

Monterey Hts.  
NAME Tingey's 80 Acres.

Class \_\_\_\_\_ Course \_\_\_\_\_ Party \_\_\_\_\_  
Profile of Easement Lines.

216

1947

RETURN TO  
Watson, Valle & Gough, Inc.  
508 Spreckels Bldg.  
San Diego, Calif.

# FIELD NOTES

No. 403P

ESPECIALLY ADAPTED

TO THE USE OF

ENGINEERING STUDENTS

---

---

**EUGENE DIETZGEN Co.**

MANUFACTURERS

**DRAWING MATERIALS**

**MATHEMATICAL AND SURVEYING INSTRUMENTS**

**MEASURING TAPES**

CHICAGO SAN FRANCISCO NEW YORK  
NEW ORLEANS PITTSBURGH

MICROFILMED

DEC 30 1964

INDEX

Block #	29	Page	1
	28		4
	27		7
	30		8
	18		10
	20		11
	22		12
	24		13
	25		14
	23		15
X-sec Nat. Ave Ext. #2		19	(?)
Profile El Prado R.R. X-sec		23	✓
Block # 26		16	
Alley Blk 27		25-30	
" "	19	30-33	
" "	21	34 & 0	
Blk 29 - Profile of Wash		18	
X-sec. Lane East Bound Monterey Hts.		22 & 24	

Cont'd from Pg. 34

443.75

2+26

1 45

2+71

26

3+13

30

+49

44

+93

25

4+18

20

+38

45

+86

43

5+49

12

+41

Lat 1/2

3.00 440.75

9.30 450.05

5.84 444.51 444.25

B.W

0

$\frac{61}{3}$   $\frac{64}{5}$   $\frac{84}{20}$   $\frac{88}{25}$

$\frac{58}{5}$   $\frac{61}{11}$   $\frac{65}{11}$   $\frac{74}{20}$   $\frac{78}{25}$

$\frac{63}{6}$   $\frac{68}{6}$   $\frac{88}{20}$   $\frac{87}{25}$

$\frac{78}{6}$   $\frac{48}{6}$   $\frac{77}{20}$   $\frac{80}{25}$

$\frac{45}{6}$   $\frac{48}{6}$   $\frac{67}{20}$   $\frac{66}{25}$

$\frac{47}{6}$   $\frac{50}{6}$   $\frac{64}{20}$   $\frac{65}{25}$

$\frac{44}{6}$   $\frac{44}{6}$   $\frac{46}{10}$   $\frac{54}{20}$   $\frac{60}{25}$

$\frac{36}{6}$   $\frac{39}{6}$   $\frac{52}{20}$   $\frac{55}{25}$

$\frac{35}{5}$   $\frac{39}{5}$   $\frac{43}{20}$   $\frac{51}{25}$

$\frac{32}{5}$   $\frac{37}{5}$   $\frac{37}{10}$   $\frac{47}{20}$   $\frac{48}{25}$

On Hub NE Cor Lat 1 Blk 21

Hub W.E. Cor Blk 19

## Block 29

	9.9 12.2	9.3 2		
			431.07	
	4.19	435.26		
1-33			2.6	432.7
+19			4.4	430.9
+48			2.1	433.2
1-2-32-33			4.0	431.3
+35			4.9	430.4
2-31-32			3.5	431.8
2-3-31			3.0	432.3
+08			2.9	432.4
+27			4.8	430.5
3-30-31			4.3	431.0
3-4-30			3.1	432.2
+22			5.9	429.4
4-29-30			5.6	429.7
4-5-29			6.8	428.5
5-28-29			7.7	427.6
+30			11.3	424.0
			11.71	423.55
	0.26	423.81		
+40			0.2	423.6
5-6-27-28			4.1	419.7
+50			13.2	410.6
+55			15.2	408.5

6

On hub Lot-11-12 - Blk 17 - Page 32 - Book 204

⊗

423.81

6-26-27	13.5	410.3
6-7-26	12.9	410.9
+20	13.7	410.1
7-25-26	12.0	411.8
+13	14.3	409.5
7-8-25	13.4	410.4
8-24-25	14.9	408.9
8-9-23-24	14.8	409.0
+13	14.8	409.0
+30	17.5	406.3
9-22-23	18.1	405.7
9-10-22	16.9	406.9
+15	18.3	405.5
10-21-22	17.5	406.3
	11.92	411.89
0.56	412.45	
+25	5.6	407.9
10-11-21	6.2	406.2
11-20-21	7.4	405.1
+16	7.0	405.5
11-17-20	10.2	402.3
12-19-20	11.4	401.1
	11.28	401.17

1.03. 402.20

On bab Lot 12-19-20 B/E 29



11.84 12/35

12-19-20	402.20		
+15		2.2	400.0
+40		1.2	401.0
12-13-18-19		2.5	399.7
+33		5.7	396.5
13-17-18		5.5	396.7
+25		9.2	393.0
+35		11.6	390.6
13-14-17		11.3	390.9
+10		12.8	389.4
14-16-17		10.7	391.5
+24		13.0	389.2
+50		12.2	390.0
14-15-16		12.8	389.4
+20		15.9	386.3
+35			381.6
14-15			381.1
14-15-16		2.54	399.66
+18		11.2	391.0
+35		10.7	391.5
+60		5.2	397.0
		0.46	401.74
12.21	413.95		
15-16		6.6	407.4
		0.24	413.71

402.2  
 11.3  
 390.9  
 391.9

on bub Lot 12-13 - Block 29

(X)

(X)

## Block 28

413.71

12.06 425.77

From Page 3

2-3		4.2	421.6
+20		2.2	423.6
		0.78	424.99
	11.32		436.31
+45		8.7	427.6
+60		8.3	428.0
2-3-4		6.7	429.6
+17		5.4	430.9
+33		6.7	429.6
3-4		6.2	430.1
<del>2-3-4</del>			
+13		5.7	430.6
+35		7.3	429.0
+65		4.7	431.6
+85		6.0	430.3
1-2-4-5-15		5.0	431.3
+40		5.4	430.9
+60		3.7	432.6
+85		4.8	431.5
4-5		3.7	432.6
1-2-4-5-15			
+10		4.1	432.2
+32		7.0	429.3

(X)

436.31

+85	7.4	428.9
+97	5.8	430.5
1-15	7.0	429.3
1-2-4-5-15		
+17	6.0	430.3
5-6-14-15	4.7	431.6
+13	3.2	433.1
+35	5.0	431.3
6-7-13-14	3.5	432.8
+16	4.6	431.7
+33	4.3	432.0
+50	3.0	433.3
7-8-12-13	4.0	432.3
+12	4.8	431.5
+43	1.2	435.1
8-10-12	3.3	433.0
	3.08	433.23

6.93 440.16

8-9	8.0	432.2
+27	4.0	436.2
+55	7.2	433.0
8-9-10	6.6	433.6
+05	6.0	434.2
+20	7.6	432.6

On herb Lot 8-10-12 - B/K 28

⊕



440.16

+35	7.6	432.6
8-10-12	7.2	433.0
10-11-12	8.4	431.8
+22	7.0	433.2
+45	8.5	431.7
11-12	9.2	431.0
	4.96	435.20

435.23 = B.M #34



Block #27

B.M #34

435.23

4.96 440.19

11-14

8.0

432.2

+40

8.5

431.7

11-13-14

7.2

433.0

+15

9.3

430.9

+35

9.2

431.0

+42

7.8

432.4

11-12-13

8.6

431.6

+15

7.2

433.0

11-12

9.2

431.0

4.96

435.23

B.M #34

## Block 30

			399.66
	11.25	410.91	
S. Cor Lot 10			0.8 410.1
			0.82 410.09
	12.02	422.11	
+25			6.6 415.5
+40			5.8 416.3
+75			0.1 422.0
			0.07 422.04
	11.62	433.66	
+115			7.7 426.0
9-10			6.8 426.9
8-9			5.2 428.5
+40			3.8 429.9
+55			2.3 431.4
8-9			3.5 430.2
7-8			1.7 432.0
+17			2.4 431.3
			1.24 432.42
	9.90	442.32	
+40			8.3 434.0
6-7			10.8 431.5
+25			9.4 432.9

Lot 12-13 - Blk 29 Page 3

On hub S. Cor, Lot 10 - Block 30

442.32

5-6	10.1	432.2
4-5	8.7	433.6
+10	7.7	434.6
+30	9.3	433.0
3-4	8.9	433.4
2-3	8.2	434.1
+25	6.1	436.2
+40	7.8	434.5
1-2	7.0	435.3
NW. Cor Lot 1	6.0	436.3
	2.73	439.59

439.62 Lot 10-11 - Blk 16

## Block 18

10

444.25

On hub N.E. Cor B1K 19

5.57 449.82

N.E. Cor Lot 4

5.1 444.7

+20

4.6 445.2

+45

6.1 443.7

+55

5.3 444.5

+75

6.0 443.8

+90

4.5 445.3

3-4

6.5 443.3

2-3

7.2 442.6

1-2

7.7 442.1

+16

6.7 443.1

+40

8.4 441.4

NW. Cor Lot 1

7.0 442.8

3-4

3-4-5

6.9 442.9

+40

6.2 443.6

3-5

7.6 442.2

5.57 444.25

On hub N.E. Cor - B1K 19

②

Block 20

11

444.25

On hub N.E. Cor Blk 19

5.57 449.82

NW. Cor Lot 1

3.0 446.8

+ 18

2.1 447.7

+27

3.4 445.8

+48

3.1 446.7

+68

5.8 444.0

11.57 438.25

437.2  
5.5  
442.7

0.37 438.62

1-4

1.4 437.2

1+2-3-4

Hand Level

437.7

+31

439.6

2-3

439.5

1-4

+65

6.7 443.1

+90

10.1 439.7

NE. Cor Lot 4

12.4 437.4

438.62

From Page 11

NW Cor Lot 7

13.6 425.0

1-2

14.2 424.4

2-3

14.3 424.3

3-4

13.8 424.8

4-5

13.6 425.0

11.06 427.56

0.98 428.54

5-6

4.1 424.4

6-7

6.6 421.9

7-8

10.6 417.9

11.41 417.13

0.24 417.37

8-9

4.7 412.7

9-10

11.2 406.2

NE Cor Lot 10

Hand Level 397.0

0.28 417.09

10.63 427.72

0.44 427.28

427.33 On Hub N.W. Cor Blk 2A

Block #24

13

On hub N.W. Cor B16 24

			427.33	
	0.44	427.77		
1-12		6.7	421.1	
1-2-12		8.3	419.5	
2-3-12		11.0	416.8	12.2
		11.12	416.65	13.9
	0.52	417.17		
3-4-12		5.0	412.2	11.6
4-7-12		8.2	409.0	405.6
7-8-11-12		11.0	416.2	405.8
8-9-10-11			398.1	7.7
9-10			391.9	348.1
4-7-12				198.9
4-5-7		10.9	406.3	
		11.86	405.31	
	0.30	405.61		
5-6-7		7.5	398.1	
+50		14.6	391.0	
+72		11.8	393.8	
+92		11.8	393.8	
6-7		8.1	397.5	
		9.30	396.31	
	4.33	400.64		

Hand Level



## Block #25

146  
74.2

14

400.64

From Page 13

6-7		374.2
+20		377.4
5-6-7-8	11.8	388.8
+35	4.1	396.5
5-8-9	2.1	398.5
4-5-9	1.0	399.6
	0.75	399.89

On hub Lot 4-5-9-BLK 25

11.14 411.03

4-9-10	8.7	402.3
3-4-10	7.1	403.9
3-10-11	7.1	403.9
3-11-12	6.5	404.5
2-3-12	5.7	405.3
2-12-13	4.2	406.8
1-2-13	2.1	408.9
1-13-14	1.7	409.3
1-14	0.3	410.7
	0.26	410.77

On hub Lot 1-14-BLK 25

410.77

From Page 14

10.60 421.37

8-9	9.0	412.4
7-8-9	7.1	414.3
7-9-10	6.1	415.3
6-7-10	5.5	415.9
5-6-10	4.1	417.3
5-10-11	3.9	417.5
4-5-11	3.2	418.2
4-11-12	2.2	419.2
3-4-12	1.5	419.9
	1.40	419.97

On hub Lot 3-4-12 Blk 23

8.78 428.75

2-3-12-13	7.2	421.6
1-2-13-14	4.7	424.1
1-14	2.2	426.53
	1.46	427.29

427.33 On hub NW Cor Blk 24

410.43

Block 26

11.5  
1.7  
13

16

410.77

On hub Lot 1-14 - Blk 25 - Page 14

	0.84	411.61		
SE. Cor Blk 26 Lot 9			Hand Level	393.2
+17				394.2
+45				392.5
+55				393.8
8-9			5.4	406.2
			0.0	411.61
	11.54	423.15		
5-7-8			8.9	414.3
5-6-7			6.1	417.1
+25			4.8	418.4
+50			4.9	418.3
+75			3.0	420.2
5-6			3.5	419.7
4-5			2.3	420.9
			0.34	422.81
	11.66	434.47		
3-4			6.5	428.0
2-3			0.5	434.0
			0.34	434.13
	11.82	445.95		

13.2  
398.4  
1.8  
400.2

On hub Lot 2-3 - Blk 26

445.95

1-2-3	11.0	435.0	
1-3	10.4	435.6	
2-3			
+75	2.6	443.4	
sw. cor Blk 26 Lot 2	2.6	442.4	
BM 36	9.34	436.61	436.61

Profile of Wash  
in Block 29

B.W.

0.09 399.75

19.0 380.80

14.6 385.2

10.7 389.0

7.2 392.6

4.2 395.6

2.42 397.33

11.75 409.08

10.8 398.3

7.5 401.6

4.2 404.9

B.W.

9.42 399.66 399.66

399.66

On lot Hob 12/13 Blk 29 - See Pg 3

On W. Line lot 4 Blk 29 - At Cor<sup>in Wash</sup> lots 14/5

± Wash 64' from bk Cor 14/13

" 58' " " 13/12

" 75' " " 12/11

" 70' " " 11/10

" 39' " " 10/9

" 39' " " 9/8

" 16' " " 8/7

See Above

12/18/26

Coote & Party

X Sections  
National Ave Extension #2

BM #38

438.61

5.01 443.62

0+00 = 328+2988 National Ave

0+50

1+00

0.34 432.56

1+50

2+00

2+50

2+75

3+00

3+50

4+00

11.40

432.22

12.1 11.0

HI 443.6

$\frac{426.0}{5.0}$	432.2	$\frac{432.2}{11.4}$	$\frac{443.6}{11.0}$	$\frac{443.6}{10.4}$	$\frac{440.7}{10.0}$	$\frac{41.1}{10.0}$	$\frac{41.2}{12.0}$
---------------------	-------	----------------------	----------------------	----------------------	----------------------	---------------------	---------------------

$\frac{426.0}{5.0}$	31.5	$\frac{31.9}{12.1}$	$\frac{33.9}{10.0}$	$\frac{37.1}{14.0}$	$\frac{39.6}{10.0}$	$\frac{40.4}{12.0}$
---------------------	------	---------------------	---------------------	---------------------	---------------------	---------------------

HI 432.6 →  $\frac{424.4}{8.2}$

28.2	$\frac{29.7}{15.4}$	$\frac{32.0}{13.0}$	$\frac{34.6}{11.6}$	$\frac{35.6}{10.0}$	$\frac{35.6}{12.0}$
------	---------------------	---------------------	---------------------	---------------------	---------------------

HI 432.6

$\frac{22.5}{10.1}$	$\frac{25.6}{7.0}$	$\frac{27.7}{15.0}$	$\frac{28.4}{5.0}$	$\frac{30.1}{2.5}$
---------------------	--------------------	---------------------	--------------------	--------------------

$\frac{22.9}{9.7}$	$\frac{24.0}{8.6}$	$\frac{26.8}{5.8}$	$\frac{26.2}{6.2}$
--------------------	--------------------	--------------------	--------------------

$\frac{23.8}{8.8}$	$\frac{24.6}{9.0}$	25.8	$\frac{25.3}{7.3}$
--------------------	--------------------	------	--------------------

$\frac{24.1}{8.5}$	$\frac{24.9}{2.7}$	$\frac{24.5}{8.1}$	$\frac{25.3}{7.3}$	$\frac{27.1}{5.5}$	$\frac{25.6}{2.0}$
--------------------	--------------------	--------------------	--------------------	--------------------	--------------------

$\frac{24.3}{8.3}$	$\frac{25.4}{7.2}$	$\frac{25.2}{7.4}$	$\frac{25.7}{6.9}$
--------------------	--------------------	--------------------	--------------------

$\frac{24.6}{8.0}$	$\frac{25.9}{6.7}$	$\frac{25.7}{6.9}$	$\frac{26.1}{6.5}$	$\frac{27.7}{4.9}$
--------------------	--------------------	--------------------	--------------------	--------------------

$\frac{25.2}{7.4}$	$\frac{25.4}{7.2}$	$\frac{25.6}{7.0}$	$\frac{26.1}{6.5}$
--------------------	--------------------	--------------------	--------------------

432.56

4+50

$$H.I. = 432.6$$

$\frac{25.8}{50}$	$\frac{26.5}{24}$	$\frac{25.8}{75}$	$\frac{27.0}{5.6}$	$\frac{25.9}{20}$	$\frac{26.3}{50}$
-------------------	-------------------	-------------------	--------------------	-------------------	-------------------

4+75

$\frac{25.8}{50}$	$\frac{26.5}{27}$	$\frac{25.8}{20}$	$\frac{26.2}{6.4}$	$\frac{26.3}{40}$	$\frac{27.4}{50}$
-------------------	-------------------	-------------------	--------------------	-------------------	-------------------

5+00

$\frac{26.3}{50}$	$\frac{27.1}{25}$	$\frac{28.1}{4.5}$	$\frac{26.4}{22}$	$\frac{27.2}{50}$
-------------------	-------------------	--------------------	-------------------	-------------------

5.18 427.38

H.I. = 436.2

8.82 436.20

5+25

$\frac{26.5}{50}$	$\frac{27.3}{27}$	$\frac{26.5}{9.7}$	$\frac{26.7}{50}$
-------------------	-------------------	--------------------	-------------------

5+50

$\frac{26.8}{50}$	$\frac{27.9}{20}$	$\frac{27.0}{9.2}$	$\frac{26.9}{50}$
-------------------	-------------------	--------------------	-------------------

6+00

$\frac{27.8}{50}$	$\frac{28.2}{28}$	$\frac{27.5}{8.7}$	$\frac{27.2}{50}$
-------------------	-------------------	--------------------	-------------------

6+50

$\frac{28.9}{50}$	$\frac{28.8}{7.4}$	$\frac{28.7}{50}$
-------------------	--------------------	-------------------

7+00

$\frac{29.4}{50}$	$\frac{29.6}{6.6}$	$\frac{29.5}{50}$
-------------------	--------------------	-------------------

7+50

$\frac{30.2}{50}$	$\frac{30.3}{5.9}$	$\frac{30.6}{50}$
-------------------	--------------------	-------------------

8+00

$\frac{31.4}{50}$	$\frac{31.2}{5.0}$	$\frac{31.8}{50}$
-------------------	--------------------	-------------------

8+50

$\frac{32.4}{50}$	$\frac{32.1}{4.0}$	$\frac{32.7}{50}$
-------------------	--------------------	-------------------

436.20

9+00

9+50

3.50 433.70

8.62 441.32

10+00

10+53 W. side Washington St

10+78

11+03

11.15 430.17

2.83 433.00

1.87 431.13

10.23 441.36

2.72 438.64

HI = 436.2

33.5	33.1	33.4
2.7	3.1	2.8
5.0		5.0

34.5	34.2	34.6	35.6
1.7	1.0	1.6	0.6
5.0		3.0	5.0

HI 441.3

35.2	35.5	35.5
6.0	5.8	5.8
5.0		5.0

37.2	36.4	37.0
4.1	4.9	4.3
5.0		5.0

37.3	36.9	37.6
4.0	4.4	3.7
5.0		5.0

38.7	37.5	38.3
3.1	3.8	3.0
5.0		5.0

438.61 = B.M. #38



Cross-Section  
Lane at East Line Monterey Heights

			427.33	T.P.
	0.98	428.31	12.31	416.00
	0.38	416.38		
0+00	N. Boundary - N.E. Cor. Block 24 (22)			
+50				
+90				
			0.38	416.00
	7.52	423.52		
1+25 <sup>02</sup>	N. Line Canton Drive			
1+75 <sup>04</sup>	S. "	"	"	"
2+00				
+50				
2+75				
			12.53	410.99
	1.42	412.41		
3+00				
+25				
			12.55	399.86
	0.09	399.95		
3+75 <sup>04</sup>	Hub - E Block - Lots 9-10			
4+00				
			12.79	387.16
	0.64	387.80		
4+50				
			11.79	376.01

P. 1. N.W. Cor. Block 24 - See page 15.

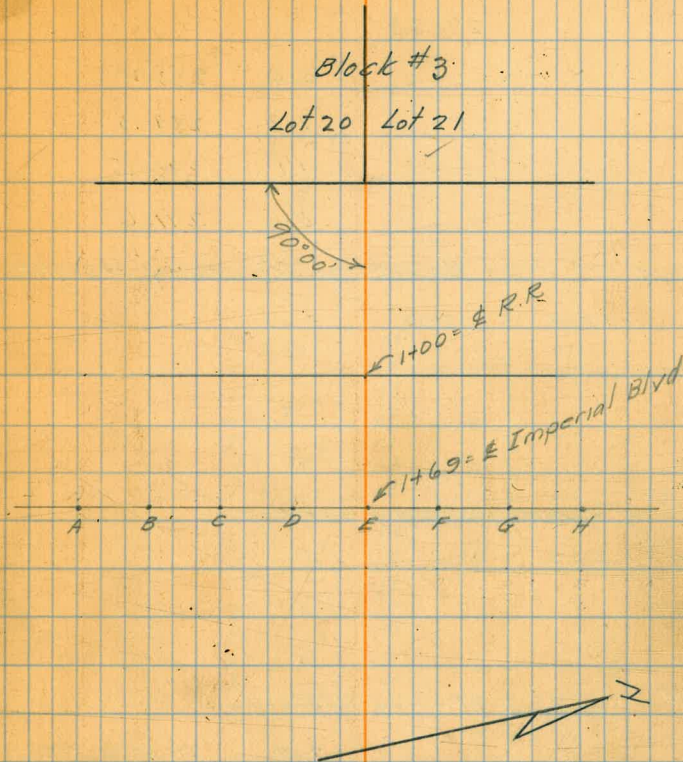
22  
E. P. Chilton  
E. Radier  
J. Thompson  
Jan 11-12, 1927

	20.8	19.0	
	15.0	0.0	
	12.7	10.0	
	15.0	0.0	
	3.0	2.0	
	15.0	0.0	
	6.5	5.1	
	15.0	0.0	5 E. Cor. Blk 24. (22)
	4.2	3.0	470.5
	15.0	0.0	N.E. Cor. Blk 26 (24)
	4.0	3.0	
	15.0	0.0	470.3
	7.0	6.0	
	15.0	0.0	417.5
	11.7	10.0	
	15.0	0.0	413.3
	6.0	3.0	
	15.0	0.0	5
	13.0	11.0	
	15.0	0.0	
	9.5	8.0	
	15.0	0.0	
	13.0	12.0	
	15.0	0.0	
	9.0	8.0	
	15.0	0.0	
	9.7	8.0	
	15.0	0.0	

Continued to page 24

Profile  
El Prado R.R. Crossing

B.M.#1		291.18	
1.12	292.30		
	5.88	286.42	
5.16	291.58		
0+00	5.2	286.4	Lot 20-21-Blk 3
0+25	5.2	286.4	
0+50	5.6	286.0	
0+67	5.9	285.7	
0+70	9.1	282.5	
0+79	10.3	281.3	
0+81	6.0	285.6	
0+87	5.6	286.0	
0+92	3.9	287.7	
1+00 $\neq$ R.R	3.2	288.4	
Top of Rail	3.06	288.52	
1+08	3.8	287.8	
1+36	4.1	287.5	
1+41	4.8	286.8	
1+50	4.0	287.6	
1+60	3.51	288.07	
1+69 $\neq$ Imperial Blvd	3.37	288.21	
A	7.7	283.9	
B	6.8	284.8	
C	5.7	285.9	
D	4.6	287.0	



291.58

E	3.4	288.2
F	2.3	289.3
G	1.1	290.5
H	0.0	291.6

15 1 75  
C

Lane at East Boundary Monterey Heights.

5+00	5.68	381.69
+09		
5+50		
5+75 <sup>25</sup>	N. Line Cameron Drive	
6+25 <sup>26</sup>	S. " " "	
6+50		
7+00		
7+50 <sup>29</sup>	E. Block 27 - Hub lots 6-7	

375.07 7.07 374.62 = 374.61

T.P. Hub lots 6-7

8+00	0.45	357.07
+30		
+50		
8+75 <sup>31</sup>	N. Line Drexel Drive	
9+00 <sup>32</sup>	S. Boundary	

Continued from Page 22

11 1/2	70 1/2	10 1/2	
15 1/2		0 1/2	Wash. running West to East
11 1/2	70 1/2	11 1/2	
15 1/2		0 1/2	" " " "
8 1/2	74 1/2	6 1/2	
15 1/2		0 1/2	
7 1/2	75 1/2	4 1/2	
15 1/2		0 1/2	S.E. Cor. lot 9 Block 26 (24)
6 1/2	77 1/2	2 1/2	
15 1/2		0 1/2	N.E. " lot 6 " 27 (25)
5 1/2	76 1/2	4 1/2	
15 1/2		0 1/2	
7 1/2	75 1/2	5 1/2	
15 1/2		0 1/2	
9 1/2	73 1/2	7 1/2	
15 1/2		0 1/2	

7 1/2		4 1/2	
15 1/2	69 1/2	0 1/2	
10 1/2		7 1/2	
15 1/2	66 1/2	0 1/2	
12 1/2		10 1/2	
15 1/2	64 1/2	0 1/2	
13 1/2		11 1/2	
15 1/2	62 1/2	0 1/2	S.E. Cor. Block 27 (25)
14 1/2		12 1/2	
15 1/2	61 1/2	0 1/2	S.E. Cor. Tract.

EP Chilton  
E Rodier  
J. Thompson  
Jan. 12, 1927

X-sec. of Alley thru

West side of Alley used as base line —

North from SANFORD DRIVE.

B<sup>m</sup>#35

436.61

176 438.37

0+00

+34

+55

+76

+96

+116

Blk. # 27

25

0+00 = S.E. Cor Lot # 14 Blk 27

On Feb 40' Pt Sta 300 Rail Ave Survey —

" 18' N + 12' E Cor Lots 24 + 25 Blk 27

12/17/26  
Roote & Party

$\frac{56}{7} \quad \frac{58}{15} \quad \frac{73}{20} \quad \frac{75}{20}$

$\frac{57}{9} \quad \frac{62}{20} \quad \frac{60}{20}$

$\frac{59}{20} \quad \frac{51}{20}$

$\frac{59}{13} \quad \frac{60}{20} \quad \frac{65}{20}$

$\frac{54}{14} \quad \frac{50}{20} \quad \frac{55}{20}$

$\frac{42}{13} \quad \frac{28}{20} \quad \frac{37}{20}$

43837

+46

$$\frac{6.7}{13} \quad \frac{6.7}{13} \quad \frac{6.6}{20}$$

+56

$$\frac{6.6}{7} \quad \frac{6.1}{7} \quad \frac{4.0}{20}$$

+76

$$\frac{6.0}{14} \quad \frac{3.2}{14} \quad \frac{3.3}{20}$$

+88

$$\frac{6.5}{20} \quad \frac{5.0}{20}$$

+100

$$\frac{5.8}{15} \quad \frac{3.5}{15} \quad \frac{3.8}{20}$$

+14

$$\frac{5.6}{11} \quad \frac{4.1}{11} \quad \frac{4.3}{20}$$

+27

$$\frac{6.5}{7} \quad \frac{6.6}{7} \quad \frac{6.4}{20} \quad \frac{6.3}{20}$$

+43

$$\frac{4.5}{3} \quad \frac{5.3}{3} \quad \frac{6.8}{8} \quad \frac{6.8}{20} \quad \frac{6.8}{20}$$

+63

$$\frac{6.8}{3} \quad \frac{6.4}{3} \quad \frac{6.4}{20} \quad \frac{6.6}{20}$$

A38.37

2+71

+95

3+17

+37

+55

+73

+90

sets 7-8

A+02

+18

$\frac{58}{5}$   $\frac{58}{5}$   $\frac{69}{8}$   $\frac{68}{20}$   $\frac{66}{25}$

$\frac{50}{5}$   $\frac{19}{11}$   $\frac{62}{11}$   $\frac{61}{20} + 25$

$\frac{74}{5}$   $\frac{74}{5}$   $\frac{67}{20}$   $\frac{65}{25}$

$\frac{77}{5}$   $\frac{77}{5}$   $\frac{75}{7}$   $\frac{66}{20}$   $\frac{49}{25}$

$\frac{67}{5}$   $\frac{67}{5}$   $\frac{65}{11}$   $\frac{65}{20} + 25$

$\frac{55}{5}$   $\frac{18}{5}$   $\frac{18}{6}$   $\frac{65}{20}$   $\frac{67}{25}$

$\frac{65}{5}$   $\frac{65}{5}$   $\frac{73}{13}$   $\frac{71}{20}$   $\frac{67}{25}$

$\frac{53}{5}$   $\frac{51}{5}$   $\frac{72}{15}$   $\frac{73}{20}$   $\frac{68}{25}$

$\frac{72}{5}$   $\frac{72}{5}$   $\frac{66}{20}$   $\frac{64}{25}$

A+34

+48

+64

+78

+96

5+10

+28

+54

+66

438.37

6-7

$\frac{62}{5}$   $\frac{64}{5}$   $\frac{77}{7}$   $\frac{59}{20}$   $\frac{62}{25}$

$\frac{73}{5}$   $\frac{77}{11}$   $\frac{78}{11}$   $\frac{71}{20}$   $\frac{70}{25}$

$\frac{67}{5}$   $\frac{75}{5}$   $\frac{81}{5}$   $\frac{74}{14}$   $\frac{65}{20}$   $\frac{58}{25}$

$\frac{79}{5}$   $\frac{79}{11}$   $\frac{75}{8}$   $\frac{57}{20}$   $\frac{49}{25}$

$\frac{77}{5}$   $\frac{77}{11}$   $\frac{75}{8}$   $\frac{60}{20}$   $\frac{59}{25}$

$\frac{62}{5}$   $\frac{62}{5}$   $\frac{71}{7}$   $\frac{69}{20}$   $\frac{67}{25}$

$\frac{64}{5}$   $\frac{68}{5}$   $\frac{73}{5}$   $\frac{70}{9}$   $\frac{50}{20}$   $\frac{48}{25}$

$\frac{88}{11}$   $\frac{87}{11}$   $\frac{73}{20}$   $\frac{70}{25}$

$\frac{86}{5}$   $\frac{89}{5}$   $\frac{87}{4}$   $\frac{67}{20}$   $\frac{66}{25}$

438.37

5+79

+93

6+24

+42

+66

+93

6.40 438.87

7+16

+33

+61

5.90 438.47

$\frac{95}{5}$   $\frac{93}{1}$   $\frac{79}{20}$   $\frac{74}{25}$

$\frac{95}{5}$   $\frac{93}{1}$   $\frac{89}{5}$   $\frac{86}{20}$   $\frac{88}{25}$

$\frac{87}{5}$   $\frac{88}{1}$   $\frac{83}{20}$   $\frac{80}{25}$

$\frac{84}{5}$   $\frac{80}{1}$   $\frac{64}{20}$   $\frac{72}{20}$   $\frac{78}{25}$

$\frac{77}{5}$   $\frac{85}{1}$   $\frac{85}{9}$   $\frac{82}{20}$   $\frac{89}{25}$

$\frac{84}{5}$   $\frac{84}{1}$   $\frac{86}{20}$   $\frac{81}{25}$

$\frac{61}{5}$   $\frac{59}{1}$   $\frac{66}{17}$   $\frac{89}{20}$   $\frac{84}{25}$

$\frac{84}{5}$   $\frac{84}{1}$   $\frac{88}{20}$   $\frac{87}{25}$

$\frac{86}{5}$   $\frac{50}{1}$   $\frac{81}{10}$   $\frac{85}{20}$   $\frac{80}{25}$



7+83

438.87

$\frac{80}{5}$   $\frac{82}{15}$   $\frac{84}{20}$   $\frac{78}{25}$

8+13

NE Cor lot # | Blk 27

$\frac{64}{5}$   $\frac{75}{15}$   $\frac{79}{20}$   $\frac{76}{25}$

Block # 19

O+00 = SE Cor lot 9

438.87 From above -

O+00

$\frac{78}{5}$   $\frac{77}{15}$   $\frac{78}{20}$   $\frac{68}{25}$

+12

$\frac{77}{5}$   $\frac{76}{15}$   $\frac{68}{20}$   $\frac{70}{25}$   $\frac{68}{25}$

+26

$\frac{76}{5}$   $\frac{70}{15}$   $\frac{69}{20}$   $\frac{56}{25}$   $\frac{65}{25}$

+43

$\frac{57}{5}$   $\frac{61}{15}$   $\frac{60}{20}$   $\frac{61}{25}$

438.87

+ 59

+ 74

+ 96

+ 14

+ 34

+ 75

+ 94

2+26

11.16

448.48

Lots 8/9

Lots 7/8

Lots 6/7  
1.55 437.32

$\frac{48}{5}$   $\frac{57}{6}$   $\frac{56}{6}$   $\frac{41}{20}$   $\frac{44}{25}$

$\frac{66}{5}$   $\frac{66}{5}$   $\frac{58}{20}$   $\frac{56}{25}$

$\frac{64}{5}$   $\frac{62}{5}$   $\frac{59}{13}$   $\frac{53}{20}$   $\frac{46}{25}$

$\frac{47}{5}$   $\frac{41}{5}$   $\frac{39}{6}$   $\frac{50}{14}$   $\frac{47}{20}$   $\frac{43}{25}$

$\frac{48}{5}$   $\frac{50}{5}$   $\frac{47}{20}$   $\frac{45}{25}$

$\frac{45}{5}$   $\frac{44}{5}$   $\frac{30}{20}$   $\frac{29}{25}$

$\frac{28}{5}$   $\frac{26}{5}$   $\frac{30}{11}$   $\frac{28}{20}$   $\frac{27}{25}$

$\frac{119}{5}$   $\frac{118}{5}$   $\frac{118}{11}$   $\frac{112}{20}$   $\frac{110}{25}$

$2+38$

$+59$

$+73$

$3+04$

$+28$

$+19$

$+68$

$+92$

448.48

Seto 4/5

32

$\frac{106}{5} \quad \frac{102}{5} \quad \frac{114}{13} \quad \frac{112}{20} \quad \frac{111}{25}$

$\frac{102}{5} \quad \frac{105}{5} \quad \frac{108}{12} \quad \frac{108}{20} \quad \frac{106}{25}$

$\frac{103}{5} \quad \frac{103}{5} \quad \frac{102}{7} \quad \frac{93}{20} \quad \frac{86}{25}$

$\frac{75}{5} \quad \frac{82}{5} \quad \frac{91}{7} \quad \frac{90}{20} \quad \frac{88}{25}$

$\frac{84}{5} \quad \frac{86}{5} \quad \frac{77}{20} \quad \frac{75}{25}$

$\frac{80}{5} \quad \frac{78}{5} \quad \frac{57}{18} \quad \frac{58}{20} \quad \frac{63}{25}$

$\frac{72}{5} \quad \frac{72}{5} \quad \frac{62}{20} \quad \frac{60}{25}$

$\frac{46}{5} \quad \frac{46}{5} \quad \frac{62}{15} \quad \frac{62}{20} \quad \frac{61}{25}$

118.18

4+17

+34

+55

+76

+88

mt.

5+44

+47

BW

u.s. @ Lot 1 Blk 19

4.28 444.20 444.26

$\frac{63}{5}$   $\frac{60}{5}$   $\frac{64}{20}$   $\frac{64}{25}$

$\frac{48}{5}$   $\frac{47}{5}$   $\frac{59}{10}$   $\frac{51}{20}$   $\frac{44}{25}$

$\frac{61}{5}$   $\frac{64}{5}$   $\frac{61}{6}$   $\frac{48}{20}$   $\frac{47}{25}$

$\frac{73}{5}$   $\frac{73}{5}$   $\frac{68}{20}$   $\frac{69}{25}$

$\frac{65}{5}$   $\frac{68}{5}$   $\frac{70}{13}$   $\frac{68}{20}$   $\frac{65}{25}$

$\frac{52}{5}$   $\frac{54}{5}$   $\frac{35}{16}$   $\frac{36}{20}$   $\frac{36}{25}$

$\frac{57}{5}$   $\frac{53}{5}$   $\frac{47}{11}$   $\frac{49}{20}$   $\frac{49}{25}$

Hub u.s. @ Lot 1 Blk 19

# Block 21

W. side of Alley used as base line -  
North from LANSING DRIVE.

Btm #35 10.55 447.19 436.61

10.96 436.23

7.52 443.75

0+00

+15

11

+61

6

+67

9

+76

15

+94

22

+116

39

+155

45

+70

26

+96

30

# X-Sec of Alley

34

See Pg. 25

Out to SE Cor Lot 9 Blk 21

0+00 = SE Cor Lot 9 Blk 21

Hole 11' x 11' x 4'  
in Alley  
at 0+55

$\frac{71}{5}$   $\frac{75}{5}$   $\frac{80}{4}$   $\frac{83}{20}$   $\frac{100}{25}$

$\frac{79}{5}$   $\frac{82}{5}$   $\frac{100}{20}$   $\frac{106}{25}$

$\frac{70}{5}$   $\frac{71}{5}$   $\frac{76}{10}$   $\frac{88}{20}$   $\frac{95}{25}$

$\frac{61}{5}$   $\frac{71}{5}$   $\frac{73}{9}$   $\frac{53}{14}$   $\frac{63}{20}$   $\frac{68}{25}$

$\frac{63}{5}$   $\frac{68}{5}$   $\frac{85}{15}$   $\frac{92}{20}$   $\frac{93}{25}$

$\frac{70}{5}$   $\frac{73}{5}$   $\frac{91}{20}$   $\frac{96}{25}$

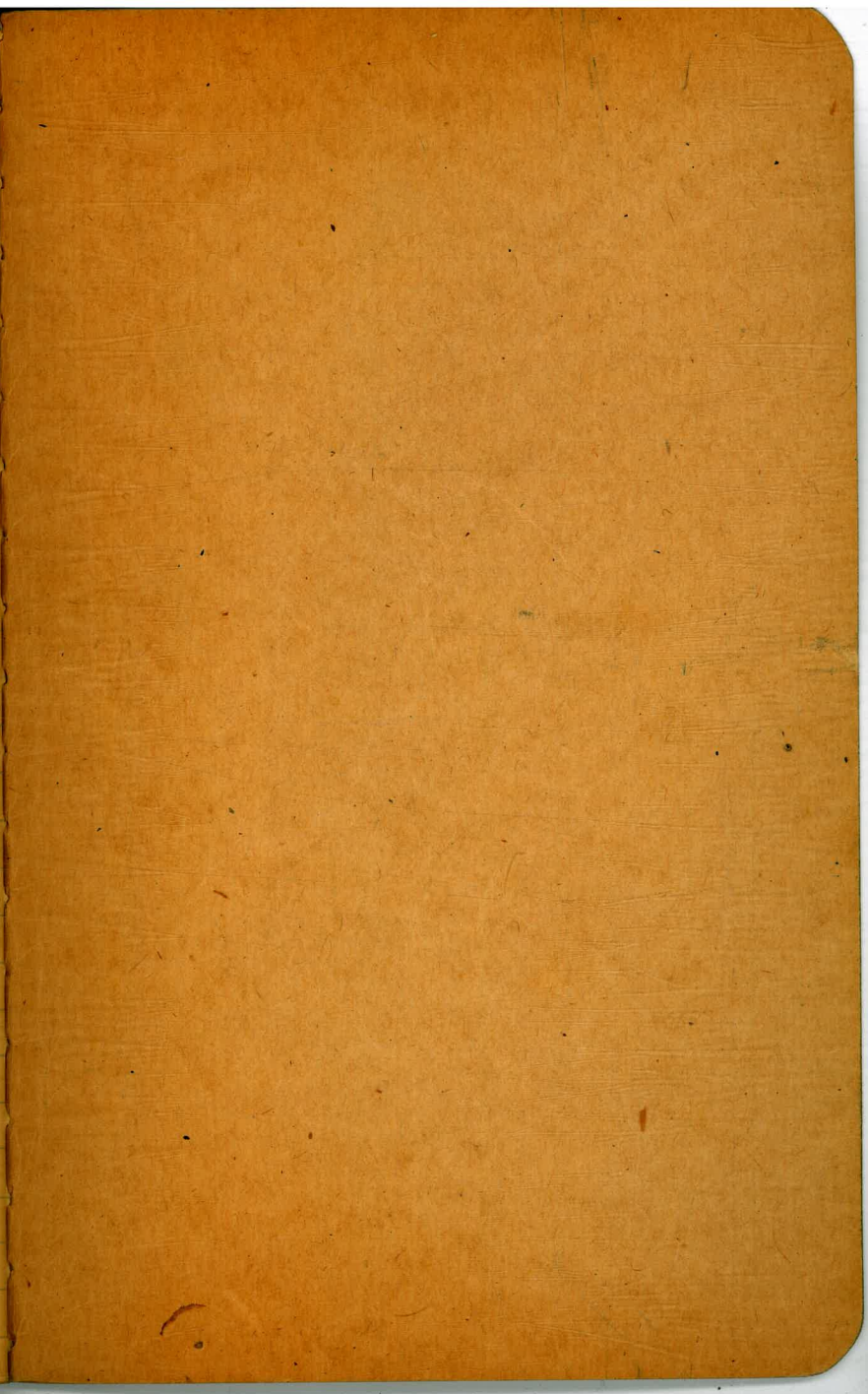
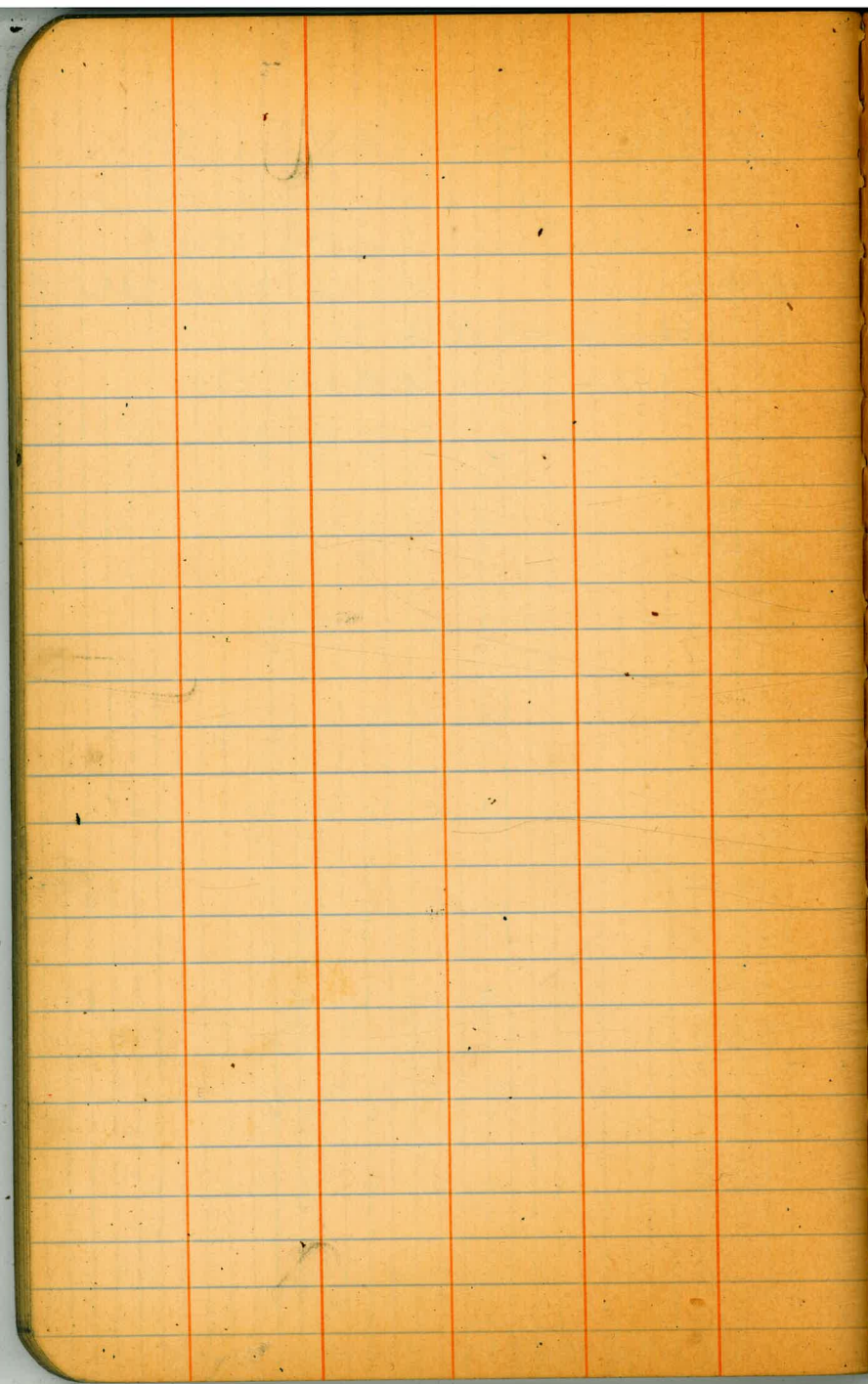
$\frac{78}{5}$   $\frac{70}{5}$   $\frac{87}{20}$   $\frac{95}{25}$

$\frac{59}{5}$   $\frac{63}{5}$   $\frac{70}{10}$   $\frac{81}{20}$   $\frac{78}{25}$

$\frac{64}{5}$   $\frac{65}{5}$   $\frac{81}{20}$   $\frac{88}{25}$

$\frac{65}{5}$   $\frac{69}{10}$   $\frac{78}{20}$   $\frac{80}{25}$

Cont'd on Pg 0 this book



420  
7373  
5300  

---

5167.73

WATSON, VAKLE & COUGH