

NAME KENSINGTON HTS.

UNIT # 2.

Class _____ Course _____ Party _____

X 50071 117

18740.0
36

1951

FIELD NOTES

No. 403 P

ESPECIALLY ADAPTED

TO THE USE OF

ENGINEERING STUDENTS

EUGENE DIETZGEN Co.

MANUFACTURERS

DRAWING MATERIALS

MATHEMATICAL AND SURVEYING INSTRUMENTS

MEASURING TAPES

CHICAGO SAN FRANCISCO NEW YORK
NEW ORLEANS PITTSBURGH

Return to

Watson, Valle & Gough Inc.
570 Spreckels Bldg.
San Diego, Calif.

MICROFILMED

DEC 30 1964

Apr 29-26
Kanters
Hammond
Reed
Cloudy; K&E Tran.

	+	TF	-	Rod	Elev	
BM	1.52	373.90			372.38	No. side Middlesex Lot 746
Δ				6.30	367.60	Ret. W.S. Marl. N. of Middlesex
BM			5.95		367.95	Ret. Rod Δ N.W. Marl. & Middlesex
	9.50	377.45				
Δ				5.48	371.97	Ret. Rod Δ S.W. Cor. Marl. & Bedford
BM			8.29		369.16	" " " N.W. Cor. Bed. & Viet.
	2.38	371.54				
Δ				5.77	365.77	App. Rod Δ NE Cor BIK.
BM			8.25		363.29	Ret. Rod Δ NE Cor. Middlesex & Bedford
	5.46	368.75				
BM			2.90		365.85	Ret. Rod Δ S.W. Cor. Hastings & Middlesex
	6.18	372.03 371.93			364.68	
B.M.		1 foot	mistake rod reading	1.35	364.58	Ret. Rod Δ S.W. Cor Roxbury & Middlesex
	1.15	365.83 365.73			358.23	
B.M.			7.60		358.13	App. 10' south of Δ #1110 Middlesex Drive.
	3.14	361.37 361.27			357.05	
BM			4.32		356.95	Ret Rod Δ S.E. Cor Hilldale & Braeburn
	4.96	362.01 361.91			357.46	
BM			4.55		357.36	70 foot Rod Δ South of near end of Braeburn
	4.60	362.06 361.96			357.04	
BM			5.02		356.94	
	11.25	368.29 368.19			362.17	
BM			6.12		362.07	Ret. Rod Δ N.E. Cor Hilldale & Bristol
	6.84	369.01 368.91			364.48	
BM			4.53		364.38	10' North from No. side Hilldale 281 West & 567

	+	↑	-	
	5.50	369.98 369.88		Elev 364.48 364.38
BM			5.21	364.77 364.67
	2.39	367.16 367.06		
BM			5.83	364.33 364.23
	8.13	369.46		
BM			1.90	368.56

10' ± No. Δ 574 No side Hilldale

Ret. @ S.W. Cor. Mark. &

Marlborough Drive
North

B.M. 9.39 377.01 367.62

B+0.0 No. Property Line Unit #2 West Side St.

+50

1+00

1+30 Ret

1+50 P.I. 524

1+75 & Bedford

2+00 P.I. 523

2+20 P.C.C.

2+50

3+00

3+50

4+00

4+47

3.44

3-

10.1 ✓

6.9
30
70.9 ✓

6.7
30
71.8 ✓

5.2
30
72.0 ✓

5.0
30
72.6 ✓

4.4
30
72.8 ✓

4.2
30
72.5 ✓

4.5
30
72.4 ✓

4.6
30
71.8 ✓

5.2
30
71.0 ✓

6.0
30
71.0 ✓

6.0
30
71.4 ✓

5.6
30
72.8 ✓

4.2
30
73.6 ✓

3.4
30
73.6 ✓

End of unit #2

10.2 ✓

6.8
30
71.2 ✓

5.8
30
71.9 ✓

5.1
30
72.4 ✓

4.6
30
72.8 ✓

4.2
30
72.6 ✓

4.4
30
72.4 ✓

4.4
30
72.3 ✓

4.7
30
72.0 ✓

5.0
30
71.0 ✓

6.0
30
69.8 ✓

7.2
30
69.4 ✓

7.6
30
69.9 ✓

7.1
30
70.8 ✓

6.2

Apr. 30-26.
Treadwell
Kanters
Smith
Joe
Hammond
Reed

10.4
30
66
30
5.3
30
71.7 ✓

12.0 ✓

5.0
30
72.6 ✓

4.4
30
72.6 ✓

4.4
30
72.4 ✓

4.6
30
72.3 ✓

4.7
30
71.9 ✓

5.1
30
71.0 ✓

6.0
30
69.6 ✓

8.4
30
68.0 ✓

9.0
30
67.8 ✓

9.2
30
66.4 ✓

8.6

+ A - Rod Elev.

377.01

5+00

7+50

6+00

4+47 A

3.44

374.03

West on Bedford

0+00 = West Line Marlborough & Bed.

0+50

1+00

1+50

TP

1.35

375.66

TP 5.17 380.83

2+00

2+50

3+00

3+46 Ret on No side

W.

742 ✓

2.8

30 ✓

75.2 ✓

1.8

30 ✓

75.9 ✓

1.1

30 ✓

N

72.8 ✓

7.2

25 ✓

3.73.6 ✓

3.7 ✓

74.9 ✓

2.1 ✓

2.1 ✓

2.1 ✓

2.1 ✓

2.1 ✓

2.1 ✓

2.1 ✓

2.1 ✓

2.1 ✓

2.1 ✓

2.1 ✓

2.1 ✓

2.1 ✓

2.1 ✓

2.1 ✓

2.1 ✓

2.1 ✓

2.1 ✓

2.1 ✓

2.1 ✓

2.1 ✓

2.1 ✓

2.1 ✓

2.1 ✓

72.8 ✓

4.2 ✓

74.3 ✓

2.1 ✓

75.2 ✓

1.8 ✓

73.0 ✓

4.0 ✓

74.0 ✓

3.0 ✓

74.9 ✓

2.1 ✓

2.1 ✓

2.1 ✓

2.1 ✓

2.1 ✓

2.1 ✓

2.1 ✓

2.1 ✓

2.1 ✓

2.1 ✓

2.1 ✓

2.1 ✓

2.1 ✓

2.1 ✓

2.1 ✓

2.1 ✓

2.1 ✓

2.1 ✓

2.1 ✓

2.1 ✓

2.1 ✓

2.1 ✓

2.1 ✓

2.1 ✓

2.1 ✓

2.1 ✓

2.1 ✓

2.1 ✓

2.1 ✓

2.1 ✓

2.1 ✓

2.1 ✓

E

70.8 ✓

6.2 ✓

73.2 ✓

70.8 ✓

74.2 ✓

70.8 ✓

73.6 ✓

73.6 ✓

73.6 ✓

73.6 ✓

73.6 ✓

73.6 ✓

73.6 ✓

73.6 ✓

73.6 ✓

73.6 ✓

73.6 ✓

73.6 ✓

73.6 ✓

73.6 ✓

73.6 ✓

73.6 ✓

73.6 ✓

73.6 ✓

73.6 ✓

73.6 ✓

73.6 ✓

73.6 ✓

73.6 ✓

73.6 ✓

73.6 ✓

73.6 ✓

73.6 ✓

73.6 ✓

73.6 ✓

73.6 ✓

73.6 ✓

73.6 ✓

73.6 ✓

73.6 ✓

73.6 ✓

73.6 ✓

73.6 ✓

+ ^ - Elev.

380.83

4+10 Ret on so. side
 North on Canterbury.
 0+00 = No. Line Unit #1. opp #146

+50
 1+00
 1+60
 2+00
 2+50
 2+73.09
 3+00
 3+50
 4+00
 4+50

7.30 ✓
 7.8 ✓
 7.5 ✓
 67.9 ✓
 12.9 ✓
 67.8 ✓
 13.0 ✓
 67.0 ✓
 13.8 ✓
 70.8 ✓
 10.0 ✓
 72.2 ✓
 8.6 ✓
 72.9 ✓
 7.9 ✓
 73.3 ✓
 7.5 OPP. 719 PC.
 737 ✓
 735 ✓
 7.3 ✓
 74.9 ✓
 5.9 ✓
 75.2 ✓
 5.6 ✓

70.8

11.0 ✓
 69.6 ✓
 11.2 ✓
 11.0 ✓
 69.8 ✓
 71.5 ✓
 9.3 ✓
 72.9 ✓
 7.9 ✓
 73.6 ✓
 7.2 ✓
 74.2 ✓
 6.6 ✓
 74.7 ✓
 6.1 ✓
 75.0 ✓
 5.8 ✓
 76.1 ✓
 4.7 ✓
 76.5 ✓
 4.3 ✓

71.4 ✓
 9.4 ✓
 71.0 ✓
 71.2 ✓
 9.6 ✓
 72.2 ✓
 8.6 Ret.
 73.6 ✓
 7.1 ✓
 74.5 ✓
 6.3 ✓
 74.6 ✓
 6.2 Ret
 75.1 ✓
 5.7 ✓
 75.8 ✓
 5.0 ✓
 76.5 ✓
 4.3 ✓
 76.9 ✓
 3.9 ✓

+ + -

380.83

4+84.22 End of Unit #1 # 718 E

B.M. " " " " 5.33 375.50

5+00

5+50

6+00

+50

B.M. 8.41 372.42

East on Bedford

0+00 = East Line of Marlborough & Bedford

10.08 377.70 367.62

0+00

+50

1+00

75.5 ✓
5.3

75.6 ✓
5.2

76.2 ✓
4.6

77.0 ✓
3.8

77.4 ✓
3.4

S

684 ✓
9.3

680 ✓
9.7

688 ✓
8.9

76.5 ✓
4.3

76.7 ✓
4.1

77.1 ✓
3.7

77.9 ✓
2.9

78.6 ✓
2.2

E

77.2 ✓
3.6

77.4 ✓
3.4

78.0 ✓
2.8

78.3 ✓
2.5

79.1 ✓
1.7

N

680 ✓
9.7

669 ✓
10.8

683 ✓
9.7

673 ✓
10.4

660 ✓
11.7

669 ✓
10.8

+ Λ - Elev

1410.6 P.T.

377.70

1450

B.M.

8.54

369.16

Ret. Rad. s.w. Marl & Bed.

4.72 373.88

1469

2+00

2+50

2+73

3+00

3+50

4+03

4+50

5+00

377.7

5

68.8 ✓

8.9 Δ #800

69.0 ✓

8.7

68.1 ✓

9.6

68.2 ✓

9.5

67.2 ✓

10.5 Δ #897

67.1

10.3

68.6 ✓

5.3 Ret #838

68.7 ✓

5.2

68.1 ✓

5.8

67.5 ✓

6.7 Ret #811

66.8 ✓

7.1

66.1 ✓

7.8

64.8 ✓

9.1 Ret

64.7 ✓

9.2

65.0 ✓

8.9 Ret

67.9 ✓

6.0

67.9 ✓

6.0

67.1 ✓

6.2

67.3 ✓

6.6

66.3 ✓

7.6

65.1 ✓

8.8

64.2 ✓

9.7

63.8 ✓

10.1

63.5 ✓

10.3

67.5 ✓

6.9

67.2 ✓

6.7

67.0 ✓

6.9

66.7 ✓

7.2

65.9 ✓

8.0

64.3 ✓

9.6

63.4 ✓

Ret. Δ 836-4 = 10.5

62.8 ✓

11.1

E

62.4 ✓

11.5 P.C.

+ + -
373.88

Elev

5+50

6+00

6+50

7+00

7+25

7+50

8+04 End of Bedford

South on Victoria Edgeware Road.

0+00 Ret. on E. side of Bedford

+20

+50

1+00

+50

W
64.3 ✓

9.6

62.3 ✓

11.6

60.3 ✓

13.6

57.9 ✓

16.0

56.9 ✓

17.0

Ditch

58.7 ✓

15.2

61.8 ✓

12.1 Ret.

69.0 ✓

4.9

69.4 ✓

4.5 Ret.

69.9 ✓

4.0

70.3 ✓

3.6

70.5 ✓

3.7

62.9 ✓

11.0

60.7 ✓

13.2

58.4 ✓

15.5

56.9 ✓

17.0

58.9 ✓

15.0

62.2 ✓

11.7

68.8 ✓

5.1

69.1 ✓

4.8

69.5 ✓

4.7

69.9 ✓

4.0

69.7 ✓

4.2

E
61.3 ✓

12.6

58.9 ✓

15.0

56.9 ✓

17.0

54.4 ✓

19.5

Bottom Ditch

58.9 ✓

15.0

63.0 ✓

Ret. 10.9

68.5 ✓

5.7

68.7 ✓

5.2

69.1 ✓

4.8

69.1 ✓

4.8

69.0 ✓

4.9

+ A -
373.88

Elev.

2+00

+50

3+00

3+35

3+50

BM

10.52

363.29
363.36

BM. 5.55 373.17

367.62

East on Middlesex

0+00 East Line Unit #1

0+50

1+00

1+50

2+00

11.701 ✓

3.8

68.6 ✓
5.3

6.71 ✓

6.2

68.2 ✓

5.7 Ret #1001

Ret. Rod @ N.E. Middlesex & Bedford

5.1 ✓
68.5 ✓

4.7

68.8 ✓

4.4

68.2 ✓

5.0

68.2 ✓

5.0

68.1 ✓

5.1

68.3 ✓

5.6

67.6 ✓
6.3

66.0 ✓

7.9

67.4 ✓

6.5

69.2 ✓

4.0

68.9 ✓

4.3

67.8 ✓

5.7

67.0 ✓

6.2

66.9 ✓

6.9

63.8 ✓
9.4
30

67.5 ✓

6.3

66.0 ✓
7.9

67.1 ✓

9.2

Ret #1002 = $\frac{65.6}{8.3}$

69.8 ✓

3.4

69.0 ✓

4.2

67.2 ✓

6.0

65.8 ✓

7.4

63.0 ✓

10.2
45

+ T -
 373.17

Elev.

S

373.2

2+30
 2+50
 2+95
 3+50
 3+86
 B.M.
 4+50
 5+00
 5+34
 5+50
 6+00
 7+50

9.87

363.29
 363.30

7.17 370.47

68.1 ✓	66.6 ✓	61.4 ✓
5.1 = 569 A.E.C. 66		562 A.E.C. 8.8
30		30
67.9 ✓	65.6 ✓	63.9 ✓
5.3	7.6	9.3
		80
67.2 ✓	65.0 ✓	63.0 ✓
6.0	8.2	10.2 Ret.
67.5 ✓	65.6 ✓	
5.7	7.6	63.7 ✓
		9.5
66.8 ✓	65.8 ✓	64.8 ✓
6.4	7.4	8.4 Ret.

370.5

Ret. Rad. Δ N.E. Middlesex & Bedford

65.5 ✓	64.1 ✓	62.7 ✓
5.0	6.4	7.8
64.8 ✓	63.8 ✓	62.7 ✓
5.7	6.7	7.8
65.8 ✓	64.9 ✓	63.6 ✓
4.7 B.C.	5.6	6.9
66.1 ✓	65.5 ✓	64.1 ✓
4.4	5.0	6.7
66.3 ✓	65.6 ✓	64.5 ✓
4.2	4.9	6.0
65.8 ✓	64.5 ✓	63.6 ✓
4.7	6.0	6.9

Δ 569 =

370.47

7+00

7+50

7+93.

B.M.

5.95 371.82

8+26

8+50

9+02

9+50

10+00

10+50

10+89

11+50

4.60

365.87

Ret. Rada S. Yr. Cor. Hastings & Middlesex

5.50 ✓
5.5 ✓
65.4 ✓
5.1 ✓
65.5 ✓
E.C. S.D. A*570

65.7 ✓
6.1 Ret. 571

65.3 ✓
6.5 ✓

66.0 ✓
5.8 Ret

66.5 ✓
5.3 ✓

66.4 ✓
5.7 ✓

66.6 ✓
5.2 ✓

66.4 ✓
5.4 Ret

65.7 ✓
6.1 ✓

370.5

64.5 ✓
6.0 ✓
64.6 ✓
5.9 ✓
64.9 ✓
5.6 ✓

65.1 ✓
6.7 ✓

64.7 ✓
7.1 ✓

64.3 ✓
6.9 ✓

65.9 ✓
5.9 ✓

65.6 ✓
6.2 ✓

65.5 ✓
6.3 ✓

65.4 ✓
6.4 ✓

65.4 ✓
6.4 ✓

63.8 ✓
6.7 ✓
64.1 ✓
6.4 ✓
64.0 ✓
6.5 570.7

64.2 ✓
7.6 ✓

64.0 ✓
7.8 ✓

65.0 ✓
6.8 ✓

64.9 ✓
6.9 ✓

64.7 ✓
7.1 ✓

64.4 ✓
7.4 ✓

64.5 ✓
7.3 ✓

64.1 ✓
7.7 ✓

371.8

371.82

371.8

11+80

5 65.4 ✓

64.5 ✓

64.1 ✓

12+00

6.4 Ret ✓

7.3 ✓

7.7 ✓

+50

6.7 65.1 ✓

64.5 ✓

63.8 ✓

13+00

6.7 64.0 ✓

7.3 ✓

8.0 ✓

+71

7.8 63.1 ✓

8.0 63.8 ✓

8.2 62.6 ✓

BM

8.14

363.68

Ret Rada S.W. Cox Middlesex & Roxbury

366.0

2.28 365.96

14+00

8.7 63.3 ✓

9.0 62.8 ✓

9.5 62.3 ✓

14+31

8.5 Ret ✓

9.1 62.7 ✓

9.6 62.2 ✓

14+50

62.1 ✓

62.6 ✓

62.4 ✓

15+00

2.9 62.7 ✓

3.4 62.4 ✓

3.6 61.9 ✓

15+50 North end of Hilldale Road

3.3 Ret ✓

3.6 62.4 ✓

4.1 62.1 ✓

Cont. Easterly on Middlesex

0+00 = E bet 1105 & 1106

62.1 ✓

3.6 62.4 ✓

3.9 62.1 ✓

5.9 60.1 ✓

5.6 60.4 ✓

6.7 60.7 ✓

58.6 ✓

57.7 ✓

53 56.8 ✓

7.4 58.2 ✓

8.3 59.2 ✓

9.2 59.4 ✓

7.8

6.8

6.6

365.96

0+50

1+00

1+50

2+00

2+38

BM

870

5.08 362.34

3+00

750

4+00

4+40

4+88

Radial to center of Tit

Prop Line thru Rad. A #1115

366.0

5 57.5 ✓

8.5

8 57.6 ✓

8.4

8 57.3 ✓

8.7

8 57.5 ✓

8.5

8 57.7 ✓

8.3 #1110

58.0

56.0 ✓

8.0

58.2 ✓

7.8

57.7 ✓

8.3

8 58.0 ✓

8.0

58.2 ✓

7.8

7 58.6 ✓

7.4

58.5 ✓

7.5

8 58.0 ✓

8.0

58.4 ✓

7.6

58.5 ✓

7.5 #1109

357.26 App. 10' so #1110 Middlesex

57.6 ✓

4.7

57.3 ✓

5.0

56.6 ✓

5.7

55.8 ✓

6.5 #1112

54.4 ✓

7.9 #1116

53.5 ✓

8.8

58.0 ✓

4.3

57.4 ✓

4.9

56.9 ✓

5.7

56.3 ✓

6.0

55.6 ✓

6.7

55.4 ✓

6.9

57.7 ✓

4.6

56.8 ✓

5.5

55.9 ✓

6.4

55.2 ✓

7.1 #1111

54.0 ✓

8.3

362.34

Prop Line thru Rad A & #1116

Ext. of E to most easterly Prop Line

TP 5.89 356.45

5.07 361.52

B.M. 5.45 356.07

5.18 361.25

B.M. 4.73 356.52

4.73 361.25

Easterly on Braeburn

0+00 = East Line Hilldale Road

0+36

+50

1+00

1+50

2+00

2+50

3+00

362.3

S.

57.8 ✓

7.5

N. 53.8 ✓
8.5

Ret. Rad. Δ S. E. Cor. Hilldale & Braeburn

70' Rad. Δ South of near end of Braeburn

361.3

S 57.6 ✓

3.7
2.0

57.0 ✓
4.3 Ret.

57.0 ✓
4.3

56.4 ✓
4.9

56.3 ✓
5.0

55.3 ✓
6.0

55.2 ✓
6.1

55.9 ✓
5.4

58.1 ✓

3.2

57.5 ✓
3.8

57.5 ✓
3.8

57.0 ✓
4.3

56.2 ✓
5.1

55.7 ✓
5.6

55.9 ✓
5.7

56.8 ✓
4.5

N 57.9 ✓

3.4
2.0

57.5 ✓
3.8 Ret.

57.5 ✓
3.8

57.0 ✓
4.3

56.0 ✓
5.3

55.4 ✓
5.9

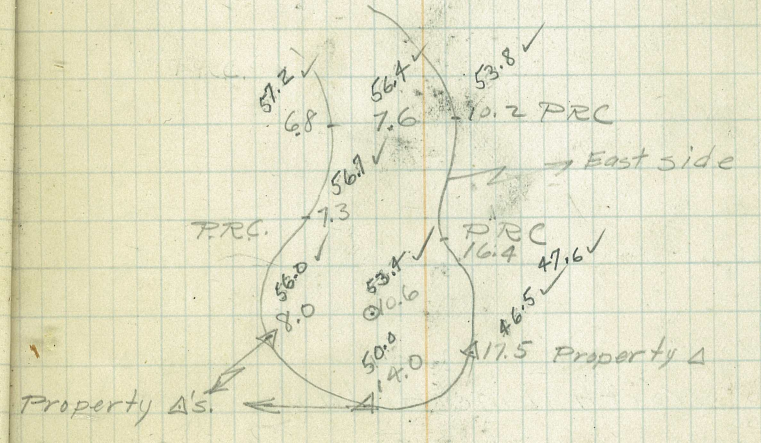
55.7 ✓
5.6

57.0 ✓
4.3

	361.25	
350		
		4.73
	7.50	364.02
3+78		
4+00		
4+50		
5+00		
5+43		

B.M.	7.50	356.52
------	------	--------

57.7 ✓	(361.3)	57.8 ✓	50.2 ✓
3.6		3.5	3.1
58.5 ✓		58.9 ✓	3.1
5.5 #602-D BC		5.3	59.0 ✓
59.0 ✓		59.3 ✓	5.0 #690 F
5.0		4.7	59.3 ✓
59.0 ✓		58.5 ✓	4.7
5.0		5.1	58.8
57.7 ✓		56.9 ✓	5.2
6.3		7.1	55.2 ✓
W 57.2 ✓		56.7 ✓	8.8
6.8 PRC		7.6	E 53.8 ✓
			10.2



South on Roxbury

370.1

W

E

0+00 = South Line Middlesex

BM 6.45 370.13

363.6 Ret. Rad. A SW Rox. Mid.

0+00

63.4
6.7 #585

63.9
7.2

63.1
7.0 #588

0+20

63.8
6.3 Ret

63.6
6.5

63.1
7.0 Ret

0+50

64.0
6.1

63.8
6.3

63.4
6.7

1+00

65.0
5.1

63.9
6.2

63.5
6.6

1+50

64.8
5.3

64.3
5.8

64.0
6.1

2+00

64.4
5.7

63.6
6.5

63.9
6.2

2+50

63.6
6.5

63.6
6.5

63.3
6.8

3+00

62.8
7.3

62.5
7.6

62.6
7.5

3+30

61.4
8.7 Ret.

61.9
8.2

61.8
8.3 Ret

+50 North Line Hilldale Road

TP 3.98

366.15

60.9
9.2 #586

61.3
8.8

61.4
8.7 #587

5.17 371.32

371.3

South on Bristol

0+00 = South Line of Middlesex

66.1
5.2 #580

65.7
5.6

65.8
5.5 #584

371.32

0+20

0+50

1+00

1+50

2+00

2+50

3+00

3+50

3+50 North Line Hilldale

BM

10.13

361.19

1.72 362.91

4+00

4+20

371.3

W

66.5 ✓
4.8 Ret

66.6 ✓
4.7

66.6 ✓
4.7

65.6 ✓
5.7

66.0 ✓
5.3

64.6 ✓
6.7

62.7 ✓
8.6

61.3 ✓
10.0 Ret.

60.4 ✓
10.9 #581

Ret Rada N.E. Cor Hilldale & Bristol

57.7 ✓
5.2 #604

57.9 ✓
5.0 Ret

66.6 ✓
4.7

66.4 ✓
4.9

66.3 ✓
5.0

65.7 ✓
5.6

66.3 ✓
5.0

64.3 ✓
7.0

62.8 ✓
8.5

61.3 ✓
10.0

59.9 ✓
11.5

56.8 ✓
6.1

55.5 ✓
7.4

E

66.1 ✓
5.2 Ret.

66.0 ✓
5.3

65.7 ✓
5.6

66.0 ✓
5.3

65.4 ✓
5.9

63.9 ✓
7.4

62.7 ✓
8.6

61.1 ✓
10.2 Ret.

59.9 ✓
11.5 #583

May. 1st 26.

56.5 ✓
6.4 #604

54.9 ✓
8.0 Ret.

362.9

362.91

4+47

4+75

5+00

5+50

6+00

6+50

7+00

7+32

BM

2.91

360.00

604-A

362.9

53.0 ✓
9.9 Bot. Ditch

55.2 ✓
7.7

55.4 ✓
7.5

55.7 ✓
7.2

56.9 ✓
6.8

59.1 ✓
3.8

59.9 ✓
3.0 #604-A

53.4 ✓
9.5

51.3 ✓
11.6

52.7 ✓
10.2

53.0 ✓
9.9

55.0 ✓
7.9

57.8 ✓
5.1

59.4 ✓
3.5

Bot. Ditch

53.3 ✓
9.6

48.4 ✓
14.5

48.2 ✓
14.7

49.9 ✓
13.0

49.7 ✓
13.2

53.3 ✓
9.6

56.0 ✓
6.9

57.9 ✓
5.0 Ret

371.3

Southerly on Hastings Rd.

W

E

0+00 = South Line Middlesex

5.42 371.29

365.87

S.W. Cor Middlesex & Hastings

0+00

65.5 ✓
5.8 #566

65.6 ✓
5.7

66.3 ✓
5.0 #578

+10

66.1 ✓
5.2 Ret

66.1 ✓
5.3

66.5 ✓
4.8

+31

67.1 ✓
4.2

66.5 ✓
4.8

66.7 ✓
4.6

0+50

66.3 ✓
5.0

67.3 ✓
4.0

67.0 ✓
4.3

1+00

66.2 ✓
5.1

66.2 ✓
5.1

66.7 ✓
4.6

+50

65.4 ✓
5.9

66.1 ✓
5.2

66.3 ✓
5.0

2+00

64.4 ✓
6.9

64.7 ✓
6.6

66.0 ✓
5.3

2+50

63.9 ✓
7.4 Ret

63.9 ✓
7.4

64.9 ✓
6.7

2+96

63.2 ✓
8.1 #567

63.1 ✓
8.2

63.7 ✓
7.6

3+16

61.6 ✓
9.7 #606

61.6 ✓
9.7

63.3 ✓
8.0 #582

3+66

61.4 ✓
9.9 #605

371.29

4+00

4+50

5+00

5+43

TP

4.70 367.67

6+00

6+29

6+50

7+00

7+50

8+00

8+36

371.3

W 60.1 ✓

11.2

59.9 ✓

11.4

61.1 ✓

10.2

61.6 ✓

9.7 Ret

S

61.6 ✓

6.1

61.0 ✓

6.7 Ret

5 60.5 ✓

7.2

59.9 ✓

7.8

59.2 ✓

8.5

59.6 ✓

8.1

60.8 ✓

10.5

61.0 ✓

10.3

9 61.9 ✓

9.4

9 62.2 ✓

9.1

62.0 ✓

5.7

61.5 ✓

6.2

61.7 ✓

6.6

60.8 ✓

6.9

60.2 ✓

7.5

60.2 ✓

7.5

E 61.0 ✓

10.3

9 61.9 ✓

9.4

62.7 ✓

8.6

62.9 ✓

Ret 8.4

N

62.1 ✓

5.6

62.3 ✓

5.7 Ret

N 61.9 ✓

5.8

61.6 ✓

6.1

60.9 ✓

6.8

60.6 ✓

7.1

60.7 ✓

7.0 Ret

8+50

367.67

9+00

9+50

BAA

7.56

360.11

#604A

56.6

10+09.3

367.7

56.2 ✓

7.5

60.6 ✓

7.1

60.5 ✓

7.2 PC

PRC

South side ← →

PRC

PC

47.9

59.8

83

59.4

9.9

57.8

56.6

11.1

7.5

54.1

13.6

PRC

10.4

56.9

54.1

13.6

60.5

7.2

60.6 ✓

7.1

59.8

7.9

60.5

7.2

60.6 ✓

7.1

59.8

7.9

7.4

60.3 ✓

7.7

8.2

59.5 ✓

58.4 ✓

9.3

7.3

369.5

369.49

5+00

+50

6+00

B.M.

5.19

368.67

6.11

363.48

10± No. from No. side Hilldale 281 West A567

368.1

6+50

7+00

7+50

8+00

8+44

8+64

9+14

9+34

N

6.38 ✓

5.7

6.42 ✓

5.3

6.36 ✓

5.9

6.32 ✓

5.5

6.28 ✓

5.9

6.36 ✓

5.1

6.24 ✓

6.3

6.25 ✓

6.2 Ret

6.33 ✓

5.4 #567

6.34 ✓

5.3 #582

6.39 ✓

4.8 Ret

S

6.21 ✓

7.4

6.22 ✓

7.3

6.5 ✓

8.0

6.3 ✓

7.4

6.5 ✓

7.2

6.4 ✓

7.3

6.11 ✓

7.6

6.13 ✓

7.4 Ret

6.16 ✓

7.1 #606

6.24 ✓

6.3 #605

6.26 ✓

6.1 Ret

368.61

9+50

10+00

10+50

11+15

Bristol

11+35

11+85

12+05

B.M.

7.55

361.12

5.73 366.85

12+50

13+00

+66

+86

368.1

7.63.9 ✓

7.8 ✓

5.6 ✓

6.5 ✓

7.6 Ret ✓

8.3 #581 ✓

8.9 #583 ✓

9.0 Ret ✓

Ret. Rad. Δ NE Hilldale & Bristol

6.7 ✓

6.2 ✓

6.0 Ret ✓

5.8 #586 ✓

5.1 ✓

6.2 ✓

7.2 ✓

8.9 ✓

9.9 ✓

10.4 ✓

10.7 ✓

Ret. Rad. Δ NE Hilldale & Bristol

8.3 ✓

7.4 ✓

7.2 ✓

6.8 ✓

6.1 ✓

6.2 ✓

8.0 ✓

10.9 Ret ✓

11.0 #604 ✓

12.2 #603 ✓

12.3 Ret ✓

Ret. Rad. Δ NE Hilldale & Bristol

10.2 ✓

9.3 ✓

8.0 ✓

7.9 ✓

366.85

14+36

+56

15+00

+37

+80

16+07

+50

17+00

17+33

B.M.

6.82 362.87

17+66

18+00

366.9

N 61.5 ✓

5.4 + 587

61.6 ✓
5.3 Ret

61.8 ✓
5.1 ✓

60.9 ✓
6.0 + 601 BC.

61.0 ✓
5.9 ✓

60.8 ✓
6.1 ✓

60.9 ✓
6.0 ✓

W 59.1 ✓
7.8
25

9.5 ✓
8.4 + 599
25

57.4 ✓
9.9 ✓
25

W 58.9 ✓
7.0
25

58.7 ✓
4.2

E 54.5 ✓
12.4
25

51.1 ✓
15.8
35

55.5 ✓
16.4 BC
25

57.7 ✓
5.2
25

58.0 ✓
4.9

60.7 ✓
6.2

60.8 ✓
6.1

60.7 ✓
6.2

60.2 ✓
6.7

60.1 ✓
6.8

59.8 ✓
7.1

59.4 ✓
7.5

52.7 ✓
14.2
35

57.1 ✓
5.2
25

58.0 ✓
4.9

S 59.6 ✓
7.3

59.7 ✓
7.2

59.6 ✓
7.3

59.9 ✓
7.6 BC.

58.7 ✓
8.2

58.1 ✓
8.8

56.8 ✓
10.1

56.6 ✓
6.3 Ret
25

59.9 ✓
5.0

57.9 ✓
5.0

Ret. Rad A SE Hilldale & Braeburn.

362.9

362.9

18+50 362.87
+80
19+00
+50
20+00
+70

W 58.7 ✓
4.2
58.6 ✓
4.3 # 59.1 ✓
58.3 ✓
4.6
57.4 ✓
5.5
57.9 ✓
5.0
59.9 ✓
3.0 * 58.9 E

58.6 ✓
4.3
57.7 ✓
5.2
57.2 ✓
5.7
55.9 ✓
7.0
57.2 ✓
5.7
60.0 ✓
2.9

E 57.9 ✓
5.0
57.3 ✓
5.6 Ret
56.2 ✓
6.7
55.0 ✓
7.9
56.1 ✓
56.7 ✓
6.8
59.4 ✓
3.5

Finis

Profile of back Lot Line B/K 0
 From Bedford to Middlesex

5/21/26
 Party } TREADWELL
 SNEAD
 BROWNSON.

Sta	+S	π	TR.	-S	Elev.
B.M.					369.16
	5.38				374.54
0+00	= S/LINE BEDFORD DRIVE		5.7		368.8
0+50			4.1		370.4
1+00			3.1		371.4
+50			2.3		372.2
2+00			2.2		372.3
+50			2.7		371.8
+61	LINE TURNS EAST		2.6		371.9
+91	" " SOUTH		3.4		371.1
3+00			3.4		371.1
+54	HUB # 154		4.5		370.0
3+97	HUB # 155 = N/L Middlesex		4.7		369.8

B.W. COR BEDFORD & VICTORIA ON RADIAL POINT

B/K. (2)

0+00	= S/LINE Bedford drive		8.5		366.0
+50			7.9		366.6
1+00			7.5		367.0
+50			8.1		366.4
2+00			10.0		364.0
+50			12.2		362.3
3+00			13.8		360.7
3+50			12.1		362.4
+75	HUB # (809-A) = N/L Middlesex		10.1		364.4
		11.25			

363.29
 363.29
 ✓

B.M. N/E. cor Bedford & Middlesex

East & West Line B/K(3)

STA	+S	X	TP.	-S	Elev.	
B.M.					369.48	10' N. from. N/L Hildale Road 281 ± West Δ 567
	7.24				371.72	
0+00 = hub = 158						^E EAST from UNIT #1
				5.9	365.8	
+50				5.3	366.4	
1+00				4.5	367.2	
+50				4.5	367.2	
2+00				3.3	368.4	
+33 ^E	Δ			3.5	368.2	
+50				3.5	368.2	
3+00				3.5	368.2	
+50				4.0	367.7	
4+00				4.6	367.1	
+50				4.3	367.4	
5+00				4.2	367.5	
5+50			4.44	4.4	367.28	
	4.97				372.25	
6+00				6.0	366.3	
+50				6.3	366.0	
7+00				6.6	365.7	
+15				6.4	365.9	end of E.&W. Line
0+00 =				6.6	365.7	N & S Line B/K(3) Middlesex Drive
+50				5.9	366.4	
1+00				5.0	367.3	
+32 ^E	Δ			6.1	366.2	

372.25

Sta	+S	X	TR	-S	Elev.
1450				6.3	366.0
2+00				7.1	365.2
450				7.9	364.4
2+77	N/Line Hildale Road.			8.0	364.3
N & S. Line BIK (4)					
0+00	= S/line Middlesex Drive			5.2	367.1
450				4.5	367.9
1+00				4.6	367.7
450				5.6	366.7
2+00				5.9	366.4
450				6.6	365.7
3+00				7.9	364.4
+47	N/line Hildale Road.			9.3	363.0
N & S. Line BIK (7)					
0+00	= S/line Hildale Road			10.1	362.2
450				10.4	361.9
1+00				9.9	362.4
450				9.2	363.2
2+00				9.4	362.9
450				10.3	362.0
770	= N/Line Hasting Road.			10.6	361.7

10.34

} 361.91
 { 362.17

1.26

363.79
 363.48

 .31

Sta	TS	T	TP	-S	Elev.
B.M.	9.71	371.88			362.17
N. & S Line B/K. (5)					
0+00	= S/line Middlesex drive		7.00		364.9 362.17
+50			6.40		365.4
1+00			6.00		365.9
+50			5.7		366.2
2+00			6.4		365.5
+50			6.9		365.0
3+00			8.0		363.9
+52	N/line Hildale Road.		10.1		361.8

N & S Line B/K (6)

0+00	= S. Line Middlesex		11.1		360.8
+50			10.7		361.2
1+00			9.4		362.5
+50			9.1		362.8
2+00			9.3		362.6
+50			8.7		363.2
3+00			8.8		363.1
+52	N/line Hildale Road		10.1		361.8

7.20

364.68
364.68

Rad. Pt. S.W. cor Roxbury & Middlesex

N. E. Rad. Pt. Hildale Road & Bristol Road

0+91.5	6.76	364.22	60.51	3.71	→ Ken.
0+50	5.73	365.29	60.10	5.19	
0+91.5	4.62	366.40	62.35	4.05	→ Marl.
0+50	4.21	366.81	61.10	5.71	

MH# 21 = 4.86 371.02

+375 TP	1.56	366.16	59.60	5.56
4+00	2.19	365.53	59.32	6.21
3+50	2.90	364.82	58.94	5.88
3+00	2.95	364.77	58.57	6.20
2+50	3.45	364.27	58.19	6.09
2+30	3.63	364.09	58.04	6.05
2+00	3.48	364.24	57.81	6.43
+50	3.86	363.86	57.44	6.42
1+00	4.20	363.52	57.07	6.45
0+50	4.72	363.00	56.70	6.30

B.M. N.E. Ret. Jefferson & Kensington

MH# 20 =	10.60	357.12		
6+42.5	7.87	359.75	51.91	7.94
6+00	7.14	360.58	51.85	8.73
+50	5.98	361.74	51.78	9.96
5+00	5.12	362.00	51.71	10.89

4.31 367.72

B.M.	0.95	363.41		
4+85	1.50	362.86	51.67	11.19
+50	1.45	362.91	51.63	11.28
4+00	2.10	362.26	51.56	10.70
3+50	3.07	361.29	51.48	9.81

B.M. 6.27 364.36 358.09

Phone.
W.C. HASENBOCK
3942 446

$$\begin{array}{r} 37.98 \\ 7.2 \\ \hline 64.78 \end{array}$$

$$\begin{array}{r} 64.48 \\ 720 \\ \hline 71.72 \\ 004 \\ \hline 67.28 \\ 497 \\ \hline 72.25 \end{array}$$

$$\begin{array}{r} 64.68 \\ 720 \\ \hline 71.88 \end{array}$$

$$\begin{array}{r} 72.25 \\ 10.34 \\ \hline 61.91 \\ 62.17 \\ \hline .26 \end{array}$$

$$\begin{array}{r} 64.58 \\ 3.14 \\ \hline .84 \end{array}$$

36329
12
37215

36299
375
35724

3468
7

36329
13
37252
-7
36319

WATSON VALLE & GOUGH