

NAME Topog lots 284-285-286

Kensington Hts #3.

Class _____ Course _____ Party _____

520

1954

FIELD NOTES

No. 403 P

ESPECIALLY ADAPTED

TO THE USE OF

ENGINEERING STUDENTS

EUGENE DIETZGEN Co.

MANUFACTURERS

DRAWING MATERIALS

MATHEMATICAL AND SURVEYING INSTRUMENTS

MEASURING TAPES

CHICAGO SAN FRANCISCO NEW YORK
NEW ORLEANS PITTSBURGH

MICROFILMED

DEC 30 1964

Topog lots 284, 285, 286, Ken. H/s #3

1-9

Az.	Dist	Vert	Rod
366.1	364.6	364.1	364.1
298	452	513	517
369.05	369.12	369.23	369.27
Mean H.I. = 369.17			
0°			1.1 368.1
0°	72		1.2 368.0
0°	48		1.3 367.9
0°	18		2.1 367.1
0°	0		5.0 364.2
15°	19		2.5 366.7
15°	32		1.8 367.4
15°	57		1.9 367.3
18°	78		2.3 366.9
15°			2.2 367.0
15°			3.4 365.8
30°			4.1 365.1
30°			3.2 366.0
30°	105		3.4 365.8
30°	83		3.3 365.9
30°	61		2.6 366.6
30°	42		2.3 366.9
30°	30		2.5 366.7
40°	28		3.1 366.1
40°	48		2.8 366.4
40°	81		3.6 365.6
40°	103		4.0 365.2

E.P. Chilton III
 Allenbaugh T
 Dobbins &
 Sept 1, 1928.

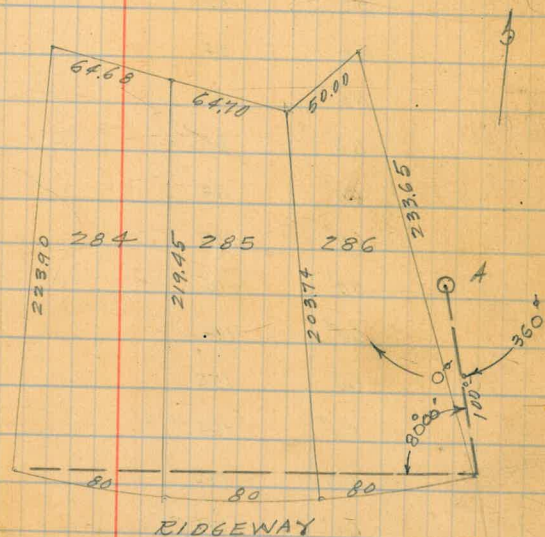
Note - All shots taken from
 one station marked "A"
 4' in from S.W. on sketch below, and one
 H.I. (369.17) used thruout.
 All distances by stadia,
 except 100⁰⁰ from the
 S.E. Cor. lot 286 to station "A"
 which was chained.
 EPC

At transit

2' from S.W.

Edge of S.W.

2' from S.W.



40°	132	Level	44	364.8
50°	150	"	46	364.6
50°	143	"	46	364.6
50°	138	"	58	363.4
50°	118	"	56	363.6
50°	83	"	41	365.1
50°	66	"	35	365.7
50°	49	"	33	365.9
50°	32	"	33	365.4
50°	15	"	41	365.1
60°	24	"	42	365.0
60°	47	"	43	364.9
60°	65	"	45	364.7
60°	83	"	49	364.3
60°	102	"	59	363.3
60°	115	"	65	362.7
60°	134	"	74	361.8
60°	152	"	68	362.4
60°	165	"	71	362.1
60°	172	"	48	364.4
60°	176	"	48	364.4
68°	206	"	51	364.1
68°	203	"	51	364.1
68°	194	"	74	361.8
68°	180	"	78	361.4

Edge S.W.

" " "

Edge S.W.

" " "

68°	164	Level	80	361.2
68°	152		83	360.9
68°	129		84	360.8
68°	88		61	363.1
68°	61		57	363.5
68°	45		51	364.1
68°	18		45	364.7
75°	27		51	364.1
75°	45		64	362.8
75°	62		70	362.2
75°	90		81	361.1
75°	101		88	360.4
75°	117		101	359.1
75°	138		99	359.3
75°	150		100	359.2
75°	165		90	360.2
75°	185		83	360.9
75°	200		64	362.8
75°	232		60	363.2
75°	242		49	364.3
75° 54'	241			
85°	242		4.8	364.4
85°	202		5.5	363.7
85°	185		7.5	361.9
85°	154		10.7	358.5

Edge S.W.

on pipe S.W. Cor lot 284

85°	139		108	358.4
85°	113		120	359.2
85°	110		134	355.8
85°	76		104	358.8
85°	57		93	359.9
85°	29		59	363.3
85°	15		54	363.8
92°	15		58	363.4
92°	32		71	362.1
92°	40		85	360.7
92°	62		119	357.3
92°	94	-6°02	50	354.3
92°	118	-6°10	50	351.5
92°	126	-5°28	50	352.2
92°	134	Level	124	356.8
92°	145	"	115	357.7
92°	175		76	361.6
92°	201		52	364.0
92°	240		41	365.1
100°	240		33	365.9
100°	183		61	363.1
100°	154		98	359.4
100°	136	-3°22	50	356.2
100°	111	-8°03	50	348.6
100°	99	-8°40	50	350.2

Draw

Draw

	100°	73	-8°29'	5.0	353.4
	100°	48	0°	11.6	357.6
	100°	21		7.2	362.0
	115°	9		6.2	363.0
37	115°	38	-15°22'	5.0	354.10
63	115°	66	-15°55'	5.0	346.1
87	115°	92	-15°32'	5.0	339.5
100	115°	105	-14°31'	5.0	337.9
	115°	125	-8°41'	5.0	345.3
	115°	142	-3°53'	5.0	354.6
	115°	154	0°	11.3	358.9
	115°	190		5.4	363.8
	115°	219		3.3	365.9
	115°	242		2.9	366.3
	131°01'	242		10.2	359.0
	130°	253		11.6	357.6
	130°	225		6.2	363.0
	130°	214		6.5	362.7
	130°	201		9.2	360.0
	130°	173	-4°23'	5.0	351.0
	130°	160	-5°24'	5.0	349.1
119	130°	126	-14°24'	5.0	332.8
92	130°	102	-19°31'	5.0	330.1
79	130°	92	-22°06'	5.0	330.0
64	130°	70	-22°17'	5.0	337.6

354.5

346.8

340.4

338.7
Draw

345.5

354.7

358.9

357.9

on Hub N.W. Cor lot 284

333.9

332.0
Draw

332.0

339.1

40	130°	45	-21° 22'	6.00	348.8	348.0
31	130°	34	-21° 11'	5.00	351.9	352.8
	130°	16	0	9.2	360.0	
	138°	13	0	9.1	360.1	
49	138°	58	-24° 31'	6.0	339.1	341.4
78	138°	93	-24° 06'	6.0	325.2	328.5
92	138°	106	-22° 30'	8.0	320.6	328.7
171	138°	172	-9° 22'	6.0	335.2	335.2 Draw
152	138°	156	-10° 50'	5.0	334.9	335.4
194	138°	194	-6° 50'	5.0	341.1	341.2
212	138°	212	-3° 10'	5.0	352.5	352.5
223	134°	223	-1° 48'	5.0	357.2	357.2
70	148°	84	-25° 39'	8.0	324.8	328.4
92	148°	110	-24° 24'	8.0	316.7	319.9
100	148°	119	-24° 28'	10.0	309.9	314.5
100	148°	120	-24° 52'	9.0	310.3	314.9 Draw
146	148°	158	-16° 41'	9.0	314.6	316.6
120	148° 07'	136	-20° 32'	6.0	315.5	318.4 on Hob at Angle point
106	155°	131	-26° 20'	10.0	306.1	307.0 Draw ✓

40	162°	52	-29° 50'	5.0	338.30	341.8
66	162°	85	-28° 55'	7.0	321.1	326.3
128	162°	152	-24° 02'	10.0	297.3	302.4
92	162°	114	-26° 50'	9.0	308.7	314.2

Could not see draw on this line

	175°	13	0°	9.3	359.9	
69	175°	88	-28° 13'	10.0	317.6	322.5
156	175°	201	-28° 52'	7.0	265.1°	277.7 draws Converge
118	175°	154	-29° 03'	11.0	283.4	292.7
111	175°	144	-29° 02'	10.0	289.3	297.9

185°	39	-27° 18'	6.0	345.3
185°	104	-28° 31'	11.0	308.5
185°	142	-29° 13'	10.0	289.9
185°	155	-28° 21'	9.0	286.6
185°	196	-26° 28'	7.0	274.8
185°	205	-26° 06'	7.0	262.0

186° 14'	198	-26° 02'	6.0	275.6
----------	-----	----------	-----	-------

188°	182	-25° 43'	7.0	283.20
------	-----	----------	-----	--------

200°	102	-25° 16'	11.0	338.2
------	-----	----------	------	-------

Draw

NE Cor lot 286 ? (May be POT or other corner)

Draw

215°	15	0	91	360.1
215°	39	-20°08	50	364.2
240°	50	0°	91	360.1
240°	34		94	359.8
240°	7		54	363.8
260°	48		32	366.0
260°	25		50	364.2
305°	50		07	368.5
305°	20		14	367.3
343°	56		08	368.4
343°	17		19	367.3

