

NAME Kensington Park Extension

Class _____ Course _____ Party _____

KENSINGTON PARK EXTENSION

112 (1955)

FIELD NOTES

No. 403P

ESPECIALLY ADAPTED
TO THE USE OF
ENGINEERING STUDENTS

EUGENE DIETZGEN Co.

MANUFACTURERS

DRAWING MATERIALS

MATHEMATICAL AND SURVEYING INSTRUMENTS

MEASURING TAPES

CHICAGO SAN FRANCISCO NEW YORK
NEW ORLEANS PITTSBURGH

MICROFILMED
DEC 30 1964

KENSINGTON PARK
EXTENSION

ORIGINAL Notes

REVISED SEWER NOTES 13-19

BENCH MARKS KENSINGTON PARK
EXTENSION.

sta	+s	T	-s	Elev.	(1.)	B.M.	N.E. COR. EDGEWARE & JEFFERSON. (RETURN ON JEFF SIDE)
B.M.				358.09			
	5.19	363.28					
			5.29	357.99	(2)		" ^{4" on} B.M. TOP OF CURB N.E. COR. JEFF. & BIONA DRIVE ON RETURN. → JEFF. SIDE.
			5.65	357.63	(3)		" ^{4" on} " " " ON S/S JEFF. 130' E. of BIONA DRIVE ON RETURN.
TP1			7.26	356.02			
	3.57	59.59					
			6.64	352.95	(4)		" ^{4" on} B.M. TOP OF CURB N.E. COR. VISTA & JEFF. ON RET. ON JEFF. SIDE.
TP2			2.15	357.44			
	8.44	365.88					
			10.60	355.28	(5)		B.M. "T" ON END OF CURB W/S OF VISTA ST & N. LINE OF TRACT.
			7.43	358.95	(6)		B.M. "T" ON END OF CURB E/S OF BIONA DRIVE & N. LINE OF TRACT.
TP3			6.30	359.58			
	3.61	363.19					
			5.12	358.07			
			358.09			B.M. #1	

MAY. 3. 1926

Party

TREADWELL NOTES.
SMITH T
VAN DIEMEN ?



SECTION JEFFERSON ST.
EAST FROM COUNTY ROAD.

Sta +S T -S Elev
B.M. NE COR. JEFF & EDGEWARE
TOP OF CURB ON JEFF. SIDE 358.09

4.19 62.28

0+00 E. LINE OF EDGEWARE ROAD

+50

1-

+20 W/S COUNTY ROAD

+40 " " "

1+60 E/S COUNTY ROAD. NO. SIDEWALK ON N/SIDE
FROM HERE TO RETURN.

2+00

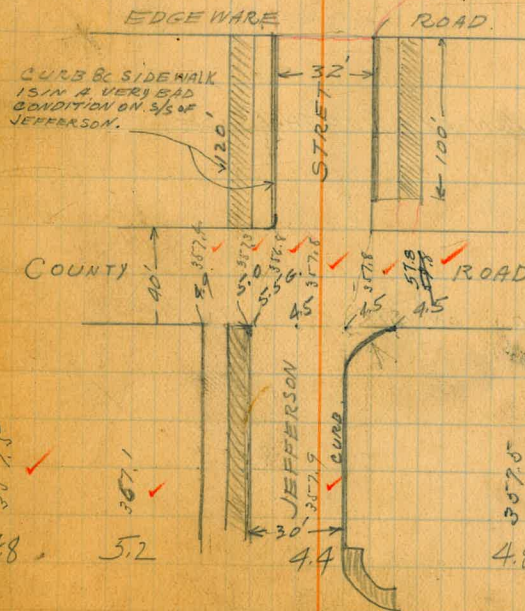
S

362.3

N.

V3

TOPO OF CURB	GUTTER	C	GUTTER	TOPO OF CURB
357.6 ✓	357.0 ✓	357.9 ✓	357.5 ✓	358.1 ✓
4.7 ✓	5.3 ✓	4.4 ✓	4.8 ✓	4.19 ✓
5.0 ✓	5.6 ✓	4.7 ✓	5.3 ✓	4.6 ✓
5.2 ✓	5.7 ✓	5.0 ✓	5.5 ✓	5.1 ✓
5.2 ✓	5.7 ✓	5.5 ✓	5.3 ✓	4.7 ✓
6.4 ✓	6.0 ✓	4.2 ✓	3.0 ✓	2.1 ✓
150 ✓	100 ✓	50 ✓	16 ✓	150 ✓



T = 36228

2+46^E RETURN ON BOTH SIDES

2+80

3+10

3+40^E RETURN ON BOTH SIDES
START OF OIL. PAV. 18' WIDE

+50

4+00

+20^S RETURN ON NORTH SIDE

4+50

+60^E RETURN ON S/S

5+00

+50

6+00

362.3

	S			N
	TOP OF CURB.	GUTTER		TOP OF CURB.
	4.5	4.8	4.1	4.1
		4.6 1.5	4.1	4.1 1.5
		4.7 1.5	4.2	4.2 1.5
	4.2	4.7	3.9	4.5
	4.3	4.7	4.0	4.7
	4.2	4.7	4.0	5.0
	4.2	4.7	4.4	5.2
	4.5	5.0	4.6	5.8
	4.7	5.1	4.8	
		6.7 1.5	6.9	7.8
	8.3	8.8	8.4	9.3
	9.9	10.3	10.1	10.5

A

367.28

6+17 END OF OIL PAV. (RWIDE)

6+50

6+82 RETURN ON. N/SIDE

7+00

+50

8+06 END OF JEFFERSON ST.

VISTA LANE.

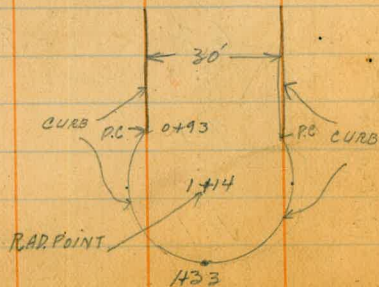
0+00 = C.O.F VISTA LANE PRODUCED TO AN INTERSECTION WITH THE (S) CURB LINE OF JEFFERSON STREET (GOING SOUTH)

0+44 RET. ON. W/S

0+93 P.C

1+14

H33



362.3

S	GUTTER ON. CATCH BASIN	C	GUTTER	N
10.2	10.8	10.3	11.0	10.6
9.9	10.4	10.2	10.2	10.2
9.4	9.9	9.7	9.8	9.3
9.0	9.0	9.1	9.1	8.7
7.8	8.5	7.7	7.8	7.2
6.4	6.8	6.2	6.4	5.6

W	VISTA LANE	E
5.1	5.5	5.9
6.3	6.8	7.4
7.5	7.9	8.3
8.0	8.2	8.6
8.4	8.4	8.1

TOP OF CURB 8.4
GUTTER 9.3

STA +S T -S Elev.
 362.28
 TR 9.33 352.95 B.M.# 4
 352.95
 8.73 61.68

SOUTH ON VISTA STREET.

0+00 = NORTH LINE OF TRACT.

0+50

1+00

1+50

2+00

+50

3+00

+50.

4+00 P.C

+50

4+92 Ret. on E/S

361.7

	W	Center	E	
	TOP OF CURB	GUTTER	GUTTER	TOP OF CURB
	6.4	6.2	6.9	6.4
	5.9	6.2	6.6	6.0
	5.4	5.7	6.1	5.4
	4.9	5.0	5.5	4.8
	4.3	4.3	4.9	4.2
	3.9	4.0	4.2	3.6
	4.0	4.4	4.9	4.3
	5.3	5.8	6.0	5.2
	6.6	6.7	7.1	6.3
	7.8	8.0	8.4	7.7
	8.9	9.0	9.2	9.5

VISTA STREET.

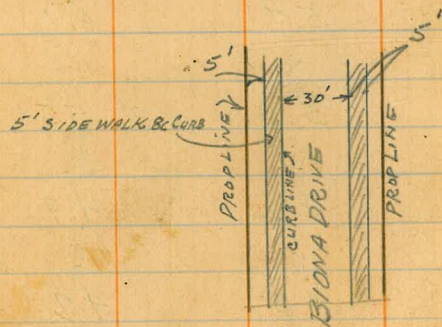
STA.	+S	T	-S	Elev.
		6168		
5+42			6.41	355.27 ✓ 355.28 / BM#5

SOUTH ON BIONA DRIVE
 BM. #6

END OF CURVE E/S BIONA DRIVE
 7.28 365.73 358.45

0+00 = N/LINE OF TRACT.

0+50
 1+00
 1+50
 2+00
 2+50
 3+00
 3+50
 4+00



5/12/26 TREADWELL SWEAD BROWNSON ✓
 W. 361.7
 E.
 TOP OF CURB 357.6 ✓
 GUTTER 357.0 ✓
 10.1 10.7 9.8
 GUTTER 357.5 ✓
 TOPOG. 10.2 / 15

365.7
 W. 357.5 ✓
 E. 357.7 ✓
 7.2 7.8 7.5 8.0 7.3
 357.7 ✓ 357.2 ✓ 357.5 ✓ 357.2 ✓ 357.7 ✓
 6.0 6.5 5.9 6.5 6.0
 357.7 ✓ 360.3 ✓ 357.5 ✓ 360.4 ✓ 360.5 ✓
 4.9 5.4 5.0 5.3 4.9
 360.8 ✓ 360.3 ✓ 360.7 ✓ 360.4 ✓ 360.9 ✓
 4.7 5.2 4.8 5.2 4.8
 361.0 ✓ 360.7 ✓ 360.9 ✓ 360.5 ✓ 360.9 ✓
 5.0 5.4 4.9 5.4 5.0
 360.7 ✓ 360.3 ✓ 360.8 ✓ 360.3 ✓ 360.7 ✓
 5.3 5.9 5.3 5.9 5.3
 360.4 ✓ 360.8 ✓ 360.4 ✓ 360.8 ✓ 360.4 ✓
 5.6 6.2 5.6 6.3 5.6
 360.1 ✓ 360.5 ✓ 360.1 ✓ 360.4 ✓ 360.1 ✓
 5.9 6.6 5.9 6.5 6.0
 360.8 ✓ 360.1 ✓ 360.8 ✓ 360.4 ✓ 360.1 ✓
 6.2 6.7 6.3 6.6 6.2
 357.0 ✓ 357.0 ✓ 357.4 ✓ 357.1 ✓ 357.5 ✓

365.73
4+50 6.41 359.32

TP₁ 361 362.93

5+00

7+50

6+00

6+51.5 RETURN ON JEFF.

7+00 ✓

7+41 RETURN

7+81 END OF SIDEWALK & CURB ON E/S. BIONA DRIVE

8+00

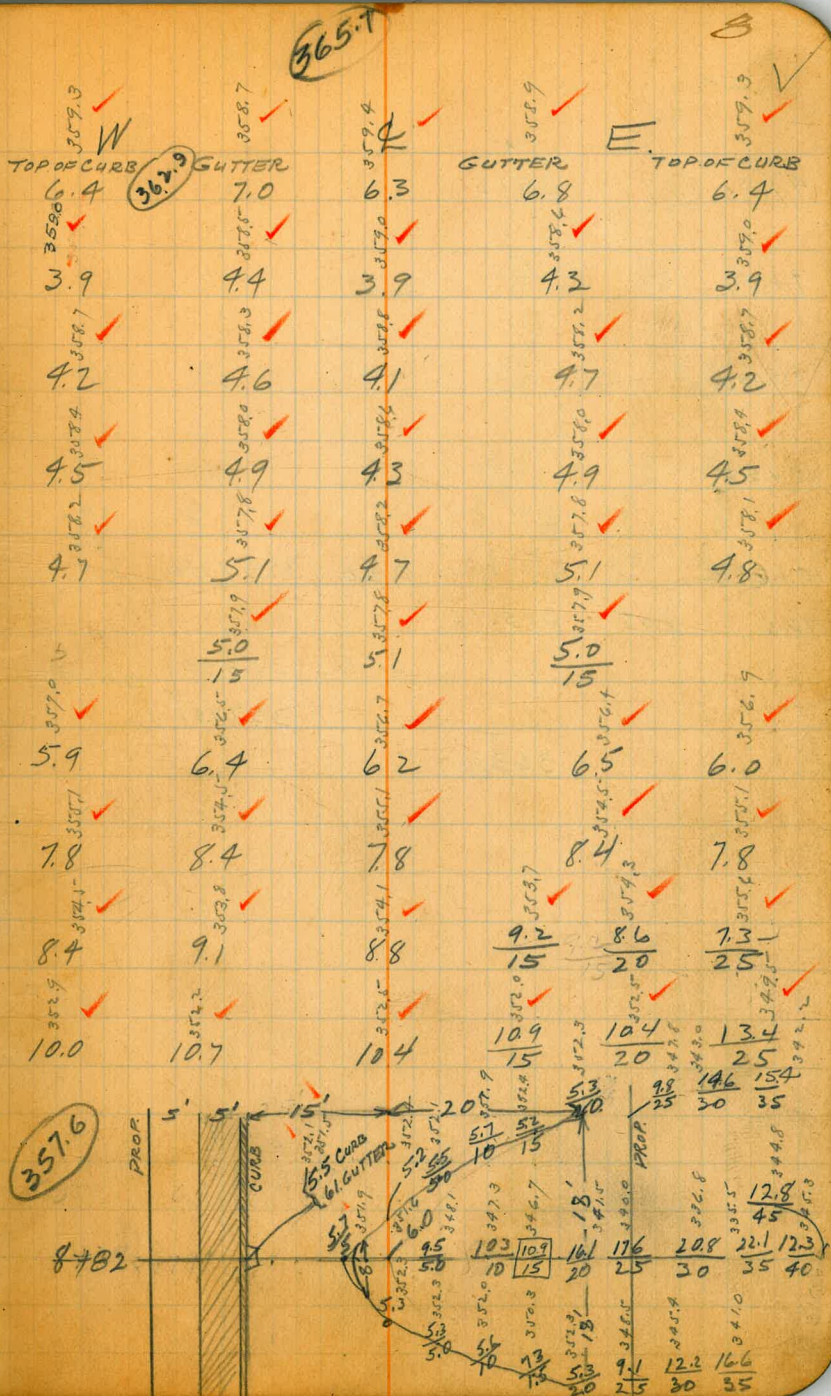
8+50 10.84 352.09

TP₂ 5.52 357.61

8+82 12" CULVERT UNDER
BIG FILL PARTLY WASHED OUT. SAID FILL

NOTE 12" CONCRETE SHAFT RUNNING DOWN TO CULVERT.
ON E/S IS BUSTED OFF. QT. ROD READING $\frac{10.9}{15}$

USED FOR A CATCH BASIN



9+00 \bar{x} 357.61

9+50

10+00

10+50

10+63.62

2.50 35511

TR3 805 363.16

5.16 35820 | BM#2
35799 |

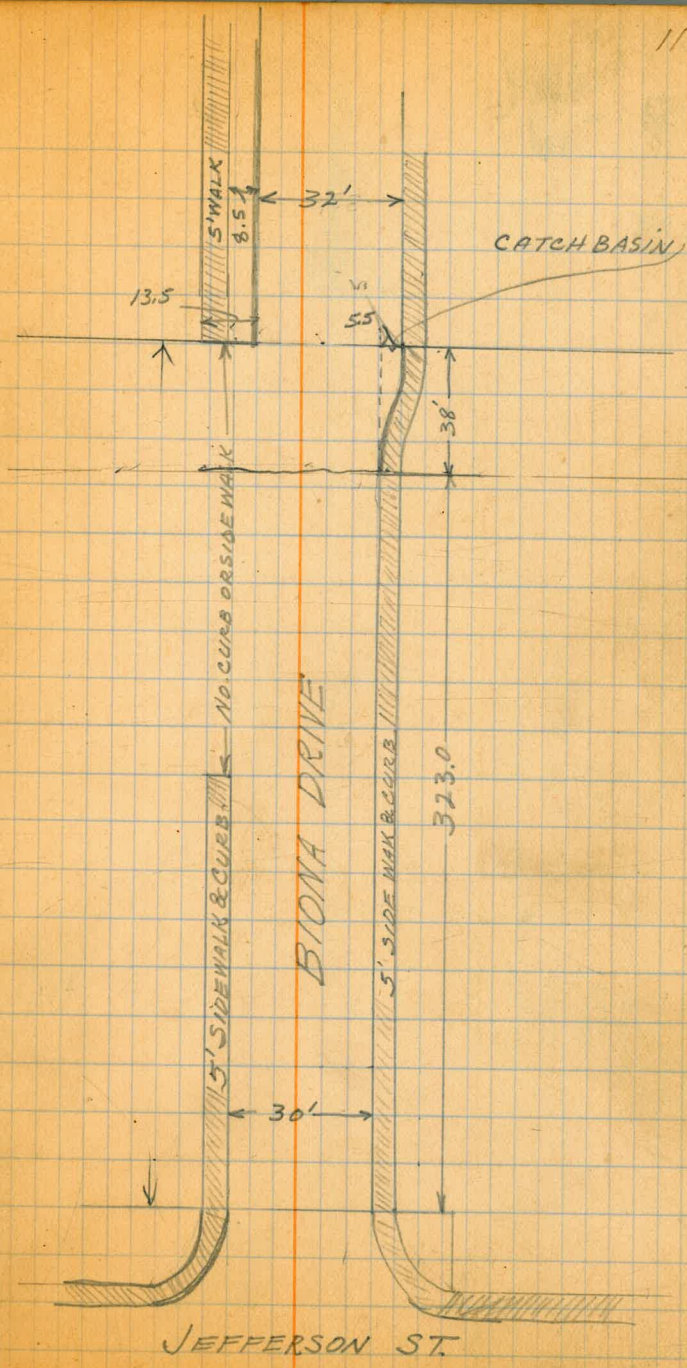
\bar{x}
363.16

357.6

TOP CURB	W. \bar{x} 357.9	GUTTER	C. \bar{x} 357.3	GUTTER	E. \bar{x} 357.4	TOP CURB
5.3	5.7	5.3	5.3	5.2	5.2	5.2
$\frac{5.3}{15}$	$\frac{5.4}{15}$	$\frac{5.3}{15}$	$\frac{4.8}{15}$	$\frac{4.8}{15}$	$\frac{4.8}{20}$	$\frac{5.2}{25}$
4.8	5.4	5.2	4.7	4.7	4.7	4.7
$\frac{4.8}{15}$	$\frac{5.2}{15}$	$\frac{4.9}{15}$	$\frac{4.5}{15}$	$\frac{3.9}{15}$	$\frac{3.6}{20}$	$\frac{1.0}{25}$
4.6	5.2	4.7	4.1	4.1	4.1	4.1
$\frac{4.6}{15}$	$\frac{4.5}{15}$	$\frac{4.5}{15}$	$\frac{4.3}{15}$	$\frac{3.7}{15}$	$\frac{3.6}{20}$	$\frac{2.5}{25}$
4.1	4.5	4.1	3.9	3.9	3.9	3.9
$\frac{4.1}{15}$	$\frac{4.4}{15}$	$\frac{4.3}{15}$	$\frac{3.7}{15}$	$\frac{3.6}{20}$	$\frac{2.5}{25}$	$\frac{2.5}{25}$
3.9	4.4	3.9	3.7	3.7	3.7	3.7

9





12

— SEWERS —
Kensington Park
Extension

Note - All elevations on 6' offset stakes
cut to Flow Line

13 Sept 24, 1926
E.P. Chilton
H. Thompson
E. Rodier
H.E. Clifton

				G.R.	Cut.			
								357.99
	4.47	362.46						
J 0+00	M.H. Jefferson & East L.	6.70	344.30	18.16	+11.46	11.96	0.50	11.46
+50							2.03	+9.93
1+00							3.52	+8.44
+50							4.82	+7.14
J 1+70	M.H. #3 Jefferson & Vista	10.50	345.00	17.46	+6.96	11.96	5.00	+6.96
						16.85	9.69	+6.96
2+00						16.65	10.04	+6.61
+50						16.65	8.79	+7.86
3+00						16.65	7.24	+9.41

J 3+48⁴⁵ M.H.#2 5.01 345.70
Jefferson & Vista Place

G.R. Cut
16.76 +11.75 16.65 4.90 +11.75
16.86 5.11 +11.75

4+00 16.86 5.04 +11.82

+50 16.86 4.68 +12.18

5+00 16.86 4.96 +11.90

Jefferson & Biona

J 5+30 M.H.#1 4.45 346.42

16.04 +11.59 16.86 5.27 11.59

V 0+00 = J 3+48⁴⁵ = M.H.#2 5.01 348.00
Jefferson & Vista Place

14.46 +9.45 14.66 5.21 +9.45

+50 +7.76 ~~14.66~~ ~~6.26~~ +8.40

1+00 +6.12 ~~14.66~~ ~~8.53~~ +6.13

V 1+44⁶⁵ Dead End. 8.42 349.00

13.46 4.75 +5.04 ~~14.66~~ ~~9.62~~ +5.04

A 0+00 M.H. #1 4.45 346.42 16.04 +11.59 15.79 4.20 +11.59

Jefferson & Biona

+50 15.79 6.22 +9.57

1+00 15.79 8.76 +7.03

+50 15.79 10.80 +4.99

2+00 15.79 11.45 +4.34

+50 15.79 11.59 +4.20

3+00 M.H. #6 9.67 348.62 13.84 +4.25 15.79 11.54 +4.25

+50 15.79 11.29 +4.50

Biona & S.L. Tract.

A 3+95 Dead End 8.56 349.20 13.26 +4.70 15.79 11.09 +4.70

				352.95 BM					
B	11.84	364.79							
0+00	M.H. #1		6.78	349.61	15.18	+8.40	12.72	4.32	+8.40
	Jefferson & Biona								
+50							12.72	4.40	+8.32
1+00							12.72	4.37	+8.35
+50							12.72	4.50	+8.22
2+00							12.72	4.60	+8.12
+50							12.72	4.63	+8.09
3+00							12.72	4.94	+7.78
+25	M.H. #4		5.18	351.90	12.89	+7.71	12.72	5.01	+7.71
+50							12.72	5.03	+7.69

4+00 12.72 5.22 +7.50

7.50 12.72 5.24 +7.48

5+00 12.72 5.08 +7.64

+5.00 12.72 5.41 +7.31

6+00 12.72 6.00 +6.72

+5.5 Dead End 5.20 354.20 10.59 +5.39 12.72 7.33 +5.39
Biona & N.L. Tract

5'	364.79							
0+00	= J1+70 M.H. #3	345.00		+6.96	13.91	6.95	+6.96	
	Jefferson & Vista							
+50						6.65	+7.26	
1+00						6.34	7.57	
+50						5.60	8.31	
2+00						5.10	+8.81	
+50						4.52	+9.39	
3+00	M.H. #5	7.11	348.60	16.19	+9.08	13.91	4.83	+9.08
+50						5.82	+8.09	
4+00						6.85	+7.06	

Sept. 24, 1926 19
E.P. Chilton
H. Thompson
E. Rodier
H.E. Clifton

4.50

7.83 + 6.08

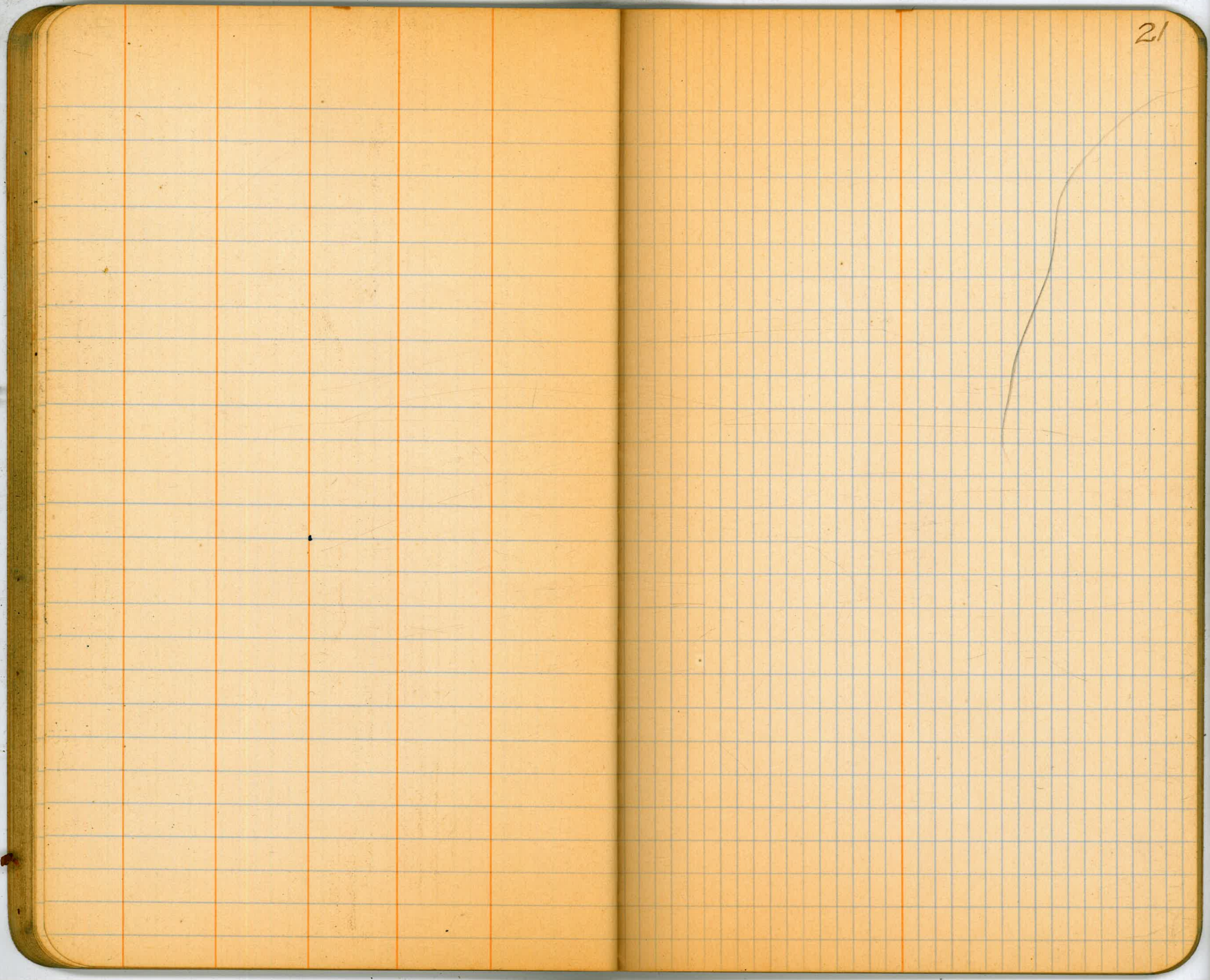
5.05 Dead End 9.55 350.00 14.79
Vista & N.L. Tract

5.24 13.91 8.67 + 5.24

1.46

7.21

21



24

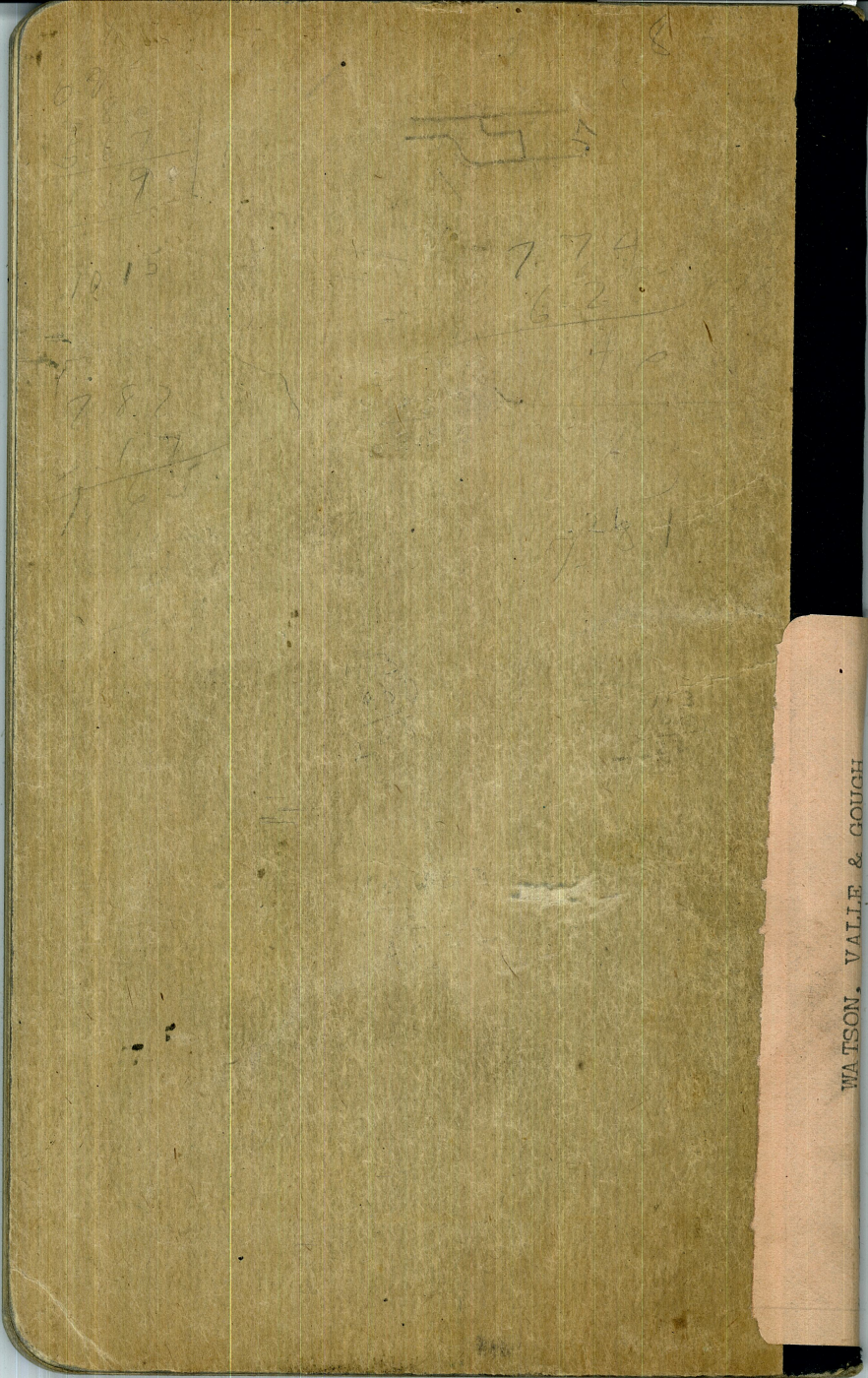


B.M. 357.99
+ = 1.85
H.T. = 359.84

357.99
4.05
362.04

357.99
7.69
362.68

357.99
4.54
362.53



WATSON, VALIE & GOUGH