

NAME Ravenna Park.

Class _____ Course _____ Party Book #3

Elm Street Extension.

Alignment & Cross Sections.

142

1957

FIELD NOTES

No. 403P

ESPECIALLY ADAPTED

TO THE USE OF

ENGINEERING STUDENTS

EUGENE DIETZGEN Co.

MANUFACTURERS

DRAWING MATERIALS

MATHEMATICAL AND SURVEYING INSTRUMENTS

MEASURING TAPES

CHICAGO SAN FRANCISCO NEW YORK
NEW ORLEANS PITTSBURGH

MICROFILMED

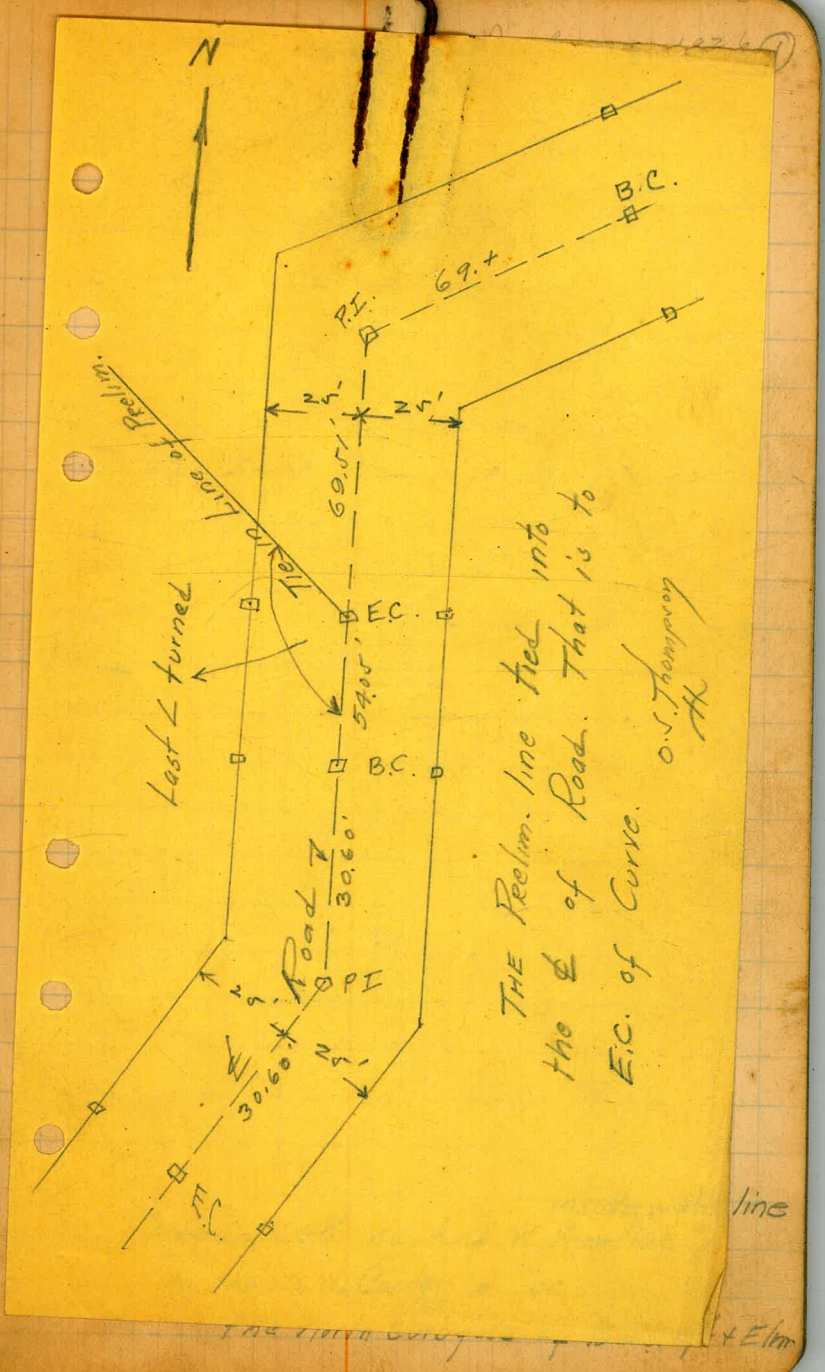
DEC 30 1964

Rough Grades Pentucket Ave

15-18

Elm Street Bancroft East
 De Roo - Job #76
 Lt. et.

12473.94	E.C.	31°20'	N. 63°29' W
11495.96		29°02'	S. 87°34' W
10438.21		2°19'	S. 89°53' W
8487.21		9°36'	S. 80°17' W
7499.16		37°31'	N. 62°46' W
6495.76		8°27'	N. 53°45' W
5427.80		20°10'	N. 43°55' W
4462.11		11°03'	N. 89°58' W
0+00		4°33'	N. 89°31' W
			N. 87°45'



Elm Street - Bancroft East
De Root - Job #76
Lt. et.

Sta.

12473.94 E.C.

31°20'

N.63°24'W

11495.96

29°02'

S.87°34'W

10438.21

2°19'

S.89°53'W

8487.21

9°36'

S.80°17'W

7499.16

37°31'

N.62°46'W

6495.76

8°27'

N.53°45'W

5427.80

20°10'

N.43°55'W

1462.11

11°03'

N.84°58'W

0+00

4°33'

N.89°31'W

N.89°15'E

July 28-1926 ①
Og. Thompson
Bet Key
Bill Spawell

E.C. on some old line to B.C. South

inside walk line
0+00 = 1.40' West of W. Prop line
on the N.W. Corner & on
the North Curb face of Bancroft & Elm

De Pans - Elm Street
Bancroft East

Sta.	H.I.	Elev.
B.M.		282.061
	4.39	286.45
o		13.05 273.40
	0.79	274.19
o		12.78 261.41
	0.33	261.74
o		11.96 249.78
	0.80	250.58
o		13.06 237.52
	0.63	238.15
o+oo		11.57 226.58
		11.59 226.56
		13.00 25.4
o		11.57 226.58
	2.55	229.13
o		12.68 216.45
	0.21	216.66
1+62.11		1.7 215.0
1+85		3.2 213.5
2+30		8.5 208.2
2+60		11.6 205.1
o		12.99 203.67
	0.93	204.60
3+00		8.2 196.4
3+40		12.0 192.6

July 29-26 { O.I. Thompson
Key
Spencell (2)

Brass Plug - N.W. Corner Hawthorne & 32nd.

Brass Plug N.W. Corner Elm & Bancroft.
Curb - West Prop line Bancroft at N.W. Corner
" 28' - South (on West Prop. Line produced.)

De Ross - Cont.
Bancraft East

(3)

Sta.	+	H.I.	Elev.
		204.60	
0		13.05	191.55
	1.27	192.82	
3+60		6.0	86.8
4+00		13.5	179.3
0		12.46	180.36
	2.53	182.89	
5		7.1	75.8
+27.8		8.8	74.1
6		12.6	70.3
6+95.76		17.3	65.6
0		12.52	170.37
	1.38	171.75	
7		6.8	64.9
+50		10.5	61.2
0		12.70	159.05
	2.15	161.20	
+75		7.4	53.80
7+99.16		+ 0.3	161.5
8+87.21		6.8	54.4
10		10.3	50.9
10+38.71		12.6	48.6
0		12.27	148.93
	2.31	149.24	

De Roos - Elm St.
Bancroft East

Sta.	+	H.I.	-	Elev
		149.24		
11		4.5		44.7
11+9.596		8.0		141.2
12+7.394		6.0		143.2

E.C. on Subdivision Street Curve

De Roos - Elm St. Ext.
X - Section

Sta. Temp.	+	H.I.	-	Elev.
13M	2.82	229.40		226.58
0+70			5.38	224.02
0+78			4.38	225.02
0+80			5.5	223.9
1+00			10.4	219.0
			10.1	219.3
1+00V			7.1	222.3
0			12.94	216.46
	0.30	216.76		
1+62.11			1.8	215.0
			6.7	210.1
			2.4	214.4
1+V 62.11			+2.8	219.6
2+00			4.3	212.5
			9.0	207.8
			11.7	205.1
			19.4	197.4
			19.2	197.6
			15.4	201.4
			2.8	214.0
2+00			+1.0	217.8
2+60			11.6	205.1
			6.1	210.7
			3.1	213.7

July 29-26 (5)
O. J. Thompson
W. B. Key
Bill Spence

Plug N.W. Corner Elm & Bancroft

Top Corb - East End ^{Return} S.E. Corner Elm & Ban.
" " - East " Return - N.E " " "

±
±

65' North = House line

62' South = Fence line

Note
± in notes =
North side of
Proposed street

±
60' North
13' South
25' "
±
7' North
20' "
42' "
55' "
65' -
16' South
50
±
33' South
50' "

South
North

Job #76 Cont

5.3

(6)

Sta.	+	H.I.	-	Elev
		216.76		
2+60		29.60	189.2	
2+60		31.4	185.4	
0		11.38	205.38 ✓	
	0.12	205.50 ✓		
3+00 _A		8.8	196.7	
		25.3	180.2	
		20.1	185.4	
		.19	205.6	
		+3.4	208.9	
3+00 _V		+5.6	211.1	
3+50 _A		20.3	185.2	
		11.0	194.5	
		0.5	205.0	
		28.3	177.2	
		28.0	177.5	
		25.1	180.4	
3+50 _V		23.8	181.7	
0		12.02	193.48 ✓	
	0.29	193.77 ✓		
4+00 _A		14.3	179.5	
		21.0	172.8	
		20.0	173.8	
		8.4	185.4	
		2.5	191.3	

52'	North	
57'	"	Bottom Creek
4		
50'	North	Bottom Creek
65'	"	
174'	South	
36.0	"	
43.0	"	
4		
22'	South	
49'	South	
9'	North	
41'	"	
50'	"	
71'	"	
4		
16'	North	Bottom
37'	"	"
61'	"	"
28'	South	

Job # 76 cont

(7)

Sta.	+	H.I.	-	Elev.
4+00		193.77	+1.0	194.8
4+00 v			+5.0	198.8
○			12.42	181.35 ✓
	1.83	183.18 ✓		
5+00 ₁			7.3	75.9
			15.2	168.0
			14.5	168.7
			4.2	179.0
			2.4	180.8
			+1.0	184.2
			+5.0	188.2
			+9.3	192.5
5+00 v			14.5	168.7
5+27.80			9.7	173.5
			14.1	169.1
			18.3	164.9
			18.8	164.4
			4.8	178.4
			1.2	182.0
			+11.1	187.3
			+8.2	191.4
5+27.80 v			+13.2	196.4
○			12.61	170.57 ✓
	1.56	172.13 ✓		

- 38' - South
- 45' - "
- ♀
- 26' - North - Bottom
- 44' - " - "
- 65' - " - "
- 14' - South
- 22' - "
- 32' - "
- 42' - "
- 54' - "
- ♀
- 16' - North
- 29.5' - North - Bottom
- 45' - " - "
- 71' - " - "
- 18' - South
- 29' - "
- 38' - "
- 49' - "

Job # 76 Cont

8

Sta.	+	H.I.	-	Elev		
		172.13				
6+00	^		1.6	170.5	±	
			11.3	160.8	26'	North Bottom
			11.7	160.4	45.5'	" "
			7.2	164.9	63.0'	" "
			+2.7	174.8	10'	South
			+7.7	179.8	18.5'	" "
			+12.1	184.2	27'	" "
			+16.9	189.0	34'	" "
			+21.9	194.0	44.5'	" "
6+00	v		26.3	145.8	55'	" "
6+95	76		7.3	164.8	±	
			16.1	156.0	23'	North
			19.2	152.9	26'	" Bottom ditch
			15.7	156.4	33'	" "
			10.2	161.9	44'	" "
			5.9	166.2	55'	" "
			2.97	169.16	11'	South
			+1.3	173.4	20'	" "
			+5.1	177.2	28'	" "
			+9.7	181.8	38'	" "
			+15.0	187.1	49'	" "
6+95	76v		18.5	153.6	±	
7+75	^		15.8	156.3	25'	South } Heavy Brush in Side draw
			8.6	163.5	50'	" } Appx. Only

Job # 76 Cont

Sta.	+	H.I.	-	Elev.
		172.13	20.3	143.8
			23.6	148.5
			20.4	151.7
7+75V			12.9	159.2
7+70			10.03	162.10 ✓
	3.52	165.62 ✓		
7+99.16			3.5	62.1 ✓
			+7.5	173.1
			16.7	148.9
			18.7	146.9
			16.6	149.0
7+99.16			9.0	156.6
8+87.21			11.3	154.3
			+12.7	178.3
			23.7	141.9
			10.2	155.4
8+87.21			4.5	161.1
7+70			16.49	154.13 ✓
	1.31	155.44 ✓		
9+66			2.2	153.2
			+13.0	168.4
			+25.3	180.7
			17.1	138.3
			9.8	145.6
9+66			4.3	151.1

July 30-26

(O.G. Thompson)
 (R.H. Key)
 (Bill Spadwell) 9

- 26' - North
- 30' - North
- 35' - North
- 50' - North

Temp. 13.1. Top Hub Sta. 7+99.16 ^{4:00 P.M.}

- 27' - South - (Heavy Brush) Same slope up the hill.
- 19' - North
- 22' - North - Bottom
- 25' - North
- 50' - "
- 55' - South
- 25' - North - Bottom
- 50' - "
- 60' - "
- 31' - South
- 45' - " Same slope on up
- 37' - North - Bottom
- 50' - "
- 65' - "

Job # 76

10

Sta.	+	H.I.	Elev.
		155.44	
10+80.		10.86	144.58
		1.0	154.4
	+12.0		167.4
	23.4		132.0
	11.8		143.6
10+80 ^d		4.9	150.5
		12.94	142.50 ✓
	8.30		150.80 ✓
11+66		8.2	142.6
		1.0	149.8
	+11.2		162.0
	+16.2		167.0
	21.9		128.9
11+66 ^d		10.8	140.0
11+95.96		9.6	141.2
		1.0	149.8
	+11.6		162.4
	22.9		127.9
	17.8		133.0
11+95.96 ^d		11.5	139.3
12+73.94	pc.	7.5	143.3
	+16.0		166.8
	28.5		122.3
	91.0		129.8

24' South
 53' "
 21' North Bottom
 50' "
 70' "

13' - South
 40' - "
 50' - "
 21' - North Bottom
 50' - "
 21' - South
 50' - "
 21' - North Bottom
 40' - "
 55' - "
 Section taken R/Ls to line Ahead
 53' - South
 49' - North Bottom
 75' "

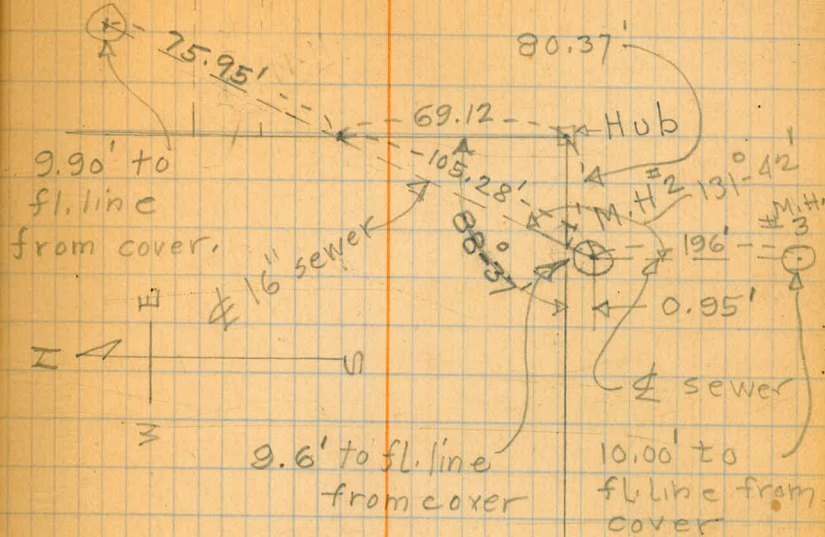
S.E. Cor.
RAVENNA PARK

Oct. 21, 1926

UPHAM
BROWN
OLLERTON

(11)

M.H. #1



+	Hi.	-	Elev.
---	-----	---	-------

220.38 S. East Cor Lot C.

3.30 223.68

11.65 212.03

3.38 215.41

B.M.

1.72 213.69

S.W. Cor. Concrete Step. Tract Office

11.15 204.26

2.19 206.45

8.66 197.79

11.94 209.73

B.M.

4.37 205.36

20' N + 15' E of Prop. Line Lot 13-14 Blk 2

11.08 198.65

4.54 203.19

1.90 201.29

11.22 212.51

0.47 212.04

11.66 223.70

3.30 220.40

14

Rough Grades
Pentucket Ave

B.M			Elev	Prop Line Grade	Cut	Fill
	5.09	210.45	205.36			
	0.18	200.14	10.49	199.96		
0+00 West Side		17.6	182.5	184.25		1.8
0+30 ⁸⁹ East Side		13.3	186.8	185.85	0.9	
0+50 East		12.1	188.0	186.94	1.1	
0+50 West		13.6	186.5	187.08		0.6
1+00 West		10.7	189.4	189.91		0.5
1+00 East		8.6	191.5	189.80	1.7	
1+50 East		5.5	194.6	192.66	1.9	
1+50 West		8.4	191.7	192.74		1.0
2+00 West		5.4	194.7	195.58		0.9
2+00 East		1.6	198.5	195.52	3.0	
2+50 West		1.2	198.9	198.42	0.5	
T.P.	11.88	210.80	1.22	198.92		On ground 2+50 West
2+50 East		9.0	201.8	198.38	3.4	
3+00 East		4.4	206.4	201.25	5.1	
3+00 West		8.1	202.7	201.25	1.4	
3+25 West		6.4	204.4	202.05	2.3	
3+25 East		0.9	209.9	202.05	7.9	
3+50 East		3.0	207.8	202.45	5.4	
3+75 East		6.2	204.6	202.55	2.0	
3+50 West		5.7	205.1	202.45	2.7	
3+75 West		7.5	203.3	202.55	0.7	
4+00 West		9.7	201.1	202.25		1.1
4+00 East		9.7	201.1	202.25		1.1

Apr 25-1927

Clark
Culver
Rodier

			Elev	Prop Line Grade	
	210.80				
4+25 East		11.9	198.9	201.65	2.8
0 T.P. 4.36	203.29	11.87	198.93		20 guinea 4+25 East
0 4+25 West		4.9	198.4	201.65	3.3
0 4+50 West		6.0	197.3	200.65	3.4
0 4+50 East		5.6	197.7	200.58	2.9
1 5+00 East		6.5	196.8	198.43	1.6
1 5+00 West		6.0	197.3	198.65	1.4
1 5+25 West		5.4	197.9	197.65	0.3
1 5+25 East		7.0	196.3	197.35	1.0
2 5+50 East		7.7	195.6	196.85	1.3
2 5+50 West		5.5	197.8	197.15	0.7
2 5+75 West		6.7	196.6	196.95	0.4
2 5+75 East		8.1	195.2	196.65	1.5
2 6+00 East		8.1	195.2	196.75	1.6
3 6+00 West		7.4	195.9	197.05	1.1
3 6+25 West		6.8	196.5	197.45	1.0
3 6+25 East		7.7	195.6	197.15	1.6
6+50 East		7.0	196.3		
6+50 West		6.5	196.8		
6+72 ³⁰ Pk. West		6.0	197.3	198.45	1.2
	8.95	206.20	6.04	197.25	On guinea 6+72 ³⁰ West Side
6+72 ³⁰ East		9.1	197.1	198.13	1.0
7+00 East		7.6	198.6	198.73	0.1
7+00 West		8.7	197.5	198.88	1.4

			Elev		at Fill
	206.20				
47+21 ⁵³ West		8.8	197.4	199.31	1.9
7+21 ⁵³ East		6.0	200.2	199.34	0.9
7+50 East		4.1	202.1	199.93	2.2
47+50 West		9.2	197.0	199.91	2.9
48+00 West		15.0	191.2	200.96	9.8
58+00 East		1.9	204.3	200.97	3.3
58+50 East		1.2	205.0	202.02	3.0
58+50 West		19.0	187.2	202.01	14.8
59+00 West		14.8	191.4	203.07	11.7
59+50 West		12.6	193.6	204.12	10.5
59+00 East		0.5	206.7	203.05	3.6
	6.62	212.31	0.51	205.69	On ground 9+00 East
9+50 East		5.4	206.9	204.09	2.8
10+00 East		3.3	209.0	205.13	3.9
10+52 ⁶⁷ East - Ret Fir St		0.2	212.1	209.25	2.8
10+00 West		13.0	199.3	205.18	5.9
10+12 ⁴² West - Ret Fir St		10.1	202.2	205.45	3.3
	11.19	222.87	0.63	211.68	
11+62 ⁰⁶ West - Ret Fir St		12.1	210.8	210.25	0.6
11+42 ⁶⁷ East - Ret Fir St		2.7	220.2	209.25	11.0
12+00 West		8.6	214.3	213.65	0.6
12+45 ⁶⁰ West		4.7	218.2	219.25	1.0
	9.57	232.17	0.27	222.60	

			Elev	Prop Line Grade	
	232.17				
7 11+75 East		8.7	223.5	211.15	12.3
7 12+00 East		6.1	226.1	213.65	12.4
7 12+42.9 East		1.3	230.9	219.05	11.8
7	1.78	222.56	11.39	220.78	
8 B.M.		8.89	213.67	Elev = 213.69	

B.M. SW. Cor 1st Conc. Strip to Tract Office See page 13

JOB. NO. 76.