

NAME RAVENNA PARK

Class _____ Course _____ Party _____
Traverse of Portion of

WATSON, VILLE & GOUGH, INC.

388

1959

FIELD NOTES

No. 403P

ESPECIALLY ADAPTED

TO THE USE OF

ENGINEERING STUDENTS

EUGENE DIETZGEN Co.

MANUFACTURERS

DRAWING MATERIALS

MATHEMATICAL AND SURVEYING INSTRUMENTS

MEASURING TAPES

CHICAGO SAN FRANCISCO NEW YORK
NEW ORLEANS PITTSBURGH

MICROFILMED

DEC 30 1964

INDEX

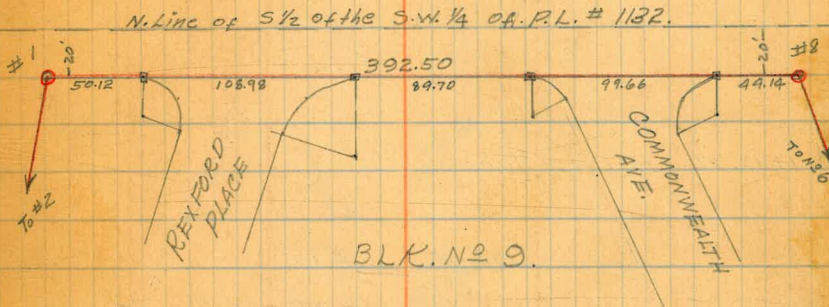
PAGE

AUG. 17, 1927
 Teadwell
 Reed
 Ruplinger

①

TRAVERSE OF A PORTION OF RAVENNA PARK

Balance of Traverse
 Calculated from Rec.
 Map. of Ravenna Park



STA DIST Def ANGLE BEARING

COR # 1	392.50		
COR # 8	Δ = 68° 33' Lt.		
	126.09		
COR # 7	Δ = 19° 00' Lt.		
	139.41		
COR # 6	Δ = 43° 41' Lt.		
	174.71		
COR # 5	Δ = 8° 52' 30" Lt.		
	190.66		
COR # 4 ✓	Δ = 39° 53' 30" Lt.		
	721.13		
	212.50		
COR # 3 ✓	Δ = 91° 03' Lt.		
	526.30		
	140.85		
COR # 2 ✓	Δ = 91° 03' 30" Lt.		
	531.18		
	369.43		
COR # 1 ✓	Δ = 83° 40' Lt.		

From Cor # 2 to # 1 } Same Bearing
 " # 1 to # 8 }

Note -
 Cor. # 3 established by intersection
 with W. boundary from Con. Map
 as found and exr. as found at
 N.W. Cor. of Tract. Dist. Chained
 from Monument to Cor. # 3 - 134.28'

S-50°-33'-55" W

S-89°-31'-25" E

N-1°-31' E.

S-89°-32'-30"

Cor # 2 is N.W. Cor. Tract
~~COR # 2 is COR of Lot 5 31432 BLK 9 COMMONWEALTH AVE~~

COR # 8

Traverse of Canyon
For Road Location

EP Chilton
J. Thompson
C.H. Price
9-4-1927

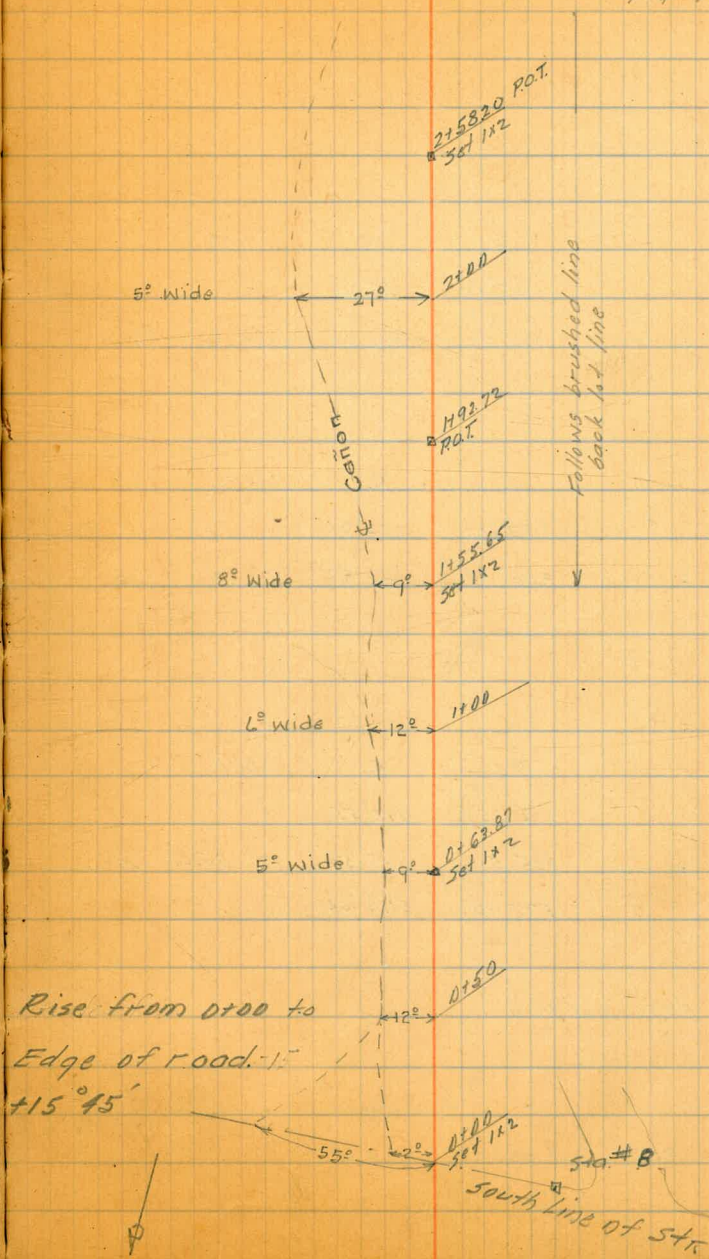
2158.20 P.O.T.

1+92.72 P.O.T. Lot Hub

	D.	R.	Def.
	195° 43'	195° 43'	
1+55.65 Δ	391° 26'	391° 26'	15° 43' Rt.
	587° 09'	587° 09'	

	D.	R.	Def.
	214° 14½'	214° 14½'	
0+63.87 Δ	428° 29½'	428° 29'	34° 14.15' Rt.
	642° 44½'	642° 43'	

	D.	R.	Def.
	55° 08'	55° 06½'	
0+00 B	110° 16'	110° 13'	55° 07.3' Rt.
	165° 24'	165° 20'	



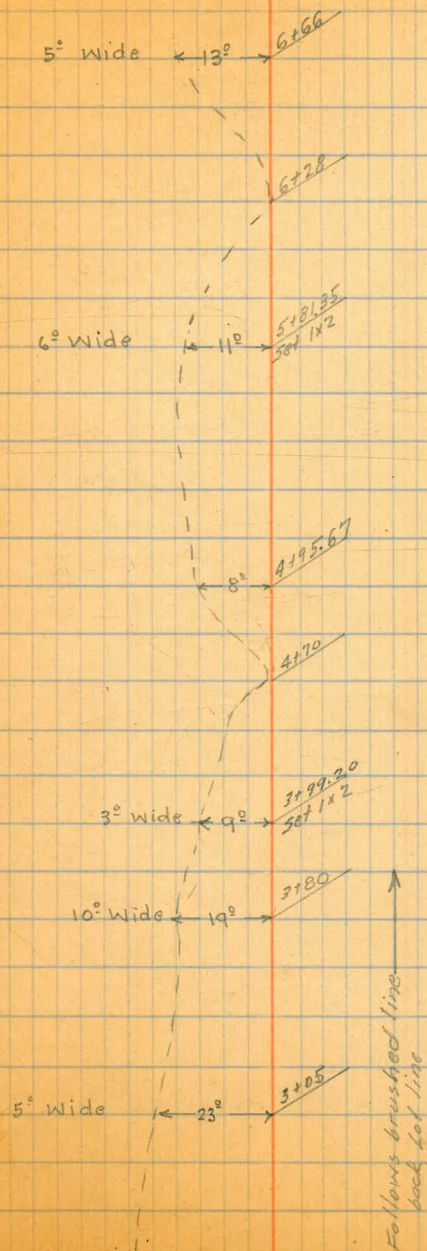
	D.	R.	Def.
	195° 10'	195° 10'	
5+81.35 Δ	390° 20'	390° 20'	15° 10' Rt.

	D.	R.	Def.
	202° 20'	202° 20'	
4+95.67 Δ	404° 40'	404° 40'	22° 20' Rt.

	D.	R.	Def.
	192° 55 1/2'	192° 55'	
3+99.20 Δ	385° 51'	385° 50'	12° 55.08' Rt.
	578° 46 1/2'	578° 44'	

3+43.35 P.O.T. Lot Hub

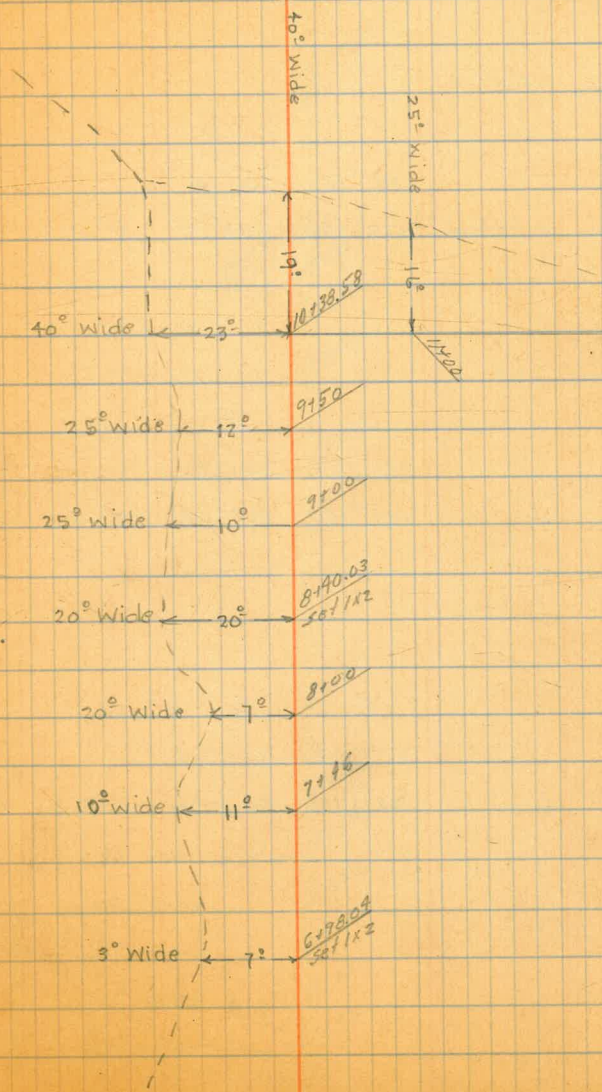
2+82.31 P.O.T. Lot Hub



	D.	R.	Def	
	274° 43'	274° 43'		
10+98.58 Δ	549° 27'	549° 27'	98° 43'	RT

	D.	R.	Def	
	191° 51'	191° 51'		
8+90.03 Δ	383° 43'	383° 43'	11° 51'	RT

	D.	R.	Def	
	191° 20 1/2'	191° 20 1/2'		
6+98.04 Δ	382° 41'	382° 41'	11° 20 1/2'	RT



18+08.85

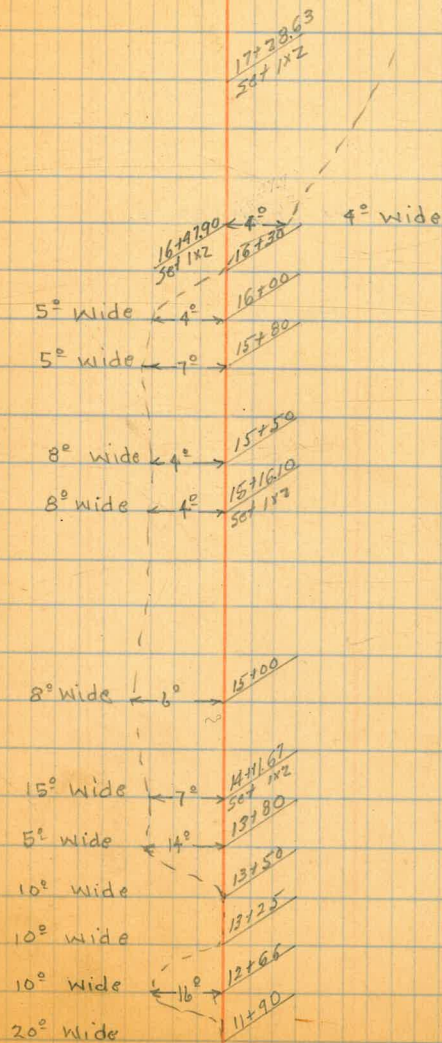
17+58.85 sta #1 See page 1.

17+28.63 P.O.T.

		261° 13½	261° 15'		
16+47.90	Δ	522° 26¾	522° 30'	81° 14.2	RT

		D.	R.	D.	
		203° 26½	203° 26½		
15+16.10	Δ	406° 53	406° 53	23° 26½	RT

		D.	R.	Def.	
		161° 56¾	161° 56¾		
14+11.67	Δ	323° 53	323° 53½	18° 03.44	LT



22+12.04 = 0+00 Pt. of beginning

21+51.10 Sta. #8 Sec P.1.

21+07.01

20+07.38

19+67.69

19+17.69

18+88.20

18+62.05

18+35.90

173°14' 26
8.6 37

76'48'

39°24'

17°45'

8°52'30"

87°22'

43 41

137°01'

68°33'1/2"

248.70