

NAME Crown Point

Class _____ Levels for Culverts
Course _____ Party _____

Book #3

Watson Valle & Gough.

Spreckles Bldg.

San Diego

77

1960

FIELD NOTES

No. 403P

ESPECIALLY ADAPTED
TO THE USE OF
ENGINEERING STUDENTS

EUGENE DIETZGEN Co.

MANUFACTURERS

DRAWING MATERIALS

MATHEMATICAL AND SURVEYING INSTRUMENTS

MEASURING TAPES

CHICAGO SAN FRANCISCO NEW YORK
NEW ORLEANS PITTSBURGH

MICROFILMED

DEC 30 1964

26
18
49

Prolongation of ~~Ingraham~~ St
to the bay

B.M.		2.19		26.80
TP	10.10	31.09	0.72	20.99
TP	12.86	21.71	0.29	8.85
1480	beach breaker		15.0	-5.9
1434	Toe		8.4	0.7
TP	0.25	9.14	12.36	8.89
+24			12.9	8.3
1414			6.2	15.1
TP	2.83	21.25	12.81	18.42
+07			10.9	20.3
+00	break		4.1	27.1
+90	small break		3.3	27.9

0+00 ~~Ingraham~~ St.

B.M. 2.34 31.23 28.89

starting at point 25' R/Ls to Ret. Lot 428
& prolonging ~~Ingraham~~ St. to the bay.

Index.

1 to 5 = Levels on Crown
Point culverts.

5 to

166.89
558.29
725.18

558.29
166.89
725.18

166.89

70° 52'
17' 45"

88° 16' 40"
88° 16' 40"
88° 16' 40"
88° 16' 40"
88° 16' 40"
88° 16' 40"
88° 16' 40"
88° 16' 40"
88° 16' 40"
88° 16' 40"
88° 16' 40"

845+83.61

89° 01' 30"
89° 01' 30"
89° 01' 30"
89° 01' 30"
89° 01' 30"
89° 01' 30"
89° 01' 30"
89° 01' 30"
89° 01' 30"
89° 01' 30"
89° 01' 30"

848+61.06

89° 01' 30"
89° 01' 30"
89° 01' 30"
89° 01' 30"
89° 01' 30"
89° 01' 30"
89° 01' 30"
89° 01' 30"
89° 01' 30"
89° 01' 30"
89° 01' 30"

97° 54'
55° 30'
98° 52' 30"

89° 01' 30"
89° 01' 30"
89° 01' 30"
89° 01' 30"
89° 01' 30"
89° 01' 30"
89° 01' 30"
89° 01' 30"
89° 01' 30"
89° 01' 30"
89° 01' 30"

13 34
9 51
83 25

760 25'
80 09
156 34
179 60
23 26

3788
31.59

423.74
513-35E

59-51W
617.46

57-54E
248706 287

S 8-16-15E

256.28
S 2-03 E

N 76-25E

N 82-11 E. 129

S 13-35 E
346.00

S 9-35 E. 224.80

78.43

S 2-03 E

147.40
546.00
493.40

13.35
2.03

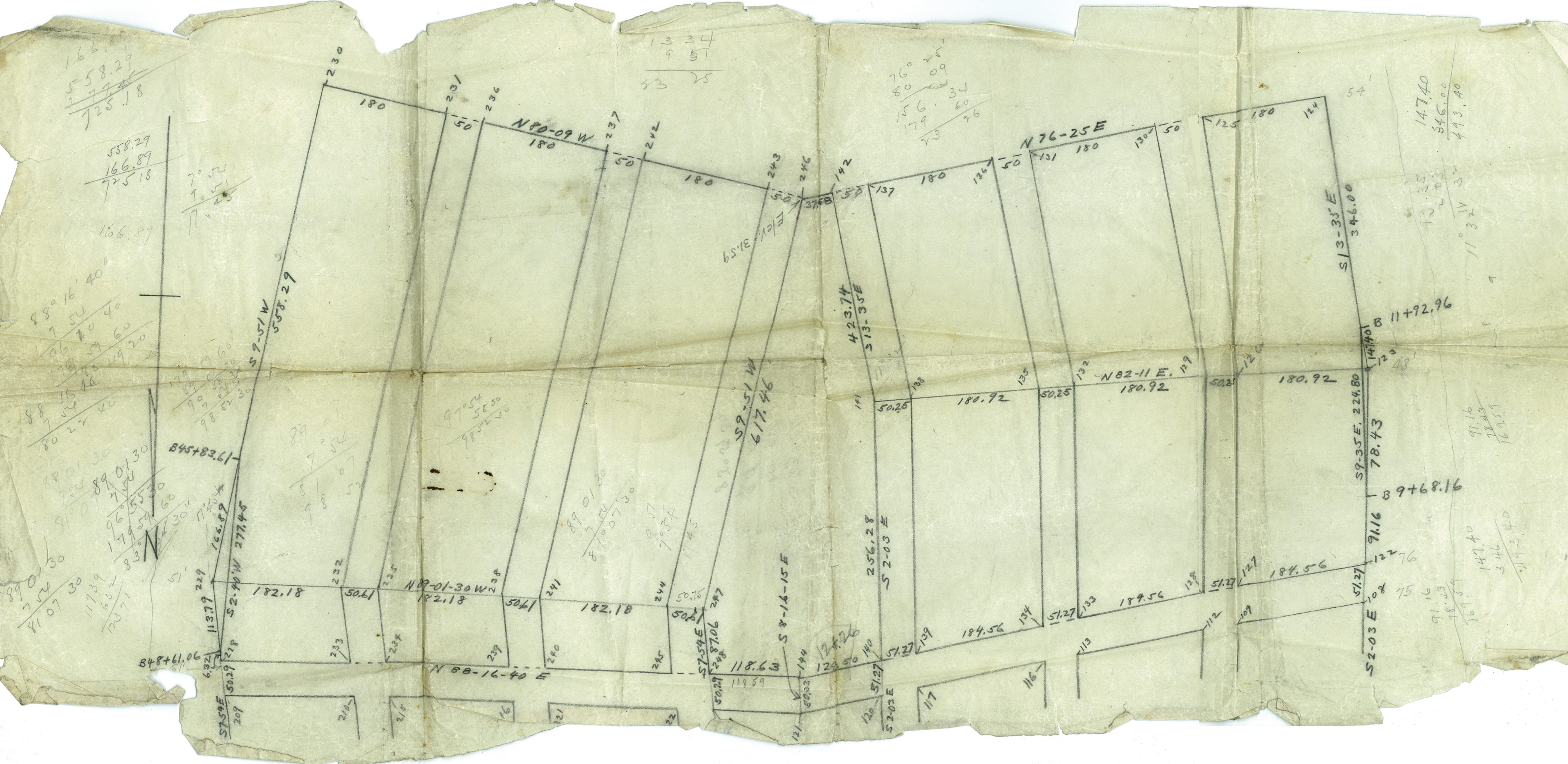
11° 32'

11+92.96

91.16
78.43
164.59

147.40
546.00
493.40

91.16
78.43
164.59



Crown Point Culvert.

Profile Elevations

May 11-1926

E.P. Chilton ①

A.R. Ross

Allan Fraser

1. Moorland and Crown Pt. Drive.

25.68 H.I.

Rod.

Station	Description	Rod.	Elevation
0+00	P.L. West side Crown Pt. Drive	3.9	21.8
+02		3.9	21.8
+02	Graded - Not O.G.	4.9	20.8
+32		3.8	21.9
+55		3.1	22.6
+86	Beach Line	27.8	-2.1

2. On Crown Point Drive, between

La Mancha and La Cima. Lots 314 & 315

20.44 H.I.

Rod.

Station	Description	Rod.	Elevation
0+00	10' from P.L. stake bet. Lots 300-301	2.5	17.9
+10	P.L. stake Lots 300 & 301 - Jewell	2.9	17.5
+50		3.9	16.5
1+00		5.0	15.4
+50		5.3	15.1
+90 ⁵	P.L. bet. 314 & 315, Crown Pt. Dr.	5.0	15.4
2+00 ⁵	Curb Line (Top Curb 5 ⁸)	5.0	15.4
+52		4.1	16.3
+58		5.1	15.3
2+78		22.3	-1.9

Crown Point Drive
Between La Mancha + Lo Cima.

	20.94 H.I.	Rod	
0+00	P.L. stake bet. Lots 311+312	6.2	14.7
+65		6.4	14.5
+70		8.2	12.7
+89		23.5	-2.6

From Bayone thru Edge Cliff Dr.

	29.17 H.I.	Rod.	
0+00	P.L. - P.T. Lot 373	3.7	25.5
+10	Curb line	3.7	25.5
+40	"	3.8	25.4
+50	P.L. P.T. Lots 385-386	3.8	25.4
1+00		3.3	25.9
+42	stake bet. Lots 391-392-385-386	2.5	26.7
2+00		3.0	26.2
+32	P.L. Stake Lots 391-392	3.0	26.2
+42	Curb line	3.2	26.0
+93	N.W. Curb Ret. Edge Cliff	5.1	24.1
3+50	along Curb	7.2	22.0
4+00	"	9.6	19.6
+54	Curb Ret. Edge Cliff + Riviera	12.5	16.6
+85 ⁺	around Curb	13.4	15.8
5+26		14.2	15.0
+36		16.0	13.2
+53		31.7	-2.5

51
491
20

Riviera and La Cima

23.81 H.L. Rod.

0+00	P.L. Ret.	5.4	18.4
+10	Curb line	5.3	18.5
+56		6.5	17.3
+83	Pile Rocks	25.7	-1.9
+89	"	28.5	-4.7

From Bayone to Riviera

33.21 H.L.

0+00	East P.L. Bayone	1.2	32.0
+10	Curb	1.9	31.3
+40	"	3.3	29.9
+50	P.L. Stake at lots 203-204	3.9	29.3
1+00		6.8	26.4
+50		9.2	24.0
2+00		10.7	22.5
³⁰ +80	P.L. Buena Vista	11.5	21.7
⁴⁰ +90	Curb line	11.8	21.4
2+70	"	12.1	21.1
²⁰ 3+20	"	12.1	21.1
²⁰ 4+30	P.L. Stake 181-182	12.2	21.0

25.22 H.L.

3+50			
4+00		4.8	20.4
4+00		4.8	20.4
⁵⁰ +50			19.8
⁴⁰ 5+11	P.L. Stake Lots 167-168, Riviera	5.4	19.8
4+71	Curb line	5.5	19.7
5+20		6.0	19.2
⁷⁰ +70			
5+40		28.4	-3.2
⁹⁰ +90	Beach		

(A)

Moorland and Riviera

23.59 H.I.

0+00	P.L. Ret. on Moorland	4.9	18.7
+10	Curb	5.7	17.9
+58		8.4	15.2
+75		25.0	-1.4

5

sk
8

55° 03' 30"
48 08 15
83 12 60
179 59 60
96 41 45

54 50 30
41 47 15

68 07
54 39
13 28

N 10 18 W
76 25
76 07 W
55 35



S 76° 35' 30" E
9 9 51
86 26 30

S 16° 58' W
76° 35' 30"
93 33 30
179 59 60
86° 26' 30"

93 33 30
76 26 30
180° 00

76° 35' 30"
76 25
153° 00' 30"
179 59 60
76 59 30

219 72
257 24
476 88

66 06 30
13 35
13 41 30
19 41
179 59 60
100 18 30

76 53 30
73 18 30
100 18 30

340 12
130 37
288 57



