

Job # 23

NAME BROADWAY EXT.

Class _____ Course BOOK Party #1

Central Ave Alignment.

Central Ave
#62
1962

FIELD NOTES

No. 403 P

ESPECIALLY ADAPTED

TO THE USE OF

ENGINEERING STUDENTS

EUGENE DIETZGEN Co.

MANUFACTURERS

DRAWING MATERIALS

MATHEMATICAL AND SURVEYING INSTRUMENTS

MEASURING TAPES

CHICAGO SAN FRANCISCO NEW YORK
NEW ORLEANS PITTSBURGH

Book #7

BROADWAY EXTENSION -

Central Avenue

MICROFILMED

DEC 30 1964

Property of
Watson, Valle & Gough,
508 Spreckles Bldg,
San Diego -

INDEX -

	Page:
Alignment & Topog Central Ave $\frac{3}{2}$, Lemon Cr. Rd	1 - 25

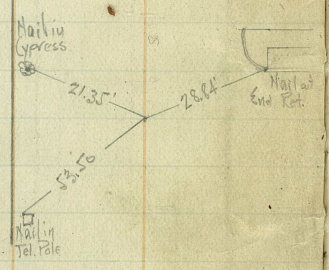
Sta. Dist Def. Angle Lt. Rt.

948.50

0+00

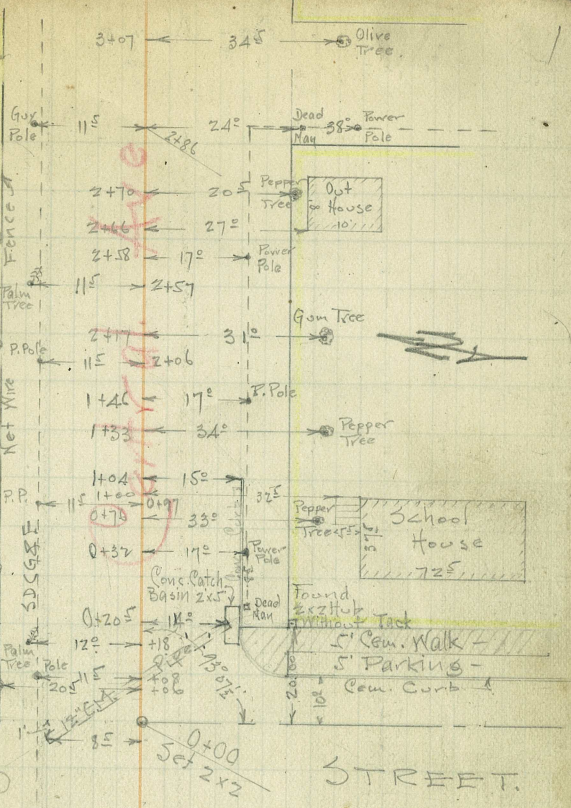
69.85

SD & ARR



Lemon Trees 30' Ctrs.

Row of express trees along fence 30' Ctrs.



RAILROAD

STREET.

SD & ARR

To Lemon Grove →

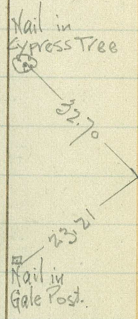
18' Conc. Pavement.

Sta. Dist. Def. Angle

* Ties -

S+77.34
P.O.T.

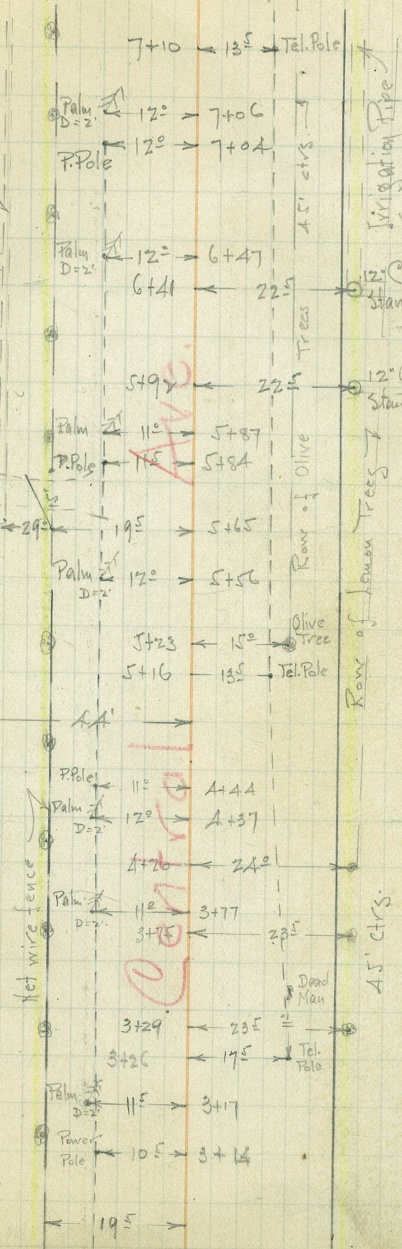
948.56



ORCHARD

LEMON

Row of Lemon Trees 30' ctrs.



ORCHARD

LEMON

Sta.

Dist.

Def. Angle
Lt. Rt.

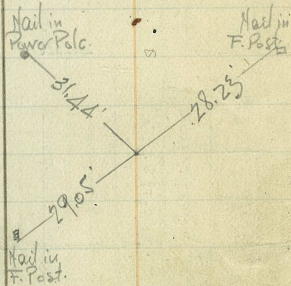
± Ties

9+48.56
F.I.

1320.94

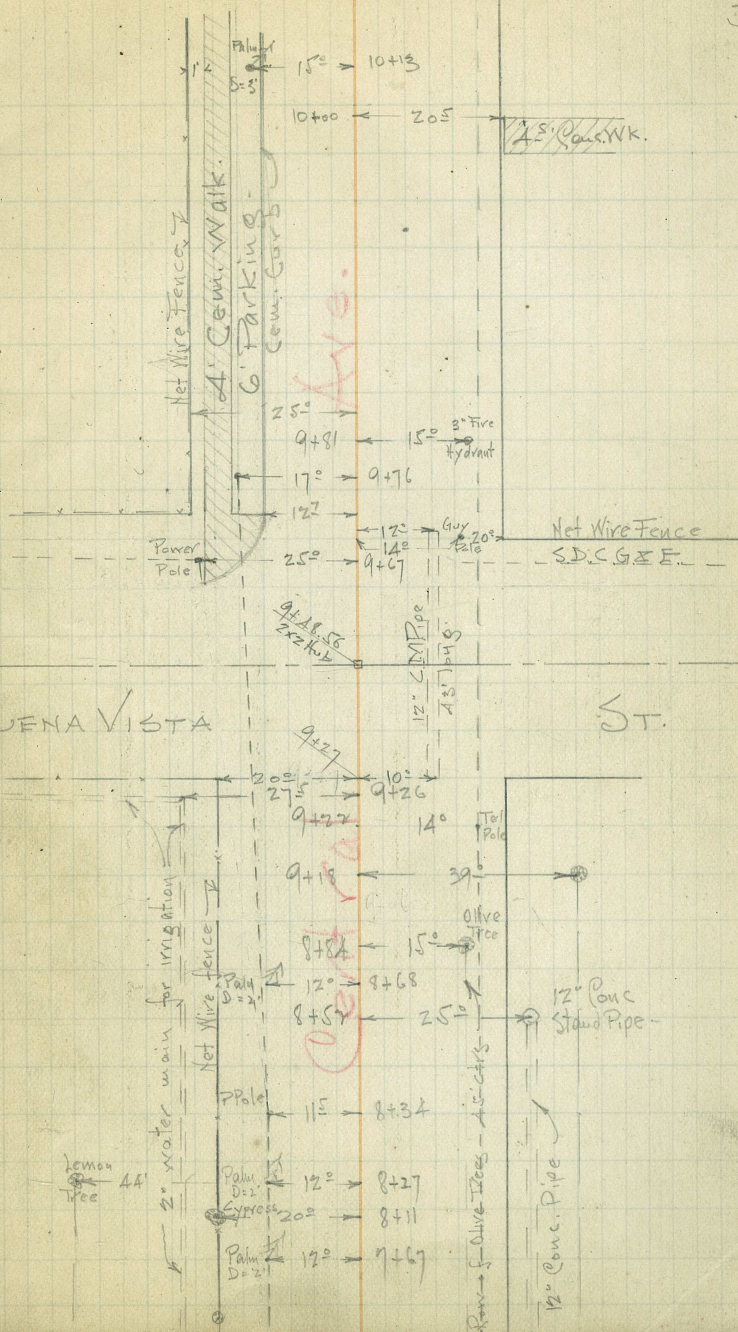
948.56

0° 07' 1/2
0° 15'



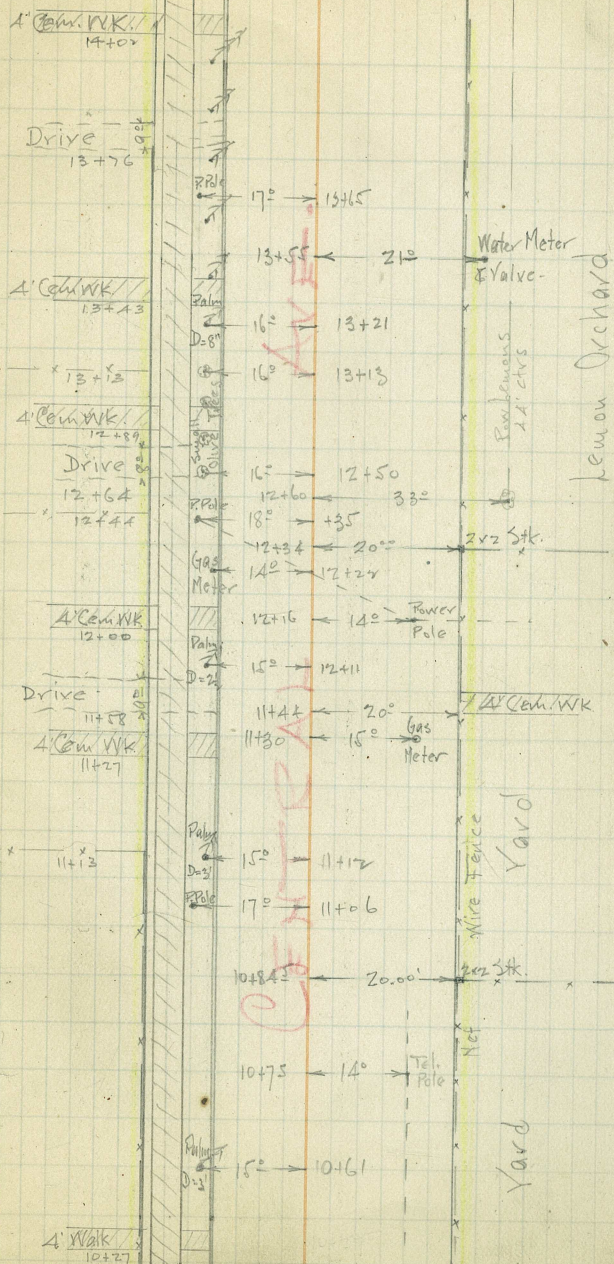
BUENA VISTA

ST.



3

1320.94



16+09.16
P.O.T.

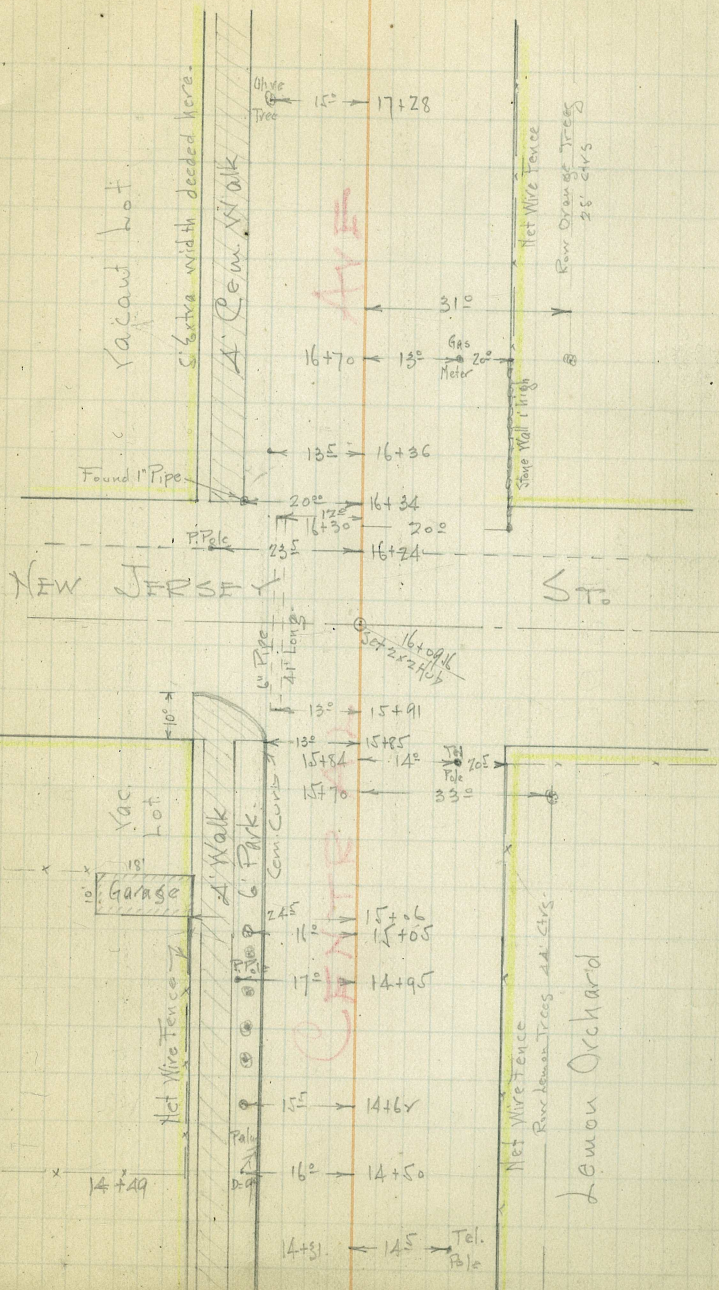
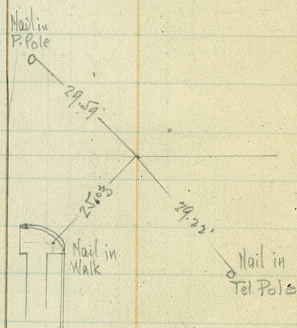
1370.94

Sta.

Dist.

Def. Angle
Lt. Rt. ✓

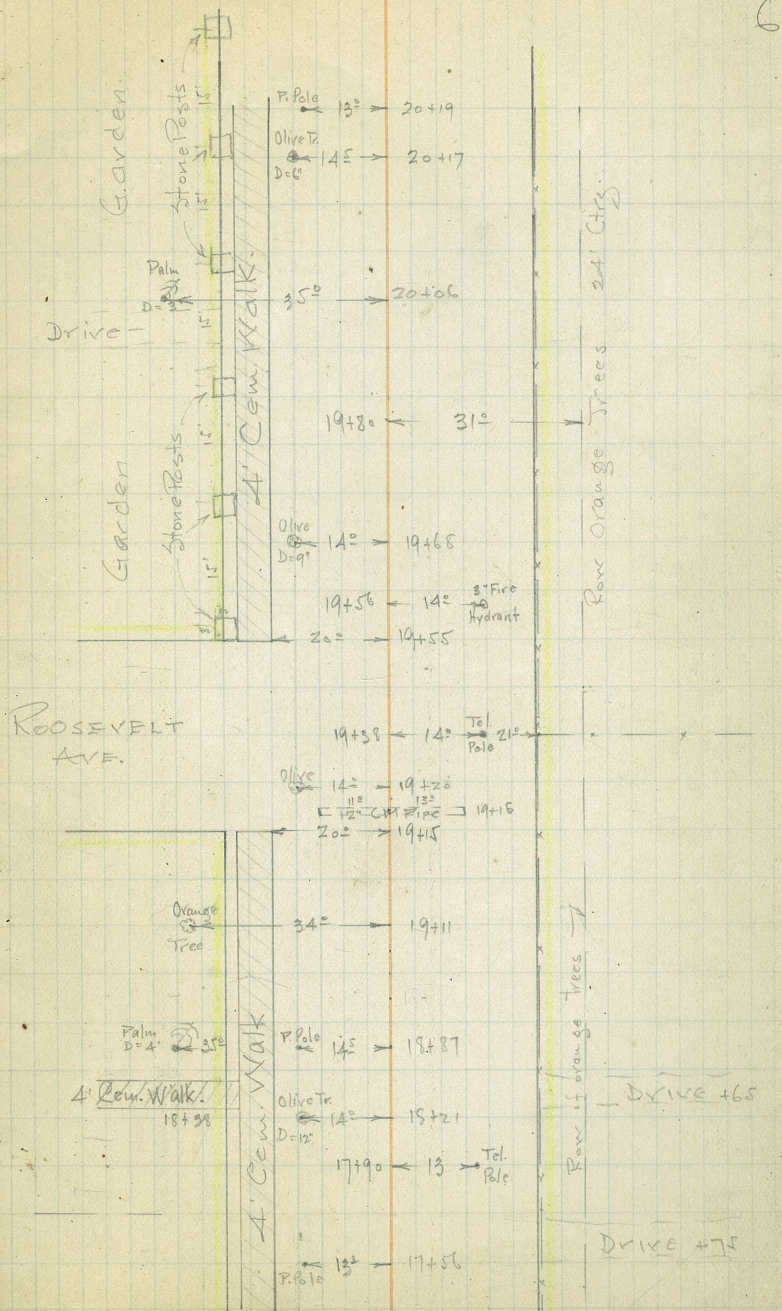
* Ties



69

1320.94

ZUAYA MACA
COURT

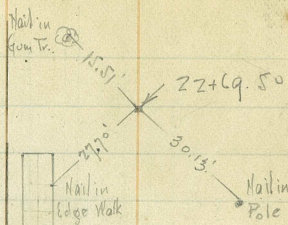


22+69.50
P.I.

Lt.
0° 02'
0° 04'

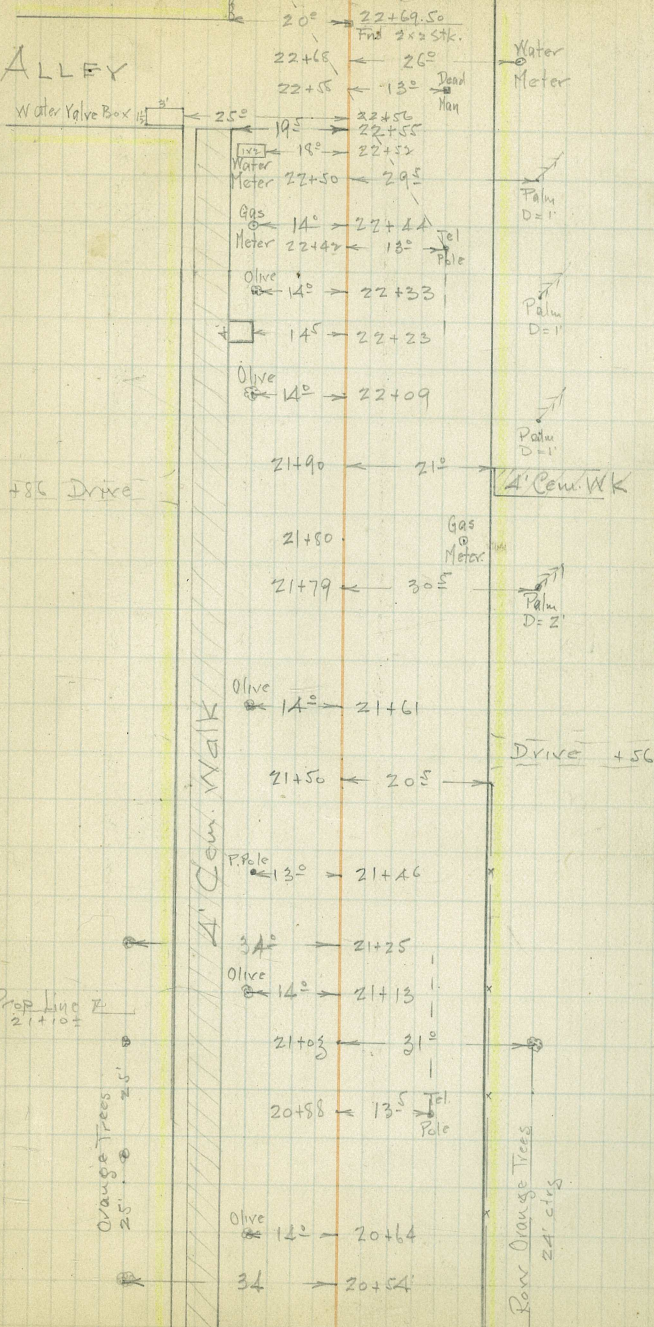
Et

F. Trees



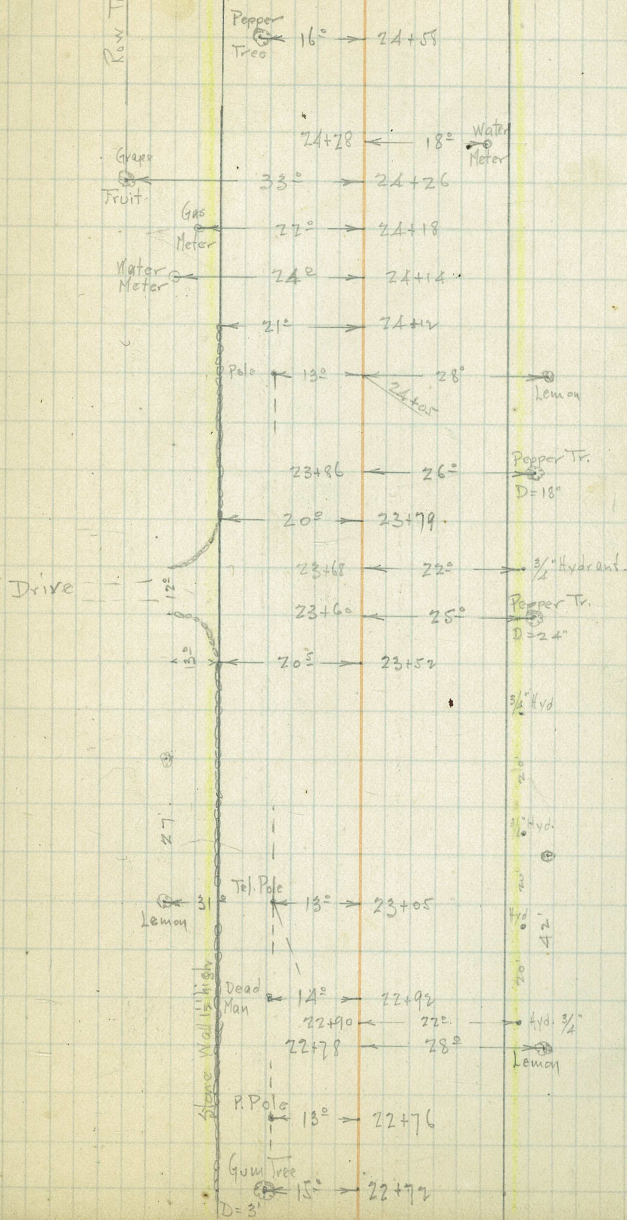
1320.94'

ALLEY



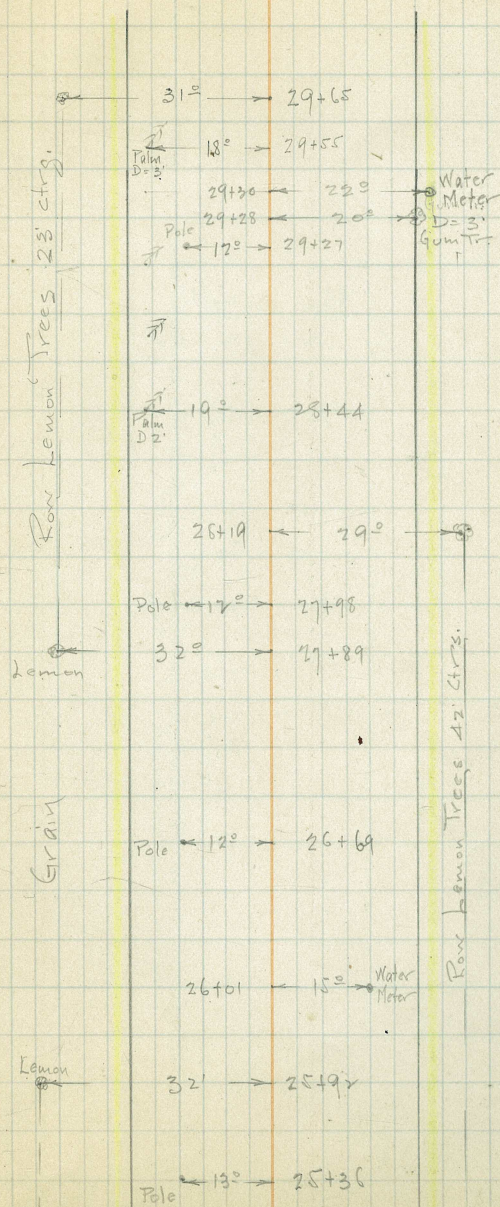
3301.85

Row Trees 28' Ctrs



3301.85

9



Sta.

Dist.

Def. Angle

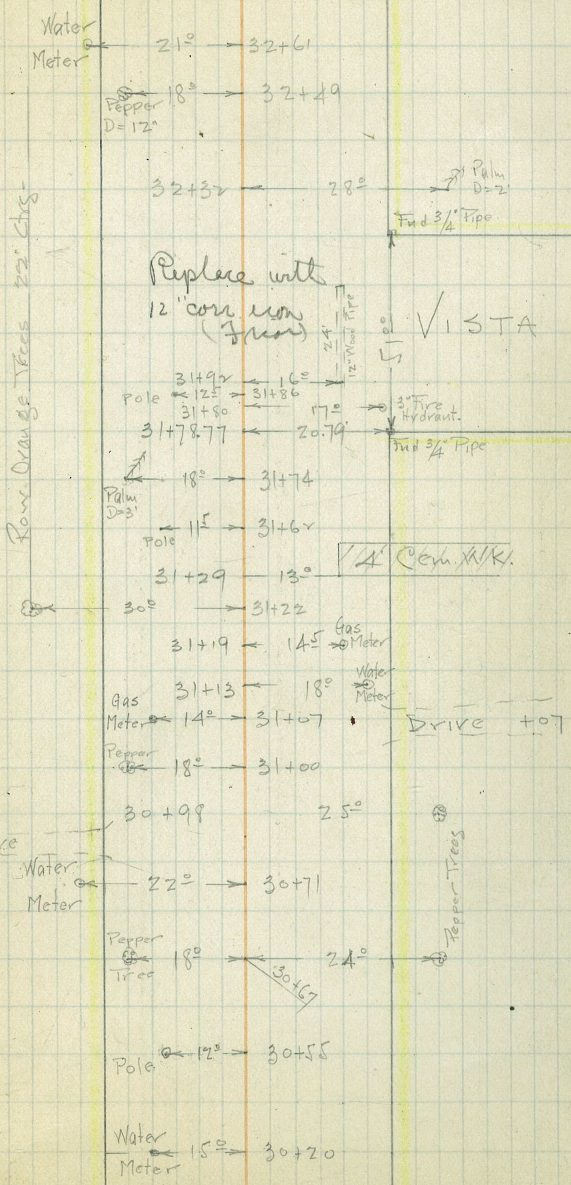
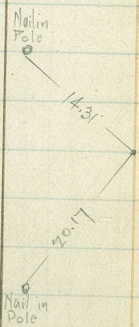
Lt.

Rt.

± Ties -

31478.77
P.O.T.

3301.85



Replace with
12" corr iron
(Iron)

VISTA ST.

4" Cor. W.K.

DRIVE 107

185 Drive

Pepper Trees

3301.85

Pepper
D=12" 19° → 35+3 ✓

← 20°

← 18°

← 17°

← 16°

← 15°

← 14°

← 13°

← 12°

← 11°

← 10°

← 9°

← 8°

← 7°

← 6°

← 5°

← 4°

← 3°

← 2°

← 1°

← 0°

← -1°

← -2°

← -3°

← -4°

← -5°

← -6°

← -7°

← -8°

← -9°

← -10°

← -11°

← -12°

← -13°

← -14°

← -15°

← -16°

← -17°

← -18°

← -19°

← -20°

← -21°

← -22°

← -23°

← -24°

← -25°

← -26°

← -27°

← -28°

← -29°

← -30°

5" Iron Pipe
8" Wood Water Pipe

Tel. Pole
D=12" → 34+6 ✓

P. Pole
D=12" → 34+4 ✓

Pepper
D=18" 19° → 34+2 ✓

34+18 ← 29°

Pepper
D=18" 19° → 33+9 ✓

33+75 ← 29°

33+53 ← 21°

33+44 ← 29°

Pepper
D=12" 19° → 33+19 ✓

P. Pole
D=13" 13° → 33+15 ✓

Tel. Pole
D=12" 12° → 33+14 ✓

Pepper
D=12" 19° → 32+85 ✓

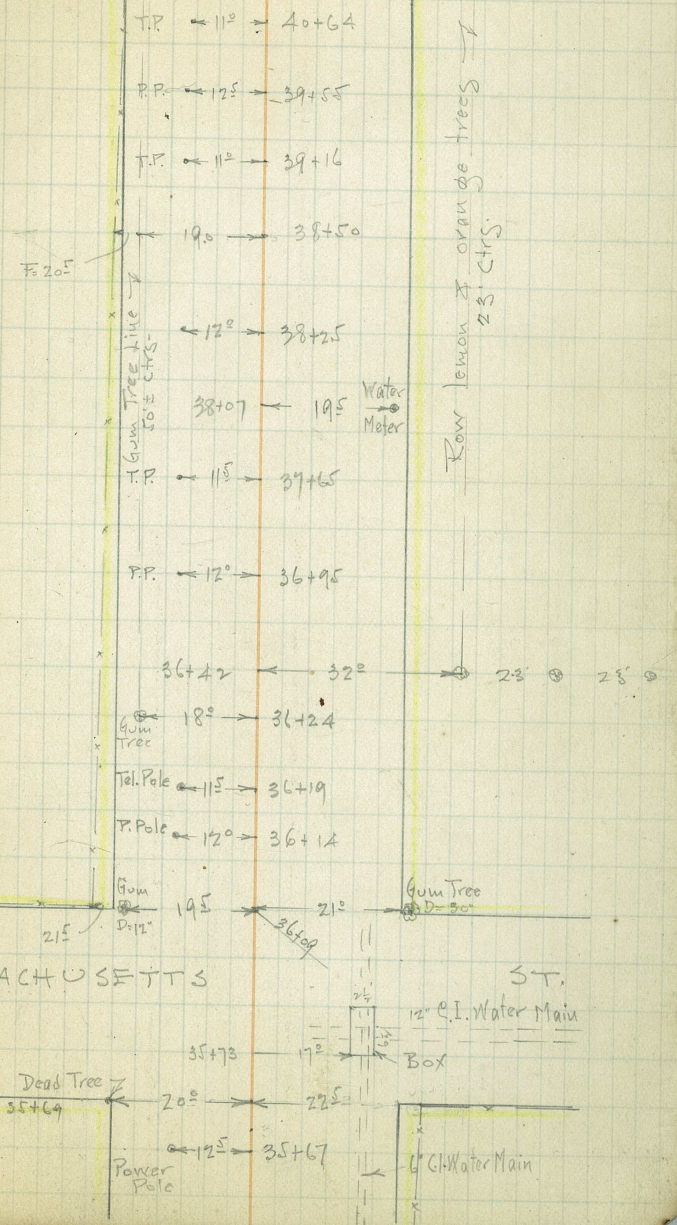
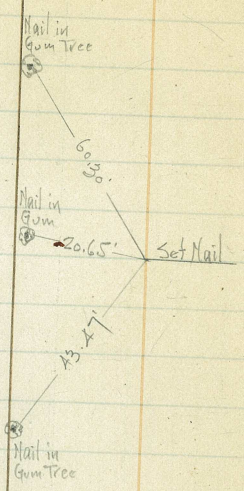
Small fruit trees

Peach Tree

Sta. Dist. Def. Lt. Angle Ties -

38+50.00
P.O.T.

3301.85

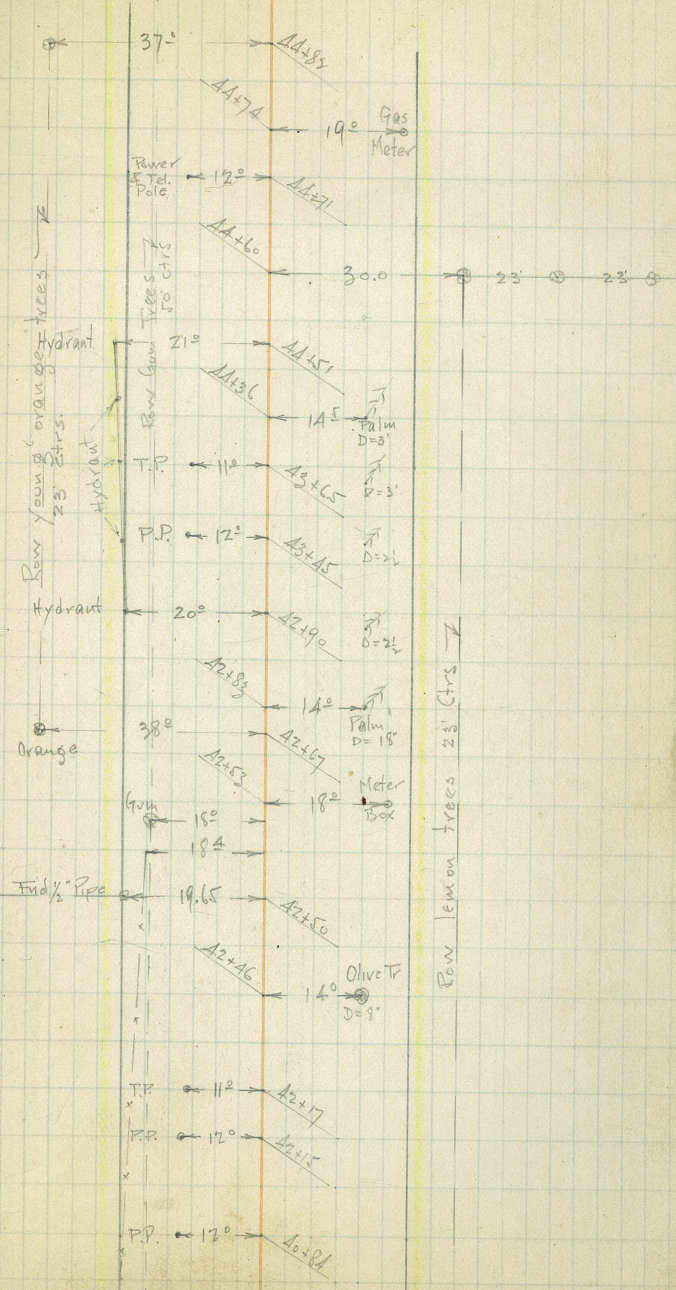


MASSACHUSETTS

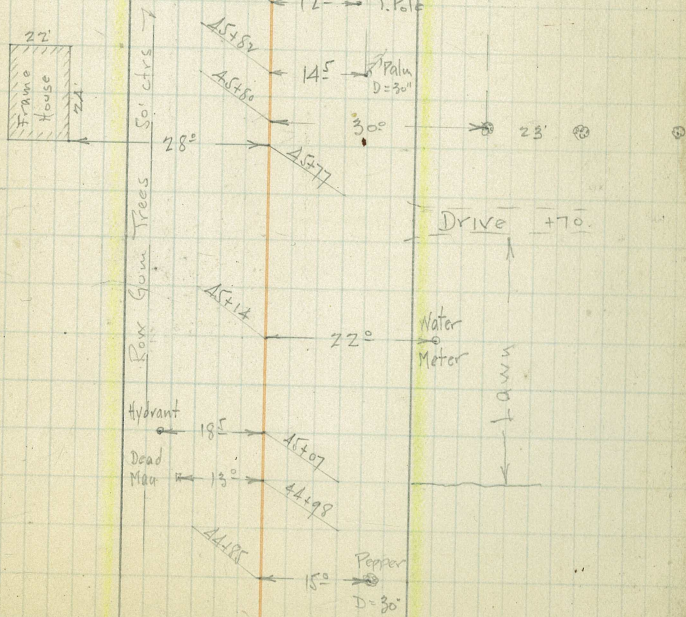
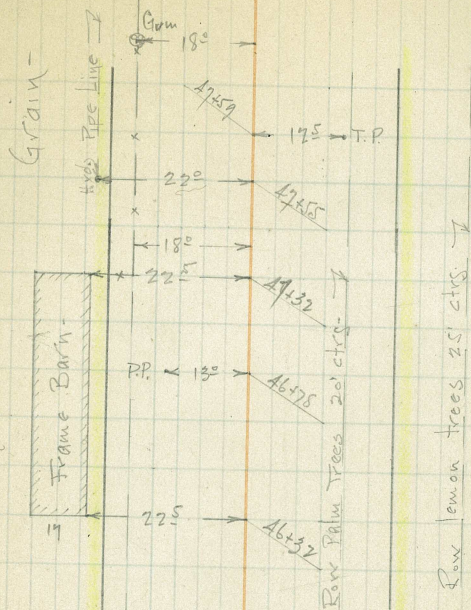
ST.

3301.85

42+50
P.O.T.



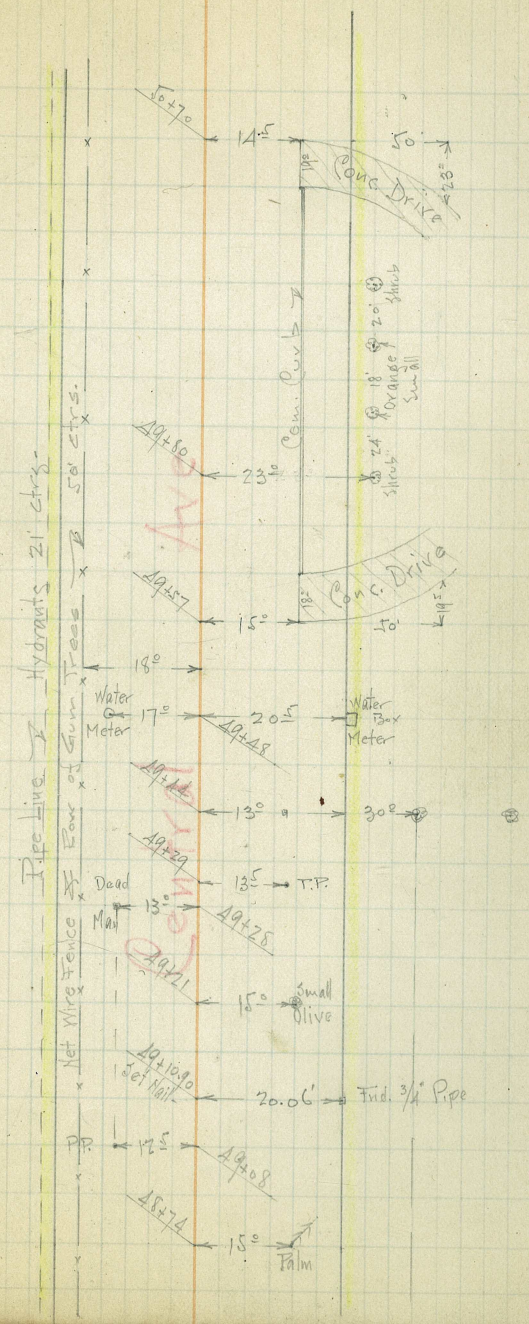
3301.85



3301.85

49+10.90
P.O.T.

GRAM



Sta	Dist	Def Lt.	Angle B.	Ties -
-----	------	---------	----------	--------

62+31.30
P.O.T.

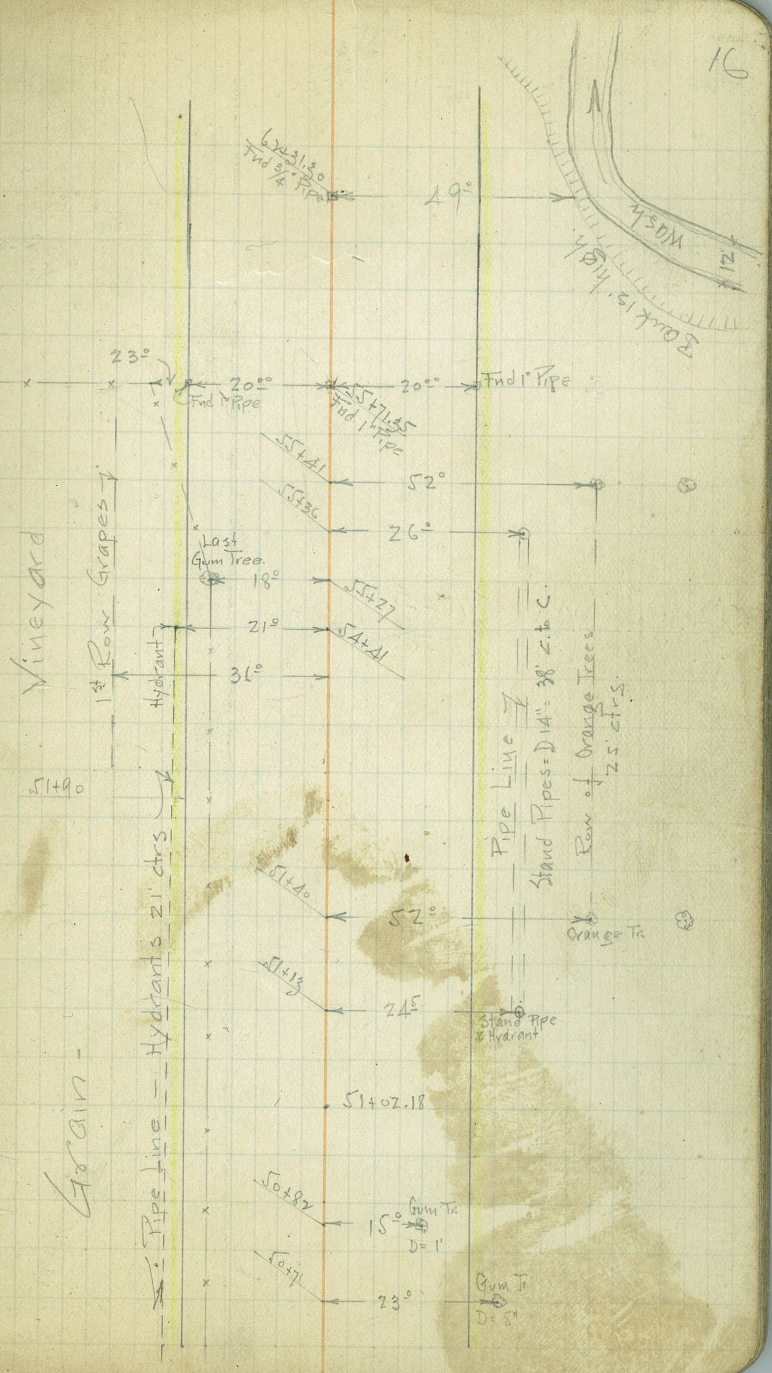
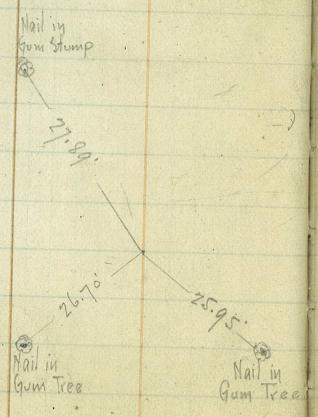
55+71.35
P.I.
659' 15"

0° 17'
0° 33'

- NOTE -
 See Pg. 28 for
 new alignment.

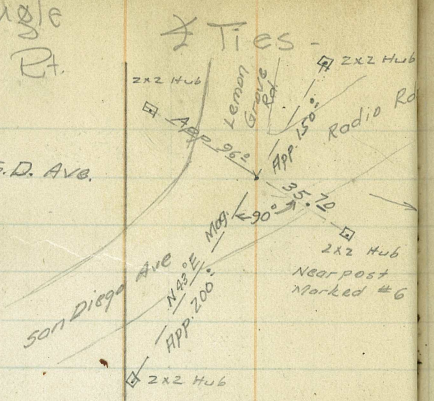
3301.85

51+02.18
P.O.T.



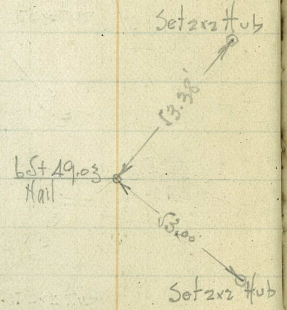
Sta. Dist. Def. Angle Lt Rt

P.I. Radio Rd. & S.D. Ave.



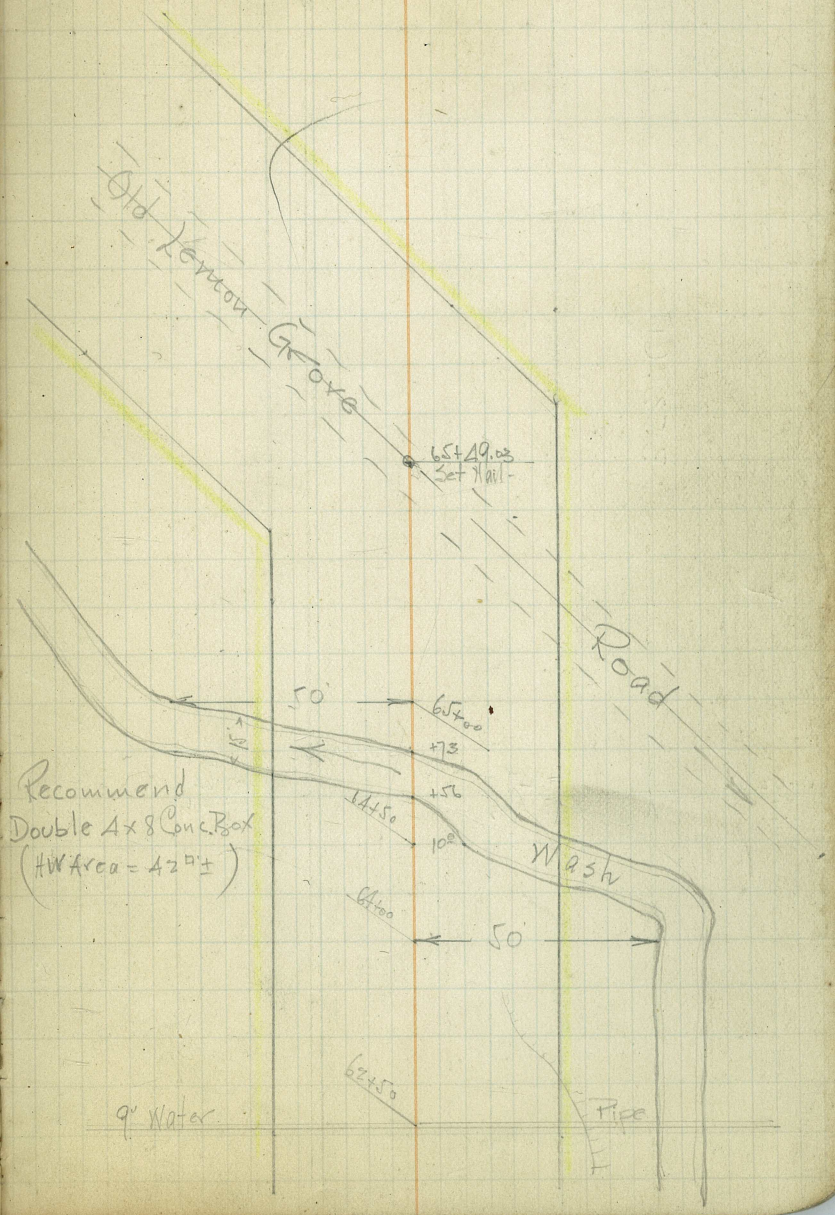
65+49.03
P.I.

16°55'
93°50'



977.68

Recommend
Double 4x8 Conc. Box
(HW Area = 42 ±)



9" Water

Sta.

Dist.

Def. Angle
Lt. Rt.

Ties

18

353.61

69+02.64
P.I.

11°47'
23°33'

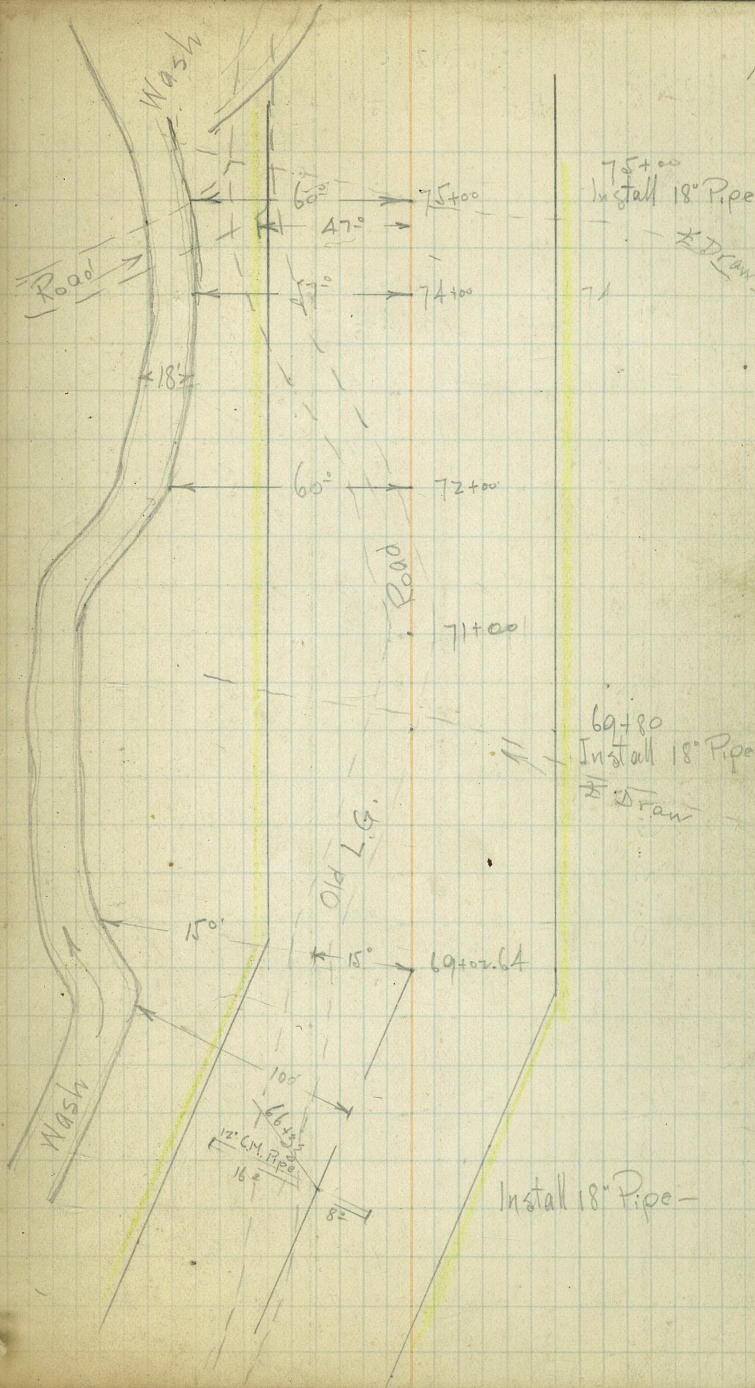
69+02.64
Setzr Hub

Setzr Hub

51.22

52.64

Setzr Hub



Sta Dist

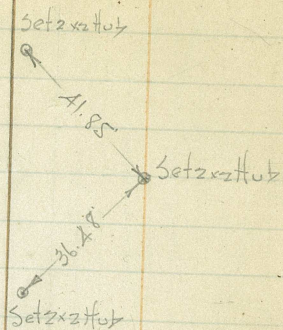
Def. Angle
Lt. Rt.

Ties

80+00.05
- 5.71

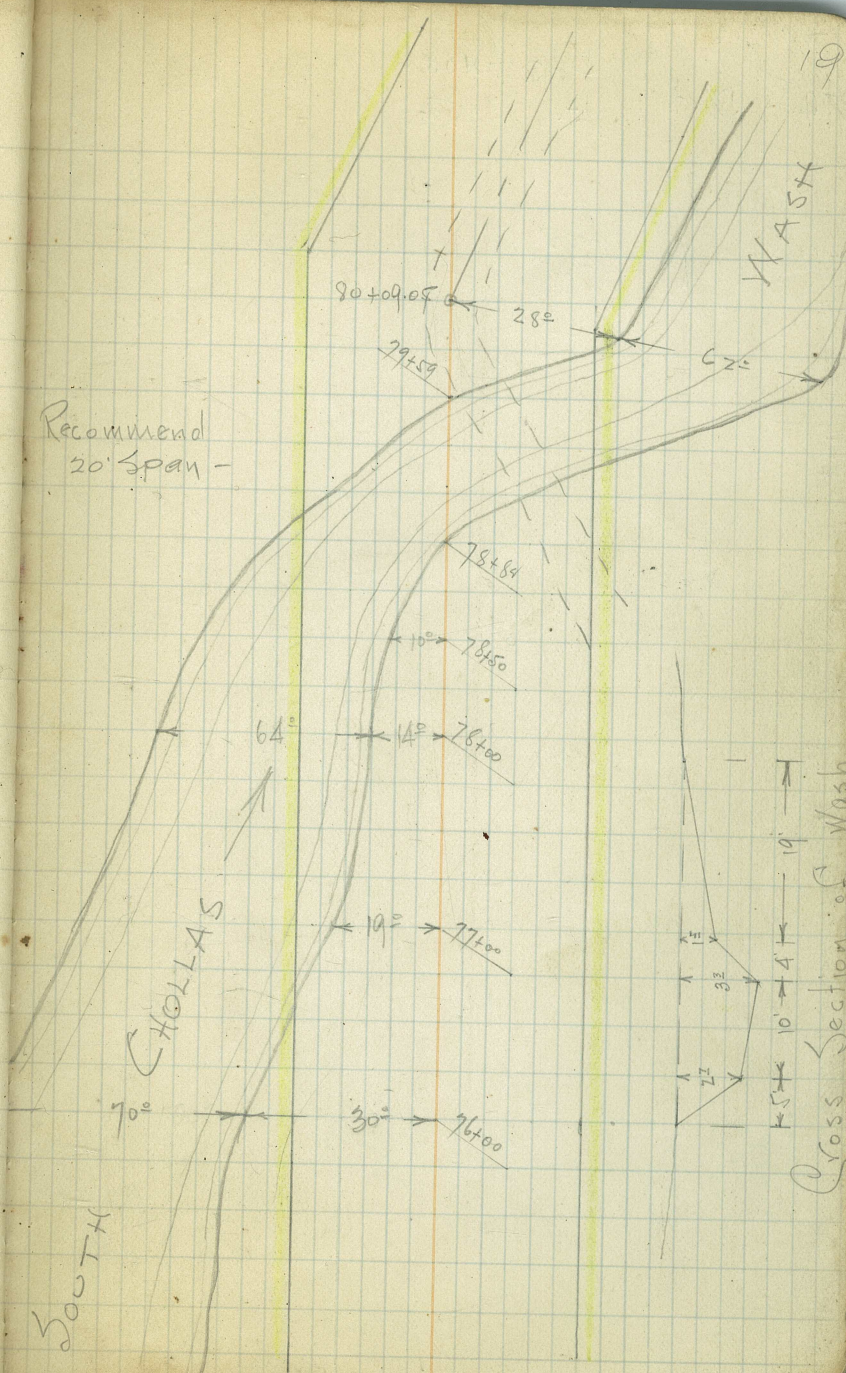


19° 25'
38° 49'



353.61

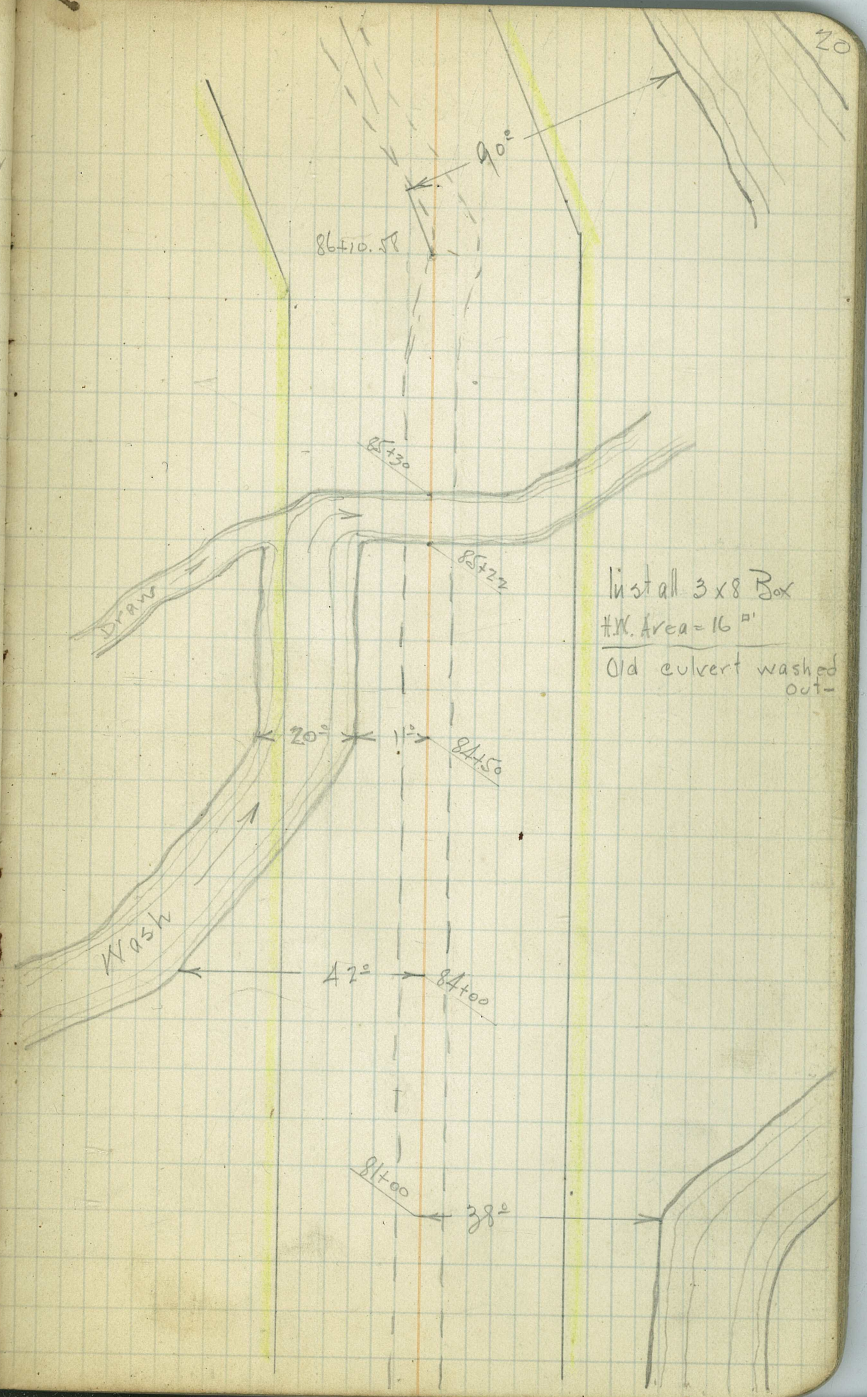
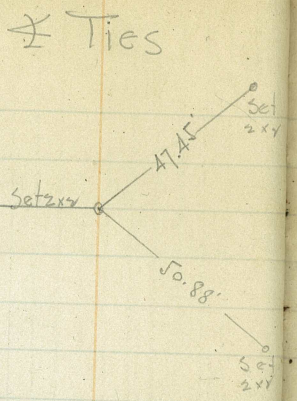
Recommend
20' span -



Sta.	Dist.	Def. Angle	Lt.	Rt.
------	-------	------------	-----	-----

86+10.58 P.I.		17° 52'		35° 45'
------------------	--	---------	--	---------

601.53'



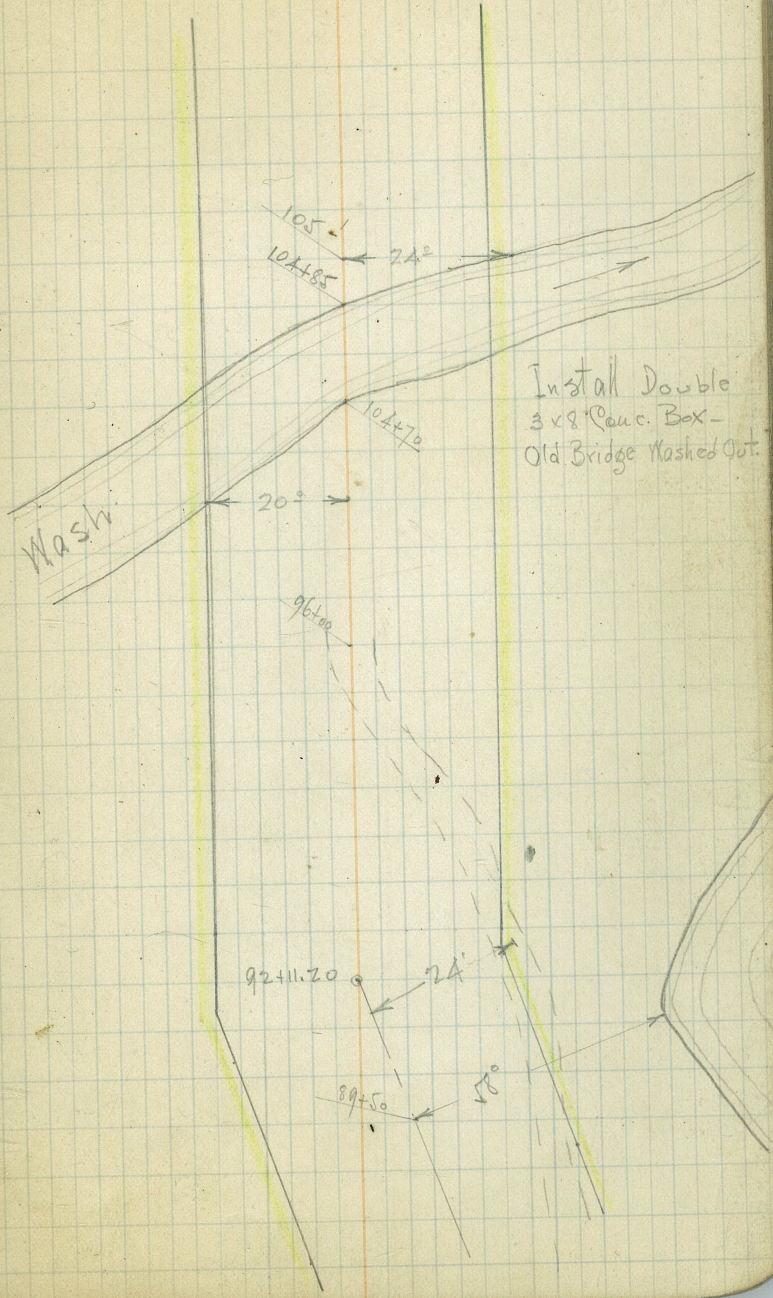
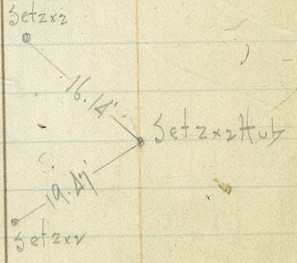
Sta.	Dist.	Def. H.	Angle Rt.	Ties -
------	-------	---------	-----------	--------

1616.68'

92+11.20
D.L.

600.62

18° 39'
37° 18'



Sta	Dist	Def. Lt.	Angle Rt.
-----	------	----------	-----------

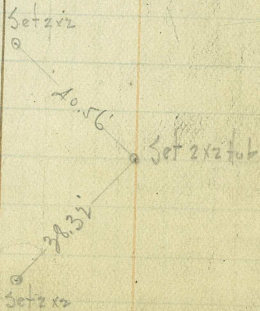
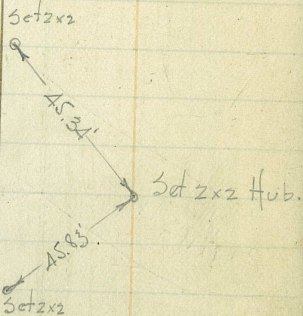
474.32

110+41.28
P.I.

214.00

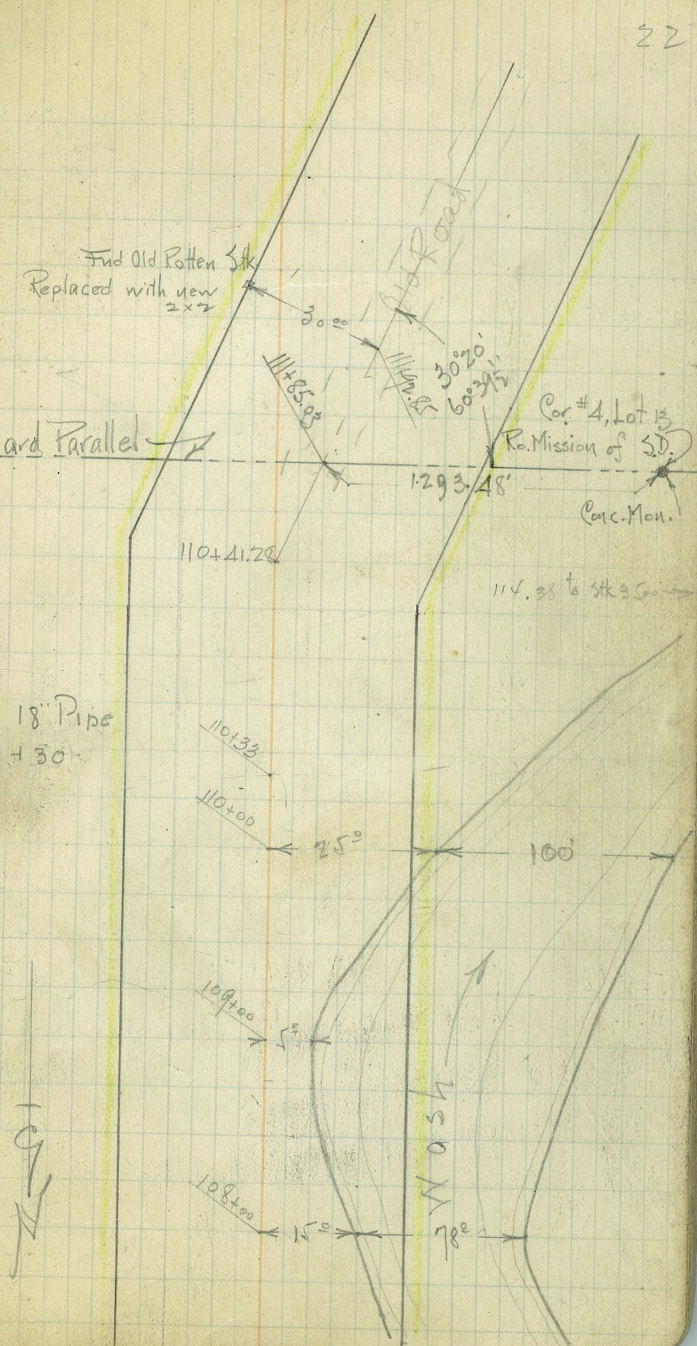
108+27.28
P.O.T.

8°21'
16°47'



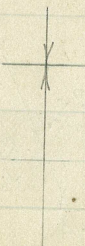
4th Standard Parallel

Install 18" Pipe
Sta 110+30



Sta. Dist. Def. Angle Lt. Rt. Ties

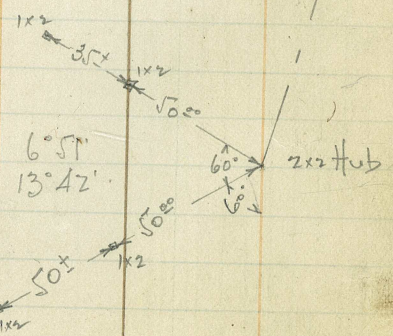
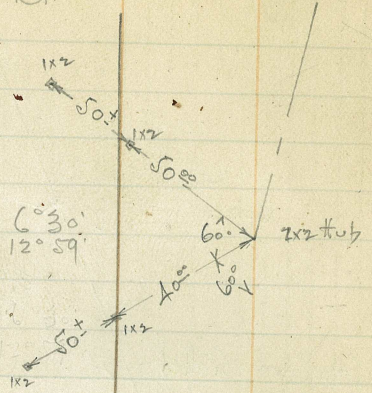
122+23.95
P.I.



708.35



115+15.60
P.I.



$\Delta = 6^{\circ}30'$
 $R = 1000'$
 $T = 56.78'$
 $L =$

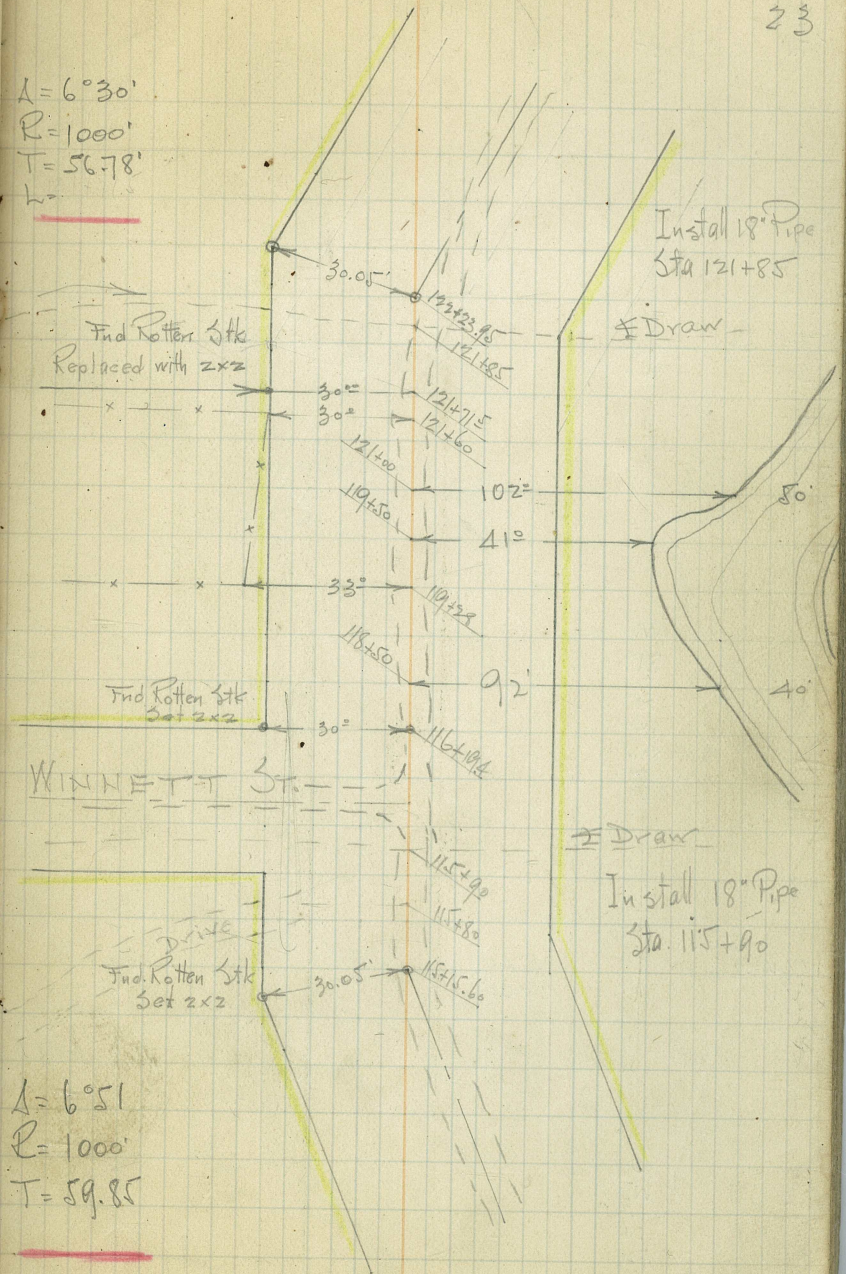
Find Rotten Stk
 Replaced with 2x2

Find Rotten Stk
 Set 2x2

WINNETT ST.

Find Rotten Stk
 Set 2x2

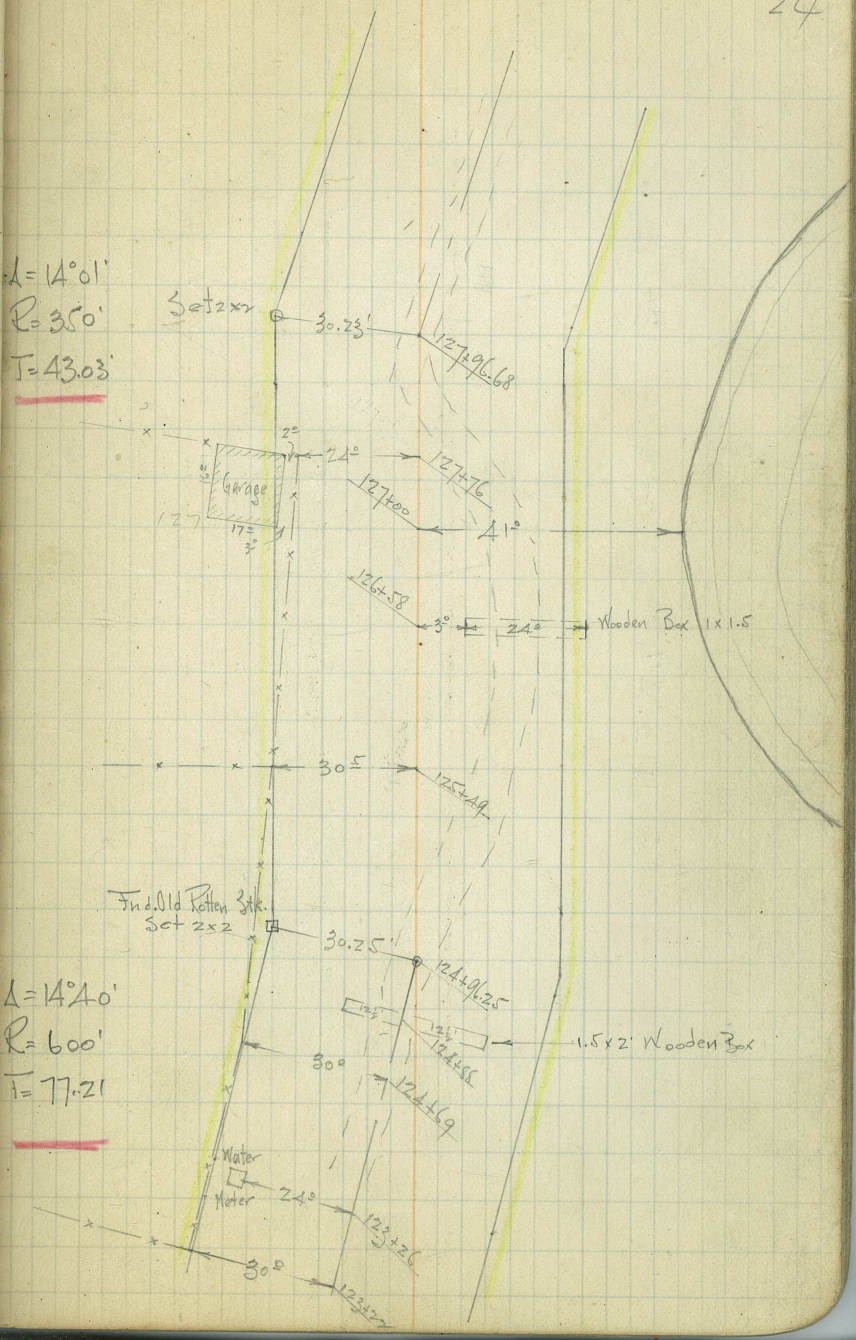
$\Delta = 6^{\circ}51'$
 $R = 1000'$
 $T = 59.85'$



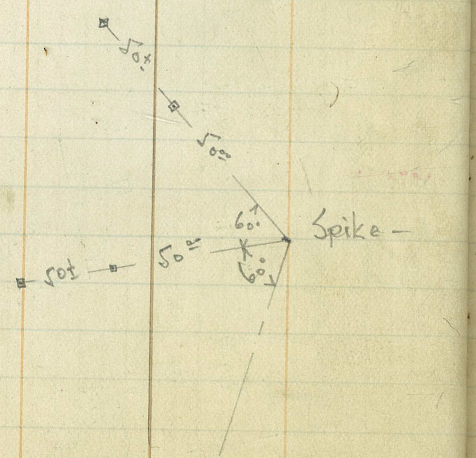
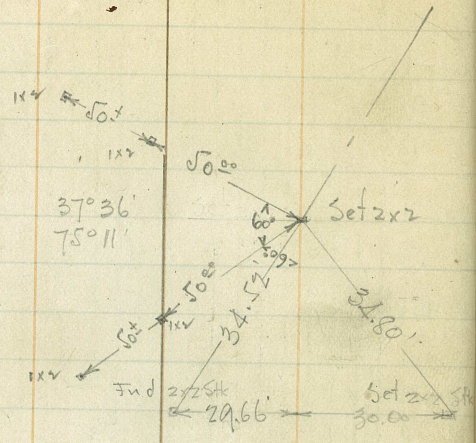
Sta.	Dist.	Def. Angle	Lt	Rt.
127+96.68 P.I.	300.43	14° 01'	28° 02'	
124+96.25 P.I.	272.30	14° 40'	29° 20'	

$\Delta = 14^\circ 01'$
 $R = 350'$
 $T = 430.3'$

$\Delta = 14^\circ 40'$
 $R = 600'$
 $T = 77.2'$

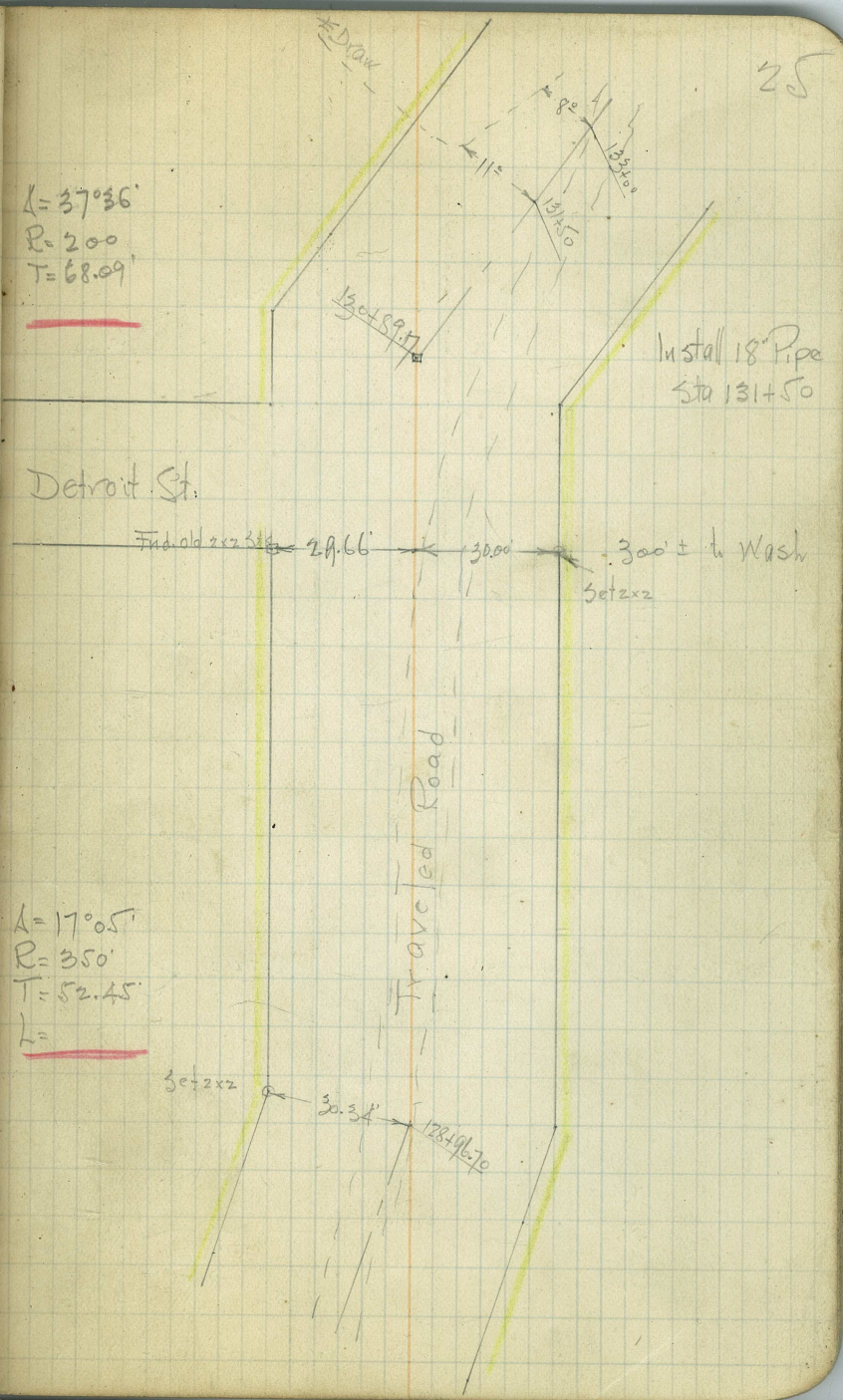


Sta	Dist	Def. Lt.	Angle
130+89.17 P.I.	192.47'		37°36'
130+71.51 P.O.T.			75°11'
128+96.70 P.I.	100.07'		17°05'
			34°10'



$\Delta = 37^\circ 36'$
 $R = 200$
 $T = 68.09'$

$\Delta = 17^\circ 05'$
 $R = 350$
 $T = 52.45'$
 $L =$



Sta Dist.

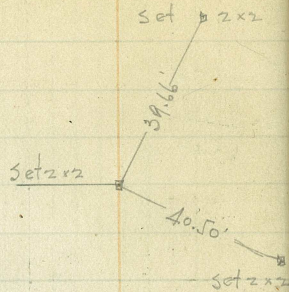
Def. Angle
Lt. Rt.

Ties -

26

148+10.66
P.I.

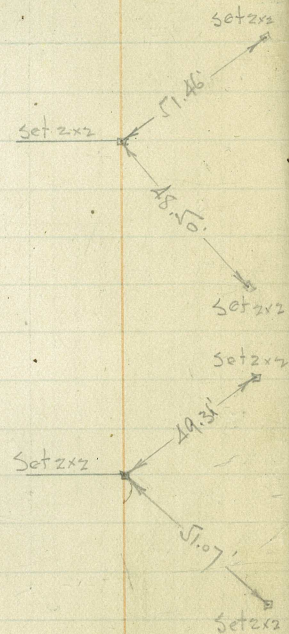
19° 09'
38° 18 1/2'



144+09.5
P.O.T

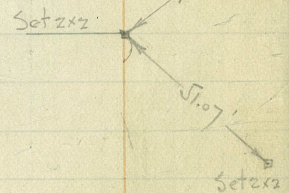
1132.11'

See Pg. 29 for
Construction Alignment -

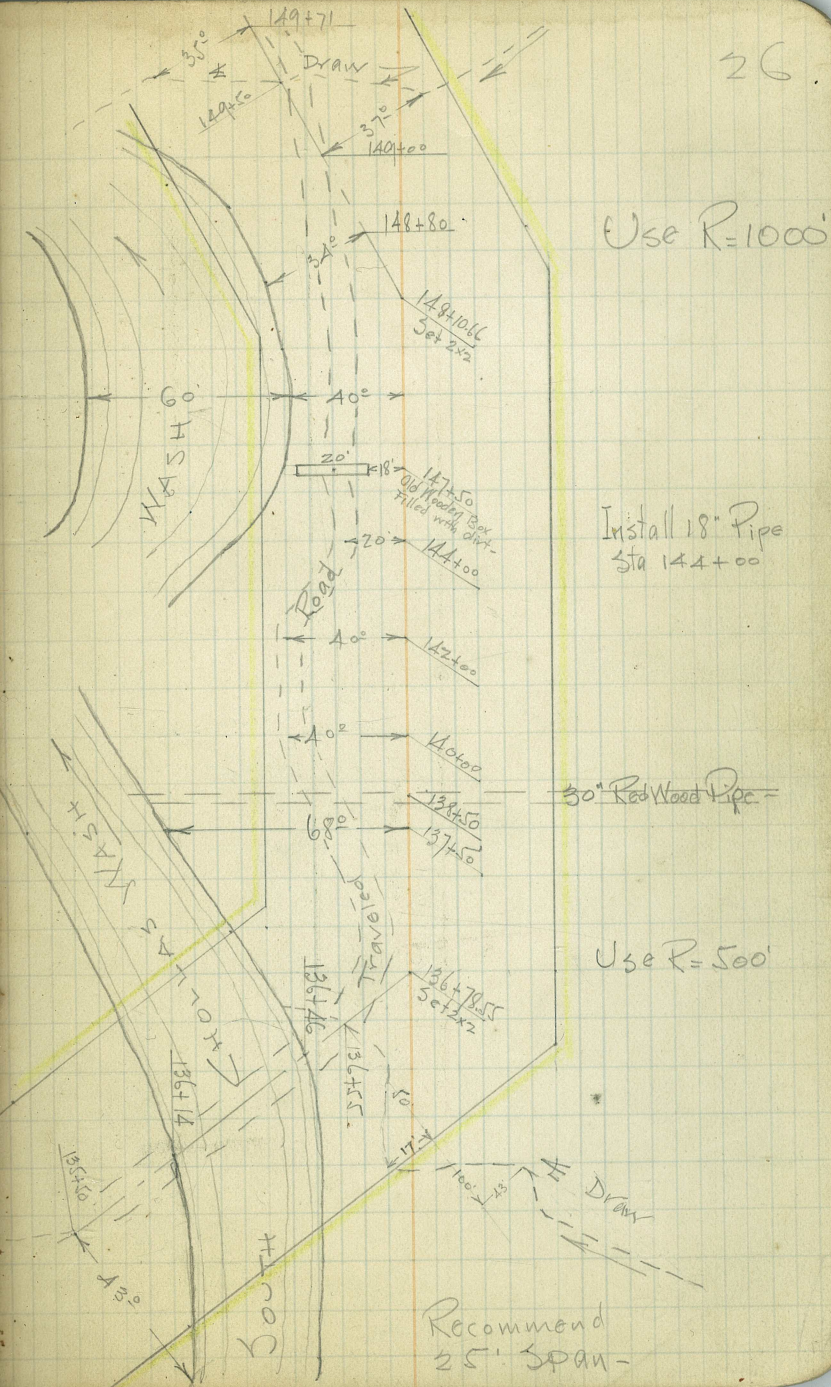
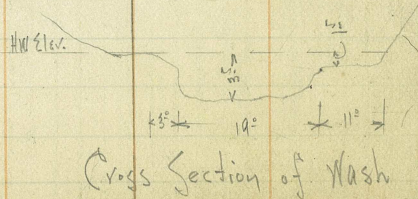


136+78.55
P.I.

26° 53'
53° 47'

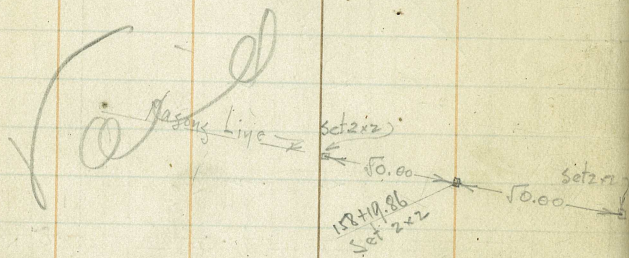


589.38'



Sta.	Dist.	Def. Lt.	Angle Rt.	Ties -
------	-------	----------	-----------	--------

158+19.86
P.O.T.



Center in FB # 213/1

157+56.95
P.I.

~~90.17
18.25~~

2x2 Hub

976.29

Vaid

Masons

Found 2x2 Stk. at
Mason's NE Corner.

East Line
454.9'

125.07
250.34

Use R = 2000

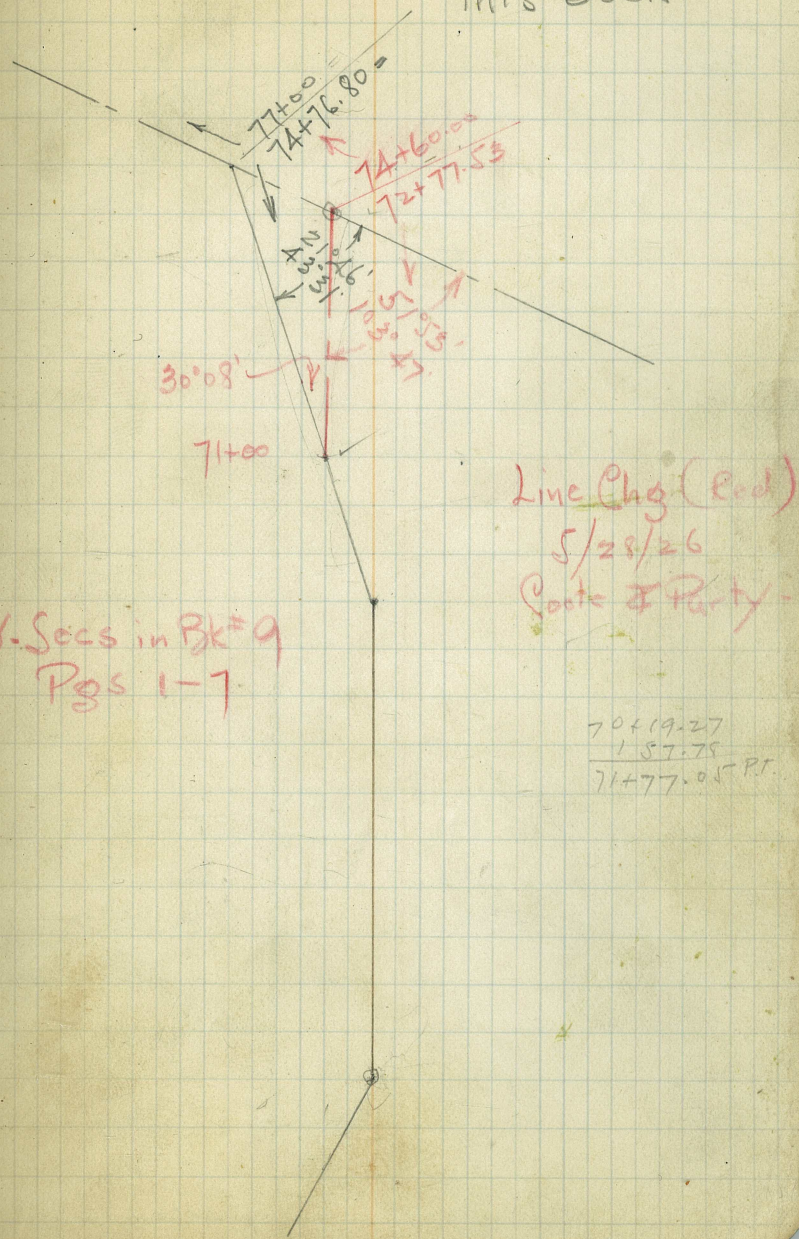
C.C. Crook - Owner

154+27
Old Wooden Box
Filled up.

Sta.	Dist.	Angle Azimuth Def.	* Ties -
77+00.00 P.I. ↓	309.05	21°46' Lt.	
	116.80		
63+60.00 P.I.	788.65	162°59' 325°58'	17°01' Lt.
		5/20/26 Coote Losey Bell	
55+71.35 P.I.		159°48' 319°35'	20°12' Lt.

Cont'd from Pg. 16
This Book

Contd on Pg. 19
This Book- 28



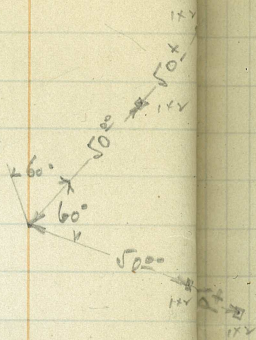
Cont'd on Pg-27

149+27.53
149+27.25=
P.T.

147+61.71
P.I.

19°09' Lt.

145+93.02
P.C.



$A = 19^{\circ}09'$
 $R = 1000'$
 $T = 168.69$
 $L =$

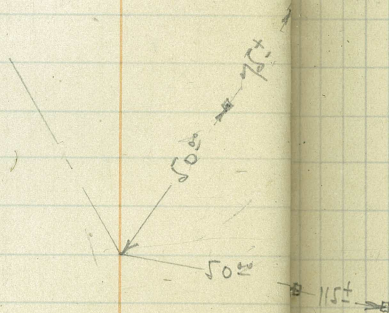
Deflections -

146 = $0^{\circ}12'$
+50 = $1^{\circ}38'$
147 = $3^{\circ}04'$
+50 = $4^{\circ}30'$
148 = $5^{\circ}56'$
+50 = $7^{\circ}22'$
149 = $8^{\circ}48'$
+27.25 = $9^{\circ}34\frac{1}{2}'$

137+249
137+41.96=
P.T.

137+6.15
P.I.

26°53' Lt.



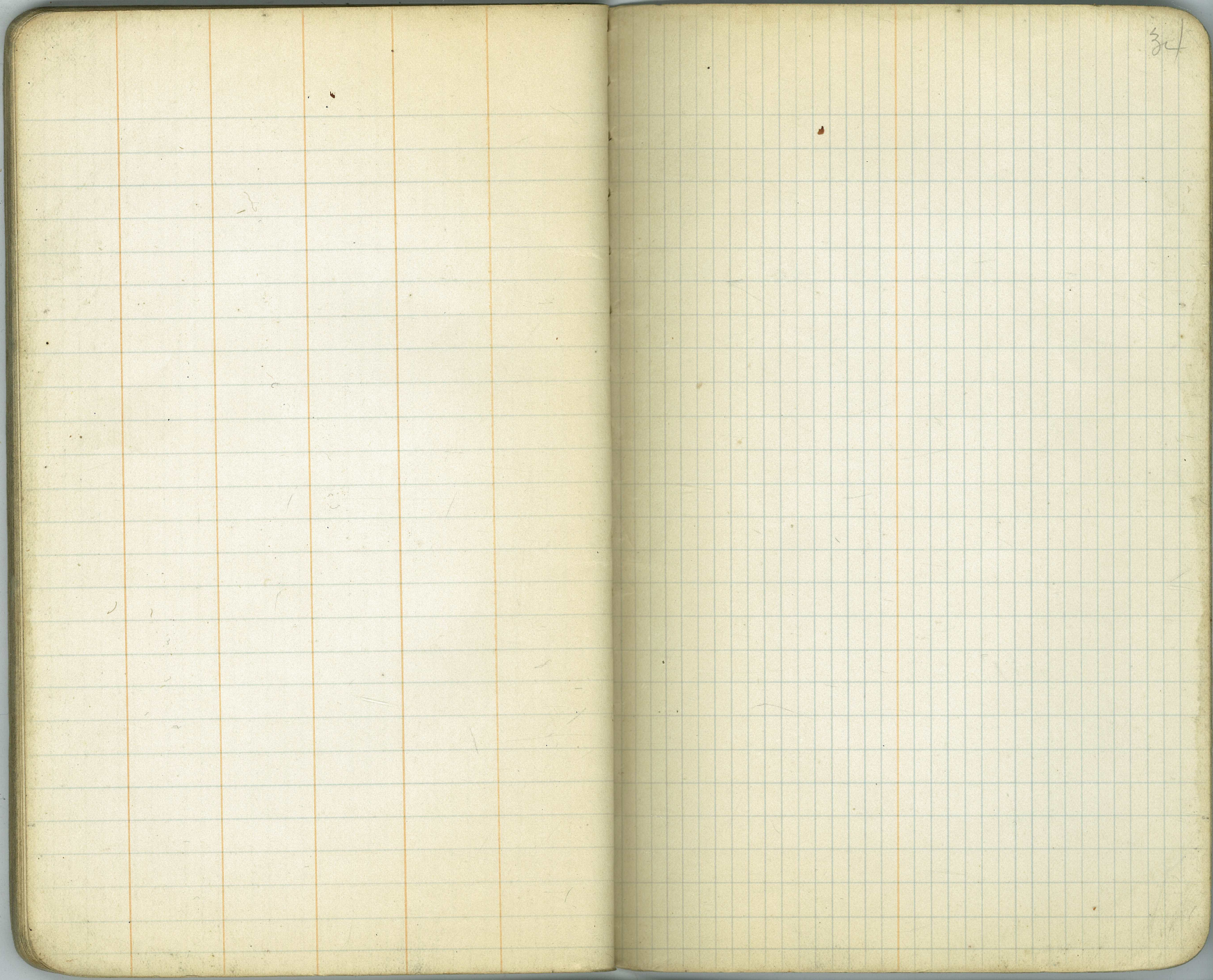
$A = 26^{\circ}53'$
 $R = 125$
 $T = 29.88$
 $L =$

Deflections

137 = $3^{\circ}09'$
+25 = $8^{\circ}53'$
+41.96 = $13^{\circ}26\frac{1}{2}'$

136+86.27
P.C.

Cont'd from Pg. 26



Blue #12

288.23

CutHub 40 Rt. 110+70

4.65 292.88

11400

4 A 88.5 289.1

+50

7.2
6.8 86.1 286.7

+85.03

8.2 847 285.3

11240

10.2 827 283

Blue #14

4.65 288.23

9/30/26

35

Coote

F 2.2
269

F 2.3
269

F 5.3
299

F 3.8
249

F 1.5
251

F 1.5
301

F 0.5
294

F 1.2
243

F 1.5
251

F 1.6
301

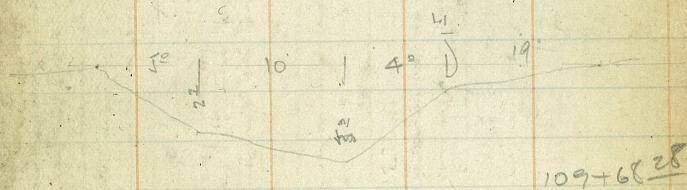
F 0.6
249

F 0.4
289

62+31.30
P.P.

1000
25' span

80136+y



$T=73.0$ $11144.01 =$
 $\Delta = 8^{\circ} 21'$ 11144.28
 85.03
 70.75

214
 13
 191

500.67'

30043
 7721

 223.22

106.02
 52.95

 47.57
 93.03

 4.54
 52.91

 56.79

41.50
 398

 4548

64256

1000
 35

 1075
 1000

 1000

1000 20 x 5