

Job # 88

NAME Broadway Extension

Class _____ Course Book # 5 Party _____

San Diego Ave.

SAN DIEGO AVE.
TRANSIT NOTES
TOPOGRAPHY

Roll # 66 (1964)

FIELD NOTES

No. 403P

ESPECIALLY ADAPTED
TO THE USE OF
ENGINEERING STUDENTS

EUGENE DIETZGEN Co.

MANUFACTURERS

DRAWING MATERIALS

MATHEMATICAL AND SURVEYING INSTRUMENTS

MEASURING TAPES

CHICAGO · SAN FRANCISCO · NEW YORK
NEW ORLEANS · PITTSBURGH

BROADWAY EXTENSION

Book # 5

San Diego Ave.

MICROFILMED

DEC 30 1964

INDEX -

	Page.
Alignment 0+00 to 71+37.35 - 65+49.03	1 - 9
San Diego Ave. X-Crossing	11

sta

± Ti-Outs

(Dorkal
Heathcote
Kinne)

0+00

Nail in
E. Side Penol
Line Pole

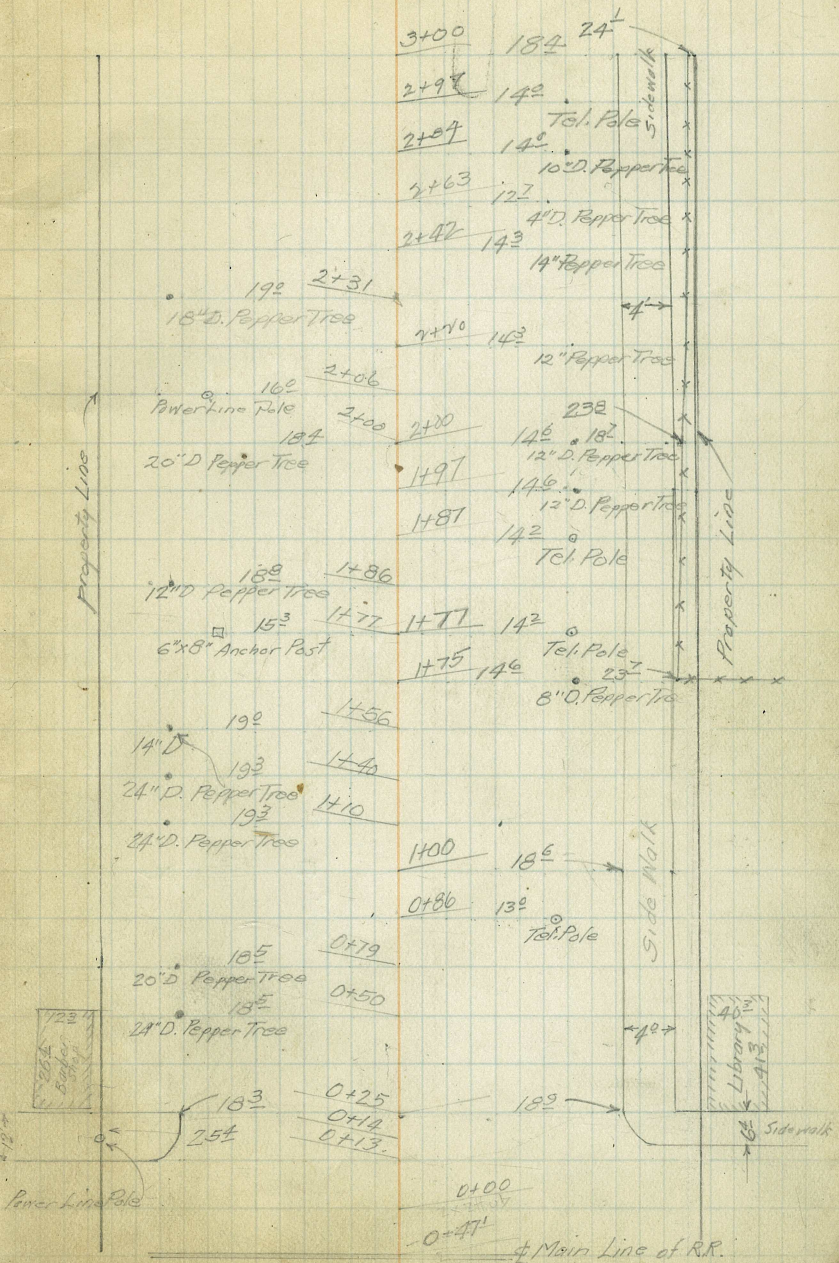
37⁸⁵ Nail in
Side of Blag

Penol Line Pole

0+00

0+11

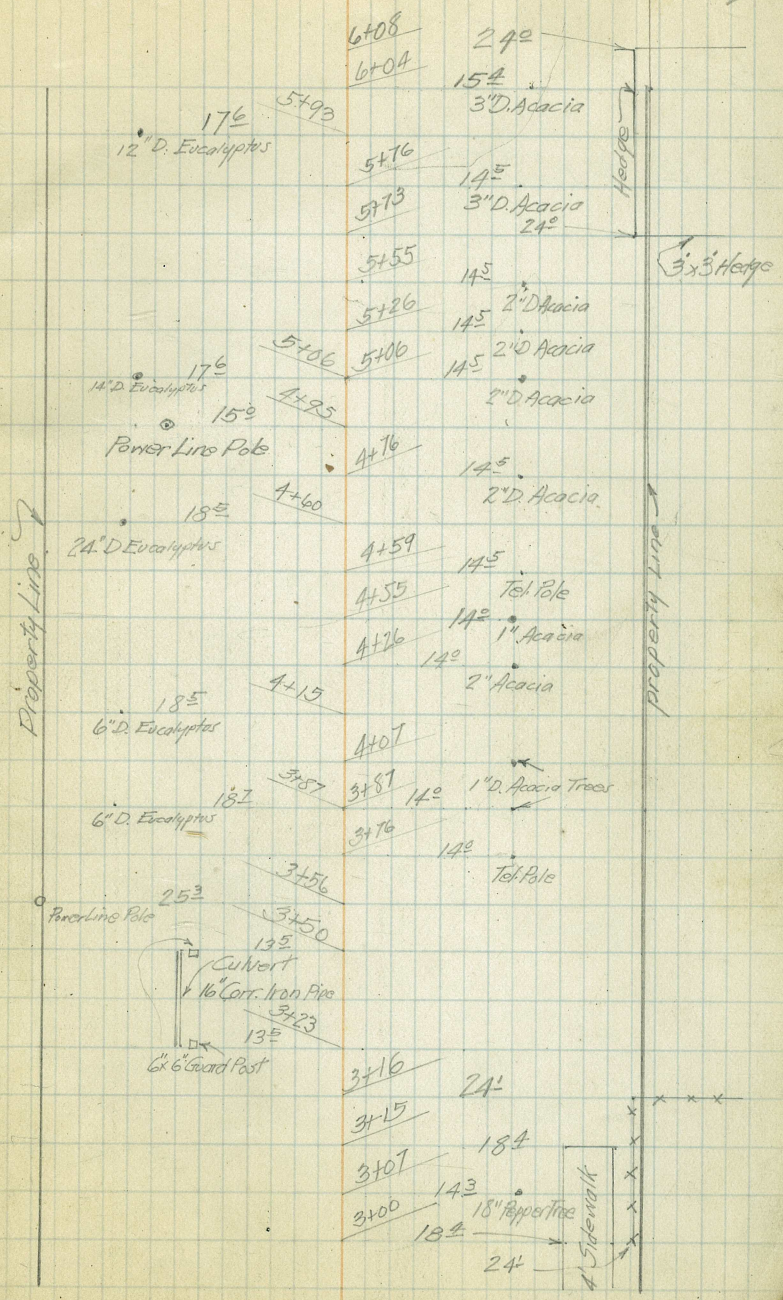
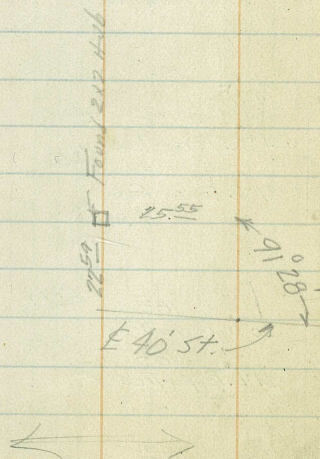
Main Line of R.R.



Sta

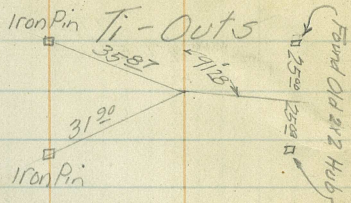
E
Ti-Outs

3+35.48



sta

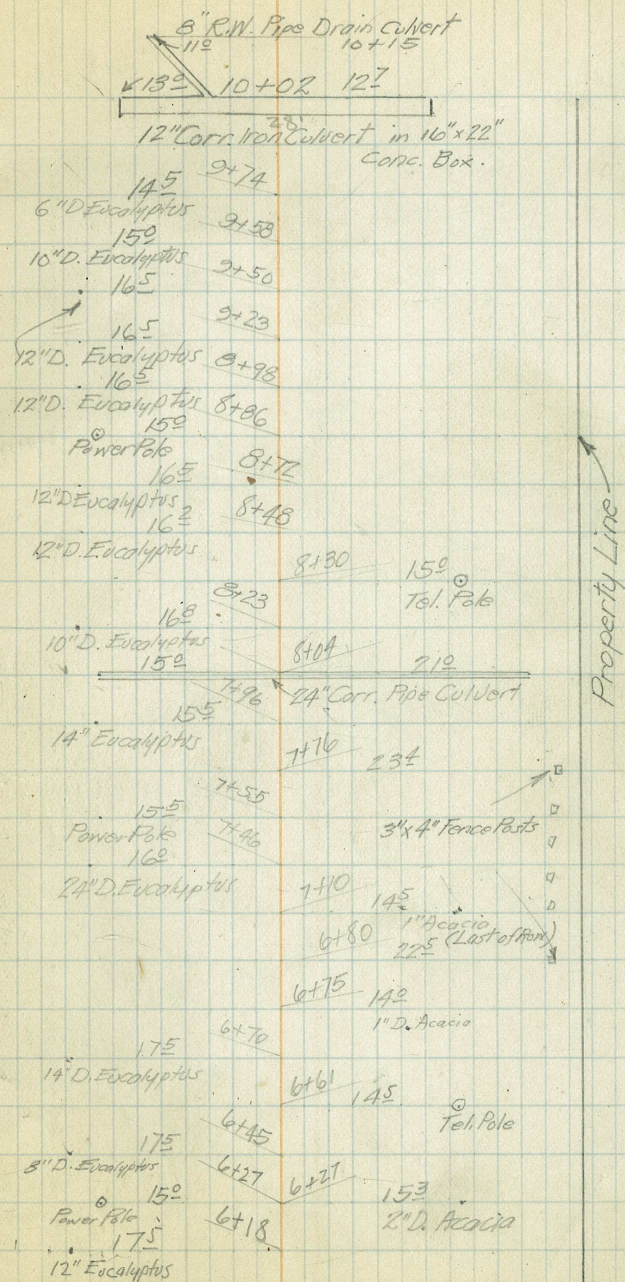
9+9080 \$ Buena Vista St.



Pipe in good cond -
 Can be used again

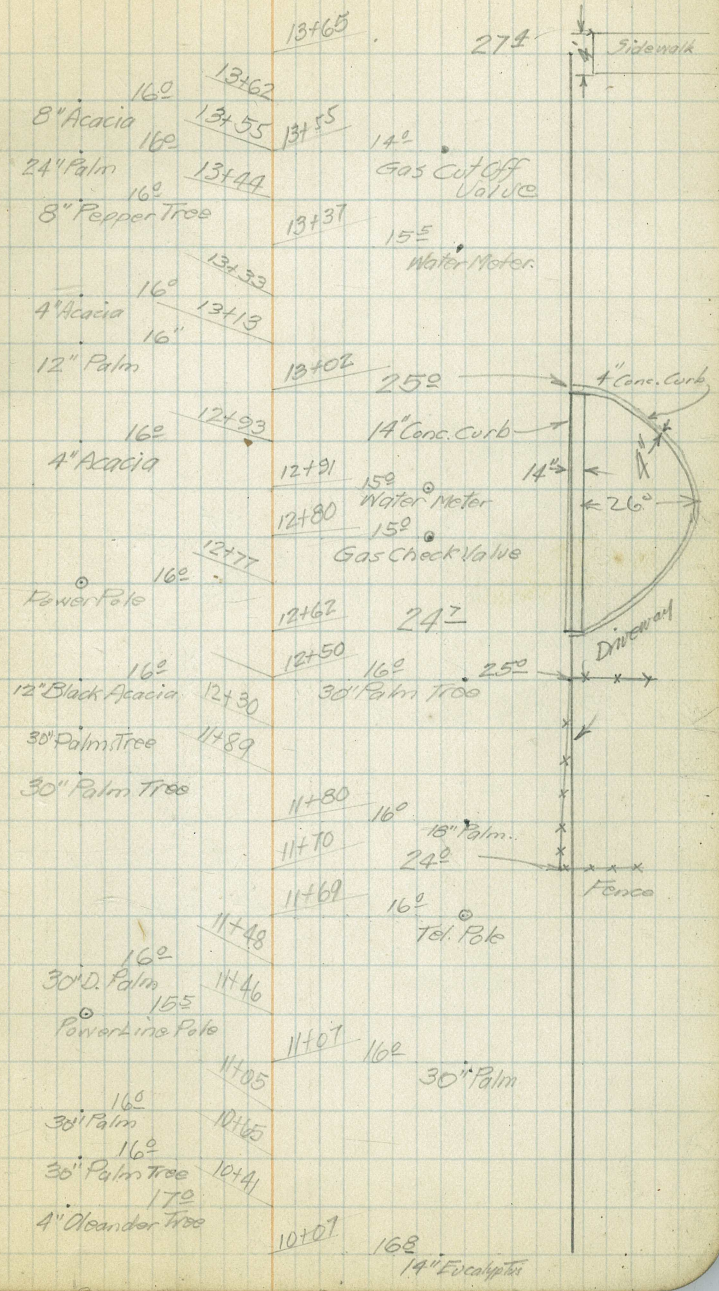
OK

Property Line



3

Property Line



13+65

274

Sidewalk

16" 13+62

8" Acacia 13+55 13+55

14"

24" Palm 13+44

Gas Cut Off Valve

8" Pepper Tree 13+37

15" Water Meter

16" 13+33

4" Acacia 13+13

12" Palm 13+02 252

4" Conc. Curb

16" 12+93

4" Acacia 12+91

14" Conc. Curb

14"

Water Meter

26"

12+80

15" Gas Check Valve

16" 12+77

Power Pole 12+67 247

Driveway

16" 12+50

12" Black Acacia 12+30

16" 250 30" Palm Tree

30" Palm Tree 11+89

30" Palm Trees 11+80 16"

18" Palm

11+70

24" Fence

11+69

16" Tel. Pole

16" 11+48

30" D. Palm 11+46

Power Line Pole 11+07 16"

30" Palm

16" 11+05

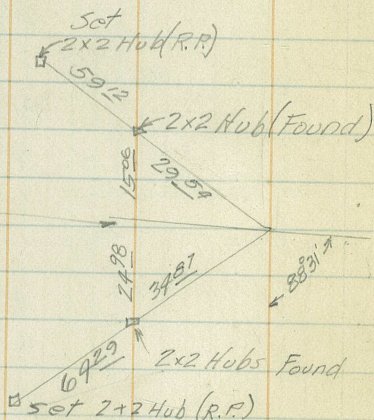
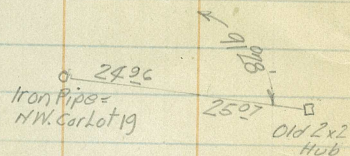
30" Palm 10+65

16" 30" Palm tree 10+41

4" Oleander tree 10+07

16" 14" Eucalyptus

Sta

E
Tl-Outs23+12⁰⁰21⁰ 24+8012" Cor. Iron Pipe
Culvert

20I 24+40

24+08	23 ⁰	Tel. Pole
22+56	23 ⁰	Tel. Pole
20+55	24 ⁵	Tel. Pole
18+71	23 ⁰	Tel. Pole
17+41	17 ⁰	Tel. Pole
17+24	17 ⁰	30" Palm
17+00	17 ⁵	2" D Lognut
16+89	17 ⁰	Tel. Pole
16+71	15 ⁵	2" D Lognut Tree
16+62	24 ⁰	30" Palm
16+33	25 ⁰	Wire Fence
15+98	16 ⁰	2" Water Line
15+87	15 ⁰	12" Palm
15+66	15 ⁰	Water Meter (2" Pipe Line)
15+44	16 ⁰	Tel. Pole
15+36	15+29	14 ⁰
15+29	14+58	36" Palm
14+58	16 ⁰	36" Palm
14+06	13+76	16 ⁵
14+06	13+76	Tel. Pole
16 ⁰		
Anchor Braca for Power Pole		
Last Pole on Power Line		
Power Pole		

Sta Dist Def. Ang. L R E

56+13²⁰

400°
Iron Pipe
9131
Iron Pipe

Ti-Outs

50+84²⁰F.H.

56+13.20
50+84.20
549.00

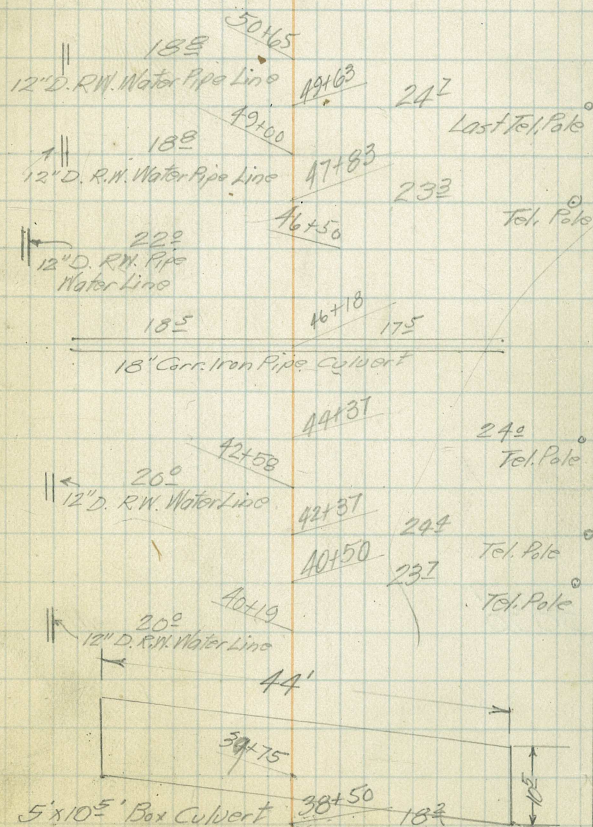
Install 22" Clu.P.
Sta. 49+55

This Clu.P. not needed
(In. good condition)

Install 2-18" Clu.P.
Sta. 42+00

Install 4x8 Box
Sta. 38+75

Cont'd on Pg. 8



Sta

Def. Ang
L R

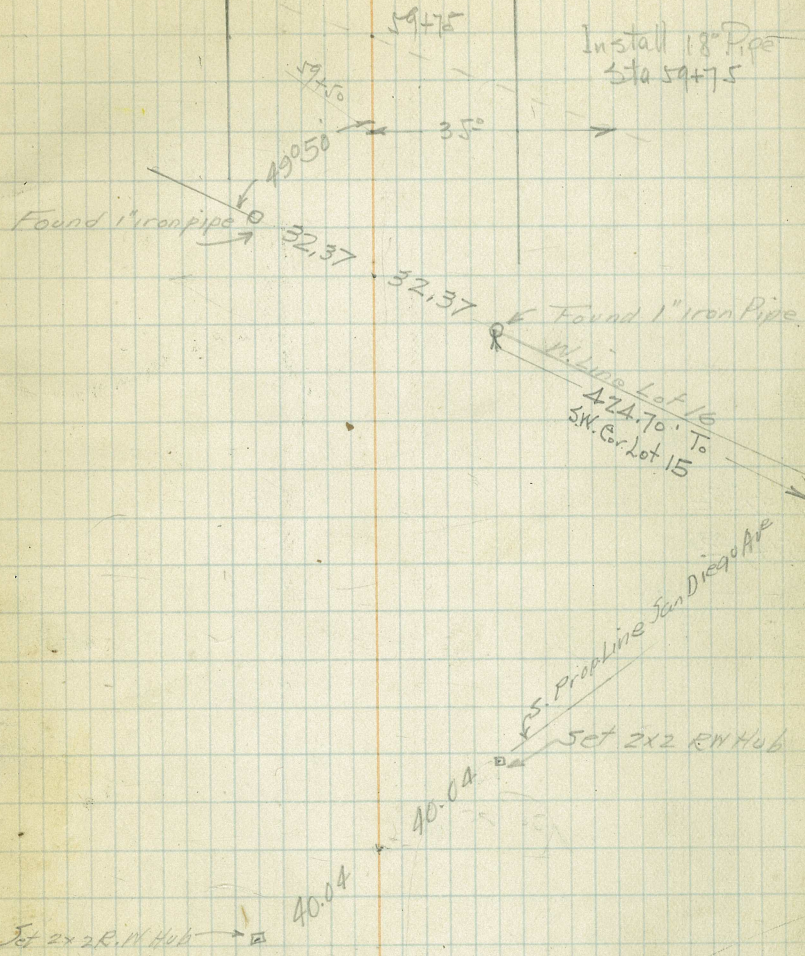
5776²⁹ RT

5777²⁹

50784²⁰ RT. 3838'

2 Draw

8



L B

$71737^{35} =$
 6574903
 P.O.T.

Equation -

Cont'd in Bk. 1, Pg 17

65132²⁰ P.I. 8°30'



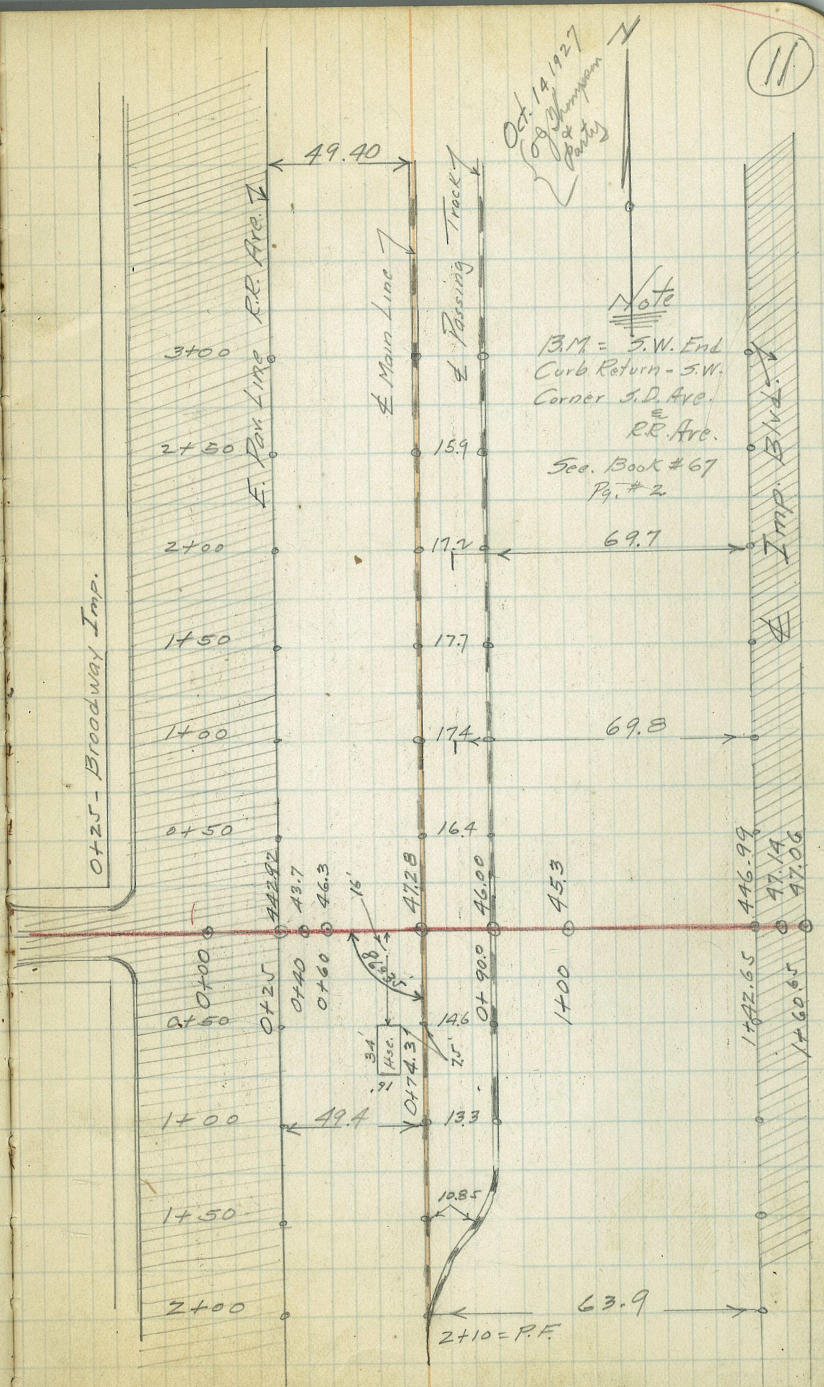
Install 18" Pipe
Sta 64+48

10

H & S. Stationing	Elevations E. Line R.R. Ave	Elev. E. Main Line Track.	Elev. E. Passing Track	Elev. W. Imperial Ave.	Remarks
3+00	443.3	48.3		46.8	
2+50	442.6	47.7		46.6	
2+00	442.2	47.4		46.5	
1+50	442.2	47.2		46.5	
1+00	442.4	447.0		46.7	
0+50	442.6	Top of Rail 447.03		46.8	
0+00					
0+50	443.1	Top of Rail 446.95		447.07	
1+00	443.3	46.8		47.1	
1+50	443.4	46.9		47.1	
2+00	443.5	46.5		47.2	

① 0+0 Line = E of San Diego Ave. produced.
 ② Stations N. & S. of 0+0 are actual measurements.
 ③ Curve & differences of Arc. lengths not taken into account

See next page



X- Sections of
Main Line Track

Sta.

3+00

2+50

2+00

1+50

1+00

0+50

0+00

0+50

1+00

1+50

2+00

±
Main
Track

12

East of ±

West of ±

$\frac{443}{50}$ $\frac{440}{35}$ $\frac{476}{25}$ $\frac{476}{14}$

48.3

$\frac{473}{70}$ $\frac{450}{160}$

$\frac{450}{59}$ $\frac{440}{35}$ $\frac{461}{27}$ $\frac{481}{16}$

47.7

$\frac{465}{7}$ $\frac{423}{15}$ $\frac{421}{21}$ $\frac{437}{27}$

$\frac{466}{62}$ $\frac{447}{54}$ $\frac{440}{36}$ $\frac{458}{25}$ $\frac{467}{17}$

47.4

$\frac{463}{7}$ $\frac{423}{14}$

$\frac{444}{20}$ $\frac{461}{30}$ $\frac{463}{17}$

47.2

$\frac{463}{70}$ $\frac{425}{18}$

$\frac{455}{41}$ $\frac{461}{17}$

47.0

$\frac{465}{70}$ $\frac{423}{22}$

$\frac{457}{42}$ $\frac{461}{17}$

47.0

$\frac{460}{14}$ $\frac{423}{22}$

± Passing Track

47.0

$\frac{463}{39}$ $\frac{464}{14}$

47.0

$\frac{464}{70}$ $\frac{450}{80}$ $\frac{458}{29}$

$\frac{461}{39}$ $\frac{463}{13}$

46.8

$\frac{468}{70}$ $\frac{440}{24}$

$\frac{456}{28}$ $\frac{465}{11}$

46.7

$\frac{466}{13}$ $\frac{442}{27}$

46.5

$\frac{458}{7}$

Sta	Dist	Def. Angle	
		L	R

69402-69
-71

14

15

16

17

18

f

19

20

21

22

24

25

26

27

28

29

30

31

32

33

34

35

478 5114.20
67 400.0
545 5074.20

5084.20
400.0

5484.20

$\frac{18}{2}$
= 9

1009' - 40' = 91.75

0.175

700

25

50

16

34

65

200

331

WATSON, VALLE & GOUGH