

68

NAME BROADWAY EXT
UNIT No 1-

Class _____ Course _____ Party _____

172

503 Broadway
San Diego

1967

FIELD NOTES

No. 403P

ESPECIALLY ADAPTED
TO THE USE OF
ENGINEERING STUDENTS

EUGENE DIETZGEN Co.

MANUFACTURERS

DRAWING MATERIALS

MATHEMATICAL AND SURVEYING INSTRUMENTS

MEASURING TAPES

CHICAGO SAN FRANCISCO NEW YORK
NEW ORLEANS PITTSBURGH

CROSS SECTIONS
STA 91+00 TO 93+50
Where GRADE Change
May be necessary

MICROFILMED
DEC 30 1964

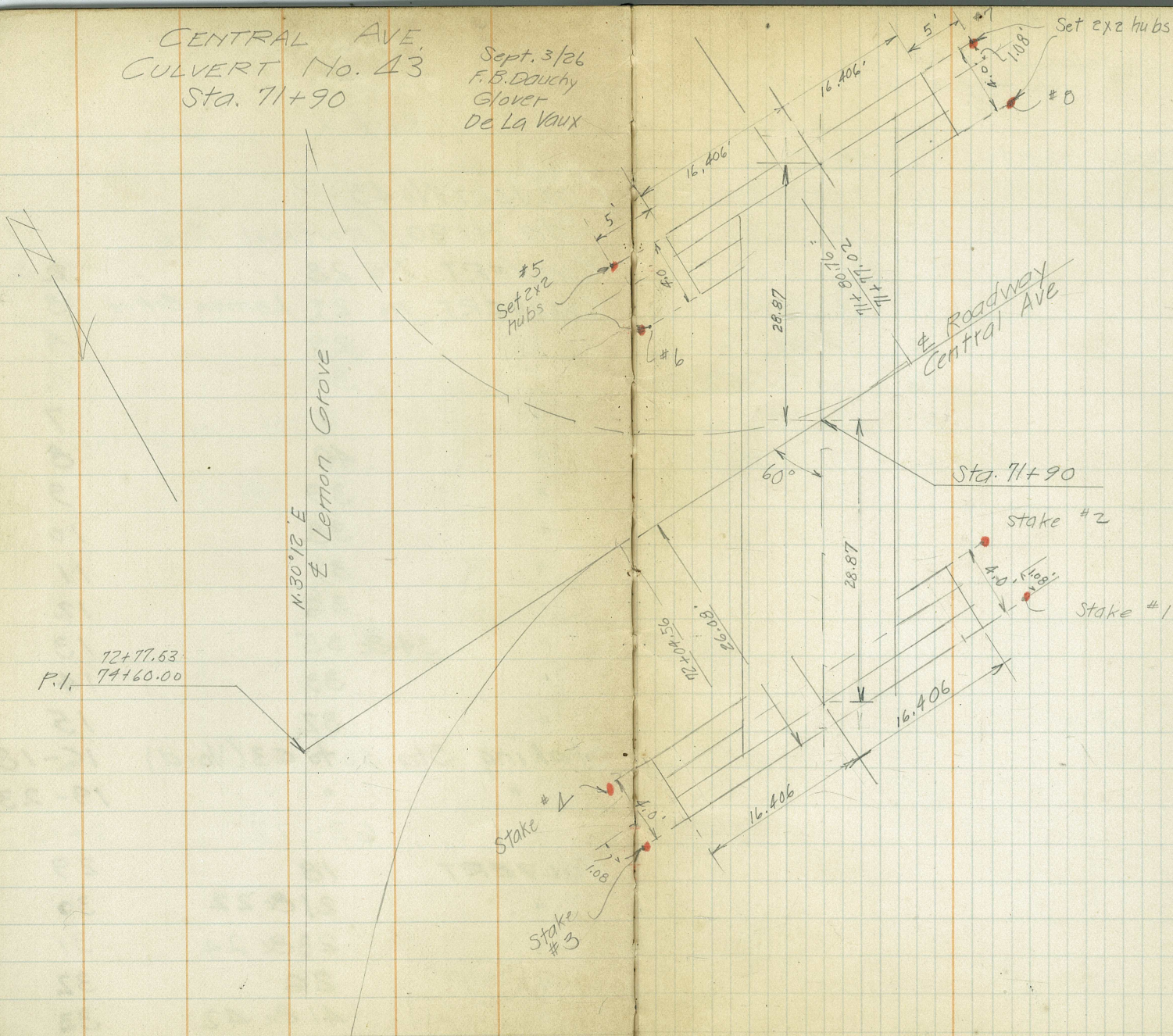
INDEX

PAGE

CULVERT No 43.		
Sta 71+90, CENTRAL AVE		1
CULVERT. No 28		2 & 5
CULVERT No 27, Lemon Grove		3
" 29		4
" 30		6
" 1		7
" 40		8
" 39		9
" 38		10
" 37		11
" 36		12
" 34 & 35		13
" 33		14
" 32		15
Staking Sta 53 to 63 (Void)		16-18
" "		19-23
" 62-72		24-27
CULVERT 18		29
" 21 & 22		30
" 23 & 24		31
" 26		32
" 41 & 42		33

CENTRAL AVE.
CULVERT No. 43
Sta. 71+90

Sept. 3/26
F. B. Dauchy
Glover
De La Vaux

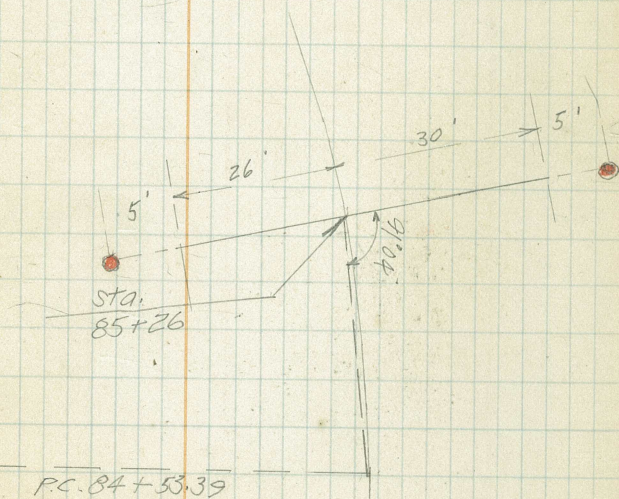


GRADE STAKES
CULVERT No 43

BM # 8	4.46	350.77	346.31	
Stake # 1	6.16	344.61	336.75	C-7.86
# 2	6.98	343.79	336.75	C-7.04
# 3	7.15	343.02	336.75	C-6.27
# 4	6.92	343.85	336.75	C-7.10
# 5	6.70	344.07	337.25	C-6.82
# 6	6.44	344.33	337.25	C-7.08
# 7	5.43	345.34	337.25	C-8.09
# 8	5.40	345.37	337.25	C-8.12

Sept. 3/26
F.B. Dauchy
Glover
De La Vaux

2



CULVERT No 28
LEITON GROVE AVE

CULVERT No. 27

Sta. 79+00

Lemon Grove Ave

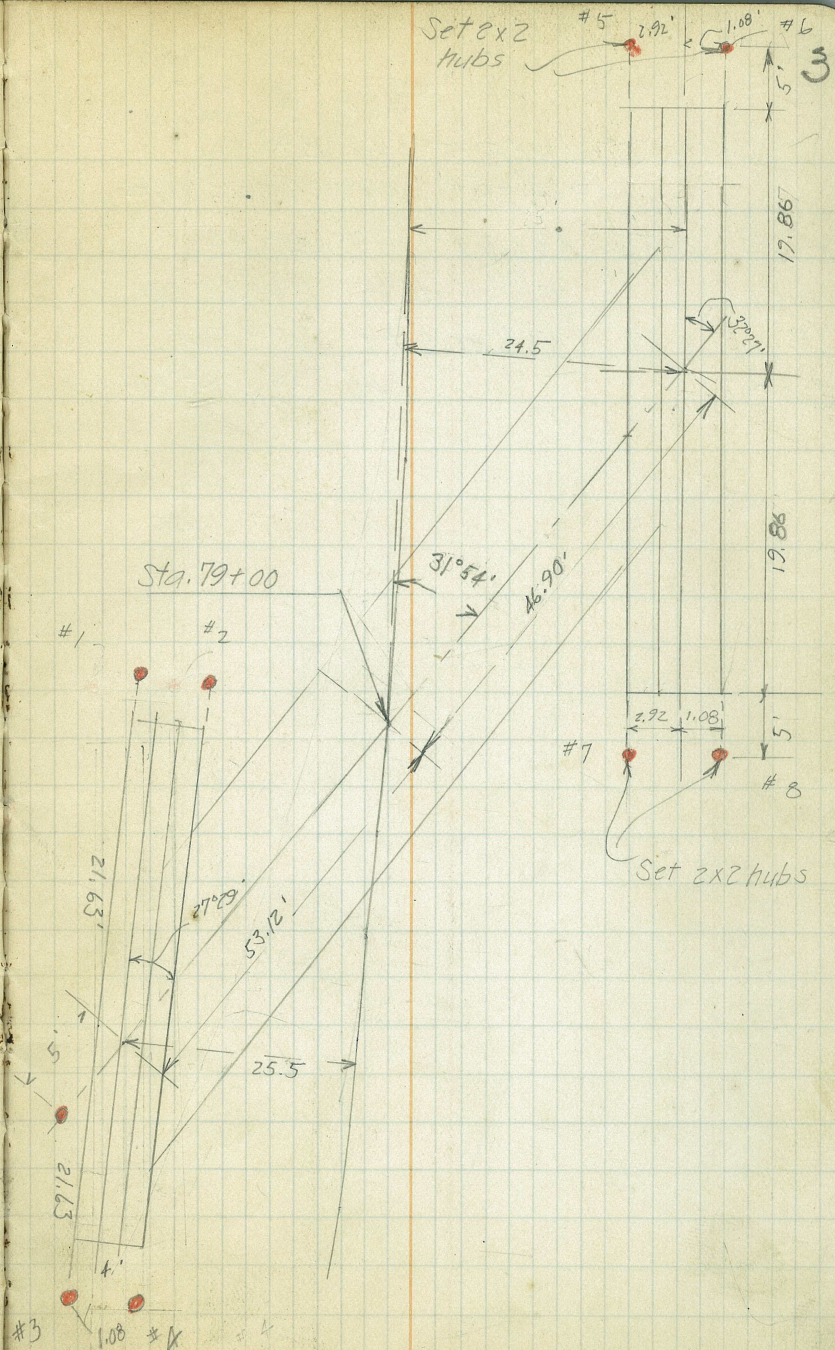
Sept. 4/26

F. B. Dauchy

Glover

De La Vaux

BM # 8	0.27	346.58	346.31	
	2.56	342.12	7.02	339.56
# 1		5.49	336.63	C-8.63 328.00
2		5.83	336.29	C-8.29 ✓
3		7.29	334.83	C-6.83 ✓
4		6.68	335.44	C-7.44 ✓
4		7.69	334.43	C-6.43 C-8.35
4		5.17	336.95	328.60
# 5		4.92	337.20	C-8.60
6		4.78	337.34	C-8.74
7		5.34	336.78	C-8.18
8		5.54	336.58	C-7.98



CULVERT No. 29
 Sta. 87+50 Lemon Grove Ave

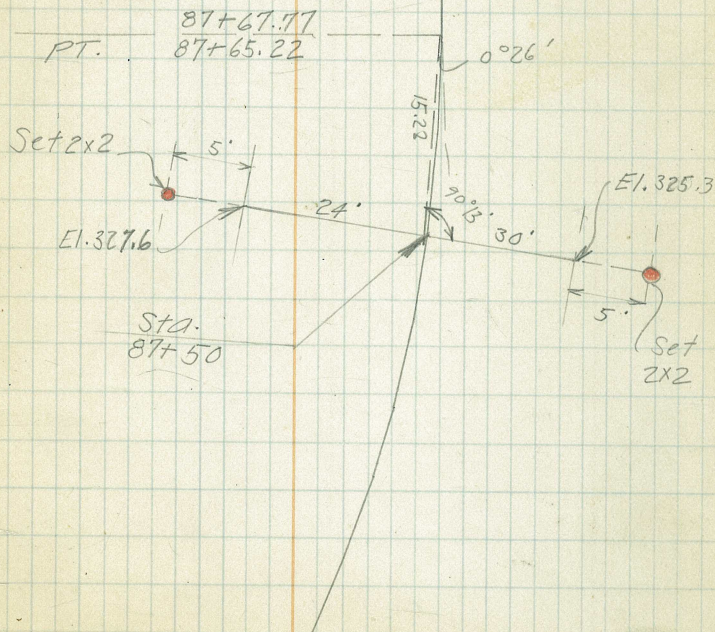
BM # 9	2.50	336.03	333.53
Lower		11.15	324.88 325.3
TP	8.87	338.41 6.49	329.54
Upper		1.46	336.95 327.60

F-0.4

C - 9.35

Sept. 7/26
 F.B. Dauchy
 Glover

4



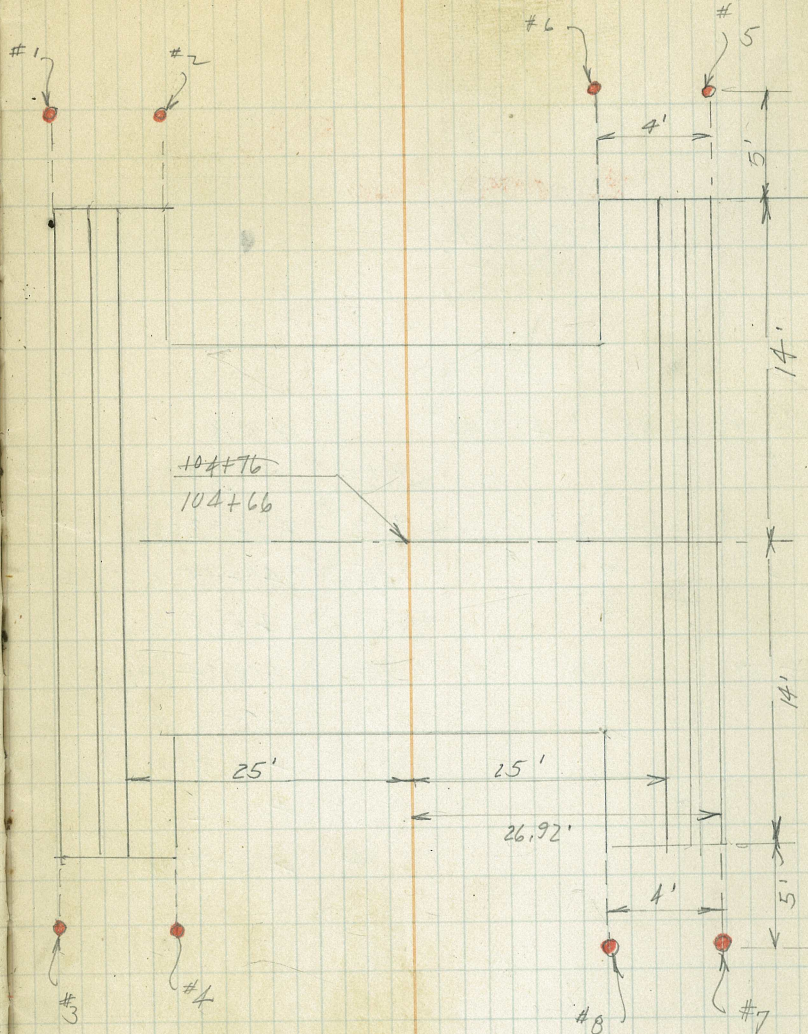
Culvert # 28

BM # 9	3.24	336.77	333.53	
Upper		5.51	331.26	326.8 C-4.5
Lower		7.77	329.00	326.3 C-2.7

CULVERT No. 30
 Sta. 104+76 **Staked**
± 104+66

BM #11 2.48 304.35 301.87

1	4.99	299.37	C-7.62 291.75
2	4.55	299.80	C-8.05
3	5.51	298.74	C-6.99 C-6.86
4	5.74	298.61	291.75 C-4.71
5	8.39	295.96	291.25
6	8.12	296.23	C-4.98
7	6.24	298.11	C-6.86
8	5.54	298.81	291.25 C-7.56

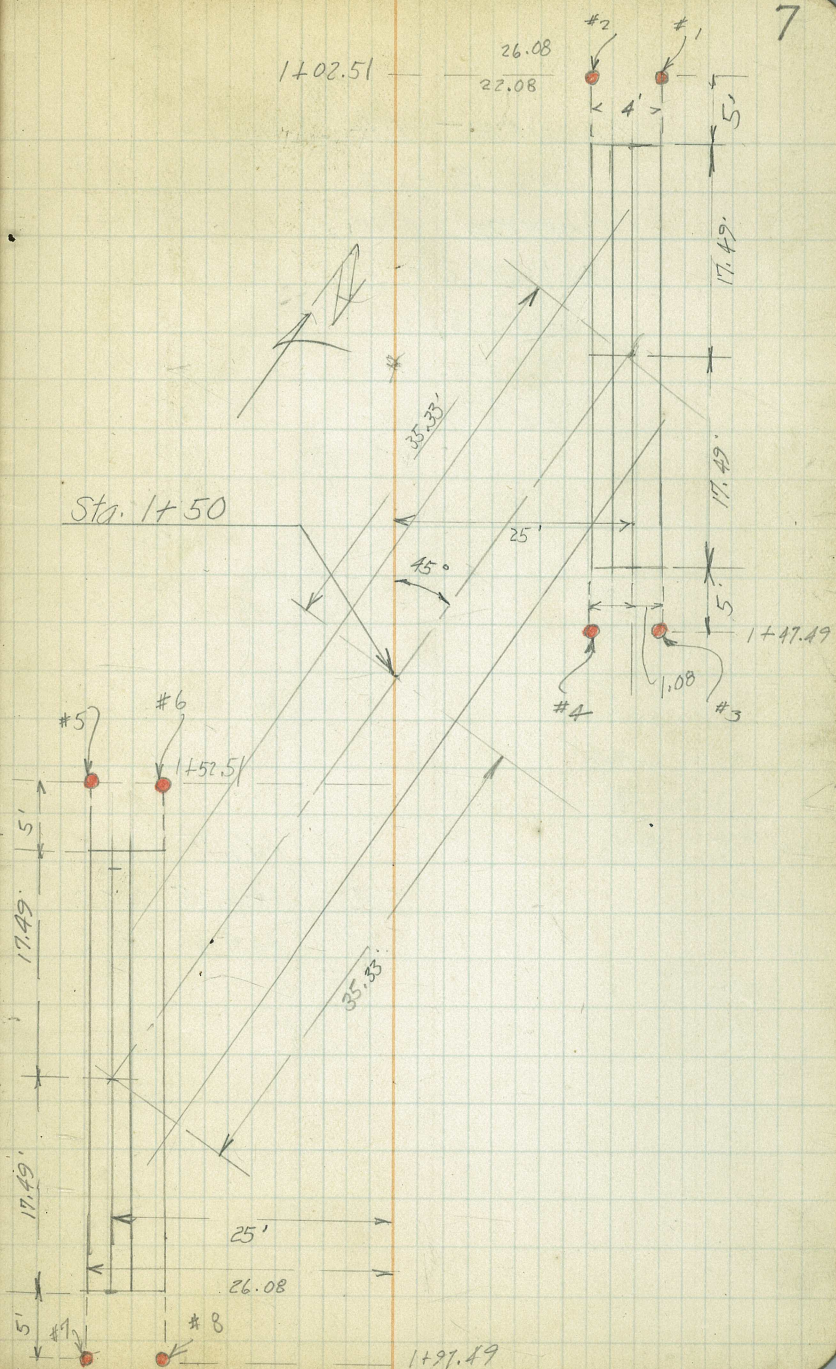


26.92
 2
 53.84

CULVERT No. 1.
 Massachusetts Ave.
 Sta. 1+50

Sept. 7/26
 F.B. Dauchy
 Glover
 H.E. Clifford

TP.	3.46	413.44	409.98
0+00			
#1	5.55	407.89	C-7.57
#2	9.12	404.32	396.75
#3	9.25	404.19	C-7.44
#4	9.17	404.27	C-7.52
#5	9.20	404.24	C-7.19 396.75
#6	10.08	403.36	C-7.61 395.75
#7	10.13	403.31	C-7.56
#8	8.60	404.84	C-9.09
	8.44	405.00	C-9.25

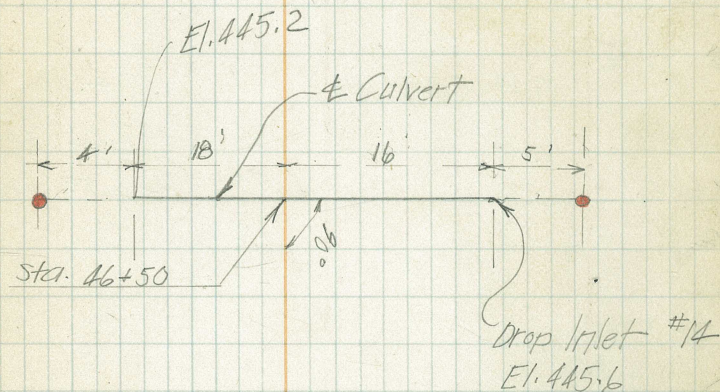


CULVERT No. 40

Sta. 46+50
Central Ave
34'-12" C.M.P.

Sept. 8/26

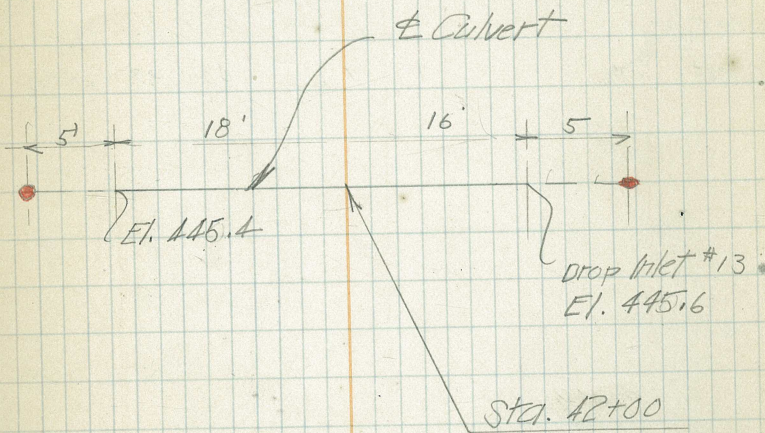
F.B. Dauchy
N. Glover
H.E. Clifton



BM #5	3.96	451.91	447.75	
Lower		5.36	446.35	6-1.15 445.2
Upper		2.31	449.40	0-3.8 445.6

CULVERT No. 39
 Sta. 42+00
 Central Ave.
 34'-12" C.M.P.
 Sept. 8/26
 F.B. Dauchy
 N. Glover
 H.E. Clifton.

42+00 R				
TP.	5.18	452.58	447.40	C-1.62
Upper		5.36	447.22	445.6
Lower		5.79	446.79	445.4



CULVERT No. 38

Sta. 34+75

Central Ave.

Sept. 8/26

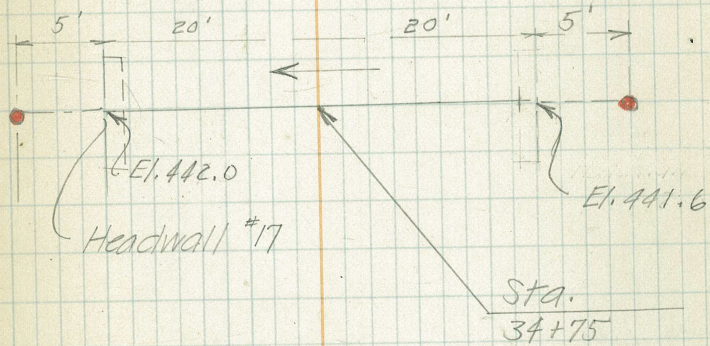
F.B. Dauchy

N. Glover

H.E. Clifton.

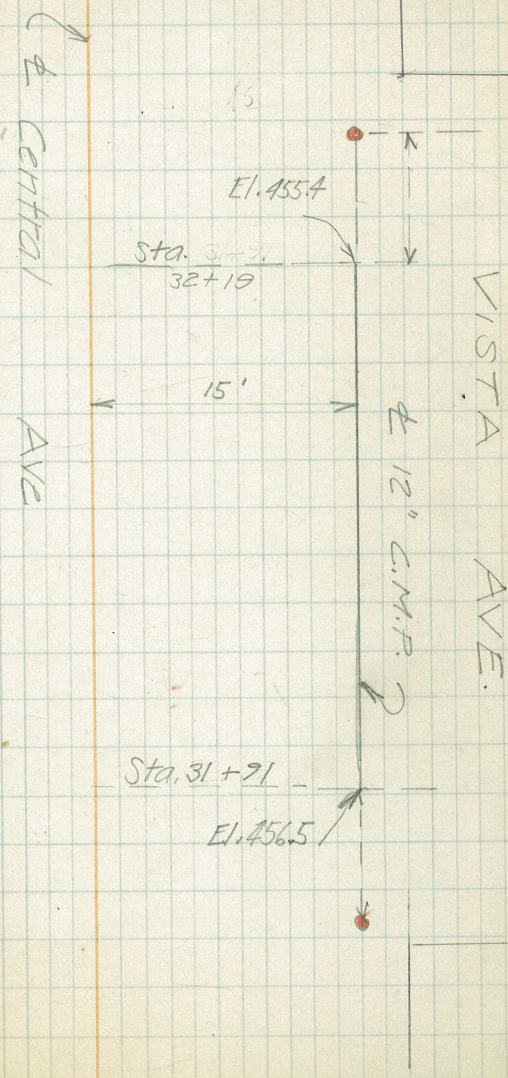
L E R

BM #4	0.09	151.63	451.54	F-2.06
Lower	12.09	439.54	441.60	
Upper	9.65	441.98	Grade	



CULVERT No. 37

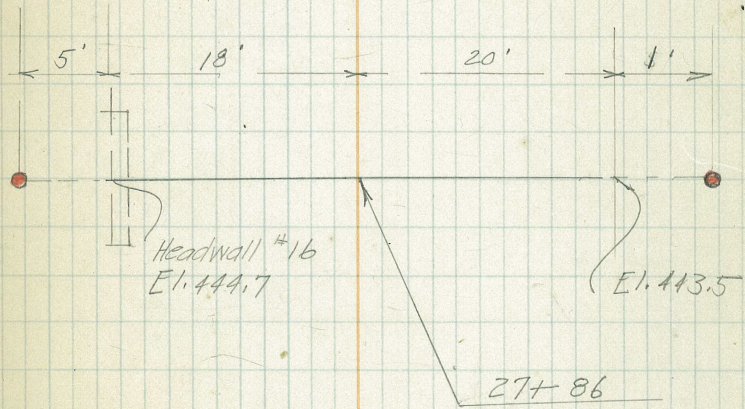
20' L 32+00	4.81	462.61	457.80	
Lower		5.99	456.62	C = 1.22 455.4
Upper	4.24	458.37	456.54	457.87



CULVERT No. 36
Sta. 27+86
Central Ave

Sept. 8 /26
F.B. Dauchy
N. Glover
H.E. Clifton

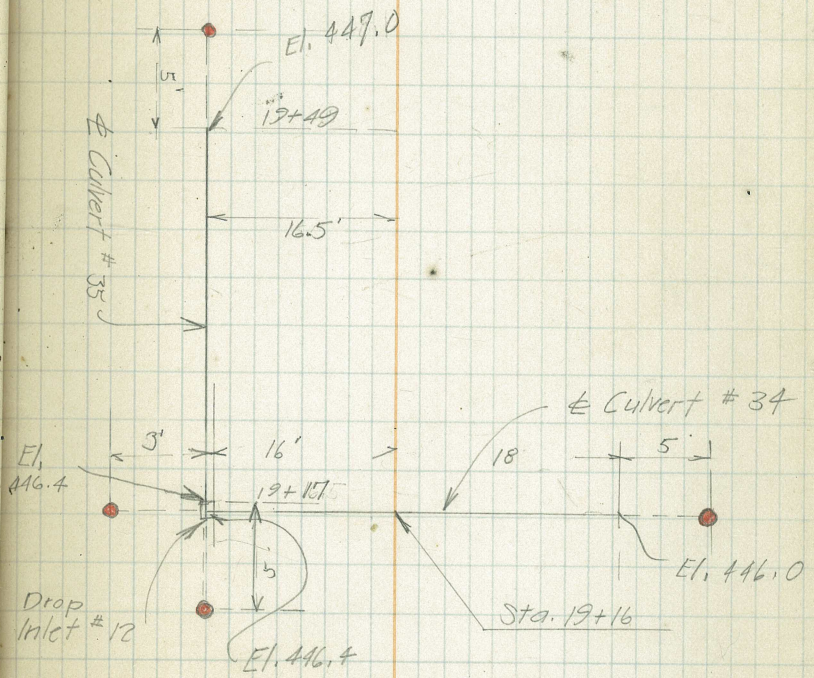
20' L					
28+00	5.60	451.50	445.90	C-0.9	
Upper		5.92	445.58	444.7	
		8.93	443.07	443.5	F-0.4



CULVERTS Nos. 34 & 35
Central Avenue.

Sept. 8/26
F.B. Dauchy
N. Glover
H.E. Clifton.

20' L					
19+00	5.58	453.48	447.90		
Lower					
35	5.23	448.25	446.4	C-1.85	
S. end					
34	5.21	448.27	446.4	C-1.87	
W. 35	5.17	448.31	447.0	C-1.31	
N. 34	7.30	446.18	446.00	C-0.18	



CULVERT No 33
Central Ave.

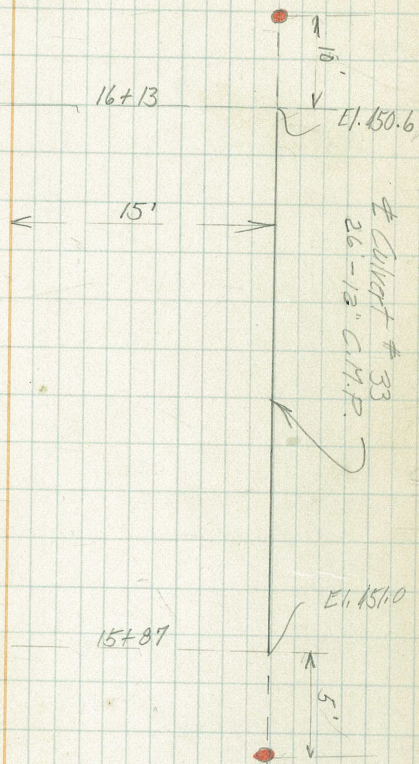
Sept 8/26

F.B. Dauchy

N. Glover

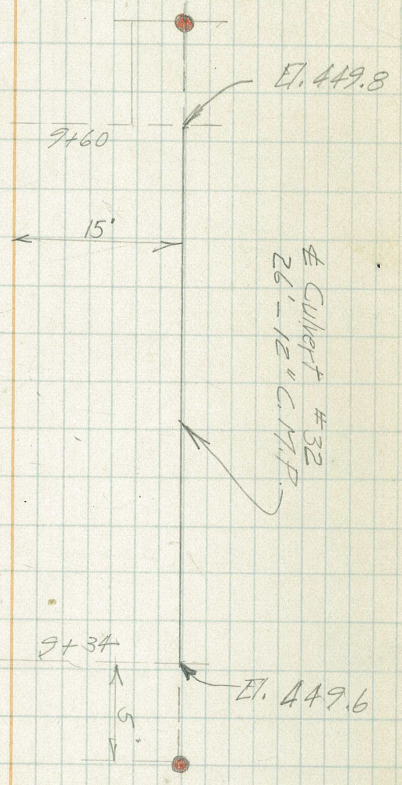
H.E. Clifton

BM [#] 2	4.42	457.22	452.80	
Lower		4.64	452.58	C-1.98 450.6
Upper		4.60	452.62	C-1.62 451.0



CULVERT No. 32
Central Ave

BM #1	6.26	456.71	450.45	
Upper		5.01	451.70	449.8
Lower		4.92	451.79	449.6
				C-1.90
				C-2.19



CENTRAL AVE
SLOPE STAKES

BM* 6. 1.22 438.00 436.78

55+37.72

55+72.97

56+08.23 =
56+07.03

TP 3.44 430.54 10.90 427.10

56+50

57+00

T.P. 1.69 422.89 9.34 421.20

57+50

58+00

L

R

C-5.2 $\frac{0.8}{22}$ $\frac{2.0}{17.0}$ $\frac{432.0}{6.0}$ 433.0 $\frac{437.4}{5.6}$ $\frac{5.6}{15}$ $\frac{5.6}{20}$ Grade

C-5.3 $\frac{2.3}{22}$ $\frac{3.4}{17}$ $\frac{430.4}{7.6}$ 431.43 $\frac{430.83}{7.2}$ $\frac{7.2}{15}$ $\frac{7.4}{20}$ F-0.2

C-2.6 $\frac{6.5}{21}$ $\frac{7.1}{16}$ $\frac{428.9}{9.1}$ 427.86 $\frac{429.3}{8.7}$ $\frac{9.6}{16.5}$ $\frac{9.8}{21.5}$ F-1.1

C-2.4 $\frac{1.2}{20.3}$ $\frac{3.5}{15.3}$ $\frac{426.9}{3.6}$ 427.94 $\frac{427.3}{3.2}$ $\frac{4.7}{17.3}$ $\frac{5.5}{22.3}$ F-2.3

C-1.7 $\frac{3.7}{21.5}$ $\frac{6.4}{16.5}$ $\frac{424.7}{5.4}$ 425.71 $\frac{425.1}{5.4}$ $\frac{10.6}{22.8}$ $\frac{11.0}{27.8}$ F-5.6

C-0.5 $\frac{+0.5}{22.2}$ $\frac{1.4}{17.2}$ $\frac{422.9}{0.0}$ 423.48 $\frac{422.9}{0.0}$ $\frac{5.1}{22.6}$ $\frac{5.7}{27.6}$ F-5.7

C-2.4 $\frac{+0.1}{21}$ $\frac{3.1}{16.0}$ 2.3 421.25 $\frac{420.6}{2.3}$ $\frac{10.1}{26.6}$ $\frac{10.9}{31.6}$ F-8.6

Void

Void

422.89

58+50

Root in road
T.P.

2.51

414.79

10.61

412.28

59+00

59+50

60+00

T.P.

2.70

409.48

8.01

406.78

60+50

61+00

61+50

L

R

17

12.6
16

6-0.4	$\frac{5.3}{22.0}$	$\frac{6.2}{17.0}$	$\frac{118.0}{9.9}$	$\frac{415.0}{19.02}$	$\frac{418.4}{4.5}$	$\frac{11.7}{25.8}$	$\frac{12.8}{30.8}$	F-8.3
-------	--------------------	--------------------	---------------------	-----------------------	---------------------	---------------------	---------------------	-------

F-1.1	$\frac{415.1}{40.3}$	$\frac{413.7}{1.1}$	416.2	416.79	$\frac{416.2}{.6}$	$\frac{407}{7.4}$	$\frac{406.5}{8.3}$	F-9.7
	23.8	18.8				28	33	

F-1.2	$\frac{2.0}{23.5}$	$\frac{3.0}{18.5}$	$\frac{414.0}{0.8}$	$\frac{410.3}{4.5}$	$\frac{414.0}{0.8}$	$\frac{9.2}{27.6}$	$\frac{10.0}{32.6}$	F-9.2
-------	--------------------	--------------------	---------------------	---------------------	---------------------	--------------------	---------------------	-------

F-1.5	$\frac{4.6}{23}$	$\frac{5.1}{18}$	$\frac{411.7}{3.1}$	412.33	$\frac{411.7}{3.1}$	$\frac{10.3}{25.8}$	$\frac{11.3}{30.8}$	F-8.2
-------	------------------	------------------	---------------------	--------	---------------------	---------------------	---------------------	-------

F-0.6	$\frac{1.0}{21.4}$	$\frac{1.3}{16.4}$	$\frac{409.1}{0.4}$	410.10	$\frac{409.5}{0.0}$	$\frac{6.8}{25.1}$	$\frac{7.4}{30.1}$	F-7.4
-------	--------------------	--------------------	---------------------	--------	---------------------	--------------------	--------------------	-------

C-0.8	$\frac{1.8}{20.2}$	$\frac{2.2}{15.2}$	$\frac{406.9}{2.6}$	407.87	$\frac{407.3}{2.2}$	$\frac{6.5}{21.5}$	$\frac{7.7}{26.5}$	F-5.5
-------	--------------------	--------------------	---------------------	--------	---------------------	--------------------	--------------------	-------

C-1.5	$\frac{3.4}{20.4}$	$\frac{4.1}{15.4}$	$\frac{404.6}{4.9}$	405.64	$\frac{405.0}{4.5}$	$\frac{6.1}{17.4}$	$\frac{6.6}{22.4}$	F-2.1
-------	--------------------	--------------------	---------------------	--------	---------------------	--------------------	--------------------	-------

Void

Void

409.48

62+00

T.P. 2.08 400.49 11.07 398.41

62+50

63+00

Void

C-1.0 $\frac{6.1}{20.3}$ $\frac{6.5}{15.3}$ $\frac{402.4}{7.1}$ 403.41 $\frac{402.8}{6.7}$ $\frac{10.4}{20.5}$ $\frac{11.3}{25.5}$ F-4.6

Grade $\frac{0.3}{20.2}$ $\frac{0.8}{15.2}$ $\frac{400.2}{0.3}$ 401.18 $\frac{400.5}{0.0}$ $\frac{5.7}{28.5}$ $\frac{6.2}{28.5}$ F-6.2

393.9

6.6

398.95

398.3

2.2

8.4

9.0

26.4

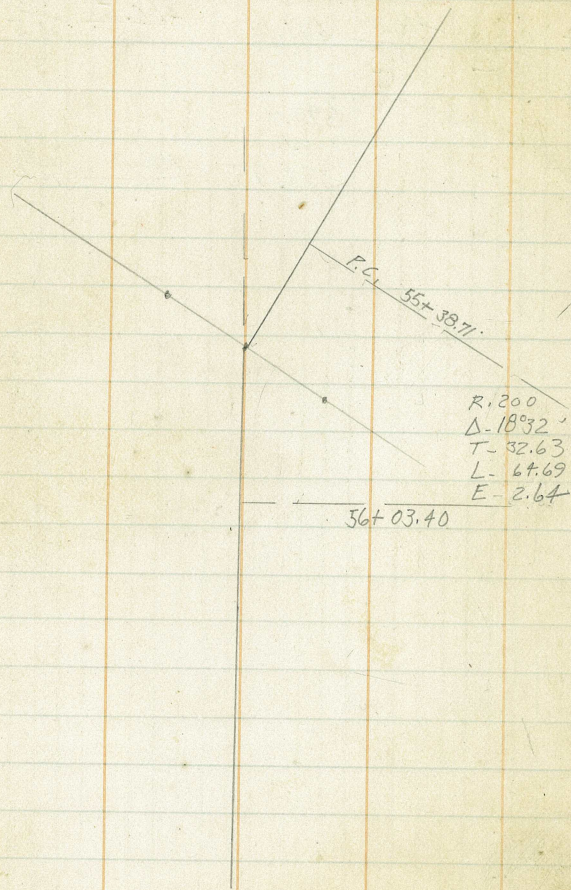
29.4

F-6.8

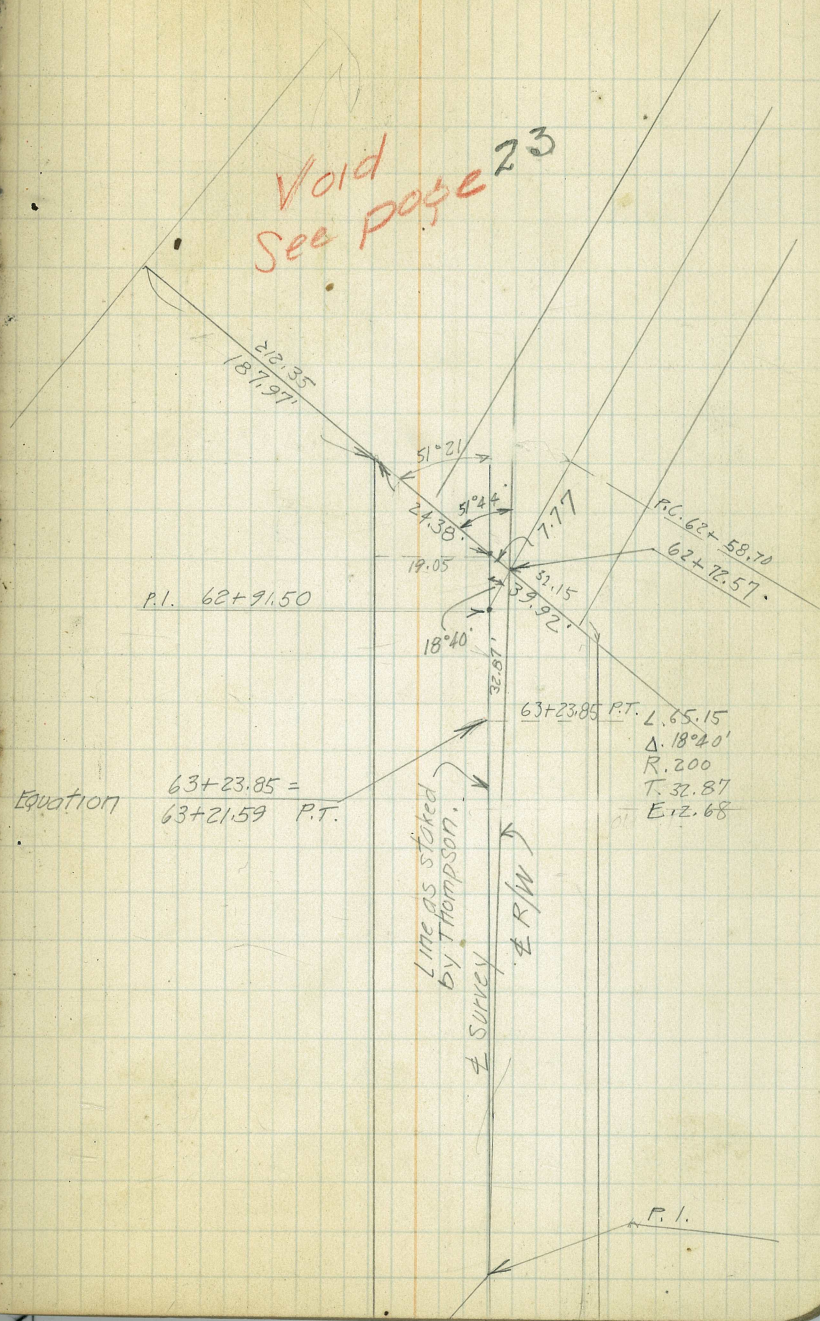
Void

LINE CHANGE
CENTRAL AVE.

Sept. 10/26
F.B. Dauchy
N. Glover
H.E. Clifton



Void
See page 23



CENTRAL AVE
Slope stakes
55+ to

Sept 10. 26
F.B. Dauchy
N. Glover
H.E. Clifton

L

E

20

R

BM #6 0.43 437.21 436.78

P.O.C.
55+ 71.05

C-5.2 $\frac{1.5}{21.9}$ $\frac{3.1}{76.9}$ $\frac{430.3}{6.9}$ 431.28 $\frac{430.7}{6.5}$ $\frac{6.5}{15}$ $\frac{6.5}{20}$ Grade

56+03.40

C-2.9 $\frac{5.8}{21.3}$ $\frac{6.2}{76.3}$ $\frac{428.5}{8.7}$ 429.54 $\frac{429.0}{8.2}$ $\frac{8.6}{15.6}$ $\frac{8.9}{20.6}$ F-0.7

T.P. 2.28 430.07 9.42 427.79

56+50

C-2.7 $\frac{1.4}{20.6}$ $\frac{3.8}{15.6}$ $\frac{426.0}{4.1}$ 427.05 $\frac{426.4}{3.7}$ $\frac{4.3}{15.9}$ $\frac{5.2}{20.9}$ F-1.5

57+00

C-0.5 $\frac{6.2}{20.5}$ $\frac{5.8}{15.5}$ $\frac{423.4}{6.7}$ 424.38 $\frac{423.8}{6.3}$ $\frac{10.3}{21}$ $\frac{10.7}{26}$ F-4.4

T.P. 1.31 422.51 8.87 421.20

57+50

F-0.4 $\frac{2.2}{20.3}$ $\frac{1.2}{15.3}$ $\frac{420.7}{1.8}$ 421.71 $\frac{421.1}{1.4}$ $\frac{5.6}{21.3}$ $\frac{6.1}{26.3}$ F-4.7

58+00

F-0.2 $\frac{4.7}{20.1}$ $\frac{4.1}{15.1}$ $\frac{418.0}{4.5}$ 419.04 $\frac{418.4}{4.1}$ $\frac{10.2}{24.1}$ $\frac{11.6}{29.1}$ F-7.5

T.P. 1.95 415.78 8.68 413.83

415.78

58+50

$$F_{0.4} \frac{0.8}{20} \frac{0.4}{15} \frac{415.4}{0.4} 416.37 \frac{415.8}{0.0} \frac{6.0}{24} \frac{7.4}{29} F-7.4$$

59+00

$$F_{0.1} \frac{3.2}{20} \frac{5.1}{15} \frac{412.7}{3.1} 413.70 \frac{413.1}{2.7} \frac{9.8}{25.7} \frac{10.6}{30.7} F-7.9$$

59+50

$$C-0.1 \frac{5.8}{20.1} \frac{5.5}{15.1} \frac{410.1}{5.7} 411.07 \frac{408.5}{7.3} \frac{11.5}{24.3} \frac{12.5}{29.3} F-7.2$$

T.P. 1.27 409.60 7.45 408.33

60+00

$$C-0.5 \frac{1.7}{20.5} \frac{1.2}{15.5} \frac{407.4}{2.2} 408.40 \frac{407.8}{1.8} \frac{7.1}{23} \frac{8.5}{28} F-6.7$$

60+50

$$C-1.6 \frac{3.3}{21.1} \frac{2.7}{16.1} \frac{404.7}{4.9} 405.73 \frac{405.1}{4.5} \frac{8.3}{20.7} \frac{9.1}{25.7} F-4.6$$

61+00

$$C-2.5 \frac{5.0}{21.6} \frac{4.2}{16.6} \frac{402.1}{7.5} 403.06 \frac{402.5}{7.1} \frac{8.2}{16.6} \frac{8.6}{21.6} F-1.5$$

61+50

$$C-4.6 \frac{5.6}{23.3} \frac{5.7}{17.3} \frac{399.4}{10.2} 400.39 \frac{399.8}{9.8} \frac{8.7}{15.5} \frac{9.0}{21.5} C-0.8$$

T.P. 1.68 401.74 7.54 400.06

4

R

21

401.74

62+00

$$C-3.5 \frac{1.5}{21.8} \frac{1.4}{16.8} \frac{396.7}{5.0} 397.72 \frac{397.1}{4.6} \frac{4.6}{15} \frac{4.6}{20} \text{Grade}$$

62+50

$$C-2.7 \frac{5.0}{21.8} \frac{4.2}{16.8} \frac{394.0}{7.7} 395.06 \frac{394.4}{7.3} \frac{8.4}{16.7} \frac{8.2}{21.7} F-1.6$$

BM.

0.82 400.92 400.89

P.C.
62+58.70

$$C-2.9 \frac{6.3}{21.8} \frac{4.7}{16.8} \frac{393.5}{8.2} 394.54 \frac{394.0}{7.7} \frac{8.6}{16.4} \frac{9.3}{21.4} F-1.6$$

62+91.27

$$C-2.1 \frac{7.8}{21.5} \frac{7.0}{16.5} \frac{391.8}{9.9} 392.8 \frac{392.2}{9.5} \frac{9.8}{15.4} \frac{10.7}{20.4} F-1.2$$

P.T.
63+23.85

$$C-1.3 \frac{7.3}{21.5} \frac{8.6}{16.5} \frac{390.1}{11.6} 391.08 \frac{390.1}{11.6} \frac{9.6}{16.0} \frac{10.3}{21.0} C-1.3$$

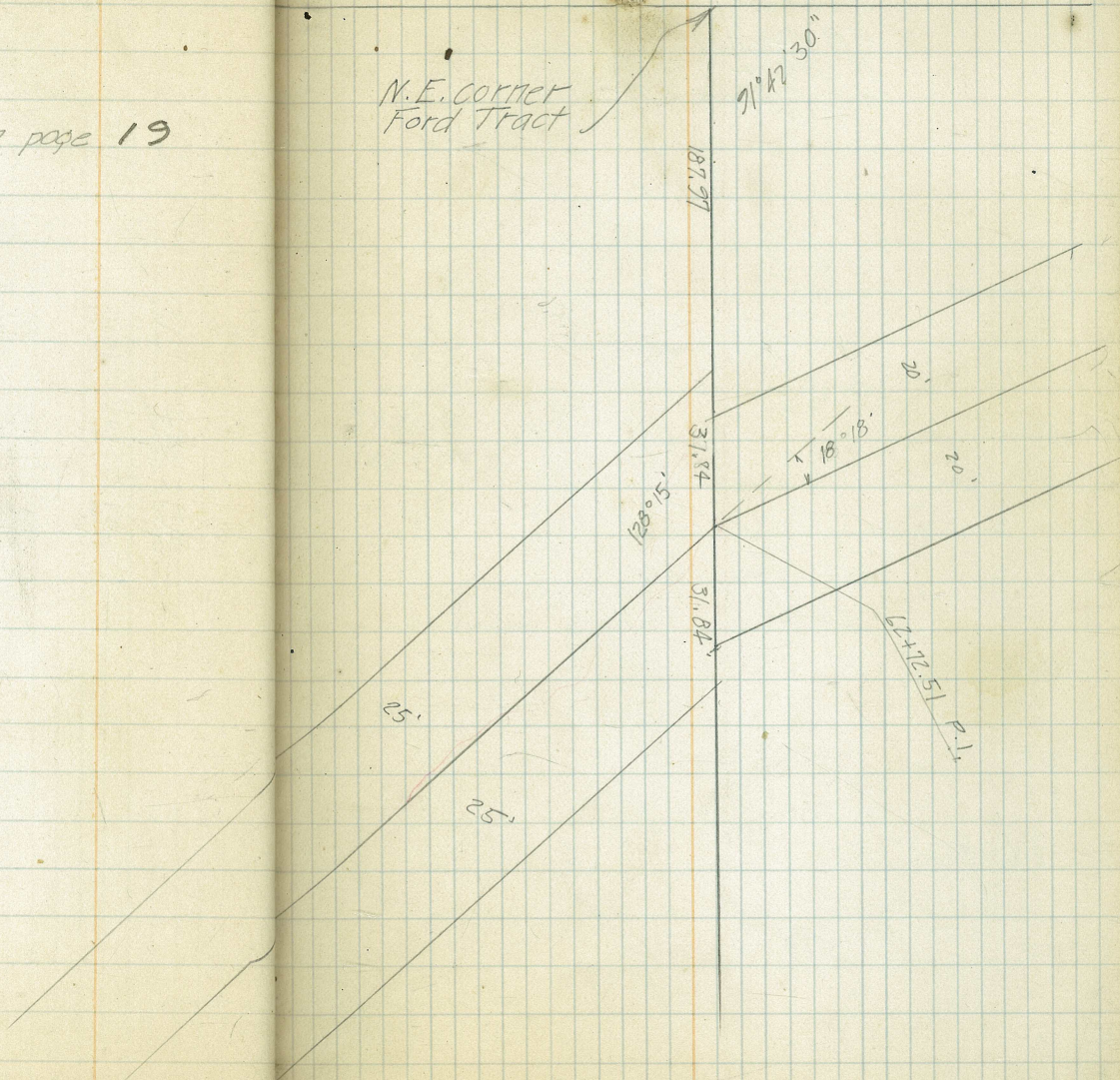
CENTRAL AVE
TIE TO EAST LINE FORD TRACT

Sept. 11/26

F.B. Dauchy
N. Glover
H.E. Clifford.

(this supercedes tie on page 19)

N.E. CORNER
Ford Tract

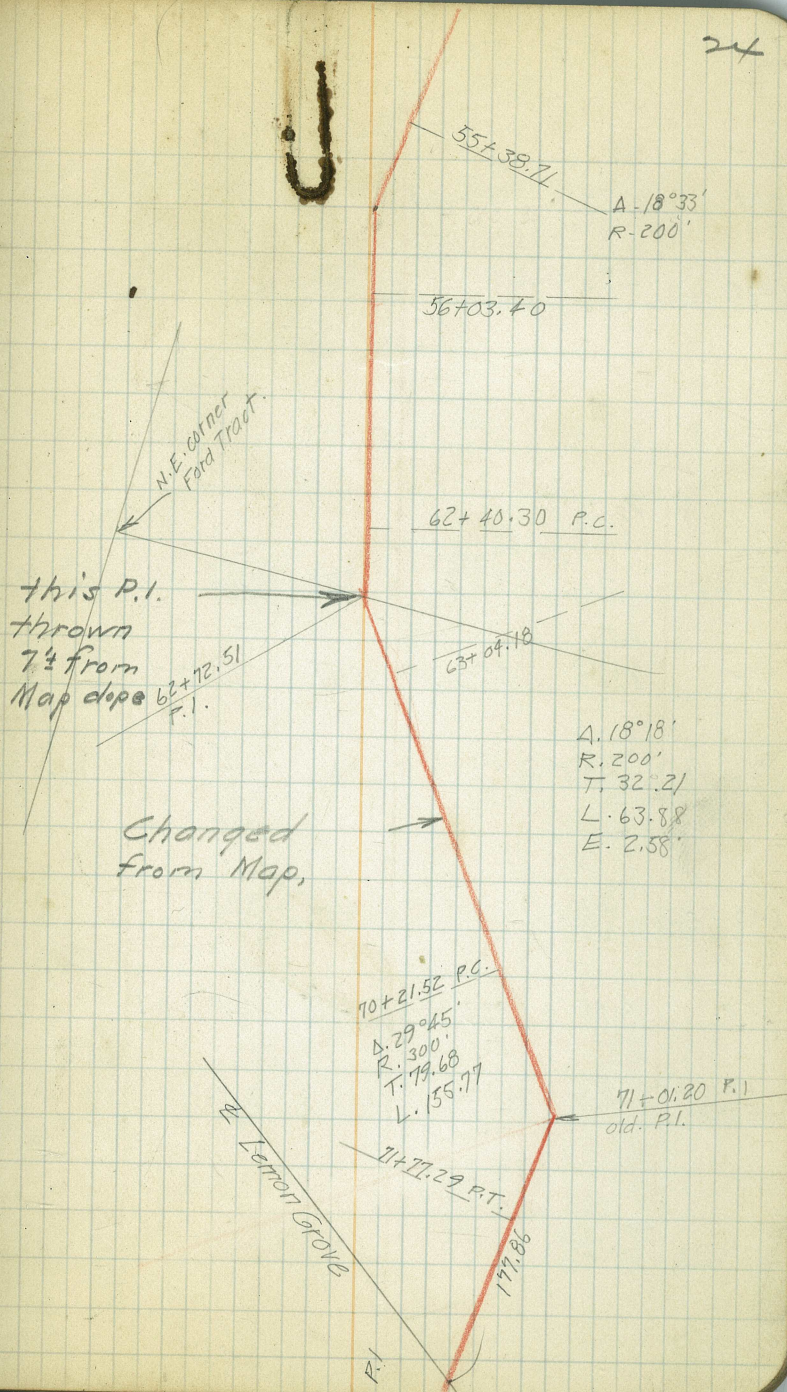


LINE CHANGE
 CENTRAL AVE
 Sta. 55+38.71 to 71+77.29
 FINAL LOCATION

Sept. 11/26

F.B. Dauchy
 M. Glover
 H.E. Clifton.

P.C.	Deflec.
70+21.52	
70+50	2°43'
71+01.20 P.I.	
71+00	7°29'
71+50	12°15'
71+77.29 P.T.	14°52'



CENTRAL AVE

Slope stakes

Sept 11/26

BM 0.79 401.68 400.89

62+72.24

C-2.5 $\frac{6.4}{21.7}$ $\frac{5.6}{16.7}$ $\frac{392.8}{8.9}$ 393.88 $\frac{392.8}{8.9}$ $\frac{7.4}{15.7}$ $\frac{8.7}{20.7}$ C-0.2

P.T.
63+04.18

C-4.3 $\frac{6.3}{21.4}$ $\frac{7.7}{15.7}$ $\frac{391.1}{10.6}$ 392.13 $\frac{391.5}{16.2}$ $\frac{10.2}{15}$ $\frac{10.9}{20}$ F-0.7

63+50

C-8.5 $\frac{4.5}{24.1}$ $\frac{4.8}{19.1}$ $\frac{388.7}{13.0}$ 389.71 $\frac{388.7}{13.0}$ $\frac{10.1}{16.5}$ $\frac{10.4}{21.5}$ C-2.6

T.P. 2.28 393.19 10.77 390.91

64+00

C-6.8 $\frac{0.3}{21.9}$ $\frac{3.4}{16.9}$ $\frac{386.1}{7.1}$ 387.07 $\frac{386.1}{7.1}$ $\frac{5.3}{15.9}$ $\frac{6.5}{20.8}$ C-0.6

64+50

C-3.0 $\frac{6.8}{21.5}$ $\frac{6.9}{16.5}$ $\frac{383.4}{9.8}$ 384.42 $\frac{383.8}{9.4}$ $\frac{10.8}{17.1}$ $\frac{11.1}{22.1}$ F-1.7

T.P. 0.55 383.58 10.16 383.03

65+00

C-0.3 $\frac{2.1}{21.2}$ $\frac{3.2}{16.2}$ $\frac{381.2}{2.4}$ 381.78 $\frac{381.2}{2.4}$ $\frac{4.9}{18.7}$ $\frac{6.0}{23.7}$ F-3.6

65+50

F-1.2 $\frac{6.3}{23.5}$ $\frac{7.4}{18.5}$ $\frac{378.5}{5.1}$ 379.13 $\frac{378.5}{5.1}$ $\frac{9.6}{21.7}$ $\frac{9.9}{26.7}$ F-4.8

383.58

66+00

$$C-0.2 \quad \frac{7.9}{21.5} \quad \frac{8.7}{16.5} \quad \frac{375.9}{7.7} \quad 376.49 \quad \frac{375.9}{7.7} \quad \frac{12.1}{21.7} \quad \frac{12.5}{26.7} \quad F-4.8$$

T.P. 3.32 376.37 10.53 373.05

66+50

$$C-1.5 \quad \frac{374.3}{20.7} \quad \frac{2.2}{15.7} \quad \frac{372.8}{3.6} \quad 373.84 \quad \frac{373.2}{3.2} \quad \frac{5.3}{18.1} \quad \frac{5.5}{23.1} \quad F-2.3$$

67+00

$$C-2.2 \quad \frac{4.0}{21} \quad \frac{4.2}{16} \quad \frac{370.2}{6.2} \quad 371.20 \quad \frac{370.2}{6.2} \quad \frac{4.8}{15.7} \quad \frac{5.7}{20.7} \quad C-0.5$$

67+50

$$C-4.7 \quad \frac{4.2}{21.4} \quad \frac{4.1}{17.4} \quad \frac{367.5}{8.9} \quad 368.55 \quad \frac{367.5}{8.9} \quad \frac{5.0}{17} \quad \frac{5.7}{22} \quad C-3.2$$

68+00

$$C-7.7 \quad \frac{3.8}{23.5} \quad \frac{4.1}{18.5} \quad \frac{364.9}{11.5} \quad 365.91 \quad \frac{364.9}{11.5} \quad \frac{9.0}{18.8} \quad \frac{9.7}{23.8} \quad C-1.8$$

T.P. 0.84 367.34 9.87 366.50

68+50

$$C-6.2 \quad \frac{4.1}{21.9} \quad \frac{4.2}{16.9} \quad \frac{362.3}{5.1} \quad 363.26 \quad \frac{362.3}{5.1} \quad \frac{4.2}{15.5} \quad \frac{4.8}{20.5} \quad C-0.3$$

69+00

$$C-2.7 \quad \frac{5.0}{23.5} \quad \frac{4.7}{16.5} \quad \frac{359.6}{7.7} \quad 360.62 \quad \frac{360.0}{7.3} \quad \frac{9.7}{18.6} \quad \frac{10.4}{23.6} \quad F-3.1$$

9.3 88 27
6.2 6.9
2 1.7

367.34

69+50

C-3.2 $\frac{7.1}{16.5}$ $\frac{357.0}{10.3}$ 357.97 $\frac{357.4}{10.0}$ $\frac{13.7}{20.5}$ $\frac{14.4}{25.5}$ F-4.4

T.P. 1.91 961.42 7.83 959.51

70+00

C-4.8 $\frac{2.3}{21.7}$ $\frac{3.8}{16.7}$ $\frac{354.3}{7.1}$ 355.33 $\frac{354.7}{6.9}$ $\frac{10.0}{19.9}$ $\frac{10.1}{24.9}$ F-3.4

70+21.52

C-5.5 $\frac{2.7}{22}$ $\frac{4.2}{17}$ $\frac{353.2}{8.2}$ 354.19 $\frac{353.6}{7.8}$ $\frac{10.4}{19.0}$ $\frac{11.2}{24}$ F-3.4

70+50

C-6.7 $\frac{3.1}{22.8}$ $\frac{4.2}{17.8}$ $\frac{351.6}{9.8}$ 352.64 $\frac{352.0}{9.4}$ $\frac{9.7}{18.3}$ $\frac{10.3}{20.3}$ F-0.9

T.P. 2.20 954.00 9.62 951.80

71+06

C-4.9 $\frac{0.1}{22}$ $\frac{1.0}{17}$ $\frac{349.0}{5.0}$ 350.0 $\frac{349.0}{5.0}$ $\frac{4.0}{15.5}$ $\frac{4.7}{20.5}$ C-0.1

71+50

F-0.3 $\frac{7.3}{21.2}$ $\frac{7.8}{16.2}$ $\frac{347.0}{7.0}$ 347.6 $\frac{347.0}{7.0}$ $\frac{8.4}{17.1}$ $\frac{9.0}{22.1}$ F-2.0

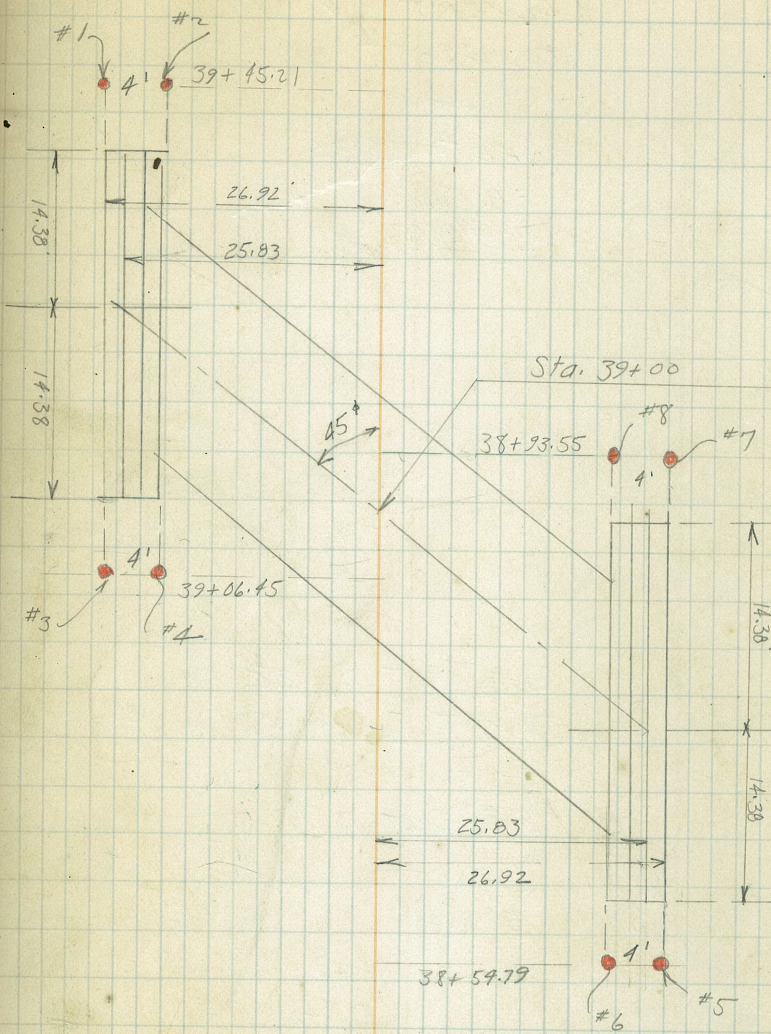
BM#8

7.96 3460.4 346.31

CULVERT No. 18
 Sta. 39+00
 San Diego Ave
 Sept. 11/26

B.M.	3.70	406.36	402.66	C-5.96
# 1		8.42	397.91	392.45
# 2		9.17	397.19	C-4.74
# 3		8.72	397.64	C-5.19
# 4		8.56	397.80	C-5.35
# 5		8.57	397.79	C-5.84
# 6		8.70	397.66	C-5.71
# 7		8.13	398.23	C-6.28
# 8		8.06	398.30	C-6.35

B.M. 2.28 401.08

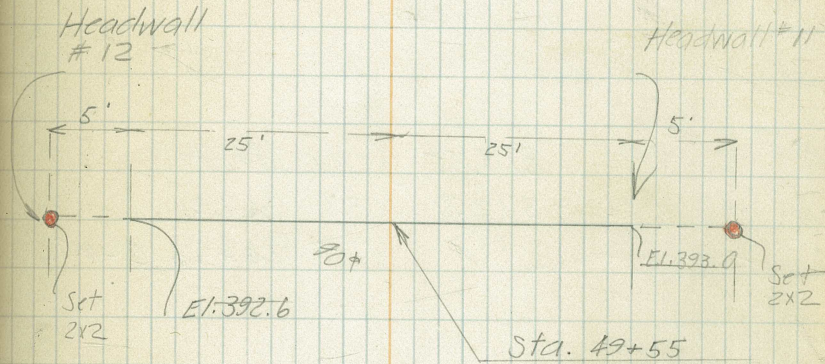


CULVERT No. 21
Sta. 49+55 San Diego
Ave.

Sept. 13/26

F.B. Dauchy
N. Glover
H.E. Clifton.

L	49+50	8.01	399.93	391.92	
Lower			8.63	391.30	Grade
Upper			7.93	392.00	Grade



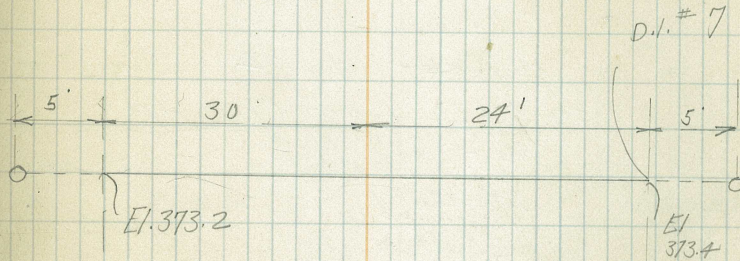
CULVERT No. 22

Sta. 59+75 Lemon Grove Ave.

Sept. 13/26

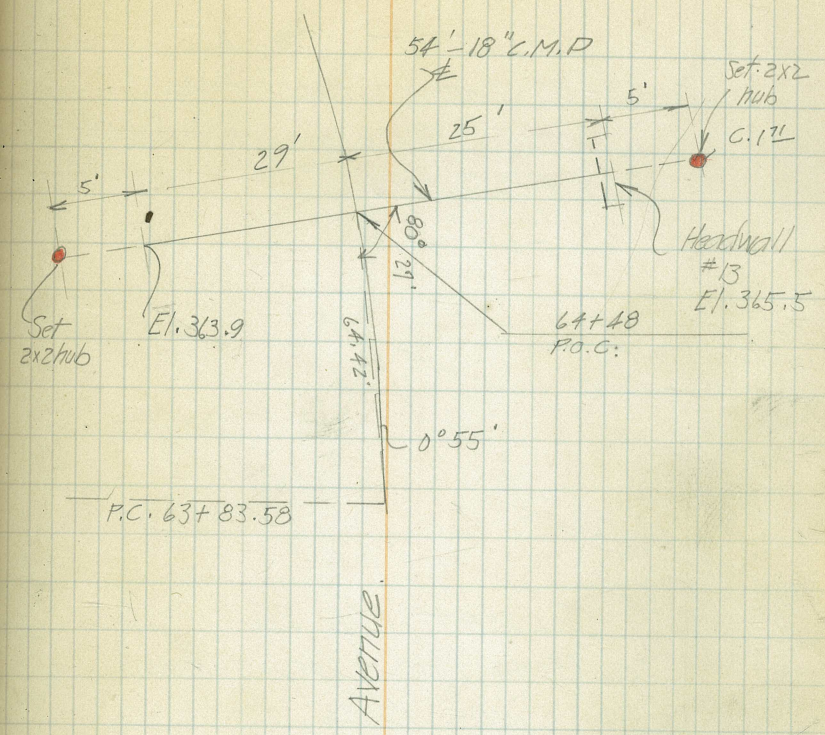
F.B. Dauchy

BM #7	0.51	380.48	379.97	
Upper			4.73	375.75 C-2.35
Lower			5.84	374.64 C-1.44



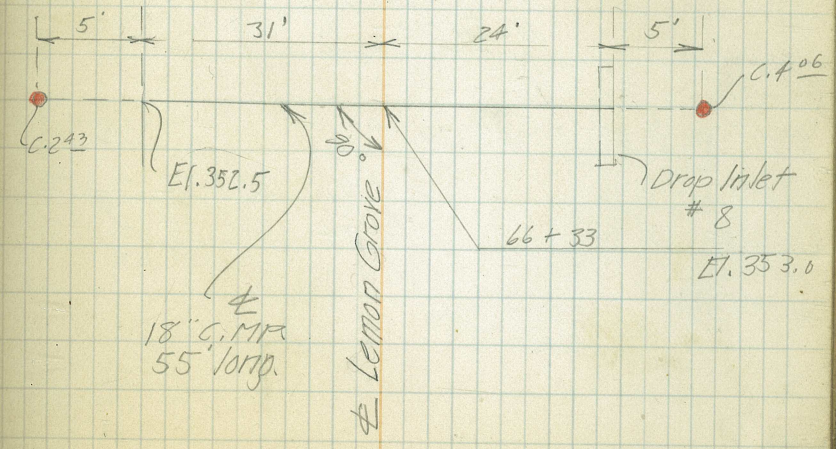
CULVERT No. 23
 Sta. 64+48
 Lemon Grove Ave.
 Sept. 13/26
 F.B. Daudy
 N. Glover
 H.E. Clifton

TP.	3.95	378.59		374.64	
Upper	6.60	373.81	11.38	367.21	C-1.71
Lower			8.15	364.66	C-0.76



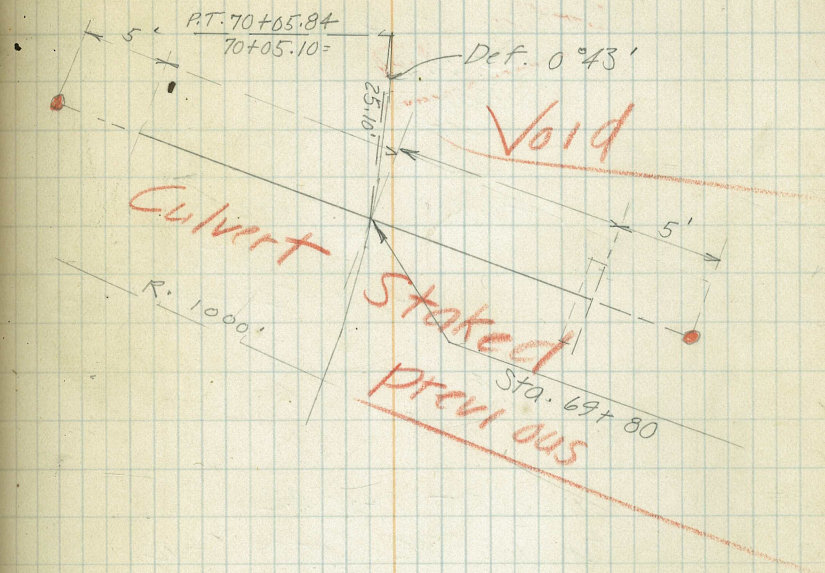
CULVERT No. 24
 Sta. 66+33 Lemon Grove Ave
 Sept. 13/26
 F.B. Daudy
 N. Glover
 H.E. Clifton

BM	3.01	361.68		358.67	
Upper			4.62	357.06	C-4.06
Lower			6.75	354.93	C-2.43



CULVERT No. 25
Sta. 69+80 Lemon Grove Ave

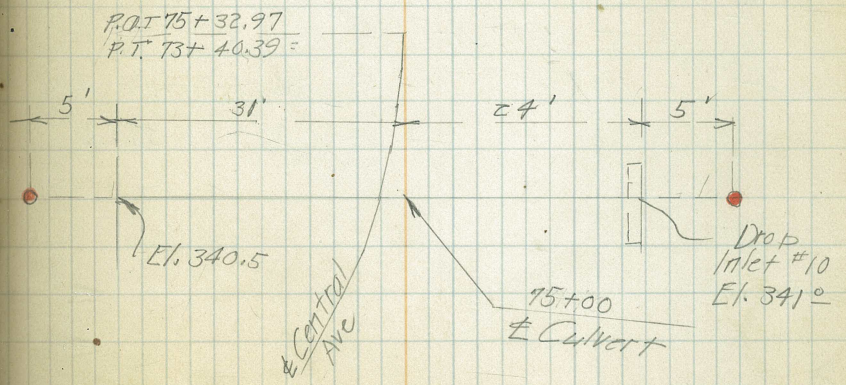
~~Sept 13/26~~
~~F.B. Dauchy~~
~~N. Glover~~
H.E. Clifton.



CULVERT No. 26
Sta. 75+00 Lemon Grove Ave.

Sept. 13/26
F.B. Dauchy
N. Glover
H.E. Clifton.

BM #8	2.68	348.99		346.31
Upper		4.07	344.92	C-3.92
Lower		6.74	342.25	C-1.75



CULVERT No. 41

Sta. 59+00

Central Ave.

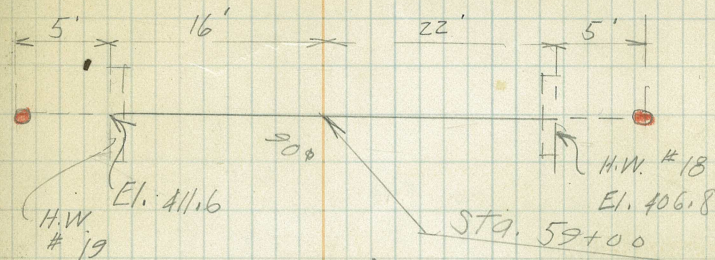
Sept. 13/26

F.B. Dauchy

N. Glover

H.E. Clifton.

20' L					
59+00	3.90	416.50		412.60	
Upper			4.0	412.50	C-0.9
Lower			10.9	405.6	F-1.2

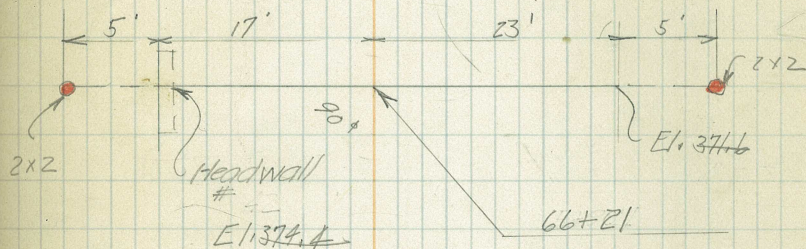


CULVERT No. 42

Sta. 65+92 Central Ave

Staked at 66+21

15.7 L					
66+50	2.75	377.05		374.3	
Lower			7.56	369.50	Grade
			3.52	373.53	371.0 ^{C-2.5}



CROSS SECTIONS
Sta. 91+00 to 93+50
Lemon Grove Ave

BM # 10 10.90 324.84 313.94

93+50

93+00

92+50

T.P. 6.67 330.08 1.13 323.41

92+00

91+50

91+00

Sept. 13/26
F.B. Douchy
N. Glover
H.E. Clifton

34

L

324.84

R

45.8	35.0	24.8	20.2	19.5	17.0	14.8
+20.7	+10.2	0.0	4.6	5.3	7.8	10.0
40	23	15		13	18	40

43.9	36.8	27.6	24.6		20.3	20.3	17.8	15.9
+19.1	+12.0	+2.8	0.0	23.1	4.5	4.6	7.0	8.9
40	23	5	3	1.7	5	16	20	40

44.8	36.4	24.4	20.9	21.0	18.3	17.0
+24.0	+12.0		3.9	3.8	6.5	7.8
40	19	0.0	5	21	28	40

A.1 - 330.06

52.0	44.1	33.6	28.1	24.1	24.7	17.2	16.9
+22.0	+12.0	+3.5	2.0	6.0	5.4	12.9	13.2
40	24	5		5	20	33	40

54.4	44.4	33.0	26.7	26.6	18.5	15.6
+24.3	+12.3	+3.3	3.4	3.5	11.6	11.5
40	20	5		8	22	40

50.9	47.9	37.1	28.5	26.3	18.9	19.3
+20.8	+17.8	12.0	1.6	11.3	10.8	
40	34	29	10	1.8	16	40

