

NAME Broadway Ext.

Class _____ Course _____ Party _____

Lemon Grove Rd - Align.

Alignment Unit #2

56

1973

213

FIELD NOTES

No. 403P

ESPECIALLY ADAPTED
TO THE USE OF
ENGINEERING STUDENTS

EUGENE DIETZGEN Co.

MANUFACTURERS

DRAWING MATERIALS

MATHEMATICAL AND SURVEYING INSTRUMENTS

MEASURING TAPES

CHICAGO SAN FRANCISCO NEW YORK
NEW ORLEANS PITTSBURGH

BROADWAY EXT.

Unit # 2

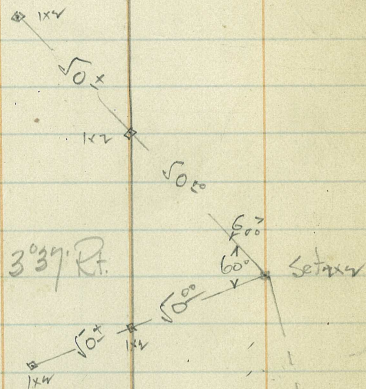
MICROFILMED

DEC 30 1964

INDEX: 1

	Page
Alignment 157 to 189	1 - 6
Alignment 38 147 147 to 31.18	7 - 25
Line Chg 86+92 to $\frac{108+51.01}{108+61.50}$	26 - 30

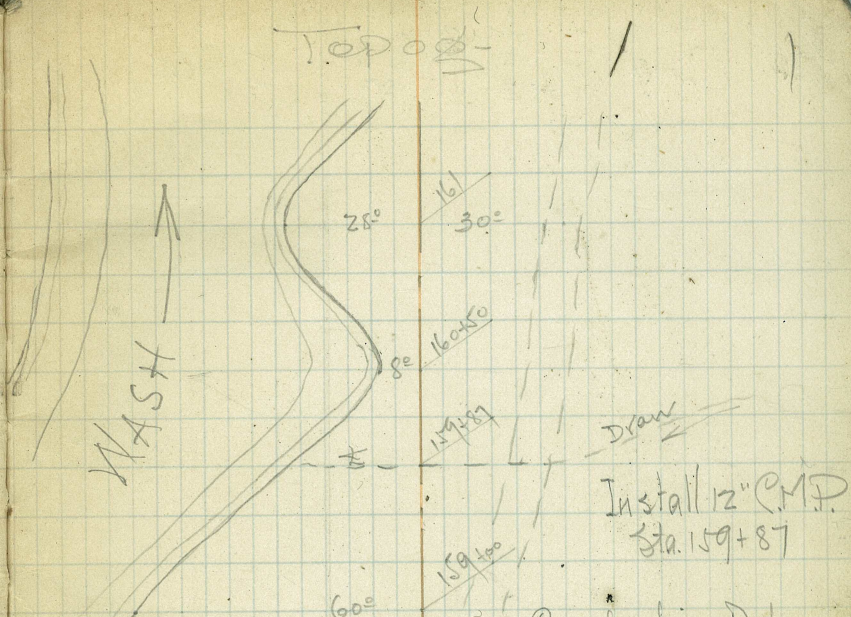
Sta. Dist. Angle Az. Def. Trees



157+56.95
P.I.

183°37' 3°37' Rt.
+7°14'

Cont'd from F.B. # 62/27



9/13/26
Route
Todd
Radier

Construction Data-

$\Delta = 3^{\circ}37'$
 $R = 5000'$
 $T = 157.88$
 $L =$

155+89.07
P.C.

156+50 = 0°17'
157 = 0°35'
+50 = 0°52'
158 = 1°09'
+50 = 1°26'
159 = 1°43'
+148 = 1°48'
159+14.83

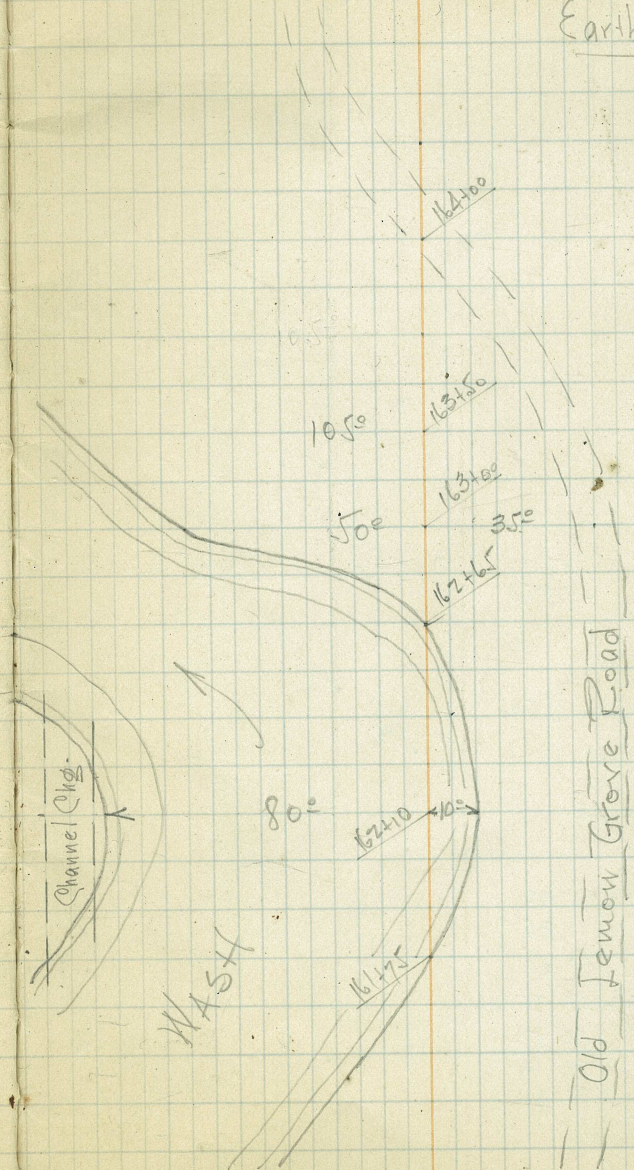
Sta.	Dist.	Angle Az. Def	Ties
------	-------	------------------	------

164424
POT

247

Topog

Earth & Loose Cobbles



Sta.	Dist	Angle Az. Def	* Ties
------	------	------------------	--------

166+44
P.I.

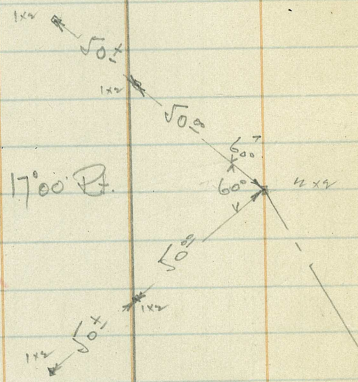
17°00'
+33°59'

17°00' P.

Construction Data-

$A = 17^{\circ}00'$
 $R = 1000'$
 $T = 149.45$
 $L =$

165 = $0^{\circ}09'$
 +50 = $1^{\circ}35'$
 166 = $3^{\circ}01'$
 +50 = $4^{\circ}27'$
 167 = $5^{\circ}53'$
 +50 = $7^{\circ}19'$
 +9126 = $8^{\circ}30'$
 167+9345

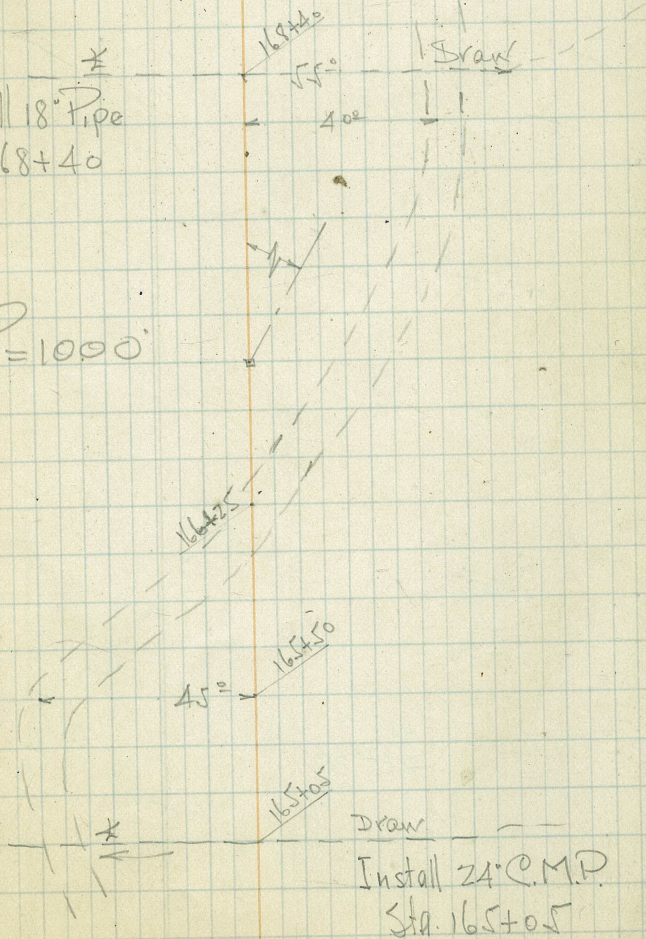


Topog

3

*
 Install 18" Pipe
 Sta. 168+40

Use $R = 1000'$



Draw

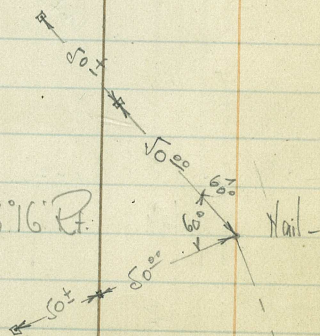
Install 24" C.M.P.
 Sta. 165+05

Sta.	Dist.	Angle		Ties
		Az.	Def.	

173+26.20
P.I.

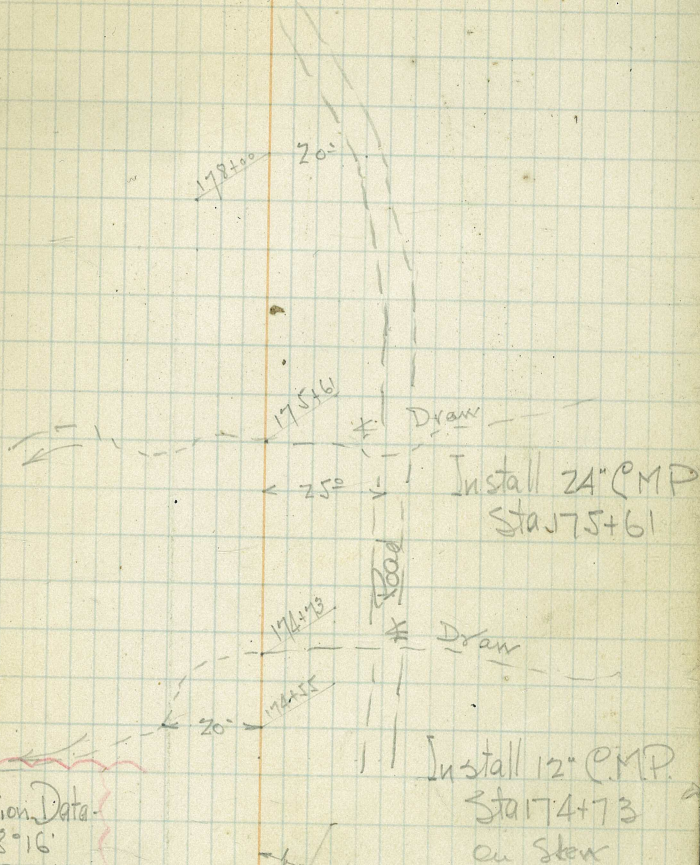
198°16'
+36°32'

18°16' R.



Topog.

4



Construction Data

$\Delta = 18^\circ 16'$

$R = 1000$

$T = 160.77$

$L =$

172 = $0^\circ 59'$

150 = $2^\circ 25'$

173 = $3^\circ 51'$

150 = $5^\circ 17'$

174 = $6^\circ 43'$

150 = $8^\circ 09'$

174.44 = $9^\circ 08'$

84.44

87.17

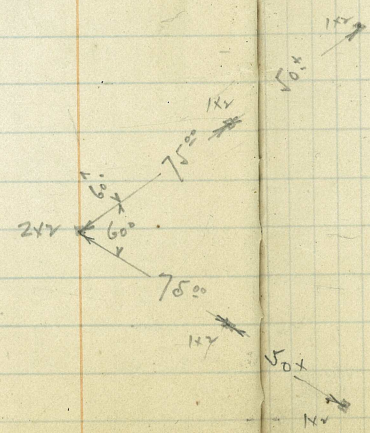
Travelled

Sta.	Dist.	Angle	± Ties
		Az. Def.	

$185+51.44$
 $173+20.20$
 $14.45.24$

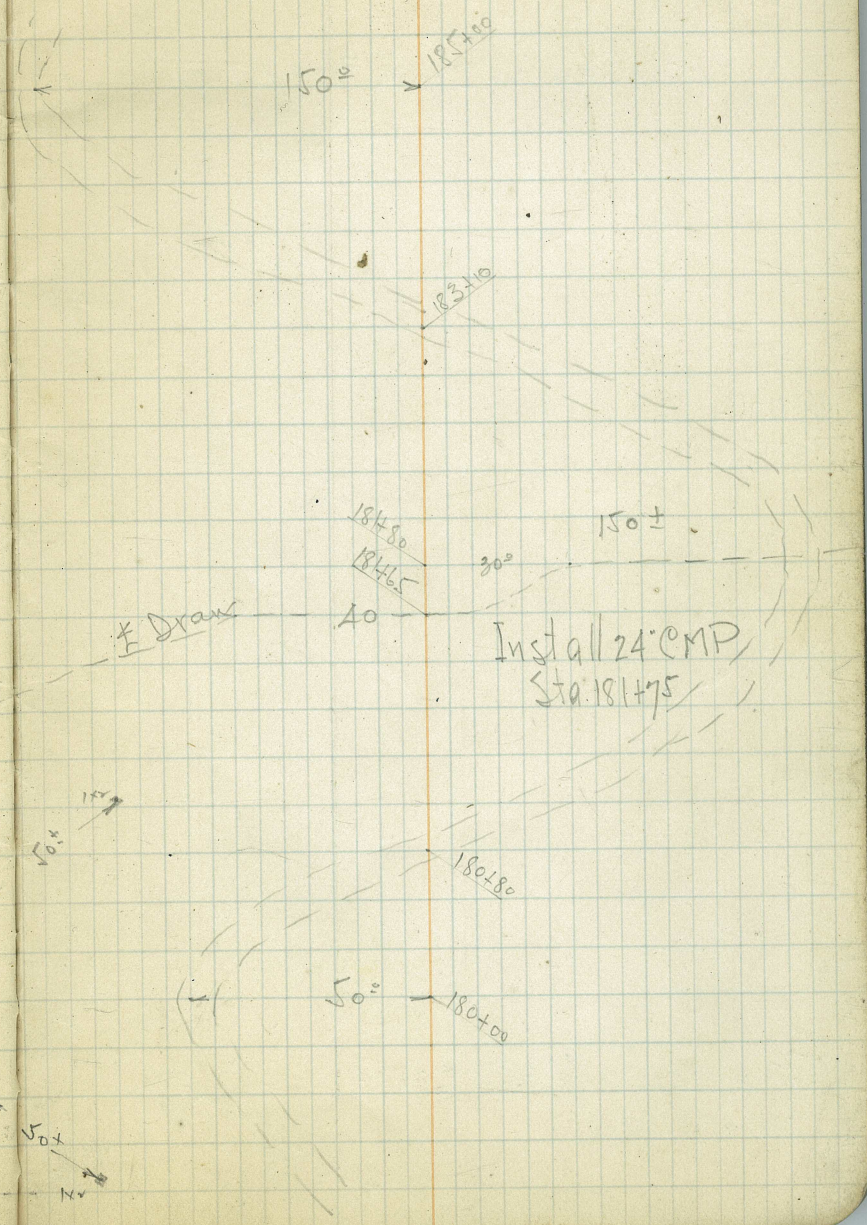
1225.24

180400
ROT



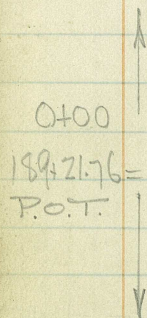
Topog.

5



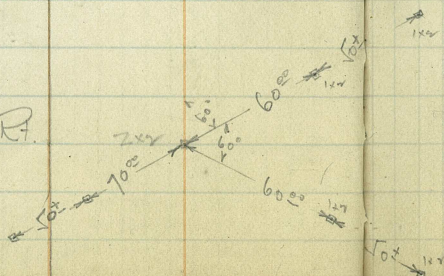
Sta.	Dist	Angle	*Ties
		Az. Def.	

Continued in Book # 72/3



185+51.41
P.I.

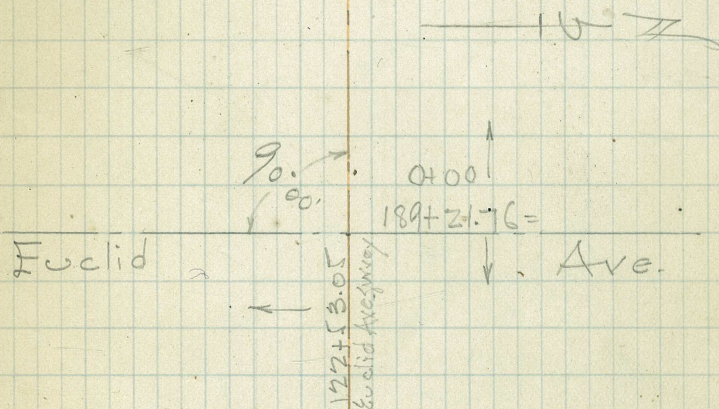
185°38' 5°38' R



Topog

6

See Next Page:-



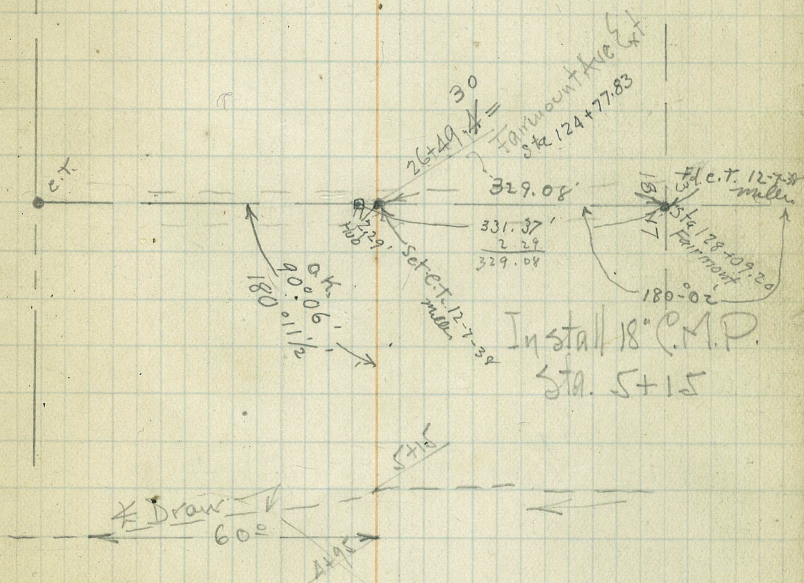
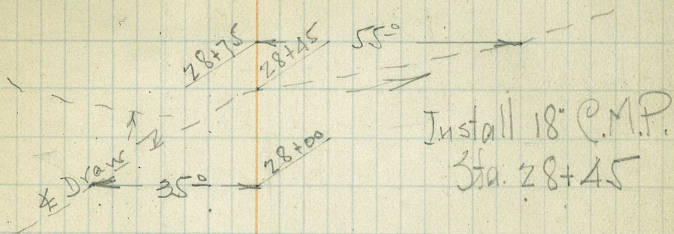
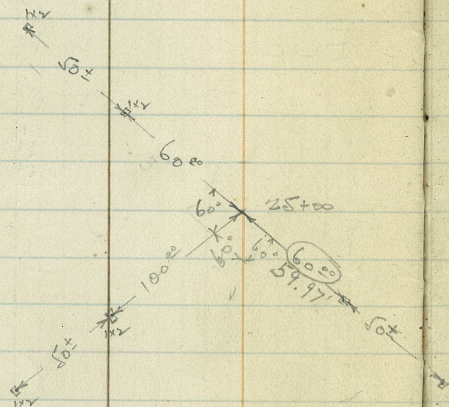
Install 12" C.M.P.
Sta 187+30

Sta	Dist	Angle Az. Def.	* Ties
-----	------	-------------------	--------

Topog

7

25+00
P.O.T.



Topography 0+00 to 45+35.10

Alignment notes in Bk# 72/3

Sta Dist. Angle Az. Def. \neq ties

45+57.60
P.T. 157°09' 22°51' Lt.
314°19'

Use R=600'

45+35.10
P.O.T.

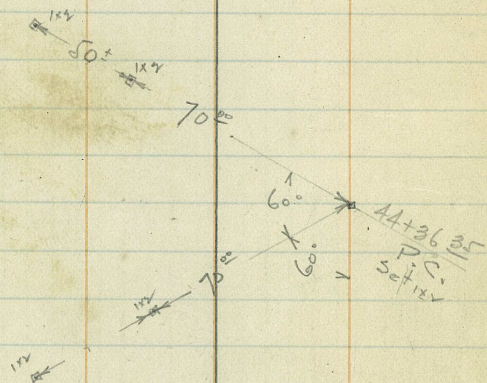
739.55

45+35.10
P.O.T.

43+67.63
P.O.T.

38+18.05

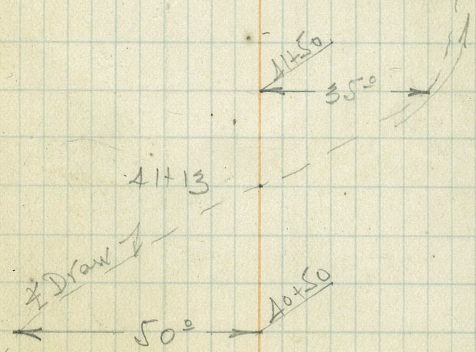
Cont'd from Bk. # 72) 19



Topog

8

Cont'd Data
 $\Delta = 22^\circ 51'$
 $R = 600$
 $T = 121.25$
 $44+50 = 0^\circ 34'$
 $45 = 3^\circ 02'$
 $45 = 5^\circ 26'$
 $46 = 7^\circ 49'$
 $45 = 10^\circ 12'$
 $+ 75.63 = 11^\circ 25.5'$

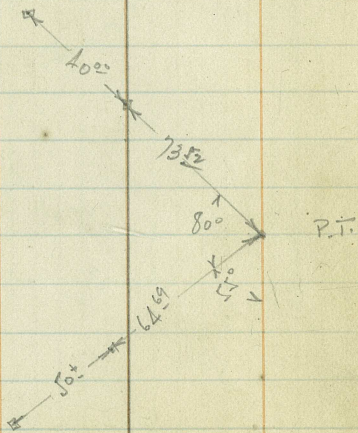


Sta.	Dist.	Angle Az. Def	Ties
------	-------	------------------	------

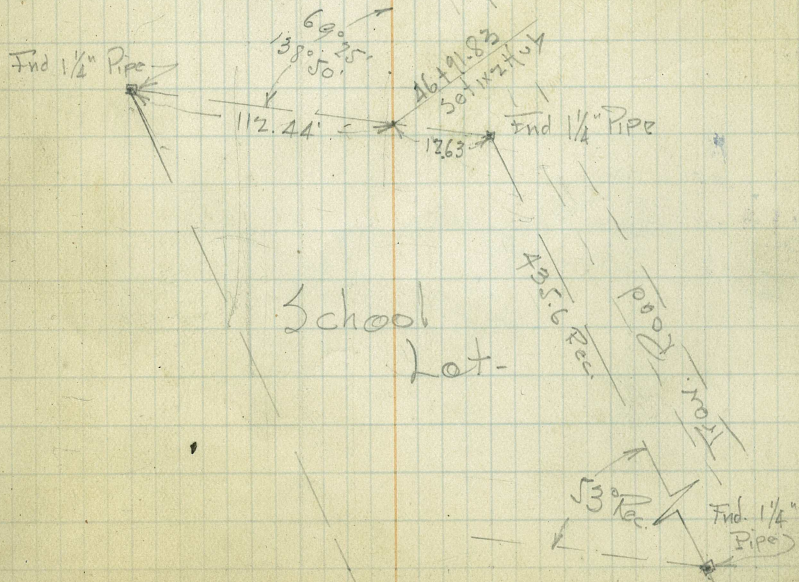
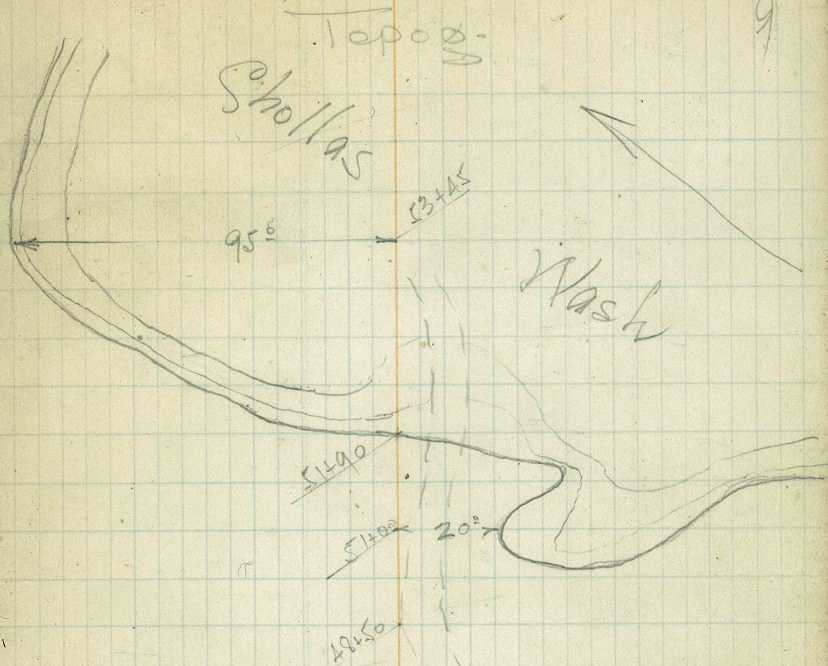
Coots
Glover
Cliffen.
Key

1426.11

46+78.85
46+73.23 =
P.T. ↓

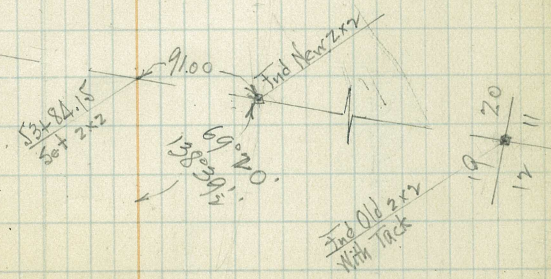
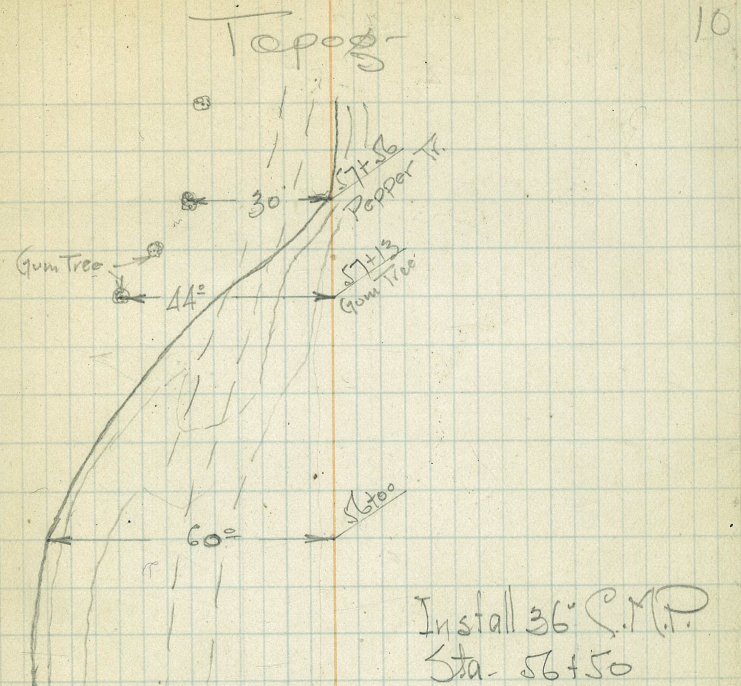


9



Sta. Dist. Angle Az. Def. Ties.

1426.11



Sta. Dist. Angle Az. Def. Ties

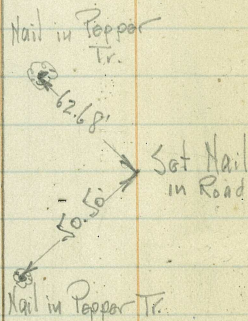
860.41'

59+83.71

173° 07' 6° 53' Lt.
326° 13'

Use R=2000'

1426.11'

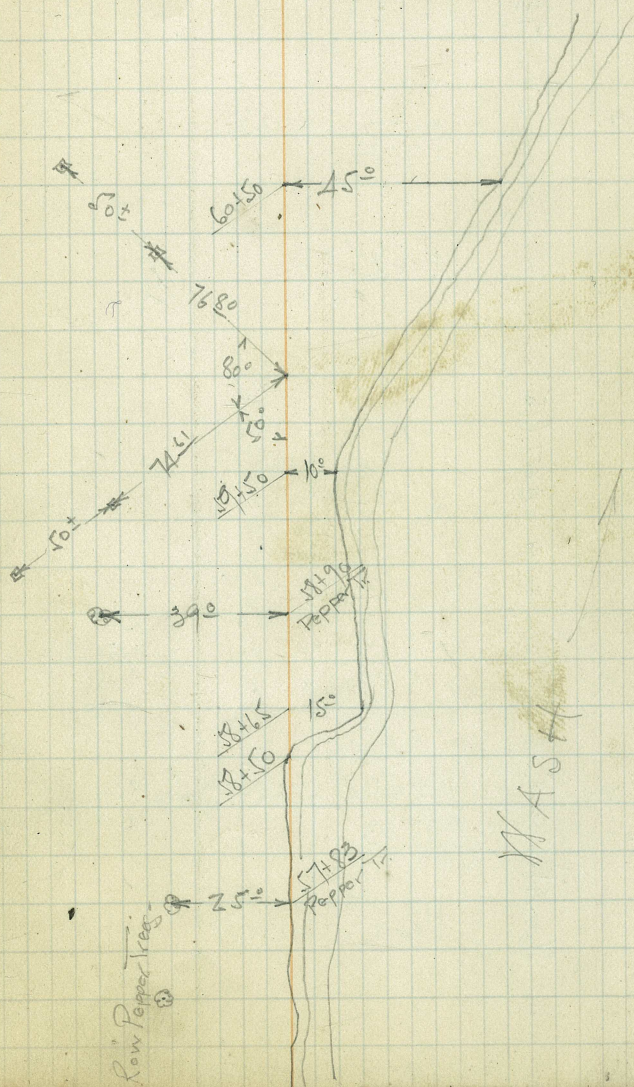


Construction A data

L = 6° 53'
R = 2000'
T = 120.28'
59 = 0° 31'
+50 = 1° 14'
60 = 1° 57'
+50 = 2° 40'
61 = 3° 23'
PT = 3° 26'

Topog 11

Install 18" C.M.P.
Sta. 66+50



Sta. Dist.

Angle
Az Def

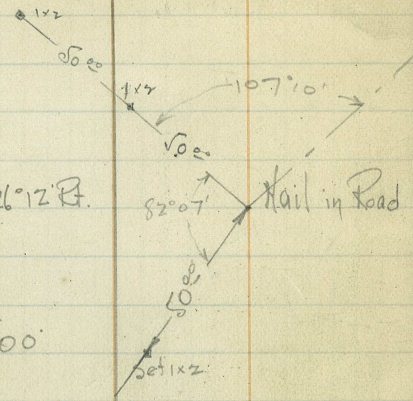
Ties-

Topog-

72+51.77
P.I.
738.61'

206°12' 26°12' P.
+52°24'

User R=500



Const. Data -
 $L = 26^{\circ}12'$
 $R = 500$
 $T = 116.36$
 $71450 = 0^{\circ}50'$
 $72 = 3^{\circ}42'$
 $+50 = 6^{\circ}34'$
 $73 = 9^{\circ}26'$
 $+50 = 12^{\circ}18'$
 $PT = 12^{\circ}06'$

407.65'

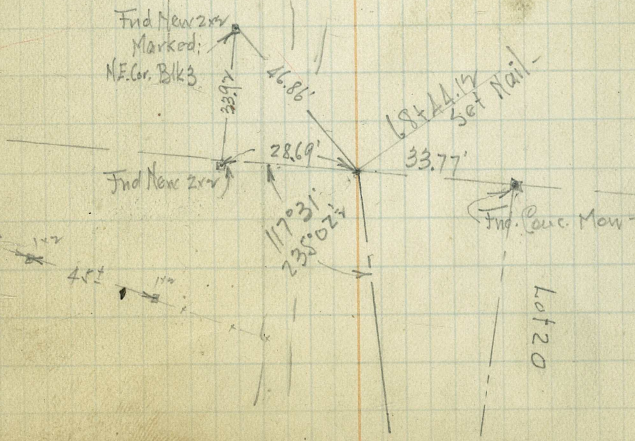
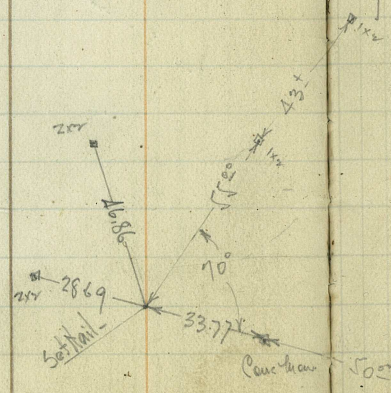
Const. Data
 $L = 3^{\circ}31'$
 $R = 2000$
 $T = 61.40$
 $68 = 0^{\circ}15'$
 $+50 = 0^{\circ}58'$
 $69 = 1^{\circ}41'$
 $PT = 1^{\circ}45'$

MARILOU PARK

68+44.17
P.I.
860.41'

183°31' 33°31' P.
+7°03'

User R=2000



Lot 20

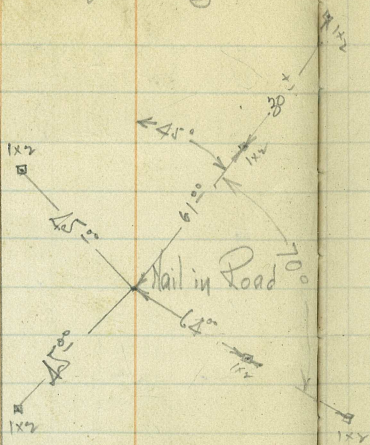
Sta. Dist. Angle
Az. Def

79+90.38 P.I. 172°20' 740' Lt.
344°39'

Use R = 2000

738.61'

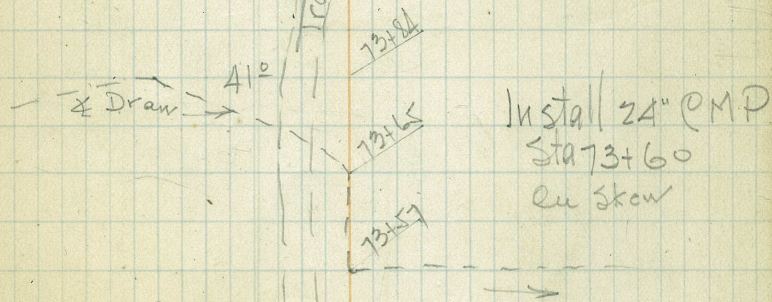
± Ties -



Topog -

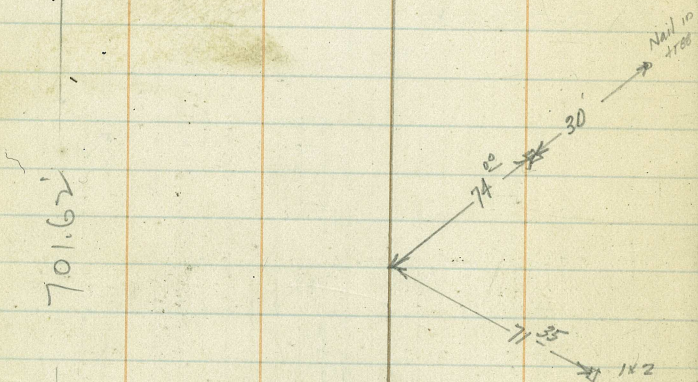
13

Curve Data
 $\Delta = 70^\circ 40'$
 $R = 2000$
 $T = 134.00$
 $79 = 0^\circ 37'$
 $+50 = 1^\circ 20'$
 $80 = 2^\circ 03'$
 $+50 = 2^\circ 46'$
 $81 = 3^\circ 29'$
 $PT = 3^\circ 50'$



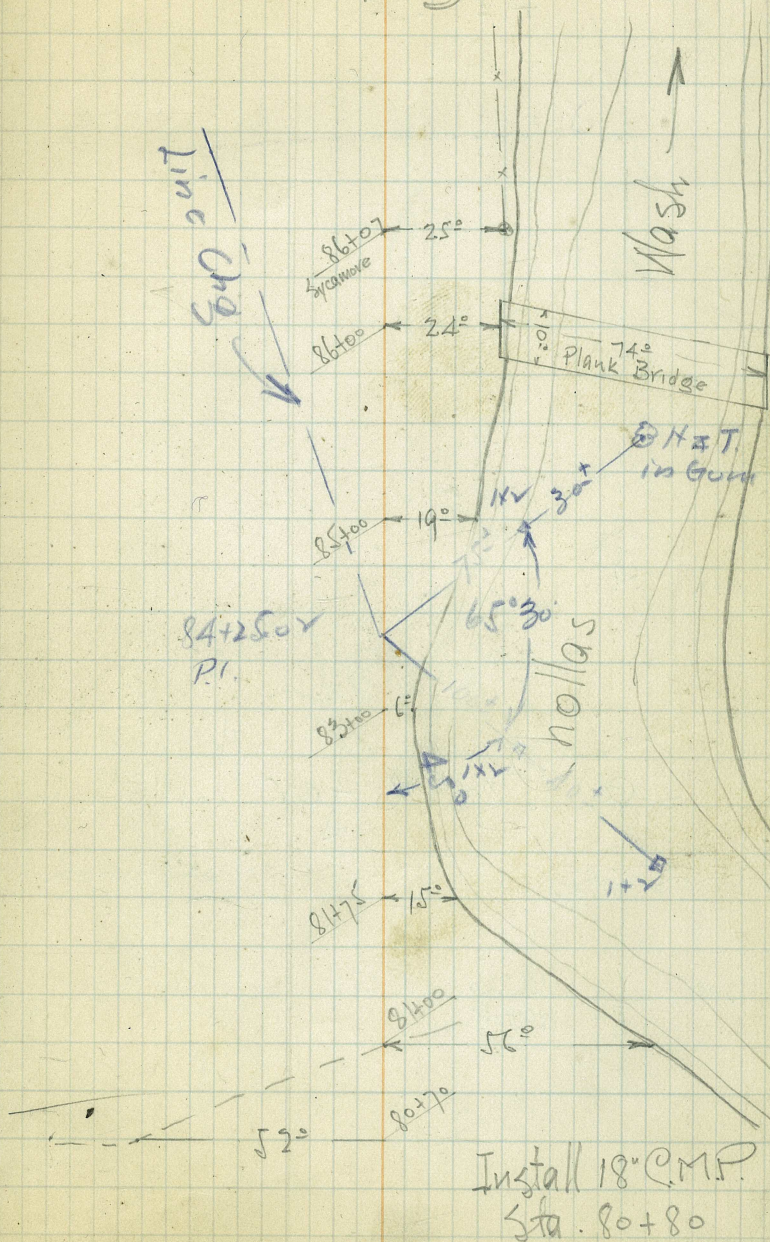
Sta. Dist. Angle Az. Def. * Ties-

See Plans for Line Chg-



Topog-

14



Sta. Dist. Angle Az. Def. ± Ties

void

452.50

See Pg. 26 for Line Chg.

86+492.00
P.I.

146°40' 33°20' Lt.
293°19'

Nail in Road

29° Nail in Sycamore

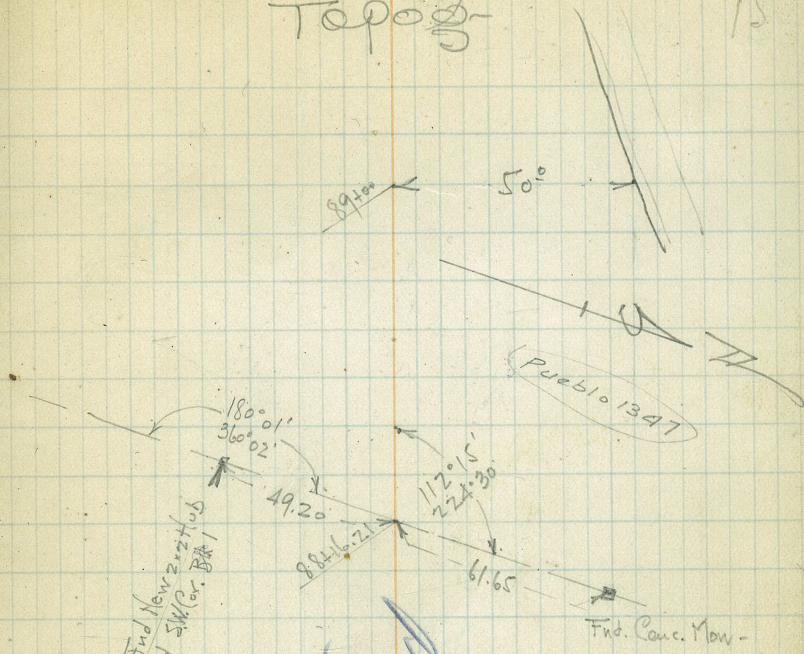
Use R=400

void

17° Nail in F. Post.

Topog

15



MARILOU

void
see P. 26

DARK-

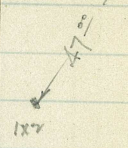
void

22°
29°

Sta. Dist. Angle Az. Def. Ties

95+02.58 P.I. \times 167°41' 335°28' 12°16' Lt. 114 ← 28° Nail in Road.

Use R =

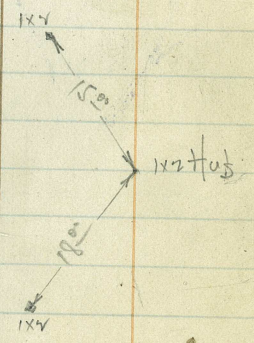


358.08'

~~Topog~~

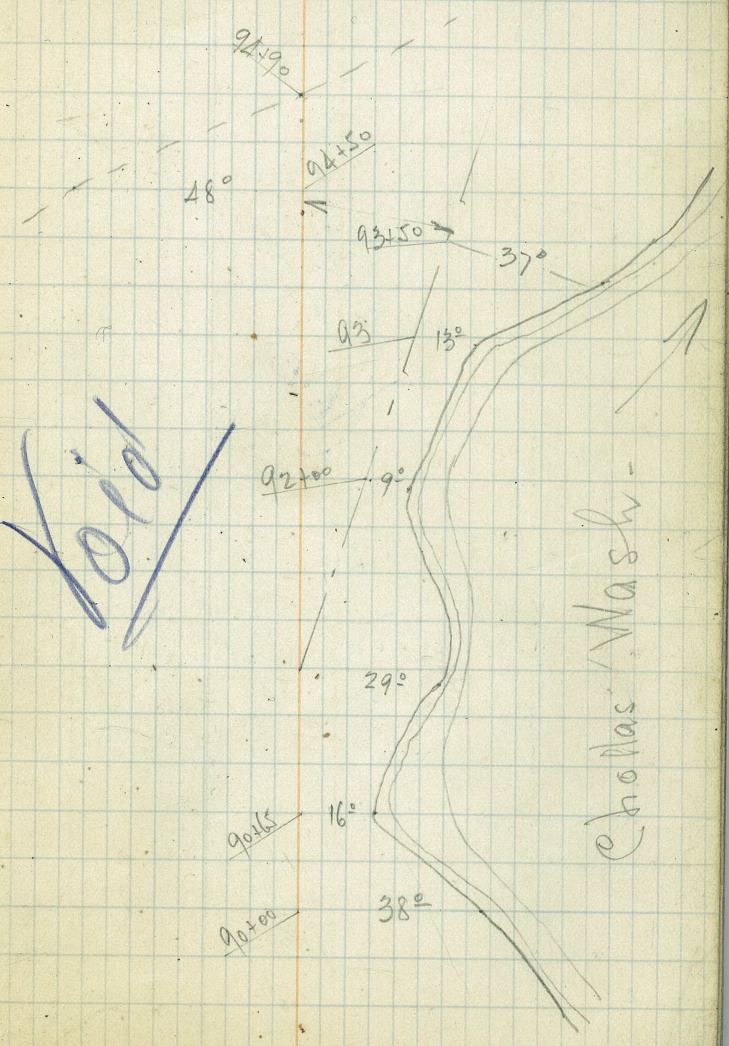
94+44.50 P.I. \times 197°53' +35°41' 17°53' Rt. 112 + 0.5

Use R = 100'



452.50'

Topog 16



~~Topog~~

Chollas Wash

Sta. Dist.

Angle
Az. Def.

* Ties-

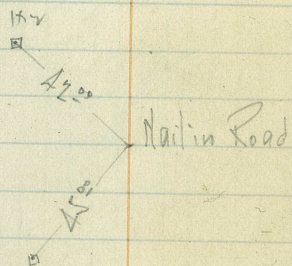
void

96+75.78
P.I.

173.70

162°56'
325°52'

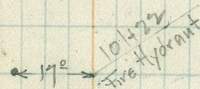
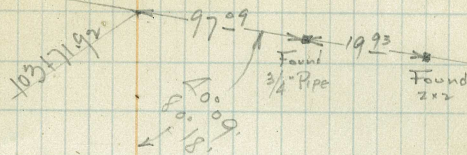
17°04' H.



Use One Curve
here if possible.

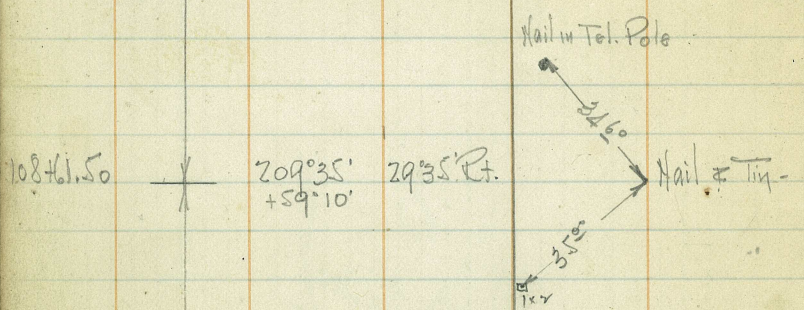
Topog

17



void
See Page 29

Sta. Dist. Angle Az. Def. ± Ties-

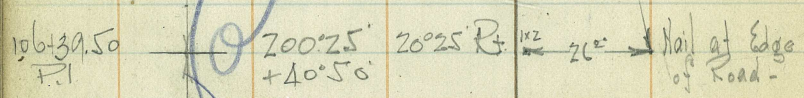


108+61.50
209°35'
+59°10' 29°35' R.

Cont'd from Pg. 30

222.00

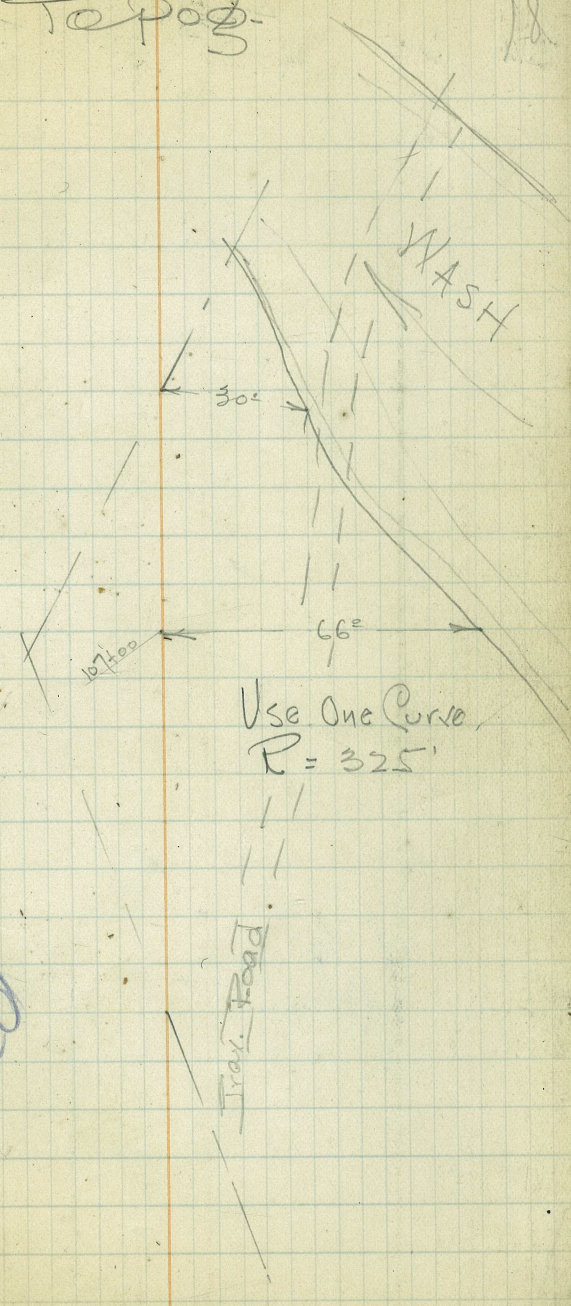
Laid



106+39.50
200°25'
+40°50' 20°25' R.

Laid

Topog. 18



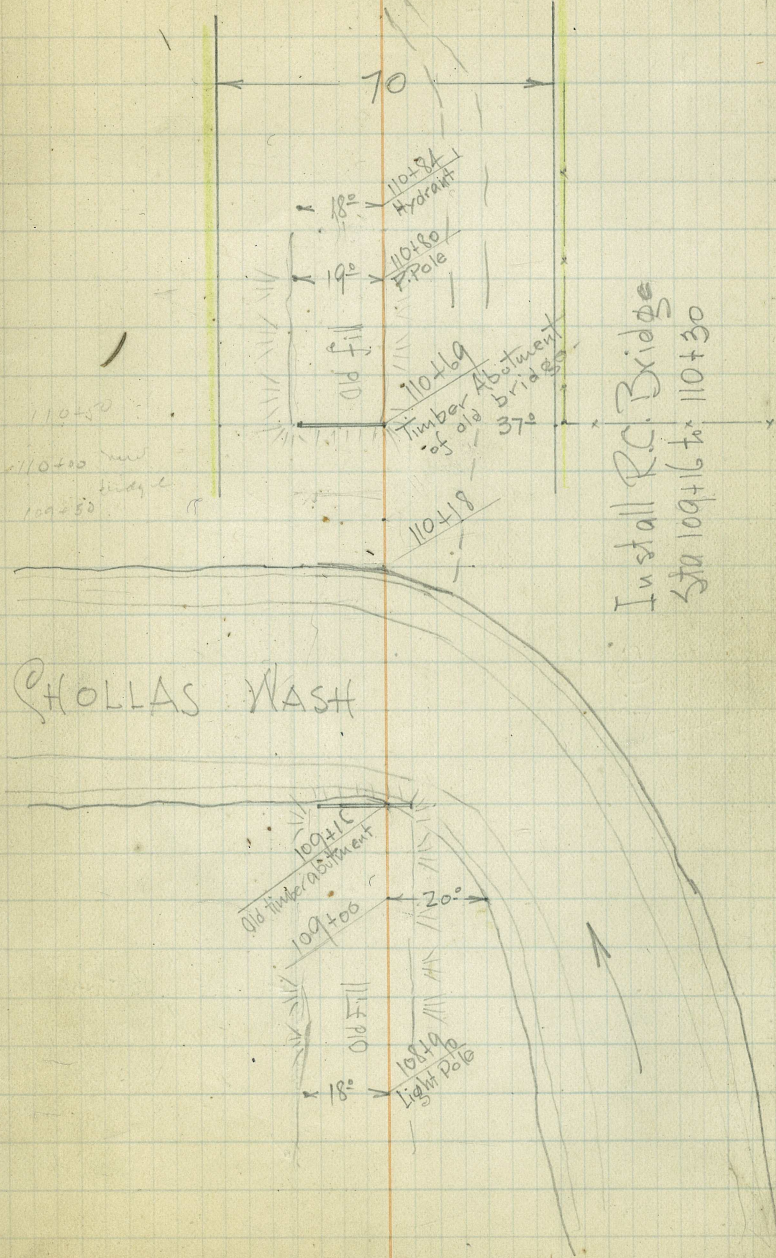
Use One Curve
R = 325'

Sta. Dist. Angle Az. Def. # Ties-

1658.62

Topog-

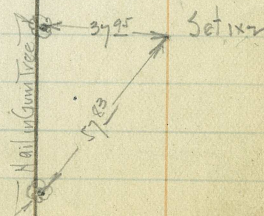
19



Sta. Dist. Angle Az. Def. ± Ties

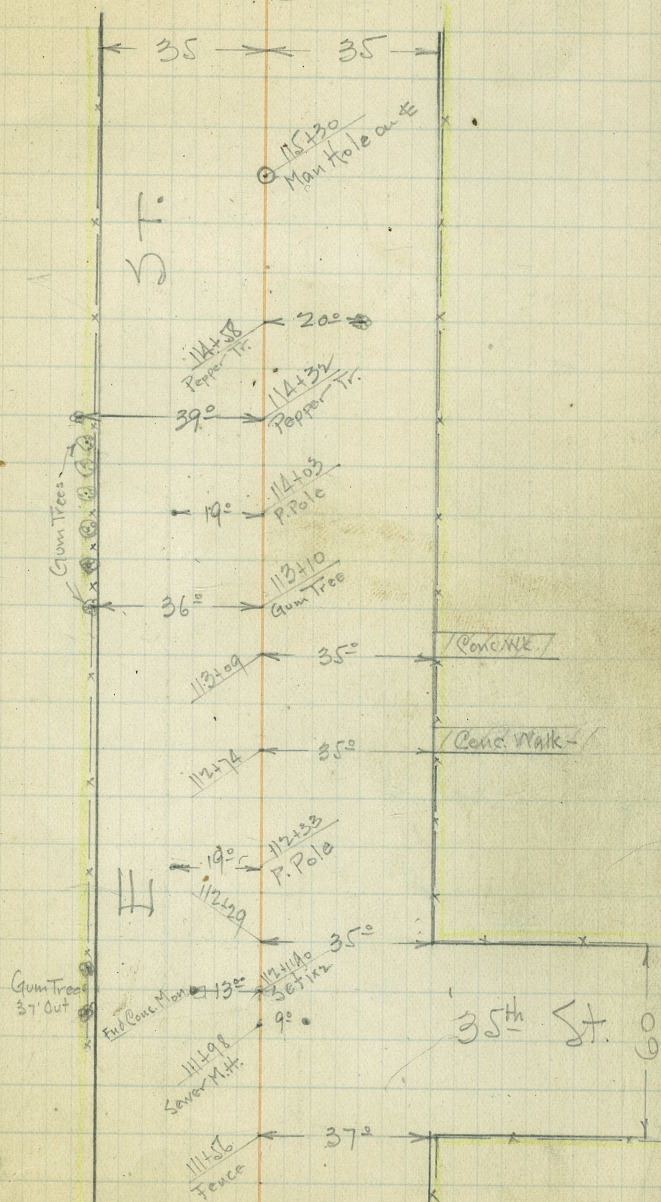
1658.62

112+1190
P.O.T



Topog-

20



Sta.	Dist	Angle Az. Def.	Ties
------	------	-------------------	------

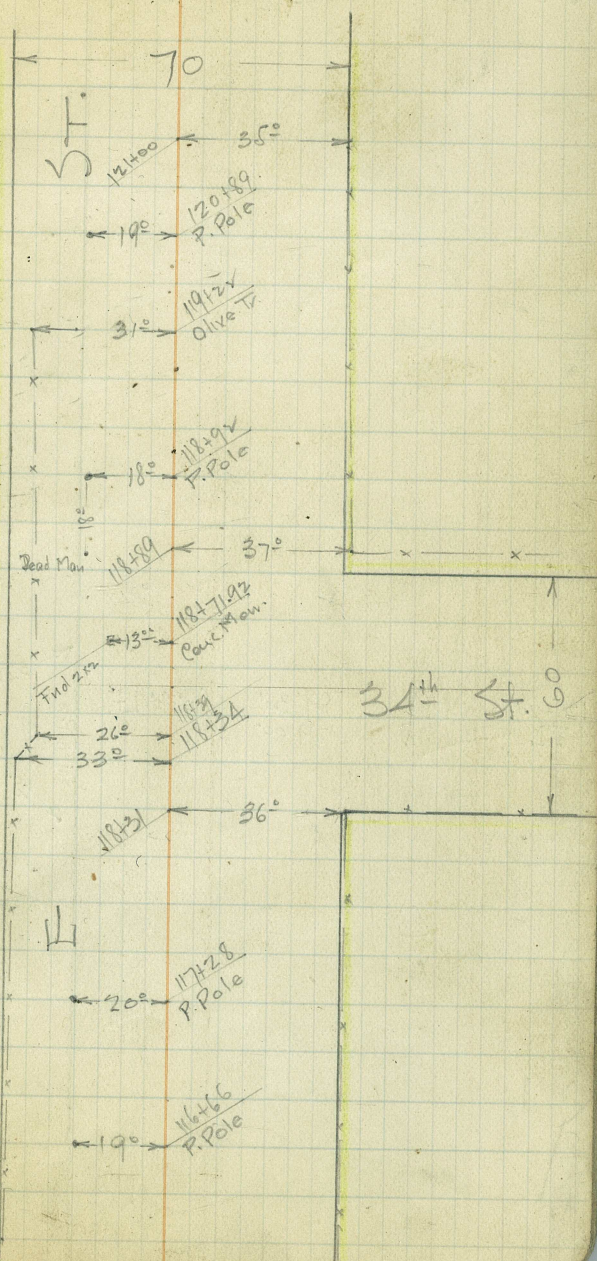
$\frac{1184719}{11241140}$
 $\frac{660}{}$

1658.62

For Line Chg.
 See Pbk # 228/1
 See Pbk # 228/1A
 A/11/27

Topog-

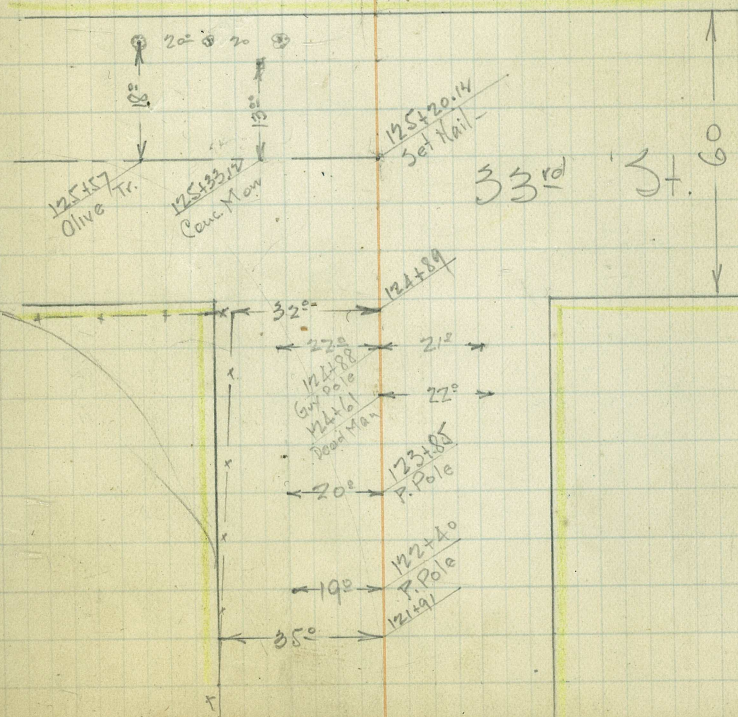
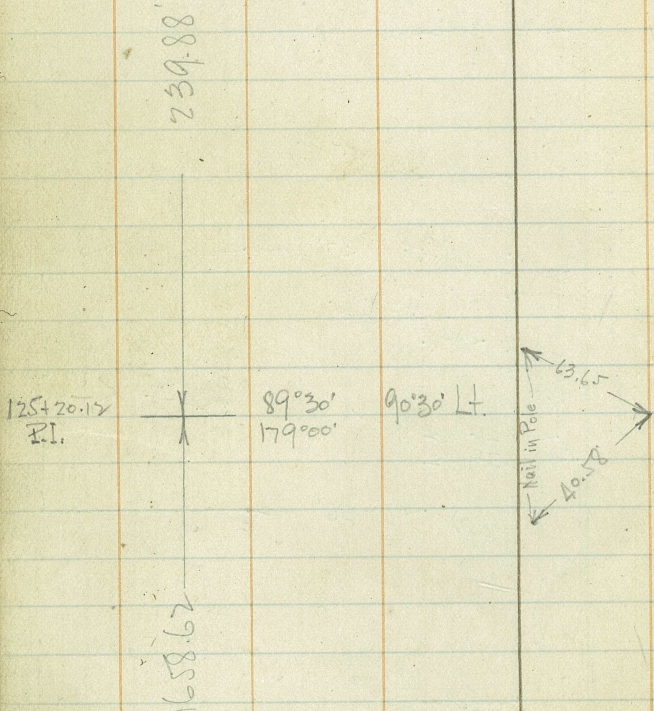
21



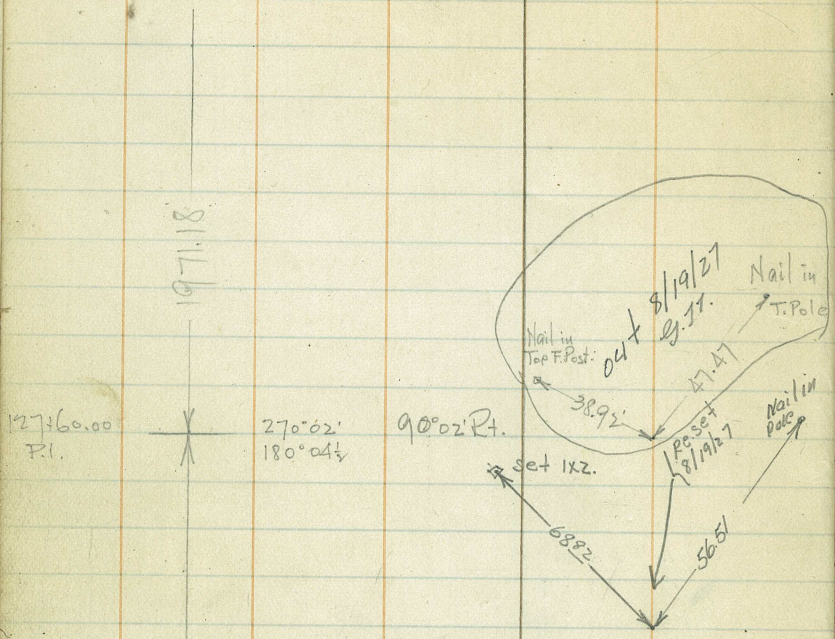
Sta. Dist. Angle Az. Def. * Ties-

Topog-

22



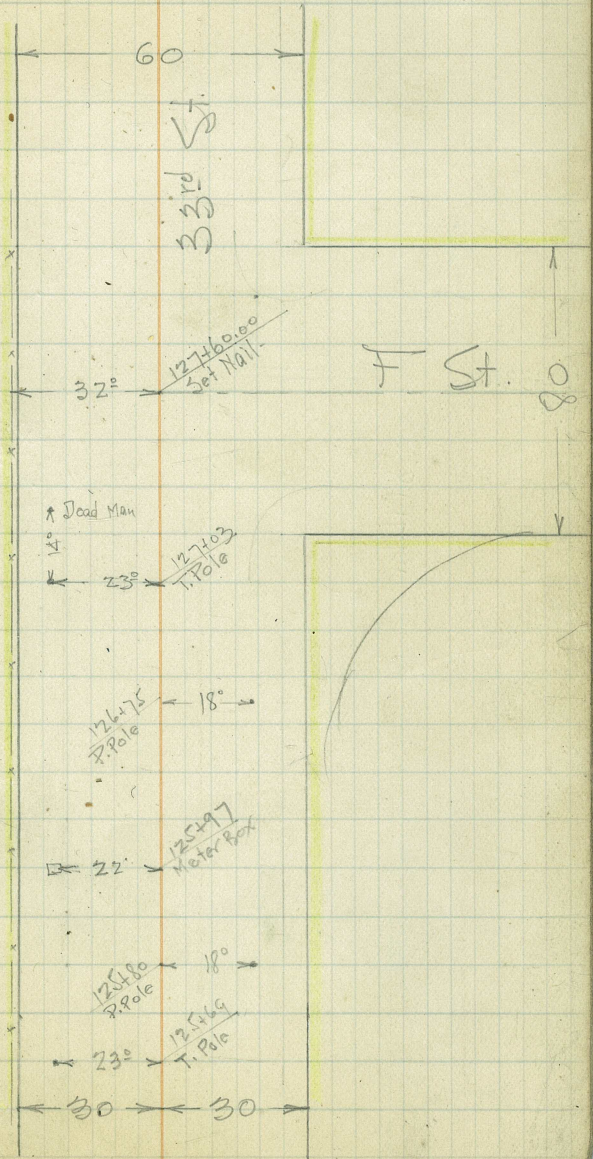
Sta Dist. Angle Az. Def. ± Ties-



For Line Chg.
Sec Bk# 228/1

Topog.

23

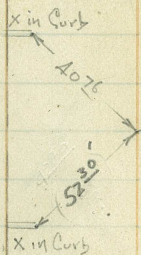


Sta. Dist. Angle Az. Def. Ties

134+23.09
134+33.09 =
P.O.T.

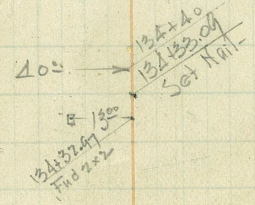
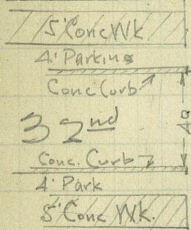
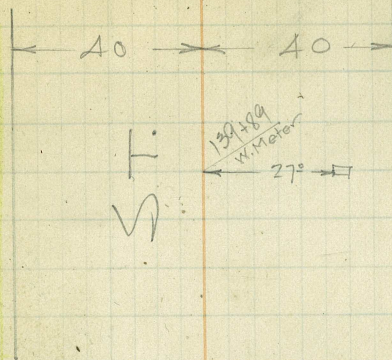
Equation

1971.8

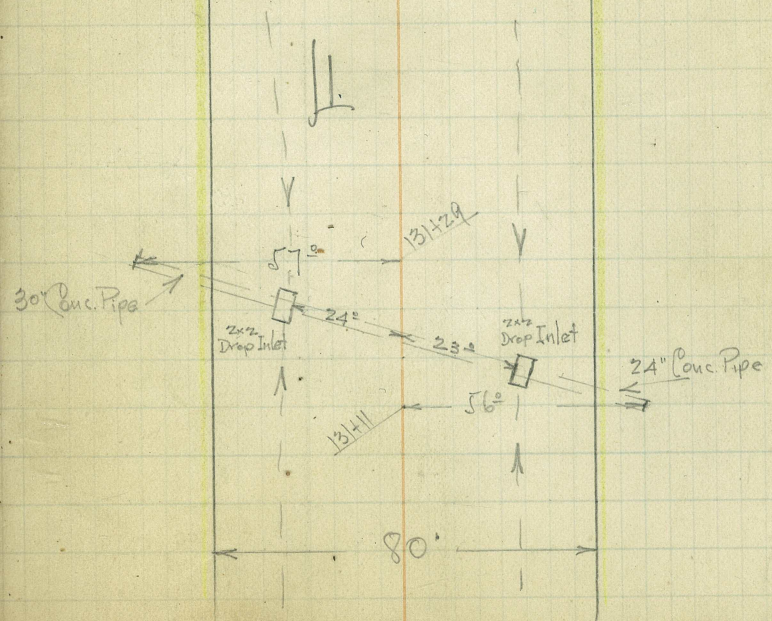


Topog-

24



St. 0

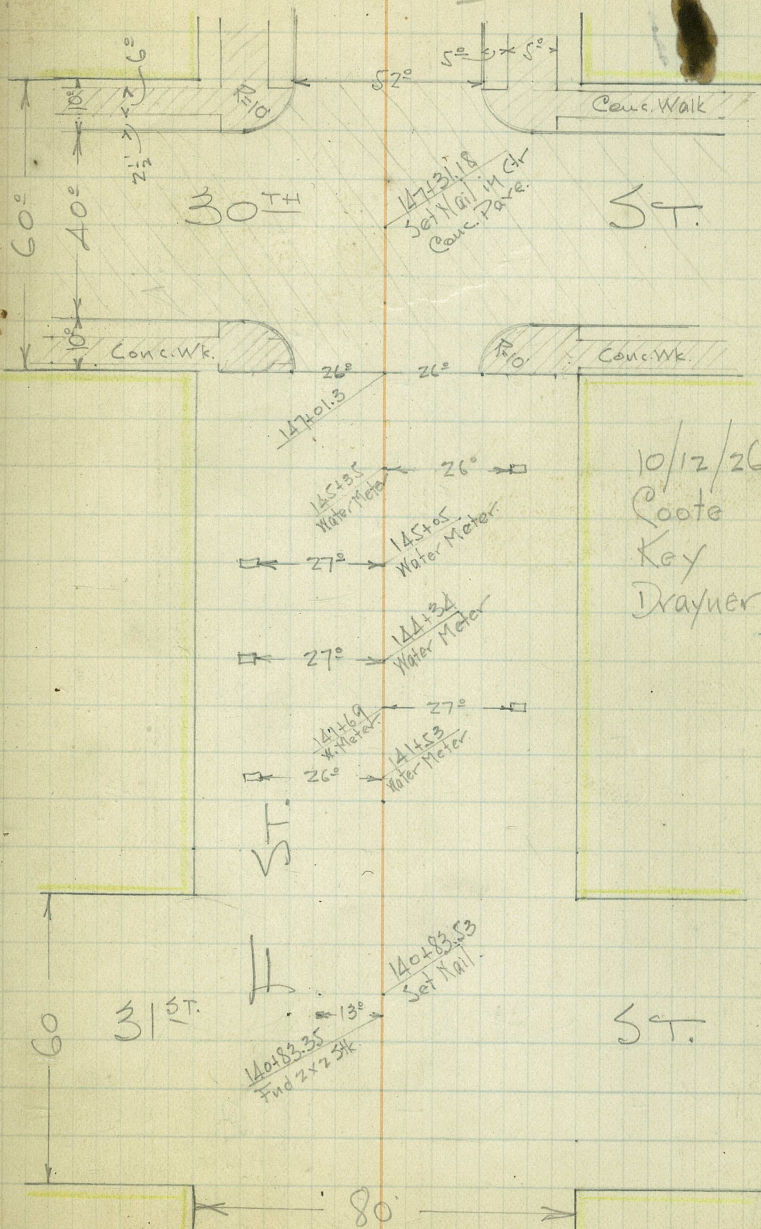
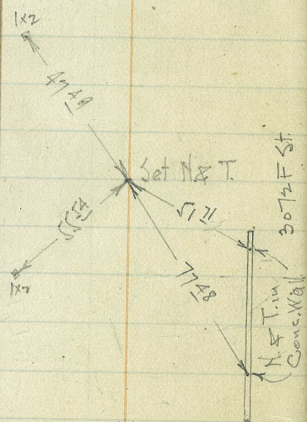
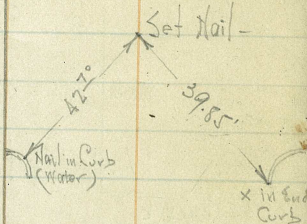


Sta. Dist. Angle Az Def. Ties

147+31.8

197+118

143+00 P.O.T.



Sta. Dist.

Angle
Az. Def.

Topog

26

88+14.87
POT

11/26/26
Code
Key
Price

96+43.13
P.I.

28+14.87
P.I.

Find New 2x2
Marked: SW Cor
Bk. 1

98+14.87
Set Nail

Find Conc. Man.

86+96.57
P.I.

147°57'
295°54'

32°03' Set & T

28.25
RH in
Sycamore

157'

71.5'

Nail in
F. Post.

86+92.00
Old P.I.

MARILOU PARK

LINE CHANGE
Sta 86 to 109

Continued from Pg. 15

Sta Dist

Angle
Az. Def.

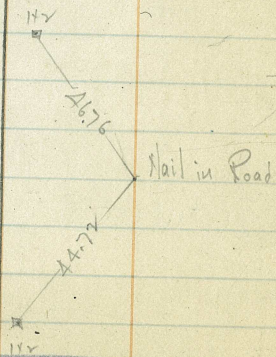
Topog-

27

88+65.41
P.I.

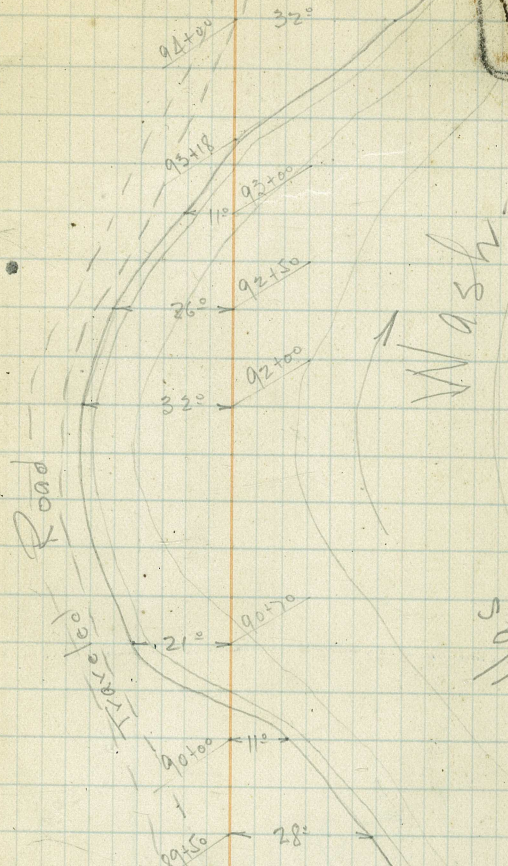
Lead

188°00' 8°00' R.
+16°00'



Road

Traverse



Wash

50/104

Sta.

Dist.

Angle
Az. Def.

Topog.

28

97+44.39
P.T.

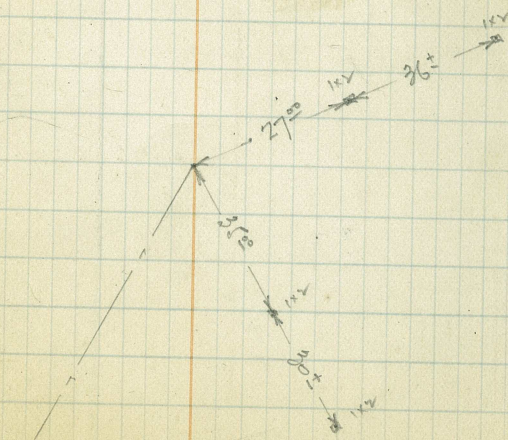
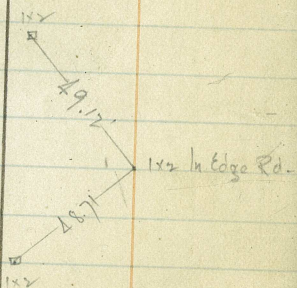
96+43.13
P.I.

~~159°20'~~ ~~20°10' Lt~~
~~41°20'~~

Curve Data Void.

~~A = 20°10'~~
~~R = 567.75~~
~~T = 103.53~~
~~L = 204.78~~

95+39.61
P.C.



Sta	Dist	Angle Az.	Def.
-----	------	--------------	------

105+07.78
P.I.

186° 45' 6.45' Pt.
+ 13° 29'

Construction Data

$$104 + 50 = 0.39$$

$$105 - 1.33$$

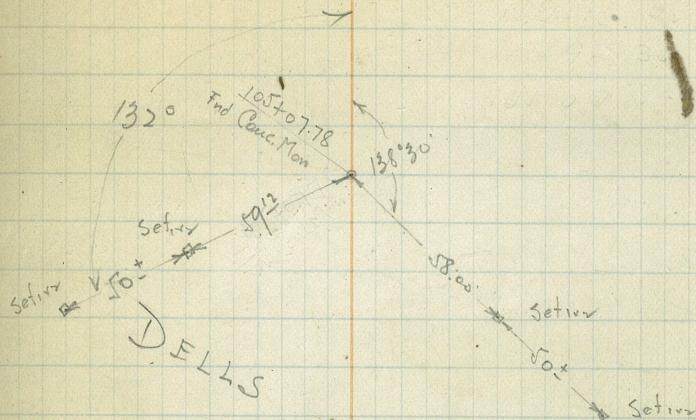
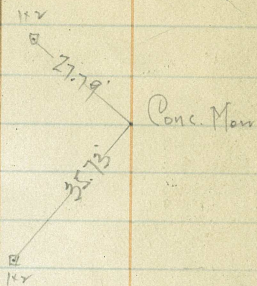
$$+ 50 = 2.27$$

$$106 + 0.92 = 3.22$$

$$L = 6.45'$$

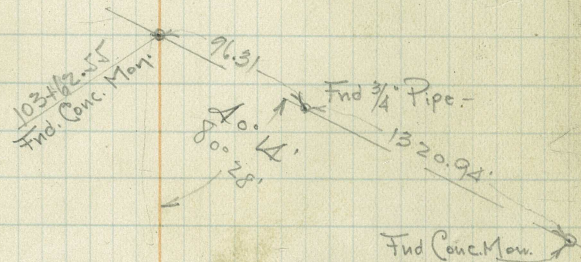
$$R = 16.00'$$

103+62.55
P.O.T.



DELLS

PARK



Sta. Dist. Angle
Az. Def.

108+61.50
108+51.01

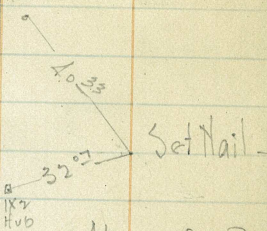
Equation -
Kru Semi Tang

108+44.42
P.I.

210° 24'
+ 60° 47'

30° 24' R.

Nail on P. Pole

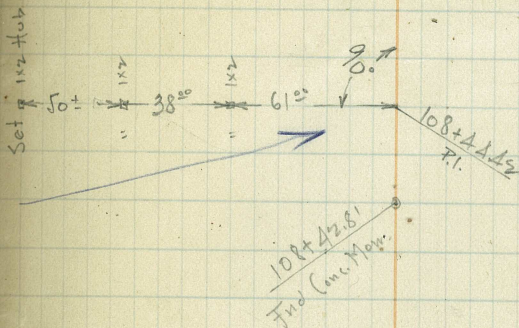


Also see Opp. Page -

Cont'd on Pg. 18

Cont Data

108 = 1° 14'
+ 25 = 5° 00'
+ 50 = 8° 47'
+ 75 = 12° 33'
+ 92 = 15° 12'
L = 30° 24'
R = 190'
T =



108+42.81
Triang. Conc. Man.

146.64

107+91.79
516.2
434.1

Construction Data -

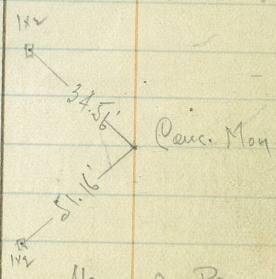
106+50 = 1° 35'
107 = 3° 18'
+ 50 = 5° 00'
+ 90.87 = 6° 23 1/2'

L = 12° 47'
R = 840'

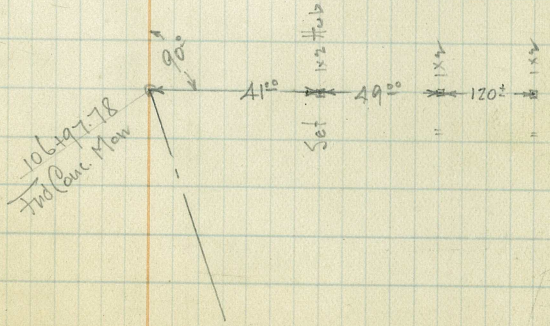
106+97.78
P.I.

192° 49'
+ 25° 34 1/2'

12° 47' R.

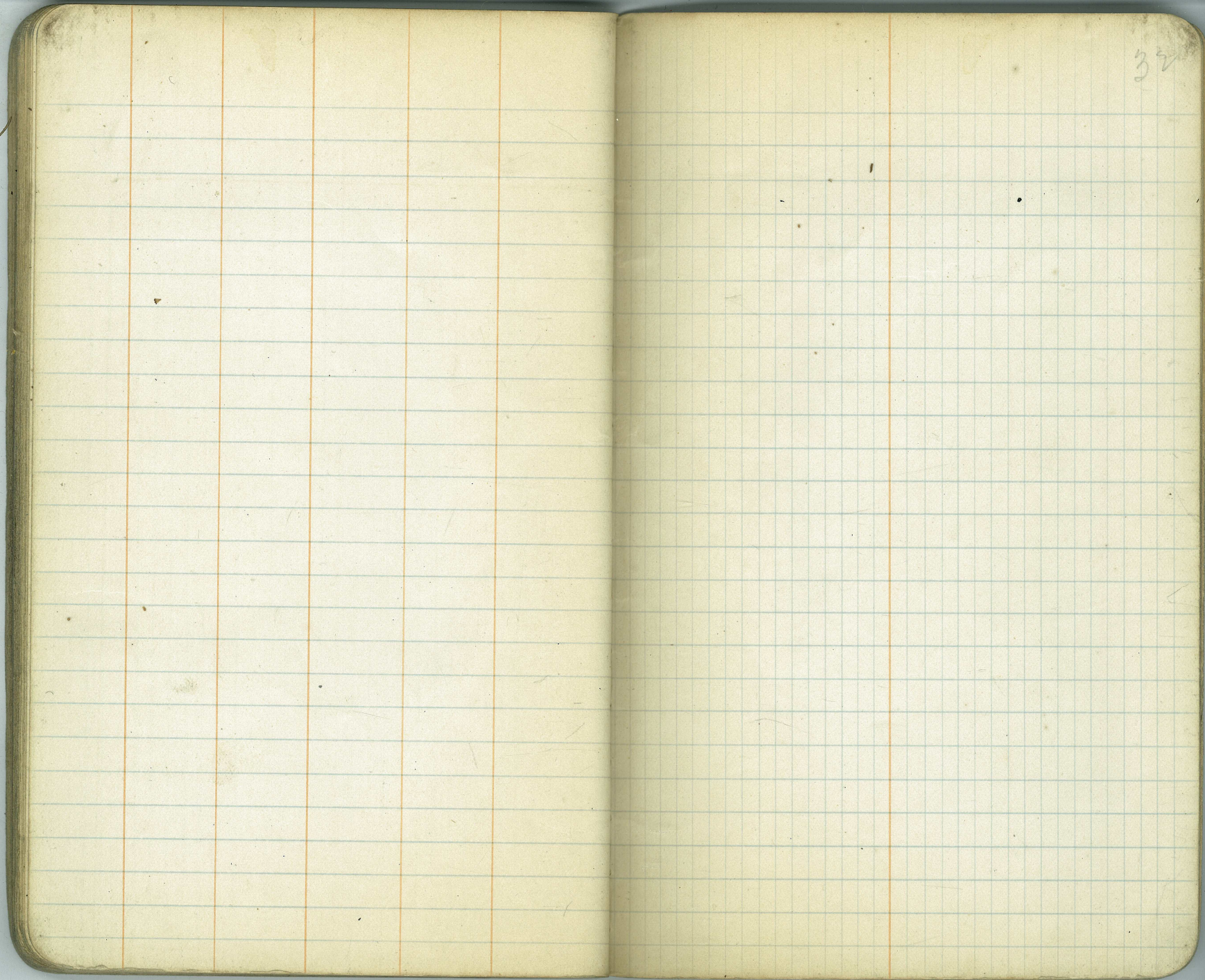


Also see Opp. Page -



190°

31



33

34

46+91.83
25+87.6

132.43
121.25
12.98

107
127+60.00
79.40

150
29.88
179.88

127+60.00
125+20.12
239.88
179.88
60.00

35

130.58
66.29
63.29

60+50
59+83.71
66.29

86+96.57
118.30
88+14.87
50.54

777.72
189-17
107-10
82-07

88+65.41
777.72

108+44.22
6.59
108+51.01

73+68.13
4 88.25

96+43.13 P.I.
1 08.54

179-60
41-30

78+56.38 PC
1 30.00
79+90.38

95+39.61 PC
2 04.58

139-20

86+96.57
7.06.19

97+44.39 P.T.
6 18.16

103+62.55

88+14.87
86+96.57

81+24.38
2 16.82

1094 21.42
106+97.78

118.30

83+41.20
83.82

146.6 X

106+97.78
105+07.78

84+25.02
86+96.57

1+90.00

771.55
83

X+9-48
D=60

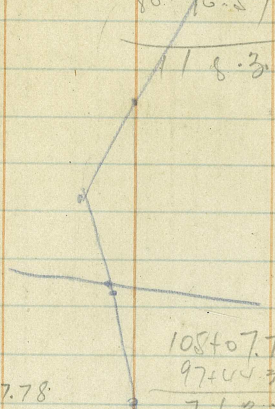
105+07.78
3+62.55

105+07.78
97+04.39

12-23
D=60.52

148.53

763.39
103.52
866.91



65.42
19+53.71

60.41

72+51.77
18+44.12

4 07.65

79+90.38

72+51.77

7 35.61

86+92.00
79+90.38

7 01.62

50+83.21
45+57.60

14 46.0

45+57.60

38+50.55

7 39.55

91+44.50
86+92.00

4 54.50

95+02.58
91+44.50

3 59.08

104+01.50
125+20.10

16 58.62
27+69.00

2 39.88

147+31.18
127+60

19 71.18