

NAME BROADWAY #2

Class _____ Course _____ Party _____

B.Ms.

RETURN TO
Eugene Dietzgen Co., Inc.
500 Broadway Bldg.
San Francisco, Calif.

1975

322
FIELD NOTES

No. 403P

ESPECIALLY ADAPTED
TO THE USE OF
ENGINEERING STUDENTS

EUGENE DIETZGEN Co.

MANUFACTURERS

DRAWING MATERIALS

MATHEMATICAL AND SURVEYING INSTRUMENTS

MEASURING TAPES

CHICAGO SAN FRANCISCO NEW YORK
NEW ORLEANS PITTSBURGH

INDEX

	Page
New BM ^s	1-5
Bridge Elevations	10-11
Flood Protection	17-20

MICROFILMED

DEC 30 1964

NEW B.M. ELEVATIONS -

Coots & Party
Apr. 1927

1

BM#3 94.16

City B.M. - Brass Plug in Conc. Man.
SW Cor. 32nd & F Sts.

0.23 94.39
10.05 84.34

1.77 86.11
0.88 85.23

9.77 95.00

BM#4 92.74

City B.M. - RR Spk. in Power Pole S.E. Cor
(See Bk 181/34) 33rd St & Lemon Grove Ave.

2.30 92.70 92.74
12.66 83.05

0.30 83.35
12.88 70.47

1.46 71.93

BM#5 64.50

Spike in Fence Post NE Cor 34th & Lemon Grove.

0.74 65.24

BM#5-A 57.21 ~~78.5~~

Nail in Power Pole #3431 - See Bk 181/34
Peterman

0.61 57.82

5.77 52.05

5.96 58.01

BM#6 49.02

Spk. in Gum Tree 65' South Sta 111+10

10.04 59.06

6.35 52.71 ~~52.35~~

TP Nail in Top Piling - See 181/34 (Peterman)

BM#6-A 58.83 ~~58.45~~

0.23 58.83 108+50
On RP Hub 61' South

	59.06			
	4.52	61.54	2.04	57.02
Bm#7			9.44	52.10
	12.06	64.16	3.41	60.75
	6.61	67.36		
			3.71	63.65
	5.16	68.81		
Bm#8			1.04	67.77 67.40
	1.04	68.81	5.16	63.65
	8.53	72.18		
Bm#9			2.92	69.26 68.87
	7.83	77.09	1.66	75.43
	5.04	80.47		
			1.82	75.65 75.40
Bm#10			3.41	77.06
	1.16	81.22	0.56	80.66
	11.66	92.32	0.26	92.06
	8.94	101.00		

Spk. in Cor. Fence Post 70 ft. Sta 102+95

On 1x2 Hub 45' S. Sta 94+40 - Bk# 190/10
Chilton -

On Conc. Man. 50' R. 87+80 - Bk# 190/10
Chilton -

On Nail in F. Post 25' R. 80+85 - FB# 181/25 - Peterman

Spk in Gum Tree 100' ± R. Sta 81+50 - 2' Above Grind -
(N. side of Wash)

		101.00			
			8.40	92.60	
BM#11	1.13	93.73			
	4.61	91.71	6.60	87.13	86.92
B ^m #11-A			4.88	86.85	
	6.57	93.43			
			2.84	90.59	
	10.92	101.51			
			2.30	99.21	
	3.30	102.51			
BM#12			0.50	102.01	
	0.84	102.85			
			7.81	95.04	
	9.97	105.01			
			6.21	98.80	98.56
			5.94	99.07	98.92
			2.41	102.60	
	5.70	108.30			
BM#13			2.97	104.33	
	9.61	113.94			
			0.37	113.57	
	12.57	126.14			
B ^m #13-A			5.03	121.11	120.93
	0.58	121.99	0.88	125.26	
	130.2	138.28			

Peterman Bk 181/25
 On Conc. Man. R.P.P.I. 33.77 Rt Sta. 68+65
 Spk in top Gum Stamp 60' Rt. Sta. 68+50
 Spk in Pepper Tree 2' Above Ground 55' Lt Sta 59+80
 T.P. (Chittaw) Bk # 326/7
 T.P. (Peterman) Bk # 181/22
 On 2x2 Hub 60' Lt. Sta 50+30
 See Bk # 181/18'

138.28

10.28 138.00

12.00 150.00

0.37 149.63

12.92 162.55

3.95 158.60 ~~158.41~~

1.82 160.73

BM#14

12.08 172.81

1.25 171.56

9.25 180.81

2.72 178.09 ~~177.93~~

BM#15

12.54 190.63

1.32 189.31

BM#15-A

13.00 204.31

2.33 199.98

12.37 212.35

0.32 212.03

8.54 220.57

5.35 215.22 ~~215.15~~

BM#16

12.15 222.94

9.78 210.79

Out P.P.I. Hub 43+67.63 Bk# 181/17 (Peterman)
aux 2 Hub 50' Lt. Sta 43+67.63

R.R Spk. in Ground 50' Rt. Sta. 40+20 (Peterman)
See Bk# 181/14

aux 2 Hub 65' Rt. 39+55

aux P.I. Hub Sta 33+00 - Bk 181/13 - Peterman

aux R.P.P.I. Hub 120' Rt. Sta 33+40

222.94

0.26 222.68

6.37 229.05

BM#17

3.72 225.33 225.31 On 2x2 Hub 50 Pt. 27+30

Sec Bk# 72/12

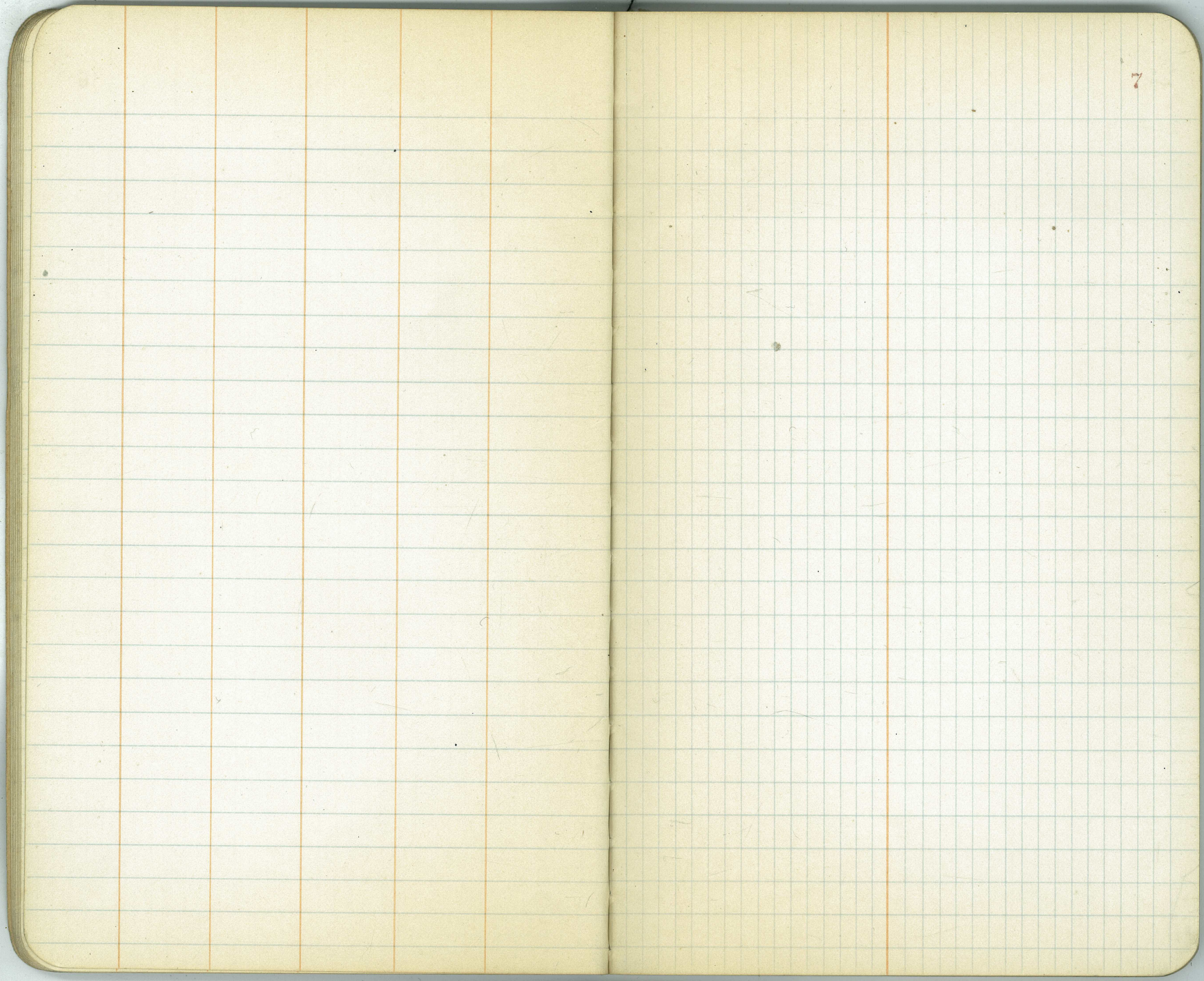
" 59/4

" 61/18+19

BM#18

234.70

Hub 50 Pt. Sta 13+00 Sec Bk 337/25



7

Elevations For
BRIDGE

Sta 109+26.50 to Sta 110+23.50

BM#6

1.99 51.01

49.02

A
B
C
D
E
F
G
H
I
J
K
L
M
N
O
P
Q
R
S
T
U
V
W
X
Y
Z

2.46	48.55 ✓
5.21	45.80 ✓
4.89	46.12 ✓
5.77	45.24 ✓
7.75	43.26 ✓
7.76	43.25 ✓
7.74	43.27 ✓
7.74	43.27 ✓
7.50	43.51 ✓
7.82	43.19 ✓
6.80	44.21 ✓
7.33	43.68 ✓
8.12	42.89 ✓
8.43	42.58 ✓
5.58	45.43 ✓
8.82	42.19 ✓
8.49	42.52 ✓
8.33	42.68 ✓

— Original Set —

10.

Spike in Gum Tree 65' South Sta. 111+10

51.01

S	8.36	42.65	✓
T	5.88	45.13	✓
U	5.87	45.14	✓
V	5.92	45.09	✓
W	5.69	45.32	✓

1.92 49.09

10.25 59.34

BM#6-A

0.49 58.85 58.83

On RPAub 61' South 108+50

Restaking BRIDGE

Sta 109+26.50 to 110+23.50

B_m#6

1.22 50.24

49.02

C

4.13 46.11 ✓

F

7.07 43.17 ✓

J

6.20 44.04 ✓

K

6.84 43.40 ✓

Y

6.07 44.17 ✓

X

7.15 43.09 ✓

O

4.66 45.58 ✓

11.48 38.76

11.44 38.80

B_m#6

1.22 49.02 49.02

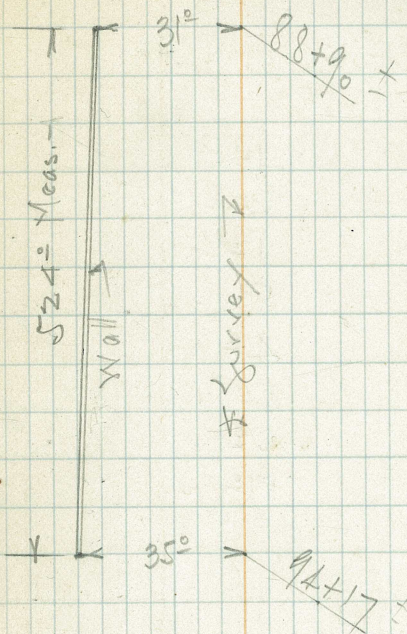
Restaked 5/23/27 (3 1/2 hrs.)

See Pg. 10

El. 2' ± above E.C. for E. Abut - Set Stk -
 " 2' ± " " W. " "

FLOOD PROTECTION WALLS

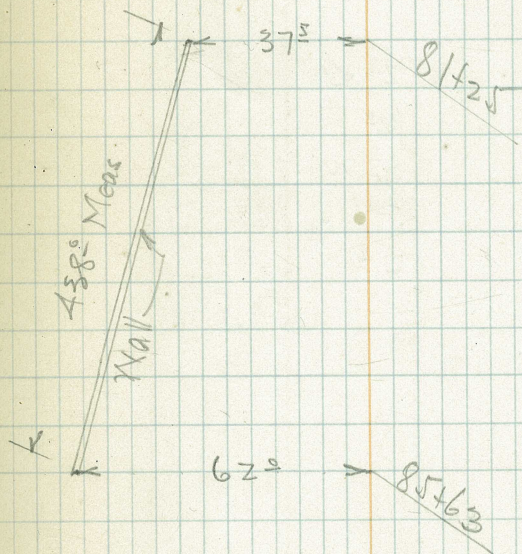
Sta	5' Offset	Slope	Stk. Hub
89	"	2°	LH
+50	"	6°	RH
90	"	6°	"
+50	"	5°	"
91	"	2°	"
+50	"	1°	"
92	"	1°	"
+50	"	2°	"
93	"	0°	"
+50	"	0°	"



Flood Protection Walls-

Sta - 5' Offset
Slope Stk. Hub

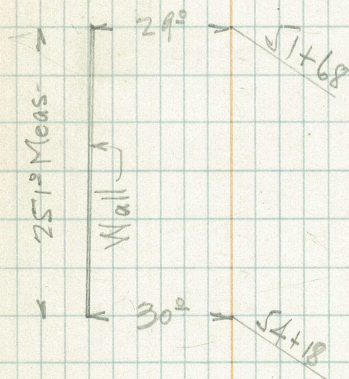
81+50		1 st Pt
82	"	2 nd "
+50	"	12 "
83	"	5 th "
+50	"	4 th "
84	"	5 th "
+50	"	0 th "
85	"	17 th "



Flood Protection Wall -

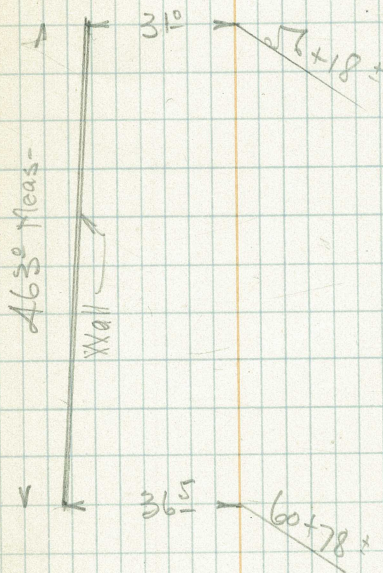
Sta- 5' Offset
Slope Stk Hub

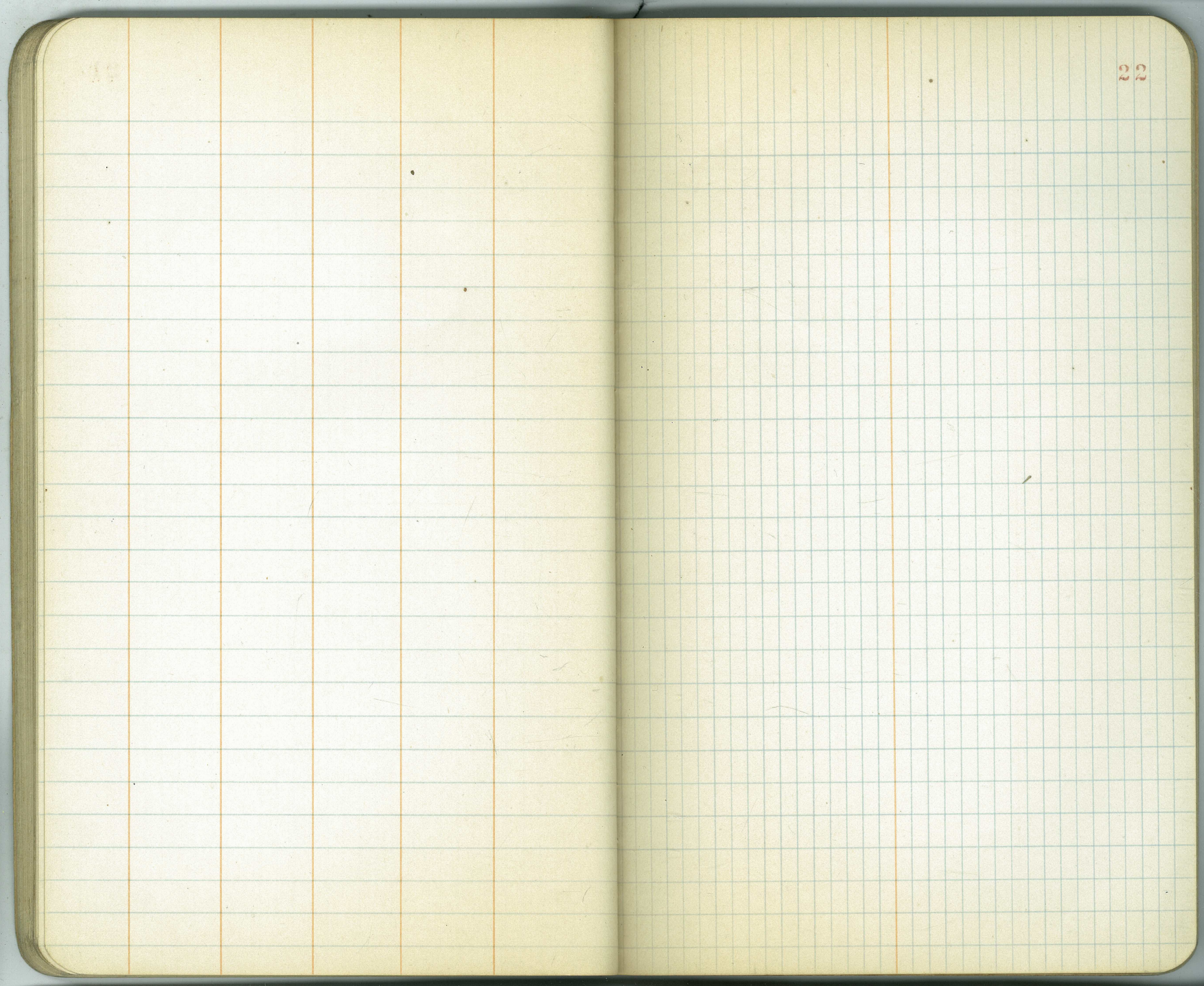
52	"	2° R
+50	"	2° "
53	"	07 "
+50	"	5° "
54	"	04 "

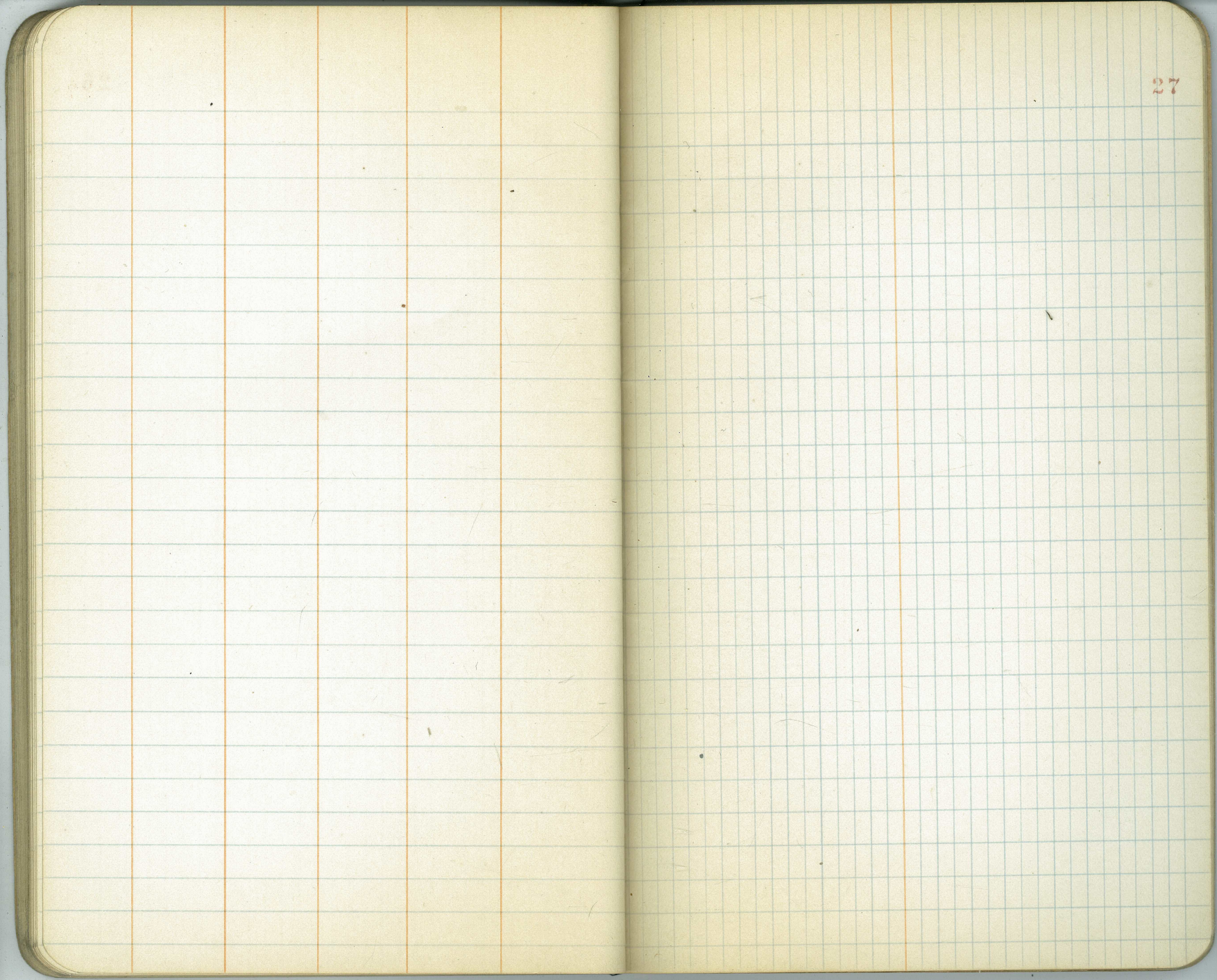


Flood Protection Wall

Sta	5' Offset	Slope Stk Hub
56+50	"	3° Rt.
57	"	2° "
+50	"	5' "
58	"	5' "
+50	"	5' "
59	"	6' "
+50	"	3' "
60	"	0' (At Hub)
+50	"	17 ft.







27

