

San Miguel

NAME Valencia St.

Job # 175
Class _____ Course Book Party Book #1

0100 to - 116 + 15.86

119

Alignment

1978

FIELD NOTES

No. 403P

ESPECIALLY ADAPTED
TO THE USE OF
ENGINEERING STUDENTS

EUGENE DIETZGEN Co.

MANUFACTURERS

DRAWING MATERIALS

MATHEMATICAL AND SURVEYING INSTRUMENTS

MEASURING TAPES

CHICAGO SAN FRANCISCO NEW YORK
NEW ORLEANS PITTSBURGH

~~BROADWAY EXTENSION~~

Valencia St. Etc.

San Miguel Ave.

Job #175

Book #1

MI (FILMED)

DEC 30 1964

Property of
Watson, Valle & Gough
508 Spreckles Bldg
San Diego, Calif.

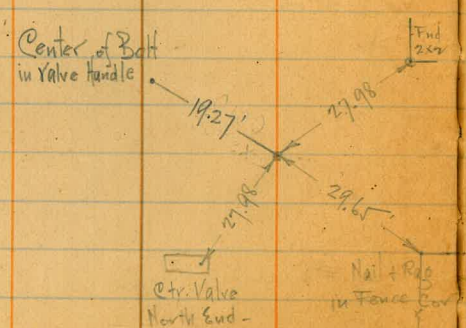
INDEX-

	Page
Alignment 0+00 to 116+15.96 (West from Golden Ave.-)	1 - 26
Sketch Imperial Ave & San Miguel	27
X-Secs " " "	28 - 30

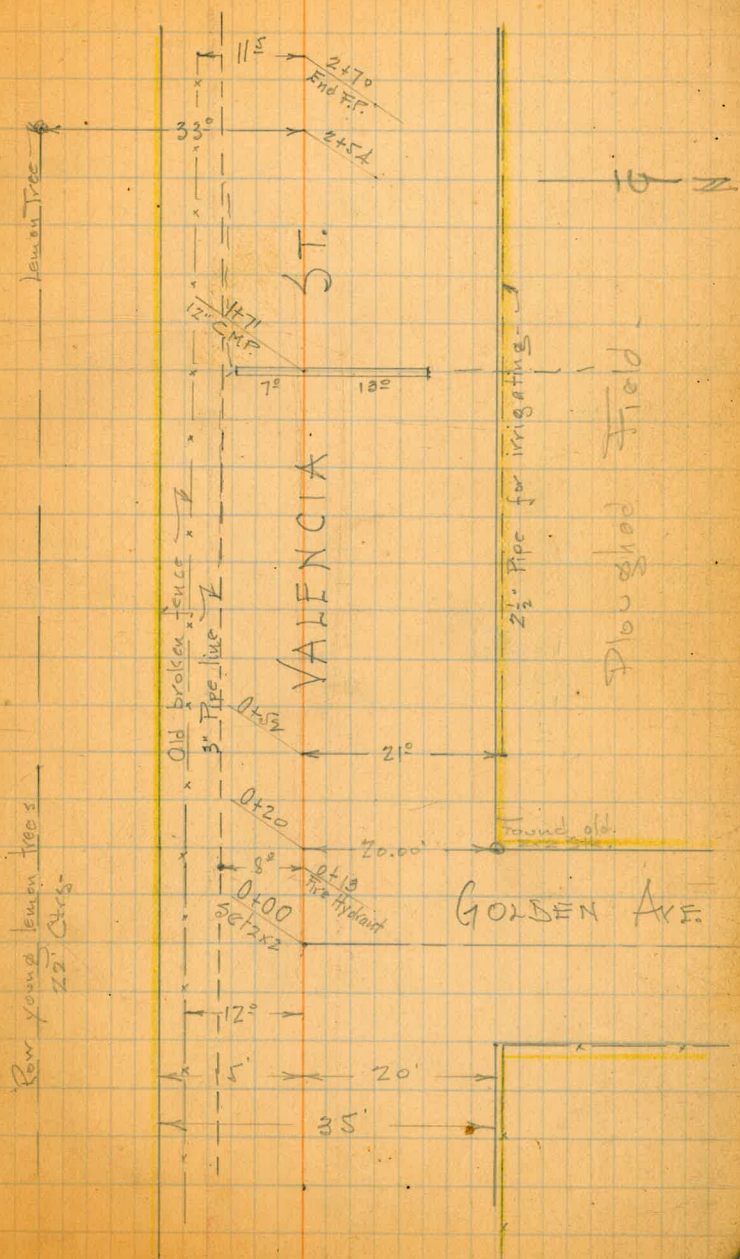
Sta. Dist. Angle Azimuth Def. Ties

115.65

7/17/26
Cootie
Clifton
Zunker Jr.



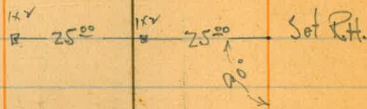
See Also Book # ~~X~~, Pg 1
120



Sta Dist.

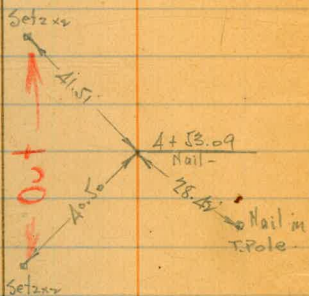
± Ties

5139.87



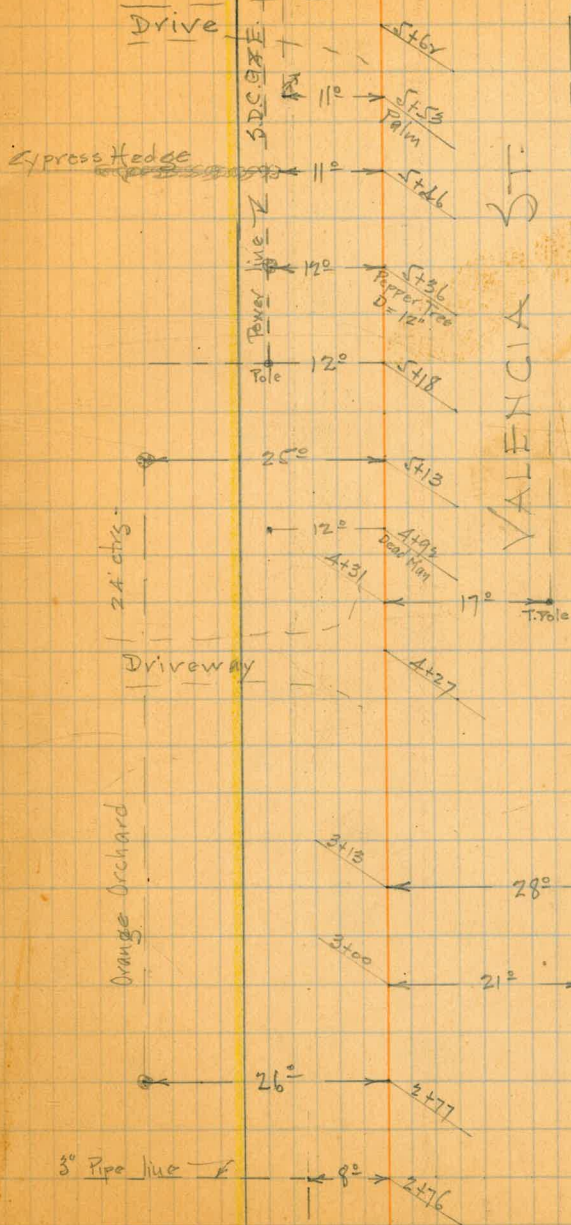
4153.09
POT.

1115.65



Topog

2



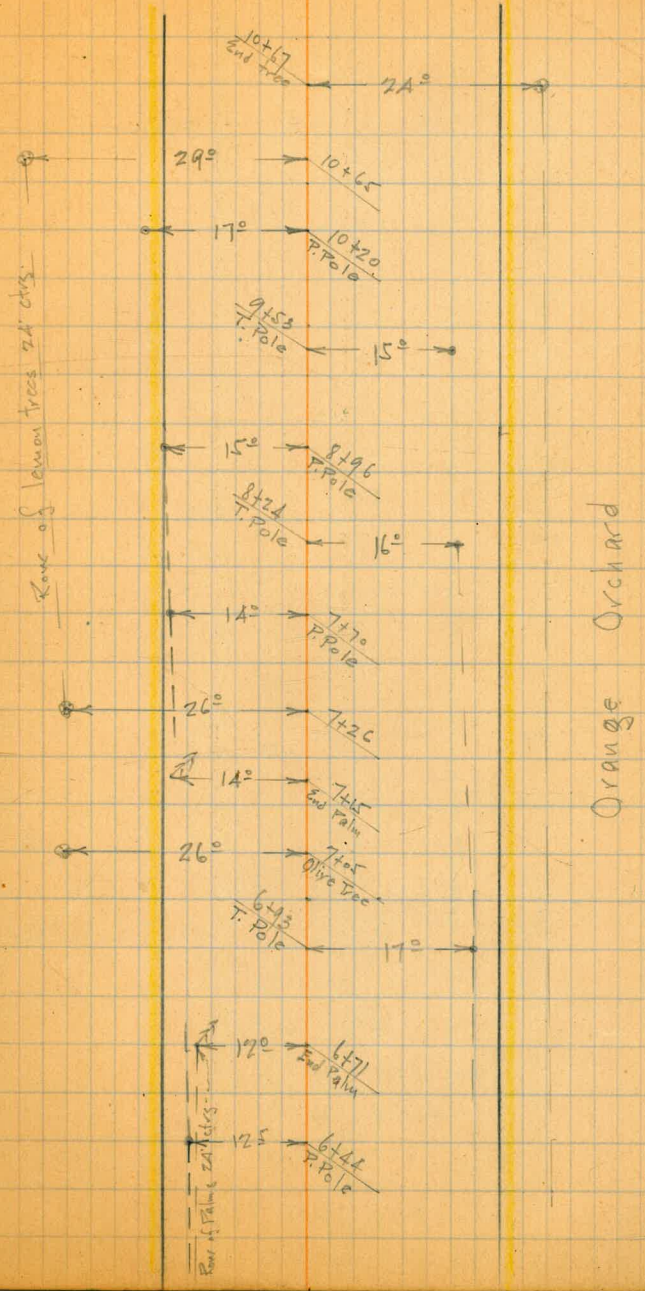
Sta Dist

Ties

Topog

3

115.65



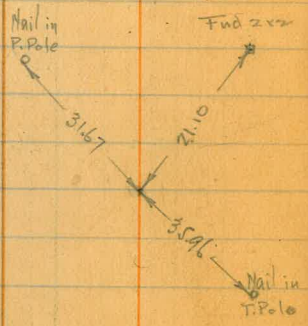
sta. Dist. Angle Az. Def. Ties -

2770.69

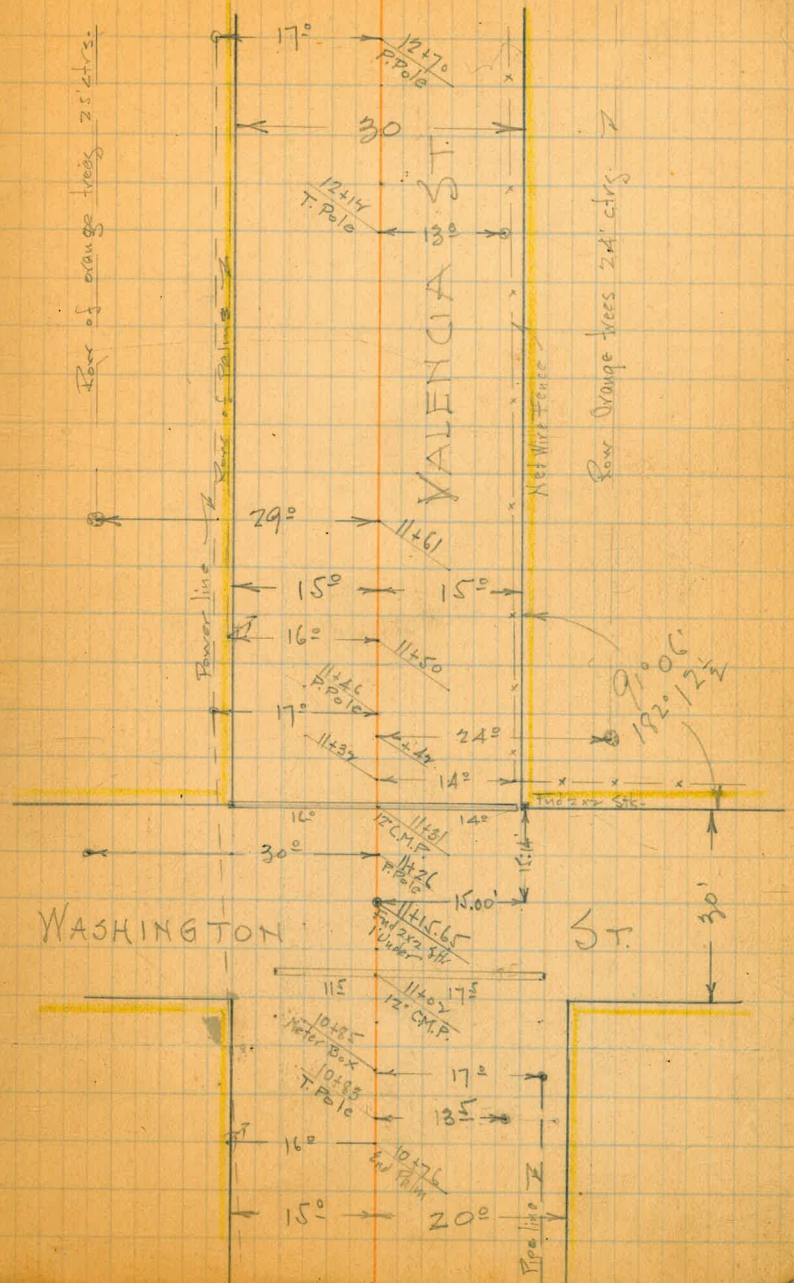
1145.65 P.I.

115.65

180° 11' 36° 29' 0° 11' R.



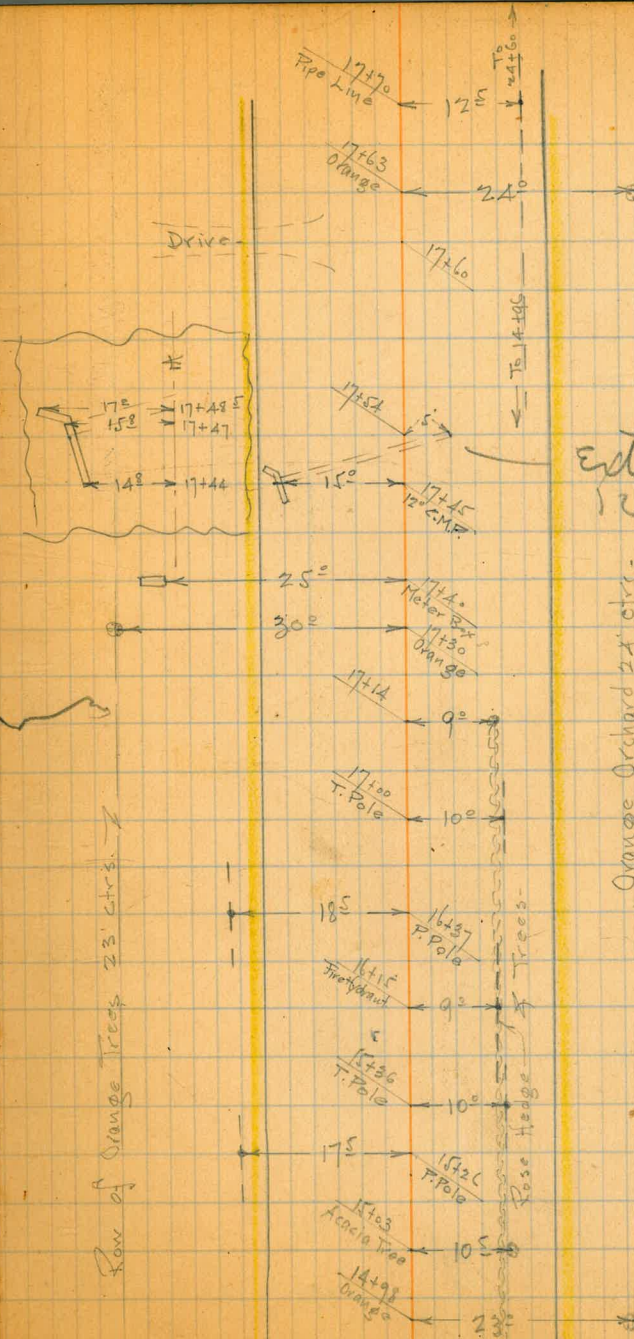
TOPOG. 4



Sta Dist.

Ties

~~277069~~



Extend
12' C.I.P.

Orange Orchard 24' etc.

Row of Orange Trees 23' etc.

Rose Hedge

6

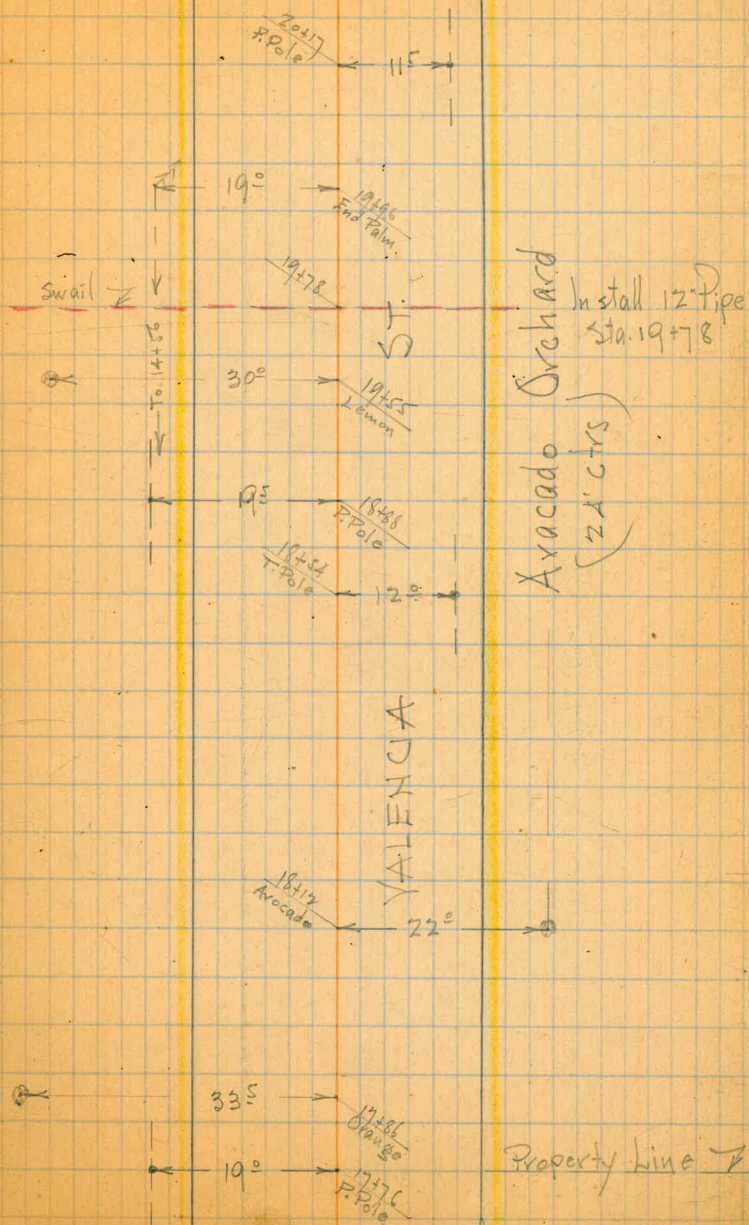
Sta. Dist.

Ties

2770.69

Topog-

7



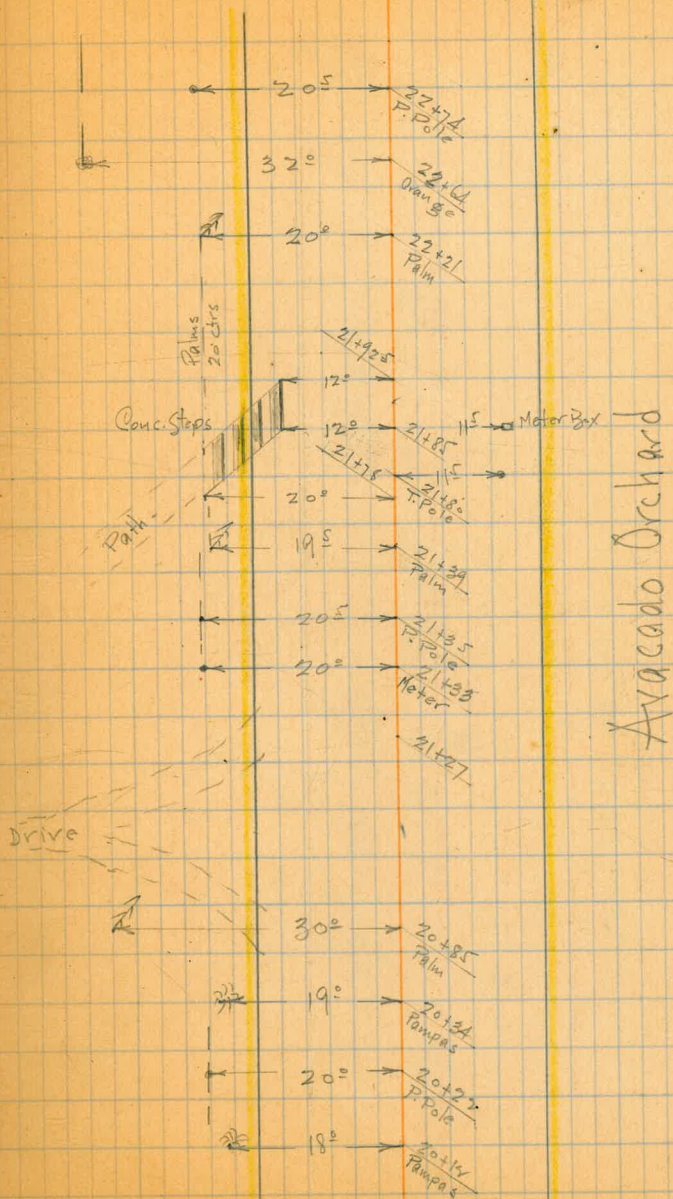
Sta Dist

± Ties

Topog

8

277069



Sta. Dist.

Ties

✓ 2770.69

Orange Orchard

Topog

9

25463
Orange Palm 15°

25458
Avacado 22°

25426
P. Pole 22°

25412
T. Pole 11°

24460
T. Pole Line (end) 10°

24427
Orange 37°

24400
P. Pole 20°

23496
Mulberry 24°

23494
O. T. Pole
& Mulberry 7°

23461
Palm 22°

23464
14' Cast. Pipe 17°

23413
T. Pole 7°

22491
Orange 11°

22491
Orange 35°

22477
Palm 21°

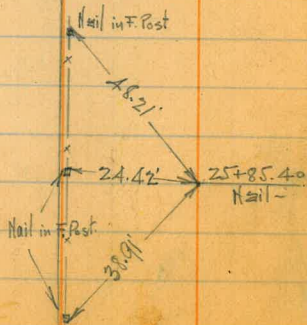
Avacado Orchard
(24' crs.)

Sta. Dist

* Ties

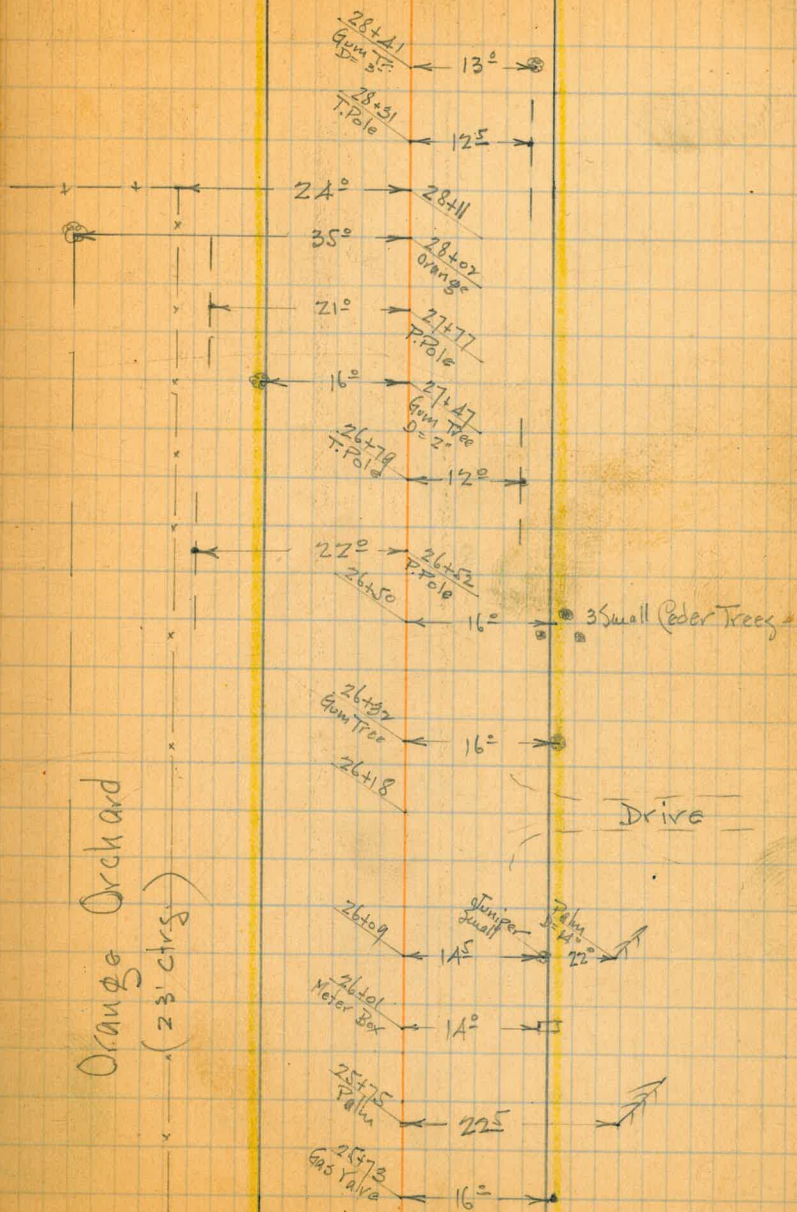
2770.69

25+85.40
ROT



Topog

10



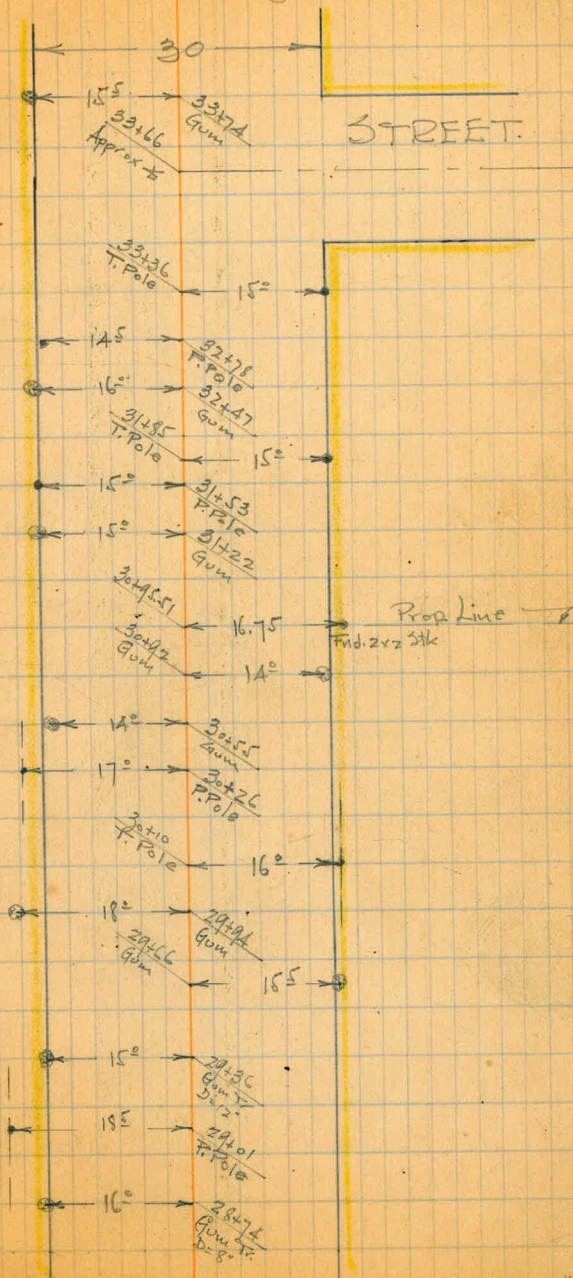
Orange Orchard
(23' circs)

Sta. Dist.

± Ties

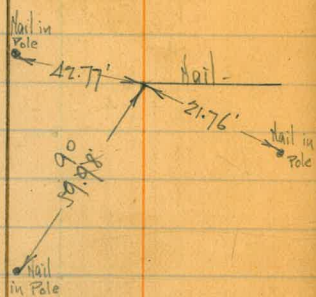
2770.69

Topo 3

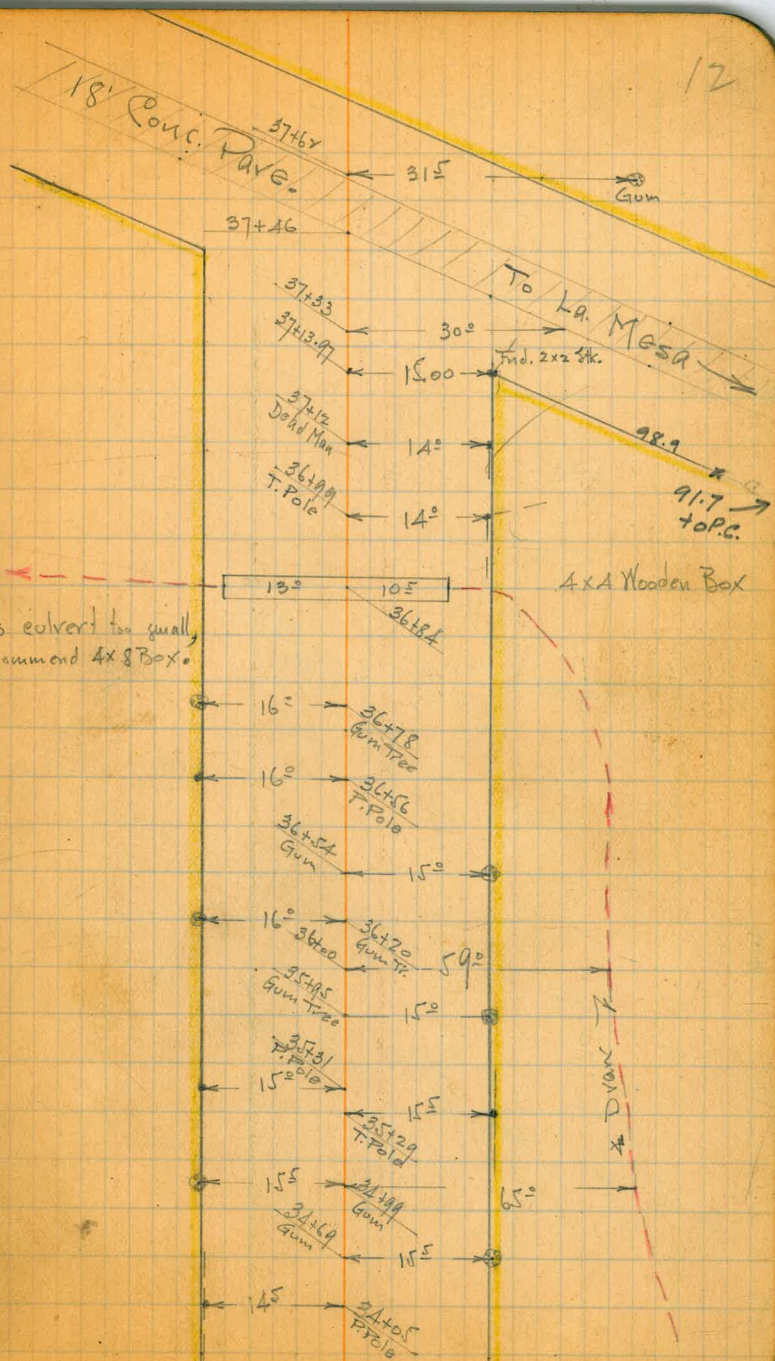


37413.97
P.O.T.

2770.69



This culvert too small,
Recommend 4x8 Box.



Sta	Dist.	Angle		Ties-
		Az.	Def.	

290.03

38+86.34
P.I.

231°49'
+103°38'

51°49' R

Nail in Curb
End of Ret.

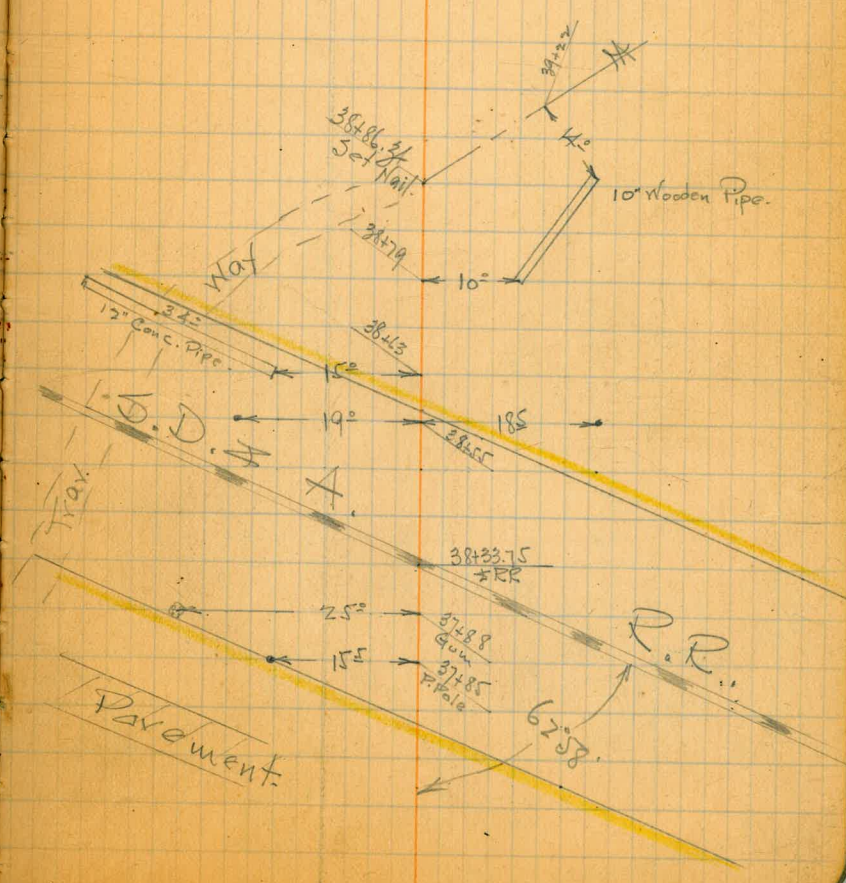
26.54

48.02

57.84

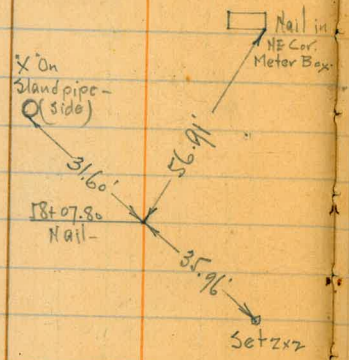
Nail in Pole

2770.69



3085 93

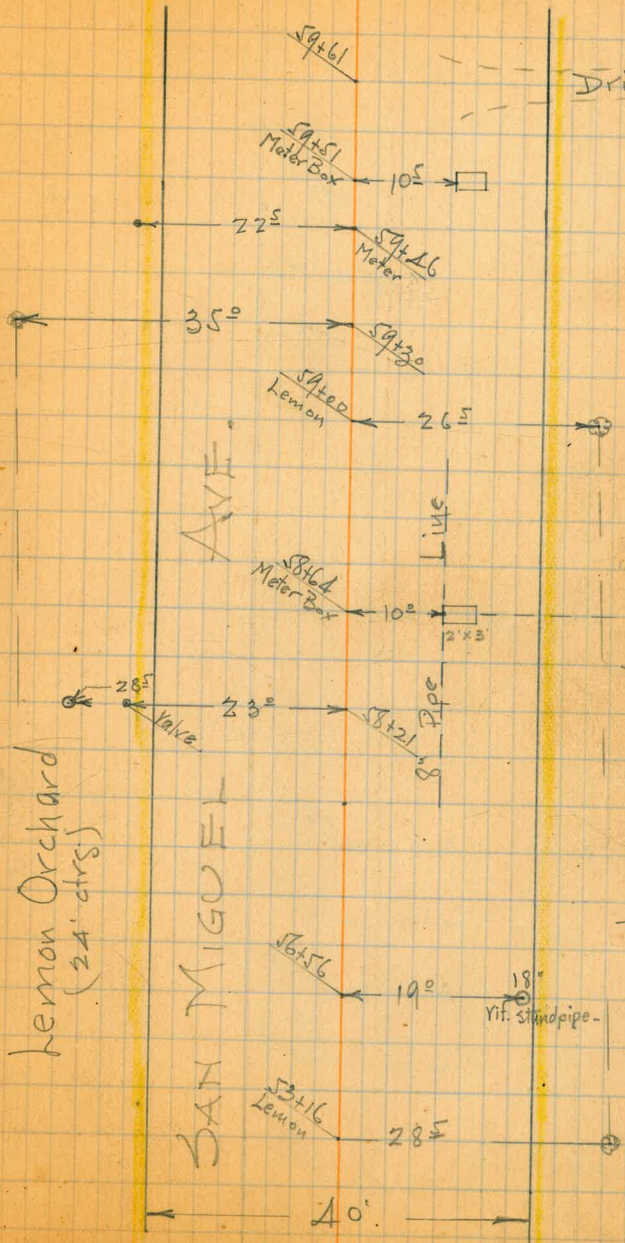
58+07.80
P.O.T.



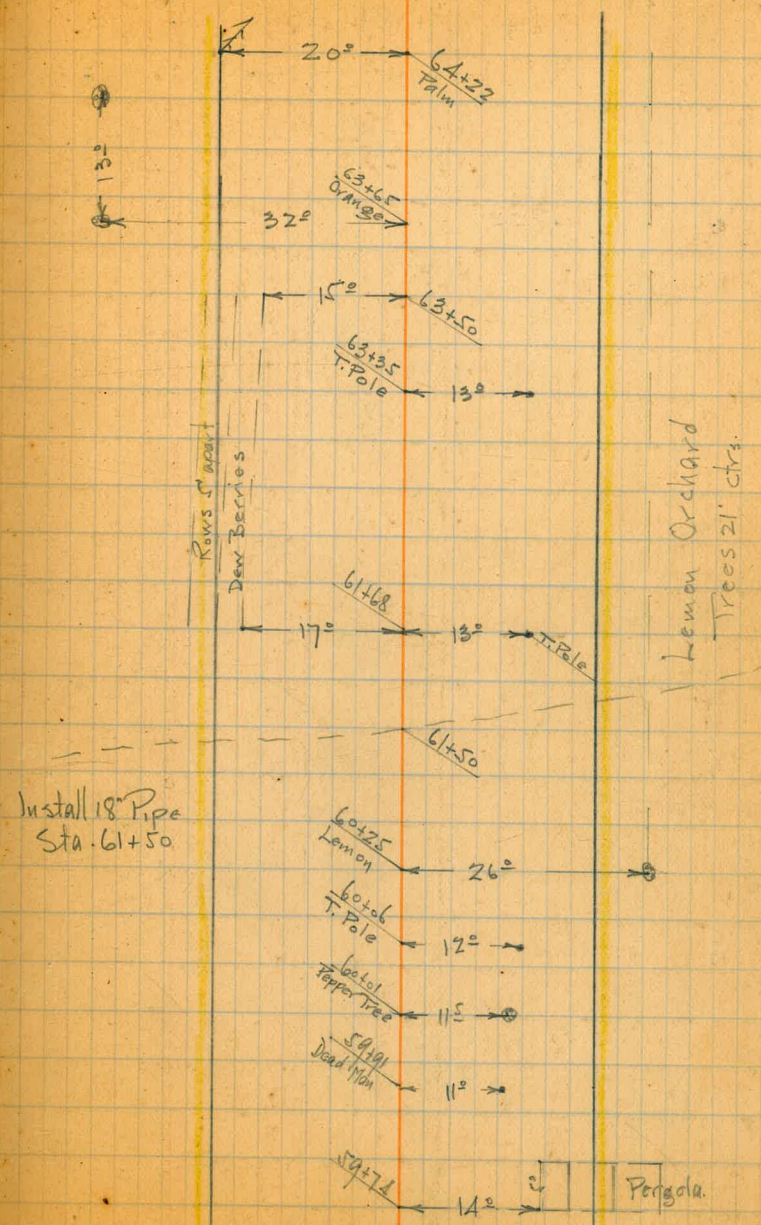
Lemon Orchard
(24' ctrs)

SAN MIGUEL

Lemon Orchard
(23' ctrs)



3085.93



Sta	Dist	Angle Az.	Def	*Ties
-----	------	--------------	-----	-------

3085.93

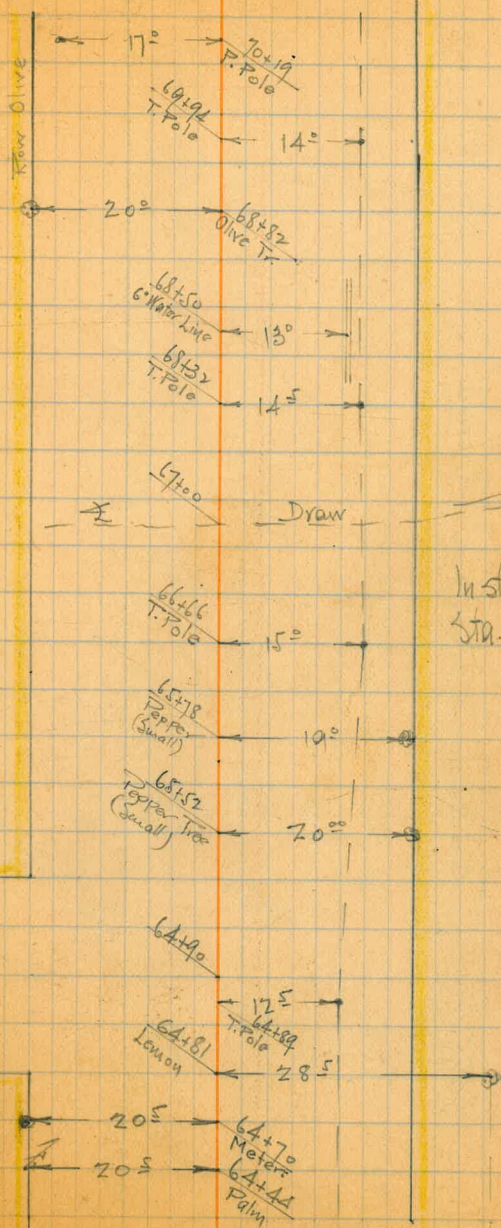
65+16.50
P.O.T.



STREET.

Topog

19



Install 12" C.M.P.
Sta. 67+00

Sta. Dist. Angle Az. Def. Ties.

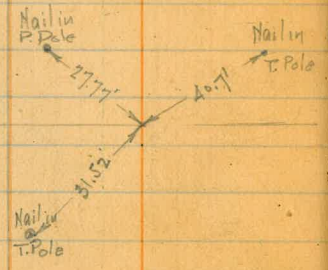
2969.15

72+230 Pl.

3085.93

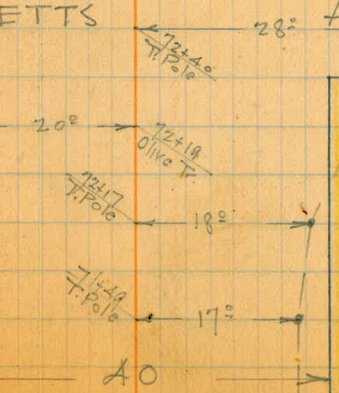
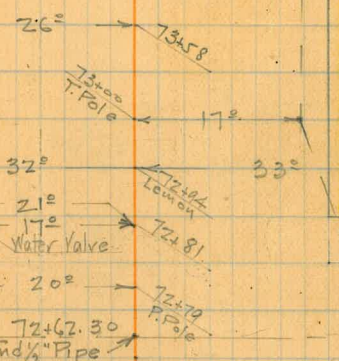
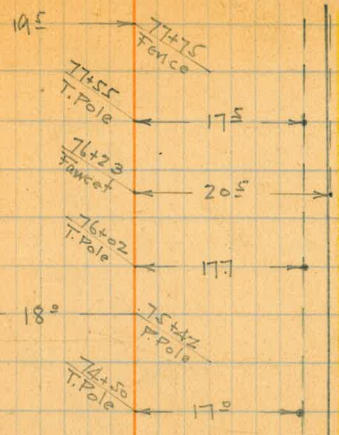
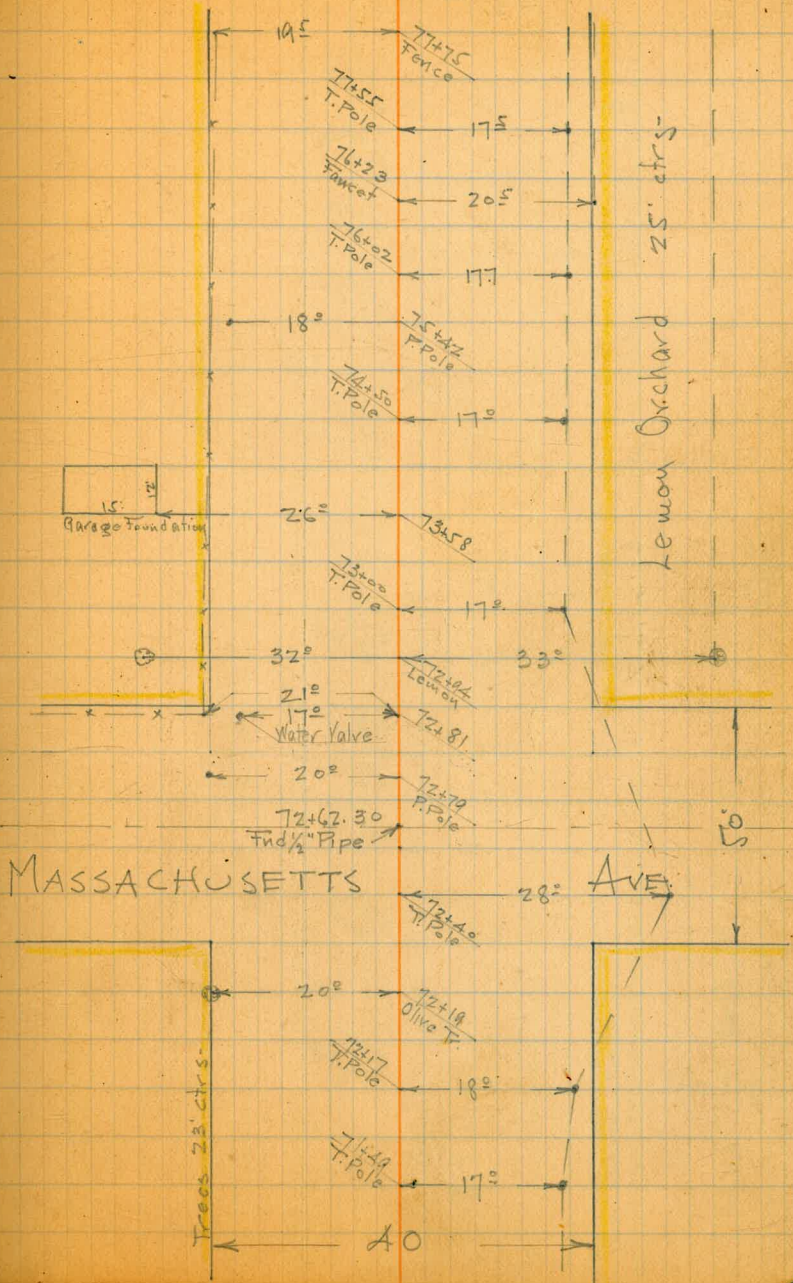
180°03'
360°06'

0°03' Rt.



Topology

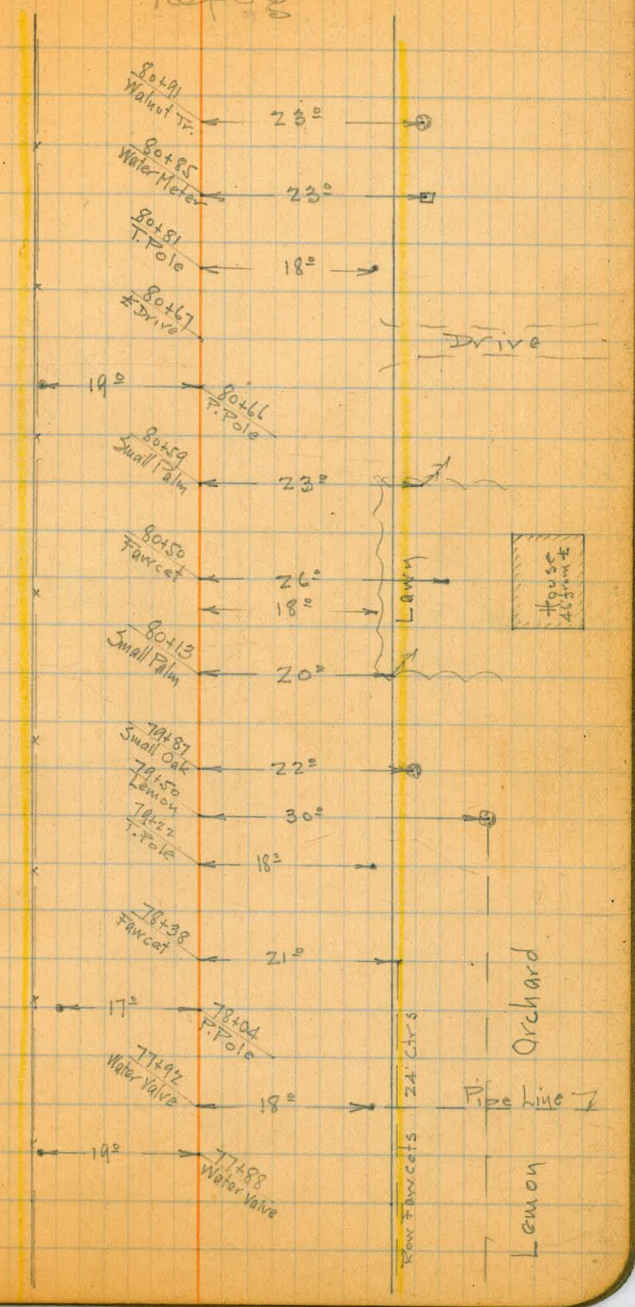
20



Sta Dist Angle Az. Def. Ties

2909.15

Topog- 21



Sta Dist

Angle
Az. Def

± Ties

Topog-

23

94+40.54
P.O.T.

2969.15

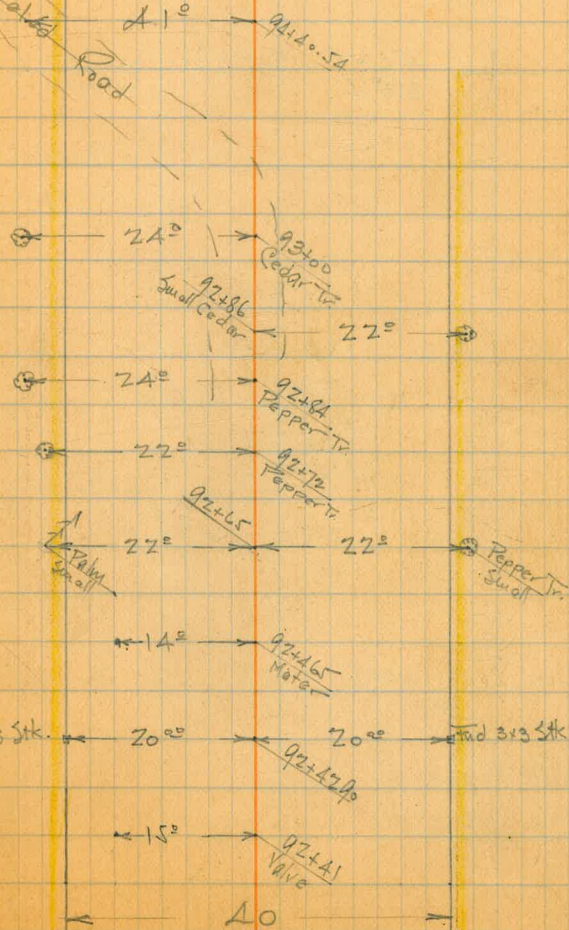
94+40.54
Set 2x2 Stk



97+47.90
P.O.T.

97+47.90
Set Nail

Present Traveled Road



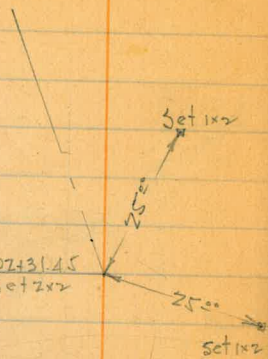
Sta.	Dist.	Angle Az. Def.	± Ties-
------	-------	-------------------	---------

103+92.39
102+92.39
P.T.

107+31.45
P.I.

156° 37'
313° 14' 23° 23' Lt.

107+31.45
Set 2nd



100+65.90
P.C.

$\Delta = 23^\circ 23'$
 $R = 800'$
 $T = 165.55'$
 $L = 326.49'$

2969.15

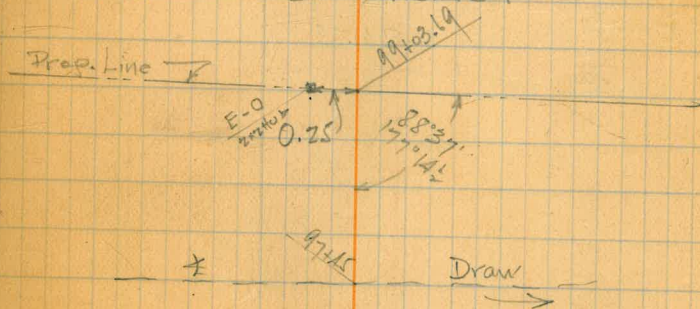
Topog-

24

Deflections -

101 = 1° 13½'
+50 = 3° 00½'
102 = 4° 48'
+50 = 6° 35½'
103 = 8° 23'
+50 = 10° 10½'
+92.39 = 11° 41½'

PAUL FORD TRACT



Install 18" Pipe
Sta. 97+45

Sta	Dist	Angle		Ties
		Az.	Def	

110+79.52
P.T.

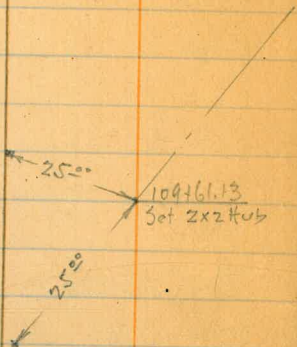
109+61.13
P.I.

108+37.94
P.C.

207°41' 27°41' R
+55°22'

A = 27°41'
R = 500'
T = 123.19
L = 241.58

?
834.29
734.29'

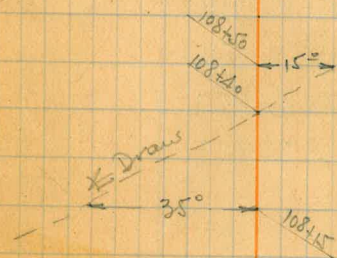


Topog-

25

Deflections -
108+50 = 0° 41 1/2'
109 +50 = 3° 33 1/4'
+50 = 6° 25'
110 +50 = 9° 17'
+50 = 12° 09'
+79.52 = 13° 50 1/2'

Install 18" C.M.D.
Sta 108+40



Install 18" C.M.D.
Sta 105+70



7/17/26

Route

Clifton

Bunker Jr.

Edwy Ext.
87+24.25
116+15.96 =
P.T.

149.67

Equation-

114+95.90
P.I.

118°11'
236°22'

61°49' Lt.

114+95.90
Settall in Road

Set 2m
34.05

34.05
Set 2m

113+16.23
P.C.

A = 61°29'

R = 250

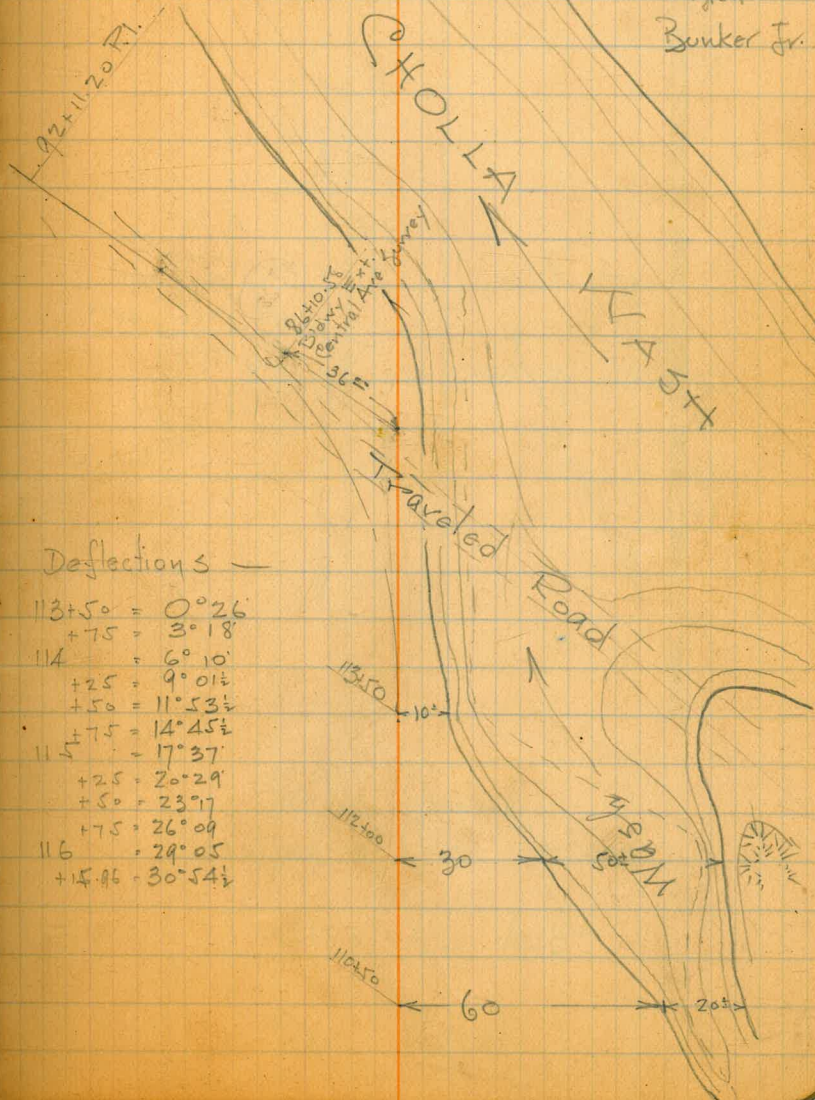
T = 149.67

L = 269.73

539.57

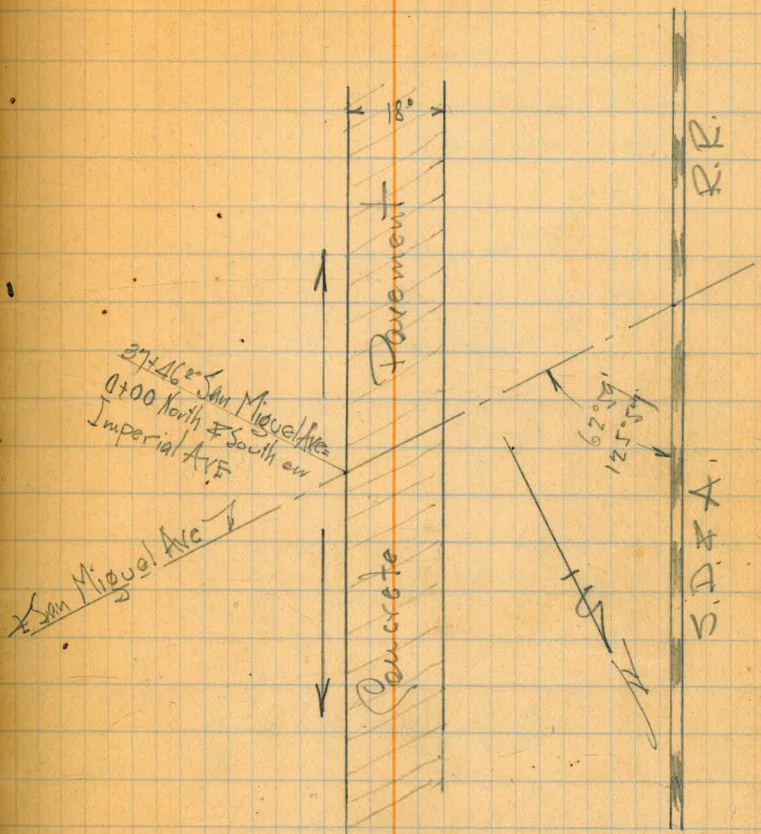
Deflections -

113+50 = 0°26'
+75 = 3°18'
114 = 6°10'
+25 = 9°01½"
+50 = 11°53½"
114+75 = 14°45½"
+25 = 20°29'
+50 = 23°17'
116+75 = 26°09'
+15.96 = 30°54½"



10/7/26
 Cote
 Glover
 Slifton
 Key

Cross sections on Pg. 28



Sketch showing
 Location of Cross Sections
 on
 IMPERIAL AVE.
 at
 San Miguel

X-SECS IMPERIAL AVE.

South from San Miguel

Btw #6

0.83 393.93

393.10 ✓ Nail in Power Pole N. Side Imperial Ave at San Miguel -
See Bk# 121/5

0+00

Sketch on Pg. 27

87.3	89.1	92.1	92.50	92.60	2.49	91.9	92.1	92.4	93.9
$\frac{6.6}{A}$	$\frac{4.8}{31}$	$\frac{1.5}{9}$	$\frac{1.43}{4.8}$	$\frac{1.33}{9}$	$\frac{1.44}{18}$	$\frac{2.0}{23}$	$\frac{1.8}{28}$	$\frac{0.5}{32}$	$\frac{0.8}{43}$

+50

87.1	88.9	89.2	90.4	91.71	91.80	91.68	91.2	92.4	93.1
$\frac{6.5}{3A}$	$\frac{5.0}{20}$	$\frac{4.7}{12}$	$\frac{3.5}{8}$	$\frac{2.22}{8}$	$\frac{2.13}{9}$	$\frac{2.25}{18}$	$\frac{2.7}{26}$	$\frac{1.5}{30}$	$\frac{0.8}{40}$

1

87.4	89.4	89.8	90.74	90.79	90.66	91.5	92.6
$\frac{6.5}{30}$	$\frac{4.5}{9}$	$\frac{4.1}{7}$	$\frac{3.19}{9}$	$\frac{3.14}{9}$	$\frac{3.27}{18}$	$\frac{2.4}{30}$	$\frac{1.3}{40}$

+26

On Angle Cypress Ave

86.9	86.7	87.0	87.7	88.2	90.16
$\frac{7.0}{200}$	$\frac{7.3}{150}$	$\frac{6.9}{100}$	$\frac{6.2}{50}$	$\frac{5.7}{30}$	$\frac{3.77}{30}$

+50

88.0	88.2	89.51	89.64	89.54	88.9	90.5	91.1
$\frac{4.1}{30}$	$\frac{5.7}{17}$	$\frac{4.42}{9}$	$\frac{4.29}{9}$	$\frac{4.39}{18}$	$\frac{5.0}{25}$	$\frac{3A}{30}$	$\frac{2.8}{40}$

+82

Top Man Hole

88.69
 $\frac{5.2A}{5}$

Lt.

Rt.

28

393.93

29

2

85.8	87.5	88.35	88.47	88.34	87.9	87.0	89.8
$\frac{8.1}{30}$	$\frac{6.4}{7}$	$\frac{5.8}{1}$	$\frac{5.46}{9}$	$\frac{5.59}{18}$	$\frac{6.8}{25}$	$\frac{4.9}{32}$	$\frac{4.1}{40}$

+50

84.3	84.9	86.4	87.15	87.23	87.17	86.7	87.1	87.6
$\frac{9.6}{30}$	$\frac{9.0}{19}$	$\frac{7.5}{7}$	$\frac{6.78}{1}$	$\frac{6.70}{9}$	$\frac{6.76}{1.8}$	$\frac{7.7}{2.4}$	$\frac{6.8}{32}$	$\frac{6.3}{40}$

3

83.6	84.5	85.8	86.05	86.11	86.04	85.4	86.6	87.0
$\frac{10.3}{30}$	$\frac{9.4}{13}$	$\frac{8.1}{5}$	$\frac{7.90}{1}$	$\frac{7.87}{9}$	$\frac{7.89}{18}$	$\frac{8.5}{2.4}$	$\frac{7.3}{28}$	$\frac{6.9}{40}$

+50

83.6	83.4	84.9	84.90	84.98	84.87	84.4	85.8	86.1
$\frac{10.3}{30}$	$\frac{10.5}{17}$	$\frac{9.0}{6}$	$\frac{9.03}{9}$	$\frac{8.95}{18}$	$\frac{9.06}{18}$	$\frac{9.5}{23}$	$\frac{8.1}{26}$	$\frac{7.8}{40}$

4

81.9	82.7	83.8	83.85	83.9	83.83	83.6	84.7	84.7
$\frac{12.0}{30}$	$\frac{11.7}{14}$	$\frac{10.1}{6}$	$\frac{10.10}{1}$	$\frac{10.00}{9}$	$\frac{10.10}{18}$	$\frac{10.3}{2.4}$	$\frac{9.7}{26}$	$\frac{9.7}{40}$

+50

81.9	81.7	80.9	82.5	82.86	83.02	82.95	82.6	82.7	81.9	82.3
$\frac{12.0}{30}$	$\frac{12.7}{16}$	$\frac{13.5}{13}$	$\frac{11.4}{9}$	$\frac{11.07}{1}$	$\frac{10.90}{9}$	$\frac{10.98}{18}$	$\frac{11.3}{25}$	$\frac{11.2}{29}$	$\frac{12.0}{32}$	$\frac{11.6}{40}$

5

81.9	81.8	79.6	81.9	82.27	82.45	82.30	81.1
$\frac{12.0}{30}$	$\frac{12.1}{21}$	$\frac{14.3}{11}$	$\frac{12.0}{6}$	$\frac{11.66}{1}$	$\frac{11.50}{9}$	$\frac{11.63}{18}$	$\frac{14.8}{40}$

B7w#6

0.83 393.10 393.10

North from San Miguel.

11

Rt.

30

BW#6

9.11 402.21

393.10

Sea Pg. 28

0+50

94.7	94.5	92.8	93.19	93.41	93.38	92.5	90.9	88.5
$\frac{7.3}{40}$	$\frac{7.7}{33}$	$\frac{9.4}{29}$	$\frac{9.02}{18}$	$\frac{8.80}{9}$	$\frac{8.83}{6P.}$	$\frac{9.7}{6}$	$\frac{11.3}{9}$	$\frac{13.7}{30}$
E.P. Time								

95.9	95.7	94.0	94.14	94.37	94.26	93.4	91.6	90.0
$\frac{6.3}{40}$	$\frac{6.5}{38}$	$\frac{8.2}{30}$	$\frac{8.07}{18}$	$\frac{7.84}{9}$	$\frac{7.95}{9}$	$\frac{8.5}{5}$	$\frac{10.6}{13}$	$\frac{12.5}{30}$

+50

96.0	95.7	94.4	94.90	95.17	95.07	94.5	93.0	91.8
$\frac{6.2}{40}$	$\frac{7.2}{33}$	$\frac{7.8}{27}$	$\frac{7.31}{18}$	$\frac{7.05}{9}$	$\frac{7.14}{9}$	$\frac{7.7}{4}$	$\frac{9.2}{9}$	$\frac{10.4}{30}$

2

97.4	95.7	95.5	96.00	96.10	95.96	94.0	92.9
$\frac{5.0}{40}$	$\frac{6.5}{31}$	$\frac{6.7}{23}$	$\frac{6.21}{18}$	$\frac{6.11}{9}$	$\frac{6.25}{9}$	$\frac{8.2}{9}$	$\frac{9.3}{30}$

+50

96.2	98.0	96.7	96.4	97.11	97.17	97.05	94.2	93.8
$\frac{4.0}{40}$	$\frac{4.2}{36}$	$\frac{5.5}{31}$	$\frac{5.5}{27}$	$\frac{5.10}{18}$	$\frac{5.04}{9}$	$\frac{5.16}{9}$	$\frac{7.4}{10}$	$\frac{8.4}{30}$

3

99.2	99.3	98.1	97.6	98.33	98.36	98.33	97.8	95.6	90.8
$\frac{3.0}{40}$	$\frac{2.9}{37}$	$\frac{4.1}{37}$	$\frac{4.6}{27}$	$\frac{3.58}{18}$	$\frac{3.85}{9}$	$\frac{3.88}{9}$	$\frac{4.4}{4}$	$\frac{1.6}{13}$	$\frac{1.4}{30}$

BW#6

9.11 393.10 393.10



31

32

33

34

$$\begin{array}{r} 94+40.54 \\ 92+42.90 \\ \hline 197.64 \end{array}$$

$$\begin{array}{r} 92+53.60 \\ 1+86.94 \\ \hline 94 \cancel{40} 54 \\ 94+4054 \end{array}$$

Coco Plamson

91-00
182-12 1/2

38+86.30	41+76.37
11+15.65	38+86.30
27 70.69	290.03

102+31.55	72+62.30
72+62.30	41+76.37
29 69.15	30 85.93

129.67	109+61.13
86.00	102+92.29
113.67	7 29.68
86+10.15	109+61.13
97+10.15	102+92.29
4 16.38	6.68.74
123.19	165.55
539.57	834.29

153.10
147-5x
179-60
34=ab

94
92
157

57+13.27
31.70
37+45.67
1

231-49
90
141-49