

NAME San Altos #3
El Prado Ave X-Sec 5

Class _____ Course _____ Party _____

433

1985

WATSON, VALLE & GOUGH

FIELD NOTES

No. 403P

ESPECIALLY ADAPTED
TO THE USE OF
ENGINEERING STUDENTS

EUGENE DIETZGEN Co.
MANUFACTURERS
DRAWING MATERIALS
MATHEMATICAL AND SURVEYING INSTRUMENTS
MEASURING TAPES

CHICAGO SAN FRANCISCO NEW YORK
NEW ORLEANS PITTSBURGH

MICROFILMED

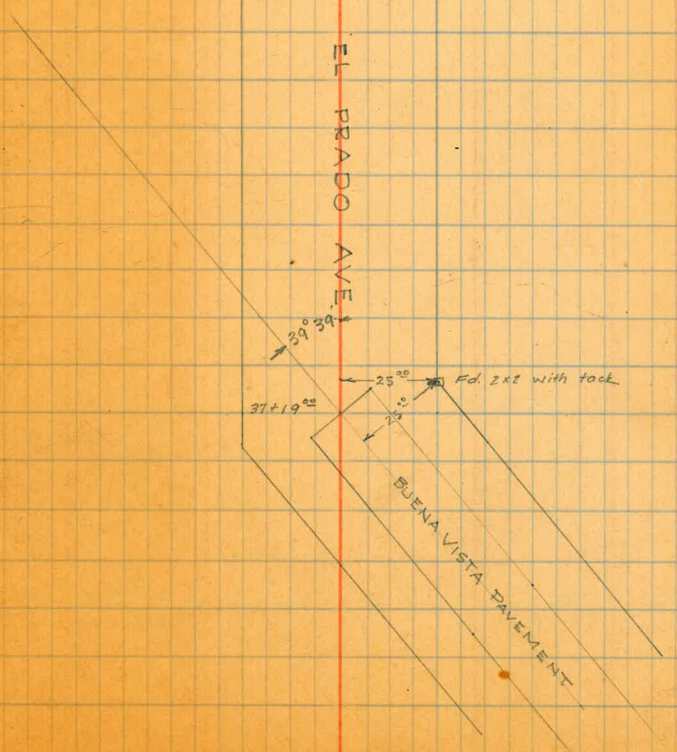
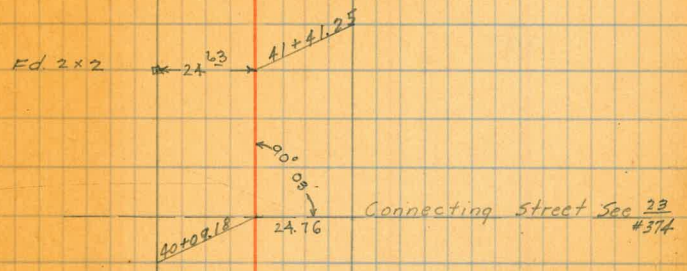
DEC 30 1964

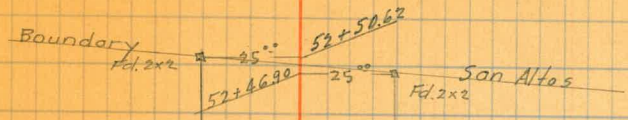
Revised Loc. El Prado Ave
X Sec ✓ ✓ ✓

1
4-7

E Loc. El Prado Ave

1





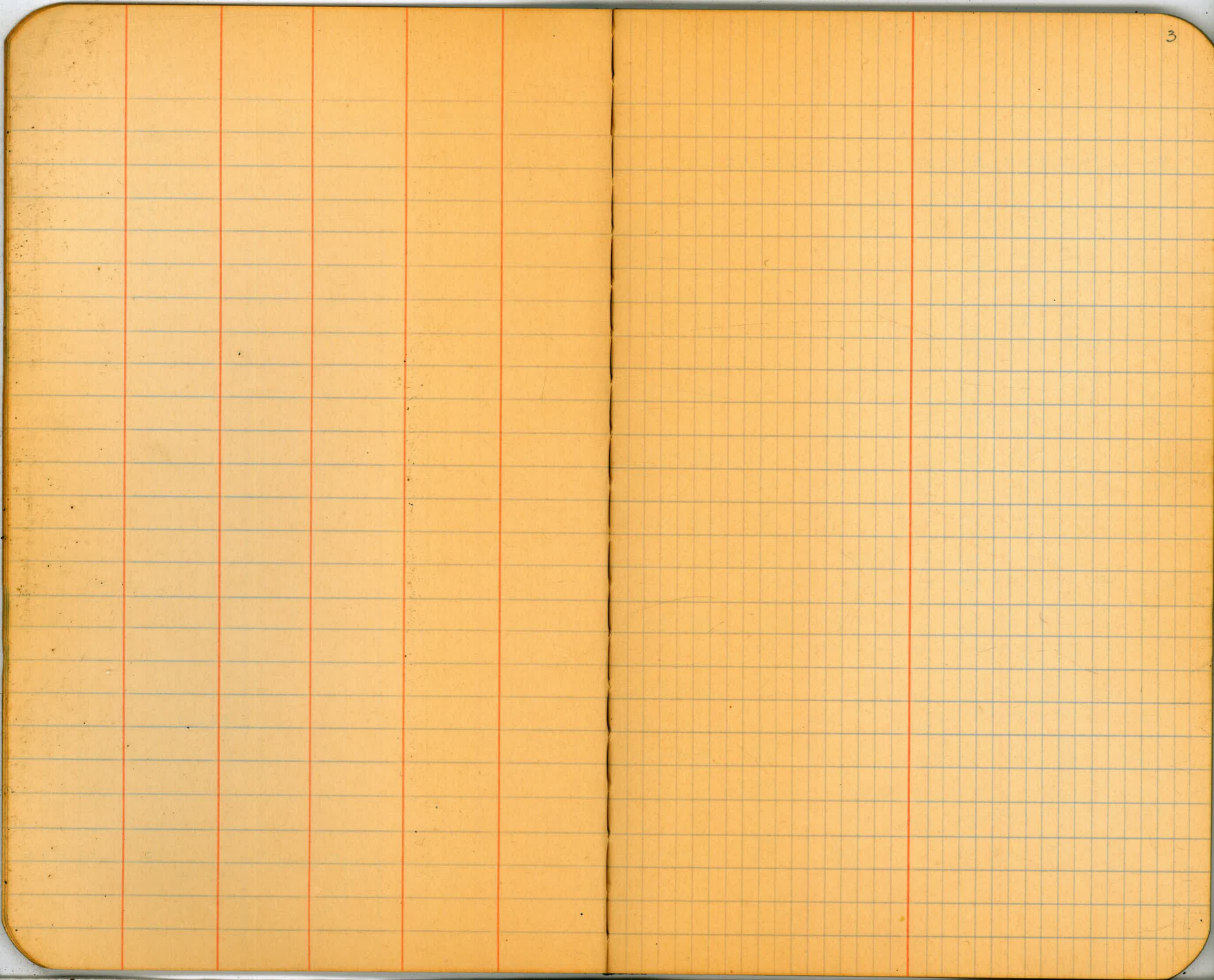
see 6
#374

Fd. 2x2

45 + 36.53 P.I.

Δ = 4° 05' Lt.





X Sec El Prado Ave

Book 374
P 15

4

B.M. 12.30 379.20 366.90

2x2 - 30' Rt Sta 52+75 (See Book 374 - Page 15)

H.I. = 379.20

Nov 1-27

Clark
Chilton

H. Thompson
M^r Gowan

51+50

51+00

50+50

50+00

49+50

3.25 371.91 10.54 368.66

49+00

48+50

48+00

1.15 361.11 11.95 359.96

47+50

386.8 385.9 382.2 381.3 380.2 379.9 381.3

7.6 6.7 3.0 2.1 0.8 40.7 42.1
35 25 15 16 25 35

371.8 373.3 377.2 377.7 378.8 380.4 381.6

7.4 5.9 2.0 1.5 0.4 11.2 12.4
35 25 15 16 25 35

371.4 372.7 376.2 376.9 377.8 379.6 380.7

7.8 6.5 3.0 2.3 1.4 10.4 11.5
35 25 15 16 25 35

369.7 370.9 374.5 374.8 376.3 377.6 378.9

9.5 8.3 4.7 4.4 2.9 11.6 10.3
35 25 15 17 25 35

368.1 369.0 372.2 372.6 374.1 375.9 376.5

11.1 10.2 7.0 6.6 5.1 3.8 2.7
35 25 15 17 25 35

H.I. = 371.9

366.0 366.9 369.6 369.3 370.1 371.2 372.3 373.5

5.9 5.0 2.3 2.6 1.8 0.7 10.4 11.6
35 25 14 14 17 25 35

364.0 364.9 365.5 366.7 367.7 367.6 368.9 369.6

7.9 7.0 6.4 5.2 5.2 4.3 3.5 2.3
35 25 15 15 16 25 35

358.6 360.0 360.4 361.9 362.5 361.9 363.3 363.7 364.2

13.3 11.9 11.5 9.4 10.0 8.6 8.2 7.7
35 25 15 10.0 9 16 17 25 35

H.I. = 361.1

351.7 352.7 354.8 355.1 356.1 357.5 358.0

9.4 8.4 6.3 6.0 5.0 3.6 3.1
35 25 15 15 25 35

361.11

47+00

46+88

46+72

46+50

11.93 372.92 0.12 360.99

46+00

South Pt. San Miguel 45+86.67

B. Pt

7.67 365.25

North Pt. San Miguel 45+36.0

11.94 384.78 0.08 372.84

45+00

44+50

44+00

0.24 384.54 383.54

5.

$344.2 \quad 346.1 \quad 348.4 \quad H.I. = 361.1 \quad 349.8 \quad 351.0 \quad 351.8 \quad 367.8$
 $\begin{array}{r} \text{Bottom} \\ \text{Draw} \end{array} \rightarrow \begin{array}{r} 16.9 \\ 64 \end{array} \quad \begin{array}{r} 15.0 \\ 50 \end{array} \quad \begin{array}{r} 12.7 \\ 25 \end{array} \quad \begin{array}{r} 11.2 \\ 15 \end{array} \quad \begin{array}{r} 11.3 \\ 17 \end{array} \quad \begin{array}{r} 10.1 \\ 25 \end{array} \quad \begin{array}{r} 9.8 \\ 25 \end{array} \quad \begin{array}{r} 9.3 \\ 35 \end{array}$
 $344.7 \quad 347.7 \quad 348.7 \quad 349.2 \quad 349.3 \quad 349.4 \quad 349.9$
 $\begin{array}{r} \text{Bottom} \\ \text{Draw} \end{array} \rightarrow \begin{array}{r} 16.4 \\ 58 \end{array} \quad \begin{array}{r} 13.4 \\ 25 \end{array} \quad \begin{array}{r} 12.4 \\ 10 \end{array} \quad \begin{array}{r} 11.9 \\ 10 \end{array} \quad \begin{array}{r} 11.8 \\ 25 \end{array} \quad \begin{array}{r} 11.7 \\ 50 \end{array} \quad \begin{array}{r} 11.2 \\ 75 \end{array}$
 $347.2 \quad 345.8 \quad 346.6 \quad 349.2 \quad 349.9 \quad \text{Bottom of Draw} \rightarrow \begin{array}{r} 350.0 \\ 350.8 \end{array}$
 $\begin{array}{r} 13.9 \\ 50 \end{array} \quad \begin{array}{r} 15.6 \\ 39 \end{array} \quad \begin{array}{r} 15.3 \\ 25 \end{array} \quad \begin{array}{r} 14.5 \\ 18 \end{array} \quad \begin{array}{r} 11.9 \\ 17 \end{array} \quad \begin{array}{r} 11.2 \\ 25 \end{array} \quad \begin{array}{r} 11.1 \\ 50 \end{array} \quad \begin{array}{r} 10.3 \\ 50 \end{array}$
 $354.5 \quad 353.8 \quad 354.1 \quad 353.5 \quad 353.9 \quad 353.5 \quad 353.6$
 $\begin{array}{r} 6.6 \\ 50 \end{array} \quad \begin{array}{r} 7.3 \\ 25 \end{array} \quad \begin{array}{r} 7.0 \\ 18 \end{array} \quad \begin{array}{r} 7.6 \\ 17 \end{array} \quad 7.2 \quad \begin{array}{r} 7.6 \\ 25 \end{array} \quad \begin{array}{r} 7.5 \\ 50 \end{array}$

$364.5 \quad H.I. = 372.9 \quad 362.8 \quad 363.3$
 $\begin{array}{r} 8.4 \\ 35 \end{array} \quad \begin{array}{r} 8.9 \\ 25 \end{array} \quad 9.5 \quad \begin{array}{r} 10.1 \\ 25 \end{array} \quad \begin{array}{r} 9.6 \\ 35 \end{array}$
 $364.4 \quad 365.3 \quad 365.0 \quad 365.2 \quad 365.1$
 $\begin{array}{r} 8.5 \\ 50 \end{array} \quad \begin{array}{r} 7.6 \\ 25 \end{array} \quad 7.9 \quad \begin{array}{r} 7.7 \\ 25 \end{array} \quad \begin{array}{r} 7.8 \\ 50 \end{array}$

1x1- 30' Lt Sta 45+90 (See Book 374 Page 11)
 Elev = 365.20 369.52 370.22 371.12 371.32 372.62

$\begin{array}{r} 3.4 \\ 50 \end{array} \quad \begin{array}{r} 2.7 \\ 25 \end{array} \quad 1.8 \quad \begin{array}{r} 1.6 \\ 25 \end{array} \quad \begin{array}{r} 0.3 \\ 50 \end{array}$

$372.9 \quad 373.5 \quad H.I. = 383.8 \quad 374.4 \quad 375.9 \quad 375.4$
 $\begin{array}{r} 11.9 \\ 35 \end{array} \quad \begin{array}{r} 11.3 \\ 25 \end{array} \quad 10.4 \quad \begin{array}{r} 9.4 \\ 25 \end{array} \quad \begin{array}{r} 9.4 \\ 35 \end{array}$
 $376.6 \quad 377.1 \quad 378.6 \quad 378.8 \quad 378.9 \quad 379.8 \quad 380.2 \quad 380.7$
 $\begin{array}{r} 8.2 \\ 35 \end{array} \quad \begin{array}{r} 7.7 \\ 25 \end{array} \quad \begin{array}{r} 6.2 \\ 9 \end{array} \quad 6.0 \quad \begin{array}{r} 5.9 \\ 16 \end{array} \quad \begin{array}{r} 5.0 \\ 16 \end{array} \quad \begin{array}{r} 4.6 \\ 25 \end{array} \quad \begin{array}{r} 4.1 \\ 35 \end{array}$
 $381.0 \quad 381.9 \quad 383.8 \quad 383.5 \quad 384.6 \quad 385.7 \quad 386.2$
 $\begin{array}{r} 3.8 \\ 35 \end{array} \quad \begin{array}{r} 2.9 \\ 25 \end{array} \quad 1.0 \quad \begin{array}{r} 1.3 \\ 16 \end{array} \quad \begin{array}{r} 0.7 \\ 16 \end{array} \quad \begin{array}{r} 10.7 \\ 25 \end{array} \quad \begin{array}{r} 11.4 \\ 35 \end{array}$

12.02 396.56
395.56

384.54
~~383.54~~

43+50

11.88 408.10
~~407.10~~ 0.34

396.22
~~395.22~~

43+00

11.73 419.76
~~418.76~~ 0.07

408.05
~~407.05~~

42+00

41+50

41+00

40+50

40+00

39+50

1.32 411.41
~~410.41~~ 9.67

410.09
~~409.09~~

39+00

396.6
H.I. = 395.6

385.9	387.2	388.7	389.0	390.0	390.8	391.6
$\frac{10.7}{35}$	$\frac{9.4}{25}$	7.9	$\frac{7.6}{16}$	$\frac{6.6}{16}$	$\frac{5.8}{25}$	$\frac{5.0}{35}$
390.2	391.8	392.5	393.6	394.6	394.5	396.1
$\frac{6.4}{35}$	$\frac{4.8}{25}$	$\frac{4.1}{15}$	$\frac{3.0}{12}$	2.0	$\frac{2.1}{15}$	$\frac{0.5}{16}$
					$\frac{+1.0}{25}$	$\frac{+2.1}{35}$

H.I. = 408.10
~~407.10~~

399.7	396.6	397.8	398.7	400.9	400.3	402.2	403.7	405.8
$\frac{13.4}{35}$	$\frac{11.5}{25}$	$\frac{10.3}{15}$	$\frac{9.4}{12}$	7.2	$\frac{7.8}{15}$	$\frac{5.9}{17}$	$\frac{4.4}{25}$	$\frac{2.5}{35}$
399.4	401.4	402.9	405.4	405.4	405.8	408.3	410.0	412.0
$\frac{8.7}{35}$	$\frac{6.7}{25}$	$\frac{5.2}{15}$	$\frac{2.7}{5}$	2.7	$\frac{2.5}{15}$	$\frac{+0.2}{17}$	$\frac{+1.9}{25}$	$\frac{+3.9}{35}$

H.I. = 419.8
~~418.8~~

403.0	404.6	406.0	409.6	410.2	411.6	414.6	416.6	418.8
$\frac{16.8}{35}$	$\frac{15.2}{25}$	$\frac{13.8}{17}$	$\frac{10.2}{6}$	9.6	$\frac{8.2}{15}$	$\frac{5.2}{18}$	$\frac{3.2}{25}$	$\frac{1.0}{35}$
405.9	407.6	410.5	413.3	415.4	417.2	419.2	421.1	
$\frac{13.9}{35}$	$\frac{12.2}{25}$	$\frac{9.3}{10}$	6.5	$\frac{4.4}{14}$	$\frac{2.6}{16}$	$\frac{0.8}{25}$	$\frac{+1.3}{35}$	
	407.8	410.0	415.6	417.4	419.5	421.0	422.8	
	$\frac{12.0}{35}$	$\frac{9.8}{25}$	4.2	$\frac{2.4}{14}$	$\frac{0.5}{17}$	$\frac{+1.2}{25}$	$\frac{+3.0}{35}$	
407.0	409.1	410.9	415.2	416.1	418.1	419.8	421.5	
$\frac{12.8}{35}$	$\frac{10.7}{25}$	$\frac{9.1}{19}$	$\frac{4.6}{7}$	3.7	$\frac{1.7}{15}$	$\frac{0.0}{25}$	$\frac{+1.7}{35}$	
406.3	408.1	409.2	411.3	412.8	414.5	416.3	417.6	419.3
$\frac{13.5}{35}$	$\frac{11.7}{25}$	$\frac{10.6}{17}$	$\frac{8.5}{10}$	7.0	$\frac{5.3}{14}$	$\frac{3.5}{17}$	$\frac{2.2}{25}$	$\frac{0.5}{35}$

H.I. = 411.4
~~410.4~~

401.6	403.5	404.5	406.7	407.9	408.9	410.5	412.5	414.1
$\frac{9.8}{35}$	$\frac{7.9}{25}$	$\frac{6.9}{19}$	$\frac{4.7}{11}$	3.5	$\frac{2.5}{15}$	$\frac{0.9}{17}$	$\frac{+1.1}{25}$	$\frac{+2.7}{35}$

411.41
410.41

0.32 399.47
398.47 12.26

399.15 38+50
398.15

38+00

37+50

37+19

389.54
388.54

9.93

B.M

		411.4					
		410.4					
397.0	398.9	402.3	403.2	405.1	406.1	407.3	
14.4	12.5		8.2	6.5	5.5	4.1	
35	25	9.1	16	18	25	35	

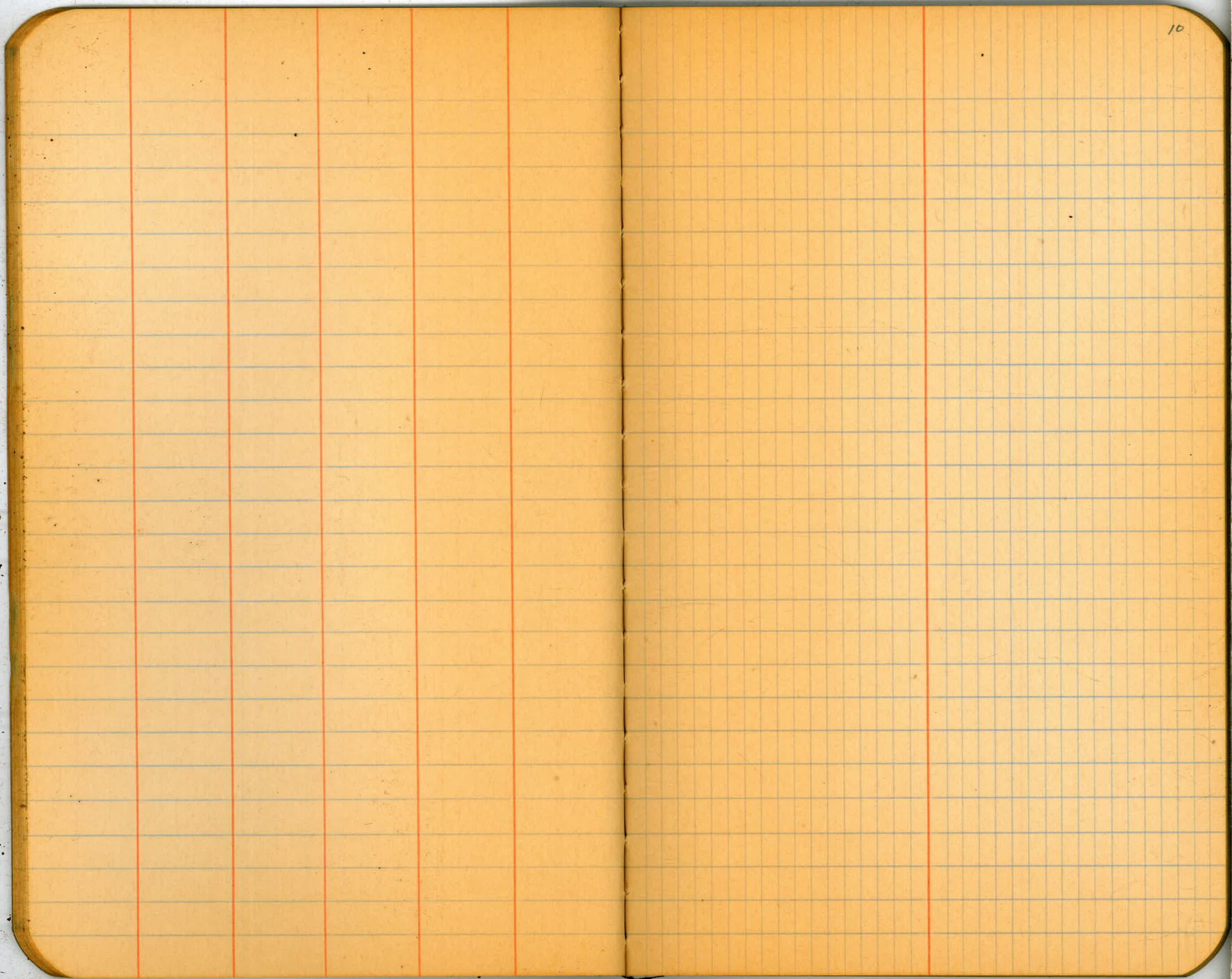
H.I. = 399.5
~~398.5~~

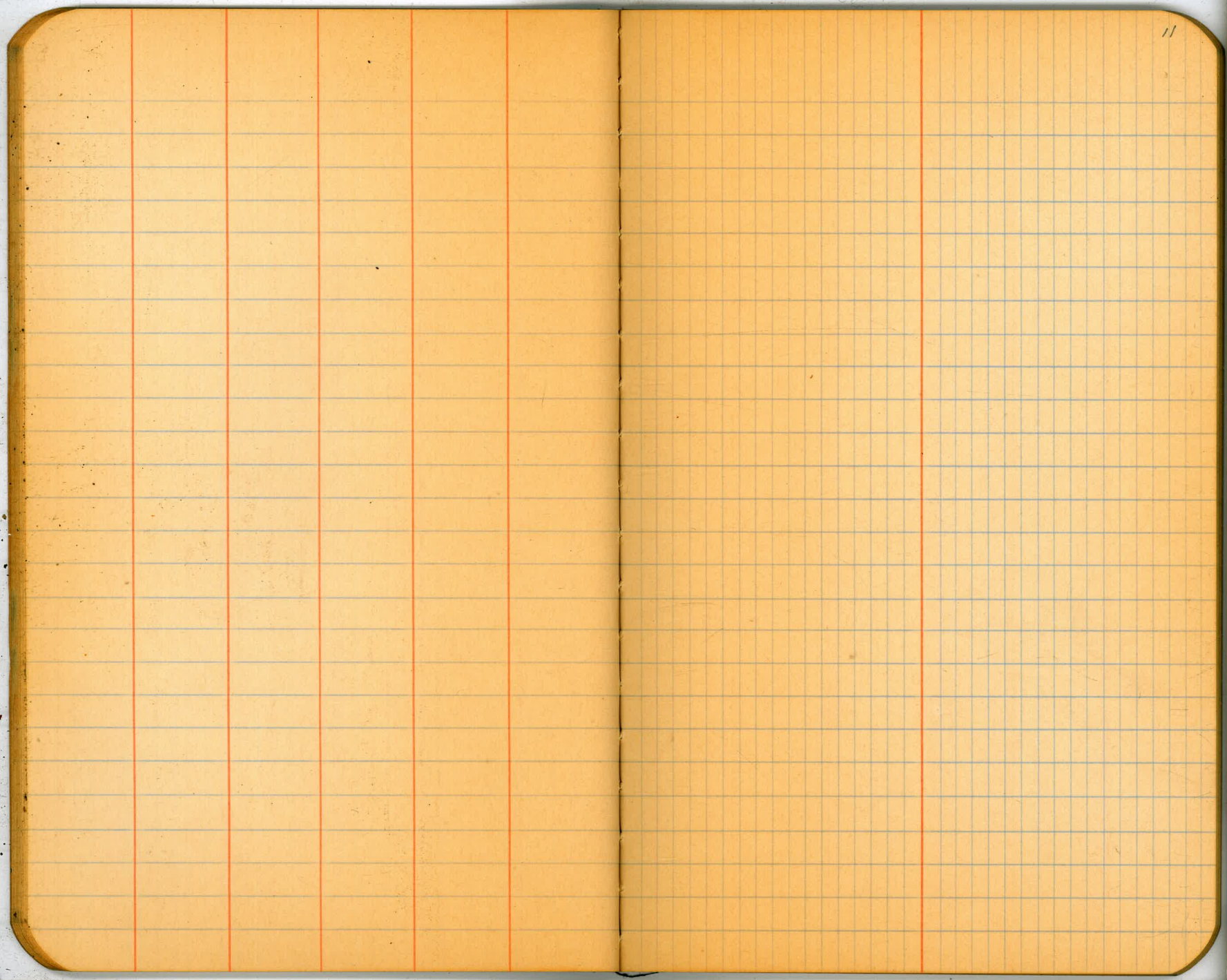
390.7	392.1	395.8	396.8	398.7	399.6	400.7	
8.8	7.4		2.7	0.8	10.1	11.2	
35	25	3.7	15	18	25	35	

382.6	384.2	385.8	387.1	387.7	391.3	392.8	
16.9	15.3	13.7	12.4		8.2	6.7	
35	25	7	6	11.8	25	35	

376.2	379.2	383.4	383.8	384.2	387.2	388.8	390.2
23.5	20.3	16.1		15.5	12.5	10.7	9.3
35	25	14	15.7	19	21	25	35

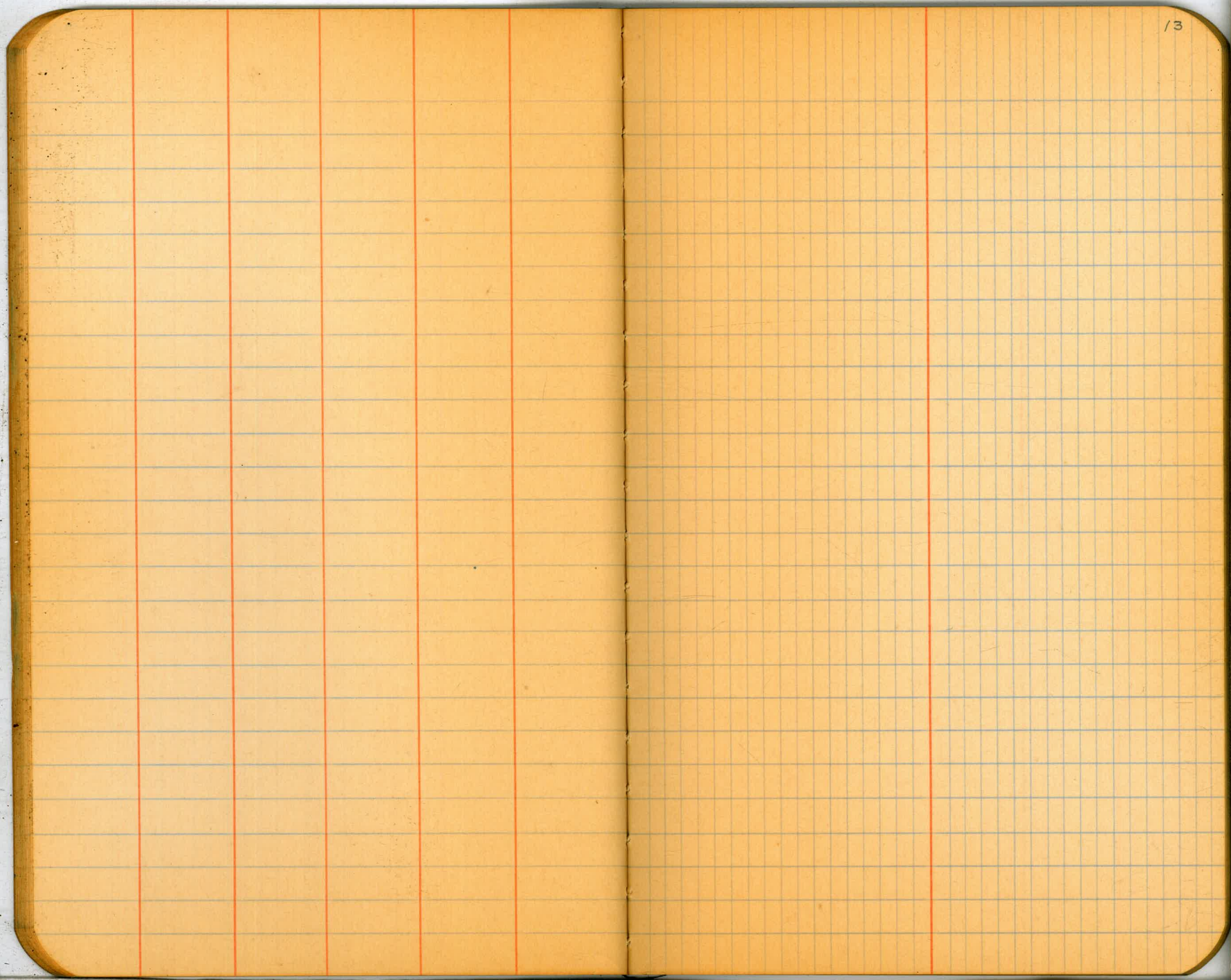
1x2 - 30 ft sta 37+00
Elev = 389.47

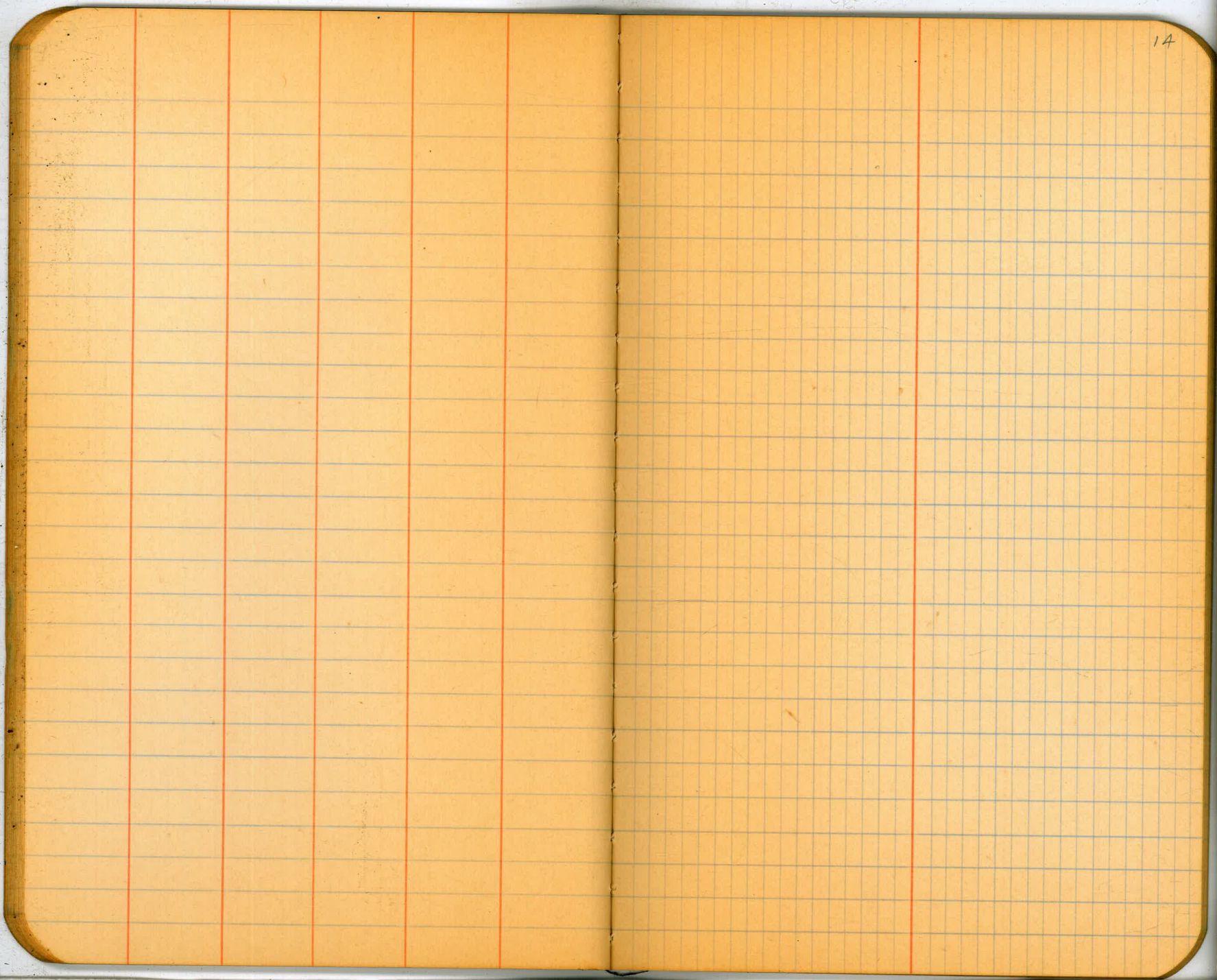


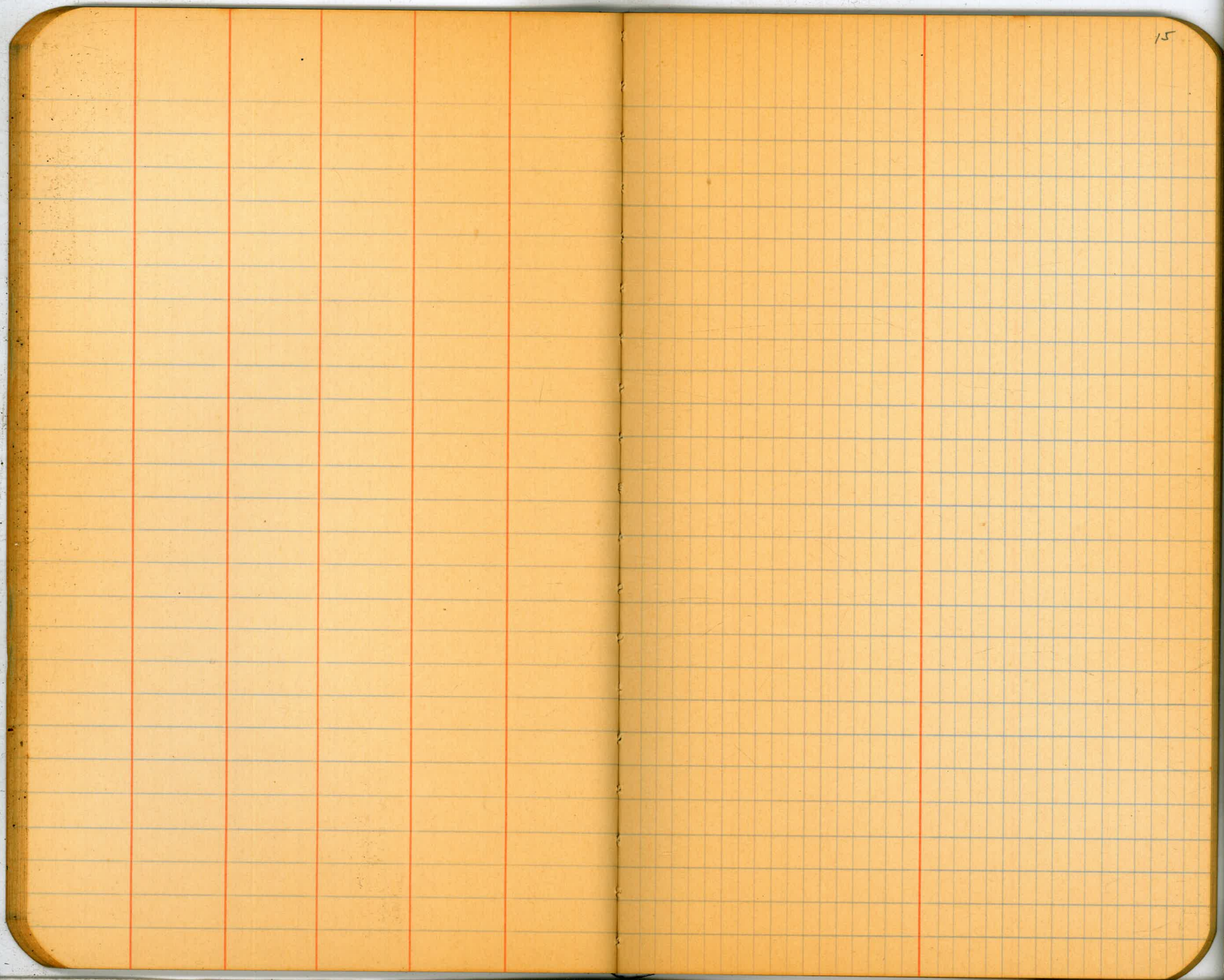


//









15

