

NAME Las Alturas Bndy.

Jab #165

Class _____ Course _____ Party _____

for Louie Utts.

125

1986

FIELD NOTES

No. 403P

ESPECIALLY ADAPTED

TO THE USE OF

ENGINEERING STUDENTS

EUGENE DIETZGEN Co.

MANUFACTURERS

DRAWING MATERIALS

MATHEMATICAL AND SURVEYING INSTRUMENTS

MEASURING TAPES

CHICAGO SAN FRANCISCO NEW YORK
NEW ORLEANS PITTSBURGH

MICROFILMED

DEC 30 1964

Tie W. Line LAS ALTURAS to
NAT'L AVE. EXTENSION - 11

1
Sta
Boundary Line
Trav. East line
of Los Alturas Track

25+73.00
P.O.T.

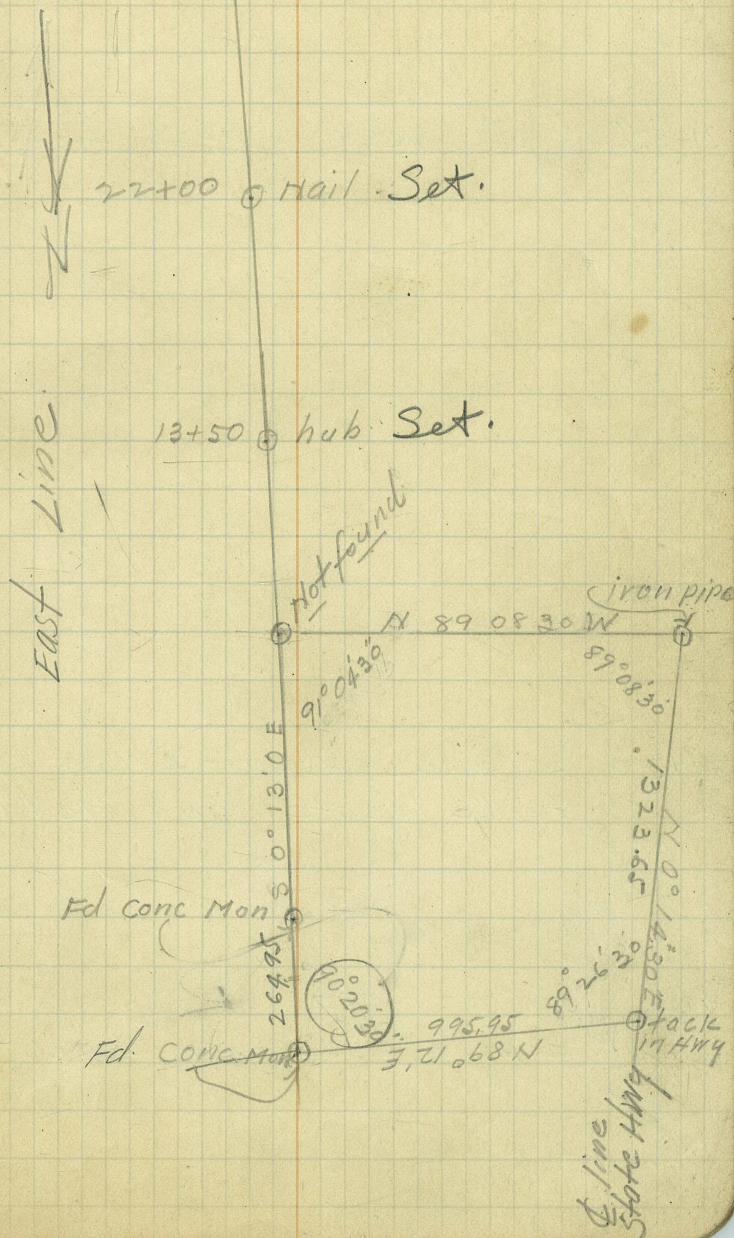
22+00 Center line east & west Rdwy

12+50 hub in Rdwy

2+64.5 Conc. mon found

0+00 Conc. mon found

JUNE 18-21
Elliott 22-23
Glover 24-25
Spancel



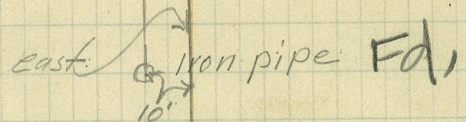
✓

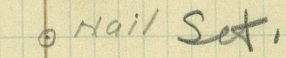
31+52⁹⁰ Iron pipe 10' east of true line

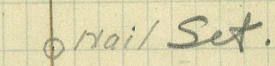
31+00

29+00 so line of east & west Rdwy
to be located and tied in

28+29⁷⁰ = P.I. 68+13²⁰ Coots line 0.3 east
(this point is a P.O.S.T.)

east.  Iron pipe Fd,
10'

 Nail Set.

 Nail Set.

East Line

True Line

13

52+3940 nail

48+37.25
Nail on Ridge - (set)

45+05± Found $1\frac{1}{2}$ " Pipe 3ft. ± East. - Coote 7/6/26

40+55± Iron pipe 4th east of true line
with Copper tack in center

But these
two pipes
is another pipe
no plus.

line of iron pipes

True line

nail set.

Iron pipe
east 4th

Fd.

4

53+68⁹³ end of line 8⁹⁹ ft so of
711011

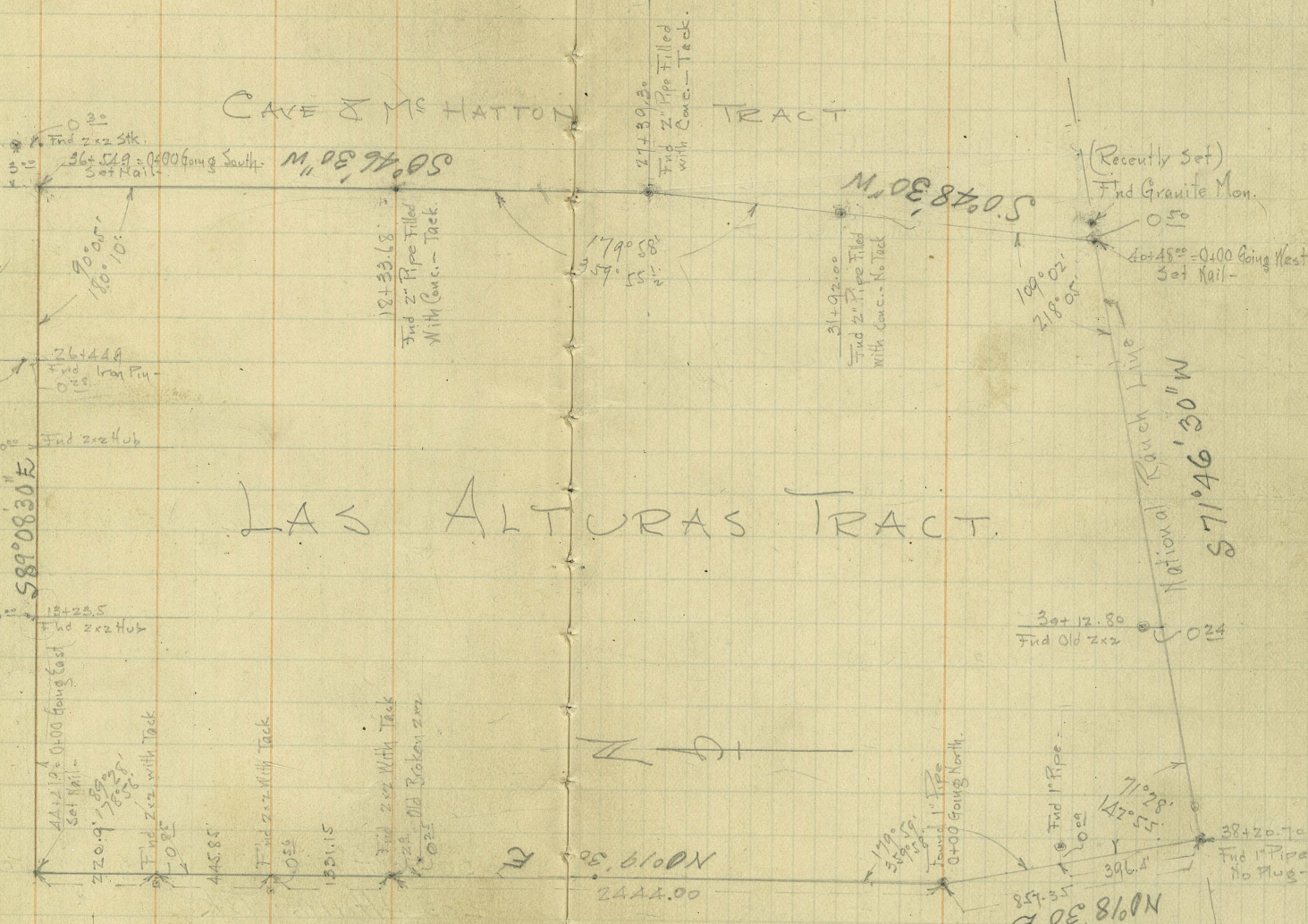
53+59⁹⁴ Granite mon 5' ft west of line
With Lead ⁹⁴ Task -

end of line \odot nail Set 1

50 East Cor
Los Alturas Trk \leftarrow 5' Granite Fd.
111011

CAVE & Mc HATTON TRACT

91+18.10
86+23.69
494.41



LAS ALTURAS TRACT.

Sketch Showing Boundary & Traverse

LAS ALTURAS TRACT.

Pages 5-10

7/15/26
Cote

44+41.9 Set Nail - Deflect 90°32 Rt.



43+99° Set Nail POT.

1997.0
2443.4x
1440.4x

42+21.00 Found 2x2 with Tack



37+75.15 Found 2x2 with Tack



24+44° Found 2x2 with Tack.

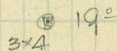
↑
X
O
X
↑



1997.0
As Measured 7/26/26

18+32° Found 3x4 Sisk.

2344.47



See Pg. 13
for ties to more Sks.

0+00 Found 1" Pipe



A Portion of
West Boundary of
LAS ALTURAS.

36+57.90

Found 2x2 Hob with Tack

36+54.90

Set Nail Deflect 89°55' Rt.

26+44.90

Found Iron Pin

East ↑

Found 2x2 Stk.

13+23.50

Found 2x2 Stk.

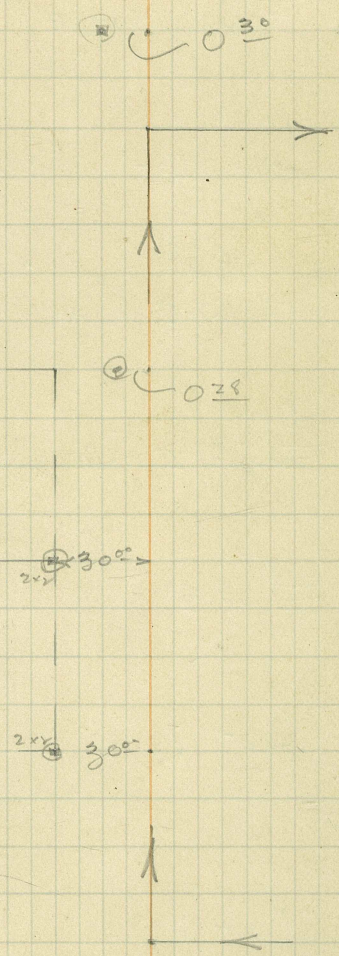
0+00

Set Nail

North Boundary
LAS ALTURAS

LAS ALTURAS
2

Lot P
Lot Q



10+48.00

Found Granite Monument.
Deflect $70^{\circ}58'$ R.

39+62.70

Set Nail - P.O.T.

37+79.25

Set Nail "

35+25.45

Set Nail "

31+92.00

Found 2" Pipe -

27+39.10

50
N

Found 2" Pipe Deflect $0^{\circ}02'$ R.

18+33.68

Found 2" Pipe

11+98.27

Set Nail.

0+00

Set Nail-

East Boundary

LAS ALTURAS -

85.25

183.55

253.65

333.20

412.75

492.30

571.85

651.40

69+28.60
P.I.

As Measured 7/26/26

1492.42
339.90
1832.32
904.20
2736.72

W

0.50

○

○

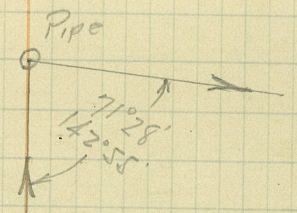
○

○

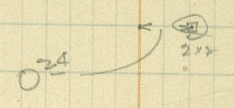
○

179°58'
359°55.5'

38+20.70 Found 1" Pipe Deflect 108°32' R.

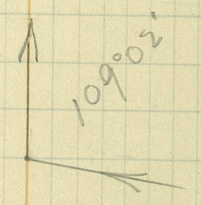


30+12.80 Found 2x2 Stk.



24+00 S.W. Set Nail.

0+00 Set Nail.



South Boundary
LAS ALTURAS-

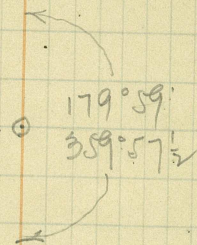
0+00 North - See Pg 6
8757.35 = Found 1" Pipe Deflect 0°01' Rt.

3+96.4
North
Found 1" Pipe -

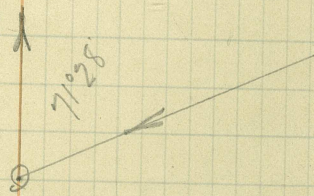
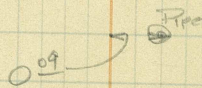
0+00
Found 1" Pipe -
Part of West Boundary
Las Alturas -

7/15/26
Coote
Clifton
W. Bunker Jr.

10



88.90
As Measured 7/27/26



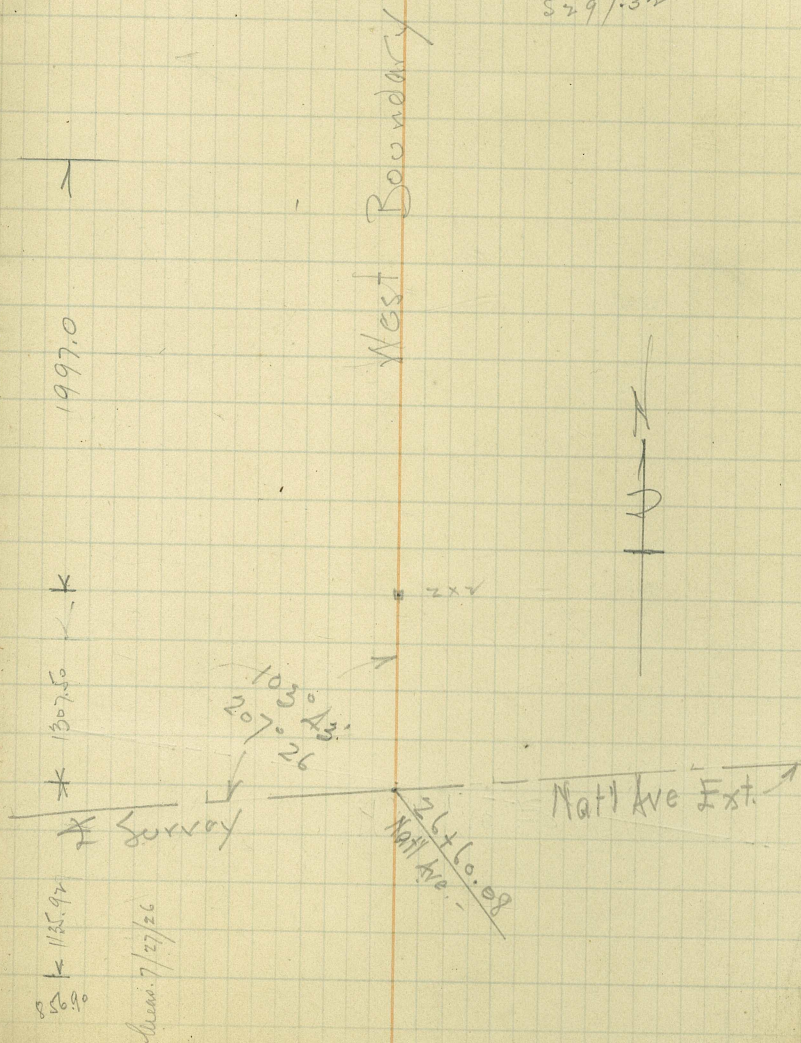
44+41.9 Sta on Original Traverse.
33+04.5 =

13+07.50

0+00

4441.9
887.35
5299.55
57.82
1.93

1997.0
1307.5
1135.92
4440.44
856.90
5297.32



1491.85

295.3 - old sta 1498.27

0+00

599.02
- 793.40
1394.42

68+29.60

19+11.82

18+41.78

17+80.3

See Pg 6
This Book

11/18/20

Coota

Key

L. Mackey

Lot 53

Lot 64

0.57

Find
Old 2x2

0.65

Find
Old 2x2

Find 3x4 Hole in Ground
from which stk had been
removed - stk originally
shown 19 West 18+32 =
Survey of W. Bdy LAS ALTURAS -

Ties to Hubs on
West Boundary
LAS ALTURAS -

16

367.85
839.43

P. 68+67.16 25.03 Rt
74+27.35 16.50

17105.60
24.32

17+34.92

17 33.14 old 212 3° Rt.

699

612

1311.00

2.88

1308.12

1307.50

.62

17329

34658

8660

1198.27

1423.65

635.01

15123.65

3.20

1443.65 ①

1421.85 ②

33.49

1531.75

300

90-33

89-27

1-06

1833.87

358.67

Apr 17

0-18-30

89-08-50

89-47

1363.87

358.67

1744.54

1833.60

111.14

90-51 1/2

183

9033

4+37.25
3 32.6

45+04.7

103-43 RT

90-32

89-55

41-53

16-16

17-41

356-440

4

360

36+57.90

26+44.90

1013.0

1121.27
from 26+60.58 South
207 44.6 etc
-53 1/2

1307.5

1135.92

1741.34

40+48

29+39

11 09

53+59.94

28+24.70

75 30.22

11-19

1100.05 = 786.31

1100) 343.00
2300
6300

22+19.00
22+19.60
41.60