

Job - #211

NAME *North Shore Highlands*

Class \_\_\_\_\_ Course \_\_\_\_\_ Party \_\_\_\_\_

RETURN TO  
Watson, Valle & Gough, Inc.  
508 Spreckels Bldg.  
San Diego, Calif.

192

1988

# FIELD NOTES

No. 403P

ESPECIALLY ADAPTED

TO THE USE OF

ENGINEERING STUDENTS

**EUGENE DIETZGEN Co.**

MANUFACTURERS

DRAWING MATERIALS

MATHEMATICAL AND SURVEYING INSTRUMENTS

MEASURING TAPES

CHICAGO    SAN FRANCISCO    NEW YORK  
NEW ORLEANS    PITTSBURGH

Boundaries

1-8

MICROFILMED

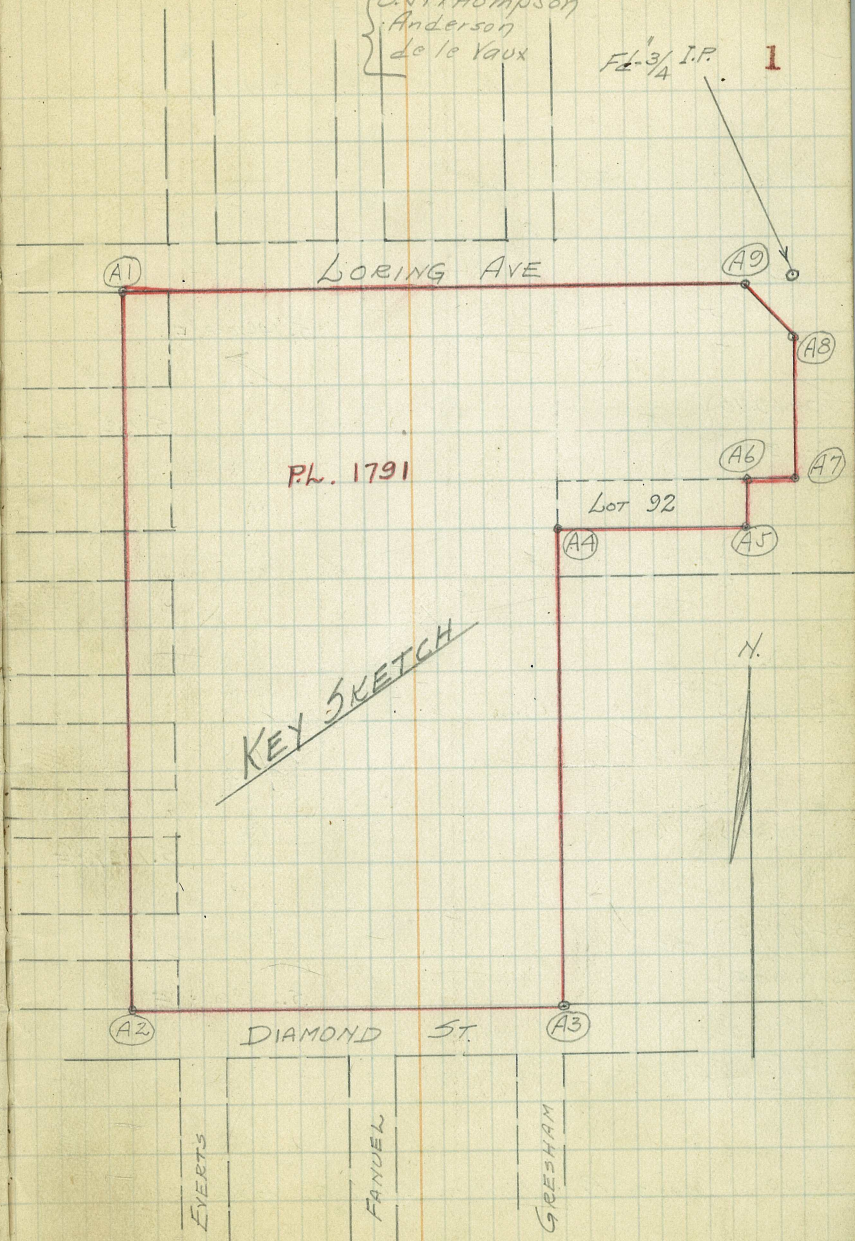
DEC 30 1964

# Walsh & MITCHELL BDRY.

Sta.	L	Lt	L Rt	Bearing
A1 *				S. 14°-10'-30" E.
A9 *				S. 75°-39'-30" W.
A8 *				N. 46°-35'-30" W.
A7 *				N. 14°-17'-30" W.
A6 *				N. 75°-40' E.
A5 *				N. 14°-21' W.
A4 *				N. 75°-40' E.
A3 *				N. 14°-13' W.
A2 *				N. 75°-38'-30" E.
A1 ↓				S. 14°-10'-30" E.

8906.63 = Distance Traversed

Oct. 19 1926  
 O. J. Thompson  
 Anderson  
 de la Vaux



"WALSH & MITCHELL" BOUNDARY

Sta.      L Lt.   L Rt.   Bearing   Needle

13+19.67    N. Prop. Line.

11+94.67 } Alley  
11+74.67 }

5.14°10'30"E

10+49.70 } St.  
9+69.70 }

5.13°15'E

8+44.72 } Alley  
8+24.72 }

"Tie Sheet" No. 3  
See for Bearing

6+99.62 } St.  
6+19.68 }

5.13°15'E

4+94.82 } Alley  
4+74.82 }

3+49.92 } St.  
2+69.85 }

5.14°10'30"E

1+450 } Alley  
1+252 }

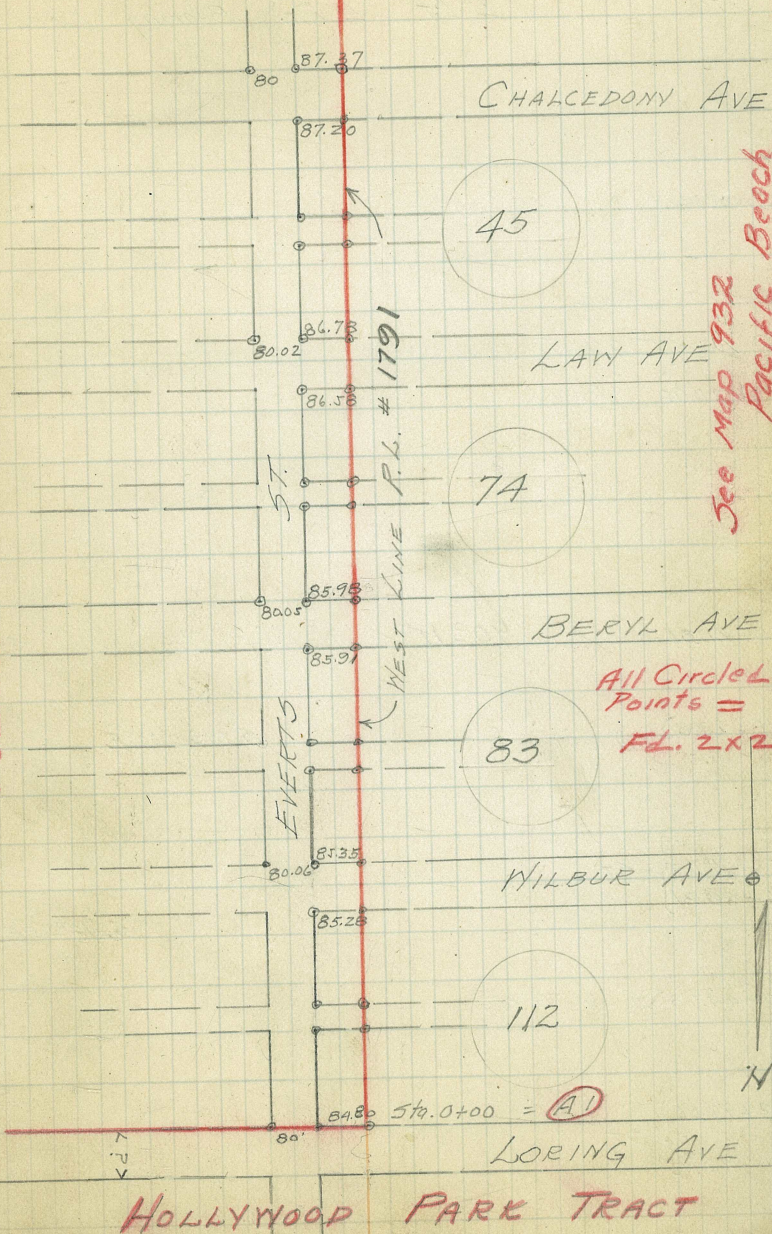
(A1) 0+00    South Prop. line of "LORING" AVE.

Oct. 16-1926

O.J. THOMASON  
ANDERSON  
de la Vaux

2

PUEBLO Lot No. 1791



W & M. BOUNDARY Cont.

Sta

L Lt. L Rt. Bearing Needle

0+00 Fwd.  
Equation  
20+20.01 Back

20+20.01 **A2** 90°-11' N. line Diamond St.

18+94.80 } Alley  
18+74.80 }

5.142°10'30"E

17+42.65 } St.  
16+60.81 }

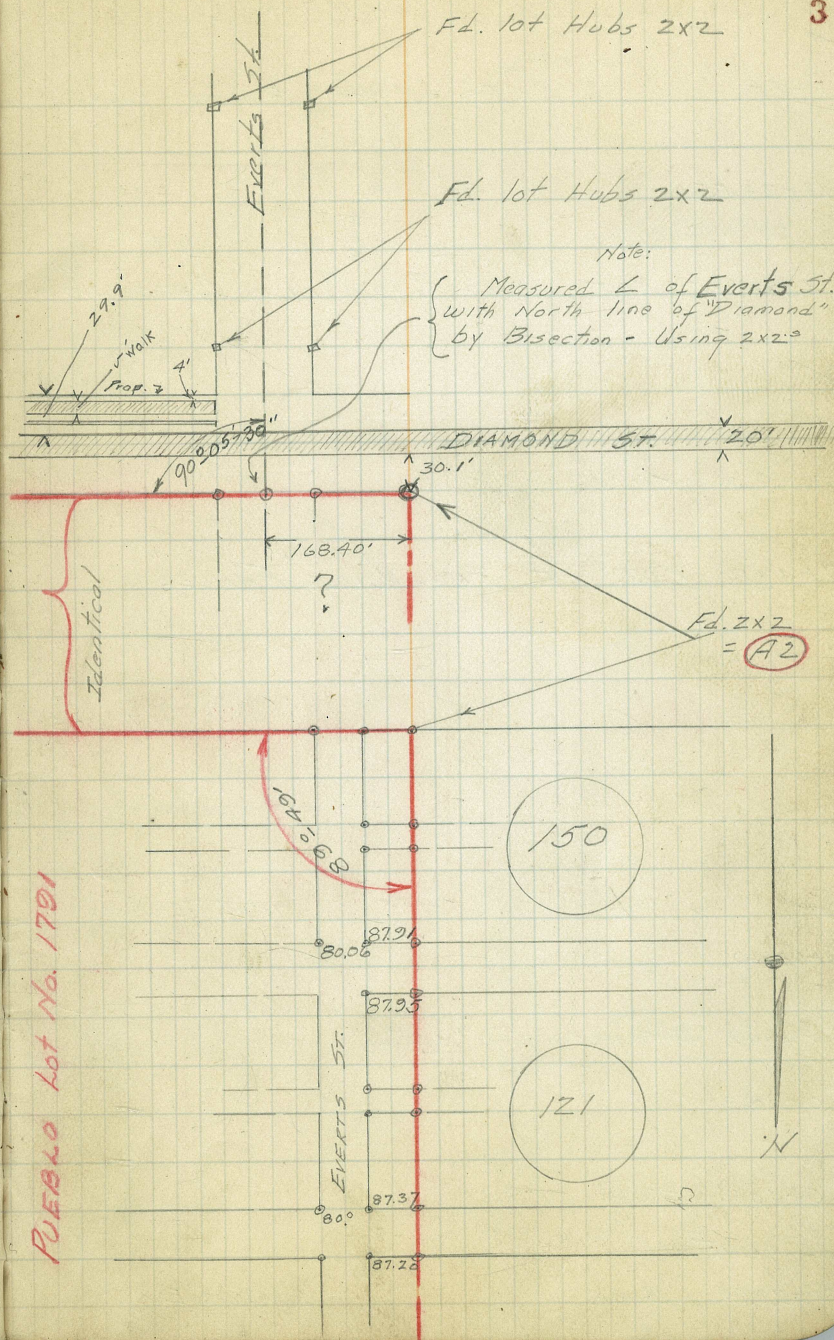
5.132°15"E

15+44.78 S. line Alley

13+99.66 } St.  
13+19.67 }

5.142°10'30"E

PUEBLO Lot No. 1791



V. & M. BOUNDARY Cont.

Sta. L Lt. L Rt. Bearing Needle

(A3)  
13+23.55 89°51'30"

N. 75°38'30"E

12+47.15 P.O.T. West Prop. Line of "GRESHAM"

7+47.80 P.O.T. E. Prop. Line "FANUEL"

N. 76°30'E

N. 75°38'30"E

1+68.40

1+28.49 Intersection with "EVERTS"

0+88.31

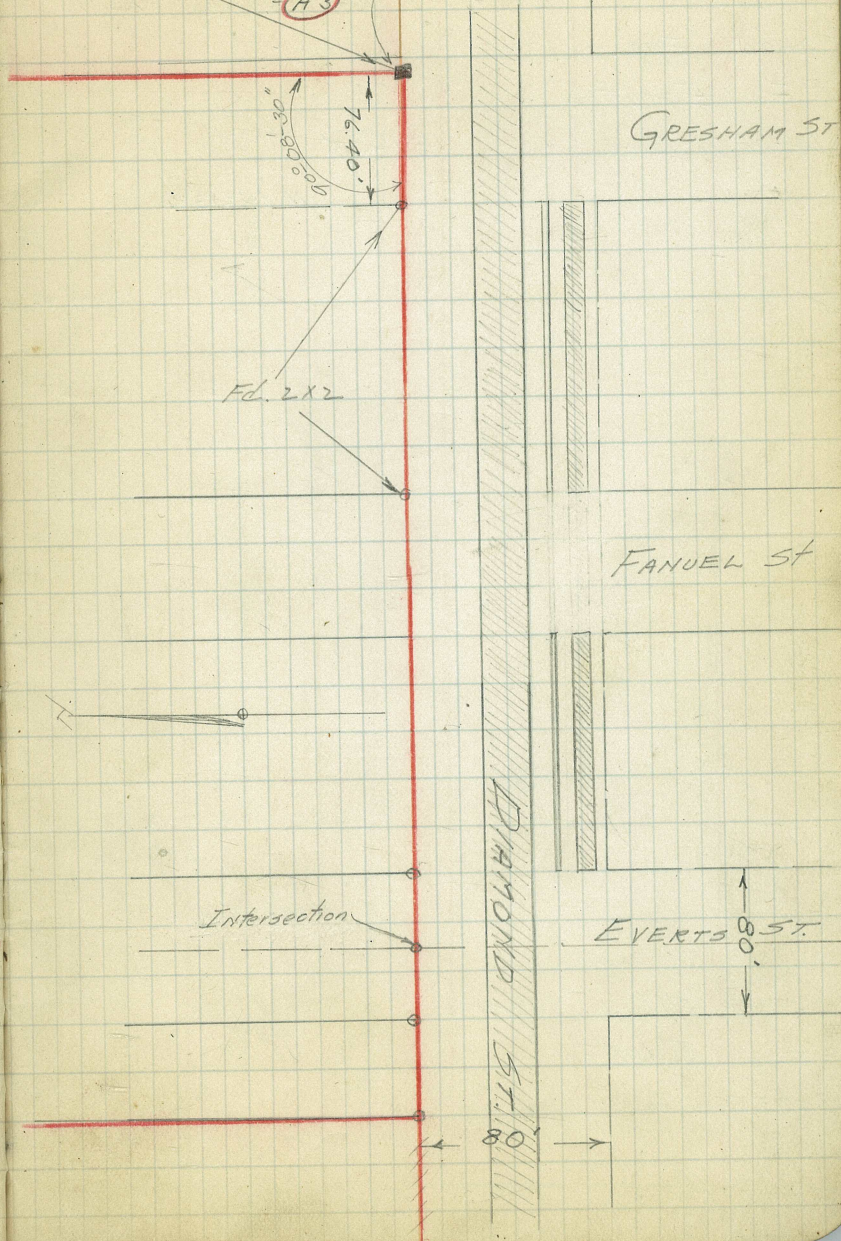
0+00 FWD.

Equation

20+20.01 Back

S. 14°10'30"E

S.E. Corner TRACT  
set 2x2  
= (A3)



Oct. 16 1926 - A.M.

O. THOMPSON  
ANDERSON  
de la Yaux.

4

W & M. Boundary Cont.

Sta.      L Lt.   L Rt   Bearing   Needle  
 0+00   Fwd.      =   Equation  
 14+00.71   Back   **A4**      89°53'

N. 14°13' W.

N. 13°00' W.

N. 13°00' W.

N. 14°13' W.

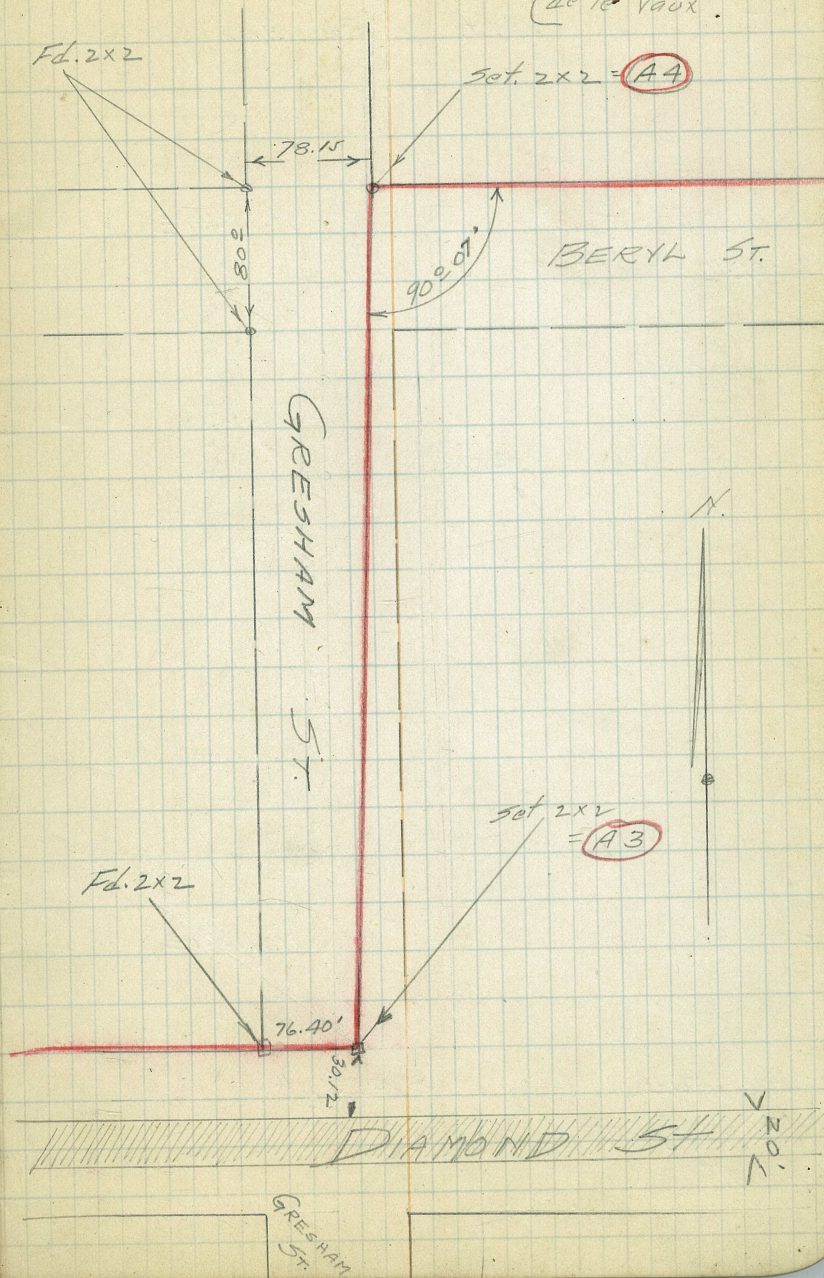
0+00   Fwd.      89°51'30"  
 =   Equation  
 13+23.55   Back

N. 75°38'30" E

Oct. 18, 1926

O.S. THOMPSON  
 ANDERSON  
 de la Vaux.

5



W. & M. BOUNDARY Cont.

Sta.          L Lt.    L Rt.    Bearing    Needle

0+00 Fwd.          = Equation          N. 75° 40' E

2+02.10 Back (A6)          90° 01'

0+00 Fwd. (A5)          = Equation          N. 14° 02' W

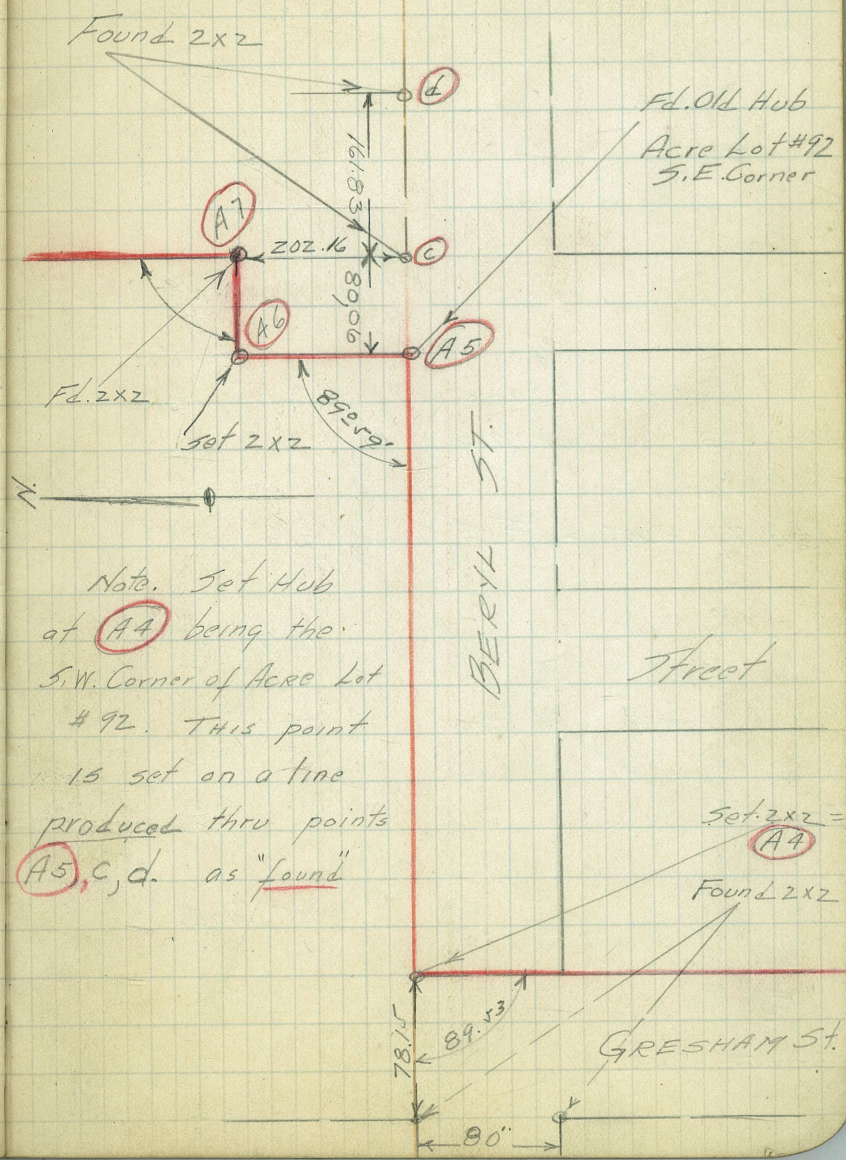
10+80.09 Back          90° 01'

N. 75° 40' E

0+00 Fwd.          = Equation          89° 53'

14+00.71 Back          N. 14° 13' W      N. 132° 00' W

See Map "Congress Hqts. Addition" No. 1627 for Bearings & Distances.



Note. Set Hub at A4 being the S.W. Corner of Acre Lot #92. This point is set on a line produced thru points A5, C, D as "found"



W. & M. Boundary Cont.

Sta      L Lt.      L Rt.      Bearing      Needle

N. 46° 35' 30" W

0+00 Fwd.

= Equation.

2+21.23 (A8) Back 32±18

1+13.77 P.O.T. = F.S. from (A7)

N. 14° 17' 30" W

0+00 Fwd. 89° 57' 30"

= Equation

0+80.05 Back (A7)

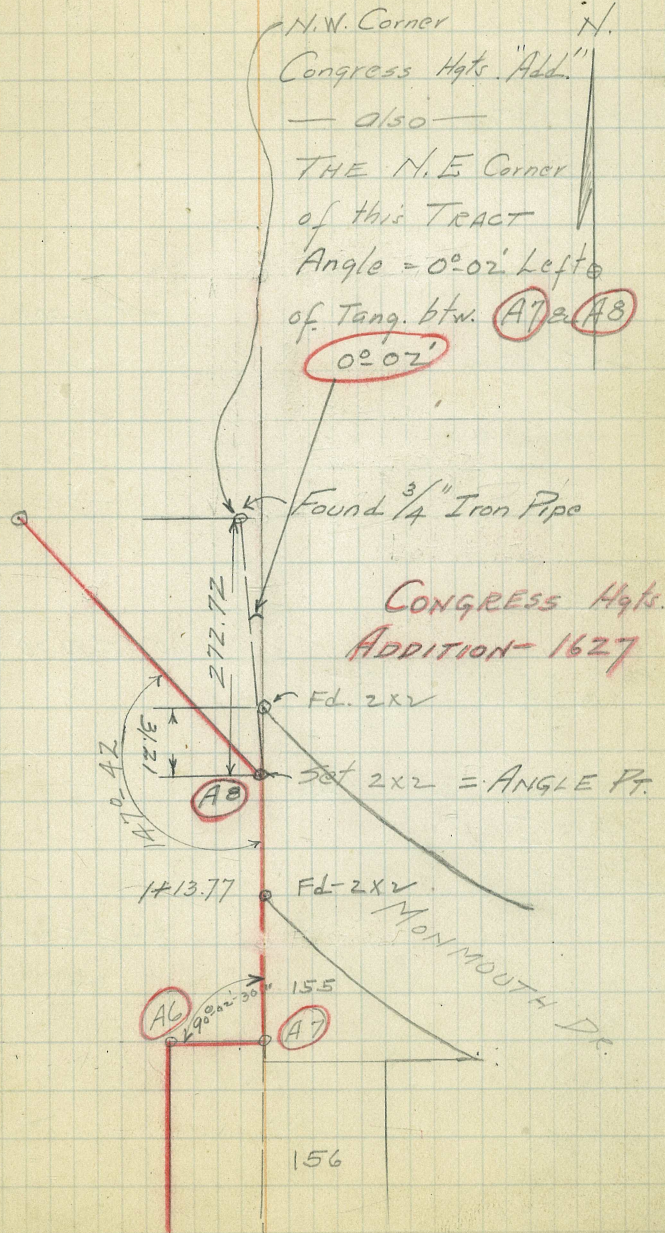
N. 75° 40' E

0+00 Fwd.

Equation

2+01.50 Back.

POEBLO LOT # 1791



CONGRESS Hq's.  
ADDITION-1627

MONMOUTH DC

Sta. L Lt. L Rt Bearing Needle  
 23+57.39 = (A1) 89.50'  
 to (A2)

22+72.59 } Street  
 21+92.56

16+93.48 } Street  
 16+13.42

11+14.30 } Street

5+35.76 = F.L. Old 2x2  
 216.23 P.O.T.

0+00 Fwd. (A9) 57° 45'  
 = Equation

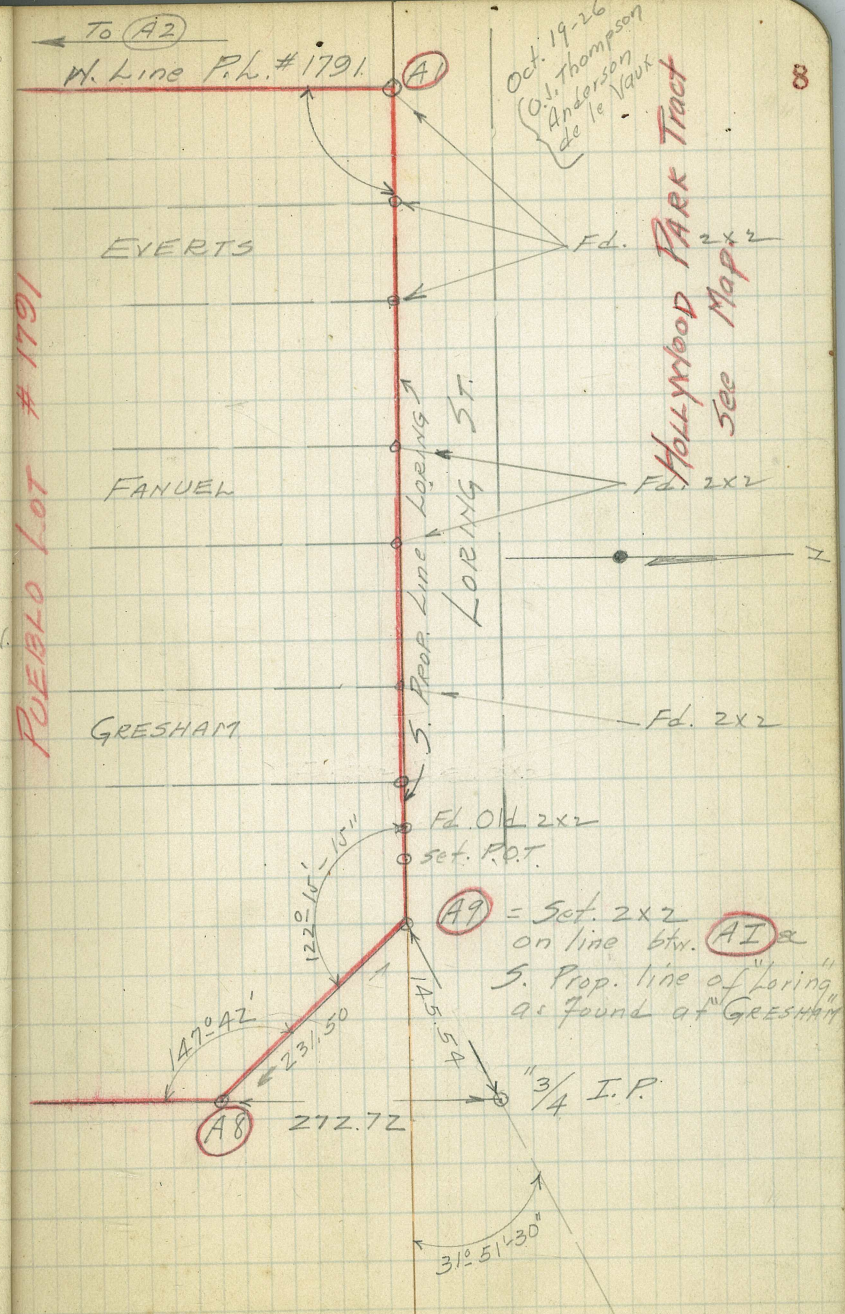
2+31.50 Back

5.75° 39' 30" W.

5.76° 50' W.

5.75° 39' 30" W.

N. 46° 35' 30" W



23+

22+

21+

16+

16+

11+

5+

21+

0+

2+



2

2

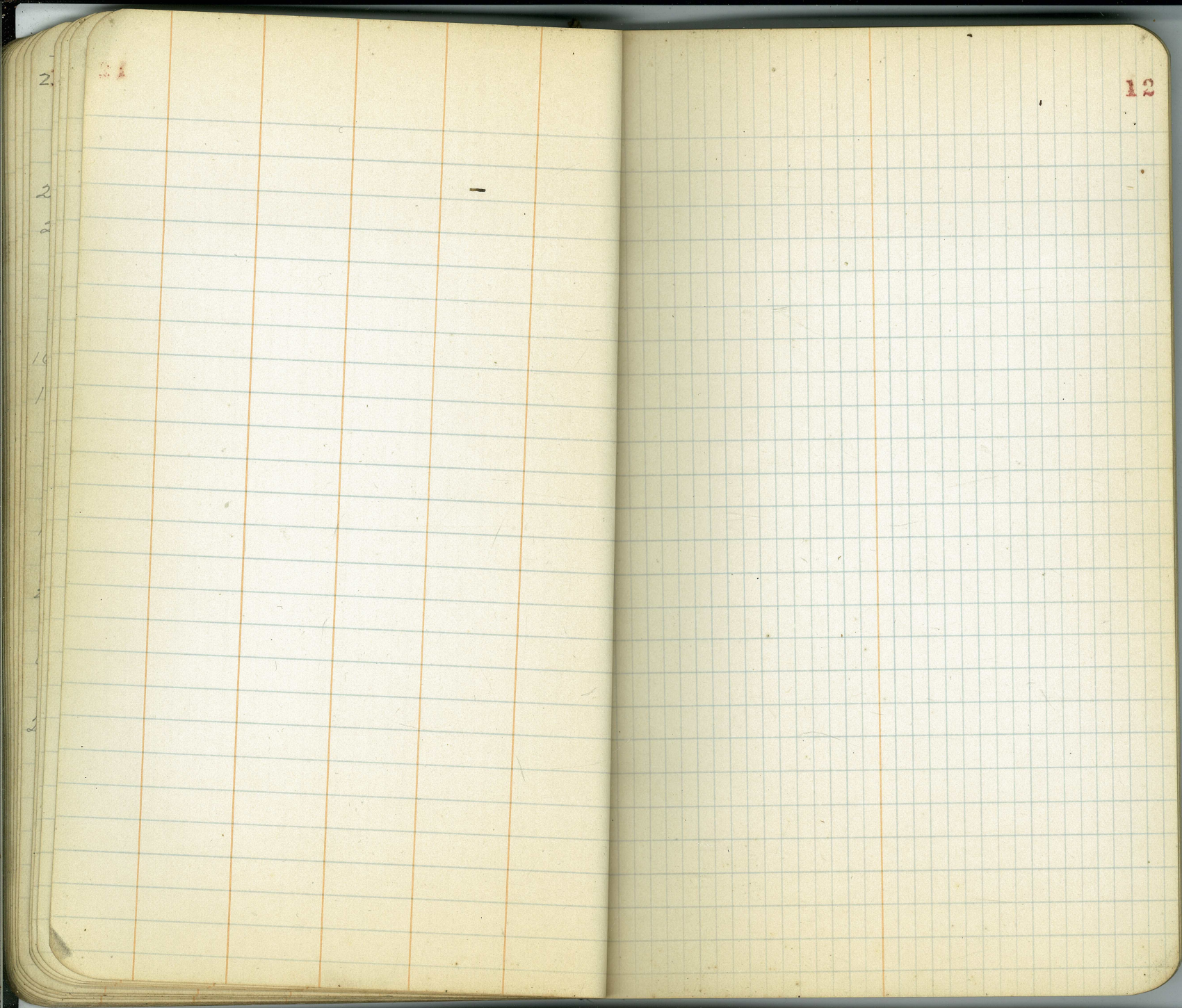
6

4

1

8

11

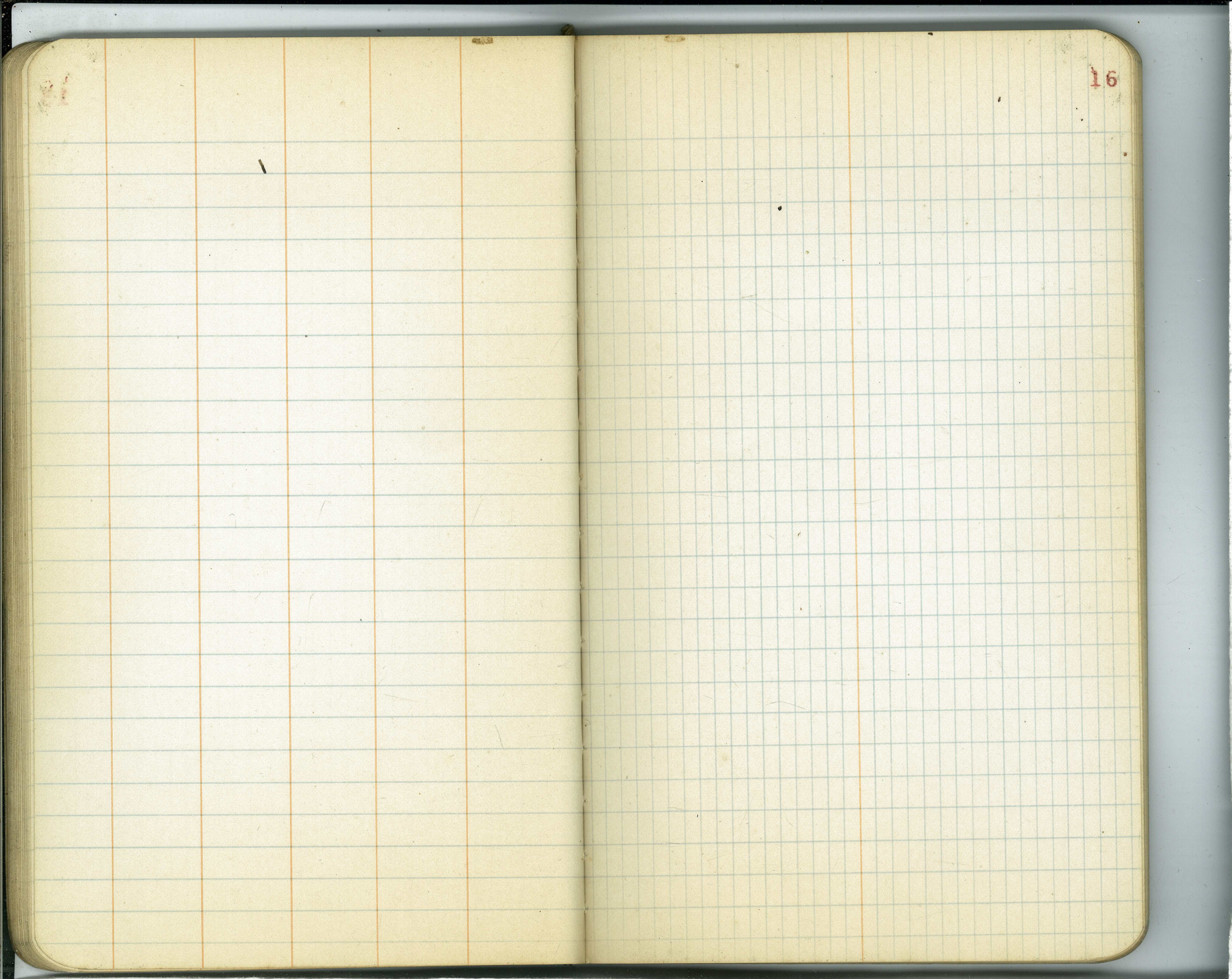


















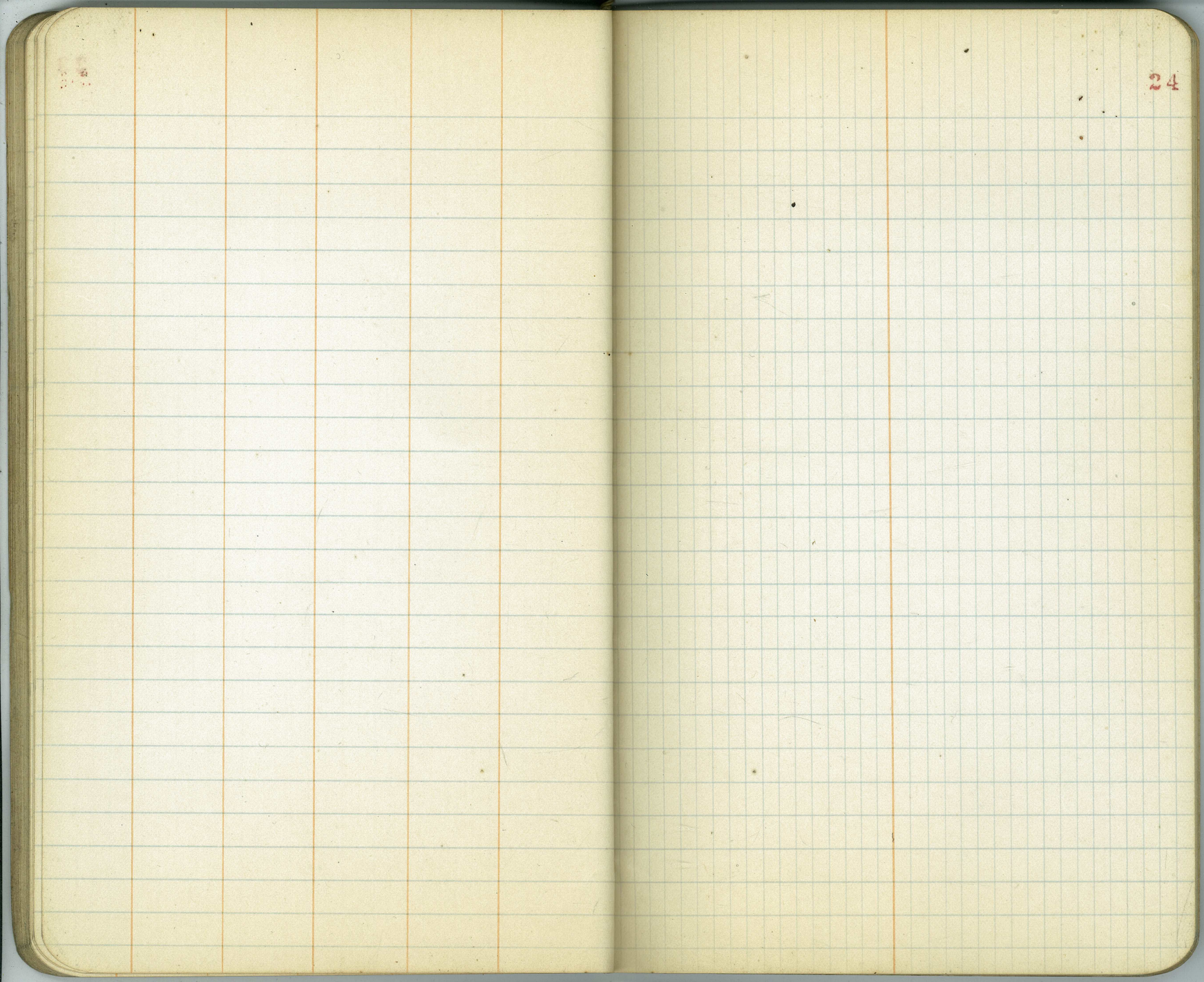












23

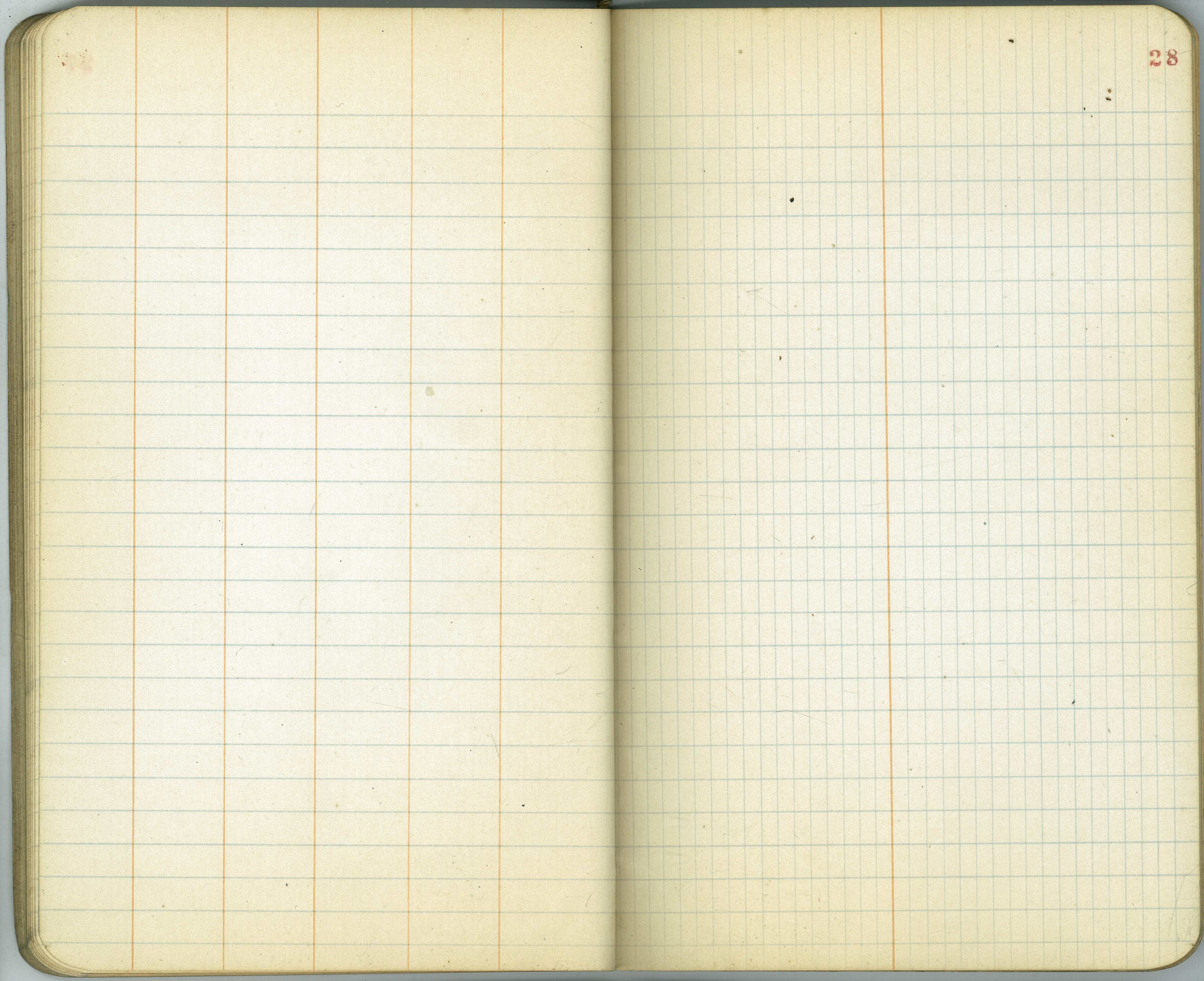
24





26

27











18

32

