

1996

EUGENE DIETZGEN CO.

DRAWING MATERIALS, MATHEMATICAL and
SURVEYING INSTRUMENTS

Chicago New York San Francisco New Orleans Pittsburg Toronto

Distances from Center of Roadway for Cross-Sectioning
Roadway 16 feet wide. Side Slopes 1 on 1.
For Single Track Embankment.

H	0	.1	.2	.3	.4	.5	.6	.7	.8	.9	H
0	8.0	8.1	8.2	8.3	8.4	8.5	8.6	8.7	8.8	8.9	0
1	9.0	9.1	9.2	9.3	9.4	9.5	9.6	9.7	9.8	9.9	1
2	10.0	10.1	10.2	10.3	10.4	10.5	10.6	10.7	10.8	10.9	2
3	11.0	11.1	11.2	11.3	11.4	11.5	11.6	11.7	11.8	11.9	3
4	12.0	12.1	12.2	12.3	12.4	12.5	12.6	12.7	12.8	12.9	4
5	13.0	13.1	13.2	13.3	13.4	13.5	13.6	13.7	13.8	13.9	5
6	14.0	14.1	14.2	14.3	14.4	14.5	14.6	14.7	14.8	14.9	6
7	15.0	15.1	15.2	15.3	15.4	15.5	15.6	15.7	15.8	15.9	7
8	16.0	16.1	16.2	16.3	16.4	16.5	16.6	16.7	16.8	16.9	8
9	17.0	17.1	17.2	17.3	17.4	17.5	17.6	17.7	17.8	17.9	9
10	18.0	18.1	18.2	18.3	18.4	18.5	18.6	18.7	18.8	18.9	10
11	19.0	19.1	19.2	19.3	19.4	19.5	19.6	19.7	19.8	19.9	11
12	20.0	20.1	20.2	20.3	20.4	20.5	20.6	20.7	20.8	20.9	12
13	21.0	21.1	21.2	21.3	21.4	21.5	21.6	21.7	21.8	21.9	13
14	22.0	22.1	22.2	22.3	22.4	22.5	22.6	22.7	22.8	22.9	14
15	23.0	23.1	23.2	23.3	23.4	23.5	23.6	23.7	23.8	23.9	15
16	24.0	24.1	24.2	24.3	24.4	24.5	24.6	24.7	24.8	24.9	16
17	25.0	25.1	25.2	25.3	25.4	25.5	25.6	25.7	25.8	25.9	17
18	26.0	26.1	26.2	26.3	26.4	26.5	26.6	26.7	26.8	26.9	18
19	27.0	27.1	27.2	27.3	27.4	27.5	27.6	27.7	27.8	27.9	19
20	28.0	28.1	28.2	28.3	28.4	28.5	28.6	28.7	28.8	28.9	20
21	29.0	29.1	29.2	29.3	29.4	29.5	29.6	29.7	29.8	29.9	21
22	30.0	30.1	30.2	30.3	30.4	30.5	30.6	30.7	30.8	30.9	22
23	31.0	31.1	31.2	31.3	31.4	31.5	31.6	31.7	31.8	31.9	23
24	32.0	32.1	32.2	32.3	32.4	32.5	32.6	32.7	32.8	32.9	24
25	33.0	33.1	33.2	33.3	33.4	33.5	33.6	33.7	33.8	33.9	25
26	34.0	34.1	34.2	34.3	34.4	34.5	34.6	34.7	34.8	34.9	26
27	35.0	35.1	35.2	35.3	35.4	35.5	35.6	35.7	35.8	35.9	27
28	36.0	36.1	36.2	36.3	36.4	36.5	36.6	36.7	36.8	36.9	28
29	37.0	37.1	37.2	37.3	37.4	37.5	37.6	37.7	37.8	37.9	29
30	38.0	38.1	38.2	38.3	38.4	38.5	38.6	38.7	38.8	38.9	30
31	39.0	39.1	39.2	39.3	39.4	39.5	39.6	39.7	39.8	39.9	31
32	40.0	40.1	40.2	40.3	40.4	40.5	40.6	40.7	40.8	40.9	32
33	41.0	41.1	41.2	41.3	41.4	41.5	41.6	41.7	41.8	41.9	33
34	42.0	42.1	42.2	42.3	42.4	42.5	42.6	42.7	42.8	42.9	34
35	43.0	43.1	43.2	43.3	43.4	43.5	43.6	43.7	43.8	43.9	35
36	44.0	44.1	44.2	44.3	44.4	44.5	44.6	44.7	44.8	44.9	36
37	45.0	45.1	45.2	45.3	45.4	45.5	45.6	45.7	45.8	45.9	37
38	46.0	46.1	46.2	46.3	46.4	46.5	46.6	46.7	46.8	46.9	38
39	47.0	47.1	47.2	47.3	47.4	47.5	47.6	47.7	47.8	47.9	39
40	48.0	48.1	48.2	48.3	48.4	48.5	48.6	48.7	48.8	48.9	40

Example—If point is 22.6 ft. above grade, how far should it be from center line to be a slope stake point? Ans. from Table 30.6. For same slopes but other widths of roadbed, correct above figures by one-half difference in width of roadbed; thus in example above, for 20 ft. roadbed distance will be $30.6 - (20 - 16) \div 2$ or 2 ft. added to $30.6 = 32.6$. For slopes of 1 on $1\frac{1}{2}$ see inside of back cover.

Copyright, 1914, by Eugene Dietzgen Co.

1996

This Field Book is manufactured of a High Grade 50% Rag Paper having a WATER RESISTING SURFACE, and is sewed with Bing Special Enamel Waterproof thread.

Made in U. S. A.

Index 1996

Finish Grades Rwy. "B" 1-14
Check Bench Marks 15-17
Finish Grades Rwy. "H" 18-33

Access Road "A" 34-71

Finish Grades For Returns At
Intersec. Rwy. "A" & "B" 73-75

Finish Grades Rwy. "A" Sta. 108+00 To
Sta. 110+00 P-76

Finish Grades Rwy. "B" Sta. 8+00 To
10+00 P. 78

~ FINISH GRADES ~ GIBBS AIRPORT
 "B" Runway (Paved Portion)

11750

11700

10750

10700

9750

9700

6.30 409.97

403.07 B.M.

	W	E	FF
	75	62.5	50
	37.5	25	12.5
	12.5	25	37.5
	50	62.5	75
105.28	05.21	05.53	09.50
	05.78	16.58	406.03
	08.91	05.78	05.66
	10.53	14.54	405.28
405.03	05.16	05.28	14.50
	05.53	09.20	405.78
	05.66	10.53	05.41
	10.58	10.58	14.54
	14.54	405.03	
404.78	04.91	05.03	09.50
	05.28	14.50	405.53
	05.41	405.28	10.516
	10.503	14.54	404.78
404.53	04.66	04.78	04.91
	05.03	09.16	405.28
	05.16	05.03	14.50
	14.50	10.478	14.54
	14.54	404.53	
404.28	04.41	04.53	
		405.03	04.91
			404.28
404.03			
		404.78	
			404.03

Cont. Mon. 8+00 F.B. 1860.
 7

B-RUNWAY - Finish Grades

14+50

14+00

13+50

13+00

12+50

12+00

	75	50	25	25	50	75
14+50	406.78	07.91	07.03	07.16	07.28	07.41
14+00	406.53	06.66	06.78	06.91	07.03	07.16
13+50	406.28	06.91	06.53	06.66	06.78	06.91
13+00	406.03	06.16	06.28	06.41	06.53	06.66
12+50	405.78	05.91	06.03	06.16	06.28	06.41
12+00	405.53	05.66	05.78	05.91	06.03	06.16

11th Runway
Finish Grades

17+50

17+00

16+50

16+00

15+50

15+00

75'	50'	25'	25'	50'	375'
408.28 ^{08.91}	408.53 ^{08.91}	408.78 ^{08.91}	409.03 ^{08.91}	408.78 ^{08.91}	408.53 ^{08.91}
408.63 ^{08.16}	408.28 ^{08.91}	408.53 ^{08.16}	408.78 ^{08.66}	408.53 ^{08.91}	408.28 ^{08.16}
407.78 ^{08.91}	408.03 ^{08.16}	408.28 ^{08.41}	408.53 ^{08.91}	408.28 ^{08.91}	407.78 ^{08.16}
407.53 ^{08.66}	407.78 ^{08.91}	408.03 ^{08.16}	408.28 ^{08.16}	408.03 ^{08.91}	407.53 ^{08.16}
407.28 ^{08.91}	407.53 ^{08.16}	407.78 ^{08.16}	408.03 ^{08.91}	407.78 ^{08.16}	407.28 ^{08.16}
407.03 ^{08.16}	407.28 ^{08.16}	407.53 ^{08.16}	407.78 ^{08.16}	407.53 ^{08.16}	407.03 ^{08.16}

"B" - Runway

Final Grades

20+25

20+40

19+50

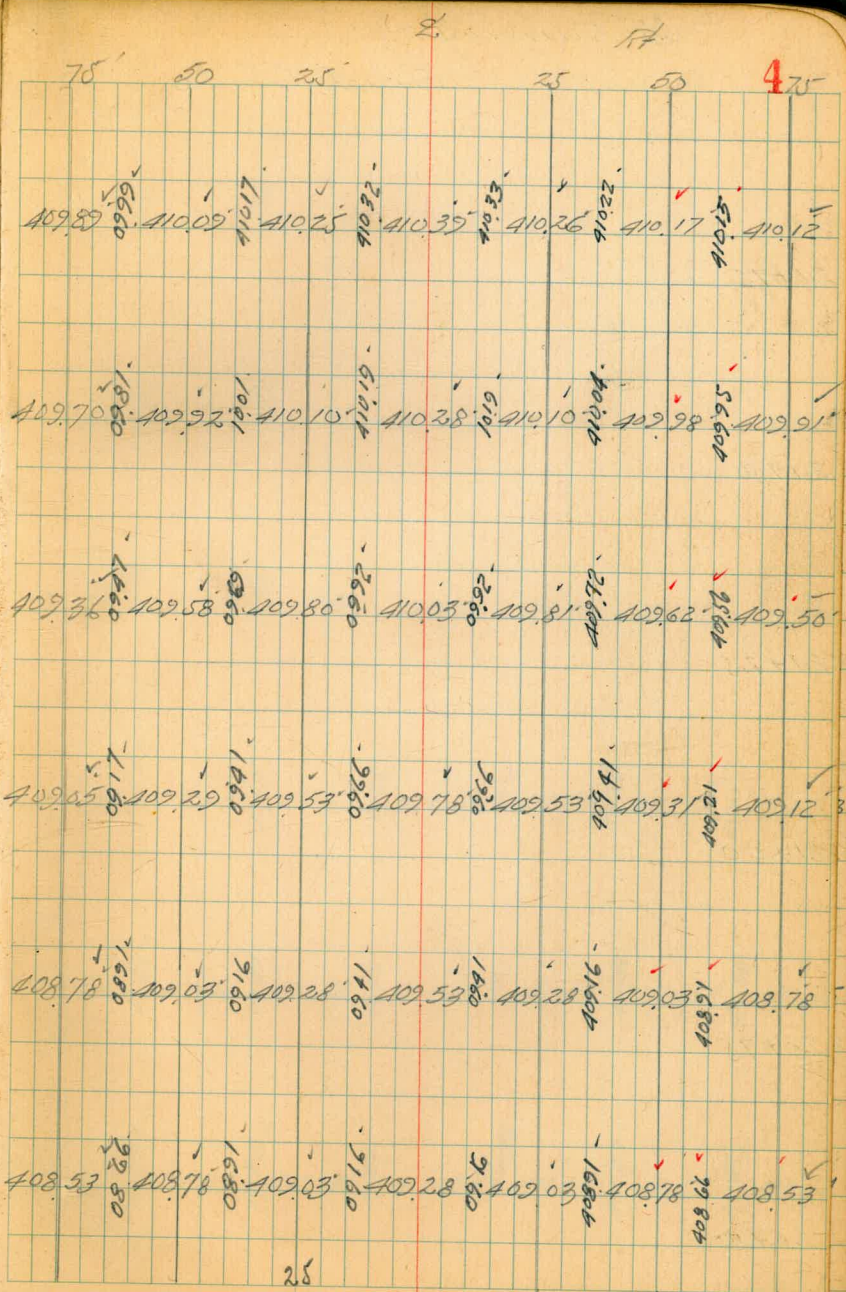
19+00

18+50

6.58 41513

408.53

18+00



"B. Runway"

Finish Grades

21+75

21+50

21+25

21+00

20+75

20+50

	Lt.		Rt.			
	75	50	25	25	50	75
	411.06	411.13	411.14	411.15	411.16	411.17
	0.01					
	410.86	410.97	411.02	411.03	411.02	411.01
	2.60	0.01				
	410.65	410.80	410.89	410.90	410.88	410.88
	5.60	0.88				
	410.45	410.63	410.73	410.78	410.73	410.71
	10.61	0.90	10.76	0.76	21.01	410.72
	410.36	410.46	410.56	410.64	410.58	410.53
	9.61	1.50	10.60	10.61	25.01	410.54
	410.07	410.27	410.40	410.53	410.42	410.35
	11.01	10.54	10.47	8.08	6.61	410.34
						410.34

~ "B" Runway ~
 Finish Grades

23+25

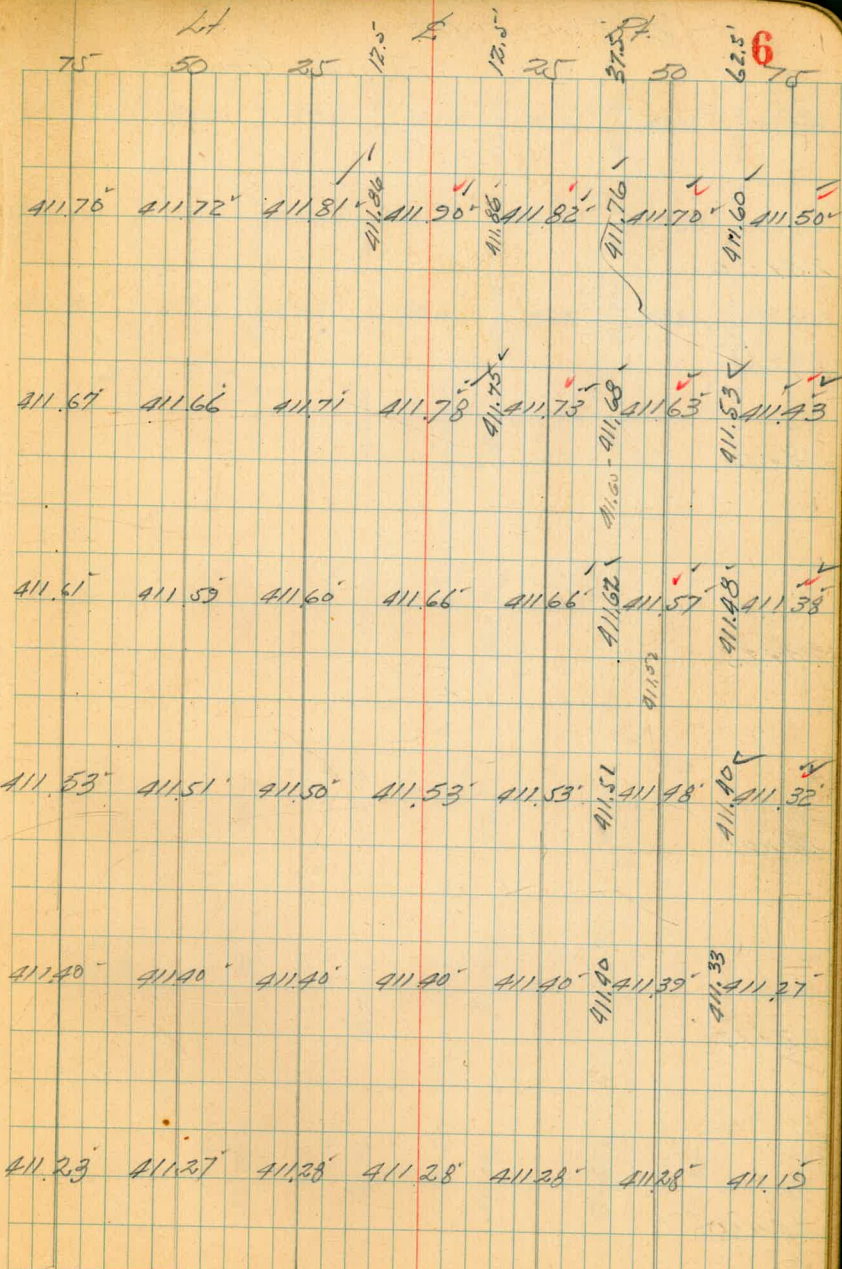
23+00

22+75

22+50

23+25

22+00



B. Ramsey

Finish Grades

25+25

75	50	25	0	25	50	75
412.15	412.27	412.65	412.90	412.65	412.92	412.18

25+00

412.03	412.28	412.53	412.78	412.55	412.30	412.07
--------	--------	--------	--------	--------	--------	--------

24+75

411.93	412.17	412.41	412.66	412.41	412.21	411.98
--------	--------	--------	--------	--------	--------	--------

24+50

411.83	412.06	412.29	412.53	412.32	412.11	411.85
--------	--------	--------	--------	--------	--------	--------

24+25

411.75	411.97	412.17	412.40	412.22	412.02	411.80
--------	--------	--------	--------	--------	--------	--------

24+00

411.67	411.88	412.07	412.28	412.11	411.93	411.72
--------	--------	--------	--------	--------	--------	--------

23+75

411.63	411.81	411.99	412.14	412.01	411.85	411.62
--------	--------	--------	--------	--------	--------	--------

23+50

411.66	411.77	411.88	412.03	411.92	411.78	411.57
--------	--------	--------	--------	--------	--------	--------

"B" Runway ~
Finish Grades

28+00

27+50

27+00

26+50

26+00

25+75

25+50

6.52 417.98

411.26 BM #3

75 62.5 50 37.5 25 12.5 25 37.5 50 62.5 8

413.33
413.33
4.95

413.79 414.09 413.79 ✓
414.08 413.89 413.58 413.33 ✓

413.18 ✓
18
4.60

413.64 413.89 413.64 ✓
413.99 413.68 413.43 413.18 ✓

412.98
412.98
4.80

413.44 413.69 413.44 ✓
413.23 413.78 413.73 413.48 413.23 412.98 ✓

412.77
412.77
5.01

413.23 413.48 413.23 ✓
413.02 413.52 413.27 413.02 412.77 ✓

412.53
5.25

412.66 412.78 412.99 ✓
412.53 413.28 413.03 412.78 412.53 ✓

412.40
412.28

412.52 412.65 412.89 413.00 413.13 412.89 412.65 412.90 ✓
412.40 412.53 412.78 413.03 412.90 412.78 412.66 412.53 412.28 ✓

"B" - RUNWAY - Finish Grades
 - PAVED AREA -

31+00 Brk

30+50 Brk

T.P.

4.06 413.72

30+00 Brk

29+50 Brk

29+00 Brk

28+50 Brk

417.78
 5

	Lt.	E	Rt.	
	75	50	25	25' 50 75
413.76 ✓		414.22 ¹	414.47 ¹	414.22 ¹ ✓
		414.51	414.26	414.01 ✓
				413.76 ✓
413.75 ✓		414.21 ¹	414.46 ¹	414.21 ¹ ✓
		414.50	414.25	414.00 ✓
				413.75 ✓
413.72 ✓		414.18 ¹	414.43 ¹	414.18 ¹ ✓
413.72 ✓		414.47	414.22	413.97 ✓
4.06				413.72 ✓
0.00		414.13 ¹	414.38 ¹	414.13 ¹ ✓
413.67 ✓		414.42	414.17	413.92 ✓
413.67 ✓				413.67 ✓
4.11				
0.00		414.24 ¹	414.28 ¹	414.03 ¹ ✓
413.57 ✓		414.32	414.07	413.82 ✓
413.57 ✓				413.57 ✓
4.21				
0.00		413.93 ¹	414.18 ¹	413.93 ¹ ✓
413.47 ✓		414.22	413.97	413.72 ✓
413.47 ✓				413.47 ✓
4.31				

~ 45' Runway ~ Finish Grade

34+50

34+00

33+50

33+00

32+50

32+00 - EVC

31+50 Brk

	Lt.	L.	Rt.	10
413.42 ✓	75	50	25	75
413.48 ✓				
413.54 ✓				
413.59 ✓				
413.65 ✓				
413.70 ✓				
413.74 ✓				
413.88 ✓	25	50	75	
413.94 ✓				
414.00 ✓				
414.05 ✓				
414.11 ✓				
414.16 ✓				
414.22 ✓				
414.26 ✓				
414.30 ✓				
414.34 ✓				
414.36 ✓				
414.40 ✓				
414.41 ✓				
414.45 ✓				
414.49 ✓				
414.51 ✓				
414.55 ✓				
414.59 ✓				
414.63 ✓				
414.65 ✓				
413.92 ✓	25	50	75	
413.98 ✓				
414.02 ✓				
414.09 ✓				
414.15 ✓				
414.20 ✓				
414.24 ✓				
414.29 ✓				
414.33 ✓				
414.37 ✓				
414.42 ✓				
414.47 ✓				
414.52 ✓				
414.57 ✓				
414.62 ✓				
413.67 ✓	50	75		
413.73 ✓				
413.79 ✓				
413.84 ✓				
413.89 ✓				
413.95 ✓				
413.99 ✓				
414.04 ✓				
414.08 ✓				
414.13 ✓				
414.17 ✓				
414.21 ✓				
414.25 ✓				
414.29 ✓				
414.33 ✓				
414.37 ✓				
414.41 ✓				
414.45 ✓				
414.49 ✓				
414.53 ✓				
414.57 ✓				
414.61 ✓				
414.65 ✓				
413.42 ✓	75	50	25	75
413.48 ✓				
413.54 ✓				
413.59 ✓				
413.65 ✓				
413.70 ✓				
413.74 ✓				
413.88 ✓	25	50	75	
413.94 ✓				
414.00 ✓				
414.05 ✓				
414.11 ✓				
414.16 ✓				
414.22 ✓				
414.26 ✓				
414.30 ✓				
414.34 ✓				
414.36 ✓				
414.40 ✓				
414.41 ✓				
414.45 ✓				
414.49 ✓				
414.51 ✓				
414.55 ✓				
414.59 ✓				
414.63 ✓				
414.65 ✓				
413.92 ✓	25	50	75	
413.98 ✓				
414.02 ✓				
414.09 ✓				
414.15 ✓				
414.20 ✓				
414.24 ✓				
414.29 ✓				
414.33 ✓				
414.37 ✓				
414.42 ✓				
414.47 ✓				
414.52 ✓				
414.57 ✓				
414.62 ✓				
414.65 ✓				
413.67 ✓	50	75		
413.73 ✓				
413.79 ✓				
413.84 ✓				
413.89 ✓				
413.95 ✓				
413.99 ✓				
414.04 ✓				
414.08 ✓				
414.13 ✓				
414.17 ✓				
414.21 ✓				
414.25 ✓				
414.29 ✓				
414.33 ✓				
414.37 ✓				
414.41 ✓				
414.45 ✓				
414.49 ✓				
414.53 ✓				
414.57 ✓				
414.61 ✓				
414.65 ✓				

B⁴ Runway - Finish Grades

37+50

37+00

36+50

36+00

35+50

35+00

	75	50	25	25	50	75	11
413.09			413.55	413.80	413.59	413.34	413.09
			413.84				
413.15			413.61	413.86	413.61	413.40	413.15
			413.90	413.85			
413.30			413.66	413.91	413.70	413.45	413.20
			413.75				
413.26			413.72	413.97	413.76	413.51	413.26
			414.01				
413.31			413.77	414.02	413.81	413.56	413.31
			414.06				
413.37			413.83	414.08	413.87	413.62	413.37
			414.12				

"B" Runway - Finish Grades

40+50

40+00

39+50

39+00

38+50

38+00

	Lt.	E	Rt.	
	75	50'	25	25 50 12
412.76 [✓]		413.22 [✓]	413.47 [✓]	413.26 [✓] 413.01 [✓] 412.76 [✓]
		413.51 [✓]		
412.82 [✓]		413.28 [✓]	413.53 [✓]	413.32 [✓] 413.07 [✓] 412.82 [✓]
		413.57 [✓]		
412.88 [✓]		413.34 [✓]	413.59 [✓]	413.38 [✓] 413.13 [✓] 412.88 [✓]
		413.63 [✓]		
412.93 [✓]		413.39 [✓]	413.64 [✓]	413.68 [✓] 413.43 [✓] 413.18 [✓] 412.93 [✓]
		413.68 [✓]		
412.98 [✓]		413.44 [✓]	413.69 [✓]	413.73 [✓] 413.48 [✓] 413.23 [✓] 412.98 [✓]
		413.73 [✓]		
413.04 [✓]		413.50 [✓]	413.75 [✓]	413.79 [✓] 413.54 [✓] 413.29 [✓] 413.04 [✓]
		413.79 [✓]		

Runway - Finish Grades

43+50

43+00

42+50

42+00

41+50

41+00

	Lt.	E	Rt	13
	75	50	25	75
412.43		412.89	413.14	412.43
		413.18	412.93	412.68
412.49		412.95	413.20	412.49
		413.24	412.99	412.74
412.54		413.00	413.25	412.54
		413.29	413.04	412.79
412.60		413.06	413.31	412.60
		413.35	413.10	412.85
412.65		413.11	413.36	412.65
		413.40	413.15	412.90
412.71		413.17	413.42	412.71
		413.46	413.21	412.96

B- Runway
Finish Grades

45+00

44+50

44+00

412.27

412.32

412.38

Lt

75

50

25

Rt

25

50

14

75

413.02

413.07

412.84

413.09

413.15

412.88

412.63

412.38

412.00

412.20

Walker Runway "B" Finish Grade
 Levels for Grades 75' Rt.
 from 45+00 to to 25+50
 Grade Elevations Page

15

					0.015
				411.255	
chk. B.M. No 3		6.91	411.27		
T.P.	4.96	418.18	4.89	413.73	
T.P.	5.24	418.61	4.38	413.37	
T.R.	4.93	417.75	4.60	412.82	on stake 75' Rt 40+00-P-12
				411.20	181860-2
chk L Mon 46+00 Runway B		6.23	411.19		
	6.51	417.43		410.91	

85' Rt. 24+00 on Pipe

5

412.58

~~5.85~~ 418.77

419.12 BM#5

chk BM

6.18 411.15

T.P. 4.32 417.33 4.72 413.01

T.P. 3.82 417.73 4.45 419.91

T.P. 3.90 418.36 3.10 414.46 30+50

6.30 417.56 411.26

6.32 417.58

~~6.54~~ 417.80 411.36

T.P. 4.40 412.83

0.01 Error.

411.20

chk S.M. Conc. Non 6.04 411.19

T.P. 4.51 417.23 5.17 412.72 75' Lt 41+00

T.P. 4.77 417.89 5.23 413.12

F.P. 5.05 413.30 35+00 75' Lt 30+00

T.P. 4.63 418.35 4.16 413.72

T.P. ~~4.16~~ 417.88 4.06 413.72 30+00 75' Lt

6.52 417.78 411.26 BM#3

6.29 417.35 411.26 BNT#3

46+00 Runy "B"

BM#5 FB 1860-78 90' Lt 35+75

Walker
Johnson
Bojce
Ritter
11-8-48

Runway "A" Finish Grades
from 144+00 to 131+00
on line 75.3' ft of E

144+00

25 50 75 100

416.88 416.63 416.38 416.13[✓]
4.05

143+50

416.72 416.47 416.22 415.97[✓]
1.5 L

143+06

416.56 416.31 416.06 415.81[✓]

142+50

416.40 416.15 415.90 415.65[✓]

142+00

416.24 415.99 415.74 415.49[✓]

141+50

416.08 415.83 415.58 415.33[✓]

75' 62.5 50

141+00

140+50

140+00

139+50

139+00

138+50

37.5 25 12.5

£

25 50 75' ¹⁹

41592 41567 41542 41517

41576 41551 41526 41501

41560 41535 41510 41485

41544 41519 41494 41469

41528 41503 41478 41453

41512 41487 41462 41437

138+00

75' 62.5 50

375 25 12.5'

£

2.5' 50' 75'R

20

414.96 414.71 414.46 414.21 ✓

137+50

414.80 414.55 414.30 414.05 ✓

137+00

414.64 414.39 414.14 413.89 ✓

136+50

414.48 414.23 413.98 413.73 ✓

136+00

414.32₇₅ 414.07 413.82 413.57 ✓

135+50

414.16 413.91 413.66 413.41 ✓

135+00

414.00 413.75 413.50 413.25 ✓

134+50

75' 62.5 50'

134+00

133+50

133+00

132+50

132+00

131+75

412.21

131+50

412.13

Lt 37.5 25 12.5 Rt 25 50 75' 0

413.84 413.59 413.34 413.09 ✓

413.68 413.43 413.18 412.93 ✓

413.52 413.27 413.02 412.77 ✓

413.36 413.11 412.86 412.61 ✓

413.20 412.95 412.70 412.45 ✓

413.04 412.79 412.54 412.29 ✓

412.88 412.63 412.38 412.13 ✓

131400

130750

130100

From 110100

To 130100

See P-29-32

£

25

50

75

22

412.72 412.47 412.22 411.97

Walker

Levels to Determine Grade
Rods for Finish Grades
Station P-18 to
"A" Runway

			0.07	
			412.58	BM #4
		4.62	412.65	
4.35	417.27	6.00	412.22	75' RT 134+00
4.07	418.92	5.90	414.85	75' RT 140+00
5.42	420.75		415.33	

BM. & Conc Mark "A" Runway

			0.06	
			412.58	BM #4
		4.66	412.64	
4.21	417.30	5.80	413.09	
TP 4.04	418.89	5.33	414.85	140+00 75' RT
4.85	420.18		415.99	

BM. & Conc Mark "A" Runway

"A" Runway Finish Grades

From 110+00 to 75

112+50 406.95

T.P. 5.37 413.24 4.32 406.85 ¹¹²⁺⁰⁰ 75' RT

112+00 406.85

111+50 406.75

111+00 406.65

110+50 406.55

110+00 406.45 ^{406.53}
7.83 411.17 403.34

Lt

50 25

E

25

Rt

25 37.50

62.5

24

75

407.20 407.45 407.70 ^{07.58} 407.45 407.20 ^{07.88} 406.95

5.29
112.24

407.10 407.35 407.60 ^{07.68} 407.35 407.10 ^{07.98} 406.85

4.32

407.00 407.25 407.50 ^{07.38} 407.25 407.00 ^{07.68} 406.75

4.42

406.90 407.15 407.40 ^{07.28} 407.15 406.90 ^{07.58} 406.65

4.52

406.80 407.05 407.30 ^{07.18} 407.05 ^{07.48} 406.80 ^{07.78} 406.55

4.62

406.70 ^{07.08} 406.95 ^{07.38} 407.20 ^{07.68} 406.95 ^{07.98} 406.70 ^{08.28} 406.45

4.72

"A" Runway Finish

75

115+50

407.55

115+00

407.45

114+50

407.35

114+00

407.25

113+50

407.15

113+00

407.05

412.24

Lt

50

25

± 12.5'

25

Rt.

50

62.5'

25

407.80

408.05

408.30

408.05

407.80

407.55

469

407.70

407.95

408.20

407.95

407.70

407.45

472

407.60

407.85

408.10

407.85

407.60

407.35

482

407.50

407.75

408.00

407.75

407.50

407.25

492

407.40

407.65

407.90

407.65

407.40

407.15

500

407.30

407.55

407.80

407.55

407.30

407.05

519

"A" Runway Finish Grades

420' Vert. Curve

75 37.5

118+50 = Bk

408.16
408.29

118+00 = P.V.C

408.05
408.18

TP 5.68 413.63

429 407.25 117+50 75' RA

117+50

407.95

117+00

407.85

116+50

407.75

116+00

407.65

412.24

Sta	21'	50'	37.5'	25'	12.5'	2'	12.5'	25'	37.5'	50'	26'
118+50	408.41	408.66	408.91	408.66	408.41	408.16					547
118+00	408.30	408.55	408.80	408.55	408.30	408.05					5.58 412.63
117+50	408.20	408.45	408.70	408.45	408.20	407.95					4.29
117+00	408.10	408.35	408.60	408.35	408.10	407.85					4.39
116+50	408.00	408.25	408.50	408.25	408.00	407.75					4.49
116+00	407.90	408.15	408.40	408.15	407.90	407.65					4.59

"A" Runway Finish Grades

75'

131+50 Bk

408.93
409.06

121+00 Bk

408.79
408.92

check BM #2

405.815 ✓
7.81 405.82 ✓

130+50 Bk

408.65
408.78

130+00 Bk

408.51
408.64

119+50 Bk

408.39
408.52

119+00 Bk

408.37
408.40

400' Vert. Curve 119+00 to 122+00

413.63

Lt 50 37.5 25' 12.5' 25' 50 62.5' 27
R 125' 25' 50 75

409.18	409.43	409.68	409.43	409.18	408.93
409.04	409.29	409.54	409.29	409.04	408.79
408.90	409.15	409.40	409.15	408.90	408.65
408.76	409.01	409.26	409.01	408.76	408.51
408.64	408.89	409.14	408.89	408.64	408.39
408.52	408.77	409.02	408.77	408.52	408.27

5.36

"A" Runway - Finish Grades

75' 75'

chk B.M.

4.01

403
411.26
411.29
411.30 - 18 1994

123+75

409.67

123+50

409.58

123+25

Above B.M. use to set finish from 123+25 to

409.48

131+00 4.01 415.27

411.26 4.28

7.P 5.89 415.30 4.22 409.41

123+00
75' K6

Use B.M. from 110+00 to 123+00 inclusive

123+00

409.41

122+50

409.25

122+00 = E.V.C.

409.09

413.63

50 37.5 20 12.5 25 37.5 50 62.5 28 75

409.89	410.14	410.39	410.16	409.91	409.73
409.82	410.14	410.39	410.16	409.91	409.73
409.82	410.07	410.32	410.08	409.82	409.61
409.73	409.98	410.23	409.99	409.73	409.50
4.03	3.78	3.53	3.77	4.03	5.77
409.66	409.91	410.16	409.91	409.66	409.41
409.50	409.75	410.00	409.75	409.50	409.25
409.34	409.59	409.84	409.59	409.34	409.09

"A" Runway Finish Grades

75' 37.5'

125+25

410.46

410.52

125+00

410.31

410.38

124+75

410.17

410.25

T.P.

3.59

124+50

410.03

410.12

124+25

410.03

410.09

124+00

409.79

409.90

415.27 Corrected
415.30

ft

30 25

ft

25 37.5 50 62.5 29

410.58

410.46

410.73

410.88

410.84

410.76

410.65

See Here
12-10-49

4.63

410.45

410.54

410.63

410.80

410.72

410.62

410.50

4.77

410.33

410.43

410.52

410.72

410.60

410.47

410.33

4.94

410.21

410.31

410.41

410.64

410.48

410.32

410.17

5.10

410.10

410.21

410.31

410.55

410.36

410.17

410.01

5.26

410.00

410.12

410.23

410.48

410.27

410.04

409.87

5.40
5.43

415.27

"A" Runway - Finish Grades

75'

~~TP 4.78 416.41 364 411.63~~ ¹²⁸⁺²⁵ 75' R.H.

128+25 411.19

128+00 411.14

127+75 411.10

127+50 411.07

5.24 416.50 40' 411.26

127+25 411.04

127+00 411.01

415.27

50

25'

L

105'

25'

FR

50

31

75'

411.82
411.44 411.64 411.85 411.78 411.70 411.63

4.87

411.38 411.58 411.76 411.73 411.70 411.68

4.82

411.34 411.52 411.68 411.67 411.69 411.73

4.77

411.30 411.47 411.60 411.62 411.68 411.79

4.71

416.50

411.25 411.41 411.52 411.56 411.65 411.77

3.50

411.21 411.36 411.44 411.51 411.62 411.75

3.52

"A" Runway Finish - Grades

75

131+25

412.03
1317.00
75 R

4.58 411.92

131+00

411.93

130+75

411.85

130+50

411.78

130+25

411.70

130+00

411.63

129+75

411.55

129+50

411.47

129+25

411.41

129+00

411.36

128+75

411.30

128+50

411.23

416.50

62.5

50

37.5

Lt

25

12.5

L

12.5

25

Rt

50

37.5

25

12.5

32

412.06

412.18

412.43

412.68

412.43

412.18

411.93

411.91

412.03

412.28

412.53

412.28

412.03

411.78

411.76

411.88

412.13

412.38

412.13

411.88

411.63

411.60

411.72

411.97

412.22

412.01

411.79

411.62

411.48

411.59

411.83

412.08

411.90

411.73

411.61

411.36

411.48

411.69

411.92

411.82

411.70

411.62

411.24

411.48

411.69

411.92

411.82

411.70

411.62

411.12

411.48

411.69

411.92

411.82

411.70

411.62

411.00

411.48

411.69

411.92

411.82

411.70

411.62

410.88

411.48

411.69

411.92

411.82

411.70

411.62

410.76

411.48

411.69

411.92

411.82

411.70

411.62

410.64

411.48

411.69

411.92

411.82

411.70

411.62

410.52

411.48

411.69

411.92

411.82

411.70

411.62

410.40

411.48

411.69

411.92

411.82

411.70

411.62

410.28

411.48

411.69

411.92

411.82

411.70

411.62

410.16

411.48

411.69

411.92

411.82

411.70

411.62

410.04

411.48

411.69

411.92

411.82

411.70

411.62

409.92

411.48

411.69

411.92

411.82

411.70

411.62

409.80

411.48

411.69

411.92

411.82

411.70

411.62

409.68

411.48

411.69

411.92

411.82

411.70

411.62

409.56

411.48

411.69

411.92

411.82

411.70

411.62

409.44

411.48

411.69

411.92

411.82

411.70

411.62

409.32

411.48

411.69

411.92

411.82

411.70

411.62

409.20

411.48

411.69

411.92

411.82

411.70

411.62

409.08

411.48

411.69

411.92

411.82

411.70

411.62

408.96

411.48

411.69

411.92

411.82

411.70

411.62

408.84

411.48

411.69

411.92

411.82

411.70

411.62

408.72

411.48

411.69

411.92

411.82

411.70

411.62

408.60

411.48

411.69

411.92

411.82

411.70

411.62

408.48

411.48

411.69

411.92

411.82

411.70

411.62

408.36

411.48

411.69

411.92

411.82

411.70

411.62

408.24

411.48

411.69

411.92

411.82

411.70

411.62

408.12

411.48

411.69

411.92

411.82

411.70

411.62

408.00

411.48

411.69

411.92

411.82

411.70

411.62

407.88

411.48

411.69

411.92

Levels to Set Road Finish
 Stakes Runway "A" 50' End 625' Rt off
 P 24-32

Used FB 1860 For Finish Grades
 to End from 131400 to 145100

				0.00	
				411.26	BM #3
		5.29		411.26	
485	416.55	3.59	411.70	128+00	50' Rt

403	415.29		411.26	BM
			411.30	BM

use from 123+25 to 121+00 } inclusive

CHK BM #3		4.03	411.30		
	5.77	415.33	4.30	409.56	119+50
TP	5.22	413.86	4.01	408.64	50' Rt
TP	5.05	412.65	4.18	407.60	112+50
TP	5.13	411.78	4.21	406.65	50' Rt
	8.22	411.56		403.34	

Gibbs Airport -
Access Road - Location.

Set Radius

$\Delta = 20^\circ 37' 18''$
 $R = 434.59'$
 $L = 178.00'$
 $T = 90.0'$

$33+79.40'$
 $100' + E. N$
 $2251.08' N$
 $532.43' W$

Walker
Johnson
Faye
Riley
12-17-48

Abandoned

$35+57.40$
P.R.C.

$100'$
R.P.

$10' 10''$

Airport Boundary Line

$30'$
 $30'$
 $200.03'$

$39+71.47$

$200'$ $200'$ $10'$ $10'$

$N 2246.09$
 $W 112.43$

$5+89.65'$
E.C.

$19/30$
 $\Delta = 32^\circ 42' 56''$
 $R = 337.80$
 $L = 154.50$
 $T = 92.73$
 344.12
 194.14

P.R.C.

$3+05.5'$

$10' 10''$

$N 79^\circ 52' 47'' W$
 $\Delta = 20^\circ 41' 38''$
 $R = 432.96'$
 $L = 178.00'$
 $T = 90.0'$

$15.05'$
 $\Delta = 32^\circ 42' 56''$
 $R = 337.80$
 $L = 154.50$
 $T = 92.73$
 344.13
 193.72
 99.56
 100.00

$S 89^\circ 55' 35'' W$

$2+01.79$ B.C.
 $2+00.57$

$N 88^\circ 53' 35'' E$

$150'$
Comp. Man.
S.E. Cor. lot 24

$100'$
 $30' \times 20' \times 10'$

$30'$
 $30'$

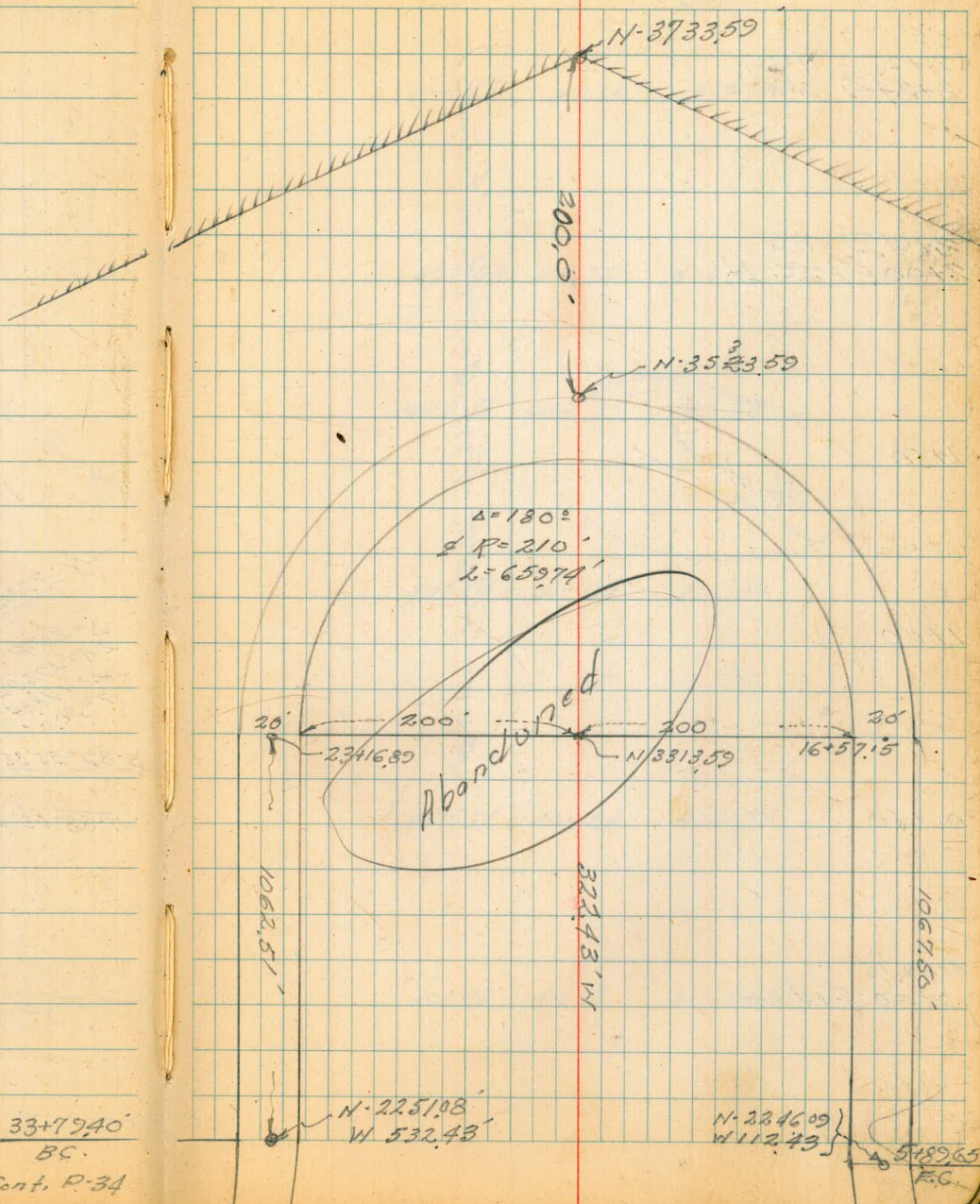
$1st. Ave.$

$30' \times 30'$

$0+00.75$

$300.03'$

R.V.



33+79.40'
 BC.
 Cont. P-34

Grades Access Road ~~F~~

~~Location P-62~~
G

2+25 1.56
2+24.89 3206.47"

2+01.79 = B.C
2+00.57 = 80.14

1+50

Abandoned

1+00

0+50

0+00.75
0+00 = 1st Ave

(See P-60 For Correct Stations)

Lt

Rt

10'

10'

10'

36

406.61 406.76 406.61

406.59 406.74 406.59

406.58 406.71 406.58

406.54 406.69 406.54

406.51 406.66 406.51

406.48 406.63 406.48

3+75 14°26'
3+70.86 14°19'29"

3+50 12°21'
3+46.50 12°16'42"

3+25 10°16'
3+22.17 10°13'55"

3+00 8°11.0'
2+97.85 8°11'08"

2+75 6°06'
2+73.53 6°08'31"

2+50 4°01'
2+49.21 4°05'34"

(SEE P. 60 For Correct Stations)

Lt
10'

±

Rt
10'

37

406.70 406.85 406.70

406.69 406.84 406.69

406.67 406.82 406.67

406.66 406.81 406.66

406.64 406.79 406.64

406.63 406.78 406.63

5+25 10°47'

~~5+16.70 10°15'15"~~

5+00 8°42'

~~4+92.39 8°12'12"~~

4+75 6°37'

~~4+68.08 6°09'09"~~

4+00 4°32'

~~4+33.77 4°06'06"~~

4+25 2°27'

~~4+19.46 2°03'03"~~3+95.76 = PRC. ^{5/1} 16°07'32"
16°22'75"

(See P-60 for Correct Stations)

406.79 406.94 406.79

406.78 406.93 406.78

406.76 406.91 406.76

406.75 406.90 406.75

406.73 406.88 406.73

406.71 406.86 406.71

Finish Grades - Access Road "A"
Location P-62

Cont. on P. 40

7+00

6+50

6+00

BK P.O.T.
5+89.65 = 5.6 - 16°09.75'

411.87' from Bottom of Page

Stations → (Change Cont from P-61)

4.98 411.87 406.89

5+65.33 14°21'21"

5+75 14°57'

5+46.02 12°48'18"

5+50 12°52'

39

F064'	F057'		F040'	F047'
40717	40710	40732	40710	40717
406.53	477		477	406.70
534	534		517	517

F051'	F048'		F039'	F052'
40710	40627	40725	40627	40710
406.49	490		490	406.58
538	538		529	529

40702 406.85 40717 406.85 40702

F050'	F031'		F037'	F056'
40701	40682	40716	40682	40701
406.51	505		505	406.45
536	536		542	542

411.87

B.M. Cons. Mon. SE. Cor. Lot 24. PB 1874
55

40681 406.96 40681

40680 406.95 40680

Finish Grades
Access Road "A"
Location P.62

Cont. P.41

10+00

9+50

9+00

TR 6.00 41318 4.62 40718 8+50 12.67

8+00

7+50

41187 ✓

40

F018 ✓	F041 ✓	F015 ✓	C008 ✓
40762	40785	40785	40762
40744	5.33	5.33	40770
5.74 ✓	5.74	5.48	5.48 ✓

F015 ✓	F033 ✓	F012 ✓	C006 ✓
40755	40773	40773	40755
40740	5.45	5.45	40761
5.78 ✓	5.78	5.57	5.57 ✓

F021 ✓	F034 ✓	F015 ✓	F002 ✓
40747	40760	40760	40747
40726 ✓	5.58	5.58	40745
5.92	5.92	5.73	5.73 ✓

F022 ✓	F039 ✓	F017 ✓	F010 ✓
40740	40747	40747	40740
40718	4.40	4.40	40730
4.69 ✓	4.69	4.57	4.57 ✓

F023 ✓	F036 ✓	F008 ✓	F005 ✓
40732	40735	40735	40732
40709	4.52	4.52	40727
4.78 ✓	4.78	4.60	4.60 ✓

F040 ✓	F038 ✓	F022 ✓	F02A ✓
40725	40723	40723	40725
40685	4.51	4.51	40701
5.02 ✓	5.02	4.85	4.85 ✓

41187 ✓

Finish Grades
Access Road "A"
Location P-62

Cont. P-42

13+00

12+50

12+00

11+50

11+00

10+50

Cont. from P-40 41318

Lt

E

Rt

41

F019 ✓ 408.07 407.88 5.30 ✓	F072 ✓ 408.60 4.58 5.30	408.22	F052 ✓ 408.60 4.58 5.10	C001 ✓ 408.07 408.08 5.10 ✓
C007 ✓ 408.00 408.07 5.11 ✓	F041 ✓ 408.48 4.70 5.11	408.15	F010 ✓ 408.48 4.70 4.80	C038 ✓ 408.00 408.38 4.80 ✓
F018 ✓ 407.92 407.74 5.44 ✓	F061 ✓ 408.35 4.83 5.44	408.07	F025 ✓ 408.35 4.83 5.08	C018 ✓ 407.92 408.10 5.08 ✓
F007 ✓ 407.85 407.78 5.40 ✓	F045 ✓ 408.23 4.35 5.40	408.00	F017 ✓ 408.23 4.35 5.12	C021 ✓ 407.85 408.06 5.12 ✓
Grade ✓ 407.77 407.77 5.41	F033 ✓ 408.10 5.08 5.41	407.92	F017 ✓ 408.10 5.08 5.25	C016 ✓ 407.77 407.93 5.25 ✓
F002 ✓ 407.70 407.61 5.57 ✓	F036 ✓ 407.97 5.21 5.57	407.85	F044 ✓ 407.97 5.21 5.65	F017 ✓ 407.70 407.53 5.65 ✓

41318

16+00

C 0.66 ✓	F 0.17 ✓		F 0.12 ✓	C 0.71 ✓
408.52	409.35	408.67	409.35	408.52
409.18	4.67		4.67	409.23
4.84	4.84		4.79	4.79

15+50

C 0.49 ✓	F 0.29 ✓		F 0.12 ✓	C 0.66 ✓
408.45	409.23	408.60	409.23	408.45
408.94	4.79		4.79	409.11
5.08	5.08		4.31	4.31

15+00

C 0.64 ✓	F 0.09 ✓		C 0.26 ✓	C 0.99 ✓
408.37	409.10	408.52	409.10	408.37
409.01	4.92		4.92	409.36
5.01	5.01		4.66	4.66

14+50

F 0.04 ✓	F 0.71 ✓		F 0.53 ✓	C 0.14 ✓
408.30	408.97	408.45	408.97	408.30
408.26	5.05		5.05	408.44
5.76	5.76		5.38	5.58

14+00

F 0.06 ✓				F 0.13 ✓
408.22	F 0.69 ✓		F 0.76 ✓	408.22
408.16				408.09
5.86	408.85	408.37	408.85	5.93
	5.17		5.17	
	5.86		5.93	

TP 5.62 414.02 4.78 408.40

13+50

		414.02		
C 0.25 ✓	F 0.33 ✓		F 0.21 ✓	C 0.37 ✓
408.15	408.73	408.30	408.73	408.15
408.40	4.75		4.45	408.52
4.78	4.78		4.66	4.66

Cont. from P. 41

41318

41318

Finish Grades
 Access Road "A"
 Location P-62

Cont. P-44

17+45.11

+23.12

17+01.13

16+79.14

TR 333 412.80 455 409.47 3405N
 Brk-Apx

16+57.15 = B.C. 4. This curve in 30 Equal Parts.

16+50

414.02
 2

43

Lt. 10' R. 10' Rt. 10'

C 0.29	F 0.32		C 0.07	C 0.48
408.49	409.10	408.59	409.10	408.69
408.78	370.		370.	409.17
402	402		3.63	3.63

408.53	409.20	408.63	C 0.07	C 0.54
	out		409.20	408.73
			3.60	409.27
			3.53	3.53

C 0.54	F 0.18		C 0.14	C 0.66
408.57	409.29	408.67	409.29	408.77
409.11	3.51		3.51	409.43
3.69	3.69		3.37	3.37

C 0.68	F 0.10		C 0.06	C 0.58
408.61	409.39	408.71	409.39	408.81
409.33	3.41		3.41	409.33
3.51	3.51		3.41	3.41

412.80

C 0.57	F 0.27		C 0.12	C 0.76
408.65	409.49	408.75	409.49	408.85
409.22	4.53		4.53	409.61
4.80	4.80		4.41	4.41

408.59

408.74

408.59

414.02

Finish Grades
Access Road "A"

Cont P. 45
18+99.04

18+77.05

18+55.06

18+33.07

18+11.08

17+89.09

17+67.10

412.80

	✓ L	Σ	R	044
	C 0.59' ✓	G 0.40	C 0.54	C 0.53' ✓
	408.22	408.41	408.41	408.42
	408.81	4.29	4.29	408.95
	3.99	3.99	3.85	3.85
	C 0.51' ✓	G 0.26'	G 0.28'	C 0.33' ✓
	408.26	408.51	408.51	408.46
	408.77	4.29	4.29	408.79
	4.03	4.03	4.01	4.01
	C 0.59' ✓	G 0.28'	G 0.21'	C 0.32' ✓
	408.30	408.61	408.61	408.50
	408.89	4.19	4.19	408.82
	3.91	3.91	3.98	3.98
	C 0.36' ✓	F 0.01	C 0.33'	C 0.50' ✓
	408.34	408.71	408.71	408.54
	408.70	4.09	4.09	409.04
	4.10	4.10	3.76	3.76
	C 0.13' ✓	F 0.29'	C 0.34'	C 0.56' ✓
	408.38	408.80	408.80	408.58
	408.51	4.29	4.00	409.14
	4.29	4.29	3.66	3.66
	C 0.38' ✓	F 0.11'	C 0.15'	C 0.44' ✓
	408.46	408.90	408.90	408.61
	408.79	3.90	3.90	409.05
	4.01	4.01	3.71	3.75
	C 0.72' ✓	G 0.17'	F 0.07'	C 0.28' ✓
	408.45	409.00	409.00	408.65
	409.17	3.80	3.80	408.93
	3.63	3.63	3.87	3.87
		412.80		

Finish Grades
Access Road "A"

20+52.97

20+30.98

20+08.99

19+87 = B+K

19+65.01

19+43.02

19+21.03

412.80

5

		L		R		45	
F0.17	F0.17			F0.36	F0.56		
407.73	407.73	407.83		407.73	407.93		
407.56	5.07			5.07	407.57		
5.24	5.24			5.24	5.43		
F0.23	F0.21			F0.20	F0.42		
407.84	407.82	407.94		407.82	408.04		
407.61	4.98			4.98	407.62		
5.19	5.19			5.18	5.18		
F0.35	F0.31			F0.29	F.53		
407.96	407.92	408.06		407.92	408.16		
407.61	4.88			4.88	407.63		
5.19	5.19			5.17	5.17		
	F0.34			F0.30			
	408.07	408.17		408.27			
	407.73			407.97			
	5.07			4.83			
F0.03	F0.05			E0.08	F0.10		
408.10	408.12	408.20		408.12	408.30		
408.07	4.68			4.68	408.20		
4.73	4.73			4.60	4.60		
C0.17	C0.09			C0.24	C0.12		
408.14	408.22	408.24		408.22	408.34		
408.31	4.58			4.58	408.46		
4.49	4.42			4.34	4.34		
C0.25	E0.12			G0.40	C0.33		
408.18	408.31	408.28		408.31	408.38		
408.43	4.49			4.49	408.71		
4.37	4.87	412.80		4.09	4.09		

Finish Grades
Access Road 'A'

21+8491

21+6292

21+4093

21+1894

20+9695

20+7496

412.80

Lt

St

Rt

46

C 022	C 011		C 001	F 0.08
407.03	407.14	407.13	407.14	407.23
407.25	5.66		5.66	407.15
5.55	5.55		5.65	5.65

C 019	C 009		C 001	F 0.09
407.14	407.24	407.24	407.24	407.34
407.33	5.56		5.56	407.25
5.47	5.47		5.55	5.55

C 0.08	C 001		F 0.22	F 0.35
407.26	407.33	407.38	407.33	407.46
407.34	5.47		5.47	407.11
5.46	5.46		5.69	5.69

C 0.06	Grade		F 0.30	F 0.44
407.37	407.43	407.47	407.43	407.57
407.43	5.37		5.37	407.13
5.37	5.37		5.67	5.67

C 0.13	C 0.10		F 0.41	F 0.58
407.50	407.53	407.60	407.53	407.70
407.63	5.27		5.27	407.12
5.17	5.17		5.68	5.68

F 0.10	F 0.11		F 0.40	F 0.59
407.62	407.63	407.72	407.63	407.82
407.52	5.17		5.17	407.23
5.28	5.28		5.57	5.57

412.80

Finish Grades
Access Road "A"

T.P. = 4.45 410.99 6.26 406.54 ^{12' st.} 23+16.89 = F.G. 210' Rods.

23+94.86

23+72.87

22+50.88

22+28.89

22+06.90

412.80

Lt. 2 Rt. 47

C 0.17' F 0.01' F 0.24' - F 0.26' ✓
406.37 406.55 406.47 406.55 406.57
406.54 6.25 6.25 6.25 406.31
6.26 6.26 6.49 6.49

C 0.08' F 0.10' F 0.43' - F 0.45' ✓
406.47 406.65 406.57 406.65 406.67
406.55 6.75 6.75 6.75 406.22
6.25 6.25 6.58 6.58

C 0.24' G 0.07' F 0.15' - F 0.18' ✓
406.58 406.75 406.68 406.75 406.78
406.82 6.05 6.05 6.05 406.60
5.98 5.98 6.20 6.20

C 0.27' C 0.11' F 0.15' - F 0.19' ✓
406.68 406.84 406.78 406.84 406.88
406.95 5.96 5.96 5.96 406.69
5.85 5.85 6.11 6.11

C 0.31' G 0.17' F 0.15' - F 0.21' ✓
406.86 406.94 406.90 406.94 407.00
407.11 5.86 5.86 5.86 406.79
5.69 5.69 6.01 6.01

C 0.08' F 0.05' F 0.15' - F 0.22' ✓
406.91 407.04 407.01 407.04 407.11
406.99 5.76 5.76 5.76 406.89
5.81 5.81 5.91 5.91

412.80

Finish Grades
Access Road "A"

26+00

25+50

25+00

24+50

24+00

23+50

410.99

L

L

R

48

C 0.09' C 0.17' ✓

405.81 405.73
405.90 5.26
5.09 5.09

405.96

F 0.10' F 0.18' ✓
405.73 405.81
5.26 405.63
5.36 5.36

C 0.18' C 0.20' ✓

405.90 405.88
406.08 5.11
4.91 4.91

406.05

C 0.09' C 0.07' ✓
405.88 405.90
5.11 405.97
5.02 5.02

F 0.04' F 0.07' ✓

405.99 406.02
405.95 4.97
5.04 5.04

406.14

F 0.16' F 0.13' ✓
406.02 405.99
4.97 405.86
5.13 5.13

F 0.02' F 0.17' ✓

406.08 406.16
405.99 4.83
5.00 5.00

406.23

F 0.43' F 0.35' ✓
406.16 406.08
4.83 405.73
5.26 5.26

F 0.12' F 0.26' ✓

406.17 406.31
406.05 4.68
4.94 4.94

406.32

F 0.45' F 0.31' ✓
406.31 406.17
4.68 405.86
5.13 5.13

C 0.16' F 0.03' ✓

406.26 406.45
406.42 4.54
4.67 4.57

406.41

F 0.49' F 0.30' ✓
406.45 406.26
4.54 405.96
5.03 5.03

410.99

Finish Grades
Access Road 'A'

Cont. P-50

TR 4.14 109.00 6.13 404.86 ^{294.00} 12' LT

297+00

287+50

287+00

277+50

277+00

267+50

Cont. from P-48 410.99

(OUT) this section only

LT

2

RT

49

F0.91' F0.01' F0.35' F0.75'

405.27 404.87 405.42 404.87 405.27
404.86 6.12 404.53
6.13 6.13 6.47 6.47

F0.72' F0.38' F0.53' F0.87'

405.36 405.02 405.51 405.02 405.36
404.64 5.97 404.49
6.35 6.35 6.50 6.50

F0.01' C-0.28' F0.16' F0.42'

405.45 405.16 405.60 405.16 405.45
405.44 5.83 405.03
5.55 5.55 5.96 5.96

F0.59' F0.35' F0.50' F0.74'

405.54 405.30 405.69 405.30 405.54
404.95 5.69 404.80
6.04 6.04 6.19 6.19

F0.16' G-0.02' F-0.43' F0.61'

405.63 405.45 405.78 405.45 405.63
405.47 5.54 405.02
5.52 5.52 5.97 5.97

F0.54' F0.41' F0.68' F0.81'

405.72 405.59 405.87 405.59 405.72
405.18 5.40 404.91
5.81 5.81 6.08 6.08

410.99

Finish Grades
Access Road "A"

Lt.

\$

Rt.

50

31+50

F073' F018'
404.82 404.27 404.97
404.09 4.73'
4.21 4.71

F032' F087'
404.27 404.82
4.73 403.95
5.05 5.05'

31+00

F088' F034'
404.91 404.37 405.06
404.03 4.63'
4.27 4.27

F024' F078'
404.37 404.91
4.63 404.13
4.87 4.87'

30+50

F059' F006'
405.00 404.47 405.15
404.41 4.58'
4.59 4.59

F002' F055'
404.47 405.00
4.53 404.45
4.55 4.55'

30+24.19 - 5k

F066' F014'
405.04 404.51 405.19
404.38 4.48
4.62 4.62

Grade F052'
404.52 405.04
4.48 404.52
4.48 4.48'

30+00

F039' C011'
405.09 404.59 405.24
404.70 4.41'
4.30 4.30

C012' F038'
404.59 405.09
4.41 404.71
4.22 4.22'

29+50

F031' C014'
405.18 404.73 405.33
404.87 4.27
4.13 4.13

F006' F051'
404.73 405.18
4.27 404.67
4.33 4.33'

109.00

409.00

Abandoned
 34+01.6 1'17.3'
 0.296 to End of 1st Arc

33+79.40 = BC. Pt. 8 Equal Parts

Cont. P. 56
 33+50
 Finish Grades
 Access Road "A"

33+00

32+50

32+00

Cont. from P. 50 109.00

403.77 403.92 403.77
 5.70 5.69

403.81 403.96 403.81
 5.54 5.81

F0.83' F0.24' F0.26' F0.85'
~~404.46~~ ~~403.87~~ ~~404.46~~ ~~404.46~~
 404.46 403.87 404.61 403.87 404.46
 403.63 5.13 5.13 403.61
 5.37 5.37 5.39 5.39

F0.82' F0.24' F0.43' F1.01'
 404.55 403.97 404.70 403.97 404.55
 403.73 5.02 5.03 403.54
 5.27 5.27 5.46 5.46

F0.83' F0.26' F0.57' F1.14'
 404.64 404.07 404.79 404.07 404.64
 403.81 4.93 4.93 403.50
 5.19 5.19 5.50 5.50

F0.83' F0.27' F0.37' F0.93'
 404.73 404.17 404.88 404.17 404.73
 403.90 4.83 4.83 403.80
 5.10 5.10 5.20 5.20

409.00

35+35.15 9°01.1

35+12.90 7°43.8'

TP 5.72 408.71 6.01 402.99 ^{34+90.65} 12.24
34+90.65 6°26.5'

34+68.40 5°09.2

34+46.15 3°51.9

34+23.90 2°34.6

409.00

Abandoned

403.50 403.65 403.50
5.38 5.72

403.54 403.69 403.54
5.40 5.75

408.71

403.59 403.74 403.59
6.01 6.01

403.63 403.78 403.63
5.63 6.11

403.68 403.83 403.68
5.29 5.53

403.72 403.87 403.72
5.63 5.74

409.00

36+68.65 6°27.5

36+46.40 5°10

36+24.15 3°52.5

36+01.20 2°35

35+79.65 10°17.5

10°18.6'
35+57.40-PRC 8 Equal Parts
408.71

Abandoned

53

403.24	403.39	403.24
552		566

403.28	403.43	403.28
570		601

403.33	403.48	403.33
561		575

403.37	403.52	403.37
553		570

403.41	403.56	403.41
550		578

403.45	403.60	403.45
563		567

408.71

38150

38100

37150

37+35.44 = E.C 10°20.5'

37+13.15 9°02.5'

36+90.90 7°45'

40871

Abandoned

403.02

403.12

403.22

403.10

5.45

403.25

403.10

5.56

403.15

5.47

403.30

403.15

5.80

403.19

5.46

403.34

403.19

5.56

40871

39+7147-2 1st Ave

Abandoned

39+50

39+00

402.78

402.82

402.92

Finish Grades
Access Road "A"

36+00

35+50

35+00

34+50

34+00

Cont. from P. 51

T.P. 5.72 408.71 601 402.99
409.00

Lt. ♀ Rt.

56

F 0.66 ✓

404.01
403.35
5.36 ✓

404.16

F 0.74 ✓

404.01
403.27
5.44 ✓

F 0.90 ✓

404.10
403.20
5.51 ✓

404.25

F 0.97 ✓

404.10
403.13
5.58 ✓

F 0.87 ✓

404.19
403.33
5.37 ✓

404.34

F 1.06 ✓

404.19
403.18
5.58 ✓

F 0.45 ✓

404.28
403.83
4.88 ✓

404.93

F 0.78 ✓

404.28
403.50
5.21 ✓

F 1.03 ✓

404.37
403.34
5.37 ✓

404.52

F 1.15 ✓

404.37
403.22
5.49 ✓

408.71

Finish Grades
Access Road "A"

924
38+99.4 } BC. 50' Radius
9202
38+87.7-41

38+50

38+00

37+50

37+00

36+50

Lt.

Rt.

Rt.

57

C 0.77[✓]

403.49
404.26[✓]
4.45[✓]

403.64

C 0.97[✓]

403.49
404.46[✓]
4.25[✓]

C 0.97[✓]

403.58
404.53[✓]
4.18[✓]

403.71

C 1.81[✓]

403.56
405.37[✓]
3.34[✓]

C 1.11[✓]

403.65
404.76[✓]
3.95[✓]

403.80

C 0.67[✓]

403.65
404.32[✓]
4.39[✓]

C 0.42[✓]

403.74
404.16[✓]
4.55[✓]

403.89

C 0.15[✓]

403.74
403.89[✓]
4.82[✓]

F 0.03[✓]

403.83
403.80[✓]
4.91[✓]

403.98

F 0.31[✓]

403.83
403.52[✓]
5.19[✓]

F 0.31[✓]

403.92
403.61[✓]
5.10[✓]

404.07

F 0.44[✓]

403.92
403.48[✓]
5.23[✓]

403.71

Finish Grades
Access Road 'A'
Location P. 62

				0.02	
			481	406.89	B.M.
				406.91	
T.P.	5.41	411.72	2.40	406.31	

F.G. 50' Radius.

E. Ret. 50' R

408.71

L E R

58

Cont. Mon F.B. 1874-55

C 0.64

403.30
403.94
477

C 1.54

403.39
404.93
378

C 0.03

403.00
403.03
5.68

C 0.96

403.24
404.20
1.51

408.71

This page is a blank ledger with horizontal blue lines and four vertical red lines. The red lines are positioned at approximately 10%, 20%, 30%, and 40% of the page width from the left edge. There are some faint, illegible markings in the top left corner.

This page is a blank ledger with horizontal blue lines, a vertical red line at approximately 65% of the page width from the left edge, and a grid of green lines. The grid covers the area from the red line to the right edge of the page. There is a small brownish stain near the top center of the page.

Gibbs Airport -
Grades - Access Road "A"
Location P. 62

2+50

2+00

1+50

0+90 = B.C. 50' Radius

± 50' Radius Return

B.C. 50' Radius

0+18.28
0+19.7 - E 1st Ave.

(Cont from P. 36)

60

Lt. 1
F 0.29 ✓
406.50
406.71 ✓
5.51

406.65

C 0.80 ✓
406.42
407.22 ✓
4.50

406.57

F 0.04 ✓
406.35
406.31 ✓
5.41

406.50

F 0.26 ✓
406.26
406.00 ✓
5.72

406.41

C 0.92 ✓
406.00
406.92 ✓
4.80

F 0.24 ✓
405.75
405.51 ✓
G 2.1 ✓

406.30

Rt. 1 ✓
F 0.14 ✓
406.50
406.36 ✓
5.36

C 0.76 ✓
406.42
407.18 ✓
4.54

C 0.35 ✓
406.35
406.70 ✓
5.02

C 0.78 ✓
406.26
407.04 ✓
4.68

C 1.28 ✓
406.18
407.46 ✓
4.26

C 0.33 ✓
406.10
406.43 ✓
5.29

411.72 π from P 58

Grades Access Road A
 (Cont on P. 39)
 Location P-62

Cont on P. 39

5750

5700

4750

4700

3750

3700

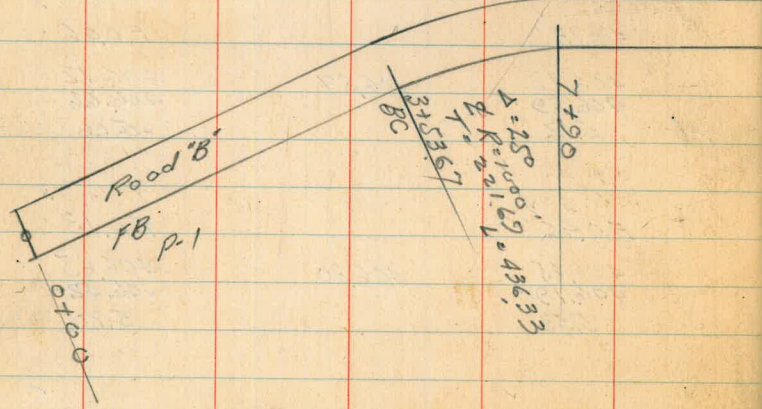
411.72

61

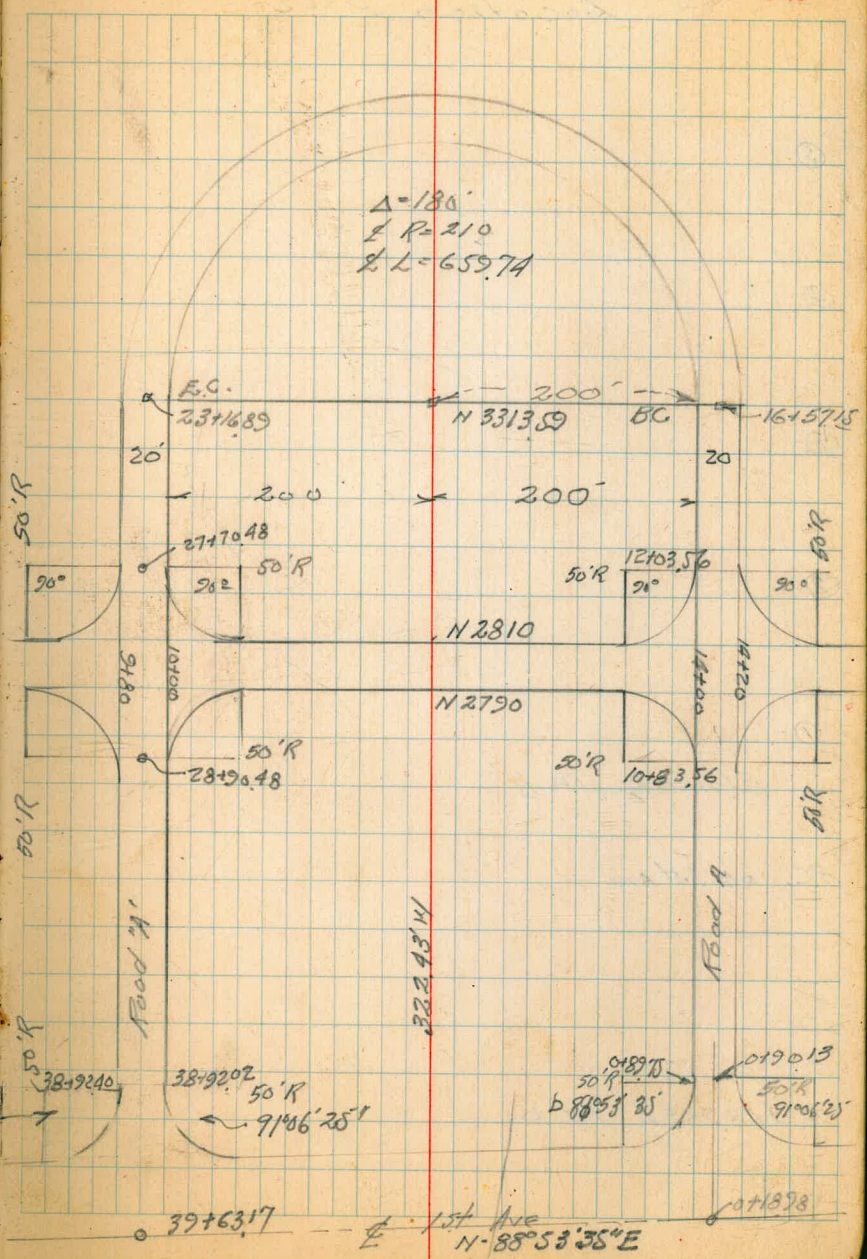
Lt	±	Rt
F0.47 ✓ 406.95 406.98 5.29	407.10	F0.51 ✓ 406.95 406.44 5.28
F0.47 ✓ 406.87 406.40 5.32	407.02	F0.11 ✓ 406.87 406.76 4.96
F0.96 ✓ 406.80 406.39 5.38	406.95	F0.12 ✓ 406.80 406.68 5.04
F0.13 ✓ 406.72 406.59 5.12	406.87	F0.06 ✓ 406.72 406.66 5.06
F0.46 ✓ 406.65 406.19 5.53	406.80	F0.13 ✓ 406.65 406.52 5.20
F0.37 ✓ 406.57 406.20 5.52	406.72	F0.17 ✓ 406.57 406.40 5.32

411.72

Location Proposed
 Access Road 'A'
 ~ Gibbs Airport ~



A = 88° 33' 35"



Subgrades - Road "A"
Location P-42

⑤

④

③

②

①

Rel. 17 6 Equal Parts

B.C. on 1st Ave

$0 + 18.98 = \frac{1}{2}$ 1st Ave

63

Finish Grade - Road "A"

2

65

6+50

407.10

407.25

407.10

6+00

407.02

407.17

407.02

5+50

406.95

407.10

406.95

5+00

406.87

407.02

406.87

4+50

406.80

406.95

406.80

4+00

406.72

406.87

406.72

British Guianas - Road "A"

10+00

9+50

9+00

8+50

8+00

7+50

7+00

£

66

407.62

407.77

407.62

407.55

407.70

407.55

407.47

407.62

407.47

407.40

407.55

407.40

407.32

407.47

407.32

407.25

407.40

407.25

407.17

407.32

407.17

FINISH Grades - Road "A"

2

67

⑤

④

③

②

①

6 Equal Parts

10 18356 B.C. 50' R

10 150

407.75 407.90 407.75

407.70 407.85 407.70

FINISH GRADES
Road "A"

68

③

②

①

Ret. ¹⁷/₆ Equal Parts

-B.C. 55' R on Road B

11 + 53.56 = 64. Road B

407.85 408.00 407.85

11 + 143.56 = 154. Road "B"

407.84 407.99 407.84

11 + 133.56 = 144.56 EC. 55' R

407.82 407.97 407.82

FINISH GRADES

Road "A"

14+00

408.22 408.37 408.22

13+50

408.15 408.30 408.15

13+00

408.07 408.22 408.07

12+58

408.00 408.15 408.00

⑥ = 12+03.56 = E.C. on Road "A"

407.93 408.08 407.93

③

④

FINISH Grades
Road "A"

17+01.13

16+79.14

16+57.15 = B.C. ^{Brk = Grade Apex}

16+00

15+50

15+00

14+50

70

408.57 408.67 408.77

408.61 408.71 408.81

408.65 408.75 408.85

408.52 408.67 408.52

408.45 408.60 408.45

408.37 408.52 408.37

408.30 408.45 408.30

17+6710

17+4511

17+2312

408.45 408.55 408.65

408.49 408.59 408.69

408.53 408.63 408.73

Johnson Finish Grades for Return
 Pope AT Station 24+14.50
 Crawford on Runway "B" Station
 3-1849 128+63.60 on Runway "A"

(See F.B.-1861-P-42 for
 Full Sketch of Runway
 Intersection)

128+63.60 = E.C. on Runway "A" 411.62

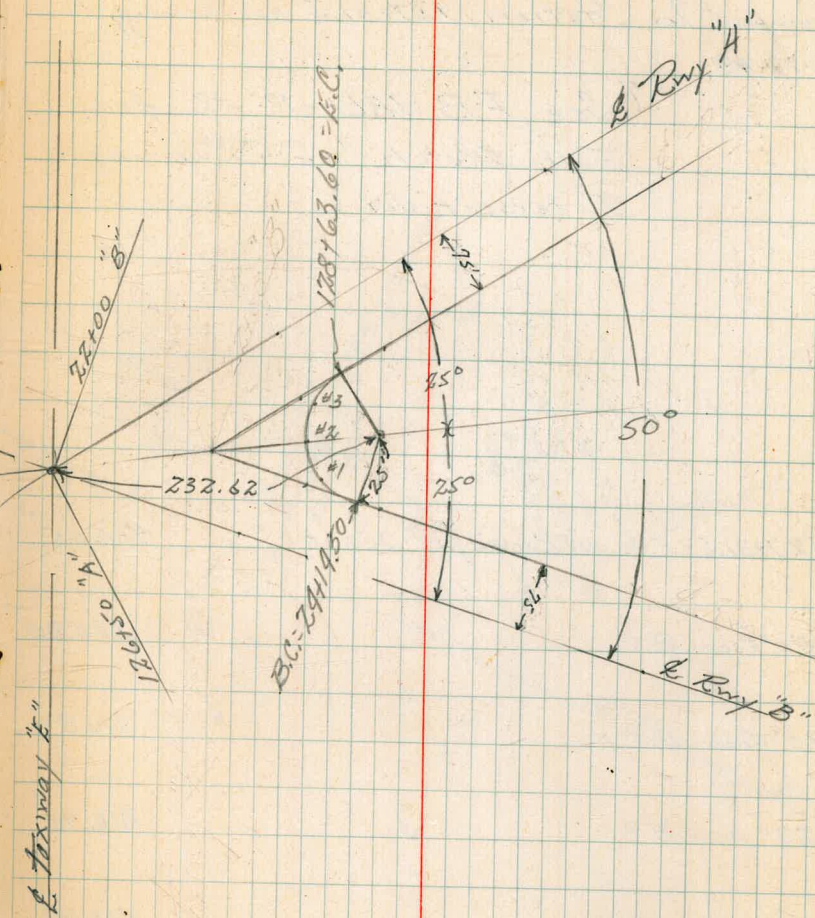
#3 - 87°38' 411.59

#2 - 65°00" 411.55

#1 - 37°30' 411.63

24+14.50 = B.C. on Runway "B" 411.72

5.07 416.33 411.76



B.M. #3

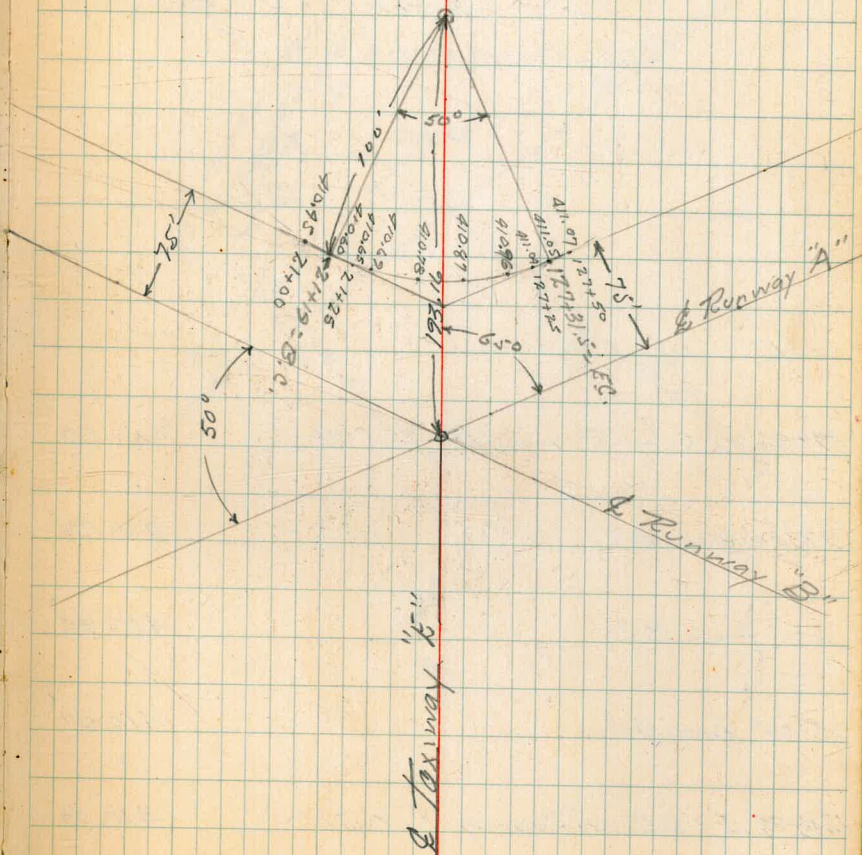
See F.B. 1860-79

Johnson Finish Grades for Return
 Pope from Station 71+19 on Runway "B"
 Crawford To Station 127+31.5 on Runway "A"
 3-17-49

(See F.B. 1861-P-42 for
 Full Sketch of Runway
 Intersection)

127+31.5 = E.C. on Runway "A" 75.5 ft	411.05
40° from B.C.	410.96
30° from B.C.	410.87
20° from B.C.	410.78
10° from B.C.	410.69
21+19 = B.C. on Runway "B" 75.5 ft	410.60

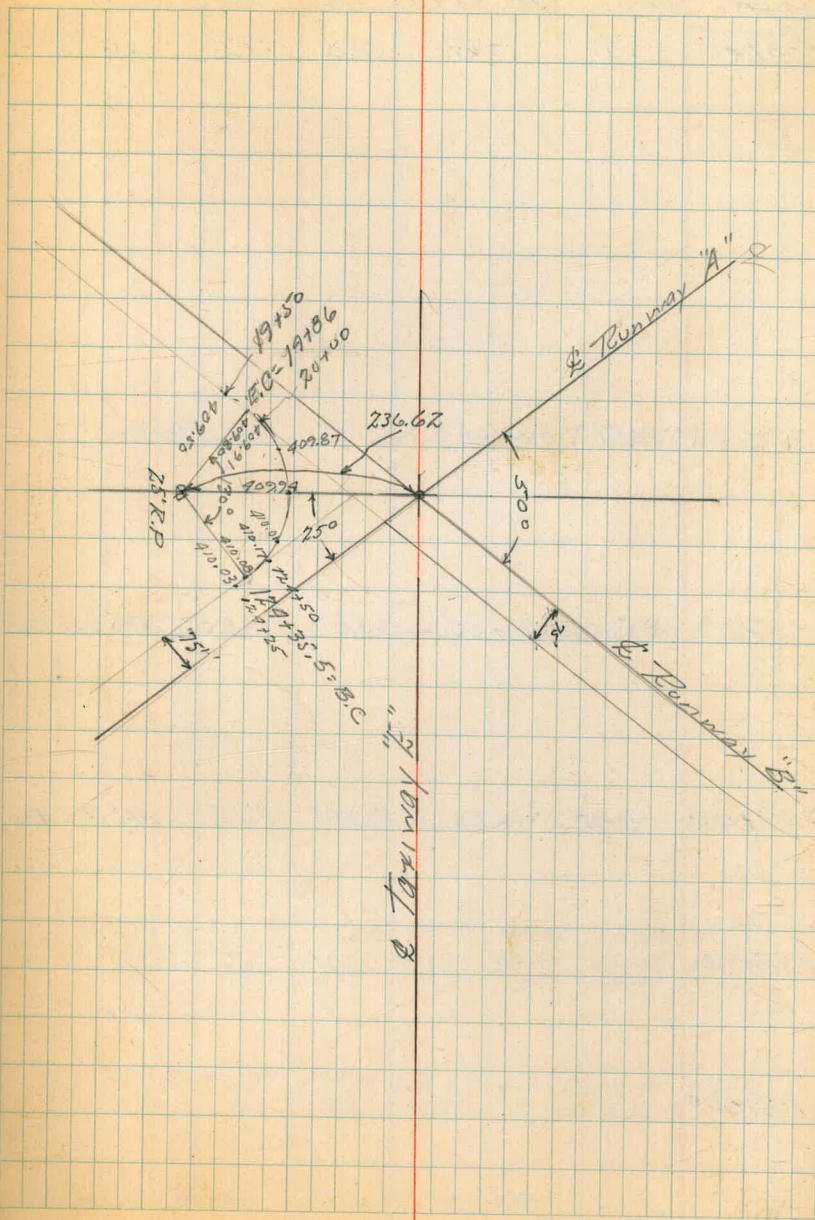
74



Johnson Finish Grades for Return
 Pope from Station 124+35.5 on Runway "A"
 Crawford To Station 19+86 on Runway "B"
 3-17-49

(See F.B. 1861-PAR for
 Full Sketch of Runway
 Intersection)

19+86 = E.C. on Runway "B" 75.5' RT	409.80
97°30' from B.C.	409.87
65° from B.C.	409.99
32°30' from B.C.	410.01
124+35.5 = B.C. on Runway "A" 75.5' Lt	410.08



Walker
Johnson
Pope
Crawford
4-27-49

Finish Grades Runway "A"
from 108+00 To 110+00

250	225	200	1750	150	125
-----	-----	-----	------	-----	-----

0119. Staking
FB 1993
44

110+00	40490	405.12	405.35	405.57
--------	-------	--------	--------	--------

109+50	40460	404.85	405.10	405.35	405.60	405.85
--------	-------	--------	--------	--------	--------	--------

109+00	40450	404.75	405.00	405.25	405.50	405.75
--------	-------	--------	--------	--------	--------	--------

108+50

108+00

9.14 411.01

401.87

FT 76

100	75	50	25	0	25	50	75
-----	----	----	----	---	----	----	----

40645	407.20	406.95	406.70	406.45
-------	--------	--------	--------	--------

40610	406.35	406.60	406.85	407.10	406.85	406.60	406.35
-------	--------	--------	--------	--------	--------	--------	--------

406.00	406.25	406.50	406.75	407.00	406.75	406.50	406.25
--------	--------	--------	--------	--------	--------	--------	--------

405.50	405.26	405.44	405.66	405.59	405.50	405.43
404.86	405.21	405.48	405.36	405.64	405.43	405.32
6.75	5.80	6.93	5.70	5.97	5.58	5.79

403.84	403.99	404.14	404.32	404.42	404.51	404.61
7.17	7.02	6.87	6.69	6.59	6.50	6.40

BM. on Hd. wall 2.50' H/ 109+25

411.01

Molker
Johnson
to go
Crosby
6-16-49

Finish Ground Grades "B" Runway

From 8100 to 10100

10100 - Bq. Paving

9150

9100

8150

8100

6.41 40948

40307

Lt				Rt.		
75	50	25'	℄	25'	50	75
40453	40478	40503	40528	40503	40478	40453
40428 520	40453 495	40478 470	40503 445	40478 470	40453 495	40428 520
40403 545	40428 520	40453 495	40478 470	40453 495	40428 520	40403 545
40392 556	40401 547	40410 538	40419 529	40406 542	40394 554	40382 566
40388 569	40374 574	40367 581	40360 588	40360 588	40360 588	40360 588
B.M. Conc. Mark						
8100 P1						

78

78

79

40312 40352

DISTANCES FROM CENTER OF ROADWAY FOR
CROSS-SECTIONING.

Roadway 16 feet wide. Side Slopes 1 on 1½

For Single Track Embankment.

H	0	.1	.2	.3	.4	.5	.6	.7	.8	.9	H
0	8.0	8.2	8.3	8.5	8.6	8.8	8.9	9.1	9.2	9.4	0
1	9.5	9.7	9.8	10.0	10.1	10.3	10.4	10.6	10.7	10.9	1
2	11.0	11.2	11.3	11.5	11.6	11.8	11.9	12.1	12.2	12.4	2
3	12.5	12.7	12.8	13.0	13.1	13.3	13.4	13.6	13.7	13.9	3
4	14.0	14.2	14.3	14.5	14.6	14.8	14.9	15.1	15.2	15.4	4
5	15.5	15.7	15.8	16.0	16.1	16.3	16.4	16.6	16.7	16.9	5
6	17.0	17.2	17.3	17.5	17.6	17.8	17.9	18.1	18.2	18.4	6
7	18.5	18.7	18.8	19.0	19.1	19.3	19.4	19.6	19.7	19.9	7
8	20.0	20.2	20.3	20.5	20.6	20.8	20.9	21.1	21.2	21.4	8
9	21.5	21.7	21.8	22.0	22.1	22.3	22.4	22.6	22.7	22.9	9
10	23.0	23.2	23.3	23.5	23.6	23.8	23.9	24.1	24.2	24.4	10
11	24.5	24.7	24.8	25.0	25.1	25.3	25.4	25.6	25.7	25.9	11
12	26.0	26.2	26.3	26.5	26.6	26.8	26.9	27.1	27.2	27.4	12
13	27.5	27.7	27.8	28.0	28.1	28.3	28.4	28.6	28.7	28.9	13
14	29.0	29.2	29.3	29.5	29.6	29.8	29.9	30.1	30.2	30.4	14
15	30.5	30.7	30.8	31.0	31.1	31.3	31.4	31.6	31.7	31.9	15
16	32.0	32.2	32.3	32.5	32.6	32.8	32.9	33.1	33.2	33.4	16
17	33.5	33.7	33.8	34.0	34.1	34.3	34.4	34.6	34.7	34.9	17
18	35.0	35.2	35.3	35.5	35.6	35.8	35.9	36.1	36.2	36.4	18
19	36.5	36.7	36.8	37.0	37.1	37.3	37.4	37.6	37.7	37.9	19
20	38.0	38.2	38.3	38.5	38.6	38.8	38.9	39.1	39.2	39.4	20
21	39.5	39.7	39.8	40.0	40.1	40.3	40.4	40.6	40.7	40.9	21
22	41.0	41.2	41.3	41.5	41.6	41.8	41.9	42.1	42.2	42.4	22
23	42.5	42.7	42.8	43.0	43.1	43.3	43.4	43.6	43.7	43.9	23
24	44.0	44.2	44.3	44.5	44.6	44.8	44.9	45.1	45.2	45.4	24
25	45.5	45.7	45.8	46.0	46.1	46.3	46.4	46.6	46.7	46.9	25
26	47.0	47.2	47.3	47.5	47.6	47.8	47.9	48.1	48.2	48.4	26
27	48.5	48.7	48.8	49.0	49.1	49.3	49.4	49.6	49.7	49.9	27
28	50.0	50.2	50.3	50.5	50.6	50.8	50.9	51.1	51.2	51.4	28
29	51.5	51.7	51.8	52.0	52.1	52.3	52.4	52.6	52.7	52.9	29
30	53.0	53.2	53.3	53.5	53.6	53.8	53.9	54.1	54.2	54.4	30
31	54.5	54.7	54.8	55.0	55.1	55.3	55.4	55.6	55.7	55.9	31
32	56.0	56.2	56.3	56.5	56.6	56.8	56.9	57.1	57.2	57.4	32
33	57.5	57.7	57.8	58.0	58.1	58.3	58.4	58.6	58.7	58.9	33
34	59.0	59.2	59.3	59.5	59.6	59.8	59.9	60.1	60.2	60.4	34
35	60.5	60.7	60.8	61.0	61.1	61.3	61.4	61.6	61.7	61.9	35
36	62.0	62.2	62.3	62.5	62.6	62.8	62.9	63.1	63.2	63.4	36
37	63.5	63.7	63.8	64.0	64.1	64.3	64.4	64.6	64.7	64.9	37
38	65.0	65.2	65.3	65.5	65.6	65.8	65.9	66.1	66.2	66.4	38
39	66.5	66.7	66.8	67.0	67.1	67.3	67.4	67.6	67.7	67.9	39
40	68.0	68.2	68.3	68.5	68.6	68.8	68.9	69.1	69.2	69.4	40

Example—If point is 22.6 ft. above grade, how far should it be from center line to be a slope stake point? Ans. from Table 41.9. For same slopes but other widths of roadbed correct above figures by one-half difference in width of roadbed; thus in example above for 20 ft. roadbed distance will be 41.9 + (20 - 16) * 2 or 2 ft. added to 41.9 = 43.9. For slopes of 1 on 1 see inside of front cover.

MADE IN U.S.A.

78.54
31.716 d
4

11243
3577
7666 = d

103
663 6