

1997

MEMBER

MEMBERS
FIELD BOOK
1997

1997

EUGENE DIETZGEN CO.

DRAWING MATERIALS, MATHEMATICAL and
SURVEYING INSTRUMENTS

Chicago New York San Francisco New Orleans Pittsburg Toronto

Distances from Center of Roadway for Cross-Sectioning
Roadway 16 feet wide. Side Slopes 1 on 1.
For Single Track Embankment.

H	0	.1	.2	.3	.4	.5	.6	.7	.8	.9	H
0	8.0	8.1	8.2	8.3	8.4	8.5	8.6	8.7	8.8	8.9	0
1	9.0	9.1	9.2	9.3	9.4	9.5	9.6	9.7	9.8	9.9	1
2	10.0	10.1	10.2	10.3	10.4	10.5	10.6	10.7	10.8	10.9	2
3	11.0	11.1	11.2	11.3	11.4	11.5	11.6	11.7	11.8	11.9	3
4	12.0	12.1	12.2	12.3	12.4	12.5	12.6	12.7	12.8	12.9	4
5	13.0	13.1	13.2	13.3	13.4	13.5	13.6	13.7	13.8	13.9	5
6	14.0	14.1	14.2	14.3	14.4	14.5	14.6	14.7	14.8	14.9	6
7	15.0	15.1	15.2	15.3	15.4	15.5	15.6	15.7	15.8	15.9	7
8	16.0	16.1	16.2	16.3	16.4	16.5	16.6	16.7	16.8	16.9	8
9	17.0	17.1	17.2	17.3	17.4	17.5	17.6	17.7	17.8	17.9	9
10	18.0	18.1	18.2	18.3	18.4	18.5	18.6	18.7	18.8	18.9	10
11	19.0	19.1	19.2	19.3	19.4	19.5	19.6	19.7	19.8	19.9	11
12	20.0	20.1	20.2	20.3	20.4	20.5	20.6	20.7	20.8	20.9	12
13	21.0	21.1	21.2	21.3	21.4	21.5	21.6	21.7	21.8	21.9	13
14	22.0	22.1	22.2	22.3	22.4	22.5	22.6	22.7	22.8	22.9	14
15	23.0	23.1	23.2	23.3	23.4	23.5	23.6	23.7	23.8	23.9	15
16	24.0	24.1	24.2	24.3	24.4	24.5	24.6	24.7	24.8	24.9	16
17	25.0	25.1	25.2	25.3	25.4	25.5	25.6	25.7	25.8	25.9	17
18	26.0	26.1	26.2	26.3	26.4	26.5	26.6	26.7	26.8	26.9	18
19	27.0	27.1	27.2	27.3	27.4	27.5	27.6	27.7	27.8	27.9	19
20	28.0	28.1	28.2	28.3	28.4	28.5	28.6	28.7	28.8	28.9	20
21	29.0	29.1	29.2	29.3	29.4	29.5	29.6	29.7	29.8	29.9	21
22	30.0	30.1	30.2	30.3	30.4	30.5	30.6	30.7	30.8	30.9	22
23	31.0	31.1	31.2	31.3	31.4	31.5	31.6	31.7	31.8	31.9	23
24	32.0	32.1	32.2	32.3	32.4	32.5	32.6	32.7	32.8	32.9	24
25	33.0	33.1	33.2	33.3	33.4	33.5	33.6	33.7	33.8	33.9	25
26	34.0	34.1	34.2	34.3	34.4	34.5	34.6	34.7	34.8	34.9	26
27	35.0	35.1	35.2	35.3	35.4	35.5	35.6	35.7	35.8	35.9	27
28	36.0	36.1	36.2	36.3	36.4	36.5	36.6	36.7	36.8	36.9	28
29	37.0	37.1	37.2	37.3	37.4	37.5	37.6	37.7	37.8	37.9	29
30	38.0	38.1	38.2	38.3	38.4	38.5	38.6	38.7	38.8	38.9	30
31	39.0	39.1	39.2	39.3	39.4	39.5	39.6	39.7	39.8	39.9	31
32	40.0	40.1	40.2	40.3	40.4	40.5	40.6	40.7	40.8	40.9	32
33	41.0	41.1	41.2	41.3	41.4	41.5	41.6	41.7	41.8	41.9	33
34	42.0	42.1	42.2	42.3	42.4	42.5	42.6	42.7	42.8	42.9	34
35	43.0	43.1	43.2	43.3	43.4	43.5	43.6	43.7	43.8	43.9	35
36	44.0	44.1	44.2	44.3	44.4	44.5	44.6	44.7	44.8	44.9	36
37	45.0	45.1	45.2	45.3	45.4	45.5	45.6	45.7	45.8	45.9	37
38	46.0	46.1	46.2	46.3	46.4	46.5	46.6	46.7	46.8	46.9	38
39	47.0	47.1	47.2	47.3	47.4	47.5	47.6	47.7	47.8	47.9	39
40	48.0	48.1	48.2	48.3	48.4	48.5	48.6	48.7	48.8	48.9	40

Example—If point is 22.6 ft. above grade, how far should it be from center line to be a slope stake point? Ans. from Table 30.6. For same slopes but other widths of roadbed, correct above figures by one-half difference in width of roadbed; thus in example above, for 20 ft. roadbed distance will be $30.6 + (20 - 16) \div 2$ or 2 ft. added to 30.6 = 32.6. For slopes of 1 on 1½ see inside of back cover.
Copyright, 1914, by Eugene Dietzgen Co.

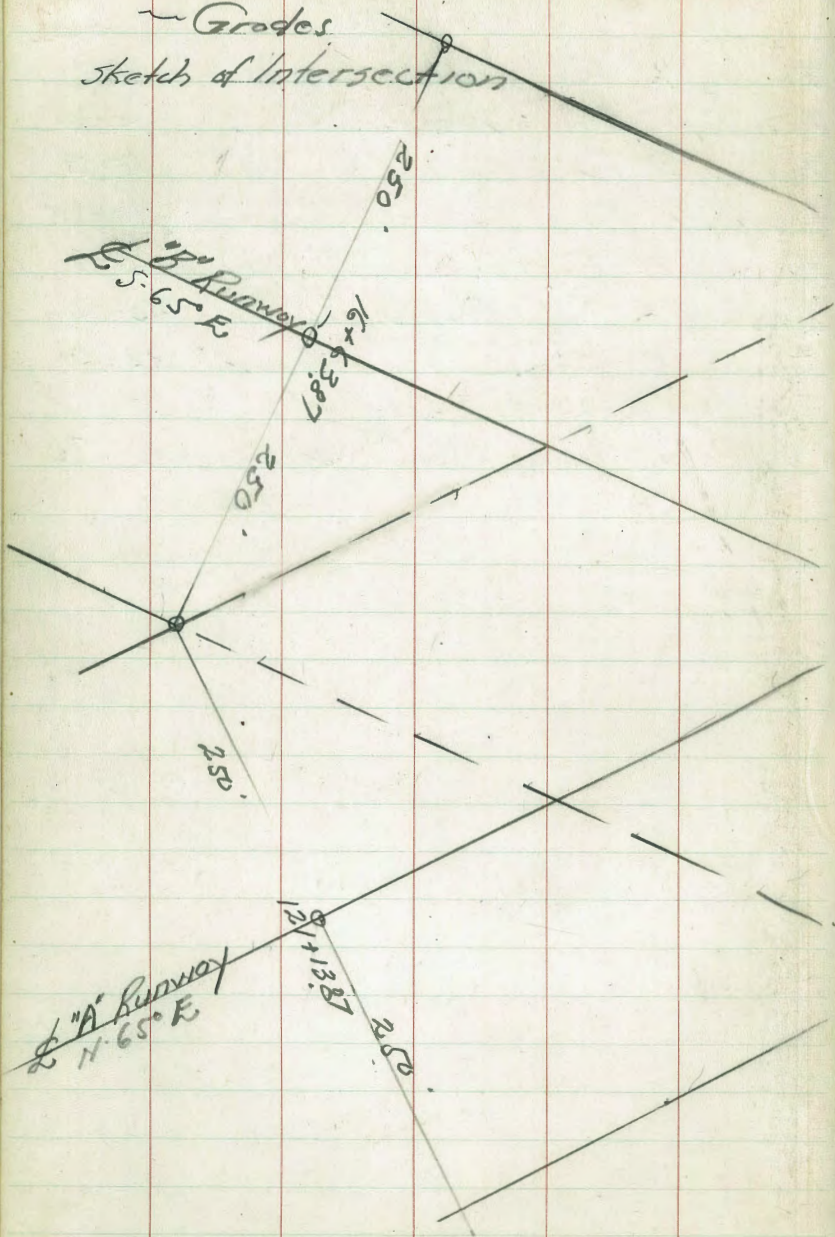
This Field Book is manufactured of a High Grade 50% Rag Paper having a WATER RESISTING SURFACE, and is sewed with Bing Special Enamel Waterproof thread.

Made in U. S. A.

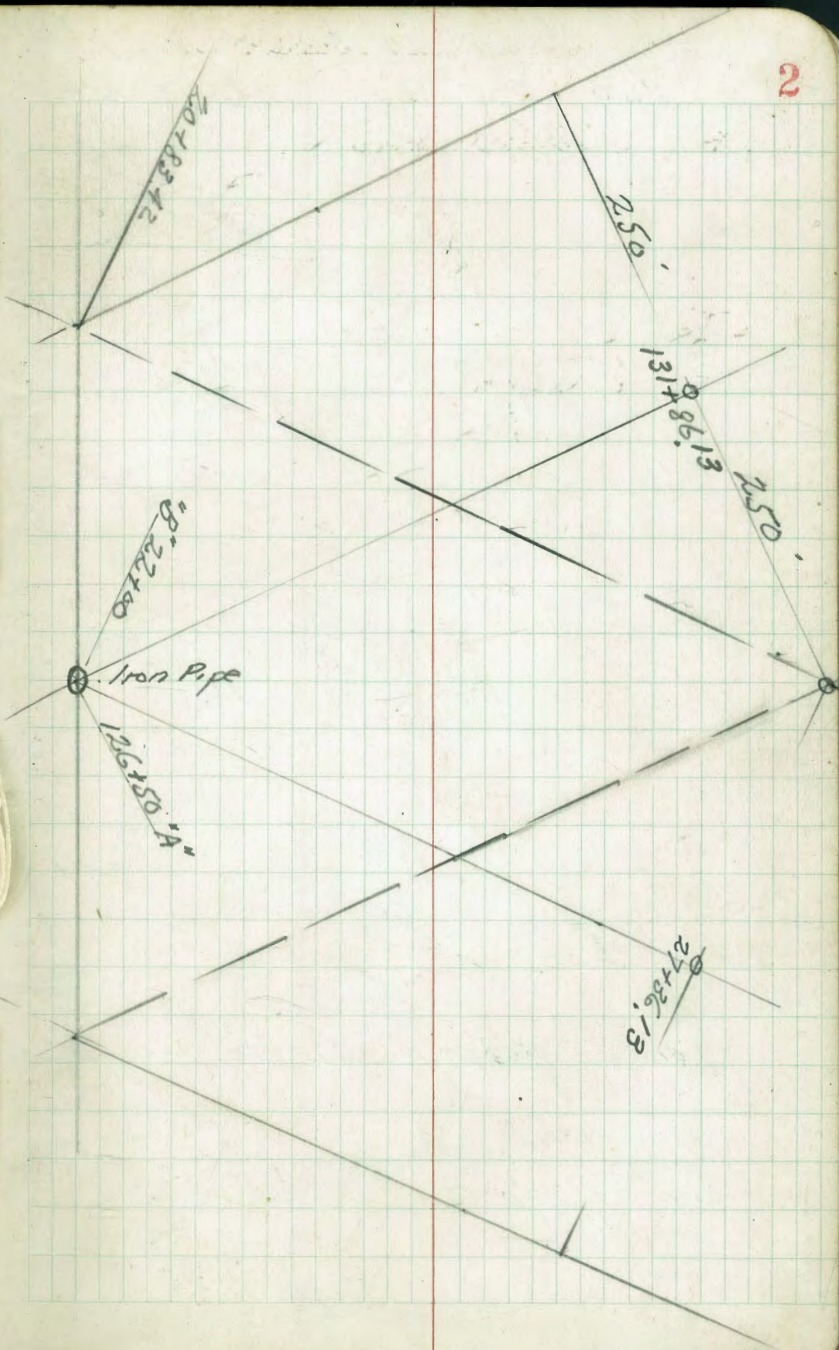
INDEX

	Page 1
Runway "A" Finish Grades (^{North} Shoulder)	4-9
Runway "A" Finish Grades (^{South} Shoulder)	10-14
Runway "A" Finish Grades (^{North} Shoulder)	15-19
Runway "A" Finish Grades (^{South} Shoulder)	20-25
Runway "B" Finish Grades (^{Left} Shoulder)	26-31
Runway "B" Finish Grades (^{Right} Shoulder)	32-39
Taxiway "C" ^{Left & Right} Shoulder Finish Grades	53-67
Drainage Ditch East End Rwy. "B"	68-77
Restake Ditch Left Rwy. "B" 10+77 to 16+50	78

"A" RUNWAY - Finish Shoulder
- Grades
Sketch of Intersection



2

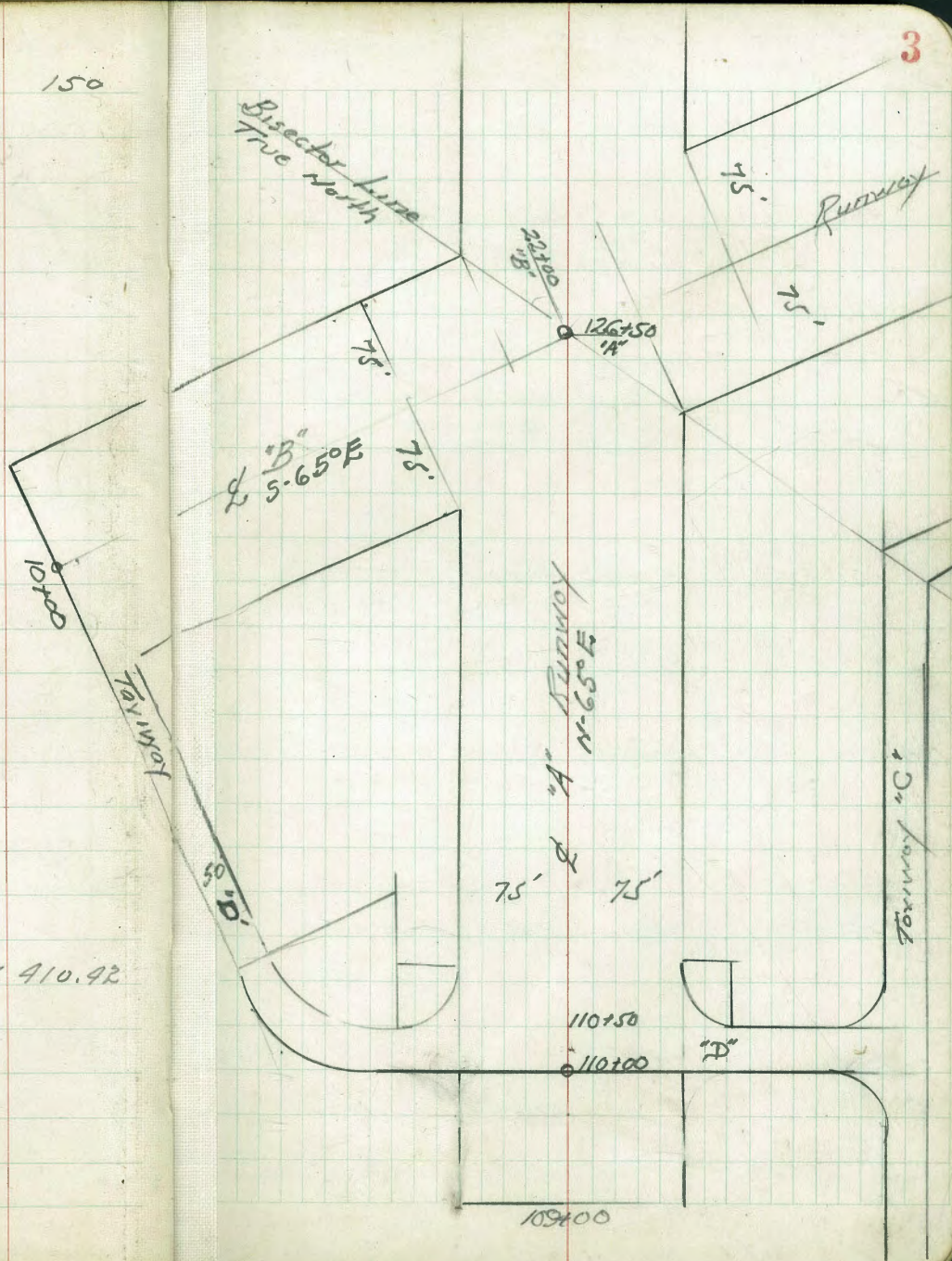


250 225 bt 200 175 150

(Cont. on P.4)

750 409.42 409.67 409.92 410.17 410.92

128+00 409.26 409.51



11-9-48
Hendricks
Bramby
Greel
Korol

"A" Runway Finish Grade
North side.

	250'	225'	200'
	CO 61		
+50	410.38	410.63	410.88
	530	566	541
	410.99		

	131+00		
	CO 47		
	410.22	410.47	410.72
	560	532	557
	410.69		

+50	410.06	410.31	410.56
	6.12	5.98	5.72

130+00	409.90	410.15	410.40
	6.39	6.14	5.89

+50	409.74	409.99	410.24
-----	--------	--------	--------

129+00	409.58	409.83	410.08
--------	--------	--------	--------

(Cont. from P. 3)

TP	5.63	416.29	4.58	410.66
TP	5.79	415.24	3.92	409.45
TP	5.76	413.37	4.50	407.61
B.M	8.77	412.11		403.34

175	150	125	100	75
411.13	411.38	411.63	411.88	412.13
516	4.91	4.66	4.41	4.16

410.97	411.22	411.47	411.72	411.97
5.32	5.07	4.82	4.57	4.32

410.81	411.06	411.31	411.56	411.81
5.48	5.23	4.98	4.73	4.48

410.65	410.90	411.15	411.40	411.65
5.64	5.39	5.14	4.89	4.64

410.49	410.74	410.99	411.24	411.49
--------	--------	--------	--------	--------

410.33	410.58	410.83
--------	--------	--------

On Pipe Intersection of "A" & "B" Runways

On Mon 3/4 1.08100 R Runway "A" FB1839-P22

'A' Runway on Lt. Contd.

	250	225	200
+50	411.34 6.37	411.59 6.12	411.84 5.87
134	411.18 6.53	411.43 6.28	411.68 5.02
+50	411.02 6.69	411.27 6.44	411.52 6.19
133+00	410.86 6.85	411.11 6.60	411.36 6.35
+50	6078 410.70 6.83 410.59	410.95 6.76	411.20 6.51
132+00	6072 410.54 5.45 41.25	410.79 6.92	411.04 6.67
TP	5.58	417.71	412.13
B17 #4	3.67	416.25	3.67
		412.62	412.58
	416.29		

	175	150	125	100	75
	412.09 5.62	412.34 5.37	412.59 5.12	412.84 4.87	413.09 4.62
	411.93 5.79	412.18 5.54	412.43 5.28	412.68 5.03	412.93 4.78
	411.77 5.94	412.02 5.69	412.27 5.44	412.52 5.19	412.77 4.94
	411.61 6.10	411.86 5.85	412.11 5.60	412.36 5.35	412.61 5.10
	411.45 6.26	411.70 6.01	411.95 5.76	412.20 5.51	412.45 5.26
	411.29 6.42	411.54 6.17	411.79 5.92	412.04 5.67	412.29 5.42
	on stub 75 Lt. 131150				

A Runway on Lt Contd.

250 ft 225 ft 200 ft

150 412.30 412.55 412.80
6.99 ✓ 6.74 ✓ 6.49 ✓

137100 412.14 412.39 412.64
7.15 ✓ 6.90 ✓ 6.65 ✓

T.P. 513 419.29 3.55 414.16

150 411.98 412.23 412.48
5.73 ✓ 5.48 ✓ 5.23 ✓

136100 411.82 412.07 412.32
5.89 ✓ 5.64 ✓ 5.39 ✓

150 411.66 411.91 412.16
6.05 ✓ 5.80 ✓ 5.55 ✓

135100 411.50 411.75 412.00
6.21 ✓ 5.96 ✓ 5.71 ✓

417.71

175 150 125 100 75

413.05 413.30 413.55 413.80 414.05
6.24 ✓ 5.99 ✓ 5.74 ✓ 5.49 ✓ 5.24 ✓

412.89 413.14 413.39 413.64 413.89
6.40 ✓ 6.15 ✓ 5.90 ✓ 5.65 ✓ 5.40 ✓

412.73 412.98 413.23 413.48 413.73
4.98 ✓ 4.73 ✓ 4.48 ✓ 4.23 ✓ 3.98 ✓

412.57 412.82 413.07 413.32 413.57
5.14 ✓ 4.89 ✓ 4.64 ✓ 4.39 ✓ 4.14 ✓

412.41 412.66 412.91 413.16 413.41
5.30 ✓ 5.05 ✓ 4.80 ✓ 4.55 ✓ 4.30 ✓

412.25 412.50 412.75 413.00 413.25
5.46 ✓ 5.21 ✓ 4.96 ✓ 4.71 ✓ 4.46 ✓

"A" Runway on N. Cont'd.

250 225 200

150 419.26 413.51 413.76
6.03 ✓ 5.78 ✓ 5.53 ✓

140+100 413.10 413.35 413.60
6.19 ✓ 5.94 ✓ 5.69 ✓

+50 412.94 413.19 413.44
6.32 ✓ 6.10 ✓ 5.85 ✓

139+100 412.78 413.03 413.28
6.51 ✓ 6.26 ✓ 6.01 ✓

+50 412.62 412.87 413.12
6.67 ✓ 6.42 ✓ 6.17 ✓

138+100 412.46 412.71 412.96
6.83 ✓ 6.58 ✓ 6.33 ✓

419.29
✓

175 150 125 100 75

414.01 414.26 414.51 414.76 415.01
5.28 ✓ 5.03 ✓ 4.78 ✓ 4.53 ✓ 4.28 ✓

413.85 414.10 414.35 414.60 414.85
5.44 ✓ 5.19 ✓ 4.94 ✓ 4.69 ✓ 4.44 ✓

413.69 413.94 414.19 414.44 414.69
5.60 ✓ 5.35 ✓ 5.10 ✓ 4.85 ✓ 4.60 ✓

413.53 413.78 414.03 414.28 414.53
5.76 ✓ 5.51 ✓ 5.26 ✓ 5.01 ✓ 4.76 ✓

413.37 413.62 413.87 414.12 414.37
5.92 ✓ 5.67 ✓ 5.42 ✓ 5.17 ✓ 4.92 ✓

413.21 413.46 413.71 413.96 414.21
6.08 ✓ 5.83 ✓ 5.58 ✓ 5.33 ✓ 5.08 ✓

A Runway on H. Cont'd.

	250	225	200
		60.52	
150	414.22	414.47	414.72
	6.68 ✓	5.91 ✓	6.18 ✓
		414.99	
		60.62	60.34
143 + 00	414.06	414.31	414.56
	6.84 ✓	5.97 ✓	6.00 ✓
		414.93	414.90
150	413.90	414.15	414.40
	7.00 ✓	6.75 ✓	6.50 ✓
BM	5.62	420.90	5.56
T.P.	6.67	420.80	5.16
		60.44	415.24 (415.28)
414.13			
142 + 00	413.74	413.99	414.24
	5.55 ✓	4.86 ✓	5.05 ✓
		414.43	
150	413.58	413.83	414.08
	5.71 ✓	5.46 ✓	5.21 ✓
141 + 00	413.42	413.67	413.92
	5.87 ✓	5.62 ✓	5.37 ✓
			419.29

175	150	125	100	75
	60.40			
414.97	415.22	415.47	415.72	415.97
5.92 ✓	5.28 ✓	5.42 ✓	5.18 ✓	4.92 ✓
	415.62			
414.81	415.06	415.31	415.56	415.81
6.09 ✓	5.84 ✓	5.59 ✓	5.34 ✓	5.09 ✓
414.65	414.90	415.15	415.40	415.65
6.25 ✓	6.00 ✓	5.75 ✓	5.50 ✓	5.25 ✓
Mon. Sta. 146 + 00 R Runway "A"				
	60.60			
414.49	414.74	414.99	415.24	415.49
4.20 ✓	4.55 ✓	4.30 ✓	4.05 ✓	3.80 ✓
415.09				
414.33	414.58	414.83	415.08	415.33
4.96 ✓	4.71 ✓	4.46 ✓	4.21 ✓	3.96 ✓
414.17	414.42	414.67	414.92	415.17
5.12 ✓	4.87 ✓	4.62 ✓	4.37 ✓	4.12 ✓

"A" Runway only. Cont'd.

250 225 200

Note: Sections from 145+00 to 146+00
made to fit Existing Ground Elevat 10173
as near as practical. c.b.w.

146+00 416.1 415.92 415.76

145+50 415.40 415.43 415.48

B17 5.62 415.28 415.28

145+00
C070 414.70
6.20 5.95 5.70
5.50 5.41 5.15
415.40 415.49 415.75

+50
C028 414.54
6.36 6.11 5.86
6.08 5.50 5.24
414.82 415.40 415.66

144+00
C063 414.38
6.52 5.77 6.02 ✓
5.89 415.73
415.01

420.90

175 150 125 100 75

415.60 415.44 415.28 415.12 414.96

415.52 415.77 415.61 415.54 415.47

Mon. Sta. 146+00 R Runway "A"

C010
415.45 415.70 415.95 416.20 416.45
5.45 5.20 ✓ 4.95 ✓ 4.70 ✓ 4.45
5.35
415.55

415.29 415.54 415.79 416.04 416.29
5.61 ✓ 5.36 ✓ 5.11 ✓ 4.86 ✓ 4.61 ✓

C036
415.13 415.38 415.63 415.88 416.12
5.77 5.52 ✓ 5.27 ✓ 5.02 ✓ 4.77 ✓
5.41
415.49

11-11-48
Hendricks
Bramby
Greer
Rorer
Gregory

Finish Grades on Rt.
Runway "A"

	75' RA	100'	125'	150'	175'	200'	225'	250'
150	413.09 3.82 3.88✓	412.84 4.08✓	412.59 4.33✓	412.34 4.58✓	412.09 4.83✓	411.84 5.08✓	411.59 5.33✓	411.34 5.58✓
134+00	412.93 3.99 4.04✓	412.68 4.24✓	412.43 4.49✓	412.18 4.74✓	411.93 4.99✓	411.68 5.24✓	411.43 5.49✓	411.18 5.74✓
150	412.77 4.15 4.20✓	412.52 4.40✓	412.27 4.65✓	412.02 4.90✓	411.77 5.15✓	411.52 5.40✓	411.27 5.65✓	411.02 5.90✓
133+00	412.61 4.31 4.36✓	412.36 4.56✓	412.11 4.81✓	411.86 5.06✓	411.61 5.31✓	411.36 5.56✓	411.11 5.81✓	410.86 6.06✓
150	412.45 4.47 4.54	412.20 4.72✓	411.95 4.97✓	411.70 5.22✓	411.45 5.47✓	411.20 5.72✓	410.95 5.97✓	410.70 6.22✓
132+00	412.29 4.63✓ 4.68	412.04 4.88✓	411.79 5.13✓	411.54 5.38✓	411.29 5.63✓	411.04 5.88✓	410.79 6.13✓ 5.74	410.54 6.38✓ 5.27
13.17 # 4 4 ³⁴	416.92			412.58				411.65
131+50	412.13	411.88	411.63	411.41	411.18	410.94		
131+00	411.97	411.72	411.47					

"A" Runway on Rt.

	75	100	125	150
±50	414.05	413.80	413.55	413.30
	5.15	5.40 ✓	5.65 ✓	5.90 ✓
	5.22 ✓			

	175	200	225	250
137+00	413.89	413.64	413.39	413.14
	5.31	5.56 ✓	5.81 ✓	6.06 ✓
	5.35 ✓			

±50	413.73	413.48	413.23	412.98
	5.47	5.72 ✓	5.97 ✓	6.22 ✓
	5.52 ✓			

T.P. 6.15 419.20 3.87 413.05

136+00	413.57	413.32	413.07	412.82
	3.35	3.60 ✓	3.85 ✓	4.10 ✓
	3.41 ✓			

±50	413.41	413.16	412.91	412.66
	3.51	3.76 ✓	4.01 ✓	4.26 ✓
	3.59 ✓			

135+00	413.25	413.00	412.75	412.50
	3.67	3.92 ✓	4.17 ✓	4.42 ✓
	3.74 ✓			

416.92

	175	200	225	250
	413.05	412.80	412.55	412.30
	6.15 ✓	6.40 ✓	6.65 ✓	6.90 ✓

	412.89	412.64	412.39	412.14
	6.31 ✓	6.56 ✓	6.81 ✓	7.06 ✓
			6.42	
			412.78	

	412.73	412.48	412.23	411.98
	6.47 ✓	6.72 ✓	6.97 ✓	7.22 ✓

	412.57	412.32	412.07	411.82
	4.35 ✓	4.60 ✓	4.85 ✓	5.10 ✓

	412.41	412.16	411.91	411.66
	4.51 ✓	4.76 ✓	5.01 ✓	5.26 ✓

	412.25	412.00	411.75	411.50
	4.67 ✓	4.92 ✓	5.17 ✓	5.42 ✓

"A" Runway on Rt. Contd.

	75	100	125	150
150	415.01	414.76	414.51	414.26
	4.19	4.44	4.69	4.94
	4.26			

	75	100	125	150
140+00	414.85	414.60	414.35	414.10
	4.35	4.60	4.85	5.10
	4.44			

	75	100	125	150
150	414.69	414.44	414.19	413.94
	4.51	4.76	5.01	5.26
	4.61			

	75	100	125	150
139+00	414.53	414.28	414.03	413.78
	4.67	4.92	5.17	5.42
	4.74			

	75	100	125	150
150	414.37	414.12	413.87	413.62
	4.83	5.08	5.33	5.58
	4.91			

	75	100	125	150
138+00	414.21	413.96	413.71	413.46
	4.99	5.24	5.49	5.74
	5.06			

419.20

	175	200	225	250
	414.01	413.76	413.51	413.26
	5.19	5.44	5.69	5.94
				TP

	175	200	225	250
	413.85	413.60	413.35	413.10
	5.35	5.60	5.85	6.10

	175	200	225	250
	413.69	413.44	413.19	412.94
	5.51	5.76	6.01	6.26
				5.80
				413.40

	175	200	225	250
	413.53	413.28	413.03	412.78
	5.67	5.92	6.17	6.42
				6.09
				413.12

	175	200	225	250
	413.37	413.12	412.87	412.62
	5.83	6.08	6.33	6.58

	175	200	225	250
	413.21	412.96	412.71	412.46
	5.99	6.24	6.49	6.74

	75	75	100	125	150
150		41597			
143100		41581	41554	41527	41500
			4.68	4.95	5.22

150	41565	41540	41515	41490
		4.82	5.07	5.32

142100	41549	41525	41500	41475
		4.97	5.22	5.47

150	41533	41508	41483	41458
BM	4.94	4.2022	5.01	4.528
TP	4.95	4.2029	3.86	4.534

141100	41517	41492	41467	41442
	4.02	4.28	4.53	4.78
	4.11			
	41920			

	175	200	225	250
168				
414.75				
415.57		41525		
4.65		4.97		
414.62	414.50	415.00	415.50	
5.60	5.72	5.22	4.72	?

414.33	414.08	413.83	413.58
5.85	6.1457	6.3969	6.6481
B17	Runway	A	Sta 146100

414.17	413.92	413.67	413.42
5.03	5.28	5.53	5.78

75 100 125 150

146+00

145+50

BM

4.94 415.28 415.28

145+00

416.25 416.20 415.95 415.70
4.02 4.27 4.52

+50

416.29 416.04 415.79 415.54
4.18 4.43 4.68

144+00

416.13 415.78 415.43
~~415.57~~ 415.60 415.33
4.35 4.62 4.89

420.22

175 200 225 250

BM Mon at Sta. 146+00 E Runway "A"

415.45 415.20 414.95 414.70
4.77 5.02 5.27 5.52415.29 415.04 414.79 414.54
4.93 5.18 5.43 5.68415.21 415.10 414.95 414.80
5.01 5.12 5.27 5.42

11-12-48
Hendricks
Bramby
Greer
Rorer

Finish Grades Runway "A"

15

250' 21. 225 200 175

+50

40555

162' 11"
0.174
405.17

111+00

+50

110+00

+50

109+00

B.M. 852 411.86
↑

40334

150	125	100' 21	75' 11	75' 10 1/4
40545 6.41 ✓	40588 5.98 ✓	40631 5.55 ✓	40675 5.11 ✓	40675 5.11 ✓
40530 6.56 ✓	40575 6.11 ✓	40620 5.66 ✓	40665 5.21 ✓	40665 5.21 ✓
			40655 5.31 ✓	40655 5.31 ✓
			40645 5.41 ✓	40645 5.41 ✓
			40635 5.51 ✓	40635 5.51 ✓
			40625 5.61 ✓	40625 5.61 ✓

on Conc. Min. & Runway "A" Sta. 108+00

Runway A Cont'd.

250' 21 225' 200' 175'
²⁰⁵
⁴⁰⁵¹⁶
 237' 21 Ditch
 150 404.60 404.34 405.95 406.22

114+00 404.90 ^{225' Ditch} 404.48 405.80 406.15 ✓

^{212' Ditch}
 150 405.20 404.60 405.30 405.82 ✓

TP 6.43 412.55 574 406.12

113+00 405.50 405.12 ^{Ditch} 404.75 405.35

150 ⁶⁶ 405.90 ^{187' Ditch} 405.30 405.18 405.10 404.87 405.04
 666 6.71 ✓ 6.76 ✓ 6.97 ✓
 554

112+00 406.20 405.80 405.40 ^{173' Ditch} 405.03
 546 ✓ 6.06 ✓ 6.46 ✓ 6.82 ✓

41186

150' 125' 100' 75' 41 75' 181
 406.50 ✓ 406.78 ✓ 407.06 ✓ 407.35 407.35
 5.20 ✓ 5.20 ✓

^{C. 46 - Road}
 406.50 406.75 ✓ 407.00 ✓ 407.25 407.25
 5.20 ✓ 5.30 ✓

406.35 ✓ 406.62 ✓ 406.89 ✓ 407.15 407.15
 5.40 ✓ 5.40 ✓

⁶⁰
 405.95 ✓ 406.32 406.69 407.05 407.05
 5.91 ✓ 5.54 ✓ 5.17 ✓ 4.91 ✓ 4.81 ✓

405.95 406.28 406.61 406.95 406.95
 5.91 ✓ 5.58 ✓ 5.25 ✓ 4.91 ✓ 4.91 ✓

^{60.32}
 405.60 406.02 406.44 406.85 406.85
 6.26 ✓ 5.84 ✓ 5.42 ✓ 5.01 ✓ 5.01 ✓
 5.22
 406.34

Runway A" Cont'd.

250' 225' 200' 175'

150' 125' 100' 75' 75' 75'

150 406.20 406.55 406.70 406.95
6.99 6.74 6.49 6.24

407.20 407.45 407.70 407.95 407.95
5.99 5.74 5.49 5.24 5.24

T.P. 5.34 43.19 4.70 407.85

On 8144 75' 117.100

117+00 406.10 406.35 406.60 406.85
6.45 6.20 5.95 5.70

407.10 407.35 407.60 407.85 407.85
5.45 5.20 4.95 4.70 4.70

150 406.00 406.25 406.50 406.75
6.55 6.30 6.05 5.80

407.00 407.25 407.50 407.75 407.75
5.55 5.30 5.05 4.80 4.80

116+00 405.90 406.15 406.40 406.65

406.90 407.15 407.40 407.65 407.65
4.90 4.90

150 405.80 406.05 406.30 406.55

406.80 407.05 407.30 407.55 407.55
5.00 5.00

115+00 Ditch 404.20 405.17 406.15 406.42

406.70 406.95 407.20 407.45 407.45
5.10 5.10

412.55

	250'±	225'	200'	175'
+50	40690 6.29 ✓	40615 6.04 ✓	40740 5.79 ✓	40765 5.54 ✓
120+00	40676 6.43 ✓	40701 6.18 ✓	40726 5.93 ✓	40751 5.68 ✓
+50	40664 6.55 ✓	40689 6.30 ✓	40714 6.05 ✓	40739 5.80 ✓
119+00	40652 6.67 ✓	40677 6.42 ✓	40702 6.17 ✓	40727 5.92 ✓
+50	40641 6.78 ✓	40666 6.53 ✓	40691 6.28 ✓	40716 6.03 ✓
118+00	40630 6.89 ✓	40655 6.64 ✓	40680 6.39 ✓	40705 6.14 ✓
	413.19			

	150'	125'	100'	75'±	75'±
	40790 5.29 ✓	40815 5.04 ✓	40840 4.79 ✓	40865 4.54 ✓	408.65 4.54 ✓
	40776 5.43 ✓	40801 5.18 ✓	40826 4.93 ✓	40851 4.68 ✓	408.51 4.68 ✓
	40764 5.55 ✓	40789 5.30 ✓	40814 5.05 ✓	40839 4.80 ✓	408.39 4.80 ✓
	40752 5.67 ✓	40777 5.42 ✓	40802 5.17 ✓	40827 4.92 ✓	408.27 4.92 ✓
	40741 5.79 ✓	40766 5.52 ✓	40791 5.28 ✓	40816 5.03 ✓	408.16 5.03 ✓
	40730 5.89 ✓	40755 5.64 ✓	40780 5.39 ✓	40805 5.14 ✓	408.05 5.14 ✓

	250' LI	225'	200'	175'
B.M.		3.48	410.70	410.66

+50

123100

+50

122100

+50

T.P.	5.38	<u>414.18</u>	4.37	408.80
------	------	---------------	------	--------

121100

	407.04	407.29	407.54	407.79
	6.15	5.90	5.65	5.40

413.19

150' LI	125'	100'	75' LI	75' RI
R. Pipe Intersection Runways A' & B'				

409.61
4.57 ✓

409.41
4.77 ✓

409.25	409.25
4.93 ✓	4.93 ✓

407.95	408.33	408.71	409.09	409.09
			5.09 ✓	5.09 ✓

407.74	408.14	408.53	408.93	408.93
6.44 ✓	6.04 ✓	5.65 ✓	5.25 ✓	5.25 ✓

408.04	408.29	408.54	408.79	408.79
5.15 ✓	4.90 ✓	4.65 ✓	4.40 ✓	4.40 ✓

11-13-48
Hendricks
Bramby
Greer
Rorer
Gregory

"A" Runway on Rt.

(210.44)

20

	75'	100'	125'	150'
+50	406.75	406.27	405.80	405.33
		4.17	4.64	5.11

111+00	406.65	406.17	405.72	405.25
		4.25	4.72	5.19

+50	406.55	406.25	405.96	405.67
		4.19	4.49	4.77

110+00	406.45	406.19	405.93	405.67
		4.25	4.41	4.77

150	406.35	406.10	405.85	405.59
		4.09	4.34	4.85

109+00	406.25	406.00	405.75	405.50
		4.19	4.44	4.94

1317 7.10 410.44

403.34

175'	200'	225'	250'
404.84	404.35	404.17	404.00
5.60	6.09	6.27	6.44
	4.65	5.10	6.16

405.05	404.85	404.67	404.50
5.39	5.59	5.77	5.94
	4.59	4.89	

405.48	405.29	405.14	405.00
4.96	5.15	5.30	5.44

405.48	405.29	405.14	405.00
4.96	5.15	5.30	5.44

405.37	405.16	404.95	404.75
5.07	5.28	5.49	5.69
		4.69	

405.25	405.00	404.75	404.50
5.19	5.44	5.69	5.94
		5.40	

On Conc. Mon 5/10 108100 & Runway "A"

9" Runway on Rt. Cont'd.

	75 RT	100	125	150
+50	40735	40698 4.70	40660 5.08	40622 5.46
114+00	40725 4.42	40687 4.81	40650 5.18	40613 5.55
TP	4.89	411.69	3.65	40679

+50	40715	40678 3.66	40640 4.04	40602 4.42
-----	-------	---------------	---------------	---------------

113+00	40705	40668 3.76	40630 4.14	40592 4.52
--------	-------	---------------	---------------	---------------

+50	40695	40657 40653 3.91 3.52	40619 40610 4.34	40581 40567 4.77 3.25
-----	-------	---	-----------------------------------	---

112+00	40685	40647 40637 4.07 3.49	40609 40589 4.55	40571 40541 5.03 3.57
--------	-------	---	-----------------------------------	---

410.44

	175	200	225	250
	40584 5.84	40547 6.21	40509 6.59	40472 6.96
	40575 5.93	40537 6.31	40499 6.69	40462 7.06
	40564 4.80	40527 5.17	40489 5.55	40452 5.92
	40554 4.90	40517 5.27 3.78	40479 5.65 4.76	40442 6.02 5.52
	40524 5.20	40489 40482 5.52 5.02	40451 40439 6.05 4.57	40414 40396 6.48 5.00
	40493 5.57	40451 40445 5.99 3.57	40411 40397 6.47 5.40	40350 6.94 6.97 Grate

"A" Runway on Rt. Cont'd.

22

	75	100	125	150
150	407.95	407.55	407.15	406.75
		+12	+52	+93
117+00	407.85	407.40	406.95	406.51
		+28	+73	+17
150	407.75	407.30	406.86	406.41
		+38	+82	+27
116+00	407.65	407.25	406.85	406.45
		+43	+83	+23
115+75 = 5 ft in gut	407.60	407.23	406.85	406.48
150	407.55	407.17	406.80	406.42
		+51	+88	+26
115+00	407.45	407.06	406.70	406.32
		+60	+98	+36
	411.68			

	175	200	225	250
	406.35	405.95	405.55	405.15
	532	572	613	653
		+73		
	406.06	405.61	405.16	404.72
	562	607	652	696
		+78		
	405.96	405.51	405.07	404.62
	572	617	661	706
		+56	+20	
	406.05	405.65	405.25	404.85
	563	603	643	683
		+45		
	406.10	405.73	405.35	404.97 = 4 ft in gutter
	406.04	405.67	405.29	404.92
	564	604	649	696
	405.94	405.57	405.19	404.82
	574	611	649	686

"A" Runway on B. Cont'd.

	75	100	125	150
+50	408.65	408.28 4.46	407.90 4.84	407.52 5.22
120+00	408.51	408.14 4.60	407.76 4.98	407.38 5.30
+50	408.39	408.01 4.73	407.64 5.10	407.27 5.47
119+00	408.27 4.47	407.90 4.84	407.52 5.22	407.15 5.59
T.P.	4.97	412.74	3.91	407.77
+50	408.16	407.79 3.89	407.41 4.27	407.03 4.65
118+00	408.05 3.63	407.68 4.00	407.30 4.38	406.92 4.76
	411.68			

	175	200	225	250
	407.14 5.60	406.77 5.97 5.69	406.39 6.35 5.55	406.02 6.72 6.54
	407.01 5.73	406.64 6.10 4.16	406.27 6.47 5.75	405.90 6.84 6.55
	406.90 5.84	406.53 6.21 5.81	406.15 6.59 5.80	405.78 6.96
	406.77 5.97	406.40 6.34 4.74	406.03 6.71 6.25	405.66 7.08
			On Stub 100' R	118+50
	406.65 5.03	406.28 5.40 4.76	405.91 5.77	405.54 6.14
	406.54 5.14	406.17 5.51 4.75	405.79 5.89	405.42 6.26

"A" Runway on Pt. Cont.
from P-23

	75	100	125	150
150	409.61	409.36 3.38	409.10 3.64	408.84 3.90
123+00	409.41	409.10 3.64	408.78 3.96	408.47 4.27
150	409.25	408.88 3.86 3.72	408.50 4.24 3.91	408.12 4.62
122+00	409.09	408.67 4.07	408.25 4.49 4.06	407.83 4.91 4.80
150	408.93	408.47 4.27	408.01 4.73 4.50	407.55 5.19 5.07
121+00	408.79	408.37 4.37	407.95 4.79	407.53 5.21
	412.74			

	175	200	225	250
	408.58 4.16	408.33 4.41	408.07 4.67	407.82 4.92 4.16
	408.16 4.58	407.85 4.89 3.17	407.53 5.21 4.62	407.22 5.52 3.15
	407.74 5.00 4.53	407.37 5.37 3.14	406.99 5.75 5.60	406.62 6.12 4.37
	407.41 5.33	407.00 5.74 4.83	406.58 6.16 5.50	406.16 6.58 5.68
	407.09 5.65	406.63 6.19 5.11	406.17 6.57 5.39	405.70 7.04
	407.11 5.63	406.70 6.04	406.28 6.46 5.16	405.86 6.88

"A" Runway on Pt. Cont. from P24

25

75 100 125 150

175 200 225 250

B.17.

1.45 411.29 411.26

B.17 #3

125+00

410.31
2.43

150

409.68 ✓
3.06 ✓

409.51 ✓ 409.35 ✓ 409.18 ✓ 409.02 ✓
3.23 3.39 ✓ 3.56 ✓ 3.72 ✓

124+00

409.25 ✓
3.49 ✓

409.04 ✓ 408.83 ✓ 408.62 ✓ 408.42 ✓
3.70 ✓ 3.91 ✓ 4.12 ✓ 4.32 ✓
3.27

412.74

11-14-48 Finish Grades Runway "B"

Hendricks

Johnson

Greer

Korer

Gregory

On Lt.

263'	250'	225'	200'	175'
	605 Rest			
	605			
+50	403.53	403.78	404.03	404.28
	5.93	5.68	5.43	5.18
	5.81			

	c12 Rest			
	611			
11+00	403.28	403.53	403.78	404.03
	6.18	5.93	5.68	5.43
	5.01			

10+75	404.16	404.21	404.31	404.41	404.51
+50	403.03	403.28	403.53	403.78	
	6.43	6.18	5.93	5.68	
	4.28				

10+50	404.41	404.43	404.48	404.53	404.58
-------	--------	--------	--------	--------	--------

10+28	404.66	404.66	404.66	404.66	404.66
-------	--------	--------	--------	--------	--------

10+00	404.41	404.41	404.43	404.45	404.46
-------	--------	--------	--------	--------	--------

9+75	404.16	404.18	404.21	404.24	404.27
------	--------	--------	--------	--------	--------

	c190 Rest	c105 Rest	c00 Rest	
	621		605	
9+50	402.53	402.78	403.03	403.28
	6.93	6.68	6.43	6.18
	4.84			6.04

	c166 Rest	c10 Rest	c09 Rest	
	640	600	604	
9+00	402.28	402.53	402.78	403.03
	7.18	6.93	6.68	6.43
	5.25	6.03		5.99

B. J. 6.39 409.46 403.07

150	125	100	75
-----	-----	-----	----

404.53	404.78	405.03	405.28
4.93	4.68	4.43	

404.28	404.53	404.78	405.03
5.18	4.93	4.68	

404.61	404.71	404.81	404.90
404.03	404.28	404.53	404.78
5.43	5.18	4.93	

404.63	404.68	404.73	404.78
--------	--------	--------	--------

404.58	404.61	404.62	404.65
--------	--------	--------	--------

404.48	404.50	404.52	404.53
--------	--------	--------	--------

404.30	404.33	404.36	404.40
--------	--------	--------	--------

403.53	403.78	404.03	404.28
5.93	5.68	5.43	

403.28	403.53	403.78	404.03
6.18	5.93	5.68	

On Conc. 1700 & Runway "B" Sta. 8100

Runway B - on Lt. Cont'd -

	250	225	200	175
+50	40503 6.30	40528 6.05	40553 5.80	40578 5.55
T.P.	6.32	<u>411.33</u>	445	405.01
14100	40478 4.68	40503 4.42	40528 4.18	40553 3.93
+50	40453 4.93	40478 4.68	40503 4.43	40528 4.18
13100	40428 5.18	40453 4.93	40478 4.68	40503 4.43
+50	40403 5.43	40428 5.18	40453 4.93	40478 4.68
				0.50 - Reset 607
12100	40378 5.68	40403 5.43	40428 5.18	40453 4.93 476
	40940			

150	125	100	75
40603 5.30	40628 5.05	40653 4.80	40678
40578 3.68	40603 3.43	40628 3.18	40653
40553 3.93	40578 3.68	40603 3.43	40628
40528 4.18	40553 3.93	40578 3.68	40603
40503 4.43	40528 4.18	40553 3.93	40578
40478 4.68	40503 4.43	40528 4.18	40553

Runway 8" on Lt. Contd.

	250	225	200	175
150	406.53 4.80	406.78 4.55	407.03 4.30	407.28 4.05

17:00	406.28 5.05	406.53 4.80	406.78 4.55	407.03 4.30
-------	----------------	----------------	----------------	----------------

150	406.03 5.30	406.28 5.05	406.53 4.80	406.78 4.55
-----	----------------	----------------	----------------	----------------

16:00	405.78 5.55	406.03 5.30	406.28 5.05	406.53 4.80
-------	----------------	----------------	----------------	----------------

150	405.53 5.80	405.78 5.55	406.03 5.30	406.28 5.05
-----	----------------	----------------	----------------	----------------

15:00	405.28 6.05	405.53 5.80	405.78 5.55	406.03 5.30
-------	----------------	----------------	----------------	----------------

411.33

	150	125	100	75
	407.53 3.80	407.78 3.55	408.03 3.30	408.28
	407.28 4.05	407.53 3.80	407.78 3.55	408.03
	407.03 4.30	407.28 4.05	407.53 3.80	407.78
	406.78 4.55	407.03 4.30	407.28 4.05	407.53
	406.53 4.80	406.78 4.55	407.03 4.30	407.28 4.05
	406.28 5.05	406.53 4.80	406.78 4.55	407.03

Runway B on Lt. Cont'd.

250 225 200 175

150 408.03 408.32 408.61 408.90
6.23 5.94 5.65 5.36

20700 407.78 408.02 408.28 408.53
6.48 6.23 5.98 5.73

150 407.53 407.78 408.03 408.28
6.72 6.48 6.23 5.98

TP. 6.98 414.26 4.05 407.28

19100 407.28 ^{407.53}~~407.53~~ 407.78 408.03
4.05 3.80 3.55 3.30

150 407.03 407.28 407.53 407.78
4.30 4.05 3.80 3.55

18100 406.78 407.03 407.28 407.53
4.55 4.30 4.05 3.80

411.33

150 125 100 75

Grade ²⁰ 20
409.20 409.49 409.78 410.07
5.06 4.77 4.48 4.28

Grade ²⁰ 20
408.78 409.07 409.40 409.70
5.48 5.17 4.86 4.55

Grade ²⁰ 20 Grade ²⁰ 20
408.53 408.81 409.09 409.36
5.73 5.45 5.17 4.90
5.05 4.88

408.28 408.54 408.80 409.05
3.05 2.79 2.53

408.03 408.28 408.53 408.78 normal
3.70 3.05 2.80

407.78 408.03 408.28 408.53
3.55 3.30 3.05

Runway "B" on Lt Cont'd.

250 225 200 175 150 125 100 75'

23 + 60.84 - Int. Runway 75' Lt. of "B" = 75' Rt. of "A"

411.64

524

23 + 00

411.28

22 + 50

410.82

410.94

411.05

411.18

in Runway,
leave out

411.20

in Runway,
leave out

22 + 00

410.32

410.44

410.57

410.68

410.80

410.95

411.09

411.23

BM #3

5.62

416.88

3.00

411.26

411.26

150

409.82

409.83

409.84

410.02

410.20

410.42

410.64

410.86

4.44

4.43

4.42

4.24

4.06

3.87

3.62

Grade

26.23

21 + 00

408.99

409.11

409.24

409.48

409.73

409.97

410.21

410.45

5.27

5.15

5.02

4.79

4.53

4.29

4.05

3.86

414.26

Runway 8" on Lt. Cont. from P-30

Cont. P-33
 26750 Bk. 250 225' 200 175
 (Cont'd P. 32)
~~C0~~ ~~C0~~ ~~C0~~ ~~C0~~ ~~C0~~
 41075 41054 41041 41057 41100
 613 634 627 631 588
 559 565 577 570 544
 20974
 Valley

26700 Bk. ~~C0~~ ~~C0~~ ~~C0~~ ~~C0~~ ~~C0~~
 41116 41095 41074 41069 41082
 572 593 614 625 606
 539 559 582 575 557
 18642
 Valley

25750 Bk. 41153 41133 41113 41094
 538 ✓ 555 ✓ 575 ✓ 584 ✓
 16314
 Valley

25700 Bk. 41124 41165 41147 41130
 171 Rwy.
 Shoulder.
 Leave
 out.
 523 ✓ 541 ✓ 559 ✓

24750 Bk. 41160
 528 ✓

24700 See sketch Valley Gutter P-32

416.88

150' 125' 100' 75'
 41143 41188 41233 41277
 545 ✓ 500 ✓ 455 ✓

41125 41168 41211 41253
 563 ✓ 520 ✓ 477 ✓

41085 41106 41147 41188 41228
 602 ✓ 582 ✓ 541 ✓ 500 ✓

~~C0~~ ~~C0~~ ~~C0~~ ~~C0~~ ~~C0~~
 41113 41107 41128 41166 41203
 575 581 560 ✓ 522 ✓ 585
 543 547
 18984
 Valley

41146 41133 41129 41151 41183
 542 ✓ 555 ✓ 559 ✓ 537 ✓ 505
 510
 1165 ft.
 Valley

507
 C030
 537
 41151 ✓
 93241
 Valley G

2.50' to 9'

75'

2743.12
175.0

158
27+00

134.7
26+50

111.4
26+00

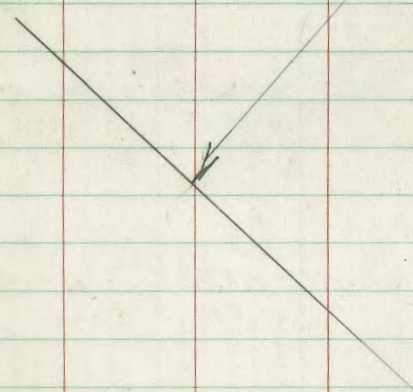
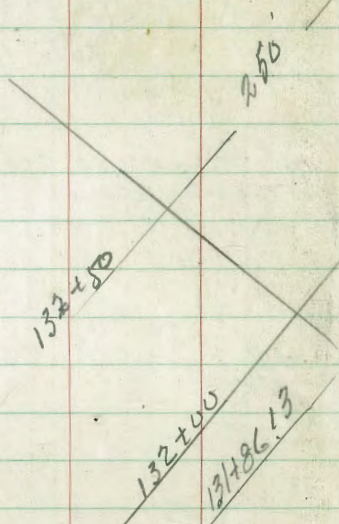
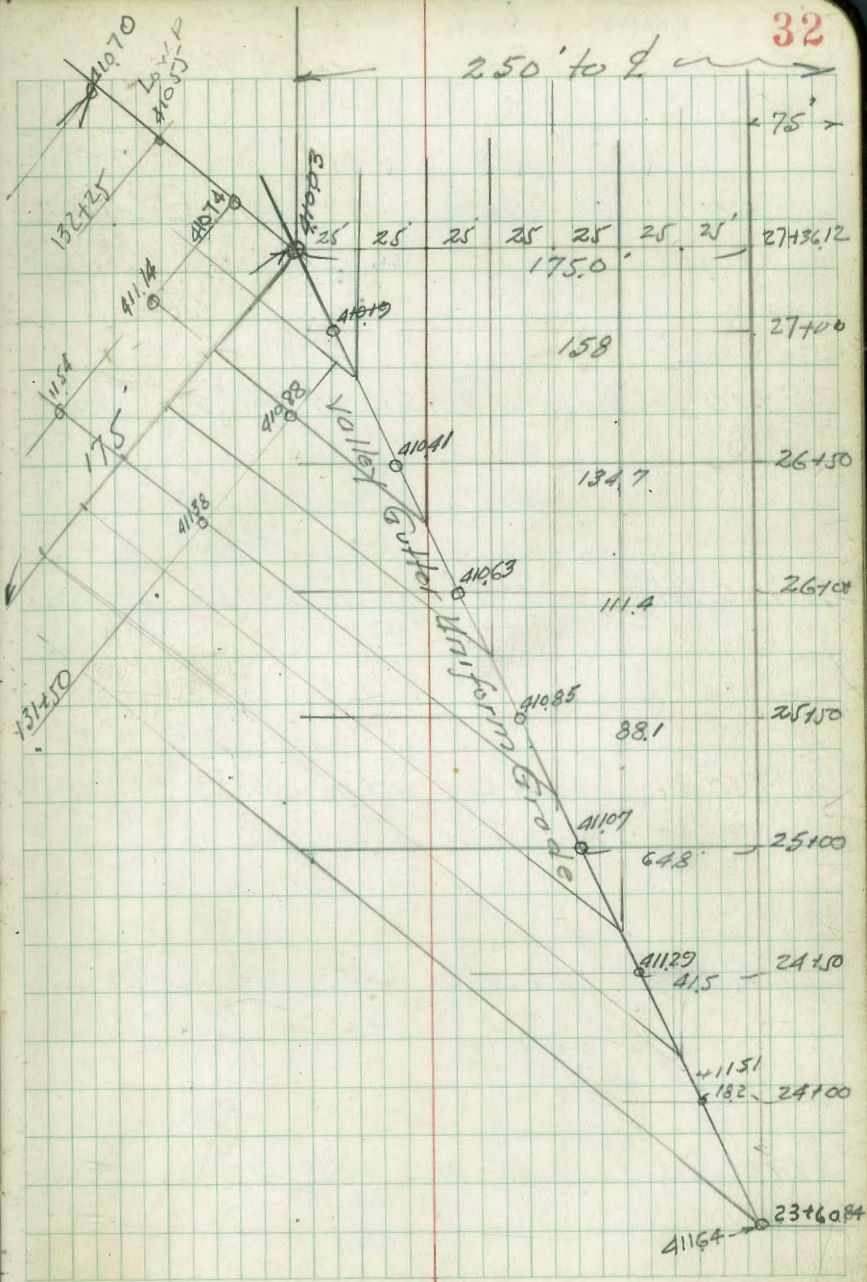
88.1
25+50

64.8
25+00

41.5
24+50

18.2
24+00

23+60.84



Runway "B" on left
Cont. from P. 31

33

29+50
258 225 200 175
411.92 412.17 412.42 412.67
6.00 5.75 5.50 5.25

150 125 100 75
412.92 413.17 413.42 413.67
5.00 4.75 4.50

29+00 Bk.
411.82 412.07 412.32 412.57
6.10 5.85 5.60 5.35

412.82 413.07 413.32 413.57
5.10 4.85 4.60

28+50
411.72 411.97 412.22 412.47
6.20 5.95 5.70 5.45
Bk # 4 5.34 417.92 4.30 412.58 412.58

412.72 412.97 413.22 413.47
5.20 4.95 4.70 4.45

28+00 Bk
411.18 411.48 411.79 412.10
5.70 5.40 5.09 4.78

412.41 412.72 413.03 413.33
4.47 4.16 3.85

27+50 Bk
~~6.05~~ ~~6.05~~ ~~6.05~~ ~~6.05~~
410.65 411.01 411.37 411.73
6.23 5.87 5.51 5.15
5.61 5.33 4.95 4.52

412.09 412.45 412.81 413.18
4.77 4.43 4.07

27+36.12 Bk
~~6.05~~ ~~6.10~~ ~~6.10~~ ~~6.05~~
410.03 410.47 410.91 411.35
6.85 6.41 5.97 5.53
5.97 5.36 4.97 4.51
End Valley gutter

~~6.05~~
411.79 412.23 412.67 413.12
5.09 4.65 4.21 3.85

27+00 Bk
~~6.05~~ ~~6.25~~ ~~6.10~~ ~~6.05~~ ~~6.10~~
410.33 410.79 410.33 410.78 411.22
6.55 6.09 6.55 6.10 5.66
5.52 5.44 5.37 5.17 4.66
= Valley

411.66 412.10 412.54 412.98
5.32 4.78 4.34

416.88

Runway "B" on left.
Finish Grades Cont. from P. 33

	250	285	200	1700
32+50	605 ✓ 411.90 602 538	602 ✓ 412.15 577 518	605 ✓ 412.40 552 496	612 ✓ 412.65 527
32+00 = FVC	605 ✓ 411.95 5.97 5.52	605 ✓ 412.20 5.72 5.26	607 ✓ 412.45 5.47 5.10	606 ✓ 412.70 5.22 5.06
31+50 Bk	602 ✓ 411.99 5.92	602 ✓ 412.24 5.68	602 ✓ 412.49 5.43 5.14	603 ✓ 412.74 5.18 4.98
31+00 Bk	601 ✓ 412.01 5.91	601 ✓ 412.26 5.66	601 ✓ 412.51 5.41	601 ✓ 412.76 5.16
30+50 Bk	601 ✓ 412.00 5.92	601 ✓ 412.25 5.67	601 ✓ 412.50 5.42 5.11	601 ✓ 412.75 5.17
30+00 Bk	601 ✓ 411.97 5.95	601 ✓ 412.22 5.70	601 ✓ 412.47 5.45	601 ✓ 412.72 5.20
	417.92			

150	125	100	75
412 ✓ 412.90 502	413 ✓ 413.15 477	413 ✓ 413.40 452	413 ✓ 413.65
412 ✓ 412.95 4.97	413 ✓ 413.20 4.72	413 ✓ 413.45 4.47	413 ✓ 413.70
412 ✓ 412.99 4.93	413 ✓ 413.24 4.68	413 ✓ 413.49 4.43	413 ✓ 413.74
413 ✓ 413.01 4.91	413 ✓ 413.26 4.66	413 ✓ 413.51 4.41	413 ✓ 413.76
413 ✓ 413.00 4.92	413 ✓ 413.25 4.67	413 ✓ 413.50 4.42	413 ✓ 413.75
412 ✓ 412.97 4.95	413 ✓ 413.22 4.70	413 ✓ 413.47 4.45	413 ✓ 413.72

"B" Runway on Left
 Finish Grades Cont. from P-34

250' 225 200 175

150 125 100 75

35+00 ✓ 412.85 412.72 412.59 412.65

412.70 412.92 413.14 413.37

33+89.28 413.07 412.86 412.77 412.76

412.79 412.94 413.25

T.P. 3.99 416.97 494 412.98

33+50 ✓ 412.51 412.54 412.58 412.69
 5.41 5.38 5.34 5.23
 4.88

412.80 412.05 413.30 413.54
 5.12 4.87 4.62
 4.94

33+00 605 607 607 607
 411.84 412.09 412.34 412.59
 6.06 5.83 5.58 5.33
 5.53 5.13 4.91 4.56

607 412.84 412.09 413.34 413.59
 5.08 4.83 4.58
 4.57

417.92

Finish Grades - "B" Runway on left.

Cont. from P-35

250' 225' 200' 175'

37+50

411.34 411.59 411.84 412.09
5.63 5.38 5.13 4.88

37+00

411.40 411.65 411.90 412.15
5.57 5.32 5.07 4.82
5.13

36+50

411.45 411.70 411.95 412.20
5.52 5.27 5.02 4.77
5.04 4.77

36+00

411.51 411.76 412.01 412.26
5.46 5.21 4.96 4.71
4.62

35+50

411.83 412.21 412.17 412.38
5.14 4.76 4.80 4.59
4.50

416.97

36

150' 125' 100' 75'

412.34 412.59 412.84 413.09
4.63 4.38 4.13 3.88

412.40 412.65 412.90 413.15
4.57 4.32 4.07

412.45 412.70 412.95 413.20
4.52 4.27 4.02

412.51 412.76 413.01 413.26
4.46 4.21 3.96

412.58 412.92 413.17 413.31
4.39 4.05 3.83

Finish Grades - "B" Runway on Left.
Cent. from P-36

	250	225	200	175
817.	5.67	416.87	5.93	411.16 411.20
40+50		411.01	411.26	411.51 411.76
		6.08	5.83	5.58 5.32
40+00		411.07	411.32	411.57 411.82
		6.02	5.77	5.52 5.27
39+50		411.13	411.38	411.63 411.88
		5.96	5.71	5.46 5.21
T.P.	5.85	417.09	5.73	411.24
39+00		411.18	411.43	411.68 411.93
		5.79	5.54	5.29 5.04
38+50		411.23	411.48	411.73 411.98
		5.74	5.49	5.24 4.99
38+00		411.29	411.54	411.79 412.04
		5.68	5.43	5.18 4.93
		416.97		

	150	125	100	75
Mon. East End Runway "B"				
	412.01	412.26	412.51	412.76
	5.08	4.83	4.58	
412.07	412.32	412.57	412.82	
5.02	4.77	4.52		
412.13	412.38	412.63	412.88	
4.96	4.71	4.46		
412.18	412.43	412.68	412.93	
4.79	4.54	4.29		
412.23	412.48	412.73	412.98	
4.74	4.49	4.24		
412.29	412.54	412.79	413.04	
4.68	4.43	4.18		

Finish Grades Runway B" on Lt.
Cont'd.

	250	225	200	175
	<u>C048</u>			
+50	410.68 6.19 5.71	410.93 5.94	411.18 5.69	411.43 5.44
	<u>C060</u>	<u>C046</u>		
+3+00	410.74 6.13 5.53	410.99 5.88 5.42	411.24 5.63	411.49 5.38
+50	410.79 6.08	411.04 5.83	411.29 5.58	411.54 5.33
+2+00	410.85 6.02	411.10 5.77	411.35 5.52	411.60 5.27
+50	410.90 5.97	411.15 5.72	411.40 5.47	411.65 5.22
+1+00	410.96 5.91	411.21 5.66	411.46 5.41	411.71 5.16
	<u>416.87</u>			

	150	125	100	75
	<u>C037</u>			
	411.68 5.19	411.93 4.94	412.18 4.69	412.43
	<u>C037</u>	<u>C046</u>		
	411.74 5.13 4.86	411.99 4.88	412.24 4.63	412.49
	411.79 5.08	412.04 4.83	412.29 4.58	412.54
	411.85 5.02	412.10 4.77	412.35 4.52	412.60
	411.90 4.97	412.15 4.72	412.40 4.47	412.65
	411.96 4.91	412.21 4.66	412.46 4.41	412.71

Finish Grades Runway "B" on Lt

250 225 200 175 150

125 100 75

~~45100~~ C1.07 ~~C0.70~~ ✓ ~~C0.47~~ ✓ C0.59 ✓
 410.52 410.77 411.02 411.27 411.52
 6.35 ✓ 6.10 ✓ 5.85 ✓ 5.60 ✓ 5.35 ✓
 5.28 5.40 5.38 5.01

411.77 412.02 412.27
 5.10 ✓ 4.85 ✓ 4.60

750 C0.66 ~~C0.45~~ ✓ ~~C0.40~~ ✓
 410.57 410.82 411.07 411.32 411.57
 6.30 ✓ 6.05 ✓ 5.80 ✓ 5.55 ✓ 5.30 ✓
 5.64 5.60 5.40

411.82 412.07 412.32
 5.05 ✓ 4.80 ✓ 4.55

0.38
~~44700~~ ~~C0.28~~ ✓ ✓ ✓ ✓
 410.63 410.88 411.13 411.38 411.63
 6.2x ✓ 5.99 ✓ 5.74 ✓ 5.49 ✓ 5.2x ✓
 5.86

411.88 412.13 412.38
 4.99 ✓ 4.74 ✓

416.87

Finish Grades Runway B" on Rt.

	75	100	125	150	175	200	225	250	
+50	405.28 4.10	405.03 4.35	404.78 4.60	404.53 4.85	404.28 5.10	404.03 5.35	403.78 5.60	403.53 5.85	Normal
11+25			404.66	404.41	404.16	403.91	403.66	403.40	
11+00	405.03	404.68 4.70	404.34 5.04	404.00 5.38	403.83 5.55 5.01	403.65 5.73 5.23	403.46 5.92	403.28 6.10	
B.M.	6.31	409.38		403.07	On Conc. Man Sta. 8+00 & Runway "B"				
10+87.5	-valley	Gutter	Per order 4-19-49 Patterson	403.75	403.51	403.22	403.30	403.18	403.12
+50	404.78	404.49	403.93 404.10	403.76	403.47	403.58	403.60 403.57	403.61	
10+00	404.53	404.27	404.01	403.76	403.67	403.58	403.60	403.61	
+50	404.28	404.03	403.78	403.53	403.40	403.28	403.03	402.78	
9+00	404.03	403.78	403.53	403.28	403.03	402.78	402.53	402.28	
B.M.				403.07	On Conc. Man Sta. 8+00 & Runway "B"				

Finish Grades Runway B on RL

Cont'd

75 100 125 150

+50 406.78 406.53 406.28 406.03
4.70 - 4.95 5.20 ✓

14100 406.53 406.28 406.03 405.78
4.95 ✓ 5.20 ✓ 5.45 ✓

+50 406.28 406.03 405.78 405.53
5.20 ✓ 5.45 ✓ 5.70 ✓

13+00 406.03 405.78 405.53 405.28
5.45 ✓ 5.70 ✓ 5.95 ✓

T.P. 5.70 411.23 3.85 405.53

+50 405.78 405.53 405.28 405.03
3.85 4.10 ✓ 4.35 ✓

12+00 405.53 405.28 405.03 404.78
4.10 ✓ 4.35 ✓ 4.60 ✓

40938

175 200 225 250

405.78 405.53 405.28 405.03
5.45 ✓ 5.70 ✓ 5.95 ✓ 6.20 ✓

405.53 405.28 405.03 404.78
5.70 ✓ 5.95 ✓ 6.20 ✓ 6.45 ✓

405.28 405.03 404.78 404.53
5.95 ✓ 6.20 ✓ 6.45 ✓ 6.70 ✓

405.03 404.78 404.53 404.28
6.20 ✓ 6.45 ✓ 6.70 ✓ 6.95 ✓

07 Hub 100' RL 12+50

~~603~~
404.78 404.53 404.28 404.03
4.60 4.85 ✓ 5.10 ✓ 5.35 ✓
4.29

~~603~~
404.53 404.28 404.03 403.78
4.85 5.10 ✓ 5.35 ✓ 5.60 ✓
4.54

Finish Grades Runway B on R1.
Cont'd.

	75	100	125	150
T.P. 6.76	414.79		3.20	408.03
+50	408.28	408.03	407.78	407.53
		2.20	3.45	3.70
17+00	408.03	407.78	407.53	407.28
		3.45	3.70	3.95
+50	407.78	407.53	407.28	407.03
		2.70	3.95	4.20
16+00	407.53	407.28	407.03	406.78
		3.95	4.20	4.45
+50	407.28	407.03	406.78	406.53
		4.20	4.45	4.70
15+00	407.03	406.78	406.53	406.28
		4.45	4.70	4.95
	411.23			

175	200	225	250
on 3146 100' R1 17+50			
407.28	407.03	407.14	407.28
3.95	4.20	4.09	3.98
407.03	406.78	406.68	406.58
4.20	4.45	4.55	4.65
406.78	406.53	406.28	406.03
4.45	4.70	4.95	5.20
406.53	406.28	406.03	405.78
4.70	4.95	5.20	5.45
406.28	406.03	405.78	405.53
4.95	5.20	5.45	5.70
406.03	405.78	405.53	405.28
5.20	5.45	5.70	5.95
			5.95

Finish Grades Runway B' on Rt
Cont'd.

43

	75	100	125	150
+50	410.34	410.37	410.40	410.42
20+00	409.91	409.93	409.95	409.98
B.M. 43		3.53	411.26	411.25
+50	409.50	409.44	409.38	409.33
		5.35	5.41	5.46
19+00	409.12	408.94	408.75	408.56
		1.88	6.04	6.22
+50	408.78	408.53	408.28	408.03
		6.26	6.51	6.76
18+00	408.53	408.28	408.03	407.78
		6.51	6.76	7.01
	414.79			

	175	200	225	250
	410.40	410.37	410.14	409.91
	410.05	410.12	410.24	410.35
B.M. 43				
	409.48	409.64	409.74	409.83
	5.31			
	409.73	408.89	409.12	409.36
	6.06	5.90	5.67	
	408.12	408.21	408.43	408.64
	6.67	6.58	6.37	6.15
	407.64	407.51	407.73	407.95
	7.15	7.28	7.06	6.84

Finish: Grades Runway B on Rt
Contd

	75	100	125	150
+50	411.57	411.29 430	411.00 459	410.72 487
23+00	411.43		410.98 461	410.76 483
+50	411.32			410.89
22+00	411.19			410.58 501
+50	411.01			410.58
21+00	410.73			410.60
+33	415.59		411.26	P.M. 1103

	175	200	225	250
	410.98 511	410.24 535	410.31 528	410.38 521
		410.82		410.58
	410.30 520	409.97 562	409.64 595	
	410.35 524	410.12 547	409.89 570	409.65 599
	410.37	410.16 543	409.92 567	409.67 592
		410.21		409.75 589

Finish Grades Runway "B" on Rt.
Cont'd.

	75	100	125	150
+50	412.77	CO¹⁴ 412.88 4.33 4.19	CO¹² 411.99 4.72 4.30	CO¹¹ 411.60 5.11 4.70
26+00	412.53	CO²⁰ 412.11 4.18 4.40	CO¹⁸ 411.68 5.03 4.37	CO²⁰ 411.25 5.46 4.56
+50	412.28	CO¹² 411.81 4.90 4.45	CO¹² 411.35 5.36 4.92	CO¹² 410.89 5.82 5.07
25+25				
25+00	412.07	CO¹² 411.64 5.07	CO¹² 411.21 5.50 5.00	CO¹² 410.78 5.92 5.22
+50	411.89	CO¹² 411.54 5.17	CO¹² 411.18 5.52 5.26	CO¹² 410.82 5.89 5.59
24+00	411.72	CO¹² 411.44 5.27	CO¹² 411.15 5.56	CO¹² 410.86 5.85
BM #3	5.26	416.71		411.25

	175	200	225	250
	CO¹⁵ 411.21 5.50 5.02	CO¹⁴ 410.82 5.89 5.15	CO¹⁵ 410.43 4.25 5.42	CO¹⁴ 410.04 6.67
	CO¹² 410.77 5.94 5.04	CO¹¹ 410.39 6.32 5.21	CO¹² 409.96 6.75 6.03	CO¹² 409.54 7.17 6.75
	CO¹² 410.43 6.28 5.35	CO¹¹ 409.97 6.74 5.33	CO¹¹ 409.50 7.21 6.32	CO¹² 409.04 7.67 6.79
	CO¹⁴ 410.35 6.36 5.32	CO¹² 409.93 6.78 6.04	CO¹² 409.50 7.21 6.02	CO¹² 409.07 7.64 6.54
	CO¹⁴ 410.26 6.25 5.86	CO¹² 410.11 6.60 5.95	CO¹² 409.75 6.96 6.19	CO¹² 409.40 7.31 6.11
	CO¹² 410.57 6.44	CO¹² 410.28 6.43	CO¹² 410.00 6.71	CO¹² 409.71 7.00
	BM #3			

408.79 - Grating.

Finish Grades Runway "B" on Rt.
Cont'd.

	75	100	125	150
+50	413.67 4.35	413.36 4.66 0.22	413.05 4.97	412.74 5.28
TR	4.79	418.02	3.63	413.23 37+00 100.94
29+00	413.57	413.24 3.12	412.91 3.95	412.58 4.29
+50	413.47	413.10 3.76	412.74 4.12	412.37 4.49
28+00	413.33	412.96 3.90	412.60 4.20	412.23 4.63
+50	413.18	412.80 4.06	412.43 4.93	412.06 4.80
B-17 #3	5.60	416.86	5.46	411.25 26 411.25
27+00	412.98	412.60 4.11	412.22 4.49	411.84 4.87
	416.71			

	175	200	225	250
	412.43 5.59	412.12 5.90	411.81 6.21	411.50 6.52
	412.24 4.62	411.92 4.94	411.59 5.27	411.26 5.60
	412.00 4.86	411.64 5.22	411.33 5.53	411.02 5.89
	411.86 5.00	411.50 5.36	411.15 5.71	410.81 6.05
	411.67 5.77	411.31 5.55	410.92 5.94	410.53 6.33
		13 M #3		
	411.46 5.25	411.08 5.63 5.32	410.70 6.01	410.32 6.39

Finish Grades Runway R Con 49
on Rt.

	75	100	125	150
+50	413.65	413.35 4.67	413.05 4.97	412.76 5.26
32100	413.70	413.38 4.64	413.06 4.96	412.74 5.28
+50	413.74	413.40 4.62	413.05 4.97	412.70 5.32
31100	413.76	413.35 4.67	412.94 5.08	412.53 5.49
+50	413.75	413.28 4.74	412.82 5.20	412.35 5.67
30100	413.72	413.33 4.63	412.94 5.08	412.56 5.46
	41802			

	175	200	225	250
			C 035	
	412.47 5.55	412.18 5.84	411.89 6.13 5.78	411.60 6.42
			C 037	
	412.42 5.60	412.10 5.92	411.78 6.24 5.83	411.46 6.56
			C 037	
	412.35 5.67	412.00 6.02	411.65 6.37 5.80	411.30 6.72
			C 059	
	412.12 5.90	411.72 6.30	411.31 6.71 6.12	410.90 7.12
	C 053	C 100	C 065	
	411.85 6.14 5.81	411.42 6.60 5.60	410.96 7.06 6.21	410.50 7.52 on grading
	412.17 5.85	411.78 6.24	411.39 6.63	411.00 7.02

Finish Grades Runway "B"
on Rt. Shoulder

ft.

48

	75	100	125	150
		0.80		
35+00	413.37	413.18 4.17 3.17	412.99 4.66	412.79 4.86
T.P.	4.28	417.65	4.65	413.37

	175	200	225	250
		0.41	0.60	0.65
	412.60 5.05	412.40 5.25 4.84	412.21 5.44 4.84	412.02 5.63 3.98

34+64.28 = Fly Line Taxiway "F"

	413.46	413.27		
34+14.28 = Fly Line Taxiway "F"			413.08	412.89

	412.75	412.70	412.60	412.50
--	--------	--------	--------	--------

	413.27	413.08	412.88	
34+00	413.48 4.65	413.27 4.75	413.17 4.55	412.88

	412.75	412.63	412.51	0.39
	412.94 5.08	412.72 5.30	412.55 5.47	412.40 412.38 5.64 5.25

		0.43		
33+50	413.54	413.32 4.70	413.10 4.92 4.49	412.87 5.15

	0.46	0.40		
	412.65 5.37	412.42 5.60 5.14	412.19 5.83 5.43	411.96 6.06

	413.59	413.34	413.08	412.82
33+00		4.68	4.94	5.20

		0.59		
	412.56 5.46	412.31 5.71	412.05 5.97 5.38	411.79 6.23

418.02

Finish Grades Runway "B"
on Rt. Shoulder

	75'	100'	125'	150'
38+00	413.04	412.62 5.61'	412.20 5.43'	411.78 5.85'
37+50	412.09	412.63 5.00'	412.16 5.97'	411.70 5.93'
37+00	413.15	412.76 4.87'	412.36 5.27'	411.97 5.66'
36+50	413.20	412.88 4.75'	412.56 5.07'	412.25 5.38'
	413.26	413.01 4.62'	412.76 4.87'	412.51 5.12'
36+00	End of 15" Conc. Pipe 200' Rt			
	4.51	417.63	453	413.12
35+50	413.21	413.09 4.56	412.89 4.78'	412.64 5.01'
	417.65			

175'	200'	225'	250'
C 0.91 411.36 6.37 5.96	C 0.52 410.94 6.69 5.17	C 1.15 410.52 7.11 5.96	C 1.61 410.15 7.48 5.87
C 0.43 411.24 6.39 5.94	C 0.72 410.78 6.73 5.03	C 1.57 410.42 7.21 5.64	C 2.03 410.05 7.58 5.55
411.58 6.05	C 0.43 411.18 6.48 6.02	C 1.30 410.56 7.07 5.77	C 2.07 409.95 7.68 5.61
411.65 5.98	C 0.77 411.05 6.38 5.81	C 1.42 410.45 7.18 5.70	C 2.35 409.85 7.78 5.43
C 1.00 411.82 44.47 6.56 5.46	C 1.27 411.13 410.63 7.00 5.73	C 1.76 410.44 410.19 7.44 5.72	C 0.03 409.75 7.88 7.85=Grating
412.92 5.23	87k 412.19 5.46	411.54 6.11	C 2.11 410.89 6.76 4.65

Finish Grades - B Runway
on Rt. Shoulder

	75'	100'	125'	150'	175'	200'	225'	250'
41+00	412.71	412.43 4.50	412.15 4.78	411.88 5.05	411.61 5.32	411.33 5.60	411.04 5.89	410.75 6.18 5.99
40+50	412.76	412.46 4.47	412.16 4.77	411.87 5.06	411.58 5.35	411.28 5.65	410.96 5.97	410.65 6.28 5.86
TP 443	416.23	5.13	412.50	40+00 100' ft.				
40+00	412.82	412.50 5.13	412.18 5.45 6.09	411.87 5.76	411.55 6.08 5.55	411.23 6.40 6.12	410.89 6.72 6.24	410.55 7.08 6.29
39+50	412.88	412.54 5.09	412.20 5.43 5.11	411.86 5.77 5.36	411.52 6.11 5.89	411.18 6.45 6.23	410.81 6.82 6.27	410.45 7.18 6.23
39+00	412.93	412.57 5.06	412.21 5.42	411.85 5.78	411.49 6.14	411.13 6.50 5.89	410.74 6.89 6.22	410.35 7.28 6.45
38+50	412.98	412.60 5.03	412.22 5.41	411.84 5.79 5.47	411.46 6.17	411.08 6.55 5.97	410.66 6.97 6.00	410.25 7.38 5.88
	417.63							

Finish Grades Runway #3
on Rt. Shoulder

75' 100' 125' 150'

175' 200' 225' 250'

44+00 = ELY Line Taxiway

Subgrades
Notes for Graders
This Taxiway FB 2001-9

43+50 = WLY Line Taxiway

001

CHK 25' RT 1+25 FB 2001-10

527

411.67
411.66

43+00

412.49

412.22
4.7N

411.95
4.98

411.70
5.33

411.48
5.45

411.25
5.68

411.20
5.73

411.15
5.78

42+50

412.54

412.33
4.60

412.12
4.81

411.91
5.02

411.70
5.23

411.49
5.44

411.27
5.66

411.05
5.88

42+00

412.60

412.37
4.56

412.14
4.79

411.90
5.03

411.67
5.26

411.44
5.49

411.20
5.73

410.95
5.98

41+50

412.65

412.40
4.53

412.15
4.78

411.90
5.03

411.65
5.28

411.39
5.54

411.12
5.81

410.85
6.08

416.93

Finish Grades Runway 'B'
on Rt. Shoulder

75' 100' 125' 150'

175' 200' 225' 250'

46+40

~~409.80~~
409.80

46+00

~~410.10~~
410.10

45+50

~~410.35~~
410.10

chk out P-51

45+00

412.00 411.67[✓] 411.33[✓] 411.00[✓]
5.26 3.60 5.93
2.15

60.35 60.3[✓] 60.3[✓] 60.3[✓]
410.70 410.80 410.70 410.60[✓]
5.13 6.23[✓] 6.33[✓]

44+50

412.20 411.94[✓] 411.67[✓] 411.40[✓]
4.99[✓] 5.26[✓] 5.53[✓]

411.35[✓] 411.30[✓] 411.20[✓] 411.10[✓]
5.58[✓] 5.63[✓] 5.73[✓] 5.83[✓]

416.93

TRAILWAY "C" - FINISH -
Shoulder Grades.

75' 50' 25' L 25'

106+50 406.04 406.39 406.54 406.79 406.54
5.23' 4.98' 4.73'

106+00 406.22 406.47 406.72 406.97 406.72
5.05' 4.80' 5.55'

105+50 406.39 406.64 406.89 407.14 406.89
4.88' 4.63'

105+00 406.57 406.82 407.07 407.32 407.07
4.76' 4.45'

104+50 406.75 407.00 407.25 407.50 407.25
4.82' 4.27'

103+85-Req. ^{406.25} 406.50 406.75 407.00 406.75
5.02' 4.77'

4.85 411.27 406.42

RT

53

50 75 100 125 150
C 063

406.29 406.04 405.79 405.54 405.29
4.98' 5.23' 5.48' 5.73' 5.98'
5.35'

406.47 406.22 405.97 405.72 405.47
4.80' 5.05' 5.30' 5.55' 5.80'

406.64 406.39 406.14 405.89 405.64
4.63' 4.88' 5.13' 5.38' 5.63'

406.82 406.57 406.32 406.07 405.82
4.45' 4.70' 4.95' 5.20' 5.45'

407.00 406.75 406.50 406.25 406.00
4.27' 4.52' 4.77' 5.02' 5.27'

406.50 406.25 406.00 405.75 405.50
4.77' 5.02' 5.27' 5.52' 5.77'
4.77' 2.50'

FB 2001-15
B.M. 00 Subgrade Stake 103+85 25.3' RB

TAXIWAY "C" FINISH
Shoulder Grades Lt.

	100	75	50	25	±
109+50	404.75	405.07	405.38	405.70	405.95
		5.51	5.20		
109+00	404.50	404.95	405.40	405.65	405.90
		5.63	5.18	4.93	
108+50	405.08	405.33	405.58	405.83	406.08
		5.25	5.00	4.75	
108+00	405.76	405.51	405.76	406.01	406.26
		5.07	4.82		
T.P.	4.91	410.58	560	405.67	^{75.27} 107+50
107+50	405.43	405.68	405.93	406.18	406.43
		5.59	5.34		
107+00	405.61	405.86	406.11	406.36	406.61
		5.41	5.16		
		<u>411.27</u>			

Rt.

54

25	50	75	100	125	150
405.70	405.45	405.20	404.95	404.70	404.45
	5.13	5.38	5.63	5.88	6.13
					5.80
			6.08		6.50
405.65	405.40	405.15	404.90	404.65	404.40
	5.18	5.43	5.68	5.93	6.18
			5.10		4.69
		6.07			6.44
405.83	405.58	405.33	405.08	404.83	404.58
4.75	5.00	5.25	5.50	5.75	6.00
		4.91			5.56
					6.03
406.01	405.76	405.51	405.26	405.01	404.76
	4.82	5.07	5.32	5.57	5.82
					5.43
		410.58			
406.18	405.93	405.68	405.43	405.18	404.93
	5.34	5.59	5.84	6.09	6.34
					6.43
406.36	406.11	405.86	405.61	405.36	405.11
4.91	5.16	5.41	5.66	5.91	6.16
					5.73
		<u>411.27</u>			

Terrace "C" Finish
Shoulder Grades

	100'	75	50	25'	±
	C047	C050	C048		
112+50	403.96 6.92 6.45	404.64 6.24 5.74	405.32 5.56 5.08	406.00	406.25

	C002 Grading	G137	C052		
112+00	403.50 7.38 7.36	404.32 6.86 5.19	405.14 5.70 5.22	405.95	406.20

		C038			
111+50	404.00 6.88	404.63 6.25	405.27 5.61 5.23	405.90	406.15

		C030			
111+00	404.50 6.37	404.95 5.93	405.40 5.48 5.18	405.85 5.03	406.10

TR	5.00	410.88	4.26	405.88	
	6.80	410.14		403.34	

110+50	405.00	405.11	405.46	405.80	406.05
--------	--------	--------	--------	--------	--------

-> Terrace "D"
110+25 405.25

110+00	405.00	405.11	405.50 ¹³	405.75	406.00
--------	--------	--------	----------------------	--------	--------

25	50	75	100	125	150
406.00	405.75 5.13	405.50 5.38	405.25 5.63	405.00 5.88	404.75 6.13

405.95	405.70 5.18	405.45 5.43	405.20 5.68	404.95 5.93	404.70 6.18
--------	----------------	----------------	----------------	----------------	----------------

405.90	405.65 5.23	405.40 5.48	405.15 5.73	404.90 5.98	404.65 6.23
--------	----------------	----------------	----------------	----------------	----------------

	F002				
405.88	405.60 5.28 5.30	405.35 5.53	405.10 5.78	404.85 6.03	404.60 6.28

110.88

405.80	405.55 5.03	405.30 5.28	405.05 5.53	404.80 5.78	404.55 6.03 5.68
--------	----------------	----------------	----------------	----------------	------------------------

C035

405.75	405.50 5.08	405.25 5.33	405.00 5.58	404.75 5.83	404.50 6.08
--------	----------------	----------------	----------------	----------------	----------------

110.58

Taxiway "C" - Finish
Shoulder Grades

100' 75' 50' 25' $\frac{1}{2}$
Taxiway
"C"

115+50 404.92 405.38 405.84 406.30 406.55
6.34 5.88 5.42

115+00 404.82 405.30 405.78 406.25 406.50
6.44 5.96 5.48

114+50 404.72 405.22 405.71 406.20 406.45
6.54 6.04 5.55

114+00 404.62 405.13 405.64 406.15 406.40
6.64 6.13 5.62 5.11

T.P. 6.54 411.26 6.16 404.72
114+50
150' st.
on stake

113+50 404.52 405.05 405.58 406.10 406.35
6.76 5.83 5.30

113+00 404.42 404.96 405.50 406.05 406.30
6.86 5.92 5.38
5.18 5.02
110.88

25' 50' 75' 100' 125' 150'

406.30 406.05 405.80 405.55 405.30 405.05
4.96 5.21 5.46 5.71 5.96 6.21

406.25 406.00 405.75 405.50 405.25 405.00
5.26 5.51 5.76 6.01 6.26

406.20 405.95 405.70 405.45 405.20 404.95
5.31 5.56 5.81 6.06 6.31

406.15 405.90 405.65 405.40 405.15 404.90
5.36 5.61 5.86 6.11 6.36

113.6

406.10 405.85 405.60 405.35 405.10 404.85
5.43 5.28 5.53 5.78 6.03

406.05 405.80 405.55 405.30 405.05 404.80
5.08 5.33 5.58 5.83 6.08

Taxiway "C"
Finish Shoulder Grades

100 75 50 25 £

6.30

117+50 405.15 405.60 406.05 406.50 406.75
6.11 5.66 5.21 5.36

6.40

117+00 404.72 405.30 405.88 406.45 406.70
6.54 5.96 5.38 5.56

grade

6.59 6.44

Bk on ht

116+75 404.50 405.14 405.78 406.43 406.68
6.76 6.12 5.48 6.81 5.53 5.09

6.29

116+50 404.62 405.21 405.80 406.40 406.65
6.64 6.08 5.46 5.17 6.29

116+00 404.83 405.38 405.83 406.35 406.60
6.41 5.91 5.41

Bk

115+75 404.97 405.43 405.88 406.33 406.58
6.29

411.26

ft

57

25 50 75 100 125 150

406.50 406.25 406.00 405.75 405.50 405.25
5.01 5.26 5.51 5.76 6.01

406.45 406.20 405.95 405.70 405.45 405.20
5.06 5.31 5.56 5.81 6.06

406.43 (No Break from L. 50 -
leaves out this side) 405.18

406.40 406.15 405.90 405.65 405.40 405.15
5.11 5.36 5.61 5.86 6.11

406.35 406.10 405.85 405.60 405.35 405.10
4.91 5.16 5.41 5.66 5.91 6.15

406.33 406.08 405.83 405.58 405.33 405.08

Towway "C"
Finish Shoulder Grades

100 75 50 25 0

120+05.19 = Beg. Apron See FB 2001-P. 34 For Apron Grades
- on Rt. of E.

120+00 405.90 406.18 406.47 406.75 407.00
7.35' 7.07' 6.78' 6.50'
6.07' 6.12' 5.78' 5.48'
7.47' 413.25' 119+50

119+50 405.78 406.09 406.39 406.70 406.95
5.48' 5.17' 4.87' 4.57' 4.27'
4.27' 4.15'

119+00 405.66 405.99 406.33 406.65 406.90
5.60' 5.27' 4.93' 4.57' 4.27'
4.70' 4.51'

118+50 405.54 405.89 406.25 406.60 406.85
5.72' 5.37' 5.01' 4.65' 4.36'
4.69' 4.36'

118+00 405.42 405.79 406.17 406.55 406.80
5.84' 5.47' 5.09' 4.73' 4.36'
4.11' 3.86'

25 50 75 100 125 150

120+00 406.83 406.64 406.46 406.29 406.11 405.94
0.71%

119+50 406.90 406.45 406.20 405.95 405.70 405.45
4.81' 5.06' 5.31' 5.56' 5.81'
4.97'

119+00 406.68 406.40 406.15 405.90 405.65 405.40
4.86' 5.11' 5.36' 5.61' 5.86'
5.22'

118+50 406.60 406.35 406.10 405.85 405.60 405.35
4.91' 5.16' 5.41' 5.66' 5.91'
5.51'

118+00 406.58 406.30 406.05 405.80 405.55 405.30
4.96' 5.21' 5.46' 5.71' 5.96'

Trailway "C"
Finish Shoulder Grades

100' 75 50 25 $\frac{1}{2}$ " "C"
Trailway

C 029 C 030

123+00 407.22 407.76 408.31 408.85 409.10
 $\frac{2.17\%}{\text{Brk}}$
 6.00 3.46 4.91
 5.71 5.16

C 038 C 044

122+50 406.62 407.25 407.88 408.50 408.75
 $\frac{2.5\%}{\text{Brk}}$
 6.60 5.97 5.34
 6.10 5.53

C 050 C 054

122+00 406.16 406.82 407.48 408.15 408.40
 $\frac{2.65\%}{\text{Brk}}$
 7.06 6.40 5.74 5.07
 5.90 5.26
 corrected to fit subgrades
 413.22 on structure

C 074

121+50 405.70 406.40 407.10 407.80 408.05
 $\frac{2.8\%}{\text{Brk}}$
 7.55 6.85 6.15 5.42
 7.50 $\frac{2.8\%}{\text{grading}}$ 5.41

C 128 C 086

121+00 405.86 406.39 406.92 407.45 407.70
 $\frac{2.13\%}{\text{Brk}}$
 7.37 6.86 6.33 5.80 5.85
 5.58 5.47

C 100 C 088

120+50 406.02 406.38 406.76 407.10 407.35
 $\frac{1.4\%}{\text{Brk}}$
 7.23 6.87 6.43 6.15 6.90
 5.87 5.61

413.25

Torrey "C"
 Finish Shoulder Grades
on Grading

TP 7.5L 416.29 6.85 408.77 25+25

25+00

24+50

24+00 3/4 Runy "B"

Torrey "B"
 PR 2001.2

4.36 415.62 411.26 BM
 CH 8M³ 4.36 411.27
 TP 5.46 415.63 3.05 410.17

124+50 3/4 Runy "A"

124+00

123+80

413.22

Drainage
 line

Left

100' 75' 50' 25'

60

Torrey
 "C"

~~C 408~~ ~~C 400~~
 409.07 409.63 410.19 410.75 411.00
 6.55' 5.99' 5.43' 4.85'

~~C 407~~ ~~C 404~~
 409.40 409.78 410.16 410.53 410.78
 6.22' 5.84' 5.46' 5.12'

~~C 406~~
 409.71 409.91 410.11 410.32 410.57
 5.91' 5.71' 5.51' 4.90'

415.62

409.02 409.31 409.60 409.90 410.15
 4.20' 3.91' 3.62' 3.33'

408.42 408.80 409.18 409.55 409.80
 4.80' 4.42' 4.04' 3.66'

407.82 408.28 408.74 409.20 409.45
 5.40' 4.94' 4.48' 4.02'

Taxiway "C"
Finish Shoulder Grades

28+44.81 = End of Apron on Rft. 150
250 225 200' 175'

28+00

27+50

27+00

26+50 = Bk 100' H

26+00

25+50

25+25 = Bk & inlet on Lt.
416.29

61

125'	100'	75'	50'	25'	8 Taxiway "C"
410.78	411.20	411.62	412.05	412.28	
410.53	410.95	411.38 C060 4.91 4.36	411.81	412.06	
410.32	410.74	411.17	411.60	411.85	
410.04	410.49	410.94	411.35	411.63	
409.54	410.08 C057 6.21 5.69	410.62 C061 5.67 5.16	411.17	411.42	
409.04	409.68 C073 6.61 5.88	410.32 C068 5.97 5.29	410.96	411.21	
inlet grading 408.79	409.48	410.17	410.85	411.10	

Taxiway "C"
Shoulder Finish Grades

	100'	75	50	25	E
T.P.	6.44	417.34	5.39	410.90	31400 100' 24.2
31+00	410.90	411.37 4.92 4.62	411.84 4.45 4.17	412.33	412.58
30+50	410.50	411.12 5.17 4.71	411.74 4.55 4.20	412.36	412.61
30+00	411.00	411.46	411.92	412.39	412.64
29+50	411.50	411.80	412.10	412.39	412.64
29+00	411.26	411.61	411.97	412.33	412.58
28+50	411.02	411.42	411.81	412.21	412.46

416.89
≡

25	50	75	100	125	150
			C0.40	C0.34	
412.33	412.08 5.27	411.83 5.52	411.58 5.77 5.37	411.33 6.02 5.68	411.08 6.27
412.36	412.11 5.34	411.86 5.49	411.61 5.74	411.36 5.99	411.11 6.24
412.39	412.14 4.96	411.89 5.21	411.64 5.56 5.71	411.39 5.96	411.14 6.21
412.39	412.14 5.21	411.89 5.46	411.64 5.71	411.39 5.96	411.14 6.21
T.P.	6.45	417.35	6.20	410.90	31400 100' 24.2
412.33	412.08 4.77	411.83 5.02	411.58 5.27 5.52	411.33 5.77	411.08 6.02
412.31	411.96 4.90	411.71	411.46	411.21	410.96

6.20

417.10

410.90

31400
100' 24.2
= 416.89 T.P.
on 27.10.79

Turnway "C"
Finish Shoulder Grades.

100 75 50 25 2

TP 6.91 416.71 754 409.80 ^{on Grading} 36+00
34+00 412.40 412.36 412.31 412.27 412.40
4.94 4.98 5.03

~~C 028~~ C 023
33+50 411.96 412.03 412.10 412.18 412.43
5.38 5.31 5.24 5.01

~~C 042~~
33+00 411.79 411.93 412.07 412.21 412.46
5.55 5.41 5.27 4.99

~~C 032~~
32+50 411.63 411.83 412.03 412.24 412.49
5.71 5.51 5.31 5.12

~~C 050~~
32+00 411.46 411.73 412.00 412.27 412.52
5.88 5.61 5.34

~~C 051~~
31+50 411.30 411.63 411.97 412.30 412.55
6.04 5.71 5.37
417.34

25'	50	75	100	125	150
TP			4.98		50' RT 341.00
40.47					
412.15	411.90	411.65	411.40	411.15	410.90
	5.45 4.98	5.70	5.95	6.20	6.45
412.18	411.93	411.68	411.43	411.18	410.93
	5.42	5.67	5.92	6.17	6.42
412.21	411.96	411.71	411.46	411.21	410.96
	5.39	5.64	5.89	6.14	6.39
				0.33	
412.24	411.99	411.74	411.49	411.24	410.99
	5.36	5.61	5.86	6.11	6.36
		6.023	6.077	6.077	
412.27	412.02	411.77	411.52	411.27	411.02
	5.33 5.03	5.58 5.03	5.83 5.53	6.08 5.77	6.33
	6.051	6.048	6.077	6.030	
412.30	412.05	411.80	411.55	411.30	411.05
	5.30 4.99	5.55 5.57	5.80 5.53	6.05 5.75	6.30

417.35 = from p. 62 on Rt. Page

Taxiway "C"
Finish Shoulder Grades

	100'	75'	50'	25'	Taxiway "C"	Grating 100' x 4'
TP	7.16	416.96	6.91	409.80		36x00
		6.55	6.88			
36+50	409.85 6.86	410.57 6.14 5.61	411.29 5.42 4.54	412.00	412.25	
		6.60	6.55			
36+00	Grating 409.75 6.96	410.51 6.20 5.60	411.26 5.45 4.90	412.03	412.28	
			6.45			
35+50	410.89 5.82	411.29 5.42	411.68 5.03 4.58	412.06	412.31	
			6.45			
35+00	412.02 4.69	412.05 4.66	412.07 4.64 4.69	412.09	412.34	
		4.67				
		$\frac{416.71}{2}$				

34+64.28 - 51' edge Taxiway "E"

34+50					412.37	
34+14.28 - 44' Edge Taxiway "E"						

	25'	50'	75'	100'	125'	150'
						6.27
						6.09
412.00	411.75	411.50	411.25	411.00	410.75	410.50
						5.93
						5.74
						5.90
						5.63
						6.03
						6.05
412.03	411.78	411.53	411.28	411.03	410.78	410.53
						5.40
						5.39
						5.87
						5.66
						6.03
						6.05
412.06	411.81	411.56	411.31	411.06	410.81	410.56
						5.37
						5.02
						6.05
						6.05
412.09	411.84	411.59	411.34	411.09	410.84	410.59
						4.84
						4.84
						4.99
						6.03
						6.05
						6.06
412.12	411.87	411.62	411.37	411.12	410.87	410.62
						4.31
						4.30
						4.81
						4.35
						6.38
						416.18
						409.80
						Grating 100' x 4' 36x00

Torway "C"
 Finish Shoulder Grades &
 Torway "G"

	100	75	50	25	Torway "G"
39+50	410.45 6.51	C.055 410.90 6.06 5.93	C.055 411.35 5.61 5.06	411.81	412.06

	100	75	50	25	Torway "G"
39+00	410.25 6.61	C.060 410.85 6.11 5.51	C.058 411.34 5.62 5.24	411.84	412.09

	100	75	50	25	Torway "G"
38+50	410.25 6.71 6.42	C.072 410.79 6.17 5.45	C.046 411.33 5.63 5.17	411.87	412.12

	100	75	50	25	Torway "G"
38+00	410.15 6.81 6.35	C.070 410.73 6.23 5.33	C.074 411.31 5.65 4.91	411.90	412.15

	100	75	50	25	Torway "G"
37+50	410.05 6.91 6.55	C.064 410.67 6.29 5.65	C.058 411.30 5.66 5.08	411.93	412.18

	100	75	50	25	Torway "G"
37+00	409.95 7.01	C.073 410.62 6.34 5.61	C.070 411.29 5.67 4.77	411.96	412.21

416.96

65

25'	50'	75'	100'	125'	150'
411.81	411.56	411.31	411.06	410.81	410.56

25'	50'	75'	100'	125'	150'
411.84	411.59	411.34	411.09	410.84	410.59

25'	50'	75'	100'	125'	150'
411.87	411.62	411.37	411.12	410.87	410.62

25'	50'	75'	100'	125'	150'
411.90	411.65	411.40	411.15	410.90	410.65

C.036
~~C.034~~
 5.56
 5.22
 6.90
 5.89

25'	50'	75'	100'	125'	150'
411.93	411.68	411.43	411.18	410.93	410.68
T.P.	4.50	416.21	4.47	411.71	3740.0

~~C.030~~
 5.53
 5.14
 5.07

25'	50'	75'	100'	125'	150'
411.96	411.71	411.46	411.21	410.96	410.71

~~C.064~~
 6.57
 5.77
 4.80
 5.94
 5.77

416.18 (from P.64 Rt. side)

Turnway "C"
Shoulder Grades

100' 75' 50' 25' Turnway "C"

chk stake 2110 25' RT 20019 551 411.77
 42+50 411.05 411.23 411.40 411.58 411.83
 5.63 5.45 5.28

42+00 410.25 411.18 411.41 411.64 411.89
 5.73 5.50 5.27

41+50 410.85 411.12 411.40 411.67 411.92
 5.83 5.52 5.28 5.01
 534 sub

TR 5.63 416.68 591 411.05 75' LT 41100

41+00 410.75 411.05 411.35 411.66 411.91
 6.21 5.91 5.61 5.30

40+50 410.65 411.01 411.37 411.75 412.00
 6.31 5.95 5.59 5.27
 6.02

40+00 410.55 410.95 411.37 411.78 412.03
 6.41 6.01 5.59 5.18 5.90
 6.02

416.96

25' 50' 75' 100' 125' 150'

411.58 411.33 411.08 410.89 410.58 410.33
 4.93 5.18 5.93 5.68 5.93
 5.32

411.64 411.39 411.14 410.89 410.64 410.39
 4.92 416.26 411.34 25.3 RT 41100

411.67 411.42 411.17 410.92 410.67 410.42
 4.71 4.94

T.P. 4.79 416.13 487 411.34 25.3 RT 41100

411.66 411.41 411.16 410.91 410.66 410.41

411.75 411.50 411.25 411.00 410.75 410.50

411.78 411.53 411.28 411.03 410.78 410.53

416.21 (from P-65 Rtside)

Torway "C"
 Finish Shoulder Grades

45+09.28

Chk 2 Torway 2ND 5.13 411.65 ^v FB 200/ P-11

45+00 410.60 410.84 411.08 411.31 411.56
 6.08 5.84 5.60

44+50 411.10 411.19 411.28 411.37 411.62
 5.58 5.49 5.40

44+00 = Hwy here Torway 411.58 411.67

43+50 = Hwy here Torway 411.60 411.72

43+00 411.15 411.28 411.40 411.53 411.78
 5.53 5.40 5.28

416.68

67

25	50	75	100	125	150
			536	410.90	OK. Mon 2.7m "C"
411.30	411.05 5.21	410.80 5.46	410.55 5.71	410.30 5.96	410.05 6.21

(OMITTED)

411.31	411.06 5.20	410.81 5.45	410.56 5.70	410.31 5.95	410.06 6.20
--------	----------------	----------------	----------------	----------------	----------------

411.37	411.12 5.14	410.87 5.39	410.62 5.64	410.37 5.89	410.12 6.14
--------	----------------	----------------	----------------	----------------	----------------

411.42	411.17 5.09	410.92 5.34	410.67 5.59	410.42 5.84	410.17 6.09
--------	----------------	----------------	----------------	----------------	----------------

411.47	411.22 5.04	410.97 5.29	410.72 5.54 5.82	410.47 5.79	410.22 6.04
--------	----------------	----------------	------------------------	----------------	----------------

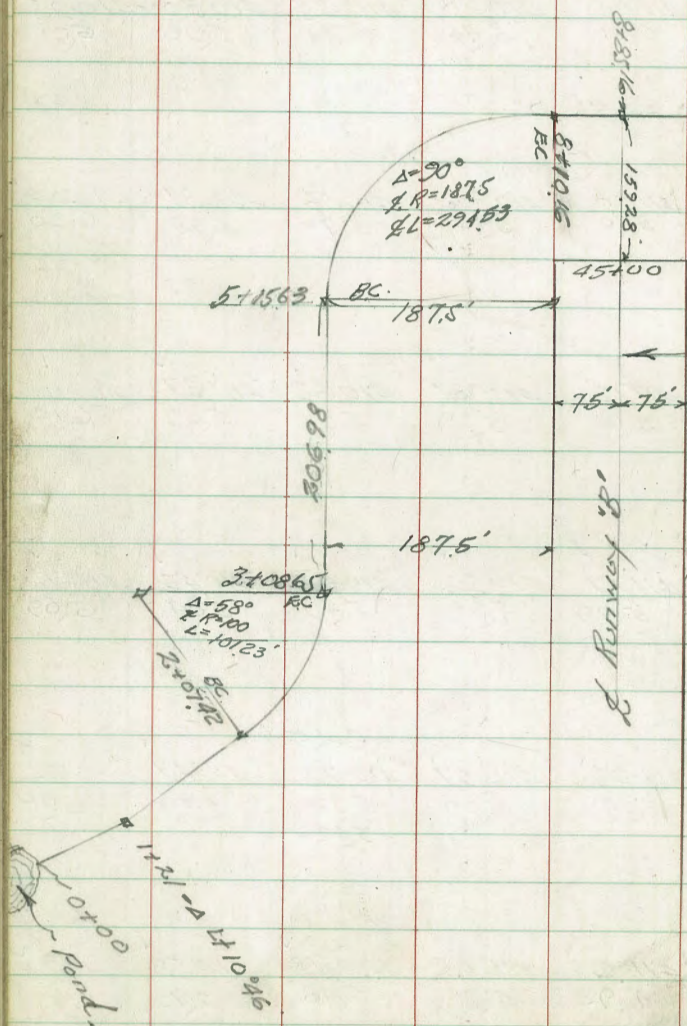
411.53	411.28 4.98	411.03 5.23	410.78 5.48	410.53 5.73	410.28 5.98
--------	----------------	----------------	----------------	----------------	----------------

416.26 (Sec P. 66 Rt. side)

Walker
Johnson
Pope
M/W
1-10-48

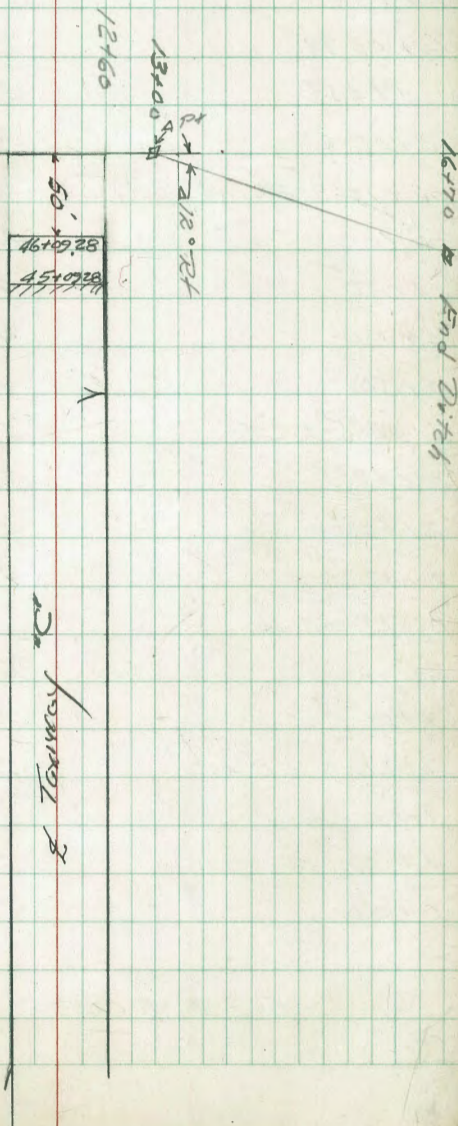
Locations Proposed Ditch

East End Runway "B"



Proposed Ditch

375



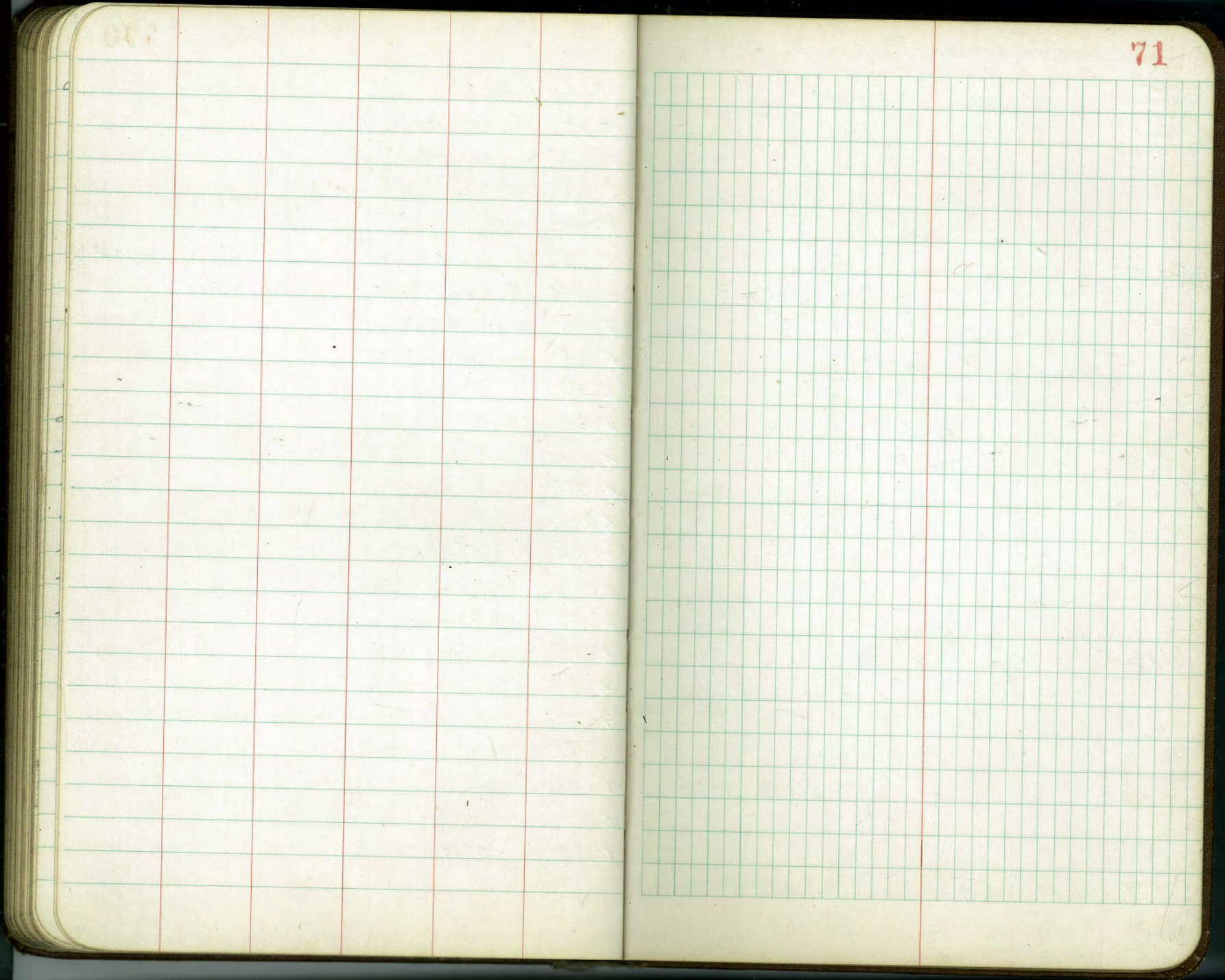
Grades Proposed Ditch
Location P. 68

Station			Elev Flowline	Cuts	Offsets
6+62.88		2.40	414.15	407.97	6.18 15' LT
6+33.43		2.31	414.24	408.03	6.21 "
6+03.98		2.60	413.95	408.09	5.86 "
+74.53		3.13	413.42	408.15	5.27 "
5+45.08		3.68	412.87	408.21	4.66 "
5+15.63 = B.C. R1		4.30	412.25	408.27	3.98 "
5+00		4.45	412.10	408.30	3.80 "
4+50		4.67	411.88	408.40	3.48 "
4+00		4.70	411.85	408.50	3.35 "
3+50		4.54	412.01	408.60	3.41 15' LT
3+08.65 = E.C.		5.11	411.44	408.69	2.75 "
2+83.35		5.35	411.20	408.74	2.46 "
2+58.02		5.41	411.14	408.79	2.35 "
2+32.73		4.99	411.56	408.84	2.72 "
2+07.42 = B.C. L1	0.20%	6.09	410.46	408.89	1.57 "
2+00		6.02	410.52	408.90	1.62 "
1+50		5.55	411.00	409.00	2.00 "
1+21 = A.H. 10° 46'		5.04	411.51	409.06	2.45 "
1+00		5.18	411.37	409.10	2.27 "
0+50		5.35	411.20	409.20	2.00 "
0+00		5.39	411.16	409.30	1.86 15' LT
		5.39	416.55	411.16	15' LT 0+00

Grades Proposed Ditch

	Conc. Mon & Trenchway "C"		410.92 Elev. 410.95 Flowline	Cuts	Offsets
16+70		3.26	406.08	405.96	0.12 ✓ 15' Lt
16+50		7.49	406.72	406.00	0.72 ✓ "
16+00		5.47	408.74	406.10	2.64 ✓ "
15+50		5.02	409.19	406.20	2.99 ✓ "
15+00		4.56	409.65	406.30	3.35 ✓ "
14+50	T.P. 4.51 414.21	6.83	409.70	406.40	3.30 ✓ "
14+10		7.24	409.29	406.48	2.81 ✓ "
13+50		7.05	409.48	406.60	2.88 ✓ "
13+00	12° RH = 4.47	6.46	410.07	406.70	3.37 ✓ "
12+50		6.34	410.19	406.80	3.39 ✓ "
12+00		5.58	410.95	406.90	4.15 ✓ "
11+50		5.25	411.28	407.00	4.28 ✓ "
11+00		5.36	411.17	407.10	4.07 ✓ "
10+50		4.78	411.75	407.20	4.55 ✓ 15' Lt
10+00		4.10	412.43	407.30	5.13 ✓ "
9+50		3.42	413.10	407.40	5.70 ✓ "
9+00		4.25	412.28	407.50	4.78 ✓ "
8+50		3.96	412.57	407.60	4.97 ✓ "
8+10	T.P. 16=K.C. 4.05 416.53	4.08	412.47	407.68	4.79 ✓ "
7+80.68		3.80	412.75	407.74	5.01 ✓ "
7+51.23		3.16	413.39	407.79	5.60 ✓ "
7+21.78		3.21	413.34	407.85	5.49 ✓ "
6+92.33		2.34	414.21	407.91	6.30 ✓ 15' Lt

416.55



Cross Sections - Proposed Ditch

Walker
Johnson
Tape
Riley
1-18-48

Easterly end Runway "B"

Location P-68

72

2+00

410.51 410.71 410.61
7.0 7.4 6.9
10

1+50

410.91 409.91 410.51
6.6 7.6 7.0
10

1+00

411.31 410.31 410.81
6.2 7.2 6.7
10

0+50

411.31 410.61 410.61
6.2 6.9 6.9
10

0+00

6.37 411.16

18" dia.
on stub

410.91 410.21 410.31
6.6 7.3 7.2
10

4.91 417.53

413.12

B.M. #5 Iron Pipe 90' dia 35+75 FB 1860-78

from 175+00 to 16+00

5+00

411.8' 412.4' 411.9'
6.3 5.7 6.2

4+50

412.1' 411.9' 411.5'
6.0 6.2 6.6
10 10

4+00

411.7' 411.4' 410.8'
6.4 6.7 7.3
10 10

3+50

411.7' 411.7' 411.5'
6.4 6.4 6.6
10 10

TP

6.92 418.06

589

411.64

1524.00
34.6
3108.65

418.06

3+00

411.5' 411.3' 411.2'
6.0 6.2 6.3
10 10

2+50

410.6' 410.0' 410.9'
6.2 7.5 6.6
10

417.53

417.53

8+00

0

7+50

7+00

6+50

6+00

5+50

413.06

413.8	412.4	-	412.3	-	412.7	-	412.0
4.8	5.7		5.8		5.4		6.1
40	10		10		10		40
	5.7						

413.9	413.3	-	413.1	-	413.1	-	412.8
4.2	4.8		5.0		5.0		5.3
40	10		10		10		40

414.8	413.7	-	413.5	-	413.4	-	412.7
3.3	4.4		4.6		4.7		5.4
40	10		10		10		40

415.2	414.0	-	413.7	-	413.5	-	412.8
2.9	4.1		4.4		4.6		5.3
40	10		10		10		40

414.9	413.7	-	413.3	-	412.7	-	412.1
4.1	4.4		4.8		5.4		5.9
40	10		10		10		40

412.7	413.1	-	411.8	-	411.2	-	411.4
5.4	5.0		6.3		6.9		6.6
40	10		10		10		40

418.06

Cross Sections Ditch

11+50

11+00

10+50

10+00

9+50

9+00

8+50

418.06

411.8

6.3
40

411.5

6.6
10

411.1

7.0

411.0

7.1
10

75

411.0
7.1
40

411.8

6.3
40

411.2

6.9
10

411.7

6.9

411.4

6.7
10

411.0

7.1
40

411.8

6.3
40

411.5

6.6
10

411.5

6.6

411.7

6.9
10

411.8

6.5
40

412.7

5.4
40

412.5

5.6
10

412.4

5.7

412.2

5.9
10

412.3

5.8
40

413.1

5.0
40

413.0

5.1
10

412.9

5.2

412.8

5.3
10

412.5

5.6
40

413.4

4.7
40

412.3

5.8
10

412.1

6.0

411.6

6.5
10

412.5

5.6
40

412.4

5.7
40

412.3

5.8
10

412.9

5.2

413.2

4.9

412.1

6.0
40

418.06

Cross Sections Ditch

75
15+50

15+00

14+70

14+30

13+70

13+00

12+50

T.P. 474 415.66

12+00

41806

714 410.92

Not
Totally C

410.1 409.4 - 408.7 - 409.2 - 408.6
56 63 7.0 65 71
40 10 10 40

409.6 409.6 - 410.0 - 409.5 - 409.1
6.1 6.1 5.7 6.2 6.6
40 10 10 40

409.4 409.4 - 408.9 - 408.9 - 410.3
6.3 6.3 6.8 6.8 5.4 6.4
40 10 10 10 24 40

409.7 410.5 - 410.2 - 408.7 - 408.7
6.0 5.2 5.5 7.0 7.0
40 10 10 40

409.4 - 409.0 - 409.1 -
6.6 6.3 6.7 6.6 6.2
40 10 10 40

410.3 410.1 - 410.2 - 410.3 - 410.4
5.4 5.6 5.5 5.4 5.3
40 10 10 40

410.4 409.1 - 409.1 - 409.1 - 409.3
5.8 6.6 6.6 6.6 6.4
40 10 10 40

415.65

409.1 410.9 - 410.8 - 410.9 - 410.5
6.6 7.2 7.3 7.2 7.6
40 10 10 40

41806

Cross Sections
Proposed Ditch

77

16775

	405.9	405.5	405.6	
94	9.8	10.2	10.1	9.8
40	10		10	40

16750

	407.0	406.6	406.1	
81	8.7	9.1	9.6	9.8
40	10		10	25

16700

	408.8	409.0	408.8	407.5
65	6.3	6.7	6.9	8.2
40	10		10	40

41566

41566

Walker RUNWAY - "B" Ditch on Rt.
 Johnson
 Pope Restake from 10+77
 Crawford
 4-18-49 Orig. Staking in F.B. 1993-50

			Flow #lowline	Cuts	offsets
16+50		5.68	405.98		
16+37.06	FB-1998-51				
16+00		7.28	404.38	403.28	1.10
15+50		7.71	403.95	403.03	0.92
15+00		7.83	403.83	402.78	1.05
14+50		8.07	403.59	402.53	1.06
T.P.					
14+00	800	411.66	5.53	403.66	402.28
13+50		6.31	402.88	402.03	0.85
13+00		6.56	402.63	401.78	0.85
12+50		7.13	402.06	401.53	0.53
12+00		7.26	401.93	401.28	0.65
11+50		7.47	401.73	401.03	0.69
11+00		7.42	401.77	400.78	0.99
10+77	Flow Exist. Culvert	8.5%	400.67	400.67	0.00
	6.1%	402.19	403.07		
					B.M. Conc. Man L. Hwy, "B" 8+00

A table with 6 columns and 20 rows. The columns are defined by vertical red lines, and the rows are defined by horizontal green lines. The table is currently empty.

A table with 10 columns and 20 rows. The columns are defined by vertical green lines, and the rows are defined by horizontal green lines. The table is currently empty.

415.28

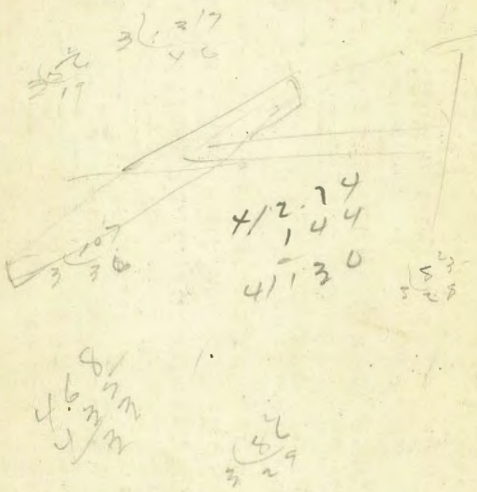
#3-411.25

#4-412.58

#2-405.82

411.18
8.31
405.87

41070
563
41633
367
66



9

DISTANCES FROM CENTER OF ROADWAY FOR
CROSS-SECTIONING.

Roadway 16 feet wide. Side Slopes 1 on 1 1/2
For Single Track Embankment.

H	0	1	2	3	4	5	6	7	8	9	H
0	8.0	8.2	8.3	8.5	8.6	8.8	8.9	9.1	9.2	9.4	0
1	9.5	9.7	9.8	10.0	10.1	10.3	10.4	10.6	10.7	10.9	1
2	11.0	11.2	11.3	11.5	11.6	11.8	11.9	12.1	12.2	12.4	2
3	12.5	12.7	12.8	13.0	13.1	13.3	13.4	13.6	13.7	13.9	3
4	14.0	14.2	14.3	14.5	14.6	14.8	14.9	15.1	15.2	15.4	4
5	15.5	15.7	15.8	16.0	16.1	16.3	16.4	16.6	16.7	16.9	5
6	17.0	17.2	17.3	17.5	17.6	17.8	17.9	18.1	18.2	18.4	6
7	18.5	18.7	18.8	19.0	19.1	19.3	19.4	19.6	19.7	19.9	7
8	20.0	20.2	20.3	20.5	20.6	20.8	20.9	21.1	21.2	21.4	8
9	21.5	21.7	21.8	22.0	22.1	22.3	22.4	22.6	22.7	22.9	9
10	23.0	23.2	23.3	23.5	23.6	23.8	23.9	24.1	24.2	24.4	10
11	24.5	24.7	24.8	25.0	25.1	25.3	25.4	25.6	25.7	25.9	11
12	26.0	26.2	26.3	26.5	26.6	26.8	26.9	27.1	27.2	27.4	12
13	27.5	27.7	27.8	28.0	28.1	28.3	28.4	28.6	28.7	28.9	13
14	29.0	29.2	29.3	29.5	29.6	29.8	29.9	30.1	30.2	30.4	14
15	30.5	30.7	30.8	31.0	31.1	31.3	31.4	31.6	31.7	31.9	15
16	32.0	32.2	32.3	32.5	32.6	32.8	32.9	33.1	33.2	33.4	16
17	33.5	33.7	33.8	34.0	34.1	34.3	34.4	34.6	34.7	34.9	17
18	35.0	35.2	35.3	35.5	35.6	35.8	35.9	36.1	36.2	36.4	18
19	36.5	36.7	36.8	37.0	37.1	37.3	37.4	37.6	37.7	37.9	19
20	38.0	38.2	38.3	38.5	38.6	38.8	38.9	39.1	39.2	39.4	20
21	39.5	39.7	39.8	40.0	40.1	40.3	40.4	40.6	40.7	40.9	21
22	41.0	41.2	41.3	41.5	41.6	41.8	41.9	42.1	42.2	42.4	22
23	42.5	42.7	42.8	43.0	43.1	43.3	43.4	43.6	43.7	43.9	23
24	44.0	44.2	44.3	44.5	44.6	44.8	44.9	45.1	45.2	45.4	24
25	45.5	45.7	45.8	46.0	46.1	46.3	46.4	46.6	46.7	46.9	25
26	47.0	47.2	47.3	47.5	47.6	47.8	47.9	48.1	48.2	48.4	26
27	48.5	48.7	48.8	49.0	49.1	49.3	49.4	49.6	49.7	49.9	27
28	50.0	50.2	50.3	50.5	50.6	50.8	50.9	51.1	51.2	51.4	28
29	51.5	51.7	51.8	52.0	52.1	52.3	52.4	52.6	52.7	52.9	29
30	53.0	53.2	53.3	53.5	53.6	53.8	53.9	54.1	54.2	54.4	30
31	54.5	54.7	54.8	55.0	55.1	55.3	55.4	55.6	55.7	55.9	31
32	56.0	56.2	56.3	56.5	56.6	56.8	56.9	57.1	57.2	57.4	32
33	57.5	57.7	57.8	58.0	58.1	58.3	58.4	58.6	58.7	58.9	33
34	59.0	59.2	59.3	59.5	59.6	59.8	59.9	60.1	60.2	60.4	34
35	60.5	60.7	60.8	61.0	61.1	61.3	61.4	61.6	61.7	61.9	35
36	62.0	62.2	62.3	62.5	62.6	62.8	62.9	63.1	63.2	63.4	36
37	63.5	63.7	63.8	64.0	64.1	64.3	64.4	64.6	64.7	64.9	37
38	65.0	65.2	65.3	65.5	65.6	65.8	65.9	66.1	66.2	66.4	38
39	66.5	66.7	66.8	67.0	67.1	67.3	67.4	67.6	67.7	67.9	39
40	68.0	68.2	68.3	68.5	68.6	68.8	68.9	69.1	69.2	69.4	40

Example—If point is 22.6 ft. above grade, how far should it be from center line to be a slope stake point? Ans. from Table 41.9. For same slopes but other widths of roadbed correct above figures by one-half difference in width of roadbed; thus in example above for 20 ft. roadbed distance will be $41.9 + (20 - 16) \div 2$ or 2 ft. added to 41.9 = 43.9. For slopes of 1 on 1 see inside of front cover.

MADE IN U.S.A.