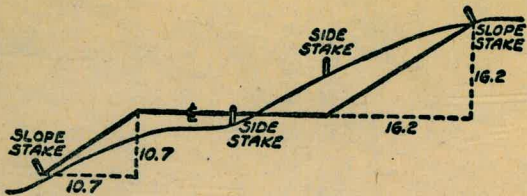


2000

TRAVIS BOLT



DISTANCES FROM SIDE STAKES FOR CROSS-SECTIONING  
SLOPE 1 TO 1. ROADWAY OF ANY WIDTH

	0	.1	.2	.3	.4	.5	.6	.7	.8	.9	
0	0.00	0.10	0.20	0.30	0.40	0.50	0.60	0.70	0.80	0.90	0
1	1.00	1.10	1.20	1.30	1.40	1.50	1.60	1.70	1.80	1.90	1
2	2.00	2.10	2.20	2.30	2.40	2.50	2.60	2.70	2.80	2.90	2
3	3.00	3.10	3.20	3.30	3.40	3.50	3.60	3.70	3.80	3.90	3
4	4.00	4.10	4.20	4.30	4.40	4.50	4.60	4.70	4.80	4.90	4
5	5.00	5.10	5.20	5.30	5.40	5.50	5.60	5.70	5.80	5.90	5
6	6.00	6.10	6.20	6.30	6.40	6.50	6.60	6.70	6.80	6.90	6
7	7.00	7.10	7.20	7.30	7.40	7.50	7.60	7.70	7.80	7.90	7
8	8.00	8.10	8.20	8.30	8.40	8.50	8.60	8.70	8.80	8.90	8
9	9.00	9.10	9.20	9.30	9.40	9.50	9.60	9.70	9.80	9.90	9
10	10.00	10.10	10.20	10.30	10.40	10.50	10.60	10.70	10.80	10.90	10
11	11.00	11.10	11.20	11.30	11.40	11.50	11.60	11.70	11.80	11.90	11
12	12.00	12.10	12.20	12.30	12.40	12.50	12.60	12.70	12.80	12.90	12
13	13.00	13.10	13.20	13.30	13.40	13.50	13.60	13.70	13.80	13.90	13
14	14.00	14.10	14.20	14.30	14.40	14.50	14.60	14.70	14.80	14.90	14
15	15.00	15.10	15.20	15.30	15.40	15.50	15.60	15.70	15.80	15.90	15
16	16.00	16.10	16.20	16.30	16.40	16.50	16.60	16.70	16.80	16.90	16
17	17.00	17.10	17.20	17.30	17.40	17.50	17.60	17.70	17.80	17.90	17
18	18.00	18.10	18.20	18.30	18.40	18.50	18.60	18.70	18.80	18.90	18
19	19.00	19.10	19.20	19.30	19.40	19.50	19.60	19.70	19.80	19.90	19
20	20.00	20.10	20.20	20.30	20.40	20.50	20.60	20.70	20.80	20.90	20
21	21.00	21.10	21.20	21.30	21.40	21.50	21.60	21.70	21.80	21.90	21
22	22.00	22.10	22.20	22.30	22.40	22.50	22.60	22.70	22.80	22.90	22
23	23.00	23.10	23.20	23.30	23.40	23.50	23.60	23.70	23.80	23.90	23
24	24.00	24.10	24.20	24.30	24.40	24.50	24.60	24.70	24.80	24.90	24
25	25.00	25.10	25.20	25.30	25.40	25.50	25.60	25.70	25.80	25.90	25
26	26.00	26.10	26.20	26.30	26.40	26.50	26.60	26.70	26.80	26.90	26
27	27.00	27.10	27.20	27.30	27.40	27.50	27.60	27.70	27.80	27.90	27
28	28.00	28.10	28.20	28.30	28.40	28.50	28.60	28.70	28.80	28.90	28
29	29.00	29.10	29.20	29.30	29.40	29.50	29.60	29.70	29.80	29.90	29
30	30.00	30.10	30.20	30.30	30.40	30.50	30.60	30.70	30.80	30.90	30
31	31.00	31.10	31.20	31.30	31.40	31.50	31.60	31.70	31.80	31.90	31
32	32.00	32.10	32.20	32.30	32.40	32.50	32.60	32.70	32.80	32.90	32
33	33.00	33.10	33.20	33.30	33.40	33.50	33.60	33.70	33.80	33.90	33
34	34.00	34.10	34.20	34.30	34.40	34.50	34.60	34.70	34.80	34.90	34
35	35.00	35.10	35.20	35.30	35.40	35.50	35.60	35.70	35.80	35.90	35
36	36.00	36.10	36.20	36.30	36.40	36.50	36.60	36.70	36.80	36.90	36
37	37.00	37.10	37.20	37.30	37.40	37.50	37.60	37.70	37.80	37.90	37
38	38.00	38.10	38.20	38.30	38.40	38.50	38.60	38.70	38.80	38.90	38
39	39.00	39.10	39.20	39.30	39.40	39.50	39.60	39.70	39.80	39.90	39
40	40.00	40.10	40.20	40.30	40.40	40.50	40.60	40.70	40.80	40.90	40
41	41.00	41.10	41.20	41.30	41.40	41.50	41.60	41.70	41.80	41.90	41
42	42.00	42.10	42.20	42.30	42.40	42.50	42.60	42.70	42.80	42.90	42
43	43.00	43.10	43.20	43.30	43.40	43.50	43.60	43.70	43.80	43.90	43
44	44.00	44.10	44.20	44.30	44.40	44.50	44.60	44.70	44.80	44.90	44
45	45.00	45.10	45.20	45.30	45.40	45.50	45.60	45.70	45.80	45.90	45
46	46.00	46.10	46.20	46.30	46.40	46.50	46.60	46.70	46.80	46.90	46
47	47.00	47.10	47.20	47.30	47.40	47.50	47.60	47.70	47.80	47.90	47
48	48.00	48.10	48.20	48.30	48.40	48.50	48.60	48.70	48.80	48.90	48
49	49.00	49.10	49.20	49.30	49.40	49.50	49.60	49.70	49.80	49.90	49
50	50.00	50.10	50.20	50.30	50.40	50.50	50.60	50.70	50.80	50.90	50

INDEXED  
through page # 70

Distance of slope stake from side or shoulder stake for any width roadway, slope 1 to 1. If ground is nearly level, the cut or fill at side stake is located by the double entry method in left column and top row. The number in body of table in same row and column gives distance from side stake to slope stake. If ground is not level estimate the difference in elevation between side stake and slope stake, lower target by this amount if cut, elevate if fill. Add this amount to cut or fill and find distance in table. Set up rod at this point, and line of sight should cut target. If it does not make the slight adjustment necessary.

TABLE XIII—CORRECTIONS FOR TANGENTS AND EXTERNALS

These corrections are to be added to the approximate values, found by dividing the tangent, or external, for a 1° curve (Table VIII) by the degree of curve, in order to obtain the true tangents, or externals. Intermediate values may be obtained by interpolation.

FOR TANGENTS ADD

Central Angle	DEGREE OF CURVE													
	5°	10°	15°	20°	25°	30°	35°	40°	45°	50°	55°	60°	65°	70°
10°	.03	.06	.09	.13	.16	.19	.22	.25	.28	.31	.34	.38	.42	.46
15°	.04	.10	.14	.19	.24	.29	.34	.39	.45	.51	.53	.58	.63	.68
20°	.06	.13	.19	.26	.32	.39	.45	.51	.58	.65	.72	.79	.84	.90
25°	.08	.16	.24	.33	.40	.49	.58	.67	.75	.83	.90	.99	1.06	1.14
30°	.10	.19	.29	.39	.49	.59	.69	.79	.89	.99	1.09	1.20	1.29	1.39
35°	.11	.22	.34	.47	.58	.69	.79	.81	.92	1.04	1.29	1.42	1.54	1.66
40°	.13	.26	.40	.53	.67	.80	.93	1.06	1.20	1.34	1.49	1.64	1.79	1.94
45°	.15	.30	.44	.60	.76	.91	1.06	1.21	1.37	1.52	1.70	1.87	2.04	2.21
50°	.17	.34	.51	.68	.85	1.02	1.19	1.36	1.54	1.72	1.91	2.10	2.29	2.48
55°	.19	.38	.57	.76	.95	1.14	1.32	1.52	1.72	1.92	2.14	2.35	2.56	2.77
60°	.21	.42	.63	.84	1.05	1.27	1.49	1.71	1.94	2.17	2.38	2.60	2.83	3.07
65°	.23	.46	.69	.93	1.16	1.40	1.64	1.88	2.13	2.38	2.63	2.88	3.13	3.39
70°	.25	.51	.76	1.02	1.28	1.54	1.80	2.06	2.33	2.60	2.88	3.16	3.44	3.72
75°	.27	.56	.83	1.12	1.40	1.69	1.98	2.27	2.57	2.87	3.16	3.47	3.78	4.09
80°	.30	.61	.91	1.22	1.53	1.84	2.15	2.46	2.78	3.10	3.44	3.78	4.12	4.46
85°	.33	.66	1.00	1.33	1.68	2.02	2.36	2.70	3.05	3.40	3.77	4.14	4.55	4.89
90°	.36	.72	1.09	1.45	1.83	2.20	2.57	2.94	3.32	3.70	4.10	4.50	4.91	5.32
95°	.39	.79	1.19	1.55	2.00	2.40	2.80	3.20	3.61	4.02	4.40	4.98	5.38	5.83
100°	.43	.86	1.30	1.74	2.18	2.62	3.06	3.50	3.95	4.40	4.88	5.37	5.85	6.34
110°	.51	1.03	1.56	2.08	2.61	3.14	3.67	4.21	4.76	5.31	5.86	6.43	7.01	7.60
120°	.62	1.25	1.93	2.52	3.16	3.81	4.45	5.11	5.77	6.44	7.12	7.80	8.50	9.22

FOR EXTERNALS ADD

Central Angle	DEGREE OF CURVE													
	5°	10°	15°	20°	25°	30°	35°	40°	45°	50°	55°	60°	65°	70°
10°	.001	.003	.004	.006	.007	.008	.009	.011	.012	.014	.015	.017	.018	.020
15°	.003	.007	.010	.014	.018	.023	.027	.032	.035	.039	.043	.047	.051	
20°	.006	.011	.017	.022	.028	.034	.038	.045	.051	.057	.063	.070	.076	.083
25°	.009	.018	.027	.036	.046	.056	.065	.074	.083	.093	.106	.120	.127	.135
30°	.013	.025	.038	.051	.065	.078	.090	.103	.116	.129	.149	.170	.179	.188
35°	.018	.035	.054	.072	.086	.109	.131	.153	.175	.197	.213	.230	.247	.264
40°	.023	.046	.070	.093	.117	.141	.172	.203	.234	.265	.277	.290	.315	.341
45°	.030	.060	.093	.119	.153	.184	.216	.254	.289	.325	.351	.378	.411	.445
50°	.037	.075	.116	.151	.189	.227	.266	.305	.345	.384	.425	.467	.508	.550
55°	.046	.093	.142	.188	.236	.283	.332	.381	.420	.479	.530	.582	.641	.700
60°	.056	.112	.168	.225	.283	.340	.398	.457	.516	.575	.636	.697	.774	.851
65°	.067	.135	.204	.273	.343	.412	.483	.554	.625	.697	.711	.845	.922	1.01
70°	.080	.159	.240	.321	.403	.485	.568	.652	.735	.819	.906	.994	1.08	1.17
75°	.095	.182	.286	.383	.480	.578	.678	.777	.877	.977	1.07	1.18	1.29	1.39
80°	.110	.220	.332	.445	.558	.671	.787	.903	1.02	1.13	1.25	1.38	1.50	1.62
85°	.128	.259	.391	.524	.657	.790	.926	1.06	1.20	1.34	1.47	1.62	1.76	1.91
90°	.149	.299	.450	.603	.756	.910	1.07	1.22	1.38	1.54	1.70	1.87	2.03	2.20
95°	.174	.350	.522	.706	.885	1.06	1.25	1.43	1.62	1.80	1.99	2.18	2.38	2.58
100°	.200	.401	.604	.809	1.01	1.22	1.43	1.64	1.85	2.06	2.28	2.50	2.73	2.96
110°	.268	.536	.806	1.08	1.35	1.63	1.91	2.20	2.48	2.76	3.05	3.35	3.66	3.96
120°	.360	.721	1.08	1.45	1.82	2.19	2.57	2.95	3.33	3.72	4.11	4.50	4.91	5.32

44-46 X Sec Alley B/K 8 Lexington Park  
 48-60 X Sec Brighton & Cape May from Abbott to Sperry

New Discharge Connection  
Crown Point Pump Station.

Sketch Showing Connection of  
Pump House - Crown Point + 30"

U.C. Sewer - As Built

See 3642 B

**INDEXED**

WK

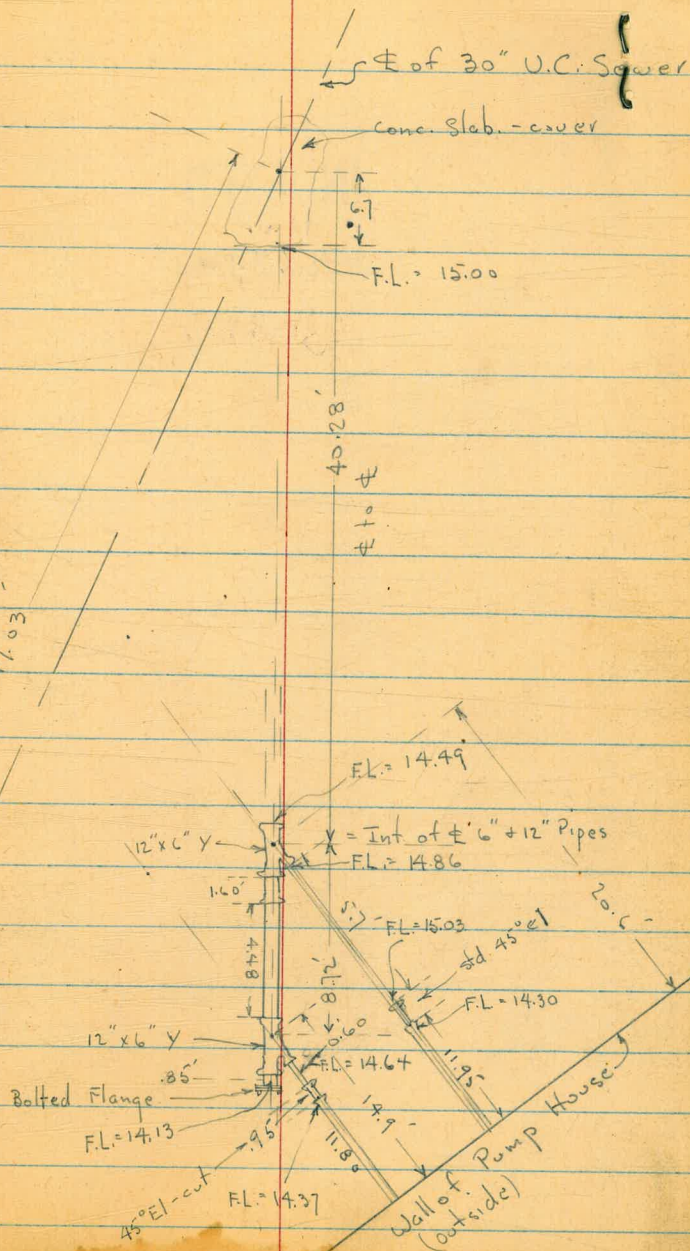
**MAY 31 1949**

W.O. 60207

5-21-49

7.0

± MH # 72  
284 + 35.87



D. Smith  
W. Moore  
J. Clark  
F. Acana

# Re Aline La Canad Storm Drain

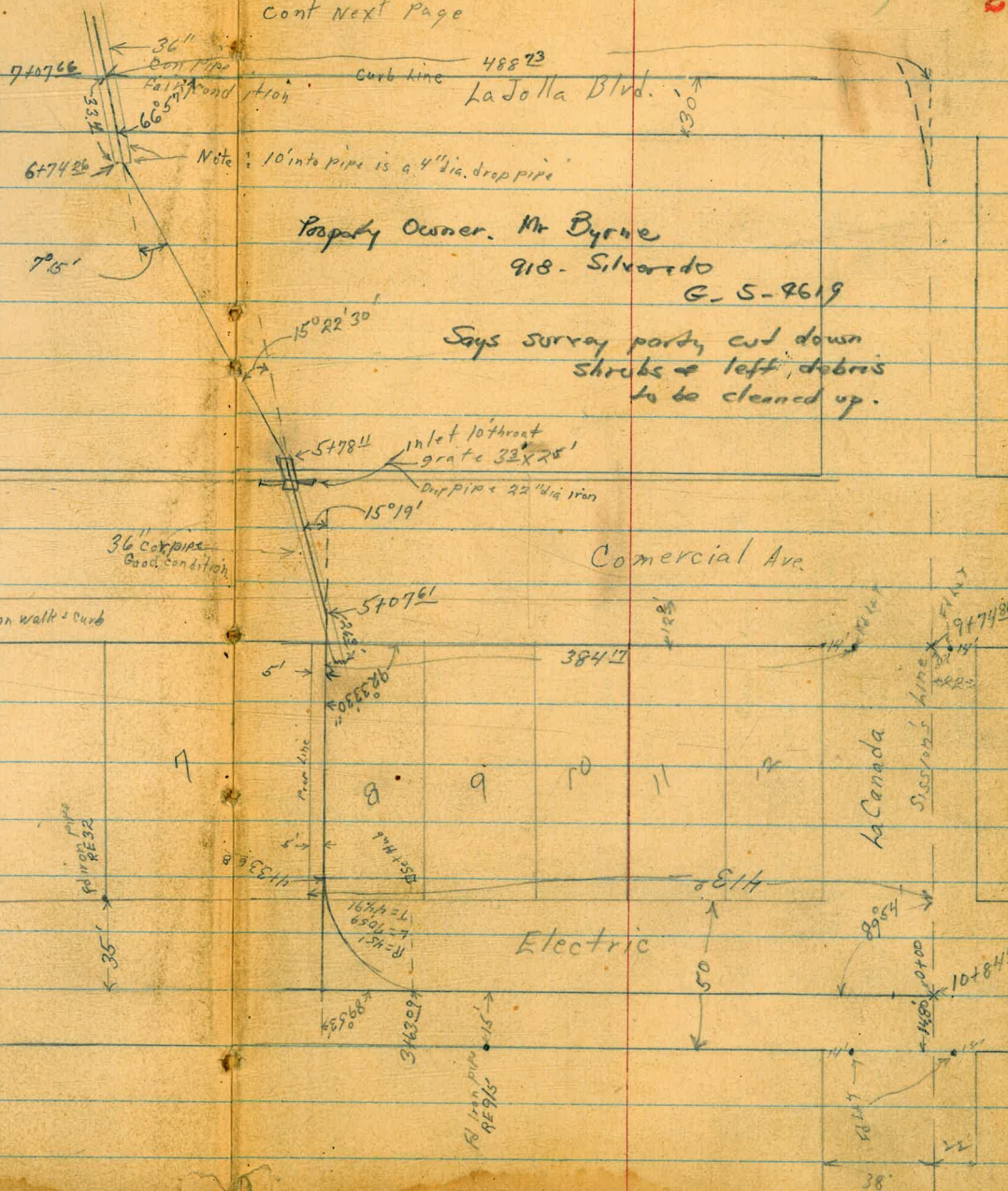
New-20439

W0#60337  
June 15, 1949

2

cont next page

INDEXED  
WK  
JUN 23 1949



Property Owner. Mr Byrne  
918. Silvestro  
C-5-4619

Says survey party cut down  
shrubs & left debris  
to be cleaned up.

Comercial Ave

Electric

La Canada

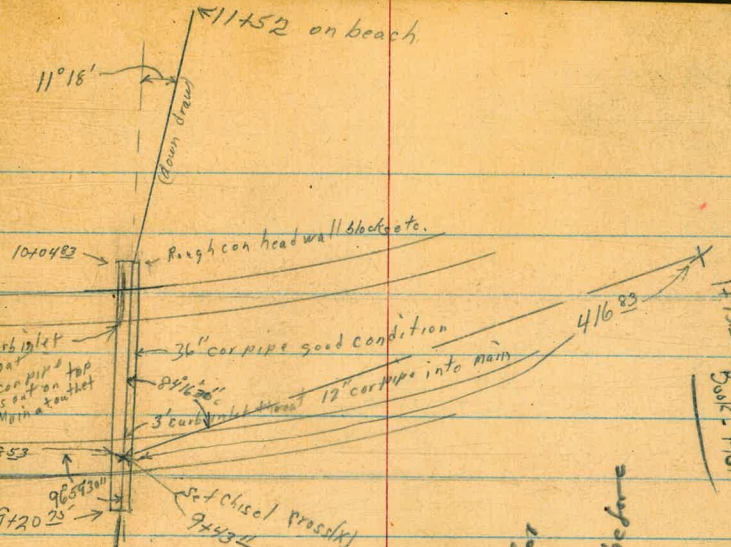
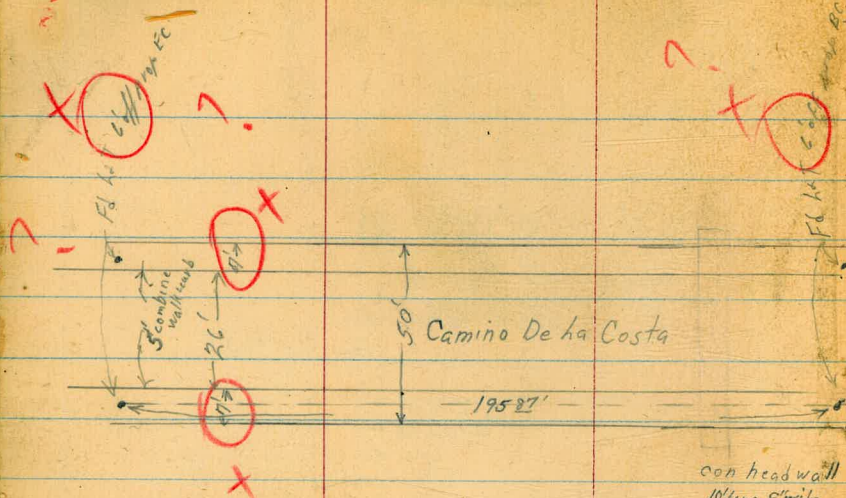


Solid con walk - curb

36" cork pipe  
Good condition

314309  
R-44  
130-11  
16344-1  
6501-7

38



con head wall 10' long 8" wide

Property Owner H. Ohl

1629 1/2 ops.

Says will get for about \$350 damages for landscaping washed out by previous trash, before will give easement.

174198 on 5550 N 141

La Jolla Blvd.

approx end of pipe 777872 end filled with 94 from road end then hit dirt but could see end.



4350

D. Smith  
W. Moore  
J. Clark  
F. Acuna

Levels for Proposed Storm Drain  
LaCanada & Electric to Ocean

Lt

96.4	93.0	92.4	91.8
34	68	74	82
15	8		15

RT

1700

0750

96.8	93.4	92.6
32	65	73
15		15

0738

96.0	93.8	92.8
38	62	72
15		15

150 Lt. & Anchor line

0732 95 RT & Power Pole # 5986

92.92	92.29	92.44	92.84	92.71	92.77
693	756	741	701	714	708
10	10	94	84	10	10
Carb	94	94	Carb	94	Carb

0723 South curb line LaCanada St

92.78  
702

0700

10784 95 Sisson's line

TP 4 484 99 85

1135 95 01

BM

062

106 36

105 74

NE 1/4 in carb  
LaCanada  
Beaumont  
FD 1761-72

99 85

cont.

14

5

3150

	93.6	92.2	90.6	90.2
	63	72	92	96
	15		9	15

3127 10° RT & Power Pole #5930

3100

	96.6	93.0	92.2	90.8
	32	62	72	90
	15	9		15

2160

	96.2	93.6	92.2	91.2
	32	62	76	86
	15	10		15

2150

	96.4	93.4	91.2
	35	65	82
	15		15

2100

	95.8	95.8	92.8	92.6	91.4
	40	44	70	73	84
	15	12	7		15

1176 95° RT & Power Pole #5950

1150

	96.2	92.8	92.2	91.6
	36	71	76	82
	15	7		15

9985 ✓



cont.

4798<sup>25</sup> Easterly walk Commercial

TP 133 90 36<sup>1</sup>

4785

4750

4733<sup>68</sup> EC

3798<sup>39</sup> Mid Point radial

3763<sup>09</sup> BC RT

L E RT

6

89.99	89.90	85.00
537	546	536
15	15	15

90 36 ✓

86.6	86.6	86.8
133	132	134
15	15	15

88.0	88.0	88.0
118	118	118
15	15	15

89.0	89.0	89.4
108	108	102
15	15	15

90.6	90.8	90.4
92	91	94
15	15	15

93.6	91.6	90.8	90.4
63	82	91	94
15	15	15	15

99 85

cont

L+

E

RT

7

TP

D<sup>82</sup>

78<sup>86</sup>

12<sup>33</sup>

77<sup>92</sup>

78<sup>86</sup>

5460

83.6	81.4	83.0
95	90	74
15		15

83.6	82.9	80.9
68	407	95
base wall	Top wall	Footings

54573 E 4" wall 3' high con parallel curbline

83.29	82.3	81.87	82.64	83.67	82.8	83.70
707	82	849	622	1672	82	666
15	15	Top Foot	Curbs	Fl. Foot	15	15
Curb	944				944	Curb

54542 West curb line Commercial on curb line

83.9	83.8	83.5
65	66	69
15		15

54323 E Commercial

83.6	82.59	82.54	83.7	82.81	82.8
68	567	582	67	535	66
15	15	Curb	944	15	944
944	Curb			Curb	

54103 East curb line Commercial taken on curb line

82.61

525

54076 L.

9036 ✓

cont

Lt E Pt

8

6+57

76.1	68.8	68.3	74.0
28	14	10	4
30	11	6	10

6+50

78.2	70.8	65.3	74.2
01	8	13	4
28	18	6	14

6+25

80.5	76.0	71.9	67.9	67.2	77.3
16	42	7	10	11	1
40	25	13	10	10	27

6+00

78.6	71.9	70.3	71.9	80.3
03	7	8	7	11
25	15	6	5	15

5+78<sup>1/2</sup> W End stom Drain 36" corrugated no head wall

taken on split of L

79.6	75.3	71.98	72.5	74.1	82.0
10	35	6	6	4	13
21	9	7	7	9	22

78.86

cont

7+50<sup>2</sup> west curb line La Jolla Blvd (on curb line)

LT		E		RT	
72.98	73.23	73.33	73.10	73.51	73.26
588	563	553	576	535	560
15	15	15	15	15	15
947	945	947	947	947	947

9

7+29 E La Jolla Blvd

73.47	73.74	73.88
539	512	498
15	15	15

7+07<sup>66</sup> East curb line La Jolla Blvd on (curb line)

73.24	73.52	73.66	73.26	73.79	73.40
562	524	522	560	507	546
15	15	15	15	15	15
947	947	947	947	947	947

6+85

74.5	74.4	74.1
44	45	48
15	15	15

6+74<sup>26</sup> L East end of 36" con sfermdrain on split 66  
No head wall

74.7	61.82	63.4	74.4
42	17.04	15.5	42
13	F.K.	E	17

78.86.1

cont.

7785

T.P.

280

6125 ✓

950

5845

Top Hyd  
De la Costa  
BC curve

6125 ✓

TP

088

6795 ✓

1022

6782

BM ✓

213

7624 ✓

7625 ✓  
NE SP  
La Jolla  
La Canada

7778<sup>20</sup> L: estimated end of pipe cant find end

7770

7762

10

LT

Q

RT

70.0	69.7	59.8	59.8	67.8	69.4
+82	+84	14	14	+65	+81
20	11		13	25	28

70.6	70.6	67.4	67.3	67.7	70.2	70.4
83	83	115	116	113	87	85
20	15	8	2	4	15	

71.4	70.3	69.5
95	86	94
15		15

73.5	73.4	71.5
54	55	74
15		15

7886 ✓

Cont.

9+20<sup>75</sup> L: Easterly 36" corrugated + don Headwall 18" by 10'

9+00

8+70

8+35

8+32

8+00

11

61.6	58.4	47.46	43.66	47.2	60.2
+03	22	1329	1752	141	11
30	19	Top Headwall	Fl.	6	18

62.6	60.2	50.0	47.0	63.0
+14	10	112	143	+18
17	8		7	30

67.0	65.8	63.2	49.8	50.6	64.2
+52	+45	+20	114	102	+30
15	5		16	25	40

68.4	68.0	65.0	64.8	52.8	65.4
+72	+68	+38	+35	84	+42
20	10		4	22	40

68.4	54.8	53.0	65.6
+72	65	82	+42
14		22	38

67.4	57.0	57.0	58.8	65.8	68.6
+82	32	42	24	+46	+72
16	5		10	20	32

6/25 ✓

Cont

TP 028 4894 1259 4866  
9+85

9+71<sup>2</sup> West Carb line Deha Costa  
D&RT 2<sup>nd</sup> RT End of throat Inlet 12" con. pipe goes  
to top of Main 36" pipe

9+58<sup>2</sup> E Deha Costa

9+45<sup>6</sup> East carb line Comina Deha Costa  
1<sup>st</sup> RT 2<sup>nd</sup> RT throat inlet in carb 12" corrugated deep.

9+35

LT E RT

12

570 568 548 562 586  
43 44 65 51 26  
30 15 18 32

55.46 55.79 54.95 55.80 56.79 54.92 55.81 54.92 55.84 55.72  
529 546 630 541 446 633 544 623 544 603  
15 15 02 02 44 24 2 2 15 15  
94 Carb 94 Carb 94 Carb 94 Carb 94 Carb 94 Carb

56.14 56.05 53.13  
511 520 512  
15 15 15

55.86 56.11 55.20 55.98 55.98 55.23 55.97 55.22 56.40 55.92  
540 524 605 527 527 602 528 528 485 533  
15 15 22 22 94 94 1 1 15 15  
94 Carb 94 Carb 94 Carb 94 Carb 94 Carb 94 Carb

59.6 56.0 55.8 56.8 57.0  
15 53 54 45 42  
28 16 11 22

6125

cont

10+63

LT					RT
	47.0	45.0	28.2		48.4
					49.0
	12	39	201		05
	25	14			10
					19
					30

10+45

49.0	48.3	37.6	39.3	47.1	50.1
+05	06	183	95	18	+13
27	19	7		13	23

10+40 E profile

33.7
152

10+25

53.7	49.9	34.6	34.9	35.9	50.8	54.6
+48	+10	143	140	130	+12	+52
30	16	3		6	15	27

10+04<sup>83</sup> L<sup>i</sup> West end 36" cor pipe also 12" con from inlet  
also 12" corrugated can't find where used.

55.9	52.3	42.2	43.44	37.96	40.81	39.1	42.2	50.1	50.5
+70	+34	62	500	1098	813	98	62	+32	+76
35	15	7	02		21	4	8	16	27
			17.1		72				
			12 con.		12" corrugated				

10+04 Head wall top con chunks & con mortar

45.06	45.06	44.23
388	388	421
10	10	10

4894 ✓



BM

Cont

346 5831

✓ 5829 ✓  
179372. Station line  
X in 2 D. to last

14

TP

1288 6177

005 4889

Lt

2.9

2.6

RT

1.9

11752 approx high water line

46°  
25

46°  
25

47°  
25

11745

3.7 3.2 3.4 2.9 2.5  
452 452 452 46° 46°  
50 25 25 25 50

11729

4.1 4.6 4.1 4.3 5.9  
448 442 448 44° 43°  
50 25 15 25

11725

8.9 4.9 4.7 6.1 8.5  
40° 44° 44° 42° 40°  
8 1 13 20

11700

6.7 6.2 7.3  
422 422 416  
10 4

10765

9.4 8.7 9.7  
398 402 392  
2 15

4894

8-8-49

X Sect. Westland Ave

Hendricks  
Roberts  
Greer  
Bunch  
402

Juniper to Ivy

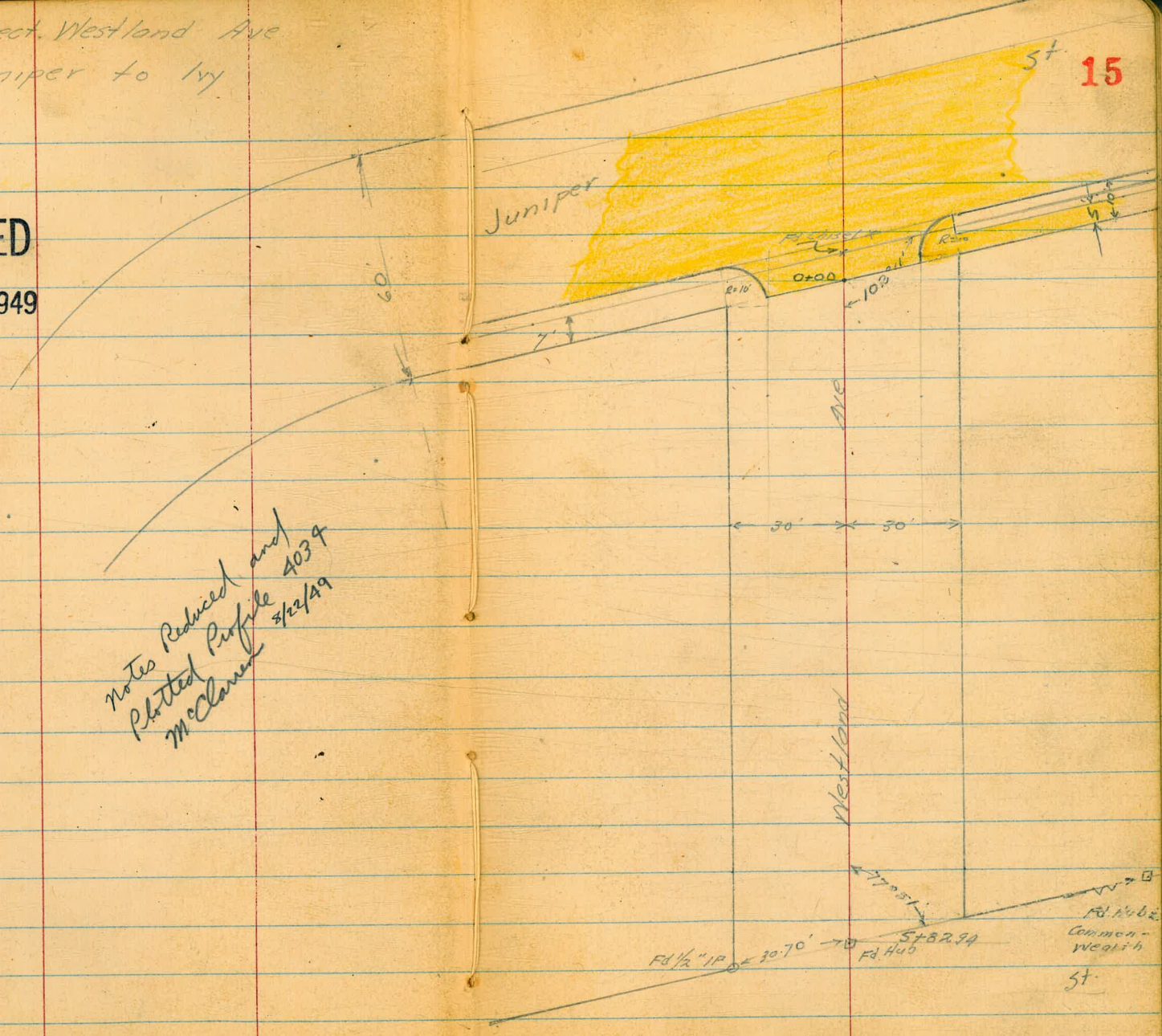
5+ 15

INDEXED

W.K.

AUG 9 1949

Notes Reduced and  
Plotted Profile 4039  
McClaren 3/22/49



Ivy

5+

0+16 RT Ls

LT

260.8	261.2	261.0	259.6	259.1	261.2	261.6	261.1	260.4
59	55	57	71	75	51	51	56	114
50	30	24	22	4	4	30	50	

0+05 Parallel to Juniper

RT

260.9	261.0	258.5	258.7	261.7	261.1	260.2
5	10	11	11	10	10	11
50	26	22		51	20	50

(Parallel to Juniper)  
0+00 30 line Juniper Edge Conc Paving

258.76	258.62	257.96	257.55	256.43	256.92	256.66
790	804	870	911	1023	974	1010
30	229	229		21	21	30
SW	CB	G		G	CB	

Parallel to Juniper  
0-10.23 30 Ch Line Juniper

258.77	258.70	258.54	257.93	257.80	257.29	256.30	255.80	256.89	253.54	254.27
767	824	813	873	886	937	1036	1036	937	1312	1239
50	50	29	29	223		229	325	325	50	50
CB	G	CB	G	G			G	CB	G	CB

0-30.69 & Juniper (Parallel to Juniper)

259.38	258.60	257.99	257.30	256.52	255.13
738	806	867	936	1014	1153
50	2046		2046	375	50

✓ BM. 0.23 26666

26643

26626  
SWBP Juniper & Commonwealth

1939.5 = \$ Produced of a 16' Conc Drive 277'RT

260.42	258.86
624	780
277	47

1+00

261.7	262.3	262.2	261.9	261.7	261.7	261.2	260.7	259.8
50	44	42	48	50	50	55	60	69
50	33	26	23	12	20	30	45	

0+79.5 = \$ Produced of a 9' Conc Drive 262'RT

260.58	259.94
608	673
262	455

0+50

260.6	261.3	261.6	261.4	260.8	260.2
61	54	51	53	59	63
50	43	30	30	50	

0+35

260.7	261.3	261.3	261.7	260.9	262.1	262.2	260.7	260.3
60	54	54	56	58	65	45	60	64
50	30	24	23	6	3	30	50	

266.66  
1

266.66  
1

2+13 = R Produced of 8' Conc Drive 30.6' H.

	<u>261.9</u>	<u>261.58</u>
X <sup>18</sup>	5.08	
50	30.6	

2+100

	<u>261.9</u>	<u>261.5</u>	<u>261.5</u>	<u>260.8</u>	<u>260.5</u>	<u>260.1</u>	<u>259.5</u>	<u>258.5</u>
X <sup>18</sup>	5.12	5.12	5.9					
50	30	28	21			18	30	46

1+81 = R Produced of a 2.5' Conc Walk 31.4' H.

	<u>261.66</u>	<u>261.91</u>
5.00	4.75	
50	31.4	

1+63 = R Produced of 3' Conc Walk 22.7' H.

	<u>260.30</u>	<u>258.39</u>
6.36	8.27	
22.7	29	

1+50

	<u>261.5</u>	<u>261.9</u>	<u>261.8</u>	<u>261.5</u>	<u>261.2</u>	<u>260.4</u>	<u>260.1</u>	<u>259.1</u>
5.12	4.8	4.9	5.12	5.5	6.12	6.6	7.6	
50	30	25	23		25	30	50	

266.66

266.66

2164 = \$ Produced of 8' Conc Dr. 30.7 RT

$$\begin{array}{r} 261.49 \\ 176 \\ 49 \end{array}$$

$$\begin{array}{r} 190 \\ 307 \end{array}$$

2163 = \$ Produced of 7' Conc Dr. 30.6 RT

~~$$\begin{array}{r} 259.61 \\ 354 \\ 700 \end{array}$$~~

$$\begin{array}{r} 259.61 \\ 454 \\ 706 \end{array}$$

2150

$$\begin{array}{r} 261.6 \\ 17 \\ 50 \end{array}$$

$$\begin{array}{r} 261.4 \\ 19 \\ 30 \end{array}$$

$$\begin{array}{r} 261.4 \\ 19 \\ 25 \end{array}$$

$$\begin{array}{r} 260.7 \\ 26 \\ 18 \end{array}$$

$$\begin{array}{r} 260.5 \\ 18 \\ 20 \end{array}$$

$$\begin{array}{r} 259.9 \\ 34 \\ 30 \end{array}$$

$$\begin{array}{r} 259.7 \\ 36 \\ 30 \end{array}$$

$$\begin{array}{r} 259.2 \\ 47 \\ 50 \end{array}$$

2136 \$ Produced at 4.8' Conc. Wgk 31.5 RT

$$\begin{array}{r} 261.80 \\ 148 \\ 45 \end{array}$$

$$\begin{array}{r} 261.61 \\ 164 \\ 315 \end{array}$$

2135 = \$ Produced of 4' Conc. Wgk 29.7 RT

$$\begin{array}{r} 260.12 \\ 313 \\ 297 \end{array}$$

$$\begin{array}{r} 259.88 \\ 317 \\ 40 \end{array}$$

2132 Power Pole # P2256 21.2 RT

TR 269  $\begin{array}{r} 263.25 \\ \times 6.10 \\ \hline 266.56 \end{array}$  260.56

$\begin{array}{r} 263.25 \\ \times 6.10 \\ \hline \end{array}$

3+25 & Produced of 2.5' Conc Walk 30' RT

258.28  
4 27  
30  
258.92  
4 23  
44

260.23  
259.72

3+18 & Produced of 8' Conc Dr 30.9' RT

302 333  
48 309  
Fl.

260.1  
260.3  
260.3  
259.9  
259.7  
259.1  
259.2  
259.3  
33 30 30 34 36 42 41 40  
50 30 33 18 18 30 50

3+00

2+87 & Produced of 4.5' Conc Walk 31.24

261.29  
196 225  
48 312

261.00

2+81 & Sewer M.H.

260.10  
2 1/2  
Rim

2+79 = & Produced of 2.5' Conc Walk 238' RT

263.25

259.53  
232 286 405  
238 30 39  
263.25

Westland Ave. Contd.

4+32 = R Produced of 3' Conc Walk 29.2 Rt

4+00

3+87 = R Produced of 3' Conc Walk 29.6 Rt

3+67.5 = R Produced of 8' Conc Dr. 30' Lt

3+65.5 = R Produced of 7.5 Conc Dr. 29.7 Rt

3+63 = Power Pole # P2236 21.6 Rt

3+50

263.25  
↑

255.5  
7.8  
46

256.0  
7.11  
30

256.5  
6.19  
18

256.3  
7.0  
16

256.9  
6.11  
18

256.7  
6.16  
18

256.9  
6.11  
20

256.7  
6.11  
30

256.5  
6.18  
15

257.22  
6.13  
29.6

256.28  
6.11  
29.1

258.08  
5.17  
50

257.76  
5.19  
30

257.97  
5.28  
29.7

256.82  
6.13  
50

257.9  
5.11  
18

258.3  
5.10  
30

258.5  
4.18  
19

258.3  
5.10  
17

258.5  
4.18  
18

258.0  
5.11  
18

258.5  
4.19  
24

258.7  
4.16  
30

258.7  
4.16  
42

263.25



518294 No line 144 (Taken Parallel to line)

236.8	241.9	243.2	244.5	246.88	248.1	248.4	249.7	250.1
16 <sup>1</sup>	11 <sup>3</sup>	10 <sup>0</sup>	8 <sup>7</sup>	6 <sup>3</sup>	5 <sup>1</sup>	4 <sup>0</sup>	3 <sup>1</sup>	2 <sup>1</sup>
50	30.7	25	15	Hub	6	18	30.7	

5160

237.2	242.5	243.7	245.8	248.2	249.4	249.5	250.4	250.7	250.8
16 <sup>0</sup>	10 <sup>7</sup>	9 <sup>5</sup>	7 <sup>4</sup>	5 <sup>0</sup>	3 <sup>10</sup>	3 <sup>7</sup>	2 <sup>8</sup>	2 <sup>5</sup>	2 <sup>4</sup>
50	30	25	13		2 <sup>10</sup>	18	25	30	47

T.P.

299    253.21    130.3    250.22

↑

5135

240.3	244.7	245.8	246.9	250.8	251.0	251.2	252.5
23 <sup>0</sup>	18 <sup>0</sup>	17 <sup>5</sup>	16 <sup>4</sup>	12 <sup>5</sup>	12 <sup>3</sup>	12 <sup>1</sup>	10 <sup>8</sup>
50	30	24	17		21	30	45

5100

243.9	247.2	251.9	252.5	252.3	252.6	253.1	253.1
19 <sup>4</sup>	16 <sup>1</sup>	11 <sup>4</sup>	10 <sup>8</sup>	11 <sup>0</sup>	10 <sup>7</sup>	10 <sup>2</sup>	10 <sup>2</sup>
50	30	7	5	3		30	30

4452.5 = K. Produced of 8' Conc Dr. 308 Rht.

255.12	254.64
8 <sup>13</sup>	8 <sup>6</sup>
30.8	28

4150

250.1	252.3	253.1	254.5	254.3	255.0	254.9	255.1	255.1	254.8
13 <sup>11</sup>	11 <sup>0</sup>	10 <sup>2</sup>	8 <sup>08</sup>	9 <sup>0</sup>	8 <sup>11</sup>	8 <sup>4</sup>	8 <sup>3</sup>	8 <sup>2</sup>	8 <sup>11</sup>
44	30	25	13	11		19	20	30	42

26325

26325

B.M. 179 266.45 266.43 JWBP Juniper & Commonwealth  
 T.P. 6.86 268.24 3.08 261.38  
 T.P. 11.98 264.46 0.73 252.48

6+13.64 50 line 144.

6+11 & Sewer M.H.

253.21  
^

235.7  
240.1  
246.3  
248.9  
248.8  
17.5 13.2 6.9  
50 30 30 50  
249.06  
6" Rim

253.21  
^

Notes Reduced

V.T.W. 11-25-49



30' 30'

st.

6 B'd

Bridge data

2 Bents - 3 wood piles each

Caps = 12x12"

Stringers = 6x18"

Decking = 3x12"

Wings = 3x12"

Wire + Rock Rip Rap

Hikins Ave.

Hue

E Sewer MH

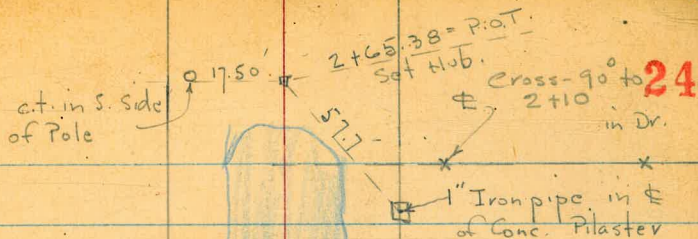
Wind wall (face)

0+00 = Fd. Mon.

Scale = 1" = 50'  
Bridge to scale

Brooklyn

Hue



30' 30'

st.

6 B'd

0+00

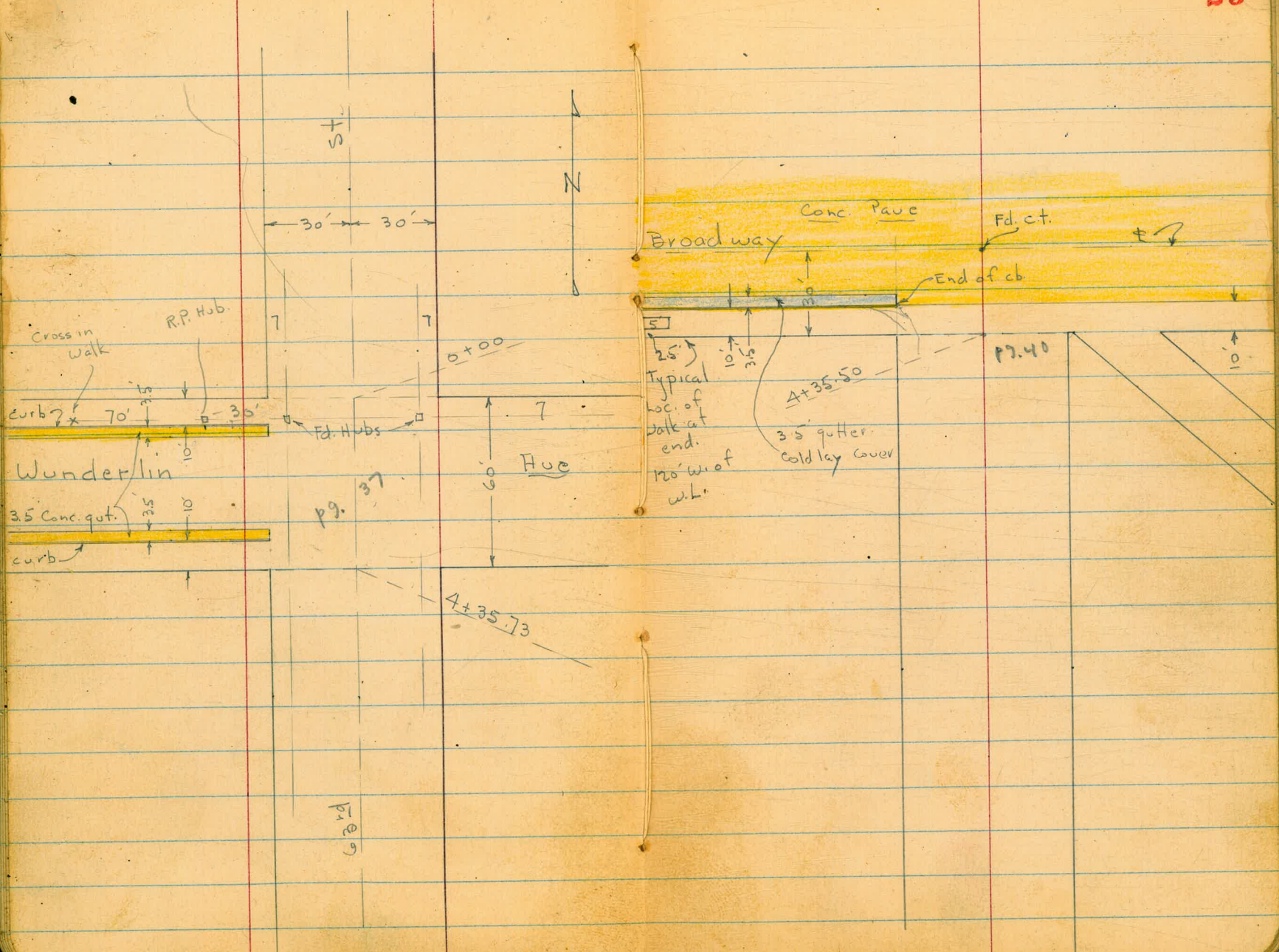
19.33

60'

Mon.

Hub

10+12.00



X-Sect. 63<sup>rd</sup> - Hkins to Broadway

60' st. - 16' cbs. - Dirt - Rough Graded.

# 4102

11-15-49

W.O. 31337

**INDEXED**

W.K.

NOV 25 1949

Osborne  
Hardin  
Hatch  
Shepard

-0+282- Cont.

196.1  
5.0  
30  
197.0  
4.1  
40

0+28.2 - 7.95 Rt. = Cor. Bridge

186.4	185.1	186.8	187.2	197.3	197.5	197.3	188.8	196.2	195.1
14.7	16.0	14.3	13.9	3.8	3.6	3.8	12.3	4.9	6.0
40	30	20	8	8	3.6	7.95	7.95	18.1	18.1
	# stream	Bottom	Top edge	Top edge	Bridge	C.L. at	Bottom	Top	Ground
						Cor.	end of	Wing	

0+28.1 - 15.4 Lt. = Sewer  
Conc. Cover M.H.

5.81 = Top M.H.

0+17.6 - 8.3 Lt. = Cor. Bridge

186.5	187.2	190.0	189.6	197.2	197.8	198.1	199.8	200.3
14.6	13.9	11.1	11.5	3.9	3.3	3.0	1.3	0.8
40	30	17	8.3	8.3	8.3	11	30	40
			= Bottom	C.L. on Cor.		edge		
			= Stream bed					

0+06.8 - 15.1 Lt. = end of wing wall

187.5	189.0	192.5	194.2	196.3	198.1	198.4	198.8	199.9	200.2
13.6	12.1	8.6	6.9	4.8	3.0	2.7	2.3	1.2	9.9
40	30	18	15.1	15.1	.7		12	30	40
			ground	Top	edge		edge		
			wing						

0+00 = S.L. Akins - Sect. at 90° to 63<sup>rd</sup>

189.3	192.0	193.9	198.4	198.5	198.7	199.2	200.0
11.8	9.1	7.2	2.7	2.6	2.4	1.9	1.1
40	30	18	11	7	7	12	30
				edge	on C.L.	edge	
				C.L.		C.L.	

BM on Mon.

3.27 197.81

= # 63<sup>rd</sup> # S.L. Akins

+0.44 201.08 - 12.58 200.64

201.08

BM

+0.60 213.22 212.62

SE. Top Hyd. - 63<sup>rd</sup> + Imperial

0+70.6 - 19' Lt. = Inlet of 30" pipe - end of C.L. on E

191.3	191.8	191.7	194.00	193.3	190.5	196.9	197.4	197.4	188.6	187.4	187.5	27
8.1	7.6	7.7	5.38	6.1	8.91	2.5	2.0	2.0	10.8	12.0	11.9	
40	30	26	24.3	24.3	19	9	edge	9.3	9.3	30	50	
			Top wall	ground	I.E. of Pipe		C.L.	Top	Bot			

0+66 - 24.3' Lt. = Beg. E. face of 6" Conc. wall

193.5	194.0
5.9	5.35
24.3	24.3
ground	Top wall

0+64.9 - 7' Lt. = Cor. Bridge

191.3	192.6	195.6	188.9	197.3	197.5	197.3	188.2	187.0	187.2
8.1	6.8	3.8	10.5	2.1	1.9	2.1	11.2	12.4	12.2
40	30	15	7	7	C.L.	9.2	9.2	30	50
			Bot. ground	Top		Top	Bot		

0+58.6 - 15.8' Lt. = end of wing wall

191.5	193.5	193.4	189.0	196.9	188.3	197.3	197.5	197.3	186.6	186.7	191.3
7.9	5.9	6.0	10.4	2.5	11.1	2.1	1.9	2.1	12.8	12.7	9.1
40	30	15.8	15.8	15.8	6.9	6.9	C.L.	9	9	30	50
		Top of Rip Rap	ground	Top end wing	Bot	Top		Top	Bot		

0+52 - No Bridge shots - shows W.L. Vert. Rip rap at

193.0	193.0	189.7	187.8	186.6	186.7	189.5	190.9
6.4	6.4	9.7	11.6	12.8	12.7	9.9	8.5
40	30	30	10	10	28	30	50
		Top of Rip Rap					

0+50.3 - 18.3 Lt. = outlet of 30" Cast Iron pipe

2-10' Sections

187.4	186.9	185.8	197.4	197.5	197.2	186.8	189.8	190.1	191.1
11.64	12.0	12.5	13.6	2.0	1.9	2.2	12.6	9.6	9.3
18.3	50	30	7.7	7.7	C.L.	8.3	8.3	23	30
			Bot	Top	199.38	Top	Bot		

T.P. 3.36 199.38 5.06 196.02

Nail in Pole - 2+43  
16.2 Lt.

201.08

- 24.7 = Ely of N. edge of 6" Conc. wall  
 1+12 - 16.9' Lt. = Ely. of End of Wood Bridge

193.13	191.2	191.4	193.94	191.6	192.18	191.4	192.63	193.9	194.3	194.1	193.3	193.6	192.9
4.71	7.2	7.0	4.50	6.8	6.26	7.0	5.81	4.5	4.1	4.3	5.1	4.8	5.5
40	40	30	24.7	24.7	22.9	20	10.9	12		12	16	30	50
Top wall		Top end wall	Top ground	Top Cor. Bridge	± Ditch	Top Cor.							

1+02 - 24.7' Lt. = end Ely of Conc. wall

194.0	192.1
4.48	6.3
24.7	24.7
Top-end.	

Wood Bridge over Ditch = 2x12's  
 1+01 - 16' Lt. = ± P. pole # P 70939 + 16.8' Lt. = Ely of 6'

192.1	192.7
6.35	5.76
22.8	16.8
Top-Cor.	Top Cor. Bridge

0+96 = Shows Vert. Rip rap wall at E.L.

190.4	191.2	191.4	194.00	192.3	191.8	194.9	195.2	195.0	193.2	189.1	188.6
8.0	7.2	7.0	4.44	6.1	6.6	3.5	3.2	3.4	5.2	9.3	9.8
100	40	30	24.6	24.6	19	13		11	30	30	50
- yard by House			Top wall	± Ditch					Top Rip Rdp	Bot.	

0+90.5 - 14.7' Rt. = end of Wing Wall

191.2	191.4	194.02	192.1	191.6	195.1	195.6	195.8	195.0	188.2	188.2
7.2	7.0	4.42	6.3	6.8	3.3	2.8	2.6	3.4	10.2	10.2
40	30	24.5	24.5	19	12		14.7	14.7	30	50
		Top wall	Top ground	± Ditch			Top-wall	ground		

0+90 - 15' Lt. = ± 24" Pepper

0+81 - 9.8' Lt. = ± 4x4" Post - RR. Sign

0+76.3 - 9.6 Rt. = Cor. Bridge

191.4	191.3	194.02	192.3	191.5	196.4	196.8	197.3	189.1	188.0	187.5
7.0	7.1	4.42	6.1	6.9	2.0	1.6	1.1	9.3	10.4	10.9
40	30	24.4	24.4	19	10		9.6	9.6	30	50
		Top wall	Top ground				Top end of c.l.	Bot.		

T.P.      24.2      198.44      3.36      196.02

198.44

199.38

J.P. 1273 210.34 0.83 197.61

3+77-21.8' Rt. =  $\Phi$  Tel. pole # 493398-H

3+69-31.3' Rt. =  $\Phi$  2' Stepping Stone walk

3+50

3+45-17.1' Lt. =  $\Phi$  P. pole # None

3+40-26' Lt. =  $\Phi$  36" Palm

3+11-17.4' Rt. =  $\Phi$  20" Euc.

2+00

2+90-17.1' Rt. =  $\Phi$  20" Pepper

2+61-21.5' Rt. =  $\Phi$  18" Pepper

2+50

2+43-16.2' Lt. =  $\Phi$  P. pole # 1711.84 = B.M.

2+42-21.2' Rt. =  $\Phi$  4" Pepper

2+25-21.6' Rt. =  $\Phi$  24" Pepper

2+12-20.9' Rt. =  $\Phi$  P. pole # J.P. 75229

2+00

1+78-20.7' Rt. =  $\Phi$  Deadman

1+50

Lt.  $\Phi$

Rt.

29

210.34

192.3  
6.1  
70  
Low spot.

195.8  
2.6  
40

196.0  
2.4  
30

196.5  
1.9  
15

196.8  
1.6  
12

196.6  
1.8  
12

195.8  
2.6  
30

196.1  
2.35  
31.3  
walk

195.1  
3.3  
40

195.2  
3.20  
7.7  
walk  
By House  
To N.

192.2  
6.2  
120  
By House

193.9  
4.5  
40

194.1  
4.3  
30

194.6  
3.8  
23

195.1  
3.3  
15

195.4  
3.0  
14

195.4  
3.0  
14

194.7  
3.7  
20

194.9  
3.5  
30

194.6  
3.8  
40

194.5  
3.9  
57  
By House

193.0  
5.4  
40

193.2  
5.2  
30

193.6  
4.8  
20

194.3  
4.1  
15

194.5  
3.9  
12

194.4  
4.0  
12

193.7  
4.7  
17

193.8  
4.6  
30

193.9  
4.5  
40

194.0  
4.4  
57  
By House

193.1  
5.3  
40

193.3  
5.1  
30

193.7  
4.7  
15

193.9  
4.5  
12

193.7  
4.7  
12

193.0  
5.4  
16

192.9  
5.5  
30

193.0  
5.4  
40

193.6  
4.8  
78  
ground  
By House

191.5  
6.9  
40

191.5  
6.9  
30

192.1  
6.3  
20

192.9  
5.5  
12

193.4  
5.0  
50

193.4  
5.0  
12

192.9  
5.5  
18

193.0  
5.4  
30

192.9  
5.5  
40

198.44



6+00

5+50

5+13- 21.3 Rt. = Tel. pole # 493397-H

T.P. 12.58 222.76 -0.16 210.18

5+12- 16.3 Lt = Popole # 77969

5+00- 28.8 Rt. = end Rock wall

4+99- 19 Lt = 24" Pepper

= Dirt Drive on Lt. = House - way back

4+89- 29.5 Rt. = 2 Conc walk to wall

4+75- 30.3 Rt. = Beg Rock + Conc wall

4+60

4+30

4+27- 30.5 Lt = 3 Conc walk

4+00

Lt.

Rt.

Rt.

30

220.3	220.6	220.9	219.7	220.4	220.3	222.3	222.8	223.2	223.8
2.5	2.2	1.9	3.1	2.4	2.5	0.5	0.0	+0.4	+1.0
40	30	18	13		11	15	22	30	40

213.8	214.3	214.0	213.0	214.0	213.7	214.8	215.5	215.7
9.0	8.5	8.0	9.0	8.8	9.1	8.0	7.3	7.1
40	30	18	13		10	15	20	40

222.76

208.6	208.6	208.3	207.5	207.4	207.4	208.0	208.3	208.2
1.7	1.7	2.0	2.8	2.9	2.9	2.3	2.00	2.1
40	30	20	11		11	28.8	28.8	40

207.2	206.9	206.66	206.87
3.1	3.4	3.68	3.47
50	30	29.5	46.8 - at
Dr.	Dr.	walk	Porch

204.4	205.91
5.9	4.43
30.3	30.3
ground	Top

202.7	202.7	202.4	202.5	202.0	201.5	201.6
7.6	7.6	7.9	7.8	8.3	8.8	8.7
40	30	12		13	30	40

200.5	200.1	199.9	200.1	199.9	199.4	199.2
9.8	10.2	10.4	10.2	10.4	10.9	11.1
40	30	13		14	30	40

190.55  
9.79  
49.9  
Walk at Porch

200.15  
10.19  
30.5 = walk

199.2	198.7	198.3	198.6	198.4	197.7	196.5
11.1	11.6	12.0	11.7	11.9	12.6	13.8
40	30	14	210.34	14	30	40

7+84-16.5' Lt. = ± 18" Dingleberry Tree  
 7+80-20' Rt. = ± Tel. pole # D22923T  
 7+62-18.9' Lt. = ± P. pole # P-173838  
 7+50  
 7+27 = ± Sewer M.H. 10.84 on Rim

7+08 = ± 10' Gravel Drive on Rt.

7+00  
 T.P. 13.26 248.08 0.30 234.82

6+92' 28.8' Lt. = ± 4' Conc walk

6+71-29' Rt. = ± 4' Conc. walk

6+66-17.6' Rt. = ± 3" Pepper

Set B.M. - Nail in Pole below 44° 230.72

6+59-20.6' Rt. = ± Tel. pole # D22922T

6+58-17.5' Lt. = ± 16" Pepper

6+50

6+45-16.8' Lt. = ± P. pole # 70837

6+23-18.8' Lt. = ± 8" Pepper

T.P. 13.11 235.12 0.75 222.01

Lt. ± Rt.

31

240.0 240.4 240.8 240.3 240.5 240.1 241.5 242.1 242.1  
 8.1 7.7 7.3 7.8 7.6 8.0 6.6 6.0 6.0  
 40 30 15 11 12 15 30 40  
 234.8 235.6 236.0  
 13.8 12.5 12.1  
 11=Dr. 30 Dr. 50=Dr.  
 232.6 233.0 233.4 233.0 233.5 233.2 234.3 235.0 235.8 236.0  
 15.5 15.1 14.7 15.1 14.6 14.9 13.8 12.1 12.3 12.1  
 40 30 15 12 11 15 25 30 40  
 248.08

230.78 231.81  
 4.34 3.31  
 50 walk 28.8 walk

232.80 233.69  
 2.32 1.43  
 29 walk 50 = walk

226.6 227.1 227.7 226.8 227.1 227.2 228.7 229.0 230.3 231.5  
 8.8 8.0 7.4 8.3 8.0 7.9 6.4 6.1 4.8 3.6  
 40 30 16 12 11 16 25 30 40

235.12  
 222.76

T.P.      13.05      272.36      0.24      259.31

- 9+21- 19.6 Rt. = £ 16" Olive
- 9+14- 17' Lt = £ Pipe # 70936
- 9+12- 29.7 Lt = Ely. of 6" Conc. wall
- 9+11- 19.7 Rt. = £ Tel pole # 493396-H
- 9+00- 38' Lt = Ely of Stone porch

8+94- 22' Rt. = £ 3' Stepping Stone walk

Dirt Dr.

8+50- 57.8 Lt. = £ Doub. Gar. - Conc. floor

30.1 Lt. along s. edge  
 8+39- 1/2 sly. + Ely. of 3' Conc. walk with 6" cb.

T.P.      13.16      259.55      1.69      246.39

8+00

7+96- 27.3 Lt = £ 3.3 Conc. walk

259.65      259.63      258.6

+ D.10	+ 0.08	1.0							
40	29.7	29.7							
Top wall	257.92	257.6	257.4	257.2	257.4	257.0	258.0	258.0	257.8
	1.6.3	1.9	2.1	2.4	2.1	2.5	1.6	1.5	1.7
	38	30	15	10	12	20	20	30	40

257.66      257.55

1.89      2.00

22      45.7

walk      at Porch

253.26      252.4      252.2      252.4      252.0      253.4      253.2      252.7

6.29	7.2	7.4	7.2	7.5	6.2	6.4	6.9
57.8	30	10		12	15	30	40
Floor.							

252.23      252.0      251.68

7.32	7.5.3	7.87
40	30.1	30.1=walk
walk	Top	cb.

Nail in Pole  
 = 20' Rt. + 80      259.55

246.7      246.7      246.9      246.7      247.0      246.7      247.8      247.9      247.5

1.4	1.4	1.2	1.4	1.1	1.4	0.3	0.2	0.6
40	30	20	11		12	20	30	40

246.56      246.58

1.52	1.50
42.5	27.3=walk
at Porch	248.09

See 1786 - P. 44 for Brooklyn Sections.

43' N. of SL

30' N. = ± Brooklyn

T.P. 12.95' 284.90 0.41 271.95

5' N. = 295' Lt. = ± P. pole # J.P. 171063

10+12.00 = S.L. Brooklyn

Set BM on S.W. 7 Mon. 0.94 271.42

on F.H. Top 1.15 271.21

10+07 - 20' Rt. = ± F.H.

10+06 - 28.6' Lt. = ± 9" Conc. Dr. = 6" cb. on N.

10+01 - 19.4' Rt. = ± 18" Olive

9+90 = Beg. Rough oil Pave in Rdwy.

9+80 - 19.5' Rt. = ± 14" Olive

9+75

9+61 - 19.7' Rt. = ± 8" Olive

9+45

9+41 - 19.6' Rt. = ± 16" Olive

Lt.

±

Rt.

33

275.4	275.5	275.6	275.1	273.8	273.6
9.5	9.4	9.3	9.8	11.1	11.3
30			11	25	30
	edge		edge		
274.4	274.2	274.2	273.5	272.9	
10.5	10.7	10.7	11.4	12.0	
30	10		13	30	
	edge		edge		

284.90

271.3	270.8	270.1	270.3	270.0	269.7	270.1	269.8
1.1	1.6	2.3	2.1	2.4	2.7	2.3	2.6
30	20	8		10	15	20	30
		edge		edge			
		oil		oil			

271.27 = B. 1660 - P. 66

269.76	270.29
2.60	2.07
50	28.6
Dr.	Dr.

267.6	267.8	267.8	265.1	265.4	264.9	265.9	265.3	265.7
4.8	4.6	4.6	7.3	7.0	7.5	6.5	7.1	6.7
40	30	16	9		14	17	30	40

260.7	261.0	261.5	261.8	261.6	262.5	262.6	262.4
11.7	11.4	10.9	10.6	10.8	9.9	9.8	10.0
40	30	10		14	16	30	40

272.36

Lt.

±

Rt.

34

0+82- 30' Rt = Beg. Wly. of 6" Conc. wall

0+77- 30' Rt = ± 10" Conc. Dr.

0+73- 25' Rt = end wly. of Hedge

T.P. 13.04 297.68 026 284.64 297.68

285.25  
12.43  
30  
Nly. of Dr.  
285.13  
12.55  
30  
Dr.

289.99  
7.69  
30 = Top  
284.95  
12.73  
40  
Dr.

0+60 = 18.7' Rt = ± 5" Palm

0+52- 29.5' Lt = Beg. Picket fence

0+51- 24.1' Lt = end of slab + Ely. of 8" Conc. wall.

0+41- 23.8' Lt = S.E. Cor. of Conc. Slab

0+30 - 18.3' Rt = ± 5" Palm

0+01- 20' Rt = ± Tel. pole # P22925 T

60' N. = N.L. = 0 too ahead.

57' N = 27.5' Rt = <sup>Beg.</sup> Wly. of 4' Hedge - 8' High

281.6 282.6 283.0 283.0 283.9 283.7 284.1 284.1

3.3 2.3 1.9 1.9 1.0 1.2 0.8 0.8

40 30 20 13 10 13 30 40

m Divt Dr. edge edge

No Gar.

282.02 282.34 280.50 282.41 280.71

2.88 2.56 4.40 2.49 4.19

40 30.3 30.3 24.1 24.1

Top wall Top wall end of slab Top wall slab

279.96 280.27 280.44

4.94 4.63 4.46

48.8 30.3 23.8 = Cor. at House Beg. sly. of 3" Conc. walk Conc.

279.4 279.4 279.7 279.7 280.7 280.1 280.5 280.5

5.5 5.5 5.2 5.2 4.2 4.8 4.4 4.4

40 30 20 13 13 30 40

edge edge

278.3 278.5 276.9 277.5 276.8 277.4 277.4

6.6 6.4 8.0 7.4 8.1 7.5 7.5

30 20 12 14 20 30

edge edge

284.90

2+11 - 13.6' Rt. =  $\pm$  10.5' Conc. Dr.

wall ends at sly. of Dr.

2+00

1+90

1+77 - 25' Rt. = end wly. of Hedge

T.P. 13.10 310.09 0.69 296.99

1+50

1+30 - 25.5' Rt. = wly. of 4' Hedge - 10' High (outside Conc. wall)

1+22 - 19.4' Rt. =  $\pm$  8" Palm

1+14 - 29.9' Lt. = sly. of Gravel Dr. to House  
Ely. of 8" Conc. block wall =

1+04 - 17.6' Lt. =  $\pm$  P. pole  $\pm$  P 70834

1+02 - 29.5' Lt. = end fence

1+00 - Beg. wire fence on wall on Rt.

0+94 - 19' Rt. =  $\pm$  5" Palm

Lt.

$\pm$

Rt.

35

302.37	303.23	304.02
7.72	6.86	6.07
13.6	30	47
Dr.	Dr.	Dr.

297.1	298.7	300.4	301.1	301.5	301.5	302.2	303.0	303.34
13.0	11.4	9.7	9.0	8.6	8.6	7.9	7.1	6.75
40	30	23	13	11	11	15	30	30
			edge		edge			Top wall

295.3	296.9	298.8	298.7	299.2	299.0	300.0	300.3	300.81
14.8	13.2	11.3	11.4	10.9	11.1	10.1	9.8	9.28
40	30	20	12	12	15	30	30	30
			edge		edge			Top wall
				310.09				

291.8	292.5	293.9	294.7	295.4	295.2	296.4	296.5	295.7
5.9	5.2	3.8	3.0	2.3	2.5	1.3	1.2	2.0
40	30	22	13	13	13	20	30	40
			edge		edge			

293.52
4.16
30.4
Top wall

287.75	288.16
9.93	9.52 = Top wall
50	29.9
Top wall	

285.7	286.2	287.7	288.7	288.7	289.4	289.84
12.0	11.5	10.0	9.0	9.0	8.3	7.94
40	30	13	13	13	30	30
		edge		edge		Top wall
			297.68			

SE. Top Hyd.  
Wunderlin

T.P. 0.22 304.70 5.61 304.48

4+00

3+92-17' Lt. = 4" Pepper

3+68-18' Lt. = 10" Pepper

3+50

3+19-18.6' Lt. = 4" Pepper

3+12-23.5' Lt. = Holley Bush

3+00

2+75

2+67-27' Lt. = end Ely. of Hedge

2+65-17.5' Lt. = Tel. pole - P-70833

2+50

2+45-26' Lt. = <sup>Req.</sup> Ely. of 8' Hedge - 12' High

2+25- end of oil pave

2+18- 30' Rt. = Wly. of 2'x2' Conc. pilaster

296.8	299.2	302.6	303.1	302.9	304.0	307.0
13.3	10.9	7.5	7.0	7.2	6.1	3.1
40	30	13		15	30	40

298.2	300.5	304.7	304.9	304.5	305.2	307.7
11.9	9.6	5.4	5.2	5.6	4.9	2.4
40	30	12		15	30	40

299.9	302.0	305.6	305.8	305.4	305.1	308.7
10.2	8.1	4.5	4.3	4.7	4.4	1.4
40	30	13		15	30	40

299.7	302.1	305.5	305.7	305.4	305.3	308.1
10.4	8.0	4.6	4.4	4.7	4.8	2.0
40	30	14		15	30	40

299.3	301.6	304.3	305.1	304.9	304.7	307.1
10.8	8.5	5.8	5.0	5.2	5.4	3.0
40	30	16		14	30	40

299.0	300.4	302.9	303.2	303.7	303.5	303.8	306.7
11.1	9.7	7.2	6.9	6.4	6.6	6.3	3.2
40	30	16	12		11	30	40

edge =  
Cor. oiledge =  
Cor. 303.8  
6.3  
30  
30  
ground  
Top

310.09

Lt.

±

Rt.

50' N. = N. cb.

292.04	291.27	296.29	295.52	297.6	299.1	299.7	301.4	308.2
12.66	13.43	8.41	9.18	7.1	5.6	5.0	3.1	+3.5
65	65	29.8	29.8	15		17	30	80
Top	gut.	Top- end cb.	Conc. gut.					

46.5' N. = S. edge of Conc. Gut

291.46	295.94
13.04	8.76
65	29.9 = Cor. Conc.
gut.	

30' N. = ±

292.4	297.2	299.0	300.3	301.6	303.0	308.7
12.1	7.5	5.7	4.4	3.1	1.7	+4.0
65	30	15		15	30	80

13.5' N. = N. edge of Conc. Gut. (3.5') wide

291.91	296.84
12.79	7.86
65	29.9 = end Conc. gut
gut.	

10' N. = S. cb.

292.26	291.62	297.20	296.53	299.6	301.0	302.0	303.0	308.5
12.44	13.08	7.50	8.17	5.1	3.7	2.7	1.7	+3.8
65	65	30	30	11		15	30	80
Top	gut.	Top- end cb.	Conc. gut.					

4+35.73 = S.L. Wunderlin

296.3	297.4	300.2	301.4	302.1	302.9	305.0
8.4	7.3	4.5	3.3	2.6	1.8	+0.3
40	30	14		15	30	40

4+33 - 22.8 Lt. = ± P. pole # 70832

4+30 - 20.3 Rt. = ± F.H.

304.70



Lt.

E

Rt.

38

1+52- 23' Lt. = <sup>Beq.</sup> shrub Hedge - 4' wide - 5' High

1+45- 26.5' Rt. = <sup>Beq.</sup> 4 Hedge - outside fence

1+30

1+18- 28.9' Rt. = end wire + Beq. Picket fence

1+00

0+92- 22.6' Lt. =  $\Phi$  P. pole # P-7082.5

0+75

0+50

0+31- 28.2' Rt. =  $\Phi$  26" Pepper

0+27- 29.5' Rt. =  $\Phi$  3' Conc walk - 4' <sup>sides</sup> ab on both

0+10

0+00- 29.5' Rt. = Beq. Wire fence

- 19.9' Rt. =  $\Phi$  Tel. pole # D-22928-1

60' N. = N.L. Wunderlin = 0+00 ahead.

295.4	295.9	296.3	297.5	297.9	298.1	298.0	298.6
9.3	8.8	8.4	7.2	6.8	6.6	6.7	6.1
40	30	22	15		15	30	40

292.7	292.8	294.2	296.5	296.7	296.9	296.9	297.7
12.0	11.9	10.5	8.2	8.0	7.8	7.8	7.0
40	30	21	15		15	30	40

291.2	292.7	294.8	296.0	296.2	296.3	296.9	298.7
13.5	12.0	9.9	8.7	8.5	8.4	7.8	6.0
40	30	15	12		15	30	40

289.7	290.8	291.9	295.9	296.5	296.6	298.2	299.6
15.0	13.9	12.8	8.8	8.2	8.1	6.5	5.1
40	30	19	11		15	30	40

299.59	301.73
5.11	2.97
29.5 = walk	47.5 = at house

288.6	290.6	290.9	297.1	298.0	298.2	300.7	302.3
16.1	14.1	13.8	7.6	6.7	6.5	4.0	2.4
40	30	27	13		20	30	40

295.5	297.2	298.5	298.6	301.4	303.0
9.2	7.5	6.2	6.1	3.3	1.7
30	15		17	30	40

304.70

T.P. 12.77 329.07 034 316.30

3+22- 22.6' Lt. = ± P.pole # P-77838

3+00

2+50

2+17- 22.5' Lt. = ± P.pole # P-77837

2+15- 21' Lt. = end ± of shrub Hedge

+ wall

2+00-27.1 = Rt. = ± 3' Conc. walk + one step. = end of walk

Conc. wall - 29' Rt. = Nly. of Dr. + Cor. of 6" Conc. wall

1+90 = 26.9 Rt. = Beg. Wly. of 2.5" Conc. walk along

1+86- 30' Lt. = ± 4' Conc. walk (not to House)

1+76- 29' Rt. = Sly. of Conc. Dr. + 6" Conc. wall

T.P. 13.12 316.64 1.18 303.52

1+76- 27' Rt. = end ± Hedge + 29' Rt. = end fence

1+60

Lt.

±

Rt.

313.1	314.0	315.5	315.2	316.3	316.2	319.5	320.1	320.5
3.5	2.6	1.1	1.4	0.3	0.4	+2.9	+3.5	+3.9
40	30	20	15		12	17	30	40

307.5	308.7	309.9	309.3	310.3	310.6	314.4	314.6	314.8
9.1	7.9	6.7	7.3	6.3	6.0	2.2	2.0	1.8
40	30	20	14		13	27	30	40

301.6	301.8	303.5	303.0	303.7	304.1	305.91	305.97	306.62	307.67
15.0	14.8	13.1	13.6	12.9	12.5	10.73	10.67	10.02	8.97
40	30	20	15	12	15	27.1	30.7	30.7	49.4

300.44	300.69
16.20	15.95
47	30
end. walk	walk

304.27	306.37	303.72	307.63	304.22
12.37	10.27	12.92	9.01	12.42
26.9	29.4	29.4	50	50
walk	Top wall	Dr.	Top wall	Dr.
Cor.				
303.91	303.58	304.38	304.12	
12.73	13.06	12.26	12.52	
29	29	50	50	
Top wall	Dr.	wall	Dr.	

316.64

297.7	297.8	298.8	299.0	299.6	299.6	300.5	300.7
7.0	6.9	5.9	5.7	5.1	5.1	4.2	4.0
40	30	21	12		15	30	40

Lt.

±

Rt.

40

30' N. = ± Broadway = end.

10' N. = S. cb. + edge of Conc. pave

4+35.50 = S.L. Broadway

4+31-22.1' Lt. = ± P. pole # P-70823  
Broadway + 63rd  
check B.M. = ± Ct.

T.P. 10.02 338.73 036 328.71

4+00

3+50

332.56	332.11	332.55	332.83	333.28	333.77	336.40
6.17	6.62	6.18	5.90	5.45	4.96	2.33
80	30	15	15	30	80	

331.82	331.11	331.91	331.27	331.76	332.23	332.84	333.49	336.12
6.91	7.62	6.82	7.46	6.97	6.50	5.89	5.24	2.61
80	80	29.9	29.9	6	15	30	80	
Top oncl.	gut endcb.	Top	gut = conc					

332.0	331.9	331.6	330.6	331.3	331.6	333.9	334.1	334.2
6.7	6.8	7.1	8.1	7.4	7.1	4.8	4.6	4.5
40	30	20	15	13	24	30	40	

332.85 = B. 1660 - P 67

338.73

329.6	329.1	328.0	326.2	327.0	326.8	330.9	331.7	333.1
+0.5	0.0	1.1	2.9	2.1	2.3	+1.8	+2.6	+4.0
40	30	19	12	13	23	30	40	

316.9	318.5	320.8	320.6	321.4	321.5	324.1	325.9	326.5
12.2	10.6	8.3	8.5	7.7	7.6	5.0	3.2	2.6
40	30	18	11	12	16	30	40	

229.07

D. Smith  
Wm. Fay  
E. Sherman  
R. Lockhead

Cross Sec Alley BIK 8  
Lexington Park

INDEXED  
MK  
AUG 11 1950

Manza  
Bike Dr

Snowdrop

BIK

£ Tuberosa

WO# 25020  
8-9-50 41

Set Hub St

3424 1/2

139 50

7

75 75

8

Poplar St

0+00

139 50

St

Fd Hub

D. Smith  
Wm. Fay  
E. Sherman  
R. Lochhead.

# Cross Sec Alley. BLK 8 Lexington Park

Walt 25020  
8-9-50 42

Lt = West      E      Rt = East

0+50      75 Rt. Begin 3' picket fence  
            75 Rt. End 4' board fence  
0+50      73 Lt. Begin 3' Picket fence

289.6	289.6	289.5	289.4	289.2	288.8
55	55	56	57	59	63
25	75		75	25	50

0+40      82 Lt. 2' Conc. Walk

289.59  
59  
82  
Walk

0+33

290.0	290.0	290.2	290.2	290.4	290.1
51	51	49	49	57	60
14	75		75	25	50

0+00      76 Rt. Begin 4' Board fence  
North Line      Tuberosc

290.6	290.3	289.9	289.8	289.6
45	48	52	53	55
25	75		75	25

0-10

290.9	290.2	289.9	289.8	289.2
42	42	52	53	52
575	75		75	575

0-25      E Tuberosc

290.9	290.4	290.60	290.2	289.1
42	42	448	42	60
575	75	M.H. rim	75	575

BM      347      29508

29161

H&B &  
12/22/10

Manzanita  
FB 2017  
RR, 15

29508

Lt. = West

£

Rt. = East

43

1+27 7<sup>5</sup> Rt. Center of 4' Conc. walk

289.27  
5<sup>81</sup>

7<sup>5</sup>

Walk

1+25 8<sup>0</sup> Rt. Begin 7' lath fence

289.37

1+25 8<sup>2</sup> Rt. NW Cor. of house

5<sup>71</sup>

8<sup>0</sup>

floor

1+20.5 5<sup>7</sup> Rt. End of 2' Conc. slab

289.01

6<sup>07</sup>

5<sup>7</sup>

conc.

1+14 5<sup>7</sup> Rt. Begin 2' wide Conc. slab 11 to line

289.02

6<sup>06</sup>

5<sup>7</sup>

Conc.

1+04 8<sup>1</sup> Rt. SW Cor. of house

289.37

5<sup>71</sup>

8<sup>1</sup>

floor

1+00 7<sup>5</sup> Rt. End of 3<sup>5</sup> Picket fence

290.4

4<sup>7</sup>

25

289.3

5<sup>8</sup>

7<sup>5</sup>

289.1

6<sup>0</sup>

7<sup>5</sup>

289.2

5<sup>9</sup>

7<sup>5</sup>

289.0

6<sup>1</sup>

25

288.6

6<sup>5</sup>

50

0+75 6<sup>5</sup> Rt. £12" Power Pole

No. PA 4080

295.08

Lt. : West

290.02  
Rt. : East  
604  
98

44

1497 98 Rt. NW Cor. Garage Conc. floor  
opens northerly

1476 95 Rt. SW Cor. Garage Conc. floor

290.12  
594  
96  
floor

1476 73 Rt. End of 45' board fence

TP 6.32 296.06 5.34 289.74

296.06

295.08

1462 75 Rt. Begin 45 Board fence

1462 76 Rt. NW Cor shed conc. floor

289.63  
289.3  
595  
58  
76  
76  
floor footing

1450

290.00  
289.5  
289.3  
289.2  
289.0  
51  
56  
58  
59  
61  
25  
75  
75  
25

1446 75 Rt. SW Cor. Shed conc. floor

1446 75 Rt. End of 7' lath fence

289.59  
549  
75  
floor

295.08

Lt. = West

Rt. = East

45

+115 9' Rt. NW. Cor. of house

3400

291.8	291.7	291.1	291.0	292.25
43	44	50	51	381
15	90	75	75	91
				291.0

+298 89' Rt. SW. Cor. of house

292.25  
381  
89  
floor

+255 7' Lt. 35' Picket fence

2450

290.7	290.6	290.7	290.2	290.0	289.8	289.6
54	55	54	59	61	63	65
25	15	75	75	75	25	50

+26 11' Lt. & single garage dirt floor

2420 7' Lt. End of 35' Picket fence

290.7  
54  
110  
floor

2400 7' Rt. & 14" Power Pole #PA4102

290.8	290.2	290.1	290.0	289.9	289.8
53	59	60	61	62	63
15	75	75	75	25	50

296.06  
2



Reduced By P. Horn

B.M.

4.64 291.42

✓ Rim M.H. Station 1+32.5

291.48 Snowdrop F.B. 2017-16

3+ 49.71

L. Snowdrop

M.H. Ring

291.9	291.7	291.6	291.42	291.5	291.0	290.6
42	44	45	46	46	51	55
50	25	75		75	25	50

3+ 34.71

291.7	291.5	291.2	291.2	291.2	291.1	290.5
44	46	49	49	49	50	56
50	25	75	75	25	50	

3+ 24.71

S. Line of Snowdrop

7<sup>th</sup> Lt. Picket fence

292.1	291.9	291.6	291.3	291.1	291.0	290.8	290.6
42	43	45	48	52	51	53	55
50	25	90	75		75	25	50

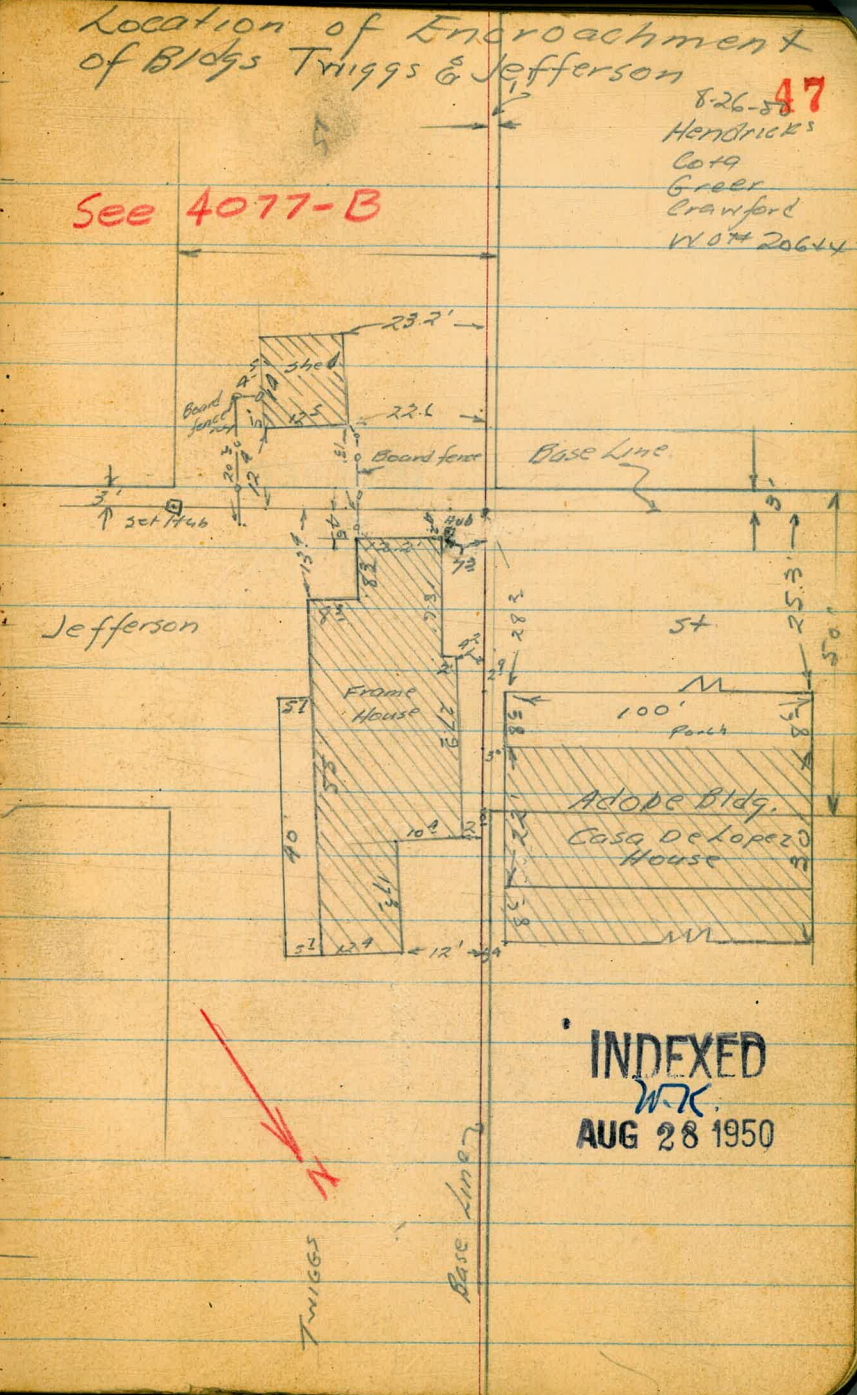
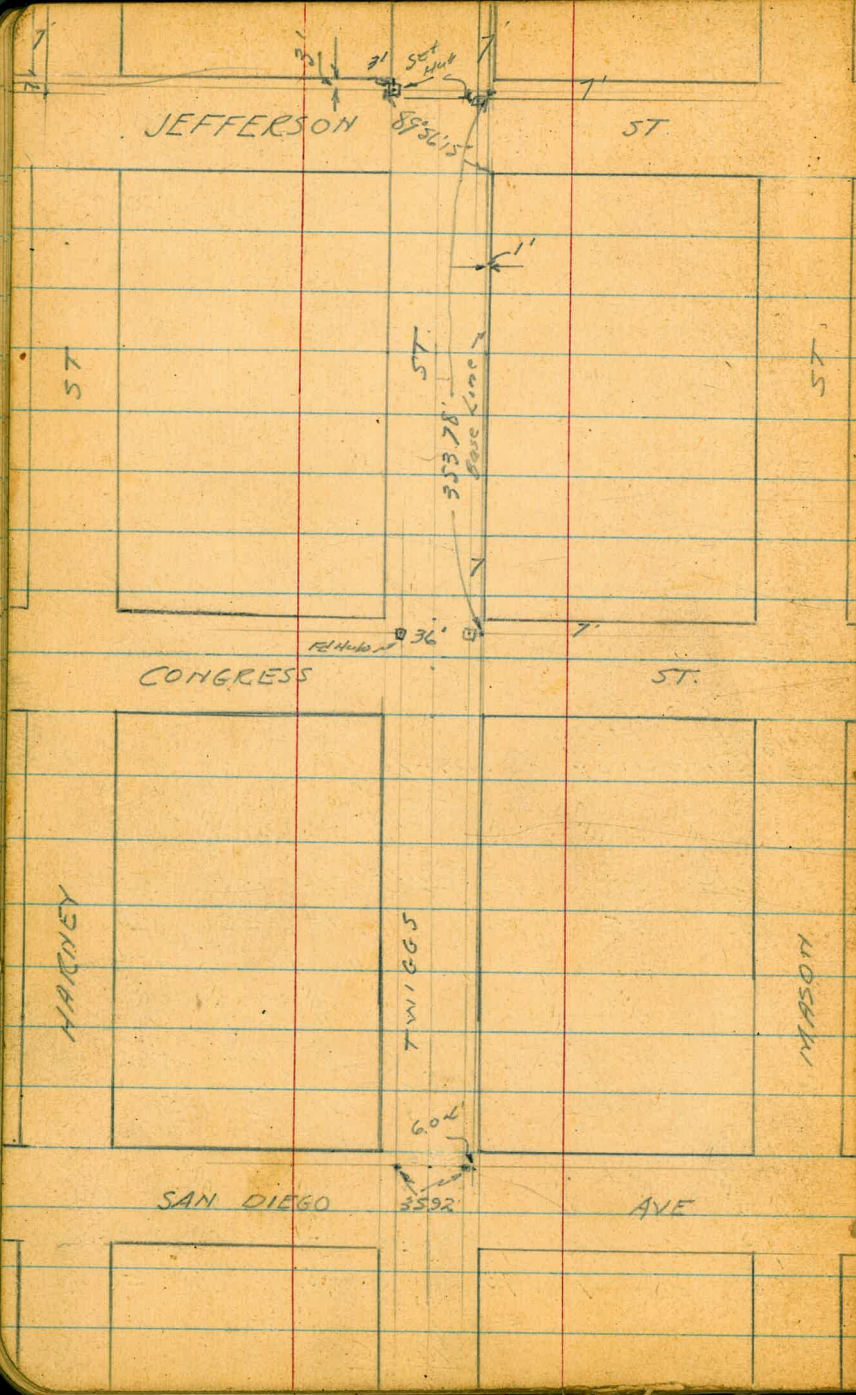
296.06  
4

Location of Encroachment  
of Bldgs Triiggs & Jefferson

8-26-50 47

Hendricks  
Co 19  
Greer  
Crawford  
W 04 20614

See 4077-B

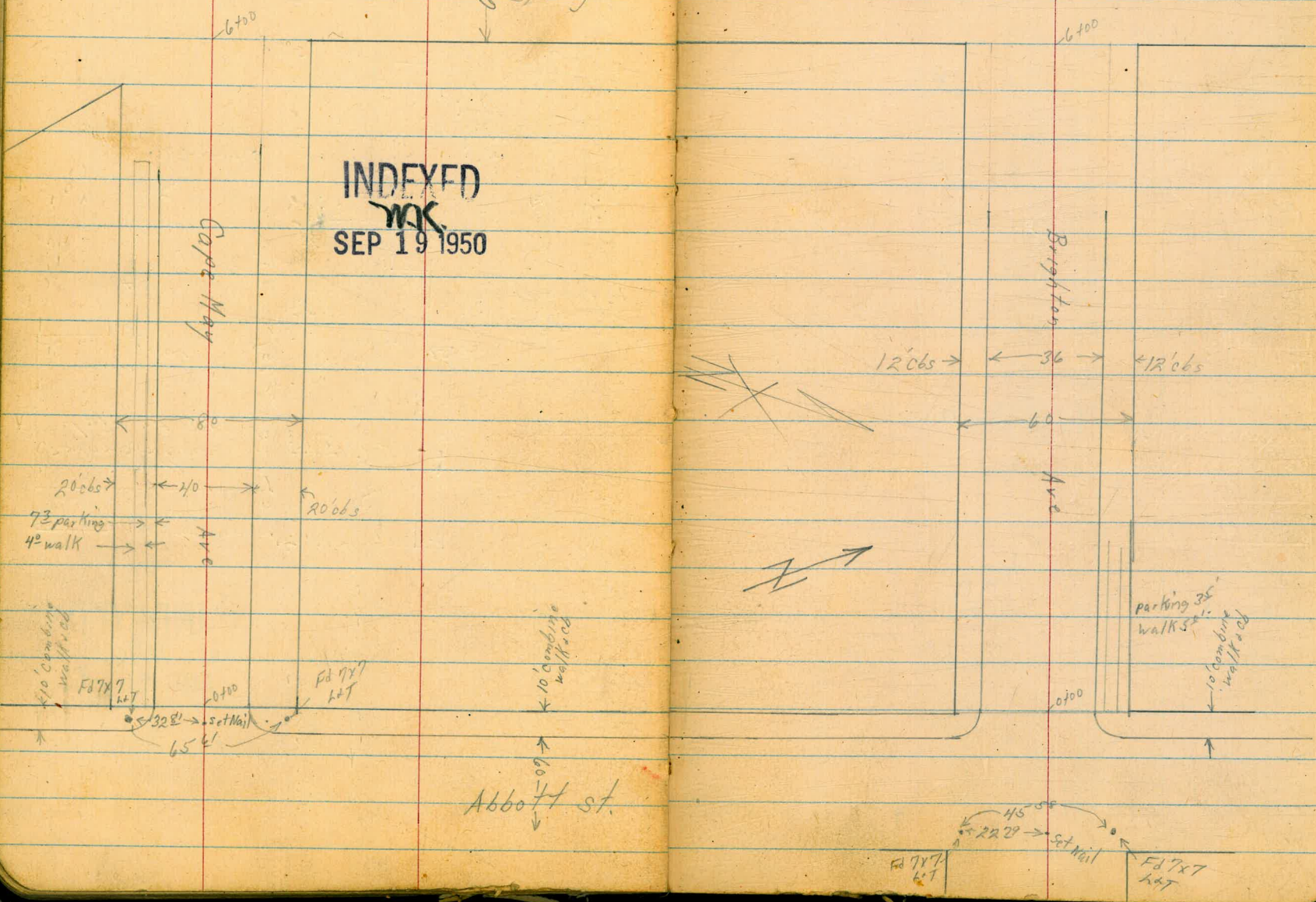


INDEXED  
W.K.  
AUG 28 1950

P. Smith  
Wm. Kay  
E. Sherman

Cross Section Brighton & Cape May Aves.  
from Abbott to Spray Sts.

9.1850  
W# 3/801 48



INDEXED  
MK  
SEP 19 1950



N14  
NW Return Abbott + Cape May  
10' Rad 17' length 3 parts 5' ea.

BC, Abbott  
8.86  
5<sup>11</sup>  
c6  
8.85  
5<sup>12</sup>

8.84  
5<sup>13</sup>  
947  
8.82  
5<sup>15</sup>

2/3  
8.87  
5<sup>10</sup>

8.83  
5<sup>14</sup>

EC, Cape May  
8.93  
5<sup>04</sup>  
c6

8.83  
5<sup>04</sup>  
947

N14  
SW Return Abbott + Cape May  
10' Rad 17' length 3 parts 5' ea.

B.C. Abbott  
8.65  
5<sup>32</sup>  
c6

8.13  
5<sup>34</sup>  
947

1/3  
8.69  
5<sup>28</sup>

8.24  
5<sup>22</sup>

2/3  
8.64  
5<sup>33</sup>

8.26  
5<sup>24</sup>

EC, Cape May  
8.65  
5<sup>32</sup>  
c6

8.07  
5<sup>20</sup>  
947

BM, 5<sup>08</sup> 13<sup>97</sup>

8.22 NWRP  
Abbott +  
Cape May

E14  
NE Return Abbott + Cape May  
10' Rad 17' length 3 parts 5' ea.

BC, Abbott  
8.99  
4<sup>98</sup>  
c6

8.92  
5<sup>55</sup>  
947

1/3  
8.91  
5<sup>06</sup>

8.46  
5<sup>51</sup>

2/3  
8.93  
5<sup>04</sup>

8.55  
5<sup>42</sup>

EC, Cape May  
8.98  
4<sup>99</sup>  
c6

8.41  
5<sup>56</sup>  
947

S14  
SE Return Abbott + Cape May  
10' Rad 17' length 3 parts 5' ea.

BC, Abbott  
8.62  
5<sup>26</sup>  
c6

8.12  
5<sup>35</sup>  
947

1/3  
8.68  
5<sup>29</sup>

8.22  
5<sup>25</sup>

2/3  
8.72  
5<sup>25</sup>

8.23  
5<sup>24</sup>

EC, Cape May  
8.71  
5<sup>26</sup>  
c6

8.24  
5<sup>13</sup>  
947

D. Smith  
Wm Fay  
E Sherman

X Sec Cape May Abbott to Spry

Lt: South

W. # 31801  
9-18-50

Rt: North

50

1734 20° Rt & 3' con walk

1717 20° Rt & 3' con walk

1400

0750

0700 West Line Abbott edge AC Paving

0-10 West Cb Line Abbott

0-30 E Abbott

BM

508

1397

889

N.W. B.P.  
Abbott  
Cape May

IMPROVED  
MAR 30 1951

8.6	7.83	7.67	7.0	7.2	7.3	7.4	7.3	7.94	8.6
53	64	63	62	62	64	65	66	603	53
40	313	20	20	10	10	10	20	20	40
	walk	cb	94t				94t	cb	

8.9	8.30	8.15	7.4	7.6	7.7	7.7	7.8	8.45	9.1
50	51	582	65	63	62	62	61	558	48
40	312	20	20	10	10	10	20	20	40
	walk	cb	94t				94t	cb	

8.85	8.72	8.66	8.07	8.47	8.65	8.59	8.32	8.93	9.16
512	525	531	590	550	532	538	565	504	481
40	313	20	20	10	10	10	20	20	40
	walk	cb	94t				94t	cb	walk
			bx edge						

8.04	7.99	8.65	8.07	8.65	8.13	8.38	8.12	8.69	8.74	8.59	9.05
523	648	532	520	522	504	509	525	528	553	509	492
70	90	40	40	30	30	20	20	30	30	40	40
cb	94t	cb	94t	cb	94t	cb	94t	cb	94t	cb	cb

7.95	8.47	8.69	8.79	8.84	8.89	9.02
62	550	528	518	513	508	425
90	40	20	20	20	40	90

1397

2784 20° Nt &amp; 12' on driveway

2757 20° Nt &amp; 3' con walk

2750

2743 20° Nt &amp; 10' drive

TP,

3<sup>25</sup>10<sup>45</sup>7<sup>27</sup>6<sup>20</sup>

2711 20° Nt &amp; 3' con walk

2700

1750

Lt = South

Rt = North

5.65	6.68
480	377
20	40
94	drive
drive	

6.40	7.40
4 <sup>25</sup>	5 <sup>25</sup>
20	39
walk	walk

6.5	6.30	6.21	5.5	5.7	5.9	5.9	5.7	6.41	7.7
32	4 <sup>15</sup>	4 <sup>24</sup>	4.2	4.2	4.5	4.5	4.2	4 <sup>24</sup>	2.2
40	31.3	20	20	10	10	10	20	20	40
	walk	cb	94				94	cb	
6.69	6.45	6.33	5.81						
3 <sup>26</sup>	4 <sup>20</sup>	4.2	4.64						
40	31.3	27.3	20						
drive	walk	walk	94						
			drive						

10<sup>45</sup>

6.87	8.64
7 <sup>10</sup>	5 <sup>33</sup>
20	40
walk	walk

8.0	6.85	6.84	6.2	6.3	6.5	6.4	6.3	6.99	8.82
5.2	7 <sup>13</sup>	7 <sup>13</sup>	7.2	7.5	7.6	7.5	7.6	6.98	5 <sup>15</sup>
40	31.3	20	20	10	10	10	20	20	40
	walk	cb	94				94	cb	

8.9	7.33	7.22	6.7	6.8	6.9	6.9	6.8	7.46	8.5
5.2	6.64	6.75	7.2	7.1	7.2	7.2	7.1	6.51	5.4
40	31.3	20	20	10	10	10	20	20	40
	walk	cb	94				94	cb	

13<sup>97</sup>

Guard Fence now goes From 3773 16' Lt to 3797 29° RT diagonally across stand.

3790 27° RT End 4' con walk // to line

3786 20° RT End cb

378

3773 14° Lt in guard railing

3756 27° Lt End 4' wide con walk // to line

3750 20° Lt End cb

3750 27° RT Begin 4' con walk // to line

3738 20° RT & 20' driveway in cb but dirt drive

3725 27° RT End 4' wide con walk // to line

3700 27° RT Begin 4' wide con walk // to line

Lt = South

RT = North

5.01

52.50

6	6	9	2.2	4.1	4.1	4.5	5.12	5.06	5.5
98	98	95	82	63	63	52	533	533	47
80	40	20	10	10	20	20	20	375	40
					get	cb	end	walk	

1.3	5.8	5.8	5.1	5.1	5.0	4.5	4.1	5.25	6.29	6.2
94	45	45	53	53	54	52	52	520	416	42
80	50	40	20	10	10	20	20	375	375	40
						get	cb	walk		

5.45  
5.20  
373  
walk  
end

6.1	5.8	5.3	5.0	5.2	5.2	5.3	5.0	5.45	5.50	5.53	6.0
43	47	54	54	52	53	51	54	500	425	422	44
40	37	20	20	10	10	20	20	275	375	375	40
	walk	cb	get			get	cb	walk	walk	walk	

5.06  
5.39  
20  
get  
drive

5.9  
4.5  
435  
graze  
floor  
dirt

5.82  
4.63  
275  
walk

5.82  
4.63  
375  
walk

5.9	5.78	5.72	5.2	5.2	5.3	5.5	5.4	5.95	6.02	6.05	6.2
42	44	47	52	52	51	42	52	450	443	420	42
40	37	20	20	10	10	20	20	275	275	375	40
	walk	cb	get			get	cb	walk	walk	walk	

10 45

ht = South

2

ht = North

53

5750

1.1	1.2	1.9	1.9	1.1	1.4	1.2	1.1	1.1
93	92	95	95	97	100	102	103	106
80	40	20	10		10	20	40	80

5700

1.2	1.1	1.8	1.8	1.8	1.6	1.3	1.4	0
92	92	96	96	96	98	101	100	104
80	40	20	10		10	20	40	80

4750

1.0	1.5	1.5	1.3	1.4	1.3	1.3	1.4	1.5
94	92	92	101	100	101	101	100	92
80	40	20	10		10	20	40	80

4720

1.8	1.1	1.6	1.6	1.6	1.3	1.0	1.3	1.1
96	97	98	98	98	96	94	94	82
80	40	20	10		10	20	40	80

4700

1	1.5	1.8	1.2	2.6	3.3	3.6	5.1	5.9
92	92	96	92	78	77	68	53	46
80	40	20	10		10	20	40	80

3792 15' ht E 24' (square) con storm Drain out let end,

3791 at E End guard rail

12.55  
15.5  
Flr  
19.0  
8.55  
16.5  
Flr  
Stendrain

10.45



Lt-South

2

Rt-North

54

Note: took soil sample at 1400 16' RT.

BM starting

153'  $\swarrow$  822  
820

6780 - E Hits Easterly Rock Rip rap

(H. 6.4)  
approx

6760 West Line Spray

1.2	1.9	4	2	2	4	1.0	1.1
92	98	102	102	102	102	94	93
40	20	10	10	20	40	80	

fact edge  
approx

6730 E Spray

6	3	5	7	7	5	4	5	6
92	104	92	92	92	92	102	92	98
80	40	20	10	10	20	40	80	

6700 East Line Spray

1.5	1.6	7	7	7	5	6	4	3
92	98	92	92	92	92	98	102	102
80	40	20	10	10	20	40	80	

10 45

Wly  
NW Return Brighton & Abbott  
10' Rad 15<sup>3</sup> length 3 parts 5<sup>1</sup> ea.

BC, Abbott  
10.08 9.56  
489 544  
06 gut

1/3  
10.14 9.67  
483 530

2/3  
10.17 9.70  
480 527

EC, Brighton  
10.14 9.64  
483 533  
06 gut

Wly  
SW Return Brighton & Abbott  
10' Rad 15<sup>3</sup> length 3 parts 5<sup>1</sup> ea.

BC, Abbott  
10.01 9.63  
486 534  
06 gut

1/3  
10.04 9.67  
483 530

2/3  
10.03 9.70  
484 527

EC, Brighton  
10.11 9.61  
486 536  
06 gut

BM.

482

1427

10<sup>15</sup>

NW of  
Brighton &  
Abbott

Ely  
NE Return Brighton & Abbott  
10' Rad 15<sup>1</sup> length 3 parts 5<sup>2</sup> ea

BC, Abbott  
9.92 9.92  
505 555  
06 gut

1/3  
9.90 9.57  
507 540

2/3  
9.90 9.58  
507 539

EC, Brighton  
9.99 9.94  
498 553  
06 gut

Sly  
SE Return Brighton & Abbott  
10' Rad 18<sup>0</sup> length 3 parts 6<sup>2</sup> ea

BC, Abbott  
10.06 9.52  
482 545  
06 gut

1/3  
10.16 9.68  
481 529

2/3  
10.15 9.65  
482 532

EC, Brighton  
10.04 9.52  
493 535  
06 gut

1427

D. Smith ✓  
Wm Fay  
E. Sherman

X Sec Brighton St.

Abbott to Spry

W 7 31801  
9-18-50

56

0+70 215 Rt End 5' con walk  
0+70 18° Rt End drive way

Lt = South

Rt = North  
8.63 9.30 9.45 9.52  
6.34 5.67 5.52 5.45  
18 215 265 30  
drive out walk walk drive

0+61 18° Lt E 11 con driveway

9.47 9.32 8.76  
5.50 5.05 6.2  
30 215 18  
drive drive drive out

0+50 31 1/2 Lt Begin 5' con walk 11 to line

9.1 9.55 9.44 9.40 8.8  
5.2 5.42 5.53 5.57 6.1 8.9  
30 265 215 18 18 9  
walk walk ct out

0+35 18° Rt Begin driveway

9.11 9.67  
5.86 5.30  
18 215  
drive drive  
out

0+00 West Line Abbott edge AC paving

10.30 10.12 9.61 9.92 10.00 9.87 9.63 10.14 10.18 10.07  
4.67 4.85 5.36 5.05 4.77 5.10 5.34 4.83 4.79 4.20  
30 18 18 9 9 18 18 265 30  
walk ct out ct walk walk

0-10 West C6 line Abbott

9.88 9.42 10.00 9.63 9.83 10.12 10.18 10.07 9.83 9.58 10.08 8.10  
5.09 5.55 4.97 5.34 5.14 4.85 4.77 4.20 5.14 5.32 4.89 6.87 6.20  
80 80 30 30 18 9 9 18 30 30 80 80  
ct out ct out out out ct out ct

0-30 E Abbott

8.63 9.81 10.05 10.16 10.18 10.15 10.05 9.97 9.75  
6.34 5.16 4.92 4.81 4.79 4.82 4.92 5.00 5.22  
80 30 18 9 9 18 30 80

BM

4.82

14.27

10.15

N.W. 1/4  
Brighton  
Abbott

15.97

2+50 21<sup>5</sup> Lt End 5' con walk // to line

2+44 18<sup>0</sup> Lt End broken or poor cb

2+32 18<sup>0</sup> Lt Begin broken or poor cb

2+00

1+60 21<sup>5</sup> Rt End 5' con walk // to line

1+50 21<sup>5</sup> Lt Begin 5' con walk // to line

1+20 21<sup>5</sup> Rt Begin 5' con walk // to line

1+00 21<sup>5</sup> Lt End 5' con walk // to line

TR

349

11<sup>76</sup>

6<sup>72</sup>

8<sup>27</sup>

Lt=South

Rt=North

57

7.2	6.75	6.65	6.53	5.9	6.0	6.1	6.1	5.9	6.53	7.8	8.4
45	50	51	52	58	52	54	55	58	53	39	33
30	26.5	21.5	18	18	9	9	9	18	18	20	30
	walk	walk	cb	cut				cut	cb		

6.60  
5.76

18  
cb

6.78

4.98

18<sup>0</sup>  
cb

7.8	7.42	7.28	6.4	6.6	6.7	6.8	6.5	7.21	8.1
39	43.4	44.8	52	51	50	49	52	45.5	36
30	26.5	18	18	9	9	9	18	18	30
	walk	cb	cut				cut	cb	

7.91

385

21.5

walk

end

7.93

383

26.5

walk

end

8.9	8.19	8.11	8.01	7.3	7.6	7.6	7.5	7.3	7.92	8.05	8.0
28	35.7	36.5	32.5	44	44	44	42	44	38.4	37.2	32
30	26.5	21.5	18	18	9	9	9	18	18	26.5	30
	walk	walk	cb	cut				cut	cb	walk	

8.48

338

21.5

walk

8.50

326

26.5

walk

8.8	8.80	8.71	8.65	8.0	8.1	8.2	8.2	8.1	8.68	9.3
22	22	30.5	31	32	36	35	35	36	30.8	24
30	26.5	21.5	18	18	9	9	9	18	18	30
	walk	walk	cb	cut				cut	cb	

11<sup>76</sup>

3493 18° Lt & 3' con walk

3455 18° Lt & 3' con walk

3450

3418 18° Lt & 3' con walk

3400

2495 18° Rt & 3' con walk

2487 18° Rt & 8' Broken out cb for dirt driveway

2470 & Sewer M.H.

2465 18° Lt & 9' con driveway

Lt = South

Rt = North

58

6.14	6.07	4.75
5.62	5.69	7.21
30 walk	27 walk	18 walk
6.23	6.17	5.11
5.53	5.59	6.65
30 walk	27 walk	18 walk

5.9	5.12	4.4	4.5	4.7	4.6	4.4	5.09	6.4	6.6
5.8	6.4	7.3	7.2	7.0	7.1	7.3	6.9	5.3	5.1
30	18 cb	18 set	9		9	18	18 set	20	30

					5.54		6.00		
					6.22		5.76		
					18 walk		30 walk		
7.0	5.87	5.2	5.3	5.4	5.4	5.1	5.81	6.0	
4.2	5.22	6.5	6.4	6.3	6.3	6.4	5.96	5.2	
30	18 cb	18 set	9		9	18 set	18 cb	30	

	5.87	6.08
	5.82	5.68
	18 walk	30 walk
		5.4
		6.3
		18 set
		6.08
		dirt

				5.68	
				11m M.L.	
7.09	6.54	6.30	5.76		
4.67	5.22	5.46	6.00		
30	21.5 drive	21.5 drive	18 set		

11 76

# INDEXED

AUG 6 1951

4450

TP<sub>2</sub>

724

1122

728

328

From Here on.

4437 18° RT + LT End C6c

4435 18° RT & 3' con walk

4423 18° RT & 3' con walk

4405 18° LT & 2' con walk

4402 18° RT & 3' con walk

4400 18° LT End 8' con walk // to line

3475 RT begin 8' wide solid con walk // to line

X-Section checked by Roberts  
Aug 3, 1951  
changes in Red.



Lt = South

RT = North

59

6.6	5.8	5.9	5.8	4.5	4.5	4.5	3.6	3.8
46	54	53	54	62	62	62	76	74
80	30	18	9	9	18	30	80	

1122

4.5	3.83	3.8	3.5	3.5	3.1	3.1	3.76	4.2
72	723	72	82	82	80	80	800	75
80	18	18	9	9	18	18	18	30
	50	50			50	50	End	

4.62  
711  
30  
walk

3.85  
721  
18  
walk

4.01 4.28  
725 748  
18 26  
walk walk

4.83 4.32  
623 744  
30 18  
walk walk

4.33 4.54

743 722  
18 25  
walk walk

5.2	5.06	4.39	3.8	3.9	3.9	3.8	3.1	4.36	4.2
65	620	732	72	78	78	72	80	70	75
30	24	18	18	9	9	18	18	30	
	walk	66	50	50		50	50		

5.25 4.74  
651 702  
260 182  
walk walk

1120

Lt=South

♀

RT=North

60

BM starting

10<sup>2</sup>

10<sup>15</sup>

↖ 10 15 ✓

6460 West line Spray

2.0 1.4 1.6 1.3 1.0 0.9 0.4

8 1 4 4 3 2 2 2 16  
10<sup>2</sup> 11<sup>3</sup> 11<sup>6</sup> 11<sup>6</sup> 11<sup>5</sup> 11<sup>4</sup> 11<sup>4</sup> 11<sup>0</sup> 11<sup>6</sup>  
80 30 18 9 9 18 30 80

1.4 1.1 0.9 0.8 0.6 0.5 -0.2

2 3 1 0 0 0 0 2 16  
11<sup>0</sup> 10<sup>2</sup> 11<sup>3</sup> 11<sup>3</sup> 11<sup>2</sup> 11<sup>2</sup> 11<sup>4</sup> 11<sup>8</sup>  
80 30 18 9 9 18 30 80

1.2 0.8 0.7 0.4 0.3 0.1

2 1 1 0 0 0 0 3 16  
11<sup>0</sup> 11<sup>1</sup> 11<sup>3</sup> 11<sup>3</sup> 11<sup>2</sup> 11<sup>2</sup> 11<sup>2</sup> 11<sup>5</sup>  
80 30 18 9 9 18 30 80

1.5 1.2 1.1 1.2 1.4 1.6 1.0 1 1

10<sup>3</sup> 10<sup>0</sup> 10<sup>2</sup> 10<sup>0</sup> 9<sup>8</sup> 9<sup>6</sup> 9<sup>2</sup> 10<sup>5</sup> 10<sup>8</sup>  
80 30 18 9 9 18 30 80

1.4 2.6 2.1 1.9 2.3 2.5 1.8 1.5 1.6

9<sup>8</sup> 8<sup>6</sup> 9<sup>1</sup> 9<sup>3</sup> 8<sup>2</sup> 8<sup>2</sup> 9<sup>4</sup> 9<sup>2</sup> 9<sup>6</sup>  
80 30 18 9 9 18 30 80

11<sup>22</sup>

Changes in Red.  
Aug 9, 1951

6430 ♀ Spray

6400 East line Spray

5750

5700

2-3-51

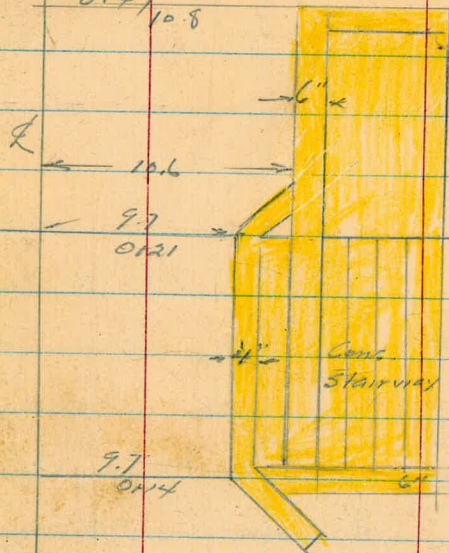
Hendricks

Pope  
Shepard

X Sect. 20' Alley.  
Block 77, Ocean Beach

Hatch  
140#

0+7/10.8



Detail of  
Stairway  
0+17.5

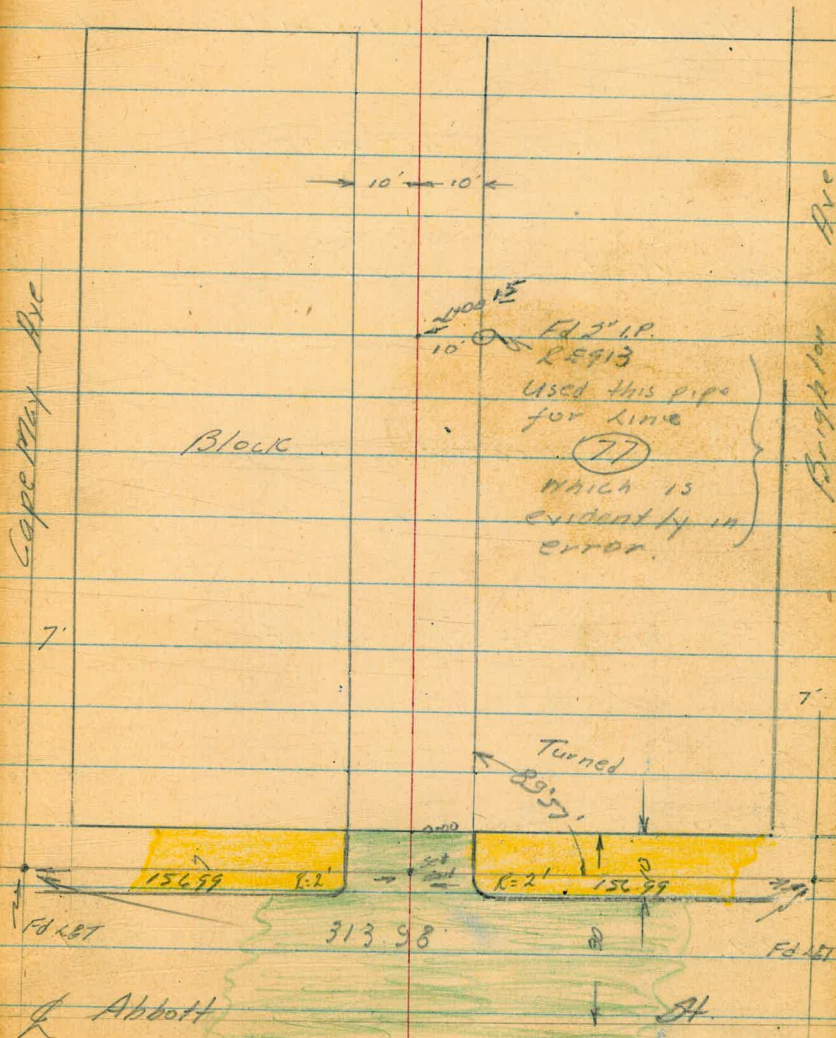
9.7  
0+14

Alley

Spray INDEXED  
MAR 30 1951

61

St.



Cape May Ave

Block

Brighton Ave

7

7

FL 2' I.P.

313.98

FL 2' I.P.

Abbott

St.

Turned

R=2'

156.99

FL 2' I.P.

28913

Used this pipe  
for line

(77)

which is  
evidently in  
error.



Levels Block 77  
Ocean Beach

(see sketch p. 61)

0+175 <sup>stairway</sup> 4' 4" Conc. Ret. Wall (entrance to Basement Apt.)

95 973 90 665  
 97 97 97 147  
 Gr. wall ft. wall

0+04 Power Pole # 448790 H 9.3 ft.

Edge Asph. Paving - End. of Cbs.  
 0+00 West Line Abbot

972 952 922 952 983  
 98 98 10 10  
 Cb G G Cb

0-08 EC 2' Cb Ret. Radius

946 903 916 958  
 98 98 10 10  
 Cb G G Cb

0-10 West Cb. Line Abbot

925 874 946 894 890 898 907 906 955 910 954  
 50 50 12 12 10 10 12 12 30 30  
 Cb G Cb G G Cb G Cb

0-30 & Abbot

919 930 940 952 964  
 50 10 10 50

B17.

889

NVIBP Abbot & Cape May

0+60

10 <sup>2</sup>	10 <sup>6</sup>	10 <sup>8</sup>	10 <sup>8</sup>	11 <sup>1</sup>	11 <sup>3</sup>
15	10		6	10	13

0+53.5 R 4.5 Conc. Walk 9.8 Rt.

11 <sup>00</sup>	11 <sup>03</sup>
9.8	12

0+48.5 R 2.5 Conc. Walk 7.8 Rt.

10 <sup>45</sup>	10 <sup>50</sup>
7.8	11

0+47 End 6" Conc Ret Wall on Rt.

10 <sup>5</sup>	10 <sup>25</sup>
10.8	10.8
Gr.	Wall

0+35

10 <sup>8</sup>	10 <sup>8</sup>	10 <sup>3</sup>	10 <sup>0</sup>
15	10		10

0+21 Beg 6" Conc Ret Wall on Rt.

9.76
10.6
Wall

Alley Block 77 Cont'd.

64

TP.

(971)

0+99.5 End 3.5' Conc Walk 9.6' Rt.  
(4" slab)

11.02 11.05  
9.6 13.1

0+90.5 End Board Porch beg 3.5' Conc Walk 9.6' Rt.  
Power Pole # A5120 9.8' Lt.  
4" slab

11.05 11.19  
9.6 13.1

0+88.5 Beg Board Porch 9.6' Rt.

0+79 End 3.5' Conc Walk 9.6' Rt.  
(4" slab)

11.12 11.08  
9.6 13.1

0+67 End Porch 6' Beg 3.5' Conc Walk 9.6' Rt.  
4" slab

11.13 11.14  
9.6 13.1

0+62 Beg Board Porch 9.6' Rt.

1428 End. Conc Ramp 10.4' Lt

10<sup>12</sup> 10<sup>03</sup>  
16.4 10.4  
floor Ramp

1418.5 End. 3.0' Conc Walk 9.2 Lt.

975 10<sup>40</sup> 10<sup>42</sup>  
9.2 9.2 12.2  
Btm Walk  
1191412 End. foundation & Beg 3' Conc Walk  
9.3' Rt.10<sup>84</sup> 10<sup>28</sup> 10<sup>50</sup>  
9.2 9.3 12.3  
Top. Walk Walk  
foundation1404 Beg 6" Conc Foundation 9.4' Rt  
& Porch9.95 10.90  
9.4 9.4  
119.

1401 Beg Conc Ramp 10.4' Lt.

995 10<sup>00</sup>  
16.4 10.4  
Ramp

1400

10<sup>0</sup> 9<sup>2</sup> 9<sup>9</sup> 10<sup>1</sup> 10<sup>6</sup> 10<sup>8</sup>  
15 10 6 10 13

Alley Block 77 Cont'd

2+28 Beg Conc Ramp 14.7 Lt.

9<sup>87</sup> 9<sup>68</sup>  
19.4 14.7  
floor Ramp

2+08 & Single Garage Dirt floor 18.7H

10'  
18.7  
floor

2+00 End Conc. Ramp 12.1' Lt.  
Revised Pole #448391 H 9.5 H.

9<sup>88</sup> 9<sup>84</sup> 9<sup>6</sup> 9<sup>1</sup> 8<sup>3</sup> 9<sup>1</sup> 9<sup>5</sup> 9<sup>9</sup>  
15.1 12.1 10 7 6 10 15  
floor Ramp

1+745 & 6' Conc. Drive 9.4' Rt.

8<sup>85</sup> 8<sup>76</sup>  
9.4 20

1+495 Beg Conc Ramp 12.3 Lt.

9<sup>74</sup> 9<sup>73</sup>  
15.3 12.3

1+445

9<sup>6</sup> 9<sup>6</sup> 9<sup>5</sup> 9<sup>6</sup> 9<sup>6</sup>  
15 10 10 15

2+98.5 Beg Shed Conc. Foundation 103 Rt  
 End 35' Conc Walk 10.3 Rt

7<sup>55</sup> 8<sup>60</sup> 7<sup>55</sup> 8<sup>03</sup>  
 103 103 103 13.8  
 fig top Walk Wall  
 Jan.

2+86 Beg 35' Conc Walk 10.6 Rt

7<sup>98</sup> 8<sup>08</sup>  
 106 14.1

2+685 & Single Garage. Dirt floor

7<sup>8</sup>  
 13.8  
 floor

2+56 & 12' Conc Drive 13.0 Lt

8<sup>33</sup> 8<sup>14</sup>  
 20 13.0

2+50

8<sup>35</sup> 8<sup>6</sup> 8<sup>4</sup> 8<sup>2</sup> 8<sup>6</sup> 9<sup>0</sup> 8<sup>5</sup>  
 15 10 7 6 10 15

2+49.5 END Conc. Ramp 137 Lt

10<sup>02</sup> 9<sup>45</sup>  
 194 137  
 floor Ramp

77.

6.42

3+69 £ 2.5' Conc. Walk 10.2 Rt.

2" L.P. Rt 4+00' 5  
RE 913

6<sup>43</sup> 6<sup>58</sup>  
10.2 15

3+58 £ Single Garage 14.4' Rt.

6<sup>9</sup>  
14.4  
floor

3+50

6<sup>0</sup> 6<sup>0</sup> 6<sup>1</sup> 6<sup>7</sup> 7<sup>0</sup>  
15 10 10 15

3+37 £ Double Garage Dirt floor 23.5 Rt.

6<sup>6</sup>  
23.5  
floor

3+08 End Shed on Rt.

7<sup>65</sup> 8<sup>66</sup>  
10.6 10.6  
14.9 floor

3+00 Power Pole # JPA 5122 12.5 Rt.

6<sup>6</sup> 6<sup>8</sup> 7<sup>0</sup> 7<sup>4</sup> 7<sup>2</sup>  
15 10 6 10

Alley Blocks 77 Contd

4+50

4+00

3+99.5 End Conc. Block Wall 10.2' Lt

3+86 & Double Garage 19.0' Lt

3+75.5 Beg. 8' Conc. Block Wall 10.3' Rt

3+75 Power Pole 9' Rt

From Here on  
+ sections checked  
by Roberts  
Aug 3, 1951  
changes in Red

357

INDEXED

AUG 6 1951

69

3<sup>±</sup> 4<sup>±</sup> 5<sup>±</sup> 5<sup>±</sup> 5<sup>±</sup>  
15 10 10 15

5<sup>±</sup> 5<sup>±</sup> 6<sup>±</sup> 6<sup>±</sup> 6<sup>±</sup>  
15 10 10 15

6<sup>05</sup> 6<sup>52</sup>  
9.5 9.5  
rim top  
ftg. ftg.

6<sup>16</sup>  
19.0  
floor

5<sup>90</sup> 6<sup>55</sup>  
10 10  
rim top  
ftg. ftg.



B.M.

10.12 (10.13)

NW BP Brighton & Abbot.

TP

3.97

6+00

2.0	2.1	2.2	2.2	2.1
<del>12</del>	<del>17</del>	<del>17</del>	<del>17</del>	<del>15</del>
18	10		10	15

5+50

1.3	1.3	1.3	1.4	1.4
<del>10</del>	<del>10</del>	<del>11</del>	<del>11</del>	<del>12</del>
18	10		10	15

5+00

0.7	1.2	1.8	1.8	2.2
<del>03</del>	<del>07</del>	<del>16</del>	<del>16</del>	<del>18</del>
15	10		10	15

4+75

1.3	✓	✓	✓	✓
<del>10</del>	<del>15</del>	<del>21</del>	<del>25</del>	<del>25</del>
15	10		10	15

4+60

✓	✓	3.9	✓	✓
<del>22</del>	<del>22</del>	<del>45</del>	<del>52</del>	<del>51</del>
15	10		4	10
				15

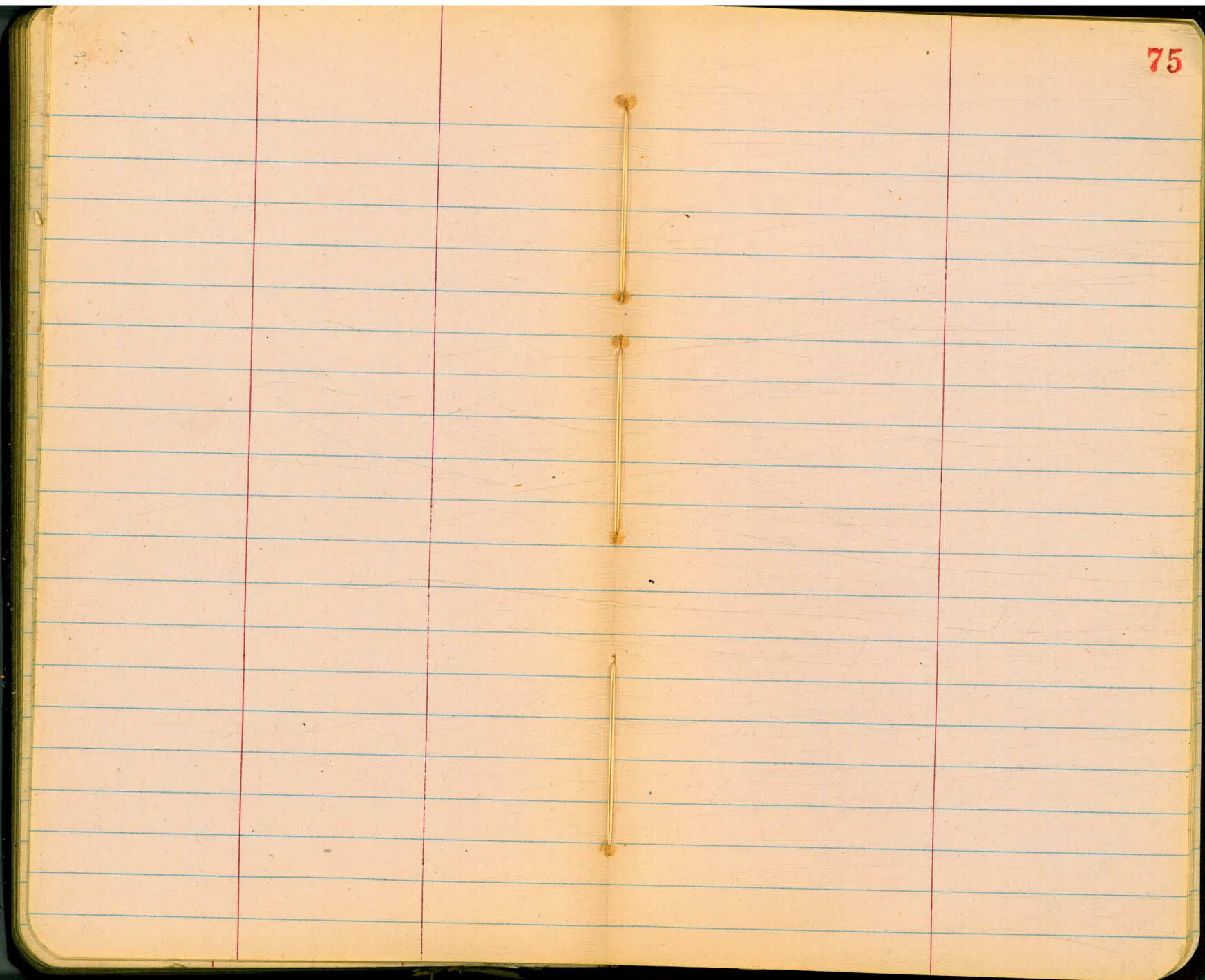
Changes in Red







74













80

518254  
 38  
 11

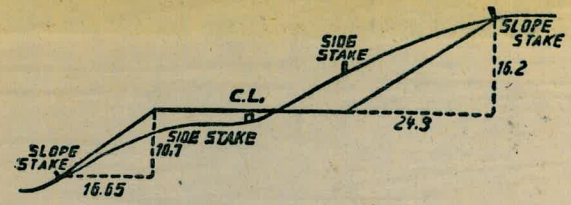
578254  
 3020  
 364

SP-38T

2+83 - 303.5  
 2.1  
 1.4

1+81 - 96.5

~~307.0~~  
 310.0  
 7.7  
 02.1



**DISTANCES FROM SIDE STAKES FOR CROSS-SECTIONING.**  
 SLOPE 1 1/2 TO 1. ROADWAY OF ANY WIDTH.

	0	.1	.2	.3	.4	.5	.6	.7	.8	.9	
0	0.00	0.15	0.30	0.45	0.60	0.75	0.90	1.05	1.20	1.35	0
1	1.50	1.65	1.80	1.95	2.10	2.25	2.40	2.55	2.70	2.85	1
2	3.00	3.15	3.30	3.45	3.60	3.75	3.90	4.05	4.20	4.35	2
3	4.50	4.65	4.80	4.95	5.10	5.25	5.40	5.55	5.70	5.85	3
4	6.00	6.15	6.30	6.45	6.60	6.75	6.90	7.05	7.20	7.35	4
5	7.50	7.65	7.80	7.95	8.10	8.25	8.40	8.55	8.70	8.85	5
6	9.00	9.15	9.30	9.45	9.60	9.75	9.90	10.05	10.20	10.35	6
7	10.50	10.65	10.80	10.95	11.10	11.25	11.40	11.55	11.70	11.85	7
8	12.00	12.15	12.30	12.45	12.60	12.75	12.90	13.05	13.20	13.35	8
9	13.50	13.65	13.80	13.95	14.10	14.25	14.40	14.55	14.70	14.85	9
10	15.00	15.15	15.30	15.45	15.60	15.75	15.90	16.05	16.20	16.35	10
11	16.50	16.65	16.80	16.95	17.10	17.25	17.40	17.55	17.70	17.85	11
12	18.00	18.15	18.30	18.45	18.60	18.75	18.90	19.05	19.20	19.35	12
13	19.50	19.65	19.80	19.95	20.10	20.25	20.40	20.55	20.70	20.85	13
14	21.00	21.15	21.30	21.45	21.60	21.75	21.90	22.05	22.20	22.35	14
15	22.50	22.65	22.80	22.95	23.10	23.25	23.40	23.55	23.70	23.85	15
16	24.00	24.15	24.30	24.45	24.60	24.75	24.90	25.05	25.20	25.35	16
17	25.50	25.65	25.80	25.95	26.10	26.25	26.40	26.55	26.70	26.85	17
18	27.00	27.15	27.30	27.45	27.60	27.75	27.90	28.05	28.20	28.35	18
19	28.50	28.65	28.80	28.95	29.10	29.25	29.40	29.55	29.70	29.85	19
20	30.00	30.15	30.30	30.45	30.60	30.75	30.90	31.05	31.20	31.35	20
21	31.50	31.65	31.80	31.95	32.10	32.25	32.40	32.55	32.70	32.85	21
22	33.00	33.15	33.30	33.45	33.60	33.75	33.90	34.05	34.20	34.35	22
23	34.50	34.65	34.80	34.95	35.10	35.25	35.40	35.55	35.70	35.85	23
24	36.00	36.15	36.30	36.45	36.60	36.75	36.90	37.05	37.20	37.35	24
25	37.50	37.65	37.80	37.95	38.10	38.25	38.40	38.55	38.70	38.85	25
26	39.00	39.15	39.30	39.45	39.60	39.75	39.90	40.05	40.20	40.35	26
27	40.50	40.65	40.80	40.95	41.10	41.25	41.40	41.55	41.70	41.85	27
28	42.00	42.15	42.30	42.45	42.60	42.75	42.90	43.05	43.20	43.35	28
29	43.50	43.65	43.80	43.95	44.10	44.25	44.40	44.55	44.70	44.85	29
30	45.00	45.15	45.30	45.45	45.60	45.75	45.90	46.05	46.20	46.35	30
31	46.50	46.65	46.80	46.95	47.10	47.25	47.40	47.55	47.70	47.85	31
32	48.00	48.15	48.30	48.45	48.60	48.75	48.90	49.05	49.20	49.35	32
33	49.50	49.65	49.80	49.95	50.10	50.25	50.40	50.55	50.70	50.85	33
34	51.00	51.15	51.30	51.45	51.60	51.75	51.90	52.05	52.20	52.35	34
35	52.50	52.65	52.80	52.95	53.10	53.25	53.40	53.55	53.70	53.85	35
36	54.00	54.15	54.30	54.45	54.60	54.75	54.90	55.05	55.20	55.35	36
37	55.50	55.65	55.80	55.95	56.10	56.25	56.40	56.55	56.70	56.85	37
38	57.00	57.15	57.30	57.45	57.60	57.75	57.90	58.05	58.20	58.35	38
39	58.50	58.65	58.80	58.95	59.10	59.25	59.40	59.55	59.70	59.85	39
40	60.00	60.15	60.30	60.45	60.60	60.75	60.90	61.05	61.20	61.35	40
41	61.50	61.65	61.80	61.95	62.10	62.25	62.40	62.55	62.70	62.85	41
42	63.00	63.15	63.30	63.45	63.60	63.75	63.90	64.05	64.20	64.35	42
43	64.50	64.65	64.80	64.95	65.10	65.25	65.40	65.55	65.70	65.85	43
44	66.00	66.15	66.30	66.45	66.60	66.75	66.90	67.05	67.20	67.35	44
45	67.50	67.65	67.80	67.95	68.10	68.25	68.40	68.55	68.70	68.85	45
46	69.00	69.15	69.30	69.45	69.60	69.75	69.90	70.05	70.20	70.35	46
47	70.50	70.65	70.80	70.95	71.10	71.25	71.40	71.55	71.70	71.85	47
48	72.00	72.15	72.30	72.45	72.60	72.75	72.90	73.05	73.20	73.35	48
49	73.50	73.65	73.80	73.95	74.10	74.25	74.40	74.55	74.70	74.85	49
50	75.00	75.15	75.30	75.45	75.60	75.75	75.90	76.05	76.20	76.35	50

THE NATIONAL BLANK BOOK COMPANY  
 HOLYOKE MASSACHUSETTS  
 NEW YORK CHICAGO BOSTON SAN FRANCISCO