

DISTANCES FROM SIDE STAKES FOR CROSS-SECTIONING  
SLOPE 1 TO 1. ROADWAY OF ANY WIDTH

	0	.1	.2	.3	.4	.5	.6	.7	.8	9	
0	0.00	0.10	0.20	0.30	0.40	0.50	0.60	0.70	0.80	0.90	0
1	1.00	1.10	1.20	1.30	1.40	1.50	1.60	1.70	1.80	1.90	1
2	2.00	2.10	2.20	2.30	2.40	2.50	2.60	2.70	2.80	2.90	2
3	3.00	3.10	3.20	3.30	3.40	3.50	3.60	3.70	3.80	3.90	3
4	4.00	4.10	4.20	4.30	4.40	4.50	4.60	4.70	4.80	4.90	4
5	5.00	5.10	5.20	5.30	5.40	5.50	5.60	5.70	5.80	5.90	5
6	6.00	6.10	6.20	6.30	6.40	6.50	6.60	6.70	6.80	6.90	6
7	7.00	7.10	7.20	7.30	7.40	7.50	7.60	7.70	7.80	7.90	7
8	8.00	8.10	8.20	8.30	8.40	8.50	8.60	8.70	8.80	8.90	8
9	9.00	9.10	9.20	9.30	9.40	9.50	9.60	9.70	9.80	9.90	9
10	10.00	10.10	10.20	10.30	10.40	10.50	10.60	10.70	10.80	10.90	10
11	11.00	11.10	11.20	11.30	11.40	11.50	11.60	11.70	11.80	11.90	11
12	12.00	12.10	12.20	12.30	12.40	12.50	12.60	12.70	12.80	12.90	12
13	13.00	13.10	13.20	13.30	13.40	13.50	13.60	13.70	13.80	13.90	13
14	14.00	14.10	14.20	14.30	14.40	14.50	14.60	14.70	14.80	14.90	14
15	15.00	15.10	15.20	15.30	15.40	15.50	15.60	15.70	15.80	15.90	15
16	16.00	16.10	16.20	16.30	16.40	16.50	16.60	16.70	16.80	16.90	16
17	17.00	17.10	17.20	17.30	17.40	17.50	17.60	17.70	17.80	17.90	17
18	18.00	18.10	18.20	18.30	18.40	18.50	18.60	18.70	18.80	18.90	18
19	19.00	19.10	19.20	19.30	19.40	19.50	19.60	19.70	19.80	19.90	19
20	20.00	20.10	20.20	20.30	20.40	20.50	20.60	20.70	20.80	20.90	20
21	21.00	21.10	21.20	21.30	21.40	21.50	21.60	21.70	21.80	21.90	21
22	22.00	22.10	22.20	22.30	22.40	22.50	22.60	22.70	22.80	22.90	22
23	23.00	23.10	23.20	23.30	23.40	23.50	23.60	23.70	23.80	23.90	23
24	24.00	24.10	24.20	24.30	24.40	24.50	24.60	24.70	24.80	24.90	24
25	25.00	25.10	25.20	25.30	25.40	25.50	25.60	25.70	25.80	25.90	25
26	26.00	26.10	26.20	26.30	26.40	26.50	26.60	26.70	26.80	26.90	26
27	27.00	27.10	27.20	27.30	27.40	27.50	27.60	27.70	27.80	27.90	27
28	28.00	28.10	28.20	28.30	28.40	28.50	28.60	28.70	28.80	28.90	28
29	29.00	29.10	29.20	29.30	29.40	29.50	29.60	29.70	29.80	29.90	29
30	30.00	30.10	30.20	30.30	30.40	30.50	30.60	30.70	30.80	30.90	30
31	31.00	31.10	31.20	31.30	31.40	31.50	31.60	31.70	31.80	31.90	31
32	32.00	32.10	32.20	32.30	32.40	32.50	32.60	32.70	32.80	32.90	32
33	33.00	33.10	33.20	33.30	33.40	33.50	33.60	33.70	33.80	33.90	33
34	34.00	34.10	34.20	34.30	34.40	34.50	34.60	34.70	34.80	34.90	34
35	35.00	35.10	35.20	35.30	35.40	35.50	35.60	35.70	35.80	35.90	35
36	36.00	36.10	36.20	36.30	36.40	36.50	36.60	36.70	36.80	36.90	36
37	37.00	37.10	37.20	37.30	37.40	37.50	37.60	37.70	37.80	37.90	37
38	38.00	38.10	38.20	38.30	38.40	38.50	38.60	38.70	38.80	38.90	38
39	39.00	39.10	39.20	39.30	39.40	39.50	39.60	39.70	39.80	39.90	39
40	40.00	40.10	40.20	40.30	40.40	40.50	40.60	40.70	40.80	40.90	40
41	41.00	41.10	41.20	41.30	41.40	41.50	41.60	41.70	41.80	41.90	41
42	42.00	42.10	42.20	42.30	42.40	42.50	42.60	42.70	42.80	42.90	42
43	43.00	43.10	43.20	43.30	43.40	43.50	43.60	43.70	43.80	43.90	43
44	44.00	44.10	44.20	44.30	44.40	44.50	44.60	44.70	44.80	44.90	44
45	45.00	45.10	45.20	45.30	45.40	45.50	45.60	45.70	45.80	45.90	45
46	46.00	46.10	46.20	46.30	46.40	46.50	46.60	46.70	46.80	46.90	46
47	47.00	47.10	47.20	47.30	47.40	47.50	47.60	47.70	47.80	47.90	47
48	48.00	48.10	48.20	48.30	48.40	48.50	48.60	48.70	48.80	48.90	48
49	49.00	49.10	49.20	49.30	49.40	49.50	49.60	49.70	49.80	49.90	49
50	50.00	50.10	50.20	50.30	50.40	50.50	50.60	50.70	50.80	50.90	50

Distance of slope stake from side or shoulder stake for any width roadway, slope 1 to 1. If ground is nearly level, the cut or fill at side stake is located by the double entry method in left column and top row. The number in body of table in same row and column gives distance from side stake to slope stake. If ground is not level estimate the difference in elevation between the side stake and slope stake, lower target by this amount if cut, elevate if fill. Add this amount to cut or fill and find distance in table. Set up rod at this point, and line of sight should cut target. If it does not make the slight adjustment necessary.

# 2005

640 92 82

## CITY ENGINEER'S OFFICE

INDEXED

to page # 77



INDEX

Page 2-37	Location & Levels for Proposed Sewer Los Alturas No. 2 & No 4.	
" 51-	Narragansett Extension Chatsworth to Macaulay	} 51
	Chatsworth - Narragansett Nly.	} to
	Macaulay - Chatsworth to Plum.	} 77
	upstair St.	45
78	Alignment & Profile Prop-Sewer 58nd Nly. Imp. Lot A	
37	Proposed Sewer - Torrence's <sup>Reynard</sup> WAY to EAGLE	

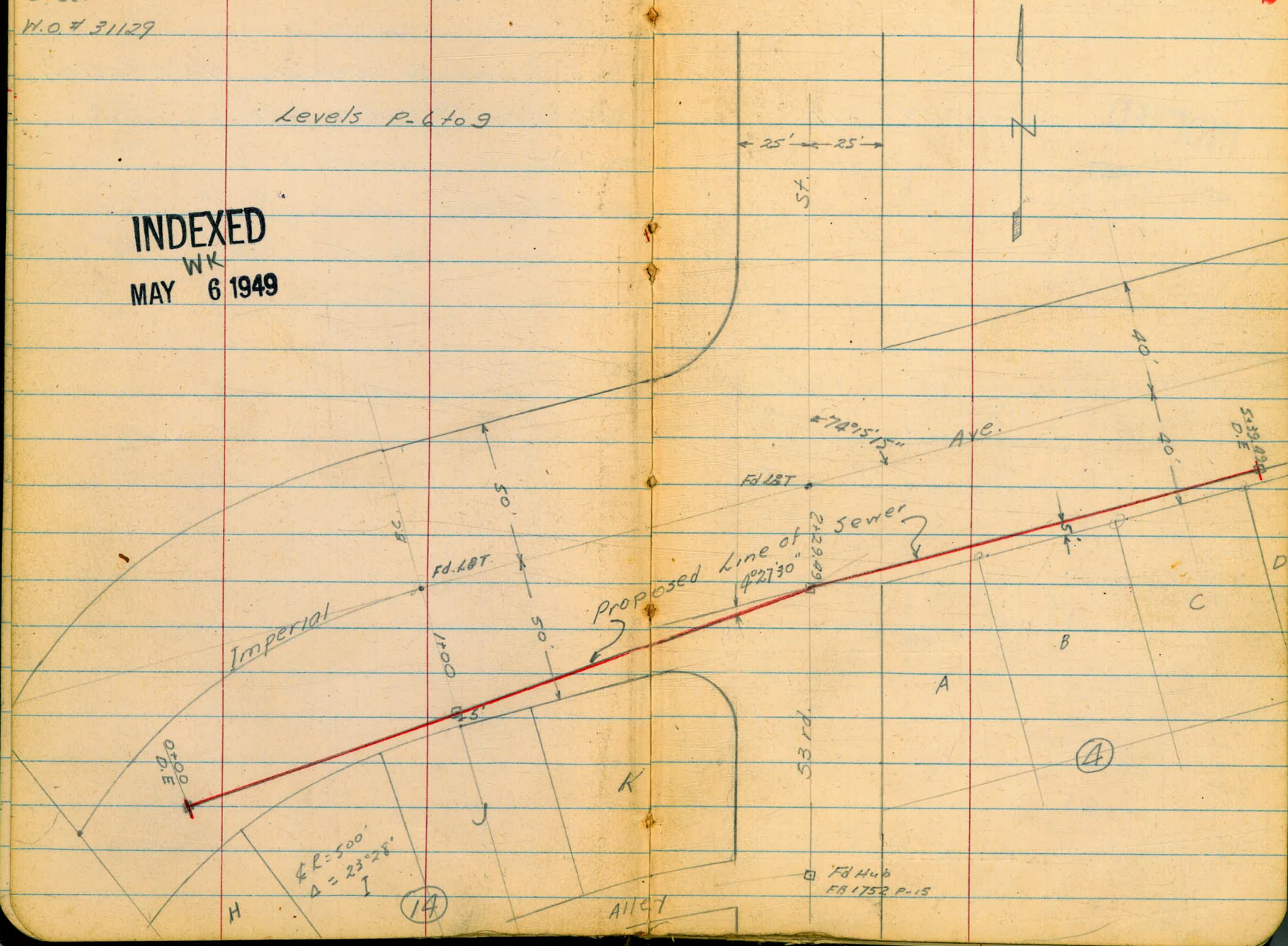


Jan. 1949  
Hendricks  
Bramby  
Greer  
W.O. # 31129

Proposed Location of Sewer  
53rd. & Imperial Los Altos No. 4. B No. 2  
Blocks 14 & 4

Levels P-6 to 9

INDEXED  
WK  
MAY 6 1949





Jan. 1949  
 Handricks  
 Bramby  
 Greer  
 WO # 31129

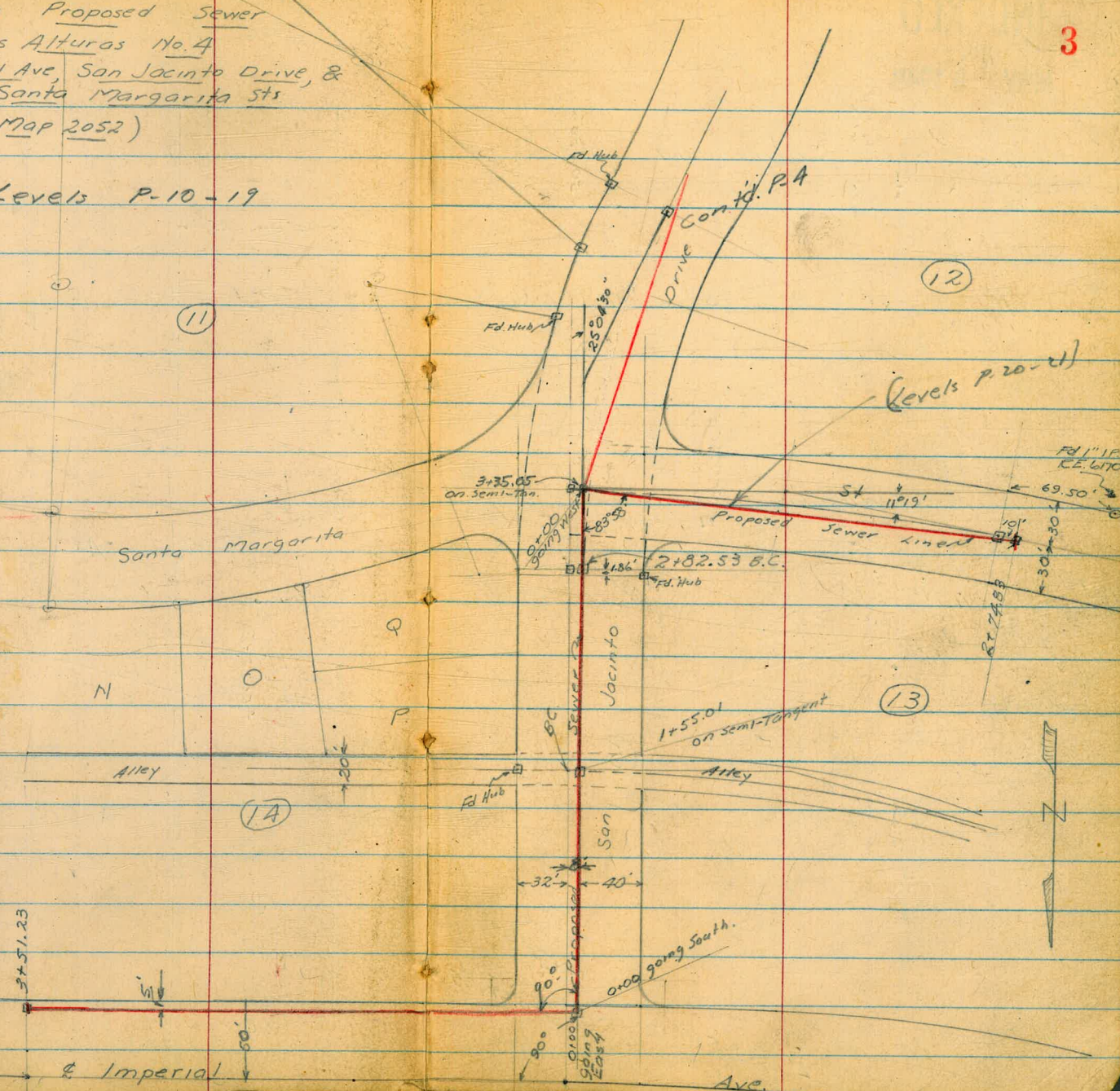
Location Proposed Sewer

Los Alturas No. 4  
 Imperial Ave, San Jacinto Drive, &  
 Santa Margarita Sts  
 (Map 2052)

INDEXED

MAY WK  
 6 1949

Levels P-10-19





INDEXED

MAY 6 1949  
WK

Cont'd. from P. 3

4

157 85.47 DE.

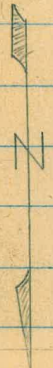
77+30.00 DE.

Churchward

O P Q R S T U

Proposed Alternate Line of Sewer

Note:  
Fd old original Hub  
S.E. Cor Lot A Blocks  
Used This and SW Cor. Lot A  
Blk 5 to Establish Line.



See P. 5 This Line  
Santa Margarita St

3+19.60 =  
0700 going North  
73° 27' 1"  
Rec. 73° 33' 30"

(5)

(11)

(12)

(5)

Fd. Disc.  
L.S. 2236  
89° 20'

Las Alamos No 2  
Lot A Hub  
2478.65  
Fd. Hub  
R.E. 4847

Fd. Hub  
R.E. 4847

Fd. Hub

Fd Hubs  
3+00.60  
2440  
3+25.60 =  
5+40.69 P. 5

6+26.39  
15.30

Fd. Hub  
R.C.  
57.66

Fd. Hub  
R.E. 4847

Fd. Hub

3+35.65  
40'

3+25.60 =  
5+40.69 P. 5

3+25.60 =  
5+40.69 P. 5

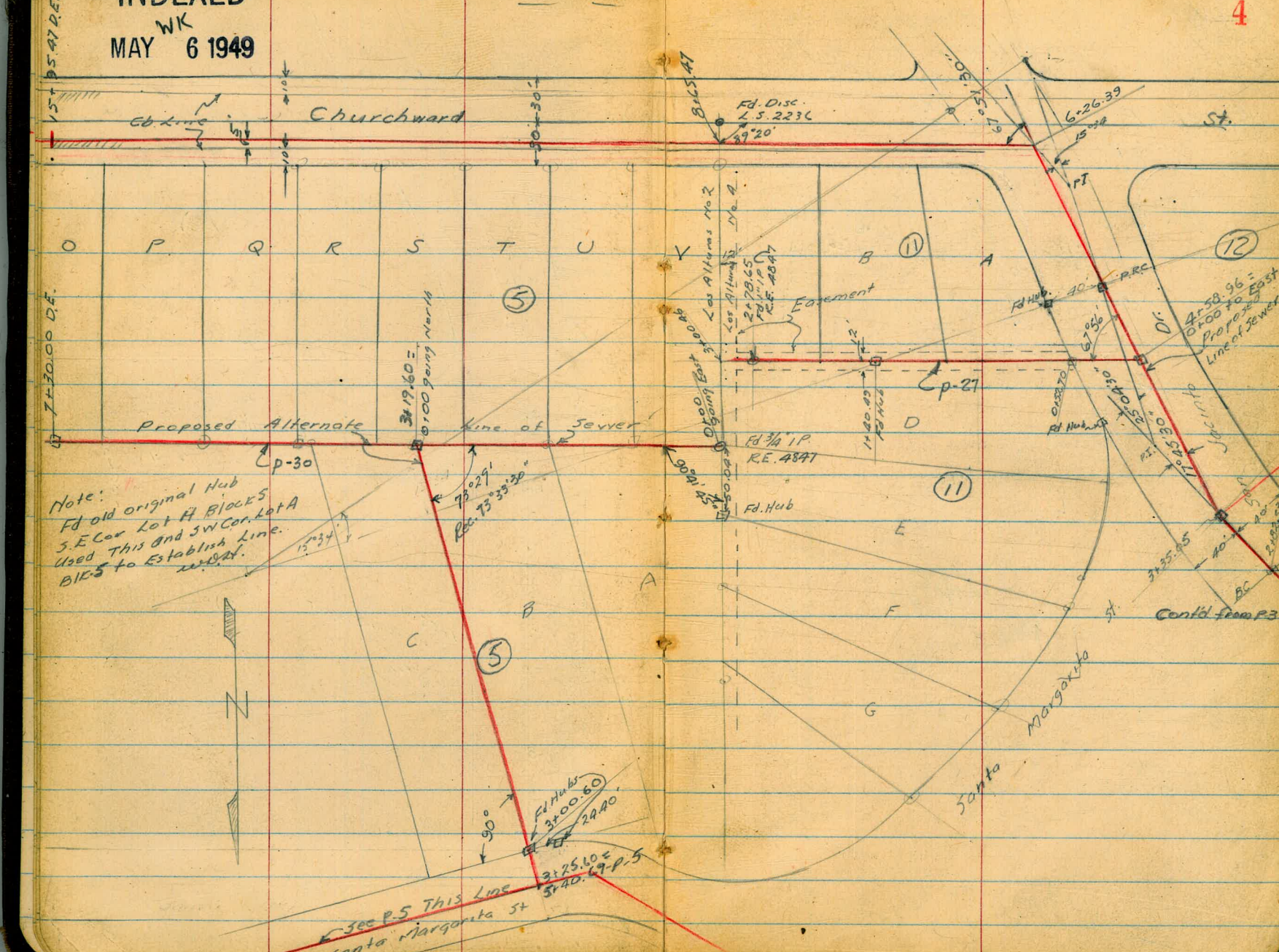
3+25.60 =  
5+40.69 P. 5

3+25.60 =  
5+40.69 P. 5

Santa Margarita St

Cont'd. from P. 3

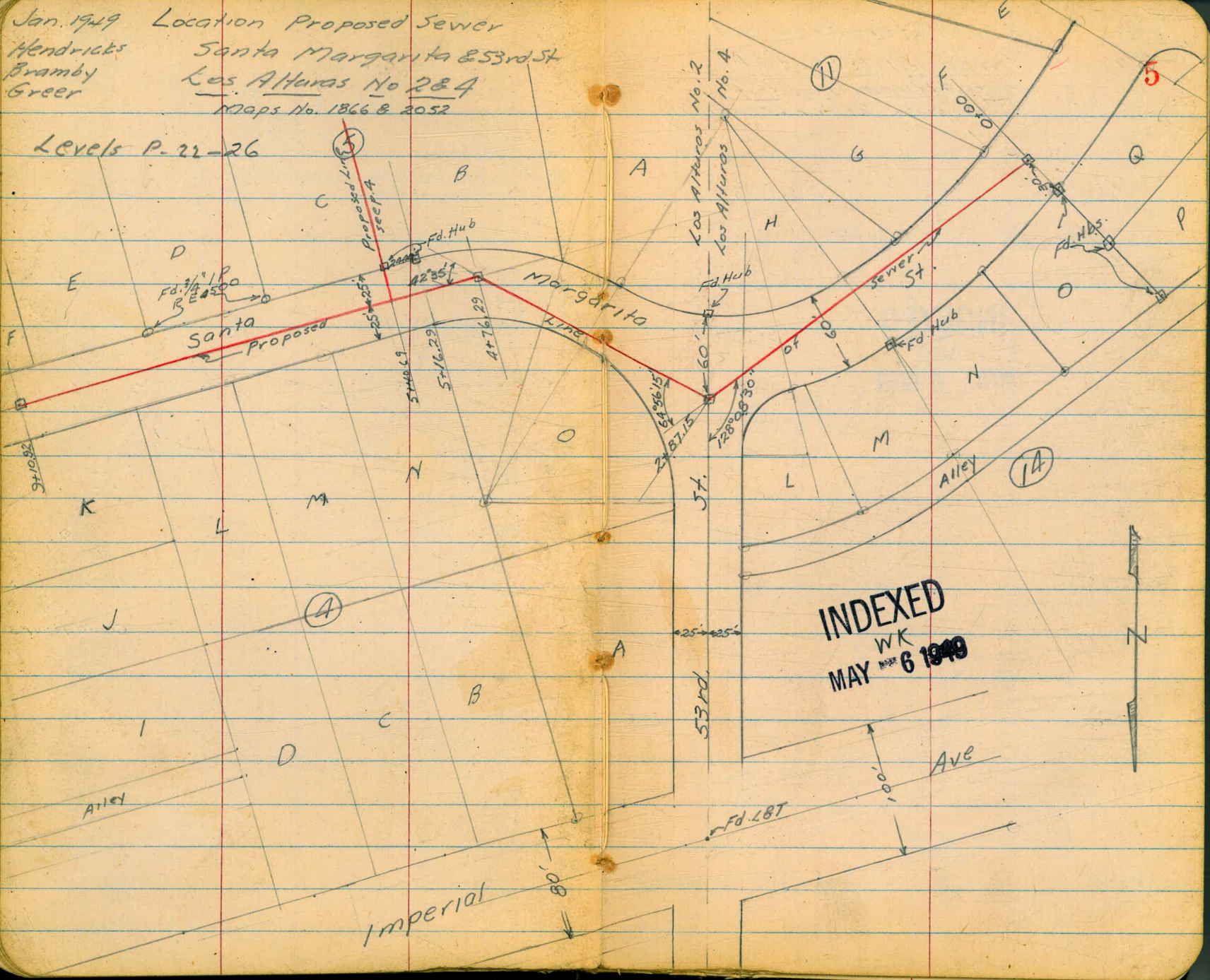
Area 88.96 =  
Proposed  
Line of Sewer





Jan. 1949 Location Proposed Sewer  
 Hendricks Santa Margarita & 53rd St  
 Bramby Los Altos No 284  
 Greer Maps No. 1866 & 2052

Levels P-22-26





Levels for Proposed Sewer  
Imperial & 53rd St.  
Los Altos No. 284  
(See page 2 for Location)

⊕

6

1+11 Power Pole # 276068 18' Lt.

1+00 E.C. on Imperial

400 21 38 37 38  
36 29 27 16  
Paving

155.7

INDEXED

WIK  
MAY 6 1949

0+50

338 36 32 34 27  
38 29 27 17  
Paving

157.3

0+32

30' 35 28 10  
27 28 27  
Edge Conc.  
Paving

158.5

0+00 DE

225 27 18 05 12  
34 24 23 18  
Edge Pav.

158.3

B.M.

449

159.47  
- .1

154.98

159.47  
- .1

L&T & Imperial & 53rd St. FB. 1664 P. 45



Cont'd. from p. 6

7

2+00

2+ 63.5 Fire Hydrant 8' Lt.

2+ 59 Power Pole # 77442 7' Lt.

2+50

2+29.49 L. Rt.  $4^{\circ}27'30''$   $\& 53.454$ .

2+00

1+50

159.47  
/

154.7  
4<sup>21</sup> 4<sup>5</sup> 4<sup>8</sup> 4<sup>0</sup> 3<sup>2</sup>  
26 18 5 50  
Paving

154.5  
5.0

154.2  
5.0

154.9  
4<sup>12</sup> 4<sup>5</sup> 4<sup>2</sup> 4<sup>7</sup> 4<sup>6</sup> 5<sup>2</sup>  
29 25 20 13 50  
Paving

155.0  
4.5

159.47  
/



Cont'd from P.7

8

5739.49

155.8  
6.0

5400

155.6  
6.0  
606 6<sup>2</sup> 5<sup>9</sup> 7<sup>0</sup> 6<sup>3</sup>  
26 21 15 10

4450

155.6  
6.0

4426 Power Pole # 77493 8' 21"

T.P. 5.90 161.77 3.60 155.87

161.77

4100

154.9  
4.35 4.9 4.4 4.6  
26 20 17

3750

154.6  
4.9

159.47

159.47



Cont'd from P. 8

£

9

OK Starting B17

678 <sup>154.99</sup> / 154.99

6+ 18

East Edge of House

159.4      151.6  
 2<sup>3</sup>      2<sup>3</sup> 2<sup>2</sup> 5<sup>3</sup> 4<sup>9</sup>      150.9  
 (60 60) 26 18  
 (Floor Ground Paving  
 Back of House

5+ 82

West Edge of Last House

156.3  
5<sup>5</sup>

161.77  
/

161.77  
/



Levels Proposed Sewer  
Imperial Ave. from  
San Jacinto Dr. Easterly  
See P. 3 for location

2+00

INDEXED

WIK

MAY 6 1949

1+50

1+00

0+60 Fire Hydr. 13.8' Lt.

0+50

0+00 @ San Jacinto

B.M.

7.89 163.06

155.17

@ Imperial & San Jacinto Dr.  
FB1752 P-11

10

159.0  
565 58 51 41  
36 29 22  
Paxms

157.4  
5.7

156.9  
705 68 73 08  
36 29 20

156.1  
7.2

155.88  
7.18  
Hub  
163.06



Contd. from P-10

11

2

1317

789

155.17

CR Starting BM.

3151.23 O.K.

157.6  
35

3100

157.4  
N<sup>20</sup> N<sup>3</sup> 37 34 37  
36 30 28 22  
Paving

2750

158.4  
47

163.06  
1

163.06  
11



Levels for Proposed Sewer  
San Jacinto & Churchward  
 from Imperial So. on San Jacinto  
 & on Churchward East from  
 San Jacinto.

See P-3 for Location

TP 1276 174.990.83 162.23

1+55.01 & Alley (Produced from East)

INDEXED

WK

MAY 6 1949

1+00

0+50

0+00

& San Jacinto

3+17

7.89 163.06 155.17

2

12

& Hub 1+55.01 & Alley

162.23  
 0.83

159.6  
 3<sup>5</sup> 3<sup>9</sup> 2<sup>1</sup> 3<sup>4</sup>  
 40 50 100

151.4  
 5<sup>7</sup> 5<sup>5</sup> 5<sup>1</sup> 6<sup>3</sup>  
 30 40 100

155.88  
 7<sup>1</sup> 8<sup>6</sup> 7<sup>0</sup> 6<sup>4</sup> 7<sup>1</sup> 7<sup>0</sup> 8<sup>6</sup>  
 Hub. 17 22 27 46 100

163.06

1



Cont'd. from P. 12

4+00

TP 11.59 186.00 0.58 174.41

3+35.05 @ Santa Margarita 17°45'30" Rt.

3+00

2+50

2+00

174.99  
T

178.4

7<sup>2</sup> 8° 8'  
23 50

186.00

@ Hub San Jacinto @ Santa Margarita 3+35.05

174.41  
0.58

171.8  
3<sup>2</sup>

168.3  
6<sup>2</sup>

164.8  
10<sup>2</sup>

174.99  
T



6+12.3 No. Edge Conc. Paving Churchward

189.14

363

5+78

189.5

33

5+50

188.8

40

TP. 7.10 19277 0.33 18567

19277

5+00

185.6

04

4+58.96

39  
182.61

329

41

36

41

Hub

14

18

50

186.00

186.00



7+50

194.59  
8<sup>04</sup>

7+00

192.44  
10<sup>19</sup>

6+80.7 BC Ch Ret. LI.

10<sup>22</sup> 10<sup>95</sup> 191.78  
5 5 10<sup>95</sup> 10<sup>65</sup>  
C6 G 15

6+50

190.46  
12.17

BM 13.18 202.63 3.33 189.44 189.45

202.63  
✓

(FB 1752 P. 12) L&T & San Jacinto & Churchward

189.50  
3.27

6+26.39 L. 67°51'30" N.

192.77  
✓

192.77  
✓



Cont'd. from P15

€

16

10100

	202.10	
621	686	667
6	-	15

9150

203.46
850

T.P. 10<sup>18</sup> 211.96 0<sup>85</sup> 201.78

211.96
7

9100

	201.64	
060	118	079
5	5	15
66	8	

8150

199.43
320

8100

202.63
7

	196.98	
522	584	565
5	5	15
66	6	202.63
		7



12+50

213.17

10.92

T.P. 12<sup>28</sup> 224.09 0<sup>65</sup> 211.31

224.09

1

12+00

10<sup>06</sup>

0<sup>55</sup>

211.53

0<sup>43</sup>

0<sup>09</sup>

5

5

15

06

6

209.94

202

11+50

11+00

31<sup>5</sup>

37<sup>9</sup>

208.33

36<sup>3</sup>

34<sup>3</sup>

5

5

15

06

6

206.69

527

10+50

211.96

211.96



Cont'd from P-17

15+00

303	368	200.53	340
5	5	356	15
Ch	G		

14+67

364	432	249.96	391
5	5	413	15
Ch	G		

14+00

540	595	218.26	552
5	5	583	15
Ch	G		

13+50

214.49	760
--------	-----

13+00

573	933	214.93	888
5	5	916	15
Ch	G		

224.09

224.09



B.17 10.47 154.98  
 TP 2.31 165.45 10.71 163.14  
 TP 0.55 173.85 13.12 173.30  
 TP 0.08 186.42 12.18 186.34  
 TP 0.24 198.52 12.78 198.28  
 TP 0.88 211.06 12.65 210.18  
 TP 0.54-222.83 13.70 222.29  
 TP 12.36 235.99 0.46 223.63

15195.47 DE

15+50

224.09

154.98 LBT &amp; 53rd &amp; Imperial

on Hub 9+10.92 (P. 5)

on stub 7+30 Alternate line (see P. 4)

202	258	221.61	
5	5	228	222
06	6		15

221.20

289224.09



Levels Proposed Sewer  
on Santa Margarita St.  
from E San Jacinto Dr. to West  
(see P. 3 for Location)

20

INDEXED

WIK  
MAY 6 1949

1150

172.6  
5.3

1100

173.3  
4.6 61 73 99  
33 50 100

0+50

173.1  
4.2

0+00

174.41  
3.51  
Hub

B.M.

3.51

177.92

174.41

177.92

on Hub 3135.05 (P-13)  
& Santa Margarita  
& San Jacinto



CK Starting B.M. 2.51 174.41 174.41

3+20 Low Point gully on Rt-

174.0  
 69 74 115 142  
 14 50 100

2+74.83 DE

170.43  
 749 78 113 137  
 Hub 11 50 100

2+40

170.8  
 71 82 98 105  
 31 50 70

1+95 East Edge House on Rt.

171.8  
 61 78 92 61  
 45 76 76  
 Ground Floor

177.92  
 7

177.92  
 7



Levels for Proposed Sewer  
 on Santa Margarita St.  
 Between San Jacinto & 54th St  
 (see P-5 for Location)

£

22

2100

TP 0<sup>50</sup> 170.86 1284 170.36

INDEXED

WIK  
 MAY 6 1949

1150

76 9<sup>3</sup> 11<sup>4</sup> 13<sup>0</sup> 12<sup>2</sup> 10<sup>5</sup> 10<sup>9</sup>  
 80 50 43 10 15 50

170.2

1406

Power Pole # 277365 10<sup>5</sup> ft.

1400

5<sup>1</sup> 5<sup>2</sup> 7<sup>2</sup> 7<sup>9</sup> 6<sup>8</sup> 6<sup>5</sup> 5<sup>1</sup> 4<sup>0</sup>  
 100 46 46 9 14 20 50

175.3

0150

179.6  
 26

0100 D.E

7<sup>9</sup> 4<sup>1</sup> 2<sup>9</sup> 2<sup>02</sup>  
 100 50 32

181.18

B17 8.79 183.20  
 1

174.41

On Hub 3+35.05 (R 13)  
 & Santa Margarita 183.20  
 & San Jacinto



3+50

157.6  
69

3+00

157.7  
68

T.P.

6<sup>2</sup> 164.50 . 1307 157.79

on Hub 2+87.15

164.50  
71

2+87.15  $\angle$  Rt.  $64^{\circ}56'15''$   
Rt Ls to Back line

8<sup>2</sup> 9<sup>0</sup> 10<sup>3</sup> 157.79  
70 50 38 1307 Hub 12<sup>1</sup> 10<sup>5</sup>  
50 100

2+50

161.3  
96 95  
50

2+00

165.8  
51

170.86  
71

170.86  
71



Contd. from P 23

2

24

6100

157.8  
52 47  
50

5150

157.5  
50

5100

157.4  
62 57 51  
50 27

4176.29 L.L. 42° 35'

157.26  
524  
Hub

4100

158.8  
57

164.50

164.50



Cont'd. from P. 24

€

25

8750

162.2  
23

8700

161.5  
25 21 30  
50 18

7150

161.2  
32

7100 & House on Lt

160.1  
29 44 38  
58 58  
Floor ground

6150

160.2  
42

16450

16450  
71



Cont'd. from P-25

£

26

B.M

1.40 163.10

163.14 (P. 19 on hub 9+10.92)

9+10.92 DE

	163.10
25	1.40
50	Hub

164.50  
//

164.50  
//



Levels Proposed Sewer  
Block 11 Los Altos No. 4

See P. 4 for Location

1400

191.6  
56

INDEXED

WK  
MAY 6 1949

0163

189.3  
57

0152.70 No. line San Jacinto

184.5  
87

0138

188.1  
71

0100  
4+58.96 = P-4

182.6  
125

B.17

1263 195.24

182.61

On R Hub 4+58.96 (P-14)

195.24  
7



Cont'd from P. 27

28

2140

T.P. 1076 21787 0<sup>31</sup> 20711

2109

East side House on Rt.

1170

1150

East side House on Rt.

1138

T.P.

1310 20742 0.92 19432

195.24  
π

2

209.9

86

84

21787  
π

50

205.5

45 26

19

27 25

204.3

204.7

31

27

100 50

6 50

84.2

84.2

ground floor

200.5

93 86

69

45 41

100 50

7 20

196.9

105

96

196.8

105

195.4

120

50

100

100

ground floor

195.3

116 114

121

100 50

207.42  
π



Cont'd. from p. 28

T.P

381 214.06 ←

(Carried to p. 30)  
on Pipe SW Cor. Lot A Block 5

3402.7 East Side Tool House

West side House on Rt.

2492.7 West Side Tool House 0.6 Rt & 19.7 Lt.

214.7	213.9	216.9
32	40	10
40.6	40.6	
Ground	Floor	

2478.65

213.41  
40  
Pipe

2468 East Side House on Lt. 19.5'

212.5	211.4	212.7
54	65	57
53	53	19.5
Floor	Ground	

217.87  
1

217.87  
1



Levels Proposed Sewer Blocks  
 Los Altos No 2

for location see P. 4

1+45 West side House on Rt.

214.8  
 39 30 21 06  
 32 46 46  
 Ground Floor

1+15

INDEXED  
 WK  
 MAY 6 1949

217.0  
 37

1+00 End shed on Rt.

217.3  
 8' 37 34  
 28 10

0+92 Beg. Small shed on line

0+34 End shed on Rt.

0+22 Beg. Small shed on Rt. No. side on line

0+00 S.W. Cor. Lot "A" Block 5 Los Altos No 2

218.1  
 6'

220.73

T.P 6.67 220.73 214.06 Carried from P. 29



Cont'd from p 30

31

2+19.60

202.00

10 <sup>46</sup>

Hub

2+80 End shed on Rt.

2+70 Beg. small shed on Rt. on line

202.7

17<sup>7</sup>

9<sup>8</sup>

1<sup>2</sup>

+4<sup>0</sup>

44

55

98

T.P. 4.93 212.46 13.20 207.53

212.46

1

2+35

206.3

14<sup>4</sup>

1+80

211.2

17<sup>0</sup>

15<sup>0</sup>

9<sup>8</sup>

3<sup>9</sup>

3<sup>0</sup>

50

41

35

46

1+68

213.1

7<sup>6</sup>

220.73

220.73

1



Cont'd from 1271

5+13 West side House on Rt.

211.3

8<sup>2</sup> 6<sup>2</sup> 5<sup>2</sup> +4<sup>8</sup> +6<sup>7</sup> +7<sup>9</sup>  
4 16 34 62 62  
Ground Floor

32

T.P. 9.27 219.53 2.30 210.16

219.53

4+51 Beg shed & bath House 16 ft.

210.2

11<sup>9</sup> 2<sup>3</sup> +7<sup>8</sup> +14<sup>0</sup> +15<sup>L</sup>  
27 56 100 135

4+12

206.7

14<sup>7</sup> 6<sup>8</sup> 12 +3<sup>L</sup> 17<sup>3</sup>  
30 14 55 75

3+72

201.6

10<sup>9</sup>

3+39 West side of House on Rt.

202.2

10<sup>3</sup> 37 +3<sup>8</sup> +7<sup>3</sup>  
42 100 100  
Ground Floor

212.46

212.46



B.M. 8.00 222.30  
 7+30 D.E.

(222.29) P-19 on Stub 7+20  

$$\begin{array}{r} 222.3 \\ 16.5 \\ \hline 50 \end{array} \quad \begin{array}{r} 8.0 \\ 3.1 \\ \hline 19 \end{array} \quad \begin{array}{r} 10.3 \\ 50 \end{array}$$

T.P. 12.01 230.30 1.24 218.29  
 6+79

$$\begin{array}{r} 230.30 \\ 12.9 \\ \hline 45 \end{array} \quad \begin{array}{r} 23.7 \\ 5.8 \\ \hline 30 \end{array} \quad \begin{array}{r} 18.8 \\ 74 \end{array}$$

6+20

$$\begin{array}{r} 209.3 \\ 15.6 \\ \hline 25 \end{array} \quad \begin{array}{r} 10.3 \\ 50 \end{array} \quad \begin{array}{r} 17.3 \\ 81 \end{array}$$

$$\begin{array}{r} 231.9 \\ +12.4 \\ \hline 128 \end{array} \quad \begin{array}{r} 235.0 \\ +15.2 \\ \hline 128 \end{array}$$
  
 Grand Floor

5+85 West Side House on Rt.

$$\begin{array}{r} 210.6 \\ 8.9 \\ \hline 10 \end{array} \quad \begin{array}{r} 14.0 \\ 59 \end{array} \quad \begin{array}{r} 17.5 \\ 80 \end{array} \quad \begin{array}{r} 12.6 \\ 91 \end{array}$$

5+50

$$\begin{array}{r} 209.5 \\ 15.4 \\ \hline 21 \end{array} \quad \begin{array}{r} 10.0 \\ 3 \end{array} \quad \begin{array}{r} 7.7 \\ 20 \end{array} \quad \begin{array}{r} 5.0 \\ 38 \end{array} \quad \begin{array}{r} 12.5 \\ 62 \end{array} \quad \begin{array}{r} 16.0 \end{array}$$

$$\begin{array}{r} 219.53 \\ \hline \end{array}$$

$$\begin{array}{r} 219.53 \\ \hline \end{array}$$



Levels Proposed Sewer  
Block 5 Los Altos No 2  
see P. 4 for Location

34

TP 0<sup>08</sup> 190<sup>84</sup> 12.64 190.76

0+45

INDEXED  
WK  
MAY 6 1949

193.9  
50 9<sup>5</sup> 13<sup>1</sup>  
50 50

0+17

199.1  
4<sup>2</sup>

0+04

200.0  
3<sup>4</sup>

= 0+00 going North  
3+19.60

202.0  
1<sup>4</sup>

203.40

BM 1.40 203.40 202.00

on stub 3+1960 P 31.



2+15

$$\begin{array}{r} 166.4 \\ 88 \quad 95 \quad 116 \quad 110 \quad 116 \\ 45 \quad 17 \quad \quad \quad 4 \quad 50 \end{array}$$

1+80

$$\begin{array}{r} 172.9 \\ 13 \quad 51 \quad 75 \quad 83 \\ 45 \quad \quad \quad 5 \quad 50 \end{array}$$

1+58

$$\begin{array}{r} 175.8 \\ 13 \quad 23 \quad 20 \\ 33 \quad \quad \quad 50 \end{array}$$

T.P.

0.21 178.03 13.12 177.72
$$\begin{array}{r} 178.03 \\ \hline \uparrow \end{array}$$

1+08

$$\begin{array}{r} 183.2 \\ 76 \quad 113 \quad 125 \\ \quad \quad \quad 6 \quad 50 \end{array}$$

0+97

$$\begin{array}{r} 184.7 \\ 0: \quad 61 \quad 94 \\ 41 \quad \quad \quad 50 \end{array}$$

$$\begin{array}{r} 190.84 \\ \hline \uparrow \end{array}$$

190.84



Contd, from P35

£

36

BM 15.20 688 159.22 (159.26) on Hub 4+76.26 P-24

3+25.60 £ Santa Margarita

159.5  
6.6

3+00.60 50 line Santa Margarita

160.4  
5.2

2+60

162.4  
23 32 25 24  
40 3 30

T.P. 0.65 166.10 12.58 165.45

166.10  
T

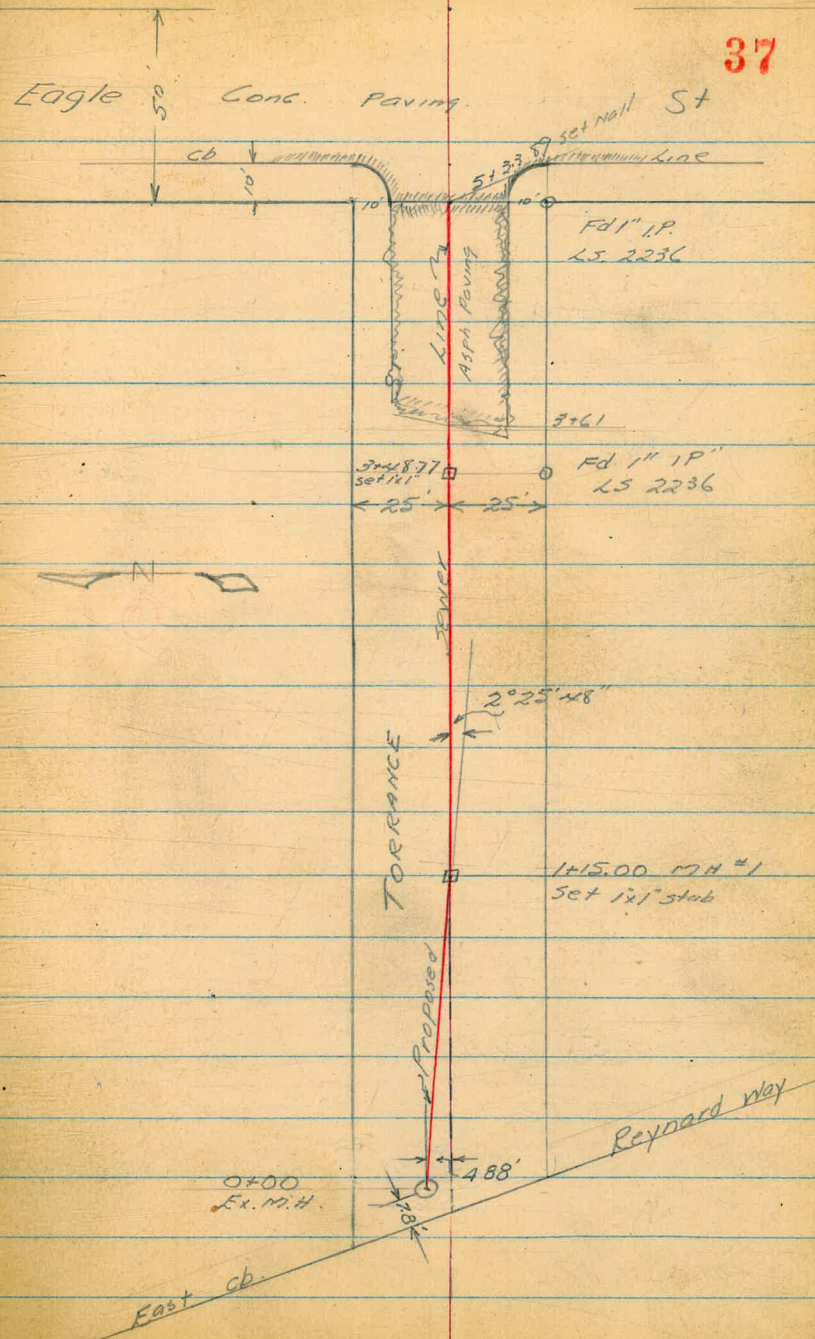
178.03  
T



4-29-49 PROPOSED SEWER TORRANCE ST.  
Hendricks REYNARD WAY to EAGLE ST.  
Greer  
Rorer  
NO# 80155

INDEXED  
WK  
MAY 6 1949

37





Levels Proposed Sewer  
Torrance St  
Reynard Way to Eagle

38

1+15.00 MH #2

198.2  
6.6  
10  
197.04  
7.8  
Hub  
10  
197.0  
7.8  
27  
197.0  
9.7  
50  
195.1

1+00

196.7  
8.4

0+59

195.0  
9.8

0+50

196.1  
8.2  
7  
195.3  
9.1  
10  
194.5  
12

0+00 Ex MH

191.8  
13.8  
FL. Rim  
7.2  
197.63

BM 13.84 204.84  
A

191.00 FL. Ex MH (From Proposed Profile)  
204.84



2122 & Double Garage Lt

	217.41	216.6	216.0	215.1	213.7	213.2	202.6
0.22	10	16	25	42	44	15	16
25	23	7		12	15	22	45
Fl							

2110

	216.7	215.9	212.6
12	12	50	
21	9		

2100

	214.3	211.5	211.0	209.0	200.1	204.9	199.9
18	10	6	8	8	12	17	
			19	22	22	40	

1473

	210.1	208.3	208.3	206.6	203.6	204.9	205.2	205.3	199.6
7	5	9	9	11	12	12	12	12	15
15			2	6	12	28	30	35	

T.P. 13.20 217.63 0.41 204.43

	217.62	204.3	200.5	199.6	202.0	200.9	201.5	201.3	198.2	194.7
0	4	5	5	8	32	34	38	42	70	
11				7	33	34	38	42	70	

1455

20484  
/

20484  
/



T.P. 12.77 254.16 0.80 241.39

2490

2490

	223.7	222.2	231.1	231.5	231.6	230.1	232.8
	18-20	11	10	10	12	9	
←	40	30	7		7	28	43

18 240.4

T.P. 12.17 242.19 0.27 230.02

T.P. 13.09 270.29 0.40 217.20

2478

242.19

190 215.8  
21 215.8  
19

2473

	216.8	216.1	222.6	223.4	215.6	215.6
0.8	1.5	15.0	15.0	2.0	2.0	
25	20	8	3	1		

2470 Bay Bank on Lt.

	217.0	215.2	216.1	215.4	214.8
0.5	2.4	1.5	2.0	2.8	
25	19	6		22	

217.63

217.63



Cont'd. from P. 40

B.M.

6.19 257.66

5+33.89 W Line Eagle Beg Conc Pav.

5+00

4+50

4+00

3+61

TP. 9.85 263.85 0.16 254.00

3+36

0.16 254.00

254.16

(+0.65 Error)

257.01 NWBP Eagle & Torrance

257.54  
6 31

258.7  
5 2

259.5  
4 4

259.6  
3 1

257.9  
259.9  
259.9  
258.9  
258.3  
6° 4' 4" 5° 5'  
20 8 27 50

249.9  
247.1  
249.1  
254.1  
252.3  
8 7' 4" 0' 12"  
25 13 12 26

254.16



X-Sect. - 20' Alley in Block 280 -  
Pac. Beach

# 3732

W.O. 25020

INDEXED  
W.R.  
JUL 12 1949

W. 7' Line  
Mon.

Fd. Hub. on E of Alley.  
42 Mon.

Noyes

73'

st

0+00

Block 280  
Pac. Beach

Oliver

Reed

10'  
10'

Hue

Hue

N

40'

7

350.02

175.01

40'

Mon.

Olney

st.

Hub.

4+99.49



Lt. = N.

±

Rt. = S

43

X-Sect. 20' Alley - Block 280 - Pac. Beach  
 Dirt - Not Graded - 2 Houses on N.  
 None on S.

Reduced by  
 J. B. Smith

2+50

13.3	12.4	11.5	10.8	9.7
5.3	6.2	7.1	7.8	8.9
20	10		10	20

2+00

16.4	13.9	12.9	12.4	8.6
2.2	4.7	5.7	6.2	10.0
50	10		10	50

T.P. 4.44 18.60 2.58 14.16

18.60

1+50

14.5	13.7	12.7	11.9	11.2
2.2	3.0	4.0	4.8	5.5
20	10		10	20

1+00

13.8	11.8	11.5	10.7	8.2
2.9	4.9	5.2	6.0	8.5
50	10		10	50

0+50

9.7	9.1	8.5	7.9	7.6
7.0	7.6	8.2	8.8	9.1
20	10		10	20

0+00 = E.L. Noyes

7.6	5.5	5.1	4.3	2.1
9.1	11.2	11.6	12.4	14.6
50	10		10	50

16.74

B.M. 12.11 16.74 4.62

- Spike in SW Pole - Noyes + Oliver



4+99.49 = w.L. Olney

11.3	7.9	7.3	7.2	5.5
7.3	10.7	11.3	11.4	12.1
50	10		10	50

4+97- 18' Lt. ± 3' Conc. Walk

7.10  
9.50  
18 = walk

4+58- 10.9 Lt. = ± 10' Conc. Dr. - To Sing. Gar. -  
Conc. floor.

10.44	8.98
8.16	9.62
24.5	10.9 = Dr.
floor.	
Gar.	

4+50

9.7	8.8	8.0	7.6	7.0
8.9	9.8	10.6	11.0	11.6
20	10		10	20

4+00

13.2	9.8	9.0	8.3	6.5
5.4	8.8	9.6	10.3	12.1
50	10	10	10	50

3+50

10.6	9.7	9.5	8.6	7.8
8.0	8.9	9.1	10.0	10.8
20	10		10	20

3+00

14.6	10.8	10.0	9.6	6.1
4.0	7.8	8.6	9.0	12.5
50	10		10	50

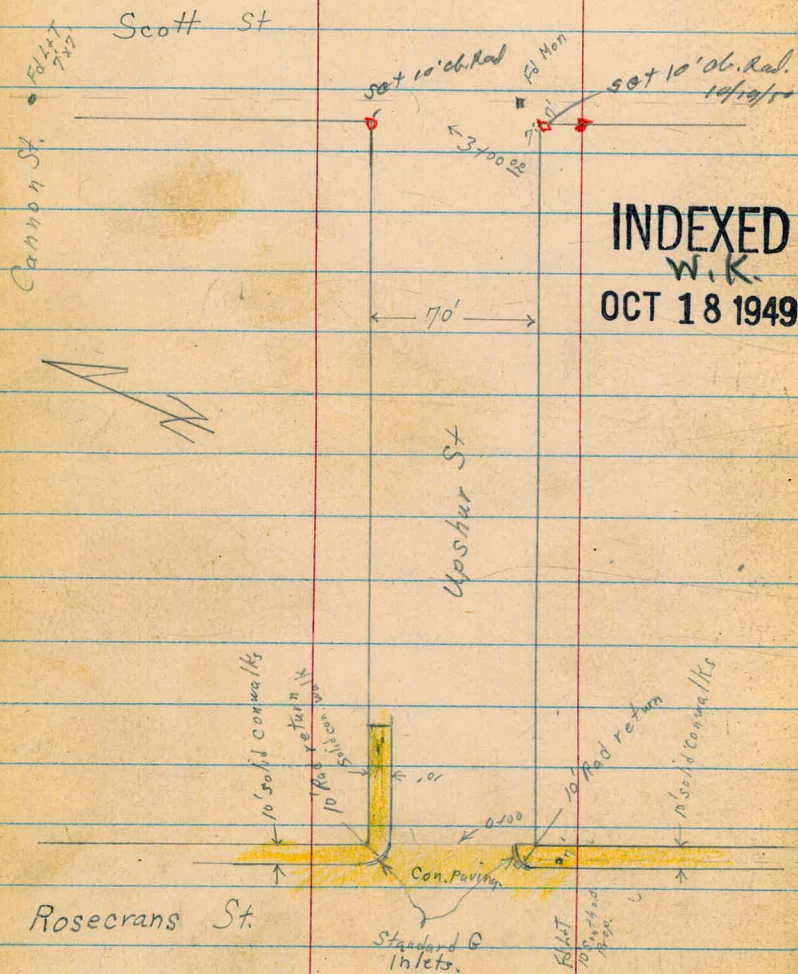
18.60



D. Smith  
F. Osborne  
C. Hatch  
D. Shepherd

Cross Sec Upshur St  
Rosencrans to  
Scott St

WO# 31498  
10-18-49 45





D. Smith  
 F. Osborne  
 C. Hatch  
 D. Shepherd

X Sec Upshur St  
 Rosencrans to Scott

WO# 31498  
 10-18-49 46

Rods around Returns

Note; public says that water  
 bypasses drains.

Flow line sec plans of inlet + 72" pipe

Flowline

11.43  
 11.21  
 17.73  
 4.21

Top grate inlet & Return 4.97 <sup>17.67</sup>

Top grate inlet & Return 4.21

	curb	gutter
	18.35	17.45
Easterly BC	4.29	5.19
	18.43	17.58
$\frac{2}{3}$	4.21	5.06
	18.48	17.63
$\frac{1}{3}$	4.16	5.01
	18.46	17.67
Northerly BC	4.18	4.97
	curb	gutter

	curb	gutter
	18.54	17.74
Southerly BC	4.10	4.90
	18.53	17.69
$\frac{2}{3}$	4.11	5.05
	18.55	17.73
$\frac{1}{3}$	4.09	4.91
	18.46	17.64
Easterly BC	4.18	5.00
	curb	gutter

NE Return Rosencrans + Upshur

SE Return Rosencrans + Upshur

BM	309	1955	7' x 2' SW cor Upshur Rosencrans	in storm drain FB
JP	10.15	22.64	307	12.49

BM	12.99	15.56	257	SW B.P. Cannon + Schaffter St.
----	-------	-------	-----	--------------------------------------

22.64



Cont.

Begin X Section Upshur St

0442 35' RT NE cor stucco store Bldg

0425

0423 5' Lt & Storm Drain clean out MH.

0403 27' RT & Power pole # GP2999

0400 East Prop Rosen crans edge con paving

35' RT NW cor stucco store Bldg

0-10 Curb Line Rosen crans

0-35 = E Rosen crans

Lt = North

&

RT = South

47

18.48	18.29	17.34	17.14	17.14	17.2	17.5	18.4
416	435	53	55	55	54	51	42
342 on walk	25 curb	25 94	125		125	25	35
		17.24					
		540					
		51					
		rim					

18.60	18.35	17.45	17.63	17.51	17.59	17.64	18.46	18.56	18.92
404	429	519	501	513	505	500	418	408	372
35 on walk brad RT	25 curb	25 94	125		125	25 94	25 curb	326 on walk	35 on walk

18.73	18.23	17.99	18.46	17.67	18.12	18.16	18.21	18.20	18.10	18.72	18.22
391	444	465	418	492	452	448	443	444	454	420	410
85 curb	85 94	45 94	35 curb	35 94	25	125		125	25	35 94	35 curb
										18.54	18.53
										85 curb	85 curb

19.24	19.00	19.00	18.96	18.96	19.00	19.07
340	364	364	368	368	364	294
85	35	25	25	35	35	85

22.64



cont

TP, 255 1754 765 1499

1750

1421.34° RT & 3° con walk

1700 35° RT westerly 9° drive

1700 27° RT & power pole # JP 2945

1700 29° RT end cold lay strip

0194 362 RT NE cor metal bldg

0475 362 RT NW cor metal garage bldg con floor

0459 25° LT end curb + walk

0452 30° RT Begin cold lay paving strip

Lt

Q

RT

48

15.5	15.5	15.4	14.6	14.4	14.8	15.0	14.9	15.2	15.5	15.5
74	74	72	80	80	78	76	72	74	74	74
45	35	25	18	125		125	20	25	35	45

16.51  
613  
348 on walk  
16.51  
613  
446 on walk

16.3	16.3	16.5	16.1	15.9	16.1	16.4	16.8	17.1	16.80	16.70
63	63	58	65	62	65	62	58	55	584	594
45	35	25	20	125	65	125	25	297 edge cold lay	25 on drive	40 on drive

18.51  
413  
362 floor  
17.4  
52  
25  
30 edge cold lay  
17.6  
50  
38  
17.9  
52  
45  
17.9  
47  
30  
17.9  
42  
35

22 64



cont

2761 35° RT £ 3' brick walk

2750 26° RT £ tel pole # 511272H

2742 29° LT £ single garage con floor + apron

2722 18° RT £ 3' brick + con walk

2700 26° LT £ guy pole tel # 412539H

1490 27° RT £ 6" Acacia tree

1482 34° RT £ 3° brick walk

1471 27° RT £ 7" Acacia tree

LT

£

RT

49

133	109	106	102	129	130	137	138	139
42	32	39	43	46	45	38	32	36
45	35	25	125	125	25	35	45	

1412	1389
342	365
344	298
Floor	apron

187	18	14	23
375	336	331	323
18	274	35	45
on brickwalk	on con walk	on walk	on walk

146	142	141	141	140	132	132	142	142
22	34	22	34	35	38	38	31	31
45	35	25	18	125	125	25	35	45

1469	1478
285	276
347	442
on walk	on walk

1754



Cont

BM starting

107 257

2 TP 253 1224 733 1021

3+70<sup>02</sup> East Prop Line Scott St

Lt				Rt			
2	81	51		2	2	41	101
58	52	60		58	58	64	62
85	35	25		58	25	35	85

27

27 3+60<sup>02</sup>

	122	125	121		51	51	107
	48	50	53	54	60	60	68
	85	35	25		25	35	85

27

3+35<sup>02</sup> E Scott

	120	121	121		121	121	107
	55	53	51	53	54	54	68
	85	35	25		25	35	85

27

3+10<sup>02</sup>

	125	122	122		120	121	115
	42	48	48	51	55	54	60
	85	35	25		25	35	85

3+04 31<sup>1</sup> Rt. E power pole # P1098

3+00<sup>02</sup> West Prop line Scott

	131	122	122	125		121	121	115	
	44	48	41	50	51	53	51	51	60
	85	35	25	125		125	25	25	85

1754



Narragansett Extention  
Chatsworth Blvd to Macaulay St.

Sommermejer  
McCoy  
Allen  
Bunch

INDEXED

12-29-49

W.K.  
JAN 9 1950

Levels - P. 59 1/5/50

• = Fd. L+T.  
• = Set. nail.

F.B. 1599-67

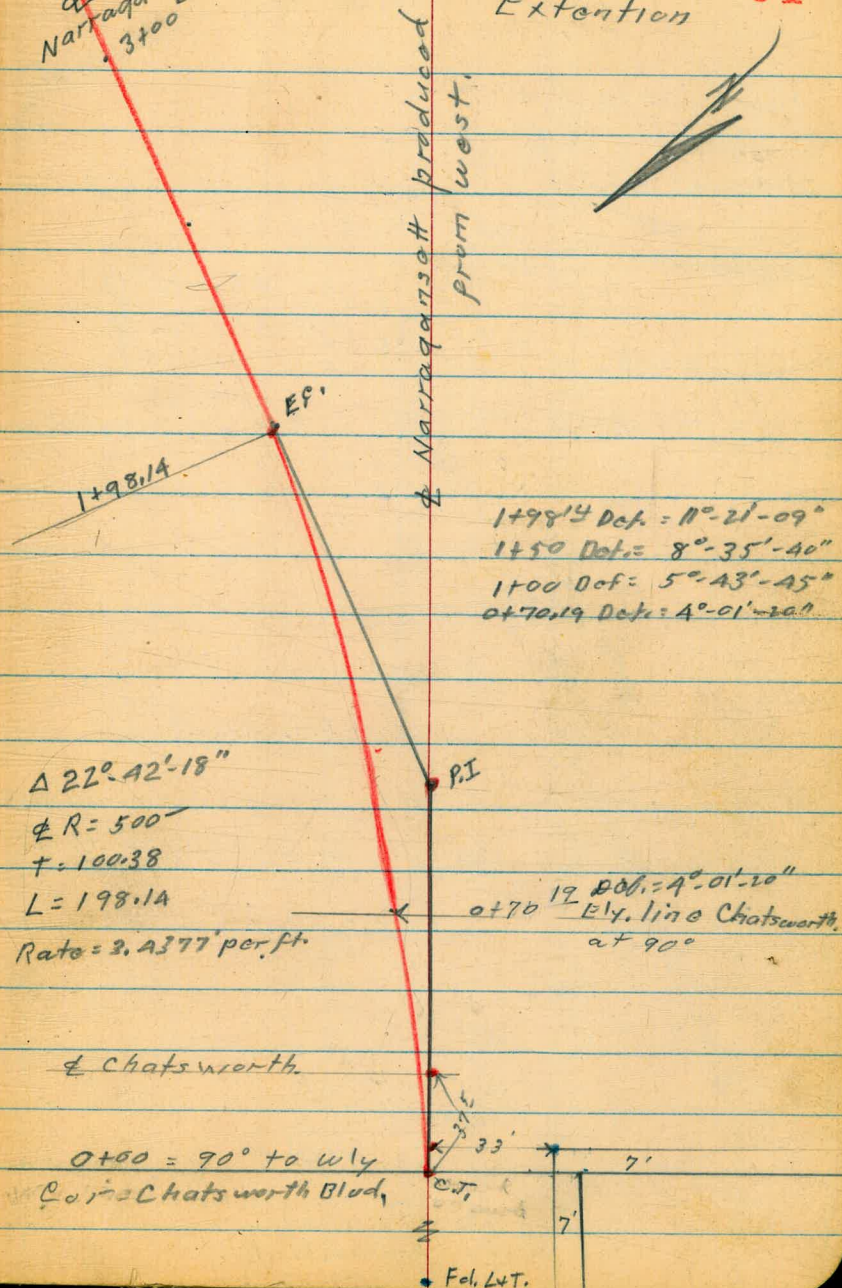
T.P. 15

T.P. 26

This line run out from Sissons notes in  
EB 1577 9/17/40. Narragansett extention  
67  
80' wide and run to a P.I. on a  
line 35' sly. from Nly. line Macaulay.

P. 52  
L.  
Narragansett  
3400  
Extention

Narragansett 51  
Extention





Narragansett Extension

Eq. = 6+09.85

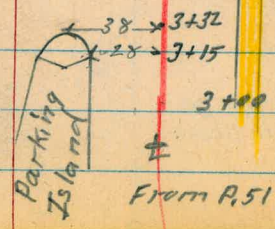
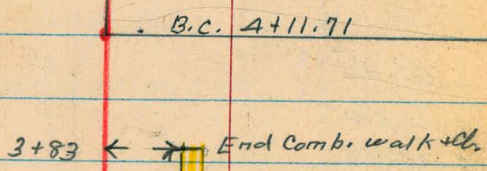
This point is 25' Nly.  
of Macaulay St & also  
shown on p. 53



$\Delta 22^\circ 42' 18''$   
 $R = 500'$   
 $T = 100.38$   
 $L = 198.14$   
 Rate = 3.4377' per ft.

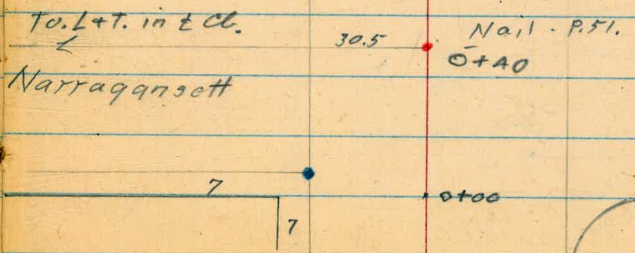
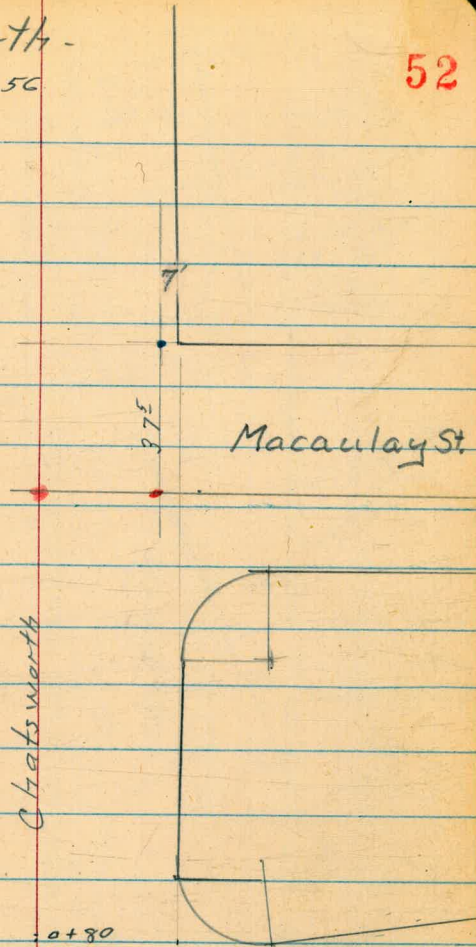
35' sly. of No. line  
Macaulay St.

Macaulay as shown  
on p. 52



From P. 51 - Rt.

Chatsworth -  
Levels - P. 50

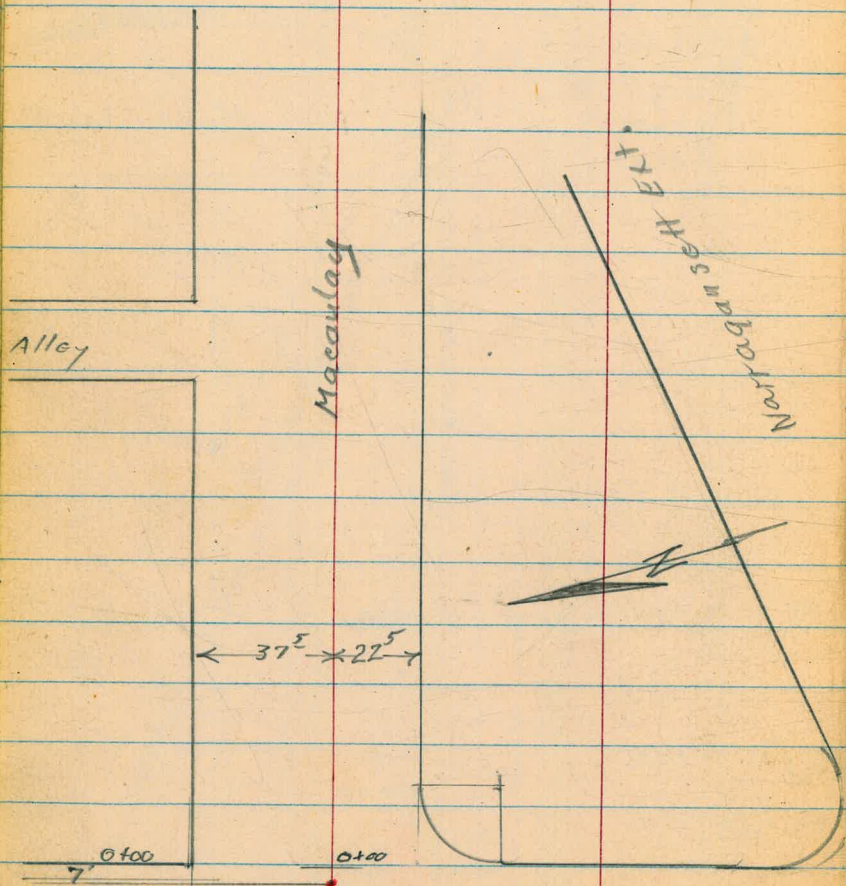




Macaulay St.  
Chatsworth to Plum

1/5/50

Levels - P. 62



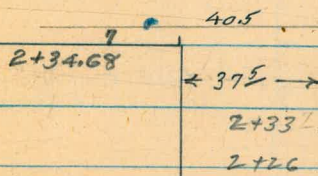
CHATS WORTH

53

Alley



Mandota



Macaulay

P.I.  
Narragansett  
Extension  
= 25 Lt. of  
1+22.96  
P. 52 Lt.  
(Macaulay St.)

P. 52 Lt.  
4+11.71

1+22.96

← 35' →

← 37' →

40'

← 37' →

2+33' ← 32' →

2+26' ← 12' →



Macaulay St

Macaulay

Macaulay St.

54

476.82

7E

89°40'35"

15'

Set disc

ALLEY BLK. 11  
PT. LOMA HTS.  
SUB MAP 1106

15'

HATCH  
12-7-66

Δ 2'-20" Lt  
Mon.

← 37E

Set disc on split.

0+61.68

Δ 2'-20" Lt.

0+61.68 split

15'

60.09

37E

15'

Set disc

0+00  
3+13.75

Mon.

Tustin

0+00  
2+85.37

Capistrano

40.8

2+32.37

2+53.75

2+25.37

← 37E

2E

(2E Lt. = E.C. Narragansett  
Extension

Macaulay

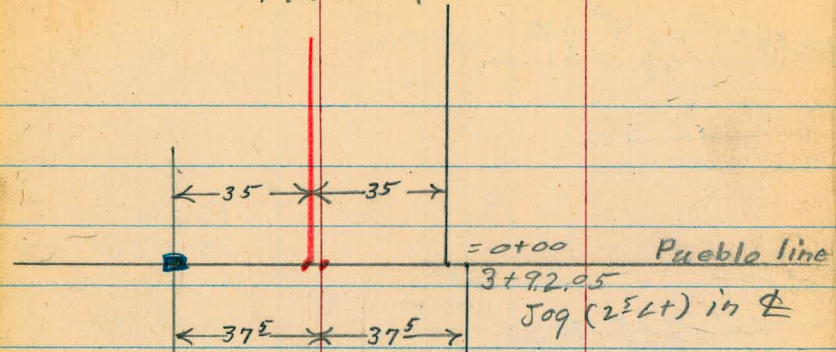
2.5



Macaulay St.

Macaulay St.

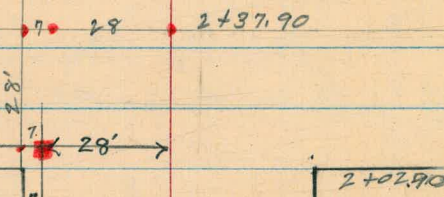
55



Pluitt

7' Mon out.  
Replaced by  
intersection

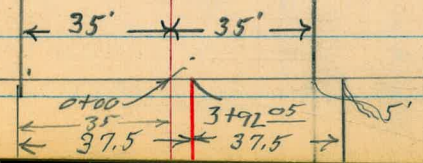
Mon. is 0.1  
under 3/4" water  
pipe



Clave

Macaulay

Macaulay





Chatsworth Blvd. levels

1-4-50

Sketch - P 52

INDEXED

N.K.  
JAN 9 1950

to west

35' Lt. =  $\pm$  + start of ctr. island

0+40 =  $\pm$  Narragansett.

Cont.

Notes  
Reduced  
J.M.B.

0+10 = Sly. of line Narragansett to west

Aprox. cl. B.C. Rt.

0+00 = Sly. line Narragansett.

10' cl. on east.

14' cl. on west

0-50

A6' Road way

Chatsworth

+ Narragansett 8.13

141.23

133.10

N.W.  
B.P.

141.23

56

135.21	134.85	134.47	134.53	134.66	134.57	134.11	134.03
6.02	6.38	6.76	6.70	6.57	6.86	7.12	7.20
35	342	21	105		12	25	35
on cl.	G						

135.93	135.43	135.62	135.97	136.03	135.80	135.75	135.75	139.09
5.30	5.80	5.61	5.26	5.20	5.43	5.48	5.48	5.14
35	35	21	105		12	25	29	29
cl	G						G	cl

136.57	135.85	136.53	135.55	136.32	136.31	136.75
4.66	5.38	4.70	4.68	4.91	4.92	4.48
21	21	105		10	25	25
cl	G				G	cl

141.07	139.38	139.71	139.83	139.68	139.42	139.96
1.16	1.85	1.52	1.40	1.55	1.82	1.27
cl	G	1/4		1/4	G	cl



Chatsworth Blvd.

57

1+80

0.05 133.15 8.13 133.10

1+35 26<sup>E</sup> RT = Ctr. 9" pole # 72657H.

1+30

0+84 21' RT = cl. ret. E.C.

E.P. = edge of pavement.

0+80 = Nly. line Narragansett.

+70 Cont.

35' RT = Nly. line pavement to east.

0+70 Nly. cl. Narragansett to west.

126.74	126.15	126.51	126.47	126.33	126.38	126.11	126.11
6.41	7.00	6.64	6.68	6.82	6.77	7.1	7.1
21	21	10E		10	24	28	35
cc	Q		133.15		E.P.		

129.90	129.33	129.53	129.57	129.52	128.53	128.8
11.33	11.90	11.70	11.66	11.71	12.70	12.4
21	21	10E		9E	22E	35
cc	Q				E.P.	

133.01	132.30
8.22	8.93
21	21
cc	Q.

133.21	132.57	132.61	132.79	132.73	131.92	132.6
8.02	8.66	8.62	8.44	8.50	9.71	8.6
21E	21E	10E		10	24	35
cc.					E.P.	
ch. ret.						

136.59	136.04
4.64	5.19
85	85
cc	Q

133.92	133.32	133.13	133.15	132.33	133.11	132.69	132.60	132.91
7.31	7.71	8.10	8.08	7.90	8.12	8.54	8.63	8.32
35	35	21	10E		12	17	23	35
cc	Q							pave.
								+End

141.23



Orig  
B.M.

0.05 133.10

2+85

Conts

25 parking

25' Rt. = start. Cl. + 5' walk  
2+34± = Nly. line Macaulay

2+04 = ± Macaulay Pave. to East

also = Sly. line Macaulay Pave.  
1+87 24' Rt. = End Chatsworth pave.

119.89	119.24	120.27	120.49	120.35	120.02	120.73
$\frac{13.26}{21}$	$\frac{13.91}{21}$	$\frac{12.88}{105}$	12.71	$\frac{12.80}{10}$	$\frac{13.13}{25}$	$\frac{12.42}{25}$
cc	G			G	G	cc

123.57	123.8
$\frac{9.58}{325}$	$\frac{7.4}{35}$

Back edge  
walk

122.99	122.41	123.15	123.33	123.25	122.48	123.31
$\frac{10.16}{21}$	$\frac{10.74}{21}$	$\frac{10.00}{105}$	9.82	$\frac{9.90}{10}$	$\frac{10.67}{25}$	$\frac{8.78}{25}$
cc	G			G	G	cc

125.08	124.44	124.93	125.05	124.89	124.33	124.63
$\frac{8.07}{21}$	$\frac{8.71}{21}$	$\frac{8.22}{105}$	8.10	$\frac{8.26}{11}$	$\frac{8.82}{235}$	$\frac{8.52}{35}$
cc	G					

125.08	125.12
$\frac{8.07}{24}$	$\frac{8.03}{35}$



Narragansett Ext.

Sketch P. 51

1/5/50

2+50

1+98.14 = E.C.

1+50

1+00

+75 = Approx. cl. P.R.C. (Curb Rot) Encl.

E.P. = Edge paving.

0+70.12

Ely line Chats worth at 90°

N.W.B.P.

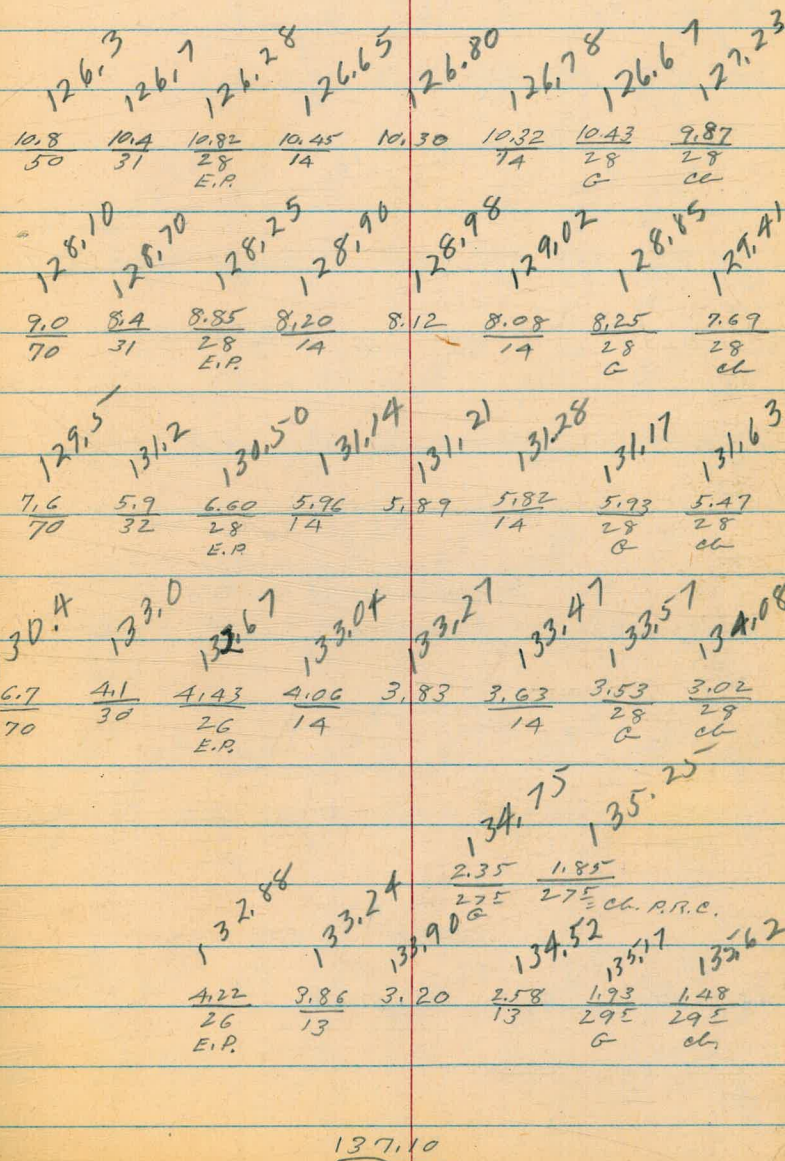
Narragansett

4.00

137.10

133.10

Chatsworth





4+11.71 = B.C.

3+83 - 28' Lt. = end walk.  
wide Comb Cl. +

3+60

(P. 52)  
+ aprox mid curve pave  
3+32 - 38' Lt. = Nose of dirt island

3+15 = 28' Lt. = Pave. B.C. Lt.

T.P. 6.61 130.64 13.07 124.03

3+00

N  
Va  
Ch

123.98  
6.66 6.71 6.63 6.68 7.00 6.5 6.3  
20 14 14 28 28 28 40

122.60 122.13 123.01 123.14 123.27<sup>EP</sup> 123.25 123.69 123.82  
8.04 7.91 7.63 7.50 7.37 7.41 6.95 6.82  
35 28 14 14 28 28 40  
G Cl walk

122.24 122.58 122.12 122.96 123.16 123.26 123.65  
8.40 8.06 7.92 7.68 7.48 7.38 6.99  
46 28 14 14 28 28  
G Cl

122.10 122.91 123.26 123.50 123.70 123.68 124.10  
7.94 7.73 7.38 7.14 6.94 6.96 6.54  
38 28 14 14 28 28  
Pave G Cl

124.2 123.9 123.65 123.89 124.08 124.29 124.08 124.59  
6.4 6.7 6.99 6.75 6.56 6.35 6.56 6.05  
45 31 28 14 14 28 28  
EP G Cl

130.64

124.4 124.3 123.95 124.52 124.75 124.88 124.70 125.14  
12.7 12.8 13.15 12.58 12.35 12.22 12.40 11.96  
50 31 28 14 14 28 28  
EP G Cl

137.10



Balance of Narragansett St. Ext.  
 can better be plotted off  
 Macaulay St. notes. see p. 62-

5+10<sup>78</sup> = Mid curve.

Cont.

4+50

127.14	127.34	127.06	126.60	127.3	127.6
3.50	3.30	3.58	4.09	3.3	3.0
9.95		14	29	31	40
P.I.					
on next					

126.84  
 3.8  
 40

125.22	125.22	125.08	124.60	125.1	125.3
5.42	5.42	5.56	6.04	5.5	5.3
5		14	27	28	36
			E.P.		

139.64



Macaulay St.

1/5/50

Sketch P-53

+17 18' Lt. = Ctr. 2<sup>5</sup>x2<sup>5</sup> S.D.G.+E.Co Man Hole

+10 29' Lt. = pole J.P. 3676

+100

INDEXED

N.K.

JAN 9 1950

AA.7 Lt. = 8' wide sing. Chan.

0+78 40.5 Lt. = 8' wide corte apron

+50

0+27 28 Lt. = pole# J.P. 3690

outs to near side of poles

0+17

0+03 - 30' Lt. = deadman

0+00 = Fly. line Chatsworth

N.W.B.P.

Marragansett 0.55 133.65

133.10

+Chatsworth

±

123.5	123.05	123.83	123.84	123.72	124.5	124.9	124.6	124.9
10.2	10.60	9.82	9.81	9.93	9.2	8.8	6.1	5.8
375	25	8		11	14	19	25	375
	EP			EP				70

123.90	123.81
9.75	9.84
AA.7	405
Floor	Apron

123.9	123.8	123.49	124.38	124.35	124.14	125.0	125.8	126.8
9.8	9.9	10.16	9.27	9.30	9.51	8.7	5.4	4.9
375	29	26	8		11	21	27	375
		EP			EP			80

123.9	124.0	123.65	124.70	124.83	124.68	125.1	125.6	128.1
9.8	9.7	10.00	8.95	8.82	8.97	8.0	5.1	5.0
375	28	26	8		10	22	30	375
		EP			EP			80

123.9	123.7	123.37	124.10	124.62	124.89	125.13	126.9	127.3
9.8	10.0	10.28	9.55	9.03	8.76	8.52	6.8	6.4
375	31	27	17	8		10	30	375
		EP				EP		80

133.65



Macaulay St.

Cont.

1+80

T.P. 4.65 128.05 10.25 123.40

1+46 = 37<sup>E</sup> Lt. = start Conc. wall <sup>5" wide 1' high</sup>

1+46 = Ehd same (Gar.)

1+30 37<sup>E</sup> Lt. = start double Gar. Conc. <sup>Floor</sup>

1+26 14<sup>E</sup> Rt. anchor pole = 4299614

1+21 Approx  $\neq$  Alley to North

63

123.4  $\neq$   
 4.7  
 375  
 End + base of wall  
 123.4 122.33 122.19 123.03 123.61 122.66 124.9  
 4.7 5.72 5.26 5.02 5.04 5.39 3.2  
 29 25 16 7 11 11 375  
 E.P. E.P. E.P.

128.05  
 123.1 123.4 122.64 123.19 123.47 123.46 123.19 124.35 124.5 126.7 126.8 124.9  
 10.6 10.3 11.01 10.46 10.18 10.19 10.46 9.4 9.2 7.0 6.9 6.8  
 375 375 25 16 8 11 15 20 25 375 50  
 Base EP EP EP EP EP EP EP EP EP EP EP EP  
 wall

123.95  
 9.70  
 375  
 Floor

123.96  
 9.69  
 375  
 Floor

119.5 122.55 122.80 123.41  
 10.24  
 14.2 11.1 10.35 9.98 10.00 10.26 9.2 8.8 6.4 6.2  
 80 375 26 8 11 15 21 26 375  
 E.P. E.P. EP EP EP EP EP EP EP EP  
 14  
 123.65



Macaulay

2+47<sup>3</sup> = Fly edge (S.E. Cor.) gutter  
Conc.

7.01									
37 <sup>5</sup>									
Edge gutter									
121.57	120.90	121.49	121.93	122.15	122.26	122.28	122.48	122.74	
6.18	7.15	6.56	6.12	5.90	5.79	5.77	5.57	5.31	
37 <sup>5</sup>	37 <sup>5</sup>	26	16	8		12	26	37 <sup>5</sup>	
cb	G	E.P.							

3' wide gutters  
37<sup>5</sup> Lt. = St N. & S. conc. cb. and  
2+44<sup>68</sup> = Wly cb. line Mendota

Cont.

122.3	
122.4	
5.8	5.7
37 <sup>5</sup>	37 <sup>5</sup>
Base	Ord
Wall	

2+34<sup>68</sup> = Wly line Mendota

122.5	122.72	122.14	122.31	122.39	122.31	122.82
5.6	6.33	5.91	5.74	5.66	5.74	5.23
28	26	16	8		13	37 <sup>5</sup>
	ER					

2+33 - 32<sup>5</sup> Mid curve in Pavc (P53)  
Rt. = End parking area +

122.68									
5.37									
32 <sup>5</sup>									
122.7	122.5	121.84	122.27	122.45	122.54	122.38	124.0	123.7	
5.4	5.6	6.21	5.78	5.60	5.51	5.67	4.1	4.4	
37 <sup>5</sup>	29	26	16	7		12	31	37 <sup>5</sup>	
		ER				E.P.			

2+26 12' Lt. = B.C. Rt. in Pavc.

+12 29<sup>5</sup> Lt. = Pole # P3650

2+07 37<sup>5</sup> Lt. = brk. in grade of wall

123.3	
4.8	
37 <sup>5</sup>	
Ord + base of wall	

128.05



0+50

145 29' Lt. = pole # 493425H

0+04 - 28' Lt. = Ctr. Firg Hydt.

T.R. 3' tie back L+T.

Ely 7' 12.37 134.11 6.31 121.74

Mendota

= 0+00

2+94<sup>68</sup> = Ely line Mendota

2+84<sup>68</sup> = Ely cl. line

2+81<sup>68</sup> = wly edge conc. gutter

2+74<sup>68</sup> = Mendota

122.8  
122.8  
124.4  
124.8  
123.77  
124.40  
124.85  
124.90  
124.72  
124.60

11.3	11.3	9.7	9.3	10.34	9.65	9.26	9.21	9.39	9.57
40	37.5	35	30	26	13		13	26	37.5
				ER					

134.11

122.4  
122.65  
122.06  
122.82  
123.10  
123.03  
123.00  
123.05  
123.10

5.7	5.5	5.99	5.23	4.95	5.02	5.05	5.00	4.95
37.5	28	26	13		13	16	25	37.5
		ER						

121.83  
120.84  
121.73  
122.58  
122.81  
122.77  
122.67  
122.72  
122.81

6.22	7.21	6.32	5.47	5.24	5.28	5.38	5.33	5.18
37.5	37.5	26	13		10	15	25	37.5
Top		ER						
Cl.	Gutter							
End								

121.07  
6.98  
37.5

S.W. cor. gutter

119.1  
121.35  
121.64  
122.09  
122.36  
122.30  
122.46  
122.68

9.0	6.7	6.41	5.96	5.69	5.75	5.59	5.37
87.5	37.5	26	13		14	25	37.5
		ER					

128.05



# Macaulay

Cont.

1+62

123A #

7.7  
40

125.2

5.9  
37.5

128.2

5.9  
40

66

127.4	127.8	127.33	126.05	128.41	128.22	127.69	127.43	128.2
6.7	6.3	6.78	6.06	5.70	5.89	6.42	6.68	5.9
37.5	28	26	13		13	26	30.5	33
		EP					EP	

Cont.

1+22.96

2<sup>5</sup> Lt. = P.I. for Narragansett St.

Curve (P.53 + 61)

123.2

10.9  
48

125.8	126.4	126.6	125.98	126.84	127.14	127.21	127.14	126.71	126.25
8.3	7.7	7.5	8.13	7.27	6.97	6.90	6.97	7.40	7.86
37.5	35	28	26	13	25		13	26	37.5
			EP	EP					EP

1+13 = Approx & Alley to north.

115.1	124.5	126.2	125.75	126.54	126.87	126.82	126.43	125.94
19	8.6	7.7	8.36	7.57	7.24	8.29	7.68	8.17
70	37.5	28	26	13		13	26	37.5
			EP					

Cont.

0+90

122.5

11.6  
50

122.6

11.5  
39

125.5	125.5	125.7	124.94	125.79	126.16	126.12	125.89	125.59
8.6	8.6	8.4	7.17	8.32	7.95	7.99	8.22	8.52
38.5	37.5	29	26	13		13	26	37.5
			EP					

134.11



2+38<sup>37</sup> = Ely. edge wly gutter 3' conc. Nt+S.

2+35<sup>37</sup> = Wly. cb. line Capistrano  
 N.E.B.P.  
 Macaulay 11.27 143.06 2.32 131.79  
 Capistrano  
 FR. at 3' tie back  
 Wly 9' line  
 Capistrano 4.35 129.76

2+25<sup>37</sup> = wly line Capistrano

2+05<sup>5</sup> - 38<sup>2</sup> Lt. = End house

1+92<sup>5</sup> - 42<sup>2</sup> Lt. = cor. house

1+92<sup>5</sup> - 38<sup>2</sup> Lt. = Jog. in house

1+74 - 35<sup>2</sup> Lt. = ± 4' wide Conc. walk

1+70 28<sup>2</sup> Lt. = pole \* D16769 +

1+68 Cont. 41<sup>5</sup> Lt. = start house

1+68 37<sup>5</sup> Lt. = sly edge Conc. walk

134.11

129.11

13.95  
37.5  
 Edge gutter

129.81	128.86	130.12	130.96	131.25	136.84	130.36	131.3	133.0
13.25	14.20	12.94	12.10	11.81	12.22	12.70	11.8	10.1
<u>37.5</u>	<u>37.5</u>	26	13		13	26	28	37.5
Nt+S. End	Cl. gutter	Conc.	EP.			EP		
				143.06				

129.1	129.9	130.2	129.67	130.55	130.84	130.46	129.92	130.9	132.5
4.4	4.2	3.9	4.44	3.56	3.27	3.65	4.19	3.2	1.5
<u>30</u>	<u>37.5</u>	30	26	13		13	25	28	37.5
			EP.				EP.		

128.25  
5.86  
 40

128.30  
5.81  
 35

128.21

5.70  
41.5

128.6  
5.5  
 37.5

128.6  
5.5  
 40

128.2	128.0	128.0	127.55	128.25	128.59	128.41	127.79	127.63	128.4
5.90	6.1	6.1	6.56	5.86	5.52	5.70	6.32	6.48	5.7
<u>37.5</u>	<u>37.5</u>	28	26	13		13	26	30	33
								EP.	

134.11



Macaulay

68

cont.

20+00.

2+85<sup>37</sup> = Ely. line Capistrano

cont.

2+75<sup>37</sup>

+72<sup>37</sup> = Edge wly. N. & S. gutter (3' wide)

2+55<sup>37</sup> =  $\neq$  Capistrano

131.4	132.2	133.4
<u>11.7</u>	<u>10.9</u>	<u>9.7</u>
50	37 $\frac{1}{2}$	35

133.9	133.33	133.61	134.12	134.31	134.12	133.68	134.1	135.2
<u>9.2</u>	<u>9.73</u>	<u>9.45</u>	<u>8.94</u>	<u>8.75</u>	<u>8.94</u>	<u>9.38</u>	<u>9.0</u>	<u>7.9</u>
28	26	23	13		13	26	28	37 $\frac{1}{2}$
	E.P.					E.P.		

130.81	132.34	132.81	133.41	133.64	133.38	133.00	133.5	134.9
<u>12.25</u>	<u>10.72</u>	<u>10.25</u>	<u>9.65</u>	<u>9.42</u>	<u>9.68</u>	<u>10.06</u>	<u>9.6</u>	<u>8.2</u>
37 $\frac{1}{2}$	26	23	13		13	25	28	37 $\frac{1}{2}$
177 Gutter	E.P.					E.P.		

131.03
<u>12.03</u>
37 $\frac{1}{2}$
Edge gutter

130.4	131.26	132.08	132.37	132.04	131.59	132.2	134.0
<u>12.7</u>	<u>11.80</u>	<u>10.98</u>	<u>10.69</u>	<u>11.02</u>	<u>11.47</u>	<u>10.9</u>	<u>9.1</u>
37 $\frac{1}{2}$	26	13		13	25	28	37 $\frac{1}{2}$
	E.P.				E.P.		

143.06



Macaulay

+50 31' Rt Dead Man 35.5' School Fence

145.8  
 $\frac{2.8}{37.5}$  2.8 23  
 145.8  
 $\frac{4.58}{23}$  4.43 13  
 144.02  
 $\frac{4.43}{13}$  4.46 13  
 144.17  
 $\frac{4.48}{13}$  4.71 24  
 144.14  
 $\frac{4.71}{24}$  4.74 26  
 143.85  
 $\frac{4.74}{26}$  4.77 26  
 144.2  
 $\frac{4.77}{26}$  4.77 26  
 144.9

+37 29' Lt Teleph. Pole # D16767T

145.90  
 $\frac{2.7}{75}$  5.1 37.5  
 143.5  
 $\frac{6.00}{23}$  5.80 13  
 142.60  
 $\frac{5.80}{13}$  5.88 13  
 142.80  
 $\frac{6.08}{13}$  6.43 24  
 142.72  
 $\frac{6.43}{24}$  6.2 26  
 142.52  
 $\frac{6.2}{26}$  6.2 26  
 142.17  
 $\frac{6.2}{26}$  6.2 26  
 142.4  
 $\frac{6.2}{26}$  6.2 26  
 143.0

+27.5 Approx of Alley to North

351  
 57 = floor  
 142.8  
 $\frac{5.8}{37.5}$  6.63 29  
 141.97  
 $\frac{7.79}{25}$  7.28 13  
 140.81  
 $\frac{7.28}{13}$  7.28 13  
 141.32  
 $\frac{7.53}{13}$  8.04 24  
 141.05  
 $\frac{8.04}{24}$  7.6 27  
 140.56  
 $\frac{7.6}{27}$  7.6 27  
 141.10  
 $\frac{7.6}{27}$  7.6 27  
 37.5

+10- 57' Lt. = 4 Double Bars.

139.12  
 9.98  
 37.5  
 On Walk  
 138.76  
 9.82  
 30  
 Begin Walk  
 148.60

0+57- 30' Lt. = 4 3' wide Conc. walk

T.P. 10.70 148.60 5.16 137.90  
 0+50 4 Nail

138.80  
 $\frac{4.13}{37.5}$  4.7 30  
 136.4  
 $\frac{5.98}{26}$  5.30 13  
 137.13  
 $\frac{5.17}{13}$  5.17 13  
 137.76  
 $\frac{5.37}{13}$  5.94 25  
 137.92  
 $\frac{5.94}{25}$  5.7 27  
 137.67  
 $\frac{5.7}{27}$  5.7 27  
 137.12  
 $\frac{5.7}{27}$  5.7 27  
 137.4  
 $\frac{5.7}{27}$  5.7 27  
 137.3

0+25- 28<sup>6</sup> Lt. = pole # D31447T

135.9  
 $\frac{7.2}{37.5}$  7.1 28  
 136.0  
 $\frac{8.35}{26}$  7.87 13  
 134.11  
 $\frac{7.74}{13}$  7.74 13  
 135.19  
 $\frac{7.97}{13}$  8.61 26  
 135.32  
 $\frac{8.2}{27}$  8.2 27  
 135.09  
 $\frac{8.2}{27}$  8.2 27  
 134.45  
 $\frac{8.2}{27}$  8.2 27  
 134.9  
 $\frac{8.2}{27}$  8.2 27  
 135.1

0+15

143.06



Macaulay

4

70

Cont. 41' Rt. = start wall  
Cone. block

2+05

T.P. 4.88 151.52 1.96 146.64

Cont.

1+80 school yard.  
37<sup>5</sup> Rt. = top of cut for

1+75 31' Rt. = Pole # 3511

Cont.

1+70 play yard for school.  
35' Rt. = End of graded

147.2	154.3	154.3
4.3	+2.8	+2.8
34	375	41

143.3	143.5	146.78	146.90	146.82	146.68	146.4	
3.2	3.0	4.74	4.62	4.70	4.84	5.12	4.8
375	27	23	13	151.52	13	23	26
		E.R.				E.R.	

151.1	151.2	149.1	153.6	153.6
+2.5	+2.6	+0.9	+5.0	+5.0
50	10	375	375	50

147.1	147.6	145.38	145.72	145.73	145.70	145.46	145.9	146.8
1.5	1.0	3.22	2.88	2.87	2.90	3.14	2.7	1.8
36	28	23	13	2.87	2.90	3.14	2.7	1.8
		E.R.			13	23	25	35
						E.R.		

135.5
13.1
42

14 graded out  
play yard.

147.0	147.0	144.96	145.22	145.21	145.21	144.92	145.3	145.6	143.5
1.6	1.6	3.64	3.38	3.39	3.39	3.68	3.3	3.0	5.1
375	28	23	13	3.39	3.39	3.68	3.3	3.0	5.1
		E.R.			13	23	25	35	375
						E.R.			

148.60



Macaulay

T.P. Mon 1.47 141.27 11.72 139.80  
 37<sup>5</sup> Lt.  
 0+61.68

30 Lt. = Pole # H9764  
 0+61.68 = Δ 20-20' Lt.

0+50 - 30' Rt. = Pole # 3491

0+30

0+06 - 28' Lt. = Ctr. Fire Hydr.

3+13<sup>75</sup> = 0+00 = Ely. line Tustin

2+83<sup>75</sup> = Δ Tustin 42' Rt. = End Conc. block <sup>wall</sup>

2+53<sup>75</sup> = Wly line Tustin

2+49 - 29<sup>2</sup> Lt. = Pole # D314A8 T

2+27 38<sup>5</sup> Lt. = Sing. Gar. #. - Conc. floor

140.3 140.3 138.57 139.24 139.34 139.29 139.10 139.5 145.7  
 11.2 11.2 12.95 12.28 12.18 12.23 12.42 12.0 5.8  
 37<sup>5</sup> 31 26 13 13 22 33 37<sup>5</sup>  
 E.P. E.P. TOP bank

143.4 142.9 141.38 141.88 142.06 142.12 141.87 142.3 149.3  
 8.1 8.6 10.14 9.64 9.46 9.40 9.65 9.2 2.2  
 37<sup>5</sup> 29 24 13 13 23 34 37<sup>5</sup>  
 E.P. E.P. Top-bank

146.0 145.4 143.70 144.10 144.30 144.44 144.12 144.16 154.6  
 5.5 6.1 7.82 7.42 7.22 7.08 7.00 6.9 +3.1  
 37<sup>5</sup> 31 24 13 13 23 34 37<sup>5</sup>  
 E.P. E.P. Top-wall

146.9 149.5 146.62 146.11 146.28 146.38 146.62 146.40 146.9 156.2  
 4.6 2.0 4.9 5.14 5.24 5.14 4.90 5.12 4.6 +4.7 +4.7  
 120 70 37<sup>5</sup> 24 13 13 24 34 37<sup>5</sup> 42  
 E.P. E.P.

151.5 149.0 149.1 147.51 147.41 147.35 147.27 147.28 147.8 155.9  
 9.0 2.5 2.4 4.01 4.11 4.17 4.25 4.24 3.7 +4.4  
 39 37<sup>5</sup> 28 24 13 13 23 32 37<sup>5</sup>  
 E.P. E.P. TOP of Bank

147.82 147.82 147.66 147.53 147.44 147.25 147.11 147.9 156.3  
 3.70 3.70 3.86 3.99 4.08 4.27 4.41 3.6 +4.8  
 37.5 37<sup>5</sup> 23 13 13 23 33 37<sup>5</sup>  
 Gar. Apron E.P. TOP bank

151.52



Macaulay St

No APR 27

2+72 53' Rt. = E double Gar. Conc. floor

2+57 30' Rt. = deadman

2+56<sup>3</sup> = Wly. line Clove

2+40 = 32' Rt. = N. end N. + S. rubble + Conc. wall  
+37 30' Rt. = Pole # 3455  
+24 29' Lt. = Pole # D 16764T

+21 30' Lt. = End 18" wide hedge 4' high

2+00

T.P. 0.55 128.82 13.00 128.27

1+95 30' Lt. = start. 18" wide hedge 4' high

1+50

1+27 = Approx E Alley to north

1+00

#

123.12<sup>72</sup>  
5.70  
53  
Floor

119.92 120.06 120.22 120.19 120.07 121.8 122.9  
 9.4 8.76 8.60 8.63 8.75 7.0 5.9  
 37E 21 " 8 E.P. 24 37E

123.2 122.9 121.42 121.72 121.75 121.58 122.4 122.4 123.3  
 5.6 5.9 7.10 7.10 7.07 7.24 6.0 6.4 5.5  
 37E 27 20 E.P. 12 10 E.P. 32 Brd 32E 37E  
 Brd Base wall Brd.

126.8 126.5 125.35 125.53 125.60 125.62 125.58 125.9 128.3  
 2.0 2.3 3.47 3.29 3.22 3.20 3.24 2.9 0.15  
 37E 30 20 E.P. 11 128.82 7 E.P. 14 34 37E top bank

123.5 122.12 122.22 122.29 122.37 122.31 122.6 124.5  
 9.5 10.95 10.75 10.68 10.60 10.66 10.4 8.5  
 37E 22 E.P. 15 9 E.P. 34 37E top bank

122.8 124.9 124.53 124.60 132.97 133.09 133.03 133.1 131.4  
 10.2 8.1 8.44 8.37 8.30 8.18 8.24 8.2 3.9  
 90 37E 25 E.P. 13 13 20 E.P. 34 37E top bank

136.7 136.4 134.98 135.50 135.65 135.57 135.46 135.48 135.3  
 4.6 4.9 6.29 5.77 5.62 5.70 5.81 5.5 1.0 0.9  
 37E 30 21 E.P. 13 141.27 13 E.P. 21 34 37E 52



Macaulay

3+73 35<sup>7</sup> Lt. = End

cont.

379 Lt. = Corner. + Ely. Face 8" wide  
N.t.s. Conc. wall.

3+54 36<sup>2</sup> Lt. = start conc. Apron

T.P. 0.30 113.38 6.82 113.08

3+46 Rt. =  $\pm$  double Gar. Conc. Floor  
No Apron

3+37 28<sup>6</sup> Lt. = Pole # D 31425T

3+18 - 37<sup>2</sup> Rt. =  $\pm$  3' wide N.t.s. Conc. walk

3+16<sup>3</sup> = Ely. line Cloue.

T.P. 3.93 119.90 12.85 115.97

2+86<sup>3</sup> =  $\pm$  Cloue

108.88 108.48  
4.50 4.90  
54.4 35.2  
Gar. floor Apron

108.90 108.88  
4.48 4.50  
54.6 37.5  
At. Gar. 017 Apron

108.92 111.2 110.33 110.73 110.79 110.81 114.6  
4.16 2.2 3.05 2.65 2.60 2.57 +1.2  
3.6 27 20 10  
Apron E.R. 113.38 E.R. 37.5  
+ Grd.

113.1 112.9 112.2 111.9 111.70 111.71 111.67 114.9 115.65  
6.8 7.0 7.7 8.71 8.20 8.19 8.23 5.0 4.25  
37.5 29 21 20 10 7 37.5 53  
E.R. E.R. Floor

119.38  
6.52  
37.5  
 $\pm$  walk

116.1 115.6 114.08 114.46 114.41 114.37 115.7 117.0 119.3  
3.8 4.3 5.82 5.44 5.49 5.53 4.2 2.9 0.6 0.6  
37.5 30 19 10 7 16 28 35 37.5  
E.R. E.R.

115.62 117.4 117.44 117.54 117.26 117.02 118.5 121.3  
13.2 11.4 11.38 11.28 11.56 11.80 10.3 7.5  
90 37.5 22 12 5 11 37.5  
E.R. E.R.



Macaulay St

0+23<sup>E</sup> 31<sup>E</sup> Lt. = ± 4' wide Conc. walk

106.14  
 $\frac{7.24}{35}$      $\frac{7.30}{31.5}$

0+12 - 35' Rt. = End Conc. drive

0+05 35' Rt. = start Conc. Drive

106.83  
 $\frac{6.55}{35}$   
 107.18  
 $\frac{6.52}{35}$      $\frac{6.20}{65}$   
 on drive

0+04 32<sup>P</sup> Lt. = ± 2' wide Conc. walk

107.56    107.78  
 106.44    106.88  
 $\frac{5.82}{35}$      $\frac{5.80}{32}$      $\frac{6.94}{17}$      $\frac{6.50}{9}$      $\frac{6.45}{9}$      $\frac{6.70}{9}$      $\frac{6.5}{35}$   
 E.R.

(This out is along Pueb. line) wall.  
 0+02 34<sup>E</sup> Rt. = ± 8" wide 2 1/2' High Conc.

106.6  
 $\frac{6.8}{34.5}$   
 Base wall

Also 2<sup>E</sup> Jog in ± - See P. 55

= 0+00 3+92<sup>05</sup> = Pueblo line

3+90 30<sup>E</sup> Rt. = pole # 3435

107.9    107.1    106.77    107.24    107.26    107.21  
 $\frac{5.5}{37.5}$      $\frac{6.3}{21}$      $\frac{6.61}{19}$      $\frac{6.14}{7}$      $\frac{6.12}{2.5}$      $\frac{6.17}{7}$      $\frac{6.45}{7}$     3.8    3.6  
 E.R.    E.R.    E.R.    E.R.    E.R.    E.R.    32.5    37.5  
 to east.

3+78 37<sup>E</sup> Rt. = ± 3' wide Conc. walk

113.01  
 $\frac{0.37}{37.5}$      $\frac{113.38}{42}$



t.p. 1.25 103.78 10.85 102.53  
ribbons thru gate in wall.

0+89 36<sup>6</sup> Lt. = 4 12<sup>t</sup> of 2 conc. drive

102.59  
102.53  
10.79 10.85  
46 36.6  
on drive drive

0+63 - 35' Rt. = End conc. drive.

102.47  
10.91  
35  
drive

0+55 35' Rt. = start Conc. Drive

104.0 104.1 103.26 103.28 102.92 102.45 102.4 102.50 102.43  
9.4 9.3 10.12 10.10 10.46 10.93 11.0 10.88 10.95  
35 25 18 9 9 25 35 70  
at wall E.P. Drive + End

0+53.26<sup>3</sup> Lt. = Pole # D 31426T wall  
35' Lt. = start 8" wide Conc. Block

0+52 35' Rt. = 6" wide Conc. wall

103.6 104.5  
9.8 8.9  
35 35  
Base Ord  
of wall Base of wall

0+50 31<sup>6</sup> Lt. = end Conc. drive

104.69 104.63 104.5 103.51 103.60 103.27 102.80 104.6  
8.69 8.75 8.9 9.87 9.78 10.11 10.58 8.8  
35 31<sup>6</sup> 27 18 9 9 35  
on Dr. Drive E.P.

0+39<sup>5</sup> 31<sup>6</sup> Lt. = start Conc. drive

104.74 104.66  
8.64 8.72  
35 31<sup>6</sup>  
on Dr. drive

0+32 - 35' Rt. = 3' wide Conc walk

106.09  
7.29  
35  
walk



Macaulay St

1+79 25<sup>2</sup> Lt. = Pole # 92655H

1+71 34<sup>1</sup> Rt =  $\phi$  3' wide Concr. walk

1+61 23' Lt. = ctr. 1' diam palm.

1+49 35' Lt. = 2<sup>nd</sup> of 2 ribbon drives

Also = B.C. Rt of pavement  
Fibbers = For drive

1+44- 35 Lt. =  $\phi$  1<sup>st</sup> of 2 Conc.

1+03 35<sup>2</sup> Lt. = End Conc. block wall

Cont.

ribbons thru gate in wall

36<sup>5</sup> Lt. =  $\phi$  2<sup>nd</sup> of 2- conc. drive

0+93 35<sup>2</sup> Rt =  $\phi$  4' wide Concr. walk

$\phi$

95.58  
95.26  
76  
 $\frac{8.20}{35}$   $\frac{8.52}{45}$   
on walk  
95.91 95.4 95.58  
 $\frac{7.87}{11}$   $\frac{8.4}{34}$   $\frac{8.20}{34.7}$   
E.P. walk

99.5  
99.3  
98.48  
97.97  
 $\frac{4.13}{35}$   $\frac{4.5}{25}$   $\frac{5.30}{17}$   $\frac{5.81}{10}$  6.80  
E.P.

100.18  
100.10  
 $\frac{3.60}{45}$   $\frac{3.68}{35}$   
on Dr. Drive

100.26  
100.18  
100.1  
99.34  
98.78  
97.85  
97.12  
97.8  
96.9  
 $\frac{3.50}{45}$   $\frac{3.60}{35}$   $\frac{3.7}{28}$   $\frac{4.44}{18}$   $\frac{5.00}{10}$  5.93  $\frac{6.66}{9}$   $\frac{6.0}{13}$   $\frac{6.9}{35}$   
on Drive Dr. + End. E.P. E.P.

101.7  
102.2  
2.1 1.6  
352 352  
Base of Grd  
wall.

102.65  
102.49  
100.61  
100.67  
 $\frac{1.13}{46.5}$   $\frac{1.29}{36.5}$   $\frac{3.17}{35.2}$   $\frac{3.11}{45.2}$   
drive Drive walk on walk

102.5  
102.3  
101.26  
101.68  
100.46  
99.79  
100.2  
100.3  
 $\frac{1.3}{35}$   $\frac{1.5}{29}$   $\frac{2.52}{18}$   $\frac{2.70}{10}$  3.32 3.99  $\frac{3.5}{20}$   $\frac{3.4}{35}$   
E.P. E.P.

103.78



S.W.B.P.  
Lowell + Plum

4189 87.12 (87.22)

T.P. 0.70 92.01 12.47 91.31

2+72<sup>90</sup> = Fly. line Plum

2+37<sup>90</sup> = € Plum. 32' Rt. = start Pave

2+13<sup>E</sup> = End pave on €

Cont.

2+02<sup>90</sup> = Wly line Plum.

99.8 99.7 97.9 97.9 93.1 89.9 89.2  
 $\frac{4.0}{35}$   $\frac{4.1}{25}$   $\frac{5.9}{13}$  5.9  $\frac{10.7}{35}$   $\frac{14.0}{50}$   $\frac{14.6}{60}$

96.4 99.8 99.8 99.6 96.1 93.15 93.05 91.72  
 $\frac{7.4}{100}$   $\frac{4.0}{45}$   $\frac{4.0}{35}$   $\frac{4.2}{28}$  7.7  $\frac{10.63}{32}$   $\frac{10.73}{35}$   $\frac{13.06}{68}$   
 start Pave

96.24  
7.54

93.4  
 $\frac{10.4}{35}$

99.2 98.8 96.94 96.47 95.60 94.19 92.82  
 $\frac{4.6}{35}$   $\frac{5.0}{23}$   $\frac{6.84}{6}$  7.31 8.78 9.59 10.96  
 E.P. 103.78 9 22 32.5  
 E.P.



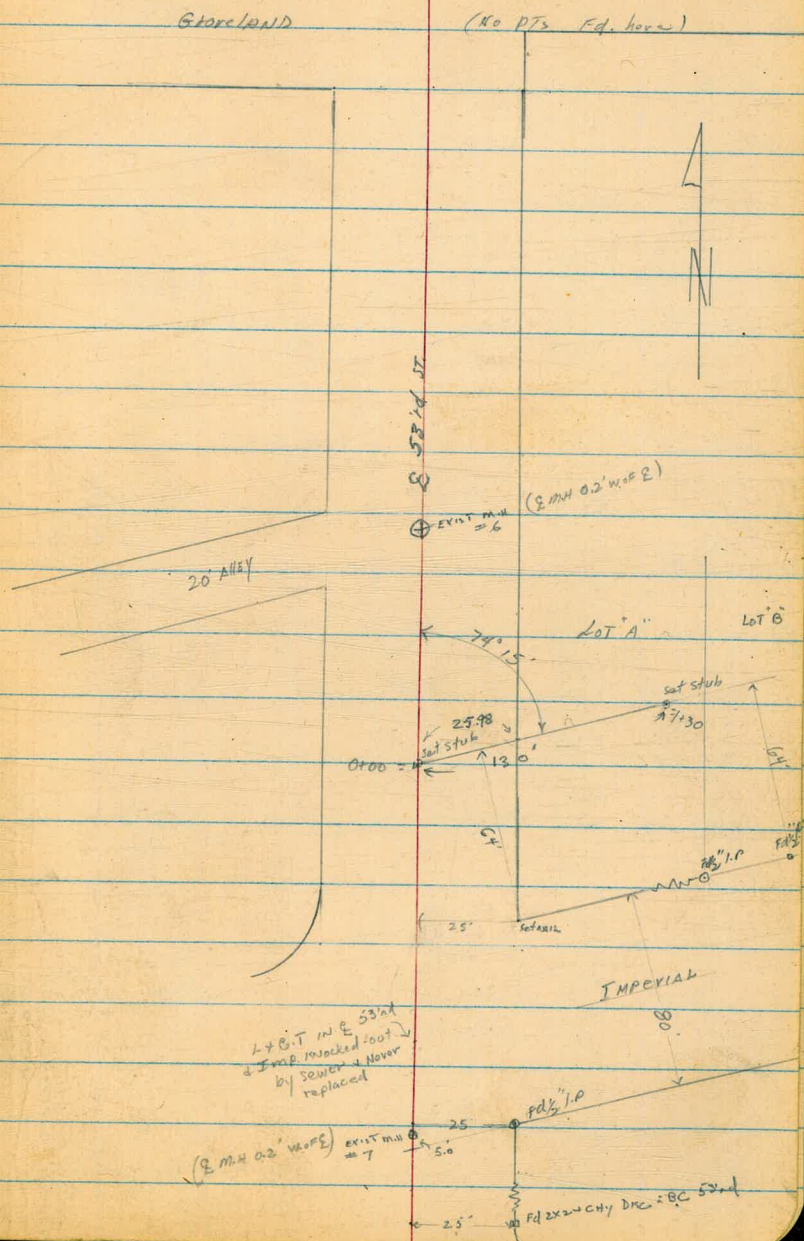
Clark  
Shepherd  
O'Neil  
N.O. 62317  
3-17-53

PROFILE & ALIGNMENT PROP-  
SEWER LOT A - 53rd & IMPERIAL, AS  
LAS ALTURAS  
Per 1425-D Y.T.S. 3333 (in red line)

78

Notes: B.79

Indexed  
3-19-53





ALIGNMENT & PROFILE For  
Prop. - sewer LOT A LAS ALTURAS #2

0+94 10.4 RT END FOTN 2nd Bldg

0+75

0+65 10.45 RT Beg FOTN 2nd Bldg

0+55 10.55 RT END FOTN Bldg

0+50

0+25.98 = { 10.7 RT Beg FOTN Bldg (1st of 3)  
ELY Line 53rd

0+00 = Intersection of 53rd & A Line 64' N'ly of N'ly Line Imperial  
4' // to Imp.

M.H. #6 (E 53rd & Alley) 13.77 144.11 = F Line (Sheet 1426-D shows 144.06)  
See sketch

B.M. 10.94 157.88 146.94 = F Line E lev. M.H. #7 of 53rd & 5' Nly of sly Line Imp.  
(See 1426-D)

INDEXED  
LOW  
MAR 19 1953  
Reduced & Plotted  
3-20-53  
H. Mills

157.7	157.63
5.0	3.25
10.4	10.4
DWT	TP. FOTN
157.7	157.63
5.0	3.25
10.45	10.45
DWT	TP. FOTN
157.7	157.63
5.0	3.25
10.5	10.5
DWT	TP. FOTN
157.7	157.63
5.0	3.25
10.7	10.7
DWT	TP. FOTN
157.7	157.63
5.0	3.25
10.7	10.7
DWT	TP. FOTN
157.7	157.63
5.0	3.25
10.7	10.7
DWT	TP. FOTN



2

0+94

0+75

0+65

0+55

0+50

CHK:

10.93 = 146.95 = 146.94

(see pg 79)

0+25

0+00

1+44

10.3 RT end Bldg

153.1

154.65

4.8

3.23

10.3  
NFT

10.3  
TRFBN

153.0

1+30

4.9

M.

1+15

10.3 RT Bldg  
3rd Bldg

152.9

154.59

5.0

3.29

10.3  
NFT

10.3  
TRFBN

152.9

B.M.

1+00

5.0

157.88



187 59 60  
 112-08-30  
 67 51 30

257.01  
 7865  
 9265

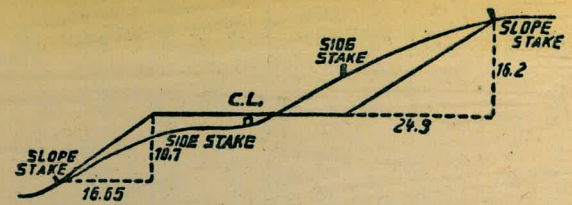
86547  
 730  
 158247 1308

14658  
 7329  
 22919  
 15

612639  
 139  
 61123  
 21952  
 22312

154.99  
 6.63  
 161.62  
 8.52  
 153.30

079  
 077  
 076  
 0753  
 0751  
 0725  
 0700  
 M.  
 B.M.



**DISTANCES FROM SIDE STAKES FOR CROSS-SECTIONING.**  
 SLOPE 1 1/2 TO 1. ROADWAY OF ANY WIDTH.

	0	.1	.2	.3	.4	.5	.6	.7	.8	.9	
0	0.00	0.15	0.30	0.45	0.60	0.75	0.90	1.05	1.20	1.35	0
1	1.50	1.65	1.80	1.95	2.10	2.25	2.40	2.55	2.70	2.85	1
2	3.00	3.15	3.30	3.45	3.60	3.75	3.90	4.05	4.20	4.35	2
3	4.50	4.65	4.80	4.95	5.10	5.25	5.40	5.55	5.70	5.85	3
4	6.00	6.15	6.30	6.45	6.60	6.75	6.90	7.05	7.20	7.35	4
5	7.50	7.65	7.80	7.95	8.10	8.25	8.40	8.55	8.70	8.85	5
6	9.00	9.15	9.30	9.45	9.60	9.75	9.90	10.05	10.20	10.35	6
7	10.50	10.65	10.80	10.95	11.10	11.25	11.40	11.55	11.70	11.85	7
8	12.00	12.15	12.30	12.45	12.60	12.75	12.90	13.05	13.20	13.35	8
9	13.50	13.65	13.80	13.95	14.10	14.25	14.40	14.55	14.70	14.85	9
10	15.00	15.15	15.30	15.45	15.60	15.75	15.90	16.05	16.20	16.35	10
11	16.50	16.65	16.80	16.95	17.10	17.25	17.40	17.55	17.70	17.85	11
12	18.00	18.15	18.30	18.45	18.60	18.75	18.90	19.05	19.20	19.35	12
13	19.50	19.65	19.80	19.95	20.10	20.25	20.40	20.55	20.70	20.85	13
14	21.00	21.15	21.30	21.45	21.60	21.75	21.90	22.05	22.20	22.35	14
15	22.50	22.65	22.80	22.95	23.10	23.25	23.40	23.55	23.70	23.85	15
16	24.00	24.15	24.30	24.45	24.60	24.75	24.90	25.05	25.20	25.35	16
17	25.50	25.65	25.80	25.95	26.10	26.25	26.40	26.55	26.70	26.85	17
18	27.00	27.15	27.30	27.45	27.60	27.75	27.90	28.05	28.20	28.35	18
19	28.50	28.65	28.80	28.95	29.10	29.25	29.40	29.55	29.70	29.85	19
20	30.00	30.15	30.30	30.45	30.60	30.75	30.90	31.05	31.20	31.35	20
21	31.50	31.65	31.80	31.95	32.10	32.25	32.40	32.55	32.70	32.85	21
22	33.00	33.15	33.30	33.45	33.60	33.75	33.90	34.05	34.20	34.35	22
23	34.50	34.65	34.80	34.95	35.10	35.25	35.40	35.55	35.70	35.85	23
24	36.00	36.15	36.30	36.45	36.60	36.75	36.90	37.05	37.20	37.35	24
25	37.50	37.65	37.80	37.95	38.10	38.25	38.40	38.55	38.70	38.85	25
26	39.00	39.15	39.30	39.45	39.60	39.75	39.90	40.05	40.20	40.35	26
27	40.50	40.65	40.80	40.95	41.10	41.25	41.40	41.55	41.70	41.85	27
28	42.00	42.15	42.30	42.45	42.60	42.75	42.90	43.05	43.20	43.35	28
29	43.50	43.65	43.80	43.95	44.10	44.25	44.40	44.55	44.70	44.85	29
30	45.00	45.15	45.30	45.45	45.60	45.75	45.90	46.05	46.20	46.35	30
31	46.50	46.65	46.80	46.95	47.10	47.25	47.40	47.55	47.70	47.85	31
32	48.00	48.15	48.30	48.45	48.60	48.75	48.90	49.05	49.20	49.35	32
33	49.50	49.65	49.80	49.95	50.10	50.25	50.40	50.55	50.70	50.85	33
34	51.00	51.15	51.30	51.45	51.60	51.75	51.90	52.05	52.20	52.35	34
35	52.50	52.65	52.80	52.95	53.10	53.25	53.40	53.55	53.70	53.85	35
36	54.00	54.15	54.30	54.45	54.60	54.75	54.90	55.05	55.20	55.35	36
37	55.50	55.65	55.80	55.95	56.10	56.25	56.40	56.55	56.70	56.85	37
38	57.00	57.15	57.30	57.45	57.60	57.75	57.90	58.05	58.20	58.35	38
39	58.50	58.65	58.80	58.95	59.10	59.25	59.40	59.55	59.70	59.85	39
40	60.00	60.15	60.30	60.45	60.60	60.75	60.90	61.05	61.20	61.35	40
41	61.50	61.65	61.80	61.95	62.10	62.25	62.40	62.55	62.70	62.85	41
42	63.00	63.15	63.30	63.45	63.60	63.75	63.90	64.05	64.20	64.35	42
43	64.50	64.65	64.80	64.95	65.10	65.25	65.40	65.55	65.70	65.85	43
44	66.00	66.15	66.30	66.45	66.60	66.75	66.90	67.05	67.20	67.35	44
45	67.50	67.65	67.80	67.95	68.10	68.25	68.40	68.55	68.70	68.85	45
46	69.00	69.15	69.30	69.45	69.60	69.75	69.90	70.05	70.20	70.35	46
47	70.50	70.65	70.80	70.95	71.10	71.25	71.40	71.55	71.70	71.85	47
48	72.00	72.15	72.30	72.45	72.60	72.75	72.90	73.05	73.20	73.35	48
49	73.50	73.65	73.80	73.95	74.10	74.25	74.40	74.55	74.70	74.85	49
50	75.00	75.15	75.30	75.45	75.60	75.75	75.90	76.05	76.20	76.35	50

THE NATIONAL BLANK BOOK COMPANY  
 HOLYOKE MASSACHUSETTS  
 NEW YORK CHICAGO BOSTON SAN FRANCISCO