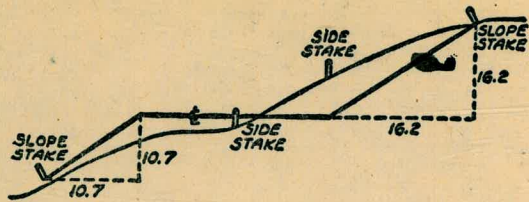


2011



DISTANCES FROM SIDE STAKES FOR CROSS-SECTIONING
SLOPE 1 TO 1. ROADWAY OF ANY WIDTH

	0	.1	.2	.3	.4	.5	.6	.7	.8	.9	
0	0.00	0.10	0.20	0.30	0.40	0.50	0.60	0.70	0.80	0.90	0
1	1.00	1.10	1.20	1.30	1.40	1.50	1.60	1.70	1.80	1.90	1
2	2.00	2.10	2.20	2.30	2.40	2.50	2.60	2.70	2.80	2.90	2
3	3.00	3.10	3.20	3.30	3.40	3.50	3.60	3.70	3.80	3.90	3
4	4.00	4.10	4.20	4.30	4.40	4.50	4.60	4.70	4.80	4.90	4
5	5.00	5.10	5.20	5.30	5.40	5.50	5.60	5.70	5.80	5.90	5
6	6.00	6.10	6.20	6.30	6.40	6.50	6.60	6.70	6.80	6.90	6
7	7.00	7.10	7.20	7.30	7.40	7.50	7.60	7.70	7.80	7.90	7
8	8.00	8.10	8.20	8.30	8.40	8.50	8.60	8.70	8.80	8.90	8
9	9.00	9.10	9.20	9.30	9.40	9.50	9.60	9.70	9.80	9.90	9
10	10.00	10.10	10.20	10.30	10.40	10.50	10.60	10.70	10.80	10.90	10
11	11.00	11.10	11.20	11.30	11.40	11.50	11.60	11.70	11.80	11.90	11
12	12.00	12.10	12.20	12.30	12.40	12.50	12.60	12.70	12.80	12.90	12
13	13.00	13.10	13.20	13.30	13.40	13.50	13.60	13.70	13.80	13.90	13
14	14.00	14.10	14.20	14.30	14.40	14.50	14.60	14.70	14.80	14.90	14
15	15.00	15.10	15.20	15.30	15.40	15.50	15.60	15.70	15.80	15.90	15
16	16.00	16.10	16.20	16.30	16.40	16.50	16.60	16.70	16.80	16.90	16
17	17.00	17.10	17.20	17.30	17.40	17.50	17.60	17.70	17.80	17.90	17
18	18.00	18.10	18.20	18.30	18.40	18.50	18.60	18.70	18.80	18.90	18
19	19.00	19.10	19.20	19.30	19.40	19.50	19.60	19.70	19.80	19.90	19
20	20.00	20.10	20.20	20.30	20.40	20.50	20.60	20.70	20.80	20.90	20
21	21.00	21.10	21.20	21.30	21.40	21.50	21.60	21.70	21.80	21.90	21
22	22.00	22.10	22.20	22.30	22.40	22.50	22.60	22.70	22.80	22.90	22
23	23.00	23.10	23.20	23.30	23.40	23.50	23.60	23.70	23.80	23.90	23
24	24.00	24.10	24.20	24.30	24.40	24.50	24.60	24.70	24.80	24.90	24
25	25.00	25.10	25.20	25.30	25.40	25.50	25.60	25.70	25.80	25.90	25
26	26.00	26.10	26.20	26.30	26.40	26.50	26.60	26.70	26.80	26.90	26
27	27.00	27.10	27.20	27.30	27.40	27.50	27.60	27.70	27.80	27.90	27
28	28.00	28.10	28.20	28.30	28.40	28.50	28.60	28.70	28.80	28.90	28
29	29.00	29.10	29.20	29.30	29.40	29.50	29.60	29.70	29.80	29.90	29
30	30.00	30.10	30.20	30.30	30.40	30.50	30.60	30.70	30.80	30.90	30
31	31.00	31.10	31.20	31.30	31.40	31.50	31.60	31.70	31.80	31.90	31
32	32.00	32.10	32.20	32.30	32.40	32.50	32.60	32.70	32.80	32.90	32
33	33.00	33.10	33.20	33.30	33.40	33.50	33.60	33.70	33.80	33.90	33
34	34.00	34.10	34.20	34.30	34.40	34.50	34.60	34.70	34.80	34.90	34
35	35.00	35.10	35.20	35.30	35.40	35.50	35.60	35.70	35.80	35.90	35
36	36.00	36.10	36.20	36.30	36.40	36.50	36.60	36.70	36.80	36.90	36
37	37.00	37.10	37.20	37.30	37.40	37.50	37.60	37.70	37.80	37.90	37
38	38.00	38.10	38.20	38.30	38.40	38.50	38.60	38.70	38.80	38.90	38
39	39.00	39.10	39.20	39.30	39.40	39.50	39.60	39.70	39.80	39.90	39
40	40.00	40.10	40.20	40.30	40.40	40.50	40.60	40.70	40.80	40.90	40
41	41.00	41.10	41.20	41.30	41.40	41.50	41.60	41.70	41.80	41.90	41
42	42.00	42.10	42.20	42.30	42.40	42.50	42.60	42.70	42.80	42.90	42
43	43.00	43.10	43.20	43.30	43.40	43.50	43.60	43.70	43.80	43.90	43
44	44.00	44.10	44.20	44.30	44.40	44.50	44.60	44.70	44.80	44.90	44
45	45.00	45.10	45.20	45.30	45.40	45.50	45.60	45.70	45.80	45.90	45
46	46.00	46.10	46.20	46.30	46.40	46.50	46.60	46.70	46.80	46.90	46
47	47.00	47.10	47.20	47.30	47.40	47.50	47.60	47.70	47.80	47.90	47
48	48.00	48.10	48.20	48.30	48.40	48.50	48.60	48.70	48.80	48.90	48
49	49.00	49.10	49.20	49.30	49.40	49.50	49.60	49.70	49.80	49.90	49
50	50.00	50.10	50.20	50.30	50.40	50.50	50.60	50.70	50.80	50.90	50

Distance of slope stake from side or shoulder stake for any width roadway, slope 1 to 1. If ground is nearly level, the cut or fill at side stake is located by the double entry method in left column and top row. The number in body of table in same row and column gives distance from side stake to slope stake. If ground is not level estimate the difference in elevation between the side stake and slope stake, lower target by this amount if cut, elevate if fill. Add this amount to cut or fill and find distance in table. Set up rod at this point, and line of sight should cut target. If it does not make the slight adjustment necessary.

244.00
129.85
114.15

269.60
255.36
14.24

114.15
96.85
17.30

INDEXED
to page # 68

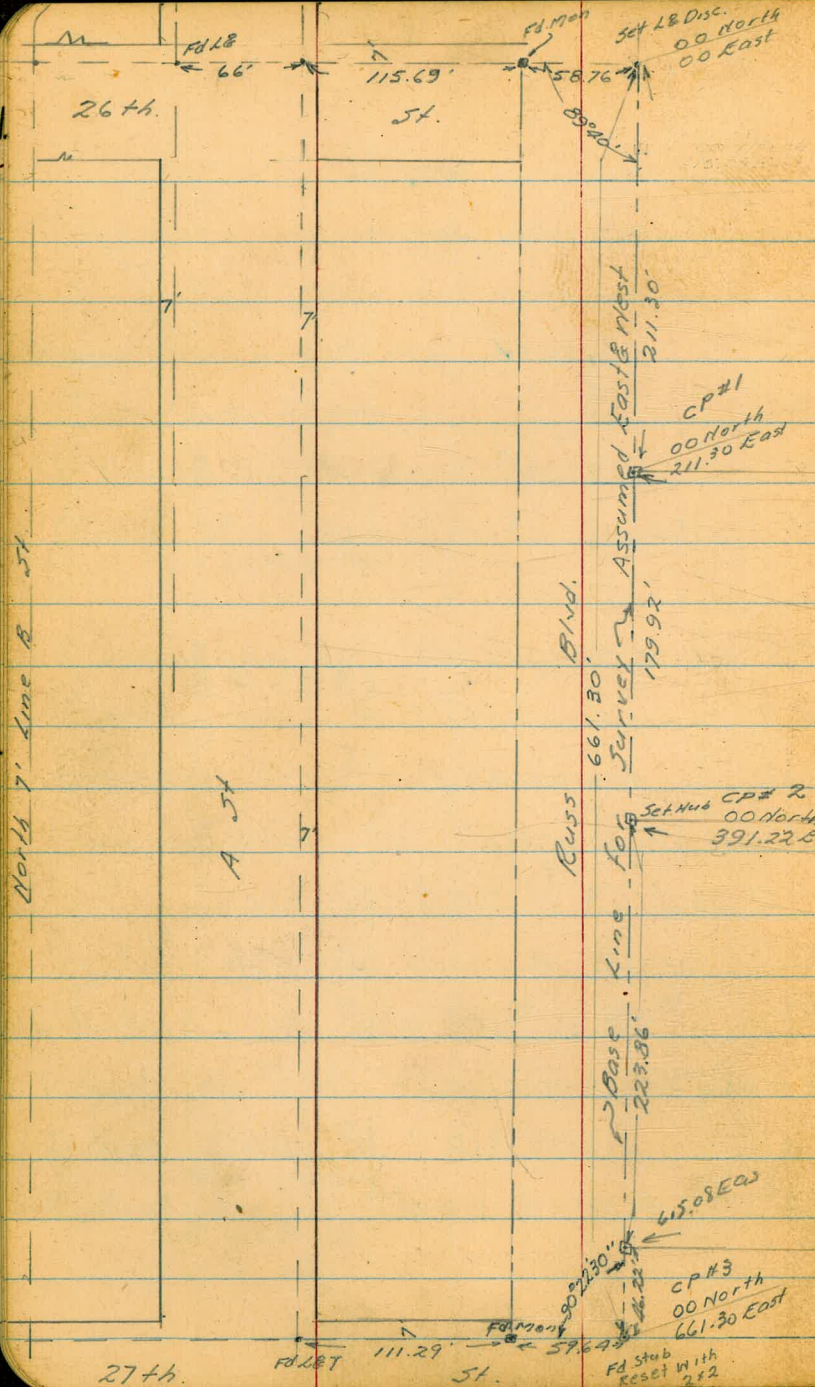
Callan St. - Fellen Ely. PL.
Date 31-33 " " "

39

Index
(over)

Index

Topography Date Golden Hill Playground	34
Cross Sec. Russ Blvd. 26 th to 27 th St	5-13
Sewer Prelim Lots 5+6, 14+15	}
Overlook Hgts.	
X- Sec. Alley, 38, Ocean Beach	15
Oliver St. - Ingraham to Sewell new improvements	26
X- Sec. Anna Ave. - Pac. Hwy. - 300' beyond S. F. & T. R.R.	27
Keating, Neal to Titus	35
Overlook Hts., Blk. 3, easement	36
X- Sec. Cedar St. Felton ^{E'ly} to P.L. Line	39
Date St. 33 rd ^{E'ly} to P.L. Line	
X- Sect., 42 nd St. Gamma to Alpha	53
Req. X- Sect. of Beta - 41 st to 42 nd	58
X- Sect. 41 st St. from Gamma to N'ly Term	62
X- Sect. Beta St. - 41 st N.W'ly	67
X- Sect. Area N. Gamma + 100' W. thru opening of 42 nd St.	69



Topography Data W 0 60346
 Golden Hill Playground 3

Feb 1949
 Hendricks
 Bramby
 Greer
 Rorer
 Ref. (5260 L)

INDEXED
 WK
 FEB 18 1949

CP#4

CP#5

CP#6

Levels for Topography
Golden Hills Recreational Area

INDEXED

B.M.			4.07	20505	20503	S.W.B.P. A st & 26 th	P
T.P.	5.62	209.12	8.95	20350			
T.P.	2.52	212.45	8.22	20993			
			6.68	21147		C.P. # 3 Hub	
T.P.	5.39	218.15	6.74	21276		C.P. # 2 Hub	
			1.02	218.48		C.P. # 5	
T.P.	4.82	219.50	5.54	214.68		C.P. # 6 Hub	
			1.01	219.21		C.P. # 4 Hub	
T.P. C.P. # 1	11.33	220.22	0.35	208.89		CP # 1 Hub	
B.M.	4.21	209.24			20503	N.W.B.P. A st & 26 th	P

Cross Section Russ Blvd.
26th. to 27th St.

INDEXED

+60 = F.L. 26th St 27' R of L = L 36" Elec. Trac

+53 6' L of L = L Pow. Pole 12" #1345

+50

+50 = F cb Line

+30 = L 26th St to South

+10 = W cb Line

0+0 = W.L. 26th St to South

BM

322

208.25

205.03

N. W. 89
+ 26th St.

L = N R = V 6

202.30 5.95 30' 10.5' 201.89 6.36 30' 8.36 201.39 6.86 25.6' 202.40 5.83 25.6' 203.45 4.80 202.86 5.39 15' 204.2 4.30 202.67 5.86 30' 203.13 5.15 30' 203.08 5.17 70' 203.77 4.48 70' 202.11 6.14 45' 201.80 6.45 30' 201.57 6.60 15' 201.90 6.35 30' 202.44 5.58 202.95 5.20 202.62 5.63 203.09 5.16 202.40 5.85 15' 202.62 5.63 30' 203.18 5.07 30' 203.93 4.33 200.61 7.64 45' 201.05 7.20 30' 201.08 7.17 201.31 6.94 202.05 6.70 202.48 5.77 203.05 5.30 203.22 5.03 203.99 4.12 200.0 8.2 50' 200.0 8.3 30' 200.2 8.0 21' 201.2 7.0 17' 202.0 6.2 202.2 6.1 15' 202.4 5.9 25' 203.26 4.99 30' 208.25

1+86.5

1+79

1+77.5

1+60

TP

10.19

216.99

1.45

206.80

+50

1+0

0+92

12/01/2024 24' Fac Tree
20825

Lt.

Rt.

Rt.

7

207.33

9.66

27.5

NY Conc

Found.

207.40

9.66

27.5

NY Conc

Found.

207.39

9.66

27.5

NY Conc

Found.

207.32

9.66

27.5

NY Conc

Found.

206.87

10.19

27.5

NY Conc

Found.

207.08

9.66

27.5

NY Conc

Found.

216.99

206.2
27.5
NY Conc
Found.

206.2
27.5
NY Conc
Found.

206.29
27.5
NY Conc
Found.

206.2
27.5
NY Conc
Found.

206.6
16
205.6

206.0
27.5
NY Conc
Found.

206.6
27.5
NY Conc
Found.

206.6
27.5
NY Conc
Found.

204.10
11.5
203.4

204.16
11.5
204.2

204.48
11.5
204.6

204.6
11.5
204.2

204.8
11.5
205.2

205.2
11.5
204.6

204.2
11.5
204.8

204.8
11.5
205.2

205.2
11.5
204.6

20825

20825

20825

20825

20825

20825

20825

20825

20825

Russ Blvd.

4.

5.

6.

8

+90 30.8 ft of 2" Fly Shed + High Board Fence

+60 30.2 ft of 2" Fly High Board Fence

+58

+53

+36

+16

+12

+10

29.8 ft of 2" 8" Tol Pala # D 4732E

240

216.99

210.2
68
30

209.7
76
30

209.4
76
15

208.8
82
15

209.04
79.5
29.8

209.32
73.7
30

209.20
75.0
30

209.04
79.5
30

209.71
77.8
32

209.96
80.3
30

209.10
73.8
30

208.7
83
15

208.1
82
15

208.96
80.3
30

209.10
73.8
30

208.68
81
30

208.79
82
30

207.32
90.7
30

207.5
91
30

207.7
90
30

208.7
82
30

208.2
80
30

208.1
80
30

207.9
91
30

207.5
91
30

207.7
90
30

208.7
82
30

208.2
80
30

208.1
80
30

207.9
91
30

207.5
91
30

207.7
90
30

216.99

209.04
79.5
30
Fly Shed
Conc. Floor

209.71
77.8
32
Fly Shed
Conc. Floor

209.96
80.3
30
Fly Shed
Conc. Floor

209.10
73.8
30
Fly Shed
Conc. Floor

208.7
83
15
Fly Shed
Conc. Floor

208.1
82
15
Fly Shed
Conc. Floor

208.96
80.3
30
Fly Shed
Conc. Floor

209.10
73.8
30
Fly Shed
Conc. Floor

208.68
81
30
Fly Shed
Conc. Floor

208.79
82
30
Fly Shed
Conc. Floor

207.32
90.7
30
Fly Shed
Conc. Floor

207.5
91
30
Fly Shed
Conc. Floor

207.7
90
30
Fly Shed
Conc. Floor

+88

+68

+60

+40

+15

3707

27 91

216.99

Lt.

S

Rt.

9

211.67

532

31.4-11/12.5
Conc. Floor

210.9

6.1

31.4-10/12.5
Dir. Floor

210.4

6.6

30.5-11/12.5
Dir. Floor

211.1

5.9

30.5

211.2

5.8

30.5

210.9

6.1

30.5

210.3

6.8

30.5

210.2

6.8

30.5

30.5-11/12.5
Dir. Floor

70

30.5-11/12.5
Dir. Floor

210.6

6.7

30.5

210.3

6.7

30.5

210.0

7.0

30.5

209.8

7.2

30.5

209.77

7.2

30.5

209.99

7.08

30.8

30.8-11/12.5
Conc. Floor

209.67

7.3

30.5

210.83

6.96

30.8

30.8-11/12.5
Dir. Floor

216.99

Russ Blvd.

Lt.

S

Rt.

10

+84

214.2
1/30

214.0
1/15

213.9
44

215.6
1/15

213.82
4.52
32.2-HV Conc.
4/10/02

213.88
4.41
34.1-HV Conc.
4/10/02

+61

213.79
4.58
37.1-HV Conc.
4/10/02

213.86
4.48
37.1-HV Conc.
4/10/02

TP

378

218.34

237

214.62

208.34

+53

213.8
1/30

213.7
1/15

213.2
48

213.0
4.0
1/15

212.81
4.18
29.6-HV Conc.
4/10/02

212.94
4.05
32.6-HV Conc.
4/10/02

+38

212.86
4.13
30.0-HV Conc.
4/10/02

+07

212.36
4.63
30.8-HV Conc.
4/10/02

4+0

212.8
1/30

212.5
1/15

212.2
48

211.7
5.8
1/15

212.0
5.0
3.0

216.99

216.99

+97

+67

+50

+365

+21

5+07

218.34

61

8

Rt.

11

213.1
53
30

212.9
52
15

213.1
53
30

212.9
52
15

213.7
46
30

214.1
48
30

214.71
363
30

213.9
41
30

213.8
45
15

213.9
41
30

213.9
41
30

214.43
41
30

214.91
43
30

214.2
41
30

214.1
42
15

214.2
41
30

214.2
41
15

214.9
44
30

214.61
47
30

41
30

214.24
41
30

41
30

214.7
41
30

214.6
41
30

214.0
41
30

213.9
41
15

213.81
453
315

213.84
450
335

218.34

41
30

8 M

1.95 ✓ NYX BP
209.03 A+277551
208.85

+91.21 = 277551 to South

+75.21

+75.21 = W Cobline to South

TP

3.39

211.03

10.70

207.64

+61.21 = W.L. 27th St. 21 ft of 2 = 30' Pepper Tree

+50

+20

6+11

6.5 ft of 2 = 8" Jac Tree

218.04

Lt.

S

Rt

207.1
3.29
30

207.4
3.26
15

207.2
3.29
30

207.4
3.26
15

207.33
3.20
30.5

207.63
3.40
62.07 Box

207.70
3.33
62.5-Cult.

208.37
3.16
62 = TOP CL. NYX
Came Drive

207.7
3.30
30

207.8
3.25
15

207.9
3.31
30

207.8
3.22
15

207.8
3.22
30

207.40
3.63
30.5-Cult

208.11
3.03
30.5 = NYX
Cult

211.03

208.9
3.28
30

208.5
3.28
15

208.6
3.27
30

209.0
3.23
15

210.8
3.25
30

210.0
3.23
30

210.01
3.33
30.8
TOP CL. NYX
Came Drive

209.7
3.28
30

209.5
3.28
15

209.3
3.29
30

209.7
3.26
15

210.7
3.25
30

210.8
3.25
30

212.3
3.29
30

212.1
3.29
15

212.4
3.29
30

212.2
3.26
15

212.8
3.25
30

214.64
3.20
30.5 = TOP CL. NYX
Came Drive

218.04

BM

157

205.06

MMSB
#1266
20503

TP

2.54

211.63

3.38

209.09

TP

10.81

212.47

1.01

201.66

788

9 ft. of - Woven Wire Fence

7+58

07 ft. Closed at Garage

+16

13 ft of 2" x 12" Acacia Tree

+32

16 ft of 2" x 12" Acacia Tree

TP

2.30

202.77

10.56

200.47

724

135 ft of 2" x 8" Acacia Tree

+212 = East Line 27' to South

7+07.21

7+07.21 = E CB line to South

211.03

4

2

8

196.0

6.8
30

195.4

7.4
5

193.6

9.2

193.9

8.9
15

194.5

8.2
30

194.53

8.34
30

198.1

1.7
30

198.0

1.8
15

198.4

4.4

199.4

5.4
15

198.96

3.8
27

199.15

3.62
32

199.53

3.24
32

202.77

202.6
8.4
40

202.3
8.2
30

202.3
8.7
15

203.5
7.5

204.8
6.2
15

204.7
6.4
26

205.7
5.3
30

207.3
3.70
30

206.77
4.1
62

207.32
3.71
62

204.8
6.2
40

204.3
5.67
30

206.1
1.9
15

206.7
1.3

206.6
1.4
15

206.6
1.8
30

206.45
1.58
30

206.95
4.02
30

211.03

Check - Cross Section of

Oliver Ave.

Lt.

&

Rt.

14

Ingraham to Jewell

Roberts

See F.B. 1721 Page 2-8

W. Moore

J. Clark

4-6-49

W.O. 25001

Only New Improvements shown.

See P. 26 also for
new improvements)

INDEXED

WK

APR 7 1949

4+27 15²' Lt Deadman

4+10 16²' Lt. to Center P. Pole # 1671

51.29 50.59

4+00 25²' Lt & 8' Conc. Driveway Single Garage

$\frac{2.33}{57}$ $\frac{3.03}{25^2}$
conc. conc.

3+03² 16²' Lt to Center P. Pole # 1653

53.62

2+00 17' Lt. Deadman

BM 5.63 53.62

47.99

ECT.

Oliver & Ingraham

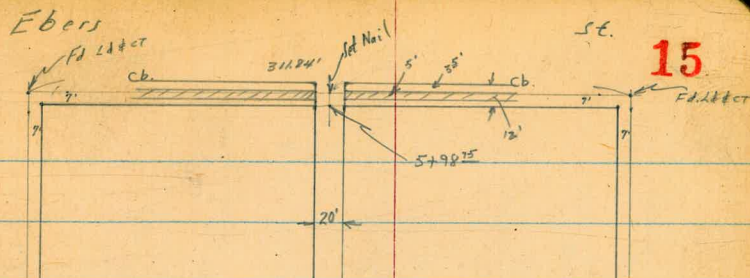
X-Sect Alley 38 Ocean Beach

Roberts

W. Moore
J. Clark
4-28-49
W.O. 31699

T.P. 778 Map 279 FB 1130

INDEXED
WIK
MAY 4 1949



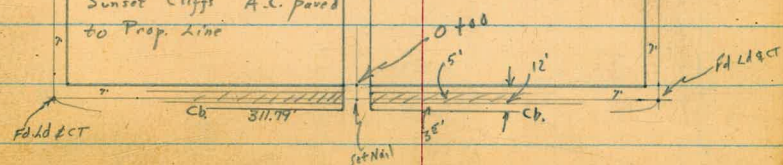
Ave.

Coronado

Ave.

Del Mar

Note:
Both Ebers &
Sunset Cliffs A.C. paved
to Prop. Line



Sunset Cliffs

Blvd.

Cont'd From Page 13

Lt.

℄

Rt. 16

0+44 { 10' Lt Begin^{4"} curb 10' Lt Begin board Fence
91' Rt End Conc. Block Wall

45.68
2.91
102
709

44.79
3.8
102
Foot

45.49
3.1
102
Dirt

44.79
3.8
91
Dirt

43.39
5.2
92
Foot

46.15
2.44
92
Top

0+10 Reduced 6/3/49
C. Lawrence

45.19
3.4
10

44.19
4.4
10

43.69
4.9

43.99
4.6
5

43.79
4.8
9.6

43.09
5.5
10

0+00 { 96' Rt Begin Conc. Block Wall
Prop. Line Sunset Cliffs

43.94
4.65
10.3
cb.

43.50
5.09
10.3
Gutt

42.92
5.67

42.93
5.66
9.6
Gutt

43.00
5.59
9.6
cb.

42.69
5.9
9.6
Foot

45.35
3.24
9.6
Wall

0-12 Curb Line Sunset Cliffs

47.85
0.74
100
cb.

47.22
1.37
100
Gutt.

44.96
3.65
50
cb.

43.80
4.79
12
cb.

43.51
5.28
12
Gutt

42.71
5.88

42.26
6.33
12
Gutt

42.81
5.78
12
cb.

40.53
8.06
50
Gutt

41.05
7.54
50
cb.

40.82
9.77
90
Gutt

40.82
9.77
90
cb.

0-30 ℄ Sunset Cliffs

47.45
1.14
100

45.30
3.29
50

43.09
5.50

40.82
7.77
50

38.69
9.90
100

BM 12.40 48.59

36.19
NWBP
Sunset Cliffs
Del Mar

48.59

Contd From Page 17

Lt ✕ Rt

18

2+19⁴ 11³' Lt begin 2' Conc. Walk

56.81.

$\frac{3.85}{11^3}$
Walk

58.34

54.86.

56.86.

2+18⁸ 12⁴' Lt End Conc. Ret Wall & Fence

$\frac{2.32}{12^4}$
Top

$\frac{5.8}{12^4}$
Foot

$\frac{3.4}{12^4}$
Dist

2+18 11⁸' Rt & 12' Conc. Apron Single Garage

54.79.

$\frac{5.87}{11^8}$
Apron

54.81.

$\frac{5.85}{15^6}$
Floor

2+00⁵ 12²' Lt Begin Conc. Ret Wall & Fence

58.04.

54.16.

55.76.

$\frac{2.62}{12^2}$
Top

$\frac{6.5}{12^2}$
Foot

$\frac{4.9}{12^2}$
Dist

2+00 9⁰' Rt to Center P. Pole # PA 4766

55.26.

54.56.

53.46.

$\frac{5.4}{10}$

$\frac{6.1}{8}$

72

$\frac{53.56}{10}$

$\frac{7.8}{20}$

1+50

52.16.

50.96.

50.66.

$\frac{8.5}{10}$

$\frac{2.7}{6}$

100

$\frac{50.56}{70}$

$\frac{7.56}{20}$

60.66

60.66

Cont'd From Page 18

2+53^s 11⁶ Lt. begin 3' high 12' wide con wall

2+50

T.P. 8⁸⁹ 69 38 0.17 60.49

2+44^s 10² Lt. End 2' walk

2+42^s 10² Lt Break walk

2+36 11⁸ Lt break 2' walk

2+27 11² Lt to walk 13⁶ to & Single Garage

60.66

Lt

Rt

Rt

19

61.88.

7.50

11²

Top wall

57.88.

11²

End

11²

11²

11²

11²

11²

11²

11²

11²

11²

11²

11²

11²

11²

11²

11²

11²

11²

11²

11²

11²

11²

11²

11²

11²

11²

11²

11²

11²

11²

11²

11²

11²

11²

11²

11²

11²

58.98.

57.98.

57.28.

57.58.

56.08.

10⁴

20

11⁴

10

12⁴

10

11⁸

20

13³

20

69.38

58.29.

2.37

102

walk

58.22.

2.44

102

walk

56.94.

3.72

11.0

walk

56.96.

3.7

13.6

Dirt Floor

56.88.

3.78

11.2

walk

60.66

Cont'd From Page 19

3750

3723E 13E to SE cor single garage opens East con floor

3720E 11E E 16" pepper tree

3709 11E Lt. E 10" pepper tree

3701E 11E Lt End 3' high 12' wide con wall

3700 8E Rt E Power Pole #PA 4750

2788 18E Rt End garage + shed con floor

2765E 18E Rt Begin garage shed. con floor

2760 18E Rt E single 10' long garage + dirt floor

Lt

Rt

Rt

20

65.31.	61.08.	65.28.	64.88.	64.38.	64.38.	62.18.
33	44	45	50	50	73	
15	10	7		10	25	

40Z
13E
Floor

64.18.	61.18.	61.88.	61.78.	61.12.	61.38.	61.48.	60.58.	59.48.
520	820	75	76	826	80	79	88	92
112	112	112	112	826	9	10	18	25
58.10.	64.28.	64.15.	61.88.	61.78.	61.12.	61.38.	61.48.	60.58.
15	15	112	112	10	826	9	10	18
					on rim			
					N.H.			

1428
18E
Floor
1134
1134
Floor
57.68.
1134
dirt floor

20

6938

L+

R+

4117 16² Lt End 2 car garage con apron + floor

4102 16² Lt begin 2 car garage con apron + floor

4100 9⁴ Rt 2 power pole # PA 4736

3198 10⁴ Rt begin 4 high Board fence

T.P. 911 78 34 0021 6917 4100 Nail in Pole 94 Rt

3185 15² Rt westerly edge 10' garage dirt floor

3184 11² Lt Easterl 2 car garage dirt floor

3167 12³ Lt westerly 2 car garage dirt floor

3158 15³ Lt 2 car garage dirt floor 18' long

71.12.
722
192
71.06.
728
182
71.24.
71
20
70.99
735
160
70.52.
728
162
71.24.
8E
10
69.74.
9E
6
68.74.
10E
10
68.54.
9E
10
67.44.
10E
20

7834
69.68.
703
15
69.18.
62
12
68.18.
13
10
67.48.
19
5
66.98.
24
10
67.28.
24
10
67.68.
17
15
dirt floor

68.18.
12
dirt floor
66.78.
12
dirt floor
66.28.
31
15
dirt floor

6938

5+295 12' Rt closest cor NE of Dia garage opens Easterly Floor ^{con}

85.67. 85.47. 82.97. 82.67. 83.51. 525
122
Floor 82.49. 82.27.

5+20 9' Lt ^{5' south of trunks 2' North of trunks} Begin trunk line of cypress hedge 7' wide 10' high

32 34 52 62 64 65
20 10 6 10 15
82.77. 83.07. 82.47. 82.47. 82.17. 82.17.

5+18 14' Lt SE cor 2 garages dirt floors

61 55 64 64 62 62
144 10 5 10 15
Floor 82.57. 81.97. 81.17. 81.27. 81.37. 80.87. 80.77.

5+16

63 69 72 76 75 80 81
144 10 8 10 20 30
Floor 82.97. 82.77. 80.97.

5+100 143 Lt SW cor 2 garages dirt floors

82.97.
64
143
Floor

4+99 102 Rt E power pole No Number

82.77. 80.97.

4+98 9' Lt. End 3' high 2x12" plank retaining wall

64 72
76 76
Top 83.67. 81.37. 79.87. 78.87. 78.07. 78.17. 77.57. 75.87. 75.27.
52 75 90 100 108 102 112 120 136
20 10 Top base 7 8 10 20 30

4+90

8887

5485

LT
 95.79. 95.59. 92.69. 91.99. 91.79. 92.19. 91.79. 91.39.
 28 30 52 71 68 68 68 73
 20 10 8 8 10 12 20

5476

91.39. 91.79. 91.19. 90.29. 90.59. 90.89. 90.59. 89.99.
 72 68 74 83 80 72 80 86
 20 10 8 8 8 10 20 30

5474

91.19. 91.39. 90.59. 89.89. 90.99. 88.39. 88.19. 88.19.
 74 72 80 82 81 102 104 104
 20 10 8 10 12 20 30

TP

104

9859

039

8848

9859

5456

89.57. 89.27. 88.17. 87.47. 87.87. 88.27. 88.37. 88.27.
 703 704 02 14 10 06 05 06
 20 10 5 8 10 20 30

5453 9th LT End trunk line of cy press hedge 7' wide 10' high
 5' south of trunks 2' North of trunks

5445

88.37. 87.87. 86.57. 85.97. 85.97. 85.97. 83.77. 82.97.
 05 12 23 29 29 34 51 59
 20 10 5 8 10 20 30

88 87

L+

♀

R+

25

SLint Coronado
Top Curb Web Ebers

FB 1130
538 105⁰⁶ 105⁰⁷
pass 49

TP 1262 1104⁵ 029 9783

6+2825 E Ebers

97.99.
060
50
97.35.
424
80
50
90.59.

6+1025 West curb line Ebers

97.99.	97.15.	94.95.	94.22.	93.50.	92.89.	93.23.	89.82.	90.99.
082	144	364	437	509	539	526	877	88 1/2
94.59.	94.94.	94.29.	93.99.	93.93.	93.52.	93.19.		
30	365	420	510	516	507	51		
20	102	103	5	10	10	20		
	102	103						
	curb	curb						
		set						
			98.	59				

5+9825 West Line Ebers St = edge AC paving + curbs

8-25-49 New Improvements on
Hendricks Oliver St
Roberts Ingraham to Jewell
Bunch
Gregory Original notes FB1721 P-2
see also p-14 this Book

INDEXED

CEBM. W.K. AUG 26 1949 336 5060 50.59 \$ 8' Conc Drive LI 4100 P-12

3+37.5 \$ 3' Conc Walk 25' Lt.

50.90 50.03
355 395
40 25

5+11.5 \$ 9' Conc Drive 25' Lt.

49.88 49.51
408 445
40 25

2+41 \$ 8' Conc Drive 22.6 Rt.

48.77 48.94 48.80
519 502 515
226 24.8 40

BM 5.97 53.96
7

47.99

L&T \$ Oliver & Ingraham
53.96

1 + 10

1 + 00 To 1 + 10 3 peach tree well inside right of way

0 + 98

SW cor Howe 37.9

Beg of Picket fence in $\frac{1}{2}$ mi

0 + 88

1.7 mi of Pole Tel no number

0 + 70

0 + 71 { 1.2 Lt 12 + 12 Post Southernly of wood fence
203 Lt PPole 27.2 S of sign

0 + 35

0 + 00

BM.

17.41 17.67

5.26

17.67
 NE Anna E of RR 2" Pipe
 see 1801 - P34

	5.21	5.7	6.1	7.2	7.4	7.4
1 + 13 cor	11.9	12.0	11.6	10.5	10.3	10.3
3' from SE cor	32.2	15		15	25	25
37 mobile						

8.6	6.3
9.1	11.4
floor	37.9

7.0	7.2	8.2	9.2	10.6	13.43
10.7	10.5	9.5	8.0	7.1	4.24
32.7	15		15	25	25

5.6	5.1	5.8	7.1	12.0	13.20	13.51
12.1	12.0	11.9	10.6	5.7	4.47	4.16
50	32.2	18	11		18	25

5.3	5.3	5.5	13.7	12.3	13.44	13.76
10.4	12.4	12.2	3.8	4.4	4.23	3.91
50	32.23	22	11	8		25

1 + 97

7.7	7.8	7.9	7.7	7.1	7.2	6.1
9.0	9.9	9.8	10.0	10.6	10.5	9.6
50	32.7	11		15	25	35

1 + 94 16 ft. end of Picket

1 + 50

6.8	6.7	6.7	6.5	7.1	7.1	7.0	6.8
10.7	11.3	11.3	11.1	10.6	10.6	10.7	10.9
50	32.7	20	7		15	25	35

1 + 50 46 ft. end of line of Sheds

1 + 36 Line crosses both fence

1 + 38

cross fence both - change in line
Picket at 21 ft. end of
Picket by both

1 + 34

18 1/2 ft. cor. of Shed - beginning of line of
Sheds ending at 1 + 50

1 + 14

cross fence wire - 2' 8" Picket

17.67

B + 75 26.4 end of house

B + 64 23.3 R of 4' con slab 28.6 RT porch

B + 61 18 ft by both fence

B + 56 RT 31.0 cor house

B + 53 38.8 ft cor of house

B + 50

B + 28

B + 12.87 L-RT, section on split

10.21

7.46
slab

9.3

11.7

8.4 6.50
31.6 floor

11.3

10.0

6.54 7.7
floor 38.8 grid

9.7

9.9

9.7

9.8

9.8

8.7

9.8

8.0 7.8 8.3 7.9 7.9 9.0 12.9
40 25 10 15 25 50

8.4

8.7

8.2

8.9

8.5

8.3

9.7

9.3 9.3 9.4 8.8 9.2 9.4 12.0
40 25 15 15 25 50

8.6

8.7

8.7

9.1

9.7

6.7

9.1 9.6 9.6 10.2 9.8 11.0
40 15 15 30 40

17.67

3 + 45

10.9	8.7	7.3	13.4	12.3	13.2	7.6	7.1	5.8
5.8	8.0	9.4	3.3	3.4	3.5	9.1	9.6	10.9
50	25	20	10		10	21	25	50

3 + 35

5.7	5.4	6.4	12.0	13.0	12.6	7.0	6.3	4.2
11.0	11.3	10.3	3.7	3.7	4.1	9.7	10.4	12.5
50	25	21	10		11	23	25	50

3 + 34

30 Lt of Tel Pk

T.P.

4.58 16.71 5.54 12.13

16.71

3 + 15

end of Packet 19 Lt

3 + 05

5.6	5.6	5.4	11.6	11.8	12.1	7.8	7.5	3.4
50.7	12.1	11.9	6.1	5.9	5.6	9.9	10.2	14.3
12.1	25	21	12		11	22	25	50

2 + 90

20 R of Hydrant

2 + 80

5.4	6.3	6.3	11.1	10.9	11.0	9.5	9.0	4.8
12.3	11.4	11.4	6.6	6.8	6.7	8.2	8.7	13.1
50	25	21	12		15	25	27	50

2 + 79

19.8 R of PP P1697

17.67

17.67

4 + 73 20 Rt P Pole P1685

6.7	6.3	6.5	11.4	11.8	11.4	5.5	6.7
10.0	10.4	10.2	5.3	4.9	5.3	11.2	10.3
50	25	21	13		11	25	50

4 + 20

5.5	6.6	11.9	12.8	12.7	6.4	7.2
11.2	10.1	4.8	3.9	4.0	10.3	9.5
50	25	14		11	25	50

4 + 00

6.5	8.2	13.1	13.6	12.9	13.5
10.2	8.5	3.6	3.1	3.8	3.2
50	25	11		25	50

3 + 85

2.12 14.59 BM
23.57 = RR Elev

on Pedestal of Signal.

3 + 65.5 West Rail along Track

14.04	14.09	14.11	14.15	14.22
2.67	2.62	2.60	2.56	2.49
50	25		25	50

16.71

16.71

6+50

7.7	7.9	8.3	8.7	8.4	7.6	7.8
5.7	5.5	5.1	4.7	5.0	5.8	5.6
40	25	15		15	25	40

6+50

8.1	8.3	7.9	8.7	8.6	7.9	8.3
5.3	5.1	5.5	5.0	4.8	5.5	5.1
40	25	15		15	25	40

5+50

7.6	7.8	8.4	8.4	7.7	7.7
5.8	5.6	5.0	5.0	5.7	5.7
40	25		15	25	40

T.P.

5.42

13.44

8.69

9.02

13.44

5+50

7.9	7.3	7.7	8.6	7.3	9.5	7.7	7.7
9.1	9.4	9.0	8.1	7.4	7.2	9.0	9.0
50	27	25	17		15	25	40

4+60

7.4	7.1	7.7	10.0	10.4	10.2	6.4	7.5
9.3	9.4	9.0	6.7	6.3	6.5	10.3	9.2
50	25	18	15		14	25	50

16.71

16.71

X Sections Ann

Pacific Blvd to SFAT RR

8.18 5.26 5.26

BM sec p 28

7.12 6.32 6.36
-04

Mon

5 Line Anna & Sherman

} sec 1801 - P34

7 + 00

8.2	8.5	8.7	8.3	8.2	8.6
52	49	50	51	52	48
40	25	15		25	40

6 + 69

20.3 At P Pole P1647

13.44

13.44

KEATING

X Section Neal to Titus

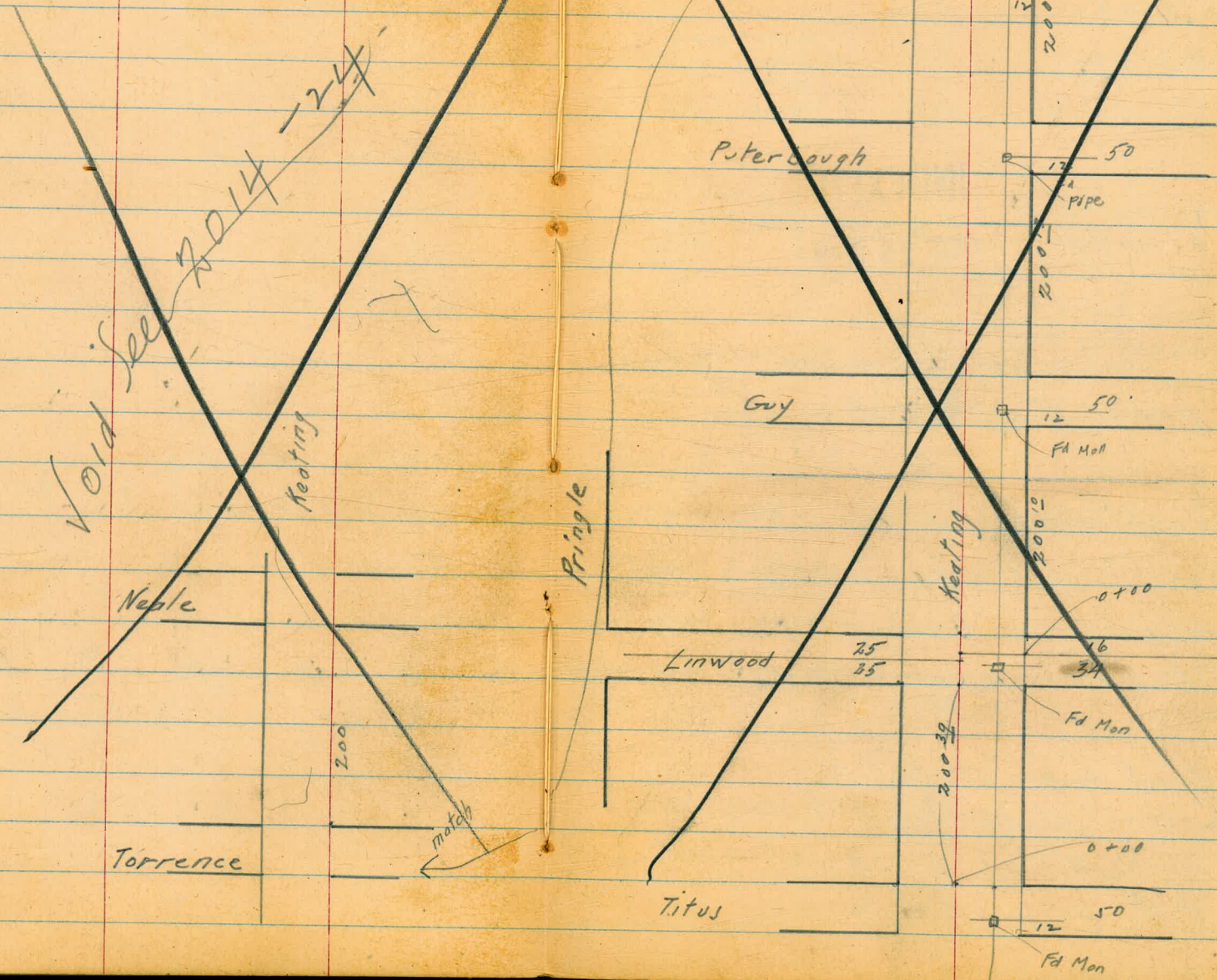
4010

WD 31158

Begg
Osborn
Hatch
Shepard

10/11/49

35



Void See 2014-24

Pringle

Keating

Keating

Neal

Torrence

Linwood

Titus

Torrence

Peterbough

Guy

Fd Mon

PIPE

Fd Mon

Fd Mon

Fd Mon

200

20039

12 50

12 50

12 50

16 34

12 50

match

0+70

0+46 3' Lt. = start 5' High hedge, 2' wide

approx 4' High - 8" wide

0+39- 3' Lt. = So. End. N. + S. Conc. wall.

T.B. 11.95 121.17 2.00 109.22

0+37 ³⁷ = Δ

0+32

0+17 = End of oil pipe.

0+01 = Rim of M.H. (on north edge of rim)

0+00 = invert exist M.H.

Invert. M.H. "A" 1405 111.22 — 97.17 ← this grade must be met so is assumed to be correct.
Page 37 X

2.6 ^{118.6}

7.0 ^{114.2}

121.17

109.2
2.0

3.6 ^{107.6}

4.4 ^{106.8}

4.77 ^{106.45}

14.05 ^{97.17}

111.22

1+50

1+46 = 3⁵ Lt. = End Conc. fish pond1+39 = 3⁵ Lt. = start conc. fish pond

1+39 } 3² Rt. = }
 0⁵ Lt. = } 2" pipe standard clothes line

1+38 } N. & S. hedge
 also = Cross 2' wide 4' high
 3⁵ Lt. = start board fence

1+22

1+08

cobble wall

1+07 - 3⁵ Lt. = 3' High, 10" wide1+05 - 3⁵ Lt. = 2⁵ wide N. & S. Conc walk

1+04 - 3' Lt. = End Hedge

sewer - 4" C.I. Pipe.

0+91 - 28' Lt. = outlet from house

7.79 128.72 0.24 - 120.93
 126.17

$$\frac{0.6}{10} \quad 128.0$$

$$0.7 \quad 128.0$$

$$\frac{0.7}{10} \quad 128.0$$

$$\frac{1.7}{10} \quad 127.0$$

$$1.7 \quad 127.0$$

$$\frac{1.7}{10} \quad 127.0$$

$$3.1 \quad 125.6$$

$$\frac{5.0}{10} \quad 123.7$$

$$5.3 \quad 123.4$$

$$\frac{4.7}{10} \quad 124.0$$

$$\frac{8.6}{10} \quad 120.1$$

$$\frac{8.66}{35} \quad 120.06$$

$$\frac{6.1}{2} \quad 122.6$$

$$6.1 \quad 122.6$$

$$\frac{6.0}{10} \quad 122.7$$

$$\frac{9.68}{28} \quad 119.04$$

$$\frac{8.7}{28} \quad 120.0$$

$$\frac{9.0}{3} \quad 119.7$$

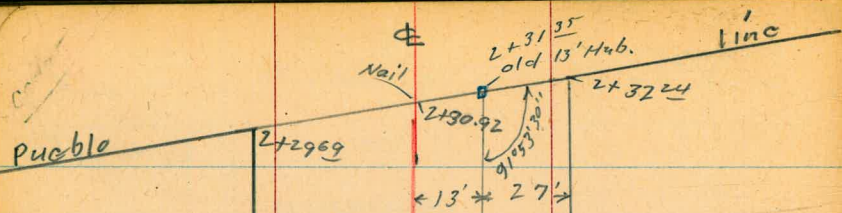
$$7.8 \quad 120.9$$

$$\frac{7.8}{10} \quad 120.9$$

Top
 4" O.I.
 Pipe

End.

$$\underline{128.72}$$



Cedar St.

Wash

Gregory

Wash

Street

40' x 40'

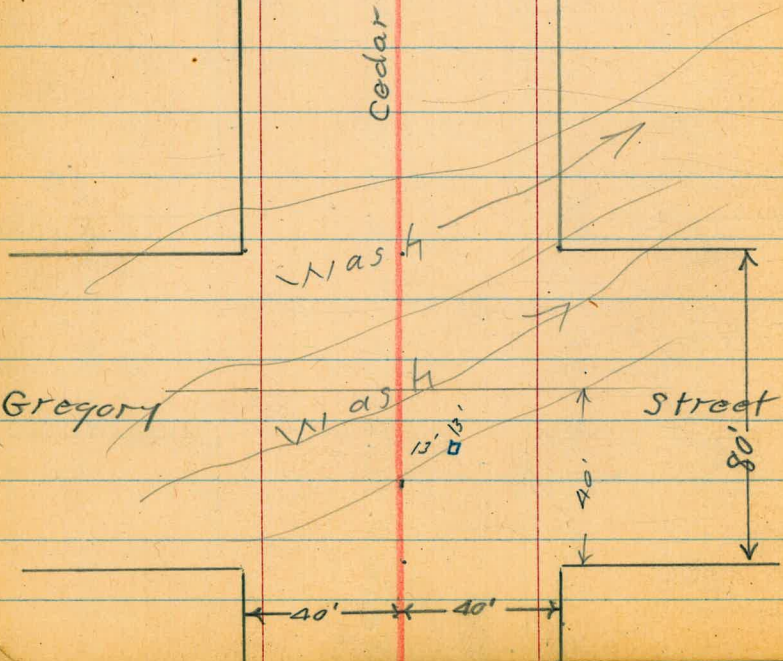
80'

40'

13' 0 1/2'

40'

40'



Felton

Date st.
Levels P-46

Gregory

st. 41

Levels P. 47

See Index I-21 5/22/59

Date st.

Date st.

2100

0100

0-10

0100
mail

17' • 23' 23' • 17'
Nail: 0-17'

33rd

st.

Felton

st.

10'
8'
10'

to split
on Bagcroft.

← 40' * 40' →

T. P. shoot #193
2+23.99 Line

Pueblo

Ed. 13' 4/6

Date street.

20+00
2+80

Gregory

street

2+13

27' ↑

27'

Cedar St. Levels
Felton - Ely. sketch P.39

0.04 Fall East + West.
0+15 19⁸ Rt. = E Conc. Drive.

217.79
218.42
6.96
198
6.33
30
At Garage
on floor

0+10 29² Rt. = start frame house
26' Lt. = End existing cl.

219.99
A.76
26
cl.

26' Lt. = cl. Ret. E.C.
also end good pavement
0+00 = New Eastline Felton

220.06 219.41 219.19 218.95 218.50 217.83 218.54 218.2
A.69 5.34 5.56 5.80 6.25 6.92 6.21 6.6
26 26 13 10 22 22 30
cl @ cl Top wall

Also = start brick wall
0-01 23² Rt End Exist cl.

217.73 218.04 218.52
7.02 6.71 6.23
23 23 23
cl cl wall
Top

gmt.
February 7, 1949

0+10 Cont.

220.99 223.21 220.13 219.88 220.14 219.79 217.13 217.67 216.36 216.97
0.76 1.54 4.62 4.87 4.61 A.96 7.62 7.08 8.39 7.78
100 100 40 40 36 36 40 40 100 100
cl G cl G cl B.C. G cl cl B.C. cl cl

36' Lt. = cl. Ret. B.C.

40' Rt. = cl. Ret. B.C.
0-10 = Ely Cl. line Felton

219.42 219.57 219.48 219.20 218.78 218.25 219.53
5.13 5.18 5.27 5.55 5.97 6.50 7.22
26 20 10 22 10 20 30
224.75

T.P. 4.61 224.75 1.20 220.14
N.E. 7/4th. sat
Cedar + Felton 1.20 220.14 B.M. #1
Boech + NW
Felton 5.38 221.34 — 215.96 RR

224.75 T.P.

Cedar St.

set. Temp. B.M. in 1/4 0.00 201.14 = B.M. #2

±
201.14

T.P. 0.37 201.14 12.57 200.77

211.14 Gregging

1+60

205.9	201.9	202.6	200.3	188.7
7.4	11.4	10.7	13.0	24.6
40	25	7		40

1+10 - 30' RT. = End of closing

216.3	212.5	209.3	211.3	211.5	210.1	204.5	194.9
+3.0	0.8	4.0	2.0	1.8	3.2	8.8	14.4
50	40	20		25	30	40	50

T.P. 1.49 213.34 12.90 211.85

213.34

0+63 - 18' RT. = End brick wall

215.7	214.7
7.1	8.1
188	188
End	top wall

0+58 - 29' RT. = End Frame house.

7.9	216.9
29	
At house	

0+50 19' RT. = Face of wall

219.3	215.9	216.5	212.5
5.5	8.9	8.5	7.3
40	20		29

0+33 - 18' RT. = ± 3' wide brick walk

219.42	219.4
5.33	7.34
30	18
Porch	

224.75

Cedar St.
Sketch - P. 40

45

T.P. 12.93 213.31 0.47 200.38
1+50

1+00

T.P. 11.81 200.85 0.67 189.04

0+50

T.P. 0.67 189.71 0.00 189.04

0+20 = Wash

0+00 = Ely line Gregory

T.P. 0.37 189.04 12.47 188.67

Gregory St.
For intersection see X-Section

2+09⁷⁸ = Wly. line Gregory

206.1
75.2
40

199.6
1.3
11.1
40

189.8

198.7
2.2
40

191.6
9.3
200.85

184.3
16.6
40

189.5
0.2
50

184.1
5.6
40

181.4
8.3
28

184.9
4.8
189.71

175.2
14.5
40

180.2
8.8
40

173.2
15.8
24.7
40

144.3

177.9
11.1
40

177.7
11.3
16.2
40

172.8

Bottom
of wash 189.04

198.7
2.4
40

199.5
1.6
10

193.3
7.8

171.3
29.8
40

201.14

Cedar St.

S

46

Temp. B.M. #2
P.A.A

12.16 201.15 201.14

2+03.92 = Pueblo line + $\frac{1}{2}$ Cedar.
Along pueblo line

230.92?

2+00

213.31

216.6
+ 3.3
40

212.0
1.3

201.3
12.0
40

212.9
0.4
40

207.3
6.0

199.2
15.1
40

213.31

Date St. 14/7/49
 33rd Ely, To Pueblo line
 sketch P-A1

47

0+50

235.0

236.0

236.8

5.1
40

4.1

3.3
40

0+34 - 39² RT. = End Frame Gar. + house

235.9

237.8

237.7

0+17 - 39¹ RT. = start garage + house

4.2
40

2.3

Cor.
Gar.
39.2

2.4
40

0+00 = Ely. line 33rd

236.7

234.17

235.1

235.1

235.17

237.4

3.4
40

5.96
15
Top of cl.

5.0
15
End

5.0

4.96
15
End +
Top of cl.

2.7
40

0-10 15' Lt } cl. E.C. (10' Rad Returns)
 15' Rt }

233.90

6.23
15
cl. E.C.

235.00

5.13
15
cl. E.C.

0-20 { 25' Rt. = cl. B.C. - 40' Rt. =
 25' Lt. = cl. B.C. 40' Lt. = End. Exst. cl.

233.64

237.80

6.51
40
cl. and
top of cl.

6.33
25
cl. B.C.

234.93
5.20
25
cl. B.C.

237.84

5.29
40
top of cl.

Set B.M. S-17' Lx
 33rd +
 Date

5.13

240.13

4.25

235.00

= B.M. #3

240.13

T.P.

6.76

239.25

0.42

232.49

1277

232.91

—

220.14

B.M. #1
 P.43

Set I.B.M. Pole # 3357 set.
= Nail in pole 6.10 222.79 = BM #4

Also wly. line Felton st.
2+00 - 40³ Rt. = End conc. wall.

1+65 - 41' Rt. = start Conc. wall

1+50

T.P. 1.71 228.89 12.95 227.18

1+00

0+97 - 38⁸ Rt. = End Frame House

0+72 { 39' Rt. = Porch deck.
36⁸ = Bottom conc. steps
26⁴ Rt. = ± 3' wide Conc. walk

0+69 38⁸ Rt. = start House (Frame)

240.13

210.8	205.8	200.0	212.6	213.6	219.9
<u>18.1</u>	<u>23.1</u>	28.9	15.1	15.1	9.0
40		17	40	40 ³	40 ³
				Base top at wall	

222.1	222.5	217.9
<u>6.8</u>	<u>6.4</u>	<u>11.</u>
40	41	41
Grid	Top wall	Apex base of wall
224.8	225.6	225.2
<u>4.1</u>	3.3	<u>3.7</u>
40		40
	<u>228.89</u>	

229.5	231.6	231.4
<u>10.6</u>	8.5	<u>8.7</u>
40		40

231.9	234.2	235.2	235.54	235.69	237.35
<u>8.2</u>	5.9	4.9	4.59	4.44	2.78
40		26	26 ³	36 ⁸	39
			walk	Bottom steps	Porch

240.13

85.0

Date Street.

±

49

1+30 - 39² Rt. = End of House.
Gar. floor level
1+21 - 39² Rt. = ± Gar. doors.

1+04 - 39² Rt. = start 2 story house + Gar.

1+00

0+48

T.P 1:15 223.94 6.10. 222.79 (BM #4)

223.94

0+08
2+88

2+80 = Ely line from to North.

2+68

2+50

These rods and
stations are by
stadia.

These rods are
in bottom of cross wash

Sections above have constant grade
from Sta 2+00 to station shown above

228.89

228.89

221.1

2.85
39.5
Floor

156.2
25.7
40

213.5
10.4

221.1
2.8
18

221.3
2.6
40

219.3
4.6
40
top of bank

175.1
53.8
40

221.7
46.2

188.4
40.5
40

Date st.

50

1+00

189.6
22.5
40

204.6
7.5

214.6
+2.5
40

0+50

194.6
17.5
40

208.0
4.1
212.14

215.7
+3.6
40

T.P. 0.80 212.14 12.60 211.34

2+00

198.2
25.7
40

211.3
12.6

219.7
4.2
40

2+80 = Ely. line Gregory

2+40 ± Gregory

197.9
26.0
40

213.2
10.7

220.3
3.6
24

220.9
3.0
40

2+13 ± 13' Atr = 8.08 215.86 BM 45
13' Hub

2+00 = W. Line Gregory

196.5
27.4
40

213.7
10.2

219.0
4.9
17

221.4
2.5
40

P 1+50

200.7
23.2
40

214.2
9.7

219.4
4.5
18

219.5
4.4
33

221.8
2.1
40

223.94

223.94

Date st.

B.M. 42 P. 44
201.12

12.16
201.18 ^{.04} 201.18

T.P. 1.84 213.34 12.21 211.50

T.P. 12.18 223.71 0.22 211.53

T.P. 11.39 211.75 0.87 200.36

Section along Pueblo line
2+24 = Pueblo line

2+00

T.P. 0.87 201.23 11.78 200.36

1+50

212.14

176.0
25.2
40

187.0
14.2

192.8
7.4
40

180.0
21.2
40

190.8
10.4
201.23

198.9
2.3
40

186.5
25.6
40

192.5
12.6

214.7
+2.6
40

212.14

X-Sept. 42nd st. from Grama to

Alpha

10-3-50

4764

INDEXED

Osborne

Hardin

Hatch

Lochhead

W.O. 31665

OCT 5 1950

A.P. STEGENS
10-6-50

1+15

8/	2/	5/	4/	4/	5/	2/	5/	2/
8.3	7.9	7.6	7.7	7.7	7.6	6.9	6.5	5.7
40	30	18	8	4	6	30	40	40

1+11 29.8 Lt. = end fence

1+02- 30.1 Rt. = end fence

0+85

4/	2/	2/	6/	0/	6/	2/	2/	2/	2/
8.7	8.4	8.3	9.3	9.1	9.3	9.4	4.9	5.2	5.1
40	30	21	18	8	9	3	9	20	30

0+60

8/	4/	2/	2/	20/	2/	2/	5/	2/	6/
8.6	9.5	8.9	10.5	10.1	10.2	10.2	5.6	3.8	3.5
40	30	22	18	8	10	3	10	30	40

0+49- 29.6 Lt. - Beg. picket fence

0+42- 30 Rt. = Beg. cyclone fence

0+30

2/	2/	2/	2/	2/	3/	2/	2/	0/	6/
8.9	9.4	9.7	11.4	10.9	10.8	10.9	5.4	4.1	3.6
40	30	23	19	8	10	4	10	30	24

0+00- N.L. Grama

50.2/	0/	16.7/	2/	2/	2/	0/	2/
9.8	10.1	11.4	11.3	11.4	7.1	5.9	
30	22	20	4	9	30		

Sec B. 1827- P. 71 for Int.

B.M.

8.99

90.12

81.13 = SE.

Top Hyd.

90.12

B. 1827- P. 71

42 ng

C.N. - 30' Rt. - ± 8' Conc. Dr.

Set B.M. - Nail in S.W. Pole 5.02 84.53

2+99.83 = S.L. Beta - 30' Rt. = end fence

2+96 - 20.8' Lt. = ± P. pole # 1500

2+93 - 30.1' Rt. = E 8' Conc. Dr.

2+88 - 29.7' Lt. = end Conc. walk

2+61 - 27' Rt. = ± 3' Conc. walk

T.P. 5.36 89.55 5.93 84.19

T.P.

2+50

2+41 29.4' Rt. = Beg. Low Picket Fence

2+20 - ± Sewer M.H. 5.80 on Rim

2+00

1+64 - 30.2' Lt. = along Row of Houses.
Beg. Ely. of 2.5' Conc. walk

1+50

It.	#	Rt.		
			4.08	4.00
			3.0	4.0
			Dr.	Dr.
			5.1	4.2
			15	30
			5.16	3.9
			29.7	4.0
			Cor. walk	Dr.
			89.55	5.06
				4.0
				89
				4.0
				84.8
				5.3
				4.0
				5.9
				15
				30
				4.0
				5.4
				30
				4.0
				5.6
				4.0
				6.2
				15
				30
				5.6
				4.0
				6.5
				30
				15
				6.1
				15
				30
				5.6
				32.7
				30.2
				walk
				along Gar.
				6.6
				15
				30
				6.4
				15
				30
				5.6
				5.0
				90.12

54

0+57-29.8 Lt. = 8' Conc. Dr.

20/	Lt.	#	Rt.	
83	5.85	5.3/	25/	6/
40		6.02	25/	6/
Floor	Dr	29.8	3.80	3.47
Car.			30	40

0+50

0+42-20.5 Lt. = 8' P. pole # 1438

20/	6.01	6.0	5 5	4.9	4.1	3.6
83	29.9	15	15	15	30	40
40	wall					

0+36-29.9 Lt. = 4.5' Conc. walk (over wall)

20/	5.90	5.99				
83	38.6	29.9				
40	at porch	walk				

0+22-30 Rt. = 3' Conc. walk

80' N. = NL. Beta = 0+00 ahead - 29.9 Rt. - Beg. 6" Conc Found. wall

20/	6.29	6.1	5.9	6.3	5.9	5.3	4.4	4.1
83	29.9	29.9	16	14	15	15	30	40
40	Top wall	ground.						

76' N - 30 Rt. = 8' Conc. Dr.

20/	4.39					
83	30					
40	Dr.					

60' N. = N. cb.

20/	7.0	6.4	5.7	5.3	4.5	4.1
83	30	15	15	15	30	40

40' N = 8

20/	6.4	5.9	5.5	5.2	4.4	4.1
83	30	15	15	15	30	40

20' N. = S. cb. Beta

20/	5.3	5.9	5.4	5.2	4.5	4.1
83	24	15	15	15	30	40

2+70.9 - 22.7 Lt. = Beg. 5' Conc. walk

2+70 - 29.7 Lt. = end Fly. of Hedge

2+70 - 29.5 Rt. = end wly of Hedge

2+50

T.P. 5.14 91.55 3.14 86.41

2+15 - 55' Rt. = \$ Doub. Crav. - Conc. floor

2+00

1+62 - 20.8 Lt. = \$ Pipe - # P. 1432

1+60 - 29 Lt. = Beg. Fly. of 2' Hedge - 6' High

1+50

1+30 - 30.3 Rt. = \$ 3' Conc. walk

1+18 - 31 Rt. = Beg. Wly. of 3' Hedge - 6' High

1+00

0+80 - 29.9 Rt. = \$ 3' Conc. walk

0+76 - 29.8 Lt. = end wall

6/	86	86	86	86	86	86	86	86	86
4.92	5.01								
27.7	22.7								
(Cor. walk)									

b/	3/	3/	9/	3/	b/	6/	b/	x/
86	86	86	86	86	86	86	86	86
5.1	5.3	5.3	5.7	5.3	5.1	5.0	4.1	3.2
40	30	20	19	10		17	30	40

91.55

86	86	86	86	86	86	86	86	86	
3.7	3.5	3.3	3.3	3.1	2.1				
40	30	15	15	15	30				
in Dirt Dr. To Doub. Crav.									

86	86	86	86	86	86	86	86	86
5.1	4.9	4.6	4.5	4.1	3.2	2.8		
50	30	15		15	30	40		

86	86	86	86	86	86	86	86	86
3.05	3.37							
40	30							
6.05	5.3	5.9	5.1	4.6	4.0	3.5		
40	30	16	15	15	30	40		

86	86	86	86	86	86	86	86	86	
5.87	6.2								
29.8	29.8								
Top	Ground								
89.55									

Rods around Returns - S.W. Ret. - 54.6 around
5 parts - 10.8 each

W. = P.C. on Beta

10.8 E. -

10.8 = E.C. = end

3 + 20.25 = S. cb. = End.

3 + 10.25 = S.L. Alpha

2 + 85.4 = Beg. cbs + A.C. Pave
(+ walk on Rt)

5.50
6.24
5.37
6.10
5.30
5.98
5.21
5.84
5.20
5.79
5.19
5.82

^{86.05}
^{85.2}
^{86.19}
^{85.45}
^{86.25}
^{85.51}
^{86.24}
^{85.21}
^{86.35}
^{85.76}
^{86.24}
^{85.13}

T = Top
g = gut.
T
g
T
g
T
g
T
g
T
g

Lt
SE. Ret - 54.2 - 5 parts 10.8 - Rt.

57

S = P.C. on 4th rd

10.8 N

"

10.8 = E.C. - on Beta

5.31
4.61
4.60
5.23
4.56
5.23
4.58
5.25
4.54
5.25
4.54
5.21

^{86.24}
^{86.24}
^{86.25}
^{86.22}
^{86.22}
^{86.22}
^{86.22}
^{86.20}
^{87.01}
^{87.20}
^{86.01}
^{87.24}
^{86.24}

Top
g
T
g
T
g
T
g
T
g
T
g

54	21	51	21	21	23	4	21	21	21	21	21	21
84	83	86	85	85	85	84	84	84	84	84	84	84
7.01	7.74	5.50	6.24	5.83	5.62	5.44	5.27	5.28	5.21	4.54	4.91	4.24
100	100	55	55	30	15	15	30	55	55	100	100	100
Top	gut.	Top	gut.				gut	Top	Top	gut	Top	Top

35' Rad.
5.21 5.87 5.47 5.22 5.13 5.20 4.56
Top 30 15 15 30.1
gut. Top

51	21	21	21	21	21	21	21	21	21	21	21	21
86	86	86	86	86	86	86	86	86	86	86	86	86
5.00	5.10	5.19	5.82	5.53	5.30	5.30	5.31	4.61	4.54	4.44	4.44	4.44
227	227	20	20	10		10	20	20	22.8	27.8	30	30
	walk	Top	gut.				gut	Top	walk			

Beq. X-Sect. of Beta - from 41st To 42nd
W.O. 31665

0+75

INDEXED

OCT 5 1950

0+40

0+38 - 40' Lt. = £ 3' Conc. walk
T.P. 9.80 75.88 0.35' 66.08

0+00 = E.L. 41st

0-30 = £ 41st - St. not Graded to N.

0-53 = £ of P. pole # 1498

4.81 66.43 12.20 61.62

0.22 73.82 11.96 73.60

B.M. 1.03 85.56 84.53 = Nail in Pole - P 54

1/	2/	6/	9/	3/	4/	7/	1/	1/
6.5	6.7	7.4	8.6	8.6	9.5	11.2	11.8	14.8
50	40	18	12		18	30	40	77
								+ wash

5/	2/	3/	6/	7/	1/	3/	1/	8/
7.4	8.2	9.6	10.3	13.0	12.8	13.6	14.8	16.1
50	40	20	4	edge Rd.	10	28	40	60
								+ wash

80/ 83/

7.08 8.05

56 40

at Porch walk

75.88

1/	2/	6/	7/	8/	1/	1/	2/	2/
10.6	0.1	0.6	1.7	3.6	5.8	5.5	7.2	8.2
90	40	30	15		10	20	40	55
								75
								100
								edge Rd.

50/	60/	80/	2/	1/	3/	3/	50/	70/	9/
2.6	2.4	2.6	3.2	4.3	7.2	7.1	8.2	8.3	6.5
90	40	25	10		10	20	40	50	75
									100
									edge Road.

66.43

Beta

2+60

2+57- 39.9 Rt. = \pm 9' Conc. Dr.

2+51- 39.9 Lt. = Beg. picket fence

2+50- 31.2 Rt. = end Hedge

2+25

2+17- 30.2 Rt. = Beg. \pm 3' Hedge - 3' High

2+10- 10.3 Rt. = \pm 9' Conc. Dr.

2+10- 42.8 Lt. = \pm 3' Conc. walk

T.P. 10.41 85.17 11.2 74.76

1+80

1+40

1+29 = \pm Sewer M.H. 4.33 on Rim

1+15

Lt. \pm Rt. 59

2	2	2	9	1	1	2	3	2	6
7.5	8.5	9.5	10.3	10.1	10.1	10.4	10.9	11.16	11.49
50	40	22	16	10		13	30	39.9	50
								Dr.	Dr.

11.32
39.9

11.57
50

2	6	1	1	1	3	2	2	2	3
8.3	8.6	10.1	11.1	10.8	10.9	11.1	11.9	12.1	11.9
50	40	25	17	10	9	13	25	40	50

11.44
10.3
Dr.

11.18
12
Bk

12.45
40

13.38
50
Dr.

85.17

6	3	6	1	4	2	2	6	4	9	
1.3	1.6	2.1	2.8	2.5	2.4	2.8	2.5	3.3	3.5	4.0
50	40	25	18	9		10	12	25	40	50

6	6	6	0	2	1	2	2	2	6
2.3	3.1	3.4	3.9	3.7	3.8	4.0	4.2	5.0	6.1
50	40	23	18	9		11	20	40	55

6	2	2	2	0	2	4	2	2	1	
4.3	4.1	4.5	5.3	4.9	5.3	5.5	5.2	5.6	6.7	8.8
50	40	23	19	8		13	15	30	40	55

75.88

Beta

T.P. 7.24 88.68 3.73 81.44

4+50 - 39.6 Rt. = end of wall

4+46 - 40.4 Lt. = Beg. 8" Conc. Block wall - 3.5' High

4+34 - 39' Lt. = end Sly. of Hedge

- 39' Lt. = Beg. sly. of 2' Hedge - 8' High

4+00 = Fly. of 8' Conc. Dr. on Rt. - Thru wall

3+74 - 39.7 Rt. = ± 3' Conc. walk Thru wall

3+50

3+30 - 38.9 Lt. = ± 4' Conc. walk

3+05 - 37' Lt. = ± 8' Conc. Dr.

3+01 - 39.7 Rt. = end cb. at 8' Conc. Block wall - 4' High

3+00 - 40' Lt. = end fence

2+77 - 39.9 Rt. = ± 4.5' Conc. walk back of cb.

2+62 - 40' Rt. = Beg. 6" Conc. curb.

Lt.

Rt.

60

b/	m/	n/	n/	x/	n/	b/	b/	g/
40	40	40	40	40	40	40	40	40
1.7	+0.11	3.0	4.0	5.8	5.5	5.7	5.7	5.3
50	40.4	40	23	14		20	40	50
	Top wall						along end of wall	

1	x/	a/	a/	a/	n/	a/	n/	n/	g/
40	40	40	40	40	40	40	40	40	40
3.1	3.8	5.3	6.9	6.8	7.0	7.3	7.0	7.05	7.08
50	40	23	14	9		12	30	39.7	50
								Dr.	Dr.

n/	b/	b/	o/	a/	n/	a/	n/	n/	a/
40	40	40	40	40	40	40	40	40	40
4.2	4.7	6.6	8.2	7.9	8.0	8.3	8.7	8.6	4.77
50	40	22	16	9		12	25	39.7	50
								Top wall	

b/								
40								
4.41				5.61				
52.5 at porch	80.58			38.9 walk				

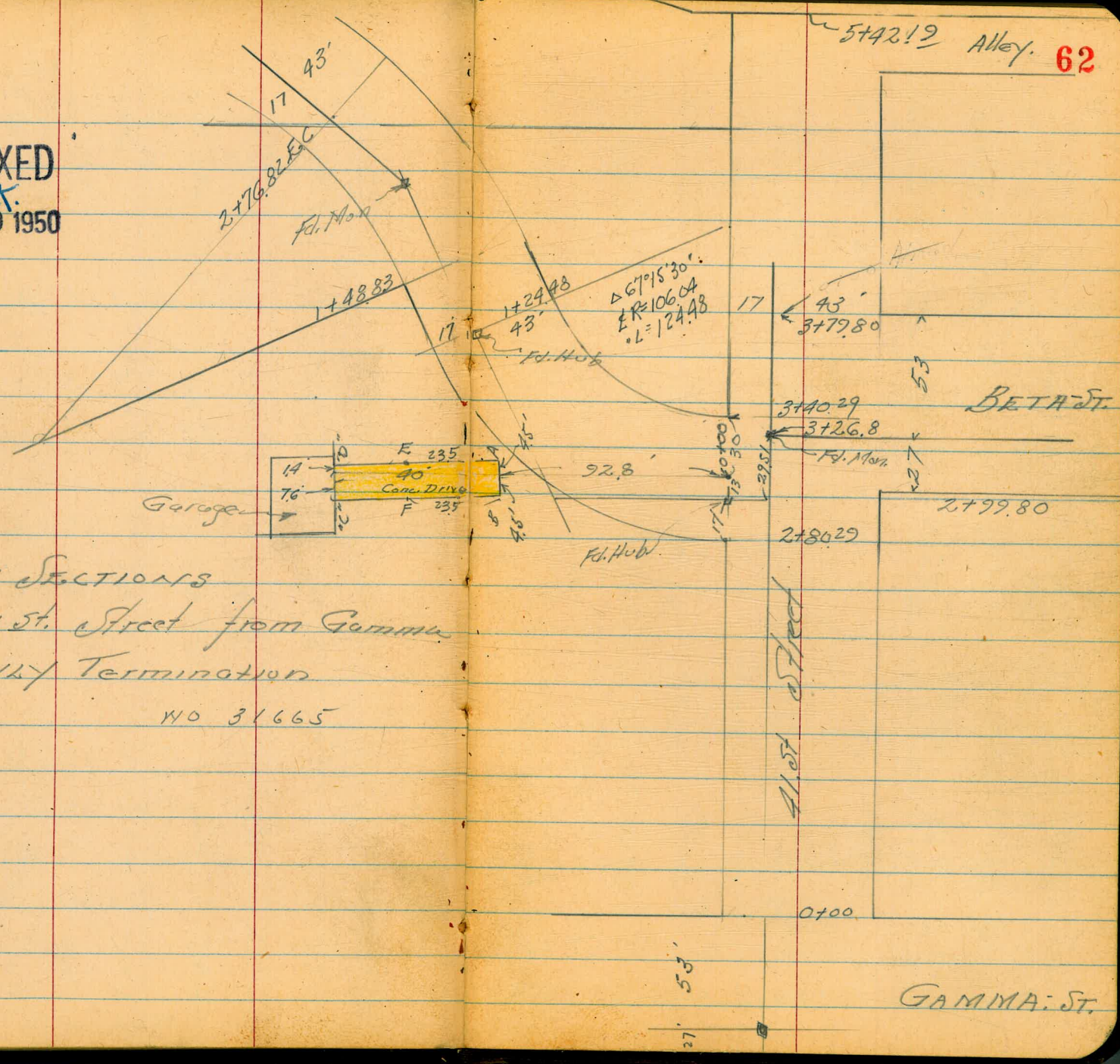
4.59	5.35	6.26						
58	50	37 = Dr						

w/	n/	n/	n/	n/	n/	n/	n/	n/	n/	b/
40	40	40	40	40	40	40	40	40	40	40
5.4	7.4	9.1	9.6	9.3	9.1	9.2	9.0	9.6	10.0	9.63
50	40	25	17	8		13	18	30	39.7	50
									Top cb.	

10.11								10.44
39.9 Top cb. walk								50.5 at Porch
	10.60							
	40							
	Top cb.							

85.17

INDEXED
 NOV 9 1950



CROSS SECTIONS
 41st Street from Gamma
 To N47 Termination

Walker
 G. Pope
 R. J. Sisson
 11-8-50

NO 31665

GAMMA ST.

41st St.

Lt.

L

Rt.

63

1+75

67	68	68	68	68	68	68	68	68	68
2	21	21	21	21	21	21	21	21	21
9.4	21	87	22	86	88	72	76	73	
40	30	8	6		17	23	30	40	

1+50

69	68	69	68	69	68	69	69	69	69
2	21	21	21	21	21	21	21	21	21
9.7	9.1	82	8.7	82	8.4	7.6	7.4	7.1	5.7
40	30	7	5		19	23	30	50	100

1+48 = Guy Anchor 23.5' Lt.

1+25 = Pole # P 1598 23' Lt.

1+00

68	68	68	68	68	68	68	68	68	68
2	21	21	21	21	21	21	21	21	21
8.8	9.0			7.6		8.1		8.3	
40	30					30		40	

0+70

69	69	69	69	69	69	69	69	69	69
2	21	21	21	21	21	21	21	21	21
7.6	7.5			7.4		7.5		6.7	
40	30					30		40	

0+50

70	70	70	70	70	70	70	70	70	70
2	21	21	21	21	21	21	21	21	21
6.6	6.6	9.0	7.5	6.9	7.0	5.2	6.1	6.3	
40	30	8	6		17	24	30	40	

0+00 = N.W. Gamma

72	72	72	71	71	71	72	72	72	72
2	21	21	21	21	21	21	21	21	21
4.6	4.6	5.1	5.9	5.5	6.5	4.4	4.3	4.3	
40	30	10	9		18	21	30	40	

Page 58

Chk. 2' Long. Walk 4024 0138 9.49

67.83'

1.75

77.32

75.57

B.M. 54 Nail in Pole Gamma & 41st

77.32

2+99.80 = Same Beta on Rt.

11.6	10.3	9.1	7.9
30		30	50
56.2	58.1	59.2	60.5

2+80.29 = Sh. Beta on Lt.

9.1	9.8	2.7	10.7	10.8	9.9	2.7	9.1	8.1	6.6	1.4
100	85	50	30	14		30	50	80	100	150
57.2	57.5	58.2	59.2	57.6	58.5	58.2	57.3	60.3	61.8	67.0

2+70

78	83	9.1	9.7	9.5	10.3	9.3	8.7	8.1	8.4	7.6	3.3
100	85	50	30	15	13		30	50	75	95	145
60.5	60.1	68.3	58.2	58.2	58.1	59.1	59.2	60.1	60.0	60.1	65.2

Bottom Draw

2+45

2.6	3.3	5.3	7.0	6.3	6.7	5.4	3.9	2.5	5.0
40	30	11	7		17	20	30	43	136
68.2	65.1	68.1	61.4	63.1	61.2	63.2	61.4	65.2	63.4

Bottom Draw

2+30

1.7	2.8	3.5	5.2	4.5	4.4	3.6	2.8	1.8	3.2
40	30	10	7		15	18	30	42	150
66.2	66.1	64.2	68.2	68.2	64.0	64.2	65.5	66.5	61.1

Bottom Draw

TR 2.57 68.35 11.84 65.78

68.35

2+00

77.32

9.5	9.1	10.0	10.6	10.3	10.6	9.8	9.7	9.6
40	30	24	9	6	17	20	30	40
67.2	68.2	67.2	66.2	67.2	66.2	67.5	67.5	67.2

77.32

41st Street

Lt.

R

RT

65

4+00

58 3	60 61	64 1	67 9	64 9
9.4	6.9	3.6	0.7	+0.3
50	30		30	40

3+79.8 = NL Beta on RT

58 4	60 9	64 1	66 2	66 2
9.3	6.8	3.6	1.4	0.8
50	30		30	40

3+63 23 Lt. Pole Anchor

51	59	60 3	63 2	64 9	64 6
10.2	8.6	7.4	4.5	3.7	3.1
55	40	30		30	40

3+50

60 Pipe RE #32
30 Lt 3+46.29

TP 8.56 6770 931 Pipe 59.14

6770

3+39.8 = L Beta on RT 23 Lt = L Pole

59 2	62 2	62 2	63 2
9.1	6.1	5.5	4.7
30		30	40

3+32

58 1	60 5	61 8	63 1
10.3	7.9	6.6	5.3
30		30	40

3+30

57 8	69 2	60 5	62 1
10.6	9.2	7.9	6.3
30		30	50

6835

6835

CHK L. 3' Conc. Walk P-63 +012 $\begin{array}{r} 001 \\ 6783 \\ \hline 6782 \end{array}$

5+42.19 = End
Elec. x

5+41 = Tel Pole # A 4101 30' RT. $\left(\begin{array}{l} \text{Pole} \\ \text{Anchor} \\ 12' RT \text{ } 5+41 \end{array} \right)$

5+22.19 = S. Line Alley on RT.

5+00

4+50

67.70

59	63	66	67	66	69
8.1	4.6	1.3	0.1	+1.2	+2.0
50	30		20	30	40
59	62	65	67	68	65
8.6	5.6	2.1	0.0	+0.8	
50	30		30	40	
58	63	65	67	68	65
9.3	6.4	2.7	0.0	+0.9	
50	30		30	40	
57	60	64	67	68	68
10.3	7.7	2.5	0.4	+0.4	
50	30		30	40	

67.70

CROSS SECTION - BETA ST.

Lt.

R.

Rt.

67

from 41st

Walker NWNW thru opening

Papo
Reissner
11-8-50

140 31665

1402 = 2' Conc. Walk

55 73
619 710
33 Walk 29 Walk

1400

INDEXED
NOV 9 1950

61	58	53	54	51	52	52	52	51	55
3.3	7.0	8.6	8.7	9.7	9.7	9.7	8.8	8.3	7.0
50	30	25	9	2	2	23	23	30	50

Concrete Drive, Location sketch P-62.

61 23	62 24	60 22	60 14	57 32	57 21
0.39	0.38	1.90	1.98	4.75	4.81
D	C	F	E	B	A

Drive way

8100
0+85 = 2' Pole 2954 ± 4083

0+50

680
BM

61	59	56	55	54	53	51	50	49	48
1.0	2.5	5.5	6.9	7.3	6.7	6.5	5.8	5.4	4.5
60	50	30	9	5	6	21	23	30	50

0+45.6 = 2' Source MH 11.5 ft.

0+00 = H-Line 41st

58	57	56	55	54	53	50	50
3.4	4.9	5.6	4.7	4.3	3.0	2.0	2.0
40	30	10	62.16	21	30	40	40

2.98

62.16

62.12
a.p.s.

5214

BM on Pipe P. 65

62.12

connection
a.p.s.

Beta St.

Lt

R.

Rt.

P-67
chk BM on Pipe

2.68

003
59.14
59.17

T.P. 6.28 61.85 0.90

55.57

2+76.82 = F.C.

1	2	3	4	5	6	7	8	9	10
51	48	45	42	43	44	47	45-0	45-2	46
53	8.1	10.9	11.2	12.6	13.1	12.3	11.4	10.7	10.2
50	45	30	16	13		12	15	30	40
								LOWN	LOWN

2+50 = N edge Conc. Drive

21

21

2+40 = S " " "

975
365
Rt
on Drive

9.60
60 ft
on Drive
at Garage

8	1	2	3	4	5	6	7	8	9	10
54	52	47	42	45	43	45	42	41	45	48
1.6	4.3	8.6	9.7	10.9	10.9	10.9	10.2	10.0	9.78	9.7
47	34	30	20	15		5	15	30	36.5	40
									36.5	40
									36.5	40

2+100

2+60

T.P. 7.15 56.47 12.84 42.32

2	3	4	5	6	7	8	9	10	11	12
51	54	52	47	47	45	45	42	48	48	41
2.0	4.1	7.0	8.1	9.0	8.6	8.7	8.3	7.9	6.88	6.88
50	34	30	15	12	56.47	6	8	30	50	50
						56.43				
						A.P.S.				

1+48.83 - B.C. Lt.

1	2	3	4	5	6	7	8	9	10
51	52	45	45	50	50	50	51	51	51
5.6	7.9	10.8	11.2	12.0	11.6	11.5	10.8	10.5	9.1
50	36	30	17	7		14	17	30	50

1+24.48 = F.C.

62.16

1	2	3	4	5	6	7	8	9	10
51	52	53	52	51	51	51	51	52	51
4.9	7.3	8.6	9.7	9.7	10.9	10.6	10.1	9.4	8.0
50	33	30	28	13	2		20	23	30
									50

62.16
62.12
A.P.S.

Roberts
Cota
Moore
Pollen
4-19-51
W.O. 31665

X-Section Area North of Gamma
and 100' West of 42nd St.

Rt.

69

INDEXED
APR 19 1951

1750

1725

1700

0+75

0+50

↑
West

0+00 W. Line 42nd St

BM 448 82.38

7790 SW 13'

Mon. 42nd & Gamma 82.38

Gamma

40	46	5.0	4.0	3.6	81
779	778	774	784	788	788
17	27	40	100	150	3.6
780	780	780	778	785	81
44	44	5.4	4.6	3.8	788
16	26	40	100	150	3.1
783	781	771	772	787	81
42	43	5.2	5.1	3.5	802
15	26	40	100	150	117
					House Floor
783	784	775	781	788	805
42	40	4.8	3.3	2.6	788
16	40	100	150	124	124
					Shed
7828	7825	7898	7875	8008	8008
41	3.4	2.6	1.9	2.1	150
13	40	69	100	150	150
	Drive	Garage			

74

78

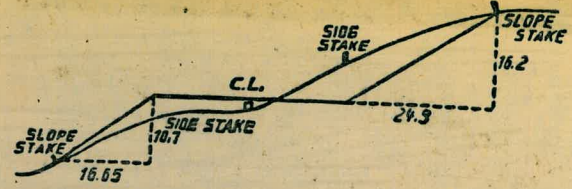
661 30
 46.22
 615 08
 397 22
 227 86

90.22-30

179-5960
 89-3730
 90-2230

11 18
 95
 12 13

3912 30
 2 11 99
 1 19 99



DISTANCES FROM SIDE STAKES FOR CROSS-SECTIONING.
 SLOPE 1 1/2 TO 1. ROADWAY OF ANY WIDTH.

	0	.1	.2	.3	.4	.5	.6	.7	.8	.9	
0	0.00	0.15	0.30	0.45	0.60	0.75	0.90	1.05	1.20	1.35	0
1	1.50	1.65	1.80	1.95	2.10	2.25	2.40	2.55	2.70	2.85	1
2	3.00	3.15	3.30	3.45	3.60	3.75	3.90	4.05	4.20	4.35	2
3	4.50	4.65	4.80	4.95	5.10	5.25	5.40	5.55	5.70	5.85	3
4	6.00	6.15	6.30	6.45	6.60	6.75	6.90	7.05	7.20	7.35	4
5	7.50	7.65	7.80	7.95	8.10	8.25	8.40	8.55	8.70	8.85	5
6	9.00	9.15	9.30	9.45	9.60	9.75	9.90	10.05	10.20	10.35	6
7	10.50	10.65	10.80	10.95	11.10	11.25	11.40	11.55	11.70	11.85	7
8	12.00	12.15	12.30	12.45	12.60	12.75	12.90	13.05	13.20	13.35	8
9	13.50	13.65	13.80	13.95	14.10	14.25	14.40	14.55	14.70	14.85	9
10	15.00	15.15	15.30	15.45	15.60	15.75	15.90	16.05	16.20	16.35	10
11	16.50	16.65	16.80	16.95	17.10	17.25	17.40	17.55	17.70	17.85	11
12	18.00	18.15	18.30	18.45	18.60	18.75	18.90	19.05	19.20	19.35	12
13	19.50	19.65	19.80	19.95	20.10	20.25	20.40	20.55	20.70	20.85	13
14	21.00	21.15	21.30	21.45	21.60	21.75	21.90	22.05	22.20	22.35	14
15	22.50	22.65	22.80	22.95	23.10	23.25	23.40	23.55	23.70	23.85	15
16	24.00	24.15	24.30	24.45	24.60	24.75	24.90	25.05	25.20	25.35	16
17	25.50	25.65	25.80	25.95	26.10	26.25	26.40	26.55	26.70	26.85	17
18	27.00	27.15	27.30	27.45	27.60	27.75	27.90	28.05	28.20	28.35	18
19	28.50	28.65	28.80	28.95	29.10	29.25	29.40	29.55	29.70	29.85	19
20	30.00	30.15	30.30	30.45	30.60	30.75	30.90	31.05	31.20	31.35	20
21	31.50	31.65	31.80	31.95	32.10	32.25	32.40	32.55	32.70	32.85	21
22	33.00	33.15	33.30	33.45	33.60	33.75	33.90	34.05	34.20	34.35	22
23	34.50	34.65	34.80	34.95	35.10	35.25	35.40	35.55	35.70	35.85	23
24	36.00	36.15	36.30	36.45	36.60	36.75	36.90	37.05	37.20	37.35	24
25	37.50	37.65	37.80	37.95	38.10	38.25	38.40	38.55	38.70	38.85	25
26	39.00	39.15	39.30	39.45	39.60	39.75	39.90	40.05	40.20	40.35	26
27	40.50	40.65	40.80	40.95	41.10	41.25	41.40	41.55	41.70	41.85	27
28	42.00	42.15	42.30	42.45	42.60	42.75	42.90	43.05	43.20	43.35	28
29	43.50	43.65	43.80	43.95	44.10	44.25	44.40	44.55	44.70	44.85	29
30	45.00	45.15	45.30	45.45	45.60	45.75	45.90	46.05	46.20	46.35	30
31	46.50	46.65	46.80	46.95	47.10	47.25	47.40	47.55	47.70	47.85	31
32	48.00	48.15	48.30	48.45	48.60	48.75	48.90	49.05	49.20	49.35	32
33	49.50	49.65	49.80	49.95	50.10	50.25	50.40	50.55	50.70	50.85	33
34	51.00	51.15	51.30	51.45	51.60	51.75	51.90	52.05	52.20	52.35	34
35	52.50	52.65	52.80	52.95	53.10	53.25	53.40	53.55	53.70	53.85	35
36	54.00	54.15	54.30	54.45	54.60	54.75	54.90	55.05	55.20	55.35	36
37	55.50	55.65	55.80	55.95	56.10	56.25	56.40	56.55	56.70	56.85	37
38	57.00	57.15	57.30	57.45	57.60	57.75	57.90	58.05	58.20	58.35	38
39	58.50	58.65	58.80	58.95	59.10	59.25	59.40	59.55	59.70	59.85	39
40	60.00	60.15	60.30	60.45	60.60	60.75	60.90	61.05	61.20	61.35	40
41	61.50	61.65	61.80	61.95	62.10	62.25	62.40	62.55	62.70	62.85	41
42	63.00	63.15	63.30	63.45	63.60	63.75	63.90	64.05	64.20	64.35	42
43	64.50	64.65	64.80	64.95	65.10	65.25	65.40	65.55	65.70	65.85	43
44	66.00	66.15	66.30	66.45	66.60	66.75	66.90	67.05	67.20	67.35	44
45	67.50	67.65	67.80	67.95	68.10	68.25	68.40	68.55	68.70	68.85	45
46	69.00	69.15	69.30	69.45	69.60	69.75	69.90	70.05	70.20	70.35	46
47	70.50	70.65	70.80	70.95	71.10	71.25	71.40	71.55	71.70	71.85	47
48	72.00	72.15	72.30	72.45	72.60	72.75	72.90	73.05	73.20	73.35	48
49	73.50	73.65	73.80	73.95	74.10	74.25	74.40	74.55	74.70	74.85	49
50	75.00	75.15	75.30	75.45	75.60	75.75	75.90	76.05	76.20	76.35	50

THE NATIONAL BLANK BOOK COMPANY
 HOLYOKE MASSACHUSETTS
 NEW YORK CHICAGO BOSTON SAN FRANCISCO