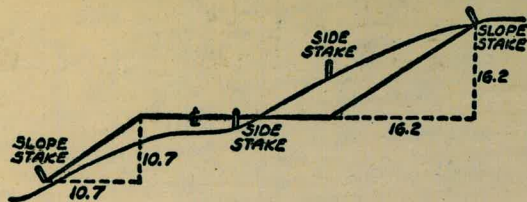




2012

1976



DISTANCES FROM SIDE STAKES FOR CROSS-SECTIONING
SLOPE 1 TO 1. ROADWAY OF ANY WIDTH

	0	.1	.2	.3	.4	.5	.6	.7	.8	.9	
0	0.00	0.10	0.20	0.30	0.40	0.50	0.60	0.70	0.80	0.90	0
1	1.00	1.10	1.20	1.30	1.40	1.50	1.60	1.70	1.80	1.90	1
2	2.00	2.10	2.20	2.30	2.40	2.50	2.60	2.70	2.80	2.90	2
3	3.00	3.10	3.20	3.30	3.40	3.50	3.60	3.70	3.80	3.90	3
4	4.00	4.10	4.20	4.30	4.40	4.50	4.60	4.70	4.80	4.90	4
5	5.00	5.10	5.20	5.30	5.40	5.50	5.60	5.70	5.80	5.90	5
6	6.00	6.10	6.20	6.30	6.40	6.50	6.60	6.70	6.80	6.90	6
7	7.00	7.10	7.20	7.30	7.40	7.50	7.60	7.70	7.80	7.90	7
8	8.00	8.10	8.20	8.30	8.40	8.50	8.60	8.70	8.80	8.90	8
9	9.00	9.10	9.20	9.30	9.40	9.50	9.60	9.70	9.80	9.90	9
10	10.00	10.10	10.20	10.30	10.40	10.50	10.60	10.70	10.80	10.90	10
11	11.00	11.10	11.20	11.30	11.40	11.50	11.60	11.70	11.80	11.90	11
12	12.00	12.10	12.20	12.30	12.40	12.50	12.60	12.70	12.80	12.90	12
13	13.00	13.10	13.20	13.30	13.40	13.50	13.60	13.70	13.80	13.90	13
14	14.00	14.10	14.20	14.30	14.40	14.50	14.60	14.70	14.80	14.90	14
15	15.00	15.10	15.20	15.30	15.40	15.50	15.60	15.70	15.80	15.90	15
16	16.00	16.10	16.20	16.30	16.40	16.50	16.60	16.70	16.80	16.90	16
17	17.00	17.10	17.20	17.30	17.40	17.50	17.60	17.70	17.80	17.90	17
18	18.00	18.10	18.20	18.30	18.40	18.50	18.60	18.70	18.80	18.90	18
19	19.00	19.10	19.20	19.30	19.40	19.50	19.60	19.70	19.80	19.90	19
20	20.00	20.10	20.20	20.30	20.40	20.50	20.60	20.70	20.80	20.90	20
21	21.00	21.10	21.20	21.30	21.40	21.50	21.60	21.70	21.80	21.90	21
22	22.00	22.10	22.20	22.30	22.40	22.50	22.60	22.70	22.80	22.90	22
23	23.00	23.10	23.20	23.30	23.40	23.50	23.60	23.70	23.80	23.90	23
24	24.00	24.10	24.20	24.30	24.40	24.50	24.60	24.70	24.80	24.90	24
25	25.00	25.10	25.20	25.30	25.40	25.50	25.60	25.70	25.80	25.90	25
26	26.00	26.10	26.20	26.30	26.40	26.50	26.60	26.70	26.80	26.90	26
27	27.00	27.10	27.20	27.30	27.40	27.50	27.60	27.70	27.80	27.90	27
28	28.00	28.10	28.20	28.30	28.40	28.50	28.60	28.70	28.80	28.90	28
29	29.00	29.10	29.20	29.30	29.40	29.50	29.60	29.70	29.80	29.90	29
30	30.00	30.10	30.20	30.30	30.40	30.50	30.60	30.70	30.80	30.90	30
31	31.00	31.10	31.20	31.30	31.40	31.50	31.60	31.70	31.80	31.90	31
32	32.00	32.10	32.20	32.30	32.40	32.50	32.60	32.70	32.80	32.90	32
33	33.00	33.10	33.20	33.30	33.40	33.50	33.60	33.70	33.80	33.90	33
34	34.00	34.10	34.20	34.30	34.40	34.50	34.60	34.70	34.80	34.90	34
35	35.00	35.10	35.20	35.30	35.40	35.50	35.60	35.70	35.80	35.90	35
36	36.00	36.10	36.20	36.30	36.40	36.50	36.60	36.70	36.80	36.90	36
37	37.00	37.10	37.20	37.30	37.40	37.50	37.60	37.70	37.80	37.90	37
38	38.00	38.10	38.20	38.30	38.40	38.50	38.60	38.70	38.80	38.90	38
39	39.00	39.10	39.20	39.30	39.40	39.50	39.60	39.70	39.80	39.90	39
40	40.00	40.10	40.20	40.30	40.40	40.50	40.60	40.70	40.80	40.90	40
41	41.00	41.10	41.20	41.30	41.40	41.50	41.60	41.70	41.80	41.90	41
42	42.00	42.10	42.20	42.30	42.40	42.50	42.60	42.70	42.80	42.90	42
43	43.00	43.10	43.20	43.30	43.40	43.50	43.60	43.70	43.80	43.90	43
44	44.00	44.10	44.20	44.30	44.40	44.50	44.60	44.70	44.80	44.90	44
45	45.00	45.10	45.20	45.30	45.40	45.50	45.60	45.70	45.80	45.90	45
46	46.00	46.10	46.20	46.30	46.40	46.50	46.60	46.70	46.80	46.90	46
47	47.00	47.10	47.20	47.30	47.40	47.50	47.60	47.70	47.80	47.90	47
48	48.00	48.10	48.20	48.30	48.40	48.50	48.60	48.70	48.80	48.90	48
49	49.00	49.10	49.20	49.30	49.40	49.50	49.60	49.70	49.80	49.90	49
50	50.00	50.10	50.20	50.30	50.40	50.50	50.60	50.70	50.80	50.90	50

INDEXED

to page # 68

Distance of slope stake from side or shoulder stake for any width roadway, slope 1 to 1. If ground is nearly level, the cut or fill at side stake is located by the double entry method in left column and top row. The number in body of table in same row and column gives distance from side stake to slope stake. If ground is not level estimate the difference in elevation between the side stake and slope stake, lower target by this amount if cut, elevate if fill. Add this amount to cut or fill and find distance in table. Set up rod at this point, and line of sight should cut target. If it does not make the slight adjustment necessary.

TABLE XIII—CORRECTIONS FOR TANGENTS AND EXTERNALS

These corrections are to be added to the approximate values, found by dividing the tangent, or external, for a 1° curve (Table VIII) by the degree of curve, in order to obtain the true tangents, or externals. Intermediate values may be obtained by interpolation.

FOR TANGENTS ADD

Central Angle	DEGREE OF CURVE													
	5°	10°	15°	20°	25°	30°	35°	40°	45°	50°	55°	60°	65°	70°
10°	.03	.06	.09	.13	.16	.19	.22	.25	.28	.31	.34	.38	.42	.46
15°	.04	.10	.14	.19	.24	.29	.34	.39	.45	.51	.53	.58	.63	.68
20°	.06	.13	.19	.26	.32	.39	.45	.51	.58	.65	.72	.79	.84	.90
25°	.08	.16	.24	.33	.40	.49	.58	.67	.75	.83	.90	.99	1.06	1.14
30°	.10	.19	.29	.39	.49	.59	.69	.79	.89	.99	1.09	1.20	1.29	1.39
35°	.11	.22	.34	.47	.58	.69	.79	.81	.92	1.04	1.29	1.42	1.54	1.66
40°	.13	.26	.40	.53	.67	.80	.93	1.06	1.20	1.34	1.49	1.64	1.79	1.94
45°	.15	.30	.44	.60	.76	.91	1.06	1.21	1.37	1.52	1.70	1.87	2.04	2.21
50°	.17	.34	.51	.68	.85	1.02	1.19	1.36	1.54	1.72	1.91	2.10	2.29	2.48
55°	.19	.38	.57	.76	.95	1.14	1.32	1.52	1.72	1.92	2.14	2.35	2.56	2.77
60°	.21	.42	.63	.84	1.05	1.27	1.49	1.71	1.94	2.17	2.38	2.60	2.83	3.07
65°	.23	.46	.69	.93	1.16	1.40	1.64	1.88	2.13	2.38	2.63	2.88	3.13	3.39
70°	.25	.51	.76	1.02	1.28	1.54	1.80	2.06	2.33	2.60	2.88	3.16	3.44	3.72
75°	.27	.56	.83	1.12	1.40	1.69	1.98	2.27	2.57	2.87	3.16	3.47	3.78	4.09
80°	.30	.61	.91	1.22	1.53	1.84	2.15	2.46	2.78	3.10	3.44	3.78	4.12	4.46
85°	.33	.66	1.00	1.33	1.68	2.02	2.36	2.70	3.05	3.40	3.77	4.14	4.55	4.89
90°	.36	.72	1.09	1.45	1.83	2.20	2.57	2.94	3.32	3.70	4.10	4.50	4.91	5.32
95°	.39	.79	1.19	1.55	1.94	2.32	2.70	3.08	3.46	3.85	4.26	4.68	5.10	5.53
100°	.43	.86	1.30	1.74	2.18	2.62	3.06	3.50	3.95	4.40	4.88	5.37	5.85	6.34
110°	.51	1.03	1.56	2.08	2.61	3.14	3.67	4.21	4.76	5.31	5.86	6.43	7.01	7.60
120°	.62	1.25	1.93	2.52	3.16	3.81	4.45	5.11	5.77	6.44	7.12	7.80	8.50	9.22

FOR EXTERNALS ADD

Central Angle	DEGREE OF CURVE													
	5°	10°	15°	20°	25°	30°	35°	40°	45°	50°	55°	60°	65°	70°
10°	.001	.003	.004	.006	.007	.008	.009	.011	.012	.014	.015	.017	.018	.020
15°	.003	.007	.010	.014	.018	.023	.027	.032	.035	.039	.043	.047	.051	.055
20°	.006	.011	.017	.022	.028	.034	.038	.045	.051	.057	.063	.070	.076	.083
25°	.009	.018	.027	.036	.046	.056	.065	.074	.083	.093	.106	.120	.127	.135
30°	.013	.025	.038	.051	.065	.078	.090	.103	.116	.129	.149	.170	.179	.188
35°	.018	.035	.054	.072	.086	.109	.131	.153	.175	.197	.213	.230	.247	.264
40°	.023	.046	.070	.093	.117	.141	.172	.203	.234	.265	.277	.290	.315	.341
45°	.030	.060	.093	.119	.153	.184	.216	.254	.289	.325	.351	.378	.411	.445
50°	.037	.075	.116	.151	.189	.227	.266	.305	.345	.384	.425	.467	.508	.550
55°	.046	.093	.142	.188	.236	.283	.332	.381	.420	.479	.530	.582	.641	.700
60°	.056	.112	.168	.225	.283	.340	.398	.457	.516	.575	.636	.697	.774	.851
65°	.067	.135	.204	.273	.343	.412	.483	.554	.625	.697	.771	.845	.922	1.01
70°	.080	.159	.240	.321	.403	.485	.568	.652	.735	.819	.906	.994	1.08	1.17
75°	.095	.182	.266	.353	.440	.528	.617	.707	.797	.887	.977	1.07	1.18	1.29
80°	.110	.220	.332	.445	.558	.671	.787	.903	1.02	1.13	1.25	1.38	1.50	1.62
85°	.128	.259	.391	.524	.657	.790	.926	1.06	1.20	1.34	1.47	1.62	1.76	1.91
90°	.149	.299	.450	.603	.756	.910	1.07	1.22	1.38	1.54	1.70	1.87	2.03	2.20
95°	.174	.350	.522	.706	.885	1.06	1.25	1.43	1.62	1.80	1.99	2.18	2.38	2.58
100°	.200	.401	.604	.809	1.01	1.22	1.43	1.64	1.85	2.06	2.28	2.50	2.73	2.96
110°	.268	.536	.806	1.08	1.35	1.63	1.91	2.20	2.48	2.76	3.05	3.35	3.66	3.96
120°	.360	.721	1.08	1.45	1.82	2.19	2.57	2.95	3.33	3.72	4.11	4.50	4.91	5.32

Page 1-17 - X-Sect. Mohawk 67th to 70th

18-32- " " Saranac 67th to 70th

33-40- " " 67th El Cajon to Saranac

41-49- " " 68th " " "

50-52 " " 67th Saranac N.

53-55 " " 68th " "

56-62 " " 69th El Cajon to Saranac.

63-65 " " 70th Saranac N.

66 - Check Levels - El Cajon - 67th to 73rd

67 Proposed opening Kemper St.

74 X SECT 68th MOHAWK to SARANAC

9+66.42

Fd. pipe + Disk

X-Sept. Mohawk + Saranac - 67th to 70th

2+50.02

67th + 68th - El Cajon to Saranac

- = Fd. Hub.
- = Fd. Mon.
- = Fd. ct.

Fd Hub. T.P. 29-18

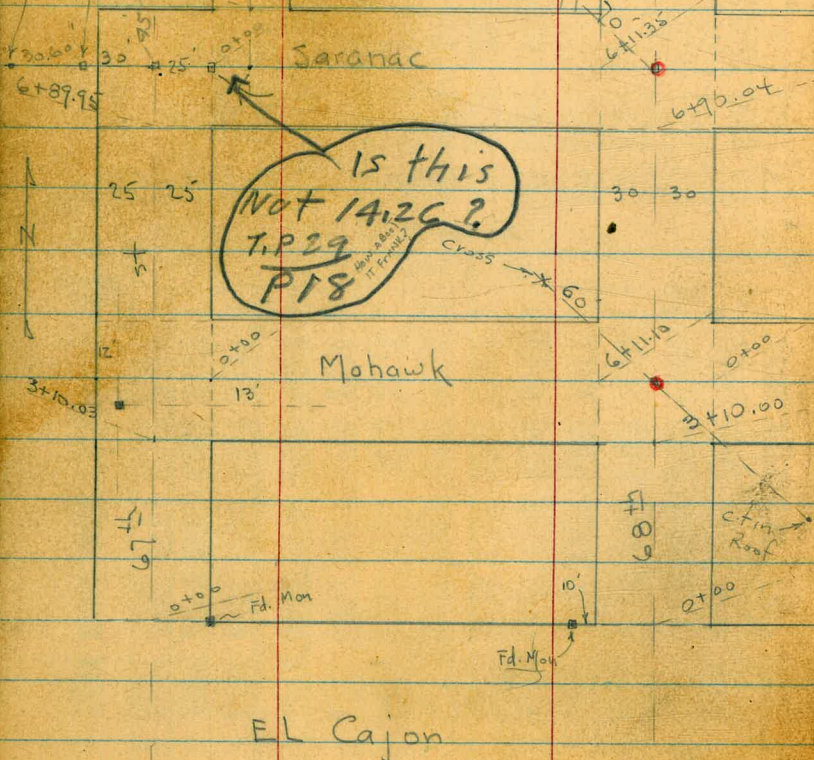
See P. 16 for Detail

- = 4 Crosses on Mt. Rim
- = City Disk

INDEXED

WK
MAR 14 1949

ct. in window
Sill Cross in



Also F.B. 2077
22-

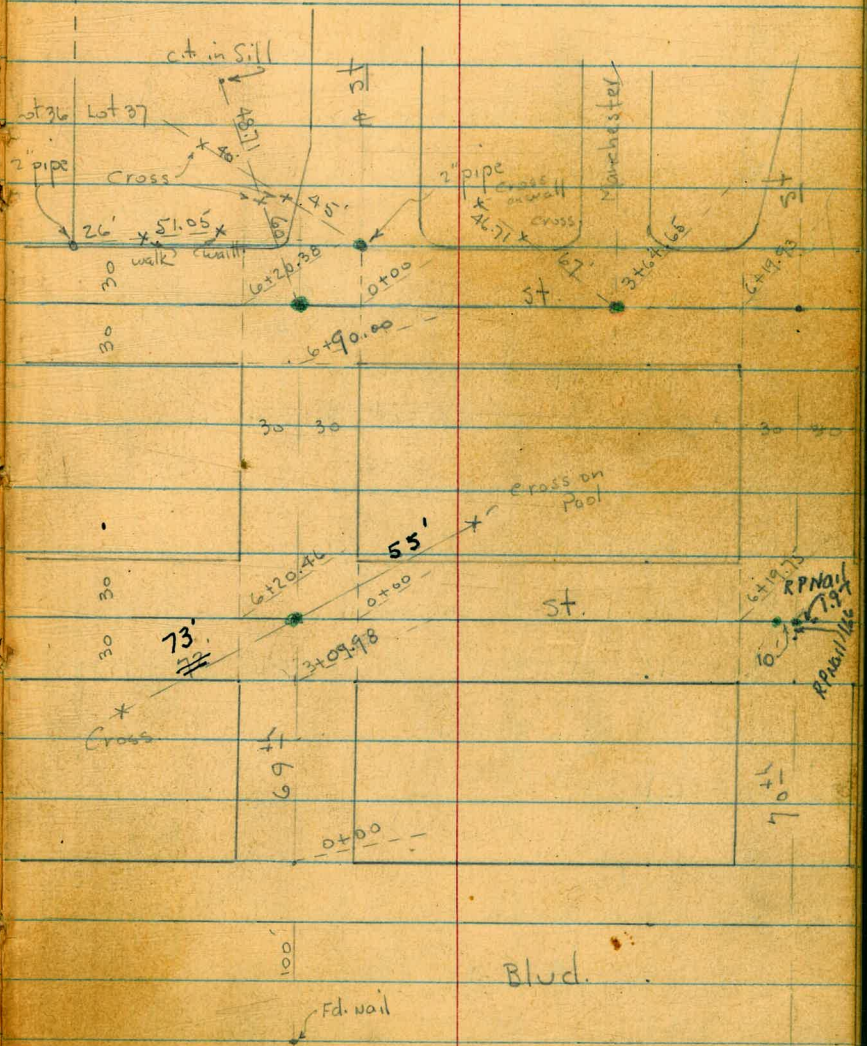
1

3313

2-3-49

W.O. 31576

Osborne
Hardin
Hatch
Shepard



INDEXED

X-Sect. Mohawk - from 67th to 70th
60' st. - Divt Rough Graded

1+00

0+98 - 30' Rt. = € 15.5 Conc. Dr.

0+80 - 31' Lt. = € 3' Conc. walk

0+61 - 31.1 Lt. = € 7' Dr. - 2-2' Conc. strips

24.3 Rt. = € Guy Pole

0+50 - 22' Lt. = € P. pole # P-174641

0+39 - 30' Rt. = € 15.4' Conc. Dr.

0+29 - 31' Lt. = € 3' Conc. walk

0+11 - 31.2' Lt. = € 7' - Dr. - 2-2' Conc. strips

0+10 - 21.4 Rt. = € F.H.

0+00 = E.L. of 67th

Mohawk + 67th

Set BM - Nail in Sw. Pole 6.30 449.31 449.40

6.20 455.61 6.60 449.41

BM 2.31 456.01 453.70 79

	451.6	451.6	451.4	451.3	451.9	451.6	452.0	452.4	452.6
	4.0	4.0	4.2	4.3	3.7	4.0	3.6	3.7	3.0
	40	30	20	17		17	20	30	40
450.79									
4.82									
50.9 at Porch									
450.71									
4.90									
45-Dr.									
450.6									
5.0									
40									
51 450.6									
5.0									
30									
51 450.5									
5.1									
20									
51 450.3									
5.3									
17									
48									
450.8									
4.8									
17									
450.8									
4.8									
17									
450.9									
4.7									
20									
451.7									
3.9									
30									
451.8									
3.8									
40									
451.8									
3.8									
40									
450.01									
5.60									
10.2 floor Gar.									
450.53									
5.08									
31.2 Dr.									
450.44									
5.17									
50.9 at Porch									
450.69									
4.9									
3.1 walk									
450.2									
5.4									
30									
449.6									
6.0									
20									
449.9									
5.7									
17									
449.9									
5.7									
17									
450.2									
5.4									
20									
450.3									
3.0									
30									
451.49									
7.12									
30 Dr.									
451.81									
3.8									
40									
451.81									
3.8									
40									
450.61									

S.W. B.P. 67th + El Cajon.

Mohawk

2+25

2+22 - 38.7 Lt. = ± 3' Conc. walk

2+00 - 22' Lt. = ± P. pole # P-174642

1+83 - 30' Lt. = ± 3' Conc. walk

1+73 - 18' Rt. = ± 3' Brick walk

1+55 - 30' Lt. = ± 10' Conc. Dr.

1+50

T.P. = Nail 6.79 462.22 0.18 455.43
in Pole - 4.2+00

1+31 - 30.6' Lt. = ± 3' Conc. walk

1+11 - 30.7' Lt. = ± 6.5' Conc. Dr.

1+09 - 29.8' Rt. = ± 7' Dr. - 2-2' Conc. Strips

40	456.6	40	456.6	40	456.0	40	457.4
30	456.6	30	456.6	20	456.8	30	457.4
20	456.1	20	456.1	10	456.5	20	457.4
10	456.3	10	456.3	0	456.0	10	457.4

40	455.4	40	455.4	40	455.1	40	455.9
30	455.4	30	455.4	30	455.8	30	455.9
20	455.0	20	455.0	20	455.5	20	455.9
10	455.5	10	455.5	10	455.1	10	455.9

40	453.23	40	453.23	40	454.50	40	455.87
30	453.23	30	453.23	30	454.50	30	455.87
20	453.23	20	453.23	20	454.50	20	455.87
10	453.23	10	453.23	10	454.50	10	455.87

40	452.8	40	452.8	40	453.0	40	454.5
30	452.9	30	452.9	30	453.8	30	454.5
20	452.9	20	452.9	20	454.2	20	454.5
10	452.7	10	452.7	10	453.3	10	454.5

40	452.28	40	452.28	40	453.0	40	454.5
30	452.28	30	452.28	30	453.8	30	454.5
20	452.28	20	452.28	20	454.2	20	454.5
10	452.28	10	452.28	10	453.3	10	454.5

40	451.49	40	451.49	40	452.83	40	455.31
30	451.49	30	451.49	30	452.83	30	455.31
20	451.49	20	451.49	20	452.83	20	455.31
10	451.49	10	451.49	10	452.83	10	455.31

3

Mohawk

4+00

3+92 - 28.5' Rt. = ± 8' Conc. Dr.

3+62 - 28.1' Rt. = ± 3' Conc. walk

3+51 - 21.9' Lt. = ± P. pole # 174907

3+50

3+46 - 30' Lt. = 7' Conc. Dr.

3+32 - 19.4' Rt. = ± 7' Conc. step to 4' walk

√ 3+31 - 24.6' Lt. = ± 15" Palm

3+21 - 29.8' Lt. = ± 3' Conc. walk

√ 3+11 - 24.4' Lt. = ± 14" Palm

3+00

2+99 - 32.7' Lt. = ± 12" Tree

2+93 - 25' Rt. = ± 9' Cold Lay Dr.

2+50

	5.0	5.1	5.2	5.3	5.4	5.5	5.6	5.7	5.8	5.9	5.0	5.1	5.2	5.3	5.4	5.5	5.6	5.7	5.8	5.9	5.0		
	40	30	20	16	30	20	16	30	20	16	30	20	16	30	20	16	30	20	16	30	20	16	
	456.7	456.5	456.7	456.4	456.1	456.5	456.4	457.38	457.22	457.2	457.2	457.7	457.7	457.8	457.8	457.8	457.7	457.7	457.7	457.7	457.7	457.7	457.7
	Dr.	Dr.	Dr.	Dr.	Dr.	Dr.	Dr.	Dr.	Dr.	Dr.	Dr.	Dr.	Dr.	Dr.	Dr.	Dr.	Dr.	Dr.	Dr.	Dr.	Dr.	Dr.	Dr.

8

456.88

T.P. 4.19 456.88 9.53 452.69

5+14 - 22.5' Lt = Beg. of 4' Hedge 4' High
5+08 - 30.4' Lt = ± 7' Dr. - 2-2' Conc Strips

5+00

4+95 - 26' Lt = ± 7' Conc. Dr.
4+91 - 20.8' Rt = ± 7.8' Conc. Dr.

9.52 Dr. 452.70
4.5
452.4
30
9.2 Dr. 452.97
30
9.452.97
0
26 = Dr.
9.33
5
9.452.97
30
8.8
453.4
9.453.1
20
9.453.5
30
453.5

4+73 - 20.9' Rt = ± 3' Conc. walk

4+67 - 30.3' Lt = ± 3' Conc. walk

4+51 - 22.4' Lt = ± P. pole # P-177122

4+50

4+49 - 30' Rt = ± 2.5' Conc. Step to 25' walk

4+40 - 28.2' Lt = ± 11' AC. Dr.

8.73 Dr. 453.49
46.2 at Porch
8.73 Dr. 453.49
30.3 = walk
8.1
30
8.454.1
8.0
20
8.454.2
8.2
17
8.454.0
7.5
7.452.7
7.9
454.3
6.64
30
6.455.58
6.04
30.9
454.18
5.90
5.0
454.9
5.90
454.92
7.30 floor
7.30 walk
454.62
454.9

4+18 - 30.2' Lt = ± 3' Conc. walk

6.77 Dr. 454.57
49.6 at Porch
6.97
30.2 walk
462.22

0+01 - 21.2 Rt. = ± 6" Euc.

0+00 = EL. 68th

54	51	54	53	59	40	59
30	20	15		10	20	30
451.5	451.8	451.5	451.6	451.0	452.9	453.0

See 68th Sections for Int and end of walk on
6+11.10 = WL. 68th

52	492	499	50	51	45	44	40	30
30	28.6	24.6	20	14		17	20	30
451.7	451.96	451.89	451.9	451.8	452.4	452.5	452.9	453.3

6+08 - 21' Lt. = ± Shrub

6+02 - 21' Lt. = ± 5" Palm ^{gone} on Lt.

5+91 = ± 3' Conc. walk N. from edge of F+W.

51	502	490	457					
486	308	28.6	24.6					
at Porch	Bk	Beg N+S.	Edw walk					
451.9	452.06	452.08	452.3	452.2	452.6	452.6	453.0	453.2

5+83 - 20.7 Lt. = ± Shrub

5+80 - 25.3 Rt. = Ely of 3' Conc. walk

50	482	480	46	47	43	43	39	36	39	39	39
30	28.6	24.6	20	14		16	20	25.3	30	30	44
								walk		at Bk	
451.9	452.06	452.08	452.3	452.2	452.6	452.6	453.0	453.2	453.49	453.69	

5+77 - 21' Lt. = ± 4" Palm

5+67 - 21' Lt. = ± Shrub.

5+57 - 21' Lt. = ± Shrub.

5+51 - 24.6 Lt. = Beg shy of 4' Conc. walk

467		475									
28.6		24.6									
low walk											
452.1	452.13	452.3	452.5	452.8	452.7	452.9	453.2				
30	20	14	14	14	17	20	30				

5+50 - 23.5' Lt. = ± P. pole # P 176 114

5+50 - 22.5' Lt. = end ± Hedge

451.88

Mohawk

2+60

2+40

2+00 - 27.6 Rt. = fence

1+50

1+35 - 9' Rt. = House

1+11 - 26 Rt. = Beg. Picket fence

1+00

0+74 - 26' Rt. = 8' Conc. Dr.

0+50 - 20.6' Rt. = 14" Euc.

0+36 - 20.6' Rt. = 11" Euc.

0+24 - 20.3' Rt. = 10" Euc.

0+10 - 21.2' Rt. = F.H.

5.6-451.3
3.38-453.50

ground
floor
Elev.

455.5	451.6	451.8	451.8	451.9	451.6	451.5	451.8	452.9
40	40	30	20	9	3	6	20	30
450.5	450.6	451.2	450.6	450.6	450.5	450.5	450.4	452.1
30	20	10	9	3	6	20	30	15
449.8	449.8	450.5	449.7	449.7	449.5	449.7	450.0	450.6
30	20	17	11	2	11	6	30	15
447.0	449.5	449.7	449.3	449.4	449.8	449.8	451.8	451.8
30	20	14	6	9	20	30	15	15
450.4	450.2	450.0	449.9	450.8	450.1	450.9	451.5	451.5
30	20	15	0	26	9	30	50	50
452.3	452.6	452.1	452.2	452.3	452.6	452.6	452.9	452.9
40	30	20	9	6	20	30	30	30

Mohawk

4+44-29.9 Rt. = \$ 14.6' Conc. Dr.

4+00-26.6 Rt. = 7' Conc. Dr.

3+68-29.3 Rt. = \$ 2' Conc. Walk

✓ 3+51-20.9 Rt. = \$ 12" Pepper

3+50

3+16-27.7 Rt. = \$ 7' Conc. Dr.

3+05-29.8 Rt. = \$ 7' Dr. - 2' Conc. Strips

T.P. 8.47 464.15 1.20 455.68

3+01-29.2 Rt. = end fence

3+00

H.

#

Rt.

8

459.63
4.52
29.9
Dr.

459.73
4.42
50
Dr.

46
40

49
30

53
20

65
10

63
18

63
20

61
20

59
26.6
Dr.

57
30.4
Brk

58
40
Dr.

69
40

61
30

66
20

81
10

82

80
15

76
20

74
30

457.52
6.63
29.3 walk

457.56
6.59
40
walk

833
27.7
Dr.

809
29.6
Dr. Brk

807
40
Dr.

902
29.8
Dr.

923
50
Dr.

456.5
0.4
40

456.4
0.5
30

456.3
0.6
20

454.0
2.9
10

453.9
0
16

454.2
2.3
20

454.6
1.9
30

455.0

456.88

Mohawk

Lt. ♀ Rt.

9

T.P. 7.40 470.26 1.29 462.86

470.26

5+91 - 27.4' Rt. = ± 3' Conc. walk

15.462.59
27.4
walk
61.1
at porch
1.77
462.38

5+85

19.462.3
30
19.462.3
20
15.462.5
13
1.462.6
1.462.4
20
1.6
20
1.5
30
462.5

5+62 - 26.5' Rt. = end ± of Hedge

5+50 - 26.2' Rt. = ± 2' Conc. walk

441.7
2.5
30
441.7
2.5
20
441.8
2.4
12
461.9
2.3
10
441.8
2.4
20
461.7
1.93
walk
462.22
19.0
30
462.25
2.08
50
walk
462.07

5+41 - 30.2' Lt. = ± of 6' Conc. walk

5+34 - 27' Rt. = Beg ± of 4' Hedge - 4' High

5+20 - 29.4' Lt. = ± P. pole # P 71 020

5+12 - 26.6' Rt. = Wly. of 4' Hedge

5+00

461.99
2.21
50
walk
461.86
2.29
30.2
walk

461.1
3.1
30
461.0
3.2
20
460.9
3.3
12
461.0
3.2
10
460.8
3.4
20
461.0
3.2
30

4+100

4+12

4+50

460.3
3.9
30
460.1
4.1
20
459.6
4.6
12
459.7
4.5
10
459.8
4.4
20
459.5
4.7
20
459.67
4.48
29.9
Di.

464.15

Mohawk

0+50

0+14-223 Rt. = \pm Guy Pole
60' F = EL. 69th = 0+00 ahead

50' F = F. cb.

40' F

30' F = \pm

10' F = w. cb.

03' F. - 24.9 Rt. = \pm P. pole \pm 71019
6+20.46 = w.L. 69th

3.5 40	3.4 30	3.5 20	4.1 18	4.0 10	4.2 12	4.9 10	4.7 20	5.1 30	5.4 40	5.4 40
466.8	466.9	466.6	466.2	466.3	466.1	465.4	465.6	465.2	464.9	464.9
5.4 80	5.0 30	5.2 20	5.4 10	5.4 10	5.7 10	6.3 11	5.1 15	5.5 20	6.0 30	6.1 80
464.9	465.3	465.1	464.9	464.6	464.0	465.2	464.8	464.3	462.6	462.6
5.1 80	5.6 30	5.8 20	6.1 10	6.1 10	6.4 12	6.6 13	6.7 20	6.8 30	7.1 80	7.1 80
464.2	464.8	464.5	464.4	463.9	464.7	464.6	464.1	462.7	462.7	462.7
5.2 80	5.4 30	5.6 20	5.9 10	5.9 10	6.2 12	6.4 13	6.5 20	6.8 30	7.1 80	7.1 80
463.5	464.2	464.3	464.2	463.9	463.5	463.2	461.9	461.9	461.9	461.9
5.3 80	5.3 30	5.3 20	5.3 10	5.3 10	5.6 12	5.9 13	6.1 20	6.2 30	6.5 80	6.5 80
463.2	464.0	464.0	464.0	463.7	463.4	463.2	462.2	462.2	462.2	462.2
5.4 80	5.6 30	5.8 20	6.1 10	6.1 10	6.4 12	6.6 13	6.8 20	7.1 30	7.1 80	7.1 80
463.3	463.3	463.5	463.4	463.2	463.1	463.1	461.8	461.8	461.8	461.8
5.4 80	5.4 30	5.4 20	5.4 10	5.4 10	5.7 12	5.9 13	6.1 20	6.2 30	6.5 80	6.5 80
462.4	463.1	463.2	463.5	462.8	463.1	462.9	461.8	461.8	461.8	461.8
5.9 80	5.9 30	5.9 20	5.9 10	5.9 10	6.2 12	6.4 13	6.5 20	6.8 30	7.1 80	7.1 80

470.26

10

1+85 - 29.5' Rt. = # 2.5" Conc walk

1+83 - 29.2' Lt. = # 3' Conc. walk

1+61 - 29.4' Lt. = Beg. 6" Conc wall

1+56 - 29.5' Lt. = # 7' Dr. - 2 - 2' Conc. strips

T.P. 792 476.70 148 468.78

1+50

1+37 - 29.4' Rt. = # 3' Conc. walk

1+14 - 29.5' Rt. = # 7' Conc. Dr.

1+03 - 29.5' Lt. = # 6' Dr. - 2 - 18" Conc. strips

1+00

471.60
4.90
40 = walk

471.51
5.19
29.2 = walk

472.59
4.16
29.4 = Top wall

470.9
5.470.9
29.4 = ground

5.64
50
Dr.

470.51
6.14
29.5 = Dr.

468.93
8.27
29.5
walk

468.02
8.68
40
walk

470.5
+0.2
40

470.4
+0.1
30

469.3
+1.0
18

469.2
+1.1
10

468.7
+1.4

468.4
+1.9
10

468.1
+2.2
20

467.7
+2.6
30

467.3
+3.0
40

476.70

467.29
2.97
29.4
walk

467.00
3.26
29.5
Dr.

466.74
3.6
20

466.5
3.8
30

465.85
4.1
50 = Dr.

467.06
4.0
40

468.93
1.33
50 = Dr.

468.66
1.6
29.5 = Dr.

468.9
1.7
30

468.8
2.5
20

467.6
2.7
10

467.4
2.9

467.00
3.26
29.5
Dr.

466.74
3.6
20

466.5
3.8
30

465.85
4.1
50 = Dr.

465.9
4.4
40

470.26

Mohawk

walk Curves to House
 + Bottom of Brick Steps to Rt.
 3+32- 28.7 Lt. = E 4' Conc walk

wall to E.

to Curved walk to House + Peg Rock
 3+28- 23.5' Rt. = NW. Cor. of 3.4' Brick Steps

3+21- 30.4' Rt. = E 14.5' Conc. Dr.

3+00

2+72- 30.4 Rt. = E 14.5' Conc. Dr.

2+50- 49.2 Lt. = Wly. Strip of Dr. (7.3)

2+15- 30' Rt. = E 9.7' Conc. Dr.

+ 28.9' Lt. = end Conc. wall + Wly. of 9' Conc. Dr.
 2+00- 30.2 Rt. = E of W. strip of Dr.

	Lt.		Rt.
	474.82	474.53	471.07
	1.89	2.17	5.63
	45.8 at Porch	28.7 = walk	23.4 = Top Rock wall
			471.22
			5.49
			23.5 = cor. walk + end Rock wall
			5.64
			30.4 Dr.
			471.21
			5.49
			26.8 = Cor. walk
			6.469.85
			6.85
			45.5 = floor Grav.
	474.0	473.8	471.9
	2.7	2.9	4.8
	40	30	9
			472.9
			3.8
			20
			472.8
			3.9
			10
			472.4
			4.3
			471.3
			5.4
			20
			470.3
			6.4
			30
			470.0
			6.7
			40
			469.58
			7.12
			30.4 Dr.
			468.98
			7.72
			47.7 floor Grav.
	473.43	473.1	471.8
	3.27	4.2	4.9
	49.2 Dr.	40	20
			471.5
			5.2
			10
			471.2
			5.5
			470.6
			6.1
			9
			469.9
			6.8
			20
			469.3
			7.4
			30
			468.3
			8.4
			40
			469.12
			7.58
			30 = Dr.
	472.58	472.16	470.5
	4.12	4.03	6.2
	50 Dr.	28.9	20
			10
			470.1
			6.6
			469.5
			7.2
			10
			469.1
			7.6
			20
			468.72
			7.98
			30.2
			468.57
			8.33
			40
			468.23
			8.47
			40
			476.70

12

Mohawk

4+50

4+48-27.3 Lt. = end Sly. of Hedge

4+38-30' Rt. = ± 3' Conc walk

4+20-27.8' Lt. = Beg. Sly. of 2' Hedge
19.7' Rt. = Nly. of 6" wall

4+30-19' Rt. = Beg. Nly. of 2' Hedge

4+22-30.1' Rt. = ± 14.5' Conc. Dr.

4+09-19' Rt. = Nly. of 4' Hedge

4+08-22.8' Rt. = end fence

4+00

3+89-30.6' Rt. = ± 3' Conc walk

3+82-28.3' Lt. = ± 4' Conc. walk

3+75-23' Rt. = Beg. Picket fence

3+69-30.4' Rt. = ± 7.8' Conc Dr.

3+57-23.4' Rt. = end Rock wall

3+50

10	13	16	19	24	32	34	40	46
475.7	475.4	474.9	474.8	474.3	473.5	473.3	472.7	472.1
40	30	20	10	4	8	20	30	40

12	15	20	24	30	38	45	51	59
475.5	475.2	474.7	474.3	473.7	472.7	472.2	471.6	470.8
40	30	20	10	8	8	20	30	40

0.7	1.39					5.42	6.43	
474.00	473.31					30.6	44.2	
at Porch	28.3 = walk					walk	at Porch	

5.86	47.02					5.68	75.3	
470.84	471.02					23.4 = Top	46.17	
30.4 Dr.	wall					wall	Dr.	

1.9	2.2	2.7	2.9	3.5	4.2	5.1	5.66	6.2	6.3	6.6
474.8	474.5	474.0	473.8	473.2	472.5	471.6	471.04	470.5	470.4	470.1
40	30	20	10	5	9	20	23.5	24	30	40

476.70

Top wall

13

Mohawk

Lt.

Rt.

Rt.

475.95
14

5+85 - 29.9 Rt. = wly. of 16" Conc. Dr.

480.25

5.01
29.9
Dr.

6.74
45.1
floor
Gar.

5+87 - 27.9 Lt. = 3.5' Conc. walk

1.44
5.0
walk

1.71
479.98

27.9 = walk

5+83 - 30.3 Rt. = end fence

2.0
40

2.2
30

4.0
15

4.7

4.9
9

4.7
5

5.4
30

5.6
40

5+75

5+74 - 29.9 Lt. = 16" Acacia

5+60 - 30' Lt. = Beq. wire fence

(Level out)

5+60 - 30.3 Rt. = Nly. of 8" Conc. Ret. wall

2.55
50
Dr.

3.16
30.2
Dr.

3.7
30

4.1
15

4.8

5.1
9

4.9
15

5.6
30

6.0
40

5.26 Top
30.3 wall

5+50 - 30.2 Lt. = wly. of 8.5' Conc. Dr.

5+11 - 30.4 Rt. = Beq. wire fence

5+10 - 18.7 Rt. = end Nly. of Hedge

5+00

4.8
40

5.0
30

5.9
20

6.0
10

5.4

7.0
9

7.2
20

7.5
30

7.9
40

T.P. 9.20 481.69 3.21 473.49

481.69

4+89 - 30.4 Rt. = 3' Conc. walk

2.88
473.85

3.35
30.2
Dr.

30.4
walk

4.72.80
40
Dr.

3.14
43.1
at Porch

4+69 - 30.2 Rt. = 8' Conc. Dr.

476.70

473.56

Cont. on Page 17
Mohawk

10' E - Cont.

10' E = w. cb.

See sketch - P. 16

6+19.75 = w.l. of 70th = edge of H.C. Pave + end of curbs.

6x+19 = 30.2 Lt. = end fence

6x+18 = Step in top of wall on Rt

6+15

Brick wall to E

6+01 = 29.9 - Rt. = Elly of Conc. Dr. + Beg 8"

6+00

8.51	9.08	7.28	7.91	6.77	7.42	9.10	8.53	10.72	10.01
130	130	108	100	70	70	50	50	100	100
Top	gut	Top	gut	Top	gut	gut	Top	gut	Top
473.18	472.61	474.41	473.78	474.92	474.27	472.59	473.16	470.97	471.68
6.66	7.30	6.84	7.47	7.57	7.62	7.99	8.29	8.54	7.87
50	50	30	30	20	20	10	20	30	30
Top	gut	Top	gut	Top	gut	Top	gut	Top	gut
475.03	474.39	474.85	474.22	474.12	474.07	473.70	473.40	473.15	473.82
479.7	479.5	474.79	474.27	474.35	474.20	473.76	473.26	473.93	473.6
2.0	2.2	6.90	7.42	7.34	7.49	7.93	8.43	7.76	8.1
40	30	20	20	10	10	10	19.9	19.9	29.9
Bank down		Top	gut				gut	Top	end wall
to. cb.		end cb.						end cb.	
						5.12	7.14		
						29.9	29.9		
						Top to	Top to		
						5.12	7.14		
						29.9	29.9		
						Top to	Top to		
						474.5	474.55		
						474.7	474.2		
						474.0	475.8		
						12	20		
						17	29.9		
						17	29.9		
						5.22	5.28		
						29.9	Top wall		
						476.47	476.41		
						475.6	476.5		
						5.22	5.22		
						29.9	29.9		
						475.6	476.47		
						11	15		
						5.22	5.22		
						29.9	29.9		
						edge	Dr		
						481.69			

15

H.C. Pavc

Rough Cold Lay Pavc

67th

st

30' Rad.

Ed Mon.

Cold lay - Car lot.

El Cajon Ave

Detail of 67th + 68th
Pavc + cbs. at El Cajon

↔ N ↔

10' Rad.
H.C. Pavc

68th

st.

Ser. Sta

14

Saranac
Rough Cold Lay Pavc

st

10' Rad

10'

Detail of 70th
Pavc + Curbs

10' → ← 40' ← 10'

curb →

st.

N

↑
N
↓

70th

Mohawk

10'

40'

10'

10' Rad

st

H.C. Pavc

around - 3 parts 5.2 each
Rods around 10 Rod. Returns -

S.W. Ret. 15.6

N.W. Ret. - 15.6 around - 3 5.2 each

P.C. = W.L. 70th

7.76 473.93 T=Top

P.C. = W.L. 70th

6.90 474.79 T

8.43 473.26 G=got.

7.40 474.27 ♀

5.2

7.90 473.79 T

5.2

7.00 474.69 T

8.44 473.25 ♀

7.61 474.08 ♀

7.92 473.77 T

7.02 474.67 T

8.49 473.20 ♀

7.61 474.08 ♀

5.2 = E.C. = S.L. Mohawk

7.87 473.82 T

5.2 = E.C. = N.L. Mohawk

6.84 474.85 T

8.54 473.15 ♀

7.47 474.22 ♀

on E Side
Set BM = Nail in Pole

8.17 473.⁶¹82

30' E = ± 70th = end

473.17	474.25	474.89	475.06	474.91	474.76	474.54	474.32	474.12	473.99	473.78	473.19	471.71
8.52	7.44	6.80	6.63	6.78	6.95	7.15	7.37	7.57	7.70	7.91	8.50	9.98
130	100	70	50	30	20	10	7	10	20	30	50	100

20' E. Cont.

8.64 73.05
130

10.08 471.61
100

20' E of E.L. 70th

474.12	474.65	474.79	474.72	474.54	474.37	474.18	474.04	473.82	473.64	473.07
7.57	7.04	6.90	6.97	7.15	7.32	7.51	7.65	7.87	8.03	8.62
100	70	50	30	20	10	7	10	20	30	50

Cont. from P. 15

481.69

INDEXED

X-Sect. Saranac from 67th to 70th
60 St. - Rough Graded Dirt.

W.O. 31576

1+00 - 22.6 Rt. = \pm 12" Pepper

0+94 - 41.5 Rt. = \pm Sing. Grav. - Conc floor

0+70

0+51 - 23.2 Rt. = \pm 18" Pepper

0+40

0+29 - 23.3 Rt. = \pm 14" Pepper

0+20 = \pm of 67th to N.

0+10 - 21.2 Rt. = \pm F.H.

0+06 - 22.2 Rt. = \pm 14" Pepper (out)

Gas. Co. M.H.

0+04 - 9.8 Lt. = ϕ 2'x2' 502 on Rim

0+00 = E.L. of 67th to S. + w.l. to N.

D.M. on Pole 1.91 31 40
P.2 451.22 449.31

W.O. 31576

2.7	2.9	3.5	3.7	3.9	3.5	3.6	3.4
40	30	15		12	20	30	40

3.3	3.4	4.1	4.2	4.5	4.8	4.3	4.1
40	30	22	15		10	20	30

3.3	3.4	4.0	5.0	4.9	5.1	4.5	4.1
100	50	30	26	15		9	40

4.6	5.0	5.1	5.1	5.1	5.4	5.3	4.8	4.5
100	50	41	30	15		15	30	40

on CL strip edge CL.

5.6	5.7	5.7	5.1	4.9	5.2	5.4	5.1
100	50	31.3	30	15	edge CL	20	30

451.22

2+05 - 30.4 Lt. = \$ 3.4 Conc. walk thru wall

2+00 - 21.6 Rt. = end fence

1+79 - 30.7' Lt. = Beg. 4" Conc. wall - with Hedge Behind

1+68 - 73' Rt. = Nly. of 6" Conc. cb along Dr.

1+64 - 21.8' Rt. = \$ 7.6 Dr. - 2 - 2' Conc. strips

Curb along Dr.

1+59 - 27.3' Rt. = Ely. of Conc. + Nly. of 6" Conc.

1+56 - 21.8' Rt. = ang. in edge of Conc.

1+50 - 21.5' Rt. = Beg. Picket fence + Cor. of Rough conc. slab.

1+43 - 22.4' Rt. = \$ 14' Pepper

1+30 - 55.8' Lt. = \$ Sing Gar. - Conc. floor

1+29 - 31.5' Rt. = \$ P. pole # P 75906 Moxey

T.P. 7.12 454.90 3.44 447.78

450.82 Lt. 4.08 50 walk
450.76 Lt. 4.14 32.2 30.4 - walk
450.37 Lt. 4.53 30.4 - walk

450.5 4.4 40
450.76 4.12 30.5
449.9 5.0 30
449.8 5.1 15
449.8 5.1

450.67 Top wall 4.23 30.7
449.7 5.2 30.7 = ground
Top wall

450.62 4.24 23 Top cb
450.57 4.33 30 Top cb
450.08 4.42 30 Dr.
450.50 4.40 40 Top cb

450.01 4.89 21.8 - Dr
450.03 4.87 50 = Dr

450.51 4.39 27.3 Top slab
450.14 4.76 21.8 = Cor. conc.
450.50 4.40 30.1 = Top cb + end of slab
450.59 4.51 40 Top cb

449.42 5.48 55.8
449.3 5.6 40
449.3 5.6 30
449 6.0 15
448 6.1
448.7 6.2 12
448.9 5.0 20
450.10 4.80 21.8 Cor. conc.
450.17 4.73 30 Back of conc.
450.0 4.9 40

454.90

451.72

Saranac

3+58- 20.2 Rt. = ± 7.5 Conc Dr.

3+50- 19.9 Rt. = Ely. of 7.5 Conc Dr.

3+24- 21.6 Lt. = ± 10.8 H.C. Dr.

3+05- 29.8 Rt. = ± 12" Tree

3+02- 28.2 Rt. = ± P. pole # P75650

3+00- 20.4 Rt. = 2' W. of Ely. of 10.8 H.C. Dr.

T.P. 0.89 451.53 426 450.64 ^{.73} Nail Pole Rt 3+02

2+60

2+50- 21 Rt. = Nly of 3' Hedge 3' High

2+30

2+29- 30.1 Lt. = end of wall

4

#

Rt.

20

446.9	446.8	446.9	447.3	447.2	448.34	448.59	448.60	448.79
4.6	4.7	4.6	4.2	4.3	3.19	2.94	2.7	2.01
40	30	15		12	19.9	22	30	50
					Dr.	Brk.	Dr.	Dr.
447.16	447.37	447.25	447.52					
4.37	4.16	4.28	4.01					
50	30	27	21.6 = Dr.					
Dr.	Dr.	Brk.						
448.3	448.1	448.3	448.7	448.7	449.81	450.24	450.96	
3.2	3.4	3.2	2.8	2.8	1.72	1.29	0.57	
40	30	15		10	20.4	30	50	
					Dr.	Dr.	Dr.	
			451.53					
449.7	450.2	450.1	449.9	449.8	450.7	451.3	451.6	
5.2	4.7	4.8	5.0	5.1	4.2	3.6	3.3	
40	30	15		13	20	30	40	
450.5	450.5	450.3	450.1	450.0	450.6	450.7	451.0	
4.4	4.4	4.6	4.8	4.9	4.3	4.2	3.9	
40	30	15		12	20	30	40	
	450.97	450.6						
	3.93	4.3						
	30.1	30.1						
	Top	ground						
	wall							
			454.90					

4+92 - 30' Rt. = ± 8' Conc. Drive

4+87 - 28.5' Rt. = end Nly. of Hedge

4+52 - 29' Rt. = Nly. of 2' Hedge - 4' High

4+50 - 22.5' Rt. = Ely. of 7' Dr. 2-2' Conc. Strips

4+43 - 14.9' Rt. = end wall

4+37 - 21' Rt. = ± 2" Tree

4+24 - 22.7' Rt. = ± 3' conc. walk
3' Rail fence

4+16 - 28.1' Lt. = end Sly. of Hedge + 29.1' Lt. = Beg.

4+08 - 21.4' Rt. = ± 2" Tree

4+03 - 15.3' Rt. = Beg. 3' Conc. wall

4+02 - 28.4' Rt. = ± Pipe # J.P. 175216

4+00

3+96 - 25.1' Rt. = ± 7" Shrub

3+82 - 30.5' Rt. = ± 2.5' Conc. walk

3+81 - 28.6' Lt. = Beg. Sly. of 2.5' Hedge - 3' High

3+73 - 28.3' Lt. = ± 7' Dr. - 2-2' Conc. Strips

445.98

5.5' Dr.

447.07

4.6' Dr.

444.3
7.2
40

444.5
7.0
30

444.5
7.0
17

445.3
6.2
11

444.9
6.6
22.5' Dr.

446.68
4.85' Dr.

446.96
4.57' Dr.

447.34
4.17' Dr.

445.9
5.6
14.9
ground

446.49
5.04
14.9
Top of Wall

447.70
4.83
22.5' Top-sly. of wall

447.66
4.19

22.7' = walk

446.5
5.0

15.3
ground

446.94
4.59

15.3
Top wall

445.6
5.9
40

445.8
5.7
30

445.8
5.7
18

446.1
5.7
10

446.1
5.4

446.0
5.5
10

446.8
4.7
30

447.4
4.1
30

447.6
3.9
40

447.69
3.84

30.5' walk

448.0
3.53

43.3' at Porch

446.06
5.7
5.0
Dr.

446.31
5.22
28.3
Dr.

451.53

30' F = #

12' E. = W. cb.

6+11.35' = WL 69th To S.

5+99-31.2' Rt. = # P. pole # 75649

5+85-30.3' Lt. = # 8' Conc Dr.

5+80

5+60-30.8' Lt. = # 3' Conc. walk

T.P. 5.45 448.69 8.29 443.24

5+40

5+21-31.1' Rt. = # ^(Moved) P. pole # IP 175290

5+16-29.4' Lt. = end fence

5+00-23.4' Lt. = 2' E. of Wby. of 10' # C. Dr.

7.6 130	6.8 80	6.3 30	5.9 15	5.6 13	5.1 10	5.0 10
441.1	441.9	442.4	442.8	443.1	443.2	443.3
7.1 130	6.6 80	6.2 30	5.9 15	5.8 13	5.3 10	5.1 10
441.0	442.1	442.5	442.8	442.9	443.0	443.2
8.0 130	6.7 80	6.2 30	6.0 15	5.8 13	5.3 10	5.1 10
440.7	442.0	442.5	442.7	442.9	443.0	443.3
6.3 40	5.1 30	6.1 20	6.0 12	5.7 12	4.5 20	4.2 30
442.4	442.6	442.6	442.7	443.0	442.9	444.5
6.6 50	6.1 30	6.1 30	6.1 30	6.1 30	4.2 30	3.9 40
442.0	442.6	442.53	442.7	443.0	444.5	444.8
9.3 40	9.1 30	8.6 13	8.2	8.3 12	7.1 20	6.8 30
442.2	442.4	442.9	443.3	443.2	444.4	444.7
9.6 50	8.8 30	8.7 23.4	8.0 15	7.5	7.7 12	6.3 20
441.85	442.65	442.81	443.5	444.0	443.8	445.2
9.6 50	8.8 30	8.7 23.4	8.0 15	7.5	7.7 12	6.3 20
441.85	442.65	442.81	443.5	444.0	443.8	445.2
9.6 50	8.8 30	8.7 23.4	8.0 15	7.5	7.7 12	6.3 20
441.85	442.65	442.81	443.5	444.0	443.8	445.2

451.53

3+50

445.4	446.1	447.5	447.5	447.4	448.3	448.9	449.5
7.2	6.5	5.1	5.1	5.2	4.3	3.7	3.1
40	30	15		10	15	30	40

Same as 3+20

3+44- 14.8 Lt. - end Sly. of Walk + 6" wall to House

446.76	447.68	447.68
5.83	4.91	4.91
44.7	17.7	14.8
walk at House	Cor. walk wall	

walk to House

3+34- 17.7 Lt = ± 2.7' Conc. walk from E+W.

446.43	447.61	447.61
6.16	5.42	4.98
41.8	17.7	14.9
walk at Porch	walk to N.	E+W walk

3+31- 22.7 Rt. = ± 14" Pepper

wall from back of walk to House

2+20- 14.9 Lt = Beg. Sly. of 2.7' Conc. walk + 6" Conc.

446.20	447.63	447.68
5.79	4.96	4.96
44.9	17.6	14.9
To wall at House	Cor. walk + wall	Cor. wall

3+07- 24.1 Rt = ± 4" Peach

3+00

447.7	447.7	449.1	449.4	449.7	450.3
6.4	5.7	5.0	4.9	4.9	3.5
40	30	15	10	15	20
				3.2	2.9
					30
					40

2+92- 23.8 Rt. = ± 5" Peach

2+83- 22.4 Rt. = ± Pipe # 74987

2+75- 23.6 Rt. = ± 10" Pine

2+50

447.3	447.8	448.1	447.6	447.9	447.8	448.7	449.5	450.2
5.3	4.8	4.5	5.0	4.7	4.8	3.9	3.1	2.4
40	30	15	13	9	9	15	30	40

2+43- 22.4 Rt. = ± 6" Pepper

T.P. 5.17 452.59 1.27 447.42

452.59

448.69

Saranac

6+20.38 = w.L. 69th to S.

10.0	9.9	8.9	9.0	8.9	9.4	8.3	8.0	9.1	9.9	8.9
40	30	20	10	10	8	11	20	30	30	10

5+80

11.6	11.5	11.0	10.9	10.8	11.1	10.6	11.0	10.9	10.9	10.4
40	30	20	10	10	9	10	20	30	40	40

5+40

13.5	13.3	12.6	12.6	12.9	12.3	11.6	11.4	11.4	11.4	11.4
40	30	15	15	8	10	30	30	40	40	40

5+00

15.4	15.1	13.9	14.0	14.1	13.6	13.3	12.2	11.8	11.8	11.8
40	30	15	10	8	15	25	30	40	40	40

T.P. 1294 463.85 169 450.91

463.85

4+56-22' Rt. = E P. pole # None

4+50-30' Lt. = ± 9.5' Conc. Dr.

5.19	4.84	4.1	3.9	3.9	3.7	3.8	3.8	4.0	4.0	4.0
50	30	15	8	8	15	30	30	40	40	40

4+00

5.8	5.8	5.0	4.9	5.0	4.7	4.4	4.4	4.6	4.6	4.6
40	30	15	8	9	15	30	30	40	40	40

3+85-29.7 Lt. = Sliy. of 6" Conc. Brick wall

2.22
29.7
Top
Wall

6.9
29.7 = ground

452.19

25

0+56 - 12.4 Rt = ± 26 Conc. steps to Conc. walk

0+55

12	462.7	12	462.0	13	461.4	12	461.6	12	462.3	11	463.35	9	465.05	9	465.99	9	465.99
40		30		20		18		4		8		11		20		30	40
							edge CL.			edge CL.							

T.P. 12.24 474.73 136 462.49

474.73

0+25

4	459.9	3	460.3	3	460.3	2	460.6	3	460.4	2	461.0	3	462.6	0	463.2
30		18		15		3		5		5		20		40	
			edge CL.						edge CL.						

check S.W. F.H. 3.11 360.74

0+10 - Beg. Rough Coldhay Pave
60' E = F.L. 69th to S. = 0+00 ahead

5	458.7	5	458.7	5	458.9	5	458.6	5	458.9	4	459.8	3	460.8
30		15		0		5		0		1		1	

48' E - 29' Lt = ± P. pole # P-71022

5	457.5	5	458.0	5	458.2	5	458.3	5	458.2	5	458.2	4	458.8
30		15		1		6		3		6		100	

30' E = ± 69th

7	456.2	7	456.6	7	456.6	7	456.7	6	457.2	6	457.6	6	457.8	5	458.2
30		0		0		2		5		3		5		10	

See 69th Sections to N.

12' E = w. cb.

9	457.7	9	455.6	8	455.5	8	455.6	8	455.5	6	457.0	7	456.8	7	456.3	9	455.7	7	456.0
30		0		10		3		4		9		12		20		30	50	100	

4' E - 21.2 Rt = ± P. pole # 74986

463.85

1+45 - 20.8' Lt. = 3' Conc. walk

5.05 469.68
43.8 469.40
at Porch 30 walk 468.38
6.35
20.8 = walk

1+25

5.7 469.0
40 468.6
6 467.76
6.97 466.5
8.2 467.7
7.0 467.7
7.0 470.3
9 470.6
20 471.1
30 471.1
40 471.1

1+16 - 21.1' Lt. = Beg. 6" Conc. wall

7.16 467.57
21.1 466.4
Top wall 21.1 21.1-ground
8.3 466.4

1+13 - 22' R. = P. pole # 274092

8.6 466.1
40 466.2
8.5 465.2
30 25 9.5 465.2
8.5 465.2
25 18 edge
8.5 466.2
5' 8.3 466.4
8 467.8
15 468.2
30 468.2
40 468.4

1+00

0+92 - 23.4' Lt. = 4' Conc. Walk

8.65 466.08
42.9 465.78
at Porch 23.4 = walk

0+75

9.7 465.0
40 465.2
9.5 465.1
30 11.2 463.5
25 18 edge
10.3 462.9
10.2 464.5
8 465.7
9.0 466.7
5 30 7.6 467.1

0+66 - 21.8' Rt. = 8' Conc. Dr.

9.4 465.59
21.8 466.16
Dr. Brk
7.50 467.23
50 Dr.

Saranac

Lt.

#

Rt.

3+06 - 32' Rt. = ± 7' Dr - 2-2' Conc. strips

3+05 - 19.8' Lt. = ± 3' Conc. walk

3+00

2+85 - 21.8' Rt. = ± 3' Conc. walk

2+60 - 23.5' Rt. = ± P. pole # None

2+50

2+08 - Rt. = ± 10' Cold Lay Drive to Reg. strip

2+00

1+91 - 28.6' Rt. = ± 10" Pepper

1+76 - 19.7' Lt. = ± 14' Conc. Dr.

1+69 - 20.9' Lt. = end of wall

1+50

1+47 - 13' Rt. = ± 3' Conc. steps to walk

470.61
4.12
43.6
at Porch

470.43
4.30
30
walk

470.41
4.22
19.8
walk

470.3
4.4
40

470.3
4.4
30

470.1
4.6
18
edge

470.7
4.0

471.47
32.6
32-Dr

472.01
2.72
50
Dr.

471.3
3.4
18
edge

471.3
3.4
30

471.5
3.2
40

469.9
4.2
40

470.0
4.7
30

469.6
5.1
18
edge

470.6
4.1

471.61
3.12
21.8
walk

471.0
3.1
15

471.2
3.5
30

471.9
2.2
30
Dr

472.31
2.42
50
walk

472.1
2.6
40

472.8
5.0
Dr

469.6
5.1
40

469.5
5.2
30

469.1
5.6
20
edge

470.0
4.7
8
edge

470.2
4.0
15
9-ft

471.2
3.5
20
Dr

471.9
2.2
30
Dr

472.4
2.3
30

473.2
5.1
40

470.90
4.33
46
floor
Crat.

470.21
4.52
32
Brk

470.13
4.50
30
Dr

468.73
6.00
19.7

468.94
5.79
20.9
Top

468.7
60
20.9
ground

469.9
5.0
40

469.4
5.3
30

468.76
5.97
20.9
Top
wall

467.9
6.8
20
edge

468.9
6.0

468.7
6.0
9
edge

471.1
3.6
17

471.7
3.0
30

471.5
3.57
30

471.71
3.02
30

472.5
2.2
40

472.29
2.44
45
walk

474.73
13
Bottom
+ walk

16.7-Top
+ walk

Saranac

4+30

4+10 - 29.8' Rt. - Beg. Nly. of 2' Hedge - 3' High

3+92 - 31.7' Rt. = 3' Conc. walk

3+89.65 = E.L. Manchester

T.P. 6.65 477.70 3.68 471.05

3+71 - 31.8' Rt. = 7' Dr. - 2-2' Conc. strips

3+64.65 = Manchester

3+47 - 31.6' Rt. = 3' Conc. walk

3+39.65 = W.L. of Manchester Rd. to N.

3+19 - 31.8' Rt. = 7' Dr. - 2-2' Conc. Strips

Lt.

+

Rt.

29

473.0	472.5	472.2	471.0	471.0	471.2	470.9	470.8	472.9	473.1	473.3
4.7	5.2	5.6	6.7	6.7	6.5	6.8	6.9	4.8	4.6	4.4
40	30	24	20	16	5	16	19	22	30	40
				edge		edge				

470.8	470.7	470.9	471.1	471.0	470.9	472.2	473.12
6.9	7.0	6.8	6.6	6.7	6.8	5.24	4.58
30	23	15	6	14	19	31.7 = walk	49.2 = porch
	edge			edge			

477.70

470.7	470.9	471.0	470.9	471.8	472.05	472.41
4.0	3.8	3.7	3.8	2.9	2.68	2.32
30	15	7	20	22	31.8 = Dr.	50 = Dr.
			edge			

472.06	472.2	472.41
2.67	2.9	2.7
31.6 walk	50 = walk	

470.1	470.6	470.8	470.8	471.0	471.7	471.7	472.1
4.6	4.1	3.9	3.9	3.5	3.0	3.0	2.5
30	15	9	9	20	22	30	40
			edge				

471.59	472.29
3.4	2.44
31.8 = Dr.	50 = Dr.

474.73

T.P. 8.20 472.73 13.17 464.53

5+40

Take Dr. Sect on Rt. out for yardage

5+37- 29.5 Rt. = ± 8" Pine

5+25- 19.8 Rt. = ± 8' Conc. Dr.

5+11- 27.9 Rt. = end of Fence - goes S.

5+10

4+80

4+70- 19.2' Rt. = 7' Conc. Dr. - Thru fence

4+61- 27.5' Rt. = Beg Board fence

4+40- 30' Lt. = ± 3' Conc. walk

4+36- 29.4 Rt. = end Nly. of Hedge

477.73

7.0	7.6	10.467.2	10.5	10.476	9.5	10.0	5.3	4.5	4.2
40	30	17	10	10	10	18	24	30	40
		edge				edge			

468.9%

Dr.

30 = Dr.

Pric. Adv. Gax

5.7	6.9	7.6	8.7	7.9	8.0	8.5	4.1	3.8	3.6
40	30	22	16	16	10	17	23	30	40
			edge			edge			

5.0	5.8	6.4	7.5	6.9	7.0	7.4	4.2	3.8	3.7
40	30	22	16	16	10	18	23	30	40
			edge			edge			

4.9	5.5	5.9	7.2	6.8	6.8	7.15	5.5	3.8	3.7
40	30	22	16	10	10	19.2	30	40	50
			edge			Dr.	Dr.	Pric.	Dr.

473.17
4.53
43.9
at Porch

472.68
5.02
30 = walk

477.70

16.5' E. = \pm at edge of H.C. Pavc

See Sketch - P. 16 for Int.

10' E - Cont.

09' E - 30.3' Rt. = \pm P. pole # 178232

09' E - 26.5' Lt. = \pm Guy Pole

10' E = w. cb. to S.

check S.W. B.P.

6.49 96
461.87

check B.M. = \pm C.T.

8.13 460.23 - 460.34

T.P.

3.83 468.36 8.20 464.53

6 + 19.93 = w.l. of 70th to S = end of cb. on Rt.

5 + 9.5

- from Dr.

5 + 6.5 - 44.5 Rt. = Nly of 2.5' Conc. walk along itouse

Lt.

\pm

Rt.

5.2	6.3	8.9	8.8	8.7	7.8	6.9	5.8	4.3	1.6
40	30	18	10		10	20	30	50	80
463.2	462.1	459.5	459.6	460.09	460.53	461.08	461.55	462.52	464.06

edge

6.1	5.5	4.5	3.9	3.9	3.9	3.9	3.9	3.9	3.9
50	40	30	20	10	10	10	10	10	10
462.18	462.82	463.77	464.90	464.39	464.97	464.97	464.97	464.97	464.97

3.9	5.3	8.6	8.6	8.3	7.7	7.4	7.1	6.5	5.5
40	30	18	10	8	20	30	30	30	30
464.5	463.1	459.8	459.8	460.1	460.58	461.02	461.26	461.80	461.80

edge

edge of
C.L. + H.P.

9.4
Top

7.6	9.3	12.3	12.2	11.8	11.55	11.06	9.9	7.5
40	30	17	7	10	20	20	30	40
465.1	463.4	460.4	460.5	460.9	461.18	461.47	462.8	468.2

edge c.l.

edge of
9.4
Top
end of
cb.

6.0	6.7	9.9	9.8	9.7	9.9	2.6	1.01
40	30	17	10	10	18	30	44.9
466.7	466.0	462.8	462.9	463.2	463.0	470.1	471.72

edge

edge

end of walk

3.8	4.4	7.5	7.0	6.7	6.8	7.0	7.0	0.6	0.0
40	30	17	10	6	10	10	19	30	0.0
469.2	468.3	465.2	465.7	466.0	465.9	465.7	465.7	472.1	472.70

edge

edge

walk

472.73

Saranac

Rods around S.W. 10' Rad. Ret.
16 around - 3 parts S.3 each

468.36

W.L. 70⁺

Req. at W. end =

INDEXED

6.67 461.69 T

7.17 461.19 9

S.3 =

6.71 461.65 T

7.27 461.09 9

6.68 461.68 T

7.25 461.11 9

Saranac

S.3 = E.C. = S.L

6.56 461.80 T

7.10 461.26 9

check B.M. - nail in Pole

2.26 473.54

473.52 = P 17

T.P.

6.94

475.80

0.50

467.86

Rods are along ± of Rdwy. out from ±
slightly curved + angles to E. going N.

43' E on ± = ± of H.C. Paved Roadway

454.93
13.43 80
9.91 30
458.45
8.09
460.27
6.57 30
461.78

- meets Req. ± about 130' out.

30' E = ± 70⁺ = end

9.459.9
40
9.459.4
30
9.458.6
25
9.459.19
16.3
8.80
10
8.13
10
7.56
20
7.05
30
6.51
50
5.52
80
3.98
130
4.38
130
4.6

468.36

Lt.

±

Rt.

INDEXED

H

#

Rt.

X-Sect. 67th from El Cajon to
Saranac - 50' st. Cold Lay Strip Pauc.

W.O. 31576

Cont on P. 35

0+44-16' Rt. = ± 19' Cold Lay Dr. to Carhot

76 452.1
16' Dr.
72 452.5
25 Dr.
50 453.2
50 453.2
50 453.2

edge noted is in gutter.

0+25 - edge of C.L. on Lt. has roll for gutter-

72 452.5
35
72 452.5
25
72 452.5
17
7 452.1
5
7 452.6

0+24- 24.2' Rt. = ± Tel. pole # 99953-11

6.9 452.8
35
7.0 452.7
25
7.19 452.55
14.9
7.22 452.52
14.9
6.12 452.82
75
6 453.14
6.0
6.55 453.19
6.55
6.55 452.89
6.55
6.6 453.58
15
5.81 453.93
5.62
5 454.12

0-01.7 - + cb. on Rt. ends at 0-01.9 = Rods on end of cbs.

0-02 = edge of 4.C. Pauc in ± - cb. on Lt. ends at
Beg. Cold Lay Strip

0-17.5 = opp. P.C. of Ret. on Lt. (outs Normal to 67th)

7.0 452.7
35
6.7 453.0
25
6 453.04
15
6 453.94
15
6 453.35
39
6 453.45
10.9
6.5 453.59
19.5
5 454.24
19.5
5 454.46
25
5 454.70
25

El Cajon - outs along cb. line
0+42.7 = ± at approx. N. cb. line (curved) of

6+3 453.31
100
7.02 452.72
100
6.70 453.34
45
6.49 453.25
45
6.26 453.49
25
6.16 453.58
15
5.94 453.80
15
5.80 453.94
15
5.63 454.11
25
5.24 454.50
52
4.68 455.06
52
4.41 454.82
100
4.35 455.39
100

See sketch P. 16

B.M. - S.W. 6.64 459.74 453.70
67th + El Cajon

P.C. of Ret. +
Req. Curve along
El Cajon 459.74

Rods around Returns - at 67th + El Cajon

459.74

N.E. Ret. - 52' ground - 4 parts - 13' each
of El Cajon

Beg. at end - 19' S. of NL.

6.16 453.58 T = Top

6.85 452.89 q = gut.

13'

INDEXED

5.65 454.09 T

6.29 453.45 q

13'

5.11 454.63 T

8.70 454.04 q

"

4.82 454.92 T

5.44 454.30 q

13' = P.C.C.

4.68 455.06 T

5.24 454.50 q

459.74

34

N.W. Ret. 50.8 ground - 4 parts 12.7 each
El Cajon

Beg. at P.C. 17.5 S. of NL.

6.70 453.04 T

6.80 452.94 q

6.50 453.24 T

6.59 453.15 q

6.32 453.42 T

6.45 453.29 q

6.31 453.43 T

6.40 453.34 q

6.40 453.34 T

6.49 453.25 q

12.7 = P.C.C.

1+65 - 13.7 Rt = Cor. of Conc. Dr

4.450.64
4.335
13.7
457.24
2.75
28.7 = floor
Cav. 452.95

1+59 - 23.8 Rt = Wlk. of 8" Conc + Rock wall

4.457.0
23.8
ground
2.07
23.8
Top
Wall
2.04
2.8
Top

T.P. 449 454.99 9.24 450.50

454.99

1+50

9.450.6
3.5
9.3 450.4
2.5
9.3 450.4
1.7
9.7 450.0
1.5
edge
9.4 450.3
1.0
9.450.6
1.1
9.1 450.6
5
edge
9.1 450.5
5
9.1 450.6
2.5
8.7 451.0
5
+ Alley

1+37 - 25' Lt = Beg. ± of 25' Hedge 5' High

1+41 - 16.5 Lt = ± P. pole #.78348

1+08 - 24.3 Lt = Ely of 5" Conc. cb. along Dr.

8.2 451.58
14.6
451.5
20.0
8.11 451.63
24.3

1+00

8.2 451.5
40
Dirt Dr.
8.2 451.5
2.5
Dirt Dr.
8.3 451.4
1.7
8.7 451.0
1.5
edge
8.4 451.3
1.0
8.1 451.6
8.3 451.4
5
edge
8.4 451.1
2.5
8.6 451.1
2.5
8.4 451.3
3.5

0+98 - 24' Lt = Ely of 5" Conc. cb. Bet. Drives

8.15
40
Top
451.57
8.19
24 = Top cb.

0+96 - 25' Rt = end of C.L. Parking

8.1 451.58
24 = Top cb.

0+88 - 24' Lt = Ely of 5" Conc. cb. along Dirt Dr.

8.07 451.67
40
Top cb.
8.16 451.58
24 = Top cb.

0+76 - 16.6 Lt = ± P. pole # P.74270

8.1 451.6
24 = Top cb.

0+70 - 20' Rt = ± Guy Pole

7.7 452.0
3.5
7.9 451.8
2.5
7.8 451.9
1.7
8.1 451.6
1.5
edge
7.7 452.0
7.8 451.9
6
edge
8.0 451.7
1.5
7.8 451.9
2.4
7.8 452.4
2.5
edge c.l.
7.0 452.7
3.5

0+60

Cont from P. 33

459.74 - P. 33

2+86- 25' Lt. = ± 7' Conc Dr.

2+74- 25' Lt. = ± 3' Brick walk

2+52- 22' Lt. = ± 6' Acacia

2+50

2+47- 23.9' Rt. = ± 5' Conc. walk

2+44- 25' Rt. = end ± Hedge

2+42- 16.4' Lt. = ± P. pole # 76857

2+33- 25.7' Lt. = ± 6.5' Dr. - 2-2' Conc. Strips

2+14- 25.7' Lt. = ± 3' Brick walk

2+12- 25' Rt. = ± 2' Hedge - 5' High

2+11- 24.5' Rt. = ± Tel. pole # 450567-H

2+00

1+86- 23.8' Rt. = end wly. of Conc. walk

1+79- 13.8' Rt. = Cor. Conc. Dr. - 4' walk to N.

	Lt.	#	Rt.	36
2+86- 25' Lt. = ± 7' Conc Dr.	6.61 5.0	448.38	6.15 25'	448.84
2+74- 25' Lt. = ± 3' Brick walk	6.37 45=walk	448.62	6.15 25=walk	448.84
2+52- 22' Lt. = ± 6' Acacia	448.8	449.0	449.4	449.1
2+50	6.2 35	5.0 25	5.6 17	5.9 15
2+47- 23.9' Rt. = ± 5' Conc. walk	5.7 10	449.3	5.4	449.6
2+44- 25' Rt. = end ± Hedge	5.4 5	449.6	5.1 15	449.9
2+42- 16.4' Lt. = ± P. pole # 76857	4.9 28	450.1	4.9 28	450.5
2+33- 25.7' Lt. = ± 6.5' Dr. - 2-2' Conc. Strips	4.5 28	450.5	4.5 28	450.5
2+14- 25.7' Lt. = ± 3' Brick walk	4.5 28	450.5	4.5 28	450.5
2+12- 25' Rt. = ± 2' Hedge - 5' High	4.5 28	450.5	4.5 28	450.5
2+11- 24.5' Rt. = ± Tel. pole # 450567-H	4.5 28	450.5	4.5 28	450.5
2+00	4.5 28	450.5	4.5 28	450.5
1+86- 23.8' Rt. = end wly. of Conc. walk	4.5 28	450.5	4.5 28	450.5
1+79- 13.8' Rt. = Cor. Conc. Dr. - 4' walk to N.	4.5 28	450.5	4.5 28	450.5

448.8
6.2
35

449.0
5.0
25

449.4
5.6
17

449.1
5.9
15

449.3
5.7
10

449.6
5.4
5

449.6
5.4
5

449.9
5.1
15

450.1
4.9
28

450.5
4.5
28

449.59
5.4
39.7
at Porch

449.45
5.0
Di.

449.34
5.6
25.7=walk

449.33
5.6
25.7=Dr.

449.9
5.1
35

449.6
5.4
25

449.7
5.3
7

449.4
5.6
15

449.7
5.3
10

450.1
4.9

450.1
4.9

450.3
4.7

450.5
4.5

450.6
4.4

450.59
4.4
13.8
Dr.

450.97
4.02
23.8
walk

451.02
3.97

451.19
3.8

451.24
3.75

451.24
3.75

451.24
3.75

451.24
3.75

451.24
3.75

451.24
3.75

454.99

13.8

23.8

28.8

28.8

Wly. of 4' Conc. walk

Cor. walk

edge

edge

edge

edge

edge

edge

edge

edge

edge

edge

edge

edge

67+3

3+76-24.9 Rt. = E Tel. pole # 99955-H

3+70.03 = NL

3+65-25.2 Lt. = E 3.2 Brick walk

P-2 4.88

check BM - Nail in Pole 454.16 5.8 449.31

3+52-22.2 Lt. = E 6" Tree

3+40.03 = E Mohawk

3+30-25.9 Lt. = E 2.5' Conc walk

3+10.03 = S.L. Mohawk to E

3+04' 25.8 Lt. = E 2' Conc walk

3+00

2+96-25' Lt. = end E of Hedge

Lt.

E

Rt.

37

448.9
5.3448.9
5.3449.2
5.0448.7
5.5449.5
4.7449.4
4.8449.3
4.9450.2
4.0448.7
5.494.8
at Porch448.92
5.24

25.2 = walk

448.9
6.1

35

448.8
6.2

25

449.1
5.9

17

448.8
6.2

15

edge

449.1
5.9

10

454.16

449.6
5.4

5

449.5
5.5

6

edge

449.5
5.5

15

449.9
5.1

25

448.69
6.30

40.9

at Porch

448.73
6.26

25.9 = walk

448.8
6.2

35

448.8
6.2

25

449.1
5.9

17

448.8
6.2

15

edge

449.2
5.8

15

449.6
5.4

6

449.6
5.4

15

450.3
4.7

25

448.43
6.56

5.0

walk

448.86
6.13

25.8 = walk

448.5
5.5

35

448.7
6.3

25

449.1
5.9

17

448.9
6.1

15

edge

449.2
5.8

10

449.6
5.4

6

449.6
5.4

15

edge

450.6
4.4

25

451.1
3.9

35

454.99

5+00
Hedge behind fence
4+80-23.7 Rt. = Beg. Picket fence - Same

4+80-24 Rt. = \pm Tel. pole # 458390-H

4+70

4+51-21.2 Lt. = Beg. Ely. of 4' Conc. walk

4+42 = N. gutter line of st.

4+24 = approx. \pm of unknown St. to W.

W. down st.

4+12-7' Lt. = edge of C.L. to N. also edge to
apparent street - Have no record of it.

4+00 = Coldlay gutter & roll turns to W. down

3+96-22.3 Lt. = \pm 5" Tree

3+90-17.1 Lt. = \pm P. pole # P-76858

3+80-21.8 Lt. = \pm 5" Tree

5.9 35	448.3	5.63 24.9	448.53	5.64 20.9	448.52	6.0 15	448.2	5.8 6	448.4	5.5 6	448.7	5.7 6	448.5	6.0 15	448.2	5.6 25	448.6	5.5 35	448.7
								edge			edge		edge						

5.4 35	448.8	5.28 25.1	448.88	5.31 21.1	448.85	5.8 15	448.4	5.5 6	448.7	5.2 6	449.0	5.4 6	448.8	5.6 15	448.6	5.2 25	449.0	5.2 35	449.0
		walk							edge			edge							

6.3 50	447.9	5.8 25	448.4	5.5 15	448.7	5.2 6	449.0	4.9 6	449.3	5.1 6	449.1	5.2 15	449.0	5.1 25	449.1	4.9 35	449.3		
								edge		edge									

8.1 100	446.1	6.1 50	448.1	5.3 25	448.9	5.2 15	449.0	5.0 6	449.2	4.8 6	449.4	5.0 6	449.2	5.3 15	448.9	4.6 25	449.6	4.4 31	449.8
								edge		edge			edge					along	Grav.

6.2 50	448.0	5.3 25	448.9	5.2 21	449.0	5.8 19	448.9	5.1 6	449.1	4.8 6	449.4	4.9 15	449.3	5.0 25	449.2	4.2 25	450.0	4.2 35	450.0
												edge							

6+45

6+37-17.9' Rt. = ± 10" Acacia

6+14-24.2' Rt. = ± Tel. pole # 458391-H

6+14-17.7' Rt. = ± 10" Acacia

6+02-20.4' Lt. = end Ely. of 4' walk

6+00-24.4' Rt. = Sly. of 8' Conc Dr.

T.P. 467 452.07 6.76 447.40

5+91-18' Rt. = ± 16" Acacia

5+68-18.5' Rt. = ± 18" Acacia

5+57-± 7' Dr. on Lt. - 2-2' strips - from walk-w.

5+50

5+48-16.7' Lt. = ± P. pole # P 76 113

5+45-18.1' Rt. = ± 10" Acacia

5+24-23' Rt. = end fence

Lt.

Rt.

Rt.

4.39	5.0	5.4	5.3	5.2	5.3	5.5	5.0	5.03
38.2	25	15	6	9	14	25	33.5	
edge of			edge		edge			Conc. walk
Conc. Porch.								along House

4.18	4.27							
24.4	20.4							
4.3	4.27	4.9	4.9	4.7	4.8	4.7	4.63	4.34
35	24.4	20.4	15	6	6	15	24.4	50
	walk			edge	edge		Dr	Dr

452.07

6.49	6.25	6.27
40	24.6	20.6
Dr.	beg. Dr.	walk

6.4	6.20	6.22	6.6	6.4	6.1	6.3	6.4	6.5	6.4
35	24.7	20.7	15	6	6	6	15	25	35
	walk			edge		edge			

454.16

check B.M.

277 - 449.30

- 20' Lt. = ± 18" Euc

7+60 = E. + W. Wire fence - 19' Rt. - Cor. fence

7+55 = 4.4' Lt. = ± 20" Euc. Tree

7+49.95 = NL. Saranac to E.

7+48 = 2' Lt. = ± 3" Pepper

7+41 = 4' Rt. = ± 8" Pepper

7+37.95 = N. cb

7+35 = 7.5' Rt. = ± 12" Pepper

7+19.95 = ± Saranac

See P. 49 for Culvert under Pavement
Noticed too Late -

7+01.95 = S. cb.

6+89.95 = S.L. Saranac to E.

6+89 = 9.6' Lt. = ± Pole # 75907

6+83 = 17.5' Rt. = ± 14" Acacia

6+60 = 17.7' Rt. = ± 20" Acacia

449.31 - P. 2

Nail in Pole

8.2	10.2	11.6	13.3	12.8	7.6	6.4	6.3
35	25	15	5	12	18	25	27
			± Ditch				w. edge
444.8	444.7	444.3	442.2	445.2	445.8		
7.3	7.4	7.8	9.9	6.9	6.3		
35	25	15	± Ditch	10	25		
					w. edge		
644.1	446.2	445.8	443.9	444.4	445.7	444.0	444.1
5.0	5.9	6.3	7.2	7.7	6.4	6.1	6.0
35	25	15	± Ditch	5	14	21	25
						w. edge	E. edge
544.6	446.1	446.4	445.5	446.2	444.3		
5.5	6.0	6.7	6.9	5.9	5.8		
35	25	15	on tub	15	25		
					w. edge		
447.0	446.5	445.8	444.1	444.3	446.3	444.0	445.8
5.1	5.6	6.3	6.0	6.0	5.2	6.1	6.3
35	25	10		6	14	23	25
					edge	edge	
446.8	446.9	446.4	446.4	446.3	444.1	446.1	
5.3	5.7	5.7	5.7	5.8	6.0	6.0	
35	25	15	2	2	15	25	
					edge	edge	

INDEXED

41

X-Sect. 68th - From El Cajon to
Saranac - 60' st. Rough Graded. Dirt.

W.O. 31576

B.M. 445 461.85 457.40 = S.W. BP El Cajon + 68th 461.85

Rods around Returns

10' Rad.

N.W. Ret. - 15.7' around - 3 parts 5.2 each

Beg. - w. end = P.C. = W.L. 68 th	4.32	457.53	T
	5.01	456.89	9
5.2	4.57	457.28	T
	5.19	456.66	9
"	4.84	457.01	T
	5.43	456.42	9
5.2 = F.C. = 4 S. of N.L. El Cajon	4.93	456.92	T
	5.53	456.32	9

10' Rad.

N.E. Ret. 15.6' around - 3 - 5.2 each

Beg. P.C. = 4' S. of N.L. El Cajon	5.14	456.71	T
	in Dr.	5.14	9
5.2	in Dr.	5.02	T
	"	5.02	9
"	4.37	457.48	T
	4.86	456.99	9
5.2 = F.C. = EL. 68 th	4.20	457.65	
	4.85	457.00	

Req. Req. sections of 68th

0+25

Ser. Sta. Bldg.

0+19-28 Rt. = Beg. Wly of 22' Conc. walk along

0+10-32.5- Rt. = Conc. slab. at Pump Island ends

0+08-20.2 Lt. = Φ 3' Conc. walk = N+S Walk

curbs. Rds on edge

0+00 = N.L. of El Cajon - on S. = edge of Pavement

0-01.9-32.3 Rt. = Cor. Conc. Slab for Ser. Sta.

0-04 = opp. PC. of Returns

See sketch - P. 16

0-14 = N. cb. El Cajon

	Lt.	+	Rt.
	457.80		457.25
	4.05	4.2	4.60
	36.7	30	30.9 at Bldg
Cor. along Bldg			
	457.7		457.22
	5.6	5.3	4.63
	15	14	28.4 edge walk
	457.6		457.16
			4.71
			28' cov walk
			457.14
			4.69
			30.3' walk at Cor. Bldg.
			457.17
			4.68
			32.5 Conc.
			457.42
			4.43
			51.6 = E. edge
	457.81		457.65
	4.04	4.19	5.20
	35.7 at House	26.7 Brk.	20.2 = Walk
	457.67		457.77
	4.18	4.11	5.08
	40 Conc.	29.5 edge	10
			457.94
			20 Top
			457.21
			20 gut
			457.65
			10
			457.87
			4.98
			5.08
			10
			457.77
			5.23
			20 end cb. in Dr.
			457.18
			4.17
			30
			457.26
			4.59
			32.4 Conc.
			457.26
			4.59
			32.3
			457.35
			51.6
			Cor. Conc.
	457.63		457.92
	4.22	4.93	5.3
	29.5 edge	20 Top	5.10
			10
			457.89
			4.96
			4.96
			10
			457.71
			5.14
			2.0
			30
			457.19
			4.66
			30
			457.66
			4.79
			5.0
			457.06
			4.79
			5.0
			457.72
			4.53
			5.0
			457.30
			4.55
			10.0
			in Dr. gut.
			461.85

1+20 - 20.6' Lt. = ± 3' Conc. walk

1+00

0+95 - 20.5' Lt. = ± 3' Conc. walk

0+70 - 20.4' Lt. = ± 3' Conc. walk

0+58 - 20.4' Lt. = ± 3' Conc. walk

0+50

0+33 - 20.3' Lt. = ± 3' Conc. walk
Cor. of Bldg.

0+31 - 28.7 Rt. = end wly. of Conc. walk at

0+30 - 21' Lt. = ± P. pole # P 76 262

457.42	457.17	457.81
4.43	4.68	6.04
35.7	27	20.6 = walk
at House	Bk	

457.44	457.1	456.1	457.7	457.7	457.3	457.9	456.0	456.2
4.41	4.8	5.8	6.2	6.2	6.6	6.0	5.9	5.7
36.7	30	20	12	12	12	14	30	40
Conc. along House								

457.43	457.12	456.11
4.42	4.73	5.74
36.7	26.5	20.5 = walk
at House	Bk	

457.50	457.26	456.37
4.35	4.59	5.48
35.7	26.8	20.4 = walk
at House	Bk	

457.88	457.62	456.38
3.96	4.23	5.47
35.7	27	20.4 = walk
at House	Bk	

457.88	457.5	456.8	456.3	456.9	457.9	456.3	456.7	457.6
3.97	4.4	5.1	5.6	5.5	6.0	5.6	5.2	4.3
35.7	30	22	12	14	15	30	40	
Conc. along House	4.4							

457.91	457.66	456.49
3.94	4.19	5.36
36.7	27.2	20.3 = walk
at House	Bk	

457.15	457.16
4.70	4.69
28.7	31 = Cor.
Cor.	Conc. Bldg.
Walk	

461.85

2+13- 30.5' Lt = \pm 8' Conc. Dr.

2+00- 2' N. of Sly of Conc. Dr. on Rt.

1+89- = \pm 3' Conc. walk to E. of N+S. walk

1+84- 22' Lt = \pm Gray Pole

1+83- 30.2 Lt. = \pm 5.5' Conc. walk

✓ 1+80- 21.2' Rt. = \pm 14" Euc.

1+63- = \pm 2' Conc. walk E from N+S. walk

✓ 1+62- 21.3' Rt. = \pm 16" Euc.

1+61- 22.6 Rt. = Beg. Wly. of 4.7' Conc. walk

T.P. 3.60 458.28 7.17 454.68

1+50

1+39- 22' Lt. = \pm P. pole # P 78358

1+35- 24' Rt. = \pm 8' Conc. Apron to Gar. Conc. floor
5' wide

1+32- 20.8 Lt. = \pm Ely of 10' Conc. Slab

	Lt.	Rt.
2+13- 30.5' Lt = \pm 8' Conc. Dr.	455.31 2.97 44.9 = floor Gar.	454.97 30.5 454.2
2+00- 2' N. of Sly of Conc. Dr. on Rt.	3.3 40	3.93 22.6 edge
1+89- = \pm 3' Conc. walk to E. of N+S. walk	3.82	3.71 454.57
1+84- 22' Lt = \pm Gray Pole	455.33	27.4 edge + Beg. walk
1+83- 30.2 Lt. = \pm 5.5' Conc. walk	2.95 33.7 at Porch	3.02 30.2 walk
✓ 1+80- 21.2' Rt. = \pm 14" Euc.		454.76 3.52
1+63- = \pm 2' Conc. walk E from N+S. walk		3.17 455.11
✓ 1+62- 21.3' Rt. = \pm 16" Euc.		27.4 Back of N+S walk
1+61- 22.6 Rt. = Beg. Wly. of 4.7' Conc. walk		3.45 22.6 Cor. walk
T.P. 3.60 458.28 7.17 454.68		458.28
1+50	6.3 40	6.26 13
1+39- 22' Lt. = \pm P. pole # P 78358	456.06	455.59
1+35- 24' Rt. = \pm 8' Conc. Apron to Gar. Conc. floor 5' wide	5.79 25.8	6.26 24 apron
1+32- 20.8 Lt. = \pm Ely of 10' Conc. Slab	5.86 20.8	6.01 30.2 Floor Gar.

✓4+55- 21.3' Lt. = ± 8" Palm

4+50

Base for Rail fence

4+47 30.3' Lt. = Reg. Conc. wall =

4+38- 30.1' Lt. = ± 15' Conc. Dr.

4+80- 24.7' Lt. = end Ely of Walk

✓4+25- 21.3' Lt. = ± 4" Palm

✓4+09- 20.9' Lt. = ± 8" Palm

4+00

✓3+96- 21' Lt. = ± 6" Palm

✓3+79- 21.1' Lt. = ± 6" Palm

3+70 = N.L. of Mohawk

3+69- 20' Lt. = ± R. pole # P178 309

3+64 24.5' Lt. = Reg. Ely. of 4' Conc. walk

✓3+61- 21' Lt. = ± 6" Palm

3+55

3+40 = ±

449.79
8.49
30.3
Top
wall

450.1	449.79	449.8	449.8	448.2	448.3	448.3	448.0	449.0	448.9	447.2
8.2	8.49	8.5	8.5	10.1	10.0	10.0	10.3	9.3	9.4	11.1
40	30.3	30	15	6	10.0	9	15	26	30	40
450.75	Top wall									
7.53										
45.2										
floor.										
Grav.										
	450.31									
	30.1 = Dr.									
	450.28									
	7.97									
	28.1									
	Cor. walk									
	24.7									

451.3
7.0
40

450.9	451.13	451.05	451.1	449.7	450.1	450.2	450.1	451.1	451.0	450.1	447.9
7.4	7.15	7.23	7.2	8.6	8.2	8.1	8.2	7.2	7.3	8.2	10.4
30	28.5	24.5	10	7	9	15	19	28	30	40	
	walk										

451.8	451.94	451.83	451.6	451.0	451.4	451.4	451.3	451.8	451.6
6.5	6.34	6.45	5.7	7.3	6.9	6.9	7.0	6.6	6.7
30	28.5	24.5	10	8	9	15	18	30	
	walk								

451.9	451.94	451.87	451.7	451.7	451.9	451.6
6.4	6.34	6.4	6.4	6.4	6.4	6.4
30	28.5	24.5	10	8	9	15
	walk					

452.4	452.4	452.0	451.9	451.6
5.9	5.9	5.9	5.9	5.9
30	15	15	15	30

452.4	452.4	452.0	451.9	451.6
5.9	5.9	5.9	5.9	5.9
30	15	15	15	30

458.28

5+91- 30.5' Lt. = ± 7.5' Conc. Dr.

✓ 5+84- 22' Lt. = ± 5" Tree

✓ 5+74- 22.2' Lt. = ± 4" Acacia

5+65- 30.4' Lt. = ± 3' Conc. Walk

5+50

5+38- 30.4' Lt. = ± 7.5' Conc. Dr.

5+30- 30.3' Lt. = end Conc. wall

5+30- 21.6' Lt. = ± P. pole P-178308

5+00

T.P. 218 450.18 10.28 448.00

✓ 4+97- 21.7' Lt. = ± 8" Palm

4+91- 30.3' Lt. = ± 3.8' Conc. Walk

✓ 4+86- 21.7' Lt. = ± 12" Palm

4+65

447.56
2.62
50 = Dr.

447.16
3.02
30.5' = Dr.

447.71
2.47
39.4
at Porch

447.54
2.64
30.4 = walk

447.5
2.7
40

447.66
3.0
20

446.9
3.3
20

445.6
4.6
9

445.9
4.3

445.7
1.6
8

445.3
4.7
14

445.9
4.3
20

445.7
4.5
30

445.6
4.6
40

448.10
2.08
50 = Dr.

447.66
2.52
30.4 = Dr.

449.1
1.1
36.7
along Porch

449.26
0.92
30.4
Top wall

448.4
1.6
30
Top wall

448.3
1.9
20

447.5
2.7
9

447.0
3.2
8

447.2
3.0

446.7
3.5
14

446.1
3.1
15

447.0
3.2
30

446.6
3.6
40

450.18

449.28
9.00
3.4
at Porch

449.34
8.94
30.3 = walk

448.3
9.4
20

448.1
10.2
10

447.7
10.6
7

448.0
10.3

447.8
10.5
8

447.6
10.7
14

448.4
9.9
19

448.2
10.1
30

446.9
11.4
40

458.28

P. 23

check B.M. Top Hyd.

426 445.92 445.87

see P. 22 for Int

6+90.04 = S.L. Saranac - end.

6+78-20.9

Lt. = $\frac{1}{2}$ Tel Pole # 469149 - H

6+45

6+27-22.1' Lt. = $\frac{1}{2}$ 1" Tree6+19-21.8' Lt. = $\frac{1}{2}$ 2" Oleander6+10-30.6' Lt. = $\frac{1}{2}$ 3' Conc. walk6+01-21.8' Lt. = $\frac{1}{2}$ 2" Oleander

6+00

Lt

Rt

Rt.

See P. 45

P. 23 - Note .05' Diff. in Starting B.M.s

6.9	7.0	6.9	6.9	6.9	6.9	6.9
30	18	9	6	9	18	30
443.3	443.2	443.3	443.4	443.3	443.7	443.5

4.3	5.0	5.7	6.4	6.3	6.6	6.2	6.0	5.5
40	30	15	10	3	10	20	30	40
445.9	445.2	444.5	443.8	443.9	443.6	444.0	444.2	444.3

3.00	3.32
39.5	30.6
at Porch	- walk

3.2	3.5	4.0	5.4	5.7	5.8	5.6	5.1	5.5
40	30	20	9	6	12	20	30	40
447.0	446.7	446.2	444.8	444.6	444.4	444.6	444.6	444.7

450.18

Location of Culvert under
 67th at Saranac - Missed in Reg
 Notes - P. 40

INDEXED
 WK
 MAR 14 1949

7+31.7 - 10' Rt. = \pm outlet 12" culvert.

443.18
 7.92
 10
 F.L. Pipe

Culvert
 7+03.7 - 30.2' Rt. = \pm inlet 12" Cor. Iron Pipe

449.91
 6.19
 30.2
 F.L. Pipe

T.P. P. 39

270

451.10

447.40

451.10

X-Sect. 67th - from Saranac North
 To City Line - See sketch - P. 1 - 40' st.
 Rough Graded - Rough Cold Lay Strip Roadway
 W.O. 25001 3-24-49 - 7.0.

INDEXED

WIK
 MAY 4 1949

1+00

0+84 - 20.4 Rt. = ± 18' Conc. Dr.

0+70 - 19.9 Rt. = end fence

0+60 = 18.9 Rt. = ± Guy Pole ✓

0+60 - 18' Lt. = ± P. pole # P-271648 ✓

0+50

0+41 - 17.7 Lt. = ± Tel. pole # ^{MOVED} P-29823T

0+25

Rough

0+00 = U.L. of Saranac - 199' Rt. = Beg. Picket fence

B.M. on Pole P.2 2.66 451.97 449.31 - .40

Lt.

±

Rt.

6.4 30	445.6	6.1 20	445.9	5.2 2 edge	446.8	5.0	447.0	4.9 10 edge	447.1	4.7 20	447.5	4.4 20 Dr.	447.56	3.7 40 Dr.	448.23
-----------	-------	-----------	-------	------------------	-------	-----	-------	-------------------	-------	-----------	-------	------------------	--------	------------------	--------

8.8 30	443.2	6.8 20	445.2	6.0 4 edge	446.0	5.8	446.2	5.6 7 edge	446.4	5.6 16	446.4	4.2 20	447.8
-----------	-------	-----------	-------	------------------	-------	-----	-------	------------------	-------	-----------	-------	-----------	-------

11.7 30	440.3	7.6 20	444.5	6.6 15 edge	445.5	6.2 7 edge	445.8	5.8 16 edge	446.2	5.7 16 edge	446.3	5.8 16	446.2	4.4 20	447.6
------------	-------	-----------	-------	-------------------	-------	------------------	-------	-------------------	-------	-------------------	-------	-----------	-------	-----------	-------

6.0 20	445.5	6.2 15 edge	445.8	5.8 15 edge	446.2	6.0 5 edge	446.0	5.9 15 edge	446.1	5.5 20	446.5	5.5 20	446.5
-----------	-------	-------------------	-------	-------------------	-------	------------------	-------	-------------------	-------	-----------	-------	-----------	-------

451.97

Cont'd on Pg 69

2+50.02 = end at County Line

2+49-18.3 Lt = \pm P. pole # T-76112

2+08-19.5 Lt = \pm 7' Dr. - 2-2' Conc. strips

2+00

1+50

Lt.

\pm

Rt.

51

448.4	448.2	448.5	448.6	448.7	448.5	448.6
3.6	3.5	3.5	3.4	3.3	3.5	3.4
20	10	2	4	5	9	20
		edge			edge	

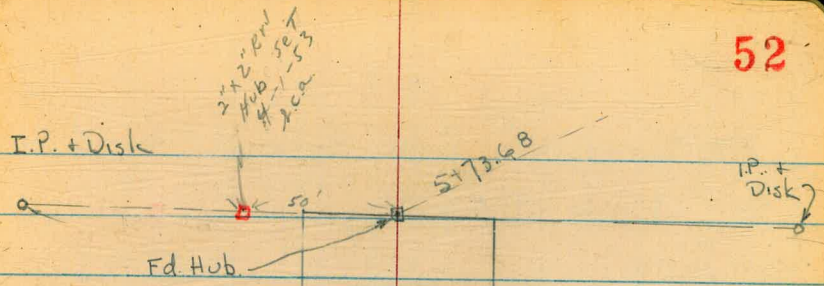
448.06	448.18
3.91	3.79
50	19.5 = Dr.
Dr.	

447.9	447.7	448.0	448.1	448.4	448.2	448.1	448.5
4.1	4.3	4.0	3.9	3.6	3.8	3.9	3.5
20	10	2	9	5	10	15	20
		edge			edge		

446.9	447.2	447.6	447.7	448.0	447.7	447.9
5.1	4.8	4.4	4.3	4.0	4.3	4.1
20	10	2	3	6	11	20
		edge			edge	

451.97

See 3033-B



← 25 → ← 25 →

68+5

† Saranac

30' 10.51

Hub.

st

← 68+5 to S.

X-Section 68th from Saranac to N. end.

Lt.

+

Rt.

See sketch - P. 52

W.O. 25001

3340

INDEXED

WK
MAY 4 1949

3-25-49

7.0.

2+00

5.5

35

439.1

7.3

25

440.3

7.0

20

440.6

8.2

16

439.4

6.9

12

440.7

± Ditch

5.5

5

441.1

5.5

5

441.7

5.5

5

442.2

1+50

8.2

35

439.4

7.7

25

439.9

7.7

19

440.4

8.1

15

439.5

7.0

12

440.6

6.8

8

440.8

6.3

15

441.3

5.5

25

442.0

± Ditch

1+00

7.0

25

440.6

6.7

18

440.9

7.1

15

440.5

6.9

12

440.7

6.7

8

440.9

6.5

15

441.1

6.1

25

441.5

± Ditch

0+50

5.7

25

441.9

5.7

18

441.9

6.8

15

440.8

5.7

12

441.9

5.8

8

441.8

5.7

15

441.9

5.3

25

442.3

± Ditch

0+00 = N.L. Saranac

4.8

25

442.8

5.0

20

442.6

5.9

16

441.7

5.2

14

442.4

5.2

15

442.4

5.2

15

442.9

5.0

25

442.6

± Drain
Ditch

B.M.

1.74

447.61

445.87 = Top. Hyd 68th

P. 23

447.61

5+35

5+18-22⁵ Rt. & 2" Eugenia5+10-22⁵ Rt. & 1" Eugenia5+06-30⁰ Rt. & 14" Base Palm

5+00

4+95-25⁵ Rt. & 4" Shrub

4+50

4+00

3+50 - Ditch goes West to Valley

3+00

2+50

H

439.4

439.9

440.3

440.8

Rt.

441.3

8.2
5.57.7
5.51.3
5.56.8
5.55.3
2.5

440.1

440.7

441.1

441.4

441.9

7.5
5.55.9
5.55.5
5.56.2
5.55.7
2.5

440.3

440.7

441.5

441.9

442.3

7.3
2.55.9
5.56.1
5.55.7
5.55.3
2.5

440.8

441.2

441.8

442.1

442.5

6.2
2.56.4
5.55.8
5.55.5
5.55.1
2.5

439.4

441.0

441.3

441.8

442.3

442.9

8.2
2.6
Ditch5.6
2.56.3
5.55.8
5.55.3
5.54.7
2.5

439.9

440.8

441.1

440.0

441.4

441.9

442.5

443.1

7.7
3.56.8
2.56.5
2.17.6
1.86.2
1.45.7
5.55.1
5.54.5
2.5

Ditch

439.2

440.3

440.8

439.6

441.0

441.6

442.2

442.7

8.4
3.57.3
2.56.8
2.08.0
1.66.6
1.26.0
5.55.7
5.54.9
2.5

Ditch

447.61

Lt

±

Rt

25' ahead of edge of Dr. along ±

Curves to W. + N. - to Large Gar. (Low)

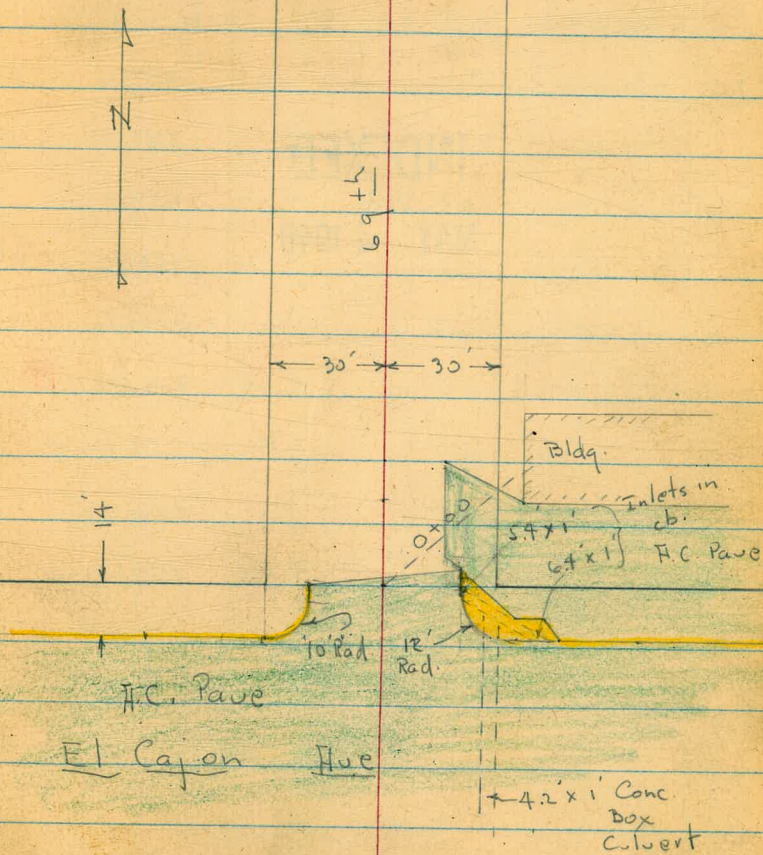
5+75- 3.3 Lt = SEly. cor. of 16' Conc. Drive

5+73.68 = end - 25' Lt. Fly. of 12" Rock + Conc. wall

9.3	9.1	8.67	8.7	8.1	7.4	7.6	8.0
438.3	438.5	438.94	438.9	439.5	440.2	440.0	439.6
25'	20	20	15	15	15	25	35
	ground	Top Conc Wall					
				447.61			

438.81
8.80 8.07
19.3 3.3
Cor. Dr.

437.67
9.94
± of Dr.

X-Sect. 69thINDEXED
WK
MAY 4 1949INDEXED
WK
MAY 4 1949

X-Sect. 69th - from El Cajon to
Saranac - W.O. 25001 - 3-25-49 - 70.

See P. 56 for Detail of Curbs + Culvert

Rods around Returns - N.E. Return -

20.4' around - 4 Parts - 5.1' each

Beg. at S. end = ^{of 69th} F.L. = P.C. 4.51 457.16 T

INDEXED

WK
MAY 4 1949

5.1 4.90 456.77 9

" 4.53 457.14 T

" 4.72 456.95 9

" 4.52 457.15 T

" 5.04 456.63 9

" 4.45 457.22 T

" 5.47 456.20 9

5.1 = N.L. El Cajon 4.45 457.22 T

= & Inlet 5.92 455.75 9

461.67

N.W. Ret. - 20.8' around - 4 - 5.2' each

Beg. N. end = N.L. ^{El Cajon} 4.59 457.08 T

" 5.13 456.54 9

5.2' 4.56 457.11 T

" 5.10 456.57 9

" 4.58 457.09 T

" 5.16 456.61 9

" 4.61 457.06 T

" 5.24 456.43 9

5.2' = P.C. = W.L. 69th 4.61 457.06 T

" 5.24 456.43 9

B.M.

4.92

461.67

456.79

456.75

S.W. BP - El Cajon + 69th

1+00

0+60

0+48- 36.9' Rt. = N.W. Cor. Bldg

0+43- 30.9 Lt. = N.E. Cor. Conc. Slab.

0+38- 21.6 Rt = Tel pole - # - None

0+33

Island - for New Ser. Sta.

0+29- 30.9 Lt. = S.E. Cor. Conc. Slab for Pump

0+22- 36.9' Rt. = S.W. Cor. Bldg.

T.P. 6.38 467.31 0.74 - 460.93

0+05- 17.6 Rt = Wly. of A.C. pave to Ser. Sta.

0+05- 21.2 Lt. = F.H.

0+04- 20.5' Rt. = end of cb. + F.C. Pave on Rt

Lt.

Rt

Rt.

458.5	458.3	457.8	458.1	457.9	458.3	457.9	457.9
8.8	9.0	9.5	9.2	9.4	9.0	9.4	9.4
40	30	17	2	12	20	30	40

457.8	457.8	457.1	457.3	457.1	457.8	458.0	458.0
9.5	9.0	10.2	10.0	10.2	9.5	9.3	9.3
40	30	16	0	12	20	30	40

457.79	457.74						
9.52	9.57						
40	30.9 = Cor. Conc.						

457.77	456.8	456.9	456.6	457.01	457.9	458.2
9.54	10.5	10.4	10.7	10.30	9.4	9.1
30.9	16		12	15.8	30	36.9
edge Conc.				Cor. AC. Pave		along Bldg

457.79	456.75	456.9	456.75	457.01	457.9	458.2
9.52	9.54	10.56	10.56	9.43	9.4	9.1
40	30.9 =	16.8	16.8	30	36.9 =	36.9 =
Conc.	Cor. Conc. Slab.	edge AC.	edge AC.		floor Bldg.	

467.31

456.47	457.23	457.64
5.20	4.44	4.03
17.6	23	40
edge	Brk	

457.92	457.22
5.75	4.46
20.5	20.5
cut	Top

461.67

5+85- 25' Rt. = £ 2.5' Conc. walk

5+62 - 189' Rt. = £ Tel pole # 90868-H

5+54 - 27' Lt. = £ P. pole # 71021

5+50

5+00

4+66- 123' Rt. = £ Water MH. 4.65^{462.59} on Rim

4+50

4+20- 24.2' Lt. = £ P. pole - # 177977-

4+07- 29.9' Rt. = £ Conc. walk to Pump House

4+00

3+74- 25' Rt. = £ Tel. pole # D-18199-T

3+69.98 = N.L. Mohawk

T.P. 2.86 467.24 2.93 464.38

10.1	9.4	9.3	9.7	8.4	7.9	7.7	7.1	5.8	4.8
40	30	26	22	16	19	12	13	30	40

457.1	457.8	457.9	457.5	458.8	459.3	459.5	460.1	461.4	462.4
40	30	22	14	14	11	20	30	40	40

461.7	461.7	461.2	461.5	462.3	462.6	463.5	464.3	464.5
40	30	20	15	49	10	20	30	40

462.5	462.6	462.6	463.4	463.7	464.5	465.2	465.59
47	46	46	38	35	27	30	40

463.0	463.2	463.9	464.2	464.9	465.3
4.2	4.0	3.3	3.0	2.3	1.9
30	16	30	12	20	30

467.24

6.92
25
walk

463.75
5.49
walk

465.04
29.9
walk

465.48
40
at
House

40 = along
Pump
House

T.P. 0.84 465.58 2.50 464.74

8.84 456.74

check B.M. = F.H. (shown Below) 6.45 460.79

6+90 = S.L. of Saranac - See P. 26 for Int.

6+80 - 21.4' Rt. = ± F.H.

6+50

6+10 - 23.4' Rt. = ± 2' Conc. walk

6+00 - 31.9' Rt. = ± 15' Conc. Dr.

.79
456.75 = starting B.M.

83
460.74 = P. 26

457.8	455.9	457.7	457.3	458.0	457.8
12.4	11.3	9.5	9.9	9.2	8.4
30	20	5	5	15	30

454.3	454.9	455.4	457.8	458.0	458.2	458.8	459.2	460.2	461.7
12.9	12.3	11.8	9.4	9.2	9.0	8.4	8.0	7.0	5.5
40	30	20	8	2	4	7	24	30	40

459.60	462.43
7.6	4.2
23.4	40
walk	walk

454.8	455.4	456.4	458.1	458.9	458.6	459.4	460.6	461.4	462.86	463.51
12.4	11.8	10.8	9.1	8.8	8.6	7.8	6.6	6.10	4.38	3.93
40	30	20	13	8	12	23	30	31.9	44	54.1

467.24

Floor
Gar.

Add Levels along \pm of 70th =

Lake Murray Blvd - N. of Saranac

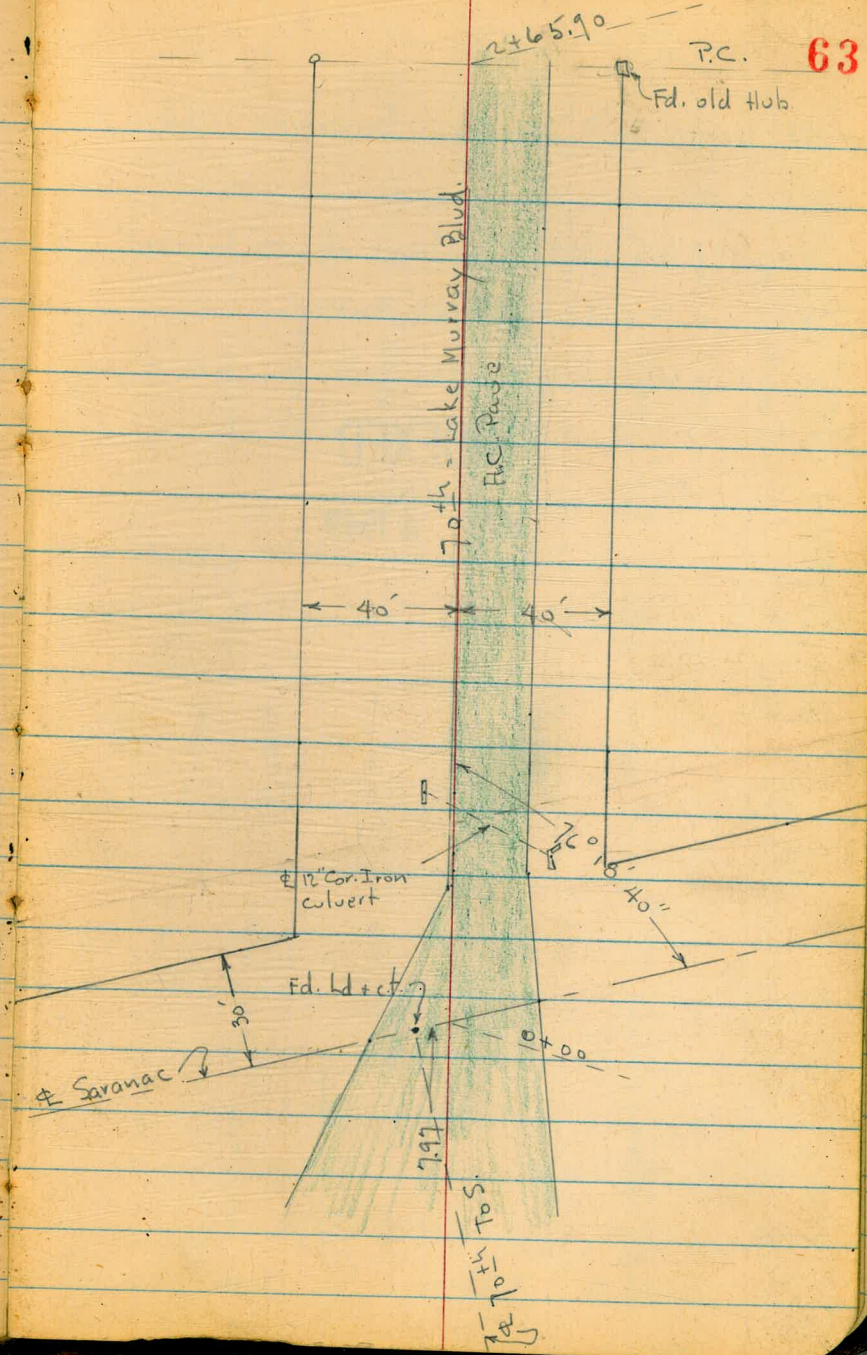
Per- Map # 2299

3340

3-28-49

W.O. 25001

7.0.



check Starting B.M. 1.82 461.87 ✓

T.P. 6.93 463.69 12.3 456.76

2+00 Cont.

2.0 456.0
30
0.5 457.5
40
+ 0.4
50 458.4

2+00 = end.

447.3 10.7 445.2 12.8 441.5 16.5 447.3 10.7 446.0 12.0 445.9 12.1 446.01 11.98 446.13 11.91 446.08 11.6 446.4
50 40 32 20 10 05 edge 10 20.3 edge 27

1+50

1.2 456.8 50 6.6 451.4 40 8.2 449.2 35 6.1 451.8 20 8.3 449.7 10 8.3 449.7 8.3 8.30 0.3 edge 8.17 447.82 10 8.13 449.26 20.2 edge 7.84 450.2 28 7.84 460.4 32 7.84 441.8 40 7.84 465.6 50

T.P. 4.84 457.99 12.87 453.15

457.99

1+00 Cont.

462.8 3.2 40 466.9 + 0.9 59.5 = along Bldg.

1+04 - 13.3 Lt = t. p. pole # I.P. 274027

462.9 3.1 50 461.1 4.9 40 454.4 11.6 22 453.0 13.0 12 453.33 12.69 edge 453.53 12.49 10 453.48 12.54 19.8 edge 453.8 12.2 26 460.0 6.0 32

1+00

0+82 - 54.6 Rt = Near Cor. of Clinic Bldg.

466.02

+ 1.467.12 54.6 ground + 1.35 54.6 floor Bldg.

Check levels for B.M's on S. Side of El Cajon - 67th to 73rd

use 453.79
B.B. 10-11-49

W.O. 25020

10-3-49-70

Book Elev.

B.M. +7.60 461.30 453.70.79

S.W. B.P. 67th + El Cajon

check B.M. 4.71 462.03 -3.98 457.32-41

S.W. B.P. 68th "

457.40

INDEXED

OCT 4 1949

W.I.C.

7.99 464.68 5.33 456.70-79

S.W. B.P. 69th "

456.75

9.68 473.86 0.50 464.18-27

S.W. B.P. 70th

464.26

1.26 484.22 0.90 472.96-05

" " 71st

473.05

3.12 483.47 3.87 480.35-44

" " 72nd

480.46

402.46

T.P. 5.74 482.07 7.14 476.33-42

" " 73rd

480.35

1.85 480.22-31

T.P. 6.88 483.47 5.48 476.59

5.83 486.18 3.12 480.35

1.28 474.24 13.22 472.96

0.42 464.60 10.06 464.18

5.57 461.27 7.90 456.70

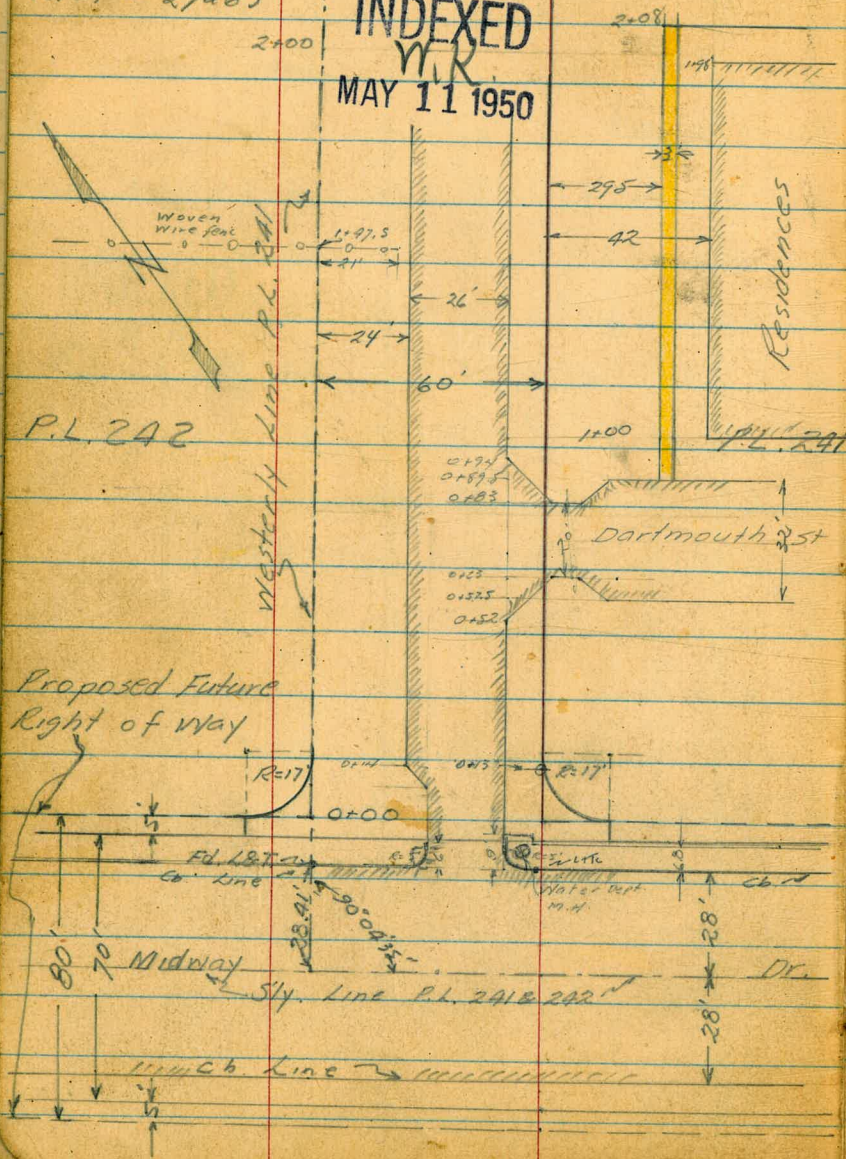
4.14 461.46 4.95 457.32

7.77 453.69 = 453.70

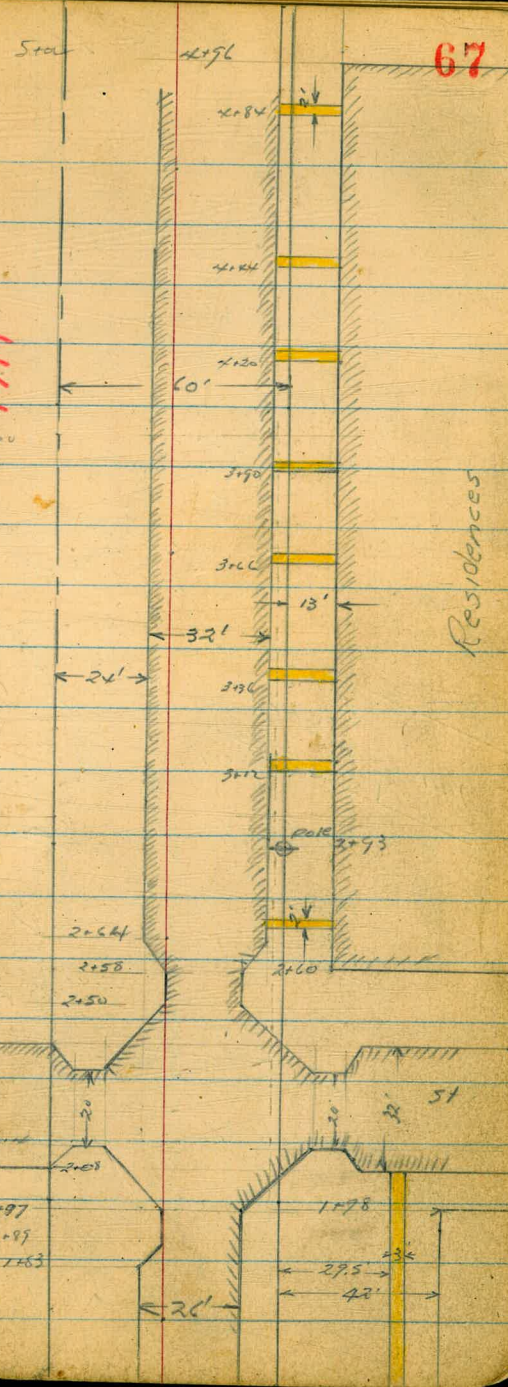
5-10-50
 Hendricks
 McCoy
 Greer
 Crawford
 W.O. # 27263

PROPOSED OPENING
 KEMPER ST.
 Reference Dwg. 3686 B

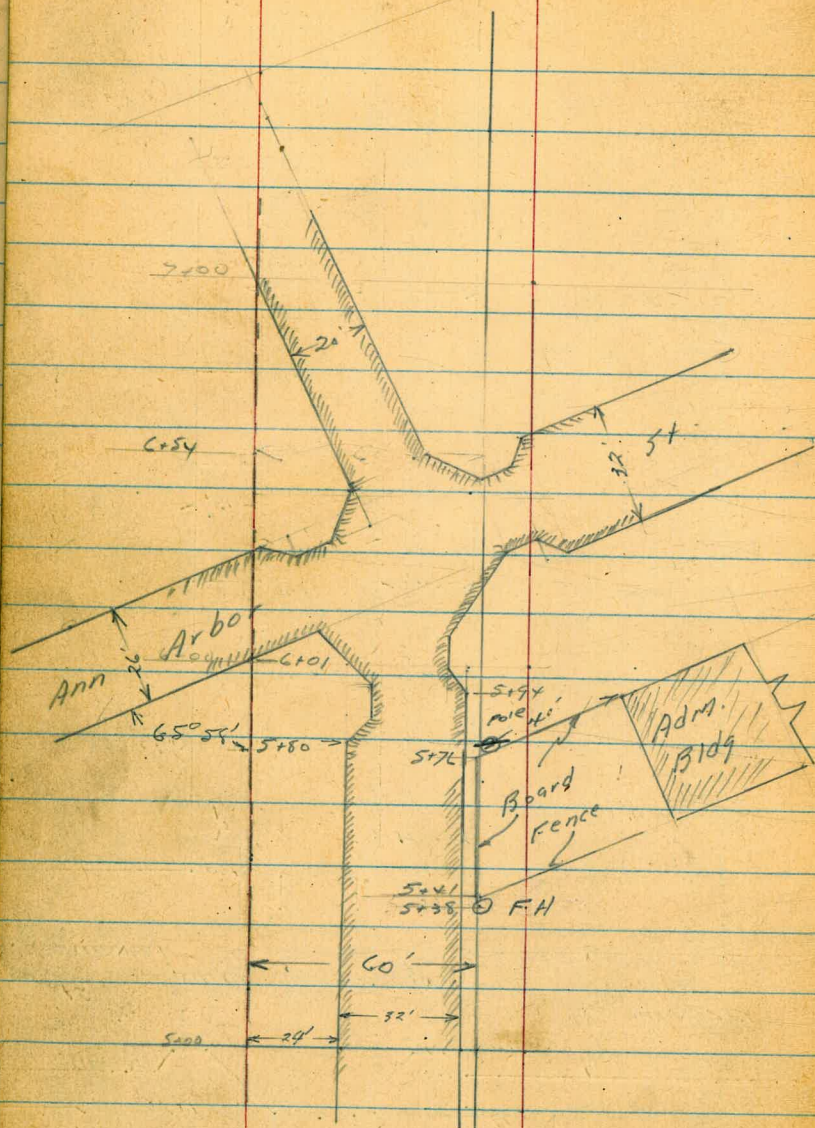
INDEXED
 W.R.
 MAY 11 1950



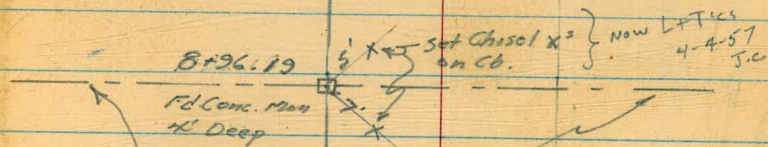
Ref: G-179
 G-225
 F.B. 871
 1634
 1643
 1677
 1719



Contd. from P. 67



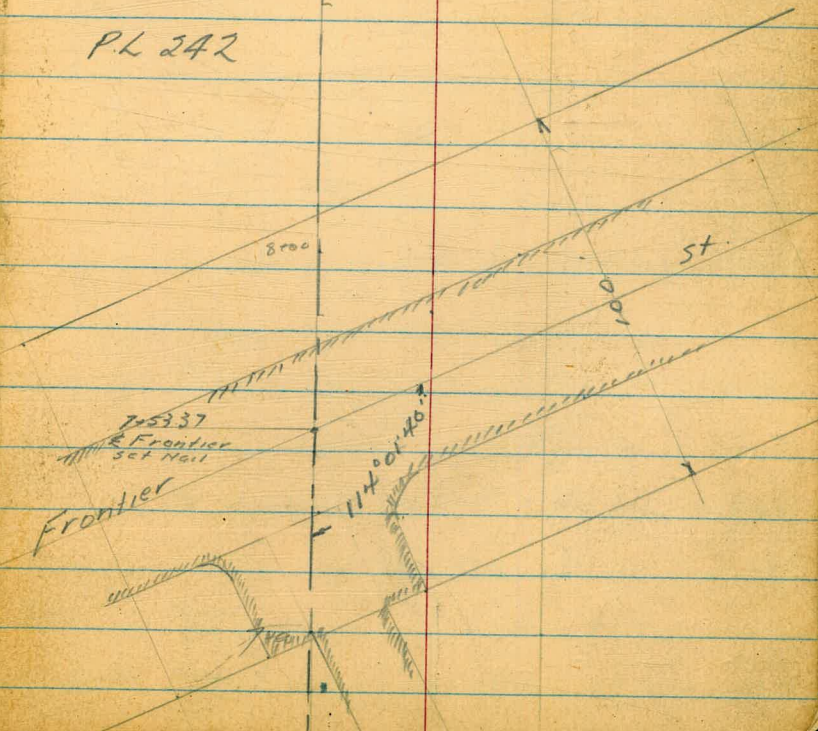
68



1/4 P.L's 241 & 242

P.L 241

P.L 242



X-Sect. 67th from Sta. 2+50.0 on

Page 51 To Sub. Line - See sketch P. 1

5252

W.O. 25020

4-3-51

7.0

Lt.

Cl

Rt.

4+00

448.7	448.9	448.4	448.6	448.6	449.0	449.4
5.1	4.9	5.4	5.2	5.2	4.8	4.4
30	20	4		8	20	30
		edge		edge		

3+72 - 17.8' Lt. = ± 8' Conc. Dr.

448.76	448.81
5.04	4.91
30	17.8
Dr.	

3+50

448.5	448.8	448.6	448.8	448.7	449.2	449.2
5.3	5.0	5.2	5.0	5.1	4.6	4.6
30	20	3		9	20	30
		edge		edge		

3+44 - 20.9 Rt. = ± 3' Conc. Walk

449.19	449.14
4.61	4.66
20.9	30
	walk

3+00

448.7	448.2	448.4	448.6	448.6	448.7	448.8
5.1	5.6	5.4	5.2	5.2	5.1	5.0
30	20	3		9	20	25
		edge		edge		

Cont. Rough Cold Lay Pave

1+81 - 16.4 Rt. = ± New 12' Conc. Dr.

5.79	5.16	4.93
16.4	20.2	30
Dr.		Dr.

453.80

4.36 453.80 1.81 449.44 - Nail in Pole Lt. - 2+50

B.M. 1.85 451.25

449.40 - adjusted elev. - See P. 66
449.21 - P. 2

Lt. ♀ Rt

6+25-24⁶ Lt. ♀ 10" Eugenia 19/0's spread - 20' High
 6+09-20¹ Rt ♀ 5' Lat Wire fence
 6+00

5+55-22² Rt. ♀ 3" Eugenia Tree

5+54-22⁰ Lt ♀ 2'x2' Eugenia Hedge

5+53-20⁰ Lt Begin 4' Wire fence

5+50 = sly of 2' Conc walk

5+47-22⁰ Rt ♀ 4" Eugenia

5+37-17¹ Lt. ♀ PPN⁰ P174511

5+37-18⁵ Lt Fina 3' Hedge

5+00

4+65-20.4 Rt. = ♀ 3' Conc. Walk

4+50

T.P. 2.38 451.40 478 449.02 = Nail

4+46 - 14.2' Rt. = ♀ 13' Conc. Dr.

447.8	446.5	446.2	446.5	446.3	445.6	445.20
3.6	4.9	5.2	4.9	5.1	5.8	6.0
30	20	5		7	20	30
		edge		edge		

447.9	447.9	447.1	447.2	446.9	446.78	446.98
3.5	3.5	4.3	4.2	4.5	4.62	4.42
30	20	4		6	20.2	30
		edge		edge	walk	

448.4	448.3	447.8	448.0	447.8	448.0	447.9
3.0	3.1	3.6	3.4	3.6	3.4	3.5
30	20	5		6	20	30
		edge		edge		

448.84	448.86
2.56	2.57
20.4	30
walk	

448.7	448.7	448.3	448.4	448.3	448.8	448.9
2.7	2.7	3.1	3.0	3.1	2.6	2.6
30	20	4		7	20	30
		edge		edge		

in Pole: 5+37 Lt. 451.40

448.7	448.91	448.84
5.10	4.89	4.96
14.2	20	30
Dr.		Dr.

453.50

Lt. ⊕ Rt.

8+00

444.4	444.2	444.5	444.6	444.3	443.7	443.7
7.0	7.2	6.9	6.8	7.1	7.7	7.7
30	20	7		5	20	30
		edge		edge		

7+94 - 20.3' Lt. = 3' Conc Walk

444.59	444.48
6.81	6.92
30	20.3
	walk

7+50

444.1	443.9	444.6	444.8	444.5	444.1	443.7
7.3	7.5	6.8	6.6	6.9	7.3	7.7
30	20	7		5	20	30
		edge		edge		

7+25 - 21' Rt. = 2' Conc. Walk

444.43	444.48
6.97	6.92
	21 - walk 30

7+08 - 20' Rt. = 7' Conc Dr.

444.37	444.37
7.03	7.03
20	
	Dr.

7+00

444.5	444.8	444.8	444.9	444.6	443.8	443.8
6.9	6.6	6.6	6.5	6.8	7.6	7.6
30	20	6		6	20	30
		edge		edge		

6+83 - 36.2 Rt. = Low House

444.46
6.94
36.2 - Porch

6+50 = Nly. of Doub. Gar. on Rt. - Conc floor

445.1	444.6	445.3	445.5	445.3	444.5	445.26
6.3	6.8	6.1	5.9	6.1	6.9	6.14
30	20	5		6	20	40.7
		edge		edge	Dirt	floor
			451.40		Dr.	Gar.

9+66-23.0 Lt = End 2' Hedge

= 23.8' Lt = 3.4' Conc. Walk

9+46-40' Rt = 7' Doub. Grav. - Dirt floor

9+35

9+31-23.0 Lt = 2' wide x 3' High Hedge

9+27-22.3 Lt = 7' Dr. - 2-2' Conc. strips

9+00

8+92-22.4 Lt = 3.5' Conc. Walk

8+85-21' Rt = 6" Palm Tree

8+73-22.4 Lt = 7' Dr. - 2-2' Conc. strips

8+69-20.2 Rt = End 2.5' Rail fence

8+50 = Nly. of 3' Conc. walk on Lt.

8+26-22' Lt = 7' Dr. - 2-2' Conc. strips

Lt. E Rt. 72

444.42	444.38	444.2
6.98	7.02	7.2
40	23.8	40 = floor.
walk	-	

444.3	444.1	444.1	444.2	443.8	443.7	443.9
7.1	7.3	7.3	7.2	7.6	7.7	7.5
30	20	8		5	20	30
		edge		edge		

444.27	444.27
7.13	7.13
40	22.3
Dr.	-

444.5	443.9	444.2	444.4	444.0	443.7	443.7
6.9	7.5	7.2	7.0	7.4	7.7	7.7
30	20	8		5	20	30
		edge		edge		

444.51	444.31
6.89	7.09
40	22.4
walk	-

444.4	444.26
7.00	7.14
40	22.4
Dr.	-

444.29	444.2	444.1	444.4	444.5	444.1	443.8	443.8
7.11	7.20	7.3	7.0	6.9	7.3	7.6	7.6
30	22.4	20	8	5	20	30	
	walk		edge		edge		

444.25	444.18
7.15	7.22
40	22
Dr.	-
	451.40

Lt

±

Rt.

73

Lt. 8+70

Set B.M. = Nail in Pole

6.31. 445.09

10+50

443.5	444.0	444.1	444.0	443.5
7.9	7.4	7.3	7.4	7.9
30	20		20	30

10+00 - for Profile in New Sub

443.4	443.6	444.0	444.5	444.0
8.0	7.8	7.4	6.9	7.4
30	20		20	30

9+66.42 = end at Sub. line = end Cold Lay Pave

443.6	443.7	443.9	443.6	444.0
7.8	7.7	7.5	7.8	7.4
30	20		20	30

451.40

Clark
Bruner
O'Neil
8-31-53
W.O. 32249

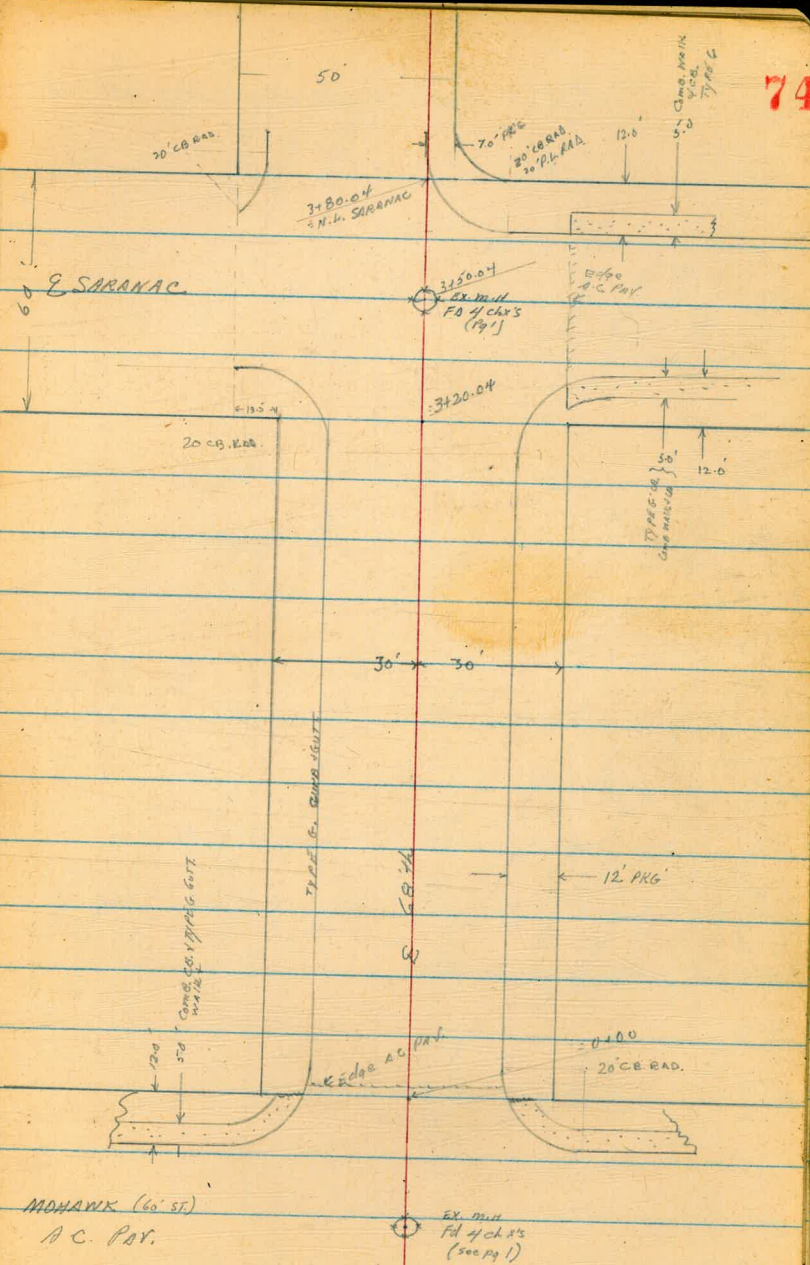
X-SECT 6816 - MOHAWK to NLY
LINE SARANAC.

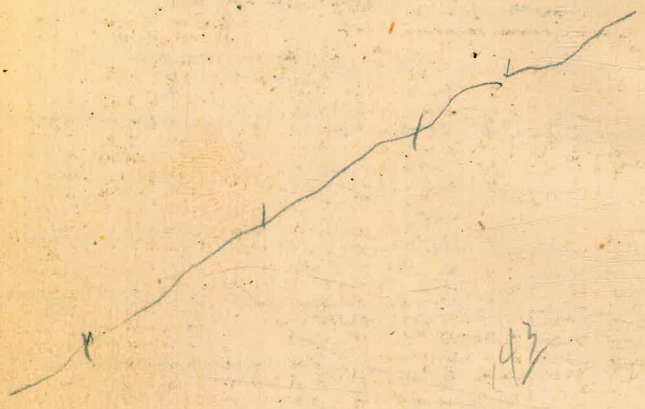
REF. P.B. 2012 - 1
DWC 7842-L

Sketch not to scale:
Notes: Pg 75

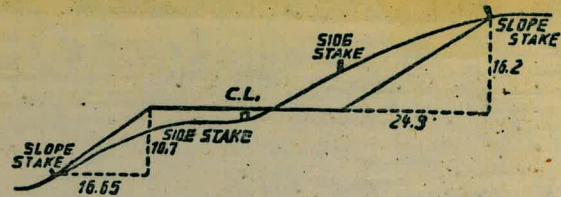
SARANAC 60' ST.

INDEXED
SEP 8 1953





7960
11402
4530



DISTANCES FROM SIDE STAKES FOR CROSS-SECTIONING.

SLOPE 1 1/2 TO 1. ROADWAY OF ANY WIDTH.

	0	.1	.2	.3	.4	.5	.6	.7	.8	.9	
0	0.00	0.15	0.30	0.45	0.60	0.75	0.90	1.05	1.20	1.35	0
1	1.50	1.65	1.80	1.95	2.10	2.25	2.40	2.55	2.70	2.85	1
2	3.00	3.15	3.30	3.45	3.60	3.75	3.90	4.05	4.20	4.35	2
3	4.50	4.65	4.80	4.95	5.10	5.25	5.40	5.55	5.70	5.85	3
4	6.00	6.15	6.30	6.45	6.60	6.75	6.90	7.05	7.20	7.35	4
5	7.50	7.65	7.80	7.95	8.10	8.25	8.40	8.55	8.70	8.85	5
6	9.00	9.15	9.30	9.45	9.60	9.75	9.90	10.05	10.20	10.35	6
7	10.50	10.65	10.80	10.95	11.10	11.25	11.40	11.55	11.70	11.85	7
8	12.00	12.15	12.30	12.45	12.60	12.75	12.90	13.05	13.20	13.35	8
9	13.50	13.65	13.80	13.95	14.10	14.25	14.40	14.55	14.70	14.85	9
10	15.00	15.15	15.30	15.45	15.60	15.75	15.90	16.05	16.20	16.35	10
11	16.50	16.65	16.80	16.95	17.10	17.25	17.40	17.55	17.70	17.85	11
12	18.00	18.15	18.30	18.45	18.60	18.75	18.90	19.05	19.20	19.35	12
13	19.50	19.65	19.80	19.95	20.10	20.25	20.40	20.55	20.70	20.85	13
14	21.00	21.15	21.30	21.45	21.60	21.75	21.90	22.05	22.20	22.35	14
15	22.50	22.65	22.80	22.95	23.10	23.25	23.40	23.55	23.70	23.85	15
16	24.00	24.15	24.30	24.45	24.60	24.75	24.90	25.05	25.20	25.35	16
17	25.50	25.65	25.80	25.95	26.10	26.25	26.40	26.55	26.70	26.85	17
18	27.00	27.15	27.30	27.45	27.60	27.75	27.90	28.05	28.20	28.35	18
19	28.50	28.65	28.80	28.95	29.10	29.25	29.40	29.55	29.70	29.85	19
20	30.00	30.15	30.30	30.45	30.60	30.75	30.90	31.05	31.20	31.35	20
21	31.50	31.65	31.80	31.95	32.10	32.25	32.40	32.55	32.70	32.85	21
22	33.00	33.15	33.30	33.45	33.60	33.75	33.90	34.05	34.20	34.35	22
23	34.50	34.65	34.80	34.95	35.10	35.25	35.40	35.55	35.70	35.85	23
24	36.00	36.15	36.30	36.45	36.60	36.75	36.90	37.05	37.20	37.35	24
25	37.50	37.65	37.80	37.95	38.10	38.25	38.40	38.55	38.70	38.85	25
26	39.00	39.15	39.30	39.45	39.60	39.75	39.90	40.05	40.20	40.35	26
27	40.50	40.65	40.80	40.95	41.10	41.25	41.40	41.55	41.70	41.85	27
28	42.00	42.15	42.30	42.45	42.60	42.75	42.90	43.05	43.20	43.35	28
29	43.50	43.65	43.80	43.95	44.10	44.25	44.40	44.55	44.70	44.85	29
30	45.00	45.15	45.30	45.45	45.60	45.75	45.90	46.05	46.20	46.35	30
31	46.50	46.65	46.80	46.95	47.10	47.25	47.40	47.55	47.70	47.85	31
32	48.00	48.15	48.30	48.45	48.60	48.75	48.90	49.05	49.20	49.35	32
33	49.50	49.65	49.80	49.95	50.10	50.25	50.40	50.55	50.70	50.85	33
34	51.00	51.15	51.30	51.45	51.60	51.75	51.90	52.05	52.20	52.35	34
35	52.50	52.65	52.80	52.95	53.10	53.25	53.40	53.55	53.70	53.85	35
36	54.00	54.15	54.30	54.45	54.60	54.75	54.90	55.05	55.20	55.35	36
37	55.50	55.65	55.80	55.95	56.10	56.25	56.40	56.55	56.70	56.85	37
38	57.00	57.15	57.30	57.45	57.60	57.75	57.90	58.05	58.20	58.35	38
39	58.50	58.65	58.80	58.95	59.10	59.25	59.40	59.55	59.70	59.85	39
40	60.00	60.15	60.30	60.45	60.60	60.75	60.90	61.05	61.20	61.35	40
41	61.50	61.65	61.80	61.95	62.10	62.25	62.40	62.55	62.70	62.85	41
42	63.00	63.15	63.30	63.45	63.60	63.75	63.90	64.05	64.20	64.35	42
43	64.50	64.65	64.80	64.95	65.10	65.25	65.40	65.55	65.70	65.85	43
44	66.00	66.15	66.30	66.45	66.60	66.75	66.90	67.05	67.20	67.35	44
45	67.50	67.65	67.80	67.95	68.10	68.25	68.40	68.55	68.70	68.85	45
46	69.00	69.15	69.30	69.45	69.60	69.75	69.90	70.05	70.20	70.35	46
47	70.50	70.65	70.80	70.95	71.10	71.25	71.40	71.55	71.70	71.85	47
48	72.00	72.15	72.30	72.45	72.60	72.75	72.90	73.05	73.20	73.35	48
49	73.50	73.65	73.80	73.95	74.10	74.25	74.40	74.55	74.70	74.85	49
50	75.00	75.15	75.30	75.45	75.60	75.75	75.90	76.05	76.20	76.35	50

THE NATIONAL BLANK BOOK COMPANY
 HOLYOKE MASSACHUSETTS
 NEW YORK CHICAGO BOSTON SAN FRANCISCO