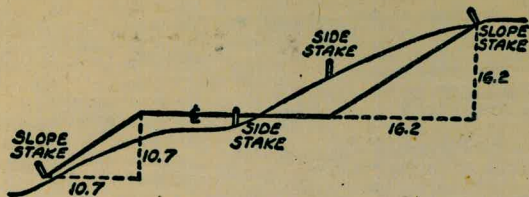


2014

BRISTOL

# 2014



DISTANCES FROM SIDE STAKES FOR CROSS-SECTIONING  
SLOPE 1 TO 1. ROADWAY OF ANY WIDTH

	0	.1	.2	.3	.4	.5	.6	.7	.8	.9	
0	0.00	0.10	0.20	0.30	0.40	0.50	0.60	0.70	0.80	0.90	0
1	1.00	1.10	1.20	1.30	1.40	1.50	1.60	1.70	1.80	1.90	1
2	2.00	2.10	2.20	2.30	2.40	2.50	2.60	2.70	2.80	2.90	2
3	3.00	3.10	3.20	3.30	3.40	3.50	3.60	3.70	3.80	3.90	3
4	4.00	4.10	4.20	4.30	4.40	4.50	4.60	4.70	4.80	4.90	4
5	5.00	5.10	5.20	5.30	5.40	5.50	5.60	5.70	5.80	5.90	5
6	6.00	6.10	6.20	6.30	6.40	6.50	6.60	6.70	6.80	6.90	6
7	7.00	7.10	7.20	7.30	7.40	7.50	7.60	7.70	7.80	7.90	7
8	8.00	8.10	8.20	8.30	8.40	8.50	8.60	8.70	8.80	8.90	8
9	9.00	9.10	9.20	9.30	9.40	9.50	9.60	9.70	9.80	9.90	9
10	10.00	10.10	10.20	10.30	10.40	10.50	10.60	10.70	10.80	10.90	10
11	11.00	11.10	11.20	11.30	11.40	11.50	11.60	11.70	11.80	11.90	11
12	12.00	12.10	12.20	12.30	12.40	12.50	12.60	12.70	12.80	12.90	12
13	13.00	13.10	13.20	13.30	13.40	13.50	13.60	13.70	13.80	13.90	13
14	14.00	14.10	14.20	14.30	14.40	14.50	14.60	14.70	14.80	14.90	14
15	15.00	15.10	15.20	15.30	15.40	15.50	15.60	15.70	15.80	15.90	15
16	16.00	16.10	16.20	16.30	16.40	16.50	16.60	16.70	16.80	16.90	16
17	17.00	17.10	17.20	17.30	17.40	17.50	17.60	17.70	17.80	17.90	17
18	18.00	18.10	18.20	18.30	18.40	18.50	18.60	18.70	18.80	18.90	18
19	19.00	19.10	19.20	19.30	19.40	19.50	19.60	19.70	19.80	19.90	19
20	20.00	20.10	20.20	20.30	20.40	20.50	20.60	20.70	20.80	20.90	20
21	21.00	21.10	21.20	21.30	21.40	21.50	21.60	21.70	21.80	21.90	21
22	22.00	22.10	22.20	22.30	22.40	22.50	22.60	22.70	22.80	22.90	22
23	23.00	23.10	23.20	23.30	23.40	23.50	23.60	23.70	23.80	23.90	23
24	24.00	24.10	24.20	24.30	24.40	24.50	24.60	24.70	24.80	24.90	24
25	25.00	25.10	25.20	25.30	25.40	25.50	25.60	25.70	25.80	25.90	25
26	26.00	26.10	26.20	26.30	26.40	26.50	26.60	26.70	26.80	26.90	26
27	27.00	27.10	27.20	27.30	27.40	27.50	27.60	27.70	27.80	27.90	27
28	28.00	28.10	28.20	28.30	28.40	28.50	28.60	28.70	28.80	28.90	28
29	29.00	29.10	29.20	29.30	29.40	29.50	29.60	29.70	29.80	29.90	29
30	30.00	30.10	30.20	30.30	30.40	30.50	30.60	30.70	30.80	30.90	30
31	31.00	31.10	31.20	31.30	31.40	31.50	31.60	31.70	31.80	31.90	31
32	32.00	32.10	32.20	32.30	32.40	32.50	32.60	32.70	32.80	32.90	32
33	33.00	33.10	33.20	33.30	33.40	33.50	33.60	33.70	33.80	33.90	33
34	34.00	34.10	34.20	34.30	34.40	34.50	34.60	34.70	34.80	34.90	34
35	35.00	35.10	35.20	35.30	35.40	35.50	35.60	35.70	35.80	35.90	35
36	36.00	36.10	36.20	36.30	36.40	36.50	36.60	36.70	36.80	36.90	36
37	37.00	37.10	37.20	37.30	37.40	37.50	37.60	37.70	37.80	37.90	37
38	38.00	38.10	38.20	38.30	38.40	38.50	38.60	38.70	38.80	38.90	38
39	39.00	39.10	39.20	39.30	39.40	39.50	39.60	39.70	39.80	39.90	39
40	40.00	40.10	40.20	40.30	40.40	40.50	40.60	40.70	40.80	40.90	40
41	41.00	41.10	41.20	41.30	41.40	41.50	41.60	41.70	41.80	41.90	41
42	42.00	42.10	42.20	42.30	42.40	42.50	42.60	42.70	42.80	42.90	42
43	43.00	43.10	43.20	43.30	43.40	43.50	43.60	43.70	43.80	43.90	43
44	44.00	44.10	44.20	44.30	44.40	44.50	44.60	44.70	44.80	44.90	44
45	45.00	45.10	45.20	45.30	45.40	45.50	45.60	45.70	45.80	45.90	45
46	46.00	46.10	46.20	46.30	46.40	46.50	46.60	46.70	46.80	46.90	46
47	47.00	47.10	47.20	47.30	47.40	47.50	47.60	47.70	47.80	47.90	47
48	48.00	48.10	48.20	48.30	48.40	48.50	48.60	48.70	48.80	48.90	48
49	49.00	49.10	49.20	49.30	49.40	49.50	49.60	49.70	49.80	49.90	49
50	50.00	50.10	50.20	50.30	50.40	50.50	50.60	50.70	50.80	50.90	50

INDEXED

to page #65

L.A.E.

A

Distance of slope stake from side or shoulder stake for any width roadway, slope 1 to 1. If ground is nearly level, the cut or fill at side stake is located by the double entry method in left column and top row. The number in body of table in same row and column gives distance from side stake to slope stake. If ground is not level estimate the difference in elevation between the side stake and slope stake, lower target by this amount if cut, elevate if fill. Add this amount to cut or fill and find distance in table. Set up rod at this point, and line of sight should cut target. If it does not make the slight adjustment necessary.

TABLE XIII—CORRECTIONS FOR TANGENTS AND EXTERNALS

These corrections are to be added to the approximate values, found by dividing the tangent, or external, for a 1° curve (Table VIII) by the degree of curve, in order to obtain the true tangents, or externals. Intermediate values may be obtained by interpolation.

FOR TANGENTS ADD

Central Angle	DEGREE OF CURVE													
	5°	10°	15°	20°	25°	30°	35°	40°	45°	50°	55°	60°	65°	70°
10°	.03	.06	.09	.13	.16	.19	.22	.25	.28	.31	.34	.38	.42	.46
15°	.04	.10	.14	.19	.24	.29	.34	.39	.45	.51	.53	.58	.63	.68
20°	.06	.13	.19	.26	.32	.39	.45	.51	.58	.65	.72	.79	.84	.90
25°	.08	.16	.24	.33	.40	.49	.58	.67	.75	.83	.90	.99	1.06	1.14
30°	.10	.19	.29	.39	.49	.59	.69	.79	.89	.99	1.09	1.20	1.29	1.39
35°	.11	.22	.34	.47	.58	.69	.79	.89	.99	1.09	1.20	1.31	1.42	1.54
40°	.13	.26	.40	.53	.67	.80	.93	1.06	1.20	1.34	1.49	1.64	1.79	1.94
45°	.15	.30	.44	.60	.76	.91	1.06	1.21	1.37	1.52	1.70	1.87	2.04	2.21
50°	.17	.34	.51	.68	.85	1.02	1.19	1.36	1.54	1.72	1.91	2.10	2.29	2.48
55°	.19	.38	.57	.76	.95	1.14	1.32	1.52	1.72	1.92	2.14	2.35	2.56	2.77
60°	.21	.42	.63	.84	1.05	1.27	1.49	1.71	1.94	2.17	2.38	2.60	2.83	3.07
65°	.23	.46	.69	.93	1.16	1.40	1.64	1.88	2.13	2.38	2.63	2.88	3.13	3.39
70°	.25	.51	.76	1.02	1.28	1.54	1.80	2.06	2.33	2.60	2.88	3.16	3.44	3.72
75°	.27	.56	.83	1.12	1.40	1.69	1.98	2.27	2.57	2.87	3.16	3.47	3.78	4.09
80°	.30	.61	.91	1.22	1.53	1.84	2.15	2.46	2.78	3.10	3.44	3.78	4.12	4.46
85°	.33	.66	1.00	1.33	1.68	2.02	2.36	2.70	3.05	3.40	3.77	4.14	4.55	4.89
90°	.36	.72	1.09	1.45	1.83	2.20	2.57	2.94	3.32	3.70	4.10	4.50	4.91	5.32
95°	.39	.79	1.19	1.55	1.94	2.40	2.80	3.20	3.61	4.02	4.40	4.98	5.38	5.83
100°	.43	.86	1.30	1.74	2.18	2.62	3.06	3.50	3.95	4.40	4.88	5.37	5.85	6.34
110°	.51	1.03	1.56	2.08	2.61	3.14	3.67	4.21	4.76	5.31	5.86	6.43	7.01	7.60
120°	.62	1.25	1.93	2.52	3.16	3.81	4.45	5.11	5.77	6.44	7.12	7.80	8.50	9.22

FOR EXTERNALS ADD

Central Angle	DEGREE OF CURVE													
	5°	10°	15°	20°	25°	30°	35°	40°	45°	50°	55°	60°	65°	70°
10°	.001	.003	.004	.006	.007	.008	.009	.011	.012	.014	.015	.017	.018	.020
15°	.003	.007	.010	.014	.018	.023	.027	.032	.035	.039	.043	.047	.051	.055
20°	.006	.011	.017	.022	.028	.034	.038	.045	.051	.057	.063	.070	.076	.083
25°	.009	.018	.027	.036	.046	.056	.065	.074	.083	.093	.106	.120	.127	.135
30°	.013	.025	.038	.051	.065	.078	.090	.103	.116	.129	.149	.170	.179	.188
35°	.018	.035	.054	.072	.086	.109	.131	.153	.175	.197	.213	.230	.247	.264
40°	.023	.046	.070	.093	.117	.141	.172	.203	.234	.265	.277	.290	.315	.341
45°	.030	.060	.093	.119	.153	.184	.216	.254	.289	.325	.351	.378	.411	.445
50°	.037	.075	.116	.151	.189	.227	.266	.305	.345	.384	.425	.467	.508	.550
55°	.046	.093	.142	.188	.236	.283	.332	.381	.420	.479	.530	.582	.641	.700
60°	.056	.112	.168	.225	.283	.340	.398	.457	.516	.575	.636	.697	.774	.851
65°	.067	.135	.204	.273	.343	.412	.483	.554	.625	.697	.771	.845	.922	1.01
70°	.080	.159	.240	.321	.403	.485	.568	.652	.735	.819	.906	.994	1.08	1.17
75°	.095	.182	.286	.383	.480	.578	.678	.777	.877	.977	1.07	1.18	1.29	1.39
80°	.110	.220	.332	.445	.558	.671	.787	.903	1.02	1.13	1.25	1.38	1.50	1.62
85°	.128	.259	.391	.524	.657	.790	.926	1.06	1.20	1.34	1.47	1.62	1.76	1.91
90°	.149	.299	.450	.603	.756	.910	1.07	1.22	1.38	1.54	1.70	1.87	2.03	2.20
95°	.174	.350	.522	.706	.885	1.06	1.25	1.43	1.62	1.80	1.99	2.18	2.38	2.58
100°	.200	.401	.604	.809	1.01	1.22	1.43	1.64	1.85	2.06	2.28	2.50	2.73	2.96
110°	.268	.536	.806	1.08	1.35	1.63	1.91	2.20	2.48	2.76	3.05	3.35	3.66	3.96
120°	.360	.721	1.08	1.45	1.82	2.19	2.57	2.95	3.33	3.72	4.11	4.50	4.91	5.32

x-sect. Alleys Blks. 5 & 6 P. Loma Hts. 1-18

X-Sec Gregory St - Cedar to Date 19-23

X-Sec Keating - Neal to Titus 24

Storm drain Linwood - Keating to Washington 48-51

x sec alley Blk 52 Fairmont Abd. 52

Elevations existing curbs & pav. Conde & Pine 62

X-Sec. Alley Blk. 1, Pacific Beach Vista 66

Tract

Additional levels, Pacific Beach Vista 70

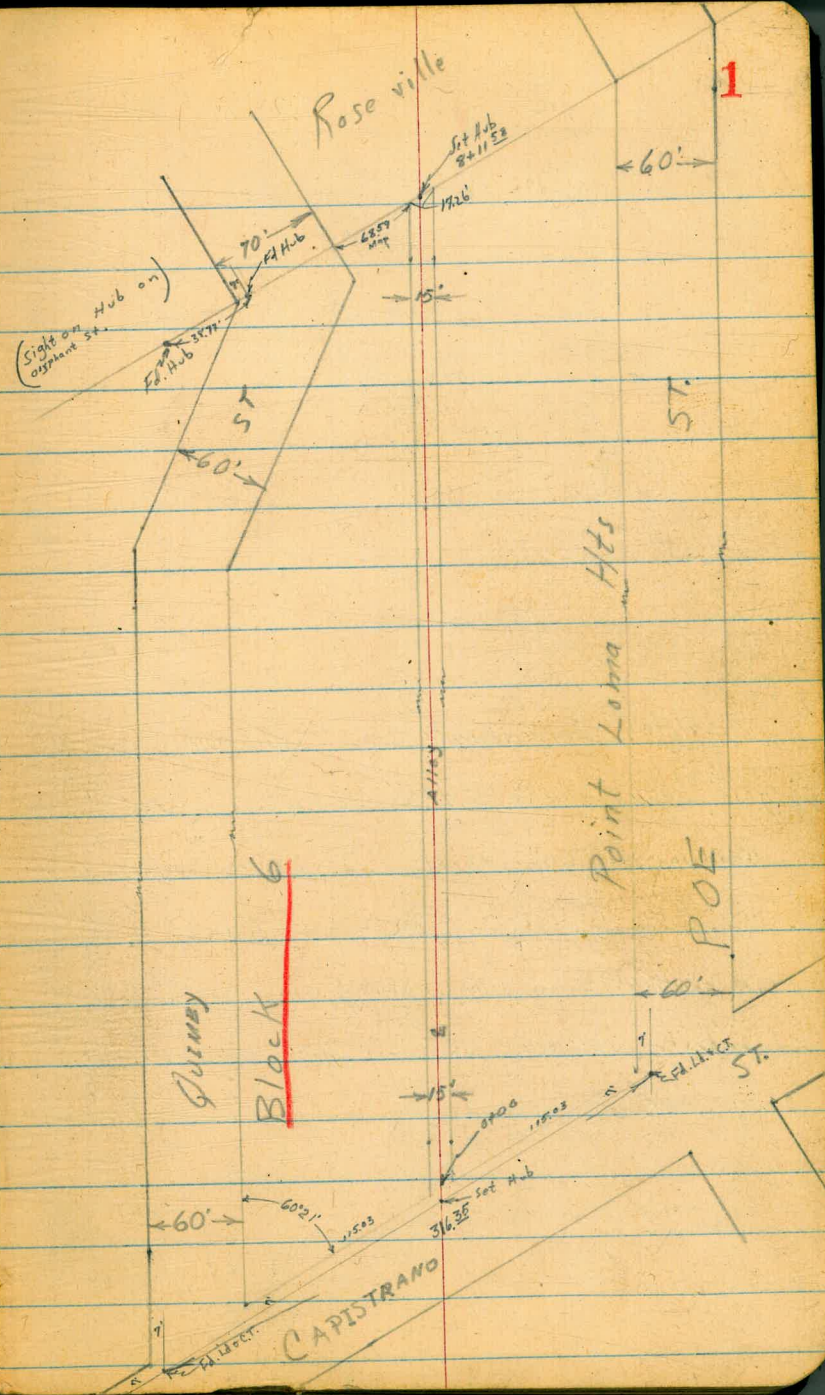
X-Sect. Alleys Block 5 and Block 6 in Point Loma Hts.

Roberts  
W. Moore  
Clark  
3-5-49  
W225001

T.P. 26 F.B. 1689, 1822, 1830

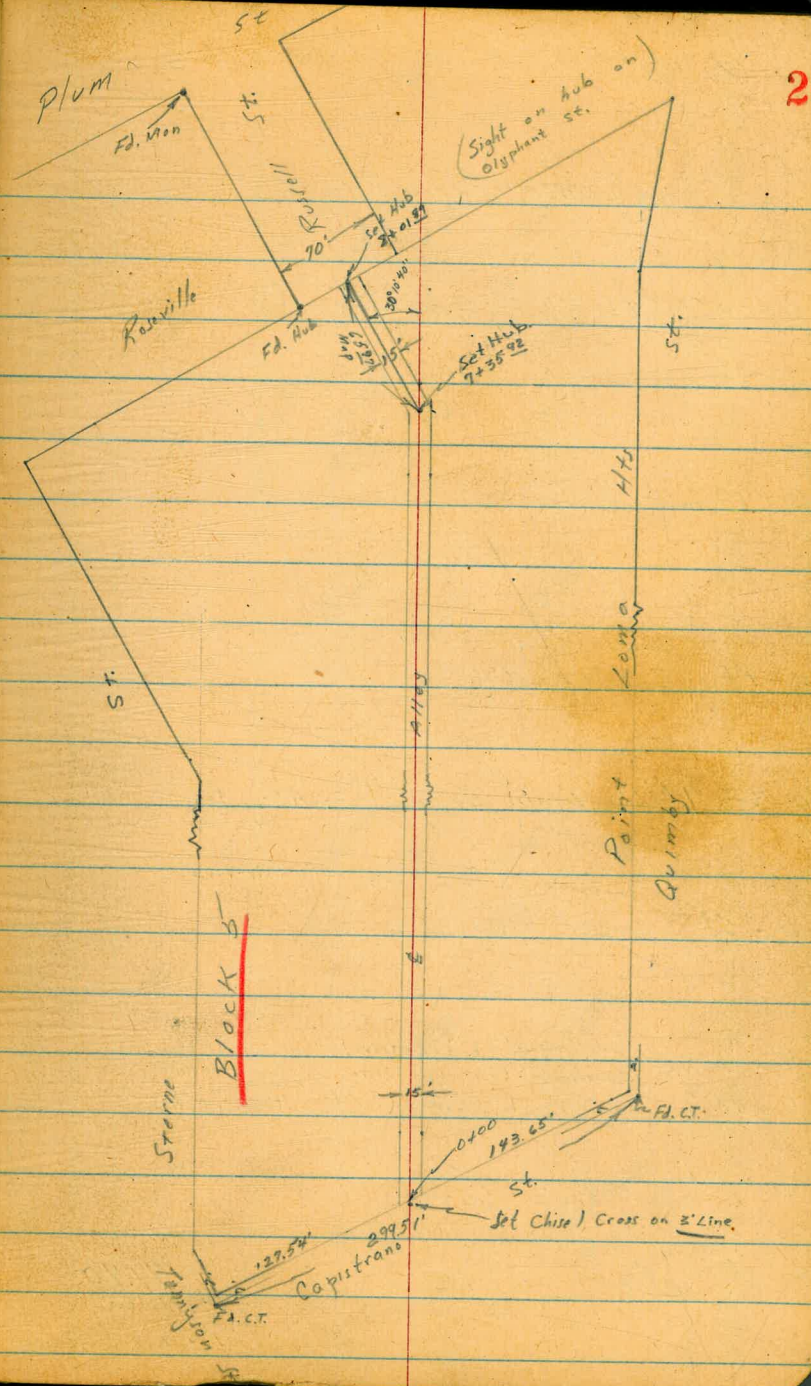
Map 1106 TP 710, 711, 720 & 72221

INDEXED  
WIK  
MAR 11 1949



Cont'd From Page 1

Note: Improvements on Capistrano St.  
 for both blocks 5 & 6 consist of 40'  
 Roadway in 60' street; 10' pit. to ch. face;  
 5' ch. face to Edge walk; 4' walk.  
 cb. continues across alley opening alley B1K.5  
 cb. broken out alley B1K.6 for quite away rd. & ht.  
 See X-sec Capistrano.



Levels on Block 6

Lt.

±

Rt.

3

Cont'd From Page 2

0+14 9<sup>8</sup>' Lt End Garage

78.38.	78.28.	77.58.	77.78.	77.18.
$\frac{41}{98}$	$\frac{42}{75}$	49	$\frac{47}{75}$	$\frac{53}{15}$

0+00 ± to ±

77.58.	76.88.	76.38.	75.98.
$\frac{47}{98}$	$\frac{56}{75}$	61	$\frac{65}{75}$

Levels taken on line of Capistrano  
0-1<sup>2</sup> E. Edge Walk

76.68.	76.33.	75.95.
$\frac{580}{863}$	615	$\frac{653}{863}$

0-3<sup>6</sup> 9<sup>8</sup>' Lt. Begin Garage Tl to Alley ±

77.56.	76.70.	76.36.	76.02.	74.52.
$\frac{492}{30}$	$\frac{570}{863}$	612	$\frac{642}{863}$	$\frac{816}{50}$

Levels taken on line of Capistrano  
0-5<sup>6</sup> W. Edge Walk.

77.88.	75.58.	73.68.
$\frac{46}{50}$	69	$\frac{88}{50}$

See x-sect. of Capistrano  
Levels taken on line of Capistrano  
0-11<sup>5</sup> approx. Cb. Line Cb. out Lt. ± Rt.

B.M. 1078 82.48

71.70  
NWBP  
Poc and Capistrano

82.48

Reduced  
3-25-49  
C-J-L

Cont'd From Page 3

1+39<sup>5</sup> 4' Rt to Center P.Pole #PA3560

1+26 20' Lt Edge Apron & Single Garage

1+00

0+94 3' Rt to E. Edge Apron

0+89 10' Lt & Single Garage

0+78 40' Rt. W. Edge Apron of Double Garage

0+48 28' Lt & Single Garage

82.48

Lt.

4

Rt.

4

78.88.  
78.64.

$\frac{3.60}{23.2}$   $\frac{3.84}{20.1}$   
Floor Apron

78.88.  
77.58.  
77.38.

$\frac{3.9}{10.4}$   $\frac{4.9}{7.5}$   $\frac{5.1}{7}$

76.78.

5.7

76.58.

$\frac{5.9}{7.5}$   $\frac{6.2}{15}$

76.28.

76.82.

76.65.

75.89.

$\frac{5.66}{38}$   $\frac{5.83}{75}$   $\frac{6.61}{23.8}$   
Floor

78.00.

$\frac{4.48}{10.4}$   
conc. Floor

76.89.

76.71.

75.89.

$\frac{5.59}{40}$   $\frac{5.77}{75}$   $\frac{6.61}{23.9}$   
Floor

80.18.

78.08.

77.48.

77.38.

77.28.

$\frac{2.3}{28.4}$   $\frac{4.4}{75}$  5.0

$\frac{5.7}{75}$   $\frac{5.2}{15}$

82.48

Cont'd From Page 4

2+52 21' Rt & Single Garage

85.72'	85.92'	87.92'		84.32'	83.82'	82.83'
$\frac{4.4}{10}$	$\frac{4.2}{7.5}$	$\frac{5.2}{6.5}$	58	$\frac{6.3}{7.5}$	$\frac{7.29}{2.2}$	Comp. Floor

2+44 6' Rt End Picket Fence

85.02'	84.62'	84.12'	83.92'	83.62'	83.42'	83.22'
$\frac{5.1}{8}$	$\frac{5.5}{8}$	$\frac{6.0}{7.5}$	$\frac{6.2}{6}$	65	$\frac{6.7}{7.5}$	$\frac{6.9}{15}$

TOP Wall

2+32 8' Lt End Loose slab wall

2+23 6' Rt Begin Picket Fence

83.72'	80.82'	80.62'	80.12'	79.82'	80.72'	78.92'	78.12'
$\frac{6.4}{80}$	$\frac{7.3}{80}$	$\frac{7.5}{75}$	$\frac{10.0}{6}$	10.3	$\frac{8.4}{7.5}$	$\frac{11.2}{12.5}$	$\frac{12.0}{15}$

TOP Wall

1+96 8' Lt Loose broken conc. Slabs Wall

T.P. 9#  $\frac{90.12}{3}$  1.83 80.65  $\frac{90.12}{3}$

1+82 7' Rt End board Fence (7.5' Rt 4.5.9901 990%)

80.68'	77.28'	76.78'	76.48'	75.38'
$\frac{1.8}{16}$	$\frac{5.2}{7.5}$	57	$\frac{6.0}{7.5}$	$\frac{7.1}{12}$

1+50

1+41E 8' Rt Begin Board Fence

$\frac{82.48}{3}$   $\frac{82.48}{3}$



Lt.

¢

Rt.

6

Cont'd From Page 5

3+81<sup>5</sup> 6<sup>5</sup>' Rt to Center P. Pole # PA. 35283+79 10<sup>4</sup>' Rt to So. Edge Single Garage3+60 10<sup>4</sup>' Rt to Edge Single Garage <sup>No. End with spanning</sup> TP to ¢

3+30 18' Rt ¢ Single Garage

3+15

2+93

2+61 58' Rt. to Center P. Pole # PA 3544

90.12

	83.12°	82.42°	81.82°	81.12°
<u>15</u>	$\frac{7.0}{7.5}$	7.7	$\frac{8.3}{7.5}$	$\frac{9.0}{10}$
				Floor Dirt

86.32°	83.92°	82.42°	81.92°	81.24°	81.26°
$\frac{3.8}{15}$	$\frac{6.7}{7.5}$	7.7	$\frac{8.2}{7.5}$	$\frac{8.88}{17.4}$	$\frac{8.86}{18}$
				Apron	Floor

86.52°	84.32°	83.32°	82.62°	82.02°
$\frac{3.6}{14}$	$\frac{5.8}{7.5}$	6.8	$\frac{7.5}{7.5}$	$\frac{8.1}{15}$

87.02°	85.92°	85.32°	84.82°	83.12°
$\frac{3.1}{15}$	$\frac{4.2}{7.5}$	4.8	$\frac{5.3}{7.5}$	$\frac{7.0}{15}$

90.12

Cont'd From Page 6

4461 32' Rt Begin Lath Fence

4450

44285 74' Rt 3" Fig tree

4419 10' Rt to 3' walk

4417 74' Rt End cypress Hedge

4415 { 93' Lt to Edge Conc Block Wall  $\perp$  to  $\perp$   
Unfinished  
Owner intends to put wall in on back of lot  $\perp$  to  $\perp$  Alley.

4400

3484 7' Rt Begin cypress Hedge

90.12

Lt.  $\phi$  Rt. 7

87.92.	87.72.	86.32.	85.72.	86.82.	85.32.	82.32.
$\frac{2.2}{15}$	$\frac{2.4}{15}$	$\frac{3.8}{7}$	4.4	$\frac{3.3}{2}$	$\frac{4.6}{25}$	$\frac{7.8}{15}$

88.42.	88.12.	86.02.	85.22.	85.72.	83.72.	81.92.
$\frac{1.7}{15}$	$\frac{2.0}{10.5}$	$\frac{4.1}{7.5}$	4.9	$\frac{4.4}{2}$	$\frac{6.4}{25}$	$\frac{8.2}{15}$

83.50.  
6.62  
10  
walk

85.22.

4.9  
93  
Foot wall

85.12.	83.82.	83.32.	82.42.	81.42.
$\frac{5.0}{15}$	$\frac{6.3}{25}$	6.8	$\frac{7.7}{25}$	$\frac{8.7}{15}$

90.12

Lt.

E

Rt.

8

Cont'd From Page 7

6721 5.5' Rt to Center P. Pole # A3490

6700

82.04°

80.84°

79.24°

78.14°

77.34°

 $\frac{10.0}{15}$  $\frac{11.2}{7.5}$ 

12.8

 $\frac{13.9}{7.5}$  $\frac{14.7}{15}$ 

83.14°

81.54°

80.04°

79.24°

78.24°

 $\frac{8.9}{15}$  $\frac{10.5}{7.5}$ 

12.0

 $\frac{13.8}{7.5}$  $\frac{13.8}{15}$ 

5750

84.04°

82.64°

81.74°

81.04°

80.44°

 $\frac{8.0}{15}$  $\frac{9.4}{7.5}$ 

10.3

 $\frac{11.0}{7.5}$  $\frac{11.6}{15}$ 

5725

T.P. 7.15 92.04 523 84.8992.04

5701 5' Rt to Center P. Pole # A3512

5700

86.32°

84.92°

84.12°

82.92°

81.92°

 $\frac{3.8}{15}$  $\frac{5.2}{7.5}$ 

6.0

 $\frac{7.2}{7.5}$  $\frac{8.2}{15}$ 

4497 4' Rt End Lathe Fence

90.1290.12

Cont'd From Page 8

Set BM Hub-8411<sup>58</sup> 102 91.02

8411<sup>58</sup> Levels taken  
on P.L.

8400 5<sup>3</sup>/<sub>4</sub>' R<sub>L</sub> to deadman

7481 42' R<sub>L</sub> to Center P. Pole # A3434

7450

7400

6450

92.04

Lt.

St

Rt.

9

95.34	92.74	91.34	91.54	91.14	90.04	86.94
$\frac{+3.3}{20}$	$\frac{+0.7}{10}$	$\frac{0.7}{86}$	0.5	$\frac{0.9}{4}$	$\frac{2.0}{86}$	$\frac{5.1}{20}$

94.84	93.04	90.64	91.14	90.74	89.04	86.04
$\frac{+2.8}{15}$	$\frac{+1.0}{8}$	$\frac{1.4}{75}$	0.9	$\frac{1.3}{3}$	$\frac{3.0}{75}$	$\frac{6.0}{15}$

92.64	90.24	88.04	88.34	87.74	85.64	83.34
$\frac{+0.6}{15}$	$\frac{1.8}{8}$	$\frac{4.0}{75}$	3.7	$\frac{4.3}{3}$	$\frac{6.4}{75}$	$\frac{8.7}{15}$

89.64	88.04	86.14	86.04	85.44	83.54	82.04
$\frac{2.4}{15}$	$\frac{4.0}{8}$	$\frac{5.9}{7}$	6.0	$\frac{6.6}{3}$	$\frac{8.5}{75}$	$\frac{10.0}{15}$

83.74	82.14	80.54	79.34	77.74
$\frac{8.3}{15}$	$\frac{9.9}{75}$	11.5	$\frac{12.7}{75}$	$\frac{14.3}{15}$

92.04

Lt.

Q

Rt.

10

Cont'd From Page 9

check                      1.86      71.71 = 71.70      START. BM

T.P.    4.76              73.57      11.38              68.81

T.P.    0.20              80.19      12.05              79.99

92.04

Levels on Alley BIK 5

Will change Notes in F.B. 1830 pg. 26

Cont'd From Page 10

0+048 7' RT to Conc. Ret. Wall

INDEXED

0+00 Levels taken I to E

0-1' Levels taken on line of Capistrano  
E. Edge walk

0-3'45" I to E  
9'14" to Conc. Ret. Wall

0-05'56" Levels taken on line Capistrano  
W. Edge walk

0-11' See X-Section of Capistrano!  
Levels taken on line of Capistrano  
Cb Line

BM 12 55 93.76

81.21

Lt. \$

Rt. 11

91.56'  
 $\frac{2.2}{72}$   
Bott. wall

92.06'  
 $\frac{1.7}{74}$   
Dirt

93.54'  
 $\frac{0.22}{72}$   
Top wall

94.26'  
 $\frac{+0.5}{92}$

93.86'  
 $\frac{+0.1}{75}$

92.36' 14

91.56'  
 $\frac{2.2}{75}$

92.78'  
 $\frac{0.98}{863}$

92.11' 165

91.50'  
 $\frac{2.26}{863}$

93.96'  
 $\frac{+0.2}{92}$   
Dirt

98.96'  
 $\frac{+52}{92}$   
Top wall

93.06'  
 $\frac{0.7}{92}$   
Bott. wall

92.68'  
 $\frac{1.08}{863}$

92.06' 170

91.56'  
 $\frac{2.20}{863}$

96.36'  
 $\frac{+2.6}{50}$   
Cb. breakout

92.96'  
 $\frac{0.8}{86}$

91.96' 1.8

91.91'  
 $\frac{1.85}{1}$   
Cb.

91.47'  
 $\frac{2.19}{863}$   
Cb.

88.91'  
 $\frac{1.85}{50}$   
Cb.

SEBP Quimby & Capistrano

93.76

Lt.

2

Rt

12

Cont'd. From Page 11

1+21 78' Rt End. Picket Fence

1+19 73' Lt to Center P. Pole <sup>D332037</sup> # JPA3581

1+00

109.24.  
 $\frac{18}{15}$  3.6  $\frac{42}{73}$   $\frac{53}{7}$  53 100.74.  
 $\frac{50}{73}$   $\frac{58}{75}$   $\frac{70}{15}$

0+75<sup>L</sup> Begin Picket Fence 73' Rt.  
End Conc. Wall 73' Rt

98.44.  
 $\frac{76}{73}$   $\frac{63}{73}$   $\frac{3.07}{73}$   
 Boty wall Dirt Top wall

0+49 6' Rt to & 2' Walk with steps

96.42.  
 $\frac{262}{8}$   $\frac{9.29}{78}$   $\frac{87}{62}$   $\frac{89}{62}$  88 97.24.  
 Boty 2 Step on Walk 1 Step Conc. Dirt

0+35<sup>E</sup> 102' Lt End Conc. Ret. Wall

98.90  
 $\frac{7.14}{10.2}$   $\frac{9.4}{10.2}$   $\frac{10.2}{10.2}$   
 Top Wall Dirt Batt. Wall

T.P. 12.68

106.04 0.40

93.36

Mail in P. Pole

106.04

93.76

Cont'd From Page 12

Lt

¢

Rt

13

2+68 7<sup>2</sup> Lt to Deadman

115.65.  
114.15.  
112.85.  
111.95.  
111.15.  
110.95.  
108.85.

2+50

$\frac{25}{15}$   $\frac{40}{12}$   $\frac{53}{75}$   $\frac{62}{6}$  70  $\frac{72}{75}$   $\frac{83}{15}$

2+38 7<sup>2</sup> Lt to Center P. Pole # PA3561

{ 41' Rt Flat Ramp to Double Garage

2+35 { 6<sup>2</sup> Rt to 7' Rough Cont. Drive

108.99.  
105.71.  
102.95.  
102.15.

$\frac{9.16}{69}$   $\frac{12.41}{87}$   $\frac{15.1}{41}$   $\frac{16.8}{47}$   
Floor Gar.

2+00

111.05.  
108.15.  
108.35.  
107.95.  
107.55.  
107.15.  
106.05.

$\frac{7.1}{20}$   $\frac{9.0}{10}$   $\frac{9.8}{75}$   $\frac{10.2}{7}$  10.6  $\frac{16.0}{75}$   $\frac{12.1}{15}$

T.P. 12.33 118.15 0.22 105.82

118.15

1+50

109.94  
108.54  
104.44.  
104.14.  
103.94.  
103.74.  
103.34.  
102.54.  
100.94.

$\frac{+3.0}{20}$   $\frac{+2.5}{15}$   $\frac{1.6}{75}$   $\frac{1.9}{65}$  2.1  $\frac{2.3}{65}$   $\frac{2.7}{75}$   $\frac{3.5}{10}$   $\frac{5.1}{20}$

106.04

106.04



Cont'd From Page 13

Lt

¢

Rt

3+57 80' Lt to Center P.Pole # PA 3343

123.91.  
121.61.  
119.41.  
118.51.  
117.91.  
116.91.  
111.61.

$\frac{5.5}{20}$   $\frac{7.8}{11}$   $\frac{10.0}{7.5}$  10.9  $\frac{11.5}{7.5}$   $\frac{12.5}{23}$   $\frac{17.8}{30}$

3+55

T.P. 11.32 129.41 0.06 118.09

129.41

3+24

123.65.  
121.25.  
117.55.  
116.95.  
117.35.  
116.95.  
112.65.

$\frac{5.5}{20}$   $\frac{13.1}{11}$   $\frac{0.6}{7.5}$  1.2  $\frac{0.8}{7.5}$   $\frac{1.2}{23}$   $\frac{5.5}{29}$

3+16 70' Rt to 3/4" Pipe LS 2300

119.95.  
117.35.  
116.45.  
116.65.  
115.15.  
113.55.  
110.45.

$\frac{1.8}{20}$   $\frac{0.8}{7.5}$  1.7  $\frac{1.5}{6}$   $\frac{3.0}{7.5}$   $\frac{4.6}{11}$   $\frac{7.7}{25}$

2+78

117.05.  
115.55.  
113.85.  
112.85.  
112.25.  
109.75.

$\frac{1.1}{20}$   $\frac{2.6}{11}$   $\frac{4.3}{7.5}$  5.3  $\frac{5.9}{7.5}$   $\frac{8.4}{20}$

2+762 70' Lt to Hub

118.15

118.15

Cont'd From Page 14

5+50

129.61	121.11	120.01	119.01	116.81
$\frac{28}{20}$	$\frac{83}{75}$	9.4	$\frac{10.4}{75}$	$\frac{12.6}{20}$

5+00

129.01	125.61	124.41	123.21	121.11
$\frac{0.4}{20}$	$\frac{3.8}{75}$	5.0	$\frac{6.0}{75}$	$\frac{8.3}{20}$

4+99

75' Lt to Deadman

4+76

78' Lt to Center Pole #PA 3521

4+50

129.91	126.41	124.11	122.01	119.11
$\frac{1.5}{12}$	$\frac{3.0}{75}$	5.3	$\frac{7.4}{75}$	$\frac{10.3}{20}$

4+00

125.51	123.31	121.61	119.91	116.61
$\frac{4.3}{15}$	$\frac{6.1}{75}$	7.8	$\frac{9.7}{75}$	$\frac{12.8}{20}$

3+63

123.11	120.91	119.51	118.61	116.81	114.71
$\frac{6.3}{20}$	$\frac{8.0}{75}$	9.9	$\frac{10.8}{75}$	$\frac{12.6}{12}$	$\frac{14.7}{20}$

129.41

129.41

Cont'd From Page 15

T.P. 12.52 15 3.81 0.38 141.29

6+75

6+50

T.P. 12.34 141.67 0.08 129.33

6+00

5+70

5+62

Bottom of Gully

129.41

Lt

¢

Rt

16

144.87  
13.2  
20

142.07  
10.4  
75

139.90  
1.7

138.37  
3.3  
75

135.17  
6.5  
20

142.47  
10.8  
20

138.07  
3.6  
75

136.07  
56

133.97  
7.7  
75

130.97  
10.7  
20

141.67

130.41  
11.0  
20

127.51  
1.9  
75

126.91  
25

126.11  
3.7  
75

124.01  
5.4  
20

123.01  
6.4  
20

120.31  
9.1  
75

119.61  
9.8

118.51  
10.9  
75

116.41  
13.0  
20

121.01  
8.4  
20

117.91  
11.7  
75

116.01  
13.4

115.01  
14.4  
75

113.51  
15.9  
20

129.41

Cont'd From Page 16

8401<sup>89</sup>

End of Alley Begin Russell St.

162.31.  
 $\frac{3.5}{20}$   $\frac{4.4}{75}$  4.4 "  $\frac{4.7}{75}$   $\frac{7.8}{13}$   $\frac{9.8}{20}$   
 161.91.  
 161.41.  
 161.11.  
 158.01.  
 156.01.

7+80

159.91.  
 $\frac{6.5}{20}$   $\frac{6.3}{75}$  6.6  $\frac{11.1}{75}$   $\frac{14.8}{20}$   
 159.51.  
 159.21.  
 154.71.  
 151.01.

T.P. 12.46

165.81 0.46 153.35

165.81

7+35<sup>92</sup>

L. Lt

Section on split of L

154.91.  
 ~~$\frac{1.1}{25}$~~   ~~$\frac{10.9}{18}$~~   $\frac{4.3}{72}$  7.4  $\frac{8.7}{72}$   $\frac{11.7}{20}$   
 154.71.  
 149.51.  
 146.41.  
 145.11.  
 142.11.

7+05

43<sup>5</sup>' Lt. to E. Edge Opening Garage under House

153.48.  
 $\frac{0.33}{432}$   $\frac{0.6}{26}$   $\frac{0.5}{12}$   $\frac{3.0}{75}$  7.6  $\frac{12.5}{75}$   $\frac{16.2}{20}$   
 153.21.  
 153.31.  
 150.81.  
 146.21.  
 141.31.  
 137.61.

6+90

34' Lt to S.W. Cor. House.

153.30.  
 $\frac{0.51}{34}$   $\frac{1.4}{26}$   $\frac{1.2}{13}$   $\frac{5.0}{75}$  9.2  $\frac{14.8}{75}$   $\frac{17.5}{20}$   
 152.41.  
 152.61.  
 148.81.  
 144.61.  
 139.01.  
 136.91.

153.81

153.81

Lt

±

Rt

17

Cont'd From Page 17

Check                      12.08   161.43   = 161.33   S.W.B.P. Russell + Wilcox.

T.P.            8.22   173.51   052   165.29

165.81

8-22-49  
 Hendricks X Sect. Gregory St.  
 Roberts Cedar to Date.  
 Bunch  
 Gregory  
 NON 25020

INDEXED  
 W.K.  
 AUG 23 1949

notes Reduced and  
 plotted 8-29-49  
 McClure

FELTON



(257)  
 to  
 Cedar

Date

Fd. Hub & Tack  
 Reset Hub & Disc

Fd. Hub & Disc  
 Under Fill  
 Reset on surface  
 set Hub & Disc  
 11-20-57

19

set nail  
 3100.22

set POT  
 Hub & Disc

51

80

13'

40'

GREGORY

set stub  
 30+00

Cedar

80'  
 57'

Fd. Hub & Tack

THIS POINT  
 HAS BEEN  
 WASHED OUT

set Hub & Disc  
 11-20-57  
 G.H.P.

Levels Gregory St  
Cedar to Date

0+05 Inlet 12" CMP 43' H

197.44  
9.21  
43  
inlet

0+00 N Line Cedar

202.1 200.6 198.7 198.9 199.7 200.9 194.7 193.6 187.9 178.6 177.3 178.3  
4.6 6.1 8.0 7.0 6.7 12.0 12.9 18.8 28.1 29.4 28.4  
61 49 43 24 20 7 12 32 40 50

0-10 Outlet 12" CMP Drain 20' H

196.13 20.52 20  
200.3 199.1 199.3 196.5 192.2 191.8 188.7 186.8 182.3 179.3 175.3  
Outlet  
6x 76 7x 10 14 15 17 9 18 19 24 31  
63 54 40 33 13 13 20 27 58

0-27

0-40 E Cedar St.

196.1 193.4 192.5 191.4 188.9 186.9 184.5 183.7 178.7 173.3  
10.6 13.3 14.3 15.3 17.08 19.8 22.3 23.0 28.0 33.5  
65 50 40 25 15 25 28 40 60

T.P. 0.44 206.65 13.26 206.21

206.65

T.P. 0.06 219.47 2.23 219.41

B.M. 5.68 221.64

215.96

NWBP Felton & Beech

Gregory St  
Cedar to Date Cont'd.

21

1435  $\times$  3' Conc. Walk 40.2' RT.

$\begin{array}{r} 210.81 \\ 747 \\ \hline 40.2 \end{array}$   $\begin{array}{r} 211.64 \\ 664 \\ \hline 50 \end{array}$

1414  $\times$  18' Conc. Drive 40' RT.

$\begin{array}{r} 208.06 \\ 1022 \\ \hline 40 \end{array}$   $\begin{array}{r} 207.69 \\ 1059 \\ \hline 50 \end{array}$

0492

$\begin{array}{r} 210.1 \\ 82 \\ \hline 50 \end{array}$   $\begin{array}{r} 209.0 \\ 92 \\ \hline 40 \end{array}$   $\begin{array}{r} 206.7 \\ 116 \\ \hline 22 \end{array}$   $\begin{array}{r} 205.0 \\ 132 \\ \hline 17 \end{array}$   $\begin{array}{r} 205.4 \\ 129 \\ \hline 12 \end{array}$   $\begin{array}{r} 206.0 \\ 123 \\ \hline 1 \end{array}$   $\begin{array}{r} 206.4 \\ 119 \\ \hline 25 \end{array}$   $\begin{array}{r} 206.7 \\ 116 \\ \hline 40 \end{array}$   $\begin{array}{r} 207.0 \\ 113 \\ \hline 50 \end{array}$

T.P. B.27 218.28 1.64 205.01

$\begin{array}{r} 209.4 \\ 122 \\ \hline 50 \end{array}$   $\begin{array}{r} 207.9 \\ 112 \\ \hline 40 \end{array}$   $\begin{array}{r} 206.7 \\ 00 \\ \hline 34 \end{array}$   $\begin{array}{r} 205.8 \\ 09 \\ \hline 22 \end{array}$   $\begin{array}{r} 205.0 \\ 17 \\ \hline 25 \end{array}$   $\begin{array}{r} 203.7 \\ 30 \\ \hline 19 \end{array}$   $\begin{array}{r} 204.2 \\ 25 \\ \hline 3 \end{array}$   $\begin{array}{r} 204.5 \\ 23 \\ \hline 25 \end{array}$   $\begin{array}{r} 199.7 \\ 70 \\ \hline 25 \end{array}$   $\begin{array}{r} 202.9 \\ 41 \\ \hline 40 \end{array}$   $\begin{array}{r} 204.7 \\ 20 \\ \hline 50 \end{array}$

0475

$\begin{array}{r} 205.6 \\ 11 \\ \hline 50 \end{array}$   $\begin{array}{r} 204.1 \\ 26 \\ \hline 40 \end{array}$   $\begin{array}{r} 203.4 \\ 33 \\ \hline 34 \end{array}$   $\begin{array}{r} 200.8 \\ 59 \\ \hline 26 \end{array}$   $\begin{array}{r} 201.0 \\ 57 \\ \hline 10 \end{array}$   $\begin{array}{r} 197.4 \\ 93 \\ \hline 2 \end{array}$   $\begin{array}{r} 197.2 \\ 95 \\ \hline 6 \end{array}$   $\begin{array}{r} 195.0 \\ 117 \\ \hline 19 \end{array}$   $\begin{array}{r} 188.2 \\ 185 \\ \hline 40 \end{array}$   $\begin{array}{r} 185.2 \\ 215 \\ \hline 40 \end{array}$   $\begin{array}{r} 187.5 \\ 192 \\ \hline 50 \end{array}$

0150

$\begin{array}{r} 206.65 \\ \hline \end{array}$

$\begin{array}{r} 206.65 \\ \hline \end{array}$



Gregory 5+

Cedar to Date Cont'd.

2+34 3' Conc. Walk 33.2' Lt.

2+24

2+11

2+02 Power Pole # P1666 28.3' Lt.

2+00

T.P. 11.29 228.54 1.03 217.25

1+50

218.28

22

227.45  
1.09 1.40  
44 33.2

226.5 226.3 223.9 223.0 222.4 221.7 222.5 222.4 222.2  
20 23 46 55 61 61 60 61 61  
40 30 25 14 23 31 40 50

226.1 225.6 221.0 220.6 220.0 221.3 221.3 221.3  
24 29 75 79 85 72 72 72  
50 40 9 19 31 40 50

223.6 222.6 221.5 219.9 219.2 219.0 218.4 220.2 220.1 220.1  
49 57 70 86 92 95 101 81 84 84  
50 40 30 12 8 19 30 40 50

228.54  
217.9 216.7 215.1 213.7 212.6 212.3 211.4 212.2 213.1  
0.4 1.6 2.2 4.6 5.7 6.10 6.9 6.1 5.2  
50 40 26 13 11 19 40 50

218.28

Gregory St.  
Cedar to Date Cont'd.

BM. 8.37 21596 21596

HW 27 Beech  
& Felton

TP 7.89 224.34 12.09 216.45

3+28

216.3  
12.12  
50

216.1  
12.14  
40

216.1  
12.14  
27

216.3  
12.11  
20

215.7  
12.09  
40

214.3  
12.12  
50

213.4  
12.11  
50

3+16

218.5  
10.10  
50

218.7  
9.08  
40

219.5  
9.0  
26

220.2  
8.11  
10

218.3  
10.11  
40

216.8  
11.7  
50

215.9  
12.6  
50

3+00.32 So. line Date

221.3  
7.12  
50

221.5  
7.0  
40

221.9  
6.6  
30

220.9  
7.6  
24

220.4  
8.1  
13

220.8  
7.7  
11

221.3  
7.2  
22

219.7  
8.8  
40

219.5  
9.0  
50

219.0  
9.11  
50

2+75

225.6  
2.9  
50

225.6  
2.9  
40

225.0  
3.15  
19

223.6  
4.2  
25

222.5  
6.0  
30

222.7  
5.8  
40

222.1  
6.4  
50

221.6  
6.9  
50

2+50

227.3  
12  
50

227.1  
14  
40

227.0  
15  
30

225.7  
2.18  
10

224.7  
3.18  
23

223.4  
5.1  
40

223.0  
5.11  
50

222.5  
6.10  
50

22854

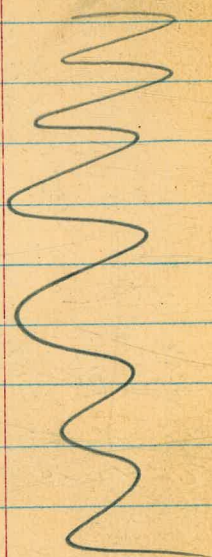
22854

# KEATING

X Section between Neal  
10/11/49 & Titus  
#4010  
W.O. 31158

Begg  
Osborn & Doyle  
Hatch  
Shepard  
Begg  
Greer  
Bunch

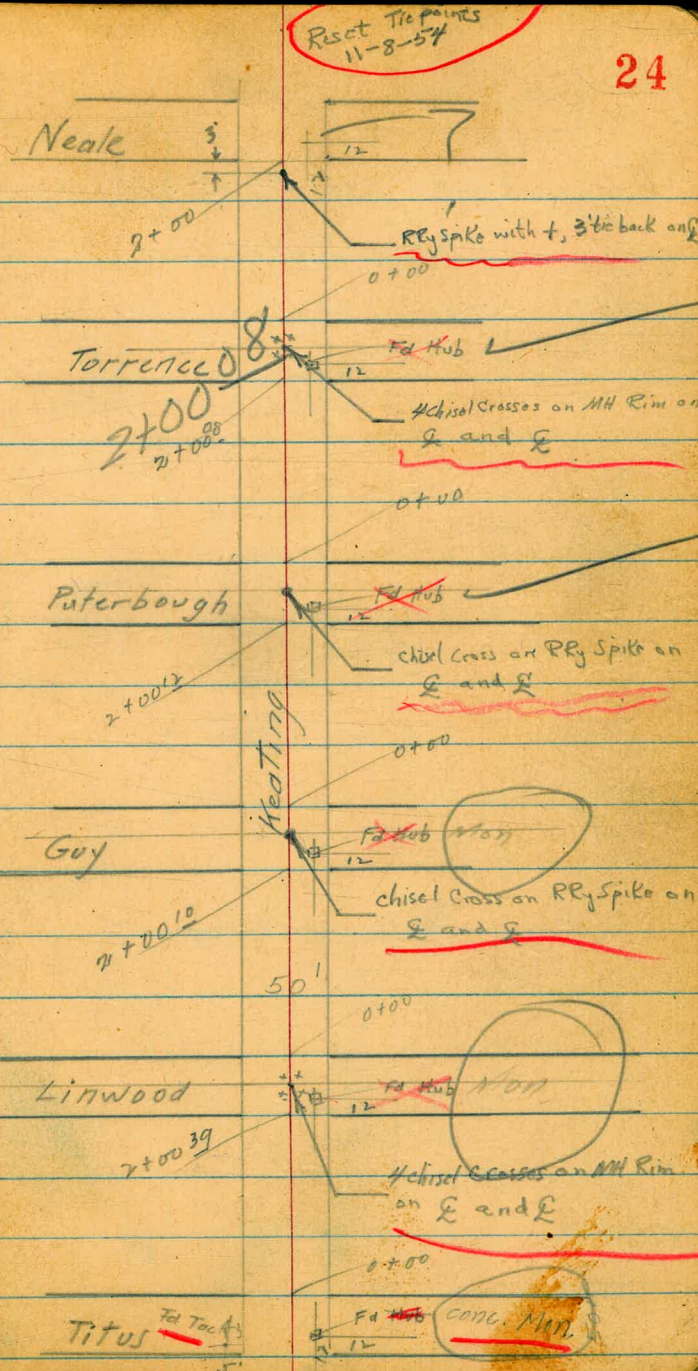
INDEXED  
W.K.  
OCT 19 1949



113' Mar. Keating & Sutter 167.14

164.32 Linwood & Pringle Lat 13

Pringle



		H.I.		
	1.05	165.37	<del>152.89</del>	164.32
TP			12.48	152.89
TP	0.20	153.09	13.17	139.92
TP	0.19	140.11	6.76	133.35
TP	8.50	141.85	10.50	131.35

BM 13' L & T Linwood & Pringle

Set T.P. on 5' <sup>1</sup>/<sub>2</sub> Sect NW. cor Titus & Keating  
3' N. of N. line Keating

X Sections Keating

to Titus

0-01 SE corner of walk 5' wide

		133.68	133.17	133.4	133.4	133.3	134.3	132.4	132.6	133.15	130.2	129.9	129.9
0-10	curb line	8.17 6.0	8.68 25.4 end of curb	8.2 25	6.5 19	6.6 17	7.6 7	7.5	7.3 12	8.70 20	11.7 21	12.0 25	12.0 33
											Top of wall		

0-25 of Titus

		132.00		131.11	9.7 25	132.2	132.6	132.9	132.1	130.1	130.3		
0-40	Lt. 24.8 end of curb	9.25 8.0		10.74 24.8 Lt		9.3 15		9.1	9.8 11.2	11.8 25	11.6 29		
										beg. Cobble wall			

0-44 in line of Sidewalk

				131.24	10.56 25	131.0	131.0	130.3	129.9	128.9			
0-44	in line of Sidewalk			10.74 24.8 Lt		10.9 15		11.6	12.0 15	13.0 25			
					cor. side walk								

0-45 P Pole P 3548

				131.39	10.46 25	130.2	130.2	129.3	129.0	128.8	128.4	128.10	
0-50	West line Titus			10.74 24.8 Lt		11.7 15		12.4	12.9 15	13.1 21	13.75 21.5	13.75 25	
- 52					beg of Sidewalk						conc walk		

21.4 ft. N.E. cor of House

8.50

141.85

131.35

141.85

Keating

27

0+30

37.5  
+ 1.0  
40  
Southernly  
of brick walk

143.1

+ 0.2

142.1

141.9

140.5

137.0

137.6

137.7

132.62

129.8

129.95

0+28

20+2 Rt 8" Pepper

0+25

20+2 Lt Bay Bd Fence

0+12

21 Rt 6" Pepper

0+10

N.W. cor. house 34.5 Rt

130.00

11.85

34.5

on walk

9.54

25.2

line of wall

short road way between  
ret. wall & house provides  
access to garage at 0+85  
change see p 28

129.167

129.4

129.43

30.1

walk

129.4

34.1

5. Edge of walk

0+02

{ 30' W. edge of conc. walk 4" wide  
20.8 Rt 12" Pepper

0+00

East Line Titus

137.8

4.1

40

Top of Rock wall

137.4

4.5

25

137.4

4.5

21

136.6

5.3

10

135.4

6.5

5

135.3

6.6

11

135.6

6.3

11

133.19

8.66

23.5

wall

129.8

12.1

24.5

129.7

12.2

35

141-85

141-85

11.31  
35.2  
House

conc. walk

Top wall

11.90

11.90

26

30.9

4.2

11.

25.2

26

30.9

11.31

35.2

House

0+83 Westly of Dbl garage 26.1 Rt dirt floor  
see Note

130.5  
11.4 11.8  
26.1 46.7  
garage

0+72 Lt  
20.7 most sly. of conc brick & stone Walk

146.1  
+4.2 +3.20  
34  
ground  
at house

0+60

145.2  
+3.3  
34  
House

144.4 144.1 139.8  
+2.5 +2.2 2.1  
25 20.5 6  
144.35  
138.9  
3.2 8.3 11.4 12.0  
31 23 25 40

0+59 22.8 Lt L in brick Walk

+2.50  
+1.70  
22.8

0+58 end of Ret. wall 75.4 Sdgc Rt

133.33  
8.52  
22.4 Rt

0+56 21.0 Rt 6" Peppor

0+42 21.0 Rt 8" Peppor

0+39 31.1 Rt end of conc walk

0+33 end of house 35.2 Rt

130.13  
11.72  
31.1  
conc walk  
cor

141.95

141.85

1 + 30

1 + 21

1 + 17

138.4

Concret 4" Steps left

1 + 10

25.1 conc block wall

1 + 02

18.7 Rt beg row Cypress 6' on of

1 + 00

2.0" band of board fence

end of garage on Lt. 25.5

beg conc wall 25.1 in process of Const.

0 + 84

18 Lt Pole no number 19.7 R 10" Poffor

TP

7.63

146.30

318 138.67

141.85

Keating

148.9  
+2.6 40  
147.7  
+1.4 25  
137.9  
8.4 5  
9.3  
137.0

128.96 17.34 129.10 17.14  
46.2 25.6  
133.5 29  
131.9  
130.2  
135.18 13  
23 24  
11.12 25.1  
17.15 17.22  
14.4 16.1 11.09  
135.10 135.15 129.08  
142.10 25.6 46.5  
4.17 27.1  
135.25 129.6 ps  
11.05 16.7  
25.1 26

steps

left.

148.7

146.3

145.2

100.8

139.7

138.5

138.4

134.5

132.4

130.1

+2.4

0.0

1.1

5.5

6.6

7.8

7.9

11.8

14.16

16.2

40

25

21

13

4

10

14

443

25

Top of wall

12 9.5  
16.8  
40

146.30



1+96 28.7 ft E end of garage  
 1+86 20.5 ft Tel Pole P 32395 T  
 1+85 30.5 ft of 6" Euc  
 1+79 end of walk 21.4 ft 29.4 ft bag  
 1+75 16.5 ft end of row of spruce

1+70 37 ft  
 28.1 ft Cor of House foot East

1+62 of 85 ft 3.5 Cement Steps

1+49 25.0 ft end of conc. wall - 28.4 ft bag  
 & bag flagstone walk

0+41 36.8 ft bag Porch & House

146.30

109.8  
 +2.5  
 Cor  
 house  
 371

155.8  
 +2.5  
 33

146.6  
 0.7  
 32  
 rough  
 conc  
 slab

142.4  
 3.9  
 33

135.5  
 8

135.0  
 11.3

house end of conc slab

151.2  
 +4.9  
 floor  
 36.8

146.30

131.5  
 14.8  
 21.4  
 steps

131.5  
 14.8  
 25.5  
 steps

130.70  
 15.60  
 29.4  
 180.00  
 129.3  
 180.00

at end of walk

135.0  
 131.8  
 130.6  
 129.40

11.7  
 14.5  
 157  
 16.99  
 170

9  
 15  
 21.8  
 22.2  
 rub wall  
 wall

135.19  
 11.12  
 8.5  
 Top steps

130.12  
 16.18  
 17.2  
 bot

130.15  
 16.15  
 porch  
 steps

130.6  
 15.69  
 88.1  
 house  
 floor

129.5  
 16.8  
 22.0  
 flagstone  
 wall

135.19  
 11.11  
 25  
 25.5

129.56  
 16.74  
 25.5

Keating

0 + 10 317 Lt cor House

2 + 50<sup>39</sup> = E. line Linwood  
= 00 ahead

+ 43 E. edge of Drive

+ 35<sup>39</sup> W. edge of drive

2 + 33<sup>39</sup> beg. cen. apron wing

T.P. 6.69 140.29 12.70 133.60 Sec p  
48

2 + 35<sup>39</sup> of Linwood

2 + 00<sup>39</sup> W Line Linwood

146.30

137.2	138.3	136.7	134.7	133.9	133.2	133.0	131.4	131.1	122.9
14	2.0	3.6	5.6	6.4	7.1	7.3	8.9	9.2	17.9
31.7	25	20	18	12	7	3	9	28	42
Cor House									Top
2.0	3.7	5.2	6.9	8.4	12.2	18.0	18.2		
25	19	17	15	25	39	40			

8.4	9.40	13.45	12.8.1	126.84
7.6	11.6	8.28	9.11	131.18
8.30	8.5	12	25	127.16
8.5				

137.55	135.62	140.29	133.3	127.7	123.2
8.75	10.68	12.4	13.0	18.6	23.1
25	14.6	9	25	40	
	end of oil				

139.2	135.2	136.2	134.1	132.0	130.8	123.8
11	11.1	12.1	12.2	14.3	15.5	22.5
25	16	9	18	25	40	

146.30

0+74 PPale 18.6 Lt P3612  
 0+69 Cactus 19.5 Lt very large  
 0+56 25.7 Lt Cor Picket fence  
 0+54 14.9 Lt of 10" Apricot  
 0+50 31.6 Lt end of house

0+40 30.3 Rt end of house  
 0+17 30.5 Lt of Wooden Steps  
 0+16 30.5 Rt beg stucco house

140.29

140.3  
0.0  
31.6139.5  
0.7  
31.6  
house

139.7 136.4 134.5 133.1 132.7 132.8 130.8 131.1 131.2  
 1.6 3.9 5.8 7.2 7.6 7.5 9.4 9.2 9.1  
 25 19 17 10 9 12 25 30.3  
 cor of house  
 143.38 139.49  
 +30.9 0.80  
 floor of house Top of bottom step  
 30.5

30.5 142.38  
 12.6 139.49  
 17.9 38.9

131.2  
 9.1 777  
 30.5 floor

140.29

## Keating

33

B + 100<sup>10</sup> West line of guy

1 + 90 195' Rt to Center T. Pale # 70598H

1 + 70

1 + 30

1 + 00

0 + 98

E of garage 26.7H

0 + 78

W. of Dbl gar 26.3H

0 + 75

740.29

	148.6	140.5	135.6	134.7	133.8	129.3	124.5
	+ 4.3	+ 0.2	4.7	5.6	6.5	11.0	15.8
	40	25	14		9	25	40
	136.0	139.7	134.3	133.7	132.5	129.3	128.0
	4.3	0.6	6.0	6.6	6.8	11.0	12.7
	40	25	12	4	13	25	40
	144.1	138.7	134.2	132.6	132.4	123.9	119.8
	+ 3.8	1.6	7.1	7.7	7.9	17.4	20.5
	40	25	12	4	25	40	
	143.2	138.8	134.4	132.8	132.6	125.3	118.8
	+ 2.9	1.5	5.9	7.5	7.7	15.0	21.5
	40	25	10	7	25	37	
	142.3	137.9	134.7	133.2	133.0	129.2	115.6
	+ 2.0	0.9	6.6	7.1	7.3	8.8	10.9
	40	23	16	9	10	27	25
							46
							706

140.29

1+00 why con. A wide 21.9  
steps & wall & walk

+416 150.69

40.3

Top of wall

+ 73 1834 PPole 3664

+50

149.0	143.9	139.3	138.5	132.2	129.8	125.1
+2.5	2.6	7.2	8.0	14.3	16.7	21.4
40	25	16		15	25	40

Keating

144.33	141.20	140.99	140.3	139.6	139.7	132.0	129.4	126.1	34
220	533	554	62	69	6.8	145	18.1	19.8	
Top of wall	24.9	21.9	21.9		14	25	28	40	
Steps									

9.30 46.53 3.06 137.23

set bench RR spike PPole N.W. Guy & Keating

+50' E=East Line Guy = 00 ahead

145.6	142.1	138.8	136.1	136.8	129.5	125.0
+5.3	+1.8	1.5	3.2	3.5	<del>17.0</del>	15.3
40	25	15		4	25	40

+25' E of Guy

145.4	141.9	137.6	136.0	135.5	131.2	129.8	124.7
+5.1	+1.6	2.7	4.3	4.8	9.1	10.5	16.0
40	25	14		4	20	25	40

+02' E

1594 PP P3648

140.29

2+00 <sup>12</sup> W Line Puterbaugh  
18-2 Lt P Pole P 3698

152.0	147.4	141.6	140.9	135.9	130.6	126.1
+5.5	+0.9	4.9	5.6	10.6	15.9	20.4
40	25	16		10	25	40

0+60

151.0	149.2	144.8	140.8	141.5	135.0	132.3	128.1
+5.5	+2.7	4.7	5.7	5.0	11.5	14.2	18.4
40	25	18		4	15	25	40

0+50

25 Lt end of conc ret wall

147.26	141.0
+0.73	4.5
Top of wall	25

0+40

150.6	147.33	141.7	140.9	140.5	140.6	134.6	129.1
+4.1	+0.80	4.8	5.6	6	5.9	11.9	17.4
35	25	25	15	0	17	25	40
Top Wall							

0+30

25 Lt Beg con retaining wall  
End apron and apron 22 2 Lt for 25 Lt

147.41	142.4	141.14	140.6
+0.88	5.29	5.39	
25	25	22	
Top of wall	floor	apron	

1+06 Beg 3 car garage 24-6 Lt conc floor

141.18	141.03
5.35	5.51
floor	apron
246	22

146.53

146.53

+34 end of wall 55 ft

0+17 BC of wall

0.4	2.6	36.4	9.4	10.4	11.2	19.9	23.1	27
40	33	21.2	25.2	5		15	25	40
		Top Wall	foot of wall					
						<u>153.85</u>		

TP. 10.87 153.85 3.55 142.98

TP on Pole spike P3698 NW cor Peterborough

0+015 Beg wall 24.8

+3.23	2.6
Top Wall	24.8 ground

also of conc steps 24 ft 3' wide  
50 E = E line Peterborough  
= 0+00 ahead

155.08	144.68	143.9	142.9	142.6	135.2	130.0	125.5
+8.55	18.5	2.6	3.6	3.9	11.3	16.5	21.0
44	Top of	24	20		10	25	40
Top of step	bottom step						

25' East of Peterborough

151.9	142.1	141.8	139.6	130.1	125.0		
+5.4	2.2	4.4	4.7	4.7	11.9	16.4	21.5
40	25	23	12		12	25	40

146.53

146.53

Keating

1+17 31 ft Jag in wall  
 25 0.99  
 on ground on wall  
 40 40

157.4 153.25  
 52.86 150.3  
 149.8  
 149.2  
 148.7  
 147.7  
 141.0  
 129.9  
 137.9  
 137.9  
 140

1+00 } beg conc wall 30.5  
 beg rubble wall  
 end of wall 25.7  
 24.7 ft. end of Pipe  
 154.3 152.77  
 1+00 } Pole 1.85 ft. Pipe 24 405 1.08  
 40 TOP  
 20.5  
 conc wall

153.2  
 152.87  
 152.87  
 147.8  
 147.7  
 146.2  
 141.2  
 128.7  
 126.5  
 124.2  
 2.9 7.87 6.2 6.1 7.7 12.7 25.3 27.4 29.7  
 2.57 2.4 4 7 7 85 89 40  
 Top conc wall  
 flow Pipe  
 2417

+69 cross 15" conc pipe

153.2  
 152.21  
 147.0  
 146.0  
 9.40 10.92  
 Top of Pipe flow  
 Pipe 13 ft  
 13 4.5  
 13 11.5  
 12.80  
 0.6 1.64 6.9 7.8  
 40 25.8 257 7  
 9.6 19.4 12.4 25.8  
 14 25 40  
 Top Wall

0+62 EC of wall

447 49.8 leg circular ret. wall  
 end of conc steps 3' wide

153.2  
 150.70  
 150.55  
 3.28  
 49.8  
 3.30  
 150.57  
 149.75

+37 43.3 ft apron 55 ft to Sing gar  
 concrete floor

3.15 49.7 4.10  
 55 43.3  
 153.85  
 148.52

153.85  
 148.52  
 now



2 + 25 08

of Torrence

+5.9  
40

172.1

2 + 00 08

w. line Torrence

+24  
40

168.5

+ 84 end of house 27 Lt

1 + 65

1324 166.17  
w. line 0.92

152.93  
~~145.64~~

1 + 56 car barn 25.6 Lt

1 + 50 of step 22.3 Lt 3.6 wide

1 + 35

153.85  
~~146.53~~

### Keating

+3.7	+1.6	2.6	2.4	3.1	3.1	12.1	14.0	20.4	38
25	21	20	12	163.1	4	20	25	40	146.8

151.64.7	164.3	158.8	159.2	159.2	153.1	152.3	150.3	146.8	14.15
34	23	14	51	7.0	17	21	25	40	24.6

95	12	12.6	12.4	18.3	24.0	30.0
27	25	15	16	25	40	136.17
house						

153.29  
0.56  
28.6  
152.49  
136.26  
22.3  
platform

0.88  
22.4  
apron  
140  
152.25  
22.3  
platform

+1.96	2.4	3.1	3.5	11.7	14.6	22.0
40.7	40.7	25	14	25	40	131.7
top	bot wall					

153.85  
~~146.53~~



1 + 38

197.0	197.3	189.6	185.0	180.3	181.0	180.7	179.0
+6.5	+6.0	1.8	6.3	7.0	9.5	10.6	12.3
50	40	25	12		14	25	40

1 + 32

184.3	184.3	184.1	173.4	181.1	181.5	180.4	179.3
7.0	7.0	7.2	7.9	8.2	9.8	11.9	13.0
40	25	20		5	10	25	40

1 + 00

21.74 P3774

183.7	180.5	180.3	179.5	180.1	180.9	176.3	175.4
7.6	10.8	11	11.8	11.2	11.4	15.0	15.9
40	25	18		2	14	25	40

TP

12.97

191.33 0.44

178.36

191.33

+ 85

180.4	179.2	177.7	177.8	179.1	172.3	171.2	167.5
+1.8	+1.6	+0.4	1.1	+0.7	6.5	7.6	11.3
40	33	25	14	7	18	25	40

+ 77

end of wall 75

185.8	185.1	182.8	176.6	176.8	177.2	166.6	165.7	162.9
+7.0	+6.3	0	2.2	2.0	1.6	12.2	13.1	15.9
50	37	25	14		5	20	25	40

178.80178.80

2+25  $\frac{1}{2}$  Neal

878 200.92 1081 192 14

2+25

$\frac{1}{2}$  Neal

12.26 202.95 0.64 190.69

2+05

2+00 W Line Neale

1+80

191.33

Keating

196.9	193.8	193.2	12.14	191.6	191.6	189.2	183.4
4.0	7.1	7.7	878	93	93	117	175
40	25	19	15	29	25	40	

200.92

1081  
MH

41

196.0	194.2	192.7	190.7	189.5	186.1	190.9
+4.7	+2.9	+1.4	0.6	1.8	5.3	10.4
40	25	19	20	25	40	

199.2	194.5	193.8	191.9	190.5	189.5	186.0	180.6
+7.9	3.2	+2.5	+0.6	0.8	1.8	4.3	5.3
40	25	24	16	19	25	29	40

197.5	195.9	194.0	190.0	189.5	189.8	189.5	181.8	177.9
+6.2	+4.6	+2.7	1.3	1.8	1.5	1.8	9.5	13.4
40	36	25	17	5	18	25	40	

191.33

07 #1 -  
 TP. 0.20 188.27 12.85 188.07

3+50

10.1	8.5	1.6	0.3	1.1	1.7	8.9	13.4
40	35	25	17		9	25	40
190.8	192.4	199.3	200.5	199.8	199.2	192.0	187.5

300

9.7	+ 2.0	0.7	2.3	2.9	7.7	15.3
40	25	17		16	25	40
210.6	202.9	200.2	198.6	198.0	198.2	185.6

2+55

+2.9	1.6	4.5	6.2	6.7	6.2	9.1	19.4
40	25	17	13		20	25	40
203.8	199.3	196.4	194.7	190.6	194.7	191.8	181.5

2+50

East of Neal

$$\frac{100.6}{25} = 7.28$$

3.0	5.5	5.9	7.0	6.5	9.5	12.7	17.9
40	25	22		20	25	32	40
197.9	195.4	195.0	193.9	192.4	192.4	188.2	183.0

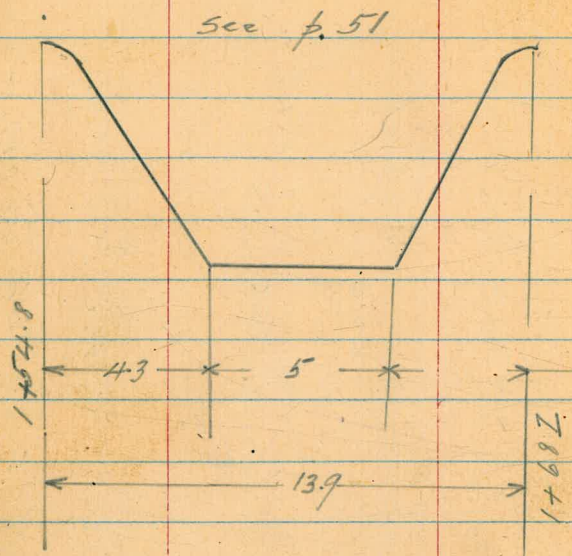
2+38

Curb line Neal

0.32	7.60	6.9	7.9	8.1	9.4	13.0	17.0
50	25	25		21	25	34	40
200.60	193.32	194.0	193.0	192.8	191.5	187.9	183.9

200.92

200 92



154.8  
130  
16.87

	1.58	176.86	12.57	164.33
TP	0.19	188.05	12.77	175.28
TP	9.89	200.53	12.67	187.86
TP	12.17	197.62	6.98	190.64
TP		188.27	2.82	185.45

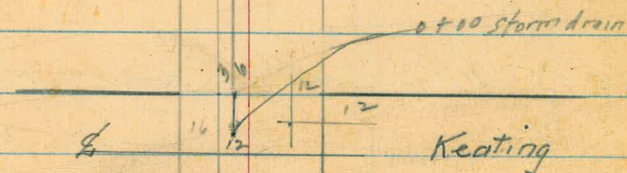
43

25  
16

Conc. ditch

offset line

Proposed storm drain



3+00.19

Linwood

25 25



164.32 Pringle & Linwood 13' Tack see p. 25

01

13' Tack  
13' Tack

X Section

0+22 So. End of Apron

0+15 162 R P.1799

0+05 N. end of apron of 2 car gar

0+00

INDEXED  
W. K.  
OCT 19 1949

-10

205  
cb  
50  
171.98  
170.90

9.21

173.53

164.32

Linwood

172.74  
0.79  
395  
171.15  
238  
244

5.16  
7.6

6.4  
10

Two steps  
3 wide

7.4  
33  
167.47  
6 wide  
165.85  
165.76  
44

0.86  
40  
floor  
174.77  
239  
24.4  
apron  
5.6  
14  
167.9  
7.2  
166.2  
8.2  
12  
165.3  
8.0  
15  
24.8  
cok apron  
8.6  
25  
Wall  
164.9  
8.16  
165.37

168.40  
5.13  
25  
168.00  
5.53  
15  
167.21  
6.32  
15  
166.02  
7.51  
15  
163.75  
9.78  
15  
164.20  
9.32  
cb  
164.39  
9.14  
25  
Wall  
165.23  
159.61

168.06  
5.47  
cb  
25.3  
167.59  
5.94  
25.3  
166.88  
6.65  
15  
165.55  
7.98  
conc  
164.01  
9.52  
15  
163.37  
10.16  
24.7  
164.20  
9.33  
24.7  
cb

173.53

Pringle & Linwood

Linwood

1+27 } beg. of conc. slab  
 } end of wall 25.2R

2 car gar

171.1	170.1	2169.2	167.7	166.9	167.1	165.65	164.9
2.6	3.6	4.5	6.0	5.8	6.4	8.02	8.8
33	25	21		11	15	25.0	36

1+24 25.2R by brick wall

9 pro  
 3.90  
 252

1+15 P. 17 81 16.6R

1+00

173.4	172.1	170.9	170.3	169.9	168.3	168.6	166.8	166.7	165.9
0.3	1.6	2.8	3.4	4.8	5.4	5.1	6.9	7.0	7.8
37	25	17	14		10	15	20	25.3	37

0+93 26 26 Ribbon drive

25R by fence  
 25 ft. end of wall

173.0  
 26  
 Conc.

172.24  
 26  
 Conc.

7.3  
 25

0+50

173.7	172.7	172.3	171.7	170.4	169.0	168.2	168.4	166.3	166.07
0.0	1.0	1.4	2.0	3.3	4.7	5.4	5.3	7.4	7.60
34	26	25	19	14		12	14	18	25

582 173.67 568 167.85

173.67

173.53

173.53



2 + 00

0.59 161.02 13.24

1.3 3.0 1.3  
37 rock wall  
25.5  
To south  
To north

160.43

1 + 96 beg end of apron 36° Rt

1 + 80 beg rock wall end of apron 25.5 Lt

1 + 70 30.7 beg conc slab of 3 car gar

1 + 52 25.2 beg 2 car gar

1 + 46 break in apron

173.67

157.95  
307 3.09 15 1.0 0.9 0.8 + 20 + 1.3 40.5  
24.7 205 walk 17 9 8 15 28 35  
161.02

165.01 164.82 164.6 163.8 163.7 164.8 163.0 162.41 163.60  
8.66 8.85 9.1 9.9 10.0 9.9 10.7 11.26 10.07  
30 25.5 conc. at top of wall 12 8 14 25 apron floor

165.94 164.93 165.5 165.4 164.7 164.76 164.68  
8.73 8.74 8.2 8.3 9.0 8.91 8.99  
29.4 25.2 conc. end of slab 12 9 25.2 30.5

170.5 168.9 167.8 166.7 165.74 165.64 165.07  
3.2 4.8 5.9 7.1 8.3 8.03 8.60  
40 25 18 23 25.2 38 floor gar

173.67

t60 20 Rt Euc #"

0.50 150.07 11.45 149.59

t50

130 130  
30 26  
147.0  
147.0

t36 24.5 beg rock wall

t28 & 43.5 ft single dirt floor

t22.5

7.0 6.7  
39 25

t22 end of wall & end of side walk 25 270  
39 Top wall

Rt 13

17 Rt P1763

Linwood

4.2	4.2	3.3	3.4	2.9	2.7	2.6	0.1	2.0	2.0	4.2
40	26	25	14	12	12	6	12	18	25	25
145.7	145.9	146.8	146.7	147.2	147.9	147.5	150.1	152.1	152.1	151.1

8.4	11.3	11.7	11.2	11.1	10.7	8.4	8.8	8.0
Top	25	14	11	11	6	16	25	33
25								

7.7	7.7	8.3	7.9	7.5	6.9	6.9	4.8	1.9
Top of wall	24.5	11	6	11	18	25	32	
153.8	153.3	153.3	152.7	153.1	153.5	154.1	152.1	156.2
7.9	4.9							
43.5								

5.89	5.89	6.4	5.6	5.1	4.9	3.9	2.8	1.7	1.7
25	Walk	20.4	11	8	19	25	30	40	
204									

161.02

47

Linwood

Storm Drain

Keating to Washington St.

Free way Storm drain

Keating

Proposed Storm drain

0+00

6 12

INDEXED

W.K.

OCT 19 1949

nail on Painted 4x4 post

0.48 <sup>194</sup> +43.09 7.68 133.61 133.60 See p.31

0.56 141.29 9.34 140.73

300<sup>19</sup> N. Line Keating

+95 175 Rt. P. 1753

+75

7.2	7.1	7.0	6.6	6.6	6.6	5.4	3.3	0.3
35	25	13	12	66	5	8	25	40
142.9	143.0	143.1	143.5	143.6	143.5	145.0	146.8	149.8
11.8	12.7	12.5	12.6	10.9	137.6	137.5	139.2	
25	11	10	25					
138.3	137.4							

150.07

150.07

Storm Drain

+69

+61.5 end of conc. Pipe 15 ft.

+55

+51 <sup>S.W.</sup> 4 ft cor of conc. Apron

+40 beg 6" conc. pipe on g. 234 fl

0-10 121.52 12.67 121.42

+13 = Prop. Line

0+00 = 125 if Keating & Linwood  
& 6 w. of g.

134.09

Linwood

111.2  
10.3

4.85 <sup>16.67</sup> Fine

2.6  
118.9

2.6  
118.9

1.8  
119.7

121.52

5.2  
125.6

131.3  
2.8

134.09

Storm Drain

Linwood

50

1.85 99.13 11.99 97.28

1+25

1+11

1+07

+80

0.48 109.27 12.73 108.79

121.52

99.13

11.4

102.4

6.9

103.5

103.5

5.8

108.3

108.3

0.9

109.27

Storm Drain

	1.93	133.57	<u>133.61</u> 04
11.52	135.50	0.44	123.98
13.39	124.42	0.43	111.03
12.55	111.46	0.22	98.91

1+687 edge of conc.

} bottom of ditch

1+54.8 edge of conc

1+41.8

99.13

Linwood

51

Trail on 44 Part see p 48

8 P. 13  
 10.40  
 4.82.65  
 14 4.8  
 14 84.55 4.8  
 10 88.25 4.8  
 3.1 96.0

sketch  
see p 43

99.13

3-17-50

Moore Xsec Alley 20' wide

8099 Sherman Blk 52 Fairmont Add

Crawford Map # 1035

# XVO 31742 FB 1311-27

INDEXED

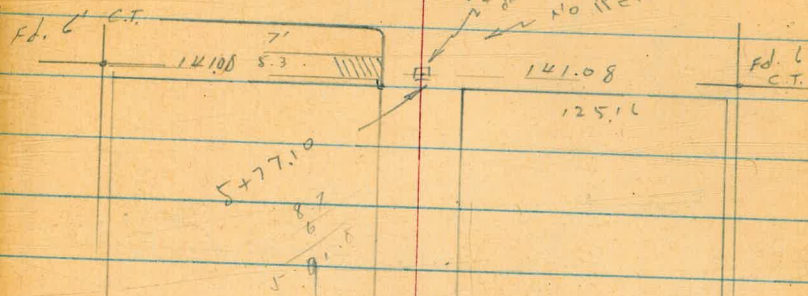
MAR 20 1950

REDUCED 3-23-50  
P.V.S.

Orange

Ave NOT PAVED

52

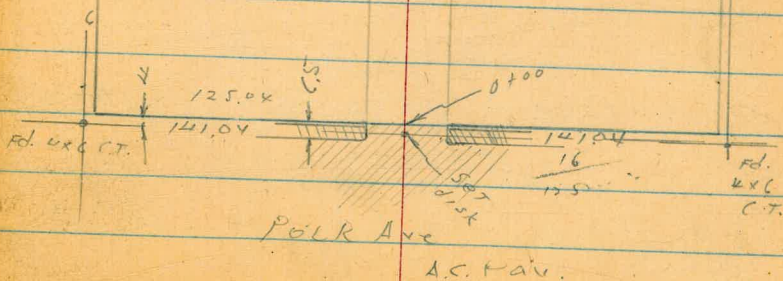


Chammond Ave

BLB 52

Fairmont Add

W C 7 1/2 ST



0 + 25

349.2  
4.1  
20

348.8  
4.5  
10

348.5  
4.8  
10

348.6  
4.7  
10

348.6  
4.7  
25

0 + 00 NL of Polk 10 lb Bg Picket F

348.37  
4.45  
66

348.53  
4.79  
10.16  
9

348.44  
4.88  
9

348.93  
4.89  
7.82  
9

348.81  
4.51  
9.12  
6

0 - 65

349.02  
4.30  
66

348.49  
4.83  
5.09

348.90  
4.42  
66

348.38  
4.94  
12  
30

348.32  
5.00

348.27  
5.05  
12  
2.9

348.84  
4.48  
66

348.07  
5.25  
9

348.59  
4.72  
50  
66

00 - 20 of Polk

348.90  
4.42  
50

348.65  
4.67

348.22  
5.10  
50

BM 3.62 353.32 5.00 349.70

T.P. 3.72 354.72 5.16 351.00

BM. NW-BP 2.22 356.16 353.94

Orange  
4  
46.15 13.11 7

353.32  
NW-BP Polk & Stormore



0+99.5 { Pole 9.2 L PA 4121  
 Pole 9.6 R JPA-4120

0+97 12 Rt end House

$\frac{349.8}{3.5}$ 20	$\frac{349.2}{4.1}$ 10	$\frac{348.9}{4.4}$	$\frac{349.0}{4.3}$ 10	$\frac{349.3}{4.0}$ 30
---------------------------	---------------------------	---------------------	---------------------------	---------------------------

0+80 12 Rt beg house

0+74 Nord of Dbl gar

$\frac{348.9}{4.4}$   
14

0+72 S gar 18 ft 9 wide

$\frac{349.42}{3.90}$ 15.2 07 Ramb	$\frac{349.06}{4.26}$ 10 0076 apron	$\frac{348.6}{4.7}$	$\frac{348.9}{4.4}$ 10	$\frac{348.9}{4.4}$ 14	$\frac{348.2}{4.6}$ 30
---	--	---------------------	---------------------------	---------------------------	---------------------------

0+67 end of Fence 10.1 L

0+54 14 Rt 5 Line Bbl gar det floor

$\frac{348.9}{4.4}$ 10	$\frac{348.5}{4.8}$	$\frac{348.8}{4.5}$ 10	$\frac{348.8}{4.5}$ 14
---------------------------	---------------------	---------------------------	---------------------------

353.32

353.32

10/bag Board fence  
 10 L end of wire  
 9.3 Lt Pole PA#4135  
 bag Picket 10.5R  
 end of Picket 10 R

1+00

399.2  
 3.6  
 10  
 349.0  
 4.0  
 7  
 349.2  
 4.1  
 10  
 349.2  
 3.6  
 10  
 349.3  
 4.0  
 35

55

1+61

349.5  
 3.8  
 10  
 349.12  
 4.2  
 MH  
 10  
 349.3  
 4.0  
 35

1+60 { end of Patio 10 Lt  
 end of Picket 10 L 10L Bag wire fence

350.10  
 3.8  
 10

1+50 bag Picket Fence 10.1 R

1+37 end of out House 11.9 R

350.05  
 3.87  
 10.1  
 349.5  
 3.8  
 10  
 348.9  
 4.4  
 10  
 348.9  
 4.4  
 10  
 348.9  
 4.4  
 30

1+20 10 Lt Bag Picket bag corer Patio

350.04  
 3.8  
 10

1+13 bag out house 11.8 R

353.32

353.32

B + 70  $\frac{1}{2}$  S gar 11.7 ft dirt floor

B + 63  $\frac{1}{2}$  walk

end of out base 11.7

B + 61 } beg Picket fence 10.4 ft

B + 56 10.3 ft  $\frac{1}{2}$  S gar dirt floor

B + 50 10.1 ft eng bd fence

B + 41 { 10.8 ft beg out base  
10.8 ft eng bd fence

B + 33 10.8 ft beg board fence

B + 20 S garage 21 ft - 12 wide

B + 08 10.5 ft and Picket

TP 848 357.83 397 349.25

353.30

Lt

d

R

350.8  
7.0  
11.7  
350.93  
6.90  
11.7

350.1  
7.7  
10

350.0  
7.8

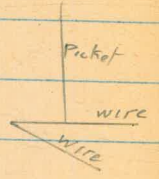
350.1  
7.4  
10

352.20  
563  
21

357.83

353.30

3 + 35 } 12.9 R beg Picket  
 10.3 Rt



3 + 16 } 5 gar 9.8 ft apron 10 wide

3 + 12 } 5 gar 17.5 Rt 10 wide

2 + 98 } 10.4 R angle wire  
 9.9 ft angle in Picket  
 9.1 L P Pole PA 4151

2 + 88 } beg wire 10.4 R  
 end Picket 11.7 R

2 + 85

2 + 75 } 11.7 R beg Picket

357.81

351.4  
 6.4  
 15  
 351.71  
 6.12  
 13  
 floor

351.4  
 6.4  
 10

351.1  
 6.7

351.6  
 6.2  
 10

351.6  
 6.2  
 15

351.47  
 6.36  
 17.5

350.8  
 7.0  
 15

350.1  
 7.1  
 10

350.4  
 7.2

350.2  
 6.9  
 10

351.1  
 6.7  
 30

357.83

3+99 9.2lt Ppk \$PA41 67

3+94 end dbl gar 13.5 ft

beg Picket 10.6 ft  
beg dbl gar 13.6

3+76 end wire fence 10 ft

3+74

3+73 Nord gar 12.2 ft

3+49 Snd apron 12.2 ft

3+45 12 ft end Picket

3+34 9.4 Lt ang wire fence

3+26 14.5 Lt beg wire fence

357.83357.83352.99  
4.84  
13.5  
floor  
5.352.83  
5.00  
13.6  
floor352.5  
5.3  
10352.7  
5.4352.6  
5.2  
10352.2  
5.6  
30352.59  
5.24  
12.2  
apron 5.39  
12.2  
apron352.83  
5.06  
13.8  
floor  
352.77  
5.06  
13.8  
floor

4 + 66 beg dog house 13.6 R  
end of Lat Fence 13.6 R

4 + 57 S end DBL gar

4 + 57 beg Lat fence 13.6 R  
S end Patio 10.4 L  
end Picket 10.4 L

4 + 57 N. gar facing east 13.6 R

4 + 43 S end garage facing east 13.6 R

4 + 41 N end DBL gar 13.5 R

4 + 31 beg Patio

4 + 23 S End Dbl gar

4 + 25 { 9.8 L beg Picket  
10.3 L end Picket

4 + 23 13.3 R end of Picket

4 + 00 13.3 R beg Picket

357.83

353.47  
436  
13

353.40  
4.43  
114

353.75  
4.08  
10.4

353.55  
4.20  
10.4  
4.28  
10.4

353.63  
4.5  
10

353.30

353.4  
4.4

353.5  
4.3  
10

353.56  
4.27  
13.5  
353.41  
4.42  
13.3  
floor

352.8  
5.0  
15

352.9  
4.9  
10

352.9  
4.9  
357.83

353.1  
4.7  
10

5+25 beg con patio 10.1  
beg of Picket 10.1 Lt  
end of Picket 9.9 Lt

5+15

5+13

end tool shed 13 Rt

5+05

beg tool shed 13 Rt  
P Pole 9 Lt PA 4181

4+80

TP

5.02

357.38 5.47 352.56

4+75

104 beg lath fence  
13.2 Lt end of 261 gar

4+75

end of dog house 13.6 Rt

357.83

353.83  
3.55  
104

354.0  
3.4  
20

354.0  
3.4  
10

354.2  
3.2  
10

354.1  
3.9  
10

354.0  
3.4  
25

353.6  
3.8  
20

353.9  
3.5  
10

353.9  
3.5  
10

353.7  
3.5  
10

354.0  
3.4  
35

357.38

353.57  
4.76  
13.2

353.50  
4.33  
11.2  
96.10

357.83

BM

348 353.96 353.94  
or

5+91.8 curb line Orange as built

951

95 Lt end Picket

5+77.10 } 5L Orange

5+56 } eng gar facing Orange  
gar facing Orange  
beg house 13.8 R

5+51 } end Picket 135 R

5+50

5+34 } end conc patio

5+31 } beg Pio Fen 128 R

357.38

Orange 446

352.69 352.1  
4.69 5.3 5.2 5.0  
12 12 12 12  
cb352.88 352.70 353.2 353.7  
4.50 4.48 4.2 3.5  
9.5 9.5 10 10  
ground cb354.1 354.3 354.2 354.1 354.0  
3.2 3.1 3.2 3.2 3.4  
10 7 10 10 15

353.95

3.47  
10.1

357.38



Elevations on Exist. curb  
& Pav. Conds & Pine St

Walker  
Gregory  
G. Page  
R. Sisson  
15-29-50

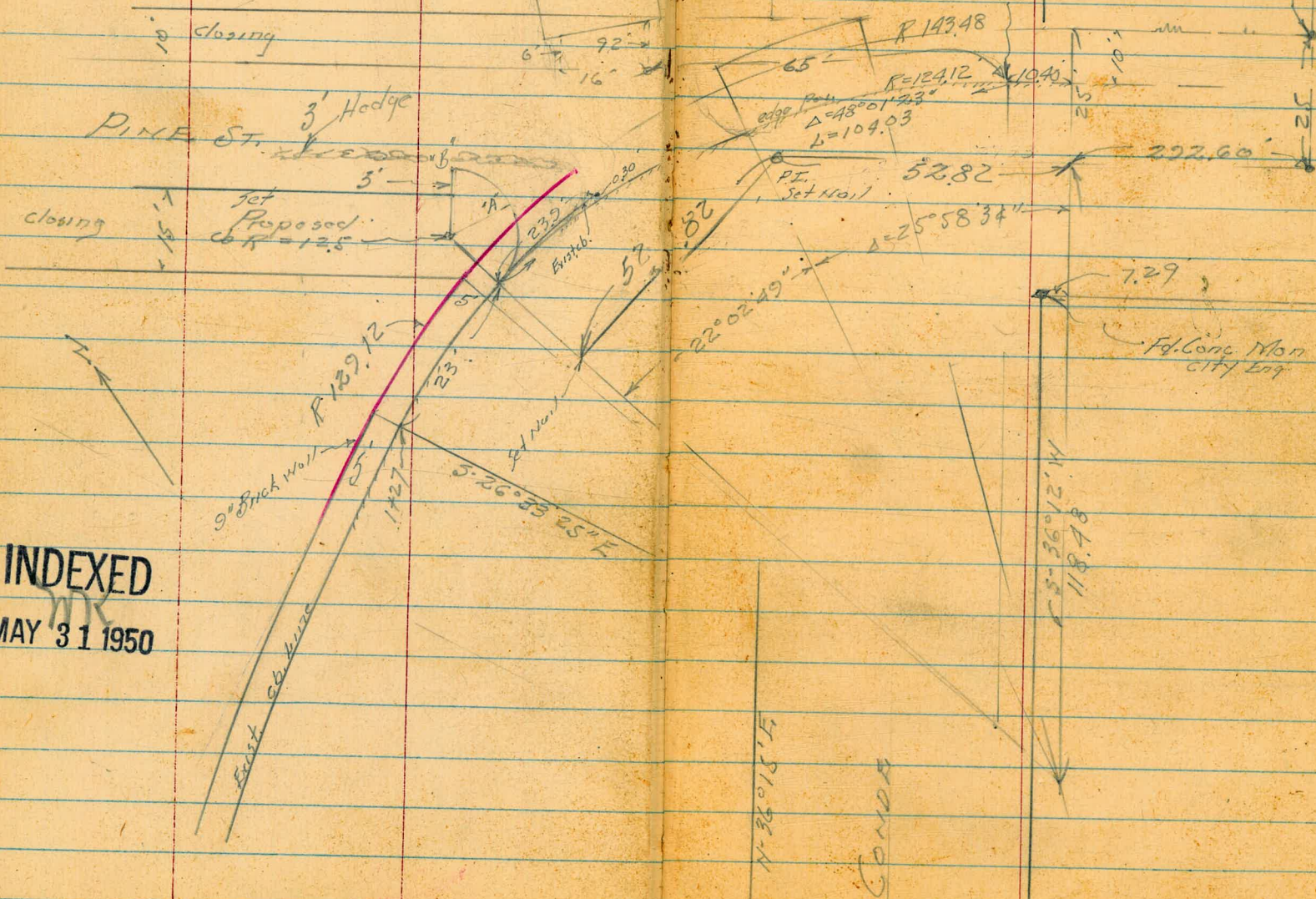
NO 25020

p-63  
Loc. 1107  
Dble.  
Cur.  
conc. Floor

INDEXED  
MAY 31 1950

12412  
0700

62  
115.32  
115.74



INDEXED  
MAY 31 1950

N 36° 15' E

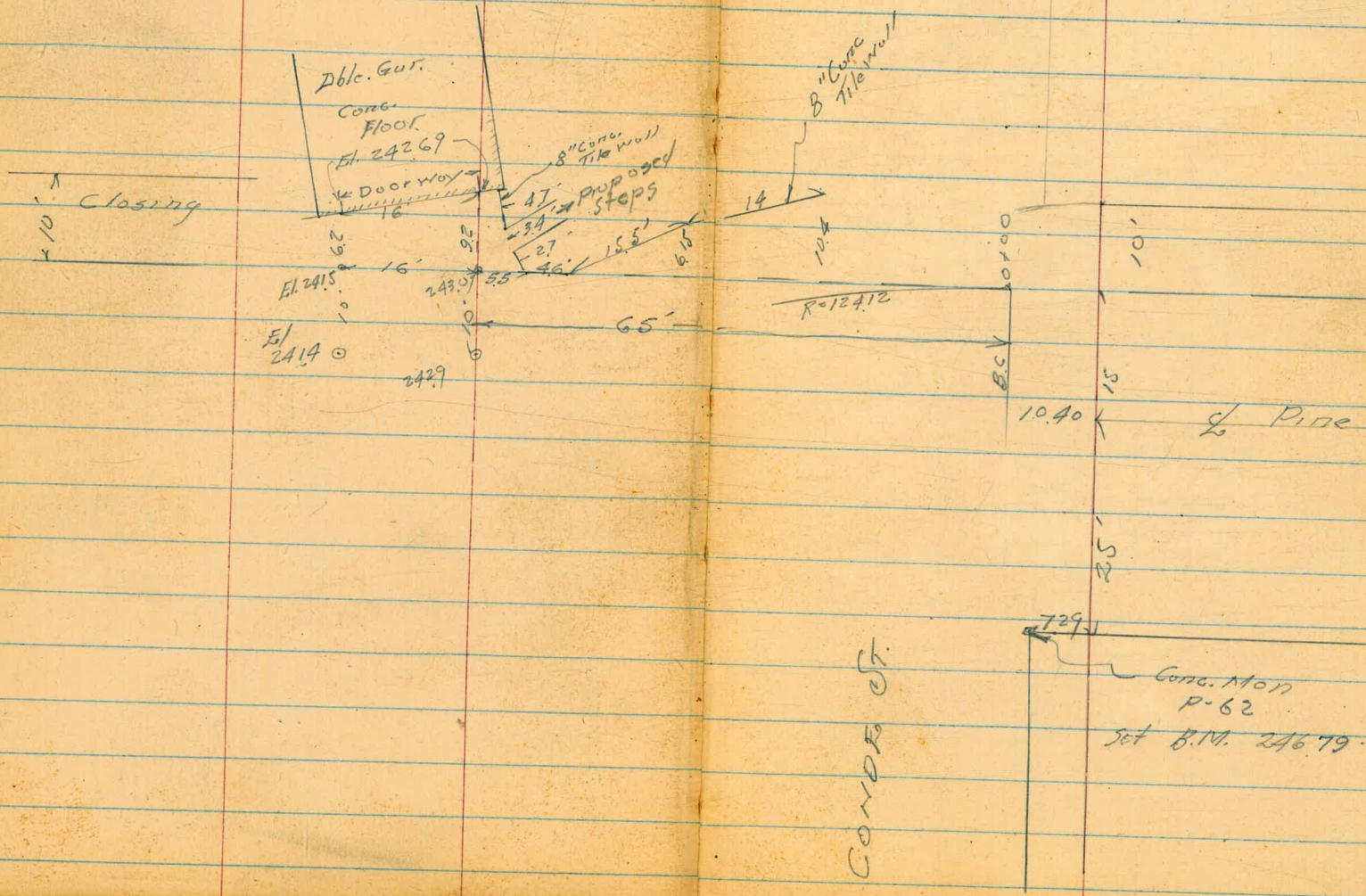
CONDA

Location East Garage

Condo & Pine

$R = 124.12$   
Radius

63



CONDO ST.

Cong. Man  
P-62  
set B.M. 246.79 - P-64

Condo Pl.

Lt.

$\frac{d}{2}$   
= 12.12  
Radius  
Line

Rt.

64

0+80.14 = Beg. exist. cb

24095 24102 24134 24134  
15 15 0 0.3  
Gut Top cb

0+69.36

24208 24231 2422  
15 07 dirt  
Pov edge Pov

0+52.02

24377 24406  
15 Pov

0+34.68

24543 24572 2458  
15 05  
Pov edge Pov

0+17.34

24684 24725 24737  
15 1' edge Pov

0+00

24762 24800  
15 Pov

0-20

24803 24823  
15 Pov

0-40

24819 24813  
15 Pov

246.79

Set B.M. on line Mort  
SELY Cor. Condo & Pine

T.P.

247.88

B.M.

Self Reading Rod

245.94

NELLY 7' tack Pine & Ariste

chk B.M. P-64

001  
245.94  
245.93

20' R.L. of "B" on closing wire El. = 239.9

15' R.L. of "B" El. = 239.5

"B" = E.C. Ret. <sup>Proposed</sup> El. = 239.2

"A" = Proposed Ret. El. = 240.0

1477

23588 23560 23609  
15 Gut cb

1427

23847 23807 23863  
15 0 0  
Gut. cb

140404

23945 23920 23976 23976  
15 0 0  
Gut cb  
on line  
at this Point

04867

24054 24052 24063 24093  
15 15 03  
Pave Gut. cb

3-30-51

Hendricks  
Allen  
Bruner  
NO# 25020

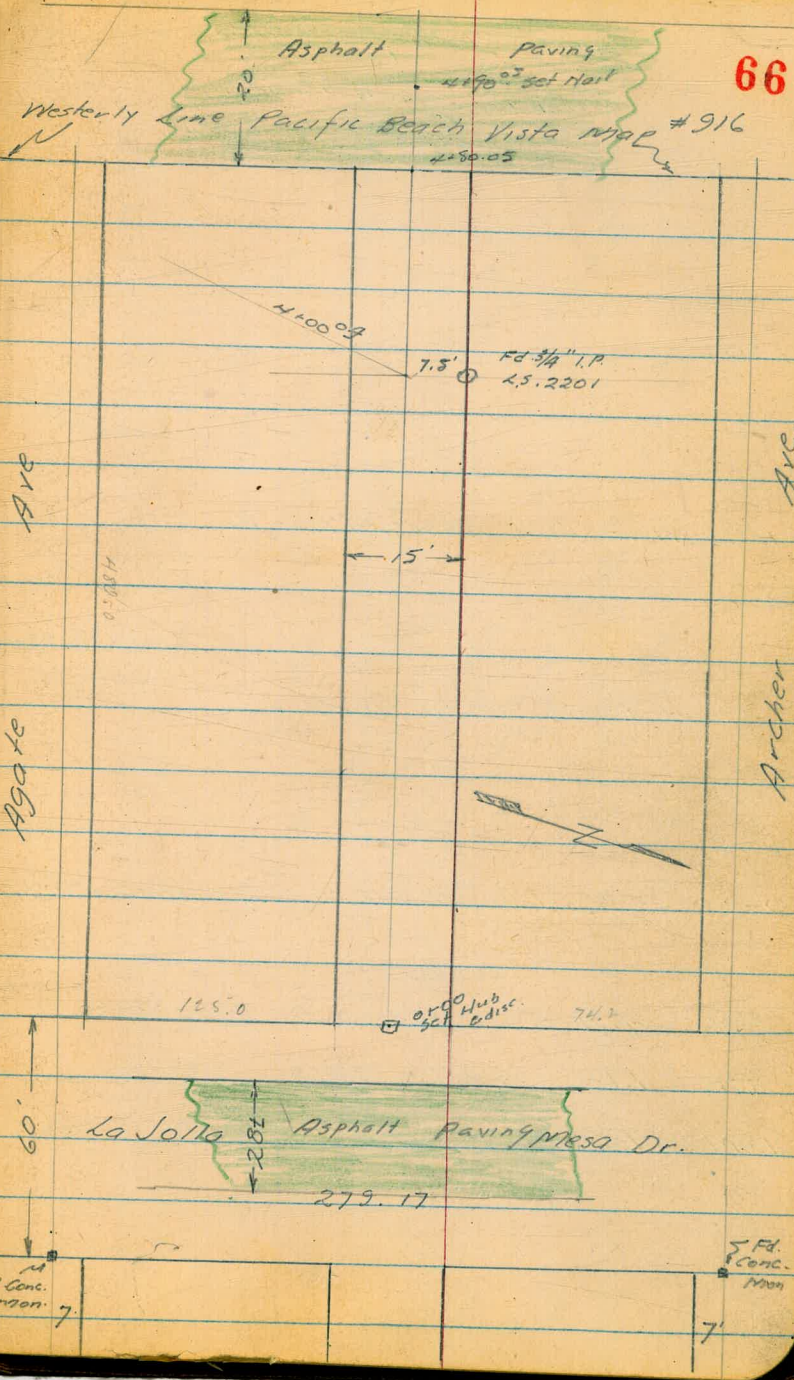
X Section 15' Alley Block 1  
Pacific Beach Vista Tract

66

INDEXED  
APR 2 1951

REDUCED BY  
R.W. DE HASS  
5-14-51

NEW NOTES PLOTTED  
7-10-51  
R.W.D.



FD Conc.  
1700.7

5 Ft.  
Conc.  
1700.7

Levels Alley Block 1  
Pacific Beach Vista

67

0+50

0+00 West Line La Jolla Mesa Dr

0-16 West Edge Asphalt paving

0-30 E La Jolla Mesa Dr. C & Asphalt Paving

T.P. 4.31 122.19 10.90 117.88

T.P. 1.16 128.78 13.08 127.62

B.M. 1.02 140.70 139.68

139.68 (F.B. 1201-A)

114.8 114.6 115.0 116.2 117.2 117.3 117.6 118.1  
262 26 7.3 6.0 5.0 4.9 4.5 118.1  
11 7.5 5 7.5 125  
Circ. Walk

116.0 117.6 118.1 118.1 118.8  
6.2 4.5 4.1 4.1 3.4  
35 7.5 7.5 35

115.51 117.05 117.31 117.55 118.95  
668 514 488 464 324  
50 7.5 7.5 50

116.49 118.07 118.31 118.57 119.95  
570 413 388 363 224  
50 7.5 7.5 50

122.19

E Hub 0+00 Alley Block 1 Pacific Beach Vista

L & disc. E La Jolla Mesa Dr. E South 7 Line Venters

Levels Alley Block 1  
Pacific Beach Vista Contd.

TP 1.70

12.68

3+00

2+79.4 Beg. Conc. Slab for 4 Car Garage 13.7' Lt

2+77 = N edge 3' Conc. walk

2+73 = Pole Anchor 6.5' Lt

2+50

2+49 = 1/2 Pole 6.5' Lt #A750

2+27.5 = 1/2 MH

2+30 det taken in ord

2+00

1+50

1+00

68

111.21

108.7  
13.5

108.9  
13.3

109.1  
13.1

109.5  
12.7

111.8  
10.4

137  
60

7.5

7.5

7.5

60

60

60

107.37  
12.82

13.7

floor

108.7

216.1

20

109

Walk

Walk

111.8

111.93

15

1.0

15

1.0

15

1.0

15

1.0

15

1.0

15

1.0

15

1.0

15

1.0

15

1.0

15

1.0

15

1.0

15

1.0

15

1.0

15

1.0

15

1.0

112.2  
10.2

112.8  
9.2

112.8  
9.2

112.8  
9.2

113.2  
9.2

114.9  
7.3

15

7.5

7.5

7.5

7.5

7.5

50

Good  
at House

113.5

113.6

113.4

114.2

114.5

115.0

30

15

7.5

5

7.5

7.5

114.4

114.5

115.6

115.6

115.7

116.2

7.8

7.7

6.5

6.5

6.5

6.0

30

10

7.5

7.5

7.5

27

122.19

Levels Alley Block 1  
Pacific Beach Vista Contd.

BM		204	(134.85)
T.P.	8.26	0.07	
T.P.	12.00	0.24	
T.P.	11.65	4.98	
T.P.	8.97	9.80	
4+90.05 & Paving			

East Edge Asphalt Paving

4+80.05 V.L. line Pacific Beach Vista

4+00

3+50

3+27

3+21 End Conc. Slab for 4 Car garage 136.11

TR

102.98

SE. B.P. Turquoise & Cass

69

101.79  
94.2  
50  
102.48  
87.3  
75  
103.93  
73.8  
7.5  
104.09  
71.2  
7.5  
105.64  
55.7  
50

102.01  
92.0  
50  
103.66  
75.5  
75  
103.93  
73.5  
7.5  
104.21  
70.0  
7.5  
105.66  
53.5  
50

104.4  
61.8  
65  
106.1  
51  
75  
106.7  
45  
7.5  
107.0  
43  
7.5  
108.2  
39  
40

107.3  
30  
107.5  
10  
108.3  
75  
107.7  
35  
7.5  
109.1  
35  
109.4  
2  
7.5  
109.31  
190  
13.6  
floor

111.21



Additional records Alley Blk 1  
Pacific Beach Vesta

orig. records P-67

Walker  
Pope  
Clark  
Hoffman  
6-29-51

W025020

INDEXED

JUL 3 1951

70

0+00

1159 1166 1172 1181 1182 1194  
50 13 75 75 50

0-15

1155 1170 11735 11758 1194  
50 75 75 50  
Pay Pay Pay Pay

0-30 L. Laguna Mesa Dr

11652 11812 11838 11865 12005  
50 75 75 50  
Pay. Pay. Pay. Pay.

0-43 = Hwy edge Asphalt Pav

11602 11755 11783 11812 11969  
50 75 75 50  
Pay. Pay. Pay. Pay.

0-55

1162 1176 1180 1184 1198  
50 75 75 50

0-60 = Hwy line

117.88

1182 1191 1187 1194 1208  
50 75 75 50

B.M. on 0+00 Hub P-67

Direct Entry Rod Used.

CROSS SECTIONS KEATING ST. FROM  
 125' E. OF TITUS ST. TO LINWOOD NLY.  
 SIDE W.O. 2/153

INDEXED  
 JUL 31 1953

NE C.T. Pringle

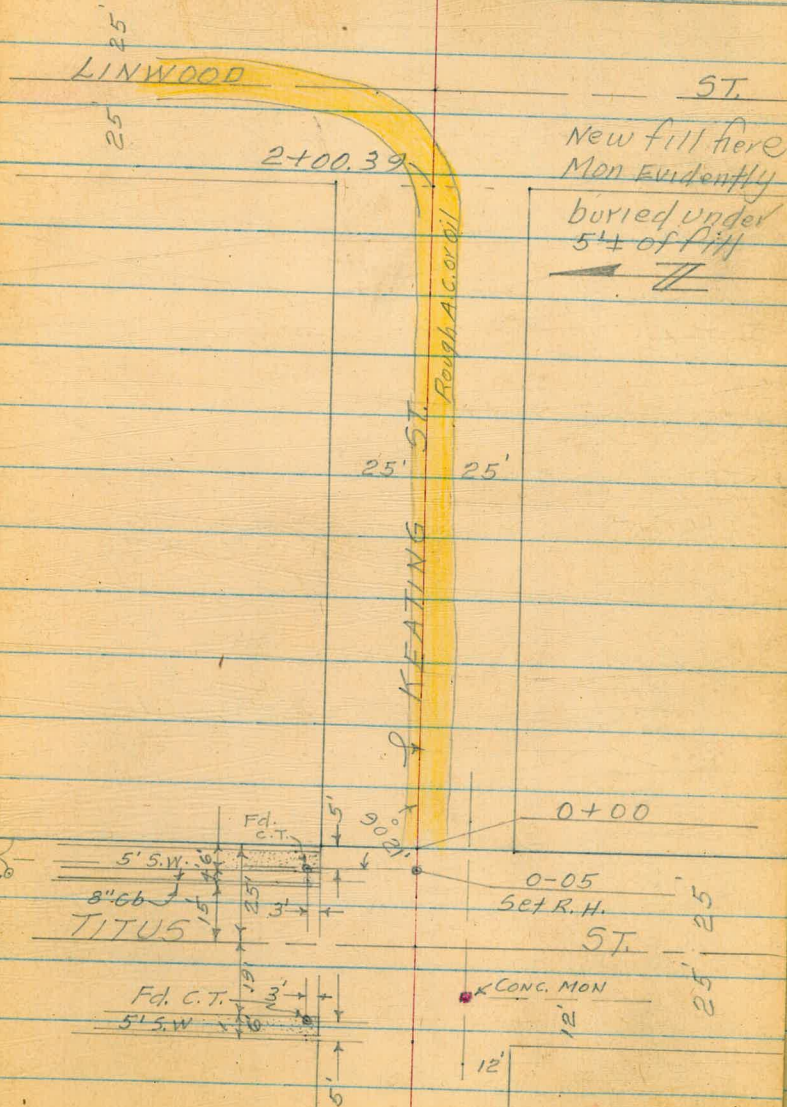
Fd. PIR  
 L.S. 22012 @ 25' Set R.H.

71

7-30-53

100' ±

T.A. Stampfer



CROSS SECTIONS OF KEATING ST.

2+09 & 14' P.P. No P-1753 - 30' Lt.

WD 21153

2+00.39 Wly Line Linwood <sup>145.5</sup> <sup>144.3</sup> (-2.1) (-0.9)

1+86 & 10" Tel Pole 20<sup>E</sup> Lt. No D32395-T <sub>42 35</sub>

1+85 30<sup>E</sup> Lt. & 7' Eucalyptus <sup>146.7</sup>

1+75 (-3.3) <sub>33</sub>

1+50

1+25 <sup>148.8</sup> <sup>147.7</sup> <sup>144.</sup> (-5.4) (-4.3) (-0.6) <sub>29 25 19</sub>

1+17 <sup>148.46</sup> (-5.00) <sub>27.1</sub>

12.11 143.46

B.M.

131.35

7-30-53

Stamp 72

Huffman

& Moralez

& Less

Lt. North

NOTE: Rods indicated (-0.0) are Plus & have to be added to H.I.

<sup>141.7</sup> <sup>139.4</sup> <sup>137.7</sup> <sup>135.3</sup> <sup>135.01</sup> <sup>134.26</sup>  
17 4.0 6.7 8.1 8.35 9.20  
30 25 18 15 14 0  
Top EP.

<sup>143.9</sup> <sup>140.2</sup> <sup>136.8</sup> <sup>135.3</sup> <sup>134.84</sup> <sup>134.74</sup>  
(-0.5) 3.2 6.6 8.1 8.62 8.70  
29 20 12 10 5 0  
EP.

<sup>148.3</sup> <sup>142.3</sup> <sup>142.2</sup> <sup>137.6</sup> <sup>136.22</sup> <sup>136.12</sup>  
(-4.9) 0.1 0.2 5.8 7.24 7.34  
30 23 20 8 4 0  
EP.

<sup>143.9</sup> <sup>142.1</sup> <sup>141.2</sup> <sup>138.2</sup> <sup>137.44</sup> <sup>137.44</sup>  
(-0.5) 1.3 2.2 5.2 6.02 6.02  
17 15 10 5 1 0  
EP.

<sup>142.14</sup> <sup>141.5</sup> <sup>140.7</sup> <sup>138.0</sup> <sup>137.76</sup> <sup>137.77</sup>  
(-5.00) 1.32 1.9 2.7 5.4 5.70 5.69  
27.1 13.8 13.8 7 3 1 0  
Top EP.

143.46

S.W.C.T. Keating & Titus (see Pg. 25)

X-SEC'S KEATING ST. CONTD.

7-30-53

73

Lt. North  $\leftarrow$

B.M.

1211 131.35 -  $\leftarrow$  131.35 (500 ft. 72)

2 + 25.39  $\leftarrow$  Limwood St.

270 472 845 90 97  
41 32 10 7 0  
EP

143.46

$\nabla$  143.46

74

The image shows an open notebook with two facing pages. The pages are cream-colored and feature light blue horizontal ruling. A vertical red margin line is present on each page, positioned approximately one-third of the way from the inner edge. The notebook is bound in the center with a yellow thread, which is visible as a vertical line with four distinct knot points. The pages are otherwise blank, with no handwriting or printed text. The number '75' is printed in red in the upper right corner of the right-hand page. The notebook is set against a dark background, and the edges of the pages are slightly rounded.

76

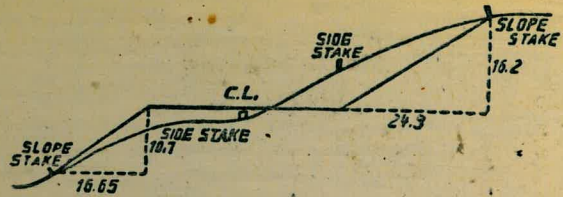
77



78

79

Pacific  
 43° 35' 30"  
 26  
 27  
 93  
 set 2+2 hub  
 RR



**DISTANCES FROM SIDE STAKES FOR CROSS-SECTIONING.**  
 SLOPE 1 1/2 TO 1. ROADWAY OF ANY WIDTH.

	0	.1	.2	.3	.4	.5	.6	.7	.8	.9	
0	0.00	0.15	0.30	0.45	0.60	0.75	0.90	1.05	1.20	1.35	0
1	1.50	1.65	1.80	1.95	2.10	2.25	2.40	2.55	2.70	2.85	1
2	3.00	3.15	3.30	3.45	3.60	3.75	3.90	4.05	4.20	4.35	2
3	4.50	4.65	4.80	4.95	5.10	5.25	5.40	5.55	5.70	5.85	3
4	6.00	6.15	6.30	6.45	6.60	6.75	6.90	7.05	7.20	7.35	4
5	7.50	7.65	7.80	7.95	8.10	8.25	8.40	8.55	8.70	8.85	5
6	9.00	9.15	9.30	9.45	9.60	9.75	9.90	10.05	10.20	10.35	6
7	10.50	10.65	10.80	10.95	11.10	11.25	11.40	11.55	11.70	11.85	7
8	12.00	12.15	12.30	12.45	12.60	12.75	12.90	13.05	13.20	13.35	8
9	13.50	13.65	13.80	13.95	14.10	14.25	14.40	14.55	14.70	14.85	9
10	15.00	15.15	15.30	15.45	15.60	15.75	15.90	16.05	16.20	16.35	10
11	16.50	16.65	16.80	16.95	17.10	17.25	17.40	17.55	17.70	17.85	11
12	18.00	18.15	18.30	18.45	18.60	18.75	18.90	19.05	19.20	19.35	12
13	19.50	19.65	19.80	19.95	20.10	20.25	20.40	20.55	20.70	20.85	13
14	21.00	21.15	21.30	21.45	21.60	21.75	21.90	22.05	22.20	22.35	14
15	22.50	22.65	22.80	22.95	23.10	23.25	23.40	23.55	23.70	23.85	15
16	24.00	24.15	24.30	24.45	24.60	24.75	24.90	25.05	25.20	25.35	16
17	25.50	25.65	25.80	25.95	26.10	26.25	26.40	26.55	26.70	26.85	17
18	27.00	27.15	27.30	27.45	27.60	27.75	27.90	28.05	28.20	28.35	18
19	28.50	28.65	28.80	28.95	29.10	29.25	29.40	29.55	29.70	29.85	19
20	30.00	30.15	30.30	30.45	30.60	30.75	30.90	31.05	31.20	31.35	20
21	31.50	31.65	31.80	31.95	32.10	32.25	32.40	32.55	32.70	32.85	21
22	33.00	33.15	33.30	33.45	33.60	33.75	33.90	34.05	34.20	34.35	22
23	34.50	34.65	34.80	34.95	35.10	35.25	35.40	35.55	35.70	35.85	23
24	36.00	36.15	36.30	36.45	36.60	36.75	36.90	37.05	37.20	37.35	24
25	37.50	37.65	37.80	37.95	38.10	38.25	38.40	38.55	38.70	38.85	25
26	39.00	39.15	39.30	39.45	39.60	39.75	39.90	40.05	40.20	40.35	26
27	40.50	40.65	40.80	40.95	41.10	41.25	41.40	41.55	41.70	41.85	27
28	42.00	42.15	42.30	42.45	42.60	42.75	42.90	43.05	43.20	43.35	28
29	43.50	43.65	43.80	43.95	44.10	44.25	44.40	44.55	44.70	44.85	29
30	45.00	45.15	45.30	45.45	45.60	45.75	45.90	46.05	46.20	46.35	30
31	46.50	46.65	46.80	46.95	47.10	47.25	47.40	47.55	47.70	47.85	31
32	48.00	48.15	48.30	48.45	48.60	48.75	48.90	49.05	49.20	49.35	32
33	49.50	49.65	49.80	49.95	50.10	50.25	50.40	50.55	50.70	50.85	33
34	51.00	51.15	51.30	51.45	51.60	51.75	51.90	52.05	52.20	52.35	34
35	52.50	52.65	52.80	52.95	53.10	53.25	53.40	53.55	53.70	53.85	35
36	54.00	54.15	54.30	54.45	54.60	54.75	54.90	55.05	55.20	55.35	36
37	55.50	55.65	55.80	55.95	56.10	56.25	56.40	56.55	56.70	56.85	37
38	57.00	57.15	57.30	57.45	57.60	57.75	57.90	58.05	58.20	58.35	38
39	58.50	58.65	58.80	58.95	59.10	59.25	59.40	59.55	59.70	59.85	39
40	60.00	60.15	60.30	60.45	60.60	60.75	60.90	61.05	61.20	61.35	40
41	61.50	61.65	61.80	61.95	62.10	62.25	62.40	62.55	62.70	62.85	41
42	63.00	63.15	63.30	63.45	63.60	63.75	63.90	64.05	64.20	64.35	42
43	64.50	64.65	64.80	64.95	65.10	65.25	65.40	65.55	65.70	65.85	43
44	66.00	66.15	66.30	66.45	66.60	66.75	66.90	67.05	67.20	67.35	44
45	67.50	67.65	67.80	67.95	68.10	68.25	68.40	68.55	68.70	68.85	45
46	69.00	69.15	69.30	69.45	69.60	69.75	69.90	70.05	70.20	70.35	46
47	70.50	70.65	70.80	70.95	71.10	71.25	71.40	71.55	71.70	71.85	47
48	72.00	72.15	72.30	72.45	72.60	72.75	72.90	73.05	73.20	73.35	48
49	73.50	73.65	73.80	73.95	74.10	74.25	74.40	74.55	74.70	74.85	49
50	75.00	75.15	75.30	75.45	75.60	75.75	75.90	76.05	76.20	76.35	50

THE NATIONAL BLANK BOOK COMPANY  
 HOLYOKE MASSACHUSETTS  
 NEW YORK CHICAGO BOSTON SAN FRANCISCO