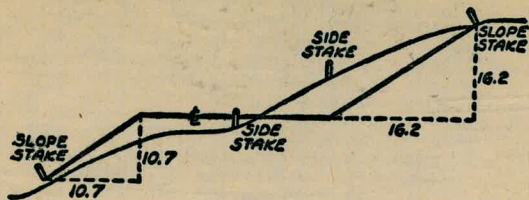




2015

4.77
 2.34
 1.99



DISTANCES FROM SIDE STAKES FOR CROSS-SECTIONING
 SLOPE 1 TO 1. ROADWAY OF ANY WIDTH

	0	1	2	3	4	5	6	7	8	9	
0	0.00	0.10	0.20	0.30	0.40	0.50	0.60	0.70	0.80	0.90	0
1	1.00	1.10	1.20	1.30	1.40	1.50	1.60	1.70	1.80	1.90	1
2	2.00	2.10	2.20	2.30	2.40	2.50	2.60	2.70	2.80	2.90	2
3	3.00	3.10	3.20	3.30	3.40	3.50	3.60	3.70	3.80	3.90	3
4	4.00	4.10	4.20	4.30	4.40	4.50	4.60	4.70	4.80	4.90	4
5	5.00	5.10	5.20	5.30	5.40	5.50	5.60	5.70	5.80	5.90	5
6	6.00	6.10	6.20	6.30	6.40	6.50	6.60	6.70	6.80	6.90	6
7	7.00	7.10	7.20	7.30	7.40	7.50	7.60	7.70	7.80	7.90	7
8	8.00	8.10	8.20	8.30	8.40	8.50	8.60	8.70	8.80	8.90	8
9	9.00	9.10	9.20	9.30	9.40	9.50	9.60	9.70	9.80	9.90	9
10	10.00	10.10	10.20	10.30	10.40	10.50	10.60	10.70	10.80	10.90	10
11	11.00	11.10	11.20	11.30	11.40	11.50	11.60	11.70	11.80	11.90	11
12	12.00	12.10	12.20	12.30	12.40	12.50	12.60	12.70	12.80	12.90	12
13	13.00	13.10	13.20	13.30	13.40	13.50	13.60	13.70	13.80	13.90	13
14	14.00	14.10	14.20	14.30	14.40	14.50	14.60	14.70	14.80	14.90	14
15	15.00	15.10	15.20	15.30	15.40	15.50	15.60	15.70	15.80	15.90	15
16	16.00	16.10	16.20	16.30	16.40	16.50	16.60	16.70	16.80	16.90	16
17	17.00	17.10	17.20	17.30	17.40	17.50	17.60	17.70	17.80	17.90	17
18	18.00	18.10	18.20	18.30	18.40	18.50	18.60	18.70	18.80	18.90	18
19	19.00	19.10	19.20	19.30	19.40	19.50	19.60	19.70	19.80	19.90	19
20	20.00	20.10	20.20	20.30	20.40	20.50	20.60	20.70	20.80	20.90	20
21	21.00	21.10	21.20	21.30	21.40	21.50	21.60	21.70	21.80	21.90	21
22	22.00	22.10	22.20	22.30	22.40	22.50	22.60	22.70	22.80	22.90	22
23	23.00	23.10	23.20	23.30	23.40	23.50	23.60	23.70	23.80	23.90	23
24	24.00	24.10	24.20	24.30	24.40	24.50	24.60	24.70	24.80	24.90	24
25	25.00	25.10	25.20	25.30	25.40	25.50	25.60	25.70	25.80	25.90	25
26	26.00	26.10	26.20	26.30	26.40	26.50	26.60	26.70	26.80	26.90	26
27	27.00	27.10	27.20	27.30	27.40	27.50	27.60	27.70	27.80	27.90	27
28	28.00	28.10	28.20	28.30	28.40	28.50	28.60	28.70	28.80	28.90	28
29	29.00	29.10	29.20	29.30	29.40	29.50	29.60	29.70	29.80	29.90	29
30	30.00	30.10	30.20	30.30	30.40	30.50	30.60	30.70	30.80	30.90	30
31	31.00	31.10	31.20	31.30	31.40	31.50	31.60	31.70	31.80	31.90	31
32	32.00	32.10	32.20	32.30	32.40	32.50	32.60	32.70	32.80	32.90	32
33	33.00	33.10	33.20	33.30	33.40	33.50	33.60	33.70	33.80	33.90	33
34	34.00	34.10	34.20	34.30	34.40	34.50	34.60	34.70	34.80	34.90	34
35	35.00	35.10	35.20	35.30	35.40	35.50	35.60	35.70	35.80	35.90	35
36	36.00	36.10	36.20	36.30	36.40	36.50	36.60	36.70	36.80	36.90	36
37	37.00	37.10	37.20	37.30	37.40	37.50	37.60	37.70	37.80	37.90	37
38	38.00	38.10	38.20	38.30	38.40	38.50	38.60	38.70	38.80	38.90	38
39	39.00	39.10	39.20	39.30	39.40	39.50	39.60	39.70	39.80	39.90	39
40	40.00	40.10	40.20	40.30	40.40	40.50	40.60	40.70	40.80	40.90	40
41	41.00	41.10	41.20	41.30	41.40	41.50	41.60	41.70	41.80	41.90	41
42	42.00	42.10	42.20	42.30	42.40	42.50	42.60	42.70	42.80	42.90	42
43	43.00	43.10	43.20	43.30	43.40	43.50	43.60	43.70	43.80	43.90	43
44	44.00	44.10	44.20	44.30	44.40	44.50	44.60	44.70	44.80	44.90	44
45	45.00	45.10	45.20	45.30	45.40	45.50	45.60	45.70	45.80	45.90	45
46	46.00	46.10	46.20	46.30	46.40	46.50	46.60	46.70	46.80	46.90	46
47	47.00	47.10	47.20	47.30	47.40	47.50	47.60	47.70	47.80	47.90	47
48	48.00	48.10	48.20	48.30	48.40	48.50	48.60	48.70	48.80	48.90	48
49	49.00	49.10	49.20	49.30	49.40	49.50	49.60	49.70	49.80	49.90	49
50	50.00	50.10	50.20	50.30	50.40	50.50	50.60	50.70	50.80	50.90	50

INDEXED

to page #70

Distance of slope stake from side or shoulder stake for any width roadway, slope 1 to 1. If ground is nearly level, the cut or fill at side stake is located by the double entry method in left column and top row. The number in body of table in same row and column gives distance from side stake to slope stake. If ground is not level estimate the difference in elevation between the side stake and slope stake, lower target by this amount if cut, elevate if fill. Add this amount to cut or fill and find distance in table. Set up rod at this point, and line of sight should cut target. If it does not make the slight adjustment necessary.

TABLE XIII—CORRECTIONS FOR TANGENTS AND EXTERNALS

These corrections are to be added to the approximate values, found by dividing the tangent, or external, for a 1° curve (Table VIII) by the degree of curve, in order to obtain the true tangents, or externals. Intermediate values may be obtained by interpolation.

FOR TANGENTS ADD

Central Angle	DEGREE OF CURVE															
	5°	10°	15°	20°	25°	30°	35°	40°	45°	50°	55°	60°	65°	70°		
10°	.03	.06	.09	.13	.16	.19	.22	.25	.28	.31	.34	.38	.42	.46		
15°	.04	.10	.14	.19	.24	.29	.34	.39	.45	.51	.53	.58	.63	.68		
20°	.06	.13	.19	.26	.32	.39	.45	.51	.58	.65	.72	.79	.84	.90		
25°	.08	.16	.24	.33	.40	.49	.58	.67	.75	.83	.90	.99	1.06	1.14		
30°	.10	.19	.29	.39	.49	.59	.69	.79	.89	.99	1.09	1.20	1.29	1.39		
35°	.11	.22	.34	.47	.58	.69	.79	.81	.92	1.04	1.29	1.42	1.54	1.66		
40°	.13	.26	.40	.53	.67	.80	.93	1.06	1.20	1.34	1.49	1.64	1.79	1.94		
45°	.15	.30	.44	.60	.76	.91	1.06	1.21	1.37	1.52	1.70	1.87	2.04	2.21		
50°	.17	.34	.51	.68	.85	1.02	1.19	1.36	1.54	1.72	1.91	2.10	2.29	2.48		
55°	.19	.38	.57	.76	.95	1.14	1.32	1.52	1.72	1.92	2.14	2.35	2.56	2.77		
60°	.21	.42	.63	.84	1.05	1.27	1.49	1.71	1.94	2.17	2.38	2.60	2.83	3.07		
65°	.23	.46	.69	.93	1.16	1.40	1.64	1.88	2.13	2.38	2.63	2.88	3.13	3.39		
70°	.25	.51	.76	1.02	1.28	1.54	1.80	2.06	2.33	2.60	2.88	3.16	3.44	3.72		
75°	.27	.56	.83	1.12	1.40	1.69	1.98	2.27	2.57	2.87	3.16	3.47	3.78	4.09		
80°	.30	.61	.91	1.22	1.53	1.84	2.15	2.46	2.78	3.10	3.44	3.78	4.12	4.46		
85°	.33	.66	1.00	1.33	1.68	2.02	2.36	2.70	3.05	3.40	3.77	4.14	4.55	4.89		
90°	.36	.72	1.09	1.45	1.83	2.20	2.57	2.94	3.32	3.70	4.10	4.50	4.91	5.32		
95°	.39	.79	1.19	1.55	2.00	2.40	2.80	3.20	3.61	4.02	4.40	4.98	5.38	5.83		
100°	.43	.86	1.30	1.74	2.18	2.62	3.06	3.50	3.95	4.40	4.88	5.37	5.85	6.34		
110°	.51	1.03	1.56	2.08	2.61	3.14	3.67	4.21	4.76	5.31	5.86	6.43	7.01	7.60		
120°	.62	1.25	1.93	2.52	3.16	3.81	4.45	5.11	5.77	6.44	7.12	7.80	8.50	9.22		

FOR EXTERNALS ADD

Central Angle	DEGREE OF CURVE															
	5°	10°	15°	20°	25°	30°	35°	40°	45°	50°	55°	60°	65°	70°		
10°	.001	.003	.004	.006	.007	.008	.009	.011	.012	.014	.015	.017	.018	.020		
15°	.003	.007	.010	.014	.018	.023	.027	.032	.035	.039	.043	.047	.051			
20°	.006	.011	.017	.022	.028	.034	.038	.045	.051	.057	.063	.070	.076	.083		
25°	.009	.018	.027	.036	.046	.056	.065	.074	.083	.093	.106	.120	.127	.135		
30°	.013	.025	.038	.051	.065	.078	.090	.103	.116	.129	.149	.170	.179	.188		
35°	.018	.035	.054	.072	.086	.109	.131	.153	.175	.197	.213	.230	.247	.264		
40°	.023	.046	.070	.093	.117	.141	.172	.203	.234	.265	.277	.290	.315	.341		
45°	.030	.060	.093	.119	.153	.184	.216	.254	.289	.325	.351	.378	.411	.445		
50°	.037	.075	.116	.151	.189	.227	.266	.305	.345	.384	.425	.467	.508	.550		
55°	.046	.093	.142	.188	.236	.283	.332	.381	.420	.479	.530	.582	.641	.700		
60°	.056	.112	.168	.225	.283	.340	.398	.457	.516	.575	.636	.697	.774	.851		
65°	.067	.135	.204	.273	.343	.412	.483	.554	.625	.697	.771	.845	.922	1.01		
70°	.080	.159	.240	.321	.403	.485	.568	.652	.735	.819	.906	.994	1.08	1.17		
75°	.095	.182	.286	.383	.480	.578	.678	.777	.877	.977	1.07	1.18	1.29	1.39		
80°	.110	.220	.332	.445	.558	.671	.787	.903	1.02	1.13	1.25	1.38	1.50	1.62		
85°	.128	.259	.391	.524	.657	.790	.926	1.06	1.20	1.34	1.47	1.62	1.76	1.91		
90°	.149	.299	.450	.603	.756	.910	1.07	1.22	1.38	1.54	1.70	1.87	2.03	2.20		
95°	.174	.350	.522	.706	.885	1.06	1.25	1.43	1.62	1.80	1.99	2.18	2.38	2.58		
100°	.200	.401	.604	.809	1.01	1.22	1.43	1.64	1.85	2.06	2.28	2.50	2.73	2.96		
110°	.268	.536	.806	1.08	1.35	1.63	1.91	2.20	2.48	2.76	3.05	3.35	3.66	3.96		
120°	.360	.721	1.08	1.45	1.82	2.19	2.57	2.95	3.33	3.72	4.11	4.50	4.91	5.32		

T

Alley Blk. 55 Ocean Beach 3-15
 X Sect 6th St. Univ. to 200' North. 12-21
 Location of improvements
 in M'Kea St. Ketter. N.Y. 31-34
 San Bernardo Terrace 42-48
 X-see
 Alley Blk 175 Univ Hqts 54-68
 Levels in Lot 22+23, Pantages Terrace 69-72
 Yonge St. Proposed Drain 73-79
 Re Survey Lots 42-43-44 Blk 175 Univ Hqts 80

Alley BIK 55 Ocean Beach.
 Cross Sec. for Improvement

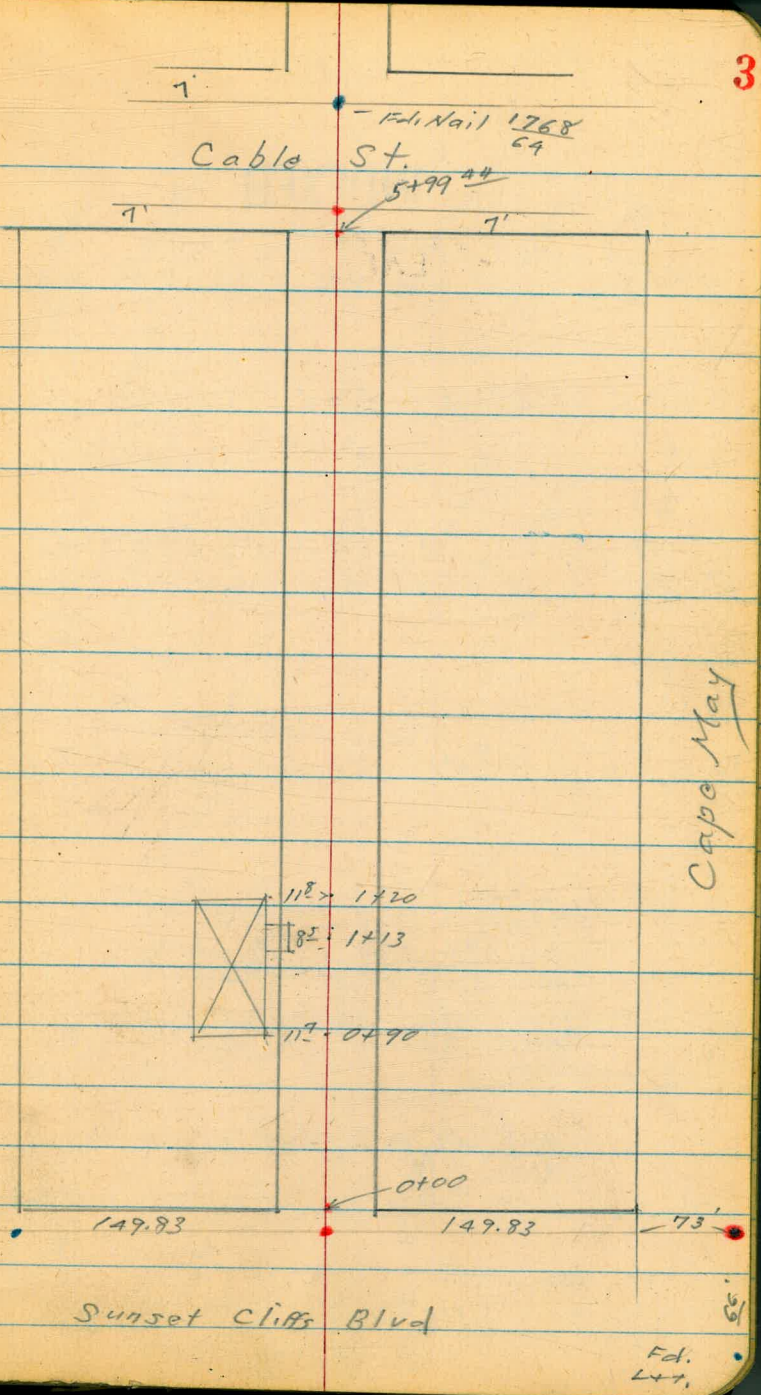
3-10-49
 W.O. # 31625

INDEXED
 WK
MAR 14 1949

Sammermayer
 McCoy
 Allen
 Jones

Alley - 20' wide

Reduced 3/16/49
 C. Lawrence



Alley Bk. 55 O.B.

Sketch P. 3

INDEXED

+ Apron to Simg. Car.
0+36 - 12⁹ Lt. = start Comb. Conc. walk

0+35 - 10⁶ Lt. = End stucco house

T.P. 3.68 26.73 7.30 23.05

0+20⁵ 10⁵ Lt. = start stucco house
= End Conc. wall &

0+09 - 10⁸ Lt. = End picket fence
= start Conc. wall

10² Lt. = start picket fence
9.90 Lt. = End Exist. cl.
9.93 Rt. = End Exist. cl.
Also = End of A.C. Pavc.
0+00 = Wly. line Sunset Cliffs Blvd.
10' Rt. = start picket fence.

Rods on A.C. pavc.

0-12 = Wly. Ch. line Sunset Cliffs

N.W. B.P. Cape May
Sunset Cliffs
Blvd.

6.31 30.35 — 24.04

23.78.	23.63.	23.23.	23.03.	23.23.	23.63.	23.73.
2.95	3.1	3.5	3.7	3.5	3.1	3.0
12.2	10	6		6	10	25
Conc.						

23.53.	26.73
3.2	
10 ⁶	
End. at House Cor.	

28.11.	23.65.	24.25.	23.75.	23.55.	23.65.	24.45.	24.55.
2.24	6.7	6.1	6.6	6.8	6.7	5.9	5.8
10 ⁶	10 ⁵	10	6		7	10	25
Top wall	Base wall						

28.11.	23.95.	24.55.
2.24	6.4	5.8
10 ⁸	10 ⁸	10 ⁸
Top-wall	Base wall	End

24.80.	24.5A.	24.18.	24.5A.	24.76.
5.55	5.81	6.17	5.81	5.59
9.22	9.2		9.2	9.2
Top-End cl.	Q		Q	Top d. end

24.15.	24.10.	24.09.	24.0A.	23.83.
6.20	6.25	6.26	6.3A	6.52
50	10		10	50
Q	Q		Q	Q

30.35

0+97-10⁴ Lt. = Ctr. 8" trunk peach(?)
on blocks. ^{tree.}

0+90 - 11³ Lt. = start frame house

0+80

22.93.	22.73.	22.13.	22.23.	22.83.	23.03.
3.8	4.0	4.6	4.5	3.9	3.7
15	10		7	10	25

0+77 - 15³ Lt. = £ Sing. Gar. dirt floor.

22.93.
3.8
152
Gar. Floor

0+67 - 15³ Lt. = £ Sing. Gar. dirt floor.

22.93.
3.8
143
Gar. floor.

0+57 - 15³ Lt. = £ Sing. Gar. dirt floor

23.03.
3.7
152
Gar. Floor.

15³ Lt. = End Sing. Gar.

0+49 - 12³ Lt. = End Comb. walk + Apron

23.92.	23.59.
2.81	3.14
153	129
Gar. floor	Apron

0+40 - 15³ Lt. = start Sing. Gar. Conc. floor.

23.98.	23.73.
2.75	3.00
152	12.9
Gar. Floor	Apron

INDEXED

10³ Rt. = Start Picket fence1+49 - 10³ Rt. = End slat fence1+33 - 24³ Lt. = \pm Sing. Gar. dirt floor
$$\begin{array}{r} 22.53 \\ 4.2 \\ \hline 24.9 \\ \text{Floor} \end{array}$$
10² Rt. = Start slat fence.1+25 - 9¹ Lt. = Ctr. pole # P.A. 4820
$$\begin{array}{r} 21.93 \\ 4.8 \\ \hline 10 \end{array}$$

21.33

$$\begin{array}{r} 21.73 \\ 5.0 \\ \hline 10 \end{array}$$
1+20 - 11⁸ Lt. = End frame house, on blocks.steps not fastend to house
wooden steps in alley (P. 3)1+13 - 11⁸ Lt. = \pm doorway to house
$$\begin{array}{r} 24.23 \\ 2.50 \\ 11.8 \\ \hline \text{Floor} \\ \text{Level} \end{array}$$

22.33

$$\begin{array}{r} 4.40 \\ 11.9 \\ \hline \text{Grd} \end{array}$$
1+12 - 25² Rt. = \pm Sing. Gar. Conc. Floor.
$$\begin{array}{r} 22.27 \\ 4.40 \\ 25.2 \\ \hline \text{Gar. floor} \end{array}$$
1+03 - 10³ Lt. = Ctr. 4" trunk Loguat1+00 - 10¹ Rt. = End picket fence.
$$\begin{array}{r} 22.83 \\ 3.9 \\ 11.7 \\ \hline \text{at house} \end{array}$$

22.73

$$\begin{array}{r} 4.0 \\ 10 \end{array}$$

21.93

$$\begin{array}{r} 4.8 \end{array}$$

22.03

$$\begin{array}{r} 4.7 \\ 10 \end{array}$$

22.23

$$\begin{array}{r} 4.5 \\ 25 \end{array}$$

26.73

26.73

Alley Bk. 55 O.B.

INDEXED

11⁶ Lt. = Start Conc. wall
9² Lt. = Ctr. pole # P.A. 4840.
2+25 - 13² Lt. = End board fence.

2+08 - 10² Rt. = £ 3' wide NtS. walk.

2+00

13⁷ Lt. = start board fence.
13⁷ Lt. = End 3 Car Bar, Conc. floor.
1+75 - 9⁸ Lt. = End Conc. Apron.

13⁸ Lt. = £ 3 car bar
1+62 - 9² Lt. = Edge Apron

13⁸ Lt. = start 3 car Car, Conc. floor.
1+51 - 9² Lt. = start Conc. Apron

26.73

24.33.	19.53.	20.13.
2.4	7.2	6.6
11 ⁶	11 ⁶	11 ⁶
Top wall	Base wall	Ord.

20.63.
6.10
10
£ walk

20.83.	20.33.	20.43.
5.9	6.7	6.3
10		10

21.77.	21.25.
4.96	5.48
137	98
Car. Floor	End Apron.

21.76.	21.33.
4.97	5.40
138	99
Car. Floor.	Apron

21.79.	21.45.	21.43.	20.93.	21.23.
4.94	5.28	5.30	5.8	5.5
138	10	99		10
Car. Floor	Concl	Ord + Conc		

26.73

INDEXED

Alley BIK. 55 O.B.

3+25 - $1A^{\circ}$ Lt. = start Sing. Car. Dirts. floor.
 10° Lt. = start Comb Apron + walk
 9° Lt. = Ctr. Pole # P.A. 485A
 10° Rt. = End board fence

3+21 Σ 11° Lt. = End house

conc. foundation.

also start Frame house. 07

3+12 - 11° Lt. = End Conc. slab.

11° Lt. = N. line of slab.

3+00 10° Rt. = line of board fence.

2+94 - 11° Lt. = start Conc. slab. (walk)

T.P. 4.38 23.69 7.42 19.31

2+75 - 11° Lt. = End Conc. Wall.

2+45 - 11° Lt. = \pm 2' wide N. + S. Conc. Walk

26.73

8

18.99.
4.7
 $1A^{\circ}$
 Car. floor. Dirts.

19.09.
4.60
 $1A^{\circ}$
 Apron at Car.

18.96.
4.73
 10°
 Apron

19.09.
4.6
 11°
 Ord

19.56.
4.13
 11°
 End slab

19.39.
4.3
 11°
 Ord.

19.36.
4.33
 11°
 Conc. slab.

19.19.
4.5
 11°
 Ord

19.19.
4.5
 10

19.09.
4.6
 10

19.29.
4.7
 10

19.63.
4.06
 11°
 Conc.

19.29.
4.4
 11°
 Ord

23.69

24.13.
2.6
 11°
 Top wall

19.13.
7.6
 11°
 Base wall

19.63.
7.1
 11°
 Ord

19.73.
7.0
 10

19.43.
7.3

19.73.
7.0
 10

20.09.
6.64
 11°
 \pm walk

26.73

Alley Bk. 55 O.B.

INDEXED

3+76 - 10⁸ Lt. = Φ 2' wide Nit S. Conc. ^{walk}

1847.
5.22
108
 Φ walk

3+74 - 9² Rt. = End board fence.

3+57 - 17¹ Lt. = Φ Sing. Gar. dirt floor.

1849.
5.2
175
Gar. floor

3+52 - 17¹ Lt. = Φ 3' wide Flag stone ^{walk}

1890.
4.79
17
Flag stone

3+50

1869. 1849. 1879.
5.0 5.2 4.9
10 10

3+47 - 10⁸ Lt. = End Comb. walk + Apron.

1909. 1899.
4.60 4.70
1A 10+
Back edge Conc.
walk walk

3+39 - 9² Rt. = start board fence.

3+33 - 1A¹ Rt. = Φ Sing. Gar. - ? floor. (Door locked - can not see floor)

1909.
4.6
1A¹
Approx Floor
level.

23.69

23.69

Alley BIK. 55 O.B.

INDEXED

4+12 14' Lt. = \pm 3rd Gar.
11' Lt. = \pm 3rd Gar. Nly edge
Apron

4+03 14' Lt. = \pm 3rd Gar.
11' Lt. = Nly line Apron

4+00

3+94 14' Lt. = \pm 2nd Gar.
10⁹ Lt. = Apron. (Nly. line)

+92 - 9⁹ Rt. = start board fence
14' = \pm 1st Gar.
3+85 - 10⁹ Lt. = Nly. edge Apron

3+81 - 14⁵ Rt. = \pm old Gar. now used
as work shop. (wood floor)

7 Garages (1-4 car + 1-3 car)
3+77 - 10⁸ Lt. = start Conc. Apron To

2369

10

18.58.
5.11
14
Gar Floor

18.35.
5.34
11
Apron

18.60.
5.09
14
Floor

18.37.
5.32
11
Apron

18.39.
5.13
10

17.99.
5.7
5

17.99.
5.9
9

17.99.
5.7
10

18.62.
5.07
14
Floor

18.43.
5.26
10²
Apron

18.64.
5.05
14
Floor

18.45.
5.24
10³
Apron

18.49.
5.2
14⁵
Floor

18.49.
5.20
10⁸

23.69

INDEXED

Alley Bk. 55 O.B.

11

14² = End of garage unit.
 4+50 11¹ Lt. = End Conc. Apron

18.03.	17.82.	17.65.	16.95.	17.35.	17.45.
3.22	3.43	3.6	4.3	3.9	3.8
1A ²	11 ²	10		5	10
Gar.	End				
floor	Apron				

4+44 - 10⁴ Rt. = Sing. Gar. dirt floor

17.25.
 4.0
 10.4

4+39 - 10⁴ Rt. = End board fence.

garage stalls.

4+37 14² Lt. = 2 doors for 5th - 6th + 7th

18.05.	17.87.	17.85.	17.85.	17.25.	17.45.	17.85.
3.20	3.38	3.4	3.4	4.0	3.8	3.4
1A ²	11 ²	11	10		5	10
Gar	Apron					
floor						

of garage (3 car)

14² Lt. = start second unit

4+25 - 11¹ Lt. = Brk. in Apron grade.

18.05.	17.93.
3.20	3.32
1A ²	11 ²
Gar. floor	N. Edge
	Apron

21.25

Pole # 4870

T. P. Nail in 2.36 21.25 4.80 18.89

4+22 - 10³ Lt. = Pole # P.A 4870

14¹ Lt. = Back edge Apron.

4+21 - 11¹ Lt. = Brk. in Apron grade

18.07.	17.94.
5.62	5.75
1A	11
S. Edge Apron	Apron

14¹ Lt. = End 1st Car. unit.

4+17 11¹ Lt. = Brk. in Apron grade

18.60.	18.36.
5.09	5.33
1A	11
At Car	Apron

23.69

23.69

Alley BIK.55 0.8

INDEXED

5+24 - 9⁸ Lt. = Ctr. Polc# P.A. 4880

To 4 Car. Garage
Conc. walk. Also = start Apron

5+05 - 9⁸ Rt. = Wly. line 5' wide N. + S.

	16.91'	16.92'	17.95'
4.34	4.33	3.80	
98	10	174	
Apron	Apron	Car. Floor	

N. + S. conc. walk.

5+00 9⁸ Rt. = East line of 5' wide

	17.15'	16.95'	16.83'	16.84'	17.08'
4.1	4.8	4.42	4.41	4.17	
10	98	10	10	15	
		S.E. Cor	walk	walk	
		walk	+6rd		

18² Rt. = End double Gar.

4+97 16² Rt. = End Conc. Apron

	17.55'	17.85'
3.70	3.40	
162	182	
Apron	Floor	

4+96 - 16^E Lt. = Φ Sing. Gar. Conc. floor

17.21'

4.04
16 ^E
Floor

18² Rt. = start double Gar
to double Gar.

4+82 16² Rt. = start conc. Apron

	17.55'	17.84'
3.70	3.41	
162	182	

4+59 - 16² Lt. = Φ Sing. Gar. Conc. floor

17.58'

3.67
162
Floor

21.25

21.25

INDEXED

5+51^E 10' RT. = ± 4' wide ^{N.+S.} Conc. Walk.

5+49^E - 10' RT. = ± N.+S. 8" wide brick wall

5+47^E - 10' RT. = ± 3' wide N.+S. Conc. Walk.

17 ± RT. = End 4 Car. Gar.

5+46 10^o RT = End of Conc. Apron.

13^E Lt. = line of Apron.

5+41 14^L Lt. = ± 3 Car. Gar.

14^L Lt. = start 3 Car. Gar.

5+29 13^L Lt. = start Conc. Apron

17 ± RT. = ± of doors to 4 Car. Gar.

5+25 9^L RT = line of Conc. Apron

21.25

15.96.
5.29
10
walk
16.15.
15.55.
17.73.
5.1 5.7 3.52
10 10 10
Ord Base Top
wall wall wall

16.83.
4.42
10
walk

15.75.
16.65.
16.86.
17.45.
5.5 4.6 4.39 3.80
10 10 10
Ord Apron at Gar.

16.91.
16.79.
4.34 4.46
14^L 13^E
Gar. Floor Apron

16.90.
16.80.
4.35 4.45
14^L 13^L
Gar. Floor Apron

16.75.
16.15.
16.75.
16.86.
16.88.
17.47.
4.5 5.1 4.5 4.39 4.37 3.78
10 9^L 9^L 10 10 174
Apron Car. floor

21.25

Alley Bk. 55 O.B.

INDEXED

€

14.98.

15.65.
14

15^o = End 4 Car Bar. Conc. floor
5+96 - 10' Rt. = End Conc. Apron

6.27
10^L
Apron
5.60
15
Floor

14^L Lt = End double Bar.
5+79 13^L Lt = End Conc. Apron

16.52.
16.92.
4.73
14^L
Floor
4.83
13^L
Apron

15^o Rt. = 4 Car Garage
5+75 10^L Rt. = line of apron

15.85.
15.15.
15.15.
15.05.
15.25.
15.66.
5.4
10
6.1
7
6.1
6.2
10
Grd.
6.00
10^L
Apron
5.59
15
Floor

14^L Lt. = start double Bar. Conc. floor,
5+61 - 13^L Lt. = start Conc. Apron

16.50.
16.43.
4.75
14^L
Floor
4.82
13^L
Apron

14^L Lt.
5+58 = 7' wide N. + S. Conc. walk

16.53.
4.72
14^L
walk

14^L Lt. = End 3 Car Bar. Conc. floor.
5+54 13^L Lt. = End Conc. Apron

16.89.
16.75.
4.36
14^L
Floor
4.50
13^L
Apron

15^o Rt. = start 4 Car. Garage.
5+53^S - 10' Rt. = start. Conc. Apron

16.35.
15.85.
15.55.
15.57.
15.68.
15.68.
4.9
10
5.4
7
5.7
5.68
10
Grd +
Apron
5.57
15^L
Car Floor

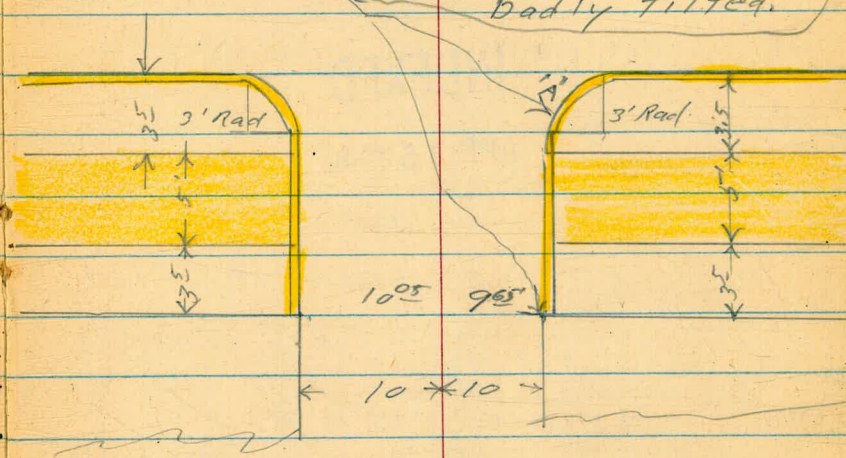
21.25

21.25

Alley - BIK 55-0.B.

INDEXED

This portion of curb has been pushed south. Broken at "A" + All is badly tilted.



N.W.B.P. Sunset Cliffs Blvd
+ Cape May. (orig B.M.) 4.17 24.06 (24.04)

T.P. 6.59 28.53 2.70 21.94

S.W.B.P. Cape May + Cable 11.52 24.64 6.44 13.12 (shown as 13.05)

6+11⁴⁹ = Ely. Cl. line Cable.

T.P. 4.88 19.56 6.57 14.68

9⁶⁵ Rt. = start alley curb
10⁰⁵ Lt. = start Alley curb
5+99⁴⁴ = Ely line Cable
start. A.C. Pave.

21.25

14.70.	13.88.	13.93.	13.73.	13.52.
5.46	5.68	5.83	5.83	6.04
50	10		10	50
Gr.	Pave.	19.56	Pave	Gr.

14.87.	14.99.	14.14.	14.51.	14.72.
6.38	6.76	7.11	6.74	6.53
10 ⁰⁵	10	Pave	9 ⁶⁵	9 ⁶⁵
06.	Gr. +	Grd.	Gr.	06.
	Grd.		Grd	

21.25

(See Above sketch)

Levels 6th St
University North

INDEXED

0-11.2 Power Pole #600 34' Rt

2x2' Cleanout 18.5 Rt. & Box

0-12.75 No Cb Line University on Rt.

Apprx & Univ.

0-37.6 Sewer MH 3.5 Lt

Cb Inlet 24.2' Rt

0-63.5 Production 50 Cb University (on Rt)

0-65 & 2x2 Cleanout 11.9 Rt.

0-75 Cb Inlet 16.7 Rt

B.M 357 287.44

283.87

NWBP 6th & University

281.26
281.89
281.48
282.00
281.70
282.14

5.55 5.56 5.54 5.54 5.54 5.58

25 35 50 50 90 90

G2 C6 G C6 G C6

Grote

282.93
282.53
281.90
280.71
281.86
282.86

4.51 4.21 5.55 6.73 5.58 4.58

10 185 195 31 31

Grote FL Grote FL Inlet

283.57
283.46
283.11
283.07
283.17

3.57 3.57 4.23 4.23 4.27

7.5 35 50 100

Cim

283.26
282.02
282.40
283.27
282.59

4.18 5.42 5.04 4.17 4.15

24.2 24.2 282 282 58 58

Grote FL FL C6 G C6

Grote

283.16
281.75

4.28 5.09

11.9 11.9

Grote FL

283.38
282.41

4.06 5.03

16.7 16.7

Grote FL

287.44

INDEXED

This is Culvert cleanout, F.L. is 3.71'
outfall 18" x 1 1/2" 46' wide 4x4 Box

Jewer MH 199 RT

0+02 (Cone on RT. STEPS up) Power Pole 22.5 ft.

0+01 Signal Light 23.3 RT

0+00 No. Line University

0-00.7 End Cb. Rt.

287.44

EI 278.76
below EIM -

282.94	283.70	282.92	282.95	282.81	282.45	281.97	281.94	282.04	282.38
350	374	452	449	453	499	547	550	554	550
30E	20E	20.5	8	9	17.5	19.9	25.3	25.3	
cb	G								

282.39	282.14	282.24
50.4	53.0	52.0
37	39	50

EIM MH

283.90	283.94	282.94	282.97	282.80	282.49	282.01	281.93	282.04	282.21	282.30
354	350	450	457	454	495	543	551	553	553	556
30E	20L	20L	8	8	17.5	21.5	25.3	25.3	30.5	
cb	G									

282.36	282.14	282.23
50.2	52.0	52.1
36.5	39	50

282.83	282.47	282.08	281.95	282.05	282.22
451	497	536	549	538	550
8	17	21	25.3	30.5	

287.44

282.50	282.50	282.14	282.50	282.19	282.54
494	494	530	494	517	470
31.3	36.3	39.39	51.51		

0+54.7 End Conc on Lt.

$\begin{matrix} 284.20 \\ 324 \\ 275 \\ 298 \end{matrix}$
 $\begin{matrix} 283.94 \\ 279 \\ 258 \end{matrix}$
 $\begin{matrix} 283.50 \\ 274 \\ 191 \end{matrix}$

(← Conc. Paving)
0+49 End Conc Slab on Rt.

$\begin{matrix} 282.24 \\ 305 \\ 299 \end{matrix}$
 $\begin{matrix} 282.06 \\ 322 \\ 260 \end{matrix}$
 $\begin{matrix} 281.42 \\ 387 \\ 194 \end{matrix}$
 $\begin{matrix} 281.87 \\ 342 \\ 9 \end{matrix}$
 $\begin{matrix} 281.93 \\ 326 \\ 13 \end{matrix}$
 $\begin{matrix} 281.73 \\ 384 \\ 198 \end{matrix}$
 $\begin{matrix} 281.45 \\ 35 \\ 253 \end{matrix}$
 $\begin{matrix} 281.7 \\ 329 \\ 253 \end{matrix}$
 $\begin{matrix} 282.00 \\ 329 \\ 313 \end{matrix}$
 $\begin{matrix} 282.04 \\ 35 \\ 50 \end{matrix}$
 $\begin{matrix} 281.69 \\ 35 \end{matrix}$

T.P. 3.53 285.29 5.8 281.76

0+36 Beg Conc Slab on Rt.

$\begin{matrix} 282.72 \\ 472 \\ 302 \end{matrix}$
 $\begin{matrix} 282.53 \\ 491 \\ 261 \end{matrix}$
 $\begin{matrix} 281.92 \\ 552 \\ 195 \end{matrix}$
 $\begin{matrix} 282.08 \\ 536 \\ 15 \end{matrix}$
 $\begin{matrix} 282.24 \\ 520 \\ 6 \end{matrix}$
 $\begin{matrix} 285.29 \\ 285.29 \\ 520 \end{matrix}$
 $\begin{matrix} 282.24 \\ 558 \\ 196 \end{matrix}$
 $\begin{matrix} 281.86 \\ 55 \\ 253 \end{matrix}$
 $\begin{matrix} 281.8 \\ 50 \\ 253 \end{matrix}$
 $\begin{matrix} 282.43 \\ 50 \\ 313 \end{matrix}$
 $\begin{matrix} 282.54 \\ 490 \\ 313 \end{matrix}$
 $\begin{matrix} 282.63 \\ 491 \\ 51 \end{matrix}$

Conc. Pav.

0+22 End Conc Slab on Rt.

$\begin{matrix} 283.25 \\ 479 \\ 302 \end{matrix}$
 $\begin{matrix} 283.06 \\ 428 \\ 261 \end{matrix}$
 $\begin{matrix} 282.32 \\ 52 \\ 195 \end{matrix}$
 $\begin{matrix} 282.50 \\ 494 \\ 12 \end{matrix}$
 $\begin{matrix} 282.51 \\ 93 \\ 19.8 \end{matrix}$
 $\begin{matrix} 282.10 \\ 534 \\ 25.1 \end{matrix}$
 $\begin{matrix} 282.14 \\ 52 \\ 25.3 \end{matrix}$
 $\begin{matrix} 282.41 \\ 502 \\ 313 \end{matrix}$
 $\begin{matrix} 282.51 \\ 493 \\ 51 \end{matrix}$
 $\begin{matrix} 282.55 \\ 490 \end{matrix}$

Conc. Pav.

0+03.6 ← in Conc Slab Lt.

$\begin{matrix} 283.86 \\ 478 \\ 305 \end{matrix}$
 $\begin{matrix} 283.75 \\ 465 \\ 265 \end{matrix}$
 $\begin{matrix} 283.30 \\ 474 \\ 21 \end{matrix}$
 $\begin{matrix} 282.44 \\ 470 \\ 20.3 \end{matrix}$

287.44
↑

287.44

INDEXED

1407 Beg. Ch & S.W. 2325 Lt.

1400 Anchor Pole # P3915R 27' Rt.

0199 End Conc Slab on Rt.

0190 Power Pole # P3916 295 Lt.

0172 Beg Conc Slab on Rt.

0169.71 BC 6th St. Exst

285.29
1

285.29
11

5 280.12
5 279.87
5 279.22
29 2325 2325
Cb G

5 280.28
5 280.66
5 280.72
22.5 328 52

280.79
279.7
279.39
279.43
279.39
279.43
279.50
279.32
279.2
279.8
280.19
25 5 5 5 5 5 5 5 5 5
30 27 27 10 06 10 20 24 28 28

Conc
Pyl.

280.81
281.01
28.2 37

281.20
281.05
280.79
281.0
281.2
9 12 18 14 11
20 35 50

4-20-49 Additional Elevs. 6th.
Mendricks.
Greer. University to North
River

22

1190 18" Conc. Pipe 54' Rt.

272.04
1352 16 01
54 54
HW FL.

0178 Beg. Stucco Bldg. 53.1' Rt.

281.39
4.8
53.1
Floor

0144 Beg. Stucco Bldg. on Rt. 52.8'

282.20
3.27
52.8
Floor

B-7 1.70 285.57

283.87

285.57
↑
HWBP 6th University

D Smith
W Moore
J. Clark EIV Storm Drain 6th & University Ave.
F Acung NE Cor.
WQ #0361
May 19 1949

23

INDEXED
WK
MAY 20 1949

Clean out near signs (traffic) NE cor

~~27039~~
1162
FL

~~28182~~
799
Rim

Clean out @ intersection of curb lines

~~28030~~
921
FL

~~28189~~
823
Rim

BM

6th

28991

NWBP
28387 6th & Univ. Ave

X Sec Atascadero Dr.
Wells St to Catalina Blvd.

Lt = South

♀

WO # 31606

25

7-28-49

Rt = North

0-10 West Curb line Wells St

14402	14400	14359	143	154.4	153.08	151.3	150.8	147.1
006	02	442	57	52	62	88	93	130
80	80	30	30	20		20	30	80
Curb	94	Curb	94					
		Curb	End					

0-30 E Wells St

152.96	154.4	153.9	152.1	150.9	150.1	146.0
12	55	62	74	92	100	141
80	30	20		20	30	80

0-50 East curb line Wells St

159.16	167.96	154.03	153.44	162.38	151.82	150.18	149.42	144.88
092	21	605	66	73	82	92	106	152
80	80	30	30	20		20	30	80
Curb	94	Curb	94					

0-60 East Prop Wells St Edge AC paving

153.05	152.34	152.01	151.52	150.78	150.00	150.23	
703	704	807	8	56	930	1008	952
20	20	10		10	20	20	20
Curb	94				94	Curb	End

TP 1050 16008 017 14958

TP 1267 14975 039 13708

BM 1273 13747 12474

Nw Prop
Mon, Wells
Alicia
FB 1743-26

16008

cont.

1750 End curbed walk on Rt

LT				RT			
155.80	155.59	155.51	155.5	154.9	154.9	154.98	155.18
428	449	50	54	52	55	510	490
29	20	20	10	10	20	20	29
walk	curb	pat				curb	walk

1725

LT				RT			
156.60	156.47	155.9	155.6	155.7	155.5	155.4	155.30
348	361	42	45	44	46	47	428
29	20	20	10	10	20	20	29
walk	curb	pat				pat	curb

1711⁵ RTE 15⁵ drive

LT				RT			
157.07	156.89	156.3	155.9	155.9	155.9	155.8	155.54
381	379	38	42	42	43	381	389
29	20	20	10	10	20	20	29
walk	curb	pat			pat	curb	walk

1700 Begin curbed walk on Lt

LT				RT			
157.7	156.7	156.4	156.0	155.9	155.5	155.9	156.37
24	34	32	41	42	43	42	369
30	21	20	10	10	20	20	29
					pat	curb	walk

0775

0761⁵ RTE 14⁵ drive

LT				RT			
156.21	156.63	156.	155.8	155.7	155.5	155.5	156.1
327	345	41	43	44	46	46	388
29	20	20	10	10	20	20	29
walk	curb	pat				curb	walk

0750 End curbed walk on Lt Begin curbed walk on Rt

LT				RT			
155.67	155.37	154.6	154.3	153.8	153.2	153.5	153.4
441	421	53	52	63	69	76	62
29	20	20	10	10	20	25	30
walk	curb	pat					

0742 22' RT & 12" Eucalyptus tree

0700 West Prop. Wells

cont.

LT.

♀

RT.

BM

11689 ✓
FB 7743-29

666 11686 ✓ SEBP Fd
Atascadero + Catalina

6775 ♀ Catalina approx

11674	116532	11422	11460	11226
678	820	860	892	1126
100	21		21	100

6753 valley gutter on Catalina taken along Catalina

11772	11741	11721	11718	11711	11701	11691	11681	11671	11661	11651	11641	11631	11621	11611	11601	11591	11581	11571	11561	11551	11541	11531	11521	11511	11501	11491	11481	11471	11461	11451	11441	11431	11421	11411	11401	11391	11381	11371	11361	11351	11341	11331	11321	11311	11301	11291	11281	11271	11261	11251	11241	11231	11221	11211	11201	11191	11181	11171	11161	11151	11141	11131	11121	11111	11101	11091	11081	11071	11061	11051	11041	11031	11021	11011	11001	10991	10981	10971	10961	10951	10941	10931	10921	10911	10901	10891	10881	10871	10861	10851	10841	10831	10821	10811	10801	10791	10781	10771	10761	10751	10741	10731	10721	10711	10701	10691	10681	10671	10661	10651	10641	10631	10621	10611	10601	10591	10581	10571	10561	10551	10541	10531	10521	10511	10501	10491	10481	10471	10461	10451	10441	10431	10421	10411	10401	10391	10381	10371	10361	10351	10341	10331	10321	10311	10301	10291	10281	10271	10261	10251	10241	10231	10221	10211	10201	10191	10181	10171	10161	10151	10141	10131	10121	10111	10101	10091	10081	10071	10061	10051	10041	10031	10021	10011	10001	9991	9981	9971	9961	9951	9941	9931	9921	9911	9901	9891	9881	9871	9861	9851	9841	9831	9821	9811	9801	9791	9781	9771	9761	9751	9741	9731	9721	9711	9701	9691	9681	9671	9661	9651	9641	9631	9621	9611	9601	9591	9581	9571	9561	9551	9541	9531	9521	9511	9501	9491	9481	9471	9461	9451	9441	9431	9421	9411	9401	9391	9381	9371	9361	9351	9341	9331	9321	9311	9301	9291	9281	9271	9261	9251	9241	9231	9221	9211	9201	9191	9181	9171	9161	9151	9141	9131	9121	9111	9101	9091	9081	9071	9061	9051	9041	9031	9021	9011	9001	8991	8981	8971	8961	8951	8941	8931	8921	8911	8901	8891	8881	8871	8861	8851	8841	8831	8821	8811	8801	8791	8781	8771	8761	8751	8741	8731	8721	8711	8701	8691	8681	8671	8661	8651	8641	8631	8621	8611	8601	8591	8581	8571	8561	8551	8541	8531	8521	8511	8501	8491	8481	8471	8461	8451	8441	8431	8421	8411	8401	8391	8381	8371	8361	8351	8341	8331	8321	8311	8301	8291	8281	8271	8261	8251	8241	8231	8221	8211	8201	8191	8181	8171	8161	8151	8141	8131	8121	8111	8101	8091	8081	8071	8061	8051	8041	8031	8021	8011	8001	7991	7981	7971	7961	7951	7941	7931	7921	7911	7901	7891	7881	7871	7861	7851	7841	7831	7821	7811	7801	7791	7781	7771	7761	7751	7741	7731	7721	7711	7701	7691	7681	7671	7661	7651	7641	7631	7621	7611	7601	7591	7581	7571	7561	7551	7541	7531	7521	7511	7501	7491	7481	7471	7461	7451	7441	7431	7421	7411	7401	7391	7381	7371	7361	7351	7341	7331	7321	7311	7301	7291	7281	7271	7261	7251	7241	7231	7221	7211	7201	7191	7181	7171	7161	7151	7141	7131	7121	7111	7101	7091	7081	7071	7061	7051	7041	7031	7021	7011	7001	6991	6981	6971	6961	6951	6941	6931	6921	6911	6901	6891	6881	6871	6861	6851	6841	6831	6821	6811	6801	6791	6781	6771	6761	6751	6741	6731	6721	6711	6701	6691	6681	6671	6661	6651	6641	6631	6621	6611	6601	6591	6581	6571	6561	6551	6541	6531	6521	6511	6501	6491	6481	6471	6461	6451	6441	6431	6421	6411	6401	6391	6381	6371	6361	6351	6341	6331	6321	6311	6301	6291	6281	6271	6261	6251	6241	6231	6221	6211	6201	6191	6181	6171	6161	6151	6141	6131	6121	6111	6101	6091	6081	6071	6061	6051	6041	6031	6021	6011	6001	5991	5981	5971	5961	5951	5941	5931	5921	5911	5901	5891	5881	5871	5861	5851	5841	5831	5821	5811	5801	5791	5781	5771	5761	5751	5741	5731	5721	5711	5701	5691	5681	5671	5661	5651	5641	5631	5621	5611	5601	5591	5581	5571	5561	5551	5541	5531	5521	5511	5501	5491	5481	5471	5461	5451	5441	5431	5421	5411	5401	5391	5381	5371	5361	5351	5341	5331	5321	5311	5301	5291	5281	5271	5261	5251	5241	5231	5221	5211	5201	5191	5181	5171	5161	5151	5141	5131	5121	5111	5101	5091	5081	5071	5061	5051	5041	5031	5021	5011	5001	4991	4981	4971	4961	4951	4941	4931	4921	4911	4901	4891	4881	4871	4861	4851	4841	4831	4821	4811	4801	4791	4781	4771	4761	4751	4741	4731	4721	4711	4701	4691	4681	4671	4661	4651	4641	4631	4621	4611	4601	4591	4581	4571	4561	4551	4541	4531	4521	4511	4501	4491	4481	4471	4461	4451	4441	4431	4421	4411	4401	4391	4381	4371	4361	4351	4341	4331	4321	4311	4301	4291	4281	4271	4261	4251	4241	4231	4221	4211	4201	4191	4181	4171	4161	4151	4141	4131	4121	4111	4101	4091	4081	4071	4061	4051	4041	4031	4021	4011	4001	3991	3981	3971	3961	3951	3941	3931	3921	3911	3901	3891	3881	3871	3861	3851	3841	3831	3821	3811	3801	3791	3781	3771	3761	3751	3741	3731	3721	3711	3701	3691	3681	3671	3661	3651	3641	3631	3621	3611	3601	3591	3581	3571	3561	3551	3541	3531	3521	3511	3501	3491	3481	3471	3461	3451	3441	3431	3421	3411	3401	3391	3381	3371	3361	3351	3341	3331	3321	3311	3301	3291	3281	3271	3261	3251	3241	3231	3221	3211	3201	3191	3181	3171	3161	3151	3141	3131	3121	3111	3101	3091	3081	3071	3061	3051	3041	3031	3021	3011	3001	2991	2981	2971	2961	2951	2941	2931	2921	2911	2901	2891	2881	2871	2861	2851	2841	2831	2821	2811	2801	2791	2781	2771	2761	2751	2741	2731	2721	2711	2701	2691	2681	2671	2661	2651	2641	2631	2621	2611	2601	2591	2581	2571	2561	2551	2541	2531	2521	2511	2501	2491	2481	2471	2461	2451	2441	2431	2421	2411	2401	2391	2381	2371	2361	2351	2341	2331	2321	2311	2301	2291	2281	2271	2261	2251	2241	2231	2221	2211	2201	2191	2181	2171	2161	2151	2141	2131	2121	2111	2101	2091	2081	2071	2061	2051	2041	2031	2021	2011	2001	1991	1981	1971	1961	1951	1941	1931	1921	1911	1901	1891	1881	1871	1861	1851	1841	1831	1821	1811	1801	1791	1781	1771	1761	1751	1741	1731	1721	1711	1701	1691	1681	1671	1661	1651	1641	1631	1621	1611	1601	1591	1581	1571	1561	1551	1541	1531	1521	1511	1501	1491	1481	1471	1461	1451	1441	1431	1421	1411	1401	1391	1381	1371	1361	1351	1341	1331	1321	1311	1301	1291	1281	1271	1261	1251	1241	1231	1221	1211	1201	1191	1181	1171	1161	1151	1141	1131	1121	1111	1101	1091	1081	1071	1061	1051	1041	1031	1021	1011	1001	991	981	971	961	951	941	931	921	911	901	891	881	871	861	851	841	831	821	811	801	791	781	771	761	751	741	731	721	711	701	691	681	671	661	651	641	631	621	611	601	591	581	571	561	551	541	531	521	511	501	491	481	471	461	451	441	431	421	411	401	391	381	371	361	351	341	331	321	311	301	291	281	271	261	251	241	231	221	211	201	191	181	171	161	151	141	13
-------	-------	-------	-------	-------	-------	-------	-------	-------	-------	-------	-------	-------	-------	-------	-------	-------	-------	-------	-------	-------	-------	-------	-------	-------	-------	-------	-------	-------	-------	-------	-------	-------	-------	-------	-------	-------	-------	-------	-------	-------	-------	-------	-------	-------	-------	-------	-------	-------	-------	-------	-------	-------	-------	-------	-------	-------	-------	-------	-------	-------	-------	-------	-------	-------	-------	-------	-------	-------	-------	-------	-------	-------	-------	-------	-------	-------	-------	-------	-------	-------	-------	-------	-------	-------	-------	-------	-------	-------	-------	-------	-------	-------	-------	-------	-------	-------	-------	-------	-------	-------	-------	-------	-------	-------	-------	-------	-------	-------	-------	-------	-------	-------	-------	-------	-------	-------	-------	-------	-------	-------	-------	-------	-------	-------	-------	-------	-------	-------	-------	-------	-------	-------	-------	-------	-------	-------	-------	-------	-------	-------	-------	-------	-------	-------	-------	-------	-------	-------	-------	-------	-------	-------	-------	-------	-------	-------	-------	-------	-------	-------	-------	-------	-------	-------	-------	-------	-------	-------	-------	-------	-------	-------	-------	-------	-------	------	------	------	------	------	------	------	------	------	------	------	------	------	------	------	------	------	------	------	------	------	------	------	------	------	------	------	------	------	------	------	------	------	------	------	------	------	------	------	------	------	------	------	------	------	------	------	------	------	------	------	------	------	------	------	------	------	------	------	------	------	------	------	------	------	------	------	------	------	------	------	------	------	------	------	------	------	------	------	------	------	------	------	------	------	------	------	------	------	------	------	------	------	------	------	------	------	------	------	------	------	------	------	------	------	------	------	------	------	------	------	------	------	------	------	------	------	------	------	------	------	------	------	------	------	------	------	------	------	------	------	------	------	------	------	------	------	------	------	------	------	------	------	------	------	------	------	------	------	------	------	------	------	------	------	------	------	------	------	------	------	------	------	------	------	------	------	------	------	------	------	------	------	------	------	------	------	------	------	------	------	------	------	------	------	------	------	------	------	------	------	------	------	------	------	------	------	------	------	------	------	------	------	------	------	------	------	------	------	------	------	------	------	------	------	------	------	------	------	------	------	------	------	------	------	------	------	------	------	------	------	------	------	------	------	------	------	------	------	------	------	------	------	------	------	------	------	------	------	------	------	------	------	------	------	------	------	------	------	------	------	------	------	------	------	------	------	------	------	------	------	------	------	------	------	------	------	------	------	------	------	------	------	------	------	------	------	------	------	------	------	------	------	------	------	------	------	------	------	------	------	------	------	------	------	------	------	------	------	------	------	------	------	------	------	------	------	------	------	------	------	------	------	------	------	------	------	------	------	------	------	------	------	------	------	------	------	------	------	------	------	------	------	------	------	------	------	------	------	------	------	------	------	------	------	------	------	------	------	------	------	------	------	------	------	------	------	------	------	------	------	------	------	------	------	------	------	------	------	------	------	------	------	------	------	------	------	------	------	------	------	------	------	------	------	------	------	------	------	------	------	------	------	------	------	------	------	------	------	------	------	------	------	------	------	------	------	------	------	------	------	------	------	------	------	------	------	------	------	------	------	------	------	------	------	------	------	------	------	------	------	------	------	------	------	------	------	------	------	------	------	------	------	------	------	------	------	------	------	------	------	------	------	------	------	------	------	------	------	------	------	------	------	------	------	------	------	------	------	------	------	------	------	------	------	------	------	------	------	------	------	------	------	------	------	------	------	------	------	------	------	------	------	------	------	------	------	------	------	------	------	------	------	------	------	------	------	------	------	------	------	------	------	------	------	------	------	------	------	------	------	------	------	------	------	------	------	------	------	------	------	------	------	------	------	------	------	------	------	------	------	------	------	------	------	------	------	------	------	------	------	------	------	------	------	------	------	------	------	------	------	------	------	------	------	------	------	------	------	------	------	------	------	------	------	------	------	------	------	------	------	------	------	------	------	------	------	------	------	------	------	------	------	------	------	------	------	------	------	------	------	------	------	------	------	------	------	------	------	------	------	------	------	------	------	------	------	------	------	------	------	------	------	------	------	------	------	------	------	------	------	------	------	------	------	------	------	------	------	------	------	------	------	------	------	------	------	------	------	------	------	------	------	------	------	------	------	------	------	------	------	------	------	------	------	------	------	------	------	------	------	------	------	------	------	------	------	------	------	------	------	------	------	------	------	------	------	------	------	------	------	------	------	------	------	------	------	------	------	------	------	------	------	------	------	------	------	------	------	------	------	------	------	------	------	------	------	------	------	------	------	------	------	------	------	------	------	------	------	------	------	------	------	------	------	------	------	------	------	------	------	------	------	------	------	------	------	------	------	------	------	------	------	------	------	------	------	------	------	------	------	------	------	------	------	------	------	------	------	------	------	------	------	------	------	------	------	------	------	------	------	------	------	------	------	------	------	------	------	------	------	------	------	------	------	------	------	------	------	------	------	------	------	------	------	------	------	------	------	------	------	------	------	------	------	------	------	------	------	------	------	------	------	------	------	------	------	------	------	------	------	------	------	------	------	------	------	------	------	------	------	------	------	------	------	------	------	------	------	------	------	------	------	------	------	------	------	------	------	------	------	------	------	------	------	------	------	------	------	------	------	------	------	------	------	------	------	------	------	------	------	------	------	------	------	------	------	------	------	------	-----	-----	-----	-----	-----	-----	-----	-----	-----	-----	-----	-----	-----	-----	-----	-----	-----	-----	-----	-----	-----	-----	-----	-----	-----	-----	-----	-----	-----	-----	-----	-----	-----	-----	-----	-----	-----	-----	-----	-----	-----	-----	-----	-----	-----	-----	-----	-----	-----	-----	-----	-----	-----	-----	-----	-----	-----	-----	-----	-----	-----	-----	-----	-----	-----	-----	-----	-----	-----	-----	-----	-----	-----	-----	-----	-----	-----	-----	-----	-----	-----	-----	-----	-----	-----	-----	----

- N.E.	Catalina P.L.	260' around	3.58	116.82	R
Return		6.5'	3.89	116.51	
642.5					
	Return	6.5'	4.13	116.27	
		6.5	4.61	115.79	
	Atascadero P.L.	6.5	4.98	115.37	U ^v
S.E.	Atascadero P.L.	24.6' around	4.55	117.84	116.82
Return		6.06	4.43	117.86	116.94
629.7		6.06	4.36	117.88	117.01
		6.06	4.02	117.88	117.35
		1.5	3.96	117.85	117.41
	Catalina P.L.	5.0	3.57	117.87	117.54

McKee St.

Location of encroachments in
1800 Blk. (Kettner to India)

Sommernoyer
Allen
Bunch
McCoy, X

12-27-49

INDEXED

W.K.

W.D. 20006

DEC 29 1949

Ref: T.P. sheets 486+487

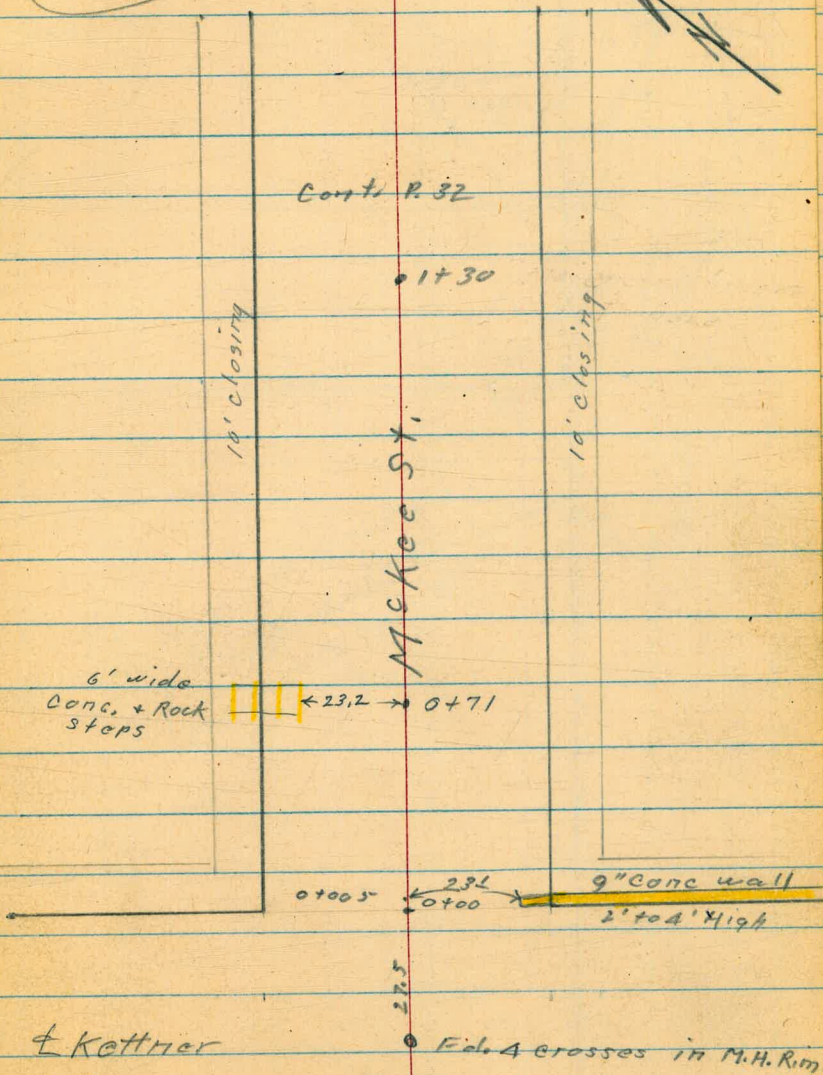
Closing " 34+216

Books F.B. 1307-32
✓ 1443-71
G 102-28

■ = set stub

● = Nail

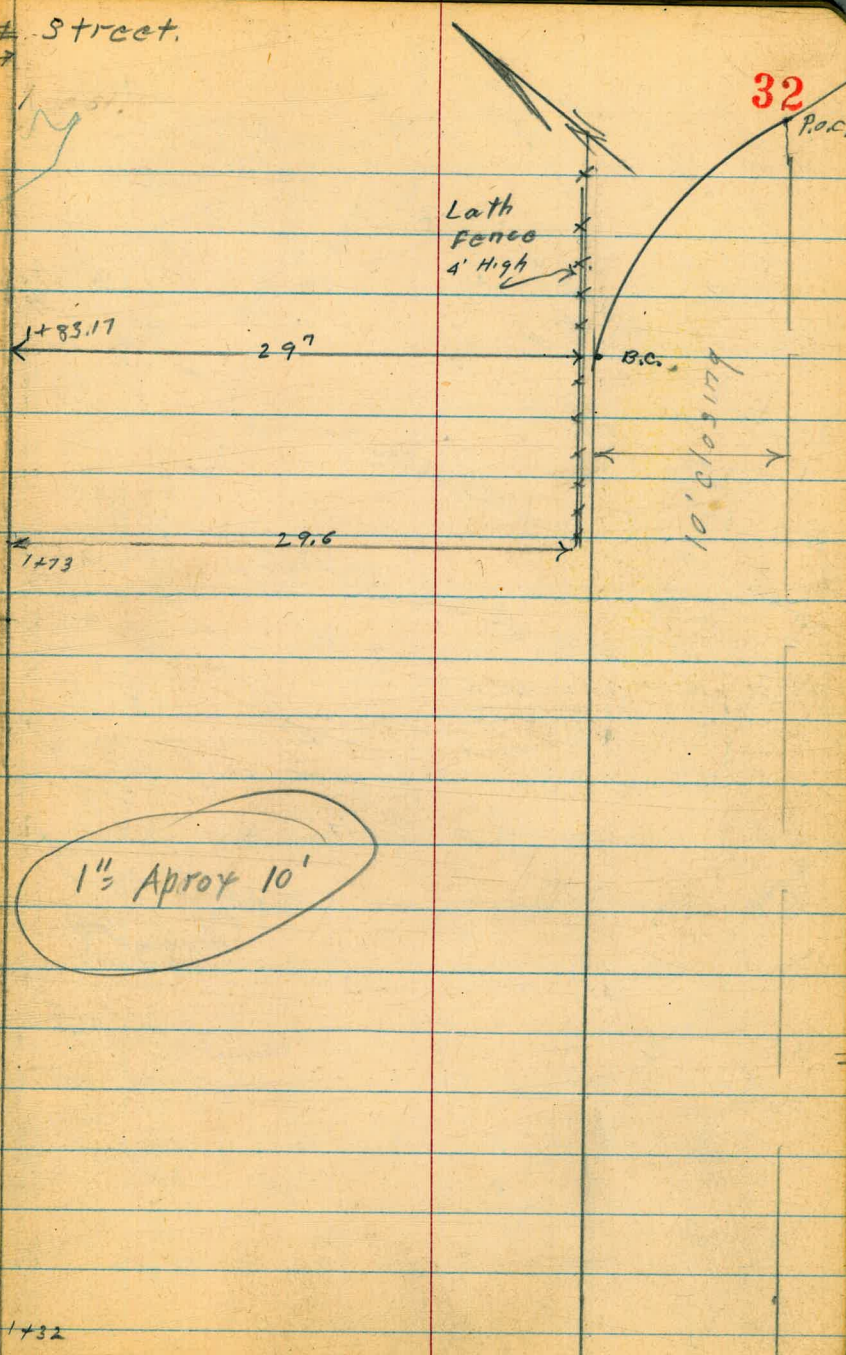
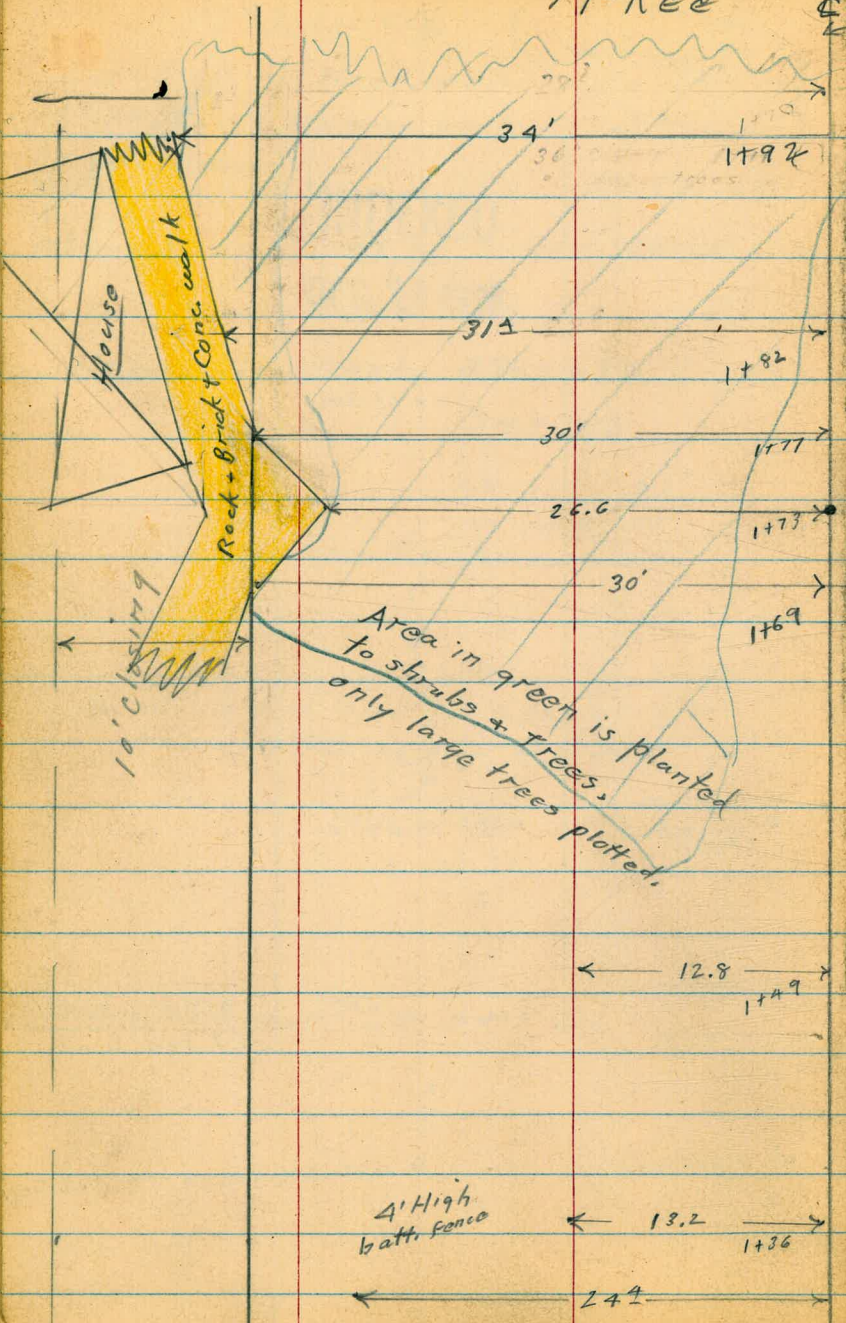
■ = Ed. old hub. Tied out + replaced in
same position by new $\frac{1}{2}$ " disk.



Mckee

Street.

32



Ref. FB. 1664/46/50

35

E16-49

MOORE X SEC Pynchon St.

Begg Sherman (Between curbs)

Crawford For Paving.

Franklin to Imperial Ave.

INDEXED

Note! curb and Sdms.

W.K.

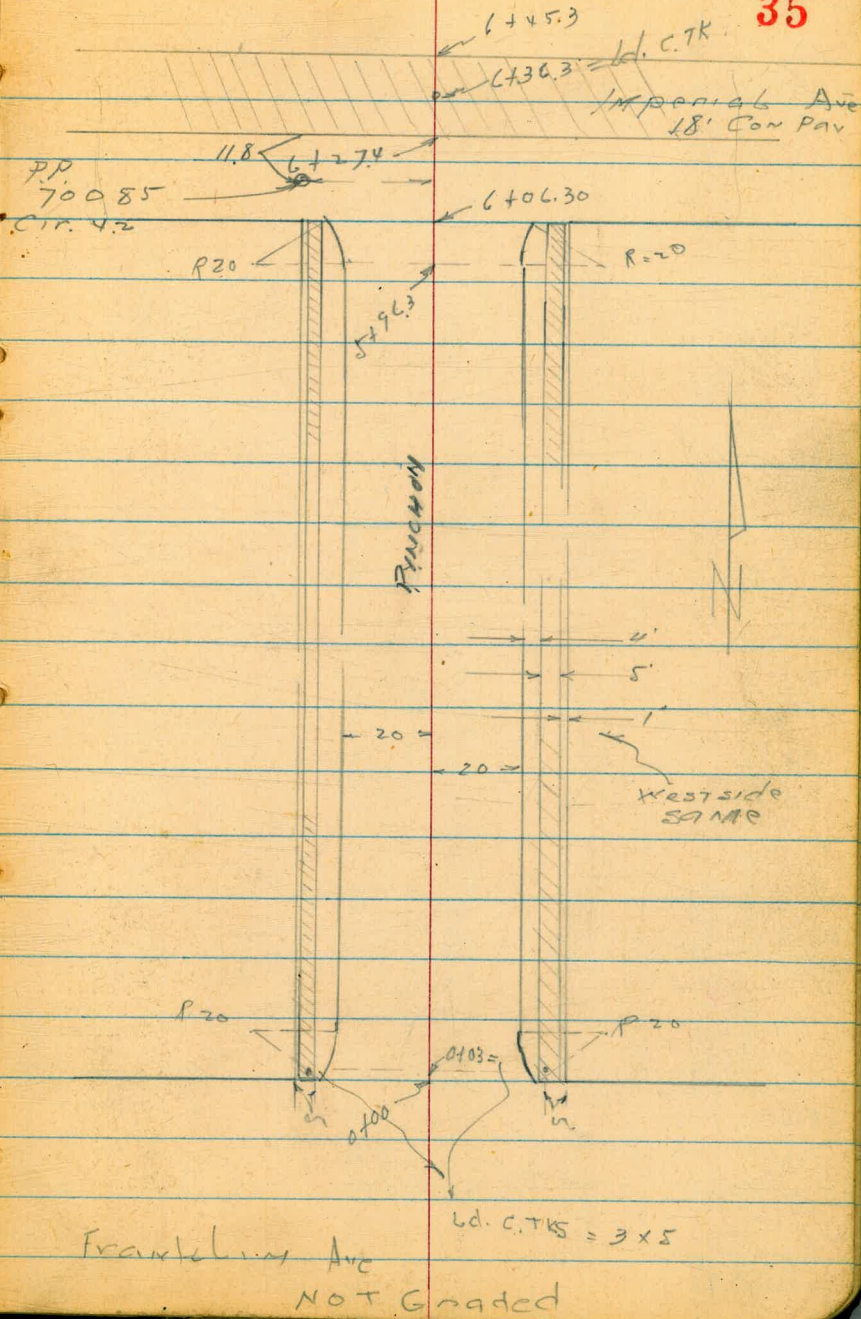
IN OK.

JAN 17 1950

WD 31516

Soil sample 0+50 5'

" " 5+00 " "



Franklin Ave

NOT Graded

1 sec Pyncheon St

67

88

R7

36

1740

4.1021.89 84	5.102.0 57	7.102.5 57	5.102.7 57	4.102.9 48	5.102.7 50	4.103.49 24
-----------------	---------------	---------------	---------------	---------------	---------------	----------------

1700

5.102.06 55	5.101.2 57	5.101.8 57	5.102.0 57	5.102.0 57	5.101.7 50	5.102.64 59
----------------	---------------	---------------	---------------	---------------	---------------	----------------

0750

5.100.96 77	7.100.2 57	7.100.7 70	5.100.9 57	5.100.8 55	7.100.6 71	5.101.42 51
----------------	---------------	---------------	---------------	---------------	---------------	----------------

0710 c6 BC

7.100.07 66	8.99.5 7	7.99.8 7	7.100.0 7	7.100.0 7	7.99.8 7	7.100.53 20
----------------	-------------	-------------	--------------	--------------	-------------	----------------

0700 n.b. Franklin

7.99.82 79	8.99.8 8	8.99.6 8	8.99.6 8	8.99.7 8	8.99.7 8	7.100.29 44
---------------	-------------	-------------	-------------	-------------	-------------	----------------

T.P. NW Cor. 76
Franklin
Pyncheon

7.79	107.73	9.90	99.94
------	--------	------	-------

107.73

B.M.
SW CT
47th and
Franklin

0.94	109.84	108.90
------	--------	--------

4+00

3+51 E of 52' drive
on West

3+00

T.P. 383 107.47 409 103.6X

2+60

2+20

1+80

107.73

W 103.65
E 103.61
29 24
WALK

4.2 X 103.23
06

4.8 X 102.7

4.2 X 103.2

4.1 X 103.9

4.2 X 103.3

4.4 X 103.0

37

3.7 X 103.70

06

4.4 X 103.07

4.4 X 103.0

4.0 X 103.5

3.8 X 103.7

3.9 X 103.6

4.2 X 103.3

3.4 X 104.03

06

CON. DRIVE
THRU C6.

3.5 X 103.91

4.3 X 103.2

3.7 X 103.8

3.5 X 104.0

3.1 X 103.9

3.9 X 103.6

4.0 X 104.01

2.0 C

2.8 C

2.0 C

3.5 C

3.0 C

3.9 C

4.0 C

2.0 C

2.8 C

2.0 C

3.5 C

3.0 C

3.9 C

4.0 C

4.0 X 104.08
2.0 C

4.0 X 103.3
2.0 C

4.0 X 103.7
2.0 C

4.0 X 104.1
2.0 C

4.0 X 103.9
2.0 C

4.0 X 103.7
2.0 C

4.0 X 104.55
2.0 C

3.7 X 103.97
2.4 C

4.0 X 103.1
2.4 C

4.0 X 103.5
2.4 C

4.0 X 103.8
2.4 C

4.0 X 103.8
2.4 C

4.0 X 103.5
2.4 C

4.0 X 104.44
2.4 C

4.1 X 103.55
2.0 C

4.5 X 102.6
2.0 C

4.7 X 103.0
2.0 C

4.0 X 103.3
2.0 C

4.3 X 103.2
2.0 C

4.3 X 103.2
2.0 C

4.2 X 104.11
2.0 C

107.73

6706.3 = 5L Imperial 4L

T.P. 533 106.92 588 101.59

51963 06 B.C.

450

5

4750

4705 E of 8' drive ^{CON.}
thru 06

107.47

4.19 ^{103.20}
29

←
BACK

4.25 ^{103.22}

4.81 ^{102.66}

4.80 ^{102.7}

24 20 20
CON. dirt
06. pt
drive

107.47

101.64
5.28
231
06 end

101.0
5.9
231
dirt

101.3
5.0
10

101.7
5.0

101.8
5.0
10

101.9
5.0
231
dirt

102.62
4.30
231
06 end

106.92

101.81
5.66
20
06

101.1
5.0
20

101.5
5.0
10

101.8
5.0

102.0
5.0
10

101.8
5.0
20

102.42
5.0
20
06

102.12
5.35
06

101.3
5.0

101.9
5.0

102.2
5.0

102.2
5.0

101.9
5.0

102.70
5.0
20
06

102.57
4.96
06

102.0
5.5

102.4
5.0

102.7
5.0

102.6
5.0

102.3
5.0

103.04
5.0
20
06

102.83
5.0
20
06

102.6
5.0
20

102.8
5.0
10

103.0
5.0

102.9
5.0
10

102.7
5.0
20

103.35
5.0
20
06

check to E l.d.c.t. BM. 511 10181 10184
 Imperial & Pynchon 003

6+453 w edge

6 Pav. 6+363

6+274 S edge 18' Con. Pav.

6+163 or dirt

10692

99.67
 7.25
 80

100.98
 5.94
 30

101.76
 5.1

102.63
 4.29
 30

104.11
 2.81
 80

99.76
 7.16
 80

101.00
 5.94
 30

l.d.c.t.k.

101.81
 5.1

102.72
 4.20
 30

104.19
 2.73
 80

99.57
 7.35
 80

100.80
 6.12
 30

101.65
 5.29

102.59
 6.33
 30

104.07
 2.85
 80

5 101.2
 10

5 101.5
 30

6 100.9
 20

5 101.3
 10

5 101.7
 20

5 101.8
 10

4 102.1
 20

5 102.9
 30

3 103.0
 40

10692

~Check Bench Marks~
 on 47th Street
 Between Ocean View Blvd.
 And Franklin

TP 6.59 108.75 7.06 102.16

N.L. Franklin on Pyrites

INDEXED
 W.K.
 MAR 15 1950

W. Line 47th on Franklin

TP 0.27 109.22 8.47 108.90 - P-36
 108.95

0.23 117.42 116.49

Walker Lt. 2
 F. Gregory
 G. Poppe
 R. Sission
 1-26-50

47.

40

99.88
 93.4
 22.9
 on cb. Return P-36
 76.81
 0.26
 20
 on top cb.
 108.60
 0.62
 on Conc. Pav.
 109.22
 100.56
 886
 22.9
 on cb. Ref. P-36
 109.61
 + 0.15
 20
 on cb.

B.M. SW 7th Jack Franklin & 47th P-36 this Book

B.M. Brass Plq. SW. Ocean View & 47th

FB 1249

3

Check Bench Marks
Cont. from P-40

Lt

2

Rt

41

SW B.P. Ocean View & 97th 116.49 → P-40
 Chk. Starting B.M. 1.42 116.50
 T.P. 846 117.92 5.16 109.46

Franklin & 47th 108.95 → P-40
 Chk. B.M. SW 7' Jack 5.66 108.96
 T.P. 336 114.62 6.78 111.26

T.P. 922 118.04 0.49 108.82

G+O.G. 3 = Sh. Imp. Arc on Ryncher

101.62

769
20
on cb. West

102.70

661
20
on cb. East.

E. Pos.
 Chk. Ld & Tack 6+36.3 P-39 742 101.89

T.P. 641 109.31 5.85 102.90

Chk cbs. 3 too on Ryncher P-37

86.58
103.98
4.77
20
on cb.

104.97
4.28
20
on cb.

108.75 from P-40

San Bernardo
San Jacinto Dr. west.

3-27-50
W.O. 25020

Sommerneyer
M. Coy
Allen

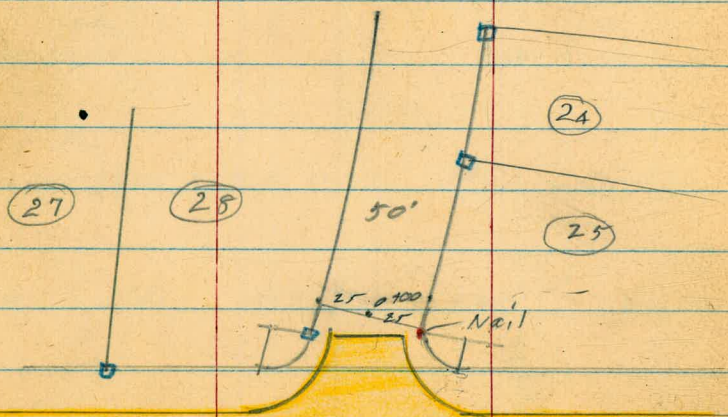
INDEXED
N.K.
MAR 29 1950

Field book $\frac{1835}{62}$

REDUCED 3-29-50
P.V.S.

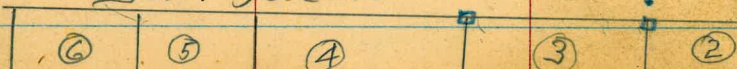
- = Fd. $\frac{1}{2}$ " Tack
- = Fd. $1\frac{1}{2}$ " pipe + disk
- = Fd. $\frac{3}{4}$ " pipe + disk
- = Fd. L+T.

800' $\frac{1}{2}$ Rad. Def. = 2.1186' per. ft.
1610' $\frac{1}{2}$ " " = 1.0676' " "



Conc. Pave.

San Jacinto



42

Cont. FB
2088-56

Ely line Las Alturas Villa Sites.

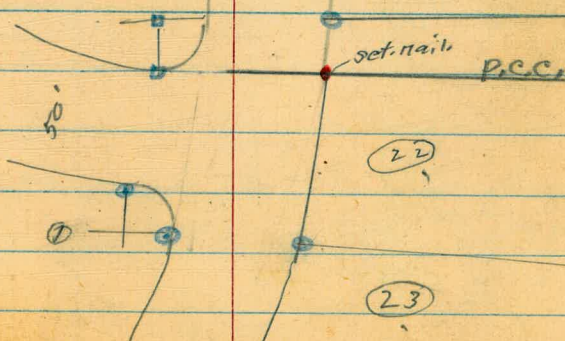
7403.77.

San Bernardo Terrace



50'

La Paz
 $\frac{1835}{62}$



def. = $2^{\circ}25'-15''$
 1+37 - 26 $\frac{1}{2}$ Rt. = \pm 8' wide Conc. Dr.

179.76	180.04
7.13	6.85
<u>268</u>	<u>49</u>
	Car. Floor

def. = $2^{\circ}16'-70''$
 1+24 25 $\frac{1}{2}$ Lt. = \pm 3' wide Conc. walk

179.80	180.01
7.09	6.88
<u>35°</u>	<u>25°</u>
	on walk

1+00 def. $1^{\circ}46'-45''$

180.1	179.8	180.1	179.8	180.3	178.1
6.8	7.1	6.8	7.1	6.7	8.8
<u>25</u>	<u>15</u>		<u>15</u>	<u>25</u>	<u>50</u>

(across so only \pm shown)
 (drives + walks are level)

25 $\frac{1}{2}$ Lt. = \pm 14' wide Conc. drive
 0+94 def. $1^{\circ}40'$

179.41	180.12
7.48	6.77
<u>44°</u>	<u>25.2</u>
	Car. Floor

0+50 def. $0^{\circ}53'-24''$

180.0	180.8	180.5	180.8	180.6	181.1	180.4
6.9	6.1	6.4	6.1	6.3	5.8	6.5
<u>35</u>	<u>25</u>	<u>15</u>		<u>15</u>	<u>25</u>	<u>40</u>

0+00 Radial to Prop E.C. on north

180.7	180.9	181.5	181.6	182.5
6.2	6.0	5.4	5.3	4.4
<u>25</u>	<u>13</u>		<u>15</u>	<u>25</u>

186.89

2+41⁹² def. 4°-18'-15" = P.C.C.

177 ²	177 ⁸	178 ²	178 ⁰	178 ⁸
5.0	4.9	4.5	4.7	3.9
25	15		15	25

2+14 def = 3°-48'-27" Approx La Paz.

178 ⁰	178 ⁴	178 ²	178 ⁵	179 ²
4.7	4.3	4.0	4.2	3.5
25	15		15	25

2+00 - def. 3°-33'-30"

178 ⁰	178 ⁶	178 ²	178 ²	179 ⁵
4.7	4.1	3.8	4.0	3.2
25	15		15	25

def. 3°-30'-10"

1+97 2A² Rt. = ± 8' wide conc. Dr.

179 ⁴⁴	179 ⁴⁵
3.28	3.27
24.2	50
	Car floor

See $\frac{1835}{62}$ for La Paz Drive

182.72

on pipe 25 ft. off

T.P. 3.39 182.72 7.56 179.33
 S.E. La Paz Dr.
 2+175^E - 25' Lt. = prop. pipe R.C. (RF. 4847)
 32.04-21' Lt

179 ³	178 ⁹	179 ²	178 ⁹	179 ⁴
7.7	8.0	7.7	8.0	7.5
25	15		15	25

1+50 2°-40'-08" Lt.

179 ⁶	179 ²	179 ⁵	179 ¹	179 ⁵
7.3	7.7	7.4	7.8	7.4
25	15		15	25

186.89

4+00 5°-39'-40

$\frac{173.8}{8.9}$	$\frac{173.6}{7.1}$	$\frac{173.9}{8.8}$	$\frac{174.3}{8.4}$	$\frac{173.8}{8.9}$	$\frac{174.3}{8.4}$	$\frac{170.3}{12.3}$	$\frac{161.2}{21.5}$
$\frac{50}{15}$	$\frac{25}{15}$	$\frac{15}{15}$	$\frac{15}{15}$	$\frac{13}{13}$	$\frac{20}{20}$	$\frac{25}{25}$	$\frac{50}{50}$

~~3+37 End of skim coat oil on roadway~~

3+50 3°-52'-14 Lt.

$\frac{174.8}{7.9}$	$\frac{174.8}{7.9}$	$\frac{175.3}{7.4}$	$\frac{174.8}{7.9}$	$\frac{174.6}{8.1}$	$\frac{174.1}{8.6}$
$\frac{50}{25}$	$\frac{15}{15}$	$\frac{15}{15}$	$\frac{13}{13}$	$\frac{25}{25}$	$\frac{50}{50}$

3+37 = End of oil skim coat on road

24^L Rt. = ± 7' wide Conc. drive.

3+14 - def. 2°-35' Lt.

$\frac{176.97}{5.75}$	$\frac{176.97}{5.75}$	$\frac{176.78}{5.94}$	$\frac{176.24}{6.48}$
$\frac{24.1}{25}$	$\frac{25}{25}$	$\frac{52}{52}$	$\frac{73}{73}$
on drive			Cor. Floor

3+00 2°-04'-48' Lt.

$\frac{176.9}{5.8}$	$\frac{176.4}{6.3}$	$\frac{176.8}{5.9}$	$\frac{176.4}{6.3}$	$\frac{177.5}{5.2}$
$\frac{25}{25}$	$\frac{15}{15}$	$\frac{15}{15}$	$\frac{15}{15}$	$\frac{25}{25}$

2+61 def - 0°-41' Lt. 25^R Rt. = ± 7' wide Conc. Dr.

$\frac{178.76}{3.96}$	$\frac{179.00}{3.72}$	$\frac{178.62}{4.10}$
$\frac{25.9}{25.9}$	$\frac{49}{49}$	$\frac{60}{60}$
on drive		Cor. Floor

2+57^R def. 0°-34'-10"
25' Lt. = Prop. E.C. La Paz.

$\frac{177.9}{4.8}$	$\frac{177.5}{5.2}$	$\frac{177.8}{4.9}$	$\frac{177.3}{5.0}$	$\frac{178.4}{4.3}$
$\frac{25}{25}$	$\frac{15}{15}$	$\frac{15}{15}$	$\frac{15}{15}$	$\frac{25}{25}$

182.72

6+93¹² 25' Rt. = Prop. cor. = end of Job in RR
16°-09'-27" Lt.

165.6	164.1	157.6	156.4	156.6	155.6	144.6	140.9
+1.5	0.0	6.5	7.7	7.5	8.5	17.5	23.2
50	30	25		23	25	47	60

6+50 14°-36'-50" Lt

176.5	174.2	163.7	162.6	162.6	161.8	150.6	146.3
+12.4	+10.6	0.4	1.5	1.5	2.5	13.5	17.8
50	33	25	164.06	23	25	45	60

T.P. 1.51 164.06 12.27 162.55

6+00 12°-49'-24" Lt.

180.3	176.8	171.1	169.3	167.9	168.0	166.8	157.2	151.8
+5.5	+2.0	3.7	5.6	6.9	6.8	8.0	17.1	23.0
60	34	25	22		23	25	36	50

5+50 11°-02' Lt.

173.1	171.3	171.4	171.8	170.8
1.7	3.5	3.4	3.0	4.0
25	23		22	25

5+00 9°-14'-32" Lt.

177.8	175.8	173.3	173.2	173.1	170.9	163.4	158.2
+3.0	+1.0	1.5	1.6	1.1	3.9	11.4	15.1
50	30	25		20	25	36	50

T.P. 1.61 174.82 9.57 173.21

174.82

4+50 7°-27'-06" Lt.

174.1	173.9	173.3	173.8	174.4	173.0
8.6	8.8	9.4	8.9	8.3	9.7
50	25	15		23	25

182.72

Orig. B.M. P. A3. 1.41 183.42 (183.40)

T.P. 9.91 184.83 0.78 174.92

T.P. 12.90 175.70 1.26 162.80

9+00 on Tang. produced

14.0
158-

8+50 on Tang. produced

17.0
147-

7+75 = on Tang. produced

24.0
140-

7+14.42 25' Lt. = Prop. Cor. = end of job.
16°-55'-15" Lt.

160.8
3.3
50
158-
6.0
25

7+03⁷⁷ = 16°-32'-21" Lt. = End on ϕ

157.6
6.5
25
155-5
8.6

164.06

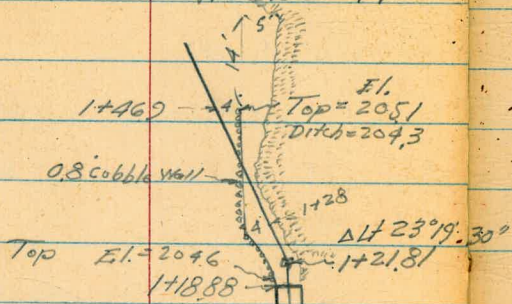
LOCATION - PROPOSED DRAIN

Block 260 - UNCL. Hts.

Walker
G. Pope
R. Sisson
8-9-50

NO 20699

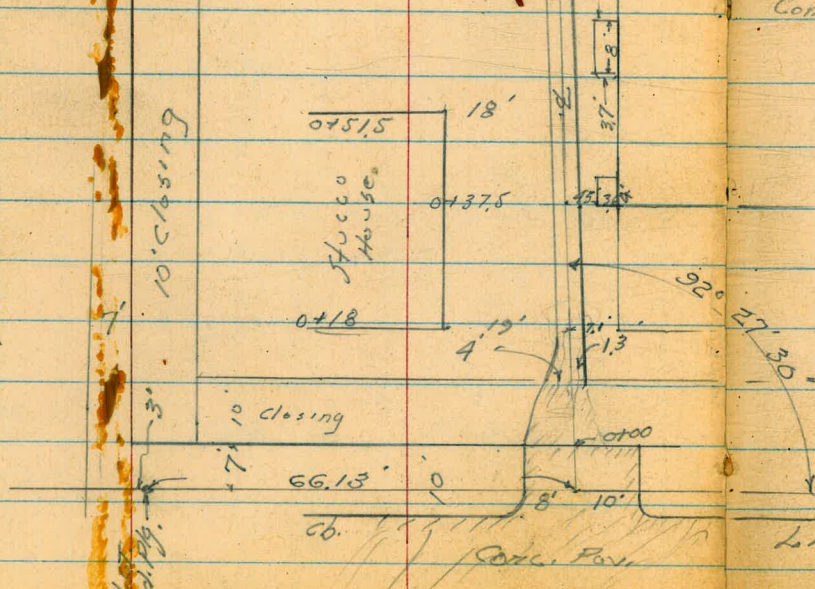
INDEX
MK
AUG 11 1950



Exist. Box
Culvert
Cone Wall on
RT = Conc. Slab
on Top
N. side = Cobble stone

1709.5
House
under
Const.

MYRTLE AVE.



Florida St.

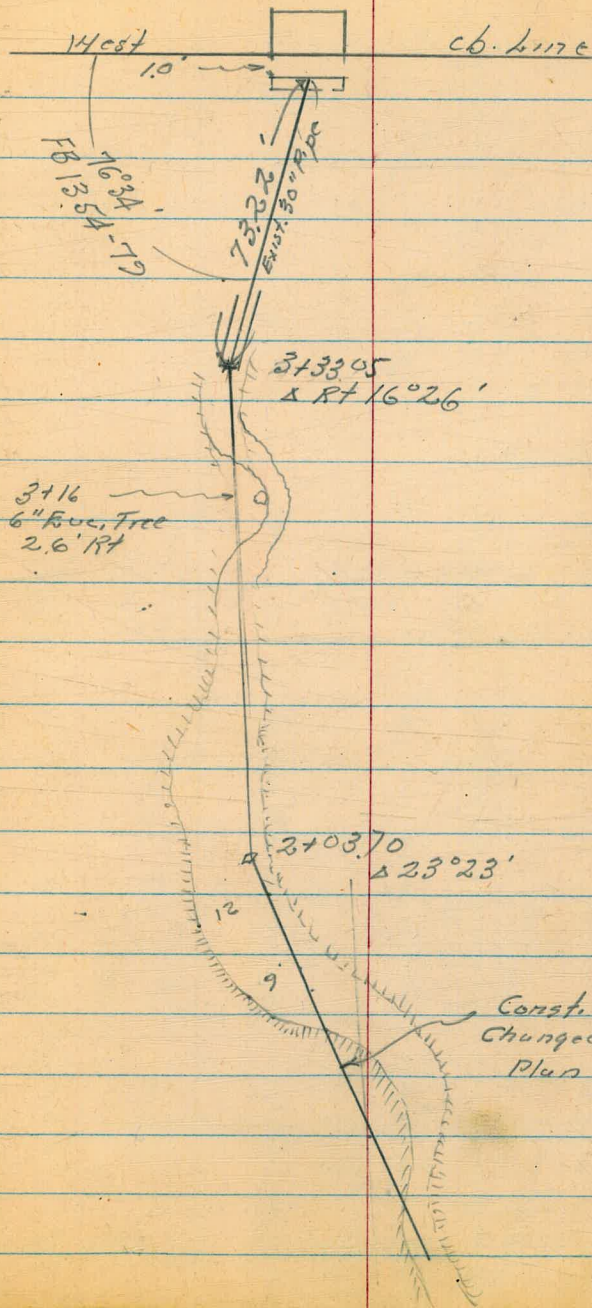
Block 260 - U.N.N. Hts

Drain

Construction Notes 1+76.60 } Sec
 To 2+132.60 } Grade
 } Box 263
 }

Alaburnia

50



Block 260 - Univ. Hts

Drain

Lt

g

PK

51

1400

283
10.8
10

2043
+ 0.8
7

2043
3.2
3

2043
3.2

2041
3.4
9

0750

2028
4.7
10

2027
4.5

2028
4.7
8
Ground
at house

0709.40 = Beg. Box Chart

2000
7.5
8

199.36
8.15
4
Top Box

197.6
9.9
4

197.16
10.35
invert

199.43
8.08
Top
Box

197.14
10.35
1.3
Top

199.43
8.08
1.3
Top

199.0
8.5
10

0700

197.48
10.03
8
cb

197.06
10.45
8
Gut.

196.44
10.52
10
Gut.

196.86
10.65
10
cb

197.29
10.22
10
cb

0-10 = E. cb. line Florida

196.69
10.82
25
Gut.

197.58
9.93
25
cb

196.51
11.00
11
Gut.

197.41
10.10
11
cb

196.42
11.09
13
Gut.

196.27
11.24
13
cb

197.10
10.41
13
Gut.

196.13
11.38
25
cb

196.92
10.59
25
cb

0-30.2 = d Conc. Paving - Approx 2 Florida

196.37
11.14
25

196.14
11.37
207.51 ✓

195.87
11.64
25

7.21 207.51 ✓

200.30 ✓

BN. Sta. Top Fire Hydr.

Myrtle
8 Florida
FB 1671-28

Block 260 - Univ. Hts
 Drain

2+60

TR 12.21 226.68 1.89 219.47

2+50

2+03.7 Δ RT

1+66

1+21.81 = Δ Lt 23°19'30"

2. Hrb 12.21.81

TR 12.81 216.36 3.96 203.55

1+18.88

207.51

Lt.

♀

RT.

52

219.5 216.6 214.9 214.0 215.3 217.1 218.3
 7.2 10.1 11.8 12.7 11.4 9.6 8.4
 10 8 3 5 11 15 15
 226.68 ✓

218.6 216.4 214.6 214.6 216.9 216.9
 +2.2 0.0 1.8 1.8 +0.5 +0.5
 10 4 Wash Wash 11 15

215.3 212.2 211.30 211.3 213.2 215.0
 11 4.2 5.6 5.1 3.2 1.7
 17 12 11.6 2 4 15
 Top slope

212.3 209.0 207.0 207.2 211.7 214.6
 4/10 7.4 9.4 3 9.2 4.7 1.8
 10 m. Wash Wash Wash Bark

209.0 208.7 204.8 203.55 208.6 206.1
 7.4 7.7 11.6 12.81 7.8 8.3
 10 8 3 7 12
 (con Wash) 216.36 1

1/0 208.5

1/5 206.0

203.25
 4.36
 Invert

205.19
 2.32
 Top

207.1
 0.4
 8

207.51 ✓

Block 260 - Univ. Hts
Drain

3+49 out station = 3+40 $\frac{FB1671}{33}$
3+41 = old end of Pipe as per notes $\frac{FB1671}{33}$

3+33.05 (END 30" PIPE)

3+09

2+85

2+78

Lt

Rt

RT

53

PG

Notes Reduced. 8-11-50

2242

2.5

2228

3.9
Invert

0.5 225.9
10

2.6 224.1
4

4.8 221.9
8

9.4 217.3
5
Ditch

6.2 220.5
8

4.9 221.8
5

9.1 217.6
8
Ditch

4.0 222.7
10

5.9 220.8
8

9.8 215.9
3

11.7 215.0
2
Ditch

11.7 215.0
2
Ditch

11.7 215.0
2
Ditch

8.7 218.0
3

7.7 219.0
5

22668 ↓

Alley BIK, 175 Univ. Hqts.

X-sec. for Imp.

Sommermeier
Johnson
Allen

10-15-50
W.O.# 31852

F.B 1565 - P43

• = Fd L+T, ore.T. in pave-

$\frac{1565}{43}$

Soil sample taken on # 5+90

side of pole.
outs to poles taken to property

INDEXED
M.
SEP 20 1950

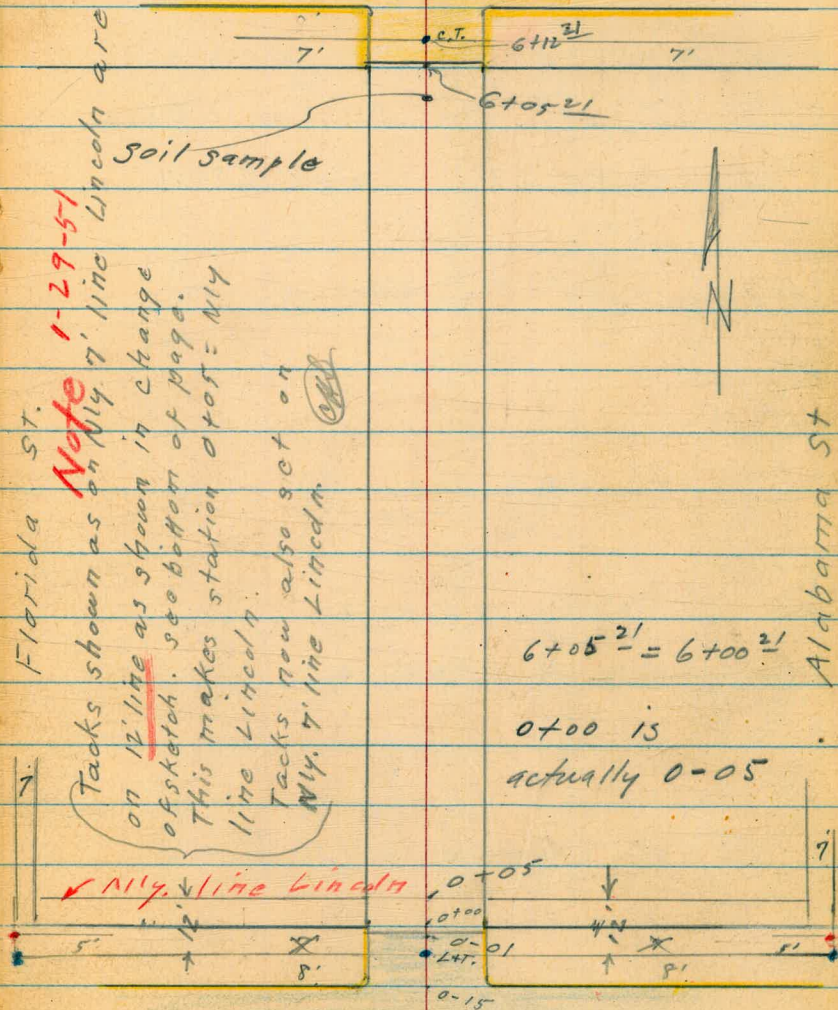
STEVENS
12-20-50

Clint - RECHECK Notes -
Ed.

54

Plotted T.P. 288 Polk. St.
1-30-51 - M²Q

Conc. Pave.



also = end Pave.

98 ft } = End of curbs
 0-01 10' Lt.

0-05 11' Lt. = start 2nd wide hedge

0-07 = L.H. (Set B.M.) 5.29 274.01

98 ft } = E.C. 2' Rad cl. Ret.
 0-13 10' Lt.

0+15 Cont.

12' Lt } = B.C. 2' Rad alley cl. Ret.
 12' Lt

0-15 = Nly. Cl. line Lincoln

0-35 = E. Lincoln - A.C. Pave

Set B.M. 5.29 279.30 10.73 274.01

0.13 284.74 — 284.61

273.95
 5.35
 10
 cl.
 273.91
 5.39
 10
 G
 274.21
 5.09
 275.02
 4.28
 98
 G
 275.23
 4.07
 98
 cl.

273.60
 5.70
 10
 cl.
 273.20
 6.10
 10
 G
 273.82
 5.47
 274.54
 4.76
 98
 G
 275.12
 4.18
 98
 cl.

270.09
 7.21
 60
 cl.
 269.44
 7.86
 60
 G
 278.55
 0.75
 cl.
 60

273.41
 5.89
 12
 cl.
 272.82
 6.48
 12
 G
 273.01
 6.29
 10
 273.73
 5.57
 274.47
 4.88
 10
 274.55
 4.75
 12
 G
 275.26
 4.14
 12
 cl.
 277.95
 1.35
 60
 G

269.09
 9.91
 60
 272.94
 6.36
 10
 273.59
 5.71
 274.25
 5.05
 10
 271.67
 1.63
 60

279.30

C.T. & Alley BIK 175 + 7' south of N. line Lincoln
 N.W. B.P. Lincoln & Alabama

T.P 6.92 284.41 1.81 277.49

0+25 - 10' Rt. = 5' wide house fire place

276.01	276.3	277.0	277.0	277.2	278.2	278.0	276.0
3.3	3.0	2.3	2.3	2.1	0.6	0.5	2.5
14 ²	10	6		2	8	10	10
End. At house							Base Fire place.

0+12¹ 14² Lt. start stucco house

275.5
3.7
14²
End.

0+12 11' Lt. = end hedge

0+08 Cont.

276.01	276.10
3.23	3.20
123	225
Conc.	± Bar.
0r.	

0+08

Rt. = ± double Gar. south front.
 start Frame House + Bar.
 11⁵ Rt. } end Ret. wall (conc.)
 9' Rt. = Pole # 406843

274.4	274.8	275.2	274.5	274.4	274.3	277.47
4.9	4.5	4.0	4.8	3.9	2.0	1.83
15	10	7		3	10	112
						End. + top of wall

0+05 = Nly line Lincoln ~~cont~~

0+00 = Nly. line Lincoln

274.3	274.3
5.0	5.0
10	10
	3.7
	275.5

0+00⁹ - 11⁵ Rt. = stat 8" Wide Ret. wall (conc.)

275.5	275.3	276.1
3.7	4.0	3.20
116	116	116
End	Base	Top

279.30

0+84 - 9' Rt = post + rail fence

0+82 11³Lt = 4' wide Conc. walk

0+81 - 8' Rt = end fence

0+80 - 11³Lt = end house

0+60 - 11³Lt = start frame house set
on conc. blocks.

0+56 - 11⁵Rt = end house
8' Rt = start slat fence

0+46 - 10²Lt = Sing. Bar. Conc. floor.
Floor is level

0+41 - 14²Lt = end house
10²Lt = start stucco Bar.

	275 4	277 4	277 4	278 5	278 2	278 7	280 4	280 7
	9.0	7.0	7.0	5.8	5.7	5.7	4.0	3.5
	30	11 ³	10	7		3	10	30
		N. E. Cor. house						
			7.8					
		276 0	276 2	277 9	277 9	278 0	280 2	280 4
	8.4	7.7	6.5	6.5	6.4	4.2	4.0	3.6
	30	10	8		3	10	11 ²	35
							N. E. Cor. house	
		276 5	277 5	277 5	277 5	278 8	279 5	279 9
	7.82	7.9	6.9	6.8	6.6	4.8	4.5	4.5
	10 ²	10	7		3	10	11 ²	11 ²
	Bar. Floor							
								8.0
								14 ²
								end

12^ELt = end house
 9^ELt = end walk
 1+36 - 9^LLt. = end conc. curb.

(used as Gar. + store room)
 also = start board shed (dirt floor)

1+30^E - 9^LRt = end frame Bldg. on Conc. Foundation

9^ERt = start frame Bldg on Conc. Foundation
 1+10 - 9^ERt = end fence

12^ELt = start frame house
 9^LLt = start conc. walk.
 1+06^E - 9^ALt = start 6" wide conc. curb.

1+05 - 10' Lt = pole # A-4007

1+00

0+98 - 13^LLt = Sing. Gar. - dirt floor.

0.3	0.2		0.3					
278	278	277	278	278	278	278	278	278
6.38	6.39	6.7	6.02	5.5	5.5	5.5	4.8	
12 ^E	9 ^E	9 ^L	9 ^L	5				
at house	walk	Base	End + top wall				at shed	

250	274
4.2	5.2
9 ^L	9 ^L
End	Base of conc.

277	277	277	278
6.93	6.77	7.0	6.4
12 ^E	9 ^L	9 ^A	9 ^A
walk at house	walk	Base curb	End + top of wall. etc.

277	277	278	278	278	278	280	280
6.7	6.5	5.8	5.6	5.3	3.8	3.5	
13	10	6		4	10	15	

277
 6.7
 13^L
 at Gar.

284.41

280	279.1	281
4.2	5.3	3.2
83	83	82
End.	Base	Top

2+07 - 8³ Rt. = Δ in wall

1+98 - 10⁴ Rt. = 14" stump. 3' high

No good - should come out
conc. wall

1+96 - 8⁴ Rt. = start 1' wide rubble +

1+80 - { 9³ Rt. = end picket fence
10³ Lt. = end picket fence

1+75

1+50

1+48 - 8⁸ Rt. = Polo J.P.A 402A

1+47 - 8⁸ Rt. = start picket fence

1+46 - 8⁸ Rt. = end of board shed.

1+44 - 10⁵ Lt. = start picket fence.

1+39 - 12⁵ Lt. = 2' wide conc. walk.

277.4	278.7	279.2	279.4	280.9	281.2	282.1
7.0	5.5	5.2	5.0	3.5	2.7	2.3
25	10		3	8.4	10	35
			End			

279.1	279.5	280.3
5.3	4.9	4.1
10		10

276.2	278.5	279.9	279.2	279.8	280.3	280.3	282.4
7.8	5.9	5.4	5.3	5.2	4.1	4.1	2.0
35	12	10		5	8	10	35

276.3
6.10
12.5
walk

284.41

2+30 83 Rt. = start board fence
102 Lt. = end double Gar

277	278	279	279	280	281
7.3	5.5	5.2	5.0	4.0	3.2
<u>35</u>	<u>10</u>		<u>3</u>	<u>10</u>	<u>20</u>

2+29- 102 Lt. = end frame shed.

278	278
5.9	5.6
<u>109</u>	<u>109</u>
Base	End
Foundation	

2+23^E 11' Rt. = $\frac{1}{2}$ 2nd door to double Gar.

280
4.0
Black top floor

2+14^E - 11' Rt. = $\frac{1}{2}$ 1st door to double Gar.

280
4.1
11
Black top floor

4" to 10" High.
on rubble conc. foundation
Part Conc floor. part wood floor.

2+11 - 11' Lt. = start frame shed

278	278
6.1	5.8
<u>11</u>	<u>11</u>
base	End
Conc.	

also = start double Gar. (plant mix floor.)
2+09 - 11' Rt. = end wall

280	280	281
4.1	4.1	3.2
11	11	11
End	base	TOP

284.41

9² Rt = start picket fence

2+82 - 8⁶ Rt. = pole # J.P.A. 4040

13^E Rt = End Car. + shed
2+80 8² Rt. = end apron

11² Lt. = end board fence.
2+69 9² Lt. = pole # A 4039

13' Rt. = start Car. + shed.
2+61⁵ 8² Rt. = start conc. apron . No good.

2+56 8² Rt. = end board fence

2+50

2+44 11¹ Lt. = start board fence.

2+42 - 11² Lt. = end apron

2+32 - 11² Lt. = start conc. apron - 5179. Car

280	281
412	3.00
8 ²	13 ^E
Apron	Floor

280	281
4.3	3.01
8 ²	13 ^L
Apron	Car, floor

278	279	279
5.7	5.0	5.0
25	10	

280	280
412	3.7
10	30

279	279
5.22	5.28
15L	11 ²
Floor	Apron

279	279
5.21	5.35
15L	11 ^E
Floor	Apron

284.41

3+27 11⁸ Lt. = end Conc. slab.
 To come out.
 3+26 10² Lt. = Ctr. 2' x 2' Conc. step

279.49
5.73
 10²
 Conc. step.

3+15- 11¹ Lt. = start Conc. Ret wall.

278.24
 6.48
 11⁸
 Conc. yard
 Slab to west
 of wall.

279.2
 5.42
 11¹
 top
 wall

279.4
 5.6
 11
 Gnd

3+10 14⁶ Lt. = ± Sing. Gar. Conc. floor

279.04
6.18
 14⁶
 Floor

Tip End of wall 11' Lt

3+16 5.41 285.22 4.60 279.81

285.22

14¹ Lt. = end Gar.

3+03 11¹ Lt. = End Conc. Apr 07

279.83
4.58
 14¹
 Floor

279.00
4.91
 11¹
 Apr 07

3+00

279.6
4.8
 10

279.2
4.5
 6

279.9
4.5
 6

280
4.0
 10

281.2
3.4
 30

double Gar.

2+8A- 10⁶ Lt. = start Conc. Apr 07 to

279.2
4.70
 13⁴
 Floor

279.46
4.95
 10⁶
 Apr 07

284.41

Alley BIK. 175
Univ. Hqts.

63

4+00

3+94 - 9³ RT: start board fence.

279.0	280.07	279.5	279.2	279.2	280.4	280.7	281.9
6.2	5.15	5.7	5.5	5.5	4.8	4.5	3.3
11	10.2	10		5	9.3	10	20
Grd	Top wall						

3+66 10² Lt: start of board fence

on conc. Ret. wall

277.5	278.5	279.5	
7.7	6.8	5.7	
20	10.7	10.7	
	Base of wall	Grd + top of wall	

3+60 10⁶ Lt: \pm Sing Gar. Dirt Floor

279.5
5.7
10.6
Floor

3+55 10⁶ Lt: end conc. wall

277.8	278.2	279.2	279.6	279.7	280.0	281.8
7.4	6.5	5.51	5.6	5.5	5.2	3.4
30	11.4	10.2	10		10	30
	Grd	top of wall				

3+42 - 9² RT: end frame shed

Conc. floor.

280.2	280.5	281.09
5.0	5.1	4.13
9	9.5	9.5
Grd.	Base Footings	Floor

Also = start frame shed - Conc. floor.
3+33 - 9² RT: end picket fence

278.4	279.4	279.7	280.0	279.2	280.2	280.5	281.09
6.6	5.42	5.5	5.2	5.3	4.3	4.3	4.0
15	11.2	10		5	9	10	30
	top wall						

285.22

4+36 - 10² Lt. = end conc. wall

278 F	279 6	279 2
6.6	5.4	6.0
10 ²	10 ²	10 ²
base	top	End
wall	wall	

4+32 10² Lt. = end wash house

conc. yard slab
11² Rt. = start board fence on

4+31 9² At = pole # 500232H

280 4	281 8	281 7
4.8	4.2	3.3
11 ²	11 ²	11 ²
Base	End	top of
Footing		slab

4+25 9² Rt. = Sing. Gar. Dirt floor

01
4.2
99

4+21 9² Rt. = end frame shed.

4+16 10⁵ Lt. = start wash room

279 2
5.5
10⁵
End

4+11 9⁵ Rt. = end board fence
start frame shed

279 2	279 2	279 2
5.34	6.4	5.7
10 ²	10 ²	10 ²
top of	base	End
wall	wall	
TO		
South		

4+06 { Also 10³ Lt. = start board fence
on conc. Ret. wall
10² Lt. = end of board fence
9⁵ Lt. = pole # A4063

285.22

4+88 { start wood floor on blocks
 9⁸ Lt. = end conc. slab floor.
 11⁶ Rt. = end board fence

4+75 { 15 wood floor.
 part conc. slab floor + part
 9⁵ Lt. = start house set on blocks
 9⁵ Lt. = start slab floor

4+77 { posts in conc.
 11⁵ Rt. = start board fence -
 11³ Rt. = end Conc. slab.

4+70 - 18² Lt. = end double Gar.

4+55 18³ Lt. = start double Gar.
 Conc. floor

4+48 { 13³ Lt. = E Sing Gar. Conc. Floor.
 8⁵ Lt. = E Conc. Apron.
 Apron level across

4+40

277	277	278	278	278	278
7.4	7.4	6.4	5.9	4.3	4.5
9 ⁵	9 ⁵	30	5	11 ³	11 ²
Conc. floor	Ord.			Ord	Base. Slab
					Footing
279	279	279	279	279	279
7.7	6.3	6.4	5.9	4.3	4.5
30	10		5	10	11 ³
					Base. Slab
					Footing
279	279	279	279	279	279
5.91	18 ²				
Floor					
279	279	279	279	279	279
5.94	18 ³				
Floor					
278	278	278	278	278	278
6.6	6.67	6.63	6.63		
8 ⁵	8 ⁵	10	13 ³		
Ord	Apron	Apron	Gar. Floor		
279	279	279	279	279	279
8.9	6.7	5.8	5.3	4.0	
30	10		5	10	

left

285.22

98 Rt. = start lath fence
5+29 - 132 Lt. = start house

5+25 92 Rt. = end frame shed

5+19 - 92 Rt. = end lath fence + start
frame shed

5+05

10^L Lt. = end frame house
5+04 92 Lt. = pole # A 4075
92 Rt. = start lath + post fence

5+01 6^S Rt. = end Conc. apron

5+00

4+89 6^S Rt. = start Conc. Apron to
S 179. Bar.

01
278
7.2
13.7
Ond

	275	278	278	278	280
	10.1	6.9	6.5	6.4	5.2
	30	10		5	10

277
7.5
10^L
Aprox.
Floor.

278
6.6
10
Ond

279	279	280
12	12	18
6.10	5.24	5.04
6E	10	14E
Apron		Bar

6.4	279	279
	12	12
	6.10	5.26
	6E	10

279	280	280
13	12	17
5.92	5.20	5.05
6E	10	14E
Apron		Bar. Floor

285.22

Polk + Alabama

290.16

S.W. 7' Lt. 2.59 290.17

T.P. 8.82 292.76 1108 283.94

G+45² ≠ Polk

G+19² Cont

G+19² = Sly cl. line Polk.

G+16² 10' Rt } = B.C. 3' Rad. cl. Ret.
10' Lt }

G+05⁹ = start Conc. Pave.

10° Rt } start alley curbs
10° Lt }
G+04²¹ = Sly line Polk.

277 24	278 50	279 05	279 58	280 01
7.78	6.52	5.96	5.44	2.01
60	10		10	60

276 35	278 15	277 52	276 83	278 29	278 35	283 25
8.77	6.87	7.50	8.19	6.73	2.47	1.77
60	13	13	60		60	60
G	cl. E.C.	G	cl.	G	G	cl.
277 68	278 93	277 91	279 21	278 29	278 93	279 21
7.34	6.09	5.91	6.73	6.09	5.91	5.32
10	10	13	10	10	13	13
G	G	G	G	G	G	cl. E.C.

278 16	277 88	278 96	278 16	
6.86	7.14	6.06	5.36	
10	10	10	10	
cl.	G	G	cl.	
278 54	278 52	279 55	279 30	279 57
6.56	6.60	6.47	5.72	5.35
10	10	10	10	10
cl.	G	G	G	cl.

278 58	278 8	278 5	279 2	279 57
6.54	6.66	6.5	5.8	5.35
10	10	10	10	10
top ob				top
				cl.

285.02

68

Levels on front of
lots 22 & 23
(Contd. p. 72)

70

119.08 N.E. 1/4 Cor. Lot 22

116.07
116.04
117.7
X 83 X 80 3 2
10 X
C6 SW

0+85

114.22 114.31 114.3 118.9 122.5
C 68 C 59 S S 20 + 1.6 8
10 X C 18
C6 SW

0+50

112.15 112.30 112.9 116.4 117.8
8 75 8 60 80 X 5 3 1 5
10 X
C6 SW

0+07

109.47 109.60 110.3 114.7 17
11 4 3 11 30 10 6 C 2 5
10 X
C6 SW
108.07 108.18 109.9
11 8 3 11 7 2 11 2
10 X
C6 SW

(Section Rt. Ls to street)

0+00 S.E. 1/4 Cor. Lot 22

120.90
A

B.M. 407 120.90
A

116.83

S.V.I.P. Chatsworth & Va Hair

71

Levels on Nly line
Lot 23 Pantages Terrace

1457

1450

1433

1417

1400

0450

T.P 11.54 138.20 0.51 126.66

0425

0400 = Ely line Chatsworth

BM 10.34 127.17

11683

5m BP Chatsworth 6 Voltaire

72

137.2
~~126.2~~
10
~~136.3~~
1.9
132.5
~~121.5~~
5.7
130.5
~~115.5~~
5.7
130.0
~~114.2~~
8.0
5
134.1
~~122.1~~
4.1
133.4
~~122.4~~
4.8
130.2
~~117.2~~
8.0
127.1
~~116.1~~
11.1

124.0
~~121.0~~
3.0
5
124.0
~~121.0~~
3.0
5

117.2
10.0
5
117.8
9.4
127.17

Proposed drain
 Yonge St
 Rosecrans to Locust 8-15-51

Sommermeier

Begg

R. Sisson

C. Ford = rd L+T
 = Fd. Disk

■ = Fd. Mon.

□ = set 1/2 + disk

T.P. Book 15

F.B. $\frac{1505}{57}$

W = ϕ existing wash

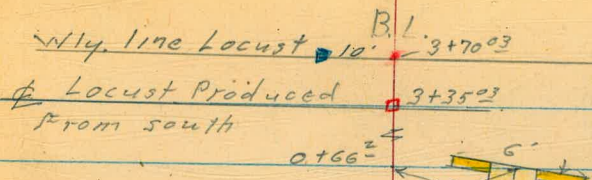
1/2 P.O.T. set at 1+93.40

" " " " 2+81.35

" " " " 3+35.03 = ϕ Locust

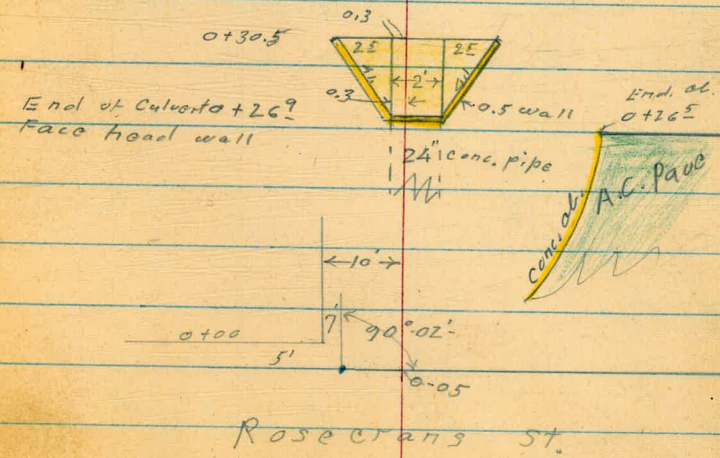
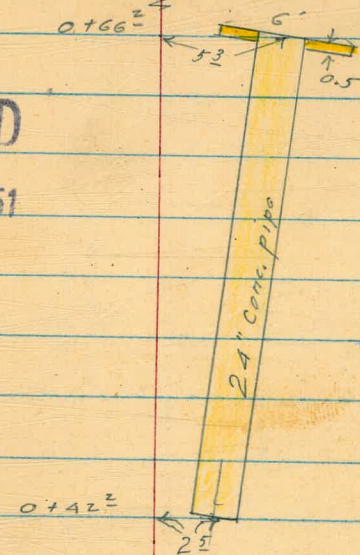
These P.O.T.'s on sly 10' line Yonge.

Note: - B.L. is 10' Nly. of sly line Yonge.



INDEXED

AUG 17 1951



S.W. 1/4 7' x 25' Disk Zelay Rosecrans

Yonge

B.L.

74

0+42

0+31

0+30⁵ = end intake to 24" pipe

0+29⁹⁵ = start throat + wing walls

0+28⁹ = wly face head wall

0+26⁵ 8' RT = end cl. + pavement

0+00 = wly line Rosecrans

B.M.#2 10.90 35.03^v 6.38 24.13^v

B.M.#1 4.04 30.51^v - 26.47 N.W. B.P.

	28.2	27.9	25.3	24.7	28.2	28.3
	6.8	7.1	9.7	9.7	9.8	7.7
	10	3		1	3	5
				W		

	2160	2533	2528	2798
	7.53	9.70	9.75	7.55
	28	03	17	43
	End wing walls	End Throat	End Throat	End wing walls

	2191	2168	2127	2172	2143
	7.56	11.35	11.76	11.31	7.60
	02	03	02	12	12
	on wall	Throat of intake	I.E. pipe	Throat	on wall

	2191	2197	2193
	7.56	7.56	7.60
	02		17

	24.58	25.93	26.67
	8.45	9.10	8.36
	8	8	25
	06	6	± Pav. =
			± Yonge

35.03^v

S.Wly. 15' x 7' disk in cl. Rosecrans + Yonge
Rosecrans + Zola.

Yonge

B. L.

75

Nail in P. pole.

T.P. 9.44 44.12¹ 0.35 34.68¹

1+00⁵ 0⁵ Rt. = Near face power pole
No number

1+00

0+76 - 3' Lt. = dead man

0+69 - { Average space between trees = 12'
Average diam. = 1'
7' Lt. = start row of cypress

0+67

0+66 5³ Rt. = E. end 24" conc. pipe
head wall,
Also: E Wly. face 6' long 6" wide

0+65

0+46 4⁵ Lt. = ctr. 14" diam cypress

0+44

0+42² 2⁵ Lt. = E start 24" Conc. pipe.

33.3	33.7	33.4	32.9	31.6	31.0	31.7	34.2	34.3
1.7	1.3	1.6	2.1	3.4	4.0	3.3	0.8	0.7
15	5		4	6	8	11	15	20
					W			
30.8		31.3	31.3	28.5		31.0		31.0
4.2		3.7	3.7	6.5		4.0		4.0
15			2	5.3		9		15
				W				
			29.75	28.53		29.68		
			5.30	6.50		5.35		
			23	53		83		
			top wall	I.E.		top wall		
			30.6	31.0		30.8		
			4.4	4.0		4.2		
			15			15		
			29.8	29.3		28.9		
			5.2	5.7		6.1		
			10			15		
						26.90		
						8.63		
						25		
						I.E.		

35.031

Yorrgo

B.L.

77

T.P. 10.13 55.51 1.99 45.38[✓]

1/2 P.O.T. 3+35²

3+02 - 3' Rt. = 14" Diam Eucalyptus

2+90 3' Rt. = \pm 24" Diam Eucalyptus

2+88

2+81³⁵ 1/2 P.O.T. 1.97 45.40

2+74 1⁵ Rt. = \pm 9" Diam Eucalyptus

2+62 1⁵ Lt. = \pm 17" Diam Eucalyptus

2+58

Sewer lateral.

2+57 19' Lt. = singly end exposed 4" C.I.

cased
N.Ely. 2' of exposed pipe is Conc.

2+53 7' Lt. = N.Ely. end C.I., 4" sewer lateral

2+46 1⁵ Lt. = Ctr. 18" Diam Eucalyptus

2+40

2+36 8' Lt. = \pm small poplar

2+33 11' Rt. = start vine covered fence

2+30 2⁵ Rt. = \pm 8" Diam Eucalyptus

2+20 3' Rt. = \pm 8" Diam Accacia

2+04 3' Rt. = \pm 10" diam Accacia

57.4									
+10.0	14	2.7	1.7	10.2	15.0	14.6			
20	7	4	4	7	12	20			
57.4									
+10.0	1.7	4.8	2.6						
20	7	4	3	0.0	15.0	14.7			
		W		7	12	20			

46.4									
95.5									
41.4									
41.4									
42.7									
44.0									
44.6									
10	1.9	6.0	6.0	4.7	3.4	2.8	4.2	4.0	
20	15	14	12	7	6		11	20	
		W							

44.7
2.50
1.9
top of pipe
42.97
1.00

7 = on top
Conc. case ment at clean out.

42.0								
41.2								
40.4								
41.8								
44.2								
5.4	6.2	7.0	5.6	3.2	3.0	3.0		
25	21	15	11		12	20		
		W						

47.37[✓]

Yonago

78

B.M.#3 S.Wly. Prop. Mon.
Locust + Yonago 0.94 61.11

3+70²³ = wly. line Locust
25 Rt. = Nly. end Rubble Conc.
retaining dam.

611	528	550	526	51.6	966	51.2	52.4
0.94	4.3	7.0	8.5	10.5	15.4	10.9	9.7
10	4	3		7	11	24	25
Mon.				W			top of dam + 2nd

T.P. 10.08 62.05 3.54 51.97⁴

62.05

3+60

594	522	525	46.1	46.1	465	50.9	531
+3.9	1.3	3.0	9.4	7.4	9.0	4.6	2.4
10		3	6	8	10	21	30
				W			

3+35²³ } 22' Rt. = ϕ 17" Diam Eucalyptus
 } ϕ Locust

588	954	452	452	50.1	52.4
0.0	10.1	10.3	10.3	5.4	3.1
14		4	8	15	25
		W			

3+25

585	453	455	455	48.3	50.8	51.5	54.6
0.0	10.2	10.0	10.0	7.2	4.7	4.0	1.0
16	3	2	8	9	15	20	25
		W					

3+21 16' Rt. = ϕ 10" Diam Eucalyptus.

3+14 10' Rt. = ϕ 8" Eucalyptus

3+10

586	454	481	515	525
0.0	10.1	7.4	4.0	3.0
14	W	7	13	20

3+06 17' Rt. = ϕ 16" Diam Eucalyptus.
Power

3+04 } 12' Lt. = Pole No Number
 } 13' Rt. = End vine covered
 } Fence

555	460	450	481	518	520
0.0	10.5	10.5	7.4	3.7	3.5
14	1		7	14	20
	W				

55.51⁴

Yonge

B.L.

79

orig. B.M. P. 74	7.85	26.42	26.47
T.P. 6.20	30.27	10.83	24.07
T.P. 0.27	34.90	11.83	34.63
Check B.M. #	4.03	42.43	42.46
T.P. 2.88	46.46	7.55	43.58
T.P. 0.31	51.13	11.23	50.82

Error probably due to short
& uneven turns thru shrubs, etc.

4+25 20' Rt. = ϕ wash

3+74 12' Rt. = sly end rubble conc. dam.

61.8	9.65	11.5	9.1	5.30		
0.13	7.5	10.2	10.5	10.1	5.2	
10		12	18	29	40	
		Top dam	w			
		+ grad.				
	62.05					

Re Survey Lots 12-43-44
 Block 175 University Heights

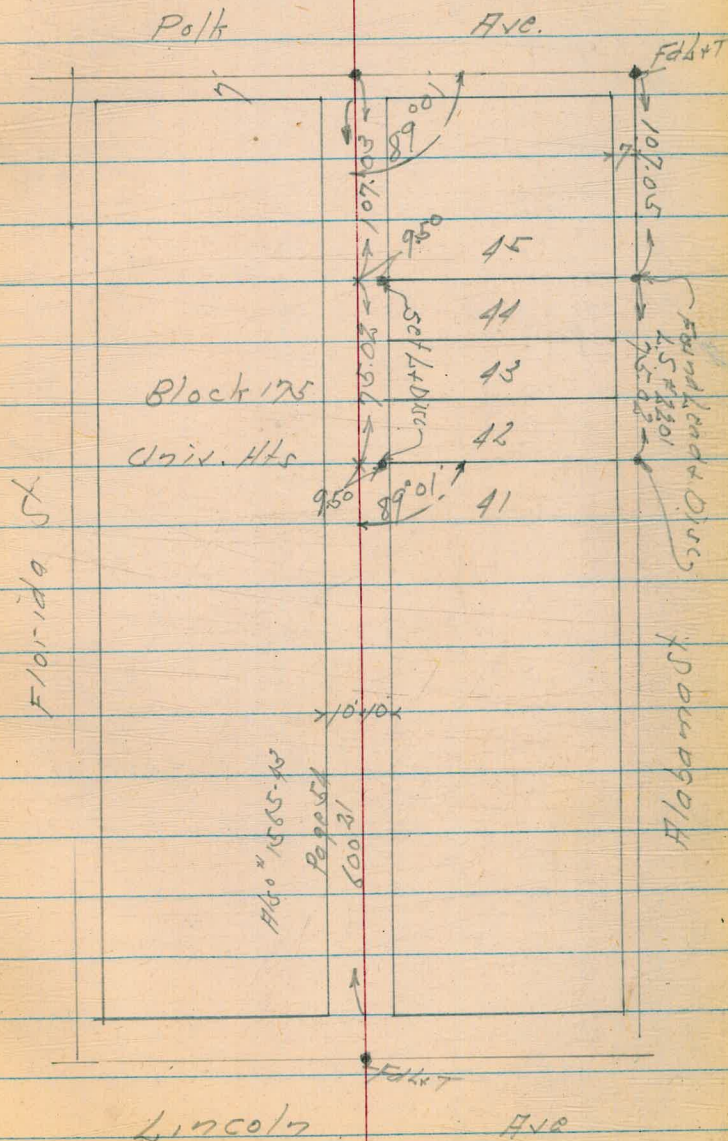
Dec. 14-51
 H.S. 2007
 Garber
 Rorer
 Fritz

No. 20006

INDEXED

80

DEC 17 1951



2.9
2.93
2.83

6275
5633
908

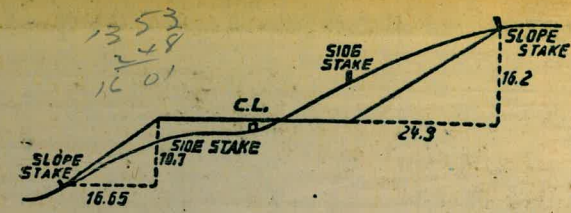
124.45
64.58

19903
4079
23982

150 CB ML/End of inlet
150.72 ELY "

SHARP SILEY & Corp. & Churchward
18512 - FB1652 Plan 8586-1
53

ht. 66
25.62
33 265



DISTANCES FROM SIDE STAKES FOR CROSS-SECTIONING.
SLOPE 1 1/2 TO 1. ROADWAY OF ANY WIDTH.

	0	.1	.2	.3	.4	.5	.6	.7	.8	.9	
0	0.00	0.15	0.30	0.45	0.60	0.75	0.90	1.05	1.20	1.35	0
1	1.50	1.65	1.80	1.95	2.10	2.25	2.40	2.55	2.70	2.85	1
2	3.00	3.15	3.30	3.45	3.60	3.75	3.90	4.05	4.20	4.35	2
3	4.50	4.65	4.80	4.95	5.10	5.25	5.40	5.55	5.70	5.85	3
4	6.00	6.15	6.30	6.45	6.60	6.75	6.90	7.05	7.20	7.35	4
5	7.50	7.65	7.80	7.95	8.10	8.25	8.40	8.55	8.70	8.85	5
6	9.00	9.15	9.30	9.45	9.60	9.75	9.90	10.05	10.20	10.35	6
7	10.50	10.65	10.80	10.95	11.10	11.25	11.40	11.55	11.70	11.85	7
8	12.00	12.15	12.30	12.45	12.60	12.75	12.90	13.05	13.20	13.35	8
9	13.50	13.65	13.80	13.95	14.10	14.25	14.40	14.55	14.70	14.85	9
10	15.00	15.15	15.30	15.45	15.60	15.75	15.90	16.05	16.20	16.35	10
11	16.50	16.65	16.80	16.95	17.10	17.25	17.40	17.55	17.70	17.85	11
12	18.00	18.15	18.30	18.45	18.60	18.75	18.90	19.05	19.20	19.35	12
13	19.50	19.65	19.80	19.95	20.10	20.25	20.40	20.55	20.70	20.85	13
14	21.00	21.15	21.30	21.45	21.60	21.75	21.90	22.05	22.20	22.35	14
15	22.50	22.65	22.80	22.95	23.10	23.25	23.40	23.55	23.70	23.85	15
16	24.00	24.15	24.30	24.45	24.60	24.75	24.90	25.05	25.20	25.35	16
17	25.50	25.65	25.80	25.95	26.10	26.25	26.40	26.55	26.70	26.85	17
18	27.00	27.15	27.30	27.45	27.60	27.75	27.90	28.05	28.20	28.35	18
19	28.50	28.65	28.80	28.95	29.10	29.25	29.40	29.55	29.70	29.85	19
20	30.00	30.15	30.30	30.45	30.60	30.75	30.90	31.05	31.20	31.35	20
21	31.50	31.65	31.80	31.95	32.10	32.25	32.40	32.55	32.70	32.85	21
22	33.00	33.15	33.30	33.45	33.60	33.75	33.90	34.05	34.20	34.35	22
23	34.50	34.65	34.80	34.95	35.10	35.25	35.40	35.55	35.70	35.85	23
24	36.00	36.15	36.30	36.45	36.60	36.75	36.90	37.05	37.20	37.35	24
25	37.50	37.65	37.80	37.95	38.10	38.25	38.40	38.55	38.70	38.85	25
26	39.00	39.15	39.30	39.45	39.60	39.75	39.90	40.05	40.20	40.35	26
27	40.50	40.65	40.80	40.95	41.10	41.25	41.40	41.55	41.70	41.85	27
28	42.00	42.15	42.30	42.45	42.60	42.75	42.90	43.05	43.20	43.35	28
29	43.50	43.65	43.80	43.95	44.10	44.25	44.40	44.55	44.70	44.85	29
30	45.00	45.15	45.30	45.45	45.60	45.75	45.90	46.05	46.20	46.35	30
31	46.50	46.65	46.80	46.95	47.10	47.25	47.40	47.55	47.70	47.85	31
32	48.00	48.15	48.30	48.45	48.60	48.75	48.90	49.05	49.20	49.35	32
33	49.50	49.65	49.80	49.95	50.10	50.25	50.40	50.55	50.70	50.85	33
34	51.00	51.15	51.30	51.45	51.60	51.75	51.90	52.05	52.20	52.35	34
35	52.50	52.65	52.80	52.95	53.10	53.25	53.40	53.55	53.70	53.85	35
36	54.00	54.15	54.30	54.45	54.60	54.75	54.90	55.05	55.20	55.35	36
37	55.50	55.65	55.80	55.95	56.10	56.25	56.40	56.55	56.70	56.85	37
38	57.00	57.15	57.30	57.45	57.60	57.75	57.90	58.05	58.20	58.35	38
39	58.50	58.65	58.80	58.95	59.10	59.25	59.40	59.55	59.70	59.85	39
40	60.00	60.15	60.30	60.45	60.60	60.75	60.90	61.05	61.20	61.35	40
41	61.50	61.65	61.80	61.95	62.10	62.25	62.40	62.55	62.70	62.85	41
42	63.00	63.15	63.30	63.45	63.60	63.75	63.90	64.05	64.20	64.35	42
43	64.50	64.65	64.80	64.95	65.10	65.25	65.40	65.55	65.70	65.85	43
44	66.00	66.15	66.30	66.45	66.60	66.75	66.90	67.05	67.20	67.35	44
45	67.50	67.65	67.80	67.95	68.10	68.25	68.40	68.55	68.70	68.85	45
46	69.00	69.15	69.30	69.45	69.60	69.75	69.90	70.05	70.20	70.35	46
47	70.50	70.65	70.80	70.95	71.10	71.25	71.40	71.55	71.70	71.85	47
48	72.00	72.15	72.30	72.45	72.60	72.75	72.90	73.05	73.20	73.35	48
49	73.50	73.65	73.80	73.95	74.10	74.25	74.40	74.55	74.70	74.85	49
50	75.00	75.15	75.30	75.45	75.60	75.75	75.90	76.05	76.20	76.35	50

THE NATIONAL BLANK BOOK COMPANY
 HOLYOKE MASSACHUSETTS
 NEW YORK CHICAGO BOSTON SAN FRANCISCO