

DISTANCES FROM SIDE STAKES FOR CROSS-SECTIONING  
SLOPE 1 TO 1. ROADWAY OF ANY WIDTH

	0	.1	.2	.3	.4	.5	.6	.7	.8	9	
0	0.00	0.10	0.20	0.30	0.40	0.50	0.60	0.70	0.80	0.90	0
1	1.00	1.10	1.20	1.30	1.40	1.50	1.60	1.70	1.80	1.90	1
2	2.00	2.10	2.20	2.30	2.40	2.50	2.60	2.70	2.80	2.90	2
3	3.00	3.10	3.20	3.30	3.40	3.50	3.60	3.70	3.80	3.90	3
4	4.00	4.10	4.20	4.30	4.40	4.50	4.60	4.70	4.80	4.90	4
5	5.00	5.10	5.20	5.30	5.40	5.50	5.60	5.70	5.80	5.90	5
6	6.00	6.10	6.20	6.30	6.40	6.50	6.60	6.70	6.80	6.90	6
7	7.00	7.10	7.20	7.30	7.40	7.50	7.60	7.70	7.80	7.90	7
8	8.00	8.10	8.20	8.30	8.40	8.50	8.60	8.70	8.80	8.90	8
9	9.00	9.10	9.20	9.30	9.40	9.50	9.60	9.70	9.80	9.90	9
10	10.00	10.10	10.20	10.30	10.40	10.50	10.60	10.70	10.80	10.90	10
11	11.00	11.10	11.20	11.30	11.40	11.50	11.60	11.70	11.80	11.90	11
12	12.00	12.10	12.20	12.30	12.40	12.50	12.60	12.70	12.80	12.90	12
13	13.00	13.10	13.20	13.30	13.40	13.50	13.60	13.70	13.80	13.90	13
14	14.00	14.10	14.20	14.30	14.40	14.50	14.60	14.70	14.80	14.90	14
15	15.00	15.10	15.20	15.30	15.40	15.50	15.60	15.70	15.80	15.90	15
16	16.00	16.10	16.20	16.30	16.40	16.50	16.60	16.70	16.80	16.90	16
17	17.00	17.10	17.20	17.30	17.40	17.50	17.60	17.70	17.80	17.90	17
18	18.00	18.10	18.20	18.30	18.40	18.50	18.60	18.70	18.80	18.90	18
19	19.00	19.10	19.20	19.30	19.40	19.50	19.60	19.70	19.80	19.90	19
20	20.00	20.10	20.20	20.30	20.40	20.50	20.60	20.70	20.80	20.90	20
21	21.00	21.10	21.20	21.30	21.40	21.50	21.60	21.70	21.80	21.90	21
22	22.00	22.10	22.20	22.30	22.40	22.50	22.60	22.70	22.80	22.90	22
23	23.00	23.10	23.20	23.30	23.40	23.50	23.60	23.70	23.80	23.90	23
24	24.00	24.10	24.20	24.30	24.40	24.50	24.60	24.70	24.80	24.90	24
25	25.00	25.10	25.20	25.30	25.40	25.50	25.60	25.70	25.80	25.90	25
26	26.00	26.10	26.20	26.30	26.40	26.50	26.60	26.70	26.80	26.90	26
27	27.00	27.10	27.20	27.30	27.40	27.50	27.60	27.70	27.80	27.90	27
28	28.00	28.10	28.20	28.30	28.40	28.50	28.60	28.70	28.80	28.90	28
29	29.00	29.10	29.20	29.30	29.40	29.50	29.60	29.70	29.80	29.90	29
30	30.00	30.10	30.20	30.30	30.40	30.50	30.60	30.70	30.80	30.90	30
31	31.00	31.10	31.20	31.30	31.40	31.50	31.60	31.70	31.80	31.90	31
32	32.00	32.10	32.20	32.30	32.40	32.50	32.60	32.70	32.80	32.90	32
33	33.00	33.10	33.20	33.30	33.40	33.50	33.60	33.70	33.80	33.90	33
34	34.00	34.10	34.20	34.30	34.40	34.50	34.60	34.70	34.80	34.90	34
35	35.00	35.10	35.20	35.30	35.40	35.50	35.60	35.70	35.80	35.90	35
36	36.00	36.10	36.20	36.30	36.40	36.50	36.60	36.70	36.80	36.90	36
37	37.00	37.10	37.20	37.30	37.40	37.50	37.60	37.70	37.80	37.90	37
38	38.00	38.10	38.20	38.30	38.40	38.50	38.60	38.70	38.80	38.90	38
39	39.00	39.10	39.20	39.30	39.40	39.50	39.60	39.70	39.80	39.90	39
40	40.00	40.10	40.20	40.30	40.40	40.50	40.60	40.70	40.80	40.90	40
41	41.00	41.10	41.20	41.30	41.40	41.50	41.60	41.70	41.80	41.90	41
42	42.00	42.10	42.20	42.30	42.40	42.50	42.60	42.70	42.80	42.90	42
43	43.00	43.10	43.20	43.30	43.40	43.50	43.60	43.70	43.80	43.90	43
44	44.00	44.10	44.20	44.30	44.40	44.50	44.60	44.70	44.80	44.90	44
45	45.00	45.10	45.20	45.30	45.40	45.50	45.60	45.70	45.80	45.90	45
46	46.00	46.10	46.20	46.30	46.40	46.50	46.60	46.70	46.80	46.90	46
47	47.00	47.10	47.20	47.30	47.40	47.50	47.60	47.70	47.80	47.90	47
48	48.00	48.10	48.20	48.30	48.40	48.50	48.60	48.70	48.80	48.90	48
49	49.00	49.10	49.20	49.30	49.40	49.50	49.60	49.70	49.80	49.90	49
50	50.00	50.10	50.20	50.30	50.40	50.50	50.60	50.70	50.80	50.90	50

Distance of slope stake from side or shoulder stake for any width roadway, slope 1 to 1. If ground is nearly level, the cut or fill at side stake is located by the double entry method in left column and top row. The number in body of table in same row and column gives distance from side stake to slope stake. If ground is not level estimate the difference in elevation between the side stake and slope stake, lower target by this amount if cut, elevate if fill. Add this amount to cut or fill and find distance in table. Set up rod at this point, and line of sight should cut target. If it does not make the slight adjustment necessary.

2017

INDEXED

to page # 73

Manzanita Drive (Cont'd from 1852)	2, 59
VIOLET St.	9
Tuberose St.	13
Snowdrop St (N. of Poplar)	16
Arbor Vitae St.	18
Manzanita Place	23
Glenfield St.	28
Heather St.	33
Columbine St. (N. of Poplar)	36
Dahlia St.	39
Columbine St (S. of Poplar)	42, 49
Pepper Dr.	53, 42
Snowdrop St. (S. of Poplar)	45
COLUMBINE ST. (POPLAR TO PEPPER DR.)	49
PEPPER DR. (COLUMBINE ST. TO HOLLYWOOD PARK)	53
MANZANITA DR (W'ly END)	59
ALLEY, BLOCK 38, LEXINGTON PARK	69
ALLEY, BLOCK 37, LEXINGTON PARK	71

X Sect. Manzanita Dr.  
Marlborough to Violet  
Cont'd. from F.B. 1852

13+11 \$25 Conc Walk 15.5 Rt.

13+07 18" Tree 17.5 Rt.

13+00

INDEXED

WK

APR 12 1949

12+81 Power Pole # P4081 17.4 Lt.

12+59 12" Tree 18' Rt.

12+52 End Rock Wall 14' Rt.

12+33 \$4 Conc Walk 15.6' Rt.

592 297.53  
297.13

291.61  
291.21

292.77

292.77

292.53

292.50

2

276 47 500 50  
185 17 17 25

294.2

294.0

293.9

293.7

293.0

293.1

292.6

292.9

292.9

292.5

292.2

33 25 26 25 12 9

33 26 25 12 9

36 25 12 9

38 12 9

45 47

47

49 13

46 15

46 18

50 25

50 35

294.0

292.6

292.9

292.5

291.9

292.1

291.8

291.2

35 33

49 25

45 18

50

55 14

54 14

57 25

63 34

Wall

291.92

292.01

561

552

297.53

156 25

~~297.13~~

(Hub 12+22.10 EC)



X Sect. Manzanita Dr. Cont'd.

15+08.36

292.1	292.2	291.5	291.3	290.6	290.7	290.7	290.5	289.5	289.7	289.5	288.6
5 <sup>2</sup>	5 <sup>3</sup>	6.0	6.2	6.9	6.8	6.8	7.0	8.0	7.8	8.0	8.7
35	25	17	14	11	8	6	5	17	20	25	35

14+968 Sewer M.H. 2' Rt.

290.86  
6.67  
2  
Rim

14+93 Dead Man to Pole 16' Lt.

292.3	292.0	291.6	290.8	290.7	291.0	290.3	290.3	290.3	289.9
5 <sup>2</sup>	5.5	5.9	6.7	6.8	6.5	7.2	7.2	7.2	7.6
35	25	16	12	9	6	14	20	25	35

14+85.29

292.6	292.2	292.1	291.2	291.1	291.6	291.3	291.4	291.5	290.9
4.9	5.3	5.4	6.3	6.4	5.9	6.2	6.1	6.0	6.1
35	25	22	13	10	13	20	25	25	35

14+62.22

291.91	291.55
5.62	5.98
19	25

14+41 & Produced of a 3.8' Conc. Walk

297.53  
~~297.13~~  
7

297.53  
~~297.13~~  
7

16+21 & 25 Conc Walk 20.6 Lt.

290.78  
0.74 1.09  
30 20.6

16+05 & 6.5 Split Drive 188 Lt.

290.88  
0.4 1.16  
28 188  
No strip

16+00

291.1 290.8 290.6 289.7 289.9 290.0 289.4 289.3 289.2  
0.4 0.7 0.9 1.0 1.6 1.5 2.1 2.2 2.1  
35 25 22 10 6 10 25 35

TP

1.26 291.52 291.42 7.27 290.26 289.86 7.8

& Hub 15+54.49 E.C.

291.4 291.1 290.8 290.6 290.3 290.4 290.4 290.0 289.6 289.7  
6.1 6.4 6.2 6.9 7.2 7.1 7.1 7.5 7.9 7.8  
35 25 19 15 14 6 12 25 35

15+54.49 E.C.

291.6 291.1 291.0 290.4 290.5 290.5 290.1 289.6 289.5 289.1  
5.9 6.4 6.5 7.1 7.0 7.0 7.4 7.9 8.0 8.4  
35 25 15 13 7 10 17 25 35

15+31.43

15+10 Power Pole #4031 15' Lt

297.53  
297.13  
T

297.53  
297.13

17+32 R Sewer MH 11' Lt

17+27.10  
New Sect

288.2	288.0	288.0	287.3	287.6	287.7	287.4	286.8	286.7	287.1	287.3	287.2	287.0
86.7	25	86.4	15	11	86.4	85.77	18.1	14.1	18.1	14.1	15	14.1
				Lim			Top cb.					
<del>35</del>	<del>25</del>	<del>22</del>	<del>18</del>	<del>13</del>	<del>7</del>	<del>7</del>	<del>9</del>	<del>11</del>	<del>15</del>	<del>25</del>	<del>35</del>	

~~17+27.10~~

Req. New Sect. + checking old - 8-6-53  
7.0.

17+02.21

288.9	288.7	288.3	287.6	287.6	288.1	287.9	287.4	288.1	287.6	287.3
25	25	11	6	5	3	4	3	4	3	4
35	25	11	6	5		6	11	14	25	35

16+89 Power Pole # 84089H 12.3 Lt.

289.6	289.4	281.1	288.8	288.7	288.6	288.3	288.0	288.2	287.9	287.9	287.1
19	21	24	27	28	29	32	35	38	35	35	40
35	25	12	11	5		10	15	17	25	31	40

16+77.32

16+73 Dead Man tapole 13.5 Lt.

Curve in 10 parts 24.89

289.9	289.6	287.3	289.1	289.0	288.3	288.5	288.3	288.1
15	19	22	24	25	32	30	32	35
35	25	9		4	11	18	25	35

16+52.43 B.C.

291.52  
291.12

291.52  
291.12



X Sect. Manzanita Dr. Contd.

18+51.57

283.5  
283.7  
284.2  
284.2  
284.3  
284.5  
284.9  
285.1  
285.3

8.0 7.8 7.3 7.3 7.2 7.0 6.6 6.4 6.1  
35 25 17 10 9 14 25 35

18+33 - 14.5 R + Lt 6" Palm

283.5  
~~283.5~~  
~~283.5~~  
83.7  
283.7  
~~284.4~~  
284.4  
284.4  
285.0  
285.2  
285.3  
285.4

18+26.67 Jewer MH 10.2 Lt.

8.0 7.5 8.0 7.8 7.7 7.1 7.1 6.5 6.2 6.1 6.0  
45 36 31 25 23 10.2 8 11 25 30 35  
Rm

18+01.77

284.2  
284.3  
284.8  
284.7  
~~284.7~~  
284.8  
284.8  
285.2  
285.6

7.3 7.2 7.1 7.1 6.7 6.7 6.3 5.9  
35 25 16 11 8 25 35

17+76.88

285.3  
285.3  
285.2  
~~285.1~~  
285.3  
285.2  
285.0  
286.1  
286.3

6.2 6.3 6.2 6.2 6.2 6.2 5.7 5.2  
35 25 12 9 9 14 25 35

17+51.99 = end of cb. on Both Sides - See plan for exact loc.

PC of Return on Lt.

291.52  
291.12

286.4  
286.5  
286.3  
285.9  
286.1  
286.5  
285.8  
285.4  
286.6  
286.8  
286.9

5.1 5.8 6.3 6.3 6.3 6.3 5.8 5.9 5.8 5.7 5.7  
35 25 20 20 20 20 18.2 18.2 18.2 18.2 18.2  
Top of gut. Top of cb. walk

86.43  
85.92  
PC. Top gut.

291.52  
291.12

#569051-H  
B.M. = spike in Tel. pole 283.52

TP  
BM 0.79 289.44 289.50  
TP 4.63 290.23 289.82 5.92 285.60 285.20

Cont. Mon Rt. 23+25.77 (FB 1128 P. 46)

19+65.99 BC. = 0+00 P. 60 ✓

19+65 Dead Man to pole 13' Lt. ✓

19+49 Power Pole H P 3985 12.3 Lt. ✓

19+01.34 EC. - O.K. ✓

24.88

18+76.46 - 15.6 Rt. = B.M. - RR spike 286.10  
Tel. pole #569048-H ✓

13.46

18+53 Power Pole # P 3999 18.6 Lt. ✓

291.52  
291.12

284.3 284.6 285.0 284.4 284.8 284.9 285.2 285.0 284.8 283.4  
7<sup>2</sup> 6<sup>9</sup> 6<sup>5</sup> 7<sup>1</sup> 6<sup>7</sup> 6<sup>6</sup> 6<sup>3</sup> 6<sup>5</sup> 6<sup>7</sup> 8<sup>1</sup>  
35 25 12 10 13 14 25 35 47

283.8 284.1 284.4 284.6 284.6 284.7 285.0 285.0 283.8

7<sup>2</sup> 7<sup>4</sup> 7<sup>1</sup> 6<sup>9</sup> 6<sup>9</sup> 6<sup>8</sup> 6<sup>5</sup> 6<sup>5</sup> 7<sup>2</sup>  
35 25 15 11 13 15 25 35

283.4 283.7 283.9 284.2 284.3 284.3 284.6 285.0 284.9 285.0

8<sup>1</sup> 7<sup>8</sup> 7<sup>6</sup> 7<sup>3</sup> 7<sup>2</sup> 7<sup>2</sup> 6<sup>8</sup> 6<sup>5</sup> 6<sup>6</sup> 6<sup>5</sup>  
35 25 16 13 8 10 14 25 32

291.52  
291.12

3-2249

X Sect. Violet St.  
Poplar to Manzanita Dr.  
Sketch P. 51 FB 1852

0+76 2.5' Conc Walk 20' Lt.

INDEXED

WK

APR 12 1949

0+05 12" Conc. Pipe 19 Lt.

0+00 West Line Poplar

0-01 Power Pole # P 2802 13.5 Lt.

0-09 12" Conc. Pipe 22 Lt.

B17

1.92

291.42

289.50

282.5	282.5	282.9	283.6	283.7	283.6	284.2	284.6
8.9	8.9	8.5	7.8	7.7	7.8	7.2	6.8
40	25	14	10.		12	25	40

281.89  
9.5"  
19  
FL

280.3	281.4	281.8	282.6	282.9	283.4	283.3	283.2	284.2	284.8
11.10	9.6	8.8	8.5	8.0	8.1	8.2	7.2	6.6	
40	25	17	12	8	14	20	25	40	

279.92  
11.50  
22.4  
FL. 291.42

Cont. from R+2312577 (FB 1628 P. 46)

X Sect Violet St. Cont'd

1469 Dead Man to Pole 13.2 ft.

14535 to sewer MH.

285.33  
6.03  
Rim

284.3 284.9 284.8 284.6 285.2 284.7 285.3 285.9 285.9 286.6

1450

7' 6" 6" 6" 6" 10" 6" 6" 5" 5" 4" 8"  
40 25 12 11 9 14 19 25 40

29136

7 P. 6.03 291.36 6.09 285.33

Rim sewer MH 14535

1446 Power Pole # P2824 13' Lt.

285.23 285.04

1430 2.5' Conc Walk 26' Lt.

6' 9" 6' 3" 8"  
36 26

284.70 284.72

1414 2 10' Conc Drive 25' Lt.

7' 0" 6' 7" 0"  
45 25

283.9 284.0 284.1 284.1 284.2 284.7 285.1 285.0

1400

7' 5" 7' 4" 7' 3" 7' 3" 7' 2" 6' 7" 6' 3" 6' 4"  
40 25 10 12 14 25 40

29142

29142

X Sec Violet St. Cont'd.

2+66 Power Pole H JP 2868 137 Lt.

2+50

2+44 R 25 Conc Walk 239' Lt.

2+09 E 10' Conc Drive 21' Rt.

2+00

1+66 E 9' Conc Drive 21.7 Rt.

29136

11

284.4	284.8	285.2	286.0	286.0	285.9	286.6	287.2	287.7
70	66	62	54	54	55	48	42	37
40	25	13	5		10	15	25	40

284.46	284.50
670	686
40	239

286.30	286.80	287.66
506	456	370
21	25	40

283.7	284.3	284.8	285.4	285.3	285.7	286.4	287.0
72	71	66	60	61	57	50	44
40	25	12		8	15	25	40

286.11	286.57	286.88
525	492	448
217	255	40

29136

X Sec Violet St. Contd.

377 3.64 287.72 287.65

378 83.86 See sketch

379 Power Pole # P2898 14' Lt.

3740

8' Brick Drive 227 Rt.

3703 End Conc Ret. wall on Rt.

3700

3780 Beg Conc Slab on Rt. Ret wall

291.36

285.8 286.4 286.9 286.3 287.5 287.6 287.3 286.0 286.4 288.8 **12**

Rim MH Manzanita & Violet (Sta 1732 P. 6 This St)

5<sup>6</sup> 5<sup>0</sup> 4<sup>5</sup> 5<sup>1</sup> 3<sup>9</sup> 3<sup>8</sup> 4<sup>1</sup> 3<sup>4</sup> 3<sup>0</sup> 2<sup>6</sup>  
40 28 18 12 2 8 11 25 40

285.8 286.7 286.8 286.5 287.0 287.3 287.6 288.1 288.5  
5<sup>6</sup> 4<sup>7</sup> 4<sup>6</sup> 4<sup>9</sup> 4<sup>4</sup> 4<sup>1</sup> 3<sup>8</sup> 3<sup>3</sup> 2<sup>9</sup>  
40 25 14 13 9 10 25 40

288.06 288.81  
378 227 244 40

286.66 287.75  
470 361  
95 13.4

285.4 285.8 285.9 286.3 286.0 286.2 286.7 286.8 286.58 287.62 287.9 288.3 288.6  
6<sup>0</sup> 5<sup>6</sup> 5<sup>5</sup> 5<sup>1</sup> 5<sup>4</sup> 5<sup>3</sup> 4<sup>7</sup> 4<sup>6</sup> 4<sup>8</sup> 3<sup>7</sup> 3<sup>5</sup> 3<sup>1</sup> 2<sup>8</sup>  
40 29 25 14 12 11 6 9.5 13.2 23 25 37

286.28 287.14  
508 422  
9.3 13.2

291.36

X Sec Tuberosc

Poplar to Manzanita Dr  
See FB 1852 P 50 for sketch

13

1+32.3 R Sewer 17H

290.70  
326  
Rim

1+23 Power Pole # P2824 16.2 Lt.

290.8 291.0 290.5 289.5 289.6 289.4 289.8 289.6 289.7

1+00

INDEXED

WK  
APR 12 1949

32 30 25 25 47 46 42 44 41  
30 25 14 10 10 12 25 40

0+75 R 2.8' Conc. Wall 14' Lt.

290.54  
290.09  
30 162  
30 14

290.2 290.0 290.0 289.5 289.2 288.6 288.8 288.6 289.2 289.5 289.3

0+50

37 40 40 40 5 48 5 4 5 10 5 4 48 45 47  
35 25 19 19 13 11 9 11 25 40

290.32 289.71

0+41 R 3' Conc. Wall 13.7 Lt.

364 425  
30 137

289.5 289.0 288.9 287.9 287.7 287.5 287.7 288.2 288.4 288.4

0+00 W. Line Poplar

45 50 51 61 6 10 6 5 6 10 5 8 5 5 5 6  
40 25 13 12 6 11 12 25 40

293.96

BIM 446 293.96

289.50

Cont. 170m Rt. 2312577 FB1628 P.46

Xact Tuberose Cont'd.

2100

293.1 292.5 291.6 291.1 290.8 291.1 291.0 291.1 290.8 290.5

37 42 52 57 60 57 58 57 60 63

40 25 14 12 8 12 14 25 40

1490.5 \$ 25' Conc. Walk 25' Lt.

293.01 292.70

38 42

40 25'

290.83 290.74

6' 6' 8

209 35

1478 \$ 7' Conc. Drive 209 Rt.

292.17 291.82

1472 \$ 8' Con. Drive 27' Lt.

467 502

40 27

T.P. 6.37. 296.84 349 290.47

296.84 290.66 290.70

320 326

212 269

Tapers to 3.5' of 26.9

1459 \$ 7.0' Conc. Walk 212 Rt.

292.3 292.2 292.0 291.1 290.4 290.5 290.2 290.4 290.4 290.6 290.6 290.6

1450

17 18 20 28 36 35 38 36 36 34 34 34

40 25 18 10 9 10 12 21 22 25 34

293.96

293.96



X Sect Tuberosa Cont'd.

B17 5.17 291.67 291.61

3+37.64 Int. East Line Manzanita Dr.

Hub 12+22.10 EC

(Page 2 this Ax)

29 29 30 39 45 45 46 50  
40 25 18 11 7 11 25

293.9 293.9 293.8 292.9 292.4 292.7 292.6 291.8

3+27 & 7' Conc Drive 258' Lt.

293.99 293.91  
285 293  
40 258

3 05 & 4' Conc Walk 257' Lt.

293.84 293.68  
300 3'6  
37 257

3+00

293.6 293.5 293.3 292.9 291.8 292.1 292.2 291.7 291.9 291.2 290.9  
32 32 35 39 50 47 46 51 49 56 59  
40 26 25 15 9 8 20 24 26 46

2+50 & 25' Conc Walk 25.3 Lt.

293.31 292.92 292.5 292.0 291.4 291.6 291.2 291.5 290.9 290.8 290.4  
353 393 43 48 54 50 58 53 59 60 64  
40 253 253 13 10 11 12 16 25 40

2+15 & 7' Conc Drive 23.2 Lt.

293.12 292.69 292.45  
372 420 439  
40 25 232

296.84

296.84

X Section Snowdrop  
 Poplar to Manzanita Dr  
 & Arbor Vitae St.

See FB 1852 P. 49 for sketch

INDEXED

WK  
 APR 12 1949

16

1150

1132.5 R. Sewer M.H.

1123

Power Pole #P282416.5 Lt.

1105

Dead man to Pole 162'

1100

0150

0+00 W line Poplar St.

BM

7.93 297.26  
 ^

289.33

R Hub 10+14.80 BC FB 1852 P. 77

291.7 291.7 291.4 291.3 291.6 291.9 291.6 291.7 292.2 292.2

56 56 59 60 57 54 57 56 51 51  
 40 25 13 11 8 15 20 25 35

291.48  
 291.78  
 Rim

290.6 290.6 291.1 290.6 291.0 290.7 291.2 291.3 291.5

67 67 63 67 63 65 61 60 58  
 40 25 13 10 10 12 25 40

289.5 290.3 290.2 289.7 289.9 289.8 291.1 291.4 290.9

78 70 71 76 74 75 63 59 64  
 40 25 13 11 8 15 25 40

288.9 289.1 289.2 288.3 288.7 288.6 288.6 289.9 290.1 290.1

84 83 81 90 85 87 87 74 73 73  
 40 25 14 12 6 11 14 25 40

297.26

X Section Snowdrop Contd

17

2+65 East Line Arbor Vitae

291.7 291.8 292.4 292.7 292.6 292.7 293.3  
 5.6 5.5 4.9 4.6 4.7 4.6 4.0  
 25 19 9 14 17 25

2+43 Power Pole # P2898 16.6 Lt

292.7 292.7 292.5 292.3 292.1 292.4 292.2 292.7 293.0 293.3

2+41 Anchor Pole 17.4 Rt

2+35

4.6 4.6 4.8 5.0 5.2 4.9 5.1 4.6 4.3 4.0  
 40 25 22 13 11 13 14 25 40

2+35.5 62<sup>5</sup> Conc Walk 22.4 Lt

292.43 292.33  
 4.5 4.7  
 25 22

2+00

292.5 292.3 291.9 291.7 292.1 292.0 292.6 292.8  
 4.8 5.0 5.4 5.6 5.2 5.3 4.2 4.5  
 40 25 14 11 13 25 40

1+85 R 7.5' Conc Drive 26.5 Rt

292.40 292.62 292.88  
 4.8 4.4 4.3  
 26.5 28 44  
 292.17 292.24

1+62 R Conc Walk 25.2 Rt

5.09 5.02  
 25.2 28

29726

29726

X Sect. Arbor Vitae  
 Snowdrop to Manzanita Dr  
 See p 48 & 49 F.B. 1852  
 for sketch

1+00 & 2' Conc. Walk 25.2' Rt.

INDEXED

WK

APR 12 1949

0+66 & 2' Conc. Walk 24.9 Rt.

T.P. 846 30156 416 293.10

1+50

0+46 & 9' Conc. Drive 28' Rt.

0+40 & 3.3' Conc. Walk 25.3' Lt.

0+00 No line Snowdrop.

297.26 (from p. 17)

296.3  
296.4  
296.2  
295.6  
295.8  
295.7  
295.3  
295.45  
295.4

5<sup>2</sup> 5<sup>2</sup> 5<sup>4</sup> 6<sup>0</sup> 5<sup>18</sup> 5<sup>9</sup> 6<sup>13</sup> 6<sup>11</sup> 6<sup>17</sup>  
 40 25 14 11 5 12 25 2 39

295.31  
295.26

6<sup>25</sup> 6<sup>30</sup>  
249 40

30156

& Hub 0+00 Arbor Vitae

295.2  
294.9  
294.5  
294.1  
294.5  
294.0  
294.3  
293.7  
2<sup>1</sup> 2<sup>4</sup> 2<sup>18</sup> 3<sup>3</sup> 2<sup>18</sup> 3<sup>3</sup> 3<sup>0</sup> 3<sup>16</sup>  
 40 25 11 9 11 25 40

294.09  
293.34

3<sup>17</sup> 3<sup>22</sup>  
28 25

294.86  
294.73

240 2<sup>13</sup>  
37 25.3

293.3  
293.1  
293.3  
293.2  
292.9  
293.0  
293.4  
293.3

4<sup>0</sup> 4<sup>2</sup> 4<sup>0</sup> 4<sup>1</sup> 4<sup>4</sup> 4<sup>3</sup> 3<sup>9</sup> 4<sup>0</sup>  
 25 16 10 10 17 19 25

297.26

X Sect. Arbor Vitae Contd

19

296.93

296.90

1+82 R 3<sup>5</sup>' Conc. Walk 24.7' Rt.

$\frac{24.7}{24.7}$   $\frac{40}{40}$

297.47

297.31

1+77 R 6.3' Conc. Drive 25.6 Lt.

$\frac{40}{40}$   $\frac{25.6}{25.6}$

297.42

297.35

1+61 R 3' Conc Walk 25.4' Lt.

$\frac{40}{40}$   $\frac{25.4}{25.4}$

297.4

297.3

296.9

296.4

296.2

296.5

296.3

296.5

296.7

296.4

1+50

$\frac{40}{40}$   $\frac{26}{26}$   $\frac{25}{25}$   $\frac{12}{12}$   $\frac{10}{10}$   $\frac{5}{5}$

$\frac{11}{11}$   $\frac{13}{13}$   $\frac{25}{25}$   $\frac{10}{10}$

296.58

296.46

1+39 R 3<sup>5</sup>' Conc. Walk 25' Rt.

$\frac{25}{25}$   $\frac{39}{39}$

296.69

296.52

1+04 R 6' Conc. Walk 24' Lt.

$\frac{38}{38}$   $\frac{24}{24}$

$\frac{301.56}{1}$

$\frac{301.56}{1}$

X Sect. Arbor Vitae Cont'd.

20

2+50

2982	2989	2965	2962	2958	2960	2955	2957	2958	2958
41	47	51	54	58	56	61	59	58	58
40	26	25	13	9		11	14	25	40

2+34 R 9 Conc Drive 25.2 Lt.

29751  
40<sup>5</sup> 44<sup>9</sup>  
40 252

29593  
29612  
29611

2+32 R 7' Conc Drive 24.5 Rt.

29747  
29709

56<sup>3</sup> 54<sup>4</sup> 54<sup>5</sup>  
23.5 25.3 40

2+22 R 3' Conc Walk 25.4 Lt.

40<sup>9</sup> 44<sup>7</sup>  
40 25.4

29619  
29615

2+21 R 4' Conc Walk 25.5 Rt.

29716  
29712  
29619  
2962  
2964  
2960  
2962  
2963  
2962

53<sup>7</sup> 54<sup>1</sup>  
25.5 40

2+00

40	44	47	54	52	56	54	53	54
40	26	25	11		12	13	25	40

301.56

301.56

X Sect. Arbor Vitae Contd.

3+33 \$3<sup>5</sup> Conc Walk 24' Lt.

295.34  
295.05  
6<sup>22</sup> 6<sup>21</sup>  
30 24

294.68

294.64

3+14 \$7 Conc Drive 25 Rt.

296.1  
295.7  
295.2  
294.9  
295.0

6<sup>88</sup> 6<sup>92</sup>  
25 20

294.7

294.8

294.8

294.8

3+00

5<sup>5</sup> 5<sup>9</sup> 6<sup>4</sup> 6<sup>7</sup> 6<sup>6</sup> 6<sup>9</sup> 6<sup>8</sup> 6<sup>8</sup> 6<sup>8</sup>  
40 25 13 10 12 14 25 20

297.20

296.66

296.40

2+83 \$9 Conc Drive 236' Lt.

2<sup>36</sup> 2<sup>90</sup> 5<sup>16</sup>  
20 25 236

295.33

295.16

2+76 \$7 Conc Drive 247 Rt.

6<sup>23</sup> 6<sup>40</sup>  
247 240

295.65

295.2

2+59 \$2 Conc Walk 25' Rt.

5<sup>91</sup> 5<sup>95</sup>  
25 20

301.56

301.56

B.M. 397 293.21 (293.23)

T.P. 397 297.18 835 293.21

3+59.18 Int. East Line Manzanita Dr.

31 53 65' Conc Walk 251 Rt

301.56

Q Hub 2+20.62 PRO P. 72 FB 1852

Q Hub 3+59.18

	293.8	293.6	293.3	293.7	293.4	293.2	293.1
7.8	8.0	8.1	8.2	8.3	8.4	8.5	8.5
25	12		13	16	25	40	

293.46

293.29

8.10	8.27
251	40

301.56







1+00

312.98  
312.88  
312.7  
313.1  
313.0  
313.6  
313.6  
313.4  
313.4

5<sup>54</sup> 5<sup>54</sup> 5<sup>50</sup> 5<sup>54</sup> 5<sup>55</sup> 4<sup>59</sup> 4<sup>59</sup> 5<sup>51</sup> 5<sup>51</sup>  
29 24 18 16 18 20 30 50  
SW

0+70 to 3' Conc walk 203' Lt

312.80  
312.77

5<sup>72</sup> 5<sup>75</sup>  
29 203

0+55

Power Pole # 4375 228' Lt.

312.79  
312.71  
312.38  
312.2  
312.6

5<sup>72</sup> 5<sup>81</sup> 6<sup>14</sup> 6<sup>3</sup> 5<sup>9</sup>  
29 24 217 18  
Dr.

0+49.71 EC on Lt.

0+49.71 (L. on Rt.) (EC on Lt.)

312.68  
312.62  
312.52  
312.2  
312.6  
312.8  
312.8  
313.0

5<sup>54</sup> 5<sup>50</sup> 6<sup>0</sup> 6<sup>3</sup> 5<sup>9</sup> 5<sup>5</sup> 5<sup>5</sup> 5<sup>5</sup>  
29 24 19 19 20 30 50  
SW SW

313.69  
314.17  
313.58  
313.94  
313.58  
313.88  
313.58  
313.85  
313.43  
313.70

4<sup>83</sup> 4<sup>35</sup> 4<sup>24</sup> 4<sup>58</sup> 4<sup>24</sup> 4<sup>4</sup> 4<sup>24</sup> 4<sup>57</sup> 5<sup>09</sup> 4<sup>82</sup>  
G C6 G C6 G C6 G C6 G C6  
① ② ③ EC

H W ch. ret. Fairmount & Manzanita Pl. BC on Fairmount) BC.

(4 parts)

318.52

318.52

2150.35 W Line Manzanita Dr

313.0  
5.7  
30  
314.9  
3.8  
30  
314.7  
4.0  
50  
314.8  
3.9  
50

2125.33 E Manzanita Dr

313.7  
5.0  
30  
314.6  
4.1  
20  
315.1  
3.6  
30  
315.1  
3.6  
30  
316.0  
2.7  
40

T.P. 5.17 318.70 4.99 313.53

318.70

E Hub Manzanita Dr. to Line Manzanita Pl.

313.8  
4.2  
30  
314.0  
4.5  
25  
313.4  
5.1  
20  
314.5  
4.0  
7  
314.6  
3.9  
20  
315.0  
3.4  
35  
317.32  
1.2  
50  
316.52  
2.0  
50

2100.31 East Line Manzanita Dr

1198 Power Pole # 4351 22' Lt.

312.8  
5.7  
50  
313.3  
5.2  
41  
313.7  
4.8  
30  
313.8  
4.7  
22  
313.5  
5.0  
16  
313.8  
4.7  
9  
313.9  
4.6  
7  
313.8  
4.7  
17  
314.5  
4.0  
18  
314.7  
3.8  
27  
314.7  
3.8  
30  
314.2  
4.3  
50

1150

1144 Power Pole # 4355 22' Lt.

313.00  
5.52  
29  
312.96  
5.56  
24

1144 End SW on Lt

318.52

318.52

B17. 0.68 318.02 318.02

2 E.B.P. Thorn & Fairmount

2+38 Rim Canyon

298.4	299.0	300.5	304.5	305.7	307.1	308.9	310.7
20 <sup>3</sup>	19 <sup>1</sup>	18 <sup>2</sup>	14 <sup>2</sup>	13 <sup>0</sup>	11 <sup>5</sup>	9 <sup>8</sup>	8 <sup>0</sup>
50	30	16		9	12	30	50

306.2	307.6	310.8	311.9	312.9	314.0
12 <sup>5</sup>	11 <sup>1</sup>	7 <sup>9</sup>	6 <sup>8</sup>	5 <sup>8</sup>	4 <sup>2</sup>
50	30		10	30	50

2+08 86 Int to line Thorn & No. line Manzanita Dr.

309.5	310.9	312.7	313.8	314.3
9 <sup>2</sup>	7 <sup>8</sup>	6 <sup>0</sup>	4 <sup>9</sup>	4 <sup>4</sup>
50	30		30	50

2+90

318.70  
/

318.70  
/





2+00

306.3	306.9	306.9	307.4	307.6	308.0	308.2	308.6
57	51	51	46	44	40	38	34
40	23	14		11	16	25	40

1476<sup>5</sup> & Sewer M.H.

307.49  
47  
Rim

1465 Deadman to Pole 16' Lt.

1456 Anchor Pole 16.5 Lt.

308.04

1453 & 7' Conc. Drive 23.5 Rt.  
on skew

392  
235

1+50

306.1	306.4	306.6	307.0	306.6	307.1	307.2	307.8	307.96	308.14	308.4
59	51	54	50	54	49	48	43	40	38	36
40	25	20	16	13		12	18	21	30	35
								Dr		

311.96  
✓

311.96  
✓



3+00

306.3	307.0	307.1	307.6	307.7	308.1	308.4	308.5
57	50	49	44	43	39	36	35
45	25	15		11	14	25	33

2+73 2' Conc Drive 25' Lt.

306.91	307.00
50	49
40	25

2+62 2' Conc Walk 25' Rt.

306.99	307.10	308.65	308.88
49	48	32	30
36	25	25	32

2+54 2' Conc Walk 25' Lt.

307.0	307.2	307.3	307.5	307.8	308.1	308.4	308.6
50	48	47	45	42	39	36	35
40	25	15		12	13	25	35

2+63 10' Acacia Tree 19.2 Lt.

2+50

307.0	307.2	307.3	307.5	307.8	308.1	308.4	308.6
50	48	47	45	42	39	36	35
40	25	15		12	13	25	35

2+47 10" Acacia Tree 17.8 Lt.

31196

31196



X Sect. Heather St.

Poplar to Manzanita Dr

See Sketch FB1852 P. 44

1+33

INDEXED

WK

APR 12 1949

1+23 Power Pole #P3024 165' Lt.

1+20

0+96 & 25 Conc Walk 189 Lt.

0+50

0+00 West Line Poplar St.

BM. 589 304.62

298.73

& Hub 4194.8 PCC FB1852 P. 58

299.5  
299.5  
299.5  
299.4

299.7

299.9

299.8

300.0

33

5' 5' 5' 5' 4' 9'  
35 25 21 11

4' 2' 4' 8' 4' 6'  
15 25 35

300.0

299.9

299.8

299.3

299.4

299.4

299.3

300.1

300.4

300.4

4' 6' 4' 1' 4' 8' 5' 3' 5' 2' 5' 2'  
35 25 19 12 11

4' 1' 4' 5' 4' 10' 4' 10'  
12 15 25 30

299.87

299.84

4' 7' 4' 10'  
30 189

299.9

299.9

299.9

298.5

298.7

298.7

299.8

300.0

300.3

4' 2' 4' 2' 4' 2' 6' 5' 9'  
35 25 14 11

5' 9' 4' 8' 4' 6' 4' 10'  
13 16 25 35

299.5

299.7

299.4

297.9

298.3

298.1

299.7

300.0

5' 4' 2' 9' 5' 2' 6' 2' 6' 3'  
35 23 16 12

6' 5' 4' 9' 4' 6'  
13 16 25

304.62



B17

589 298.73 298.73 Starting 1917.

3+15.07 East Line Manzanita Dr. on Lt.

	298.3	298.5	298.6	298.2	298.7	299.0	299.5	299.5	299.8
6 <sup>in</sup>	6 <sup>in</sup>	6 <sup>in</sup>	6 <sup>in</sup>	5 <sup>in</sup>	5 <sup>in</sup>	5 <sup>in</sup>	5 <sup>in</sup>	4 <sup>in</sup>	
35	25	15	11		16	18	25	35	

2+99.24 BC Rt.

	299.1	299.0	299.0	298.3	298.9	298.9	299.3	299.6	299.8
5 <sup>in</sup>	5 <sup>in</sup>	5 <sup>in</sup>	6 <sup>in</sup>	5 <sup>in</sup>	5 <sup>in</sup>	5 <sup>in</sup>	5 <sup>in</sup>	4 <sup>in</sup>	
35	25	15	11		12	14	25	35	

2+96.5 4.35 Conc. Walk 25 Lt.

	299.16	299.11
5 <sup>in</sup>	5 <sup>in</sup>	
35	25	

2+91 4 7' Conc Drive 16.2 Rt.

	299.57	299.68
5 <sup>in</sup>		4 <sup>in</sup>
16.2		26

304.62  
/

304.62  
/

X Sect. Columbine St

Poplar to Manzanita Dr.

See sketch FB 1852 P-45

1+07 #3' Conc Walk 25' Lt.

1+24 Power Pole # 3024 16' Lt.

1+00

INDEXED  
WK  
APR 12 1949

0+78 # 7' Conc Drive 25' Lt.

0+50

0+03

Power Pole # 3002 17' Lt.

0+00

White Poplar St.

B17 2.86 300.58

297.72

SE Top Hydt Poplar & Columbine  
FB 1628 P 18

295.93  
295.96

4.65  
28 25

296.0 295.7 295.5 295.2 295.3 295.3 295.8 296.1 296.1

4.1 4.9 5.1 5.4 5.11 5.2 4.8 4.5 4.5  
35 25 15 10 13 15 25 25

295.91  
295.96

4.9 4.6  
35 25

295.5 295.6 295.4 295.0 295.0 295.1 295.0 295.8 296.1 296.3

5.1 5.0 5.2 5.1 5.16 5.5 5.5 4.9 4.5 4.2  
35 25 15 13 9 13 15 25 35

295.2 295.2 295.3 294.9 294.3 294.6 294.5 294.8 295.4 295.9 296.3

5.4 5.4 5.2 5.7 6.2 6.10 6.1 5.8 5.2 4.7 4.3  
35 25 18 15 13 13 15 17 25 35

300.58

2+50

295.6  
5.0 4.9 4.7 5.0 4.8  
35 25 16 13 12 25 35

2+32 R 2' Conc Walk 25' Rt.

295.5  
4.7 4.9 4.9  
25 25 35

2+17 L 5.5 Conc Walk 24.6 ft

296.07  
4.5 4.4 4.2  
35 24 11

2+05 R 2.5 Conc Walk 25' Rt.

295.91  
4.8 4.9  
25 25

2+00

296.16  
4.6 4.9 4.9 5.0 4.9 4.5 4.5 4.4  
35 25 12 13 17 25 35

1+50

296.0  
295.7  
295.7  
295.6  
295.9  
295.7  
295.7  
295.5  
295.5  
295.6  
295.8  
295.8  
296.0  
4.7 4.9 4.9 5.1 5.1 5.0 4.8 4.8 4.6  
35 25 14 11 12 15 25 35

Levels Columbine J. Contd

B. 17.  
 3444 Power Pole # 3098 17.5 Lt. 5.57 295.01 294.98  
 3440 BC Lt.

3438 & Conc Drive 24' Lt.

3403 & 3' Conc Walk 25.1 Lt.

3415 East Line Mansanita Dr. on Rt.

3400

2492 & 2' Conc Walk 24' Rt.

2478 & 2' Conc Walk 25.6 Lt.

300.58

Q Hub 296.13 296.07 295.8 295.8 295.2 295.6 295.8 295.4  
 9+08.54 PRC FB 1852 P 61

4.4 4.5 4.8 4.8 5.4 5.0 4.8 5.2  
 35 24 23 17 12 13 25

296.13 296.07  
 4.25 4.51

296.34 296.16  
 35 24

4.24 4.42  
 35 25.1

296.2 295.8 295.7 295.4 295.7 295.4 295.8 295.6 295.6  
 4.4 4.8 4.9 5.2 4.9 5.2 4.8 5.0 5.0  
 35 25 15 13 14 15 25 35

295.8 295.8 295.7 295.5 295.6 295.5 295.7 295.8 295.9  
 4.8 4.9 4.9 5.1 5.0 5.1 4.9 4.8 4.7  
 35 25 16 14 13 14 25 35

295.70 295.67  
 4.88 4.91  
 24 35

295.99 295.91

4.89 4.97  
 45 25.6

300.58



X Sect. Dahlia St.  
Poplar to Manzanita Dr.  
 See Sketch FB 1852 P 46

INDEXED

WK  
 APR 12 1949

1+00

0+174 & Conc Drive 25' Rt.

0+50

0+01 Power Pole # P2900 165' Lt.

0+00 West Line Poplar

BM 5.57 296.54

290.97

Nail & Poplar W Line 296.54  
 Dahlia FB 1628 P 23

39

291.5	291.6	291.5	291.2	291.5	291.3	292.1	292.4	292.7
5° 35'	4° 25'	5° 14'	5° 11'	5° 12'	5° 15'	4° 25'	4° 25'	3° 35'

293.17	293.63
3° 25'	2° 38'

291.7	291.7	291.9	291.7	291.9	291.9	292.7	292.9	293.1
4° 35'	4° 25'	4° 14'	4° 11'	4° 13'	4° 16'	3° 25'	3° 25'	3° 35'

291.4	291.6	292.0	291.9	291.1	291.4	291.3	292.4	292.5	292.8
5° 35'	4° 25'	4° 21'	4° 18'	5° 12'	5° 12'	5° 12'	4° 16'	4° 25'	3° 35'

x Seat Dahlia St. Contd

40

1+97 & Conc Walk 26' Rt.

290.2  
290.1  
289.8  
289.2  
289.9  
289.6  
290.3  
290.7  
291.5

5<sup>30</sup>  
26  
5<sup>30</sup>  
25

290.60  
290.70

1+65

6<sup>30</sup>  
35  
6<sup>30</sup>  
25  
6<sup>30</sup>  
17  
6<sup>30</sup>  
12  
6<sup>30</sup>  
12  
6<sup>30</sup>  
14  
5<sup>30</sup>  
25  
5<sup>30</sup>  
35

290.27  
290.16

1+60 & 4' Conc Walk 25' Lt.

6<sup>30</sup>  
35  
6<sup>30</sup>  
25

291.24  
291.48

1+27 & 3' Conc Walk 27' Rt.

290.9  
290.9  
290.8  
290.5

5<sup>30</sup>  
27  
5<sup>30</sup>  
37

291.1  
290.6  
291.1  
291.4

1+33

5<sup>30</sup>  
35  
5<sup>30</sup>  
25  
5<sup>30</sup>  
11  
5<sup>30</sup>  
12  
5<sup>30</sup>  
12  
5<sup>30</sup>  
12  
5<sup>30</sup>  
12  
5<sup>30</sup>  
12  
5<sup>30</sup>  
12  
5<sup>30</sup>  
12

1+23 Power Pole # P2924 16.5' Lt.

291.84  
291.63

1+13 & 16' Conc Drive 25' Lt.

5<sup>30</sup>  
30  
5<sup>30</sup>  
25

296.54

↑

296.54

↑

BM

9.18 287.36 287.32

R 2.5 Conc. Walk

2490.05 RC on Rt.

2465.05 Eastline Manzanita Dr. on Lt.

2440

2423 R 7.5 Conc Drive Rt. 25.2

2400

296.54

R Hub  
12409.02 PRO FB 1852 R 63

284.8	287.1	287.3	287.4	288.2	289.1	289.9	289.66	289.86
11 <sup>7</sup>	9 <sup>4</sup>	9 <sup>3</sup>	9 <sup>1</sup>	8 <sup>3</sup>	7 <sup>4</sup>	6 <sup>6</sup>	6 <sup>88</sup>	6 <sup>08</sup>
25	3		13	14	17	24	24	34
					6	WALK		

284.5	285.5	287.0	286.9	287.7	287.6	289.0	289.2	290.1
12 <sup>0</sup>	11 <sup>0</sup>	9 <sup>4</sup>	9 <sup>6</sup>	8 <sup>4</sup>	8 <sup>9</sup>	7 <sup>5</sup>	7 <sup>3</sup>	6 <sup>4</sup>
35	25	12	12		14	19	25	35

285.4	286.7	287.6	287.5	288.0	287.9	289.2	289.3	290.2
11 <sup>1</sup>	9 <sup>8</sup>	8 <sup>9</sup>	9 <sup>0</sup>	8 <sup>10</sup>	8 <sup>6</sup>	7 <sup>3</sup>	7 <sup>3</sup>	6 <sup>11</sup>
35	25	12	11		15	19	25	35

290.06

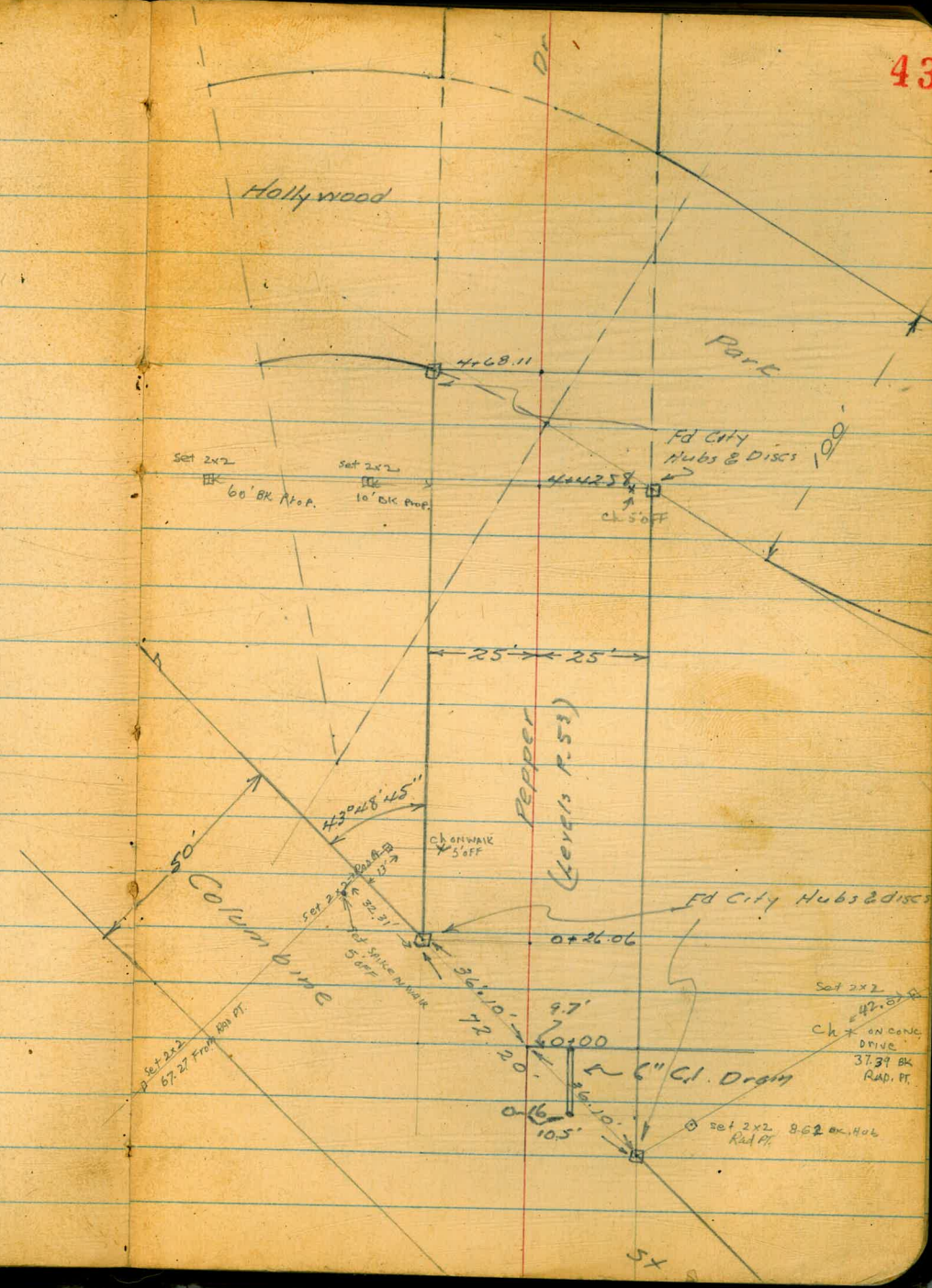
290.30

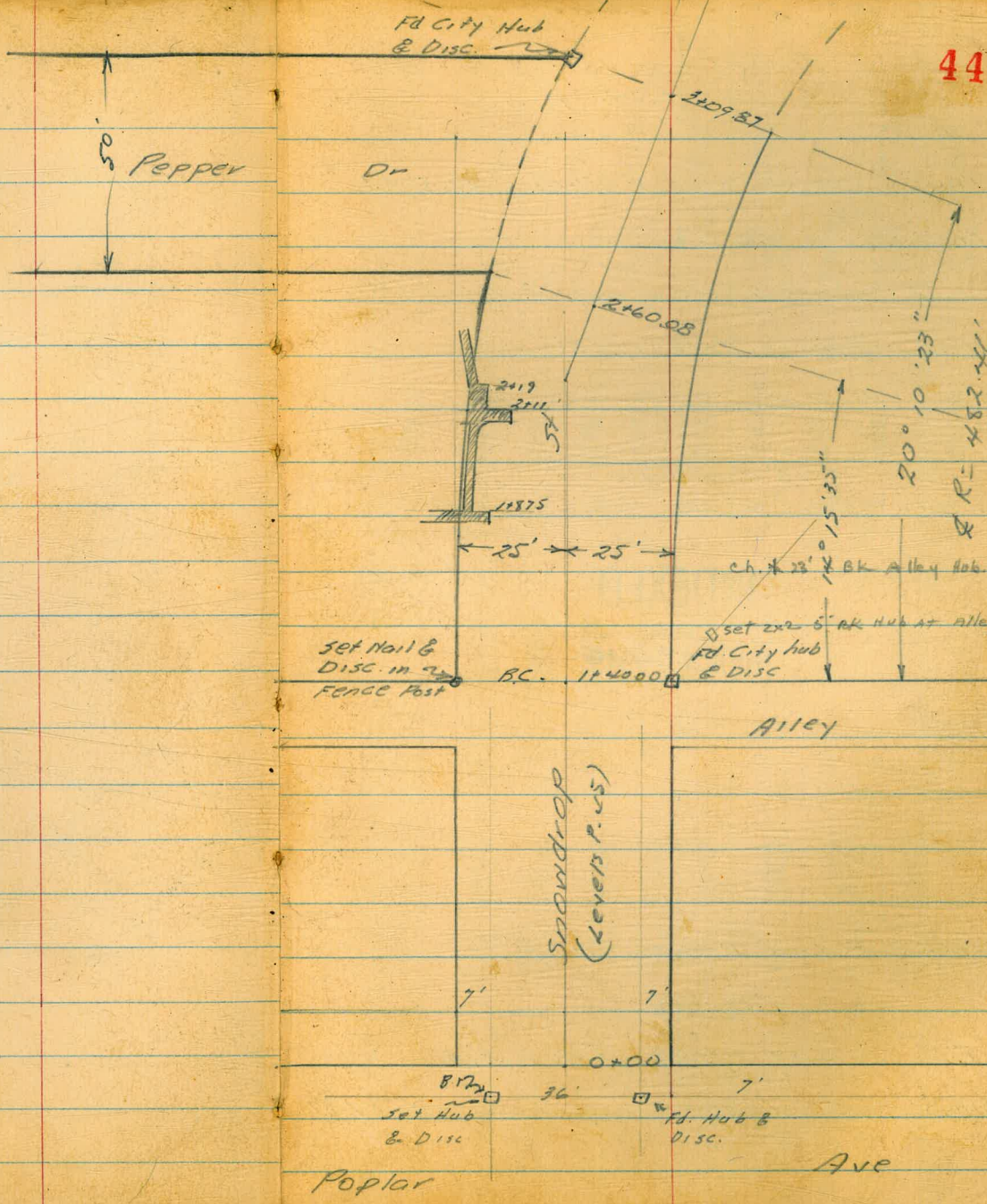
287.6	288.1	288.5	288.2	288.8	288.9	289.4	290.0	290.3
8 <sup>9</sup>	8 <sup>4</sup>	8 <sup>0</sup>	8 <sup>11</sup>	7 <sup>7</sup>	7 <sup>6</sup>	7 <sup>1</sup>	6 <sup>5</sup>	6 <sup>3</sup>
35	25	13	11		13	16	25	35

296.54



Levels P-53





Levels Snowdrop St.

Poplar Ave. to Pepper Dr.

See sketch P. 44

1+45 Power Pole # P2748 17.3' Rt.

(S)  
1+40 E. Line Alley

1+23 Anchor Pole # 467712 H 14.3 Rt.

1+10 Anchor Pole 17.3 Rt

1+05 Dead Man to Pole 17.2 Rt.

& 1.5' Conc Walk 25 x 4 ft

1+00 Dead Man to Pole 17.5 Rt.

INDEXED

WK

APR 12 1949

0+50

0+00 E. Line Poplar St

T.P. 4.87 293.22 5.00 288.35

B.M. 5.46 293.35

287.89

NE 7' Hub Poplar & Snowdrop

SE Top Fire Hydr. Poplar & Hollywood Park

FB 1628 P. 25

289.1  
288.8  
288.3  
287.9  
287.5  
287.7  
287.2  
286.8

4.1 4.2 4.3 5.1 5.7 5.4 6.0 6.4  
35 25 12 12 13 25 35

289.37 289.35 289.0 288.8 288.6 288.5 288.3 288.9 288.6 288.4

385 387 4.2 4.4 4.5 4.7 4.9 4.3 4.5 4.8  
30 25.4 25 14 12 12 14 25 35  
Walk

289.2 289.1 289.0 288.7 288.8 288.6 289.3 288.9 289.0 288.9

4.0 4.1 4.2 4.3 4.4 4.5 4.7 4.3 4.2 4.3  
35 25 16 15 10 13 21 25 28

289.2 289.0 289.0 288.5 288.5 288.3 288.9 288.9 288.9

4.0 4.2 4.3 4.7 4.7 4.9 4.3 4.3 4.3  
35 25 20 17 9 12 25 35

293.22

Levels Snowdrop St. Contd.

46

1+875 Reg. 2' Conc Walk 23' Lt.

1+880x

1+86 3' Conc Walk 188 Lt.

1+77 3' Conc Walk 24.5 Rt.

1+64.02

1+54 2.5' Conc Walk 23.1 Lt.

1+52 Reg Wire Fence 23' Lt.

1+47 1' Garage on Lt.

293.22

↑

288.60	288.60	288.2	288.0	287.6	287.2	287.6	287.0	286.4
4.42	4.42	5.0	5.12	5.1	6.0	5.1	6.2	6.8
25	23	11	10		12	18	25	35

288.81  
288.79

4.41  
4.43  
25  
18.5

287.01  
286.59

6.21  
6.13  
24.5  
35

289.1	289.0	288.2	287.7	287.3	287.6	286.9	286.6
4.1	4.2	5.0	5.5	5.7	5.1	6.3	6.5
35	25	11		12	13	25	35

288.94  
288.86  
4.28  
4.36  
33  
23.1

288.94  
288.84

4.28  
4.38  
247  
237  
Fl. Apron 293.22





T.P.

(3)  
583 287.39

(Tied To this P. 58)

N.E. Prop. Hub. Pepper Dr. & Snowdrop

St. 09.07 power pole # P2698 18' H  
Radial to Easterly Line Pepper Dr.

287.4	287.0	286.5	286.6	285.9	286.5	286.7	286.3
5 <sup>th</sup>	6 <sup>th</sup>	6 <sup>th</sup>	6 <sup>th</sup>	7 <sup>th</sup>	6 <sup>th</sup>	6 <sup>th</sup>	6 <sup>th</sup>
25	14	12		11	13	25	35

282

to Sewer M.H.

287.18  
6.04  
Rim

2+84.97

287.9	287.7	287.6	287.3	286.4	287.1	287.1	286.7
5 <sup>th</sup>	5 <sup>th</sup>	5 <sup>th</sup>	5 <sup>th</sup>	6 <sup>th</sup>	6 <sup>th</sup>	6 <sup>th</sup>	6 <sup>th</sup>
35	28	14		11	14	22	35

293.22

293.22



Levels Columbine St Cont'd

1121 R 3' Conc. Walk 24.9' Lt.

	295.85	295.79					
	5 <sup>12</sup>	5 <sup>18</sup>					
	30	24.9					
	295.8	295.7	295.4	295.0	294.7	295.2	295.2
	5 <sup>12</sup>	5 <sup>18</sup>	5 <sup>17</sup>	6 <sup>10</sup>	6 <sup>13</sup>	5 <sup>8</sup>	5 <sup>8</sup>
	35	25	17		8	13	25
							35

1124.00

1192 Power Pole # JP 2948 18' Rt.

	296.41	295.81					
	4 <sup>56</sup>	5 <sup>16</sup>					
	38.9	28.9					

1179 R 3' Conc. Walk 25.9' Lt.

	296.1	295.9	295.7	295.4	295.5	295.2	295.7	295.6	295.6
	4 <sup>1</sup>	5 <sup>1</sup>	5 <sup>3</sup>	5 <sup>6</sup>	5 <sup>5</sup>	5 <sup>8</sup>	5 <sup>9</sup>	5 <sup>4</sup>	5 <sup>4</sup>
	35	25	18	17		9	12	25	35

1186.01 So Line Quince St.

	296.6	296.5	295.7	296.3	295.4	295.6	295.6	295.6	295.6
	4 <sup>4</sup>	4 <sup>5</sup>	5 <sup>13</sup>	4 <sup>70</sup>	5 <sup>6</sup>	5 <sup>4</sup>	5 <sup>4</sup>	5 <sup>4</sup>	5 <sup>4</sup>
	38	22	21	Rim	18	19	25	20	

Westerly Edge Sewer MH

1131.66 L. Rt. 46° 14' 30" (Rt. to Back line)

300.97

300.97

301.97

Levels Columbine St. Contd.

3+50.40 Int Prop Line Pepper Dr on Rt.

295.4	295.3	295.0	294.7	294.8	294.4	294.8	294.7	294.6	51
56	57	60	63	62	66	63	63	64	
33	25	14	13		12	15	25	35	

3+47 Power Pole # P2902 17.2 Rt.

295.4	295.2	294.9	294.8	294.7	294.4	294.7	294.7	294.6
-------	-------	-------	-------	-------	-------	-------	-------	-------

3+40

56	58	61	62	63	65	63	63	64
39	28	15	13		10	12	25	35

3+05 8" Pepper tree 22.5 Lt.

295.2	294.9	294.8	294.5	294.5	294.9	294.9	294.7
-------	-------	-------	-------	-------	-------	-------	-------

3+00

58	61	63	63	65	61	61	63
34	25	15		9	14	25	35

2+66 8" Pepper Tree 22.5 Lt

295.62	295.32
--------	--------

2+56 3' Conc Walk 25.3 Lt.

58	56
25	25

2+50

295.6	295.3	295.0	294.7	294.6	294.7	294.8	294.7
54	57	60	63	64	63	63	63
37	28	16		8	11	25	35

TP.

6.67 294.30

on Hub 25 Rt 7150.40 (p. 22)

4134.65

2949	2948	2946	2937	2940	2936	2942	2940
6 <sup>1</sup>	6 <sup>2</sup>	6 <sup>1</sup>	7 <sup>2</sup>	7 <sup>0</sup>	7 <sup>4</sup>	6 <sup>10</sup>	7 <sup>0</sup>
42	25	19	11		13	17	25

4100

2954	2952	2950	2944	2946	2948	2947
5 <sup>6</sup>	5 <sup>8</sup>	6 <sup>0</sup>	6 <sup>6</sup>	6 <sup>1</sup>	6 <sup>12</sup>	6 <sup>13</sup>
35	25	15	11		16	25

300.97

300.97

Levels Pepper Dr  
 Columbine to Hollywood Park  
 See Sketch P. 43

INDEXED  
 WK  
 APR 12 1949

0+50

293.7 293.6 293.7 293.5 293.7 293.5 292.9 293.4 293.4 293.3

12 18 17 19 17 19 25 20 20 21  
 35 35 16 13 4 9 15 25 35

53

0+26.06 Int. Prop Lines on Lt.

293.7 294.3 294.1 293.6 293.2 294.0 294.0 293.8

17 17 17 18 22 14 14 14  
 25 10 7 9 16 25 35

0+00 End 6" C.I. Drain Pipe 9.7 Rt.

293.7 294.7 294.4 294.2 294.7

187  
 9.7

Section Taken on Diagonal Parallel to Columbine  
 0+00 Int. W Line Columbine

17 0.7 10 13 0.8  
 36.10 16 15 36.10

1809  
 0+16 6" C.I. Pipe 10.5 Rt.

293.84  
 1.59  
 10.5  
 F.L.

B77 113 295.43

294.30  
 from 8.22

295.43  
 On Hub Rt. 3+50.40

Levels Pepper Dr. Contd.  
Columbine to Hollywood Park

1+71 \$ 8' Conc Dr. 24.5 Lt.

290.45  
4.95  
40 24.5

1+70 \$ 2<sup>5</sup>' Conc Walk 24.7 Lt.

290.97  
4.46  
40 24.7

1+50

291.2 291.4 291.6 291.7 291.3 291.0 291.6 291.4 291.6  
4.2 4.0 3.8 3.7 4.1 4.4 3.8 4.0 3.8  
35.25 32 6 10 14 25 32

1+42 \$ 3' Conc Walk 25' Rt.

291.71 291.73  
37.8 37.0  
25 40

\$ 3.3' Conc Walk 24.8 Lt.  
1+23 \$ 6.5' Conc Drive 25' Rt.

291.93 291.92  
35.0 35.1  
40 24.8

291.71 291.67  
37.2 37.6  
25 40

1+00

292.4 292.5 292.4 292.3 292.6 292.4 292.0 292.3 292.2 291.9  
3.0 2.9 3.0 3.1 2.8 3.0 3.4 3.1 3.2 3.5  
35 25 15 14 5 10 15 25 35

295.43  
T

295.43  
T



2+45 @ 7' Conc Wall 25' Lt.

289.33  
289.67

6' 5.76

40 25

2+42 Endo. 4' Conc Ret Wall 24.2 Lt

289.57

5' 86

24.2 Wall

290.42  
5' 21'  
Lim

2+36 @ Sewer MH.

290.32

290.34

2+25 @ 2.5' Conc Wall 25' Rt.

289.51

289.54

5' 25'

5' 38

2+22 @ 4' Conc Wall 24' Lt.

5' 72 5' 89

38 24'

290.63

290.63

2+06 @ 7' Conc Dr 25.1 Rt.

289.6

289.8

290.11

290.2

290.5

290.7

290.4

290.1

290.6

290.7

290.6

4' 80

4' 80

25'

40

2+00 Beg. o.v.d Conc Ret Wall 24.3 Lt.

5' 8 5' 5 5' 3 5' 2 4' 7 4' 7 5' 0 5' 3 4' 8 4' 7 4' 8  
35 25 24 21 12 7 11 15 25 35

295.43

295.43



Levels Pepper Dr. Contd.

57

4+00

285.0 285.0 283.7 282.8 282.9 282.5 283.2 284.5 284.6 284.6

10.4 10.4 11.7 12.6 12.5 12.9 12.2 10.9 10.8 10.9

35 25 13 9 8 11 13 25 35

3+84 \$6.5 Conc. Drive 24.6 Rt.

286.5 286.6 286.4 286.0 286.2 286.0 286.8 287.2 287.2

8.9 8.8 9.0 9.4 9.2 9.4 8.5 8.3 8.2

35 25 14 11 7 15 25 35

287.22 287.17

8.2 8.6

24.6 28

3+50

287.79 287.57

76.4 78.6

38 24

3+30 \$3 Conc. Walk 24.4 Lt.

288.26 288.2

3+09 \$7 Conc. Drive 24.2 Lt.

7.7 7.2

40 24.2

289.07

289.01

3+02 \$4 Conc. Walk 24.6 Rt.

6.2 6.2

24.6 40

295.43

295.43

BM 4.30 287.45 287.39

5+00

4+69.11 Int. Hollywood Park on Lt.

4+42.58 Int. Hollywood Park on Rt.

T.P. 837 291.75 1205 283.38

295.43

(p. 48)  
H.E. Prop Hub Pepper Dr & Snowdrop

267.3	270.3	277.7	277.6	277.5	272.6	272.5
24 <sup>E</sup>	21 <sup>E</sup>	14 <sup>E</sup>	14 <sup>E</sup>	14 <sup>E</sup>	19 <sup>E</sup>	19 <sup>E</sup>
35	23	10		12	23	37

280.6	279.8	278.8	278.7	278.7	278.8	272.9	271.4	270.8
11 <sup>E</sup>	12 <sup>E</sup>	13 <sup>E</sup>	12 <sup>E</sup>	13 <sup>E</sup>	13 <sup>E</sup>	18 <sup>E</sup>	20 <sup>E</sup>	21 <sup>E</sup>
35	28	16	8		9	18	25	35

283.0	282.8	282.4	280.4	280.1	280.2	280.1	279.9	281.2	279.97	279.4
8 <sup>E</sup>	9 <sup>E</sup>	9 <sup>E</sup>	11 <sup>E</sup>	11 <sup>E</sup>	11 <sup>E</sup>	11 <sup>E</sup>	11 <sup>E</sup>	10 <sup>E</sup>	11 <sup>E</sup>	11 <sup>E</sup>
35	25	14	12	10		6	9	13	25	35

Hub

291.75

Moore  
Begg  
SHERMAN  
L13501  
8-10-49

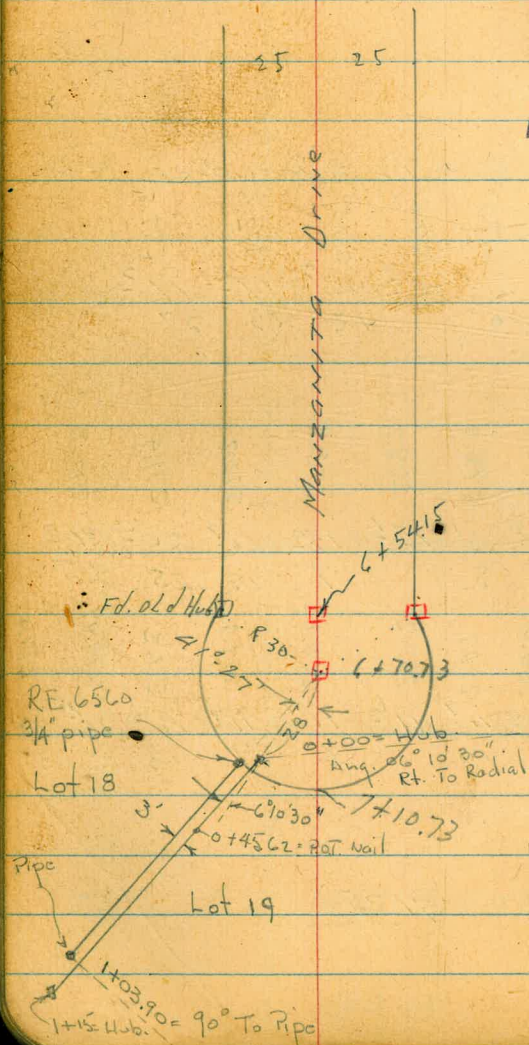
Levels, Wly end Manzanita Dr.  
W.O. 31514

1 SET 2x2 Hub & disk

INDEXED

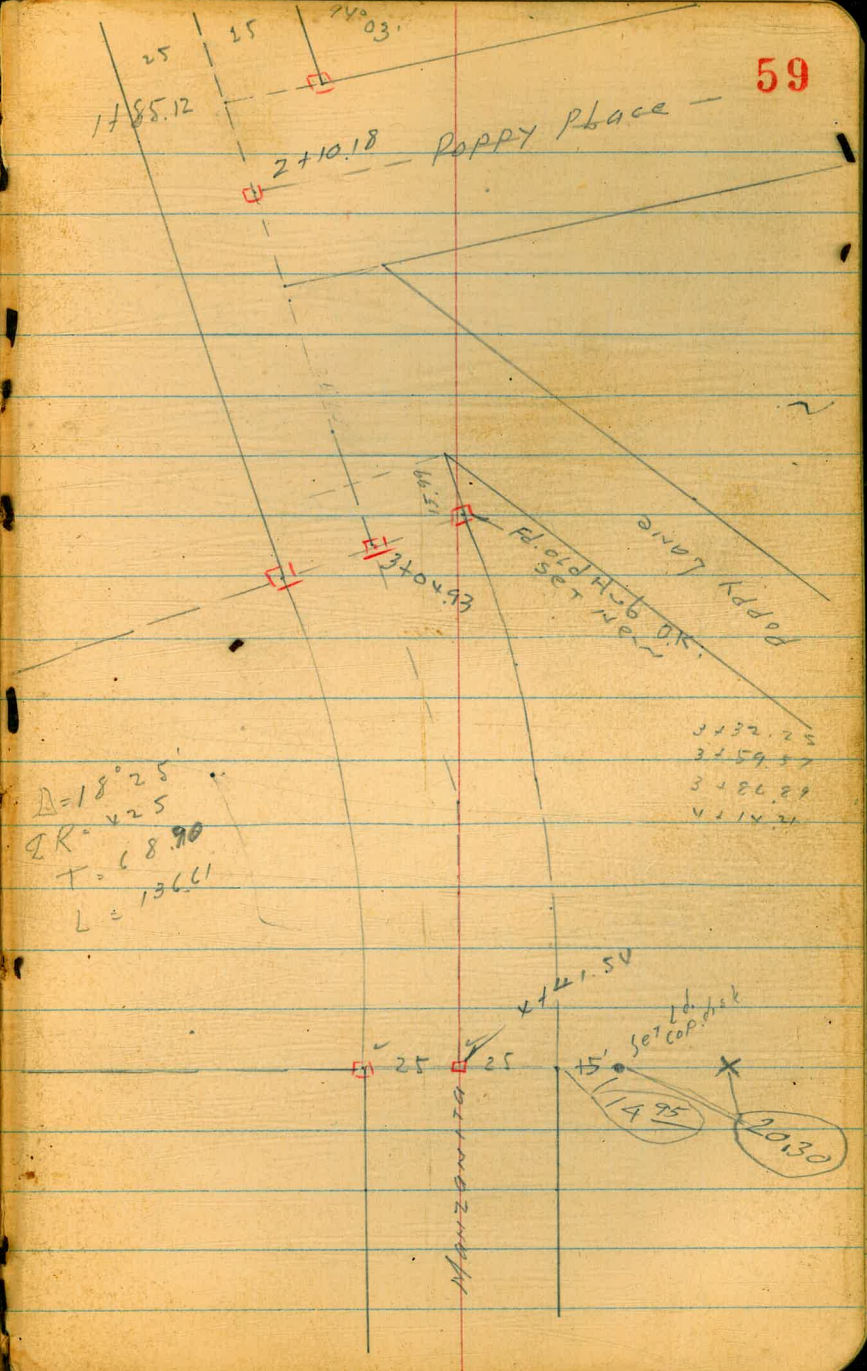
W.K.

AUG 12 1949



Prop ties  
G.B 343  
P 25  
2/27/55  
cch

59

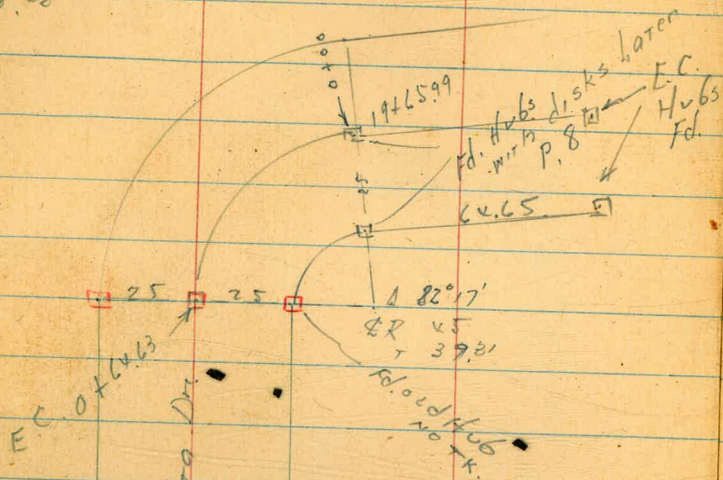


$\Delta = 18^{\circ} 25'$   
 $QR = 425$   
 $T = 68.90$   
 $L = 13661$

16.16

3232

2848



1485.12

2506

2+10.18

Poppy PL.

X Section Manzanita Dr

see p B

sec p 5  
Hub  
75+54 49 EC

19+65 99 BC

0. + 00

H1

290.26 49

Hub

TP

1.34 291.60 454 287.06

0.32 287.38

see next Page

61

Manganita

Reduced  
5-1-51  
Ryan

0 + 64 63 EC

0 + 48 48

0 + 40 - 4.5' rt. =  $\pm$  Sewer M.H. 84.53 S. Rio

0 + 36 32 =  $\pm$  drive on Rt - 26.8' rt.   
 8' Conc.   
 70

0 + 32 32

0 + 16 16

New Shots shown are actual Elev.

checked - 8-7-53 - 70

0 + 00 BC

287.38

283.9 3.5 25	283.9 3.5 14	283.3 4.1 12	283.6 3.8 12	283.6 3.8 12	283.4 4.0 25	62
--------------------	--------------------	--------------------	--------------------	--------------------	--------------------	----

284.2 3.2 25	284.2 3.2 14	283.7 3.7 12	284.1 3.3 12	284.2 3.2 12	284.2 3.2 25
--------------------	--------------------	--------------------	--------------------	--------------------	--------------------

285.03  
2.9  
25  
284.9  
2.9  
25  
284.5  
2.9  
25  
Sect. was Turned  
285.5 around  
284.1  
3.3  
12  
284.6  
3.3  
14  
285.1  
3.3  
25  
84.94  
26.8  
40  
Dr Dr

284.5 2.9 25	284.2 3.2 12	284.6 2.8 12	284.6 2.8 12	285.0 2.4 25
--------------------	--------------------	--------------------	--------------------	--------------------

284.6 2.8 25	284.4 3.0 12	284.8 2.6 12	284.9 2.5 12	285.1 2.3 25
--------------------	--------------------	--------------------	--------------------	--------------------

284.5 2.9 25	284.8 2.6 12	284.8 2.6 12	284.8 2.6 12	285.1 2.3 25
--------------------	--------------------	--------------------	--------------------	--------------------

287.38



Margarita  
+ H1 - E1

2+02 Drive way 25 Rt 8 1/2 wide

277.4	277.9	278.2	278.1	278.4	278.7	03
4.3	3.8	3.5	3.6	3.3	3.48	71.30
25	12		12	14	25.1	40
					Dr.	Dr.

TP. 279 281.67 8.50 278.93 <sup>our Elev.</sup> Pole  
278.88 = Navim

1+85 1/2 E line Poppy

279.9	279.8	279.7	278.9	279.0	279.0
7.5	7.6	8.7	8.5	8.4	8.4
25	14	10		12	25

1+82 3' walk 25 Rt ✓

1+50

281.0	280.9	280.1	280.5	280.3	280.2	280.0
6.4	6.5	7.3	6.9	7.1	7.2	7.4
25	13	10		12	25	40

1+14-254 L = + 2.5' Conc. walk ✓

82.85	82.58
40	25.4

1+15 ~~2' walk 25 Rt~~ - Not Here

1+00

282.1	282.9	282.2	282.5	282.4	282.1
4.3	4.5	5.2	4.9	5.0	5.3
25	12	10		12	25

82.42 81.68  
27.1 40  
walk

0+95-27.1 Rt = + 3' Conc. walk ✓

0+91 13' Rt Pole 3960 ✓

0+90-24.4 Rt = + Tel. Pole # 569051-A

287.38 = BM 283.52

0+71.5-126 Rt = + Dead man ✓

00) 4.00	287.38
25	
12.60	

0.19 273.44 8.48 273.75

3+04 93 BC Rt

2700

2+50

2+35<sup>24</sup> West Line Poppy

2+28 Sidewalk 13.0 Rt 3' Wide

2+12 0.5 Rt. = Sewer MH 77.62 S. Rim

2+10<sup>18</sup> ♀ Poppy 18.8 Rt P 39 40 = BM. 278.93 = Nat281.67  
2+08-23.4 Rt. = Tel. pole # 5690 52 H

273.44

264.2	269.2	273.7	272.9	272.8	272.5	273.9	273.6
17.5	13.5	8.0	8.8	8.9	9.2	7.8	8.1
40	25	12	10	8	8	12	25

264.7	268.4	273.7	273.1	273.0	272.7	274.1	273.9
17.0	13.3	8.0	8.6	8.7	9.0	7.6	7.8
40	25	12	10	8	8	12	25

268.7

270.7	270.2	275.9	275.3	275.5	275.4	276.7	276.7
11.0	6.4	5.8	6.4	6.8	6.3	5.0	5.0
40	25	12	10	10	10	12	25

274.2	276.7	277.1	276.0	276.4	276.3	277.2	277.3
7.5	5.0	4.6	5.7	5.3	5.4	4.5	4.4
40	25	12	10	10	10	12	25

277.64	277.56
4.03	4.11
13	25

277.4	277.5	277.8	277.6	278.2	278.0
4.3	4.2	3.9	4.1	3.5	3.7
25	12	10	10	12	25

281.67

14+25- 36.8' Lt. =  $\pm$  Conc. Porch to House

65.73

36.8

Porch

265.5	265.2	268.4	265.1	268.7	265.4
7.9	5.2	5.0	5.3	4.7	5.0
25	12		9	12	25

4+14 21

3+86 89

263.7	265.2	269.4	268.8	269.2	268.9	269.8	269.8
9.7	8.2	4.0	4.6	4.2	4.5	3.6	3.6
40	25	12	10		9	12	25

3+69.3 - 1.7 Lt. =  $\pm$  Sewer M.H. 70.28 S. Rim

3+59 57

264.1	266.1	270.5	269.9	270.4	269.3	270.8	270.9
9.3	7.3	2.9	3.5	3.0	3.6	2.6	2.6
40	25	12	10		9	12	25

3+40 - 21.7 Rt. =  $\pm$  Tel. pole # 569053-H

3+40 - 19.3' Lt. =  $\pm$  Guy Pole # 569054-H

32 25

266.2	268.8	271.7	271.4	271.6	271.0	272.3	272.0
7.2	4.6	1.7	2.0	1.8	2.4	1.1	1.4
40	25	11	10		9	12	25

3+26 - 13.3' Lt. =  $\pm$  Guy Pole

9+26 P. Pole R124P3910

273.44

273.44



on Lot Line - 18-19 - New Conc. wall. Being Const. - May be bad for Drain

Cont. on P. 68

Bot. lots 19+20 - owner says - 6' Easement along Lot Line

7+40 = Profile for Dain along lot line

46.5	<del>46.2</del>	<del>47.1</del>	45.2
15	<del>14.2</del>	<del>15.1</del>	15

7+05.3 = 2x6 Guard Rails

247.6	248.8	<del>249.2</del>	249.3	248.8
14.5	13.3	<del>12.7</del>	12.8	13.3
30	15	15	15	30

7+00.73 = end of Banjo on E

6+93 - 1' Rt. = E P. pole # 3840 - BM = 250.31 spike

6+84 - 25.2 Rt. = E 3 Conc. Walk

42' Lt. = Forms for New House + Grav.

6+70.73 of Banjo - Thru Dr. on Rt.

50.45	<del>48.9</del>	49.7	<del>49.7</del>	249.8	250.1	49.97	50.16
13.5	<del>14.5</del>	12.8	13.5	12.8	12.0	25.2 walk	37.8 d'step
42	30	20	15	15	15	50.3	50.3
= Top of Prop. Found.						250.1	249.5

6+65 - 26.6 Rt. = E 14' Conc. Dr.

249.7	250.1	250.6	250.4	251.1	250.9	250.5
12.4	12.0	11.5	11.7	11.0	11.2	11.6
35	10	8	12	25	40	

6+54.15

6+30

50.6	51.6	51.6	51.4	51.8	51.6	52.1	52.4
35	25	12	10	10	10	25	25
	<del>54.2</del>	<del>54.6</del>	<del>53.8</del>	254.3	<del>254.1</del>	255.1	256.3
	7.1	7.0	7.9	7.8	8.0	7.0	6.8
	25	10	8	8	8	12	55

6+00

5+79 - 13.5 Rt. = E Dead man

5+76 - 15' Rt. = E Dead man

262.14

262.14

Lt.

±

Rt.

68

$$\begin{array}{r} 45 \\ 91 \\ \hline 59 \end{array}$$

Note: This line heads for Drain under  
Freeway.

T+80

$$\frac{38.8}{10}$$

37.9

35.9

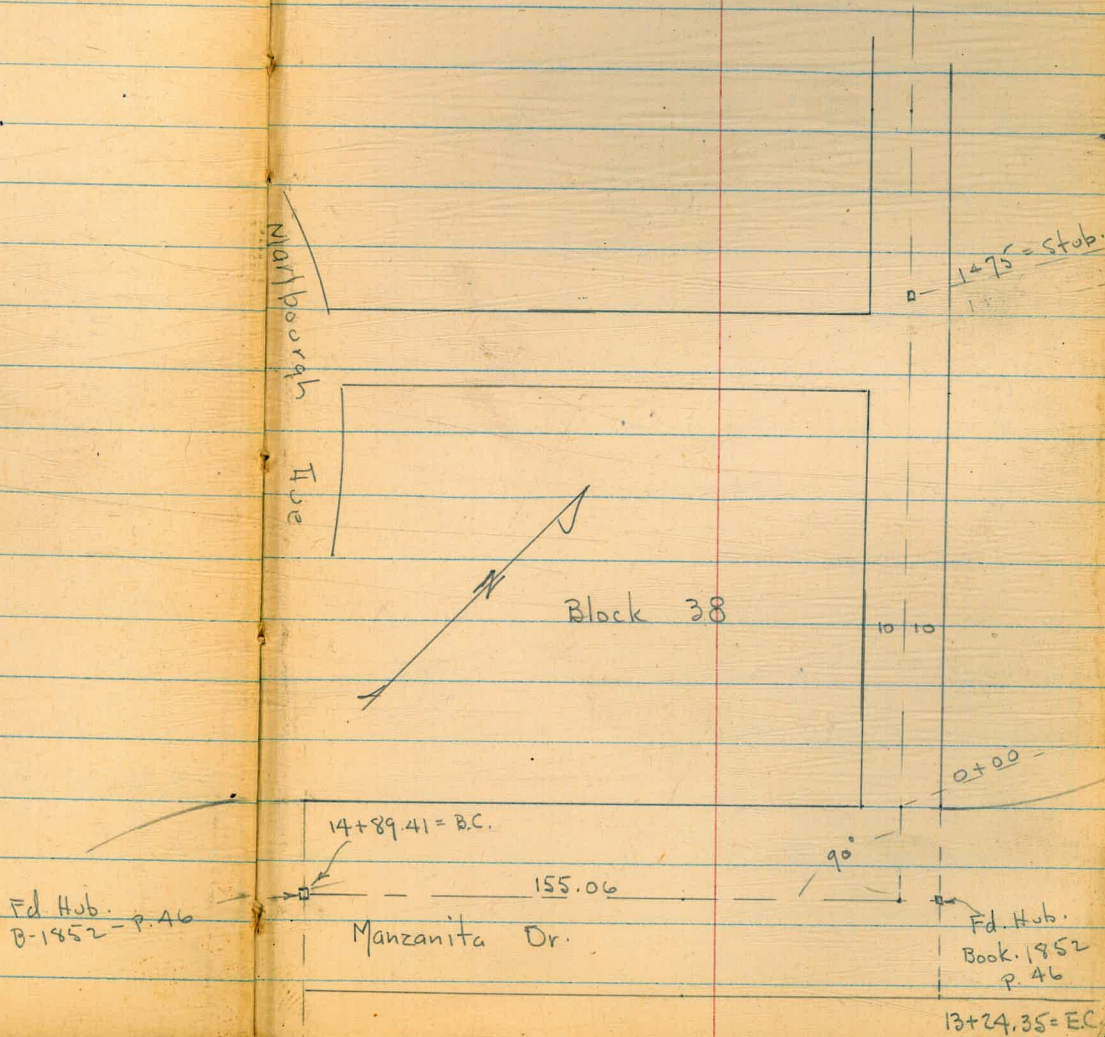
10 = Top of  
steep slope

	7.71	291.42	1.16	290.26
TP	9.95	284.36	0.65	283.71
TP	13.09	274.95	0.54	274.41
TP		262.14	0.38	261.86

290.26 see p 61

X-Sections in Alley - in Block 38  
 Lexington Park - for Culvert Loc.  
 from Manzanita Dr.  
 See Book 1852 - P. 46

INDEXED  
 W.K.  
 MAR 9 4 1950



= end.  
1+50 =  $\pm$  of wash is back to  $\pm$  of Alley

1+00

0+63

0+50

0+17

0+00 = NWly. Line of Manzanita  
Consider  $\pm$  as N+S.

Due to Heavy Brush - will use Stadia for elev.

+ 5.56 285.24 - 9.07 279.68 - spike in pole

+ 0.40 288.75 288.35 - Nail in P

Lt. = W.

$\pm$

- Rt. = E **70**

246.4  
 $\pm$  of wash

251.2  
- 0.2 - 3.5 254.7 + 5.0 + 10.4  
25 10 10 20  
 $\pm$  wash

255.6  
+ 0.4 - 2.9 - 5.6 - 5.6 261.2 + 5.2 + 9.6  
25 15 10 8 10 20  
 $\pm$  wash

256.4  
+ 3.6 + 1.1 - 3.1 259.5 + 4.7 + 10.7  
20 10 5 10 20  
 $\pm$  wash

+ 3.3 263.4 + 1.5  
10 10

+ 2.6 = 270.6 268.0 + 5.1 = 273.1  
10 10

285.24 =  $\pi$

- Note elev. of  $\pm$  + or - for side shots.

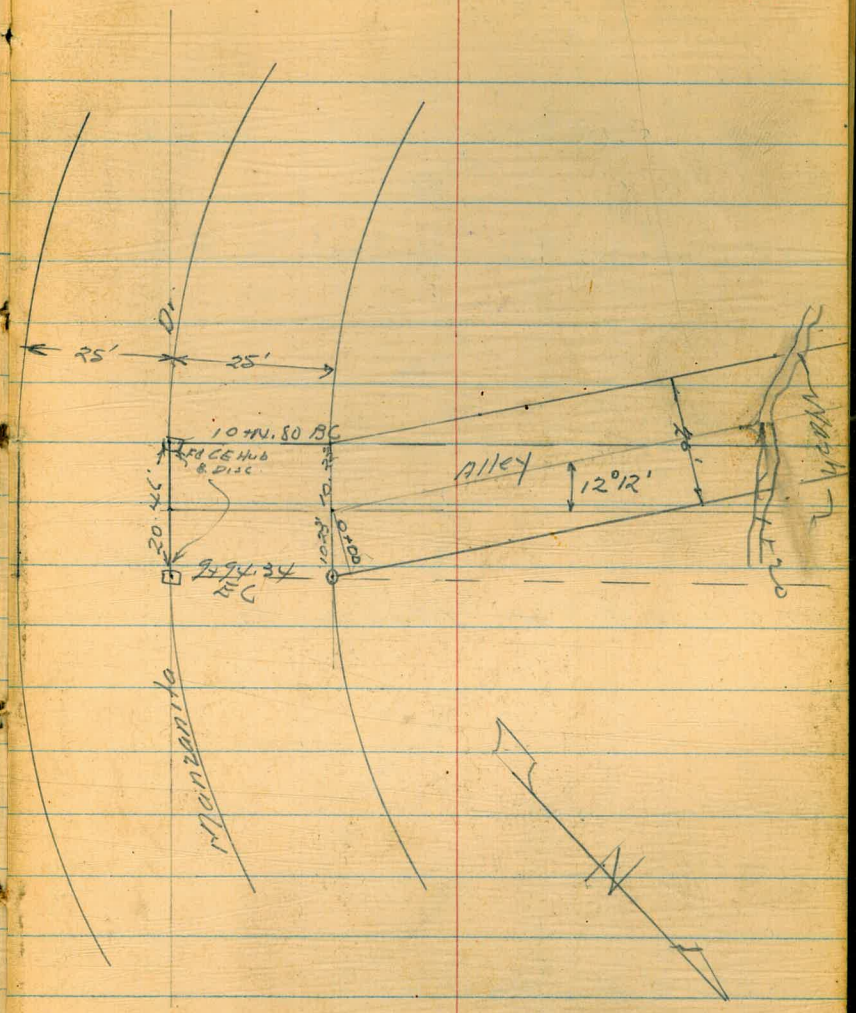
# 4226 - W. of Alley on N side of Manzanita

etc - B. 1852 - P. 69



5-9-50 Levels for Proposed Drain  
Hendricks in Alley Block 37  
McCoy  
Bunch  
Greer  
Crawford  
Ref. F B 1852

INDEXED  
MAY 9 1950



Levels Alley Block 37  
Lexington Park

T.P. 2.12 282.48 12.99 280.36

0+50

10 <sup>6</sup>	12 <sup>9</sup>	14 <sup>9</sup>	12 <sup>1</sup>	3 <sup>6</sup>	2 <sup>8</sup>
20	10	4		13	20

281.3

end

72

0+25

6 <sup>8</sup>	7 <sup>1</sup>	7 <sup>1</sup>	6 <sup>7</sup>	3 <sup>7</sup>	3 <sup>8</sup>
20	10		7	10	20

286.3

0+00 West Line Manzanita

4 <sup>8</sup>	4 <sup>5</sup>	4 <sup>4</sup>
10		10

288.8

0-14

4 <sup>8</sup>	4 <sup>6</sup>	4 <sup>5</sup>
10		10

288.8

0-25 & Manzanita

2 <sup>9</sup>	2 <sup>7</sup>	3 <sup>5</sup>
10		10

289.7

B.M. 4.02 293.35

289.33

on & Hub 10+14.80 BC FB1852 P-77

293.35

Cont'd. from P-72:

73

1+20

22<sup>7</sup> 15<sup>3</sup> 29<sup>1</sup> 24<sup>3</sup> 19<sup>1</sup>  
18 10 10 20

253.4

1410

21° 27<sup>1</sup> 22<sup>E</sup>  
7 20

255.4

0+85

9<sup>2</sup> 13<sup>1</sup> 15<sup>1</sup> 10<sup>8</sup>  
20 8 20

266.8

0+65

5<sup>2</sup> 7<sup>1</sup> 8<sup>0</sup> 5<sup>0</sup> 0<sup>0</sup> 15<sup>1</sup>  
20 10 6 13 23

277.5

282.48

282.48



Profile of Prop. Storm Drain inlet

19 - Blk 35 - Lexington Park - Sketch - P. 59

cont. on P. 76

W.O. 32.062      -      10-20-53      7.0.

1+15 = Hub. - in Alley or Lane

212.34

1+03.9 = opp. Prop. Cor.

on H.I.  
17.9

1+03.4 - 32 Rt. = Cor. of Conc. wall

17.6      23.80  
3.2      Top wall  
Bot.

0+97 - 33 Rt. = Beg 9" Conc. wall

224.0  
21.3      23.77  
3.3      Top  
9"      wall

0+70

35.5

0+55

42.4

0+18 - 6 Rt. = Cor. of Conc. cb

48.3      48.7      49.18  
6      Top  
9"      cb.

0+00 = Hub. on Prop. cb. line - (2' out from prop.)

49.16  
a Hub  
200' fig. not noted.

B.M. = spike in Pole  
P. 67

250.31

Actual Elev. shown

Lt.

±

Rt.

76

2 + 30 = floor of Canyon

162.1

1 + 98 = Toe of slope

169.5



78





85.2  
17.1  

---

68.1

81

-15° 29'

85.3  
25.9  

---

259.5  
27

20.9

258

129

-25.5'

25.6  
30.6

85.3  
30.6  

---

54.7

H.I. = 4.8 above Nail

10845

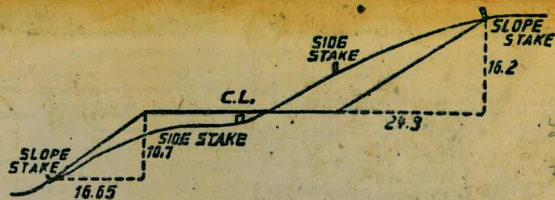
51.38 Below

217.9  
51.4  

---

166.5

12490  
 18° 25'  
 9° 12' 30"  
 1° 50' 30"  
 2126.10  
 77  
 2125.33  
 252  
 50  
 18443  
 18089  
 86532  
 18266  
 1° 50' 30"  
 3° 41' 00"  
 5° 31' 30"  
 1° 50' 30"  
 7° 22' 00"  
 9° 12' 30"



54.7  
 8.3  
 46.4

**DISTANCES FROM SIDE STAKES FOR CROSS-SECTIONING.**  
**SLOPE 1 1/2 TO 1. ROADWAY OF ANY WIDTH.**

	0	.1	.2	.3	.4	.5	.6	.7	.8	.9	
0	0.00	0.15	0.30	0.45	0.60	0.75	0.90	1.05	1.20	1.35	0
1	1.50	1.65	1.80	1.95	2.10	2.25	2.40	2.55	2.70	2.85	1
2	3.00	3.15	3.30	3.45	3.60	3.75	3.90	4.05	4.20	4.35	2
3	4.50	4.65	4.80	4.95	5.10	5.25	5.40	5.55	5.70	5.85	3
4	6.00	6.15	6.30	6.45	6.60	6.75	6.90	7.05	7.20	7.35	4
5	7.50	7.65	7.80	7.95	8.10	8.25	8.40	8.55	8.70	8.85	5
6	9.00	9.15	9.30	9.45	9.60	9.75	9.90	10.05	10.20	10.35	6
7	10.50	10.65	10.80	10.95	11.10	11.25	11.40	11.55	11.70	11.85	7
8	12.00	12.15	12.30	12.45	12.60	12.75	12.90	13.05	13.20	13.35	8
9	13.50	13.65	13.80	13.95	14.10	14.25	14.40	14.55	14.70	14.85	9
10	15.00	15.15	15.30	15.45	15.60	15.75	15.90	16.05	16.20	16.35	10
11	16.50	16.65	16.80	16.95	17.10	17.25	17.40	17.55	17.70	17.85	11
12	18.00	18.15	18.30	18.45	18.60	18.75	18.90	19.05	19.20	19.35	12
13	19.50	19.65	19.80	19.95	20.10	20.25	20.40	20.55	20.70	20.85	13
14	21.00	21.15	21.30	21.45	21.60	21.75	21.90	22.05	22.20	22.35	14
15	22.50	22.65	22.80	22.95	23.10	23.25	23.40	23.55	23.70	23.85	15
16	24.00	24.15	24.30	24.45	24.60	24.75	24.90	25.05	25.20	25.35	16
17	25.50	25.65	25.80	25.95	26.10	26.25	26.40	26.55	26.70	26.85	17
18	27.00	27.15	27.30	27.45	27.60	27.75	27.90	28.05	28.20	28.35	18
19	28.50	28.65	28.80	28.95	29.10	29.25	29.40	29.55	29.70	29.85	19
20	30.00	30.15	30.30	30.45	30.60	30.75	30.90	31.05	31.20	31.35	20
21	31.50	31.65	31.80	31.95	32.10	32.25	32.40	32.55	32.70	32.85	21
22	33.00	33.15	33.30	33.45	33.60	33.75	33.90	34.05	34.20	34.35	22
23	34.50	34.65	34.80	34.95	35.10	35.25	35.40	35.55	35.70	35.85	23
24	36.00	36.15	36.30	36.45	36.60	36.75	36.90	37.05	37.20	37.35	24
25	37.50	37.65	37.80	37.95	38.10	38.25	38.40	38.55	38.70	38.85	25
26	39.00	39.15	39.30	39.45	39.60	39.75	39.90	40.05	40.20	40.35	26
27	40.50	40.65	40.80	40.95	41.10	41.25	41.40	41.55	41.70	41.85	27
28	42.00	42.15	42.30	42.45	42.60	42.75	42.90	43.05	43.20	43.35	28
29	43.50	43.65	43.80	43.95	44.10	44.25	44.40	44.55	44.70	44.85	29
30	45.00	45.15	45.30	45.45	45.60	45.75	45.90	46.05	46.20	46.35	30
31	46.50	46.65	46.80	46.95	47.10	47.25	47.40	47.55	47.70	47.85	31
32	48.00	48.15	48.30	48.45	48.60	48.75	48.90	49.05	49.20	49.35	32
33	49.50	49.65	49.80	49.95	50.10	50.25	50.40	50.55	50.70	50.85	33
34	51.00	51.15	51.30	51.45	51.60	51.75	51.90	52.05	52.20	52.35	34
35	52.50	52.65	52.80	52.95	53.10	53.25	53.40	53.55	53.70	53.85	35
36	54.00	54.15	54.30	54.45	54.60	54.75	54.90	55.05	55.20	55.35	36
37	55.50	55.65	55.80	55.95	56.10	56.25	56.40	56.55	56.70	56.85	37
38	57.00	57.15	57.30	57.45	57.60	57.75	57.90	58.05	58.20	58.35	38
39	58.50	58.65	58.80	58.95	59.10	59.25	59.40	59.55	59.70	59.85	39
40	60.00	60.15	60.30	60.45	60.60	60.75	60.90	61.05	61.20	61.35	40
41	61.50	61.65	61.80	61.95	62.10	62.25	62.40	62.55	62.70	62.85	41
42	63.00	63.15	63.30	63.45	63.60	63.75	63.90	64.05	64.20	64.35	42
43	64.50	64.65	64.80	64.95	65.10	65.25	65.40	65.55	65.70	65.85	43
44	66.00	66.15	66.30	66.45	66.60	66.75	66.90	67.05	67.20	67.35	44
45	67.50	67.65	67.80	67.95	68.10	68.25	68.40	68.55	68.70	68.85	45
46	69.00	69.15	69.30	69.45	69.60	69.75	69.90	70.05	70.20	70.35	46
47	70.50	70.65	70.80	70.95	71.10	71.25	71.40	71.55	71.70	71.85	47
48	72.00	72.15	72.30	72.45	72.60	72.75	72.90	73.05	73.20	73.35	48
49	73.50	73.65	73.80	73.95	74.10	74.25	74.40	74.55	74.70	74.85	49
50	75.00	75.15	75.30	75.45	75.60	75.75	75.90	76.05	76.20	76.35	50

THE NATIONAL BLANK BOOK COMPANY  
 HOLYOKE MASSACHUSETTS  
 NEW YORK CHICAGO BOSTON SAN FRANCISCO