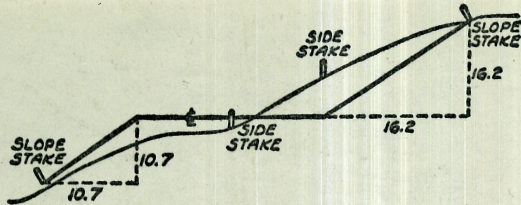


2018

EMISE 1001



DISTANCES FROM SIDE STAKES FOR CROSS-SECTIONING  
SLOPE 1 TO 1. ROADWAY OF ANY WIDTH

	0	.1	.2	.3	.4	.5	.6	.7	.8	9	
0	0.00	0.10	0.20	0.30	0.40	0.50	0.60	0.70	0.80	0.90	0
1	1.00	1.10	1.20	1.30	1.40	1.50	1.60	1.70	1.80	1.90	1
2	2.00	2.10	2.20	2.30	2.40	2.50	2.60	2.70	2.80	2.90	2
3	3.00	3.10	3.20	3.30	3.40	3.50	3.60	3.70	3.80	3.90	3
4	4.00	4.10	4.20	4.30	4.40	4.50	4.60	4.70	4.80	4.90	4
5	5.00	5.10	5.20	5.30	5.40	5.50	5.60	5.70	5.80	5.90	5
6	6.00	6.10	6.20	6.30	6.40	6.50	6.60	6.70	6.80	6.90	6
7	7.00	7.10	7.20	7.30	7.40	7.50	7.60	7.70	7.80	7.90	7
8	8.00	8.10	8.20	8.30	8.40	8.50	8.60	8.70	8.80	8.90	8
9	9.00	9.10	9.20	9.30	9.40	9.50	9.60	9.70	9.80	9.90	9
10	10.00	10.10	10.20	10.30	10.40	10.50	10.60	10.70	10.80	10.90	10
11	11.00	11.10	11.20	11.30	11.40	11.50	11.60	11.70	11.80	11.90	11
12	12.00	12.10	12.20	12.30	12.40	12.50	12.60	12.70	12.80	12.90	12
13	13.00	13.10	13.20	13.30	13.40	13.50	13.60	13.70	13.80	13.90	13
14	14.00	14.10	14.20	14.30	14.40	14.50	14.60	14.70	14.80	14.90	14
15	15.00	15.10	15.20	15.30	15.40	15.50	15.60	15.70	15.80	15.90	15
16	16.00	16.10	16.20	16.30	16.40	16.50	16.60	16.70	16.80	16.90	16
17	17.00	17.10	17.20	17.30	17.40	17.50	17.60	17.70	17.80	17.90	17
18	18.00	18.10	18.20	18.30	18.40	18.50	18.60	18.70	18.80	18.90	18
19	19.00	19.10	19.20	19.30	19.40	19.50	19.60	19.70	19.80	19.90	19
20	20.00	20.10	20.20	20.30	20.40	20.50	20.60	20.70	20.80	20.90	20
21	21.00	21.10	21.20	21.30	21.40	21.50	21.60	21.70	21.80	21.90	21
22	22.00	22.10	22.20	22.30	22.40	22.50	22.60	22.70	22.80	22.90	22
23	23.00	23.10	23.20	23.30	23.40	23.50	23.60	23.70	23.80	23.90	23
24	24.00	24.10	24.20	24.30	24.40	24.50	24.60	24.70	24.80	24.90	24
25	25.00	25.10	25.20	25.30	25.40	25.50	25.60	25.70	25.80	25.90	25
26	26.00	26.10	26.20	26.30	26.40	26.50	26.60	26.70	26.80	26.90	26
27	27.00	27.10	27.20	27.30	27.40	27.50	27.60	27.70	27.80	27.90	27
28	28.00	28.10	28.20	28.30	28.40	28.50	28.60	28.70	28.80	28.90	28
29	29.00	29.10	29.20	29.30	29.40	29.50	29.60	29.70	29.80	29.90	29
30	30.00	30.10	30.20	30.30	30.40	30.50	30.60	30.70	30.80	30.90	30
31	31.00	31.10	31.20	31.30	31.40	31.50	31.60	31.70	31.80	31.90	31
32	32.00	32.10	32.20	32.30	32.40	32.50	32.60	32.70	32.80	32.90	32
33	33.00	33.10	33.20	33.30	33.40	33.50	33.60	33.70	33.80	33.90	33
34	34.00	34.10	34.20	34.30	34.40	34.50	34.60	34.70	34.80	34.90	34
35	35.00	35.10	35.20	35.30	35.40	35.50	35.60	35.70	35.80	35.90	35
36	36.00	36.10	36.20	36.30	36.40	36.50	36.60	36.70	36.80	36.90	36
37	37.00	37.10	37.20	37.30	37.40	37.50	37.60	37.70	37.80	37.90	37
38	38.00	38.10	38.20	38.30	38.40	38.50	38.60	38.70	38.80	38.90	38
39	39.00	39.10	39.20	39.30	39.40	39.50	39.60	39.70	39.80	39.90	39
40	40.00	40.10	40.20	40.30	40.40	40.50	40.60	40.70	40.80	40.90	40
41	41.00	41.10	41.20	41.30	41.40	41.50	41.60	41.70	41.80	41.90	41
42	42.00	42.10	42.20	42.30	42.40	42.50	42.60	42.70	42.80	42.90	42
43	43.00	43.10	43.20	43.30	43.40	43.50	43.60	43.70	43.80	43.90	43
44	44.00	44.10	44.20	44.30	44.40	44.50	44.60	44.70	44.80	44.90	44
45	45.00	45.10	45.20	45.30	45.40	45.50	45.60	45.70	45.80	45.90	45
46	46.00	46.10	46.20	46.30	46.40	46.50	46.60	46.70	46.80	46.90	46
47	47.00	47.10	47.20	47.30	47.40	47.50	47.60	47.70	47.80	47.90	47
48	48.00	48.10	48.20	48.30	48.40	48.50	48.60	48.70	48.80	48.90	48
49	49.00	49.10	49.20	49.30	49.40	49.50	49.60	49.70	49.80	49.90	49
50	50.00	50.10	50.20	50.30	50.40	50.50	50.60	50.70	50.80	50.90	50

Distance of slope stake from side or shoulder stake for any width roadway, slope 1 to 1. If ground is nearly level, the cut or fill at side stake is located by the double entry method in left column and top row. The number in body of table in same row and column gives distance from side stake to slope stake. If ground is not level estimate the difference in elevation between the side stake and slope stake, lower target by this amount if cut, elevate if fill. Add this amount to cut or fill and find distance in table. Set up rod at this point, and line of sight should cut target. If it does not make the slight adjustment necessary.

INDEXED

through page 73

**TABLE XIII—CORRECTIONS FOR TANGENTS AND EXTERNALS**

These corrections are to be added to the approximate values, found by dividing the tangent, or external, for a 1° curve (Table VIII) by the degree of curve, in order to obtain the true tangents, or externals. Intermediate values may be obtained by interpolation.

**FOR TANGENTS ADD**

Central Angle	DEGREE OF CURVE													
	5°	10°	15°	20°	25°	30°	35°	40°	45°	50°	55°	60°	65°	70°
10°	.03	.06	.09	.13	.16	.19	.22	.25	.28	.31	.34	.38	.42	.46
15°	.04	.10	.14	.19	.24	.29	.34	.39	.45	.51	.53	.58	.63	.68
20°	.06	.13	.19	.26	.32	.39	.45	.51	.58	.65	.72	.79	.84	.90
25°	.08	.16	.24	.33	.40	.49	.58	.67	.75	.83	.90	.99	1.06	1.14
30°	.10	.19	.29	.39	.49	.59	.69	.79	.89	.99	1.09	1.20	1.29	1.39
35°	.11	.22	.34	.47	.58	.69	.79	.81	.92	1.04	1.29	1.42	1.54	1.66
40°	.13	.26	.40	.53	.67	.80	.93	1.06	1.20	1.34	1.49	1.64	1.79	1.94
45°	.15	.30	.44	.60	.76	.91	1.06	1.21	1.37	1.52	1.70	1.87	2.04	2.21
50°	.17	.34	.51	.68	.85	1.02	1.19	1.36	1.54	1.72	1.91	2.10	2.29	2.48
55°	.19	.38	.57	.76	.95	1.14	1.32	1.52	1.72	1.92	2.14	2.35	2.56	2.77
60°	.21	.42	.63	.84	1.05	1.27	1.49	1.71	1.94	2.17	2.38	2.60	2.83	3.07
65°	.23	.46	.69	.93	1.16	1.40	1.64	1.88	2.13	2.38	2.63	2.88	3.13	3.39
70°	.25	.51	.76	1.02	1.28	1.54	1.80	2.06	2.33	2.60	2.88	3.16	3.44	3.72
75°	.27	.56	.83	1.12	1.40	1.69	1.98	2.27	2.57	2.87	3.16	3.47	3.78	4.09
80°	.30	.61	.91	1.22	1.53	1.84	2.15	2.46	2.78	3.10	3.44	3.78	4.12	4.46
85°	.33	.66	1.00	1.33	1.68	2.02	2.36	2.70	3.05	3.40	3.77	4.14	4.55	4.89
90°	.36	.72	1.09	1.45	1.83	2.20	2.57	2.94	3.32	3.70	4.10	4.50	4.91	5.32
95°	.39	.79	1.19	1.55	2.00	2.40	2.80	3.20	3.61	4.02	4.40	4.98	5.38	5.83
100°	.43	.86	1.30	1.74	2.18	2.62	3.06	3.50	3.95	4.40	4.88	5.37	5.85	6.34
110°	.51	1.03	1.56	2.08	2.61	3.14	3.67	4.21	4.76	5.31	5.86	6.43	7.01	7.60
120°	.62	1.25	1.93	2.52	3.16	3.81	4.45	5.11	5.77	6.44	7.12	7.80	8.50	9.22

**FOR EXTERNALS ADD**

Central Angle	DEGREE OF CURVE													
	5°	10°	15°	20°	25°	30°	35°	40°	45°	50°	55°	60°	65°	70°
10°	.001	.003	.004	.006	.007	.008	.009	.011	.012	.014	.015	.017	.018	.020
15°	.003	.007	.010	.014	.018	.023	.027	.032	.035	.039	.043	.047	.051	.055
20°	.006	.011	.017	.022	.028	.034	.038	.045	.051	.057	.063	.070	.076	.083
25°	.009	.018	.027	.036	.046	.056	.065	.074	.083	.093	.106	.120	.127	.135
30°	.013	.025	.038	.051	.065	.078	.090	.103	.116	.129	.149	.170	.179	.188
35°	.018	.035	.054	.072	.086	.109	.131	.153	.175	.197	.213	.230	.247	.264
40°	.023	.046	.070	.093	.117	.141	.172	.203	.234	.265	.277	.290	.315	.341
45°	.030	.060	.093	.119	.153	.184	.216	.254	.289	.325	.351	.378	.411	.445
50°	.037	.075	.116	.151	.189	.227	.266	.305	.345	.384	.425	.467	.508	.550
55°	.046	.093	.142	.188	.236	.283	.332	.381	.420	.479	.530	.582	.641	.700
60°	.056	.112	.168	.225	.283	.340	.398	.457	.516	.575	.636	.697	.774	.851
65°	.067	.135	.204	.273	.343	.412	.483	.554	.625	.697	.711	.845	.922	1.01
70°	.080	.159	.240	.321	.403	.485	.568	.652	.735	.819	.906	.994	1.08	1.17
75°	.095	.182	.286	.383	.480	.578	.676	.777	.877	.977	1.07	1.18	1.29	1.39
80°	.110	.220	.332	.445	.558	.671	.787	.903	1.02	1.13	1.25	1.38	1.50	1.62
85°	.128	.259	.391	.524	.657	.790	.926	1.06	1.20	1.34	1.47	1.62	1.76	1.91
90°	.149	.299	.450	.603	.756	.910	1.07	1.22	1.38	1.54	1.70	1.87	2.03	2.20
95°	.174	.350	.522	.706	.885	1.06	1.25	1.43	1.62	1.80	1.99	2.18	2.38	2.58
100°	.200	.401	.604	.809	1.01	1.22	1.43	1.64	1.85	2.06	2.28	2.50	2.73	2.96
110°	.268	.536	.806	1.08	1.35	1.63	1.91	2.20	2.48	2.76	3.05	3.35	3.66	3.96
120°	.360	.721	1.08	1.45	1.82	2.19	2.57	2.95	3.33	3.72	4.11	4.50	4.91	5.32

*Index on page 1*

## INDEX

1

National 43 <sup>rd</sup> - west to old Bdry	2-7
Cross Section Nutmeg St. W of 32 <sup>nd</sup> Also Nutmeg Place	8-14
Cross Section Olive St. E W of Nutmeg Place	15-19
" " Emerald - Faniel to Gresham	18-23
Encroachments - Alley - Blk 96 - Ocean Bay Beach	24-25
X-Sect. Alley - Blk "K" Montecello	26-31
X Sec Alley Blk 323 Reed + Daley's Add. Notes only sketch 1527-11	33-40
Club House Grounds Redwoods + 6th	31-32
X-Sec. Alley Blk 323, Reed + Daley's Add.	33-40
Drainage survey Pardee St. - from end bet. lots 12 + 13 to Ocean View Blvd.	41-46
Proposed sewer Cleveland and Richmond	47-
X-Sec. Stewart St., Millar to 63 <sup>rd</sup>	48-53 <sup>Also p. 71-72</sup>
X-Sec. Hobart St., Millar to 63 <sup>rd</sup>	54-58 <sup>Also p. 73</sup>
Lot 12 Ex. Mission Rancho - 69 <sup>th</sup> to culvert at W'ly	60-67 <sup>Channel from Hermosillo 98" Culvert.</sup>
Drain Survey - Jamaica Rd. S'ly	59
State N.W. Cor. Lot 92 Oakemore	74

Cross Sec. National Ave.

west line 43rd west to old boundary

3-24-49

W.O.# 22020

INDEXED

WK

MAR 25 1949

Sommarmeyer  
Allen  
Jones

T.P. 24  
AV

fd. disk  
old city bdy.

8+42.62

8+30.7

8+23.2

7+93.5

5'

Ob.

Ob.

26

26

7+22.5

7+07

6+92.5

cold lay  
NO shown

cont. from Rt.

cont. on  
Left.

9+9

oiled berm  
Not shown

40' x 40'

old west line T.P. 24  
25  
check for opening  
if any.

9.3

2'

26'

13'

20' 00"

9.3

8+50.2

Exc. pavement  
very rough  
pave. edge

30

30

Feb. 1949

set nail

43rd.

National Ave.  
Levels - 43<sup>rd</sup> to west.

T.P. 1.49 53.95 7.55 32.48

1450

INDEXED  
WIK  
MAR 25 1949

1400

0+50<sup>L</sup> - 9' RT. = Pav. E.C.

0+35<sup>L</sup> 10<sup>L</sup> Lt. = edge pave. to east.  
8<sup>L</sup> Lt. = Edge pave. to west.

0+00 wly. 43<sup>rd</sup> E.P. = edge pavement.

Check Nail T.P.  
S.W. Cor. of 43<sup>rd</sup> + National  
Pole # 407136H

1.71 58.32 BM.#1

See Note - Page 7. 

T.P. 13.01 60.03 0.80 47.02

Chisel X - So. Riv. man hole

0+00  $\frac{FB/672}{40}$  13.15 47.82 - 34.67

3

65	7160	7.55	7.64	8.2
40	9		9	10
	E.P.		E.P.	
55.1	53.56	53.70	53.51	53.1
4.9	6.47	6.33	6.52	6.9
40	9		9	40
	E.P.		E.P.	
56.5	54.75	54.75	54.56	54.0
3.5	5.28	5.28	5.47	6.0
40	9		9	40
0.100	E.P.		E.P.	
55.03	55.08	56.01	55.87	55.9
3.00	4.95			
10 <sup>L</sup>	8 <sup>L</sup>			
E.P.	E.P.			
56.9	3.99	3.76	4.15	4.1
40	26 <sup>L</sup>		33 <sup>L</sup>	40
oilad.	Edge		E.P.	
station	pave.	60.03		
Yard				

5+00

3.9	5.00	5.08	5.6
<u>40</u>	<u>9</u>	<u>9</u>	<u>40</u>
E.P.	E.P.	E.P.	

4+50

0.6	2.04	1.96	2.02	2.7
<u>40</u>	<u>9</u>	<u>42.25</u>	<u>9</u>	<u>40</u>
E.P.	E.P.		E.P.	

T.R. 0.91 42.25 12.61 41.34

4+00

9.0	10.63	10.51	10.57	11.3
<u>40</u>	<u>9</u>	<u>23.32</u>	<u>9</u>	<u>40</u>
E.P.	E.P.		E.P.	

3+50

6.5	7.77	7.71	7.75	9.44
<u>40</u>	<u>9</u>	<u>46.18</u>	<u>9</u>	<u>40</u>
E.P.	E.P.		E.P.	

T.R. ~~5.96~~

3+00

4.6	5.54	5.48	5.56	7.3
<u>40</u>	<u>9</u>	<u>49.01</u>	<u>9</u>	<u>40</u>
E.P.	E.P.		E.P.	

2+50

2.9	2.9	3.79	3.72	3.89	5.48	7.3
<u>40</u>	<u>30</u>	<u>9</u>	<u>9</u>	<u>9</u>	<u>25</u>	<u>40</u>
E.P.	E.P.	E.P.	E.P.	E.P.	E.P.	E.P.
1.52	1.52	2.50	2.50	2.64	3.4	5.5
<u>40</u>	<u>15</u>	<u>9</u>	<u>9</u>	<u>9</u>	<u>26</u>	<u>40</u>
E.P.	E.P.	E.P.	E.P.	E.P.	E.P.	E.P.

2+00

53.95

7+07 = Bridge deck. (on E)

5.0	28.1	28.2	28.04	28.16	27.92	27.49	28.16
<u>40</u>		<u>30</u>	<u>9</u>	<u>9</u>	<u>13</u>	<u>26</u>	<u>26</u>
			E.P.			G.	cl

7+02<sup>E</sup>, 9' RT = Junction 18' pavo. + bridge deck

28.01
<u>5.07</u>

6+92<sup>2</sup> = 26' RT = start bridge deck. (Conc)

27.52	28.18
<u>5.56</u>	<u>4.70</u>
G	cl

6+50

29.6	29.18	28	29.21	28.1	25.8
<u>3.5</u>	<u>3.90</u>	<u>3.80</u>	<u>3.87</u>	<u>4.0</u>	<u>7.3</u>
40	9		E.P.	30	40

T.P. 2.59 33.08 11.76 30.49

33.08
<u>99.0</u>

6+00

31.7	31.37	31.57	31.49	29.9
<u>10.6</u>	<u>10.88</u>	<u>10.74</u>	<u>10.76</u>	<u>12.4</u>
40	9		E.P.	40

Check orig. B.M. (P. 3) 7.58

35.1	34.13	34.25	34.18	32.9
<u>7.2</u>	<u>8.12</u>	<u>8.00</u>	<u>8.07</u>	<u>9.4</u>
40	9		E.P.	40

5+50

<u>42.25</u>
--------------



8+14 9' Lt. = start 18' conc. pave.

8+08 1/2 = End bridge deck on 4

8+03 9' Rt. = start 18' conc. pave.

7+93 26' Rt. = End bridge deck.

7+58

7+22 26' Lt. = start bridge deck.

5.28.66  
5.22  
9  
E.P.

5.24 26 cl.	5.27.16 26 C.	5.45 73	5.22 9	5.28.71 9	5.1 40
-------------------	---------------------	------------	-----------	--------------	-----------

27.72  
5.36  
9  
E.P.

5.28 26 C.	5.24 26 cl.
------------------	-------------------

5.27.96 26 cl.	5.27.88 26 C.	5.29 73	5.28.85 5.	5.26.82 73	5.79 26 C.	5.10 26 cl.
----------------------	---------------------	------------	---------------	---------------	------------------	-------------------

5.20 26 cl.	5.27.38 26 C.	5.29.06 26 C.
-------------------	---------------------	---------------------

33.08



See B.M. Page 3

I believe this B.M. was set on 43<sup>rd</sup> St. cross section.

Check relative elevations to tie this level line in with 43<sup>rd</sup> St. line. Should be F.B. 18.75 ~~18.75~~

Orig. B.M. (page 3)

1109 34.66 (34.67)

N.W. B.P. 41<sup>st</sup>

4 National

0.65 35.10 (35.25)

T.P.

6.77

35.75

4.10

28.98

8+50

	5.16	5.08	5.08
	9		9
	E.P.		E.P.
	27.92	28.00	28.00

8+42<sup>50</sup>

Section at 90° to National = old. Bdry. line

24.5	27.6	28.3	27.8	27.87	27.92	27.92	28.1
8.6	5.5	4.8	5.2	5.21	5.16	5.16	5.0
40	35	28	25	9		9	40
				E.P.		E.P.	

5' long cb. inlet.

8+30<sup>7</sup>

26' L. = End cb. + end of

27.76	24.83
5.32	6.25
cb. end.	inlet

35.08

X-Section Nutmeg St & Nutmeg Pl.

(32nd to Olive)

10-14-49  
Roberts  
Handrick's  
Greer  
Bunch  
W.O. #6020

T.P. 9

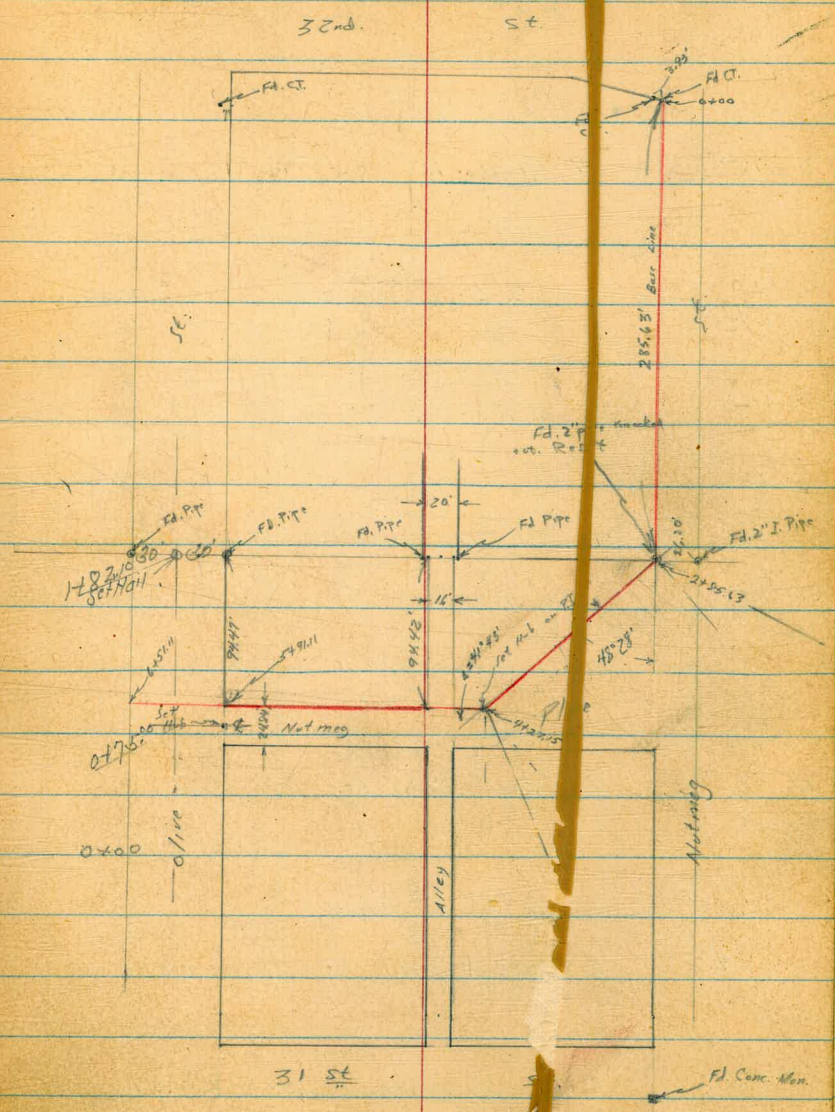
FB. 1518, 1112, 1620, 1347

Map 940, 2307

T.P. 169

5697L

INDEXED  
W.K.  
OCT 20 1949



Cont'd From Page 8

0+25

23.5  
57

13.2  
36

18  
23

5.39  
57

5.34  
13

5.6  
1

5.4  
4

4.7  
4

4.67  
Wall

4.0  
7

2.3  
16

285.0

275.3

283.7

283.09

283.14

282.86

Base Line  
283.1

283.6

284.41

284.5

286.2

9.

0+185

4' Rt Begin Ret. Wall 6" Conc

4.06  
2  
conc.

0+20

33.5' Lt. P. Pole

# J.P. 395

5.1  
50

4.3  
34

4.6  
50

4.4  
24

4.29  
11

4.0  
64

3.8  
66

3.82

3.4  
4

3.0  
6

2.0  
20

283.4

284.2

283.88

283.62

284.19

284.28

284.62

284.66

284.80

285.5

286.5

0+00

W.P.L. 32nd.

5.4  
100

6.0  
100

4.9  
50

6.0  
50

4.7  
34

5.27  
34

4.4  
12

4.4

3.96  
8

3.49  
8

1.75  
8

1.38  
8

283.02

282.47

283.59

282.38

283.76

283.21

284.08

284.34

284.52

284.99

286.73

287.10

0-10

Curb Line

0-25

± 32nd on Lt.

4.88  
100

4.74  
50

4.08  
25

3.47

1.07  
50

283.60

283.74

284.40

285.01

287.41

0-345

± 32nd on Rt.

5.00  
100

4.78  
50

4.03  
25

3.43

0.95  
50

283.48

283.70

284.45

285.05

287.55

T.P.

3.11

288.48

9.60

285.37

288.48

BM

0.89

294.97

294.08

NEBP Bancroft

± Nitrog

see FB 1112 pg. 10

Cont'd From Page 9

+32.7

- 1/2 Conc Walk + Steps

23  
22  
2571.7

TP

1.00 28/3/ 8.17 280.31

+18

31.7 Lt of P = 0.4 Port P/c # P.C. 2890

1400

0+84

0+75

0.5 Lt of 17.2 Conc. Apron going Rt

0+63

41 Rt End Ret. Wall

0+50

288.48

Rt  
Lt

10

227  
66  
22.57.6

26  
31  
2078.7

19  
21  
218.75

20  
10  
2078.46

3  
07  
2278.06

6  
22  
2780.9

2  
94  
278.37

5  
54  
280.17

17  
17.5  
285.97

28/3/

Nail in P.Pole # P.C. 2690

28/3/

17.5: Hill Top Stop

29.3  
62  
259.2

14.3  
37  
274.2

8.2  
29  
280.3

8.6  
25  
279.9

8.70  
19  
279.78

8.77  
12  
279.91

9.01  
2  
279.47

8.9  
8  
279.6

8.6  
4  
279.9

6.4  
5  
282.1

3.5  
11  
285.0

3.0  
20  
285.5

28.4  
60  
260.1

13.4  
35  
275.1

7.5  
25  
281.0

8.0  
22  
280.5

8.15  
19  
280.33

8.29  
2  
279.89

8.280.4

7.5  
45  
281.0

6.6  
5  
281.9

3.5  
12  
285.0

2.4  
20  
286.1

7.89  
8.5  
Apron  
280.59

7.19  
17  
281.29

7.5  
41  
281.0

4.02  
41  
284.46

27.7  
58  
260.8

13.4  
34  
275.1

6.5  
23  
282.0

6.93  
19  
281.53

6.75  
11  
281.73

6.97  
E.P.  
281.51

6.9  
6.9  
281.6

6.0  
4  
280.5

4.04  
Wall  
4  
281.0

2.6  
15  
285.9

288.48

Hutmeg St

Oct 18 49  
45.5500  
Garber Lt. South  
Cota  
Chavez

Rt. North **11**



+8563

18' 28 RT

Taken on Split of A

351	246.2
54	246.2
56	246.2
52	251.0
27	259.5
26	265.2
59	270.4
109	279.87
118	269.51
120	269.25
111	270.5
24	279.2

+65

33	248.3
78	244.9
77	251.4

78	258.1
40	267.3
25	270.9
23	271.93
19	271.41
10	270.68
10	270.6
5	271.5
18	279.4
26	282.7

+44

3' Conc walk + Step on Diag N-Wly

79	248.4
80	251.0
75	263.4
41	273.4
21	273.88
77	272.87
84	273.49
82	272.57
7	273.4
21	281.7

+41

31' Lt of 2: Sly. Power pole # PC 2650

+26.4

2' 3' Conc Walk + Steps on Rt

29	252.1
88	249.8

29	251.9
76	274.7
29	274.39
19	273.84
7	273.48
7	273.57
7	274.10
7	282.3

2+0

29	252.3
83	252.8
79	252.8

28	253.0
58	259.5
30	276.0
5	275.76
5	275.31
6	274.94
5	275.4
16	276.5

1+65.3

2' 3' Conc walk + Steps on Rt

281.31

28	256.7
28	254.8
30	277.3
3	277.39
4	277.02
6	276.69
7	276.73
5	277.05
5	285.66

Nutmeg St.

+27.15

41° 43 RT

take 2 on split of L

1+0

+50

+27.9

= N.W. Curb Inlet on RT

TP

10.98 28005 1224 269 07

07 N.W. Cb.  
17 let

+20.9

= S.E. Curb Inlet on RT

3+0

281.31

St.

St.

RT

12

67.58 273.55  
14.5 N.W. HC

67.70 273.35

7.27 272.93

1 Don Hub

7.30 272.75  
1.5 = E.H.C.

7.27 276.0

7.27 278.7

12.1 238.0  
8.1 = S.W. Cb.

8.58 244.3

19.4 260.7

8.73 271.80

8.81 271.24

9.1 270.94

11.5 = S.E. HC

6.59 274.2

7.27 278.6

38.0 242.1  
1.5 = S.W. Cb.  
17 let

80.5 249.6

10.6 261.5

10.82 269.23

11.8 268.85

11.8 268.45  
11.8 = E.H.C.

8.3 271.8

7.27 278.2

11.8 267.93

11.8 = G.H.C.

10.98 269.07

11.8 = H.W. Cb.  
17 let

180.05

36.9 244.4  
8.6

37.2 249.01

13.1 268.20

13.9 268.62

13.2 268.1

13.86 267.95  
11.8 = G.H.C.

11.8 269.08

9.1 272.2

4.1 276.9

35.9 245.4  
7.6

35.1 245.0

28.9 252.4  
4.0

11.73 269.38  
15.7 = S.W. HC

12.46 268.85

12.46 269.1  
12.46 ground

7.27 279.3

281.31





Lt

Rt

Rt

TP 4.72 291.30 1.48 286.58

+91.11 = S.L. Olive St

54 51 = 2.25 Conc Walk on Lt

288.06

38 5.9 282.2  
10 0.1 283.06  
10 1.6 283.42  
41 283.95  
14 1.6 286.5

6.76 281.30  
6.41 281.65  
6.26 281.60  
6.33 281.83  
6.23 281.83  
55 282.6  
8.9 284.2  
3.33 284.8  
10.6 = W. Sturco House

288.06

Cross Section Olive St.  
East + West of Nutmeg Place

Sketch page 8

INDEXED

W.K.

OCT 20 1949

+75

= Nutmeg Place

+62.58

= W.L. Nutmeg Place

+132

= Fly Case Drive on Rt

+29

= Fly Case Drive on Rt

+15

= West End of H.C. Parking

0100

H= North

Rt= South

15

7.26 15	7.21 15	7.40	7.15 15	7.28 15	7.29 30
284.04	284.09	283.90		283.80	283.31
8.14 15	8.21 10	8.27	8.20 15	8.23 15	8.22 30
283.16	283.06	283.03	282.99	283.00	282.79
9.06 30	10.04 13	10.03	10.03	10.05	10.02
281.7	281.36	281.27	281.37	281.25	280.58
11.26 30	11.10 26	11.57	11.30	11.15	10.80
278.7	280.3	279.84	280.00	280.15	280.50
12.26 30	12.17 24	12.98 95	12.80	12.15	12.76
277.3	278.6	278.32	278.50	277.1	276.50
13.01 30	13.27 15	13.06	13.00	13.00	12.90
273.6	274.3	273.6	273.2	274.3	273.3

29130 Bt. Ford Page 14

29130

Olive St.

+76.6

+62.6

+46.6 = Wly Conc Drive on Rt.

TP 1197 300.89 238 288.92

+17 = 1/2 Conc Walk on Rt.

170

+87.42 = E.L. Dulmage Place

291.60

Lt.

Rt.

Rt. 5

16

293.16  
773  
30  
450  
NYHC  
291.89  
900  
17  
291.69  
980

292.9  
800  
30  
291.09  
980  
106-NYHC  
290.63  
1026

292.3  
500  
11.28  
10-NYHC  
289.17  
1172  
300.89

288.9  
500  
49.7  
NYHC  
286.93  
49.7  
286.9  
44

287.6  
500  
51.4  
15-NYHC  
285.54  
51.4  
285.34  
500

284.54  
476  
36-1/2  
31  
50  
30  
285.89  
610  
285.30  
287.12  
658  
291.30

290.26  
10.63  
15  
290.19  
1070  
26-NYHC  
289.94  
1095  
30 on Dr

289.13  
11.76  
1207.5  
289.13  
11.76  
1207.5  
11.23  
130 on Dr

286.19  
451  
105-54  
287.5  
320  
287.46  
287.46  
3007 Hall

285.34  
51.4  
15-NYHC  
284.01  
749  
30-54  
284.01  
30-54  
NYHC

284.47  
683  
15  
284.01  
749  
30-54  
284.01  
30-54  
NYHC

BM

320

304.00

NE BR  
Palm x 32nd  
304.03

TP

9.64

307.20

2.33

297.56

1782.10 = 1/4 of Ex. Int. Curb x Walk

300.89

293.1  
30

292.29  
18.5

292.09  
18.1 = gutter

291.99  
89°

291.75  
9 1/4

291.41  
9 1/8 = gutter

291.79  
9 1/8

291.6  
30

1/4 Curb  
Top

300.89

X-Sect. Emerald st. - from Fanuel to  
Gresham - 80' st. 20' curbs. + walks in

# 4917

W.O. 31436

INDEXED  
M.K.  
MAR 15 1950

2-23-50

Osborne  
Hardin  
Hatch  
Shepard.

Notes - Next Page

Gresham - 80'

st

18

end of walk = 0.9' E.  
" " curb = 0.7' E.

c.t. on 7' line  
of from Prop.

4+99.60

end of walk = 0.5' E  
" " cb = 0.6' E

20' ← → 20' ← → 20' ← → 20'

st.

Emerald

OTOD

7' cur.

10' Rad.

Conc. Pavt

Fanuel - 80'

st

X-Sect. Emerald - sketch - P. 18

Lt. = N.

Rt = S 19

ϕ of 10' Rad.

N.E. Ret.	5.58.24	4.58.96	5.57.74	5.58.36
9.4	5.58.24	4.58.96	5.57.74	5.58.36
58.75	5.58.24	4.58.96	5.57.74	5.58.36
4.66	5.58.24	4.58.96	5.57.74	5.58.36
198	198	10	20.2	20.2
Top	9.4	10	9.4	Top

o-10 = opp PC. of 10' Rad Ret.

o-20 = E. cb.

60.03	57.29	58.79	58.34	57.00	58.24	58.14	58.02	57.71	57.63	58.29	57.43	58.14	56.47	57.19
3.68	4.32	4.62	5.27	4.61	5.37	5.47	5.59	5.84	5.98	5.32	6.14	5.47	7.14	6.42
80	80	40	40	30	30	20	20	20	20	30	40	40	80	80
Top	9.4	Top	9.4	Top	9.4	20	20	9.4	9.4	PC. 10'	9.4	Top	9.4	Top
				PC. 10' Rad						Rad.				

o-40 = ϕ

57.63	58.64	58.47	58.28	58.26	57.84	56.83
3.98	4.97	5.14	5.33	5.55	5.77	6.18
80	40	20	20	20	40	80

o-60 = w. cb.

57.52	58.96	58.65	58.05	58.05	58.25	58.28	58.03	57.69	57.24	57.94	56.20	56.96
4.09	4.66	4.98	5.56	5.56	5.36	5.33	5.58	5.92	6.37	5.67	7.41	6.65
80	80	40	40	20	10	10	10	20	40	40	80	80
Top	9.4	Top	9.4	20	10	10	10	20	9.4	Top	9.4	Top

o-80 = w.L. of Fanuel

58.44	57.79	58.02	58.07	57.85	57.43	58.01
198	198	10	10	10	20	200
Top	9.4	10	10	10	9.4	Top

B.M.

535 63.61

58.26 - S.E. BP Emerald + Fanuel

63.61

2+00

1+95 = ± 13' Conc. Dr. on Lt.

1+89 = ± 10' Conc. Dr. on Rt.

1+50

1+39 = ± 10' Conc. Dr. on Rt.

1+00

0+59 = ± 11.5' Conc. Dr. on Rt.

0+57 = ± 10' Conc. Dr. on Lt.

0+50

0.4 E. - Rods on edge

0+00 = E.L. Fanel - edge of Conc. Pave is

	3.60.45 3.6 19.7 Top	0.59.8 19.7 Cut	3.57.9 10	3.60.1 5	0.59.8 10	0.59.3 20.2 Cut	0.59.1 3.70 20.2 Top
	3.60.0 30.8 walk	3.77 19.1 Dr.			4.36 20.2 Dr.	3.69 21.2 = walk	
	3.59.15 19.8 Top	4.59.5 19.8 Cut	4.57.6 10	4.59.6 0	4.59.4 10	4.58.8 20.7 Cut	4.59.50 20.2 Top
						4.58.79 4.82 20 Dr.	4.59.46 4.15 31.2 = walk
	3.9.59.63 19.9 Top	4.59.2 19.9 Cut	4.59.2 10	4.59.2 4	4.59.0 10	5.2 20.1 Cut	4.59.13 20.1 Top
	5.59.50 4.11 30.9 walk	5.59.01 4.60 19.9 = Dr.			5.58.36 5.25 20 = Dr.		4.6.58.97 31.1 = walk
	4.59.29 19.9 Top	5.58.6 19.9 Cut	4.58.8 10	4.58.7 9	5.58.6 10	5.58.1 20.1 Cut	4.58.75 20.1 Top
	5.58.93 4.68 19.9 Top	5.58.33 5.28 19.9 Cut	4.58.62 4.99 10	5.58.61 00	5.58.34 10	5.57.93 20.2 Cut	5.58.39 20.2 Top

4+00

5.77  
19.6  
Top5.61.1  
19.6  
9ft.5.61.3  
105.61.2  
35.60.9  
10.67.60.5  
20.2  
9ft.6.61.25  
6.28  
20.2  
Top

3+89 = ± 10' Conc. Dr. on Rt.

5.61.81  
30.8  
walk5.60.93  
19.7  
Dr.7.60.53  
20.1  
Dr.6.61.22  
31.2  
walk

3+84 = ± 16' Conc. Dr. on Lt.

3+50

6.61.43  
19.8  
Top5.60.7  
19.8  
9ft.5.60.8  
105.60.8  
75.60.6  
10.97.60.1  
8.1  
9ft.6.60.90  
6.3  
20.1  
Top

3+43 = ± 0' 15' Conc. Dr. on Lt.

6.61.52  
30.9  
walk6.60.93  
19.8  
Dr.

67.53

T.P. 6.42 67.53 250 61.11

3+00

2.61.10  
19.7  
Top3.60.5  
19.7  
9ft.3.60.6  
103.60.6  
03.60.4  
103.59.9  
20.2  
9ft.3.60.58  
3.03  
20.2  
Top

2+93 = ± 15' Conc. Dr. on Lt.

2.61.20  
2.41  
30.7  
walk3.60.51  
19.6  
Dr.3.59.93  
3.68  
20.1  
Dr.3.60.58  
3.03  
31.2  
walk

2+90 = ± 10' Conc. Dr. on Rt.

2+50

2.60.76  
2.55  
19.7  
Top3.60.3  
3.3  
19.7  
9ft.3.60.3  
103.60.2  
43.60.0  
103.59.4  
4.2  
20.2  
9ft.3.60.21  
3.40  
20.2  
Top

2+42 = ± 15' Conc. Dr. on Lt.

2.60.91  
2.70  
30.8  
walk3.60.20  
3.41  
19.7  
Dr.3.59.48  
4.13  
20.2  
Dr.3.60.12  
3.49  
31.2  
walk

2+14 = ± 15' Conc. Dr. on Rt.

63.61



Lt. # Rt.

40 E = ±

3.4	4.9	5.3	5.5	5.7	5.9	6.3
80	40	20	5	20	40	80

26 E.

4.6	5.2	5.2	5.4	6.2	6.4	7.1
80	40	20	4	20	40	80

20 E. of W.L. = w. cb.

3.4	4.4	5.0	5.2	5.4	5.6	5.7	6.2
80	40	20	10	10	19	23	40

Rods on ends.  
are E. of W.L. See sketch for dist.

4+99.6 = W.L. Gresham - end of curbs + walks

4.7	4.8	5.0	5.1	5.3	5.4	5.5	5.6	5.8	5.9	6.0	6.1	6.2	6.3	6.4
35.8	30.8	19.8	19.8	10	10	10	20.3	31.3	36.3					
	Cor. walk	Top	Top				Top	Top	Cor. walk					

4+58 = ± of 13' Conc. Dr. on Lt.

5.1	5.8	6.1	6.1	6.1	6.1	6.1	6.1	6.1	6.1	6.1	6.1	6.1	6.1	6.1
30.7	19.6	19.6	10.0	9	10	20.2	20.2	20.2	20.2	20.2	20.2	20.2	20.2	20.2
walk	Top	Top	Dr.			Top	Top	Top	Top	Top	Top	Top	Top	Top

4+50

5.3	5.9	6.1	6.1	6.1	6.1	6.1	6.1	6.1	6.1	6.1	6.1	6.1	6.1	6.1
19.6	19.6	10.0	9	10	20.2	20.2	20.2	20.2	20.2	20.2	20.2	20.2	20.2	20.2
Top	Top	Dr.			Top	Top	Top	Top	Top	Top	Top	Top	Top	Top

4+42 = ± 8' Conc. Dr. on Lt.

5.3	6.3	6.1	6.1	6.1	6.1	6.1	6.1	6.1	6.1	6.1	6.1	6.1	6.1	6.1
30.6	19.6	19.6	10.0	9	10	20.2	20.2	20.2	20.2	20.2	20.2	20.2	20.2	20.2
walk	Dr.					Top	Top	Top	Top	Top	Top	Top	Top	Top

4+38 = ± 10' Conc. Dr. on Rt.

5.3	6.3	6.1	6.1	6.1	6.1	6.1	6.1	6.1	6.1	6.1	6.1	6.1	6.1	6.1
30.6	19.6	19.6	10.0	9	10	20.2	20.2	20.2	20.2	20.2	20.2	20.2	20.2	20.2
walk	Dr.					Top	Top	Top	Top	Top	Top	Top	Top	Top

67.53

Soil Sample at 2+50

329 70.39 - 70.30

= NW B.P. Diamond + Gresham

T.P. 7.66 73.68 1.51 66.02

80' E. - E.L. Gresham = end.

60' E. = F. cb

56' E.

5.659	2.652	3.643	4.629	4.630	4.627	4.635	4.632	4.626
80	40	23	17		18	23	40	80
5.645	3.645	3.637	5.625	4.626	5.622	4.629	4.628	5.623
80	40	23	50	9	18	32	40	80
4.630	4.627	5.625	5.625	5.620	5.618	5.618	5.613	
80	40	20	0	20	40	40	80	

67.53

Roberts  
Garber  
Moore  
Clark  
N.O. 20660  
4-15-50

Survey Alley BIK. 96 - Ocean Bay  
Beach for Encroachments

T.P. 13

MAP. 1189

T.P. 795 + 796

**INDEXED**

N.K.  
APR 18 1950

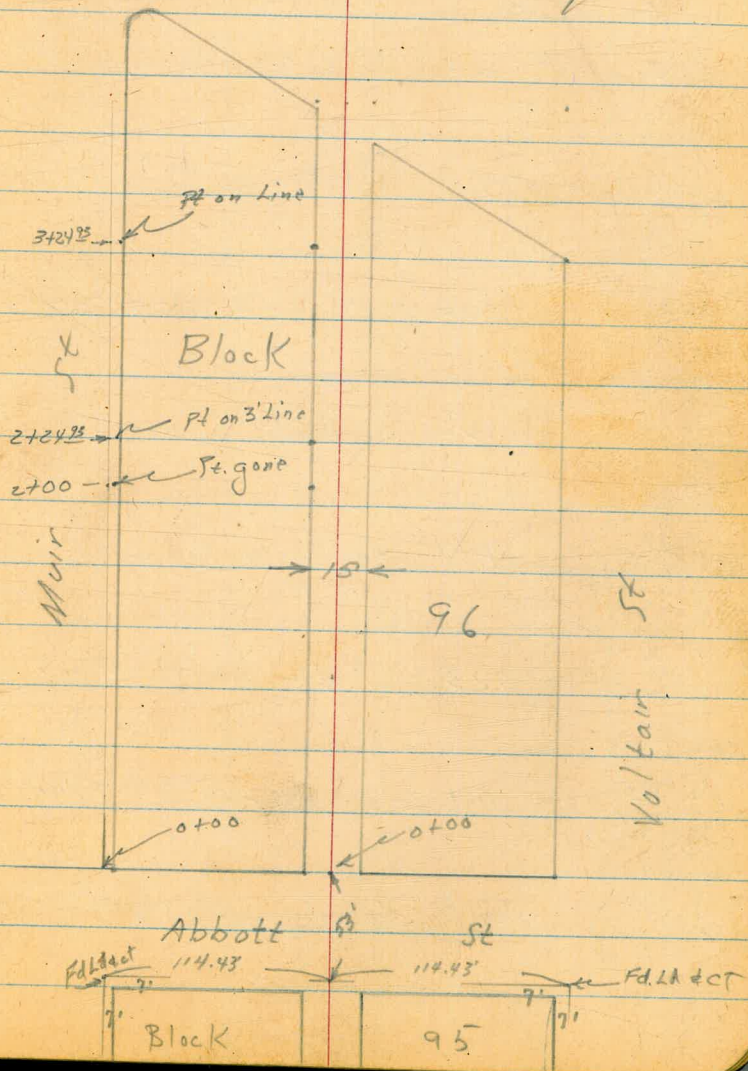
Note: -

Split both Ends of Block

95. Found 7x7' d. & c.T on all  
corners. Plugged & Alley of BIK  
95 through Block 96.

229.05' between ticks on Bacon.

24



Cont'd From Page 24

Encroachments in Alley

1+24<sup>2</sup> 7.83' Rt End Garage

1+23 6.06 Lt. End 2' Lath Fence

1+12 6.88' Lt. & 15' Conc. Walk

1+06 7.18' Rt Begin Garage

1+00 6.10' Lt. Begin 2' Lath Fence

1+00 7.52' Lt End Garage

0+82 7.47' Lt Begin Garage

0+60 7.23' Lt. End Lath Fence

0+53 7.31' Lt Begin Lath Fence

0+00 West Prop. Line Abbott

3+33 8.55' Lt. End Barbed wire Fence **25**

3+24<sup>92</sup> 7.43' Lt + Jaeger Pipe.

2+87 7.10' Lt End Lattice Begin Barbed wire Fence

2+73 6.92' Lt. End house Begin Lattice Fence

2+53 6.37' Lt End Fence begin house

2+51<sup>5</sup> 6.52' Lt. & 2' Conc. Walk

2+50 7.65' & 6.26' Lt Jag in Fence

2+25 7.35' Lt Begin Lattice Fence

2+24<sup>81</sup> 7.42' Lt to Jaeger pipe

2+20<sup>2</sup> 7.45' Rt End Conc. Apron

1+99<sup>83</sup> 7.51' Lt to Jaeger 2" pipe

1+79<sup>5</sup> 7.46' Rt Begin Conc. Apron

Set Gal. spike

X-Section 20 Alley in Block "K"  
Montecello - Map # 11.54

# 4415

w.o. 31429

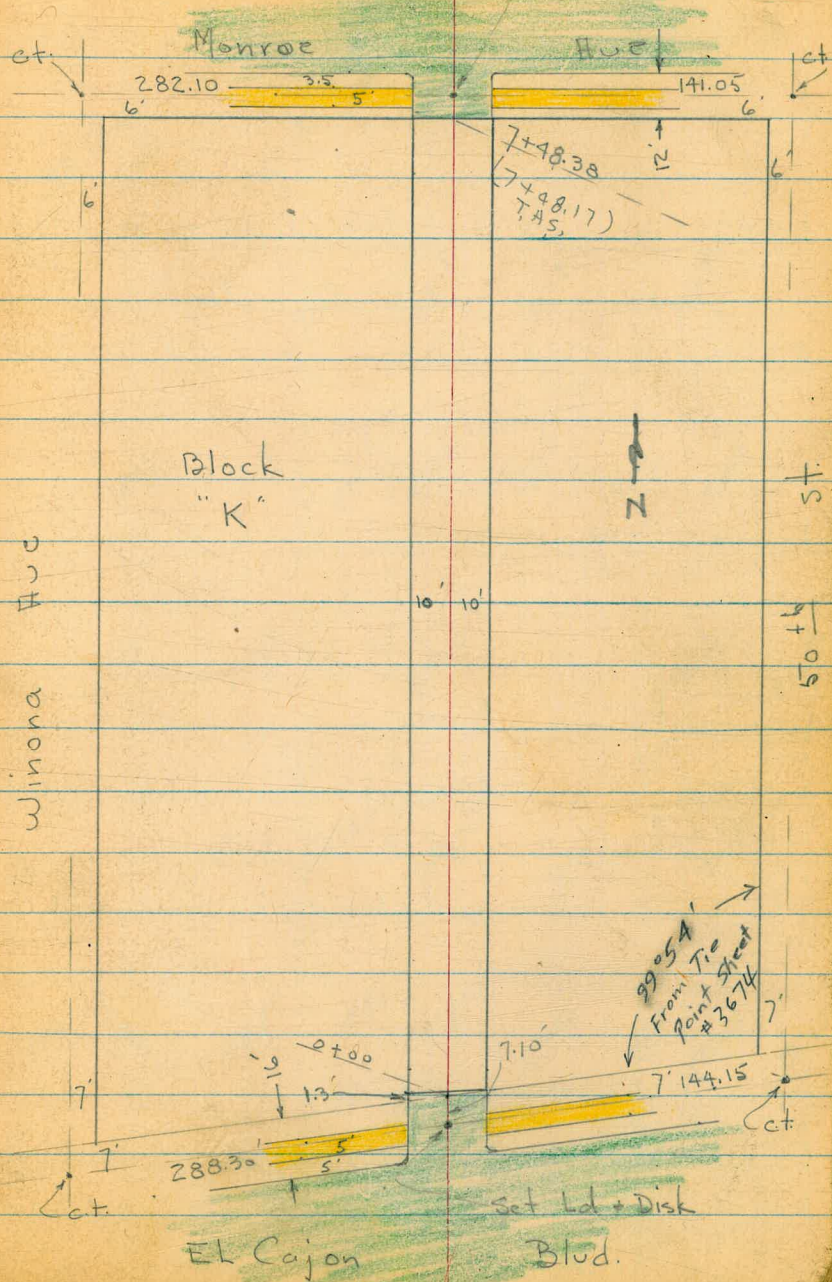
INDEXED  
W.K.  
APR 28 1950

4-26-50

Osborne  
Hardin  
Hatch.

Soil Sample at 7+00

See P. 75 for new work.  
6-21-55



See P. 75 for Redcheck  
of X-sections

7-Sect. 20 Alley in Blk. K.

0+49 - 18' Lt =  $\pm$  of Conc. apron to Doub. Gar.

0+30

0+29 - 9.5' Lt =  $\pm$  P. pole # PA. 4405

0+10 - Sect. Normal

Req. Rough oil Pavc in Alley

Rods on Edge of Pavc

Sect. along N.L. - (on Angle)  
end of cb + Pavc on Lt. is 1.3' ahead.

0+00 = M.L. El Cajon - edge of A.C. pave + cb. on Rt.

Reduced  
4-30-50  
Firebaugh

0-16.2 = N. cb. Line El Cajon

B.M. 280 385.95

383.15 = S.W. Ld. - no Plug - S.W. 50<sup>th</sup> + El Cajon

Lt.  $\pm$  Rt.

27

382.38							
3.57							
22 = floor							
382.18							
3.77							
14 = apron							
382.2	381.2	381.8	381.8	382.9			
3.7	4.1	4.2	4.2	3.1			
15	10		10	15			
382.2	381.6	380.8	380.4	380.8	382.0	382.5	
4.0	4.4	5.2	5.6	5.2	4.0	3.5	
13.6	10	7		8	10	15	
along House							
379.82	379.68		379.35		379.73	380.49	
6.13	6.27		6.60		6.22	5.46	
Top -	gut-edge		edge = 0.6'		gut.	Top	
end of cb. =	1.3' ahead.		ahead.		on Line		
1.3' ahead							
379.81	379.62		379.31		379.73	380.49	
6.14	6.33		6.64		6.22	5.46	
9.9	9.9				10.1	10.1	
Top	gut.				gut =	Top	
					edge Pavc	end cb.	
378.13	377.45	379.57	378.97	379.25	379.56	380.24	380.99
7.82	8.50	6.38	6.98	6.70	6.39	5.71	4.96
6.0	6.0	Top	10.15		10.15	Top	6.0
Top	gut.	2 Rad.	gut.	385.95	gut.	2 Rad.	gut.
							Top
							381.64

2+30- 14' rt. = end Bldg

2+00

1+98- 9' Lt. = end wire + Beg. Lath fence

1+60- 13.9' Rt. = Beg. Stucco Bldg.

1+60- 7.5' Lt. =  $\pm$  P. pole # P.A. 4421

1+60- 8.2' Lt. = end fence + Beg. wire fence

1+50

walk to w.

1+33- 8.3' Lt. = Beg. Board fence + sly. of 4' Conc

1+33- 8.7' Lt. = end st. room

1+23- 8.7' Lt. = Beg. Store room - Conc. floor

T.P. 5.35 388.88 2.42 383.53

1+00- 10.5' Lt. =  $\pm$  of 3' Conc. steps

0+75- 22.1' Lt. =  $\pm$  Doub. Grav. Conc. floor

0+60

Lt.	$\pm$	Rt.
3839	3839	3831
5.0	5.0	5.2
15	10	10

3839 28  
5.0  
14  
ground  
14 = along Bldg.  
384.92  
5.2 3.96  
13.9 13.9  
ground floor

3832	3831	3834	3835
5.6	5.2	5.5	5.4
10		10	15

383.70  
383.76

5.18 5.12  
10 8.3  
on Conc.  
Conc. walk

384.10

3837

4.78 5.2  
8.7  
floor  
st. Room.  
3835  
5.3  
8.7  
ground at  
Cor.

384.40

384.23

383.22

383.20

388.88

383.2

383.5

3837

1.55  
16  
House

1.72  
12.5  
Conc. Porch

2.73  
10.5  
Bottom step

3.0  
10

2.8

2.5  
10

2.3  
15

382.45

3.50  
22.1  
floor

382.5

382.5

382.7

382.9

382.8

3.5  
15

3.5  
10

3.3

3.1  
10

3.2  
15

385.95

4+74-10.2 Lt. = ± 2' Conc. walk

4+50

4+45- 8.8' Lt. = ± P. pole # P.A. 4458

4+23- 9.9 Rt. = Beg. Picket Fence

4+12- 9.9' Rt. = ± of Conc. Apron to Sing. Car.

T.P. 3.11 386.92 5.07 383.81 Nail in Pole - Lt  
4+45

4+00

3+50

3+47- 9' Lt. = ± P. pole # P.A. 4441

3+00

2+50

2+49- 10' Lt. = end fence

2+45- 8.8' Lt. = ± P. pole # P.A. 4425

383.27 Lt. 383.28  
3.65 3.64  
20 102 = walk  
walk  
382.1 382.8 382.8  
4.8 4.1 4.1 4.2 4.0  
50 10 10 10 50

Rt. 29

382.84 383.09  
4.08 3.83  
9.9 14.4  
apron floor

382.9 382.8 382.2 383.3 383.2  
6.0 6.1 6.2 5.6 5.7  
30 10 10 20

383.1 382.8 382.7 383.1 383.1  
5.8 6.1 6.2 5.8 5.5  
15 10 10 15

382.8 382.8 383.0 383.3 383.4  
6.1 6.1 5.9 5.6 5.3  
20 10 10 15

382.5 382.9 383.6 383.5 384.2  
6.4 6.0 5.3 5.4 4.7  
50 10 10 50

388.88



6+62 - end Conc Slab + Drain on Rt.

6+50 - 10' Lt. = fence

6+44 - Beg Conc. slab on Rt - along fence + Drain

6+44 - 8.8' Lt. = P. pole PA 4485

Drain - rough along fence

6+43 - 7.9 Rt. = Beg wly. of 2.3' Conc. Dip sect.

6+00 - 10' Lt. = fence

5+50 - 9.9 Rt. = fence

5+48 - 10.1 Lt. = Beg. Picket fence

5+47 - 8.7 Lt. = P. pole PA 4471

5+00 - 10.1 Rt. = fence

Lt.

±

Rt.

30

381.2

5.7  
30

381.3

5.6  
10

381.2

5.2

381.38

5.54  
8.3  
wly.

381.18

5.74  
9.3  
±  
Drain

381.67

5.25  
10.3  
Ely. +  
Beg. Conc.  
Slab.

381.92

5.00  
20  
Conc.

381.19

5.73  
9.1  
wly.  
Drain

381.17

5.75  
9.7  
±  
I.E.

381.58

5.34  
10.4  
Beg.  
Slab.

381.97

4.95  
20  
Conc.

381.60

5.32  
10.2  
Beg.  
Conc.

381.82

5.10  
20  
Conc.

381.24

5.68  
7.9  
wly. of  
conc.

381.15

5.77  
9  
±  
I.E.

381.30

5.62  
10.2  
Ely.  
of Drain

381.3

5.6  
40

381.1

5.8  
10

381.3

5.7  
10

381.3

5.6  
10

381.2

5.0  
40

381.2

5.0  
40

381.6

5.3  
10

381.8

5.1  
10

381.6

5.3  
10

382.1

4.8  
15

382.2

4.0  
15

382.2

4.2  
10

382.4

4.5  
10

382.6

4.3  
10

382.2

4.2  
15

386.92

check B.M. S.E. B.P. - Winona + Monroe  
 6.85 377.04 377.04 =

7+60.38 = S. cb.

7+54.38 - Seems High

Curbs is out S. - Rods on edge

7+48.38 = S.L. Monroe - edge of A.C. pave +

T.P. 5.77 383.89 8.80 378.12 on 6 spike - E Alley 383.89

7+37.99 Rt. = E of Wly. of 6" Stucco arch.

7+30.11 Lt. = end E of Hedge

7+25

7+06.10 Lt. = end fence + Beg. E of 6 High Hedge

10' Lt. = fence

7+00.10.3 Rt. = end fence

6+88.9.5 Rt. = E 4" Apple Tree (outside fence)

377.79	377.51	378.31	378.03	378.01	378.27	378.75	378.61	378.99
6.10	6.38	5.58	5.86	5.88	5.62	5.14	5.28	4.90
50	50	Top	10		10	Top	50	50
Top	gut	2' Rad.	gut.		gut.	2' Rad.	gut.	Top

378.35	378.23	378.11	378.50	378.63
5.54	5.66	5.78	5.39	5.26
10	10		10	10
Top	gut		gut	Top

378.40	378.26	378.17	378.49	378.67
5.49	5.63	5.72	5.40	5.22
9.9	9.9		10	10
Top-end	gut.		gut.	Top
cb.				end/cb.

379.02	379.3
7.90	7.6
9.9	9.9
Top of footing	ground
	13
	at House

380.2	380.5	379.2	379.8	380.1
6.1	6.4	7.0	7.1	6.8
15	10		10	13
				along House

380.9	380.9	381.2	380.2	381.3
6.0	6.0	5.9	6.2	5.6
20	10		10	20

386.92

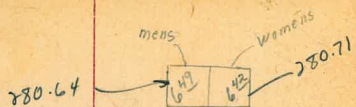
D. Smith  
 Wm Fay  
 F. Sherman  
 R. Lockhead.

W0# 20006

8-9-50

32

U.O. 20704



280.75

282.0	281.9	281.8	281.8	281.8	281.8	281.7	281.7	281.7	281.6	281.4
5/10	5/10	5/10	5/10	5/10	5/10	5/10	5/10	5/10	5/10	5/10
281.7	281.7	281.6	281.5	281.4	281.5	281.6	281.4	281.3	281.2	281.2
5/10	5/10	5/10	5/10	5/10	5/10	5/10	5/10	5/10	5/10	5/10
281.4	281.4	281.3	281.1	281.0	281.0	281.0	281.0	281.0	281.0	281.0
5/10	5/10	5/10	5/10	5/10	5/10	5/10	5/10	5/10	5/10	5/10
281.9	281.9	281.8	281.6	281.5	281.4	281.5	281.4	281.3	281.4	281.4
5/10	5/10	5/10	5/10	5/10	5/10	5/10	5/10	5/10	5/10	5/10
281.3	281.3	281.1	281.9	281.9	281.9	281.9	281.7	281.6	281.6	281.6
5/10	5/10	5/10	5/10	5/10	5/10	5/10	5/10	5/10	5/10	5/10
281.7	281.5	281.5	281.3	281.2	281.2	281.2	281.2	281.2	281.2	281.2
5/10	5/10	5/10	5/10	5/10	5/10	5/10	5/10	5/10	5/10	5/10
281.9	281.7	281.6	281.4	281.3	281.3	281.3	281.3	281.3	281.3	281.3
5/10	5/10	5/10	5/10	5/10	5/10	5/10	5/10	5/10	5/10	5/10
281.8	281.7	281.6	281.5	281.4	281.4	281.4	281.4	281.4	281.4	281.4
5/10	5/10	5/10	5/10	5/10	5/10	5/10	5/10	5/10	5/10	5/10



INDEXED  
 WK  
 AUG 11 1950

• Eucalyptus tree

#287 13

See page 78

North Collins Road and Station

West Collins Rd

D. Smith  
E. Sherman  
J. Crawford

Note Sketch in FB 1527-17  
X Sec Alley BIK 323

Lt - North  
Reed + Daleys Add 10-3-50 **33**  
Franklin + Clay, 29th + 30th.

0+27<sup>5</sup> 92RT NW cor. Room on House

0+20

**INDEXED**

**OCT 4 1950**

0+07 10<sup>2</sup>RT + E 24" cypress tree

0+04 92RT End 6' con wall

0+01 10<sup>6</sup>ht Begin 6' Board fence

0+00 92RT Begin 6" on wall

Reduced 10-19-50  
Firebaugh

0-10 East gutter 29th edge A.C. paving

0-30 E 29th

B.M.

875

86<sup>80</sup>

7805

SFBP 29th  
Clay

83 <sup>5</sup>	83 <sup>5</sup>	83 <sup>4</sup>	82 <sup>8</sup>	82 <sup>1</sup>	82 <sup>2</sup>	84 <sup>2</sup>	84 <sup>7</sup>	84 <sup>8</sup>
33	32	34	40	41	40	26	21	20
20	10	9	8		6	8	10	15

84.62  
832

218  
92  
top wall  
92  
footing

81 <sup>2</sup>	82.00	81 <sup>5</sup>	81 <sup>8</sup>	82.0	82.2	84.53	81.9	82 <sup>5</sup>	84.52
54	480	52	50	48	46	227	49	42	228
26	10	10		6	9	92	92	25	25
	06	cut	cut			top wall	footing		For wall

80.78	80.13	81.73	81.18	81.40	81.67	82.72
608	667	507	562	540	513	408
50	50	10	10		10	50
06	9ut	06	9ut			

81.06	82.01	82.24	82.44	83.53
577	499	47	436	327
50	10		10	50

86<sup>80</sup>

1119 9<sup>2</sup> RT is board fence here

1110 10<sup>1</sup> LT Begin 5' Board Fence

TR 4<sup>83</sup> 88<sup>27</sup> 3<sup>36</sup> 83<sup>44</sup>

1160

0486 9<sup>2</sup> RT Begin 6' Board Fence

0486 9<sup>2</sup> RT End 3' Board Fence

0484 8<sup>2</sup> RT E 14" dia Power pole #PA2908

0470 10<sup>2</sup> LT End 6' Board Fence

0450 9<sup>1</sup> RT End Lat4 fence Begin 3' board fence

0437 9<sup>2</sup> RT NE cor House Begin half fence

88<sup>27</sup>  
 82<sup>4</sup> 83<sup>4</sup> 83<sup>4</sup> 83<sup>5</sup> 83<sup>8</sup>  
 4<sup>4</sup> 3<sup>4</sup> 3<sup>4</sup> 3<sup>3</sup> 3<sup>0</sup>  
 20 10 7 10

83<sup>5</sup> 83<sup>4</sup> 83<sup>5</sup> 83<sup>3</sup> 84<sup>2</sup> 84<sup>3</sup>  
 3<sup>3</sup> 3<sup>4</sup> 3<sup>5</sup> 3<sup>5</sup> 2<sup>6</sup> 2<sup>5</sup>  
 20 10 6 7 10

86<sup>50</sup>

2135

2120 10' Lt Begin 4' Board Fence

2120 9' Lt End 6' Board Fence

2116 10' Rt E 3' con walk

2101 10' Rt Begin 6' Atlas Fence

2100 8' Rt E 12" Power Pole PA 2924

1790 10' Lt end 2' con walk // to line

1784 9' Lt End picket fence begin 4' Board fence

1775 12' Lt E House

1761 10' Lt Begin 2' con walk // to line

1761 9' Lt to picket fence

1761 9' Rt End 5' bath fence

1750 10' Lt End 5' Board fence Begin picket fence 3'

1750 10' Rt End Board fence Begin bath fence 5'

LT = North  
 81.6 82.1 83.0 83.4 83.9 82.8  
 62 62 53 42 52 53  
 15 10 6 10 20

83.15  
 5.2  
 10.6  
 walk

82.4 83.0 83.1 83.1 83.2  
 52 53 52 52 51  
 20 10 10 15

82.78  
 5.49  
 10.2  
 walk

82.73  
 5.54  
 12.5  
 floor

82.51  
 5.76  
 10.2  
 walk

82.6 83.2 83.1 83.3 83.5  
 52 51 52 50 48  
 15 10 10 15

8827

3+53 10<sup>2</sup> Lt end 8' con wall. board fence on top

3+50

3+14 10<sup>3</sup> Rt Begin 5' Board Fence

3+04 19' Rt & garage dirt floor

3+00 10<sup>6</sup> Lt Begin 8' con wall with board fence on top

2+95 10<sup>2</sup> Rt End 4' Board Fence

2+90 8<sup>2</sup> Rt & 14" power pole PA2940

2+90 14<sup>3</sup> Lt & garage dirt floor

2+82 10<sup>2</sup> Lt. End 4' Board Fence

2+60

2+50 9' Rt End 6' Atlas fence begin 4' Board fence

81 <sup>6</sup>	81 <sup>57</sup> North					Rt = South
6 <sup>2</sup>	3 <sup>20</sup>	5 <sup>20</sup>	4 <sup>54</sup>	8 <sup>55</sup>	8 <sup>36</sup>	8 <sup>36</sup>
10 <sup>2</sup>	10 <sup>2</sup>	6 <sup>3</sup>	3 <sup>73</sup>	4 <sup>8</sup>	4 <sup>7</sup>	4 <sup>7</sup>
Footing	top	15	10 <sup>2</sup>	10	10	20
			Top wall			

82<sup>7</sup>  
5<sup>6</sup>  
19<sup>2</sup>  
Floor

80 <sup>91</sup>	83 <sup>81</sup>
17 <sup>36</sup>	4 <sup>46</sup>
10 <sup>2</sup>	10 <sup>2</sup>
Footing	top wall

81 <sup>7</sup>	81 <sup>9</sup>	83 <sup>1</sup>	83 <sup>3</sup>	83 <sup>1</sup>	82 <sup>9</sup>	82 <sup>7</sup>
6 <sup>6</sup>	6 <sup>4</sup>	5 <sup>2</sup>	5 <sup>0</sup>	5 <sup>2</sup>	5 <sup>4</sup>	5 <sup>6</sup>
14 <sup>2</sup>	10	7	6	10	20	
Floor						

81 <sup>3</sup>	81 <sup>4</sup>	82 <sup>7</sup>	83 <sup>3</sup>	83 <sup>0</sup>
7 <sup>2</sup>	6 <sup>2</sup>	5 <sup>6</sup>	5 <sup>0</sup>	5 <sup>3</sup>
20	11	10	10	

88<sup>27</sup>

Lt = North

E

Rt = South

37

4464 9<sup>3</sup> Rt Begin 6' Board Fence

90 <sup>3</sup>	90 <sup>3</sup>	89 <sup>2</sup>	90 <sup>1</sup>	91 <sup>1</sup>	91 <sup>2</sup>
5 <sup>1</sup>	5 <sup>0</sup>	5 <sup>4</sup>	5 <sup>2</sup>	3 <sup>2</sup>	3 <sup>6</sup>
15	10		7	10	15

4450

88 <sup>3</sup>	88 <sup>5</sup>	88 <sup>3</sup>	87 <sup>6</sup>	87 <sup>6</sup>	88 <sup>4</sup>	88 <sup>6</sup>
7 <sup>0</sup>	6 <sup>8</sup>	7 <sup>0</sup>	7 <sup>2</sup>	7 <sup>2</sup>	6 <sup>2</sup>	6 <sup>2</sup>
20	15	10	7	7	20	15

4425

4413 15<sup>4</sup> Rt E storage garage dirt floor

87<sup>5</sup>  
7<sup>8</sup>  
15<sup>4</sup>  
Floor

85 <sup>3</sup>	85 <sup>4</sup>	85 <sup>2</sup>	85 <sup>6</sup>	85 <sup>1</sup>	85.92	86.01
10 <sup>0</sup>	9 <sup>2</sup>	9 <sup>6</sup>	9 <sup>2</sup>	9 <sup>5</sup>	9 <sup>33</sup>	9 <sup>24</sup>
20	10		7	10	13 <sup>2</sup> apron	10 <sup>2</sup> Floor

4400 13<sup>2</sup> Rt End double garage con floor + apron

4400 8<sup>4</sup> Rt E 14" power pole # PA2964

84 <sup>5</sup>	84 <sup>6</sup>	84 <sup>6</sup>	84 <sup>8</sup>	85 <sup>2</sup>	85.66	85.99
10 <sup>8</sup>	10 <sup>7</sup>	10 <sup>7</sup>	10 <sup>5</sup>	10 <sup>1</sup>	9 <sup>59</sup>	9 <sup>26</sup>
15	10		7	10	12 <sup>2</sup> apron	16 <sup>2</sup> Floor

3486 12<sup>7</sup> Rt Begin double garage con floor + apron

3479 10<sup>5</sup> Rt End 6' Board Fence

84.25  
11<sup>00</sup>  
16<sup>3</sup>  
Floor

3464 16<sup>2</sup> Lt E garage con floor

TP<sub>2</sub>

11<sup>22</sup> 95<sup>25</sup>

424 84<sup>03</sup>

95<sup>25</sup>



Lt = 1108  
 908 905 898 895 899 903 901  
 4<sup>5</sup> 4<sup>3</sup> 5<sup>2</sup> 5<sup>8</sup> 5<sup>4</sup> 5<sup>0</sup> 5<sup>0</sup>  
 15 10 8 7 10 20

92.53  
 2<sup>22</sup>  
 9<sup>3</sup>  
 walk

5150

5149 9<sup>3</sup> RT End 7' lath fence

5132 9<sup>3</sup> RT & 4' com walk

5130 8<sup>7</sup> RT & Dead man

5125

92<sup>5</sup> 92<sup>0</sup> 91<sup>4</sup> 91<sup>2</sup> 91<sup>5</sup> 92<sup>0</sup> 93<sup>1</sup> 93<sup>3</sup>  
 3<sup>0</sup> 3<sup>3</sup> 3<sup>2</sup> 4<sup>2</sup> 3<sup>8</sup> 3<sup>3</sup> 2<sup>2</sup> 2<sup>0</sup>  
 15 10 7 7 9 10 15

5120 8<sup>5</sup> RT & 14" power pole # PAR 984

5114 9<sup>3</sup> RT Begin 7' lath fence

5105 10<sup>3</sup> LT & garage con floor

5100 10<sup>0</sup> RT End 6' Board fence

917 919 916 920 922 934 934  
 3<sup>6</sup> 3<sup>4</sup> 3<sup>2</sup> 3<sup>3</sup> 2<sup>4</sup> 1<sup>2</sup> 1<sup>2</sup>  
 15 10 7 10 11 15  
 91.96  
 3<sup>20</sup>  
 10<sup>8</sup>  
 10<sup>00</sup>

4475

916 918 913 912 914 926 936 937  
 3<sup>3</sup> 3<sup>5</sup> 4<sup>0</sup> 4<sup>4</sup> 3<sup>2</sup> 2<sup>2</sup> 1<sup>2</sup> 1<sup>6</sup>  
 15 10 6 7 9 10 15

95 25  
 25

6+29<sup>35</sup> West Chain 30th St

6+19<sup>95</sup> West Prop 30th St edge comparing

6+18<sup>3</sup> 10° RT End 6" con wall

6+13<sup>98</sup> RT Begin 6" con wall

6+13<sup>95</sup> RT End 3' picket fence

TP<sub>3</sub>      099      84<sup>36</sup>      11<sup>88</sup>      83<sup>37</sup>

6+60

5+75

5+67 95° RT Begin 3' picket fence

LT = North

76.80	76.04	78.20	77.46	77.84	78.22	79.06	79.58	80.32	81.39
756	832	616	690	652	614	530	478	401	
50	50	10	10	10	10	10	50	50	
cb	cut	16	cut		cut	cb	cut	cb	

77.94	78.44	78.34	78.21	78.76	79.14	79.76	
642	598	602	615	560	522	480	
25	100	100		92	92	25	
cb	cut	cut		cut	cb	walk	

83.28

108	53
100	100
Top wall	Footings
1378	82.5
0.58	1.2
98	98
Top wall	Footings

84<sup>36</sup>

84.0	84.4	82.3	82.0	82.3	85.4	85.6
113	102	130	133	130	92	92
20	10	8		7	10	15

87.1	87.8	86.3	86.2	86.7	89.3	88.3
83	75	90	91	86	70	70
20	10	7		7	10	15

95<sup>26</sup>

Lt = North

±

Rt = South

40

BM south top cb approx 30th

5<sup>22</sup>

79<sup>14</sup>

79<sup>15</sup>

FB 1527-28

6749<sup>35</sup> ± 30th St

76.29

77.58

77.92

78.27

79.57

8<sup>07</sup>

6<sup>28</sup>

6<sup>44</sup>

6<sup>02</sup>

4<sup>72</sup>

50

10

10

10

50

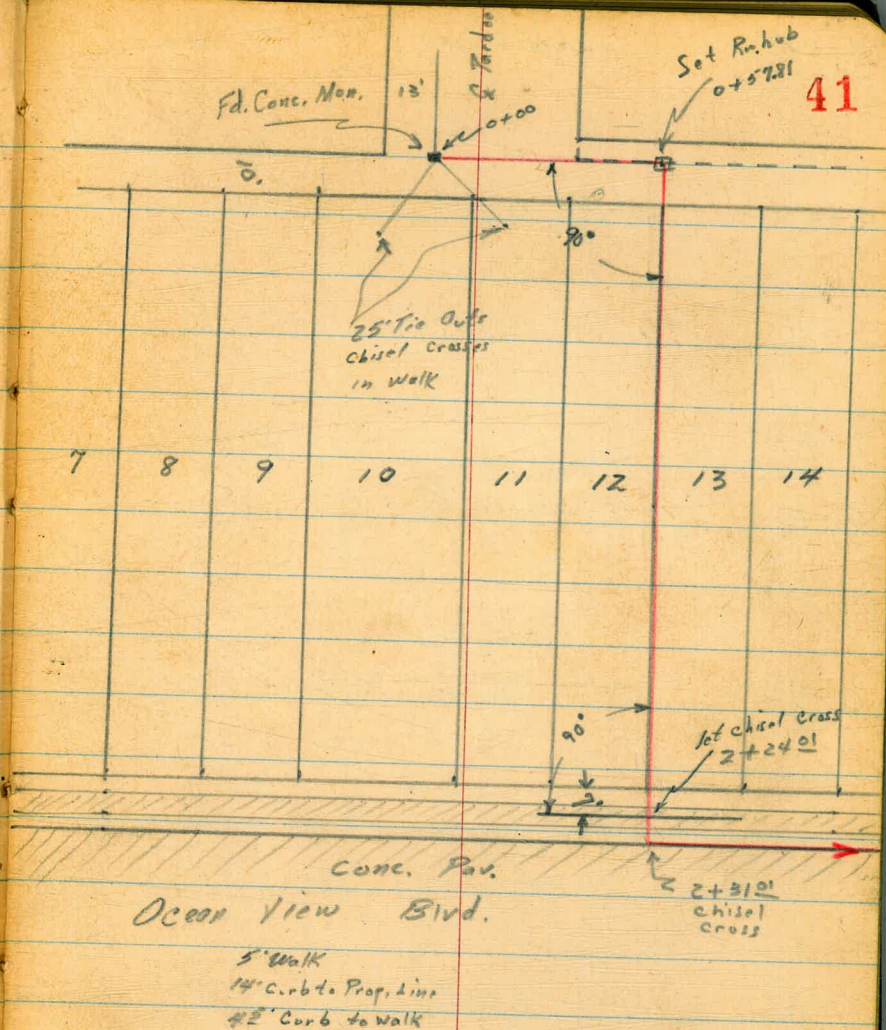
8436

Roberts  
Cota  
Moore  
Clark  
12-28-50  
W.P. 20759

Drainage Survey From End of  
Pardee St. Between Lots 12 & 13  
to Ocean View Blvd. (Long & Hickocks  
Sub.)

Map 477 TP 337

INDEXED  
W.K.  
DEC 29 1950



At 35<sup>th</sup> & Ocean View and 36<sup>th</sup> & Ocean View  
Found 717' C.T. in block. 539.56' E.P.L. 35<sup>th</sup> to  
W.P.L. 36<sup>th</sup> on North side Ocean View. 314.74'  
From E.P.L. 35<sup>th</sup> to Lot Line 12 & 13.

Q+13 23' Rt to NE Cor. House

O-10 24' Rt to N.W. Cor. House

O-13 46' Lt to Brick Wall  
West Line Pardee

O-32 10' Rt Begin Wire Fence

O-50

T.P. 609 74.29✓ 131 68.20✓

BM 113 69.51✓ 68.38✓

check 3.29 63.51 = 63.47 ✓  
~~63.43 X~~

TP 8.83 66.80✓ 0.82 57.97✓

T.P. 213 58.79✓ 12.92 56.66✓

BM 1.20 69.58✓ 68.38✓ SE Fire Hydrant 35<sup>th</sup> Ocean View

68.73  
5.56  
24  
Floor

1.7	5.4	5.7	5.8	5.4	5.5	6.6	6.8	7.8
76	15		4	5	10	102	20	70

5.4	5.6	5.1	5.7	6.9	7.0
15		2	10	102	20

5.3	5.2	6.0	6.4	6.56
15		5	15	18

Garage Floor

74.29✓

0+63

5.3	5.5	5.5
25		5
69.0	68.8	68.8

0+61

5.6	5.8	6.0
25		5
68.7	68.5	68.3

0+57.81 L. Rt.

71.4	69.7	68.7	68.5
2.9	4.6	5.6	5.8
100	50	15	
E. hub	E. hub.	No. Hub.	

0+41 Conc. is Roughly built back of Pipe.  
8' Rt 16" Storm Drain  
Could not Find Outlet

68.6	68.1	67.69	63.7
5.7	6.2	6.60	10.6
15		8	8
		Top	Bottom

0+37 46' Lt. to Conc. BIR Wall  
East Line Pardee

5.2	5.8	6.1	6.3	5.7	6.0	6.1	7.8
46	15		4	6	9	17	50
69.1	68.5	68.2	68.0	68.6	68.3	68.2	66.5

0+20 23' Rt to NW Cor. House

5.0	5.7	6.0	5.9	5.5	5.8	6.2	6.6	5.35
30	15		4	5	9	10	20	232
69.3	68.6	68.3	68.4	68.8	68.5	68.1	67.7	68.94
								Floor

0+20 94' Rt to Fence

74.29  
✕74.29 ✓  
✕

Cont'd From Page 43

1+70

1+67

12<sup>±</sup> Rt Begin Garage

1+37<sup>±</sup>

7' Rt Begin Picket Fence on Conc. Base

1+35

2<sup>±</sup> Rt to End Fence

1+16<sup>±</sup>

22' Rt SE Cor House

1+00

0+70

0+67.2

0.5' Rt to Cor. Fence

74.29

π

Lt

R

R2

44

65.3  
9.0  
25

65.2  
9.1

65.3  
9.0  
7  
Grd.

64.06  
8.23  
7  
Top  
Base

66.0  
8.3  
10

64.4  
7.9  
25

65.9  
8.4  
10

65.8  
8.5

65.8  
8.5  
23

67.5  
6.8  
25

67.1  
7.2

66.7  
7.6  
15

68.5  
5.8  
25

68.4  
5.9

68.1  
6.2  
15

74.29

π

Cont'd From Page 44

Lt

Q

Rt

45

T.P. 5.51  $\frac{69.69 \checkmark}{\uparrow}$  10.11 64.18<sup>✓</sup> chisel + cb face Sta. 2+31.01

2+31.01 Curb Line Ocean View

64.18	63.51	64.49	62.77
10.11	10.78	9.80	10.52
cb.	Gutter	50	50
		w. chisel +	
		cb	Gutt

2+26.51 S. Edge Walk

64.29  
10.00

2+21.51 N. Edge Walk

64.41  
9.88

2+18 7<sup>3</sup> Rt End Fence with Conc. Base

2+00

64.9	64.2	65.0	65.0	65.69
9.4	9.7	9.3	9.3	8.6
25	12		7	7
			Grid	Top
				Base

1+97 12<sup>3</sup> Rt End Garage

$\frac{74.29}{\uparrow}$

$\frac{74.29 \checkmark}{\uparrow}$



Cont'd From Page 45

Lt

£

Rt

46

check

1.35

68.34 = 68.38 Starting BM

4+50

63.10  
6.59  
Cb.

62.40  
7.29  
Gutt

4+00

63.38  
6.31  
Cb.

62.63  
7.06  
Gutt

3+50

63.63  
6.06  
Cb.

62.95  
6.74  
Gutt

3+00

63.90  
5.79  
Cb.

63.26  
6.43  
Gutt

2+50

69.69  
T

63.33  
Drive  
Cb. 6.36  
Gutt  
69.69 ✓  
T

Roberts  
Cota  
Ware  
Clark  
1-15-51  
W.062210

Obtain Elevation of P.G. &  
Invert of MH at Sears new  
Location Pro-Sewer Cleveland & Richmond

T.P. 1.77 300.50 3.32 298.73

MH#4 No MH Found in Richmond between Hendricks & Cleveland

INDEXED

MK  
JAN 16 1951

MH#3 Cleveland & Richmond  
297.85 291.18  
1.20 10.87  
Fav. INVERT

check

622 297.19 = 297.15 SWBP  
Richmond & University

T.P. 5.05 303.41 2.14 298.36

T.P. 8.96 302.05 1.54 293.09

MH#8 Could NOT LOCATE MH in Washington Freeway

MH#2 Cleveland between Vermont & Richmond  
293.27 287.92  
1.36 6.71  
Fav. INVERT

MH#7 Alley BK180 Uni. Hts & Lincoln COULD NOT LOCATE

MH#1 Cleveland & Vermont  
288.65 284.65  
5.38 9.98  
Fav. INVERT

MH#6 Hendricks E. of Richmond  
295.31 289.63  
5.19 10.87  
MH Rinc Top Island INVERT

BM 490 294.63 289.73 SWBP  
University of Vermont

MH#5 Hendricks W. of Richmond  
298.06 288.78  
2.44 11.72  
Fav. INVERT

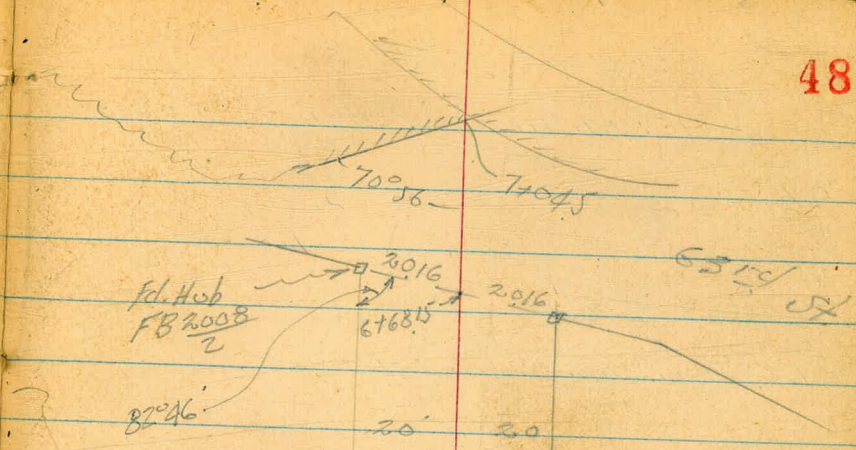
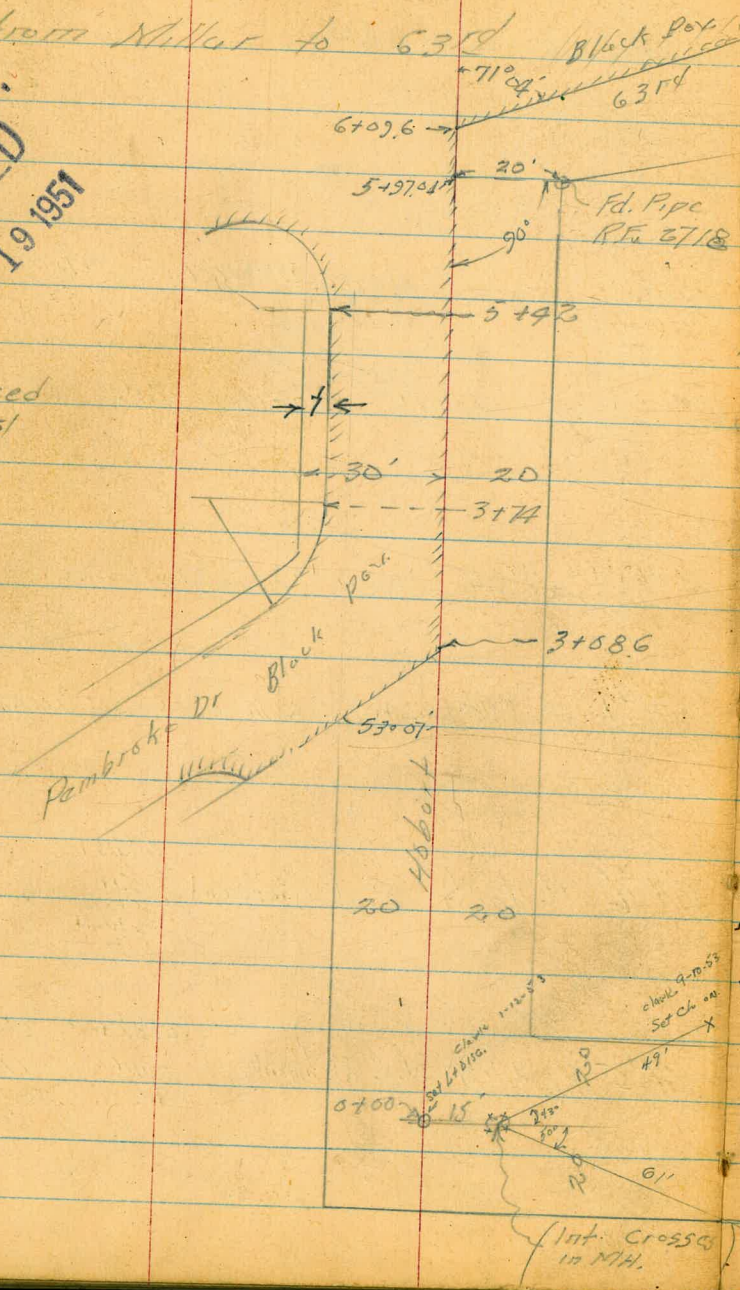
300.50

CROSS SECTION - STEWART ST.

from Miller to 63rd Black Dev.

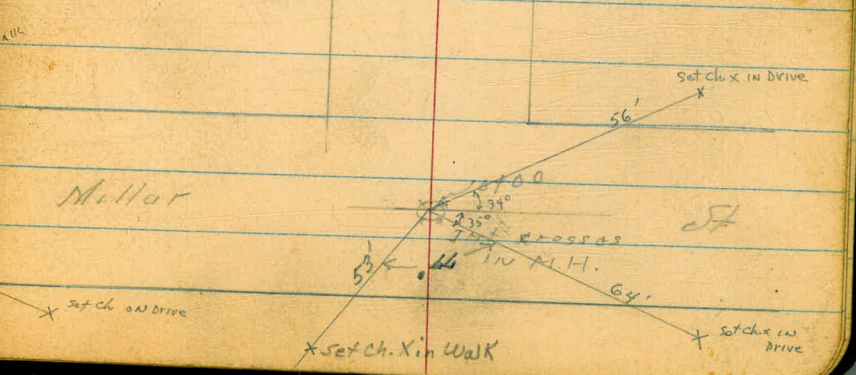
INDEXED  
MAR 19 1951

Reduced  
3-20-51  
Ryan



Also FB 2226

Soil sample  
5' N. of Stewart  
300' E. Fly line  
63rd



Stewart Street

Note: Miller St section in FB 2008

0+92 =

INDENT

MAR 19 1951

0+83 = W. edge Conc. Drive

0+71 = 3' Conc. Walk

0+60

0+25

0+00

Note for stations shown in red  
see P. 71  
8/4/52

7.82

468.03

460.21

49

463.20 463.23

483 480

475

Drive  
& Floor.

463.20 463.24

483 479

475 217

Drive  
& Floor.

463.18 463.17

485 486

31 217

Walk

463.3 463.2 462.7 463.5 463.4

4.7 4.8 5.3 4.5 4.6

35 25 25 35

462.9 462.9 462.6 463.0 463.23

5.1 5.1 5.7 5.0 4.8

35 25 25 35

462.33 462.5 462.3 462.6

5.7 5.5 5.7 5.4

35 25 25 35

468.03

B.N. 2 NORTS

in Pole FB. 2008

70

Note 3 side Hebert

Produced

Approx 50 W

Miller St

Stewart St

3+00

3+06 = End

2+67 Beg. 3' Pickett fence 20' Lt.

2+66 = E. edge Conc Drive

2+79

2+57 = W edge Conc Drive

2+50

2+20

2+14

2+10

2+00

1+50

1+45 = Pole \* P-78 486 16' Rt.  
~~1+25~~ seep-71  
 1+00

Lt.

L

Rt.

50

463.2	463.2	462.7	462.9	462.9
4.8	4.8	5.3	5.1	5.1
35	25		25	35

463.45	462.92
4.58	5.11
47.8	20.7
DRIVE	DRIVE

463.45	462.97
4.58	5.06
47.8	20.7
DRIVE	DRIVE

463.1	463.1	462.8	463.4	463.6
4.9	4.9	5.2	4.6	4.4
35	25			35
Lawn	Lawn			

462.9	462.7	462.6	463.5	463.5
5.1	5.3	5.2	4.5	4.5
35	25		25	35

462.7	463.2	462.8	462.9	463.5
5.3	4.8	5.2	5.1	4.5
35	25		25	35

462.9	462.9	463.0	463.7	463.5
5.1	5.1	5.0	4.3	4.5
35	25		25	35
		463.03		

Stewart St

4+33

4+23

T.P. 4.57 467.73 4.87 463.16

4+20 = 8' Fire Hydr. 179

4+00

3+94

3+90 = East edge Conc. Drive

3+82 = W " " "

3+71

3+65

3+62 = 2' Pole 16.5' RT

3+54

3+50

3+37 16.5' RT = Pole Anchor

3+29 = 2' 4" Peach Tree 22' LT

3+46 = End

3+20 = Beg 3' Ricket Fence 19.9' LT

3+18 = East edge Conc. Drive

3+06 = Beg. Conc. Drive

468.03

Lt.

Rt.

RT

51

463.0	463.0	462.65	462.3	462.9	462.8	462.6
5.0	5.0	5.38	5.7	5.1	5.2	5.4
35	25	on Rim	10	15	25	35
		NH				

463.11	463.15
4.92	4.88
37.4	21.0
Drive	Drive

463.12	463.17
4.91	4.86
37.2	20.9
Drive + Foot	Drive

462.9	462.9	462.6	462.7	463.2	463.4	463.4
5.1	5.1	5.4	5.3	4.8	4.6	4.6
35	25		11	13	25	35

463.29	463.35
4.74	4.69
46	20
Drive	Drive

463.27	463.33	
4.76	4.70	
46	20	
Drive	Drive	468.03

5+50

5+41 17' RT = Pole Anchor

5+19 = Pole 17' R P-78985

5+09 = Garage under Const.

5+14 } See P 72  
5+06 }

5+00

4+87 = E edge Conc. Drive

4+78 = W edge Conc. Drive

4+50

4+39

462.63	462.63	462.53	462.53	462.9	462.9
51	51	52	52	48	48
35	25		12	25	35
	LOW D				

463.03

470

12  
Proposed  
Conc. Floor

462.6	462.7	462.4	462.6	462.7
51	50	53	51	50
25	25		25	35

462.89	463.15
484	458
305	40
Drive	Drive
	2 Floor

462.89	463.18
484	455
305	40
Drive	Drive
	2 Floor

462.9	462.6	462.4	462.7	462.2	462.1
48	51	53	50	55	56
35	25		25	35	60

467.73

low  
point  
on lot.

5+8466  
 Chk L Hub FB 2008-74 442 <sup>0.01</sup> 464.15  
 464.74  
 TP 592 468.56 459 463.14

Section Parallel to 63rd on Lt.  
 7+04.5 = 1st West edge Pole Strip to North

462.82 462.77 463.26 462.83  
 4.91 4.96 4.47 4.35 4.90  
 50 25 Pole 15 27 = south b  
 on N Edge Pole MH Edge Pole

6+90

463.2 463.52  
 4.7 4.21  
 27  
 Pole

6+68.15 Dig Sec. on Y-Line 63rd

463.1 463.1 462.4 462.8 462.4 462.9 462.72 462.9  
 4.6 4.6 5.3 4.9 5.3 4.8 5.01 4.8  
 35 25 14 12 2016 2016 35  
 on Hub

Rt. & Lt.

6+68 20' Rt = Pole P-76806

6+50

463.2 463. 462.7 462.3 462.6 462.3 463.1 463.3 463.3  
 4.5 4.7 5.0 5.4 5.1 5.4 4.6 4.4 4.4  
 35 25 15 13 12 13 20 35  
 Lower Lower Lower

6+43 = Pole Anchor 18' Rt

6+43 = End 23.9' Rt.

6+18 = Beg Stucco House 23.7' Rt.

6+68 = End

6+00 = Beg Eugene Hedge 23' Lt.

467.73

462.8 462.8 462.8 462.7 463.2 463.1 463.1  
 4.9 4.9 4.2 5.0 4.5 4.6 4.6  
 35 35 10 15 25 35  
 Lower 467.73



CROSS SECTION - HOBART ST.

from Miller to 63rd

Walker  
Pope  
Clark  
Hoffman  
3-16-51

Reduced  
3-20-51  
Ryan

NO 25020

Note

See page 73 for  
stations shown  
in red

1+70

1+45

1+45

1+28

1+00

0+84 19' Lt Pole 2768 83

0+67 = End Stucco House 24' Rt

0+60

0+38 = Beg. Stucco House 24' Rt

0+25

0+00 - E. Miller St.

439.03  
233  
55

5.00

462.33

467.33

Lt.

Rt

Rt

54

REVISED

MA 10 1951

460.4	460.3	460.2	456.9	456.8	455.9	456.0	456.3
19	20	2.3	54	55	64	63	60
30	20	10	8		20	30	45

457.4	449.4	454.9	455.6	455.4	455.8	456.7
49	127	74	67	69	65	56
38	20	8		15	20	30

Side slope  
Foot of Draw

445.8	450.0	453.4	455.5	457.2	458.2	458.8	459.8
16.5	123	89	68	51	43	35	25
54	33	20	16		19	20	30

Bottom  
Draw

446.1	450.0	456.1	457.3	458.1	458.8	459.4	459.8
16.2	123	62	50	42	35	29	25
54	40	20	17		17	20	24

Draw  
at House

442.3	446.9	454.13	455.8	456.9	457.4	458.0	458.3
20.0	154	82	65	54	49	43	40
60	42	20	17		15	20	30

Bottom  
Draw

445.93	449.9	455.3	455.9	457.7	458.2
164	124	70	64	46	41
30	20	10		20	30

462.33

B.M. Rim NH Miller & Hobart  
FB 2008-77

Hobart St.

Lt.

Lt.

Rt.

2+99

1+99 = 3' Conc. Walk

460.74	460.88	55
1.59	1.45	
19.5	30	
si walk	Walk	

2+81

1+81 = 8' Conc. Drive level across

460.70	460.87
1.63	1.46
20	43
	Floor
	Garage

2+74

2+74 = Pole Anchor 187 St.

2+71 = 2' MH

460.65
1.68
17.5
Rim MH

2+65

461.9	461.5	461.1	461.0	461.0	457.6
0.4	0.8	1.2	1.3	1.3	4.7
30	20		20	25	60
Low					

2+54 19' Lt = Pole # 276802

2+53

2+56 = End of 5' Brick wall

461.17
11.6 - Top Footing
20.6

2+25

461.2	460.4	460.4	460.4	457.1
1.1	1.9	1.9	1.9	52.52
20.6		20	30	50 60
at wall				Drive Drive

2+19 20.6' Lt = Beg. <sup>50</sup> Brick wall

461.16
11.7 - Top Footing
20.6

2+00

461.2	461.1	460.9	459.1	459.1	459.3	456.4	456.4
1.1	1.2	1.4	3.2	3.2	3.0	5.9	5.9
30	20	10	5	5	20	44	60
			462	3.3			

Hubert St.

4+00

3+74 = B.C. Rd. on Lt = 9' Drive on Rt

3+68 = MH

3+30

3+40

Section

3+08.6 RT to L

3+08.6 Diag Sec on Pav

Rim MH

TP 519 465.84 168 460.65

2+85  
1+85

462.33

Lt.

Rt.

Rt.

56

460.66	460.77	460.78	461.24	461.44
5.18	5.67	5.86	4.6	4.4
22	11		20	30
Conc. Cut.	Pav.			

460.87	460.77	460.57	460.63	461.23	461.45	461.78
4.97	5.30	5.20	5.21	4.61	4.57	4.86
24	22	11.5	Pav.	20.2	23	30
cb	Conc. Cut.	Pav.		Lip Conc. Drive	2.5	DRIVE

461.04  
4.69  
14.6  
Rim MH

460.25	460.33	460.44	460.84	
5.59	5.51	5.40	5.0	4.8
30	23	Pav.	20	30
Pav.	Pav.			

460.17	460.32	460.32	460.25	460.84	460.64	460.64
5.67	5.52	5.52	5.59	5.0	5.2	5.2
50	30	23	Pav.	5	20	30
Pav.	Pav.	Pav.				

460.24	459.94	460.17	460.25
5.60	5.90	5.67	5.59
47.6	47	25	Pav.
cb	Pav.	Pav.	

460.2	460.7	461.2	461.1	460.7	460.8
2.7	1.4	1.1	1.2	1.6	1.5
33	20	18		20	40
			462.33		

Hobart St.

5185

Top  
Fire Hydrant

TP 316 467.60 140 464.44

5142

5134 = Garage on R  
cb.

5142 = B.S. Return on Lt.

5100

4179

4170

4165

4123

465.84

Lt	R	R	R	R	R
462.01	462.03	461.77	462.5	462.9	462.8
5.59	5.57	5.83	5.1	4.7	4.8
30	15		6	20	30
Pov.	Pov.				

467.60

461.82	461.38	461.62	461.54	462.5	462.8	462.9
4.02	4.46	4.22	4.30	3.3	3.0	2.9
23	23	11		10	20	30
cb	Gut of H. cb					

462.88	463.10
2.96	2.70
24	34
Apron broken up	Conc. Floor Garage

461.34	461.42	461.40	462.6	463.2	462.6
4.50	4.42	4.44	3.2	3.8	3.2
22	11	Pov.	10	20	30
Conc. Gut	Pov.				

461.15	461.25	461.19	462.7	463.5	463.2
4.69	4.59	4.65	3.1	2.3	2.6
22	11	Pov.	10	20	30
Conc. Gutter	Pov.				

461.09	461.21	461.15	461.4	461.4
4.75	4.63	4.69	4.4	4.4
22	11	Pov.	20	30
Conc. Gutter	Pov.			

465.84

Hobart St.

H. L.  
INDEXED

Rt

58

MAR 19 1951

422 463.38 ✓

chk. N edge Run MH 7+045 P-53

6+27.6 = E. Gutter 63rd sec Mary cb

462.17	461.69	461.93	462.3	461.95	462.42
543	591	567	530	565	518
50	50	94	0	50	50
cb.	Gut.		cb	Gut.	cb.

6+07.6 sec 71°04' Rt

461.99	462.06	462.14	462.18	462.30
561	554	546	542	530
50	31		16	50
Pov.	Pov.		on 111 m MH = Pov.	

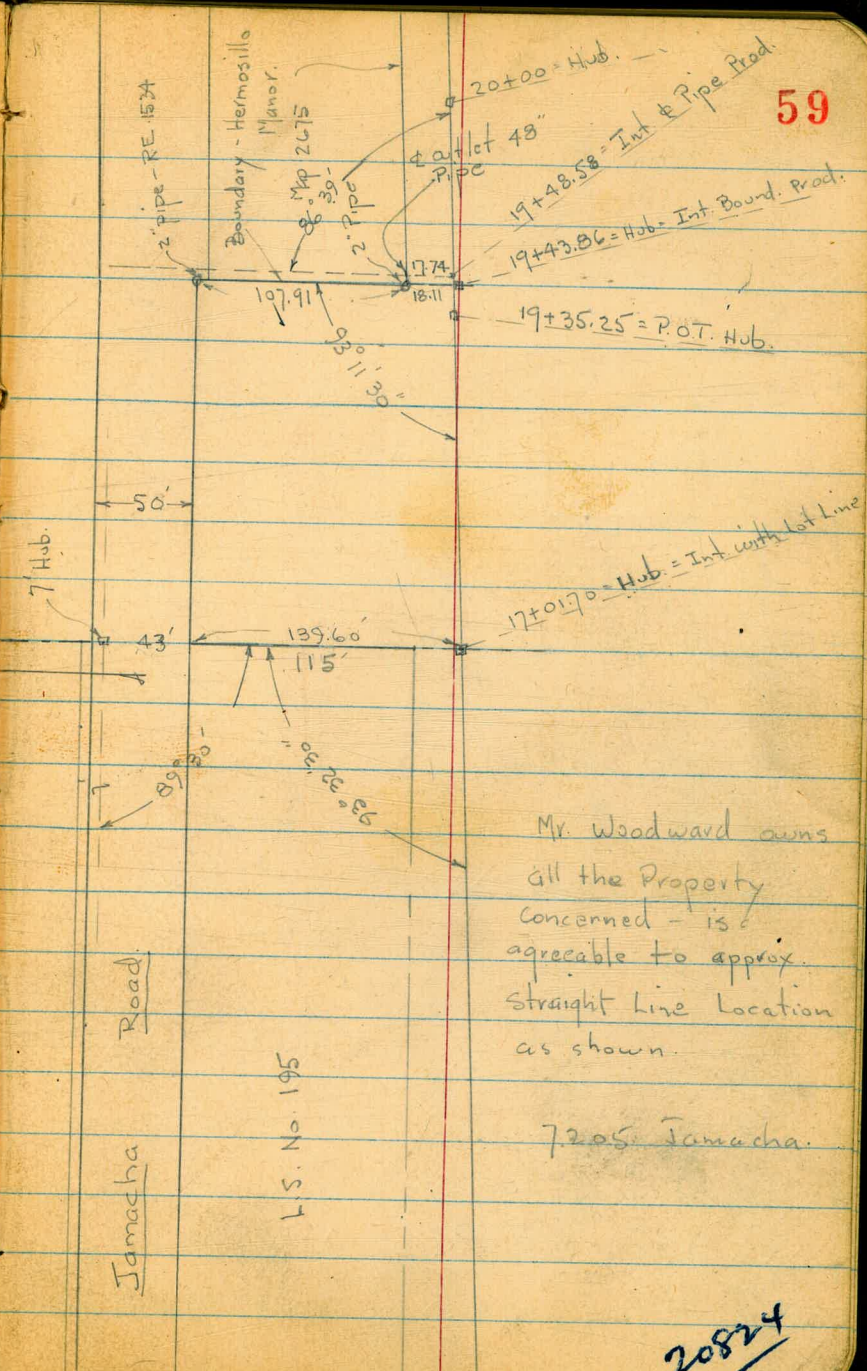
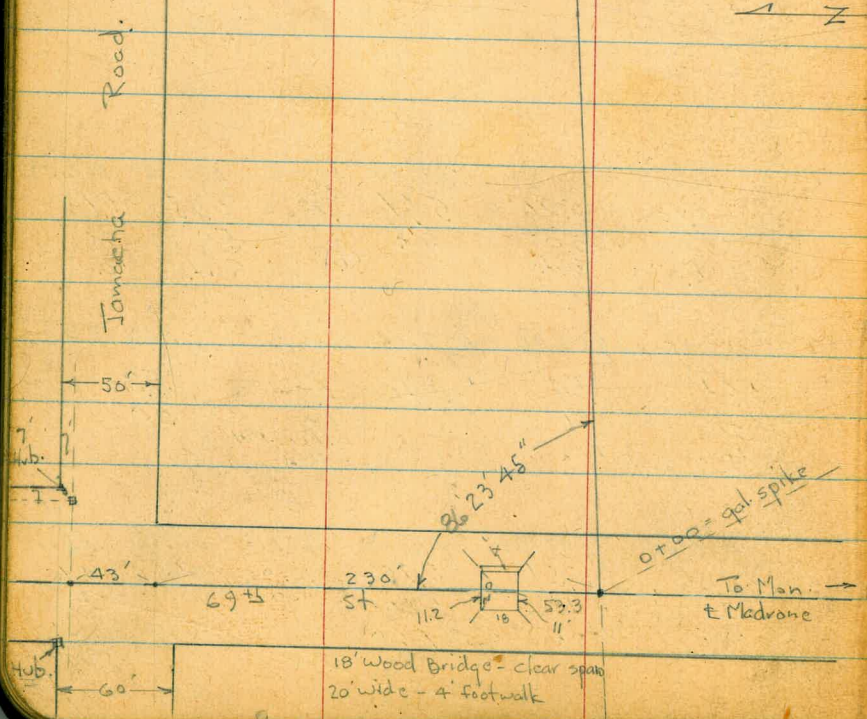
4+97.04 sec Rt to d

462.04	462.09	461.90	462.60	462.8	462.9
556	551	570	50	48	47
30	15	Pov.	60		30
Pov.	Pov.	467.60			

Survey for Drain Channel

See T.P. Book 12 - P. 13

INDEXED  
*See*  
 APR 4 1952



59

Mr. Woodward owns  
 all the Property  
 concerned - is  
 agreeable to approx.  
 Straight Line Location  
 as shown.

7205 Jamaacha.

L.S. No. 195

20824

Levels along  $\pm$  of Prop. Drainage Channel  
 Thru Lot 12 - Ex Mission - Rancho - from  
 69<sup>th</sup> to 48<sup>th</sup> Culvert at Wly. of Hermisillo  
 Manor.

# 5278                      6-14-51              7.0.

W.O. 20824

0+07 = edge Road

0+00 =  $\pm$  69<sup>th</sup> cuts along  $\pm$

0-10 = edge of Road.

0-30 = Sect Normal to 69<sup>th</sup>

0-100

# 370476

B.M. = spike in Pole - W. 0+00              6.25              245.55<sup>v</sup>

5.89              251.80<sup>v</sup>              7.84              245.91<sup>v</sup>

B.M.              0.31              253.75<sup>v</sup>              253.44 - S.W. 2<sup>v</sup>

Indexed  
 JUN 18 1951

60

	Lt.	#	Rt.
246.95			
4.85			
71.3			
Nly. Deck			
246.95			
10.7			
$\pm$ Ditch			
246.95			
4.95			
53.3			
sly. of Deck			
246.83			
4.97			
on spike			
248.10			
3.70			
25			
250.71			
1.09			
50			
246.6			
5.2			
240.5			
11.3			
5.1			
$\pm$ 10' Ditch			
242.4			
7.5			
242.4			
9.4			
13.7			
11			
$\pm$ 10' Ditch			
242.4			
9.4			
130			
249.2			
7.6			
30			
251.80 <sup>v</sup>			
Pipe - Imperial + 69 <sup>th</sup>			





7+50

7+00

6+35

5+60

4+85

4+76 = Cross wire fence - 56' Rt. - Cor. - 27' Lt. = end

4+32 = Cross wire fence - 36' Rt. = E+W. fence

4+14 = Cross wire fence - 32' Rt. = Cor. = E+W

4+00 Dog Pen

3+81 = Cross wire fence 32' Lt. = Cor. 21' Rt. = end at E+W. fence

3+40 23' Rt. = Beg. wire fence to E.

3+26 = Cross wire fence - ends 18' Rt.

2+75 = 18' Rt. = Beg. old wire fence

Lt.

2539

256.5

1.6

40

251.8

6.3

40

256.3

1.8

85 =

edge Vac.

field =

251.4

5.7

50

249.7

8.4

30

250.1

8.0

30

248.6

9.5

30

Rt.

2529

2518

6.3

50

251.6

6.5

40

250.9

7.2

50

250.4

7.7

78

249.5

8.6

32

249.1

9.0

37

248.7

13.4

45

16

Ditch

258.12

10.1

12.5

# 18" Ditch

10.4

10

# 15 Ditch

12.3

88 =

# 4 Ditch

12.7

85

# 14 Ditch

13.6

39 =

12 Ditch

11+50

25' Lt. - 200' Rt.

10+95 = Beg. Cultivated field (Tomatoes)

10+84 = Bank

10+73 = ± Ditch

10+58 = Cross wire fence

10+48

10+25 = 11' Lt. = end fence

10+00.11 = P.O.T. Hub.

5.42 25 270

9+85 = ± of wash from south - joining Ditch

9+00

21' Lt. = Beg. wire fence

8+80 = Cross Barb wire fence - Creek to Lots.

8+50

T.P.

9.62 266.42

1.32 256.80

8+00

	Lt.	Rt.
254.0	258.8	258.8
12.4	7.6	7.6
50	45	50
± 10' Ditch		
253.2	257.4	257.0
13.2	9.0	9.4
48	40	
± 16' Ditch		
	253.5	12.9
	261.4	0
263.0	261.5	257.5
3.4	4.9	8.9
60	50	10.4
at fence		95
	260.8	256.0
	257.6	15.9
	254.2	10.5
	251.3	± 15' Ditch
	253.3	7.6
	12.2	258.8
	14.7	235
	16.7	± wash
	18.8	± wash from S.
260.2	259.8	249.4
6.2	7.6	17.0
67	30	193
edge field at fence		± 20' Ditch
258.1	254.0	253.5
0.0	2.1	4.6
30		50
	258.12	

15+00

35' Lt. = end at E.W. wire fence

14+84 = Bank - 11' Lt. = edge Corn field

14+60 = ± Ditch

14+50 = Bank - 10' Rt. = edge field

T.P. 7.01 268.60' 4.83 261.59'

14+00 - 5' Rt. = edge field

13+38 = Top Bank - 15' Rt. = edge of field

13+00 - 39' Rt. = edge field To 150 Rt.

12+80

12+70 = Bank

12+50 = edge of field

12+00

Lt. 262.7

5.9 6.8

35

261.8

261.5

261.4

261.6

7.2

12.0

7  
Bank

260.9

7.7

260.7

7.9

7 = Bank

268.60'

258.9

260.4

261.2

10.5

6.0

5.2

20

13

± 14' Ditch

260.3

261.3

5.1

50

260.1

259.9

258.0

255.3

256.3

260.4

259.9

6.3

6.5

10.4

11.1

10.1

5.0

6.5

30

17

7

10

10

22

35

100

Barbwire  
fence along  
Bank of Ditch

Bank

± Ditch

Bank

258.7

258.0

257.2

257.2

257.2

257.2

257.2

257.2

257.2

257.2

257.2

257.2

257.2

257.2

257.2

257.2

257.2

257.5

258.9

11.9

7.5

40

32

± 16' Ditch

266.42'

19+49 - 11' Rt. = 6" Willow  
over Ditch  
17+30 - 33.5 Rt. = 4 + Nly. of 12' by 15' long Wood Bridge

17+00 = 4 6' Drain Ditch from Jamacha (normal to lot line)  
16+84 - 24' Rt. = 4 3" Peach tree  
16+85 = 12' Rt. } end Row of Trees

16+78 - 13' Rt. = end Cor. chicken Pen  
16+53 - 12' Rt. = Beg. Row of Fruit Trees  
16+53 - 4 = Beg. Row of Small fruit trees

T.P. 5.27 270.39 248 265.12 = Nail in Post. - Rt. - 16+80 270.39

16+37 - 18' Lt. = Beg. Row of Small fruit trees  
16+35 - 16' Rt. = Cor. wire chicken pen.  
16+32.5 - Cross 3/4" water pipe - 8' Rt. = end at Tap.  
16+25 - 10' Rt. = sly. end corn field  
16+14 - 17' Rt. = end Row of Trees  
16+00

15+77 - 16' Rt. = Beg. Row of fruit trees  
10' Rt. = sly. corn field  
15+50 - 40' Rt. = edge Tomato field

	Lt.	#	1 Rt.
265.7	264.0	262.3	265.39
4.7 Ave Top	4.0 Bot	5.3 Ave Top	5.1 Ave Top
5.2	3.0	5.00	3.35 = Deck
			10.9 Ditch
			12' Main Ditch side Ditch
264.4	263.8	262.8	258.6
4.2	4.8	5.8	10.1
29 = along fence		5.3	6.2
			17' Ditch
263.9	262.5	262.0	257.5
4.7	6.1	6.6	11.1
3.0		16	2.5
			36
			7.5
		268.60	4 Ditch

19+30 - 6' Rt. = Cor. Play Pen.

19+20 - 26' Rt. = E 8" Cottonwood

19+02 - 19' Rt. = E 8" Pepper

19+00

7-Lt. = Cor. 13' Rt. = Cor.

18+74 = Wood fence around Play Pen (can be moved.)

18+55

18+40

18+32.2 = E 4' foot Bridge - 22' Long.

18+32 - 26.5' Lt. = E sly. of 7 by 15' shed

T.P. 7.28 273.92 3.75 266.64

18+22 - 19.5' Lt. = E 3" Apricot

18+15 = E Ditch

17+88 - 27' Lt. = E 20" Olive

17+65

17+52 - 18.5' Lt. = E 10" Willow

17+50

	Lt.		Rt.	
	2642	2622	2667	2619
	4.7	6.7	7.2	12.0
	50	20	35	50 =
			2664	E 12" Ditch
			266.4	240.7
			7.5	13.2
			22	35
			fence	E 12" Ditch
			2660	2674
			9	50
			2608	2675
			6.0	6.4
			8.1	4.5
			50	edge field
			13.1	12
			Ditch	
			2606	2655
			13.3	8.4
			5	12
			2605	2675
			7.38	7.5
			11	11
			W. end Deck	S. end Deck
			15.4	2661
			Ditch	
			2665	2679
			273.92	2679
			2665	2679
			3.9	4.8
			28	10
			edge of Lagoon	40 edge field
			2666	2651
			3.8	5.3
			43 = sly. of Packing shed.	40 = Bank edge Tomatoc field
			2620	2676
			8.4	10.1
			2653	18
			5.1	E 12" Ditch
			270.39	100

check starting B.M. 2.21 253.47 - 253.44 ✓  
 T.P. 5.66 255.68 12.27 250.02 ✓  
 B.M. = Cross in N. Rim M.H. & Flicker 6.04 256.25 + #  
 T.P. 2.27 262.29 10.77 260.02 ✓  
 T.P. 2.00 270.79 4.75 268.79 ✓

T.P. 2.43 273.54 ✓  
 S. Side Jamacha - W. Bound.  
 Set B.M. = Cross & Inlet. 2.81 271.11 ✓

20+50

20+00

19+90 = edge Tomatoe field  
 19+70 = Top bank

19+57

19+48.58 = Int of # of 48" pipe prod. 17.74 S.

19+40 = Bank

19+35.25 = P.O.T Hub. 6.11 267.81 ✓  
 on Hub:

Jamacha = 256.22 adj. Elev.

273.1  
 0.8 6.5 4.2 269.9  
 35 25 20 5  
 # Ditch edge field

272.0  
 1.9 9.1 5.0 269.9  
 33 23 17 5  
 # Ditch edge field

267.8  
 6.1 266.5  
 12.4

260.61  
 13.31 12.4 13.2 260.7  
 17.74 = I.E. 5.7  
 # outlet 40 = Top  
 48" RC pipe in Ditch Bank

267.3  
 6.6  
 273.92 ✓

Reduced By Lockhead  
 6-19-51

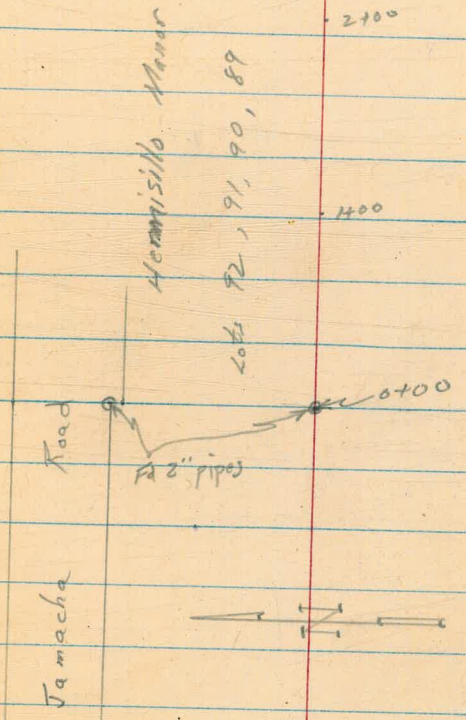
Roberts  
Cota  
Moore  
Tullen  
5-2-52  
146.20824

Survey to show Erosion behind  
Lots 92, 91, 90 & 89 Hermisillo Manor

See page 59 this F.R.

INDEXED

Survey  
AUG 20 1952



Edge Line F1 Three Lot Pipes

Cont'd From Page 68

Lt  
North

R  
Subst  
Line

Rt  
South 69

1463

274.2	274.1	266.3	266.1	271.0	271.0
0.7	0.8	8.6	8.8	3.9	3.9
22	17	12	3	5	5

1740

273.8	273.7	265.7	266.1	270.6	270.6
1.1	1.2	8.5	8.8	4.3	4.3
23	18	15	5	5	5

1700

273.4	273.1	265.7	265.7	267.9	269.6	269.6
1.5	1.8	9.2	9.2	2.0	5.3	5.3
26	21	18	7	2	7	7

0770

272.7	272.4	265.5	265.8	269.1	269.1
2.2	2.5	9.4	9.1	5.8	5.8
23	18	14	3	8	8

0735

272.4	271.4	265.5	264.9	265.0	264.8	264.9
2.5	3.5	9.4	10.0	7.7	6.1	6.0
20	15	11	7	9	14	14

0700

2" Pipe Subdivision Corner (at head of creek)

270.49	269.69	265.89	264.0	263.8
4.4	5.2	9.0	10.9	11.1
15	10	2	40	40

BM

1428

274.89 N

260.6

INVERT ELEV. Osborne's Sta.

78" R.L.P. 1944.54

See page 67

274.89 N



Cont'd From Page 69

28

R

R

70

2740

out of creek

	276.1	272.1	272.1	272.1
+1.2	2.8	2.8	2.8	
18	10		30	

2713

	275.7	275.6	272.0	271.7	268.9	259.7	272.3
+0.8	+0.7	2.9	3.2	8.0	7.2	2.6	
21	16	10		3	22	26	

2709

Creek Bends

	275.5	275.4	271.6	271.1	266.8	267.4	272.2
+0.6	+0.5	3.3	3.8	8.1	7.5	2.7	
21	16	10	2		15	17	

514.52

1792

	275.1	274.9	266.1	266.5	271.8	271.8
+0.2	0.0	8.8	8.4	3.1	3.1	
20	15	8		3	8	

Reduced

27489X

27489X ↓

Stewart St.

Additional notes

orig notes on P. 49 this book

Figures shown are elevations

3+94 19' Lt. = <sup>10" diam</sup> pole # JP 377234

3+71 15<sup>8</sup> Rt. = 10" diam pole # P 77208

3+65 20' Rt. =  $\pm$  8<sup>5</sup>' wide Conc. drive

3+54 20' Rt. =  $\pm$  3' wide Conc. walk

2+79 20<sup>5</sup> Rt. =  $\pm$  8' wide conc. drive

(17<sup>2</sup> Lt. = 10" pole # JP 377235

2+20 - 16' Rt. = 10" pole # P 376304

2+14 - 20' Rt. =  $\pm$  8' wide conc. drive

2+10 - 19<sup>8</sup> Lt. =  $\pm$  9' wide Conc. drive

1+25 - 21<sup>6</sup> Lt. =  $\pm$  level ribbon drive

1+21 15<sup>E</sup> Rt. = 10" diam pole # P 7848C

Direct elev. rod used Elev. ~~plane~~

*Overhead*

463.54 463.54  
20 30  
drive

463.58 463.71  
20 30  
walk

463.12 463.93  
20<sup>E</sup> 42  
Car Plan

463.57 463.80  
20 30  
drive

463.36 463.23 462.9  
42 198 19  
Car drive Bd.

463.17 463.15  
31<sup>E</sup> 21<sup>E</sup>  
Mean  
of ribbon

plane same as on page 49

Stewart St  
Cont from p. 71

72

starting on p. 149  
End of additions to notes

5714 22' Lt. = end conc. drive

463105 462.85  
42 22  
Gar. Floor drive

5706 22' Lt. = start conc. drive

463105 462.72  
42 22  
Gar. Floor drive

4739 21<sup>6</sup> Lt. = end conc. drive

462.90  
21<sup>6</sup>  
drive

4733- 19<sup>3</sup> Lt. =  $\phi$  8<sup>5</sup>' wide conc. drive

46296 463.15  
192 39  
drive Gar floor

4723- 21<sup>6</sup> Lt. = start conc. drive to

463106 462.85  
40 21<sup>6</sup>  
Gar Floor drive

Hobart st.

Additional notes,

Original on P 54

Figures shown are elevations

(W) denotes water meter box

4+77 19<sup>3</sup> RT =  $\pm$  8' wide Conc. drive

4+23 20<sup>1</sup> RT =  $\pm$  8' wide Conc. drive

3+30 - 21<sup>3</sup> RT =  $\pm$  10' wide Conc. drive

2+85 (shown as 1+85 - is 2+85)

2+99 (shown as 1+99 - is 2+99)

2+81 (shown as 1+81 - is 2+81)

2+74 - omitted (now at 2+53)

2+53 - 13<sup>5</sup> Lt = Pole anchor TP = 460.44

1+45 - 19' RT = (W)

1+28 59' RT =  $\pm$  10' wide Conc. drive

BM = M.H. Rim Miller + Hobart P-54

EL = 457.33

Indexed

73

462.19 463.20  
192 35  
drive Gar. floor

461.25 461.93  
201 34  
on drive

461.28 461.80  
213 35  
drive Gar. floor

460.06  
59

Reset N.W. Cor. Lot 92+93

Oake mere

C.H.S.  
Bo99  
Altman  
Johns

9-16-52

W.O. 20006

FB 2019 - P 48

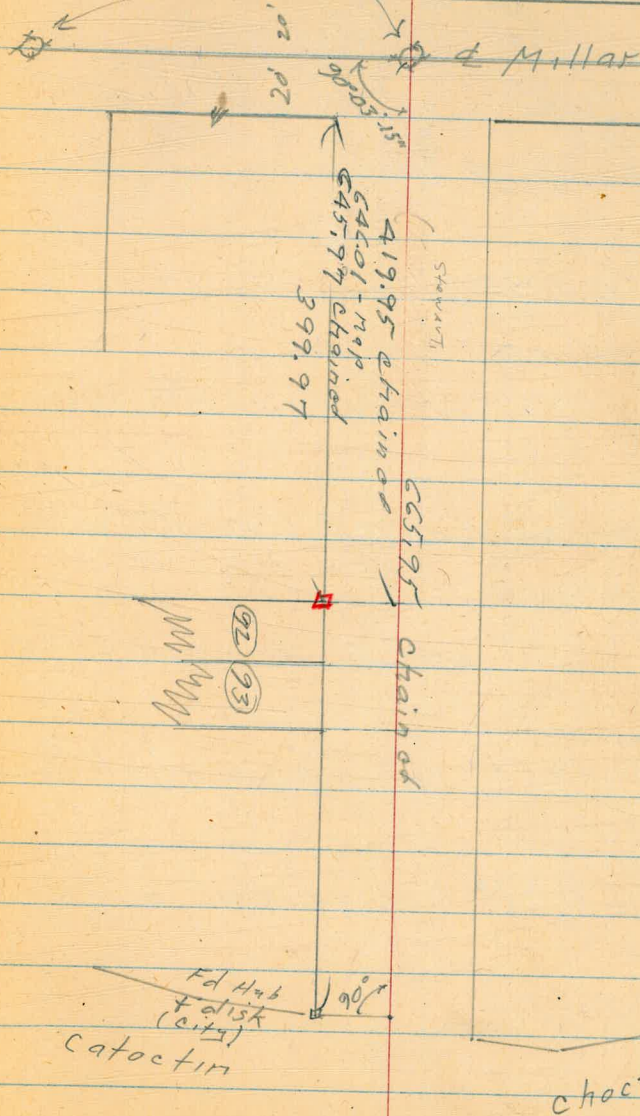
Map # 1576

□ = set 1/4 & disk

INDEXED  
SEP 18 1952

= A crosses in M.H. yim  
page 48  
this book

74



INDEXED

Den  
JUN 22 1955

RE-CHECK CROSS SECTIONS ALLEY BLK. K.

MONTECELLO W.O. 31429

See Pg 26-31 for Original x-sec's

& Sketch Pg. 26.

Ref. Map 6-21-55  
N<sup>o</sup> 1154

Stamp  
Hoffman 75  
Blunt  
Elmore

NOTE: Use Original  
Notes in addition  
to these (see Pg. 27)

Lt.                      &                      Rt

3+92-10' Rt = & 10' Conc. Carport

383.39    383.43

10'        20'

Conc.     on Conc.

T.B.M.

384.03

Set P.K. P.P.N<sup>o</sup> PA-4441 Sta 3+47-9' Lt. &

3+48-11' Rt. Begin 8" Conc blk Wall

383.0    382.41    388.45

11'        11'        11'

Ground ftg    Top  
Wall

1+22<sup>7</sup>-8' Lt. End 4' Chainlink fence

0+85<sup>5</sup>-9' Lt. Begin 4' Chainlink fence

0+17-9' H. & Deadman (Twin)

B.M.

383.15

S.W. Lead (No Plug) 50-74 & E/Cajon  
(see Pg. 27)

ALLEY BLK. A.

Lt.

E

Rt 76

5+74<sup>±</sup> 10<sup>6</sup> Rt. Begin Conc. Patio Slab

381.94	382.05
10 <sup>6</sup>	20 <sup>6</sup>
CONC	ON CONC
Slab	

T.P. 384.03

4+73-10<sup>6</sup> Lt. End Conc. Patio Slab

383.44	383.45
20 <sup>6</sup>	10 <sup>6</sup>
ON CONC	CONC
Slab	

4+47-10<sup>5</sup> Lt. Begin Conc. Patio

383.39	383.40
20 <sup>5</sup>	10 <sup>5</sup>
ON CONC	TOP CONC
Slab	Slab

3+98-10<sup>±</sup> Rt. End 8" Conc blk Wall

383.2	382.28	388.63
10 <sup>±</sup>	10 <sup>±</sup>	10 <sup>±</sup>
Ground	Flg	Top
		8" Wall

RE-X-SEC ALLEY BLK. K MONTECELLO  
B.M.

377.04 - 377.04 SEBP. WILSON & MONROE

7+60.17 = S. Cb. Line Monroe

6-21-55  
Lt. E Rt. 77  
378.29 377.98 378.02 378.06 378.23 378.24 378.78  
12° 12° 10° 0° 10° 12° 12°  
Cb G G Cb

7+58.17 = B.C. Cb. Ret's

378.28 378.12 378.07 378.40 378.67  
10° 10° 0° 10° 10°  
Cb G G Cb

NOTE: This Area has been Re-Surfaced  
7+48.17 = S. Line Monroe With A.C. Since  
Orig. Sec's.

378.37 378.37 378.33 378.59 378.64  
9° 9° 0° 10° 10°  
Cb G G Cb

6+01-10<sup>6</sup> Rt. End Conc. Patio Slab

381.97 382.14  
10<sup>6</sup> 20<sup>6</sup>  
CONC. ON CONC.

T.B.M.

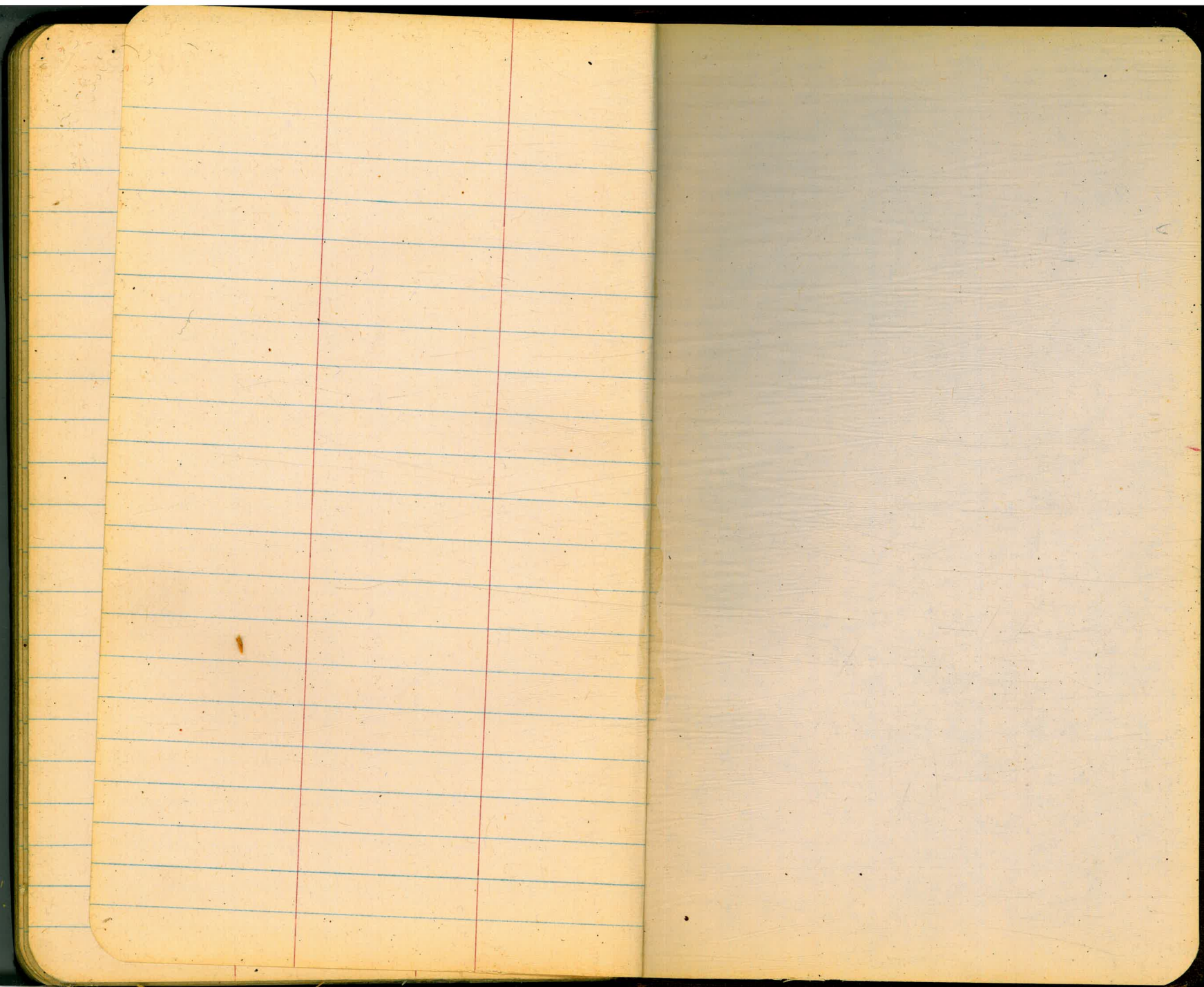
380.44

Set P.K. PP# JP4975 SW. Cor. Alley &  
Monroe









Gut 520 551  
 592

6096  
 59704  
 1258

228.97  
 114.43  
 229.05

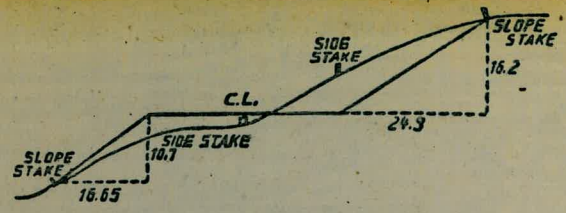
224.01  
 25  
 151  
 36

13,000.00  
 9  
 400  
 396  
 400

36  
 36  
 21  
 108.6  
 179.6

60  
 6  
 66

7.22



**DISTANCES FROM SIDE STAKES FOR CROSS-SECTIONING.**

**SLOPE 1 1/2 TO 1. ROADWAY OF ANY WIDTH.**

	0	.1	.2	.3	.4	.5	.6	.7	.8	.9	
0	0.00	0.15	0.30	0.45	0.60	0.75	0.90	1.05	1.20	1.35	0
1	1.50	1.65	1.80	1.95	2.10	2.25	2.40	2.55	2.70	2.85	1
2	3.00	3.15	3.30	3.45	3.60	3.75	3.90	4.05	4.20	4.35	2
3	4.50	4.65	4.80	4.95	5.10	5.25	5.40	5.55	5.70	5.85	3
4	6.00	6.15	6.30	6.45	6.60	6.75	6.90	7.05	7.20	7.35	4
5	7.50	7.65	7.80	7.95	8.10	8.25	8.40	8.55	8.70	8.85	5
6	9.00	9.15	9.30	9.45	9.60	9.75	9.90	10.05	10.20	10.35	6
7	10.50	10.65	10.80	10.95	11.10	11.25	11.40	11.55	11.70	11.85	7
8	12.00	12.15	12.30	12.45	12.60	12.75	12.90	13.05	13.20	13.35	8
9	13.50	13.65	13.80	13.95	14.10	14.25	14.40	14.55	14.70	14.85	9
10	15.00	15.15	15.30	15.45	15.60	15.75	15.90	16.05	16.20	16.35	10
11	16.50	16.65	16.80	16.95	17.10	17.25	17.40	17.55	17.70	17.85	11
12	18.00	18.15	18.30	18.45	18.60	18.75	18.90	19.05	19.20	19.35	12
13	19.50	19.65	19.80	19.95	20.10	20.25	20.40	20.55	20.70	20.85	13
14	21.00	21.15	21.30	21.45	21.60	21.75	21.90	22.05	22.20	22.35	14
15	22.50	22.65	22.80	22.95	23.10	23.25	23.40	23.55	23.70	23.85	15
16	24.00	24.15	24.30	24.45	24.60	24.75	24.90	25.05	25.20	25.35	16
17	25.50	25.65	25.80	25.95	26.10	26.25	26.40	26.55	26.70	26.85	17
18	27.00	27.15	27.30	27.45	27.60	27.75	27.90	28.05	28.20	28.35	18
19	28.50	28.65	28.80	28.95	29.10	29.25	29.40	29.55	29.70	29.85	19
20	30.00	30.15	30.30	30.45	30.60	30.75	30.90	31.05	31.20	31.35	20
21	31.50	31.65	31.80	31.95	32.10	32.25	32.40	32.55	32.70	32.85	21
22	33.00	33.15	33.30	33.45	33.60	33.75	33.90	34.05	34.20	34.35	22
23	34.50	34.65	34.80	34.95	35.10	35.25	35.40	35.55	35.70	35.85	23
24	36.00	36.15	36.30	36.45	36.60	36.75	36.90	37.05	37.20	37.35	24
25	37.50	37.65	37.80	37.95	38.10	38.25	38.40	38.55	38.70	38.85	25
26	39.00	39.15	39.30	39.45	39.60	39.75	39.90	40.05	40.20	40.35	26
27	40.50	40.65	40.80	40.95	41.10	41.25	41.40	41.55	41.70	41.85	27
28	42.00	42.15	42.30	42.45	42.60	42.75	42.90	43.05	43.20	43.35	28
29	43.50	43.65	43.80	43.95	44.10	44.25	44.40	44.55	44.70	44.85	29
30	45.00	45.15	45.30	45.45	45.60	45.75	45.90	46.05	46.20	46.35	30
31	46.50	46.65	46.80	46.95	47.10	47.25	47.40	47.55	47.70	47.85	31
32	48.00	48.15	48.30	48.45	48.60	48.75	48.90	49.05	49.20	49.35	32
33	49.50	49.65	49.80	49.95	50.10	50.25	50.40	50.55	50.70	50.85	33
34	51.00	51.15	51.30	51.45	51.60	51.75	51.90	52.05	52.20	52.35	34
35	52.50	52.65	52.80	52.95	53.10	53.25	53.40	53.55	53.70	53.85	35
36	54.00	54.15	54.30	54.45	54.60	54.75	54.90	55.05	55.20	55.35	36
37	55.50	55.65	55.80	55.95	56.10	56.25	56.40	56.55	56.70	56.85	37
38	57.00	57.15	57.30	57.45	57.60	57.75	57.90	58.05	58.20	58.35	38
39	58.50	58.65	58.80	58.95	59.10	59.25	59.40	59.55	59.70	59.85	39
40	60.00	60.15	60.30	60.45	60.60	60.75	60.90	61.05	61.20	61.35	40
41	61.50	61.65	61.80	61.95	62.10	62.25	62.40	62.55	62.70	62.85	41
42	63.00	63.15	63.30	63.45	63.60	63.75	63.90	64.05	64.20	64.35	42
43	64.50	64.65	64.80	64.95	65.10	65.25	65.40	65.55	65.70	65.85	43
44	66.00	66.15	66.30	66.45	66.60	66.75	66.90	67.05	67.20	67.35	44
45	67.50	67.65	67.80	67.95	68.10	68.25	68.40	68.55	68.70	68.85	45
46	69.00	69.15	69.30	69.45	69.60	69.75	69.90	70.05	70.20	70.35	46
47	70.50	70.65	70.80	70.95	71.10	71.25	71.40	71.55	71.70	71.85	47
48	72.00	72.15	72.30	72.45	72.60	72.75	72.90	73.05	73.20	73.35	48
49	73.50	73.65	73.80	73.95	74.10	74.25	74.40	74.55	74.70	74.85	49
50	75.00	75.15	75.30	75.45	75.60	75.75	75.90	76.05	76.20	76.35	50

THE NATIONAL BLANK BOOK COMPANY  
 HOLYOKE MASSACHUSETTS  
 NEW YORK CHICAGO BOSTON SAN FRANCISCO