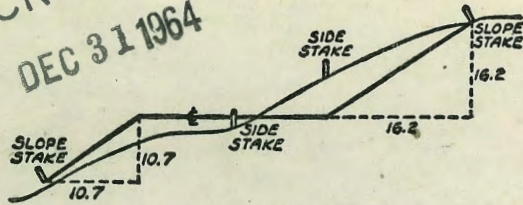


2021

ESTABLISHED

MICROFILMED
DEC 31 1964



DISTANCES FROM SIDE STAKES FOR CROSS-SECTIONING
SLOPE 1 TO 1. ROADWAY OF ANY WIDTH

	0	.1	.2	.3	.4	.5	.6	.7	.8	.9	
0	0.00	0.10	0.20	0.30	0.40	0.50	0.60	0.70	0.80	0.90	0
1	1.00	1.10	1.20	1.30	1.40	1.50	1.60	1.70	1.80	1.90	1
2	2.00	2.10	2.20	2.30	2.40	2.50	2.60	2.70	2.80	2.90	2
3	3.00	3.10	3.20	3.30	3.40	3.50	3.60	3.70	3.80	3.90	3
4	4.00	4.10	4.20	4.30	4.40	4.50	4.60	4.70	4.80	4.90	4
5	5.00	5.10	5.20	5.30	5.40	5.50	5.60	5.70	5.80	5.90	5
6	6.00	6.10	6.20	6.30	6.40	6.50	6.60	6.70	6.80	6.90	6
7	7.00	7.10	7.20	7.30	7.40	7.50	7.60	7.70	7.80	7.90	7
8	8.00	8.10	8.20	8.30	8.40	8.50	8.60	8.70	8.80	8.90	8
9	9.00	9.10	9.20	9.30	9.40	9.50	9.60	9.70	9.80	9.90	9
10	10.00	10.10	10.20	10.30	10.40	10.50	10.60	10.70	10.80	10.90	10
11	11.00	11.10	11.20	11.30	11.40	11.50	11.60	11.70	11.80	11.90	11
12	12.00	12.10	12.20	12.30	12.40	12.50	12.60	12.70	12.80	12.90	12
13	13.00	13.10	13.20	13.30	13.40	13.50	13.60	13.70	13.80	13.90	13
14	14.00	14.10	14.20	14.30	14.40	14.50	14.60	14.70	14.80	14.90	14
15	15.00	15.10	15.20	15.30	15.40	15.50	15.60	15.70	15.80	15.90	15
16	16.00	16.10	16.20	16.30	16.40	16.50	16.60	16.70	16.80	16.90	16
17	17.00	17.10	17.20	17.30	17.40	17.50	17.60	17.70	17.80	17.90	17
18	18.00	18.10	18.20	18.30	18.40	18.50	18.60	18.70	18.80	18.90	18
19	19.00	19.10	19.20	19.30	19.40	19.50	19.60	19.70	19.80	19.90	19
20	20.00	20.10	20.20	20.30	20.40	20.50	20.60	20.70	20.80	20.90	20
21	21.00	21.10	21.20	21.30	21.40	21.50	21.60	21.70	21.80	21.90	21
22	22.00	22.10	22.20	22.30	22.40	22.50	22.60	22.70	22.80	22.90	22
23	23.00	23.10	23.20	23.30	23.40	23.50	23.60	23.70	23.80	23.90	23
24	24.00	24.10	24.20	24.30	24.40	24.50	24.60	24.70	24.80	24.90	24
25	25.00	25.10	25.20	25.30	25.40	25.50	25.60	25.70	25.80	25.90	25
26	26.00	26.10	26.20	26.30	26.40	26.50	26.60	26.70	26.80	26.90	26
27	27.00	27.10	27.20	27.30	27.40	27.50	27.60	27.70	27.80	27.90	27
28	28.00	28.10	28.20	28.30	28.40	28.50	28.60	28.70	28.80	28.90	28
29	29.00	29.10	29.20	29.30	29.40	29.50	29.60	29.70	29.80	29.90	29
30	30.00	30.10	30.20	30.30	30.40	30.50	30.60	30.70	30.80	30.90	30
31	31.00	31.10	31.20	31.30	31.40	31.50	31.60	31.70	31.80	31.90	31
32	32.00	32.10	32.20	32.30	32.40	32.50	32.60	32.70	32.80	32.90	32
33	33.00	33.10	33.20	33.30	33.40	33.50	33.60	33.70	33.80	33.90	33
34	34.00	34.10	34.20	34.30	34.40	34.50	34.60	34.70	34.80	34.90	34
35	35.00	35.10	35.20	35.30	35.40	35.50	35.60	35.70	35.80	35.90	35
36	36.00	36.10	36.20	36.30	36.40	36.50	36.60	36.70	36.80	36.90	36
37	37.00	37.10	37.20	37.30	37.40	37.50	37.60	37.70	37.80	37.90	37
38	38.00	38.10	38.20	38.30	38.40	38.50	38.60	38.70	38.80	38.90	38
39	39.00	39.10	39.20	39.30	39.40	39.50	39.60	39.70	39.80	39.90	39
40	40.00	40.10	40.20	40.30	40.40	40.50	40.60	40.70	40.80	40.90	40
41	41.00	41.10	41.20	41.30	41.40	41.50	41.60	41.70	41.80	41.90	41
42	42.00	42.10	42.20	42.30	42.40	42.50	42.60	42.70	42.80	42.90	42
43	43.00	43.10	43.20	43.30	43.40	43.50	43.60	43.70	43.80	43.90	43
44	44.00	44.10	44.20	44.30	44.40	44.50	44.60	44.70	44.80	44.90	44
45	45.00	45.10	45.20	45.30	45.40	45.50	45.60	45.70	45.80	45.90	45
46	46.00	46.10	46.20	46.30	46.40	46.50	46.60	46.70	46.80	46.90	46
47	47.00	47.10	47.20	47.30	47.40	47.50	47.60	47.70	47.80	47.90	47
48	48.00	48.10	48.20	48.30	48.40	48.50	48.60	48.70	48.80	48.90	48
49	49.00	49.10	49.20	49.30	49.40	49.50	49.60	49.70	49.80	49.90	49
50	50.00	50.10	50.20	50.30	50.40	50.50	50.60	50.70	50.80	50.90	50

Distance of slope stake from side or shoulder stake for any width roadway, slope 1 to 1. If ground is nearly level, the cut or fill at side stake is located by the double entry method in left column and top row. The number in body of table in same row and column gives distance from side stake to slope stake. If ground is not level estimate the difference in elevation between the side stake and slope stake, lower target by this amount if cut, elevate if fill. Add this amount to cut or fill and find distance in table. Set up rod at this point, and line of sight should cut target. If it does not make the slight adjustment necessary.

INDEXED

to page # 92

Proposed Storm Drain Witherby Under Pass 2-7

Proposed Storm Drain East of 60th So. Hunderlin 8-20

Elev. Gas Main Witherby Under Pass 31

Proposed Culvert West 28th St. E. + Broadway 23-30

Survey Block 1 Encanto Heights 31

X-sec. Alley BIK 157 Pacific Beach 49-56

X-sec. 51st Trojan to Orange 66-72

X-sec. Alley BIKs H + I Plumosa Park 32-45

LOCATION - PROPOSED DRAIN
AND PUMP HOUSE
at Witherby St. Underpass

Existing
24" Conc. Pipe

Walker
Johnson
Pope
Clayford
4-5-49

W.O. 60353

INDEXED

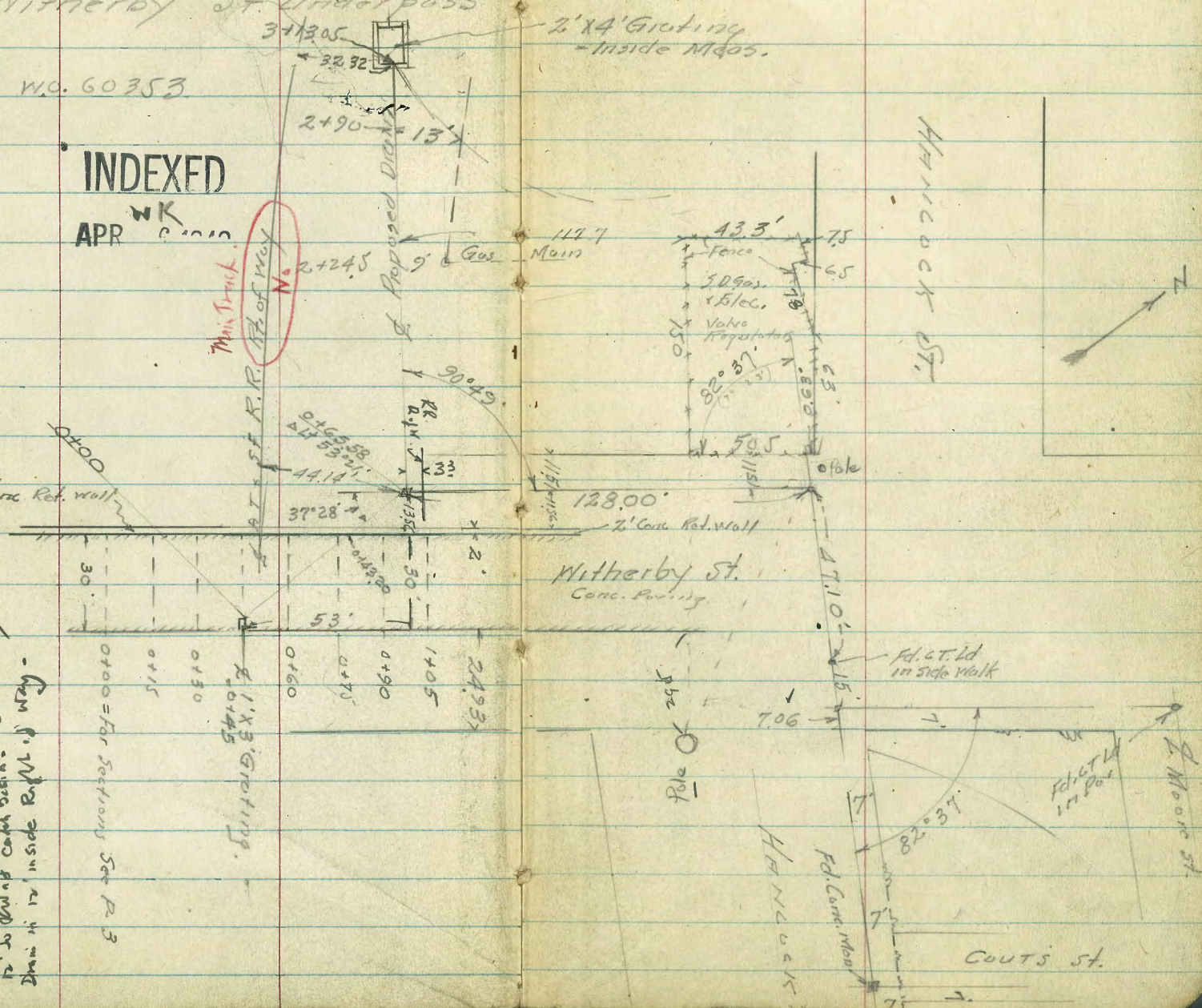
APR 21 1949

Min. Track
R.R. of W.V.

By G. Made
Survey

Half y - Sand Fe. Engr. Says - east end
is 3' at east of survey line -
making 2 main lines about 2 1/2' off
the original center line of R.R. of W.V.
to do work at each end.
Draw in side R.R. of W.V.

0100 = for Sections See P. 3



HANCOCK ST.

Witherby St.
Conc. Ret. Wall

COURTS ST.



Cross Section 12 - on Eusting Paving
 Witherby St. Underpass
 Sketch P. 2

W. Witherby St.

3

INDEXED

0160

-8.06	-8.01	-8.32	-2.16
12.63	12.58	12.89	6.73
15		15	15
Gut.		Gut.	Wall

0145 - 2 Grating

-8.34	-8.32	-8.49	-8.53	-2.14
12.91	12.89	12.06	13.10	6.71
15		12	15	15
Gut.		Grating	Grating	on Wall

0130

-8.30	-8.11	-8.41	-2.15
12.87	12.68	12.98	6.72
15		15	15
Gut.		Gut.	Wall

0115

-7.94	-7.66	-7.92	-2.15
12.51	12.23	12.49	6.72
15		15	15
Gut.		Gut.	Wall

0100

2.45	-7.34	-7.03	-7.25	-2.13
2.12	11.91	11.60	11.82	6.70
15	15	15	15	15
on Wall	Gut.		Gut.	on Wall
		4.57		

TR 1.25 4.57 2.76 3.32

TR 2.76 6.08 12.77 3.32

TR 0.39 16.09 12.93 16.70

0.90 28.63 27.73

S.V.
 B.M. 5P. Witherby & Moore

Cross Sections
Wetherby St. Underpass

Lt.

Rt.
Wetherby
St.

Rt.

4

INDEXED

1+20

6.8?	2.4	6.6	4.1	3.6	2.51	-3.81	-3.81	-3.87	-0.77
	2.2	+20	0.5	1.0	206	838	838	844	534
	60	43	40	27	15	15	15	15	15
					Wall	Gut.		Gut.	Wall

1+05

6.9?	2.3	6.6	4.0	3.6	3.5	2.50	-5.03	-5.00	-5.12	-1.31
	2.3	+20	0.6	11	11	207	960	957	969	588
	60	43	40	27	20	15	15	15	15	15
						Wall				Wall

0+90

7.3	7.1	6.7	4.1	4.1	3.6	2.52	-6.16	-6.14	-6.31	-1.81
+2.7	+25	+21	0.5	0.5	1.0	205	1073	1071	1088	638
60	48	45	40	27	30	15	15	15	15	15
						Wall				

0+75

5.8		5.2	2.53	5.2	2.53	-7.30	-7.22	-7.36	-2.13
+12		+06	204	11.87	11.77	1193	670		
40		27	15	15	15	15	15	15	15
			Wall			Gut.	Wall		

4.57

Wetherby St. Underpass
 Profile Levels - Proposed Drain

Lt.

ℓ

Rt.

5

INDEXED

0+80 = ℓ Tel Pole 10' Lt (NO NUMBER)

T.P. 10.58 14.43 072 3.85

Δ Lt 53°21

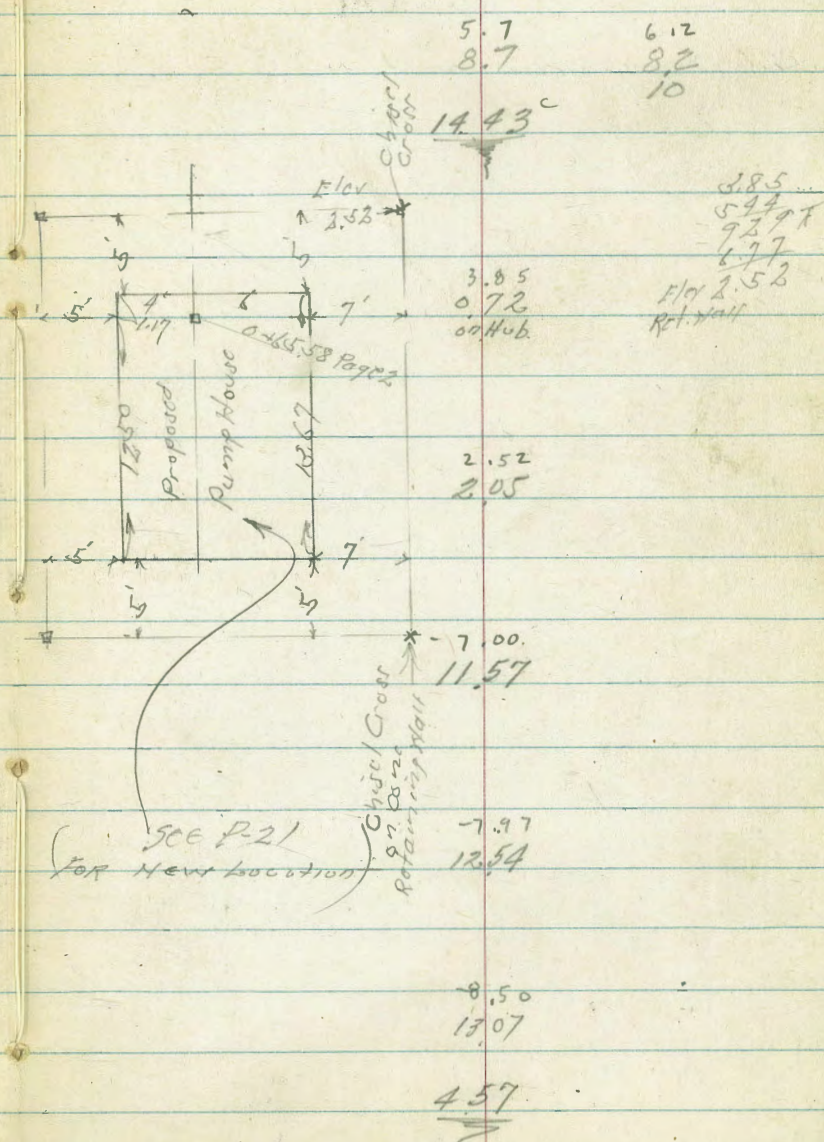
0+65.58 = ℓ Proposed Pump Plant

0+43.20

0+43.20 = Ext. of Ret Wall

0+20.0 = ℓ Wetherby

0+00 = N.E. Cor. Grating



4.57

Wetherby St. Underpass
Profile Proposed Drains

Lt. Rt.

6

INDEXED

2+26 = Seq. Sidings on Lt.

10.51
392
21.6
E. Rail
sidings

2+10

9.1	11.0	11.0	9.9	8.1	8.0
5.3	27	34	4.5	6.3	6.4
23	19	10	17.511	6	
				Top Fill on Not Graded	

2+09 = Tc/R/c 13' Lt.

2+00

8.1	8.8	7.9	7.9
6.3	5.6	6.5	6.5
11	7	10	10

1+50

7.3	7.1	6.9
7.1	7.3	7.5
10		10

1+20

6.5	6.6	6.7
7.2	7.8	7.7
10		10

0+90

6.2	6.2	6.6
8.2	8.2	7.8
10		10

14.43

14.43

Withby St. Underpass
Profile Proposed Drain

140 60353

INDEXED

Lt.

Rt.

Rt.

7

				<u>201</u>
Check Starting B.M.	012			2773
				2772
T.P.	12.15	2784	017	1569
T.P.	12.54	1586	111	332

3+13.05 = Inside Edge 2' x 4' Grating

10.28	9.13	1.25
4.15	5.30	13.18
154	on Grating	0
to Rail siding.		on Flow
		24" Conc. Culvert

3+00

10.0	9.3	9.2
4.4	5.1	5.2
10		10

2+75

10.2	10.1	9.7
4.2	4.3	4.7
10		10

2+50

10.0	10.1	9.3
4.4	3.7	5.1
10		10

14.43

14.43

Plot

Brooklyn 1/12

415410

Nail

Ed 13th Brooklyn on 115th

68°36'

1170225 Set Hub

Void

162 35'

60th St

0°39'

10' curbs
5' walk
5' sidewalk

0400

Plot

23925

Wunderland

con. gatters

10' throat in curbs with a 4x4 rebar centered

Hub out

Curbs 10'
walk 5'
sidewalk 5'

0°39'

18' 1/2

22°33'00"

7+25 Set Hub

D. Smith
W. Moore
J. Clark
F. Acung.

cont on next
page

Proposed

Storm Drain East of 60th St.
Wunderlin - to Creek

W[#] 20555

8-7-49

9

Cont
Next
Page

89° 11' 23" 1/2
11544
set nail
Brooklyn

11427

69° 36'
Sisson 71° 25' 71° 25'

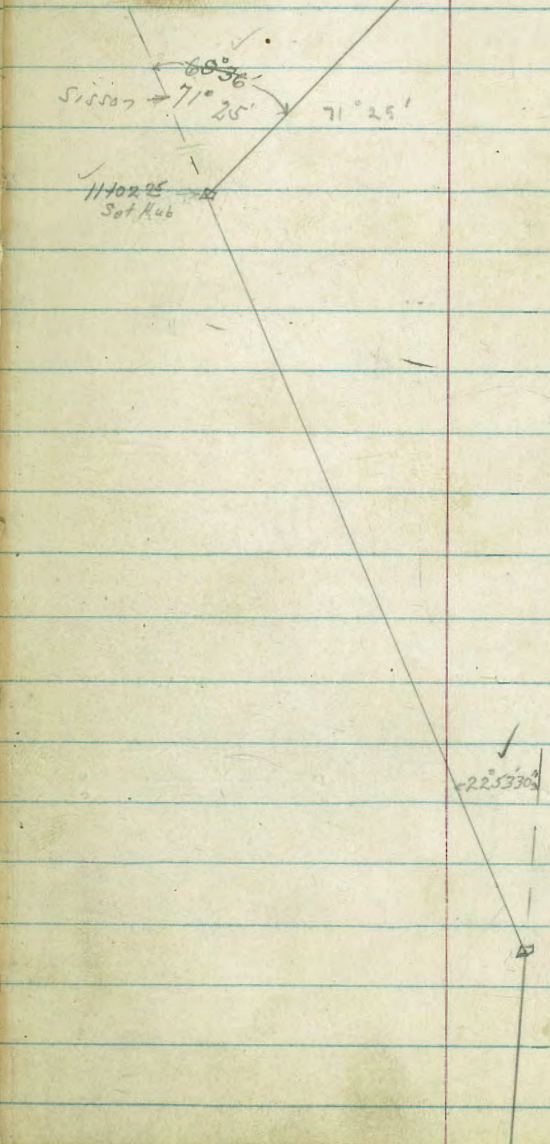
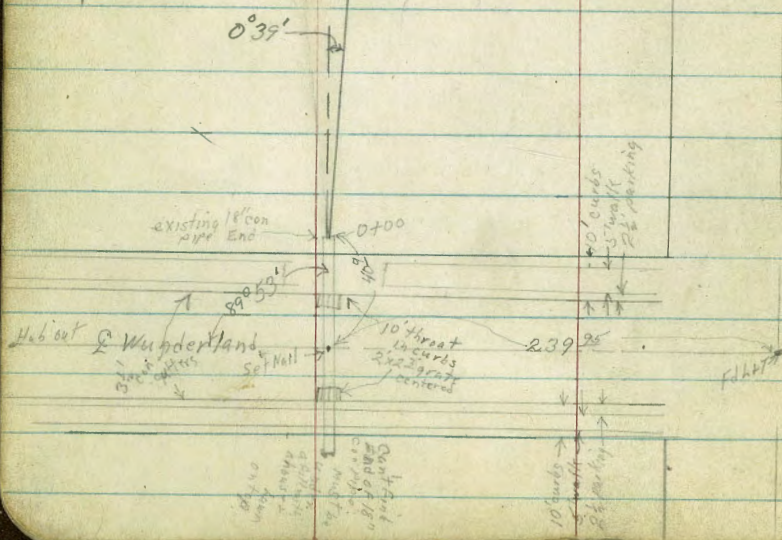
11102 25
Set Hub

INDEXED
N. K.
AUG 8 1949

25 1402

22° 53' 30"

7425
set Hub



52
29.6
22.4

60th St Storm Drain Contd

Creek Bank

16792⁰⁵
Set Hub

1465530⁵

149604
approx
Hwy 11
1542963
Set Hub

N

Set Hub @
Inter. line of
2' cont' of B. line

Division Line between
Parake Mission Lots 13 & 16

1276554

41265

213221

Set Hub

FD Mon E 60th St

Set Hub further on by
South line Long

117025

D. Smith
W. Moore
J. Clark
F. Acuna

Levels Proposed 60th St Storm Drain

1700

0750

TP 279 253⁷² 1158 252²³

0700 End 18" con pipe no headwall

0-202 South curb line Wunderland

0-61 North curb line Wunderland

TP 256 264⁵¹ 12²⁵ 261⁹⁵

BM 056 274²⁰

274³⁴ L&T E Wunderland
w/line 60th St

WO² 20555
8-4-49

11

Lt. East

249.7	249.9	249.7	249.9	At West
10 ² 9 ⁸	10 ² 9 ⁸	10 ² 9 ⁸	10 ² 9 ⁸	249.1
25 10	25 10	25 10	25 10	

249.6	249.5	249.3	250.1	251.3
61 62	64 56	44 44		
25 10	25 10	25 10	25 25	

255⁷²

255.2	253.1	251.59	252.3	250.4
93	11 ⁴⁰	13 ¹²	11 ³	91
10	10	10	10	10

259.76	259.14	259.66	258.83	258.61	259.31	259.98
475	539	485	565	10 ²⁰	520	453
15 Curb	25 Gutter	15 Curb	15 Gutter	15	15 Gutter	15 Curb

260.89	260.18	260.99	260.18	257.68	260.23	261.09
367	433	352	433	6 ²³	418	342
15 Curb	15 Gutter	15 Curb	15 Gutter on side	15	15 Gutter	15 Curb

264⁵¹

Cont.

TP₄ 3³⁷ 234⁴⁰ 12² 231⁰³

3755 12° RT & 48" Palm tree

3750

3700

2750

2710 6° RT & Sewer MH

2700

TP₃ 0⁸¹ 243⁷³ 12²² 242²²

1750

4T

E

RT

231.6	232.0	231.9	232.0	232.0
12L	11Z	11Z	11Z	11Z
25	10	10	10	25

233.3	233.3	233.2	233.3	233.0
10Z	10Z	10Z	10Z	10Z
25	10	10	10	25

237.3	236.3	235.6	235.7	236.0
6Z	7Z	8Z	8Z	7Z
25	10	10	10	25

531
6
17m
238.42

239.1	238.9	238.7	238.9	238.9
4Z	4Z	5Z	4Z	4Z
25	10	10	10	25

243⁷³ ✓

242.5	242.3	241.9	242.1	242.5
13Z	13Z	13Z	13Z	13Z
25	10	10	10	25

255⁷² ✓

cont.

5400

LT

226.4	226.1	225.9	226.7	226.4
80	82	85	82	80
25	10	10	25	

RT

4475

227.2	227.3	227.5	227.1	227.3
73	72	62	72	71
25	10	10	25	

4470 6° RT power pole # P171034

4450

229.5	229.3	229.2	229.0	229.0
42	52	52	54	54
25	10	10	25	

4425

229.9	229.7	229.3	230.4	230.4
45	42	52	40	40
25	10	10	25	

4400

231.5	231.4	231.6	231.4	231.3
22	32	28	32	32
25	10	10	25	

3499 9° RT SE cor Frame House

192 332.43

3463 11° RT NE cor Frame House

9°
Top
Foundation 232.3

11°
Top
Foundation

234.40

cont.

LT

♀

RT

7+24 11° LSW cor chicken coupe

7+03 12° LT NW cor chicken coupe

6+85 52° LT Begin wall 9" con runs North & South

277.2	278.0	278.27	279.8	277.0	223.0
102	96	93	72	55	45
80	53	52	25	15	

Top wall

6+84 51° LT End 6" con wall ⊥ to hinge

279.0	279.33	279.0	279.53	279.6	272.4	223.6
85	82	85	80	72	53	40
80	80	51.5	51.5	25	15	

Ground to North
Top wall

6+50

270.4	220.0	220.4	211.0	222.6
74	75	71	65	53
50	25	10	18	

TP₅ 5^B 227⁵⁵ 11²⁸ 222⁴²

227⁵⁵ 1

6+00

224.3	220.8	221.9	222.7	224.8
13	13	12	11	9
25	10	10	25	

5+50

224.7	223.8	222.4	222.8	224.4
9	10	12	11	10
25	10	10	25	

234 40 ↓

cont

TP₇ 035 208³⁶ 12²³ 208¹¹

9400

84950 E End fig tree Bush

8485 E Begin fig tree Bush

8450 E Berry patch 40' long 10' wide

8410 6' ht. & 2" Peach tree

8400

7450

TP₆ 064 220⁸⁴ 735 220²⁰ 7125 H46

7425 Lt. taken on split of L

LT ♀ RT
 229.1 228.4 224.8 224.3 225.8 229.7
 112 124 16 165 150 114
 25 10 10 10 15 30

211.8 209.8 209.0 229.6 212.3
 90 110 118 112 85
 25 10 10 10 25

212.1 210.9 212.8 214.7 215.0 215.7
 82 92 70 61 58 52
 75 50 10 10 10 20

214.6 214.4 215.7 217.6 218.0 218.3 218.6 218.6
 62 64 51 32 28 25 22 22
 90 75 50 25 10 10 10 25

216.6 216.4 217.44 215.4 222.2 220.8 221.2
 110 112 101 82 75 68 62
 80 50 45 10 10 10 20
 Top wall 227 55

cont.

LT

E

RT

11702²⁵ L. RT taken on split of L

201.2	200.1	199.13	198.9	199.4
72	83	92	95	90
25	10	20H6	10	25

10782

201.4	198.7	196.6	196.4	199.2
70	92	112	120	92
25	10		10	15

10760

203.4	199.3	197.2	196.8	197.3	198.1	200.5
50	94	112	116	114	109	72
50	25	10	10	25	40	

10740

202.0	198.6	198.3	200.5	201.0	201.1
62	92	102	79	74	73
40	25	10	10	25	

10700

201.9	200.4	199.6	201.2	203.1	204.4	206.2
65	80	82	72	53	42	22
50	25	15	10		10	20

9750

207.0	201.7	201.9	205.5	207.1	208.1
12	62	65	22	12	02
50	25	10	10	25	

20836 ✓

cont.

13+17

13700 23°RT SE cor of cyclone fence in 6" con base

12750

12700

TP₈

335

19873

1298 195³⁸

11750

11718

LT

S

RT

193.9	192.9	186.5	186.0	190.9
48	58	12	12	78
25	15		10	25

194.6	194.0	186.9	186.3	186.8	189.6	192.4
42	42	118	12	112	91	632
30	20	9	12	10	23	23
						21

196.7	196.4	189.4	189.7	189.2	191.2
20	23	93	95	95	45
30	20	5		10	25

198.5	198.4	192.9	192.9	192.0	197.6
02	05	58	58	52	11
25	12		10	20	40

19873 ↓

199.8	199.9	195.1	195.3	195.8	201.3
88	85	133	131	126	71
25	10		10	25	45

200.7	196.7	196.3	191.1	191.5
72	112	1	93	82
25	5	12	10	25

20836 ↓

cont.

TR₁₀ 169 184⁸⁴ ✓ 860 183¹⁵

15129⁶⁹ Lt taken on split up L.

15100

14750

TR₉ 588 191²⁵ 12⁸⁶ 185⁸⁷

14400

13775

13440

LT

L

RT

1840 180.4 176.6 172.84 186.2
72 113 154 132 55
50 25 15 13 15

190.6 190.6 178.6 175.4 188.0
12 12 13 13 3
30 20 10 30

191.2 180.4 180.4 187.4
06 114 114 23
30 15 50

191.8 183.2 182.8 190.5
62 155 152 82
30 15 30

192.3 183.9 183.8 190.9
64 142 142 72
30 15 30

193.3 192.5 190.1 185.2 185.6 192.2
54 62 86 135 134 65
20 10 10 25 40

198731

cont

Lt

♀

Rt

TP₁₁ 2.47 176.21 11° 173 24

176 21 ↓

16+57 7° Rt & 12" olive tree

167.6	167.7	169.4	171.7	171.8	174.3	177.4
17 ²	17 ⁴	15 ⁴	13 ⁴	13 ⁰	10 ⁵	7 ⁴
30	25	10	6	10	20	

16+50

16+42 7° Rt & 16" olive tree

16+30 6° Rt & 12" olive tree

16+00

177.5	174.3	174.7	181.2
7 ³	10 ⁵	10 ⁴	3 ⁶
30	20	10	22

4° Rt & 10" palm tree

15+86 7° Lt & 10" pomigranite tree

15+65 3° Lt & 4" guince tree

181.4	182.3	177.4	181.0	177.9	184.7
3 ⁶	6 ⁵	7 ⁴	3 ⁸	6 ²	0 ¹
30	20	4	5	20	

15+55 South edge of 3' wide wood bridge (walking)

15+52 North edge of 3' wide wooden bridge (walking)

12' Rt to end 29' Lt to end

184 84 ↓

2.47

cont

LT

£

41

BM

823

16128 ✓ BP in Bridge
Escal on
Martin off
Mark. + 1.40

16134 ✓

TP₁₂

144

170⁰⁷

758

168⁶³

1737 2 creek

1657	1641	1645	1647
105	124	112	115
50	20	12	20

17107 Top of creek bank

1665	1649	1666	1676
92	113	96	86
25	10	20	20

16792⁰⁵ creek bank

1716	1718	1698	1692	1700
30	44	64	64	12
25	4	3	20	20

16780

1675	1668	1681	1692	1654
82	94	84	70	08
30	15	5	20	20

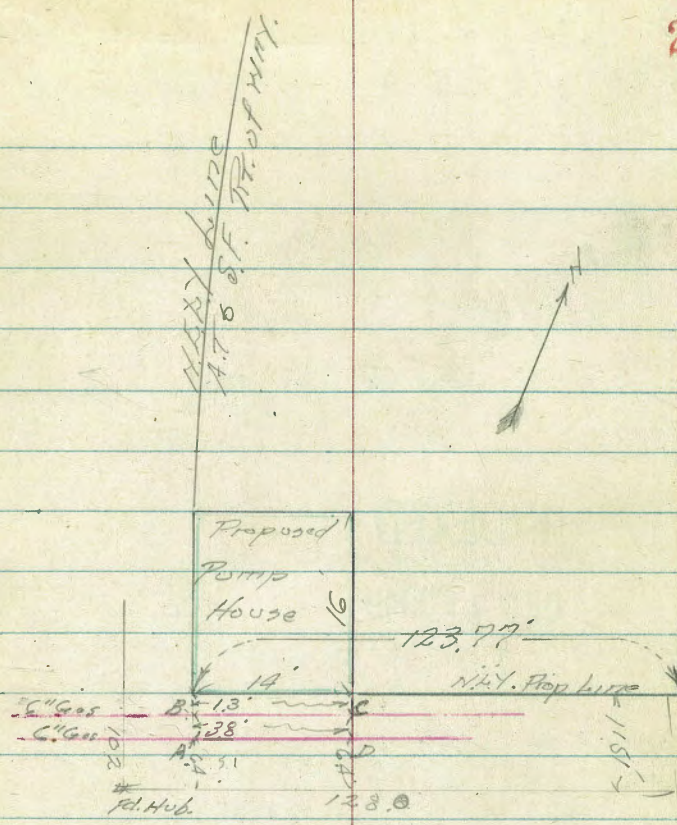
1762 ✓

Walker
 F. Gregory
 Pope
 P. Sission
 Elevations on Existing Gas Mains
 at Proposed Location
 Pump House
 Witherby St. Underpass
 12-1-49

INDEXED

W.K.

DEC 19 1949



WITHERBY ST.

B on Pipe	5.82	2.39
C on Pipe	5.99	2.27
D on Pipe	6.81	1.45
A on Pipe	6.67 6.70	1.59
SE. Ref.		
Chk Chisled Cross	5.75	10-5 = 2.52 2.51
4.91	8.26	3.85

B.M. on Hub 0+65.58 P-5

Walker
F. Gregory
G. Pope
R. Sisson
12-15-49

LOCATION - PROPOSED CULVERTS

And Existing Culverts

West of 28th St.

Between F-St & Broadway

0+88.45 = Δ Lt. 1°21'30"

Int = 7.9' Line

0+63.33 = P.O.T. Set Hub

INDEXED

N.Y.C.

DEC 19 1949

0+00 = Face Hd Wall

(Levels - p. 24 -)

0-510.0

Cont.
p. 23

Set Hub → 0+88.45 = Δ Lt 1°21'30"

33' 39" 0+84.45

89' 45"

50+63.33 x 95.54

0+60.33 = cb. line

Cons. Gutter

0+57.33

TREAT

0+29.33 = Gutter

0+26.33 = cb. line

0+16.33 = Prop line

0+00

7' 50'

510

SEE PAGE 73

30" Cons. pipe

Photo. of pipe in curb

28TH

4+29.38 = Beg. Exist. 30" Conc. Pipe Culvert

3+64.93 = Δ Lt. 0°33'30"

Set Hub
3+08.02 = P.O.T. - 8' E-ST.

2+56.85 = Δ Rt. 2°26'30" Set Hub

Dist = 9

30" Conc. Pipe

4+29.38

33'

Δ Lt 0°33'30"

3+64.93

30"

3+60.93

Ch. Line
2' x 2' Inlet Box

3+28.22

0.25'

88°37'

E-ST.

3+08.02
P.O.T. Set Hub

27.96'

2' x 2' Inlet Box

2+87.96

Ch. Line

0.64'

2+60.85

2+56.85 - Set Hub

Δ Rt 2°26'30"
Replaced 11/152
G. Adams

Set Cap Disc. in Street

7'

10'

23'

Set Hub 1.1k.

Bk. 156/28
982

Set
2874

Cont. from P-22
#018846

Levels - Proposed Culvert
 as per Location P. 22-23
 Side Shots 10' Lt + Rt Level unless
 Noted otherwise

24

				126.0	127.27	123.67	126.9
0+00				107 10	947 on Hd Wall	1307 invert 0	98 10
TP 1289	136.74 ✓	1.72	123.85		136.74 ✓		
0-100'		2.4	123.2				
0-200'		4.8	120.8				
0-300'		6.5	119.1				
0-400'		8.1	117.5				
0-510.0	invert 30" Concr. Pipe	12.64	113.00				
TP 037	125.64 ✓	12.13	125.27				
076333 on Hub							
TP 1.68	137.40 ✓	10.51	135.72				
TP 039	146.23 ✓	12.90	145.84				
TP 1.94	158.74 ✓	7.82	157.30		on Cap. Disc N. 7' line E-st 3' West W.L. 28th		
TP 1.06	165.12 ✓	13.09	164.06				
110	177.15 ✓		176.05 ✓		BM BP NE 28th & C-St		

Levels - Drain
Cont. from 1224

Lt.

2

FF.

25

TP 292 138.64
Check Hub 106 135.72
135.74 0+6333
P-24

TP 1295 136.80 1289 123.85
on foot P-24

E.C. SE Return 457
cb

E SE Return 460 531
cb = 13' Gut
Ret

0+29.33 = N. edge 3' Conn. Gutter
131.54 131.29 520 535
42.3 38.3 131.21 131.67 131.87 42.89 134.05 135.32
543 507 487 385 269 142
366 237 197 10 Gut 10 Gut
Gut Gut Gut

0+26.33 Cont.
131.54 131.10 542 464
42.3 42.3 735 514 476
Gut cb 38.3 38.3 36.6
Flow Box outlet Grotting cb

0+26.33 = S. ch. line
131.48 131.56 131.71 131.52 132.65 133.50 134.66 133.82 135.96 135.14
526 430 503 422 406 324 208 292 078 162
237 237 197 197 10 10 0 0 10 10
Gut cb Gut cb Gutter cb Gutter cb Gut

0+16.33 - Spine Tract St
136.74
133.74 134.8 135.1
3.0 1.9 0.6
10 10
136.74

Levels - Drains
Cont. from p. 25

Lt.

R

PK

26

0+70.33

134.5
4.1
10

135.4
3.2
10

136.6
2.0
10

0+60.33 Cont

132.81	133.68	133.14	132.26	132.06	132.97	132.48	133.21
583	496	550	639	686	567	616	533
70.5	70.5	46	46	40	40	237	237
Gut.	cb.	cb.	Gut.	Gut.	cb.	Gut.	cb.

0+60.33 = cb. line

132.67	133.52	133.65	134.50	135.68	134.83	137.03	136.21
597	512	428	414	296	381	161	243
197	197	10	10	cb.	0	10	10
Gut.	Gut.	Gut.	cb.	cb.	Gutter	cb.	Gutter

0+57.33 Cont.

133.03	132.43
561	621
70.5	46

0+57.33 = South Edge 3' Conc. Gutter

132.50	132.77	132.98	133.96	135.13	136.46
634	587	566	468	351	218
40	29.7	19.7	10	10	10

0+41.33 = 1/2 Treat St.

134.0	135.1	136.4
4.6	3.5	2.2
10		10

138.64 ✓

Levels - Drain
Cont. from P 26

TR 1231 14277 118 13746

2+60.85 = Beg. 30" Conc. Pipe

2+59 = Beg. Conc. Lip to Culvert

2+56.85 Δ R#

2+00

1+50

1+00

0+88.45 Δ L

0+84.45

Lt.

R

R#

27

^{136.5} 2.1 10	^{130.70} 7.94 0 invert	^{134.70} 3.94 on Hd Wall	^{136.8} 1.8 10
^{130.70} 7.94 on Lip	^{134.4} 4.4	^{133.0} 5.6 5	^{131.98} 6.66 on Hub
		^{133.1} 4.9 5	^{134.8} 3.8 10
	^{130.4} 8.2 10	^{130.4} 8.4	^{130.3} 8.3 10
	^{128.5} 10.1 10	^{129.0} 9.6 5	^{128.6} 10.0
			^{128.7} 9.9 10
	^{127.4} 11.2 10	^{127.4} 11.2	^{127.5} 11.1 10
	^{127.5} 11.1 10	^{127.6} 11.0 on Hub	^{127.6} 11.0 5
		^{128.65} 12.99	^{127.5} 11.1 10
	^{127.5} 11.1 10	^{129.35} 9.29 10" Hd Wall	^{125.49} 13.15 0
		^{138.64} invert	^{129.0} 10.6 10

Levels - Drain
Cont. from D-27

3+27.5 = Sec. 12" Corrug. Pipe
3+28.22 = N. Ch. E. St.

3+08.02 = E. St.

2+87.96 Cont.

South
2+87.96 = Ch. Line E. St.

2+85

2+77.96

2+77.5 9' RT = West edge 30" Cypress

2+76.5 2.6' RT = West edge 30" Cypress

145.54
423
Invert
12" Pipe

147.3
2.5
10
147.62
2.15
on H.C.
148.13
164
10
0.1
Foot.

147.43
234
192
Ch
147.21
256
472
Ch

146.79	146.44	146.8	146.64	146.50	147.31	146.51	148.03	147.8
3.1	3.3	3.0	3.09	3.27	3.46	2.96	1.74	2.0
27.8	27.5	23	23	3.6	10	0.1	20	20
Gut.	Ch.	Gut.	Ch.	Gutter	Ch.	Gut.	Ch.	Gut.

146.79	146.72	146.4	146.65	146.95	146.37	145.23	147.08
3.3	3.05	3.4	3.12	3.82	3.40	6.44	3.69
13.7	13.7	8.7	8.7	Ch	Gut	Invert	3.6
Gut	Ch.	Gut	Ch.	Gutter	Gutter	"Bottom Box.	Ch.

148.2
1.6
10
148.1
1.7
10
148.5
1.3
10

148.3
1.5
10
147.8
2.0
10
148.5
1.3
10

199.77

Level - Drain
Cont. from p. 28

3+87 = N end Broken Asphalt Rubble Wall

3+60.93 = End 30" Pipe

3+56

3+38.22 = N.L. E-5A

3+28.22

3+28.22 = N. Cb. E-5A

Lt

Rt

Rt

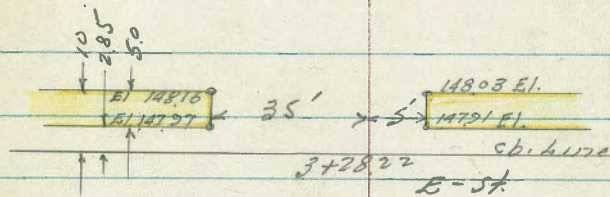
29

136.1	136.4	133.9	136.3	137.4
137	134	159	135	124
10	6		3	10
			on Wall	

136.2	135.5	132.1	132.8	132.1	135.1	136.1
136	143	176	1759	176	146	131
10	5	2	0	2	3	10
			invert			
					Rubble Wall = Asphalt	Broken Asphalt

157.1	137.0	137.7
127	128	121
10		10

147.5	147.7	148.2
23	21	16
10		10



147.9	148.24	147.4	147.85	148.10	147.50	148.90	148.14
19	163	34	194	167	227	997	163
47	47	35	35	10	10	20	20
cut	cb.	cut	cb.	cb	cut	cb	cut
							all Pav.

146.9	147.48	146.56	147.39	147.75	146.93	147.93	147.14
2.2	2.29	2.91	2.38	2.07	2.84	1.84	2.63
17.6	17.6	10	10	0	0	52	52
cut	cb	cut	cb.	cut	cut	cb	cut
			142.771				

Levels-Dress
Cont. from p-29

Lt.

L

Rt

30

Marks Reduced - 1-12-50

				001 ✓
				176.05
Check starting	BM-P24	122		176.04 ✓
TP	1248	177.26	216	164.78
TP	843	166.94	235	158.51
check		357		157.29 ✓
TP	1199	160.86	090	148.87

on disc 2' West W.L. 2.8th N-7' line E-P24

4+29

	143.7	140.3	136.7	133.12	139.8	142.6
	67	95	121	166.5	10.0	6.2
	20	8	3	invert 39"	5	17

4+16

	138.4	138.4	134.2	134.2	134.2	138.2	138.4
	114	114	156	15.6	156	116	114
	20	7	2	2	2	10	20

149.77

4+10

2.2 Rt = West edge Cluster of Trees
Average = 18" dia.

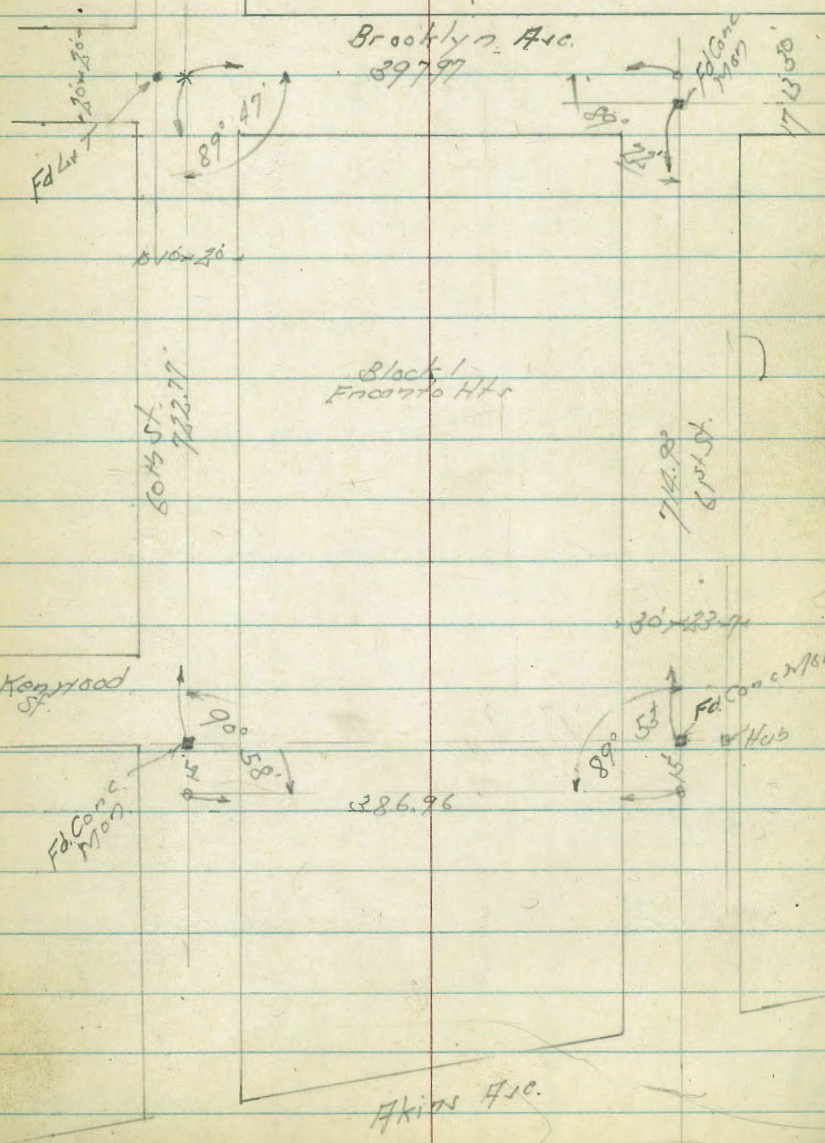
149.77 ✓

Survey Block 1 Encanto Heights

INDEXED
W.R.
JAN 9 1950

Jan. 6 - 50
A. Sisson
D. Smith
R. Rorer
Chavez
W.O. 20,555

31



0.
17.70
15

Cross Section Alley Blk. I & H
Plumosa Park

Note: Used self reading Rod, with
All elevations direct.

INDEXED

APR 18 1950

1708 Pole # JPH 2634 7' Rt.

1408 Pole Anchor 11' Lt.

0+90 = Pole Anchor 7.5' Rt.

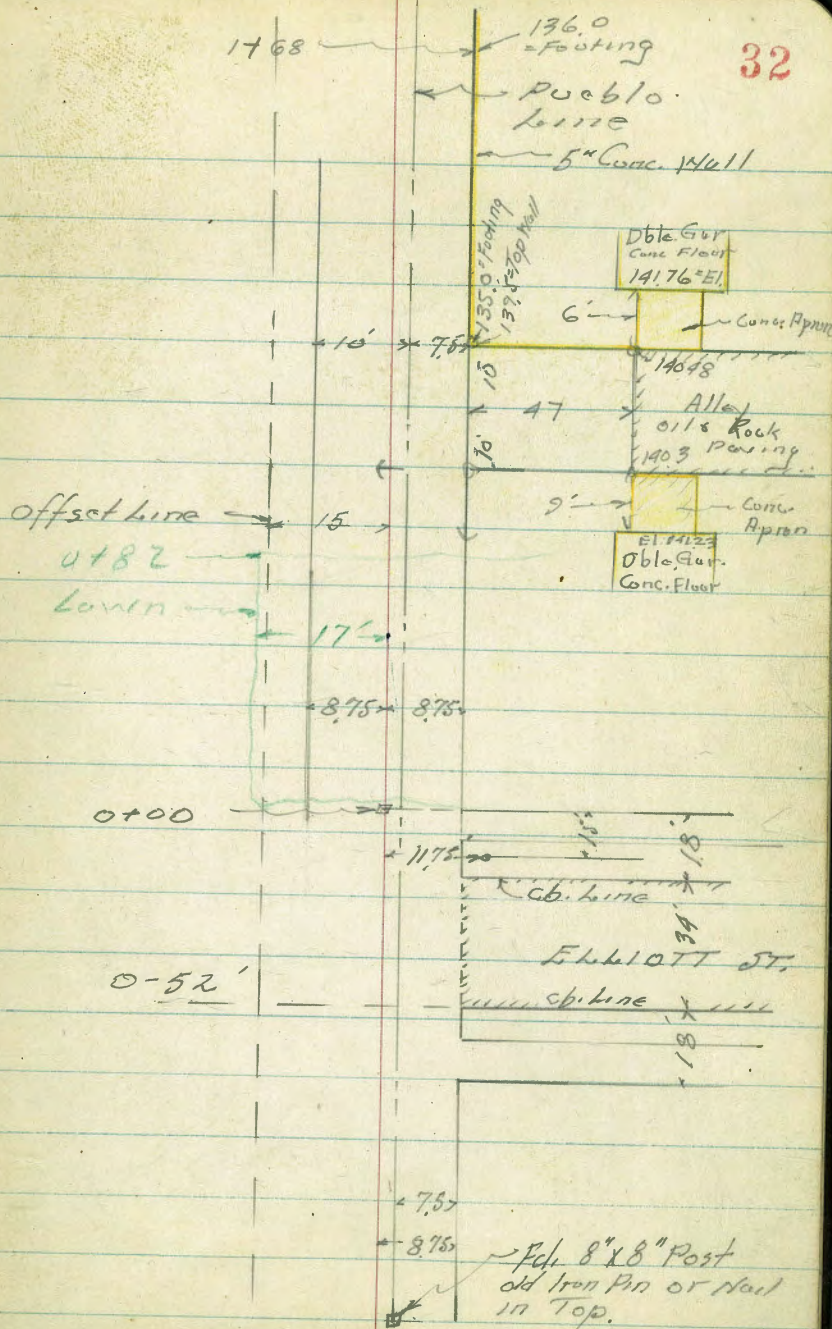
T.P. 137.25

T.P. 146.07

Chk B.P. S&LX Elliott & Poinsettia 150.39

T.P. on S&LX of Elliott 155.20

B.M. SWLY B.P. Elliott & Narcissus 157.14



Proposed
of Alley

Continuation
Lower Rt.
Page

3+92 = 6" Tree

4.0

875 875

3+27

CYPRESS HEDGE

Tel & Elec Pole

2+79

7

2780

PR 2666

2+77

4" Tree

Hodge (Pyracanthus) J. No. F.

2+30

End 5" Conc. Wall

140.9 = Top

136.1 = Footing

5" Soil Pipe Cleanout
5' 1st Check w. th
136.8 = Top sewer dept.

1+79

Proposed
of Alley

Pueblo
LINE

33

1+44.85
POT

875

1+88

876 x 875 825

45

Offset Line

1+35.15
1+34.43
POT

15

1+92.10
1 1/2" Pipe + DISC

Set 2" x 2" Redwood
+ DISC.

8" Conc. Tile Wall

155.2 = Top

15'

876 x 875

0+00

1+45.82

1+28.82

1+11.82

3+98.12

876

875

875

875

875 x 875

875

1/2" Pipe
Set Disc

Prop Line

Set Disc
Prop Line

10' x 10' R.I. 775

15.03

76.88'

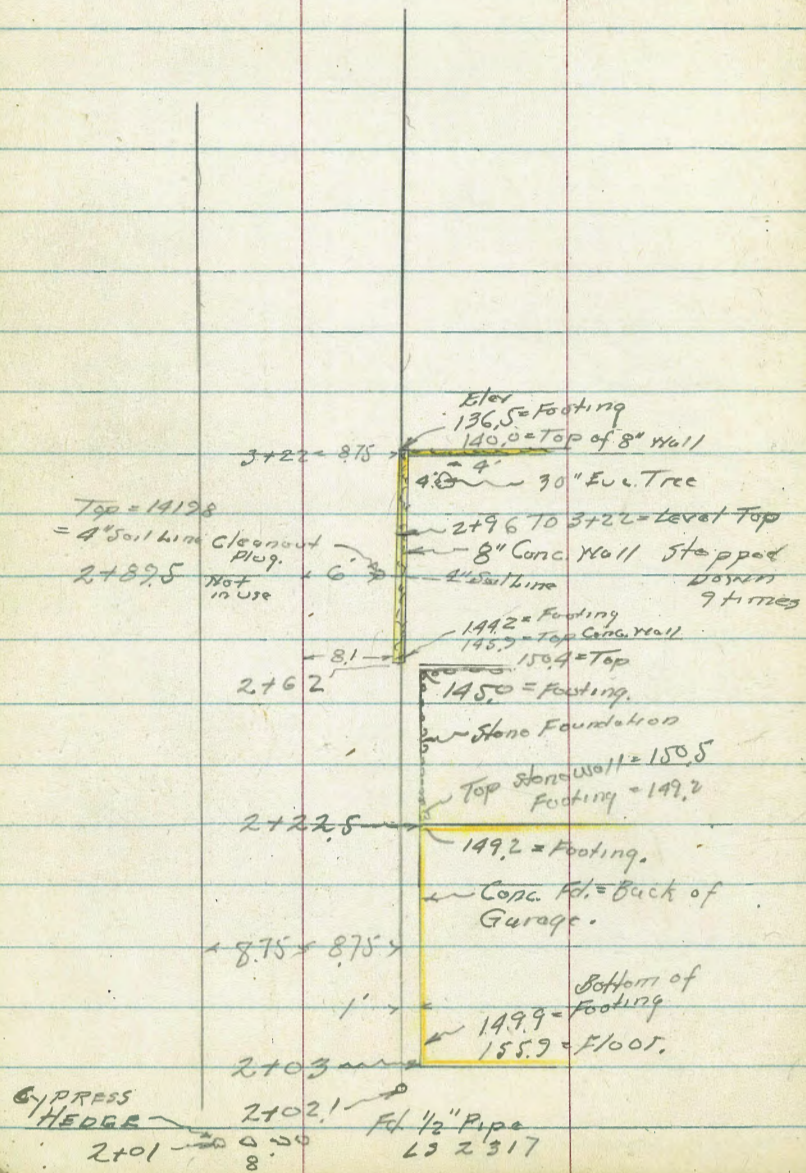
112° 45' 20"

NIPOMA ST.

18' x 13'

16'

Proposed
E of Alley



Alley Bk I.
Plumosa Park

Lt.

E

Rt.

35

1410 75' RT
Large
T.P. Nail in Pole

13670

1400

1291	1310	1325	1336	1349	1357
35	20	875	875	75	

0+50

1321	1304	1329	1341	1353	1359
30	20	875	875	165	on ground at House

0+00

1306	1324	1340	1356	1362	1374
30	20	875	875	20	LOWN
		LOWN	LOWN		

0-18

1315	1334	1346	1352.29	1365	1399.5	1426.7
23	875	875	875	875	5875	5875
			Gut	cb	Gut	cb

0-25 = Elliott

1320	1333	1346	1359.2	1372.9	140.09
23	875	875	37	875	5875
			Rim MH	Por.	Por.

0-57

1305	1329	1342	1345	1358	1372.7	1398.2
23	875	875	875	875	5875	5875
			Gut	cb	Gut	cb

Alley Blk 1 - Plumosa Park
Cross sections

Lt

Rt

Rt

36

2730

1331
30

1357
875

1365
875

1371
875

2700

1326
30

1352
875

1364
875

1374
875
Ground
at wall

1760

1307
30

1341
875

1354
875

1375
875
Ground
at wall

1+29.4 = 141.4 edge Alley Para

1302
30

1339
875

1347
875

1357
875

1390
30

1408
47

1416
67

1428
94

1475
118

1+12.9 = 132.9 Line Alley

1298
30

1328
875

1341
875

1353
17

1363
35

1391
47

1405
56

1405.3
78

1424
94

1442
114

1468
114

1+09.4 = 142.4 Line Alley

1321
30

1328
875

1340
875

1355
35

1378
47

1408
59

1408
59

1433
85

1448
93

1468
109

1488
109

1498
109

1508
109

By. at
+ Rock Pav

Par. Par. Par. Par. Par.

Cross Sections - Alley 814 I - Plumosa Park

4+11.12 = 517 CB Line Hipoma

4+02 L. Pole PA 2698 10.5 RT

3+98.12 = 517 Line

TP

149.27

3+90

3+98.82 = 517 Line Hipoma

3+50

3+00

TP

136.73 on shot

2+65

Lt.

L

RT

37

136.4

50

135.8

50

138.2

30

137.2

30

136.8

30

135.5

30

134.5

30

133.8

30

140.4

875

140.0

875

139.4

875

137.9

875

136.7

875

135.3

875

142.3

875

141.9

875

140.6

875

139.5

875

137.1

875

135.6

875

142.3

875

141.9

875

141.2

875

140.5

875

138.2

875

137.1

875

151.976.4

62

149.8

15

141.2

875

140.5

875

138.2

875

137.1

875

152.57-26.

62

149.8

82

141.4

20

140.2

12

137.1

875

137.1

10 at fence

at fence

10 at fence

Cross Sections - Alley Blk-H.

Plumosa Park

LT ST RT

0+82

966
1351
50
1351
49
1408
12
1488
875
1503
875
1510 = Ground
on NW 1/4
1552 on NW 1/4

0+682 = 3.5' Conc. Walk on Rt

15022
875
on Walk

0+65

1347
1351
50
1351
41
1447
20
1466
13
1472
875
1492
1494
875

0+57

on Angle Iron

1484

TD

144.83

0+27

1341
1351
50
1351
41
1411
29
1425
19
1441
11
1452
875
1458
1471
1472
1446
7946

875
Footings of
Conc. Wall

0-06 to 0+29 Eugene Hedge 3.5' Rt

875
Ground
at Wall

0+00 = NLY Line Nipoma

1354
1351
50
1351
41
1392
30
1424
875
1440
1459
875
1467
15

13'

4+45.12 = NLY cb Nipoma

1351
50
2151
50
1375
30
1415
875
1434
838
on cb
1442
975
on
1446
58
on
1521
58
cb
1521.8

4+28.12 = NLY Nipoma

1351
50
1382
30
1409
875
1426
1422
875
on
1448
9
on
1521.94
on

Alley - Blk. H. Plumosa - Park

2+10

133.0
137.0
135.6
141.9
146.2
146.4
149.2
50 43 33 12 875 3 875

Spike
T.P. 2+13 16' Lt.

144.20

2+00

139.6
137.5
135.8
147.5
148.6
147.7
150.0
50 43 33 10 875 5 875

17
Ground at House

1+88 = 2 3' Conc. Steps

15145
4.5
on Bottom step
15925
17'
on Top
Conc. Step

1+75

137.6
137.0
136.6
140.6
148.8
149.1
150.6
50 41 33 12 875 2 3 7 11 17

at House
on Ground

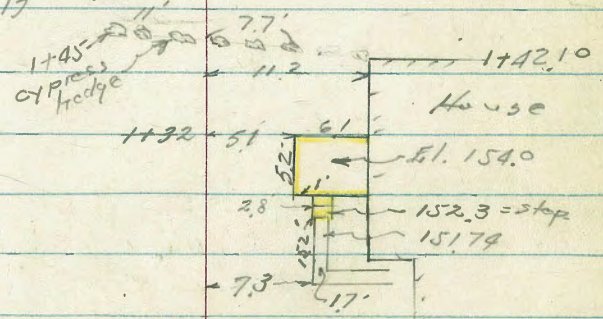
1+50

1+3515 on stub

T.P. 18' Lt. of Proposed E. of Alley - 14876

1+42 7.75 Rt + Tel & Elec Pole # PA 2722

133.8
134.4
149.0
149.9
151.4
50 39 13 875 6 7.7' 11.2



1+02 4' Rt = 12" Apricot Tree

1+00

134.4
135.1
150.0
150.0
150.2
151.5
151.4
50 39 11 875 4 3 875

Ground
at House

X-Sections - Alley Bldg. H.
Plumosa Park

3+50

130.5
131.1
132.9
133.4
134.2
136.7
30 17 8.75 8.75 25

3+22

132.8
133.5
134.3
134.8
136.0
137.3
137.0
29 17 15 8.75 8.75 15

TP

137.86

2+90

132.6
135.2
136.2
137.4
139.2
140.8
141.6
140.55
38 23 15 8.75 6 8.3 8.3
Top wall Bottom of footing

2+65

139.1
139.8
141.2
142.9
143.6
145.1
147.9
87 15 8.75 5 81 82
Top Wall

2+62 7.4 RT = Tel & Elev. Pk # PA 2744

2+43

133.0
133.1
135.1
145.1
145.6
146.0
149.0
149.5
149.2
154.5
50 42 31 11 8.75 4 8.75 9.75 9.75
Footing Top

2+25

133.0
133.1
135.1
145.1
145.6
146.0
149.0
149.5
149.2
154.5
50 42 31 11 8.75 4 8.75 9.75 9.75
Footing Top

X-Sections - Alley B.K.H.
 ~ Plumosa Park ~

4+94.6 = N.W. edge Conc. Drive

4+84.6 = S.W. edge Conc. Drive

4+65

This Section Not for Yardage
 4+44.85 = Existing 15" Gas Pipe Subcut = 97 Lt. End

4+25

Top
 on both 1" x 2"
 T.P. 4+00

128.90

4+00

3+82 = Tel & Elec. Pole # PA 2766 7.5' R

12881	13015	13551	1389
2	11	40	60
DRIVE	DRIVE	DRIVE	DRIVE
12890	13010	13543	1357
2	11	40	60
DRIVE	DRIVE	"	DRIVE of Garage

1253	1274	1286	1294	1315
30	875	875	875	25

1151	1121	11021	10521	10481	1028	1300	12921
102	96	84	37	97	9	16	16
				Invert	Ground	Ground	Invert

1321	1270	1281	1288	1295	1311
30	20	875	875	875	25

1321	1280	1291	1304	1310	1322
30	17	875	875	875	25

Cross Section Alley Blk. H
Plumosa Park.

Contour P-45
6+13.06 = R.A. to Sky cb. Sketch P-44

R.A. to
6+00.18 = Sky line Amargosa St.

5+85

B.M. Set by Subdividing Engr.
Check Nail in Pole Marked - 139.62 ✓ OK.

on stake
TP

139.12

5+50

5+00

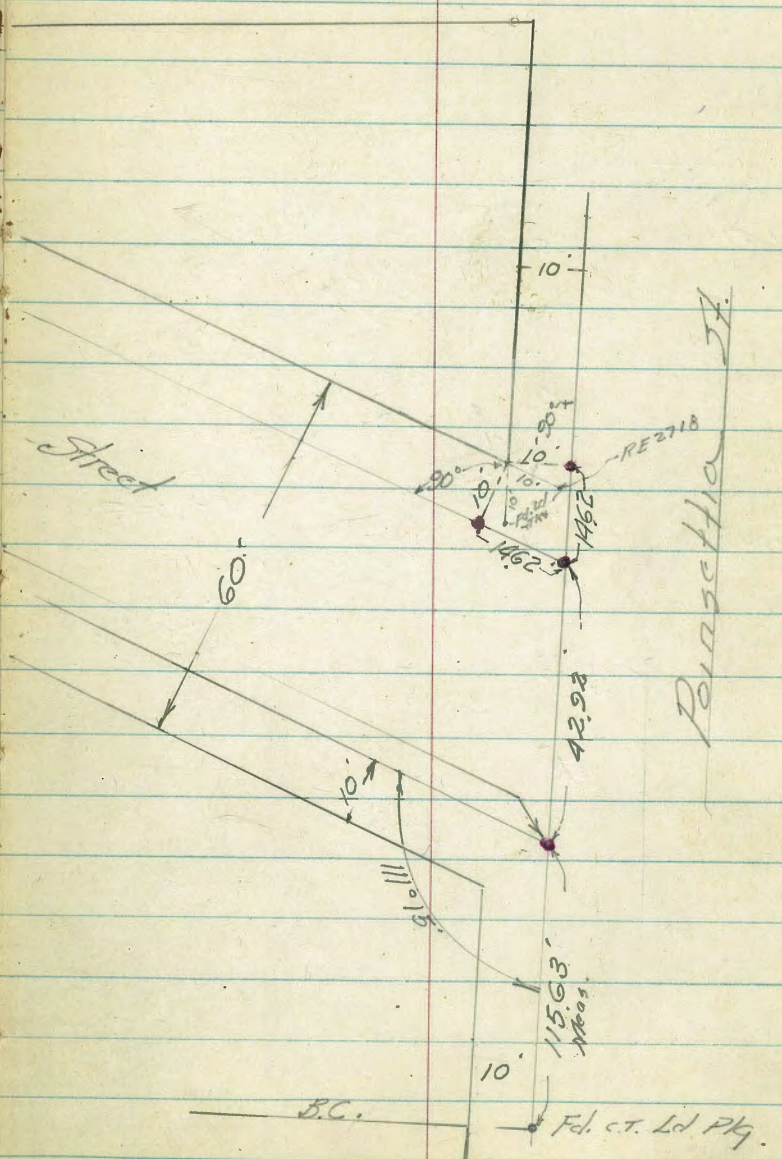
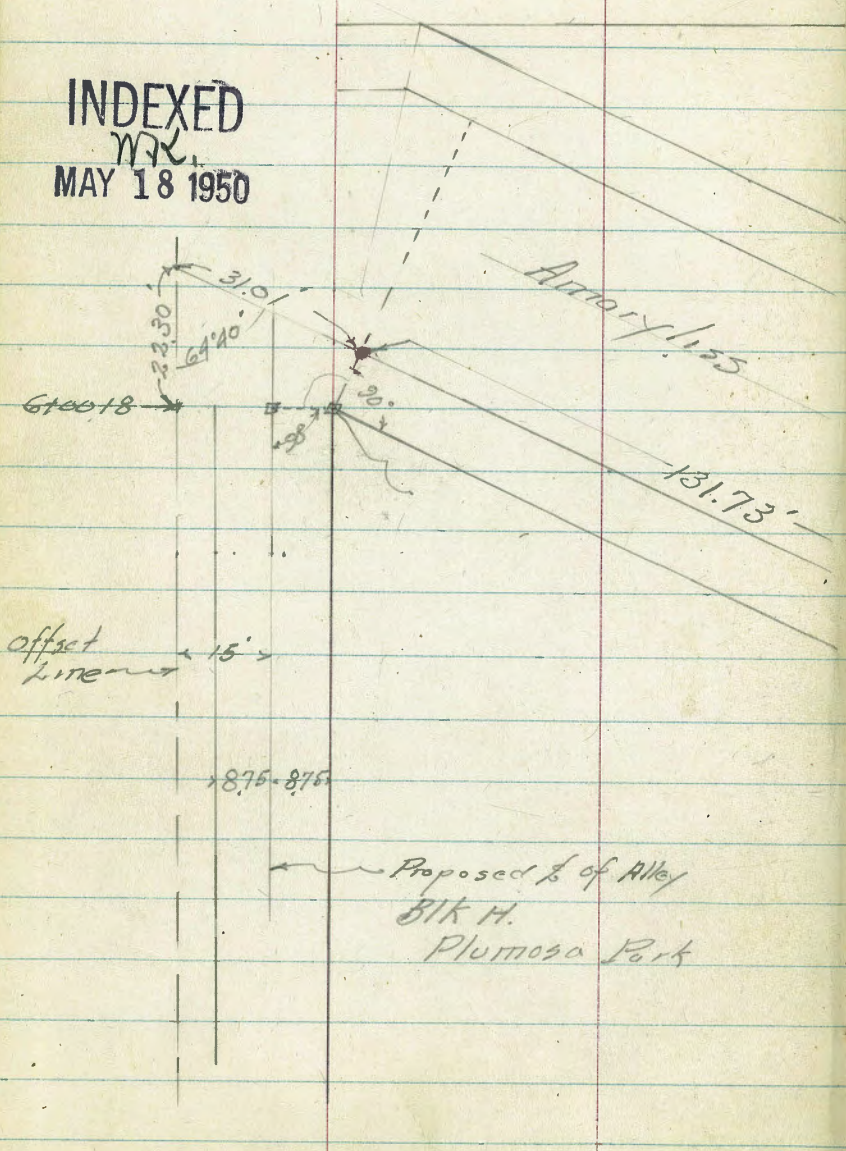
5+02.1 8' RT JPA 2780 * Elec. Pole

137.8	137.8	137.2	138.28	138.81	138.74
30	875		875 Gut. 5+1164	875 cb	1075 Pole OK.
137.0	139.6	136.3	137.0	138.02	140.2
30	875		5	875 on Hub.	20
137.1	133.1	133.8	133.9	133.1	134.1
30	875		5	875	16
128.1	129.1	130.3	130.8	132.4	
30	875		875	25	
125.9	127.7	128.7	129.7	131.5	
30	875		875	25	

Ties To Alley Blk H - Plumosa Park

- = Set Cup, Disc. & Ld Plg.
- = Set 2" x 2" Hub & Disc.

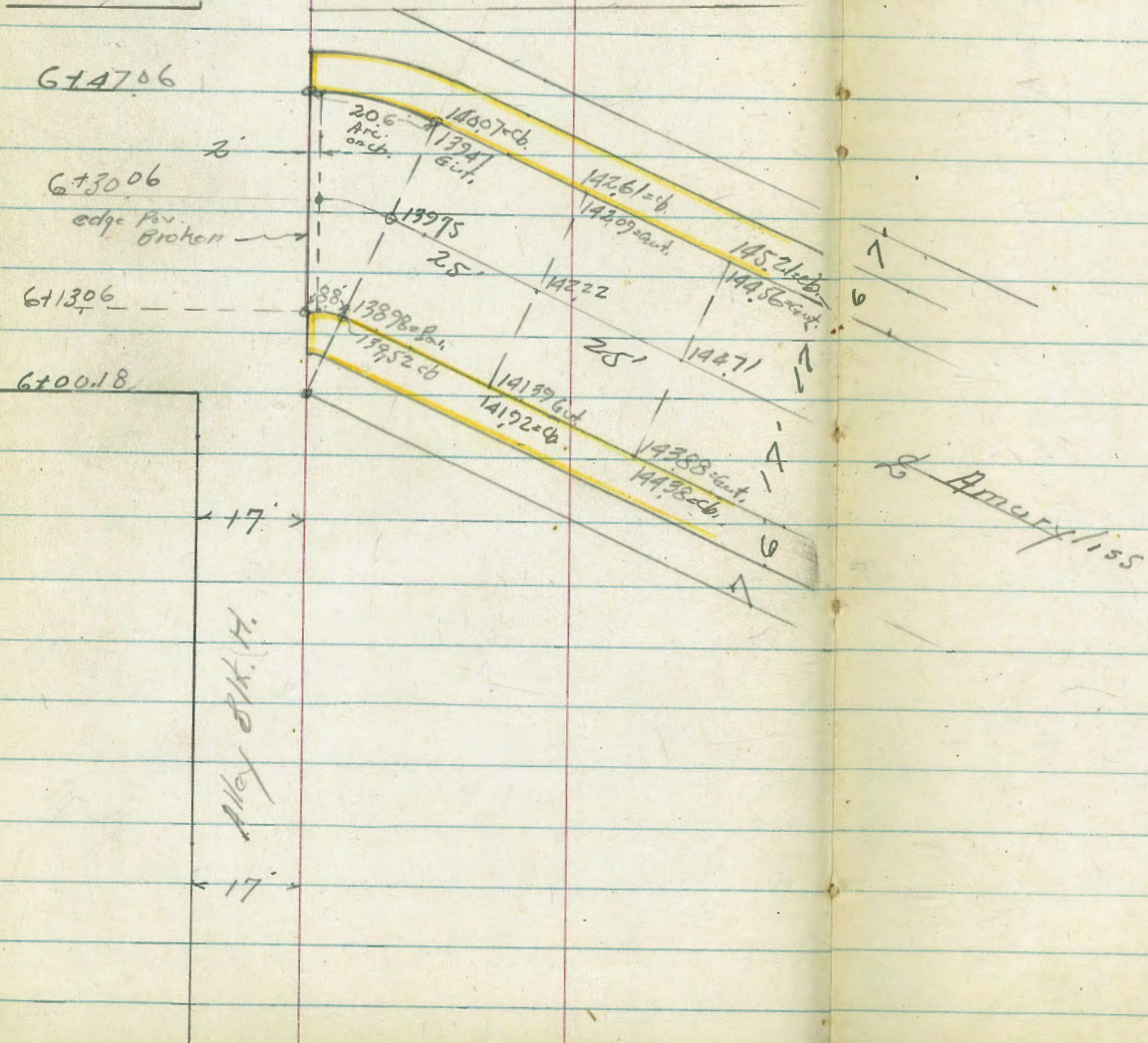
INDEXED
 WK.
 MAY 18 1950



Alley Blk. H.

- Plumosa Park

44



Alley Blk H.
Plumosa Park

ht

h

RL

45

Cont. from P-42

Completed 4-17-50

0.07 Error

Check Starting BM P-32

157.14 - BM
157.07

TP

155.66

Chk BM Elliotts Binssetta

0.07
150.39 P-32
150.32

TP

153.74

TP

155.14

TP

146.26

6+47.06

133.8

30

136.1

875

137.1

138.0

875
Pav. Broken
out here

139.0

875
cb

138.50

10.75
Pos.
OK

6+38.06 sketch P-44

133.8

30

135.9

875

137.0

138.60

875
Pav

138.80

10.75

Pav

Roberts
Clark
Moore
6-22-50
W.O. 62183

Re-X-Section Alley in Highlands
Gardens from Dayton to Gilbert
No. of E/Cajon

See FB. 1867 pg 58 for Sketch & Notes

Lt

£

R# 46

Fd. Walkers Spikes on the Alley #7 Line Dayton
#117021 on the Alley in Gilbert Dr.

A 22.8	A 22.8	A 22.1	A 21.5	A 21.5	A 21.5
3.4	3.4	4.1	4.7	4.7	4.7
20	14	10	9		10

INDEXED
JUN 26 1950

0+15

0+00

Rt L: to the Alley

0-1.9

Begin Building 10.2' Rt

0-5.1

To check Existing Curb Ends

A 21.2	A 20.8	A 20.9	A 21.3
5.0	5.4	5.3	4.9
15	10		10

A 20.5
5.2
10.3
Foot

A 20.9
5.2
7.0
curb
11

A 21.4
5.0
7.0
curb
10.3

BM

6.87

426.18 ±

419.31

NEBP E/Cajon & Dayton

426.18

Cont'd From Page 46

LT

R

R

422.63 47

3.55
10.5
A.C.

0+98 { 10⁶ Rt to 4' Blocktop Walkway
10⁴ Rt to Base ^{conc.} 12x12' of Light Standard

0+96 11' Rt to Locker 13⁰ Rt End Bldg.

would have to dig through A.C. to get Footing of foundation

0+89 { 10² Rt to Locker on Rear of Bldg.
12' Rt to Building
9⁵ Rt to Center Guy Pole

421.6
4.6
Foot
12'

0+50 10² Rt to Building

422.6
3.6 3.7 3.9 3.9
20 10 10

0+48 9⁵ Rt to Center P.P. # 17001

421.3
4.9
Foot
10.6

0+35

422.1 422.9 422.3 422.1 422.0
3.5 3.3 3.9 4.1 4.2
20 16 10 10

426.18 X

426.18 X

1752^I to check Conc. Ribbon421.6
572
10
conc1749 9^I Rt to Center P.P. # JP176081

1746

421.3	421.3	420.9	420.8	420.3
4.9	4.9	5.3	5.4	5.9
20	10		10	20

1727 30^I Rt to Conc. Platform

421.8	421.7	421.7	421.3	421.1	420.8	421.0
4.4	4.5	4.5	4.9	5.1	5.4	5.2
20	10		10	20	30 ^I conc	at Bldg.

1712 27^I Rt to Conc. Platform (9' x 15^I)

422.1	422.4	422.1	421.8	421.6	420.7	421.0
3.5	3.8	4.1	4.4	4.6	5.5	5.2
20	10		10	15	27 ^I conc	36 ^I Bldg.

1702 9^I Rt. to Anchor

422.9	422.7	422.3	422.4	421.2	422.4	420.6	421.4
3.3	3.5	3.9	3.8	4.0	3.8	5.0	4.5
20	10		10	10 ^I Top Wall	10 ^I Dirt	10 ^I Foot	20

1700 10^I Rt to Conc. Black Wall TP to Dayton

426.18 X

426.18 X

Alley BIK. 157 Pacific Beach

X-sec. for grade

n.o. 25020

Sommermeier

8-1-50

Begg

Allen

Bunch

INDEXED

AUG 2 1950

Tie sheet 1764

• = Fd. L. & T.

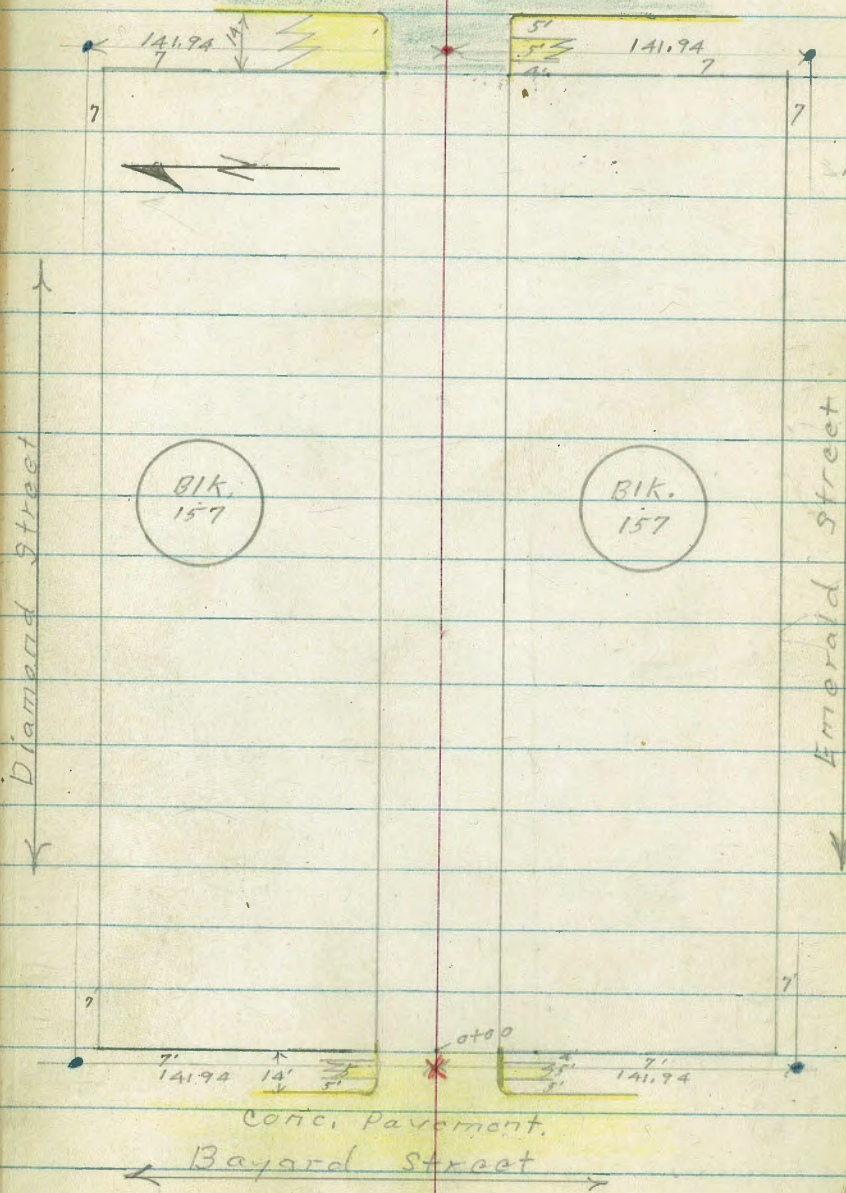
• = set conc. nail

x = cut across in conc. pave

No soil sample taken.

49

CASS Street
A.C. Pavement



Alley BIK 157 - P.B.

North

South

50

0+30

$\frac{2.8}{15}$	$\frac{3.0}{10}$	$\frac{3.9}{10}$	$\frac{3.9}{10}$	$\frac{4.4}{50}$
------------------	------------------	------------------	------------------	------------------

10' RT }
10' LT } = End Conc. Curbs
0+100 = End Conc. Pave

$\frac{4.86}{10}$	$\frac{5.17}{10}$	$\frac{5.70}{10}$	$\frac{5.56}{10}$	$\frac{5.43}{10}$
-------------------	-------------------	-------------------	-------------------	-------------------

0-12 }
10' LT } } cl. = B.C. (v' Rad Ret.)
10' RT. }

$\frac{4.95}{10}$	$\frac{5.60}{10}$	$\frac{6.03}{10}$	$\frac{5.40}{10}$
-------------------	-------------------	-------------------	-------------------

0-14 Cont

$\frac{2.85}{110}$	$\frac{3.41}{110}$	$\frac{8.32}{110}$	$\frac{7.67}{110}$
--------------------	--------------------	--------------------	--------------------

0-14 = Ely cl. line Bayard

$\frac{4.93}{12}$	$\frac{5.57}{12}$	$\frac{5.64}{10}$	$\frac{5.95}{10}$	$\frac{6.11}{10}$	$\frac{6.14}{12}$	$\frac{5.50}{12}$
-------------------	-------------------	-------------------	-------------------	-------------------	-------------------	-------------------

0-40 = Φ Bayard

$\frac{3.01}{110}$	$\frac{5.25}{10}$	$\frac{5.45}{10}$	$\frac{5.67}{10}$	$\frac{7.90}{110}$
--------------------	-------------------	-------------------	-------------------	--------------------

109 38.59 - 37.50

N.W.B.P. Bayard + Diamond

T.P. 5.53 41.23 2.89 35.70

1700

0+65 - 14⁹ ~~11.2~~ 3' wide Conc. walk

0+58 - 15⁵ Rt. = ~~1/2~~ Sing. Car. Conc. floor.
 No Apron.

0+50

0+48 - 10⁵ Lt. = End same

0+38 - 10² Lt. = start Conc. Apron. Sing. Car

~~36~~
2.5
10

~~35.6~~
3.0

~~35.1~~
2.9
10

~~35~~
3.20
14.7
walk

~~35~~
3.54
15⁵
Car. Floor

~~35.6~~
3.0
10

~~35.10~~
3.6

~~35.2~~
3.7
10

~~35.24~~
2.65
10⁵
Apron

~~36.25~~
2.54
12
Car. Floor

~~35.91~~
2.69
10.1
Apron

38.59

2+35 13' Lt. = start Conc. Apron
5 1/4" Bar

$\frac{38\frac{25}{2}}{2.98}$ $\frac{37\frac{64}{2}}{3.55}$
17 Bar floor 13 Apron

2+00

$\frac{37\frac{2}{2}}{4.0}$ $\frac{36\frac{2}{2}}{4.4}$ $\frac{36\frac{3}{2}}{4.9}$ $\frac{36\frac{3}{2}}{4.9}$ $\frac{35\frac{6}{2}}{5.6}$
50 10 10 50

1+75 - 7" Lt. = end same

$\frac{37\frac{51}{2}}{3.72}$ $\frac{37\frac{19}{2}}{4.04}$
12 Bar 78 Apron

1+57 - 7" Lt. = start Conc. Apron
double Bar.

$\frac{31\frac{50}{2}}{3.67}$ $\frac{31\frac{20}{2}}{4.03}$
12 Bar floor 78 Apron

1+50

$\frac{37\frac{2}{2}}{4.0}$ $\frac{36\frac{2}{2}}{4.5}$ $\frac{36\frac{3}{2}}{4.9}$ $\frac{36\frac{3}{2}}{5.0}$ $\frac{35\frac{5}{2}}{5.7}$
50 10 10 50

1+13 30' Lt. = double Bar.
Dirt floor

$\frac{36\frac{9}{2}}{4.4}$
30 Dirt floor

T.P. 6.25 44.60 2.88 38.35

3+50

$\frac{38^4}{2.16}$ $\frac{38^3}{2.9}$ $\frac{38^2}{3.0}$
 $\frac{10}{10}$ $\frac{10}{10}$

3+47 11² Lt. = $\frac{1}{2}$ 15' wide Conc. walk

$\frac{38^4}{2.28}$ $\frac{38^3}{2.40}$
 $\frac{20}{on\ walk}$ $\frac{11^2}{walk}$

3+00

$\frac{38^4}{2.7}$ $\frac{38^3}{3.1}$ $\frac{38^2}{3.3}$ $\frac{37^8}{3.4}$ $\frac{37^7}{4.0}$
 $\frac{20}{20}$ $\frac{10}{10}$ $\frac{10}{10}$ $\frac{10}{10}$ $\frac{50}{50}$

2+75 11⁴ Lt. = $\frac{1}{2}$ 2' wide Conc. walk

$\frac{38^4}{2.70}$ $\frac{38^4}{2.83}$
 $\frac{20}{on\ walk}$ $\frac{11^4}{walk}$

2+50

$\frac{38^8}{3.4}$ $\frac{37^1}{4.1}$ $\frac{37^6}{3.6}$
 $\frac{10}{10}$ $\frac{10}{10}$

2+46 13⁰ Lt. = end Conc. Apr. 17.

$\frac{38^27}{2.96}$ $\frac{37^18}{3.45}$
 $\frac{17}{Bar.}$ $\frac{13}{Apr. 17}$

41.23

A+79- 10⁰⁵ Lt = into Bldg. 3' wide doorway

36
A
3.24
10⁰⁵
Floor. level

A+75- 10⁰⁵ Lt = start Conc. Block store Bldg.

5
A
4.1
10
Ord

A+50

3
A
4.3
10
39²
4.8
39¹
4.9
10

A+23 - 10⁰⁸ Lt = end same

54
A
4.06
15
Gar.
39⁷
4.86
10⁸
Apron

A+12 10⁰⁸ Lt = start Conc Apron

51
A
4.09
15
Gar. floor
39²⁵
4.85
10⁸
Apron

A+00

61
A
5.0
40
3
A
5.3
10
39⁰
5.6
39²
5.9
10
38²
5.9
50

44.60

Alley BIK. 157 P.B.

55

5+40² = \pm Cass. St.

$\frac{2.89}{110}$	$\frac{4.76}{10}$	4.90	$\frac{5.13}{10}$	$\frac{7.00}{110}$
--------------------	-------------------	------	-------------------	--------------------

5+14² Cont

$\frac{3.61}{110}$	$\frac{4.08}{110}$		$\frac{8.08}{110}$	$\frac{7.69}{110}$
--------------------	--------------------	--	--------------------	--------------------

5+14² = Wly. cl. line Cass.

$\frac{5.38}{13}$	$\frac{5.80}{13}$	$\frac{5.80}{10}$	6.05	$\frac{6.25}{10}$	$\frac{6.33}{13}$	$\frac{5.83}{13}$
-------------------	-------------------	-------------------	------	-------------------	-------------------	-------------------

5+11² } 10' Lt. } = B.C. 3' Rad. Cl. Ret.
 10' Rt.

$\frac{5.40}{10}$	$\frac{5.76}{10}$		$\frac{6.02}{10}$	$\frac{5.74}{10}$
-------------------	-------------------	--	-------------------	-------------------

Nail 5+07.20

T.P. 5.98 46.09 4.49 40.11 46.09

(= End Conc. block store Bldg.
 10' Lt. = start curb.
 10' Rt. = start curb.

5+00²⁰ = Wly. line Cass. = start A.C. Pauc.

$\frac{3.84}{10}$	$\frac{4.08}{10}$	<u>4.43</u>	$\frac{4.30}{10}$	$\frac{4.16}{10}$
-------------------	-------------------	-------------	-------------------	-------------------

house

4+80 17² Rt. = \pm 3' wide step to

4.4	4.00	3.95
17 ²	17 ²	21
Ord. Step	\pm 2E'	wide
	door.	Floor level

44.60

Alley BIK. 157 P.B.

Reduced by P. Van

4.36 ^{0.01} 37.51 (37.50)

N.W. B.P. Diamond + Bayard = orig. B.M.

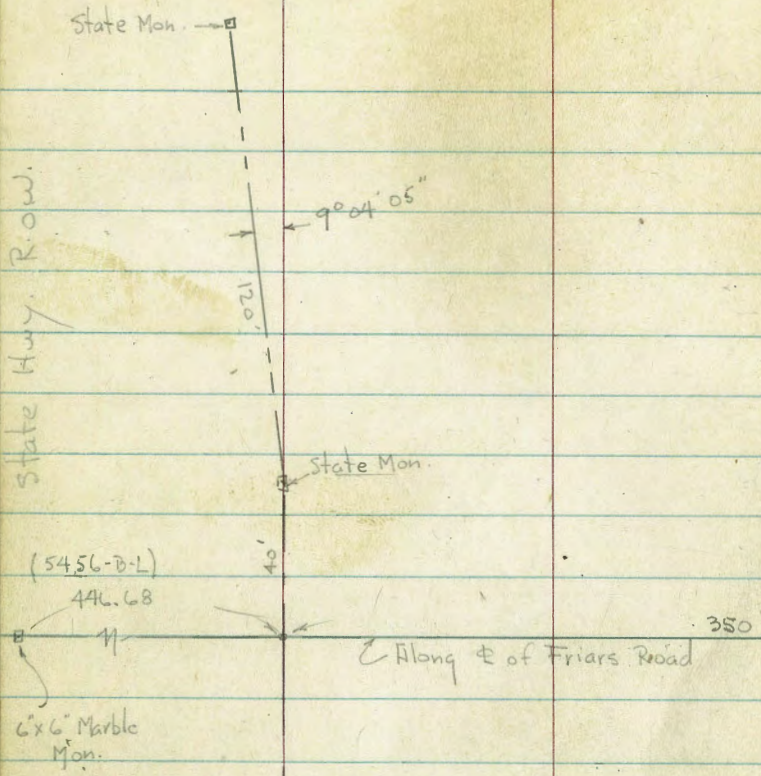
T.P. 2.98 41.87 6.38 38.89

T.P. 2.25 45.27 3.07 43.02

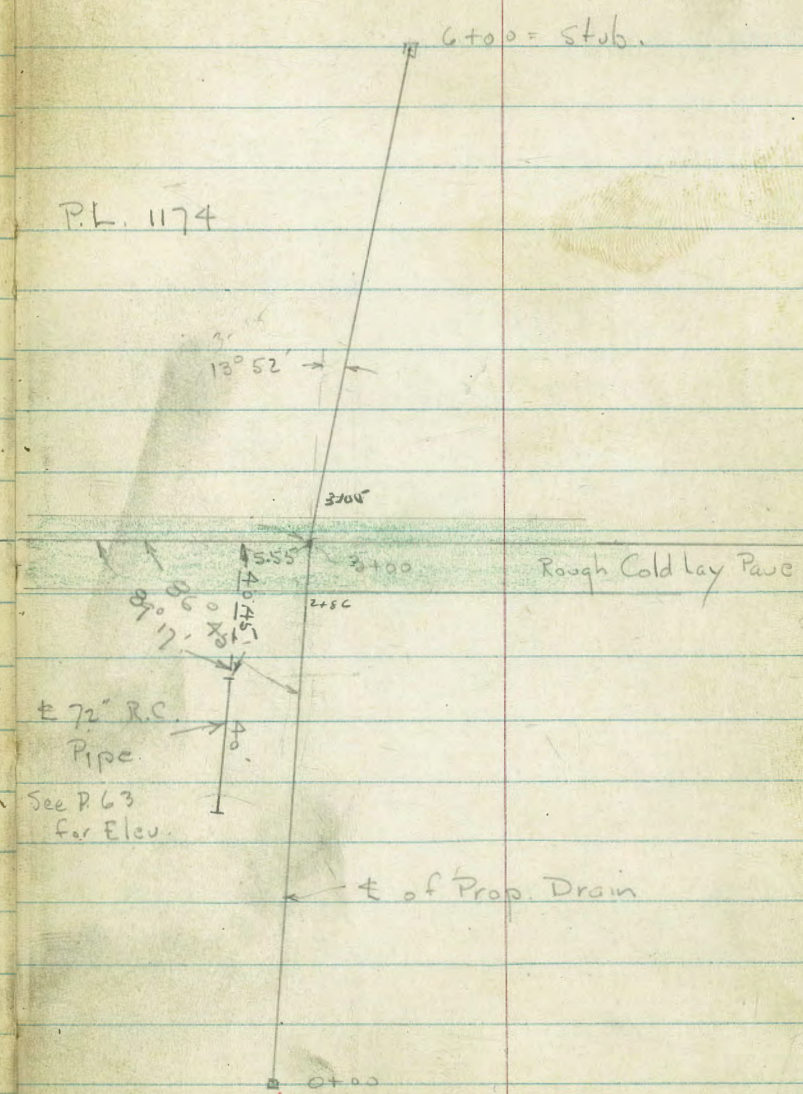
S.W. T. L. T. Diamond + Cass

T.P. 8.17 46.09 8.17 37.92 ^{-0.09} 38.01

N.W. B.P. Cass + Emerald (38.01)



P.L. 1174



Extend Levels to below the Foot Bridge.

Survey for Prop. Culvert at
 Friars Road - E. of Freeway
 See Sketch - P. 57

#4638

10-5-50

W.O. 20715

Osborne
 Hardin
 Hatch
 Lochhead

INDEXED

OCT 6 1950

1+00

^{32.6} 6.6	^{33.6} 6.6	^{28.3} 11.9	^{22.1} 12.1	^{28.9} 11.3	^{32.4} 7.8	^{32.2} 7.9
30	19	9		20	33	45
					oil	

0+97 - 28.6' Rt. = P. pole

0+50

^{33.6} 6.6	^{33.3} 6.9	^{28.9} 11.3	^{26.0} 12.2	^{28.4} 11.8	^{31.6} 8.6
35	22	14		19	30 = oil

channel
 0+00 - 300' S. of Φ Friars Rd - in Graded

^{33.5} 6.7	^{32.8} 7.4	^{28.0} 12.2	^{21.5} 12.7	^{28.5} 11.7	^{31.1} 8.9	^{31.1} 31.1
40	26	15		20	24	31
			40.21 ✓			edge oil trace

5.40 40.21 ✓ 5.09

34.81 = Nail

in P. - S. side - W. of culvert

3.50 39.90 ✓ 2.03

36.40 ✓

B.M. 3.95 38.43 ✓

34.48 = Nail

in Tree = Φ State Hwy. 25 N. of Friars Rd. Bridge

See Book 2031 - P. 75 Shows - 34.27 ???

3+00 = Ang. 13° 52' Rt. - out along ♀ of Friars Rd. (on Pavc)

35.11 35.21 35.5v 35.41 35.59
5.10 5.00 4.89 4.80 4.62
100 50 50 50 100

2+86 = ♀ at Sly of Pavc

35.09 35.06 35.0
5.12 5.15 5.2
50 50 = on shoulder
on pavc Edge 3'S. of edge

with Rock Headwall - 15' long

2+81.6 - 2.3' Rt = outlet of 30" C.I. culvert ^{Covered.}

34.7 34.6 30.99 33.27 34.9 34.9
5.50 5.6 9.22 6.84 5.3 5.3
42.5 2.3 2.3 12 35
edge 7.92 TOP TOP
Pavc 30" Headwall

2+72.5 = Cross wire fence + 3" Water pipe

2+70.2 - 28" Lt = ♀ Tel. pole # 461039-H

Top pipe X?

filled with Sand

2+72.2 - 4.4' Lt = outlet of 60" Cor. Iron Culvert

35.7 29.4 24.0 25.39 29.0 31.2 34.9 34.9
6.5 10.8 11.2 14.82 11.2 9.0 5.3 5.3
25 15 4.4 4.4 12 25 35
ground I.F. Pipe

2+50

33.7 33.9 29.2 28.3 30.4 34.6 35.0
6.5 6.3 11.0 11.9 9.8 5.6 5.2
40 30 23 18 30 45
oil on oil

2+00

33.9 34.2 29.7 28.4 29.7 34.7 34.8
6.4 6.0 11.5 11.8 10.5 5.3 5.4
35 23 14 19 32 45
oil

1+50

33.4 33.6 29.3 29.2 29.7 33.9 34.8
6.8 6.4 11.9 12.0 10.8 6.3 6.4
30 18 9 40.21v 23 33 45
oil oil

3+70

^{34.8}	^{32.8}	^{31.5}	^{30.0}	^{30.1}	^{33.5}	^{36.3}
5.4	7.4	8.7	10.2	10.1	6.7	3.9
50	30	13	18	24	28	45
field			creek			

3+30

^{34.2}	^{33.1}	^{32.6}	^{29.5}	^{29.6}	^{29.9}	^{31.6}	^{23.7}	^{35.2}	^{35.6}
6.0	6.5	7.4	10.7	10.6	10.3	7.6	6.5	5.0	4.6
50	25	10	8	10.6	4	9	25	31	50
				Creek					

3+27 = 31.3 Rt. = ± P. pole # 279327

3+12

^{31.0}	^{33.5}	^{29.2}	^{29.5}	^{29.8}	^{35.2}	^{35.2}	^{35.2}
9.2	6.7	11.0	10.7	10.4	5.0	4.95	4.73
50	14	7	7	6	9	25	50
in Side Ditch						edge	Pauc

3+10.8 = 23' Rt. = Inlet 30" C.I. pipe - Half Full

^{25.5} 11.26
23 = I.E.
Pipe

3+09.9 = 2.3' Lt. = Nearly full Inlet - 60" Culvert - C.I.

^{26.23}
13.99
2.3 =
I.E.
Pipe

3+08.7 = Cross 2" Water pipe

^{34.86}
5.35
Top pipe

3+05 = ± at N. edge Pauc

^{33.9}	^{31.6}	^{35.30}	^{35.46}
6.3	4.6	4.91	4.75
50	20		50

40.21 ✓

Lt. # Rt.

Notes Reduced
8-7-50

6 + 00 = end

35.1	34.26	34.4	34.6	34.8
5.1	5.45	5.8	8.6	4.4
50	on stub.	10	17	30
			± Creek	Toe slope

5 + 50

34.7	34.4	34.2	34.1	34.9	34.7
5.5	5.7	8.2	9.0	5.3	5.5
50		2	8	12	38
			± Creek		Toe

flat field

5 + 00

34.7	34.4	34.4	34.8	34.8	34.0	34.5
5.5	5.8	6.0	9.4	9.4	6.2	5.7
50		3	8	15	20	42
			± Creek			Toe

4 + 50

34.7	33.9	34.7	34.4	34.2	34.4	34.6
5.6	6.3	7.5	10.0	7.9	6.0	6.6
50		8	12	16	25	47
			± Creek			Toe slope

4 + 00

34.7	33.6	33.4	30.3	32.6	34.4	34.6
5.5	6.6	6.6	9.9	7.6	6.1	2.6
50	40.21	4	12	19	45	52
			± Creek			

Extend Profile of channel \pm S. of
 0+00 - P. 58

B.M. 2.86 37.67 ✓ 34.81 ✓

Angles to w.

0+00 to S. = 0+00 to N. 10.2 27.5

0+50 - ϕ 10.2 27.5

1+00 11.3 26.4

1+50 11.9 25.8

2+00 12.3 25.4

T.P. 7.17 32.81 ✓ 12.03 25.64 ✓

2+50 9.6 23.2

2+59 = \pm Bridge - Bottom 9.6 23.2

Top Bridge 3.55 29.26

3+00 9.0 23.8

3+50 9.3 23.5

4+00 9.5 23.3

4+26 = Angle to E 9.5 23.3

5+00 9.6 23.2

6+00 - end 10.0 22.8

REDUCED 10-30-50. AEX.

Levels on New 72" Culvert - See P. 57
for loc.

B.M. 2.65 37.46 ✓ ^{2.65} 34.81

I.E. of Inlet of 72" Pipe - 40.45' S. of
Φ Friars Rd. - I.E. = 10.83 26.63

I.E. of outlet 40' Culvert	11.40	26.06
10' S. of end = Bot. channel	13.0	24.5
50' S.	15.4	22.1
100' S.	16.1	21.4

37.5
13.0
24.5

Roberts
Cota
Clark
12-14-50
WR 25620

X-Sect College Ave
(University Ave 500' South)

Ref: 1637-D SAN DIEGO COUNTY

14

Q

Re 64

Our Q is approximate center line
of Existing Paving.

2+00

Per: Ed Gabrielson

319.88
6.53
19

320.71
5.70

321.41
5.00
19

1+50

INDEXED

YK

DEC 15 1950

320.23
6.18
19

320.86
5.55

321.18
5.23
19

1+00

320.51
5.90
19

321.09
5.32

320.75
5.66
19

U.S.S. Datum - 6.12' = City Datum

~~CITY DATUM~~

~~STANDARD RED~~

0+50

321.11
5.30
18

321.35
5.06

320.81
5.54
18

0+00 So. Edge Conc. Paving University Ave

322.05
3.56
50

322.01
4.40

321.28
5.13
50

CITY DATUM

BM

427

326.41

332.53

322.14

328.26

326.41

332.53

Note

University & College USGS Datum County Sta. 32+00.54

Cont'd From Pg 64

24

¢

RR 65

check

11.45 328.26 =

starting BN
328.26

5700

329.14

329.59

329.54

4.45

1.00

4.05

21

21

326.50

327.32

327.50

4750

7.09

6.27

6.09

20

20

324.41

325.30

326.13

4700

9.38

8.29

7.46

21

21

T.P.

10.08

339.71

2.90

329.63

333.59

339.71

3750

322.39

323.45

324.36

4.02

2.96

2.05

19

19

320.93

321.91

322.92

3700

5.48

4.50

3.49

19

19

320.00

320.94

321.79

2750

6.41

5.47

4.62

19

326.41

19

332.53

332.53

↑

↑

X-Sec. 51st street

Trojan to Orange

29-Mar '51
W.O. 25020

Solmmermeyer
Begg
Wlarciszewski.

F.B. 1297
T.P. sheet # 3663

□ = Fd 1/2 Hub & tack

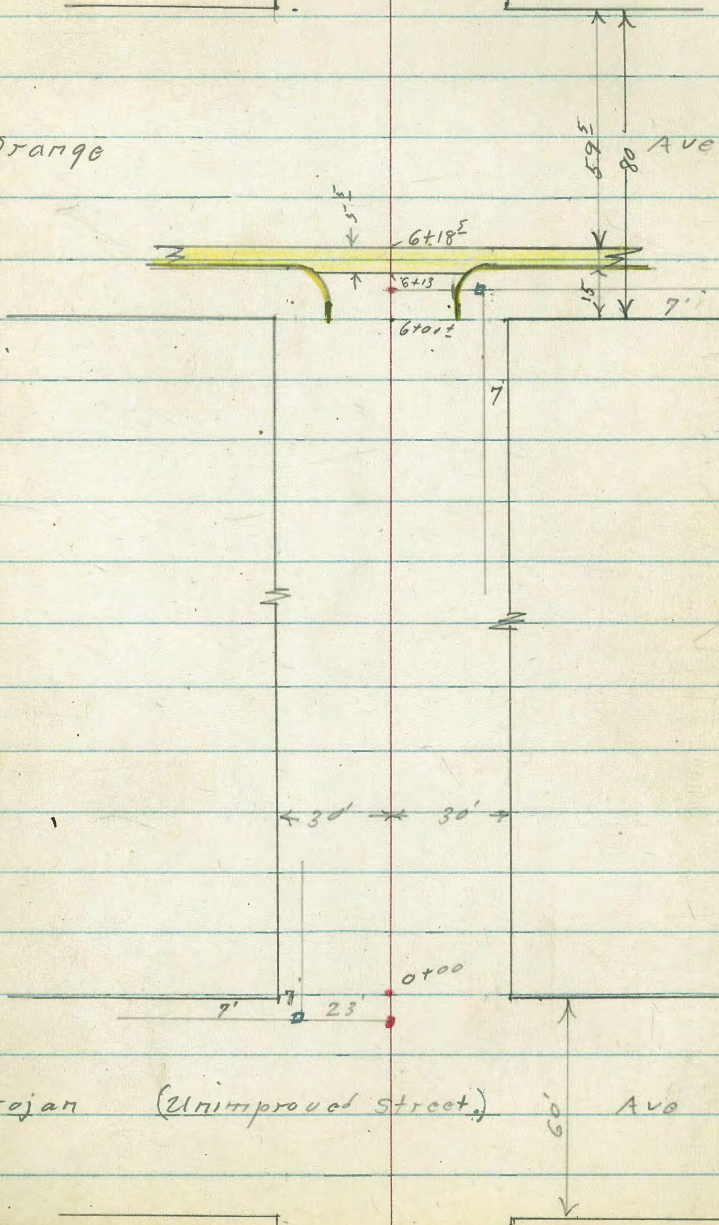
• = Nail

INDEXED

51st

66

Orange



51st Trojan to Orange

Reduced
4-9-51
Ry99

1+00

T.P. 0.92 336.87 13.19 335.95

0+51 - 36' RT - ϕ 4' wide conc. walk

0+50

T.P. 0.95 349.14 11.63 348.19

0+00 sly. Trojan

0-30 = ϕ 51st

B.M.#2 11.09 348.73

T.P. 0.75 359.82 12.08 359.07

T.P. 1.23 371.15 8.47 369.92

B.M.#1 4.23 378.39 - 376.16

ϕ

67

326.8 330.6 332.8 338.3

10.9 6.3 4.1 3.6
30 5 30

336.87

339.1 339.8 340.6

10.0 9.33 8.50
35 36 16
and walk

338.3 335.1 339.4 339.9

15.8 1.40 9.7 2.2
30 10 30

349.14

347.4 344.5 347.6

12.4 13.3 12.2
30 30

347.6 351.7 352.6 352.6 354

12.2 8.1 7.2 7.2 5.8
80 30 30 80

359.82

set B.M. - S.E. 7' Hub. 51st + Trojan

N.W. B.P. 50th x Trojan

Top of wall is level with 2nd step.

Nly. + Sly. Ret. walls plank steps + ~~etc~~
Sly. Cobble conc. steps.

2+22 - 34' Lt. = \pm Nly end 7' wide Nly +

322.81

6.37

34

top step

323.6

323.83

5.12

5.35

48

28

At house

2+14 - 28' Lt. = \pm 3' wide Conc. walk.

2+00

324.4

327.7

326.2

328.1

4.8

1.5

3.0

1.1

30

24

30

1+96 38³ Lt. = end apron

523.43

5.75

38¹

Gar.
1+79 - 38³ Lt. = start conc. apron to double

523.85

523.75

5.33

5.43

47

38³

Over

Apron

Floor

329.18

T.P. 2.37 329.18 10.06 326.81

331.21

331.69

1+65 - 37² Rt. = \pm 3' wide Conc. walk

5.66

5.18

37²

50

1+50

322.6

329.6

330.8

14.3

7.3

6.2

30

30

336.87

51st

#

69

3+98 = 36² RT = end conc. drive

313.9

12.28

3623+91 = 36² RT = start conc. drive

314.1

314.3

12.16

11.90

362

60

3+61 = 36⁵ RT = 4' wide conc. walk

314.9

315.0

11.27

11.24

365

41.6

walk at steps

3+50

313.4

315.5

316.1

12.8

10.7

10.1

3030

3+06

316.5

317.5

318.1

320.5

9.7

6.7

8.1

5.7

30326.21

24

30T.P. 0.47 326.21-3.44 325.74

2+50 - 28' LT = 4' wide conc. walk

315.0

315.1

315.1

315.4

323.9

322.7

326.0

14.2

14.1

14.1

13.8

5.3

6.5

3.2

40

30

28

25

20

30

on walk

walk

30' LT = end of wall.
Conc. wall.

2+44 = 5' LT = E Bly. + wly Cobble +

323.1

323.7

324.2

322.9

326.5

6.0

5.5

5.0

6.3

2.7

3052030

Ondt

top of

wall

Ondt

top of

wall

34' LT = end of steps.

38' LT = sly end. of east wall

2+38 = 30' LT = sly end of west wall

322.5

315.9

323.1

6.7

13.30

6.0

38

34

30

Top of

wall

bottom

step

top of

wall

329.18

51.5⁺

4

70

3 A+70⁵ - 43' Lt. = end conc. drive.

315.87
4.63
43
Apron

3

A+62 - 43' Lt. = start conc. drive

315.98 315.89
4.52 4.61
49 43
Gar. floor Apron

3

3 A+52 - 43' Lt. = 4' wide steps (conc.)

315.72 314.6
4.78 5.9
43 42
steps End

T.P. 4.53 320.50 10.24 315.97

320.50

3

A+50 40' Lt. = 4' s.wly. + N.Ely ditch

313.0 309.2 313.0 312.9 313.0
13.2 17.0 13.2 13.3 13.2
45 40 30 30
 ditch

A+13 - 30' Rt. = end drive

313.86
12.35
30

2 A+05 30' Rt. = start conc. drive

313.85 313.94
12.36 12.27
30 45
Gar. floor

2 A+00

312.1 313.6 313.8
14.1 12.6 12.4
30 30

326.21

3 6+13 = Nly. 11 in 5' wide Conc. gutter

329.94	329.44	329.36	329.61	327.93	327.59	328.46
1.95	2.45	2.53	3.28	3.96	4.30	3.43
2.15	2.15	1.8		1.8	2.15	2.15
00	G				G	00

3 6+05 } 18' Lt.
172 Rt. } = B.C. 10' Rad. cl. Ret

329.8	329.82
209	3.07
18'	172
00	00

3 6+00 } 18' Lt. = } start Conc. curbs.
179 Rt. = }

331.9	331.1	329.92	331.0	328.1	327.4	328.87	328.7	327.4
0.0	0.8	1.97	0.9	3.8	4.5	3.02	3.2	4.5
		18'	17		G	172	20	30
.30	20	00	00			00		

5+50

331.5	321.4	317.9
0.4	10.5	14.0
30	331.89	30

T.P. 12.48 331.89 1.09 319.41

5+13 - 32' Rt. = I.E. 30" Cor. Iron Culvert

307.6
12.9
32'
I.E. + Cor. in ditch

5+00

316.5	315.7	314.8	311.5
4.0	4.8	5.9	9.0
30		23	30

4+80 - 2' Lt. = I.E. 30" Cor. Iron Culvert

315.1	313.7	308.5	311.5	313.6	313.6
5.4	6.8	12.0	9.0	6.9	6.9
30	8	2	1		30
		I.E.			

Also bottom ditch 320.50

			0.07	
			332.95	
T.P.		2.41	332.87	
T.P.	6.87	335.28	2.95	328.41
T.P.	9.27	331.36	0.56	322.09
T.P.	9.60	322.65	5.97	313.05
T.P.	0.29	319.02	13.16	318.73

G+40 = \neq Orange

G+18⁵ = Sly edge 5⁵ Conc. gutter

G+15 Co 7+

28' Lt = }

28' Rt = } E.C. curb.

G+15 = Nly. Cl. line Orange

S.E.B.P. 49th + Orange 332.95 in B. book

331.89	330.89	329.89	328.89	327.79
0.0	1.0	2.0	3.0	4.1
30	18		18	30

330.	330.12	329.85	329.34	328.66	327.99	327.61	327.27	328.99
+1.9	1.75	2.04	2.55	3.23	3.90	4.28	4.62	7.90
50	30	28	18		18	28	30	50

334.5	328.6	331.0	330.02	327.0	327.7	323.7	324.7
+2.6	+1.7	0.9A	1.87	4.93	4.20	8.15	7.21
50	50	30	30	G	30	6	50
cl.	G	cl.	G	30	cl.	50	cl.

330.59	329.71	329.19	328.39	327.79	327.37	328.04
1.30	2.18	2.70	3.50	4.10	4.52	3.85
28	28	18		18	28	28
E.C.	G			G	G	cl.E.C.

331.89

22.08-15
9752

INDEXED
NOV 3 - 1953

Survey to correct RCP Culverts

West of 22nd St and between G St

and Treat St.

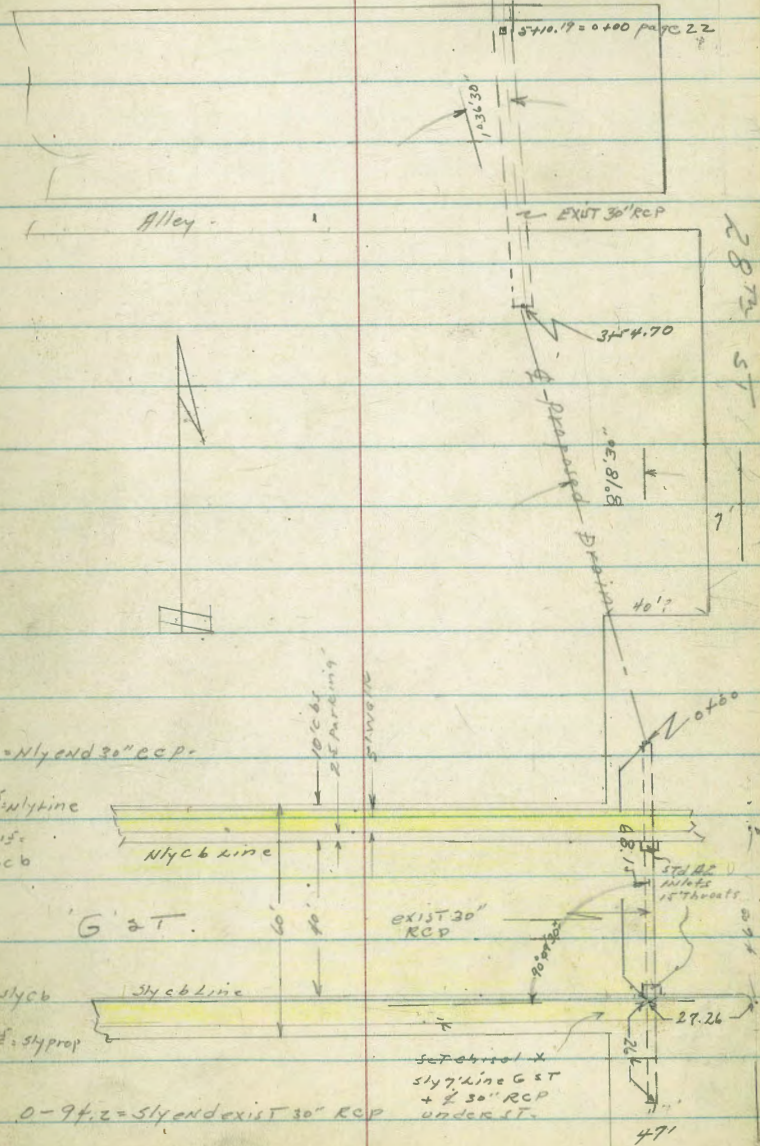
Wd # 20617.

1/2/53 - C. Allen, D. Sisson, C. Powell.

Ret TP sheets 118, 121.

See Page 22.

Treat St
See page 22



0+00 = Nly end 30" RCP

0-15' Nly line

0-25' Nly to Nly b

Nly b line

G St

0-25' Nly b

Nly b line

0+75' Nly prop

EXIST 30" RCP

Set out X
Nly line G St
+ 30" RCP
under ST.

0-94.2 = Nly end EXIST 30" RCP

73

22nd ST

47'

Levels for Proposed Drain

See page 73 + Page 22.

could change anytime

0+70 = Nly edge fill to wly

0+40.

0+00 = Nly end 36" RCP - 1. = 8°18'30" LT.

0-25¹⁵ = face nly cut b. + d Type A-2 inlet - 15' throat

0-65¹⁵ = face sly curb + d Type A-2 inlet 15' throat

0-94.2 = sly end 30" RCP under G ST

TP ₂	1.89	123.97 [↓]	6.13	122.08 [↓]
TP ₁	1.33	128.21 [↓]	13.14	126.88 [↓]
B.M.	4.32	140.04 [↓]		135.72

LT = wly -

1163
7 8
10

1210
3 0

10
on fill

1192
4 8

10
on fill

1196
9 4

3
Toe house
fill

11287
11

12124

203
grate

12092

305
grate

10955

14.32
1 E

123.97[↓]
=

Hub P.O.T. 0+63.33 Page 24.

LT = wly -

1163
7 7
10

Toe
slope 28°

1160
8 10

8
Toe
slope 28°

11142
9 2

2

11101
7 0

10

74

11184
7

11112
4 13

15

Proposed drain Wly 28th St
between G & Treat Sts

2+60

2+50 = Man Made Rectangular ditch widens here

2+40 = SECOR Man Made ditch

2+00

1+50

TP₃

8.54

126.31

6.20

119.77'

1+00

LT = Wly

RT = Ely

75

Station	LT = Wly	RT = Ely
1	119.8 6.5 15	119.8 6.5 15
2+60	117.5 8.8 9 Wye edge	117.2 8.6 8 Ely edge Ditch
2+50	119.6 6.8 15	120.1 6.1 10
2+40	119.8 6.5 10	119.7 6.6 10 20 Toe slope 28 th St
2+00	118.9 7.4 10	119.3 6.4 17.2 Toe slope 28 th St
1+50	117.2 8.4 10	118.2 7.9 9.0 Toe slope 28 th St
TP ₃		126.31
1+00	117.1 6.9 10	117.2 6.2 11 Toe slope 28 th St

123.97'

Proposed Drain w/ly of 28th ST.
between G + Treat STs.

TPS - start, BM 3.69 1135.727
135.73
TPH 13.14 139.42 0.03 126.28^f

4+00 - Dirt over exist 30" RCP

3+60 - to show dirt over 30" RCP

L = 1036'30" RT
3+54.70 = Begin 30" RCP.

3+25

3+00

L.T. = w/ly

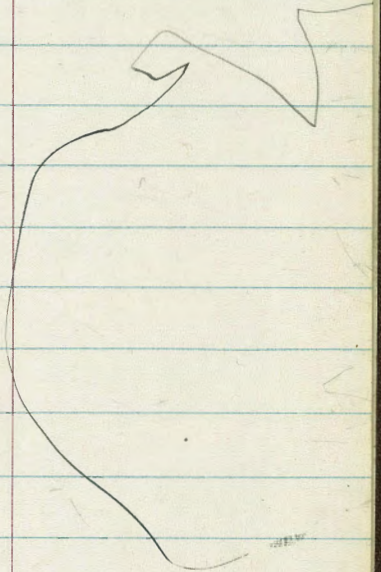
Rt = o/ly

76

REDUCED BY LOCKHEAD 11-5-53

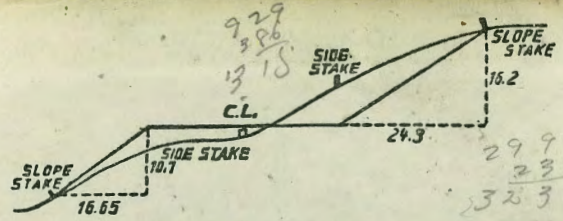
122.5	122.5	122.1	122.3	124.3	121.8	121.7
2 ¹ / ₁₅	2 ¹ / ₁₀	2 ¹ / ₄	2 ⁰ / ₂₀	2 ¹⁰ / ₄	4 ⁵ / ₈	4 ⁶ / ₁₃
						100 Fill
	121.8		122.3		121.8	
	4 ⁵ / ₁₀		3 ¹⁰ / ₁₀		4 ⁵ / ₁₀	
121.9	121.3	120.2	119.2 ²	120.2	121.5	121.2
4 ⁴ / ₁₀	4 ⁶ / ₁₃	6 ¹ / ₁₅	6 ⁵ / ₁₅	6 ¹³ / ₁₅	4 ² / ₁₀	4 ⁹ / ₁₀
5 ⁰ / ₁₀	5 ⁰ / ₁₀	6 ¹⁰⁰ / _{119.5}	6 ⁹ / _{119.9}	6 ⁹ / _{119.9}	5 ¹ / _{120.8}	5 ¹⁵ / _{120.8}
				2 E/Y BOTT.		
5 ² / ₁₀	7 ² / _{118.6}		7 ¹⁸ / _{118.5}	7 ² / _{118.6}	5 ¹⁰ / _{121.0}	5 ⁴ / _{120.9}
	6 ⁴ / _{w/ly Bott. ditch}			15 d/ly Ditch Bottary	2 ² / ₁₀	10

126.31^f



78

79



DISTANCES FROM SIDE STAKES FOR CROSS-SECTIONING.
 SLOPE 1 1/2 TO 1. ROADWAY OF ANY WIDTH.

	0	.1	.2	.3	.4	.5	.6	.7	.8	.9	
0	0.00	0.15	0.30	0.45	0.60	0.75	0.90	1.05	1.20	1.35	0
1	1.50	1.65	1.80	1.95	2.10	2.25	2.40	2.55	2.70	2.85	1
2	3.00	3.15	3.30	3.45	3.60	3.75	3.90	4.05	4.20	4.35	2
3	4.50	4.65	4.80	4.95	5.10	5.25	5.40	5.55	5.70	5.85	3
4	6.00	6.15	6.30	6.45	6.60	6.75	6.90	7.05	7.20	7.35	4
5	7.50	7.65	7.80	7.95	8.10	8.25	8.40	8.55	8.70	8.85	5
6	9.00	9.15	9.30	9.45	9.60	9.75	9.90	10.05	10.20	10.35	6
7	10.50	10.65	10.80	10.95	11.10	11.25	11.40	11.55	11.70	11.85	7
8	12.00	12.15	12.30	12.45	12.60	12.75	12.90	13.05	13.20	13.35	8
9	13.50	13.65	13.80	13.95	14.10	14.25	14.40	14.55	14.70	14.85	9
10	15.00	15.15	15.30	15.45	15.60	15.75	15.90	16.05	16.20	16.35	10
11	16.50	16.65	16.80	16.95	17.10	17.25	17.40	17.55	17.70	17.85	11
12	18.00	18.15	18.30	18.45	18.60	18.75	18.90	19.05	19.20	19.35	12
13	19.50	19.65	19.80	19.95	20.10	20.25	20.40	20.55	20.70	20.85	13
14	21.00	21.15	21.30	21.45	21.60	21.75	21.90	22.05	22.20	22.35	14
15	22.50	22.65	22.80	22.95	23.10	23.25	23.40	23.55	23.70	23.85	15
16	24.00	24.15	24.30	24.45	24.60	24.75	24.90	25.05	25.20	25.35	16
17	25.50	25.65	25.80	25.95	26.10	26.25	26.40	26.55	26.70	26.85	17
18	27.00	27.15	27.30	27.45	27.60	27.75	27.90	28.05	28.20	28.35	18
19	28.50	28.65	28.80	28.95	29.10	29.25	29.40	29.55	29.70	29.85	19
20	30.00	30.15	30.30	30.45	30.60	30.75	30.90	31.05	31.20	31.35	20
21	31.50	31.65	31.80	31.95	32.10	32.25	32.40	32.55	32.70	32.85	21
22	33.00	33.15	33.30	33.45	33.60	33.75	33.90	34.05	34.20	34.35	22
23	34.50	34.65	34.80	34.95	35.10	35.25	35.40	35.55	35.70	35.85	23
24	36.00	36.15	36.30	36.45	36.60	36.75	36.90	37.05	37.20	37.35	24
25	37.50	37.65	37.80	37.95	38.10	38.25	38.40	38.55	38.70	38.85	25
26	39.00	39.15	39.30	39.45	39.60	39.75	39.90	40.05	40.20	40.35	26
27	40.50	40.65	40.80	40.95	41.10	41.25	41.40	41.55	41.70	41.85	27
28	42.00	42.15	42.30	42.45	42.60	42.75	42.90	43.05	43.20	43.35	28
29	43.50	43.65	43.80	43.95	44.10	44.25	44.40	44.55	44.70	44.85	29
30	45.00	45.15	45.30	45.45	45.60	45.75	45.90	46.05	46.20	46.35	30
31	46.50	46.65	46.80	46.95	47.10	47.25	47.40	47.55	47.70	47.85	31
32	48.00	48.15	48.30	48.45	48.60	48.75	48.90	49.05	49.20	49.35	32
33	49.50	49.65	49.80	49.95	50.10	50.25	50.40	50.55	50.70	50.85	33
34	51.00	51.15	51.30	51.45	51.60	51.75	51.90	52.05	52.20	52.35	34
35	52.50	52.65	52.80	52.95	53.10	53.25	53.40	53.55	53.70	53.85	35
36	54.00	54.15	54.30	54.45	54.60	54.75	54.90	55.05	55.20	55.35	36
37	55.50	55.65	55.80	55.95	56.10	56.25	56.40	56.55	56.70	56.85	37
38	57.00	57.15	57.30	57.45	57.60	57.75	57.90	58.05	58.20	58.35	38
39	58.50	58.65	58.80	58.95	59.10	59.25	59.40	59.55	59.70	59.85	39
40	60.00	60.15	60.30	60.45	60.60	60.75	60.90	61.05	61.20	61.35	40
41	61.50	61.65	61.80	61.95	62.10	62.25	62.40	62.55	62.70	62.85	41
42	63.00	63.15	63.30	63.45	63.60	63.75	63.90	64.05	64.20	64.35	42
43	64.50	64.65	64.80	64.95	65.10	65.25	65.40	65.55	65.70	65.85	43
44	66.00	66.15	66.30	66.45	66.60	66.75	66.90	67.05	67.20	67.35	44
45	67.50	67.65	67.80	67.95	68.10	68.25	68.40	68.55	68.70	68.85	45
46	69.00	69.15	69.30	69.45	69.60	69.75	69.90	70.05	70.20	70.35	46
47	70.50	70.65	70.80	70.95	71.10	71.25	71.40	71.55	71.70	71.85	47
48	72.00	72.15	72.30	72.45	72.60	72.75	72.90	73.05	73.20	73.35	48
49	73.50	73.65	73.80	73.95	74.10	74.25	74.40	74.55	74.70	74.85	49
50	75.00	75.15	75.30	75.45	75.60	75.75	75.90	76.05	76.20	76.35	50

THE NATIONAL BLANK BOOK COMPANY
 HOLYOKE MASSACHUSETTS
 NEW YORK CHICAGO BOSTON SAN FRANCISCO

115
 102
 13

115
 64
 51
 13
 38
 13
 65
 175

4429
 24
 24

73
 115
 7
 1851
 6749

33077
 32826
 1145