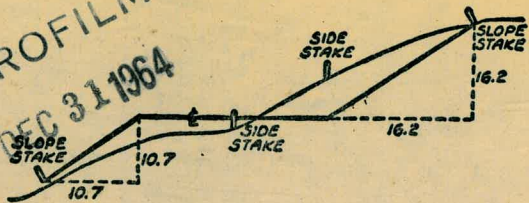


2028

TRAVEL BOOK

MICROFILMED
DEC 31 1964



DISTANCES FROM SIDE STAKES FOR CROSS-SECTIONING
SLOPE 1 TO 1. ROADWAY OF ANY WIDTH

	0	.1	.2	.3	.4	.5	.6	.7	.8	.9	
0	0.00	0.10	0.20	0.30	0.40	0.50	0.60	0.70	0.80	0.90	0
1	1.00	1.10	1.20	1.30	1.40	1.50	1.60	1.70	1.80	1.90	1
2	2.00	2.10	2.20	2.30	2.40	2.50	2.60	2.70	2.80	2.90	2
3	3.00	3.10	3.20	3.30	3.40	3.50	3.60	3.70	3.80	3.90	3
4	4.00	4.10	4.20	4.30	4.40	4.50	4.60	4.70	4.80	4.90	4
5	5.00	5.10	5.20	5.30	5.40	5.50	5.60	5.70	5.80	5.90	5
6	6.00	6.10	6.20	6.30	6.40	6.50	6.60	6.70	6.80	6.90	6
7	7.00	7.10	7.20	7.30	7.40	7.50	7.60	7.70	7.80	7.90	7
8	8.00	8.10	8.20	8.30	8.40	8.50	8.60	8.70	8.80	8.90	8
9	9.00	9.10	9.20	9.30	9.40	9.50	9.60	9.70	9.80	9.90	9
10	10.00	10.10	10.20	10.30	10.40	10.50	10.60	10.70	10.80	10.90	10
11	11.00	11.10	11.20	11.30	11.40	11.50	11.60	11.70	11.80	11.90	11
12	12.00	12.10	12.20	12.30	12.40	12.50	12.60	12.70	12.80	12.90	12
13	13.00	13.10	13.20	13.30	13.40	13.50	13.60	13.70	13.80	13.90	13
14	14.00	14.10	14.20	14.30	14.40	14.50	14.60	14.70	14.80	14.90	14
15	15.00	15.10	15.20	15.30	15.40	15.50	15.60	15.70	15.80	15.90	15
16	16.00	16.10	16.20	16.30	16.40	16.50	16.60	16.70	16.80	16.90	16
17	17.00	17.10	17.20	17.30	17.40	17.50	17.60	17.70	17.80	17.90	17
18	18.00	18.10	18.20	18.30	18.40	18.50	18.60	18.70	18.80	18.90	18
19	19.00	19.10	19.20	19.30	19.40	19.50	19.60	19.70	19.80	19.90	19
20	20.00	20.10	20.20	20.30	20.40	20.50	20.60	20.70	20.80	20.90	20
21	21.00	21.10	21.20	21.30	21.40	21.50	21.60	21.70	21.80	21.90	21
22	22.00	22.10	22.20	22.30	22.40	22.50	22.60	22.70	22.80	22.90	22
23	23.00	23.10	23.20	23.30	23.40	23.50	23.60	23.70	23.80	23.90	23
24	24.00	24.10	24.20	24.30	24.40	24.50	24.60	24.70	24.80	24.90	24
25	25.00	25.10	25.20	25.30	25.40	25.50	25.60	25.70	25.80	25.90	25
26	26.00	26.10	26.20	26.30	26.40	26.50	26.60	26.70	26.80	26.90	26
27	27.00	27.10	27.20	27.30	27.40	27.50	27.60	27.70	27.80	27.90	27
28	28.00	28.10	28.20	28.30	28.40	28.50	28.60	28.70	28.80	28.90	28
29	29.00	29.10	29.20	29.30	29.40	29.50	29.60	29.70	29.80	29.90	29
30	30.00	30.10	30.20	30.30	30.40	30.50	30.60	30.70	30.80	30.90	30
31	31.00	31.10	31.20	31.30	31.40	31.50	31.60	31.70	31.80	31.90	31
32	32.00	32.10	32.20	32.30	32.40	32.50	32.60	32.70	32.80	32.90	32
33	33.00	33.10	33.20	33.30	33.40	33.50	33.60	33.70	33.80	33.90	33
34	34.00	34.10	34.20	34.30	34.40	34.50	34.60	34.70	34.80	34.90	34
35	35.00	35.10	35.20	35.30	35.40	35.50	35.60	35.70	35.80	35.90	35
36	36.00	36.10	36.20	36.30	36.40	36.50	36.60	36.70	36.80	36.90	36
37	37.00	37.10	37.20	37.30	37.40	37.50	37.60	37.70	37.80	37.90	37
38	38.00	38.10	38.20	38.30	38.40	38.50	38.60	38.70	38.80	38.90	38
39	39.00	39.10	39.20	39.30	39.40	39.50	39.60	39.70	39.80	39.90	39
40	40.00	40.10	40.20	40.30	40.40	40.50	40.60	40.70	40.80	40.90	40
41	41.00	41.10	41.20	41.30	41.40	41.50	41.60	41.70	41.80	41.90	41
42	42.00	42.10	42.20	42.30	42.40	42.50	42.60	42.70	42.80	42.90	42
43	43.00	43.10	43.20	43.30	43.40	43.50	43.60	43.70	43.80	43.90	43
44	44.00	44.10	44.20	44.30	44.40	44.50	44.60	44.70	44.80	44.90	44
45	45.00	45.10	45.20	45.30	45.40	45.50	45.60	45.70	45.80	45.90	45
46	46.00	46.10	46.20	46.30	46.40	46.50	46.60	46.70	46.80	46.90	46
47	47.00	47.10	47.20	47.30	47.40	47.50	47.60	47.70	47.80	47.90	47
48	48.00	48.10	48.20	48.30	48.40	48.50	48.60	48.70	48.80	48.90	48
49	49.00	49.10	49.20	49.30	49.40	49.50	49.60	49.70	49.80	49.90	49
50	50.00	50.10	50.20	50.30	50.40	50.50	50.60	50.70	50.80	50.90	50

INDEXED
Completely.

Distance of slope stake from side or shoulder stake for any width roadway, slope 1 to 1. If ground is nearly level, the cut or fill at side stake is located by the double entry method in left column and top row. The number in body of table in same row and column gives distance from side stake to slope stake. If ground is not level estimate the difference in elevation between the side stake and slope stake, lower target by this amount if cut, elevate if fill. Add this amount to cut or fill and find distance in table. Set up rod at this point, and line of sight should cut target. If it does not make the slight adjustment necessary.

63
79
14

DIRECTIONS FOR USE OF TABLES

TABLE No. XIV

Distance of slope stake from side of shoulder
stake for any width roadway slope 1 1/2 to 1.
If ground is nearly level, the cut or fill at side
stake is located by the slope stake method.

IMPROVED TABLES
AND
INFORMATION

TABLE No. VIII

To find Tangent and External for curve of
any other degree, divide by degree of curve and
add correction found in column of corrections.
Degree of curve with a given L may be found
by dividing tangent (or external) opposite L by
given tangent (or external).

The distance from a point on the tangent to
the curve is very nearly the square of the tangent
length divided by twice the radius.

Also see book 2019

1

Sewer Prelim.

{ Charlotte to Torrey Pines	57-59
{ Road to west of Coast Blvd.	78-79
{ Via Bluff	2
{ Via Bluff	15
{ Via Bluff	66-71
{ Princess to Charlotte	16-24
{ Arnalpi St. Ely Prom. Princess	
{ Sierra Mar Dr.	25 to 37
{ Thru BIK to Princess	
{ Soledad Road from pump west	
{ of Whitefield Pl. to Al Bahr. Dr	43-49
{ Sly. from Lowry Terrace	
{ (P.L. 1286)	50-52
{ Alternate Line	
{ BIK. 46 La Jolla Park	53-56
{ BIK. 46 "Blue" line Levels	
{ Also see "Blue" line (Sketch P.H)	57-59
✓ Viking Way (Torrey Road)	60-62
✓ Little St.	63-65
✓ Princess St. (No. of Torrey Rd)	72-77
Change Bluff line	78-79

5-20-49 Bluff line
Stadia data.

Sommermeier
McCoy
Allen

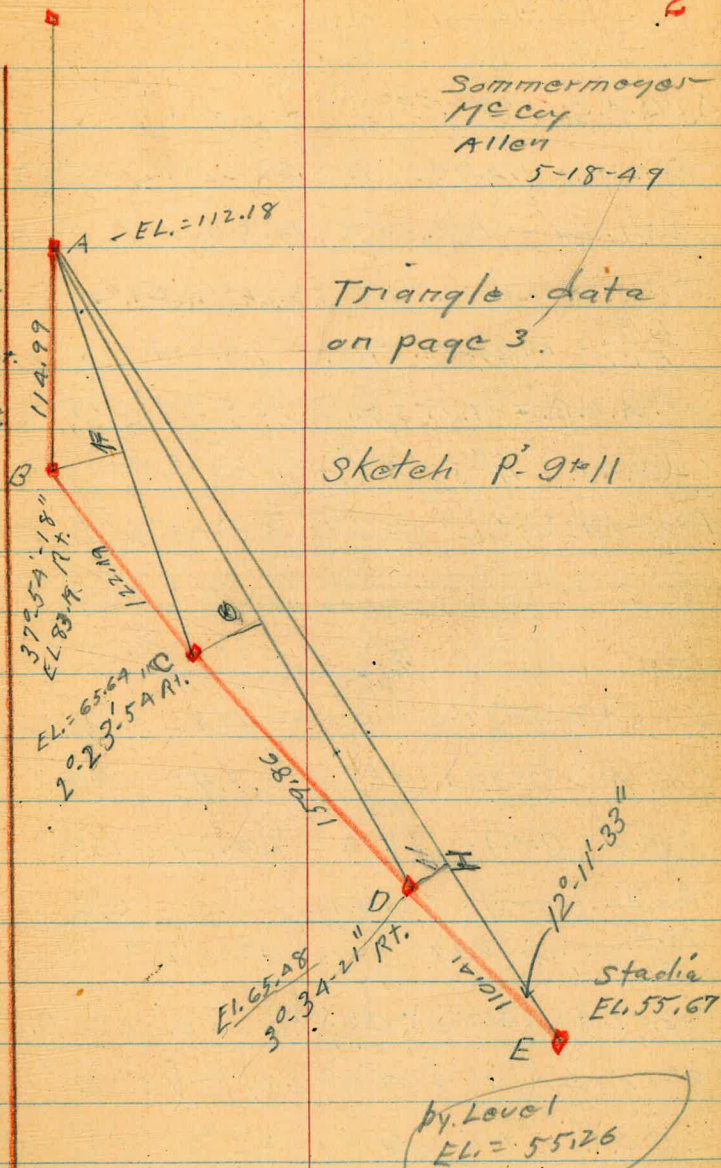
π at "A"	Vert. L	Slope Dist.	Dist	π 4.70 Vert. L	Elev Diff.	AZM.
to B	14°-20'	118.17 chain.	114.99	-14°-12'	-28.99	0°-00'
		stadia				
C	-11°-43'	234'	224.34	-11°-43'	-46.54	19°-33' 24"
D	-7°-00'	386'	380.21	-7°-00'	-46.70	28°-10' 24"
E	-6°-37'	494' 247x2	487.43	-6°-37'	-56.51	31°-41' 24"

π at "E"	Vert. L	slope dist	Dist.	π 5.00 Vert. L	Elev diff	AZM.
to OATS	6.20	267.76	266.13	+5°-55'	+27.60	0°-00'

INDEXED
W.K.
AUG 23 1949

2

Sommermeier
McCoy
Allen
5-18-49



Calc. of Ls + Course length.

Triangle A.B.C. Page 2

$$\Delta B.A.C. = 19^{\circ} 33' \begin{cases} \text{Sine} = .33463 \\ \text{Cos} = .94235 \end{cases}$$

$$\text{Cos. } A \times 114.99 = 108.36 = A.F.$$

$$224.34 - 108.36 = 115.98 = F.C.$$

$$\text{Sine. } A \times 114.99 = 38.48 = B.F.$$

$$\frac{B.F.}{F.C.} = \text{Tang. } A.C.B. = 18^{\circ} 21' 18''$$

$$\text{Sec. } A.C.B. = (1.05354) \times C.F. = 122.19 = C.B.$$

$$(C.B.F. = 71^{\circ} 38' 42'') + (F.B.A. = 70^{\circ} 27'') = 142^{\circ} 05' 42''$$

$$180^{\circ} - 142^{\circ} 05' 42'' = 37^{\circ} 54' 18'' = \Delta B$$

Triangle A.C.D. Page 2

$$\angle CAD = 8^{\circ} 37' \begin{cases} \text{Cos} = .98871 \\ \text{Sine} = .14982 \end{cases}$$

$$\text{Cos. } A \times (224.34 = AC) = 223.92 = G.A.$$

$$(380.21 = D.A.) - 223.92 = 156.29 = D.G.$$

$$(\text{Sine } A = .14982) \times 224.34 = 33.61 = G.C.$$

$$\frac{33.61}{156.29} = .215049 = \text{Tang. } 12^{\circ} 08' 12'' = C.D.A$$

$$(\text{Sec. } C.D.A = 1.02284) 156.29 = 159.86 = D.C$$

$$[(8^{\circ} 37' = \angle A) + (12^{\circ} 08' 12'' = \angle D)] - (18^{\circ} 21' 18'' =$$

$$\angle B.C.A. \text{ in triangle \# 1}) = 2^{\circ} 23' 54'' = \Delta C$$

Triangle A.D.E. page 2.

3.

$$\angle D.A.E. = 3^{\circ} 31' \begin{cases} \text{Sine} = .06134 \\ \text{Cos.} = .99812 \end{cases}$$

$$\text{Cos. } A \times 380.21 = 379.50 = A.H.$$

$$487.43 - 379.50 = 107.93 = E.H.$$

$$\text{Sine } A \times 380.21 = 23.32 = D.H.$$

$$\frac{23.32}{107.93} = .216066 = \text{Tang. } 12^{\circ} 11' 33'' = \angle E$$

$$(\text{Sec. "E" } = 1.02300) \times 107.93 = 110.41 = E.D.$$

$$(E + A) - (12^{\circ} 08' 12'' = \angle C.D.A. \text{ in triangle \# 2})$$

$$= 3^{\circ} 34' 21'' = \Delta D$$

Work sheet included
with notes. ~~off~~

Torrey Pines Rd. + Charlotte to
North of Coast Blvd. Via Bluff.

1+12 = Cross 1' wide tile + mortar walk

1+09 13' Lt. = End frame house

12' Lt. = start frame house

+81 -21' Rt. = End 24' Culvert.

T.P. 1.11 $\langle 62.53 \rangle$ 13.15 $\langle 61.42 \rangle$

+75

+50

T.P. 2.11 $\langle 74.57 \rangle$ 12.65 $\langle 72.46 \rangle$

+34

0+25⁸ = Δ 82°-49' Lt. Nail in ^{walk} cold lay

0+19 = End pave. (curb sunken)

0+00 = Exist M.H. opposite pump house
(Sta. 38+50⁰) Const. Plans.

0.87 $\langle 85.11 \rangle$ — $\langle 84.24 \rangle$ B.P. #1
EL. = 84.24 G.B. 250

B.M. = 34⁵ Niy. R.P. to pump house = Cross in d.

69.5	64.5			
+7.0	+2.0			
<u>13</u>	<u>13</u>			
Floor	Ord			
69.5	64.5	61.3	57.5	53.70
+7.0	+2.0	1.2	3.0	8.83
<u>12</u>	<u>12</u>		<u>19</u>	<u>21</u>
Floor	Ord			End Culvert
		$\langle 62.53 \rangle$		
		62.0	57.9	
		12.6	<u>16.7</u>	
			<u>21</u>	
				Ord. over culvert.
		70.0		
		4.6		
		$\langle 74.57 \rangle$		
		81.9		
		3.2		
		82.8		
		2.3		
		82.8		
		2.3		
		84.35		
		0.76		
		M.H. cover		
		$\langle 85.11 \rangle$		

Bluff line

5

3+14 = Cross of rock wall

3+13 (T.P. 10.40) $\langle 65.66 \rangle$ 7.27 $\langle 55.26 \rangle$

2+92 - 2' RT. = 1' wide stucco wall. E

2+91.93 = Δ 106°-39'-30" Lt. = "E"
$$\begin{array}{r} 59.4 \\ 6.3 \text{ ord.} \\ \hline \langle 65.66 \rangle \end{array}$$

$$\begin{array}{r} 55.26 \\ 7.27 \end{array}$$

2+60

$$\begin{array}{r} 56.4 \\ 6.3 \end{array}$$

2+30

$$\begin{array}{r} 63.8 \\ + 1.3 \\ \hline 17 \end{array} \quad \begin{array}{r} 44.0 \\ 20.5 \\ \hline \end{array} \quad \begin{array}{r} 31.5 \\ 31 \\ 29 \\ w \end{array}$$

2+00

Possible

(Probable tunnel outlet)

Between these 2 - (1+52 + 2+00)

Possible

(Probable tunnel outlet)

1+52 = Cross of 3 wide wooden bridge

$$\begin{array}{r} 47.1 \\ 14.8 \\ \hline 17 \end{array} \quad \begin{array}{r} 57.5 \\ 5.0 \\ \hline 15 \end{array} \quad \begin{array}{r} 44.5 \\ 20.0 \\ \hline \end{array} \quad \begin{array}{r} 39.5 \\ 23 \\ 10 \\ w \end{array} \quad \begin{array}{r} 42.4 \\ 20.1 \\ 20 \end{array}$$

$$\begin{array}{r} 55.0 \\ 7.5 \\ \hline 17 \end{array} \quad \begin{array}{r} 47.5 \\ 15 \\ \hline 4 \end{array} \quad \begin{array}{r} 46.5 \\ 16.0 \\ \hline \text{Deck} \end{array} \quad \begin{array}{r} 43.9 \\ 18.6 \\ 2 \\ \hline \text{wash} \\ \hline \end{array}$$

1+27

$$\begin{array}{r} 52.9 \\ 9.6 \\ \hline 10 \\ \hline \text{Wash} \end{array} \quad \begin{array}{r} 46.0 \\ 16.5 \\ \hline \end{array}$$

$$\langle 62.53 \rangle$$

$$\langle 62.53 \rangle$$

Bluff like

6

5+00 Edge Bluff 40' Rt.

4+75 Possible tunnel outlet

4+60 = Possible tunnel portal.

4+02³⁹ = Δ 3°-34'-21" Rt. = "D"

3+80 also = ± 1' wide brick wall.
8' Lt. = end porch

3+59 = { 5' Lt. = line of porch
Also = top of bluff.
Ehd Conc. faced bluff.

5.9 < 71.4 > - 65.5 "D"

3+35

3+19 = start concrete faced bluff

3+18 = Top of bluff.

< 65.66 >

70.1 ✓
113
10

63.0 ✓
8.4

55.9 ✓
15.5
10
Bluff edge ✓

75.4 ✓
+ 40
15

65.5 ✓
5.9

66.9 ✓
45
7
Bluff edge

66.8 ✓
4.6
85

64.0 ✓
9.4

56.4 ✓
15
7
Bluff edge

63.4 ✓
8.0
< 71.4 > ✓

65.7 ✓
0.0
10' to
House
floor

64.5 ✓
1.2
9
top of
bluff

on beach
15

59. ✓
6.3

< 65.66 > ✓

Bluff line

6+50

1.8 $\langle 85.0 \rangle$

$\langle 83.19 \rangle$

"B"
812

6+02

walls, patios etc.

6+00 = leave area covered by tile

5+02 = $\Delta 2^{\circ} 23' 54''$ Rt. = "C" page 2.

extends over entire bluff slope,
benches, terrace patios, walks etc.

5+50 = start series of tile walls,

Cedars 3 to 6' apart

5+49 = intersect row of 8" dia.

5+30

5.66 $\langle 71.30 \rangle$

$\langle 65.64 \rangle$ "C"

7

80.0	74.0	68.0	25.0
<u>5.0</u>	<u>11.0</u>	<u>17.0</u>	<u>60.0</u>
10		10	5.0

$\langle 85.0 \rangle$

Cliff
Edge

66.4
4.9

74.6	66.6	62.6
<u>+3.3</u>	<u>4.7</u>	<u>8.7</u>
10		10

House
about 20'
(poor line thru
trees)

72.3	65.7	54.1	21.3
<u>+1.0</u>	<u>5.6</u>	<u>17.2</u>	<u>50.0 ±</u>
15		15	5.5

Edge Bluff

66.5
4.8

73.3	67.5	61.6
<u>+2.0</u>	<u>3.8</u>	<u>9.7</u>
10		10

$\langle 71.30 \rangle$

+50

110.2 ✓

3.5

107.6 ✓

6.1

22

Edge of bluff ✓

8+25

1.52

113.70 ✓

112.18 = Edge "A"

111.2 ✓

2.5

113.70

7+9938 = P.O.T. 1/2 = "A"

112.2 ✓

5.0

107.2 ✓

10.0

50

Bluff

Edge

5+96

5.0

117.2 ✓

112.18 = "A"

112.1 ✓

5.1

117.2 ✓

7+26

Cross wash - bottom of wash

65.0

13.0

68.0

10.0

50

Edge

Bluff

T.P.

3.0

78.0

9.0

75.0

78.0 ✓

7+00

88.0 ✓

+3.0

10

82.9 ✓

2.1

73.0 ✓

12.0

10

under house
 10' Lt. = Floor Furnace room
 6+84.39 Δ 37°-54'-18' Rt. = "B"

88.6

+3.6

10

88.0

+3.0

7

83.2 ✓

1.8

74.0 ✓

11.0

10

59.0 ✓

32.0

35

Bottom

wash

65.0 ✓

20.0

50

Cliff

Edge

85.0 ✓

Bluff line Prelim Sewer,
Charlotte + Torrey Rd. to
North of Coast Blvd.

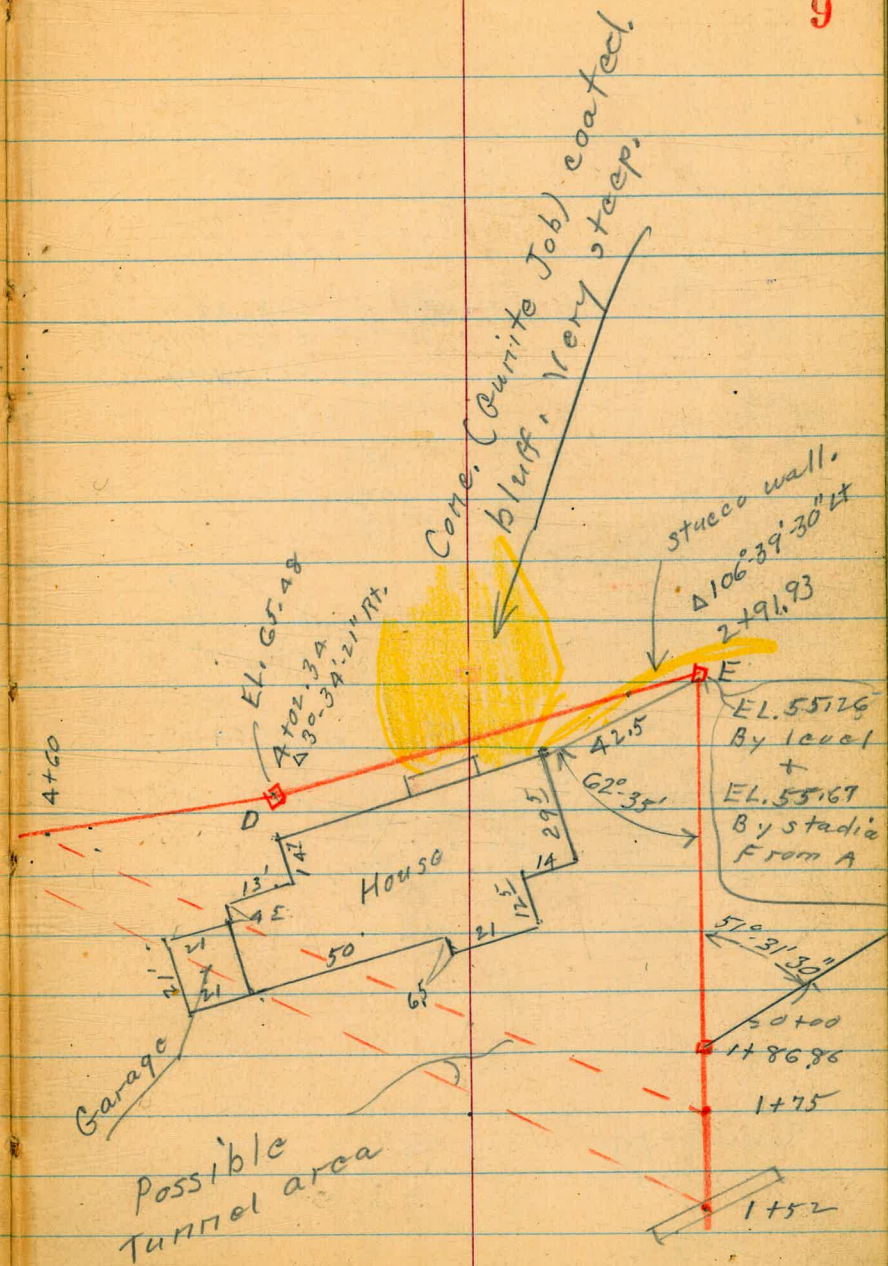
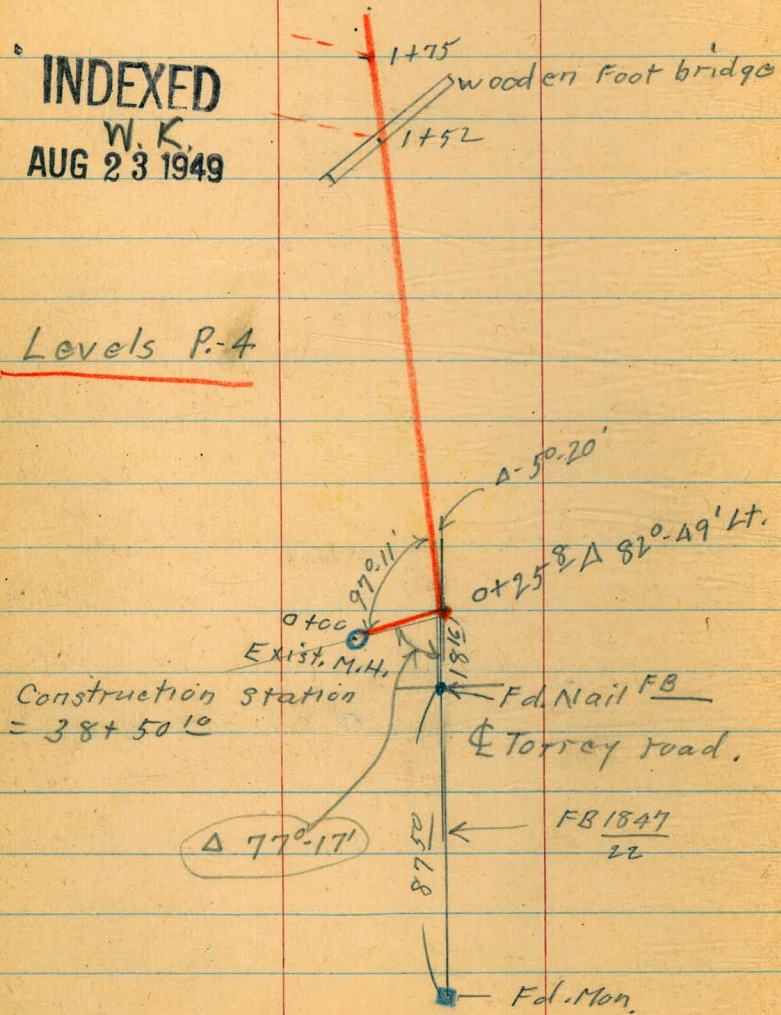
5-20-49

Sommermeier
Mc Coy
Allen

9

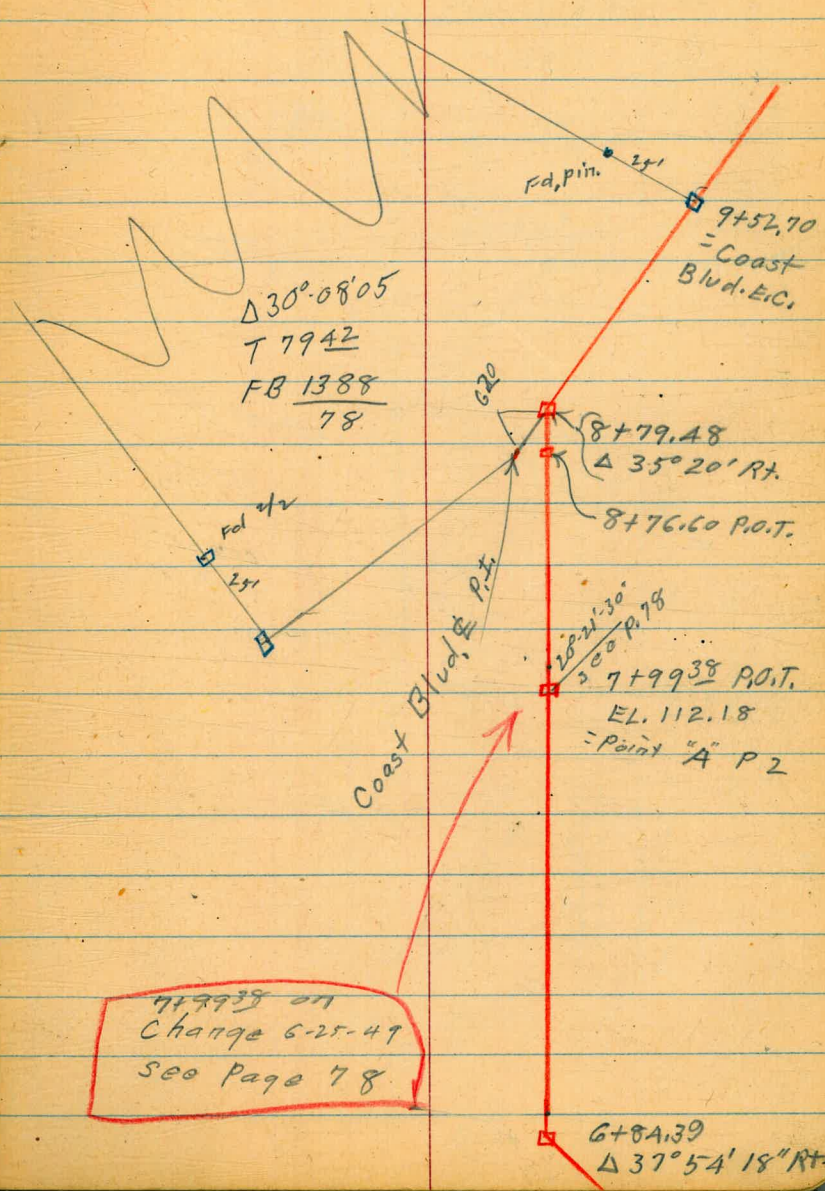
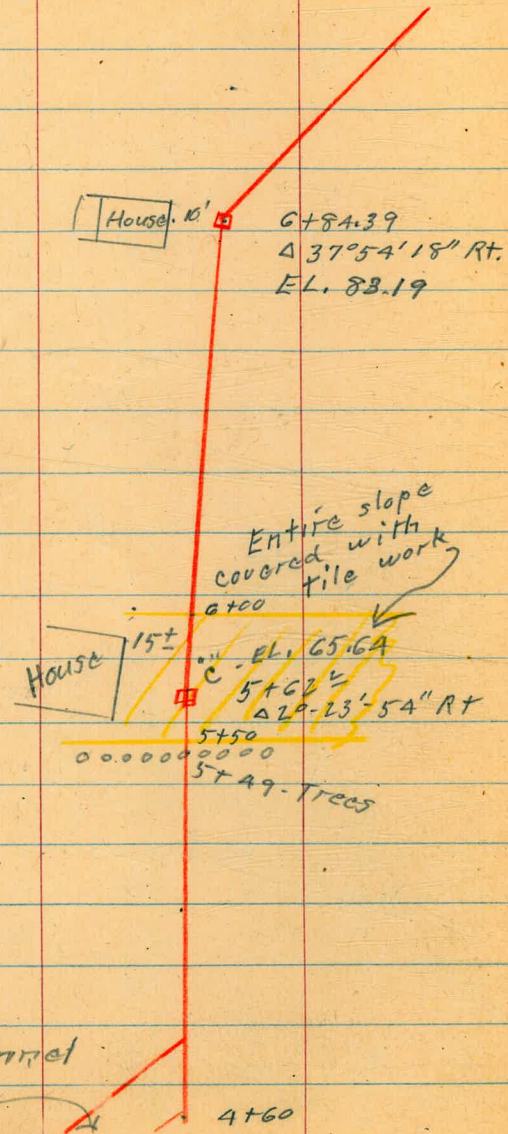
INDEXED
W. K.
AUG 23 1949

Levels P-4



Bluff line

10



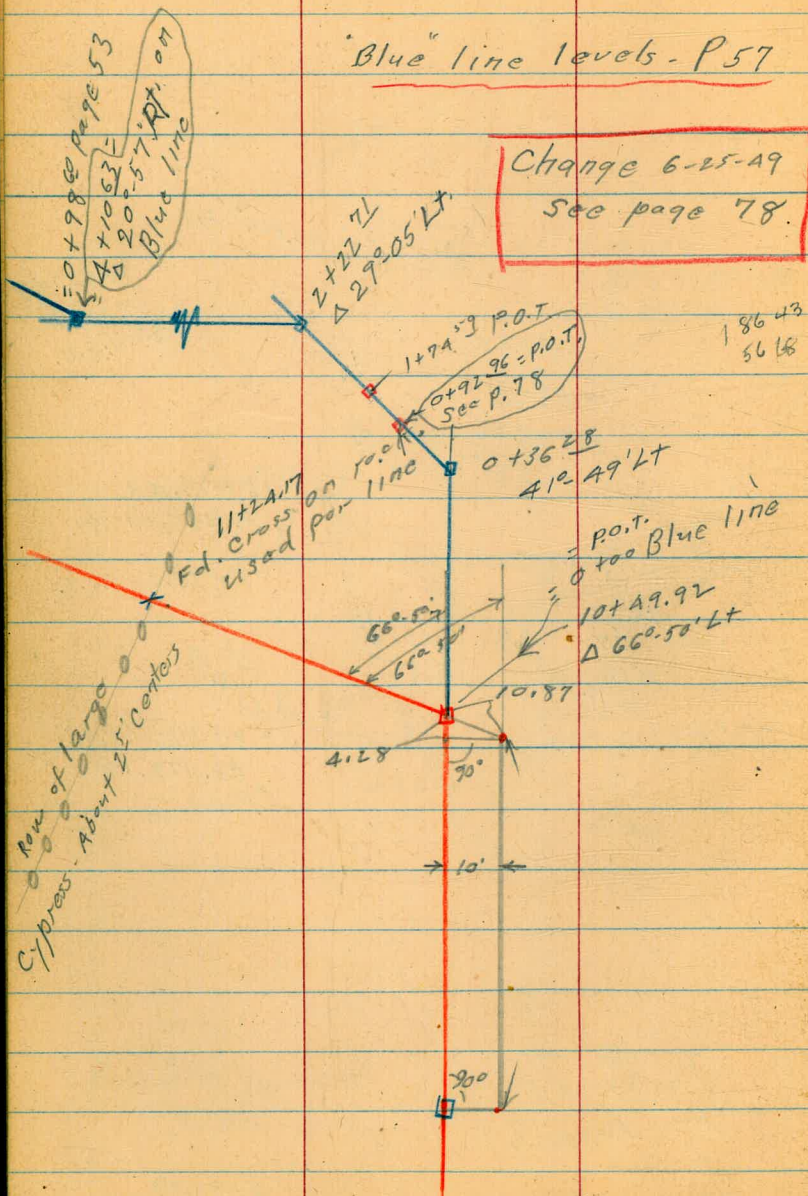
Possible tunnel area

7+99.38 on
Change 6-25-41
See Page 78

Bluff line

Blue line levels - P57

Change 6-25-49
See page 78.



11

16+48² = Ely Ch. Prospect

16+344
Ed disk RE 1534

Lot. 10 Lot 9

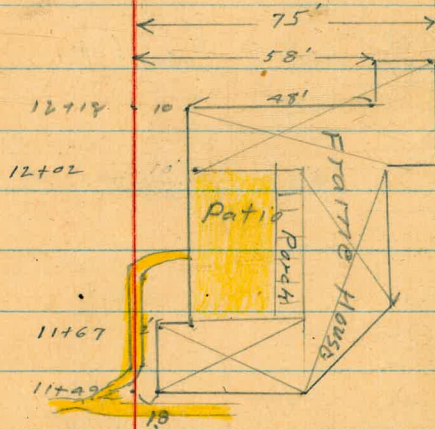
11 8
12 7

Cor. lots
6-7-12+13

13

11+714² Ed pipe
Jaeger

6



Bluff line

T.P. 6.99 $\langle 91.38 \rangle$ 5.00 $\langle 84.37 \rangle$

11+25 Cross run of cypress

+75

T.P. 0.68 $\langle 87.39 \rangle$ 12.94 $\langle 88.71 \rangle$ 10+49.92 = A $66^{\circ} 50' \text{ Lt}$

10+00

= P.O.T.

9+52⁷⁰ = E.C. + Coast BlvdT.P. 0.08 $\langle 101.65 \rangle$ 12.13 $\langle 101.57 \rangle$

9+00

8+79¹⁸ = A $35^{\circ} 20' \text{ Rt.} - \text{P. 10}$

From Page 8

 $\langle 113.70 \rangle$

12

86.7 ✓

2.7

87.3 ✓

2.1

 $\langle 89.39 \rangle$ ✓

88.71 ✓

12.94

stub

95.1 ✓

6.5

99.5 ✓

2.1

 $\langle 101.65 \rangle$ ✓

106.7 ✓

7.0

107.29 ✓

6.41

stub

 $\langle 113.70 \rangle$ ✓

Bluff line

13

4174 $\langle 92.42 \rangle$ 3.70 $\langle 87.68 \rangle$

12+28

$\frac{85.6}{5.8}$	$\frac{77.5}{13.9}$	$\frac{77.6}{13.8}$
	$\frac{75}{75}$	$\frac{75}{75}$
	Ord	Floor level

12+18 $\left. \begin{array}{l} 58' \text{ RT.} \\ 10' \text{ RT.} \end{array} \right\} \Delta \text{ in house}$

$\frac{86.5}{4.9}$
$\frac{10}{10}$
Floor level

12+02 10' RT. = end patio ^{house} start

12+00

$\frac{85.9}{5.5}$

11+81² = End E+W. walk. \pm 3' wide walk to right (N+S.)

$\frac{86.00}{5.38}$

11+70 - 3' Lt. = Lemon tree
10' Rt. = start patio11+67 - 2' Rt. = \angle in house

$\frac{86.4}{5.0}$
$\frac{2}{2}$
Floor level

11+56 = start 3' wide E+W. Conc. ^{walk.}

$\frac{86.33}{5.05}$

11+49 - 1⁸ RT. = SE. Cor. House

$\frac{86.05}{5.33}$

11+47 = \pm 3' wide N+S. Conc. walk $\langle 91.38 \rangle$ $\langle 91.38 \rangle$

T.P.

$$11.35 \left\langle \frac{125.72}{} \right\rangle 0.15 \left\langle \frac{111.37}{} \right\rangle$$

(Garage used as living quarters)

14+80 72' Rt. = S. Ely. Cor. House + Bar.

14+74.4 = Lot. Cor. = Pipe (Cor. lots 6-7-12+13
BIR 46 La Jolla Park)

14+25

T.P.

$$12.11 \left\langle \frac{111.52}{} \right\rangle 0.26 \left\langle \frac{102.41}{} \right\rangle$$

14+00

T.P.

$$10.76 \left\langle \frac{102.67}{} \right\rangle 0.51 \left\langle \frac{91.91}{} \right\rangle$$

+50

13+00 (start shrubs)

12+92 - 2^E Lt. = 6" diam. pine

12+74 Large pine (14" diam.) on line

12+65

$$\left\langle \frac{92.42}{} \right\rangle$$

$$\frac{112.5}{2.0}$$

$$\frac{111.7}{2.8}$$

$$\frac{100.2}{}$$

$$\frac{14.3}{114.52}$$

$$\frac{97.2}{5.5}$$

$$\left\langle \frac{102.67}{} \right\rangle$$

$$\frac{91.2}{1.2}$$

$$\frac{88.5}{4.1}$$

$$\frac{86.5}{5.9}$$

$$\left\langle \frac{92.42}{} \right\rangle$$

95.4

$$\frac{72.3}{19.1}$$

$$\frac{72}{100.8}$$

Lower floor

100.8

$$\frac{77.7}{13.7}$$

$$\frac{73}{93}$$

Main house floor

S.E. 7th Lt. Prospect
 + Turkey Pines Rd.

3.01 $\langle 152.26 \rangle$ ^{FB. 2019}

T.P. 10.83 $\langle 155.27 \rangle$ 0.66 $\langle 144.44 \rangle$

16+48⁴ = Ely. Cb. Prospect.

16+34⁴ Fd disk in walk RE. 1534

(above notes for Tie in of line)

T.P. 9.34 $\langle 145.10 \rangle$ 0.60 $\langle 135.76 \rangle$

T.P. 11.75 $\langle 136.36 \rangle$ 1.11 $\langle 124.61 \rangle$

15+25 End shrubs

119.9[✓]

5.8

$\langle 125.72 \rangle$ [✓]

Bluff Line (East)
Princess to Charlotte

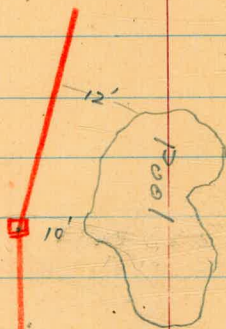
5-23-49

Sommermeier
McCoy,
Allen

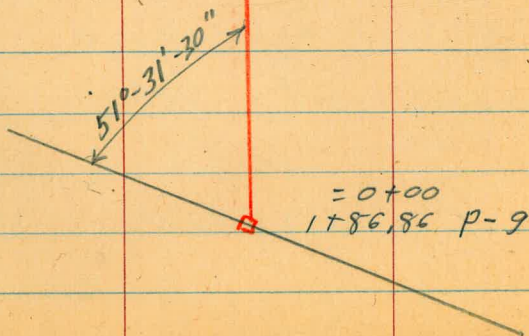
INDEXED

W.K.
AUG 23 1949

1+84.69
Δ 14°-49' Rt.
Elev. = 65.21
Pg 19



About 10' to
12' deep.



5+40.49 - See page 17

16

152.50

3+87.99
Δ 25°-43' Lt.
Elev. = 54.23
Pg 20

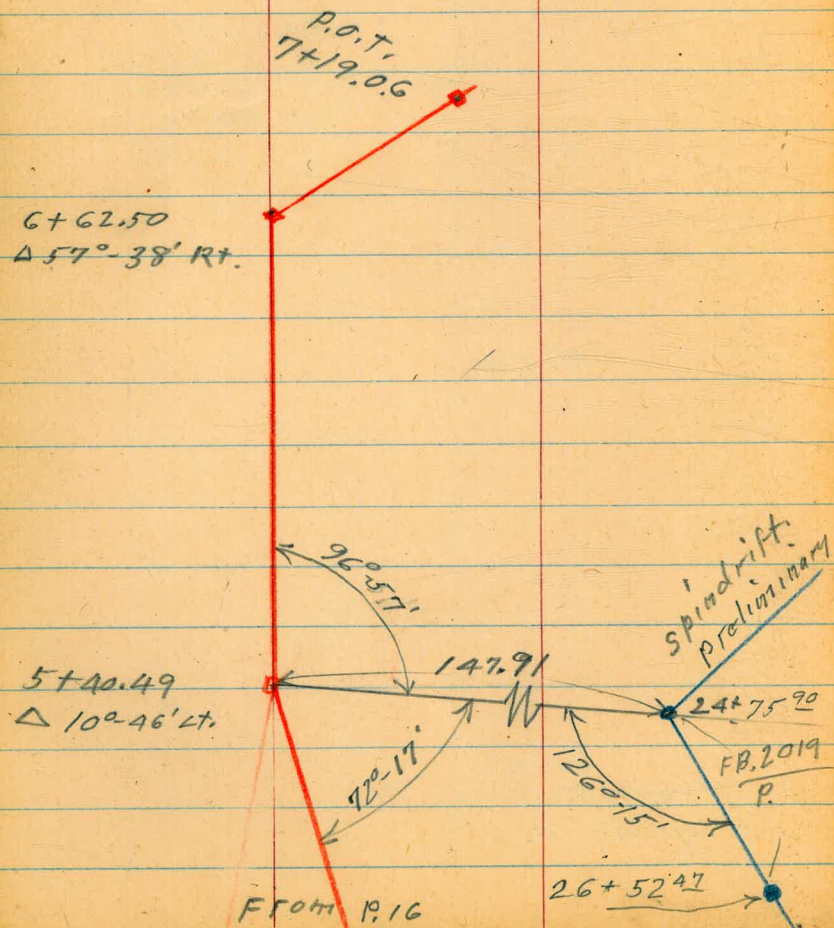
use line as
run on P. 66

6/22/49

1+84.69
Δ 14°-49' Rt.

Bluff line - (East)

17



Levels on Bluff Line
(East) Charlotte to Princess

Sketch Pg 16

18

T.P. 15.6 $\langle 56.2 \rangle$ - 8.4 $\langle 41.6 \rangle$
1+00 20' Lt Bottom No-So Channel

$\langle 56.2 \rangle$
24.0 ✓
26.0 ✓
20 ✓
41.6 ✓
8.4 ✓
54.6 ✓
 $\langle +4.6 \rangle$
15 ✓

INDEXED

N.K.

AUG 23 1949

+86 15' Lt Bottom No-So Channel

27.0 ✓
23.0 ✓
15 ✓
40.3 ✓
9.7 ✓
53.0 ✓
 $\langle +3.0 \rangle$
15 ✓

0+60 10' Lt Bottom No-So Channel

35.0 ✓
15 ✓
10 ✓
43.0 ✓
7.0 ✓
48.0 ✓
2.0 ✓
10 ✓

0+47 & Channel from East

37.5 ✓
12.5 ✓

0+31 & No + So. Channel

36.5 ✓
13.5 ✓

0+00 = LRI 51°31'30"
1+86.86 pg 9

44.0 ✓
60 ✓

Deck of
Foot Bridge } Pg 5
1+52

397 $\langle 50.00 \rangle$ ✓
Hand Level

$\langle 46.53 \rangle$ ✓

$\langle 50.00 \rangle$ ✓

Bluff Line

+50

52.2 ✓	55.5 ✓	63.7 ✓
<u>13.5</u>	10.2	<u>2.0</u>
15		18
		Top Bank

19

+25

59.2 ✓	60.7 ✓	64.7 ✓
<u>6.5</u>	3.0	<u>1.0</u>
15		8
		Top Bank

2+06 Edge Bank

58.0 ✓	60.5 ✓	65.2 ✓	64.2 ✓
<u>7.7</u>	<u>5.2</u>	0.5	<u>1.5</u>
37	8		12
Edge cliff			Edge Pool

1+84.69 Outs on split of L
L Pt. 14°49' RT.

40.7 ✓	57.2 ✓	65.2 ✓	64.2 ✓	53.7 ✓
<u>25.0</u>	<u>8.2</u>	0.48	<u>1.5</u>	<u>12.0</u>
50	10	stub	10	25
Edge cliff			Edge Fish Pond	Approx. depth of pool

1+81 Top of Bank

"E" P92	Transit 10.43	{ 65.69 } ✓	{ 55.26 } ✓
L Pt. 1+84.69		2.2	{ 64.9 } ✓
TP	11.2	{ 67.1 } ✓	0.3 { 55.9 } ✓

65.2 ✓
0.5

{ 65.69 } ✓

+50

45.8 ✓	55.8 ✓	63.8 ✓
<u>10.9</u>	0.4	<u>+7.6</u>
10		8 Top Bank
39.6 ✓	51.6 ✓	61.8 ✓
<u>16.6</u>	4.6	<u>+5.6</u>
10.		10

1+20

{ 56.2 } ✓
Hard Level

{ 56.2 } ✓

Bluff Line

41
32
33

+33

31.0[✓]
28.0
1044.8[✓]
14.252.0[✓]
7.0
10

20

4+13 Bottom of Wash

35.0[✓]
26.0
1535.2[✓]
23.8
2 Wash
1538.0[✓]
21.0
15

+96 Ridge

53.5[✓]
5.5
1555.0[✓]
4.056.0[✓]
3.0
15

3+66 Top Bank

50.2[✓]
8.8
35
Edge
Cliff46.5[✓]
12.5
1550.0[✓]
9.051.2[✓]
7.8
153+87.99
25°43' Lt4.77
Hand Level $\langle 59.0 \rangle^{\checkmark}$

54.23

11.46

 $\langle 54.23 \rangle^{\checkmark}$ $\langle 59.0 \rangle^{\checkmark}$
Hand Level

3+27 Bottom Ely-Wly Channel

52.7
20

50.7

48.7
20

3+00

38.0
15

35.4

31.5
15

2+90

37.7[✓]
28.0
1533.2[✓]
32.528.7[✓]
37.0
15 $\langle 65.69 \rangle^{\checkmark}$
Transit $\langle 65.69 \rangle^{\checkmark}$

Hand level

Bluff Line

+25

5715

+95

+84

+80

Bottom Bank

+66

± Crosses Nly-Sly Wash

3+87.99
L.P. Stub
Pg. 20

4453

20' Rt. to Corner House

TP

14.3

59.1
59.0

14.2

44.8

54.23

54.1 ✓
4.0
20
Edge
Cliff

50.1 ✓
8.0
30
Edge
Cliff

46.1
12.0
15

55.0 ✓
3.1
49.1 ✓
9.0

42.6 ✓
15.5

35.5 ✓
22.6

48.7 ✓
9.9
15
Top
Bank

30.7 ✓
28.4
15
Bottom
Narrow
Wash

58.06 ✓

59.1 ✓

33.7 ✓
24.4

36.0 ✓
21.1

52.5 ✓
5.6
10

47.7 ✓
10.4
15

60.1 ✓
+1.0
20
Cor. House
Floor

21

+85

+72

12.06

56.32

13.80

44.26

6+6x.50
∠ RT 57° 38'

6+06

Crosse Draw

+75

+68

5+40.49 stub
∠ 10° 46' RT.

(3.04

55.02

58.06

40.7
15.6
8
Edge
Bluff

40.7
15.6

47.2
9.1
3.1
Cor
House

22

42.6
13.7

44.3
13.8
6
Bluff

56.32
44.3
13.8

31.06
27.0
26
Edge
Bluff

30.06
28.0

39.8
18.3

39.1
19.0
11
Cor.
House
Gr.

39.86
18.2
11
Floor
House

8.1
50.0
60

30.1
28.0
30

50.1
8.0
2
Edge
Cliff

51.1
7.0

54.3
3.8
5
Edge
Cliff

55.02
3.04

56.7
6.4
10

55.5
2.6
25

58.06

+42

59.9[✓]

+3.6

+40 Approx. Lot line

58.6[✓]+36 ϕ 10' Conc. Slab.

+2.3

+30 ϕ 8" conc. wall parallel to Steps52.3[✓]
+1.0
28
TOP
Bluff60.1[✓]
+3.8
TOP
wall+0.9[✓]
Gr
56.7[✓]+24 ϕ 3' steps \angle 45° Lt.54.5[✓]

1.8

POT
7+19.0653.4[✓]

2.9

7+05

50.6[✓]51.6[✓]

5.7

4.7

10
TOP
Bluff

6+95

40.9[✓]

15.4

56.32[✓]56.32[✓]

7+53 7' RT Cor. House

✓
57.1

⊕0.8

33

T. Platt.

✓
60.12

⊕3.8

✓
61.7

⊕5.4

7

House
#100

✓
60.5

⊕4.2

7

56.32

Amalti St. Ely. from Princess
Sierra Mar Drive

5-24-49

INDEXED

M.K.
AUG 23 1949

Sommermeier
McCoy
Allen

- = Fd. Mon.
- = " Hub
- ▼ = " R.R. spike
- = " Pipe
- ⊙ = " Iron pin = I.P.

- = set. Hub + disk
- = " Nail
- = " stub.

Ties from
T.P. 17
39 to 42

2+00
I.P. street & B.C.
1+63.06 = P.O.T.

Mon. - Pub. line
0+74.66
Δ 20° 36' RT.

NOTE

Line from
0+74.66 why. to
Charlotte St. should
be moved north.
Run in present
position so as to
Tie in with
walkers line in
F.B. 2027

See F.B. 2016
12-21-49
31

Fd. Hub. F.B. 2027
11
3+42.18
Δ 69° 21' 45" RT.
EL. = 108.57

See G 290 as Const
To P. 26
5+55.88
Δ 18° 30' RT.
Street & P.I.

25

Amalti
& Charlotte

4+48.07 = Δ 69° 48' 30" RT.

See P. 28

4+37.79 R.O.T.

4+22.64 - P.O.T.

3+86.42
P.O.T.

3+16.92 = Amalti & E.C.
= P.O.T.

New Δ 20° 06'

Cont. From
FB 2016
32

Amalti
2+39.99 Street & P.I.
Δ 22° 34' LT.
(T.P. 17 shows 20° 36')

2+00

Sierra Mar Drive

INDEXED

W.K.
AUG 23 1949

8+56.35
Δ 20° 08' 09"
(see opposite page)

Cont.
P. 27

Correct location of shaft.
line runs thru. left edge of shaft.
this done because of trees.
4/14/52

See P 12
G-290
5/15/52

Note
M.H. as built
G-290
P 12

Stub & Nail R.P.

G+38.32
Δ 50° 09' Rt.
= E.C. of Sierra Mar. Dr.

5+55.88
Δ 18° 30' Rt. (± P.I. Sierra Mar)

From P 25

15.93
66.80
82.73
14° 58' 51"
137.46
152° 44' 51"
179° 59' 50"
152° 44' 51"
27° 15' 09"
S-Δ RT.

14° 58' 51"
71.17
86° 15' 51"
3 44 09
90 00 00
168° 16' 52"
15.93
90°

Detail for triangulation of

line from 8+56.35 to 9+39.26
92.91
92.926

68.68 @ 15° 26'
= 66.80

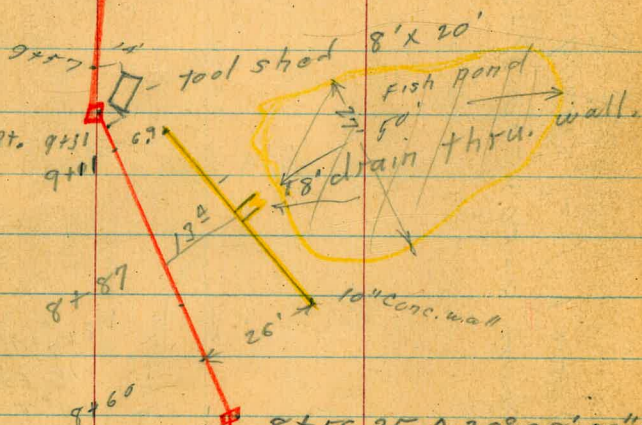
3° 44' 09"
16-24
20° 08' 09"
Δ Lt

11+15.43
Δ 84°-17'Rt.

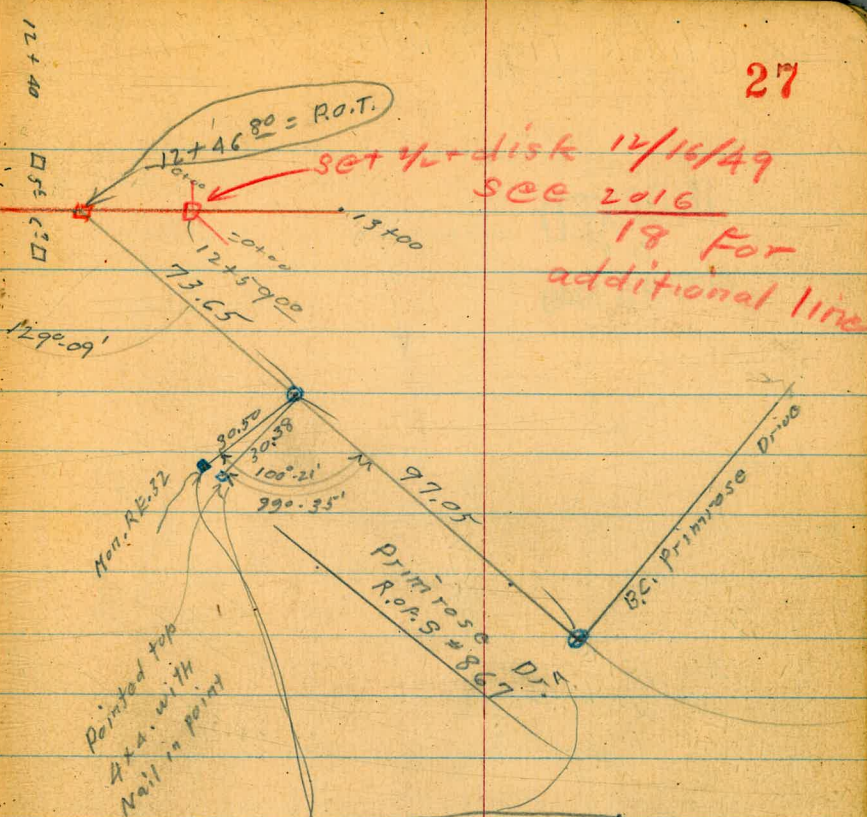
10+05.25
P.O.T.

See FB 2325

9+39.26
Δ 27°-15'-09" Rt. 9+31
See page
26 right



8+56.35 Δ 20°-08'-09" Lt.
(From P. 26 left)



set 4 1/2 disk 12/16/49
see 2016
18 for
additional line

Note: - use points on E
These points are being
pushed North N by a
large Eucalyptus tree.

6-10-54

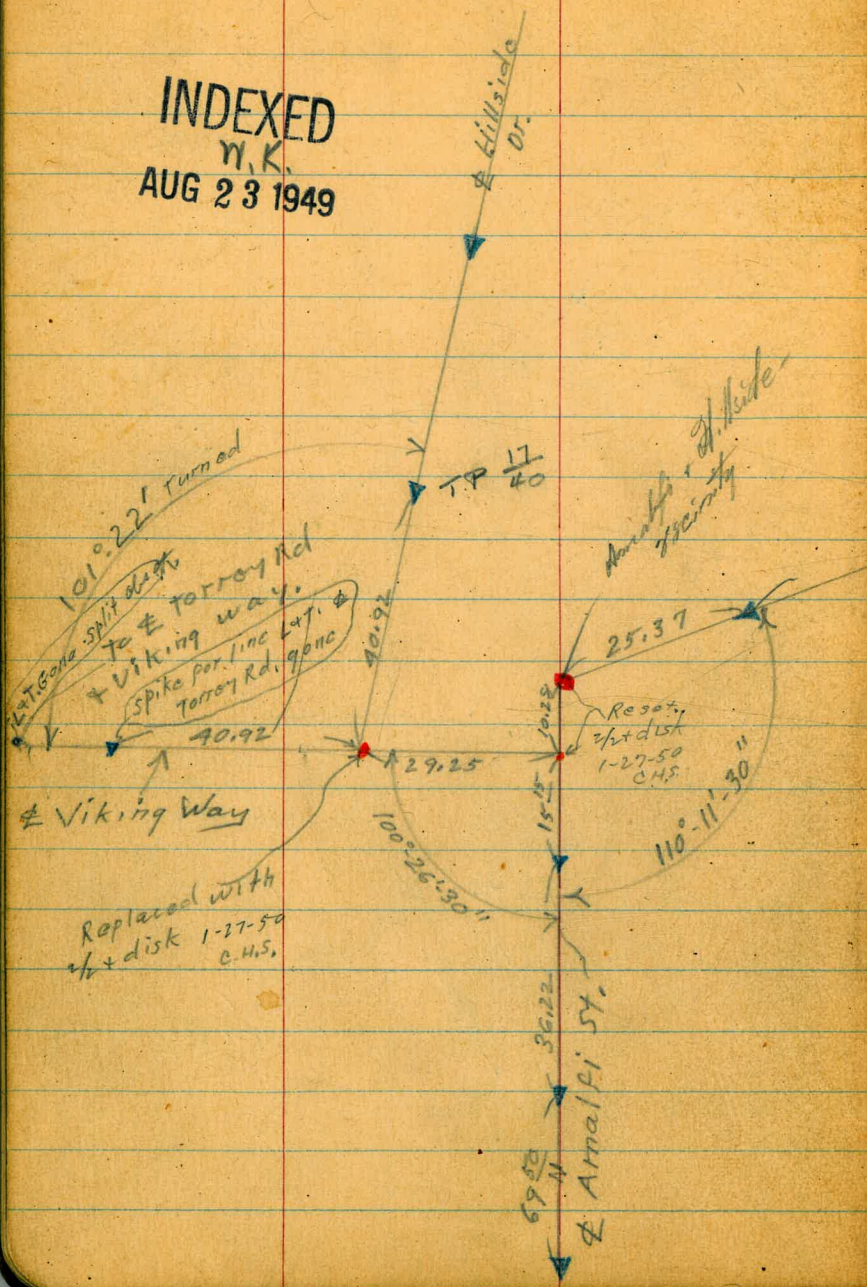
CHP

Check Tie Points

Viking Way

Hillside Dr. - Sierra Mar Dr. and Amalfi St.

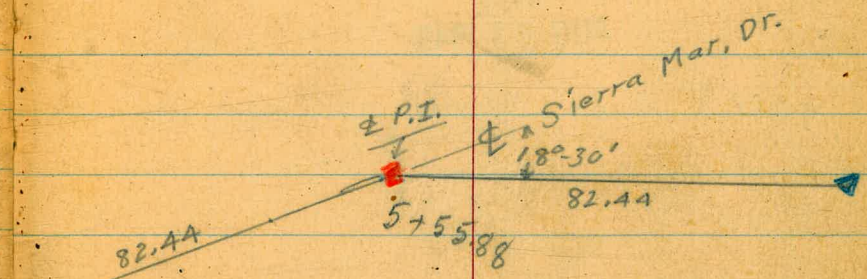
INDEXED
N.Y.K.
AUG 23 1949



28

Sommarmeyer
M & Coy
Allen. 5/26/49

- ▼ = R.R. spike found
- = Nails set by intersection of \perp of streets.
- = set $\frac{1}{2}$ disk.



Tie points on ground are as shown here. All distances chained and angles turned.

This does not agree with data in T.P. book #17

See T.P. 17
40 & 42

Amalfi - Sierra Mar. Dr.
 + Via easements to Primrose
 Prelim. Sewer levels

29

sketch - Pages 25 to 28.

Sammarmeyer
 McCoy
 Allen.

5/27/49

INDEXED

W.K.

AUG 23 1949

+50

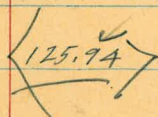
2+39.99 Δ 22°-34' Lt.

2+00

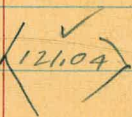
1+63.06 = F.P. P.O.T.

1+50

4.90



0.11



1+00

52' Lt. = $\$$ House

0+74.66

Δ 20°-36' Rt.

0+50

on oil + rock paving

= 0+00

12.58

121.15

108.57

FB2027

11

3+42.18

FB2027

11

103.9 ✓
 22.80
 110.9 ✓
 15.0 65
 120.7 ✓
 5.2 30
 3.85 on Hub
 122.03 ✓

3.7

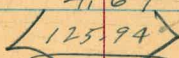
122.2 ✓

4.1

121.8 ✓

4.69

121.25 ✓



0.11

121.04 ✓

113.9 ✓
 7.3
 52
 Floor level

1.9

119.3 ✓

4.7

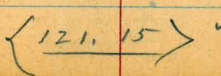
116.5 ✓

7.7

113.5 ✓

12.58

108.57 ✓



Right side is high

T.P. 12.92 <145.08> 1.05 <132.16> T.P. 7/2 Δ 3+55.88

+50

5+00

4+62

T.P. 13.05 <133.21> 5.78 <120.16>

4+48° Δ 69°48'-30" Rt.

133

4+00

3+63- 71' Lt. = S. Ely. Cor. House

3+50

3+00

125.94

131.6 ✓
1.6 131.6 ✓
20 8.8 124.4 ✓
35 3.0 130.2 ✓
60

30

125.4 ✓
7.8

121.1 ✓
12.1
<133.21>

120.16 ✓
5.78
Nail

119.1 ✓
6.8

111.1 ✓
14.8
70

120.0 ✓
5.7

108.0 ✓
17.9 18.3 10.0 6.0 119.9 ✓
71 91 25 15 5.4
Floor Ord

120.5 ✓
5.4

120.9 ✓
5.0

121.6 ✓
4.3

125.94

+60 9' Rt. = ctr. 24" diam Eucalyptus
+59 12' Lt. = ctr. 20" diam Eucalyptus
+54 8' Lt = Ctr. 30" diam Eucalyptus

+50 { 11" Rt. = 20" Eucalyptus
7' Lt. = 24" diam. Eucalyptus

7+49 - 15' Rt = Ctr. of 3x3 wood stored
box to storm drain inlet.

+44 - 4' Lt = ctr. 10" Eucalyptus

+40 5 1/2 Lt. = Ctr. 3 1/2" diam. Eucalyptus.

(3 1/2 Lt. = Lot. Cor. R.E. 32 (aprox. dist.)

7+34 15 Lt. = ± 1' wide Fly. + Wly. wall (Conc.)

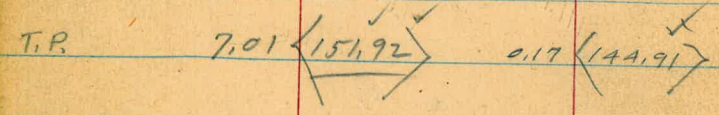
7+33 - 32 Lt. = pole # 7753

7+19³⁹ Δ 31°-35' Lt.

Rod & outs on culvert line

Δ of culvert. = 26°-31' Lt.

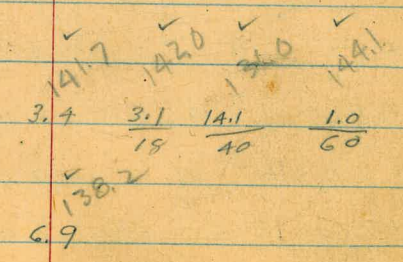
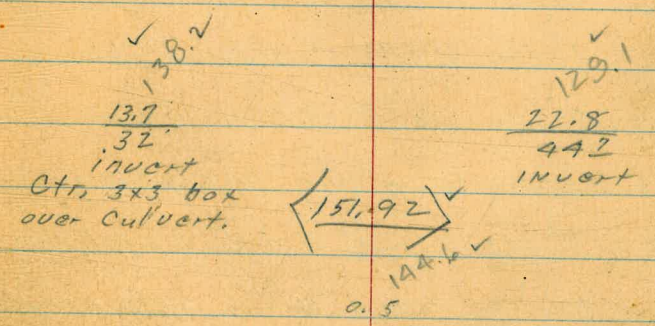
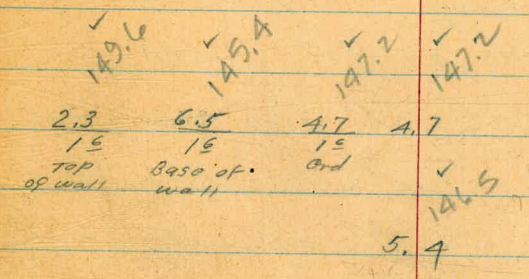
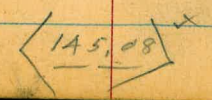
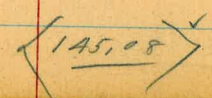
7+16⁴ = Cross 18" Conc. Culvert.



+75

6+38³² = Δ 50°-09' Rt.

6+00



8160 - 26' Rt. = start 10" wide conc. wall.

See FB 2325-P 2

T.P.

11.06 $\langle 162.20 \rangle$ 1.78 $\langle 150.14 \rangle$

8156³⁵ $\Delta 20^\circ - 08' - 09''$ Lt. (Calc.)

+52 - 11² Rt. = ctr. 24" diam Eucalyptus

+41 16' Lt. = ctr. 8" diam. peach tree

+31 - 9² Rt. = ctr. 15" diam. Eucalyptus.

+29 - 20' Lt. = 6" diam. lemon

+24 - 7² Rt. = ctr. 18" diam Eucalyptus

+19 - 8' Lt. = ctr. cluster of Quince (?)

8100 - 6² Rt. = 20" diam Eucalyptus

+99 - 8' Lt. = ctr. 4" diam peach tree

+98 - 18' Lt. = ctr. 4" diam tangerine tree

+93 - 4⁵ Rt. = ctr. 24" diam. Eucalyptus

+87 - 16' Lt. = small lemon tree

+82 - 4² Rt. = ctr. 24" diam. Eucalyptus

+77 - 15' Lt. = small lemon tree

+70 - 7' Rt. = ctr. 18" diam Eucalyptus

7462 - 15' Lt. = cluster of 3 - 6" diam
Eucalyptus

$\langle 151.92 \rangle$

32

151.0 ✓
11.2 ✓
162.20 ✓
150.5 ✓
71.7 ✓
10 ✓
26
End. at wall

150.14 ✓
1.78 ✓
Stub

148.9 ✓
3.0

148.4 ✓
3.5

147.0 ✓
4.9

$\langle 151.92 \rangle$

+52

2325
4

9+45

T.P. 11.28 <176.38> 2.90 <165.10>

9+44 10' Lt. = Aprox. Prop. Cor.

9+39²⁵ = Δ 27°-15'-09" Rt. (Calc.)

9+38 = 1^E Rt. = Cor. storage shed

9+31 - 4^E Rt. = ^{Cor.} storage shed (stack)

9+28

9+14 8' Rt. = 10" diam. Eugetia

9+11 6.9 Rt. = End Conc. wall.

T.P. 7.15 <168.00> 1.35 <160.85>

Top of wall = Ord. Elev. ^{Front} N/A' Rt of $\frac{1}{2}$ on out.
also = $\frac{1}{2}$ 18" drain thru. wall.

8+87 - 13^A Rt. = face of wall.

<162.20>

170.1 ✓
6.3

164.7 ✓
11.7 ✓
<176.38> ✓

165.1 ✓
2.90

166.3 ✓
1.7
164.0 ✓
4.0 ✓
4
20

166.9 ✓
1.5

163.8 ✓
4.2
163.1 ✓
4.9
6.9
wall
+ Ord

<168.00> ✓

155.2 ✓
7.0
151.8 ✓
10.9
133
ord. Invert
150.3 ✓
11.7
133
Top of
wall
+ 0.9

<162.20> ✓

10+76 = ± 2⁵ wide conc. walk.

10+72 18' Lt. = End stucco bar.

+57 20² Rt. = end stucco house

+55

+46 - 11' Lt. = start stucco garage

46' Rt. = step down in floor level

+45 - 22' Rt. = start stucco house

+32

10+27 - 6³ Rt. = Tangerine tree, 6" Diam

Sgt. 11+14

B.M. 29A:14A

P.27

T.P.

2.38 $\left\langle \begin{array}{l} 184.41 \\ 182.03 \end{array} \right\rangle$ 5.45 $\left\langle \begin{array}{l} 182.03 \\ 175.67 \end{array} \right\rangle$ 11.81 $\left\langle \begin{array}{l} 184.41 \\ 182.03 \end{array} \right\rangle$ 0.71 $\left\langle \begin{array}{l} 182.03 \\ 175.67 \end{array} \right\rangle$

10+00 - 1⁵ Lt. = 8" diam. elder tree

9+57 14' Rt. = End tool shed

$\left\langle \begin{array}{l} 176.38 \\ 176.38 \end{array} \right\rangle$

✓ 179.3
5.1 W

✓ 178.9 ✓
6.0 $\frac{5.5}{20}$ $\frac{5.1}{20.2}$
Ord Floor Lvl

✓ 178.4
6.0

✓ 179.8
4.6
" Floor level

✓ 178.3
6.1
" Ord.

✓ 175.9
8.5

✓ 175.8
8.6

✓ 175.7
8.7
22 Ord

✓ 178.8
5.6
22 Floor level

✓ 177.4
7.0
26 Floor level

✓ 174.1
10.3

✓ 169.4
15.0
75

$\left\langle \begin{array}{l} 184.41 \\ 184.41 \end{array} \right\rangle$

✓ 172.9
3.5

✓ 170.5
5.9

✓ 169.7
6.7
6

✓ 164.6
11.8
14

✓ 164.4
12.0
20

$\left\langle \begin{array}{l} 176.38 \\ 176.38 \end{array} \right\rangle$

12+06 - 45' Rt. = end house

+04 14' Lt. = 14" diam. acacia

+03 11' Rt. = 20" diam eucalyptus

12+00 45' Rt. on house wall,
Sewer vent, stand pipe

+91 - 12' Rt. = 24" diam eucalyptus

+85 36' Rt. = End patio - 45' Rt. = Joag in house

+72 - 16' Lt. = Ctr. 10" diam eucalyptus

+71 - 10' Rt. = Ctr. 24" diam eucalyptus

11+62 { 35' Rt. = well around patio
57' Rt. step down in floor level of house
36' Rt. = start flag stone patio

+58 10' Rt. = 14" diam acacia

+36 10' Rt. = 8" diam acacia

+33 16' Lt. = 12" diam eucalyptus

T.P. 4.78

186.81

2.38

182.03

11+154 Δ 84° - 17' Rt.

+95

+90

10+84 27' Rt. = Ctr. 14' x 11' Lilly pond

10+82 13' Lt. = Ctr. 14" diam pine tree

184.41

184.41

176.2
10.6
45
Orcl.
176.5
10.3
45
Floor level

35

182.4
4.4
20
182.0
4.8
180.2
6.6
21
178.7
8.1
30
176.4
10.4
33
176.4
10.6
45
at pipe

181.9
4.9
20
182.0
4.8
180.5
6.3
25
179.2
7.6
35
Orcl & wall
176.3
10.5
36
patio
177.1
9.7
59
Floor level

186.81

182.03
2.38
Stub.

181.1
3.3

179.9
4.5
15
179.6
4.8
179.1
5.3
15

12+67 ± (Traveled road Primrose)

12+60

T.P. 9.96 $\left\langle 193.60 \right\rangle$ 3.17 $\left\langle 183.64 \right\rangle$

12+46.80 = P.O.T. (also = tie in see P. 27)

- +42 - 5' Lt. = Face. at ± 3'x3' stucco gate pillar.
- +40 - 6' Rt. = Face. of ± 3'x3' stucco gate pillar.
- +37 - 13' Rt. = ctr. 24" diam eucalyptus
- +34 - 14' Lt. = 8" diam. tree
- +30

- +23^E Rt. = out. lot of culvert
- +23 10' Rt. = A in culvert
- +18 13' Rt. = ctr. 24" diam. eucalyptus
- +17 = cross culvert.

Rough job on culvert.

12+13 - 11' Lt. = inlet (average approx. 11" high - 15" wide)

$\left\langle 186.81 \right\rangle$

$\begin{array}{r} \checkmark \\ 188.3 \\ 5.3 \\ \hline 50 \end{array}$
 $\begin{array}{r} \checkmark \\ 186.7 \\ 6.9 \\ \hline 25 \end{array}$
 $\begin{array}{r} \checkmark \\ 184.9 \\ 8.7 \\ \hline 20 \end{array}$
 $\begin{array}{r} \checkmark \\ 184.8 \\ 8.8 \\ \hline 20 \end{array}$
 $\begin{array}{r} \checkmark \\ 187.1 \\ 6.5 \\ \hline 50 \end{array}$

$\begin{array}{r} \checkmark \\ 184.9 \\ 8.7 \\ \hline 20 \end{array}$

$\left\langle 193.60 \right\rangle$

$\begin{array}{r} \checkmark \\ 183.64 \\ 3.17 \\ \hline 544 \end{array}$

$\begin{array}{r} \checkmark \\ 182.8 \\ 4.0 \\ \hline 15 \end{array}$
 $\begin{array}{r} \checkmark \\ 182.6 \\ 4.2 \\ \hline 9 \end{array}$
 $\begin{array}{r} \checkmark \\ 182.4 \\ 4.4 \\ \hline 15 \end{array}$
 $\begin{array}{r} \checkmark \\ 181.4 \\ 5.4 \\ \hline 15 \end{array}$

$\begin{array}{r} \checkmark \\ 178.7 \\ 8.1 \\ \hline 235 \\ \text{Invert} \end{array}$

$\begin{array}{r} \checkmark \\ 180.8 \\ 6.0 \\ \hline 115 \\ \text{Invert} \end{array}$

$\left\langle 186.81 \right\rangle$

Top.
N.W. Fire Hydr.
Hillsido & Soledad Rd. 0.52 $\langle 215.61 \rangle$ $\overset{1/54}{\swarrow}$ $\langle 215.58 \rangle$

T.P. 6.47 $\langle 216.13 \rangle$ 2.94 $\langle 209.66 \rangle$

T.P. 12.06 $\langle 212.60 \rangle$ 0.96 $\langle 200.54 \rangle$

T.P. 12.80 $\langle 201.50 \rangle$ 4.90 $\langle 188.70 \rangle$

Set B.M. on Mon. (R.E. 32)
(see page 27) 4.74 $\langle 188.86 \rangle$

13 + 35 Ground levels out here.
Top of Major rise

13 + 00

12 + 74

$\langle 193.60 \rangle$

\checkmark
200.6
+ 7.0
50

\checkmark
198.6
+ 5.0

\checkmark
195.4
+ 1.8
50

\checkmark
191.6
2.0

\checkmark
185.0
8.6

$\langle 193.60 \rangle$

From Paseo Dorado Wly thru Lots,
 & Sly, thru Lots
 (Kellogg property) N.E. 1/4 of Roseland Dr

W.O.
 31720
 6-13-49

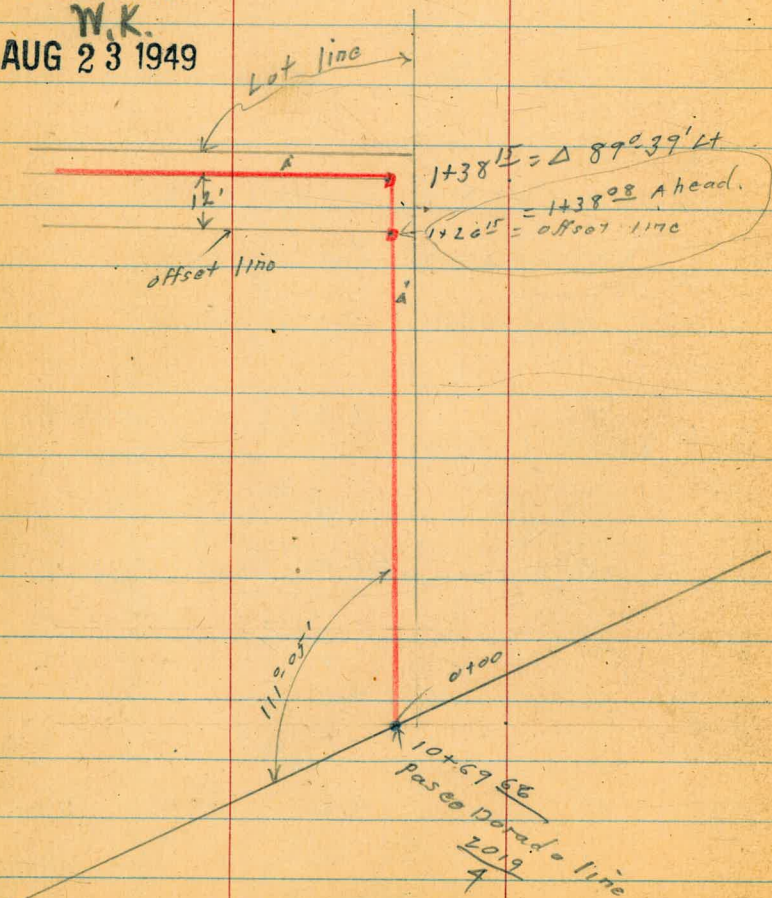
Sommermeier
 McCoy
 Allen
 Bunch

Levels Page 40

INDEXED

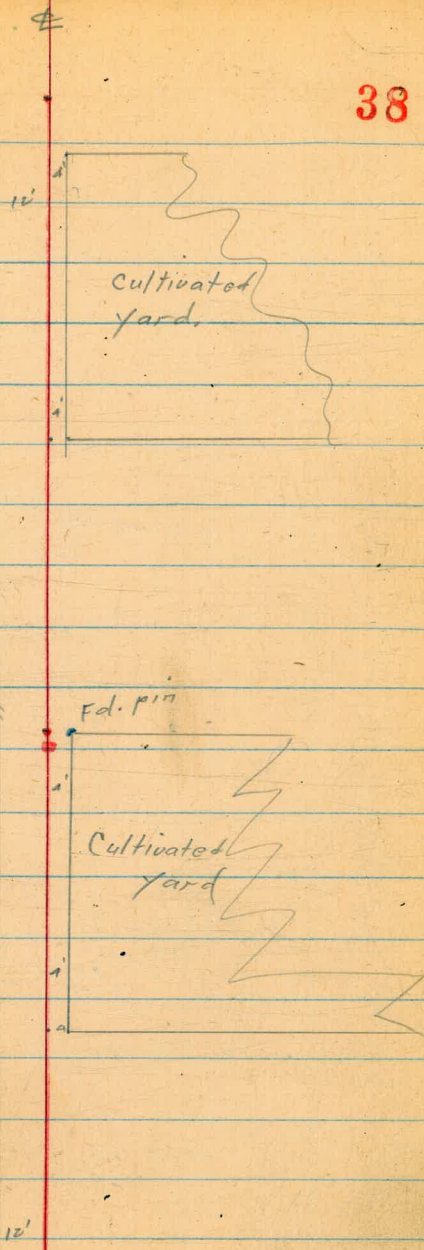
W.K.

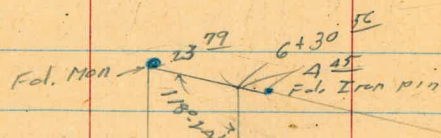
AUG 23 1949



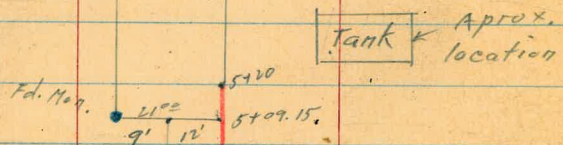
38

4+50





Crandall property



Tank ← Approx. location

offset line 12'

T. P.

11.75 $\left\langle \begin{array}{l} \downarrow \\ 24.91 \end{array} \right\rangle$ 1.57 $\left\langle \begin{array}{l} \downarrow \\ 13.16 \end{array} \right\rangle$

10th Rt. = End conc. block house
 1+21^E 4th Rt. = start conc. wall.

11.6[✓]
3.1+74 9th Rt. = start conc. block house9.4[✓]
5.3

+70

5.6[✓]
9.1

+43

2.9[✓]
11.80+20²1.9[✓]
12.790+15² top cl.1.79[✓]
12.940+15² gutter1.29[✓]
13.44

= 0+00
 10+69^E 2019
 4

1.51[✓]
13.1912.80 $\left\langle \begin{array}{l} \downarrow \\ 14.73 \end{array} \right\rangle$

- 1.93

27+57²⁶
 2019
 7

 $\left\langle \begin{array}{l} \downarrow \\ 14.73 \end{array} \right\rangle$

3+65 - 4' Rt. = start improved yards
(Flowers - trees - etc)

27.1

5.2

3+59¹⁵ 4' Rt. Fd. pin. prop. cor.

26.7 ✓

5.6

32.33 ✓

3+50

T.P. 9.66 $\langle 32.33 \rangle$ 2.24 $\langle 22.67 \rangle$

3+00

24.4 ✓

0.5

4' Rt. = Pin - lot corner

2+84¹⁵ - 4' Rt. = End cultivated yard & garden

23.5 ✓

1.4

2+84 = P.O.T. on offset line (12' Lt. of \pm)

2+50 (Tank to right)

21.5 ✓

3.4

2+09 yard + flower garden.
4' Rt. = start intensely cultivated

2+00

20.3 ✓

4.6

+70

16.4 ✓

8.5

1+38¹⁵ Δ 89° 39' Lt.

$\langle 24.91 \rangle$

14.10 ✓

10.81

5.26

$\langle 24.91 \rangle$

= SE. cor. lot. #

L31744 @ $\Delta 61^{\circ}36'$ 6+30^{SE} on road not pin in road.

7.37

Set. B.M.

34.04

6+30^{SE} = intersect lot line (P. 39)

5+20 = end of line - (Tank to right)

+15 - 3" Rt. = 10" diam pine

5+09^{SE} 21' Lt. @ 90° = Mon. (lot. corner.)5+09 = \pm cross hedge 7' wide

T.P.

9.62

31.75

5+00

+50

+47 1' Rt. = 4" diam. Sapota tree

(2' Lt. = ctr. 1" diam. Acacia

4+35 - A' Rt. end cultivated yard.

4+00

Tank on right.

32.33

33.3¹
8.141.41¹
32.0¹
0.329.8¹
2.528.5¹
3.832.33¹

Soledad Ave

From pump West of Whitefield Place
to Al. Bahr Drive.

6-16-49
W.O. 31720

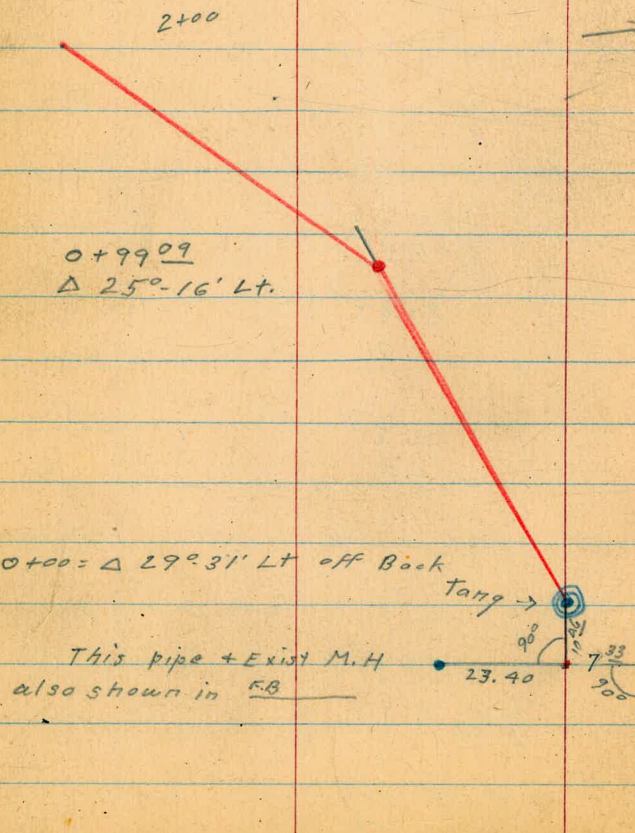
Sommiermeyer
McCoy
Allen
Bunch

5+00

43

- ⊙ = Exist. M.H.
- = Fd. disk in pipe
- = set nail

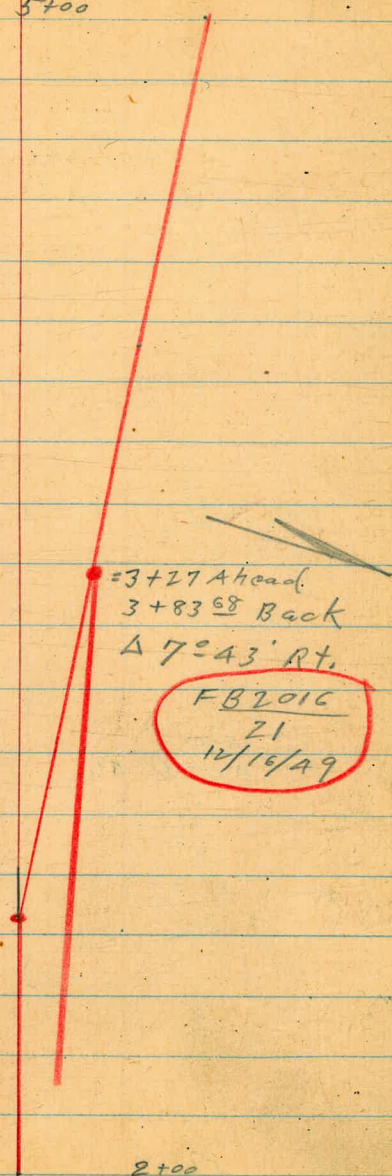
INDEXED
N.K.
AUG 23 1949



0+00 = $\Delta 29^{\circ}31'$ Lt off Back

This pipe + Exist M.H.
also shown in F.B.

N.Y. Co. Soledad



3+27.4 head.
3+83.68 Back
 $\Delta 7^{\circ}43'$ Rt.

FB 2016
21
12/16/49

2+64.78
 $\Delta 12^{\circ}04'$ Rt.

2+00

Soledad Ave.

7+67²⁸
Δ 7°-57' Lt.

6+10³⁸
Δ 6°-35' Rt.

5+00

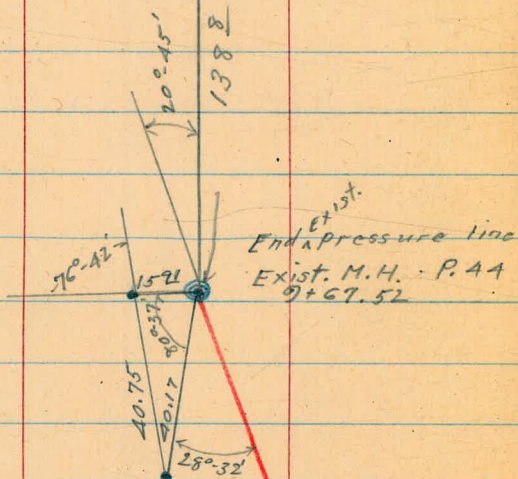
7+67²⁸ = Exist. M.H.
Δ 20°-45' Rt.

End of line **44**
See P. 45 for Tie In.

7+67²⁸
Δ 7°-57' Lt.

Approx. \pm of
Al. Bahr. Dr.

Exist M.H.
Approx. \pm of
Al Bahr Dr and
Soledad Road.



Soledad Ave.

46

1+50

T.P. 12.24 194.54 8.58 182.30

0+99⁰⁹ Δ 25°-16' Lt.

stab. 400 Line in
Lots B+C, Villa Tract. 10.33 180.55

0+50

Ctr. M.H. Cover
0+00

set B.M. Chisol D west end
N.W. Return Soledad
White Field Place 0.85 190.03 B.M.#2

T.P. 0.98 190.88 12.21 189.90

T.P. 1.09 202.11 12.23 201.07

T.P. 0.71 213.30 12.63 212.59

T.P. 4.56 225.22 6.38 220.66

Top. Fire Hydr
Hillside x 11.46 229.04 — 215.58 B.M.#1
Soledad Ave.

cl
112

182.74
11.8
194.54

cl
135

cl.
103 on split

181.4
9.5

cl.
15 on split

cl
6

180.4
10.5

cl
218

cl
183

179.68
11.20

cl
69

190.88

Soledad Ave.

47

4+50

4.4

4+00

$\frac{cl}{122}$

7.6

3+76

12³RT. = cc. B.C. into Ludington Pl.

$\frac{cl}{122}$

9.0

$\frac{122}{cc. B.C. 171}$

3+50

$\frac{cl}{122}$

11.3

$\frac{cl}{122}$

T.P. 13.13 207.56 0.11 194.43

207.56

3+00

$\frac{cl}{122}$

2.3

$\frac{cl}{122}$

2+64⁷⁸ Δ 12° 04' RT.



$\frac{cl}{113}$ on split

4.7

$\frac{cl}{135}$ on split

2+50

$\frac{cl}{132}$

5.6

$\frac{cl}{121}$

2+00

$\frac{cl}{152}$

9.0

$\frac{cl}{92}$

194.54

203.2

200.0

198.6

196.3

192.2

189.8

188.9

185.5

Soledad Ave.

48

7+00

6+52

T.P. 13.10 232.41 0.83 219.31

+50

6+10³⁸ Δ 6° 35' Rt.

6+00

5+70

T.P. 12.90 220.14 0.32 207.24

5+09 - Rt. = Cb. E.C. from Ludington Pl.

5+00

4+83

207.56

cb
112

10.3

cb
132

cb
142

13.0
232.41

cb
106

cb
122 on split

3.2

cb
123 on split

cb
123

3.9

cb
122

cb
125

0.3

cb
122

2.3

207.56

222.1

219.4

219.31

216.9

216.9

214.0

210.14

207.3

206.5

205.7

Soledad Ave.

N.W.B.P. Mar. Ave
Exchange Pt.

10.43 219.54 (219.62)

T.P. 2.34 227.77 4.78 227.63

9+67⁵² = Exist M.H. - $\Delta 20^{\circ} 45'$ to next }
Exist M.H.

+25

9+00

+83

8+40

8+00

7+67⁷⁸ $\Delta 7^{\circ} 57'$ Lt

7+11

232.41

cb
108 on split

cb
14

cb
132

cb
125 on split

cb
64 on split

7.9
Ctr. M.H. Cover

6.1

5.0

4.6

4.9

5.5

6.6

9.6

232.41

14.20
invert

224.5

226.3

227.4

227.8

227.5

226.9

225.8

222.8

218.21

cb
142 on split

cb
11

cb
113

cb
122

cb
125 on split

cb
142 on split

From LOWRY TERRACE - South.

50

6-16-49

INDEXED

W.K.
AUG 23 1949

Sommermeier
McCoy
Allen
Bunch

■ = Fd. Conc. Men

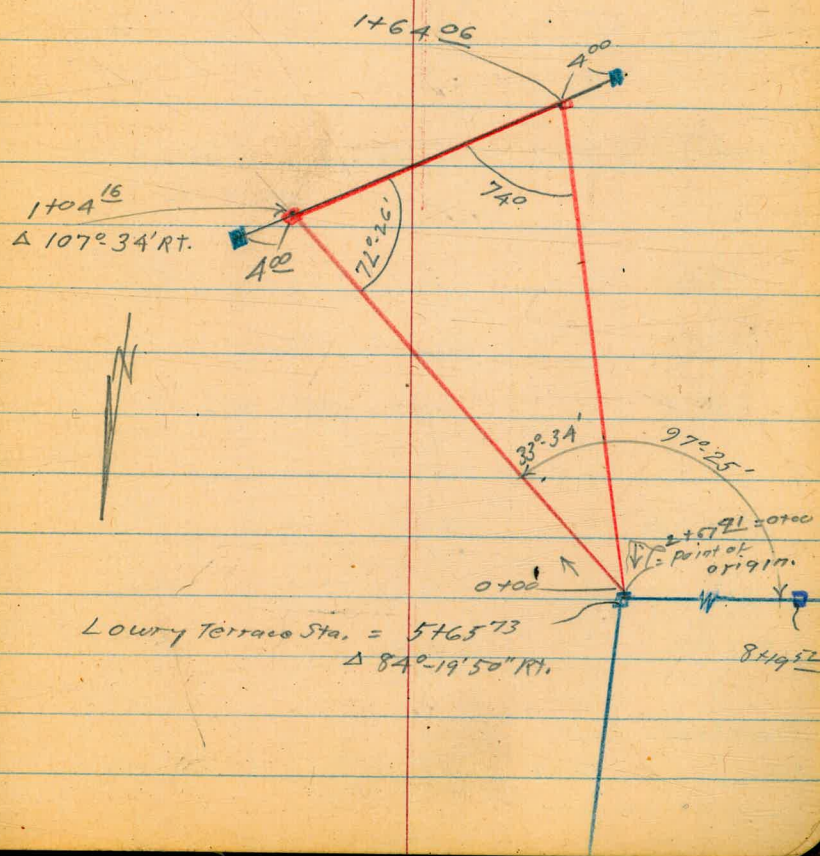
□ = Fd. stub

◻ = Set stub.

Line run in this manner
because 0700 to 1+64⁰⁶ more
nearly follows lot lines.

Line from 1+64⁰⁶ to
2+67⁴¹ cuts across the lot
just about in place to
be under a probable
house or garage drive
location.

Suggest line 0700 to 1+64⁰⁶
be used. Run to min. = 1+68⁰⁶.
C.H.S.



$1+64^{06} = \Delta 106^{\circ} - RT.$

+ 1.2

1+35

2.6

1+20

4.5

 $1+04^{16} = \Delta 107^{\circ} - 34' RT.$

$$\frac{4.9}{20}$$

70° to Back Tang.

5.0

+60

$$\frac{10.9}{40} \quad \frac{10.8}{30} \quad \frac{10.1}{11} \quad 8.9$$

+38

$$\frac{13.7}{40} \quad \frac{13.5}{30} \quad \frac{16.0}{11} \quad \frac{11.0}{3} \quad 10.6$$

0+12

$$\frac{15.7}{40} \quad \frac{13.8}{11} \quad 12.7$$

0+00

12.62
stub.5+65 $\Delta 89^{\circ} - 19' - 50'' RT.$

FB. 12.62 50.35

37.73

50.35

Lowry Terrace line

±

2+67 ¹¹ = orig. point (0+00)

12.62

2+48

12.2

2+38

9.3

2+00

1.6

50.35

50.35

Alternate Line

BIK. 46. La Jolla Park

6-16-49

Sommermeier
Allen
Bunch

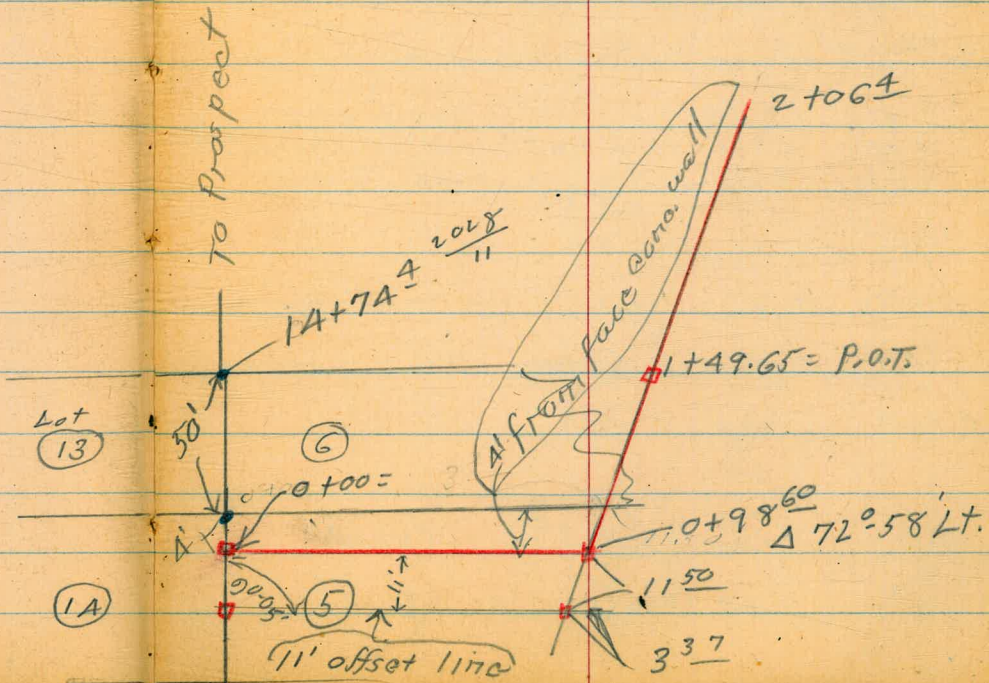
INDEXED

W.K.

AUG 23 1949

Alternate line Levels P. 54.

• = Fd Pipe & Disk (Jaeger)



Levels Alternate Line
 BIK. 46 La Jolla Park
 sketch P. 53

54

0+98.60 = Δ 72°-58' Lt.

88.7
 9.2

set B.M. on stub 10104 88.01 B.M. #2

7' Rt. = small pine

0+95.00 = -11' Rt. = Δ stub on offset line

+84 on line = clump bamboo

+65 - 5' Rt. = small pine

13' Lt. = double car door.

5' Lt. = start paved yard. (Plant mix)

0+60.7 } 5' Lt. = end garage

91.1	91.6	94.0	93.7	94.0
6.9	6.4	4.0	4.3	4.1
	4.2 End	5.2 top wall	5.2 pave	13.2 4 doors

0+60.4 } Lt. = start Conc. wall

+42 - 3' Lt

Eucalyptus

+41 - 5.2 Lt. = start car. (North front.) + end rock wall

+39 - 2' Rt. = small pine tree

+35

93.2
 4.8

0+15 4' Lt. = start rough rock + conc. wall.

+09 - 1' Rt. = 6" diam Mock orange

0+00

100.0
 +2.0 97.71
 0.34
 11
 stub

T.P.	10.61	98.05	4.19	87.44
11+814 } an.	5.63	91.63	-	86.00

98.05

BIK 46
La Jolla Park

55

1+83	2 ^J Rt. = Face 6" Conc. wall 4 ^S Rt. = 4' diam. palm	93.4 3.6 5	92.6 4.4	92.2 4.8 2.3 top wall	90.8 6.2 2.9 End	85.5 11.5 10
1+76	5' Lt. = 3 1/2' diam. palm.					
1+66	3' Lt. = start 6" wide Conc. wall	94.2 2.8 3 top wall	92.3 4.7 3 End	90.8 6.2		
1+64	5' Lt. = 4' Diam. palm.					
1+49 ⁶⁵	3' Rt. = 6" Conc. wall = P.O.T.			90.0 7.1 5	88.63 8.42 8.9 2 wall	86.0 11.0 2.5 10
<p>(not get to it because of palm.) (This is rough station on wall. Can)</p>						
1+35	5' Rt. = start 6" wide Conc. wall. 7' Rt. = 24" diam. palm				90.3 6.7	
1+28	2' High cross 6x6" wood guard rail				92.1 4.9	
1+25 ⁶	End paved yard				91.8 3.2	
1+09					90.1 6.9	
1+04	paved yard				90.0 7.0	
1+03 ²	cross Conc. wall.			89.3 7.7 End	90.77 6.28 Top wall	
TIP	9.04 (97.05) 98.05	10.04 (88.01)			(97.05)	

BIK. 46
La Jolla Park

56

From tank.
2+06^A = intersect 4" tile drain

2+05^A = { 2' Rt. = end 6" wide Conc. wall
wall.
intersect face rock & conc.
aprox. lot line (N. + Sly)

2+03 = ~~2'~~ 2' wide plank walk.

2' Rt. = face Conc. wall
1+97 = Cross 1' wide open drain (Cene.)

2+05' Lt. = Aprox. tank location
1+91 { 4' Rt. = 3' diam palm

In the yard.
given orders not to cut a d— thing.
Aprox. sta. because we were
1+86 { 8' Lt. = Aprox end 6" Conc. wall,
9705

96.7
0.3
invert

96.9
0.2
Crd on Φ

9A.5	96.7	95.0	93.0	91.0
2.5	0.3	2.1	4.0	6.0
Crd.	top wall	2	3	10
	Φ	wall		
		top end		

95.7	9A.1	94.0	93.0	88.0
1.3	2.9	3.0	4.0	9.0
70	ctr. drain	2.9	3	10
		top wall	wall	

9A.7
2.3

95.3
1.7
82
top wall
& Crd.

97.05

BIK. 46 La Jolla Park.
 "Blue" line, sketch P. 11
See note page 59

57

2+00 33' Lt. = Cor. house

1+75⁵⁹ P.O.T. stub

T.P. 1.14 $\langle 78.93 \rangle$ 12.17 $\langle 77.79 \rangle$

+57 9' Lt. = Large Cypress

1+47 6' Lt. = Large Cypress

1+40

+29 11' Lt. = Large cypress

+25

1+18 11' Lt. = Large Cypress

1+00

+50

0+36²⁸ $\Delta 41^\circ 49'$ Lt

0+00 = (10+49⁹² - P. 11)

1.25 $\langle 89.96 \rangle$

$\langle 88.71 \rangle$ 10+49⁹²
P. 12

17.4 ✓ 16.9 ✓ 70.2 ✓
 1.5 2.0 8.7
 33 32
 floor Ord.
 level

73.18 ✓
 5.78

$\langle 78.93 \rangle$ ✓

77.0
~~78.0~~
 13.0

79.8 ✓
 10.2

80.9 ✓
 9.1

83.7 ✓
 6.3

84.9 ✓
 5.1

88.71 ✓
 1.25

$\langle 89.96 \rangle$ ✓

$$4+10^{\circ} = 0+98^{\circ} \text{ (P. 53)}$$

$$4+10^{\circ} = \Delta 20^{\circ}-57' \text{ RT}$$

4+00

T.P.

12.03

 $\langle 90.32 \rangle$

0.64

 $\langle 78.29 \rangle$

3+50

3+15 t

Prop. line approx 13' Lt.

3+00

+74

Prop. about 1' Rt.

2+68

2+64

Cross wash

+60

+45

2+22.71

 $\Delta 29^{\circ}-05' \text{ Lt.}$ Prop. Line is
Approx. 3' Lt. $\langle 78.93 \rangle$

89.02 ✓

1.30

Stub

89.2 ✓

2.1

20

86.9 ✓

3.4

 $\langle 90.32 \rangle$ ✓

85.6 ✓

4.7

ctr. oiled Rd

83.3 ✓

+4.4

20

83.3 ✓

+4.4

10

77.7 ✓

1.2

78.9 ✓

0.0

ctr. oiled
Road.

76.1 ✓

2.8

20

70.3 ✓

8.6

73.1 ✓

5.8

12

ctr. oiled Rd.

68.7 ✓

10.2

65.7 ✓

13.2

71.6 ✓

7.3

20

69.1 ✓

9.8

71.7 ✓

7.2

76.8 ✓

2.1

25

72.8 ✓

6.1

68.9 ✓

10.0

16

Ctr. traveled
Road $\langle 78.93 \rangle$

Note

Mr. Shelton, ^{and his son} owners of lots
number 1-2-3-4-5 - 1A-15-16-17-
18 + 19 BIK 46, would

like to have the line
run below their houses
along coast Blvd.

They are willing to
have line on their
property if needed
to get cover but
do not wish to
have the yard torn
up along line as
shown on page 11.

Line on page 11 would
require deep cut and
hand work.

Lots back, (fly
from) of line can

59

be filled so as to
protect line.

Stub lines along line
between lots 1 and 2,
3 and 4, and 5 and 6,
would serve the
property not now
served by prospect line.

Mr. Shelton will
give easements
and/or put in
stub laterals.

(Signature)

Mr. Shelton would
like to talk this
over with Mr. Hall.

(Signature)

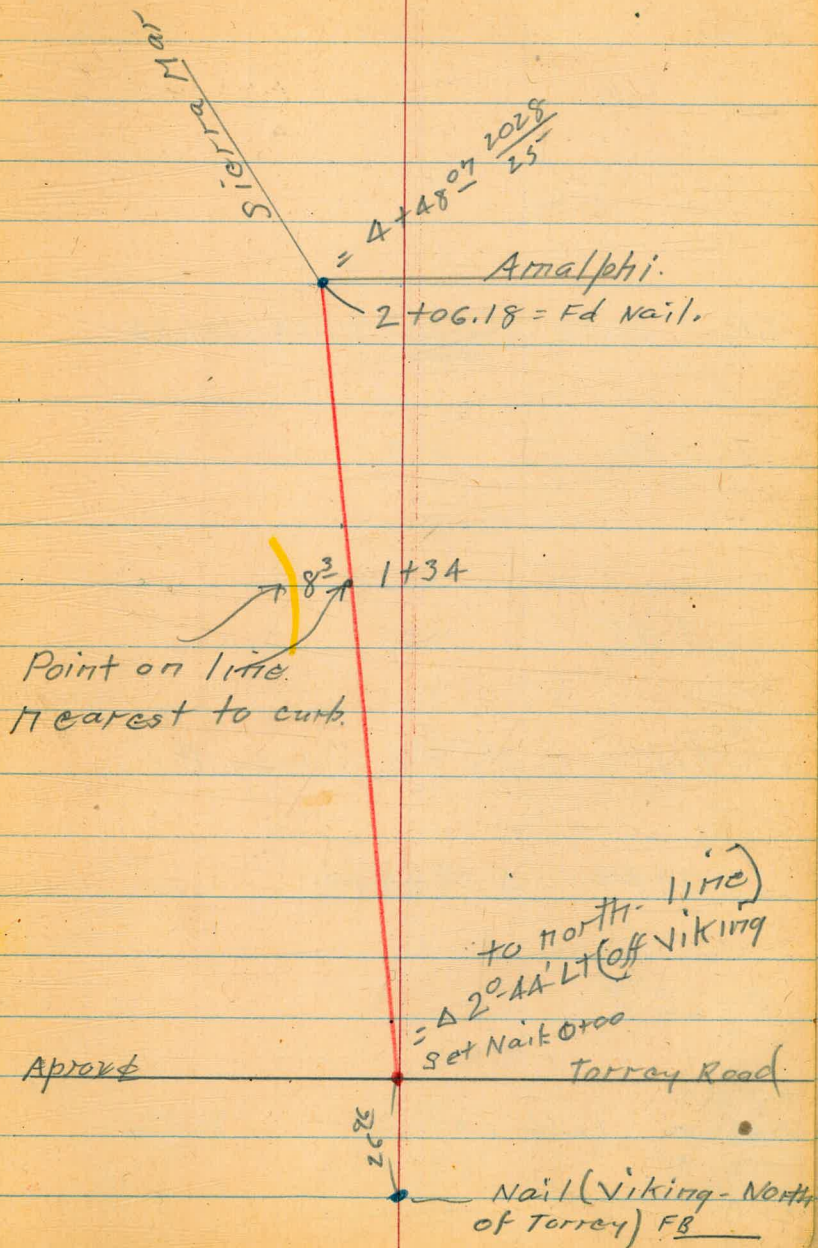
Viking Way,
South of Torrey Road

W.O. 31720
6-20-49

Sommermeier
McCoy
Allen
Butch

INDEXED
W.K.
AUG 23 1949

60



T.P. 12.96 120.30 1.14 107.34

120.30

+90

2.6

+45

8.0

+15 sly Cb. Torrey Rd

11.1

0+00 Δ 2^o AA' Lt.

10.7

0-26⁹⁶

11.57

Nail

N.W. B.P.
Viking+ 12.16 108.48 — 96.32
Torrey Rd.

108.48

Viking Way.
Torrey Rd. south

62

$$2 + 06 \frac{18}{18} = 4 + 48 \frac{07}{07} \text{ (P.25)}$$

+90

+75

1+35

120.30

120.15

0.15

119.1

112

116.4

3.9

111.0

9.3

120.30

Little Street, Roseland Wly.

Alternate Line

C-21-49

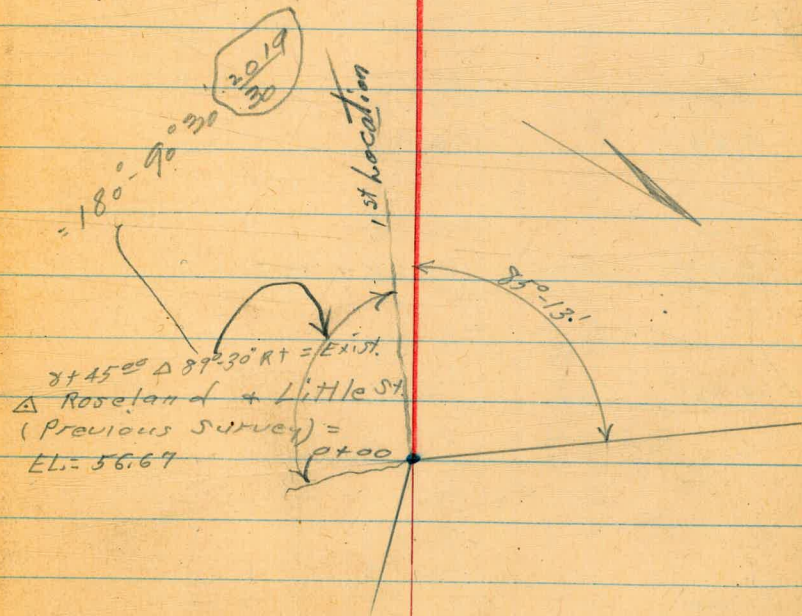
Sommer-meyer
McCoy
Allen
Burch.

63

• = Fd. Nail
◻ = Set. Stub.

INDEXED
W.K.
AUG 23 1949

2+27-25'00" - Fd. Lot stake
Marker. (No nub)
2+52'00"



Little St.

2+00

1+50

11.58 $\left\langle \begin{array}{c} \downarrow \\ 80.74 \\ \leftarrow \end{array} \right\rangle$ 0.84 $\left\langle \begin{array}{c} \downarrow \\ 69.16 \\ \leftarrow \end{array} \right\rangle$

1+00

+84

+77 Leave pavement

0+50

8+45=0+00
El. From:
P. 63

13.33 $\left\langle \begin{array}{c} \downarrow \\ 70.00 \\ \leftarrow \end{array} \right\rangle$

56.67

Little St.

64

74.9 ✓
5.8

70.4 ✓ 71.0 ✓ 70.3 ✓
 $\frac{10.3}{9}$ $\frac{9.7}{8}$ 10.4
Edge Pav.

$\left\langle \begin{array}{c} \downarrow \\ 80.74 \\ \leftarrow \end{array} \right\rangle$

65.5 ✓ 65.9 ✓ 65.9 ✓
 $\frac{4.5}{3}$ $\frac{4.1}{2}$ 4.1
Edge Pav.

64.6 ✓
5.4

63.0 ✓
7.0

60.6 ✓
9.4

60.4 ✓
 $\frac{9.6}{5}$
Edge Pav.

56.67 ✓
13.33

$\left\langle \begin{array}{c} \downarrow \\ 70.00 \\ \leftarrow \end{array} \right\rangle$

2+40 - 18' Rt. = ^{Ely} Cor. of house

81.6 ✓
+1.1

82.7 ✓
+2.0
18

2+32

80.3 ✓
0.4

+27 5' Rt. = lot. Cor. marker.

79.1 ✓
1.6

+25 = End oiled drive

78.8 ✓
1.9

+11 start oiled drive.

78.1 ✓
2.6

2+05

75.8 ✓
4.7

80.74 ✓

Bluff line
- Charlotte To Princess -

6-22-49

Sommermeier
McCoy
Bunch

INDEXED

W.K.
AUG 23 1949

- = set stub
- = Fd. Mon.
- = " Iron Pin
- ▣ = Fd. stub

1+71.66
Δ 15°-29' RT.

= 0+00 = Δ 47°06'-30" RT.
1+8685-P.9
(Reset)
6-22-49

66

3+70.59
Δ 9°-49'-30" Lt.

P.O.T. 2+18.25

1+71.66

← 33' →

10 to 14' deep
concrete lined
Pool.

27

Bluff Line
Charlotte to Princess

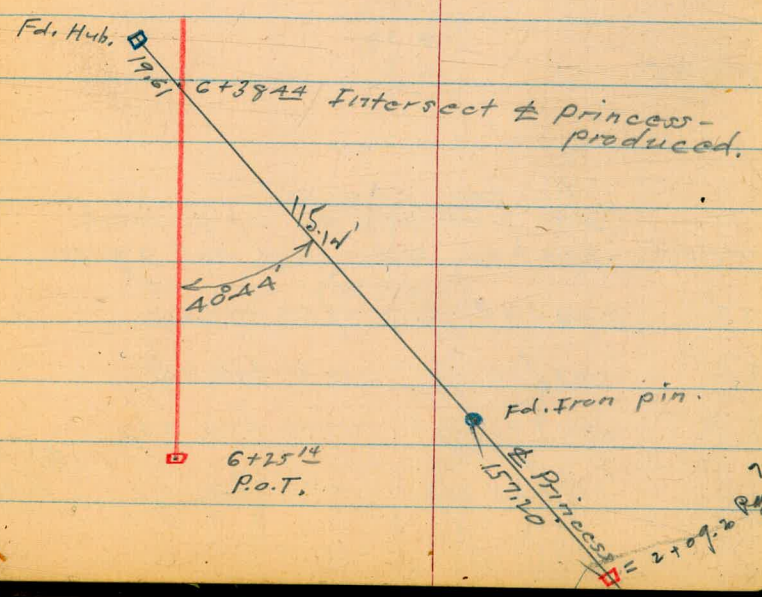
P.O.T. 6+25.14

P.O.T. = 5+29.67

3+70.59
 $\Delta 9^{\circ} 49' 30''$ Lt.



Supp for tie into



Bluff line Charlotte to Princess

68

Set B.M. A sta. 1+71⁶⁶ 8.63 $\left\langle \begin{array}{l} 54.52 \\ \downarrow \end{array} \right\rangle$ B.M.#2

T.P. 8.95 $\left\langle \begin{array}{l} 63.15 \\ \downarrow \end{array} \right\rangle$ 0.37 $\left\langle \begin{array}{l} 54.20 \\ \downarrow \end{array} \right\rangle$

+50

1+35

0+85

T.P. 10.62 $\left\langle \begin{array}{l} 54.57 \\ \downarrow \end{array} \right\rangle$ 5.12 $\left\langle \begin{array}{l} 43.95 \\ \downarrow \end{array} \right\rangle$

0+55

0+40

0+05

has been changed
with previous run as ground
0+00 See P. 66. This will not agree

T.P. 0.46 $\left\langle \begin{array}{l} 49.07 \\ \downarrow \end{array} \right\rangle$ 12.60 $\left\langle \begin{array}{l} 48.61 \\ \downarrow \end{array} \right\rangle$

T.P. 0.93 $\left\langle \begin{array}{l} 61.21 \\ \downarrow \end{array} \right\rangle$ 12.81 $\left\langle \begin{array}{l} 60.28 \\ \downarrow \end{array} \right\rangle$

T.P. 0.27 $\left\langle \begin{array}{l} 73.09 \\ \downarrow \end{array} \right\rangle$ 13.03 $\left\langle \begin{array}{l} 72.82 \\ \downarrow \end{array} \right\rangle$

1.61 $\left\langle \begin{array}{l} 85.85 \\ \downarrow \end{array} \right\rangle$ — $\left\langle \begin{array}{l} 84.24 \\ \downarrow \end{array} \right\rangle$

B.M.#1
P. 4

37.6[✓]
17.0
15

47.0[✓]
7.6

37.4[✓]
17.2
15

47.5[✓]
7.1

57.6[✓]
13.0
15

35.6[✓]
19.0
20

29.6[✓]
25.0
10

35.8[✓]
18.8
 $\left\langle \begin{array}{l} 54.57 \\ \downarrow \end{array} \right\rangle$

45.6[✓]
9.0
10

30.4[✓]
18.7
20

40.1[✓]
9.0

42.1[✓]
7.0
5

39.0[✓]
10.1
15

30.5[✓]
18.6
20

36.6[✓]
12.5

38.6[✓]
10.5
15

41.4[✓]
7.7

43.95[✓]
5.12
 $\left\langle \begin{array}{l} 49.07 \\ \downarrow \end{array} \right\rangle$

T.P.

6.65

 $\langle 57.12 \rangle$

12.68

 $\langle 50.47 \rangle$

3+90

3+70.59 = Δ 9° 49' 30" Lt.

3+40

3+22

Bottom of wash

2+80

2+30

2+18²⁵ P.O.T. stub

+90

1+71⁶⁶ = Δ 15° 29' Rt. $\langle 63.15 \rangle$ 52.1[✓]

11.0

33

81[✓]50.8[✓]

12.3

19

81[✓]54.1[✓]

9.0

49.1[✓]

13.9

39.6[✓]

23.6

10.6[✓]

52.6

38

81[✓]14.5[✓]

45.6

35.3[✓]

21.8

51.1[✓]

12.0

27

81[✓]59.1[✓]

3.9

58.6[✓]

4.5

20

81[✓]59.99[✓]

3.16

64.1[✓]

+1.0

20

48.1[✓]

15.0

35

81[✓]60.1[✓]

3.0

54.0[✓]

9.2

19

81[✓]54.51[✓]

8.63

64.1[✓]

+1.0

27

Edge pool.

 $\langle 63.15 \rangle$

5+77 4' Rt. = N.W.ly. Cor. House.

5+68

+48

5+29⁶⁷ P.O.T. stub 0.82 (56.30) BM. #3

5+00.

4+60

4+25 bottom cross wash

4+19

4+06

57.12

40.1 [✓]	40.1 [✓]	40.7 [✓]
17.0	17.0	16.4
	7	7
	Ord.	Floor

44.3^v
12.8

40.9 [✓]	50.1 [✓]	54.0 [✓]
16.2	7.0	3.1
18	8	

56.30^v
0.8245.1[✓]
12.0
55
BM. #449.9[✓]
7.2
3845.9[✓]
11.2
1047.1[✓]
10.048.3[✓]
8.8
2532.1[✓]
25.0
4045.1[✓]
12.0
1532.1[✓]
25.031.1[✓]
26.0
944.1[✓]
13
2027.9^v
29.231.1[✓]
26.050.1[✓]
7.0

57.12

T.P.

B.M. #3 P70
 stub
 0.82 <56.30> 5119⁶³

+60 ± 12 Rt = Line of House

40.1 ✓
 17.0

6150

45.1 ✓
 12.0

613849 & Princess

44.3 ✓
 12.8

6105

26.6 ✓ 31.2 ✓
 305 19.9
 47
 8148

<57.12> ✓

<57.12> ✓

Princess Street

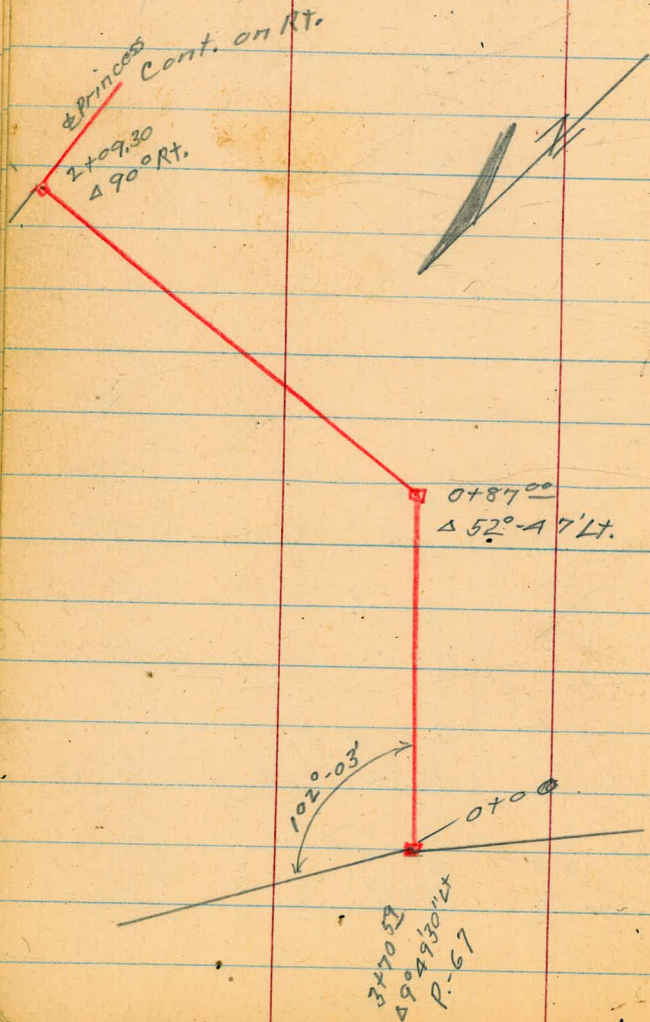
6-23-49

INDEXED

W.K.

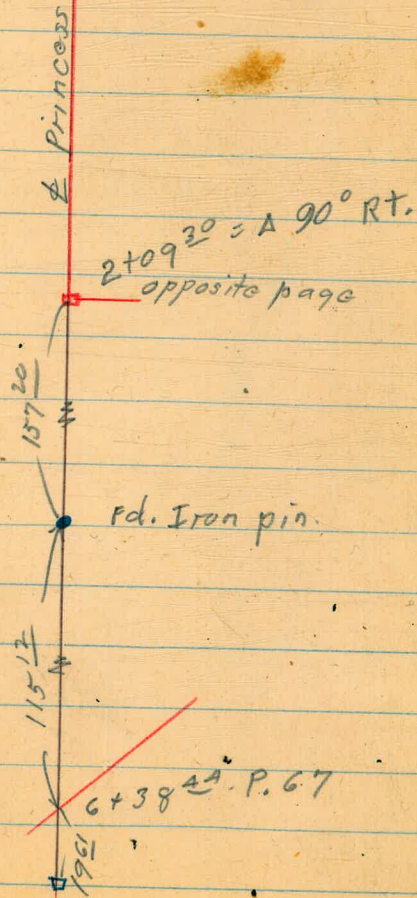
AUG 23 1949

Sommarmeyer
McCoy
Bunch



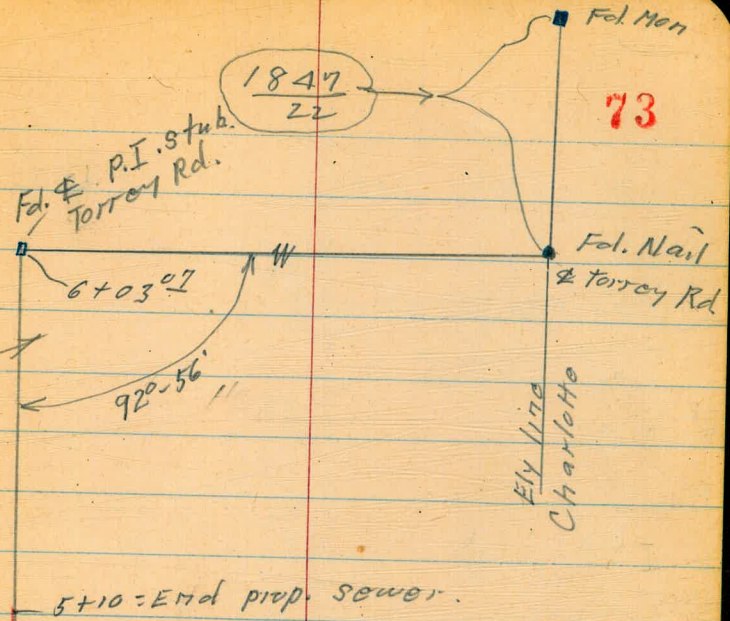
72

3+50
To page 73



Princess St.
Cont. from P 72

Have M^cCoy check Δ
(87-04?)



73

Princess

3+50 From P. 72

Princess St.

74

T.P. 11.94 $\left\langle \begin{array}{c} \downarrow \\ 69.63 \\ \downarrow \end{array} \right\rangle$ 0.56 $\left\langle \begin{array}{c} \downarrow \\ 57.69 \\ \downarrow \end{array} \right\rangle$

0+87 $\Delta 52^\circ - 47' Lt.$

+80

+64

+50

+23

+11

0+00 = 3+70 ⁵⁹ P 66+69

T.P. 3.78 $\left\langle \begin{array}{c} \downarrow \\ 58.25 \\ \downarrow \end{array} \right\rangle$ 9.06 $\left\langle \begin{array}{c} \downarrow \\ 54.27 \\ \downarrow \end{array} \right\rangle$ BM#3
7.03 $\left\langle \begin{array}{c} \downarrow \\ 63.33 \\ \downarrow \end{array} \right\rangle$ 56.30 P.70

49.5

8.73
stab.

15.3

9.8

8.7

10
90° to

3

10
90° to

Bank tang

Fwd
Tand

50.0

8.2

49.1

9.1

11.7

10

50.6

7.6

11.9

10

50.0

8.2

15.0

10

47.75

6.9

10

11.0

15.5

10

49.75

7.00

$\left\langle \begin{array}{c} \downarrow \\ 58.25 \\ \downarrow \end{array} \right\rangle$

Princess st.

75

65.89
3.74

2+08 - End Pavc.

65.8
3.8

2+00

65.40
4.23

1+89³⁵ Gutter. (A.C. Pavc.)

65.79
3.84

1+89³ Top. cl.

65.8
3.80

1+84⁷ = back edge walk

65.6
4.0

+75

62.0
7.6

+47

56.2
13.4

+35

59.3
10.3

1+20

59.09
10.54

1+14²¹ stab P.O.T.

69.63

69.63

T.P. 11.25 88.48 1.15 77.23

+50

$$\frac{1.1}{5} \quad \frac{1.2}{5} \quad \frac{1.3}{5}$$

A+00

$$\frac{3.9}{5} \quad 4.0 \quad \frac{4.1}{5}$$

+50

$$\frac{6.6}{5} \quad 6.6 \quad \frac{6.7}{5}$$

3+00

$$\frac{8.5}{5} \quad 8.5 \quad \frac{8.7}{5}$$
+67 Junct. Princess - Spindrift ^{pave.}

$$\frac{8.8}{8} \quad \frac{8.9}{4} \quad 9.5 \quad \frac{10.0}{5}$$

+60

$$\frac{9.1}{3} \quad 10.4$$
wly edge
Spindrift pave
$$\frac{10.4}{0.4}$$
 Ely edge
Princess Pave

2+10

66.6

T.P. 11.81 $\langle 78.38 \rangle$ 3.06 $\langle 66.57 \rangle$

$$\frac{9.8}{5}$$
 wly edge
Spindrift Pave

11.8

12.5

 $\langle 18.38 \rangle$ 1 = Ely edge
Princess st. Pave2+09³⁰ = Δ 90° Rt.66.6
3.469.63 $\langle 69.63 \rangle$

PRINCESS ST.

77

Lt. @ Princess
Sly. Cb. Torrey Rd.

3.33

85.15

85.15

1847

23

5+10

$\frac{7.8}{5}$

7.8

$\frac{8.0}{5}$

5+00

(as improved)

25' Lt. = Apex lat corner.

$\frac{8.4}{5}$

8.4

$\frac{8.6}{5}$

88.48

88.48

Change in Bluff Line

See pages 10 & 11 this book
C-2A-A9

Sommermeier
McCoy
Bunch

□
□

78

"Blue" Line - P. 11.
= 92.96 = P.O.T. P. 11
11+24.80 Δ 26° 49' LT

785

24' 11+16.95
90°

Dense growth
of shrubs
P.O.T. or offset

90°
241' 9+85.00

orig. line
P. 10+11

= 7+99.38 Δ 20° 21' 30" RT
7+99.38 P.O.T. P. 10 =

Levels - (Change Bluff Line)

sketch P. 78

11+24.80 = 0+92.96 Page 11.

0+36.28
12.57 = 84.9
Check
89.78
51
84.8

11+00

T.P. 0.53 <89.98> 12.82 <89.45>

+50

10+00

9+50

T.P. 0.46 <102.27> 11.97 <101.81>

8+90

+75

+70

8+55

7+99.38 = Δ 20°21' - 30° Rt.

1.60 <113.78> — <112.18> Point 'A'
P-2

79

81.75 ✓

8.23
Stub

83.0 ✓

7.0

<89.98> ✓

81.9 ✓

14.4

94. ✓

8.1

98.1 ✓

4.2

<102.27> ✓

Bluff
25

104.7 ✓

9.1

Bluff
15

105.8 ✓

8.0

102.6 ✓

11.2

Bluff
20

109.7 ✓

4.7

Bluff
20

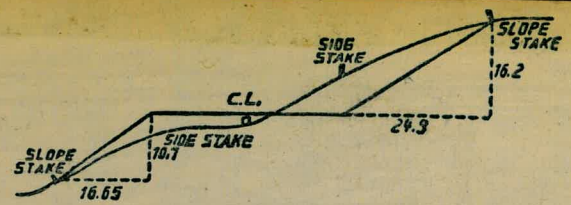
112. ✓

1.6

Bluff
56

<113.78> ✓

60
1.1547



DISTANCES FROM SIDE STAKES FOR CROSS-SECTIONING.
SLOPE 1 1/2 TO 1. ROADWAY OF ANY WIDTH.

	0	.1	.2	.3	.4	.5	.6	.7	.8	.9	
0	0.00	0.15	0.30	0.45	0.60	0.75	0.90	1.05	1.20	1.35	0
1	1.50	1.65	1.80	1.95	2.10	2.25	2.40	2.55	2.70	2.85	1
2	3.00	3.15	3.30	3.45	3.60	3.75	3.90	4.05	4.20	4.35	2
3	4.50	4.65	4.80	4.95	5.10	5.25	5.40	5.55	5.70	5.85	3
4	6.00	6.15	6.30	6.45	6.60	6.75	6.90	7.05	7.20	7.35	4
5	7.50	7.65	7.80	7.95	8.10	8.25	8.40	8.55	8.70	8.85	5
6	9.00	9.15	9.30	9.45	9.60	9.75	9.90	10.05	10.20	10.35	6
7	10.50	10.65	10.80	10.95	11.10	11.25	11.40	11.55	11.70	11.85	7
8	12.00	12.15	12.30	12.45	12.60	12.75	12.90	13.05	13.20	13.35	8
9	13.50	13.65	13.80	13.95	14.10	14.25	14.40	14.55	14.70	14.85	9
10	15.00	15.15	15.30	15.45	15.60	15.75	15.90	16.05	16.20	16.35	10
11	16.50	16.65	16.80	16.95	17.10	17.25	17.40	17.55	17.70	17.85	11
12	18.00	18.15	18.30	18.45	18.60	18.75	18.90	19.05	19.20	19.35	12
13	19.50	19.65	19.80	19.95	20.10	20.25	20.40	20.55	20.70	20.85	13
14	21.00	21.15	21.30	21.45	21.60	21.75	21.90	22.05	22.20	22.35	14
15	22.50	22.65	22.80	22.95	23.10	23.25	23.40	23.55	23.70	23.85	15
16	24.00	24.15	24.30	24.45	24.60	24.75	24.90	25.05	25.20	25.35	16
17	25.50	25.65	25.80	25.95	26.10	26.25	26.40	26.55	26.70	26.85	17
18	27.00	27.15	27.30	27.45	27.60	27.75	27.90	28.05	28.20	28.35	18
19	28.50	28.65	28.80	28.95	29.10	29.25	29.40	29.55	29.70	29.85	19
20	30.00	30.15	30.30	30.45	30.60	30.75	30.90	31.05	31.20	31.35	20
21	31.50	31.65	31.80	31.95	32.10	32.25	32.40	32.55	32.70	32.85	21
22	33.00	33.15	33.30	33.45	33.60	33.75	33.90	34.05	34.20	34.35	22
23	34.50	34.65	34.80	34.95	35.10	35.25	35.40	35.55	35.70	35.85	23
24	36.00	36.15	36.30	36.45	36.60	36.75	36.90	37.05	37.20	37.35	24
25	37.50	37.65	37.80	37.95	38.10	38.25	38.40	38.55	38.70	38.85	25
26	39.00	39.15	39.30	39.45	39.60	39.75	39.90	40.05	40.20	40.35	26
27	40.50	40.65	40.80	40.95	41.10	41.25	41.40	41.55	41.70	41.85	27
28	42.00	42.15	42.30	42.45	42.60	42.75	42.90	43.05	43.20	43.35	28
29	43.50	43.65	43.80	43.95	44.10	44.25	44.40	44.55	44.70	44.85	29
30	45.00	45.15	45.30	45.45	45.60	45.75	45.90	46.05	46.20	46.35	30
31	46.50	46.65	46.80	46.95	47.10	47.25	47.40	47.55	47.70	47.85	31
32	48.00	48.15	48.30	48.45	48.60	48.75	48.90	49.05	49.20	49.35	32
33	49.50	49.65	49.80	49.95	50.10	50.25	50.40	50.55	50.70	50.85	33
34	51.00	51.15	51.30	51.45	51.60	51.75	51.90	52.05	52.20	52.35	34
35	52.50	52.65	52.80	52.95	53.10	53.25	53.40	53.55	53.70	53.85	35
36	54.00	54.15	54.30	54.45	54.60	54.75	54.90	55.05	55.20	55.35	36
37	55.50	55.65	55.80	55.95	56.10	56.25	56.40	56.55	56.70	56.85	37
38	57.00	57.15	57.30	57.45	57.60	57.75	57.90	58.05	58.20	58.35	38
39	58.50	58.65	58.80	58.95	59.10	59.25	59.40	59.55	59.70	59.85	39
40	60.00	60.15	60.30	60.45	60.60	60.75	60.90	61.05	61.20	61.35	40
41	61.50	61.65	61.80	61.95	62.10	62.25	62.40	62.55	62.70	62.85	41
42	63.00	63.15	63.30	63.45	63.60	63.75	63.90	64.05	64.20	64.35	42
43	64.50	64.65	64.80	64.95	65.10	65.25	65.40	65.55	65.70	65.85	43
44	66.00	66.15	66.30	66.45	66.60	66.75	66.90	67.05	67.20	67.35	44
45	67.50	67.65	67.80	67.95	68.10	68.25	68.40	68.55	68.70	68.85	45
46	69.00	69.15	69.30	69.45	69.60	69.75	69.90	70.05	70.20	70.35	46
47	70.50	70.65	70.80	70.95	71.10	71.20	71.40	71.55	71.70	71.85	47
48	72.00	72.15	72.30	72.45	72.60	72.75	72.90	73.05	73.20	73.35	48
49	73.50	73.65	73.80	73.95	74.10	74.25	74.40	74.55	74.70	74.85	49
50	75.00	75.15	75.30	75.45	75.60	75.75	75.90	76.05	76.20	76.35	50

THE NATIONAL BLANK BOOK COMPANY
 HOLYOKE MASSACHUSETTS
 NEW YORK CHICAGO BOSTON SAN FRANCISCO