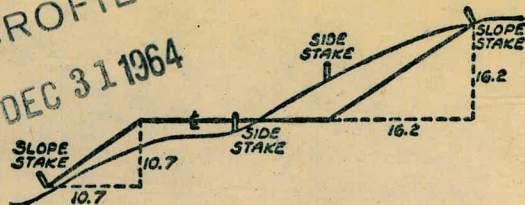


2030

TRAVEL BOOK

MICROFILMED

DEC 31 1964



DISTANCES FROM SIDE STAKES FOR CROSS-SECTIONING
SLOPE 1 TO 1. ROADWAY OF ANY WIDTH

	0	.1	.2	.3	.4	.5	.6	.7	.8	.9	
0	0.00	0.10	0.20	0.30	0.40	0.50	0.60	0.70	0.80	0.90	0
1	1.00	1.10	1.20	1.30	1.40	1.50	1.60	1.70	1.80	1.90	1
2	2.00	2.10	2.20	2.30	2.40	2.50	2.60	2.70	2.80	2.90	2
3	3.00	3.10	3.20	3.30	3.40	3.50	3.60	3.70	3.80	3.90	3
4	4.00	4.10	4.20	4.30	4.40	4.50	4.60	4.70	4.80	4.90	4
5	5.00	5.10	5.20	5.30	5.40	5.50	5.60	5.70	5.80	5.90	5
6	6.00	6.10	6.20	6.30	6.40	6.50	6.60	6.70	6.80	6.90	6
7	7.00	7.10	7.20	7.30	7.40	7.50	7.60	7.70	7.80	7.90	7
8	8.00	8.10	8.20	8.30	8.40	8.50	8.60	8.70	8.80	8.90	8
9	9.00	9.10	9.20	9.30	9.40	9.50	9.60	9.70	9.80	9.90	9
10	10.00	10.10	10.20	10.30	10.40	10.50	10.60	10.70	10.80	10.90	10
11	11.00	11.10	11.20	11.30	11.40	11.50	11.60	11.70	11.80	11.90	11
12	12.00	12.10	12.20	12.30	12.40	12.50	12.60	12.70	12.80	12.90	12
13	13.00	13.10	13.20	13.30	13.40	13.50	13.60	13.70	13.80	13.90	13
14	14.00	14.10	14.20	14.30	14.40	14.50	14.60	14.70	14.80	14.90	14
15	15.00	15.10	15.20	15.30	15.40	15.50	15.60	15.70	15.80	15.90	15
16	16.00	16.10	16.20	16.30	16.40	16.50	16.60	16.70	16.80	16.90	16
17	17.00	17.10	17.20	17.30	17.40	17.50	17.60	17.70	17.80	17.90	17
18	18.00	18.10	18.20	18.30	18.40	18.50	18.60	18.70	18.80	18.90	18
19	19.00	19.10	19.20	19.30	19.40	19.50	19.60	19.70	19.80	19.90	19
20	20.00	20.10	20.20	20.30	20.40	20.50	20.60	20.70	20.80	20.90	20
21	21.00	21.10	21.20	21.30	21.40	21.50	21.60	21.70	21.80	21.90	21
22	22.00	22.10	22.20	22.30	22.40	22.50	22.60	22.70	22.80	22.90	22
23	23.00	23.10	23.20	23.30	23.40	23.50	23.60	23.70	23.80	23.90	23
24	24.00	24.10	24.20	24.30	24.40	24.50	24.60	24.70	24.80	24.90	24
25	25.00	25.10	25.20	25.30	25.40	25.50	25.60	25.70	25.80	25.90	25
26	26.00	26.10	26.20	26.30	26.40	26.50	26.60	26.70	26.80	26.90	26
27	27.00	27.10	27.20	27.30	27.40	27.50	27.60	27.70	27.80	27.90	27
28	28.00	28.10	28.20	28.30	28.40	28.50	28.60	28.70	28.80	28.90	28
29	29.00	29.10	29.20	29.30	29.40	29.50	29.60	29.70	29.80	29.90	29
30	30.00	30.10	30.20	30.30	30.40	30.50	30.60	30.70	30.80	30.90	30
31	31.00	31.10	31.20	31.30	31.40	31.50	31.60	31.70	31.80	31.90	31
32	32.00	32.10	32.20	32.30	32.40	32.50	32.60	32.70	32.80	32.90	32
33	33.00	33.10	33.20	33.30	33.40	33.50	33.60	33.70	33.80	33.90	33
34	34.00	34.10	34.20	34.30	34.40	34.50	34.60	34.70	34.80	34.90	34
35	35.00	35.10	35.20	35.30	35.40	35.50	35.60	35.70	35.80	35.90	35
36	36.00	36.10	36.20	36.30	36.40	36.50	36.60	36.70	36.80	36.90	36
37	37.00	37.10	37.20	37.30	37.40	37.50	37.60	37.70	37.80	37.90	37
38	38.00	38.10	38.20	38.30	38.40	38.50	38.60	38.70	38.80	38.90	38
39	39.00	39.10	39.20	39.30	39.40	39.50	39.60	39.70	39.80	39.90	39
40	40.00	40.10	40.20	40.30	40.40	40.50	40.60	40.70	40.80	40.90	40
41	41.00	41.10	41.20	41.30	41.40	41.50	41.60	41.70	41.80	41.90	41
42	42.00	42.10	42.20	42.30	42.40	42.50	42.60	42.70	42.80	42.90	42
43	43.00	43.10	43.20	43.30	43.40	43.50	43.60	43.70	43.80	43.90	43
44	44.00	44.10	44.20	44.30	44.40	44.50	44.60	44.70	44.80	44.90	44
45	45.00	45.10	45.20	45.30	45.40	45.50	45.60	45.70	45.80	45.90	45
46	46.00	46.10	46.20	46.30	46.40	46.50	46.60	46.70	46.80	46.90	46
47	47.00	47.10	47.20	47.30	47.40	47.50	47.60	47.70	47.80	47.90	47
48	48.00	48.10	48.20	48.30	48.40	48.50	48.60	48.70	48.80	48.90	48
49	49.00	49.10	49.20	49.30	49.40	49.50	49.60	49.70	49.80	49.90	49
50	50.00	50.10	50.20	50.30	50.40	50.50	50.60	50.70	50.80	50.90	50

Distance of slope stake from side or shoulder stake for any width roadway, slope 1 to 1. If ground is nearly level, the cut or fill at side stake is located by the double entry method in left column and top row. The number in body of table in same row and column gives distance from side stake to slope stake. If ground is not level estimate the difference in elevation between the side stake and slope stake, lower target by this amount if cut, elevate if fill. Add this amount to cut or fill and find distance in table. Set up rod at this point, and line of sight should cut target. If it does not make the slight adjustment necessary.

INDEXED

through page # 54

TABLE XIII—CORRECTIONS FOR TANGENTS AND EXTERNALS

These corrections are to be added to the approximate values, found by dividing the tangent, or external, for a 1° curve (Table VIII) by the degree of curve, in order to obtain the true tangents, or externals. Intermediate values may be obtained by interpolation.

FOR TANGENTS ADD

Central Angle	DEGREE OF CURVE													
	5°	10°	15°	20°	25°	30°	35°	40°	45°	50°	55°	60°	65°	70°
10°	.03	.06	.09	.13	.16	.19	.22	.25	.28	.31	.34	.38	.42	.46
15°	.04	.10	.14	.19	.24	.29	.34	.39	.45	.51	.53	.58	.63	.68
20°	.06	.13	.19	.26	.32	.39	.45	.51	.58	.65	.72	.79	.84	.90
25°	.08	.16	.24	.33	.40	.49	.58	.67	.75	.83	.90	.99	1.06	1.14
30°	.10	.19	.29	.39	.49	.59	.69	.79	.89	.99	1.09	1.20	1.29	1.39
35°	.11	.22	.34	.47	.58	.69	.79	.81	.92	1.04	1.29	1.42	1.54	1.66
40°	.13	.26	.40	.53	.67	.80	.93	1.06	1.20	1.34	1.49	1.64	1.79	1.94
45°	.15	.30	.44	.60	.76	.91	1.06	1.21	1.37	1.52	1.70	1.87	2.04	2.21
50°	.17	.34	.51	.68	.85	1.02	1.19	1.36	1.54	1.72	1.91	2.10	2.29	2.48
55°	.19	.38	.57	.76	.95	1.14	1.32	1.52	1.72	1.92	2.14	2.35	2.56	2.77
60°	.21	.42	.63	.84	1.05	1.27	1.49	1.71	1.94	2.17	2.38	2.60	2.83	3.07
65°	.23	.46	.69	.93	1.16	1.40	1.64	1.88	2.13	2.38	2.63	2.88	3.13	3.39
70°	.25	.51	.76	1.02	1.28	1.54	1.80	2.06	2.33	2.60	2.88	3.16	3.44	3.72
75°	.27	.56	.83	1.12	1.40	1.69	1.98	2.27	2.57	2.87	3.16	3.47	3.78	4.09
80°	.30	.61	.91	1.22	1.53	1.84	2.15	2.46	2.78	3.10	3.44	3.78	4.12	4.46
85°	.33	.66	1.00	1.33	1.68	2.02	2.36	2.70	3.05	3.40	3.77	4.14	4.55	4.89
90°	.36	.72	1.09	1.45	1.83	2.20	2.57	2.94	3.32	3.70	4.10	4.50	4.91	5.32
95°	.39	.79	1.19	1.55	2.00	2.40	2.80	3.20	3.61	4.02	4.40	4.95	5.38	5.83
100°	.43	.86	1.30	1.74	2.18	2.62	3.06	3.50	3.95	4.40	4.88	5.37	5.85	6.34
110°	.51	1.03	1.56	2.08	2.61	3.14	3.67	4.21	4.76	5.31	5.86	6.43	7.01	7.60
120°	.62	1.25	1.93	2.52	3.16	3.81	4.45	5.11	5.77	6.44	7.12	7.80	8.50	9.22

FOR EXTERNALS ADD

Central Angle	DEGREE OF CURVE													
	5°	10°	15°	20°	25°	30°	35°	40°	45°	50°	55°	60°	65°	70°
10°	.001	.003	.004	.006	.007	.008	.009	.011	.012	.014	.015	.017	.018	.020
15°	.003	.007	.010	.014	.018	.023	.027	.032	.035	.039	.043	.047	.051	.053
20°	.006	.011	.017	.022	.028	.034	.038	.045	.051	.057	.063	.070	.076	.083
25°	.009	.018	.027	.036	.046	.056	.065	.074	.083	.093	.106	.120	.127	.135
30°	.013	.025	.038	.051	.065	.078	.090	.103	.116	.129	.149	.170	.179	.188
35°	.018	.035	.054	.072	.086	.109	.131	.153	.175	.197	.213	.230	.247	.264
40°	.023	.046	.070	.093	.117	.141	.172	.203	.234	.265	.277	.290	.315	.341
45°	.030	.060	.093	.119	.153	.184	.216	.254	.289	.325	.351	.378	.411	.445
50°	.037	.075	.116	.151	.189	.227	.266	.305	.345	.384	.425	.467	.508	.550
55°	.046	.093	.142	.188	.236	.283	.332	.381	.420	.479	.530	.582	.641	.700
60°	.056	.112	.168	.225	.283	.340	.398	.457	.516	.575	.636	.697	.774	.851
65°	.067	.135	.204	.273	.343	.412	.483	.554	.625	.697	.771	.845	.922	1.01
70°	.080	.159	.240	.321	.403	.485	.568	.652	.735	.819	.906	.994	1.08	1.17
75°	.095	.182	.266	.353	.440	.528	.617	.707	.797	.887	.977	1.07	1.18	1.29
80°	.110	.220	.332	.445	.558	.671	.787	.903	1.02	1.13	1.25	1.38	1.50	1.62
85°	.128	.259	.391	.524	.657	.790	.926	1.06	1.20	1.34	1.47	1.62	1.76	1.91
90°	.149	.299	.450	.603	.756	.910	1.07	1.22	1.38	1.54	1.70	1.87	2.03	2.20
95°	.174	.350	.522	.706	.885	1.06	1.25	1.43	1.62	1.80	1.99	2.18	2.38	2.58
100°	.200	.401	.604	.809	1.01	1.22	1.43	1.64	1.85	2.06	2.28	2.50	2.73	2.96
110°	.268	.536	.806	1.08	1.35	1.63	1.91	2.20	2.48	2.76	3.05	3.35	3.66	3.96
120°	.360	.721	1.08	1.45	1.82	2.19	2.57	2.95	3.33	3.72	4.11	4.50	4.91	5.32

1-5 Cross Section Alley Block & Bracemar
 6-10 Prop Sewer Pump Sta Kensington Hts Unit #2
 11 Location & Grader Sewer Lots 25 & 26 Terrace ^{Yacht club}
 47 & Sec. Reed. Bayard To Cass
 55-59 Cross Section E & W Alley Blk 30 Normal Hts
 66-67 " " " " " " " "

D Smith
W Moore
J Clark
F Acana

X Sec Alley B/K R Braema
for grade establishment

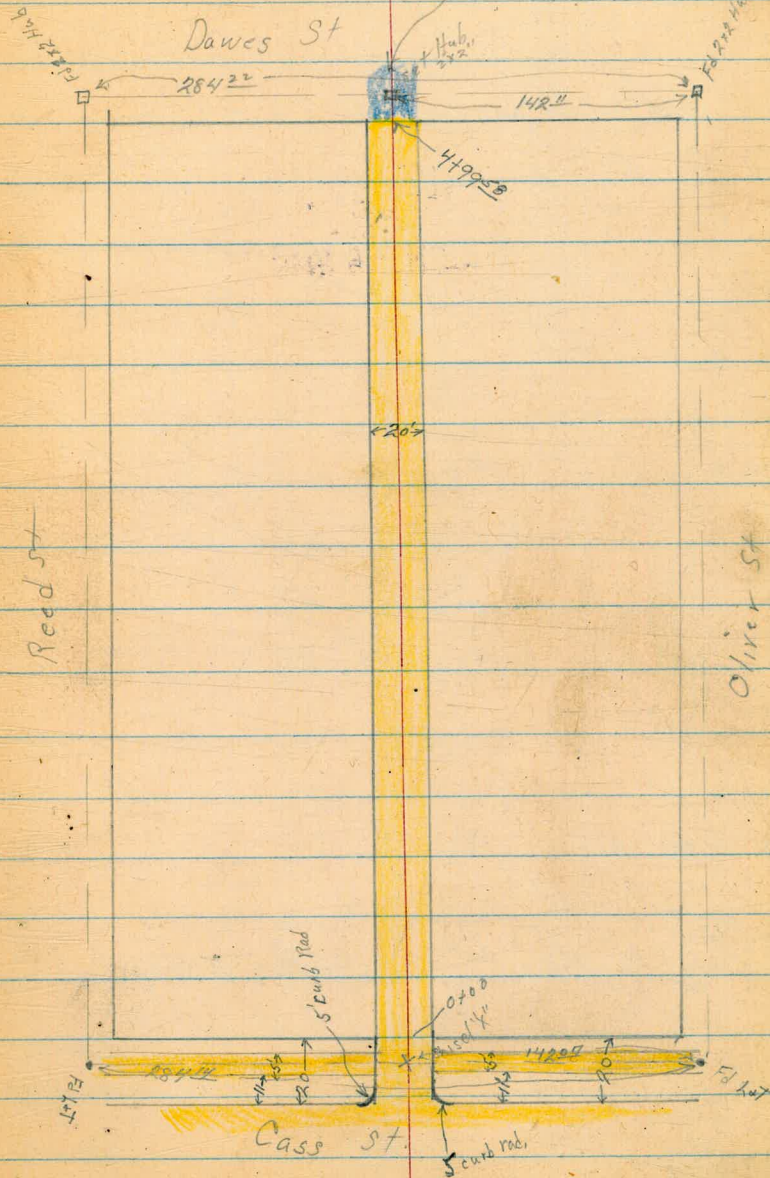
INDEXED
WIK
JUN 6 1949



con paving work

June 3 1949

roughly laid work
cold lay 25001 **1**



XSec Alley BIKR Braema

1715 20^{ft} E 2 car garage con floor + apron

1700

0750

0400 East prop Cass

0-20 East curb line Cass St

TP₁ 567

1156

854

589

BM

008 1445

1437 SE cor Top Hyd
Cass + Thomas

W.O. 25001

June 3, 1949

2

2+ North

♀

Rt = South

6.32 6.81
524 495
10 20
Floor

7.6 6.70 6.59 6.37 6.7
38 484 497 512 42
20 10 10 20

7.4 6.63 6.54 6.33
43 493 508 523
11 10 10

6.70 6.71 6.40
486 535 516
10 10

7.03 6.33 6.49 5.82 5.66 5.45 6.07 4.90 5.59
453 523 507 524 590 611 542 666 527
50 50 10 10 10 10 10 50 50
Curb 24 24 24 24 24 Curb 24 Curb

1156

cont

LT

R

R +

3

3115 14'x22' 2car garage con floor + apron

3700

			6.30	6.46
			5.36	5.40
			10 apron	149 Floor
6.8	6.66	6.57	6.33	6.9
4.8	4.20	4.99	5.23	5.1
20	10		10	20

2463 20'x26' 2car garage con floor + apron

2450

			6.26	6.34
			5.30	5.22
			10 apron	20 Floor
6.66	6.56	6.29	5.27	
4.96	5.01	5.27		
10	10	10		

2400

7.4	6.57	6.49	6.30	6.2
4.8	4.88	5.07	5.25	5.4
20	10		10	20

1757 16'x26' single garage con floor + apron

1750

			6.31	6.26
			5.25	5.30
			10 apron	16 Floor
6.58	6.57	6.38	5.26	
4.88	5.04	5.26		
10		10		

1156

cont.

5700²⁸ edge con paving end alley begin rough cold lay

4799⁵⁸ west prep Daves

4757 11²⁸ single garage con floor capren

4750

4700

3750

TP

566

1220

502 654

4

47

48

49

7.4
48
20

6.64
588
10

6.53
567
10

6.43
522
10

6.4
58
20

6.26
594
10
4/10/18

6.35
585
11
Floor

6.61
559
10

6.24
596
10

6.26
594
10

6.9
520
20

6.64
556
10

6.53
567
10

6.33
587
10

6.2
60
20

6.63
554
10

6.57
563
10

6.30
520
10

1230

cont.

LT

£

RT

5

BM

336 1487 ✓

1487 ✓
SE 7' man
Thomas & Dawes

TP

622 1823

089

1131

5739⁵⁸

£ Dawes

1.4
48
50

1.5
495
0.11m
MH

55
67
50

5719⁵⁸

West curb line Dawes
end rough cold lay

73
42
20

71
51
12

63
52
10

60
62

60
5

63
52
10

63
52
20

1220

Proposed Over Flow Server
 Pump Station Kensington Hts. Unit #2
 East of Marlborough Drive South
 of Hilldale Road

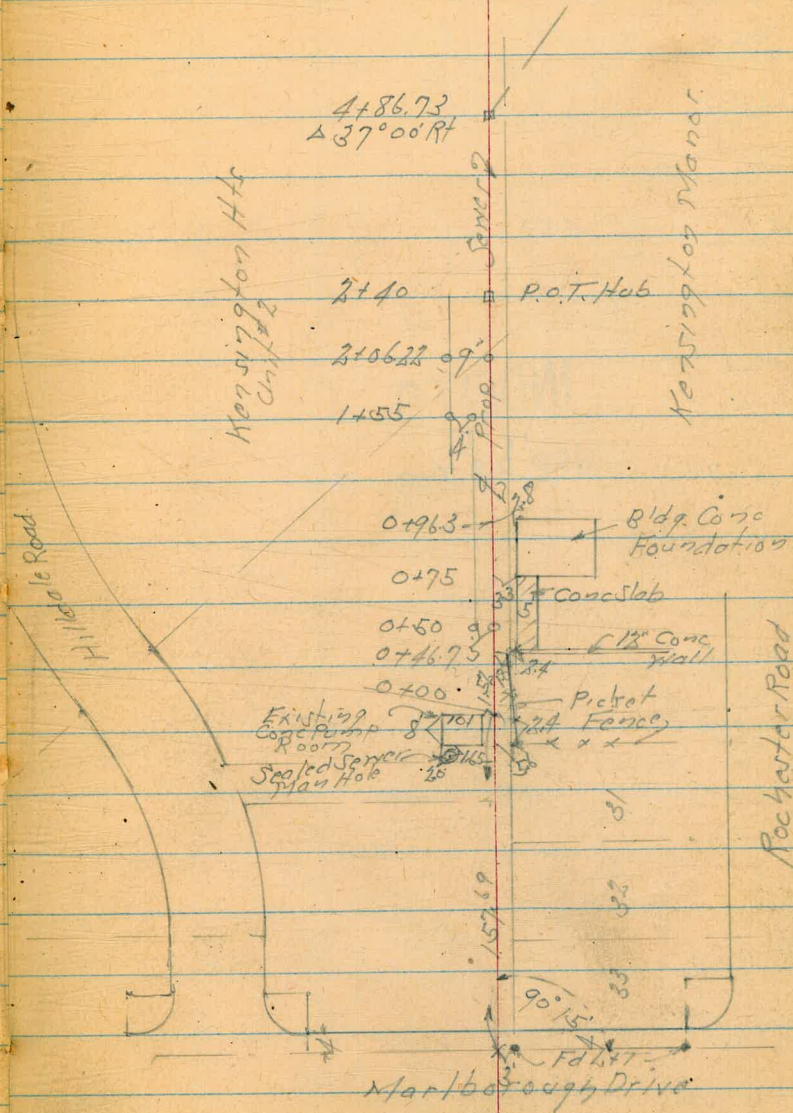
Levels next page

INDEXED

W.K.
 SEP 23 1949

Sept. 13-49
 H.S. 5507
 Garber
 Cata
 N.O. 20574

6



Lt

S

Pt

8

TP 1.10 336.89 12.53 335.79

+65 2.5' Rt of S - 11y Paver Pk # P 9025

335.8
12.5
10
8.3
340.0
4.7
10
344.1

TP 0.55 348.31 11.65 347.76

+40 POT

+32 5.5' Rt of S - 8" Apricot tree
4' Lt of S - 5.4' Peach Tree
+20 10' Rt of S - 2.8" Grape Fruit tree
+10 10' Rt of S - 4" Avocado

348.31
347.8
18.6
10
349.9
11.56
10
9.5
10
349.9

+106

352.0
7.6
10
352.8
6.6
10
353.7
5.7
10

+98

4.7
10
352.8
4.7
10
354.7
4.7
10
354.7
6.4
10
354.0
Top Cobble
Hall
10' Lot 5 House

+97 2' Rt of S - 7" Cypress

+85 2' Rt of S - 4" Orange Tree

+72 3' Rt of S - 8" Avocado Tree

+66 7.8 Lt of S - 8" Fruit Tree

354.6
4.9
10
354.9
4.5
10
355.0
4.4
10
356.0
3.9

359.11

359.11

+50
 TP 0.80 301.99 12.63 301.19

+40

+80

+60

TP 0.93 313.82 11.73 312.89

+35

TP 0.80 324.62 13.07 322.82

+10

336.89

44 283.1 294.3 292.3 295.4
 8.9 7.7 8.7 6.6
 13-Bottom 7/10 301.99 6/10
 Wash
 297.6 299.0 300.6

16.2 14.8 13.2 11.5 302.3
 15-Bottom 7/10 302.0 300.8
 Wash
 11.8 11.0 11.0 308.8

6.5 307.5 308.8 313.8
 10 10 10 10
 313.82

10.1 314.5 317.4 320.3
 10 10 10 10

324.62

12.5 22.4 228.0 330.7
 10 10 10 10
 8.9 6.8

336.89

Lt.

Z

Rt.

+75

+63

+25

5+10

TP 2.21 291.63 12.57 289.42

4+86.73 A 27°00' Rt. Takarao Split off

301.99

280.0

11.6 Bottom
Habit

6.0 285.3

7.7 283.9

291.9

9.7

6. Bottom
Habit

289.7

288.3

281.1

285.2

1.9

5.2

5.7

6. 12. Bottom
Habit

287.7

286.8

286.3

288.2

2.9

4.8

5.2

7.7

6. Bottom
Habit

291.50

289.3

290.3

290.30

290.4

12.7

11.7

11.9

11.6

8. Bottom
Habit

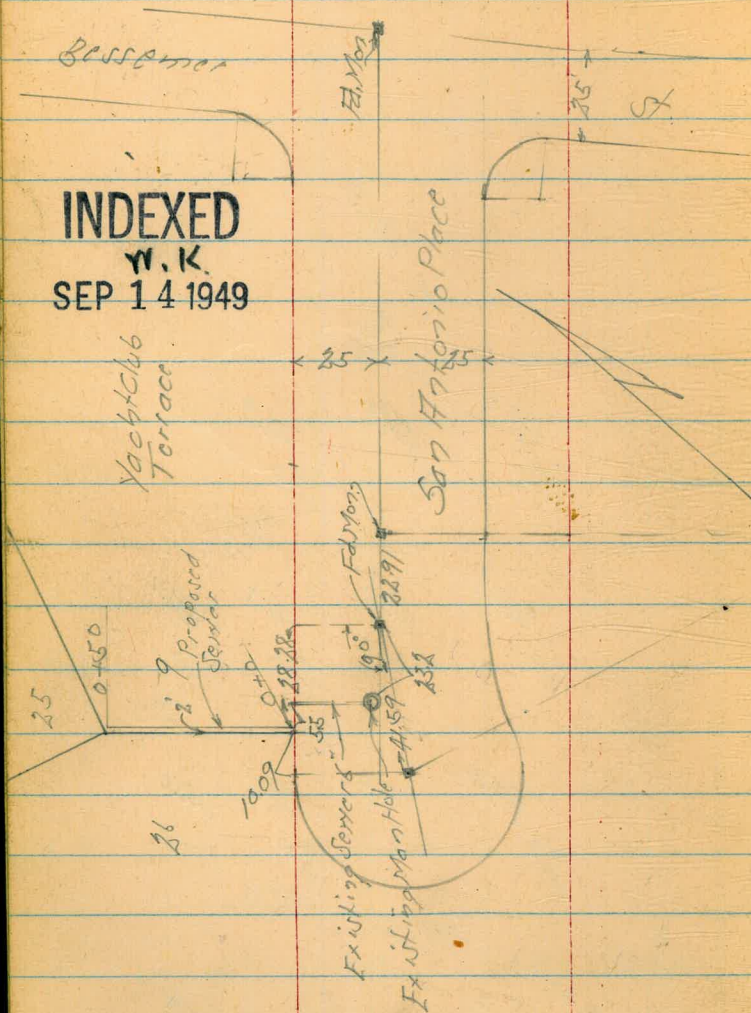
10.6

301.99

Location + Grades of Sewer to
Sewer Lots 25 + 26 Yacht Club Terrace

Sept. 14. 49
F. J. J. J. J.
Garber
Coto
W.O. 20009

11



INDEXED
W.K.
SEP 14 1949

offset 3' of 2

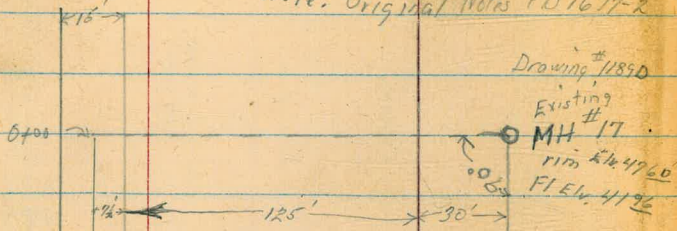
0+50.	2.22	33.20	c5.20	0 (28.00)
		9.2478		
0+25	7.33	28.09	c6.69	(21.40)
		9.2926		
TP	10.26	25.42	0.37	25.16
0+0			c7.61	
Exist Lateral	-3.11	22.42	10.730	(14.80) Flow line
W.K. San Antonio		Ground + 5' Sub.		
Exist Man Hole			16.240	(9.29) Flow line
San Antonio				
TP	11.83	25.53	8.74	13.70
				Tap for Hyd East Side San Antonio
TP	0.85	22.44	12.58	21.59
				Non B.P. Rosecrans
BM	6.35	34.17		27.82 + Berremitt

D. Smith
W. Moore
J. Clark
E. Gregory

Lower Sewer Mentone to Clovis

W.O. # 20583
Sept. 19, 1949 **12**

Note: Original Notes FB#1677-2



INDEXED
W.K.
SEP 20 1949

G. Mentone

DE

347355

Clovis

2321 sewer elbow of apt over.	50.02	48.3
1470 double garage	251	42
	231	
Top Elbow		
1725 1st & House	48.48	49.54
Sewer Elbow	405	299
	38	30
Top Elbow		Floor
1700		47.7
		48
1024	49.33	
0+92 R House	320	
	10	Floor
984	47.79	47.5
0782 Sewer + Vent Elbow	474	50
	78	
	700	
0150		47.3
		52
0100		46.7
		58
TP 096	(52.53)	11.23 (57.57)
BM 048	(62.80)	

62.80 Spike P.S. Sewer
Mentone + Clovis
FB#1677-5

cont

BM (Starting)

$\frac{11}{14}$
 $\frac{250}{250}$ $\left\langle \frac{62.22}{250} \right\rangle \swarrow$

3473⁵⁰ South Prop Clovis

61.4
3E

3445

58.20
70

3413²² Lt Sewer Elbow

55.28^v 54.8^v
 9²⁴ 10⁴
 22¹
 Top Elbow

3400¹⁵ Lt & House

56.20 53.7^v
 9²² 11⁵
 15⁵
 Floor

TP

12⁰⁰

$\left\langle \frac{65.22}{65.22} \right\rangle$

$\left\langle \frac{52.42}{52.42} \right\rangle$

2443 Lt & House
Lt Sewer Elbow

51.38^v 52.46^v 51.0^v
 1¹⁵ 6⁰⁷
 40⁵ 21⁵
 Top Elbow Floor

2405¹⁹ Lt Sewer Elbow

49.18^v 49.0^v
 3³⁵ 3⁵
 19¹
 Top Elbow

1795⁹³ Lt & House

50.60
 19³
 9³
 Floor

$\left\langle \frac{52.53}{52.53} \right\rangle$

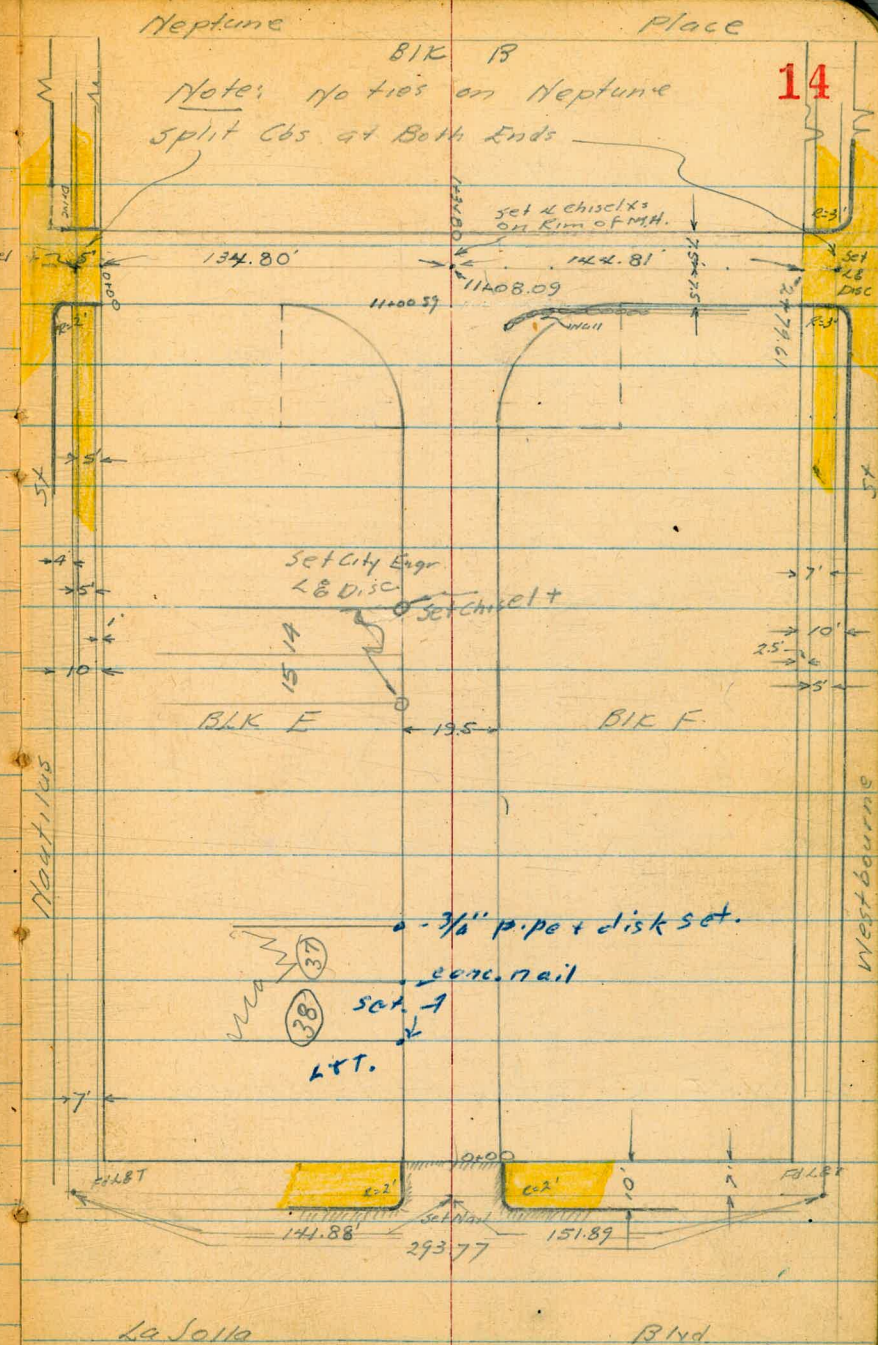
10-4-49
 Hendricks
 Roberts
 Greer
 Bunch
 W0# 31662

X Sect. Alleys BIKs B, E, & F
 To La Jolla Sub

INDEXED

W.K.
 OCT 6 1949

INDEXED
 JAN 9 1951



Levels East & West Alley

BKS B.E. & F

(see P-33 For Additional Notes)

Notes off by 1.04 (High)

0+00 West Line La Jolla Blvd. Edge Asphalt Paving

79.88	79.71	79.48	79.84	79.93
4.28	4.15	4.68	4.32	4.23
10.2	10.2		9.7	9.7
6	6		6	6

0+08 EC Cb Ret.

79.71	79.29	79.42	79.87
4.15	4.87	4.74	4.29
10	10	9.7	9.7
6	6	6	6

0+10 West Cb Line La Jolla Blvd

79.57	78.89	79.74	79.06	79.14	79.23	79.25	79.21	79.89	79.20	79.54
4.29	5.27	4.42	5.10	5.02	4.93	4.91	4.95	4.27	4.11	4.32
50	50	12	12	10		9.7	11.7	11.7	50	50
6	6	6	6				6	6	6	6

0-34.21 & La Jolla Blvd. Asp Pav

79.34	79.48	79.53	79.58	79.72
4.82	4.68	4.58	4.58	4.11
50	10		10	50

B.M. 4.78 8416

79.35

Check on B.M. (should be 78.19)

Deduct .099 from all Elevations

Survey 10-14-49 78.39?

(Check this B.M.)

NW/SP La Jolla Blvd & Westbourne

(Book 360 vs 3E/BP)

79.01

See page 33

0+92 & Single Garage dirt #1. 15.7 Lt.

8
77.4
56.7
77.7
697
157
Fl.

0+83 & Garage 15.7 Lt.

0+77 Power Pole # PA 472 10.9 Lt.

0+70 & Single Garage 10.4 Rt.

618
77.98
10.4
Fl.

0+60 & Single Garage 10.3 Rt.

619
77.97
10.3
Fl.

0+50

6¹⁰⁰ 77.9
12 975
6¹⁰⁰ 77.9
7 975
6¹⁰⁰ 77.7
7 975
6¹⁰⁰ 77.7
8 975
6¹⁰⁰ 77.9
20 975
6¹⁰⁰ 78.2
20 975
6¹⁰⁰ 78.3
20 975

0+26 Anchor Pole # 93921 H 11.2 Lt.

84.16
1

84.16
1

1450

3 ¹²	75.3	23	104	74.8
3 ²³	75.3	37	37	74.9
3 ⁴	75.20	8	3 ¹²	75.1
3 ⁷	74.7	975	3 ¹	75.5
20	975	6	21	

1465 R Single Garage

76.99
159
14
Fl.

1407.5 R Single Garage 14' Rt.

76.97
161
14
Fl.

1401 R Single Garage 15.5' Lt. Dirt Fl.

2076.6
155
Fl.

1400

2 ⁰	76.6	2 ⁰	76.4
2 ²	76.4	1 ⁹	76.7
15	975	12	76.9
		7	975
		14	77.1
			78.58

TP 209 78.58 767 76.49

8416

2+00

74.0	74.0	73.7	73.7	73.8	73.9	74.5
46	4.6	4.9	4.9	4.8	4.9	4.1
20	9.75	7	7	7	9.75	28

1796 9' Lt. End Conc. Apron & Triple Garage

74.27	74.25
4.31	4.33
11.8	9.8
FI.	

1786 Break in Gd.

74.35	74.31
4.23	4.29
11.8	7.8
FI.	

1784 Break in Gd. in Apron

74.66	74.39
3.62	4.19
11.8	9.8
FI.	

1765 9' Lt. Begin Conc. Apron Triple Garage

75.02	74.73
3.56	3.85
11.8	9.8
FI.	

1764 & Double Garage. 22' RT.
Power Pole # PA442

75.16
3.62
22
FI.

7858
^

7858

East & West Alley

3700 156 Rt End Conc Apron

71.9	71.8	71.6	71.6	71.6	72.64	72.78
17	18	20	20	2.0	0.97	0.93
20	9.75	6		9.75	15.5	17.5
						Fl.

T.P. 2.00 $\frac{73.61}{1}$ 6.97 71.61

73.61

2174 154' Rt. Begin Conc. Apron Triple Garage

72.53
6.05
15.2
72.65
5.92
17.4
Fl.

2150

72.8	72.8	72.7	72.7	72.7	73.0	72.8
5.8	5.8	5.9	5.9	5.9	5.6	5.8
20	9.75	7		7	9.75	20

2137 222' Rt. & Double Garage

73.83
4.75
22.4
Fl.

2128 161' Lt. & Single Garage

5.75.48
5.10
16.7
Fl.

2111 138' Lt & Conc Apron Double Garage

21' Wide

73.92	73.70
4.66	4.88
16.5	13.8
Fl.	

$\frac{78.58}{1}$

78.58

3+82 & Single Garage 10.6 RT.

70.6
34.5
10.6
Arron Fl.

70.3
33.0
12.4

3+62 & Double Garage 18.2 RT.

70.84
2.77
18.2
Fl.

3+50

70.6
3.0
20
70.6
2.2
9.75
70.5
3.1
7
70.5
2.1
6
70.3
3.2
6
70.6
3.0
9.75
70.8
2.4
20

3+38 & Single Garage 12.4 RT. Durt Fl

70.91
2.2
12.4

3+26 Power Pole # PA422 9.8 RT

71.78

3+15 & Double Gar. 13 RT

13
Fl.

73.61

73.61

4+40 L Double Garage 11.7 Rt.

4+30 End Board fence 9.5' Rt.

4+18 R L Conc Walk 11.3 Rt.

4+15 Beg Board fence 9.5 Rt
End Conc slab 9.5 Rt

4+01 Beg Conc Slab 9.5' Rt.

4+00

3+88 Sewer MH. 0.5 H. &

7361
/

4886
4 73
11.7
Apron
4 28
11.3
69.65
396
9.5

69.91
370
9.5

49.3	49.2	49.5	49.3	49.7	49.7
4 ^m	4 ^L	4 ^L	4 ^m	3 [?]	3 [?]
20	975		5	975	20

49.71
390
Rim

7361
/

5+26 & Double Garage 13.7 Rt

66-88
673
13.7
Apren

668
14.7
Fl

5+20.5 & Single Garage 17.6 Lt.

67.21
18
176
Fl

5+00

67.4
67.3
67.0
67.1
67.3
67.5

20 975 6
975 20

4+90 & Double Garage 16.7 Lt. Out Ft.

67.6
16.7
Fl

4+74 End Board Fence 9.4 Lt.

4+51 Beg Board Fence 9.4 Rt.

4+50 Power Pole # PA 390 9.3 Lt.

68.5
68.5
68.2
68.2
68.4
68.7
68.7

20 975.8
6 975 20

73.61
/

73.61
/

6+36 & Conc. Ramp to Double Garage 9.9 Rt.

29.1
99.
Ramp
64.80
24.1
27.8

6+07 Beg. Conc. Ramp to 4 Car garage Lt.

20.5
24.7
Fl.
65.16
18.8
Ramp

6+00

20
8
6
27
97.5
11
65.2
65.2
65.0
65.0
65.1
65.2

5+69 & 8.3' Conc. Walk 10' Lt.

10
10
66.11

5+79 Power Pole #PA362 8.3' Lt.

T.P. 2.19 67.71 8.09 65.52

5+50

73
97.5
73
8
76
6
76
16
76
6
73
7.75
71
20
66.3
66.3
66.0
66.0
65.8
66.3
66.5

73.61
/

73.61
/

7+38 E Double Garage 198 Lt.

62.86
62.63
188
198
2x8

7+18 Beg 4 Car Garage on Rt

63.15
63.19
188
198
2x8
Ramp Fl.

7+00

63.5
63.6
63.1
63.2
63.1
63.5
63.5
15
9.75
6
9.75
20

6+99 Porrex Pole # JPA 256 8.5 Lt.

64.50
64.47
18.8
18.8
Fl. Ramp

6+63 E Double Garage 188 Lt.

64.6
64.3
64.2
64.1
64.2
64.4
20
9.75
7
9.75
20

6+50

6+44 End Conc Ramp 4 Car Gar Lt

65.18
64.95
18.8
18.8
Fl. Ramp

6771

6771

8+50

7 ¹	7 ¹	7 ¹	7 ¹	7 ¹	7 ¹	7 ¹	7 ¹
15	9.75	7	6	60.3	60.2	60.1	60.4
							60.4

8+09 & Single Garage 14.3' RT.

61.38
61.33
14.3
Fl.

8+00

6 ¹	6 ¹	6 ¹	6 ¹	6 ¹	6 ¹	6 ¹	6 ¹
20	9.75	6	60.9	61.0	61.2	61.3	61.3
							61.4

7+99 Power Pole #1A25L 8.4' H.

5¹ 61.85
2+9 98
Ramp
6¹ 61.60

7+91 & Single Gar

7+58 End. 4 Car Garage RT

63.05
4¹ 22.8
Ramp
4¹ 24.7
Fl.
63.09

7+50

5 ¹	5 ¹	5 ¹	5 ¹	5 ¹	5 ¹	5 ¹	5 ¹
18	9.75	7	62.2	62.3	61.9	62.1	61.9
							62.2
							62.0
							62.0

67.71

67.71

10+00

3 ¹¹	57.4
20	
8 ¹⁰	57.1
7	
4 ¹¹	56.6
15	
4 ¹¹	56.4
7	
3 ¹⁰	57.1
9.75	
20	

9+50

2 ⁵	58.4
20	
2 ²	58.7
9.75	
8	
2 ¹¹	58.6
7	
2 ⁹	58.0
7	
2 ⁹	58.0
7	
3 ¹	57.8
7	
2 ⁶	58.3
10	
2 ⁴	58.5
20	

9+24 Power Pole # PA234 8.4' Lt

T.P. 1.30 60.85 8.16 59.55

9+00

8 ¹	59.6
20	
8 ²	59.5
9.75	
7	
8 ⁰	59.7
6	
8 ¹¹	59.5
6	
1 ¹¹	59.4
60.85	
6	
8 ¹¹	59.2
6	
8 ¹¹	59.4
9.75	
20	
8 ¹⁰	59.7
20	

8+83 & Double Garage 15.8 Lt.

8+69 15.6 Lt - 18" Conc. Walk

6771

6771

B.M.

866 52.19

Nail in Pole # PA 6949 West End Alley

11+00.59

10+92

10+87 End House 10.55' Rt

10+66

10+64 Beg. House 10.8 Rt

10+58

10+48 Power Pole # PA 212 8.3' Lt.

10+41 & Single Garage

10+32 & Single Garage 11' Rt.

60.85

60.85

22	20	9	6	7	5	9	7
55.3	54.5	54.4	52.8	52.4	53.8	54.2	54.1
20	20	9	6	7	5	9	7
55.3	54.5	54.4	52.8	52.4	53.8	54.2	54.1
20	20	9	6	7	5	9	7
55.3	54.5	54.4	52.8	52.4	53.8	54.2	54.1

10.8	13.7
Ramp	Fl.
55.46	55.61
11	13.8
Ramp	Fl.

0+05

6.6	49.9
7.5	6
6.6	50.1
3	49.6
6.6	49.9
6	50.2
5	50.7
3	53.4
7	54.8

1317 4.28 56.47 2.71 52.19

Nail in Pole

Req Conc Brick Wall 7.7ft. Edge Conc Pav. &

0+00 No Line Nautilus End of Cbs.

5.4	49.75
7.5	6
5.2	49.65
7.5	6
5.9	50.47
7.5	6
5.9	50.97
7.5	6
5.2	52.6

Req 6.4t.

0+08 EC Cb Ret. R.

5.3	49.51
7.5	6
5.4	49.11
7.5	6
5.6	50.23
7.5	6
5.5	50.72

0-10 No Cb Line Nautilus

9.8	45.02
50	6
10.4	44.44
50	6
5.9	48.96
7.5	6
1.3	49.55
7.5	6
4.5	50.22
9.5	50.77
7.5	6
4.2	50.83
37	52.19
37	52.75
50	52.90
50	53.42

0-30 2 Nautilus Conc Pav.

9.9	44.91
50	6
5.6	44.28
7.5	6
4.8	50.02
7.5	6
4.2	50.59
7.5	6
2.2	52.65
37	53.40
50	53.40

1317 2.71 54.90

52.19

54.90

NB 5 Alley

Power Pole # PA6949 4.2' Lt.

1+25.05 So Line E&W Alley

99	46.6
25	9
63	50.2
85	51.4
27	51.8
5	51.3
11	51.7
7.5	51.7

1+20 End. Conc. Brick Wall 7.7' Lt.

1+00

5	51.1
7.5	51.7
11	51.3
12	51.3
25	51.5
9	51.5
11	52.8
20	54.3

0+66.5 & 3' Conc. Walk 7.6' Lt.

5	50.94
121	7.6
10	50.96
5	51.1

0+50

5	50.7
7.5	50.7
6	50.4
11	50.4
11	50.4
25	50.6
11	53.4
24	54.1

0+33.8 Beg. Conc. Brick Wall
End. Stucco Garage 7.6' Lt.

0+12 Beg. Brick Wall 7.7' Lt.
Beg. Stucco Garage 7.7' Lt.

56.47
/

56.47
/

1+55 E.C. Conc. & Rock Wall 8' Rt.

6.0 50.5
8 8 8
Base Gr. Wall
Wall

1+46 Bq. Rock & Conc. Ret Wall 12' Rt.

X 52.1
12 12
Gr Wall

1+46 10" Cyp Tree 13' Rt.

1+44.55 N. Line E&W Alley

46.9
9.6 7.1 5.1 5.1 5.1 10.50.7
25 9 9 3 5 5
5.15 51.0
6. 7.5

1+35.3 & Sewer 17H.O. 5' Rt

6.50.20
0.5
Rim

1+34.80 & E&W Alley

46.5
10.0 6.2 5.1 5.1 5.1 5.1 5.1
27 9 9 2 5 5 5
5.10 51.5
7.5

56.47
/

56.47
/

2+60

T.P. 167 52.36 578 5069

2+40 End Conc Brick Wall 76 ft.

2+18.6 @ #7 Conc Walk & Stairway

2+00

1+95.3 Beg. Conc Brick Wall 77 ft.

1+58

56.47

46.0
64 47.7
15 7 5 47.4
47.7
48.0
35 48.4
158 50.18
122 51.2

52.52
98.2 46.65 47.9
86 45.1
114 47.7
76 76 76 22 75 6 5 8 48.2
Top of Wall at wall 49.24 48.6 48.1 47.9
77 77
Walk Gr
75 48.8
77 49.3
7 49.9
7.8 51.8
16 52.0

52.60
387 76 9.58
77 77 77
top of Wall Gr. Base Top of fig.

46.1 48.3 50.2 50.1 50.3
104 82 63 64 62
30 14 7 2 6
5 50.7 5 51.3 3 52.83 3 52.7
6 77 77 16
Wall

56.47

B.M.	NBS Alley	2.95	79.38	79.38
T.P.	9.88	82.32	0.25	72.44
T.P.	980	72.69	0.34	62.89
T.P.	1181	63.23	0.94	51.42

3+09.61 E Westbourne St (Conc. Pav.)

13.30	8.48	7.60	6.78	3.07
50	75	75	50	50
39.06	43.88	44.76	45.58	49.29

2+89.61 So. Cb. Line Westbourne St.

12.18	13.55	8.49	9.02	8.15	7.00	6.21	6.06	3.28	2.70
50	50	105	105	75	75	105	105	50	50
Cb.	G	Cb	G	G	G	G	Cb	G	Cb
39.41	38.81	43.87	43.34	43.70	47.53	45.36	45.65	46.30	47.08

2+86.61 BC Cb. Ret.

8.11	8.32	7.80	7.03	6.33
75	75	180	75	75
Cb	G	Cb	G	Cb
44.25	44.04	44.56	45.33	45.98

2+79.61 So. Line Westbourne St. Edge. Conc. Paving & Reg. Cbs.

10.21	7.99	7.70	6.90	6.32	3.19
32	75	75	75	75	32
Cb	G	G	G	Cb	G
42.11	44.37	44.66	45.44	46.04	48.5

2+77

9.0	6.33	7.0	6.13	2.10
37	10	6	7	27
43.4	46.2	45.4	44.2	48.6

2+69 End. Conc. & Cell Wall 79 Rt.

8.23	5.0	6.0	0.1	5.13	3.0	3.0	1.67	1.4	1.5
30	9	5	1.6	7	77	77	77	27	27
44.2	47.4	46.4	46.8	47.1	48.6	48.8	50.69	48.0	50.9

52.36

52.36

Additional Levels for
Alley B, E, & F
So La Jolla Sub

33

	4.47	49.84	50.83	
T.P.	0.18	54.31	13.02	54.13
T.P.	0.14	67.15	11.55	67.01
T.P.	0.93	78.56	6.33	77.63
		6.00		77.96
		5.22		78.74
		5.19		78.77
		4.78		78.18
BM	5.57	83.96		78.39

USE 78.34 @ BM

E. F. Gabrielson

(78.19)

(P28 this Bk)

East Cb ECT Alley on Nautilus

Cb BC on Nautilus NW Cor La Jolla & Nautilus

Cb BC on La Jolla NW Cor " " "

So. BC Alley on La Jolla Blvd.

North BC Alley on La Jolla Blvd

Cb BC on La Jolla SW Cor La Jolla & Westbourne

NW B.P. La Jolla & Westbourne

on NWBP LA JOLLA & WESTBOURNE

Deduct 0.2' From above. Use El. for N.W.B.P.

Roberts
Garber
Moore
Clark

3-22-50
W.O. 31499

Re-x- Sect Alleys BIK 18
Point Loma Hts.
Between Tennyson, Quimby, Chatsworth
and Capistrano.

See F.B. 1689 pg. 29 For Sketch

INDEXED

W.K.

MAR 23 1950

Fd. 4d & Discs on alleys reset

at hub intersection of alley & s.

Some check sections are shown —

does not appear as if any cuts or
fills have been made.

0+62 7' 6" Lt. to Conc. Wall Wall Curves to Garage

0+56 7' 6" Lt. & 3" Conc. Walk

0+25

0+00 { 7' 3" Lt. Conc. Block Ret. Wall
Sly. Line Tennyson N & S Alley

B.M.

6.80 103.45

96.65

Lt

Gr

Re 34

106.9
+3.4 7' 6" top
101.4
2.1 7' 6" Foot

101.9
7' 6" Grd

102.23
1.22 17' 6" conc.
102.17
1.28 7' 6" conc.

104.9
+1.4 7' 6" Top
101.1
2.4 7' 6" Foot
101.7
1.8 7' 6" Grd

101.7
1.8 7' 6" Grd

101.3
2.2

101.8
1.6 7' 6"

means bottom
of Foundation

101.65
1.84 7' 6" Top
97.5
6.0 7' 6" Foot
98.1
5.4 7' 6" Dirt

SWBP Chatsworth & Tennyson

103.45

2+56^E 16' Rt. End Garage

97.65
8.02
16'
conc.

2+42 6' Rt. to Center P.Pole #PA 2053

97.65

2+40^E 16' Rt. Begin 2 Car Garage (unfinished)

8.02
16'
conc.

2+00

5.5
15

100.2

5.9
7.5

99.8

5.9

99.8

5.8
7.5

99.9

6.4
15

99.3

1+31 6' Rt. to Center P.Pole #PA 2075

4.2
15

101.5

4.3
7.5

101.4

4.2

101.5

3.9
7.5

102.8

4.0
20

101.7

1+00

3.28
23'
Floor

102.39

3.66
11'
conc.

102.01

0+73^E 11' Lt. & 10' Conc. Apron

T.P.

361

105.67

1.39

102.06

105.67

103.45

1700

99.6

99.3

99.1

99.0

98.7

6.1
15

6.4
18

6.6

6.7
15

7.0
15

0780

To show Footing of wall

4.2
193
Floor

101.25

5.22
6.9
conc

Foot

99.5

0771

69' Lt. & 12' Conc. Apron

0738.5

63' Lt. to Center P. Pole # 519073H
JPA 3677

0722

65' Lt to Deadman

0700

E. Line of N. & S. Alley (E. & W. Alley)

98.3

98.0

97.4

96.7

96.2

7.4
15

7.7
15

8.3

9.0
15

9.5
15

2770

Edge Bank

105.67

105.67

Cont'd From Page 36

Lt

Rt

37

2700

2.1
20

2.4
7.8

30
95.7

20
7.5

3.4
17

T.P.

2.74

98.74

9.67 96.00

98.74

1799

7' Lt to Center P. Pile #PA3653

95.75

95.29

1796

7' Rt End Apron

9.92
7.5
conc

10.32
17.2
Floor

1789^E

13' Lt & 8' Conc. Apron

97.34
8.33
20.2
Floor

96.79
8.88
13.1
conc.

96.00

95.95

1777

7' Rt Begin Conc. Apron

9.67
7.5
conc

9.72
17.2
Floor

1719^E

to show footing of wall

7.3
7.5
Foot

105.67

105.67

2+76 ^E	6' Lt. End Apron
2+75	14' Rt. End Garage
2+60	13' Lt. to Conc. Apron
2+59 ^E	14' Rt. to Double Garage
2+19 ^E	17 ¹ / ₂ ' Rt. End Double Garage
2+16 ^E	16' Lt. End Apron
2+03 ^E	17 ¹ / ₂ ' Rt. to Double Garage
2+02	16' Lt. to Conc. Apron Double Garage

95.67	94.90
3.07	3.84
103	61
Floor	conc.

95.68	94.91
3.06	3.83
105	62
Floor	conc.

94.6
4.70
142
Floor

81.18
94.18
4.66
142
Floor

89.68
95.68
3.06
175
Floor

196.92	88.48
1.82	2.26
201	161
Floor	conc.

85.58

96.87	96.57
1.87	2.17
201	161
Floor	conc.

3.16
173
conc.
Floor

92.74

92.74

Cont'd. From Page 38

Lt.

E

Rt

39

3761 For check Walk Edge.

3700

98.74

90.91

7.83

95.0

94.4

93.9

93.6

93.4

93.0

3.7

4.3

4.8

5.1

5.3

5.7

15

7E

4

7E

15

98.74

Check of X-Sept Nordica Ave.

Lt. E Rt. 40

Robert
Garber
Moore
Clark
5-5-50
w.o. 31730

40th to 43rd

See FB 1716 pg 3 to 21

1434 29³ Rt Begin Picket Fence
1400 29¹ Lt Begin Fence
0+25 215' Rt Deadman

INDEXED
MAY 9 1950

0+00 End. Curbs & Walk

17.09	16.91	16.80	16.5	16.5	15.8	16.24	16.26	16.26
4.77	4.85	5.06	5.4	5.4	6.1	5.62	5.60	5.10
27.5	22.5	20	20		20	20	22.5	27.5
Walk	Walk	cb	Gutt		Gutt	cb	Walk	Walk

Center Curb Return

Reduced May 16, 1950
John Firebaugh

19.10	16.6	15.9	16.28
4.76	5.3	6.0	5.58
cb.	Gutt.	Gutt.	cb.

0-10 E. Curb Line 40th

21.26	20.5	18.54	17.9	17.47	16.8	16.7	16.4	16.0	15.9	16.33	15.5	16.21	15.2	15.93
0.60	1.4	3.32	4.1	4.59	5.1	5.2	5.5	5.9	6.0	5.53	6.45	6.7	5.93	
100	100	50	50	30	30	20		20	30	30	30	50	100	100
cb	Gutt	cb	Gutt	cb	Gutt			Gutt	cb	Gutt	cb	Gutt	cb	cb

0-30 E 40th St

21.8	18.7	17.1	16.3	15.9
0.1	3.2	4.8	5.6	6.0
100	30		30	100

21.86

BM 5.58 21.86

SE 2d St
16.28 Nordica & 40

Cont'd From Page 40

4431 30' RT & 3' Conc. Walk

4410 295' RT Begin Wire Fence

3+60 298' LT Begin Picket Fence

T.P. 633 23.33 4.86 17.00

2+48 30' LT & 8' Conc. Drive

2+22.5 298' LT & 3' Conc. Walk

1740 293' LT End Fence

1738 289' LT & 2.5' Conc. Walk

21.86 π

LT

R

RT

41

18.16

18.03

5.17
30.2
walk

5.30
38
walk

23.33

17.87

17.74

3.99
10
conc.

4.12
30
conc.

17.69

17.46

4.17
40
walk

4.40
29.3
walk

17.86

17.31

4.00
40
walk

4.55
28.9
walk

21.86 π

84105 33' RT 8' Conc. Drive

20.80
6.28
33
conc

20.67
6.21
45
conc

T.P. 6.97 27.08 322 20.11

27.08

7491 33' RT & 3' Conc. Walk

20.50
2.83
33
Walk

20.51
2.82
40
Walk

7461 32' RT & 8' Conc. Drive

20.11
3.22
322
Walk

20.26
3.07
450
Walk

74395 33' RT & 3' Conc. Walk

19.86
3.47
339
Walk

19.90
3.43
40
Walk

5462 32' RT to center Pole #2003

5409 30' RT End Wire Fence

4458 30' RT End Picket Fence

Cont'd From Page 42

←

£

RT

43

9+32

32' RT £ 8' Conc. Drive

21.42

5.66
322
conc

21.60

5.48
29
conc

9+11

32' RT £ 8' Conc. Drive

21.23

5.85
322
conc

21.26

5.82
33
conc.

8+91

33' RT £ 4' Conc. Walk

21.34

5.74
33
walk

21.34

5.74
44
walk

8+87

⁴¹
¹³
295' 4 £ 3' Conc Walk

21.55

5.53
40
walk

21.32

5.76
295
walk

8+495

33' RT £ 3' Conc. Walk

20.48

6.60
33
walk

20.55

6.53
19
walk

8+28

33' RT £ 8' conc Drive

20.65

6.43
33
conc

20.77

6.31
43
floor

8+19

218' RT to Center P. Pole # 74145

27.08

27.08

Cont'd From Page 43

Lt

¢

Rt

44

31.10	30.50
294	33K
255	40
Conc	Conc

15+22 255' Rt 45' Conc Walk

13+75 225' Rt Deadman

13+56 225' Rt to Center P Pdr 5P4225

O.N.T.P. 873 33.84 1.97 25.11

Nail in Pole
SP4225
13+58

33.84

11+38 242' Rt Deadman

10+10 32' Rt & 8' Conc Drive

21.86	21.94
5.22	5.14
32	533
Conc	Floor

9+91 329' Rt & 3' Conc Walk

21.87	21.89
5.21	5.19
329	44
Walk	Walk

9+52 328' Rt & 3' Conc Walk

21.54	21.60
5.54	5.48
328	44
Conc	Conc

27.08

27.08

17+58 23¹ Rt Deadman

Check 3.62 30.71 = 30.70 WaK 17+16 see FB17/16 pg 19

16+44 25² Rt to Center P.P. # JP4275

16+34 25² Rt & MH

29.51
48L
22
MH
Kim

T.P. 4.41 34.33 3.92 29.92 34.33

15+50

36 ¹	35 ²	35 ²	33 ⁰	32 ³	32 ¹	32 ²	30 ⁹	25 ⁹	25 ⁹
+2.9	+1.7	+1.4	0.8	1.5	1.7	1.6	2.9	7.9	7.9
50	30	23	15		18	27	30	38	50

15+40

36 ⁶	35 ⁴	35 ²	33 ⁰	32 ³	32 ²	31 ¹	30 ²
+2.8	+1.6	+1.4	0.8	1.5	1.5	2.7	3.6
50	30	23	15		18	30	50

33.84

33.84

Cont'd From Page 45

LT

£

RT

46

18+57.61

£ 43rd Pav. Strip

34.2	32.79	31.46	30.12	30.20
0.0	15.4	2.87	3.91	4.13
98	50		50	100

18+09.61

W. Curb Line 43rd

34.29	33.72	32.63	32.02	31.50	31.02	30.52	30.07	30.63	29.25	29.65	30.32
0.04	0.61	1.70	2.31	2.83	3.31	3.81	4.26	3.70	5.08	4.05	4.05
95	95	40	40	20		20	40	40	738	738	738
cb	Gutt	cb	Gutt				Gutt	cb	£	£	cb

Center Curb Returns

32.22	31.64	30.26	30.88
2.11	2.69	4.07	3.45
cb	Gutt	Gutt	cb

17+97.61

W.L. 43rd Edge Pav.

3-6 Pipe Culvert with 0.9' Headwall

46' RT #1 56' RT #2 65' RT to #3

34.33

31.6	31.6	32.03	31.37	31.44	31.30	30.90	30.28	30.90	30.6	29.3
2.7	2.7	2.20	2.96	2.89	3.03	3.43	4.05	3.43	3.7	5.0
40	30	21.7	21.7	10		10	21.9	21.9	27.30	
		cb	Gutt				Gutt	cb		

3.59
795
Culvert
Headwall

34.33

30.63
21.49
21.53
21.53

3.70 12.80 12.80 12.20
32.5 FL#1 FL#2 FL#3
Culvert Headwall

X Sec Reed

Cass to
Bayard

47

Begg

9-28-50
W.O.# 31756

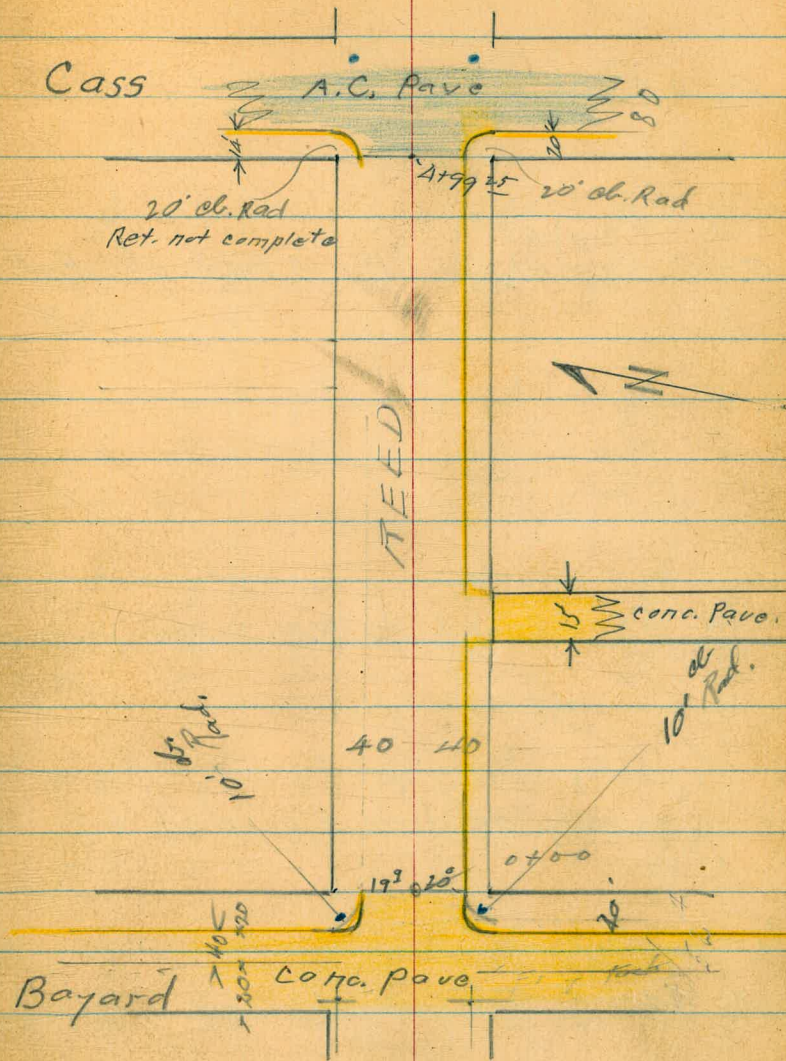
• Fd. 7'247. Tiesheets 1743 + 1744

(W) = Ctr. water Meter Box

Soil sample from 10'24 of Sta 3+00

INDEXED
M.K.

OCT 5 1950



REED;
Bayard to Cass

4

48

0-0A to 0100 = Curl. or right is out.

0-10 $\left. \begin{array}{l} 20' \text{ RT} \\ 20' \text{ Lt.} \end{array} \right\} = \text{E.C. } 10' \text{ Rad. Cl. Ref.}$

$\times 87$	$\times 16$	$\times 91$	$\times 38$
4.29	5.00	5.25	4.78
20	20	20	20
Cl. E.C.	G	G	Cl. E.C.

$\times 21$	$\times 52$	$\times 62$	$\times 30$
3.95	4.64	5.54	4.86
130	130	130	130
Cl.	G	G	Cl.

(Note B.M. S.E.B.P.)

$\times 02$	$\times 34$	$\times 56$	$\times 86$	$\times 44$	$\times 70$	$\times 32$
4.14	4.82	4.30	5.30	4.72	5.46	4.84
80	80	40	40	40	80	80
Cl.	G	Cl.	G	Cl.	G	Cl.

0-20 = Ely cl. line Bayard

$\times 24$	$\times 89$	$\times 20$	$\times 10$	$\times 99$	$\times 88$	$\times 86$	$\times 39$
4.92	4.27	4.96	5.06	5.17	5.28	5.30	4.77
40	30	30	20	20	20	30	30
G	Cl. B.P.	G				G	Cl. B.C.

0-40 = 4 Bayard

$\times 98$	$\times 86$	$\times 69$	$\times 61$	$\times 56$	$\times 50$	$\times 40$	$\times 29$	$\times 22$
4.18	4.30	4.47	4.55	4.60	4.66	4.76	4.87	4.94
130	80	40	20		20	40	80	130
				9.16				

Set B.M. 4.16 9.16 4.58 5.00 - B.M. #1
3.20 9.58 - 6.38

N.E. 7' L+T. Reed + Bayard
N.E. B.P. Thomas + Bayard

Road-

Bayard to Cass

±

49

1+21 - 20' RT. = ± double drive

1+00

6 ⁶	6 ³	6 ³	5 ⁹	6 ¹	5 ³	4 ⁸	5.21
2.6	2.7	2.7	3.3	3.1	3.4	4.4	3.95 ⁺⁰²
50	40	20	17		10	20	20
							cl.

4.91
 4.25
 20
 in drive

0+50

6 ³	6 ¹	5 ⁹	5 ⁹	5 ⁶	5 ²	4 ⁵	4.75
2.4	2.7	3.4	3.9	3.6	4.0	4.7	4.41 ⁺⁰⁹
50	40	20	16		12	20	20
							cl.

0+10

6 ⁵	6 ⁴	5 ⁹	4 ⁹	4 ⁹	4 ⁷	4.16	4.46
2.7	2.8	3.3	4.3	4.3	4.5	5.00	4.70 ⁺⁰⁶
50	40	22	15		10	20	20
							cl.

Reduced 10-5-50
Firebrash

5⁷ 5.14
 3.5 4.02
 40 358
 N.E. Cor
 walk

20' Lt. = end conc. curb.
 also = end conc. pave.
 0+00 = Ely line Bayard.

5.14	4.90	4.18	4.36	4.41	4.22	4.01	4.44
4.02	4.26	4.98	4.80	4.75	4.94	5.15	4.72
3 DE	19.9	19.9	10		10	20	20
S.E.	end	5				6	cl.
Cor.	cl.						
walk							

9.16

Reed.

1755 - 20' Rt. = E.C. 5' Rad. Alley Ret.

$\frac{6.9}{50}$	$\frac{6.8}{40}$	$\frac{6.8}{20}$	$\frac{6.8}{16}$	$\frac{6.6}{4.7}$	$\frac{6.1}{5.2}$	$\frac{5.3}{6.0}$	$\frac{5.1^{k} 1.0^1}{5.60}$
					$\frac{10}{20}$		$\frac{20}{20}$
							cl. E.C.

40' Rt. = end alley cl. + start ^{pave.} Alley

1750 - 25' Rt. = B.C. 5' Alley cl. Ret.

$\frac{5.67}{25}$	$\frac{5.41}{40}$	$\frac{5.53}{40}$
cl. B.C.	End cl.	Alley Pave.

18' Rt. = 14 sq. ft. Conc. ^{out.} grout to come

1742⁵ 40' Rt. = ϕ N. + S. Alley Conc. Pave

$\frac{6.1}{4.6}$	$\frac{6.1}{4.6}$	$\frac{7.0}{4.3}$	$\frac{6.3}{5.0}$	$\frac{6.5}{4.8}$	$\frac{6.2}{5.1}$	$\frac{5.2}{6.1}$	$\frac{5.1}{5.6}$	$\frac{5.49}{5.85}$	$\frac{5.22}{6.12}$
$\frac{50}{40}$	$\frac{40}{78}$	$\frac{16}{16}$		$\frac{10}{20}$	$\frac{20}{25}$			$\frac{40}{140}$	$\frac{140}{140}$
								Pave	Alley

11.34

T.P. 5.63 11.34 3.45 5.71

40' Rt. = end curb + start ^{conc. Pave.} alley

1735 - 25' Rt. = E.C. 5' Rad Alley Ret.

$\frac{5.64}{3.52}$	$\frac{5.76}{3.40}$	$\frac{5.71}{3.45}$
cl. E.C.	End cl.	Alley Pave.

1730 - 20' Rt. = B.C. 5' Rad. alley Ret.

$\frac{5.47}{3.69}$
$\frac{20}{20}$
cl. B.C.

9.16

REED.

40⁵Lt. 3+04 =
S.W. Cor. drive ribbon

T.P. 4.60 12.99 2.95 8.39
3+00

2+81 40⁵Lt. = ϕ 3' wide conc. walk

2+61 - 40⁵Lt. = ϕ 2' wide drive ribbon (Conc.)

2+56 40⁵Lt. = ϕ 2' wide drive ribbon (Conc.)
20' Ntr = ϕ sing. drive

2+50

2+08⁵ - 20' RT = ϕ sing. Dr.

2+00

51

8 ³ / ₁₀	9 ² / ₄₀	8 ⁰ / ₂₀	1 ¹ / ₈	1 ⁵ / ₁₀	1 ⁶ / ₇	1 ¹ / ₁₄	6 ³ / ₂₀	6 ¹⁰ / ₂₀ x .02
3.0	3.1	3.3	3.9	3.7	3.7	4.2	5.0	4.54
50	40	20	8	10		14	20	20
								Ch

8.22	8.17
3.12	3.17
50	40 ¹ / ₂
at steps	

1.84
3.50
40 ⁵ / ₅

9.29	1.84
3.05	3.50
59	40 ⁵ / ₅
Car.	

6.07
5.27
20
in drive

1 ⁵ / ₄₀	1 ⁵ / ₂₀	1 ¹ / ₁₆	1 ² / ₈	6 ⁸ / ₁₀	5 ⁸ / ₂₀	6.34 x .02
3.8	3.8	4.2	4.0	4.5	5.5	5.00
40	20	16		10	20	20
						Ch

5.66
5.68
20
in drive

1 ¹ / ₁₄	1 ¹ / ₄₀	1 ¹ / ₂₀	6 ⁸ / ₁₆	1 ⁰ / ₇	6 ⁵ / ₁₀	5 ⁵ / ₂₀	6.01 x .02
4.2	4.2	4.2	4.5	4.3	4.8	5.8	5.39
50	40	20	16		10	20	20
							Ch

11.34

3+93⁵ 39² Lt. = end conc. drive

3+86⁵ 39² Lt. = start conc. drive

Lt. = start conc. drive

3+71 - 39² Lt. = ± 3' wide conc. walk

3+69 - 21' Lt. = (W)

3+67 - 21' Rt. = (W)

3+50

3+38 - 22^{Lt} = (W)

3+36 { 22' Lt. = (W)
21' Rt. = (W)

3+35 21' Rt. = (W)

3+34 21' Rt. = (W)

3+33 21' Rt. = (W)

3+10⁵ - 40⁵ Lt. = ± 2' wide conc. Dr. ribbon

3+05 - 40⁵ Lt. = ± 2' wide conc. Dr. ribbon

8.94
405
80
Bar.
Floor

8.75
424
20

8.75
424
392

8.75
424
20

8.75
424
392

8.64

4.34
52

8.62

4.37
40

8.62

4.37
392

8.4

4.6
40

8.5

4.5
20

7.9

5.1
18

8.1

4.9
10

8.0

5.0

7.5

5.5
10

6.5

6.4
20

7.14

5.85
20
cc

8.32
461
405

8.71

468
60

Bar. Floor

8.41

458
405

12.99

Reed
 N.E. 1/4 Lt. Cass + Reed
 T.P. 4.28 13.44 3.83 9.16 - B.M. #2

38' Lt. = end hedge
 20⁹ Lt. = start conc. dl.
 20' Rt. = B.C. 20' ch. Ret.
 4+99 - ²⁵ = start A.C. Pava.

4+60 { 21' Lt.
 21' Rt. } = (W)
 39' Lt. = start 4' high hedge 2' wide
 4+57 - 40² Lt. = end stucco wall

4+50

4+37 - 21³ Lt. = end Conc. drive
 ↑
 Rods on drive

↓
 4+23 - 21⁴ Lt. = start Conc. drive

4+15 - 21' Rt. = (W)

4+00 40² Lt. = start stucco wall
 3' high

9 ⁴	9 ³¹	9 ²⁶	9 ⁰⁹
3.6	3.68	3.73	3.91
40	36	31	20 ⁹
	walk	walk	ch.
	N.W. Cor	S.W. Cor.	

8 ⁴¹	8 ⁴¹	8 ³³	8 ²⁷	8 ⁰¹	7 ⁷⁹	8 ⁴¹
4.58	4.58	4.66	4.72	4.98	5.20	4.58
20 ⁹	20	10		10	20	20
6						ch

8 ⁹	8 ⁶	8 ⁰	8 ⁴	8 ³	7 ⁹	7 ²	7 ⁹⁹
4.1	4.4	5.0	4.6	4.7	5.1	5.8	5.00
40	20	17	10		11	26	26
						?	ch

8 ⁹¹	8 ⁸³	8 ⁶⁹	8 ⁴⁶
4.08	4.16	4.30	4.53
40	36	31	21 ³

8 ⁸³	8 ⁷⁵	8 ⁶⁸	8 ³⁴
4.16	4.24	4.31	4.65
40	36	31	21 ⁴

8 ²	8 ³	7 ¹	8 ²	8 ²	7 ⁹	7 ⁰	7 ⁵⁷
4.5	4.7	5.3	4.8	4.8	5.2	6.0	5.42
40	20	17	10		10	20	20
							ch

12.99

Recd.

£

54

6.07 6.42^{.04} (638)

orig B.M. N.E.B.P. Thomas + Bayard

T.P. 2.94 12.49 7.06 9.55

T.P. 6.35 16.61 3.18 10.26

= £ Cass (North + South)

10.09	9.54	9.06	8.86	8.83	8.67	8.52	7.69	6.82
$\frac{3.35}{1.40}$	$\frac{3.90}{90}$	$\frac{4.38}{40}$	$\frac{4.58}{20}$	4.61	$\frac{4.77}{20}$	$\frac{4.92}{40}$	$\frac{5.75}{90}$	$\frac{6.62}{1.40}$

5+19² Cont.

6.99	7.63	6.21	6.86
$\frac{6.45}{90}$	$\frac{5.81}{90}$	$\frac{7.23}{1.40}$	$\frac{6.58}{1.40}$
G	cb.	G	cb.

40' rt. = E.C. Ch. Ret.
5+19² = wly ch. Cass. to south

8.39	8.26	8.16	7.80	8.42
5.05	$\frac{5.18}{10}$	$\frac{5.28}{20}$	$\frac{5.64}{40}$	$\frac{5.02}{40}$
			G	cb. E.C.

5+13² Cont.

10.01	9.42	9.54	8.91
$\frac{3.43}{1.40}$	$\frac{4.02}{1.40}$	$\frac{3.90}{90}$	$\frac{4.53}{90}$
cb.	G	cb.	G

40' Lt. = ch. E.C.
5+13² = wly ch. Cass to North

9.10	8.39	8.24	8.19	8.16
$\frac{4.34}{40}$	$\frac{5.05}{40}$	$\frac{5.20}{20}$	$\frac{5.25}{10}$	5.28
cb.E.C.	G			

13.44

Cross Section East + West Alley
 Block 30 Normal Heights
 From Bancroft to 33rd St
 Levels next page

INDEXED

MAY 4 1951

May 3-51
 F. Sisson
 Garber
 Porter
 Bertolucci
 W 250 20

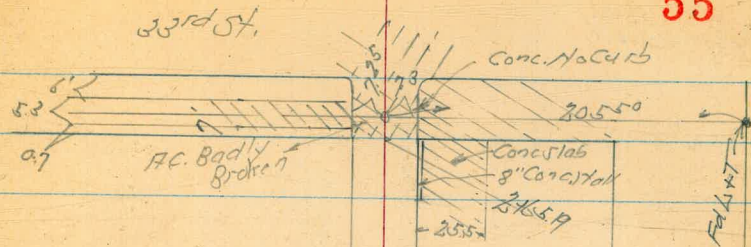
55

Note: Cross Sections North + South
 Alley Page 60

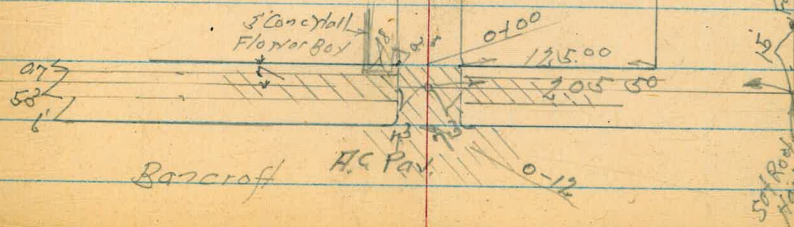
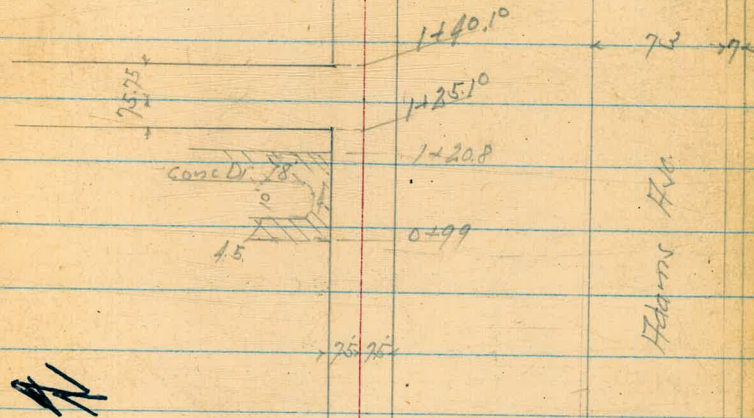
See pages 66 & 67
 for additional notes.
 Otherwise these are
 O.K. to use

OK

4/5/57



Block 30
 Normal Heights



+38

+30

+33

75 Rt of 2 = Sky Power Pole # PH 3274

+25.1

= W1 North & South Alley

+28.8

1+10.5

+99

71 Lt of 2 Fly Picket Fence

0+84

75 Lt of 2 Fly Stucco Garage #150
NY Picket Fence
893.44

388.52
5.9
19.5
10.5
388.52
6.0
20.0
10.5
388.52
5.7
19.5
10.5

388.23
4.69
9.5
+Rock
388.52
4.9
7.5
388.23
4.69
17.7
+Rock
388.52
4.86
19.0
+Rock
388.23
4.65
21.5
+Rock
388.52
4.70
17.7
+Rock

388.52
4.90
18.5
+Rock
388.52
5.27
17.7
+Rock

388.20
4.82
17.0
+Rock
388.24
4.18
17.5
+Rock
388.81
4.11
21.5
+Rock

388.52
4.90
18.0
+Rock
388.52
5.16
17.7
+Rock

388.12
50
393.12

BM 420 ✓ 385.79 ✓ SFBP
 Adams St
 7322st
 385.79

TP 500 ✓ 389.99 ✓ 843 ✓ 384.99 ✓

+ 77.19 = West Curb Line 33rd St

+ 65.19 = West Line 33rd St

+ 64

2+62.20

387.27
 386.92
 387.21
 386.91
 386.27
 385.92
 385.21
 384.92
 384.61
 384.30
 383.99
 383.68
 383.37
 383.06
 382.75
 382.44
 382.13
 381.82
 381.51
 381.20
 380.89
 380.58
 380.27
 379.96
 379.65
 379.34
 379.03
 378.72
 378.41
 378.10
 377.79
 377.48
 377.17
 376.86
 376.55
 376.24
 375.93
 375.62
 375.31
 375.00
 374.69
 374.38
 374.07
 373.76
 373.45
 373.14
 372.83
 372.52
 372.21
 371.90
 371.59
 371.28
 370.97
 370.66
 370.35
 370.04
 369.73
 369.42
 369.11
 368.80
 368.49
 368.18
 367.87
 367.56
 367.25
 366.94
 366.63
 366.32
 366.01
 365.70
 365.39
 365.08
 364.77
 364.46
 364.15
 363.84
 363.53
 363.22
 362.91
 362.60
 362.29
 361.98
 361.67
 361.36
 361.05
 360.74
 360.43
 360.12
 359.81
 359.50
 359.19
 358.88
 358.57
 358.26
 357.95
 357.64
 357.33
 357.02
 356.71
 356.40
 356.09
 355.78
 355.47
 355.16
 354.85
 354.54
 354.23
 353.92
 353.61
 353.30
 352.99
 352.68
 352.37
 352.06
 351.75
 351.44
 351.13
 350.82
 350.51
 350.20
 349.89
 349.58
 349.27
 348.96
 348.65
 348.34
 348.03
 347.72
 347.41
 347.10
 346.79
 346.48
 346.17
 345.86
 345.55
 345.24
 344.93
 344.62
 344.31
 344.00
 343.69
 343.38
 343.07
 342.76
 342.45
 342.14
 341.83
 341.52
 341.21
 340.90
 340.59
 340.28
 339.97
 339.66
 339.35
 339.04
 338.73
 338.42
 338.11
 337.80
 337.49
 337.18
 336.87
 336.56
 336.25
 335.94
 335.63
 335.32
 335.01
 334.70
 334.39
 334.08
 333.77
 333.46
 333.15
 332.84
 332.53
 332.22
 331.91
 331.60
 331.29
 330.98
 330.67
 330.36
 330.05
 329.74
 329.43
 329.12
 328.81
 328.50
 328.19
 327.88
 327.57
 327.26
 326.95
 326.64
 326.33
 326.02
 325.71
 325.40
 325.09
 324.78
 324.47
 324.16
 323.85
 323.54
 323.23
 322.92
 322.61
 322.30
 321.99
 321.68
 321.37
 321.06
 320.75
 320.44
 320.13
 319.82
 319.51
 319.20
 318.89
 318.58
 318.27
 317.96
 317.65
 317.34
 317.03
 316.72
 316.41
 316.10
 315.79
 315.48
 315.17
 314.86
 314.55
 314.24
 313.93
 313.62
 313.31
 313.00
 312.69
 312.38
 312.07
 311.76
 311.45
 311.14
 310.83
 310.52
 310.21
 309.90
 309.59
 309.28
 308.97
 308.66
 308.35
 308.04
 307.73
 307.42
 307.11
 306.80
 306.49
 306.18
 305.87
 305.56
 305.25
 304.94
 304.63
 304.32
 304.01
 303.70
 303.39
 303.08
 302.77
 302.46
 302.15
 301.84
 301.53
 301.22
 300.91
 300.60
 300.29
 299.98
 299.67
 299.36
 299.05
 298.74
 298.43
 298.12
 297.81
 297.50
 297.19
 296.88
 296.57
 296.26
 295.95
 295.64
 295.33
 295.02
 294.71
 294.40
 294.09
 293.78
 293.47
 293.16
 292.85
 292.54
 292.23
 291.92
 291.61
 291.30
 290.99
 290.68
 290.37
 290.06
 289.75
 289.44
 289.13
 288.82
 288.51
 288.20
 287.89
 287.58
 287.27
 286.96
 286.65
 286.34
 286.03
 285.72
 285.41
 285.10
 284.79
 284.48
 284.17
 283.86
 283.55
 283.24
 282.93
 282.62
 282.31
 282.00
 281.69
 281.38
 281.07
 280.76
 280.45
 280.14
 279.83
 279.52
 279.21
 278.90
 278.59
 278.28
 277.97
 277.66
 277.35
 277.04
 276.73
 276.42
 276.11
 275.80
 275.49
 275.18
 274.87
 274.56
 274.25
 273.94
 273.63
 273.32
 273.01
 272.70
 272.39
 272.08
 271.77
 271.46
 271.15
 270.84
 270.53
 270.22
 269.91
 269.60
 269.29
 268.98
 268.67
 268.36
 268.05
 267.74
 267.43
 267.12
 266.81
 266.50
 266.19
 265.88
 265.57
 265.26
 264.95
 264.64
 264.33
 264.02
 263.71
 263.40
 263.09
 262.78
 262.47
 262.16
 261.85
 261.54
 261.23
 260.92
 260.61
 260.30
 259.99
 259.68
 259.37
 259.06
 258.75
 258.44
 258.13
 257.82
 257.51
 257.20
 256.89
 256.58
 256.27
 255.96
 255.65
 255.34
 255.03
 254.72
 254.41
 254.10
 253.79
 253.48
 253.17
 252.86
 252.55
 252.24
 251.93
 251.62
 251.31
 251.00
 250.69
 250.38
 250.07
 249.76
 249.45
 249.14
 248.83
 248.52
 248.21
 247.90
 247.59
 247.28
 246.97
 246.66
 246.35
 246.04
 245.73
 245.42
 245.11
 244.80
 244.49
 244.18
 243.87
 243.56
 243.25
 242.94
 242.63
 242.32
 242.01
 241.70
 241.39
 241.08
 240.77
 240.46
 240.15
 239.84
 239.53
 239.22
 238.91
 238.60
 238.29
 237.98
 237.67
 237.36
 237.05
 236.74
 236.43
 236.12
 235.81
 235.50
 235.19
 234.88
 234.57
 234.26
 233.95
 233.64
 233.33
 233.02
 232.71
 232.40
 232.09
 231.78
 231.47
 231.16
 230.85
 230.54
 230.23
 229.92
 229.61
 229.30
 228.99
 228.68
 228.37
 228.06
 227.75
 227.44
 227.13
 226.82
 226.51
 226.20
 225.89
 225.58
 225.27
 224.96
 224.65
 224.34
 224.03
 223.72
 223.41
 223.10
 222.79
 222.48
 222.17
 221.86
 221.55
 221.24
 220.93
 220.62
 220.31
 219.99
 219.68
 219.37
 219.06
 218.75
 218.44
 218.13
 217.82
 217.51
 217.20
 216.89
 216.58
 216.27
 215.96
 215.65
 215.34
 215.03
 214.72
 214.41
 214.10
 213.79
 213.48
 213.17
 212.86
 212.55
 212.24
 211.93
 211.62
 211.31
 211.00
 210.69
 210.38
 210.07
 209.76
 209.45
 209.14
 208.83
 208.52
 208.21
 207.90
 207.59
 207.28
 206.97
 206.66
 206.35
 206.04
 205.73
 205.42
 205.11
 204.80
 204.49
 204.18
 203.87
 203.56
 203.25
 202.94
 202.63
 202.32
 202.01
 201.70
 201.39
 201.08
 200.77
 200.46
 200.15
 199.84
 199.53
 199.22
 198.91
 198.60
 198.29
 197.98
 197.67
 197.36
 197.05
 196.74
 196.43
 196.12
 195.81
 195.50
 195.19
 194.88
 194.57
 194.26
 193.95
 193.64
 193.33
 193.02
 192.71
 192.40
 192.09
 191.78
 191.47
 191.16
 190.85
 190.54
 190.23
 189.92
 189.61
 189.30
 188.99
 188.68
 188.37
 188.06
 187.75
 187.44
 187.13
 186.82
 186.51
 186.20
 185.89
 185.58
 185.27
 184.96
 184.65
 184.34
 184.03
 183.72
 183.41
 183.10
 182.79
 182.48
 182.17
 181.86
 181.55
 181.24
 180.93
 180.62
 180.31
 180.00
 179.69
 179.38
 179.07
 178.76
 178.45
 178.14
 177.83
 177.52
 177.21
 176.90
 176.59
 176.28
 175.97
 175.66
 175.35
 175.04
 174.73
 174.42
 174.11
 173.80
 173.49
 173.18
 172.87
 172.56
 172.25
 171.94
 171.63
 171.32
 171.01
 170.70
 170.39
 170.08
 169.77
 169.46
 169.15
 168.84
 168.53
 168.22
 167.91
 167.60
 167.29
 166.98
 166.67
 166.36
 166.05
 165.74
 165.43
 165.12
 164.81
 164.50
 164.19
 163.88
 163.57
 163.26
 162.95
 162.64
 162.33
 162.02
 161.71
 161.40
 161.09
 160.78
 160.47
 160.16
 159.85
 159.54
 159.23
 158.92
 158.61
 158.30
 157.99
 157.68
 157.37
 157.06
 156.75
 156.44
 156.13
 155.82
 155.51
 155.20
 154.89
 154.58
 154.27
 153.96
 153.65
 153.34
 153.03
 152.72
 152.41
 152.10
 151.79
 151.48
 151.17
 150.86
 150.55
 150.24
 149.93
 149.62
 149.31
 149.00
 148.69
 148.38
 148.07
 147.76
 147.45
 147.14
 146.83
 146.52
 146.21
 145.90
 145.59
 145.28
 144.97
 144.66
 144.35
 144.04
 143.73
 143.42
 143.11
 142.80
 142.49
 142.18
 141.87
 141.56
 141.25
 140.94
 140.63
 140.32
 140.01
 139.70
 139.39
 139.08
 138.77
 138.46
 138.15
 137.84
 137.53
 137.22
 136.91
 136.60
 136.29
 135.98
 135.67
 135.36
 135.05
 134.74
 134.43
 134.12
 133.81
 133.50
 133.19
 132.88
 132.57
 132.26
 131.95
 131.64
 131.33
 131.02
 130.71
 130.40
 130.09
 129.78
 129.47
 129.16
 128.85
 128.54
 128.23
 127.92
 127.61
 127.30
 126.99
 126.68
 126.37
 126.06
 125.75
 125.44
 125.13
 124.82
 124.51
 124.20
 123.89
 123.58
 123.27
 122.96
 122.65
 122.34
 122.03
 121.72
 121.41
 121.10
 120.79
 120.48
 120.17
 119.86
 119.55
 119.24
 118.93
 118.62
 118.31
 118.00
 117.69
 117.38
 117.07
 116.76
 116.45
 116.14
 115.83
 115.52
 115.21
 114.90
 114.59
 114.28
 113.97
 113.66
 113.35
 113.04
 112.73
 112.42
 112.11
 111.80
 111.49
 111.18
 110.87
 110.56
 110.25
 109.94
 109.63
 109.32
 109.01
 108.70
 108.39
 108.08
 107.77
 107.46
 107.15
 106.84
 106.53
 106.22
 105.91
 105.60
 105.29
 104.98
 104.67
 104.36
 104.05
 103.74
 103.43
 103.12
 102.81
 102.50
 102.19
 101.88
 101.57
 101.26
 100.95
 100.64
 100.33
 99.99
 99.68
 99.37
 99.06
 98.75
 98.44
 98.13
 97.82
 97.51
 97.20
 96.89
 96.58
 96.27
 95.96
 95.65
 95.34
 95.03
 94.72
 94.41
 94.10
 93.79
 93.48
 93.17
 92.86
 92.55
 92.24
 91.93
 91.62
 91.31
 91.00
 90.69
 90.38
 90.07
 89.76
 89.45
 89.14
 88.83
 88.52
 88.21
 87.90
 87.59
 87.28
 86.97
 86.66
 86.35
 86.04
 85.73
 85.42
 85.11
 84.80
 84.49
 84.18
 83.87
 83.56
 83.25
 82.94
 82.63
 82.32
 82.01
 81.70
 81.39
 81.08
 80.77
 80.46
 80.15
 79.84
 79.53
 79.22
 78.91
 78.60
 78.29
 77.98
 77.67
 77.36
 77.05
 76.74
 76.43
 76.12
 75.81
 75.50
 75.19
 74.88
 74.57
 74.26
 73.95
 73.64
 73.33
 73.02
 72.71
 72.40
 72.09
 71.78
 71.47
 71.16
 70.85
 70.54
 70.23
 69.92
 69.61
 69.30
 68.99
 68.68
 68.37
 68.06
 67.75
 67.44
 67.13
 66.82
 66.51
 66.20
 65.89
 65.58
 65.27
 64.96
 64.65
 64.34
 64.03
 63.72
 63.41
 63.10
 62.79
 62.48
 62.17
 61.86
 61.55
 61.24
 60.93
 60.62
 60.31
 60.00
 59.69
 59.38
 59.07
 58.76
 58.45
 58.14
 57.83
 57.52
 57.21
 56.90
 56.59
 56.28
 55.97
 55.66
 55.35
 55.04
 54.73
 54.42
 54.11
 53.80
 53.49
 53.18
 52.87
 52.56
 52.25
 51.94
 51.63
 51.32
 51.01
 50.70
 50.39
 50.08
 49.77
 49.46
 49.15
 48.84
 48.53
 48.22
 47.91
 47.60
 47.29
 46.98
 46.67
 46.36
 46.05
 45.74
 45.43

Cross Section North & South Alley
 Block 30 Normal Hts.
 From N.L. of East & West Alley
 (Shown on Page 55) To
 S. Line Collier St. No. 25020

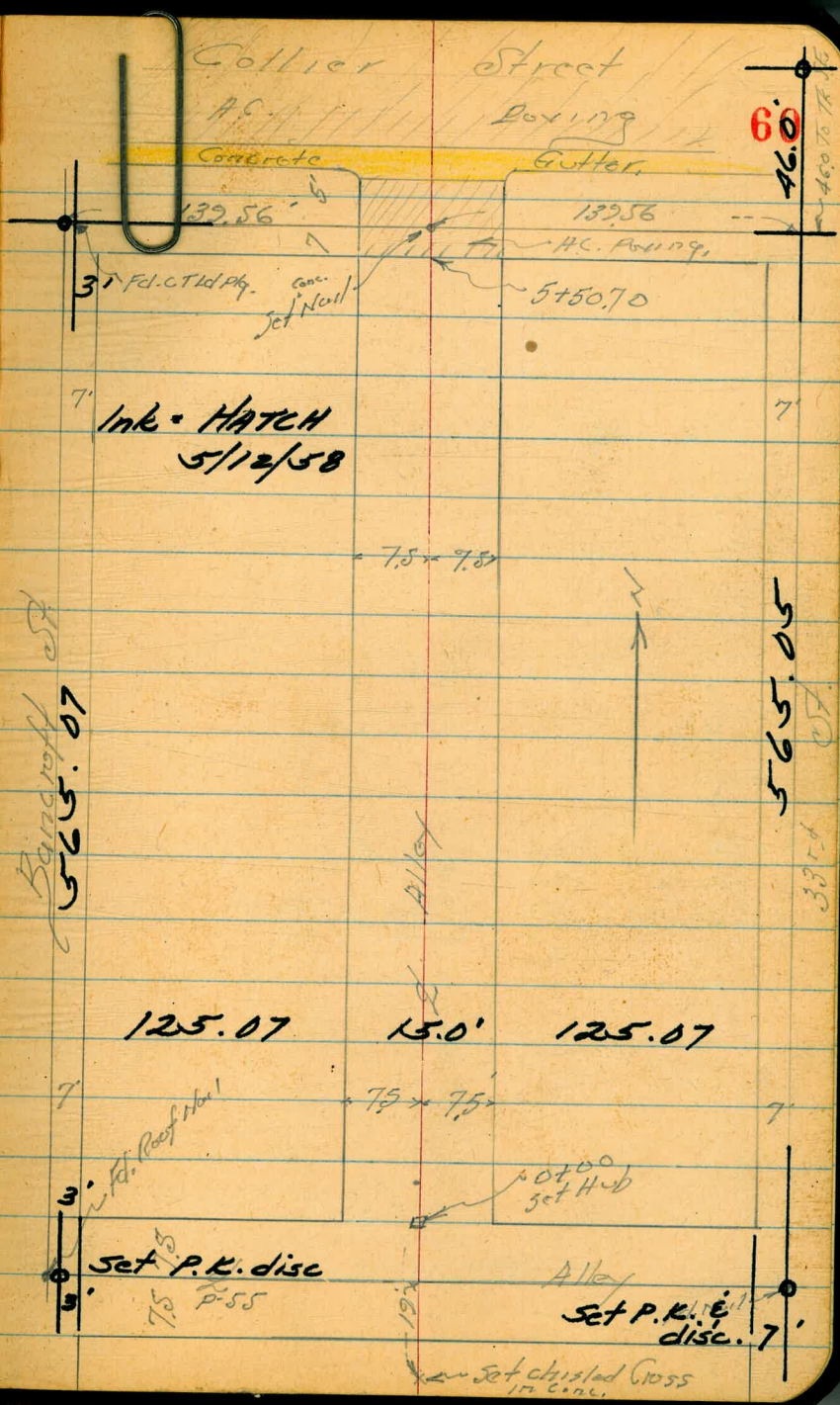
Walker
 Pope
 Clark
 Hoffmann
 5-25-51

E. & W. Alley P. 55

INDEXED

MAY 29 1951

Reduced
 5-28-51
 R.W. Hartzell



Ink - MATCH
 5/12/58

6.0

Bancroft St
 565.07

565.05
 335.4

Alley

Alley

Set crystal Cross
 17' conc.

Alley Blk 30

61

1+50

TR 6.20 394.82 4.82 388.62

1+48 = Pole # 4745 6.2' Lt.

1+00

0+91 = End Lath House 7.45' Lt

0+77 = Beg. Lath House 7.75' Lt

PA 474

0+53 = Pole 6.7' Lt

0+50

0+34 = Pole Anchor 6.5' Lt

0+50 = Ent Fence

0+00 = N.L. Alley = Beg 4' Picket Fence

0-07.5

1+251 on Rt. P-57

Chk. Conc. Apron

4.71 388.73

7.32 393.44 386.12

Lt.

Rt.

Rt

^{388.8}
 6.0
 7.5
 394.82
^{388.4}
 6.3
 7.5
^{389.0}
 6.4
 7.5
 389.0
 5.8
 35
 17 Drainage
 Ditch
^{389.3}
 5.5
 35 = yard.

^{388.6}
 4.8
 20
 17 yd
^{388.6}
 4.8
 7.5
^{388.3}
 5.1
 7.5
^{388.3}
 5.1
 15
^{388.4}
 5.0
 15
^{388.6}
 4.8
 35

^{388.5}
 4.9
 20
^{388.3}
 4.9
 10
^{388.2}
 5.2
 7.5
^{388.0}
 5.4
^{388.2}
 5.3
 7.5
^{387.8}
 5.6
 2.5
 17 yd.

^{388.2}
 5.3
 7.5
^{388.2}
 5.2
 Ground
^{388.00}
 5.44
 0
 on Hob.
^{388.2}
 5.2
 7.5

^{388.32}
 5.12
 Run down
 NH

393.44

B.M. on South cb 0+00 P-56

Alley Bk 30

2+56 = Garage on Rt. Broken Floor

2+54 = Pole PA 4751 6' Lt.

Req. Garage, Broken Conc. Floor Not used

2+50 = End of Fence 7.2 Rt

2+35 = Low Spot

= Req 4.0 Board Fence 7.2 Rt.

2+28 = End Frame Shed 7.2 Rt

2+10 = Req. Frame Shed 7.2 Rt

1+97 = End Cottage 7 Rt

1+87.5 = End Conc. Fdn. (Not taken in order)

2+00

1+75

1+52 = Req. Frame Cottage, Conc. Fdn.

Lt.

Rt.

Rt.

389.30

62

5.52

7.2

Bottom of Door

389.2

5.6

7.2

at Garage

389.0
5.8
4.5
in yard

388.9
5.9
1.5

389.0
5.8
7.5

389.2
5.6

389.2
5.6
2.0

388.9
5.9
7.5

388.9
5.9

389.0
5.8
7.5

389.1
5.7
2.0

388.51

389.52

389.2

6.31

5.30

5.6

7 Top Fdn.

7

Bottom Fdn Footing

Ground

389.0

389.1

388.8

389.0

389.0

389.2

5.8

5.7

6.0

5.8

5.8

5.6

5.0

2.5

7.5

7.5

2.0

Yard

Yard

388.7

388.7

389.0

388.8

389.0

389.2

5.0

5.1

5.8

6.0

5.8

5.6

5.0

2.5

7.5

6.0

6

7.1

Yard

Yard

at House

388.09

370.07

389.0

6.73

4.75

5.8

7.1

7.1

7.1

Bottom Footing

Top Fdn.

Ground.

394.82

N & S Alley Blk 30, - Normal Hts

4 + 31 = Req. Dble Garage (Conc. Apront Floor, 4+31) (= End Conc. Walk)

T.P. 544 396.75 2.51 391.31

4 + 03.5 = Req. Conc. Walk Parallel to Alley

4 + 00

3 + 75

3 + 50 = Pole 6.5' U

3 + 00

2 + 75

394.82

Lt.

Rt.

Rt.

63

391.99 392.07 392.07 392.07

476 468 468 468

87 102 141 166

396.75 } Apron Walk Floor

Apron Brk

391.87

295

137

on Walk

389.5 389.7 390.2 390.4 389.8 391.8

53 51 46 44 40 30

50 28 75 75 75 20

Yard Yard

389.5 389.3 389.6 390.1 390.2 390.6

53 55 52 47 46 42

40 25 75 75 75 20

Yard Yard

389.1 389.8 390.1 390.1 390.2

57 50 47 47 46

15 75 75 75 20

Yard

389.9 389.0 389.5 389.6 389.8 390.0

53 58 50 52 50 48

50 27 10 7.5 40

Yard Yard

389.3 389.0 389.2 389.7 389.9 389.5 389.6 389.8

55 58 56 51 49 53 52 50

30 30 15 7.5 7.5 20 20 40

Yard Yard Yard Yard Yard Yard

394.82

No 5 Alley Blk 30 - Normal Hts.

Lt.

Rt.

Rt

64

5+21.5 = N end Garage

Collier St
Ent.

391.52
523 466
8.5 8.5
Bottom Footing Floor

5+04 = Bag. Garage Conc Floor

Collier St
Entrance

391.47 392.10
528 465
8.5 Bot. Footing 8.5 Floor

5+00

392.2 391.9 391.7 391.8 392.2
4.6 4.9 5.1 5.0 4.6
10 7.5
392.09 392.58
4.66 4.17
9.4 13.4
Toe Apron Floor

Simple.
4+92 = L Garage on Rt. Conc. Apron + Floor.

391.4 391.2 390.9 391.5 391.4 391.5 391.1
54 56 59 53 54 53 47
40 25 10 7.5 7.5 35
Yard Yard Yard

PR 4781

4+50 = Pole 6.5' ct.

4+49 = N end Walk

391.88
4.87
14.2

4+46 = N end Conc. Apron

391.77 391.98 392.03 392.03
4.98 4.77 4.72 4.72
8.7 10.2 14.2 14.8
396.75 Apron Apron Walk To North Floor

N & S Alley Blk 30 - Normal Hts.

Lt.

Rt.

Rt.

65

J.F. B.P. Adams #32110

chk. 8/11 P. 59 542 385.79 ✓

T.P. 602 391.21 807 385.19

T.P. 328 393.26 424 389.98

5+62.7 = South Ch. Collier St.

391.94	391.63	391.46	391.34	391.41	391.30	391.79
481	512	520	541	534	545	496
50	50	75	Comp.	75	50	50
Ch.	Comp. Gut.	Comp. Gut.	Gut.	Comp. Gut.	Gut.	Ch.

5+56.7 = Brk in Box

392.09	391.83	391.66	392.03	391.81
466	492	509	472	494
7.5	7.5		7.3	7.3
Ch.	Gut.		Ch.	Gut.

5+50.70 = S.L. Collier St.

392.23	392.05	391.90	392.17	392.31
489	470	485	458	440
7.5	7.5		7.3	7.30
Ch.	Gut.		Gut.	Ch.

T.P. 479 394.22 732 389.43

5+25

396.75

391.9	391.7	391.3	391.3	391.7	391.7
49	51	55	55	51	51
10	75		5	7.5	11
					at House

396.75

Additional notes
Alley BIK. 30. Normal Hqts

C.H.S.
Schelin
Pullen
Wentworth.

6/5/57
W.O.#
31715

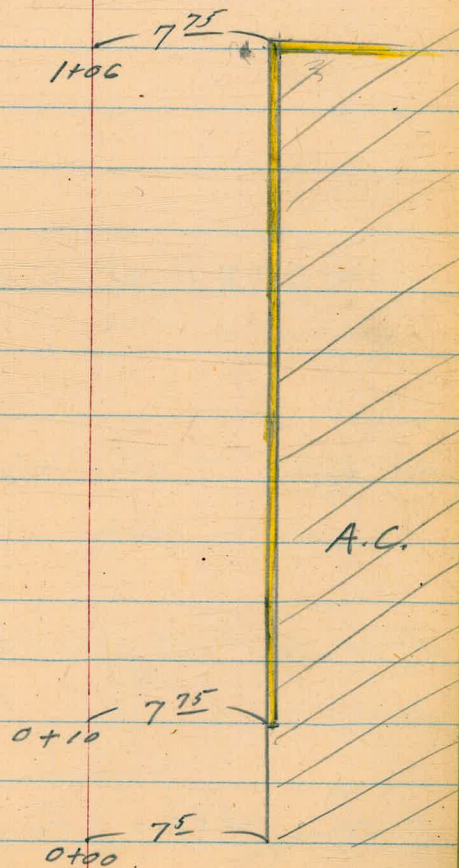
See page 55 for previous
survey.

1+06 - 7⁷⁵ RA. = end 4' high wall.

0+00 - 7⁵ RA. = start A.C. Parking lot.

±

66



±

1+06 - 7⁷⁵ Rt. = end wall.

387.70
72
bottom of footing

0+60 - 7⁷⁵ Rt. = Nly. face of wall

387.1
72
Bottom of footing

0+10 - 7⁷⁵ Rt. = start A' High Conc. block wall

386.87 386.3
78 72
A.C. bottom of footing

0+00 = 7⁷⁵ Rt. = start A.C. Parking lot.

386.22
75
A.C.

68

69

71

72

75

77

78

79



1134
 295
 8.39

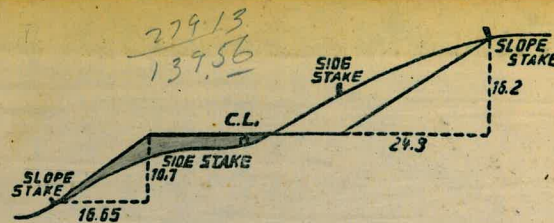
98.70
 7.83
 90.91

265.1
 132.60

27521

132.00

565.07
 125.50
 704.57



DISTANCES FROM SIDE STAKES FOR CROSS-SECTIONING.

SLOPE 1 1/2 TO 1. ROADWAY OF ANY WIDTH.

	0	.1	.2	.3	.4	.5	.6	.7	.8	.9	
0	0.00	0.15	0.30	0.45	0.60	0.75	0.90	1.05	1.20	1.35	0
1	1.50	1.65	1.80	1.95	2.10	2.25	2.40	2.55	2.70	2.85	1
2	3.00	3.15	3.30	3.45	3.60	3.75	3.90	4.05	4.20	4.35	2
3	4.50	4.65	4.80	4.95	5.10	5.25	5.40	5.55	5.70	5.85	3
4	6.00	6.15	6.30	6.45	6.60	6.75	6.90	7.05	7.20	7.35	4
5	7.50	7.65	7.80	7.95	8.10	8.25	8.40	8.55	8.70	8.85	5
6	9.00	9.15	9.30	9.45	9.60	9.75	9.90	10.05	10.20	10.35	6
7	10.50	10.65	10.80	10.95	11.10	11.25	11.40	11.55	11.70	11.85	7
8	12.00	12.15	12.30	12.45	12.60	12.75	12.90	13.05	13.20	13.35	8
9	13.50	13.65	13.80	13.95	14.10	14.25	14.40	14.55	14.70	14.85	9
10	15.00	15.15	15.30	15.45	15.60	15.75	15.90	16.05	16.20	16.35	10
11	16.50	16.65	16.80	16.95	17.10	17.25	17.40	17.55	17.70	17.85	11
12	18.00	18.15	18.30	18.45	18.60	18.75	18.90	19.05	19.20	19.35	12
13	19.50	19.65	19.80	19.95	20.10	20.25	20.40	20.55	20.70	20.85	13
14	21.00	21.15	21.30	21.45	21.60	21.75	21.90	22.05	22.20	22.35	14
15	22.50	22.65	22.80	22.95	23.10	23.25	23.40	23.55	23.70	23.85	15
16	24.00	24.15	24.30	24.45	24.60	24.75	24.90	25.05	25.20	25.35	16
17	25.50	25.65	25.80	25.95	26.10	26.25	26.40	26.55	26.70	26.85	17
18	27.00	27.15	27.30	27.45	27.60	27.75	27.90	28.05	28.20	28.35	18
19	28.50	28.65	28.80	28.95	29.10	29.25	29.40	29.55	29.70	29.85	19
20	30.00	30.15	30.30	30.45	30.60	30.75	30.90	31.05	31.20	31.35	20
21	31.50	31.65	31.80	31.95	32.10	32.25	32.40	32.55	32.70	32.85	21
22	33.00	33.15	33.30	33.45	33.60	33.75	33.90	34.05	34.20	34.35	22
23	34.50	34.65	34.80	34.95	35.10	35.25	35.40	35.55	35.70	35.85	23
24	36.00	36.15	36.30	36.45	36.60	36.75	36.90	37.05	37.20	37.35	24
25	37.50	37.65	37.80	37.95	38.10	38.25	38.40	38.55	38.70	38.85	25
26	39.00	39.15	39.30	39.45	39.60	39.75	39.90	40.05	40.20	40.35	26
27	40.50	40.65	40.80	40.95	41.10	41.25	41.40	41.55	41.70	41.85	27
28	42.00	42.15	42.30	42.45	42.60	42.75	42.90	43.05	43.20	43.35	28
29	43.50	43.65	43.80	43.95	44.10	44.25	44.40	44.55	44.70	44.85	29
30	45.00	45.15	45.30	45.45	45.60	45.75	45.90	46.05	46.20	46.35	30
31	46.50	46.65	46.80	46.95	47.10	47.25	47.40	47.55	47.70	47.85	31
32	48.00	48.15	48.30	48.45	48.60	48.75	48.90	49.05	49.20	49.35	32
33	49.50	49.65	49.80	49.95	50.10	50.25	50.40	50.55	50.70	50.85	33
34	51.00	51.15	51.30	51.45	51.60	51.75	51.90	52.05	52.20	52.35	34
35	52.50	52.65	52.80	52.95	53.10	53.25	53.40	53.55	53.70	53.85	35
36	54.00	54.15	54.30	54.45	54.60	54.75	54.90	55.05	55.20	55.35	36
37	55.50	55.65	55.80	55.95	56.10	56.25	56.40	56.55	56.70	56.85	37
38	57.00	57.15	57.30	57.45	57.60	57.75	57.90	58.05	58.20	58.35	38
39	58.50	58.65	58.80	58.95	59.10	59.25	59.40	59.55	59.70	59.85	39
40	60.00	60.15	60.30	60.45	60.60	60.75	60.90	61.05	61.20	61.35	40
41	61.50	61.65	61.80	61.95	62.10	62.25	62.40	62.55	62.70	62.85	41
42	63.00	63.15	63.30	63.45	63.60	63.75	63.90	64.05	64.20	64.35	42
43	64.50	64.65	64.80	64.95	65.10	65.25	65.40	65.55	65.70	65.85	43
44	66.00	66.15	66.30	66.45	66.60	66.75	66.90	67.05	67.20	67.35	44
45	67.50	67.65	67.80	67.95	68.10	68.25	68.40	68.55	68.70	68.85	45
46	69.00	69.15	69.30	69.45	69.60	69.75	69.90	70.05	70.20	70.35	46
47	70.50	70.65	70.80	70.95	71.10	71.25	71.40	71.55	71.70	71.85	47
48	72.00	72.15	72.30	72.45	72.60	72.75	72.90	73.05	73.20	73.35	48
49	73.50	73.65	73.80	73.95	74.10	74.25	74.40	74.55	74.70	74.85	49
50	75.00	75.15	75.30	75.45	75.60	75.75	75.90	76.05	76.20	76.35	50

THE NATIONAL BLANK BOOK COMPANY
 HOLYOKE MASSACHUSETTS
 NEW YORK CHICAGO BOSTON SAN FRANCISCO