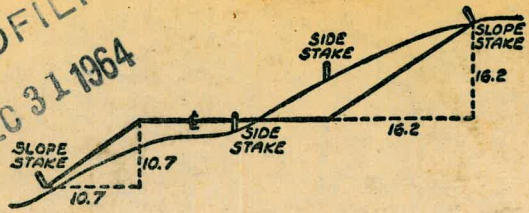


2035

TRAVEL BOOK



MICROFILMED  
DEC 31 1964



DISTANCES FROM SIDE STAKES FOR CROSS-SECTIONING  
SLOPE 1 TO 1. ROADWAY OF ANY WIDTH

	0	.1	.2	.3	.4	.5	.6	.7	.8	9	0
0	0.00	0.10	0.20	0.30	0.40	0.50	0.60	0.70	0.80	0.90	0
1	1.00	1.10	1.20	1.30	1.40	1.50	1.60	1.70	1.80	1.90	1
2	2.00	2.10	2.20	2.30	2.40	2.50	2.60	2.70	2.80	2.90	2
3	3.00	3.10	3.20	3.30	3.40	3.50	3.60	3.70	3.80	3.90	3
4	4.00	4.10	4.20	4.30	4.40	4.50	4.60	4.70	4.80	4.90	4
5	5.00	5.10	5.20	5.30	5.40	5.50	5.60	5.70	5.80	5.90	5
6	6.00	6.10	6.20	6.30	6.40	6.50	6.60	6.70	6.80	6.90	6
7	7.00	7.10	7.20	7.30	7.40	7.50	7.60	7.70	7.80	7.90	7
8	8.00	8.10	8.20	8.30	8.40	8.50	8.60	8.70	8.80	8.90	8
9	9.00	9.10	9.20	9.30	9.40	9.50	9.60	9.70	9.80	9.90	9
10	10.00	10.10	10.20	10.30	10.40	10.50	10.60	10.70	10.80	10.90	10
11	11.00	11.10	11.20	11.30	11.40	11.50	11.60	11.70	11.80	11.90	11
12	12.00	12.10	12.20	12.30	12.40	12.50	12.60	12.70	12.80	12.90	12
13	13.00	13.10	13.20	13.30	13.40	13.50	13.60	13.70	13.80	13.90	13
14	14.00	14.10	14.20	14.30	14.40	14.50	14.60	14.70	14.80	14.90	14
15	15.00	15.10	15.20	15.30	15.40	15.50	15.60	15.70	15.80	15.90	15
16	16.00	16.10	16.20	16.30	16.40	16.50	16.60	16.70	16.80	16.90	16
17	17.00	17.10	17.20	17.30	17.40	17.50	17.60	17.70	17.80	17.90	17
18	18.00	18.10	18.20	18.30	18.40	18.50	18.60	18.70	18.80	18.90	18
19	19.00	19.10	19.20	19.30	19.40	19.50	19.60	19.70	19.80	19.90	19
20	20.00	20.10	20.20	20.30	20.40	20.50	20.60	20.70	20.80	20.90	20
21	21.00	21.10	21.20	21.30	21.40	21.50	21.60	21.70	21.80	21.90	21
22	22.00	22.10	22.20	22.30	22.40	22.50	22.60	22.70	22.80	22.90	22
23	23.00	23.10	23.20	23.30	23.40	23.50	23.60	23.70	23.80	23.90	23
24	24.00	24.10	24.20	24.30	24.40	24.50	24.60	24.70	24.80	24.90	24
25	25.00	25.10	25.20	25.30	25.40	25.50	25.60	25.70	25.80	25.90	25
26	26.00	26.10	26.20	26.30	26.40	26.50	26.60	26.70	26.80	26.90	26
27	27.00	27.10	27.20	27.30	27.40	27.50	27.60	27.70	27.80	27.90	27
28	28.00	28.10	28.20	28.30	28.40	28.50	28.60	28.70	28.80	28.90	28
29	29.00	29.10	29.20	29.30	29.40	29.50	29.60	29.70	29.80	29.90	29
30	30.00	30.10	30.20	30.30	30.40	30.50	30.60	30.70	30.80	30.90	30
31	31.00	31.10	31.20	31.30	31.40	31.50	31.60	31.70	31.80	31.90	31
32	32.00	32.10	32.20	32.30	32.40	32.50	32.60	32.70	32.80	32.90	32
33	33.00	33.10	33.20	33.30	33.40	33.50	33.60	33.70	33.80	33.90	33
34	34.00	34.10	34.20	34.30	34.40	34.50	34.60	34.70	34.80	34.90	34
35	35.00	35.10	35.20	35.30	35.40	35.50	35.60	35.70	35.80	35.90	35
36	36.00	36.10	36.20	36.30	36.40	36.50	36.60	36.70	36.80	36.90	36
37	37.00	37.10	37.20	37.30	37.40	37.50	37.60	37.70	37.80	37.90	37
38	38.00	38.10	38.20	38.30	38.40	38.50	38.60	38.70	38.80	38.90	38
39	39.00	39.10	39.20	39.30	39.40	39.50	39.60	39.70	39.80	39.90	39
40	40.00	40.10	40.20	40.30	40.40	40.50	40.60	40.70	40.80	40.90	40
41	41.00	41.10	41.20	41.30	41.40	41.50	41.60	41.70	41.80	41.90	41
42	42.00	42.10	42.20	42.30	42.40	42.50	42.60	42.70	42.80	42.90	42
43	43.00	43.10	43.20	43.30	43.40	43.50	43.60	43.70	43.80	43.90	43
44	44.00	44.10	44.20	44.30	44.40	44.50	44.60	44.70	44.80	44.90	44
45	45.00	45.10	45.20	45.30	45.40	45.50	45.60	45.70	45.80	45.90	45
46	46.00	46.10	46.20	46.30	46.40	46.50	46.60	46.70	46.80	46.90	46
47	47.00	47.10	47.20	47.30	47.40	47.50	47.60	47.70	47.80	47.90	47
48	48.00	48.10	48.20	48.30	48.40	48.50	48.60	48.70	48.80	48.90	48
49	49.00	49.10	49.20	49.30	49.40	49.50	49.60	49.70	49.80	49.90	49
50	50.00	50.10	50.20	50.30	50.40	50.50	50.60	50.70	50.80	50.90	50

Distance of slope stake from side or shoulder stake for any width roadway, slope 1 to 1. If ground is nearly level, the cut or fill at side stake is located by the double entry method in left column and top row. The number in body of table in same row and column gives distance from side stake to slope stake. If ground is not level estimate the difference in elevation between the side stake and slope stake, lower target by this amount if cut, elevate if fill. Add this amount to cut or fill and find distance in table. Set up rod at this point, and line of sight should cut target. If it does not make the slight adjustment necessary.

F 434

INDEXED  
to page # 50



TABLE XIII—CORRECTIONS FOR TANGENTS AND EXTERNALS

These corrections are to be added to the approximate values, found by dividing the tangent, or external, for a 1° curve (Table VIII) by the degree of curve, in order to obtain the true tangents, or externals. Intermediate values may be obtained by interpolation.

FOR TANGENTS ADD

Central Angle	DEGREE OF CURVE													
	5°	10°	15°	20°	25°	30°	35°	40°	45°	50°	55°	60°	65°	70°
10°	.03	.06	.09	.13	.16	.19	.22	.25	.28	.31	.34	.38	.42	.46
15°	.04	.10	.14	.19	.24	.29	.34	.39	.45	.51	.53	.58	.63	.68
20°	.06	.13	.19	.26	.32	.39	.45	.51	.58	.65	.72	.79	.84	.90
25°	.08	.16	.24	.33	.40	.49	.58	.67	.75	.83	.90	.99	1.06	1.14
30°	.10	.19	.29	.39	.49	.59	.69	.79	.89	.99	1.09	1.20	1.29	1.39
35°	.11	.22	.34	.47	.58	.69	.79	.89	.99	1.04	1.29	1.42	1.54	1.66
40°	.13	.26	.40	.53	.67	.80	.93	1.06	1.20	1.34	1.49	1.64	1.79	1.94
45°	.15	.30	.44	.60	.76	.91	1.06	1.21	1.37	1.52	1.70	1.87	2.04	2.21
50°	.17	.34	.51	.68	.85	1.02	1.19	1.36	1.54	1.72	1.91	2.10	2.29	2.48
55°	.19	.38	.57	.76	.95	1.14	1.32	1.52	1.72	1.92	2.14	2.35	2.56	2.77
60°	.21	.42	.63	.84	1.05	1.27	1.49	1.71	1.94	2.17	2.38	2.60	2.83	3.07
65°	.23	.46	.69	.93	1.16	1.40	1.64	1.88	2.13	2.38	2.63	2.88	3.13	3.39
70°	.25	.51	.76	1.02	1.28	1.54	1.80	2.06	2.33	2.60	2.88	3.16	3.44	3.72
75°	.27	.56	.83	1.12	1.40	1.69	1.98	2.27	2.57	2.87	3.16	3.47	3.78	4.09
80°	.30	.61	.91	1.22	1.53	1.84	2.15	2.46	2.78	3.10	3.44	3.78	4.12	4.46
85°	.33	.66	1.00	1.33	1.68	2.02	2.36	2.70	3.05	3.40	3.77	4.14	4.55	4.89
90°	.36	.72	1.09	1.45	1.83	2.20	2.57	2.94	3.32	3.70	4.10	4.50	4.91	5.32
95°	.39	.79	1.19	1.55	2.00	2.40	2.80	3.20	3.61	4.02	4.40	4.98	5.38	5.83
100°	.43	.86	1.30	1.74	2.18	2.62	3.06	3.50	3.95	4.40	4.88	5.37	5.85	6.34
110°	.51	1.03	1.56	2.08	2.61	3.14	3.67	4.21	4.76	5.31	5.86	6.43	7.01	7.60
120°	.62	1.25	1.93	2.52	3.16	3.81	4.45	5.11	5.77	6.44	7.12	7.80	8.50	9.22

FOR EXTERNALS ADD

Central Angle	DEGREE OF CURVE													
	5°	10°	15°	20°	25°	30°	35°	40°	45°	50°	55°	60°	65°	70°
10°	.001	.003	.004	.006	.007	.008	.009	.011	.012	.014	.015	.017	.018	.020
15°	.003	.007	.010	.014	.018	.023	.027	.032	.035	.039	.043	.047	.051	.051
20°	.006	.011	.017	.022	.028	.034	.038	.045	.051	.057	.063	.070	.076	.083
25°	.009	.018	.027	.036	.046	.056	.065	.074	.083	.093	.106	.120	.127	.135
30°	.013	.025	.038	.051	.065	.078	.090	.103	.116	.129	.149	.170	.179	.188
35°	.018	.035	.054	.072	.086	.109	.131	.153	.175	.197	.213	.230	.247	.264
40°	.023	.046	.070	.093	.117	.141	.172	.203	.234	.265	.277	.290	.315	.341
45°	.030	.060	.093	.119	.153	.184	.216	.254	.289	.325	.351	.378	.411	.445
50°	.037	.075	.116	.151	.189	.227	.266	.305	.345	.384	.425	.467	.508	.550
55°	.046	.093	.142	.188	.236	.283	.332	.381	.420	.479	.530	.582	.641	.700
60°	.056	.112	.168	.225	.283	.340	.398	.457	.516	.575	.636	.697	.774	.851
65°	.067	.135	.204	.273	.343	.412	.483	.554	.625	.697	.771	.845	.922	1.01
70°	.080	.159	.240	.321	.403	.485	.568	.652	.735	.819	.906	.994	1.08	1.17
75°	.095	.182	.286	.383	.480	.578	.678	.777	.877	.977	1.07	1.18	1.29	1.39
80°	.110	.220	.332	.445	.558	.671	.787	.903	1.02	1.13	1.25	1.38	1.50	1.62
85°	.128	.259	.391	.524	.657	.790	.926	1.06	1.20	1.34	1.47	1.62	1.76	1.91
90°	.149	.299	.450	.603	.756	.910	1.07	1.22	1.38	1.54	1.70	1.87	2.03	2.20
95°	.174	.350	.522	.706	.885	1.06	1.25	1.43	1.62	1.80	1.99	2.18	2.38	2.58
100°	.200	.401	.604	.809	1.01	1.22	1.43	1.64	1.85	2.06	2.28	2.50	2.73	2.96
110°	.268	.536	.806	1.08	1.35	1.63	1.91	2.20	2.48	2.76	3.05	3.35	3.66	3.96
120°	.360	.721	1.08	1.45	1.82	2.19	2.57	2.95	3.33	3.72	4.11	4.50	4.91	5.32

Poplar St.

8

39-50 Abbott St Storm Drain  
West Point Loma to  
Muir

Malden at Jewell X-sec. Imp. 60-60

Malden @ Jewell - n.e. cor. - local levels 61-63

also Garage of House under Constr.

X-sec Malden - Collingwood Dr to Jewell St 67-



x-Sect. Pera st. Opening - W. of 47<sup>th</sup>

# 3632

6-14-49

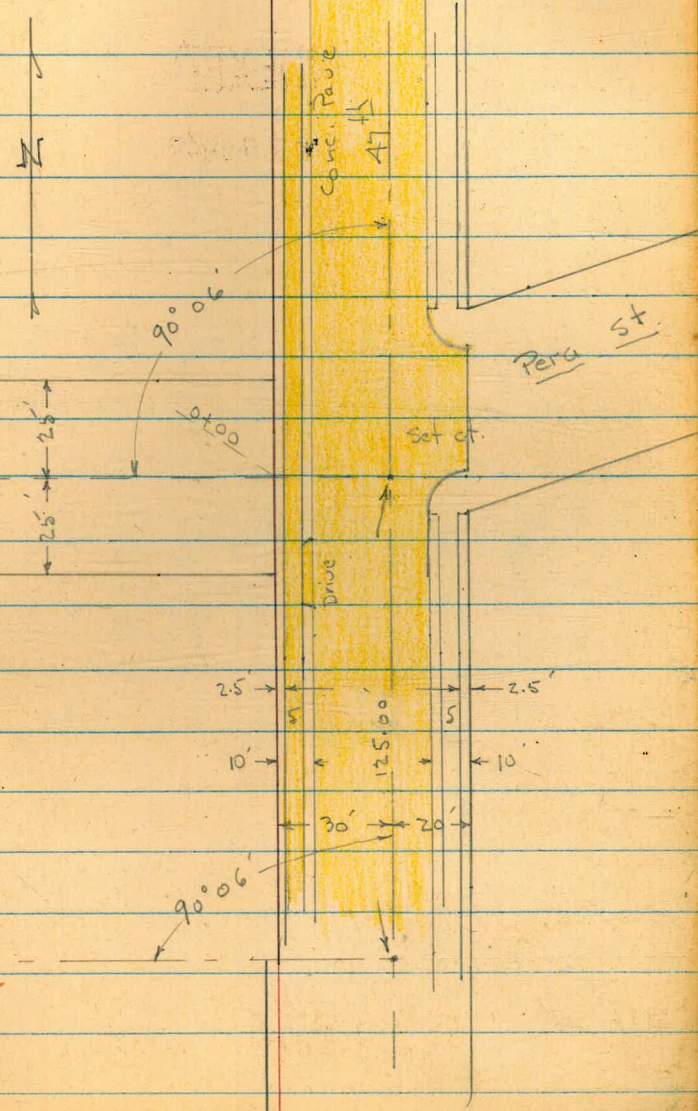
W.O. 25001

7.0.

INDEXED  
WK  
JUN 16 1949

1

2+02.47<sup>th</sup> Hvb.





Lt = S

Rt = N 2

X-Sect. Pera - 47<sup>th</sup> West

50' st. - 10' cbs. - Rough Graded.

0 + 00 = W.L. 47<sup>th</sup>

0 - 02.1 = Wly. of walk

0 - 07.1 = Ely. of 5' walk

0 - 07.8 = 14.6 Lt = P. pole # P-178613

0 - 09.7 = W. cb.

0 - 17.5 = 1/4

0 - 25 = Lt 47<sup>th</sup> - Conc. Pave

B.M. 6.26  
H.F. D.P. Pera + 47<sup>th</sup>

90.63

84.37

90.63

Reduced  
by  
J. Barnett

	82.8		83.1	83.5	84.1	84.4	84.6	84.8							
	7.8		7.5	7.1	6.5	6.2	6.0	5.8							
	35		25	15	15	15	25	35							
	82.46		82.97	83.41		84.08	84.25	84.37							
	8.17		7.66	7.22		6.55	6.34	6.26							
	35		25	15		15	25	35							
			walk				walk								
	82.29		82.73	83.31		84.01	84.12	84.26							
	8.34		7.90	7.32		6.62	6.51	6.37							
	35		25	15		15	25	35							
			walk				walk								
	80.15		81.71	82.33	82.87	83.19	82.66	83.10	83.17	83.94	83.41	84.06	83.55	84.10	84.17
	10.48		10.92	8.30	8.76	7.44	7.97	6.93	7.46	6.69	7.22	6.57	7.08	5.93	6.46
	75		75	33	33	15.9	15.9	Top	9ft	15	15	25	25	75	75
	Top		got	Top	got	Wly. of Dr.	Top	got		Top	got	Top	got	Top	got
			81.99	82.45	83.12	83.31	83.56	83.70	84.38						
			10.64	8.18	7.71	7.32	7.07	6.93	6.25						
			75	25	15	15	15	25	75						
			80.06	82.58	83.02	83.40	83.63	83.73	84.41						
			10.57	8.05	7.61	7.23	7.00	6.90	6.16						
			75	25	15	15	15	25	75						



2+00

98.4	Lt.	99.3	99.4	100.0	100.0	Rt.	100.6	3
3.3		2.4	2.3	1.7	1.7	1.1	0.8	110.9
35		25	15		15	25	35	

1+60

94.5	96.1	96.9	97.3	98.4	99.0	99.1
7.2	5.6	4.8	4.4	3.3	2.7	2.6
35	25	15		15	25	35

1+32 - 244 Lt. = end Nly. of Wall

91.3	95.4	93.2	94.6	95.1	95.4	97.1	97.8	98.6
10.4	6.52	8.5	7.1	6.6	6.3	4.6	3.9	3.1
35	24.4	24.4	15		10	15	25	35

Top Wall

1+00 - 24.6 Lt. = Beg. Nly. of 12" Stone + Conc. Wall

87.8	93.2	88.1	90.8	92.2	93.2	96.0	97.0
13.9	8.39	13.0	10.9	9.5	8.5	5.7	4.7
35	24.6	24.6	15		10	25	35

Top Wall

0+65

85.3	95.5	87.0	88.1	89.2	93.5	94.7	95.4
16.4	16.2	14.7	13.0	12.5	8.2	7.0	6.3
35.5	26	25	15		15	25	35

along House

T.P. 11.59 101.66 0.56 90.07

101.66

0+55 - 32.7 Lt. = 4' Conc. steps to Porch to House

86.35	85.32	85.1
4.28	5.31	5.5
35.5	32.7	32.7 = ground

Line Top of House Porch Top

0+25

83.9	84.5	85.5	86.0	89.7	90.5	91.2
6.7	6.1	5.1	4.6	0.9	0.1	+0.6
35	25	15		15	25	35

90.43







D. Smith  
W. Moore  
J. Clark  
E. Gregory

Cross Section 52<sup>nd</sup> Polk to Ottilie Pl.

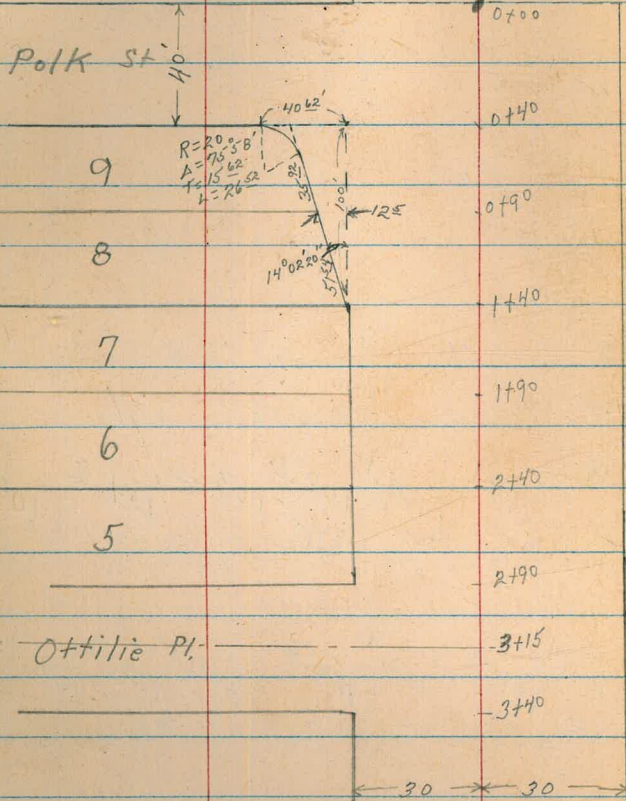
W025010  
9-28-49

5

INDEXED

W.K.  
SEP 29 1949

FD Mon.  
E 1/2 Cor. Sec. 28



opening Dec. # 11535  
# 11695  
# 11696

File Map #1732 Oak Per K  
Tie Sheet #3653

FD Map  
952 No  
See H. Polk line  
V. 1/2







cont

3+40 South prop Ottilie Pl

3+32

3+15 E Ottilie Pl

North prop Ottilie Pl

2+90 29° RT end 6" con retaining wall

2+69 28° RT E 3 1/2 con walk

2+52 28° RT 6" con retaining wall begin

2+46

TP 44 315<sup>85</sup>

11 22 311 74

1496

check starting BM

030 315<sup>55</sup>

7

Lt = East

Q

Rt = West

112	102	65	75	74	72	79	83	83	87
50	30	12	9		19	30	50	75	100

108	90	62	75	72	75	50	52	62	80
50	30	12	9		18	30	50	75	100

102	84	56	65	65	62	46	42	52	65
50	30	12	9	6	17	30	50	75	100

45	42
75	100

86	62	50	61	52	52	45	38	34	32	32
50	30	12	10	5	16	24	29	29	50	50

Routing Top wall ground wall

357	302
28	30
walk	walk

33	28
28	28
Routing	Top wall

52	48	44	45	42	42	34	22	21
50	30	14	12		15	20	30	50

315<sup>85</sup>

123	116	104	106	104	106	92	94	92
50	30	12	9		18	23	30	50

323<sup>46</sup>



X-Sect. Poplar St.

10-11-49

(Fairmount to Violet)

Roberts

Hendricks

Greer

Bunch

W.O.# 31514

T.P. 3509, 3512, 3520

F.B. 1628

For sketches see

F.B. 1628 & 1798

INDEXED

N.K.

OCT 14 1949



Cont'd From Page 8

0+50

0+18

End Walk on Rt

0+00

Levels L to & Poplar

0+00

Levels P to Fairmount  
Prop. Line Fairmount

For detail on curb Ret & Walk on Rt See FB, 1798

0-14.44

Levels P to Fairmount  
Curb Line

0-43.32

Levels taken parallel to Fairmount  
& Fairmount

BN

9.91

307.10

^

297.19

SEBP Quince & Fairmount

Lt.

Rt

Rt

302.0	301.9	301.8	301.00	301.36	301.40	301.28	301.76	302.41	303.2	303.4
51 50	52 40	53 34	610 295 295 295 295	574 15.5	570	582 20.5	534 20	469 20	399 40	37 50
						302.30	302.97	303.40		
						480 28 Gut	43 28 G	370 40 Walk		
					302.72	302.50	302.69	303.29		
					438	460 26	441 Gut	381 26		
	301.9	301.75	301.36	302.04	302.72	303.15	303.65			
	52 743	535 59.4 G	574 48.5 Gut	56 377	438	393 40.6 Gut	345 40.6 G			
	301.45	300.54	301.77	301.02	301.54	302.69	302.22	302.65	304.62	
	565 100 G	636 100 Gut	533 88 G	608 88 Gut	556 57.76	441	388 38.5	345 30	248 100	
			301.91	302.90	303.98	304.52	305.38	306.38		
			519 100	420 57.76	312	258 26	172 57.76	072 100		

307.10



Cont'd From Page 9

Lt

298.90

298.65

298.29

Rt 298.34

10 299.1

299.7

2742

454

479

515

510

413

37

299.7

299.8

299.8

298.45

298.85

298.99

298.75

298.45

298.66

299.7

299.8

37

36

36

499

459

445

469

499

478

37

36

50

40

30

25

14

13

20

28

30

40

2733.32

E. Line Heather

299.5

299.7

299.6

298.74

299.20

299.21

299.06

298.80

299.24

300.0

300.2

300.2

39

37

38

470

424

415

428

464

410

34

32

32

50

40

29

26

13

14

20

27

30

40

50

2400

1783

End Curb on Rt

299.64

300.26

T.P.

3.49

303.44

7.15

299.95

303.44

1450

300.5

300.5

300.6

299.90

300.44

300.67

300.48

300.93

301.55

301.8

302.3

6.6

6.6

6.5

7.20

6.6

6.43

6.62

6.17

5.55

5.3

4.8

50

40

30

25

14

12

20.5

28

28

40

50

1400

307.10

307.10



3750

3738

37.5 Lt. & 3' Conc. Walk

3700

278532

W. Prop. Line Heather

2773

2770

2746

303.44  
71

299.1	299.0	298.5	297.36	297.53	297.78	297.46	297.00	298.4	298.7	299.0
43 30	44 40	49 32	68 27 E.P.	5.91 16	5.66	5.98 14	6.44 25 E.P.	5.0 30	4.7 40	4.4 50
			299.40	299.22						
			4.04 50	4.22 39.5 walk						
299.9	299.3	299.0	297.96	298.26	298.36	298.01	297.46	299.2	299.3	299.4
3.5 50	4.1 40	4.4 32	5.48 26 E.P.	5.18 13	5.08	5.43 13	5.98 23 E.P.	4.2 29	4.1 40	4.0 50
299.8	299.3	298.8	297.92	298.46	298.51	298.23	297.71	299.4	299.5	
3.6 50	4.1 40	4.6 30	5.52 25 E.P.	4.98 12	4.93	5.21 15	5.78 26 E.P.	4.0 29	3.9 40	
					298.59	298.28	297.81	299.3	299.5	
					4.85	5.16 16	5.63 26 E.P.	4.1 29	3.9 40	
					298.86	298.62	297.82	298.2	297.8	
					4.82	5.06 15	5.58 26 E.P.	5.6 40		
					4.58	4.81 13	5.27 26 E.P.	5.2 40		

303.44



4454 39.9' Rt & 3' Conc. Walk

4450

4437 31.8' Rt & Double Ribbon Drive 2' Ribbons 6.6' overall

4433 39.7' Lt & 3' Conc. Walk

4418 39.9' Lt. & 7.5' conc. Drive  
38' Rt & 3' Conc. Walk

4400

3491 41.8' Rt & 3' Conc. Walk

303.44  
↑

	Lt.	Rt.	Rt.
	297.94	297.7	297.7
	297.5	56P	565
	297.2	39.9	50
	296.78	Walk	
	296.45	295.87	297.2
	296.49	297.6	297.8
	296.23	297.2	
	55 59 6.2 7.4	7.57	5.8
	50 40 29 25	24.5	46
	E.P.	E.P.	50
	6.99	6.2	5.6
	72	29	50
	6.95	7.21	
		13	
		297.38	297.6
		6.06	5.18
		31.8	37.5
			5.70
			50
			297.74
			298.07
			297.78
			5.37
			50
			5.66
			39.7
			Walk
			298.11
			298.82
			298.26
			298.51
			298.44
			5.33
			50
			5.62
			39.9
			Drive
			5.18
			37
			Walk
			4.93
			40.5
			5.00
			50
			298.5
			298.4
			298.5
			298.6
			299.1
			298.5
			298.6
			298.1
			5.3
			31
			48
			40
			43
			50
			298.76
			4.68
			41.8
			Walk
			298.78
			4.66
			50

303.44  
↑

297.79  
12



5495

294.2  
9.2  
40

294.1  
9.3  
31

294.74  
8.70  
13

294.86  
8.58

294.79  
8.65  
14

294.40  
9.04  
26  
E.P.

294.1  
9.3  
40

5469

294.6  
8.8  
40

294.4  
9.0  
32

295.02  
8.42  
13

295.13  
8.31

295.00  
8.44  
19

294.71  
8.93  
26  
E.P.

294.4  
9.0  
40

5467

296.0  
7.4  
40

296.1  
7.3  
32

294.71  
8.73  
30  
E.P.

295.09  
8.39  
14

295.16  
8.28

295.01  
8.43  
15

294.71  
8.73  
26  
E.P.

295.3  
8.1  
37

295.3  
8.1  
40

5458.15 E. Prop. Line Columbine

296.4  
7.0  
40

296.3  
7.1  
30

294.74  
8.70  
23  
E.P.

295.09  
8.35  
15

295.25  
8.19

295.04  
8.40  
16

294.76  
8.64  
23  
E.P.

295.5  
7.9  
29

295.3  
8.1  
34

295.7  
7.7  
40

5419

39' 2" E 2' Conc. Walk  
40' R. & 11' Conc. Drive

297.31  
6.13  
50

297.17  
6.27  
39  
Walk

296.54  
6.90  
40  
Drive

296.65  
6.79  
30

5400

297.8  
5.6  
50

297.4  
6.0  
40

297.0  
6.4  
30

295.4  
8.0  
26  
E.P.

295.82  
7.62  
16

295.82  
7.62

295.66  
7.78  
13

295.28  
8.16  
26  
E.P.

296.2  
7.2  
30

296.5  
6.9  
40

296.8  
6.6  
50

4493

30' R. & 3' Conc. Walk

296.62  
6.82  
30  
Walk

297.18  
6.26  
50

303.44

303.44



Cont'd From Page 13

7+00

	Lt	Rt
	294.9	293.78
	4.1 40	5.25
	294.1	293.45
	4.9 30	5.38
	293.31	293.15
	5.72 26 E.P.	5.88 25 E.P.
	293.57	294.1
	5.46 13	4.9 31
	293.78	294.3
		4.7 37
		294.7
		4.2 40
		294.8
		4.2 50

6+65

26.8 Rt & 3 Conc. Walk

	Lt	Rt
	295.5	294.67
	3.5 50	4.26 26.8 walk
	295.4	295.08
	3.6 40	3.95 50
	295.1	294.6
	3.9 31	4.4 29
	293.73	294.7
	5.30 26 E.P.	4.3 40
	294.11	295.0
	4.92 14	4.0 50
	294.22	
	4.91 11	

6+50

T.P.

2.95    299.03    7.36    296.08

299.03  
Set BM Nail in P. Pole N.W. Cor. Columbine & Poplar

6+29

37.2 Lt. & 3' Conc. Walk

	Lt	Rt
	296.0	295.99
	7.4 50	7.45 50
	295.9	295.66
	7.5 40	7.78 37.2
	295.5	294.68
	7.7 30	8.88 15
	293.89	294.06
	9.55 26 E.P.	9.38 25 E.P.
	294.19	295.0
	9.25 22	8.4 30
	294.62	295.1
	8.82 10	8.3 40
	294.68	295.7
	8.76	8.2 50

6+08<sup>15</sup>

W. Prop. Line Columbine



5+97

	Lt	Rt
	296.04	294.73
	7.4 40	8.71 14
	295.7	294.19
	7.7 31	9.25 25 E.P.
	294.10	294.94
	9.34 14	8.5 40
	294.66	
	8.78	
	294.82	
	8.62	

303.44

303.44



8402 27.2 Rt & 5' Conc. Walk

293.6  
5.4  
50  
293.5  
5.5  
40  
292.9  
6.1  
31  
292.05  
6.98  
27  
E.P.

292.42  
6.51  
292.24  
6.79  
14  
292.07  
6.96  
E.P.

293.12  
5.91  
27.2  
292.2  
5.45  
50  
292.2  
6.2  
26  
293.2  
5.7  
40  
293.6  
5.4  
50

8400

7492 39.8 Lt & 7.5' Conc. Drive

293.63  
5.20  
39.8  
Drive  
294.17  
5.38  
50  
293.63  
5.20  
39.8  
Drive

7469 39.8 Lt. & 3' Conc. Walk

294.6  
4.1  
50  
294.5  
4.5  
40  
294.1  
4.9  
40  
293.6  
5.4  
29  
293.7  
5.3  
40  
294.1  
4.9  
50

292.84  
6.17  
27  
E.P.  
292.98  
6.05  
26  
293.19  
5.84

292.89  
6.14  
15  
292.43  
6.60  
E.P.  
293.6  
5.4  
29  
293.7  
5.3  
40  
294.1  
4.9  
50

7450

7443 38.8 Rt & 11' Conc. Drive

294.08  
5.04  
38.8  
Drive

294.11  
4.92  
50

7418 27.8 Rt & 3' Conc. Walk

294.08  
4.95  
27.8  
walk

294.08  
4.05  
50

299.03  
A

299.03  
A



lt

291.46

Rt

10  
291.2

8495

7.57  
291.44  
7.59  
7.95  
25  
E.P.  
7.8  
40  
7.8  
50

8492

291.50  
7.53  
291.41  
7.62  
7.95  
25  
E.P.  
291.08  
6.1  
30  
292.3  
6.5  
38  
292.5  
6.6  
50  
292.4

8483.24 E. Prop. Line Dahlia

292.03  
2.0  
50  
291.93  
7.1  
46  
291.93  
7.1  
31  
291.09  
7.94  
26  
E.P.  
291.35  
7.68  
17  
291.62  
7.41  
291.45  
7.58  
15  
291.16  
7.89  
25  
E.P.  
292.4  
6.6  
31  
292.5  
6.5  
46

8458 38.6' Rt & 3' Conc. Walk

293.16  
5.87  
38.6  
Walk  
293.33  
5.70  
50

8456 39.8' Lt. & 3' Conc. Walk

292.73  
6.30  
50  
292.67  
6.35  
39.8  
Walk

8450

292.9  
4.1  
50  
292.5  
6.5  
40  
292.2  
6.8  
31  
291.4  
7.60  
27  
E.P.  
291.69  
7.34  
18  
291.97  
7.06  
291.66  
7.37  
15  
291.34  
7.19  
25  
E.P.  
292.73  
6.3  
30  
293.0  
6.0  
40  
293.2  
5.8  
50

8423 27.2' Rt & 8' Conc Drive

292.37  
6.66  
27.2  
Drive  
293.04  
5.99  
32.3  
293.27  
5.76  
40

299.03  
X

299.03  
X



Cont'd From Page 16

9762 37.6' Lt. & 2' Conc. Walk

9756 40' Rt. & 4' Conc. Walk

9750

T.P. 137 294.03 6.37 22.66

9733.24 W. Prop. Line Dahlia

9723

9720

299.03

Lt.

290.73

290.57

Rt

Rt

17

3.36  
50

3.46  
37.6  
Walk

290.8

290.7

290.5

290.01

290.35

290.57

290.49

289.81

291.1

291.0

291.2

3.2  
50

3.3  
40

3.5  
32

4.02  
28  
E.P.

3.8  
16

3.46

3.58  
14

4.22  
25  
E.P.

2.9  
30

3.0  
40

2.8  
80

294.03

Set BM Spike P.Pole N.W. Cor Dahlia & Poplar #2900

290.9

291.0

291.0

290.24

290.66

290.91

290.74

290.30

291.6

291.8

291.6

8.1  
50

8.0  
40

8.10  
31

8.79  
27  
E.P.

8.57  
16

8.12

8.29  
16

8.73  
25  
E.P.

7.4  
30

7.2  
37

7.4  
40

291.10

291.03

290.54

291.9

292.0

291.8

7.83  
13

8.00  
26  
E.P.

8.49  
30.5

7.1  
40

7.0  
50

7.2

291.14

291.08

290.65

291.1

291.2

7.89

7.95  
13

8.38  
24  
E.P.

7.9  
40

7.8  
50

299.03



10+54 39.8' Lt & 5' Conc. Walk

288.73	288.78 Lt	288.2	287.82	288.04	288.07	287.86	287.24	288.0	288.1	288.3
4.2 50	4.51 39.8 walk	4.8 50	5.17 27 ET	4.95 14	4.92	5.13 13	5.75 26 TP	5.0 30	4.9 47	5.0

10+39 39.8' Rt & 2 Ribbon Drive 2' strips  
6.5' overall

287.74	287.84
4.29 39.8 drive	4.9 50

10+32 40' Rt End Ret. Wall

289.7	290.19	290.2
3.31 40	2.80 40 Top	2.8 50

T.P. 0.33 292.99 1.37 292.66 <sup>RM</sup> <sub>SPK</sub>

see pg. 17 292.99

10+00  
9+92 40' Lt & 8' Conc. Drive

290.3	289.7	289.2	288.79	289.21	289.41	289.28	288.59	289.4	289.9	290.33
3.7 50	4.3 40	4.8 28	5.24 26 30	4.82 16	4.62	4.75 13	5.44 26 E.P.	4.2 30	4.1 40	3.7 50
		290.37		290.14						
		3.66 50		3.89 40 Drive						

A Retain. wall begins at edge of walk at same grade

9+89 40' Rt & 2.5' Conc. Walk

290.47	290.60
3.56 40 Walk	3.43 50

294.03

294.03



Cont'd From Page 18

11783.15 } 25' Rt & 20' x 20' Drain Box  
E. Prop. Line Hollywood Park

11757 39.7' Rt & 23' Conc. Walk

11750

11740 39.4' Rt & 2 Ribbon Drive <sup>6.5' small</sup> 2 strips

11724 59.4' Rt & 10' Conc. Drive

11704 39.5' Rt & 25' Conc. Walk

11700

292.99

Lt.

284.8	285.5	285.66	285.76	285.97	285.70	287.96	282.88	285.0	285.8	285.8	286.49	286.4
7.1 50	7.5 40	7.33 24 EP	7.23 12	7.02	7.29 14	8.03 25.1 25.0 Rt. Rt.	10.11 25.1 Rt.	8.0 27	7.2 28	7.2 26	6.6 41	6.1 50
285.9	286.2	286.0	286.3	286.08	286.15	286.25	286.45	286.62	286.75	286.75	286.75	286.75
7.1 50	6.8 40	7.0 37	6.7 26	6.91 24 EP	6.84 16	6.74	6.54 39.7 Walk	6.37 50	6.45 39.4 Drive	6.24 50	6.24 50	6.3 50
287.6	287.6	287.3	286.71	286.89	287.06	287.54	286.98	287.10	287.57	287.57	287.10	287.6
5.4 50	5.4 40	5.7 31	6.28 26 EP	6.10 15	5.93	5.45 39.5 Walk	6.01 39.4 Drive	5.89 50	5.42 50	5.42 50	5.89 50	5.4 50
286.78	286.44	287.1	287.2	287.6	287.6	287.6	287.6	287.6	287.6	287.6	287.6	287.6
6.21 13	6.55 25 EP	5.9 29	5.8 40	5.4 50	5.93	5.45 39.5 Walk	6.01 39.4 Drive	5.89 50	5.42 50	5.42 50	5.89 50	5.4 50

292.99



13+00

7.1 285.9  
50  
7.1 285.9  
40  
6.8 286.2  
27  
7.18 285.89  
5.5  
6.81 286.18  
16  
6.14 286.55  
6.57 286.40  
17  
6.73 286.26  
27  
6.6 286.4  
40

12+91

7.5 285.5  
60  
7.3 285.7  
40  
6.9 286.1  
27  
7.14 285.85  
2.3  
6.81 286.18  
12  
6.58 286.41  
6.65 286.34  
12  
7.2 285.97  
27  
6.1 286.9  
31  
6.2 286.8  
40

12+83.15

E. Prop. Line Marlborough St  
W. Prop. Line Hollywood Park

12.5 280.5  
63  
12.6 280.4  
50  
11.6 281.4  
42  
7.1 285.9  
33  
7.0 286.0  
27  
7.15 285.74  
2.4  
7.0 285.99  
12  
6.82 286.17  
6.97 286.02  
11  
7.30 285.69  
26  
6.6 286.4  
29  
6.4 286.6  
40  
6.4 286.6  
50

12+75

15.1 277.9  
63  
13.2 279.8  
50  
10.9 282.1  
42  
7.5 285.5  
35  
7.3 285.7  
27  
7.75 285.24  
2.5  
7.40 285.59  
16  
7.5 285.5  
7.27 285.72  
14  
7.70 285.29  
26  
6.8 286.2  
30  
7.1 285.9  
31  
7.1 285.9  
40  
6.7 286.1  
50

12+33.15

♀ Hollywood Park

12+12

40' Rt. & 3' Conc. Walk

286.38  
6.61  
40  
WALK  
6.56  
50

286.4

11.6 280.3  
64  
12.7 287.2  
56  
11.8 285.5  
45  
7.5 285.9  
35  
7.1 281.18  
30  
11.31 284.75  
2.3  
7.24 2.3  
2.3  
2.3

11+95

27.3 Lt. & 20x20" Drain Box

292.99

292.99



13784 40 Lt & 75' Conc. Drive

4.99  
50  
5.08  
40  
Drive

287.3  
287.2  
287.1  
286.84  
287.12

5.7  
50  
5.8  
40  
5.9  
30  
6.5  
26  
5.87  
15

287.3

287.29

286.89

287.8

288.4

288.5

13760

13745.5 40.5' Lt & 28' Conc. Walk

287.08  
287.03

5.91  
50  
5.96  
20.3  
Walk

13733.15 W. Proj. Line Marlborough

286.2  
286.2  
286.4  
286.19  
286.56

6.8  
80  
6.8  
70  
6.6  
21  
6.80  
26  
6.83  
15

286.85

286.74

286.53

287.79

288.0

13722

13717

286.0  
286.1  
286.4  
286.13  
286.49

7.0  
50  
6.9  
40  
6.6  
28  
6.86  
26  
6.50  
14

286.77

286.69

286.50

286.8

13707 40 Lt & 3' Conc. Walk

286.04  
286.12

6.95  
50  
6.87  
40  
Walk

292.99

292.99



Cont'd from Page 21

15+00 39.7' Lt & 2 Ribbon Drive 6.3' overall  
15' Ribbons

289.56  
3.43  
50  
289.55  
3.42  
50  
289.55  
3.41  
50  
289.56  
3.43  
50  
289.56  
3.41  
50  
289.03  
3.42  
50  
288.97  
3.42  
50  
288.09  
3.40  
50  
290.0  
3.41  
50  
290.3  
3.40  
50  
22  
290.6

14492 39.4' Lt. & 2 Ribbon Drive 2.5' overall  
15' strips

289.54  
3.45  
50  
289.55  
3.44  
50

14482 39.4' Lt. & 2.5' Conc. Walk

289.54  
3.45  
50  
289.50  
3.49  
50

14449 40' Lt. & 2.5' Conc. walk

288.88  
4.11  
50  
288.81  
4.14  
50  
288.4  
4.6  
50  
288.1  
4.90  
50  
288.41  
4.58  
50  
288.68  
4.31  
50  
288.57  
4.42  
50  
288.11  
4.88  
50  
289.1  
3.9  
50  
289.3  
3.7  
50  
289.6  
3.4  
50

14425 40.3' Lt & 8' Conc. Drive

288.56  
4.43  
50  
288.46  
4.53  
50

14402 39.3' Lt. & 2.5' Conc. Walk

288.19  
4.80  
50  
287.94  
5.05  
50

14400

288.2  
4.8  
50  
287.8  
5.2  
40  
287.6  
5.4  
29  
287.31  
5.68  
27  
287.68  
5.81  
15  
287.95  
5.04  
14  
287.84  
5.65  
14  
287.31  
5.67  
22  
288.5  
4.6  
30  
288.8  
4.2  
40  
288.9  
4.1  
50

292.19  
1

292.99  
1



15757 37' Rt & 35' Conc. Walk

290.70  
4.22  
37  
Walk  
290.97  
3.95  
50

T.P. 5.81 294.92 3.88 289.11

294.92 ✓

289.64  
289.50  
289.3  
288.67  
288.97  
289.19  
289.14  
288.70  
290.1  
290.3  
290.8  
291.0  
3.35 3.49 3.7 4.32 4.02 3.70 3.85 4.29 2.9 2.7 2.2 2.0  
50 39.1 21 28 E.P. 14 17 26 E.P. 30 37 40 50

15750 39.1 Lt & 3' Conc. Walk

15743 37.3 Rt & 7' Conc. Drive

290.71  
2.28  
37.3  
Drive  
291.01  
1.98  
50

15727 44.4 Rt & 2 Ribbon Drive

63' Overall  
2' Ribbon

290.58  
2.41  
44.4  
Drive  
291.00  
1.99  
55

15718 39.7 Lt & 25' Conc. Walk

289.71  
289.69  
3.28 3.30  
50 37.7  
Walk

15710 37.3 Rt & 3' Conc. Walk

290.86  
290.65  
2.63  
37.3  
Walk  
2.34  
50

292.99  
↑

292.99  
↑



Lt.

R

Rt

16783.24 W. Prop. Line Snowdrop on Lt.

289.0  
288.8  
288.71  
288.68  
289.03  
288.93  
288.70  
289.0  
289.7  
290.5  
290.9  
291.0

16770

5.9  
40  
6.1  
32  
6.41  
27  
E.P.  
6.24  
15  
5.89  
5.99  
12  
6.22  
E.P.  
5.9  
29  
5.2  
31  
4.4  
40  
4.1  
41  
3.9  
30

16768

288.3  
288.27  
288.66  
289.04  
288.97  
288.70  
289.0  
289.6  
290.4  
290.8  
291.0

6.1  
40  
6.45  
20  
E.P.  
6.26  
17  
5.88  
5.95  
11  
6.22  
E.P.  
5.9  
29  
5.3  
30  
4.5  
40  
4.1  
41  
3.9  
30

16741

288.4  
288.44  
288.83  
289.12  
288.98  
288.78  
289.9  
290.3  
290.5

6.5  
40  
6.48  
30  
6.09  
15  
5.90  
5.94  
14  
6.19  
25  
5.0  
30  
4.6  
40  
4.6  
30

16733.24 E. Prop. Line Snow Drop on Lt.

289.0  
289.0  
288.34  
288.82  
289.14  
289.05  
288.64  
290.0  
290.2  
290.2

5.9  
40  
5.9  
31  
6.54  
27  
E.P.  
6.10  
15  
5.78  
5.87  
12  
6.24  
E.P.  
4.9  
30  
4.7  
40  
4.7  
30

16700

289.1  
289.5  
289.3  
288.52  
288.98  
289.15  
289.08  
288.77  
289.8  
290.6  
290.4

5.8  
30  
5.4  
40  
5.6  
30  
6.40  
27  
E.P.  
5.94  
12  
5.77  
5.84  
12  
6.15  
E.P.  
5.1  
30  
4.8  
40  
4.5  
30

15770 392' Lt. & 8' Conc. Drive

289.53  
289.45

5.39  
30  
5.47  
39.2  
Drive



18445

287.9  
7.0  
50  
287.9  
7.0  
40  
287.7  
7.2  
30  
287.22  
7.70  
26  
E.P.  
287.67  
7.25  
18  
288.09  
6.83  
288.19  
6.73  
10  
287.98  
6.74  
23  
288.3  
6.6  
40

18425

287.8  
7.1  
50  
288.0  
6.9  
40  
287.8  
7.1  
31  
287.50  
7.42  
26  
E.P.  
287.82  
7.10  
18  
288.28  
6.64  
288.37  
6.55  
15  
288.32  
6.60  
24  
288.5  
6.4  
40

18417

287.8  
7.1  
50  
288.0  
6.9  
40  
287.8  
7.1  
29  
287.50  
7.42  
26  
E.P.  
287.92  
7.00  
16  
288.37  
6.55  
288.38  
6.54  
12  
288.34  
6.56  
22  
288.3  
6.6  
28  
289.7  
5.2  
32  
289.9  
5.0  
40

18708 1/2 E. Prop. Line Snowdrop on Pt.

287.8  
7.1  
50  
287.9  
7.0  
40  
287.9  
7.0  
30  
287.54  
7.31  
27  
E.P.  
288.06  
6.86  
288.39  
6.53  
289.42  
5.50  
10  
288.28  
6.64  
20  
288.25  
6.67  
26  
E.P.  
289.9  
5.0  
30  
290.0  
4.9  
40  
290.1  
4.8  
50

17450

287.82  
7.1  
50  
288.0  
6.9  
40  
288.2  
6.7  
31  
287.85  
7.07  
26  
E.P.  
288.25  
6.67  
16  
288.70  
6.22  
288.68  
6.24  
17  
288.48  
6.44  
26  
E.P.  
290.1  
4.8  
29  
290.2  
4.7  
40  
290.3  
4.6  
50

17419 39.6' Lt. & 10' Conc. Drive

288.96  
5.96  
50  
288.85  
6.07  
39.1  
walk  
288.7  
6.2  
30  
288.06  
6.16  
26  
E.P.  
288.47  
6.45  
17  
288.88  
6.04  
288.86  
6.06  
13  
288.78  
6.14  
19  
288.94  
5.98  
26  
E.P.  
289.9  
5.0  
32  
290.2  
4.7  
40  
290.7  
4.2  
50

17400 39.1' Lt. & 8' Conc. Walk

288.96  
5.96  
50  
288.85  
6.07  
39.1  
walk  
288.7  
6.2  
30  
288.06  
6.16  
26  
E.P.  
288.47  
6.45  
17  
288.88  
6.04  
288.86  
6.06  
13  
288.78  
6.14  
19  
288.94  
5.98  
26  
E.P.  
289.9  
5.0  
32  
290.2  
4.7  
40  
290.7  
4.2  
50

294.92

294.92



19+61

8.6 286.3  
40  
8.59 286.33  
25  
8.17 286.75  
15  
7.86 287.06  
7.83 287.09  
15  
8.01 286.91  
25  
7.2 287.7  
29  
6.8 288.1  
40  
6.7 288.2  
50

19+39

25.2' Rt & 2' x 2' Drain Box

8.17 286.75  
25  
25.2  
7.66 285.26  
25  
11.25 283.67  
27  
9.17 285.75  
27

19+29

27' Lt & 2' x 2' Drain box

11.25 283.67  
27  
9.17 285.75  
27  
8.4 286.5  
40  
8.1 286.8  
25  
8.60 286.32  
25  
8.14 286.78  
4  
7.86 287.06  
7.82 287.10  
14  
8.06 286.86  
25  
7.2 287.7  
28  
6.6 288.3  
40  
6.5 288.4  
50

19+58.24

E. Prop. Tuberosa on Lt.

285.0  
9.9 286.4  
50  
8.5 286.6  
44  
8.3 286.9  
40  
8.0 286.6  
31  
8.29 287.07  
25  
7.85 287.49  
15  
7.43 287.36  
17  
7.56 287.37  
11  
7.55 288.1  
26  
6.8 288.6  
30  
6.3 288.6  
40  
6.3 288.6  
50

19+00

18+58.16 W. Prop. Lino Snowdrop on Rt

7.1 287.8  
50  
7.2 287.7  
40  
7.3 287.6  
30  
7.65 287.27  
25  
7.27 287.65  
16  
6.87 288.05  
6.87 288.05  
17  
7.10 287.82  
41  
5.9 289.0  
31  
5.7 289.22  
40

18+48

294.92

294.92



T.P. 5.40 292.82 7.50 287.42

292.82

[Solid 37.1 to 40.5]

8' Overall

20+78 37' Rt. & 2 Ribbon Drive 2' Strips

287.85  
7.07  
372 Drive  
288.07  
6.85  
40.5  
288.08  
6.84  
50

20+50 392' Lt. & 13' Conc. Drive

287.52  
7.46  
50  
287.38  
7.54  
39.7  
Drive

20+48 40' Rt. & 35' Conc. Walk

287.3  
7.6  
50  
286.9  
8.0  
40  
287.2  
7.7  
30  
286.5  
8.40  
27  
EP  
286.7  
8.20  
15  
287.11  
7.87  
20  
287.11  
7.92  
12  
287.00  
7.92  
24  
EP  
287.5  
7.4  
28  
288.19  
6.73  
40  
Walk  
288.26  
6.66  
50

20+08.24 W. Prof. Line Tuberos on Lt.

287.0  
7.9  
40  
287.11  
7.7  
36  
286.45  
8.47  
27  
EP  
286.69  
8.23  
15  
287.04  
7.83  
17  
287.10  
7.82  
17  
287.07  
7.85  
25  
287.6  
7.3  
30  
288.11  
6.8  
40  
288.3  
6.6  
40  
50.3

19+97

286.4  
8.5  
40  
286.45  
8.47  
27  
EP  
286.71  
8.21  
15  
287.09  
7.83  
15  
287.04  
8.88  
25  
EP  
287.6  
7.3  
30  
288.1  
6.8  
40  
288.3  
6.6  
50

19+94

294.92

294.92







22+23

288.0  
4.8  
39

288.0  
4.8  
35

287.50  
5.32  
27  
EP

287.68  
5.14  
15

288.01

287.97  
4.85  
16

287.62  
5.20  
23  
EP

288.47  
4.4  
29

288.8  
4.0

29

22+20

288.1  
4.7  
39

287.9  
4.9  
31

287.39  
5.43  
26  
EP

287.65  
5.17  
15

288.00

287.95  
4.87  
16

287.48  
5.34  
26  
EP

287.8  
5.0  
40

22+16

39.8' 26.2' 10' Conc. Drive

288.25  
4.57  
45

288.29  
4.53  
39.8  
Drive

22+00

288.1  
4.7  
50

288.0  
4.8  
40

287.9  
4.9  
30

287.26  
5.56  
25  
EP

287.47  
5.35  
15

287.83  
4.99

287.81  
5.01  
16

287.45  
5.27  
22

287.6  
5.2  
40

21+96

288.0  
4.8  
40

287.9  
4.9  
29

287.16  
5.66  
26  
EP

287.39  
5.43  
16

287.77  
5.05

287.77  
5.05  
16

287.40  
5.24  
23  
EP

288.1  
4.7  
32

288.2  
4.6  
40

21+88

34.6' 21' 22' Conc. Walk

288.07  
4.75  
30

288.01  
4.81  
34.6  
Walk

21+82.98

E. Prop. Line Tuberosc on Rt.

288.0  
4.8  
50

287.9  
4.9  
40

287.6  
5.2  
31

286.97  
5.85  
28  
EP

287.28  
5.54  
15

287.62  
5.20

287.60  
5.22  
14

287.27  
5.55  
23  
EP

287.9  
4.9  
29

288.2  
4.6  
40

292.82  
/

292.82  
/



23+98 35.3' Lt & 9' Conc. Drive

287.7	287.9	287.26	287.51	287.78	287.73	287.55	288.5	289.1	289.3	
2.3 50	2.0 40	2.1 32	2.9 27 E.P.	2.4 17	2.7	2.2 16	2.8 21 E.P.	1.5 21	0.9 40	0.7 50
287.57	287.57									

23+50

T.P. 3.57 289.95 6.94 286.38 = 286.40

see 99.47 FB 1620

Fireplug 289.95

Top Hyd. S.E. Violet & Poplar

23+25.77 B.C.

288.0	288.2	288.1	287.4	287.70	288.03	288.03	287.76	287.8	288.9	289.9	289.7
4.4 50	4.6 40	4.7 31	5.4 28 E.P.	5.1 17	4.7 19	4.7 15	5.0 23 E.P.	5.0 26	3.9 29	3.4 40	3.1 50

23+00

287.8	288.0	287.68	287.19	288.17	288.22	287.85	287.7	289.0	289.2	289.6
5.0 50	4.8 40	5.4 29 E.P.	5.0 18	4.6 15	4.6 15	4.9 23 E.P.	5.1 26	3.8 30	3.6 40	3.2 50

22+85 38.8' Lt & 3' Conc. Walk

288.22  
4.6  
50  
38.8  
walk

288.1	288.2	287.67	287.83	288.12	287.86	287.9	289.1	289.6	289.8
4.7 59	4.6 32	5.1 28 E.P.	4.9 15	4.7 21	4.9 25	4.9 31	3.7 40	3.2 50	3.0

22+50

22+32.78 W. Prop. Line Tuberose on Rt

292.82

292.82



check 1.33 287.71 3.57 286.38 →

25+45 Levels TP to Violet  
W. Edge Black Top on Violet

25+22 Levels TP to Violet  
E. Edge Black top on Violet

25+14.5 out TP to Violet  
43 Red 12" Drain Culvert

25+09.11 Levels TP to Violet  
E. Prop. Line Violet

24+50

24+00

289.93

Fireplug See pg. 30

283.12	283.00	282.92	282.58	282.43	282.48	282.07
6.83 50	6.95 35	7.02 15	7.37	7.52 16	7.47 29	7.88 50
283.60	283.64	283.58	283.63	283.87	283.70	283.46
6.35 50	6.31 40	6.37 25	6.32 14	6.12	6.04 14	6.55 35
284.6	284.3	283.58	283.89	284.09	283.92	284.2
5.4 40	5.7 29	6.37 EP	6.0 13	5.86	6.03 16	6.13 EP
286.4	286.3	286.0	285.74	285.43	285.32	285.23
3.6 50	3.7 40	4.0 32	4.80 EP	4.61 16	4.52	4.63 15
287.60	287.57	287.3	286.44	286.63	286.81	286.82
2.15 40	2.34 35	2.7 31	3.51 EP	3.32 16	3.14	3.13 15
287.64	287.7	287.9	287.8	287.9	287.8	287.8
3.51 EP	2.3 29	2.1 40	2.2 50			

289.95



BM

1.33 286.38

(Fire Plug see p. 30)  
Violet & Poplar

26 + 00

6 <sup>1</sup>	6 <sup>2</sup>	8 <sup>1</sup>	14 <sup>1</sup>	13 <sup>8</sup>	13 <sup>6</sup>	9 <sup>2</sup>	9 <sup>2</sup>	9 <sup>2</sup>	7 <sup>2</sup>	7 <sup>5</sup>
50	35	20	5		9	15	25	40	44	50

25 + 65

4 <sup>2</sup>	4 <sup>5</sup>	4 <sup>2</sup>	5 <sup>1</sup>	4 <sup>6</sup>	5 <sup>2</sup>	6 <sup>6</sup>	8 <sup>2</sup>	8 <sup>2</sup>	8 <sup>6</sup>	8 <sup>5</sup>	7 <sup>6</sup>	7 <sup>2</sup>
50	35	31	27	25	10		10	25	35	41	43	50

25 + 50 B/Ls to poplar

4 <sup>0</sup>	4 <sup>1</sup>	4 <sup>2</sup>	4 <sup>1</sup>	5 <sup>6</sup>	6 <sup>6</sup>	7 <sup>1</sup>	7 <sup>1</sup>	6 <sup>8</sup>
50	35	25	13		10	25	35	50

287.71

---

71

287.71

---

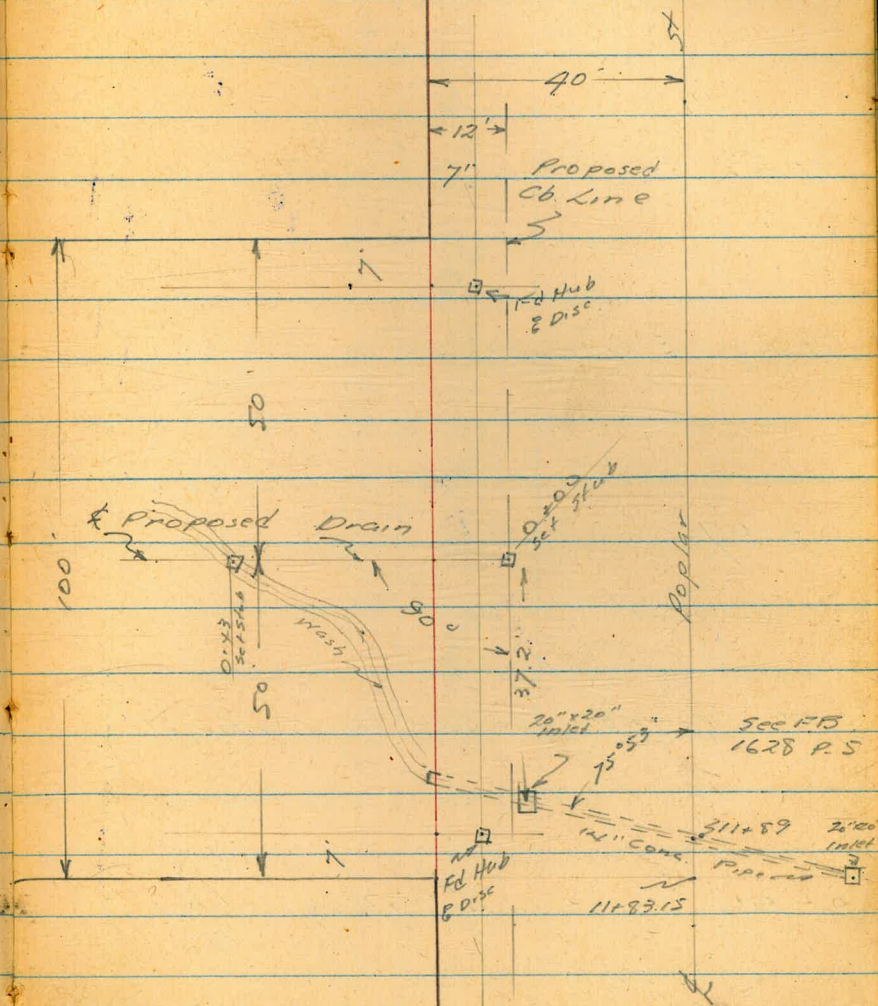
71



Proposed Drain  
 Poplar & Hollywood Park

See Also FB 1628 P.5

INDEXED  
 JUL 26 1950



~~0+00 Proposed C & G Line Poplar~~

B.M. 0.12

288.01  
 11

287.89

Top F Hyd SE Cr  
 Poplar & Hollywood Park  
 FB 1628 P.25



Levels Proposed Drain

Poplar & Hollywood Park

0+40

277.1  
 $\begin{array}{r} 86 \\ 21 \end{array}$   $\begin{array}{r} 115 \\ 3 \end{array}$   $\begin{array}{r} 109 \\ 15 \end{array}$   $\begin{array}{r} 92 \\ 15 \end{array}$

0+23 Top Slope

279.5  
 $\begin{array}{r} 79 \\ 22 \end{array}$   $\begin{array}{r} 93 \\ 11 \end{array}$   $\begin{array}{r} 85 \\ 13 \end{array}$   $\begin{array}{r} 83 \\ 13 \end{array}$

0+42 E. line Poplar

283.2  
 $\begin{array}{r} 726 \\ 144 \end{array}$   $\begin{array}{r} 59 \\ 144 \end{array}$   $\begin{array}{r} 48 \\ 144 \end{array}$   $\begin{array}{r} 59 \\ 20 \end{array}$   
 FL  
 144

0+07

285.5  
 $\begin{array}{r} 26 \\ 20 \end{array}$   $\begin{array}{r} 25 \\ 20 \end{array}$   $\begin{array}{r} 25 \\ 20 \end{array}$

0+00 Proposed Fly Ch Line Poplar St.

285.71  
 $\begin{array}{r} 22 \\ 20 \end{array}$   $\begin{array}{r} 22 \\ 20 \end{array}$   $\begin{array}{r} 21 \\ 20 \end{array}$

6-01 Inlet on H. 37.2

669 323  
 37.2 37.2  
 FL Grate

BM 0.12 288.01

287.89

SETop Hydt Poplar  
 & Hollywood Park  
 FB1628 P-25



Contd. from P 34

35

04 55

277.4      274.8  
8<sup>1</sup> 10<sup>6</sup> 12<sup>1</sup> 13<sup>3</sup> 12<sup>1</sup>  
13            7 8 12

04 43 Btm Ditch

275.6  
9<sup>4</sup> 10<sup>2</sup> 12<sup>3</sup> 11<sup>2</sup> 10<sup>1</sup>  
13 4            2 15

28801







Levels Proposed Drain

0+50

281.0  
 $\begin{matrix} 5^2 & 6^0 & 8^9 & 8^8 & 7^1 & 4^5 \\ 15 & 6 & 3 & 6 & 20 \end{matrix}$

0+45

285.0  
 $\begin{matrix} 3^8 & 5^5 & 6^8 & 6^6 & 4^3 \\ 15 & 5 & 9 & 19 \end{matrix}$

0+30

285.9  
 $\begin{matrix} 3^5 & 3^9 & 4^3 & 3^6 \\ 10 & 5 & 5 & 14 \end{matrix}$

0+23 10" Cypress 2.4' Lt

0+15 12" Cypress 2.4' Lt

0+00 = face of Cb of Prop. 15' Ch Radius

286.6

3<sup>2</sup>

CK Grating

285.78

Top of Grating 275' Lt Sta. 19+34

BM 3.21 289.52

286.61

FB 1628-P 38  
 3W 7' Nutt Tuberose & Poplar



Contd. from P.37

~~2~~

38

0+75

270.6  
267.6  
 $4 \frac{6}{18}$   $9 \frac{3}{7}$   $12 \frac{3}{13}$   $11 \frac{3}{13}$   $8 \frac{1}{21}$

0+64

279.7  
 $4 \frac{7}{17}$   $10 \frac{1}{3}$   $10 \frac{5}{3}$   $9 \frac{4}{11}$   $7 \frac{4}{21}$

0+58

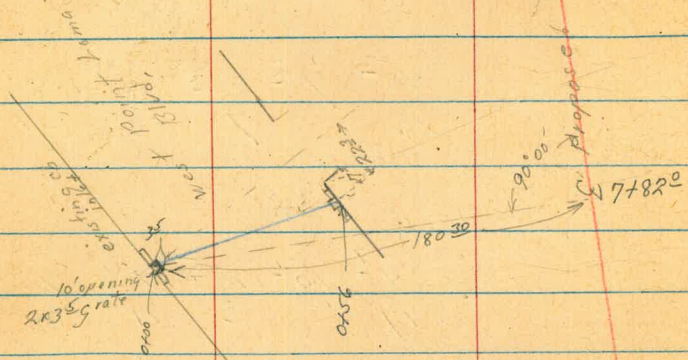
280A  
 $4 \frac{5}{17}$   $9 \frac{3}{3}$   $9 \frac{55}{546}$   $8 \frac{4}{13}$   $6 \frac{0}{22}$



West Point home & Bacon St  
Storm Drain Notes added

See Also Book 1818-541679.

INDEXED  
mk  
SEP 15 1950



Lt = East  
Rt = west  
is 2 9" guy pole  
Note 3' BKcb Face at drive way end (East) of new proposed inlet

	6.13	6.84	6.01	6.08	6.64	6.09	6.69	6.67	6.09	6.66	6.11	6.65	6.13
along south	557	489	563	556	560	555	495	477	555	488	553	499	551
40 40 222				7	7	5	5	06	9ut	06	5	30	30
sat cb	drive	9ut	cb	9ut	cb	9ut	cb	9ut	cb	9ut	cb	9ut	cb

		4.08		5.97		6.03		6.08		6.17		6.44		6.52
11 to st.		556		567		551		556		547		523		512
40		20		5		5		5		20		40		40

		6.07		5.85		5.86		5.89		5.96		6.23		6.60
2 West Point home		557		529		578		575		568		541		504
11 to st.		40		20		5		5		5		20		40

		4.03		5.62		5.54		5.57		5.62		5.81		6.18
11 to st.		561		602		616		607		602		583		546
40		20		5		5		5		5		20		40

		5.74		6.36		5.52		6.30		5.23		6.22		0.53		6.19		5.19		4.40		5.55		6.70		5.96		
along south		590		528		613		534		641		542		11		545		645		524		609		492		558		558
40 40 30 20																												
sat cb		9ut		cb		9ut		cb		grate		cb		fh.		cb		9ut		cb		9ut		cb		9ut		cb

BM. 6<sup>57</sup> 11<sup>64</sup> ✓ 5<sup>07</sup> ✓  
EC. Curve  
North of W. H. Ave.  
(1818/59) ✓

REVISED 9-15-50 A.E.K.



D. Smith  
Wm Fay  
E. Sherman

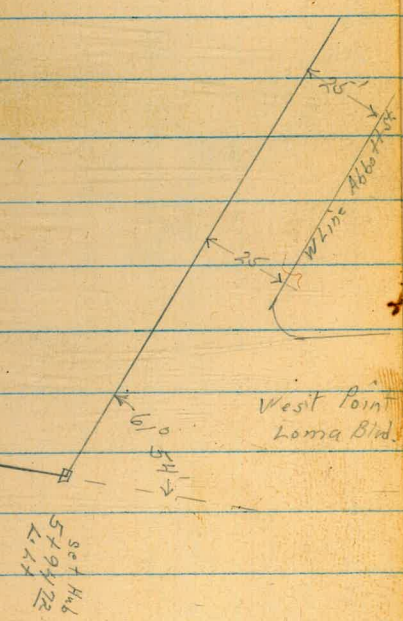
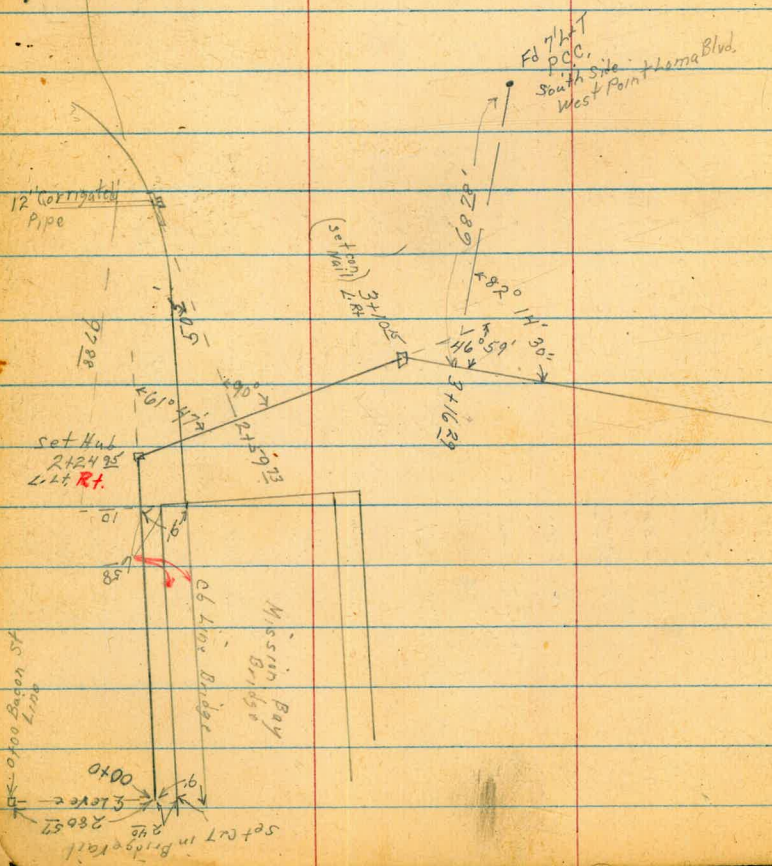
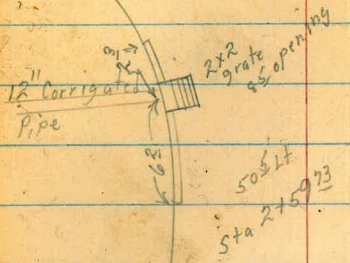
Abbott St

Proposed Storm Drain

WO# 20608  
9-14-50

40

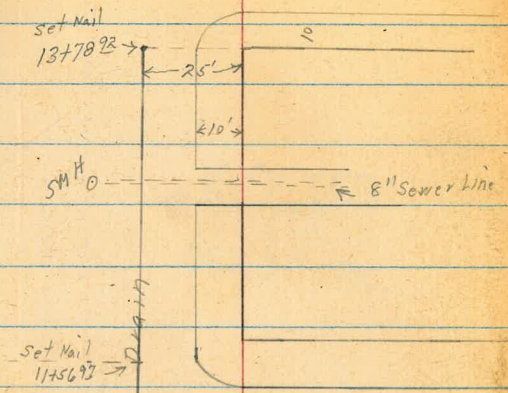
INDEXED  
MK  
SEP 15 1950





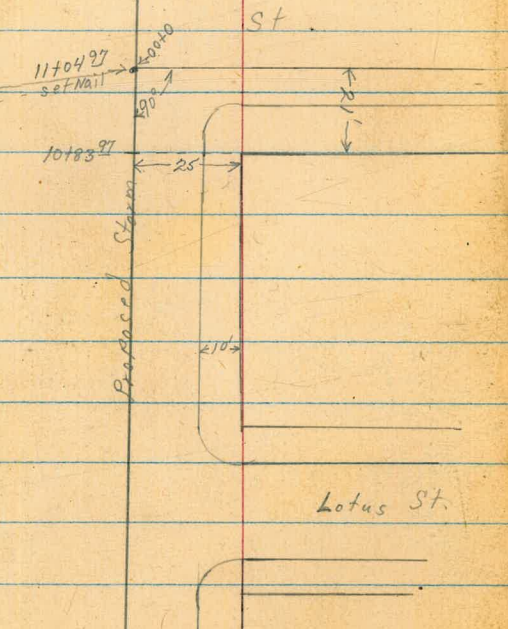
Muir

St



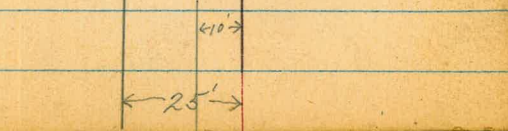
Voltaire

St



Lotus St.

Lotus St.



West Point Loma Blvd. Sketch p. 49.  
also levels



D. Smith  
E. Sherman  
R. Kochhead

Abbott St. Storm

Drain

WO# 20668  
RT 9-13-50 42

1700

2.6

4.4

2785

1.46 2.23 1.19 2.11 2.05  
5.53 4.26 5.80 4.88 5.00 5.12 1.87  
123 123 22 23 inlet 6 6 16 16  
along cb gut cb gut cb North North North  
North North North  
cb gut cb gut

0780

3.2

10

275933 inlet

2.11 0.29 1.14 1.84 2.49 2.59  
4.88 6.70 5.85 5.15 4.50 4.40  
50 50 50 25 10  
cb Fl grate

0755

0.3

7.10

27355  
37355 Cross cb

2.85 2.34  
4.14 4.65  
cb gut

0753

2.6

9.6

272435 L. RT

3.14 3.85  
4.6

0730

5.5

12.5

2700

2.3 4.2

0700 in water

BM

5.48

6.99 ✓

10.52 U.S. Army Datum  
151 City South Side  
W. Point Long  
Bluff Abbott  
Mission Bridge

1750

2.6 4.4

6.99 ✓



4400 Lt 5 21/13  
 17 AC edge  
 RT 5 21/11  
 10 2.30  
 469 13° Floor

3496 13° RT & Cafe  
 3460 10° RT & 8" gully pole #537200H

along C6  
 Lt 6 25 0.24  
 10 10 6 08 0.81  
 947 East C6  
 Rt 6 08 0.91  
 10 10 6 64 0.35  
 1447 1447 1447  
 10 10 10 10 10 10

3447 584 Lt 2x2 grate inlet  
 816 -1.17  
 6 96 0.03  
 6 6 0.88  
 6 0.96  
 6 0.3  
 584 584 584 30  
 Fl. grate C6  
 C6 edge. No opening  
 109 1.2 1.3  
 590 58 52  
 6 AC edge

3437 line crosses edge AC  
 5 82 1.17

3410 15 L.R.T. on split  
 5 52 1.47  
 10 5 58 1.41  
 10 5 64 1.35

4' gas Main crosses line Bridge  
 2487 15 RT & 3x3 gas vault  
 1.85 -1.59  
 5 14 7 58  
 13 rim Fl.

6 99

5400 Lt 5 21/13  
 285 AC edge  
 Rt 5 21/11  
 10 2.30  
 469 13° Floor

4489 3° Lt & 2x2 can holder for bag parking stop

4475 11 1/2 RT & pump house  
 5 31 1.82  
 Floor

4472 10' Lt & sewer MH  
 5 64 1.49  
 rim Fl.  
 15 44 7.13 -8.31  
 4464 4 1/2 Lt & sewer MH  
 5 67 1.46  
 rim Fl.  
 15 0.3 -7.90

4461 17° Lt & 4x3 water meter vault  
 5 87 1.26  
 rim 8 47 -1.34  
 bot box

4461 E of 2x2 concrete holder for parking stopper  
 4459 13 Lt & 24x4 City Sign Post

4450  
 5 85 1.28  
 AC edge 10 6 1 1.10  
 10 6 0.5  
 TP, 5 97 7 13  
 5 83 1 16



7+19 BC, cb RT  
 7+04 PCC cb RT  
 7+00

LT  
 2.34  
 4<sup>79</sup><sub>5</sub>  
 2.31  
 4<sup>82</sup><sub>4</sub>  
 RT  
 2.03  
 5<sup>10</sup><sub>54</sub>  
 2.52  
 4<sup>11</sup><sub>6</sub>

6+60  
 6+23<sup>N</sup> Edge AC parking

2.29  
 4<sup>84</sup><sub>10</sub>  
 2.26  
 4<sup>87</sup><sub>10</sub>  
 2.34  
 4<sup>77</sup><sub>10</sub>  
 2.13  
 5<sup>10</sup><sub>10</sub>  
 2.20  
 4<sup>93</sup><sub>10</sub>  
 2.20  
 4<sup>93</sup><sub>10</sub>

5+94<sup>73</sup> L:LT on split

2.1  
 5<sup>0</sup><sub>10</sub>  
 2.20  
 4<sup>93</sup><sub>446</sub>  
 1.1  
 6<sup>0</sup><sub>10</sub>

5+50  
 5+19 7<sup>5</sup> RT & anchor guy  
 5+19 4<sup>5</sup> LT & 8" guy pole #484127 H

2.04  
 5<sup>02</sup><sub>30</sub>  
 1.7  
 5<sup>4</sup><sub>10</sub>  
 1.9  
 5<sup>3</sup><sub>10</sub>  
 1.9  
 5<sup>3</sup><sub>10</sub>  
 AC edge

7<sup>13</sup>

LT  
 Lotus + Abbott  
 8+83 15' RT BC NW, RT + 5<sup>61</sup><sub>25</sub>  
 2.37  
 6<sup>20</sup><sub>94</sub>  
 1.78  
 5<sup>88</sup><sub>5</sub>  
 2.14  
 5<sup>93</sup><sub>5</sub>  
 2.05  
 6<sup>72</sup><sub>15</sub>  
 1.26  
 6<sup>10</sup><sub>15</sub>  
 1.88  
 6<sup>16</sup><sub>15</sub>  
 1.82  
 6<sup>16</sup><sub>15</sub>  
 1.82  
 6<sup>16</sup><sub>15</sub>  
 1.82

TP<sub>2</sub> 5<sup>84</sup> 7<sup>98</sup> ✓  
 8+44 15' RT to cb 2x2<sup>5</sup> grate  
 No opening  
 5<sup>18</sup><sub>1.95</sub>  
 7<sup>72</sup><sub>-0.59</sub>  
 6<sup>00</sup><sub>1.13</sub>  
 5<sup>30</sup><sub>1.83</sub>  
 8+43 5' LT & sewer MH  
 4<sup>99</sup><sub>2.14</sub>  
 1.335  
 4<sup>99</sup><sub>2.14</sub>  
 1.335

8+00  
 4<sup>92</sup><sub>2.21</sub>  
 4<sup>98</sup><sub>2.15</sub>  
 5<sup>20</sup><sub>1.43</sub>  
 5<sup>19</sup><sub>1.94</sub>  
 7+60  
 4<sup>94</sup><sub>2.19</sub>  
 4<sup>94</sup><sub>2.19</sub>  
 5<sup>47</sup><sub>1.66</sub>  
 4<sup>91</sup><sub>2.22</sub>

7<sup>13</sup>



11104<sup>22</sup> = 0700 West clean out

LT 2.60 RT 2.38

10784 Prop North Voltair

2.77  
5<sup>21</sup> 2.31  
25 25  
cb 94t 5  
2.46  
5<sup>58</sup> 2.35  
10 15  
94t cb  
1.90  
5<sup>75</sup> 2.23  
15 15  
cb

10750

2.13  
5<sup>85</sup> 2.41  
25 5  
cb 94t  
2.35  
5<sup>63</sup> 1.77  
15 15  
94t cb  
2.24  
5<sup>74</sup> 2.17  
15 15  
cb

10700

2.62  
5<sup>36</sup> 1.97  
25 25 5  
cb 94t  
2.34  
5<sup>64</sup> 2.28  
20 20  
cb  
1.59  
6<sup>39</sup> 2.17  
15 15  
94t cb

9770

2.23  
5<sup>75</sup> 1.48  
15 15  
94t cb  
2.03

9734 EC SW Ret

Lotus & Abbott

2.44  
5<sup>54</sup> 1.86  
25 25  
cb 94t 5  
2.21  
5<sup>77</sup> 2.16  
15 15  
94t cb  
1.48  
6<sup>50</sup> 2.03  
15 15  
94t cb

9710

2.43  
5<sup>55</sup> 1.78  
25 25  
cb 94t 5  
2.15  
5<sup>85</sup> 2.12  
15 15  
94t cb  
1.42  
6<sup>56</sup> 1.98  
15 15  
94t

13700

2.48  
4<sup>28</sup> 5<sup>21</sup> 5<sup>02</sup> 5<sup>09</sup> 5<sup>81</sup> 5<sup>22</sup>  
25 25 5  
cb 94t 5  
2.17  
1.45  
2.04

12771 E Sauri MH

5<sup>27</sup> 2.32  
13<sup>58</sup> 4<sup>89</sup> 4<sup>98</sup>  
5 5  
cb 94t  
going west  
8" sewer in alley

12750

2.58  
4<sup>68</sup> 5<sup>22</sup> 4<sup>83</sup> 4<sup>93</sup> 5<sup>60</sup> 5<sup>07</sup>  
25 25 5  
cb 94t 5  
2.33  
1.66  
2.19

12700

2.66  
4<sup>60</sup> 5<sup>11</sup> 4<sup>80</sup> 4<sup>90</sup> 5<sup>46</sup> 4<sup>93</sup>  
25 25 5  
cb 94t 5  
2.36  
1.80  
2.53

11764 South Prop Voltair

2.78  
4<sup>78</sup> 4<sup>89</sup> 4<sup>70</sup> 4<sup>99</sup> 5<sup>29</sup> 4<sup>87</sup>  
25 25 5  
cb 94t 5  
2.47  
1.97  
2.29

11748 Voltair

2.88  
4<sup>38</sup> 4<sup>83</sup> 4<sup>55</sup> 4<sup>62</sup>  
25 5 15  
2.74  
2.71  
2.64

TP<sub>3</sub> 4<sup>79</sup>

7<sup>26</sup> ✓  
5<sup>52</sup> 2<sup>46</sup> ✓  
2<sup>47</sup> Abbott

SWBP  
Voltair  
Abbott







NE Voltaire Ret.  
101 Rad 165 Long 3 parts 56 ea -

North Prop Voltaire 12 BK cb face & Lamp Post #5329

N Prop Voltaire  
cb 941  
277  
521 567

BC Abbott  
277  
521 569

INDEXED  
mk  
SEP 15 1950  
1/3  
275  
523 566

2/3  
275  
523 564

EC Voltaire  
275  
523 566

HI 798

It is 29' betwn clean out box and NE Ret.

Took shot 15 off cleanout on this line

543

SE Return Voltaire + Abbott

47

101 Rad 165 Length 3 parts 56 ea

1' South of  
South Prop Line Voltaire 15 BK cb face & Power Pole # PAR 178  
has fire call box

S Prop Voltaire  
cb 941  
278  
520 567

BC Abbott  
271  
522 566

1/3  
275  
523 566

2/3  
274  
524 566

EC Voltaire  
278  
520 560

15 East of EC, 15 BK cb face & Lamp Post #5249

HI 798



N.W. Return Muir & Abbott  
 10' Rad 16' Length 3 parts 5<sup>3</sup> c9

BC Abbott  
 5<sup>185</sup>      947  
 5<sup>41</sup>      5<sup>137</sup>  
             5<sup>89</sup>

1/3  
 5<sup>187</sup>      1.41  
 5<sup>39</sup>      5<sup>85</sup>

2/3  
 5<sup>187</sup>      1.24  
 5<sup>39</sup>      5<sup>92</sup>

EC Muir  
 5<sup>186</sup>      1.23  
 5<sup>40</sup>      6<sup>03</sup>

Q Muir & west cb Line Abbott

2.06  
 5<sup>20</sup>

SW. Return Muir & Abbott

10' Rad 16' Length 3 parts 5<sup>3</sup> c9

BC Abbott  
 5<sup>191</sup>      1.44  
 5<sup>35</sup>      5<sup>82</sup>

1/3  
 5<sup>190</sup>      1.52  
 5<sup>36</sup>      5<sup>74</sup>

2/3  
 5<sup>186</sup>      1.40  
 5<sup>40</sup>      5<sup>86</sup>

EC Muir  
 5<sup>184</sup>      1.28  
 5<sup>42</sup>      5<sup>98</sup>  
 cb      947

HI 7<sup>36</sup>

2150

2100

1750

1700

0750

0725 BC Ret NW

11704<sup>97</sup> 50400 west

BM 4<sup>46</sup>

6<sup>92</sup> ✓

247 ✓

SW BP  
 voltaire  
 + Abbott

17 172  
 5<sup>20</sup> 5<sup>68</sup>  
 45 45 19  
 26 947  
 124  
 481 3,111  
 2  
 159  
 533 562  
 7 26  
 RT  
 540 152

5<sup>169</sup>      1.38  
 5<sup>23</sup>      5<sup>64</sup>  
 947      76  
 5<sup>173</sup>

5<sup>165</sup>      1.55  
 5<sup>07</sup>      5<sup>37</sup>  
 947      76  
 5<sup>190</sup>

2.03  
 4<sup>89</sup>      5<sup>23</sup>      4<sup>83</sup>  
 7 7  
 947 66  
 2.09

2.22  
 4<sup>70</sup>      5<sup>13</sup>      4<sup>66</sup>  
 7 7  
 947 66  
 2.26

2.32  
 4<sup>60</sup>      4<sup>99</sup>      4<sup>57</sup>  
 7 7  
 947 66  
 2.35

4<sup>760</sup>  
 4<sup>32</sup>

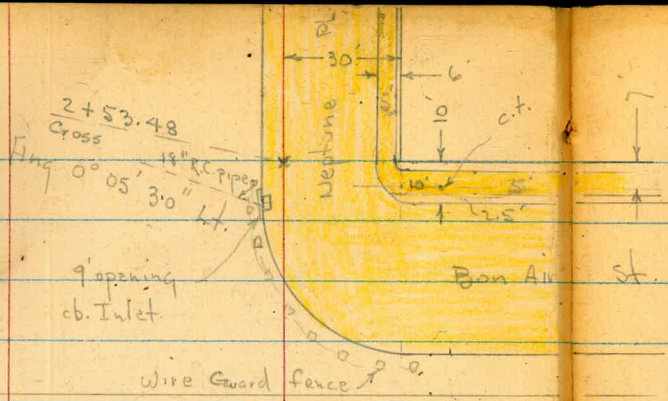












⊕ = Base line

Playa Del Norte

0+00 = Rad  
Hub.



Topo. of Area Bet. end of Playa Del Norte + Bon Arr + Neptune Pl.

W.O. 31555

11-21-50

7.0.

⊕ = Base Line

Lt. = W.

52  
Rt. = E

1 top - on loose piles of fill

2A	5.0	10.2	15.9	17.4	18.0	20.2	21.4	22.9	20.7
25.9	22.7	18.1	12.5	10.9	10.3	8.1	6.7	5.4	7.6
18.5	14.0	12.0	9.8	7.5	3.5	3.0		5.0	8.4
Beach					edge of fill				edge fill

0+75

A.1	9.6	17.1	18.2	19.0	19.9	21.3	23.3
24.2	18.7	11.2	10.1	9.3	9.0	7.0	5.0
15.0	12.0	9.2	5.0	2.5		5.0	8.5
Beach							

0+50

2.9	10.7	17.4	18.8	23.2	23.5	23.8	24.0
25.4	17.6	10.9	9.5	5.1	4.8	4.5	4.3
16.0	12.8	9.0	5.0	3.9		5.0	7.5
Beach							

0+00 - Sect. 90° to Base Line

See x-Sect. Notes for end of Pavc

2A	8.7	17.5	18.2	23.7	23.83	24.4
25.9	19.6	10.8	10.1	4.6	4.52	3.9
15.0	10.0	8.2	4.8	3.6	on job.	5.0
on beach						

0-50

18.90	18.89	23.3	24.0	24.7
9.45	9.46	5.0	4.3	3.6
4.5	4.08	3.2		5.0
Top	wdk		28.35	
⊕				

BM. 1 0.00 28.35

18.35 - ct. 88 S. of end of Pavc

See La Playa Del Norte  
x-Sect. Book



18" RC pipe culvert  
curb Inlet - 6' Rt.

2+43.5 = N. cb = # opening

2+23.5

2+03.5 = S. cb: Ban A1X

T.P. 7.38 34.41 13.2 27.03

1+93.5  
24.2 19.8 23.6 19.9 12.8 12.0 12.7 8.3 5.3 0.6 +1.8 +7.1  
150 145 125 100 75 45 12 15 30 50 80

1+70 = ± Wash + Nly. of New fill  
25.0 19.6 17.1 22.3 14.5 13.8 19.4 17.8 16.6 14.1 8.2  
177 150 122 102 85 70 55 30 40 80 = Bot of Bank  
Bank

1+65.3 = opp Nly. S Wood Post Bridge  
1+50  
25.7 21.6 15.9 20.0 19.8 12.4 9.9 8.4 8.2 11.4 14.2  
187 150 120 100 80 65 50 20 50 62 = Wash + Top fill

1+35  
25.7 22.3 18.7 13.3 12.9 13.0 9.2 6.0 6.3 8.2 9.7 12.7  
171 150 120 95 80 70 50 28.35 35 50 62 79  
Bank edge fill wash

11.1 25.6 27.89 24.11 26.90 27.22 27.78 28.36 28.86 29.32 31.81 32.31  
23.3 8.8 6.58 10.30 7.51 11.9 6.63 6.05 5.55 5.09 6.0 2.10  
69' 36 6 IF. 6  
Top Top Box pt = 9 24 34 Top = 70 70  
cb. pipe 9+ Rad. 9+ Top

7.3 13.0 27.0 27.89 27.47 27.46 27.95 28.61 28.91 32.29  
27.1 21.4 7.4 6.52 6.94 6.95 6.46 5.80 5.50 7.12  
100 55 21 Top 0.6 9 24 30 70  
cb. pt. Sewer Mill

5.8 10.1 15.8 25.5 28.4 28.79 28.26 31.82 31.58  
29.2 24.3 18.6 8.9 6.9 5.62 6.15 2.59 2.83  
130 80 50 7 30 30 70 70  
Top cb. pt. Top pt.

4.1 8.5 4.7 8.4 5.5 16.8 15.6 20.0 23.0 27.7 30.1 32.4  
24.2 19.8 23.6 19.9 12.8 12.0 12.7 8.3 5.3 0.6 +1.8 +7.1  
150 145 125 100 75 45 12 15 30 50 80

3.3 8.1 11.2 6.0 13.8 14.5 8.9 10.5 11.7 14.2 20.1  
25.0 19.6 17.1 22.3 14.5 13.8 19.4 17.8 16.6 14.1 8.2  
177 150 122 102 85 70 55 30 40 80 = Bot of Bank  
Bank

2.6 6.7 12.8 8.3 8.5 15.9 18.4 14.9 20.1 16.9 14.1  
25.7 21.6 15.9 20.0 19.8 12.4 9.9 8.4 8.2 11.4 14.2  
187 150 120 100 80 65 50 20 50 62 = Wash + Top fill

2.6 6.0 9.6 15.0 15.45 15.3 19.1 22.3 22.0 20.1 18.6 15.6  
25.7 22.3 18.7 13.3 12.9 13.0 9.2 6.0 6.3 8.2 9.7 12.7  
171 150 120 95 80 70 50 28.35 35 50 62 79  
Bank edge fill wash



2+93.5 = end

29.0	28.48	28.08	28.34	28.61	28.60	29.05
5.4	5.93	6.33	6.07	5.80	5.81	5.36
4.5	Top	6	9	9	24	Top
top		put			put	
bank						

2+66.5 - 46.5' Lt. = outlet of 18" RC Inlet  
culvert - from

16.97  
17.44  
46.5 = I.E pipe

2+53.48 = N.L. Bon Air = Ang. 0° 05' 30" Lt.  
To Line Normal To Neptune Place

27.0	27.94	27.30	27.53	28.15	28.01	28.55
7.4	6.47	7.11	6.88	6.56	6.40	5.86
34	Top	6.1	9	9	24	Top
Top		put			put	Top
Bank						ECL
			34.41			



LOCATION PROPOSED SEWER

IN 54TH ST.  
from Laurel St to Blackton

INDEXED

JUL 1951

BLACKTON 55

Walker  
Pope  
Clark  
Huffman  
7-8-51

NO 62227  
Levels - P-56

4+82.11 = P.O.T. Set Chisled Cross in Drive

0+22.90 = P.O.T. Set Hub

0+100 = End Exst Sewer

0-014 = End " " Sec P-59

54TH STREET

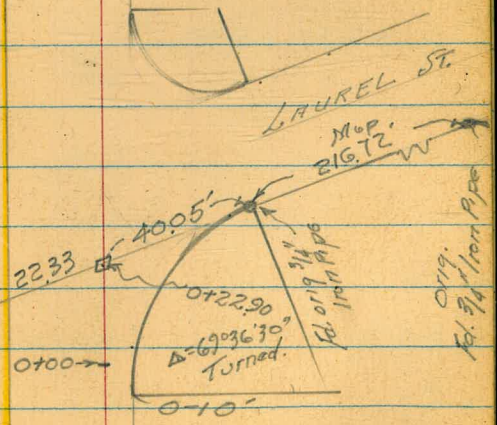
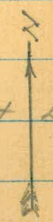
Set Ld & Disk in Paving

4+82.11

4+84  
Cont. Drive

4+26

1d Pipe Lat Line





LEVELS - PROPOSED SEWER

in 54th St.

Location P 55

INDEXED

L.

56

JUL 5 1951

2.700

272.68  
20  
Pot.

274.6

1.775

273.2

1.773

272.4

1.732

270.61  
20  
Pot.

271.6

272.26

5  
2' conc. wall

1.700

269.70  
20  
Pot.

270.6

0+22.90 = Pot.

267.20  
22.33 = diag.  
on Disk  
in Pot.

267.34  
on  
Hub

0+00

266.74  
20  
Pot.

266.7

T.P.

273.85

T.P.

277.89<sup>v</sup>

J.E. B.P. in Paving Blacktop & 54th = Osborn's  
BM Book

T.P.

279.14

278.52

B.M. J.E. Spike in Pole  
Olive & 54th ~ Osborn's Bench Book.

Direct Elev. Rod used.



54th St - Sewer

£

57

4+38

2812

4+36

2780

4+30 = 1/2 Cora Drive

27812

5

on Drive

4+26 in Drive (Dist)

2776

4+25

2801

4100

27666

2793

20  
Per

3+56

2780

3+00

27534

2771

20  
Per

T.P.

274,82

2+50

2760



54th St. Sewer

2

chk B.M. 8.P. Blackstone 54th 277.89 ✓  
6+00

278.13 278.5  
20  
Per.

58

5+71.3

280.0

5+50

281.3

5+25

281.8

5+22 11.5' Lt = 1/2 Pole

5+00

277.44 281.9  
20  
Per.

4+89

281.3

4+86

280.10

4+82.11

278.39 280.08  
9.8 0.14  
Lip Conc. Drive

4+78

280.04

4+76

281.3



54th St. Sewer

Levels on Exist Sewer

As found 7-18-51

Walker  
Papp  
Clark  
Huffman

59

0+22.9 = P.O.T. P-55

# 0+22.9 P.O.T.

0+00

0+00

0-01.4 = End Exist 6" Sewer

26096  
invert 0-01.4

0 N.H. Hot fd.

267.34

BM  
on Hub 0+22.9 P-56



Improvements Nly. side Malden  
Jewell to Kendall

← Kendall St. → 60

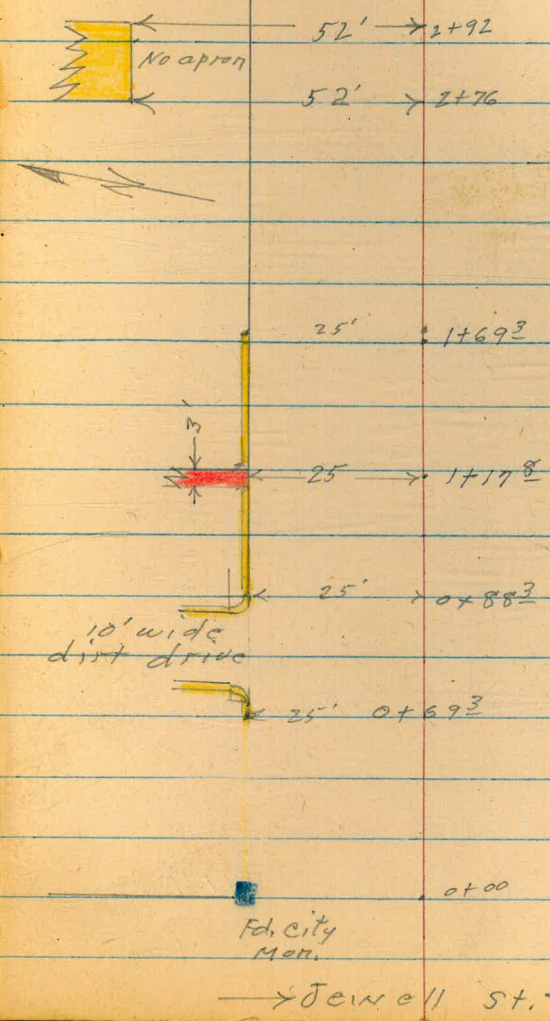
Mon. 9011c

Sommer moyer  
B 99.  
R. 51507

9-24-51  
W.O. 20006

Fed. L.S. tab  
& pipe  
Looks like  
LS 2001.

G = ground  
B.W. = base of footing for wall  
T.W. = top of wall.





INDEXED

SEP 25 1951

Malden St. NE by Co  
and Jewell

2.11 254.10

0+88<sup>3</sup> = 25' Lt. = E.C. of 4' Rad. curve  
17. wall.0+79<sup>2</sup> =  $\frac{1}{2}$  dirt drive thru wall  
(see sketch)0+70<sup>3</sup> = 25' Lt. B.C. Lt. 4' Rad. curve in wall.Reduced + Plotted  
H.J.M. 9-27-510+69<sup>3</sup> 25' Lt. = start 6" wide conc. wall.

Set. B.M. SS. 6.62 229.59

Set. B.M. SS. 1.70 234.51

T.P. 5.05 236.21 0.35 231.16

T.P. 11.76 231.51 0.26 219.75

T.P. 12.44 220.01 0.05 207.57

T.P. 12.27 207.62 0.74 195.35

T.P. 12.73 196.09 0.43 183.36

T.P. 12.36 183.79 0.48 171.43

11.76 171.91 — 160.15

2377	2379	2383
1.8	8.3	7.9
25	25	25
T.W.	B.W.	G

2373	2371	2375
1.9	7.1	6.7
25	25	25
T.W.	B.W.	G

2373	2371	2376
1.9	7.1	6.6
25	25	25
T.W.	B.W.	G
		236.21

Jewell

= Prop. pipe N. line Malden, 69<sup>3</sup> E. of Ely. line

= N.E. Prop. Mon. Malden + Jewell

N.E. B.P. Jewell + Beryl.

61



T.P. 2.11 225.00 13.32 222.89

2+92 - 52' Lt. = end garage

230.51  
5.40

(House under Const.)

2+76 52' Lt. = start double Gar. conc. floor

230.81  
5.40  
52  
Gar. floor

1+693 25' Lt. = end conc. wall

2317  
4.5  
25  
T.W.

2261  
10.1  
25  
B.W.

2264  
9.8  
25  
Cnd.

1+28 25' Lt. = line of wall

2330  
3.2  
25  
T.W.

2276  
8.6  
25  
B.W.

2276  
8.6  
25  
C.

1+178 25' Lt. = thru wall. 3' wide steps & walk

2286  
7.6  
25  
walk

2281  
8.1  
25  
C

1+13 - 25' Lt. = line of wall

2331  
3.1  
25  
T.W.

2279  
8.3  
25  
B.W.

2279  
8.3  
25  
C

236.21



Malden St

63

orig B.M.			6.16	160.16	<sup>(0.07)</sup>	160.15 N.E.B.P. Beryl + Jewell,
T.P.	3.51	166.32	10.32	162.81		
	2.74	173.13	9.48	170.39	<sup>(0.05)</sup>	? (Check this Elev) 170.34 N.E.B.P. Beryl + Kendall
T.P.	2.26	179.87	12.40	177.61		
T.P.	0.51	190.01	12.02	189.50		
T.P.	1.33	201.52	13.22	200.19		
T.P.	0.35	213.41	11.94	213.06		



Elev. of Inlet at NW Cor. of  
Texas + El Cajon.

#5684

7.0

W.O. 20006

10-22-51

BM. - S.W. B.P. - Texas + El Cajon 321.92

Elev. of Grate - <sup>curb face</sup> at ~~the~~ end

322.86

Elev. of I.E. of Box

316.37



Indexed

Lt.      ±      Rt.      65

Re-X-Sect. Neptune Place - N. of  
Playa Del Norte - By New House  
See Sketch on Print of Plan-8918-L.

W.O. 20758      7-24-52      7.0.

± of Sections is 15' W. of E.L. on Tang.

1+00

0+89- 26.4 Lt. = ± of Nly. of Bridge

Board House

14.2    14.9    15.1    19.3    21.6    21.8  
33      21    15  
edge  
13.89      26.4 = Deck      15      20 = By House

0+79- 29.6 Lt. = ± + Ely of 42' x 9.8' Surf

0+77-

Hand. Rail - 3- 3" x 12" Stringers - 2" x 12" Deck

0+59- 27.7 Lt. ± of 5' Wood Bridge with

0+53.7 - 20' Rt. = Beg. House

0+50

0+25

0+00 = 50' S. of Prop. P.C.

08.1    15.0    18.9    21.5    21.8  
31      21  
± Draw      15      18.3 = along ± of 6 Brick Chimney  
15.45      27.7 = Deck  
15.2    16.3    18.4    20.93    21.84  
35      21      15 = Prop    20 = Top of  
edge      = pipe P.C.    Bot. Step  
16.2    16.9    17.8    18.6  
35      21      15  
edge  
16.7    17.3    17.9    18.5  
32      21      15  
edge

Actual Elev. shown



Lt.

#

Rt.

66

Origl Sect on P. 53 are O.K. for Rest.

1+55

08.6	10.6	12.8	18.5	20.5	21.0	24.4	28.1
50	21	10		5	11	20	44

1+35

7.5	11.7	12.5	17.0	17.4	20.0	21.0	27.7
50	21	12		5	10	32	57

1+15

08.2	14.5	15.4	15.5	18.8	21.6	22.0	22.1
50	32	21	8		15	20	45

1+09- 20' Rt. = end House

21.8  
20 = By  
House



X-see Malden St - Collingwood Dr. to  
Jewell St - For Grade establishment

WO# 25020

2-11-53

Allen

Ref. TP 1638

#1627

Sisson

Sub Map - Congress Hts Add

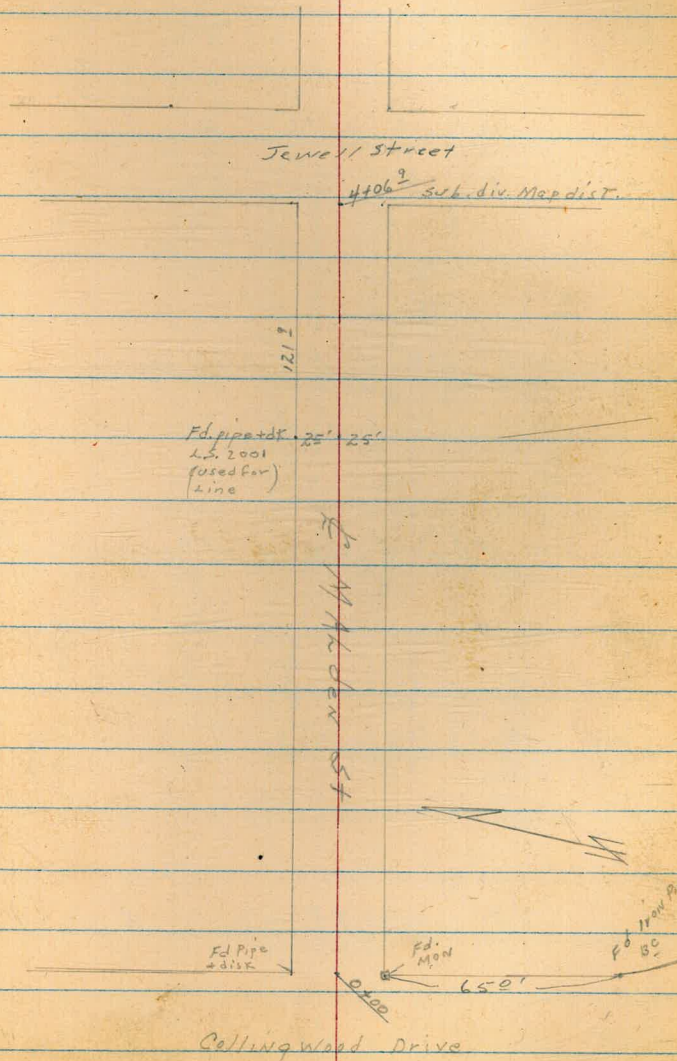
Powell

Schelin

See page 68 for levels

INDEXED  
FEB 16 1953

67





X-sec. Malden ST. Collingwood Dr  
to Jewell-ST  
See sketch page 67. No #25020

Lt = North

Rt = South

68

0+50

246.1	244.7	243.7	243.2	242.3	239.3
18	32	42	42	56	80
50	25		15	25	50

0+25

244.4	243.4	242.4	242.1	241.1	
35	45	55	58	68	
25	18		15	25	

0+12.24<sup>3</sup> Rt = E. 11<sup>5</sup>' conc drive

244.6	243.8	242.0	240.5	239.96	239.16
33	41	59	74	88	143
100	25	23		25	65

0+00 = Fly Line Collingwood Dr

242.5	242.4	241.4	239.6	236.9	233.8	229.9
54	55	65	83	110	141	181
100	50	25		25	50	65

0-25 = E Collingwood ST

TP, 7.94 247.88 0.11 239.94

247.88 T

B.M. 10.46 240.05

Prop Pipe Fly Line Malden  
69<sup>5</sup> E of Fly Line Jewell-  
229.59. FB 2035



Malden Street

Lt = No -

±

Lt. 20

69

Prop  
CONG MON. SE COR  
Collingwood + Malden.

T.P. 10.70 249.44 9.14 238.74

1400

0+90-24<sup>2</sup> Lt = ± 6<sup>5</sup>' wide Conc drive

0485- 24<sup>2</sup> Lt = begin brick wall -  
4<sup>2</sup> high Brick Post at cor. wall 2<sup>1</sup> high

0485- 21<sup>2</sup> Lt = ± 2'x2' Brick post 1' high

0+76-20<sup>1</sup> Rt = ± 11<sup>2</sup>' wide Conc drive

0+75

0+54-258 Lt = ± 7<sup>1</sup>' wide Conc drive

247.4	246.4	249.44	243.5	239.6
0 <sup>5</sup>	1 <sup>5</sup>	2 <sup>5</sup>	3 <sup>3</sup>	4 <sup>4</sup>
50	2 <sup>5</sup>	2 <sup>5</sup>	17	25
246.96	246.45			
0 <sup>92</sup>	1 <sup>43</sup>			
34 <sup>2</sup>	24 <sup>2</sup>			
Dr	0 <sup>5</sup>			
245.8	245.45			
2 <sup>1</sup>	2 <sup>5</sup>			
242	242			
Gr	Footings			
			243.17	242.30
			47 <sup>1</sup>	55 <sup>8</sup>
			20 <sup>1</sup>	30 <sup>1</sup>
			Dr	Dr
	245.2		243.2	
		244.5		
		3 <sup>4</sup>	47	
			25	
46.68				
120	245.56			
60 <sup>2</sup>	3 <sup>32</sup>			
Gar	35 <sup>88</sup>			
Floor	Dr			
	244.66			
	3 <sup>22</sup>			
	25 <sup>88</sup>			
	Dr			

247.88 ±



1+63-24<sup>8</sup> Lt= end Conc Drive

1+50

1+38-25<sup>0</sup> Lt= begin Conc drive - 39<sup>2</sup> Lt= Gar Floor

1+38-25<sup>0</sup> Lt= 2<sup>5</sup>' high brick wall  $\perp$  to line

1+35-18<sup>2</sup> Rt=  $\perp$  10" power pole #1633.

TP3 1.64 247.39 3.69 245.75 <sup>Nail in pole Rt 1+35 #1633</sup>

1+35-23<sup>6</sup> Lt= end brick wall

1+25

LT=No.

Et=50

70

245.54	245.17			
18 <sup>2</sup>	2 <sup>10</sup>			
39 <sup>2</sup>	14 <sup>2</sup>			
Gar Floor	Or			
	245.18			
	2 <sup>11</sup>	245.0	244.8	244.1
	2 <sup>11</sup>	24	26	23
	2 <sup>10</sup>	17	25	20
	drive			
	245.40			
18 <sup>2</sup>	19 <sup>2</sup>			
39 <sup>2</sup>	25 <sup>0</sup>			
Gar Floor	Or			

245.54	
18 <sup>2</sup>	
39 <sup>2</sup>	
Gar Floor	
	245.40
	19 <sup>2</sup>
	25 <sup>0</sup>
	Or
	245.4
	2 <sup>10</sup>
	245.0
	Gar
	at wall

46.6	247.39		
2 <sup>10</sup>	247.3		
23 <sup>5</sup>	2 <sup>11</sup>		
Footings	23 <sup>10</sup>		
	Or		
247.0			
245.9			
24	35	40	57
25		10	25

249.44



2144-40<sup>2</sup> Rt = 6 single Garage - Conc Floor No Apron

2135-18<sup>2</sup> Rt = 4 Power pole = JP1655

2125

2100-24<sup>5</sup> Lt = 6 double garage Conc. Apron + drive 16' wide FLOOR

1485-24<sup>8</sup> Lt = end 2<sup>7</sup>' high brick wall - base = 237

1475

1463-25<sup>2</sup> Lt = begin 2<sup>7</sup>' high brick wall - Conc base 00T 24<sup>2</sup>

Lt = No -

6

Rt = 50 -

71

108  
402  
Floor

	4 <sup>10</sup> = 43.1	6 <sup>6</sup> = 40.8	7 <sup>2</sup> = 240.2	7 <sup>4</sup>	8 <sup>4</sup>			
	25	4	3		25			
	245.19	244.41	244.2	247.7	241.1	241.4	239.4	235.5
	220	298	32	57	6 <sup>10</sup>	60	80	119
	396 Gar Floor	245 Apron	243 Gr		16	21	50	100
	244.4	244.8	244.8					
	30	2	10					
	248 Foot	248 Gr						
	10 <sup>9</sup> = 246.5	2 <sup>1</sup> = 245.3		4 <sup>10</sup>	4 <sup>5</sup>	4 <sup>6</sup>	6 <sup>10</sup>	
	260 Gr. above Wall	250		18	25	50		
	244.7	245.2						
	21	8 <sup>12</sup>						
	250 Footing	65 250						

247.39 x







Lt = No.

Rt = So.

73

TP5 7.93 238.59 - 10.18 230.66238.59 x

3481-18° Rt = 10" pepper tree

3477-18° Rt = Deadman.

3475

3462-17° Rt = 11" pepper tree.

3450

3444-26° Rt = 13' wide Conc drive <sup>E+W</sup> garage

3435-25° Lt = begin 5' high cyclone fence

3430-17° Rt = 10" pepper tree.

3423-25° Lt = 11' wide Conc drive

3410-17° Rt = 9" pepper tree

10	5	7	8	9	9	11
40	25	6	5	9	11	25
45	6	7	8	9	9	11
25	4	3			25	

239.8	235.5	233.1	231.9	231.6	231.3	229.5
236.3	233.9	232.9	232.6		231.1	

40	43
45	25
Dr	Dr

240.84 x



Lt = No

Rt = 50

74

TP<sub>6</sub> starting BM (229.59)  
8.99 229.60

4456<sup>2</sup> Ely line Jewell

253.4	238.2	234.8	230.8	226.3	221.6
+40	04	30	70	12 <sup>10</sup>	17 <sup>0</sup>
100	50	25	10	25	50

4431<sup>2</sup> = L.P.I. Jewell + Malden

244.0	237.8	235.0	230.9	226.6	224.5
+54	08	36	71	12 <sup>0</sup>	14 <sup>1</sup>
100	50	25	10	25	50

4407 - 18<sup>5</sup> Rt = 12" power pole # P1699

245.1	238.6	235.1	231.7	226.9	224.6
+65	00	35	69	11 <sup>1</sup>	14 <sup>0</sup>
100	50	25	9	25	50

4406<sup>2</sup> Wly line Jewell - 24<sup>8</sup> Lt = end 5' cyclone

245.1	238.6	235.1	231.7	226.9	224.6
+65	00	35	69	11 <sup>1</sup>	14 <sup>0</sup>
100	50	25	9	25	50

238.59 x



75



76



77



78



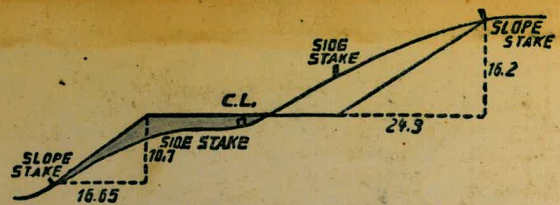
79



285

294.92  
11 17  
28375

34.3  
39.6  
4.7



**DISTANCES FROM SIDE STAKES FOR CROSS-SECTIONING.**  
SLOPE 1 1/2 TO 1. ROADWAY OF ANY WIDTH.

	0	.1	.2	.3	.4	.5	.6	.7	.8	.9	
0	0.00	0.15	0.30	0.45	0.60	0.75	0.90	1.05	1.20	1.35	0
1	1.50	1.65	1.80	1.95	2.10	2.25	2.40	2.55	2.70	2.85	1
2	3.00	3.15	3.30	3.45	3.60	3.75	3.90	4.05	4.20	4.35	2
3	4.50	4.65	4.80	4.95	5.10	5.25	5.40	5.55	5.70	5.85	3
4	6.00	6.15	6.30	6.45	6.60	6.75	6.90	7.05	7.20	7.35	4
5	7.50	7.65	7.80	7.95	8.10	8.25	8.40	8.55	8.70	8.85	5
6	9.00	9.15	9.30	9.45	9.60	9.75	9.90	10.05	10.20	10.35	6
7	10.50	10.65	10.80	10.95	11.10	11.25	11.40	11.55	11.70	11.85	7
8	12.00	12.15	12.30	12.45	12.60	12.75	12.90	13.05	13.20	13.35	8
9	13.50	13.65	13.80	13.95	14.10	14.25	14.40	14.55	14.70	14.85	9
10	15.00	15.15	15.30	15.45	15.60	15.75	15.90	16.05	16.20	16.35	10
11	16.50	16.65	16.80	16.95	17.10	17.25	17.40	17.55	17.70	17.85	11
12	18.00	18.15	18.30	18.45	18.60	18.75	18.90	19.05	19.20	19.35	12
13	19.50	19.65	19.80	19.95	20.10	20.25	20.40	20.55	20.70	20.85	13
14	21.00	21.15	21.30	21.45	21.60	21.75	21.90	22.05	22.20	22.35	14
15	22.50	22.65	22.80	22.95	23.10	23.25	23.40	23.55	23.70	23.85	15
16	24.00	24.15	24.30	24.45	24.60	24.75	24.90	25.05	25.20	25.35	16
17	25.50	25.65	25.80	25.95	26.10	26.25	26.40	26.55	26.70	26.85	17
18	27.00	27.15	27.30	27.45	27.60	27.75	27.90	28.05	28.20	28.35	18
19	28.50	28.65	28.80	28.95	29.10	29.25	29.40	29.55	29.70	29.85	19
20	30.00	30.15	30.30	30.45	30.60	30.75	30.90	31.05	31.20	31.35	20
21	31.50	31.65	31.80	31.95	32.10	32.25	32.40	32.55	32.70	32.85	21
22	33.00	33.15	33.30	33.45	33.60	33.75	33.90	34.05	34.20	34.35	22
23	34.50	34.65	34.80	34.95	35.10	35.25	35.40	35.55	35.70	35.85	23
24	36.00	36.15	36.30	36.45	36.60	36.75	36.90	37.05	37.20	37.35	24
25	37.50	37.65	37.80	37.95	38.10	38.25	38.40	38.55	38.70	38.85	25
26	39.00	39.15	39.30	39.45	39.60	39.75	39.90	40.05	40.20	40.35	26
27	40.50	40.65	40.80	40.95	41.10	41.25	41.40	41.55	41.70	41.85	27
28	42.00	42.15	42.30	42.45	42.60	42.75	42.90	43.05	43.20	43.35	28
29	43.50	43.65	43.80	43.95	44.10	44.25	44.40	44.55	44.70	44.85	29
30	45.00	45.15	45.30	45.45	45.60	45.75	45.90	46.05	46.20	46.35	30
31	46.50	46.65	46.80	46.95	47.10	47.25	47.40	47.55	47.70	47.85	31
32	48.00	48.15	48.30	48.45	48.60	48.75	48.90	49.05	49.20	49.35	32
33	49.50	49.65	49.80	49.95	50.10	50.25	50.40	50.55	50.70	50.85	33
34	51.00	51.15	51.30	51.45	51.60	51.75	51.90	52.05	52.20	52.35	34
35	52.50	52.65	52.80	52.95	53.10	53.25	53.40	53.55	53.70	53.85	35
36	54.00	54.15	54.30	54.45	54.60	54.75	54.90	55.05	55.20	55.35	36
37	55.50	55.65	55.80	55.95	56.10	56.25	56.40	56.55	56.70	56.85	37
38	57.00	57.15	57.30	57.45	57.60	57.75	57.90	58.05	58.20	58.35	38
39	58.50	58.65	58.80	58.95	59.10	59.25	59.40	59.55	59.70	59.85	39
40	60.00	60.15	60.30	60.45	60.60	60.75	60.90	61.05	61.20	61.35	40
41	61.50	61.65	61.80	61.95	62.10	62.25	62.40	62.55	62.70	62.85	41
42	63.00	63.15	63.30	63.45	63.60	63.75	63.90	64.05	64.20	64.35	42
43	64.50	64.65	64.80	64.95	65.10	65.25	65.40	65.55	65.70	65.85	43
44	66.00	66.15	66.30	66.45	66.60	66.75	66.90	67.05	67.20	67.35	44
45	67.50	67.65	67.80	67.95	68.10	68.25	68.40	68.55	68.70	68.85	45
46	69.00	69.15	69.30	69.45	69.60	69.75	69.90	70.05	70.20	70.35	46
47	70.50	70.65	70.80	70.95	71.10	71.25	71.40	71.55	71.70	71.85	47
48	72.00	72.15	72.30	72.45	72.60	72.75	72.90	73.05	73.20	73.35	48
49	73.50	73.65	73.80	73.95	74.10	74.25	74.40	74.55	74.70	74.85	49
50	75.00	75.15	75.30	75.45	75.60	75.75	75.90	76.05	76.20	76.35	50

THE NATIONAL BLANK BOOK COMPANY  
HOLYOKE MASSACHUSETTS  
NEW YORK CHICAGO BOSTON SAN FRANCISCO