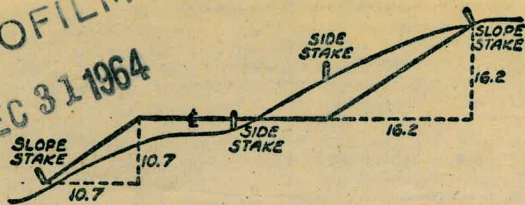


2041

TRAVEL BOOK



MICROFILMED  
DEC 31 1964



DISTANCES FROM SIDE STAKES FOR CROSS-SECTIONING  
SLOPE 1 TO 1. ROADWAY OF ANY WIDTH

	0	.1	.2	.3	.4	.5	.6	.7	.8	.9	
0	0.00	0.10	0.20	0.30	0.40	0.50	0.60	0.70	0.80	0.90	0
1	1.00	1.10	1.20	1.30	1.40	1.50	1.60	1.70	1.80	1.90	1
2	2.00	2.10	2.20	2.30	2.40	2.50	2.60	2.70	2.80	2.90	2
3	3.00	3.10	3.20	3.30	3.40	3.50	3.60	3.70	3.80	3.90	3
4	4.00	4.10	4.20	4.30	4.40	4.50	4.60	4.70	4.80	4.90	4
5	5.00	5.10	5.20	5.30	5.40	5.50	5.60	5.70	5.80	5.90	5
6	6.00	6.10	6.20	6.30	6.40	6.50	6.60	6.70	6.80	6.90	6
7	7.00	7.10	7.20	7.30	7.40	7.50	7.60	7.70	7.80	7.90	7
8	8.00	8.10	8.20	8.30	8.40	8.50	8.60	8.70	8.80	8.90	8
9	9.00	9.10	9.20	9.30	9.40	9.50	9.60	9.70	9.80	9.90	9
10	10.00	10.10	10.20	10.30	10.40	10.50	10.60	10.70	10.80	10.90	10
11	11.00	11.10	11.20	11.30	11.40	11.50	11.60	11.70	11.80	11.90	11
12	12.00	12.10	12.20	12.30	12.40	12.50	12.60	12.70	12.80	12.90	12
13	13.00	13.10	13.20	13.30	13.40	13.50	13.60	13.70	13.80	13.90	13
14	14.00	14.10	14.20	14.30	14.40	14.50	14.60	14.70	14.80	14.90	14
15	15.00	15.10	15.20	15.30	15.40	15.50	15.60	15.70	15.80	15.90	15
16	16.00	16.10	16.20	16.30	16.40	16.50	16.60	16.70	16.80	16.90	16
17	17.00	17.10	17.20	17.30	17.40	17.50	17.60	17.70	17.80	17.90	17
18	18.00	18.10	18.20	18.30	18.40	18.50	18.60	18.70	18.80	18.90	18
19	19.00	19.10	19.20	19.30	19.40	19.50	19.60	19.70	19.80	19.90	19
20	20.00	20.10	20.20	20.30	20.40	20.50	20.60	20.70	20.80	20.90	20
21	21.00	21.10	21.20	21.30	21.40	21.50	21.60	21.70	21.80	21.90	21
22	22.00	22.10	22.20	22.30	22.40	22.50	22.60	22.70	22.80	22.90	22
23	23.00	23.10	23.20	23.30	23.40	23.50	23.60	23.70	23.80	23.90	23
24	24.00	24.10	24.20	24.30	24.40	24.50	24.60	24.70	24.80	24.90	24
25	25.00	25.10	25.20	25.30	25.40	25.50	25.60	25.70	25.80	25.90	25
26	26.00	26.10	26.20	26.30	26.40	26.50	26.60	26.70	26.80	26.90	26
27	27.00	27.10	27.20	27.30	27.40	27.50	27.60	27.70	27.80	27.90	27
28	28.00	28.10	28.20	28.30	28.40	28.50	28.60	28.70	28.80	28.90	28
29	29.00	29.10	29.20	29.30	29.40	29.50	29.60	29.70	29.80	29.90	29
30	30.00	30.10	30.20	30.30	30.40	30.50	30.60	30.70	30.80	30.90	30
31	31.00	31.10	31.20	31.30	31.40	31.50	31.60	31.70	31.80	31.90	31
32	32.00	32.10	32.20	32.30	32.40	32.50	32.60	32.70	32.80	32.90	32
33	33.00	33.10	33.20	33.30	33.40	33.50	33.60	33.70	33.80	33.90	33
34	34.00	34.10	34.20	34.30	34.40	34.50	34.60	34.70	34.80	34.90	34
35	35.00	35.10	35.20	35.30	35.40	35.50	35.60	35.70	35.80	35.90	35
36	36.00	36.10	36.20	36.30	36.40	36.50	36.60	36.70	36.80	36.90	36
37	37.00	37.10	37.20	37.30	37.40	37.50	37.60	37.70	37.80	37.90	37
38	38.00	38.10	38.20	38.30	38.40	38.50	38.60	38.70	38.80	38.90	38
39	39.00	39.10	39.20	39.30	39.40	39.50	39.60	39.70	39.80	39.90	39
40	40.00	40.10	40.20	40.30	40.40	40.50	40.60	40.70	40.80	40.90	40
41	41.00	41.10	41.20	41.30	41.40	41.50	41.60	41.70	41.80	41.90	41
42	42.00	42.10	42.20	42.30	42.40	42.50	42.60	42.70	42.80	42.90	42
43	43.00	43.10	43.20	43.30	43.40	43.50	43.60	43.70	43.80	43.90	43
44	44.00	44.10	44.20	44.30	44.40	44.50	44.60	44.70	44.80	44.90	44
45	45.00	45.10	45.20	45.30	45.40	45.50	45.60	45.70	45.80	45.90	45
46	46.00	46.10	46.20	46.30	46.40	46.50	46.60	46.70	46.80	46.90	46
47	47.00	47.10	47.20	47.30	47.40	47.50	47.60	47.70	47.80	47.90	47
48	48.00	48.10	48.20	48.30	48.40	48.50	48.60	48.70	48.80	48.90	48
49	49.00	49.10	49.20	49.30	49.40	49.50	49.60	49.70	49.80	49.90	49
50	50.00	50.10	50.20	50.30	50.40	50.50	50.60	50.70	50.80	50.90	50

Distance of slope stake from side or shoulder stake for any width roadway, slope 1 to 1. If ground is nearly level, the cut or fill at side stake is located by the double entry method in left column and top row. The number in body of table in same row and column gives distance from side stake to slope stake. If ground is not level estimate the difference in elevation between the side stake and slope stake, lower target by this amount if cut, elevate if fill. Add this amount to cut or fill and find distance in table. Set up rod at this point, and line of sight should cut target. If it does not make the slight adjustment necessary.

INDEXED

to page # 67



Scott-Garrison-Fenelon 2-

Tooley St. 60<sup>th</sup> to Paradise 3A to 54

Alley BIK. 17, La Jolla Park, 68-69  
levels proposed sewer



X-Sec. SCOTT.  
Dickens to Harbor Drive

#3749

Sommermeier  
McCoy  
Allen  
Rohr

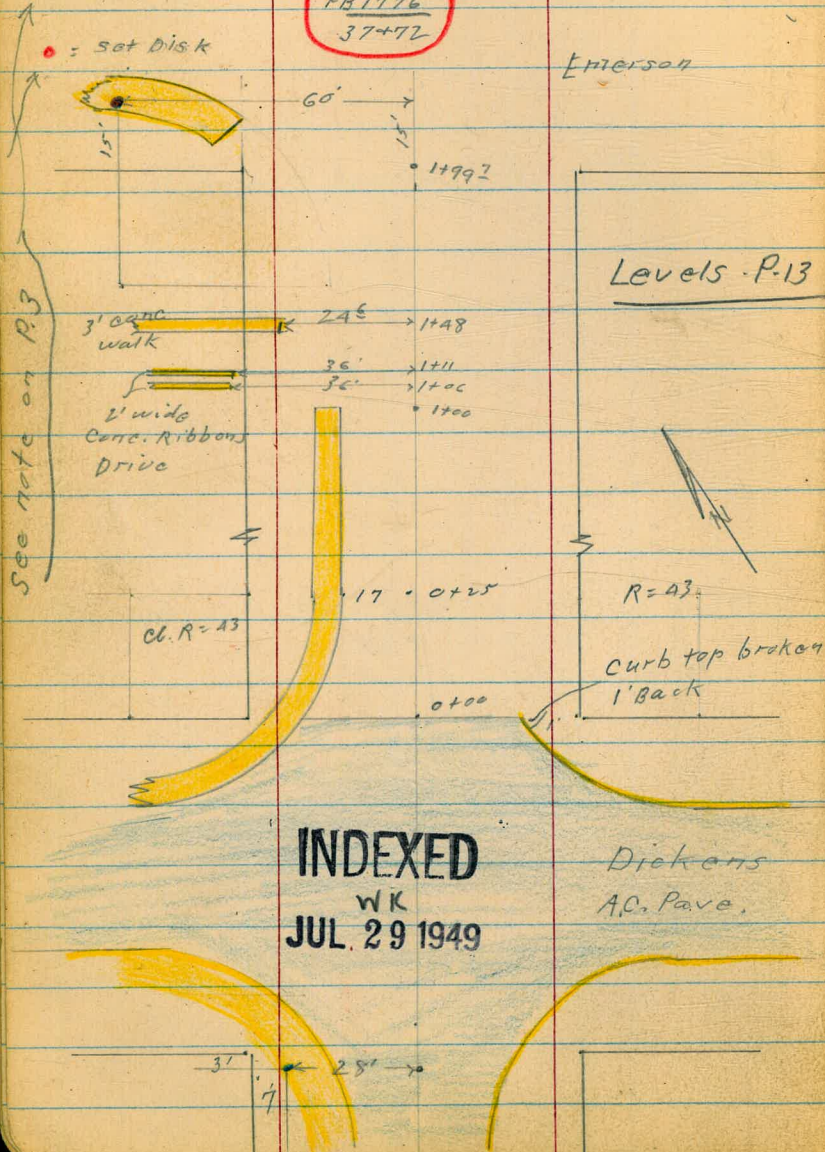
7-22-49

W.O. 3148A

■ = Fd. Man  
● = Fd. L+T. or Disk

See  
FR 1776  
37+72

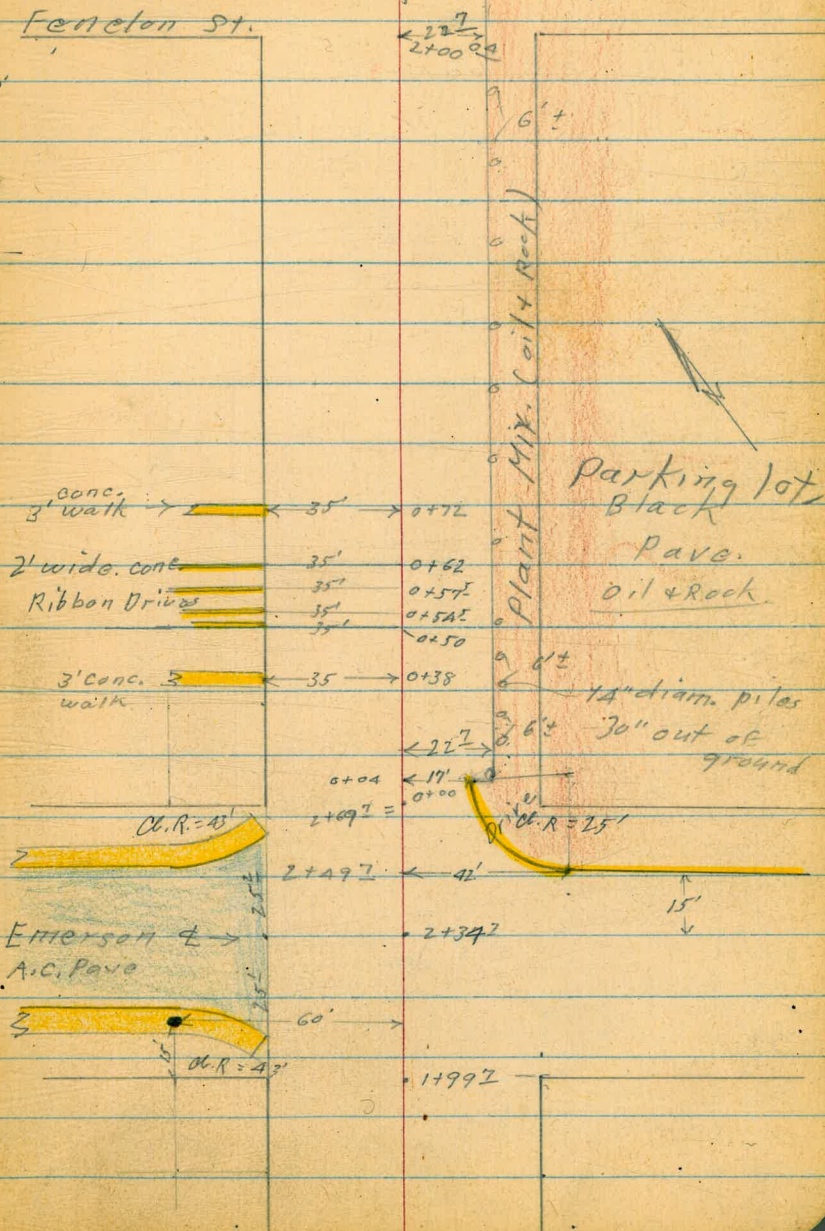
● = set Disk



Fenelon St.

SCOTT.

2





Garrison St. - E

Note  
Scott run from 1760 S.E. 1/4. from L+T at Dickers (P.1)  
Point  
To 1760 S.E. 1/4 from L+T. at Ingelow (P.3)  
Lines on Fenelon and Garrison streets  
were produced S.E. 1/4. from points on  
locust-through Rosecrans. to south.  
Points used for this are shown  
on City Tie sheets #707 + #708

Fenelon St

60'

1779<sup>ST</sup>

Face cb =  
2400<sup>±</sup>

1776<sup>Q</sup>

25' Rad.

SCOTT ST.

Plant Mix  
oil & Rock

Ch. R =  
43'

0+00

60'

Garrison St

SCOTT ST.

35'

Reset.

This Mon. was  
0.15 West  
& 0.03 south of our  
lines. Mr. Dickerson,  
of Harbor Dept.,  
removed R.E. 587 Tag.  
I set City Disk on  
intersection as per  
our lines.

L+T. N.Y. Rot. Ingelow.  
see tie pt. sheet #705

Exist. Pav. See 1776  
72

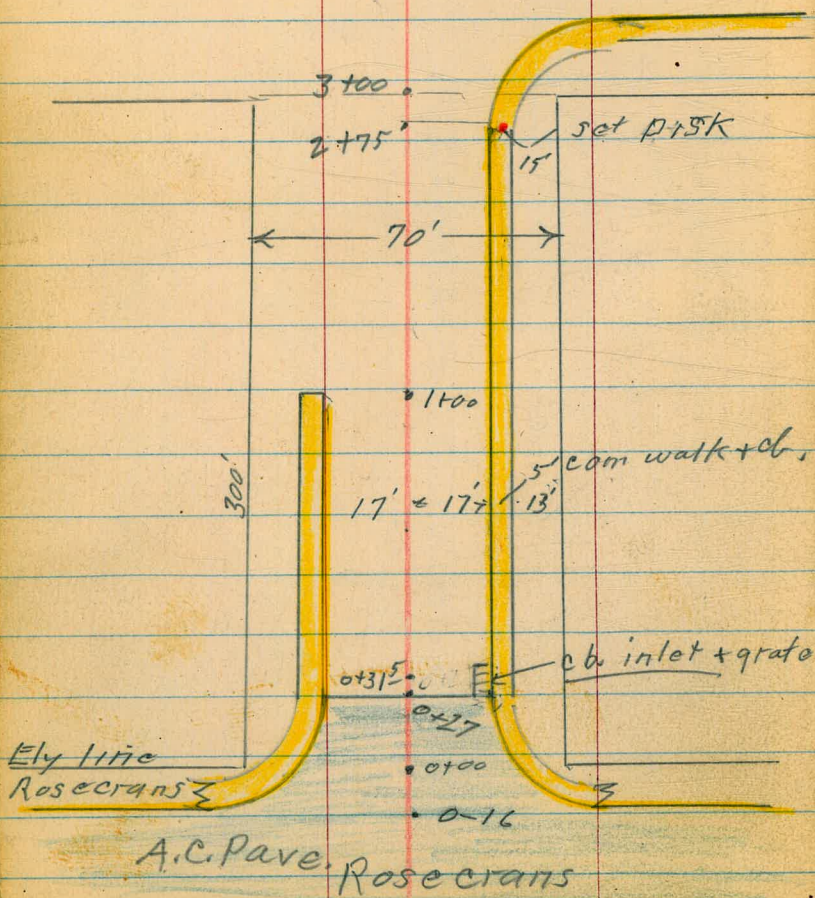
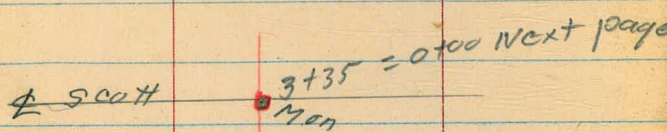
3



GARRISON St.  
Rosecrans to Scott.

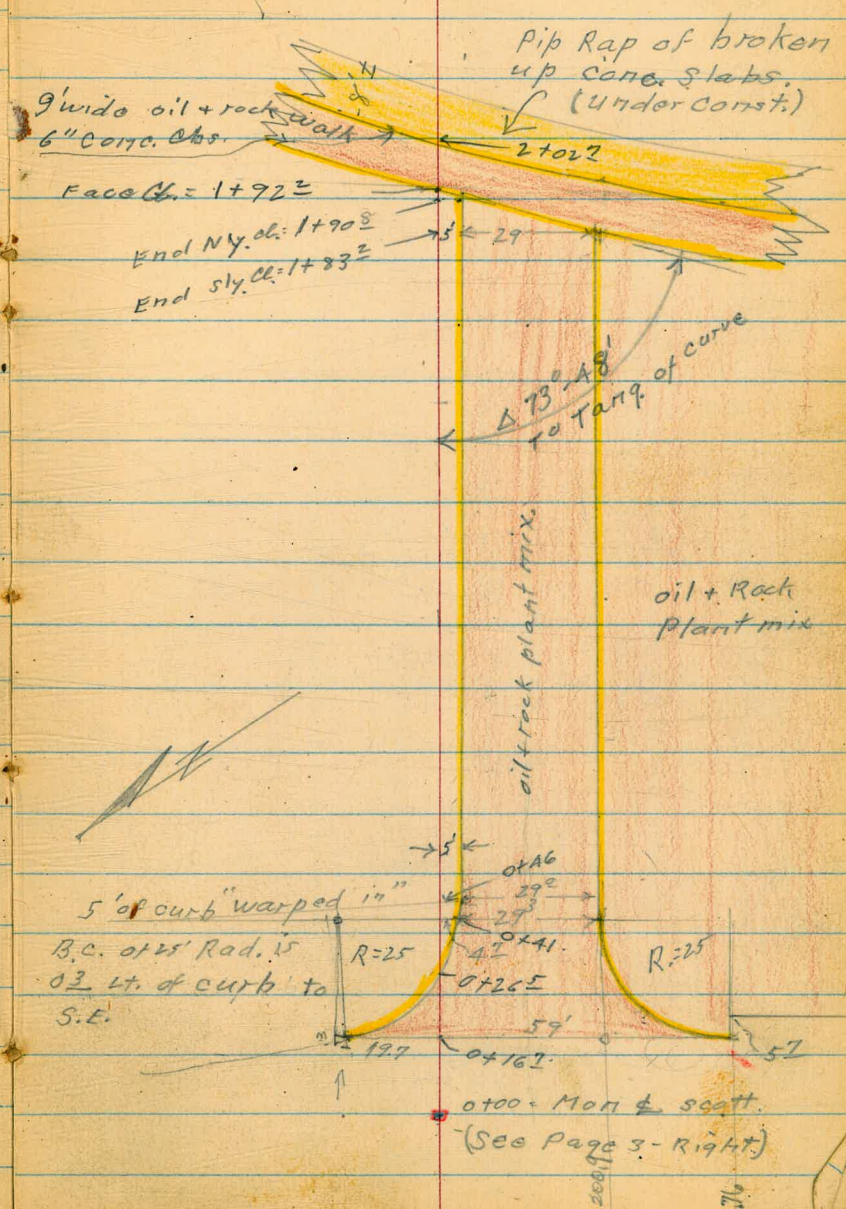
Levels - P.G.

IND  
W.K.  
JUL 29 1949



Garrison St. Produced  
Scott. Ely. (on Tidelands)

4





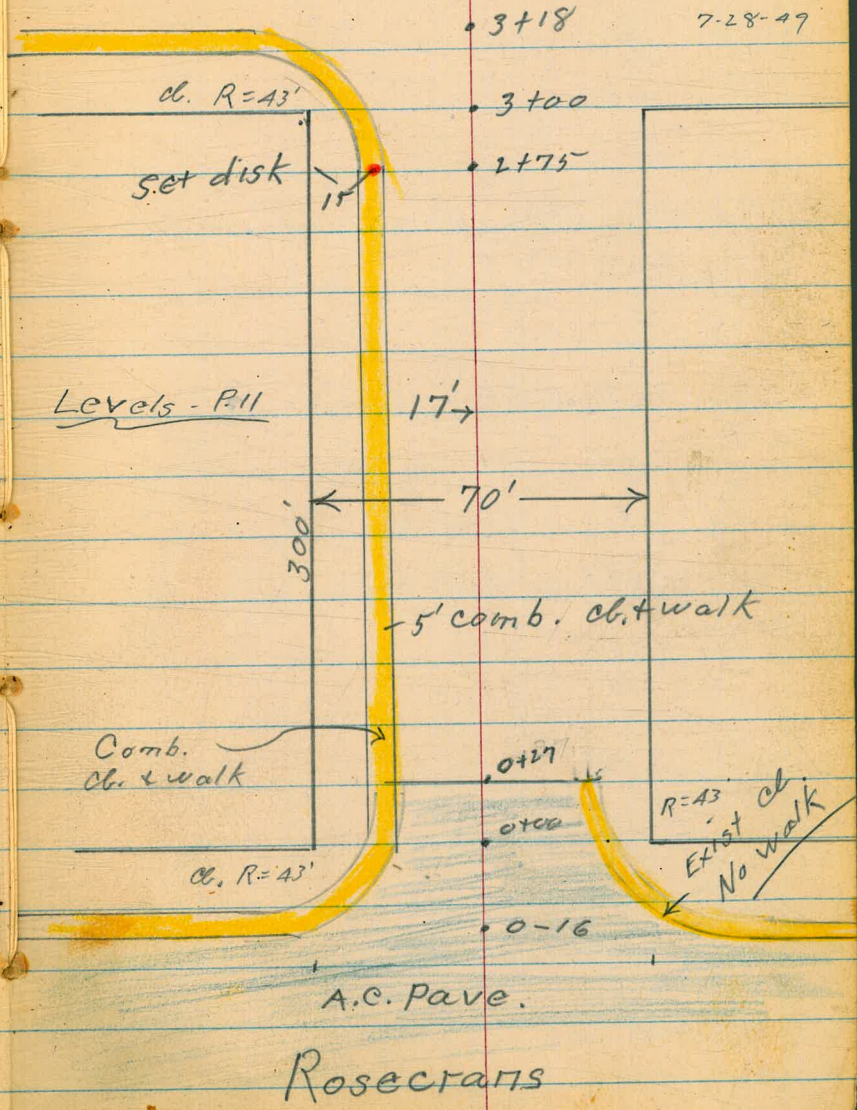
INDEXED  
W.K.  
JUL 29 1949

Fenelon  
Rosecrans to Scott.

5

Sommereyer  
M<sup>o</sup> Coy  
Allen  
Rohr  
7-28-49

Scott





Garrison St.  
(Sketch - PA)

0+50

0+31<sup>5</sup> = ctr. 3<sup>5</sup> long 2<sup>5</sup> wide grate to  
ob. inlet.

0+27 = End A.C. Pavc.

0+00 = Ely line Rosecrans

0-16 Cont.

0-16 = Ely Cb. line Rosecrans (A.C. Pavc.)

Sw. BR Garrison

+ Rosecrans 4.68

7.43

2.75

#

2.55	1.93	1.93	1.63	2.16
<u>4.93</u>	<u>5.5</u>	5.5	5.8	5.27
17	17		17	17
cc				cc

1.53	1.28
<u>5.91</u>	<u>6.15</u>
142	17
Grde	Grate

2.55	1.92	2.13	1.59	2.19
<u>4.88</u>	<u>5.51</u>	5.30	5.84	5.24
17	17		17	17
cc	G		G	cc E.C.
E.C.				

2.85	2.23	2.29	2.41	2.21	2.02	2.65
<u>4.58</u>	<u>5.21</u>	<u>5.14</u>	5.02	5.22	5.41	4.78
263	262	17		17	263	262
cc	G				G	cc

2.82

4.61  
60  
cc. B.C.

3.11	2.46	2.50	2.59	2.63	2.51	2.33	2.19
<u>4.82</u>	<u>4.97</u>	<u>4.93</u>	4.84	4.80	4.92	5.10	5.24
60	60	35	17		17	35	60
cc.	G.						
B.C.							

7.43



Garrison st

2+75-17' RT. = cl. B.C.

2+50

2+00

1+50

1+05

1+01

1+00

17' LT. = End curb

	2.03	1.53	.73	.73	.73	7 1.77
	5.4 35	5.9 23	6.7 18	6.7	6.7 17	5.96 17 cl. B.C.
	2.23	2.03	.93	1.03	1.03	1.76
	5.2 35	5.4 24	6.5 17	6.4	6.4 17	5.86 17 cl.
	2.23	2.13	1.13	1.53	1.23	1.75
	5.2 35	5.5 20	6.3 15	5.9	6.2 17	5.68 17 cl.
	2.53	2.23	1.33	1.53	1.22	
	4.9 35	5.2 20	6.1 15	5.9	6.21 17 in drive	
	2.73	2.73	1.73	1.73	1.53	2.08
	5.0 35	5.0 20	6.0 17	5.7	5.9 17	5.35 17 cl.
	1.73		1.53	1.83	1.63	2.08
	6.0 35		5.9 17	5.6	5.8 17	5.35 17 cl.
	2.29		1.53	1.83	1.63	2.08
	5.1A 17 cl.	5.9 17		5.6	5.8 17	5.35 17 cl.

7.13



Garrison St.

(Entrance on the return)

0+41 4<sup>2</sup> Rt. = where B.C. should be

2.25	2.05	2.14	1.35		
3.7	3.7	3.61	4.40	4.22	4.57
35		42	42	42	34
		cc	cc	cc	cc
			cc-E.C. in drive		
			1.53	1.18	1.34

19<sup>E</sup> Rt. = ± 29' roadway.  
 59' Rt. = start cl. (1+76 Scott p.18)  
 19<sup>B</sup> Lt. = start cl.  
 0+16<sup>2</sup> } start plant mix pave. (cont)

1.65	1.75	1.24	1.14	1.01	1.04	1.01	1.50
4.1	4.00	4.51	4.61	4.74	4.71	4.74	4.25
35	192	193		195	34	59	59
	cc	pave				pave	cc
	End						End

(sketch - P. 4)

Garrison St. on the tidelands

This section = 0+00 for balance of  
 3+35 = 0+00 ± Scott

.75	.85	.75	.35
5.0	4.9	5.0	5.4
35		35	60

3+18 = Wly cl. line Scott.

.75	.65	.65	.65	.45	.55	1.25
5.0	5.1	5.1	5.1	5.3	5.2	4.55
35	17		17	35	60	60
						cc-E.C.

3+09<sup>2</sup> 35' Rt. = Face cl.

1.55	1.25	.55	.65	.65	.55	1.34
4.2	4.5	5.2	5.1	5.1	5.2	4.41
35	30	20		17	35	35
						cc

T.P.S.W Disk  
 5-15' Garrison  
 25' tie to west

424 5.75 • 5.92 | 1.51 BM #1

5.75

3+00 = Wly. line Scott.

1.63	1.23	.53	.63	.63	.63	1.33
5.8	6.1	6.9	6.8	6.8	6.8	6.00
35	25	18		17	25	25
						top cl

7.43







BM<sup>#1</sup>-P8

7.12 1.51 ✓

2+03

$$\begin{array}{r} 3.35 \\ 5.28 \\ \underline{35} \\ \text{walk} \end{array}$$

$$\begin{array}{r} 3.73 \\ 4.90 \\ \underline{35} \\ \text{TOP CL} \end{array}$$
2+02<sup>I</sup> = End cross walk + wall
$$\begin{array}{r} 3.15 \\ 5.48 \\ \text{Top wall + walk} \end{array}$$
1+92<sup>8</sup> (start walk - P-A)
$$\begin{array}{r} 3.35 \\ 5.28 \\ \text{walk} \end{array}$$
1+92<sup>I</sup> = Face cross cl.1+92<sup>2</sup> = 4' intersect cross cl.
$$\begin{array}{r} 3.71 \\ 4.92 \\ \text{cl} \end{array}$$
1+90<sup>8</sup> - 4' = End Nly cl. (P.A)  
5' Rt. = Intersect Cross cl.
$$\begin{array}{r} 3.23 \\ 5.4 \\ \underline{35} \end{array}$$

$$\begin{array}{r} 3.33 \\ 5.3 \\ \underline{5} \\ \text{cl} \end{array} \quad \begin{array}{r} 3.69 \\ 4.94 \\ \underline{5} \\ \text{G} \end{array} \quad \begin{array}{r} 3.06 \\ 5.57 \\ \underline{5} \\ \text{G} \end{array}$$
1+89 - 2<sup>I</sup> At. = Ctr. fire Hydt.8.638.63



Fennelon St.  
(sketch-P-5)

Sommermeier  
7-28-49

11

T.P. 4.72 5.46 7.16 0.74

1+50

	1.54	1.00	.80	.80	.60	1.90	
	6.36	6.9	7.1	7.1	7.3	6.5	6.0
	17	17	10	17	26	35	
	Ob.						

1+00

	1.96	1.50	1.20	1.20	.80	2.00	2.40
	5.94	6.4	6.7	6.7	7.1	5.9	5.5
	17	17	11	18	26	35	
	cc						

0+50

	2.37	2.00	1.70	1.60	2.00	2.60	
	5.53	5.9	6.2	6.3	5.7	5.3	
	17	17	16	19	35		
	cc						

0+27 } 17' Lt. = Cl. E.C.  
17' Rt. = End curb. = Cl. E.C.  
End A.C. Pavc.

	2.57	1.99	2.17	1.79	2.40	2.90	
	5.33	5.71	5.73	6.11	5.50	5.0	
	17	17	17	17	17	35	
	Cl. E.C.	G	G	G	Cl. E.C.	Ord.	

0+00 = Ely. line Rosecrans

	2.92	2.30	2.17	2.33	2.14	2.77	
	4.98	5.60	5.47	5.43	5.57	5.76	5.13
	268	268	17	17	26.8	26.8	26.8
	cc	G			G		cc

0-16 = Ely. Cl. Rosecrans

	3.00	2.35	2.49	2.60	2.69	2.62	2.51	3.11
	4.90	5.55	5.41	5.30	5.21	5.28	5.39	4.79
	60	60	35	17	17	35	60	60
	cc	G					G	cc
	cc							cc

SW P.  
Rosecrans 5.15 7.90 — 2.75  
+ Garrison

7.90



T.P. 7.17 6.35 6.28 -0.82

Set B.M. on Disk  
N'y. 15' Line Fenelon  
25' wly. of wly line Scott.

4.94 0.52 B.M.#2

3+00 = Wly line Scott

+37	-24	-14	-14	-54	+46
5.09	5.7	5.6	5.6	6.0	5.0
25	25	17	17	17	35
cl					

2+75 - 17' Lt. = cl. B.C. (43' Rad)

+49	+04	-04	-24	+76	+76
4.97	5.5	5.5	5.7	4.7	4.7
17	17	17	17	27	35
cl B.C.					

2+50

.69	.26	.26	.06	1.06	
4.77	5.2	5.2	5.4	4.4	
cl	17	17	17	35	

2+00

1.12	.56	.76	.66	.36	1.36	1.76
4.32	4.9	4.7	4.8	5.1	4.1	4.0
17	17	17	9	17	30	35
cl						

5.46

5.46



Scott St.

Dickens St. to Harbor Dr.  
Sketch - P. 2.

1+48 - 24' Lt. = ± 3' wide Concr. walk.

3.73  
35

3.88  
24'

1+11 - 36' Lt. = ± 2' wide Concr. ribbon Dr.

3.08  
45

3.07  
36

1+06 - 36' Lt. = ± 2' wide Concr. ribbon Dr.

3.22  
45

3.22  
36

starting at 1+00 hedge and garden planted to with 17' of standard 17' curb line

1+00 17' Lt. = End 5' comb. walk + cl.

3.15  
35

3.97  
17  
End  
cl.

4.0  
17  
End

4.1

4.6  
16

4.0  
19

3.8  
35

0+50

INDEXED  
W.K.  
JUL 29 1949

2.70  
3.65  
17  
cl.

2.55  
3.8  
17  
End.

3.8

4.4  
17

3.4  
25

3.1  
35

0+25 - 17' Lt. = cl. E.C.

2.87  
3.48  
17  
cl. E.C.

2.65  
3.7  
17  
End.

3.35

4.3  
16

3.4  
20

2.9  
35

0+00 = Nly. Dickens = End A.C. Pauc.

3.05  
3.30  
25  
cl.

2.55  
3.80  
25  
cl.

2.65  
3.70  
17

3.50

4.06  
17

4.17  
25  
cl.

3.63  
25  
cl.

3.1  
35

X - From P. 12 = 6.35

6.35







Scott

15

0+54<sup>Σ</sup> 35' Lt. = ± 2' wide drive ribbon

↑  
conc.

.29  
4.44  
48  
4.70  
35

0+50 - 35' Lt. = ± 2' wide drive ribbon

.35 .13 .13  
4.38 4.60 4.6 5.2 5.2 4.4 4.10 3.40  
48 35 Drive 23 8 17 222 35  
Edge pave pave

+47 - 22' Rt. = light standard

+44 - 29' Lt. = Polo # 1360

0+38 - 35' Lt. = ± 3' wide walk

.19  
4.54  
35  
walk

0+10 - 23' Rt. = start row 14" diam pile ends  
Set in ground as guard posts. 6' centers

also 22' Rt. = 90° in line of parking lot.  
0+04 - 17' Rt. = End cb. + 90° in

.43 1.15 1.21 1.53  
4.3 3.58 3.52 3.18  
17 17 222 35  
End cb. pave

0+00  
2+69<sup>Σ</sup> = Nly. Emerson

1.03 .33 .03  
3.7 4.4 4.7 4.8 4.2 3.48  
35 17 7 175 17.6  
cc

2+59<sup>Σ</sup> = 35' Lt. = End cb. + paving

1.33 1.52 .93  
3.4 3.21 3.80  
35 35 35  
cb G

2+51.7 = Line of cb. to west.

1.67 1.22 1.16 .93  
3.06 3.51 3.57 4.3 4.5 4.4 3.48  
60 G 35 17 17 17 31.9  
cb. B.C. 60 pave 17 drive

4.73

4.73



Scott

16

T.P 6.32 5.90 5.15 -0.42

+87 - 22<sup>3'</sup> Rt. = Ctr. light standard

1+50

1+31 - 23' Rt. = 6" iron pipe sign standard

1+17 5' Rt. = Ctr. 2'x2' grate over box.  
Exact  
(can not get a flow line)

1+00

0+72 - 35' Lt. = 3' wide Conc. Walk

0+64 18' Rt. = Pole # A20695 H

0+62

35' Lt. = 2' wide Conc.  
Ribbon to drive

0+57E

4.73

±

-1.27	-1.77	-1.77	.18	.84
<u>5.0</u>	<u>5.5</u>	5.5	<u>4.55</u>	<u>3.89</u>
35	20		22E pave	35 pave.

See Page 20 →

-1.22	-4.07
<u>5.95</u>	<u>8.81</u>
5.75 Grate	5. Approx Invert of box

-1.27	-1.47	-1.87	.31	1.01
<u>5.4</u>	<u>5.2</u>	5.6	<u>4.42</u>	<u>3.72</u>
35	20		22E pave	35

-1.15	-1.26
<u>4.88</u>	<u>4.99</u>
43	35

.31	-1.17
<u>4.42</u>	<u>4.90</u>
48	35

.84	-1.05
<u>4.39</u>	<u>4.78</u>
48	35

4.73



Scott

17

+31 22<sup>2</sup> Rt. = light standard

0+25 23<sup>5</sup> Rt. = Fire Hydt.  
17' Lt. = cl. E.C.

	x.44	-1.10		-1.20	x.75	x.88
	5.46	6.0	6.1	5.15	4.52	
	17	17		22 <sup>4</sup>	35	
	cl			pavo	pavo	

= 0+00  
2+70<sup>24</sup> = Nly. Fenelon

	x.36	-1.20	-1.30		x.60	x.18
	5.54	6.1	6.2	6.1	5.3	4.72
	24 <sup>9</sup>	24 <sup>9</sup>	17		22 <sup>2</sup>	35
	top. cl.				pavo	

2+60 35' Lt. = Top. cl.

	x.36
	5.54
	35
	top. cl.

2+35<sup>04</sup> =  $\Phi$  Fenelon

	-1.20	-1.40	.30	.50	.97
	6.1	6.3	5.7	5.40	4.93
	35	19		22 <sup>6</sup>	35
				pavo	

2+18<sup>24</sup> sly cl. line fenelon

	-1.60	-1.60	-1.20	x.43	x.43
	6.5	6.5	6.1	5.47	4.97
	35	19		22 <sup>6</sup>	35
				pavo	pavo

2+00<sup>04</sup> = sly, Fenelon

	-1.40	-1.50	-1.30	.33	.90
	5.5	6.4	6.2	5.57	5.00
	35	20		22 <sup>2</sup>	35
				pavo	

5.90

5.90



Scott

T.P. 5.51 6.33 5.08 0.82

intersection  
See Garrison st. (P. 8) for

1+80 - 23<sup>2</sup> Rt. = End Row of pile guard posts.

1+76 22<sup>5</sup> = Jog in paved lot.  
16<sup>2</sup> Rt. = start cl. paved lot.

1.50	1.55	1.70
<u>4.40</u>	<u>4.35</u>	<u>4.20</u>
162	222	35
cl	Jog in pave	pave

1+75 17' Lt. = cl. B.C.

+1.19 (40.8) (125)	+1.40	+1.40	+1.80	+1.57	+1.85
<u>4.71</u>	<u>5.5</u>	5.5	<u>5.1</u>	<u>4.33</u>	<u>4.05</u>
17	17		15	222	35
cl	cl			pave	

1+50

1+30 - 22<sup>3</sup> Rt. = light standard

+1.00	+1.20	+1.10	+1.20	+1.16	+1.90
<u>4.90</u>	<u>5.7</u>	5.8	<u>5.7</u>	<u>4.44</u>	<u>4.00</u>
17	17		12	222	35
cl				pave	

1+00

+1.75	+1.10	+1.10	+1.10	+1.14	+1.64
<u>5.15</u>	<u>5.8</u>	6.0	<u>5.8</u>	<u>4.76</u>	<u>4.26</u>
17	17		14	223	35
cl				pave	

0+50

+1.56	0	+1.30	+1.83	+1.60
<u>5.34</u>	5.9	6.2	<u>4.97</u>	<u>4.38</u>
17	17		222	35
cl			pave	

5.90

5.90



Scott

See F.B. 1776 for Harbor drive  
72

B.M.#1 - P.8. (15L) 4.82 1.51 (OK)

2+11<sup>8</sup> = intersect Harbor Dr. pave:

3.35  
2.98  
Cone.

1+90<sup>08</sup> sly Hugo.

2.73 2.63 2.53 1.93 1.53  
3.6 3.7 3.8 4.4 4.8  
35 20 20 35 35

1+50

2.63 1.73 1.53 1.33 2.03  
3.7 4.6 4.8 5.0 4.3  
35 20 15 35 35

1+00

2.63 2.93 1.43 1.13 1.23 2.53 2.53  
3.7 3.9 4.9 5.2 5.1 3.8 3.8  
35 22 17 13 35 35 50

0+50

2.53 1.73 .93 .93 1.13 2.43  
3.8 4.6 5.4 5.4 5.2 3.9  
35 20 16 14 35 35

0+00 = Nly Garrison  
2+63

1.63 .73 .73 .93 1.73  
4.7 5.6 5.6 5.4 4.6  
35 17 20 35 35

6.33

6.33



Check Elevation Inlet  
Scott St. Between Emerson + Foyelon Sts.

Oct. 14-49  
F.S. 5907  
Garber  
Cota  
Chavez

20

7150 page 16

" 1776-48

BM

5.01

7.76

2.75

Six BP  
Potter  
Garber

TP

4.00

4.54

7.12

0.64

Inlet 24x15 Conc Box

-1.24

5.88

on Grate

" " "

-5.85

10.49

Flopline

INDEXED  
W. K.  
OCT 14 1949



- X-Section - Acceleration Lane of  
Scott St. to Harbor Drive - East on  
Harbor Drive to Existing Curb

Walker  
Johnson  
Pope  
Crawford  
8-15-49  
W-0-61020

Fd. L. & T.  
& Disk  
Harbor Drive  
2112.975  
25'

Cont. P-22

21

Sly Hugo St.

□ = Hub or Man.

• = L & T. Disk

INDEXED

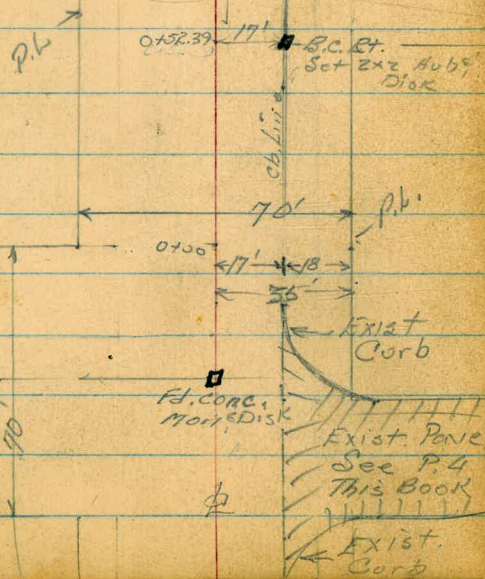
N. K.

AUG 16 1949

Note:

See P. 27

for Additional  
Notes



Acceleration Lane

Proposed Curb Line

63° 19' 11" = P22  
C.R.

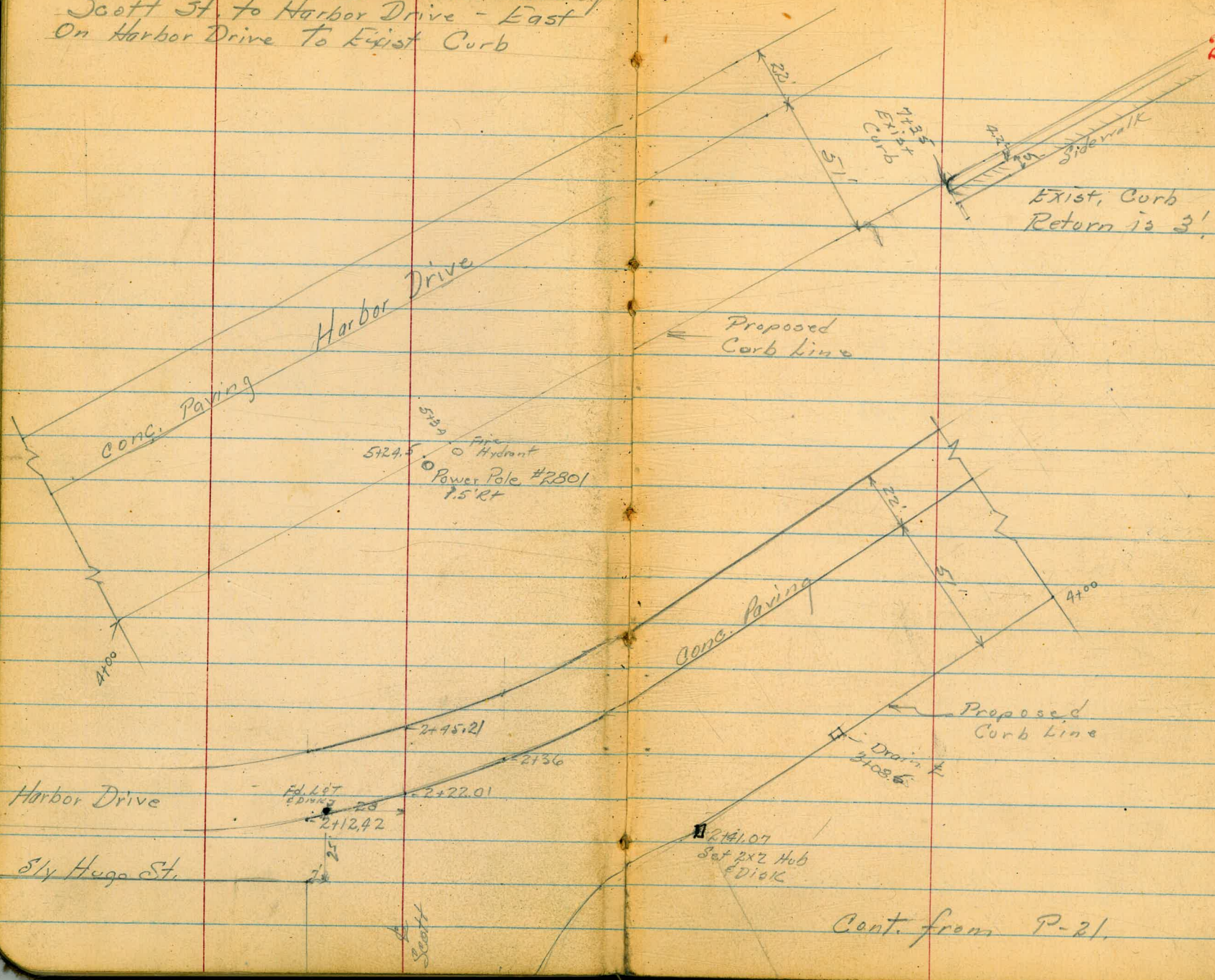
$\Delta = 54^{\circ} 38' 15''$   
Cb R = 197.86'  
L = 188.68'

Garrison St.

Exist. Pavement  
See P. 4  
This Book  
Exist. Curb



- X-Section Acceleration Lane of  
 Scott St. to Harbor Drive - East  
 On Harbor Drive To Exist Curb





X-Section  
 Scott Street  
 Garrison to Harbor Drive & East  
 On Harbor Drive to Exist. Curb

2+22.01 Diagonal Section of Paving  
 See Sketch P-22

1+90.08 Sly Hugo St

1+50

INDEXED  
 W.K.  
 AUG 16 1949

1+00

0+50

0+00

0-15-

0-35-

Reduced  
 8-18-49  
 C. Lawrence

4.66 6.18 5.95 1.56

4.72 7.47 2.75

S.W. Disc Garrison & Scott

S.W. B.P. Garrison & Rosecrans (P-11  
 This Book)

3.85							
2.85							
36.3							
3.3	3.4	3.5	3.7	4.5	4.7		
50	35	17		17	35		
3.4	3.6	4.3	4.7	4.6	4.2		
40	32	21		17	35		
3.4	3.6	4.8	5.1	4.7	3.7		
40	29	18		17	35		
3.5	4.8	5.2	5.3	4.8	3.8		
40	30	17		17	35		
4.5	4.4	4.2		5.0	4.4		
10	28	17		19	35		
5.3	5.6	5.5	5.7	5.1	4.2		
50	35	17		17	35		
5.5	5.0	5.2	5.4	5.03			
50	35	17		17			
				6.18			



X-Section  
Scott St - Garrison to Harbor  
Drive & East on Harbor Drive  
To Existing Curb

lt

¢

24

Cont - P-25

2145.21

Diagonal Section of Paving  
See Sketch P-22

2.06

2.24

2.29

2.30

4.12  
36.7

3.94

3.89  
38.1

3.88  
64.6

61.8



X-Section  
 Scott St - Garrison to Harbor  
 Drive - & East on Harbor  
 Drive to Exist. Curb.

Note: Additional Levels  
 on N. 22' Conc. Pav.  
 See P-31-33

4+00

	2.36	2.09	1.98	1.98	1.78	1.88	2.08
	3.82	4.09	4.2	4.2	4.4	4.3	4.1
	73	51	43	20		4	20
	conc. Paving						

3+50

	2.28	2.04	2.08	1.68	1.98	1.98	1.98
	3.95	4.14	4.1	4.5	4.7	4.7	4.2
	73	51	45	21		4	20
	conc. Pav.						

3+08.5 = Drain

5.42

3+00

	2.15	2.31	2.38	1.98	1.08	1.38	2.38
	4.03	3.87	3.8	4.7	5.1	4.8	3.8
	73	51	44	20		4	20
	conc. Paving						

2+41.07 = E.C.

	3.04	3.08	1.58	1.28	1.68	1.58	2.58
	3.14	3.1	4.6	4.9	4.5	4.3	3.6
	51	43	22	15		4	20
	conc. Paving						

2+00

	1.58	1.98	2.28	2.68
	4.8	4.2	3.9	3.5
	24		4	20

1+50

	1.48	2.18	2.38	2.78
	4.7	4.0	3.8	3.4
	27		4	20

1+00

	1.08	1.18	1.78	2.08	2.78
	5.1	5.0	4.4	4.1	3.4
	20	10		4	20

0+52.39 = B.C. RT

	.88	1.38	1.68	2.48
	5.3	4.8	4.5	3.7
	20		4	20

Cont. from P-24

6.18



cb  
L.P.C.  
Pd.  
197.86

28

903

1.51

1.54

S.W. Disk Garrison & Scott P.B

640

6.03

7.94

4.93

1.91

8+27.95

7+37.95

F.C. of 3' Ch Return

7+00

6+50

6+00

5+50

5+34

Fire Hydrant 3' RT

5+29.5

Power Pole #2801 1.5' RT

5+00

4+98

Dead Man 1.5' RT

T.P.

3.33

6.84

2.67

3.51

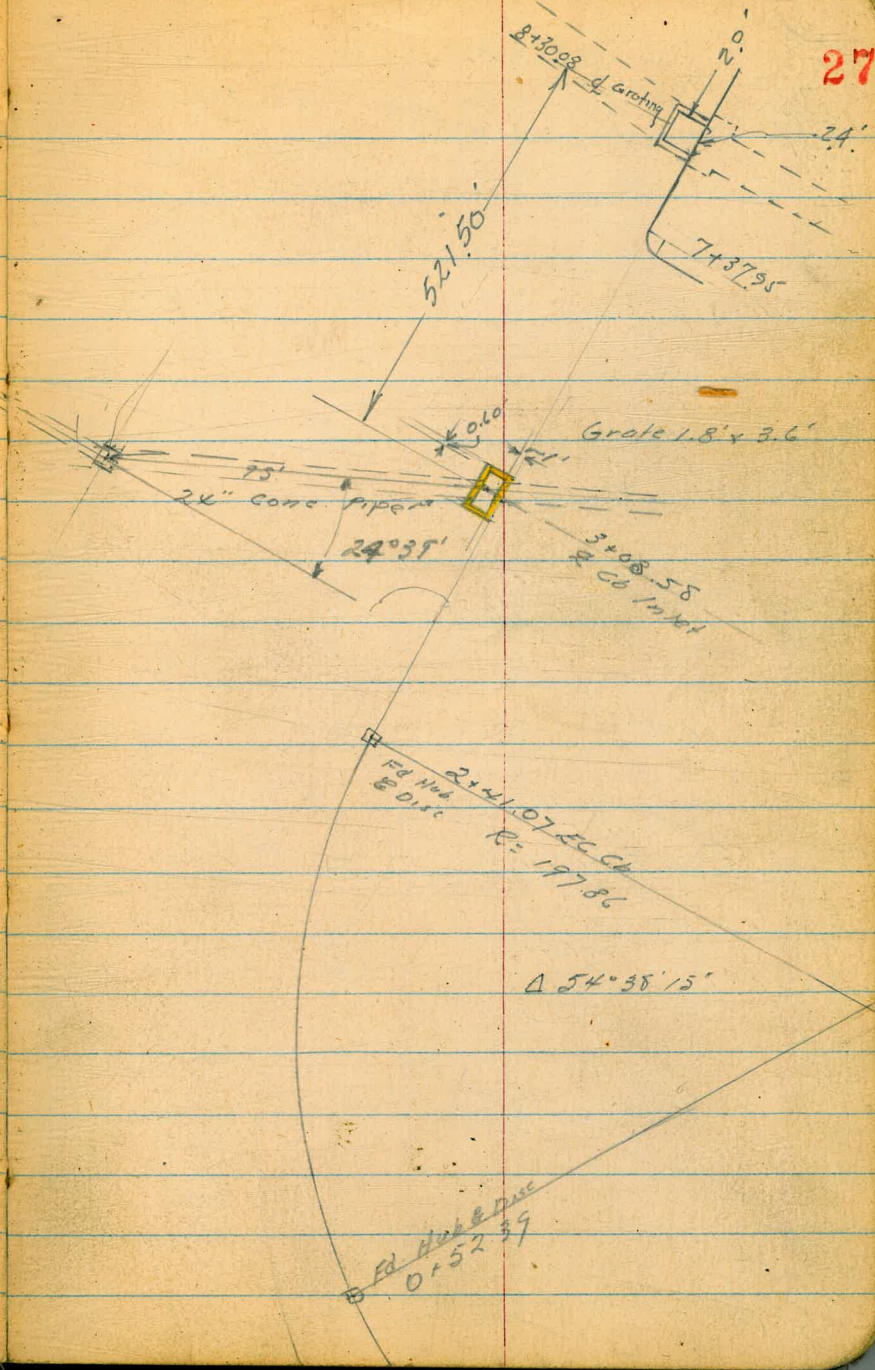
4+50

2.84	2.57	1.84	1.44	1.34	5.33	1.75	1.81
4.00	4.27	5.0	5.4	5.5	5.12	5.09	5.03
73	51	34	20	20	20	4.2	9.2
conc. Pave.				Gutter	cb	Wall	
2.87	2.61	1.54	1.34	1.24	5.6	5.4	5.4
3.97	4.23	5.3	5.5	5.6	5.6	5.4	5.4
73	51	31	20	20	4	20	20
conc. Pave.				1.34	1.54	1.64	1.94
2.90	2.64	1.74	1.54	1.54	5.2	4.9	4.9
3.94	4.20	5.1	5.3	5.3	5.2	4.9	4.9
73	51	34	20	20	4	20	20
conc. Pave.				1.94	2.04	2.04	2.34
2.86	2.62	1.94	1.94	2.04	4.8	4.8	4.8
3.98	4.22	4.9	4.9	4.8	4.8	4.8	4.8
73	51	35	20	20	4	20	20
conc. Pave.				1.94	2.14	2.34	2.64
2.84	2.57	1.94	1.94	2.14	4.5	4.2	4.2
4.00	4.27	4.9	4.7	4.7	4.5	4.2	4.2
73	51	20	20	20	4	20	20
conc. Pave.				2.72	2.90	2.14	2.04
4.18	4.44	4.7	4.8	4.6	4.4	4.2	4.2
73	51	41	20	20	4	20	20
conc. Pave.				2.72	2.90	2.14	2.04
2.98	2.73	2.08	1.98	6.84	1.98	1.88	2.28
3.70	3.95	4.1	4.2	4.2	4.3	3.9	3.9
73	51	43	20	20	4	20	20
conc. Paving				6.18			



9-27-49 Location of Cb. Inlet.  
Hendricks Scott St & Harbor Dr.  
Roberts  
Bunch  
Greer  
W.O.#61020

INDEXED  
W.K.  
OCT 14 1949





Walker  
Pope  
Crowford  
10-20-49

Elevation - Existing Drain

on Harbor Drive

Wp. 61020 at station 3708.58 sketch-key

" " 8+30.08

7+37.95 P-26

1.70

0.02  
1.72 = P-26

Check Top of

469

1.70

inlet

9.12

8+30.08

on Flow Line

inlet

5.92

8+30.08

on Grating

TP

1.56

6.39

2.99

4.83

inlet

11.90

3+08.58

on Flow Line

inlet

7.03

3+08.58

on Grating

6.30

7.82

1.52

B.M. SW. DISC. Garrison & Scott - P-23



Levels on Existing  
Sewer M.H.s. in Scott St.

Location P-30

W061020

Rim MH #4 546 +.16

Flow MH #4 1082 -5.20

Rim MH #3 527 +.35

Flow Line #3 1122 -5.60

Rim MH #2 495 +.67

Flow Line #2 890 -3.28

Rim MH #1 435 +1.17

Flow Line #1 937 -3.75

4.10 562

1.52

B.M. 544. Garrison & Scott Cop Disc

Walker  
M&C Coy.  
Pope  
Crawford  
10-24-49

29



Walker  
1850  
Pope  
Crowford  
10-21-49

Location Sewer M.H.

177 Scott St.

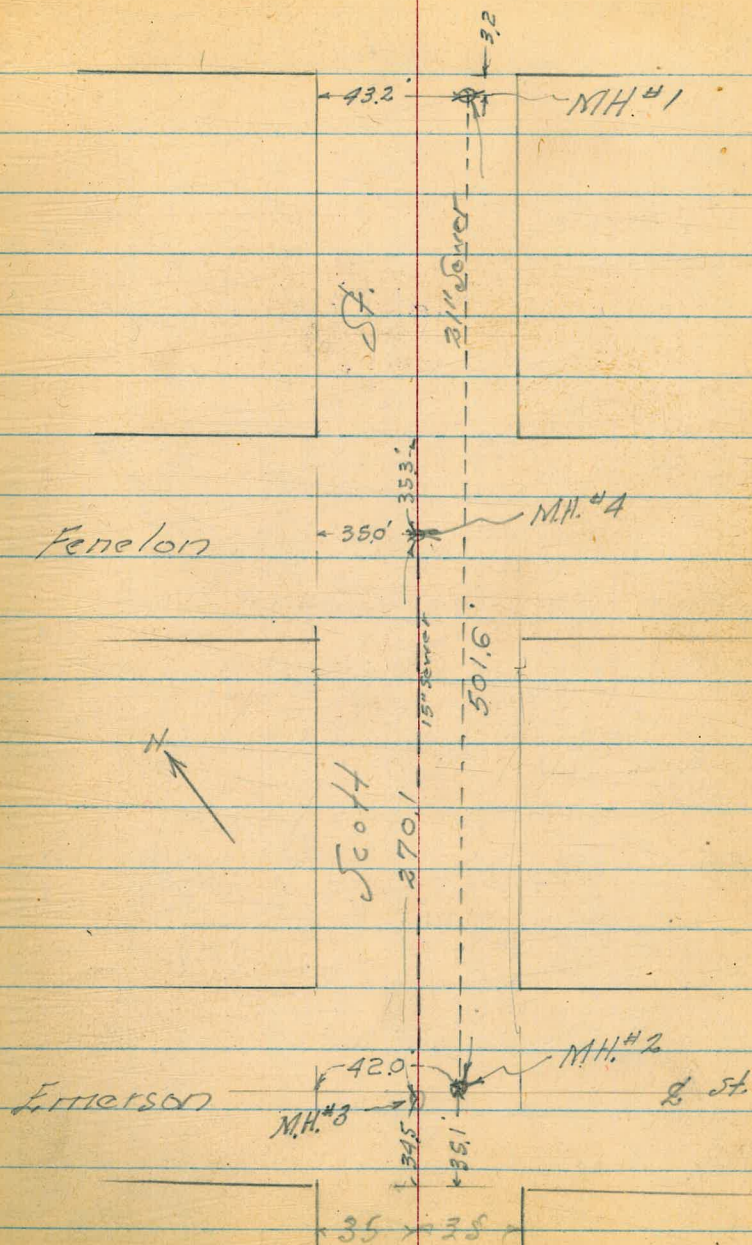
Levels P-29

NO 61020

GARRISON

30

INDEXED  
W.K.  
JAN 18 1950





Walker  
Gregory  
Pope  
R. Sisson  
11-14-29

Harbor Drive

Levels on 22' Strip Conc. Pav.  
on North Side opp. Sections P.25-26

5100

4150

4100

3750

3400

24107 = E.C. P. 25 - P. 21 <sup>Sketch</sup>

5.89 7.41

152

BM Cop. Disc. St. Garrison = Scott - P. 29

North 22' Conc. Pav.

N. edge South  
Edge

2.36°  
5.05 2.67°  
4.74

2.21°  
5.20 2.50°  
4.91

2.00°  
5.41 2.29°  
5.12

1.70°  
5.71 2.07°  
5.34

1.13°  
6.28 1.74°  
5.67

.38°  
7.03 1.32°  
6.09

7.41

INDEXED 31  
JUL 8 1951



Harbor Drive - Cont from P. 31

n. edge      S. edge

32

7+75

<sup>51.</sup>  
2  
4.33

<sup>276.</sup>  
4.08

<sup>280.</sup>  
4.04

<sup>253.</sup>  
4.31

7+87.95

<sup>55.</sup>  
2  
4.29

<sup>279.</sup>  
4.05

<sup>257.</sup>  
4.27

7+00

<sup>63.</sup>  
2  
4.21

<sup>286.</sup>  
3.98

6+50

<sup>66.</sup>  
2  
4.18

<sup>291.</sup>  
3.93

6+00

<sup>64.</sup>  
2  
4.20

<sup>289.</sup>  
3.95

5+50

<sup>56.</sup>  
2  
4.28

<sup>285.</sup>  
3.99

TP 415

684    472    2.69  
791

~~684~~



Harbor Drive  
Cont. from P-32

North Strip  
Conc. Pav.

N. edge S. edge

South Strip 33  
Conc. Pav.

N. edge S. edge

7137.95 P-26  
Chock Pav. S. edge S. Strip 4.27 2.57 ✓ "

on Right  
8130.08 on Top cb at E of lot 4.40 2.44

8130.09

2.38	2.64	2.73	2.44
4.46	4.20	4.11	4.40

8 400

6.84

2.14	2.69	2.80	2.52
4.40	4.15	4.04	4.32

6.84







Tooley st

35

REPUBLIC ST.

Tooley St.

0+01.05  
CA-

1+05.90° to N.E. Prop.

0+00  
4+95.3A-

E WINNETT ST. = 4+65.3A

11+01.79 = 0+00

FULMAR ST.

10+80.65 = Mon. E Fulmar-

10+61.77

4+35.3A



7+80.69 Stub P.O.T.

1+36.2 spiko P.O.T. (out)

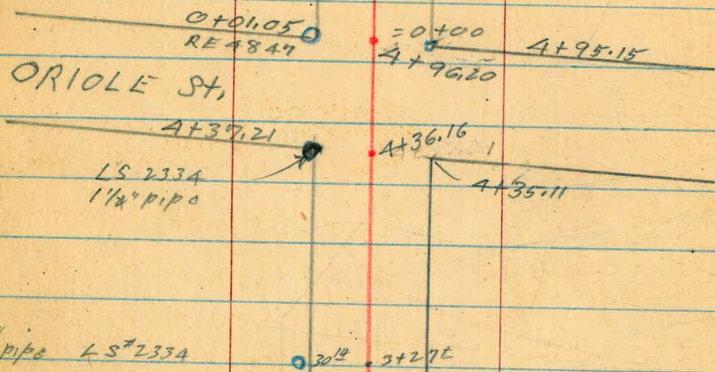
= 0+00  
1+71.62

1+51.62 REPUBLIC ST.

1+31.62



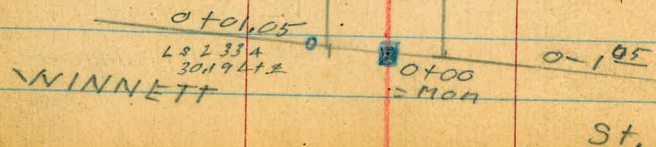
Tooley St.



3/4" pipe LS 2334 30" 3+27E

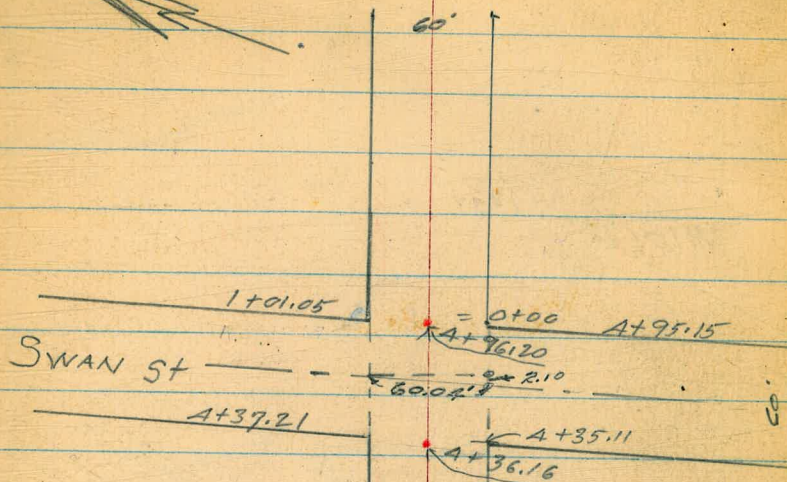
2+66E = stub 0.17  
North of true line  
30" 2+11 6" = 3/4" pipe o.k. for line  
No disk

3/4" pipe LS # 2334  
1+08.4E 30" 1+10.5E  
3/4" pipe No tab. o.k. for line



Tooley St.

36



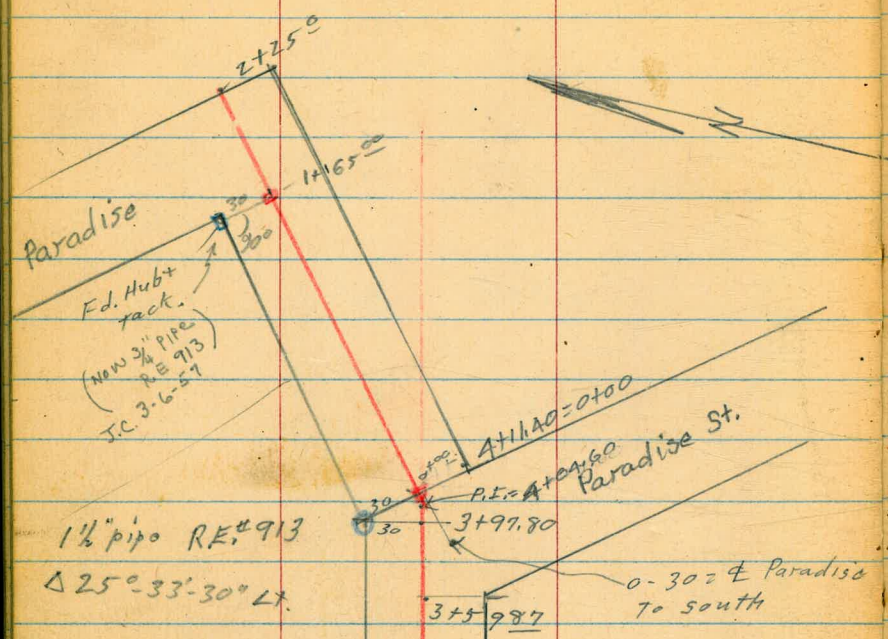
60'



Tooley St.

0460  
640

37





T.P.	10.97	429.46	0.42	418.49	
T.P.#12	12.02	418.91	0.10	406.89	
T.P.#11	12.65	406.99	0.27	394.34	
Mon. 30' Lt + 57.87 = Nike Weaver + Toolley			3.12	391.49	B.M.#3
T.P.#10	12.42	394.61	0.10	382.19	
<del>Mon. 30' Lt of</del> 3+29.16 = Saw. Mon. Weaver + Toolley			4.86	377.43	B.M.#2
T.P.#9					
Set spike in P. pole # 170392	12.29	382.29	3.16	370.00	B.M.#1
S.E. 60th + Toolley					
T.P.#8	12.53	373.16	0.46	360.63	
TP#7	12.74	361.09	0.48	348.35	
TP#6	12.80	348.83	0.41	336.03	
TP#5	12.47	336.44	0.59	323.97	
TP#4	13.08	329.56	1.03	311.48	
TP#3	12.35	312.51	0.59	300.16	
TP#2	12.96	300.70	1.51	287.74	
TP#1	12.42	289.25	5.74	276.88	
SE.B.P. Broadway + 60th	0.41	282.54		282.13 ✓	

see p. 52 for B.M.#10

see p. 52 for B.M.#9

see page 46 for B.M.#8

see  
Page 44 Lt. for B.M.#7.Mon. & Fulmar  
+ Toolley

363 - 449.04 B.M.#6

Bolt in Base of Flag pole  
Nly Toolley + 300'±  
West of Republic1.26 451.41 B.M.#5  
FB 1313  
36  
451.95

T.P.

13.03 452.67 0.94 439.64

Set B.M. spike  
Pole # 170390  
29' Rt. C + 34

12.41 - 440.58 1.29 - 428.17 B.M.#4

429.46



Tooley St

sketch p 34-37.

39

2+50

385.3	381.3	377.6	377.7	377.5	374.2	371.9
+3.1	0.9	4.6	4.4	4.7	8.0	10.3
<u>30</u>	<u>15</u>	<u>10</u>		<u>5</u>	<u>15</u>	<u>30</u>

2+00

381.5	378.7	372.7	372.0	371.9	367.7
0.7	3.5	9.5	10.2	10.3	14.5
<u>30</u>	<u>18</u>	<u>10</u>		<u>10</u>	<u>30</u>

1+50

379.7	376.9	372.2	371.5	371.5	368.8	365.8
2.5	5.3	10.0	10.7	10.7	13.4	16.4
<u>30</u>	<u>19</u>	<u>12</u>		<u>6</u>	<u>12</u>	<u>30</u>

1+00

373.2	379.2	375.7	372.6	371.8	371.8	367.6	364.1	353.9
+14.0	3.0	6.5	9.6	10.4	10.4	14.6	18.1	28.3
<u>80</u>	<u>30</u>	<u>19</u>	<u>13</u>		<u>6</u>	<u>14</u>	<u>30</u>	<u>80</u>

0+15<sup>2</sup> 29<sup>e</sup> Lt. Hd. 1/2 + Tack

379.8	376.2	373.8	372.9	372.8	365.4
2.4	6.0	8.4	9.3	9.4	16.8
<u>30</u>	<u>16</u>	<u>11</u>		<u>7</u>	<u>30</u>

0+00 = Fly. 60<sup>th</sup> st.

390.2	382.1	374.0	373.4	373.4	365.9	355.0
+8.0	2.1	8.2	8.8	8.8	16.3	27.2
<u>80</u>	<u>30</u>	<u>10</u>		<u>7</u>	<u>30</u>	<u>80</u>

BM#1      12.16    382.16      370.00

P.38

382.16



TOOLEY ST.

under const,  
4+84-52<sup>E</sup> Rt. 15 wide - 10 deep: House

T.P. 12.88 407.47 0.22 394.59

Fulmar + Tooley  
4+59<sup>87</sup> - 30<sup>00</sup> Lt. Fed. Conc. Men. = N.E. Cor.

4+14<sup>18</sup> 30' Rt. = S.E. Cor. Weaver + Tooley

Fulmar + Tooley  
4+03.06 30.00 Lt. = Conc. Men. = N.W. Cor.

+80

+ Tooley  
3+29<sup>16</sup> 30<sup>30</sup> Rt. Fed. Men. = S.W. Cor. Weaver

T.P. 13.07 394.81 0.42 381.74

B 3+00  
P

4

395.2  
12.8  
52  
Grd.

396.3  
11.2  
52.5  
Floor

40

407.47

11.1  
80

383.7  
391.48  
30  
Men  
B.M. 21  
P 38

3.2  
30  
Grd

391.6  
1.0

393.2  
5.1

393.9  
0.9  
30

386.7  
8.1  
80

383.6  
11.2  
80

389.38  
30  
Men + Grd

388.3  
6.5

384.6  
10.2  
30

377.8  
17.0  
80

386.6  
8.2  
80

389.6  
5.2  
30

386.5  
8.3

382.2  
12.6  
30

374.0  
20.8  
80

396.2  
11.4  
80

389.4  
5.4  
30

386.8  
8.0  
16

383.8  
11.0  
11

383.7  
11.1

383.8  
11.0  
3

381.4  
13.4  
9

377.3  
17.5  
30

371.3  
23.5  
80

394.81

399.8  
+17.0  
80

389.4  
+7.2  
30

385.6  
+3.4  
16

382.7  
0.5  
11

381.7  
0.5  
4  
(382.16)

381.7  
0.5  
4

379.0  
3.2  
11

375.2  
7.0  
30

367.0  
15.2  
80



Tooley st.

7+80.69 = stub on £

T.P. 8.50 453.36 0.22 444.86

7+50

445.26  
7.40  
453.36  
439.4  
5.7  
80  
443.2  
1.9  
30  
443.9  
1.2  
444.7  
0.4  
30  
442.4  
2.7  
80  
Rim of Canyon

7+00

T.P. 12.87 445.08 0.31 432.21

429.8  
15.3  
80  
437.6  
7.5  
30  
437.3  
7.8  
437.7  
7.4  
11  
438.8  
6.3  
13  
440.2  
4.9  
30  
438.8  
6.3  
66  
435.7  
2.4  
80  
Rim of Canyon

6+50

T.P. 12.56 432.52 0.22 419.96

426.1  
6.4  
30  
427.8  
4.7  
430.2  
2.3  
15  
430.9  
1.7  
30

6+00

403.7  
16.5  
80  
414.4  
5.8  
30  
416.9  
3.3  
418.9  
1.3  
16  
418.2  
2.0  
30  
411.3  
8.9  
80

5+50

T.P. 12.92 420.18 0.21 407.26

401.9  
18.3  
30  
407.5  
12.7  
420.18  
407.7  
12.5  
30

5+00

387.1  
20.4  
80  
395.1  
12.4  
30  
397.3  
8.2  
399.9  
7.6  
30  
394.6  
12.9  
80

407.26



Tooley St.

10+50

449.9		449.6		449.6
$\frac{3.5}{30}$		$\frac{3.8}{30}$		$\frac{3.8}{30}$

10+00

450.3		449.6		449.5
$\frac{3.1}{30}$		$\frac{3.1}{30}$		$\frac{3.9}{30}$

9+50

450.8		449.2		447.7
$\frac{2.6}{30}$		$\frac{4.2}{30}$		$\frac{5.7}{30}$

33' Rt. of  
9+33±

= B.M. #5  
P.38

1.96 451.40 (451.41)

9+00

450.64		450.4		449.1
$\frac{2.72}{40}$		$\frac{3.0}{30}$		$\frac{4.3}{30}$
		450.47		448.3
		$\frac{2.89}{30\pm}$		$\frac{7.1}{80}$

8+95-30<sup>±</sup> Lt. ± 3<sup>±</sup> wide Conc. walk

+50

449.1		449.3		448.7
$\frac{4.3}{30}$		$\frac{4.1}{30}$		$\frac{4.7}{30}$

8+00

445.7		447.2		447.4
$\frac{7.7}{80}$		$\frac{6.5}{30}$		$\frac{6.0}{30}$
		446.9		445.9
		$\frac{6.2}{80}$		$\frac{7.5}{80}$

453.36



Tooley

43

1+31<sup>62</sup> = Wly. Republic to south

	<del>447.3</del>	<del>444.6</del>	
	15.6	8.3	8.1
	<u>30</u>		<u>30</u>

1+00

	<del>440.9</del>	<del>445.4</del>	<del>447.1</del>
	12.0	7.5	5.8
	<u>30</u>		<u>30</u>

0+50

	<del>442.2</del>	<del>446.6</del>	<del>447.3</del>	<del>448.9</del>	<del>450.2</del>
	10.7	6.3	5.6	4.0	2.7
	<u>80</u>	<u>30</u>		<u>30</u>	<u>80</u>

= 0+00

11+01<sup>79</sup> 90° to N.E. Fulmar + Tooley

	<del>448.7</del>	<del>449.0</del>	<del>450.3</del>
	4.2	3.9	2.6
	<u>216</u>		<u>30</u>

B.M.#6

P.38      3.82    452.86    —    449.04

452.86

Mon. = B.M.#6 P.38 -      4.33    449.03    (449.04)

of Fulmar.

10+80<sup>65</sup> = Mon. + Fulmar Section on line

	<del>448.3</del>	<del>449.2</del>	<del>449.4</del>	<del>450.1</del>	<del>449.4</del>
	5.1	4.2	4.0	3.3	4.0
	<u>100</u>	<u>30</u>		<u>30</u>	<u>80</u>

10+61<sup>77</sup> = 90° to N.W. Fulmar + Tooley

	<del>449.4</del>	<del>449.6</del>	<del>449.8</del>
	4.0	3.8	3.6
	<u>30</u>		<u>30</u>

453.36



Tooley St.

T.P. 1.15 439.22 13.06 438.07

2+00 64' Lt. = Aprox. west line 24' wide house

T.P. Pole  
# P170387

0.11 451.13 1.84 451.02

Nail  
in  
Pole  
So. side

447.4	448.1	448.0	441.8	442.1	441.7	447.0	447.2
13.7	30	3.1	9.3	9.0	9.4	4.1	3.9
64	30	16	10		11	17	30
Ord at house				451.13			

450.5	452.9	452.7	445.5	445.7	445.5	452.6	452.6
2.4	0.9	0.2	7.4	7.2	7.4	0.3	0.3
60	30	18	9		12	18	30

1+50

440.5	445.5	446.0	446.1	445.7	441.5	441.5
12.4	7.4	6.9	6.8	7.2	1.4	1.4
60	30	10		13	18	30

1+00

0+50

435.6	444.7	444.8	445.4	450.8	451.1
17.3	8.2	8.1	7.5	3.1	1.8
30	30	8	19	30	40

1+71.62

H 701 79 = 0+00 = Ely. Republic to south

432.9	443.9	444.2	445.3
20.0	9.0	8.7	7.6
30	4		30

on  $\neq$  Mon. = B.M. #7

9.99

B.M.  
= #7.

1+51.62 =  $\neq$  Republic to So.

419.9	434.6	436.6	444.5	444.3	445.3	450.0
33.0	18.9	16.3	8.4	8.6	7.6	2.9
100	30	20	5		30	100

452.86



4+35<sup>34</sup> = Wly. Winnett

	416.3	415.5	415.2	410.0
	10.1	10.9	11.2	16.4
	<u>30</u>	<u>25</u>		<u>30</u>

4+00

	420.4	420.0	418.1	418.0	413.1	406.7
	6.0	6.4	8.3	8.1	13.3	19.7
	<u>30</u>	<u>20</u>	<u>12</u>		<u>30</u>	<u>60</u>

3+65 25<sup>E</sup> Lt. = end drive

	422.88	422.90
	8.50	3.48
	<u>30</u>	<u>25<sup>E</sup></u>
		Drive

3+50 25<sup>I</sup> Lt. = start N.4.S. drive

	422.90	422.94	422.96	423.7	420.1
	3.48	3.44	3.42	2.7	9.3
	<u>76</u>	<u>30</u>	<u>25</u>		<u>30</u>
	Bar. floor		Drive		

T.P. 0.22 426.38 13.06 426.16

426.38

3+00

	432.2	432.8	433.3	429.5	430.3	428.0	426.5
	7.0	6.4	5.9	9.7	8.9	11.2	12.7
	<u>60</u>	<u>30</u>	<u>25</u>	<u>12</u>		<u>30</u>	<u>60</u>

2+50

	437.0	437.9	438.9	436.1	436.6	436.9
	2.2	1.3	0.3	3.1	2.6	2.3
	<u>60</u>	<u>30</u>	<u>15</u>	<u>11</u>		<u>30</u>
					439.22	



Tooley St.

T.P. 8.39 446.02 1.28 437.63

1+50

1+10<sup>6</sup>t 30' Lt. = pipe LS #233A

1+08<sup>4</sup>t 30' Lt. = 3/4" pipe on line

1+00

T.P. 13.04 438.91 0.51 425.87

0+50

0+01<sup>05</sup> = 90° to Fwd. Tang. # Tooley  
30<sup>19</sup> Lt. = 3/4 pipe LS #233A

Set B.M.#8  
on Mon. ↓  
= 0+00

4+65<sup>3A</sup> = Ely. line Winnett

4+65<sup>34</sup> = # Winnett

446.02

433.1	433.8	428.7	429.2	429.1	434.3	434.8
$\frac{5.8}{30}$	$\frac{5.1}{16}$	$\frac{10.2}{13}$	9.7	$\frac{9.8}{14}$	$\frac{4.6}{19}$	$\frac{4.1}{30}$
428.2	428.4	424.1	424.5	424.3	427.2	427.6
$\frac{10.7}{30}$	$\frac{10.5}{19}$	$\frac{14.8}{15}$	14.4	$\frac{14.6}{12}$	$\frac{11.7}{14}$	$\frac{11.3}{30}$

438.91

422.1	422.5	419.1	419.7	419.0	421.5	420.5
$\frac{4.1}{30}$	$\frac{3.9}{18}$	$\frac{7.3}{15}$	6.7	$\frac{7.4}{11}$	$\frac{4.9}{15}$	$\frac{5.9}{30}$

418.0	415.1	412.8
$\frac{8.4}{30}$	11.3	$\frac{13.6}{30}$

418.0	415.0	412.3
$\frac{8.4}{30}$	11.4	$\frac{14.1}{30}$

406.4	415.2	414.5	410.8	399.7
$\frac{20.0}{100}$	$\frac{11.2}{30}$	11.9	$\frac{16.2}{30}$	$\frac{26.7}{100}$

426.38



Tooley St.

47

4+35<sup>ll</sup> = Sidw. Oriole + Tooley

T.P. 13.04 458.14 0.92 445.10

4+00

3+50

3+27<sup>±</sup> 30<sup>14</sup> Lt. = 3/4" pipe LS. # 2334

3+00

2+66<sup>±</sup> = set stub on random line  
0.17 north of true line

2+50

2+11<sup>±</sup> 30' Rt. = 3/4" pipe o.k. for line  
no disk

2+00

	421.6	429.9	438.0	442.6	443.3	433.4	
	24.4	16.1	8.0	3.4	2.7	12.6	
	60	30		8	30	30	
	425.0	430.0	437.0	441.3	441.7	446.0	
60	21.0	16.0	9.0	4.7	4.3	0.0	
	60	30		7	30	55	
		434.1	440.1	440.6	444.2	445.4	
		11.9	5.9	5.4	1.8	0.6	
		30		22	30	40	
	432.8	439.1	440.0	438.6	438.5	444.0	445.5
	13.2	6.9	6.0	7.6	7.4	7.5	2.0
	80	30	12	9		16	21
							0.5
							1.0
							60
	438.5	438.7	434.5	434.1	434.3	441.3	441.2
	7.5	7.3	11.5	11.9	11.7	4.7	4.8
	30	15	13		4	19	30
				446.02			



Todley St.

Stub. 10' Lt. of 1+50  
T.P. 6.71

463.81 1.04 457.10

1+50

1+00

0+50

0+01<sup>05</sup> ± 30<sup>00</sup> Lt. = 1 1/2" pipe R.E. 4847.

= 0+00

A+96<sup>20</sup> = Ely. line oricle

A+95 ± 30<sup>00</sup> Rt. = Fd. 1/2 hub + tack

A+66<sup>18</sup> = ~~φ~~ oricle (on line of Oricle)

A+37 ± 30<sup>00</sup> Lt. = 1 1/2" pipe L.S. 2334

A+36<sup>15</sup> = Wly oricle

48

455.8  
2.3  
30

452.4  
5.7  
30

447.2  
10.9  
30

439.5  
18.6  
30

426.4  
31.7  
100

433.9  
24.2  
30

433.9  
24.2  
30

456.9  
1.2  
30

455.2  
2.9  
30

451.4  
6.7  
30

447.7  
10.4  
30

444.4  
13.7  
6

439.7  
18.4  
7

458.1  
0.0  
30

455.2  
2.9  
21

451.5  
6.6  
21

448.4  
9.7  
21

446.2  
11.9  
3

444.0  
14.0  
7

457.8  
0.3  
23

456.1  
2.0  
23

451.5  
6.6  
23

447.8  
10.3  
30

445.5  
12.6  
30

458.1  
0.0  
30

457.0  
1.1  
30

452.6  
5.5  
30

457.1  
1.0  
100

452.6  
5.5  
30

458.14



Tooley St.

49

3+50 70' Rt. = rim of canyon

460.7  
3.1  
30

459.5  
4.3

458.7  
5.1  
30

455.0  
8.8  
70

3+00

461.1  
2.7  
30

460.1  
3.7

460.2  
3.6  
30

2+50

460.0  
3.8  
30

459.3  
1.5

459.8  
4.0  
30

2+05<sup>3</sup> 30<sup>5</sup> Lt. = end driveway

458.71  
5.10  
30<sup>5</sup>  
N.E. Cor. Dr.

458.2

2+00

458.4  
3.4  
30

5.6

458.8  
5.0  
30

1+97 30<sup>5</sup> Lt. = start Conc. Dr.

458.71  
5.10  
458  
Car.  
1<sup>st</sup> floor.

458.60  
5.21  
30<sup>5</sup>  
S.W. Cor.  
Dr.

463.81



Tooley St.

50

A+95<sup>15</sup> 30' Rt. = S. Ely. Swan + Tooley

A+66<sup>18</sup> = Swan. (on line of Swan)  
40' Rt = rim of Canyon

A+37<sup>21</sup> 30' Lt. = N. Wly Swan + Tooley.

A+36<sup>16</sup> = Wly. Line Swan.  
48' Rt. = Rim of Canyon

A+35<sup>11</sup> 30' Rt. = S. Wly. Swan + Tooley

A+00

458.3  
5.5  
100

458.2  
5.6  
30

457.4  
6.4

455.3  
8.5  
30

453.1  
10.1  
40

444.6  
19.2  
70

455.4  
8.4  
30

458.7  
5.1  
30

458.7  
5.1  
30

457.5  
6.3

454.9  
8.9  
30

452.5  
10.3  
48

455.0  
8.8  
30

459.1  
4.7  
30

458.1  
5.7

455.8  
8.0  
30

463.81



Tooley St.

1+50

	454.3		454.8		453.0
	<u>12.5</u>		<u>12.0</u>		<u>13.8</u>
	30				30

1+35 27' Lt. = 2' wide conc walk

	454.82				
	<u>11.95</u>		<u>11.70</u>		
	30		27		
	on walk				

1+00

	456.8		456.9		456.1		448.8
	<u>10.0</u>		<u>9.3</u>		<u>10.7</u>		<u>18.0</u>
	70		30		30		70

T.P 9.16 466.77 6.20 ~~457.61~~ ~~457.21~~

466.77

0+50 52' Rt. = Rim of Canyon

	458.3		457.8		457.2		454.7
	<u>5.5</u>		<u>6.0</u>		<u>6.6</u>		<u>9.1</u>
	30				30		52

1+01<sup>05</sup> 30' Lt = N. Ely, Swan + Tooley

5.1  
30

1+00  
4+96<sup>20</sup> Ely line Swan

	458.7		457.5		455.5
	<u>5.1</u>		<u>6.3</u>		<u>8.3</u>
	30				30

463.81



Tooley

5.27 461.50 = BM#10  
Hub

4+11<sup>40</sup> = 0+00 = N. Ely. line Paradise to So.

$\Delta 25^{\circ}-33'-30''$  Lt.  
4+04<sup>60</sup> = P.I. -  $\pm$  Tooley

=  $\Delta$  in North line Tooley  
3+97<sup>80</sup> 30' Lt. = 1 1/2" pipe - R.E. 913

+ Tooley  
3+59<sup>87</sup> 30' Rt. S. Ely. Paradise to south.

3+00

2+50

2+00 = bottom of cross swale

462.06  
471  
30  
on pipe  
R.E. 913  
= B.M. #9

463.2

3.6  
30

460.3

6.5  
80

462.1

4.7  
30

458.7

8.1  
30

463.9

12.9  
80

455.2

11.6  
30

462.0

4.8

458.3

8.5

455.3

11.5

461.6

5.2  
30

458.0

8.8  
30

453.5

13.3  
30

461.2

5.6  
80

447.6

19.2  
80

466.77



Tooley

±

on ± Hub.

30' Lt. = Ed 1/2 + tack  
set, 1/2 + disk on ±

1+65 = Wly. line Paradise to north

T.P. 0.92 454.76 12.93 453.84

1+20

0+81 30<sup>2</sup> Ft. = ± 24' wide House Ex. garage.

0+50

30' Lt. = 1 1/2" pipe R.E. 913

to south

0+00 (= 4+11.40 P. 52) = N. Ely. line Paradise  
set Hub + disk on ±

0 - 6.80 = P.I. ± Tooley

0 - 30 = ± Paradise to south

452.5  
2.3  
30

458.2  
8.6  
30

459.4  
7.4  
30

460.2  
6.6  
30

462.06  
4.71  
30

463.3  
3.5  
30

452.5

454.76

458.8

460.1

462.0

463.3

448.3

6.5  
30

466.9  
9.9  
30

459.6

7.2  
30  
Ord

460.1  
6.7  
30

461.6  
5.2  
30

462.5

4.3  
30

460.2  
6.6  
30  
Floor level

461.0  
5.8  
100

466.77



Tooley st.

±

54

2+75

428.7  
17.3

2+25 = Ely. line Paradise to north

TP. 4.20 445.96 13.00 441.76

438.6  
7.1  
30  
437.4  
8.6  
445.96  
10.4  
30  
435.6

1+95 = ± Paradise to north

454.4  
0.4  
100  
446.4  
8.4  
30  
443.5  
11.3  
440.6  
14.2  
30  
438.7  
16.1  
70

454.76

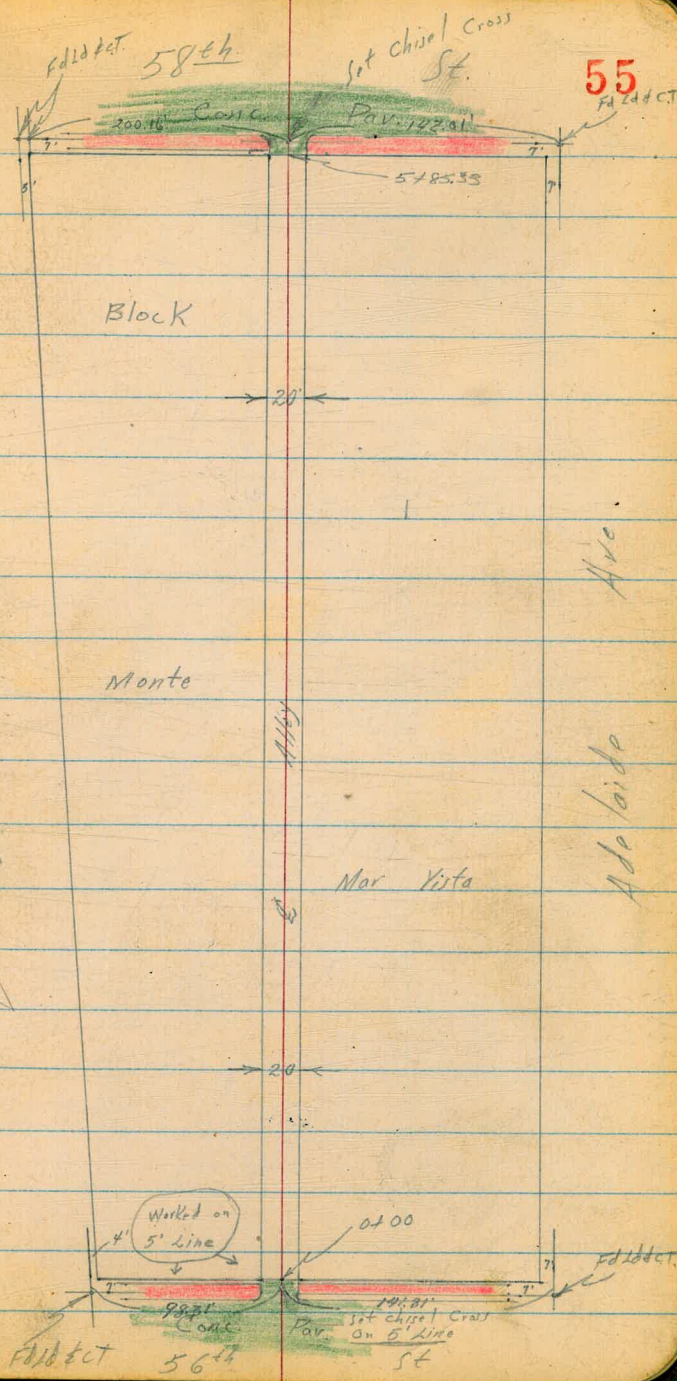


X-Section Alley Block 1  
 Monte Mar Vista  
 56th to 58th  
 Between El Cajon & Adelaide Ave.

Roberts  
 Garber  
 Moore  
 Clark  
 2-21-50  
 NO. 31828

Map 1914  
 Q 122 pg 14  
 TP 3779, 3688 & 3670

INDEXED  
 N.K.  
 MAY 4 1950





0+61 12' Lt End AC Strip Along Bldg

Lt  
1.02 436.98  
148 AC Bldg 1.2436.179  
12 AC

0+49 98' Rt Begin Board Fence on Conc. Wall

1.80 436.20  
14.6 AC Bldg  
1.84 436.06  
11.2 AC  
2.0 436.0  
2.3 435.7  
2.5 435.5  
2.2 435.8  
2.7 435.3  
1.88 436.12  
3.1 434.9  
10 20

0+16 114' Lt to AC, Pav. Park Lot Strip AC, continues Along rear of Bldg.

434.44  
3.56 434.08  
2.5 AC 11.8 AC  
4.1 433.9  
5.0 433.0  
4.6 433.4  
4.8 433.2  
5.5 432.5  
10 25

0+00<sup>18</sup> Pav. Edge { 10.6' Lt to AC, Pav. Park Lot flush with top Curb

432.10  
5.70 6.42 6.85  
10.03 10.03 9.2  
Cb. Gutt Gb

0+00 E. Prop. Line 56<sup>th</sup>

434.70  
433.06  
431.43  
432.01  
430.81  
430.39  
430.96  
428.60  
429.26

0-10 E. Curb Line 56<sup>th</sup>

430 434  
50 50  
Cb Gutt Gb  
6.57 5.75  
12 12  
Gutt Cb  
7.19 7.61 7.01 7.40 8.14  
11 11  
Gutt Cb Gutt Cb

0-25 E 56<sup>th</sup> St.

433.28  
431.51  
431.08  
430.65  
428.89  
4.72 6.49 6.92 7.35 9.11  
50 10 10 50

BM

0.23 438.00  
↑

437.77 E/Cajon 56<sup>th</sup> NEBP

438.00  
↑



1450

442.5	442.3	441.6	441.5	441.5	441.3
7.9	8.1	8.8	8.9	8.9	9.1
11 Buy	10	6	6	10	20

1446 93' Rt End Board Fence on Conc Wall Begin Wire Fence

441.5	440.7	441.55
8.9	9.7	8.80
92 Grd	92 Foot	92 Top

1413 { 96' Rt. Begin Board Fence on conc. wall.  
94' Rt End Conc. Apron

439.11	440.0	439.19	439.93
11.24	10.4	11.6	10.42
92 Apron	92 Grd	92 Foot	92 Top

1400

439.5	439.3	438.8	438.9	438.9	438.6	438.9
10.9	11.1	11.6	11.5	11.5	11.7	11.5
20	10	8	6	6	10	25

0+99 96' Rt Conc. Apron

439.55	439.55
11.26	11.54
92 Conc.	25 CONC. BRK

0+98 { 83' Rt to Center P. Pole # P 78190  
92' Rt End board Fence on conc. wall

438.5	438.0	438.85
11.9	12.4	11.50
92 Grd.	92 Foot	92 Top

0+74 92' Rt Deadman

T.P. 12.56 450.35 0.21 437.79  
438.00

450.35



2+92 86' Rt to center P. Pole # P171861

T.P. 12.65 462.10 0.90 449.45

2+54 110' 14' & 7' Conc. Apron {Garage not now in use}

449.57  
0.98  
142  
Floor

448.98  
1.37  
110  
Apron

462.10

2+43 92' Rt. End Conc. Block Wall

3.5  
92  
Grd.

43  
92  
Foot

362  
92  
Top  
Base

446.9  
446.1  
446.73

2+41 103' 14' & 7' Conc. Apron {Garage not now in use}

0.92  
142  
Floor

1.77  
102  
Apron

2.0  
10  
7

3.3  
7

3.6

449.53  
448.58  
448.4  
447.1  
446.8

3.7  
10

5.8  
20

446.7  
444.6

2+00

445.3  
5.1  
25

444.8  
5.6  
10

444.1  
6.3  
6

444.3  
6.1

444.2  
6.2  
10

444.0  
6.4  
20

1+95

85' Rt to Center P. Pole # P171891  
92' Rt End Wire Fence Begin Conc. Block Wall

1.3  
92  
Grd.

6.2  
92  
Foot

5.93  
92  
Top  
Base

444.1  
443.6  
444.2

450.35

450.35



3+82 10' Rt. Begin Rock Wall

3+76 10' Rt. & 10' Conc. Apron

3+64 10' Rt. End Rock Wall

3+50

3+41 10' Rt. Cor. Rock Shed <sup>8' x 8'</sup> & Wall

3+28 14' Lt. & 8' Conc. Apron

3+00

40	46	2.62
10	10	10
Grd	Foot	Top Wall
458.1	457.5	459.48
457.86	457.65	457.27
124	145	483
105	112	208
Apron	Brk	Floor

49	51	5.5	56	55	5.7
25	13	10		10	25
457.2	457.0	456.6	556.5	556.6	456.2

5.97	6.1	7.2	9.3	9.9	10.8
162	10	10	10	10	25
Floor	Grd.	Foot	Top	Top	Top
457.13	455.7	454.9	452.8	452.2	451.3
142	10	10	10	10	25
Apron	Grd.	Foot	Top	Top	Top
455.93	455.7	454.9	452.8	452.2	451.3

462.10

462.10



Cont'd From Page 59

Lt

\$

Rt

60

4+50

462.8  
73  
152

462.1  
80  
10

461.7  
84

461.7  
84  
10

461.8  
83  
20

4+40 15' Lt Begin Conc. Apron 4 Car Garage

462.84  
7.23  
172  
Floor

462.79  
7.33  
156  
Apron

T.P. 8.22 470.12 0.20 461.90

470.12

4+38 10' Rt Begin Board Fence on Conc Wall

450.6  
1.5  
102  
Grd

460.4  
1.7  
102  
Foot

442.06  
0.04  
102  
Top  
Bite

4+28<sup>E</sup> 9' Rt & 15' Conc. Apron

459.93  
2.17  
73  
Apron

460.08  
2.02  
156  
Floor

4+16 9' Rt Deadman

460.3  
13  
20

459.4  
2.7  
10

459.3  
2.8

459.2  
2.9  
10

458.8  
3.3  
20

4+00

3+90 { 9' Rt Begin Wire Fence  
to center P. Pole # P-78192  
10' Rt End Rock Wall

462.10

462.10



Contd From Page 60

LL

L

RL

61

5712<sup>S</sup> 10' RT End Picket on Conc Base

464.58

464.47

6.6  
10.4  
Grid

7.4  
10.4  
Foot

6.53  
10.4  
Top

5701 10' Lt Conc. Apron

5.54  
12.0  
Floor

5.65  
10.2  
Apron

5700

464.3  
5.8  
10

6.6  
463.7

6.7  
7.0

6.8  
7.0

4792 92' RT to Center P. Pole # JP179761

4787 10' RT Begin Picket Fence on Conc Base

4775 15' Lt (& 4th Garage) to Conc. Apron  
10.2' RT & 15' Conc. Apron

6.08  
17.2  
Floor

6.18  
15'  
Apron

463.0  
7.1  
10.2  
Grid

462.1  
8.0  
10.2  
Foot

463.53  
6.59  
10.2  
Top

4767 10' RT End Board Fence on conc wall  
15.7' Lt. Conc. Apron 3rd Garage

462.99  
7.13  
17.2  
Floor

462.87  
7.25  
15.2  
Apron

462.4  
461.7  
7.7  
8.4  
10.2  
Grid Foot

462.75  
7.27  
10.2  
Top  
Wall

476.12

790.12



Cont'd From Page 61

5750

5739E 10<sup>3</sup> Lt. Begin Conc Block Wall

5736 10<sup>1</sup> Rt Begin Board Fence on Conc. Base

5731E 10<sup>1</sup> Rt End. Conc Apron

5724E 10<sup>3</sup> Lt Conc. Apron

5716 10<sup>1</sup> Rt to Edge Conc. Apron

5713 10<sup>3</sup> Lt to Conc. Apron

470.12  
↑

22

2

Rt

62

465.9

4.2  
15

469.51

0.61  
10<sup>3</sup>  
Top

465.9

4.2  
11

464.14

5.91  
10<sup>3</sup>  
Foot

465.3

4.8  
10

465.1

5.0  
10<sup>3</sup>  
Grd

465.2

4.9

464.9

5.2  
10

464.5

5.6  
10<sup>1</sup>  
Grd

463.7

6.4  
10<sup>2</sup>  
Foot

464.81

5.31  
10<sup>2</sup>  
Top

464.50

5.62  
10<sup>2</sup>  
Apron

464.58

5.54  
10<sup>2</sup>  
Floor

465.34

4.78  
12<sup>2</sup>  
Floor

464.97

5.15  
10<sup>3</sup>  
Apron

464.18

5.94  
10<sup>1</sup>  
Apron

464.53

5.58  
10<sup>2</sup>  
Floor

465.02

5.10  
12<sup>2</sup>  
Floor

464.74

5.38  
10<sup>3</sup>  
Apron

470.12  
↑



5495<sup>33</sup>

W. Curb Line 58<sup>th</sup>

466.92	466.44	466.00	465.37	464.98	464.51	465.08	462.75	463.42
3.20	3.6V	4.12	4.15	5.14	5.61	5.04	7.57	6.70
50	50	12	12		12	12	50	50
cb	Gutt	cb	Gutt		Gutt	cb	Gutt	cb

5485<sup>33</sup>

10<sup>th</sup> 2<sup>nd</sup> End Conc. Block Wall  
W. Prop. Line 58<sup>th</sup> Edge Pav.

469.58	464.8	465.7	466.02	465.58	465.29	465.00	465.34
0.54	5.3	4.4	4.10	4.54	4.83	5.12	4.78
10 <sup>th</sup> Top	10 <sup>th</sup> Foot	10 <sup>th</sup> Grd	10 <sup>th</sup> cb	10 <sup>th</sup> Gutt		10 <sup>th</sup> Gutt	10 <sup>th</sup> cb

5479

11<sup>th</sup> Rt End Conc. Apron

466.10	466.50
4.02	3.72
11 <sup>th</sup> Apron	15 <sup>th</sup> Floor

5475

465.9	465.6
4.2	4.5
10	10

5462

10<sup>th</sup> Rt Begin Conc Apron

466.04	466.19
4.08	3.73
10 <sup>th</sup> Apron	15 <sup>th</sup> Floor

5459<sup>5</sup>

10<sup>th</sup> Rt End Board Fence on Conc. Base

465.52	464.4	465.50
4.9	5.7	4.62
10 <sup>th</sup> Grd	10 <sup>th</sup> Foot	10 <sup>th</sup> Top



Cont'd From Page 63

LL

Q

RT

64

Check

4.75

471.29 = 471.28

NWDP 6/16/09 \$383

T.P.

8.87

476.04

2.95

467.17

6 + 10<sup>33</sup>

Q

58<sup>th</sup>

SA

	467.10	466.06	465.80	465.51	463.34
3.02	4.06	4.32	4.61	6.78	
50	10		10	50	

470.12

470.12





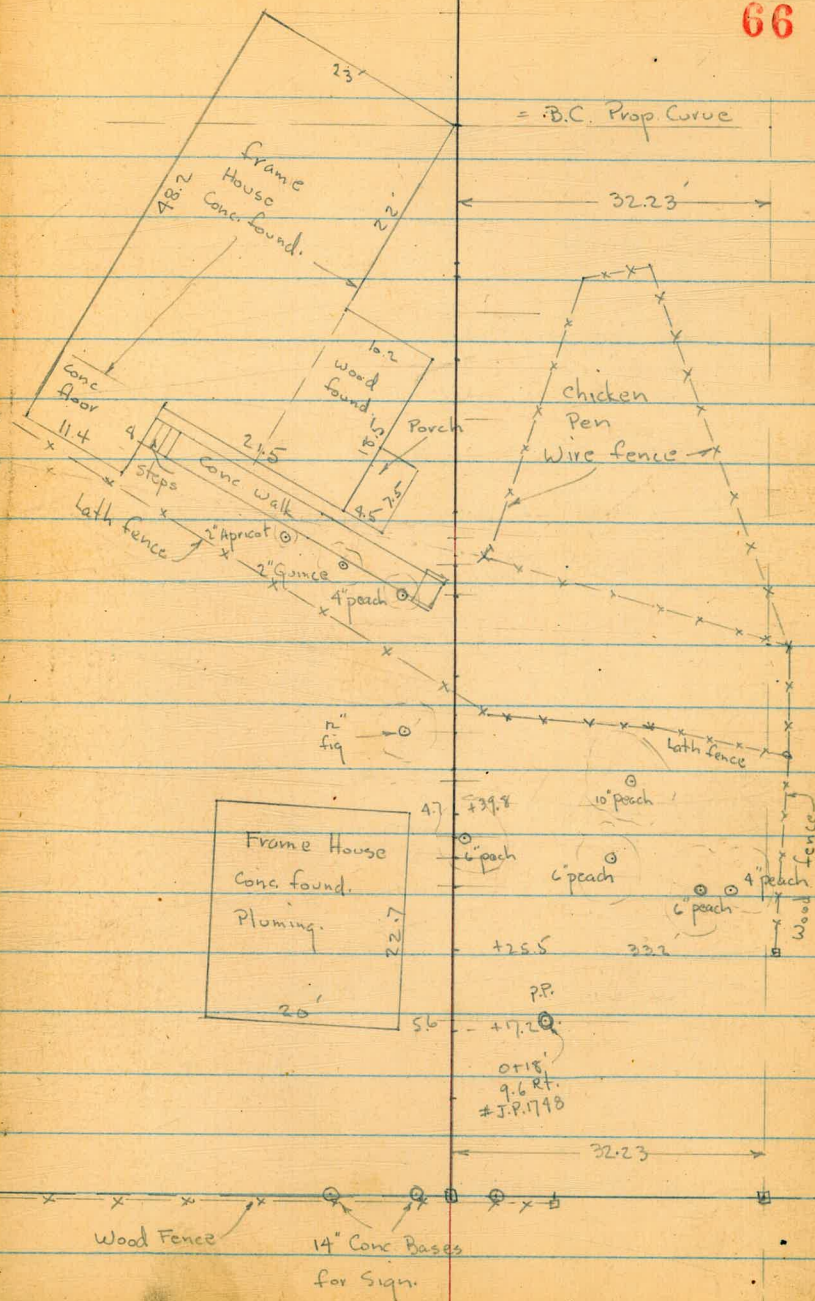
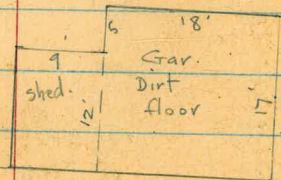


1+11.44 - 0.5' Lt. = Cor. House

+95.4 - 13.1 Rt.

+87 - 23' Lt.

0+71 - 11.4 Lt. = Cor. House



= B.C. Prop Curve

32.23

Chicken Pen  
Wire fence

12" fig

Frame House  
Conc. found.  
Plumbing.  
20'  
22.7'

+25.5  
P.P.  
+17.2  
0+15  
9.6 RT.  
#J.P.1748

32.23

Wood Fence  
14" Conc Bases  
for Sign.



0+54.5 - 1' rt = ± 24" Century Plant.

0+43 - 14.1 Lt. - Cor.

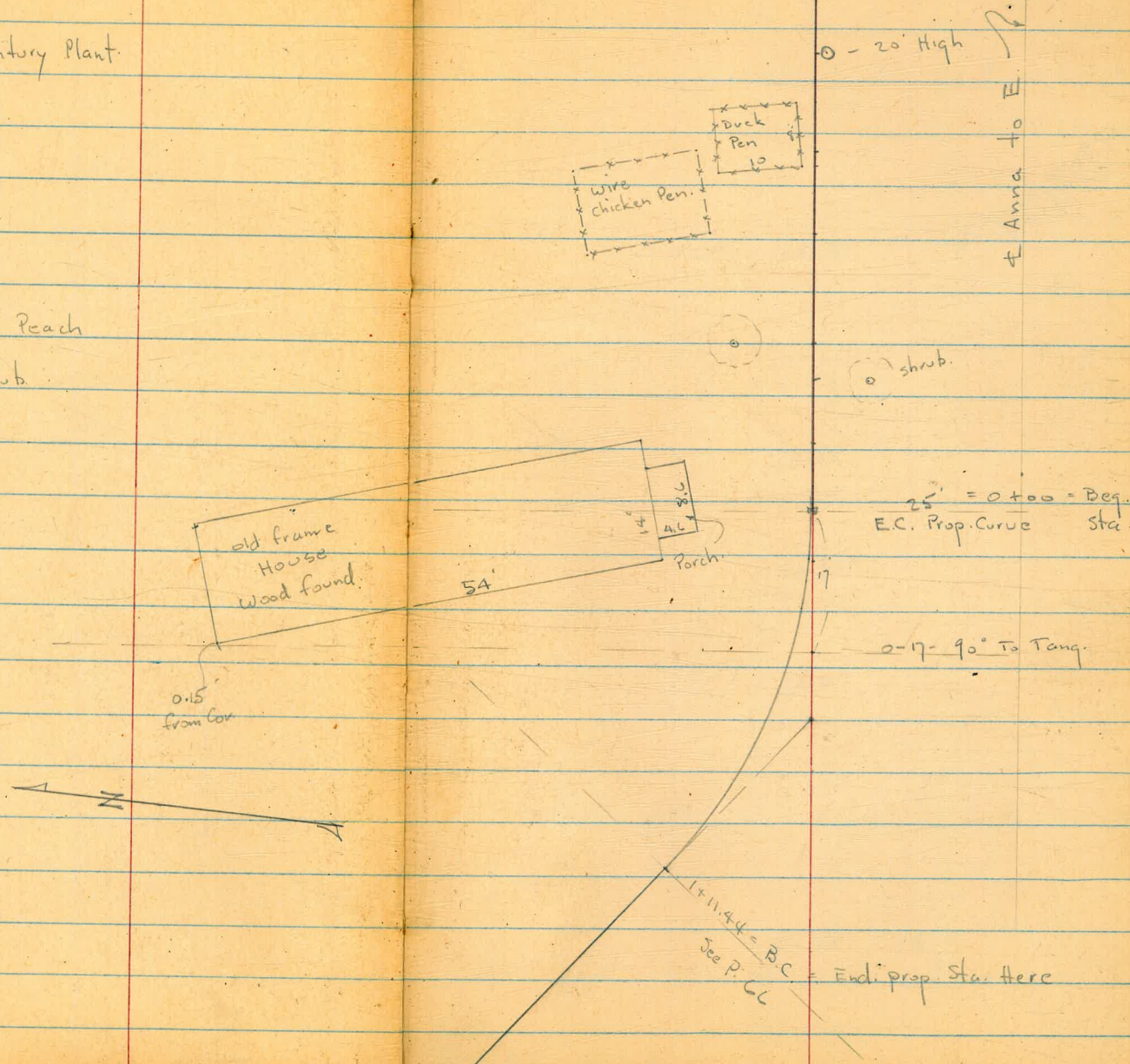
0+33 - 12.2 Lt. - Cor.

0+20 - 9.3 Lt. = ± 6" Peach

0+15.4 - 6.4 rt. = ± shrub.

0+08 - 20.8 Lt. - Cor.

0-06 - 15' Lt. - Cor.



± Anna to E

0 - 20' High

shrub.

25' = 0+00 - Beg. E.C. Prop. Curve Sta.

0-17 - 90° To Tang.

1+11.44 = B.C. = Endi prop. Sta. Here  
See P. 66





Levels along  $\pm$  of Prop. Sewer - from  
M.H. in  $\pm$  of Alley Block 17 to Cuvier st.  
# 4288

W.O. 62225                      7.0.      6-28-51

See Plan 1497-L - Sketch on T.P. <sup>Print.</sup> sheet.  
PLANS 4336-B

Lt.                       $\pm$                       Rt.

2+00			58.19	
			4.87	
1+65			56.68	
			6.38	
1+30			55.06	
			8.00	
1+00			54.12	
			8.24	
0+50			54.39	
			8.07	
0+00 = End of Sewer = Beg. Prop. Sewer.			54.04	
			9.02	

INDEXED  
JUN 2 1951

Paved - Conc.  
Flow Line of 6" Line to N. in Drop M.H.  
0-125'

BM. = 12.55'      63.06                      50.51 = S.F.B.P.      Cuvier + Coast. Blvd.

50.73      53.19  
F.L. = 12.33      1.87 Top = Rim  
63.06



Lt.

+

Rt.

69

2+75.08 = prop. Line ?

2+74.8 = Back of walk =

60.60  
2.46

2+69.1 = edge walk

60.43  
2.63

2+64.5 = curb. Line

59.55	58.60	59.43	60.40	60.35	61.28
3.51	4.46	3.63	2.66	2.71	1.78
10	10	10	10	10	10
Top	gut	gut	Top	gut	Top

2+35 = £ Curb

58.01	59.80	60.75
5.08	3.26	2.31
20		10
along £		along £

2+13 = Ang. 51° 14' Rt.

58.03  
5.03  
on Cross  
63.06



3

3



71



72



73



74



75



76







78







15  
347

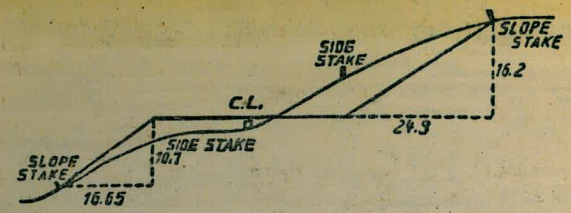
3.0855

EX # El Cajon  
V. P.  
7/1, 28

24025

5.78  
6 1/2  
11.90

AD  
3068  
23



**DISTANCES FROM SIDE STAKES FOR CROSS-SECTIONING.**  
SLOPE 1 1/2 TO 1. ROADWAY OF ANY WIDTH.

	0	.1	.2	.3	.4	.5	.6	.7	.8	.9	
0	0.00	0.15	0.30	0.45	0.60	0.75	0.90	1.05	1.20	1.35	0
1	1.50	1.65	1.80	1.95	2.10	2.25	2.40	2.55	2.70	2.85	1
2	3.00	3.15	3.30	3.45	3.60	3.75	3.90	4.05	4.20	4.35	2
3	4.50	4.65	4.80	4.95	5.10	5.25	5.40	5.55	5.70	5.85	3
4	6.00	6.15	6.30	6.45	6.60	6.75	6.90	7.05	7.20	7.35	4
5	7.50	7.65	7.80	7.95	8.10	8.25	8.40	8.55	8.70	8.85	5
6	9.00	9.15	9.30	9.45	9.60	9.75	9.90	10.05	10.20	10.35	6
7	10.50	10.65	10.80	10.95	11.10	11.25	11.40	11.55	11.70	11.85	7
8	12.00	12.15	12.30	12.45	12.60	12.75	12.90	13.05	13.20	13.35	8
9	13.50	13.65	13.80	13.95	14.10	14.25	14.40	14.55	14.70	14.85	9
10	15.00	15.15	15.30	15.45	15.60	15.75	15.90	16.05	16.20	16.35	10
11	16.50	16.65	16.80	16.95	17.10	17.25	17.40	17.55	17.70	17.85	11
12	18.00	18.15	18.30	18.45	18.60	18.75	18.90	19.05	19.20	19.35	12
13	19.50	19.65	19.80	19.95	20.10	20.25	20.40	20.55	20.70	20.85	13
14	21.00	21.15	21.30	21.45	21.60	21.75	21.90	22.05	22.20	22.35	14
15	22.50	22.65	22.80	22.95	23.10	23.25	23.40	23.55	23.70	23.85	15
16	24.00	24.15	24.30	24.45	24.60	24.75	24.90	25.05	25.20	25.35	16
17	25.50	25.65	25.80	25.95	26.10	26.25	26.40	26.55	26.70	26.85	17
18	27.00	27.15	27.30	27.45	27.60	27.75	27.90	28.05	28.20	28.35	18
19	28.50	28.65	28.80	28.95	29.10	29.25	29.40	29.55	29.70	29.85	19
20	30.00	30.15	30.30	30.45	30.60	30.75	30.90	31.05	31.20	31.35	20
21	31.50	31.65	31.80	31.95	32.10	32.25	32.40	32.55	32.70	32.85	21
22	33.00	33.15	33.30	33.45	33.60	33.75	33.90	34.05	34.20	34.35	22
23	34.50	34.65	34.80	34.95	35.10	35.25	35.40	35.55	35.70	35.85	23
24	36.00	36.15	36.30	36.45	36.60	36.75	36.90	37.05	37.20	37.35	24
25	37.50	37.65	37.80	37.95	38.10	38.25	38.40	38.55	38.70	38.85	25
26	39.00	39.15	39.30	39.45	39.60	39.75	39.90	40.05	40.20	40.35	26
27	40.50	40.65	40.80	40.95	41.10	41.25	41.40	41.55	41.70	41.85	27
28	42.00	42.15	42.30	42.45	42.60	42.75	42.90	43.05	43.20	43.35	28
29	43.50	43.65	43.80	43.95	44.10	44.25	44.40	44.55	44.70	44.85	29
30	45.00	45.15	45.30	45.45	45.60	45.75	45.90	46.05	46.20	46.35	30
31	46.50	46.65	46.80	46.95	47.10	47.25	47.40	47.55	47.70	47.85	31
32	48.00	48.15	48.30	48.45	48.60	48.75	48.90	49.05	49.20	49.35	32
33	49.50	49.65	49.80	49.95	50.10	50.25	50.40	50.55	50.70	50.85	33
34	51.00	51.15	51.30	51.45	51.60	51.75	51.90	52.05	52.20	52.35	34
35	52.50	52.65	52.80	52.95	53.10	53.25	53.40	53.55	53.70	53.85	35
36	54.00	54.15	54.30	54.45	54.60	54.75	54.90	55.05	55.20	55.35	36
37	55.50	55.65	55.80	55.95	56.10	56.25	56.40	56.55	56.70	56.85	37
38	57.00	57.15	57.30	57.45	57.60	57.75	57.90	58.05	58.20	58.35	38
39	58.50	58.65	58.80	58.95	59.10	59.25	59.40	59.55	59.70	59.85	39
40	60.00	60.15	60.30	60.45	60.60	60.75	60.90	61.05	61.20	61.35	40
41	61.50	61.65	61.80	61.95	62.10	62.25	62.40	62.55	62.70	62.85	41
42	63.00	63.15	63.30	63.45	63.60	63.75	63.90	64.05	64.20	64.35	42
43	64.50	64.65	64.80	64.95	65.10	65.25	65.40	65.55	65.70	65.85	43
44	66.00	66.15	66.30	66.45	66.60	66.75	66.90	67.05	67.20	67.35	44
45	67.50	67.65	67.80	67.95	68.10	68.25	68.40	68.55	68.70	68.85	45
46	69.00	69.15	69.30	69.45	69.60	69.75	69.90	70.05	70.20	70.35	46
47	70.50	70.65	70.80	70.95	71.10	71.25	71.40	71.55	71.70	71.85	47
48	72.00	72.15	72.30	72.45	72.60	72.75	72.90	73.05	73.20	73.35	48
49	73.50	73.65	73.80	73.95	74.10	74.25	74.40	74.55	74.70	74.85	49
50	75.00	75.15	75.30	75.45	75.60	75.75	75.90	76.05	76.20	76.35	50

THE NATIONAL BLANK BOOK COMPANY  
HOLYOKE MASSACHUSETTS  
NEW YORK CHICAGO BOSTON SAN FRANCISCO