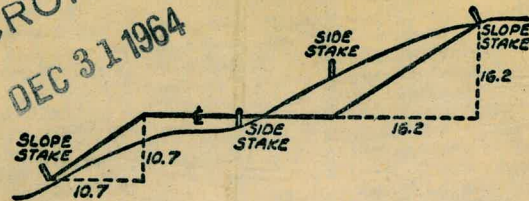


2044

TRAVEL BOOK

MICROFILMED
 DEC 31 1964



DISTANCES FROM SIDE STAKES FOR CROSS-SECTIONING
 SLOPE 1 TO 1. ROADWAY OF ANY WIDTH

	0	.1	.2	.3	.4	.5	.6	.7	.8	9	
0	0.00	0.10	0.20	0.30	0.40	0.50	0.60	0.70	0.80	0.90	0
1	1.00	1.10	1.20	1.30	1.40	1.50	1.60	1.70	1.80	1.90	1
2	2.00	2.10	2.20	2.30	2.40	2.50	2.60	2.70	2.80	2.90	2
3	3.00	3.10	3.20	3.30	3.40	3.50	3.60	3.70	3.80	3.90	3
4	4.00	4.10	4.20	4.30	4.40	4.50	4.60	4.70	4.80	4.90	4
5	5.00	5.10	5.20	5.30	5.40	5.50	5.60	5.70	5.80	5.90	5
6	6.00	6.10	6.20	6.30	6.40	6.50	6.60	6.70	6.80	6.90	6
7	7.00	7.10	7.20	7.30	7.40	7.50	7.60	7.70	7.80	7.90	7
8	8.00	8.10	8.20	8.30	8.40	8.50	8.60	8.70	8.80	8.90	8
9	9.00	9.10	9.20	9.30	9.40	9.50	9.60	9.70	9.80	9.90	9
10	10.00	10.10	10.20	10.30	10.40	10.50	10.60	10.70	10.80	10.90	10
11	11.00	11.10	11.20	11.30	11.40	11.50	11.60	11.70	11.80	11.90	11
12	12.00	12.10	12.20	12.30	12.40	12.50	12.60	12.70	12.80	12.90	12
13	13.00	13.10	13.20	13.30	13.40	13.50	13.60	13.70	13.80	13.90	13
14	14.00	14.10	14.20	14.30	14.40	14.50	14.60	14.70	14.80	14.90	14
15	15.00	15.10	15.20	15.30	15.40	15.50	15.60	15.70	15.80	15.90	15
16	16.00	16.10	16.20	16.30	16.40	16.50	16.60	16.70	16.80	16.90	16
17	17.00	17.10	17.20	17.30	17.40	17.50	17.60	17.70	17.80	17.90	17
18	18.00	18.10	18.20	18.30	18.40	18.50	18.60	18.70	18.80	18.90	18
19	19.00	19.10	19.20	19.30	19.40	19.50	19.60	19.70	19.80	19.90	19
20	20.00	20.10	20.20	20.30	20.40	20.50	20.60	20.70	20.80	20.90	20
21	21.00	21.10	21.20	21.30	21.40	21.50	21.60	21.70	21.80	21.90	21
22	22.00	22.10	22.20	22.30	22.40	22.50	22.60	22.70	22.80	22.90	22
23	23.00	23.10	23.20	23.30	23.40	23.50	23.60	23.70	23.80	23.90	23
24	24.00	24.10	24.20	24.30	24.40	24.50	24.60	24.70	24.80	24.90	24
25	25.00	25.10	25.20	25.30	25.40	25.50	25.60	25.70	25.80	25.90	25
26	26.00	26.10	26.20	26.30	26.40	26.50	26.60	26.70	26.80	26.90	26
27	27.00	27.10	27.20	27.30	27.40	27.50	27.60	27.70	27.80	27.90	27
28	28.00	28.10	28.20	28.30	28.40	28.50	28.60	28.70	28.80	28.90	28
29	29.00	29.10	29.20	29.30	29.40	29.50	29.60	29.70	29.80	29.90	29
30	30.00	30.10	30.20	30.30	30.40	30.50	30.60	30.70	30.80	30.90	30
31	31.00	31.10	31.20	31.30	31.40	31.50	31.60	31.70	31.80	31.90	31
32	32.00	32.10	32.20	32.30	32.40	32.50	32.60	32.70	32.80	32.90	32
33	33.00	33.10	33.20	33.30	33.40	33.50	33.60	33.70	33.80	33.90	33
34	34.00	34.10	34.20	34.30	34.40	34.50	34.60	34.70	34.80	34.90	34
35	35.00	35.10	35.20	35.30	35.40	35.50	35.60	35.70	35.80	35.90	35
36	36.00	36.10	36.20	36.30	36.40	36.50	36.60	36.70	36.80	36.90	36
37	37.00	37.10	37.20	37.30	37.40	37.50	37.60	37.70	37.80	37.90	37
38	38.00	38.10	38.20	38.30	38.40	38.50	38.60	38.70	38.80	38.90	38
39	39.00	39.10	39.20	39.30	39.40	39.50	39.60	39.70	39.80	39.90	39
40	40.00	40.10	40.20	40.30	40.40	40.50	40.60	40.70	40.80	40.90	40
41	41.00	41.10	41.20	41.30	41.40	41.50	41.60	41.70	41.80	41.90	41
42	42.00	42.10	42.20	42.30	42.40	42.50	42.60	42.70	42.80	42.90	42
43	43.00	43.10	43.20	43.30	43.40	43.50	43.60	43.70	43.80	43.90	43
44	44.00	44.10	44.20	44.30	44.40	44.50	44.60	44.70	44.80	44.90	44
45	45.00	45.10	45.20	45.30	45.40	45.50	45.60	45.70	45.80	45.90	45
46	46.00	46.10	46.20	46.30	46.40	46.50	46.60	46.70	46.80	46.90	46
47	47.00	47.10	47.20	47.30	47.40	47.50	47.60	47.70	47.80	47.90	47
48	48.00	48.10	48.20	48.30	48.40	48.50	48.60	48.70	48.80	48.90	48
49	49.00	49.10	49.20	49.30	49.40	49.50	49.60	49.70	49.80	49.90	49
50	50.00	50.10	50.20	50.30	50.40	50.50	50.60	50.70	50.80	50.90	50

INDEXED
 to page # 46

625
 50.16
 13.10

Distance of slope stake from side or shoulder stake for any width roadway, slope 1 to 1. If ground is nearly level, the cut or fill at side stake is located by the double entry method in left column and top row. The number in body of table in same row and column gives distance from side stake to slope stake. If ground is not level estimate the difference in elevation between the side stake and slope stake, lower target by this amount if cut, elevate if fill. Add this amount to cut or fill and find distance in table. Set up rod at this point, and line of sight should cut target. If it does not make the slight adjustment necessary.

TABLE XIII—CORRECTIONS FOR TANGENTS AND EXTERNALS

These corrections are to be added to the approximate values, found by dividing the tangent, or external, for a 1° curve (Table VIII) by the degree of curve, in order to obtain the true tangents, or externals. Intermediate values may be obtained by interpolation.

FOR TANGENTS ADD

Central Angle	DEGREE OF CURVE													
	5°	10°	15°	20°	25°	30°	35°	40°	45°	50°	55°	60°	65°	70°
10°	.03	.06	.09	.13	.16	.19	.22	.25	.28	.31	.34	.38	.42	.46
15°	.04	.10	.14	.19	.24	.29	.34	.39	.45	.51	.53	.58	.63	.68
20°	.06	.13	.19	.26	.32	.39	.45	.51	.58	.65	.72	.79	.84	.90
25°	.08	.16	.24	.33	.40	.49	.58	.67	.75	.83	.90	.99	1.06	1.14
30°	.10	.19	.29	.39	.49	.59	.69	.79	.89	.99	1.09	1.20	1.29	1.39
35°	.11	.22	.34	.47	.58	.69	.79	.81	.92	1.04	1.29	1.42	1.54	1.66
40°	.13	.26	.40	.53	.67	.80	.93	1.06	1.20	1.34	1.49	1.64	1.79	1.94
45°	.15	.30	.44	.60	.76	.91	1.06	1.21	1.37	1.52	1.70	1.87	2.04	2.21
50°	.17	.34	.51	.68	.85	1.02	1.19	1.36	1.54	1.72	1.91	2.10	2.29	2.48
55°	.19	.38	.57	.76	.95	1.14	1.32	1.52	1.72	1.92	2.14	2.35	2.56	2.77
60°	.21	.42	.63	.84	1.05	1.27	1.49	1.71	1.94	2.17	2.38	2.60	2.83	3.07
65°	.23	.46	.69	.93	1.16	1.40	1.64	1.88	2.13	2.38	2.63	2.88	3.13	3.39
70°	.25	.51	.76	1.02	1.28	1.54	1.80	2.06	2.33	2.60	2.88	3.16	3.44	3.72
75°	.27	.56	.83	1.12	1.40	1.69	1.98	2.27	2.57	2.87	3.16	3.47	3.78	4.09
80°	.30	.61	.91	1.22	1.53	1.84	2.15	2.46	2.78	3.10	3.44	3.78	4.12	4.46
85°	.33	.66	1.00	1.33	1.68	2.02	2.36	2.70	3.05	3.40	3.77	4.14	4.55	4.89
90°	.36	.72	1.09	1.45	1.83	2.20	2.57	2.94	3.32	3.70	4.10	4.50	4.91	5.32
95°	.39	.79	1.19	1.55	2.00	2.40	2.80	3.20	3.61	4.02	4.40	4.98	5.38	5.83
100°	.43	.86	1.30	1.74	2.18	2.62	3.06	3.50	3.95	4.40	4.88	5.37	5.85	6.34
110°	.51	1.03	1.56	2.08	2.61	3.14	3.67	4.21	4.76	5.31	5.86	6.43	7.01	7.60
120°	.62	1.25	1.93	2.52	3.16	3.81	4.45	5.11	5.77	6.44	7.12	7.80	8.50	9.22

FOR EXTERNALS ADD

Central Angle	DEGREE OF CURVE													
	5°	10°	15°	20°	25°	30°	35°	40°	45°	50°	55°	60°	65°	70°
10°	.001	.003	.004	.006	.007	.008	.009	.011	.012	.014	.015	.017	.018	.020
15°	.003	.007	.010	.014	.018	.023	.027	.029	.032	.035	.039	.043	.047	.051
20°	.006	.011	.017	.022	.028	.034	.038	.045	.051	.057	.063	.070	.076	.083
25°	.009	.018	.027	.036	.046	.056	.065	.074	.083	.093	.106	.120	.127	.135
30°	.013	.025	.038	.051	.065	.078	.090	.103	.116	.129	.149	.170	.179	.188
35°	.018	.035	.054	.072	.086	.109	.131	.153	.175	.197	.213	.230	.247	.264
40°	.023	.046	.070	.093	.117	.141	.172	.203	.234	.265	.277	.290	.315	.341
45°	.030	.060	.093	.119	.153	.184	.216	.254	.289	.325	.351	.378	.411	.445
50°	.037	.075	.116	.151	.189	.227	.266	.305	.345	.384	.425	.467	.508	.550
55°	.046	.093	.142	.188	.236	.283	.332	.381	.420	.479	.530	.582	.641	.700
60°	.056	.112	.168	.225	.283	.340	.398	.457	.516	.575	.636	.697	.774	.851
65°	.067	.135	.204	.273	.343	.412	.483	.554	.625	.697	.771	.845	.922	1.01
70°	.080	.159	.240	.321	.403	.485	.568	.652	.735	.819	.906	.994	1.08	1.17
75°	.095	.182	.266	.353	.440	.528	.617	.707	.797	.890	.984	1.08	1.29	1.39
80°	.110	.220	.332	.445	.558	.671	.787	.903	1.02	1.13	1.25	1.38	1.50	1.62
85°	.128	.259	.391	.524	.657	.790	.926	1.06	1.20	1.34	1.47	1.62	1.76	1.91
90°	.149	.299	.450	.603	.756	.910	1.07	1.22	1.38	1.54	1.70	1.87	2.03	2.20
95°	.174	.350	.522	.706	.885	1.06	1.25	1.43	1.62	1.80	1.99	2.18	2.38	2.58
100°	.200	.401	.604	.809	1.01	1.22	1.43	1.64	1.85	2.06	2.28	2.50	2.73	2.96
110°	.268	.536	.806	1.08	1.35	1.63	1.91	2.20	2.48	2.76	3.05	3.35	3.66	3.96
120°	.360	.721	1.08	1.45	1.82	2.19	2.57	2.95	3.33	3.72	4.11	4.50	4.91	5.32

X-section Bayard (Law to Loring) 13-23

X-Sect. Emerald (Noyes to Olney) 24-30

Proposed 8" Sewer Pacific Hwy 31-34
(Balboa Ave South)

X-Sec Alcott-Chatsworth to Palermo
and to Zola 35-46

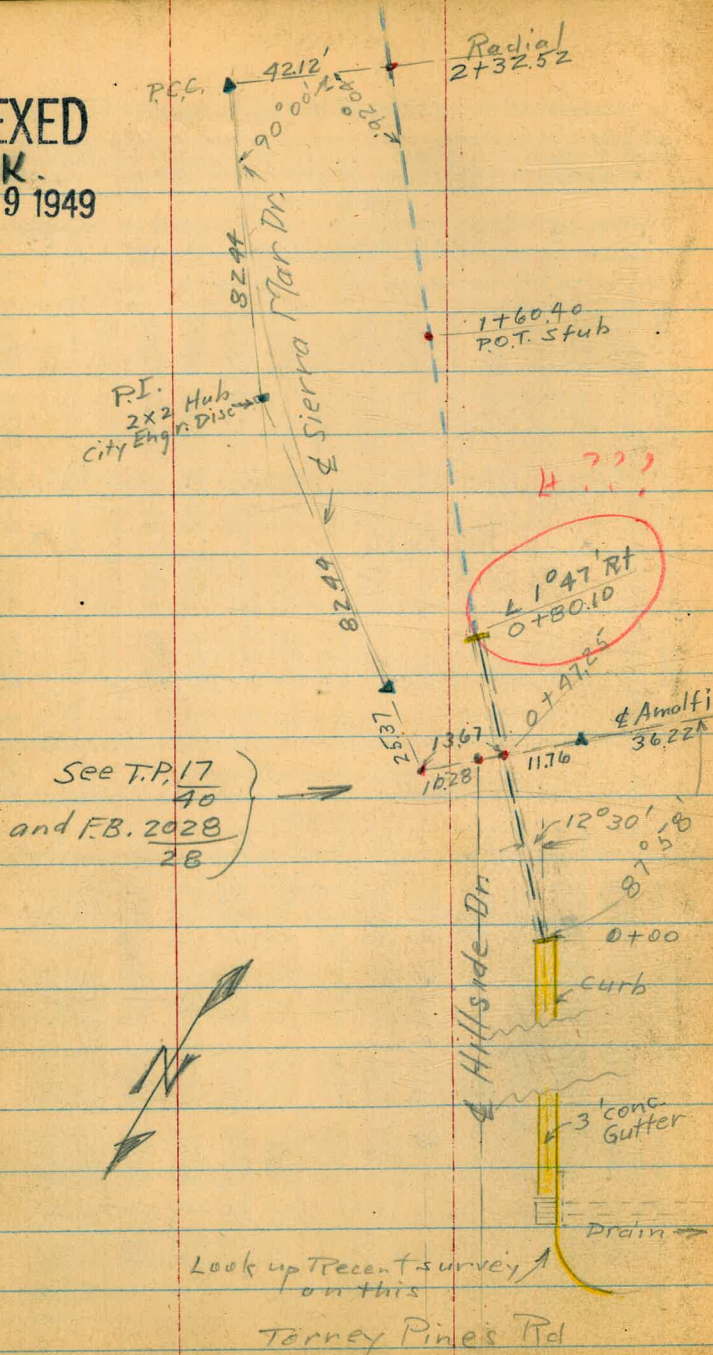
Redwood-Thorn Vancouver Haller

X Sec Alley B/K B Montclair Sub 5D-58

Cross Sec. Larnmont St. Cross Pt. Dr. to Pacific Beach Dr. 59-75

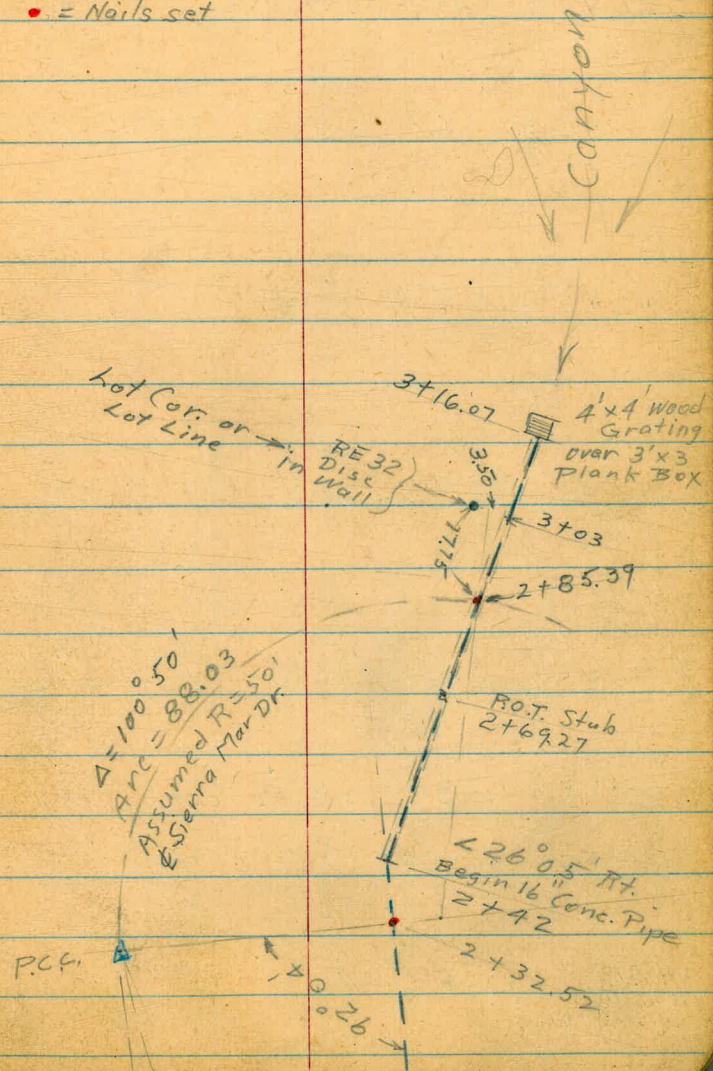
Alignment Curbs. Pac Beach Dr & Larnmont 76

INDEXED
N.K.
AUG 19 1949



Storm Drain - Lot 9
Sierra Mar Drive and
Amalfi - So. La Jolla Shores ¹
(Levels on pages 2 to 5)

- = Existing and proposed Storm Drain
- = Hub + disc
- ▲ = RR, spikes - Street &
- = Nails set



8/18/49

McCoy
Allen
RorerStorm Drain Survey
Thru Lot 9 - Hillside + Amalfi
So. La Jolla Shores
(Sketch Pg I)

NO. 20567

Lt.

E

Rt.

2

+61

+57 Edge Oil + Rock Surface

+17.25 Intersection of E Amalfi

+29 Begin Rock + Oil

0+00 Top Head Wall

0+00 Begin with 15" x 11" Plank Culvert (Poor Condition)
Concrete Headwall (20" x 14" opening)

T.P. #1 1303, 122.02 0.59 108.99

0-50 Concrete Gutter + Curb.

NWBP
Viking Way
+ Torrey Pines

1326 109.58

96.32

1317.17

 $\frac{1.8}{5}$
120.22.1
119.9 $\frac{1.9}{5}$
120.1 $\frac{2.2}{5}$
119.82.70
119.3 $\frac{2.7}{5}$
119.3 $\frac{7.7}{5}$
117.37.7
117.1 $\frac{7.5}{5}$
117.58.0
2.0
Gr.
114.08.34
1.8
End
Headwall
113.698.40
113.678.44
1.8
End
Headwall
113.588.3
2.0
Gr.
113.79.07
3.0
Edge
112.957.93
0.8
112.0910.08
H.
111.9410.08
0.8
Gut.
111.948.59
0.9
Top
Curb.
112.43

107.25 (122.02) ✓

2.33
3.0
Edge of
conc. Gutter
107.212.37 2.40
0.8
Gut.
107.181.67
0.8
Top
Curb.
107.91

(109.58) ✓

Lt. E. RT.

1+29 18" Willow 8.0' Lt

1+25 @ 5' Pl/m 12' RT 15" Willow 7.5 Lt

1+05

$$\begin{array}{r} 8.5 \\ \hline 5 \end{array} \begin{array}{l} 121.9 \\ 121.3 \end{array}$$

9.1

$$\begin{array}{r} 8.2 \\ \hline 5 \end{array} \begin{array}{l} 122.2 \\ 121.7 \end{array}$$

0+92

$$\begin{array}{r} 7.1 \\ \hline 5 \end{array} \begin{array}{l} 123.3 \\ 119.3 \end{array}$$

11.1

$$\begin{array}{r} 9.3 \\ \hline 5 \end{array} \begin{array}{l} 121.1 \\ 119.3 \end{array}$$

0+80.10

$$\begin{array}{r} 6.5 \\ \hline 5 \end{array} \begin{array}{l} 123.9 \\ 119.3 \end{array}$$

12.2

$$\begin{array}{r} 8.9 \\ \hline 5 \end{array} \begin{array}{l} 121.5 \\ 119.3 \end{array}$$
0+80.10 End 15" x 11" Plank Culvert (Poor Condition)
6" Concrete Head wall 3.6" wide
$$\begin{array}{r} 10.45 \\ \hline 1.8 \end{array} \begin{array}{l} 119.98 \\ 119.3 \end{array}$$

End Head wall

10.45
& Head wall
$$\begin{array}{r} 10.45 \\ \hline 1.8 \end{array} \begin{array}{l} 119.95 \\ 119.3 \end{array}$$

End Head wall

0+78

$$\begin{array}{r} 8.0 \\ \hline 5 \end{array} \begin{array}{l} 121.4 \\ 121.6 \end{array}$$

8.8

$$\begin{array}{r} 9.0 \\ \hline 5 \end{array} \begin{array}{l} 121.4 \\ 121.6 \end{array}$$

0+67 3.8' RT Dead End of Wire Fence

$$\begin{array}{r} 1046 \\ \hline 12202 \end{array} \begin{array}{l} 130.73 \\ 119.97 \end{array}$$

$$\begin{array}{r} 130.73 \\ \hline \end{array}$$

2+25

$\frac{7.2}{10}^{133.6}$ $\frac{10.7}{7}^{130.1}$ $\frac{12.2}{1.0}^{128.6}$ $10.7^{130.1}$ $\frac{7.8}{5}^{133.0}$ RT

IT #3 1113 140.77 079 129.64

$\frac{0.1}{10}^{130.3}$ $\frac{1.9}{7}^{128.5}$ $\frac{3.5}{3}^{126.9}$ $1.9^{128.5}$ $\frac{+3.0}{5}^{133.4}$

2+00

+87 16" Eucalyptus 3.5 RT

+8.2 18" Pepper Stump 3.5 RT

+81

$\frac{4.2}{10}^{126.2}$ $\frac{4.1}{5}^{126.3}$ $0.2^{130.2}$ $\frac{+3.0}{5}^{133.4}$

1460.90 P.O.T.

$\frac{4.8}{12}^{125.6}$ $\frac{5.1}{8}^{125.3}$ $\frac{2.9}{3}^{127.5}$ $2.5^{127.9}$ $\frac{1.5}{5}^{128.9}$
 on stub

+45

$\frac{0.5}{10}^{123.9}$ $\frac{5.0}{5}^{125.4}$ $4.5^{125.9}$ $\frac{3.3}{5}^{127.1}$

1+35

$\frac{6.6}{10}^{123.8}$ $\frac{6.6}{5}^{123.8}$ $5.9^{124.5}$ $\frac{7.7}{5}^{125.7}$

130.43 ↓

NWBP
Viking Way.
+ Torrey Pines

		7.07	96.37	96.32
TR #8	1.38	103.44	12.35	102.06
TR #7	0.25	114.41	12.58	114.16
TR #6	0.60	126.74	13.02	126.14
TR #5	0.42	139.16	12.71	138.74

3+10 \pm 3'x3' Box - Bottom filled with Debris

3+16.07 { Begin Canyon
Begin 4'x4' Plank Grating
over 3'x3' Plank Shored Box
Assumed End 16" Conc. Pipe Drain

3+0.3 Disc (RE32) 3.5' Lt. (Either Lot)

2+85.39 (Assumed \pm 30' Road (50' Radius))

2+67

TR #4	10.74	151.95	0.06	140.71
Nail in Eug. Tree				
6' RT 2+69				

2+42.0 Top Conc. Head Wall

2+42.0 Begin 16" Conc. Pipe

140.77

Lt. \pm Rt. 5

147.5
3.9
20

147.2
4.3
5

146.35
5.10
Edge Plank Grating

138.0
13.5
To Debris

148.0
3.5
5

149.4
2.0
20

146.5
99.5

145.2
6.3

(151.45)

131.43
9.34

133.9
6.9
5

132.3
8.5
1.0

129.32
11.75
5

132.5
8.3
1.0

133.7
7.1
5

(140.77)

Notes Reduced. 8.26.29

Jursey Proposed Storm
Drain Extension
From 28th to J St
Easterly to Hoitt St.

W.P. 20588

Walker
Johnson
Pope
Granford
9-28-49

7

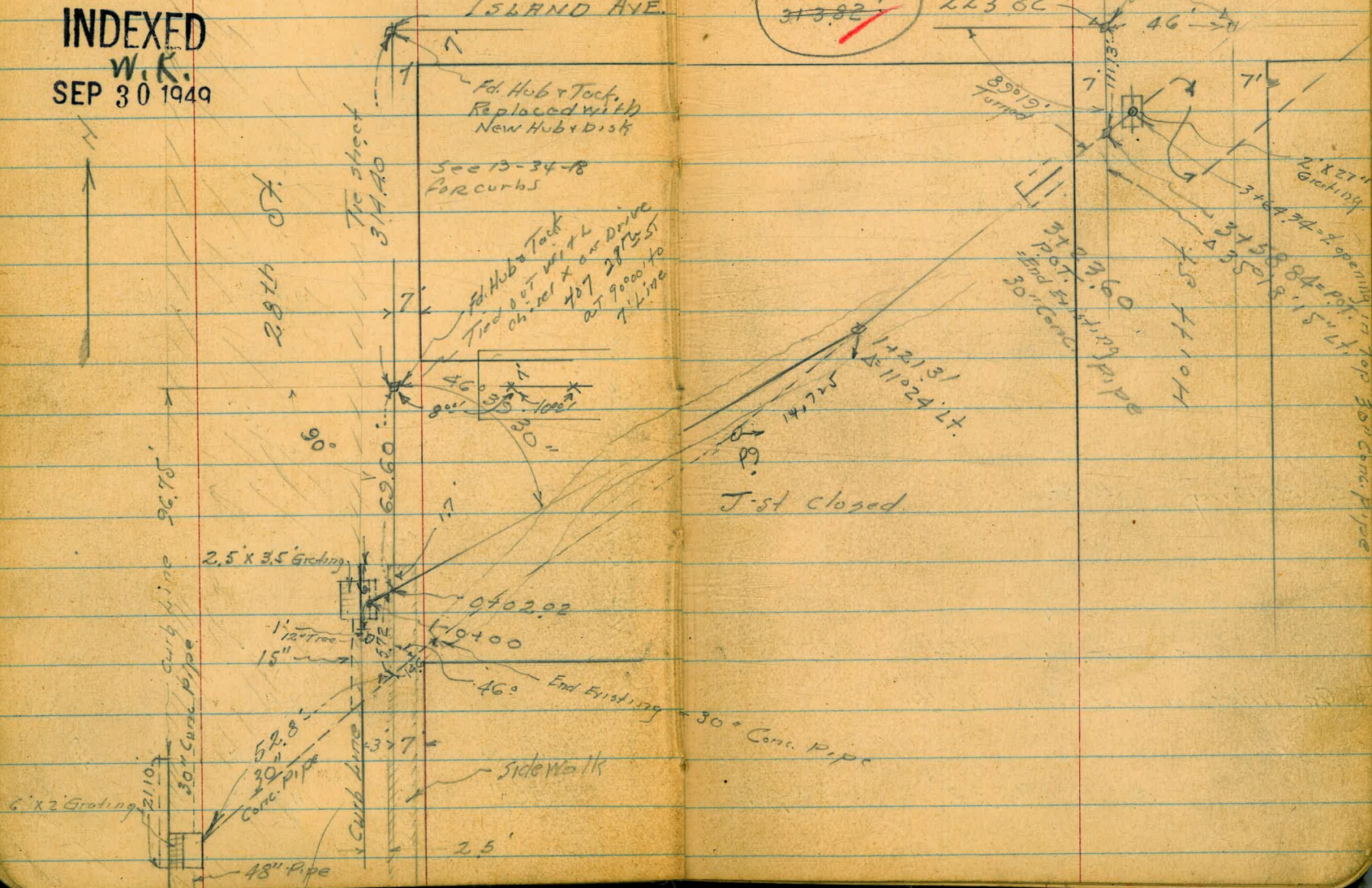
INDEXED
W.K.
SEP 30 1949

ISLAND AVE.

Meas.
313.82'

OK-CBW.
223 82

Fd Hub & Tack
set New Hubs
& Disks.



J-st closed

30" Conc. Pipe

30" Conc. Pipe

Sidewalk

See 13-34-48
for curbs

Fd Hub & Tack
Tied out with 4" Drive
at 9000 to
1" Line

To street
34.40

28th St

26.70'

2.5 x 3.5 Grating

30" Conc. Pipe

30" Conc. Pipe

48" Pipe

2.5'

69.60'

70.02.02

10400

46°

33.7'

End Existing

14.725

14.2131
11.24 Lt.

34.29.60
End Existing
30" Conc. Pipe

Hoitt St

34.58.84 = 2' opening
34.55.18 = 1.5' Lt.
2' x 27" Grating

89°19' Turned

7'

7'

46'

OK-CBW.
223 82

Final

28th & J-
Current levels

Lt.

Σ

Rt.

7

0712

88.52	88.52	88.54	88.07
45	45	438	895
10		4 on Hd Walk	4 Flow 30" Pipe

0702.02 Diag. Sec Parallel to Walk

88.13	88.14	88.20	88.23
489	490	482	499
1.7 N end Walk	Walk	10 Walk	20 Walk

Cb inlet East side

84.82	86.73	88.02	87.41	87.86
8.20	6.09	5.00	5.61	5.16
Flow 15" Pipe	Grating	Cb. inlet	15" Kt Gut.	15" Kt Cb.

E Paving 28th St.

87.47
5.55

TP 6.04 93.02 11.34 86.98

81.06	76.45	80.84	81.94	86.90
1096	1457	718	1108	612
Flow Line 30" N.E.	Flow Line 48" to South	Grating 93.02	30" Flow from North	Cb at Grating

Cb inlet on West Side 28th

0.29 98.32 98.93

S.W.B.P. Island & 28th

28th & J
Cutwest Levels

Lt.

R

Kt.

8

TP 1301 102.50 353 89.49

172131

^{87.5}	^{87.5}	^{87.11}	^{87.5}	^{87.3}
4.5	5.5	5.91	5.5	4.7
5	3	Hub in Ditch	3	10

1700

^{87.4}	^{87.1}	^{87.1}	^{87.4}	^{87.1}	^{87.1}
4.2	6.3	6.3	5.5	4.3	4.3
10	3		3	4	10

0+56 = Int. Fence

^{87.4}	^{86.0}	^{86.0}	^{87.4}	^{87.4}
4.6	7.0	7.0	4.6	4.6
7	4 Ditch	Ditch East edge	8	12

0+22

^{87.6}	^{87.2}	^{87.2}	^{87.2}	^{87.2}	^{87.2}
5.4	7.8	7.8	7.8	4.8	4.8
3	25	Ditch	35	7	10

0+17

9302

^{88.5}
4.5
West
edge Ditch

93021

28th & J-St
 Culvert Levels

3+00

96.0 92.5 92.1 92.2 91.1 94.3
 4.5 10.0 10.4 10.3 11.4 8.2
 15 4 5 7 13

2+50

96.8 94.6 91.6 91.0 90.9
 5.7 7.9 10.9 11.5 11.6
 17 10 4 10

2+25

92.5 90.7 90.3 90.4
 10.0 11.8 12.2 12.1
 13 4 10

2+00

90.2 89.8 89.8
 12.3 12.7 12.7
 10 10

1+57.1 - 1st Chicken Wire Fence

88.9 89.4 88.4 87.7 89.7
 13.6 13.1 14.1 14.8 13.8
 10 5 10 10
 Ditch

102.50

102.501

28th & J
Curvet Levels

chk starting BM 447 98.03 ✓

3+64.34 = starting inlet

3+65.32 Elec. Pole 36 ft #470

3+58.84 = P.O.T. = Int 7' line Hartt St.

3+40

3+23.6 = Beg 38" Conc. Pipe

Lt. E Ft. 10

99.19

331
on starting

Notes Reduced 10.28.89

—

100.10
2.40

23
100.2
10

2.1
100.4

17
100.8
10

98.9
3.6
14

92.6
9.9
4

91.20
11.30
7

94.1
8.4
7

99.7
3.8
17

102.50.1

D. Smith III
 C. Sommermyer
 C. Allen
 J. Rorer

Additional outs for Prainago
 BIK 57 Normal Hts between 33rd,
 Bancroft, Madison, Monroe.

W 0th
 10-11-49 **11**

2750
 TP 4²⁰ 386⁹⁴ 4²¹ 382⁷⁴

Lt = East
 382.4
 4¹⁵
 40

Rt = West
 382.2
 4¹⁵
 15

2700
INDEXED
 W.K.
OCT 28 1949

386⁹⁴
 382.5
 4¹⁵
 40

382.6
 4¹⁵
 15

382.8
 4¹⁵
 15

382.9
 4¹⁵
 50

1750

Reduced by A.C.O.
 11-1-49

382.8
 4¹⁵
 40

382.6
 4¹⁵
 15

383.1
 4¹⁵
 15

383.5
 4¹⁵
 50

1700

382.7
 4¹⁵
 40

383.4
 4¹⁵
 15

383.2
 4¹⁵
 15

383.8
 3¹⁵
 50

0750

383.6
 4¹⁵
 40

384.1
 3¹⁵
 15

384.1
 3¹⁵
 15

384.2
 3¹⁵
 50

0700 South Prop Madison Ave

BM 6⁶⁴ 387⁶⁵ 381⁰¹ SEBR. Madras
 Bancroft

387⁶⁵

cont

Lt-East

♀

Rt-West

12

5150

41	382.5	41	382.7
40		15	

5100

42

45	382.4	41	382.8
50		15	

4150

42	382.7	42	382.5
50		15	

4100

32	382.2	45	382.4
40		15	

3150

50	381.9	42	382.0
40		15	

3100

46	382.3	46	382.3
40		15	

386.24

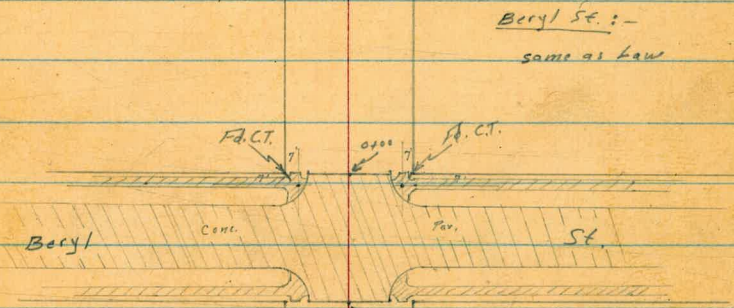
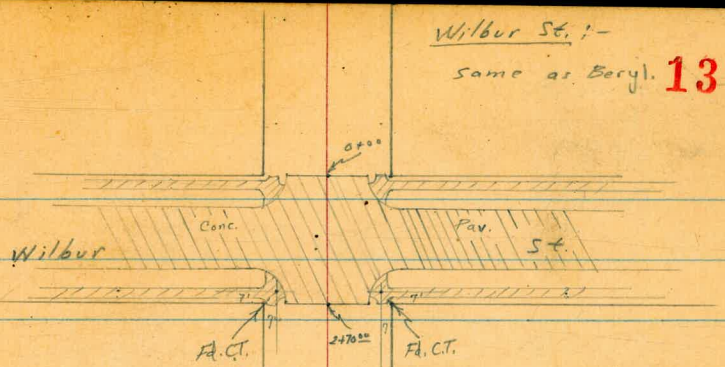
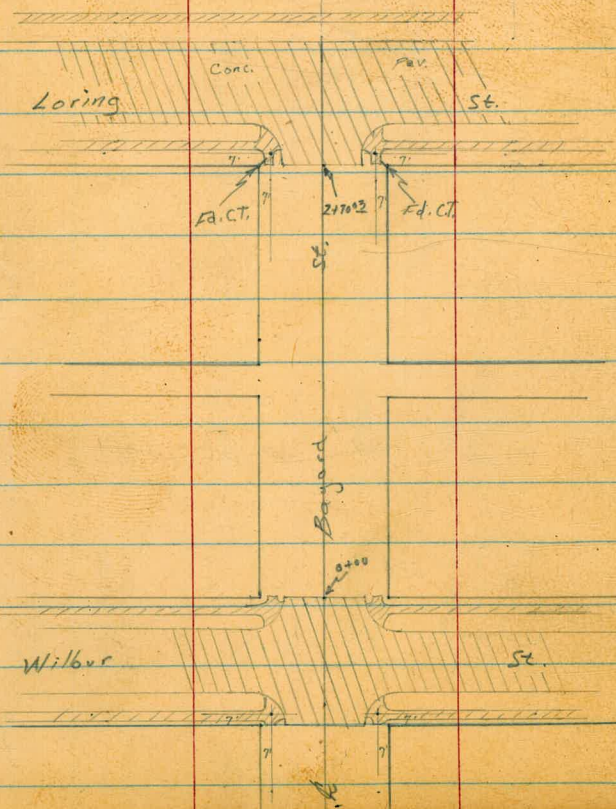
Cross Section Bagard St.
(Law to Loring)

11-17-49
Roberts
Garber
Moore
Clark
W.O. 31644

INDEXED
W.K.
NOV 18 1949

T.P. 1784 # 1774

Loring St. :-
11' cb. fee. + walk
5' Walk
20' cb. Rad.
110' St. ?
52' Rdway.
24' Park. on So.



Bagard St. :-
unpaved, 30' St.
From Law End Pav.
52' Roadway
5' cb. fee. + walk
5' Walk

Law St. :-
90' St.
40' Rdway.
11' cb. fee. + walk
5' Walk
20' cb. Rad.



Cont'd From Page 13

NOTES REDUCED
by
MORGAN
11-23-49

Lt Lt Rt

14

62.19
61.89
61.39
60.89
61.09
61.59
61.69
61.99
62.09

6.4 6.7 7.2 7.7 7.5 7.0 6.9 6.6 6.5
40 26 20 19 15 7.0 13 26 40

61.79
61.39
61.19
60.79
60.19
59.69
60.39
60.89
60.29
60.69
60.49
60.99
61.59

6.8 7.2 7.4 7.8 8.4 8.9 8.2 8.0 8.3 7.7 8.1 7.6 7.0
50 40 30 26 20 19 13 7.7 13 14 24 26 40

1+00

0+50

0+20 27° Rt To Center Telephone Pole #84217

0+12 Begin Conc. BK. Wall 39.75° Rt.

0+00 No. Prop. Line Low (End Conc. Pav.)

59.59
59.23
59.23
59.14
58.58
58.91
59.07
59.14
58.92
59.61
59.73
59.71
60.19

9.0 9.36 9.36 9.45 10.11 9.68 9.52 9.45 9.67 9.78 9.86 9.82 8.4
40 36 31 26 26 19 9.52 13 26 26 31 36 40

walk walk cb gutt gutt cb walk walk

59.09
9.5 5.05
39.75
39.75
Top

0-20 No. Cur b Line

58.79
58.09
58.09
58.23
58.27
58.33
58.55
58.72
58.92
58.97
59.60
59.01
59.69

9.70 10.50 9.70 10.31 10.32 10.26 10.04 9.87 9.67 9.62 9.77 9.57 9.70
54 54 46 46 40 26 10.04 26 40 46 46 53 23
cb gutt cb gutt gutt cb gutt cb

0-40 L Law St.

58.77
58.33
58.49
58.75
58.94
59.03
59.24

10.42 10.26 10.10 9.84 9.65 9.56 9.35
60 40 26 26 40 60

B.M. 9.70 68.59 58.89

68.59
N.W. B.P. Law & Bayard

1454 38.7' Rt. Begin Board Fence

63.59	62.39	62.19	61.69	62.19	62.69	62.39	62.59	62.69	62.99
5.0	6.2	6.4	6.9	6.4	5.9	6.2	6.0	5.9	5.6
75	40	26	20	13	13	26	40	70	

1445 No. Alley Line (Approx)

1435 7' Lt. 3' Sq. NH. Gas Co.

62.21
6.38
7
NH
Rim

1425 So. Alley Line (Approx)

63.19	62.19	61.39	61.69	62.19	61.89	62.49	62.59	63.09
5.4	6.4	7.2	6.9	6.4	6.7	6.1	6.0	5.5
75	40	26	13	13	26	40	70	

1423 27.4' Rt. Power Pole # P4875

62.59
68.59
6.0
39.75
Dirt
7.0
0.0
39.75
T.P

1420 39.75' Rt. End Conc. BIK Well

1413 43.5' Lt. & Double Garage

62.61
5.98
43.5
Floor
62.41
6.18
40.1
Apron

68.59
A

68.59
A

Cont'd From Page 15

Lt

R

R

16

2+70.9 So. Prop. Line Beryl (Pav. Edge)

65.69	65.52	65.50	65.49	64.93	65.34	65.54	65.38	65.02	65.90	65.99	66.06	66.19
2.9	3.07	3.09	3.10	3.66	3.25	3.05	3.21	3.37	2.69	2.60	2.53	2.9
40	36	31	26	26	13	13	26	26	31	36	40	40
	Walk	Walk	cb	Gutt			Gutt	cb	Walk	Walk		

2+57 272' Rt T. Pole. # 84218

2+35

64.99	64.49	63.79	64.29	64.59	64.09	64.59	64.19	64.89	65.79
3.6	4.1	4.8	4.3	4.00	4.5	4.0	4.4	3.7	2.8
40	26	21	15	11	14	26	27	40	40

2+16 397' Rt N. Edge Conc. Apron

65.24	65.59
3.35	3.00
397	46.7
Apron	Floor

2+00.5 397' Rt So. Edge Conc. Apron Double Garage

65.20	65.59
3.39	3.00
397	46.7
Apron	Floor

2+00 38.7 Rt End Board Fence

64.09	63.89	63.09	63.49	63.69	62.79	63.29	63.79	63.89	64.99
4.5	4.7	5.5	5.1	4.9	4.8	5.3	4.8	4.7	3.6
40	26	20	13	10	11	13	26	40	40

68.59
1

68.59
1

Cont'd From Page 16.

LT

E

Rt

17

0+18 27' R T. Pole # 84219

0+15

	69.26	69.26	68.86	67.66	67.46	67.26	66.96	68.26	68.76	68.76
	8.7	8.7	9.1	10.3		10.7	11.0	9.7	9.2	9.2
	60	40	26	16	10.5	17	22	26	40	60

0+00

No. Prop. Line Beryl (Pav. Edge)

	67.48	67.16	67.24	67.17	66.64	67.07	67.30	67.38	67.29	68.01	68.10	68.14	68.26
	10.48	10.81	10.72	10.77	11.32	10.89	10.58	10.67	9.95	9.86	9.82	9.7	
	40	36	31	26	26	13	10.66	13	26	26	31	36	40
		Walk	Walk	cb	Gutt				Gutt	cb	Walk	Walk	

T.P.

9.94

77.96

0.57

68.02

77.96

0-20

No. Cb. Line

	66.29	65.62	66.74	66.09	66.12	66.29	66.63	66.94	67.23	67.33	67.99	67.99
	2.30	2.97	1.85	2.50	2.47	2.30		1.60	1.36	1.16	0.10	1.10
	80	80	46	46	40	26	1.96	26	40	46	46	80
	cb	Gutt	cb	Gutt					Gutt	cb	Gutt	

0-40

E Beryl

	65.49	66.01	66.19	66.60	66.82	66.89	67.24
	3.10	2.58	2.40		1.77	1.70	1.35
	80	40	26	1.99	26	40	80

0-60

So. Curb Line Beryl

	64.94	64.43	65.32	64.85	64.91	65.50	66.22	65.84	65.54	65.59	66.07	65.93	66.40
	3.65	4.16	3.27	3.74	3.68	3.09		2.75	3.05	3.00	2.52	2.66	2.19
	80	80	46	46	40	26	2.37	26	40	46	46	80	80
	cb	Gutt	cb	Gutt					Gutt	cb	Gutt	Gutt	cb

68.59

68.59

Cont'd From Page 17

Lt

Rt

Rt

18

1435.2 Lt MH Sewer

71.40

6.56

7.11

7.11

72.56

71.46

71.16

70.66

70.16

70.56

70.86

10.46

71.66

71.76

71.56

72.46

1425 So. Line Alley (Approx)

5.4

6.5

6.8

7.3

7.8

7.4

7.1

7.5

6.3

6.2

6.4

5.5

75

40

26

21

20

13

71

13

17

26

40

75

1422 28° Lt. P. Pole # P4924

1421 27° Rt T. Pole # 84220

70.76

70.56

70.16

69.46

69.86

70.06

69.96

70.66

71.06

70.86

70.96

1400

7.2

7.4

7.8

8.5

8.1

7.9

8.0

7.3

6.9

7.1

7.0

50

40

26

20

14

79

14

15

26

40

50

0474 39° Lt. & 3' Conc. Walk

70.45

70.20

7.51

7.76

7.6

7.9

walk

69.56

69.46

68.96

68.26

68.66

68.66

68.36

69.46

69.76

69.86

69.86

0450

8.4

8.5

7.0

7.7

9.3

9.3

9.6

8.9

8.2

8.1

8.1

50

40

26

22

16

9.3

15

16

26

40

50

77.96

7

77.96

7

Cont'd From Page 18

Lt

R

Rt

19

2735 40' Rt & 3' Conc. Walk

74.96	74.66	73.86	73.16	73.46	73.76	73.26	73.96	74.66	75.33	75.59
3.0	3.3	4.1	4.8	4.5	4.7	4.0	3.3	2.3	2.37	
50	40	26	20	13	42	14	18	26	10	50
									WALK	WALK

2713 398' Lt & 2' Conc. Walk

74.37	74.31
3.59	3.65
50	39.8
	WALK

2707 40' Rt & 3' Conc. Walk

74.95	75.40
3.01	2.56
40	50
WALK	WALK

2700

74.06	73.86	73.16	72.16	72.46	72.76	72.56	73.16	74.16	74.76	74.96
3.9	4.1	4.8	5.8	5.5	5.2	5.4	4.8	3.8	3.2	3.0
50	40	26	20	13	52	13	18	26	40	50

1745 No. Line Alley (Approx)

73.36	72.46	71.76	71.36	70.76	71.16	71.76	70.96	71.66	72.06	72.46	73.26
4.6	5.5	6.2	6.6	7.2	6.8	6.6	7.0	6.3	5.9	5.5	4.7
75	40	26	21	20	12	6.6	13	17	26	40	75

1740 8.2' Lt Gas Co. Gate Valve

71.22
6.74
8.2

77.96
^

77.96
^

0+00 No. Prop. Line Wilbur (Par. Edge)

75.35	75.10	75.09	75.09	74.57	74.99	75.25	75.31	75.26	76.02	76.12	76.13	76.55
12.5	12.75	12.76	12.76	13.28	12.86	12.57	12.57	12.59	11.83	11.73	11.72	11.3
40	36	31	26	26	13	2.60	13	26	26	31	36	40
	walk	walk	cb	Gutt				Gutt	cb	walk	walk	

T.P. 11.81 87.85 1.92 76.04

87.85

0-20 No. Curb Line Wilbur

74.26	73.61	74.88	74.0	74.20	74.39	74.74	75.09	75.25	75.35	76.03	75.58	76.24
3.70	4.35	3.08	3.86	3.76	3.57		2.77	2.71	2.61	1.93	2.34	1.72
80	80	46	46	40	26	3.22	26	40	46	46	80	80
cb	Gutt	cb	Gutt					Gutt	cb	Gutt	cb	

0-40 E Wilbur

75.72	75.36	75.24	74.94	74.57	74.32	73.64
2.24	2.60	2.72		3.39	3.64	4.32
80	40	26	3.02	26	40	80

0-60 So. Curb Line Wilbur

73.38	72.86	73.90	73.36	73.42	73.84	74.56	74.66	74.51	74.51	75.00	74.80	75.46
4.58	5.16	4.66	4.60	4.54	4.12		3.30	3.45	3.45	2.96	3.16	2.50
73	73	46	46	40	26	3.40	26	40	46	46	80	80
cb	Gutt	cb	Gutt					Gutt	cb	Gutt	cb	

2+70.00 So. Prop. Line Wilbur (Par. Edge)

74.06	73.85	73.88	73.93	73.29	73.97	74.27	74.36	74.14	74.90	74.93	74.93	75.06
3.9	4.11	4.08	4.03	4.69	3.99		3.60	3.82	3.06	3.05	3.03	2.9
40	36	31	26	26	13	3.69	13	26	26	31	36	40
	walk	walk	cb	Gutt				Gutt	cb	walk	walk	

2+66 27' Rt T. Pole # 307975 H

77.96

77.96

1425 So. Line Alley (Approx)

79.75	80.45	80.55	80.65	80.55	80.45	80.75	80.75	81.45	81.95
81	74	73	78	73	74	71	71	64	59
70	40	26	20	73	11	22	26	40	70

1423 27' Lt. T. Pole # P4974

1419 40' Rt. End Conc. Apron

81.40	81.70
6.45	6.15
40.6	43.4
Apron	Floor

1403 33' Lt. & 3' Conc. Walk

7986	7991
7.99	7.94
40	33.8
	Walk

1400 { 40.9' Rt. Begin Conc. Apron to Double Garage
40.0' Rt. End Board Fence

7985	7985	7985	7985	8005	7985	7935	7985	8065	8114	8165
8.0	8.0	8.0	8.5	7.8	8.5	8.0	7.2	6.71	6.20	
48	40	26	20	3	80	11	26	40	40.9	43.6
									Apron	Floor

0450

78.45	78.45	78.35	78.25	77.65	78.15	77.65	78.15	78.15	78.85	78.45	79.05	79.65
9.4	9.4	9.5	9.6	10.2	10.2	9.7	9.7	9.0	8.9	8.8	8.2	
50	40	26	21	18	27	11	13	21	22	26	40	50

0448 { 39.7' Rt. Begin Board Fence
26.5' Rt. T. Pole # 307986

87.85
↑

87.85
↑

Cont'd From Page 21

2+23 37.3 Lt. Begin Picket Fence
36.0 Lt. End. Conc. Apron

Lt. Rt.
83.52 83.25
4.33 4.60
44 Floor 36 Apron

22

2+14 39.6 Rt. End Conc. Apron

84.25 85.51
3.60 2.34
39.6 Apron 58.8 Floor

2+08 36.1 Lt. Begin Conc. Apron to Double Garage
38.2 Lt. End Board Fence

83.38 82.96
4.47 4.89
44.1 Floor 36.1 Apron

2+00

82.65 82.25 82.05 81.75 82.25 82.65 82.25 82.65 82.25 84.21
5.2 5.6 5.8 6.1 5.6 5.2 5.6 5.2 4.6 3.64
50 40 26 20 13 52 11 13 26 40

1+99 39.6 Rt. Begin Conc. Apron Garage now a dwelling

84.17 85.50
3.61 2.35
39.6 Apron 58.5 Floor

1+51 26.8 Rt. Guy Pole #468672

1+45 { 36.6 Lt. Begin Board Fence
No. Line Alley (Approx)

79.85 80.65 80.75 80.85 80.55 81.25 81.05 81.45 81.85 82.35
8.0 7.2 7.1 7.0 7.3 6.6 6.8 6.4 6.0 5.5
70 40 26 21 20 66 11 26 40 70

87.85
1

87.85

Check 8.56 58.90 = 58.89

Starting BM

T.P. 153 67.46 1115 65.93

T.P. 197 77.08 12.74 75.11

Set BM 3.52 84.33

Loring # Bayard

SW. 7' CT.

3+20⁰³ £ Roadway Loring

83.02 83.87 84.15
 4.83 3.98 3.70
 80 40 26 3.24 2.85 2.62 2.18
 80 26 40 70

2+94⁰³ So. Curb Line Loring

83.02 82.44 83.88 83.30 83.38 83.93
 4.83 5.41 3.97 4.55 4.47 3.92
 80 80 46 46 40 26 3.33 3.33 3.36 3.30 2.68 3.09 2.52
 cb gutt cb gutt gutt cb gutt cb

2+77 39^{1/2} End Picket Fence

84.15 84.50 84.96 84.74 83.73 84.16
 3.7 3.35 3.39 3.51 4.12 3.69
 40 36 31 26 26 13 3.42 3.45 3.73 3.10 3.06 2.97 2.7
 walk walk cb gutt gutt cb walk walk

2+70⁰³ So. Prop. Line Loring (Pan. Edge)

83.65 83.55 83.05 83.05 82.75
 4.2 4.3 4.8 4.8 5.1
 50 40 26 20 19 4.6 4.7 4.0 2.7 2.3
 50 40 26 20 19 4.6 11 26 40 50

2+35

87.85

87.85

Roberts X-Section Emerald St.

Garber Noyes to Olney

Moore

Clark

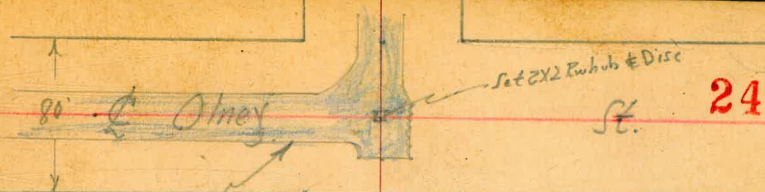
4-10-50

YV 1585

T.P. 20

T.P. 1624 & 1625

INDEXED
W.K.
APR 12 1950



Government Pav.
Very thin &
very rough
24" strip
About 2" thick

Set & Int. Hub at Olney
& Emerald from points
at Diamond & Olney and
Garnet & Olney - Pendleton &
Emerald and Pendleton &
Feldspar.

St.

Emerald

Set P.O.T. Hub
H50

0+00

OUT-3-31-57 SCA
Set 2x1 Pw Hub

(← Sign Post Diamond) & Noyes

St. 80'

0+29 40³ Rt End of the Eucalyptus Trees

Another Row of Euc. behind this Row.

0+07 40⁸ Rt. & Row of ±15" Eucalyptus

T.P. *9.47 86.16 3.00 76.69

0+00 E. Prop. Lina Noyes

0	79.7	78.3	77.2	75.9	75.6	75.4	75.6	74.5	72.6
100	40	2.5	3.8	4.1	4.3	4.1	5.2	7.1	
		14	16	13	13	15	40	100	

0-17

79.4	77.5	76.7	75.4	75.1	74.7	74.1	73.0
0.3	2.4	3.0	4.1	4.6	5.0	5.6	6.7
100	40	18	15	20	40	100	

0-22

78.5	76.0	75.6	75.1	74.1	73.4	72.0
1.4	3.7	4.1	4.6	5.6	6.3	7.7
100	40	17	20	40	100	

0-40 E Noyes

78.5	76.4	75.2	74.1	72.4
1.2	3.3	4.5	5.6	7.3
100	40	40	100	

T.P. 10.69 79.69 0.08 69.00

BM 7.06 69.08 62.02 NWBP
Garnet &
Noyes

79.69

Cont'd From Page 25

Lt

☉

Rt 26

1445

83.2	82.9	82.5	82.2	81.8	81.4	81.6	81.0	79.2	76.4	73.4
3.0	3.3	3.7	4.0	4.4	4.8	4.6	5.2	7.0	9.4	12.8
50	40	14	10	4	8	10	13	25	40	60

1407

Another Row of Euc. behind
40' Rt. & Row of Eucalyptus Trees

1400

82.8	82.4	82.5	82.1	81.8	81.6	82.0	79.8	77.0	75.4	72.0
3.4	3.8	3.7	4.1	4.4	4.6	4.2	6.4	9.2	10.8	14.2
50	40	26	13	4	8	10	14	28	40	60

0+99

84.7	84.4	84.0	82.6	82.1	81.8	81.6	82.0	79.8	77.0	75.4	72.0
1.5	1.8	2.2	3.6	4.1	4.4	4.6	4.2	6.4	9.2	10.8	14.2
50	40	31	26	13	4	8	10	14	28	40	60

0+70

84.5	84.1	83.7	82.8	82.2	81.8	80.6	80.8	80.4	81.0	79.1	75.5	72.5
1.7	2.1	2.5	3.4	4.0	4.7	5.6	5.4	5.8	5.2	7.1	10.7	13.7
50	40	32	29	23	17	11	8	10	14	40	60	

0+40

82.7	82.5	82.5	79.9	79.5	78.5	78.2	77.9	78.1	77.0	75.6	73.4
3.5	3.7	3.7	6.3	6.7	7.7	8.0	8.3	8.1	7.2	10.6	12.8
50	40	35	19	14	13	8	8	10	14	40	60

0+20

81.4	81.0	78.1	77.8	76.7	76.5	76.4	76.4	75.9	74.6	73.1
4.8	5.2	8.1	8.4	9.5	9.7	9.8	10.5	11.6	13.1	
50	40	20	16	13	9	12	17	40	60	

86.16

86.16

Cont'd From Page 26

LT

R

R 27

T.P. 2.16 81.21 7.11 79.05
↑

3400 39' Rt End Wire Fence around Catery

2465

81.4	81.1	80.9	80.8	80.8	80.1	80.2	79.7	78.9	78.1
4.8	5.1	5.3	5.4	5.7	6.1	6.0	6.5	7.3	8.1
50	40	22	4	12		10	20	40	60

2425

40' Rt Begin Wire Fence

83.7	82.9	82.6	81.8	81.2	80.9	80.5	79.7	78.7	77.2
2.5	3.3	3.6	4.4	5.0	5.3	5.7	6.5	7.5	9.0
50	40	26	14	11		9	20	40	50

2410

39' Rd Single Garage

77.2
9.0
39'
Floor
Dirt

2400

83.9	83.6	82.5	81.6	81.3	80.7	80.9	80.1	78.2	77.1	75.1
2.3	2.6	3.7	4.6	4.9	5.5	5.3	6.1	8.0	9.1	11.1
50	40	14	11	11	9	11	18	30	40	60

1479 41' Rt End Row of Fucs.

1475 39' Rt Begin Wire Fence around Catery

1450

84.6	84.5	84.0	83.1	82.2	81.8	81.3	81.6	80.7	78.8	76.4	75.0
1.6	1.7	2.2	3.1	4.0	4.4	4.9	4.6	5.5	7.4	9.8	13.2
50	40	25	14	10	4	8	10	14	27	40	60

86.16
↑

86.16
↑

Contd From Page 27

Lt.

Lt.

Rt.

28

4413 39' Lt 3' Conc. Walk

76.89
432
50
Walk

76.55
411
39
Walk

4400

40' Rt Begin Wire Fence
39' Lt Begin Picket Fence

77.2
4.0
50

77.1
4.1
40

76.9
4.3
12

76.4
4.8
8

76.3
4.9
7

76.4
4.8
12

76.0
5.2
28

75.2
6.0
50

74.3
6.9
60

3499

25' Rt to Guy Pole

3490

25' Rt to Doodman

3450

39' Lt. End Wire Fence

78.7
2.5
50

78.5
2.9
40

78.1
3.1
14

77.4
3.8
18

77.3
3.9
16

77.0
4.2
12

76.9
4.3
20

76.9
4.3
40

76.2
5.0
60

3429

40' Rt 4' Conc. Walk

76.61
4.60
483
Walk

76.54
4.67
60
Walk

3410

57' Rt 6' Conc. Apron Single Garage

76.71
4.50
572
Apron

76.78
4.43
603
Floor

3400

80.5
0.7
50

80.1
1.1
40

79.6
1.6
12

79.2
2.0
10

79.0
2.2
10

78.9
2.3
10

78.5
2.7
20

77.6
3.6
40

76.7
4.5
60

81.21

81.21

Cont'd From Page 28

Lt

Rt

Rt

29

4422

74.7	73.0	71.9	71.95	71.63	71.11	71.98	71.98
6.5	8.2	9.3	9.26	9.58	10.10	11.4	13.4
100	50	20	127 Edge AC		17 Edge AC	50	100

5418 Edge government AC. Pav. (Rough & Thin)

74.8	73.8	72.3	72.01	71.71	71.26	71.3	69.5
6.4	8.4	8.9	9.20	9.50	9.96	9.9	11.7
100	40	20	12 Edge AC		17 Edge AC	40	100

5415 42' Rt to Center P. Pole # 94648

396' Lt. End Picket Fence

4499' W. Prop. Line Olney

40' Rt. End Wire Fence

75.5	73.0	72.5	72.3	72.2	73.1	73.0	70.8
5.7	8.2	8.9	8.9	9.0	8.1	8.2	10.4
100	40	20		10	18	40	100

4486 36' Rt. Center 4" Tree

4470

74.7	73.9	73.5	73.3	73.6	74.0	74.3	74.7	74.1	73.6
6.5	7.3	7.7	7.9	7.6	7.2	6.9	6.5	7.1	7.6
50	40	20	16		9	13	25	40	60

4456 37' Rt. Center 6" Tree

4440

76.0	75.2	75.2	74.9	75.1	75.7	76.0	75.6	75.3	76.1
5.2	6.0	6.6	6.3	6.1	5.5	5.2	5.6	5.9	5.1
50	40	20	14		11	12	20	40	60

4421

392' Rt. & Ribbon Drive 2' Ribbons 7' Overd

74.98	74.81
6.23	6.40
392	53
Apron	Fill

81.21

81.21

check

3.75 45.10 = 45.70

N.W. B.P. Garnet # Olney

T.P. 4.06 48.85 11.32 44.79

T.P. 0.38 56.11 12.71 55.73

T.P. 0.50 68.64 13.07 68.14

5439 61 E Olney

74.03
7.18
100

72.39
8.82
50

70.99
10.22

70.29
10.92
17
Edge
Ad

69.1
12.1
50

67.9
13.3
100

4727 1/2 W. Edge Rav.

72.75
6.46
100

73.08
8.13
50

72.09
9.12
20

71.41
9.80

70.86
10.35
17
Edge
Ad

69.7
11.5
50

68.0
13.2
100

81.21

71

81.2

71

D. Smith
Wm Fay
E. Sierman

W.O. 20006

Proposed Sewer 8"
Pacific Hwy south of
Balboa

INDEXED

AUG 11 1950

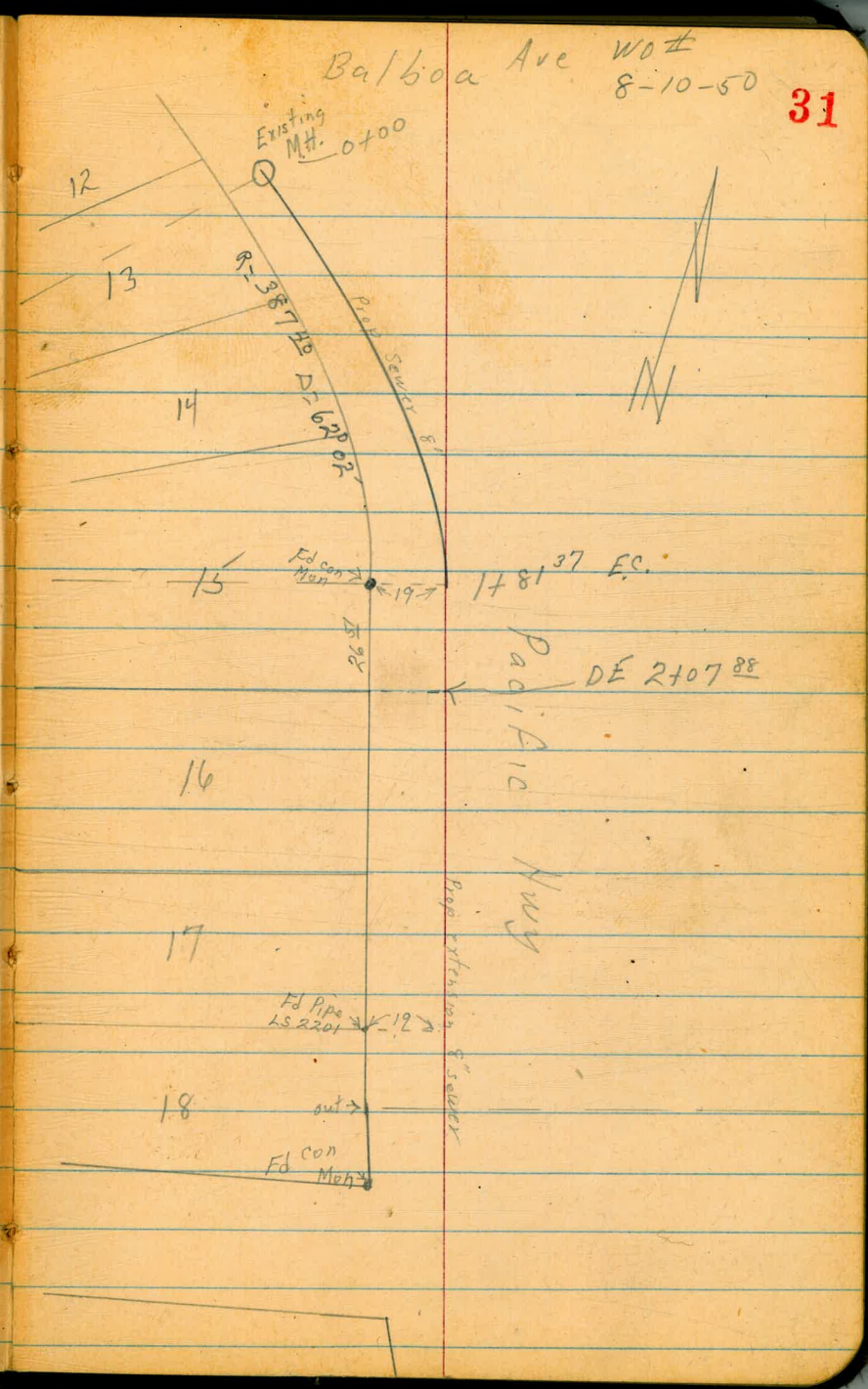
Sewer curve

$$\Delta = 31^{\circ} 06' 14''$$

$$R = 334 \frac{14}{14}$$

$$L = 181 \frac{37}{98}$$

$$T = 92 \frac{98}{98}$$



Balboa Ave W.O.#
8-10-50

31

Existing
M.H. 0400

12

13

14

15

16

17

18

Ed. con
Man

1781.37 ES.

Pacific Hwy

DE 2107 88

Ed Pipe
LS 2201

Ed con
Man

Prop. extension of sewer

D. Smith
Wm. Fay
E. Sherman

INDEXED

APR 2 1951

Grades Proposed
also X Sec. of

Sewer 8" Pacific Hwy
South of Balboa
line Extended.

VO#
8-10-50 32
EV. stakes RT - west

1700

96 8.92

16.53
973
66.80

0775

95 8.82

16.63
962
C-701

0750

92 8.72

16.73
991
66.82

0725

94 8.62

16.83
950
C-7.33

0700 Existing MH

947 16.93
rim FL

8.52

stakes 5' RT upgrade or Westerly

BM

443 25 45

2102

BP Southend.
gas pump base
Union Oil Sta
NE Cor
Balboa +
Pacific

25 45

.004 rate

Stakes At West

2+50

50 50 56 72 85
25 75 100 150

2+30

20 08
Elv.

TP, 4³² 20 08 969 15 76

2707⁸⁸ DE

10⁴ 9.35

16.10
10.13
C6.97

1781³² EC

9² 9.25

16.20
9.95
C6.25

1775

.004 rate

9⁸ 9.22

16.23
9.91
C6.32

1750

9⁶ 9.12

16.33
9.70
C6.63

1725

9⁵ 9.02

16.43
9.65

25 45 C6.78

At = west

4750

68	72	77	70	347
25	75	150	200	
			House	
			Flax	

4700

64	71	78	86
25	75	150	

3750

58	42	52	75
25	75	150	

3700

55	45	53	60	42
25	75	100	150	

2008

Note: Levels in FB 990
approx 0.10 higher
than these

INDEXED Lt.
APR 18 1951

35

x-Sect. Alcott - Chatsworth to Palmero
+ To Zola.

5257 4-16-51 - 7.0.

W.O. 31935 T.P. 26 - P. 55 - T.P. sheets 643 - 642

0+99.21 = E.C. (Sect C in FB 990)

175.63	174.95	175.08	175.8	176.40	176.31	177.01
6.20	6.98	6.75	6.0	5.43	5.52	4.82
Top	13 gut.	10.6 edge		10.5 edge	13.1 gut.	Top

0+67.3 = end of Pave - A.C.

174.37	173.69	173.79	174.67	174.82	174.65	175.30
7.46	8.14	8.04	7.16	7.01	7.18	6.53
Top	12.8 gut.	10.7 edge	10.8 edge	13.1 conc gut.	13.1 gut.	Top P.C. of Return to Drive

0+33.07

172.45	172.33	172.63	172.53	172.76	172.96
9.38	9.50	9.20	9.30	9.47	8.87
19 walk	12.9 Top of ch. on covered gut = Drive	181.83	10.6 edge.	15 conc. gut.	23.7 conc Drive

T.P. 10.74 181.83 1.50 171.09

0+00 = on Curve - on Paving.

170.40	170.25	169.51	170.40	170.00	170.69	170.81.
2.19	2.34	3.08	2.19	2.59	1.90	1.78
18.8	Top	12.8 gut.		13.1 gut.	Topcb.	19.1 Back of walk

13.29 172.59

159.30 Book

172.59

1.67 159.33 = S.W.B.P. Alcott + Chatsworth 159.30 = Bench Book - Marked NE

B.M. 12.25 151.00

148.75 = S.E. B.P. Curtis + Chatsworth

2+20

Lt.			±	Rt.			36
175.63	174.93	175.05	175.80	176.3	176.14	176.01	176.73
6.20	6.90	6.78	6.03	5.5	5.69	5.82	5.10
Top	gut.	edge		11	13.6	16.8	Top
					edge	gut.	

2+10 = opp. end of Ret. at Gate at Rt.

175.82	175.12	175.25	176.1	176.8	176.42	176.31	177.03	177.15	176.53
6.01	6.71	6.58	5.7	5.0	5.41	5.52	4.80	4.65	5.30
Top	gut.	edge		13	22	26	Top	52.5	gut.
					edge	gut.	on Ret.	edge	Top

1+88 - 9.2 Rt. = ± 2.2 x 2.2 Gas Co. M.H.

177.39
4.44
9.2 = Top
Lid

1+79.21 = PC (D)

176.09	175.31	175.44	176.5	177.6	177.9	177.49	177.39	176.09
5.74	6.52	6.39	5.3	4.2	3.9	4.34	4.44	3.74
Top	12.9	10.2		15	25	45	48.5	
	gut.					edge	gut.	Top

1+60

176.19	175.46	175.57	176.6	177.5	177.47	177.33	178.01
5.64	6.37	6.26	5.2	4.3	4.36	4.50	3.82
Top	12.9	10.2		15	28.7	31.9	
	gut.				edge	gut.	Top

1+40

176.30	175.55	175.64	176.6	177.1	177.24	177.14	177.85
5.53	6.28	6.19	5.2	4.7	4.59	4.69	3.98
Top	13	10.4		12	18.3	21	
	gut.	edge			edge	gut.	Top

1+20

176.16	175.45	175.56	176.3	177.00	176.94	177.63
5.67	6.38	6.27	5.5	4.83	4.89	4.20
Top	13	10.4		12.4	15.1	
	gut.	edge	181.83	edge	gut.	Top

3+75

3+50

3+25

T.P.

0.85

169.94

12.74

169.09

3+12.5 = \pm Sewer MH

^{169.78}
12.05

on Rim

3+00

2+75

2+37 = P.C. Ret. on Rt. (24 Y)

Lt.

\pm

Rt.

37

164.0v	163.19	163.26	163.8	164.26	164.13	164.85
5.92	6.75	6.64	6.1	5.68	5.81	5.09
17 Brk in walk	13.2 gut. in Dr.	10.6 edge		10.3 edge	13 gut.	Top
166.26	165.54	165.65	166.1	166.62	166.48	167.23
3.68	4.40	4.29	3.8	3.32	3.46	2.71
Top	13 gut.	10.3 edge		10.2 edge	13 gut.	Top
168.5v	167.8v	167.97	168.7	168.89	168.76	169.5v
1.42	2.12	1.97	1.2	1.05	1.18	0.42
Top	13.1 gut.	10.5 edge		10.3 edge	12.9 gut.	Top

169.94

170.88	170.18	170.29	170.9	171.30	171.13	171.87
10.95	11.65	11.54	10.9	10.53	10.70	9.96
Top	13.1 gut.	10.5 edge		10.2 edge	12.9 gut.	Top

172.97	172.21	172.35	172.8	173.3v	173.21	173.98
8.86	9.62	9.48	9.0	8.51	8.59	7.85
Top	13.1 gut.	10.6 edge		10.3 edge	13 gut.	Top

175.05	174.29	174.48	175.1	175.54	175.40	176.11
6.78	7.54	7.35	6.7	6.29	6.43	5.72
Top	13 gut.	10.4 edge		10.3 edge	13 gut.	Top

181.83

5+00 - walk now 5'

gut. inlet on Rt.

4+87.9 = end of 3.1 x 2.5 Conc. slab over

on Rt.

4+84.52 = PC Curve on Rt. - end cb. + walk

(=)

To Covered opening

4+69 = end gut. inlet. (walk starts to narrow down)

4+78 = Beg. 4" Conc. Wing wall on edge of Conc. gutter.

4+63 = Brk. inc gut.

4+50

T.P. 1.57 15.8.38 13.13 156.81

4+25

4+00

	Lt.	±	Rt.	
	153.50	153.3	153.6	153.4
	4.88	5.1	4.8	5.0
	Top	15.5 gut.	8	14
			155.36	155.48 along wall
			7.02	2.90
	13.5		10.3	13.3
			Cor. slab.	

38

154.29	153.7	154.5	154.5	155.55	154.68	154.66	155.73
4.09	4.7	3.9	3.9	2.83	3.70	3.72	2.66
Top	13.5		10.3	10.3	11	12.9	15.7
	gut.		Top	ingut.		Top	cb.
			wall			End	walk

154.30	154.28		155.45	155.32	156.09
4.08	4.10		2.93	3.06	2.29
13.2	11.1		10.2	12.9	Top
End gut.			edge + Beg.	gut.	
	155.17	155.28	wall		
	3.21	3.10			
	13.2	10.6			

156.94	156.20	156.33	156.9	157.32	157.25	157.94
1.44	2.18	2.05	1.5	1.06	1.13	0.44
Top	13.2	10.6		10.3	13	
	gut.	edge		edge	gut.	Top

158 38

159.21	158.51	158.65	159.0	159.51	159.36	160.11
10.73	11.43	11.29	10.9	10.43	10.58	9.83
Top	13.2	10.6		10.3	12.9	Top
	gut.	edge		edge	gut.	

161.54	160.80	160.93	161.4	161.95	161.79	162.54
8.40	9.14	9.01	8.5	7.99	8.15	7.40
Top	13.3	10.7		10.4	12.9	
	gut.	edge	169.94	edge	gut.	Top

6+50

S.L. at 6+19.31 to 20' from S.L. at 7+38.50. (see sketch)

Note: from Here to 7+38.50 Φ is Tanq. - from 25' from

6+19.31 = E.C.

6+00

5+99 - 3' Rt. = Φ Gas. Co. M.H.

6.85

on Rim

5+75

5+50

5+25

5+17.5 = Φ Sewer M.H.

153.00

5.38

on Rim

39

Lt.	Φ	Rt.
152.68	151.7	151.7
5.70	6.7	6.3
Top	13.4	50
	gut.	

152.26	151.6	151.7	151.3	151.0	151.6	151.7
6.12	6.8	6.7	7.1	7.4	6.8	6.7
Top	14.3		15	21	25	50
	gut.					

152.20	151.6	151.7	151.4	151.0	151.6	151.7	150.8
6.78	6.8	6.7	7.0	7.4	6.8	6.7	7.6
Top	14		15	25	30	45	67
	gut.						70

152.02	151.5	151.8	151.6	151.4	151.1	150.8	151.7
6.36	6.9	6.6	6.8	7.0	7.3	7.6	6.7
Top	13.9		15	25	50	80	90
	gut.						

151.98	151.9	152.2	152.2	151.9	151.7	152.8	154.2
6.40	6.5	6.2	6.2	6.5	6.7	5.6	4.16
Top	13.8		15	25	40	70	70
	gut.						Top

152.48	152.8	152.7	152.4	152.9	153.6	154.4
5.90	5.6	5.7	6.0	5.5	4.8	3.47
Top + gut.		10	18	22	39.7	39.7
						Top
						well

158.38

8+45.81 = P.CC. on Lt.

8+18.99 =

8+17.7 = 84' Lt. = \pm Tel. M.H.

8+11.6 - 4.8' Lt. = ϕ Gas Co. M.H.

7+92.16

7+65.33

7+38.50 = P.C.

7+00

6+75

153.74
4.64

153.64
4.74

on Rim

on Rim

Lt.	ϕ	Rt.	40
154.94	153.8	154.0	153.7
3.44	4.6	4.4	4.7
Top	15.3	20	30

154.59	153.4
3.79	5.0
Top	15.3
	gut.

153.7	153.4	152.6
4.7	5.0	5.8
20	30	

154.23	153.3	153.4	153.1	152.7
4.15	5.1	5.0	5.3	5.7
Top	15.3	20	30	
	gut.			

153.92	152.9	153.0	152.8	152.5
4.46	5.5	5.4	5.6	5.9
Top	15.3	20	30	
	gut.			

153.56	152.5	152.6	152.4	152.1
4.82	5.9	5.8	6.0	6.3
Top	15.2	20	30	
	gut.			

153.23	152.4	152.4	151.9	152.1	152.1
5.15	6.0	6.0	6.5	6.3	6.3
Top	12.5	15	25	35	
	gut.				

153.06	151.8	152.1	151.9	151.9	151.7
5.32	6.6	6.3	6.5	6.5	6.7
Top	12.4	15	25	5.00	
	gut.	158.38			

10 + 00.09

? 9+71

9+74.38

10+71-48' Rt. = Sewer MH.

152.77

7.95

on Rim

T.P. 4.40 160.72 4.42 156.32 = 4' Dick at E.C. 160.72

9+48.67

9+22.95

8+97.24

T.P. 6.49 160.74 4.13 154.25 Prop. pipe on Rt. 160.74

8+71.52

Lt. Rt. 41

156.22	155.2	155.7	155.4	155.2	146.4	138.5
4.50	5.5	5.0	5.3	5.5	14.3	22.2
Top	14.9		15	30	45	90
	gut.					

156.11	155.1	155.2	155.2	154.1	141.7	137.9	134.0
4.61	5.6	5.5	5.5	6.6	19.0	22.8	26.7
Top	15		20	40	65	80	100
	gut.						

155.92	154.7	155.1	155.0	154.7	151.6	149.0	137.5
4.82	6.0	5.6	5.7	6.0	9.1	11.7	23.2
Top	15.1		20	30	50	65	95

155.75	154.4	154.9	154.7	155.2	151.7	150.8
4.99	6.3	5.8	6.0	5.5	6.0	9.9
Top	15.3		14	20	30	50
	gut.					

155.46	154.3	154.6	154.4	155.1	153.3	149.5
5.28	6.4	6.1	6.3	5.6	7.4	11.2
Top	15.3		13	20	30	50
	gut.					

155.33	154.71	154.4	154.3	152.4
3.05	3.67	4.0	4.1	6.0
20.4	15.4		20	30
edge	gut in Drive			
walk	158.38			

• = Disk
□ = Hub.

$\Delta = 62^\circ 25'$
 $\pm R = 404'$
 $L = 440.10'$
 $T = 244.75'$

$\Delta = 23^\circ 33' 30''$
 $\pm R = 261'$
 $L = 107.31'$
 $T = 54.43'$
5' Comb. cb + walk

6' Comb. cb. + walk
2.5' Conc. gut.
See Notes for outs.

1+79.21 = P.C.

ALCOTT ST

0+99.21 = E.C.

Ref = 8985' L"

TP-26 P.55256

0+67.3

A.C. 1200

6' Comb. cb. + walk
+ 2.5' Conc. gut.

Walk Now 5'
5+00

4+69
Walk - end gut.
Begins to Narrow

7+84.52 = P.C. To Rt.
end cb. + walk

Poinsettia Drive

$\Delta = 62^\circ 25'$
 $\pm R = 404'$

$\phi = \text{Tang. from E.C. to P.C.}$

$8^\circ 38' 45''$

$17^\circ 45'$

7+38.50 = P.C.

199.8

20'

6+19.31 = E.C.
F.L. Gut
15# RR 36

Set L.D. Disk
5-29-52

25'

25'

30.6

20.55

10.10

10.10

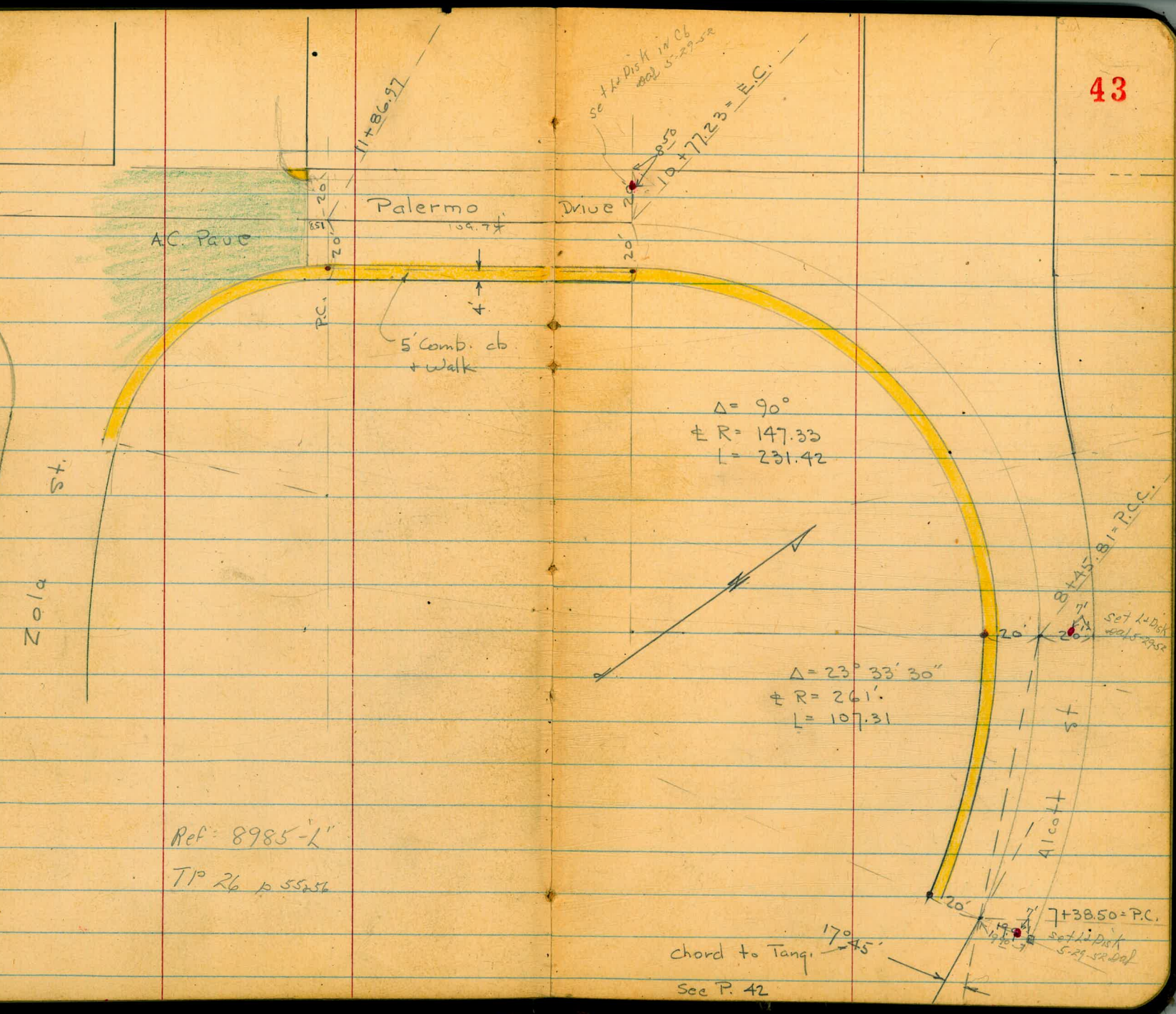
ALCOTT ST

Reset L.D. Disk
5-29-52

10'

15'

15'



11+86.97

set 1/2 Disk in CB
802 5-29-52
8.50
10+77.23 = E.C.

AC Pavc

Palermo 104.74

Drive

5' Comb. cb + walk

$\Delta = 90^\circ$
 $R = 147.33$
 $L = 231.42$

Zola St.

$\Delta = 23^\circ 33' 30''$
 $R = 261'$
 $L = 107.31$

8+45.81 = P.C.C.
set 1/2 Disk
walk 5-29-52

Alcott St.

Ref: 8985-1"
TIP 26 p 55-56

Chord to Tang. 17° 45'
See P. 42

7+38.50 = P.C.
set 1/2 Disk
5-29-52

11+25

11+00

10+85 = \neq Conc Dr on Lt. 13'

10+77.23 = F.C.

10+51.52

10+25.81

10+19-7' Lt. = \neq Tel Co. M.H. 4.6310+13- 5.5 Lt. = \neq Gas Co. M.H. 4.61

on Riv

Lt.

 \neq

Rt.

44

156.02	155.3	155.1	154.4	155.5	154.6	146.4
4.70	5.4	5.6	6.3	5.2	6.1	14.3
Top	14.5 gut		12	15	20	40

156.33	155.7	155.7	155.4	155.2	148.1
4.39	5.0	5.0	5.3	5.5	12.6
Top	14.4 gut.		10	20	35

156.36	155.73
4.36	4.99
7.5 walk	14.4 Dr.

156.29	155.8	155.9	155.5	155.6	143.5
4.43	4.9	4.8	5.2	5.1	17.2
Top	14.5 gut.		15	20	50

156.25	155.6	155.9	155.8	154.4	141.9
4.47	5.1	4.8	4.9	6.3	18.8
Top	14.6 gut.		15	30	55 = Top

156.21	155.4	155.9	155.8	156.1	154.9	140.9
4.51	5.3	4.8	4.9	4.6	5.8	19.8
Top	14.7 gut		15	20	25	60

160.72

13.21 = Book 1323 - P.48

check B.M. = Top Hyd. Sw. Cor. 8.54

143.59

Lt.

±

Rt.

45

12+45

145.18	144.79	144.86	145.16	145.23	145.10	145.01
6.95	7.34	7.27	6.97	6.90	7.03	7.12
Top	37.4 gut.	30	15		10	19.6 edge

12+25

146.64	146.28	146.84	147.15	147.17	147.11
5.49	5.85	5.29	4.98	4.96	5.02
Top	23.6 gut.	12		10	19.6 = edge A.C.

T.P. 1.84 152.13 10.43 150.29

12+04 = end of 10' Rad. Ret. on Rt.

149.12	148.73	149.10	149.26	149.20	148.59	149.08
11.60	11.99	11.62	11.46	11.52	12.13	11.64
Top	16.2 gut.	8		10	19.6 = Top gut = edge A.C.	19.6 = Top end cb.

11+95.48 = N.L. Zola - edge A.C. Pavc + cb. on Rt.

150.32	149.78	150.06	150.06	150.46	150.37	141.2
10.40	10.94	10.66	10.66	10.26	10.35	19.5
Top	15 gut.		14.4 gut.	Top cb.	19.5 Cor. walk Ret.	40

11+94-16' Rt. = ± Guy Pole

11+86.97 = P.C. on Lt.

151.46	150.6	150.7	150.7	151.0	143.1
9.26	10.1	10.0	10.0	9.7	17.6
Top	14.5 gut.		12	20	35

11+70

153.35	151.9	152.1	151.5	152.3	152.4	142.5
7.37	8.8	8.6	9.2	8.4	8.3	18.2
Top	14.4 gut.		12	15	20	45

11+50

154.93	153.8	153.7	152.9	154.2	153.1	144.2
5.79	6.9	7.0	7.8	6.5	7.6	16.5
Top	14.4 gut.		12	15	20	40

160.72

		7.58	159.29	159.30	= s.w.B.P. Chatsworth + Alcott.
2.96	166.87	4.60	162.91		
13.16	167.51	2.40	154.35		
13.16	156.75		143.59	= Top Hyd. - P. 45'	

LOCATION - PROPOSED STORM DRAIN

And EXISTING DRAINS

at Island & 29th St

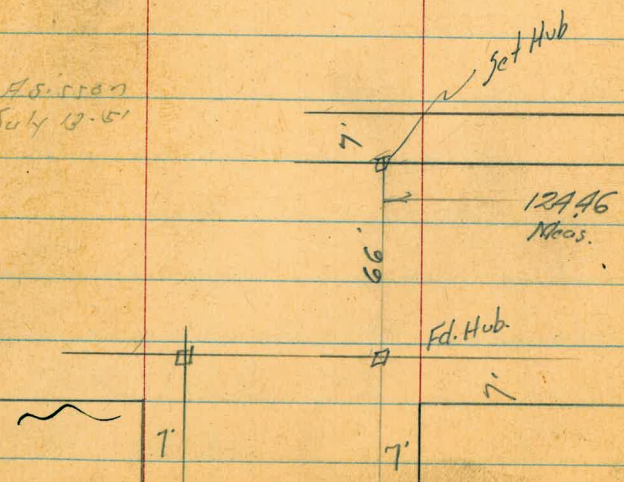
Walker
Pope
Clark
Huffman
6-1-51

170.20829

off set 15' SE of 1/2 Ditch

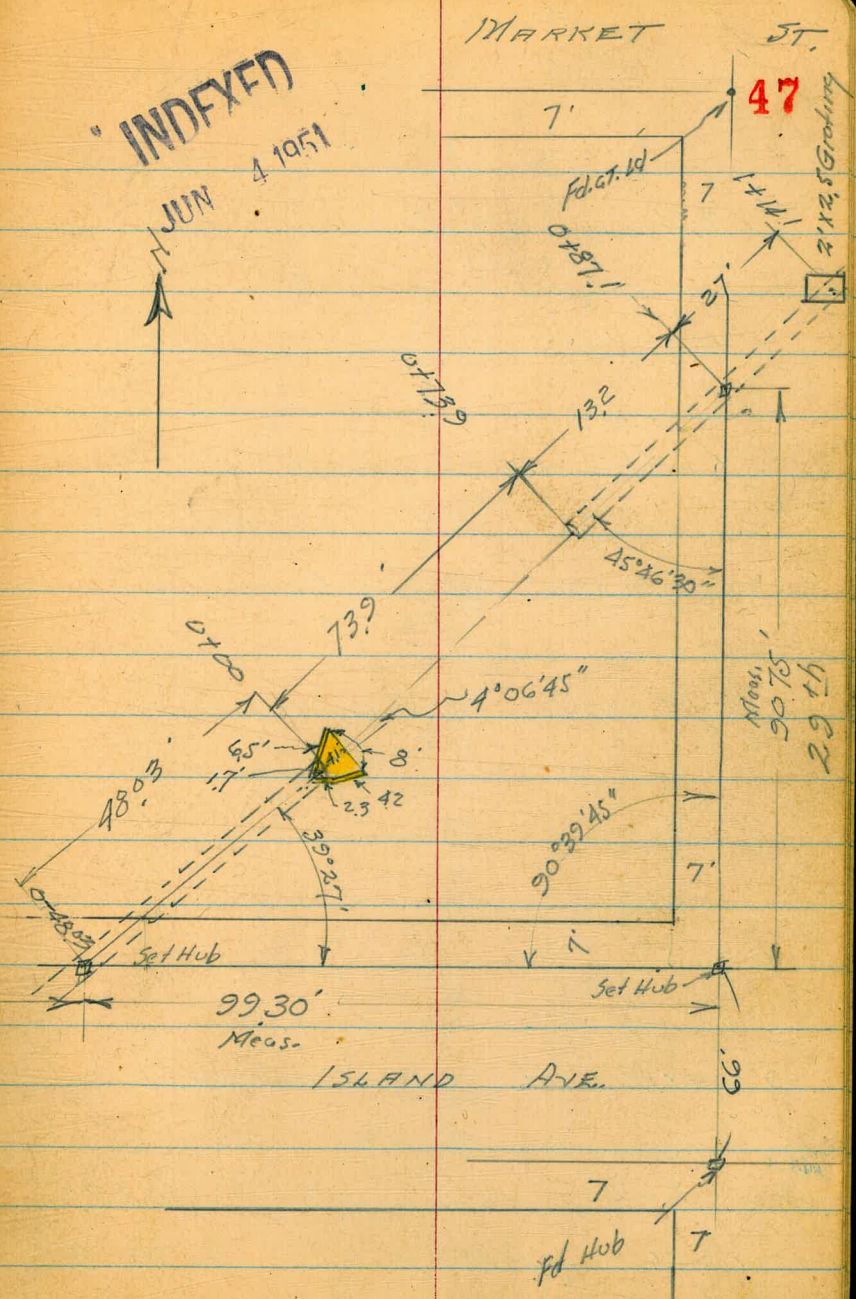
+40	9885	8.07 2.91 65.15 15.5F	
+20	9873	8.19 3.87 64.35 15.5F	
0+0	9862	8.30	
BM	8.30	106.92	9862

As. 1107
July 13-51



INDEXED

JUN 4 1951



47

Meas. 90.75'
29th

0+34

0+25

0+04.10 = End Conc. Apron

0+00 = End 30" Conc. Pipe Culvert

0-1.7 = N.W. edge Hd. Wall

0-14

0-35

0-48.03 Int. N 7' Line Island

T.P. 567 114.46 030 108.79

11.06 109.09 98.03

	1090	1090	101.5	99.3	101.5
	5.5	5.5	13.0	15.2	13.0
	10	5		3	10
				Ditch	
	1079	1074	103.9	102.2	
	6.6	12.1	10.6	12.3	
	10	7		10	
	102.1	98.76	98.73	98.74	102.6
	12.4	15.70	15.73	15.68	12.9
	10	4	Conc. Apron	4	10
		Conc. Apron = Well		Conc. Apron = Well	
			15.84		
			11 vert		
			30" pipe		
			102.73		
			12.11		

	1018	1076	108.0
	12.7	10.9	6.5
	10		10
	108.1	111.8	108.0
	6.4	2.7	1.5
	10		10
	on slope of fill		
	111.5	112.02	113.2
	3.0	2.44	2.7
	10	on Hub	8
	Edge Fill	114.46	

S.H. B.P. Island 28th

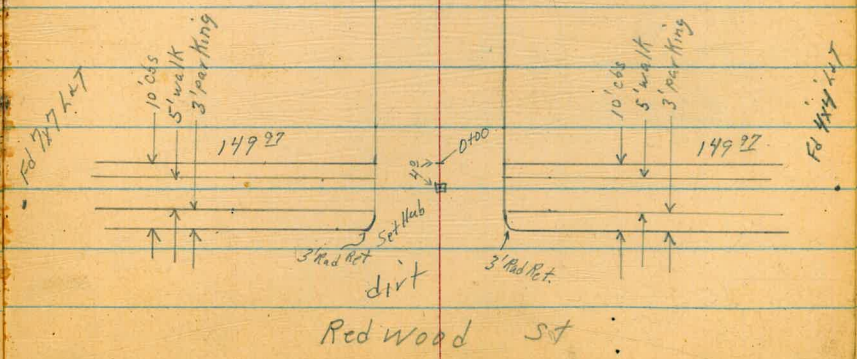
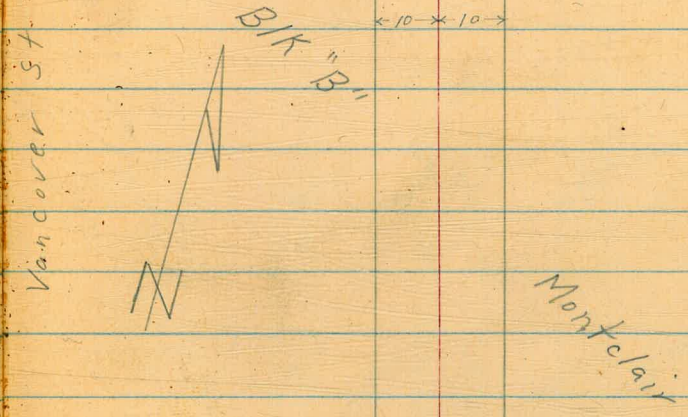
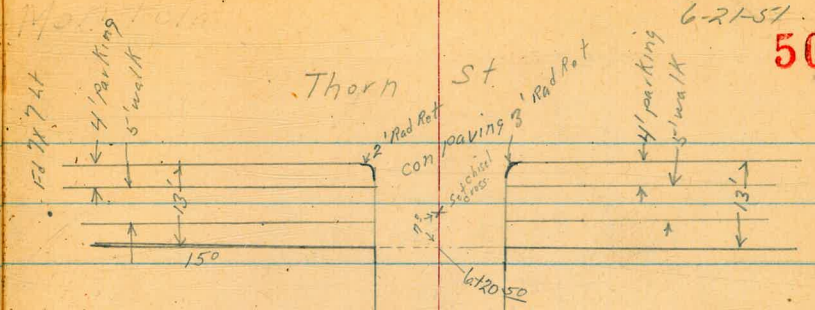
D. Smith
 C. Allen
 Nick
 H. Bruner

Cross Section BIK "B" Alley
 Montclair Sub.

Reduced-
 Ryan
 6-22-51

INDEXED
 JUN 22 1951

Wot 31556
 6-21-51
 50



X Sec BIK "B"

Alley Montclair
west
Lt

E

East
RT

51

0460 9^o RT & 12" power pole PA 3148

0450

298.1	298.1	297.8	297.7	297.7	298.3	299.1
32	32	42	43	43	32	22
20	72	5		6	10	20

0431 9^o Lt & water meter

297.05
420
90
valve

0400 North prop line Redwood

297.5	296.9	297.1	297.1	297.67
45	51	42	42	428
92	6		92	92
			gut	cs

0-01 9^o Lt has columns 1' every 11' every Making it into East side columns
Begin red brick & con decorative wall. Note dist. out

297.32	297.1	297.4	299.1	297.1	297.1	297.65
463	42	46	283	42	42	430
10	10	92	92	92	92	92
cb	gut	footing	Top wall	gut	cs	

0-10 North cb line Redwood

297.44	296.85	297.19	296.65	296.9	297.0	297.59	297.35	298.17
451	51	477	53	51	50	436	46	322
50	50	13	13	13	13	13	50	50
cb	gut	cs	gut	gut	cb	gut	cs	cs

BM

192

301-95

299⁹⁸

S.W.B.P.
Vancouver +
Redwood.

30195

1450

1740 9° Lt & water meter

1701 9° Lt & water meter

1700 9° Lt End brick wall

0786 10° Lt Begin brick wall again (as before)

0761 10° Lt & double garage con floor + apron

0765 9° Lt End brick wall

52

West			Q	East		
Lt	Lt	RT				
23	20	24	16	10	06	306.4
20	10	5		10	25	
299.8	300.0	299.9		300.4	301.0	

299.39
 256
 90
 valve

297.80
 415
 90
 valve

299.2	298.5	300.13	298.8	299.0	298.6	298.7	299.0	299.6	300.4
28	35	182	33	30	34	33	30	24	16
15	72	78	10	7	5		7	10	25
Footing for wall									

298.25
 32
 195
 100
 Footing Top wall

299.23
 298.08
 372
 387
 154
 107
 Floor apron

297.95
 299.67
 40
 228
 99
 99
 Footing Top wall

301.95

2+38 7^e RT & water meter

2+36 13^e RT & double garage con floor

2+35 8^e Lt & water meter

2+15^e & SMH

2+10 8^e RT & 12" power pole #PA 3198

2+00 6^e RT & double garage con floor & apron

1+89 11^e Lt & water meter

1+79 9^e RT & water meter

TR, 7²⁷ 309¹⁷ 0²⁵ 301²⁰

West
Lt

E

East

RT
6¹² 302.98
7^e
valve
304.08

53

302.08

7⁰⁹
8^e
valve

5⁰⁹
13^e
floor

302.81

6³⁶
rim

301.4

302.1

301.7

302.2

302.77

303.52

304.77

7⁸ 7² 7⁵ 7⁰
20 10 8

6⁴⁰ 5⁶⁵ 4⁴⁰
6⁰ 10 11^e
apron apron floor

301.37

7⁸⁰
11^e
valve

301.20

7²⁷
9⁵
valve

TR 309¹⁷

3748 10' RT E. double garage con floor & apron

3735 10° RT E 2' con walk

3733 9° RT E water meter

3728 10° LT E water meter

3700

2754 13° RT E double garage con floor

2750

West
LT

E

East

54

250 306.67
10' Apron
233 12' Floor

306.38

279
10' walk

305.27

390
22 Valve

304.50

467
102
valve

305.1

304.8

304.6

305.1

305.5

306.1

44
25

44
10

46
6

44
10

32
20

31
20

304.34

483
132
Floor

303.4

303.0

303.9

303.7

304.2

58
10

62
7

58
6

55
10

50
10

309.17

West
LT

£

East
RT

55

4700

206.70	206.7	306.5	306.6	306.9	307.3	307.3	307.2
6 ²	6 ²	7 ²	6 ²	6 ²	6 ²	6 ²	6 ³
15	10	8	6	9	10	15	

TP₂ 7¹⁴ 313⁵⁰ 2⁸ 306³⁶

313⁵⁰
30590
 327
 12¹
 value

3791 12⁴ LT £ water meter

3788 11⁵ RT £ water meter

306.55
 2⁶²
 11⁵
 value

3768 15⁴ RT £ single garage con floor apron

307.09 307.08
 2⁶² 2⁰⁹
 15⁴ 17²
 apron floor

3760 8⁶ RT £ 8" power pole # PA 3242

305.37
 3⁸⁰
 11²
 value

3754 11² LT £ water meter

306.3	306.4	306.0	306.1	306.4	306.7
2 ²	2 ²	3 ²	3 ¹	2 ²	2 ⁵
14	10	9		7	10

3750

30947

4491 10² LT & 8' con drive

4484 10² LT & water meter

4454 11⁵ LT & water meter

4450 13³ LT & 8' con drive

4440 10² RT & water meter

4435 & SMH

4420 44² RT & single garage con floor + apron

West
LT 308.42
508 500
20% 10%
drive drive

East
RT

56

307.82

568
100
valve

307.64

586
115
valve

307.94

308.13

307.9

307.6

307.8

308.0

308.2

308.2

308.1

556
233
drive

537
132
drive

56 52
10 8

57

55 53
7 8

53 54
10 20

307.59

592
100
valve

450 309.0
rim

308.58

308.93

492

457

444

476

apron

floor

π 313⁵⁰

5450 12² RT & 14' con drive

5440 11² LT End con brick wall

5434 11² RT & water meter

5429 8² RT & dead man

5423 9² LT & water meter

5415 N² RT Begin 3² 6" wide con brick wall

5411 8² RT & 12" power pole # RA 3282

5406 17² LT & 7' con drive

5400

West						East			
42	45	42	42	42	42	42	42	42	57
15	10	8	6	6	10	12	12	12	388
						drive	drive	drive	drive
309.3	309.0	308.8	308.8	308.8	309.1	309.34	309.62		
308.5	312.52								
5 ²	0 ²								
11 ²	11 ²								
Footing	Topwall								

309.58
4²
11²
Valve

308.07
5²
9²
Valve

308.7
312.37
4² 11²
11² 11²
Footing Topwall

308.57
308.66
4² 4²
27² 17²
drive drive

52	42	42	54	53	44	44	48
20	10	9	6	8	10	20	
308.3	308.6	308.6	308.1	308.2	309.1	309.1	308.7

313 50

BM starting

9⁷⁴

299⁹⁸ 299⁹⁸

SW BP
Vancouver
Redwood

TP₄

1⁰²

309⁷²

5⁷³

308²⁰

SE Con 7' x 7'
Thorn 2
Vancouver

6+33⁵⁰ South Ch line Thorn

6+20⁵⁰ 10' RT end con brick wall
South Prop Thorn edge con paving

TP₃

5³²

314⁴³

4³⁹

309⁴⁴

6+00

5+87⁹³ LT & water meter

5+85¹⁰ RT Begin 3' con brick wall

West
Lt

±

East
RT

58

309.24	308.71	309.42	308.87	308.68	308.51	309.12	307.88	308.55
5 ¹⁹	5 ²²	5 ⁰¹	5 ⁵⁶	5 ²⁵	5 ²²	5 ³¹	6 ⁵⁵	5 ⁸⁸
50 06	50 94	13 06	12 94		13 94	13 06	13 94	13 06
309.62	309.41	309.08	309.35	309.59	309.13	311.67		
4 ⁸¹	5 ⁰²	5 ³⁵	5 ⁰⁸	4 ⁸⁴	5 ¹	2 ²⁶		
10 06	10 94		10 94	10 06	10 06	10 06	10 06	10 06
end				footing	footing	top wall		

314 ⁴³			
309.9	309.4	309.4	309.8
3 ²	4 ⁶	4 ⁶	3 ²
10	7		10

308.97
4⁵³
9³
value

312.78
0²² 3⁸
10² 10²
top wall footing

313⁵⁰

Cross Section Lomont St.
Crown Point Drive to Pacific Beach Drive

Lt - West

Rt - East 61

Alignment Page 59

(M) = Water Meter Distance out = 7 Meter

+150										19.6	19.7	19.1	19.01	19.43	19.19	19.0	19.4		
+34.5	41' Rto of Sly. Picket Fence									46/50	45/40	51/20	49/12	580	604	52/17	58/40		
0+00										19.1	19.1	19.0	16.92	17.81	17.80	18.7	17.9	17.0	17.0
										51/30	51/40	52/30	7.31/24	6.92/12	6.43/12	6.0/17	6.3/24	7.2/40	7.2/30
0-20										18.8	18.9	17.20	17.75	17.69	17.49	17.28	17.7		
										54/50	52/41	70.3/37	6.48/23	6.54/11	6.75/11	6.95/30	7.06/15		
0-40										17.81	18.13	17.88	17.35	17.61	17.26	17.4	15.8		
										6.21/60	6.10/41	6.25/26	6.88/12	6.52/12	6.97/24	6.8/47	8.4/104		
0-60										18.30	18.42	17.77	17.42	17.2	18.4	17.9	16.4		
										59.3/80	5.81/60	6.46/44	6.81/17	6.4/8	5.8/20	6.3/20	7.8/39		

BM	7.35	24.23	6.49	16.88															
BM	2.60	23.27		20.77															

PL BPN 07
Alignment
Lomont St.
Mon Pl.
37.2 Sequoia
4th Crown
PL Drive

24.23

+60.07 = J.L. Roosevelt St 39.5 Rt of $\frac{1}{2}$ High Board Fence

+55 22.5 Rt of $\frac{1}{2}$ Fire Hydrant

+30 39.8 Rt of $\frac{1}{2}$ High Board Fence

+40 40 Rt of $\frac{1}{2}$ High Board Fence

+56

+50 40.2 Rt of $\frac{1}{2}$ Picket Fence

+19

+40

24.23

22.3 21.5 20.7 21.13 21.45 21.21 21.5 21.3

1.9 2.7 3.5 3.0 2.78 3.02 2.9 2.9

40 17 15 15 9.5 9.5 10

9-FH/FH

22.3 21.6 20.7 20.73 21.07 20.81 21.0 21.2

1.9 2.6 3.5 3.5 3.1 3.13 3.3 3.0

40 30 15 9.5 9 20 40

21.6 21.3 20.2 20.29 20.61 20.36 20.7 20.6

2.6 2.9 4.0 3.9 3.6 3.87 3.5 3.6

40 18 15 9.5 9.5 20 40

11.99

4.34

21.5

19.0

21.1 19.7 19.54 19.83 19.54 20.2 20.1

3.1 4.5 4.69 4.0 4.69 4.0 4.1

40 20 10 9.5 30 40

10-FH/FH

20.79

3.14

1.65

2.8

10-FH/FH

20.6 19.7 18.89 19.16 18.95 19.6 19.4

3.6 4.5 5.34 5.07 5.28 4.6 4.8

40 30 10 10 20 40

10-FH/FH

24.23

+59

23.38
3.52
10.2
10.14

23.38
3.52
37.5
N.H.H.
Roosevelt
Cincinnati

23.3
22.8
22.0
20.96

21.05
20.92

21.2
22.6
22.7

+58

22.29
4.61
22.29
20.96

+34

1002 Rt of $\frac{1}{2}$ = 114 Cyclone Fence

23.3
22.4
20.96

21.18
20.97

20.97
20.97
4.5
22.4

+10

20.00
6.90
20.5
20.25

+40

23.9
23.1
21.14
21.09

21.32
21.00

20.6
20.88
21.8

+65

23.12
23.0
21.73
22.6
21.4
21.09
21.35

21.04
20.6

21.0
21.7

TP

5.71 26.90 30.4 21.19

H.F.H.
Roosevelt
Larnest

+47

290 ft of $\frac{1}{2}$ 24' Palm Tree

+37

10' Rt of $\frac{1}{2}$ = 114 Cyclone Fence
24.23

24.23

+80

+55

+44

+38

+35

+17

40' Rt of $\frac{1}{2}$ = N 1/4 55 Cypress Hedge

30' Rt of $\frac{1}{2}$ = 22" Torrey Pine Tree

5+04

+95

+84

390' Rt of $\frac{1}{2}$ = S 1/4 55 Cypress Hedge

4+79

2690

22.1 22.0 20.8 20.55 20.89 20.71 21.2 21.4 21.91 22.3

48 49 61 63.5 6.8 619 57 45 49 16

40 34 17 7.5 9.5 9.5 15 20 22 10

22.1 22.27

480 463

10.2 50 on Dr

8 Condr

21.38

5.52

20.8

22.59

22.5

421

10.4 11.4 11.4

17.8 17.8

17.8 17.8

23.23 22.7 21.2 20.75 21.01 20.80 21.3 22.1 22.6

367 323.1 47 57 617 589 610 56 48 45

4.4 4.4 20 16 10.3 9.7 18 19 40

4.4 4.4 8 Cone Drive

10.3 10.3

22.03

487

21.8

23.06

384

384 4.4 4.4

384 Cone Drive

2690

+83 295 ft of 2-2 1/2" Palm Tree

+77

20.83 21.03 21.21 21.26
 447 427 409 404
 19-2 21.00 40 on Dr. 50 on Dr.

+61

20.56 20.68 20.7 20.8 20.7 20.27 20.55
 474 463 46 45 54 508 435 489 41 407 381 361
 50 on Dr. 39 39 20 14 9.5 9 20 20.9 40 on Dr. 50 on Dr.
 SELVA
 GORDON

+47

20.7
 410
 215 (D)
 215

+28

20.77
 452
 214 (D)
 215

+25

21.1 20.9 20.2 20.40 20.66 20.38 21.0 20.54 21.3 21.63
 43 44 51 490 464 492 43 476 40 367
 40 30 15 9.5 9.5 20 25 33 355
 25.30 25.30 25.30
 3.51 on Dr. 3.51 on Dr.

TP 494 25.30 6.54 20.86

640

21.3 20.9 20.3 20.42 20.71 20.49 21.2 21.7
 51 60 66 648 6.19 641 56 57
 40 17 14 40 20 40
 SELVA
 26.90

26.90

5x

8

Rt.

+77

9.05
6.55
21.20
20.05

+75

19.46 19.39 19.34

+56

20.10
5.20
50 on Mt.

20.10 20.00 20.00 19.8 20.30
5.20 5.3 5.3 5.5 5.0
7.5 40 20 14 9
3.5 2.5
7.5

5.84 5.91 5.94
20.10 40 on D.M.
1.5 on D.M.
20.11 19.60 19.5 19.55 19.6
5.13 5.7 5.8 5.75 5.69
9.5 30 2.5 30.5
20.11 19.60 19.5 19.55 19.6
5.13 5.7 5.8 5.75 5.69
9.5 30 2.5 30.5

+42

19.26
5.74
21.20
20.15

+36

5.4 19.82

7+11 *

19.29
5.41
50 on Mt.

19.69 19.9 20.2 19.9 20.22
5.1 5.1 5.1 5.4 5.08 4.87
10. 10. 10 14 9
10.5 on Mt.
10.5 on Mt.
10.5 on Mt.

5.76 5.48
21.10 40 on D.M.
20.24 20.2 20.3
5.06 5.1 5.0
9.5 30 40

6+95

19.73
5.57
21.20
20.15

2530

3530

+71

TP 6.54 26.53 5.31 19.99

+54

+45

+26

8+14

8+10

7+96

19' Holz: Fly 41" Exc. T.R.C.

2530

21.42 21.24 19.9 20.00 20.17 19.86 19.6 18.9 19.13 19.31

511 529 66 653 636 667 697 740 722

5000 Dir. 408 17 9-11/12 9-11/12 20 33 39 5000 Dir.

SELEX 28.53

21.11 20.84

4.19 4.46

5000 Dir. 406 SELEX 28.53

20.6 20.3 19.48 19.9 20.06 20.29 19.98 19.7 19.5

47 52 58 54 52 50 52 56 58

40 38 20 20 95 9 20 70

20.89 20.55

4.1 4.75

5000 Dir. 8 SELEX 28.53

538

20.2 20.1 20.21 20.37 20.06 19.5 19.67 19.70

51 52 509 493 525 58 563 580

40 20 95 20 297 5000 Dir.

25.50

+52.70

+35.20 = S.L. Fortana Hic.

+34 27.8 Rt of L Fire Hyd.

+33 23 H of L Power Pole #3998

+26

9 + 06

+95

+92

8 + 88

26.53

L

R

R

69

21.7 20.3 20.10 20.23 19.97 19.7 20.2

5.30 6.30 8.50 6.30 6.56 6.7 6.30 6.30

40 20 20 20 20 20 20 20

1.5 Hr. 1.5 Hr.

21.13 20.4 20.05 20.14 19.84 19.8 20.2 20.1

5.4 6.4 6.48 6.39 6.69 6.7 6.3 6.4

40 20 20 20 20 20 20 20

8.5 13 15 40

21.83 21.51

4.70 5.02

4.50 and Drive 4.7 and Drive

21.92 21.50 20.6 20.4 19.94 20.08 19.84 19.7 19.0

4.61 5.03 5.9 6.1 6.59 6.45 6.69 6.8 7.5

50 40 34 20 9 9 20 20

1.5 Hr. 1.5 Hr. 1.5 Hr. 1.5 Hr. 1.5 Hr. 1.5 Hr. 1.5 Hr. 1.5 Hr.

19.84

6.69

13.10

10.585

19.17

7.56

23.7

19.25 19.45

7.18 7.08

5.99 5.0

1.5 Hr. 1.5 Hr.

2.53

+79 TP 6.16 29.29 3140 2313 on N End cobbler hill #10158

+73

+59 204.5 ft of L. of Picket Fence #4012

+58 34.5 ft of L. Picket Fence

+27

10+1020 = North Line Fortuna Hill

+92.70

BM

9+72.70

666

N.E. 1/4 D. Fortuna + lamp

26.53

St. S Pt.

22.06
233
22.6
21.3
21.48
21.61
21.26
20.81
20.97
21.07
21.37
32
40
29
30
53
15
505
95
4.92
527
10
57
20-90ft
555
20-11/16
546
30
521
40-0ft

23.1
23.13
22.7
22.1
21.0
21.10
21.33
21.06
20.3
20.62
20.85
21.15
34
40
340
275
38
27
14
20
55
76
543
95
520
515
10.5
62
20-90ft
59
30-66
548
30-24 ft
528
40
N.C. cobbler hill

22.98
365
38-24 ft
5 Carb
York
22.72
22.57
21.6
20.9
20.1
20.42
20.59
20.22
19.5
19.76
19.97
20.53
38
40
346
275
49
27
56
30
63
14
61
9
525
95
631
70
70-60ft
625
20-10 Carb
656
30-24 ft
600
40-0ft

21.39
22.1
21.0
20.0
20.29
20.48
20.28
19.6
19.4
19.8
54
40
44
90
55
20
65
15
624
85
605
97
625
20
69
70-60ft
71
40-60ft
677
40-0ft

21.2
20.43
20.19
20.33
20.65
20.2
20.2
53
40
61
20
634
85
620
9-11 ft
648
20
63
40
65
40
26.53

July 5, 51

71

25.3
10 16 57 57 54 57 64 66 60 62 63
30 25 15 15 5 5 10 20 20 20 20
23.7 23.3 23.1 23.0

22.97
22.91
437
365
8
4000
Car Drive

23.01
427
195
200

24.5
48 49 64 67 66 64 69 71 65 67 67
40 31 20 16 9 12 16 20 25 20 20
22.4 22.89 22.6 22.65 22.85 22.33 22.7 22.8 22.6 22.6

23.6
57 60 69 73 72 75 77 73 73
46 26 20 19 20 10 10 10 10
23.3 22.4 21.90 22.01 21.75 21.6 22.1 22.0

22.64
515
315
22.51

7929

12+0 36' Rt of $\frac{1}{2}$ = Picket Fence

+83

+71

161 290 Rt of $\frac{1}{2}$ = Wly 28' Pepper Tree

160 209 Lt of $\frac{1}{2}$ = Wly Picket Fence

+50

143 210 Rt of $\frac{1}{2}$ = Wly 36' Palm Tree
356 Rt of $\frac{1}{2}$ = Sly Picket Fence

+34 290 Rt of $\frac{1}{2}$ = 6" Double Pepper Tree

+23 312 Lt of $\frac{1}{2}$ = Sly Picket Fence

+09 357 Lt of $\frac{1}{2}$ = Fly Board Fence

1140

+99 34.5' Lt of $\frac{1}{2}$ = Wly Picket Fence

+92 280' Rt of $\frac{1}{2}$ = Wly 20' Pepper Tree

10+86

2929

+34

13-10

+83.72 $\Delta 18^{\circ} 16'$ Taken 90° NE

+76 184 Rt of Δ 1/4 Picket Fence

+46.87 330 Rt of Δ : WY Tree 18"
Taken on line Ch coast

+10

+13

12+10.02 $\Delta 18^{\circ} 18'$

2929

Lt

Z

Rt.

72

25.06

24.98

173
405- Δ WY
87 Comb Div

25.1	25.1	24.6	24.53	24.66	24.64	24.66	24.9
42	42	47	47	46	45	43	44
10	20	18	18.5	4	6.5	15	40
			WY			WY	

25.0	25.0	24.4	24.33	24.47	24.46	24.45	24.6	25.1	24.8
42	42	49	49	48	48	47	47	43	45
40	26	20	15.5	5.5	5.5	7	20	70	70
			WY			WY			

24.4	23.8	24.01	24.19	23.80	23.6	23.57	24.1
40	55	5.8	5.10	5.4	5.8	5.7	5.7
16	17	15	15	14	16	10	10
		WY		WY		WY	

23.67

23.45

5.4
188- Δ WY
28 Comb Div

24.14

5.75
189- Δ WY
25 Comb Div

25.1

24.6

23.60

23.50

23.72

22.90

22.8

23.4

23.2

41	47	54	54	55	63	25	59	61
10	20	20	20	5	17	20	23	40
		WY			WY			

29.29

+46

+42

400 Rtoft - Sly Picket Fence

+34

+27

40' Rtoft - Sly Picket Fence

+21

27' Ltoft - Fly 16" Pepper Tree

+17

TP

8.67 36.13 1.83 27.46

+09

407 Ltoft - Sly Picket Fence

14+0

+59

215 Ltoft - Porter Pole #4060

+53

+50

13+42

227 Rtoft - Anchor Pole
2929

27.21
8.22
27.83
27.98
8.15
40.5 - 1/2" Ply
Conc. Wall
50 on Wall
27.27
27.22
8.86
40.5 - 1/2" Ply
70 Conc. Wall
80 on Dr
27.25
24.81
26.70
9.13
40.5 - 1/2" Ply
85 on Dr

27.8
27.1
26.7
27.30
27.51
27.01
24.3
25.70
24.38
26.35
175
40
22
18
26
17
199
9
178
178
30
17
259
291
40.5
30 on Dr
25.04
25.09
175
40.5
105
Conc. Wall
45 on Wall
24.0
25.7
26.9
25.1
25.81
24.07
25.79
25.3
26.0
33
40
24
28
24
18
41
17
249
337
550
45
40
20
43
40
29.77
EMC

+78 40' Rt of L - Fly Hedge Nly Picket & No Yellow Force
 25' Rt of L - Fly & Hedge

+59 40.5' Lt of L - Nly Picket Fence

+50

+45 26' Lt of L - Fly 20" Pepper Tree

+40 40.5' Rt of L - Fly Short Picket Fence

+36

+20 26.5' Lt of L - Fly 12" Pepper Tree

+14

+09 24.5' Lt of L - Fly 8" Palm Tree

1510

+82 24.5' Lt of L - Fly 8" Palm Tree

+81 21.0' Lt of L - L Picket Pole "4082

+77 40' Rt of L - Nly Picket Fence

+60 26' Lt of L - Fly 11" Palm Tree

+50 40' Lt of L - Picket Fence

14148 26.5' Lt of L - Fly 12" Pepper Tree
 3613

31.2 31.0 30.9 31.46 31.71 31.38 30.3 30.7 30.8

49 51 52 457 442 475 458 54 52
 40 30 13 107 10 18 30 40

30.44 5.69 30.70 30.80
 2.50 2.80

5.43 5.33
 10.5 500m Drive
 14 Conc Drive

30.73 29.90

5.40 6.23
 40 = 1/2 Fly
 27 Conc
 14 Conc
 14 Conc

30.1 29.8 29.2 30.09 30.30 29.92 28.9 29.6 29.4

60 62 69 405 582 621 72 65 67
 40 23 18 10 45 15 31 40

28.5 28.5 28.6 28.43 28.39 27.6 27.9

76 76 74.5 720 774 85 82
 40 17 45 40 70 = Fly
 40

3613

B74

101 25.12
NE 7' 417
Pacific Beach Dr.
Lamont
35.10

33.57 34.21
2.56 1.92
40-Gulf 40-Cb-Fair

+42 South Carbline Pacific Beach Dr to East

33.95 33.71 33.68 34.07 34.12 34.03 33.73 33.50 34.23
2.8 2.42 2.45 2.06 2.01 2.10 2.40 2.62 1.90
40 30 20 10 10 30 30-50 Gulf 30-Cb

+31 220 Rt of 2 = 2 Tel Pole # 559539
402 Rt of 2 = NY Cyclone Lane

33.94 33.44 33.40 33.77 33.92 33.64 33.29 34.02 34.18 34.10
2.19 2.19 2.73 2.46 2.31 2.49 2.84 2.11 1.95 2.1
40-Carb 40-Gulf 40 40 40 40-Carb 40-Carb 40-Carb

+37 = South Carbline Pacific Beach Dr to West

+25 218 Rt of 2 = 2 Fire Hyd

33.8 33.58 33.43 32.71 33.12 33.27 33.11 32.89 33.51 33.4
2.3 2.55 2.70 3.42 3.01 2.86 3.02 2.24 2.12 2.7
40 30 30 40 40 40 40 40 40 40
30-50-Carb 30-Carb 40-Gulf 40-Carb 40-Carb

+07

+05 220 Rt of 2 = 2 Parrier Pole # 4098

33.50 33.53 32.69 32.65
2.17 2.10 3.44 3.48
40-Carb 40-Carb 40-Carb 40-Carb

16+01

33.6 32.9 32.4 32.87 33.17 32.77 32.2 32.6 33.1 33.43
2.5 3.2 2.7 3.2 2.96 3.36 3.9 3.5 3.0 2.70 3.9
40 38 30 40 40 40 40 40 40 40
40-Carb 40-Carb 40-Carb 40-Carb 40-Carb 40-Carb 40-Carb 40-Carb

36.13

LAMMONT ST.

check Alignment of curbs
on Pacific Beach Drive

at Lammont St.

ST.

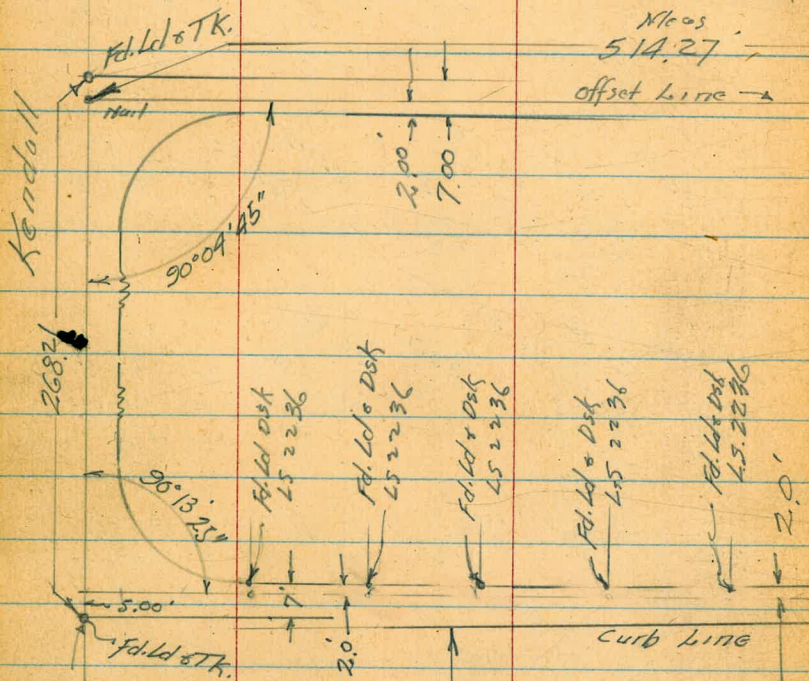
OLIVER

No. 05

514.27

offset line

ST.



PACIFIC BEACH DR.

67.00

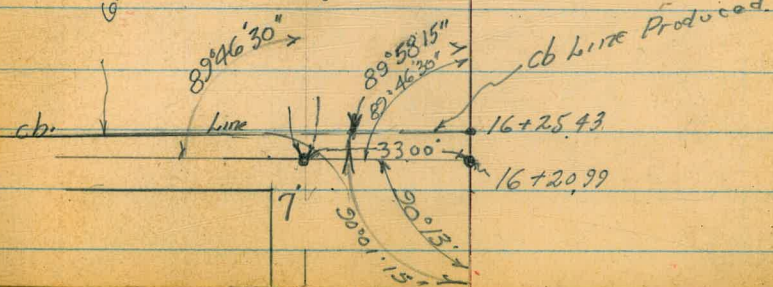
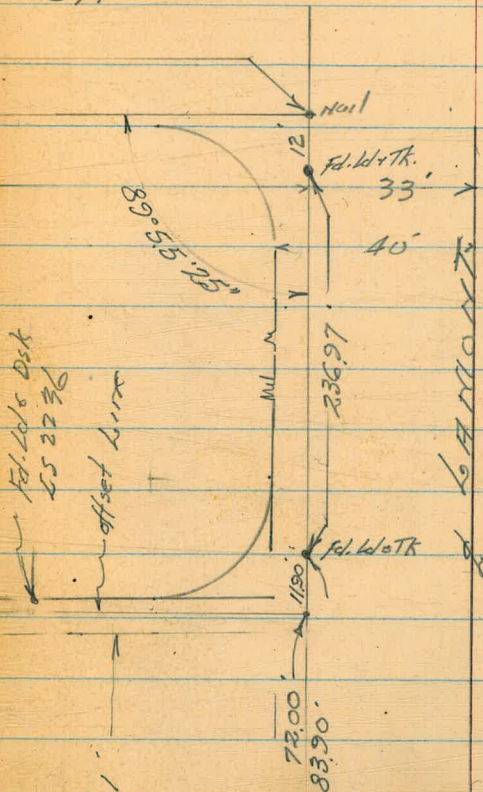
6.10
cb line

7

INDEXED
NOV 7 1951
Law

Walker,
Pope
Huffman
Nov. 1951

76



Cross Section Crown Point Drive
At Laumont St.

See sketch Page 57

+12

+10

+75

+50 = Curb RL

+25

0+0

BM 504 31.92

81 Mo's
Elyhamont
16.88 H. G. W. P.
Page 51

Base (112)

N.E.

Nov. 8-51
H. S. J. S. S. S.
Rogger
Fritz 77

M.O. 31914

16.84 17.77 17.58 17.30 17.4 17.7 18.4 17.4
504 4.15 4.34 4.61 4.5 4.2 3.5 4.5
18.74 31 38 50 63 67 75-Top
H. G. W. P. Bluff

17.6 18.9 18.8 17.06 17.85 17.32 17.3 18.4 17.4
3.3 3.0 3.1 4.86 4.07 4.60 4.6 3.5 4.5
35 5 7-H. G. W. P. 50-RL 40 56 66 75-Top
Bluff

18.9 18.4 17.67 18.16 17.70 17.5 19.1
30 3.5 4.35 3.76 4.22 4.4 3.8
10 16-H. G. W. P. 30-RL 40-RL 66-Top
Bluff

19.2 18.0 17.98 18.40 17.76 18.2 19.4
27 3.9 3.94 3.52 4.16 3.7 3.5
15 19-H. G. W. P. 30-RL 43.5-RL 66-Top
Bluff

19.3 18.9 18.2 18.33 18.65 18.15 17.9
26 3.0 3.7 3.59 3.77 3.77 4.0
11 15 19.5-H. G. W. P. 30-RL 40.5-RL 67-Top
Bluff

19.1 19.3 19.4 18.5 18.50 18.86 18.46 17.7
24 26 2.5 3.4 3.42 2.06 2.46 4.2
25 11 14 20-H. G. W. P. 29.5-RL 40-RL 66-Top
Bluff

31.92

2+11.89 = 11 My Cross Point Drive

+ 8843 = E.L. Lamont

+ 75 = Lamont

+ 50

1+30

2192

8

R1-5E

17.7 17.5
42 44 49 51 57 63
13 13 31 37 43
150-Top Bluff

18.1 17.5
38 44 51 56 63 69
15 21 25 35 41
76-Top Bluff

18.1 17.5
38 44 51 56 63 69
15 21 30 40 48 58
88-Top Bluff

17.80 18.2 17.5 17.2
48 57 64 72
20 30 50 68 81
15 51
16.5

17.83 17.60 17.52
49 57 64 72
30 50 61 70 76-Top Bluff
18-5-7-8

2192

79

86.97
8.52

95.49

323.60
 121.31

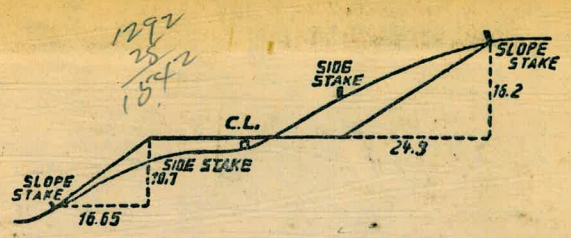
 202.30

Buy 1 }
 Bayard } NW 70T
 6783

148.75
 12.25

 161.00
 1.67

 159.33



DISTANCES FROM SIDE STAKES FOR CROSS-SECTIONING.
 SLOPE 1 1/2 TO 1. ROADWAY OF ANY WIDTH.

	0	.1	.2	.3	.4	.5	.6	.7	.8	.9	
0	0.00	0.15	0.30	0.45	0.60	0.75	0.90	1.05	1.20	1.35	0
1	1.50	1.65	1.80	1.95	2.10	2.25	2.40	2.55	2.70	2.85	1
2	3.00	3.15	3.30	3.45	3.60	3.75	3.90	4.05	4.20	4.35	2
3	4.50	4.65	4.80	4.95	5.10	5.25	5.40	5.55	5.70	5.85	3
4	6.00	6.15	6.30	6.45	6.60	6.75	6.90	7.05	7.20	7.35	4
5	7.50	7.65	7.80	7.95	8.10	8.25	8.40	8.55	8.70	8.85	5
6	9.00	9.15	9.30	9.45	9.60	9.75	9.90	10.05	10.20	10.35	6
7	10.50	10.65	10.80	10.95	11.10	11.25	11.40	11.55	11.70	11.85	7
8	12.00	12.15	12.30	12.45	12.60	12.75	12.90	13.05	13.20	13.35	8
9	13.50	13.65	13.80	13.95	14.10	14.25	14.40	14.55	14.70	14.85	9
10	15.00	15.15	15.30	15.45	15.60	15.75	15.90	16.05	16.20	16.35	10
11	16.50	16.65	16.80	16.95	17.10	17.25	17.40	17.55	17.70	17.85	11
12	18.00	18.15	18.30	18.45	18.60	18.75	18.90	19.05	19.20	19.35	12
13	19.50	19.65	19.80	19.95	20.10	20.25	20.40	20.55	20.70	20.85	13
14	21.00	21.15	21.30	21.45	21.60	21.75	21.90	22.05	22.20	22.35	14
15	22.50	22.65	22.80	22.95	23.10	23.25	23.40	23.55	23.70	23.85	15
16	24.00	24.15	24.30	24.45	24.60	24.75	24.90	25.05	25.20	25.35	16
17	25.50	25.65	25.80	25.95	26.10	26.25	26.40	26.55	26.70	26.85	17
18	27.00	27.15	27.30	27.45	27.60	27.75	27.90	28.05	28.20	28.35	18
19	28.50	28.65	28.80	28.95	29.10	29.25	29.40	29.55	29.70	29.85	19
20	30.00	30.15	30.30	30.45	30.60	30.75	30.90	31.05	31.20	31.35	20
21	31.50	31.65	31.80	31.95	32.10	32.25	32.40	32.55	32.70	32.85	21
22	33.00	33.15	33.30	33.45	33.60	33.75	33.90	34.05	34.20	34.35	22
23	34.50	34.65	34.80	34.95	35.10	35.25	35.40	35.55	35.70	35.85	23
24	36.00	36.15	36.30	36.45	36.60	36.75	36.90	37.05	37.20	37.35	24
25	37.50	37.65	37.80	37.95	38.10	38.25	38.40	38.55	38.70	38.85	25
26	39.00	39.15	39.30	39.45	39.60	39.75	39.90	40.05	40.20	40.35	26
27	40.50	40.65	40.80	40.95	41.10	41.25	41.40	41.55	41.70	41.85	27
28	42.00	42.15	42.30	42.45	42.60	42.75	42.90	43.05	43.20	43.35	28
29	43.50	43.65	43.80	43.95	44.10	44.25	44.40	44.55	44.70	44.85	29
30	45.00	45.15	45.30	45.45	45.60	45.75	45.90	46.05	46.20	46.35	30
31	46.50	46.65	46.80	46.95	47.10	47.25	47.40	47.55	47.70	47.85	31
32	48.00	48.15	48.30	48.45	48.60	48.75	48.90	49.05	49.20	49.35	32
33	49.50	49.65	49.80	49.95	50.10	50.25	50.40	50.55	50.70	50.85	33
34	51.00	51.15	51.30	51.45	51.60	51.75	51.90	52.05	52.20	52.35	34
35	52.50	52.65	52.80	52.95	53.10	53.25	53.40	53.55	53.70	53.85	35
36	54.00	54.15	54.30	54.45	54.60	54.75	54.90	55.05	55.20	55.35	36
37	55.50	55.65	55.80	55.95	56.10	56.25	56.40	56.55	56.70	56.85	37
38	57.00	57.15	57.30	57.45	57.60	57.75	57.90	58.05	58.20	58.35	38
39	58.50	58.65	58.80	58.95	59.10	59.25	59.40	59.55	59.70	59.85	39
40	60.00	60.15	60.30	60.45	60.60	60.75	60.90	61.05	61.20	61.35	40
41	61.50	61.65	61.80	61.95	62.10	62.25	62.40	62.55	62.70	62.85	41
42	63.00	63.15	63.30	63.45	63.60	63.75	63.90	64.05	64.20	64.35	42
43	64.50	64.65	64.80	64.95	65.10	65.25	65.40	65.55	65.70	65.85	43
44	66.00	66.15	66.30	66.45	66.60	66.75	66.90	67.05	67.20	67.35	44
45	67.50	67.65	67.80	67.95	68.10	68.25	68.40	68.55	68.70	68.85	45
46	69.00	69.15	69.30	69.45	69.60	69.75	69.90	70.05	70.20	70.35	46
47	70.50	70.65	70.80	70.95	71.10	71.25	71.40	71.55	71.70	71.85	47
48	72.00	72.15	72.30	72.45	72.60	72.75	72.90	73.05	73.20	73.35	48
49	73.50	73.65	73.80	73.95	74.10	74.25	74.40	74.55	74.70	74.85	49
50	75.00	75.15	75.30	75.45	75.60	75.75	75.90	76.05	76.20	76.35	50

THE NATIONAL BLANK BOOK COMPANY
 HOLYOKE MASSACHUSETTS
 NEW YORK CHICAGO BOSTON SAN FRANCISCO