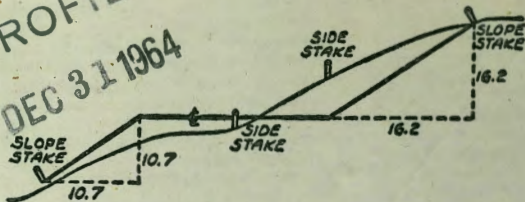


2046

BRUCE WINE

MICROFILMED
DEC 31 1964



DISTANCES FROM SIDE STAKES FOR CROSS-SECTIONING
SLOPE 1 TO 1. ROADWAY OF ANY WIDTH

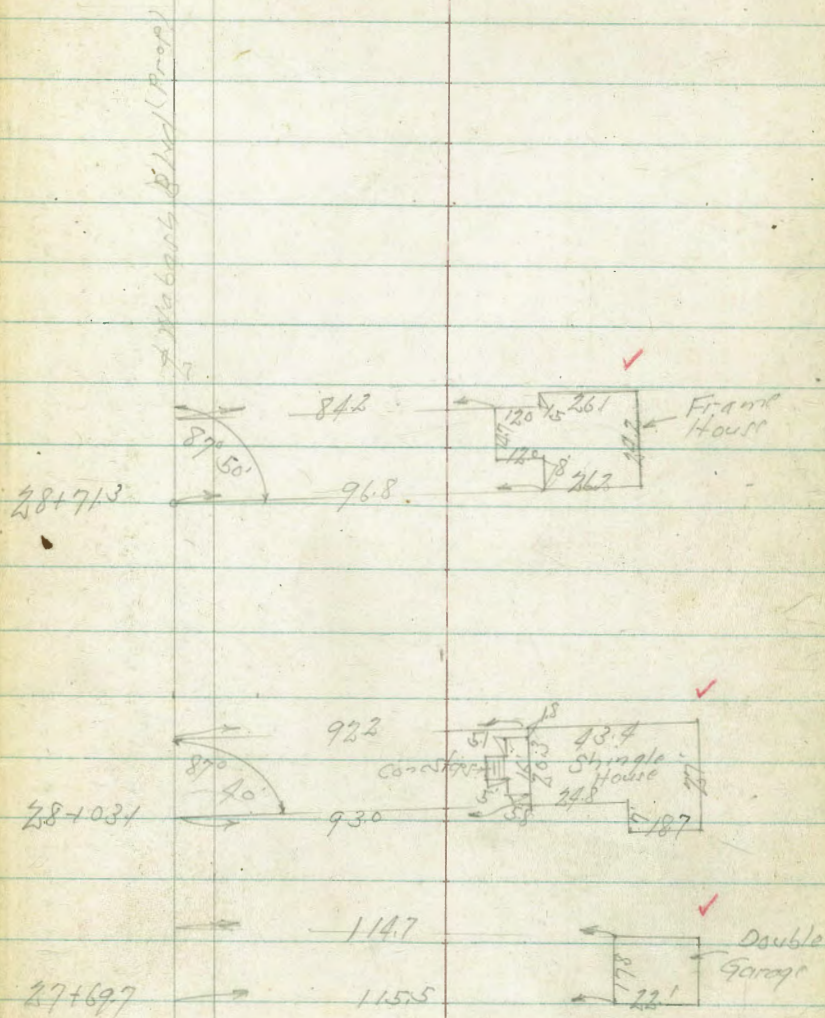
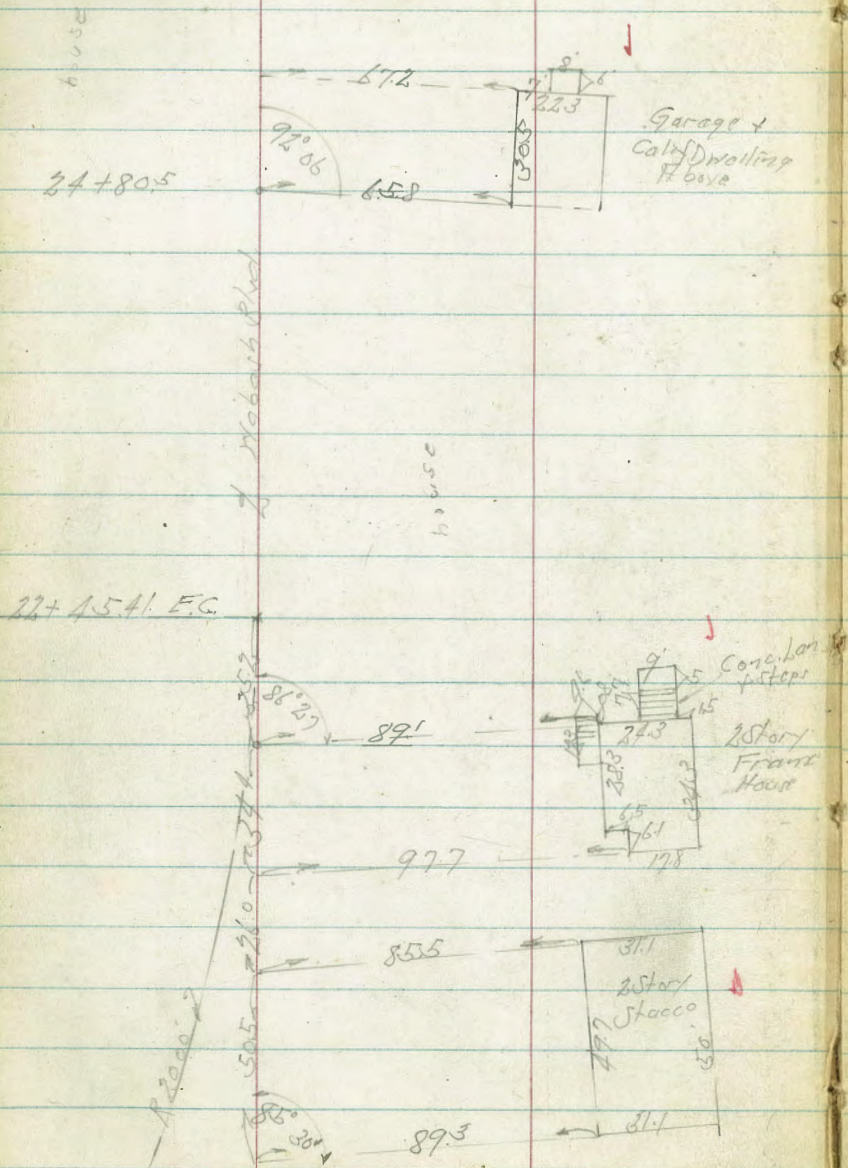
	0	.1	.2	.3	.4	.5	.6	.7	.8	.9	
0	0.00	0.10	0.20	0.30	0.40	0.50	0.60	0.70	0.80	0.90	0
1	1.00	1.10	1.20	1.30	1.40	1.50	1.60	1.70	1.80	1.90	1
2	2.00	2.10	2.20	2.30	2.40	2.50	2.60	2.70	2.80	2.90	2
3	3.00	3.10	3.20	3.30	3.40	3.50	3.60	3.70	3.80	3.90	3
4	4.00	4.10	4.20	4.30	4.40	4.50	4.60	4.70	4.80	4.90	4
5	5.00	5.10	5.20	5.30	5.40	5.50	5.60	5.70	5.80	5.90	5
6	6.00	6.10	6.20	6.30	6.40	6.50	6.60	6.70	6.80	6.90	6
7	7.00	7.10	7.20	7.30	7.40	7.50	7.60	7.70	7.80	7.90	7
8	8.00	8.10	8.20	8.30	8.40	8.50	8.60	8.70	8.80	8.90	8
9	9.00	9.10	9.20	9.30	9.40	9.50	9.60	9.70	9.80	9.90	9
10	10.00	10.10	10.20	10.30	10.40	10.50	10.60	10.70	10.80	10.90	10
11	11.00	11.10	11.20	11.30	11.40	11.50	11.60	11.70	11.80	11.90	11
12	12.00	12.10	12.20	12.30	12.40	12.50	12.60	12.70	12.80	12.90	12
13	13.00	13.10	13.20	13.30	13.40	13.50	13.60	13.70	13.80	13.90	13
14	14.00	14.10	14.20	14.30	14.40	14.50	14.60	14.70	14.80	14.90	14
15	15.00	15.10	15.20	15.30	15.40	15.50	15.60	15.70	15.80	15.90	15
16	16.00	16.10	16.20	16.30	16.40	16.50	16.60	16.70	16.80	16.90	16
17	17.00	17.10	17.20	17.30	17.40	17.50	17.60	17.70	17.80	17.90	17
18	18.00	18.10	18.20	18.30	18.40	18.50	18.60	18.70	18.80	18.90	18
19	19.00	19.10	19.20	19.30	19.40	19.50	19.60	19.70	19.80	19.90	19
20	20.00	20.10	20.20	20.30	20.40	20.50	20.60	20.70	20.80	20.90	20
21	21.00	21.10	21.20	21.30	21.40	21.50	21.60	21.70	21.80	21.90	21
22	22.00	22.10	22.20	22.30	22.40	22.50	22.60	22.70	22.80	22.90	22
23	23.00	23.10	23.20	23.30	23.40	23.50	23.60	23.70	23.80	23.90	23
24	24.00	24.10	24.20	24.30	24.40	24.50	24.60	24.70	24.80	24.90	24
25	25.00	25.10	25.20	25.30	25.40	25.50	25.60	25.70	25.80	25.90	25
26	26.00	26.10	26.20	26.30	26.40	26.50	26.60	26.70	26.80	26.90	26
27	27.00	27.10	27.20	27.30	27.40	27.50	27.60	27.70	27.80	27.90	27
28	28.00	28.10	28.20	28.30	28.40	28.50	28.60	28.70	28.80	28.90	28
29	29.00	29.10	29.20	29.30	29.40	29.50	29.60	29.70	29.80	29.90	29
30	30.00	30.10	30.20	30.30	30.40	30.50	30.60	30.70	30.80	30.90	30
31	31.00	31.10	31.20	31.30	31.40	31.50	31.60	31.70	31.80	31.90	31
32	32.00	32.10	32.20	32.30	32.40	32.50	32.60	32.70	32.80	32.90	32
33	33.00	33.10	33.20	33.30	33.40	33.50	33.60	33.70	33.80	33.90	33
34	34.00	34.10	34.20	34.30	34.40	34.50	34.60	34.70	34.80	34.90	34
35	35.00	35.10	35.20	35.30	35.40	35.50	35.60	35.70	35.80	35.90	35
36	36.00	36.10	36.20	36.30	36.40	36.50	36.60	36.70	36.80	36.90	36
37	37.00	37.10	37.20	37.30	37.40	37.50	37.60	37.70	37.80	37.90	37
38	38.00	38.10	38.20	38.30	38.40	38.50	38.60	38.70	38.80	38.90	38
39	39.00	39.10	39.20	39.30	39.40	39.50	39.60	39.70	39.80	39.90	39
40	40.00	40.10	40.20	40.30	40.40	40.50	40.60	40.70	40.80	40.90	40
41	41.00	41.10	41.20	41.30	41.40	41.50	41.60	41.70	41.80	41.90	41
42	42.00	42.10	42.20	42.30	42.40	42.50	42.60	42.70	42.80	42.90	42
43	43.00	43.10	43.20	43.30	43.40	43.50	43.60	43.70	43.80	43.90	43
44	44.00	44.10	44.20	44.30	44.40	44.50	44.60	44.70	44.80	44.90	44
45	45.00	45.10	45.20	45.30	45.40	45.50	45.60	45.70	45.80	45.90	45
46	46.00	46.10	46.20	46.30	46.40	46.50	46.60	46.70	46.80	46.90	46
47	47.00	47.10	47.20	47.30	47.40	47.50	47.60	47.70	47.80	47.90	47
48	48.00	48.10	48.20	48.30	48.40	48.50	48.60	48.70	48.80	48.90	48
49	49.00	49.10	49.20	49.30	49.40	49.50	49.60	49.70	49.80	49.90	49
50	50.00	50.10	50.20	50.30	50.40	50.50	50.60	50.70	50.80	50.90	50

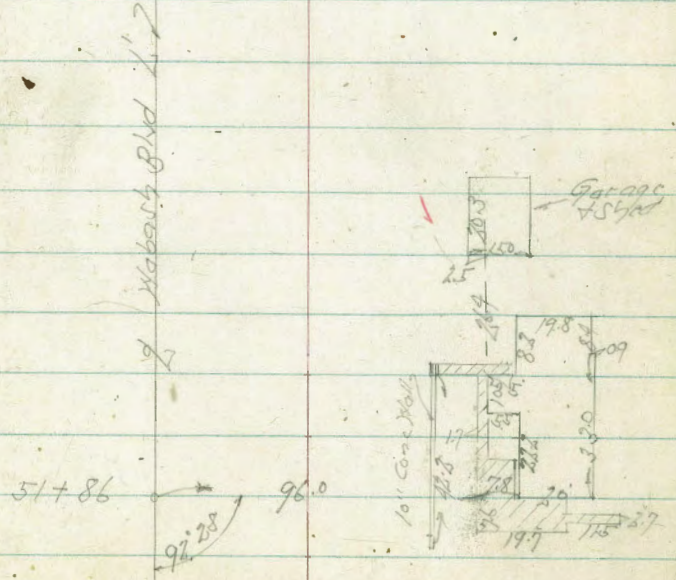
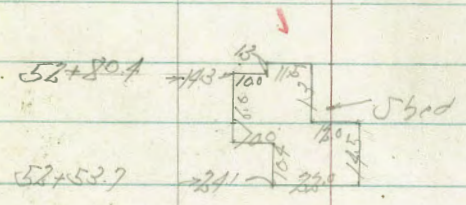
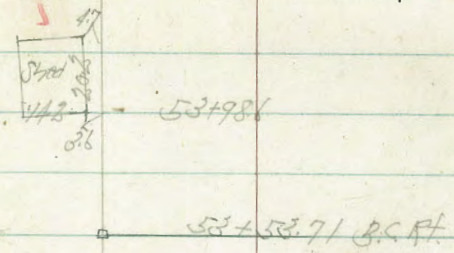
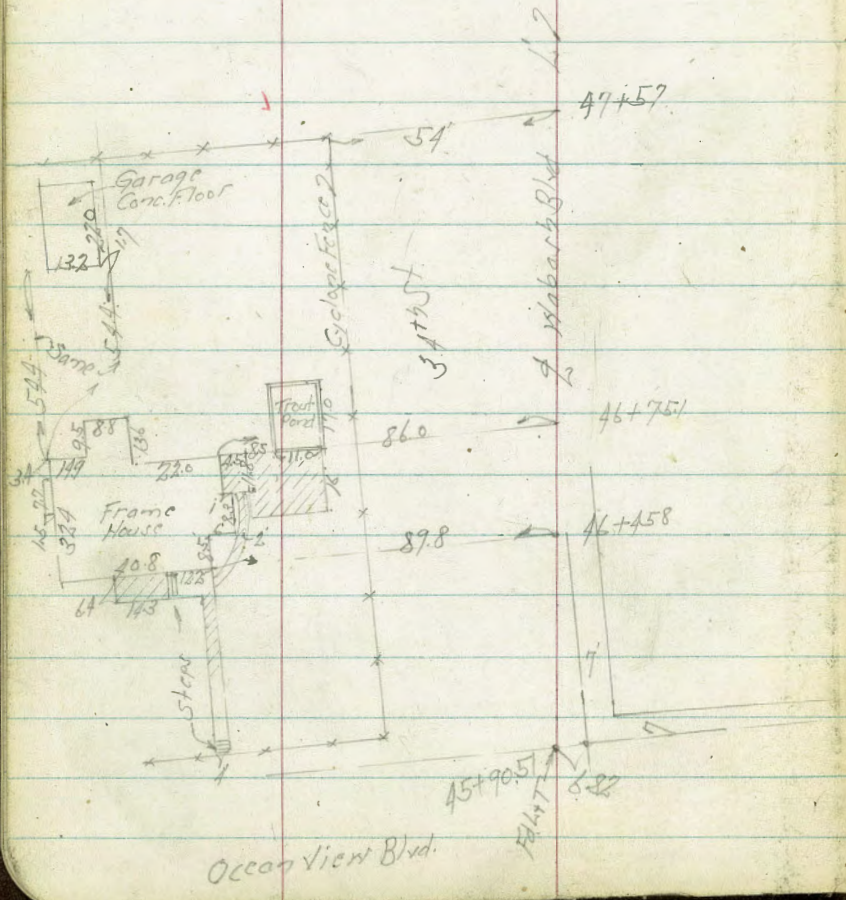
Distance of slope stake from side or shoulder stake for any width roadway, slope 1 to 1. If ground is nearly level, the cut or fill at side stake is located by the double entry method in left column and top row. The number in body of table in same row and column gives distance from side stake to slope stake. If ground is not level estimate the difference in elevation between the side stake and slope stake, lower target by this amount if cut, elevate if fill. Add this amount to cut or fill and find distance in table. Set up rod at this point, and line of sight should cut target. If it does not make the slight adjustment necessary.

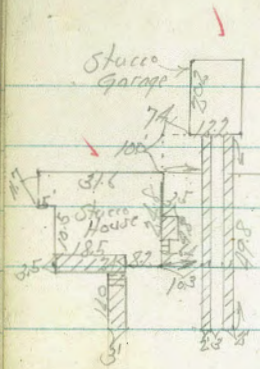
Topog. Wabash Blvd. Sec B
National Ave to North of Ocean View

Aug. 16-49
H. Sisson
Garber
Coty
Chavez
N.O. 22008

1



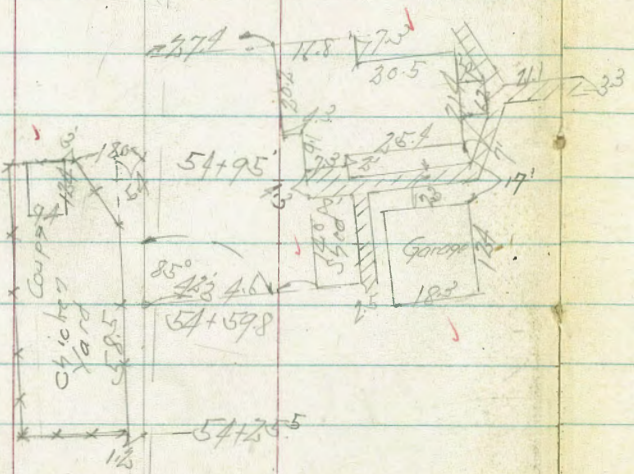




118.0 → 59+58

115.9 → 59+53

↙ Xabon Blvd ↘

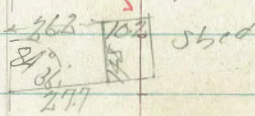


54+95

54+59.8

54+20.5

54+03.7



53+53.7 BC PL

54 60
52 54
1 16

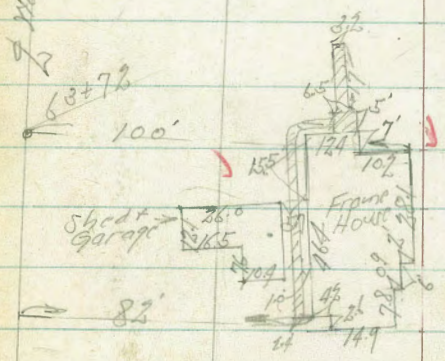
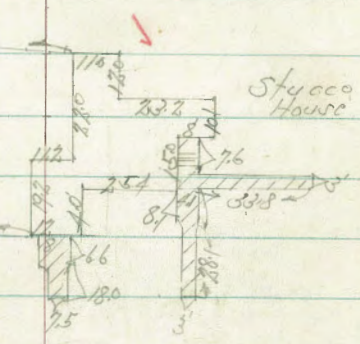
67+37 → 99.7

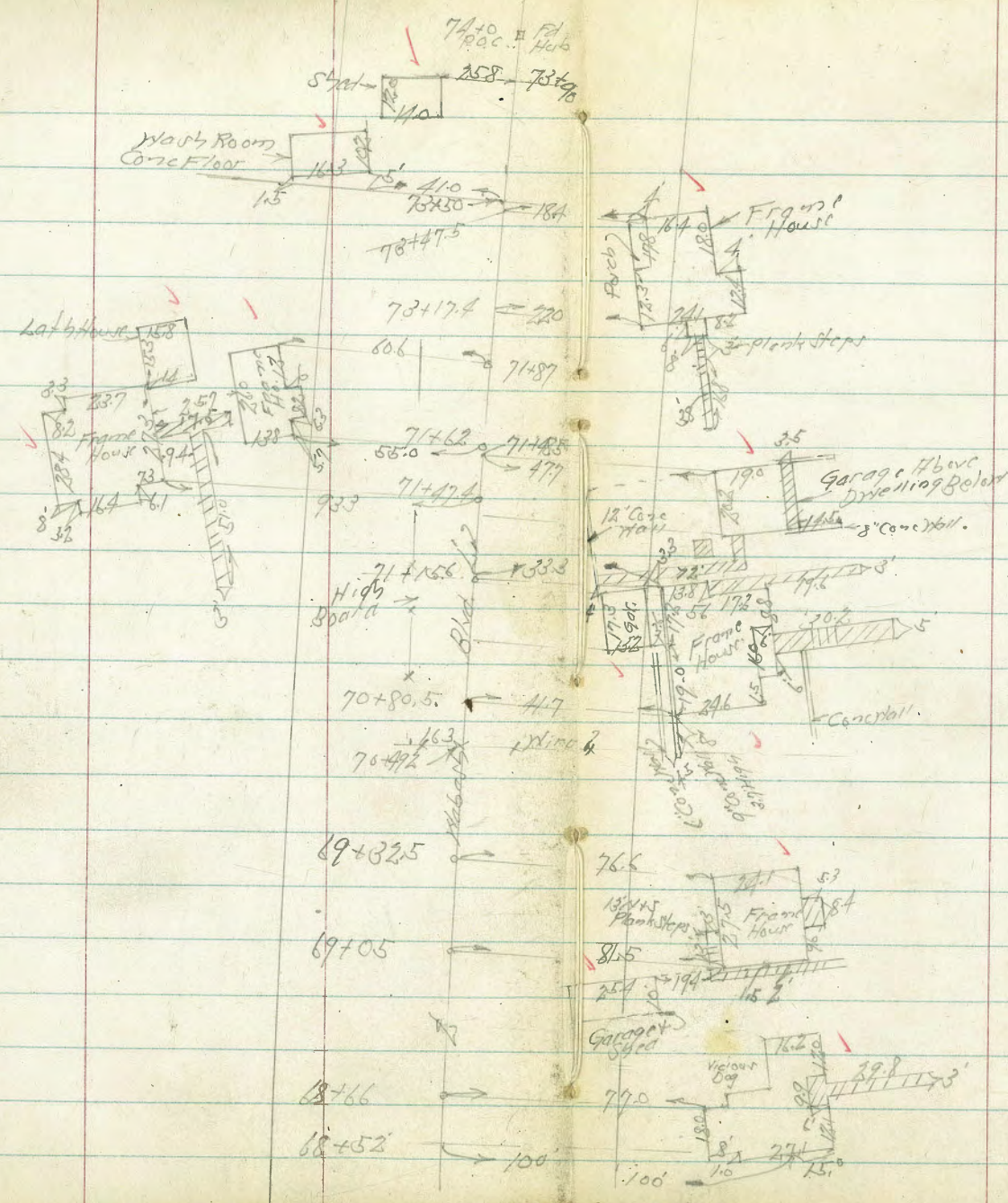
66+94 → 95.4

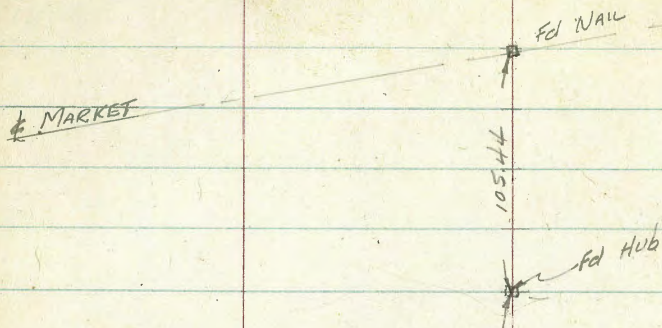
Z. Nabar b Blvd. P

68+72 → 100'

68+28 → 82'







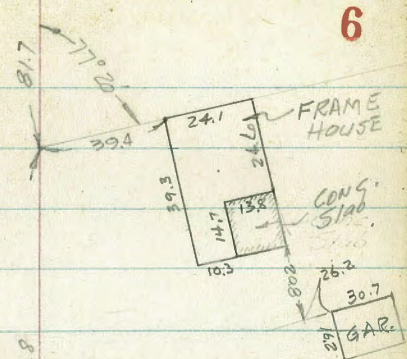
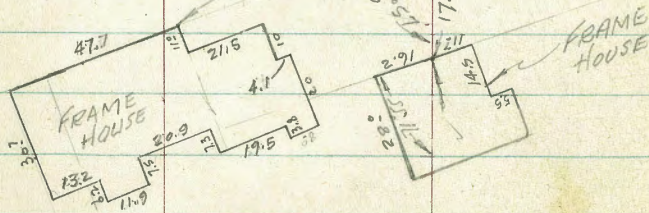
105.44

176.56

63.6

17.4

SEMI-TANG
81.7



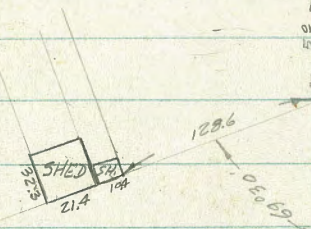
81.7

81.81

81.81

5.9

SEMI-TANG



128.6
69° 05' 69"

66° 50'

74.2

5.9

5.9

128.6

69° 05' 69"

69° 05' 69"

69° 05' 69"

69° 05' 69"

69° 05' 69"

69° 05' 69"

69° 05' 69"

69° 05' 69"

69° 05' 69"

69° 05' 69"

69° 05' 69"

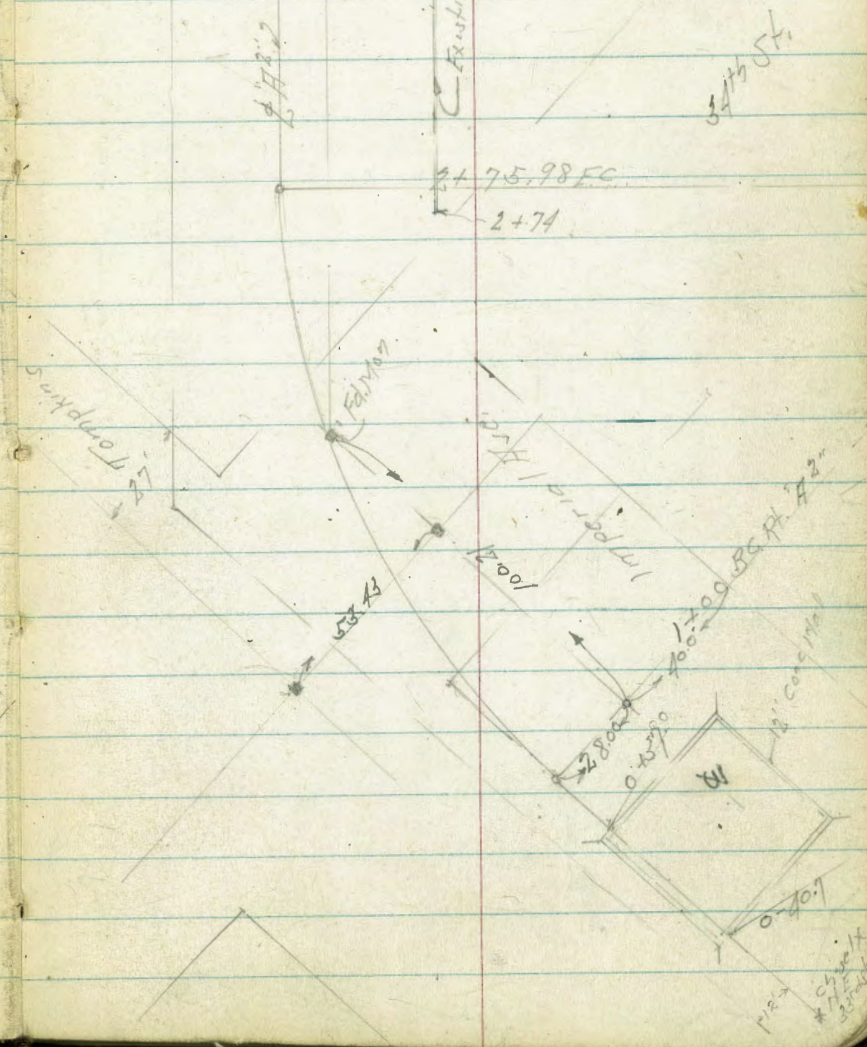
Alignment H² Line Imperial Ave.
East of 34th St. to Pardee St.

Indexed *AW*
11-7-51

June 7-50
H. Sisson
W. Gorber
E. Chavez
No. 22008

7

+75.98 FC	23° 33.50'	
+50	20° 04.82'	Δ 97° 07.00'
+25	16° 44.02'	R 214.0'
2+0	13° 23.21'	T 93.21'
+75	10° 02.41'	L 175.98'
+50	6° 41.61'	D 18.03212
+25	3° 20.80'	
1+00 BC Pt.		

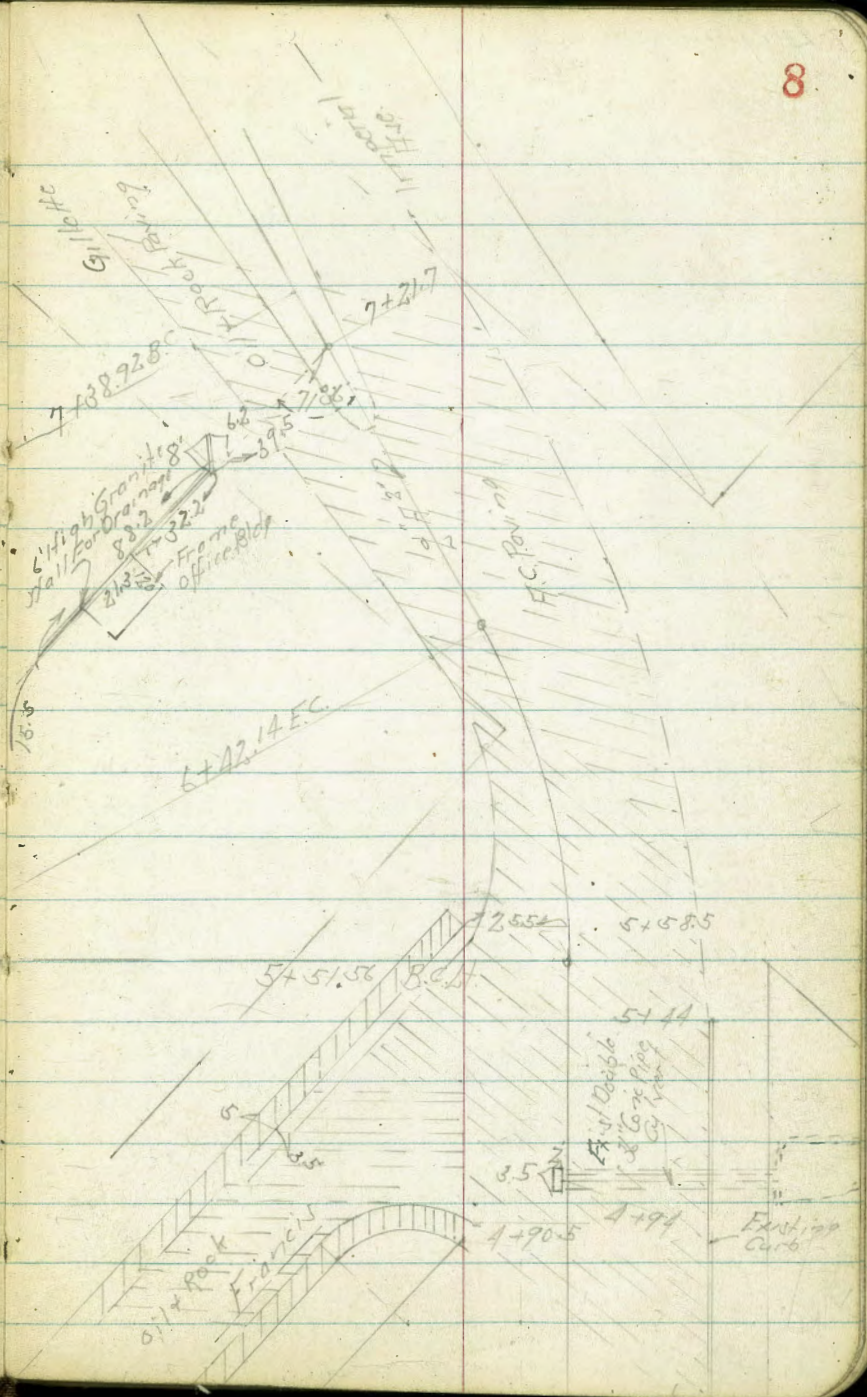


Alignment 73

+42.14 EC	14° 27.88'
+25	11° 43.65'
+10	7° 44.12'
+75	3° 44.68'

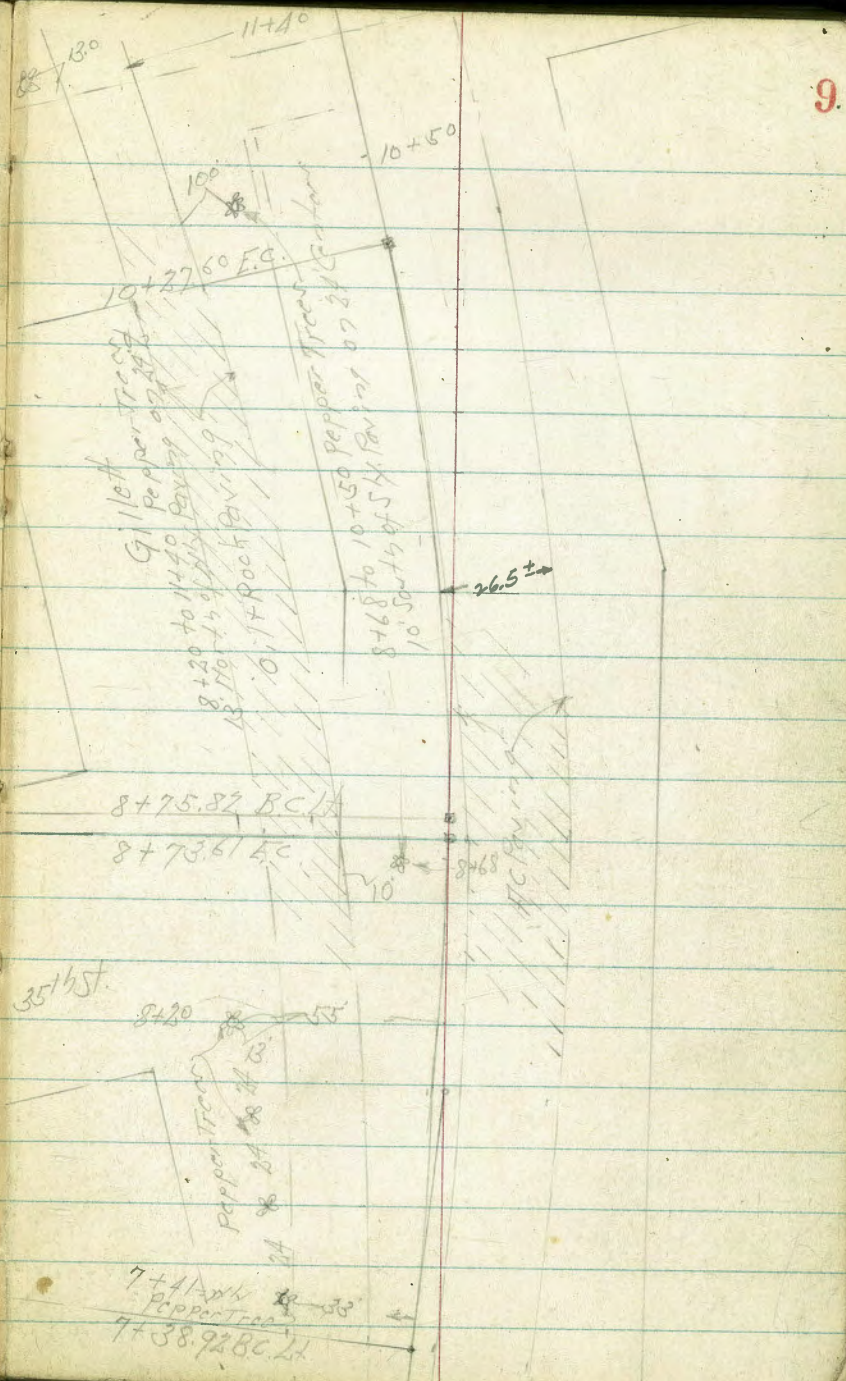
$\Delta 28^{\circ} 55' 16''$
 $R 179.40'$
 $T 46.28$
 $L 90.58$
 $D 9.58/2$

5+51.56 BCH



Alignment "A"

10+27.60 FC cso't of L-2537	7° 00.67'	
10+0	5° 44.18'	A 14° 01.20"
+75	4° 34.89'	R 620.18
+50	3° 25.60'	T 76.27
+25	2° 16.31'	L 151.78
cso't of L-2298		DI 2-7715
9+0	1° 07.02'	
cso't of L-2223		
8+75.82 BC LA		
+73.61 FC cso't of L-2296	2° 58.63'	
+50	1° 46.08'	A 4° 17' 14"
+25	1° 22.31'	R 1800'
8+0	0° 58.33'	T 67.37'
+75	0° 34.46'	L 134.69'
+50	0° 10.52'	DI 0.955
7+38.92 BC LA		



370

+75.98 EC

+50

+25

270

1750

40.43

37.77	36.83	38.0	28.3	27.67	27.72	27.51	26.78	27.38	26.58	26.1
266	24	24	121	1276	1270	1292	1365	1305	138	148
50.3	51.0	30.0	14.0	3.5	3.5	174	40.6	40.6	67.0	100
TOPSY Rail			H.H.C.			Gul				

37.69	37.0	36.8	27.9	27.55	27.65	27.39	26.71	27.11	26.5	26.1
274	24	1.6	12.5	12.88	12.78	1304	1374	1332	139	148
55.8	48.0	30.0	13.0	3.0	3.0	17.8	40.1	40.1	70.0	100
TOPSY Rail			H.H.C.			Gul				

37.69	36.89	37.4	34.2	28.0	27.56	27.22	26.53	26.0	27.4	27.4
274	3.5	3.0	6.2	121	12.89	12.87	13.21	13.90	14.1	13.0
54.0	48.0	30.0	31.0	12.0	4.0	4.0	19.0	39.5	47.0	100
TOPSY Rail			H.H.C.			S.H.F.C.				

37.61	36.6	37.6	33.5	27.3	27.44	27.52	27.07	26.33	25.7	25.9	25.4
281	39	2.8	6.9	131	12.99	12.91	13.36	14.10	14.7	11.5	11.0
82.8	50.0	35.0	25.0	15.0	5.0	5.0	19.4	38.5	77.0	87.0	100
TOPSY Rail			H.H.C.			S.H.F.C.					

37.16	36.2	33.8	27.2	27.34	27.42	26.92	26.15	25.9	25.5	25.6	25.1
297	12	6.6	13.2	13.09	13.01	13.51	11.28	11.5	11.9	12.8	12.8
88.6	50.0	33.0	18.0	6.0	6.0	19.0	37.0	45.0	75	100	100
TOPSY Rail RR			H.H.C.			S.H.F.C.					

28.4	31.3	25.9	26.2	27.64	27.62	27.41	26.45	26.2	25.1	25.1
60	91	145	142	1279	1281	1332	140	143	172	172
100.0	80.0	420	220	7.0	7.0	19	34.0	40	70.0	70.0
H.H.C.			H.H.C.			S.H.F.C.				

40.43

Imperial Ave. H² 2.10

+75

35.45	34.66	32.38	33.15	32.5	29.8	28.9	28.9	28.50	28.49	28.61	28.02	28.61	27.1	27.8	27.3
293	272	100	523	59	86	95	95	988	787	977	1036	977	107	136	141
1017	1017	944	583	550	470	300	16	7-HYFC		180	40	40	50	540	780
			cb								Got	Got			

+35

39.02	37.92	37.4	30.1	29.2	28.9	28.30	28.36	28.33	27.78	28.38	27.9	27.9	26.2	26.2	26.2
036	046	10	83	92	95	1008	1002	1005	1040	1000	105	105	105	105	105
111.6	106.3	910	810	50	230	3-HYFC		180	40	40	50	50	50	50	50

+10

35.13	37.6	36.2	29.7	28.8	28.02	28.09	28.15	27.55	28.12	26.2	26.2	26.2	26.2	26.2	26.2
025	08	22	87	96	1036	1027	1023	1023	1026	1026	1026	1026	1026	1026	1026
947	890	740	680	420	4	4	4	4	4	4	4	4	4	4	4

TP

10.29 38.38 12.34 28.09

0.76 tail
+10

+75

38.10	37.7	29.3	29.7	27.7	27.84	28.01	27.43	26.9	26.5
203	27	11	117	1270	1259	1242	1300	125	139
843	650	600	350	4-HYFC		177	897	120	900

+10

37.27	37.4	28.5	27.85	27.75	27.81	27.0	27.67	26.83
246	80	119	1228	1268	1262	134	1276	136
170	500	450	125	12	175	40	40	63

+25

37.94	38.2	34.9	27.7	27.69	27.74	27.67	26.93	27.55	26.7
249	22	575	127	1274	1269	1276	1300	1288	137
650	870	350	150	5-HYFC		175	40	40	63

40.43

10.43

12

Imperial H.A. #2 Lint

15

Lt. Z. R.

+38 60 Lt of 2 = 2 Tel + Power Pole # P3511

+25

910

+75.82 B.C. Lt

+50

+38 360 R1 of 2 = 2 Tel + Power Pole # P3495

+25

TP 11.32 52.18 ✓ 1.07 40.86

870

41.93

For Lt of 2 of 2 See Page 18 & 20

47.2	46.2	47.93	48.60	48.27	72.3	73.2
5.0	4.0	4.5	3.58	3.91	+2.01	+2.10
6.0	4.5	15.0	16.0	16.0	7.00	10.00
		41.1	41.1	41.1		
46.0	45.1	46.45	47.03	46.72	+19.0	71.2
6.2	6.5	5.73	5.15	5.16	5.16	+1.00
7.0	3.2	15.3	19.9	15.0	15.0	5.80
		41.1	41.1	41.1		
44.9	45.16	45.09	45.50	45.21	+1.07	54.6
5.0	7.02	7.09	6.68	6.97	6.8	+1.00
	on Has	3.4	3.4	3.4	3.4	3.4
		41.1	41.1	41.1		
42.8	43.55	43.47	43.90	43.55	+1.31	65.6
9.4	8.6	8.71	8.28	8.65	+1.64	+1.64
5.0	3.5	8.5	8.5	8.5	8.5	8.5
		41.1	41.1	41.1		
42.1	42.3	42.12	42.37	41.84	42.0	65.5
10.1	9.9	10.06	9.81	10.34	9.8	+1.7
3.0		4.7	4.7	4.7	4.7	4.7
		41.1	41.1	41.1		
40.4	40.9	40.73	40.84	40.22	50.0	61.2
1.5	1.0	1.20	1.08	1.71	+8.1	+1.97
5.0	5.0	18.8	18.7	19.0	19.0	19.0
		41.1	41.1	41.1		
41.93				+2.0	10.00	

+88.5 50 L of 1/2 = 1/2 Tel + Power Pole #P3548

+75

+50

+27.60 EC

10 + 0

TP 12.91 64.66 ✓ 0.43 51.75

+75

9 + 50

52.18

For L of Sidewalk Page 18-20

57.4	57.38	57.48	57.0x	74.1	78.5	81.3
7.2	7.28	7.14	7.62	+9.1	+1.88	+1.6
7.0		12.6	26.2	48.0	60.0	66.0
			26.2			
55.5	55.78	56.0	55.66	72.7	80.86	81.2
8.8	8.88	8.67	9.90	+8.0	+1.62	+1.68
		12.5	26.0	28.0	38.2	40.0
			26.0			
54.1	54.38	54.21	80.5	+15.8	+1.70	81.7
10.1	10.28	9.95	10.74	12.0	16.5	16.9
8		12.5	26.5	28.5	38.0	40.0
			26.5			
52.86	52.65	53.13	53.66	+13.0	76.7	
11.8	12.0	11.53	12.00	17.0	19.0	19.8
		12.8	28.0	34.0	42.0	45.0
			28.0			
64.66 ✓						
50.0	51.20	51.63	51.35	+22.2	74.4	75.9
7.2	0.98	0.55	0.88	10.0	+23.7	+23.7
7.0		14.0	29.6	36.0	44.0	44.0
			29.6			
49.1	49.61	50.14	49.83	72.9	74.7	
8.0	2.57	2.04	2.35	+20.7	+22.5	
		11.8	30.2	37.0	40.0	40.0
			30.2			
52.18						

Imperial Ave. H² List

Lt

Z

Rt 17

BM

291 97.98 ✓
JFBP:
Imperial
South of oak
Cemetery 98.50
97.91

TP

12.65 100.92 ✓ 0.37 88.27

TP

11.97 88.64 ✓ 0.50 76.67

TP

12.75 77.17 ✓ 0.24 64.42

140

61.5
70 61.36
3.30 51
130 58.55
3.86 +31
27.25 120 75.8
70 +17.5
830 82.2

1140

58.9
5.80 58.86
126 53.00
130 50.54
130 75.7
130 82.1
130 +17.7
130 70.0

64.66

64.66

Cross Section Imperial Fwd. #A Line

Left Side Sta. 8+0 to 11+40

+25

9+0

+75.82

+75.28 = BC

+50

+35

TP

8+0

BM

504 35.20 ✓

725 30.16 ✓

943 37.52 ✓

28.09
0.08 Na
4+0
9.9' 12

Lt. = North

18

30.2 30.7 29.1 29.0 31.6 30.46 30.40 30.9
50 45 61 67 76 172 180 130
1000 950 870 780 710 610-HYPER 440-SHYRO 350
HYPER HYPER HYPER HYPER HYPER HYPER HYPER HYPER

30.3 30.6 28.7 28.7 30.7 29.97 30.17 31.3
40 46 65 65 45 523 503 390
1060 910 800-HYPER 730-SHYRO 400-SHYRO 330
HYPER HYPER HYPER HYPER HYPER HYPER HYPER HYPER

30.4 30.4 28.5 28.5 30.1 30.3 29.92 30.5 30.4
48 48 67 67 51 47 528 515 48
100 890 870-HYPER 730-SHYRO 550-SHYRO 350-SHYRO 380
HYPER HYPER HYPER HYPER HYPER HYPER HYPER HYPER

29.8 29.3 28.2 28.2 29.6 29.95 30.2 30.3
54 57 76 76 51 525 500 19
100 890 760-HYPER 770-SHYRO 800 470-HYPER 290-SHYRO 270
HYPER HYPER HYPER HYPER HYPER HYPER HYPER HYPER

29.4 29.4 28.0 28.0 29.7 30.28 30.32 30.7
58 58 72 72 47 45 191 188 45
100.0 950 700 610-SHYRO 540 480 420-HYPER 370-SHYRO 240
HYPER HYPER HYPER HYPER HYPER HYPER HYPER HYPER

35.20

28.1 27.9 31.6 31.6 30.62 30.62 30.9
92 96 68 68 69 180 66
260 270 460 460 360 200-SHYRO 170
HYPER HYPER HYPER HYPER HYPER HYPER HYPER HYPER

37.52

For Plot See pp. 15-17
Centerline 725

Imperial Ht. of Hint Left Side

Left = North

19

+75

31.2	32.7	30.7	30.4	33.4	35.0	34.93	35.13	35.6
87	72	92	95	65	49	498	178	43
120	167.0	102.0	91.0	85.0	74.0	67.0	48.0	44.0
SYR								

+50

31.2	32.9	30.1	29.9	32.4	33.5	33.26	33.86	34.6
87	70	98	101	75	60	605	495	430
118.0	105	100.0	70.0	85.0	74.0	65.0	49.0	43.0
SYR								

+2760 FC

31.3	33.3	30.2	30.2	32.6	33.3	33.0	32.8	33.3
86	66	97	97	73	66	690	710	66
119.0	105.0	100.0	89.0	85.0	75.0	66.0	49.0	43
SYR								

10+0

31.1	32.8	29.9	29.9	31.8	32.3	32.27	31.94	31.9
88	71	100	100	81	76	768	797	80
114.0	102.0	96.0	87.0	83.0	70.0	65.0	48.0	44.0
SYR								

TP

6.35

3991 ✓

1.64

33.56

3991

+75

30.9	32.7	29.6	29.7	31.0	31.5	31.42	31.2	31.3
43	29	56	55	47	37	378	400	39
107.0	100.0	94.0	84.0	80.0	71.0	66.0	47.0	43.0
SYR								

9+50

30.8	30.6	32.7	29.5	29.4	30.6	30.77	30.72	30.7
44	44	25	57	58	46	443	448	45
112.0	103.0	98.0	92.0	81.0	78.0	68.0	46.0	43.0
SYR								

For Code Page 1517

Geotechnical

Imperial Fla. H^o Line Left Side

Lt = North

20

+ 40

1140

321.6	32.5	38.2	38.54	38.61	38.8
75	71	77	137	130	170
160	890	75°	68° = N/140	51° = S/190	

31.33	31.0	30.7	34.9	34.4	36.4	36.64	36.9
16	87	97	50	55	250	337	30
1100	107	94° = S/140	80°	75°	67° = N/140	48° = S/140	45°

40° = N/140
40° = S/140

39.9

Cross Section Habash Blvd Sec B
 At National Ave Additional Cuts

47 - West
 5.10 4.95 58.0 5.0 5.89 6.12 6.02 5.75
 +76.8 = National
 11.58 12.33 11.48 12.26 11.39 12.16 11.26 12.03
 N curb line 230=cb 230=cb 190=cb 190=cb 180=cb 180=cb 125=cb 125=cb
 230=cb 230=cb

+50.8 = National
 5.65 5.10 5.74 5.84
 11.63 11.58 11.54 11.44
 230 190 180 125

5.38 4.71 5.43 4.86 5.54 4.83 5.64 4.95
 +74.8 = National
 12.57 11.85 12.23 11.74 12.45 11.60 12.33
 S curb line 230=cb 230=cb 190=cb 190=cb 180=cb 180=cb 125=cb 125=cb
 230=cb 230=cb

+10.8 = South Line
 National 6.8 5.8 6.7 6.0
 11.5 11.50 11.6 11.2
 230.0 200.0 150.0 100.0
 11.70 of National
 11.70 of National

2640
 6.2 5.5 6.0 5.8 5.5
 11.1 11.8 11.2 11.5 11.8
 180.0 140.0 100.0 70.0 50.0

25 + 75
 5.9 5.7 5.3 5.1
 11.4 11.6 12.0 12.2
 115.0 87.0 85.0 30.0

BM 10.47 17.28
 6.81 S.F.B.P.
 National Ave
 4341516
 184.9

Alignment 1823-27
 Original Section 1844-41

INDEXED

NOV 8 1951

Survey 18-50
 H.S. 5009
 Chavez
 Bunch 21

12.15 13.7 14.83 15.63 16.82 17.62
 4.48 3.70 2.45 1.65 0.46 +0.34
 150=Cut 150=Cut 185=Cut 185=cb 230=cb 230=cb

13.21 15.23 17.29
 4.07 3.05 0.0
 130 185 220

12.92 13.09 14.28 10.04 16.26 16.99
 4.95 4.19 3.00 2.24 1.02 0.39
 150=Cut 150=cb 185=Cut 185=cb 230=Cut 230=cb

10.4 11.5 13.3 15.15
 6.9 5.8 4.0 2.8
 10.00 1150 140.0 190.0
 800=Cut

5.6 5.9 7.8 8.5 10.5 11.8 24.58
 11.7 11.4 9.5 8.8 6.8 5.5 +7.3
 0.0 230 140 890 950 110 130

5.3 5.9 8.1 8.5 8.0 15.7
 12.0 11.4 9.7 8.8 8.7 1.6
 0.0 30.0 45.0 680 890 1050

17.28

TP 669 2160[✓] 237 1491[✓]

28+0 ✓

11.1 12.3 13.5 15.0
6.2 5.0 3.8 2.3
100 118 140 150

+75 Hand

10.9 11.3 14.6 15.8
6.9 6.0 2.7 1.5
100 130 143 155

+50

10.8 11.7 13.1 14.5 15.0
7.7 5.6 4.2 2.8 2.3
100 129 140 160 170

27+25

10.9 12.8 14.1 15.8
6.5 4.5 3.2 1.5
100 135 150 180

26+90.8-H/1
National

5.9 5.6 5.9 6.3
11.4 11.5 11.4 11.0
230 190 180 185

11.1 12.6 14.0 15.0 20.3
5.9 4.7 3.3 1.5 1.2
180 125 150 185 220

17.28

17.28

+25

	7.6	7.6	10.0	12.10	14.2	15.9
14.0	14.0	11.6	9.5	7.4	5.7	
0.0	25'	50'	75'	85'	110'	

29+0

	14.3	14.5
7.3	7.1	
100'	120'	

+75

	11.1	11.3	8.8	10.2	13.2	14.7	19.1
14.5	14.3	12.8	11.4	8.1	6.9	2.5	
0.0	20'	50'	68'	86'	125'	133'	Graded Hill

+50

	12.7	14.7	16.2
8.9	6.9	5.4	
100'	120'	140'	

28+25

	11.9	14.0	16.7
9.7	7.6	5.2	
100'	125'	140'	

21.60

21.60

Cross Section Habash Blvd. Sec "B"
 Ft Ocean View Blvd.

Alignment #1823
 Original Sec 1682-64

June 13-50
 F.S. Mason
 Chavez
 Ranch

24

Rt. - East

*Inverted
 flow*

44+0

18.2
 5.7
 100
 21.9
 2.0
 130
 23.8
 0.1
 145.0

+75

16.0
 7.9
 0.6
 16.3
 7.6
 19.0
 17.9
 6.0
 145.0
 18.7
 5.0
 65.0
 19.7
 1.2
 95
 23.1
 0.8
 130.0
 23.4
 -0.5
 140.0

+50

19.1
 4.8
 100
 19.7
 4.2
 130
 20.6
 5.3
 135

+25

15.4
 8.5
 0.0
 15.5
 8.1
 20
 17.1
 6.8
 40
 17.3
 6.6
 70
 18.3
 5.2
 100
 19.3
 4.5
 130

43+0

18.2
 5.7
 100
 16.9
 5.0
 130

BM

394

3292

1998

SEP 24 1950
 Ocean View
 4347
 1658-28

33-92

TP

894

19.98

J.E. 7' 2 1/2"
occasional
73/100

+50

12.
100.0+0.8
130+2.6
160

22.7

24.7

26.52

144+25

76
6.072
77.064
84.058
60.059
74.037
100103
120+17
150

25.6

23.92 ✓

23.92

150 = 144 + 6

CROSS SECTION ALLEY BLK 228
PACIFIC BEACH

PLOTTED TRS 1754
1-24-52-MIC

INDEXED
Law
NOV 13 1951

29

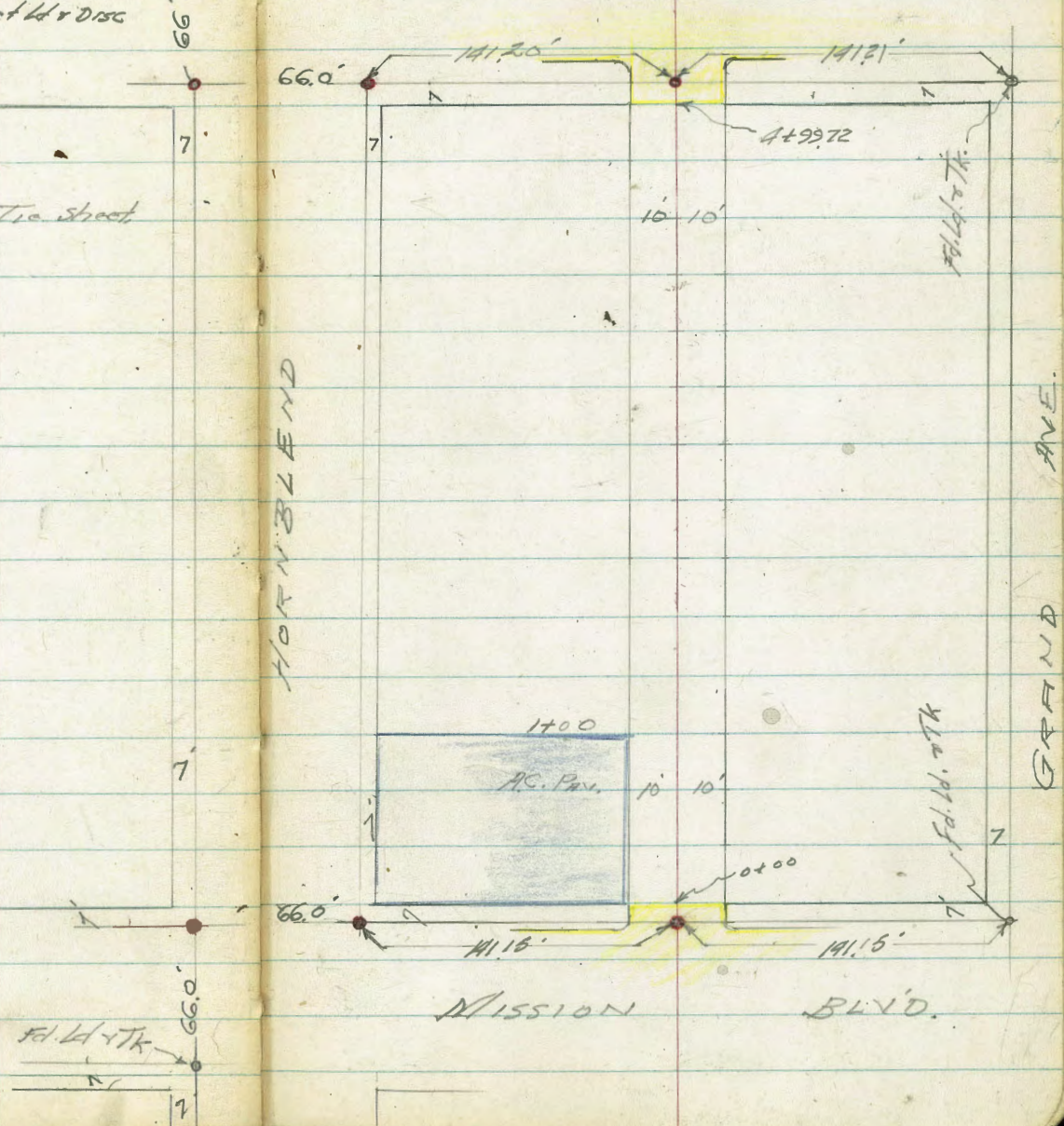
Welker
Pope
Hoffman
Allen
11-9-51

7'
Fd. W. & T.K. →

• - Set W & Disc

BAYARD

Please Plot Ties on Tie Sheet



Alloy Blk 228 - Pacific Beach

H L RT 30

1+50

10.9	10.8	10.5	10.8	10.8	11.0
48	49	52	49	49	47
20	10		10	20	20

1+25

10.6	10.4	10.3	10.8	11.2	9.2	9.0
51	53	54	49	45	65	67
20	10		10	20	21	30

Drains →

Pole 9' RT # PH 82

1+00 = End Paving to Parking lot on Lt

9.96	9.82	9.9	10.3	8.8	8.1
578	592	58	54	69	70
20	10		9	10	20

Pv. on Pv.

0+81 = Pole Anchor 8.2' RT

0+50

8.86	8.84	8.6	8.1	8.0	7.9
688	690	71	70	77	78
20	10		5	10	20

Paving Paving

Seg. Paving to Parking lot

0+00 = E. side Mission Blvd.

8.32	8.08	7.82	7.44	7.66	7.92	7.6
742	766	792	830	808	782	81
35	10	10		10	10	35

Pv. Parking lot cb Gut Gut cb

0-10 = East of Mission Blvd.

8.23	150	804	7.26	7.22	8.13	7.10	7.05	7.69	6.74	7.38
751	870	770	848	852	861	864	869	808	900	836
50	50	8	13	10		10	125	125	60	60

cb Gut cb Gut 15.74 Gut cb Gut cb

TP 7.81 15.74 6.92 7.93
8.93 14.85 6.82

B.M.
St. B.P. Grand Ave & Esplanade (ocean)

Alley 511 228 Pacific Beach

Lt. E Rt

31

2+75 = Reg. Dble Garage Conc. Floor

12.75
5.04
17
Floor

2+50 2 MH

12.1
5.7
20
12.1
5.7
10
11.78
6.01
Rim
MH
11.9
5.9
10.5
at
Fence

2+11 = Elec Pole PA 842 8.8' Rt.

12.21
5.88
Floor
26.0
12.14
5.65
24.7
Top Apron
17.79

2+10 = 1/2 Garage Conc. Floor 7' Wide Apron.

TR 6.75 17.79 4.70 11.04

2+00

11.4
4.3
20
11.2
4.5
10
11.0
4.7
6
11.0
4.2
10
11.4
4.3
20

1+96

11.62
4.12
11
Floor

1+78 = Reg. Dble Garage Conc. Floor

11.56
4.18
11
Floor

1+58 1/2 Garage 8' Wide Ent. Conc. Floor

15.74

11.34
4.40
11.4
Floor
15.74

3+93 = Doorway Carpenter Shop

14.07
3.72
14.3
13.44
4.35
9.2
Toe Apron

3+665 = Doorway to Cabinet Shop

14.09
3.70
14.3
Floor
3.70
17.3

3+50 = West edge 8" Conc. Tile Wall
Runs North
To Hornblad.

12.9
4.9
20
12.8
5.0
9.4
at wall
12.7
5.1
13.0
4.8
10
12.8
5.0
20

3+17 = Elec. Pile = PA 852 88' RT

3+14 = End Dble Garage

12.76
5.63
16.7

3+00

12.4
5.4
20
12.4
5.4
10
12.3
5.5
12.5
5.3
10

3+28 = Beg. Dble Garage Conc. Floor

12.79
5.00
16.7
Floor

3+22 = End Dble Garage Conc. Floor

12.70
5.09
16.8
Floor

17.79

Alley 81k 228 - Pacific Beach

4+93

4+58 = West end 4 Car Garage Conc. Floor

4+54 E 4' Conc. Walk

4+50

4+21 = End Dble Garage on Lt. Conc. Floor

4+16 = End Dble Garage on Rt.

4+02 Bay, Dble Garage Lt. Rt. Conc. Floors

4+00 = East edge Cons. Tile Wall 94' Lt. Runs to Hornblend

4+00

Lt.

Rt.

Rt. 33

13.75
404
101

Apron Floor

13.78
401
102

Apron

13.71
408
114
Walk

13.84
395
164
Walk

14.6
32
20

14.4
34
10

13.8
40
5

13.6
42

13.5
43
10

13.4
44
20

13.73
406
105
Floor

13.00
479
284
Floor

13.68
411
10.5
Floor

13.03
476
287
Floor

13.4
477
10

13.2
46

13.2
46
10

13.0
48
20

17.79

Alley 51k228 Pacific Beach

lt.

L

ft

34

Mission & Gurnet

Records = ²⁰²14.08

CHK SE B.P.

6.08

14.10

TP

2.92

20.18

7.01

17.26

NVA 7' DISC Hornblend & Bayard

TP

7.34

24.27

2.02

16.93

5 + 13.72

14.45
4.50
50
cb

13.85
510
50
Gut

13.19
516
12
cb

13.19
576
12
Gut

13.15
580
10

12.99
5.96

12.85
610
70
Gut

12.75
620
72
Gut

13.35
562
12
cb

12.06
689
50
Gut

12.63
632
50
cb

5 + 00 = West end Conc. Quarry

4 + 29.72 = NW Bayard ST

13.19
516
29
cb

13.61
534
99
Gut
atcb

13.17
5.78

13.36
5.59
10.1
Gut

13.41
5.44
10.1
cb

ON DISC. 5 + 06.72

TP

5.88

18.95

4.72

13.07

18.95

1779

Roberts
Cota
Hose
P. 16 n
3-24-52
W022004

X-Section Wabaska Drive for
Quantities after Construction
Sta. 29+00 to West Pt Loma Drive.
FB 2085 Pg 50

Lt

£

Pt 35

INDEXED
Law
APR 15 1952

29+50

REDUCED MEEHAN
27 MARCH 1952

30.1	38.8	30.4	30.9	30.1	28.8	27.5
+5.8	+5.5	2.9	2.4	3.2	4.5	5.8
100	75	66		65	90	100

29+30

37.1	36.0	30.6	30.9		29.8	26.9
+3.8	+2.7	2.7	2.4		3.5	6.4
100	73	66			75	100

T.P.

613 57.95 π 0.27 57.82

29+00

~~Set Abs & Pies on £ £ 100 £ 200 RP to~~
~~Dist of S or West of S/E~~

32.5	30.1	30.9	29.1	25.2	22.2
0.8	2.6	3.2	4.2	8.1	11.1
100	65	32.8	55	62	100

ON HUB

T.P.

11.77 52.09 1.19 40.32

28+93

Top of Fill

30.9	30.4	29.5	24.8	22.2
2.4	2.9	3.8	8.3	11.1
100		50	61	100

B.M.

5.42 41.51

ON Calv. Post
36.09 NW. Cor. Soto £ Wabaska

28+81

Top of Fill

28.2	25.3	28.2	20.1
5.1	10.0	11.1	13.2
100		84	100

T.P.

7.10 33.29 π 3.31 26.19

33.29 π

T.P.

9.58 29.50 3.50 21.92

* 38+66.29 £
Hub

B.M.

11.19 25.42

14.23
2d £ City Disc
£ West Pt Loma Dr
£ £ Wabaska Drive

Cont'd From Page 35

32+00

LE				FE		RE	
530	520	26.1	26.4	270	15.1	36	4.5
5.0	60	7.2	69	63	18.2	18.8	
100	93	69		45	85	100	

31+50

550	53.8	21.3	21.3	276	15.0	14.5	
30	32	6.0	6.0	5.7	18.3	11.9	
100	95	69		41	85	100	

31+00

54.4	54.3	28.2	28.2	28.2	15.1		
2.6	2.7	5.1	5.1	5.1	18.2		
100	95	70		45	100		

30+50

55.1	54.9	29.0	29.1	29.4	22.0		
2.9	3.1	4.3	4.2	3.7	11.3		
100	94	69		52	100		

30+10

51.8	51.5	29.6	29.7		300	24.8	
6.2	6.5	3.7	3.6		33	8.5	
100	89	68			60	100	

29+85

45.7	46.6	29.8	30.1	30.0	28.9	70.3	
12.3	11.4	3.5	3.2	3.3	4.4	7.0	
100	84	68		59	85	100	

29+60

41.7	42.2	30.1	30.6	30.1	29.0	27.5	
48.4	48.9	3.2	2.7	3.2	4.3	5.8	
100	79	67		65	90	100	

57.95 π

33.29 π

33.29 π

Cont'd From Page 36

34+90

T.P. 3.89 41.63 π 12.39 37.74

34+50

34+00

33+50

T.P. 1.31 27.20 π 7.40 25.89

33+00

T.P. 0.26 50.13 π 8.08 49.87

32+55

57.95 π

33.29 π

16

17

18 37

36.1	35.8	22.4	22.3	22.6	18.6	16.0	14.3
55	5.8	4.8	4.9	4.6	8.6	4.2	12.9
100	83	71		39	46	118	123

37.1	37.2	22.7	22.6	22.8	18.4	16.4	14.4
12.4	12.9	4.5	4.6	4.4	8.8	10.8	12.8
100	84	69		38	58	115	121

40.1	39.4	23.2	23.2	23.1	17.6	16.3	14.2
10.0	10.7	4.0	4.0	3.5	9.6	10.9	13.0
100	85	69		44	70	115	120

43.4	42.9	23.8	24.1	14.6	17.4	16.3	14.2
6.7	7.2	3.4	3.1	2.6	9.8	10.9	13.0
100	88	69		48	75	113	117

27.20 π

46.7	45.8	24.5	23.1	25.4	18.2	16.6	15.0
3.4	4.3	8.8	8.2	7.9	15.1	16.7	18.3
100	90	68		49	75	114	117

50.0	49.3	25.0	25.7	26.2	19.2	16.8	15.0
8.0	8.7	8.3	7.6	7.1	14.1	16.5	18.3
100	92	70		48	75	115	120

33.29 π

Cont'd From Page 37

Check

37+31

5.56

36.07 = 36.09

37+17

37+00

36+50

36+00

35+50

35+14

41.63x

27.20x

31.6 Lt

10.0
100

20.9
6.3
89

23.9
3.3
77

23.2
10

23.6
3.6
36

16.4
10.8
45

16.2
11.0
63

14.3
12.9
66

30.8
10.8
100

30.6
11.0
84

24.0
3.2
77

23.3
3.9

23.6
3.6
36

16.4
10.8
45

16.5
10.7
74

14.6
12.6
79

31.2
10.4
100

31.3
10.3
84

24.2
3.0
77

24.6
3.6

23.9
3.3
36

16.8
10.4
54

16.7
10.5
80

14.7
12.5
85

32.1
9.5
100

31.1
9.9
84

24.2
3.0
76

24.1
3.1
35

24.1
3.1
35

16.6
10.6
46

15.7
11.5
88

14.7
12.5
90

32.1
8.5
100

32.3
9.3
83

24.6
2.6
76

24.5
2.7

24.4
2.8
34

16.4
10.5
45

16.3
10.9
124

14.1
13.1
128

24.2
7.4
100

33.3
8.1
83

25.0
2.2
75

24.8
2.4

24.6
2.6
33

17.1
10.1
46

16.0
11.2
112

14.4
12.8
114

35.3
6.3
100

34.8
6.8
83

23.3
3.9
73

24.2
3.0

23.8
3.4
36

18.6
8.6
43

15.9
11.3
116

14.1
13.1
120

38

27.20x

Cont'd From Page 38

40+00

13.1	14.4	21.7	21.8	21.6	14.5	14.0
13.9	12.6	5.3	5.2	5.4	12.5	13.0
72	62	52		50	60	70

39+50

13.0	14.3	22.1	22.0	21.9	14.1	13.0
14.0	12.7	4.9	5.0	5.1	12.9	14.0
73	63	52		48	57	67

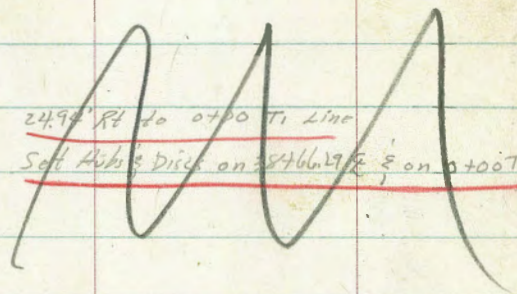
39+00

13.5	14.6	22.4	22.2	21.9	14.3	13.0
13.5	12.9	4.6	4.8	5.1	12.7	14.0
72	62	51		46	56	66

38+66.29

24.94' Rt do 0+00 T1 Line

Set Auto Disc on 38+66.29' & on 0+00 T1 &



13.6	14.4	22.4	22.3	22.4	15.1	13.7
13.4	12.6	4.6	4.7	4.6	11.9	13.3
71	61	52		45	55	65

38+00

14.3	15.7	23.0	23.1	23.1	14.3	13.8
12.7	11.3	4.0	4.3	3.9	12.7	13.2
80	66	56		40	51	60

37+70

Water on both sides of fill will limit our cuts!

16.5	17.4	23.1	22.9	22.9	17.7	16.7
10.5	9.6	3.9	4.1	4.1	12.3	12.3
91	69	60		39	49	60

T.P.

5.10 27.00x 5.30 21.90

27.20x

27.00x

Cont'd From Page 39

42+50

42+88.84

5723 RT to BC Ti 423.83

Set Hubs & Discs 42+88.84 & E 423.83

Tied out BC Ti 423.83 with 100' 200 RP Hubs & Discs to Right or Easterly.

T.P.

3.65 23.80X 6.85 20.15

23.80X

42+00

41+50

41+00

40+50

27.00X

Lt

E

Rt

40

13.3	13.8	19.9	19.9	20.3	15.1	15.1	13.8
10.5	10.0	3.9	3.9	3.5	8.7	8.7	10.0
73	63	54	69	69	77	100	110

(Set Hubs & Disc on P.I.T. Line 6+03.12 with 100' RP Hubs & Disc to Right or Ely.)

(Set Hubs & Disc on P.I.T. Line) See sketch FB2085 pg 54

12.9	13.1	20.3	20.1	20.8	15.5	14.5	13.4
14.1	13.3	6.7	6.9	6.2	11.5	12.5	13.6
72	62	54	64	71	100	120	

13.3	14.3	21.0	20.9	21.5	17.5	15.1	13.4
13.7	12.7	6.0	6.1	5.5	9.5	11.9	13.6
72	62	53	59	66	89	92	

13.4	13.9	21.2	21.3	21.4	13.9	13.8
13.6	13.1	5.8	5.7	5.6	13.1	13.2
73	63	54	56	66	76	

13.5	14.4	21.3	21.5	21.7	14.6	14.0
13.5	12.6	5.7	5.5	5.3	12.4	13.0
72	62	53	54	64	74	

27.00X

Cont'd From Page 40

44+36

44+20

44+19.32

44+00

43+50

43+03.83

43+00

23.80X

~~Set Hubs & Disc on 39' Lt to PI T₂ Line
See Sketch FB 2085 pg 54~~

~~39.0' Lt to EC Tr # 89.88
Set Hubs & Disc on 43+03.83 & 3409.88
Set Hubs & Disc on 100' & 200' RP Lt on Wly of
EC Tr 3409.88~~

Lt

£

Rt 11

14.3	14.3	21.5	20.5	18.5	18.2	18.9	23.2
9.5	9.5	2.3	3.3	5.3	5.6	4.9	0.6
140	130	114	85	67		100	200

14.4	14.4	21.0	20.5	18.3	18.4	20.1	12.7	13.3	19.1
9.4	9.4	2.8	3.3	5.5	5.4	3.7	11.1	10.5	4.7
120	107	95	71	53		148	164	193	210

14.1	14.1	20.2	19.8	18.6	18.6	19.9	13.9	13.9
9.7	9.7	3.6	4.0	5.2	5.2	3.9	9.9	9.9
99	89	81	52	42		132	142	152

14.3	14.3	20.0		19.2	19.7	14.9	14.9
9.5	9.5	3.8		4.6	4.1	8.9	8.9
80	70	62			88	94	120

~~(Set Hubs & Disc on FCC, T₂ # 80.41 with 100' RP Lt or Sly of £)
(Set Hubs & Disc on P.I. T₂ Line) See Sketch FB 2085 pg 54~~

13.3	13.8	19.9	19.5	14.9	14.9	15.0	13.7
10.5	10.0	3.9	4.3	3.9	8.9	8.8	10.1
73	63	55		75	83	107	120

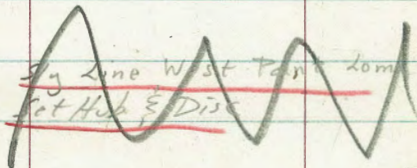
23.80X

check

7.60

14,20 = 1423

44+75.55



X-sect.
Taken Parallel
to Line
of
W.P.L. Stud.

21.3	20.2	19.8	17.6	17.2	15.9	19.0	20.7
+0.5	2.6	5.0	6.2	9.6	7.9	4.8	3.1
200	155	127	100		100	170	200

44+71

21.3	21.2	20.8	19.6	18.4	17.0	20.1	20.7
+0.5	2.6	3.0	4.2	5.4	4.8	3.7	3.1
200	155	127	100		100	170	200

44+70

21.3	20.5	20.8	19.6	18.4			
+0.5	1.3	3.0	4.2	5.4			
200	155	127	100				

44+53

14.3	13.8	22.1	21.3	19.2	18.3	18.8	22.2	22.2	23.0
9.5	10.0	1.7	2.5	4.6	5.5	5.0	3.6	1.6	0.8
173	163	134	108	88		100	167	187	200

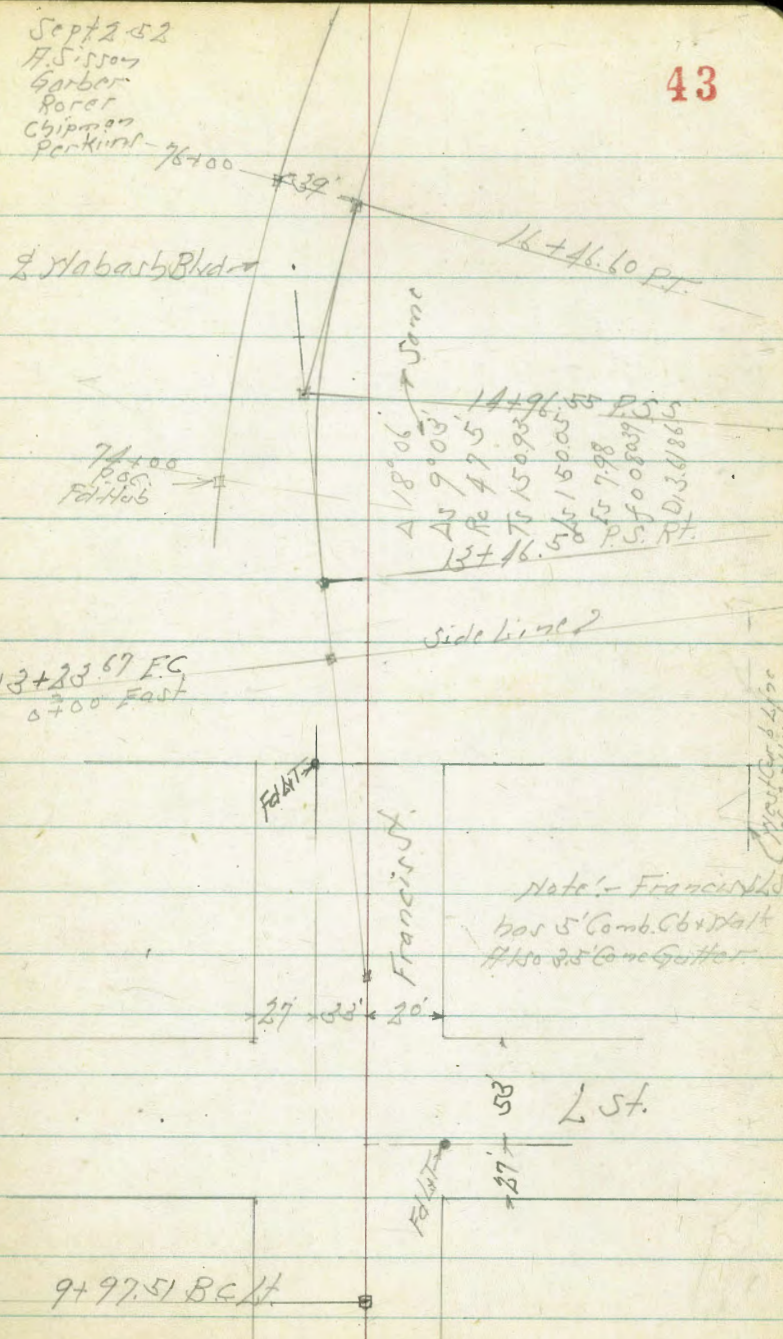
23.80 K

23.80 K

Alignment Yabarb Blvd.
Francis St. & South East Outer Connection
to Market St.

+75	2° 12.74'	A 18° 06'
+50	1° 26.11'	AS 9° 03'
+25	0° 51.70'	PC 475'
14+0	0° 23.01'	TS 150.93'
+75	0° 06.53'	LC 150.05'
+50	0° 00.98'	ES 798'
13+16.50 P.S. RT.		f 008039 D. 3.6186

+2367 FC	1° 52.12'	
13+0	1° 43.98'	A 3° 44' 15"
+50	1° 26.80'	P 5000'
12+0	1° 09.61'	T 16213 ✓
+50	0° 52.42'	L 32616 ✓
11+0	0° 35.23'	D. 0.34397
+50	0° 18.04'	
10+0	0° 00.86'	
9+97.51 BCLT		



+46.60 P.T.	6° 02'	
+25		118° 06
16+0	1° 48.35'	As 9° 05'
+75	3° 54.43'	Rc 475
+50	2° 51.46'	Ts 150.93
+25	1° 36.57'	As 150.05
15+0	0° 11' 52"	f. 008039
	0.00	D. 36186
14+96.55 P.S.S.	3° 01'	

317 1380 4211

Cross Section Hobart Blvd.
Francis St + South East Outer Connection
to Market St.

Lt. West

S

Rt. East

45

+18

12.28	74.1	74.20	73.50	74.45	74.28	74.94	75.02	75.4	75.4	82.6	83.8
13.30	11.8	11.8	11.88	10.93	11.12	10.44	10.86	10.0	6.0	2.8	1.6
80	34.6	34.6	34.6	30	3.94	5.6	7.97	2	17	21	23

TP 10.23 85.38 10.8 75.05 85.38

11+03 = North Curb Line List

73.05	72.34	73.69	74.17	73.18	74.28	75.08	74.66	75.47
83.8	1.09	2.74	2.26	2.25	2.15	1.25	1.27	0.91
57.0	57.0	31	20	21.56	21.66	21.66	21.66	21.66

+ 98 = South Curb Line List

12.71	12.00	13.33	13.71	13.79	13.91	14.65	14.31	14.96
3.77	4.43	3.10	2.77	2.4	2.52	1.28	2.12	1.27
60.6	60.6	31	20	21.66	21.66	21.66	21.66	21.66

BM

1.74

74.69

1st St.
Francis
So. Cb of 68.

10+50

39.3 No of 2-2 Power Pole # 110

66.9	72.43	72.08	72.11	72.47	72.55	73.35	74.1	75.2
9.5	40	3.65	1.37	3.91	3.88	3.98	2.3	1.2
8	32.7	32.7	20.01	7.2	7.2	7.2	7.2	7.2

9+97.51 RC Lt.

61.7	67.7	71.80	67.09	67.84	67.19	67.99	68.2	68.5
14.7	8.7	8.6	9.34	8.59	9.24	8.41	8.2	6.9
60	38	22.5	32.5	20.01	7.5	7.5	7.5	7.5

TP 12.92 76.43 0.73 63.91

TP 12.88 64.74 0.27 57.86

TP 12.86 51.63 3.64 58.77

BM 12.84 42.41 29.57

BPA Rail
2 Bridge
Imperial Ave
West of 34th St

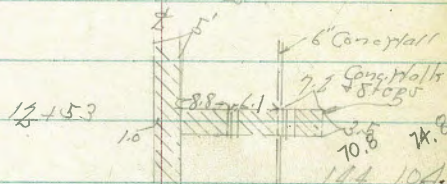
13+0

75.9 78.8 79.5 81.6 82.6 83.8
11.3 6.4 5.7 3.6 2.6 1.4
60 45 23 20 30

+82 22.5' H of T = 1/2 Port Polc # P 2449

200 RT of T = 1 1/4" Conc Wall

+75 = 1 1/4" Comb Cb + Walk RT + LT



12+30

+28.5 18.0 RT of T = 5/4 6" Conc Wall

73.8 80.3 80.56 79.65 80.57 80.07 80.03 80.90 81.6 81.8 85.10 86.3
14.4 14.9 18.7 5.58 4.6 5.16 5.70 1.33 3.6 9.8 9.9 11.1
60 36 24.5 24.5 10.14 0.5 5.4 10.5 13.28 20 28

79.9 80.0 79.92 79.25 79.74 79.62 80.40 80.5 81.5 83.3 84.9 87.8
5.3 5.3 5.31 5.29 5.49 5.61 4.77 4.70 3.7 1.9 0.30 + 2.0
45 33 27.25 27.5 15 19.5 19.4 2.7 1.8 13.7 26

+190 = Break 12 Grade

79.2 79.5 78.91 78.70 78.85 79.15 79.93 80.06 80.0 85.4
5.7 6.07 6.53 6.38 6.08 5.30 5.18 5.2 + 0.2
37 28.2 28.6 16 on oil 36.6 3.6 9 24

+77 26.5' H of T = 1/2 Port Polc # P 284

+50

72.9 76.6 76.1 76.08 75.44 76.16 75.80 76.67 76.9 77.3 84.7
12.2 9.6 9.1 9.15 9.79 9.07 9.43 8.56 8.3 7.9 0.5
60 45 36 30.2 30.2 15 15 8 6 23

TP

4.86 85.23 5.01 80.27 1412+75

71.9 74.4 74.7 74.64 74.02 75.0 74.31 75.06 75.5 76.3 82.0 85.58
13.5 11.0 10.7 10.74 11.36 10.28 11.07 10.22 9.9 8.6 3.4 + 0.2
80 46 38 30.8 30.8 18 15.7 5.7 8 16 23

11+30

85.38

85.38

+96.55 P.S.S.

TP 9.81 98.46 622 88.65

+80

14+0

+75

TP 1260 94.87 296 82.27

+60 3.5 ft of $\frac{1}{2}$ = $\frac{1}{2}$ 24 Ev. Trac

+46.50 P.S. RA

+41 30.8 ft of $\frac{1}{2}$ SWY of Concord Hill

12+23.67 EC

8523

4x

Z

pt

47

74.0	82.7	81.3	90.5	92.3	90.5
$\frac{24.5}{30}$	$\frac{16.8}{30}$	$\frac{11.2}{15}$	8.0	$\frac{6.2}{15}$	$\frac{3.0}{15}$

98.46

81.1	84.5	85.7	91.2	94.2
$\frac{12.8}{25}$	$\frac{10.3}{25}$	6.2	$\frac{2.7}{15}$	$\frac{3.0}{15}$

80.1	80.1	84.4	84.6	86.9	90.8	92.0
$\frac{14.8}{33}$	$\frac{14.8}{19}$	$\frac{11.5}{11}$	10.2	$\frac{8.9}{15}$	$\frac{4.1}{12}$	$\frac{2.9}{12}$

83.5 FIVE Feet
84.5 FIVE Feet

79.2	79.6	81.0	82.3	84.3	86.8	87.7	88.5
$\frac{15.7}{29}$	$\frac{15.3}{19}$	$\frac{13.9}{14}$	12.6	$\frac{10.6}{15}$	$\frac{8.9}{27}$	$\frac{2.2}{33}$	$\frac{6.4}{33}$

84.5 FIVE Feet
84.5 FIVE Feet

94.87

75.9	76.7	78.5	80.5	82.7	84.3	87.2
$\frac{9.3}{20}$	$\frac{8.5}{23}$	$\frac{6.9}{20}$	7.7	$\frac{2.5}{15}$	$\frac{0.9}{30}$	$\frac{+2.0}{30.8}$

30.8 Top of Col. m.s.

74.6	77.4	78.9	80.7	82.7	83.7
$\frac{10.6}{60}$	$\frac{7.8}{44}$	$\frac{6.3}{20}$	4.5	$\frac{2.5}{20}$	$\frac{1.5}{30}$

85.23

For Check

15.8 60.3

on 25 Feb
764.0
770.0
60.46
1844-24

TP 0.59 76.11 11.61 75.52

+16.10 = P.T.

16.40

+75

TP 1.40 87.13 12.73 85.73

+50

15+25

98.46

60.1 62.5 66.6 72.4 80.1
26.4 24.6 20.5 14.7 7.0
39. 30. 35. 50.

58.5 62.9 68.9 73.2 79.5 85.1
28.6 24.2 18.2 13.8 7.6 3.0
40. 30. 11. 38. 50.

59.9 64.0 68.5 73.4 79.7 81.8
27.2 23.1 18.1 13.7 7.4 5.3
40. 30. 20. 44. 50.

87.13

68.2 74.8 76.6 84.3 85.8 86.0
30.2 23.7 21.9 14.2 13.7 12.5
37. 14. 24. 34. 50.

73.5 81.5 89.4 93.9 97.6 99.0
25.0 17.0 9.1 4.6 2.7 2.5
30. 15. 19. 30. 50.

98.46

Levels Side Line
Francis St. to 35th St.

+84 = Approx East Curb of 35th to South

+58 Approx West Curb of 35th to South

2+0

TP 11.65 103.66 0.150 92.01

+77

+50

+0

+77

+50

0+0 = 13+23.67 Francis St.

B/T 12.14 97.51

80.37

Lx1.1111
Curb
Lx12+75
Page 46

L

R+

+J

101.1

96.53

96.82

2.6

7.13

7.84

99.1

8.6

8.6

4.6

95.96

95.24

93.9

7.70

8.42

9.8

6.5 = Hx1.1111
Curb

100.66

90.4

2.2

88.1

4.4

88.9

2.6

89.3

2.2

85.9

6.6

80.6

11.9

91.51

Roberts X-Section of Wabaska Drive, Sta.
 Cote
 Moore 29+00 to West Point Loma Blvd. to determine
 amount of settlement of fill.

9-18-52

W.O. 20008

see pg. 35 this F.B.

(Six Months)

Lt.

€

Rt

50

33+00

25.1

7.7

25.4

7.4

49

18.3

14.5

75

32+00

26.4

6.4

27.2

5.6

45

31+00

28.2

4.6

28.3

4.5

45

30+10

29.1

3.1

29.9

2.9

60

29+30

30.2

1.9

29.8

3.0

75

29+00

30.5

2.3

29.7

3.1

55

TBM

276 32.77X

30.01 L Hub Sta. 29+00

32.77X

Contd From Page 50

Lt

R

R 51

37+00 32' Lt to crack

24.0
5.9
77

23.4
6.5

23.6 16.1
6.3 13.5
36 45

36+50 23' Lt to Crack

24.1
5.8
77

23.9
6.0

23.8 16.1
6.1 13.8
35 45

36+00 18' Lt to Crack

24.6
5.3
76

24.3
5.6

24.0 16.5
5.9 13.4
34 44

35+50 4' Lt to Crack

25.0
4.9
75

24.8
5.1

24.1 16.1
5.5 13.2
33 45

35+14 16' Rt to Crack

34+90 29' Rt begin crack in fill

22.9
7.6

22.5 18.0
7.4 11.9
38 47

34+00

23.2
6.7

23.1 17.8
6.2 12.1
44 70

T.P. 4.91 29.89 X 779 24.98

29.89 X

32.77 X

Contd From Page 51

Lt

Q

Rt

52

39+00

130	21.9	21.5	21.4	13.2
13.5	4.6	5.0	5.1	13.3
62	51		46	57

38+66.29

13.1	22.4	21.5	21.8	13.8
13.4	4.1	5.0	4.7	12.7
62	51		44	55

38+00

14.5	22.5	22.1	22.5	13.4
12.0	4.0	4.4	4.0	13.1
66	56		40	51

T.P.

3.11

26.52A

6.48

23.41

26.52A

37+70

16.9	22.8	22.5	22.7	13.7
13.0	7.1	7.4	7.2	16.2
69	60		39	50

37+43

74' Lt End crack in fill

37+31

55' Lt to crack

23.7	22.9	22.2	15.9	16.7	14.0
6.2	7.0	7.7	14.0	14.2	15.9
77		37	46	62	68

37+17

38' Lt to Crack

24.0	23.0	23.3	16.5
5.9	6.9	6.6	13.4
77		36	45

29.89A

29.89A

Contd From Page 52

42+50

Lt		Σ	R ₂
13.0	19.5	19.4	20.1
13.5	7.0	7.1	6.4
62	54		69
			15.0
			11.5
			76

53

42+00

24" Corr. Iron Culvert

13.1	13.97	19.9	20.0	20.6	14.30	16.8
13.4	12.55	6.6	6.5	5.9	12.22	16.7
64	63	54		64	72	72
	INVERT				INVERT	

41+50

13.2	20.1	20.1	21.4	16.9
13.3	5.8	5.8	5.1	9.6
62	53		59	66

41+00

13.0	20.1	20.3	21.2	13.7
13.5	5.8	5.6	5.3	12.8
62	54		56	66

40+50

13.7	20.7	21.1	21.5	14.1
13.2	5.8	5.4	5.0	12.4
62	53		53	63

40+00

12.9	21.0	21.2	21.3	13.8
13.6	5.5	5.3	5.2	12.7
62	52		50	60

39+50

12.7	21.5	21.4	21.5	13.4
13.8	5.0	5.1	5.0	13.1
62	52		48	57

26.52A

26.52A

Check 9.17 14.16 = 1423 Ldg City Disc & West Point Loma & Wabaska

44471

5.1

44400

14.0	19.9	19.6	18.0	16.0	19.3	14.6
9.3	3.4	3.8	5.3	5.3	4.0	8.7
92	82	54	43		120	130

43450

13.1	19.4	18.1	19.6	14.7
9.6	3.9	4.6	3.7	8.6
71	62		87	93

43400

13.1	19.4	19.0	19.9	14.8
10.2	3.9	4.3	3.4	8.5
62	54		74	81

T.P. 3.75 23.33 π 6.94 19.58 23.33 π

26.52 π

D. Smith
 C. Allen
 R. Taylor
 R. Parks
 0-3700

Extend Sec. "A" Line Imperial Ave. Lt. North
 Note: Please look up 33rd St X Sec. Steel Sub.
 RT = South

25.1 25.5 26.3 26.5 26.4 26.0 26.5
 72 68 64 52 55 62 57 57 63 81 81
 25 13 12 2 2 13 23 38 55 68

0-3725

25.2 25.5 26.5 26.70 26.5 26.1 26.7 26.5 26.1 27.3 23.7
 72 62 59 52 55 62 57 57 63 81 87
 25 13 12 2 2 13 23 37 50 68

0-3743 11 1/2 Lt & 6" Power Pole + Note

0-3752 end sidewalk

27.1 26.82 26.9 26.3 26.8 26.6 26.1 26.1 23.8
 533 558 551 614 558 580 613 63 86
 12 2 2 13 23 42 50 68

0-3769 end Rt South Fly

27.1 26.87 26.83 26.4 26.9 26.7 26.5 26.5 27.0 27.2
 530 553 557 604 547 565 52 59 57 58
 12 2 2 13 24 40 54 54 68

0-3791⁵³ Fly 33rd St. 90° 24' SE quarter

26.0 27.0 27.1 26.97 27.0 26.5 27.14 27.0 27.05
 64 536 531 543 542 520 526 545 52 52 52
 55 20 12 2 2 13 23 43 55 634
 2 2 2 2 2 2 2 2 2
 94 94 94 94 94 94 94 94 94

0-4701⁵³ Fly cb line 33rd St.

25.6 26.5 27.0 26.60 26.56 26.6 27.3 27.1 26.9 26.6
 68 59 537 580 584 580 574 531 55 58
 55 25 12 12 2 2 13 23 43 68
 94 94 94 94 94 94 94 94 94

p. 7-10 this book

37.40

13M.

R²³ 3240

29⁵² BP N rail
 & bridge
 Imperial Ave 33rd-34th St.

X 3240

0-57 36° RT & 12" Power Pole # R 3353

23.7
25.3
27.9
28.10
28.15
28.0
28.3
28.0
27.0
23.5

82 74 45 43 425 422 410 420 54 82 93
25 12 3 26 2 13 23 40 55 68

0-70

24.4
23.9
25.3
27.6
27.80
27.7
27.4
27.9
27.6
27.2
23.4
23.1

80 85 72 48 46 469 498 453 481 52 90 93
25 15 12 4 2 2 13 23 36 50 68

0-100

23.9
24.4
26.1
27.1
27.30
27.2
26.9
27.4
27.2
26.7
24.0
23.9

85 80 62 52 51 518 546 503 514 52 82 85
25 12 12 9 2 2 13 23 36 55 68

0-150

0-151 36° RT & 12" Power Pole # 3339

24.5
24.6
25.9
26.70
26.7
24.3
26.8
26.7
24.1
24.4
24.3

72 78 65 52 522 64 555 566 63 78 81
25 13 12 2 2 13 23 40 60 68

0-200

0-214 10° Lt & 8" Power Pole # 3324

0-216 36° RT & 14" Power Pole # R 3325

0-2150

24.6
24.7
26.0
26.19
26.2
25.7
24.4
26.3
25.6
25.4
24.2

78 72 64 62 624 669 528 610 66 70 82
25 13 12 2 2 13 23 36 60 68

0-2151 2" RT & 2" opening Storm drain 15' RC pipe

24.74
24.71
25.65

1066 1069 675
12 West 10 East 924

32 40

Alignment North West Outer Connections
 Nabash Blvd. At Market St.

33

+1289 E.C.	50° 45.70'	
+50	28° 28.90'	A 61° 31' 21"
+244B	23° 57.58'	$\frac{1}{2}$ R 162.0'
+40	19° 58.38'	T 96.42
+65 P.O.C.	13° 33.16'	L 173.95
+4809	10° 27.58'	D, 10.61033
+25	6° 22.60'	
+40	1° 57.35'	
+8894 B.C.H.	0° 00'	

+9024 E.C. ✓	35° 38.47' ✓	
+75	30° 56.81' ✓	A 67° 16' 57"
+50	26° 31.55' ✓	$\frac{1}{2}$ R 162.0'
+25	22° 06.29' ✓	T 107.80
+40	17° 41.05' ✓	L 190.24
+75	13° 15.77' ✓	D, 10.61033
+50 P.O.C. C 34.975	8° 50.52' ✓	
+25	4° 15.16' ✓	
0+00 B.C.H.	0° 00'	

9+34.74 Market House

+33.91 E.C.

31° 12.72' ✓

+25

29° 38.18' ✓ A 62° 25' 27"

7+0

25° 12.92' ✓ $\frac{1}{2}$ R 162.0'

+75

20° 47.66' ✓ T 98.16

+50 P.O.C.

16° 22.40' ✓ L. 176.50

+25

11° 57.15' ✓ D₁ 10.61033

6+0

7° 31.89' ✓

+75

3° 06.63' ✓

5+57.41 B.C. Rt.

0° 00'

Alignment North West Inner Loop
Yabarb Blvd. + Market St.

60

+75	82°	38.29' ✓
+50	77°	07.73' ✓
+31.57	73°	04.05' ✓
+25	71°	37.18' A 280° 28' 14"
2+0	66°	06.63' ✓ R 130
+75	60°	36.08' L 63637
+70.31	59°	54.03' ✓ D, 1.3.2221
+50	55°	05.53'
+43.46 P.O.C.	53°	41.19' ✓
+25	49°	34.97' ✓
2+0	44°	04.42' ✓
+75	38°	33.87' ✓
+50	33°	03.31' ✓
+25	27°	32.76'
+15 P.O.C.	25°	30.54'
1+0	22°	02.21'
+75	16°	31.66' ✓
+50	11°	01.10' ✓
+25	5°	30.53' ✓
C 2496		
0+00 BC	0°	00'

+50. app. 7° 16.32'
Set Light #19

+3637 EC.	140° 14.12'	✓
+25	137° 43.82'	
640	132° 13.26'	✓
+75	126° 42.71'	✓
+60 P.O.C.	123° 24.38'	✓
+50	121° 12.16'	✓
+25	115° 41.60'	✓
570	110° 11.05'	
+75	104° 40.50'	✓
+50	99° 09.94'	✓
+25	93° 39.39'	✓
410	88° 08.84'	✓
3783.25 P.O.C.	84° 27.37'	

Cross Section North West Outer Com.

Yabashi Blvd. + Market St.

Sketch Page 57

Notes: - Rods Rtd H. = + Above - Below &

+10

+75

+50

+28

1' Rtd of & Server Man Hole.

+25

0+0 0 BC

opp 88+74.61 Yabashi

BM

957

82.79

74.22

2.5' Cor.
Drop 1/4" ft
90+0.5

Lt = Foot

Reduced-MOH 5/2/54

May 13 1954

Rt = Yard 62

82.1	82.1	79.6	64.6	32.4	37.4	43.8
+12.5	+11.5	132	-10.0	-32.2	-37.2	-26.8
83	85	82.8	80	125	127	127
80.9	79.9	80.9	78.9	66.9	58.9	38.4
+2.0	+1.0	+2.0	1.9	-12.0	-20.0	-40.5
27	10	5	25	50	86	122
79.7	80.0	79.3	79.4	68.8	58.8	39.3
+0.4	+0.7	1.5	+0.4	-10.5	-20.5	-40.0
25	14	18	18	64	81	124
78.7	78.7	78.8	78.1	63.8	52.6	34.8
-0.1	-0.1	5.788	-0.7	-15.0	-26.1	-40.0
80	81	78	36	85	89	130
78.0	78.0	77.4	68.2	58.2	40.2	38.2
-0.2	-0.2	9	-10.0	-19.0	-38.0	-10.0
83.79	46.6	43.0	41.4	41.4	41.4	41.4
-31.6	-35.2	-37.0	-26.8	-31.0	-31.0	-31.0
123	151	212	280	330	380	380

North West Outer Connections
 Habash Blvd + Mar ket St.

Lt.

Rt.

63

Z+15

40.7
 38.2
 35.9
 35.8
 36.4
 37.6
 45.1
 42.0
 43.7
 +4.9
 +3.4
 +0.1
 120
 +0.6
 +1.8
 +9.3
 +6.2
 +7.9
 45
 13
 3
 120
 25
 45
 73
 85
 150

+90.34 PC

58.2
 42.3
 41.0
 37.4
 36.9
 37.6
 43.9
 42.0
 43.6
 +17.2
 +1.6
 6.8
 -3.1
 -4.1
 -2.4
 +2.9
 +1.0
 +3.6
 65
 13
 6.8
 28
 37
 90
 105
 118
 150

TP 2.19 47.79 1221 45.60

47.79

+75

81.4
 73.0
 61.2
 47.4
 41.9
 37.5
 36.9
 37.5
 43.9
 +39.0
 +25.6
 +13.8
 10.4
 -5.5
 -9.9
 -10.5
 -9.9
 -2.5
 92
 87
 31
 10.4
 28
 47
 80
 90
 105
 118
 150

TP 0.11 57.81 1322 57.70
 0.75
 1150

57.81

+50

94.2
 71.1
 57.7
 43.3
 37.1
 38.5
 44.1
 +36.5
 +19.4
 13.2
 -14.4
 -20.8
 -19.2
 -13.6
 77
 27
 13.2
 32
 78
 108
 111

+25

88.6
 63.4
 41.6
 59.2
 38.6
 37.4
 44.6
 +27.0
 +1.8
 9.3
 -2.4
 -22.0
 -24.2
 -17.0
 30
 10
 14
 72
 72
 118
 124

TP 0.50 70.92 1317 70.62

70.92

8279

41.6
 -20.5
 136

North West Outer Connection
 Habers Bhd & Mar Kdr

St.

29

Rt.

64

1+10

41.6
 -0.1
 32
 5.8
 42.4
 +0.4
 35
 42.6
 +0.6
 70
 41.8
 -0.2
 100
 41.5
 -0.5
 138
 42.2
 +0.2
 150

3+65

42.1
 -0.6
 32
 5.7
 42.9
 +0.4
 35
 43.1
 +0.4
 70
 43.0
 +0.3
 100
 42.0
 -0.7
 135
 42.9
 +0.2
 150

+88.94 BC

45.2
 +2.1
 36
 -0.2
 14
 5.7
 42.6
 +0.5
 30
 43.2
 +1.1
 65
 43.4
 +1.3
 100
 44.0
 +1.9
 150

+68

36.3
 -0.2
 27
 39.0
 -0.6
 27
 43.6
 +2.3
 35
 42.7
 -0.9
 52
 43.4
 -0.2
 100
 44.0
 -1.5
 150

2+10

36.1
 -0.7
 40
 35.7
 -1.1
 25
 39.8
 +3.0
 18
 46.2
 +9.4
 39
 42.0
 +5.2
 51
 43.0
 +6.2
 100
 42.5
 +6.9
 141

47.79

47.79

North West Outer Connection

Lt.

Z

Rt.

65

TP 884 55.44 119 46.60

+75

$$\begin{array}{r} 389 \\ 89 - 59 - 70 - 72 - 77 + 35 + 77 \\ 21 \quad 36 \quad 57 \quad 71 \quad 105 \quad 116 \\ \hline 40.6 \\ + 1.7 \\ \hline 162 \end{array}$$

+5741 BC RT

$$\begin{array}{r} 53.5 \quad 39.1 \\ + 2/0 \quad + 6/6 \\ 56 \quad 82 \\ \hline 15.5 - 0.3 + 0.9 + 4.7 + 8.0 + 10.6 \\ 25 \quad 44 \quad 65 \quad 85 \quad 10 \end{array}$$

+35

$$\begin{array}{r} 370 \quad 336 \\ - 20 \quad - 14 \\ 42 \quad 20 \\ \hline 350 \end{array}$$

540

$$\begin{array}{r} 36.0 \quad 37.2 \\ - 6.7 \quad - 5.5 \\ 30 \quad 76 \\ \hline 51 \end{array}$$

41289 F.C.

$$\begin{array}{r} 44.2 \quad 40.9 \\ + 2.1 \quad - 0.7 \\ 32 \quad 26 \\ \hline 67 \end{array}$$

4779

4779

North West Outer Connection

LT

R

R

66

740

49.8	49.1	50.3	38.2	32.9	32.0	39.8
+0.7	6.3	+1.2	-10.9	-16.2	-17.1	-7.5
20.		23	42	64	93	105

1000
32.7

-94
140

+75

51.6	51.6	51.6	38.2	33.1	32.5	39.8
0.0	0.8	0.0	-13.4	-18.5	-19.1	-7.5
80	8	7	58	68	92	105

1000
32.7

-94
140

+50

52.7	52.7	40.6	33.1	32.1	40.7	39.8
0.0	2.7	-12.1	-19.6	-20.6	-17.0	-7.5
80	25	25	60	88	118	105

1000
32.7

-94
140

+25

55.2	45.6	38.0	26	32.7	39.8	39.8
+9.6	9.8	-7.6	-13.0	-12.9	-6.0	-7.5
118	100	90	50	82	100	105

1000
32.7

-94
140

640

47.7	47.7	37.8	32.9	32.1	32.7	39.8
+9.6	7.7	-9.9	-14.8	-15.1	-15.0	-7.5
118	20	20	37	66	71	105

1000
32.7

-94
140

5544

5544

North Star Outer Connection

2

67

BM

7.73

47.71

D SFCor
Market Choke
Bridges
(47-71)

7+ 3391 EC

5544

	47.8	48.0	47.4	36.5	32.4	31.3	39.0
1.07		71	-26	-165	-156	-167	-90
20			38	18	80	90	100
		5574		-83	39.7		
				140			

Cross Section North West Inner Loop
 Mabary Blvd + Market St.

Alignment Page 60

Note: - Rods RT + Lt
 = + Above - Below $\frac{1}{2}$

R.N

68

TP 11.38 82.63 0.20 71.25

+75

58.3
 $\frac{1.9}{2.6}$ 11.5 +0.4 +3.05 +2.91 +1.31
 $\frac{1.9}{2.6}$ 36 36 46 90

+50

60.5 62.1 88.0 89.5 72.3
 11.0 +1.6 +2.75 +2.25 +1.8
 15 42 85 92

+25

60.7 61.8 91.0 92.7
 10.8 +2.1 +3.05 +3.20 =
 21 50 72

0+00 BC - opp
 12+39.75 Market St

61.6 63.9 93.1 95.6 71.7
 9.9 +2.3 +31.5 +34.0 +1.6
 23 52 77 80

TP 11.33 71.45 0.42 60.12

BM 12.80 60.54

47.74
 B.S. for
 Market
 + Chelley
 Blvd

71.45

240

+75

TP 3.85 4.767 13.16 43.82

+50

TP 0.13 56.98 12.76 56.85

TP 0.22 69.61 13.24 69.39

+23

17 10

8263

69

57.1	36.1	35.1	34.6	36.0	37.3	45.0
+20	+10	-11	-0.5	+0.7	+1.2	+9.9
40	14	46	22	49	77	100

57.1	53.4	54.6	58.0	40.2	42.2	47.7
-15	-12	11	+3.4	+5.6	+7.6	+13.1
50	55	61	7	42	82	100

47.67

58.3	58.0	45.5	47.1	50.1	60.0
+128	+65	11.5	+2.2	+4.6	+14.5
38	11	35	6	10	80

56.98

54.7	58.1	79.5	78.9	65.2	64.5
-24.2	-20.8	-0.1	3.7	-14.7	-14.4
93	56	50	67	106	-

57.1	59.6	80.1	81.9	69.0	65.7
-230	-205	2.5	+1.8	-1.1	-14.4
59	30	25	25	64	106

8263

North West Inner Loop

70

+31.57

	42.6						
	42.2						
	41.6						
	44.2						
	38.2						
	35.1						
	39.8						
	+0.1	5.5	-0.6	+1.0	-1.0	-7.1	-2.4
	20	16	23	23	24	27	25

370

	42.4						
	42.3						
	41.3						
	45.4						
	37.6						
	35.6						
	39.9						
	+0.1	5.4	-1.0	+2.1	-1.7	-6.7	-2.4
	13.5	16	27	27	28	28	100
	80.9						

+70.31

	41.8						
	41.3						
	41.1						
	45.4						
	36.4						
	35.9						
	42.0						
	+0.5	6.4	-0.3	+4.1	-4.9	-5.4	+0.7
	20	8	20	20	26	28	105

+43.66

	40.9						
	42.2						
	37.2						
	34.8						
	36.0						
	42.5						
	+1.2	6.5	-7.0	-9.1	-8.2	-0.7	
	13	21	21	25	24	105	

2725

	44.1						
	39.0						
	36.8						
	34.7						
	36.0						
	42.1						
	+5.7	8.7	-2.2	-1.8	-3.8	+4.7	
	26	11	10	10	20	100	

47.67

47.67

TP 11.58 59.21 0.04 47.63

+50

40.8 40.1 46.6 47.8 50.3 57.4
10.2 10.1 71 +72 +97 +168
70 25 28 50 88

+25

36.1 35.1 39.3 52.5
+0.4 170 -0.6 +3.6 +16.8
30 19 50 80

410

45.1 38.8 36.7 34.9 39.9 53.8
+6.8 89 -2.1 -0.29 +1.1 +100
51 11 50 75 100

+75

42.1 41.9 40.8 44.0 37.1 34.9 39.2 57.8
-1.7 -1.9 37 +0.2 -5.7 -8.9 -4.6 +14.0
22 7 50 30 85 81 115

+57

700 RT of Z = Z Sewer MH

42.3 42.0 41.5 42.9 37.4 36.5 40.1
+0.2 57 -0.5 +1.9 -1.6 -5.5 -1.0
20 70 19 40 76 90

3+50

4767

4767

6+0

850
-0.7
85
+1.0
+1.18
-0.6
97.5
85.1
9 cut

+ 75

86.4
-1.0
3.5
86
+1.0
10.90
+1.16
+1.6
-1.0
-1.23
88.4
88.4
75.1
10 cut
10 cut

94.21

TP 0.91 94.21 1306 93.80

+ 60

84.1
-1.5
15
84
0.3
-9.0
-19.5
-2.50
106.6
97.6
87.1
81.6
15 cut
15 cut

106.86

TP 9.38 106.86 0.29 97.48

5+25

98.9
+10.0
91
94.9
+6.0
89
82.7
76.5
73.5
88.9
-6.2
-1.2
-1.5
75
91 cut
15 cut

97.77

TP 13.01 97.77 0.05 84.76

TP 12.96 84.81 0.20 71.85

TP 12.93 72.05 0.09 59.12

61.3
+6.4
58.6
+3.7
53.3
-1.6
49
57.6
+2.7
57.5
+2.6
50
52.2
+4.5
70

59.21

59.21

For
check

4.54

7930

on 5/66
0+50
4100
(99.2)

TP

2.83

83.85

134

81.02

(6)

6+32.37 f.c.

9421

86.2

89.5

90.4

112.8

111.8

94.2

32
10

47

+0.9

+24.3

+22.3

+47

500
53
84

9421

Cross Section Yabarb Blvd Sec B
Also Chollas Creek Channel

May 20 54
H. Sisson
Garber
Chipman
Parker
Kelley

74

97+35.50 FC

Right line for
Cross Section
Yabarb Sta.

Yabarb Blvd Sec B

89+52.33 BC

100

June 7-54
Start 90+38 Lt.

RT

75

+96	95.0 Lt. 24 Conc. Colv.	45.8	45.0	44.1	49.4	41.5	41.0	44.1	40.5	39.3	43.1			
+50		+6.5 150	+5.7 125	+4.8 108	+10.1 94	+3.2 79	+1.7 58	+4.8 43	+1.2 35	101	+3.8	21 Conc. Crib		
+38			45.5	45.2	44.4	48.5	41.3	40.6	39.2	39.7	42.7	48.4	59.7	70.7
		+5.8 130		+5.5 130	+4.7 106	+8.8 93	+1.6 78	+0.9 42	-0.5 30	9.7	+3.0 15	+8.7 21	+20.0 27	+31.0 53
90+0		45.6	44.0	48.1	41.0	40.5	44.6	39.3	39.0	41.7	43.1	42.3	57.7	72.7
		+3.9 150	+2.3 105	+6.3 90	-0.7 72	-1.2 65	+2.9 52	-2.4 47	-2.7 13	7.7	+1.4 6.5	+5.7 6.5	+1.0 24	+31.0 46
+5338 BGL		45.1	44.3	43.2	41.7	43.8	44.6	39.1	38.4	41.6	45.3	64.1	70.3	75.3
		-0.2 150	-1.0 125	-2.1 90	+1.4 80	-1.5 74	-0.7 65	-1.7 58	-1.9 25	-0.7 16	4.1	+1.8 24	+25.0 34	+20.0 47
89+0					44.3	43.1	42.4	46.2	37.9	39.5	47.1	57.3	75.6	
TP	780	49.44	13.17	41.64	2.8 150	-1.0 100	-4.7 83	-0.9 74	-9.2 58	-7.6 20	23	+10.1 24	+28.5 30	
BM	0.97	54.81									49.44			

Max BP
53.84 Federal
10/10/54

93+0

47.5	47.0	46.9	46.4	46.0	42.2	41.5
+5.3	+4.8	+4.7	+4.2	+3.8	7.2	-0.7
150	125	100	50	7		43 Conc. Grip

+50

46.8	46.8	47.0	41.5	41.4	45.6	41.5	41.6
+5.3	+5.5	+4.9	+4.9	+4.1	7.9	+0.1	
150	125	100	75	50	14		41 Conc. Grip

93+0

46.8	46.9	46.9	47.0	46.8	44.4	45.0	41.6	41.3	41.7
+5.5	+5.6	+5.6	+5.7	+5.5	+3.1	+3.7	+0.3	8.1	+0.4
150	125	100	80	60	36	15	8		40 Conc. Grip

+50

46.2	45.9	45.2	49.3	42.0	41.4	44.8	44.6	41.0	40.8	40.3
+5.4	+5.1	+4.4	+8.5	+1.2	+0.6	+4.0	+3.8	+0.2	8.6	-0.5
150	125	100	86	70	46	38	22	13		34 Conc. Grip

91+0

46.1	44.9	45.1	46.6	41.8	42.8	43.8	40.9	40.3	41.9
+5.8	+4.6	+4.8	+6.3	+1.4	+3.5	+3.5	+0.6	9.1	+1.4
150	125	110	100	80	48	27	21		28 Conc. Grip

Ely sidehouse

49.44

49.44

93 + 50

55.1	46.1	45.1	43.6	44.3
+10.0	+1.0	5.1	-1.5	-0.8
49	34		30	56
Top Rip Rap	Top Rip Rap			Conc. Box
				Cult.

+98

53.9	46.2	44.5	42.5	45.0	53.5
18.4	+0.7	5.7	-2.0	+0.5	+9.0
32.2	32.2		20	42	46.6
Top Abut.	Footing			Conc. Grip	Top W. Wall
	Abut.			" Wind Wall	

+53.5 Sly Abutment

54.0	53.6	53.9	45.1	41.5	42.5
+12.5	+12.1	+12.4	+3.6	8.7	+6.0
61	32	27.5	27.5		43
		Top Abut			

+48.50 = Pl. 21' Cast Iron Sewer Line

49.8	7.1	+1.0	+1.1
+6.7		43	43
33.5		Conc. Grip	Top Pipe
Top W. Wall			

+45.1 Sly Wing Wall

TP 6.87 50.16 6.15 43.29

48.7	48.3	49.2	49.0	41.5	42.5	43.2
+6.2	+5.8	+6.7	+5.5	-1.0	6.9	+0.7
150	100	50	15	4		43
						Conc. Grip

94 + 0

48.0	47.2	55.1	47.7	47.2	42.6	40.6	42.0
+5.4	+4.6	+5.7	+5.1	+4.6	6.8	-2.0	-0.6
150	100	75	50	9		3	4
							Conc. Grip

93 + 50

27+82.8 = opp 2 18" Conc. Culvert

Cont. P-72

B.M.

4.66 53.84

H. J. B.P. Top
Federal +
Chamber
Broom old

478

72

Top R. Rap

Top R. Rap

432 438 447 460 446

62 50 25 16

4303 4577 508

47 47.1 55

Invert Hdwall Edge Rd.
18" Pipe

TP

978 58.50 1.44 18.72

+5501 FC

47.2 46.2 46.3 46.6 45.8 44.8 44.3
+6.0 -0.4 -0.3 3.6 -0.8 -1.8 +6.3
69 59 25 25 37 57
Top R. Rap Top R. Rap Edge Rd.

97+0

53.8 46.7 45.9 46.6 46.1 46.3 47.0 53.4
+6.2 +0.1 -0.7 3.6 -0.5 -0.3 +0.4 +6.8
44 51 25 8 25 46 57
Top R. Rap Top R. Rap Edge Rd.

+50

54.9 46.8 45.3 45.6 46.9 49.6 53.6
+9.3 +1.2 -0.3 4.1 +1.3 +4.0 +8.0
60 46 25 25 43 59
Top R. Rap Top R. Rap Edge Rd.

+33.6

My Wing Wall 43.9 Rt = Top 47.2 Rt = Top

96+0

54.1 46.5 45.6 45.8 53.3
+9.0 +1.4 5.1 +0.2 +7.7
56 40 51 43.9 47.2
Top R. Rap Top R. Rap 25 57
Comp. Box
C.V.

50/6

50/6

Las Chollas Creek Channel

Cross Sections

Cont. from P-78

Lt

Rt

Rt

79

50.08
60 = Top Hd. Wall

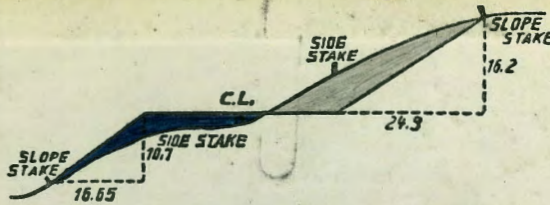
97+93.5 = opp end Triple Conc. Culverts Lt.

43.8	43.6	50.1	47.0	45.7
56	38	34	11	
	Invert	Top		
		Hd. Wall		

97+86.4 opp End Wing Walls on Lt.

47.8	44.55
72	60
Top	Top
Rip Rap	Wing
	Wall

43.2	43.6	44.60	45.8	44	0	43.0	50.8
60	34.5	34	15			46	55
Ground	Ground	Top					Edge Rd.
		Utility					
		Wall					
		S. End					



DISTANCES FROM SIDE STAKES FOR CROSS-SECTIONING.

SLOPE 1 1/2 TO 1. ROADWAY OF ANY WIDTH.

	0	.1	.2	.3	.4	.5	.6	.7	.8	.9	
0	0.00	0.15	0.30	0.45	0.60	0.75	0.90	1.05	1.20	1.35	0
1	1.50	1.65	1.80	1.95	2.10	2.25	2.40	2.55	2.70	2.85	1
2	3.00	3.15	3.30	3.45	3.60	3.75	3.90	4.05	4.20	4.35	2
3	4.50	4.65	4.80	4.95	5.10	5.25	5.40	5.55	5.70	5.85	3
4	6.00	6.15	6.30	6.45	6.60	6.75	6.90	7.05	7.20	7.35	4
5	7.50	7.65	7.80	7.95	8.10	8.25	8.40	8.55	8.70	8.85	5
6	9.00	9.15	9.30	9.45	9.60	9.75	9.90	10.05	10.20	10.35	6
7	10.50	10.65	10.80	10.95	11.10	11.25	11.40	11.55	11.70	11.85	7
8	12.00	12.15	12.30	12.45	12.60	12.75	12.90	13.05	13.20	13.35	8
9	13.50	13.65	13.80	13.95	14.10	14.25	14.40	14.55	14.70	14.85	9
10	15.00	15.15	15.30	15.45	15.60	15.75	15.90	16.05	16.20	16.35	10
11	16.50	16.65	16.80	16.95	17.10	17.25	17.40	17.55	17.70	17.85	11
12	18.00	18.15	18.30	18.45	18.60	18.75	18.90	19.05	19.20	19.35	12
13	19.50	19.65	19.80	19.95	20.10	20.25	20.40	20.55	20.70	20.85	13
14	21.00	21.15	21.30	21.45	21.60	21.75	21.90	22.05	22.20	22.35	14
15	22.50	22.65	22.80	22.95	23.10	23.25	23.40	23.55	23.70	23.85	15
16	24.00	24.15	24.30	24.45	24.60	24.75	24.90	25.05	25.20	25.35	16
17	25.50	25.65	25.80	25.95	26.10	26.25	26.40	26.55	26.70	26.85	17
18	27.00	27.15	27.30	27.45	27.60	27.75	27.90	28.05	28.20	28.35	18
19	28.50	28.65	28.80	28.95	29.10	29.25	29.40	29.55	29.70	29.85	19
20	30.00	30.15	30.30	30.45	30.60	30.75	30.90	31.05	31.20	31.35	20
21	31.50	31.65	31.80	31.95	32.10	32.25	32.40	32.55	32.70	32.85	21
22	33.00	33.15	33.30	33.45	33.60	33.75	33.90	34.05	34.20	34.35	22
23	34.50	34.65	34.80	34.95	35.10	35.25	35.40	35.55	35.70	35.85	23
24	36.00	36.15	36.30	36.45	36.60	36.75	36.90	37.05	37.20	37.35	24
25	37.50	37.65	37.80	37.95	38.10	38.25	38.40	38.55	38.70	38.85	25
26	39.00	39.15	39.30	39.45	39.60	39.75	39.90	40.05	40.20	40.35	26
27	40.50	40.65	40.80	40.95	41.10	41.25	41.40	41.55	41.70	41.85	27
28	42.00	42.15	42.30	42.45	42.60	42.75	42.90	43.05	43.20	43.35	28
29	43.50	43.65	43.80	43.95	44.10	44.25	44.40	44.55	44.70	44.85	29
30	45.00	45.15	45.30	45.45	45.60	45.75	45.90	46.05	46.20	46.35	30
31	46.50	46.65	46.80	46.95	47.10	47.25	47.40	47.55	47.70	47.85	31
32	48.00	48.15	48.30	48.45	48.60	48.75	48.90	49.05	49.20	49.35	32
33	49.50	49.65	49.80	49.95	50.10	50.25	50.40	50.55	50.70	50.85	33
34	51.00	51.15	51.30	51.45	51.60	51.75	51.90	52.05	52.20	52.35	34
35	52.50	52.65	52.80	52.95	53.10	53.25	53.40	53.55	53.70	53.85	35
36	54.00	54.15	54.30	54.45	54.60	54.75	54.90	55.05	55.20	55.35	36
37	55.50	55.65	55.80	55.95	56.10	56.25	56.40	56.55	56.70	56.85	37
38	57.00	57.15	57.30	57.45	57.60	57.75	57.90	58.05	58.20	58.35	38
39	58.50	58.65	58.80	58.95	59.10	59.25	59.40	59.55	59.70	59.85	39
40	60.00	60.15	60.30	60.45	60.60	60.75	60.90	61.05	61.20	61.35	40
41	61.50	61.65	61.80	61.95	62.10	62.25	62.40	62.55	62.70	62.85	41
42	63.00	63.15	63.30	63.45	63.60	63.75	63.90	64.05	64.20	64.35	42
43	64.50	64.65	64.80	64.95	65.10	65.25	65.40	65.55	65.70	65.85	43
44	66.00	66.15	66.30	66.45	66.60	66.75	66.90	67.05	67.20	67.35	44
45	67.50	67.65	67.80	67.95	68.10	68.25	68.40	68.55	68.70	68.85	45
46	69.00	69.15	69.30	69.45	69.60	69.75	69.90	70.05	70.20	70.35	46
47	70.50	70.65	70.80	70.95	71.10	71.25	71.40	71.55	71.70	71.85	47
48	72.00	72.15	72.30	72.45	72.60	72.75	72.90	73.05	73.20	73.35	48
49	73.50	73.65	73.80	73.95	74.10	74.25	74.40	74.55	74.70	74.85	49
50	75.00	75.15	75.30	75.45	75.60	75.75	75.90	76.05	76.20	76.35	50

THE NATIONAL BLANK BOOK COMPANY
 HOLYOKE MASSACHUSETTS
 NEW YORK CHICAGO BOSTON SAN FRANCISCO

200
 176
 223
 28