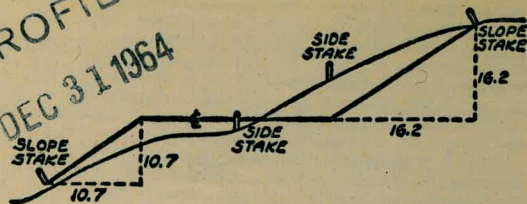


2047

DIARY BOOK

MICROFILMED
DEC 31 1964



DISTANCES FROM SIDE STAKES FOR CROSS-SECTIONING
SLOPE 1 TO 1. ROADWAY OF ANY WIDTH

	0	.1	.2	.3	.4	.5	.6	.7	.8	.9	
0	0.00	0.10	0.20	0.30	0.40	0.50	0.60	0.70	0.80	0.90	0
1	1.00	1.10	1.20	1.30	1.40	1.50	1.60	1.70	1.80	1.90	1
2	2.00	2.10	2.20	2.30	2.40	2.50	2.60	2.70	2.80	2.90	2
3	3.00	3.10	3.20	3.30	3.40	3.50	3.60	3.70	3.80	3.90	3
4	4.00	4.10	4.20	4.30	4.40	4.50	4.60	4.70	4.80	4.90	4
5	5.00	5.10	5.20	5.30	5.40	5.50	5.60	5.70	5.80	5.90	5
6	6.00	6.10	6.20	6.30	6.40	6.50	6.60	6.70	6.80	6.90	6
7	7.00	7.10	7.20	7.30	7.40	7.50	7.60	7.70	7.80	7.90	7
8	8.00	8.10	8.20	8.30	8.40	8.50	8.60	8.70	8.80	8.90	8
9	9.00	9.10	9.20	9.30	9.40	9.50	9.60	9.70	9.80	9.90	9
10	10.00	10.10	10.20	10.30	10.40	10.50	10.60	10.70	10.80	10.90	10
11	11.00	11.10	11.20	11.30	11.40	11.50	11.60	11.70	11.80	11.90	11
12	12.00	12.10	12.20	12.30	12.40	12.50	12.60	12.70	12.80	12.90	12
13	13.00	13.10	13.20	13.30	13.40	13.50	13.60	13.70	13.80	13.90	13
14	14.00	14.10	14.20	14.30	14.40	14.50	14.60	14.70	14.80	14.90	14
15	15.00	15.10	15.20	15.30	15.40	15.50	15.60	15.70	15.80	15.90	15
16	16.00	16.10	16.20	16.30	16.40	16.50	16.60	16.70	16.80	16.90	16
17	17.00	17.10	17.20	17.30	17.40	17.50	17.60	17.70	17.80	17.90	17
18	18.00	18.10	18.20	18.30	18.40	18.50	18.60	18.70	18.80	18.90	18
19	19.00	19.10	19.20	19.30	19.40	19.50	19.60	19.70	19.80	19.90	19
20	20.00	20.10	20.20	20.30	20.40	20.50	20.60	20.70	20.80	20.90	20
21	21.00	21.10	21.20	21.30	21.40	21.50	21.60	21.70	21.80	21.90	21
22	22.00	22.10	22.20	22.30	22.40	22.50	22.60	22.70	22.80	22.90	22
23	23.00	23.10	23.20	23.30	23.40	23.50	23.60	23.70	23.80	23.90	23
24	24.00	24.10	24.20	24.30	24.40	24.50	24.60	24.70	24.80	24.90	24
25	25.00	25.10	25.20	25.30	25.40	25.50	25.60	25.70	25.80	25.90	25
26	26.00	26.10	26.20	26.30	26.40	26.50	26.60	26.70	26.80	26.90	26
27	27.00	27.10	27.20	27.30	27.40	27.50	27.60	27.70	27.80	27.90	27
28	28.00	28.10	28.20	28.30	28.40	28.50	28.60	28.70	28.80	28.90	28
29	29.00	29.10	29.20	29.30	29.40	29.50	29.60	29.70	29.80	29.90	29
30	30.00	30.10	30.20	30.30	30.40	30.50	30.60	30.70	30.80	30.90	30
31	31.00	31.10	31.20	31.30	31.40	31.50	31.60	31.70	31.80	31.90	31
32	32.00	32.10	32.20	32.30	32.40	32.50	32.60	32.70	32.80	32.90	32
33	33.00	33.10	33.20	33.30	33.40	33.50	33.60	33.70	33.80	33.90	33
34	34.00	34.10	34.20	34.30	34.40	34.50	34.60	34.70	34.80	34.90	34
35	35.00	35.10	35.20	35.30	35.40	35.50	35.60	35.70	35.80	35.90	35
36	36.00	36.10	36.20	36.30	36.40	36.50	36.60	36.70	36.80	36.90	36
37	37.00	37.10	37.20	37.30	37.40	37.50	37.60	37.70	37.80	37.90	37
38	38.00	38.10	38.20	38.30	38.40	38.50	38.60	38.70	38.80	38.90	38
39	39.00	39.10	39.20	39.30	39.40	39.50	39.60	39.70	39.80	39.90	39
40	40.00	40.10	40.20	40.30	40.40	40.50	40.60	40.70	40.80	40.90	40
41	41.00	41.10	41.20	41.30	41.40	41.50	41.60	41.70	41.80	41.90	41
42	42.00	42.10	42.20	42.30	42.40	42.50	42.60	42.70	42.80	42.90	42
43	43.00	43.10	43.20	43.30	43.40	43.50	43.60	43.70	43.80	43.90	43
44	44.00	44.10	44.20	44.30	44.40	44.50	44.60	44.70	44.80	44.90	44
45	45.00	45.10	45.20	45.30	45.40	45.50	45.60	45.70	45.80	45.90	45
46	46.00	46.10	46.20	46.30	46.40	46.50	46.60	46.70	46.80	46.90	46
47	47.00	47.10	47.20	47.30	47.40	47.50	47.60	47.70	47.80	47.90	47
48	48.00	48.10	48.20	48.30	48.40	48.50	48.60	48.70	48.80	48.90	48
49	49.00	49.10	49.20	49.30	49.40	49.50	49.60	49.70	49.80	49.90	49
50	50.00	50.10	50.20	50.30	50.40	50.50	50.60	50.70	50.80	50.90	50

Distance of slope stake from side or shoulder stake for any width roadway, slope 1 to 1. If ground is nearly level, the cut or fill at side stake is located by the double entry method in left column and top row. The number in body of table in same row and column gives distance from side stake to slope stake. If ground is not level estimate the difference in elevation between the side stake and slope stake, lower target by this amount if cut, elevate if fill. Add this amount to cut or fill and find distance in table. Set up rod at this point, and line of sight should cut target. If it does not make the slight adjustment necessary.

INDEXED

to page # 69
except page # 1

INDEXED

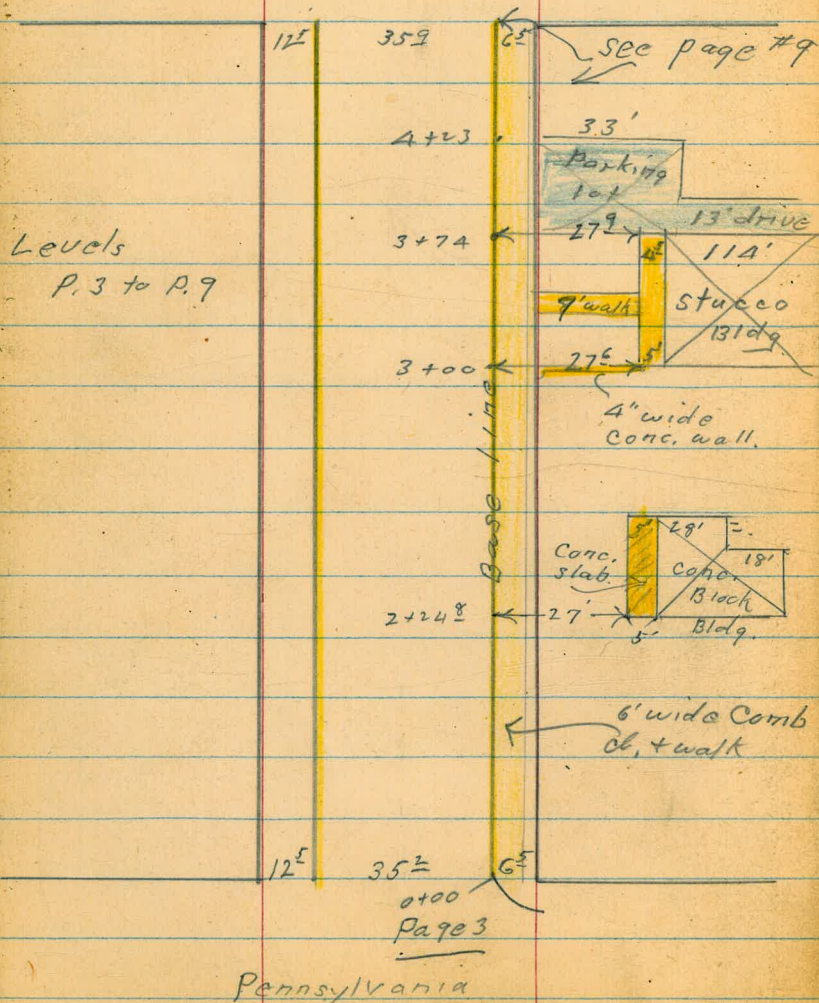
DEC. 28 1950

Masters Super dry
Cleaner

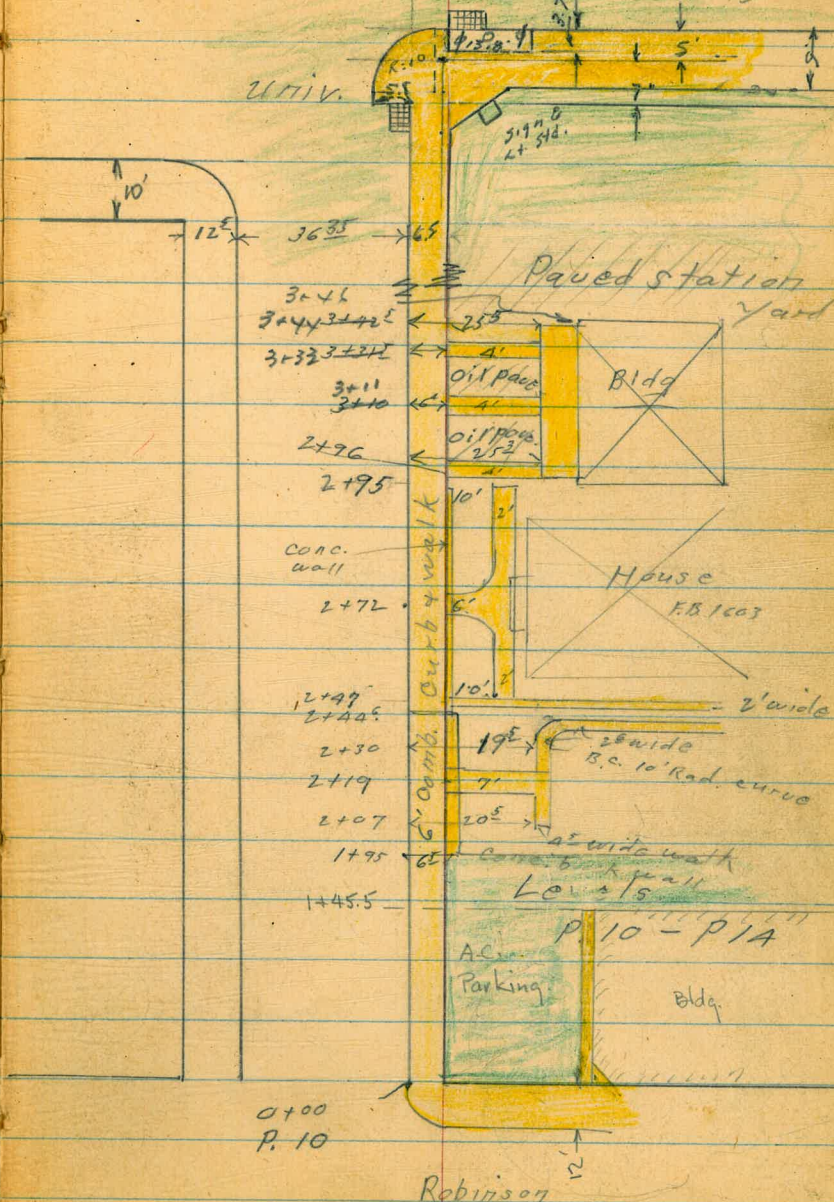
Levels 6 th Ave. Pennsylvania to Univ.	2-14
Reed Ave. - Cass St. to Gresham	18-45
Add. Levels - 6th Ave adj. Store	58
Alley BIK 245 Mission Beach	61-69
Add. notes. 6th & Univ. Ave.	70
Levels 10th & Robinson	74

INDEXED
W.K.
SEP 16 1949

Robinson



6th Ave.
Pennsylvania to Union 9-1-49 2



Levels 6th Ave.
 Pennsylvania to Univ.

9-1-49

Sommermeier
 McCoy
 Allen
 Rorer

Note

Ely. Curb line 6th Ave = Base line

cl. = Top of Conc. curb.

G = in gutter

P = \neq existing roadway

0+00 = Nly. line Pennsylvania.

0+76^E - 6^E RT. = \neq 3^E Conc. walk

0+50 6^E RT. = \neq wide R+W. Conc. walk

0+00 = Nly. line Pennsylvania
 (See P 73 also)

S.E.L.+T.
 Pennsylvania 4.60 292.23 0.56 287.63 (Set B.M.)
 + 6th

S.E. 7^L+T.
 Pennsylvania
 + 7th
 10.15 288.19 — 278.04

B.L.
 = Ely. cl.

3

Notes reduced
 9-6-49 Rorer

				287.25	287.55
				4.88	4.68
				65	315
286.40	287.20	286.73	287.36	287.48	287.44
5.83	5.03	5.50	4.87	4.75	4.79
G	P	G		65	315
					walk
286.54	287.38	286.99	287.66	287.83	287.24
5.69	4.85	5.24	4.57	4.40	4.99
G	P	G	cl	65	315
					on N. Edge
					walk
				<u>292.23</u>	

B.L.
= cl.

4

steps.

20^s Rt. = bottom + $\frac{1}{2}$ of 8' wide Conc.

2+08 - 6^s Rt. = $\frac{1}{2}$ 5' ^{conc.} walk

286.80	287.35
5.43	1.88
<u>6^s</u>	<u>20^s</u>

2+00 20' Rt. = $\frac{1}{2}$ 3' wide N.+S Conc. walk

285.94	286.54	285.99	286.69	286.9	287.43	287.5
6.29	5.69	6.24	5.54	5.3	4.80	4.7
<u>G</u>	<u>P</u>	<u>G</u>	<u>cl</u>	<u>6^s</u>	<u>18</u>	<u>24^s</u>
						At House

1+50

286.08	286.78	286.24	286.88	287.0	287.7
6.15	5.45	6.01	5.35	5.2	4.5
<u>G</u>	<u>P</u>	<u>G</u>	<u>cl</u>	<u>6^s</u>	<u>31^s</u>

1+36 - 6^s Rt. = $\frac{1}{2}$ 2' walk

287.13	287.82	287.93
5.10	4.41	4.30
<u>6^s</u>	<u>18^s</u>	<u>31^s</u>

1+10^s 6^s Rt. = $\frac{1}{2}$ 5' Conc. walk

287.21	287.95
5.02	4.28
<u>6^s</u>	<u>22^s</u>
	At steps

1+00

286.25	287.00	286.45	287.06	287.3	287.6
5.98	5.23	5.78	5.17	4.9	4.6
<u>G</u>	<u>P</u>	<u>G</u>	<u>cl</u>	<u>6^s</u>	<u>31^s</u>

0+98 - 6^s Rt. = $\frac{1}{2}$ 3' wide Conc. walk

287.23	287.60
5.00	4.63
<u>6^s</u>	<u>31^s</u>

292.23

2+75 = P.I. S.W. ab. Rot. (Evans Pl.)

2+75 = S.W. ab. Rot. B.C. (Evans Pl.)

T.P. 4.52 290.88 5.87 286.36

2+53 = ± 8' wide drive. (concr.)

2+50

32' Rt. = End. Bldg.
2+49^E, 27' Rt. = End Concr. slab.

2+24⁸ 27' Rt. = start. Concr. slab.

Concr. walk.

2+14^E 20' Rt. ± End of 3' wide N+S

285.93
4.95
G
Intersection

285.78
5.10
west
G

290.88

285.68
6.55
Drive

286.35
5.88
65

286.72
5.51
26

286.43
5.80
315

285.83
6.40
G

286.30
5.93
P.

285.70
6.53
G

285.70
6.53
Drive

286.3
5.9
65

286.55?
285.58
6.65
27

286.28
5.95
315

286.46
5.77
27
Slab.

286.69
5.54
32
Floor level

286.55
5.68
27
Slab

286.69
5.54
32
Floor El.

287.31
4.92
20

292.23

32^A Rt. = End stucco store Bldg.
 27^R Rt. = End Conc. slab.
 3+74 - 6' Rt. = start plant mix parking lot.

3+58 - Palm shown $\frac{1603}{18}$ is gone

3+50

3+33.8 - House shown $\frac{1603}{18}$ is gone

36^L Rt. = \pm Recessed doorway

3+27 6' Rt. = \pm 7' wide Conc. walk

N.W.B.P.

Evans & 6th

A.60 286.28 B.M.#2

3+25 = N.W. cb. Ret. E.C. (Evans Pl.)

3+19 Palm shown $\frac{1603}{18}$ is gone

3+15 = P.I. N.W. cb. Ret. (Evans Pl.)

32^E Rt. = start stucco store Bldg.

27^E Rt. = start Conc. slab.

3+00 = Approx ϕ Evans PL

6' Rt. = start $\frac{1}{4}$ " wide, 1' high, E+W. Conc. wall

290.88

B.L.
= cl.

6

285.82
 $\frac{5.06}{6}$ 4.51 4.46 4.45
 End Slab End Bldg.

285.57 286.02 285.15 285.77 286.0 286.37 286.40
 $\frac{5.31}{G}$ $\frac{4.86}{P}$ $\frac{5.73}{G}$ 5.11 $\frac{4.9}{65}$ $\frac{4.51}{272}$ $\frac{4.48}{315}$
 Edge Conc.

286.03 286.39 286.45
 $\frac{4.85}{C}$ $\frac{4.49}{315}$ $\frac{4.43}{362}$
 Floor.

285.65
 $\frac{5.23}{\text{west. G}}$

285.88
 $\frac{5.00}{G}$
 intersection

286.14 286.16 286.13 285.50 286.12 286.27 286.37 286.42 286.91
 $\frac{4.74}{\text{west line 65}}$ $\frac{4.72}{G}$ $\frac{4.75}{P}$ $\frac{5.38}{G}$ 4.76 $\frac{4.61}{65}$ 4.51 4.46 3.93
 End + top wall Conc Slab at End of wall

290.88

T.P. 4.21 289.83 5.26 285.62

A+50

4+64.5 = start of E. + W. 3' wide walk
 35' Rt. = End circular walk
 15' of Rad. (35' wide)
 4+47.9 = start circular walk about

4+45 - 6' Rt. = of 5' wide Conc. walk

A+27 House shown $\frac{1603}{19}$ OK. at 4+27

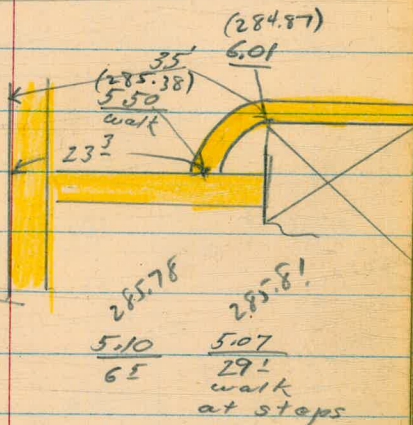
4+23 - 6' Rt. = End cold lay parking lot.

A+00

3+93.5 - House shown $\frac{1603}{19}$ is gone

B.L.
= 06.

285.34
 5.57 G
 285.61
 5.27 P
 285.00
 5.88 G
 285.61
 5.27 06
 285.73
 5.15 65
 285.67
 5.21 2' walk
 285.51
 5.37 30
 At
 Porch.



285.78
 5.10
 65
 285.81
 5.07
 29'
 walk
 at steps

285.72
 5.16
 65
 285.98
 4.90
 315

285.38
 5.50 G
 285.54
 5.04 P
 284.97
 5.91 G
 285.04
 5.84 Driv
 285.77
 5.11 65
 286.16
 4.72
 315

290.88

see page 9.

5+88 aprox. B.C. S.E. cl. Ret. (Robinson)

284.01
5.82
G.

284.01
5.82
Drive

5+50

284.99
4.84
G

285.18
4.65
P

284.15
5.68
G

284.83
5.00
cl.

284.90
4.93
65

284.78
5.05
315

284.10
5.73
50

5+10

65 RT. = start paved station lot.

285.19
4.64
65

285.17
4.66
315

284.90
4.93
50

5+065

29 RT. = 2' wide conc. walk.

285.26
4.57
292

285.22
4.61
315

5+00

285.09
4.74
G

285.35
4.48
P

284.44
5.39
G

285.09
4.74
cl.

285.23
4.60
65

285.26
4.57
315

4+99

6 RT. = 5' wide conc. walk.

285.23
4.60
65

285.26
4.57
315

289.83

289.54

Detail S.E. Cor Robinson + 6th
See page 2 left.

End conc. slab.

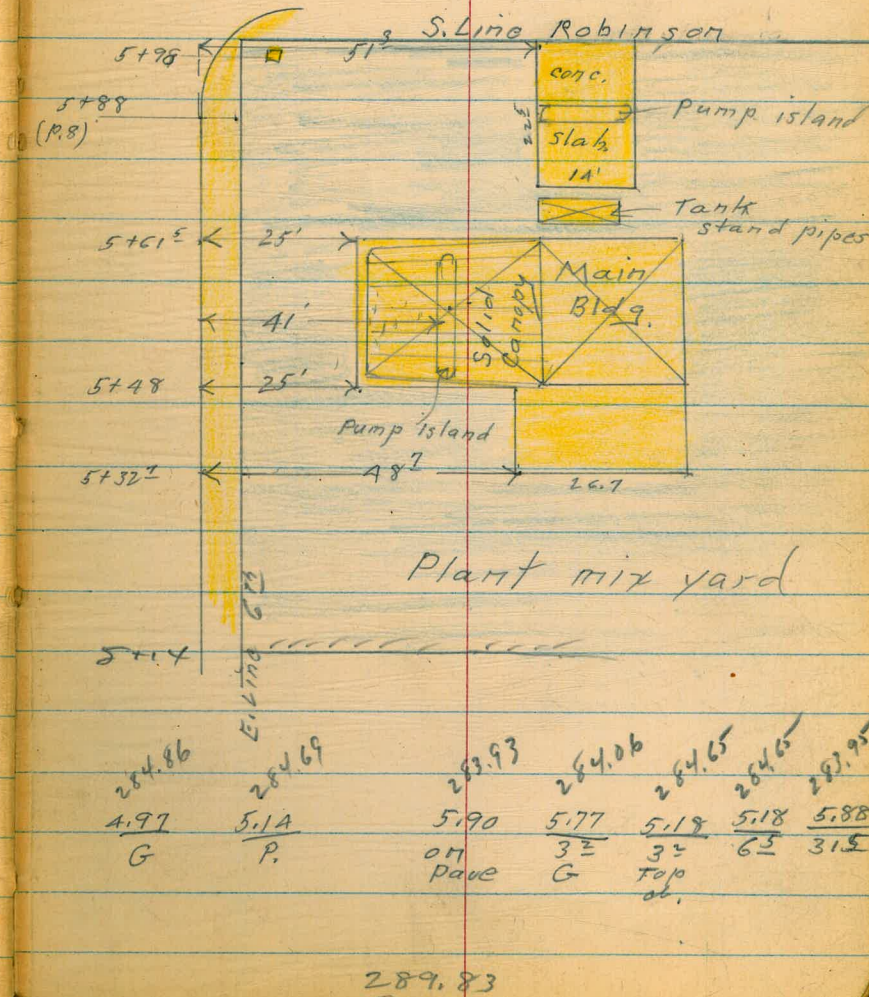
Jog in conc. slab.

start conc. slab.

SEly. Prop. dist.
Robinson + 6th 4.85 289.54 5.14 284.69

5+99± = sly line Robinson

5+98 - 13⁵ Rt. = set in 18"x18" base
3" pipe sign. standard.
289.83



289.83

1+47 6" RT. = End curb wall
1+445 7" RT. = 4" pipe light standard
1+00

284.58	284.79	283.77	284.32	284.52	283.94
<u>4.96</u>	<u>4.75</u>	<u>5.77</u>	<u>5.22</u>	<u>5.02</u>	<u>5.60</u>
G	P	G		65	315

0+50 wall runs N.Y.S. - To come out.
0+31 - 6" RT. = start 8" wide 8" high curb

284.59	284.93	283.91	284.44	284.55	283.73
<u>4.85</u>	<u>4.61</u>	<u>5.63</u>	<u>5.10</u>	<u>4.99</u>	<u>5.81</u>
G	P.	G		65	315

BL =

6" RT. = start paved parking yard
0+00 (Page 2 - Right.)

Nly. line Robinson = 0+00

284.83	284.79	284.07	284.62	284.69	283.99
<u>4.71</u>	<u>4.75</u>	<u>5.47</u>	<u>4.92</u>	<u>4.85</u>	<u>5.35</u>
G	P	G	ob.	65	315

Nly. cl. line Robinson

284.88	284.63	284.06		283.91	283.33
<u>4.66</u>	<u>4.91</u>	<u>5.48</u>	No	<u>5.63</u>	<u>6.21</u>
wy. ob. line	P.	G.	ob.	65	315

± Robinson

285.32	285.01	284.62		284.50	283.87
<u>4.22</u>	<u>4.53</u>	<u>4.92</u>	No	<u>5.04</u>	<u>5.67</u>
wy. ob. line	P.	G.	Ch.	65	315

South curb line Robinson

284.81	284.48	283.99		283.88	283.33
<u>4.73</u>	<u>5.06</u>	<u>5.55</u>	No	<u>5.66</u>	<u>6.21</u>
wy. ob. line	P.	G. J.	Ch.	65	315 17 gutter

289.54

289.54

also = start 6" wide 8" high ^{wall} conc.
 2+44^s } - 6^s Rt. = End 2'x2'x1' block wall
 2+38^s } = 2^s wide walk to east

conc. walk.
 2+30 = 19^s Rt. = B.C. (right) 2^s wide
 2+22^s 19^s Rt. = start 2^s wide conc. walk

0070.
 2+19 - 6^s Rt. = 7' wide steps + walk.

2+15^s 20^s Rt. = End 4^s wide walk
 4^s wide - conc.
 2+07 - 20^s Rt. = start N. + S. walk

see - P. 2 - Right

1+95 - 6^s Rt. = start 2'x2'x1' conc. block wall

~~T.P. 4.77 289.19 5.12 284.42~~

1+95 - 6^s Rt. = End paved parking yard

T.P. 4.77 289.19 5.12 284.42

1+50

289.54

285.42
 3.77
 6^s
 Top wall
 To south

284.69
 4.50
 6^s
 Top wall to
 North

285.24
 3.95
 29^s
 walk E.C.

285.16
 4.03
 31^s
 2 walk

285.47
 3.72
 20^s
 2 walk at B.C.

284.26
 4.93
 6^s
 walk

284.41
 4.78
 6^s
 stop

285.01
 4.18
 6^s
 stop

285.57
 3.62
 7^s
 stop

285.95
 3.24
 22^s
 walk
 out
 porch
 steps

285.87
 3.32
 22^s
 2 walk

284.24
 4.95
 G

284.49
 4.70
 P

283.64
 5.55
 G

284.30
 4.89

284.40
 4.79
 6^s

285.8
 3.4
 6^s

285.5
 3.7
 31^s

284.44
 5.10
 G

284.59
 4.95
 P

283.65
 5.89
 G

284.30
 4.89

284.40
 4.79
 6^s

284.44
 5.10
 6^s

284.49
 4.70
 31^s

284.27
 5.27
 31^s

287.54

3+10 - 6^E RT. = Φ 4' walk

2+96 = sly edge. walk (see P. 2 Right)

16^E RT. = End 2' wide conc. walk.

2+95 - 6^A RT. = End 6' wide - 8' High Conc. wall

T.P. 3.99 288.48 4.70 284.79

2+72 - 6^I RT. = Φ 6' wide E+W. conc. walk

2+48 - 16^E RT. = sw. cor. 2' wide N+S. Conc. walk

2+47 - 7' RT. = Φ 2' wide walk

289.19

284.11
437
65

284.41
407
259

284.53
3.95
315

284.06
4.42
G

284.26
4.22
P

283.38
5.10
G

283.98
4.50
G

284.09
4.39
65

284.39
4.09
253

284.46
4.02
315

284.05
4.43
G

284.26
4.22
P

283.37
5.11
G

284.00
4.48
G

284.04
4.44
65

284.49
3.99
62

285.00
3.48
165

285.4
3.1
315

288.48
wall walk

284.06
5.13
el.

284.14
5.05
63
walk
Base of wall

284.64
4.55
63
walk
wall

285.01
4.18
17E
walk
at steps
to porch

284.91

4.28
1.75
2' walk

284.24
4.95
G

284.39
4.80
P

283.49
5.70
G

284.08
5.11
G

284.1
5.1
64
walk

284.69
4.50
65
top walk

285.04
4.15
229

284.94
4.25
315

284.91
walk

289.19

univ + G²
N.W.B.P.

Cont. P. 14

(See P. - 14
this does not
agree with orig B.M.)

S. P.

4.38

284.10

(283.87)

4+44^Et = sly. line Univ.

4+40 = start. 4^E x 2^E catch basin + grate

4+26 = sly. ch. Univ. to west

4+00

3+50

3+42^E - 25^E Rt. = N.W. Cor. walk. (P. 2 right.)

3+31^E - 6^E Rt. = 4' wide conc. walk

288.48

283.81

283.52

283.49

283.62

283.62

283.70

283.87

13

4.67
G.

4.96
P

4.99
5.8
old
06.80
+ pave.

4.86
2^E
grate

4.86
walk

4.78
6^E

4.61
31^E

End paved yard.

283.75

283.44

283.09

283.14

283.14

283.78

283.99

4.73
G

5.06
P

5.39
2^E
Grate

5.34
G
grate

5.34
Drive

4.70
6^E

4.49
31^E

paved yard

283.59

283.57

283.07

283.07

283.85

284.17

4.89
G
06.82

4.91
P

5.41
G

5.41
Drive

4.63
6^E

4.31
31^E

Paved yard

283.78

284.00

283.12

283.74

283.84

284.18

284.18

4.70
G

4.48
P

5.36
G

4.74

4.64
6

4.30
72

4.30
31^E

Paved yard

283.89

284.11

283.23

283.36

284.05

284.4

4.59
G

4.87
P

5.25
G

5.12
Drive

4.43
6^E

4.1
31^E

Paved yard.

284.41

284.50

4.07
25^E

3.98
31^E

284.02

284.43

4.16
6^E

4.05
25^E

4' walk

288.48

6th Ave
 Pennsylvania to Univ.

East Cb
 Line C.H. 5A
 Product

14

See P. 70

283⁵⁷ 282⁸⁴
 50 50

4156.5 ± 514 Cb line Univ. Ave to East.

283³⁴ 283⁴² 283⁵⁰ 282⁶¹ 282⁸⁴
 4 6.2 11 11
 Cb EC. Cb, grate & paving G Cb

4146.5 ± B.C. 10' Cb Radius 5.8 Lt

283.45
 5.8
 Cb & Pav

S.E. L+T. 7th
 + Pennsylvania Orig B.M. P.3 10.15 278.03 278.04 ✓

S.E. L+T. 6th
 + Pennsylvania (P-3) 0.57 287.61 287.63

T.P. 0.51 288.18 4.12 287.67

T.P. 6.11 291.79 3.88 285.68

T.P. 5.13 289.56 4.05 284.43

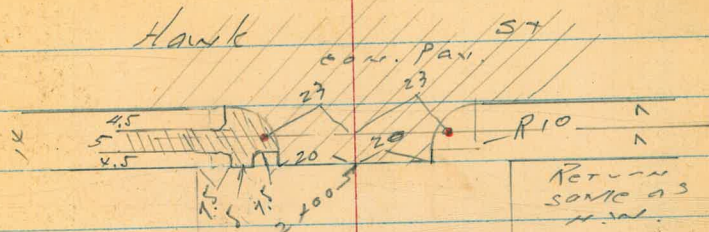
288.48

Moore
Sherman
Sisson

Fd. Ld. CTKs

15

X sec Thorn ST 9-20-49
1615 to Hawk No 25020
Ref 1451-11



INDEXED
W.K.
SEP 21 1949



Compl.

Fd. 3/4" Pipe
RE 2718

40

0700

40

Fd. Con. Mon.

1615

ST

Upas
Spruce

0490

0460

0430

T.P. 12.92 197.79 0.31 184.87

0100 E.L. 1815 St.

12.57 185.18

T.P. 4.30 172.61

T.P. 12.13 176.91 1.16 164.78

T.P. 13.05 165.94 4.19 152.89

T.P. 12.80 157.08 0.47 144.28

B.M. 13.12 144.75 131.63

Edisk
Thorn and Horton

Thorn

L

$\frac{5.1}{40} \frac{191.6}{30}$

$\frac{5.2}{30} \frac{192.6}{15}$

$\frac{4.8}{15} \frac{193.0}{15}$

$\frac{4.8}{15} \frac{193.0}{15}$

$\frac{5.1}{15} \frac{192.4}{30}$

$\frac{5.8}{30} \frac{192.0}{15}$

$\frac{6.5}{40} \frac{193.5}{16}$

$\frac{11.2}{40} \frac{186.6}{30}$

$\frac{10.4}{30} \frac{187.4}{15}$

$\frac{9.6}{15} \frac{188.2}{15}$

$\frac{9.0}{15} \frac{188.8}{15}$

$\frac{9.6}{15} \frac{188.2}{30}$

$\frac{10.3}{30} \frac{189.5}{15}$

$\frac{10.6}{40} \frac{189.2}{15}$

$\frac{16.4}{40} \frac{181.4}{30}$

$\frac{14.7}{30} \frac{183.1}{15}$

$\frac{13.6}{15} \frac{184.2}{15}$

$\frac{14.0}{15} \frac{183.8}{15}$

$\frac{13.4}{15} \frac{184.4}{30}$

$\frac{15.0}{30} \frac{182.8}{15}$

$\frac{16.1}{40} \frac{181.7}{15}$

197.79

$\frac{10.0}{40} \frac{175.2}{30}$

$\frac{8.9}{30} \frac{176.3}{15}$

$\frac{8.3}{15} \frac{176.9}{15}$

$\frac{9.3}{15} \frac{175.9}{15}$

$\frac{10.4}{15} \frac{174.8}{30}$

$\frac{11.2}{30} \frac{174.0}{15}$

$\frac{12.3}{40} \frac{172.9}{15}$

185.18

S.E. Corn Mon. Thorn & Horton 1615

Bk. on Horton Ave x sec

Thorn

214 w c6 line Hawk:

$\begin{array}{r} 210.03 \\ 65 \\ \hline 145 \end{array}$	$\begin{array}{r} 209.33 \\ 65 \\ \hline 144 \end{array}$	$\begin{array}{r} 208.28 \\ 40 \\ \hline 168 \end{array}$	$\begin{array}{r} 207.67 \\ 65 \\ \hline 142 \end{array}$	$\begin{array}{r} 207.38 \\ 20 \\ \hline 187 \end{array}$	$\begin{array}{r} 207.14 \\ 70 \\ \hline 137 \end{array}$	$\begin{array}{r} 206.77 \\ 20 \\ \hline 186 \end{array}$	$\begin{array}{r} 206.44 \\ 40 \\ \hline 166 \end{array}$	$\begin{array}{r} 207.47 \\ 40 \\ \hline 167 \end{array}$	$\begin{array}{r} 209.72 \\ 45 \\ \hline 164 \end{array}$	$\begin{array}{r} 205.90 \\ 65 \\ \hline 140 \end{array}$
---	---	---	---	---	---	---	---	---	---	---

17

2100 w Hawk on Pav.

FB 1x51

$\frac{0.03}{208.25}$

$\begin{array}{r} 208.5 \\ 40 \\ \hline 168 \end{array}$	$\begin{array}{r} 208.22 \\ 20 \\ \hline 188 \end{array}$	$\begin{array}{r} 207.59 \\ 20 \\ \hline 187 \end{array}$	$\begin{array}{r} 207.72 \\ 10 \\ \hline 197 \end{array}$	$\begin{array}{r} 207.58 \\ 50 \\ \hline 158 \end{array}$	$\begin{array}{r} 207.22 \\ 70 \\ \hline 137 \end{array}$	$\begin{array}{r} 206.64 \\ 30 \\ \hline 176 \end{array}$	$\begin{array}{r} 207.17 \\ 20 \\ \hline 187 \end{array}$	$\begin{array}{r} 207.0 \\ 40 \\ \hline 167 \end{array}$
--	---	---	---	---	---	---	---	--

T.P. 191 214.17 224 207.26
Sw. Handit
id. CT.
Thorn + Hawk

214.17

1780

$\begin{array}{r} 206.2 \\ 40 \\ \hline 166 \end{array}$	$\begin{array}{r} 206.4 \\ 30 \\ \hline 176 \end{array}$	$\begin{array}{r} 206.8 \\ 15 \\ \hline 191 \end{array}$	$\begin{array}{r} 206.6 \\ 20 \\ \hline 186 \end{array}$	$\begin{array}{r} 205.6 \\ 15 \\ \hline 190 \end{array}$	$\begin{array}{r} 204.5 \\ 30 \\ \hline 174 \end{array}$	$\begin{array}{r} 204.4 \\ 40 \\ \hline 164 \end{array}$
--	--	--	--	--	--	--

1750

$\begin{array}{r} 200.6 \\ 40 \\ \hline 160 \end{array}$	$\begin{array}{r} 201.0 \\ 30 \\ \hline 171 \end{array}$	$\begin{array}{r} 202.2 \\ 15 \\ \hline 187 \end{array}$	$\begin{array}{r} 200.9 \\ 50 \\ \hline 150 \end{array}$	$\begin{array}{r} 201.1 \\ 15 \\ \hline 186 \end{array}$	$\begin{array}{r} 200.5 \\ 30 \\ \hline 170 \end{array}$	$\begin{array}{r} 199.8 \\ 40 \\ \hline 159 \end{array}$
--	--	--	--	--	--	--

1720

$\begin{array}{r} 196.0 \\ 13.5 \\ \hline 182 \end{array}$	$\begin{array}{r} 196.2 \\ 13.3 \\ \hline 183 \end{array}$	$\begin{array}{r} 196.8 \\ 12.7 \\ \hline 184 \end{array}$	$\begin{array}{r} 197.4 \\ 12.1 \\ \hline 185 \end{array}$	$\begin{array}{r} 196.8 \\ 12.7 \\ \hline 184 \end{array}$	$\begin{array}{r} 196.4 \\ 13.1 \\ \hline 183 \end{array}$	$\begin{array}{r} 196.2 \\ 13.3 \\ \hline 183 \end{array}$
--	--	--	--	--	--	--

T.P. 1262 209.50 0.91 196.88
197.79

209.50

Levels Reed St.

Cass to Gresham

S.E. Cb Ret Cass & Reed (BC on Cass, L=31.4=4pts)

N.E. Cb Ret Cass & Reed (BC on Cass, L=26=3pts)

0+00 Edge Asph. Paving. Beg. Conc Block Wall
East Line Cass 29.2' Lt

0-14 East Cb line Cass to North

0-20 East Cb. Cass to South

0-40 R Cass

TP	4.99	14.10	7.69	9.11
TP	3.21	16.80	4.04	13.59
BM	5.88	17.63		11.75

See page 76

7.73	8.31	7.83	8.41	7.86	8.43	7.91	8.47	19
6.37	5.79	6.27	5.69	6.24	5.67	6.19	5.63	6.25
G	Cb	G	Cb	G	Cb	G	Cb	G Cb
BC								EC
Cass								

8.237	8.96	8.33	9.00	8.30	8.99	8.35	9.10
5.73	5.04	5.77	5.10	5.80	5.01	5.75	5.00
G	Cb	G	Cb	G	Cb	G	Cb
BC							EC
Cass							

9.10	8.35	8.32	8.79	8.62
5.0	5.0	5.75	6.27	5.48
29	21.2	21.2	20	20
	Cb	G	G	Cb

8.30	8.62	9.06	8.37	8.83	8.11
4.10	5.18	5.04	5.78	5.87	5.79
60	60	40	40	20	
Cb	G	Cb	G		
8.30	8.20	8.73	8.31	10.6	7.75
5.80	6.37	5.79	7.04	6.35	
20	40	40	80	80	
	G	Cb	G	Cb	

9.39	10.0	8.85	8.78	8.62	8.43	7.76
4.21	5.10	5.27	5.32	5.48	5.67	6.34
80	40	20	14.10	20	40	80

NE 7 2&T Cass & Reed

NE 7 2&T Boyard & Grand

Reed St Contd.

20

1455 £ 10' Conc Drive Rt.

8.28
582
20 31
Dr. Tw.

1450

10.3
9.1
9.0
9.2
8.8
8.3
8.82
3.8 4.2 5.1 4.9 5.3 5.5 5.25
29 20 14 8 20 20
G Cb

1100

9.7
9.8
8.9
9.1
8.8
8.2
8.75
4.4 4.2 5.2 5.0 5.3 5.7 5.25
29 20 15 8 20 20
G Cb

0+65

9.6
9.8
8.8
9.1
8.9
8.2
8.67
4.5 4.2 5.2 5.0 5.2 5.7 5.43
29 20 15 8 20 20
G Cb

0+30

9.4
9.5
8.8
9.0
8.8
8.2
8.64
4.7 4.6 5.3 5.1 5.3 5.7 5.46
29 21 15 8 20 20
G Cb

14.10
A

14.10
A

Reed St. Contd.

21

3100

10.6					
4.0	4.4	5.5	5.13	5.5	6.1
297	20	15		8	20
Wall				G	CB

2+56 R 9' Conc Dr. on Rt.

8.41	9.06
6.15	5.50
20	31
Dr.	SW

2150

10.6					
4.0	4.3	5.1	5.12	5.7	6.4
29	19	14		8	20
				G	CB

2+05 R 9' Conc Dr. on Rt.

8.25	9.01
6.31	5.55
20	31
Dr.	SW

T.P. 5.41 14.56 4.95 9.15

2+00

10.2					
3.9	3.9	5.0	4.2	5.9	5.88
20	20	15		20	20
Wall				G	CB

14.10
X

14.10
X

Reed St Contd.

22

4+05 £ 9' Conc Dr. on Rt.

	F.61		
5	95	5	22
20		31	
Dr.		SW.	

4+00

	10.2					
4	4	5	5	5	5	5
296	20	15		8	20	20
Wall					6	6

3+57 £ 9' Conc Dr. on Rt.

	F.49		
6	07	5	37
20		31	
Dr.		SW.	

3+50

	10.2					
4	4	5	5	5	5	5
29	20	15		8	20	20
					6	6

3+06 £ 9' Conc Dr. on Rt.

	F.46		
6	10	5	44
20		31	
Dr.		SW.	

14.56
X

14.56
X

Reed St. Contd

5+27

9.9	9.8	9.5	9.2	8.8	8.5	8
4.7	4.8	5.1	5.4	5.8	6.1	6.2
50	40	20		20	40	50

5+20

10.7	10.6	10.4	9.8	9.5	9.0	8.4	8.3	8.0
3.9	4.0	4.2	4.8	5.1	5.6	5.3	5.3	5.5
50	40	28	17		20	23	40	50

5+02.6 End Conc Block Wall 29.6 ft

5+00 End C&B SW on Rt.

11.1	10.8	10.0	9.8	9.0	8.54	8.0	7.73	7.8	7.2
3.5	3.8	4.6	4.1	5.5	5.3	4.8	4.9	5.4	5.4
29.6	18	13		20	20	31	36	40	50
Wall									

4+99.36 West Line Dawes

11.1	10.8	10.0	9.8	9.6	9.0	8.54
3.5	3.8	4.6	4.1	5.0	5.6	5.02
29.6	18	13		8	20	20
Wall					6	6

4+50

10.6	10.4	9.5	9.5	9.4	8.9	8.37
4.0	4.2	5.1	5.1	5.2	5.7	5.19
29	20	15		8	20	20
					6	6

14.56
↑

14.56
↑

6+04 £ 3' Conc Walk 39' RT

10.09
4.47 4.42
39 50

6+00

11.9	11.9	11.3	10.8	10.8	10.2	10.4	10.2	10.1
27	27	33	38	38	4.4	4.2	4.4	4.5
50	40	33	20	20	18	20	40	50

5+79.36 East Line Daves

11.7	11.6	11.1	10.6	10.5	10.0	10.3	10.2	10.0
29	30	35	40	41	4.6	4.3	4.4	4.5
50	40	37	18	20	20	21	40	50

5+70 power Pole # D29667T ~ 345' L

5+50

9.9	9.8	9.6	9.3	8.9	8.4	8.4
4.7	4.8	5.0	5.3	5.7	6.0	6.4
50	40	20	20	20	40	50

5+39.36 £ Daves

10.2	10.1	10.0	9.6	9.2	8.8	8.6
4.4	4.5	4.6	5.0	5.4	5.8	6.0
50	40	20	20	20	40	50

14.56
X

14.56
X

Reed St. Contd

25

7+00

12.2	12.1	11.5	11.4	10.8	10.8	10.5
2.4	2.5	3.1	3.2	3.8	3.8	4.1
50	40	20		17	40	50

6+92 & 2³ Conc Walk 40.2H

12.39	12.26
2.7	2.30
50	40.2

6+50

12.3	12.2	11.1	11.3	10.6	10.6	10.3
2.3	2.4	3.5	3.3	4.0	4.0	4.3
50	40	20		20	40	50

6+48 & 2' Conc Walk 40.1 Rt.

10.66	10.46
3.90	4.0
40.1	50

6+42 & 11' Conc Dr. 40.1H

12.30	12.14
2.26	2.42
50	40

14.56
/

14.56
/

8+74 $\frac{1}{2}$ 2' Conc Walk. 408 ft.

594
589
50 408
15.73
15.78

8+50

7.0 6.5 7.0 7.0 7.5 8.2 8.1 8.1
50 40 24 16 11 17 40 50
14.7 15.2 14.7 13.9 14.1 13.4 13.6 13.6

T.P. 9.25 $\frac{2167}{\lambda}$ 2.14 12.42

8+00

1.1 1.3 1.4 2.1 1.8 2.7 2.4 2.5
50 40 21 16 18 40 50
13.5 13.3 13.2 14.5 14.2 11.9 14.2 14.1

7+50

2.1 2.1 2.2 2.9 2.7 3.6 3.3 3.4
50 40 26 16 18 40 50
12.5 12.5 12.3 11.7 11.9 11.0 11.3 11.2

7+05 $\frac{1}{2}$ 2' Conc Walk. 39' RT.

10.65
39!
39 50
10.65

$\frac{14.56}{\lambda}$

$\frac{25.71}{\lambda}$

Reed St. Cont'd

27

10+11 $\$ 3.5$ Conc. Walk 399' Lt.

	19.79	
1.88	2.11	19.56
50	39.9	

10+00

	19.5						
2.2	19.3						
2.4		2.9	3.6	3.1	18.1	4.2	17.5
2.9		3.6	1.1			3.4	17.8
3.6						4.4	17.3
3.1							17.1
1.1							
50	40	21	17			15	18
							40
							50

9+50

	18.8						
2.9	18.7						
3.0		3.3	17.4			5.0	17.2
3.3		1.4				4.4	16.8
1.4						2.9	16.4
							14.7
50	40	29	17			15	22
							40
							50

9+38 $\$ 3$ Conc. Walk 398' Lt.

	18.56	
3.11	3.15	18.52
50	39.8	

9+00

	17.3						
4.4	17.4						
4.1		17.2				6.1	15.3
17.2		1.7				5.9	15.8
1.7						6.1	15.5
							15.4
50	40	29	20			16	22
							40
							50

2167

2167

Reed St. Contd.

11459.25 East Line Everts

20.5	20.1	19.9	20.4	19.1	19.2	18.8	18.2	18.7	18.0	17.9	17.5
1.2	1.6	1.8	1.3	2.6	2.5	2.9	3.5	3.0	3.7	3.8	4.0
80	50	40	27	15		9	16	29	40	50	80

28

11119.25 E Everts

20.6	20.1	19.6	19.5	18.8	18.8	18.2	17.7	17.5	17.0
1.1	2.1	2.3	2.9	2.9	3.5	4.0	4.3	4.7	4.7
80	50	40	18		20	40	50	80	

10179.25 W. Line Everts

20.6	20.1	19.8	19.2	18.6	18.6	18.2	17.7	17.6	17.3	17.1
1.1	1.6	1.9	2.5	3.1	3.1	3.5	4.0	4.1	4.4	4.6
75	50	40	22	16		10	15	40	50	80

10177 E 3' Conc Walk 398' Lt.

20.3	19.7	19.4	18.4	18.4
1.1	2.0	2.3	3.3	3.3
50	40	28	15	

10+50

20.3	19.7	19.4	18.4	18.4	18.2	17.7	18.0	17.5	17.2
1.1	2.0	2.3	3.3	3.3	3.5	4.0	3.7	4.2	4.5
50	40	28	15		9	15	18	40	50

10+17 E 3' Conc. Walk 337 Rt.

17.46	17.18
4.21	4.29
338	50

2167
↑

2167
↑

Reed St Contd.

29

12+82 £ 3' Conc Walk 417 Lt.

0.10 21.57
417

12+80 £ 3' Conc Walk 40.2' Rt.

1.27 20.20
40.2

12+50

0.8 20.9
50 40.22 15
0.9 20.8
1.1 20.6
1.1 20.0
1.1 20.0
2.2 19.5
2.2 18.4
2.1 19.4

12+27 £ 3' Conc. Walk 40.2' Lt.

0.10 20.73
50 40.2
1.0 20.67

12+00

1.3 20.4
50 40 25 15
1.3 20.4
1.3 20.5
2.3 19.5
2.1 19.6
2.9 18.8
2.3 18.9
3.0 18.7

21.67
X

21.67
X

Reed St. Cont'd

13178 & 2.5' Conc Walk 40' LI

22.70
22.65
50 X

13150

22.1
21.9
21.9
21.5
21.7
21.7
21.5
21.1
21.6
21.5
21.4

5.5 5.8 5.8 6.2 6.10 6.0 6.2 6.6 6.1 6.3 6.3

50 40 33 16 9 6 10 17 23 40 50

13132 & 2.5' Conc. Walk 40' RI

21.22
6.29
40

13126 & 2.5' Conc Walk 40' LI

21.62
6.09
40

13100

21.6
21.5
21.2
20.6
20.8
20.2
20.4
20.5
20.5

6.1 6.2 6.5 7.1 6.9 7.5 7.1 7.2 7.2

50 40 30 18 6 16 20 40 50

T.P. 6.72 $\frac{27.71}{26.71}$ 0.68 20.99
21.67

27.71
26.71

Reed St Confd

14+59 Reg 5' Conc SW 31' Lt

8¹⁰ 23.36
36 31

14+53 & 2.5' Conc Walk 41' Lt.

8²⁸ 23.90
50 21

14+50

8¹⁰ 23.9
8¹⁵ 22.7
8² 23.5
9³ 23.0
8⁹ 23.3
9⁴ 22.8
8⁹ 23.3
8⁹ 23.3
9¹ 23.1
50 40 21 16 16 23 40 50

14+43 & 2.5' Conc Walk 394 Rt.

T.B.M. 700 32.18 25.18
31+8 2.53 24.18

32.18
31.18
394 23.00
50 22.92

14+00

27.71
~~26.71~~

S.W. 7' 18T Reed & Gresham

4⁷ 22.8
4⁸ 22.9
5⁰ 22.7
5¹ 22.3
5¹ 22.5
5¹ 22.0
5¹ 22.4
5¹ 22.1
5¹ 22.0
50 40 38 16 16 22 40 50

27.71
~~26.71~~

Reed St. Cont'd.

15+46 £ 8' Conc Dr. 397' Lt.

69
50
25.44
25.28

15+33 End 5' Conc SW walk

729
36
SW
24.39
31
SW
24.30

15+00 £ 4' Conc Walk 43' Lt.

766	783	828	837	86	81K	82	818	81K	82	87	87
50	43	36	31	23	14		17	22	40	50	

Walk SW SW

14+93 £ 2' Conc Walk 396' Rt.

866
396
23.52
50

14+67 £ 9' Conc Drive 46' Rt.

908
46
23.10
23.07

32.18
31.18
1

32.18
31.18
1

Reed St. Cont'd

16+00

5 ¹²	5 ⁷	5 ⁸	6 ⁹	6 ⁷	7 ⁴	6 ⁵	6 ⁴	6 ⁴
26.9	26.5	26.4	25.3	25.5	24.8	26.2	25.8	25.6
50	40	21	18		16	25	40	50

15+91 & 10' Conc Dr. 40 Lt.

5 ¹⁸	5 ⁶
26.70	26.57
50	40

15+87 & 15' Conc Dr. 40 Rt.

6 ⁹²	6 ⁶¹
25.26	25.57
40	50

15+67 & 25' Conc Walk 39.8 Lt.

6 ¹²	6 ⁵⁴
25.76	25.64
50	39.8

15+50

6 ⁸⁸	7 ²	7 ²	7 ⁶	7 ⁴	8 ²	7 ⁹	8 ⁴	8 ¹²
25.4	25.0	25.0	24.6	24.8	24.2	24.3	23.8	23.9
50	40	27	16		16	21	40	50

32.18
31.18
—
✓

32.18
31.18
—
✓

Reed St. Contd

L=31.4 4 parts
S.W. Cb. Ret. Faniel & Reed BC on Reed

24.45
25.07
24.45
25.15
24.67
25.14
24.52
25.06
24.42
25.02

773 771 773 703 751 704 762 712 776 715

G Cb. G Cb. G Cb. G Cb. G Cb. G Cb. G Cb. G Cb.

BC
Reed

34

L=31.4 4 parts
N.W. Cb. Ret. Faniel & Reed BC on Reed

25.07
25.68
25.18
25.79
25.29
25.91
25.36
25.96
25.45
26.04

774 678 708 639 689 627 672 622 673 674

G Cb. G Cb. G Cb. G Cb. G Cb. G Cb. G Cb. G Cb.

BC
Reed

16+79.22 W Cb. Line Faniel

24.47
25.82
26.04
25.45
25.45
25.44
25.39
25.15
24.70
24.42
25.02
23.76
24.44

521 636 616 673 673 672 679 703 728 776 716 842 774

80 80 40 40 20 10 10 20 40 40 80 80

Cb G Cb G Cb G Cb G Cb G Cb G Cb

16+59.22 Beg Conc. Pav. W line Faniel

26.4
26.18
26.01
25.68
25.07
25.12
25.01
24.83
24.45
25.07
25.25
25.28
25.6

58 60 67 650 711 706 717 735 773 71 683 690 610

40 36 31 20 20 10 10 20 20 31 36 40

SW SW Cb G G Cb SW SW

16+35

27.2
26.2
25.4
25.5
25.0
26.1
25.1
26.1

50 60 61 67 712 61 61 61 61

40 21 20 18 24 40 50

32.18
31.18
1

32.18
31.18
1

Reed. St. Contd.

L = 31.4 3 parts
 NE Cb Ret Fanuel & Reed BC on Fanuel

5 ²⁷	5 ¹⁶	5 ⁸⁸	5 ²⁷	5 ²²	5 ³¹	5 ²⁰	5 ²⁸	5 ⁶⁰	5 ¹⁰
G	Cb	G	Cb	G	Cb	G	Cb	G	Cb
BC		0		0		0		0	0

L = 31.4 4 parts
 SE Cb Ret Fanuel & Reed BC on Fanuel

6 ⁷⁵	6 ¹³	6 ⁶⁵	6 ¹⁰	6 ²⁵	5 ⁹⁴	6 ⁴⁰	5 ⁷⁹	6 ²⁸	5 ⁷⁰
G	Cb	G	Cb	G	Cb	G	Cb	G	Cb
BC		0		0		0		0	0

End Conc. Pav.
 17+39.22 East Line Fanuel

4 ⁸	4 ²⁴	5 ⁰⁶	5 ¹⁰	5 ¹⁰	5 ⁶⁵	5 ⁷⁹	5 ⁷⁹	6 ²⁸	5 ⁷⁰	5 ²²	5 ⁷
40	36	31	20	20	10	10	10	20	20	31	36
	SW	SW	Cb	G				G	Cb	SW	SW

17+19.22 East Cb. Line Fanuel

4 ⁶⁹	5 ³¹	5 ¹⁶	5 ⁷⁷	6 ⁰⁷	6 ¹⁹	6 ²⁹	6 ⁴¹	6 ⁸¹	6 ⁷⁵	6 ¹³	7 ⁴⁵	7 ²⁷
80	80	40	40	20	10	10	10	20	20	40	40	80
Cb	G	Cb	G							G	Cb	G

16+99.22 E Fanuel

5 ⁶³	5 ⁸⁶	6 ¹⁰	6 ³⁰	6 ⁵⁸	6 ⁸⁴	7 ⁵⁰
80	40	20	20	40	80	

32.18
 31.18
 ^

32.18
 31.18
 ^

Reed St. Contd.

18+41 2.5 Conc Walk 36.3' Lt

29.36
7.23 7.66
53 36.3

TP 889 $\frac{36.58}{\text{A}}$ 4.49 27.69 26.69

36.58
 $\frac{27.69}{\text{A}}$

18+02 7' Conc Dr 36.5 Rt

28.77
36.5 50
28.80

18+00

28.8
34 35 39 45 48 28.0
50 40 28 19 9
27.7
27.4
27.6
28.7
28.8

17+89 7' Conc Dr 316' Lt

28.90
328 365
50 316

17+60

28.2
40 41 45 51 51 26.6
50 40 28 20 15 22 40 50
27.1
27.7
27.1
27.5
27.4
27.5

32.18
 $\frac{21.18}{\text{A}}$

32.18
 $\frac{21.18}{\text{A}}$

Reed 1st. Contd.

18194 & 8' Conc. Dr. 36.5' Lt.

6¹⁴ 30.15
6¹⁹ 30.09
45 36.5

18173 & 8' Conc. Drive 36.0' Lt.

6²³ 29.85
6²⁹ 29.69
46 36

18171 & 2.5' Conc. Walk 39.5 Rt.

7²² 28.84
7²⁵ 28.73
39.5 50

18150

7 ⁰	7 ⁵	8 ⁰	8 ⁴	8 ⁰	8 ¹⁰	8 ¹⁵	8 ²⁰	8 ²⁵	8 ³⁰
50	40	22	18	10	28.6	28.1	28.4	28.4	28.4

18146 & 8' Conc. Dr. 38.7' Rt.

8⁰ 28.50
8² 28.37
38.7 50

36.58
35.58

36.58
35.58

Reed St. Contd.

19+48 £7' Conc Dr. 353' Lt. (2 Ribbon)

5⁵⁶ 31.02
50 30.75

19+31 £10' Conc Dr 402' Rt

6⁵³ 49.45
40.2 50

19+29 £7' Conc Dr. 357 Lt. (2 Ribbon)

6¹⁴ 30.54
52 30.29

19+10 £2.5 Conc Walk 358 Lt

6²⁷ 30.31
40 30.22

19+00

6³⁰ 30.3
50 40 36 19 11 7² 29.4
6⁴ 30.2
6¹ 29.9
7³ 29.3
7⁵ 29.5
7⁷ 28.9
7⁵ 29.1
7² 29.4
7¹ 29.5
15 24 40 50

36.58
35.58
✓

36.58
35.58
✓

Reed St. Cont'd

20+45 & 8' Conc Dr. 40.1' Rt

31.17
54
40.1
56
50

20+34 & 3' Conc Walk 36' Rt.

31.15
54
36
56
50

20+00

31.8	31.8	31.1	31.0	31.1	30.9	30.4	30.6	30.4	30.1
58	58	55	56	57	57	62	60	62	64
50	40	26	18	6	13	21	40	50	50

19+97 & 8' Conc Dr. 36' Rt.

30.45
36
50
30.11

19+50

31.0	30.9	30.7	30.2	30.5	30.3	29.8	30.0	29.8	29.7
56	57	59	66	66	63	68	66	68	69
50	40	26	18	10	13	23	40	50	50

36.58
~~35.58~~

36.59
~~35.58~~

21+33 & 2' Conc Walk 40.0 Lt.

33.23
33.23
50 40

21+18 & 3rd Conc Walk 39.9 Lt.

33.20
33.20
39 39.9

21+00 & 2nd Conc Walk 40 Lt.

33.06
32.95
32.6
32.0
32.1
31.8
31.3
31.7
31.4
31.2
52 30 40 46 47 48 51 51 51 51 51
50 40 26 17 17 18 15 19 40 50
Walk Walk

20+58 & 3' Conc Walk 40.1 Rt.

31.27
31.03
53 55
401 50

20+50

32.4
32.2
32.4
31.7
31.6
30.9
31.1
31.1
31.0
42 44 47 49 50 52 55 55 56
50 40 21 18 15 23 40 50

36.58
~~35.58~~
↑

36.58
↑

Reed St. Contd.

22+39.00 W. Line Gresham

22+20

22+00

21+67 @ 3.5' conc walk 399' Lt.

21+50 @ 9.5' Conc Dr. 40.4 Lt.

36.58
~~35.58~~
 1

33.5
 33.4
 32.8
 32.3
 32.6
 32.5

31 32 38 41 40 41 46 42 44 46

50 40 20 16 9 17 18 40 50

41

33.5
 33.7
 33.1
 32.5
 32.8
 32.7

31 32 35 41 38 39

50 40 20 16 8 16 17 40 50

33.6
 33.5
 33.4
 32.8
 32.7

30 31 34 38 37

50 40 22 17 9 15 19 40 50

33.68
 290
 50 399

33.46
 33.36
 32.9
 32.5
 32.7
 32.6
 32.4
 31.9
 32.4
 32.4
 32.5

312 322 37 41 37 42 42 47 42 43 43 44

50 40.4 27 19 19 5 15 18 40 50

Drive

36.58
~~35.58~~
 1

Reed St. Cont'd.

(-0.14)

B.17.

11.46

21.05
~~20.05~~ 21.19

NWBP Pac. Beach Dr & Gresham

TP. 0.90

32.51
~~31.21~~

4.97

31.61
~~30.61~~

511.7 Mon Gresham & Reed

22+79 & Gresham

4.326	4.32.4	4.32.0	4.31.6	4.31.0	4.30.5	4.30.4
50	40	20	20	40	61	61.2

22+75 End Conc Slab

4.31.59	4.31.60
3	3

22+69 Beg Conc Slab for sewer mill. (6' 39.1)

4.31.59	4.31.63
3	3

22+66

4.32.0	4.31.8	4.31.9	4.31.8	4.31.0	4.30.2	4.29.8
50	40	17	18	19	40	61.8

22+63

4.33.6	4.33.7	4.32.9	4.32.1	4.31.9	4.31.6	4.32.0	4.31.3	4.31.2
30	27	32	41	42	50	46	51.2	51.4
50	40	27	17	18	20	40	50	50

36.58
~~35.58~~

36.58
~~35.58~~

Reed St. Cont.

23+45 16" Euc. Tree 21' Rt. X

23+37 4' Conc. Walk 40' Lt

23+24 6" Pepper Tree 27' Rt. X

23+19 East Line Gresham

23+09 Power Pole #4249 37' Lt

23+05 10" Pepper Tree 26' Rt.

23+00

22+98

BM 9.04 40.65
1

3161

SW 7' Mon Gresham & Reed

Sunday - 12-14-48

33.35	32.99								
73.2	76.6								
50	40								
33.4	33.2	32.5	32.1	31.6	31.3	31.9	31.9	31.5	
73	75	77	86	91	94	88	88	92	
56	40	20		8	10	14	40	70	
33.0	32.7	32.5	31.9	31.6	30.6	31.7	31.3	30.9	
77	80	82	80	91	101	90	94	98	
60	40	20		13	16	20	40	70	
32.8	32.5	32.2	31.6	31.3	30.7	30.4	29.7		
79	82	85	91	94	100	100	110		
60	40	20		12	19	40	70		
			40.65						

Reed St. Contd.

24+50

68	70	71	72	73	76	77	78	79	80	81	82	83	84	85	86	87	88	89	90
50	40	30	15		8	16	19	30	33	40	50								
\$33.9	\$33.7	\$33.1	\$33.0	\$32.9	\$33.1	\$32.8	\$33.6	\$33.6	\$32.3	\$34	\$31.1								

44

24+29 & 8' Comp. Dr. 40' Lt.

6.75	7.2
50	40
\$33.90	\$33.44

24+100

76	77	81	82	83	84	85	86	87	88	89	90
50	40	20			10	14	19	27	38	40	70
\$33.1	\$33.0	\$32.6	\$32.5	\$32.6	\$32.4	\$32.6	\$33.1	\$32.5	\$31.7	\$30.7	

23+84 & 8' Comp. Drive 40' Lt.

7.23	7.3
50	40
\$33.42	\$33.22

23+50

74	76	81	84	85	86	87	88	89	90	91	92	93	94	95	96	97	98	99	100
50	40	37	20		10	13	16	38	40	50									
\$33.3	\$33.1	\$32.6	\$32.3	\$32.1	\$32.1	\$31.8	\$32.5	\$32.2	\$31.3	\$31.2									

40.65

40.65

Reed St. Contd.

26+00

37.7
37.3
36.7
36.7
36.3
35.1
35.1
36.7
35.7
45
35.9
35.7

25+50

36.1
35.8
35.1
34.8
34.8
34.5
34.0
34.5
33.3
34.2
34.0
33.6

25+29 & 2' Conc Walk 397' Lt.

35.58
507
50
39.7

25+03 & 7' Conc Drive 40 RT.

33.08
7.51
40
8.14
50

25+00

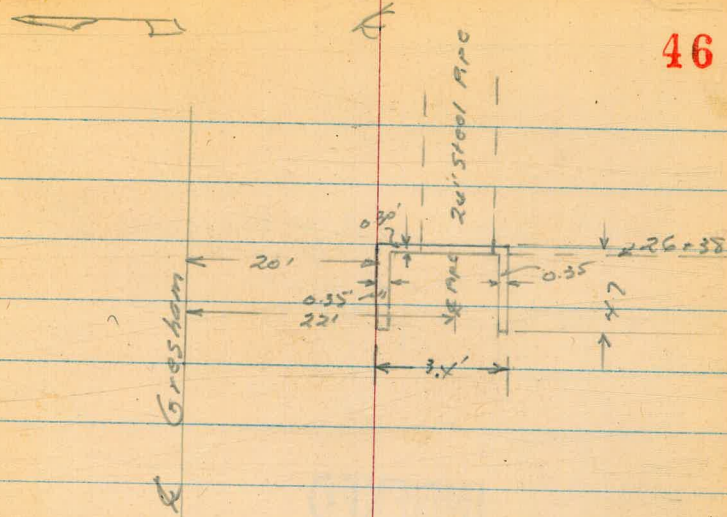
34.0
34.0
33.4
33.7
33.5
33.9
32.8
32.5

40.65

40.65

Reed St. Cont'd.

46



BM

9.04 31.61

2x7' Man Gresham & Reed

(Detail Above)

26138

Outlet 24" Steel Pipe

RT

40.6	40.51	39.3	39.0	38.6	38.4	38.4	38.2	38.55	35.99	37.5	37.7	37.7
0 ³ / ₄	0 ¹ / ₄	1 ⁴ / ₄	1 ⁷ / ₄	2 ¹ / ₄	2 ¹ / ₄	2 ² / ₄	2 ⁵ / ₄	2 ¹⁰ / ₄	4 ⁶ / ₄	3 ³ / ₄	3 ³ / ₄	3 ³ / ₄
80	40	40	29	11	13	20	22	23	30	40	50	
			Wall Gr					HW FL				
												24" Pipe

26119

Begin 10" Concr. Brick Ret Wall 40' N

40.6	40.57	38.6
0 ⁴ / ₄	0 ⁸ / ₄	2 ¹ / ₄
80	40	40
Ground Wall Gr		

40.65

40.65

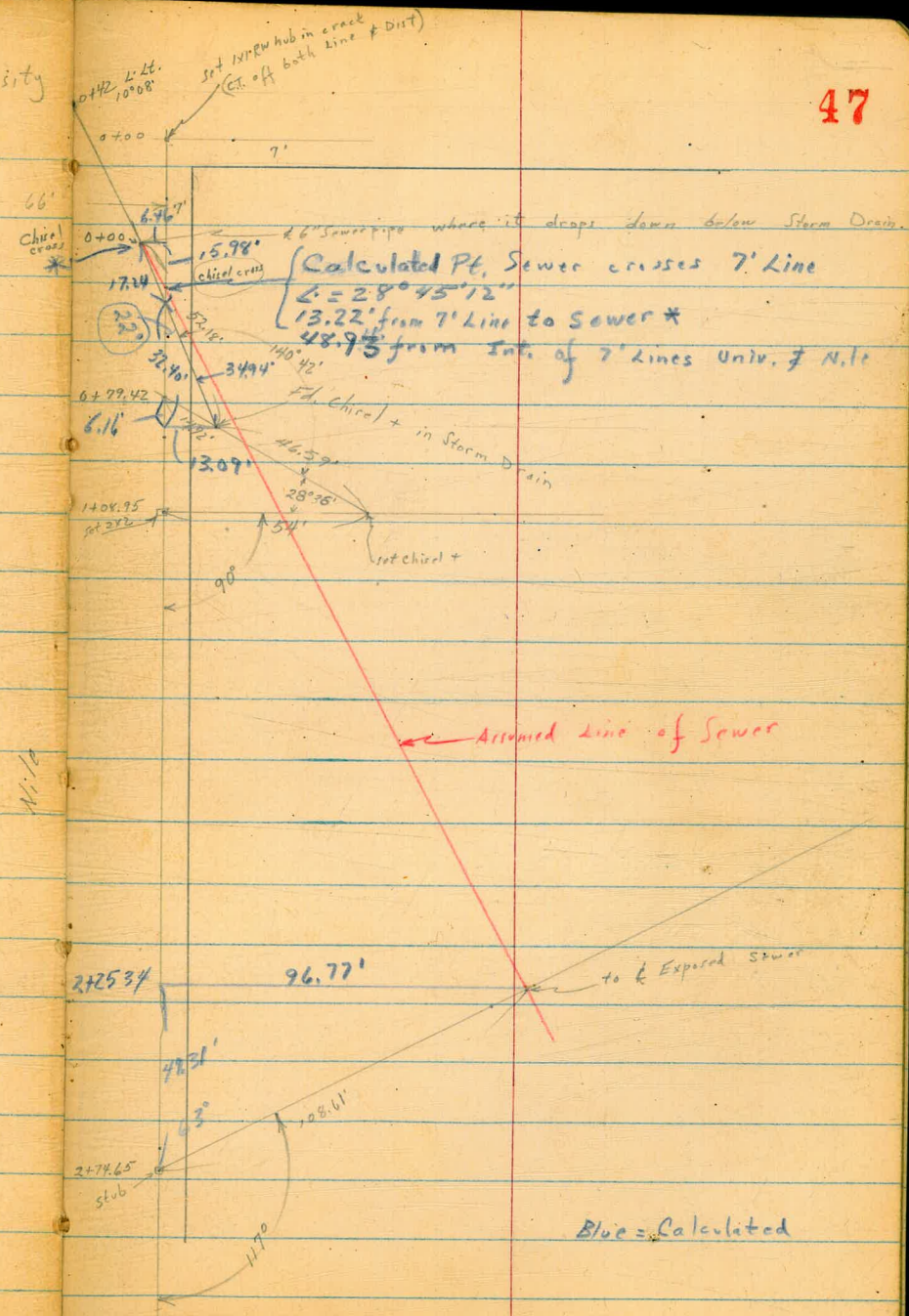
Roberts
Garber
Moore
Clark
1-13-50
W.D. 20398

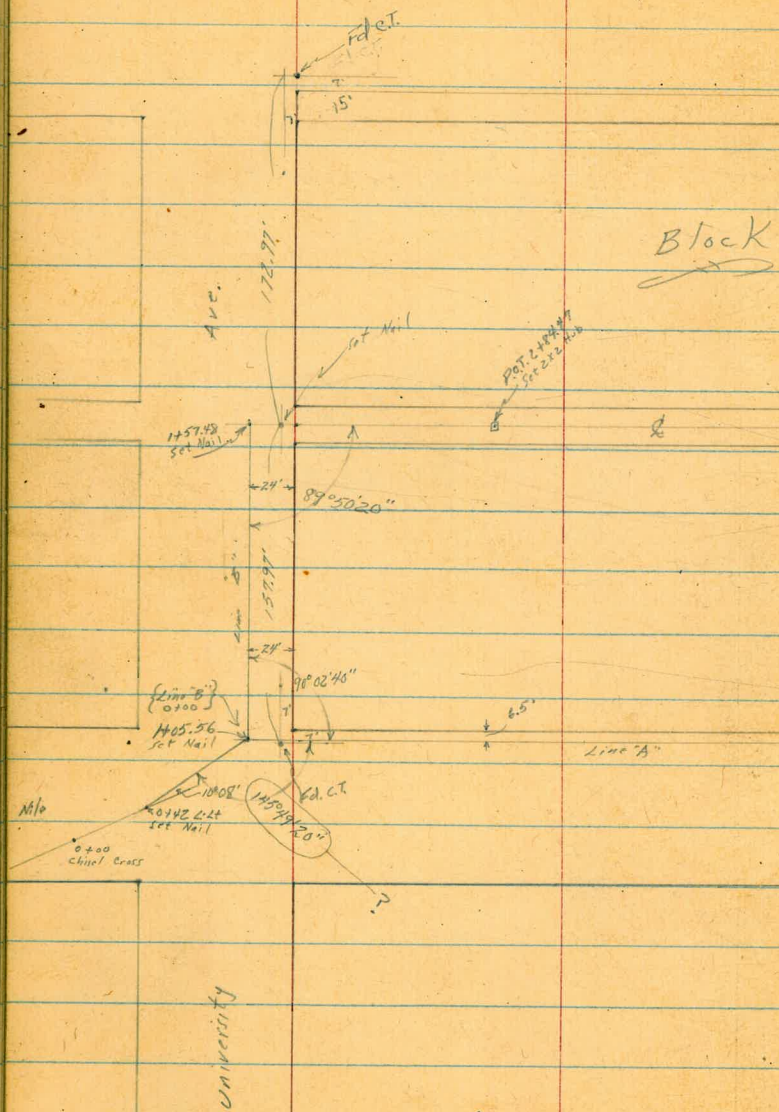
Survey for Sewers Block 195 City Hts.

T.P. 23
TP 3558

University
Fact.

INDEXED
Y.T.K.
JAN 18 1950





Block

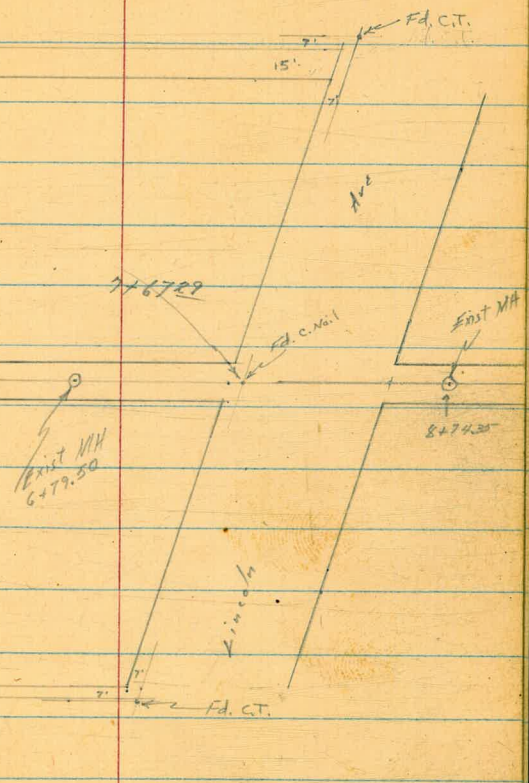
Alley

195

Line 'A'

30 1/2

St



Discontinuity

Cont'd From Page 48
Line "A"

Lt.

\$

Rt

49

0+51

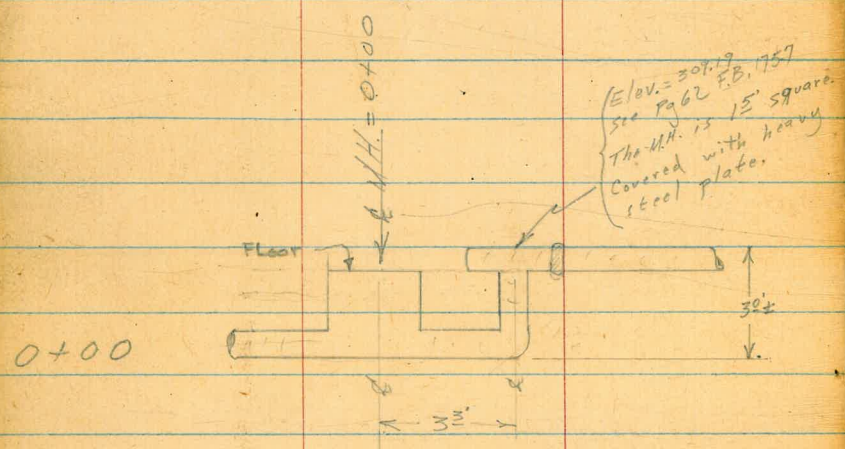
321.27
6.53

0+42 Lt 10°08'

321.41
6.49

0+0⁴

321.32 320.81
6.58 7.09
66 60ft



321.30
6.60
Walk

BM 5.75 327.90

322.15 S.W.B.P. Nile University

327.90

Cont'd From Page 49

Lt

L

Rt

50

1450.2 3⁴/₄ ft. Center 6" Palm

1450

322.68

5.22

Walk is solid from Curb to Stl. Walk

1428.9

Approx. Line Sewer Lat.

1421.1

Approx. Line of Tele. Cond.

1417.8

6.7 ft. center Light

1415.8

321.88

322.45

5.92

5.45

Gut

cb

1405.56

L

322.56

5.34

0+85

322.75

5.15

327.90

327.90

Cont'd From Page 50

Lt

Rt

Rt

51

3751 42' Rt. Center 10" Acacia

3750

325.60
2.30

3731.5 38' Rt. Center 10" Acacia

3711.5 31' Rt. Center 8" Acacia

3700

324.67
3.23

2780 53' Rt. Center P. Pole # 3932

2750

324.12
3.78

2702.5 End. Solid Walk Cb. to Std. Walk

2700

323.14
4.76

327.90
↑

327.90
↑

Cont'd From Page 51

Lt

Q

Rt

52

5704

6² Rt Center P. Pole # 3960

5700

329.68
5.10

4775

328.51
6.27

4754²

End Solid Conc. Walk Curb to Std. Wlk.

4750

327.75
7.03

T.P.

8.60

334.78

1.72

326.18 *

334.78

4711⁸

3³

Rt Center 10" Acacia

4700

326.61
1.29

3780⁴

Begin Solid Walk Curb to Std. Walk

3776.5

40' Rt Center 10" Acacia

327.90

327.90

Cont'd. From Page 52

£

53

T.P. 751 341.79 0.50 334.28

341.79

6+00

334.28
0.50

5+75

333.24
1.54

5+74² 3.8' Rt. Center 8" Acacia

5+59⁵ 38' Rt. Center 8" Acacia

5+50

332.07
2.71

5+25

330.93
3.85

334.78

334.78

Cont'd From Page 53

54

check 7.98 322.18 = 322.15

T.P. 1.16 330.16 12.79 329.00

T.B.M. EC. on W. Alley Ret. N. Side Lincoln ^{4.57} 331.22

6+78.7 S. Curb. Line Lincoln Ave.

337.03 336.58

476 521
cb Gutt.

6+65.4

337.21

4.58

6+65 54' Rt. Corner P. Pole #3998

6+50

336.40

5.39

6+25

335.34

6.45

341.79

341.79

Cont'd From Page 54
Line "B"

Lt.

Rt.

Rt.

55

3+00

+84.47 P.O.T. 2x2

+50

9.57 341.74 0.23 332.17

+08

Fol. what appears to be old abandoned M.H.

2+00

+80.5

+67.5

+57.48

Gutter

L.Rt.

1+00

+50

0+00

10.25 332.40

322.15 B.P. 3.W.
Univ. of
Nile

336.8

4.9

336.59

5.15

334.6

7.1

341.74

329.9

2.5

327.15

5.25

326.64

5.76

327.05

5.35

325.39

7.01

333.82

8.58

322.56

9.84

332.40

Cont'd From Page 55

+69

+40

+33

TP 10.55 340.56 11.73 330.01

6+00

+50

5+00

+50

T.B.M.

9.56 332.18

4+00

+70

+50

3+37

341.74

Lt

Rt

Rt

56

326.0

14.6

327.6

15.0

329.4

11.2

340.56

329.8

11.9

331.5

10.2

333.1

8.6

334.4

7.3

335.1

6.6

Top Clean-	Top Elev.	Top Elev.
330.29	326.34	335.36
11.45	15.40	6.58
32	50	16

336.3

5.4

Comp. Floor	Top Clean	Top C.I. Elev.	325.69
337.01	328.36	324.94	
13.73	13.38	16.80	16.05
72	82	128	Floor Elev

341.74

Cont'd From Page 56

Lt

¢

Rt

57

T.B.M.
336 337.20 337.22

8+74.35 Inv. M.H.
Rim

332.09
8.67
336.14
4.42

+13.4

+28 Gutter

336.70
3.86
336.45
4.11

8+00

+74.29
P
+67.29 Gutter

336.60
3.96

335.57
4.99
335.13
4.83

+44

+20.5 P.O.T. 2x2

337.2
3.4

7+12

339.72
2.84
336.9
3.7

+79.5 M.H. Rim

323.06
17.50

6+74 Bottom of Wash
340.56

321.5
19.1
340.56

Cont'd From Page 57
Levels on Houses for
future Sewer Connections.

Stations of Houses are approx.
and off line "A".

T.P. 5.13 334.86 2.38 329.73

4+38

325.99	326.99	328.73	327.1	328.78	327.0	328.71	327.2
6.12	5.12	3.33	5.0	3.33	5.1	3.40	4.9
Floor Basement #3946 1/2	Grd.	Floor Grd.	Floor Grd.	Floor Grd.	Floor Grd.	Floor Grd.	Floor Grd.
		#3948		#3952 1/2		#3952	

T.P. 4.73 332.11 4.71 327.38

332.11

3+95

326.33	326.8	328.30 1/2	328.49	327.2	328.79	326.7
5.76	5.3	3.8	4.9	3.60	4.7	3.20
Floor Basement #3946 1/2	Floor Grd.	Floor Grd.	Floor Grd.	Floor Grd.	Floor Grd.	Floor Grd.
		#3948		#3952 1/2		#3942

3+20 & #3930 House

325.8 325.5
6.3 6.6
Floor
Basement Grd.

3+70 & House No. 3940 Has Basement. Add for Sewer Pipe under Floor!

320.7 226.7
11.4 5.4
Floor
Basement Grd.

5.91 332.09

326.18 TP 4 see pg. 52

332.09

58

INDEXED
Law
JUN 11 1952

Cont'd From Page 58

59

T.P. 11.43 341.13 5.16 329.70 |

5780

330.16 327.9
4.70 7.0
Floor Grd.
#3970

5770

334.46 329.0
0.40 5.9
Floor Grd.
in Rear
#3968

5737

332.11 328.4
2.75 6.5
Floor Grd.
in Rear
#3966

5729

330.22 327.2
4.64 7.7
Floor Grd.
#3964

4796

326.71 329.6
8.15 5.3
Floor Basement Grd.
#3956 Comp. work
all over
Each yard

334.86

334.86

Cont'd From Page 59

60

check

3.90

357.23

= 337.22 TBH Ser pg. 54

6711

335.63
5.50
Flax
#3976

332.1
9.0
Grd.
in
Rear

341.13

341.13

Levels

Alley Bk. 245 Mission Beach

0+30 - 9⁸Rt. = start sing. Car, Conc. floor.

0+28 - 9⁷Lt. = start Carb. & house, Conc. stucco

0+26 9' Lt. = (W)

0+10

Reduced Mar. 7, 1950
J.M. Firebaugh

0+00 = Ely. line Strand Way

0-10 = ± Stand Way

T.P. 4.96 7.97 6.60 3.01

B.P. Seawall+

YORK Ct. 253 9.61 — 7.08

±

62

2 ⁵	2 ⁶	2 ⁴	2 ³	2 ³²
$\frac{5.2}{72}$	$\frac{5.4}{8}$	5.6	$\frac{5.7}{8}$	$\frac{5.65}{98}$
at house				Floor + End.

3 ⁴	2 ⁹	3 ²
$\frac{4.6}{8}$	5.1	$\frac{4.8}{8}$

3.11	3.00	2.76	2.98	3.13
$\frac{4.86}{58}$	$\frac{4.97}{8}$	5.21	$\frac{4.99}{8}$	$\frac{4.84}{58}$

2.97	2.79	2.79	2.81	2.92
$\frac{5.00}{58}$	$\frac{5.18}{8}$	5.18	$\frac{5.16}{8}$	$\frac{5.05}{58}$

7.97

7' Lt. = (W)

0+52 - 10' Lt. = \pm 2' conc. walk.
$$\begin{array}{r} 1.47 \\ 6.50 \\ \hline 102 \end{array}$$

0+51 - 9° Rt. = Start Garage floor.

$$\begin{array}{r} 1.81 \\ 6.16 \\ \hline 90 \end{array}$$
9° Rt. = start Comb. Gar. + house @
Do not consider for grade.

0+50 8' Lt. = start rough conc. Apron.

$\frac{1}{2}$	$\frac{1}{2}$	$\frac{1}{3}$	$\frac{1}{2}$
$\frac{6.3}{30}$	$\frac{6.5}{8}$	6.7	$\frac{6.5}{8}$

0+47 - 9° Lt. = End Comb. Gar. + house

0+46 - 10° Lt. = End Gar. floor.

0+43 - 9' Rt. = (W)

$$\begin{array}{r} 2.35 \\ 5.62 \\ \hline 103 \\ \text{Floor.} \end{array}$$

0+39 - 9° Rt. = End Single Gar.

$$\begin{array}{r} 33 \\ 2' \\ 5.64 \\ \hline 98 \\ \text{Floor} \end{array}$$

0+38 - 10° Lt. = start Gar floor. Conc.

$$\begin{array}{r} 2.35 \\ 5.62 \\ \hline 103 \\ \text{Floor.} \end{array}$$

7.97

Alley BIK245
Mission Beach

0+97 9³ Rt. = End Conc. Apron. to Sing. Bar.

0+87 9³ Rt. = start Conc. Apron to Sing Bar.

0+82 7⁰ Rt. = (W)

0+75

0+73 9' Rt. = (W)

13^E Lt. = end Bar.

10^E Lt. = end Conc. Apron

0+72 9' Rt. = End Comb. house + Bar.

8¹ Rt = end rough Apron. Not to be met.
0+59 - 7' Rt. = end Bar. floor.

13^E Lt. = start double Bar. conc. floor.

0+55 - 10¹ Lt. = Start Conc. Apron

0.75
 $\frac{7.22}{93}$
Apron

0.88 **64**
 $\frac{7.09}{104}$
Floor

0.72
 $\frac{7.25}{93}$
Apron

0.89
 $\frac{7.08}{104}$
Floor

1.4	1.0	0.1	0.9	1.1
$\frac{6.6}{30}$	$\frac{7.0}{8}$	7.3	$\frac{7.1}{8}$	$\frac{6.9}{25}$

1.60	1.23
$\frac{6.37}{13E}$ Bar.	$\frac{6.74}{10E}$ Apron

1.77
 $\frac{6.20}{9}$
Floor

1.60	1.41
$\frac{6.37}{13E}$ Floor	$\frac{6.56}{10E}$ Apron

7.97

1+37 } 9^2 Rt. = End Gar. start house.
 } 8^2 Rt. = End apron.

9^2 Rt. = start Comb house + Gar. (Frame)
 1+28 = 8^2 Rt. = start Conc. Apron

1+26 9^1 Rt. = (W)

1+22 - 8^2 Lt. = End Gar. Conc. Floor

1+21 - 9^2 Rt. = End Comb. Frame house + Gar.
 also = start Gar. Conc. Floor

1+13 8^2 Lt. = End Conc. slab.

9^0 Rt.
 1+12 = End Gar. start house

Dirt floor

1+07 9^1 Rt. = \neq Sing Gar. opening.

1+06 - 9^1 Lt. = (W)

House

1+03 9^1 Rt. = start frame Gar. +

1+01 9^1 Rt. = (W)

8^2 Lt. = Start Conc. slab + walk

1+00 7^2 Rt. = pole # P.A. 748

-0.44
 $\frac{8.41}{8^2}$
 Apron

65
 -0.29
 $\frac{8.26}{9^2}$
 Gar. floor

-0.34
 $\frac{8.31}{8^2}$
 Apron

-0.25
 $\frac{8.22}{9^2}$
 Floor

0.10
 $\frac{7.87}{8^2}$

0.10
 $\frac{7.87}{8^2}$
 slabs + Floor.

0.2
 $\frac{7.8}{9}$
 dirt

0.57 0.46 0.3 0.3 0.4 0.9

$\frac{7.40}{20}$ $\frac{7.51}{85}$ $\frac{7.7}{8}$ 7.7 $\frac{7.6}{8}$ $\frac{7.1}{30}$
 Conc. slab

7.97

Also = start lath fence.

8¹ Lt = end sing. Gar.2+35 7¹ Lt = end apron.

-1.27	-0.9	-1.33
<u>5.50</u>	<u>5.1</u>	<u>5.56</u>
8 ¹	8	7 ¹
Floor,	Ord	Apron

Also = start Sing. Gar. Conc. floor.

2+32 8² Rt = end picket fence.

-0.7	-0.75
<u>4.9</u>	<u>4.98</u>
8	8 ²
Ord	Floor,

Gar. Now used as store house

2+25 { 8¹ Lt = start Sing. Gar. Conc. floors
7¹ Lt = start Conc. Apron.

-1.27	-0.9	-1.32
<u>5.50</u>	<u>5.1</u>	<u>5.55</u>
8 ¹	8 ²	7 ¹
Floor	Ord	Apron

2+23 7² Rt = poleth P.A. 772

-0.5	-1.3	-1.1	-0.7	-0.7	-0.7	-1.0	-0.04
<u>4.7</u>	<u>5.5</u>	<u>5.3</u>	<u>4.9</u>	<u>4.9</u>	<u>4.9</u>	<u>5.2</u>	<u>4.27</u>
8	50	30	8	8	8	40	8
Zarribar							York Ct.
Cti en walk							on walk

2+00 8¹ Lt = end post + wire fence.8² Lt = start post + wire fence1+75 8² Rt = start picket fence

1+50

Rt.

1+47 7² Lt = end. Frame house.

1+45

7¹ Lt = (W)

-0.9	-0.4	-0.4	-0.5	-0.5	-0.2
<u>4.2</u>	<u>4.6</u>	<u>4.6</u>	<u>4.7</u>	<u>4.7</u>	<u>4.4</u>
50	30	8	8	8	30

4.31 4.23 8.05 - 0.08
7.97

4.23


2+77 - 8² Rt. = end picket fence.

2+76¹ 8² Lt. = start double Gar. Conc. floor.

2+76 - 8² Lt. = End brick wall

2+72 8¹ Lt. = 2⁵ walk thru brick wall

Also = end lath fence
2+50 7² Lt. = start brick wall 3' high

8² Rt. = 2' wide Conc. walk.
2+48 7' Rt. = 

8² Rt. also = start picket fence.
2+44 = end Gar. Bldg. 8² Rt.

2+40 8² Rt. = End Gar. door.

-0.47 -0.4¹ -0.5⁶ -0.3¹ -0.6⁶

4.70	4.6	4.8	4.9	4.8
<u>82</u>	<u>8</u>		<u>8</u>	<u>40</u>
Gar. floor				

-1⁶ -0.5⁵

5.8	4.7
<u>82</u>	<u>82</u>
Base of wall	End

-0.39

4.62
<u>82</u>

-1¹ -1⁶ -0.6⁶ -0.7¹ -0.9² -0.7²

5.3	5.8	4.8	4.9	5.1	4.9
<u>40</u>	<u>72</u>	<u>72</u>		<u>8</u>	<u>30</u>
	Base of wall	End			

-0.91

5.14
<u>82</u>
walk

-0.75

4.98
<u>82</u>
Floor.

4.23

also start alley el. + pave.
3+13⁴ 8¹ Lt. = End brick wall

also = start alley el. + pavement
3+13³ 8¹ Rt. = end conc. block wall

3+13 7' Rt. = (W)

3+12 7' Rt. = (W)

T.P. 5.25 4.67 4.81 -0.58

3+00

also = start 5' high brick wall
2+93 8² Lt. = End Car. Bldg.

8² Lt. = end opening to Car.
2+89 8² Rt. = start 4' high conc. block wall
8² Rt. = end stucco house

2+80 8² Rt. = start stucco house.

2+78⁵ 8³ Rt. = 3' wide conc. walk

-0.50
5.17
8¹
Curb
end

-0.09
5.6
8¹
Base
wall

-0.60
5.27
8
End +
pave.

-0.41
5.1
8
pave
+ End.

-0.43
5.10
8¹
Base
of wall

-0.8
5.5
8¹
Curb
end

-0.38
5.05
8¹
Curb
end

4.67

-0.5
4.7
8

-0.6
4.8

-0.3
4.5
8

-1.2
5.4
8²
Base
wall

-0.06
4.8
8
End

-0.44
4.67
8²
Floor

-0.5
4.7
8
End

-0.9
5.1
8²
Base of
wall

-0.47
4.70
8²

4.23

orig B.M. P. 62
sea wall +
York St.

1.04 7.09

7.08

T.P. 5.91 8.13 2.45 2.22

3
⑤+23[±] = section Along Curb line
= curb line Mission Blvd

3
⑤+16[±] = Fd. L+T. on ± Alley

3+13[±] = start Pass. on ± Alley

-0.62	-1.04	-0.48	-0.87	-0.89	-0.91	-0.45	-0.81	-0.36
5.29	5.71	5.15	5.54	5.56	5.58	5.12	5.48	5.03
50	50	ctr	8	8	8	ctr. 2'	50	50
cc	G	2' Rad	cc	G	G	Rad	G	cc
		Ret.				Ret.		
		cc				cc		

-0.46

5.13
Pass
Crd.

4.67

1-27-51 Additional Level Notes
 Hendricks 6th. & Univ.
 Shepard See Attached Sketch
 Sisson
 Bruner
 NO. #20573

0+01³ Break in Conc. Ramp on Rt

0+00 East Line 6th St.

0-00.5 East Edge SW 6th St.

0-06.5 East Ch Line 6th St.

0-08.9 wly Edge Grate

0-25 ϕ 6th St.

28410
 (283.87)

INDEXED
 NOV 20 1951

Baseline
 South Line
 Univ. Ave

70

284²⁰ 284¹⁹
 30.6 48.1

283¹²
 283¹⁰ 283¹³ 283⁵⁰ 283⁵⁷ 283⁶⁵ 283⁶⁹ 283⁷⁴ 283⁸⁴
 38 25 19 14 12 8.5 3 4 28
 Grate Ch. SW
 Grate
 & Pav.

283⁷¹ 283⁷⁶ 283⁸² 283⁸⁵
 4 30.6 48.1

283⁴⁰ 283²⁶ 283³³ 283⁶¹ 283⁰⁷ 283¹⁵ 283²¹ 283¹² 283²⁸
 38 25 12 48 30.6 30.6 50.8
 G. Ch G Ch

283⁵⁷ 283⁰⁷
 4.8

283⁶⁶ 283⁵⁷ 283⁵⁷ 283⁵¹ 283³⁶ 283⁵³ 283⁵⁸
 38 25 12 11 39 50

NW BP 6th & Univ. used to agree
 Record (with 12.3)

0+75

Base line
 $\frac{2}{1/2}$ 283⁷⁸ 283⁸⁸ 283⁰² 283⁷¹ 283²⁴
 38 12 12 65 3
 Gutter Dr. Gb 3
 284⁰⁰ 284⁵⁹
 15

0+50

$\frac{3}{1/2}$ 283²⁸ 283⁵⁰ 283²⁵ 283²⁸ 283²⁷
 38 25 12 12 3
 G Gb Sw.
 283⁹⁵ 284⁴⁴
 30

0+43.3 End. Conc. Ramp

283²⁸ 283⁹⁵ 284¹³ 284²⁵ 284²⁶
 3 3 14.3 29.6

0+30.3 Beg. Conc. Ramp

283²⁴ 283⁸⁵ 284¹⁴ 284²¹
 3 14.3 29.6
 Sw

0+25

283²³ 283⁰² 282⁷⁷ 282²¹ 283⁷² 283⁸⁵ 284²⁰
 38 25 12 12 3
 G Dr. Conc.

0+05.2 S D G B E 12" Valve 12.4' x 4'

0+04.8 End. Grate

283⁶³ 282⁴⁹ 283⁴⁸
 12.2 12 12.
 Gutter Grate Gb.

Univ. Ave Contd.

1+50 E Alley

283⁶³ 283³² 283¹¹ 283⁸¹ 283⁹³ 283⁴⁰ 283⁻
38 25 12 5 25

1+40 West Line Alley

283⁶¹ 283³² 283¹¹ 283⁹⁹ 284¹⁴ 284¹⁰ 283⁷⁵
38 25 12 12 3 25
6 6

1+28

283⁹¹ 283⁶⁷ 283⁰⁷ 283²³ 284⁰⁶ 284¹⁵
38 25 12 12 3
6 6

1+00

283⁴⁴ 283²¹ 282⁹¹ 283⁷⁷ 284⁰⁰ 284¹⁸
38 25 12 12 7
6 6

0+79 Bag vide song

283⁸⁸ 284¹⁸ 284⁶²
3 6.3

Additional Levels
6th. & Penn.

Base line =
East Ch. City

3

0-47.5 South Ch Line Penn.

286 ⁸⁹	286 ³⁸	286 ⁷⁰	287 ²⁵	287 ⁴²	287 ⁰⁷	287 ¹⁰	287 ¹⁰	287 ⁴⁰	287 ⁴⁰	287 ⁷⁰	287 ⁷⁰
47	47	35.5	25	18	10	10	40	40	70	70	70
cb	G				G	cb	G	cb	G	G	cb

287 ⁸⁹	287 ³⁸	287 ⁷⁰	287 ²⁵	287 ⁴²	287 ⁰⁷	287 ¹⁰	287 ¹⁰	287 ⁴⁰	287 ⁴⁰	287 ⁷⁰	287 ⁷⁰
145	145	100	100	100	100	100	100	100	100	100	100
cb	cb	G	G	G	G	G	G	G	G	G	G

0-30 & Penn

286 ⁹²	287 ¹⁷	287 ³⁰	287 ⁴⁸	287 ⁵¹	287 ¹⁰	287 ⁴⁰	287 ⁷⁰	287 ¹⁰⁰	287 ¹⁴⁵
47	35.5	28	17.5		10	40	70	100	145

287 ¹⁰	287 ⁴⁰	287 ⁷⁰	287 ¹⁰⁰	287 ¹⁴⁵
145	145	100	100	100
cb	G	cb	G	G

0-30 & Penn

0-12.5 North Ch Line Penn.

286 ⁹⁴	286 ³¹	286 ⁷³	287 ³⁰	287 ⁴²	287 ¹²	287 ¹⁰	287 ¹⁰	287 ⁴⁰	287 ⁴⁰	287 ⁷⁰	287 ⁷⁰
45	45	35	27	17	10	10	40	40	70	70	70
cb	G				G	cb	G	cb	G	G	cb

287 ¹⁰	287 ⁴⁰	287 ⁷⁰	287 ¹⁰⁰	287 ¹⁴⁵
145	145	100	100	100
cb	G	cb	G	G

BM

287.63

2E7' L&T Ch. & Penn. P. 3

2.6

Add. Levels - 6th + Robinson - East Side
 N. of Robinson w.o. 20573 - 6-10-52 7.0.
 See sketch - P. 2 + Notes - P. 10.

0+79 - 1.8' Rt. = \pm W.M.

0

0+75

0+71 - 8.7' Rt. = \pm 7" steel post. for store sign

0+50 - 2.1 Rt. = \pm W.M.

0

0+43.7 - Brk. in Walk by Bldg.

0+31 - Beg. Wall - No Elev. if to come out.

0+25

0+23 - 2.7' Rt. = \pm W.M.

0+22 = end Dr.

0+15 - 2.1' Rt. = \pm W.M.

0+04 = Beg. Conc. Drive

0+01 - 6.8 Rt. = \pm of 8" Light + sign Post.

0+00 - N.L. of Robinson =

B.M. = S.E. Disk - 6th + Robinson 284.69
 P. 9

cb. = Base Line

Rt.

74

INDEXED
 Law
 NOV 10 1952

83.32
 1.8 = pipe

84.41	84.50	84.12	83.84	84.15	84.70	84.78
cb.	6.5	2.0	3.2	5.7	walk	56.7
			Low pt.	got.		

83.66
 2.1 = pipe

84.47	84.53	85.17	84.52	84.05	83.72	84.09	84.73	84.75
cb.	6.6	Top	7.2	2.0	3.2	5.7	56.7	56.7
	walk at wall	wall	AC.	AC.	Low pt. AC.	got.		

84.51	84.61	84.19	83.49	83.89	84.24	84.25
Top cb.	6.1	2.0	3.8	5.8	5.8	56.8
	walk	AC.	AC.	got.	Top walk	

83.76
 2.7 - pipe

83.45
 2.1 = pipe

84.63	84.69	84.15	83.55	83.51
cb.	6.5	2.5	5.7	56.8 = walk
			Edge of N.S. Walk + E.+W. Walk	at Line of Bldg.

Actual Elev. Shown.

1+94.7 - 7.8' Rt. = Wly. of Picket fence

1+94.7 = end of AC Parking Lot

84.30	84.37	84.46	84.37	84.26
	6.1	20	37	51.7 = on AC.
	walk	AC.		
	AC.			

1+82.5 - 1.5' Rt. = \pm w.M. - No Meter - Cock only.

83.56
1.5 = pipe

1+72 = end Dr.

1+49.5 = Beg. Drive

84.24	84.50	84.40	84.36	84.19
	6.1	20	35	51.7
	walk + AC.			AC.

1+47 - 6' Rt. = end wall

85.15
6 = top of wall

1+45.5 = end walk + Bldg.

84.25	84.51	84.37	84.23	84.20	84.67	84.72
	7.2	20	35	51.7	walk	56.7 =
	AC.				at Cor.	at Cor. of
						Bldg.

1+45 - 7.3' rt. = \pm 5" steel light Post.

1+25

84.32	84.49	84.49	84.23	84.13	84.19	84.67	84.70
	6.5	7.2	20	35	51.7	walk	56.7
	walk	AC.			gut.		

1+14 - 1.8' Rt. = \pm w.M.

83.68
1.8 = pipe

1+00

84.32	84.52	84.54	84.16	83.90	84.13	84.69	84.72
	6.5	7.2	20	32	51.7	walk	56.7
	walk	AC.		low.	gut.		

Notes in addition to
those on page 19.

2+35

10.9
40

11.0
30

2+00

11.2
40

11.2
30

1+90 30' Lt. = Φ 75 sq. ft. 4" Conc. to come out.

1+50

10.8
40

10.6
30

1+35 37' Lt. = Φ 12 sq. ft. 4" Conc. to come out.

1+00

10.0
40

9.8
30

0+50

9.7
40

9.6
30

0+00

9.2
40

9.1
30

Notes for yardage north of
Actual elevations (not rds) shown.

9.11

N.E. 7' Lt. Cass & Reed. P. 19

76

INDEXED

MAR 4 1953

5+03

10.4	10.3
40	30

5+00

come out (4")
 A+80 - 35' Lt. = Φ 60 sq. ft. Conc. to

10.3	10.3
40	30

4+50

(4") to come out
 A+23 - 30' Lt. = Φ 60 sq. ft. Conc.

10.2	10.3
40	30

4+00

to come out (4")
 3+98 - 37' Lt. = Φ 74 sq. ft. Conc.

10.2	10.1
40	30

3+50

9.8	9.7
40	30

3+00

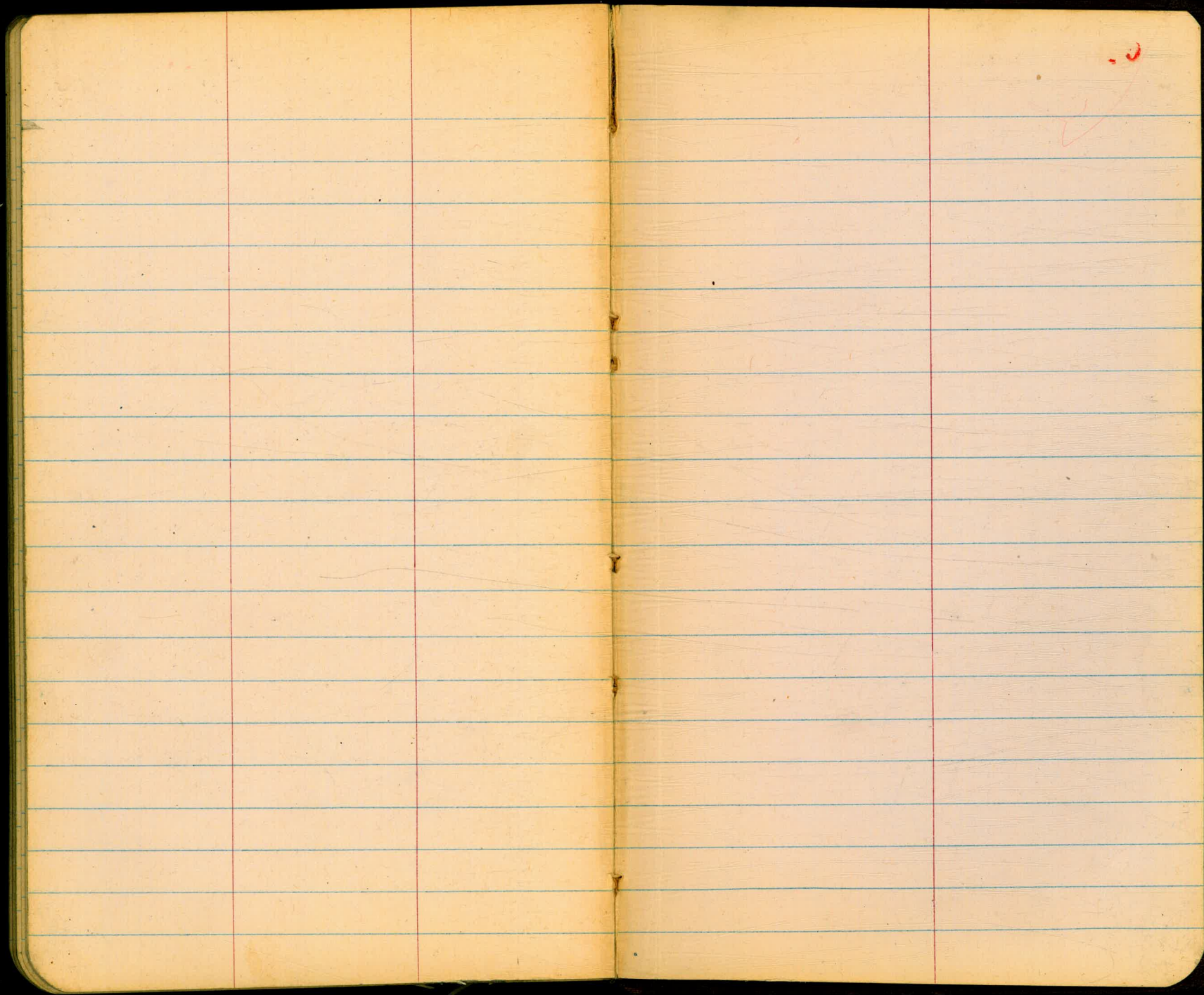
conc. to come out.
 2+55 - 32' Lt. = 6" x 6" post in

10.3	10.2
40	30

2+50

10.4	10.3
40	30

78

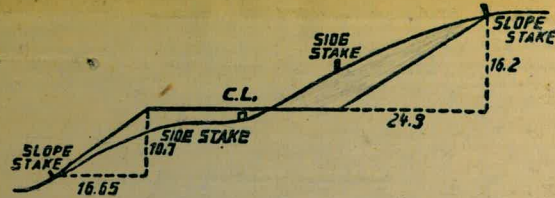


80

1145225
 73
 1079 25

32nd & Palm turn No. 1
 To Folton (Terra Sita)

1276
 68
 1158

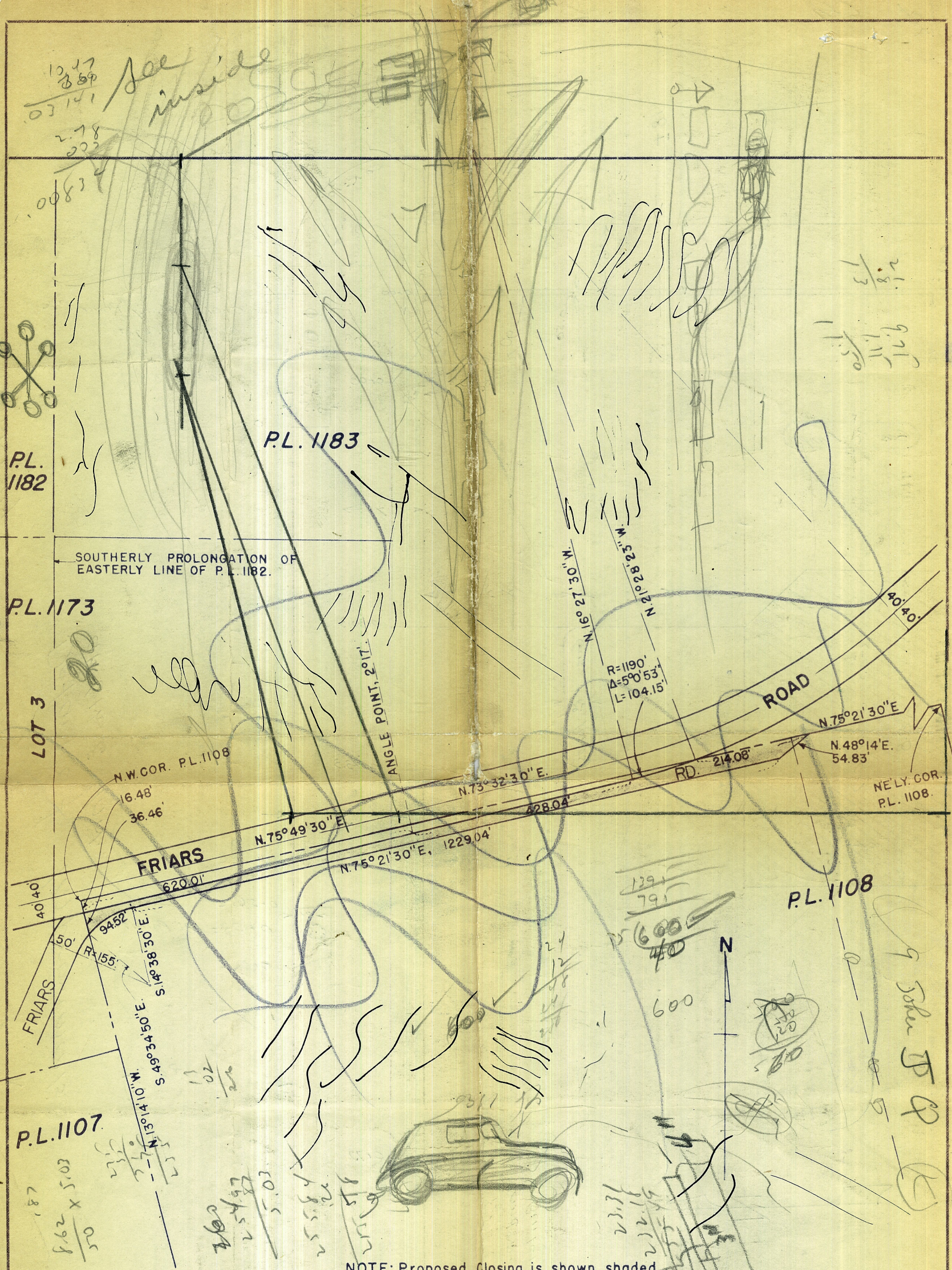


DISTANCES FROM SIDE STAKES FOR CROSS-SECTIONING.
 SLOPE 1 1/2 TO 1. ROADWAY OF ANY WIDTH.

	0	.1	.2	.3	.4	.5	.6	.7	.8	.9	
0	0.00	0.15	0.30	0.45	0.60	0.75	0.90	1.05	1.20	1.35	0
1	1.50	1.65	1.80	1.95	2.10	2.25	2.40	2.55	2.70	2.85	1
2	3.00	3.15	3.30	3.45	3.60	3.75	3.90	4.05	4.20	4.35	2
3	4.50	4.65	4.80	4.95	5.10	5.25	5.40	5.55	5.70	5.85	3
4	6.00	6.15	6.30	6.45	6.60	6.75	6.90	7.05	7.20	7.35	4
5	7.50	7.65	7.80	7.95	8.10	8.25	8.40	8.55	8.70	8.85	5
6	9.00	9.15	9.30	9.45	9.60	9.75	9.90	10.05	10.20	10.35	6
7	10.50	10.65	10.80	10.95	11.10	11.25	11.40	11.55	11.70	11.85	7
8	12.00	12.15	12.30	12.45	12.60	12.75	12.90	13.05	13.20	13.35	8
9	13.50	13.65	13.80	13.95	14.10	14.25	14.40	14.55	14.70	14.85	9
10	15.00	15.15	15.30	15.45	15.60	15.75	15.90	16.05	16.20	16.35	10
11	16.50	16.65	16.80	16.95	17.10	17.25	17.40	17.55	17.70	17.85	11
12	18.00	18.15	18.30	18.45	18.60	18.75	18.90	19.05	19.20	19.35	12
13	19.50	19.65	19.80	19.95	20.10	20.25	20.40	20.55	20.70	20.85	13
14	21.00	21.15	21.30	21.45	21.60	21.75	21.90	22.05	22.20	22.35	14
15	22.50	22.65	22.80	22.95	23.10	23.25	23.40	23.55	23.70	23.85	15
16	24.00	24.15	24.30	24.45	24.60	24.75	24.90	25.05	25.20	25.35	16
17	25.50	25.65	25.80	25.95	26.10	26.25	26.40	26.55	26.70	26.85	17
18	27.00	27.15	27.30	27.45	27.60	27.75	27.90	28.05	28.20	28.35	18
19	28.50	28.65	28.80	28.95	29.10	29.25	29.40	29.55	29.70	29.85	19
20	30.00	30.15	30.30	30.45	30.60	30.75	30.90	31.05	31.20	31.35	20
21	31.50	31.65	31.80	31.95	32.10	32.25	32.40	32.55	32.70	32.85	21
22	33.00	33.15	33.30	33.45	33.60	33.75	33.90	34.05	34.20	34.35	22
23	34.50	34.65	34.80	34.95	35.10	35.25	35.40	35.55	35.70	35.85	23
24	36.00	36.15	36.30	36.45	36.60	36.75	36.90	37.05	37.20	37.35	24
25	37.50	37.65	37.80	37.95	38.10	38.25	38.40	38.55	38.70	38.85	25
26	39.00	39.15	39.30	39.45	39.60	39.75	39.90	40.05	40.20	40.35	26
27	40.50	40.65	40.80	40.95	41.10	41.25	41.40	41.55	41.70	41.85	27
28	42.00	42.15	42.30	42.45	42.60	42.75	42.90	43.05	43.20	43.35	28
29	43.50	43.65	43.80	43.95	44.10	44.25	44.40	44.55	44.70	44.85	29
30	45.00	45.15	45.30	45.45	45.60	45.75	45.90	46.05	46.20	46.35	30
31	46.50	46.65	46.80	46.95	47.10	47.25	47.40	47.55	47.70	47.85	31
32	48.00	48.15	48.30	48.45	48.60	48.75	48.90	49.05	49.20	49.35	32
33	49.50	49.65	49.80	49.95	50.10	50.25	50.40	50.55	50.70	50.85	33
34	51.00	51.15	51.30	51.45	51.60	51.75	51.90	52.05	52.20	52.35	34
35	52.50	52.65	52.80	52.95	53.10	53.25	53.40	53.55	53.70	53.85	35
36	54.00	54.15	54.30	54.45	54.60	54.75	54.90	55.05	55.20	55.35	36
37	55.50	55.65	55.80	55.95	56.10	56.25	56.40	56.55	56.70	56.85	37
38	57.00	57.15	57.30	57.45	57.60	57.75	57.90	58.05	58.20	58.35	38
39	58.50	58.65	58.80	58.95	59.10	59.25	59.40	59.55	59.70	59.85	39
40	60.00	60.15	60.30	60.45	60.60	60.75	60.90	61.05	61.20	61.35	40
41	61.50	61.65	61.80	61.95	62.10	62.25	62.40	62.55	62.70	62.85	41
42	63.00	63.15	63.30	63.45	63.60	63.75	63.90	64.05	64.20	64.35	42
43	64.50	64.65	64.80	64.95	65.10	65.25	65.40	65.55	65.70	65.85	43
44	66.00	66.15	66.30	66.45	66.60	66.75	66.90	67.05	67.20	67.35	44
45	67.50	67.65	67.80	67.95	68.10	68.25	68.40	68.55	68.70	68.85	45
46	69.00	69.15	69.30	69.45	69.60	69.75	69.90	70.05	70.20	70.35	46
47	70.50	70.65	70.80	70.95	71.10	71.25	71.40	71.55	71.70	71.85	47
48	72.00	72.15	72.30	72.45	72.60	72.75	72.90	73.05	73.20	73.35	48
49	73.50	73.65	73.80	73.95	74.10	74.25	74.40	74.55	74.70	74.85	49
50	75.00	75.15	75.30	75.45	75.60	75.75	75.90	76.05	76.20	76.35	50

THE NATIONAL BLANK BOOK COMPANY
 HOLYOKE MASSACHUSETTS
 NEW YORK CHICAGO BOSTON SAN FRANCISCO

10.17
888
03.141
2.78
222
see inside



NOTE: Proposed Closing is shown shaded.

Sheet 2 of 2.

DRAWN BY NFD
F.G.P.
CHECKED BY
FIELD BOOKS
R.A. Hall
ACTING CITY ENGINEER
CITY MANAGER

CITY OF SAN DIEGO - ENGINEERING DEPARTMENT
Proposed Closing of Portions of FRIARS ROAD in
Pueblo Lots 1107, 1108, and 1173.

DATE: SEPT. 16, 1949.
SCALE: 1" = 200'
DRAWING NUMBER
3809 - B

6th St

5th St

University Ave

Detail of Improvements at 6th & Univ.

