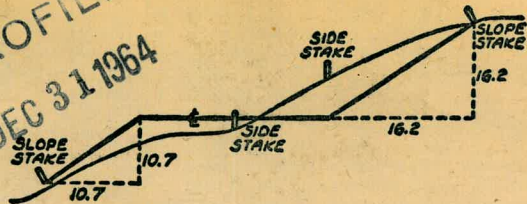


2051

INDEX BOOK

MICROFILMED
DEC 31 1964



DISTANCES FROM SIDE STAKES FOR CROSS-SECTIONING
SLOPE 1 TO 1. ROADWAY OF ANY WIDTH

	0	.1	.2	.3	.4	.5	.6	.7	.8	.9	
0	0.00	0.10	0.20	0.30	0.40	0.50	0.60	0.70	0.80	0.90	0
1	1.00	1.10	1.20	1.30	1.40	1.50	1.60	1.70	1.80	1.90	1
2	2.00	2.10	2.20	2.30	2.40	2.50	2.60	2.70	2.80	2.90	2
3	3.00	3.10	3.20	3.30	3.40	3.50	3.60	3.70	3.80	3.90	3
4	4.00	4.10	4.20	4.30	4.40	4.50	4.60	4.70	4.80	4.90	4
5	5.00	5.10	5.20	5.30	5.40	5.50	5.60	5.70	5.80	5.90	5
6	6.00	6.10	6.20	6.30	6.40	6.50	6.60	6.70	6.80	6.90	6
7	7.00	7.10	7.20	7.30	7.40	7.50	7.60	7.70	7.80	7.90	7
8	8.00	8.10	8.20	8.30	8.40	8.50	8.60	8.70	8.80	8.90	8
9	9.00	9.10	9.20	9.30	9.40	9.50	9.60	9.70	9.80	9.90	9
10	10.00	10.10	10.20	10.30	10.40	10.50	10.60	10.70	10.80	10.90	10
11	11.00	11.10	11.20	11.30	11.40	11.50	11.60	11.70	11.80	11.90	11
12	12.00	12.10	12.20	12.30	12.40	12.50	12.60	12.70	12.80	12.90	12
13	13.00	13.10	13.20	13.30	13.40	13.50	13.60	13.70	13.80	13.90	13
14	14.00	14.10	14.20	14.30	14.40	14.50	14.60	14.70	14.80	14.90	14
15	15.00	15.10	15.20	15.30	15.40	15.50	15.60	15.70	15.80	15.90	15
16	16.00	16.10	16.20	16.30	16.40	16.50	16.60	16.70	16.80	16.90	16
17	17.00	17.10	17.20	17.30	17.40	17.50	17.60	17.70	17.80	17.90	17
18	18.00	18.10	18.20	18.30	18.40	18.50	18.60	18.70	18.80	18.90	18
19	19.00	19.10	19.20	19.30	19.40	19.50	19.60	19.70	19.80	19.90	19
20	20.00	20.10	20.20	20.30	20.40	20.50	20.60	20.70	20.80	20.90	20
21	21.00	21.10	21.20	21.30	21.40	21.50	21.60	21.70	21.80	21.90	21
22	22.00	22.10	22.20	22.30	22.40	22.50	22.60	22.70	22.80	22.90	22
23	23.00	23.10	23.20	23.30	23.40	23.50	23.60	23.70	23.80	23.90	23
24	24.00	24.10	24.20	24.30	24.40	24.50	24.60	24.70	24.80	24.90	24
25	25.00	25.10	25.20	25.30	25.40	25.50	25.60	25.70	25.80	25.90	25
26	26.00	26.10	26.20	26.30	26.40	26.50	26.60	26.70	26.80	26.90	26
27	27.00	27.10	27.20	27.30	27.40	27.50	27.60	27.70	27.80	27.90	27
28	28.00	28.10	28.20	28.30	28.40	28.50	28.60	28.70	28.80	28.90	28
29	29.00	29.10	29.20	29.30	29.40	29.50	29.60	29.70	29.80	29.90	29
30	30.00	30.10	30.20	30.30	30.40	30.50	30.60	30.70	30.80	30.90	30
31	31.00	31.10	31.20	31.30	31.40	31.50	31.60	31.70	31.80	31.90	31
32	32.00	32.10	32.20	32.30	32.40	32.50	32.60	32.70	32.80	32.90	32
33	33.00	33.10	33.20	33.30	33.40	33.50	33.60	33.70	33.80	33.90	33
34	34.00	34.10	34.20	34.30	34.40	34.50	34.60	34.70	34.80	34.90	34
35	35.00	35.10	35.20	35.30	35.40	35.50	35.60	35.70	35.80	35.90	35
36	36.00	36.10	36.20	36.30	36.40	36.50	36.60	36.70	36.80	36.90	36
37	37.00	37.10	37.20	37.30	37.40	37.50	37.60	37.70	37.80	37.90	37
38	38.00	38.10	38.20	38.30	38.40	38.50	38.60	38.70	38.80	38.90	38
39	39.00	39.10	39.20	39.30	39.40	39.50	39.60	39.70	39.80	39.90	39
40	40.00	40.10	40.20	40.30	40.40	40.50	40.60	40.70	40.80	40.90	40
41	41.00	41.10	41.20	41.30	41.40	41.50	41.60	41.70	41.80	41.90	41
42	42.00	42.10	42.20	42.30	42.40	42.50	42.60	42.70	42.80	42.90	42
43	43.00	43.10	43.20	43.30	43.40	43.50	43.60	43.70	43.80	43.90	43
44	44.00	44.10	44.20	44.30	44.40	44.50	44.60	44.70	44.80	44.90	44
45	45.00	45.10	45.20	45.30	45.40	45.50	45.60	45.70	45.80	45.90	45
46	46.00	46.10	46.20	46.30	46.40	46.50	46.60	46.70	46.80	46.90	46
47	47.00	47.10	47.20	47.30	47.40	47.50	47.60	47.70	47.80	47.90	47
48	48.00	48.10	48.20	48.30	48.40	48.50	48.60	48.70	48.80	48.90	48
49	49.00	49.10	49.20	49.30	49.40	49.50	49.60	49.70	49.80	49.90	49
50	50.00	50.10	50.20	50.30	50.40	50.50	50.60	50.70	50.80	50.90	50

Distance of slope stake from side or shoulder stake for any width roadway, slope 1 to 1. If ground is nearly level, the cut or fill at side stake is located by the double entry method in left column and top row. The number in body of table in same row and column gives distance from side stake to slope stake. If ground is not level estimate the difference in elevation between the side stake and slope stake, lower target by this amount if cut, elevate if fill. Add this amount to cut or fill and find distance in table. Set up rod at this point, and line of sight should cut target. If it does not make the slight adjustment necessary.

INDEXED

to page # 75

96
2454
6006

TABLE XIII—CORRECTIONS FOR TANGENTS AND EXTERNALS

These corrections are to be added to the approximate values, found by dividing the tangent, or external, for a 1° curve (Table VIII) by the degree of curve, in order to obtain the true tangents, or externals. Intermediate values may be obtained by interpolation.

FOR TANGENTS ADD

Central Angle	DEGREE OF CURVE													
	5°	10°	15°	20°	25°	30°	35°	40°	45°	50°	55°	60°	65°	70°
10°	.03	.06	.09	.13	.16	.19	.22	.25	.28	.31	.34	.38	.42	.46
15°	.04	.10	.14	.19	.24	.29	.34	.39	.45	.51	.53	.58	.63	.68
20°	.06	.13	.19	.26	.32	.39	.45	.51	.58	.65	.72	.79	.84	.90
25°	.08	.16	.24	.33	.40	.49	.58	.67	.75	.83	.90	.99	1.06	1.14
30°	.10	.19	.29	.39	.49	.59	.69	.79	.89	.99	1.09	1.20	1.29	1.39
35°	.11	.22	.34	.47	.58	.69	.79	.81	.92	1.04	1.29	1.42	1.54	1.66
40°	.13	.26	.40	.53	.67	.80	.93	1.06	1.20	1.34	1.49	1.64	1.79	1.94
45°	.15	.30	.44	.60	.76	.91	1.06	1.21	1.37	1.52	1.70	1.87	2.04	2.21
50°	.17	.34	.51	.68	.85	1.02	1.19	1.36	1.54	1.72	1.91	2.10	2.29	2.48
55°	.19	.38	.57	.76	.95	1.14	1.32	1.52	1.72	1.92	2.14	2.35	2.56	2.77
60°	.21	.42	.63	.84	1.05	1.27	1.49	1.71	1.94	2.17	2.38	2.60	2.83	3.07
65°	.23	.46	.69	.93	1.16	1.40	1.64	1.88	2.13	2.38	2.63	2.88	3.13	3.39
70°	.25	.51	.76	1.02	1.28	1.54	1.80	2.06	2.33	2.60	2.88	3.16	3.44	3.72
75°	.27	.56	.83	1.12	1.40	1.69	1.98	2.27	2.57	2.87	3.16	3.47	3.78	4.09
80°	.30	.61	.91	1.22	1.53	1.84	2.15	2.46	2.78	3.10	3.44	3.78	4.12	4.46
85°	.33	.66	1.00	1.33	1.68	2.02	2.36	2.70	3.05	3.40	3.77	4.14	4.55	4.89
90°	.36	.72	1.09	1.45	1.83	2.20	2.57	2.94	3.32	3.70	4.10	4.50	4.91	5.32
95°	.39	.79	1.19	1.55	2.00	2.40	2.80	3.20	3.61	4.02	4.40	4.98	5.38	5.83
100°	.43	.86	1.30	1.74	2.18	2.62	3.06	3.50	3.95	4.40	4.88	5.37	5.85	6.34
110°	.51	1.03	1.56	2.08	2.61	3.14	3.67	4.21	4.76	5.31	5.86	6.43	7.01	7.60
120°	.62	1.25	1.93	2.52	3.16	3.81	4.45	5.11	5.77	6.44	7.12	7.80	8.50	9.22

FOR EXTERNALS ADD

Central Angle	DEGREE OF CURVE													
	5°	10°	15°	20°	25°	30°	35°	40°	45°	50°	55°	60°	65°	70°
10°	.001	.003	.004	.006	.007	.008	.009	.011	.012	.014	.015	.017	.018	.020
15°	.003	.007	.010	.014	.018	.023	.027	.032	.035	.039	.043	.047	.051	.055
20°	.006	.011	.017	.022	.028	.034	.038	.045	.051	.057	.063	.070	.076	.083
25°	.009	.018	.027	.036	.046	.056	.065	.074	.083	.093	.106	.120	.127	.135
30°	.013	.025	.038	.051	.065	.078	.090	.103	.116	.129	.149	.170	.179	.188
35°	.018	.035	.054	.072	.086	.109	.131	.153	.175	.197	.213	.230	.247	.264
40°	.023	.046	.070	.093	.117	.141	.172	.203	.234	.265	.277	.290	.315	.341
45°	.030	.060	.093	.119	.153	.184	.216	.254	.289	.325	.351	.378	.411	.445
50°	.037	.075	.116	.151	.189	.227	.266	.305	.345	.384	.425	.467	.508	.550
55°	.046	.093	.142	.188	.236	.283	.332	.381	.420	.479	.530	.582	.641	.700
60°	.056	.112	.168	.225	.283	.340	.398	.457	.516	.575	.636	.697	.774	.851
65°	.067	.135	.204	.273	.343	.412	.483	.554	.625	.697	.711	.845	.922	1.01
70°	.080	.159	.240	.321	.403	.485	.568	.652	.735	.819	.906	.994	1.08	1.17
75°	.095	.182	.266	.353	.440	.528	.618	.707	.797	.877	1.07	1.18	1.29	1.39
80°	.110	.220	.332	.445	.558	.671	.787	.903	1.02	1.13	1.25	1.38	1.50	1.62
85°	.128	.259	.391	.524	.657	.790	.926	1.06	1.20	1.34	1.47	1.62	1.76	1.91
90°	.149	.299	.450	.603	.756	.910	1.07	1.22	1.38	1.54	1.70	1.87	2.03	2.20
95°	.174	.350	.522	.706	.885	1.06	1.25	1.43	1.62	1.80	1.99	2.18	2.38	2.58
100°	.200	.401	.604	.809	1.01	1.22	1.43	1.64	1.85	2.06	2.28	2.50	2.73	2.96
110°	.268	.536	.806	1.08	1.35	1.63	1.91	2.20	2.48	2.76	3.05	3.35	3.66	3.96
120°	.360	.721	1.08	1.45	1.82	2.19	2.57	2.95	3.33	3.72	4.11	4.50	4.91	5.32

Index

Location South 4 Curbs Union Ave N of Sixth 1-4
 Cross Sec. Foster St Imperial Auto to Pidgeon 5-8
 " " Beverly Roswell to Lenox 9-13
 " " Derby Roswell to Geneva 14-18
 " " Hanover Roswell to Geneva 19-24
 " " Winston " " Lenox 25-35
 " " Geneva Euclid to Beverly 36-48
 " " Elwood Hilltop to N.L. 48-55
 " " 51st - Hilltop to N.L. Beverly 57-62
 59th - Brooklyn Ave to Kenwood St. 63-75
 Levels prop. drain & easement bet lots 29 & 30 76
 Stake Curbs - 59th & Kenwood BK 2051-63

Location of South Curb, Adjacent
Wall, etc on University Ave. from
Atley West of Swift to end of Curb
Near East Line of 34th St.

Johnson
PROP
Crawford
9.16.49
10.20007

INDEXED

W.K.
SEP 19 1949

1+96.26 = East 7' line of 34th Produced

1+85.66 = End of Curb also East P.L. 34th

1+17.11 = E.C. of Curb

0+09.86

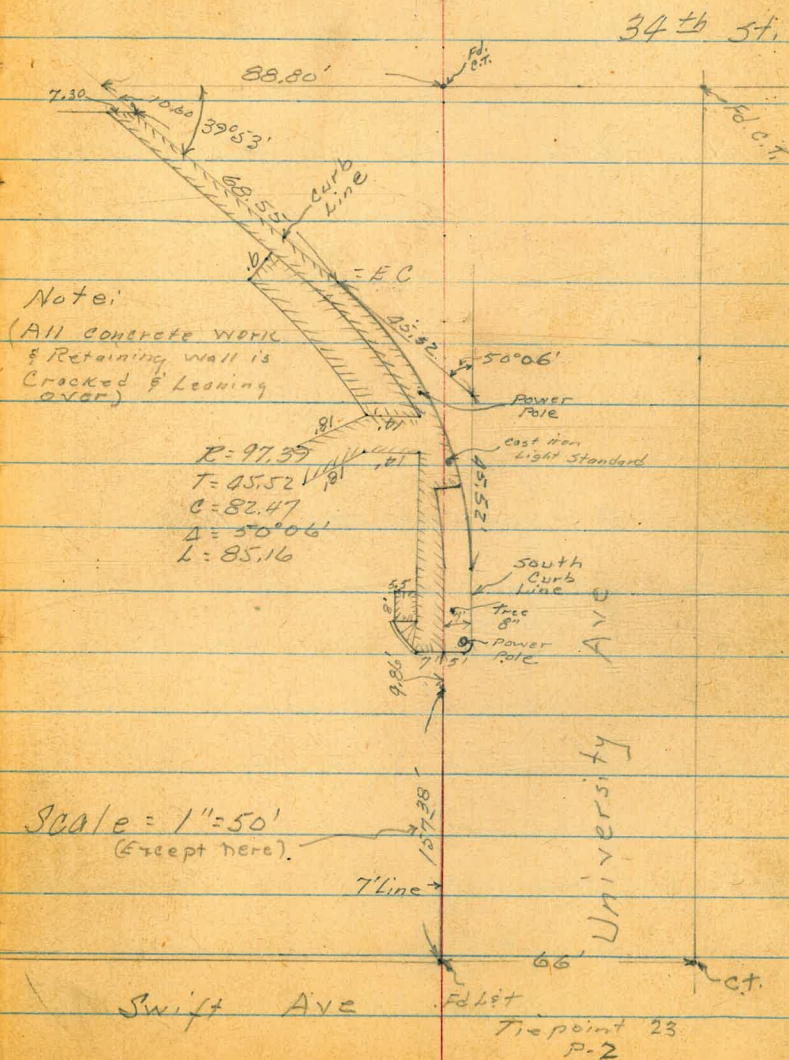
0+31.95 = B.C. of Curb

0+09.86 = West Curb of alley

157.38 = 0+00 = Spike in E of alley

Oct. 17

1



Location of South Curb, Adjacent wall etc, on University Ave. from Alley West of Swift to End of Curb Near East Line of 34th St.

Level Notes

Lt. of curb

Curb

Gutter

5' Lt + 2' Curb

East
0+64 = Edge Drive

$\frac{5.29}{34} \frac{5.61}{23} \frac{7.87}{9}$ 8.00 8.25 7.95

0+63

$\frac{5.1}{34} \frac{4.9}{22} \frac{5.45}{9} \frac{7.87}{9}$ 7.98 8.22 7.95

#6519
0+58 = 2' Lt. of curb iron light standard

0+50

$\frac{4.8}{34} \frac{5.23}{14} \frac{7.46}{14}$ 7.60 7.85 7.54

0+31.95 = B.C. of Curb

$\frac{4.4}{34} \frac{4.76}{14} \frac{6.86}{14}$ 7.00 7.30 6.99

0+19.9 = 4' Lt of curb to 8" tree

#G3425R
0+12.5 = power pole 2' Lt of curb

0+09.86

$\frac{4.3}{34} \frac{4.62}{PL} \frac{6.48}{PL} \frac{6.54}{2}$ 6.63 6.27

0+00 = E Alley West of Swift E South of Un. Ave

$\frac{4.8}{34} \frac{6.03}{PL} \frac{6.31}{Curb Line}$ 5.93

359.28

0+00 359.28

359.87 N.W. B.P. Swift & University Ave

Location of South Curb, Adjacent Wall
 etc, on University Ave. from Alley West
 of Swift to End of Curb Near East
 Line of 34th St.

Level Notes

Lt. of curb

Curb Gutter 5' Lt Curb

3

1+65

5.1	6.7	7.7	9.09	9.13	9.50	9.34
34	19	7	5			
354.46						

T.P.

8.02 354.46 12.84 346.44

G3911R
 Nail 2.1' up in power pole - north side

1+37

6.3	7.2	10.4	11.60	11.55	11.92	11.82
34	11	7	5			

1+35 = End of retaining wall 5' Lt curb

6.1	6.53	6.66	8.42	8.44	11.47	11.46	11.84	11.70
34	14	7	7	5	5			

1+17.11 = E.C. of curb

5.5	6.02	6.11	7.34	7.44	10.44	10.35	10.69	10.54
34	14.5	7.6	7.6	5	5			

1+00

5.5	5.65	5.65	6.26	6.32	9.37	9.25	9.53	9.40
34	14.5	7.5	7.5	5	5			

G3915R

0+78.5 = power pole 2' Lt of curb

0+74

5.5	5.6	5.01	5.24	8.18	8.35	8.56	8.25
34	20	15.5	5.5	5.5			

0+73 = West edge of drive

5.38	5.95	8.12	8.33	8.53	8.28
34	18.6	5.4			

359.28

Σ

Location of South Curb, Adjacent Wall,
 etc, on University Ave. from Alley West
 of Swift to End of Curb Near East
 Line of 34th St. Level Notes

Lt. of Curb Curb Gutter 5' 24" Curb

Check B.M. 0.96 ^{0.01} 358.86
 358.85 N.W. 8. P. Swift & University Ave

T.P. 7.39 359.81 2.04 358.42

179.1

6.6 7.0 10.04
 34 14.5 5 10.74 10.41

1485.66 - East P.L. of 34th St

5.9 6.5 8.3 9.75 9.75 10.17 10.05
 34 13 8 5
 354.46
 3

Johnson
Gregory
Clark
Moore
10-25-49
w. o. 25028

X-section Foster St
Imperial St. to Pidgeon St.

5

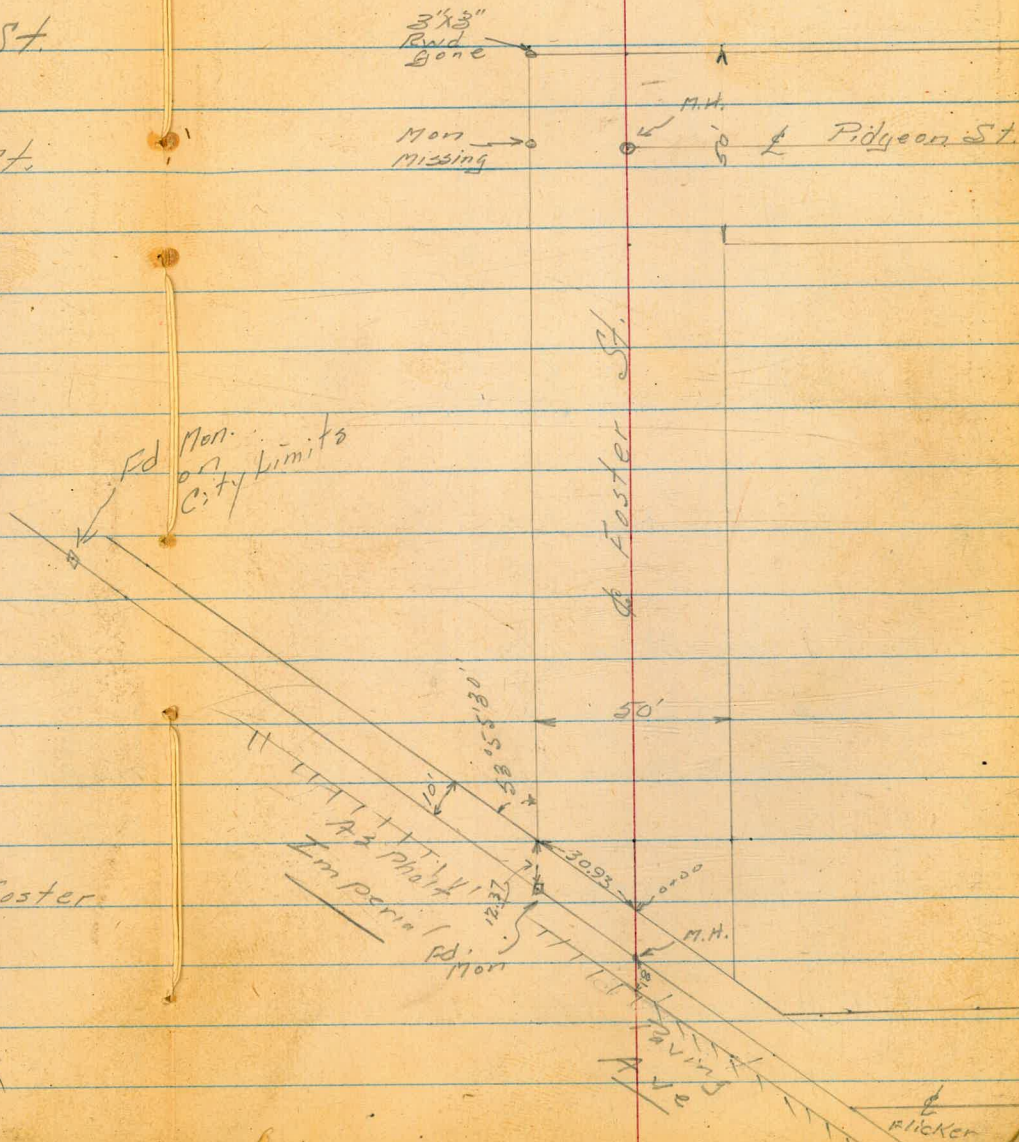
2+72.72 = Prop Line Pidgeon St

1+97.72 = E of Foster & Pidgeon St.

1+72.72 = P. line Pidgeon St.

INDEXED
W.K.
OCT 26 1949

0+00 = Prop. line Imperial St. & Foster



X-Section - Foster St
Imperial St. to Pidgeon St.

	Left			±	Right		
0+60	262.1 10.7 50	263.4 9.4 25	264.6 8.2 14	264.8 8.0 17	265.7 7.1 20	267.2 5.6 25	268.0 4.8 25
0+50	261.8 11.0 50	262.9 9.9 25	263.9 8.9 14	263.7 9.1 12	264.1 8.7 20	265.2 7.6 25	270.0 2.8 50
0+25	261.1 11.7 50	261.4 11.4 25	262.5 10.3 13	262.1 10.7 9	262.5 10.3 20	263.8 9.0 25	263.8 9.0 25
Prop. Line Imperial St.							
0+00 - Sections Right 42 to ± Foster							
	260.8 12.0 25	261.1 11.7 20	261.2 11.6 9	261.7 11.1 25	261.3 11.5 25	262.5 10.2 34	263.3 9.5 50
0-07 Section on diagonal	261.3 11.5 80.93	261.5 11.3 30.93 P.L.	261.3 11.6 18.	261.1 11.7 20	261.5 11.3 20	261.4 11.2 30.93 P.L.	261.4 11.4 58 61
0-10 Section on diagonal	261.5 11.3 80.93	261.4 11.6 30.93 P.L.	261.1 11.7 18.00 P.L.	260.8 12.0 30.93 P.L.	260.8 12.0 30.93 P.L.	260.8 12.0 80.93	
0-12.37 M.H.	261.66	261.12	260.66	260.66	260.66	260.66	
0-20.47 = Edge pavement	11.10 100	11.64 50	11.78 50	12.10 50	12.37 100	12.37 100	
0-37 = Section on diagonal Imperial & Foster	261.96 12.80 100	261.50 11.26 50	260.99 11.77 50	260.66 12.10 50	260.88 12.38 100		

Foster & Imperial
T.P. 10.90 272.76 4.02 261.86 = Rail road Spike in Power pole #70183
B.M. 12.44 265.88 253.44

X-Section - Foster St
Imperial St to Pidgeon St.

Left

Right 7

2+10

291.5
7.0
60
293.5
5.0
50
295.2
2.0
25
295.9
2.6
23
294.6
2.9
20
293.7
4.8
25
294.4
4.1
25
295.4
3.1
50

1+97.73 = E Foster & Pidgeon

288.7
9.0
60
291.4
7.1
47
291.9
6.6
25
291.5
6.2
25
291.9
5.6
25
294.3
4.2
50

1+90

287.2
11.0
60
290.2
8.0
46
291.1
7.4
25
290.8
7.7
25
291.8
6.7
25
293.4
6.1
50

1+83

284.7
13.8
65
288.2
10.3
45
294.5
9.0
25
289.8
8.7
25
290.2
8.3
25
291.9
6.6
50

1+76.73 = R Line Pidgeon St

286.2
12.3
50
287.2
11.3
40
287.5
11.0
25
287.9
10.6
25
287.6
10.9
6
288.8
10.2
8
288.2
10.3
25
290.6
7.9
50

T.P. 12.87 298.52 0.12 285.65

1+50

281.0
4.8
50
283.0
2.8
34
283.3
2.5
25
283.6
2.2
22
284.2
1.6
2
284.5
1.3
25
286.6
2.0
50

1+25

275.7
10.1
50
277.7
8.1
25
278.2
7.6
17
278.5
7.3
22
279.4
6.4
5
280.4
5.4
25
281.9
4.9
30
282.6
3.2
50

1+00

268.9
16.9
50
271.4
14.4
25
272.4
13.4
14
272.8
13.0
5
274.3
11.5
5
275.4
10.4
25
278.6
7.2
50

T.P. 13.15 285.77 0.14 272.62

0+75

264.8
6.0
50
267.1
5.7
25
267.3
5.5
13
267.4
5.4
25
268.3
4.5
5
269.4
4.4
20
270.5
3.3
22
271.1
1.7
25
275.8
+3.0
50

272.76

X-Section - Foster St
Imperial St to Pidgeon St

Left

Right 8

Grade Book 226-P77-11.87 $\frac{0.00}{261.85}$

T.P. 0.06 273.72 12.37 273.66

T.P. 0.39 286.03 12.88 285.64

2+22.72 = P. Line, Pidgeon St.

2+17.

opp. M. H. 27
Spike in Pole - 2 Foster & Imperial St.

295.5	296.6	297.7	298.1	296.2	295.7	296.6	298.3	299.1
3.0	1.9	0.8	0.4	2.3	2.8	1.9	0.2	4.6
60	50	25	12	8		18	25	50
293.4	294.8	295	297.4	295.4	295.2	295.6	296.4	296.9
5.1	3.7	2.0	1.1	3.1	3.3	2.9	2.1	1.6
60	50	25	15	13		18	19	25
								1.7
								50

298.52

Beverly - Map. 1129

INDEXED
WIK
JAN 12 1950

checked by
W.S. Fay

Lenox

Dr. 9

8+18.38 9

Nepaunt Rd.

Lot 28

Fence

Vacant

Lot 29

Lot 30

Vacant

Prop. Drain

Mon.

Mon.

Mon.

Geneva

5+62.60

Hue

5+128.60

4+51.76

Set 4 Crosses
on Mt. Rim =
Prop. Drain

st.

30 30

Hanover

N

st.

Derby

30 30

Mon.

0+00

st.

0+00

30 30

Mon.

Roswell

See P. 14
for Cb. Detail

X-Section Beverly - from Roswell
to Lenox - for Grade Ord. -

4084 12-15-49

W.O. 25020

Osborne
Hardin
Hatch
Hardin

Dirt - Rough Graded

0+50

0+06.93 = opp Prop. Cor. on E. - Sect. at 90°

0+00 = E Beverly + N.L. Roswell

0-12.9 = line of cb. face to w. - Sect. along
+9.34 273.25 263.91 = Meets

-3.98 270.60

check B.M. +10.67 274.58 -4.17 263.91 -263.8

B.M. +8.20 268.08 -259.88

Lt. = w E

Rt. = E 10

Note: Check B.M.'s in Book 2025 - P-1 -
Sewer Levels - starting B.M. seems o.k.

Levels seem to be in error - Note increase
of error at top of Hill. our circuits check in
this Book.

5.0	5.2	5.6	7.0	6.8	6.7	6.0	6.0
40	30	15	9	15	15	30	40

266.2	267.2	265.6	264.6	264.4	264.7	264.4	267.1
5.1	5.1	7.7	8.7	8.9	9.6	8.9	8.2
40	30	25	15	15	15	30	40

266.25	264.85	264.95	264.2	264.5	264.3	264.0
7.0	8.4	9.2	9.1	8.9	9.0	9.3
70	30.8	15	15	15	30.8	15

266.38	265.25	264.24	263.75	263.65	263.75	263.65	263.55	263.25
6.87	8.0	9.01	9.5	9.6	9.5	9.6	9.7	10.0
75	75	30	30	15	15	15	30.8	75
Top	cut	Top	end cut				E.L.	

270.61 = N.E. Man. Derby + Roswell

= N.E. Man. Beverly + Roswell

S.W. Man. Roswell + 56th

Beverly

3+50

3+00

2+50 -

2+40 - 29.9'

2+30 - 25.2'

2+00 - 26.5'

1+50

1+00

25.7' RT = ± 9' Dr. - 2-2' Conc. Strips
RT = ± Sing. Gar - Conc. floor

RT = ± Sing. Gar. Conc. floor

RT = ± 3' Conc. walk

RT = sly of 2' Conc. walk

4.6 40	4.7 30	4.8 12	4.5 5	4.9 15	4.3 30	4.7 40	268.7	268.8	268.5	268.7	268.4	268.3	268.3	268.3	268.9	269.0	268.6
4.2 40	5.0 30	5.9 5	5.6 5	5.7 15	4.52 25.7 Dr.	3.98 30 Dr.	269.1	268.3	267.4	267.7	267.6	269.23	269.27	269.07	269.07	269.66	270.16
4.3 40	5.4 30	6.3 15	7.3 15	8.3 15	9.7 15	10.4 40	268.7	266.7	265.6	265.4	265.0	266.3	266.3	266.3	266.3	266.2	270.25
4.3 40	5.4 30	6.3 15	7.3 15	8.3 15	9.7 15	10.4 40	266.0	269.9	267.0	263.6	263.6	263.6	263.6	263.6	263.6	263.6	262.9

11

273.25

Beverly

6+50

6+00

5+50

5+14.56 = opp. N.W. Cor.

4+88.01 = opp. Geneva at W.L. Beverly

Sect. at 90° except 70' Lt.

4+57.46 = opp. S.W. Cor. Geneva (4+51.76 = S.L. Prod.)

N.W. Mon. - Geneva

T.P. + Beverly + 774 268.90 - 12.09 261.16

4+00

6.1	7.3	8.6	9.2	10.1	11.1	12.5
40	30	15	15	15	30	40
262.8	261.6	260.3	259.7	258.8	257.8	256.4

6.4	8.1	9.2	9.8	10.5	11.6	12.7
40	30	15	15	15	30	40
262.5	260.8	259.7	259.1	258.4	257.3	255.5

6.9	8.2	9.5	10.2	10.9	12.0	13.7
40	30	15	15	15	30	40
262.0	260.7	259.4	258.7	258.0	256.9	255.2

along N.L.

4.6	7.8	9.2	10.1	11.0	12.3	14.2
70	30	15	15	15	30	40
264.3	261.1	259.7	258.8	257.9	256.6	254.7

along E

4.4	7.7	9.0	10.0	10.9	12.3	14.0
70	30	15	15	15	30	40
264.5	261.2	259.9	258.9	258.0	256.6	254.9

along S.L.

4.1	7.7	8.5	9.3	10.0	10.6	12.0
70	30	15	15	15	30	40
264.8	261.2	260.4	259.6	258.9	258.3	256.9

8.9	9.9	11.0	11.5	12.1	12.1	12.2
40	30	15	15	15	30	40
264.4	263.4	262.3	261.8	261.2	261.2	261.1
				268.90		
				273.25		

12

Beverly

checked Sections shown ✓ - 11-54 - 7.0

8+79.48 = N.L. Lenox = Sect. along N.L.

sect along S.L. of Lenox
8+18.38 = S.L. Lenox - prod.

Map Dist. - no Mon. Fd. - See sketch - P-9

8+04 - 19.5 Rt = ± F.H. - Now.

8+00

under Const.

7+60 = ± Dirt Dr. to Gar. - 45' Lt. = Gar.

7+50

7+00

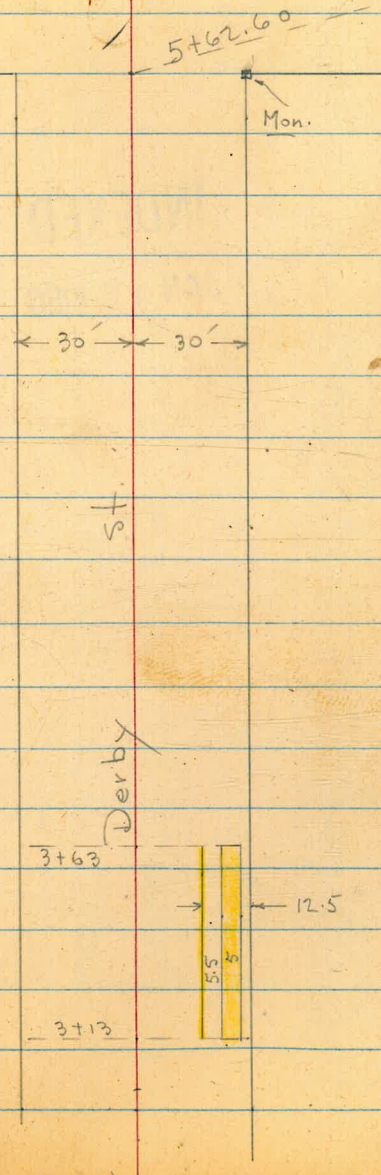
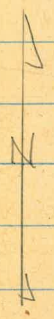
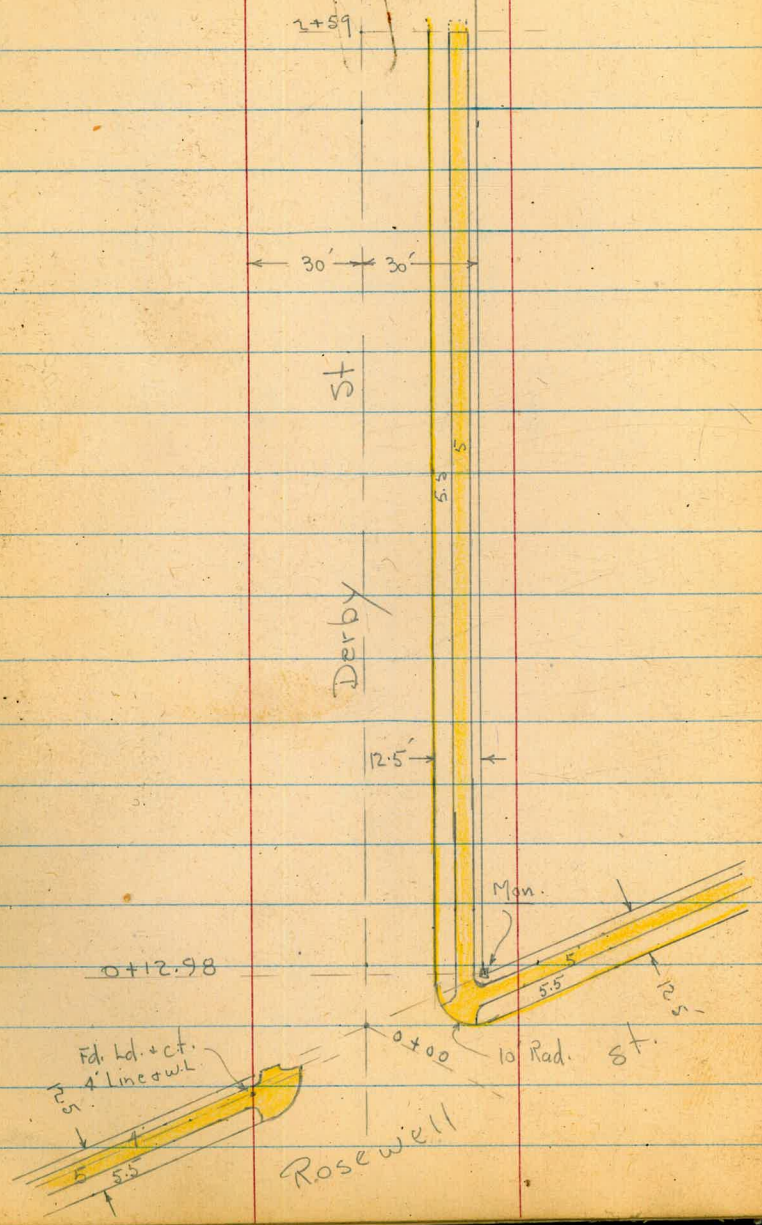
6+95 - 30.5 Rt = ± 3' Conc. walk

6+77 - 25.3 Rt = ± 9.5' Conc. Dr. - No Gar.

	Lt.	#	Rt.
	272.7		261.6
	+3.8	+0.4	7.0
	70	30.5	40
	271.6		260.7
	+2.7	1.3	8.2
	70	30.5	40
	267.6		260.7
		Prop. Cor.	
	265.5		260.7
	+3.4	15	8.2
	264.3		260.7
	264.1		260.7
	+4.8	15	8.2
	263.7		260.7
	5.5	30.5	40
	263.4		260.7
	5.5	30.5	40
	262.0		260.7
	5.9	30.5	40
	260.7		260.7
	8.2	40	40
	268.7		260.3
	0.2	2.2	8.6
	40	30	40
	266.7		260.3
	6.5	4.0	8.6
	264.9		260.3
	4.0	5.0	40
	263.9		260.3
	5.0	5.0	40
	263.2		260.3
	5.7	6.9	40
	262.0		260.3
	5.9	8.6	40
	260.3		260.3
	8.6	40	40
	266.3		259.5
	2.6	3.6	9.4
	40	30	40
	63.7		
	45		
	± Door		
	of gar.		
	63.4		
	30		
	Dr.		
	265.3		259.5
	3.6	5.4	9.4
	30	15	40
	263.5		259.5
	5.4	3.2	40
	262.5		259.5
	6.4	7.0	40
	261.9		259.5
	7.0	8.4	40
	260.5		259.5
	8.4	30	40
	264.6		257.9
	4.3	5.9	11.0
	40	30	40
	263.0		257.9
	5.9	7.2	11.0
	30	15	40
	261.7		257.9
	7.2	8.1	11.0
	15	1	40
	260.8		257.9
	8.1	8.6	10.0
	15	30	40
	260.3		257.9
	8.6	10.0	11.0
	15	30	40
	258.9		257.9
	10.0	11.0	11.0
	30	40	40
	257.9		257.9
	11.0	11.0	11.0
	40	40	40
	258.69		257.91
	10.21		10.99
	30.5 = walk		43 = at Porch
	259.06		257.91
	9.84		11.39
	25.3		34.5 = end Dr.
	Dr.		Dr.
	268.90		

Geneva

Hue.



Lt. = W.

Rt. = E.

15

X-Section Derby St. - from Roswell
to Geneva - Dirt-Graded - cb. on E.

See sketch - P. 14

12-16-49

7.0

W.O. 25020

INDEXED

checked by

W.K.

W.S. Fay

JAN 12 1950

0+50

6 270.0
4.0

6 270.0
3.0

6 269.8
1.5

5 270.5
.8

5 270.2
.4

5 271.32
.01
Top

0+12.98 = opp. N.E. Cor. - sect. at 90°

6 269.7
4.0

5 269.4
3.0

7.2 269.1
2.0

6 269.7
.6

6 269.7
1.4

5.6 270.67
1.4
Top

0+00 = \pm at N.L. of Roswell - Sect. along N.L.

7.3 269.0
32.7
Prop. Cor.

7.30 269.03
30.4
end walk

7.41 268.92
2.5

7.7 268.6
1.5

6 269.4
.9

6 269.7
1.1
94

5.7 270.58
1.1
Top

0-09.7 = end of cb on Lt. 17.1

268.78

7.55

7.8

17.1
Top

17.1
cut

266.94

266.0

268.69

267.7

268.70

267.9

268.3

269.0

269.4

269.9

270.63

270.4

271.08

9.39

10.3

7.64

8.6

7.63

8.4

8.0

7.3

6 269.4
1.5

6 269.9
33.5
cut

5.70
33.5
Top
PC-10
Rad.

5.9
7.0
cut

5.25
7.0
Top

0-13.5 = \pm + line of Exist. Curbs

B.M.

5.73

276.33

270.60

Mon. N.E.
Roswell + Derby

2+50

2+14 = Park on cb. Grade on Rt.

2+00

1+50

1+17 = 10' Dr. on Rt. cb. Broken - oil in Dr.

1+00 = 32' Lt. = Nly. of 8' Conc Dr

0+86 = 36.4 Lt. = 1/2 Doub. Gar. Conc floor

0+63 = 31.3 Lt. = 1/2 10' Conc slab.

271.3	270.9	270.6	271.2	270.7	271.60	16
40	30	15	1	5.6	4.73	
271.9	271.5	271.3	272.1	271.7	272.67	271.4
4.4	4.8	5.0	4.2	4.6	3.66	4.9
40	30	15		17.4	17.4	17.5
				got.	got.	got.
271.3	271.1	271.4	272.0	271.6	272.57	272.65
4.0	4.2	4.9	4.3	4.7	3.76	3.68
40	30	15		17.3	17.3	17.5
				got.	got.	got.
				271.6	272.54	272.80
				4.7	3.79	3.53
				14 = got.	22.9 = edge walk.	32.8 floor Gar.
270.48	270.28	270.5	271.4	271.2	272.31	
5.85	6.05	5.8	4.9	5.1	4.02	
36.8 floor Gar.	32 Dr.	30		17.5 got.	17.5 Top	
		270.46				
		5.87				
		36.4 = floor				
270.08	270.43					
6.25	5.90					
50 Conc.	31.3 Conc.					
			276.33			

4+50

4+00

3+63 = end of cb. + walk on Rt.

T.P. 3.25 271.04 854 267.79

3+50

3+13 = Beg. cb. + Walk on Rt.

3+00

2+90 - 27.8' Lt = ± 4' Conc. walk
4 more

2+59 = end of good cb. + walk on Rt. - did extend

6.48
50
walk

270.12
6.21
27.8
walk

276.33

5.8
7.5
Top

4.98
7.5
Top

4.98
23
walk

4.92
29

5.3
40

5.6
30

5.2
50

6.269.7

7.269.2

5.269.5

5.269.3

7.268.6

5.269.60

6.269.63

5.269.75

5.268.0

5.267.8

5.267.3

5.267.8

7.267.4

7.268.34

7.268.04

7.268.13

9.261.4

5.265.9

5.265.2

5.265.8

5.265.7

4.266.7

5.267.9

5.266.0

12
266.0

Derby + Geneva
 Check Mon. on S.E. Cor. 4.64 266.40
 Geneva + Beverly
 Check B.M. = N.W. Mon. 9.87 261.17

6+22.60 = N.L. = end

5+92.60 = ±

5+62.60 = S.L. Geneva

5+25

5+12- 47.9 Rt. = ± Sing Gar - Dirt floor.

5+00

Lt.	#	Rt.
266.55 = B. 2025 - P. 28 (Sewer Levels)		
261.16 - P. 12		
1.6 259.4	6.4 264.6	3.9 267.1
7.0	8.0	5.0
12.3 258.7	8.4 262.6	5.5 265.5
7.0	8.0	8.0
12.3 258.3	8.4 262.7	6.0 265.0
7.0	8.0	8.0
11.3 259.7	9.1 261.9	6.9 264.1
4.0	8.0	12.0
11.3 260.8	8.3 262.7	5.3 265.7
4.0	8.0	4.0
10.2 260.8	8.4 262.6	5.8 265.2
4.0	8.0	3.0
7.6 263.4	8.3 262.7	4.7 266.3
15 271.04	7.6 263.4	4.0
	5.1 265.4	
	3.0 = Dirt	
	7.4 263.2	
	5.8 265.2	
	4.7 267.3	
	5.1 265.9	
	4.0	

Cross Section Hanover St.
Roswell St to Geneva Ave

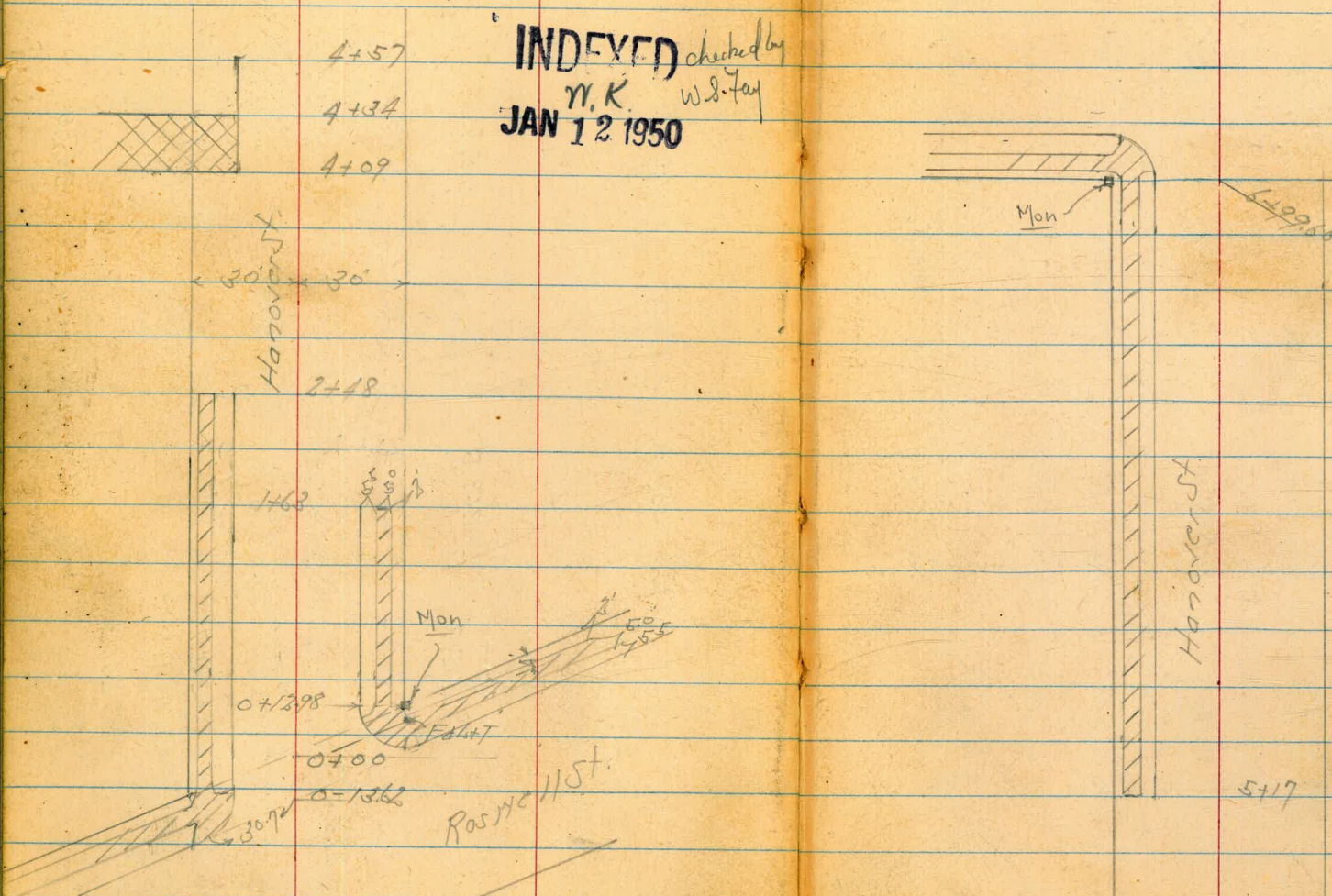
Levels Next Page

Dec. 20-49
H. Sisson
Hardin
Hatch
Shepard

19

INDEXED checked by
N.K. W.S. Fay
JAN 12 1950

Geneva Ave



Hanover St.
Roswell to Geneva

See Sketch Page 19

Lt. M

Rt. E

20

1150

530 255.8
30
530 255.57
174-CbTop
58 255.3
174-Gut
51 256.0

52 255.9
176
4.71 256.36
176-Cb
530 257.3

11298 = H.L. Roswell on Rt.

56 255.5
30
568 255.39
174-CbTop
624 254.9
174-Gut
59 255.2

56 255.5
17.5-Gut
467 256.40
17.5-CbTop
50 257.1

0+0 = H.L. Roswell Taken on Diag

617 254.90
19.1-Cb
791 254.0
174-Gut
61 255.0

55 255.6
19.2-Gut
469 256.38
19.5

0-1362 = North Carb Line Roswell Taken on Diag

639 254.68
307 253.2
307-Gut
642 253.9
307-Cb
63 254.8

57 255.4
33 255.9
33-Gut
463 256.44
33-Carb

B.M.

1.42 256.65
H.M. Roswell Hanover

256.64 = Book

1.95 261.07 12.65 259.12

- 261.07

B.M.

1.16 271.77 270.61
H.L. Mos Roswell Derby

+48 = NY Curb + Walk on Lt

TP 3.19 25718 7.08 25399

240

+63 = NY Curb + Walk on Rt

+50

140

26107

80 257.7

61 252.1

6.00 252.18

6.02 252.16

4.92 252.26

17.3 252.8

17.3 253.3

3.67 253.7

6.00 255.4

21

NY Wall
NY Wall 257.18

3.76 253.5

7.47 253.60

7.61 253.6

7.0 254.1

6.4 254.7

6.0 256.1

4.0 257.2

6.46 254.61

6.41 254.63

6.7 254.4

6.9 255.2

6.5 255.6

4.74 256.33

6.09 257.2

6.7 255.4

6.65 255.42

6.0 255.1

6.0 256.1

6.0 256.1

4.6 256.47

4.46 256.61

4.07 257.00

26107

5.5 255.6
17.5-50ft
4.80 256.27
17.5-50ft
4.67 256.40
4.5 256.55
27.9-50ft
4.5 256.55

Harover St.

+34 = 1/4 Conc Drive on Lt

+09 = 1/4 Conc Drive on Lt

4+0

+50

3+0

257.18

Lt.

Rt.

Rt.

22

10.58	10.60	10.4	9.6	8.6	6.3	4.6
30	17	10	6.0	15	30	40
246.57	246.81	246.8	247.6	248.6	250.9	252.6
30 = 1/4 Conc Drive	17 = 1/4 Conc Drive	10 = 1/4 Conc Drive	6.0 = 1/4 Conc Drive	15 = 1/4 Conc Drive	30 = 1/4 Conc Drive	40 = 1/4 Conc Drive
10.61	10.37	17.0	10.61	10.37	17.0	10.61
30	17	10	30	17	10	30
246.7	247.1	247.8	248.8	249.99	250.34	251.54
30 = 1/4 Conc Drive	17 = 1/4 Conc Drive	10 = 1/4 Conc Drive	30 = 1/4 Conc Drive	17 = 1/4 Conc Drive	10 = 1/4 Conc Drive	30 = 1/4 Conc Drive
14.2	14.2	10.25	10.15	7.19	6.84	5.64
40	30	25	15	18.5	25.5	29.7
243.0	244.9	246.7	247.8	248.8	249.99	250.34
40 = 1/4 Conc Drive	30 = 1/4 Conc Drive	25 = 1/4 Conc Drive	15 = 1/4 Conc Drive	18.5 = 1/4 Conc Drive	25.5 = 1/4 Conc Drive	29.7 = 1/4 Conc Drive
9.1	8.9	8.0	7.6	7.2	6.0	4.7
40	30	15	16	15	30	40
248.1	248.3	248.6	249.6	250.0	252.1	253.5
40 = 1/4 Conc Drive	30 = 1/4 Conc Drive	15 = 1/4 Conc Drive	16 = 1/4 Conc Drive	15 = 1/4 Conc Drive	30 = 1/4 Conc Drive	40 = 1/4 Conc Drive
8.0	6.7	6.5	6.5	6.5	3.4	1.7
40	30	15	15	15	30	10
249.2	250.5	251.3	252.1	252.1	253.8	255.5
40 = 1/4 Conc Drive	30 = 1/4 Conc Drive	15 = 1/4 Conc Drive	15 = 1/4 Conc Drive	15 = 1/4 Conc Drive	30 = 1/4 Conc Drive	10 = 1/4 Conc Drive

257.18

TP

5.10

255.13

7.15

250.03

4.50

4 17

= 5/4 Curb + 3/16 ft on Lt

5.10

4.90

= 1/2 11 Conc Drive on Rt

4.57

= 1/4 Curb on Lt

257.18

Lt

300
248.9

307
248.81

306
248.6

306
249.6

306
250.6

306
251.9

306
253.2

247.74

247.91

247.84

9.44
185

9.37
185

9.31
177

Walk
conc.

Walk
conc.

Walk
conc.

130
46
244.2

130
30
247.2

97
57
247.5

87
248.5

77
249.5

67
251.5

47
252.5

243.1

244.9

246.5

246.90

246.6

246.9

247.7

248.7

251.1

252.5

141
40

123
30

107
18

107
11

106
19

103
10

96

85

61
30

47
46

257.18

Rt

Hanover St

TP

6.26

5th Conc Man
Hanover
+ Geneva

248.87

Lt.

Rt.

24

+99.66 - SL Geneva

+79 = 8' Conc Walk on Rt.

+62 = Break Curb Grade on Lt.

+30

640

5-158 = 85 Conc Drive on Rt.

255.13

255.13

36/ 249.0
614 248.99
68 248.5
59 249.3

49 250.2
30 260.28
48 249.5
46 250.5

49 250.2
30 250.02
51 249.6
43 250.8

55 249.9
30 249.74
57 249.4
45 250.6

55 249.6
55 249.6
57 251.92
36 250.8
30 251.99

30 250.8
30 251.99
30 251.99
30 251.99
30 251.99

45 251.0
30 252.4
40 253.1

251.21
252.50
251.21
252.50

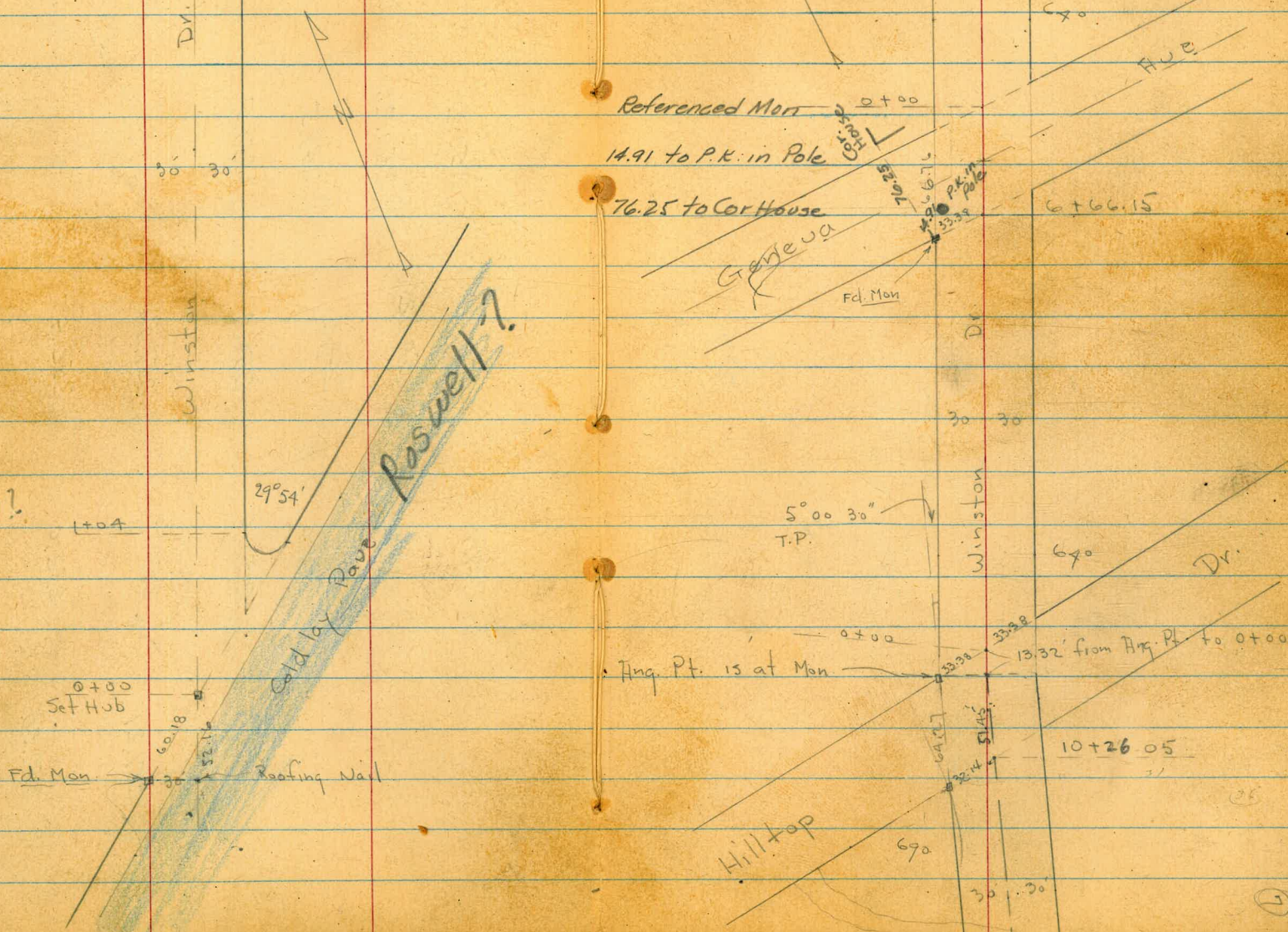
INDEXED

MEER

MAR 27 1956

25

1457





Fd. old Hubs

Dr.
w
w

3+33.78 - Set Hub

33.38 33.37

Lenox.

64°
Map - Not
Turned.

Dr.

30 30

Winston

X-Sect. Winston Drive - from
Roswell to Lenox - Dirt - Rough Rdwy. by blade

W.O. 25020 12-22-49

INDEXED

W.K.

checked by J.O.

JAN 12 1950

See sketch - P. 25

0-20.1 = edge of Cold Lay Pavc - (sect. Normal to Roswell)

Section Normal to Roswell

0-52.16 = 90° to N.W. Cor. at Winston

Set BM on N.W. Mon.

12.56 167.27 =

8.66 179.83 12.79 171.17 =

T.P. 0.92 183.96 13.09 183.04

0.17 196.13 12.88 195.96

0.75 208.84 13.24 208.09

0.51 221.33 12.76 220.82

T.P. 0.74 233.58 - 13.05 232.84

- 6.63 239.26

T.P. 101 245.89 - 12.94 244.88

B.M. +1.17 257.82 256.65

164.85	166.69	169.39	172.22	174.39	177.58
15.48	13.14	10.44	7.61	5.44	2.33
60.2	30		30	60.2	100
163.44	165.83	168.35	171.02	173.46	176.56
16.39	14.00	11.48	8.81	6.37	3.27
60.18	30	on CL.	30	60.14	100
w.L.			E.L.		

Note diff on P. 18

167.33 (B-2025-P-19) 179.83

€ ↓ N.L. Roswell at Winston

= Ang. Mon. S. side Roswell at Hilltop

256.64 = N.E. Mon. Hanover + Roswell

Winston

T.P. 244 169.50 12.77 167.06

3+00 = Sly. of Dirt Dr. to New House

2+50

2+00

1+50

1+00

sect. at 90°
0+52.16 = Int. of E.L. & N.W. line of Roswell

sect. along N.L. Roswell
0+00 = $\frac{1}{2}$ Winston + N.L. Roswell

12.2 40	11.8 30	11.6 15	11.3 5	10.1 5	10.4 24	6.6 30	2.3 40
167.6	148.6	169.7	170.2	170.7	171.5	176.1	
12.2 40	11.2 30	10.1 15	9.6 5	9.1 15	8.3 30	7.7 40	
166.0	167.4	171.5	171.6	172.3	172.5	175.1	178.3
13.8 40	12.4 30	8.3 12	8.2 5	7.5 15	7.3 25	4.7 30	1.5 40
166.0	168.1	173.1	173.3	174.0	176.8	181.4	
13.8 40	11.7 30	6.7 15	6.5 5	5.8 20	3.0 30	1.6 40	
165.4	169.5	174.1	174.2	175.1	177.2	179.8	
14.4 40	10.3 30	5.7 14	5.6 5	4.7 20	2.6 30	0.0 40	
167.2	171.9	173.1	173.5	174.1	176.4		
12.6 40	7.9 30	6.7 15	6.3 5	5.7 20	3.4 30		
167.4	169.8	171.1	173.1	173.1	176.4	179.4	
12.4 60.18 Cor.	10.0 22	8.7 179.83	6.7 30	6.7 30	3.4 60.18 E.L.	0.4 100	

Rt.
169.4
173.2
177.5

28

Winston

5+90

5+40

5+00

4+60

4+35 = Low point = Natural wash

3+90

3+50

10.0	9.9	9.5	9.0	8.0	5.0	3.2
40	30	35	0	50	30	40
159.5	159.6	160.0	160.5	161.5	163.5	166.3
10.0	9.9	9.5	9.0	8.0	5.0	3.2
40	30	35	0	50	30	40
165.8	164.8	163.9	163.8	165.8	166.4	172.9
3.7	4.7	5.6	5.7	4.7	3.7	+3.4
40	30	50	7	50	30	40
159.2	159.2	160.7	161.8	162.3	163.2	169.5
10.3	10.3	9.8	7.7	7.2	6.3	4.0
40	30	50	7	50	30	40
155.7	156.0	158.4	159.1	159.6	160.2	160.0
13.8	13.8	11.1	10.4	9.9	9.3	9.5
40	30	50	4	50	30	40
151.0	154.1	154.6	158.5	159.0	159.3	160.2
18.5	15.4	14.9	11.0	10.5	10.2	9.3
40	30	20	7	50	30	40
156.7	157.4	158.6	159.9	160.4	160.9	162.4
12.8	12.1	10.9	9.6	9.1	8.6	4.7
40	30	50	6	50	30	40
144.8	165.0	163.9	163.9	164.3	168.9	172.1
4.7	4.5	5.6	5.6	5.2	0.6	+2.6
40	30	50	169.50	20	30	40

29

Winston

8+75 = ± Wash to E.

8+35 - Small road angles to W. here

7+90 = sly. of Sing. Gar. on Lt. - dirt floor

T.P. 2.07 169.30 227 167.23

7+40 - House on Lt. floor House

7+00

6+65 = low point - wash.

6+30 - 90 Lt. = ± House floor House

	15.2	14.3	11.7	10.9	9.8	7.6	5.6
	40	30	15	15	15	30	40
Nly. of Private Road to Hilltop to W:	1552	1552.9	161.5	161.5	164.6	165.7	166.0
	14.1	12.4	7.4	7.8	4.7	3.6	3.3
	40	30	15	15	15	30	40
	164.7	166.5	166.8	167.8	168.4	169.7	172.2
	4.6	2.8	2.5	1.6	0.9	+0.4	+2.9
	43.5	30	15	15	15	30	40
	166.4	166.6	166.6	163.5	162.8	163.2	165.1
	3.1	2.9	2.9	6.0	6.3	6.5	4.4
	48.3	40	30	20	15	30	40
	158.2	158.6	157.9	157.8	157.2	159.4	161.0
	11.3	10.9	11.6	11.7	12.3	10.1	8.5
	40	30	15	15	15	30	40
	151.2	153.2	156.2	156.8	156.5	157.7	158.6
	18.3	16.3	13.3	12.7	13.0	11.8	10.9
	40	30	15	15	15	30	40
	148.2	155.1	156.3	157.2	157.5	159.1	161.2
	21.3	14.4	12.2	12.3	12.0	10.4	8.3
	9.0	40	30	15	15	15	30
	ground				169.50		40

30

R

Winston

10+39

10+15 = opp. S.W. Cor.

Hilltop

Set B.M. - N.W. Mon.

S.W. Cor. 9.12 193.77

T.P. 173924

T.P. = Nail in Pole

T.P. 10.85 190.90 0.94 180.05

9+90

9+60

T.P. 12.10 180.99 0.41 168.89

9+30

9+00

did you check
this ELD

9.48 184.29

6.25 184.65

11.9	8.1	6.1	6.0	5.8	3.3	0.4
40	30	15	15	15	30	40

11.5	10.8	9.8	9.4	10.1	9.5	8.9
40	30	15	15	15	30	40

193.77

179.6	180.3	181.0	180.1	177.0	177.7	182.7
1.4	0.7	0.0	0.9	4.0	3.3	+1.1
40	30	15	15	15	30	40

176.1	176.0	176.3	172.8	172.0	167.7	170.4	173.5
4.9	5.0	4.7	8.2	9.0	13.3	10.6	7.5
40	30	20	12	15	15	30	40

168.7	168.2	168.3	180.99	164.6	169.6	173.5
0.6	1.1	1.0	3.3	4.7	+0.3	+4.2
40	30	15	33	15	30	40

161.7	160.3	160.0	159.3	163.9	167.9	169.3
7.6	9.0	9.3	10.0	5.4	1.4	0.0
40	30	15	15	15	30	40

31

Winston

T.P. 0.58 18 2.10 12.25 181.52

2+50

2+00

1+50

1+00

0+50

No Road - Natural ground from Here on.

0+15 = opp NE Cor.

see sketch - 0+00 = $\$$ at N.W. Hilltop

Sect on split

10+78.50 = Ang 5° 00' 30" Rt.

178.4	179.84	180.4	182.54	184.1	186.2	186.7	Rt.	32
15.4 40	14.0 30	13.4 15	11.3	9.7 15	7.6 30	7.1 40		
181.8	183.6	184.8	185.2	186.5	188.7	190.0		
12.0 40	10.2 30	9.0 15	8.6	7.3 15	5.1 30	3.8 40		
182.1	184.9	186.1	186.8	187.8	189.8	192.7		
11.7 40	8.9 30	7.7 15	7.0	6.0 15	4.0 30	1.1 40		
185.5	186.9	187.6	188.3	189.5	190.7	193.8		
8.3 40	6.9 30	6.2 15	5.5	4.3 15	2.1 30	0.0 40		
185.0	186.0	187.8	188.8	189.7	191.5	194.6		
8.8 40	7.8 30	6.0 15	5.0	4.1 15	2.3 30	+0.8 40		
185.5	186.3	188.3	188.9	189.7	191.4	194.6		
8.3 40	7.5 30	5.5 15	4.9	4.1 15	2.4 30	4.0		
183.8	184.6	188.1	189.3	190.3	191.5	192.6		
10.6 40	9.2 30	5.7 15	4.5	3.5 15	2.3 30	1.2 40		
			193.77					

Winston

5+00

13.8 40	11.8 30	10 50	8.7 50	6.5 50	2.1 30	0.178.3 40
164.5	166.5	168.3	169.6	171.8	176.2	178.33

4+75

21.0 40	17.7 30	13.2 50	9 50	5.4 50	2.7 30	1.0 40
157.3	140.6	164.5	169.3	172.9	175.9	177.3

4+40

23.5 40	21.9 30	20.2 15	13.5 50	8.5 15	3.8 30	1.176.6 40
154.8	156.4	158.1	164.8	169.7	174.5	176.6

4+15 = ± wash

20.5 40	20.8 30	20.2 15	19.1 ± wash	16.0 15	12.5 30	10.0 40
157.8	157.5	158.1	159.2	162.3	165.8	168.3

3+85

15.0 40	15.0 30	15.4 15	15.4 50	17.4 15	18.0 30	18.3 40
163.3	163.3	162.5	162.5	160.9	160.3	160.0

T.P. 9.11 178.27 12.94 169.16

3+50

15.3 40	14.0 30	14.2 15	13.9 50	13.5 15	13.9 30	13.4 40
166.8	168.1	167.9	168.2	168.6	168.2	168.3

3+00

10.0 40	7.2 30	6.6 15	5.7 182.10	2.6 15	2.3 30	0.181.3 40
172.1	174.9	175.5	176.4	178.5	179.8	181.3

Winston

Lt.

\$

Rt.

34

T.P. 8.51 183.81 3.18 176.30

0+50

	169.8	170.6	171.0	172.4	174.6	176.8	178.5
	8.7 40	7.9 30	7.5 5	6.1	3.9 5	1.4 30	4.0 50
	167.8	168.6	170.3	171.6	173.5	175.6	
0+14.6 = opp. N.E. Cor.	10.7 40	9.9 30	8.5 15	6.9	5.0 15	2.9 30	

0+100 = N.L. Geneva + Lt. Winston.

0+99.53 = Lt. Both ways

	167.6	169.3	170.5	171.9	174.2
	10.9 30	9.2 15	8.0	6.6 15	4.3 30

on S.W. Mon.

T.P. 12.51 178.48 12.30 165.97

Sections Normal

6+51.6 = opp. S.W. Cor. Geneva

6+00

	166.0	166.7	167.8	169.3	171.4	173.3	173.8
	12.3 40	11.6 30	10.5 15	9.0	6.9 15	5.0 30	4.5 40
	166.0	166.7	167.0	169.5	171.1	174.9	176.3
	12.3 40	11.6 30	10.3 15	8.8	7.2 15	3.4 30	2.0 40
	165.0	165.6	168.1	169.5	171.3	174.7	176.3
	13.3 40	12.7 30	10.2 15	8.8	7.0 15	3.6 30	2.0 40

5+50

178.27

Winston

3+67.16 = # Both ways - end.

25.2	19.3	20.1	16	12.4	8.1	5.6
80	30	15	6	15	30	40
- edge of Canyon						

3+19.2 = opp. S.W. Cor.

12.3	12.6	12.9	12.3	10.6	9.6	8.2
40	30	15	30	15	30	40

2+80

8.0	8.2	7.8	7.1	6.5	6.1	5.0
40	30	15	15	15	30	40

2+40

9.4	9.0	8.6	8.0	7.6	7.0	6.1
40	30	15	30	15	30	40

2+00

11.0	9.6	10.0	9.5	8.5	7.7	7.3
40	30	15	15	15	30	40

1

1+50

11.9	11.4	10.6	9.6	9.1	7.6	7.0
40	30	15	15	15	30	40

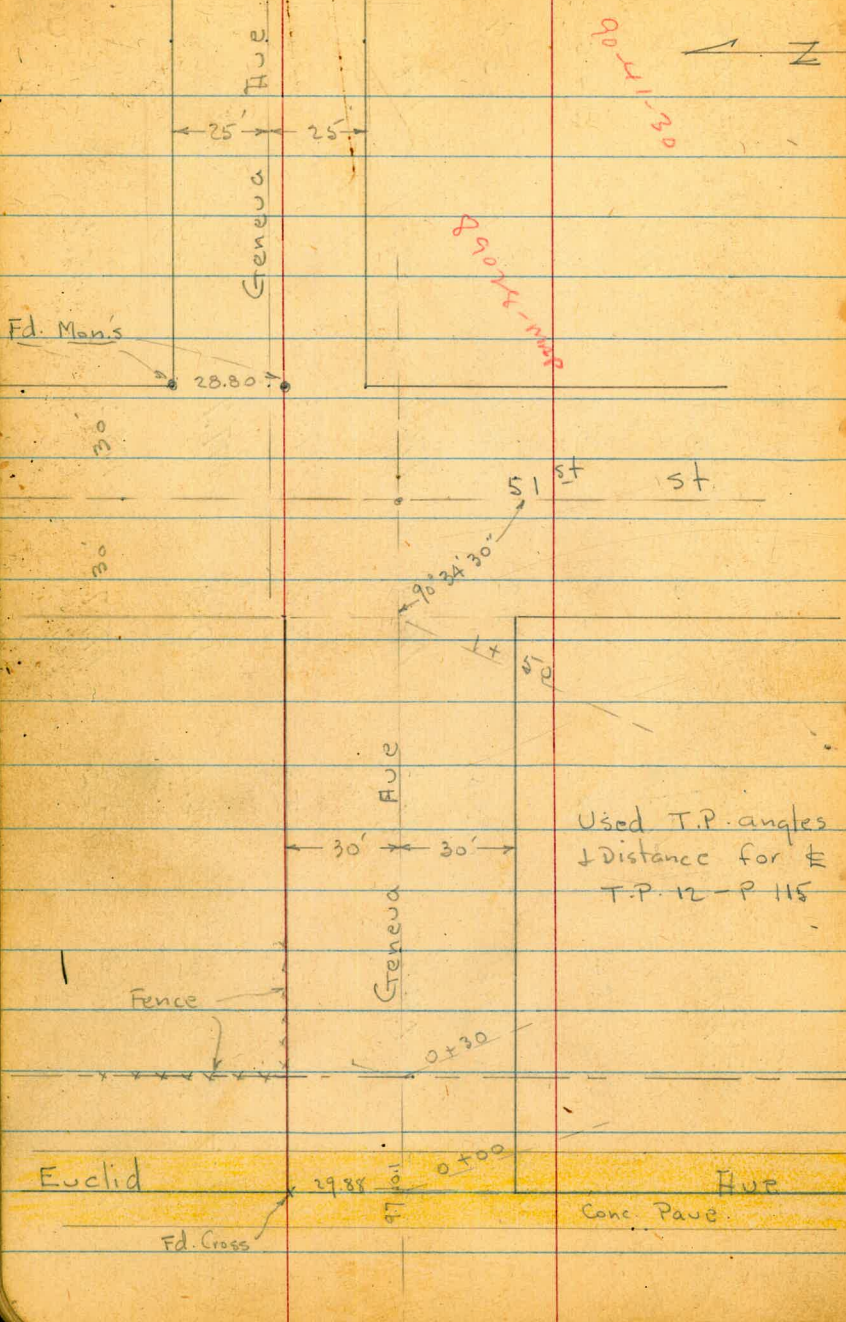
1+00

12.8	12.1	11.2	10.4	9.1	8.1	6.9
40	30	15	15	15	30	40

183.81

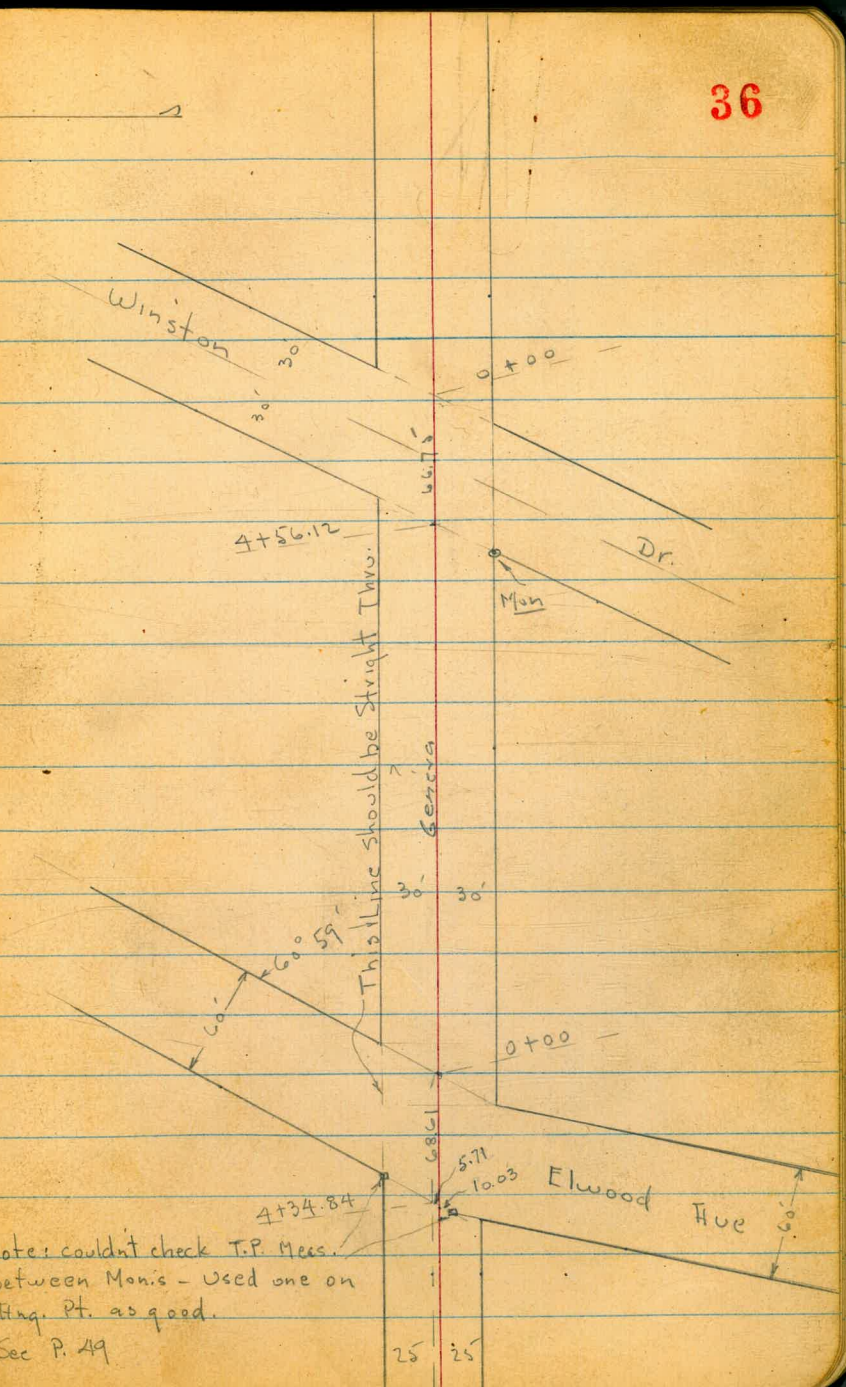
158.6	164.5	163.7	167.2	171.4	175.7	178.2
-------	-------	-------	-------	-------	-------	-------

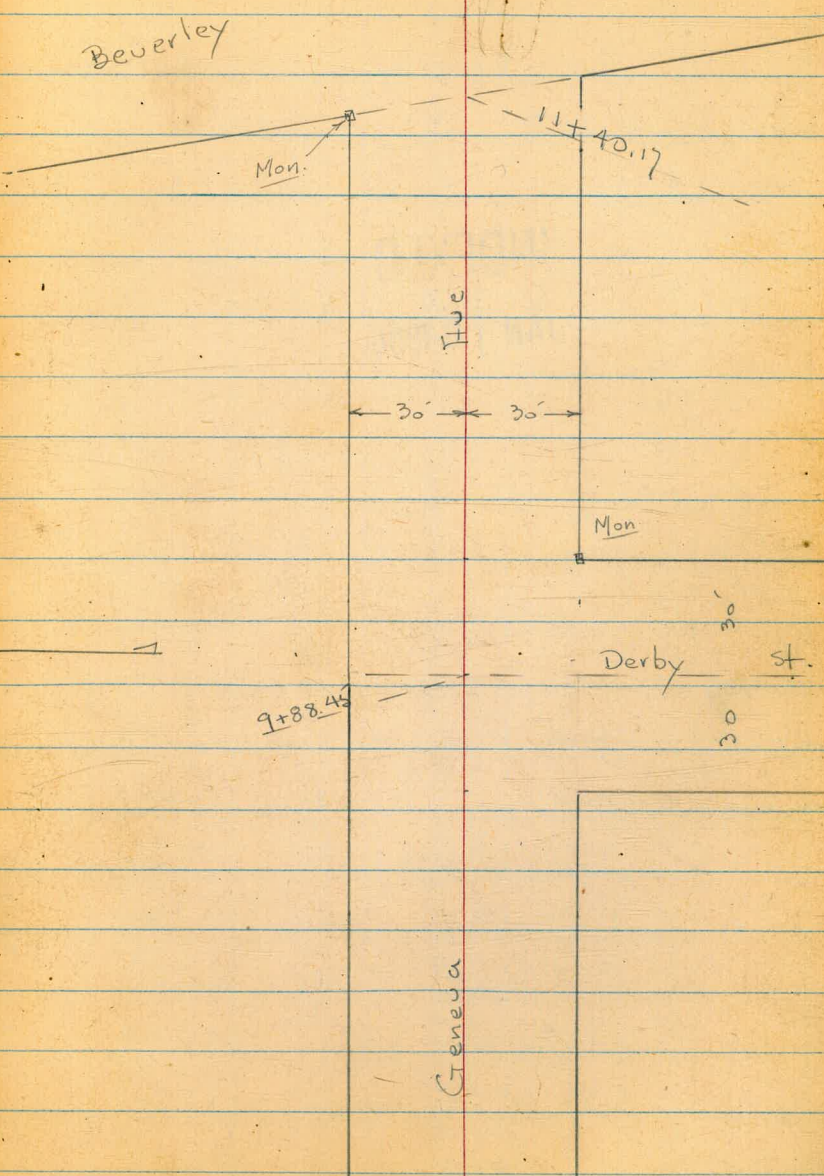
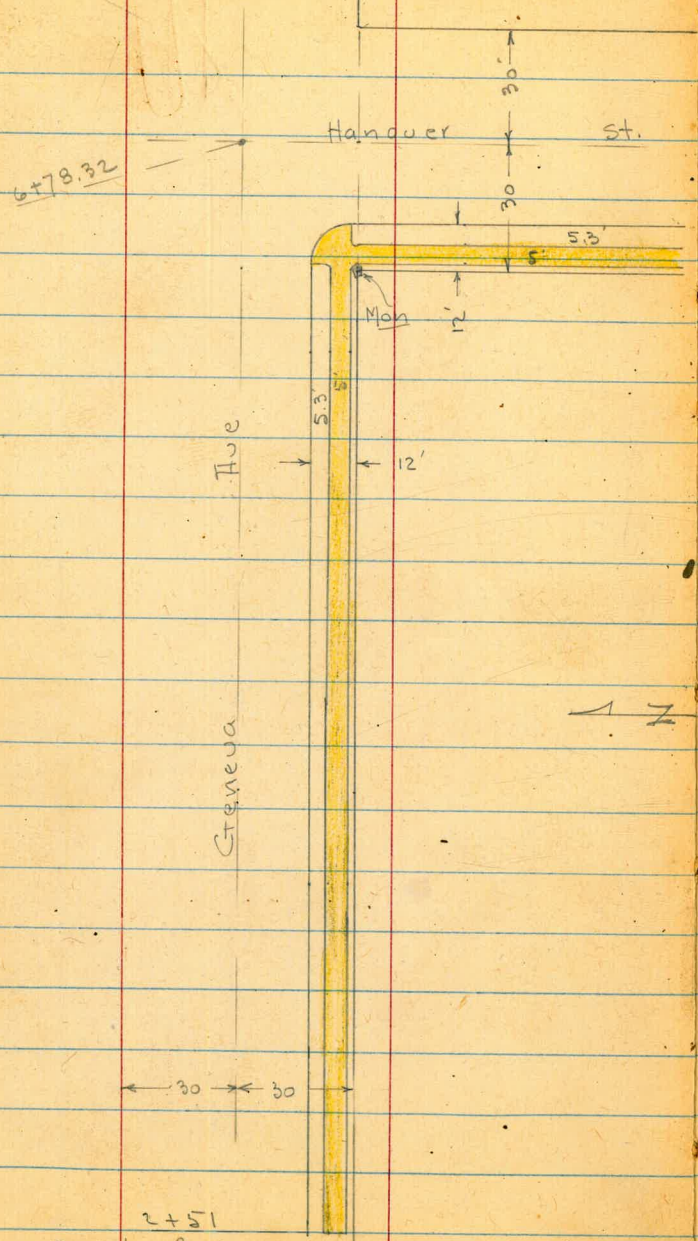
35



Used T.P. angles
 ↓ Distance for E
 T.P. 12 - P 115

Note: couldn't check T.P. Meas.
 Between Monis - Used one on
 Hing. Pt. as good.
 See P. 49





2+51
See Notes for Loc

Geneva

X- Sect. Geneva Ave - from
 Euclid to Beverly - 60' st. from
 Euclid to 51st - Rough Graded.
 W.O. 25020 12:28-49 - 70.

INDEXED checked by
 N.K. W & Fay
 JAN 12 1950

0+30 = New Prop. Line

0+10.1 = E. edge of Conc. Pavement

0+00 = on Conc. Strip - See sketch - P. 36
 51st + Geneva
 Set B.M. on NE Mon. 1.89 185.41

9.70 187.30 0.69 177.60

12.73 178.29 0.51 165.56

12.18 166.07 0.81 153.89

N.W. Mon. Elwood + Geneva 13.76 140.94

0.86 154.70 12.76 153.84

B.M. = S.W. 0.63 166.60 165.97

Mon. Geneva +
 Winston - P. 34

Lt. = N.

#

Rt. = S. 38

183.3	182.9	181.8	181.2	180.6	180.3	179.4
4.0	4.4	5.5	6.1	6.7	7.0	7.9
40	30	15		15	30	50
184.55	182.81	181.50		180.22		178.30
2.75	4.49	5.80		7.08		9.00
80	30			30		80
184.70	182.80	181.59		180.33		178.31
2.60	4.50	5.71		6.97		8.99
80	30			30		80
		187.30				

T.P. 0.99 175.13 173.16 174.14

1+50

1+00

10+50

0+00 = F.L. 51st and # of 50' St. - Natural ground.

will take Int. on 51st sections

1+50 = w.L. 51st

1

1+00

0+65

177.8 Lt. 177.4 176.4 Rt. 175.0 Rt. 174.4 39

9.5 9.9 10.9 12.3 12.9
35 25 25 25 35

181.5 181.0 179.4 177.8 177.2
5.8 6.3 7.9 9.5 10.1
35 25 25 25 35

185.3 184.5 183.2 181.5 181.1
2.0 2.2 4.1 5.8 6.2
35 25 25 25 35

185.4 184.2 182.6
1.9 2.1 4.7
25 25 25

183.8 182.7 181.7 181.0 180.5
3.5 4.6 5.6 6.3 6.8
30 15 15 30 30

185.0 183.1 182.2 181.6 180.6 180.0 179.5
2.3 4.2 5.1 5.7 6.7 7.3 7.8
40 30 15 15 15 30 40

184.1 183.2 182.1 181.8 181.1 180.3 179.7
3.2 4.1 5.2 5.5 6.2 7.0 7.6
40 30 15 15 15 30 40
187.30

Geneva

3+50

3+25

T.P. 0.84 150.61 13.13 149.77

3+00

2+70

T.P. 0.26 162.90 12.49 162.64

2+45

2+25

2+00

14

6.2
35 144.4

6.6
25 144.0

7.7
142.9

9.1
25 141.5

9.7
35 140.9

Rt.

40

4.1
35 146.5

4.7
25 145.9

5.9
144.7

7.0
25 143.6

7.7
35 142.9

12.1
35 150.8

12.9
25 150.0

12.9
15 150.0

150.61
147.3

15.3
15 147.6

15.7
25 147.2

16.4
35 146.5

2.3
35 160.6

2.0
25 160.9

3.2
162.7

5.6
25 167.3

6.9
35 166.0

4.9
35 170.2

4.0
25 171.1

3.9
5 171.2

162.90
6 169.1

8.4
15 166.7

10.0
25 165.1

10.8
35 164.3

2.6
35 172.5

2.8
25 172.6

3.1
172.0

4.2
25 170.9

4.5
35 170.6

0.0
35 175.1

0.8
25 174.3

1.5
173.6

2.1
25 173.0

2.6
35 172.5

175.12

0+65 = \pm at \pm of channel

0+50

0+16 = opp. N.E. Cor.

60' st. - Natural ground - in River Bottom

0+00 = \pm Geneva + E.L. Elwood

0-16 = opp. S.E. Cor. - Sect. Normal to Geneva

for Int. - Sec Elwood Sections

4+48.7 = opp. N.W. Cor.

4+25.2 = opp. S.W. Cor. - Sect. normal to Geneva

4+00

	140.3	139.1	139.0	137.9	138.0	138.4	138.8
	10.3 40	11.5 30	11.6 15	12.1	12.6 15	12.2 30	11.8 40
		139.8	138.9	138.3	137.2 Main channel	138.0	137.5
	10.8 30	11.7 15	12.3	13.4 15	12.6 30	13.1 40	
	138.1	138.3	138.4	138.4	137.3		
	12.5 30	12.3 15	12.2	13.3 30			
	141.1	141.1	140.5	139.9			
	9.5 25	9.5 15	10.1	10.7 25			
	142.0	141.8	141.5	140.6	139.5		
	8.6 35	8.8 25	9.1 15	10.0	11.1 25		
	142.5	142.2	141.7	140.9	140.6		
	8.1 35	8.4 25	8.9	9.7 25	10.0 35		
			150.61				

Geneva

T.P. 13.19 154.11 9.68 -140.93 =

Nw. Elwood
P. 38

Mon.

2+80 = Toe at N.L.

9.1 40	141.5	9.0 30	141.6	4.9 15	145.7	+0.5	151.1	+4.8 15	155.4	+6.0 30	156.6	+7.1 40	157.7
-----------	-------	-----------	-------	-----------	-------	------	-------	------------	-------	------------	-------	------------	-------

2+50 = Toe at #

8.9 40	141.7	9.0 30	141.6	9.1 15	141.5	9.2	141.4	3.7 5	146.9	2.7 30	147.9	2.0 40	148.6
-----------	-------	-----------	-------	-----------	-------	-----	-------	----------	-------	-----------	-------	-----------	-------

2+20 = Toe on S.L.

8.6 40	142.0	8.6 30	142.0	8.8 15	141.8	9.2	141.4	9.6 15	141.0	9.7 30	140.9	6.6 40	144.0
-----------	-------	-----------	-------	-----------	-------	-----	-------	-----------	-------	-----------	-------	-----------	-------

2+00 = E. side of River bottom.

9.0 40	141.6	9.3 30	141.3	9.5 15	141.1	9.7	140.9	9.7 15	140.9	9.8 30	140.8	9.9 40	140.7
-----------	-------	-----------	-------	-----------	-------	-----	-------	-----------	-------	-----------	-------	-----------	-------

1+60 = # E. channel

11.6 40	139.0	12.0 30	138.6	12.1 15	138.5	12.1	138.5	12.8 15	137.8	13.3 30	137.3	12.9 40	137.7
------------	-------	------------	-------	------------	-------	------	-------	------------	-------	------------	-------	------------	-------

1+30

9.6 40	141.0	10.0 30	140.6	10.5 15	140.1	11.1	139.5	11.2 15	139.4	11.3 30	139.3	11.6 40	139.0
-----------	-------	------------	-------	------------	-------	------	-------	------------	-------	------------	-------	------------	-------

0+80

11.7 40	138.9	12.1 30	138.5	11.5 15	139.1	11.7	138.9	11.6 15	139.0	12.0 30	138.6	11.8 40	138.8
------------	-------	------------	-------	------------	-------	------	-------	------------	-------	------------	-------	------------	-------

channel 150.61

42

Geneva

T.P. 12.36 189.21 0.28 176.85

0+00 = \pm at E.L. Winston (sect. along E.L.
for Int. Sec P. 34

4+56.12 = \pm at W.L. Winston - Sect. along
W.L. (on Diag)

4+10

S.W. Cor. - P. 38

check Mon.

T.P. 12.60 177.13 1.34 164.53

3+65

3+20

3+05

T.P. 12.43 165.87 0.67 153.44

Lt.

E

Rt.

43

1.3

33.4

N.E. Cor.

9.2

33.4

N.W. Cor.

12.8

40

161.7

4.2

40

156.5

9.4

40

149.4

16.5

40

1.4

33.4

N.E. Cor.

9.2

33.4

N.W. Cor.

12.6

30

161.8

4.1

30

158.5

7.4

30

151.6

14.3

30

2.5

33.4

N.E. Cor.

9.6

33.4

N.W. Cor.

12.6

15

162.1

3.8

15

159.5

6.4

15

155.7

10.2

15

2.5

33.4

N.E. Cor.

9.6

33.4

N.W. Cor.

12.6

12.5

162.2

3.7

17

159.9

6.0

0

158.5

7.4

15

3.0

33.4

N.E. Cor.

9.8

33.4

S.W. Cor.

12.7

15

162.3

3.5

15

160.5

5.4

15

159.3

6.6

15

2.6

33.4

N.E. Cor.

10.9

33.4

S.W. Cor.

12.5

30

162.5

3.4

30

160.4

5.5

30

159.7

6.2

30

2.6

33.4

N.E. Cor.

10.9

33.4

S.W. Cor.

12.6

40

162.7

3.2

40

160.3

5.6

40

159.8

6.1

40

T.P. 13.00 226.79 0.14 213.79

Note: first 10' of cb. is broken down.

2+51 - on Rt. - Beg. curb & Walk.

202.5	205.8	206.0	206.5	208.0	208.16	209.25	209.46
11.4	8.1	7.9	7.4	5.9	5.77	4.68	4.7
40	30	17	5		17.6	13.2	29.2
					end - Top cb. + ground.	end walk	

T.P. 12.88 213.93 0.30 201.05

2+00

196.9	199.6	200.6	213.93	201.9	202.6	204.0
4.5	1.8	0.8	0.6	+0.5	+1.2	+2.6
40	30	15		15	30	40

1+50 - Beg. Rough Graded Road.

192.5	193.9	195.0	195.3	196.6	197.8	198.3
8.9	7.5	5.4	6.1	4.8	3.6	3.1
40	30	15		15	30	40

1+00

185.8	186.7	188.4	189.0	189.2	191.5	192.5
15.6	14.7	13.0	12.4	12.2	9.9	8.9
40	30	10		15	30	40

is dirt Dr.
To House

T.P. 12.76 201.35 0.62 188.59

0+50

180.1	180.8	182.0	182.5	183.0	184.5	185.0
9.1	8.4	7.2	6.7	6.2	4.7	4.2
40	30	15		15	30	40

0+14.6 = opp. N.E. Cor. (sect. at 90°)

175.7	176.5	177.1	177.7	179.0	180.0
12.5	12.7	12.1	11.5	10.2	9.2
30	15		15	30	40
		189.21			

Geneva

Lt. # Rt.

T.P. 12.54 251.36 0.46 238.82

4+50

4+00

T.P. 12.86 239.28 0.37 226.42

3+61 - Ely. of Conc. Dr. on Rt. cb. has been

3+50

3+47 = Wly. of Conc. Dr. on Rt. - over old cb.

3+00

Station	Top	Bottom	Dist	Notes
4+50	231.8	231.8	4.3	
4+00	224.5	227.4	2.9	
3+61	224.5	227.4	2.9	knocked out.
3+50	215.8	220.6	4.8	Cor. of Dr.
3+47	224.12	224.73	0.6	Req.
3+00	209.5	213.0	3.5	
2+50	212.3	213.6	1.3	
2+00	213.0	213.0	0	
1+50	213.0	213.0	0	
1+00	213.0	213.0	0	
0+50	213.0	213.0	0	
0+00	213.0	213.0	0	

6+78.32 = Φ Hanover

6.0	5.4	4.1	3	6	2.7	2.0
40	30	15			15	30

Φ of S.W. Return

check SW. Mon. 2.50 248.86

2.24
248.87

6+48.32 = w.L. Hanover

6.0	5.4	4.3	3	9	3.2	2.61	2.41	2.28
40	30	15			17.8	17.8	23.2	28.2

6+00

6.2	5.6	5.2	4	5	4.2	3.74	3.43	3.23
40	30	15			17.9	17.9	23.3	28.3

5+50

9.1	7.5	7.1	6	4	5.9	5.27		
40	30	15			17.8	17.8		

5+00

12.8	10.9	10.2	10	4	9.7	9.24		
40	30	15			17.6	17.6		

4+94 = Φ 10' Conc. Dr. on Rt.

251.36 Dr. 240.96
walk 241.78
9.58 9.46 8.66
23.1 28.1 23.3
Dr. 242.70

248.75 Top
248.95 Top
249.08 Top
249.13 Top
249.15 Top
249.15 Top
249.15 Top
249.15 Top
249.15 Top
249.15 Top

6.0	5.4	4.1	3	6	2.7	2.0
40	30	15			15	30

6.0	5.4	4.3	3	9	3.2	2.61	2.41	2.28
40	30	15			17.8	17.8	23.2	28.2

6.2	5.6	5.2	4	5	4.2	3.74	3.43	3.23
40	30	15			17.9	17.9	23.3	28.3

9.1	7.5	7.1	6	4	5.9	5.27		
40	30	15			17.8	17.8		

12.8	10.9	10.2	10	4	9.7	9.24		
40	30	15			17.6	17.6		

251.36 Dr. 240.96
walk 241.78
9.58 9.46 8.66
23.1 28.1 23.3
Dr. 242.70

Geneva

See P. 18 for Sect. on Derby

9+58.45 = w.L. of Derby

T.P. 9.29 271.11 0.18 261.82

9+00

8+50

8+00

7+50

T.P. 13.14 262.00 2.50 248.86

7+08.32 = E. Hanover

Lt.

A

Rt. 47

47.5	6.8	7.5	8.4	9.9	13.3
30	30	15		15	30
266.9	264.3	263.6	262.7	262.2	262.8

along house

5.2	5.5	5.9	6.1	6.7	7.4	7.7
40	30	15		15	30	40
256.8	256.5	256.1	256.9	256.3	256.6	256.6

11.2	9.6	9.6	9.7	8.3	7.2	6.7
40	30	15		15	30	40
250.8	252.4	252.4	253.3	253.7	254.8	255.3

13.4	12.3	11.9	10.7	10.1	7.7	7.8
40	30	15		15	30	40
248.6	249.7	250.1	251.3	251.9	254.3	254.2

15.2	14.1	12.9	12.3	11.3	9.2	9.3
40	30	15		17	30	34
246.8	247.9	249.1	249.7	250.7	252.8	252.7

along house

4.1	4.0	3.6	3.3	2.6	1.0
40	30	15		15	30
247.3	247.4	247.8	248.1	248.8	250.4

251.36

262.00

check BM. Mon. NW. Beverly 9.93 261.18

261.17 - P. 18

check Mon. at SE Derby 4.71 266.40

266.40 - P. 18

See P. 12 for Int.

Sect. along W.L. Beverly

11+40.17 = \pm at W.L. of Beverly = end.
$$\begin{array}{r} 9.9 \\ 30.6 \\ \hline 261.2 \\ \text{Cor.} \end{array}$$

$$\begin{array}{r} 9.7 \\ 15 \\ \hline 261.4 \end{array}$$

$$\begin{array}{r} 9.8 \\ \hline 261.3 \end{array}$$

$$\begin{array}{r} 10.2 \\ 15 \\ \hline 260.9 \end{array}$$

$$\begin{array}{r} 10.0 \\ 30.6 = \text{Cor.} \\ \hline 261.1 \end{array}$$

11+34.47 = opp. NW. Cor. Beverly - (Sect. at 90°)

$$\begin{array}{r} 9.9 \\ 30 \\ \hline 261.2 \\ \text{Cor.} \end{array}$$

$$\begin{array}{r} 9.7 \\ 15 \\ \hline 261.4 \end{array}$$

$$\begin{array}{r} 9.5 \\ \hline 261.6 \end{array}$$

$$\begin{array}{r} 9.7 \\ 15 \\ \hline 261.4 \end{array}$$

$$\begin{array}{r} 9.0 \\ 30 \\ \hline 262.1 \end{array}$$

11+00

$$\begin{array}{r} 5.9 \\ 40 \\ \hline 264.2 \end{array}$$

$$\begin{array}{r} 7.1 \\ 30 \\ \hline 264.0 \end{array}$$

$$\begin{array}{r} 7.3 \\ 15 \\ \hline 263.8 \end{array}$$

$$\begin{array}{r} 5.6 \\ \hline 264.5 \end{array}$$

$$\begin{array}{r} 5.4 \\ 5 \\ \hline 264.7 \end{array}$$

$$\begin{array}{r} 5.7 \\ 30 \\ \hline 265.4 \end{array}$$

$$\begin{array}{r} 5.5 \\ 40 \\ \hline 265.6 \end{array}$$

10+50

$$\begin{array}{r} 2.3 \\ 40 \\ \hline 268.8 \end{array}$$

$$\begin{array}{r} 3.2 \\ 30 \\ \hline 267.9 \end{array}$$

$$\begin{array}{r} 4.0 \\ 15 \\ \hline 267.1 \end{array}$$

$$\begin{array}{r} 4.7 \\ \hline 266.4 \end{array}$$

$$\begin{array}{r} 4.5 \\ 15 \\ \hline 266.6 \end{array}$$

$$\begin{array}{r} 3.5 \\ 30 \\ \hline 267.6 \end{array}$$

$$\begin{array}{r} 3.2 \\ 34.7 \\ \hline 267.9 \\ \text{along House} \end{array}$$

10+18.45 = E.L. Derby

$$\begin{array}{r} 2.3 \\ 40 \\ \hline 268.8 \end{array}$$

$$\begin{array}{r} 3.1 \\ 30 \\ \hline 268.0 \end{array}$$

$$\begin{array}{r} 4.5 \\ 15 \\ \hline 266.9 \end{array}$$

$$\begin{array}{r} 4.9 \\ \hline 266.2 \end{array}$$

$$\begin{array}{r} 5.1 \\ 15 \\ \hline 266.0 \end{array}$$

$$\begin{array}{r} 4.6 \\ 30 \\ \hline 266.5 \end{array}$$
9+88.45 = \pm

$$\begin{array}{r} 3.8 \\ 15 \\ \hline 267.3 \\ \text{Dirt Dr.} \end{array}$$

$$\begin{array}{r} 4.5 \\ 30 \\ \hline 266.3 \end{array}$$

$$\begin{array}{r} 5.5 \\ 15 \\ \hline 265.6 \end{array}$$

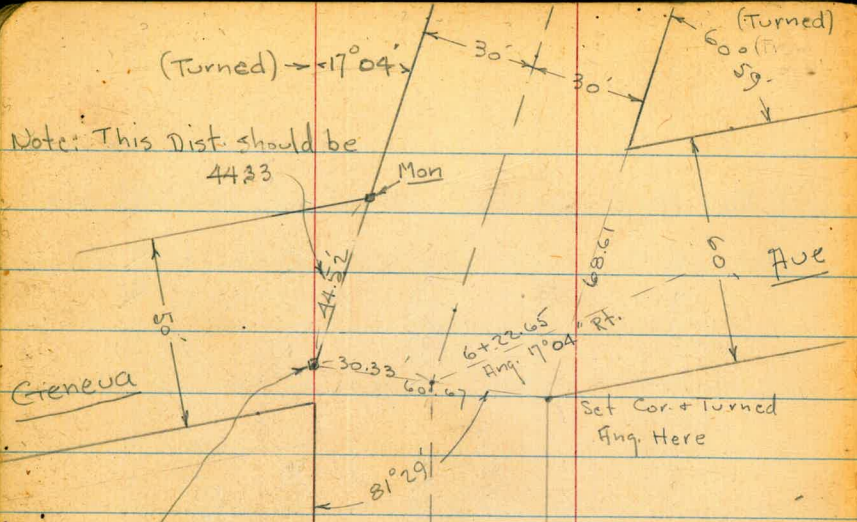
$$\begin{array}{r} 6.0 \\ \hline 265.1 \end{array}$$

$$\begin{array}{r} 5.4 \\ 15 \\ \hline 264.7 \end{array}$$

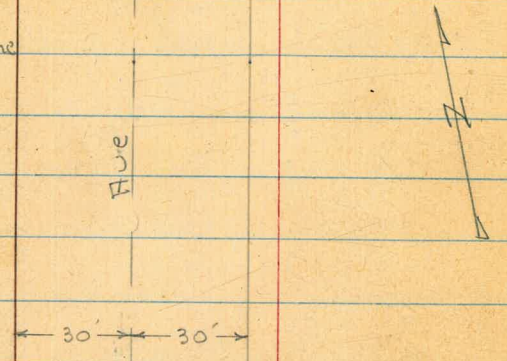
$$\begin{array}{r} 5.9 \\ 30 \\ \hline 264.2 \end{array}$$

271.11

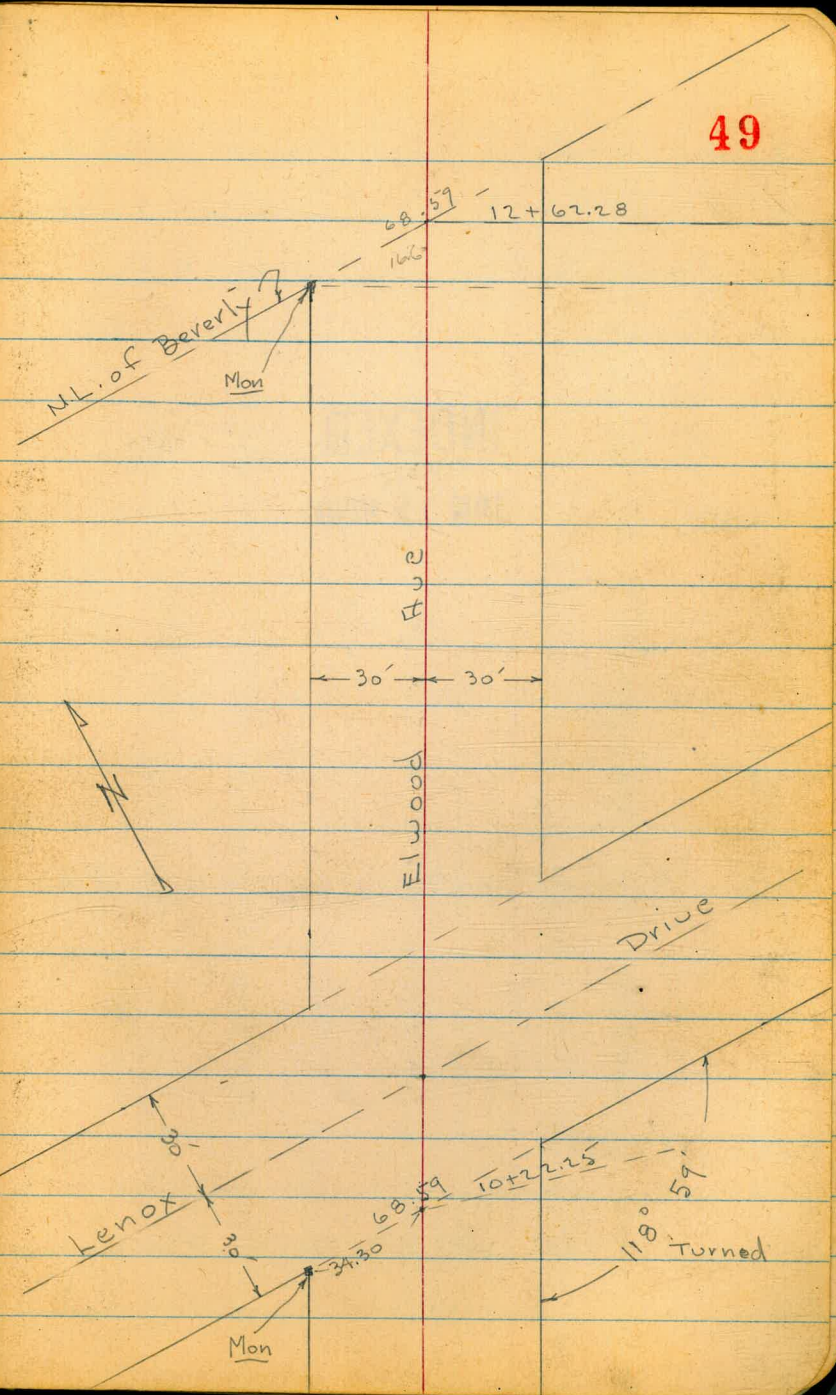
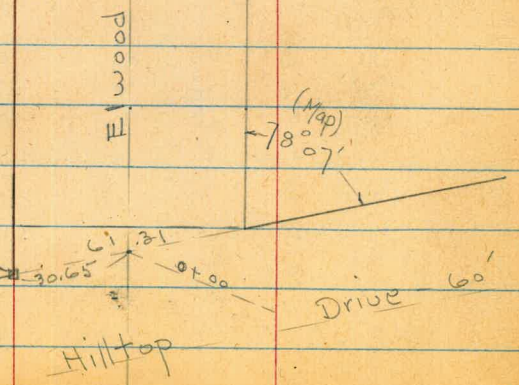
Note: This Dist. should be 44.33



used The Mon on the Ang. Pt. as good



0 + 06.31
Mon. Gone - Set Hub.
290.097
Proportionate
Measurement
51.31



X-Sect. Elwood Ave. - from Hilltop
to N.L. of Beverly - Not Graded - Brushy -
in Creek Bottom. - Sketch - P. 49
w.o. 25020 1-6-50 - 70.

INDEXED
W.K.
JAN 12 1950

checked by
W.S. Pate

0+50

0+06.31 = opp. N.E. Cor. - Sect. at 90°

0+00 = \pm at N.L. Hilltop - Sect along Hilltop

Sect. along Hilltop
0-30.65 = \pm Hilltop = Graded - obs. on S.

S.E. Hilltop + Elwood

Set - B.M. in Pole = spike

2.44

1354.5

11.41

133.01

B.M.

2.48

1444.2

140.94

N.W. Mon. Geneva
+ Elwood
P. 38

Lt.

\pm

Rt.

50

130.3	130.2	130.4	130.4	130.7	130.9	130.5	
5.5 40	5.3 30	5.1 15	5.1	4.8 5	4.6 30	4.5 40	
129.9	129.7	129.6	130.0	130.2	130.0		
5.6 40	5.8 30	5.9 15	5.5	5.3 5	5.5 30		
127.2	129.3	129.5	129.6	130.0	130.1	129.9	
8.3 80	5.2 45	6.0 30.6 = Cor.	5.9 15	5.5	5.4 15	5.6 30.6 = Cor.	4.6 80
126.8	129.6	129.4	129.4	129.6	129.8	131.3	
8.1 80	5.9 30.6	5.1 15	6.1	5.9 15	5.7 30.6	4.2 80	
						135.48	

4+00 = \pm Creek

3+50

3+00

2+50

2+00

1+50

T.P.

1+00

8.21

140.35

341

132.04

129.7

5.8
40

130.9

4.6
30

131.5

4.0
15

131.5

4.0
135.45

131.3

4.2
15

131.3

4.3
30

131.2

4.4
40

60
edge

80=
edge

7.1 40	131.9	133.3	8.6 40	131.8	10.1 40	130.3	8.2 30	132.2	10.1 30	130.3	8.9 15	131.5	8.9 15	131.5	8.9 15	131.3	4.2 15	131.3	4.3 30	131.2	4.4 40
8.2 15	131.4	133.5	7.2 30	132.2	7.8 40	132.6	8.1 15	132.3	7.2 30	132.5	7.9 15	131.8	7.9 15	131.8	7.9 15	131.9	8.0 30	131.9	8.0 30	132.0	8.4 40
5.9 30	134.5	132.2	7.5 15	132.9	7.2 30	133.2	7.9 15	132.5	7.2 30	132.5	7.9 15	132.5	7.9 15	132.5	7.9 15	132.4	8.0 30	132.4	8.0 30	132.5	8.4 40
6.0 15	134.4	132.6	7.5 15	132.9	7.5 15	132.9	7.9 15	132.5	7.2 30	132.5	7.9 15	131.8	7.9 15	132.5	7.9 15	132.4	8.0 30	132.4	8.0 30	132.5	8.4 40
5.7 15	134.7	133.1	6.4 15	134.0	6.4 15	134.0	6.4 15	134.0	6.4 15	134.0	6.4 15	134.0	6.4 15	134.0	6.4 15	134.0	6.4 15	134.0	6.4 15	134.0	6.4 15
5.6 30	134.8	133.6	6.5 15	133.9	6.5 15	133.9	6.5 15	133.9	6.5 15	133.9	6.5 15	133.9	6.5 15	133.9	6.5 15	133.9	6.5 15	133.9	6.5 15	133.9	6.5 15
5.8 40	134.6	134.6	6.7 40	133.7	6.7 40	133.7	6.7 40	133.7	6.7 40	133.7	6.7 40	133.7	6.7 40	133.7	6.7 40	133.7	6.7 40	133.7	6.7 40	133.7	6.7 40
5.5 40	134.9	134.9	5.5 40	134.9	5.5 40	134.9	5.5 40	134.9	5.5 40	134.9	5.5 40	134.9	5.5 40	134.9	5.5 40	134.9	5.5 40	134.9	5.5 40	134.9	5.5 40
5.5 40	134.9	134.9	5.5 40	134.9	5.5 40	134.9	5.5 40	134.9	5.5 40	134.9	5.5 40	134.9	5.5 40	134.9	5.5 40	134.9	5.5 40	134.9	5.5 40	134.9	5.5 40

51

Elwood

6+95.75 = opp. N.E. Cor.

6+50 - Sect. Normal

6+22.65 = ± Ang. Pt. - Sect. on split

5+85

T.P. 10.84 14 7.47 3.72 136.63

5+50

5+00

4+50

6 141.2
4.3
0

6 141.0
3.5
0

6 140.8
5.5
edge

6 138.7
3.3
0

6 139.1
5.4
0

6 139.7
3.8
0

52

6 141.1
3.4
0

6 140.6
5.5
edge

6 137.4
10.1
0

6 138.4
9.1
15

6 138.6
3.9
0

± Creek
W.

7.2
3.3
W. Ang.

7.1
15
edge

6 139.7
8
edge

6 136.1
11.4
15

6 135.4
12.1
± Creek

6 137.3
10.2
± Creek
S.E. Cor.

7.5
140.0

7.7
139.8

8.4
139.1

8.4
139.1

6 135.9

6 135.4

6 137.1

6 137.3

4.0

3.0

15

5

6

12.1

10.4

10.2

creek

1.2
138.6

1.9
138.5

2.1
138.3

5.3
135.1

4.0
136.4

4.4
136.0

3.6
136.8

3.3
137.1

4.0

3.0

2.5

12

4.0

1.5

3.0

4.0

edge

± Creek

6 134.0

6 135.4

4.8
135.6

4.8
135.6

5.7
135.2

4.4
136.0

4.2
136.2

± creek

6 133.8

6 134.2

5.6
134.8

6 134.2

6.1
134.3

5.7
135.2

6.8
133.6

± Creek
(West)

140.35

± Creek
(East)

Elwood

10+22.25 = t + S.L. of ker ox - Sect. along S.L.

146.2	146.4	146.7	146.9	147.0	144.5	53	144.5
9.0	8.8	8.5	8.3	8.2	10.7		
80	34.3	7		15	34.3		80
	Cor.			edge	Cor.		

Set B.M. on S.W. Mon. 8.87 146.28

10+05.6 = opp. S.W. Cor. - Sect. at 90°

146.5	146.4	146.3	146.1	146.1	144.0	142.5
8.7	8.8	8.9	9.1	9.1	11.2	12.7
40	30	15		20	30	40
	Cor.			edge		

9+50

144.8	144.5	143.9	143.6	143.8	144.0	142.1	142.3
10.4	10.7	11.3	11.6	11.4	11.2	13.1	12.9
40	30	15		15	20	30	40
				edge	edge		

T.P. 11.59 155.18 3.91 143.56

9+00

143.0	142.9	143.0	143.3	143.3	142.1	142.4
4.5	4.6	4.5	4.2	4.2	5.4	5.1
40	30	15		15	30	40
				edge		

8+50

143.5	143.1	142.7	142.6	142.7	143.1	140.7
4.0	4.4	4.8	4.9	4.8	4.4	6.8
40	30	15		15	30	40
					edge	

8+00

143.7	143.2	142.4	141.9	140.8	140.9	141.1
3.8	4.3	5.1	5.6	6.7	6.6	5.4
40	30	15	edge	15	30	40

7+50

143.4	142.6	140.1	139.8	140.1	139.7	140.1
4.1	4.9	7.4	7.7	7.4	7.8	7.4
40	30	15		15	30	40
	edge		147.47			

Elwood

12+62.24 = \pm at N.L. of Beverly
Sect. along N.L.

12+45.68 = opp. s.w. Cor. - Sect. at 90°

12+00

T.P. 6.22 160.96 0.41 154.74

11+50

11+17.44 = opp. N.W. Cor. Sect. at 90°

11+00.84 = \pm at N.L. Lenox - Sect. along N.L.

10+56.55 = \pm Lenox - Sect. along \pm Lenox.

157.4	156.3	156.0	155.4	154.6	150.6	147.6
3.6	4.7	5.0	5.6	6.4	10.4	13.4
50	34.3	17	6	20	34.3	80
				Edge	Gr.	
157.0	156.3	155.9	155.5	154.9	148.9	147.3
4.0	4.7	5.1	5.5	6.1	12.1	11.7
40	30	5	5	15	30	40
	Cor.			edge		
156.2	154.8	154.1	148.1	147.9	147.6	147.5
4.8	6.2	6.9	12.9	13.1	13.4	13.5
40	30	10		15	30	40
		edge				
152.0	152.3	152.3	147.2	146.8	146.7	146.6
3.2	2.9	2.9	8.0	8.4	8.5	8.4
40	30	25	15	15	30	40
		edge				
151.4	151.2	150.8	150.2	146.6	146.6	146.3
3.8	4.0	4.4	5.0	8.6	8.6	8.9
40	30	15	5	15	30	40
			edge			
148.9	149.6	149.5	149.9	149.3	146.1	146.2
6.3	5.6	5.7	5.3	5.9	9.1	9.0
80	34.3	17	10	17	34.3	80
	Cor.			edge		Cor.
147.1	147.8	148.1	148.1	147.8	145.4	145.2
8.1	7.4	7.1	7.1	7.4	9.8	10.0
80	34.3	17	155.15	10	17	34.3
				edge		80

54

7.62 140.93 - 140.94 Mon. NW. - Geneva + Elwood.

T.P. 0.28 148.55 12.69 148.27

Set. B.M. on S.W. Mon. 4.80 156.16

= end

12 + 80 = for Profile - Sect. Normal to N.L.

Beverly

156.3

4.7
34.3

6.4

17

149.0

12.0

160.96

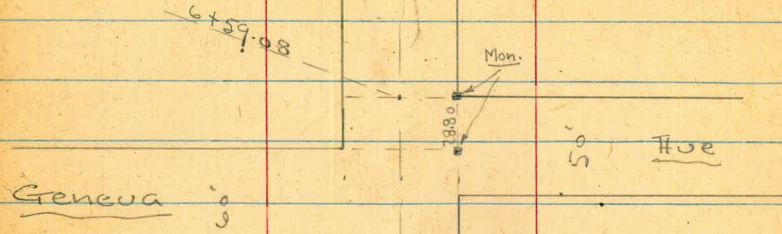
151.1

9.9
17

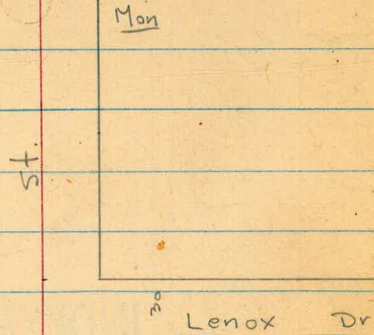
150.5

10.5
34.2

N.L. Beverly?

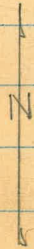


11+69.10



9+59.20

Mon.



30 30

51 st

st.

51 st

30 30

0+00
Hub. over Mon.

220.03 = T.P.
220.10 = Meas.

Hill top

290.00 = T.P.
290.09 = Meas.

To NW. Cor.
Elwood

Dr.

Lt = w.

Rt = E 57

X-Sect. 51st from Hilltop to N.L. Beverly
60st. - Not Graded To Geneva - Rough
Graded to end.

W.O. 25020 1- 11- 50 7.0.

T.P. 11.94 161.79 0.80 149.81

0+50

INDEXED
W.K.
JAN 12 1950

checked by
W.S. Ferguson

	159.6	158.4	153.0	150.0	148.2	145.3	142.1
+9.0	+7.8	+2.4	0	2.4	5.3	8.5	
40	30	18	6	15	30	40	

0+05

	157.5	153.6	143.7	142.7	141.8	136.0	131.5
+6.9	+3.0	6	9	5.8	14.6	19.1	
40	30	5	5	5	30	50	

0+00 = N.L. Hilltop

	149.4	145.4	143.8	142.2	140.5	137.8	132.2
12	5.2	6.8	8.4	10.1	12.8	18.4	
60	30	15	4	15	30	60	

0-30 = Hilltop (Graded)

	149.6	145.4	143.2	141.1	138.8	136.5	132.4
1.0	5.2	7.3	9	11.8	14.1	18.2	
60	30	15	5	15	30	60	

10.91 150.61 0.70 139.70

12.80 140.40 6.4 127.60

B.M. - spike in 1.71 134.01 132.30
SE Pole - Elwood
+ Hilltop - P- 50

150.61

3+50

3+31 - 30.4 Lt. = end wall

2+00

2+71 - 30.1 Lt. = Bcg. 18" Rock + Conc. wall

2+50

T.P. 12.70 173.86 0.63 161.16

2+00

1+50

1+00

0+75

5.21
30.4
Top
6.12
30.1
Top

8.1
30.4
ground
8.9
30.1
ground

6	8	9	9	10	11	11	13	15	16
167.1	165.9	164.6	164.1	163.3	162.1	160.1	158.8	157.4	155.0
40	30	15	2	15.6	30	40	40	40	40
8.1	8.0	8.0	8.0	8.0	8.0	8.0	8.0	8.0	8.0
165.8	165.9	164.6	164.1	163.3	162.1	160.1	158.8	157.4	155.0
6.13	8.9	10.1	11.1	11.4	14.6	16.1	16.8	17.1	17.3
30.3	30	15	11	15	30	40	40	40	40
8.5	8.8	11.1	12.1	13.1	15.1	16.5	16.8	17.1	17.3
40	30	15	12	15	30	40	40	40	40

1	1	1	2	2	4	6	6	6	6
163.6	163.0	160.1	159.2	159.4	157.5	155.0	153.8	152.6	150.2
40	30	15	2	15	30	40	40	40	40
1.2	1.2	1.7	2	2.4	4.3	6.8	8.0	9.2	10.6
163.6	163.0	160.1	159.2	159.4	157.5	155.0	153.8	152.6	150.2
1.2	1.2	1.7	2	2.4	4.3	6.8	8.0	9.2	10.6
40	30	15	2	15	30	40	40	40	40

0	0	3	4	4	5	5	8	9	9
162.5	161.8	158.2	157.3	156.9	155.6	153.8	152.6	150.2	147.6
40	30	15	4	15	30	40	40	40	40
0.7	0.0	3.6	4	4.9	5.2	8.0	9.2	10.6	12.2
162.5	161.8	158.2	157.3	156.9	155.6	153.8	152.6	150.2	147.6
0.7	0.0	3.6	4	4.9	5.2	8.0	9.2	10.6	12.2
40	30	15	4	15	30	40	40	40	40

1	2	6	6	7	9	10	10	10	10
160.0	159.4	155.7	155.2	154.1	152.6	150.2	147.6	147.6	147.6
40	30	15	6	15	30	40	40	40	40
1.2	2.1	6.1	6.6	7.7	9.2	10.6	10.6	10.6	10.6
160.0	159.4	155.7	155.2	154.1	152.6	150.2	147.6	147.6	147.6
1.2	2.1	6.1	6.6	7.7	9.2	10.6	10.6	10.6	10.6
40	30	15	6	15	30	40	40	40	40

1	2	2	7	8	10	10	10	10	10
159.9	159.4	154.1	154.6	153.6	151.3	147.6	147.6	147.6	147.6
40	30	2	7	15	30	40	40	40	40
1.9	2.1	7.7	7.2	8.2	10.6	10.6	10.6	10.6	10.6
159.9	159.4	154.1	154.6	153.6	151.3	147.6	147.6	147.6	147.6
1.9	2.1	7.7	7.2	8.2	10.6	10.6	10.6	10.6	10.6
40	30	2	7	15	30	40	40	40	40

161.79

6+30.28 = NL Geneva to Lt.

6+00.28 = Φ

5+70.28 = S.L. Geneva to Lt.

5+50

5+00

T.P. 12.33 185.26 093 172.93

4+50

4+00

Lt
30 183.8Lt
30 183.5Lt
30 183.7Lt
30 183.0Lt
30 184.0

59

3.6
30 181.73.2
30 182.13.0
30 182.33.1
30 182.23.0
30 182.33.0
40 182.34.8
30 180.54.6
30 180.74.5
30 180.84.4
30 180.55.0
30 180.35.2
40 180.15.1
40 179.25.9
30 179.45.6
30 179.75.5
30 179.85.8
30 179.56.1
30 179.26.3
40 179.09.5
40 175.89.5
30 175.89.7
30 175.69.5
30 175.810.3
30 175.09.8
30 175.59.6
40 175.7

185.26

1.2
40 172.71.6
30 172.32.2
30 171.72.9
30 171.02.9
30 171.02.9
30 171.02.9
40 170.05.0
40 168.95.5
30 168.45.5
30 166.47.4
30 166.58.0
30 165.99.0
30 164.910.8
40 163.1

173.86

51st

8+50

8+00 - 32' Rt = Nly of 6.5' Conc. Dr.

7+50

7+41 - 30' Rt = ϕ 3.3 Conc. walk

7+32 - 30' Rt = ϕ 11' Conc. Dr.

7+00

check B.M. on N.E. Mon.

11.88 185.41 - 185.

T.P. 12.71 197.29

068 184.58

6+59.08 = N.L. Geneva to Rt. = 50 st.

4

Rt.

60

7.0	7.5	7.4	7.1	7.0	7.2	7.3
40	30	15	1	15	30	40
188.6	188.3	188.1	188.5	188.7	188.8	188.82
8.7	9.0	9.2	8.8	8.6	8.5	8.47
40	30	15	5	15	30	32
						Dr.

9.7	10.2	10.0	9.7	9.2	8.7	8.5
40	30	15	7	5	30	40
187.6	187.1	187.3	187.6	188.1	188.6	188.8
				8.61	8.27	8.34
				30	50	50
				walk	walk	50 = Dr.
					9.02	8.54
					30	50 = Dr.
					Dr.	

11.0	11.3	11.2	10.9	10.7	10.5	10.4
40	30	15	10	15	30	40
186.3	186.0	186.1	186.4	186.6	186.8	186.9

41 - P. 38

0.0	0.7	0.7	0.5	0.2	+0.2
40	30	15	5	15	30
185.3	184.6	184.6	184.8	185.1	185.5
			197.29		
			185.26		

12+00

Set BM. on E. Mon.

6.79 19 0.50

11+69.10 = N.L. Beverly = end

11+20

10+70

10+52 - 302 Rt. - 3.3 Conc. walk

10+19.20 = NL

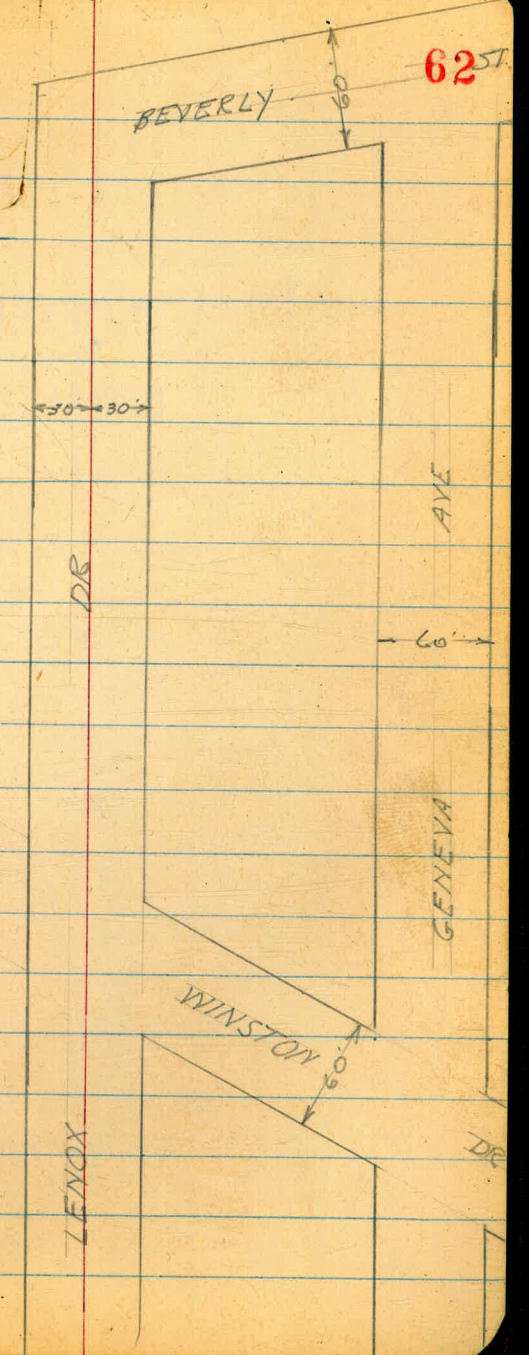
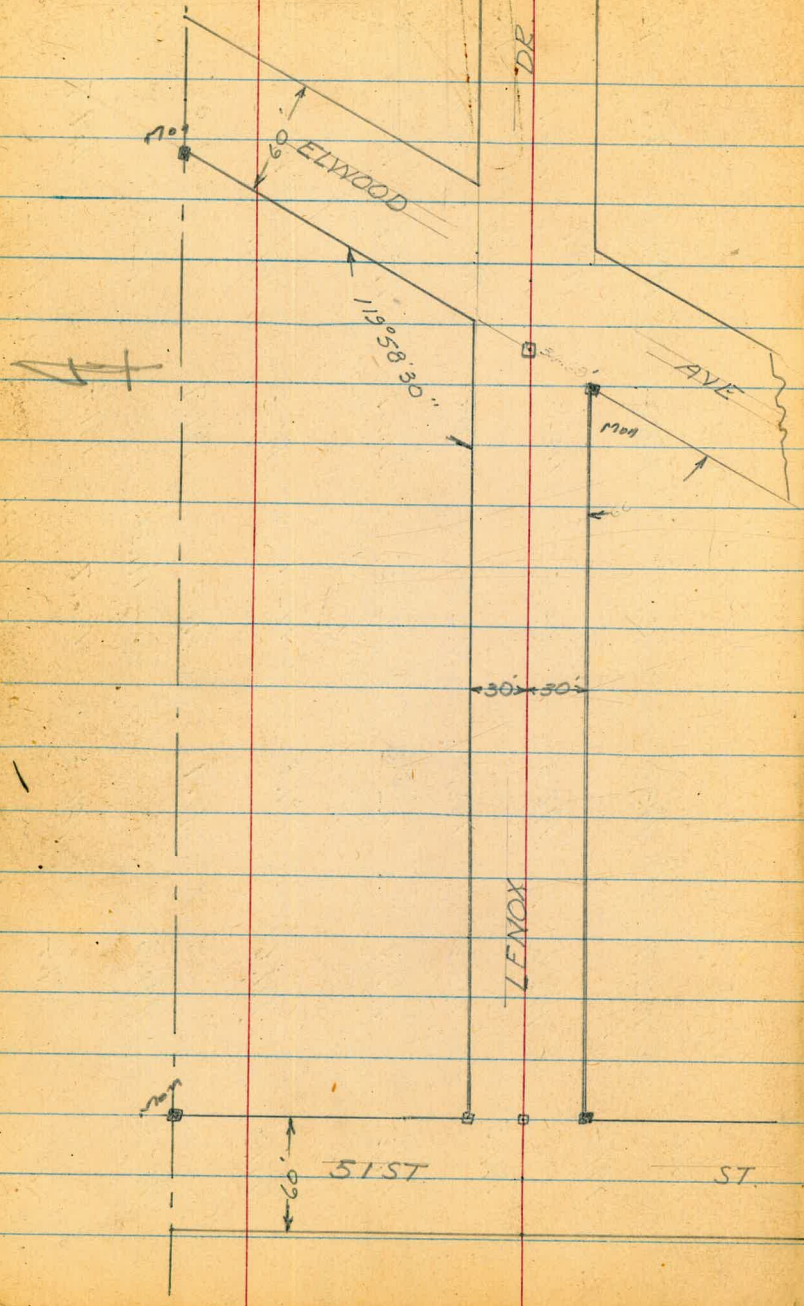
33

9+89.20 = 4

9+59.20 = S.L. Lenox to E.

9+00

5.7 40	19.6	5.9 30	19.4	5.8 15	19.5	6.0 15	19.3	5.1 15	19.2	6.7 30	19.6	7.7 40	19.1
4.6 40	192.7	4.7 30	192.6	5.0 15	192.3	5.4 15	191.9	5.7 15	191.6	6.5 30	190.8	9.9 80	187.4
4.3 40	193.0	4.5 30	192.8	4.7 15	192.6	5.1 15	192.2	5.5 15	191.8	6.4 30	190.9	10.5 80	186.0
3.6 40	193.7	3.8 30	193.5	4.5 15	192.8	4.8 15	192.5	5.2 15	192.1	5.3 30	191.0	10.6 80	186.7
1.9 40	195.4	2.3 30	195.0	2.9 15	194.4	4.2 15	193.1	5.0 15	192.3	5.6 30	191.7	5.9 40	191.4
0.3 40	197.0	1.4 30	195.9	2.3 15	195.0	3.4 15	193.9	4.2 15	193.1	4.8 30	192.5	6.1 40	191.2
0.5 40	196.8	1.2 30	196.1	2.3 15	195.0	3.7 15	193.6	4.8 15	192.5	5.3 30	191.0	7.4 40	189.9
1.2 30	196.1	1.2 30	194.7	2.3 15	195.0	3.7 15	193.6	5.2 15	192.1	7.2 30	190.1	189.9	



12.28.50
Hendricks
Crawford
Shepard
W0# 31675

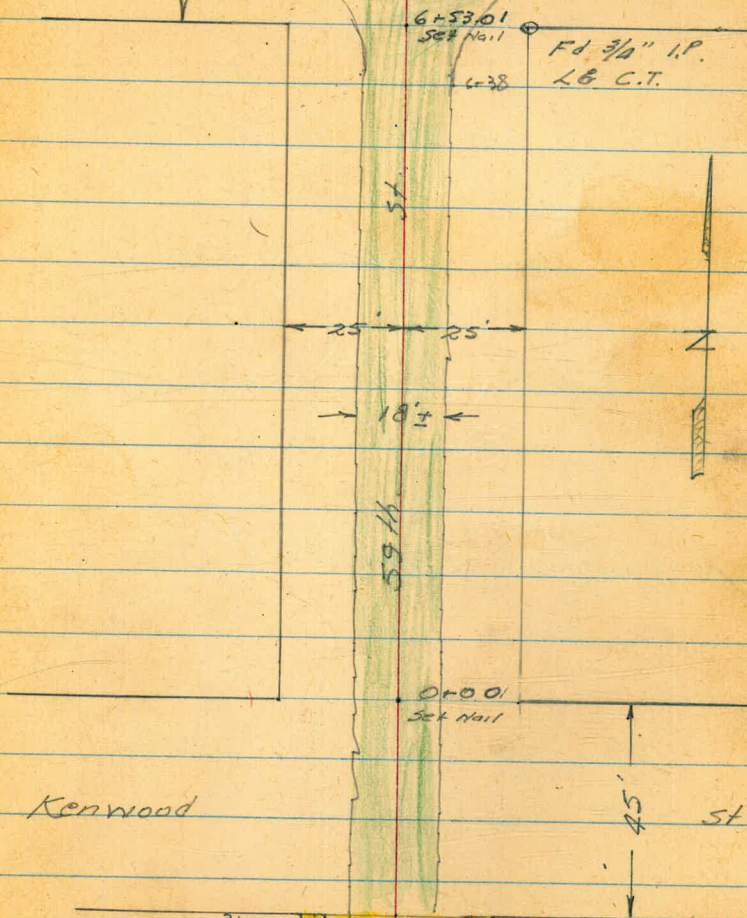
X Sect. 59th St.

Brooklyn Ave. to Kenwood St.

INDEXED
MK
DEC 29 1950

Brooklyn Ave.

63



Fd 3/4" I.P.
L&T C.T.

Kenwood

45' St

D
S 1951

INDEXED
SEP 24 1951

T.P.

207.23

0+06 & 12' Conc. Drive 25.8' Ct.

206³² 206⁴
25.8 40

0+00

207⁸ 207⁴ 206¹ 206⁴ 206⁶ 206³ 205² 206¹ 206³
35 25 11 95 9 11 25 35
Pay Pay

0+02 Tel. Pole 517269 H. 16.5' H.

0-22.5 & Kenwood

208⁰ 206⁶ 205⁶ 205¹ 205³ 205⁴ 205⁰ 204⁶ 205¹ 205⁰ 205¹
50 25 18 12 95 85 10 16 25 50
Pay Pay

Edge Conc. Pav. End Cbr & S.W

0-45 So. Line Kenwood Beg Asph. Pav.

204¹⁰ 204⁰⁰ 203⁵¹ 203⁶¹ 203⁴⁶ 203⁹⁴ 203⁸⁷
20 15 15 15 15 20
5W Cb G Cb Cb 5W

- 100

199⁰¹ 198⁵² 198⁷³ 198⁴⁴ 199¹³
15 15 15 15
Cb G Cb Cb

T.P.

206.61

& Hall 0+00

B.M.

209.24

L&T & Merlin 3' South of so. Line Kenwood

0+87 & 9' Conc. Dr. 24.5' Lt.

211⁴¹ 210⁹⁶
42 24.5

0+86 & 8' Conc. Dr. 26' Rt.

211⁰² 211²³
26 35

0+75 & 4' Conc. Walk 24.8 Lt.

210⁵⁰ 210³⁸
36 24.8

0+65 & 3' Conc. Walk 25.7 Rt.

209⁸⁰ 210⁰⁰
25.7 34

0+50

209⁶ 209⁴ 209⁰ 208⁵ 208⁹ 208⁹
35 25 17 12 9
Pay208⁵ 208³ 208⁹ 208⁹ 209²
9 11 17 25 35
Pay

& 6" Conc. Ret. Wall 25' Lt.

0+46.5 & 9" Conc. & Rock Wall 19.8 Rt.

0+25 & 5' Conc. Walk 24.9 Lt.

208⁵⁸ 208⁰⁵
39 24.9

T.P. 215.18

1446 $\begin{matrix} \text{Beg 6" Conc, Ret Wall} \\ \& \text{6" Conc. Wall} \end{matrix}$ 22.3 Lt.

216.31
22.3

1437 $\&$ 9' Conc. Dr. 24.6 Lt.

214³⁴ 214³⁴
38 246

1436.5 $\&$ 8' Conc. Dr. 26.5 Rt.

214⁹⁰ 214⁹⁵
26.5 35

1416 $\&$ 3' Conc. Walk 26.3 Rt.

212⁸³ 212⁹⁸
26.3 37.5

1407 $\&$ 3' Conc. Walk 24.3 Lt.

212²³ 211⁹⁸
35 24.3

1406 Power Pole # 440688 H¹⁵ Lt.

1400

211 ⁶	211 ⁵	212 ⁰	211 ⁸	212 ⁰	211 ⁸	211 ⁵	211 ⁷	212 ¹	
35	25	14	8.5		9	11	14	25	35
			Pay		Pay				

1491 Beg. 6" Conc. Ret Wall 22.6 Lt.

218.60

22.6

1488 6" 8' Conc Dr. 25.3' Rt.

218⁷⁵
218⁸¹

25.3 35

1477 End. 6" Conc. Ret Wall 22.5 Lt.

217⁶¹ 217⁶⁰

40 22.5

1484 6" 14' Conc. Dr. 24.7' Lt.

217⁶⁸

24.7

1462 6" 3' Conc Walk 25.4' Rt.

216⁷⁵
216⁸⁴

25.4 35

1450

216 ⁴	216 ⁴	216 ¹	215 ⁵	215 ⁵	215 ⁸	215 ⁶	215 ⁴	215 ⁶	215 ⁹
35	25	17	10	85		95	13	25	35

2+38 & 14' Conc. Dr. 25.3 Rt.

222¹² 222²²
25.3 40

2+37 & 8' Conc. Dr. 24.7 Lt.

221²⁷ 221²⁸
40 24.7

2+30 End Conc. & Cobblestone wall 24.5 Lt.

2+14 & 4' Conc. Wall

219⁸⁰ 219⁶⁶
35 24.2

2+00

219⁰ 219⁰ 219¹ 219⁵ 218⁹ 219³ 219¹ 219⁰ 219⁵ 221⁵ 221²
35 25 16 11 85 19 11 18 25 35 22.2
Par. Par.

1+96 & 6" Conc. Block Wall 19.2 Rt.

219¹ 219⁵ 219¹ 221¹
19.2 19.2 25 25
Gr Wall Gr Wall

1+95 { Ret. Conc. & Cobblestone Wall 24.5 Lt.
& 6" Conc. Ret Wall 22.1 Lt.
(End 6" Conc. Ret Wall 22.6 Lt.)

218⁰
22.6

2+95 Power Pole # 273266-21.2' Lt

2+87 & 10' Conc. Dr. 25.4' Rt.

225.25 225.50
25.4 40

TP. 224.41

2+86 & 8' Conc. Dr. 23.9' Lt

224.44 224.38
35 23.9

2+71 & 3' Conc. Walk 25.2' Rt.

223.91 224.06
24.2 34

2+67 & 4' Conc. Walk 24.9' Lt

223.35 223.31
34 24.9

2+50

222.6 222.5 222.6 222.0 222.3 222.5 222.2 221.9 222.5 222.2 222.3
35 25 17 10 9 9 11 17 25 35
Pay. Pay. 21.41 222 223

2+45 & 4" Conc. Block Wall 24.5' Lt.

3+62 R 3' Conc. Walk 25.7 RT

221 ²³	221 ⁷⁶
257	35

3+50

229 ⁵	229 ²	229 ⁰	229 ²³	229 ⁶	229 ⁴	229 ³	229 ²	230 ⁸
35	25	13	9.5	Pay	9	12	25	35
					Pay.			

3+35 R 13' Conc. Dr. 24.9 LT

228 ²⁰	227 ⁸⁸
40	249

3+34 R 9' Conc. Dr. 25.2 RT

228 ⁸¹	229 ⁵⁴
252	35

3+15 R 3' Conc. Walk 25.1 RT

227 ⁰⁸	227 ⁴²
251	35

3+00

226 ⁷	226 ¹	225 ⁸	225 ⁴	225 ²	225 ⁹	225 ²	225 ⁴	226 ⁰	226 ⁶
25	25	18	10	9	Pay	9.5	12	25	35
						Pay.			

59th St. Contd.

4+39 & 11' Conc. Dr. 25.0 RT

238²² 239¹⁰
25 40

4+36 & 8' Conc. Dr. 24.9 LT

235⁹⁵ 235⁵⁵
35 24.9

4+19 & 3' Conc. Walk 25.1 RT

236³⁹ 237⁶
25.1 33

TP

233.60

4+00

233⁶ 233⁵ 233² 233³ 233⁷ 233⁶ 233⁴ 234⁴ 234² 235¹
35 25 12 9 8.5 10 18 25 35
Pay Pay

3+87 & 8' Conc. Drive 25.4 RT.
& 8' Conc. Dr. 24.8 LT.

232²⁴ 231⁸⁸
35 24.8

233⁵⁸ 233⁸⁷
25.4 30

3+70 & 3' Conc. Walk 24.9 LT.

231⁰⁸ 230⁸⁶
35 24.9

4+88 Q 9' Conc. Dr. 25.2' Lt.

239 ⁷⁷	239 ⁶³
35	25.2

4+71 Q 5' Conc. Wall 25.5' Lt.

238 ⁴⁸	238 ³¹
35	25.5

4+62 Begin Pickett fence 16.5 Rt.

4+58 Q 2' Ribbon Dr.

238 ⁵²	238 ⁶²	240 ⁹¹
8	9	25

4+53 Q 2' Ribbon Dr. 7.0' Rt.

238 ¹³	238 ²³	240 ⁹⁷
7	9	25

4+50

237 ⁴	237 ²	237 ¹	237 ³	237 ⁷	237 ⁸	240 ⁵	241 ⁵
35	25	14	9		7	25	35
			Pa.		Pa.		

Q 8" Conc. Wall 25.1 Rt.

4+46 Power Pole # 273265 20.7' Lt.

238 ⁷	240 ⁸
25.1	25.1
Gr	Wall

5+37 R 2 Ribbon Dr 10.2 Lt

244.²⁰
25 244.¹⁶
10.2

5+32 R 2' Ribbon Dr 10.2 Lt

244.⁰⁴ 244.²⁵
25 10.2

5+07 RR Conc. Dr. 28.2' Rt

245.²⁴ 246.¹⁵
25.2 35

TP.

242.50

5+04 R 3' Conc Walk 28.1 Lt.

241.⁰⁶ 241.²⁸
35 28.1

5+00

241.³ 241.² 241.⁴ 241.⁵ 242.¹ 242.² 243.⁴ 244.¹ 245.³
35 28 17 10 Pav. 8.5 15 25 15
Pav.

4+95 End Pickett fence 18.2' Rt.

240.¹ 240.¹ 240.¹ 241.¹ 241.⁶ 241.⁷ 242.³ 242.⁵ 242.⁸
35 25 17 10 Pav. 8.5 15 25 35
Pav.

4+89 R 4' Conc Walk 25.1 Rt

242.³⁹
25.1 35

6+53⁰¹ 50 line Brooklyn

254 ²	254 ⁵	254 ⁹	255 ¹⁵	255 ¹⁵	256 ⁴	257 ⁶
50	25	17		12.5	25	50
				Pay.		

6+41.5 & 14 Conc. Dr. 28.2' Lt.

253 ⁰⁹	253 ³⁹
35	25.2

T.P. 251.24

6+02 Power Pole # 273264 21.3' Lt.

6+00

250 ⁰	250 ⁴	250 ⁴	249 ⁹	250 ¹	250 ⁴	250 ⁴	250 ⁶	251 ⁰	251 ³
35	25	20	13	9		8	12	18	25
				Pay		Pay.			35

5+98 215' Conc. Dr. 25.1' Lt.

248 ⁴⁰	248 ⁷⁰
40	25.1

5+50

246 ¹	246 ¹	246 ¹	245 ²	246 ²	246 ⁴	246 ⁷	246 ²	247 ¹	247 ¹
35	25	16	12	95		4	13	15	35
				Pay.		Pay.			

TP

251.74 251.74 2 3' Conc. walk 25.5 Lt Sta. 6+20 FB1689 P.7

TP

255.27

3/4" I.P. S.E. Con Brooklyn 59th 258.96 258.30 FB1659-13' 3/4" I.P. S.E. Con Brooklyn 59th

6778.01 2 Brooklyn

258 ⁸	256 ^E	257 ^E	258 ^t	259 ²
50	25		25	50

Levels along \pm of Prop. Drain & Easement
 along \pm of lot line Between Lots 29+30
 in Block 8 - Beverly - Map. 1129
 # 5469 sketch - P. 9

W.O. 25020 6-6-51 - 7.0.

1+45 = end at Low Point = \pm of Wash

T.P. 2.86 240.27 13.01 237.41

1+00

0+70

T.P. 0.91 250.42 13.03 249.51

0+35

0+00 = E.L. Beverly - on lot line

0-30 = \pm Beverly

B.M. = 1.38 262.54 261.16 = N.W. Mon - P. 12

Lt.
 INDEXED
 JUN 7 1951

Rt.
 Reduced by
 R.W. McHann 6-8-51

76

231.89
 8.88
 on Hub.

240.27
 13.8
 236.6

242.3
 8.1

250.42

11.0
 251.5

256.26
 6.28
 on Hub.

258.9
 3.6

262.54

77

79

6158
30.79

25.30
SE PIPE 18 1659-13
25596
8+18.38
61.10
8+79.48

3214
1332
5.70 / 182
51.76
57.46
30.58
88.01
1934
18.56
3214
5145
5+12.86
5.70
571.8.56

22.25
34.30
56.55
271.04
984
26517

R.E. 913

10+27.05
51.45
10+78.50

0032
8925
21.32
90.17
292 / 0.06
668
960
11200.72

662
14.6
51.6

6615
33.38
99.52

33.78
33.38
67.16

33.78
14.6
19.18

56.12
14.6
41.52

11+40.17
57.0
34+7

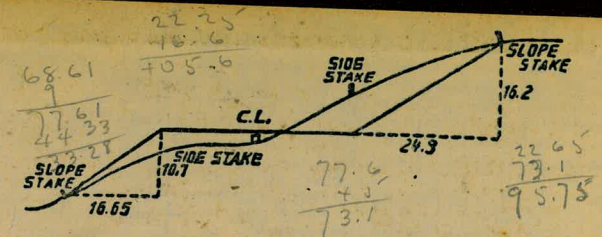
57.46
51.76
5.70

1022.25
68.59
11700.84
16.6
11717.44

12+62.28
16.6
12+45.68

60024
30
57028

24
15
39



DISTANCES FROM SIDE STAKES FOR CROSS-SECTIONING.
SLOPE 1 1/2 TO 1. ROADWAY OF ANY WIDTH.

	0	.1	.2	.3	.4	.5	.6	.7	.8	.9	
0	0.00	0.15	0.30	0.45	0.60	0.75	0.90	1.05	1.20	1.35	0
1	1.50	1.65	1.80	1.95	2.10	2.25	2.40	2.55	2.70	2.85	1
2	3.00	3.15	3.30	3.45	3.60	3.75	3.90	4.05	4.20	4.35	2
3	4.50	4.65	4.80	4.95	5.10	5.25	5.40	5.55	5.70	5.85	3
4	6.00	6.15	6.30	6.45	6.60	6.75	6.90	7.05	7.20	7.35	4
5	7.50	7.65	7.80	7.95	8.10	8.25	8.40	8.55	8.70	8.85	5
6	9.00	9.15	9.30	9.45	9.60	9.75	9.90	10.05	10.20	10.35	6
7	10.50	10.65	10.80	10.95	11.10	11.25	11.40	11.55	11.70	11.85	7
8	12.00	12.15	12.30	12.45	12.60	12.75	12.90	13.05	13.20	13.35	8
9	13.50	13.65	13.80	13.95	14.10	14.25	14.40	14.55	14.70	14.85	9
10	15.00	15.15	15.30	15.45	15.60	15.75	15.90	16.05	16.20	16.35	10
11	16.50	16.65	16.80	16.95	17.10	17.25	17.40	17.55	17.70	17.85	11
12	18.00	18.15	18.30	18.45	18.60	18.75	18.90	19.05	19.20	19.35	12
13	19.50	19.65	19.80	19.95	20.10	20.25	20.40	20.55	20.70	20.85	13
14	21.00	21.15	21.30	21.45	21.60	21.75	21.90	22.05	22.20	22.35	14
15	22.50	22.65	22.80	22.95	23.10	23.25	23.40	23.55	23.70	23.85	15
16	24.00	24.15	24.30	24.45	24.60	24.75	24.90	25.05	25.20	25.35	16
17	25.50	25.65	25.80	25.95	26.10	26.25	26.40	26.55	26.70	26.85	17
18	27.00	27.15	27.30	27.45	27.60	27.75	27.90	28.05	28.20	28.35	18
19	28.50	28.65	28.80	28.95	29.10	29.25	29.40	29.55	29.70	29.85	19
20	30.00	30.15	30.30	30.45	30.60	30.75	30.90	31.05	31.20	31.35	20
21	31.50	31.65	31.80	31.95	32.10	32.25	32.40	32.55	32.70	32.85	21
22	33.00	33.15	33.30	33.45	33.60	33.75	33.90	34.05	34.20	34.35	22
23	34.50	34.65	34.80	34.95	35.10	35.25	35.40	35.55	35.70	35.85	23
24	36.00	36.15	36.30	36.45	36.60	36.75	36.90	37.05	37.20	37.35	24
25	37.50	37.65	37.80	37.95	38.10	38.25	38.40	38.55	38.70	38.85	25
26	39.00	39.15	39.30	39.45	39.60	39.75	39.90	40.05	40.20	40.35	26
27	40.50	40.65	40.80	40.95	41.10	41.25	41.40	41.55	41.70	41.85	27
28	42.00	42.15	42.30	42.45	42.60	42.75	42.90	43.05	43.20	43.35	28
29	43.50	43.65	43.80	43.95	44.10	44.25	44.40	44.55	44.70	44.85	29
30	45.00	45.15	45.30	45.45	45.60	45.75	45.90	46.05	46.20	46.35	30
31	46.50	46.65	46.80	46.95	47.10	47.25	47.40	47.55	47.70	47.85	31
32	48.00	48.15	48.30	48.45	48.60	48.75	48.90	49.05	49.20	49.35	32
33	49.50	49.65	49.80	49.95	50.10	50.25	50.40	50.55	50.70	50.85	33
34	51.00	51.15	51.30	51.45	51.60	51.75	51.90	52.05	52.20	52.35	34
35	52.50	52.65	52.80	52.95	53.10	53.25	53.40	53.55	53.70	53.85	35
36	54.00	54.15	54.30	54.45	54.60	54.75	54.90	55.05	55.20	55.35	36
37	55.50	55.65	55.80	55.95	56.10	56.25	56.40	56.55	56.70	56.85	37
38	57.00	57.15	57.30	57.45	57.60	57.75	57.90	58.05	58.20	58.35	38
39	58.50	58.65	58.80	58.95	59.10	59.25	59.40	59.55	59.70	59.85	39
40	60.00	60.15	60.30	60.45	60.60	60.75	60.90	61.05	61.20	61.35	40
41	61.50	61.65	61.80	61.95	62.10	62.25	62.40	62.55	62.70	62.85	41
42	63.00	63.15	63.30	63.45	63.60	63.75	63.90	64.05	64.20	64.35	42
43	64.50	64.65	64.80	64.95	65.10	65.25	65.40	65.55	65.70	65.85	43
44	66.00	66.15	66.30	66.45	66.60	66.75	66.90	67.05	67.20	67.35	44
45	67.50	67.65	67.80	67.95	68.10	68.25	68.40	68.55	68.70	68.85	45
46	69.00	69.15	69.30	69.45	69.60	69.75	69.90	70.05	70.20	70.35	46
47	70.50	70.65	70.80	70.95	71.10	71.25	71.40	71.55	71.70	71.85	47
48	72.00	72.15	72.30	72.45	72.60	72.75	72.90	73.05	73.20	73.35	48
49	73.50	73.65	73.80	73.95	74.10	74.25	74.40	74.55	74.70	74.85	49
50	75.00	75.15	75.30	75.45	75.60	75.75	75.90	76.05	76.20	76.35	50

THE NATIONAL BLANK BOOK COMPANY
HOLYOKE MASSACHUSETTS
NEW YORK CHICAGO BOSTON SAN FRANCISCO