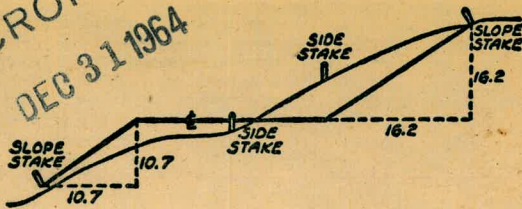


2053

BRISTOL

MICROFILMED  
DEC 31 1964



DISTANCES FROM SIDE STAKES FOR CROSS-SECTIONING  
SLOPE 1 TO 1. ROADWAY OF ANY WIDTH

	0	.1	.2	.3	.4	.5	.6	.7	.8	9	
0	0.00										0
1	1.00	0.10	0.20	0.30	0.40	0.50	0.60	0.70	0.80	0.90	1
2	2.00	2.10	2.20	2.30	2.40	2.50	2.60	2.70	2.80	2.90	2
3	3.00	3.10	3.20	3.30	3.40	3.50	3.60	3.70	3.80	3.90	3
4	4.00	4.10	4.20	4.30	4.40	4.50	4.60	4.70	4.80	4.90	4
5	5.00	5.10	5.20	5.30	5.40	5.50	5.60	5.70	5.80	5.90	5
6	6.00	6.10	6.20	6.30	6.40	6.50	6.60	6.70	6.80	6.90	6
7	7.00	7.10	7.20	7.30	7.40	7.50	7.60	7.70	7.80	7.90	7
8	8.00	8.10	8.20	8.30	8.40	8.50	8.60	8.70	8.80	8.90	8
9	9.00	9.10	9.20	9.30	9.40	9.50	9.60	9.70	9.80	9.90	9
10	10.00	10.10	10.20	10.30	10.40	10.50	10.60	10.70	10.80	10.90	10
11	11.00	11.10	11.20	11.30	11.40	11.50	11.60	11.70	11.80	11.90	11
12	12.00	12.10	12.20	12.30	12.40	12.50	12.60	12.70	12.80	12.90	12
13	13.00	13.10	13.20	13.30	13.40	13.50	13.60	13.70	13.80	13.90	13
14	14.00	14.10	14.20	14.30	14.40	14.50	14.60	14.70	14.80	14.90	14
15	15.00	15.10	15.20	15.30	15.40	15.50	15.60	15.70	15.80	15.90	15
16	16.00	16.10	16.20	16.30	16.40	16.50	16.60	16.70	16.80	16.90	16
17	17.00	17.10	17.20	17.30	17.40	17.50	17.60	17.70	17.80	17.90	17
18	18.00	18.10	18.20	18.30	18.40	18.50	18.60	18.70	18.80	18.90	18
19	19.00	19.10	19.20	19.30	19.40	19.50	19.60	19.70	19.80	19.90	19
20	20.00	20.10	20.20	20.30	20.40	20.50	20.60	20.70	20.80	20.90	20
21	21.00	21.10	21.20	21.30	21.40	21.50	21.60	21.70	21.80	21.90	21
22	22.00	22.10	22.20	22.30	22.40	22.50	22.60	22.70	22.80	22.90	22
23	23.00	23.10	23.20	23.30	23.40	23.50	23.60	23.70	23.80	23.90	23
24	24.00	24.10	24.20	24.30	24.40	24.50	24.60	24.70	24.80	24.90	24
25	25.00	25.10	25.20	25.30	25.40	25.50	25.60	25.70	25.80	25.90	25
26	26.00	26.10	26.20	26.30	26.40	26.50	26.60	26.70	26.80	26.90	26
27	27.00	27.10	27.20	27.30	27.40	27.50	27.60	27.70	27.80	27.90	27
28	28.00	28.10	28.20	28.30	28.40	28.50	28.60	28.70	28.80	28.90	28
29	29.00	29.10	29.20	29.30	29.40	29.50	29.60	29.70	29.80	29.90	29
30	30.00	30.10	30.20	30.30	30.40	30.50	30.60	30.70	30.80	30.90	30
31	31.00	31.10	31.20	31.30	31.40	31.50	31.60	31.70	31.80	31.90	31
32	32.00	32.10	32.20	32.30	32.40	32.50	32.60	32.70	32.80	32.90	32
33	33.00	33.10	33.20	33.30	33.40	33.50	33.60	33.70	33.80	33.90	33
34	34.00	34.10	34.20	34.30	34.40	34.50	34.60	34.70	34.80	34.90	34
35	35.00	35.10	35.20	35.30	35.40	35.50	35.60	35.70	35.80	35.90	35
36	36.00	36.10	36.20	36.30	36.40	36.50	36.60	36.70	36.80	36.90	36
37	37.00	37.10	37.20	37.30	37.40	37.50	37.60	37.70	37.80	37.90	37
38	38.00	38.10	38.20	38.30	38.40	38.50	38.60	38.70	38.80	38.90	38
39	39.00	39.10	39.20	39.30	39.40	39.50	39.60	39.70	39.80	39.90	39
40	40.00	40.10	40.20	40.30	40.40	40.50	40.60	40.70	40.80	40.90	40
41	41.00	41.10	41.20	41.30	41.40	41.50	41.60	41.70	41.80	41.90	41
42	42.00	42.10	42.20	42.30	42.40	42.50	42.60	42.70	42.80	42.90	42
43	43.00	43.10	43.20	43.30	43.40	43.50	43.60	43.70	43.80	43.90	43
44	44.00	44.10	44.20	44.30	44.40	44.50	44.60	44.70	44.80	44.90	44
45	45.00	45.10	45.20	45.30	45.40	45.50	45.60	45.70	45.80	45.90	45
46	46.00	46.10	46.20	46.30	46.40	46.50	46.60	46.70	46.80	46.90	46
47	47.00	47.10	47.20	47.30	47.40	47.50	47.60	47.70	47.80	47.90	47
48	48.00	48.10	48.20	48.30	48.40	48.50	48.60	48.70	48.80	48.90	48
49	49.00	49.10	49.20	49.30	49.40	49.50	49.60	49.70	49.80	49.90	49
50	50.00	50.10	50.20	50.30	50.40	50.50	50.60	50.70	50.80	50.90	50

Distance of slope stake from side or shoulder stake for any width roadway, slope 1 to 1. If ground is nearly level, the cut or fill at side stake is located by the double entry method in left column and top row. The number in body of table in same row and column gives distance from side stake to slope stake. If ground is not level estimate the difference in elevation between the side stake and slope stake, lower target by this amount if cut, elevate if fill. Add this amount to cut or fill and find distance in table. Set up rod at this point, and line of sight should cut target. If it does not make the slight adjustment necessary.

INDEXED

to page # 156



TABLE XIII—CORRECTIONS FOR TANGENTS AND EXTERNALS

These corrections are to be added to the approximate values, found by dividing the tangent, or external, for a 1° curve (Table VIII) by the degree of curve, in order to obtain the true tangents, or externals. Intermediate values may be obtained by interpolation.

FOR TANGENTS ADD

Central Angle	DEGREE OF CURVE													
	5°	10°	15°	20°	25°	30°	35°	40°	45°	50°	55°	60°	65°	70°
10°	.03	.06	.09	.13	.16	.19	.22	.25	.28	.31	.34	.38	.42	.46
15°	.04	.10	.14	.19	.24	.29	.34	.39	.45	.51	.53	.58	.63	.68
20°	.06	.13	.19	.26	.32	.39	.45	.51	.58	.65	.72	.79	.84	.90
25°	.08	.16	.24	.33	.40	.49	.58	.67	.75	.83	.90	.99	1.06	1.14
30°	.10	.19	.29	.39	.49	.59	.69	.79	.89	.99	1.09	1.20	1.29	1.39
35°	.11	.22	.34	.47	.58	.69	.79	.89	.99	1.04	1.29	1.42	1.54	1.66
40°	.13	.26	.40	.53	.67	.80	.93	1.06	1.20	1.34	1.49	1.64	1.79	1.94
45°	.15	.30	.44	.60	.76	.91	1.06	1.21	1.37	1.52	1.70	1.87	2.04	2.21
50°	.17	.34	.51	.68	.85	1.02	1.19	1.36	1.54	1.72	1.91	2.10	2.29	2.48
55°	.19	.38	.57	.76	.95	1.14	1.32	1.52	1.72	1.92	2.14	2.35	2.56	2.77
60°	.21	.42	.63	.84	1.05	1.27	1.49	1.71	1.94	2.17	2.38	2.60	2.83	3.07
65°	.23	.46	.69	.93	1.16	1.40	1.64	1.88	2.13	2.38	2.63	2.88	3.13	3.39
70°	.25	.51	.76	1.02	1.28	1.54	1.80	2.06	2.33	2.60	2.88	3.16	3.44	3.72
75°	.27	.56	.83	1.12	1.40	1.69	1.98	2.27	2.57	2.87	3.16	3.47	3.78	4.09
80°	.30	.61	.91	1.22	1.53	1.84	2.15	2.46	2.78	3.10	3.44	3.78	4.12	4.46
85°	.33	.66	1.00	1.33	1.68	2.02	2.36	2.70	3.05	3.40	3.77	4.14	4.55	4.89
90°	.36	.72	1.09	1.45	1.83	2.20	2.57	2.94	3.32	3.70	4.10	4.50	4.91	5.32
95°	.39	.79	1.19	1.55	2.00	2.40	2.80	3.20	3.61	4.02	4.40	4.98	5.38	5.83
100°	.43	.86	1.30	1.74	2.18	2.62	3.06	3.50	3.95	4.40	4.88	5.37	5.85	6.34
110°	.51	1.03	1.56	2.08	2.61	3.14	3.67	4.21	4.76	5.31	5.86	6.43	7.01	7.60
120°	.62	1.25	1.93	2.52	3.16	3.81	4.45	5.11	5.77	6.44	7.12	7.80	8.50	9.22

FOR EXTERNALS ADD

Central Angle	DEGREE OF CURVE													
	5°	10°	15°	20°	25°	30°	35°	40°	45°	50°	55°	60°	65°	70°
10°	.001	.003	.004	.006	.007	.008	.009	.011	.012	.014	.015	.017	.018	.020
15°	.003	.007	.010	.014	.018	.023	.027	.029	.032	.035	.039	.043	.047	.051
20°	.006	.011	.017	.022	.028	.034	.038	.045	.051	.057	.063	.070	.076	.083
25°	.009	.018	.027	.036	.046	.056	.065	.074	.083	.093	.106	.120	.127	.135
30°	.013	.025	.038	.051	.065	.078	.090	.103	.116	.129	.149	.170	.179	.188
35°	.018	.035	.054	.072	.086	.109	.131	.153	.175	.197	.213	.230	.247	.264
40°	.023	.046	.070	.093	.117	.141	.172	.203	.234	.265	.277	.290	.315	.341
45°	.030	.060	.093	.119	.153	.184	.216	.254	.289	.325	.351	.378	.411	.445
50°	.037	.075	.116	.151	.189	.227	.266	.305	.345	.384	.425	.467	.508	.550
55°	.046	.093	.142	.188	.236	.283	.332	.381	.420	.479	.530	.582	.641	.700
60°	.056	.112	.168	.225	.283	.340	.398	.457	.516	.575	.636	.697	.774	.851
65°	.067	.135	.204	.273	.343	.412	.483	.554	.625	.697	.771	.845	.922	1.01
70°	.080	.159	.240	.321	.403	.485	.568	.652	.735	.819	.906	.994	1.08	1.17
75°	.095	.182	.286	.383	.480	.578	.678	.777	.877	.977	1.07	1.18	1.29	1.39
80°	.110	.220	.332	.445	.558	.671	.787	.903	1.02	1.13	1.25	1.38	1.50	1.62
85°	.128	.259	.391	.524	.657	.790	.926	1.06	1.20	1.34	1.47	1.62	1.76	1.91
90°	.149	.299	.450	.603	.756	.910	1.07	1.22	1.38	1.54	1.70	1.87	2.03	2.20
95°	.174	.350	.522	.706	.885	1.06	1.25	1.43	1.62	1.80	1.99	2.18	2.38	2.58
100°	.200	.401	.604	.809	1.01	1.22	1.43	1.64	1.85	2.06	2.28	2.50	2.73	2.96
110°	.268	.536	.806	1.08	1.35	1.63	1.91	2.20	2.48	2.76	3.05	3.35	3.66	3.96
120°	.360	.721	1.08	1.45	1.82	2.19	2.57	2.95	3.33	3.72	4.11	4.50	4.91	5.32

Francis St.

30

Chico St. Shasta to Lamont

43-56

Shasta St., Fortuna to Pacific Beach Dr.

58-65

10-5-49.

Moore Location of 1 1/2" Army  
Sherman Cable, Soledad Rd.

Danham, City W. Dept., Location.

Ref. Bks - 132x

W/O. 20516

1334

1339

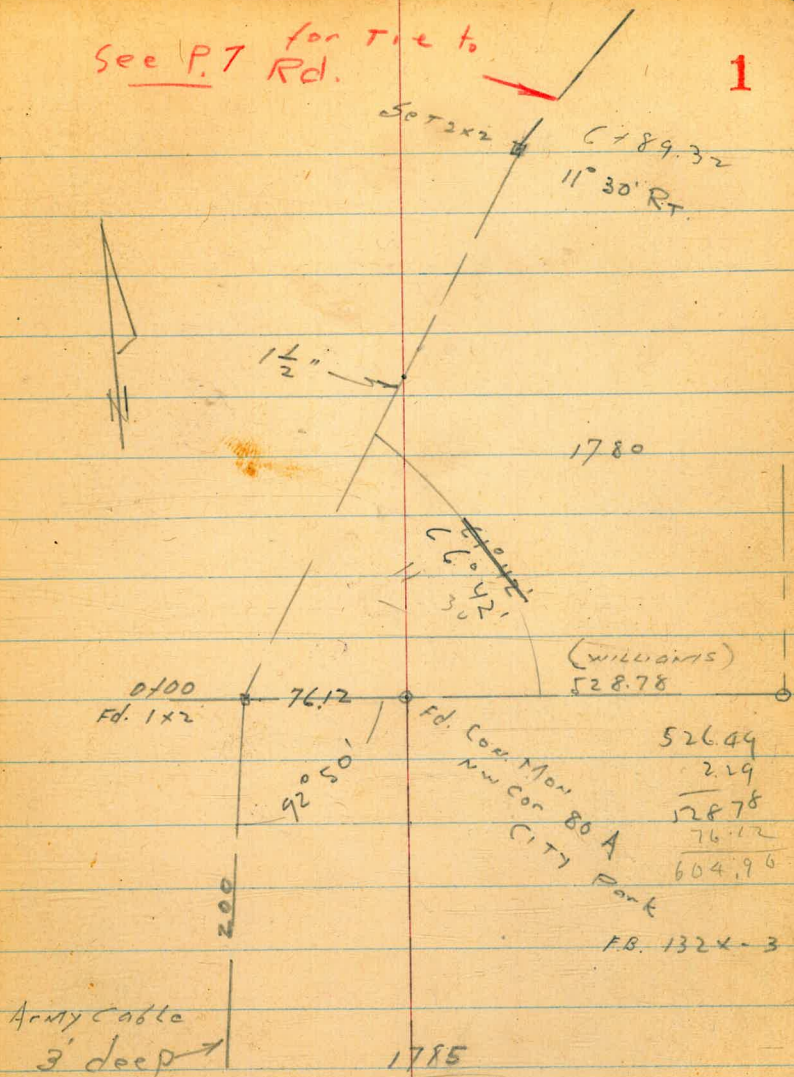
1791

INDEXED  
W.K.  
OCT 14 1949

Line Re run  
FB 2169

See P. 7 for Tie to  
Rd.

1



Army cable  
3' deep

Set 2x2 P.O.T.

16+06.16

Set 2x2

12+63.75

21° 35' LT

21° 35' 30"

2<sup>nd</sup> reading

See P. 8 For Tie

7' High wire fence



9+96.96

Set 2x2 P.O.T.

6" Tower

6+89.3~

11° 30' R

Fd 1 x 2 stake

31+54.25

0° 56' LT

1776

1775

100° 05'

308.35

28+20.70

25° 15.7'

1780

1779

64.85

80.40

83° 00'

Mkd

62+00

FB. 1324-63

Soledad Rd.

See P. 9 For Tie

Set 2x2

20+15.40

2<sup>nd</sup> reading

3° 04' LT

3° 03' 30" LT

Fd. 2x2

19+78.00

2.8

1/2" Cable

See P.

48° 45'

Fd. 2x2 Mkd

51+00

P.O.T.

76.10

48° 52'

2x2 P.O.T.

16+06.16

Soledad Rd.

Set 2x2  $\square$  39+66.60  
 $\Delta = 0^{\circ} 14' \text{ Lt}$

Fd. 2x2  $\square$  34+40.05  
 $\Delta 3^{\circ} 51' \text{ Lt}$

Set 2x2  $\square$  33+64.75  
 $\Delta 2^{\circ} 29' \text{ Lt}$

$\frac{1}{2}$ " Cable

Fd 1x2  
Stake  $\square$  31+54.25  $\Delta 0^{\circ} 56' \text{ Lt}$

10-13-49

Moore  
Hardin  
Sheepman  
Sisson

4 400'  
36475'  
7530

36475'  
15421'  
11050

3

Set 2x2  $\square$  44+02.55  
 $\Delta = 1^{\circ} 36' \text{ Rt}$

Set 2x2  $\square$  42+08.80  
 $\Delta 9^{\circ} 00' 15'' \text{ Lt}$

Set 2x2  $\square$  41+05.75  
 $\Delta 14^{\circ} 18' \text{ Lt}$

See P. 10  $\rightarrow$   
for Tie

39+66.6  $\checkmark$   
 $0^{\circ} 14' \text{ Lt}$

1 1/2"  
cable  
set 2x2

48+85.15  
Δ 3° 07' LT

set 2x2 Δ 48+01.78  
Δ 3° 21' LT

Fd. 1x2  
STUB Δ 47+26.45  
Δ 6° 16' LT

set 2x2 Δ 44+02.55  
Δ 1° 36' RT

Fd 2x2

4  
56+17.91  
Δ 0° 45' LT

set 1x1  
STUB Δ 55+27.41  
Δ 4° 18' RT

2° 32' 49+51.11  
Δ 2° 32' RT set 2x2

49+23.6

90°  
6.20  
Fd. Hub E.C.  
Salcedo Rd.  
84+09.48  
F.B. 1324-65

48+85.15  
Δ 3° 07' LT



69+49.4 □ Set 2x2.

~~1°20' RT~~  
0°13' RT

Soledad Rd.

SET 2x2

60+15.05  
1°08' LT.

Fd. 2x2  
TO MOSS

75+29.4 Fd 2x2  
A = 38°57' RT

124°15'

1/2 cable

Fd EC. Hub

Al. Con. Al. Mon. 31°08' LT  
F.B. 1324-67

100°15'

105.70

Fd. 2x2 70+74.0  
Hub A = 46°47' LT.

131°12'

1/2 cable

EC.  
Fd. Hub 91+84.31  
F.B. 1324-66  
52026

90°  
89°45'  
48.35

56+50.80 Set  
23°11' RT, 2x2

56+17.91  
0°45' LT.

69+49.4  
~~1°20' RT~~  
0°13' RT

SET 2x2

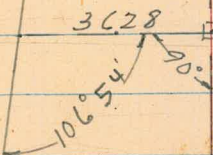
1 1/2" Cable  
CONTINUES  
NLY



83+42.3

3628

Fd. B.C. 2x2 Hub  
118+33.44



75+29.4

S. Federal Rd.

P.O.T.  
9+96.96

1 1/2" Cable

Soledad Rd.  
old

4°40'

Fd. old E.C. Eq =  $\frac{411452.77}{36+32.40}$   
New =  $\frac{52016}{36+32.40}$

6.47  
6+89.32 see P1.  
11°30' RT

1 1/2" Cable

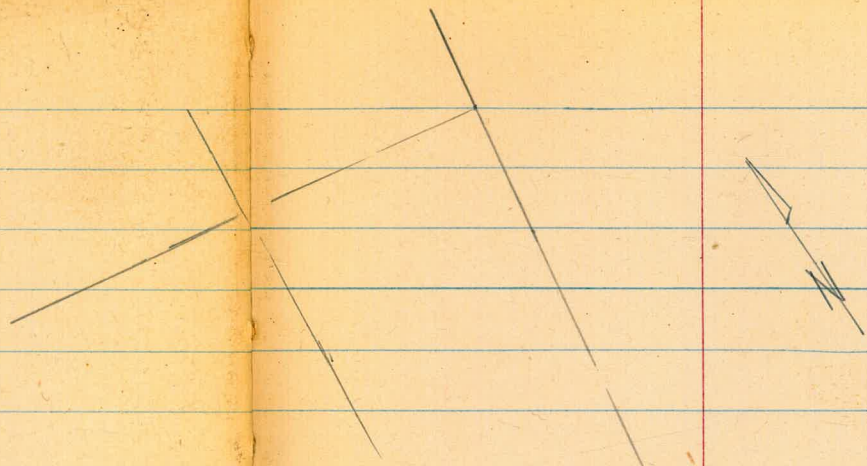
31.91

New  
E.C.  
Fd. 2x2

35+74.32  
52016

36 32.40  
35 74.38

Fd. 2x2 P1.



Ed. 2x2 P.I.  
 Δ 25°43'30" Lt  
 R 1000

12 + 63.75  
 Δ 21°35'30" Lt  
 P. 2

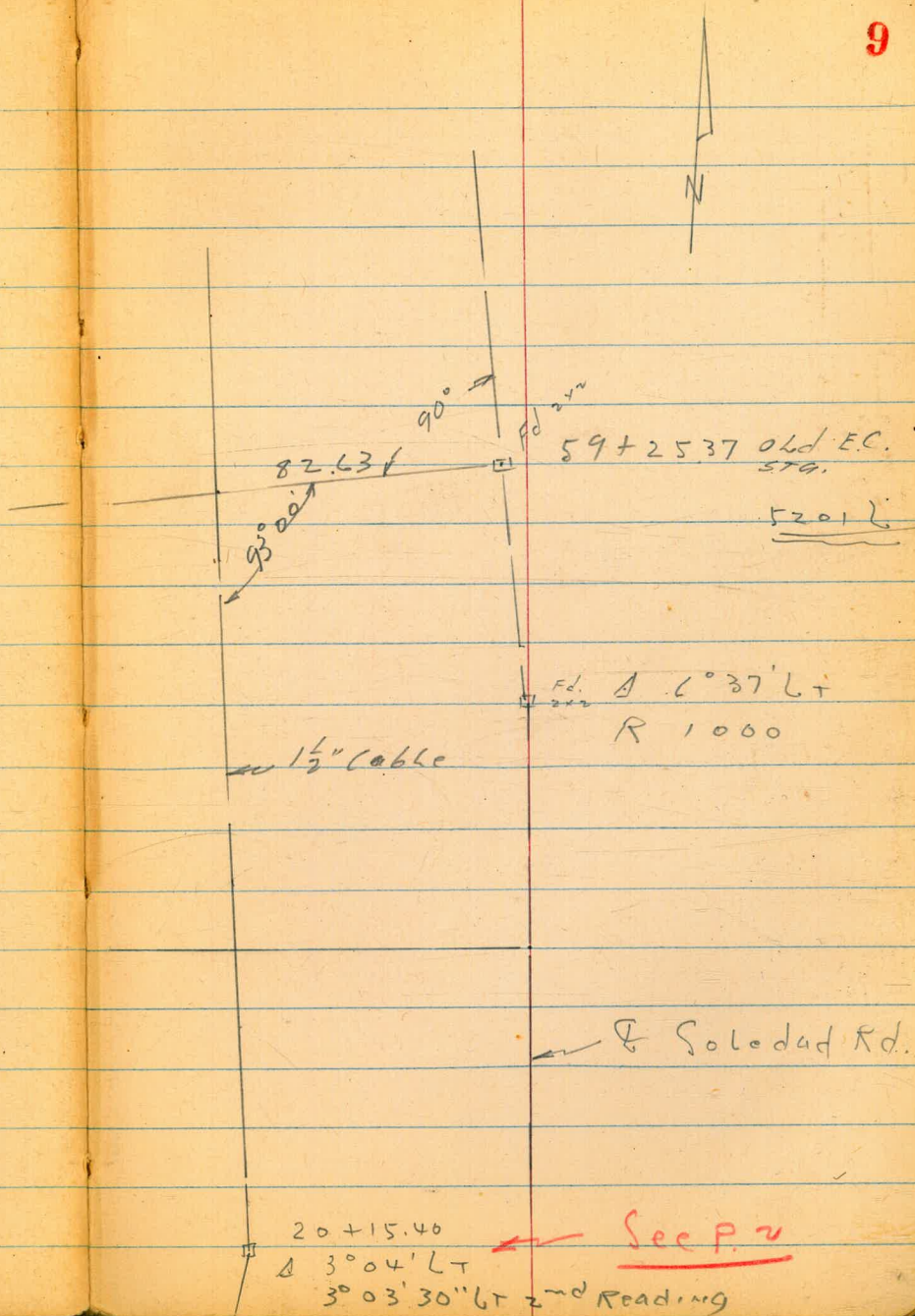
1 1/2" cable →

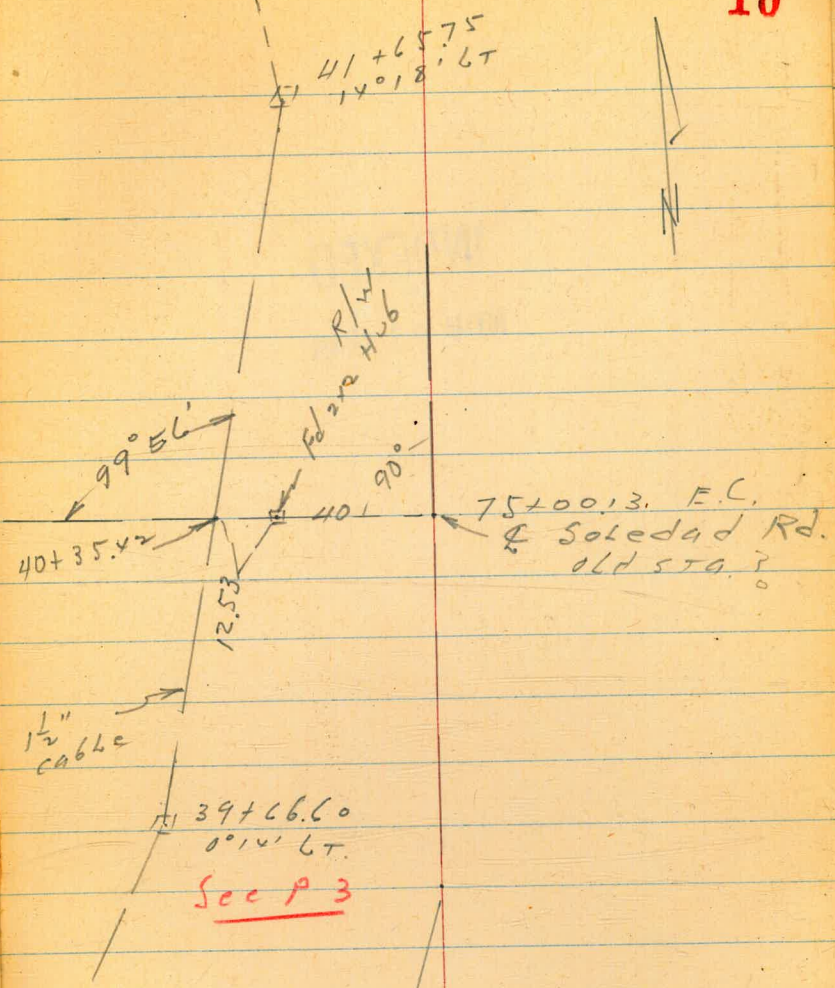
85°23'  
 10 + 63.10

29.76  
 Ed. 2x2 B.C. 44 + 92.05  
 90°  
 06d ?

← S. Soledad Rd.

P.O.T. 9 + 96.96





Survey for Location of  
Sewer in Albert between  
Robinson & Penn.

11-15-49

Roberts  
Garber  
Moore  
Clark  
M.D. 21203

T.P. 233

**INDEXED**  
W.K.  
NOV 21 1949

Blue 229

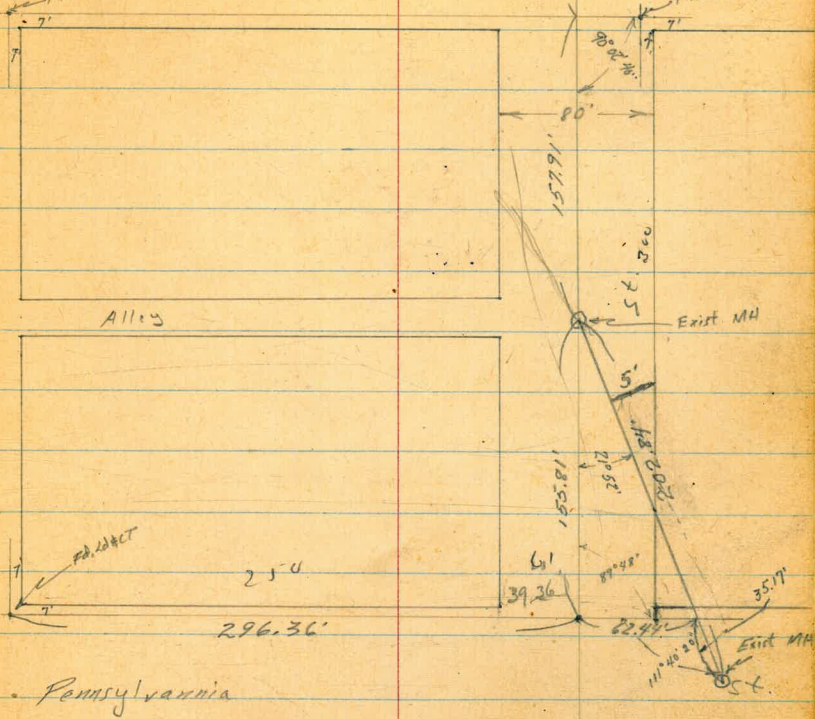
250 University Ave  
7 dts.

2 296.36  
257  
-----  
39.36

257

Sight on  
7' B&C.T. at  
Vermont

Robinson  
FA. 12 & C.T.



Richmond

Albert

296.36  
257  
-----  
39.36

BERYL ST ~ CROSS SECTIONS

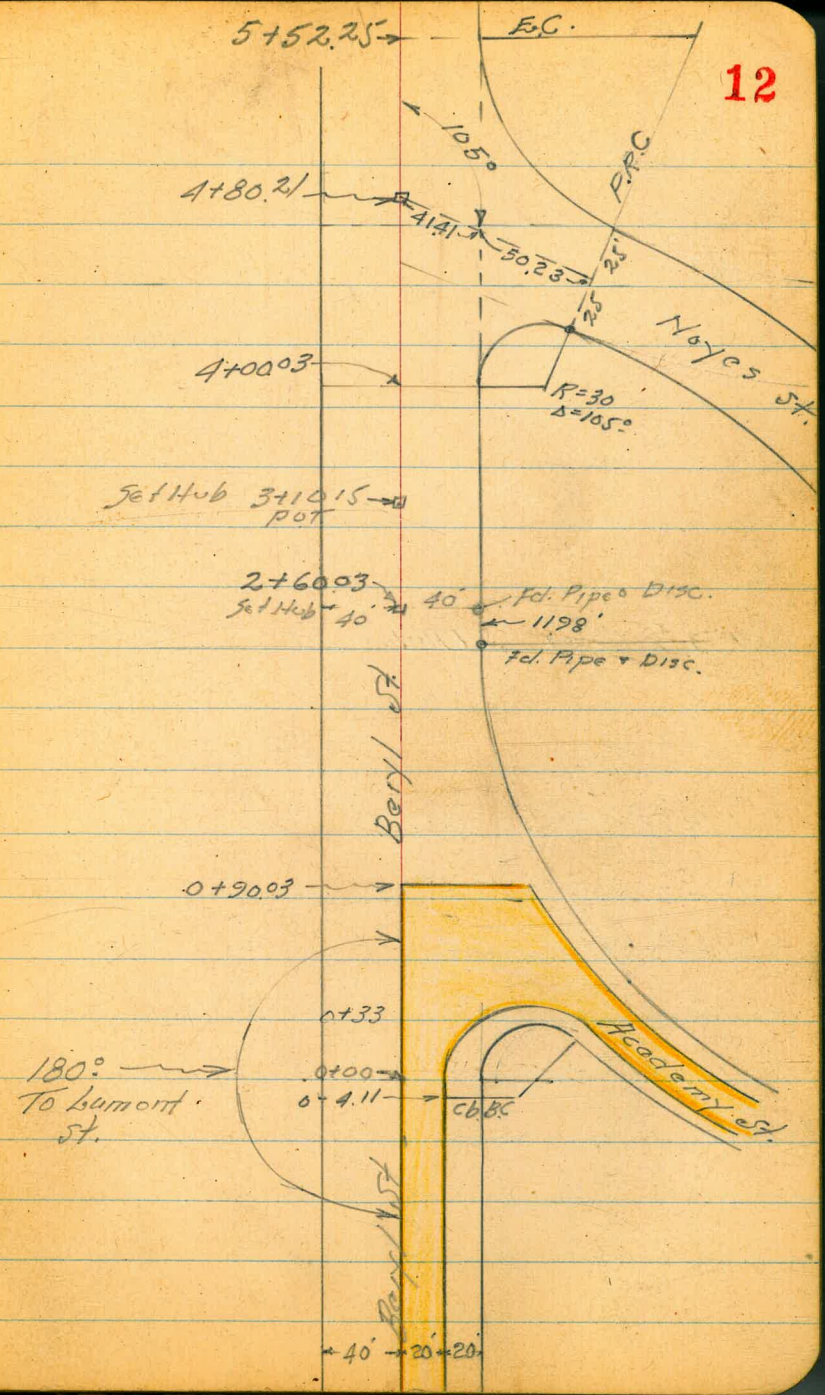
Walker  
 Joyce  
 Gregory  
 12-30-49

4+80.21 = POT Set Hub.

3+10.15 = POT Set Hub.

2+60.03 Set Hub POT.

0+00 = opp. Prop. Radius





German St

Meas.  
153.27

Fd. conc.  
Main

1562 Beryl  
Fd. conc.

1407  
TB 20/60

13

Set Hub  
13+27.32

80

Pendleton

12+47.32

80

40' x 40'

Beryl SF

10+53.56 = P.O.T. Set Hub

9+14.49 = P.O.T. Set Hub

8+13.72 = P.O.T. Set Hub

7+49.38

80  
drey-  
street

6+69.38

6+44.48

24.96

24.96

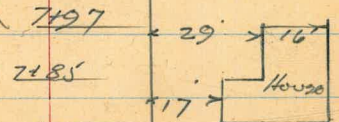
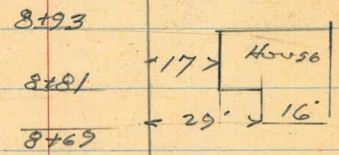
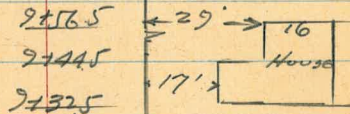
Beryl St. Cross Sections

Location Houses on Rt

Pendleton

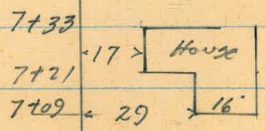
Beryl

80



Beryl St

40' x 40'



166.01 P.O.T. Hub  
9+14.49  
Pg. 20

4.01 166.01

TP 7.58 170.02 0.10 162.44

T.P. 12.42 162.54 0.19 150.12

8.27 142.04 Beryl & Pendleton  
P.O.T. Hub

3.73 146.58 13+27.32

P.O.T. Hub  
10+53.56  
Pg. 21

9.19 150.31 141.12

BERYL ST. CROSS SECTIONS  
 from Academy To Pendleton  
 Sketch P-12413

0+90.03 = Edge East. Conc. Paving

0+70

INDEXED  
 N.Y.K.  
 JAN 3 1950

0+50 = Bk. in Pav.

*Notes Reduced  
 & Plotted  
 J.M.B.*

0+33

0- 4.11 = cb. BC. on Rt

136.7	136.4	135.5	135.14	134.79	134.47	134.14
4.8 50	5.1 40	6.0 20	6.31 Pav.	6.66 20 Pav.	6.98 40 Pav.	7.31 60 Pav.
134.4	133.9	134.0	133.53	131.02	132.53	
7.1 50	7.6 40	7.45 0.17 Pav.	7.90 20 Pav.	8.43 40 Pav.	8.92 60 Pav.	
133.5	133.1	131.04	132.54	131.75	131.24	
8.0 50	7.8 40	8.41 Pav.	8.91 20 Pav.	9.70 40 Pav.	10.21 60 Pav.	
133.5	133.55	132.53	132.03	131.24	131.79	
8.0 50	8.0 40	8.90 0.07 Paving	9.42 20 Pav.	10.21 40 Cut on Return	9.66 40 cb	
134.0	134.0	133.9	132.54	131.92	132.50	132.9
7.5 50	7.5 40	7.6 8	8.91 20 Cut Paving	9.53 20 cb	8.25 20 cb	8.6 40
			141.45			

TP	2.42	141.45	12.32	139.03
TP	0.37	151.35	11.70	150.98
	0.55	162.68		162.13

B.M. NE 7' tack Lamont & Beryl  
 L-sheet 6959

Beryl Street  
Cross Sections

2+60.03

2+40

T.P. 11.96 163.92 089 151.96

1+90

1+50

1+20

T.P. 11.60 152.85 0.20 141.25

1+00

141.45

16

Station	1	2	3	4	5	6	7	8
2+60.03	49 60	43 40	59 35	47 9	1.16 on Hub	+2.3 32	+1.8 40	+3.4 60
2+40	82 60	73 40	93 35	24 25	10.0 20	9.8 10	6.0 6	4.5 20
163.92								
1+90	53 60	48 40	42 15	3.0 10	2.5	1.2 20	+0.1 40	+2.2 60
1+50	9.3 60	94 40	90 30	84	7.4 20	64 40	44 60	
1+20	12.5 60	14.3 40	16.0 26	15.3 20	133	12.3 20	114 40	10.1 60
152.85								
1+00	1.6 60	38 40	5.6 20	6.3	6.6 20	7.0 40	6.9 60	
141.45								

L+

2

177

Beryl Street  
Cross Sections

Lt.

S.

Rt.

17

3+25

175.6 176.7 177.9 175.5 175.6 174.8 179.0 178.8 179.5  
6.1 5.0 3.8 6.2 6.1 6.9 2.7 2.9 2.2  
60 40 18 15 30 35 40 60

3+05

167.5 170.5 171.9 175.1 175.1 174.5 175.1 171.6 174.4 176.2  
14.2 11.2 9.8 6.6 6.6 7.2 6.6 5.1 6.9 5.5  
60 40 24 17 27 30 34 40 60

2+94

165.8 166.5 169.3 170.6 171.1 172.3 172.6 173.9  
15.9 15.2 12.9 11.1 10.6 9.4 9.1 7.8  
60 40 12 11 11 30 40 60

TR. 12.09 181.66 462 169.57

181.66

2+84

172.1 170.7 169.8 167.4 165.0 165.1 164.3 163.4  
2.1 3.5 4.4 6.8 9.2 9.1 9.9 10.8  
60 40 29 68 22 31 40 60

2+70

160.6 161.2 160.4 160.6 163.1 164.2 168.0 168.1 169.3  
13.6 13.0 13.8 13.6 11.1 10.0 6.2 6.1 4.2  
60 40 35 22 14 32 40 60

on S. Hub 2+60.03

TR. 11.43 174.19 116 162.76

174.19

163.92

Beryl Street - Cross Sections

5+52.25

5+00

4+69.49

4+86.21 on Hub 10.44 170.01

4+43.61 - R.A. to Prop P.I. on Rt.

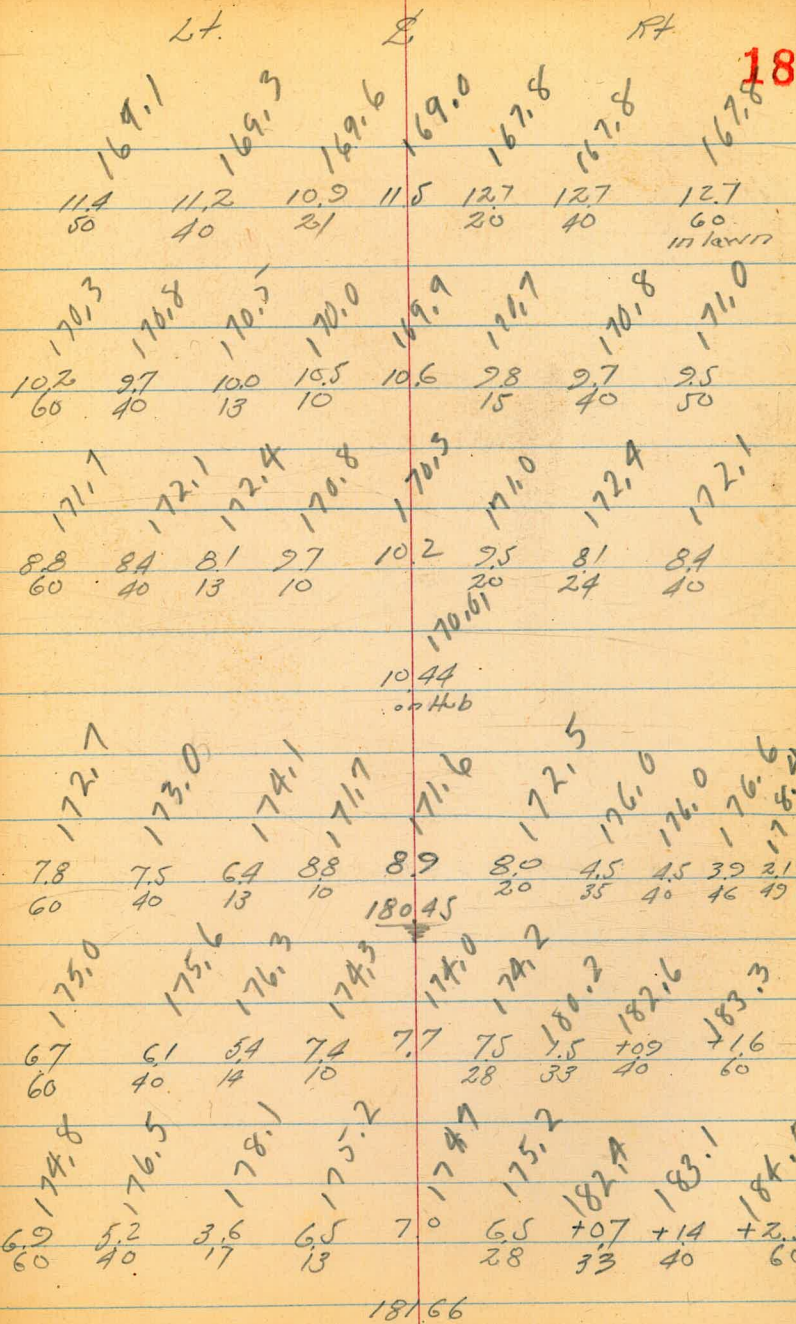
on Top with L

TP 10.88 180.45 12.09 169.57

4+00.03 opp. BC. on Rd.

3+50

181.66



Beryl St. - Cross Sections

8+00

Lt.	ft.	ft.	ft.	ft.	ft.	ft.	ft.
6.6	5.5	5.3	5.6	6.2	6.6	8.22	
60	40		13.	29	40	65	
				Begin Lawn	on Lawn	3' on Walk	

7+49.38

Rt A to E. Line Olney

Lt.	ft.	ft.	ft.	ft.	ft.	ft.	ft.
6.4	5.3	4.9	5.4	5.8	6.4	7.1	
60	40	18		27	40	60	
				Begin Lawn	on Lawn		

T.P. 6.74

178.48

8.71

171.74

7+00

Lt.	ft.	ft.	ft.	ft.	ft.	ft.	ft.
9.8	9.3	8.8	9.3	9.0	9.5	10.48	
60	40		28	31	40	68	
			Begin Lawn	on Lawn	on Lawn	3' on Walk	

6+69.38

Rt A to P.I. on Rt.

Lt.	ft.	ft.	ft.	ft.	ft.	ft.	ft.
10.1	9.7	9.6	9.9	10.5	10.3	11.0	15.0
60	40		18	32	40	50	150
			Begin Lawn	Begin Lawn	on Lawn	on Lawn	on Lawn

6+44.48

Lt.	ft.	ft.	ft.	ft.	ft.	ft.	ft.
10.6	10.2	10.7	11.5	11.2	12.9		
59	40		36	40	60		
			Begin Lawn	on Lawn	on Lawn		

6+00

Lt.	ft.	ft.	ft.	ft.	ft.	ft.	ft.
12.0	11.4	11.3	11.3	11.5	11.9	12.9	13.1
60	55	40	20		20	40	50
							on Lawn

180.45

180.45

Beryl St. - Cross Sections

20

9+45

Left				RT.			
160.3	159.9	159.6	159.8	160.4	160.40	160.81	160.75
7.7	8.1	8.4	8.2	7.6	7.6	7.9	7.25
60	40	15		36	40	19	55.5
				Begin	on	on	on
				Lawn	Lawn	3' walk	on walk
							No. Steps

9+18

164.1	164.5	165.5	165.4	166.2	165.1	165.0	165.1
3.9	3.5	2.5	2.6	1.8	2.9	2.0	2.9
60	40	18		30	35	40	60
				Begin	on	on	on
				Lawn	Lawn	Lawn	Lawn

on Hub 9+14.49

TP 1.99 168.00 12.47 166.01

9+00

165.9	166.7	167.3	168.00	167.5	167.0	166.9	166.7
12.6	11.8	11.2	11.0	11.5	11.6	11.3	
60	40	33		30	40	60	
				Begin	on	on	
				Lawn	Lawn	Lawn	

8+50

170.1	171.1	171.4	170.8	171.1	170.2	169.1	168.9
8.4	7.4	7.1	7.7	7.8	8.3	8.8	9.6
60	40	32		13	31	40	60
					Begin	on	on
					Lawn	Lawn	Lawn

8+22

171.3	172.4	173.0	172.6	172.3	171.4	171.9	170.1
7.2	6.1	5.5	5.9	6.2	7.1	6.6	8.4
60	40	28		12	26	40	60
						Begin	on
						Lawn	Lawn

8+20 39' RT 3' Cypress

8+13.72 P.O.T. Hub 10.44 172.07

178.48  
180.45

~~174.54~~  
172.67  
5.81  
on hub  
~~180.45~~ 178.48



Beryl St. - Cross Sections  
 0.28  
 162.13 B.M. 724T  
 1.48 162.11 Beryl & Lamont  
 Pg. 15

T.P. 8.39 163.59 1.25 155.20

T.P. 10.45 156.45 6.97 146.00

TP 1.85 152.97 13.04 151.12

TP 0.84 164.16 12.64 163.32

T.P. 4.22 175.96 2.55 171.74

T.P. 13.06 174.29 0.23 161.23

T.P. 12.63 161.46 0.62 148.83

10+53.56 P.O.T. Hub 8.33 141.12

T.P. 1.58 149.45 9.65 147.87

10+20

10+00

9+75

T.P. 0.28 157.52 10.76 157.24

168.00

Lt.

Q

Rt.

21

From 10+20 to 13+27.82  
 = Kipine Pandleton see Topog.  
 Hurd Copy

140.2 140.0 138.8 140.6 141.12 142.3 142.2 141.0  
 9.3 9.5 9.7 8.9 8.33 7.2 7.3 8.5  
 60 40 29 13 on hub 22 40 60

148.3 147.5 147.6 149.45 147.7 146.8 146.8 146.0  
 9.2 10.0 9.9 9.8 10.7 10.7 11.5  
 60 40 19 98 24 40 60

152.0 151.8 152.1 150.8 150.1 149.9 149.5 150.2  
 5.5 5.7 5.4 6.7 7.4 7.6 8.0 7.3  
 60 40 34 20 40 50 60

156.8 156.8 156.0 154.6 154.5 154.5 155.5  
 0.7 0.7 1.5 2.9 3.0 3.0 2.0  
 60 40 25 40 55 60

157.52

CROSS SECTION OF PORTION  
NOYES STREET  
from Beryl Street

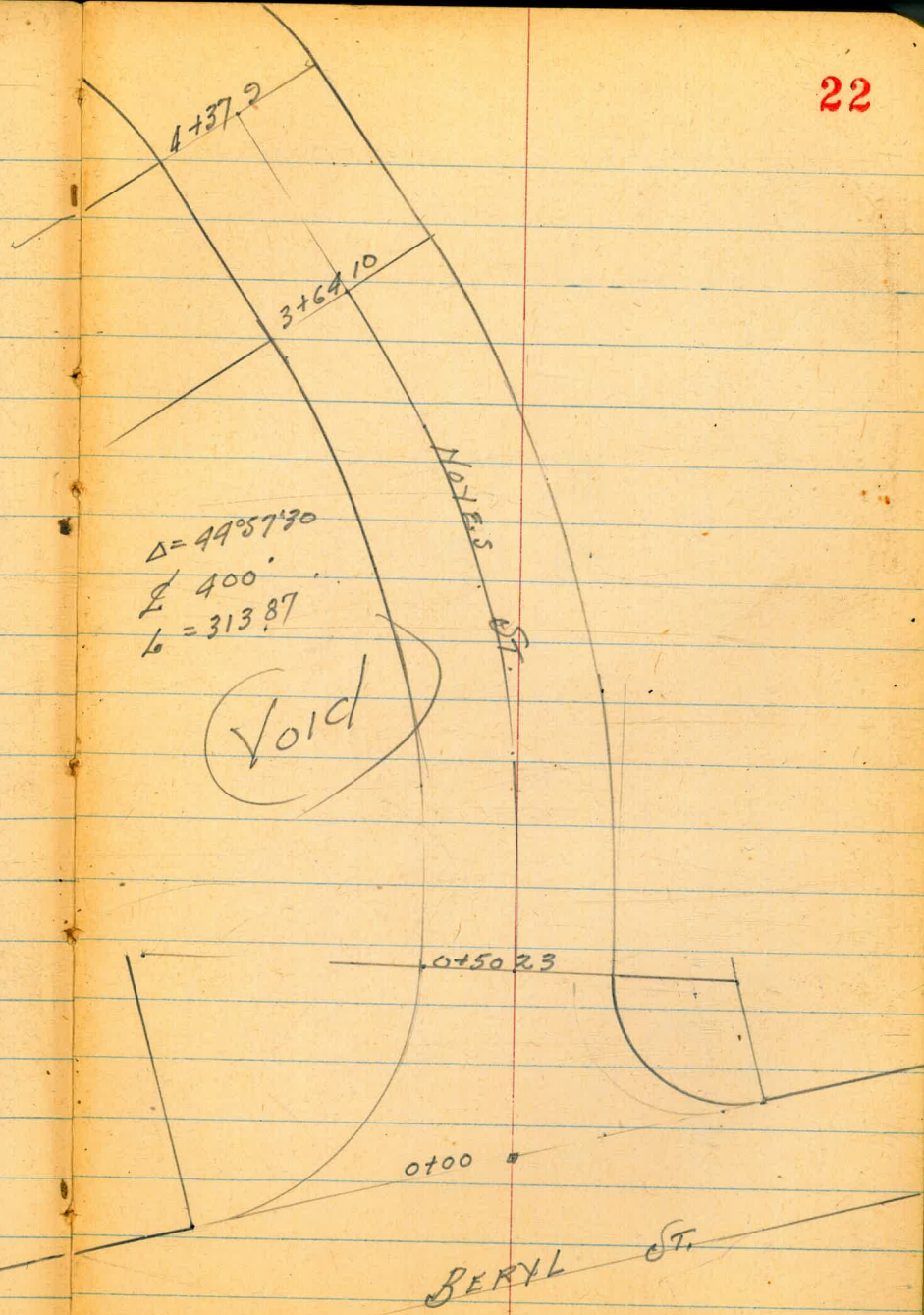
22

Void

See P. 23  
for New sketch

$$\Delta = 49^{\circ}57'30''$$
$$L = 400'$$
$$L = 313.87$$

Void

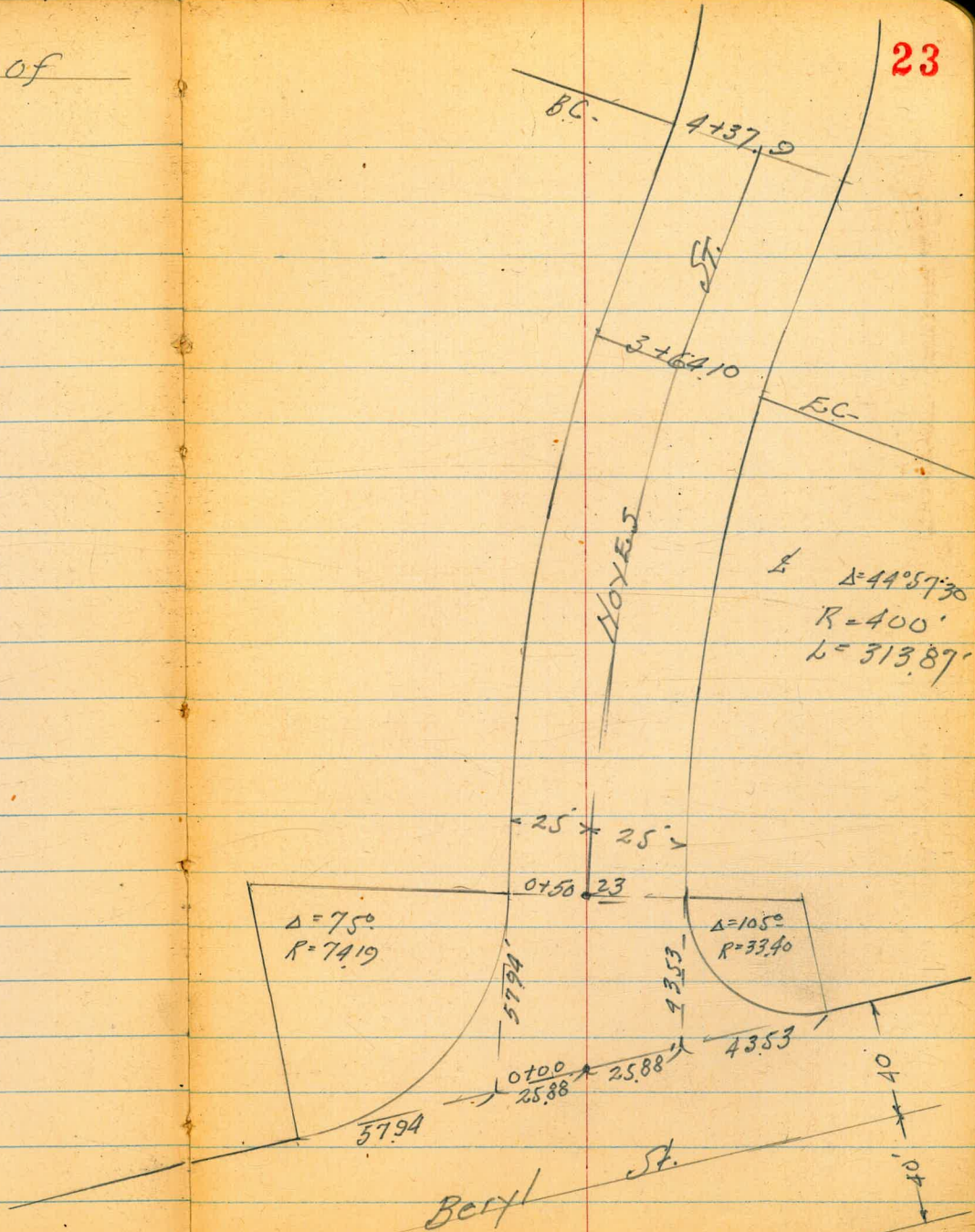


CROSS SECTION - PORTION OF  
 NOYES STREET

Walker  
 Gregory  
 Pope  
 K. Sisson  
 12-30-49

INDEXED  
 W.K.  
 JAN 3 1950

23



Noyes St.  
Cross Sections

1+00

on Pipe 25' Rt. of 5023

TR 8.02 187.47 161 172.45

0+50.23 = B.C. Rt.

0+25

0+30 sec. = Rt. 2 to L

0+00 diag sec. on Shore Beryl St

1105 18106

170.01

B.M. on Hub 4780.21 P-18

Lt

R

Rt

24

173.01  
174.41  
175.8  
176.6  
177.5  
179.1  
181.7  
182.6

14.46 131 117 109 100 78 58 49  
36 25 16 1 8 25 35

on Conc. Walk 187.47

171.32  
172.6  
173.5  
174.7  
175.8  
179.5  
181.0

974 8.5 7.6 6.4 53 1.6 0.1  
38.5 25 15 9 25 35

on Conc. Walk

171.0  
172.4  
173.1  
175.5  
179.0  
180.4

10.1 8.7 8.0 5.6 2.1 0.7  
40 25 5 25 35

170.5  
172.1  
171.9  
172.4  
176.5  
178.6  
180.2

10.6 9.0 9.2 8.7 4.6 2.5 0.9  
40 25 13 9 25 35

170.9  
170.8  
172.1  
173.9  
176.0

10.2 10.3 9.0 7.2 5.1  
25.88 13 15 25.88

18106

Noyes St.

Cross Sections

(1+85) Extra Section (Not taken in order)

2+00

1+99 9.8 Rt = 1/2 Elec Pole #4880

1+47

1+45

1+25

1+23 28' Lt. = 12" Acacia Tree

1+18 25' Rt. = 1/2 Conc. Tile Wall

Runs Approx  
Rt Δ to L

176.9	178.1	179.1	170.9	171.3	171.8	183.4	183.8	186.5
10.6	8.8	7.8	6.6	6.2	5.7	4.1	3.7	2.9
40	25	15	12	6	15	25	30	35
	on	on					on	on
	Low	Low					Low	Low

177.8	179.7	171.1	171.5	172.0	172.5	184.4	185.5	186.4
9.7	7.8	6.4	6.0	5.5	5.0	3.1	2.0	1.1
40	25	14	12	6	14	25	35	
	on	on						
	Low	Low						

174.57	176.4	178.2	179.0	179.3	180.4	183.1	183.6	186.3	186.6
12.90	11.1	9.3	8.5	8.2	7.1	5.5	4.4	3.9	17.09
41.5	25	13	10		12	12	23	25	32
									on
									Low

174.57	176.4	178.2	179.0	179.7	180.7	182.6	183.9	186.1	186.6
12.90	11.1	9.3	8.5	8.3	6.8	4.9	3.6	14.13	18.0
41	25	13	10		20	25	29	33	35
		on							
		Low							

175.5	176.9	177.1	178.0	181.1	183.6	184.9
12.0	10.6	9.8	9.5	6.4	3.9	2.6
25	13	10		25	30	35

175.5	176.9	177.7	177.8	178.7	181.1	183.1	185.2
12.0	10.6	9.8	9.7	8.8	6.4	4.4	2.3
25	13	10		8	13	25	35

183.1	187.14
44	0.33
25	2.6
on	on
	Wall

187.47

~ Noyes St. ~  
Cross Sections

Lt.

Q

Rt. 26

2.93 <sup>02</sup> 172.67  
172.69 Hub 8 + 13.72 Pg. 20

TP 5.55 175.62 11.37 170.07

TP 1.85 181.44 11.28 179.59

4 + 37.9

181.1  
182.0  
183.0  
182.8  
183.2  
184.4  
184.9

9.8 8.9 7.9 8.1 7.7 6.5 6.0  
35 25 14 11 25 35  
on Lawn on Lawn Edge Lawn

4 + 00

180.79  
182.8  
183.3  
183.2  
184.0  
185.3  
185.3

10.08 8.1 7.6 7.7 6.9 5.6 5.3  
46 25 20 16 25 35  
Edge on Edge  
3' Walk Conc. Lawn Lawn

3 + 64.10

E.C.

181.69  
182.6  
183.6  
183.7  
184.8  
185.5  
186.4  
186.4

9.18 8.3 7.3 7.2 6.1 5.4 4.5 4.5  
43 32 25 16 9 25 35  
Edge 3' on Edge  
Walk Conc. Lawn Lawn at wire fence

3 + 00

182.55  
182.9  
184.0  
184.8  
186.0  
186.7  
187.2

8.32 8.0 6.9 6.1 4.9 4.2 3.7  
20 25 16 12 25 35  
Edge on Edge  
3' Walk Conc. Lawn Lawn at wire fence

T.P. 4.31 190.87 0.91 186.56

2 + 50

180.58  
181.3  
182.9  
183.4  
190.87  
183.6  
184.2  
184.8  
186.4  
187.0

6.59 6.2 4.6 4.1 3.9 3.3 2.7 1.1 0.5  
33 25 13 11 5 9 25 35  
Edge on Edge  
3' Walk Conc. Lawn Lawn at wire fence

187.47

187.47

D. Smith  
W. Fay  
E. Sherman  
J. Crawford

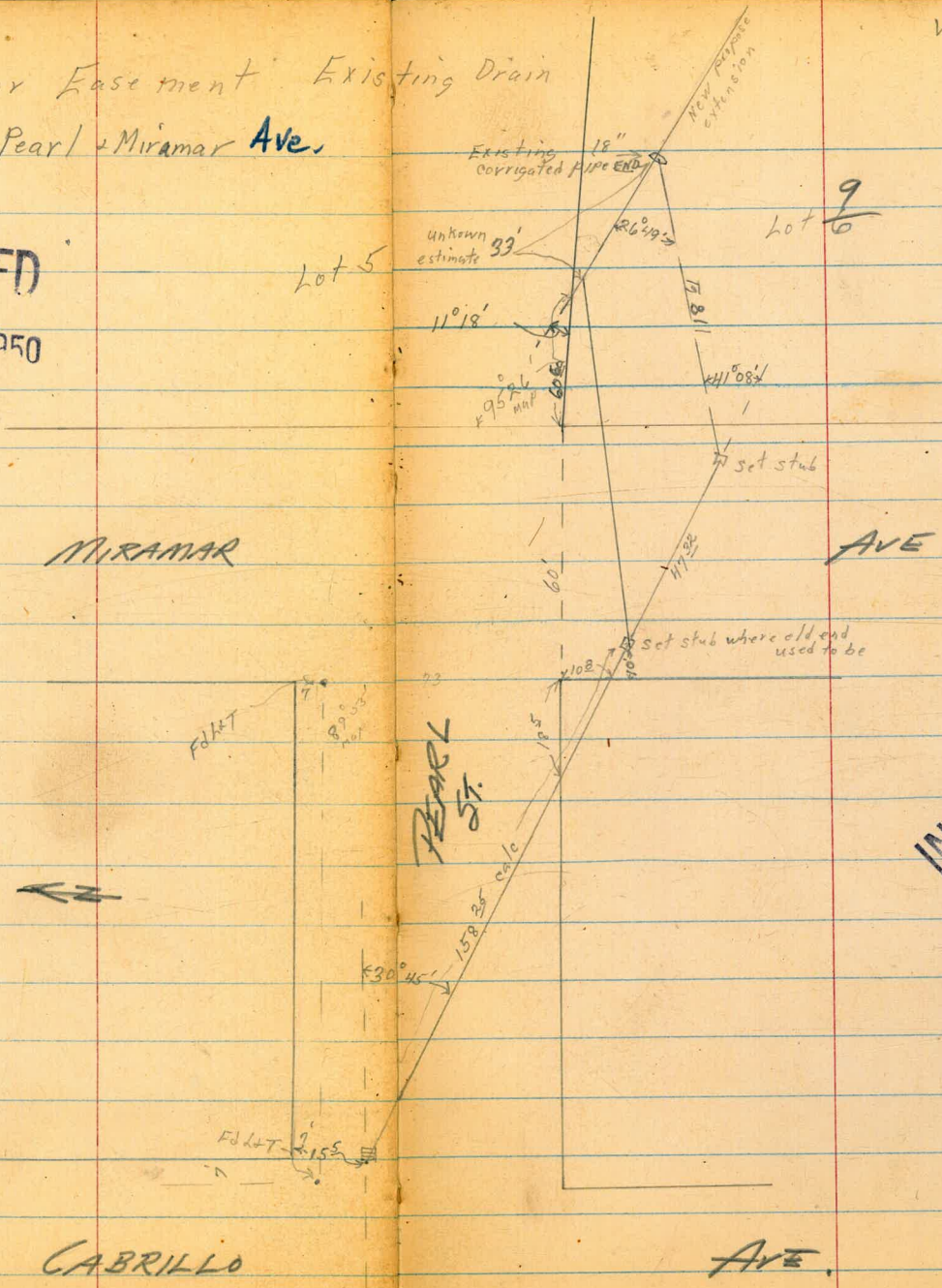
Locate for Easement Existing Drain  
and extend 60' Pearl + Miramar Ave.

Wot# 20722  
10-2-50

27

INDEXED  
OCT 3 1950

Note: Ref 1048L



INDEXED  
NOV 8 1950

0760

0740

0720

0700 end existing 18' corrugated pipe

TP <sub>5</sub>	12 <sup>34</sup>	199 <sup>13</sup> ✓	0 <sup>34</sup>	186 <sup>79</sup> ✓
TP <sub>4</sub>	12 <sup>31</sup>	187 <sup>13</sup> ✓	0 <sup>27</sup>	174 <sup>82</sup> ✓
TP <sub>3</sub>	12 <sup>29</sup>	175 <sup>09</sup> ✓	0 <sup>32</sup>	162 <sup>80</sup> ✓
TP <sub>2</sub>	12 <sup>27</sup>	163 <sup>18</sup> ✓	0 <sup>32</sup>	150 <sup>85</sup> ✓
TP <sub>1</sub>	12 <sup>17</sup>	151 <sup>17</sup> ✓	0 <sup>33</sup>	139 <sup>00</sup> ✓
BM	12 <sup>15</sup>	139 <sup>33</sup> ✓		127 <sup>18</sup> ✓

SWBP Parl  
High  
(No RECORD)

Lt = North  
198.1  
192.7  
196.8  
200.4  
Mt-South

198.4  
189.8  
197.9

196.1  
190.0  
195.1

194.8  
188.53  
187.03  
194.5

199<sup>13</sup> ✓



BM starting 8<sup>85</sup> 127<sup>16</sup> 127<sup>19</sup> ✓

TP<sub>12</sub> 169 136<sup>01</sup> ✓ 11<sup>91</sup> 134<sup>32</sup> ✓

TP<sub>11</sub> 004 146<sup>23</sup> ✓ 12<sup>13</sup> 146<sup>19</sup> ✓

TP<sub>10</sub> 015 158<sup>32</sup> ✓ 11<sup>20</sup> 158<sup>17</sup> ✓

TP<sub>9</sub> 063 169<sup>97</sup> ✓ 12<sup>15</sup> 169<sup>84</sup> ✓

TP<sub>8</sub> 002 181<sup>99</sup> ✓ 12<sup>07</sup> 181<sup>92</sup> ✓

TP<sub>7</sub> 023 193<sup>29</sup> ✓ 11<sup>97</sup> 193<sup>76</sup> ✓

N.E. 7/4 + 7  
Pearl +  
Cabrillo

1400

0400 (0480)

TP<sub>6</sub> 9<sup>12</sup> 205<sup>73</sup> ✓ 2<sup>52</sup> 196<sup>61</sup> ✓

203.1  
26 82 27 + 10  
27 14  
ditoh

201.0  
47 11.5 6.1 1.4  
22 12  
ditoh

196.8  
199.6  
204.3

203.0  
206.7

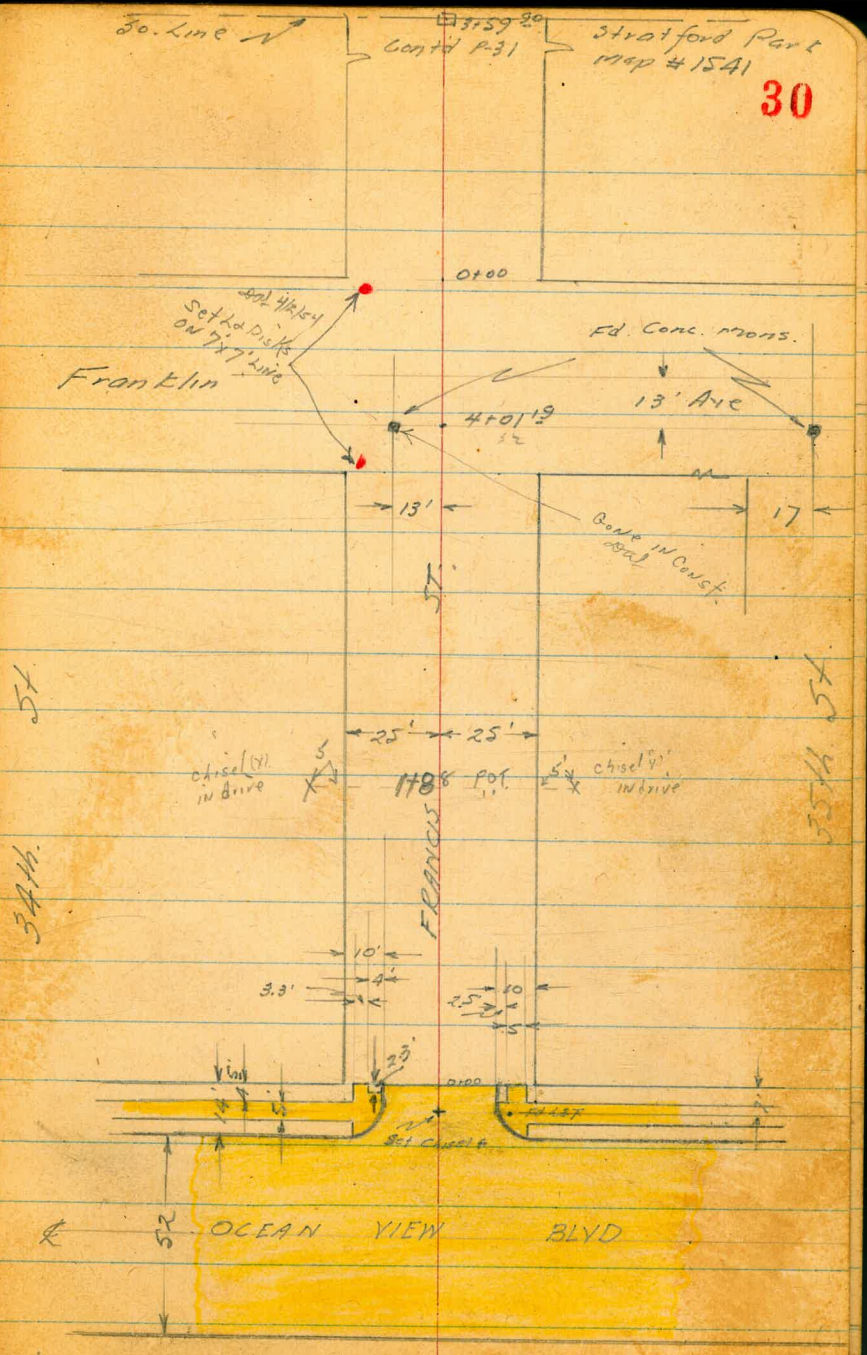
205<sup>73</sup> ✓  
97

11-22-50 Xsect Francis St  
 Hendricks  
 Sherman Ocean View Blvd. to Webster  
 Crawford  
 Shepard  
 No# 31837

Note

stations in red were added 11/25/51

INDEXED  
 M.K.  
 NOV 29 1950



Webster

Set 2x2' R.W Hubs  
& DISC'S

3+29.97

Ave

Fd old Hub

5K

50'

7444

Fd 3/4" I.P.

ST

FRANCIS

Reset off the outs  
Nail + Disk ~~at~~ 4/15/4

13'

Fd old 2x2' hub  
3' deep

South Line

50' Fd old 1" I.P.  
Reset Hub & DISC

3+59.92  
Set Hub & Disc

Stratford part

Cont'd from  
90° 01' 30" turned  
90° at 85.27

N by line

0+00

Franklin Ave

T.P. 12.87 58.95 — 46.08  
 (Begin 10' High Conc. Wall) 25' H.)  
 Edge Conc. Paving & End Cas & Sidewalk  
 0+00 North Line Ocean View

0-04 EC Ch Rets

0-14 North Ch Line Ocean View Blvd

0-40 E Ocean View Blvd

*(Dined)*  
 T.B.M. 506 ~~51.98~~ 51.14  
 3.09 47.99 (48.08) ←  
 10.85 46.02 (46.08) ←  
 Corrected

T.P. 0.21 56.87 12.84 56.66  
 B.M. 1.25 69.50 243 68.25 (68.38)  
 T.P. 2.00 70.68 7.16 68.68  
 B.M. 3.24 75.84 72.60

N.E. 7' L&T Francis & Ocean View

44.5	45.31	45.16	45.06	44.38	45.47	45.35	46.00	46.10	46.22	47.3
6.6	5.83	5.98	6.00	6.74	5.67	5.79	5.14	5.04	4.92	2.18
35	(22.3 19)	15	15		15	15	15	17.5	22.5	35
	Sidewalk	Ch	G		G	Ch		Sidewalk		
		45.14	44.46		45.75	45.99				
		6.10	6.68		5.79	5.15				
		15	15		15	15				
		Ch	G		G	Ch				

40.14	39.68	45.00	44.23	44.50	44.99	45.28	45.38	46.01	46.72	47.38	47.90	49.62
10.70	11.46	6.14	6.91	6.64	6.15	5.86	5.76	5.13	4.37	2.21	2.18	
75	75	25	25	15		15	25	25	45	45	75	75
Ch	G	Ch	G			G	Ch	G	Ch	G	Ch	G

40.14	44.05	44.48	44.94	45.24	45.58	45.94	47.13	49.54
11.00	7.09	6.66	6.20	5.90	5.56	5.16	4.01	1.60
75	31	25	15	51.14	15	25	43	75

3rd in Power Pole # 3421 (SE Cor Francis & Ocean View)  
 (Chas. Moore Genl BR)

N.E. 7' L&T Ocean View & Francis St.  
 S.E. Top Fire Hydt. Ocean View & 35th St.

SW 13' Mon Franklin & Pardee  
 (Fd no face in this mon top may have been knocked off)

X Sect Francis St Contd.

TP 7.39 65.99 0.35 58.60

1+00 End Conc Block Wall 25.4 Rt

0+84 & Single Garage 25.2 Rt

0+62 & # Stairway 21.3 Rt

0+53 Beg. 8' Conc Block Wall 25.3 Rt

0+52 End Wall 24.5 Lt

0+06

58.95

X

61.6 60.6 60.4 60.7 60.0 58.3 55.9 57.8 62.2 53.0  
 +26 +15 14 17 30 27 31 17 13 14  
 25 25 22 16 14 14 25 28 40

55.52  
 34.3  
 25.2  
 Conc. Fl.

54.33  
 6.2  
 21.3  
 Top 1st River

33

60.5 59.8 51.2 51.3 50.3 50.6 50.6 52.8 53.8 59.3 60.1  
 +15 +08 78 77 87 84 84 63 52 10 11  
 35 25 24.5 16 14 14 18 25 29 39

51.3 41.6 46.4 45.4 46.0 46.3 49.1 56.0 58.2  
 27 12 12.6 13.6 13.0 12.7 10.9 20 0.8  
 25 20 13 15 24 31 40

58.95

X

2+00

23 17	62.2	23 13	61.8	23 15	61.0	23 14	61.5	23 14	61.9	23 24	63.6	23 02	65.8	23 10	66.2
25		25		15		14		14		25		30		40	

1+90 £ 8' Conc Drive 24.5' Lt.

23 25	62.63	23 24.5	62.14

1+86 25' RT. £ wide Conc. Drive

El. for B.M.

23 29	62.90	23 24.8	62.55
			62.33

El. =  $\frac{640.6}{25.8}$

El. =  $\frac{6635}{45}$

El. =  $\frac{67.49}{73}$

1+70 £ 3.5' Conc Walk 24.8' Lt.

1+68 £ 3' Conc Walk 26.3 Rt.

23 26.3	63.52	23 29.5	65.22

1st Stop Top Stairway

1+50

23 14	62.15	23 23	61.7	23 30	60.6	23 14	60.9	23 23	61.1	23 30	62.4	23 15	64.5	23 10	65.0
35		25		13		14		23		30		40			

1+40 £ 8' Conc Drive 25' Lt.

23 35	62.15	23 25	62.03

65.99  
X

65.99  
X

2+68 & 8' Conc. Walk 24.9' Lt.

4.44  
35  
61.55  
61.09

2+57 & 9' Conc Drive 24.4' Rt.

30.2  
24.4  
62.97  
64.06

2+50

34  
35  
62.6  
61.5  
5.5  
14  
50  
14  
61.0  
61.3  
3.5  
24  
62.5  
28  
65.0  
65.3  
19.07  
35

2+41 & 8' Conc Drive 25' Lt.

34.2  
35  
62.57  
61.81

2+19 & 3' Conc Walk 17.8' Lt.

4.21  
25  
61.79  
61.27

2+07 & 9' Conc Drive 18.3' Rt.

28.2  
18.3  
63.13  
25  
63.91  
20.0  
35  
15.09

65.99

65.99

3+67 R 3' Conc Nail 24.7 Lt

57.60  
6.39  
35 24.7  
57.61

3+50

6.13 57.7  
35 25  
6.12 57.8  
15 15  
6.11 57.9  
15 15  
5 18 60.2  
5.9 60.1  
15 17  
5.8 60.6  
25 25  
4.9 61.1  
35 35  
6.2 62.6

3+44 R 8' Conc Drive 25.2 Lt

6.12 57.64  
35 25.2  
6.11 57.86

3+24 R 16' Conc Drive 24.5 Lt

61.51  
4.8 31.4  
24.5 35  
62.85

3+00

6.10 60.2  
35 25  
4.8 61.2  
25 16  
6.1 57.9  
15 15  
5 18 60.4  
5.5 60.5  
14 25  
4.6 61.4  
35 35  
6.2 62.8

2+90 R 7' Conc Drive 2-1.5 Ribbon 4.8 Lt

6.13  
4.8 53.1  
35 24.8  
60.68

65.99  
↑

65.99  
↑



0+50

58.2	58.8	59.1	59.7	59.2	59.1	60.0	60.9	62.8	62.8
5.1	5.0	4.7	5.1	4.6	4.7	3.8	2.9	1.0	1.0
35	25	11	9		15	20	25	27	35

0+00

4+39.19 = No line Franklin

58.8	58.8	58.8	59.6	59.7	59.8	60.3	61.8	62.5
6.0	5.0	4.0	4.3	4.1	4.0	3.5	2.0	1.2
50	25	11	9		15	23	27	50

4+31

58.8	58.9	59.6	60.0	60.1	60.2	61.0
6.0	4.9	4.0	3.8	3.7	3.5	2.8
50	25	15		15	25	50

4+14.19 K Franklin

57.9	59.0	59.9	60.0	60.4	60.6	61.2
5.9	4.8	3.9	3.8	2.4	3.3	2.6
50	25	15		15	25	50

T.P. 4.97  $\frac{63.75}{1}$  7.21 58.78

5.11, 13' Conc Men Franklin & Francis

3+96 Parmer Pole # P 3449 249.41

3+89.19 so line Franklin

58.4	59.5	59.8	60.2	60.3	60.9	61.6
4.6	6.5	6.3	5.8	5.7	5.1	4.4
50	25	15		15	25	50

$\frac{65.99}{1}$

$\frac{65.99}{1}$

1+09 End. Garages on Lt.

1+79 Beg. 3' single Garages 26.5 Lt.  
 Divt fls.

1+65 11" Lt. 2" 3' wide Conc. walk

1+55 10" Express tree 24.1 Lt.

1+50

1+17 2<sup>nd</sup> Conc stairway & walk 25.3' Rt.

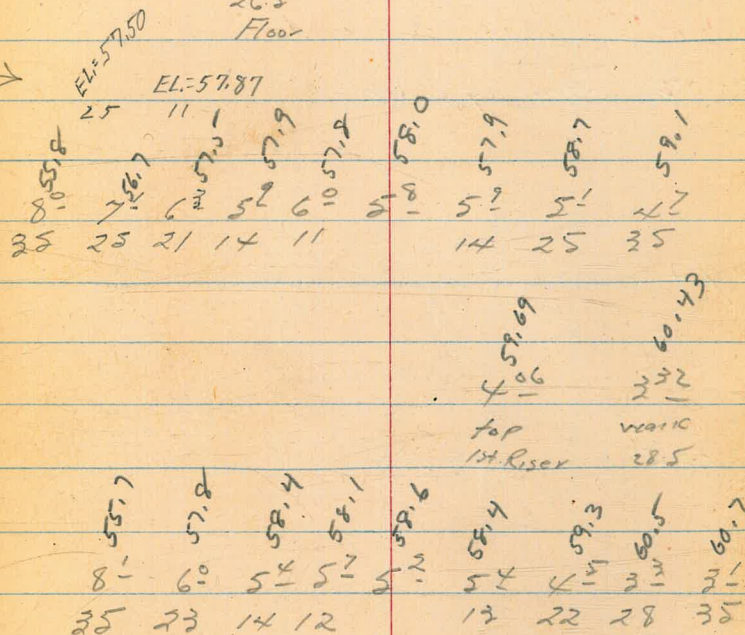
1+00

0+69 3' stairway & walk 24.8' Rt.

63.75

↑

57.0  
 6.0  
 26.5  
 Floor  
 7.0  
 26.5  
 Floor



63.75

↑

46.09  
 1.81  
 24.8  
 Top 1st Riser Walk

62.12  
 1.63  
 26.8  
 Walk

2+91

2+83 Btm of Ditch

2+70

2+72

2+65

1+80

63.75  
↑

39.6	40.6	38.3	38.5	42.5	42.7	45.7	49.0
24.2	23.5	25.5	25.3	21.3	21.1	18.1	14.8
50	36	31	13	4		25	50
	43.2	41.6	42.0	40.8		43.1	45.9
	20.5	22.2	21.8	23.0		20.7	17.9
	50	26	13			9	30
						7.1	
	45.2	44.1	43.3	43.5		44.2	42.4
	18.5	19.7	20.5	20.1		17.6	21.4
	50	25	15	20		15	24
						Edge	Btm
						Ditch	Top
		51.1	52.5	53.3		53.0	51.3
		12.7	11.2	10.5		10.8	12.5
		50	25			9	18
							25
							50
	8.5	7.3	6.5	5.7		6.8	6.2
	25	25	12			12	22
							36
							50
	7.5	6.1	6.1	5.8		6.5	5.8
	25	14	11			13	16
							25
							35

63.75  
↑

1+00

81	53.8	58.1	57.4	58.5	55.5	59.4	40	62.3
11.5	9.9	5.1	5.9	5.2	5.2	4.9	2.4	1.4
40	22	23	15		13	22	29	40

0+64 -30° Nk. ± 3' wide conc. steps

0+50

57.7	53.3	52.9	56.7	57.4	57.3	57.4
12.0	10.4	6.8	7.0	6.3	6.4	5.2
40	22	22	13	6	13	25

EL=58.63  
30' Bottom step  
EL=61.08  
35' Top step

0+10

47.5	50.4	55.2	55.2	56.2	55.5	55.6	57.4
16.2	12.3	8.5	8.9	7.4	8.2	8.1	6.3
50	32	22	16		10	25	35

0+00 Ahead

3+59.90 = So. line Stratford Park

46.5	50.0	54.2	57.6	53.8	54.4	55.7
17.2	13.7	9.5	10.1	9.2	8.9	8.0
50	22	22	14		25	40

T.P 989  $\frac{63.72}{\wedge}$  992 53.83

On Hub 3+59.90

So. line Stratford Park & FRANCIS

44.1	45.4	47.4	49.1	50.3	51.2	53.1
19.1	18.4	16.4	14.7	13.5	12.6	10.7
50	34	21		16	20	35

3+46

3+17

39.8	41.7	44.3	47.0	48.9	51.0
24.0	22.1	19.4	16.8	14.9	12.4
50	25		17	30	50

$\frac{63.75}{\wedge}$

$\frac{63.75}{\wedge}$

(over)

3+24.97 Webster

2+99.97 50 line Webster

T.P. 480 5590 12.62 5110

2+60

2+30

2+00

1+66

1+50

flanked by 6" wide conc. walls.  
31' RT: ± 5' wide conc. steps

63.72  
↑

42.7 44.9 47.0 49.1 50.9 41  
13.2 11.0 8.9 6.8 5.0  
50 25 25 25 50

45.6 45.7 46.8 48.2 49.1 51.3  
10.3 10.2 9.1 7.2 6.8 4.6  
35 25 15 25 25 50

53.1 53.9 52.0 51.8 55.9 51.8 51.8 52.4 53.2  
10.3 9.8 11.7 11.9 11.8 11.9 11.1 10.5  
35 27 23 14 13 25 35

53.7 54.5 54.6 54.9 55.0 55.8 59.2 61.2  
10.0 9.2 9.1 8.0 8.2 7.9 6.1 5.2  
25 25 13 14 25 28 32

56.2 56.6 56.4 57.1 57.4 57.9 61.2 61.9  
7.1 7.2 7.1 6.6 6.1 5.8 2.5 1.8  
35 25 15 15 22 28 35

55.2 57.0 58.0 58.3 58.7 59.1 63.26 63.1  
8.5 6.7 5.0 5.2 5.0 4.6 1.6 0.6 0.5  
40 30 24 14 11 25 30 32 40

63.72  
↑

OK

B.M.		1488	72.67	(72.66) (72.60)	Assuming Bench at Francis & Ocean View is Correct 3W 13' from Franklin & Pardee.
T.P.	0.10	87.55	5.95	87.45	
B.M.		1.22	92.18	(91.96)	SE Top Lower Step Webster & Pardee.
T.P.	13.28	93.40	0.32	80.12	
T.P.	13.30	80.44	0.25	67.14	
T.P.	11.94	67.39	0.45	55.45	
T.P.	8.12	55.90	8.12	47.78	On Hub <sup>8 disc.</sup> & Francis & North Line Webster

55.90

X-sec. CHICO Street  
Shasta to Lamont.

43

Sommermeier  
Begg  
Allen  
Bunch.

12-14-50  
W.O.# 31405

0+00  
2+90

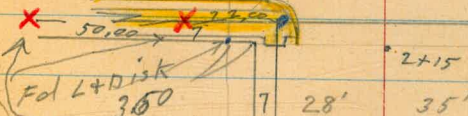
Kendall Street

Curb is to  
come out

Elevation 22' R.P. Cross  
for 7' L+T. = El. 40.10

- = Fd. Conc. Man. & L+T.
- = Fd 1/2 + Tack
- = Fd. L+T.
- = Fd pipe

T.P. sheet # 1291  
" " 1292



B.W. = base of footing for wall

(W) = Ctr. water meter box

Soil sample to Lab.

Photo Returned by G. Lewis 8-6-51

INDEXED  
MK  
DEC 18 1950

Shasta street  
wly line Shasta  
Cross on step

Fd 3/4" pipe  
No disk

0.9±

35'

E0400  
2+90

2800

Set. Disk in walk

Sequoia

Street

2+15

15'

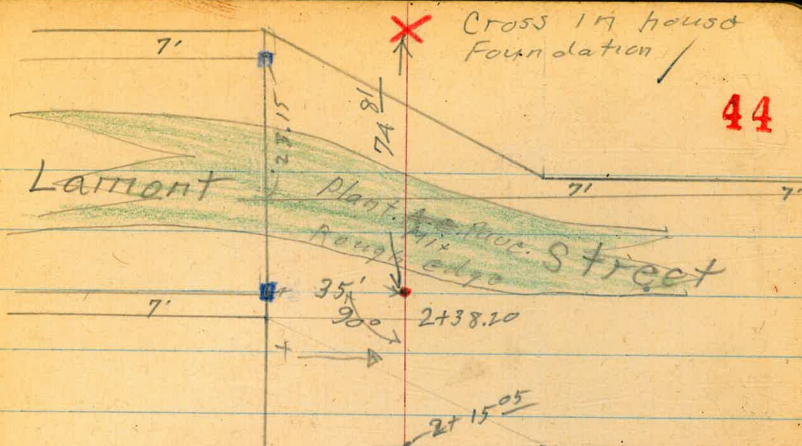
15'

INDEXED  
WK  
DEC 18 1950

0400

Kendall

Street



15'

15'

INDEXED  
WK  
DEC 18 1950



Also = start house + barn  
 0+76.35<sup>2</sup> Rt = EMD wire fence.

0+72 34<sup>3</sup> Rt =  $\pm$  2' wide Conc. walk.

45.31	44.63
<u>4.96</u>	<u>5.69</u>
342	45

0+50

49.1	48.6	48.3	46.4	46.1	46.3	46.0
<u>1.2</u>	<u>1.7</u>	<u>2.0</u>	<u>3.9</u>	4.2	<u>4.0</u>	<u>4.3</u>
40	35	29	20		20	35

0+25 - 35' Lt. =  $\pm$  3' wide Conc. walk

49.54	49.35	49.0
<u>0.73</u>	<u>0.92</u>	<u>1.3</u>
45	35	35
	walk	Ord.

0+23 - 21<sup>8</sup> Rt. = ctr. 1" pole # P 1755

35<sup>2</sup> Rt. = start wire fence  
 0+00 = Ely. line Shasta

49.6	49.6	48.5	48.0	47.4	47.4	47.0	47.4	47.0	46.9
<u>0.7</u>	<u>0.7</u>	<u>1.8</u>	<u>2.3</u>	<u>2.9</u>	2.9	<u>3.3</u>	<u>2.9</u>	<u>3.3</u>	<u>3.4</u>
50	40	35	25	20		15	20	35	40

0-35 =  $\pm$  Shasta

47.8	47.3	46.7
<u>2.5</u>	<u>3.0</u>	<u>3.6</u>
35	<u>50.27</u>	35

Set B.M. 10.80 50.27 8.88 39.47

3.14 48.35 - 45.21

N.W. 7/4<sup>+</sup> Chico + Kendall

S.W.C.T. Kendall + Pac. Beach Dr.

Chico St.

46

1+14 22<sup>2</sup> Rt. = Ctr. 11" pole # P-1776

1+13

45.6	44.7	43.7	43.5	43.3	43.7	43.1
4.7	5.6	6.6	6.8	7.0	6.6	7.2
35	20	9		11	13	35

1+07<sup>5</sup> = ± Alley to N.T.S.

48.5	45.9	43.9	43.6	43.7	43.3	41.7
1.8	4.4	6.4	6.7	6.6	7.0	8.6
100	35	10	M.H. Rim	12	35	100

1+02

46.1	44.2	44.0	43.5
4.2	6.1	6.3	6.8
35	10		35

1+00 20' } Lt. = (W)  
21'

47.0	46.8	45.3	44.2	44.1	43.9	44.9	45.0
3.3	3.5	5.0	6.1	6.2	6.4	5.4	5.3
35	27	24	10		12	16	35

0+99 35<sup>3</sup> Rt. = end House + Gar.

45.04	45.53
5.23	4.74
32	35 <sup>3</sup>
Apron	Gar. Floor

0+98 - 32' Rt. = end apron

45.07	45.47
5.20	4.80
32 <sup>1</sup>	35.4
Apron	Gar. Floor

0+90 32<sup>1</sup> Rt. = start Conc. Apron

50.27

Chico St.

2+00

40.2	40.3	39.7	39.5	40.4	40.2
10.1	10.0	10.6	10.8	9.9	10.1
35	25		12	22	35
at wall					

47

1+85 - 23' RT. = dead man

1+75 - 35' RT. = start wire fence.  
= end picket fence.

1+68 34' Lt. = 5' wide Conc. steps thru wall

41.76  
8.51  
349  
Bottom step

also = start picket fence.

1+59 35' RT. = Cmd Conc. Apron

41.47	41.62
8.80	8.65
35	423
Apron	Gar. floor

1+50

42.2	43.0	42.5	41.8	41.4	41.4
8.1	7.3	7.8	8.5	8.9	8.9
35	35	20		20	35
B.W.	at wall				

1+43 - 35' RT. = start Conc apron to double Gar.

41.54	41.69
8.73	8.58
35	42.4
Apron	Gar. floor

1+42 - 35' RT. = end picket fence

1+15 34.9 RT. = start picket fence  
35' Lt. = start Conc. block wall (4' High)

44.6	45.9	45.3	43.7	43.5	43.2	43.6	42.6
5.7	4.4	5.0	6.6	6.8	7.1	6.7	7.7
35	35	33	10		11	15	35
B.W.							

50.27

Chico St.

48

2+69

39.1	39.0	38.9	37.9
$\frac{11.2}{35}$	$\frac{11.3}{18}$	11.4	$\frac{12.4}{35}$

2+52<sup>5</sup> ± Kendall ±

40.2	39.2	38.8	38.5	38.1	37.0
$\frac{10.1}{85}$	$\frac{11.1}{35}$	11.5	$\frac{11.8}{20}$	$\frac{12.2}{35}$	$\frac{13.3}{85}$

2+36

38.9	38.5	37.6
$\frac{11.4}{35}$	11.8	$\frac{12.7}{35}$

2+22<sup>3</sup> = Ely. edge of walk to north

39.75	39.49	39.47
$\frac{10.52}{50}$	$\frac{10.78}{38.5}$	$\frac{10.80}{35}$

2+17<sup>1</sup> = wily edge of walk to north

39.82	39.63	39.57
$\frac{10.45}{50}$	$\frac{10.64}{38.5}$	$\frac{10.70}{35}$

2+15 =  $\left\{ \begin{array}{l} 18' Lt. = \text{start cb. (this comes out.)} \\ 35' Rt. = \text{end wire fence} \\ \text{wily line Kendall} \\ 35' Lt. = \text{end wall} \end{array} \right.$

39.5	39.3	39.5	39.37	39.2	39.0	39.4	39.7
$\frac{10.8}{38.5}$	$\frac{11.0}{35}$	$\frac{10.8}{35}$	$\frac{10.90}{18}$	11.1	$\frac{11.3}{14}$	$\frac{10.9}{16}$	$\frac{10.6}{35}$

2+12 22' Rt. = ctr. 12" pole # P 1799

50.27

Chico St

0+51<sup>E</sup> 38<sup>8</sup> Lt. =  $\pm$  3' wide Conc. walk.

39.6	39.40
1.7	1.95
50	38.8

0+50 ~~Lt.~~

39.4	39.0	38.0	38.0	37.4	38.0	38.8
2.0	2.4	3.4	3.4	3.7	3.4	2.6
38	30	19		12	17	35

0+46 - 35' Rt. = start board fence.

0+10 - 46<sup>8</sup> Lt. =  $\pm$  3' wide Conc. walk.

40.75
0.60
46 <sup>8</sup>

50+00

2+90 = Ely line Kendall

40.50	40.46	38.8	38.8	38.4	39.4	39.2
0.85	0.89	2.6	2.5	2.9	2.0	2.1
38	36	20		12	22	35
on walk	on walk	41.35				

T.P. 2.56  $\checkmark$  41.35 11.48 38.79

$\Delta$  Approx. 45° N. off N. line Chico.

2+86 35<sup>8</sup> Lt. =  $\pm$  3' wide Conc. walk

40.43
9.84
35 <sup>8</sup>

2+77

39.7	38.8	38.9	39.0	38.5	39.1	38.9
10.6	11.5	11.4	11.3	11.8	11.2	11.4
35	25	14		11	20	35

50.27

1+075<sup>t</sup> = 4 N. & S. Alley.

38.6	37.8	37.2	36.6	36.6	35.8	36.2	37.0	38.0
2.7	3.5	4.1	4.8	4.8	5.5	5.2	4.3	3.3
100	36	28	20	M.H. R.177	11	20	35	100

1+01 - 34<sup>2</sup> Rt. = end board fence

1+00

37.8	37.4	36.8	36.6	36.2	37.0	37.6
3.5	4.0	4.6	4.7	5.2	4.3	3.8
35	25	19		17	22	35

0+97-22' N. = Ctr. 14" pole # p 1825

0+94-38<sup>2</sup> Lt. = end of apron.

38.65	38.61
2.70	2.74
412	382
Gar. floor	Apron

0+84 38<sup>8</sup> Lt. = end 3' wide E. & W. walk  
also = start Conc. Apron.

38.70	38.70
2.65	2.65
418	388
N.E. Cor. walk	S.E. Cor. walk.
also Gar. floor.	+ start apron.

0+80-36<sup>5</sup> Lt. = 6" tree.0+53 - 38<sup>8</sup> Lt. = S.W. Cor. of 3' wide  
E. & W. Conc. walk.

39.49	39.36
1.86	1.99
412	S.W. COR walk
N.W. cor walk.	
	41.85

1+68 30' Rt. = end Conc. Apron

35.22	35.44	35.85
6.13	5.91	5.50
30	35	44
Apron		Bar. floor

1+62 36<sup>8</sup> Lt. = end Conc. Apron

37.19	36.38
4.16	4.97
45	368
Bar. floor	Apron

1+53 30' Rt. = start Conc. drive to double car.

35.30	35.51	35.85
6.05	5.84	5.50
30	35	44
Apron		Bar. floor

1+50

36.4	36.0	35.2	34.8	34.4	34.8	35.6
5.10	5.14	6.2	6.5	7.0	6.5	5.8
37	24	20		13	20	35

1+47 36<sup>7</sup> Lt. = start Conc. Apron to double car.

37.22	36.57
4.13	4.78
45	367
Bar. floor	Apron

1+15

37.6	37.2	36.4	36.0	35.4	35.8	36.8
3.8	4.2	5.0	5.3	6.0	5.6	4.5
38	25	20		11	15	35

41.35

2+32

36' Rt = (W)  
 34' Rt = (W)  
 33' Rt = (W)  
 2+30 - 33' Lt = (W)

2+26

T.P.

5.60  $\checkmark$  36.70 10.25 31.10

2+15 = wly. line Sequoia

2+13 - 22<sup>5</sup>' Rt. = ctr. 12" pole #P1849

2+00

<sup>33.4</sup> 3.3 38	<sup>33.0</sup> 3.7 26	<sup>32.5</sup> 4.2 21	<sup>32.3</sup> 4.4	<sup>31.7</sup> 5.0 19	<sup>31.4</sup> 5.3 35
------------------------------	------------------------------	------------------------------	------------------------	------------------------------	------------------------------

<sup>33.5</sup> 3.2 38	<sup>33.4</sup> 3.3 25	<sup>32.8</sup> 3.9 19	<sup>32.5</sup> 4.2	<sup>32.2</sup> 4.5 18	<sup>32.7</sup> 4.0 22	<sup>32.6</sup> 4.1 35
------------------------------	------------------------------	------------------------------	------------------------	------------------------------	------------------------------	------------------------------

36.70  $\checkmark$ 

<sup>34.3</sup> 7.1 38	<sup>33.8</sup> 7.5 25	<sup>33.1</sup> 8.2 19	<sup>32.7</sup> 8.6	<sup>32.3</sup> 9.0 16	<sup>33.1</sup> 8.2 22	<sup>32.9</sup> 8.4 35
------------------------------	------------------------------	------------------------------	------------------------	------------------------------	------------------------------	------------------------------

<sup>34.5</sup> 6.8 38	<sup>34.3</sup> 7.0 26	<sup>33.6</sup> 7.7 18	<sup>33.3</sup> 8.0	<sup>32.7</sup> 8.6 14	<sup>33.5</sup> 7.8 35
------------------------------	------------------------------	------------------------------	------------------------	------------------------------	------------------------------

41.35

$$\begin{array}{r} 41.35 \\ 2 \\ \hline 34 \quad 35 \end{array}$$



Chico St.

B.L.  
~~#~~

53

0+98 32<sup>5</sup> Lt. = 12" diam popper

0+89 22<sup>5</sup> Rt. = deadman

0+63 22<sup>4</sup> Rt. = ctr. 12" pole # J.P. 1869

0+50

	29.3	28.8	28.3	28.2	28.9	27.8	28.4	28.3
	4.8	5.3	5.8	5.9	5.2	6.3	5.3	5.8
	36	20		10	12	16	24	35

0+100  
2+90 = Ely line Sequoia

	31.4	31.1	30.2	29.9	29.9	30.4	29.7	30.3	30.2
	2.7	3.0	3.9	4.2	4.2	3.6	4.4	3.8	3.9
	36	24	18		11	13	16	20	35

2+75

	32.1	31.9	30.9	30.8	30.6	31.1	30.7
	2.0	2.2	3.3	3.3	3.5	3.0	3.4
	36	30	19		13	17	35

2+52<sup>5</sup> = ~~E~~ Sequoia

	33.3	32.4	31.7	31.2	30.2
	0.7	2.0	2.4	2.9	3.9
	100	35		35	100
			34.07		

2x2-35' Lt. 2+70.21

T.P. 2.97 34.07 5.60 31.10

2+40

	32.5	32.2	32.1	31.2
	4.2	4.5	4.6	5.5
	38	20		35

36.70

t.P. 3.77 30.00 7.84 26.23

1+29<sup>E</sup> 33<sup>E</sup> Rt = end Conc. apron.

26.32  
7.75  
33<sup>E</sup>  
7.72  
35  
7.64  
36<sup>E</sup>  
Floor

1+19<sup>E</sup> 33<sup>E</sup> Rt = start Conc. Apron to Sing. <sup>Over</sup>

26.28  
7.79  
33<sup>E</sup>  
26.32  
7.75  
35  
26.39  
7.69  
36<sup>E</sup>  
Over Floor

1+17<sup>E</sup> - 33<sup>E</sup> Rt = ± 4<sup>E</sup> wide Conc. slab.

26.28  
7.79  
33<sup>E</sup>  
26.28  
7.79  
35  
26.39  
7.68  
44<sup>E</sup>  
Back end  
of slab

1+15

27.4  
6.3  
36  
27.2  
6.8  
28  
26.6  
7.5  
20  
7.4  
7.1  
11  
26.2  
7.9  
35  
26.3  
7.8  
35

1+07<sup>E</sup> ± Alley

29.1  
5.0  
100  
28.1  
6.0  
36  
27.7  
6.4  
27  
26.9  
7.2  
20  
26.9  
7.2  
7.2  
26.3  
7.8  
12  
27.0  
7.1  
22  
26.7  
7.4  
35  
26.1  
8.0  
100

1+00 36<sup>E</sup> Lt. 2 Ctr. 10" pole # 500272 H

28.2  
5.9  
36  
28.1  
6.0  
28  
27.2  
6.9  
20  
27.0  
7.1  
7.1  
26.7  
7.4  
15  
26.8  
7.3  
35

34.07

21<sup>E</sup> Rt. = Ctr. pole # P4036  
 2+38<sup>Z</sup> = Wly. line Lamont to north.

24.7	24.7	24.1	24.0	23.7	24.8	24.6
$\frac{5.3}{36}$	$\frac{5.3}{21}$	$\frac{5.9}{20}$	6.0	$\frac{6.3}{16}$	$\frac{5.2}{18}$	$\frac{5.4}{35}$

2+15<sup>05</sup> = Wly. line Lamont to south

25.7	25.5	24.7	24.4	24.0	25.0	24.9
$\frac{4.3}{36}$	$\frac{4.5}{24}$	$\frac{5.3}{19}$	5.6	$\frac{6.0}{18}$	$\frac{5.0}{20}$	$\frac{5.1}{35}$

2+00

26.0	26.0	25.1	24.7	24.4	25.1	25.0
$\frac{4.0}{36}$	$\frac{4.0}{23}$	$\frac{4.9}{18}$	5.3	$\frac{5.6}{17}$	$\frac{4.9}{20}$	$\frac{5.0}{35}$

1+58 34<sup>Z</sup> Rt. = end conc. walk

25.52	25.80	25.52
$\frac{4.18}{34}$	$\frac{4.20}{35}$	$\frac{4.48}{50}$

1+50

27.3	26.8	25.9	25.4	25.3	25.7	25.99	25.98
$\frac{2.7}{36}$	$\frac{3.2}{25}$	$\frac{4.1}{20}$	4.2	$\frac{4.7}{11}$	$\frac{4.3}{17}$	$\frac{4.01}{34}$	$\frac{4.02}{35}$

41<sup>E</sup> Rt. = 6' wide conc porch  
 1+49-34<sup>E</sup> Rt. = start conc. walk

25.99	25.99	25.98	26.26
$\frac{4.01}{34}$	$\frac{4.01}{35}$	$\frac{4.02}{41}$	$\frac{3.74}{41}$
			on porch

30.00

Chico St

83  
62  
118

P. AA1

56

Check orig B.M. 3.78 45.124 (45.21)

T.P. 9.02 49.02 1.65 40.00

Check to B.M. 6.70 41.65 1.35 34.95 (35.28)

T.P. 7.63 36.30 3.33 26.67

10' Lt. = edge pave.

2+77 = ± pave. to north Rods on Pave

2+62 35' Lt. = start Plant Mix Pave.

6' Lt. = edge pave

2+56 = ± Existing pave to south

2+54 = start Plant Mix Pave.

2+50 - 35' Lt. = start Plant Mix Pave

N.E. 7' Lt + Lament + Pac. Beach Dr.

24.17  
5.7  
35  
23.9  
6.1  
23.6  
6.4  
10

24.12  
5.8  
35

24.17 23.8 23.9 23.90 23.60  
5.13 6.2 6.1 6.1 6.4  
35 25 64 pave 35 pave  
Pave

24.5  
5.5 24.9 23.80 23.60  
36 29 6.2 6.4 6.4  
Grd Grd pave 35 pave

24.9 24.7 23.8 23.6 23.5 23.50  
5.1 5.3 6.2 6.4 6.5 6.5  
36 29 25 20 35 pave.

30.00

Chico St.

57

SHASTA STREET

CROSS SECTIONS

from FORTUNA to PACIFIC BEACH DRIVE.

NO 31405

Mulker ✓  
Clark  
Huffman  
Pearson  
8-30-51

Soil Samples at INDEXED  
1+50 10' Lt of S  
4+50 10' Lt " " AUG 20 1951

see P66 for bench check.

Note: 10-3-52

Fd. w. 7' + 2 Mon.  
Fortuna + Shasta

It does not agree with  
this line by 0.29'.

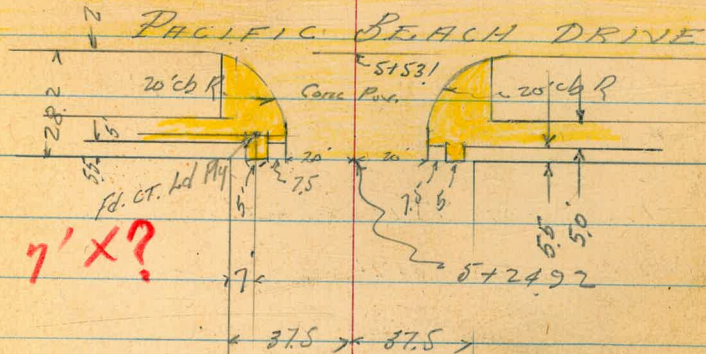
Used Mon. for line  
for construction.

aka

cb line Park way

58

cb line Park way



7' x 7'

305' Fd. Conc Mon. CHICO

SHASTA

1 1/2 to 2" thick  
No header  
FORTUNA  
curb line

Per Apprx  
1/2 to 2" thick

±0+00

±0+30

±0-55.6

El.

SHASTA ST. CROSS SECTIONS

Lt.

Rt.

59

0+10 = 3' Corn 14.1k

0-07 to <sup>0+50</sup> = 2.5' Fence 34.5' RT

0+00 = N. Fortune

Two

0-19.3 = 35' Lt 36' Rt

0-20 = 34' Lt

0-25

0-30 = N edge Exist. Pav

→ should be here

0-44.5 on Pav.

0-35 Rods on pave.

8-30-41-~~44~~

39.13 41.43  
200 150

0-55.6 = South curb Line Fortune  
on & Nail in Pav

0-55.6 T.P

40.79

T.P.

46.89

Note -

Direct Elev. Rod used.

39.47

44.4  
44.4  
44.4  
44.4  
42.0  
41.4  
41.5

50 41 37.5 38 20 18

44.4  
44.4  
44.4  
41.1  
40.9

50 37.5 27 20

41.4  
41.1  
41.03  
40.82

75 38 18

41.4  
41.4  
40.84

75 38

41.65  
41.18  
41.38  
40.92  
40.90  
40.79

75 75 38 38 18  
Cb Gut Cb Gut

42.54  
42.71  
33 38  
Walk on Walk

41.7 41.9 41.4 41.5  
13 18 37.5 50

40.6 41.3 41.2 41.5  
14 20 37.5 50

40.6 40.8  
18 38  
End Pav.

40.8 41.4  
38 75

41.85 41.60 41.29 41.05 40.89 40.71 40.45  
128 88 38 18 18 27  
end pave.

40.06  
40.10  
40.57  
40.91  
40.79  
18 38 38 75 75  
Gut Cr Gut Cb

B.M. NW 7' Jack Chico & Kendall St.

SHASTA JT - CROSS SECTIONS

60

1713.5 = N

4718 4704 4668  
50 42.6 40.3  
DRIVE Brk DRIVE DRIVE

1707 = Beg. Conc. Ribbon Drive

4715 4695 4670  
50 42.6 41.2  
DRIVE Brk. DRIVE DRIVE

1700

TP

44.39 Rock

467 463 452 444 436 435 439 446 451 454  
50 37.5 32 22 15 17 22 37.5 50  
Low 10 Low 10

0+27.5 = End Drive

4600 4509  
49 41.6  
DRIVE DRIVE

0+88 = End Conc Drive on R = Beg. Drive on L

4595 4514 4407 4438  
49 41.6 17.6 50  
DRIVE DRIVE DRIVE

0+77 Beg. Conc. Drive

4406 4420  
18 50  
DRIVE DRIVE

Elc. #  
0+52 - 1/2 Pole 2334 TP 4016

1+50 = End 31.8' RA

0+50 = Beg. Fence 3.7' High 34.5' RA

45.5 45.5 446 438 435 42.8 42.4 42.4 432 437 435  
50 41 37.5 36 25 17 18 20 34.5 50



SHASTA ST - CROSS SECTIONS

2+70

477	479	471	485	477	473	480	485
50	39	36	30		12	19	37.5

2+47 = 2' (W) 22' H

2+43 = 2' 3' Date Palm 25.5' H

2+35 = 2' Chico St.

496	496	484	477	473	474
50	40	37	15		37.5
Low	Low				

2+34 = 2' 5.5' Conc. Walk

49.80	49.69	49.04
50	38	37
Walk	Walk	Stop.

2+20 = 2' 3' Date Palm 25.5' H

2+14 = Pole Anchor 23.2' H ✓

2+01 = 2' Pole 23.5' H #4036 ✓

St. Chico

= 2+00 = End Conc. Blk Wall

48.66	47.5	46.6	46.6	46.3	46.7	47.0
37.9	37.9	15		15	20	37.5
Top Wall						

1+66 = 2' 3' Conc. Walk

48.40	48.03
50	38.3
Walk	Walk
	= Top Wall

1+50 = Beg. Conc. Blk. Wall

47.9  
50  
Low

47.9	46.7	45.9	45.2	45.1	45.1	45.6	46.0	46.0
37.9	37.9	20	16		13	18	37.5	50
Top Wall								

JHASTA ST. Cross Sections

Lt

L

Rt

62

3+44 = 2 2 1/2" Pepper Tree 25.2 ft

3+13.5 = End of Conc. Drive

5131	5109	4991
50	422	343
Drive	Drive	Drive

3+07 = 2 8" Fan Palm 25.2 ft

3+05.5 = Beg. Conc. Drive

5120	5108	4992
50	423	344
Drive	Drive	Drive

3+00

510	504	490	484	477	477	487	496	506
50	39	32	23		12	17	35	50

2+85 = N end Apron

4852  
259  
Apron

2+82 ~ N. edge Drive

4972	4847
46	26
Drive	

2+75 = S edge Drive

4955	4845
46	263
Drive	

2+72 = Beg. Conc. Apron

4851  
265  
on Conc.  
Apron

SHASTA CT. - Cross Sections

Lt.

Rt.

Rt.

63

Station	Description	52.4	52.4	50.2	49.5	49.1	49.1	49.3	50.8	51.2
4+00		50	42	39	21		12	25	38	50
3+94	25.5' Rt 10" Pappox	Low	Low					Low	Low	Low
3+81	25.1' Rt 24" Fun Palm									
3+74.6	= Hedge walk joined to Drive							50.15		
								37.5		
								140k		
3+72.5								50.09	51.06	
								37.5	50	
								Drive	Drive	
3+57	= Beg. Conc. Drive to Dbl Garage							50.06	51.12	
								37.6	50	
3+54.6	= Beg " Walk joined to Drive							50.06	Drive	Drive
								37.6		
								Walk		
3+79	= N. edge Conc. Drive	51.78			51.46	49.8				
		48			41.1	33.1				
		Drive			Drive	Drive				
3+61	= " " "	51.76	51.28	49.86						
		48	41.1	33.2						
		Drive	Drive	Drive						
3+57	25' Rt = 16" Fun Palm									
7.12				50.02						
3+50		51.2	51.3	50.0	48.9	48.6				
		50	41	35	24					

SHASTA ST. CROSS SECTION

LH

L

RT

64

4+86 = 4' Conc. Walk

5177 5217

4+84 2x.6 RJ 24" Fan Palm

381 463

Walk Walk

4+70 257' RJ = 6" Pepper Tree

4+64

5151 5218

37.6 50

Drive Drive

4+56 = Beg. Drive

5163 5221

37.6 50

Drive

4+50

525 523 509 503 497 498 496 508 511 514  
50 42 36 21 18 15 29 78 50

4+45.7 = End Drive

5114 5154

37.4 50

Drive Drive

4+35 = Beg. Conc. Drive

5120

5146

4+31 2x.7 R 24" Fan Palm

37.1

50

Drive

Drive

4+20 26' RJ = 12" Pepper Tree

4+15 = 4' Conc Walk

5098

5129

4+10 25' RJ 24" Fan Palm

38.5

46.4

Walk

Walk

SHASTA ST. CROSS SECTIONS

Lt.

2

Rt.

65

P-45

S.W. Kendall & Pacific  
Chk BTA st Beach Dr.

0.01  
45.21 = P-45  
45.20

5+67.1 = 1/2 Parking

5114	5137	5141	5160	5166	5161	5150	5126
50	47	40	20		20	40	50
	84						

5+53.1 = South cb Pacific Beach Drive

5084	4981	5120	5125	5119	5146	5122	5116	5186	4966	5014
90	90	40	40	20		20	40	40	90	90
cb	cut	cb	cut				cut	cb	cut	cb

5+33.1 = BC. 20' cb R

Pacific Beach Drive & Shasta

T.R. SW 7' Arch

5180

5115	5055	5025	5115	5102	5069	5114
198	198	10		10	20	20
cb	cut				cut	cb

5424.7 → 5138 5164 5200  
Cont 275 315 375  
Walk

5+24.72 = Sh. Pacific Beach Dr

Sec. 01

Por.

522	5181	5147	5097	5037	5085	5110	5091	5049	5075
87.5	32.5	27.5	20	20	10		10	20	20
Walk	Walk	cb	cut						cb

5100

530	526	512	501	503	507	508	518	523
50	40	32	17		18	30	34	50
Lowm	Low	Lowm					Lowm	Lowm

Check B. Mis 8-28-51  
for

Shasta street - (page 58) - and

Chico street - (Page 43)

Summermajor  
Boggs  
R. Sisson  
C. Ford.

check 5424<sup>95</sup> Page 58

	9.46	54.84	3.28	45.88	45.21
T.P. #14	9.15	48.66	2.16	39.51	39.52
T.P. #13	6.58	41.67	4.15	35.09	35.10 OK
T.P. #12	6.11	39.24	3.80	33.13	
T.P. #11	8.66	36.93	0.17	28.27	
T.P. #10	11.80	28.44	0.29	16.64	
	39		9.62	7.31	
T.P. #9	8.82	16.93	2.54	8.11	
T.P. #8	12.20	10.65	6.52	-1.55	
T.P. #7	4.10	4.97	1.88	+0.87	
T.P. #6	4.30	2.75	6.85	-1.55	
T.P. #5	6.11	5.30	3.48	-0.81	
T.P. #4	3.38	+2.67	3.77	-0.71	
T.P. #3	4.12	3.06	4.84	-1.06	
T.P. #2	4.54	3.78	4.48	-0.76	
T.P. #1	5.97	3.72	4.94	-2.25	
	5.27	2.69	-	-2.58	

Shasta

66

51.09	50.56	51.29	50.56	51.17
3.76	4.28	3.55	4.19	3.71
cl	G	54.84	G	cl

Shows as 45.21 in bench book.  
S.E. 7<sup>1</sup>/<sub>2</sub> LT. Kendall + Pac. Beach Dr.  
S.E. 7<sup>1</sup>/<sub>2</sub> LT. Sequoia + Pac. B. Drive  
Shows as 35.10 in bench book.  
N.E. 7<sup>1</sup>/<sub>2</sub> LT. Lamont + Pacific Beach Drive

Conc. Mon. Pac. Beach Drive + Crown Pt. Drive

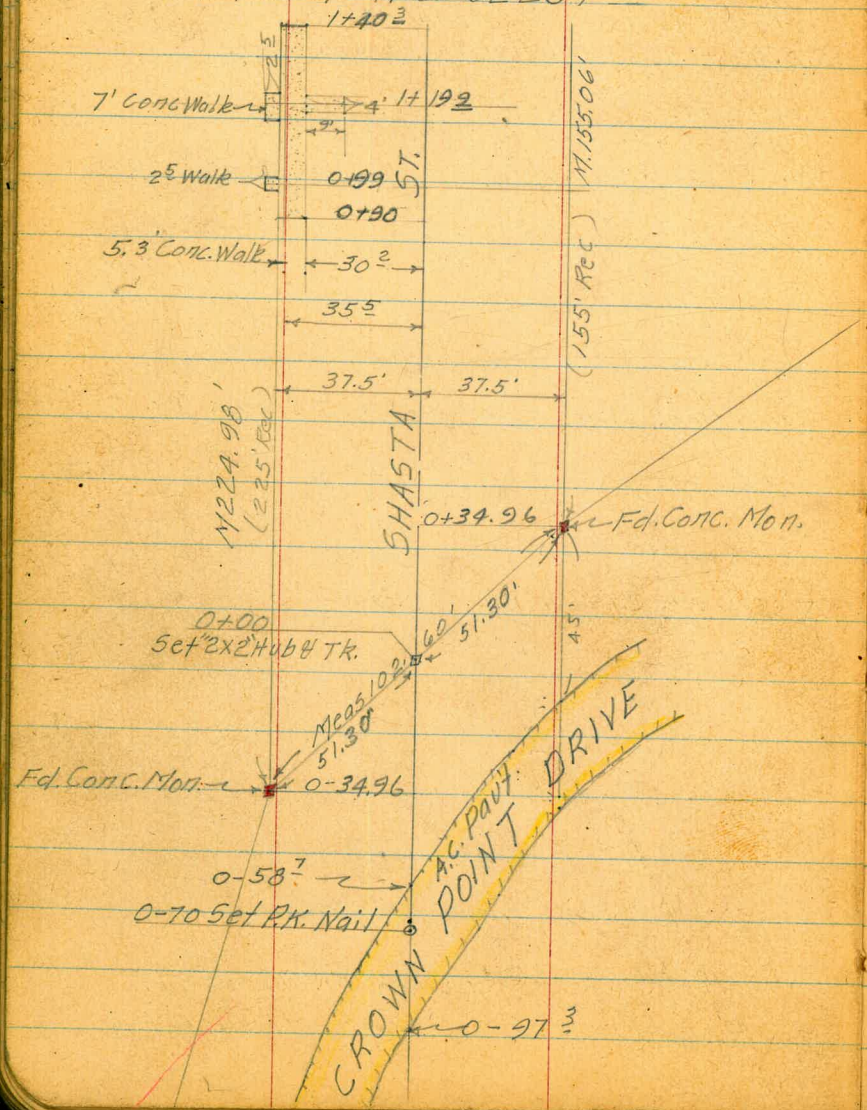
Δ 22+00 Crown Pt. sewer

3/4 0+00 Crown Pt. sewer

Beach Dr. to west,  
Conc. Mon. w. line Quincy + Pacific

INDEXED  
 J.E.K.  
 MAY 27 1955

CROSS SECTION SHASTA ST FROM CROWN  
 POINT DRIVE TO ROOSEVELT AVE FOR  
 IMPROVEMENT W.O. 32257

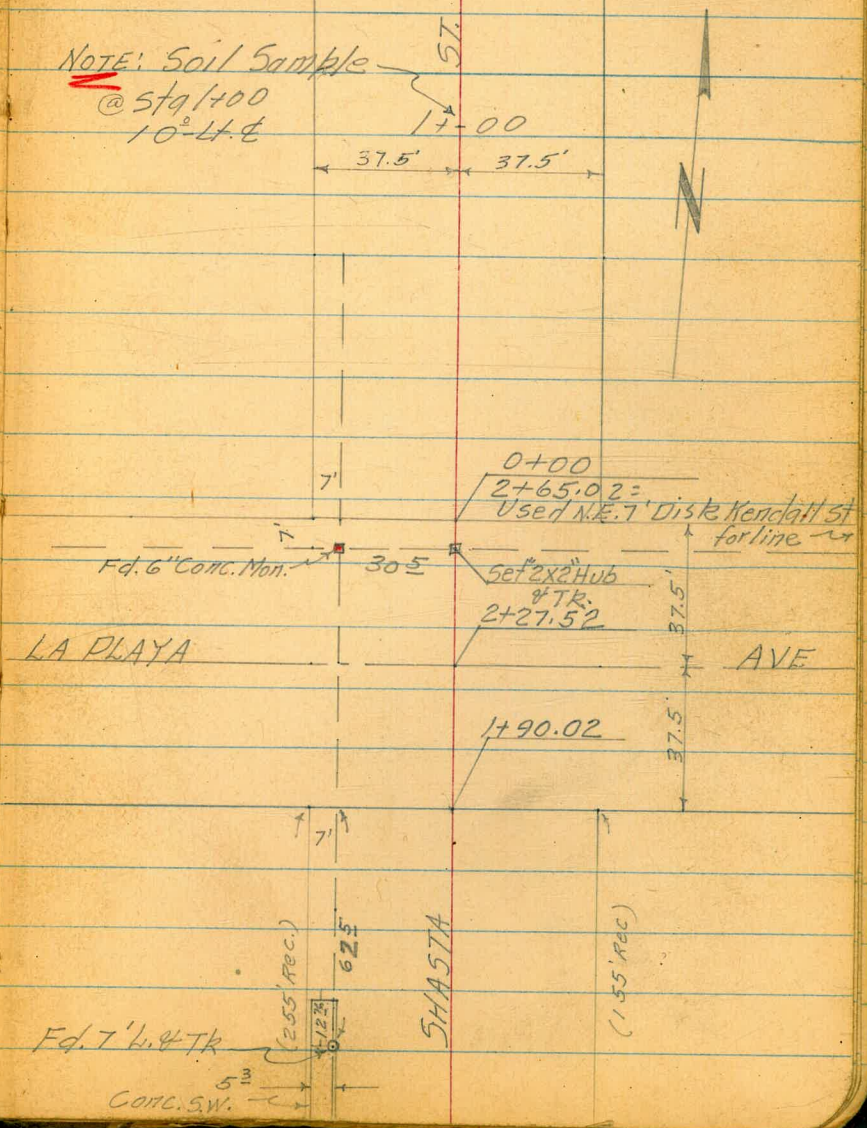


Ref TP 27-61  
 " TP 127741292  
 Map 894

67

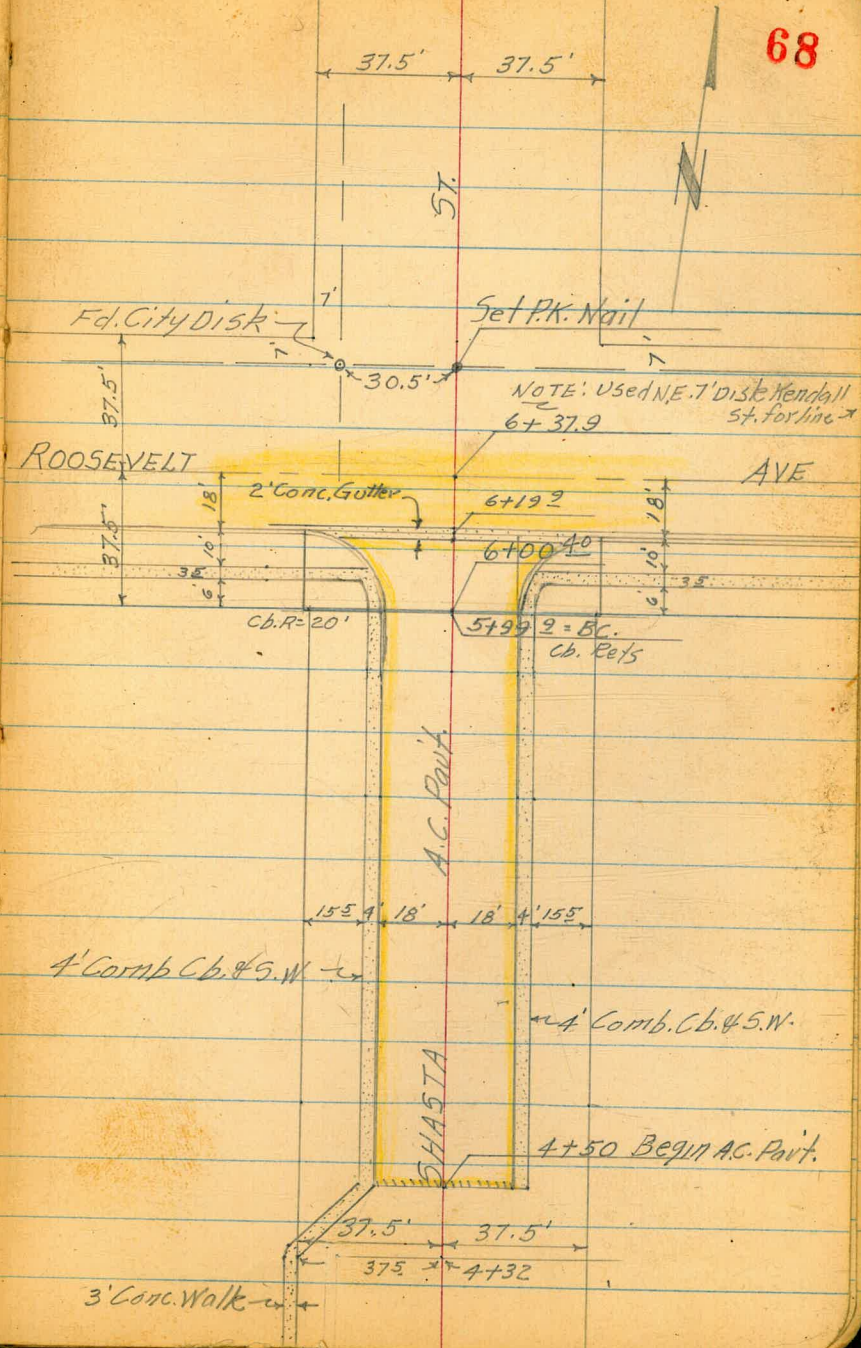
T.A. Stampler  
 5-25-55

NOTE: Soil Sample  
 @ Sta 1400  
 10' L & E



SHASTA ST.

68





Lt

CROSS SECTION SHASTA ST FROM CROWN  
POINT DRIVE TO ROOSEVELT AVE

W.O. 32257

0-32<sup>15</sup> - 5<sup>2</sup> Lt =  $\phi$  Sewer M.H.0-34 24<sup>8</sup> Lt  $\phi$  15" Palm Tree

0-34 9<sup>6</sup> Sec @ Pt  $\phi$ s To  $\phi$  = N.W. A. 28.0 25.7 25.2  
Crown Pt. Drive 50 375 34

0-58<sup>7</sup> Sec Along N/ly EP Cr. Pt. Drive 23.78 23.92  
100 75

Sec. Along  $\phi$  Cr. Pt. Dr.

0-78 =  $\phi$  A.C. Cr. Pt. Dr. 23.90 24.00  
100 75

Sec. Along EP Cr. Pt. Dr.

0-97<sup>3</sup> = Sly Edge A.C. Crown Pt. Dr. 23.67 23.74  
100 75

T.B.M. 24.38

B.M. 21.68

 $\phi$ 

Pt.

5-26-55

Stamper  
Huffman  
Elmore  
Blunt

69

NOTE: Direct Elev. Rod Used

24.14

5<sup>2</sup>

M.H.

Ely. Bm

24.6	24.4	24.1	24.45	24.51	24.41	24.08	24.3
20	19	0	168	31	375	43	50
			EP.	$\phi$ A.C.		EP.	

24.02	24.13	24.27	24.41	24.43	24.37	24.34
50	25	0	25	50	75	100

24.10	24.19	24.30	24.36	24.50	24.57	24.55
50	25	0	25	50	75	100

23.73	23.80	23.78	23.75	23.90	24.08	24.07
50	25	0	25	50	75	100

Top P.K. Nail 0-70 (see Sketch Pg. 67)  
S.W.B.P. Moorland of Crown Pt Drive

SHASTA ST. X-SEC

0+55<sup>5</sup>-24<sup>3</sup> Lt. & 30" Palm Tree

0+53-37<sup>5</sup> Lt. & 4<sup>3</sup> Conc. Steps

0+50

28.3 27.3 26.5  
43 37.5 35

0+39-25<sup>3</sup> Lt. & 9" Palm Shrub

0+34.96 = N.E. Cor. Crown Pt  
Drive

28.3 27.2 26.1  
45 37.5 34

0+21 Lt. & 2' Conc Walk

0+12<sup>5</sup>-25<sup>0</sup> Lt. & 10" Palm Tree

0+00

28.0 26.0 25.7  
42 37.5 33

0-11-24<sup>0</sup> Lt. & 14" Palm Tree

0-21-36<sup>5</sup> Lt. & 3' Conc Walk

27.74  
41.5  
TOP Step

5-26-55

70

28.23 27.07  
39.5 37.5  
Top bot  
Step step

26.2 25.4 25.3 25.0 25.8 26.7 26.5 27.6 28.3  
24 18 0 14 19 28 32 37.5 42

26.1 25.1 25.0 24.7 25.1 25.6 25.5 25.0  
22 19 0 15 27 35 37.5 50

27.75 26.39  
46.3 36.3  
Walk & Walk

25.0 24.6 24.4 24.3 25.1 24.2 24.6 24.35  
22 19 0 14 18 34 37.5 51.0  
E.P.

25.32 25.32  
38.5 36.5  
Walk & Walk

Lt

E

Rt

5-26-55

71

SHASTA ST. X-SEC'S

1+40<sup>3</sup> 30<sup>2</sup> Lt. End 5<sup>3</sup> Conc Walk1+40-24<sup>5</sup> Lt. E 17" Palm Tree1+25-24<sup>3</sup> Lt. E 20" Palm Tree1+19<sup>2</sup> 21<sup>2</sup> Lt. E 4' Conc Walk (see Sketch)

27.90

38°

E 7' Walk  
@ bk.1+15-24<sup>4</sup> Lt. E 15" Palm Tree1+02<sup>5</sup> 24<sup>5</sup> Lt. E 18" Palm Tree

1+00

29.2 28.1

42 37.5

27.5 27.4 26.6 26.2

35 21 20 0

26.2 27.3 27.7 28.7 29.2

13 15 35 37.5 42

Top

0+99-35<sup>5</sup> Lt. E 2<sup>5</sup> Conc SW. 4 Steps

29.22 27.46 27.47

40°-38° 35.5

Top Walk E Walk  
Step0+90-30<sup>2</sup> Lt. Begin 5<sup>3</sup> Conc SW.

27.30 27.25

35.5 30.5

bk SW SW.

0+90<sup>0</sup> 24<sup>6</sup> Lt. E 18" Palm Tree0+70<sup>5</sup> 24<sup>5</sup> Lt. E 20" Palm Tree

SHASTA ST. X-SEC

0+50

31.7	31.4	30.4	28.4	28.0	27.9	27.6	28.6	29.3	30.8
50	41	37.5	17	14	0	17	20	37.5	50

0+12-36<sup>6</sup> Rt. & Sing Conc. Drive 8' Wide

29.62	30.69
36.5	46.5
& Drive	& Drive

0+00=Nly Line La Playa Ave

30.3	29.9	29.4	28.9	28.0	27.6	28.0	27.9	28.5	29.2	29.5	30.5
42	37.5	35	23	16	14	0	16	18	36	37.5	50

2+27<sup>52</sup> & La Playa Ave

26.56	26.8	27.1	27.4	27.7	27.9	28.1	28.1	28.0	27.8	
128	100	75	50	25	0	25	50	75	100	
EP @ Ely Line Alley+										

1+90<sup>02</sup>=Sly Line La Playa

29.1	29.0	28.5	27.7	27.9	27.9	28.9	29.0	29.7	30.1
50	37.5	23	19	0	13	15	28	37.5	50

1+50

29.6	29.0	28.1	28.0	27.2	27.2	27.4	28.6	28.4	29.0	29.7
45	37.5	33	25	19	0	13	15	35	37.5	42
										Top bank

SHASTA ST. X-SEC.

2+00

29.1  
5028.7 27.4 27.6 27.2 28.0 28.9 30.9 33.2  
37.5 13 0 19 21 34 37.5 42

1+50

29.8  
5029.3 27.5 27.7 27.6 28.1 28.9 31.7 33.0  
37.5 13 0 18 19 24 37.5 44

T.P.

29.65

1+40<sup>5</sup> -38° R. & 9' Conc. Drive29.52  
38.2  
± Drive31.00  
48.2  
on Drive1+27<sup>5</sup> 37<sup>5</sup> Lt. & Conc Walk29.52 29.29  
47.5 37.5  
Walk & Walk

1+00

30.0  
5029.7 27.7 27.9 27.9 28.7 29.1 31.4 32.1 32.5  
37.5 13 0 18 19 29 37.5 41 50

0+80-35° Lt &amp; 4' Brick Steps

31.54 29.64  
39.8 35.8  
Top bot  
Step Step

## SHASTA ST. X-SEC.

4+00

28.2 27.89 27.80  
50 40.5 37.5  
S.W. S.W.

27.1 26.9 27.0 27.0 27.8 28.4 28.5  
16 13 0 19 24 37.5 50

3+50- 37.5 Lt. Begin 3' Conc Walk

28.3  
50

27.81 27.80 27.1 27.0 26.5 28.1 28.9  
40.5 37.5 13 0 21 37.5 50  
Walk Edge  
Walk

3+00

28.5  
50

28.1 27.0 27.1 26.8 28.1 28.6 29.2 30.6  
37.5 13 0 19 21 34 37.5 43

2+95- 58° H. &amp; 9' Conc Drive

28.76  
58°  
& Drive

2+50

28.8  
50

28.7 27.3 27.4 27.0 28.2 28.6 30.7 32.4  
37.5 13 0 18 20 32 37.5 42  
Top  
bank

2+29- 38° Lt. &amp; 3' Conc Walk

28.92 28.81  
48° 38°  
on walk & walk

Lt

E

Rt.

75

SHASTA ST. X-SEC.

6+00<sup>40</sup> = Sly Line Roosevelt Ave.

27.4	27.13	27.09	26.62	26.96	26.64	27.08	27.14	27.6
37.5	22°	18°	18°	0	18°	18°	22°	37.5
	bk.SW.	cb	G		G	cb.	bk.SW.	

5+99<sup>2</sup> <sup>cb. R = 20'</sup> B.C. Ch. Ret's Roosevelt Ave

27.4	27.15	27.06	26.61	26.96	26.63	27.09	27.15	27.6
37.5	22°	18°	18°	0	18°	18°	22°	37.5
	bk.SW.	cb.	G		G	cb.	bk.SW.	

5+88-24° Pt. of F. Hyd.

5+50

27.4	27.28	27.22	26.76	27.14	26.81	27.26	27.34	27.8
37.5	22°	18°	18°	0	18°	18°	22°	37.5
	bk.SW.	cb.	G.		G	cb.	bk.SW.	

T.P.

27.80

5+00

27.7	27.48	27.42	26.98	27.28	26.99	27.45	27.54	27.9
37.5	22°	18°	18°	0	18°	18°	22°	37.5
	bk.SW.	cb	G		G	cb	bk.SW.	

(see sketch p. 68)

4+50 Begin A.C. Pavt  
cb & S.W

27.8	27.72	27.66	27.16	27.49	27.18	27.63	27.72	28.0
37.5	22°	18°	18°	0	18°	18°	22°	37.5
	bk.SW.	cb	G		G	cb.	bk.SW.	

A+32-37.5 Lt. = A.Pt. Cont. Walk

27.91	27.90
40.5	37.5
bk walk	walk

SHASTA ST. X-SEC

Lt

±

Rt

5-26-55

76

B.M.

21.68 ~ 21.68 ~ Starting B.M.

T.B.M.

28.07 Top N.W. 7' Mon. La Playa & Shasta

T.B.M.

27.23 Top N.W. 7' City Disk Roosevelt & Shasta.

6 + 37.90 = ± Roosevelt Ave

26.74  
75

26.75 26.82 26.94 26.99 27.02 27.10  
50 25 0 25 50 75

6 + 19.9 = 5 1/4 Curbing Roosevelt Ave

26.98 26.52  
50 50  
cb 4

26.97 26.59 26.47 26.48 26.54 26.60 27.07 26.65 27.10  
38° 38° 18° 0 18° 38° 38° 50° 50°  
Ch G Pl. Pl. G Ch G cb  
EG. EG. EG. EG.



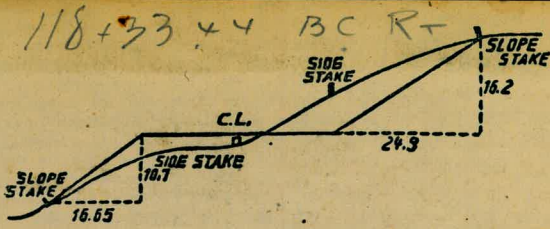
77

78

79

47.78

56.05



**DISTANCES FROM SIDE STAKES FOR CROSS-SECTIONING.**  
**SLOPE 1 1/2 TO 1. ROADWAY OF ANY WIDTH.**

	0	.1	.2	.3	.4	.5	.6	.7	.8	.9	
0	0.00	0.15	0.30	0.45	0.60	0.75	0.90	1.05	1.20	1.35	0
1	1.50	1.65	1.80	1.95	2.10	2.25	2.40	2.55	2.70	2.85	1
2	3.00	3.15	3.30	3.45	3.60	3.75	3.90	4.05	4.20	4.35	2
3	4.50	4.65	4.80	4.95	5.10	5.25	5.40	5.55	5.70	5.85	3
4	6.00	6.15	6.30	6.45	6.60	6.75	6.90	7.05	7.20	7.35	4
5	7.50	7.65	7.80	7.95	8.10	8.25	8.40	8.55	8.70	8.85	5
6	9.00	9.15	9.30	9.45	9.60	9.75	9.90	10.05	10.20	10.35	6
7	10.50	10.65	10.80	10.95	11.10	11.25	11.40	11.55	11.70	11.85	7
8	12.00	12.15	12.30	12.45	12.60	12.75	12.90	13.05	13.20	13.35	8
9	13.50	13.65	13.80	13.95	14.10	14.25	14.40	14.55	14.70	14.85	9
10	15.00	15.15	15.30	15.45	15.60	15.75	15.90	16.05	16.20	16.35	10
11	16.50	16.65	16.80	16.95	17.10	17.25	17.40	17.55	17.70	17.85	11
12	18.00	18.15	18.30	18.45	18.60	18.75	18.90	19.05	19.20	19.35	12
13	19.50	19.65	19.80	19.95	20.10	20.25	20.40	20.55	20.70	20.85	13
14	21.00	21.15	21.30	21.45	21.60	21.75	21.90	22.05	22.20	22.35	14
15	22.50	22.65	22.80	22.95	23.10	23.25	23.40	23.55	23.70	23.85	15
16	24.00	24.15	24.30	24.45	24.60	24.75	24.90	25.05	25.20	25.35	16
17	25.50	25.65	25.80	25.95	26.10	26.25	26.40	26.55	26.70	26.85	17
18	27.00	27.15	27.30	27.45	27.60	27.75	27.90	28.05	28.20	28.35	18
19	28.50	28.65	28.80	28.95	29.10	29.25	29.40	29.55	29.70	29.85	19
20	30.00	30.15	30.30	30.45	30.60	30.75	30.90	31.05	31.20	31.35	20
21	31.50	31.65	31.80	31.95	32.10	32.25	32.40	32.55	32.70	32.85	21
22	33.00	33.15	33.30	33.45	33.60	33.75	33.90	34.05	34.20	34.35	22
23	34.50	34.65	34.80	34.95	35.10	35.25	35.40	35.55	35.70	35.85	23
24	36.00	36.15	36.30	36.45	36.60	36.75	36.90	37.05	37.20	37.35	24
25	37.50	37.65	37.80	37.95	38.10	38.25	38.40	38.55	38.70	38.85	25
26	39.00	39.15	39.30	39.45	39.60	39.75	39.90	40.05	40.20	40.35	26
27	40.50	40.65	40.80	40.95	41.10	41.25	41.40	41.55	41.70	41.85	27
28	42.00	42.15	42.30	42.45	42.60	42.75	42.90	43.05	43.20	43.35	28
29	43.50	43.65	43.80	43.95	44.10	44.25	44.40	44.55	44.70	44.85	29
30	45.00	45.15	45.30	45.45	45.60	45.75	45.90	46.05	46.20	46.35	30
31	46.50	46.65	46.80	46.95	47.10	47.25	47.40	47.55	47.70	47.85	31
32	48.00	48.15	48.30	48.45	48.60	48.75	48.90	49.05	49.20	49.35	32
33	49.50	49.65	49.80	49.95	50.10	50.25	50.40	50.55	50.70	50.85	33
34	51.00	51.15	51.30	51.45	51.60	51.75	51.90	52.05	52.20	52.35	34
35	52.50	52.65	52.80	52.95	53.10	53.25	53.40	53.55	53.70	53.85	35
36	54.00	54.15	54.30	54.45	54.60	54.75	54.90	55.05	55.20	55.35	36
37	55.50	55.65	55.80	55.95	56.10	56.25	56.40	56.55	56.70	56.85	37
38	57.00	57.15	57.30	57.45	57.60	57.75	57.90	58.05	58.20	58.35	38
39	58.50	58.65	58.80	58.95	59.10	59.25	59.40	59.55	59.70	59.85	39
40	60.00	60.15	60.30	60.45	60.60	60.75	60.90	61.05	61.20	61.35	40
41	61.50	61.65	61.80	61.95	62.10	62.25	62.40	62.55	62.70	62.85	41
42	63.00	63.15	63.30	63.45	63.60	63.75	63.90	64.05	64.20	64.35	42
43	64.50	64.65	64.80	64.95	65.10	65.25	65.40	65.55	65.70	65.85	43
44	66.00	66.15	66.30	66.45	66.60	66.75	66.90	67.05	67.20	67.35	44
45	67.50	67.65	67.80	67.95	68.10	68.25	68.40	68.55	68.70	68.85	45
46	69.00	69.15	69.30	69.45	69.60	69.75	69.90	70.05	70.20	70.35	46
47	70.50	70.65	70.80	70.95	71.10	71.20	71.40	71.55	71.70	71.85	47
48	72.00	72.15	72.30	72.45	72.60	72.75	72.90	73.05	73.20	73.35	48
49	73.50	73.65	73.80	73.95	74.10	74.25	74.40	74.55	74.70	74.85	49
50	75.00	75.15	75.30	75.45	75.60	75.75	75.90	76.05	76.20	76.35	50

THE NATIONAL BLANK BOOK COMPANY  
 HOLYOKE MASSACHUSETTS  
 NEW YORK CHICAGO BOSTON SAN FRANCISCO

Handwritten notes and diagrams on the left page of the notebook. The notes include several arithmetic problems:

- $4805$   
 $1090$   
 $5855$
- $1287$   
 $4602$   
 $5895$   
 $10290$   
 $4799$
- $1053$   
 $669$   
 $384$   
 $03$
- $813$   
 $669$   
 $144 = .01$
- $914$   
 $669$   
 $245 = .02$
- $56942$   
 $373$   
 $53192$   
 $21$   
 $553$   
 $20$   
 $533$
- $16734$
- $6120$

There are also several hand-drawn diagrams, including a perspective drawing of a rectangular object with a circular top, and a cross-section diagram similar to the one on the right page.