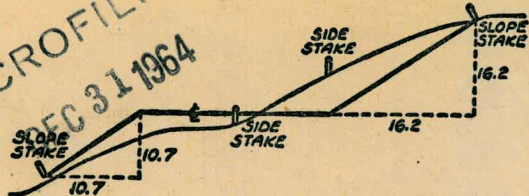


2056

TRACE BOOK

MICROFILMED
 REC 31 1964



DISTANCES FROM SIDE STAKES FOR CROSS-SECTIONING
 SLOPE 1 TO 1. ROADWAY OF ANY WIDTH

	0	.1	.2	.3	.4	.5	.6	.7	.8	.9	
0	0.00	0.10	0.20	0.30	0.40	0.50	0.60	0.70	0.80	0.90	0
1	1.00	1.10	1.20	1.30	1.40	1.50	1.60	1.70	1.80	1.90	1
2	2.00	2.10	2.20	2.30	2.40	2.50	2.60	2.70	2.80	2.90	2
3	3.00	3.10	3.20	3.30	3.40	3.50	3.60	3.70	3.80	3.90	3
4	4.00	4.10	4.20	4.30	4.40	4.50	4.60	4.70	4.80	4.90	4
5	5.00	5.10	5.20	5.30	5.40	5.50	5.60	5.70	5.80	5.90	5
6	6.00	6.10	6.20	6.30	6.40	6.50	6.60	6.70	6.80	6.90	6
7	7.00	7.10	7.20	7.30	7.40	7.50	7.60	7.70	7.80	7.90	7
8	8.00	8.10	8.20	8.30	8.40	8.50	8.60	8.70	8.80	8.90	8
9	9.00	9.10	9.20	9.30	9.40	9.50	9.60	9.70	9.80	9.90	9
10	10.00	10.10	10.20	10.30	10.40	10.50	10.60	10.70	10.80	10.90	10
11	11.00	11.10	11.20	11.30	11.40	11.50	11.60	11.70	11.80	11.90	11
12	12.00	12.10	12.20	12.30	12.40	12.50	12.60	12.70	12.80	12.90	12
13	13.00	13.10	13.20	13.30	13.40	13.50	13.60	13.70	13.80	13.90	13
14	14.00	14.10	14.20	14.30	14.40	14.50	14.60	14.70	14.80	14.90	14
15	15.00	15.10	15.20	15.30	15.40	15.50	15.60	15.70	15.80	15.90	15
16	16.00	16.10	16.20	16.30	16.40	16.50	16.60	16.70	16.80	16.90	16
17	17.00	17.10	17.20	17.30	17.40	17.50	17.60	17.70	17.80	17.90	17
18	18.00	18.10	18.20	18.30	18.40	18.50	18.60	18.70	18.80	18.90	18
19	19.00	19.10	19.20	19.30	19.40	19.50	19.60	19.70	19.80	19.90	19
20	20.00	20.10	20.20	20.30	20.40	20.50	20.60	20.70	20.80	20.90	20
21	21.00	21.10	21.20	21.30	21.40	21.50	21.60	21.70	21.80	21.90	21
22	22.00	22.10	22.20	22.30	22.40	22.50	22.60	22.70	22.80	22.90	22
23	23.00	23.10	23.20	23.30	23.40	23.50	23.60	23.70	23.80	23.90	23
24	24.00	24.10	24.20	24.30	24.40	24.50	24.60	24.70	24.80	24.90	24
25	25.00	25.10	25.20	25.30	25.40	25.50	25.60	25.70	25.80	25.90	25
26	26.00	26.10	26.20	26.30	26.40	26.50	26.60	26.70	26.80	26.90	26
27	27.00	27.10	27.20	27.30	27.40	27.50	27.60	27.70	27.80	27.90	27
28	28.00	28.10	28.20	28.30	28.40	28.50	28.60	28.70	28.80	28.90	28
29	29.00	29.10	29.20	29.30	29.40	29.50	29.60	29.70	29.80	29.90	29
30	30.00	30.10	30.20	30.30	30.40	30.50	30.60	30.70	30.80	30.90	30
31	31.00	31.10	31.20	31.30	31.40	31.50	31.60	31.70	31.80	31.90	31
32	32.00	32.10	32.20	32.30	32.40	32.50	32.60	32.70	32.80	32.90	32
33	33.00	33.10	33.20	33.30	33.40	33.50	33.60	33.70	33.80	33.90	33
34	34.00	34.10	34.20	34.30	34.40	34.50	34.60	34.70	34.80	34.90	34
35	35.00	35.10	35.20	35.30	35.40	35.50	35.60	35.70	35.80	35.90	35
36	36.00	36.10	36.20	36.30	36.40	36.50	36.60	36.70	36.80	36.90	36
37	37.00	37.10	37.20	37.30	37.40	37.50	37.60	37.70	37.80	37.90	37
38	38.00	38.10	38.20	38.30	38.40	38.50	38.60	38.70	38.80	38.90	38
39	39.00	39.10	39.20	39.30	39.40	39.50	39.60	39.70	39.80	39.90	39
40	40.00	40.10	40.20	40.30	40.40	40.50	40.60	40.70	40.80	40.90	40
41	41.00	41.10	41.20	41.30	41.40	41.50	41.60	41.70	41.80	41.90	41
42	42.00	42.10	42.20	42.30	42.40	42.50	42.60	42.70	42.80	42.90	42
43	43.00	43.10	43.20	43.30	43.40	43.50	43.60	43.70	43.80	43.90	43
44	44.00	44.10	44.20	44.30	44.40	44.50	44.60	44.70	44.80	44.90	44
45	45.00	45.10	45.20	45.30	45.40	45.50	45.60	45.70	45.80	45.90	45
46	46.00	46.10	46.20	46.30	46.40	46.50	46.60	46.70	46.80	46.90	46
47	47.00	47.10	47.20	47.30	47.40	47.50	47.60	47.70	47.80	47.90	47
48	48.00	48.10	48.20	48.30	48.40	48.50	48.60	48.70	48.80	48.90	48
49	49.00	49.10	49.20	49.30	49.40	49.50	49.60	49.70	49.80	49.90	49
50	50.00	50.10	50.20	50.30	50.40	50.50	50.60	50.70	50.80	50.90	50

Distance of slope stake from side or shoulder stake for any width roadway, slope 1 to 1. If ground is nearly level, the cut or fill at side stake is located by the double entry method in left column and top row. The number in body of table in same row and column gives distance from side stake to slope stake. If ground is not level estimate the difference in elevation between the side stake and slope stake, lower target by this amount if cut, elevate if fill. Add this amount to cut or fill and find distance in table. Set up rod at this point, and line of sight should cut target. If it does not make the slight adjustment necessary.

INDEXED

to page 4

TABLE XIII—CORRECTIONS FOR TANGENTS AND EXTERNALS

These corrections are to be added to the approximate values, found by dividing the tangent, or external, for a 1° curve (Table VIII) by the degree of curve, in order to obtain the true tangents, or externals. Intermediate values may be obtained by interpolation.

FOR TANGENTS ADD

Central Angle	DEGREE OF CURVE													
	5°	10°	15°	20°	25°	30°	35°	40°	45°	50°	55°	60°	65°	70°
10°	.03	.06	.09	.13	.16	.19	.22	.25	.28	.31	.34	.38	.42	.46
15°	.04	.10	.14	.19	.24	.29	.34	.39	.45	.51	.53	.58	.63	.68
20°	.06	.13	.19	.26	.32	.39	.45	.51	.58	.65	.72	.79	.84	.90
25°	.08	.16	.24	.33	.40	.49	.58	.67	.75	.83	.90	.99	1.06	1.14
30°	.10	.19	.29	.39	.49	.59	.69	.79	.89	.99	1.09	1.20	1.29	1.39
35°	.11	.22	.34	.47	.58	.69	.79	.81	.92	1.04	1.29	1.42	1.54	1.66
40°	.13	.26	.40	.53	.67	.80	.93	1.06	1.20	1.34	1.49	1.64	1.79	1.94
45°	.15	.30	.44	.60	.76	.91	1.06	1.21	1.37	1.52	1.70	1.87	2.04	2.21
50°	.17	.34	.51	.68	.85	1.02	1.19	1.36	1.54	1.72	1.91	2.10	2.29	2.48
55°	.19	.38	.57	.76	.95	1.14	1.32	1.52	1.72	1.92	2.14	2.35	2.56	2.77
60°	.21	.42	.63	.84	1.05	1.27	1.49	1.71	1.94	2.17	2.38	2.60	2.83	3.07
65°	.23	.46	.69	.93	1.16	1.40	1.64	1.88	2.13	2.38	2.63	2.88	3.13	3.39
70°	.25	.51	.76	1.02	1.28	1.54	1.80	2.06	2.33	2.60	2.88	3.16	3.44	3.72
75°	.27	.56	.83	1.12	1.40	1.69	1.98	2.27	2.57	2.87	3.16	3.47	3.78	4.09
80°	.30	.61	.91	1.22	1.53	1.84	2.15	2.46	2.78	3.10	3.44	3.78	4.12	4.46
85°	.33	.66	1.00	1.33	1.68	2.02	2.36	2.70	3.05	3.40	3.77	4.14	4.55	4.89
90°	.36	.72	1.09	1.45	1.83	2.20	2.57	2.94	3.32	3.70	4.10	4.50	4.91	5.32
95°	.39	.79	1.19	1.55	2.00	2.40	2.80	3.20	3.61	4.02	4.40	4.98	5.38	5.83
100°	.43	.86	1.30	1.74	2.18	2.62	3.06	3.50	3.95	4.40	4.88	5.37	5.85	6.34
110°	.51	1.03	1.56	2.08	2.61	3.14	3.67	4.21	4.76	5.31	5.86	6.43	7.01	7.60
120°	.62	1.25	1.93	2.52	3.16	3.81	4.45	5.11	5.77	6.44	7.12	7.80	8.50	9.22

FOR EXTERNALS ADD

Central Angle	DEGREE OF CURVE													
	5°	10°	15°	20°	25°	30°	35°	40°	45°	50°	55°	60°	65°	70°
10°	.001	.003	.004	.006	.007	.008	.009	.011	.012	.014	.015	.017	.018	.020
15°	.003	.007	.010	.014	.018	.023	.027	.032	.035	.039	.043	.047	.051	.051
20°	.006	.011	.017	.022	.028	.034	.038	.045	.051	.057	.063	.070	.076	.083
25°	.009	.018	.027	.036	.046	.056	.065	.074	.083	.093	.106	.120	.127	.135
30°	.013	.025	.038	.051	.065	.078	.090	.103	.116	.129	.149	.170	.179	.188
35°	.018	.035	.054	.072	.086	.109	.131	.153	.175	.197	.213	.230	.247	.264
40°	.023	.046	.070	.093	.117	.141	.172	.203	.234	.265	.277	.290	.315	.341
45°	.030	.060	.093	.119	.153	.184	.216	.254	.289	.325	.351	.378	.411	.445
50°	.037	.075	.116	.151	.189	.227	.266	.305	.345	.384	.425	.467	.508	.550
55°	.046	.093	.142	.188	.236	.283	.332	.381	.420	.479	.530	.582	.641	.700
60°	.056	.112	.168	.225	.283	.340	.398	.457	.516	.575	.636	.697	.774	.851
65°	.067	.135	.204	.273	.343	.412	.483	.554	.625	.697	.771	.845	.922	1.01
70°	.080	.159	.240	.321	.403	.485	.568	.652	.735	.819	.906	.994	1.08	1.17
75°	.095	.182	.266	.353	.440	.528	.617	.707	.797	.887	1.07	1.18	1.29	1.39
80°	.110	.220	.332	.445	.558	.671	.787	.903	1.02	1.13	1.25	1.38	1.50	1.62
85°	.128	.259	.391	.524	.657	.790	.926	1.06	1.20	1.34	1.47	1.62	1.76	1.91
90°	.149	.299	.450	.603	.756	.910	1.07	1.22	1.38	1.54	1.70	1.87	2.03	2.20
95°	.174	.350	.522	.706	.885	1.06	1.25	1.43	1.62	1.80	1.99	2.18	2.38	2.58
100°	.200	.401	.604	.809	1.01	1.22	1.43	1.64	1.85	2.06	2.28	2.50	2.73	2.96
110°	.268	.536	.806	1.08	1.35	1.63	1.91	2.20	2.48	2.76	3.05	3.35	3.66	3.96
120°	.360	.721	1.08	1.45	1.82	2.19	2.57	2.95	3.33	3.72	4.11	4.50	4.91	5.32

Exist Cont. Sewer (M.H. 29 to 20)
Hillside Drive (Map 2087)
Past lots A-B-C-D. La Jolla Hills

- Allys 64 & 69 O.B. 20
- Alley Blk 64 O.B. 35-36
- Alley Blk 64 O. Beach 37
- Alley Blk 498 Daugherty Sub 39
- " 8-9, 21 La Jolla Park 45
- Van Nuys X-Section 53-70
- " " (W) 71-76

X-section - Alley Block 6
 La Jolla Mesa Drive to Cass St
 Between turquoise & Agate

11+26.12 = Hub on T' line

11+19.12 = West Prop. Line Cass St

Johnson
 Clark
 Gregory
 Moore
 10-21-49
 W.O. 25020

INDEXED
 W.K.
 OCT 25 1949

3+85.85 = ϕ 57" drain Δ 128°51'20" Rt

Note! Drain is in wash & dirt
 is being dumped over
 ground said drain - drain
 is half covered

0+00 = East Prop. Line La Jolla Mesa Drive

Cass St. 580'

319.80 (Tie point sheet)

319.86 (Chain)

160.78

1

159.58

11+26.12

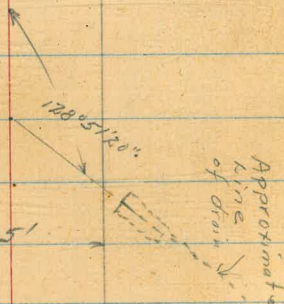
Set 2'x2"
 Hub & disk

Sec Re X-sec

4-7-58

C. ALLEN.

Agate St.



Prop. Line

Set 2'x2"
 Hub & disk

0+00

153.28

Fd. Mon.

378.95 (Chain)

378.72 (Tie Point sheet)

Asphalt

Paving

Meza Drive

La Jolla

X-section - Alley Block 6.
 LaSolla Mesa Drive to Cass St.
 Between Turquoise & Agate
 1+16 = E Conc Porch 15' wt.

1+00 = power pole 10' wt A329

0+97 = 1" Water Pipe Across Alley

0+82

0+70

0+50

0+18

0+06

0+00 = East Prop.

0-17 = East edge Paving (Broken)

0-30 = E LaSolla Mesa Drive

T.P. 11.84 118.39 2.25 106.55

10.26 108.80

98.54 = N.W.B.P. = Sapphire & Mission Beach Blvd.

	Left				Q	Right ²			
	117.3 0 117.3	118.04 0 118.04							
	1.1	3.2	3.4	3.4	9.1	3.7	4.4	5.3	
	15	10	7.5	3	4	4	7.5	15	
		116.7	115.0	115.0	114.3	114.7	114.0	113.1	
		1.7	2.8	3.4	9.5	9.3	9.8	6.1	
		12	4	4	4	4	7.5	12.5	
		114.4	114.2	113.7	113.9	114.1	113.6	112.8	
		4.0	4.2	4.6	4.7	5.3	6.3	7.7	
		15	7.5	6	6	7.5	12	15	
		113.8	113.6	113.3	113.1	113.1	112.4	110.7	
		4.6	4.8	5.1	5.3	6.1	6.9	8.3	
		15	7.5	3	3	7.5	12	15	
		113.7	113.0	112.3	112.1	111.4	110.8	109.0	
		9.7	5.4	6.1	6.1	7.0	7.6	8.4	
		18	7.5	4	3	7.5	11	15	
		114.3	114.0	110.3	110.3	110.1	109.1	108.6	
		4.1	4.4	8.1	8.1	8.3	8.3	9.8	
		20	9.3	4	4	7.5	11	15	
		109.7	109.2	108.8	108.8	108.5	108.2	107.2	
		8.7	9.7	9.6	9.6	9.9	10.2	11.2	
		50	7.5			7.5	14.7	50	
		108.96							
		24.3							
		50							
		108.19							
		9.20							
		50							
		106.67							
		11.72							
		50							

X-section - Alley Block 6
 La Jolla Mesa Drive to Cass St
 Between Turquoise & Agate

Left

E

Right ³

3+28

120.3
 5.0 5.4 5.4 5.8 5.9
 15 7.5 7.5 7.5 15

3+11

120.2
 5.1 5.6 7.0 12.8
 15 7.5 11.5 11

3+00

119.8
 5.5 5.5 6.5 13.7
 15 7.5 11.5 14

2+85

119.5
 5.8 5.9 5.9 5.9 14.1
 15 7.5 11.5 11.5 18

2+73 = power pole 7' RT # A836

2+71

119.2
 6.1 6.7 6.6 6.6 14.7
 15 7.5 11.5 7.5 26

2+50

119.4
 5.4 5.7 6.4 6.2 7.0
 15 7.5 11.5 7.5 15

2+00

118.3
 F.11 6.0 6.6 7.2 F.11
 7.5 7.5

1+68 Note!! start of loose fill in Alley & Sides

117.6
 7.7 8.0 8.3 9.0 9.4
 15 7.5 11.5 7.5 15

T.P. 9.52 125.29 2.62 115.77

1+50

117.3
 1.117.3 1.7 2.1 2.5 3.2
 15 120.03 7.5 11.5 7.5 15

1+39 = E. conc. Perch 11.5' RT

118.19
 0.20 +164
 11.5 11.5 118.39
 Bottom stop

1+19 = Deadman 9.7' RT.

X-section Alley Block 6

La Jolla Mesa Drive to Cross St
Between turquoise & Agate

4+46.5 = ϕ M.H.

4+32

4+34 = power pole 7.3' RT ϕ 1852

4+20

4+13

4+00

3+89

3+85.85 = Drain ϕ 57" 11.5' RT ϕ 128° 51' 20" RT

3+81

3+62

Left

ϕ

Right 4

123.40

2.8.9

^{121.8}
3.5
15

^{121.4}
3.9
7.5

^{121.0}
4.3
7.5

^{120.8}
4.5
7.5

^{120.9}
4.4
15

^{115.8}
9.5
15

^{116.0}
9.3
7.5

^{117.2}
8.1
7.5

^{120.1}
5.2
7.5

^{120.3}
5.0
7.5

^{120.4}
4.9
15

^{113.3}
12.0
20

^{115.9}
9.4
15

^{117.7}
7.6
7.5

^{120.0}
5.3
7.5

^{119.8}
5.5
7.5

^{120.0}
5.3
15

^{111.8}
13.5
15

^{115.5}
9.8
7.5

^{118.4}
6.9
3

^{118.5}
6.8
7.5

^{119.3}
6.0
7.5

^{119.3}
6.0
15

^{110.7}
14.6
7.5

^{110.8}
14.5
9

^{112.3}
13.0
9

^{115.6}
9.7
7.5

^{110.4}
14.7

^{110.4}
15.25

Flow Line
57" Drain

^{110.5}
14.8

^{120.4}
4.9
15

^{120.0}
5.3
7.5

^{119.8}
5.5
7.5

^{119.9}
5.4
7.5

^{119.4}
5.9
15

125.29

X-section Alley Blk 6

La Jolla Mesa Drive to Cass St.
Between Turquoise & Agate

Left \$ Right

Start Frame House 7.8' RT					130.6	132.9
6+38 = End 6' board fence 7.8' RT					5.9	3.6
6+09 = Start 6' board fence 7.4' RT					7.00	Floor
6+00	129.2	129.1	128.9	129.0	7.5	7.4
5+97 = End 5' wire fence 7.4' RT	7.3	7.4	7.6	7.5	7.5	7.4
5+77 = Start 5' wire fence 7.5' RT	13	4.5		7.5	1.5	
5+75 = power pole 7.0' RT # A900						
5+57 = End 3.5' picket fence 8' RT Also House 20' RT	127.7	127.8	127.4	127.5	9.0	10.5
	8.8	8.7	9.1	7.5	7.0	
5+51 = Deadman 6.3 RT						
5+32 = Start frame House 19.6' RT					9.9	8.3
					19.6'	Floor
5+25 = Start 3.5' picket fence 8.0' RT	126.4	126.7	126.4	126.7	9.8	10.0
	10.1	9.8	10.1	9.8	7.5	15
	15	7.5		7.5	15	
5+20	125.4	125.2	125.0	124.9	11.6	11.8
	11.1	11.3	11.5	11.6	7.5	15
	15	7.5		7.5	15	
T.P. = 12.60 136.51 1.38 123.91			136.51			
4+97 = End Stucco Building 17.5' RT	124.1	123.9	123.7	124.0	1.3	1.6
	1.2	1.4	1.6	1.3	7.5	17.7
	15	7.5		7.5	17.7	
4+53 = Start Stucco Building 17.7' RT	122.8	122.7	122.5	122.0	2.5	0.43
	2.5	2.6	2.8	3.3	3.7	0.43
	15	7.5		7.5	17.7	Floor Etc.
			125.29			

X-section Alley Block 6
 La Jolla Mesa Drive to Cass St
 Turquoise to Agate

8+70 = 3' picket fence 11.5' Lt
 8+50
 8+46 = 5' picket fence 10' Lt
 8+44 = 9' wire fence 7' Rt.
 8+00
 7+50
 T.P. 5.03 141.54 0.00 136.57
 End 3' board fence 10.5' Lt
 7+00 = power pole 6' Rt #A920
 6+98 = End Garage Apron 7.2' Rt
 Floor - 11.0' Rt
 6+92 = Single Car Garage Apron 7.2' Rt
 Start Garage Apron 7.1' Rt
 6+84 = End 5.5' conc. Block Wall 7.6' Rt
 Start 5.5' 8" conc. Block Wall 7.5' Rt
 6+74 = End of Frame house 7.5' Rt
 6+64 = 4" Walnut tree 4.4' Rt
 6+52
 6+51 = Start 3' board fence 11.4' Lt
 6+50
 6+45 = 3" Walnut tree 5.1' Rt

Left & Right **6**

^{138.4} 3.1 ^{138.2} 3.2 ^{137.2} 4.2 ^{136.8} 4.7 ^{137.0} 4.5 ^{135.7} 5.8 ^{135.0} 6.5
 15 10 7.5 4.5 8 15

^{137.3} 4.2 ^{137.2} 4.3 ^{136.4} 5.1 ^{135.9} 5.6 ^{134.0} 5.5 ^{135.6} 5.9
 15 13 7.5 7.5 15

^{135.5} 6.0 ^{135.4} 6.1 ^{135.0} 6.5 ^{135.2} 6.3 ^{134.8} 6.7 ^{134.2} 7.2
 15 7.5 141.54 7.5 8.5 15

= Nail in Power pole

^{133.5} 3.0 ^{133.9} 2.6 ^{133.7} 2.8 ^{133.4} 3.1 ^{133.04} 3.47 ^{133.2} 3.3 ^{133.1} 3.4
 12 10.5 7.5 7.2 7.2 7.5 12

^{133.01} 3.50 ^{133.09} 3.42
 7.2 11.0

^{132.97} 3.44 ^{132.1} 4.4
 7.1 7.5

^{133.3} 3.2 ^{132.6} 3.9 ^{131.6} 4.9 ^{131.5} 5.0 ^{131.4} 5.1
 11.5 11 7.5 7.5

^{131.5} 5.0 ^{131.2} 5.3 ^{131.4} 6.1 ^{131.3} 5.2
 15 7.5 7.5

136.51

X-section - Alley Block 6
 LaSolla Mesa Drive to Cass St
 Between Turquoise & Agate

10+45

Left Right 7
^{142.8} 5.9 ^{142.9} 5.8 ^{142.3} 6.4 ^{142.7} 6.0 ^{143.1} 5.6
 15 7.5 7.5 7.5 15

10+42

^{143.0} 5.7 ^{142.7} 6.0 ^{142.1} 6.6 ^{141.8} 6.9 ^{141.6} 7.1
 15 7.5 7.5 7.5 15

10+00

^{131.3} 7.4 ^{141.1} 7.6 ^{140.7} 8.0 ^{140.6} 8.1 ^{140.1} 8.6
 15 7.5 7.5 7.5 15

9+95 = 3' wire fence 9' Lt

9+94 = power pole 51' Rt 4993456 H

9+50

^{139.9} 8.8 ^{138.9} 9.8 ^{138.3} 10.4 ^{137.8} 10.9 ^{137.6} 11.1
 15 7.5 7.5 7.5 15

9+43 = End 6" conc. retaining wall 1' high 7' Rt

^{137.63} 11.03 ^{138.74} 9.92
 7 conc. wall

9+41 = End frame house 25.9' Rt

^{136.5} 12.2
 23' dirt

9+18 = Start frame house 26.3' Rt

^{136.1} 12.6 ^{136.81} 11.85
 22.2 floor
 dirt

T.P. 9.92 148.66 2.80 138.74

148.66

9+00

^{136.5} 8.0 ^{137.6} 8.9 ^{137.2} 9.3 ^{137.1} 9.4 ^{137.70} 9.4 ^{135.9} 9.6 ^{136.2} 9.3
 15 7.5 7.5 7.5 7.5 9 15

Start 6" conc. retaining wall 7.4' Rt - 1' high

8+93 = End 5' picket fence 11.5' Lt

^{136.9} 4.6 ^{137.99} 4.05
 7.4 dirt
 7.4 conc. wall.

End of 4' wire fence 7.3' Rt

8+93 = power pole 58' Rt 49960

8+91 = End row of 10" trees 10' Lt

8+72 = Start of row 10" trees 10' Lt

141.54

X-section Alley, BIK 6-
 La Jolla Mesa Drive to Cass St.
 Between Turquoise & Agate

Left & Right 0

			904				
T.P.		13.15	124.18 124.12	N.W. 7' 6" S	Sapphire & Cass		
T.P.	0.04	137.27	11.43	137.23			
11+59.12 =	& Cass Street						
				1451.8		1441.0	1411.4
				2.9		4.65	7.3
				5.0		11.4	5.0
11+40.12				1449		1439	1405
				3.8	5.4	5.8	8.2
				5.0	7.5	7.5	5.0
11+37.12				1445		1431	1411
				2.4	5.0	3.6	7.6
				5.0	7.5	7.5	5.0
11+31.12 =	power pole 6.5' RT	P5224		1449		1436	1434
11+19.12 =	West Prop. Line	Cass Street		3.8	4.1	4.7	5.1
				15	10	7.5	7.5
11+13 =	End Brick House	12.4' LT		1461		1444	
				7.65	4.3		
				Floor	12.4		
				Elev			
11+00				1449		1439	1441
				4.3	4.8	5.0	4.6
				11	7.5	7.5	15
10+97 =	dog in Brick House	12.4' LT		1430			
10+71 =	Start Brick House	14.4' LT		5.7			
				14.7			

148.66

Existing Government Sewer.
Hillside Drive
Past Lots "A"- "B"- "C"- "D"- La Jolla Hills

(Government File # 20135)

Map data from

Fortif. + AWS Subdiv. Records + Docs, Section Copy # 9
--

Shown
in box

11-21-49

W.O. 20009

INDEXED

W.K.
NOV 25 1949

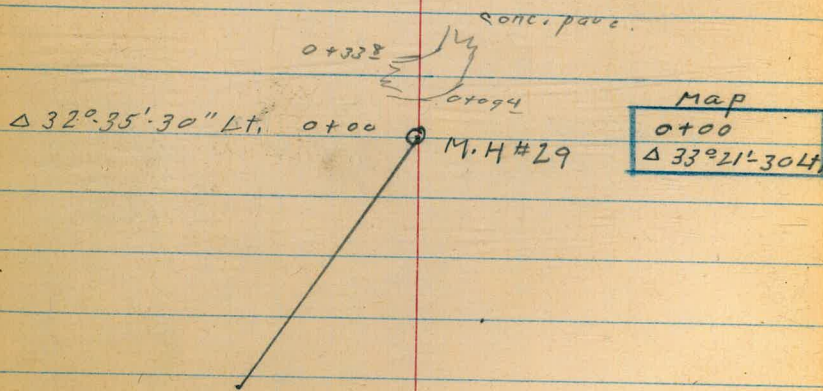
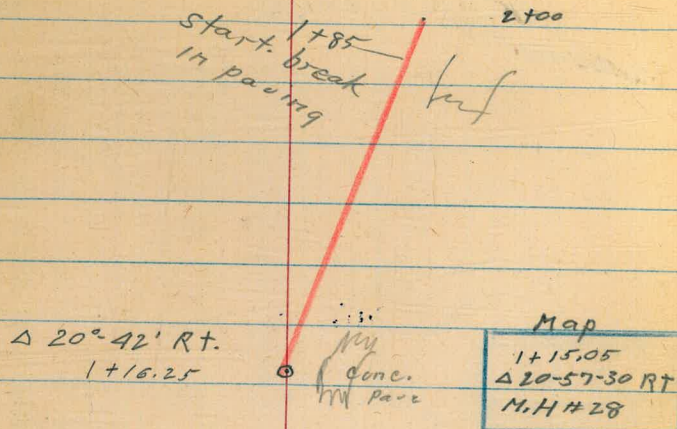
Sommermeier
McCoy
Allen
Rorer

o = Existing Man hole

also See F.B 2031
Map 2087
L.S. 489



9



Govt. Sewer

$\Delta 62^{\circ}55' \text{ Lt}$
 $5+13.66$

Map
5+14.81
63^o-00' Lt.
M.H.#25

10

$\Delta 21^{\circ}12' \text{ Lt}$
3+60.02

Map
3+56.69
 $\Delta 122^{\circ}46'30'' \text{ Lt}$
M.H.#26

$\Delta 21^{\circ}15' \text{ Rt}$
2+88.02

Map
2+86.71
 $\Delta 22^{\circ}43' \text{ Rt}$
M.H.#27

2+00

81^o-08'-30" Rt.
7+13.13

Map
7+13.35
80^o-58'-30" Rt.
M.H.#24

6+30

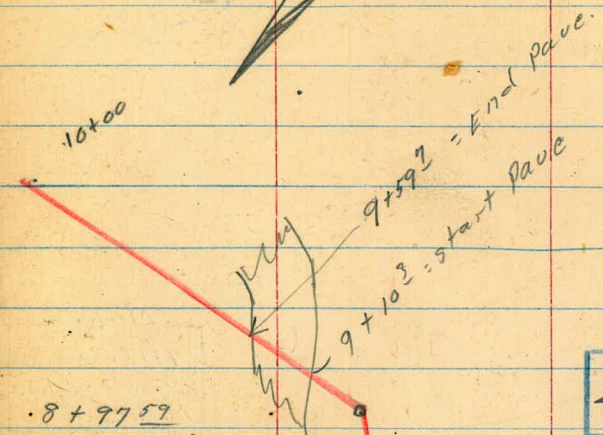
Sewer Dept
should check
(start 5+25 to 6+30)
Paving in this area
has settled with the fill.
Sewer line may be broken.

5+62.2

5+25

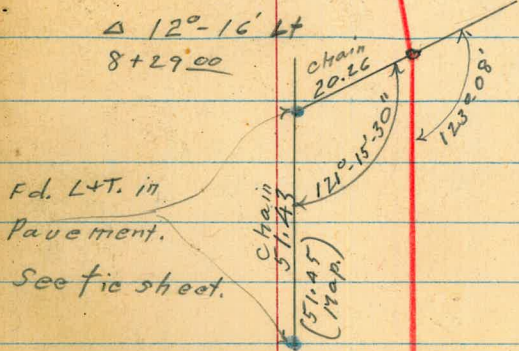
Map
M.H.#25

Govt. Sewer



8+97.59
 $\Delta 42^{\circ} 39' 30''$ Lt.

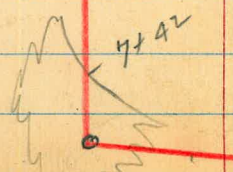
Map
 8+99.04
 $44^{\circ} 31' 30''$ Lt.
 M.H. # 22



Fd. L&T. in
 Pavement.
 See fic sheet.

$\Delta 12^{\circ} 16'$ Lt
 8+29.00

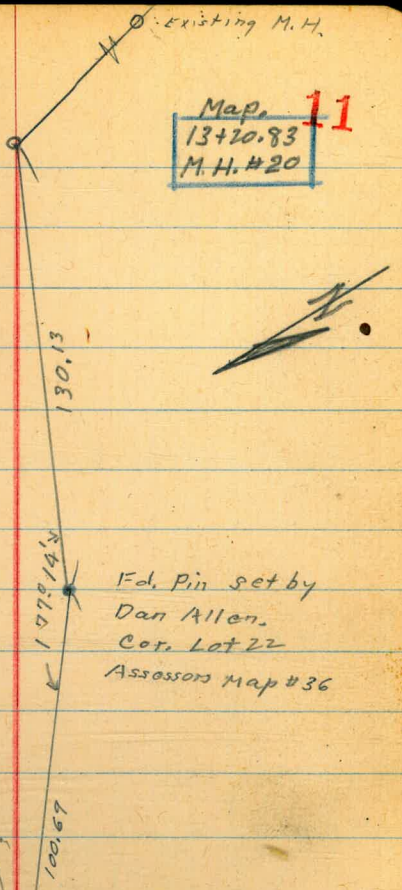
Map
 8+28.32
 $10^{\circ} 06' 30''$ Lt
 M.H. # 23



M.H. # 24

$\Delta 41^{\circ} 50'$ Rt.
 13+19.04

Map 11
 13+20.83
 M.H. # 20



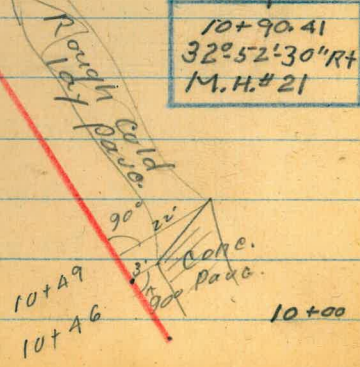
Fd. Pin set by
 Dan Allen.
 Cor. Lot 22
 Assessors Map # 36

11x16
 start cold lay

$\Delta 33^{\circ} 02'$ Rt.
 10+88.27

$\Delta = 1^{\circ} 33'$

Map
 10+90.41
 $32^{\circ} 52' 30''$ Rt
 M.H. # 21



10+49
 10+46

10+00

Govt. Sewer
Hillside Drive

±

12

0+43

5.2

0+33⁸ = End pave.

6.35

0+09⁴ = Edge pave.

6.46

0+02

6.4

(El. on covers as shown = Mean of
rim elevation).

0+00 = Dtr. M. H. # 29

$\frac{12.32}{\text{I.E. } 396.11}$

$\frac{5.86}{\text{Cover}}$

T.P. 12.44 396.11 0.04 383.67

T.P. 12.30 383.71 0.09 371.41

T.P. 12.08 371.50 0.42 359.42

12.33 359.84 — 347.51 $\frac{\text{Rim \# 31 FB 2031}}{5}$

Gout. Sewer
Hillside Dr.

13

2+15^L

9.65
Pave
2^L

2+15 2² Rt. = step up in pave. grade.

9.7 9.65 10.01
Top. Pave.
of 2^L 2^L

1+85 1² Rt. = start of sunken Pave.

12.9 12.69 12.82
Top. N.Y. edge
of Pave. 1²

T.P. 12.72 420.60 0.02 407.88

420.60

1+50 2³ Rt. = Face cl.

4.1

5³ Rt. = Face cl.
1+16.25 = M.H. # 28 Δ 20°-42' Rt.

12.21 7.21
I.E. Cover

1+00

8.3

T.P. 12.05 407.90 0.26 395.85

407.90

L+T-19' Rt } B.M. #1
of 0+65

1.65 394.46

0+68

0.0

396.11

396.11

T.P. 12.92 445.42 0.43 432.50

14

4+00

21.9

4' Lt. = Edge pave.

3+60⁰⁷ = Δ 21° 12' Lt. = M.H. # 26

5.46
4'
pave.

10.01
Invert.

5.61
Cover
& Grd

3+46 = End pave

6.68

3+20 on pavement

9.45

2+93 Edge pave.

12.18

T.P. 12.57 432.93 0.24 420.36

432.93

2' Rt. = Edge pavement

2+88⁰² = Δ 21° 15' Rt. = M.H. # 27

4.91
I.E.

0.16
Cover

0.60
2'
pave.

2+86

0.5

2+65 2' Rt. = Edge pave
End ch.

2.92
2'
End ch.

3.33
2'
pave.

2+50

5.3

410.60

420.60

Govt. Sewer

13.01 458.09 0.34 445.08

5+96 Edge pave.

1.38

Also here
to 6+30

5+62² End pave.

This pavement
has settled.

4.79

5+45

Maybe settled
before sewer
was laid.

6.12

5+25² = Edge pave.

Sewer Dept.
can check.

5.81

5+16

6.0

5+13⁶⁶ Δ 62° - 55' Lt. = M.H. # 25

10.77
I.E.

5.86
cover

5+11⁶⁶

6.1

4+96 5' Lt. = Apex B.C. Lt. pave. edge.

7.20
5
Pave

6.5

4+50 5' Lt. = edge pave.

10.90
5
Pave

10.60

445.42

445.42

Cont. Sewer

16

8+27

6.1

8+00 6' Lt. = Pavc

$\frac{8.66}{6}$
Pave

7.6

+70

Lt. 14' Lt 87+67

T.P. 1116 469.16 0.09 458.00

10.7

469.16

7+42 = End pavement

2.91

3# Lt. = Edge pave.

7+13¹³ $\Delta 81^\circ-08'-30''$ Rt. = M.H. #24

$\frac{3.71}{3}$

9.27

$\frac{3.88}{2}$

Edge Pave.

I.E

Cover

7+00 = Approx. $\frac{1}{2}$ pave.

5.10

6+70 2² Rt. = S.ELY edge pave

$\frac{7.90}{2}$
Pave

7.99

2² Edge pave

= End sunken pave.

6+30 Approx $\frac{1}{2}$ Pave.

10.52

458.09

Gout. Sewer

£

17

(P-11)

10+49 - 22' Rt. = End. sly edge Pavc

10+46 - 3' Rt. = End. North edge Pavc.

10.0

$\frac{10.12}{3}$
Pavc

T.P. 10.52 477.83 1.85 467.31

477.83

10+00 5² Rt. = Pavc. edge

2.3

$\frac{3.00}{59}$

9+59² = End Pavc.

4.17

9+30 = Aprox. £ Pavc.

4.70

9+10² = start Pavc.

5.07

8+97⁵⁹ 6' Lt. = Pavc. edge
Δ 42°-39'-30" Lt.

#22

$\frac{5.29}{6}$
Edge Pavc.

$\frac{9.52}{I.E.}$

$\frac{4.95}{\text{Cover} + \text{Ord.}}$

8+60 2² Lt. = Pavc.

$\frac{6.21}{29}$
Pavc

6.1

8+29.00 5² Lt. = Wly. edge Pavc
Δ 12°-16' Lt. M.H.#23

$\frac{7.26}{515}$
Pavc

$\frac{10.77}{I.E.}$

$\frac{6.35}{\text{Cover}}$

469.16

469.16

T.R 1.05 474.14 12.35 473.09

4

side of M.H.
of clean out hole on south
El. given as "in line I.E." = bottom
Looks like Drop Man Hole.

13+19⁰⁴ Δ 41°-50' RT.

6.2
I.E.
in line

9.75
I.E.
out line

1.87
Cover

13+00

4.0

T.P. 7.90 485.44 0.29 477.54

485.44

12+50 on Cold lay

0.3

12+00 on Cold lay

3.5

11+50 on Cold lay

6.2

11+16 start. Cold lay pave

7.6

10+88²¹ Δ 33°-02' RT. = M.H. # 21

13.86
I.E.

8.42
cover
+ Ord.

477.83

477.83

Government Sewer
Hillside Drive

				<u>70.02</u>
• Ritt M.H.#31				347.51
(P.12)	11.48			347.53

T.P.	2.27	359.01	12.25	356.74
T.P.	0.49	368.99	12.13	368.50
T.P.	0.31	380.63	12.00	380.32
T.P.	0.40	392.32	12.80	391.92
T.P.	0.56	404.72	12.97	404.16
T.P.	0.35	417.13	12.88	416.78
T.P.	0.54	429.66	12.77	429.12
T.P.	0.24	441.89	11.64	441.65
T.P.	0.63	453.29	12.49	452.66
T.P.	0.92	465.15	9.91	464.23
		<u>474.12</u>		

Garber
Roberts
Moore
Clark
Eliseo

+30

29.8	29.7	28.7	27.5	27.7	26.0	29.1	29.5
$\frac{1.9}{16}$	$\frac{1.8}{10}$	$\frac{2.4}{8}$	$\frac{3.3}{8}$	3.4	$\frac{3.1}{5}$	$\frac{2.0}{10}$	$\frac{1.6}{25}$

+13

End of Wall

29.09	27.5	26.6
Top Wall	Foot	Ground
$\frac{1.98}{10.7}$	$\frac{3.6}{10.7}$	$\frac{2.5}{10.7}$

+09

28.9	28.9	27.4	26.4	26.1	25.4	24.8	24.1	23.0
$\frac{2.2}{25}$	$\frac{2.2}{11}$	$\frac{3.7}{10}$	$\frac{4.7}{8}$	5.0	$\frac{4.7}{5}$	$\frac{2.3}{10}$	$\frac{1.9}{13}$	$\frac{1.1}{25}$

0+00

W. line Cable

26.11	25.7	26.0	25.89	25.63	25.27	25.63	25.83	26.7	27.4
Top Wall	Foot	Wall	Cr6	Gut	25.84	Gut	Cr6	26.7	27.4
$\frac{2.96}{10.8}$	$\frac{5.4}{10.8}$	$\frac{5.1}{10.8}$	$\frac{5.18}{10.05}$	$\frac{5.24}{10.05}$	5.84	$\frac{5.44}{9.85}$	$\frac{5.29}{9.85}$	$\frac{4.4}{11}$	$\frac{3.7}{23}$

0-12

Gutter

25.76	25.03	25.67	24.97	25.59	25.00	24.96	24.96	25.49	25.97	25.36	25.14	25.11
Cr6	Gut	Cr6	Gut	Cr6	Gut	24.96	Gut	Cr6	Gut	Cr6	Gut	Cr6
$\frac{5.31}{75}$	$\frac{6.04}{75}$	$\frac{5.40}{50}$	$\frac{6.10}{50}$	$\frac{5.48}{13}$	$\frac{6.07}{13}$	6.09	$\frac{6.11}{13}$	$\frac{5.58}{13}$	$\frac{6.30}{50}$	$\frac{5.71}{50}$	$\frac{6.85}{105}$	$\frac{5.89}{105}$

0-30

2 Cable BIK 64

25.73	25.64	25.56	25.29	25.19
$\frac{5.34}{100}$	$\frac{5.43}{50}$	5.51	$\frac{5.68}{50}$	$\frac{5.88}{100}$

5.96

31.07

Dr. P19. 3/E
Del Monte 4
Cable

31.07

1+00

End 4 Car Garage

+97

+64

4 Car Garage

FF

3.72 32.50

2.79 28.78

+60

+51.5

Conc. Walk

+50

+40

Double Garage Dirt Fl.

28.84	28.58	28.6	28.7	28.6
Fl.	Apron			
<u>36.6</u>	<u>3.92</u>	<u>3.9</u>	<u>3.8</u>	<u>3.9</u>
15.4	14.2	10	10	25

29.01	29.06
Apron	Fl.
<u>3.49</u>	<u>3.44</u>
12.4	14.2

28.97	28.86
Fl.	Apron
<u>3.53</u>	<u>3.64</u>
15.2	14.5

32.50	29.05	29.14
	Conc. Apron	Floor
	<u>2.02</u>	<u>1.93</u>
	12.3	13.7

28.92	29.22
<u>2.15</u>	<u>1.75</u>
11.7	25

29.4	29.4	29.0	28.5	28.5	28.9	29.1
<u>1.7</u>	<u>1.7</u>	<u>2.1</u>	<u>2.6</u>	<u>2.6</u>	<u>2.2</u>	<u>2.0</u>
25	10	8	7		10	25

29.5
<u>1.6</u>
13.7

31.07

+83 8.8 Rt. End 3' Picket Fence

+72.5 11.2 Rt. & 3.5 Conc Walk

+58 8.5 Rt. 3' Picket Fence

+50

+40 & Garage

+30 & Garage

+21.5 8.9 Lt. Pole # PA 4926

+20 & Garage

+10 & Garage

$$\begin{array}{r} 27.28 \\ 5.12 \\ \hline 11.2 \end{array}$$

$$\begin{array}{r} 27.64 \\ 4.86 \\ \hline 18.2 \end{array}$$

$$\begin{array}{r} 27.9 \\ 4.6 \\ \hline 25 \end{array}$$

$$\begin{array}{r} 28.1 \\ 4.4 \\ \hline 10 \end{array}$$

$$\begin{array}{r} 28.0 \\ 4.5 \\ \hline \end{array}$$

$$\begin{array}{r} 28.0 \\ 4.5 \\ \hline 10 \end{array}$$

$$\begin{array}{r} 28.0 \\ 4.5 \\ \hline 20 \end{array}$$

$$\begin{array}{r} 28.86 \\ \text{Conc} \\ 3.64 \\ \hline 22.4 \end{array}$$

$$\begin{array}{r} 28.81 \\ \text{Conc} \\ 3.65 \\ \hline 22.5 \end{array}$$

$$\begin{array}{r} 28.90 \\ \text{Conc} \\ 3.60 \\ \hline 22.6 \end{array}$$

$$\begin{array}{r} 28.84 \\ \text{Conc} \\ 3.56 \\ \hline 22.7 \end{array}$$

$$\underline{32.50}$$

+50.5 9.0 Lt. & Pole # JPA 4946

+50

27.5	27.1	26.7	26.7	27.0
<u>5.0</u>	<u>5.4</u>	5.8	<u>5.8</u>	<u>5.5</u>
20	10		10	20

+42 9.2 Rt. Begin 4^o Picket Fence

+37 17.2 Rt. & Garage Dirt Fl.

27.3

5.2

17.7

+27 17.7 Rt. & Garage Dirt Fl.

27.2

5.3

17.7

+15.5 8.6 Rt. End Picket Fence

+01.5 10.7 Rt. & 3^o Palm

2+00 8.4 Rt. Begin 4^o Picket Fence

27.7	27.2	27.4	27.4	27.2
<u>4.8</u>	<u>5.3</u>	5.1	<u>5.1</u>	<u>5.3</u>
25	10		10	25

1+92 & Garage

27.9

4.6

19.1

32.50

+30 Begin 5 Car Garage

+27

+21 14.0 Lt. End 7 Car Garage

+11 9.5 Rt. End L. Fence

+02 9.5 Rt. Begin Lattice Fence

3+00

2+94.5 9.5 RT. Garage CONC. FLOOR

2+88.5 9.6 RT. END FENCE

+81 9.8 Rt. & 1.5 Conc. Ribbon

+76 9.9 Rt. Center 1.5 Conc. Ribbon

2+54 13.8 Lt Begin 7 Car Garage - Conc. Ft
No Apron

28.10
Conc. Ft.
4.40
14.0

27.17
Conc. Apron
5.33
10.1

27.88
4.62
14.0

27.6 27.1 26.7 26.3 26.2
4.9 5.4 5.8 6.2 6.3
12 10 7 10

26.1
6.4
9.5

26.20 26.25
6.30 6.25
9.8 15

26.18 26.22
6.32 6.28
9.9 15

27.85
4.65
13.8

32.50

+93 11.8 Rt. & Garage-Dirt Fl.

+85 9.7 Rt. End Lattus Fence

+55 & Garage-Dirt Fl.

+50

R 5.15 31.71 5.94 26.56

4+00

+97 10.5 Rt. & Garage-Dirt Fl.

+90 14.1 Lt. End 5 Car Garage Apt.

+86 8.7 Lt. Pole PA 4966

+80 10.3 Lt. End Conc. Apron

+50

3 +40 9.5 Rt. Begin Lattus Fence

26.6

 $\frac{5.1}{11.8}$

26.4

 $\frac{5.3}{10.3}$

26.9

 $\frac{4.8}{25}$

26.7

 $\frac{5.0}{10}$

26.3

5.4

26.7

 $\frac{5.0}{10}$

31.71

27.8

 $\frac{4.7}{25}$

27.6

 $\frac{4.9}{12}$

27.2

 $\frac{5.3}{10}$

26.8

 $\frac{5.7}{6}$

26.6

5.9

26.4

 $\frac{6.1}{10}$

26.4

 $\frac{6.1}{10.5}$

26.11

 $\frac{4.39}{12.1}$

27.21

 $\frac{5.29}{10.3}$

27.1

 $\frac{5.4}{10}$

26.6

 $\frac{5.9}{7}$

26.4

6.1

26.2

 $\frac{6.3}{10}$

26.6

 $\frac{5.9}{20}$

32.50

+58 9.4 Lt. Begin ~~4~~ Car Garage
 +53 14.0 Rt. Begin Conc. Fl. ~~3~~ Car
 +50
 +36 9.2 Lt. End Conc. Apron 3 Car Garage
 +23 8.4 Lt. Pole #PA4986
 +20 14.0 Rt. End 2 Car Garage
 +04 14.0 Rt. 2 Car Garage - Begin
 +04 9.2 Lt. 3 Car Garage
 5+00
 4+97 10.7 Lt. ~~4~~ Garage - Dirt Fl.

27.13
 Fl. $\frac{4.58}{11.4}$
 26.71
 Apron. $\frac{5.06}{9.4}$

27.04
 Fl. $\frac{4.67}{14.0}$

27.1
 Fl. $\frac{4.6}{20}$
 27.0
 Apron. $\frac{4.7}{10}$
 26.6
 5.1
 26.8
 Fl. $\frac{4.9}{10}$

Fl. 26.82
 Apron $\frac{5.00}{9.2}$
 26.71
 Fl. $\frac{4.89}{11.3}$

26.72
 Fl. $\frac{4.99}{14.0}$

26.72
 Fl. $\frac{4.99}{14.0}$

26.75
 Conc. Fl. $\frac{4.96}{11.2}$
 26.62
 Apron. $\frac{5.09}{9.2}$

26.9
 Fl. $\frac{4.8}{20}$
 26.7
 Fl. $\frac{5.0}{10}$
 26.5
 5.2
 26.6
 Fl. $\frac{5.1}{10}$
 26.4
 Fl. $\frac{5.3}{20}$

26.5
 Fl. $\frac{5.2}{10.7}$

31.71

0+00

99.58
12
11

W. Prop. Line Bacon

27.38
Cb. 4.33
10.2
Gut 4.65
10.2
5.14
Gut 4.71
9.9
Cb 4.57
9.9

0-12

B.K. 69 W. Crb. Line Bacon

Check 31.71 7.66 24.05 24.04

B.M. N.W.
Pol M & Bacon

26.31 27.72 27.59 27.08 27.12 26.63 26.44 26.31 26.79 26.82 26.28 26.16 26.67
Cb Gut Cb Gut Cb Gut Cb Gut Cb Gut Cb Gut Cb Gut Cb Gut Cb Gut
3.90 3.99 4.12 4.63 4.59 5.08 5.29 5.40 4.92 5.89 5.73 6.53 6.04
100 100 50 50 12 12 12 12 50 50 100 100

6+29.88

\$ Bacon

26.27 27.53 26.85 26.21 25.56
3.44 4.18 4.86 5.50 6.15
100 50 50 100

6+11.88

E. Crb Line Bacon

26.29 27.74 27.63 27.09 27.17 26.63 26.40 26.46 26.99 25.90 25.73
Crb Gut Crb Gut Crb Gut Crb Gut Crb Gut Crb Gut Crb Gut Crb Gut
3.42 3.97 4.08 4.62 4.54 5.08 5.31 5.25 4.72 5.81 5.32 6.47
100 100 50 50 12 12 12 12 50 50 100 100

+99.88

E. Prop. Line Bacon Edge Pav

27.74 27.19 26.82 27.02 27.16
Crb Gut Crb Gut Cb
4.37 4.52 4.89 4.69 4.55
10.1 10.1 9.8 9.8

+92

9.6 Lt. End Apron 3 Car Garage

27.19 27.01
Fl. Apron
4.52 4.70
11.4 9.6

5+69

End Conc. Fl. 2 Car Garage

27.03
4.68
14.0
31.71

+60.5

+60

+52

10.2 Rt. Garage Ft.

+51

End Walk - Begin Apron

+50

FF

12.51 39.66

4.56 27.15

On break of Conc. Apron
Garage Loft.

+45.5

9.9 Rt. End Conc Walk - Begin Conc Apron

+34

10.2 Lt. Conc. Walk

+25

27.76	27.15	26.66
Fl.	Brk	Apron
11.90	12.51	13.00
16.1	10.3	7.8
	2 1/2	

26.67	27.06
12.99	12.60
9.9	16.2

26.68	27.06
Apron	Floor
12.98	12.60
9.9	16.2

27.76	27.21	26.58
Fl.	Walk	Apron
11.90	12.45	13.08
16.1	10.2	7.7

27.3	27.1	26.3	26.7	27.0
12.4	12.6	13.4	13.0	12.7
15	10		10	16

39.66

26.70	26.72
5.01	4.99
9.9	12.4

27.46
4.25
10.2

26.77	Conc. Walk
4.94	
9.9	

27.3	26.7	26.7
4.8	5.0	5.0
10		10

31.71

+19

39.9	38.7	37.9	37.4	38.6	43.7	43.5
$\frac{11.6}{30}$	$\frac{12.2}{18}$	$\frac{13.0}{10}$	13.5	$\frac{12.3}{10}$	$\frac{7.2}{20}$	$\frac{7.4}{30}$

R

12.59 50.88 1.37 38.29

50.88

Sta 2+25 Leath

2+00

38.7	38.3	37.4	36.8	37.6	38.8	39.7
$\frac{1.0}{25}$	$\frac{1.4}{14}$	$\frac{2.3}{10}$	2.9	$\frac{2.1}{10}$	$\frac{0.9}{16}$	$\frac{0.5}{30}$

+99

9.2 Rt. Pole # PA 5033

+90

38.0	36.8	36.3	36.9	37.5
$\frac{1.7}{25}$	$\frac{2.8}{10}$	3.4	$\frac{2.8}{10}$	$\frac{2.2}{25}$

+81

10.0 Rt. Pole Anchor

+50

35.0	34.4	33.5	35.0	36.5	36.0
$\frac{4.7}{25}$	$\frac{5.3}{10}$	6.2	$\frac{4.7}{10}$	$\frac{3.2}{15}$	$\frac{3.7}{25}$

+25

33.7	33.3	32.4	32.4	34.0	34.1
$\frac{6.5}{25}$	$\frac{6.4}{10}$	7.3	$\frac{7.3}{10}$	$\frac{5.7}{15}$	$\frac{5.6}{25}$

+10

10.2 Lt. Pole Anchor

1+00

31.1	30.9	29.9	30.8	29.8
$\frac{8.6}{25}$	$\frac{8.8}{10}$	9.8	$\frac{8.9}{10}$	$\frac{9.9}{25}$

+91

10.4 Lt. Pole PA 5016

30.5	30.0	29.4	29.9	29.9	29.8	27.1	26.4
$\frac{9.2}{25}$	$\frac{9.7}{10.0}$	10.3	$\frac{9.8}{6}$	$\frac{9.8}{10}$	$\frac{9.9}{15}$	$\frac{12.4}{25}$	$\frac{13.3}{40}$

+70

28.7	28.0	27.4	26.7	26.5	26.1
$\frac{11.0}{29}$	$\frac{11.7}{15}$	$\frac{12.5}{10}$	13.0	$\frac{13.2}{10}$	$\frac{13.6}{25}$

39.66

77 1.17 46.34 11.89 45.15

+91 End of Conc. Wall 10.3 Rt.

+80

+65 7.6 Rt. Pole Anchor

+59.56 Sewer M.H.

+50.5 Begin Conc. Wall 10.5 Rt.

+50

9.2 Rt. Pole # PA 5059

+39

10.6 Rt. End conc. yard

3+00

11.0 Rt. Begin Wood Fence. Yard concreted to fence

77 7.57 57.04 1.41 49.47

2+70 to 3+00 Exposed 3" Gas Main 3.5 Rt.

+65

+50 20^c to left & 10^c Rt. to Prop. Lines

+25

Start of widening

41.2	42.1	42.1	42.3	45.2	44.9	42.0	50.46
15.8	14.9	13.9	12.7	11.8	12.1	15.6	6.58
50	20	3		5	10	10.3	10.3

41.5	42.2	42.7	45.4	47.6	48.9	48.9
15.5	14.8	14.3	11.6	9.4	8.1	8.1
50	20	5		5	9	10

39.47 49.47

17.57	7.57	46.5	50.6
	Ring	Footing	Top Wall
		6.2	6.43
		10	10.5

41.9	42.1	41.8	41.8	49.0	50.7	51.6	52.1
15.1	14.9	15.2	15.2	8.0	6.7	5.4	4.9
40	20	10	5		3	10	20

40.8	40.9	40.2	40.3	45.3	52.0	52.2	52.2
16.2	16.1	16.8	16.7	11.7	5.0	4.8	4.8
40	20	13	6		8	10	25

Sly Rim M.H.

40.4	39.7	39.0	40.4	42.3	47.5	50.6	50.6
10.5	11.2	11.9	10.5	8.6	3.4	0.3	0.3
50	20	13	4		10	20	30

40.5	39.4	38.6	39.7	40.9	42.1	43.9	47.4
10.4	11.5	12.3	11.2	10.0	8.8	7.0	3.5
50	20	13	8		2	10	30

39.4	38.9	37.9	39.3	38.7	40.4	43.6	43.0
11.5	12.0	13.0	11.6	12.2	10.5	7.3	7.9
30	15	10		5	10	18	30

50.88

R 1.14 46.29 1.19 45.15
 +75 On Beach
 +60
 +40
 +15
 1+05 Top of Bluff
 +88 4.0 Rt. to E of Grate 2.5 X 2.5 (Storm)
 +50
 0+00
 3+59.56 20.0 Lt. = 0+00 Alley Sly
 0+00
 +29.50 End of Alley
 4+15.0 Sewer M.H.
 +60

-1.7
 48.0
 6.5
 39.8

20.6 19.3
 25.7 Top Inv. 27.0
 33.0 Storm
 13.3 Drain

42.1	41.5	40.9	40.6	40.4
$\frac{4.2}{25}$	$\frac{4.8}{10}$	5.4	$\frac{5.7}{10}$	$\frac{5.9}{25}$
			39.57	37.84
			Top	Inv.
			$\frac{6.77}{4}$	$\frac{8.50}{4}$

40.9	40.9	40.7
$\frac{5.4}{10}$	5.4	$\frac{5.6}{10}$

42.0	42.0	42.0
$\frac{4.3}{10}$	4.3	$\frac{4.3}{10}$

40.4	41.5	41.8	41.7
$\frac{5.9}{50}$	$\frac{4.8}{20}$	4.5	$\frac{4.6}{10}$
	42.09		
	$\frac{4.25}{13}$		
		46.34	

Station	Description	37.13	37.20	36.25	20 Parkin S C to W	34.05
+80.14	R. Del Monte	$\frac{2.16}{50}$	$\frac{2.09}{20}$	10.04	$\frac{12.24}{50}$	
+60.14	Sly Curb Line	37.49 $\frac{2.00}{30}$	37.18 $\frac{2.11}{15}$	36.75 $\frac{2.54}{5}$	36.39 9.90 $\frac{10.61}{17}$	35.68 36.41 37.97 34.81 $\frac{9.88}{17}$ $\frac{12.32}{50}$ $\frac{11.48}{50}$
+40.14	Edge Pav. Prop Line	37.46 $\frac{8.83}{25}$	37.39 $\frac{8.90}{15}$	37.32 $\frac{8.97}{5}$	36.99 9.30 $\frac{9.57}{15}$	36.72 36.64 40.2 39.9 $\frac{9.45}{16}$ $\frac{6.1}{18}$ $\frac{6.4}{25}$
+00		$\frac{7.6}{25}$	$\frac{7.3}{15}$	7.0	$\frac{6.3}{12}$	$\frac{5.5}{15}$ $\frac{4.3}{20}$ $\frac{4.4}{30}$
+50		$\frac{5.9}{25}$	$\frac{5.5}{15}$	4.7	$\frac{3.9}{12}$	$\frac{2.9}{15}$ $\frac{1.7}{17}$ $\frac{1.4}{25}$
+41	15.0 Rt. End of Conc. Wall				42.9 Gr. $\frac{3.4}{15}$	42.3 Footing $\frac{4.0}{15}$
+27	15.0 Rt. Begin Conc. Wall				42.3 Footing $\frac{4.0}{15}$	43.6 Gr. $\frac{2.7}{15}$
+27	15.3 Rt. Conc. Apron				43.69 Conc. Apron $\frac{2.60}{15.3}$	43.9 Conc. Fl. $\frac{2.37}{23.2}$
+15	15.3 Rt. Conc. Apron				43.79 Conc. A. $\frac{2.50}{15.3}$	43.9 Conc. Fl. $\frac{2.39}{22.3}$
0+00 4+14.50	10.0 Rt. = 0+00 Alley Nly	$\frac{4.6}{25}$	$\frac{4.5}{15}$	3.6	$\frac{2.9}{15}$	$\frac{2.4}{23}$

46.29

		5.45	24.04	
#	3.83	29.49	10.06	25.66
#	1.68	35.72	12.25	34.04

^{N/}
B.M. / W Del Monte
& Bacon 24.04

Alley Bk. 64 Ocean Beach.

35

Stakes for examination of Prop. grade.

Sommermeier
Allen
Sherman
Bunch

INDEXED

4/25/50

W.K.

W.O. 31392

APR 26 1950

(See Page 20)

Line #1 = straight grade
from Bacon to Cable.

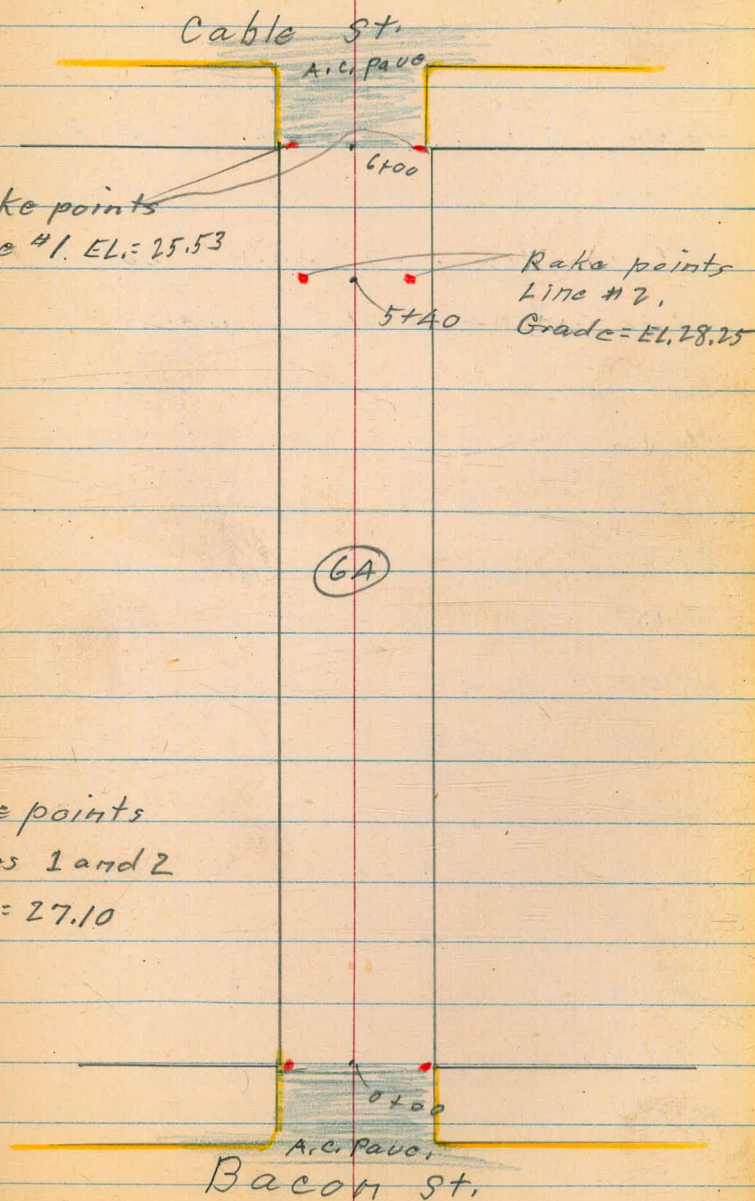
Line #2 = grade as shown
on sheet #8006-L

Stubs not set for line.

Grade only.

Stakes flush with ground
cuts + fills

Rake points
Lines 1 and 2
EL. = 27.10



Alley BIK, GA O.B.

Lt: north

Alley

Rt: south

36

Rake point # 1 line
 6+00 = Wly. line Cable. (Meet Pave.)
 5+80 P.V.C. on #2 line not staked
 5+60 P.V.C. on #2 line not staked
 5+40 Rake point # 2 line.
 4+98
 4+54
 4+13
 3+77
 3+48
 3+10
 2+75
 2+08
 0+97
 0+60
 0+42
 0+07
 0+00 = Ely line Bacon (Meet Pave.)

Stake #	Line		Line	
	#1	#2	#2	#1
13	C 2.95	C-0.51	C-0.56	C-3.06
12	C 2.80	C-0.55	C-0.56	C-2.67
11	C 2.45	C-0.40	C-0.36	C-2.08
10	C 1.55	F 0.30	F 0.50	C-1.42
9	C 1.00	F 0.70	F 0.85	C-0.86
8	C-0.40	F 1.20	F 0.80	C-0.78
7	Grade	F 1.35	F 0.65	C-0.70
6	Grade	F 1.30	F 0.60	C-0.65
5	F 0.20	F 1.10	F 0.72	C-0.15
#A	F 0.20	F 0.68	F 0.67	F 0.30
3	F 0.25	F 0.45	F 0.47	F 0.25
#2	F 0.10	F 0.30	F 0.50	F 0.40
#1			F 0.15	F 0.14
	Grade	Grade	Grade	Grade

Walker
F. Gregory
G. Pope
R. Sisson
5-17-50

Alley Block 64 Ocean Beach

Additional levels on left

From Cable to Bacon Street

Lt.

R

37

For Cross Sections See P-21-28

Cont. P-38

5+00

26.6

26.5

60

35

4+80

26.8

26.2

60

35

4+50

26.7

26.6

60

35

4+00

28.2

28.1

60

35

3+23

28.3

28.3

60

35

2+50

27.7

27.6

60

35

2+00

27.7

27.7

60

35

1+50

28.0

27.9

60

35

0+00 = White Cable P-21

TP

28.02

25.11

BM SE BR Cable & Del Monte
P-21

Alley Block 64
Cont. from p. 37

Lt

£

38

5+63

27.5 27.2
60 35

5+58 Chk Conc. Floor Garage

001
27.13 P-27
27.14
9.4
Conc. Floor P-27

5+50

27.4 27.0
60 30

(4+75)

26.5
50

X-sect - Alley BIK 498
42nd to Highland

0+04

0+00 = East P.L. 42nd

0-09

0-28

0-30 = \$ 42nd

T.P. 12.53 49.33 12.28 36.80

T.P. 0.25 49.58 12.04 49.33

T.P. 6.37 61.37 1.99 55.00

T.P. 3.40 56.99 5.76 53.59

B.M. 6.29 59.35 53.06

LT. $\frac{100}{100}$ $\frac{100}{100}$ RT 40

39.9	40.1	36.7	36.9	35.9	35.5
9 ⁴	92	12 ⁸	12 ⁹	13 ⁴	13 ⁸
27	16	8		10	20

39.3	36.3	35.6	35.3	34.5
10 ²	13 ²	13 ²	14 ²	14 ⁸
50	10		10	50

40.8	37.0	33.4
8 ⁵	12.3	15.9
50		50

40.2	37.4	33.5
9.1	11.9	15.8
50		50

40.6	38.55	33.9
8.7	10.78	15.4
50	East Rim M.H.	50

42nd
49.33

on 9' Hub & Alley

N.W. B.P. 40th & 1/2 S. 100'

X-sec - cont -

1725 = End 4' lath fence 10' Lt

	Lt.		4		Rt.			
	50.6	50.5	49.1	48.5	47.6	46.9	44.8	41.7
	+1 ³	+1 ³	0 ²	0 ⁸	1 ²	2 ⁴	4 ⁵	7 ⁴
	20	12	10	5		5	10	20

41

0798

	50.9	50.7	50.5	48.7	45.6	43.2	40.6
	+1 ⁵	+1 ⁴	+1 ³	0 ⁶	3 ⁷	6 ¹	8 ²
	20	11	10		10	17	28

0785

	51.6	51.6	50.6	49.0	48.4	45.3	37.2	36.5
	+2 ⁵	+2 ³	+1 ³	0 ³	0 ²	4 ⁰	12 ¹	12 ⁸
	20	11	10	5		10	17	25

0777 = Power Pole 9.7' Rt # A4213

0775 = Start 4' lath fence 10.1' Lt

0763

	50.7	47.3	46.3	45.5	44.8	35.8	35.8
	+1 ⁴	2 ⁰	3 ⁰	3 ²	4 ⁵	13 ⁵	13 ⁵
	20	10	8		8	16	25

0732

	41.0	40.3	39.8	39.6	36.5	36.5
	8 ³	9 ⁰	7 ⁵	9 ²	12 ⁸	12 ⁸
	20	10		10	15	25

0725

	39.7	39.0	38.6	37.8	36.8	36.5
	9 ⁶	10 ³	10 ²	11 ⁵	12 ²	12 ⁸
	20	10		10	16	25

49.27

X-sect: Cont.

2+75

	LT				RT		42
	38.6	39.2	40.1	40.4	40.4	47.7	52.7
	9 ^L	8 ^E	7 ^E	7 ^E	7 ^E	0 ^E	+5 ^E
	29	14	6		6	22	36

2+50

	37.3	37.1	37.3	37.7	37.8	38.7
	10 ^E	10 ^E	10 ^E	10 ^E	9 ^E	9 ^E
	27	17	10		16	25

2+36.5 = 17.14

2+22

			37.89		
			9 ^E		
			west		
			RTM		
	37.8	37.6	37.0	37.1	36.0
	9 ^E	10 ^E	10 ^E	10 ^E	11 ^E
	25	10		10	25

1+80

	47.7	43.6	41.1	40.1	39.1	36.4
	0 ^E	4 ^L	6 ^E	7 ^E	8 ^E	11 ^E
	50	25	10		10	23

1+75 = Power Pole 86' RT A4221

1+66

	51.9	51.7	43.3	41.3	40.6	38.7	37.0
	+4 ^E	+4 ^E	4 ^E	6 ^E	7 ^E	9 ^E	10 ^E
	30	23	10		6	16	25

T.P.

6.60	47.66	827	41.06
	49 ³⁸		

47.66
↑
49 ³⁸

X-sect. Cont.

Lt.

Rt.

43

3+50

52.7	53.1	52.8	53.2	53.2
4 ^L	3 ^L	4 ^R	3 ^L	3 ^L
25	10		10	20

3+49

52.7	53.1	52.8	53.2	54.5	54.1
4 ^L	3 ^L	4 ^R	3 ^L	2 ^L	2 ^L
25	10		7	8	20

3+29

51.8	53.0	52.7	52.5	53.7
5 ^L	3 ^L	4 ^L	4 ^L	3 ^L
30	10		10	13

3+27.5 = Power Pole 10^L Rt. #A4252

3+15

44.8	48.3	48.3	54.0	53.7
12 ^L	8 ^L	8 ^L	2 ^L	3 ^L
25	5		13	15

T.P.

10.13 56.81 0.98 46.68

3+00 =

1

		56.81			
41.0	42.9	44.0	47.1	53.7	53.7
6 ^L	4 ^L	2 ^L	0 ^L	+6 ^L	+6 ^L
30	6		7	18	28

47.66

Johnson
Cota
Greer
Crawford
7-3-50
W.O. 25020

Alley BIK 498
X-sect Cont -
42nd to Highland

T.P.		557	53 ⁰⁴
T.P.	4 ⁰⁸	58 ⁶¹	2.91 54 ⁵³
T.P.	3 ⁷⁵	57 ⁴⁴	6.99 53 ⁶⁹
T.P.	5 ⁶¹	60 ⁶⁸	0.13 55 ⁰⁷
T.P.	4 ¹⁰	55 ³⁰	5.71 51 ¹⁰

4+72.7 = £ Highland

4+43.6 = W. Curb line Highland

Section 11 to Highland
4+39.4 = End Cbs

Section 11 to Highland
4+31.31 = west line Highland

4+00

44

Lt. \$ Rt.

53⁰⁶ N.W.B.P - 40th & 6th Epsilon

Reduced
H.T. Linnoc

51 ⁰⁷	19 ⁰⁷	16 ⁹⁵
574	777	986
50		50

51 ⁵²	50 ⁰³	50 ¹⁵	49 ⁴³	48 ²⁹	48 ⁰⁹	48 ²⁴	46 ⁷⁶	47 ³⁸
529	598	666	738	802	992	857	1025	943
Cb G	G	Cb G	G		Cb G	G	G	Cb
50		15			13.8		50	

49 ⁴⁰	50 ¹⁵	50.5	50.5	50.0	49 ⁰⁶	48 ⁴⁵
741	666	63	63	68	725	836
G	Cb	9		9	Cb G	G
103						11

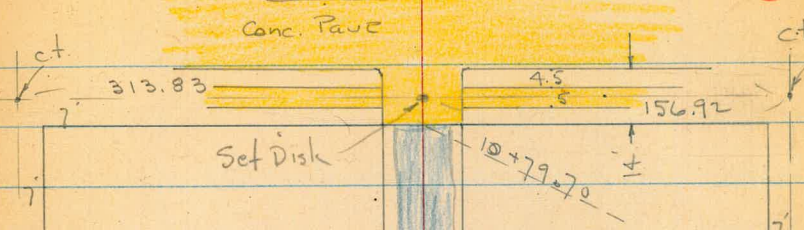
50.9	51.3	51.3	51.1	50.9
52	55	55	57	52
20	10 ³⁹		10 ³⁹	20
	P.L		P.L	

51.5	51.5	52.1	53.1	53.2
53	53	47	37	36
25	10		10	20

56.81

Kline St.

Conc. Pavc



Block 21

Note

Notes Added 3/24/83 cdf

Loading platforms

Floor EL=94.89

Doors

2+62

Floor EL=94.83

Conc. block Blkg.

Block 9

10' 10'

Fay Ave

Eads Ave

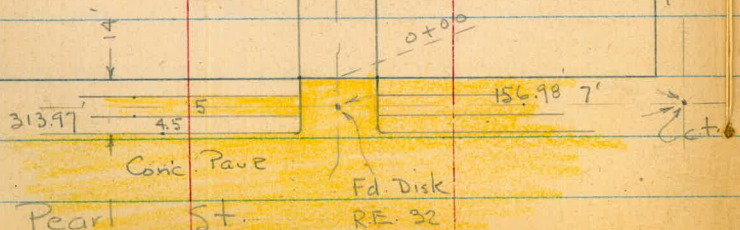
10 10

7+85

Drain - Apex 7+23

Eads Ave

Fay Ave



Pear St.

Conc. Pavc

Fd. Disk RE. 32

X-Sect. Alley (20') in Blocks
 9+21 - La Jolla Park - See sketch

P. 45 - for Grade Est. only

4631

W.O. 25020

INDEXED
 SJK
 OCT 3 1950

9-28-50

Osborne
 Hardin
 Hatch
 Lochhead.

0+37 - 10.4 ft. = Nly. of opening to shop

0+70 = in opening to Top shop - Conc. floor

0+00 = N.L. Pearl = edge Conc. Pavc

0-14 = N. cb.

Set B.M. on # +7 Disk

5.26 103.03

172 108.29 871 106.57

B.M. 0.11 115.28

115.17 = S.E. B.P.

Pearl + Girard

Lt. # Rt. 46

	103.28					
	5.01					
	10.4					
	Top conc. floor	103.26	103.1	102.8	102.9	103.6
	5.03	5.2	5.5	5.4	4.7	
	10.4	10		10	11	
	Conc. floor					along Bldg.
		103.31	103.17	103.05	103.38	103.76
	4.94	5.13	5.24	4.91	4.53	
	10	10		9.9	9.9	
	Top	gut.		gut.	Top	
	102.82	101.9	103.22	103.00	103.21	103.65
	5.97	6.35	5.07	5.45	5.29	5.08
	50	50		10		4.64
	Top	gut.	Top	gut.	108.29	4.46
			1' Rad.			4.16
						4.10
						1041.3

Alley Blk. 9+21

2+83- 11.5 Lt = Step in Wall

2+53- 11.5 Lt = Beg 3.5 Conc. walk along Bldg.

2+50

2+00

T.P. 0.59 98.90 9.98 98.31

1+50- 10 Rt = Beg Cyclone fence - Posts in Conc.

1+36- 10.8 Rt = end Wall

1+18- 11.2 Lt = ~~8~~ opening to Shop - Conc. floor House

1+17- 10.8 Rt = Beg. Wly. of 3.5 Conc. walk along

1+00- 11 Rt = end Conc. Bldg.

0+87- 16 Lt = \pm Doub. Gar. Conc. floor

0+50

47

Lt 93.67 94.64 Rt.
 94.64 94.65 5.23 4.26
 4.26 4.25 11.5 11.5 = walk
 15 11.5 walk To S.
 Cor. walk
 94.8 94.6 94.6 96.3
 4.1 4.3 4.3 2.6
 10 8 along fence
 97.2 96.8 96.7 96.7 97.9 98.0
 1.7 2.1 2.2 2.2 1.0 0.9
 15 10 8 10 along fence
 98.90
 98.5 98.2 98.4 99.4
 9.8 10.1 9.9 8.9
 10 100.13 7 100.14 10
 8.16 8.15
 10.8 14.3
 Cor. wall at House
 100.04 100.04
 8.25 8.25
 10.8 14.3
 Cor. at House
 100.2 100.2 100.22
 7.9 8.1 8.1 8.1 8.07
 15 10 10 Bot. found.
 100.59
 7.70
 16 floor
 101.88 01.8 101.6 102.5
 6.41 102.1 6.2 6.5 6.7 5.8
 10 108.29 10 10.9
 Cor. Bldg. along Bldg.
 Bot. found.

Alley Blk 9+21

T.P. 407 90.21 12.76 86.14
 5+25 - 12.1' Lt. = 2' Conc. walk in Court.

5+00

4+90 - 9.2' Lt. = end Conc. apron

4+54 - 10.4' Lt. = Beg. Conc. apron along House

4+50

4+00

3+50 - 10.1' Rt. = end wire fence

3+18 - 10' Rt. = end Bldg. + Beg. fence

3+09 - 11.6' Lt. = end Conc. Slab.

3+00 - 10' Rt. = end fence + Beg. Conc. Bldg.

48

	Lt.	#	Rt.
	86.12	86.47	
	12.78	12.43	
	20	12.1 - walk	
	86.1	86.5	86.5
	12.8	12.4	12.4
	15	10	10
	87.43	87.20	86.6
	11.47	11.70	87.3
	87.34	at House	9.2 = Cor. Conc.
	11.56	87.26	
	11.3	11.64	
one along House		10.4 = Cor. Conc.	
	86.8	87.4	87.6
	12.1	11.5	87.9
	20	10	11.0
			10
		88.8	88.9
		10.1	89.5
		10	9.4
			10
	90.3	91.1	90.9
	8.6	7.8	91.0
	20	10	8.0
			7.9
			10
		92.87	92.1
			6.8
			10
			7.73
			10
			Bot. found.
	94.15	93.12	92.6
	4.75	5.78	92.8
	26.5	11.5	6.1
in Dr. along Bldg.		10	6.3
			92.6
			92.7
			93.6
			6.2
			5.3
			8
			10
			along Bldg.

Alley - Blk. 9+21

Since Storm Drain was built
 7+20 - low point - old wash Now filled in.
 7+19 - 10.2' Rt. - end fence
 7+08 - 9.8' Lt. - end Conc. wall - found.
 7+07 - 6.9' Lt. - 3' Conc. Walk - Thru wall
 7+00
 6+52 - 10.2' Lt. - 18" High Beg. 4" Conc. found. for fence
 6+50
 6+11 - 10.1' Rt. - Beg. Cyclone fence - Posts in Conc
 6+07 - 11.1' Lt. - 2.5' Conc. Walk
 6+01 - 11' Lt. - end Conc. Wall - from Gar. at 5+57
 6+00
 5+57 - 10.4' Lt. - Song Gar. - Conc. floor
 5+50 - 10.1' Rt. - Sly. Cor. of 12' Conc. slab.

	Lt	±	Rt.
	81.0	82.4	82.7
	9.2	7.8	6.8
	40	10	10
		82.69	
		7.52	
	82.04	81.99	82.55
	8.17	8.22	7.66
	14	10.2	9.9
	along	walk	9.9 = Top
	House	82.12	82.76
			stop
			6.9 = walk
	8.09	7.45	7.7
	14	9.9	9.9
	Conc	Top Conc.	
	along	83.47	
	House		along
			fence
		6.74	
		10.2 = Top	
	82.6	83.4	84.3
	7.6	6.8	5.9
	30	15	10
			10.2 = Top
			conc
			84.3
			83.9
			6.3
			10
			6.2
			20
			along
			fence
		83.91	84.19
		6.30	6.02
		15	11.1
		Walk	walk
	84.31	85.2	85.2
	5.90	5.0	85.1
	11	11	85.0
	Bot.	9.1	85.53
	found.		5.0
			10
			5.1
			5.2
			10
		4.68	
		10.4	
		floor	
		85.8	85.5
		85.8	85.7
		4.4	4.7
		10	4.5
			10
		90.21	
			85.59
			85.70
			4.62
			4.51
			10.1
			20
			Cor. Conc.
			slab.
			on slab
			84.9 49

Alley Blk 9+21

8+71 - 15.6 Rt. = ± Sing. Gar - Dirt floor

8+60

8+38 - 8 Lt. = ± 4' Conc. walk

8+20

8+04 - 13.6 Rt. = ± Sing. Gar - Dirt floor

T.P. 5.54 92.67 3.08 87.13 = Nail in

7+91 - 13.5 Rt. = ± Sing. Gar - Conc. Block floor

7+88 - 13.4 Lt. = ± Doub. Gar - Dirt floor

7+85 - Beg. Cold Lay Pass

7+50

Lt.

±

Rt.

87.1 50

5.0

15.6 = floor

87.0

86.9

86.7

87.1

86.9

87.2

87.5

5.7

5.9

6.0

5.6

5.8

5.5

5.2

12.9

10

7

8

10

15

along
House

edge

edge

86.37

86.78

86.57

6.30

5.89

6.10

20
walk

9.5
walk

8 = walk (apron)

86.7

86.8

86.3

86.5

86.2

86.7

6.0

5.9

6.4

6.2

6.5

6.0

13

10

7

8

10

along
Shed.

edge

edge

CL

~~87.2~~

5.5

13.6 = floor

Pole - 8+30

92.67

87.05

86.1

3.16

13.5 = floor

4.1

13.4

floor

85.8

85.7

86.4

4.4

4.5

3.8

10

Point of

CL

10

83.7

83.8

84.1

84.9

6.5

6.4

6.1

5.3

15

10

10

10

90.21

10+40

90.7
2.1 2.8 2.9 2.8 2.8 2.4
14 10 6 6 10
along edge edge
House

10+00

88.1 88.8 89.0 88.7 89.0 88.9 89.6 90.5
3.9 3.7 4.0 3.7 3.8 2.1 2.2
15 10 8 6 10 15
1.0 edge edge
15.4

9+91- 15.4 Lt. = ± Doub. Gar - Dirt floor

9+70 = 10.8 Lt. = ± of Conception to Doub Gar

87.95 88.37 88.31
4.30 4.36
15.4 10.8
Gar. apron

9+57- 9' Lt. = ± 3' Conc. walk
floor - opens to N.

4.72 4.61
20 9-walk
walk

9+55 - Rt. = N.W. Cor. of 6 Car Gar - Conc

89.54
2.13
14 = floor

9+50

87.8 88.0 87.8 88.1 88.0 88.1
4.9 4.7 4.9 4.6 4.7 4.6
20 10 7 8 10
edge edge

9+09- 14' Rt. = ± Sing. Gar - Dirt floor

88.0
4.7
14 = floor

9+00 - 14' Rt. = on Conc. floor Gar.

86.9 87.2 87.2 87.5 87.4 87.6 88.17
5.8 5.5 5.5 5.2 5.3 5.1 4.50
20 10 7 8 10 14
edge edge floor

8+72- 8' Lt. = ± 4.5' Conc. walk

86.68 87.09 87.03
5.99 5.58 5.64
20 10 8
walk walk walk 92.67

INDEXED

MAR 13 1951

53

CROSS SECTION - VAN NUYS ST.
from WLY line Buena Vista Tract
and its ELY. Termination, WD 31602

Walker 11-8-50
Pope
R. Sisson

35'
0+00 28'

336.04' - To MOD
P.O.T.

7' Pd. Conc. Man.

7-9-51 see page 71 for water meters
C.H.B.

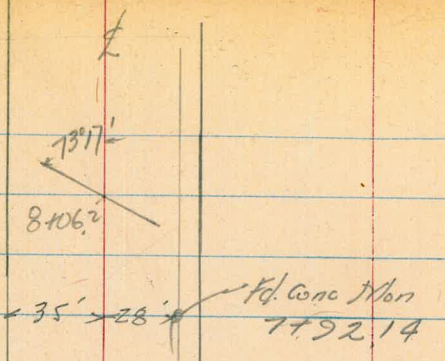
La Jolla Mesa Drive Set Nail in Paving

35' x 35'

4+79.80

VAN NUYS

0+00



Van Nuys

396.04' T. Point East
 396.10' T. Point East #20-48

Fd. Conc. Mon

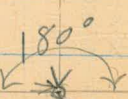
Fd 1/2 E Alley. or 5 1/2 west of 7' line
 Produced from South. 9/24/52

CASS ST.

set 1/2 R.P.
 for 7' Mon.
 9-24-52

103.98

11719.52



Fd. Conc. Mon.

11799.52

Van Nuys

397.71'

to Van R.P.
 7' line produced from west.

35' 35'

1/2 disk
 9-24-52

54

Van Nuys - Cross Sections
 from W47 line Buena Vista
 To Lajolla Mesa Drive
 Sketch P-53-54

REDUCED
 BY P.E. RIMM
 12-18-50

Lt. L Rt.

55

0+20

5.7 / 126.35
 5.9 / 126.15
 7.6 / 124.95
 9.2 / 122.95
 10.2 / 121.95
 50
 35
 35
 50
 Lawn

0+17 = ELX edge Conc. Dr.

5.66 / 126.39
 5.83 / 126.22
 50
 348
 Drive Drive

0+14 Pole Anchor 34.3 Rt.

0+09 = W47 Edge Conc. Drive

5.73 / 126.32
 6.06 / 125.99
 50
 348
 Drive Drive

0+00 = Sub. line 34.5 Rt. Tel # Pole H-537601

6.1 / 125.95
 6.6 / 126.45
 8.1 / 123.95
 9.4 / 122.65
 9.74 / 122.31
 10.24 / 121.81
 10.85 / 121.20
 13.18 / 119.87
 50 35 5
 1 on Pav. 20 Pav. 35 Pav. 85 Pav.

0-20 Sec. on Exist. Pav. Rt of L

7.9 / 124.15
 8.4 / 123.6
 9.4 / 122.6
 10.6 / 121.4
 10.65 / 121.40
 10.97 / 121.08
 11.34 / 120.71
 13.05 / 119.00
 50 35 10
 1 on Pav. 30 35 85

TP 117 132.05 130.8 130.88

S.E. T Mon Lajolla Mesa Drive
 Set B.M. on Mon 38 Rt + 0+00 P-53

442 139.54

TP 787 14396 003 136.09

13.84 136.12 123.38 - (Archer)

B2

F2

Van Noys
West of La Jolla Mesa Drive

1+54.5 = 2 3' Conc. Walk

1+50

1+00

0+69 = End Drive on Lt.

0+61 = Beg. Conc. Drive

0+50

0+35 = 2 3' Conc. Walk

Lt

Rt

Rt

128.85
340
398
Walk

127.87
418
495
Walk

56

131.75
703
45

131.75
03
35

130.75
13
20

129.75
2.3
15

129.25
2.3

128.25
38
31

128.53
35
35
Lawn

127.25
41
45
Lawn

129.95
21
50
Lawn

129.35
27
35

128.75
33
17

128.05
4.0
18

127.85
4.2

126.55
5.5
35

125.55
6.5
50

129.8
305
50
Drive

128.4
394
35
Drive

129.04
301
50
Drive

128.6
395
35
Drive

127.55
4.5
Lawn
50

127.15
4.9
35
Lawn

126.55
5.5
19

125.95
6.1
15

125.45
6.6

124.25
7.8
33

123.85
8.2
35

122.75
9.3
50

127.4
4.84
50
Walk

126.89
5.16
35
Walk

132.05

Van Nuys
West of La Jolla Mesa Dr

2+42 = Beg. Conc. Drive on Lt.

135⁹³
7.32
49
DRIVE

134⁹⁵
8.36
354
ON DRIVE

2+25 = End Conc. Drive on Rt.

129⁸⁸ 129⁹⁴
1343 1487
35.2 49
ON DRIVE DRIVE

2+17 = Beg. Conc. Dr

129⁹¹ 129⁹²
13.54 14.39
38.2 49
ON DRIVE DRIVE

2+00 (2+00.5)
End Drive

134.67 133⁸⁶ 131⁴¹ 131²¹
8.64 9.45 11.9 12.1
50 35 16
ON DRIVE ON DRIVE

129⁶¹ 129⁷¹ 128⁹¹
13.7 13.6 14.4
34 35 50

1+92.5 = Beg. Conc. Drive

134⁵⁹ 133⁶⁴
8.72 9.67 143³¹
50 35
DRIVE DRIVE

TR 12.13 143.31 0.87 131.18

1+75.2 = End Conc. Drive

128²² 127⁸⁵
31.5 4.00
34.8 50
DRIVE DRIVE

1+66.5 = Beg. Conc. Drive

132.05

128²¹ 127⁸²
31.4 4.13
34.8 50
DRIVE DRIVE

Van Nuys
3+92 = Beg Conc. Drive

West of
Mesa Drive

Logella

0.93
50
Drive

2.21
338
Drive

3+76 = 2 3' Conc. walk & steps

0.76
50
Walk

2.41
349
Conc. Walk

3.7
33.8
Top Bottom
Steps

3+50

3.6
50

4.7
35

7.1
15

7.1
136²¹

9.3
35

9.5
50

3+00

7.0
45

7.9
35

8.5
34

8.7
17

9.4
14

9.6
133²¹

11.0
35

12.5
50

2+68 = End Drive on Lt.

on Rt.
2 3' Conc. walk

6.81
50
Drive

7.99
352
Drive

12.42
353
Walk

12.89
50
Walk

2+60 = Beg Conc. Drive

7.02
50
Drive

8.13
354
Drive

2+50 = End Conc. Drive

7.20
49
Dr.

8.30
35.2
Dr.

11.2
15
14331

11.0
39
Lorin

12.7
35
Lorin

12.6
35
Lorin

12.9
45

Lt

Rt

Rt.

142⁸⁹

141¹⁰

142⁸⁹

140⁸⁹

139⁶¹

139²¹

138⁴¹

136²¹

136²¹

134⁰¹

133⁸¹

136²¹

135⁴¹

134⁸¹

134⁶¹

133²¹

133²¹

132²¹

132²¹

130²¹

136⁵⁰

135³²

130⁸⁹

130⁴²

136²⁹

135¹⁸

136¹¹

135²¹

132¹¹

132¹¹

130⁰¹

130¹¹

130⁴¹

~ Van Huy 5 ~

4 + 79.8 = 14h. LaJolla Mesa Drive

4 + 74 = 2 Fire Hydr 22.5 RA

4 + 50

Mon P-55
TP 841

147.95 = corrected Mon = 139.54
375 139.56

4 + 30

4 + 245 = End Conc. Dr.

4 + 16 = Bag. Conc. Drive

4 + 00 = End Conc. Drive on 14

143.31

LT.

R

RT

	143.95	143.15	140.35	139.25	139.05	140.15	139.25	59
4.0	4.8	7.6	8.0	8.9	7.8	8.0	8.5	
50	35	18		20	26	35	50	

	144.55	142.25	140.25	140.05	139.05	138.65	138.55	
3.4	5.0	7.7	7.9	8.9	9.3	9.4		
50	35	18		20	35	50		

147.95

	142.2	143.0	141.4	140.1	139.7	138.6	138.8	138.1	138.1
4.6	0.3	1.9	3.2	3.4	4.7	4.5	4.7	5.2	5.2
45	35	22	18		19	22	35	50	50

	138.06	138.07
5.25	5.24	
36.2	49	
Dr	Dr	

	137.23	138.04
5.38	5.27	
36.2	50	
Dr	Dr	

	143.2	141.26	138.2	138.81	137.1	137.1	137.2	137.1
6.30	2.0	4.6	4.5	6.2	6.2	5.4	5.6	
50	33.5	18		27	35	37	45	
DRIVE	DRIVE							

143.31

Van Nuys

0732 = 4' Conc. Walk

0715

= 0700 Ahead

5739.8 = E. Line La Jolla Mesa Drive

5721.8 = East Edge East. Pav

5708.3 = Existing Pav Strip

4724.5

= West Edge A.C. Paving

4789

L71

L

R71

142.84

142.27

60

5.11
35

5.18
45

7.06
45
147.35

0.5
35
147.45

5.4
15
142.55

6.
27
141.85

7.3
35
140.65

6.3
45
141.65

Lawn

4.1
45
143.85

5.2
35
142.25

6.4
15
141.55

7.1
28
140.85

8.4
35
139.55

8.3
45
139.65

8.6
45
139.35

3.20
85
144.75

5.74
35
142.21

6.33
20
141.62

7.31
20
140.64

8.22
35
139.73

9.03
85
138.92

11.49
85
136.46

2.83
85
145.12

5.30
35
142.65

6.02
20
141.23

6.93
20
141.02

7.89
35
140.06

8.67
85
139.28

11.26
85
136.62

143.84
85

142.13
50

141.39
35

140.76
20

139.98
20

139.14
20

138.25
35

137.56
50

135.68
85

133.7
50

132.7
85

6.1
50
141.85

6.3
35
141.65

6.7
28
141.25

7.4
20
140.65

8.0
25
139.25

9.2
35
138.92

9.5
50
138.45

10.5
50
137.65

147.95

Van Nuys
from Mojave Mesa Drive, East.

1+17 = East edge Conc. Drive

1+67 = Beg. Conc. Drive

1+00 = End Drive

0+77 = Beg. Drive

± 3' Conc. Walk
0+73 = Beg. Conc. Drive on Rt.

0+50

TR 1077 156.83 189 146.06
147.95

61

144⁷⁶ 144⁹⁸
1207 1235
35 45
Drive Drive

144⁸⁰ 144⁴⁹
1203 1234
35 45
Drive Drive

150 ⁴³	149 ⁶³	148 ⁰³	147 ¹³	146 ⁵³	145 ²³	144 ⁶⁸	144 ⁴⁸
6.4	7.2	8.8	9.7	10.3	11.6	12.15	12.35
45	35	25	13		27	35	45
						Drive	Drive

144² 144⁴³
1272 1290
345 45

143⁸² 143⁸⁸
1301 1295
345 45
Ditto Ditto
Work Work

149 ³³	148 ²³	146 ⁴³	145 ⁴³	144 ⁷³	143 ⁸³	144 ⁰³	143 ⁶³	143 ¹³
7.5	8.1	10.4	11.4	11.9	13.0	12.8	13.2	13.7
45	35	15	13		20	30	35	45
								Lower

156.83

Van Nuys
from Mojave Mesa Drive East.

2+50

2+26 = 2 3' Conc. Walk

2+00 = Beg. Conc. Ret Wall on Rt.

1+64 = End Drive

1+56 = Beg. Conc. Drive

1+50

1+42 = 2 3' Conc. Walk

Lt.

Rt.

Rt.

61A

149⁷ 149⁰ 147⁶ 146² 146⁵ 146⁰ 145² 145⁴ 145² 144²

7.1 7.8 9.2 10.0 10.3 10.8 11.6 11.44 11.5 11.9
40 35 14 12 20 35 35.1 45 45
Walk Walk grad.

145³⁴ 145¹¹ 144⁷⁴

11.49 11.72 11.89
35 36 45
Walk Walk

149² 149² 147² 147² 147⁰ 145²⁰ 144⁵³ 145²⁸

6.9 7.6 8.9 9.5 9.8 11.53 12.3 11.55
45 35 13 12 35 45 45
Top Walk = ground 50
Walk

150⁹⁴ 150⁸⁰

5.89 6.43
45 35
Dr. Dr.

150⁹⁶ 150³⁸

5.87 6.45
45 35
Dr. Dr.

150⁷³ 149⁴³ 147⁶³ 147¹³ 145⁰³ 144²

6.1 6.9 9.2 9.7 11.8 12.0
45 35 13 35 45
Lowin Lowin

145²⁴ 144⁵⁰

11.59 11.95
35 45
Walk

156.83

Van Nuys
from Mojave Mesa Dr, East.

on Pipe 35' Lt 4750

TR 1176 166, 67 192 154, 91

4773 = 2 3' Conc. Walk

4750

4700

3765 = 2 4' Conc. Walk

3750 lot on Lt, Excavated for New House
Grade of St could be raised 0.5' below
The Elevation without leaving
any lot below grade, and no culvert
will be necessary

3700

156.83

Lt.

St

Rt.

62

156⁷⁸ 156²³

0.10 0.60
45 342
Walk Walk

155⁴ 155⁰ 153⁶ 152⁸ 152⁶ 152² 152⁰ 150⁶
1.4 1.8 3.2 4.0 4.2 4.6 4.8 6.2
50 35 12 10 19 35 50

151⁵ 151⁶ 151² 150⁵ 150¹ 149⁴ 148²
5.3 5.2 5.8 6.3 6.7 7.4 7.9
50 35 12 11 35 50

148⁰⁴ 148⁰
8.79 8.85
35 45
Walk Walk

149⁶ 150² 148² 148⁵ 148⁴ 147⁵ 147¹
7.2 6.6 8.0 8.3 8.4 9.3 9.7
50 35 12 11 35 45

149⁸ 148⁴ 147³ 146¹ 147¹ 146⁶ 145² 146⁰
7.5 8.4 9.5 10.1 9.7 10.2 11.1 10.8
45 35 13 11 18 35 45

156.83

Van Nuys
from Mojave Mesa Dr. East.

6+02 = 1/2 Fire Plg. 23' Rt.

6+00

5+50

5+45 = End Conc. Drive

5+35 = Beg. Conc. Drive

5+00

4+94 = End Conc. Drive

4+86 = Beg. Conc. Drive

166.67

Lt.

2

Rt.

162⁶ 161⁸ 160⁶ 159⁸ 159⁶ 158² 157⁸ 157⁸
4.1 4.9 6.1 6.9 7.2 7.8 8.9 24
45 35 15 13 18 35 45

63

160⁶ 159² 158² 157⁸ 157⁸ 157² 156⁸ 155⁴
6.1 7.0 8.0 8.9 9.2 9.6 9.9 11.3
45 35 15 11 20 35 45

161³⁰ 159¹²
5.37 6.88
45 35
Drive Drive

161³⁰ 159¹²
5.37 6.85
45 35
Drive Drive

158² 157⁸ 156² 155⁸ 155⁸ 155² 154⁸ 154²
8.7 9.3 10.4 11.4 11.3 11.5 12.3 12.7
45 35 13 10 20 35 45
at wall
ground Dirt Drive Dirt Drive

157⁵⁴ 157¹²
9.13 9.48
45 35
Drive Drive

157⁴⁵ 157⁰⁸
9.22 9.59
44 35
Drive Drive 166.67

Van Nuys
from La Jolla Mesa Dr, East.

7+~~50~~²⁸ = 2' Conc. Walk

7+00

T.P. 744 17162 249 164, 18

6+72 = End of Drive

6+61 = Beg. Conc. Drive
Walk +

6+50

6+23 = End Drive

6+15 = Beg. Conc. Drive

166.67

Lt.

L

Rt.

168⁷⁶ 167⁶⁹
286 393
45 34.8
Walk Walk

64

167 ²	166 ²	165 ⁵	164 ⁴	163 ⁸	163 ²	161 ⁷	161 ¹
4.6	4.8	6.1	7.2	7.8	8.4	9.9	10.5
45	35	18	15		16	35	45

17162

161¹⁰ 160⁶⁸
5.57 5.99
34.5 45
Drive

160⁹² 160⁵⁰
5.69 6.17
34.5 45
Drive

164 ⁸	164 ³	163 ¹	162 ¹	161 ⁸	161 ²	160 ²	159 ⁴
1.9	2.4	3.6	4.6	4.9	5.4	6.5	7.3
45	35	17	14		17	35	45

158²⁰ 158⁴⁹
7.77 8.18
34.7 45
Drive Drive

158⁵⁷ 158⁴¹
7.80 8.18
34.7 45
Drive Drive

166.67

Van Hays
from Lofolla Mesa Dr. East

10+00

	Lt.			Rt.
168 ²	168 ²	167 ²	166 ²	165 ²
2.8	3.4	4.6	5.6	5.8
45	35	15	13	17
165 ²	164 ²	164 ²	164 ²	164 ²
5.9	6.7	6.8	7.2	7.2
17	27	35	45	45

9+50

167 ⁶	167 ⁴	166 ²	165 ²	163 ²	164 ⁶	164 ⁶	163 ²	163 ²
4.0	4.2	4.8	6.0	6.6	7.0	7.1	7.7	8.3
45	35	34	20	15		20	35	45

9+12 = 2' 4' Conc. Walk

163 ^{6.7}	163 ^{2.1}
7.95	8.31
36	42
Walk	Walk

9+00

167 ²	167 ³	166 ²	165 ²	164 ²	164 ²	163 ²	163 ²
4.3	4.3	5.3	6.1	6.9	7.3	8.2	8.5
45	35	31	20		20	35	45

Low 17

8+50

168 ²	167 ²	167 ²	166 ²	165 ²	164 ²	163 ²	163 ²
2.7	3.8	4.3	5.2	6.3	7.4	7.7	8.3
45	35	35	20		17	35	45

Low 17

8+00

28 Rt.

7+92.14 on Conc. Men 7.90 163.72

169 ²	168 ²	167 ⁵	166 ⁶	165 ⁵	164 ²	163 ²	162 ⁴
3.6	3.3	4.1	5.0	6.1	6.8	8.4	9.2
45	35	22	18		12	35	45

7+50

168 ²	167 ⁵	166 ²	165 ²	165 ²	164 ²	163 ²	162 ²	161 ²
3.4	4.1	5.3	5.9	6.6	7.6	8.5	9.6	10.1
45	35	20	17		15	19	35	45

171.62

171.62

Van Nuys

11+59.5 = 1/2 Cass St.

	Lt.		L ₂		Rt.					
162 ¹	178 ⁶	174 ⁰	173 ⁰	171 ¹	170 ²	169 ⁵	169 ²	168 ²	169 ⁰	66
+3.2	0.3	4.9	5.9	7.5	8.0	9.4	9.7	10.0	9.9	
50	35	20	10	4		20	35	50	100	

11 + 49 = opposite Hwy end 30" Conc. Culvert

163⁵
152.9
53
Invert Culvert.

11 + 39.52

179 ⁰	176 ²	173 ⁶	171 ²	170 ²	168 ²	168 ⁴	166 ²	163 ⁵	166 ⁵
+0.1	2.0	5.3	7.6	8.0	10.0	10.5	12.0	15.3	17.3
50	35	11	5		30	35	50	60	75

Wash.

11 + 26.52 = 28' Rt. on Conc. Man

10.26 165.60

11 + 33.8 = 1/2 Pole # P-5348 31.2' Rt

178 ⁰	175 ²	173 ²	171 ¹	170 ⁶	169 ²	168 ⁴	167 ¹
0.9	3.2	5.7	7.8	8.3	9.6	10.5	11.5
50	35	12	8		20	35	50

11 + 19.52 = 1/4 Cass St.

11 + 00

175 ²	174 ⁵	172 ²	170 ⁴	169 ²	168 ²	167 ⁵	167 ²
3.2	4.4	6.0	8.5	9.0	10.0	11.4	11.6
45	35	15	9		20	35	45

10 + 70 = 1/2 2' Conc. Walk

167²⁶ 167⁰⁶

1160 1180

29 35

Walk Walk

178.86

T.P. 9.57 178.86 2.33 169.29

10 + 50

172 ¹	171 ¹	170 ²	169 ²	168 ²	167 ²	167 ²	166 ²	166 ¹
+9.5	5.5	1.3	2.6	3.6	3.9	4.3	5.4	5.5
45	35	22	12	10		18	35	45

171.62

171.62

Van Nuy's

13+55

Lt.	L.	Rt.
178 ⁶	177 ²	177 ²
0.3	4.0	1.7
50	35	30
		2.2
		2.7
		7.4
		7.0
		25
		24
		35
		Wash
		Wash
		67
		62
		50

13+25

179 ³	177 ⁰	175 ⁸	175 ²	174 ²	170 ²	170 ⁵	170 ²	170 ⁴
+0.4	1.9	2.1	3.7	4.6	8.0	8.4	7.1	7.5
50	35	20		19	24	38	41	50
					Wash	Wash		

12+85

182 ⁵	177 ³	174 ³	174 ⁵	174 ¹	172 ⁵	168 ⁶	168 ⁴	170 ²	170 ²
+3.6	1.6	4.1	4.4	4.8	6.4	10.3	10.5	8.6	8.0
50	35	16		12	19	25	35	37	50
						Wash	Wash		

12+35

183.7	177 ⁵	176 ²	171 ⁵	170 ⁶	170 ⁴	167 ²	167 ⁴	168 ⁸
+4.8	1.4	5.2	7.4	8.3	8.5	11.2	11.5	9.8
50	35	25	14		24	23	36	39
						Wash	Wash	50

12+10

23.3 Rt. = 2 Fire Plg.

11+99.52 = E. Line Cuss

183.9	177 ⁵	170 ²	169 ²	169 ⁴	166 ²	165 ²	168 ²	167 ²	168 ²
+5.0	1.3	8.2	9.2	2.5	12.7	12.0	10.6	11.0	10.7
50	35	21		26	32	39	41	50	68
					Wash	Wash			

11+80

39.3 Rt. Inlet of 30" Culvert.

182 ⁷	178 ⁵	170 ¹	170 ¹	169 ⁵	165 ⁴	168 ⁰	168 ²
+3.8	+0.4	8.6	8.6	2.9	9.1	13.45	10.9
50	35	13		15	29	39.3	50
						Invert.	10.7

11+76

183 ¹	178 ⁵	176 ⁴	171 ³	170 ⁷	170 ⁴	169 ⁶	169 ⁶	169 ²	168 ⁶
+4.2	0.3	2.5	7.6	8.2	8.5	9.3	9.3	2.7	10.3
50	35	27	13	5		15	35	50	100

178.86

178.86

~ Van Huys ~

69

5W 7 Mon Archers Coss			<u>0.01</u>	
chk BM Conc Man	12.94		163.05	
			163.06	
TP 2.49	176.00	12.60	173.51	

F.B. 1724
44

18611

11-17-50

Van Nuys
Levels Existing

Culvert = 30" Corrugated Iron

Note: This Culvert Empties on
Private Property. Looks as if a
sufficient cut is made at 8+00
No Culvert would be necessary.
Please make field check.

Chas. Walker

70

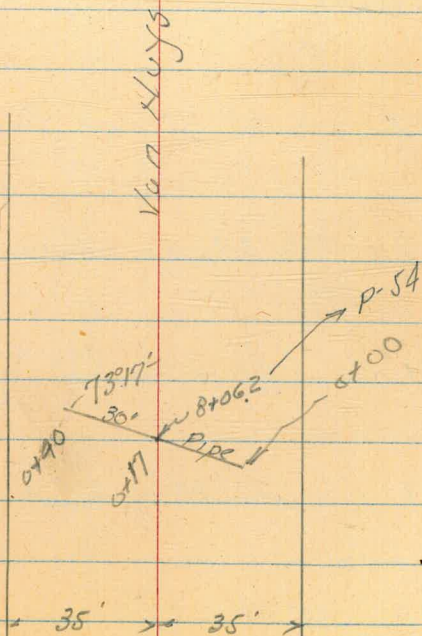
	165.65
0+40 = End Pipe	594
	160.84
0+00 Invert	10.75

B.M. on Mon 28th. 7192.14 - P. 65

7.87

171.52

163.72



Water Meter boxes

Van Nuys. 7-9-51

~~Sommernoyes~~
Begg
Sisson
Altman

For cross sec. see P 53

Elevations shown - used D.E. Rod.

" " = Top of box. Service
Pipes 0.9' lower.

Stations same as on P 53 to P 69

INDEXED

71

1+94 22' Rt. = (W)

129.6
22
(W)

1+88 23' Lt. = (W)

132.1
23
(W)

1+77 23' Rt. = (W)

129.1
23
(W)

0+81 22' Lt. = (W)

127.7
22
(W)

0+39 23' Lt. = (W)

126.2
23
(W)

0+31 22' Rt. = (W)

EL. = 123.5
22
(W)

0+00 = 0+00 bottom of P 53

Water Meter boxes

Van Nuys. 7-9-51

Sommermeier
Begg
Sisson
Altman

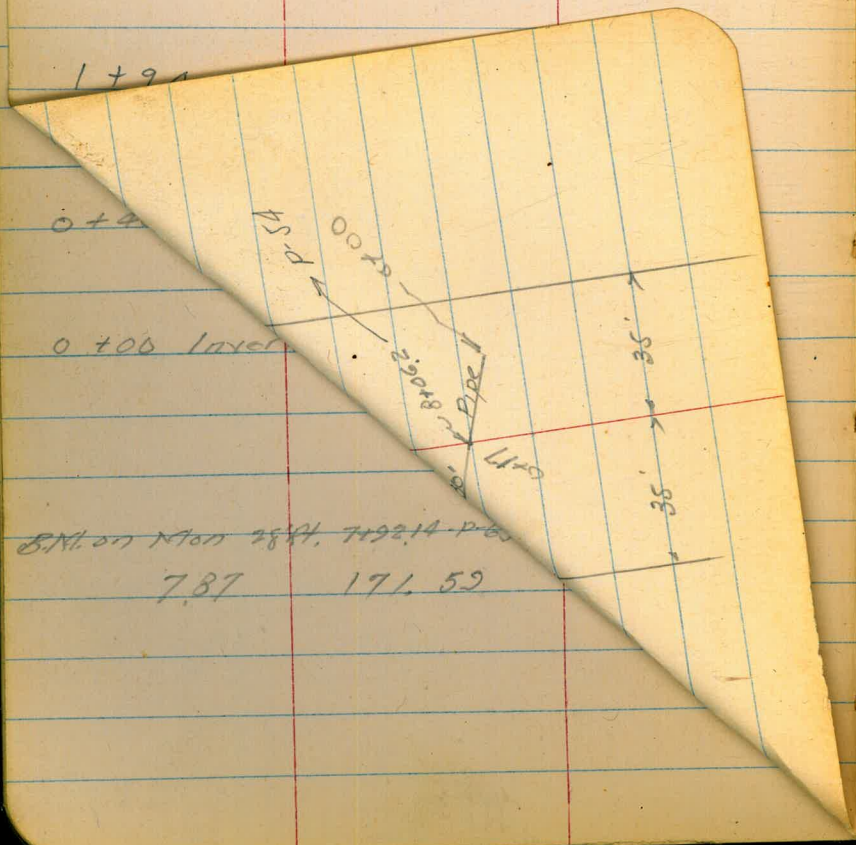
For cross sec. see P 53

Elevations shown - used D.E. Rod.

" " = top of box. service

Pipes 0.9' lower.

Stations same as on P 53 to P 69



INDEXED

129.6
22
W

132.1
23
W

129.1
23
W

127.7
22
W

126.2
23
W

EL. = 123.5
22
W

Van Nuys

139.54

4+798 = wly. line La Jolla Mesa Dr.

4+53 24 Rt = (W)

4+43 24' Lt. = (W)

4+04 22' Rt. = (W)

3+71 22' Lt. = (W)

3+31 23' Lt. = (W)

3+11 24' Rt. = (W)

2+87- 23' Lt. = (W)

2+59 22' Rt. = (W)

2+38 - 22' Lt. = (W)

137.99

72

S.E. 7' Mon. La Jolla Mesa Dr. + Van Nuys

137.2
24
(W)

141.0
24
(W)

137.5
22
(W)

138.2
22
(W)

135.8
23
(W)

133.0
24
(W)

134.3
23
(W)

131.4
22
(W)

132.9
22
(W)

Van Nuys - (W)

±

73

2+72 24' Lt. = (W)

147.7

24
(W)

2+49 23' Rt. = (W)

146.0

23
(W)

2+26 23' Lt. = (W)

148.4

23
(W)

1+79 22' Lt. = (W)

147.7

22
(W)

1+51 22' Rt. = (W)

145.8

22
(W)

1+35 24' Lt. = (W)

148.8

24
(W)

0+86 22' Rt. = (W)

144.7

22
(W)

0+41 22' Rt.

143.2

22
(W)

0+00 = Ely. line La Jolla Mesa Dr.

Van Nuys (W)

⊕

150.75 TP
159.68

74

6+21 24' Lt. = (W)

161.6
24
(W)

5+82 22' Rx. = (W)

158.0
22
(W)

5+42 22' Rt. = (W)

156.4
22
(W)

5+05 22' Lt. = (W)

157.0
22
(W)

4+70 22' Rt. = (W)

153.4
22
(W)

4+65 22' Lt. = (W)

154.7
22
(W)

4+34 22' Rx. = (W)

151.1
22
(W)

3+74 22' Rx. = (W)

148.3
22
(W)

3+20 24' Lt. = (W)

148.8
24
(W)

Van Nuys (W)

164.98 T.P.

75

±

9+88 21' RT. = (W)

165.0

21

(W)

9+64 23' Lt. = (W)

166.3

23

(W)

9+15 22' RT. = (W)

164.3

22

(W)

8+63 22' RB. = (W)

164.4

22

(W)

8+10 25' RT. = (W)

164.0

25

(W)

7+43 23' Lt. = (W)

166.7

23

(W)

7+31 24' RT. = (W)

162.9

24

(W)

6+88 22' RT. = (W)

162.1

22

(W)

6+40 22' RT. = (W)

160.3

22

(W)

Van Nuys (W)

76

12+07 22 Lt. = (W)

10+69 22 Rt. = (W)

171.8
22
(W)

167.9
22
(W)

Roberts
Rorer
Moore
Moralez
6-9-55
W.O. 32523

Bench Mark Check

77

BM 8.45 98.69 = 98.54 NWBP Sapphire & Mission Blvd.

T.P. 3.57 107.14 103.57



BM 10.38 103.57 = 103.56
NWBP
La Jolla Mesa Dr.
and
Turquoise

T.P. 3.69 113.95 9.87 110.26

T.P. 0.36 120.13 12.62 119.77

T.P. 1.15 132.39 13.14 131.24

T.P. 0.03 144.38 12.45 144.35

T.P. 0.19 156.80 13.04 156.61

set TBM 0.35 169.30 SW 1/4 Sec. in Ch.
Cass & Van Noy

BM 1.05 169.65 SW 1/4 Mon.
Cass & Van Noy

Mon at Archer & Dawes gone.

Roberts
Rorer
Moore
Morales
6-9-55
WO*32523

Check Elevations of
Ends of Curb Returns

check back flat!

NW Corner

NE Corner

SE Corner

SW corner Agate & La Jolla Mesa

BM

1147 115.05 π

nw 5P

103.56 La Jolla Mesa

1/2 Turquoise

115.05 π

78

113.91
1.14
Curb End
Top cb

114.38
0.68
Curb End
Top cb

112.34
2.71
Curb End
Top cb

114.86
3.19
Curb End
Top cb.

Robert
Rorer
Moore
Morales
6-9-55
WO+32

check

NW

NE

SE

SW

BM

1266
263
1529

1082
263
1345

Robert
Rorer
Moore
Morale
6-9-53
W.O.*32

57.76 9.425 125.29
 3.56 2.20 7.25
 2.20 7.25 118.04
 118.29
 0.85

125.29
 5.26

180.03
 178.88

1.64

0.12

check

125.29
 7.10

80

36

44

118.19

✓

121-15

NW

134.85

6.60

22

7

141.54

18

5.03

4109.50

546

4149.6

NE

186.57

SE

939.4 to End C&S

943.6 to cb line

SW C

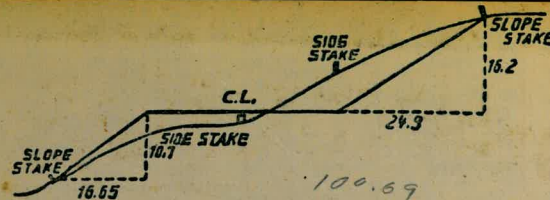
12

340

18.60

BM

1480
 153
 3
 3
 199



DISTANCES FROM SIDE STAKES FOR CROSS-SECTIONING.
 SLOPE 1 1/2 TO 1. ROADWAY OF ANY WIDTH.

	0	.1	.2	.3	.4	.5	.6	.7	.8	.9	
0	0.00	0.15	0.30	0.45	0.60	0.75	0.90	1.05	1.20	1.35	0
1	1.50	1.65	1.80	1.95	2.10	2.25	2.40	2.55	2.70	2.85	1
2	3.00	3.15	3.30	3.45	3.60	3.75	3.90	4.05	4.20	4.35	2
3	4.50	4.65	4.80	4.95	5.10	5.25	5.40	5.55	5.70	5.85	3
4	6.00	6.15	6.30	6.45	6.60	6.75	6.90	7.05	7.20	7.35	4
5	7.50	7.65	7.80	7.95	8.10	8.25	8.40	8.55	8.70	8.85	5
6	9.00	9.15	9.30	9.45	9.60	9.75	9.90	10.05	10.20	10.35	6
7	10.50	10.65	10.80	10.95	11.10	11.25	11.40	11.55	11.70	11.85	7
8	12.00	12.15	12.30	12.45	12.60	12.75	12.90	13.05	13.20	13.35	8
9	13.50	13.65	13.80	13.95	14.10	14.25	14.40	14.55	14.70	14.85	9
10	15.00	15.15	15.30	15.45	15.60	15.75	15.90	16.05	16.20	16.35	10
11	16.50	16.65	16.80	16.95	17.10	17.25	17.40	17.55	17.70	17.85	11
12	18.00	18.15	18.30	18.45	18.60	18.75	18.90	19.05	19.20	19.35	12
13	19.50	19.65	19.80	19.95	20.10	20.25	20.40	20.55	20.70	20.85	13
14	21.00	21.15	21.30	21.45	21.60	21.75	21.90	22.05	22.20	22.35	14
15	22.50	22.65	22.80	22.95	23.10	23.25	23.40	23.55	23.70	23.85	15
16	24.00	24.15	24.30	24.45	24.60	24.75	24.90	25.05	25.20	25.35	16
17	25.50	25.65	25.80	25.95	26.10	26.25	26.40	26.55	26.70	26.85	17
18	27.00	27.15	27.30	27.45	27.60	27.75	27.90	28.05	28.20	28.35	18
19	28.50	28.65	28.80	28.95	29.10	29.25	29.40	29.55	29.70	29.85	19
20	30.00	30.15	30.30	30.45	30.60	30.75	30.90	31.05	31.20	31.35	20
21	31.50	31.65	31.80	31.95	32.10	32.25	32.40	32.55	32.70	32.85	21
22	33.00	33.15	33.30	33.45	33.60	33.75	33.90	34.05	34.20	34.35	22
23	34.50	34.65	34.80	34.95	35.10	35.25	35.40	35.55	35.70	35.85	23
24	36.00	36.15	36.30	36.45	36.60	36.75	36.90	37.05	37.20	37.35	24
25	37.50	37.65	37.80	37.95	38.10	38.25	38.40	38.55	38.70	38.85	25
26	39.00	39.15	39.30	39.45	39.60	39.75	39.90	40.05	40.20	40.35	26
27	40.50	40.65	40.80	40.95	41.10	41.25	41.40	41.55	41.70	41.85	27
28	42.00	42.15	42.30	42.45	42.60	42.75	42.90	43.05	43.20	43.35	28
29	43.50	43.65	43.80	43.95	44.10	44.25	44.40	44.55	44.70	44.85	29
30	45.00	45.15	45.30	45.45	45.60	45.75	45.90	46.05	46.20	46.35	30
31	46.50	46.65	46.80	46.95	47.10	47.25	47.40	47.55	47.70	47.85	31
32	48.00	48.15	48.30	48.45	48.60	48.75	48.90	49.05	49.20	49.35	32
33	49.50	49.65	49.80	49.95	50.10	50.25	50.40	50.55	50.70	50.85	33
34	51.00	51.15	51.30	51.45	51.60	51.75	51.90	52.05	52.20	52.35	34
35	52.50	52.65	52.80	52.95	53.10	53.25	53.40	53.55	53.70	53.85	35
36	54.00	54.15	54.30	54.45	54.60	54.75	54.90	55.05	55.20	55.35	36
37	55.50	55.65	55.80	55.95	56.10	56.25	56.40	56.55	56.70	56.85	37
38	57.00	57.15	57.30	57.45	57.60	57.75	57.90	58.05	58.20	58.35	38
39	58.50	58.65	58.80	58.95	59.10	59.25	59.40	59.55	59.70	59.85	39
40	60.00	60.15	60.30	60.45	60.60	60.75	60.90	61.05	61.20	61.35	40
41	61.50	61.65	61.80	61.95	62.10	62.25	62.40	62.55	62.70	62.85	41
42	63.00	63.15	63.30	63.45	63.60	63.75	63.90	64.05	64.20	64.35	42
43	64.50	64.65	64.80	64.95	65.10	65.25	65.40	65.55	65.70	65.85	43
44	66.00	66.15	66.30	66.45	66.60	66.75	66.90	67.05	67.20	67.35	44
45	67.50	67.65	67.80	67.95	68.10	68.25	68.40	68.55	68.70	68.85	45
46	69.00	69.15	69.30	69.45	69.60	69.75	69.90	70.05	70.20	70.35	46
47	70.50	70.65	70.80	70.95	71.10	71.25	71.40	71.55	71.70	71.85	47
48	72.00	72.15	72.30	72.45	72.60	72.75	72.90	73.05	73.20	73.35	48
49	73.50	73.65	73.80	73.95	74.10	74.25	74.40	74.55	74.70	74.85	49
50	75.00	75.15	75.30	75.45	75.60	75.75	75.90	76.05	76.20	76.35	50

THE NATIONAL BLANK BOOK COMPANY
 HOLYOKE MASSACHUSETTS
 NEW YORK CHICAGO BOSTON SAN FRANCISCO