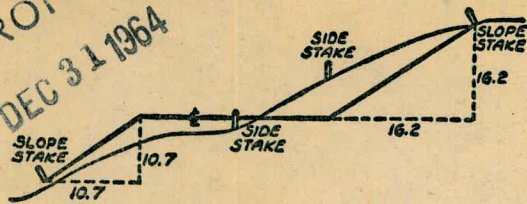


2063

FRANCE 1901

MICROFILMED
DEC 31 1964



DISTANCES FROM SIDE STAKES FOR CROSS-SECTIONING
SLOPE 1 TO 1. ROADWAY OF ANY WIDTH

	0	.1	.2	.3	.4	.5	.6	.7	.8	9	
0	0.00	0.10	0.20	0.30	0.40	0.50	0.60	0.70	0.80	0.90	0
1	1.00	1.10	1.20	1.30	1.40	1.50	1.60	1.70	1.80	1.90	1
2	2.00	2.10	2.20	2.30	2.40	2.50	2.60	2.70	2.80	2.90	2
3	3.00	3.10	3.20	3.30	3.40	3.50	3.60	3.70	3.80	3.90	3
4	4.00	4.10	4.20	4.30	4.40	4.50	4.60	4.70	4.80	4.90	4
5	5.00	5.10	5.20	5.30	5.40	5.50	5.60	5.70	5.80	5.90	5
6	6.00	6.10	6.20	6.30	6.40	6.50	6.60	6.70	6.80	6.90	6
7	7.00	7.10	7.20	7.30	7.40	7.50	7.60	7.70	7.80	7.90	7
8	8.00	8.10	8.20	8.30	8.40	8.50	8.60	8.70	8.80	8.90	8
9	9.00	9.10	9.20	9.30	9.40	9.50	9.60	9.70	9.80	9.90	9
10	10.00	10.10	10.20	10.30	10.40	10.50	10.60	10.70	10.80	10.90	10
11	11.00	11.10	11.20	11.30	11.40	11.50	11.60	11.70	11.80	11.90	11
12	12.00	12.10	12.20	12.30	12.40	12.50	12.60	12.70	12.80	12.90	12
13	13.00	13.10	13.20	13.30	13.40	13.50	13.60	13.70	13.80	13.90	13
14	14.00	14.10	14.20	14.30	14.40	14.50	14.60	14.70	14.80	14.90	14
15	15.00	15.10	15.20	15.30	15.40	15.50	15.60	15.70	15.80	15.90	15
16	16.00	16.10	16.20	16.30	16.40	16.50	16.60	16.70	16.80	16.90	16
17	17.00	17.10	17.20	17.30	17.40	17.50	17.60	17.70	17.80	17.90	17
18	18.00	18.10	18.20	18.30	18.40	18.50	18.60	18.70	18.80	18.90	18
19	19.00	19.10	19.20	19.30	19.40	19.50	19.60	19.70	19.80	19.90	19
20	20.00	20.10	20.20	20.30	20.40	20.50	20.60	20.70	20.80	20.90	20
21	21.00	21.10	21.20	21.30	21.40	21.50	21.60	21.70	21.80	21.90	21
22	22.00	22.10	22.20	22.30	22.40	22.50	22.60	22.70	22.80	22.90	22
23	23.00	23.10	23.20	23.30	23.40	23.50	23.60	23.70	23.80	23.90	23
24	24.00	24.10	24.20	24.30	24.40	24.50	24.60	24.70	24.80	24.90	24
25	25.00	25.10	25.20	25.30	25.40	25.50	25.60	25.70	25.80	25.90	25
26	26.00	26.10	26.20	26.30	26.40	26.50	26.60	26.70	26.80	26.90	26
27	27.00	27.10	27.20	27.30	27.40	27.50	27.60	27.70	27.80	27.90	27
28	28.00	28.10	28.20	28.30	28.40	28.50	28.60	28.70	28.80	28.90	28
29	29.00	29.10	29.20	29.30	29.40	29.50	29.60	29.70	29.80	29.90	29
30	30.00	30.10	30.20	30.30	30.40	30.50	30.60	30.70	30.80	30.90	30
31	31.00	31.10	31.20	31.30	31.40	31.50	31.60	31.70	31.80	31.90	31
32	32.00	32.10	32.20	32.30	32.40	32.50	32.60	32.70	32.80	32.90	32
33	33.00	33.10	33.20	33.30	33.40	33.50	33.60	33.70	33.80	33.90	33
34	34.00	34.10	34.20	34.30	34.40	34.50	34.60	34.70	34.80	34.90	34
35	35.00	35.10	35.20	35.30	35.40	35.50	35.60	35.70	35.80	35.90	35
36	36.00	36.10	36.20	36.30	36.40	36.50	36.60	36.70	36.80	36.90	36
37	37.00	37.10	37.20	37.30	37.40	37.50	37.60	37.70	37.80	37.90	37
38	38.00	38.10	38.20	38.30	38.40	38.50	38.60	38.70	38.80	38.90	38
39	39.00	39.10	39.20	39.30	39.40	39.50	39.60	39.70	39.80	39.90	39
40	40.00	40.10	40.20	40.30	40.40	40.50	40.60	40.70	40.80	40.90	40
41	41.00	41.10	41.20	41.30	41.40	41.50	41.60	41.70	41.80	41.90	41
42	42.00	42.10	42.20	42.30	42.40	42.50	42.60	42.70	42.80	42.90	42
43	43.00	43.10	43.20	43.30	43.40	43.50	43.60	43.70	43.80	43.90	43
44	44.00	44.10	44.20	44.30	44.40	44.50	44.60	44.70	44.80	44.90	44
45	45.00	45.10	45.20	45.30	45.40	45.50	45.60	45.70	45.80	45.90	45
46	46.00	46.10	46.20	46.30	46.40	46.50	46.60	46.70	46.80	46.90	46
47	47.00	47.10	47.20	47.30	47.40	47.50	47.60	47.70	47.80	47.90	47
48	48.00	48.10	48.20	48.30	48.40	48.50	48.60	48.70	48.80	48.90	48
49	49.00	49.10	49.20	49.30	49.40	49.50	49.60	49.70	49.80	49.90	49
50	50.00	50.10	50.20	50.30	50.40	50.50	50.60	50.70	50.80	50.90	50

Distance of slope stake from side or shoulder stake for any width roadway, slope 1 to 1. If ground is nearly level, the cut or fill at side stake is located by the double entry method in left column and top row. The number in body of table in same row and column gives distance from side stake to slope stake. If ground is not level estimate the difference in elevation between the side stake and slope stake, lower target by this amount if cut, elevate if fill. Add this amount to cut or fill and find distance in table. Set up rod at this point, and line of sight should cut target. If it does not make the slight adjustment necessary.

INDEXED

Through p. 53

TABLE XIII—CORRECTIONS FOR TANGENTS AND EXTERNALS

These corrections are to be added to the approximate values, found by dividing the tangent, or external, for a 1° curve (Table VIII) by the degree of curve, in order to obtain the true tangents, or externals. Intermediate values may be obtained by interpolation.

FOR TANGENTS ADD

Central Angle	DEGREE OF CURVE													
	5°	10°	15°	20°	25°	30°	35°	40°	45°	50°	55°	60°	65°	70°
10°	.03	.06	.09	.13	.16	.19	.22	.25	.28	.31	.34	.38	.42	.46
15°	.04	.10	.14	.19	.24	.29	.34	.39	.45	.51	.53	.58	.63	.68
20°	.06	.13	.19	.26	.32	.39	.45	.51	.58	.65	.72	.79	.84	.90
25°	.08	.16	.24	.33	.40	.49	.58	.67	.75	.83	.90	.99	1.06	1.14
30°	.10	.19	.29	.39	.49	.59	.69	.79	.89	.99	1.09	1.20	1.29	1.39
35°	.11	.22	.34	.47	.58	.69	.79	.81	.92	1.04	1.29	1.42	1.54	1.66
40°	.13	.26	.40	.53	.67	.80	.93	1.06	1.20	1.34	1.49	1.64	1.79	1.94
45°	.15	.30	.44	.60	.76	.91	1.06	1.21	1.37	1.52	1.70	1.87	2.04	2.21
50°	.17	.34	.51	.68	.85	1.02	1.19	1.36	1.54	1.72	1.91	2.10	2.29	2.48
55°	.19	.38	.57	.76	.95	1.14	1.32	1.52	1.72	1.92	2.14	2.35	2.56	2.77
60°	.21	.42	.63	.84	1.05	1.27	1.49	1.71	1.94	2.17	2.38	2.60	2.83	3.07
65°	.23	.46	.69	.93	1.16	1.40	1.64	1.88	2.13	2.38	2.63	2.88	3.13	3.39
70°	.25	.51	.76	1.02	1.28	1.54	1.80	2.06	2.33	2.60	2.88	3.16	3.44	3.72
75°	.27	.56	.83	1.12	1.40	1.69	1.98	2.27	2.57	2.87	3.16	3.47	3.78	4.09
80°	.30	.61	.91	1.22	1.53	1.84	2.15	2.46	2.78	3.10	3.44	3.78	4.12	4.46
85°	.33	.66	1.00	1.33	1.68	2.02	2.36	2.70	3.05	3.40	3.77	4.14	4.55	4.89
90°	.36	.72	1.09	1.45	1.83	2.20	2.57	2.94	3.32	3.70	4.10	4.50	4.91	5.32
95°	.39	.79	1.19	1.55	2.00	2.40	2.80	3.20	3.61	4.02	4.40	4.98	5.38	5.83
100°	.43	.86	1.30	1.74	2.18	2.62	3.06	3.50	3.95	4.40	4.88	5.37	5.85	6.34
110°	.51	1.03	1.56	2.08	2.61	3.14	3.67	4.21	4.76	5.31	5.86	6.43	7.01	7.60
120°	.62	1.25	1.93	2.52	3.16	3.81	4.45	5.11	5.77	6.44	7.12	7.80	8.50	9.22

FOR EXTERNALS ADD

Central Angle	DEGREE OF CURVE													
	5°	10°	15°	20°	25°	30°	35°	40°	45°	50°	55°	60°	65°	70°
10°	.001	.003	.004	.006	.007	.008	.009	.011	.012	.014	.015	.017	.018	.020
15°	.003	.007	.010	.014	.018	.023	.027	.029	.032	.035	.039	.043	.047	.051
20°	.006	.011	.017	.022	.028	.034	.038	.045	.051	.057	.063	.070	.076	.083
25°	.009	.018	.027	.036	.046	.056	.065	.074	.083	.093	.106	.120	.127	.135
30°	.013	.025	.038	.051	.065	.078	.090	.103	.116	.129	.149	.170	.179	.188
35°	.018	.035	.054	.072	.086	.109	.131	.153	.175	.197	.213	.230	.247	.264
40°	.023	.046	.070	.093	.117	.141	.172	.203	.234	.265	.277	.290	.315	.341
45°	.030	.060	.093	.119	.153	.184	.216	.254	.289	.325	.351	.378	.411	.445
50°	.037	.075	.116	.151	.189	.227	.266	.305	.345	.384	.425	.467	.508	.550
55°	.046	.093	.142	.188	.236	.283	.332	.381	.420	.479	.530	.582	.641	.700
60°	.056	.112	.168	.225	.283	.340	.398	.457	.516	.575	.636	.697	.774	.851
65°	.067	.135	.204	.273	.343	.412	.483	.554	.625	.697	.771	.845	.922	1.01
70°	.080	.159	.240	.321	.403	.485	.568	.652	.735	.819	.906	.994	1.08	1.17
75°	.095	.182	.266	.353	.440	.528	.617	.707	.797	.891	.977	1.07	1.18	1.29
80°	.110	.220	.332	.445	.558	.671	.787	.903	1.02	1.13	1.25	1.38	1.50	1.62
85°	.128	.259	.391	.524	.657	.790	.926	1.06	1.20	1.34	1.47	1.62	1.76	1.91
90°	.149	.299	.450	.603	.756	.910	1.07	1.22	1.38	1.54	1.70	1.87	2.03	2.20
95°	.174	.350	.522	.706	.885	1.06	1.25	1.43	1.62	1.80	1.99	2.18	2.38	2.58
100°	.200	.401	.604	.809	1.01	1.22	1.43	1.64	1.85	2.06	2.28	2.50	2.73	2.96
110°	.268	.536	.806	1.08	1.35	1.63	1.91	2.20	2.48	2.76	3.05	3.35	3.66	3.96
120°	.360	.721	1.08	1.45	1.82	2.19	2.57	2.95	3.33	3.72	4.11	4.50	4.91	5.32

25-36 X Sec Gibson St Hilger to 69th

43 Re-X-Sec. BIK.5, Chester Park Add.

61 Alley BIK 13 - Cornish Hgts

X-sec. Plum St. Dickens	1-14
Rough " " " "	15
Stake Pulvert hor of Market	19
X-sec alley bet 252 26th St	
Blk - 5 Chester Park	43
X-Sect. C - Cotton to 46 th	22-24
Alley B.K.B. Cornish Hqts.	61-68

2-sec. PLUM. ST.

Fenelon to Garrison

3-13-50

Sommertmeyer
McCoy
Allen
Bunch

V.I.D. # 31628

INDEXED
W.K.
MAR 16 1950

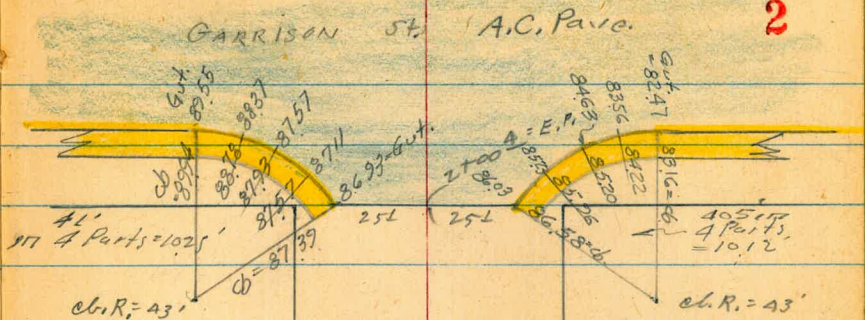
■ = Fd conc. Mon

⊙ = soil sample taken on Φ
at 0+50

sample taken at grade as
shown on profile #1307

PLUM

2



⊙ 0+50



PLUM.

Fenelon to Garrison

0.06 - No good, see page 4 for rerun.

check to S.W.B.P.
Willow + Garrison

2.92 51.57
51.63

S.W.B.P. Willow

+ Garrison = 78% 3.11 54.55 7.10 51.44

Bench book EL = 51.45

T.P. #5 0.75 58.54 12.52 57.79

T.P. #4 0.23 70.31 12.92 70.08

Set. B.P. #2 0.55 83.00 7.15 82.45

N.E. B.P. Plum + Garrison

0.50 89.69 12.65 89.10

Set. B.P.

#1 9.09 101.75 6.51 92.66

N.E. B.P. Plum + Fenelon

T.P. #3 12.72 99.17 0.70 86.45

T.P. #2 12.38 87.15 0.64 74.82

T.P. #1 12.48 75.46 0.55 63.03

S.W.B.P.
Willow +
Fenelon

12.01 63.58 — 51.57

Re-run bench Levels
(Plum St. P-3)

			Error		
Orig. B.M.			2.90	51.55	(51.57) S.W. B.P. Willow + Fenelon
T.P.#6	3.09	54.45	6.99	51.36	(51.45) S.W. B.P. Willow + Garrison
T.P.#5	0.62	58.35	12.66	57.73	
T.P.#4	0.36	70.39	12.69	70.03	
B.M.#2	0.30	82.72	6.99	82.42	Set. N.E.B.P. Plum + Garrison
T.P.	0.32	89.41	12.10	89.09	Put in bench book
B.M.#1	8.55	101.19	6.11	92.64	Set. N.E.B.P. Plum + Fenelon
T.P.#3	12.32	98.75	0.56	86.43	
T.P.#2	12.18	86.99	1.21	74.81	
T.P.#1	12.99	76.02	1.52	63.03	
	12.98	64.55	-	51.57	S.W. B.P. - Willow + Fenelon

Plum. St. Levels

FENELON to GARRISON
sketch - P. 2

0+64 = 34⁴ Rt. = end slab

104 2	100 2	97 4	97 5	95 5	96 4	95 4	97 0	97 0	97 2
102	40	7.3	7.3	8.2	8.5	8.9	7.73	7.72	7.53
42	35	29	17	10		14	34 1/2 Slab	35	34 1/2 at House
T.B.									

0+47 = 34⁶ Rt. = start Conc. slab.

97 0	97 10	97 21
7.65	7.63	7.48
34 1/2	35	44 1/2 at house

0+46 = 35⁵ Rt. = end picket fence & hedge

105 2	101 2	98 5	97 8	97 1	96 5	96 8	97 0
10.5	3.5	6.1	6.9	7.6	8.2	7.9	7.7
40	35	29	17		17	35	40
T.B.							

0+30

0+09 = 35⁵ Rt. = ± 3' wide Conc. walk

96 21	96 15
8.20	8.55
35 1/2	45 1/2

35⁴ Rt. = start picket fence & hedge
0+00 = Nly. Fenelon

108 2	101 2	100 2	97 6	97 4	96 5	96 5	96 2
11.0	3.0	4.0	6.9	7.3	8.1	8.2	8.5
40	35	28	17		17	35	40

T.B. = Top of bank

0-00⁴ = Nly edge Exist A.C. Pave

98 69	98 4	97 3	97 23	97 46	97 21	96 61	96 30	96 51
6.04	6.62	6.80	7.00	7.27	7.64	8.06	8.13	8.08
24 1/2	24 1/2	17	8 1/2		8 1/2	17	24 1/2	24 1/2
00	0					0	0	0

0+00 = Nly. line Fenelon

104.73

12.09

104.73

92.64

BMM1
P 4

Plum

Cont.

1+00 35' Lt. = start 8" wide Conc. wall.
24.8 Lt. = ctr. Pole # P1426

	100.2	100.8							
	0.1	3.9							
	42	354							
	7.8	TOP							
	950	995	999	999	10.2	94	94	95	97
	9.7	5.6	7.8	9.8	10.6	9.1	7.4	7.2	
	354	35	28	12	17	18	35	40	
	Base								

6

3 steps on city end.
0+99 = 17' Rt. = ± 3' wide flag stone walk

	94	94	95	97	97
	10.6	10.33	8.95	7.42	
	17	174	216	35	
	End.	Bottom	walk		
		step			

also = line of E+W. Fence.
0+86 19' Rt. = start picket fence
19' Rt. = start plank Ret. wall

	105.5	100.5	96.9	95.4	95.5	95.1	96.5	97.1	97.5
	10.8	4.2	7.8	8.9	9.4	9.6	8.2	7.6	7.4
	42	35	29	13	19	20	35	40	

0+85 19' Rt. = ± 2' wide E+W. Hedge

0+84 34' Rt. = End Conc. Dr. to Sing. Car.

	105.5	100.5	97.0	95.7	95.4	96.0	95.5	97.1	97.5
	10.8	4.2	7.7	8.8	9.3	9.7	9.1	7.52	7.51
	42	35	29	13	12	17	34	35	44.4
									at Car.

0+76 34' Rt. = start Conc. Drive to Sing Car.

	97.1	97.51	97.29
	7.56	7.52	7.44
	34	35	44.4
			Car.

0+69 20' Rt. = ± 18" wide E+W Hedge

104.73

Plum St.

±

7

1+60

90	91	92	91	90	89	89	91	90	91
8.8	7.8	7.6	8.6	9.5	9.9	10.4	8.3	3.4	0.4
354	35	31	14	13		13	28	35	37
Base wall									T.B.

1+31 - 37 Rt. Cut bank starts

93	94	93	93	92	92	92	92	98	101
6.5	5.6	5.6	6.7	7.3	7.6	7.0	3.0	1.0	+1.0
354	354	35	20		11	18	34	35	39
Base of wall									T.B.

1+30 Cont

95	101	96
3.9	+1.1	3.2
33	33	40
Base of wall		End south of wall

33.6 = ± 8" wide E. + W. Conc. wall.

19.5 Rt. = End picket fence

1+30 - 18.7 Rt. = End board Ret. wall

92	92	92	94	96
5.5	6.6	7.7	7.6	6.9
35	20		11	18
				19
				3.2
				33
				End.

T.P. 0.28 99.68 5.33 99.40

99.68

1+26 - 35 ± Lt. = ± 4' wide steps thru wall.
(13 steps)

102	94	93
2.4	10.0	11.6
47	35	35
Top of top step	Top of Bottom Step	Base

104.73

Check B.M. # 2 - P.A

7.50

82.40

82.42

2+18⁴ = Sly Cl. line Garrison

Cont.

25' L M+2 } = start curbs.

2+00⁴ = start exist pave + obs.

T.P. 5.09 91.92 121.85 86.83

2+00

1+80

87 28	89 28	87 31	86 28	86.06	85 67	84 75	82 39	83 08
2.26	2.64	4.61	5.32	5.86	6.25	7.17	7.53	8.84
60	60	35	17		17	35	60	60
Cl.	G						G	Cl.
F.C.							F.C.	F.C.
		91.51				88.51		82
		3.6				5.27		4.5
		35				Back Edge		35
		End.				of walk		End.
						Radial from		
87 52	87 37	86 52	86 30	86 51	85 54	86 57	86 58	
4.37	4.55	5.00	5.25	5.41	6.06	5.85	5.36	
Back edge	25' L	25' L	17		16	25' L	25' L	
walk	Cl.	G				G	Cl.	
Radial				91.92				
from								
88 1	88 9	87 2	86 7	86 51	85 5	87 51	91 3	90 6
11.6	10.8	12.0	13.0	13.1	13.8	12.2	8.4	4.1
35	35	26	17		15	30	35	42
Base of								T.B.
wall								
89 5	90 0	88 2	88 0	87 9	86 1	88 5	95 4	81
10.2	9.7	10.8	11.7	11.8	12.2	9.9	4.3	1.0
35	35	17	14		12	28	35	39
Base								T.B.
wall								
				99.68				

Cross section Plum St.
Dickens to Fenelon

3-14-50

Sommermeier
McCoy
Allen
Bunch

INDEXED
W.R.
MAR 16 1950

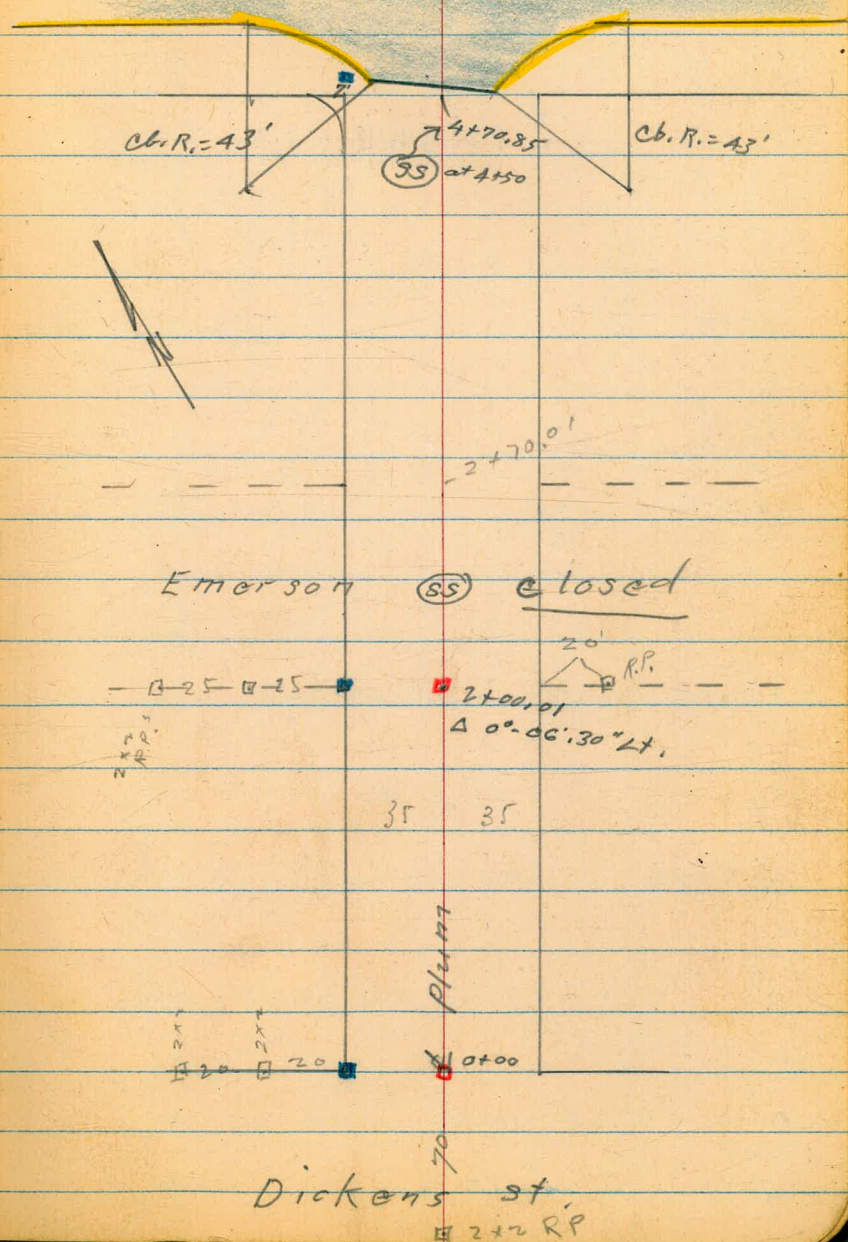
W.O. 62125

- = Fd. Conc. Mon
- = set 1/2" Disk
- Ⓢ = soil sample

Soil samples taken at grade
as on profile #1307
at sta 2+35
" " 4+50

Fenelon - A.C. Pave

9



Plum St. Levels
Dickens to Fenelon

1+00 (\$ Plotted
Notes Reduced by CARBONE
4/3/50.)

129.2	127.8	125.6	123.4	122.2
0.8	2.2	4.4	6.6	7.8
50	35		35	50
	130.5	126.3	122.1	
	35	9.7	7.9	
			35	
131.5	129.4	125.5	119.7	116.8
+1.5	0.6	5.0	10.3	13.2
50	35		35	50
129.7	127.4	121.6	115.7	113
0.3	2.2	8.4	14.3	17.0
50	35		35	50

0+50

0+25

0+00 = Nly. line Dickens

130.01

Dickens st. intersection not changed from previous cross section.

T.P.	S.S.	2.28	127.73	✓
T.P.	12.95	130.01	0.26	117.06
T.P.	12.62	117.82	1.00	104.70
B.M.#1	13.06	105.70	-	92.64

N. W. corner Dickens & Plum = B.M.#3

Plum
Dickens to Fennelon

2+60

$\frac{1.0}{5.5}$	$\frac{2.2}{35}$	$\frac{3.6}{32}$	$\frac{3.9}{24}$	$\frac{8.0}{11}$	9.0	$\frac{11.6}{35}$	$\frac{12.5}{60}$
110	109	105	107	101	102	100	99
					111.81		

T.P. 2.60 111.81 10.68 109.21

2+30

$\frac{5.3}{65}$	$\frac{7.5}{35}$	9.1	$\frac{10.6}{35}$	$\frac{12.1}{75}$
114	112	110	109	107

S.W. Men. Emerson + Plum 2.82 117.07 B.M. #A

0°-06'-30" Lt.

2+00^L = old sly. line Emerson.

$\frac{10.5}{75}$	$\frac{2.3}{35}$	4.2	$\frac{5.7}{35}$	$\frac{7.6}{75}$
120	117	115	114	112
119.89				

T.P. 1.10 119.89 11.22 118.79

1+75

$\frac{6.1}{75}$	$\frac{8.8}{35}$	10.6	$\frac{12.5}{35}$	$\frac{14.9}{75}$
123	121	119	117	115

1+50

$\frac{4.9}{30}$	$\frac{5.9}{35}$	8.5	$\frac{10.0}{35}$	$\frac{10.6}{50}$
125	124	121	120	119

130.01

Plum
Dickens to Fenelon

12

3+50

107	105	105	105	105	105	98	96	91
4.8	5.9	6.8	6.7	6.5	13.8	15.8	20.4	
50	35	20	35	17	18	35	60	

3+35

107	106	106	105	95	94	89
4.7	5.0	5.2	6.4	16.3	17.4	22.6
50	35	21	22	35	60	

3+25

107	107	107	106	100	93	91	86
4.4	4.0	4.8	5.1	11.0	18.2	20.3	25.0
50	38	35	25	18	35	60	

3+10

108	108	107	105	95	92	87	82
3.8	3.0	4.6	5.3	17.9	19.7	24.2	29.0
50	37	35	26	3	35	60	

2+97 Bottom of cross wash

105	105	107	106	90	85	83
3.2	3.0	4.6	5.3	21.1	26.3	28.3
50	38	35	20	35	60	

2+70

110	110	107	107	102	99	95	95
4.2	4.4	4.0	4.6	9.6	12.5	16.1	16.3
60	40	35	24	12	35	60	

111.81

Plum
Dickens to Ferrelon

13

4+71^E 25' LT. = Ctr. Pole P1398

4+71 25' RT. = start Cb. Ret. + A.C. Pavc.

4+60

T.R. Nail in pole
P1398

3.18 105.19 9.80 102.01

4+50

4+25

4+00

3+75

104	104	102	100	99	99	98	99	97
10.7	0.7	3.0	5.0	5.4	5.5	6.3	7.0	10.0
43	35	27	18		20	30	35	45

107	106	103	100	100	100	97	94
4.7	5.5	8.7	11.6	11.6	11.6	14.0	17.0
50	35	25	15		20	35	50

107	106	104	101	102	102	101	98	96
4.2	5.0	7.0	10.1	9.4	9.1	10.5	13.2	15.1
50	35	27	17		10	14	35	50

107	106	103	103	103	103	99	97
4.6	5.8	8.8	8.1	7.9	8.9	12.6	14.3
50	35	18		7	13	35	50

107	105	104	104	104	104	99	96
4.8	6.0	7.6	7.1	7.3	10.0	12.7	14.9
50	35	18		9	15	35	50

111.81

Levels Cont. - P. 5

B.M.# 1-P.4

12.56 92.63 92.64

5+22.85 = Nly. Ch. line Fenelon

4.48	5.38	6.09	6.64	7.29	8.11	8.54	9.54	12.83
60	50	35	17		17	25	35	60
101.48	100.5x	99.88	99.19	98.5x	97.7x	97.10	96.57	93.12
100.71	99.51	99.10	98.55	97.90	97.08	96.65	95.65	92.36
							12.35	
							60	
							Ch. B.C.	

5+05.85 = Fenelon

3.71	4.35	5.31	6.00	6.65	7.45	8.09	8.62	12.07
60	53	35	17		17	29	35	60
101.48	100.5x	99.88	99.19	98.5x	97.7x	97.10	96.57	93.12
102.11	101.59	100.28	99.60	99.05	98.23	96.82	93.31	93.86

4+88.85 = Sly Ch. line Fenelon

3.08	3.60	4.91	5.59	6.14	6.96	8.37	11.88	11.33
60	60	35	17		17	35	60	60
Ch. E.C.	6						6	E.C.
101.79	101	100.47	100					

4+72.7 25.7 = Start Ch. Ret. + A.C. Pave.

3.14	4.17	4.72
35	25.7	25.7
	Ch	6

4+71.85 = Start A.C. Pave. on 4

3.2	3.5	4.7	5.52
35	27	25	
102	101.7	100.5	99.7

105.19

Rough grades Plum from Dickens
to Fernon

Moore WO 20006

Begg 4/5/50

Crawford P. 9 for Ties

INDEXED
W.K.
APR 6 1950

0440

124.40
7.8
1.7
C 6.1

123.90
8.3
11.8
F 3.5

0425 BC curb

125.00
7.2
2.0
C 5.2

124.50
7.7
13.2
F 5.5

0400 NB Dickens

126.26
6.0
3.3
C 2.7

124.16
8.0
1.8
F 10.0

B.M. Mon. 445
#3 P. 10

13218

127.73

1740

1720

1700

0780

0760

13218

67

$$\begin{array}{r}
 118.51 \\
 \underline{13.7} \\
 6.7 \\
 \hline
 C 7.0
 \end{array}$$

$$\begin{array}{r}
 120.0 \\
 \underline{12.2} \\
 4.8 \\
 \hline
 C 7.4
 \end{array}$$

$$\begin{array}{r}
 121.32 \\
 \underline{16.9} \\
 3.9 \\
 \hline
 C 7.0
 \end{array}$$

$$\begin{array}{r}
 122.50 \\
 \underline{9.7} \\
 2.4 \\
 \hline
 C 7.3
 \end{array}$$

$$\begin{array}{r}
 123.52 \\
 \underline{8.7} \\
 1.4 \\
 \hline
 C 7.1
 \end{array}$$

17

16

$$\begin{array}{r}
 118.01 \\
 \underline{14.2} \\
 11.5 \\
 \hline
 C 2.7
 \end{array}$$

$$\begin{array}{r}
 119.50 \\
 \underline{12.7} \\
 10.3 \\
 \hline
 C 2.5
 \end{array}$$

$$\begin{array}{r}
 120.82 \\
 \underline{11.4} \\
 9.1 \\
 \hline
 C 2.3
 \end{array}$$

$$\begin{array}{r}
 122.00 \\
 \underline{10.2} \\
 8.7 \\
 \hline
 C 1.5
 \end{array}$$

$$\begin{array}{r}
 123.02 \\
 \underline{9.2} \\
 10.2 \\
 \hline
 C 1.0
 \end{array}$$

0+25 c6 B.C.

67
107.0
4.8
2.7
C 2.1

R
17
106.0
5.8
27.0
F 21.2

0+00 ^{EP}
3+70 N L EMERSON

108.50
3.3
1.4
C 1.9

107.50
4.3
15.9
F 11.6

T.P. 123 111.77 1238 110.5x

2+00 S L EMERSON

113.50
9.4
4.9
C 4.5

112.50
10.4
9.1
C 1.3

1+25 c6 B.C.

115.60
7.3
1.3
C 6.0

114.92
8.0
5.7
C 2.3

T.P. 361 122.94 1287 119.31

1+60

116.88
15.3
8.5
C 6.8

116.38
15.8
13.4
C 2.4

132.18

check to T.P. nail
Pole #1398

977

10200 102.01

P.13

GT

RT

18

2100 S 6 Fenebon

101.20
10.6
9.0
C 1.6

100.20
11.6
14.6
F 3.0

1775

101.90
9.9
4.9
C 5.0

100.90
10.9
14.8
F 3.9

1450

102.70
9.1
5.1
C 4.0

101.70
10.1
13.3
F 3.2

1400

104.30
7.5
5.5
C 2.0

103.30
8.5
13.9
F 5.4

0460

105.50
6.3
3.5
C 2.8

104.50
7.3
19.6
F 12.3

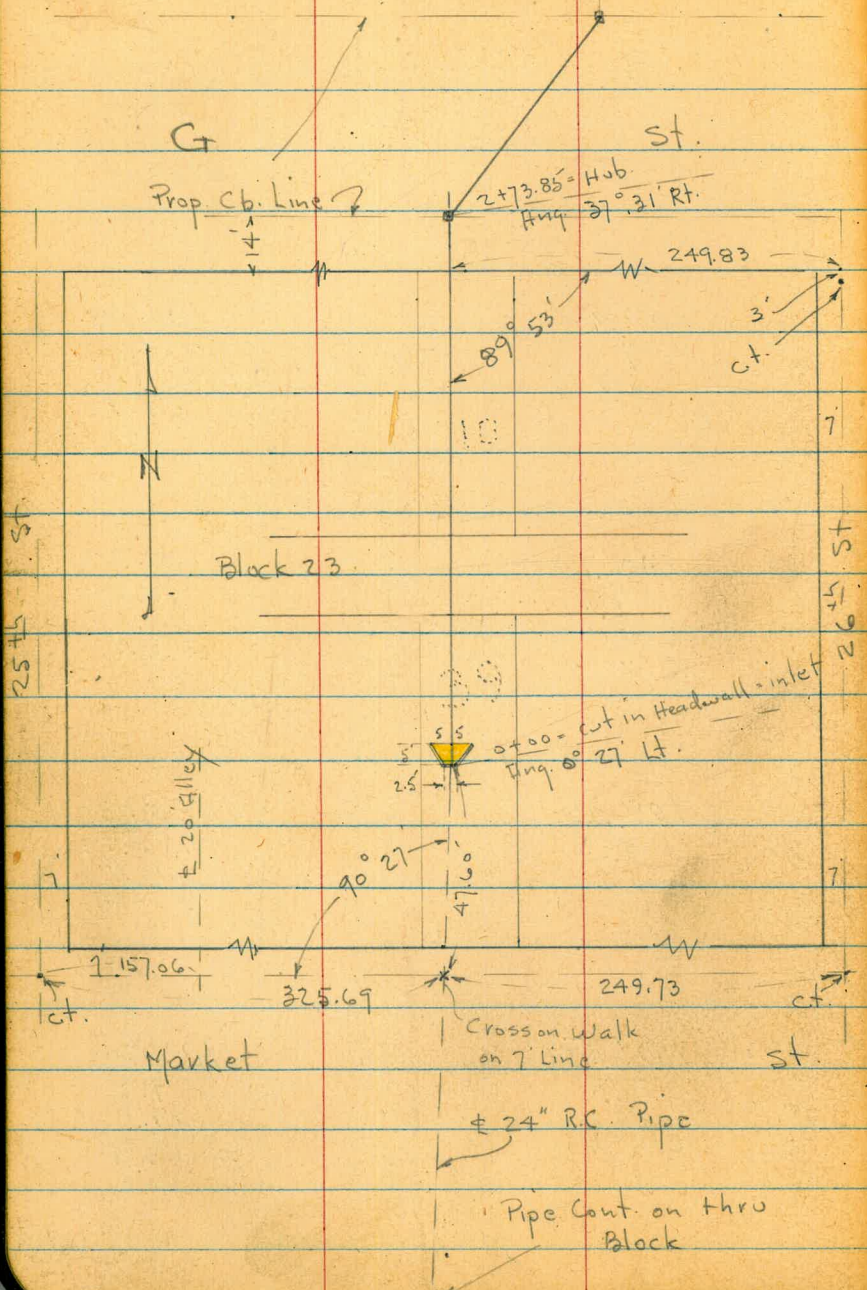
11177

INDEXED

19

OCT 3 1951

Conduit = outlet.
St 13.31 = cut in I.E. of Conc.



Block 24

Block 23

4+39.38 = Hub.
Ang. 2° 46' Lt.

3+39.30 = Hub.
Ang. 36° 46' Lt.

St.
2+73.85 = Hub.
Ang. 37° 31' Rt.

St.
52
14

Lt. = W.

#

Rt. = E

Levels along # of Prop. Drain Thru Blocks

23 + 24 - N. of Market - Bet. 25th + 26th

BREED & CHASE'S SUB.

See Sketch - P. 19

4245

4-24-50

Osborne
Hardin
Hatch
Beeg

W.O. 20656

INDEXED
N.R.
APR 25 1950

0+50

15.8 118.9

0+15

118.7
16.0
10

118.1
16.6
10

118.4
16.3
10

0+05 = end of Conc. floor

115.97
18.72
5 = Cor.

115.97
18.72
edge Conc.

115.97
18.72
5 = Cor. + end of
walls

+ Wingwalls - Conc. floor

0+00 = Inlet of 24" R.C. Conc. Pipe - in 8" Headwall

115.69

18.80
I.E. of Pipe

111.09
15.60
Top Headwall

B.M. 7.28 127.41 = Conc. Mon.

0.05 134.69 ✓ 12.91 134.64

134.69 ✓

0.62 147.55 ✓ 13.01 146.93

B.M. 2.96 159.94 ✓ 156.98 = N.W. B.P.

Market + 25th

T.P.

7.28 - 127.41 ✓

2+39.30 = Ang. 36° 46' Lt. = Hub. - out to Normal to G

3+00

Ang. 37° 31' Rt. out to Normal to G st.
2+73.85 = Hub. on Prop. cb. line = ϕ Inlet.

2+60

2+40 - 20.5 Rt. = House

2+00

1+50

1+23 - 10.3 Rt. = ϕ inlet 24" Pipe

ϕ +12 = ϕ Alley rd.

0+99 - 7.8 Rt. = ϕ 24" steel Pipe under Alley road

	Lt.	ϕ	Rt.
6.9 127.8	6.1 128.6	5.71 128.98	3.5 129.2
35	10	on Hub.	10

21

6.2 128.5	8.1 126.7	7.7 127.0	6.8 127.1
20	10		10

6.5 128.2	8.3 126.4	8.75 125.94	7.7 127.0
20	10	on Hub.	10

8.4 126.3	9.2 125.5	9.0 125.7	8.3 126.4
30	22		10

6.8 127.9	10.0 124.7	10.2 124.5	10.4 124.4	7.7 127.0
40	30	20		20.5 = ground at House

10.7 124.0	10.7 124.0	10.6 124.1
10		10

~~86~~

Notes Reduced. 4-26-50

12.5 122.10

12.00
14.69
10.3 = I.E. of Pipe

12.4

14.0 121.7
10

13.8 119.9
134.69 ✓

119.86
14.83
7.8 = I.E. of inlet Pipe

X-Sect. "e" st. - from Cotton to 46th
for Grade est.

4391

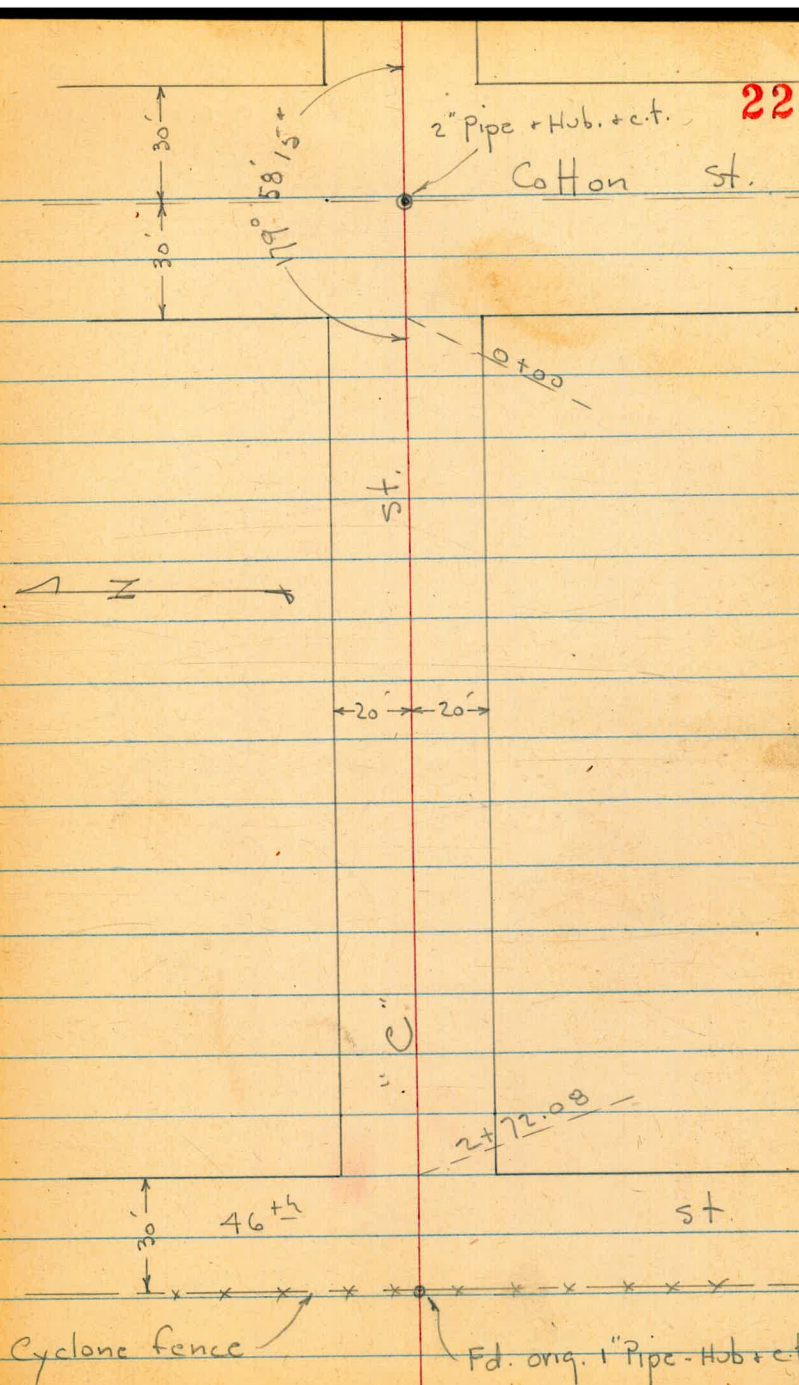
W.O. 25020

INDEXED
MK
MAY 16 1950

5-15-50

Osborne
Hardin
Hatch
Shepard.

REDUCED 5-15-50
P.V.S.



Lt. = S.

R

Rt. = N.

23

X-Sect. "C" St. - sketch - P. 22

2+00

^{178¹} 8.6 30	^{177⁴} 9.3 20	8.8 8	^{179²} 8.4 20	^{178³} 8.1 30
-----------------------------------------	-----------------------------------------	----------	-----------------------------------------	-----------------------------------------

1+50

^{187¹} +1.0 100	^{181¹} 5.6 50	^{180⁵} 6.2 20	^{178⁴} 8.3 16	8.0 8	^{178²} 8.5 15	^{179²} 7.5 20	^{179⁵} 7.2 50	^{181²} 5.4 100
-------------------------------------------	-----------------------------------------	-----------------------------------------	-----------------------------------------	----------	-----------------------------------------	-----------------------------------------	-----------------------------------------	------------------------------------------

1+00

^{181⁵} 5.2 30	^{180⁴} 6.3 20	^{179¹} 7.0 16	7.1 7	^{179⁶} 7.7 20	^{179⁸} 6.9 30
-----------------------------------------	-----------------------------------------	-----------------------------------------	----------	-----------------------------------------	-----------------------------------------

0+50

^{183⁶} 3.1 30	^{182¹} 4.0 20	^{180⁶} 6.1 17	^{181³} 5.5 20	^{180²} 6.0 20	^{180²} 5.8 30
-----------------------------------------	-----------------------------------------	-----------------------------------------	-----------------------------------------	-----------------------------------------	-----------------------------------------

0+00 = W.L. Cotton

^{181⁹} 4.8 20	^{182³} 4.5 20	^{182¹} 4.6 20
-----------------------------------------	-----------------------------------------	-----------------------------------------

186.68

3.68 186.68 9.20 183.00 = Nail in S.W. Pole - Cotton + "C"

B.M. 2.11 192.20 190.09 - Nail in Pole - SW. 47th + "C" - B. 1834 - P. 38

c st.

Lt.

#

Rt.

24

= end.

3 + 02.08 = Cyclone fence = F.L. Cemetery

$\frac{177^3}{9.4}$
100

$\frac{175^5}{11.2}$
50

$\frac{176^0}{10.7}$
20

$\frac{176^0}{10.7}$

$\frac{176^8}{10.2}$
20

$\frac{177^0}{9.7}$
50

$\frac{178^5}{8.2}$
100

2 + 72.08 = F.L. 46th

$\frac{179^4}{7.3}$
100

$\frac{175^1}{10.6}$
50

$\frac{176^1}{10.0}$
20

$\frac{176^1}{10.0}$

$\frac{176^8}{9.9}$
20

$\frac{177^1}{9.0}$
50

$\frac{178^4}{8.3}$
100

2 + 35

$\frac{177^1}{9.6}$
30

$\frac{177^0}{9.7}$
20

$\frac{177^1}{9.0}$

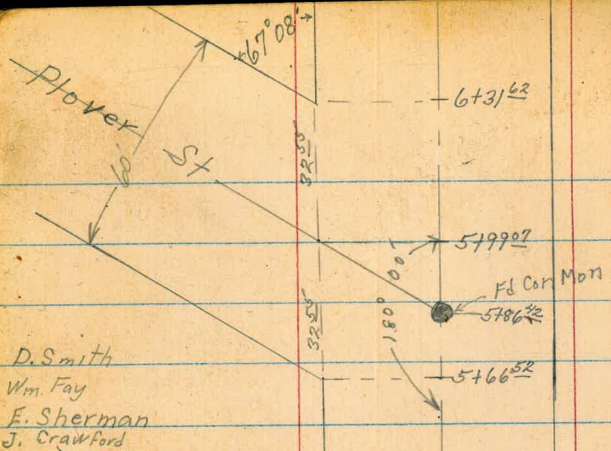
$\frac{177^0}{8.8}$
20

$\frac{178^3}{8.4}$
30

186.68

WOT 25020
10-11-50

25

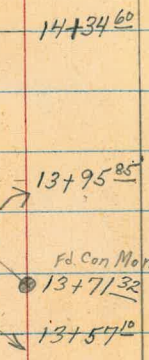
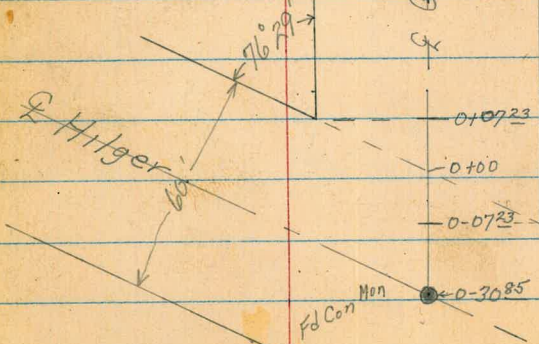


Cross Sec Gibson St.
Hilger to 69th St.

INDEXED
mk
OCT 16 1950

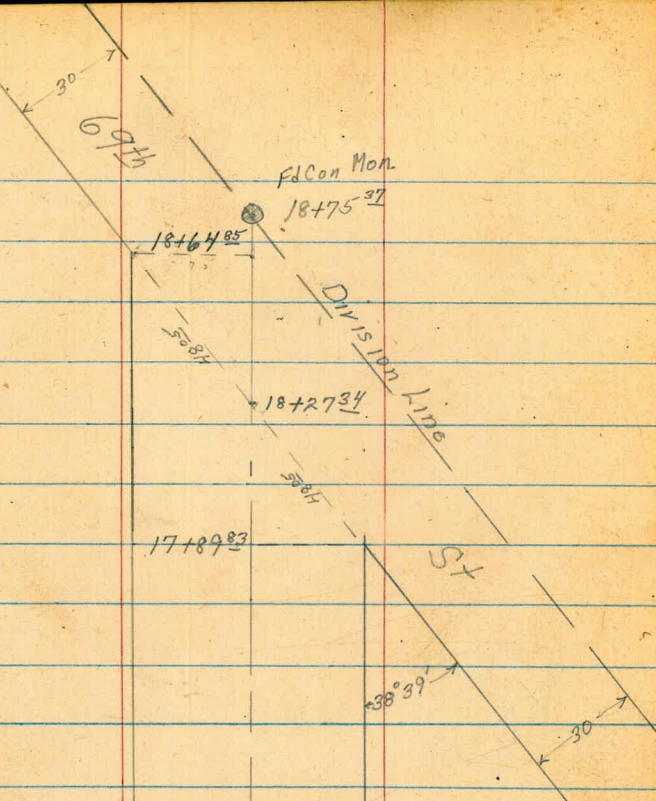
3100
set POT 2x2 Hub + Disk

Gibson St



Gibson St

set POT 2x2 Hub + Disk
10190



Phone 348 91
 93
 70607469 329,12

D. Smith
Wm. Fay
E. Sherman
J. Crawford.

Cross Sec Gibson St.

Reduced by P. Horn

0+50

0+23 21² RT & 12" Power Pole # P76626

0+07²³ NW Prop Cor Hilger + Gibson

0+00 22^o RT & Dead man

28^o RT begin row of Contry Plants

0-07²³ NE Prop Cor Hilger + Gibson

0-30⁸⁵ E Hilger taken along Hilger

0-61⁷⁰ South line Hilger taken along Hilger

BM 1212 327⁴⁴

315³²

2 Mon Hilger
- Gibson
FB 1664-R

Hilger to 69th

Lt-West

327² 327¹ 327¹ 326¹ 326⁶
705 0^o 03 13 0^o
50 30 18 15 10

RT-East

326² 325⁹ 325²
12 18 16
10 30 50

W[#] 25020
10-11-50

27

323² 323⁴ 320⁶ 320⁶ 321³ 320² 318⁹
37 4^o 6^o 6^o 6^o 6^o 8^o
50 30 19 8 30 50

320¹ 319⁸ 319² 320¹ 319⁵ 319⁵
67 76 72 73 72 82
50 30 10 30 50

320² 319⁵ 318⁹ 319¹ 318⁶ 319⁹
72 72 85 83 88 95
50 30 13 30 50

318⁵ 317⁴ 316² 314¹ 312⁴
82 100 112 133 146
50 30 30 50

314⁸ 314⁰ 312¹ 311⁰ 310²
126 134 150 164 172
50 30 30 50

327⁴⁴

TP₃ 11⁶⁰ 362⁵⁵ 10² 350²⁵

R+25

R+20 28° RT End row of Centry Plants

R+10 22° RT & 8" Pepper tree

R+00

1+91 22° RT & 6" Pepper tree

1+50

TP₂ 12³⁰ 351⁹⁷ 0⁰⁴ 339⁶⁷

1+04 23° RT & 8" pepper tree

1+00

TP₁ 12²⁷ 339⁷¹ 0⁰⁰ 327⁴⁴

Lt=West & Rt=East

28

351 ⁶	351 ²	350 ²	349 ²	347 ²	346 ⁹	343 ⁵
10 ⁴	0 ⁸	1 ²	2 ⁸	4 ⁵	5 ⁰	8 ⁵
50	30	11	14	30	30	

349 ⁶	348 ³	347 ²	346 ⁴	346 ⁴	346 ¹	344 ³	343 ¹
2 ¹	3 ²	4 ¹	5 ⁶	5 ⁶	5 ²	7 ⁷	8 ³
50	30	12	10	14	30	50	

343 ⁵	341 ²	340 ⁴	339 ²	339 ⁴	338 ¹	338 ⁰	337 ⁰
8 ⁵	10 ¹	11 ⁶	12 ²	12 ¹	13 ²	14 ⁰	15 ⁰
50	30	16	14	12	30	50	

351⁹⁷ ✓

335 ⁷	334 ²	333 ⁶	332 ⁹	333 ⁰	332 ²	331 ⁹	331 ⁴
4 ⁰	5 ¹	6 ¹	6 ⁸	6 ⁷	7 ⁵	7 ²	8 ³
50	30	16	14	12	30	50	

339⁷¹

Lt = West

♀

Rt = East

29

TP 497 357¹⁰ 10²² 352³³

4701 22⁵ Rt E 12" power pole # P276540

4400

3750

3437 29⁵ Lt End 6" con wall + rock

3420

2785 30³ Lt Begin 6" con + rock wall

2752 21³ Rt E 12" power # P76627

2740

3676 3629 3559 3542 3512 3512 3482 3443

75° 103 72 72 102 114 145 183

50 30 3 5 20 30 50

3686 3648 3640 3624 3564 3552 3522 3488 3452

36330 16° 122 114 0° 52 94 92 138 174

30 37 30 23 4 19 30 50

3612 12

296 296

Top Footing

3644 36385 3612 3595 3554 3536 3522 3499 3474 34615

12° 1130 08 31 72 90 92 122 152 164

50 30 30 16 2 18 30 30 50

Top wall

3633 3592 36285 3594 3571 3548 3532 3481 3462 34700

102 32 1030 32 55 78 95 92 145 164 1555

50 30 30 30 18 4 16 30 50 552

Footing Top House Floor

3579 3564 3626 3502 3492 3485 3475 3442

42 64 102 112 128 144 152 172

50 30 11 14 21 30 50

36255

TP₆ 6⁰⁰ 355⁷⁵ 11⁰⁰ 348⁷⁵

5199⁰⁷ E Plover St

5183 21³AT E (2) Deadmen

5166⁵³ SW prop Cor Plover St

5154 21³AT E 14" Power Pole # P76628

5145

5140

TP₅ 11⁰⁰ 359⁹⁵ 8¹⁵ 348⁹⁵ ✓ Mon Gibson's Plover 348⁹⁵ FB.1664-36

5100

4150

Lt. West E Rt. East

30

355 ⁷	349 ⁰	347 ⁵	347 ⁰	345 ²	344 ³	340 ³
4 ³	11 ⁰	12 ⁵	13 ⁰	14 ²	15 ⁷	19 ²
30	5	20	23	30	30	30
361 ⁸	357 ⁴	354 ²	351 ¹	350 ²	349 ⁸	348 ⁶
362 ⁶	358 ⁰	352 ³	350 ⁴	349 ⁸	347 ⁶	346 ³
11 ⁸	2 ⁶	5 ⁸	8 ²	9 ²	10 ²	11 ⁴
50	30	15	13	7	19	23
362 ⁶	358 ⁰	352 ³	350 ⁴	349 ⁸	347 ⁶	346 ³
12 ⁸	2 ⁰	7 ²	9 ⁶	10 ³	12 ⁴	13 ²
50	30	2	9	19	25	30
362 ⁶	357 ⁸	352 ²	350 ⁴	349 ⁸	347 ⁶	346 ³
12 ⁸	2 ⁴	7 ⁸	9 ⁶	10 ²	12 ³	13 ⁸
50	30	2	19	24	30	50
363 ⁴	359 ⁹	355 ²	353 ⁰	352 ⁴	349 ⁸	349 ²
6 ³	12 ⁸	14	4 ⁴	4 ³	7 ³	7 ⁸
50	30	15	3	6	23	30
364 ⁹	350 ⁹	355 ⁸	353 ⁷	352 ⁹	350 ⁹	349 ⁹
7 ⁸	3 ⁸	1 ³	3 ⁴	4 ²	6 ²	7 ²
50	30	10	3	6	23	30
363 ⁴	359 ⁹	355 ²	353 ⁰	352 ⁴	349 ⁸	349 ²
6 ³	12 ⁸	14	4 ⁴	4 ³	7 ³	7 ⁸
50	30	15	3	6	23	30
364 ⁹	350 ⁹	355 ⁸	353 ⁷	352 ⁹	350 ⁹	349 ⁹
7 ⁸	3 ⁸	1 ³	3 ⁴	4 ²	6 ²	7 ²
50	30	10	3	6	23	30

357¹⁰

8+50

8+48 22° RT & Dead man

8+39 21° RT & 12" Power Pole # 76629

TP

11³³ 364⁶⁸ 24° 353³⁵

8+00

7+50

7+00

6+65

6+31⁶⁷ NW Cor prop Plover St

Lt. West
 367² 363²⁰ 358⁰ RT East
 351⁶ 355² 353⁰ 319⁰
 +2⁵ 1⁵ 6⁷ 7¹ 9⁰ 9⁵ 11² 15²
 50 30 3 6 18 30 50

364⁶⁸ 362³ 358⁶ 355³ 351⁷ 350⁴ 349⁵ 348⁴ 347⁰
 +6⁵ +2⁸ 2⁴ 4¹ 5⁴ 6² 7⁴ 8⁰
 50 30 5 18 28 30 50

357³ 354² 349⁹ 348⁰ 347⁴ 346⁰ 344⁹ 343⁵ 342⁵
 +1⁵ 1⁵ 5² 7⁸ 8⁴ 9⁸ 10² 12³ 15⁰
 50 30 7 18 29 30 50 82
 House floor

354⁰ 351³ 347⁶ 346¹ 345⁴ 343² 341⁶
 1⁸ 4⁵ 8³ 9² 10⁴ 12⁰ 14⁴
 50 30 8 20 30 50

353⁹ 351² 346² 345⁴ 344⁹ 343⁶ 341⁰
 1² 4⁸ 9⁰ 10⁴ 10² 12³ 14⁸
 50 30 7 20 30 50

356⁰ 351⁴ 347² 346¹ 345⁸ 343⁵ 340¹
 +0² 4⁴ 8⁸ 9² 10⁰ 12³ 15²
 50 30 7 20 30 50

355²⁰

TP₉ 2¹⁵ 368²⁰ 7⁰⁸ 366²⁵

11750

11700

10756 21¹² RT & 12' Power Pole # 278199

10750

10700

9750

TP₈ 11⁶¹ 373⁸³ 2⁴⁶ 362²²

9700

Lt-West

Rt-East

384 ⁵	379 ⁶	371 ¹	370 ²	368 ¹	366 ²	364 ¹	32 ⁶
+107	+58	22	36	52	62	98	142
50	30	4	8	20	30	50	

385 ⁶	380 ⁶	372 ²	372 ²	369 ³	367 ²	365 ⁵	361 ¹
+118	+68	02	16	45	66	83	122
50	30	4	8	21	30	50	

385 ⁰	379 ⁷	372 ⁹	371 ⁸	369 ¹	368 ²	364 ⁸	360 ²
+112	+52	02	20	42	56	90	136
50	30	4	8	19	30	50	

382 ⁴	377 ⁰	369 ⁷	369 ⁰	366 ⁹	366 ²	363 ²	358 ⁴
+86	+32	44	48	62	76	105	154
50	30	4	7	19	30	50	

375 ²	370 ⁹	366 ¹	365 ⁸	363 ⁸	363 ¹	360 ⁰	357 ¹
+72	22	74	80	100	102	138	167
50	30	3	6	16	30	50	

373 ¹	368 ⁹	362 ²	361 ⁵	359 ⁶	359 ³	356 ²	353 ⁶
+84	+42	25	32	51	54	80	111
50	30	3	6	18	30	50	

364⁶⁸

13+80

£ Men Zeller + Gibson

480

35537

13+57¹⁰ SW Prop Co / Zeller

13+35

TP₁₀

2⁴⁶ 360¹⁷

11¹⁹

357²¹

13+26 23⁵ At £ @ Dead man

13+08 22⁵ At £ 12" Power Pole # 278200

13+00

12+50

12+00

Lt-West

360⁰

02

30

357⁶

26

24

356³

32

10

353⁴

68

17

358⁴

72

20

351⁵

82

20

350³

92

30

348⁴

116

35

33⁰¹

132

50

368²¹

+80

50

363²

+32

30

357¹

31

2

355¹

44

17

354⁶

56

17

352⁶

76

30

351³

82

33

344⁴

108

50

369⁴

+92

50

365⁵

+53

30

359³

02

8

357²

30

18

356⁵

32

18

354⁰

62

30

350³

92

30

348⁰

122

80E

N West House

360¹⁷

373⁴

+45

50

368⁰

05

30

362³

66

5

361⁵

72

9

359⁸

94

20

358⁹

100

20

356⁵

123

30

352⁸

164

30

371⁹

+90

50

372⁶

+32

30

365²

32

2

365⁸

35

4

364³

46

19

362²

62

19

359³

96

30

356¹

128

50

380⁴

+115

50

375⁵

+66

30

368²

02

4

367⁴

15

8

366¹

28

8

364²

40

20

362³

66

30

358⁹

100

30

368²⁰

16750

16700

15750

15700

14765

TP₁₁

640

35496

1161

34856

14734⁶⁰ NW Prop Cor Zeller

13795⁸⁵ E Zeller

Lt West

40 50	351 ⁰	48 30	350 ²¹	60 10	349 ⁰	64 30	348 ⁶	70 30	348 ⁰ East	74 30	347 ⁶
82 50	346 ³	90 30	346 ⁰	92 10	345 ²	96 30	344 ³⁰	106 30	344 ²	114 30	343 ⁹

78 50	347 ²	95 30	345 ⁵	103 11	344 ²	113 11	343 ⁷	117 30	343 ³	128 30	342 ²
----------	------------------	----------	------------------	-----------	------------------	-----------	------------------	-----------	------------------	-----------	------------------

32 50	351 ¹	68 30	348 ²	101 11	344 ⁹	112 11	343 ³	124 30	342 ⁶	135 30	341 ⁵
----------	------------------	----------	------------------	-----------	------------------	-----------	------------------	-----------	------------------	-----------	------------------

70 50	354 ⁰	40 30	351 ⁰	76 6	347 ⁴	81 6	346 ⁹	113 30	343 ²	132 30	341 ⁸
----------	------------------	----------	------------------	---------	------------------	---------	------------------	-----------	------------------	-----------	------------------

34 50	357 ¹	52 30	354 ³	102 11	349 ⁵	125 11	347 ⁷	146 30	345 ⁶	174 30	342 ⁸
----------	------------------	----------	------------------	-----------	------------------	-----------	------------------	-----------	------------------	-----------	------------------

12 30	358 ⁵	22 15	357 ⁵	66 17	353 ⁴	85 17	351 ²	110 30	349 ²	126 35	143 50	347 ⁶	345 ⁹
----------	------------------	----------	------------------	----------	------------------	----------	------------------	-----------	------------------	-----------	-----------	------------------	------------------

360¹⁷

18475³⁷ & Gibson int Division line 69th

18464⁸⁵ SW prop Cor 69th St

TP₁₄ 12²⁶ 389⁹¹ ✓ 077 377⁶⁵

18427³⁴ & int South line 69th St.

17489⁸³ SE Prop Cor 69th St

TP₁₃ 12¹⁹ 378⁴³ 024 366²³
17450

17400

17100

TP₁₂ 11⁵⁷ 366⁴⁷ 008 354⁸⁸

Lt = West

Rt = East

35

388¹ 387² 383¹ 383⁴ 382²
18 27 6²⁸ 65 72
50 30 on Mon dirt 30

386¹ 385¹ 381⁶ 379⁸
38 48 8³ 10¹
50 30 30

389²

366⁵ 377¹ 375³ 373⁹ 372⁰
00 02 3¹ 45 6⁴
30 30 15 30

372⁰ 370⁷ 368¹ 367¹ 366¹ 364⁰
6⁴ 7² 10³ 11³ 12⁰ 14⁴
50 30 15 30 50

364² 378⁴²
363⁵ 362⁴
2³ 30 4⁴ 58 52 6⁸
50 30 15 30 50

357⁰ 356² 354⁹ 344⁸ 354⁰ 353⁶
9⁵ 9⁸ 11⁶ 11² 12⁵ 12²
50 30 10 30 50

366⁴⁷

329B

Lt = West

♀

RT = East

36

FB1664-30

TP₁₉ Mon. ♀ Tarbox +
6945*12²⁹329⁰²✓ 329¹²TP₁₈

024

342⁰⁸12¹⁴341⁸⁴TP₁₇

017

353⁹⁵12²²353⁷⁸TP₁₄

014

366⁰⁰12¹³365⁸⁶TP₁₅

015

377²⁹12⁰⁷377⁸⁴

Roberts
Cota
Moore
Satterlee
4-4-51
no. 20818

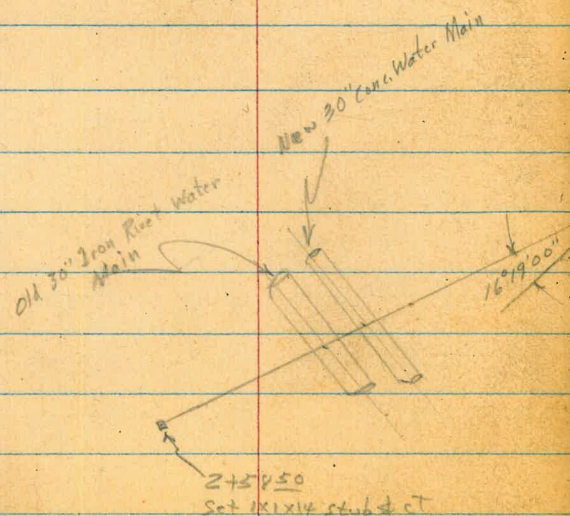
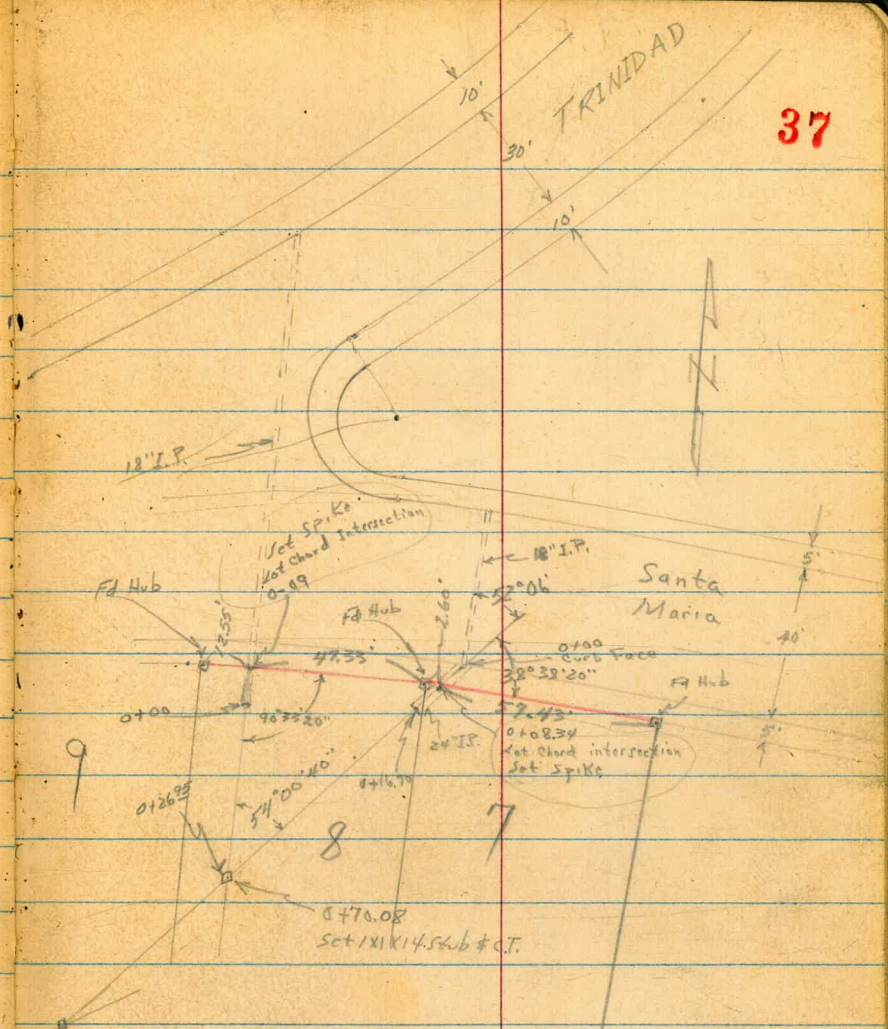
Survey to Extend Culverts across
Lots 8 & 9 BIK 19 Valencia Park Unit #1
Unit #2

See FB 1776 pg 20

INDEVELOP

APR 5 1951

37



1727
Set 1x1x14 sub
#CT

BIK. 19 Valencia PK Unit #1

could find No Hubs or Pipes
on Rear of Lots

INLET Sa. Curb Line Santa Maria

146.44

936
Bottom
Box

INLET No Curb Line Santa Maria

147.07

873
Bottom
Box

0+26²⁵ = 0+70²⁸ stub

138.9

16.9

0+10

141.0	145.6	145.7	141.8	141.4	141.6	145.3	147.8
14.8	10.2	10.1	14.0	14.4	14.2	10.5	11.0
17	12	7	4		5	9	20

0+00 END 18" Corr. Iron Pipe from N. Side Trinidad

147.8	147.4	145.18	142.8	147.7	147.8
8.0	8.4	10.62	13.0	8.1	8.0
15	5	INLET	Ground	5	10

INLET No Curb Line Trinidad

149.26

6.54
Bottom
Box

BW 4.03 155.80 K

157.77 SWBP & Return Trinidad & Santa Maria

153.80 K

Contd From Page 38.

0+64

Ditch to Right
From 18" Culvert

0+56

0+55

0+43

0+16²⁰

END 24" Corr. Iron Pipe

0+08²⁰

INSIDE EDGE WALK

0+00

So. Curb Line Santa Maria

155.80X

Lt

152.8
370
20

139.2
166
2

139.2
166
5

140.6
152
5

141.5
143
12

Rt

39

152.5
33
20

139.5
163
3

139.7
161
3

140.6
152
5

141.5
143
12

152.5
33
20

139.5
163
3

139.7
161
3

140.6
152
5

141.5
143
9

154.2
16
35

152.4
34
21

140.5
153
2

140.5
153
5

141.0
148
5

151.6
142
25

154.0
18
15

151.9
39
8

150.7
51
Top
Rubble

145.91
989
SHEET

142.7
131
GRD

150.4
54
10

15017
563

149.17

663
Top
Grate

150.19

561
Top
Curb

153.80X

1+27.00 L Rt Stub

1+12

1+05

1+00

T.P. 453 147.94 \checkmark 12.39 143.41 \checkmark

0+90

0+70.08 INTERSECTION Stub

0+65

155.80 \checkmark

24

146.9 142.7 137.7 137.7 138.2 143.1 143.4
 10 12 10.2 10.2 9.7 4.8 4.5
 20 7 4 3 10 20

147.3 144.6 139.0 138.6 138.2 143.4 143.4
 0.6 3.3 8.9 9.3 9.7 4.5 4.5
 20 8 4 6 8 20

146.3 144.3 138.7 138.3 143.8 143.6
 1.6 3.6 9.2 9.6 4.1 4.3
 15 6 10 15 25

141.0
 6.9

147.94 \checkmark

152.8 145.7 139.0 138.9 144.5 144.3
 3.0 10.1 16.8 16.9 11.3 11.5
 17 5 10 12 22

152.8 139.2 138.2 140.6 145.6 143.8
 3.0 16.6 16.6 15.2 10.2 12.0
 20 3 5 6 12

153.80 \checkmark

Rt

40

Cont'd from Page 40

1499± E New Conc. Covered Water Main - 30"

1495

1480

1474

1468

1460

1448

14794 ∇

22

137.24

10.70

42
Bottom
Bladder Valve
29 Bottom Pipe

143.1

4.8

20

142.74

5.20

Top
Pipe

135.9

12.0

8

135.4

12.5

136.7

11.2

143.4

4.5

20

142.9

5.0

15

135.9

12.0

9

136.3

11.6

4

138.2

9.7

9.7

140.5

7.4

4

141.7

6.2

20

144.2

3.7

20

143.4

4.5

2

137.5

10.4

10.4

137.4

10.5

10

142.8

5.1

15

142.9

5.0

25

14794 ∇

E

139.84

8.10

Bottom
Pipe

141.3

6.6

7

142.4

5.5

20

R6

41

check

4.11 151.77 = 151.77 ✓

Starting BM

T.P.

10.04

155.88 ✓

2.10

145.84 ✓

2+58⁵⁰

Stub

141.5	139.7	133.7	134.1	134.6	139.8	141.4
6.4	8.2	14.2	13.8	13.3	8.1	6.5
20	9	7		3	7	20

2+20

142.4	135.9	134.2		141.2	142.3
5.5	12.0	13.7		6.7	5.6
23	10			9	20

Reduced By
CR Lockhead
4-4-51

2+13

134.9
13.0

2+05

142.2	136.3	136.2	132.8	141.8	142.4
4.7	11.6	11.7	10.1	6.1	5.5
22	12	2		6	20

2+10

Old Iron Rivet Water Main 30"

138.73
9.21
Top
Pipe

136.37
11.57
Bottom
Pipe

14794X

14794X ✓

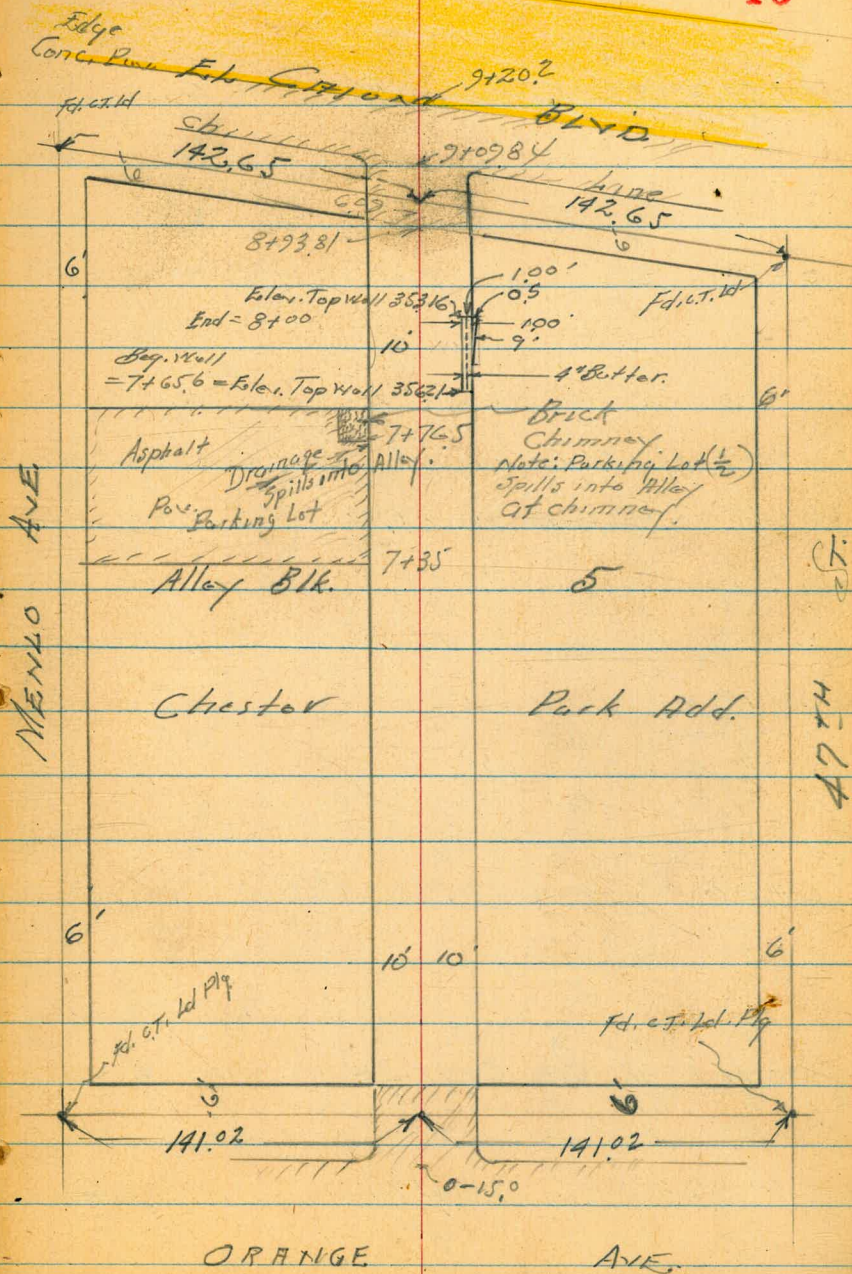
RE-CROSS SECTION ALLEY BLK 5
CHESTER PARK ADD.

Original Sections FB 583-50-70
Walker
Clerk
Huffman
5-8-51
140 25020

INDEXED

MAY 10 1951

Revised 5-17-51
By F. A. ...



Alley Block 5

0+51 = S-edge Conc. Apron to Garage

0+50

0+49.5 = Beg. S.S. Fence on Lt. on 6" Conc. Wall

0+42 = Garage on Lt.

0+15

0+35 = End Picket

0+07 Beg. Fence 79.24

0+00

0-15' = N cb Orange

1.83

356.47

354.64

B.M.

356.47

353.14
333
11.5
353.27
320
19
44

	352.93 342.21	352.27	352.31	352.27	352.27
	354	42	41	37	
	10	97		10	
	0.7 Wall				
	42	354	352.32	351.92	
	10	97			
	Wall	4.5	4.5		
		13.8	10.4		
		Conc. Floor			
	41	352.31	352.01	352.51	352.81
	15	10	4.4	3.9	3.6
				10	10
	351.85	351.64	351.44	351.88	352.58
	462	483	5.03	459	391
	99	99		10	10
	cb	Gut		Gut	cb
	351.09	350.98	351.4	351.22	351.51
	538	588	536	525	496
	35	35	10		10
	cb	Gut	Par.	Par.	Par.
					351.80
					352.54
					323
					35
					cb

Alley Blk 5

Lt.

Rt.

Rt.

2+00 = Pole 8.5' Lt PA 4235

353.50
8.1
15

354.10
7.5
10

353.90
7.7
10

354.30
7.3
10

354.30
7.3
15

1+69 = N end garage on Lt. ^{Dirt Floor.} N entrance

353.20
7.9
12

#1
TP 8.00 361.60 2.87 353.60

352.67
3.8
15

353.67
2.8
10

353.87
2.6
8

353.27
3.2
7

361.60
3.1
10

353.27
3.0
10

353.27
3.0
15

1+50

#2
1+00 = Pole 8.5' Lt = Pole JPH 4215

353.27
3.2
15

353.27
2.7
10

353.57
2.9
9

352.97
3.5
8

352.27
3.5
10

353.07
3.4
10

353.07
3.4
15

0+85 = Garage on Lt. Conc. Floor.

352.44
4.03
15.9
Floor.

352.29
4.08
14
Apron

0+67 = N edge Conc. Apron to Garage

356.47

353.24
3.23
17.4
Apron

353.24
3.03
19.7
Floor
Garage

Alley Bk 5

3+49 = L. Pole 9.0 ft PA 4255

3+45 = L. Garage

3+29 = L. Garage

3+10 = L. Garage Dirt Floor.

3+00

2+50

2+42.5 = L. Garage on Lt. Conc. Floor.

Lt.

Rt.

Rt.

46

358.72

4.83
142

Conc. Floor.

358.62

4.93
14

358.41

5.19
131

355.20

6.4
11

Ground

355.54

6.06
10.2

Conc. Floor

355.40

6.2
10

355.90

5.7

355.90

6.6

355.80

5.8
10

355.40

6.2
10

355.80

5.8
15

355.90

5.7
15

354.72

6.84
15.8

on Conc. Floor. 361.60

Alley Block 5

4+57 = Garage on Rt. Conc. Floor.

4+50

By Alarm

4+26 = End 3 Car garage

By Alarm

4+18 = 3 Car Garage on Rt.

4+00

3+50 to 4+00 3' Picket Fence on Lt. 9.8' Lt.

3+75 = L

3+50

357 90
4.6
15

357 90
3.7
10

357 80
3.8

358 46

3.14

10.2 Conc.
Toe Apron

3.6
10

358 81

448 91

3.66

144
Floor

3.6
15

358 80

357 89

3.71

10 Conc.
Toe Apron

3.67

9.6
Toe Conc.
Apron

4.1
10

357 81

3.19

137

Floor

3.15

13.3

Floor

4.1
14

357 81

356 80
4.8
15

357 40
4.2
10

357 30
4.3

357 50
4.10
13.4

357 51
4.09
15

357 80
5.8
15

357 30
5.3
10

356 40
5.2

358 50
5.1
10

358 60
5.0
14

361 60

Alley Block 5

5400

5482

5462 4.3' Lt. Pole # PA 4265

5457 = Garage, Conc. Floor

5450

5445 E Garage Conc. Floor

5418 E Garage Conc. Floor

#2

TR 4.75

363.79

2.56

Rock

359.04

5400

85' Lt. Pole # PA 4261

5440 = End

8.9' Rt.

5400 Bay

Fence

9.4' Rt.

361.60

Lt.

358.99
4.8
15

489

Lt.

358.99
4.8
10

489

Lt.

359.09
4.7

359.09

Rt.

358.29
5.0
10

358.29

48

358.29

358.99

4.8
15

358.99

4.8
10

359.19

4.6

359.19

4.66
7.24
13.5 Conc.

359.09
4.7
10

359.09
4.7
15

359.19

4.60
9.6
Apex

359.48
4.31
11.5
Flank

358.81

4.90
7.5
Floor

363.79 = Correct, Sec opp. Page
(363.75 = Error)

358.00
3.6
15

359.00
2.6
10

358.8
2.8

359.00
2.6
10

359.00
2.6
15

361.60

Alley 31k, 5

7+50

7+35 = Beg. Asphalt Pav. to Parking Lot

7+33

7+17 = 1/2 Garage on Lt. Conc. Floor

Not in Pole 8+00 ± on Lt.

#3 IR 7.30 361.89 9.16 354.59

7+13 2.6' RT & 36" Data Point

7+00

6+98

6+94 on Lt. 1/2 Garage (Not in use) Type Floor?

363.75

354.52 Lt.
355.89
355.76
355.03
355.23
356.23
355.89 Rt.
356.73

7.41 6.04 6.17 6.9 6.5 5.6 5.1 5.2
30 11 10 10 10 10 13 20
Pav. Pav. Pav. Pav. Pav. Pav. Pav. Pav.

6.87 5.06 6.35 5.8 5.0 4.7
10 10 6 10 20
Pav. Pav. Pav. Pav. Pav. Pav.

358.42
357.93
357.23
356.43
356.03
356.53
357.23
357.23
3.5 4.9 4.7 3.5 5.7 5.4 4.7 4.7
30 15 10 7 6 6 10 20

348
13.5
Conc. Floor.
361.19

358.89
358.21
357.89
358.09
358.09
4.9 5.5 5.7 5.7
15 10 10 15

358.89
4.9 5.61
10.1 16.1
Bottom of Door 363.79
363.75 Conc. Floor

Alley Block 5

Lt. S R

8+95.8

349.34
451
1005
Cb
349.06
979
1005
Cut
348.53
581
348.79
506
97
Cut
348.88
497
97
Cb

8+93.81 = Sk. 5/ Guyon Sec on line

349.31
450
Cb
349.05
480
1045
Cut
348.53
532
348.80
505
97
Cut
348.87
428
97
Cb

8+74 = Pole Anchor 9' Lt.

8+62 9' Lt Pole # JPA #4225

8+58 = Driveway

8+50

350.21
360
10
Conc.
349.25
46
349.15
47
348.95
49
10
349.05
48
30

8+44

349.26
359
10
Conc. Threshold
349.2
46
10
Ground

8+05

351.05
28
10
350.55
33
351.05
28
9
350.61
32
10
349.55
43
30

#4
T.P. 3.27 353.85 11.35 350.58
361.93

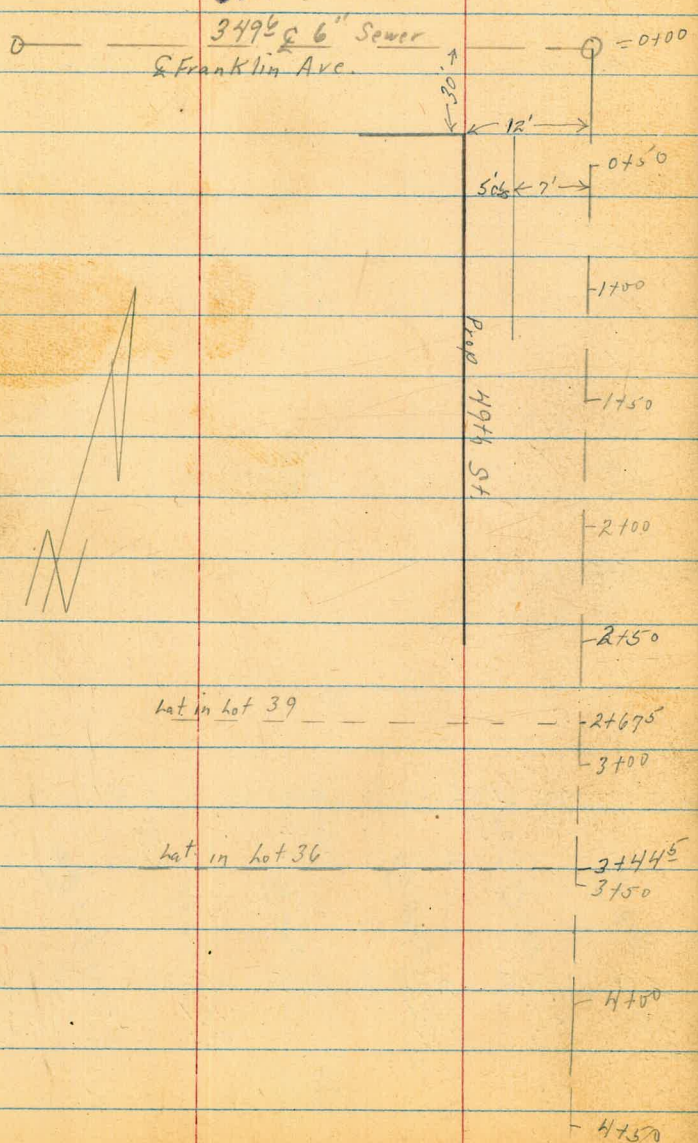
353.85

D. Smith
C. Allen
Nick
H. Bruner

INDEXED

JUN 19 1951

3496 6" Sewer
& Franklin Ave.



Lat in lot 39

Lat in lot 36

BM 14823 SE cor top Fire Hgd.
Franklin & 49th

0+00

138⁸⁹
el. F.L.

146¹⁹
el. R.R.

0+50

145¹³

1+00

144²⁶

1+50

144⁵⁹

2+00

144²⁶

2+50

143⁹⁵

2+67.5

2+67.5

143⁸⁸

143⁵⁷

144⁰³

143³

142⁵

140²

140⁰⁶

3+00

3+00

143⁶³

9' Top of
7' W

50'

72'

85'

99'

W House
Floor

3+44.5

3+44.5

143⁰⁰

142⁵⁹

143⁵²

142⁴

140¹

138²

3+50

3+50

142⁸⁹

9' Top of
7' W

50'

85'

125'

4+00

4+00

140⁹⁸

4+50

137²

W0#62228
6-18-51

54

CURB AND GUTTER ELEVATIONS
 WEST WOOD HILLS UNIT #4
 CARMEN - BAND EAST OF TOKAY

INDEXED

JUL 20 1951

55

W.O. 25020

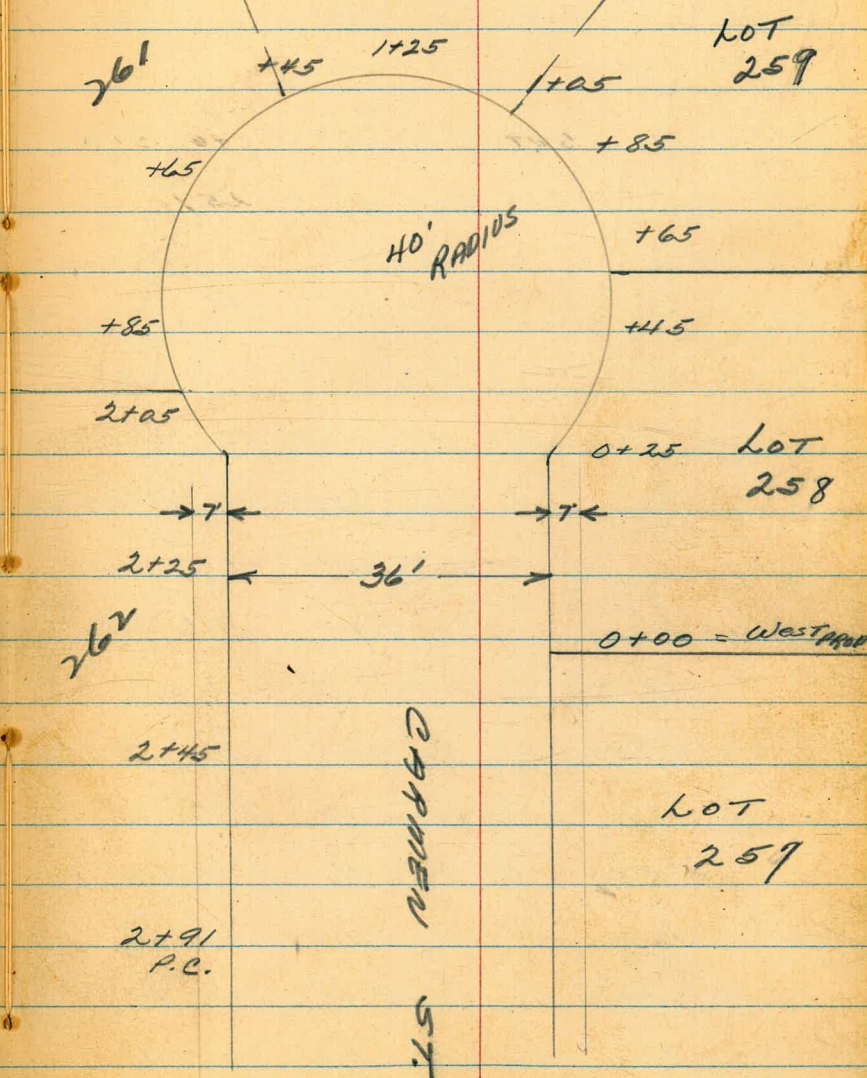
7-19-51

MAP # 2688

HATCH

BRUNNER

FRITZ



262

2+91
P.C.

CARMEN ST.

CURB & GUTTER ELEVATIONS ~ CARMEN

BANNO EAST OF TOKAY ST.

1785 E DRIVEWAY GUT 315.30 5' BACK CO. 315.77

	TOP			GUT.	TOP C.
	GUTTER 315.55	CURB 316.02	1765	315.41	315.90

0+00 = WEST PROP. LOT 257

	TOP			GUT.	TOP C.
	GUTTER 315.32	CURB 315.78	1745	315.56	316.02

0-50 GUT. 315.32 TOP CURB 315.78

				GUT.	TOP C.
			1725	315.60	316.04

USING ELEVATION ROD = ACTUAL ELEVATION

COR. CARMEN & TOKAY 1705 GUT. 315.72 TOP 316.19

SET BRASS PLUG N.W.

6.20 314.78 GUT. 315.77 TOP C. 316.22

9.45 320.98 0.53 311.53

				GUT.	TOP C.
			0+65	315.81	316.27

12.88 312.06 0.31 299.18

13.04 299.49 0.08 286.45

13.00 286.53 0.48 273.53

				GUT.	7' BACK = PROP
			0+45 IN DRIVEWAY	15.77	316.52

13.16 274.01 0.81 260.85

12.19 261.66 0.58 249.47

				GUT.	TOP CURB
			0+25	315.67	316.10

13.16 250.05 0.23 236.89

B.M. 13.33 237.12 223.79 =

S.E.B.P. GRAPE & 54TH ST.

ELEVATION ROD

(CONTINUED)

57

2+91 = P.C.	GUT. 14.86	TOP. C. 315.33
-------------	---------------	-------------------

2+45	GUT. 315.03	TOP C. 315.49
------	----------------	------------------

2+25	GUT. 315.22	TOP C. 315.62
------	----------------	------------------

2+05	GUT. 315.25	TOP. CURB 315.70
------	----------------	---------------------

ELEVATION ROD

X-SECT. DRAINAGE
BON AIR AT DRAPER

T.P. 3.87 130.11[✓] 126.24 = stub.

Sec P. 60 - for New Sect. at 0+84.45

0+84.45 = CURB LINE OF BON AIR PRODUCED
ALL OUTS ARE ALONG BON AIR CURB.

0+78.03 = 4 FT. 1X1 STUB AT T'LINE

0+53.1 = NTH END OF BRIDGE

0+39 = 12" BOARD PLANKS BRIDGE 15' WIDE

0+15

0+10 = E DITCH

± of Headwall - 90° to L of Pipe

0+00 = 12" WIDE CONCRETE 6' HEADWALL
OUTLET OF 36" COR. PIPE

11.00 137.24[✓] 4.29 126.24[✓]

12.41 130.53[✓] 0.49 118.12[✓]

13.02 118.61[✓] 105.59 =

S.W.C.P. DRAPER & BONAIR

Lt	Q	Rt
123.78	126.25	59
129.77		
123.06	126.73	129.61
126.9	126.24	128.86
10.3	11.03	11.54
10.0	5.0	2.0
126.6	8.2	10.0
132.3	131.5	6.78
4.9	5.7	9.1
15.0	5.0	4.0
	132.8	7.1
	130.7	2.0
135.9	134.1	1.3
1.3	3.1	2.58
10.0	5.0	6.51
		137.24 [✓]

TOP ROLL TOP ROLL TOP ROLL
13.46 12.47 10.99
GUT GUT GUT
14.18 13.09 11.85
50 30.0 10.0 10.51
COLDLAY 10.0 30.0 50.0
11.00 10.2 9.76
5.70 4.0 10.0
7.13 10.2 9.76
TOP BRIDGE 6.5 10.0 15.0
8.4 6.0 DITCH DRIVE
6.78 128.1 129.9
TOP BRIDGE 9.1 7.3 4.50
7.6 4.0 8.0 12.0
GRD. 129.6
E DITCH
6.6 7.1 6.76d. 1.2
6.5 2.0 3.5 6.0
Rock wall
130.7 130.5 130.7
TOP HEADWALL 1.0
6.51 5.0
Flowline

New Sect. 7-24-51

Lt. # Rt 60

Have Poured Bottom of flat out let
Thru sidewalk on Draper - N. of Bon Air
2.4' wide - 3" High - from curb to back
of Prop.

It will go from here

1+70

120.22
9.89
Top
119.79
9.0
120.15
9.96
12
120.01

1+52.1 = Beg. Reg. Curb & Walk

122.23
7.88
Top
cb.
121.74
8.37
9.0
121.85
8.26
4
121.68
8.43
7

1+25

124.7
5.4
12
124.27
5.84
1
Top
123.80
6.31
123.58
6.53
2
9.0
124.19
5.92
6
123.96
6.65
15

1+00 = Sec 90° to t

125.8
4.3
20
125.8
4.3
10
125.97
4.14
25
Top
125.16
4.95
9.0
127.02
3.09
2
125.79
4.32
4.5
127.27
2.84
15 = C.L.
130.11 - P. 59

0+94.45 = Ang. 56° 45' 30" Lt. = t is along
Curb Line

Top
CL Roll
cb.

t C.L.
Gutter

Alley Bk. "B." Cornish Hgts.

11-29-51
W.O. 25020

C.H.S.
B099
R. Sisson
oltman

- = Fd. 2" pipe - plug a disk
- = set disk radial to pipe as found
- = set 1/2" disk

outs taken to property side
of poles.

B.W. = base of wall

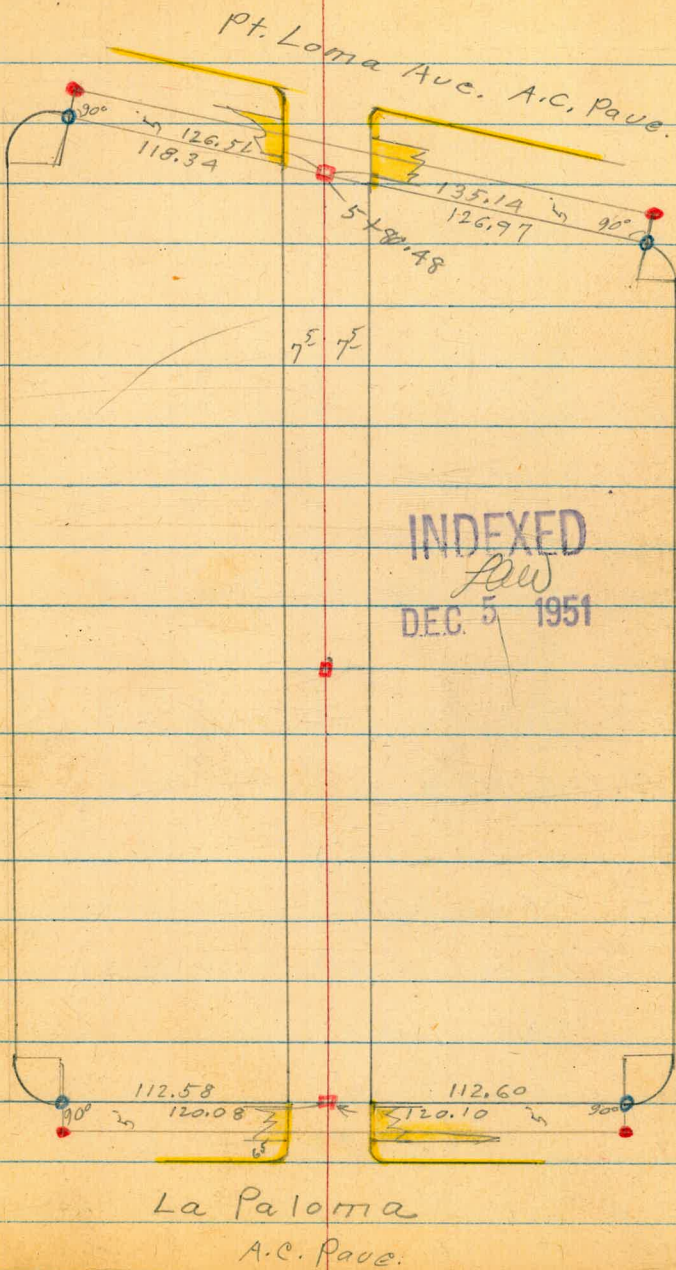
T.W. = top of wall

See Loose Leaf W.O.# 31874
FOR X-SEC 6/10/57

*Reduced by William Ferguson
12-28-51*

Savoy St.

Catalina Blvd.



Alley

BIK. "B" Cornish Hqts

12-3-57

C.H.S.
Beeg
R. Sisson
oltman

62

1+00

3.5	4.8	A	8	5.3	6.5
25	75			75	25
248.1	247.3		246.8	246.3	245.1

0+50

2.9	4.2	A	4	4.5	5.4
25	75			75	25
248.7	247.4		247.2	247.1	246.2

{ = end A.C. Pavc.
75 ft.
75 rh. } = end alley elev

4.63	5.25	6.00	6.33	6.01
75	75		75	75
246.99	246.37	245.62	245.29	245.61
cl.	G		G	cl.

95 ft } B.C. v Rad. cl. Nat.
95 ft }
0-12 Nly cl. line La Paloma

1.40	2.05	4.78	5.35	6.15	6.97	6.34	10.30	9.63
50	50	95	95	251.62	95	95	50	50
cl.	G	80.	G		G	cl.	G	80
250.22	249.57	246.84	246.27	245.47	244.65	245.28	241.32	241.99

T.P. 6.20 251.62 1.06 245.42

1/2 Hub- 0+00 ±

T.P. 11.88 246.48 6.68 234.60

NWBP
S.W.B.P. Catalina + La Paloma

T.P. 0.95 241.28 5.08 240.33

2?

T.P. 1.39 245.41 8.96 244.02

2.16 252.98 - 250.82

S.W.B.P. Verena + Catalina

~~235.46~~

S.W.B.P. Catalina + La Paloma No. B.P. on S.W.C.C.

2+15[±] 9' Lt. = end conc. apron.

247.4
1.76 2.82
20 9
Gar. Floor Apron

2+00

246.3
2.9 3.8 245.4
75 75 244.8 243.8
75 25

1+96- 9' Lt. = start conc. apron to double car.

247.45
1.71 2.75
20 9
Gar. Floor Apron

T.P. 3.66 249.16 6.12 245.50

249.16

1+50

246.7
4.9 5.6 246.0
75 75 245.7

1+41 - 11⁵ Rt. = end conc. slab.

1+31 - 7⁵ Lt. = pole P.A. 1331

246.37
5.25 5.23
115 235
NW Cor. NE Cor.

as yet.

1+21 - 11⁵ Rt. = garage floor. no building
S.W. Cor. Conc. slab.

246.0
5.6 5.24 246.38
11 115 235
End. S.W. S.E. Cor.
Cor.

251.62

T.P. 3.06 245.29 6.93 242.23

3+00

245.3
3.9
25

244.3
4.9
75

243.6
5.6

243.2
6.0
75

239.9
9.3
25

2+51 9' Lt. = end conc. wall.
75 Lt. = pole # PA. 1345

250.2
+1.0
9
T.W.

245.1
4.1
9
B.W.

244.5.3
3.9
9
Grd.

2+50

244.9
4.3
75

244.4
4.8

244.1
5.1
75

242.8
6.4
25

2+38 85' Rt = end conc. apron.

243.99
5.17
85
Apron

242.89
6.27
265
Gar. Floor

2+28 85' Rt = start conc. Apron
to Sing. Bar.

244.08
5.08
85
Apron

242.88
6.28
265
Bar. floor

2+15E 9' Lt. = start Conc. wall

250.1
+0.9
9
T.W.

245.5
3.7
9
B.W.

246.4
2.8
9
Grd.

249.16

38+71 8¹ Lt = Polo P.A. 1369

	245.6	241.3	242.0
+0.3	4.0	3.3	
8 ¹	8 ¹	8 ¹	
T.W.	B.W.	End	

38+70 8¹ Lt = start Conc. wall.

38+69 8¹ Lt = end Conc. wall

	247.6	241.5	242.4
+2.3	3.8	2.9	
8 ¹	8 ¹	7.5	
T.W.	B.W.		

38+50 8³ Lt = line of wall

	241.7	242.5	242.0	241.7
3.6	2.8	3.3	3.6	
8 ³	7.5		7.5	
B.W.				

8⁵ Lt = line of wall.

3+33 7² Rt = End. Conc. apron.

	242.5	241.89	239.38	239.49
2.8	3.40	5.91	5.80	
8 ⁵	7.3	21	22	
B.W.	Ramp	Gar. floor		

3+17 7² Rt = start ramp to double ^{Gar.}

	242.23	239.49	239.59
3.06	5.80	5.70	
7.3	21	22	
Ramp		Gar. floor	

3+10 8⁶ Lt = start Conc. wall

	247.8	242.9	243.7
+2.5	2.4	1.6	
9 ⁶	9 ⁶	8 ⁶	
T.W.	B.W.	End.	

245.29

T.P. 1.49 238.27 8.51 236.78

5+08 7' Lt = dead man

5+00

	239.7					
	5.6	9.2		8.3	8.6	8.7
	95	95		75		75
	T.W.	B.W.				25
		236.1		237.0	236.9	236.6
						234.6

4+80 7' Lt = Pole # PA. 1385

4+75 9th Lt = start Conc. wall

	239.7	237.5				
	5.6	7.8	6.4	6.6	7.8	8.1
	95	95	95	75		75
	T.W.	B.W.				
		238.9		238.7	237.5	237.2

4+50

		241.3				
		4.0	6.2	6.7	7.1	9.7
		25	75		75	25
		239.1		238.6	238.2	235.6

4+25 7th Lt = end. conc. wall.

	245.5				
	+0.2	5.8	5.0		
	75	75	75		
	T.W.	B.W.			
		239.5		240.3	

4+00 7th Lt = line of wall

	240.5	241.3	240.6		
	4.8	4.1	4.9	5.4	7.1
	75	75		75	25
	B.W.				

245.29

Alley BIK. B. Cornish Hqts.

5+76.2 7^E Rt. = start alley ch. + A.C. Pavc.

5+53.

5+35^L 9^E Lt. = start Conc. wall.

5+35 9^E Lt. = end Conc. wall

5+23^L 9^E Lt. = start Conc. wall.

5+23 9^E Lt. = end Conc. wall.

2.1	5.6	4.8	4.8	5.0	5.1	7.0
9 ^E	9 ^E	9 ^E	7 ^E		7 ^E	2 ^E
T.W.	B.W.					
236.2	232.7	233.7	233.5	233.3	233.2	231.3
1.8	4.3	2.8	2.8	2.0	2.0	2.3
9 ^E	9 ^E	9 ^E	9 ^E			
T.W.	B.W.	Grd				
1.6	2.3	1.9	1.9	2.3	2.2	2.3
9 ^E	9 ^E	9 ^E	7 ^E		7 ^E	
T.W.	B.W.	Grd.				
236.7	236.0	236.4	236.4	236.0	236.1	236.1
1.4	2.6	1.9	1.9	2.3	2.2	2.3
9 ^E	9 ^E	9 ^E	7 ^E		7 ^E	
T.W.	B.W.	Grd.				
6.7						
7 ^E						
231.6						
7.2						
231.1						
7.50						
7 ^E						
230.79						
7.25						
7 ^E						
231.02						
86.						

2381 27

Alley Bk. B. Cornish Hgts

9.72 222.73

Lt.P. Check 7.27 232.45 11.22 225.18 (225.17)

(Section along ch. line)

5+93² - Sly ch. line Pt. Loma Ave.

T.P. 6.08 236.40 7.95 230.32

9⁸ Lt 2nd Conc. wall
= start alley curb.

5+84⁰ 7^E Lt 2nd start A.C. Pave.

7.95
Hub.

5+80⁵⁰ = Sly line Pt. Loma.
= start A.C. pave

(7 Pt. Loma + B.C.)

Catalina
set. B.M. S. Wly 7' + B.C. disk Point Loma +

Top Fire Hydt. S.W. Pt. Loma + Catalina

1.85	2.50	4.39	5.10	5.72	6.47	5.78	8.70	8.22
50	50	115	115		115	115	50	50
Ch.	G.	Ch. E.C.	G.		G.	Ch. E.C.	G.	Ch.
234.55	233.90	232.01	231.30	230.68	229.93	230.62	227.50	228.18

236.40

2.6	7.1	6.43	7.01
98	98	75	75
T.W.	B.W.	Ch.	G.

230.49

6.231.5
75
7.78
pave

238.27

69

70

72

1050

73

74

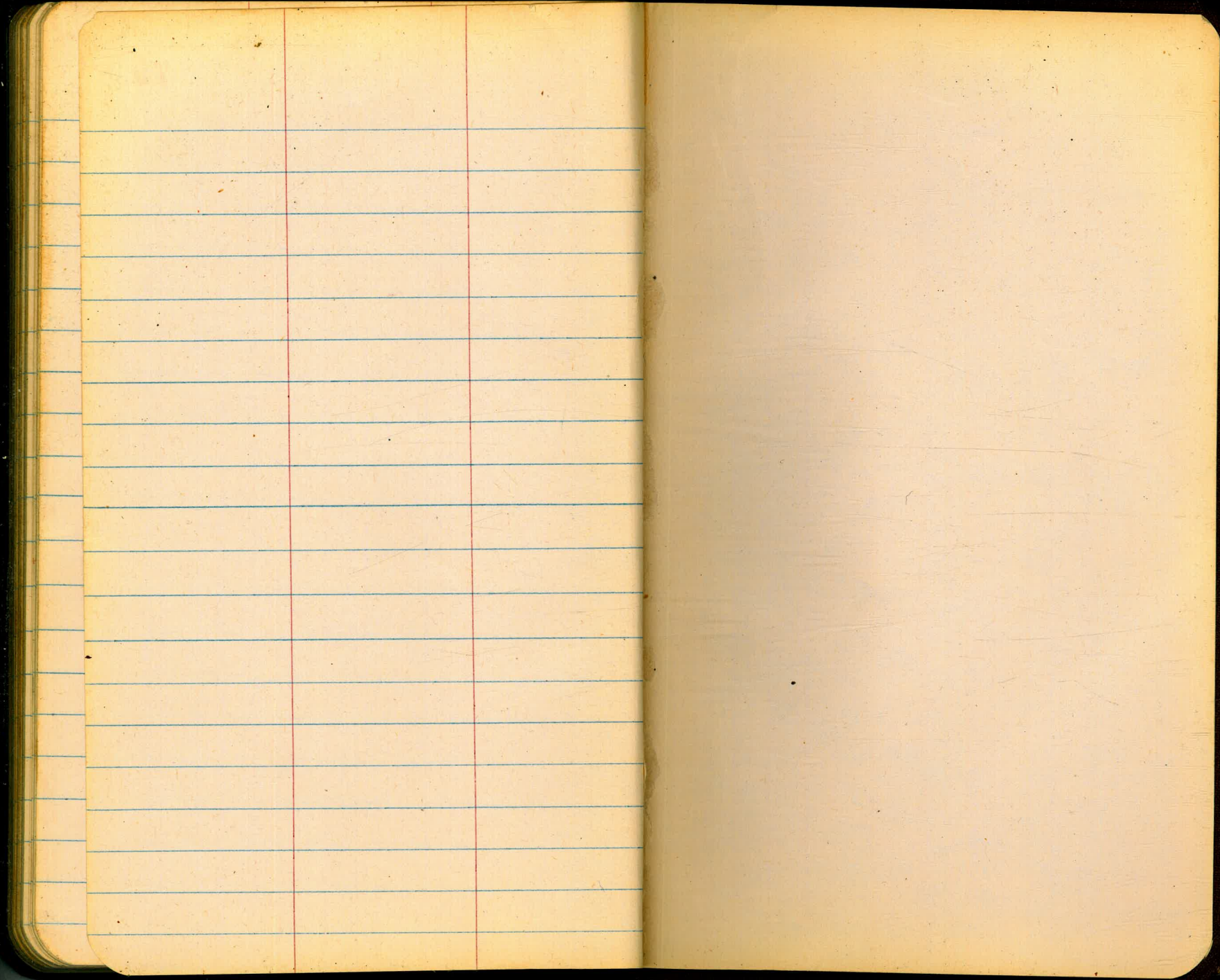
75 -

76



77

78



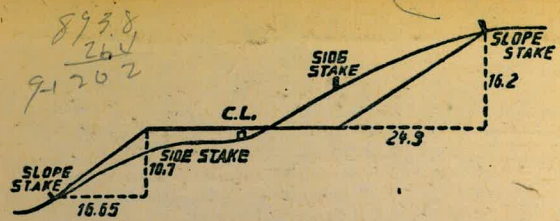
1135

41128
35.46
5.8 2

70
27
43

121
533
654

40



DISTANCES FROM SIDE STAKES FOR CROSS-SECTIONING.
SLOPE 1 1/2 TO 1. ROADWAY OF ANY WIDTH.

	0	.1	.2	.3	.4	.5	.6	.7	.8	.9	
0	0.00	0.15	0.30	0.45	0.60	0.75	0.90	1.05	1.20	1.35	0
1	1.50	1.65	1.80	1.95	2.10	2.25	2.40	2.55	2.70	2.85	1
2	3.00	3.15	3.30	3.45	3.60	3.75	3.90	4.05	4.20	4.35	2
3	4.50	4.65	4.80	4.95	5.10	5.25	5.40	5.55	5.70	5.85	3
4	6.00	6.15	6.30	6.45	6.60	6.75	6.90	7.05	7.20	7.35	4
5	7.50	7.65	7.80	7.95	8.10	8.25	8.40	8.55	8.70	8.85	5
6	9.00	9.15	9.30	9.45	9.60	9.75	9.90	10.05	10.20	10.35	6
7	10.50	10.65	10.80	10.95	11.10	11.25	11.40	11.55	11.70	11.85	7
8	12.00	12.15	12.30	12.45	12.60	12.75	12.90	13.05	13.20	13.35	8
9	13.50	13.65	13.80	13.95	14.10	14.25	14.40	14.55	14.70	14.85	9
10	15.00	15.15	15.30	15.45	15.60	15.75	15.90	16.05	16.20	16.35	10
11	16.50	16.65	16.80	16.95	17.10	17.25	17.40	17.55	17.70	17.85	11
12	18.00	18.15	18.30	18.45	18.60	18.75	18.90	19.05	19.20	19.35	12
13	19.50	19.65	19.80	19.95	20.10	20.25	20.40	20.55	20.70	20.85	13
14	21.00	21.15	21.30	21.45	21.60	21.75	21.90	22.05	22.20	22.35	14
15	22.50	22.65	22.80	22.95	23.10	23.25	23.40	23.55	23.70	23.85	15
16	24.00	24.15	24.30	24.45	24.60	24.75	24.90	25.05	25.20	25.35	16
17	25.50	25.65	25.80	25.95	26.10	26.25	26.40	26.55	26.70	26.85	17
18	27.00	27.15	27.30	27.45	27.60	27.75	27.90	28.05	28.20	28.35	18
19	28.50	28.65	28.80	28.95	29.10	29.25	29.40	29.55	29.70	29.85	19
20	30.00	30.15	30.30	30.45	30.60	30.75	30.90	31.05	31.20	31.35	20
21	31.50	31.65	31.80	31.95	32.10	32.25	32.40	32.55	32.70	32.85	21
22	33.00	33.15	33.30	33.45	33.60	33.75	33.90	34.05	34.20	34.35	22
23	34.50	34.65	34.80	34.95	35.10	35.25	35.40	35.55	35.70	35.85	23
24	36.00	36.15	36.30	36.45	36.60	36.75	36.90	37.05	37.20	37.35	24
25	37.50	37.65	37.80	37.95	38.10	38.25	38.40	38.55	38.70	38.85	25
26	39.00	39.15	39.30	39.45	39.60	39.75	39.90	40.05	40.20	40.35	26
27	40.50	40.65	40.80	40.95	41.10	41.25	41.40	41.55	41.70	41.85	27
28	42.00	42.15	42.30	42.45	42.60	42.75	42.90	43.05	43.20	43.35	28
29	43.50	43.65	43.80	43.95	44.10	44.25	44.40	44.55	44.70	44.85	29
30	45.00	45.15	45.30	45.45	45.60	45.75	45.90	46.05	46.20	46.35	30
31	46.50	46.65	46.80	46.95	47.10	47.25	47.40	47.55	47.70	47.85	31
32	48.00	48.15	48.30	48.45	48.60	48.75	48.90	49.05	49.20	49.35	32
33	49.50	49.65	49.80	49.95	50.10	50.25	50.40	50.55	50.70	50.85	33
34	51.00	51.15	51.30	51.45	51.60	51.75	51.90	52.05	52.20	52.35	34
35	52.50	52.65	52.80	52.95	53.10	53.25	53.40	53.55	53.70	53.85	35
36	54.00	54.15	54.30	54.45	54.60	54.75	54.90	55.05	55.20	55.35	36
37	55.50	55.65	55.80	55.95	56.10	56.25	56.40	56.55	56.70	56.85	37
38	57.00	57.15	57.30	57.45	57.60	57.75	57.90	58.05	58.20	58.35	38
39	58.50	58.65	58.80	58.95	59.10	59.25	59.40	59.55	59.70	59.85	39
40	60.00	60.15	60.30	60.45	60.60	60.75	60.90	61.05	61.20	61.35	40
41	61.50	61.65	61.80	61.95	62.10	62.25	62.40	62.55	62.70	62.85	41
42	63.00	63.15	63.30	63.45	63.60	63.75	63.90	64.05	64.20	64.35	42
43	64.50	64.65	64.80	64.95	65.10	65.25	65.40	65.55	65.70	65.85	43
44	66.00	66.15	66.30	66.45	66.60	66.75	66.90	67.05	67.20	67.35	44
45	67.50	67.65	67.80	67.95	68.10	68.25	68.40	68.55	68.70	68.85	45
46	69.00	69.15	69.30	69.45	69.60	69.75	69.90	70.05	70.20	70.35	46
47	70.50	70.65	70.80	70.95	71.10	71.25	71.40	71.55	71.70	71.85	47
48	72.00	72.15	72.30	72.45	72.60	72.75	72.90	73.05	73.20	73.35	48
49	73.50	73.65	73.80	73.95	74.10	74.25	74.40	74.55	74.70	74.85	49
50	75.00	75.15	75.30	75.45	75.60	75.75	75.90	76.05	76.20	76.35	50

THE NATIONAL BLANK BOOK COMPANY
HOLYOKE MASSACHUSETTS
NEW YORK CHICAGO BOSTON SAN FRANCISCO