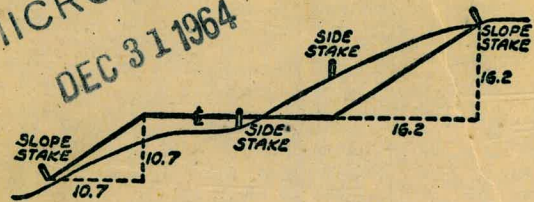


2066

PLANT BOOK

MICROFILMED
DEC 31 1964



DISTANCES FROM SIDE STAKES FOR CROSS-SECTIONING
SLOPE 1 TO 1. ROADWAY OF ANY WIDTH

	0	.1	.2	.3	.4	.5	.6	.7	.8	.9	
0	0.00	0.10	0.20	0.30	0.40	0.50	0.60	0.70	0.80	0.90	0
1	1.00	1.10	1.20	1.30	1.40	1.50	1.60	1.70	1.80	1.90	1
2	2.00	2.10	2.20	2.30	2.40	2.50	2.60	2.70	2.80	2.90	2
3	3.00	3.10	3.20	3.30	3.40	3.50	3.60	3.70	3.80	3.90	3
4	4.00	4.10	4.20	4.30	4.40	4.50	4.60	4.70	4.80	4.90	4
5	5.00	5.10	5.20	5.30	5.40	5.50	5.60	5.70	5.80	5.90	5
6	6.00	6.10	6.20	6.30	6.40	6.50	6.60	6.70	6.80	6.90	6
7	7.00	7.10	7.20	7.30	7.40	7.50	7.60	7.70	7.80	7.90	7
8	8.00	8.10	8.20	8.30	8.40	8.50	8.60	8.70	8.80	8.90	8
9	9.00	9.10	9.20	9.30	9.40	9.50	9.60	9.70	9.80	9.90	9
10	10.00	10.10	10.20	10.30	10.40	10.50	10.60	10.70	10.80	10.90	10
11	11.00	11.10	11.20	11.30	11.40	11.50	11.60	11.70	11.80	11.90	11
12	12.00	12.10	12.20	12.30	12.40	12.50	12.60	12.70	12.80	12.90	12
13	13.00	13.10	13.20	13.30	13.40	13.50	13.60	13.70	13.80	13.90	13
14	14.00	14.10	14.20	14.30	14.40	14.50	14.60	14.70	14.80	14.90	14
15	15.00	15.10	15.20	15.30	15.40	15.50	15.60	15.70	15.80	15.90	15
16	16.00	16.10	16.20	16.30	16.40	16.50	16.60	16.70	16.80	16.90	16
17	17.00	17.10	17.20	17.30	17.40	17.50	17.60	17.70	17.80	17.90	17
18	18.00	18.10	18.20	18.30	18.40	18.50	18.60	18.70	18.80	18.90	18
19	19.00	19.10	19.20	19.30	19.40	19.50	19.60	19.70	19.80	19.90	19
20	20.00	20.10	20.20	20.30	20.40	20.50	20.60	20.70	20.80	20.90	20
21	21.00	21.10	21.20	21.30	21.40	21.50	21.60	21.70	21.80	21.90	21
22	22.00	22.10	22.20	22.30	22.40	22.50	22.60	22.70	22.80	22.90	22
23	23.00	23.10	23.20	23.30	23.40	23.50	23.60	23.70	23.80	23.90	23
24	24.00	24.10	24.20	24.30	24.40	24.50	24.60	24.70	24.80	24.90	24
25	25.00	25.10	25.20	25.30	25.40	25.50	25.60	25.70	25.80	25.90	25
26	26.00	26.10	26.20	26.30	26.40	26.50	26.60	26.70	26.80	26.90	26
27	27.00	27.10	27.20	27.30	27.40	27.50	27.60	27.70	27.80	27.90	27
28	28.00	28.10	28.20	28.30	28.40	28.50	28.60	28.70	28.80	28.90	28
29	29.00	29.10	29.20	29.30	29.40	29.50	29.60	29.70	29.80	29.90	29
30	30.00	30.10	30.20	30.30	30.40	30.50	30.60	30.70	30.80	30.90	30
31	31.00	31.10	31.20	31.30	31.40	31.50	31.60	31.70	31.80	31.90	31
32	32.00	32.10	32.20	32.30	32.40	32.50	32.60	32.70	32.80	32.90	32
33	33.00	33.10	33.20	33.30	33.40	33.50	33.60	33.70	33.80	33.90	33
34	34.00	34.10	34.20	34.30	34.40	34.50	34.60	34.70	34.80	34.90	34
35	35.00	35.10	35.20	35.30	35.40	35.50	35.60	35.70	35.80	35.90	35
36	36.00	36.10	36.20	36.30	36.40	36.50	36.60	36.70	36.80	36.90	36
37	37.00	37.10	37.20	37.30	37.40	37.50	37.60	37.70	37.80	37.90	37
38	38.00	38.10	38.20	38.30	38.40	38.50	38.60	38.70	38.80	38.90	38
39	39.00	39.10	39.20	39.30	39.40	39.50	39.60	39.70	39.80	39.90	39
40	40.00	40.10	40.20	40.30	40.40	40.50	40.60	40.70	40.80	40.90	40
41	41.00	41.10	41.20	41.30	41.40	41.50	41.60	41.70	41.80	41.90	41
42	42.00	42.10	42.20	42.30	42.40	42.50	42.60	42.70	42.80	42.90	42
43	43.00	43.10	43.20	43.30	43.40	43.50	43.60	43.70	43.80	43.90	43
44	44.00	44.10	44.20	44.30	44.40	44.50	44.60	44.70	44.80	44.90	44
45	45.00	45.10	45.20	45.30	45.40	45.50	45.60	45.70	45.80	45.90	45
46	46.00	46.10	46.20	46.30	46.40	46.50	46.60	46.70	46.80	46.90	46
47	47.00	47.10	47.20	47.30	47.40	47.50	47.60	47.70	47.80	47.90	47
48	48.00	48.10	48.20	48.30	48.40	48.50	48.60	48.70	48.80	48.90	48
49	49.00	49.10	49.20	49.30	49.40	49.50	49.60	49.70	49.80	49.90	49
50	50.00	50.10	50.20	50.30	50.40	50.50	50.60	50.70	50.80	50.90	50

Distance of slope stake from side or shoulder stake for any width roadway, slope 1 to 1. If ground is nearly level, the cut or fill at side stake is located by the double entry method in left column and top row. The number in body of table in same row and column gives distance from side stake to slope stake. If ground is not level estimate the difference in elevation between the side stake and slope stake, lower target by this amount if cut, elevate if fill. Add this amount to cut or fill and find distance in table. Set up rod at this point, and line of sight should cut target. If it does not make the slight adjustment necessary.

INDEXED
to page #41

TABLE XIII—CORRECTIONS FOR TANGENTS AND EXTERNALS

These corrections are to be added to the approximate values, found by dividing the tangent, or external, for a 1° curve (Table VIII) by the degree of curve, in order to obtain the true tangents, or externals. Intermediate values may be obtained by interpolation.

FOR TANGENTS ADD

Central Angle	DEGREE OF CURVE													
	5°	10°	15°	20°	25°	30°	35°	40°	45°	50°	55°	60°	65°	70°
10°	.03	.06	.09	.13	.16	.19	.22	.25	.28	.31	.34	.38	.42	.46
15°	.04	.10	.14	.19	.24	.29	.34	.39	.45	.51	.53	.58	.63	.68
20°	.06	.13	.19	.26	.32	.39	.45	.51	.58	.65	.72	.79	.84	.90
25°	.08	.16	.24	.33	.40	.49	.58	.67	.75	.83	.90	.99	1.06	1.14
30°	.10	.19	.29	.39	.49	.59	.69	.79	.89	.99	1.09	1.20	1.29	1.39
35°	.11	.22	.34	.47	.58	.69	.79	.81	.92	1.04	1.29	1.42	1.54	1.66
40°	.13	.26	.40	.53	.67	.80	.93	1.06	1.20	1.34	1.49	1.64	1.79	1.94
45°	.15	.30	.44	.60	.76	.91	1.06	1.21	1.37	1.52	1.70	1.87	2.04	2.21
50°	.17	.34	.51	.68	.85	1.02	1.19	1.36	1.54	1.72	1.91	2.10	2.29	2.48
55°	.19	.38	.57	.76	.95	1.14	1.32	1.52	1.72	1.92	2.14	2.35	2.56	2.77
60°	.21	.42	.63	.84	1.05	1.27	1.49	1.71	1.94	2.17	2.38	2.60	2.83	3.07
65°	.23	.46	.69	.93	1.16	1.40	1.64	1.88	2.13	2.38	2.63	2.88	3.13	3.39
70°	.25	.51	.76	1.02	1.28	1.54	1.80	2.06	2.33	2.60	2.88	3.16	3.44	3.72
75°	.27	.56	.83	1.12	1.40	1.69	1.98	2.27	2.57	2.87	3.16	3.47	3.78	4.09
80°	.30	.61	.91	1.22	1.53	1.84	2.15	2.46	2.78	3.10	3.44	3.78	4.12	4.46
85°	.33	.66	1.00	1.33	1.68	2.02	2.36	2.70	3.05	3.40	3.77	4.14	4.55	4.89
90°	.36	.72	1.09	1.45	1.83	2.20	2.57	2.94	3.32	3.70	4.10	4.50	4.91	5.32
95°	.39	.79	1.19	1.55	2.00	2.40	2.80	3.20	3.61	4.02	4.40	4.98	5.38	5.83
100°	.43	.86	1.30	1.74	2.18	2.62	3.06	3.50	3.95	4.40	4.88	5.37	5.85	6.34
110°	.51	1.03	1.56	2.08	2.61	3.14	3.67	4.21	4.76	5.31	5.86	6.43	7.01	7.60
120°	.62	1.25	1.93	2.52	3.16	3.81	4.45	5.11	5.77	6.44	7.12	7.80	8.50	9.22

FOR EXTERNALS ADD

Central Angle	DEGREE OF CURVE													
	5°	10°	15°	20°	25°	30°	35°	40°	45°	50°	55°	60°	65°	70°
10°	.001	.003	.004	.006	.007	.008	.009	.011	.012	.014	.015	.017	.018	.020
15°	.003	.007	.010	.014	.018	.023	.027	.032	.035	.039	.043	.047	.051	.051
20°	.006	.011	.017	.022	.028	.034	.038	.045	.051	.057	.063	.070	.076	.083
25°	.009	.018	.027	.036	.046	.056	.065	.074	.083	.093	.106	.120	.127	.135
30°	.013	.025	.038	.051	.065	.078	.090	.103	.116	.129	.149	.170	.179	.188
35°	.018	.035	.054	.072	.086	.109	.131	.153	.175	.197	.213	.230	.247	.264
40°	.023	.046	.070	.093	.117	.141	.172	.203	.234	.265	.277	.290	.315	.341
45°	.030	.060	.093	.119	.153	.184	.216	.254	.289	.325	.351	.378	.411	.445
50°	.037	.075	.116	.151	.189	.227	.266	.305	.345	.384	.425	.467	.508	.550
55°	.046	.093	.142	.188	.236	.283	.332	.381	.420	.479	.530	.582	.641	.700
60°	.056	.112	.168	.225	.283	.340	.398	.457	.516	.575	.636	.697	.774	.851
65°	.067	.135	.204	.273	.343	.412	.483	.554	.625	.697	.711	.845	.922	1.01
70°	.080	.159	.240	.321	.403	.485	.568	.652	.735	.819	.906	.994	1.08	1.17
75°	.095	.182	.266	.353	.440	.528	.618	.707	.797	.877	1.07	1.18	1.29	1.39
80°	.110	.220	.332	.445	.558	.671	.787	.903	1.02	1.13	1.25	1.38	1.50	1.62
85°	.128	.259	.391	.524	.657	.790	.926	1.06	1.20	1.34	1.47	1.62	1.76	1.91
90°	.149	.299	.450	.603	.756	.910	1.07	1.22	1.38	1.54	1.70	1.87	2.03	2.20
95°	.174	.350	.522	.706	.885	1.06	1.25	1.43	1.62	1.80	1.99	2.18	2.38	2.58
100°	.200	.401	.604	.809	1.01	1.22	1.43	1.64	1.85	2.06	2.28	2.50	2.73	2.96
110°	.268	.536	.806	1.08	1.35	1.63	1.91	2.20	2.48	2.76	3.05	3.35	3.66	3.96
120°	.360	.721	1.08	1.45	1.82	2.19	2.57	2.95	3.33	3.72	4.11	4.50	4.91	5.32

Page

Stake E.L. Bow Ave Pl 172

- X- Sect 38th - S. of Wightman 2-5
- Survey for St. Drain - 38th - Univ to Wightman 6-10
- Levels on Univ. 38th to Alley 12
- Profiles - So of Univ. W. of 38th 14
- X- Sec Union to Front 15
- X- Sec 52d Trojan to El Cajon 18
- X- Sec Randall 24
- X- Sec 20th Alley Blk 149 - Univ Hts 32
- Alley continued (Fulmar) 37
- X- Sec Weaver, Feldspar to Dipper 43
- Storm Drain - Mile to University 49
- X- Sec Drainage SDRiver, Midway 60 to 66
- Drive to Lapwai St.
- Loc. & Elev's Imp. N. 1/2 52, South, El Cajon 68
- X- Sec. Aly 50, Park Villas 71

Flagged out F.L. of
1-25-50 Bow Ave. on 30' opening

Moore on West side of Pl. 172
8099
Shannon
Proprietor

W020006

INDEXED
W.K.
'JAN 26 1950

Fd. Con. Mon.

Virginia

53

PLOT
on
Tie
Sheet

Set with disk

90°

160

Fd. Con. Mon.

30

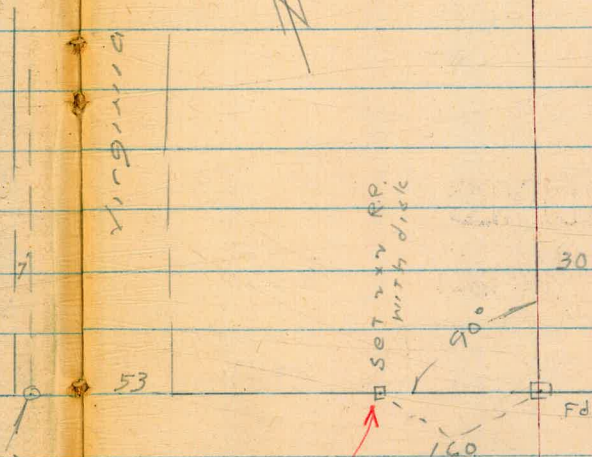
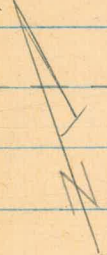
Flagged
line

Pl. 172

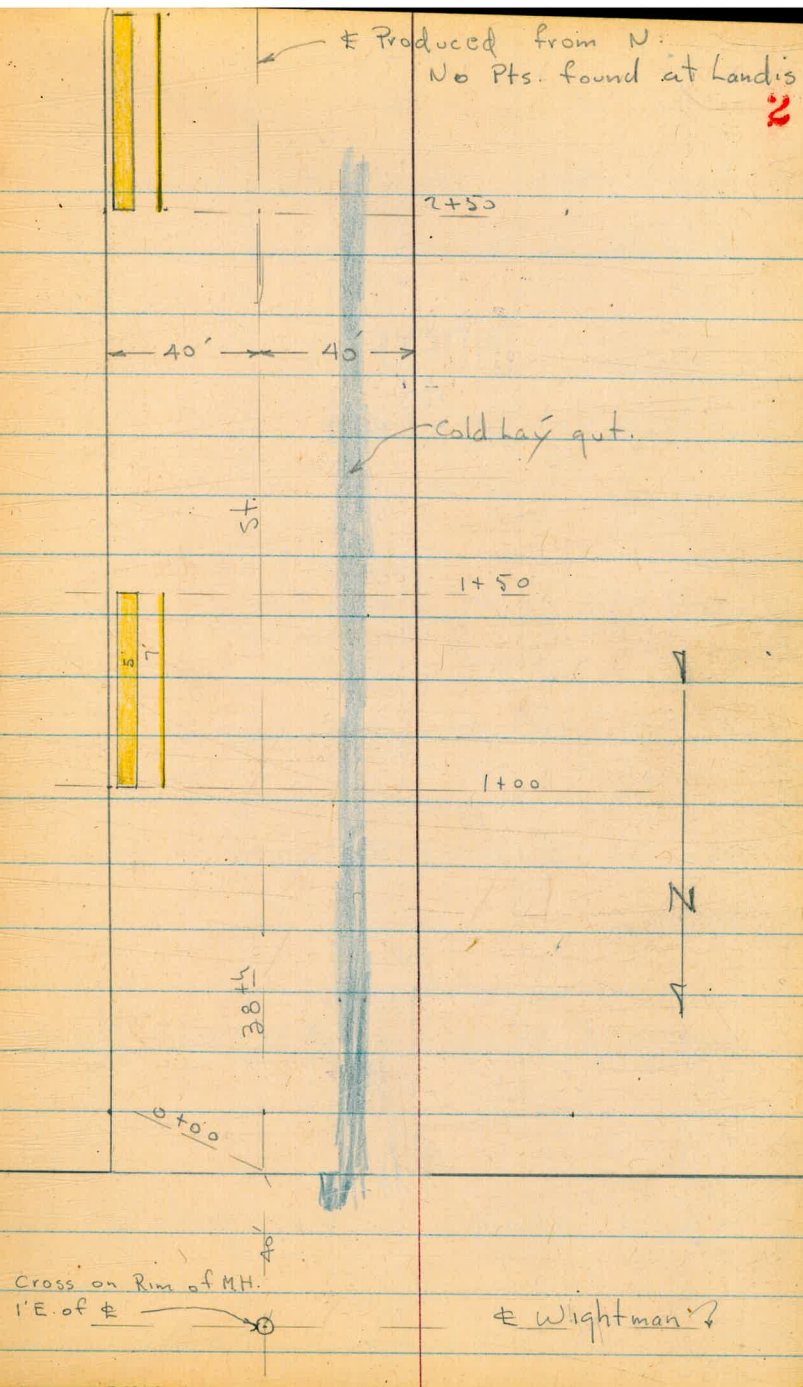
PLOT
169

Fd. Con. Mon.

Mon. Graded
OUT



INDEXED
W.K.
JAN 31 1950



Lt. = E. # Rt. = W.

X-Sect. 38[±] S. of Wightman

with cuts on W.

4185

1-30-50

W.O. 31587

INDEXED
WK
JAN 31 1950

7.0

0+50 Cont.

22.5 20.6 20.2 8.9
80 85 95 125
± wash

0+50

3.7 4.4 5.2 4.9
40 30 26 13

318.8

4.7 5.0 5.3 4.6 4.6 17.7
20 26 30 40 63
edge cl.

0+48- 392 Lt. = end wall

250 3.7
392 392
Top wall

0+28- Cont.

16.3 7.4
90 110

0+397- 81.2 Rt. = outlet 24" Conc. Culvert.

24.72
81.2
I.E. of
Pipe

0+28- 64.7 Rt. = outlet of 30" Steel Culvert.

256 4.3 4.5 5.2 4.8 4.6
392 392 30 26 13
Top wall

318.9

4.8 5.1 4.1 3.9 17.7
20 26 30 40 64.7
edge cl. I.E. of Pipe

0+00 = S.L. Wightman - 39.2 Lt. = Beg 8" Conc. wall

257 4.1 4.3 5.2 4.8 4.5
39.3 39.3 30 25 15
Top wall

319.0

4.7 4.6 4.6 4.1 3.7
13 20 26 30 40
edge cl. gut.

BM

3.75

323.47

319.72

N.W.B.P. - 38[±] + Wightman

323.47

Lt.

#

Rt.

4

2+00 Cont.

27.8	29.7	27.7
100	112	140
	#wash	

2+00

5.4	5.8	6.5	6.1	6.0	6.3	6.5	5.8	5.9	9.9
40	30	26	13	60	20	26	30	40	62

1+50 Cont.

28.4	25.9	25.9	0.4
86	95	105	145 =
#wash			Top.

1+50 = end of cb. + walk on Lt.

5.24	5.32	5.50	6.1	5.5	5.3	5.7	5.9	5.2	5.9	25.7
34	33	26	26.0	13		20	26	30	40	71
walk		Top	cut							

1+12 = # 15' Conc. Dr. on Lt.

4.94	5.70
33	26
walk	Dr.

1+00 - Conc.

25.2	0.4
88	130 = Top of
	Bank

1+00 = Beg. cb. + walk on Lt.

4.74	4.80	5.00	5.7	5.3	5.1	5.2	5.5	4.8	5.0	26.0
38	33	26	26	13		20	26	30	40	78
walk		Top	cut			edge				#wash
		cb.				cl.				

0+89.8 - 74.8' Rt. = outlet of 24" Conc. culvert

27.75
74.8 = I.E.
Pipe

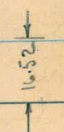
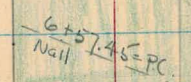
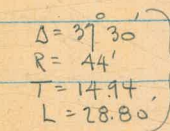
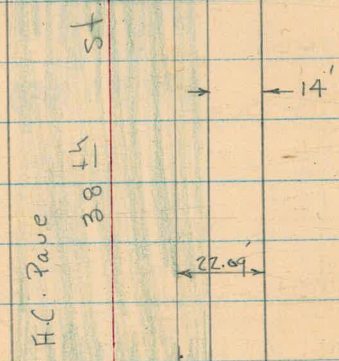
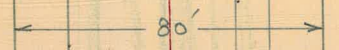
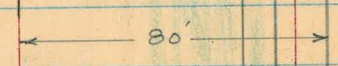
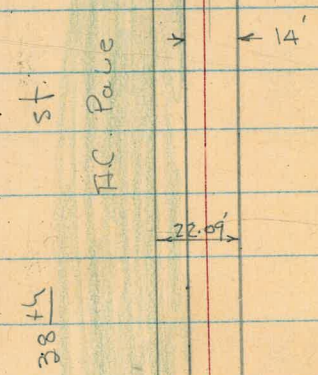
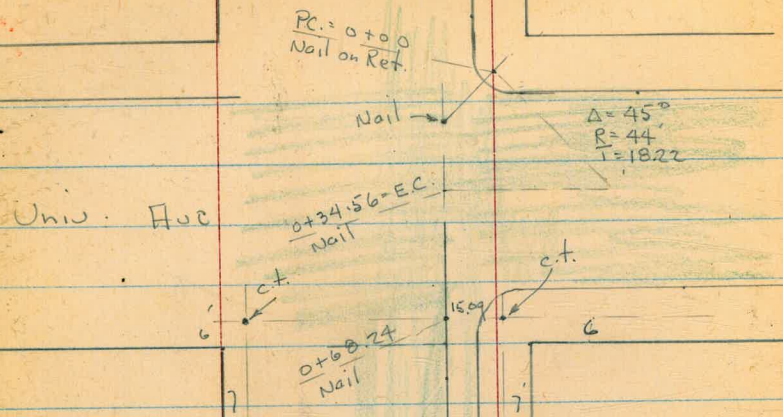
323.47

2+50 = Beg 50' of cb + walk on lt.

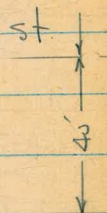
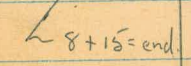
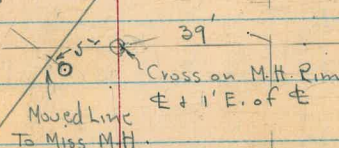
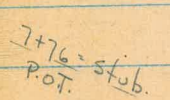
6.21 6.31 6.45 7.0
 38.2 33.2 26.1 26.1
 walk Top got
 cb.

323.47

11702



Wightman



Levels along \pm of Prop. Draw in
38th from Univ. to wrightman
sketch - P. 6

4414

W.O. 20659

INDEXED

W.K.
APR 20 1950

4-19-50

Osborne
Hardin
Hatch.

0+74.24 = S.L. Univ.

0+60.24

0+34.56 = E.C.

0+17.28 = Mid point of Curve

0+06.6 - 0.5 (inside) Rt. = Cor. of Box - See 1820-P-58 for Loc. + elev.

0+02.8 = cb. face

= P.C. of Curve

0+00 = Nail in Ret. - N.E. Cor. 38th + Univ.

B.M.

4.88

350.53 ✓

345.65 ✓

NW.B.P. 38th + Univ.

Lt.

\pm

Rt.

7

345.75
4.78

345.75
4.78

346.49
4.04

346.22
4.31

345.95
4.58 = Cor.

346.11
4.42 = Top + gut

346.19
4.34

350.53 ✓

4+50

4+00

T.P.

0.55 338.90 ✓ 12.18 338.35 ✓

3+50

3+00

2+50

2+00

1+50

1+00

0+80

Lt.

±

Rt.

8

334.60
4.30

337.01 1.89 Top	336.38 2.52 9.1	336.67 2.23	336.80 2.10 10=
-----------------------	-----------------------	----------------	-----------------------

338.90 ✓

338.30
12.23

339.93 10.60 Top	339.30 11.23 7.9 9.4	339.59 10.94	339.88 10.65 10
------------------------	-------------------------------	-----------------	-----------------------

340.90
9.63

342.54 7.99 8 Top cb.	341.84 8.69 8=	342.18 8.35	342.44 8.09 10
-----------------------------------	----------------------	----------------	----------------------

343.48
7.05

344.77
5.76

345.29
5.24

350.53 ✓

7+27 - 5' Lt. = \pm of St. Drain M.H.

7+24 = edge C.L. gutter

7+10

6+86.25 = E.C.

6+73.65 = end of A.C. Pavc

6+57.45 = P.C.

T.P. 10.2 326.69 ✓ 13.23 325.67 ✓

6+00

5+50

5+00

Lt. 1 \pm Rt. **y**

318.85 318.66
7.84 8.03

5
Rim
M.H. 318.78
7.91

319.19
7.5

319.69
7.0

319.94
6.75

320.98
5.71

326.69 ✓

325.90 325.28 326.53 325.17
13.00 13.62 12.37 13.23
8 10
Top gut

329.37
9.53

332.83 331.96 332.18 332.38
6.07 6.94 6.72 6.52
Top 7.9 10
gut 338.90 ✓

Int.

See Wightman X-Sections for Details of

check B.M. - N.W. B.P. 7.02 319.67 ✓

P.M. Book Shows 319.70 MEK.

35th & Wightman - 319.72 - P. 2.

8+15 = Bottom of Wash = end.

301.29
25.4

Conn. to Pipe shown below

8+07.5 - 2' Lt. = outlet of 24" Steel Pipe

305.29 305.69
21.40 21.0

2'
I.E. of
Pipe 314.99
11.7

7+90

7+76 = Pot. Stub

320.17
6.52
on Stub.

7+60 = edge of C.L.

319.19
7.5

24" Conc. Pipe

7+55 = C.L. gut. 7.5 Lt. = ⊕ of inlet of

817.79
8.9

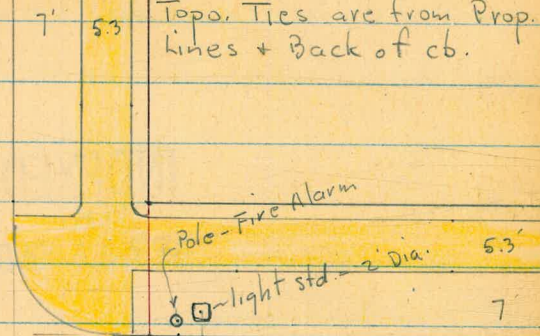
7+40

317.92
8.77

326.69 ✓

REDUCED 420.50 MEK.

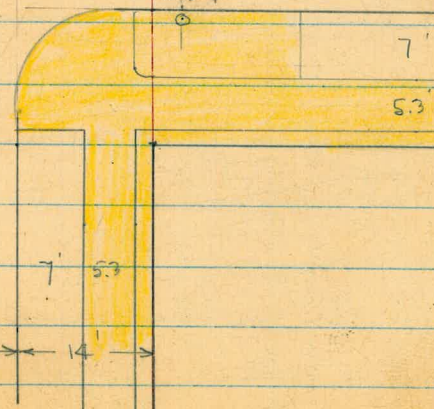
Topo. Ties are from Prop. lines + Back of cb.



Pole - Fire Alarm

light std. - 2 Dia. 5.3'

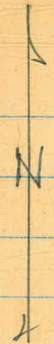
3'E - 1.8' P pole #JR3801
5.5'E - 2.3 B.
1.5 B. - 2.3 B.
3.7.5



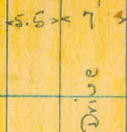
38.6' N. - end Dr.

135' D.

N.L. ->



38 + 1 54



49' W. 2.5 B. sign
AC

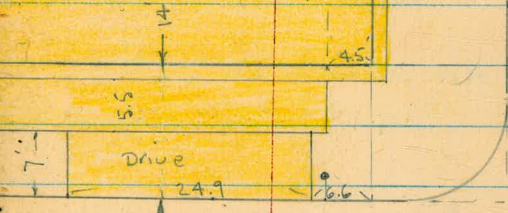
33 W. - 2.3 B

10' Rad.

light std.

52'

Unit



52'

7' 5.3'



52'

7' 5.3'

L = S.

N. cb.

et = N.

12

Levels along - N. cb. of Univ. - from 38th
 W. to Alley - cb = base line

INDEXED

 WJK
 APR 25 1950

1+30 = end of cb.

1+00

0+50

0+31.5 = end Dr.

0+06.6 = Beg. Conc. Dr.

0+00 = W.L. 38th

B.M.

5.35

351.00 ✓

345.65 ✓

New B.P.

38th & Univ.

348.19

2.81
8

347.79

2.21
9.01

348.14

2.86
Top

348.26

2.74
7

348.32

2.69
walk 12.5

347.54

3.46
8

347.05

3.95
9.01

347.49

3.52
Top

346.49

4.53
8

345.92

5.08
9.01

346.33

4.67
Top

346.32

4.38
7

346.76

4.24
walk 12.5

346.15

4.85
8

345.62

5.37
9.01

345.91

5.09
Top

346.38

4.62
7

346.15

4.55
walk 12.5

345.64

5.16
8

345.10

5.86
9.01

345.54

5.46
Top

346.10

4.90
7

346.24

4.76
walk 12.5

351.00 ✓

Lt. S.

S. cb.

Rt. = N. 13

Levels along S. cb. of Univ. - 38th W. to Alley

1+40 = EL. Alley

348.09	347.99	347.47	347.81	348.32
2.91	3.01	3.53	3.19	2.68
12.3	walk 7		Top	12

1+15

347.49	347.45	346.78	347.31	347.81
3.51	3.55	4.02	3.69	3.19
12.3	walk 7	9.4	Top	12

0+85

346.76	346.63	346.38	346.84	347.20
4.24	4.37	4.62	4.16	3.80
12.3	walk 7	9.4	Top	12

0+60

345.96	345.75	345.75	346.14	346.61
5.04	5.25	5.25	4.86	4.39
12.3	walk 7	9.4	Top	12

0+25

345.88	345.73	344.96	345.30	345.99
5.12	5.27	6.04	5.70	5.01
12.3	walk 7	9.4	Top	12

0+00 = W.L. 38th

345.49	345.38	344.50	345.35	345.62
5.51	5.62	6.50	5.65	5.38
12.3	walk 7	9.4	Top	8
		351.00 ✓		

± Profile along New Loc. on W. side of (150' W. of ±)

38th - Prop. Drain - S. of Univ.

351.00 = H.I.

0+00 = S.L. Univ.		5.45	345.55
1+00		8.45	342.55
2+00		11.04	339.96
T.P.	1.14	<u>340.73</u> ✓	11.41 339.59 ✓
3+00		3.71	337.02
4+00		5.44	335.29
5+00		7.70	333.03
6+00		10.37	330.36
T.P.	0.43	<u>328.66</u> ✓	12.50 328.23 ✓
7+00		1.69	326.97
8+00 = end		9.17	319.49

INDEXED

W.K.

APR 25 1950

REMOVED 4-25-50 AELK

X-Sect. Fir St. - from Union to
Front -

4420

INDEXED

4-25-50

W.O. 20633

W.K.
APR 25 1950

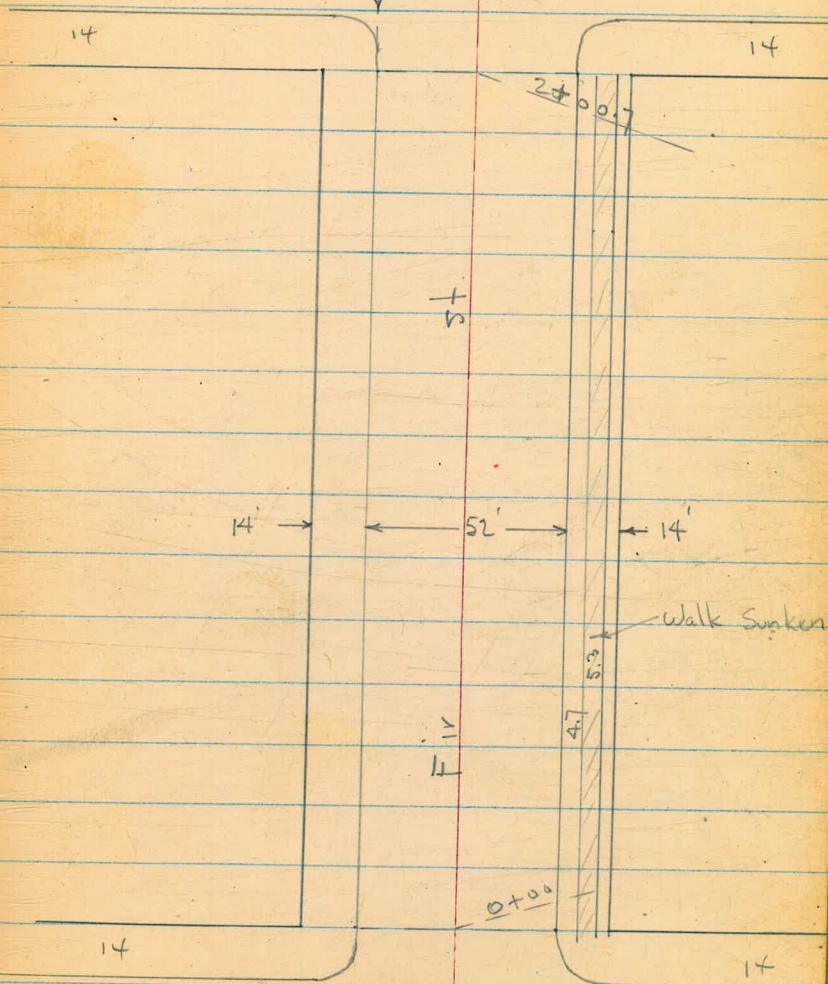
7.0.

Front

Cross gutter

15

st.



Albatross st.

? Union
st.

Drainage
 X-Sect. Fir - Union to Front. - To check
 Paved - A.C. - cbs. + Walks in.

0+75

^{96.49} 3.51 Top	^{95.75} 4.25 26 gut.	^{96.06} 3.94 13.	^{95.10} 4.30	^{95.02} 4.98 13	^{94.16} 5.84 26 gut.	^{94.69} 5.31 Top	^{94.93} 6.07 30.7	^{94.16} 5.84 36 walk.
---------------------------------	--	---------------------------------	--------------------------	--------------------------------	--	---------------------------------	----------------------------------	---

0+50

^{95.91} 4.09 Top	^{95.14} 4.86 26 gut.	^{95.39} 4.61 13	^{94.99} 5.02	^{94.20} 5.80 13	^{93.20} 6.80 26 gut.	^{93.75} 6.25 Top	^{93.04} 6.96 30.7	^{93.06} 6.94 36 walk.
---------------------------------	--	--------------------------------	--------------------------	--------------------------------	--	---------------------------------	----------------------------------	---

0+25

^{95.32} 4.68 Top	^{94.47} 5.53 26 gut.	^{94.65} 5.35 13	^{94.26} 5.74	^{93.36} 6.64 13	^{94.0} 7.60 26 gut.	^{93.90} 7.10 26 Top	^{93.38} 7.62 30.7	^{93.21} 7.76 36 walk.
---------------------------------	--	--------------------------------	--------------------------	--------------------------------	---------------------------------------	---------------------------------------	----------------------------------	---

0+00 = E.L. Union.

^{94.78} 5.22 Top	^{93.55} 6.15 26 gut.	^{93.59} 6.11 13	^{93.43} 6.57	^{92.62} 7.38 13	^{91.84} 8.18 26 gut.	^{91.55} 7.65 Top	^{91.25} 7.15 30.7	^{91.10} 7.80 36 walk.
---------------------------------	--	--------------------------------	--------------------------	--------------------------------	--	---------------------------------	----------------------------------	---

0-14 = E. cb. Front.

^{94.76} 5.24 40 Top	^{94.10} 5.90 40 gut.	^{93.60} 6.40 26	^{93.14} 6.86 13	^{92.69} 7.32	^{92.14} 7.86 13	^{91.59} 8.41 26	^{91.13} 8.87 40 gut.	^{90.88} 7.92 40 Top
---------------------------------------	--	--------------------------------	--------------------------------	--------------------------	--------------------------------	--------------------------------	--	---------------------------------------

B.M. 6.00 100.00 ✓

94.00 = N.W. 3P ✓

Albatross + Fir.

100.00 ✓

Lt. = Rt.

88

Notes Reduced 5-1-50

check B.M.

4.95 100.02

100.03 = N.W. B.P. = Front + Fir

14 E = w. cb.

	^{99.97}	^{99.98}	^{99.54}	^{99.41}	^{99.73}	^{100.24}	^{100.07}	^{99.61}	^{99.41}	^{99.97}	^{99.67}
5.00	4.99	5.43	5.56	5.04	4.73	4.90	5.36	5.56	5.10	6.30	
60	40	40	26	13		13	26	40	40	60	
gut.	Top	gut.						gut.	Top	gut.	

2+00.7 = w.b. Front.

	^{99.94}	^{99.34}	^{99.80}	^{99.94}	^{99.71}	^{99.33}	^{99.84}
5.03	5.63	5.17	5.05	5.26	5.64	5.13	
	26	13		13	26		
Top	gut.				gut.	Top	

T.P. 6.23 104.97 1.26 98.74

104.97 ✓

1+50

	^{97.15}	^{98.30}	^{98.35}	^{98.02}	^{97.29}	^{97.70}	^{97.64}	^{97.83}
2.22	1.70	1.64	1.98	2.71	2.30	2.36	2.17	
26	13		13	26	Top	30.7	36	
gut.				gut.		walk		

in Dr.

1+00

	^{97.08}	^{96.46}	^{96.17}	^{96.49}	^{95.98}	^{95.11}	^{95.57}	^{95.47}	^{95.43}
2.92	3.54	3.33	3.51	4.02	4.83	4.43	4.66	4.57	
Top	26	13	100.00	13	26	Top	30.7	36	
	gut.			gut.			walk		

7-18-50
 Hendricks
 Johnson
 Greer
 Crawford
 W.D.# 25000

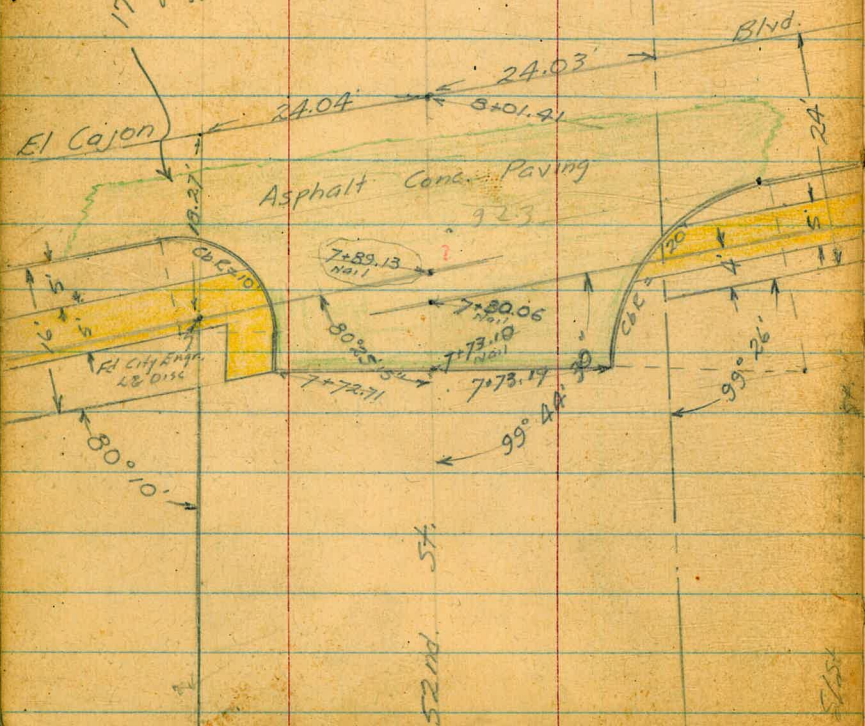
X SECT. 52ND. ST.
 TROJAN TO EL CAJON

SEC T.P. BK 23 P. 18 & 32
 & FB 1704 - P.C.

Note: For ADIT. Lemis see Pg. 68

INDEXED
 W.K.
 JUL 21 1950

Should be
 17.27 calc.
 20.00
 3/4/63



EL CAJON

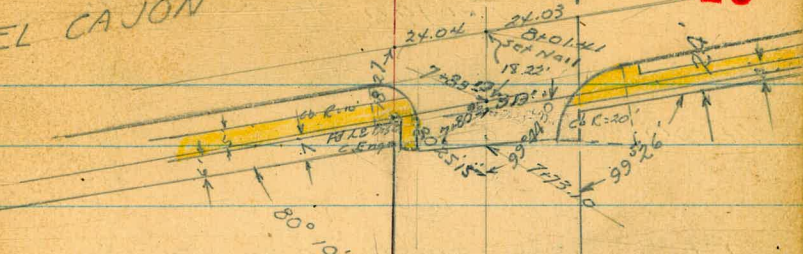


BK 41
 Fairmount Add.
 (Map 1035)

20' Radius questionable
 will not check stations
 25' likely

BVD.

18



57

52ND.

30'

30'

30'

TROJAN

AVE

Lot 4
 Lemon Villa
 (734)

2443 B&E
 Set Hub &
 Disc.
 (9-01-55)

Fd Iron
 Pin
 27.34
 27.04
 27.04
 Set Hub &
 Disc.

Set Hub &
 Disc.

Fd. C.E. Hudson

Levels 52nd St.
Trojan to El Cajon

19

1+00

T.P. 13.18 $\frac{349.81}{\lambda}$ 0.30 336.63

0+50

0+00 North line Trojan

0-10

0-30 E Trojan (Sewer 12H. 1.00 West)

B.M. 13.11 $\frac{336.93}{\lambda}$

323.82

399.1 346.8 392.3 391.7 392.0 391.7 392.4 390.1 339.8 336.9

0⁸ 4⁰ 7⁵ 8¹ 7⁸ 8¹ 7⁴ 9⁷ 10⁰ 12⁹
54 27 17 12 12 13 18 27 50

$\frac{349.81}{\lambda}$

337.5 336.0 339.3 339.3 333.2 333.5 333.1 331.3

10⁶ 0⁹ 2⁶ 2⁶ 3⁷ 3⁴ 3⁸ 5⁵
50 27 13 15 16 26 50

332.4 332.2 329.1 328.1 328.1 326.6 326.2

4⁵ 4³ 7⁸ 8⁸ 8⁸ 10³ 10⁷
50 42 27 17 26 50

327.7 327.2 327.1 326.3 325.5

9³ 9⁷ 9⁵ 10⁶ 11⁴
50 30 30 50

327.4 326.6 325.88 325.7 325.3

9⁵ 10³ 11⁰⁵ 11² 11⁶
50 30 East Rim 12H. 30 50

$\frac{336.93}{\lambda}$

Rim sewer 12H. sta 4+85.3 (FB 1576 P. 428-4)

2+70

T.P. 370 366.98 0.57 363.28

2+50

2+00

1+89 Sewer 174. 1.3 Rt.

T.P. 1410 363.85 0.06 349.75

1+50

349.81
T

371.5	369.1	364.2	369.0	363.5	365.5	351.4
+7 ⁶	+2 ³	27	27	34	11 ⁶	15 ⁵
42	21	12		12	32	50

366.98
± Hub 2+49.25
T

374.4	367.5	363.3	363.4	363.0	356.1	350.9
+10 ⁵	+3 ⁶	0 ⁶	0 ⁵	0 ⁷	7 ⁸	12 ⁹
42	20	12		12	31	50

368.5	365.1	358.4	358.7	358.2	353.2	347.1
+4 ⁶	+1 ²	5 ⁵	5 ³	5 ⁷	10 ⁷	16 ⁸
50	27	12		11	28	50

357.02

68³

South Rim

363.85
T

356.3	352.8	350.5	349.9	350.1	349.8	346.1	342.7
+6 ⁵	+3 ⁹	10 ⁷	10 ¹	10 ³	0 ⁹	3 ⁷	7 ¹
44	26	13	12		12	22	50

349.81
T

5+50

371.0	366.9	361.8	361.6	361.6	362.1	363.3	364.5
+4 ⁰	0 ⁶	5 ³	5 ⁴	5 ⁴	4 ⁷	3 ⁷	2 ⁵
50	24	15		14	25	32	50

5+00

370.8	366.0	361.2	360.6	360.2	362.2	364.7
+3 ⁸	1 ⁰	5 ⁸	6 ⁴	6 ⁴	4 ⁸	2 ³
50	28	24		28	50	80

4+50

369.9	366.0	360.8	360.0	359.7	360.9	367.0	365.0
+2 ⁷	1 ⁰	6 ²	7 ⁰	7 ³	6 ⁴	20 ⁰	22 ⁰
47	28	16		21	39	66	79

4+00

369.3	369.0	361.2	360.7	360.3	362.2	368.3	365.2
+2 ³	2 ³	5 ⁸	6 ³	6 ⁷	4 ⁸	18 ⁷	21 ⁸
36	21	17		13	24	45	60

3+50

360.2	368.5	362.3	361.9	361.4	362.7	354.9	354.2
+6 ⁸	+1 ⁵	4 ⁷	5 ⁴	5 ⁶	4 ³	12 ⁴	17 ⁸
80	26	15		9	17	28	50

3+00

375.6	369.3	363.9	363.6	363.1	364.6	365.9	350.6
+8 ⁶	+2 ³	3 ⁴	3 ⁴	3 ⁹	2 ⁴	11 ⁴	15 ⁴
47	22	12		9	16	30	50

366.98

366.98

7+50

379.3	372.8	373.2	372.5	373.2
34	4 ⁵	4 ⁵	5 ²	4 ⁵
50	15		18	40

7+00

379.2	373.1	369.7	371.0	370.8	372.1
3 ⁵	4 ⁵	8 ⁰	6 ⁷	6 ⁹	5 ⁶
50	27	16		19	50

6+52.3 & 2'x8' Conc Slab Containing
Switch for Traffic Signal

367.84	367.67
9 ⁸	9 ⁷
0.7	8.7

6+50

373.5	372.9	367.5	366.6	367.7	367.2	367.5	369.4
4 ²	4 ⁸	10 ²	11 ¹	10 ⁰	10 ⁵	10 ²	8 ²
50	29	20	15		15	18	44

T.P. 13.56 377.64 2.90 364.08

377.64
X

6+00

371.8	366.9	363.6	364.1	364.5	367.0
4 ⁸	0 ¹	34	2 ⁹	2 ⁵	0 ⁰
50	22	16		21	50

366.98
X

366.98
X

Reduced H.T. Lane

BM 216 38684 38682 SWBP El Cajon C 31.54

TP. 12.82 389.00 1.46 376.18

$\frac{375.01}{261.98}$ $\frac{375.66}{80}$
 $\frac{374.13}{80}$ $\frac{373.83}{Cb}$ $\frac{374.18}{80}$ $\frac{373.59}{80}$ $\frac{373.73}{80}$ $\frac{373.98}{80}$
 $\frac{375.1}{351}$ $\frac{375.1}{401}$ $\frac{375.1}{351}$ $\frac{375.1}{405}$ $\frac{375.1}{391}$ $\frac{375.1}{355}$
 423 423 278 278 18
 Cb G

(Section Parallel to Cb.)

7+98.2± Prod. So. Cb El Cajon on Lt

(Section Parallel to Cb.)

7+92.3± Prod. So. Cb El Cajon on Rt

373.87 373.57 $\frac{373.33}{372}$ $\frac{373.97}{372}$ $\frac{374.89}{372}$ $\frac{373.38}{372}$ $\frac{373.13}{372}$ $\frac{373.69}{372}$
 17 354 354 37 37 109
 G Cb G Cb G Cb

373.68 373.74 373.8
 $\frac{373.68}{18.5}$ $\frac{373.74}{18.5}$ $\frac{373.8}{30}$
 G Cb

7+73.19 Beg Cb on Rt

373.61
 $\frac{373.61}{4.03}$

7+73.10 Beg Asph. Pav. on R

373.79 373.51 373.00
 $\frac{373.79}{227}$ $\frac{373.51}{177}$ $\frac{373.00}{177}$
 SW Cb G

7+72.71 Beg Cb on Lt

377.64

377.64

Roberts:
Moore
Clark
WA 25020
Aug. 14, 1950

X-Section Randall
From U.S. Gov. Housing Project to Berg
For Establishing Grade

24

0+83.5 16.5 ft x 5' Culvert Dirt Ditch to West

78.9	78.9	51.0	51.0	500	492	46.13	46.13	42.2	42.2	51.5	52.0	57.6
54	53	32	32	127	12	10.8	12.0	12.0	12.0	51.5	52.0	57.6
60	50	40	21	13	12	16.5	16.5	25	25	41.79	41.79	53

0+55.5 23' R.A. 5' Culvert (R/L to top) Conc. Lined Ditch to East

49.0	49.0	48.2	49.0	38.0	37.0	39.3	39.3	41.5	41.5	40.4	41.2	41.2
426	572	6.0	10.19	16.19	17.2	32	32	35	35	40	41	41
40	13	23	23	33	33	35	35	40	40	47	47	47

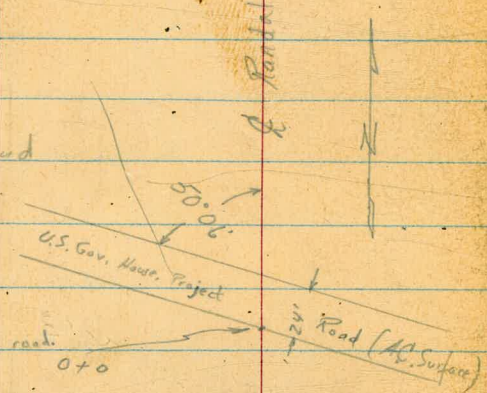
INDEXED

NOV 8 1950

0+31 No. Edge Par.

0+15.5 & AC Par. Road

0+0 So. Edge Road Sect. taken on line of road



54.21	50.87	46.94	43.60	38.74
90	50	50	50	100

53.61	49.20	45.82	43.42	39.19
100	50	50	50	100

53.33	49.07	43.68	42.39	39.16
100	50	50	50	100

T.P.	5.35	54.21	11.35	48.86	Fire Hydrant	54.21
T.P.	0.30	60.21	13.14	59.71		
T.P.	0.16	73.09	13.15	72.93		
B.M.	0.15	86.08		85.93		

SW 7/8th Chalcodony & Randall

3+0	64.2	69.2	78.1	76.6	76.5	77.0	25
	149	119	10	2.5	2.6	2.1	
	50	40		6	40	50	

2+50	51.8	54.1	55.4	63.9	71.3	71.7	71.9
	27.3	26.0	27.7	15.2	7.8	7.4	7.2
	55	46	40		12	40	50

T.P.	12.82	79.13 π	0.41	66.31		79.13 π	
		2					

2+0	47.8	47.0	49.2	50.4	53.7	56.5	57.6	65.8	65.22	65.53	66.9
	18.6	19.4	17.2	14.2	12.7	9.9	8.8	0.6	0.95	0.84	20.5
	60	56	50	40	7	6	22	22	28	40	52
	46.5	47.4	49.5	50.6	53.8	57.1	62	62	62	62	62
	20	20	20	20	20	20	20	20	20	20	20

1+50	49.1	45.5	49.2	47.6	50.1	51.4	57.8	57.8	58.3	58.7
	17.3	20.9	22.2	18.8	16.3	15.0	8.6	8.6	8.1	7.7
	62	55	40	28	6	18	22	22	40	50
							22	22	40	50
							22	22	40	50

T.P.	12.50	66.37 π	0.34	53.87		66.37 π	
------	-------	-------------	------	-------	--	-------------	--

1+0	54.2	54.0	49.2	42.4	41.9	50.0	50.0	51.9	57.7	53.2	53.5	57.8
	0	0.2	10.0	14.8	12.3	4.2	4.2	2.8	1.5	10	0.7	1.4
	75	65	40	36	20	4	4	11	33	40	42	55
								12	12	40	42	55

54.21 π

54.21 π

5+50

100.5	100.5	102.0	100.9	100.6	102.0	101.0	100.6
3.8	3.8	2.3	3.4	3.7	2.3	3.3	3.7
50	40	9		23	26	40	50

5+0

93.7	94.4	96.7	95.9	98.0	98.5	98.4	97.6
10.6	9.9	7.6	8.4	6.3	5.8	5.9	6.7
50	40	8		29	32	40	50

4+50

90.3	89.8	92.0	91.1 ²	90.1	93.1	94.1
15.0	14.5	12.3	13.7	14.2	14.2	10.2
50	40	7		37	40	50

T.P.

12.17

104.31X

0.45

91.14

104.31X

4+0

87.2	87.4	89.0	87.3	86.3	90.1	90.0
4.4	4.2	2.6	4.3	5.3	1.5	1.6
50	40	5		37	40	50

3+75

85.7	85.8	88.0	85.1	83.4	88.2	88.2
5.9	5.8	3.6	6.5	1.2	3.4	3.4
50	40	5		36	40	50

ck

565

85.94 = 85.93

3+68

So. Line Chalcedony

84.3	85.0	87.3	84.2	82.4	82.6
7.3	6.6	4.3	7.4	9.2	9.0
50	40	4		40	60

T.P.

12.88

91.59X

0.42

78.71

91.59X

78.13X

Randall Cont'd

check 356 130.73 = 130.64

T.P. 6.37 134.29 143 127.92

7450 INTO BERYL

T.P. 12.47 129.35 T 0.18 116.88

7400

6450

640

T.P. 13.02 117.06 T 0.27 104.04
104.31 T

Lt

Bottom

Redwood
A. T. Lane

Rt

27

115.1	118.0	117.4	115.8	119.6	113.1	111.0	106.4	104.5
113	114	12.0	13.6	14.8	16.3	18.4	23.0	24.9
50	40	20	15	15	30	40	50	

129.35 T

116.9	116.4	115.3	113.8	113.6	113.1	109.5	107.2
0.2	0.7	1.8	3.3	3.5	4.0	7.6	9.9
50	40	27	24	35	15	40	50

113.6	112.6	110.7	109.6	109.6	109.6	109.8	109.6	109.4
3.5	4.5	6.4	7.5	7.5	7.5	7.3	7.5	7.7
50	40	15	12	7.5	20	22	40	50

107.2	106.7	106.4	105.5	105.4	105.1	106.0	104.6	103.8
9.9	10.4	10.7	11.6	11.7	12.0	11.1	12.5	13.3
50	40	12	9		20	23	40	50

117.06 T

Cross Section West of Normal St.
North of Campus St.

Levels next page

6+40

0+00

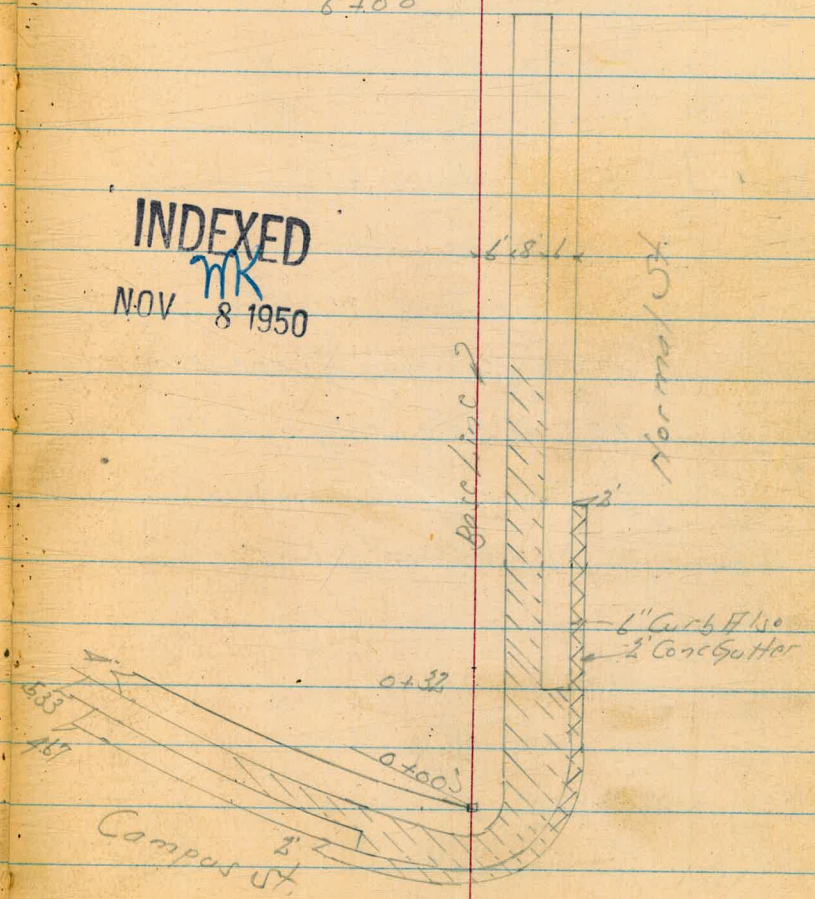
Nov. 8, 1950
H. Sisson
Rorer
Pollen

28

NO. 20729

6+00

INDEXED
mk
NOV 8 1950



Lt. West

Rt. East

- +97 70 Lt. of B = 2 22" Pine Tree
- +89 2.0 Rt. of B = 2 15" Palm
11.0 Lt. of B = 2 12" Pine
- +70 16.5 Rt. of B = 2 15" Palm
- +50 2 Rt. of B = 2 15" Palm
- +30 16.5 Rt. of B = 2 12" Palm
- +09 20 Rt. of B = 2 15" Palm
- 1 + 0
- +90 17.0 Rt. of B = 2 20" Palm Tree
- +80 17.0 Lt. of B = 2 12" Pepper Tree
- +50 16.5 Rt. of B = 2 20" Palm Tree
- +35 16.0 Lt. of B = 2 20" Gum Tree
- +29 25 Rt. of B = 2 14" Palm Tree
- +25

0 + 0 = N.L. Camp to start

TP 4.54 349.04 4.73 344.50
 8.M. 5.65 349.23 342.58
 RP Park Blvd
 St. National
 Drive

345.1 344.9 345.2 345.2 344.81 344.80 344.56 343.21
 39.55: Elytonia Court
 11.5
 40 40 42.8 44.0 44.8 51.0
 5.5: Walk 5.5: Walk 5.5: Walk 5.5: Walk
 344.2 344.2 345.2 345.2 344.89 344.21 344.15 343.54
 4.1 4.0 4.65 4.77 4.89 5.68
 5.1: Walk 5.1: Walk 5.1: Walk 5.1: Walk
 344.2 344.2 343.89 343.78 343.52 343.02
 4.1 4.1 5.15 5.26 5.42 6.02
 5.5: Walk 5.5: Walk 5.5: Walk 5.5: Walk
 345.1 345.1 343.65 343.36 342.20 342.81
 3.6 5.09 5.58 6.14 6.33
 5.5: Walk 5.5: Walk 5.5: Walk 5.5: Walk
 343.21 343.21 342.12 342.80 342.79
 5.78 5.25 6.44 6.35
 07: Herb 10:00: 20:00: 20:00:
 Walk Walk Walk Walk

349.04

TP 372 348.88 423 34466

+89	20 ft of B = 1/2 17" Palm	344 2	41	42	344 2	421	4.44	458	508
+69	170 ft of B = 1/2 10" Palm	344 2	25	100	344 2	6.0	14.0	20=cb	20=60
+50	70 ft of B = 1/2 12" Tree	344 2	41	75	344 2	344 22	14.0	20=cb	20=60
+50	230 ft of B = 1/2 9" Tree	40	41	50	344 2	344 22	14.0	20=cb	20=60
+28	120 ft of B = 1/2 9" Shrub	180	41	25	344 2	344 22	14.0	20=cb	20=60
+09	20 ft of B = 1/2 18" Palm	344 2	41	50	344 2	344 22	14.0	20=cb	20=60
+10		344 2	41	25	344 2	344 22	14.0	20=cb	20=60

+88	160 ft of B = 1/2 17" Palm	344 2	41	40	344 2	417	4.89	441	491
+69	20 ft of B = 1/2 18" Palm	344 2	41	40	344 2	417	4.89	441	491
+50	16.5 ft of B = 1/2 16" Palm	344 2	41	40	344 2	417	4.89	441	491
+50	140 ft of B = 1/2 18" Pine	48	41	40	344 2	417	4.89	441	491
+45	400 ft of B = 1/2 18" Pine	98	41	40	344 2	417	4.89	441	491

TP 388 348.89 403 34501

+28	20 ft of B = 1/2 16" Palm	344 2	41	40	344 2	417	4.89	441	491
+24	80 ft of B = 1/2 18" Pine	344 2	41	40	344 2	417	4.89	441	491
+17	380 ft of B = 1/2 15" Pine	344 2	41	40	344 2	417	4.89	441	491
+08	170 ft of B = 1/2 15" Palm	344 2	41	40	344 2	417	4.89	441	491
+20		42	41	40	344 2	417	4.89	441	491

349.01

349.01

- +95 70 Lt of B = 1/2 18" Pepper Tree
 +89 20 Rt of B = 1/2 15" Palm
 +75 200 Lt of B = 1/2 18" Pepper Tree
 +68 170 Rt of B = 1/2 14" Palm
 +50 20 Rt of B = 1/2 14" Palm
 +28 170 Rt of B = 1/2 15" Palm
 +09 20 Rt of B = 1/2 14" Palm
 5+0
 +96 120 Lt of B = 1/2 10" Cypress Tree
 +93 380 Lt of B = 1/2 12" Pepper "
 +89 16.5 Rt of B = 1/2 12" Palm
 20 Rt of B = 1/2 14" Palm
 +66 44 Lt of B = 1/2 12" Pepper Tree
 +50
 +48 170 Rt of B = 1/2 15" Palm
 +42 110 Lt of B = 1/2 12" Pepper
 +29 20 Rt of B = 1/2 15" Palm
 +08 170 Rt of B = 1/2 15" Palm
 4+0
- 34838

Lt B Rt 31

345 1/2	345 1/2	344 1/2	344 1/2	344 1/2	344 1/2	344 1/2	343 1/2	343 1/2
30	30	36	38	43	49	44	45	50
100	75	60	55	53	61	44	40	40
345 1/2	345 1/2	345 1/2	345 1/2	344 1/2	344 1/2	344 1/2	343 1/2	343 1/2
30	30	31	32	32	33	34	34	35
125	100	75	60	55	50	45	38	38
345 1/2	345 1/2	345 1/2	345 1/2	344 1/2	344 1/2	344 1/2	344 1/2	343 5/6
32	32	32	33	34	35	37	38	39
175	150	125	100	75	58	45	38	39
345 0	344 1/2	345 0	344 1/2	344 1/2	344 1/2	344 1/2	344 1/2	343 5/6
34	35	34	36	36	37	37	37	39
130	125	100	75	64	50	36	25	25
344 2/3	344 2/3	344 2/3	344 1/2	344 1/2	344 1/2	344 1/2	344 1/2	343 5/6
34	34	34	34	34	34	34	34	34
130	125	100	75	64	50	36	25	25
344 1/2	344 1/2	344 1/2	344 1/2	344 1/2	344 1/2	344 1/2	344 1/2	343 5/6
34	34	34	34	34	34	34	34	34
130	125	100	75	64	50	36	25	25
344 1/2	344 1/2	344 1/2	344 1/2	344 1/2	344 1/2	344 1/2	344 1/2	343 5/6
34	34	34	34	34	34	34	34	34
130	125	100	75	64	50	36	25	25
344 1/2	344 1/2	344 1/2	344 1/2	344 1/2	344 1/2	344 1/2	344 1/2	343 5/6
34	34	34	34	34	34	34	34	34
130	125	100	75	64	50	36	25	25
344 1/2	344 1/2	344 1/2	344 1/2	344 1/2	344 1/2	344 1/2	344 1/2	343 5/6
34	34	34	34	34	34	34	34	34
130	125	100	75	64	50	36	25	25

34838

60-70-110-140-200-300
 14-Elm
 20-Cb
 20-Gut

60-70-110-140-200-300
 14-Elm
 20-Cb
 20-Gut

Lt.

R

Rt.

32

B N

Reduced By
CR Lockhead
11-8-50

4.80

343.58

BP
Part 014
54 Normal
Drive
343.58

6+0

348.38

344.2
8.6
7.5

344.0
8.8
5.0

344.1
8.8
1.5

344.1
1.0

344.02
4.86
6:15-11:15

343.82
4.56
14:00-15:00

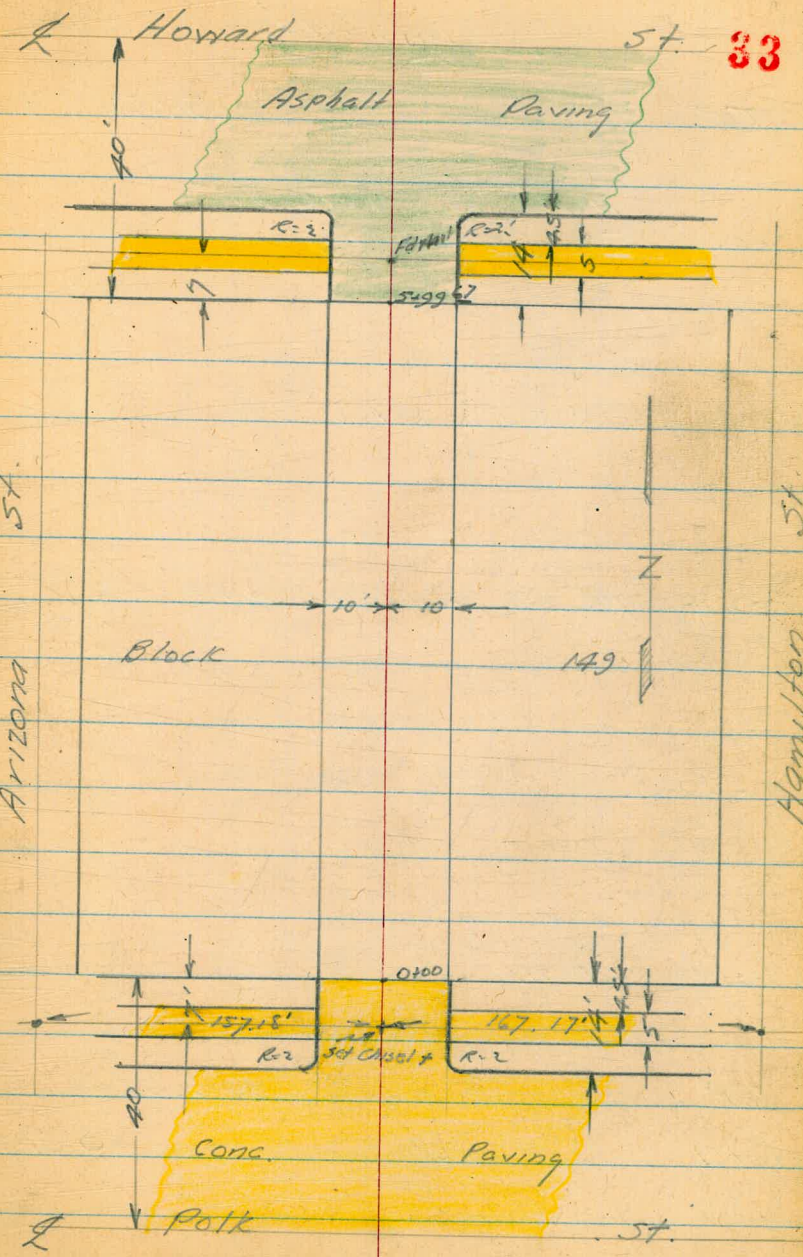
343.72
4.66
15:00-16:00

343.20
5.18
16:00-17:00

348.38 ✓

12-8-50
 Hendricks X Sect. 20 Alley
 Pope
 Shepard Block 149 University Hts
 Crawford
 Wo# 31882

INDEXED
 MK.
 DEC 11 1950



Levels Alley Block 149
Univ. Hts

Q

34

T.P. 334.58

Nail in Power Pole # PA 4125 Lt. Or 67±

0+00 North Line Polk Ave.
Edge Conc. Paving

332¹³ 331⁹⁹ 332¹⁷ 332⁷⁷ 333⁰⁹
10 10 10 10
Cb G G Cb

0-12 EC 2' Radius Rets

331⁹⁶ 331⁵⁷ 332³³ 332⁸⁶
10 10 10 10
Cb G G Cb

0-14 No. Cb Line Polk Ave

331⁴³ 330⁸⁵ 331²⁴ 331⁴⁸ 331⁵³ 331⁸⁹ 332²⁸ 332³⁷ 332⁸⁵ 333³² 333⁸²
40 40 12 12 10 10 12 12 30 30
Cb G Cb G G Cb Cb G Cb

0-30

331²⁴ 332²¹ 332⁴² 332⁸⁵ 333⁷⁶
50 10 10 35

0-40 & Polk

331³⁵ 332²⁴ 332⁴¹ 332⁹² 333⁸⁸
50 10 10 35

T.P. 2.23 330.00

N.E. 7' L&T Polk & Arizona

B.M. 7.28 332.23 324.95

S.E.B.P. Polk & Texas

0+67 Power Pole # PA4125 9.3' H

0+55

332⁹ 333² 333⁶ 333⁸ 334⁴
 15 10 10 15

0+47 & CONC. Dr. & Gau on Rt.

333.71 333.90
 10.1 14.8
 Comp Fl.

0+34 End 3' Conc Ret wall on Lts (9.4)

333³¹ 333⁰
 9.4 9.4
 Wall Gr

0+13

332⁸ 333⁰³ 332⁶ 333⁰ 333⁰ 332²
 12 9.1 9.1 10 14
 Wall Gr

9.1 H:
 0+09 Beg 3' Conc Ret wall for flower bed

332⁹⁴ 332⁶
 9.1 9.1
 Wall Gr

Alley Block 149 Cont'd

36

Req. 12" Conc. Ret Wall 11.2' Lt
 2+00 Req. 8" Conc. Ret Wall 10.3' Lt

332°
 10.3
 ft
 334⁰⁵ - 334⁹⁴ - 335⁶ - 335³ - 335³ - 335⁶ - 335⁷ - 336⁸ - 336⁶
 11 10.3 10 5 10 11.2 11.2 15
 Wall Gr Wall

1+99 Power Pole # PA4139 9' Lt

1+50 End Conc. Ret Wall 11.0' Lt

333⁶ - 333⁷ - 334⁴ - 334⁸ - 334⁴ - 334⁷ - 334⁹ - 335¹¹ - 335²
 15 11 10 8 4 10 11 15
 Wall

1+29 R 2' Conc. Walk 10.8' Lt

334⁹⁰
 10.8

1+00 Req. 18" Conc. Ret Wall 11.0' Lt

332⁷ - 332⁹ - 334² - 333⁸ - 334⁰ - 334³ - 334⁵⁵ - 334⁹
 15 11 10 5 10 11 15
 Wall

0+80
 R 2' Conc. Walk on Rt. 11.3'

334¹⁶
 11.3

Alley Block 149 Cont'd

INDEXED

APR 20 1951

£

37

4+37.2 End Conc Block Wall 10' Rt.

339¹ 339⁶⁴ 341⁶⁹
 9.7 9.7 10
 ftg top top
 ftg Wall

beg Conc Block Wall 9.9 Rt.

End fence Rt 9.4 Rt.

4+00 Power Pole # JPA 4163 9' Lt.

337¹ 337³ 337² 338² 338⁴ 339² 339⁰⁶ 341⁶⁹ 341⁶⁹
 15 11 10 10 10 9.9 9.9 11 11
 ftg ftg ftg ftg ftg ftg ftg ftg ftg
 Wall Wall Wall Wall Wall Wall Wall Wall

3+50 Beg Piccott fence 9.8 Rt.

335⁸ 336² 337² 337¹ 337⁴ 337⁸ 338²
 15 11 10 7 10 15

Sewer M.H. 1' Lt.

3+00 Power Pole # JPA 4157 9' Lt.

335¹ 335³ 336⁵ 336⁵ 336³³ 336⁵ 336⁶
 15 11 10 5 Rim 10 15

2+69 End Garage on Rt.

336³⁸ 336⁹⁵
 ftg 10.4
 10.4 ft 337² 336⁹⁵
 15 10.6
 top Wall

Beg Conc Slab for Garage Ft. 10.6 Rt.

End 12" Conc. Ret. Wall 10.6 Rt.

2+50 End 8" Conc. Ret. Wall 10.3 Lt.

333⁸ 334⁰ 335⁸ 335⁸ 335² 335⁶ 335⁹ 336⁵ 336⁹⁸ 336⁸⁸ 336⁸⁸
 15 11 10.3 10 5 5 10 10.6 10.6 10.6
 ftg ftg ftg ftg ftg ftg ftg ftg ftg ftg ftg
 Wall Wall Wall Wall Wall Wall Wall Wall Wall Wall Wall

Alley Block 149 Cont'd

Q

10

5+13 2 double Garage on Lt

339⁸³
17.3
floor

TP.

341.59

Nail in power pole # PA 4175 Lt Sta 5100

5+00 Power Pole # PA 4177 9' Lt

339¹⁵ 340⁰ 340⁵ 341¹ 341⁴ 344³ 344⁵
15 10 6 10 10 15
Wall

4+99.5 End Stucco House 11.0 Lt

340⁰ 338⁸
11.0 11.0
floor ftg

4+75 Beg Conc. Block Wall 10' Rt
End Cyclone fence 10' Rt.

339⁹ 338² 340³ 341¹ 340⁰¹ 343⁵ 344⁵
10 6 10 10 10 15 15
ftg tap G Galvan
Wall Stud North

4+52 Beg Stucco House 10.9 Lt

338²
10.9
ftg

4+38 Beg Woven Wire cyclone fence 9.5 ft

338³ 338⁴ 338⁸ 339⁰ 339³ 341⁰ 341⁴
15 11 10 4 10 15

Alley Block 149 Cont'd

39

5+79.3 End Conc. slab & End Lath fence 10.3' Lt

343⁴ 342²
10.3 10.3
top ftg

Req Conc. Slab to porch on Rt.

5+69 End Stucco Garage Beg Conc. Dr on Rt

343³⁸ 342⁹
10.5 10.5
top ftg

345⁴⁶
11
DRIVE
& fl. Garage

5+50.5 Beg Stucco Garage (opens north) on Rt

342⁴ 343⁵¹
10.8 10.8
ftg ftg
Btm top

5+49 End Conc. Block Wall 10.1 Rt.

342⁴ 343⁶ 345⁶²
9.8 9.8 10.1
ftg top top
ftg wall

5+38

340⁸ 341⁰ 341³ 341⁹ 342⁵ 345²¹ 345⁴
15 10 5 10 10 15
Wall

5+22 Beg Lath fence 9.9' Lt

Alley Block 149 Contd

£

40

6+13.67 So. cb. line Howard

57	91	58	343 ⁷⁸	344 ⁶²					
340	344 ¹⁴	343	343	344	345 ⁶⁰	345 ⁷⁶	346 ⁴²	348 ²⁰	349 ⁹¹
40	40	12	12	10	10	12	12	40	40
cb.	G	cb.	G			G	cb.	G	cb.

6+11.67 BC Alley Refs.

344 ³¹	343 ⁹⁵	345 ⁶⁵	346 ³⁰
344	343	345	346
10	10	9.8	9.8
cb.	G	G	cb.

5+99.67 So. Line Howard
beg cbs & Asph. Paving

341 ⁷⁰	344 ⁵⁸	344 ⁶⁵	345 ⁰⁶	346 ⁵⁵	346 ⁵⁹
10	10	4	9.8	9.8	
G			G	cb.	

5+94 Metal Pole # D30089T 8.524

5+87 £10" Stucco Archway (over drive)

345⁵
9.8
11.9

5+80

343 ⁵	343 ³	343 ⁹	344 ⁴	345 ⁴	346 ⁶⁸
15	10		5	10	11.2
					DRIVE

B.M.

331.45 331.51

SEBP Arizona & Howard

T.P.

340.11

6 + 39.67 Q Howard

341.71	344 ⁴⁴	348 ⁴⁸	346 ⁴⁷	349 ⁴⁷
40	10		10	40

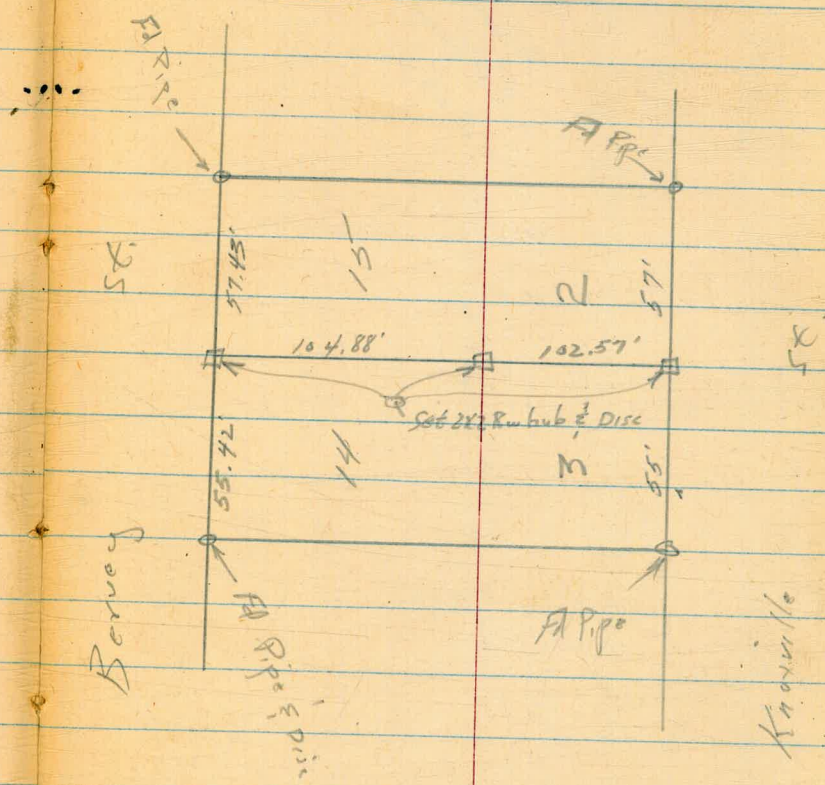
Roberts
W 000
S 10-51
W 020652

Reset Lot Corners In Hazard, Tract #1

Line between Lots 14 & 15, 2 & 3

42

INDEXED
MAY 10 1951



Roberts
Cota
Moore
Pollen
5-14-51
WD 25020

X-Section Whaver Street
(Fulmar to Dipper)

See TPR 4 pg 32 1/2 & 34

Redundant by
F.A. [unclear]
5-23-51

Lt

Rt

INDEXED
MAY 17 1951

2+00

405.6	396.22	388.3	385.7	382.12	381.1	373.6	367.1	360.9
+19.4	+10.1	+2.1	0.5	4.1	5.1	12.6	19.2	25.3
60	40	20	14	9		20	40	60

T.P.

0.14 ✓
386.22 ✓
13.03 ✓
386.08 ✓

386.22

1+50

404.4	394.8	389.2	388.5	383	375.9
+5.3	4.3	9.9	10.6	16.1	23.2
40	20	10		20	40

1+00

402.1	398.9	392.1	395.2	394.2	389.9
+3.0	+9.8	+4.1	8.9	4.9	9.2
55	40	20	8	11	20

0+50

410.4	404.2	405.4	398.2	397.7	397.6	392.4	389.2	386.4
+1.3	+5.1	+1.3	0.9	1.4	1.5	6.7	9.9	12.7
40	20	10	6	4	20	35	40	

0+00

= Sta. 7+52.21 see X-sec Fulmar
Opposite Conc. Near Intersection Fulmar & Beginning of Whaver

411.25	405.5	402.6	399.9	398.4	395.5	394.3	392.5	391.7	388.5	386.5
+2.1	+6.4	+3.5	+0.8	+0.4	3.6	4.8	6.6	1.4	10.6	12.6
40	20	12	8		6	15	20	24	26	40

BM

6.63 ✓
399.11 ✓

392.48 Conc.

399.71
Non. N.W. Cor. Fulmar & Whaver (See X-sec. Fulmar)

4+67

4+30

Wash
= =

3+91.89 BC. Found Conc. Mon. East Line

3+50

T.P. 3.43 376.74K 12.91 373.31

3+01.89 E.C. Found Conc. Mon. East Line

2+50

386.22K

Lt.

Rt.

44

393	386 3/4	377 9	376 2/4	371 2	370 6	361 6	354 -	347 8
+16.3	+7.6	+1.2	0.5	5.0	6.1	15.1	23.7	28.9
60	40	20	16	10		20	40	60

379 4	372 5	366 1	365 2	365 1	356 3	349 5	342 7
+3.1	4.2	10.6	11.3	15.2	20.3	27.2	34.0
60	40	20	3		20	40	60

372 9	365 4	376 2 1/4	375 -	370 1	364 6	359 6	353 7	347 5
+16.2	+8.7	0.0	1.7	6.6	8.1	17.1	23.0	29.2
60	40	20	15	9		20	40	60

366 1	378 0	375 2	372 7	372 1	363 2	355 4
+9.4	+1.3	1.4	4.0	4.6	13.5	21.3
40	20	14	9		20	40

397 2	388 4	381 4	376 3	374 2	365 1	357 2	350 -
+11.5	12.4	4.8	9.9	12.0	21.1	29.0	36.2
60	40	20	9		20	40	60

391 -	382 9	377 6	376 1	364 4	360 2
+4.8	3.3	8.6	10.1	17.4	25.8
40	20	10		20	40

386.22K

Contd from Page 44

16

16

45

T.P. 5.03 393.52K 0.23 388.49

7+25.78 Found Conc. Mon. East Line NE Cor. Tooley & Weaver

394.9	392	391	389.6	388.1	386.7	384.6
+6.2	+3.3	+2.4	+0.9	0.2	3.0	4.1
40	20	12	7		20	40

7+00

394.7	390.2	385.8	382.1	382.3	383.6	379.1
+3.3	+1.5	+0.1	1.6	2.4	5.1	9.6
40	20	12	8		20	40

6+50

393	387.2	383.7	383.4	382.2	376.5	372.7
+4.3	1.5	5.0	5.3	6.4	12.2	16.0
40	20	10	3		20	40

6+00

389.5	383.7	382.4	379.8	379.1	377.4	370.9	365.2
+0.8	5.0	6.3	8.7	9.6	11.3	17.8	23.5
40	20	16	11	4		20	40

T.P. 12.29 388.72K 0.31 376.43

388.72K

5+50

387.3	379.9	375.2	375.5	367.6	362.3
+10.6	+3.2	1.5	3.2	9.1	14.4
40	20	10		20	40

5+07.08 E.C. Found Conc. Mon. East Line

385.2	378.1	373.2	372.2	364.4	357.7
+8.5	+1.4	3.5	4.5	12.3	19.0
40	20	9		20	40

376.74K

376.74K

Cont'd From Page 45

9+32.19 BC Found Conc. Mon. West Line

T.P. 0.23 368.37X 12.80 368.14

9+00

8+61.69 Found Conc. Mon. S.W. Cor Tooley & Weaver
ON West Line

T.P. 0.49 380.94X 1307 380.75

8+00

check

203 3.91.49 = 391.49 Mon NE Cor
Tooley & Weaver

7+66.10 Found Conc. Mon. West Line N.W. Cor. Tooley & Weaver

7+32.60 Opposite SW Cor. Egrot
Found 24 hub Replaced with 2x2 Rwhubs & Disc

393.52X

26

27

28

46

363.91	364.51	364.7	364.9	365.8	365.3
4.5	4.0	3.7	3.5	2.6	1.1
60	30		15	30	60

368.37X

369.9	370.9	370.1	370.5	371.5
11.0	10.0	10.8	10.4	9.3
60	30		30	60

375.5	375.8	375.9X	376.2	377.0X	377.3	379.9
5.3	5.1	4.7	4.7	3.5		1.0
60	30	20	380.74X	20	30	60

374.1	374.1	374.1	374.3	374.1	374.1	374.1
5.4	6.5	6.8	7.2	7.5	5.4	4.7
50	20		20	33	40	50

393.2	391.1	390.2	390.6	390.4	390.1
0.3	2.4	3.3	2.9	4.1	4.4
50	20	10		20	50

393.52X

Cont'd From Page 46

12+11.17 ♀ Dipper Found 202K hub with C.T.
West Line

24	♀	RT
344.4	342.5	337.6
1.3	7.6	18.1
60	30	30
		47
		334.6
		21.1
		60

11+8.17 North Line Dipper

344.4	342.3	338.5	337.1	334.3	332.4
7.1	13.5	17.2	18.0	21.4	23.3
60	30	13		30	60

11+31.27 E.C. Found Conc Man West Line

340.9	339.4	335.1	335.2	333.7
4.8	16.1	17.0	20.5	22.0
60	30		30	60

11+00

342.5	342.5	342.1	340.4	340.2	339.2
13.2	13.2	13.6	14.9	15.5	16.5
60	30	8		30	60

10+50

344.7	344.1	347.1	346.5	346.1	346.7	345.7	344.3
7.0	7.7	8.0	9.2	9.1	9.0	10.0	11.4
60	30	25	21		15	30	60

10+00

355.7	354.1	353.4	353.1	352.7	351.7
0.0	0.9	1.9	2.0	3.0	4.0
60	30	22		30	60

T.P. 0.37 355.72K 13.02 355.35

355.72K

368.37K

C'heck

400 377.46 = 377.43^{.03}

S.W. Mon. Today $\frac{1}{2}$ Weaver See F.B. 2041 page 38

T.P.

13.07 381.46 0.17 368.39

T.P.

12.94 368.56 0.10 355.62

12+4/17 South Line Dipper

355.72 π

359	51	21	9		
352	32	7.5	8.9	340	337
60	30	15		30	60

355.72

D. Smith
C. Allen
Mick
H. Bruner

Survey to extend Nile & University Storm Drain

University Ave

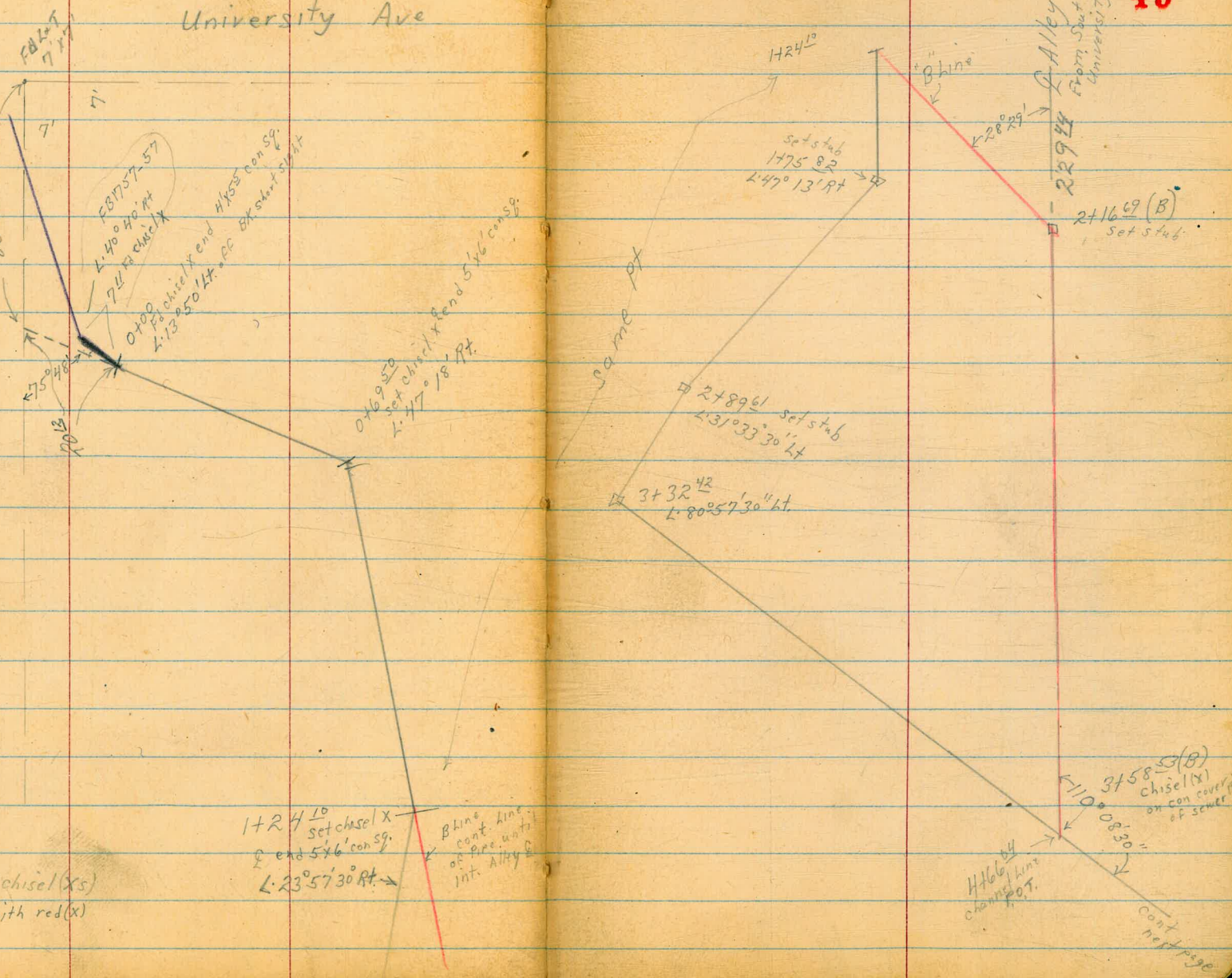
WO# 20828
6-22-51

49

INDEXED

JUN 26 1951

Nile St



Note: tied all chisel (Xs) to ceiling with red (X)

124¹⁰ set chisel X
end 5x6' con sq.
L. 23' 57' 30" ft. →

Blino cont. line of pre. unit int. Alky

cont next page

4166⁰⁴
point

5132⁰⁷
set stub
L. 67° 48' 30" Rt

South 7 Line Wightman

217.80

87° 58' 30"

6191⁹⁷
set stub
(channel)

East Prop Nite

2.47¹⁸ RT sec taken on split
 0469⁵⁰ & 5'x6' con box floor is level across

0454 10³ Lt & 18" pepper tree

TP₂ 4³⁶ 310³³ 6⁰⁰ 305²⁷

0440 7³ RT change in wall Hts.

0416

0408

0400 & 4'x5.5"

TP₁ 0¹⁹ 311²⁷ 12⁰³ 311²⁸

BM 2⁴⁶ 324⁶¹ 322¹⁵ SW BP
 Mile 4 University

East
 ht.

308.7

16
 16

305.7

46
 7

305.22

5¹¹
 FL

West
 RT

311.86

+1⁵³
 Top

308.3

32
 14

307.1

42
 8

306.7

53
 73
 To wall

305.8

63
 73
 Top wall
 low

312.62

+065

307.2

43
 18

307.4

46
 8

306.6

54
 134
 To wall

307.6

45
 134
 To wall

307.2

48
 15

306.9

51
 5

308.7

73
 1

308.7

73
 7

304.6

75
 4

306.6

54
 8

306.3

52
 144
 To wall

306.3

57
 2
 Ground

307.4

433
 20
 FL

307.22

455
 FL

306.2

58
 Ground

307.3

434
 2
 FL

306.4

56
 2
 Ground

311²⁷

2104^o & crosses 6" sewer cast iron

2100

TP₄

627

307²⁹ ↓

554

300⁵² ↓

14758² stub

1475⁸² L, 47° 13' RT

on split of L

1445

1440

1424^o

End 5' x 6' con Box sec taken along wall Top wall

L. 23° 57' 30" RT

+7³³

215.99

TP₃

0³²

306⁰⁶ ↓

4⁶⁴

305⁶⁹ ↓

LT

RT

52

29901

8²²

Top sewer

3040	3014	2988	2914	2994	303.5
3 ³	5 ²	8 ⁵	8 ⁵	7 ²	4 ⁰
14	9	2	8	19	

307²⁹ ↓

309.8

3004

3005.2

300.6

301.1

303.1

1 ³	5 ²	5 ⁵⁴	5 ⁵	5 ⁰	3 ⁰
8	6	Stub	11	12	20

306.6

303.4

302.1

301.2

301.8

301.8

304.8

10 ⁵	2 ⁷	4 ⁰	4 ²	4 ³	4 ³	1 ³
23	20	17	3	10	14	

305.1

302.2

301.4

300.4

300.0

301.7

302.2

304.2

1 ⁰	3 ²	4 ²	5 ²	6 ¹	4 ⁴	3 ²	1 ²
21	18	11	6	1	12	16	

304.2

301.0

301.2

302.99

301.9

302.2

305.8

1 ²	5 ¹	4 ²	3 ⁰⁷	4 ²	3 ²	0 ³
17	14	3	FL	Grind	5	10

306⁰⁶ ↓

3432⁴² L. 80° 57' 30" Lt on split3419 E cross 3⁵ wooden walk bridge2496 6⁶ RT E 6" Eucalyptus2489⁶¹ L. 31° 33' 30" Lt on split2475 8⁶ Lt E 8" Eucalyptus tree

2460

2435 E crosses 2 gas and 1 water 3/4 pipe

2422 10³ RT to rock retaining wall

LT	299.3	296.4	296.29	2970 RT	307.3
	80	102	11 00	103	00
	20	11	Stub	11	16

302.4

42

300.6	297.7	297.0	297.27	302.7
67	90	103	10 02	46
16	11	5	Stub	14

301.9

299.3

298.1

297.4

297.8

301.2

54

80

92

92

95

61

12

7

4

6

13

300.8

65

lowest pipe

305.3

300.6

298.5

298.5

302.6

40

62

88

88

42

11

16

102

103

103

Top

307.22

4170² E crosses 2" water main

4166^{04 POT} E cross 12" sewer incased at this pt in con.

4161 E crosses 2" gas main

TP₆ 4⁰³ 30366 766 29963

4124 3⁰ RT L.P.T of wall on rt. (Narrowest spot.)
8² LT Regene wall on lt con retaining

4100 12⁶ RT to con retaining wall

3156 5⁰ RT E 26' long 9' wide 2' thick and less
Fallen con wall or slab

LT	E	RT
297.4	292.96	
299.2	97°	292.7
290.6	Top pipe	292.9
290.9	63	297.63
292.40	95	
292.39	131	
	128	
	1126	
	1127	
	15	
	12	
	7	
	48	
	4	
	11	
	27	
	11°	
	10°	
	10	
	136	
	ground	
	Top end wall	
	294.5	
	917	
	Top gas	
29950	30366	29806
295.2	202.4	
292.9	202.4	
292.9	298.2	
779	121	923
88	141	
Top wall	4	
298.3	292.9	
294.6	292.9	
294.2	292.9	
295.4	202.4	
298.4	298.4	
92	112	
6	128	
298.7	12	
295.1	Top wall	
294.8	845	
298.8	128	
296.9	Top wall	
86	297.4	
6	3006	
123	92	
125	67	
125	20	
104	14	
3.2	Top	
5	Top	
14	Top	
20	Top	
	30729	

5445

292.8	291.7	288.6	289.1	290.4	290.7
3 ²	4 ³	7 ⁴	6 ³	5 ⁶	5 ³
12	2		8	12	24

5443

292.5	291.7	288.8	289.0	290.5	290.8	292.1
3 ⁵	4 ³	7 ²	7 ⁰	5 ⁵	5 ²	3 ²
10		3	8	12	24	32

5432⁰³ L. 67° 48' 30" AT on split

294.6	293.3	291.9	288.8	290.3	292.1	296.0
14	2 ⁸⁹	4 ²	7 ²	5 ²	3 ⁹	0 ⁰
10	stab	3	5	14	34	39

5428

295.4	299.0	292.3	289.8	290.8	291.4	295.5
0 ¹	2 ⁰	3 ⁷	6 ⁶	5 ²	4 ⁶	0 ⁵
12	8	2		16	25	33

TP6

491

~~286.02~~
296.02

12⁵⁵

~~287.11~~
291.14

5400

296.3	290.3	290.2	291.0	292.5	293.4
7 ⁴	13 ⁴	13 ⁵	12 ²	11 ²	10 ³
12	6		7	13	22

4480

297.5	291.5	291.2	290.8	294.3
6 ²	12 ³	12 ⁵	12 ²	9 ⁴
15	9		9	12

30366

6490 E cross 6" water main
 12⁵ LT E 1'x2' con piers
 92R E 1'x2'

6475

6450

6448 E cross 4" gas main
 12⁵ LT E 1'x2' con pier
 205R E 1'x2' con pier

6425

5495

5485

	2915	1887	1871	2857	2874	2891	2893	2898
	41	72	82	10 ³	8 ⁶	62	67	62
	42	35	26	23	14	10		10
							29584	
							0	18
	2903	2875	2864	2869	2901	2899	2909	
	52	85	96	91	52	64	54	
	35	26	24	17	13		15	
		2908	1887	1881	2877	2813	2916	2905
	52	72	72	83	47	44	55	
	25	17	10	6		3	13	
		2905	2895	2891	2913	2913	2915	
	5 ⁵	7 ⁵	6 ²	4 ²	4 ⁵	4 ⁵	4 ⁵	
	20	15	5	5	14			
				29602				
				28602				

Lt

E

Rt

TP

38² 282¹⁶ 4165^{63(X)}

6+9/27 stub 1st South 7' Lin. Wightman

290.8	287.4	287.5	285.7	285.71	286.4	290.5
52	82	85	104	10 ³¹	96	55
20	14	10	5	Stub	5	10

296.02
286.02

✓

Profile "B" Line

2700

TP,

155

314²⁴ ✓

003

312⁶⁹ ✓

1785

1770

1755

1740

1724¹⁰ "B"

BM

12²⁰

312⁷² ✓

300⁵² ✓

1775⁸²
Stub

Lt.

3134

08

6

3139

03

6

3132

10

6

RT

58

3140

+13

6

3117

10

6

3087

40

6

3012

115

6

314²⁴ ✓

3115

12

6

3072

55

6

3021

105

6

3008

112

6

3097

33

6

3050

72

6

3012

115

6

3002

125

6

302⁹⁹

302⁹⁹

923

FL

312⁷² ✓

3135

3106 3' RT E SMA 12" or 10"

TP₂

287

304⁹² ✓

1219

302⁰⁵ ✓

13° Lt end make shift fence

2784 11' Lt 12" tree

2780 10 3/4 Lt 18" tree

2776 10 3/4 Lt 12"

2770 10 1/4 Lt 12"

2765 10 1/2 Lt 30" "

2758 11 1/2 Lt 12" "

2750 11 3/4 Lt 16" Eucalyptus

2740

2737 11 1/2 Lt Begin make shift fence

2721 13 1/2 Rt E single garage con floor

2716 6 1/2" B" on split

	LT		RT
306.6	302.5	302.1	299.6
716	24	28	53
68	50	45	33
	308.1	301.8	301.3
	738	34	36
	50	23	6
		301.2	299.2
		293.8	299.4
		302.09	301.3
		304.9	304.9
		301.3	299.7
		1124	283
		33 FL	70 71m
		36	40
		6	12
		50	50
312.8	312.8	311.8	310.5
14	14	24	32
50	45	43	13
		305.8	304.4
		304.4	304.4
		304.6	304.6
		304.3	304.3
		302.1	302.1
		301.7	301.7
		14	84
		98	98
		98	98
		96	96
		99	99
		121	121
		125	125
		50	50
315.7	314.7	312.8	312.2
715	705	14	20
50	35	10	6
		310.5	310.5
		310.2	310.2
		310.4	310.4
		311.1	311.1
		304.2	304.2
		303.1	303.1
		109	111
		35	30
		312.66	312.66
		158	132
		floor	floor
319.0	318.2	314.7	314.2
748	740	105	00
50	37	19	10
		313.1	313.1
		312.53	312.53
		312.4	312.4
		310.6	310.6
		308.4	308.4
		309.7	309.7
		305.2	305.2
		18	18
		14	14
		48	48
		95	95
		60	60
		51	51

314124 ✓

LT S at

3 Starting BM

722 322¹⁵ ^{sw B.P.}
322¹⁵ Nile University

Reduced By
CR hookhead

364 329³⁸ ✓ 026 325⁷⁴ ✓

2 TP on B' line 13³¹ 326⁰⁰ ✓ 312⁶⁹ ✓

3758⁵³ "B" = 4766⁰⁴

292¹⁸ ✓ 9957
12⁷⁴ 282¹⁶

3750

3742

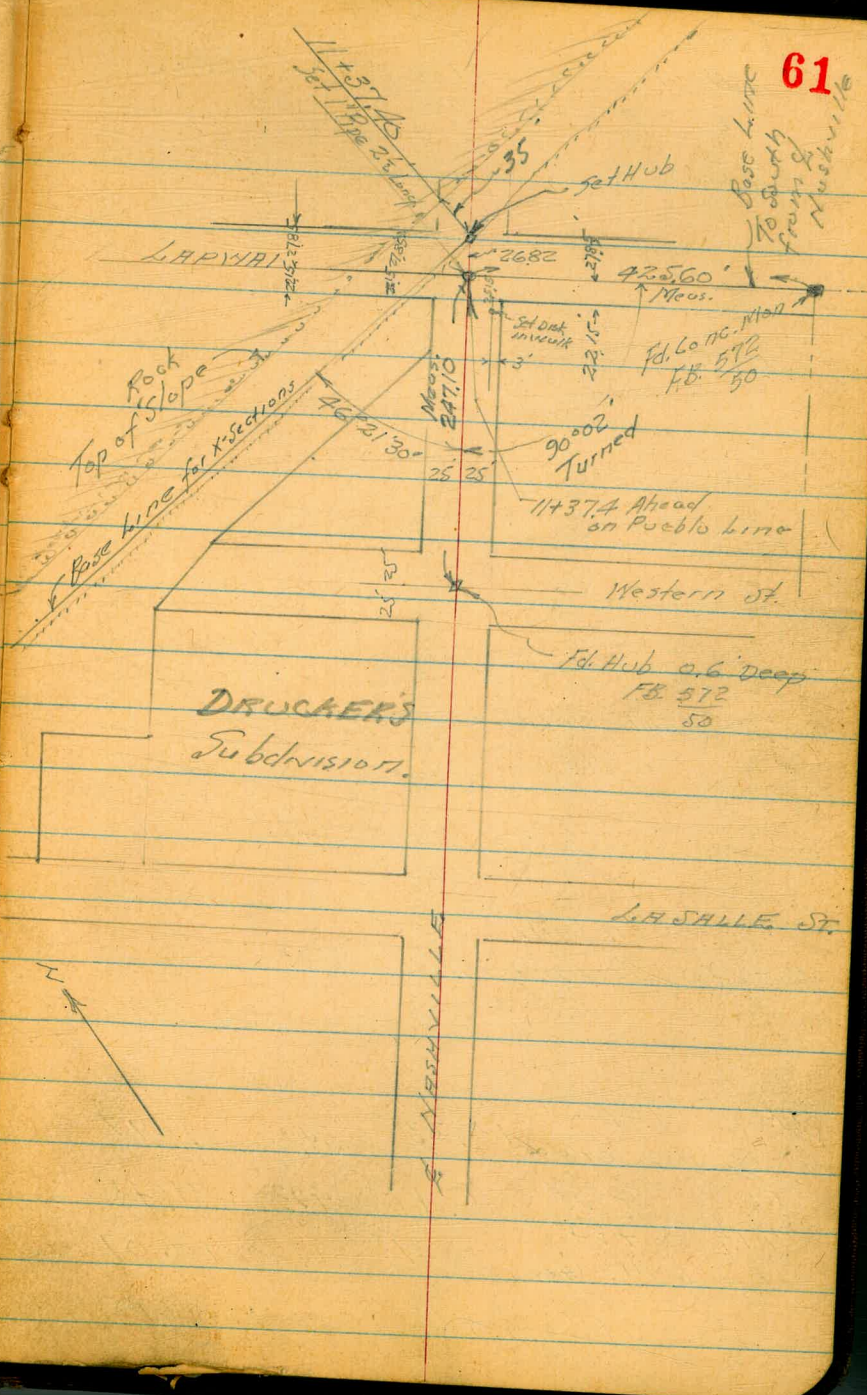
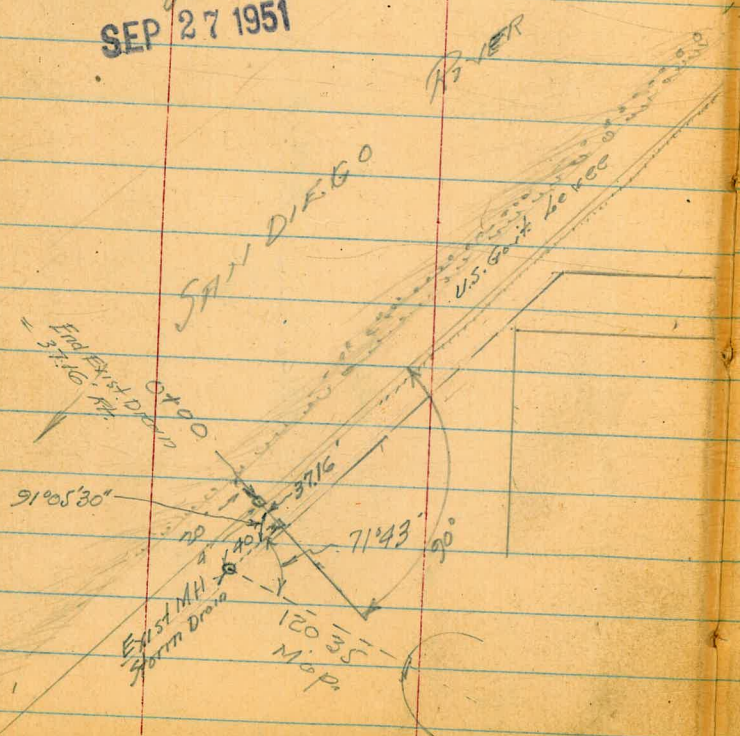
			292.18
			12.74
			on. 0.0001x
		2925	
		2934	2990
	124	115	109
	6		6
2918		2958	2965
7	75	94	84
6	3		6
		304	92 ✓

CROSS SECTIONS For Proposed
 Drainage Ditch
 Along SAN DIEGO RIVER LEVEE
 from Midway Drive
 to Lapwai Street

Walker
 Pope
 Huffman
 9-24-51

NO 20853

INDEXED
 law
 SEP 27 1951



61

Base Line
 To South
 from
 of
 Nashville

Proposed

- Drainage Ditch, Sections.

3+00

2+00

1+00

0+00 - End East Pipe (covered up)

0 - 40 Invert MH -5.26 17.49

on Rim

0 - 40 - 1/2 Exist MH 3.70 8.93

TP 146 on Hub 0+00 12.23 ✓ 540 10.77 ✓

TP 469 16.17 ✓ 493 11.48 ✓

TP 434 on Hub 1+37.40 16.41 ✓ 140 12.07 ✓

8.37 13.47 ✓ 5.10

Base
41.00
0.5 11.7 11.8 1.8 62
5 0.4 10.4 1.6 138 137
30 44 65

10.7 10.4 10.4
1.5 1.8 1.8 1.3 1.3
5 36 41 60
Toe
Dyke

10.5 10.3 10.2
1.7 1.9 1.2 1.3
5 38 60
Toe
Dyke

10.78 10.5 0.4 0.33 0.1
14.5 1.7 16.8 11.90 12.1
4 33 37 16 58
Toe
Dyke
Hub.

12.23 ✓

BM on E. side Poplar & Pk. line
By Osborne 425.6 50' Sth of
Nashville

Cross Sections - Drainage Ditch

63

Station	Notes	1	2	3	4	5	Base
10+00		12.4	1.1	0.9	4.3	1.9	0.9
			10	24	31	12.6	12.6
9+00		12.0	1.5	1.6	2.7	0.3	0.3
			12	108	132	13.2	13.2
				25	33	50	
8+00		11.8	1.7	2.0	2.1	-1.1	-1.1
7+70	#4169 = Elec. Pole 53' R/L		13	114	14.6	14.6	14.6
7+59	= Pole Anchor 39' R/L			33	37	60	60
					17 street	17 street	
7+00		11.4	2.1	2.0	7.7	-0.5	-0.5
			13.49	58	12.5	14.0	14.0
				23	38	45	60
TR	2.47 13.49 12.1 11.02						
6+00		11.3	0.9	1.4	3.6	0.1	-0.2
			11	86	12.1	12.4	12.4
				34	45	70	
5+00		11.3	0.9	1.3	4.1	0.0	-0.5
			4	81	12.2	12.7	12.7
				28	43	63	
4+00		11.4	0.8	1.1	3.0	-0.2	-0.8
			12.23	4	9.2	12.4	13.0
				4	36	37	65

Cross Sections - Drainage Ditch

14+00

P-4540
13+87 = Pole 20' Lt

13+00

12+00

SE Nashville & Lapwai Marked = 1.56
Chk Nail in Pole 4.25 1.51

11+79 = Elec Pole 20' Lt # 4500

11+66 = Pole Anchor 20' Lt

11+37.40 & Nashville & Pueblo Line

4.22 Fire Hydr. 5.76 ✓
TP SW Top of ~~...~~ 11.95 1.54 ✓
Nashville & Lapwai

on site (26.82 Tag in Base Line, See Sketch p.61)

11+37.40 This See on diag on Nashville

11+00

13.42

1.2
4.6 4.8
30 20 5.0

East edge
Dirt Drive
Ramp

1.1
4.7 5.1
30

0.8 0.1 -0.1
5.0 5.7 5.9
30

5.76 ✓

12.07
1.42 12.1 9.1 1.0 -0.2
on Hub 5 17 27 50

12.1 12.1 0.2 -0.1
14 14 13.3 13.6
3 22 48

13.49 ✓

Base
Line

Cross Sections - Drainage Ditch

Station	Notes	1	2	3	4
17+00		5.3 100	2.2 2.0	6.1 16	1.2 6.3
16+00				2.0 5.4 30	1.8 5.6 7.45 ✓
15+63 ⁰⁰	2.36 T.P. Nail starting B.M. 067 Man on pl. car	5.10 = start 5.09 ✓ (Pole # P-4566) 20.14	2.3 3.5 30	3.4 2.4 20	3.1 2.7
15+00			2.3 3.5 30	2.1 3.7	
14+30			0.3 4.5 DIVE	0.3 30	1.4 4.4 26
14+30			3.4 2.4 East edge Ramp	2.8 3.0 23 Dirt DIVE	1.2 4.6 16 Top Ramp Dirt DIVE
	5.76				1.3 4.5 5.76 ✓

Cross sections - Drainage ditch

to
Base
Line

66

Reduced By
CRA 9-26-51

18+00

1.2	1.8	1.4	1.2
6.2	5.6	6.0	6.3
100	22	17	

17+20

Polk 20' Lt. # P-4600

745 ✓

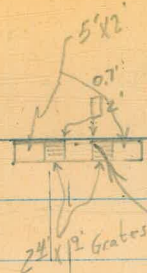
Roberts
Moore
Pulken
Sisson
11-23-51
No. 20938

Survey of Storm Drain
Park Blvd. & Brooks

INDEXED

flow

NOV 26 1951



curb

Cb - 296.67
Gutt - 295.45

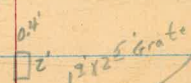
Park Blvd.
(68' Rdwy.)

Cb - 295.01

Gutt - 294.07

Cb - 295.01

Gutter - 294.34



Cb - 295.16
Gutt - 294.56

curb

295.05 - Cb.

293.79 - Gutt.

295.04 Cb.

293.76 Gutt.

10' Cb Rad.
S.W. Cor.

P.T. to
#1677

294.31 - Cb.

293.44 - Gutter

These inlets have a
0.3' curb shoulder out
from Cb. Face.

BM

295.80 S.W.B.P. Upper & Park Blvd

Brooks
(to rdwy)

curb

Clark
Bracey
O'Neil

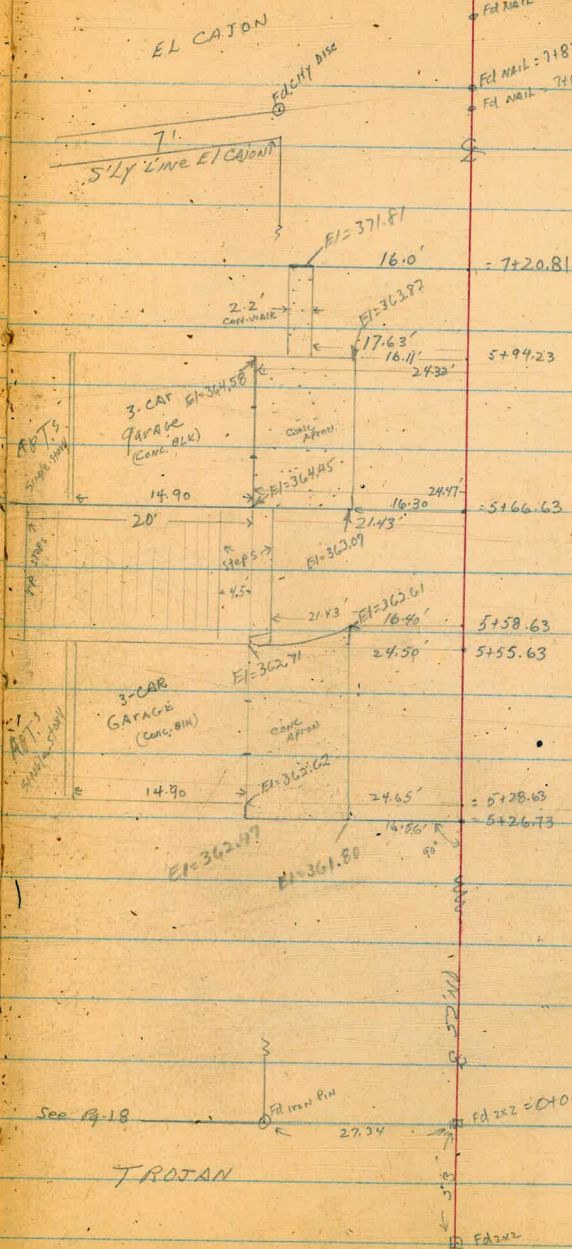
W.O. 20006
3-13-53

LOCATION of Elev's Imp's
ALONG West'ly - 52nd, S. of EL CAJON

DATA: F.B. 2066 - 18

Sketch Not. to scales
Notes Pg. 69.

INDEXED
Law
MAR 16 1953



FD 202 = 8+01.41
FD 202 = 7+83.19
FD 202 = 7+80.06

Note: Used STATIONING
Pg. 18.

Buildg. Located by
TRANSIT + CHAIN
90° OFF R AS
Shown Pg. 18

730
590
326

27

590
560
38

Elev's IMP's Wly 52nd, S. of EL CAJON

LT

§

5780 = ♀ 2nd Doorway

5766.63 { 24.47 LT. Beg 3-Car gar
21.43 LT end steps
16.30 LT Beg apron

5758.63 16.40 LT end Apron

5755.63 { 21.43 LT Beg steps bet. garages
24.20 LT end 3-car gar

5744 = ♀ 2nd doorway

5726.63 24.65 LT Beg 3-Car gar

5726.73 16.56 LT Beg Conc. apron

Redwood 3-11-53 hr

T.P. 0.49 368.56 11.00 368.07

T.P. 1.76 379.07 10.11 377.31

B.M. 0.60 387.42 386.82 = S.W.B.P.

364.49 363.50

4.07 Floor 5.06 Lip

364.45 363.92 363.07

4.11 4.64 5.49
24.47 21.43 16.30
Step Lip

(Steps bet. gar. level)

362.61

5.95
16.40
Lip

373.16

365.23

362.71

363.92

44.80 3.33 5.95 apr 4.64
44.50 30 24.50 21.43
TP Floor 18 lower
3rd step 7th step

(See sketch)
of steps
= Elev.
Per. bet. Apts)

362.64

362.28

5.92 Floor 6.28 Lip

362.62

5.94
24.65
con. Floor

362.47 361.80

6.09 6.76
24.65 16.56
BRIDGE Lip
Apron

368.56

851st EL CAJON

chk: 5.04 373.54 = 373.57 = elev. CR END AT STA. 7472.71 Pg 23

7420.81 16.0' LT END 2'2' CON. WALK

371.81
6.77
16.0
edge WALK

7400 16.0' LT edge WALK

369.03
9.55
16.0
Edge WALK

T.P. 10.79 378.58 0.77 367.79

378.58

6450 16.70 LT edge WALK

367.07
1.49
16.7
edge WALK

6406 17.51' BK IN FL WALK

365.00
3.06
17.5
edge WALK

5494.23 { 24.32 LT end 3-car gar.
17.63 LT Beg 2'2' WALK
16.11 LT END Apron

364.58 364.45 364.46 363.82
3.98 4.11 4.10 4.74
24.32 17.63 17.63 16.11
FLOR WALK WALK LP

368.56

X-SEC. ALLEY BLK. 50 PARK VILLAS

COTA
GARBER
KELLEY
PULLEN
W.D.# 3217A
7-13-55

INDEXED

JER
JUL 14 1955

71

UNIVERSITY

AVE.

UNIVERSITY AVE.

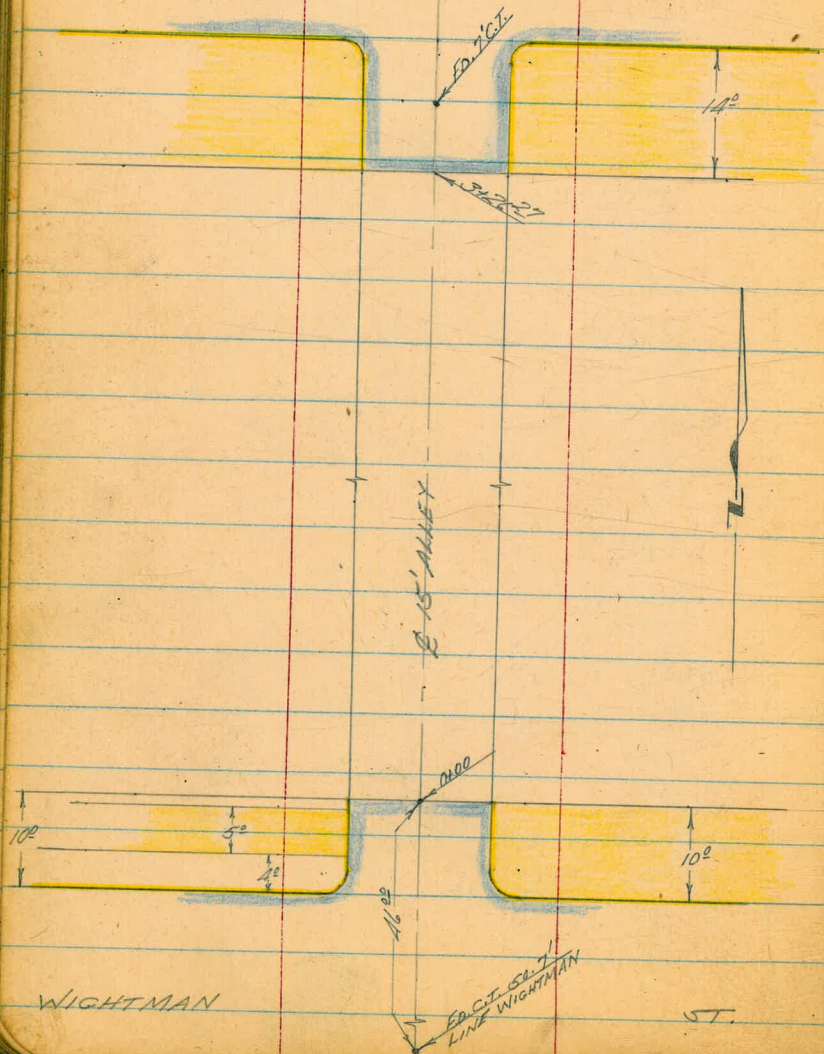
80' ST.
52' ROADWAY
1A' PARKING
22' RADIUS ON ALLEY RETURNS
A.C. PAVING.

WIGHTMAN ST.

53' ST.
33' ROADWAY
10' PARKING
22' CURB RADIUS ON WEST
32' CURB RADIUS ON EAST
A.C. PAVING.

REFERENCES

F.B. 1810 PG. 26
TIE SHEET # 182



WIGHTMAN

ST.

L. (W'14)

£

Rt. (E'14) **72**

0+50

342.7 342.7 341.1 341.2 341.2 341.0 341.5
17.5 8 7.5 7.5 9 14

{ 7.5 ft. BESIN 6" WIDE CONC. RETAINING WALL
7.5 ft. & RT. TO END OF CURBS

0+00 N'LY. PROP. LINE WIGHTMAN

342.8 342.0 342.80 342.15 342.65 342.20 342.25
7.5 7.5 7.5 7.5 7.5 7.5
TOP Foot. CB. Gut. Gut. CB.
WALL END

0-09 10 ft. to £ 22" x 22" METAL COVER TO GAS VALVE BOX

343.68 DENE
↑ 50
↑ Gut.

0-10 N'LY. CURB LINE WIGHTMAN

343.24 343.76 343.58 343.27 343.00 341.46 341.92 339.89 337.84
25 25 25 25 14.5 14.5 50 50
CB. Gut. CB. Gut. Gut. CB. Gut. CB.

0-26.5 £ WIGHTMAN & £ M.H. (SEWER)

344.03 343.29 343.22 340.39 337.48
50 25 RM 25 50

B.M. 346.40 C.W.B.P. 32nd. WIGHTMAN

DIRECT ELEV. ROD USED

7-SEC ALLEY BLK. 50 PARK VILLAS
CONT'D.

LT.

¢

RT.

13

0492 70⁰ RT. S.W. COR. HOUSE (LADY COMPLAINS THAT SEWER BACKS UP IN BATH ROOM DURING STORMS)

330.7
70
FLOOR
OF HOUSE

0481¹ 75 RT. BEGIN LIGHT BLACK-TOP PARKING AREA FOR APPTS.

339.50 339.2
73 23
← BLACK-TOP ↑

{ 8⁰ LT. BEGIN CONC. APRON FOR 4 GARAGES

0481¹ 83 RT. END RET. WALL

340.10 339.99
12 80
Conc. Conc.
Floor FIP

339.6 340.4
82 8.2
GED TOP
WALL

{ 8¹ RT. BEGIN CONC. RETAINING WALL

0475¹ 76 LT. END CONC. RETAINING WALL

342.08 340.0 340.4
76 76 76
TOP FOOT GED
WALL

339.9 339.5 342.1
81 81 81
GED FOOT TOP
WALL

0470

342.8 342.8 340.5 340.3 340.2 340.5
17.5 8 7.5 7.5 17.5

0469 16⁶ LT. to & TEL. POLE # PA. 3813

0453 11⁰ RT. to & TRIPLE GARAGE

341.19
14⁰
Conc.
Floor

337.69 ONTR. and ch

Lt.

C

Rt.

74

1450

337.0	336.0	338.4	338.1	333.8	333.5
17.5	7.5	3		7.5	17.5

1445

339.3	338.6	337.0	335.0	334.8	334.4	334.4
17.5	12	7.5	4		7.5	17.5

1425

338.5	337.8	336.9	336.6	336.7
17.5	7.5		7.5	17.5

1424 75 Rt. END LIGHT BLACK TOP PARKING
AREA FOR APTS.

336.9	337.7
7.5	23
← BLACK TOP	

1421 83 Lt. END CONC. APRON TO 4 GARAGES

340.00	338.95
12E	83
Floor	LIP

1400

339.95	339.2	338.4	338.1	338.5	338.8
12	7.5		5	7.5	17.5

7th SEC. ALLEY Bk. 50.
PARK VILLAS - Cont'd.

Lt. \$ Rt. 75

2433 7⁰ Lt. to & 10⁰ WIDE CONC. DRIVE
334.1 333.7 331.6 331.5
33³ 23 7.5 7.0
Conc.
Floor

2438 8⁰ Lt. END CONC. RET. WALL
331.3 331.8
8.2 8.2
Foot GRD.

2401 { 6⁰ Lt. to & TEL. POLE # PA 3849
7⁹ Lt. BEGIN CONC. RET. WALL (1⁰ High)
331.5 332.5
7.9 7.9
Foot GRD.

2400
333.4 332.6 331.7 331.4 331.6 331.5
17.5 7.5 3 7.5 17.5

1481 9⁷ Rt. to & 18⁰ WIDE OIL DRIVEWAY TO
DOUBLE GARAGE
331.6 332.8
9.7 16
Oil Conc.
LIP Floor

1475
333.4 333.0 331.8 331.8 331.8 332.2
17.5 7.5 2 7.5 15

3100

BLDG. 331.7 331.8 332.1 BLDG.
7.5 7.5

2487 7⁸ Rt. TO 3⁰ WIDE DOOR TO BLDG.

332.7
7⁸
Floor

24815 7⁸ Rt BEGIN BLDG.

24735 7² Rt TO 15⁰ WIDE OIL DRIVE
USED FOR PARKING

331.5 331.81
20 7²

2466 11² Rt. N.W. COR. APT. HOUSE

331.8
11²
Floor

2463 7⁴ Lt. TO 9⁰ WIDE OPENING IN BLDG.
FOR LOADING

333.41 331.7
7⁴ 7⁴
CORNER GRD.
Floor

2456 7⁴ Lt. BEGIN BLDG.

2450

333.3 331.7 331.4 331.4 331.9 332.1 → 6100.
17.5 7.5 5 7.5 11.2

LT. \$ RT.

331.58 331.38
50 50
CB GUT

3+40.27 (S'LY) CURB LINE UNIVERSITY

333.73	332.92	332.51	332.23	332.12	332.01	332.23
50	50	9.5	9.5		9.5	9.5
CB.	GUT.	CB.	GUT.		GUT	CB.

BEGIN A.C. PAVING

7⁵ LT. & RT. BEGIN CURBS.

3+26²⁷ (S'LY) PROP. LINE UNIVERSITY

332.77	332.41	332.37	332.36	332.17
7.5	7.5		7.5	7.5
CB.	GUT		GUT	CB.
				TOP

7⁵ RT. END BLDG.

3+25⁸ } 7.2 LT. END BLDG.

3+25 5⁰ LT. TO GAS VALVE COVER 1³ DIAM.

3+20 6⁵ LT. GUY WIRE ENTERS GRD.

3+01 6⁸ LT. TO \$ TEL. POLE # D31330T

7-SEC. ALLEY BLK. 50. PARK VILLAS-CONT'D.

Lt.

\$

Pt.

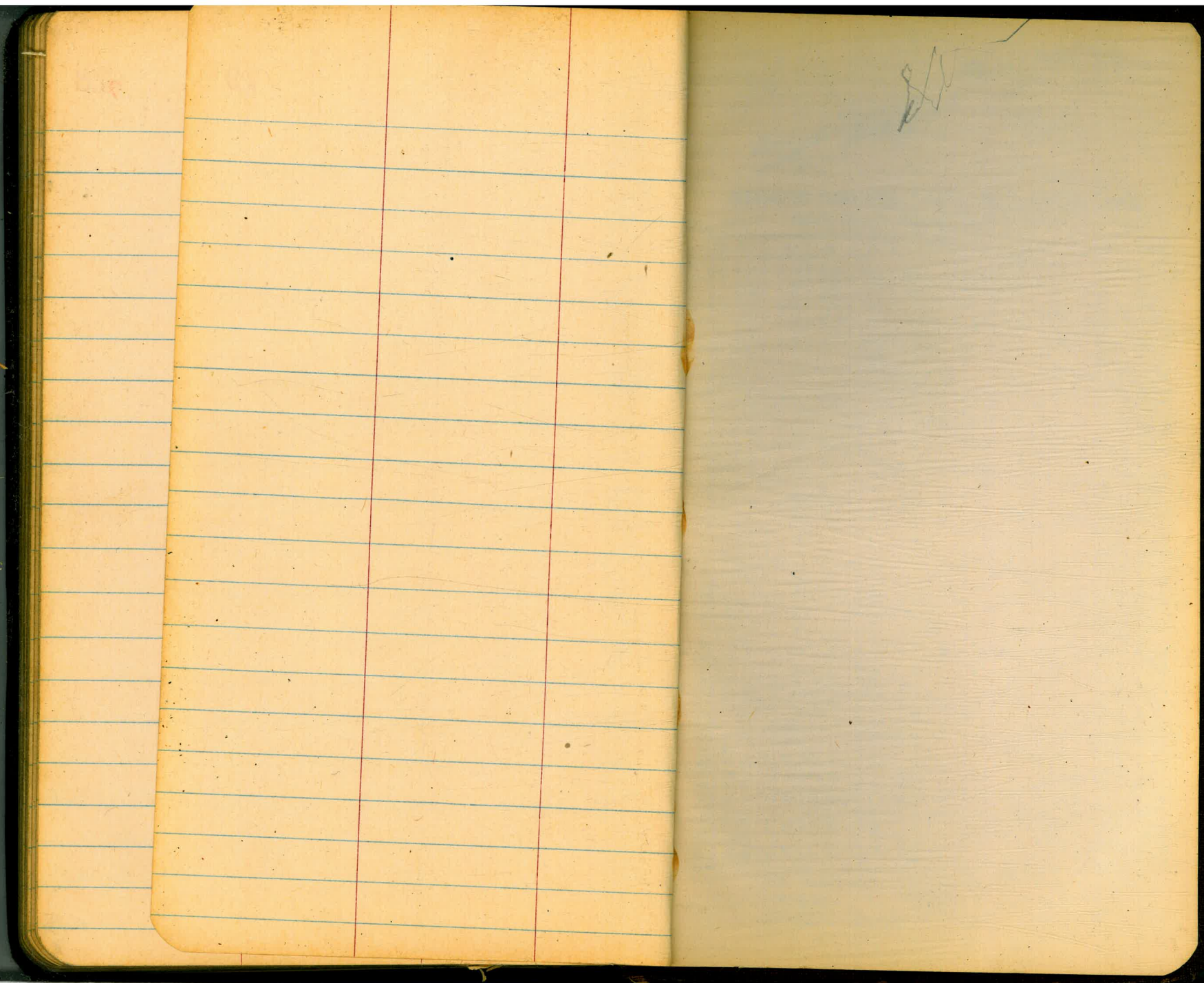
78

B. M. CHECK 332.47 = 332.00 C.B. TOP ON PT.
SUN. FL. UNIVERSITY
(F.B. 1810 P. 30)

3466.27 \$ UNIVERSITY

334.02	338.66	333.30	332.83	332.41
50	25		25	50

79



1820 - P. 58

7940-30-

199-21

99-21-20

802515

700545

31.2

1822

7-89-13
32
22

8107-11
5752-12
257925

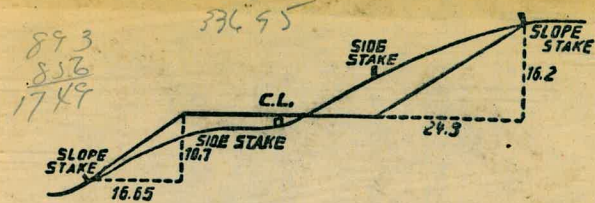
7-89-13
9-2
982

JEBP Arizona Howard 331.51

547267 Hamilton " 360.10

SW Mon
37743
2041-58

113740
423
15698



DISTANCES FROM SIDE STAKES FOR CROSS-SECTIONING.
SLOPE 1/4 TO 1. ROADWAY OF ANY WIDTH.

	0	.1	.2	.3	.4	.5	.6	.7	.8	.9	
0	0.00	0.15	0.30	0.45	0.60	0.75	0.90	1.05	1.20	1.35	0
1	1.50	1.65	1.80	1.95	2.10	2.25	2.40	2.55	2.70	2.85	1
2	3.00	3.15	3.30	3.45	3.60	3.75	3.90	4.05	4.20	4.35	2
3	4.50	4.65	4.80	4.95	5.10	5.25	5.40	5.55	5.70	5.85	3
4	6.00	6.15	6.30	6.45	6.60	6.75	6.90	7.05	7.20	7.35	4
5	7.50	7.65	7.80	7.95	8.10	8.25	8.40	8.55	8.70	8.85	5
6	9.00	9.15	9.30	9.45	9.60	9.75	9.90	10.05	10.20	10.35	6
7	10.50	10.65	10.80	10.95	11.10	11.25	11.40	11.55	11.70	11.85	7
8	12.00	12.15	12.30	12.45	12.60	12.75	12.90	13.05	13.20	13.35	8
9	13.50	13.65	13.80	13.95	14.10	14.25	14.40	14.55	14.70	14.85	9
10	15.00	15.15	15.30	15.45	15.60	15.75	15.90	16.05	16.20	16.35	10
11	16.50	16.65	16.80	16.95	17.10	17.25	17.40	17.55	17.70	17.85	11
12	18.00	18.15	18.30	18.45	18.60	18.75	18.90	19.05	19.20	19.35	12
13	19.50	19.65	19.80	19.95	20.10	20.25	20.40	20.55	20.70	20.85	13
14	21.00	21.15	21.30	21.45	21.60	21.75	21.90	22.05	22.20	22.35	14
15	22.50	22.65	22.80	22.95	23.10	23.25	23.40	23.55	23.70	23.85	15
16	24.00	24.15	24.30	24.45	24.60	24.75	24.90	25.05	25.20	25.35	16
17	25.50	25.65	25.80	25.95	26.10	26.25	26.40	26.55	26.70	26.85	17
18	27.00	27.15	27.30	27.45	27.60	27.75	27.90	28.05	28.20	28.35	18
19	28.50	28.65	28.80	28.95	29.10	29.25	29.40	29.55	29.70	29.85	19
20	30.00	30.15	30.30	30.45	30.60	30.75	30.90	31.05	31.20	31.35	20
21	31.50	31.65	31.80	31.95	32.10	32.25	32.40	32.55	32.70	32.85	21
22	33.00	33.15	33.30	33.45	33.60	33.75	33.90	34.05	34.20	34.35	22
23	34.50	34.65	34.80	34.95	35.10	35.25	35.40	35.55	35.70	35.85	23
24	36.00	36.15	36.30	36.45	36.60	36.75	36.90	37.05	37.20	37.35	24
25	37.50	37.65	37.80	37.95	38.10	38.25	38.40	38.55	38.70	38.85	25
26	39.00	39.15	39.30	39.45	39.60	39.75	39.90	40.05	40.20	40.35	26
27	40.50	40.65	40.80	40.95	41.10	41.25	41.40	41.55	41.70	41.85	27
28	42.00	42.15	42.30	42.45	42.60	42.75	42.90	43.05	43.20	43.35	28
29	43.50	43.65	43.80	43.95	44.10	44.25	44.40	44.55	44.70	44.85	29
30	45.00	45.15	45.30	45.45	45.60	45.75	45.90	46.05	46.20	46.35	30
31	46.50	46.65	46.80	46.95	47.10	47.25	47.40	47.55	47.70	47.85	31
32	48.00	48.15	48.30	48.45	48.60	48.75	48.90	49.05	49.20	49.35	32
33	49.50	49.65	49.80	49.95	50.10	50.25	50.40	50.55	50.70	50.85	33
34	51.00	51.15	51.30	51.45	51.60	51.75	51.90	52.05	52.20	52.35	34
35	52.50	52.65	52.80	52.95	53.10	53.25	53.40	53.55	53.70	53.85	35
36	54.00	54.15	54.30	54.45	54.60	54.75	54.90	55.05	55.20	55.35	36
37	55.50	55.65	55.80	55.95	56.10	56.25	56.40	56.55	56.70	56.85	37
38	57.00	57.15	57.30	57.45	57.60	57.75	57.90	58.05	58.20	58.35	38
39	58.50	58.65	58.80	58.95	59.10	59.25	59.40	59.55	59.70	59.85	39
40	60.00	60.15	60.30	60.45	60.60	60.75	60.90	61.05	61.20	61.35	40
41	61.50	61.65	61.80	61.95	62.10	62.25	62.40	62.55	62.70	62.85	41
42	63.00	63.15	63.30	63.45	63.60	63.75	63.90	64.05	64.20	64.35	42
43	64.50	64.65	64.80	64.95	65.10	65.25	65.40	65.55	65.70	65.85	43
44	66.00	66.15	66.30	66.45	66.60	66.75	66.90	67.05	67.20	67.35	44
45	67.50	67.65	67.80	67.95	68.10	68.25	68.40	68.55	68.70	68.85	45
46	69.00	69.15	69.30	69.45	69.60	69.75	69.90	70.05	70.20	70.35	46
47	70.50	70.65	70.80	70.95	71.10	71.25	71.40	71.55	71.70	71.85	47
48	72.00	72.15	72.30	72.45	72.60	72.75	72.90	73.05	73.20	73.35	48
49	73.50	73.65	73.80	73.95	74.10	74.25	74.40	74.55	74.70	74.85	49
50	75.00	75.15	75.30	75.45	75.60	75.75	75.90	76.05	76.20	76.35	50

THE NATIONAL BLANK BOOK COMPANY
HOLYOKE MASSACHUSETTS
NEW YORK CHICAGO BOSTON SAN FRANCISCO