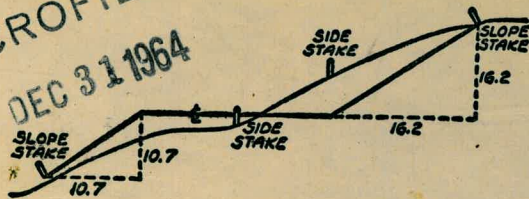


2068

DIARY BOOK

P. 36-77
 MICROFILMED

DEC 31 1964



DISTANCES FROM SIDE STAKES FOR CROSS-SECTIONING
 SLOPE 1 TO 1. ROADWAY OF ANY WIDTH

	0	.1	.2	.3	.4	.5	.6	.7	.8	.9	
0	0.00	0.10	0.20	0.30	0.40	0.50	0.60	0.70	0.80	0.90	0
1	1.00	1.10	1.20	1.30	1.40	1.50	1.60	1.70	1.80	1.90	1
2	2.00	2.10	2.20	2.30	2.40	2.50	2.60	2.70	2.80	2.90	2
3	3.00	3.10	3.20	3.30	3.40	3.50	3.60	3.70	3.80	3.90	3
4	4.00	4.10	4.20	4.30	4.40	4.50	4.60	4.70	4.80	4.90	4
5	5.00	5.10	5.20	5.30	5.40	5.50	5.60	5.70	5.80	5.90	5
6	6.00	6.10	6.20	6.30	6.40	6.50	6.60	6.70	6.80	6.90	6
7	7.00	7.10	7.20	7.30	7.40	7.50	7.60	7.70	7.80	7.90	7
8	8.00	8.10	8.20	8.30	8.40	8.50	8.60	8.70	8.80	8.90	8
9	9.00	9.10	9.20	9.30	9.40	9.50	9.60	9.70	9.80	9.90	9
10	10.00	10.10	10.20	10.30	10.40	10.50	10.60	10.70	10.80	10.90	10
11	11.00	11.10	11.20	11.30	11.40	11.50	11.60	11.70	11.80	11.90	11
12	12.00	12.10	12.20	12.30	12.40	12.50	12.60	12.70	12.80	12.90	12
13	13.00	13.10	13.20	13.30	13.40	13.50	13.60	13.70	13.80	13.90	13
14	14.00	14.10	14.20	14.30	14.40	14.50	14.60	14.70	14.80	14.90	14
15	15.00	15.10	15.20	15.30	15.40	15.50	15.60	15.70	15.80	15.90	15
16	16.00	16.10	16.20	16.30	16.40	16.50	16.60	16.70	16.80	16.90	16
17	17.00	17.10	17.20	17.30	17.40	17.50	17.60	17.70	17.80	17.90	17
18	18.00	18.10	18.20	18.30	18.40	18.50	18.60	18.70	18.80	18.90	18
19	19.00	19.10	19.20	19.30	19.40	19.50	19.60	19.70	19.80	19.90	19
20	20.00	20.10	20.20	20.30	20.40	20.50	20.60	20.70	20.80	20.90	20
21	21.00	21.10	21.20	21.30	21.40	21.50	21.60	21.70	21.80	21.90	21
22	22.00	22.10	22.20	22.30	22.40	22.50	22.60	22.70	22.80	22.90	22
23	23.00	23.10	23.20	23.30	23.40	23.50	23.60	23.70	23.80	23.90	23
24	24.00	24.10	24.20	24.30	24.40	24.50	24.60	24.70	24.80	24.90	24
25	25.00	25.10	25.20	25.30	25.40	25.50	25.60	25.70	25.80	25.90	25
26	26.00	26.10	26.20	26.30	26.40	26.50	26.60	26.70	26.80	26.90	26
27	27.00	27.10	27.20	27.30	27.40	27.50	27.60	27.70	27.80	27.90	27
28	28.00	28.10	28.20	28.30	28.40	28.50	28.60	28.70	28.80	28.90	28
29	29.00	29.10	29.20	29.30	29.40	29.50	29.60	29.70	29.80	29.90	29
30	30.00	30.10	30.20	30.30	30.40	30.50	30.60	30.70	30.80	30.90	30
31	31.00	31.10	31.20	31.30	31.40	31.50	31.60	31.70	31.80	31.90	31
32	32.00	32.10	32.20	32.30	32.40	32.50	32.60	32.70	32.80	32.90	32
33	33.00	33.10	33.20	33.30	33.40	33.50	33.60	33.70	33.80	33.90	33
34	34.00	34.10	34.20	34.30	34.40	34.50	34.60	34.70	34.80	34.90	34
35	35.00	35.10	35.20	35.30	35.40	35.50	35.60	35.70	35.80	35.90	35
36	36.00	36.10	36.20	36.30	36.40	36.50	36.60	36.70	36.80	36.90	36
37	37.00	37.10	37.20	37.30	37.40	37.50	37.60	37.70	37.80	37.90	37
38	38.00	38.10	38.20	38.30	38.40	38.50	38.60	38.70	38.80	38.90	38
39	39.00	39.10	39.20	39.30	39.40	39.50	39.60	39.70	39.80	39.90	39
40	40.00	40.10	40.20	40.30	40.40	40.50	40.60	40.70	40.80	40.90	40
41	41.00	41.10	41.20	41.30	41.40	41.50	41.60	41.70	41.80	41.90	41
42	42.00	42.10	42.20	42.30	42.40	42.50	42.60	42.70	42.80	42.90	42
43	43.00	43.10	43.20	43.30	43.40	43.50	43.60	43.70	43.80	43.90	43
44	44.00	44.10	44.20	44.30	44.40	44.50	44.60	44.70	44.80	44.90	44
45	45.00	45.10	45.20	45.30	45.40	45.50	45.60	45.70	45.80	45.90	45
46	46.00	46.10	46.20	46.30	46.40	46.50	46.60	46.70	46.80	46.90	46
47	47.00	47.10	47.20	47.30	47.40	47.50	47.60	47.70	47.80	47.90	47
48	48.00	48.10	48.20	48.30	48.40	48.50	48.60	48.70	48.80	48.90	48
49	49.00	49.10	49.20	49.30	49.40	49.50	49.60	49.70	49.80	49.90	49
50	50.00	50.10	50.20	50.30	50.40	50.50	50.60	50.70	50.80	50.90	50

Distance of slope stake from side or shoulder stake for any width roadway, slope 1 to 1. If ground is nearly level, the out or fill at side stake is located by the double entry method in left column and top row. The number in body of table in same row and column gives distance from side stake to slope stake. If ground is not level estimate the difference in elevation between the side stake and slope stake, lower target by this amount if cut, elevate if fill. Add this amount to cut or fill and find distance in table. Set up rod at this point, and line of sight should cut target. If it does not make the slight adjustment necessary.

149.55

733
 588
 4145
 36
 735
 180
 557

INDEXED

to page #35

TABLE XIII—CORRECTIONS FOR TANGENTS AND EXTERNALS

These corrections are to be added to the approximate values, found by dividing the tangent, or external, for a 1° curve (Table VIII) by the degree of curve, in order to obtain the true tangents, or externals. Intermediate values may be obtained by interpolation.

FOR TANGENTS ADD

Central Angle	DEGREE OF CURVE													
	5°	10°	15°	20°	25°	30°	35°	40°	45°	50°	55°	60°	65°	70°
10°	.03	.06	.09	.13	.16	.19	.22	.25	.28	.31	.34	.38	.42	.46
15°	.04	.10	.14	.19	.24	.29	.34	.39	.45	.51	.53	.58	.63	.68
20°	.06	.13	.19	.26	.32	.39	.45	.51	.58	.65	.72	.79	.84	.90
25°	.08	.16	.24	.33	.40	.49	.58	.67	.75	.83	.90	.99	1.06	1.14
30°	.10	.19	.29	.39	.49	.59	.69	.79	.89	.99	1.09	1.20	1.29	1.39
35°	.11	.22	.34	.47	.58	.69	.79	.81	.92	1.04	1.29	1.42	1.54	1.66
40°	.13	.26	.40	.53	.67	.80	.93	1.06	1.20	1.34	1.49	1.64	1.79	1.94
45°	.15	.30	.44	.60	.76	.91	1.06	1.21	1.37	1.52	1.70	1.87	2.04	2.21
50°	.17	.34	.51	.68	.85	1.02	1.19	1.36	1.54	1.72	1.91	2.10	2.29	2.48
55°	.19	.38	.57	.76	.95	1.14	1.32	1.52	1.72	1.92	2.14	2.35	2.56	2.77
60°	.21	.42	.63	.84	1.05	1.27	1.49	1.71	1.94	2.17	2.38	2.60	2.83	3.07
65°	.23	.46	.69	.93	1.16	1.40	1.64	1.88	2.13	2.38	2.63	2.88	3.13	3.39
70°	.25	.51	.76	1.02	1.28	1.54	1.80	2.06	2.33	2.60	2.88	3.16	3.44	3.72
75°	.27	.56	.83	1.12	1.40	1.69	1.98	2.27	2.57	2.87	3.16	3.47	3.78	4.09
80°	.30	.61	.91	1.22	1.53	1.84	2.15	2.46	2.78	3.10	3.44	3.78	4.12	4.46
85°	.33	.66	1.00	1.33	1.68	2.02	2.36	2.70	3.05	3.40	3.77	4.14	4.55	4.89
90°	.36	.72	1.09	1.45	1.83	2.20	2.57	2.94	3.32	3.70	4.10	4.50	4.91	5.32
95°	.39	.79	1.19	1.55	1.94	2.32	2.70	3.08	3.47	3.86	4.27	4.68	5.09	5.50
100°	.43	.86	1.30	1.74	2.18	2.62	3.06	3.50	3.95	4.40	4.85	5.30	5.75	6.19
110°	.51	1.03	1.56	2.08	2.61	3.14	3.67	4.21	4.76	5.31	5.86	6.43	7.01	7.60
120°	.62	1.25	1.93	2.52	3.16	3.81	4.45	5.11	5.77	6.44	7.12	7.80	8.50	9.22

FOR EXTERNALS ADD

Central Angle	DEGREE OF CURVE													
	5°	10°	15°	20°	25°	30°	35°	40°	45°	50°	55°	60°	65°	70°
10°	.001	.003	.004	.006	.007	.008	.009	.011	.012	.014	.015	.017	.018	.020
15°	.003	.007	.010	.014	.018	.023	.027	.032	.037	.043	.049	.053	.057	.061
20°	.006	.011	.017	.022	.028	.034	.038	.045	.051	.057	.063	.070	.076	.083
25°	.009	.018	.027	.036	.046	.056	.065	.074	.083	.093	.106	.120	.127	.135
30°	.013	.025	.038	.051	.065	.078	.090	.103	.116	.129	.149	.170	.179	.188
35°	.018	.035	.054	.072	.086	.109	.131	.153	.175	.197	.213	.230	.247	.264
40°	.023	.046	.070	.093	.117	.141	.172	.203	.234	.265	.277	.290	.315	.341
45°	.030	.060	.093	.119	.153	.184	.216	.254	.289	.325	.351	.378	.411	.445
50°	.037	.075	.116	.151	.189	.227	.266	.305	.345	.384	.425	.467	.508	.550
55°	.046	.093	.142	.188	.236	.283	.332	.381	.420	.479	.530	.582	.641	.700
60°	.056	.112	.168	.225	.283	.340	.398	.457	.516	.575	.636	.697	.774	.851
65°	.067	.135	.204	.273	.343	.412	.483	.554	.625	.697	.771	.845	.922	1.01
70°	.080	.159	.240	.321	.403	.485	.568	.652	.735	.819	.906	.994	1.08	1.17
75°	.095	.182	.266	.353	.440	.528	.618	.707	.797	.887	.977	1.07	1.18	1.29
80°	.110	.220	.332	.445	.558	.671	.787	.903	1.02	1.13	1.25	1.38	1.50	1.62
85°	.128	.259	.391	.524	.657	.790	.926	1.06	1.20	1.34	1.47	1.62	1.76	1.91
90°	.149	.299	.450	.603	.756	.910	1.07	1.22	1.38	1.54	1.70	1.87	2.03	2.20
95°	.174	.350	.522	.706	.885	1.06	1.25	1.43	1.62	1.80	1.99	2.18	2.38	2.58
100°	.200	.401	.604	.809	1.01	1.22	1.43	1.64	1.85	2.06	2.28	2.50	2.73	2.96
110°	.268	.536	.806	1.08	1.35	1.63	1.91	2.20	2.48	2.76	3.05	3.35	3.66	3.96
120°	.360	.721	1.08	1.45	1.82	2.19	2.57	2.95	3.33	3.72	4.11	4.50	4.91	5.32

Tecolote Creek ditch ^{Morena to} Knoxville 1
 Flag Sewer line olivewood +
 OcenView to 37th St. 2
 cb Levels on LaJolla Blvd. Adj. to 3-7
 Clairemar Apt. Project
 Pressure Sewer - Vista + Adams 4-15
 x-sec.
 Moore St. Conde to Arista 19-24
 " " Arista to Ampudia 25-29
 " " Riley to Gaines 30-35
 Agate St. Cass - to Wly line ^{(Pac. Beach} Vista 36
 Dawes St. Turquoise to Archer 43-52
 wly. end
 Archer St. Ely line. MonteVilla 53-62
 Agate wly. end to Pac. Beach ^{Tract} Vista 64

Flag Nly. line Rt. of way
 Tecolote Creek
 Morena to Knoxville.

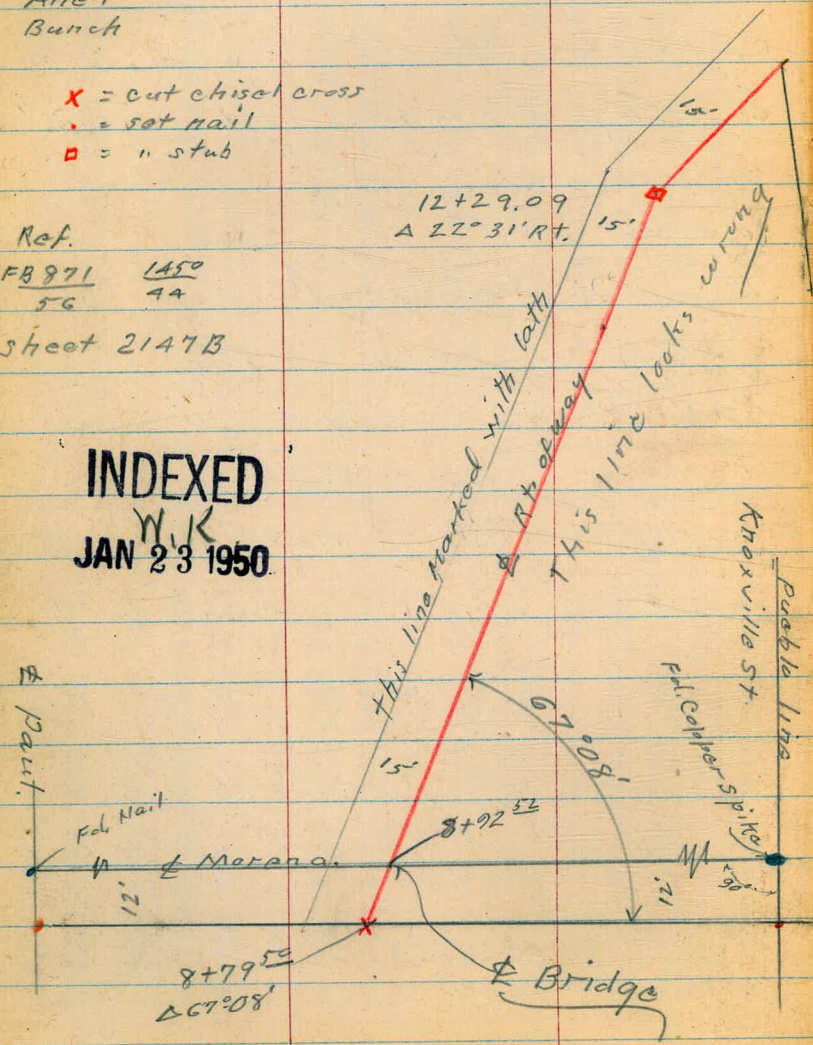
Sommermeier
 McCoy
 Allen
 Bunch

1-20-50
 W.O. #20434

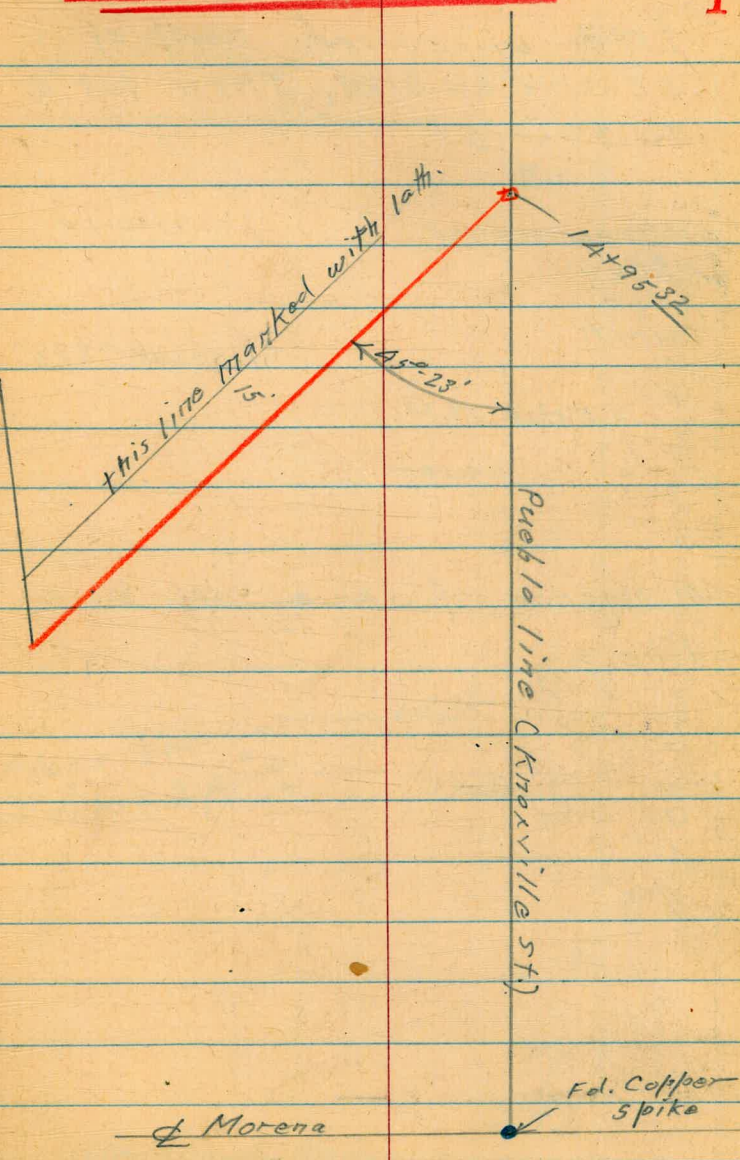
- X = cut chisel cross
- = set nail
- = " stub

Ref.
 FB 971 1450
 56 44
 sheet 2147B

INDEXED
 W.K.
JAN 23 1950



See FB. 2118-P52 5/13/52



Flag existing Sewer
 From Olivewood north of
 Ocean View Blvd. Thru lot "C"
 to 37th St.

Sammerneyer
 McCoy
 Allen
 Bunch

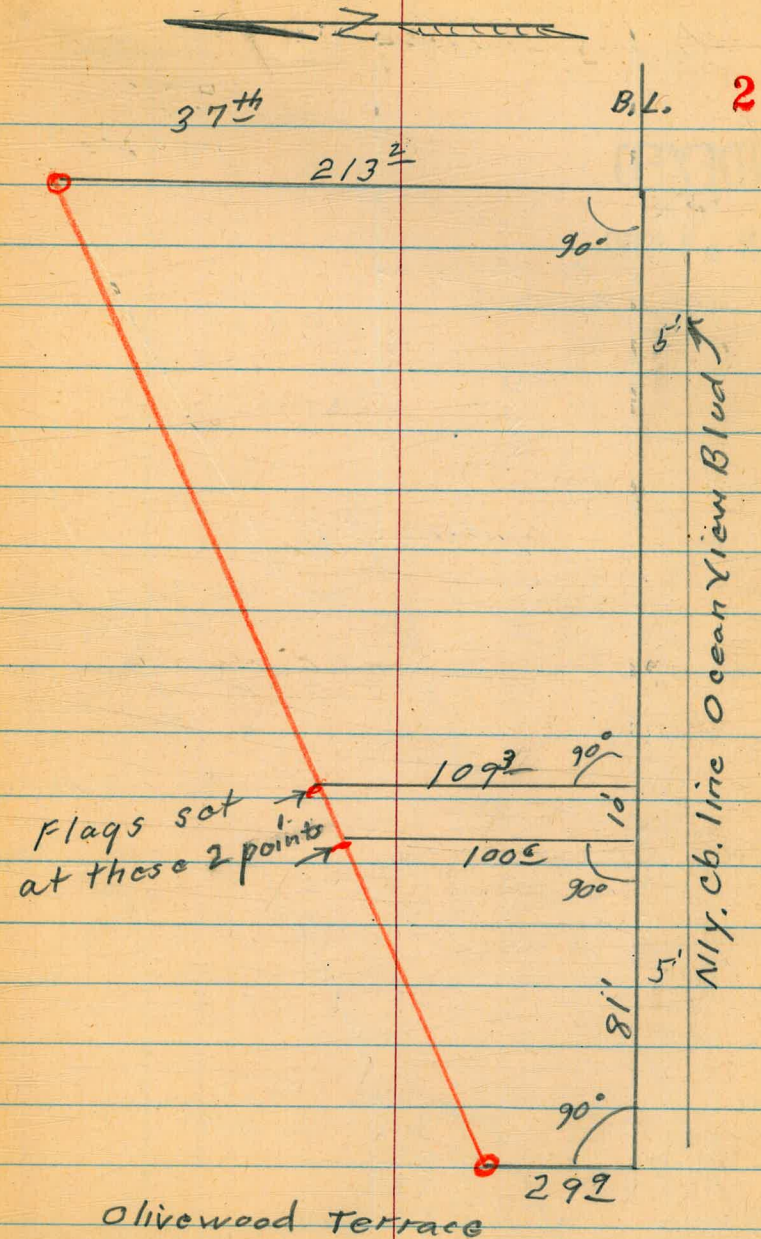
1-20-50

T.P. sheet #338

○ = Exist M.H.

| = " Sewer

Divergence of sewer off base
 line =

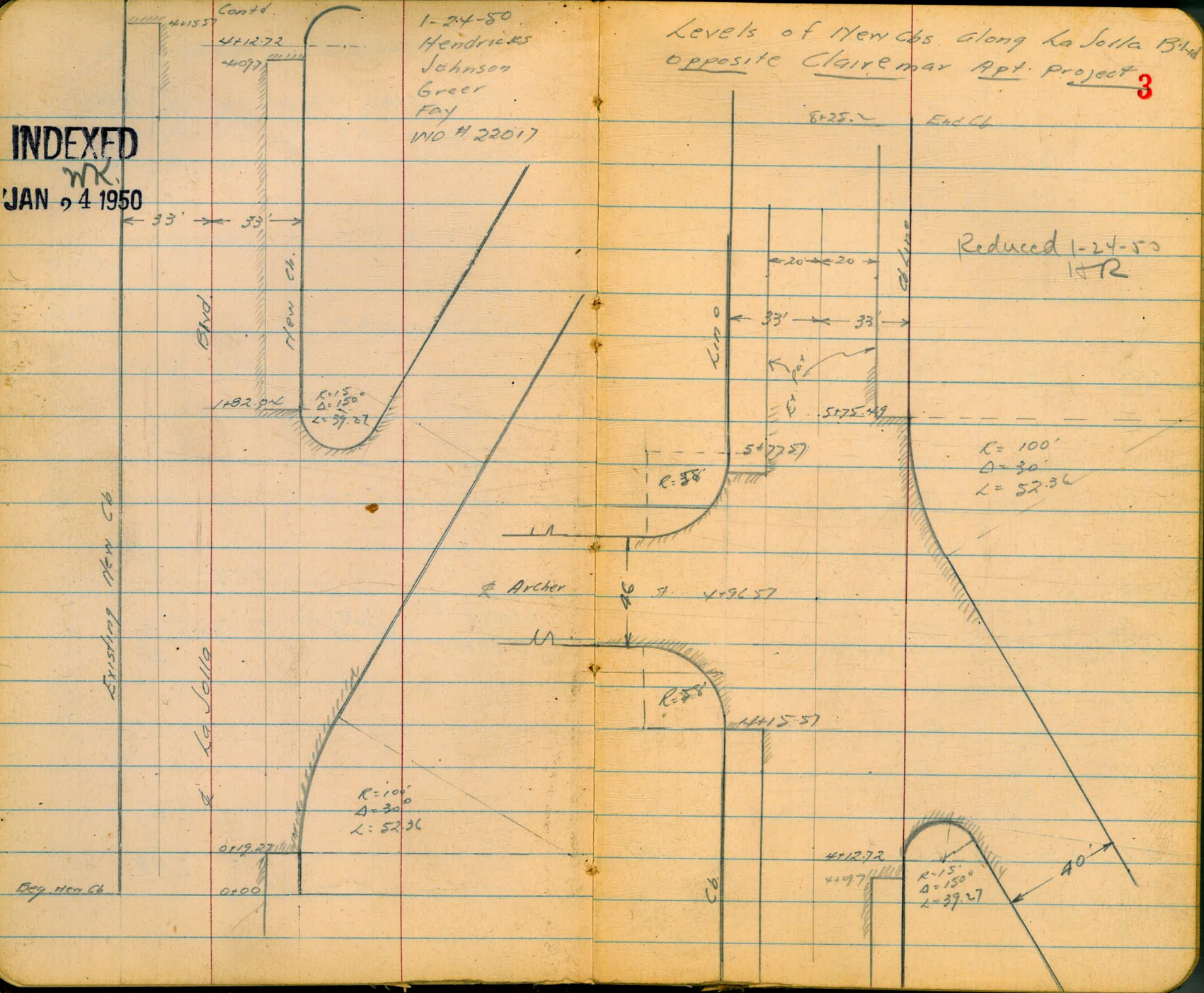


INDEXED

WK.
JAN 9 4 1950

1-24-50
Hendricks
Johnson
Greer
Fay
WNO # 22017

Levels of New Cbs. along La Solla Blvd
opposite Clairemar Apt. Project **3**



Cont'd. from B3

4

1+50

70.60	70.57	70.05	69.82
643	646	698	721
33		21	33
cb.			Pr.

1+00

71.03	70.89	70.29	70.26
600	624	674	677
33		20	33
cb.			

0+50

71.48	71.25	70.54	70.82
555	578	649	621
33		20	33
cb.			

0+19.27 BCCb on Rt.

71.14	71.68 - 15
588	535
33	33
G	cb.

0+00

71.95	71.56	71.96 - 25
508	547	507
33		33
cb.		cb.

B17. 3.44 77.03
 $\frac{\quad}{\quad}$

73.59

(Pipe in Conc. Base of Power Pole 517 + 66 H)
 (This B17 used for Const. of Clairemar
 Apt. project)

3+00

69.52 70.04 69.59
 751 622 742
 33 33
 Cb Cb

2+50

69.81 70.06 69.84
 722 697 719
 33 33
 Cb Cb

2+00

70.18 70.24 70.07
 685 679 676
 33 33
 Cb Cb

L=39.27 3 parts BC on La Jolla.
 N.E. Cb. Ret. La Jolla Blvd. & Carla Way East

69.76 70.21 69.96 70.53 70.23 70.70 70.49 70.86 71.98 72.45
 725 682 707 650 620 623 650 617 505 458
 G Cb G Cb G Cb G Cb G Cb
 BC 0 0 EC +50' up

(L=52.36 3 parts BC on La Jolla)
 S.E. Cb. Ret. La Jolla Blvd. & Carla Way East

71.14 71.68 71.02 71.57 71.07 71.54 71.11 71.64 71.45 71.96
 589 535 601 588 526 529 583 539 558 507
 G Cb G Cb G Cb G Cb G Cb
 BC 0 0 EC +50' up
 La Jolla Carla Way Carla Way

1+8204 EC Cb. Ret. on Rt.

69.76 70.21
 725 682
 33 33
 G Cb

77.03
 /
 1

77.03
 /
 1

4+097 Beg Pavings

68.45 69.03
725 737
33 33
G Cb.

3+88 End Cb. Inlet

68.12 69.11
828 729
33 33
G Cb.

3+795 E Cb. Inlet

68.09 69.10 61.62
831 730 1478
33 33 33
Grote Cb. FL.

3+77 Beg Cb. Inlet

68.29 69.14
811 725
33 33
G Cb.

TP 6.29 76.40 692 70.11
A

76.40

4+00

69.08 69.80 69.05
725 723 728
33 33
Cb. Cb.

3+50

69.27 69.95 69.37
776 708 766
33 33
Cb. Cb.

77.03
A

77.03
A

4+96.57 E Archer

68.68	69.68	68.56
772	672	784
33		33
Pay.		Pay.

4+50

68.44	69.78	68.47
796	692	793
33		33
Pay.		Pay.

L=90.5 4 parts
SW Ch. Ret. La Jolla & Archer BC on La Jolla

68.37	69.03	68.26	68.80	67.76	68.31	66.96	67.48	65.60	66.06
803	737	814	760	864	803	944	872	1080	1032
G Ch	G Ch	G Ch	G Ch	G Ch	G Ch	G Ch	G Ch	G Ch	G Ch
BC		①		②		③		EC	
La Jolla								Archer	

4+18.57 BC on Lt.
Req ASP Pay.

69.03	68.37
737	803
33	33
G	G

L=39.27 3 parts BC on La Jolla
SE Ch. Ret. La Jolla Blvd & Carlo Way West

68.43	69.00	68.55	69.12	68.74	69.21	69.12	69.53	71.26	71.71
797	740	785	728	766	719	728	627	514	469
G Ch	G Ch	G Ch	G Ch	G Ch	G Ch	G Ch	G Ch	G Ch	G Ch
La Jolla		①		②		EC		+50' up	
						Carlo Way		Carlo Way	

4+12.72 BC Ch. Ret. RL

68.43	69.00
797	740
33	33
G	G

76.40

76.40

Contd from P 5A.

6

6+00

BC on La Jolla (L=52-36 3 parts)
NE Cb Ret La Jolla & Carla Way West

5+78.49 EC Cb Ret.

L=92' BC on La Jolla (4 parts)
NE Cb Ret La Jolla Blvd & Archer

5+68 End Paving Lt.

5+50

76.40
/

69.57 69.59

683 681

33

Cb

68.97	69.54	68.95	69.51	69.11	69.54	69.21	69.61	69.78	70.26
747	688	745	689	729	686	719	679	662	614
G Cb	G Cb	G Cb	G Cb	G Cb	G Cb	G Cb	G Cb	G Cb	G Cb
BC La Jolla	①	②	③	EC Carla Way	EC Carla Way	EC Carla Way	EC Carla Way	EC Carla Way	EC Carla Way

69.60

680

68.93

747

69.54

688

33

33

G Cb

69.49	68.77	69.29	68.04	68.67	66.93	67.54	65.61	66.10
621	763	711	836	723	942	826	1029	1030
G Cb	G Cb	G Cb	G Cb	G Cb	G Cb	G Cb	G Cb	G Cb
BC La Jolla	①	②	③	④	⑤	⑥	⑦	⑧

69.44

688

68.77

763

33.8

Cb

33.8

G

68.73

767

33

Ret.

69.61

685

68.97

742

33

76.40
/

Cont'd. from RL

7

BIM		0.55	78.07	77.98
TP.	<u>9.30</u>	<u>78.62</u>	<u>7.08</u>	<u>69.32</u>

8725 2nd Cl. on Rt.

8700

7750

7700

6750

7640

SWBP La Jolla Blvd. & Calima

69.31	69.32	69.28
709	708	712
33		33
cb		cb

69.36	69.33	69.34
702	707	706
33		33
cb		cb

69.58	69.40	69.55
682	700	685
33		33
cb		cb

69.71	69.45	69.70
669	685	620
33		33
cb		cb

69.71	69.54	69.70
669	686	670
33		33
cb		cb

7640

VISTA ST. PUMP STA.
SEE P. 11.

0+80 = Pot. Sub.

Tie sheet - 359.0

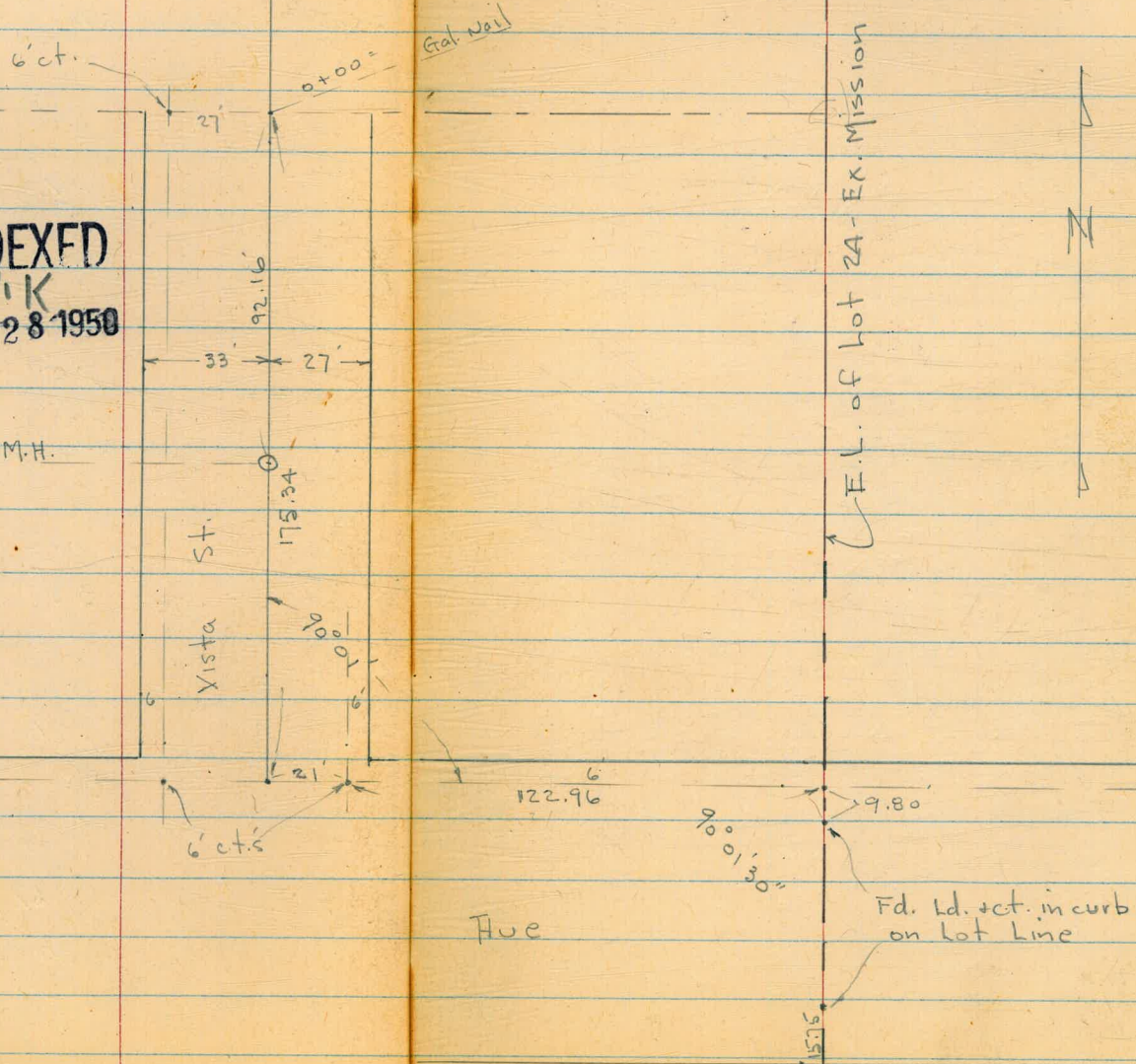
Map - 1780
1878
1838

INDEXED
YIK
APR 28 1950

Exist M.H.

Adams

Hue

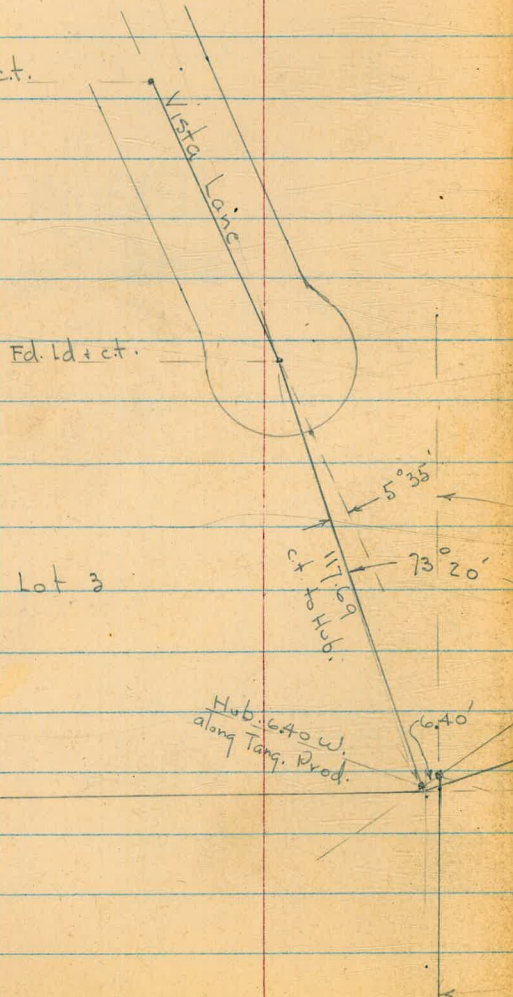


INDEXED

W.R.
APR 28 1950

9

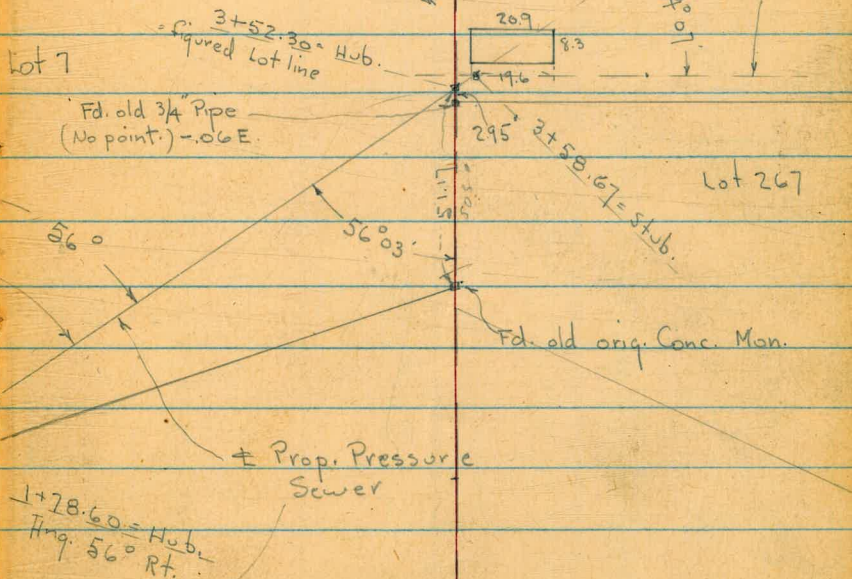
Ed. Id + ct.



E.L. of Lot 24 - Ex. Mission

See Detail P. 10

Line 3 out + Parallel to Bldg. Base-line for Topo.

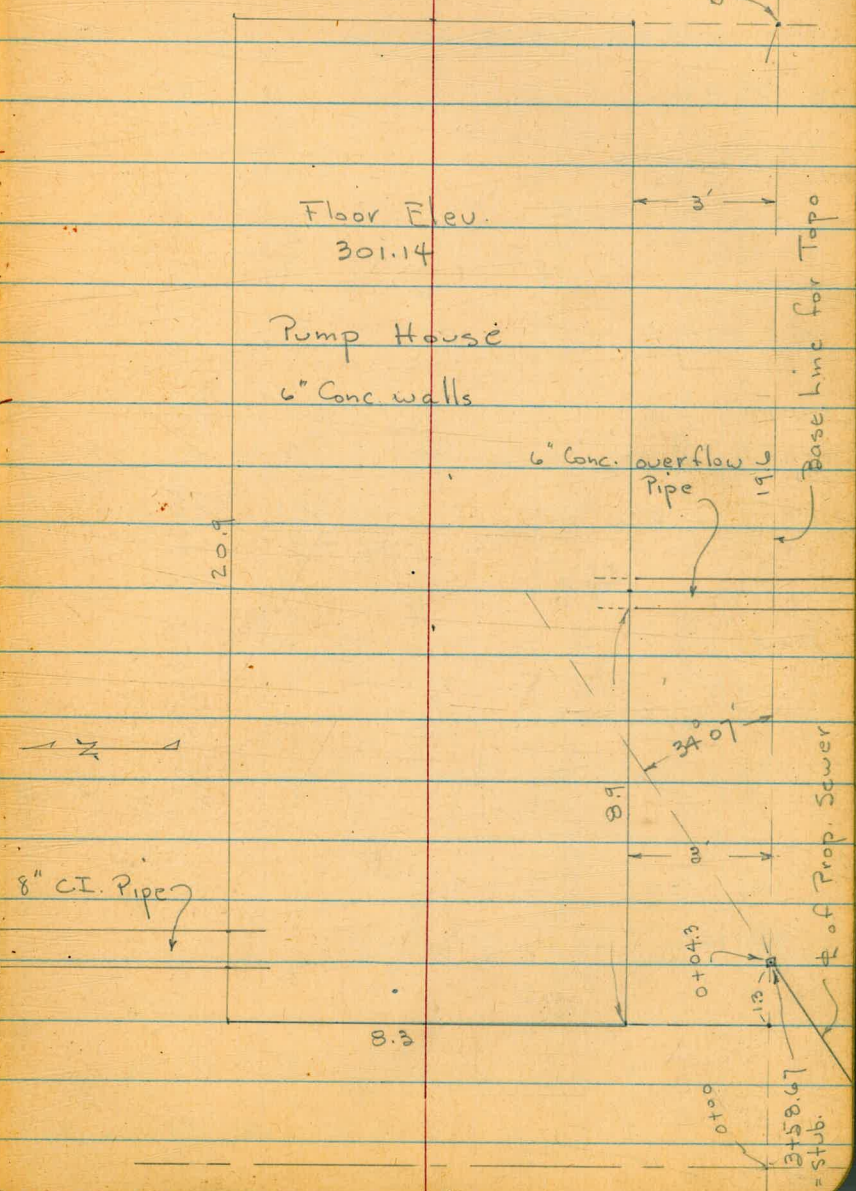


Detail of Exist. Pump House - See P. 9
for Ties - + Prop. Pressure Sewer.

10

Sewer Dept. Suggests:

- a. 2" Water Line supply for ease in cleaning
- b. Conc. Roof to overcome odor escape



Lt = W. . . †

Rt = E 11

Levels along † of Prop. Pressure Sewer
from end of Vista St. to Pump House

3542

2-15-50

W.O. 20636

Osborne
Hardin
Hatch

0+80

0+69 = Cross Guard Rail

0+57 = † + Ely. of 2'x13' Rock + Conc. wall.

0+50

= end of oil pave

0+00 = should be end of 6" Sewer

Exist. M.H. - 92.14 S. of 0+00

	352.2	352.3	352.7
	8.4	8.3	7.9
	10		10
	356.20		
	355.99		
	3.95	4.26	5.1
	13	2 = Top wall	= ground
	Top - end.		
	355.5		
	5.1	5.2	5.3
	10		10
		5.0	
		4.15	
		on Gal. Vail	
		357.25	
		2.40	357.50
		Rim	6.15
			I.E.

352.00
CORRECTED INV. ELEV.
RIM TO INV = 6.25'

8.06 . 360.65 12.94 352.59

360.65

B.M.

8.09

365.53

357.44

= S.E. 6 ct. Biona + Adams

BM on Hub. - 1+78.60 5.18 313.53

T.P. 3.87 318.71 12.47 314.84

1+78.60 = Ang. 56° Rt. - Sect. 90° to back Turn.

1+73 = # of Small wash - (Culvert loc.)

Note: Wash Drains to Biona + 12" Cor. Culvert

from 2 - inlets - on Both curbs

1+60

T.P. 2.23 327.31 11.90 325.08

1+30

T.P. 0.80 336.98 12.85 336.18

T.P. 0.41 349.03 12.03 348.62

1+00

Lt. # Rt.

	3' 14.2	3' 13.6	3' 12.7	3' 10.1
	13.1	13.7	14.6	17.2
	10		6 = N. bank	17 = E wash
3' 13.1	3' 11.6	3' 10.7	3' 11.1	3' 14.3
14.2	15.7	16.6	16.2	13.0
20 m wash	10 in wash		10 = S. bank	20
	3' 17.4	3' 18.2	3' 18.8	
	9.9	9.1	8.5	
	10		10	
	3' 33.0	3' 33.4	3' 33.4	
	4.0	3.6	3.6	
	10		10	
		327.31		
		336.98		
	3' 46.8	3' 45.8	3' 46.3	
	13.8	14.8	14.3	
	10		10	
		360.65		

along Bldg. - See Detail - P 10
 Begin Sections Normal to 3' Baseline

3+58.67 = end at 3' Baseline along Bldg.

B.M. on Hub. 3+52.30 10.40 302.18

T.P. 4.39 312.58 10.52 308.19

3+25 = \pm of scrub oak Bush

3+00

2+55

2+25

1+95

	Lt.	\pm	Rt.
			303.37
			303.4
			300.1
		9.21	9.2
		on Stub.	4
			12.5
			13 = \pm wash
		312.58	
		309.9	
		8.8	13 01.9
		10	16.8
			18
			\pm wash
		311.5	
		11.1	304.1
			304.6
		7.2	14.6
		10	7
			\pm wash
		316.2	
		12.3	307.5
			11.2
			13
			\pm wash
		2.5	
		10	
		319.2	
		319.7	
		4.0	309.5
			9.2
			10
			\pm wash
		313.9	
		4.8	310.8
			7.9
			8.6
			5 19.1
			5 313.7
			5 10.0
			7
			\pm wash
		318.71	

0+23.9 = end of Bldg.

0+20

0+18 = 2' - 4" = where 4" C.I. goes in wall

4" C.I. Pressure Line

0+12.5 = 2.5' Rt. = ± of 2.8' x 8" Conc. Pier for

0+12 = ± 6" Conc. overflow Pipe - 90° to Bldg.

0+10

0+00 = approx. Lot line + Base line

H = N. Φ = Base Line Rt. = S

14

312.4	311.3	303.2	301.7	301.5	301.6	301.7	298.9
02 23	13 20	9.4 11.3 Cor.	10.9 9	11.1 3 Cor.	11.0	10.9 5	10.7 10 = in wash
311.3	309.5	306.5	303.5	303.4	302.7	299.7	
1.3 23	2.1 19	6.1 11.3 Bldg.	9.1 3 = Bldg.	9.2	9.9 5	12.7 7	
			304.81 3.77 3 = Top of 4" pipe 3"				
			302.34	303.6	303.4	304.47	
			10.24 1.5 Top Pipe at y	9.0 = ground	9.2 2.5 = ground	8.11 2.5 = Top of Pier.	
			309.9	307.0	306.4	301.3	
2.7 23	5.6 16	6.2 11.3	9.1 3 along Bldg.	9.303.5	9.1 11.3	7	
309.3	306.8	304.6	303.4	303.5	302.5	300.6	
3.3 23	5.8 23	8.0 11.3	9.2	9.303.5	10.1 7	12.0 19	± wash
		Cor. of Easment			Cor. of Easment.		
				312.58			

Lt.

Base

Rt.

15

Set B.M. = spike in
fence cor.
on lot line

8.10 304.48

Rod on Pump House floor = 11.44 = 301.14

0+50 = end of Easement

0+33

0+28

	318.7	313.4	306.3	303.0	302.5
	+6.1	+0.9	6.3	9.6	10.1
	33	23		7 cor.	15
	316.5	313.1	307.0	303.9	296.0
	+3.9	+0.5	4.2	8.7	14.6
	33	23	10	7	12
	312.3	311.6	305.4	301.4	301.3
	0.3	1.0	1.2	11.2	11.3
	23	21	16	9	7

312.58

Profile and X-section
of LA JOLLA SHORES DRIVE
from E Avenida de la Playa to North

Top Brass Rod South end of Seawall Av. de La Playa & Ocean	+ HI	-	Elev. ✓
BM	3.16	6.67	3.51
	6.87	9.99	3.12
	9.69	17.28	7.59
L & T E of Av. de La Playa W. PL	2.87	19.56	0.59 16.69
" "	4.96	<u>21.65</u>	16.69

June 28, 1950
Clear & warm
Algeria ch.
Zinn
Etheridge &
Saunders

16

3400

2750

2700

1750

1400

0750

E Ave. de
of 00 = La Playa

INDEXED
W.N.
JUL 6 1950

B.M. = Top Brass rod at S. End
of Seawall Av. de La Playa & Ocean

14.01	15.17	15.27	15.02	13.7	16.4
2.64	6.48	6.38	6.63	8.4	5.3
14.36	15.36	15.54	15.45	14.1	17.2
7.29	6.29	6.11	6.20	2.6	4.5
14.80	15.80	15.91	15.73	14.4	16.9
6.85	5.85	5.74	5.92	7.3	4.8
15.09	16.17	16.39	16.18	15.2	17.3
6.56	5.48	5.26	5.47	6.5	4.4
15.94	16.65	16.77	16.57	15.4	17.9
5.71	5.00	4.88	5.08	6.3	3.8
17.55	17.73	17.47	16.8	19.1	
4.10	3.92	4.18	5.7	2.6	
14	5	4	19	25	
18.28	18.45	18.39	16.5	20.8	
3.37	3.20	3.26	5.2	0.9	
14	5	4	19	25	
55 ft west curb	Elev. Pub.	Φ R.V.	Edon Bitch	E. Prop. Line	
HT = 21.65					

840

7450

740

6450

6400

TP#1

5450

5400

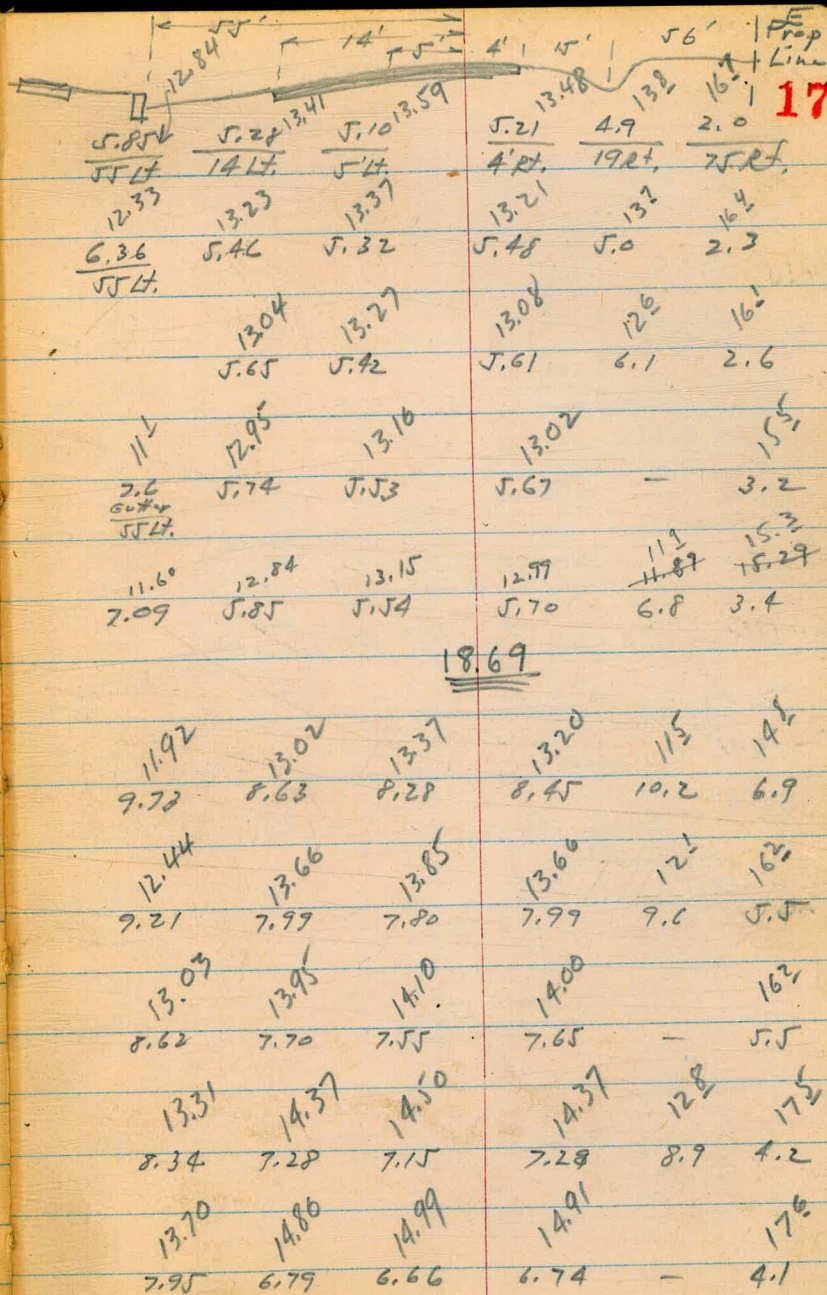
4450

4400

3450

$$+ 7.01 \quad 18.69$$

$$21.65 - 9.97 = 11.68$$

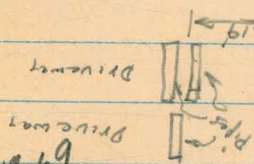


$$HI = 21.65$$

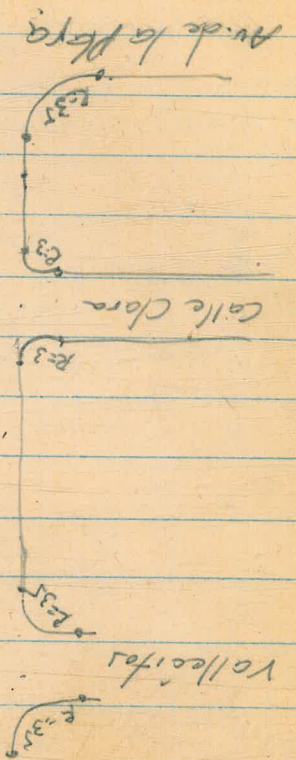
La Jolla Shores cont'd.

HI = 21.65

End curb ref. 35' Rad.			
0420 @ 90' Left.	5.55	16.10	
0455 E.C.R. 55' "	4.95	16.70	
1417 3' Radius 55' Lt.	6.33	15.32	
1420 ECR 58' Lt.	6.04	15.61	
1450 3' Rad 58' Lt.	6.40	15.25	
1453 55' Lt.	6.56	15.09	
3+41 Center 2 conc. drain (30x24) 8.94		12.71	
24" x 24" 8.30		13.35	
19' E of 24" x 24" 8.52		13.09	
4+52 Center Conc. Pipe 19" E 24" x 24" 19.07		12.58	
		12.42	
6+04 ECR 55' Lt.	7.08	14.57	11.61
6+39 } 35' Rad. ECR 90' Lt.	7.20	14.45	11.49
6+69 BCR 90' Lt.	7.05	14.60	11.64
7+04 } 35' Rad. ECR 55' Lt.	6.67	14.98	12.02



TP1 HI=18.69



MOORE St.

Oct. 9, 1950

Cont. on P. 25

19

X-Sec. for grade
Conde to Arista

W.O. 25020

Semmermeyer

Plotted TPS 529 - 10-13-50 M90

Boggs

INDEXED

Allen

MR.
OCT 10 1950

□ = Fd 1/2

✕ = cut cross in M.H. Rim for street tie.

○ = set 3/2" pipe - (disk in lead)

Arista



Arista

219992



Moore St.

Conde



7'x7'
Replaced old 4"
with pipe + disk.

Moore St
 Conde to Arista
 sketch. P. 19

20

0+50

$\begin{array}{r} 3.4 \\ 3.9 \\ \hline 25 \end{array}$	$\begin{array}{r} 3.9 \\ 3.4 \\ \hline 25 \end{array}$	$\begin{array}{r} 3.9 \\ 3.4 \\ \hline 25 \end{array}$
--	--	--

0+100 = Ely line Conde

$\begin{array}{r} 2.3 \\ 5.0 \\ \hline 25 \end{array}$	$\begin{array}{r} 2.5 \\ 4.8 \\ \hline 25 \end{array}$	$\begin{array}{r} 2.4 \\ 4.9 \\ \hline 25 \end{array}$
--	--	--

0-25 = $\frac{1}{2}$ Conde

$\begin{array}{r} 3.0 \\ 4.3 \\ \hline 125 \end{array}$	$\begin{array}{r} 2.5 \\ 4.8 \\ \hline 25 \end{array}$	$\begin{array}{r} 2.3 \\ 5.0 \\ \hline \text{on M.H.} \end{array}$	$\begin{array}{r} 2.2 \\ 5.1 \\ \hline 25 \end{array}$
---	--	--	--

0-50 = Wly line Conde

$\begin{array}{r} 2.3 \\ 5.0 \\ \hline 25 \end{array}$	$\begin{array}{r} 2.4 \\ 4.9 \\ \hline 7.34 \end{array}$	$\begin{array}{r} 2.0 \\ 5.3 \\ \hline 25 \end{array}$
--	--	--

Set. B.M.#1

5.84 1.50 ✓

Wly. 7' Pipe Conde + Moore

T.P. 2.88 7.34 ✓ 12.24 4.46 ✓

T.P. 1.49 16.70 ✓ 6.85 15.21 ✓

T.P. 1.39 22.06 ✓ 11.68 20.67 ✓

0.40 32.35 ✓ — 31.95 ✓

S. Wly. B.P. San Diego + Conde

1+15- 25[±] Lt. = ± 7' wide level Conc. Dr.

9.99	9.95
8.10	8.14
39	25±
Gar. Floor	

1+00

9.8	8.4	9.6
8.3	9.7	8.5
25		25

T.P. 10.85 18.09 0.10 7.24

18.09

0+85- 25° Rt. = ± 3' wide Conc. walk

7.24	7.25
0.10	0.09
25	27
	at stop.

0+64- 23° Lt. = End Conc. Dr.

4.23	4.27	4.20
3.11	3.07	3.14
51	25	23
Gar Floor		

0+57 30 Rt. = ± Sing. Gar. - dirt floor

4.1
3.2
30

0+54- 23[±] Lt. = start Conc. Dr.

4.05	3.85	3.80
3.29	3.49	3.54
35	25	23±

7.34

1+86 23rd Lt. = 3' wide Conc. walk

19.90	19.88	19.88
<u>10.51</u>	<u>10.53</u>	<u>10.53</u>
303	25	239
at stop		

1+84- 24th Rt. = 4' wide Conc. walk.

17.68	17.71	17.79
<u>12.73</u>	<u>12.70</u>	<u>12.62</u>
244	25	274
		at stop

1+58- 29th Rt. = 25' wide Conc. walk

15.21
<u>15.20</u>
29 th

T.P.	13.27	<u>30.41</u>	0.95	17.14	Temp
					BM #1

30.411+50 - 24th Rt. = 4' wide Conc. walk.

16.9	14.6	15.36	15.36	15.36
<u>1.2</u>	3.5	<u>2.73</u>	<u>2.73</u>	<u>2.73</u>
25		24E	25	27E
		walk		at stop
		+ 0nd		

1+31 - 24th Lt. = 25' wide Conc. walk

15.48	15.19
<u>2.61</u>	<u>2.90</u>
AA	24E
At house	

1+17- 25th Rt. = 4' wide walk

12.18	12.15
<u>5.91</u>	<u>5.94</u>
282	252
At stop	

18.09

2+99⁹² wly line Arista

27.6	26.8	25.1
2.8	3.6	4.7
25		25

2+70- 25' Lt. = \pm 3' wide Conc. walk.

26.95	26.96
3.45	3.45
34	25
At. house	

2+50

25.4	23.5	23.1
5.0	6.9	7.3
25		25

39' Lt. = \pm Sing Gar. dirt floor
 2+36 24³ Lt. = \pm 2' wide Conc. walk

24.0	23.99	24.01
6.4	6.42	6.40
39	25	24.2
at Gar.		

2+3A- 24⁹ Rt. = \pm 3' wide Conc. walk

21.67	21.38
8.74	9.03
24.9	35

2+00

20.1	19.0	18.8
10.3	11.4	11.6
25		25

30.41

Moore St.

24

orig. B.M. P-20

5.37

31.99

.04 Error

(31.95)

T.P.

5.05

37.36

6.13

32.31

T.P.

12.26

38.54

3.77

26.28

T.P.

11.07

30.05

11.43

18.98

4+50

± Arista

27.7
2.7

3+49⁹² = Ely line Arista

27.6
2.8
25

27.7
2.7

28.1
2.3
25

3+24⁹² = ± Arista

19.4
11.0
100

26.8
3.6
25

27.7
2.7

27.0
3.4
25

19.9
10.5
130

14.4
16.0
150

30.41

Moore St.
Arista to Ampudia
X-sec. for grade

11-27-50
W.O. 25020

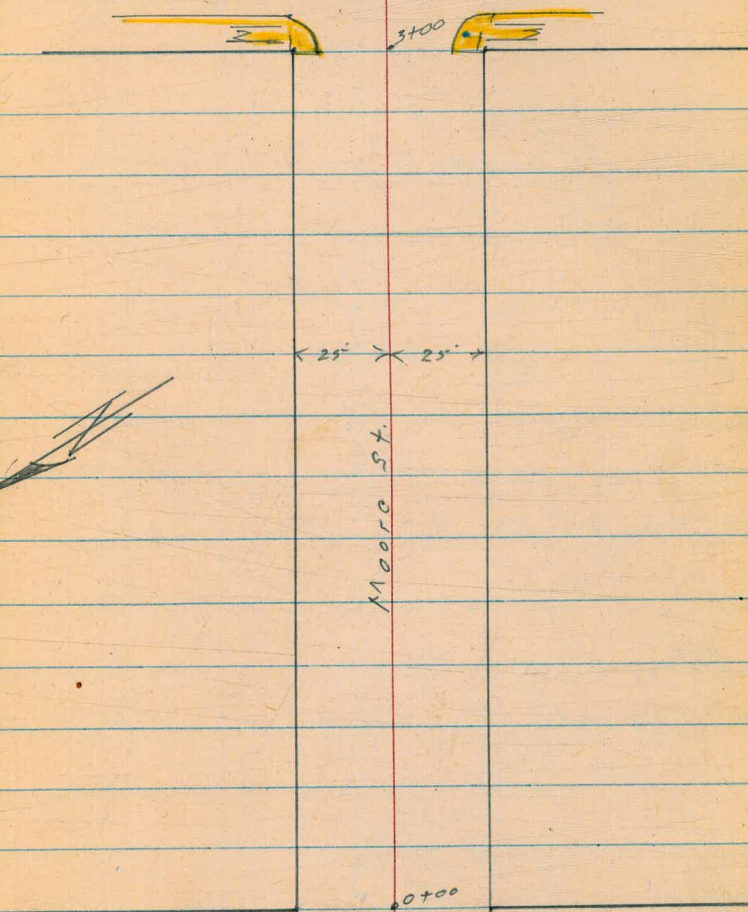
Sommermeier
Beag
Allan
Bunch

INDEXED
MK
NOV 27 1950

• = Fd L+T.

x = Fd. crosses in M.H. rim

Ampudia Street



Arista Street

Cont. From P. 19

Levels - Moore St.
Arista - to Ampudia 11/27/50

26

1+00

27.1	27.6	27.7	28.0	28.7
$\frac{5.6}{75}$	$\frac{5.1}{25}$	5.0	$\frac{4.7}{25}$	$\frac{4.0}{75}$

0+73 25^E Rt. = 2³ wide Conc. walk.

28.2	28.48	28.64
$\frac{4.5}{25}$	$\frac{4.19}{25^E}$	$\frac{4.03}{35^E}$
on	walk	on walk

0+50

27.4	27.6	28.5
$\frac{5.3}{25}$	5.1	$\frac{4.2}{25}$

0+44 - 25^E Rt. = end conc. drive

28.54	28.42
$\frac{4.13}{25^E}$	$\frac{4.25}{50}$
on drive	

0+37 - 25^E Rt. = start Conc. drive

28.51	28.42
$\frac{4.16}{25^E}$	$\frac{4.25}{50}$
on drive	

0+00 = Ely line Arista

27.8	27.6	28.2
$\frac{4.9}{25}$	5.1	$\frac{4.5}{25}$
32.67		

T.P.	4.85	32.67	1.45	27.82
	12.13	29.27	-	17.14

N.W. ly. cross in M.H. Rim - Moore + Arista
Temp. B.M. #1 P-22

1+77 26' Lt. = ± 2⁵ wide Conc. walk.

28.65 28.46

$\frac{4.02}{35}$ $\frac{4.21}{26}$

1+67 - 33' Rt. = (No walk) bottom of steps.

28.38

$\frac{4.29}{33}$
at steps.

1+61 - 25⁵ Lt. = end conc. drive

28.56 28.33

$\frac{4.11}{50}$ $\frac{4.34}{25^5}$ $\frac{4.35}{242}$

1+53 - 24⁷ Lt. = Start Conc. drive

28.56 28.33 28.32

$\frac{4.11}{50}$ $\frac{4.34}{25}$ $\frac{4.35}{242}$

1+50

27.9 27.8 28.9

$\frac{4.8}{25}$ 4.9 $\frac{4.3}{25}$

1+27 25⁴ Rt. = ± 3' wide Conc. walk

28.08 28.31

$\frac{4.59}{254}$ $\frac{4.36}{32}$
on walk

32.67

24⁸ Lt. }
25 Rt. } = Back edge conc. walk

14⁸ Lt. }
14⁹ Rt. } = B.C. 10' Rad. cc. Ret.

3+00 wly line Ampudia

29.2
29.03
4.2 4.03 4.37 4.9 4.9
25 24.8 14.8 14.8
walk cc. End
B.C.

5.32 5.12
14.9 25
cc. walk + End
B.C. End

4+7.9 36² Lt. = End at \pm steps to house

28.9
4.5
36²

2+77 24⁷ Rt. = \pm 1⁵' wide Conc. walk

28.47 28.41 28.67
4.93 4.93 4.73
24.2 25 34
on walk

2+50

28.3 28.3 28.3
5.1 5.1 5.1
25 25 25

2+21-35² Lt. = grid. at steps to house

28.2
5.2
35²

T.P. 5.39 33.40 4.66 28.01

33.40

2+00 25' Lt. = \pm 8" wide Lateral Conc. (2' high) block wall

28.7 27.9 28.5 28.0 28.2 28.3
4.9 4.9 4.2 4.7 4.5 4.4
50 25 25 25 25 50
Base of wall End

32.67

Check \neq Arista + Moore P.-24 5.65 27.75 (27²) ✓

3+50 $\left. \begin{array}{l} 15' \text{ Lt.} \\ 15' \text{ Rt.} \end{array} \right\} = \text{E.C. } 10' \text{ Rad. cl. Ret.}$

$\frac{4.31}{15}$
cl. E.C.

$\frac{5.31}{15}$
cl. E.C.

3+40 $\left. \begin{array}{l} 25' \text{ Lt.} \\ 25' \text{ Rt.} \end{array} \right\} = \text{B.C. } 10' \text{ Rad. cl. Ret.}$

$\frac{4.32}{25}$
cl. B.C.

$\frac{5.32}{25}$
cl. B.C.

3+25 = \neq Ampudia

$\frac{3.3}{100}$

$\frac{4.5}{25}$

4.6

$\frac{5.2}{25}$

$\frac{60}{100}$

3+10 Cont.

$\frac{9.25}{100}$
cl

$\frac{3.9}{100}$
cl

$\frac{6.3}{100}$
cont

$\frac{5.99}{100}$
cl

$\left. \begin{array}{l} 25' \text{ Lt.} \\ 25' \text{ Rt.} \end{array} \right\} = \text{E.C. } 10' \text{ Rad. cl. Ret.}$

3+10 = Wly cl. line Ampudia

$\frac{4.31}{25}$
cl. E.C.

$\frac{4.8}{25}$

$\frac{4.9}{15}$

4.9

$\frac{5.4}{15}$

$\frac{5.5}{25}$

$\frac{5.31}{25}$

cl. E.C.

33.40

Moore St.

11-27-50

Riley to Gains

Sammermeyer

Begg

Allen

Burich

■ = Fd. Man.

● = Fd. 1/2 hub. replaced with
3/4" pipe & disk.

INDEXED

NOV 27 1950

New notes in red 8/28/53

30

Unimproved Street

Gaines St.

7

3106.82

2199.92

7

Moore St.

← 25 → ← 25 →

0100

■ Fd. Man.

Riley St.

Unimproved street

Moore St. Levels

Riley to Gaines

0+19 - 23¹ Lt = ± wide conc. steps.

0+00⁵ 25⁵ Lt = start brick Bldg.
 25⁹ Rt = start stucco Bldg.

0+00

Note!
 For change in ground Elev. ~~0+00 to +00~~
 see F.B. 2173 9/8/53
 49

0+25 = ± Riley

Set. B.M.		6.31	1.31	
T.P.	4.74	<u>7.62</u>	5.15	2.88
T.P.	5.86	8.03	5.51	2.17
T.P.	4.00	7.68	4.66	3.68
T.P.	5.09	8.34	4.94	3.25
	3.94	8.19	—	4.25

6.18
 3
 3
 1.44
255
 Floor of Bldg 232

3
 4.3
255
 End at Bldg Lt.

3
 3.0
 2
4.3 4.6 4.7
 25 25

3.0
 2.9
 3.0
4.6 4.7 4.6 4.8 4.6
 100 25 25 100
 7.62

Mon. ± Moore + Riley

- N.Wly 7" pipe + disk Moore + Gaines
- X- Ely. M.H. Rim Jefferson + Gaines
- X- Ely. M.H. rim Congress + Gaines
- Congress + Pacific Hly. N.Wly. B.P.

Moore
Riley to Gaines

32'

1+50 18⁹ Lt = 8" tree

1+45-25² Rt. = end stucco Bldg.

1+27 21' Rt. = dead man

1+14 24⁸ Lt. = ± 2' wide conc. walk

T.P. 4.66 7.61 4.67 2.95

1+04 21' Rt. = 14" pole # 3165

1+00

0+99 17⁵ Lt. = pole # JP 3158.

0+50

0+27 - 25⁵ Lt. = end brick Bldg.

3.4	3.1	3.0	2.8
<u>4.2</u>	<u>4.3</u>	<u>4.6</u>	<u>4.8</u>
50	25		25

2.9

4.7
25.9
End at Bldg.

3.6 ^d	3.7 ^l	3.7 ^l
<u>3.93</u>	<u>3.90</u>	<u>3.90</u>
38	25	248

7.61

3.8	3.0	3.0	3.0
<u>3.8</u>	<u>4.6</u>	<u>4.6</u>	<u>4.6</u>
25		25	25.9 at Bldg.

3.7	3.0	3.2
<u>4.1</u>	<u>4.6</u>	<u>4.4</u>
25		25

3.1

4.1
25.5
End at
Bldg

7.62

Moore
Riley to Gaines

33

2+00

1+99

17⁵ Lt. = pdc# 472404 H

3.0	3.0	2.9	2.8	2.8
<u>4.6</u>	<u>4.6</u>	4.7	<u>4.8</u>	<u>4.8</u>
50	25		25	26
				at Bldg.

26² Rt. = start stucco Bldg.

1+81 - 25⁵ Lt. = ± 3' wide conc. walk.

3.2 ¹	3.2 ⁰	2.1
<u>4.40</u>	<u>4.41</u>	<u>4.9</u>
40	25	26
walk.	walk	end. at Bldg.

1+77 - 25⁹ Rt. = ± 4⁵ wide conc. walk.

2.16	2.8 ⁹
<u>4.85</u>	<u>4.72</u>
259	31

1+67 38' Rt. = ± simp. Gar. Conc. Floor

3.06
<u>4.55</u>
38
Gar. Floor.

1+64 - 42' Lt. = ± 2⁵ wide conc. walk

3.2 ⁸	3.2 ⁸
<u>4.33</u>	<u>4.33</u>
58	42

1+54 25' Rt. = ± 17' wide black top drive

2.1	2.8
<u>4.9</u>	<u>4.8</u>
25	30

7.61

Moore St
Riley to Gaines

±

34

T.P. 5.01 8.02 4.60 3.01

2+94 - 25³ Rt. = Δ in wall. (Δ to Rt.)

3.1	1.9
4.5	5.7
25 ³	25 ⁹
End.	Base of wall

2+81 45' Lt. = 1 step to house

3.1
4.2
45
End.

2+66 - 26 Rt. = end stucco Bldg
= start 3¹/₂ high conc. wall.

2.9	1.9
4.7	5.7
26	26
End.	Base of wall

2+64 17' Lt. = 6" diam tree

3.0	2.9	2.9	2.9
4.6	4.7	4.7	4.7
25		25	26
			at Bldg.

2+50

2+31 - 32' Lt. = ± 3' wide door to shop.

2.95
2.8
4.66
32
Conc. Floor

4.8
32
End

2+14 44' Lt. = ± double Gar door.

2.99
4.62
44
Conc. Floor

7.61

Moore St.
Riley to Gaines

See FB 2173

P 32 + 48

Check B.M.

F.P. 5.19 3.26 (3.27)

T.P. 5.52 8.45 5.09 2.93

Nail & Congress + wly. 7' line Gaines

²⁰⁸²
3 + 25 = 4 Gaines

2 + 99 82
3 + 00 = wly. line Gaines

2 + 99 = 30² Rt. = A in wall. (Δ to Rt.)

2 + 98 17² Lt. = 8" pole # 472403 H

2 + 97 28 Rt. = 4 3' wide brick walk

2.8	3.2	3.1	2.8	2.1
<u>5.2</u>	<u>4.8</u>	4.9	<u>5.2</u>	<u>5.3</u>
100	25		25	100

3.1	0	2.9
<u>4.9</u>	5.0	<u>5.2</u>
25		25

2.8	1.9
<u>5.2</u>	<u>6.1</u>
305	305
Grid	Base of wall

3.02	3.12
<u>5.00</u>	<u>4.90</u>
28	40
Grid	

Agate Street

Cass to Wilyline Pacific Beach Vista

Sommermeier
Beqg T
Bunch
Bruner

2-23-51
W.O.# 31602

■ = Fd. Conc. Mon.

X = cut cross in conc. drive

• = Nail

⊙ = φ Water Meter Box

El. of ⊙ taken to top of box.
Subtract 0.9' to service pipe.

Notes in red added on 7/9/51

CHB

INDEXED

4+06⁵⁷

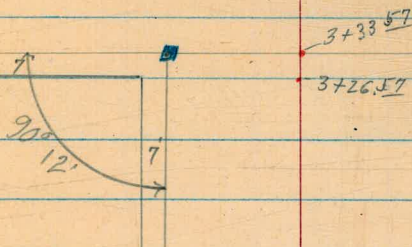
Ely. line Cass

JUN 21 1951

36

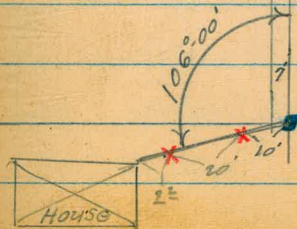
φ Cass.

3+66⁵⁷



φ Agate St.

See P 64



4+00
Wilyline Pacific Beach
Vista Tract.

1000' ↓ to Clairman

Agate St.

N.W. 7' Mon. Agate + Cass

T.P. 7.39 .156.89 0.81 154.50
 Conc. ribbon drive
 0+91 - 38° Rt. = ± 2' wide Fly. ribbon of

144.87	144.87	144.61
10.44	10.44	10.70
38°	40	60

0+86 38° Rt. = ± 2' wide wly ribbon
 of Conc. ribbon drive

144.89	144.88	144.57	144.44
10.42	10.43	10.74	10.87
38°	40	60	75
			Par. Floor

0+83 - 27' Lt. = (W) - EL = 145.4

145.9	145.2	144.2	144.5	144.3	144.05	144.07	144.02
9.4	10.1	11.1	10.8	11.0	11.26	11.24	11.29
40	22	16		23	38°	40	50
					walk	walk	

0+78 - 23' Rt. = (W) - EL = 144.2
 0+68 - 38° Rt. = ± 3' wide Conc. walk

0+50

143.7	144.1	143.5	143.8	143.7	143.6
11.6	11.2	11.8	11.5	11.6	11.7
40	22	17		25	40

0+24 - 22' Lt. = (W) ← EL = 143.1

22' Lt. = (W) ← EL = 142.1

142.7	141.6	141.7	141.4	141.7	141.3
12.6	13.7	13.6	13.9	13.6	14.0
40	17		20	30	40

0+00 = Wly. line Pac. Beach Vista Tract.

33' Lt. = Mon. 12.80 142.51

142.83	142.10
12.48	12.61
50	40

0-05 - 40° Lt. = ± 7⁵ wide Conc. Dr.

155.31

Set. B.M. #1

12.35 142.96

N.Wly. 30' R.P. Cross for Mon. (See sketch P.3d)

0.81 155.31 — 154.50

N.W. 7' Mon. Cass + Agate

1+50

1+37 48 ft beg true wall.

1+36 beg conc blk wall ⁶⁴ 39.6 1' sq Pilaster

1+32 8 conc drive

1+19 E. edge

1+04 driveway 40 15 ft conc. wedge

1+00

156.89

149.2	147.9	147.3	147.5	147.7	147.5	147.3
7.7	9.0	9.6	9.4	9.2	9.4	9.6
40	21	17		12	33	40

148.67	148.50	148.37
8.22	8.39	8.52
50	41	40

147.80	147.60
9.09	9.29
53	40

147.57	147.34
9.32	9.55
50	40

146.8	146.6	145.6	145.6	145.5	145.6
10.1	10.3	11.3	11.3	11.4	11.3
40	26	17		19	40
			<u>156.89</u>		

Agate

2+00

1+86 40' Rt. = 5' wide Conc. steps

1+77

1+64- 22' Rt. = (W) EL = 147.9
Wall 40' 1/2

1+75 end of conc wall 39' Plaster

1+63 { 40' Rt. = 5' wide Conc. steps
21' 5" W.M. - EL = 148.4

1+58 beg conc wall contd. 40' 1

1+57 conc Plaster 39.7 ft 1+59

1+55 1/2 40' 1 of 3' conc walk

1+52 39.4 ft conc Plaster 1' 59

1+51 end Conc Wall 39.9 ft

156.89

151.5	151.3	149.9	149.4	149.4	148.6	148.7	39
5.4	5.6	7.0	7.5	7.5	8.3	8.2	
40	30	15		9	27	40	

150.4	150.2	148.8	148.6	148.7	148.0	147.3
6.5	6.7	8.1	8.3	8.2	8.9	9.6
40	29	17		13	38	40

EL = 148.30
40
Top stop

EL = 144.80
46
Bottom of steps

EL = 147.71
50
on walk

EL = 147.71	EL = 144.77	EL = 144.76
40	46	50
Top of steps	Bottom of steps	walk

149.39	149.35
7.50	7.54
48	40.1

156.89

2+70 7' $\frac{1}{2}$ conc drive 39.4 ft

154.00	153.44	153.24
2.89	3.45	3.65
67	40	39.4

2+50

152.9	152.2	151.4	150.6	150.2	149.8
4.0	4.7	5.5	6.3	6.7	7.1
40	27	22		24	40

2+47 8' wide of conc drive wall 40 ft

149.90	149.71
6.99	7.18
40	44.8

2+45

3' conc walk 39.0 ft

153.36	152.79
3.53	4.10
57	38.

2+40

20 ft WM = (W) EL = 149.7

2+31

(WM) 28 ft EL = 151.0

2+23

$\frac{1}{2}$ conc walk 3.5 wide 40 ft

149.34	148.82
7.55	8.07
40	5.5

156.89

156.89

Agate St

41

♀ Cass 3+6657

155.3	154.7	153.0	150.8	149.8
1.6	2.2	3.9	6.1	7.1
55	40		40	60

3+57

154.8	154.0	153.2	152.7	151.3	150.7	149.4
2.1	2.9	3.7	4.2	5.6	6.2	7.5
60	40	15		25	40	60

3+53

155.6	155.1	154.3	153.1	152.6	151.3	152.0	151.7	150.7
1.3	1.8	2.6	3.8	4.3	5.6	4.9	5.2	6.2
60	40	21	16		26	31	40	60

3+2657

White Cass

154.4	154.7	153.9	153.0	152.3	151.7	151.2
2.5	2.2	3.0	3.9	4.6	5.2	5.7
40	32	19	16		18	40

3+00

153.8	153.8	151.7	151.7	151.1	150.7
3.1	3.1	5.2	5.2	5.8	6.2
40	36	9		25	40

2+97

♀ 3.5 carc walk

156.89

150.53	150.59
6.36	6.30
40	49

156.89

Agate St

42

2.39 154.50 ✓

NW cor Mon Agate Calls

4+06 57

156.7	155.6	154.3	154.0	153.3	152.9	152.8
0.2	1.3	2.6	2.9	3.6	3.0	4.1
40	17	15		18	21	40

3+84

156.9	156.4	155.4	153.9	153.4	152.5	152.7	152.1	151.7
0.0	0.5	1.5	3.0	3.5	4.4	4.2	4.8	5.2
55	40	17	15		19	23	40	50

3+80

156.89

155.1	154.4	153.7	153.3	152.1	150.6	149.5
1.8	2.5	3.2	3.6	4.8	6.3	7.4
55	40	15		20	40	60

156.89

Dawes
Turquoise to Archer
Sommer Meyer

Begg
Burch
Bruner

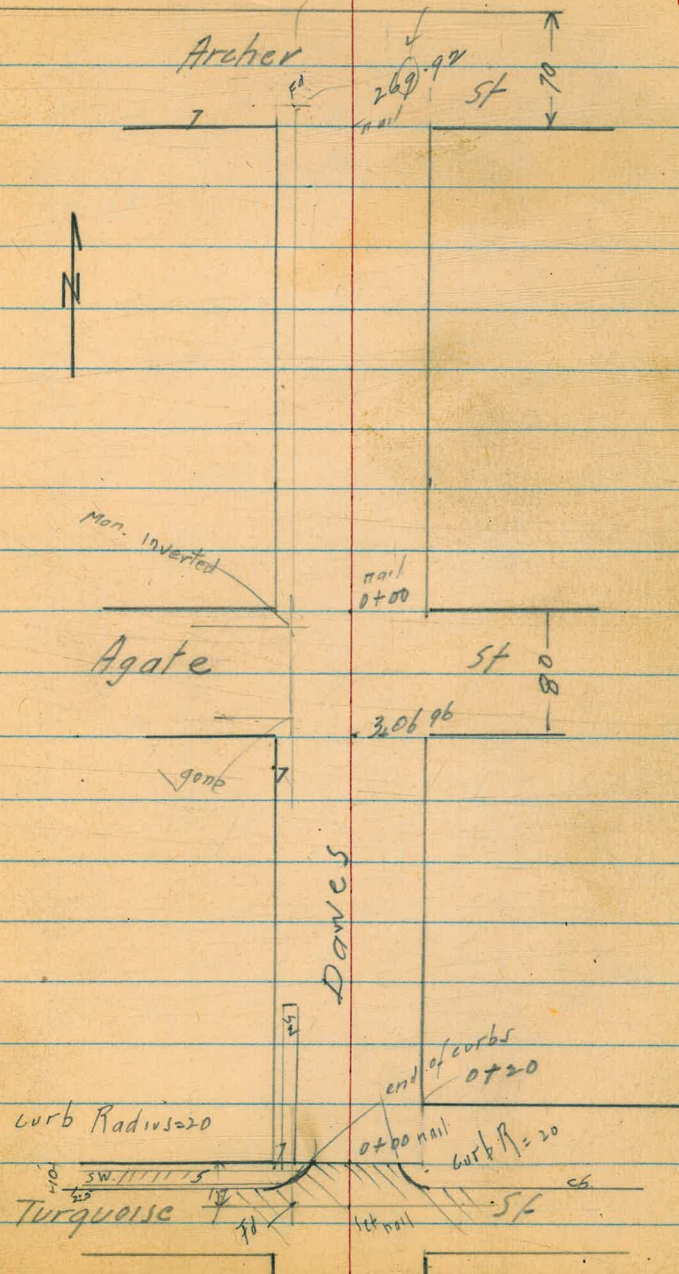
INDEXED.

JUN 21 1951

Reduced G-8-51
Remington

Notes in red added 7/9/51
(see P. 50)

No (W) on Dawes.



0+20 Prop on Right

140.7	139.63	139.55	139.4	138.7	139.0	138.7	140.7	140.8
5.5	6.50	6.60	6.8	7.5	7.2	7.5	5.5	5.4
40	35.9	30.9	23	19		9	15	40
		sw						

0+08

140.0	138.98	138.88	139.2	138.0	138.5	138.1	140.1	140.1
6.2	7.17	7.27	7.0	8.2	7.7	8.1	6.1	6.7
40	35.9	30.9	25	20		10	15	40
	walk	walk						

0+00 = Prop on Left
No walk on right

139.0	138.43	137.82	138.02	138.10	138.01	137.80	138.22	139.2
7.2	7.7.2	8.33	8.13	8.05	8.14	8.25	7.83	7.0
40	22.8	11.4			11.4	9	22.9	40

0-10

138.50	137.87	138.05	137.57	137.74	137.43	138.06	137.93	136.62
7.65	8.28	8.10	8.58	8.41	8.72	8.09	8.22	7.53
26	90	9	40	40	40	40	90	90
		26	BC		BC	26	9	66

0-30

137.82	137.42	137.37	137.12	137.43	137.87
8.33	8.73	8.78	9.03	8.72	8.28
90	40		29	40	

8.62

146.15 7.10

137.53

9.78

144.63

134.85

146.15
on 17 foot track Turquoise & Daves
SE BP Cass & Turquoise

T.P. 12.10 149.63 8.62 137.53

17 ft lock

1+08 g 3' con walk & steps

144.36 143.96 143.85 142.61
1.79 2.19 2.30 3.54
40 38 30.8

1+00

28.5 ft dead man

143.7 142.35 142.23 143.0 142.9 142.2 142.2 141.9 143.1 143.2
2.5 3.80 3.92 3.2 3.3 4.0 4.0 4.3 5.1 3.0
40 35.8 30.8 28 20 18 7 14 40

0+83

28.5 ft dead man

5 wa

142.07 142.07 142.14
4.08 4.08 4.01
24.2 40 50

0+62

24.2 ft g 3' con walk

0+59

28.0 ft Tel pole 517 426 ft

0+49 end of driveway

141.62 140.83 140.66 140.51 140.6 140.1 140.5 140.2 141.6 141.8
4.53 5.32 5.49 5.64 5.6 6.1 5.7 6.0 4.6 4.4
garage 5.6 40 36 31 24 18 8 16 40

0+26

31 ft beg driveway

141.60 140.31 139.91 139.81
4.55 5.84 6.24 6.34
5.5.5 40 36 31
garage wlk

146.15

146.15

1+66 - 41' Rt. = start 5' high board fence.

1+63 50' Lt. = start conc. drive

147.13	146.33
2.50	3.30
90	50
Gas. floor	drive

1+54 = Ctr. sewer M.H.

145.8	145.6	145.2	143.9	144.73	143.9	144.8	144.8
3.8	4.0	4.4	5.7	4.90	5.7	4.8	4.8
30	40	28	12	M.H.	8	9	40

1+46

145.4	144.7	143.9	143.6	144.1	143.5	144.4	144.4
4.2	4.9	5.7	6.0	5.5	6.1	5.2	5.2
40	26	18	11		8	9	40

1+45¹ cont.

145.4	143.84
4.2	5.79
40	35
	N.W. Cor walk

1+45² 30⁸ Lt. = end of N.W. Conc. walk.

143.71	144.7	144.6	143.8	143.6	144.1	143.4	144.4	144.4
5.92	4.9	5.0	5.8	6.0	5.5	6.2	5.2	5.2
308	30	26	18	11		8	9	40
N.E. Cor								
walk								

1+30 21³ Rt. = 3' wide Conc. walk.

143.92	143.93	144.02
5.71	5.90	5.61
212	40	50

149.63

2+36

4' = start conc. apron to double

Car.

T.P.

6.09

154.36

1.36

148.27

149.54

4.82

44

Car. floor

148.98

5.38

40

Apron

154.36

2+26' 39' RT. = start Conc. wall. 6" wide

147.1

146.8

147.9

2.5

2.8

1.7

39

39

39

End

Base

Top

2+26

39' RT. = end drive

147.09

147.10

2.54

2.53

39

40

2+11

{ 39.8 RT. = start conc. drive
40' RT. = start picket fence
41' RT. = end board fence

146.97

146.97

147.17

2.66

2.66

2.66

39

40

Car.

on drive

part

90'

2+00

147.3

146.6

145.6

145.5

145.7

146.3

146.5

2.3

3.0

4.0

4.1

3.9

3.3

3.1

40

18

17

8

10

40

147.37

147.28

147.25

2.26

2.35

2.38

50

40

38

1+98 38' Lt. = 3' wide conc. walk.

1+88 28' RT. = ctr pole # 468690H.

146.57

146.3

145.6

144.6

144.4

144.8

144.7

145.6

145.5

3.06

3.3

4.0

5.0

5.2

4.8

4.9

4.0

4.1

50

40

19

17

10

8

10

40

drive

1+72 50' Lt. = end conc. drive

149.63

3+20 198 Rt. = ctr. Gate value cap.

3+06⁷⁶ = skyline Agate
40' Rt. = end picket fence.

3+06 22' Lt. = P. pole # 5248

3+02 21' Rt. = Fire Hydr.

2+90 38' Rt. = end conc. drive

2+78 - 22' Lt. = deadman

2+75' 38' Rt. = start conc. drive

2+75 39' Rt. = end 6' wide conc. wall.

2+58. 38' Rt. = ~~4~~ 3' wide conc. wall
also = face of wall.

2+55 40' Lt. = end conc. apron

2+50

150.1	149.9	148.7	148.9	148.6	146.5	149.3	149.4
4.3	4.5	5.7	5.5	5.8	5.9	5.1	5.0
40	17	16	9		8	12	40

149.7	149.8	149.1	148.1	148.1	148.0	148.9	148.65	148.91
4.7	4.6	5.3	6.2	6.3	6.4	5.5	5.71	5.45
40	25	17	16		6	11	382	40
							Drive	Conc. + drive

148.26	148.70	148.71	148.31
6.00	5.66	5.65	5.05
381	375	40	58
			Car.
			Floor

148.6	148.1	148.52
5.8	6.3	5.84
39	395	395
Car	8450	110

148.20	148.20	148.32
6.16	6.16	6.04
395	40	50

149.59	149.10
4.77	5.26
44	40
Car.	Apron

149.1	148.0	147.3	147.0	146.8	147.6	147.7
5.3	6.4	7.1	7.4	7.6	6.8	6.7
40	18	16		6	8	40

154.36

T.P. 10.05 163.03 1.38 152.980+24 39^E Rt. = end picket fence0+24 44^E Rt. = S.W. Cor. stucco house

= 0+00 40' Rt. = start 3' high picket fence.

3+86.96 28' Rt. = ctr. Pote # B32594T

3+86.96 N14. line A gate

3+62

3+60^Z 38' Rt. = west end E+W. ch.46⁹⁶3+40⁹⁶ = ~~4~~ Agate

pave to come out. (50' pt.)

3+40 - 22' Rt. = ctr. of 450' black

also = start A.C. Pave.
6" Curb.3+32^Z 38^E Rt. = west end E+W. ch.

152.8	152.2	151.5	152.2	151.7	152.3	152.3
1.6	2.0	2.9	2.2	2.7	2.1	2.1
40	18	16		9	11	40

152.0	151.7	150.9	151.1	150.8	151.6	151.2
2.4	2.7	3.5	3.3	3.6	2.8	3.2
40	25	15		10	15	40

151.2	150.8	151.0	150.7	150.4	150.2	150.74	150.36	150.74
3.2	3.6	3.4	3.7	4.0	4.08	3.62	4.00	3.62
40	16		10	38	38	38	40	40
				Grd. & ch.			G. ch.	

153.1	151.4	150.6	150.5	150.2	150.6	150.53	151.63
1.3	3.0	3.8	3.9	4.2	3.8	3.83	2.73
100	40	16		12	38 ^E	40	100
					pave		pave

150.8	150.5	149.9	150.0	149.7	150.0	150.75	150.26	150.6
3.6	3.9	4.5	1.4	4.7	4.4	3.6.1	4.10	3.8
40	20	11		12	25	ch. G	40	48
						38 ^E	Grd.	

154.36

1+92 - No drive - conc. floor.
70 Rt. = \pm double Gar.

1+89 40³ Lt. = end linked wire fence.

1+78 39' Rt. = end picket fence.

1+67 { 49' Rt. = steps to house
36² Lt. = 4" pepper

1+56 22² Lt. = dead man.

1+50 36' Lt. = 4" diam. Asacia

1+49 22¹ Lt. = ϕ 44 pole to pole # 5274

1+42 28' Lt. = pole # D 32593 T

1+40 { 40¹ Lt. = start linked wire fence
39² Rt. = start picket fence

1+36 12⁴ Lt. = ϕ Gas. co. M.H.

1+32⁵ = \pm Alley

1+24 21² Lt. = Pole # 5274

1+00

1+09 - 39⁵ Lt. = \pm 8' wide conc. drive.

0+55 44' Rt. = N.W. cor. stucco house

0+50

159.85

3.18

70
Floor

160.2	159.2	159.0	159.2	159.2	158.6	158.62
2.8	3.8	4.0	3.8	3.8	4.4	4.41
40	20	17		16	40	49

on bottom
s top

160.4	158.7	158.2	158.4	158.09	157.8	158.0	157.4	157.5
2.6	4.3	4.8	4.6	4.94	5.2	5.0	5.6	5.5
100	40	17	12	on. M.H.	8	15	40	80

low
point

156.7	156.8	155.8	156.3	156.3	155.7	156.2	155.7
6.3	6.2	7.2	6.7	6.7	7.3	6.8	7.3
40	19	17	9		7	10	40

EL = 157.76
39⁶
drive

EL = 158.09
51
Gar. Floor

154.3	154.2	153.4	153.9	153.9	153.4	153.8	154.0	154.0
8.7	8.8	9.6	9.1	9.1	9.6	9.2	9.0	9.0
40	19	17	9		9	11	40	44

at house

163.03

249.92

3+04.92 = £ Archer = 15 Lt. = £ M.H. (Sewer)

2+90

278.92
14
264.92
-265

↓
2+69.92 = sly line Archer 40' Rt. = end picket fence.

2+56 37' Rt. = 6" diam. mock orange

2+35

2+33 50' Rt. = £ 3' wide conc. steps to house

2+18 { 40' Rt. = start Picket fence

2+14 → 42' Rt. = end hedge

2+14 → 42' Rt. = start 6' high hedge

2+04 - 41' Lt. = £ 5' wide conc. steps to house

T.P. 8.41 170.57 0.87 162.16

2+00

168.3	166.2	165.8	165.72	165.8	165.4	165.5	166.8
2.3	4.4	4.8	4.85	4.8	5.2	5.1	3.8
100	40	20	15		20	40	100
			M.H.				

164.9	164.5	164.5	164.5	164.6
5.7	6.1	6.1	6.1	6.0
40	20		20	40

164.3	163.6	162.8	162.9	162.5	163.1	163.1
6.3	7.0	7.8	7.7	8.1	7.5	7.5
40	25	20		7	10	40

163.5	163.3	162.8	161.6	161.9	161.6	161.1	162.0	161.7
7.1	7.3	7.8	9.0	8.7	9.0	9.5	8.6	8.9
40	36	25	18	10		7	10	40

162.53

8.04

41

161.79

8.78

50 steps

170.57

162.3	162.2	160.4	160.1	160.4	160.3	160.0	160.3	159.7
0.7	0.8	2.6	2.9	2.6	2.7	3.0	2.7	3.3
40	33	20	17	10		9	12	40

163.03

Dawes.

4

52

Archer + Dawes
S.W. 17' Mon.

6.36 164.21

3 + 39.92 Nly Archers

170.6	170.1	169.6	169.0	168.4
<u>0.0</u>	<u>0.5</u>	1.0	<u>1.6</u>	<u>2.2</u>
40	20		20	40

3 + 25

168.4	168.0	167.5	167.3	166.9
<u>2.2</u>	<u>2.6</u>	3.1	<u>3.3</u>	<u>3.7</u>
40	20		20	20

3 + 20

167.0	166.2	165.9	165.6	165.6
<u>3.6</u>	<u>4.4</u>	4.7	<u>5.0</u>	<u>5.0</u>
40	20		20	40

~~47~~
170.57

Archer St.

7/1/51

Elev. + Location of Meter boxes

Wly end Archer to Cassi

Elev. shown = top of box

INDEXED

JUL 19 1951

53

T.P. 9.84 125.79 4.42 115.95

1+92 21' Lt. = (W)

see
FB 1668-1

$\frac{2.86}{21}$

" 1395-24

" 1622-47

1+66 27' Rt. = (W)

$\frac{5.29}{27}$

1+49- 22' Lt. = (W)

$\frac{3.72}{22}$

1+11 - 23' Rt. = (W)

$\frac{6.54}{23}$

0+99 - 22' Lt. = (W)

$\frac{5.51}{22}$

0+55 - 23' Rt. = (W)

$\frac{8.32}{23}$

0+50 - 23' Lt. = (W)

$\frac{7.06}{23}$

0+00 = wly. end Archer

T.P. 3.58 120.37 9.01 116.79

129.37

2.52 125.80 - 123.28 $\frac{1662}{47}$

Mon. S. 7' line Archer E. line Mission Blvd.

Archer

54

0+00 = Ely. Mission Blvd.

T.P. : 11.32 134.61 2.50 123.29

4+56 - 22' Lt. = (W)

0.53
22

4+39 - 22' Rt. = (W)

3.03
22

4+01 }
22' Rt.
22' Lt. } = (W)

1.22
22

3.77
22

3+62 - 23' Rt. = (W)

4.72
23

3+11 - 22' Rt. = (W)

4.92
22

2+82 - 22' Rt. = (W)

7.76
22

2+63 21' Lt. = (W)

6.04
21

2+28 26' Rt. = (W)

9.92
26

125.79

Archer

55

±

3+48 22' RT. } = (W)
 LT. }
 T.P. 11.62 145.60 0.63 133.98

$\frac{10.0}{22}$ 145.60 $\frac{11.2}{22}$

2+99 22' RT. = (W)

$\frac{2.3}{22}$

2+68 22' LT. = (W)

$\frac{1.2}{22}$

2+02 22' LT. = (W)

$\frac{3.3}{22}$

1+57 22' LT. = (W)

$\frac{4.8}{22}$

1+05 22' LT. = (W)

$\frac{7.1}{22}$

0+80 22' RT. = (W)

$\frac{8.8}{22}$

0+58 21' LT. = (W)

$\frac{8.9}{21}$

0+46 22' RT. = (W)

$\frac{10.0}{22}$

134.61

7+01 24' Lt. = (W)

 $\frac{9.7}{24}$ 156.13T.P. 10.70 156.13 0.17 145.43

6+67- 22' Rt. = (W)

 $\frac{0.7}{22}$

6+12- 22' Rt. = (W)

 $\frac{2.9}{22}$

6+06 - 23' Lt. = (W)

 $\frac{2.4}{23}$

5+70 22' Lt. = (W)

 $\frac{2.8}{22}$

5+47- 22' Rt. = (W)

 $\frac{4.5}{22}$

4+78 22' Rt. (W)

 $\frac{6.7}{22}$

3+70- 23' Lt. = (W)

 $\frac{8.8}{23}$ 145.60

Archer

4.82 163.09 (163.06)

S.W. 7' Mon. Cass + Archer

57

TP

11 + 29 18 Lt. = (W)

2.7
18

10 + 46 25' Lt. = (W)

7.0
25

9 + 95 22 Rt. = (W)

10.9
22

9 + 51 22 Rt. = (W)

13.0
22

9 + 45 22' Lt. = (W)

12.2
22

T.P. 12.57 167.91 0.73 155.40

167.91

8 + 99 22' Rt. = (W)

2.3
22

8 + 31 26' Lt. = (W)

9.4
26

7 + 62 24' Rt. = (W)

7.2
24

156.13

Archer St 70' wide
Cass to Ely. Line Monte Villa.

58

T.P. 3.99 173.31 3.13 169.32

1+00

REDUCED 7-12-51 HR

170.4	169.5	168.7	168.5	168.0	167.6
2.1	3.0	3.8	4.0	4.5	4.9
35	14	12		20	35

0+78- 22 Lt. = (W)

169.0
3.5
22
(W)

0+60 Const. 57' Rt. = \neq double Gar. under

169.6	168.6	167.7	167.4	167.4	166.7	166.4
2.9	3.9	4.8	5.1	5.1	5.8	6.1
35	15	12		20	35	57

Approx.
floor level
Not yet
poured

0+50^S - 17' Lt. = \neq 2^S wide conc. ribbon to drive

170.64	169.32	168.36
1.77	3.13	4.09
60	35	17

0+45 drive 17 Lt. = \neq 2^S wide conc. ribbon to

170.22	169.14	168.15
1.73	3.31	4.30
60	35	17

0+42- 25' Rt. = (W)

166.4
5.9
25
(W)

0+00 = Ely. line Cass

168.2	166.5	165.9	165.4	165.7
4.3	6.0	6.6	7.1	7.2
35	17	15		35
				172.45

9.39 172.45 163.06

S.W. 7' Mon Cass & Archer

Archer

2+03 23' Rt = (VV)

2+00 35' Lt. = start picket fence.

1+87 19 Lt. = ctr. 3 1/2' diam palm

1+75 22 Lt. = (W)

T.P. 3.84 173.36 3.79 169.52

1+59 - 34 Lt. = £ 8' wide Conc. drive

1+50 35' Rt. = start picket fence.

1+31 - 22' Rt. = (W)

1+18 22 Lt. = (W)

1+11 - 35' Lt. = £ 8' wide Conc. drive

£

167.4 59

6.0.

(W)

169.9	169.3	168.3	168.1	167.7	167.0
3.5	4.1	5.1	5.3	5.7	6.4
35	15	12		20	35

169.3

4.1

22

(W)

173.36

171.59	170.06	170.05
1.72	3.25	3.26
62	35	34

- on drive.

170.0	169.0	168.6	168.4	168.3	167.9
3.3	4.3	4.7	4.9	5.0	5.4
35	15	12		20	35

168.3

5.0

22

(W)

169.7

3.6

22

(W)

171.25	170.57
2.06	2.74
52	35

Drive

173.31

T.P. 6.89 173.49 6.76 166.60
 3+50 35' Rt. = end lath fence,

3+32 22' Rt. = (W)

3+00 = start lath fence
 Rt. = end wire fence

2+84 22' Lt. = (W)

2+64 22' Rt. = (W)

2+50 35' Rt. = (start wire fence)
 = end picket fence
 35' Lt. = end picket fence

2+42 19' Lt. = 3' diam palm

2+13 - 19' Lt. = ctr. 28" diam palm

2+10 - 23' Lt. = (W)

171.7	169.9	168.4	168.5	167.9	166.8
1.7	3.5	5.0	4.9	5.5	6.6
35	16	13		15	35

167.0

6.4

(W)

170.6	169.4	168.8	168.5	167.8	167.2
2.8	4.0	4.6	4.9	5.6	6.2
35	16	13		20	35

169.3

4.1

(W)

167.5

5.9

(W)

170.4	169.1	168.3	168.2	167.6	166.8
3.0	4.3	5.1	5.2	5.8	6.6
35	16	13		20	35

169.5

3.9

(W)

173.36

4+13 35' Rt. = end ribbon drive
2⁵ Ribbons

167.29 165.89 166.02
6.20 7.60 7.47
35 on drive 56 Car. floor

4+05 35' Rt. = start ribbon drive

167.33 165.89
6.16 7.60
35 on drive 56

4+00

172.5 170.6 169.7 169.1 168.5 167.1
1.0 2.9 3.8 4.4 5.0 6.4
35 10 13 20 35

3+98 Rt. = { start picket fence
end board fence

3+91 22 Rt. = (W)

167.8
5.7
22
(W)

3+69 35⁴ Rt. = start board fence

3+67 36' Rt. = ± 3' wide conc. walk

166.49 166.07
7.00 7.42
36 50
walk

3+61⁵ 36' Rt. = end conc. drive

166.49 166.24
7.00 7.25
36 50
drive Car. floor

3+53 36' Rt. = start conc. drive

166.56 166.23
6.93 7.26
36 50
drive Car. floor

173.49

Archer

61A

Dawes

178.1	169.4	167.6	166.0	165.9	163.0	160.9
+4.6	4.1	5.9	7.5	7.6	10.5	12.6
85	35	19	16		35	85

4+98.3 Wly line Dawes
 $\frac{1662}{47}$

170.5	168.3	166.7	166.3	164.9	164.3
3.0	5.2	6.8	7.2	8.6	9.2
35	19	15		17	35

4+74 22 Rt. (W)

165.9

7.6

(W)

4+70 35' Rt. = end conc. drive

165.36	165.09
8.13	8.40
35 drive	50 Gar. floor

4+55 35' Rt. = start conc. drive

165.85	165.09
7.64	8.40
35 drive	50 Gar. floor

4+50

171.9	170.1	168.5	168.1	167.4	166.1
1.6	3.4	5.0	5.4	6.1	7.4
35	17	14		20	35

4+48 35' Rt. = end picket fence

4+29 22 Rt. = (W)

167.5

6.0

(W)

173.49

Archer
water meter boxes

Sw. 7' Man
Archer + Dawes

9.19 164.30

164.29

62

3+73 22 Lt. = (W)

+ 6.2
22
(W)

3+02 22' Rt. = (W)

1.8
22
(W)

1+72 22' Rt. = W.

3.8
22
(W)

1+35 22 Lt. = (W)

2.9
22
(W)

1+10 22' Rt. = (W)

6.8
22
(W)

0+97 22 Rt. = (W)

7.8
22
(W)

0+69 21' Lt. = (W)

5.2
21
(W)

0+49 22' Rt. = (W)

8.6
22
(W)

0+32 22' Rt. = (W)

9.5
22
(W)

0+23 21' Lt. = (W)

6.4
21
(W)

0+00 = Fly. line Dawes

173.49

~~Van Nuys.~~

~~Water Meter boxes~~

~~Sammermeter~~

~~Be99~~

~~R. Sisson~~

~~Altman~~

~~7-9-51~~

~~W.O. 31602~~

~~See F.B. 2056~~

~~53 to 69~~

~~VOID~~

(W) = Meter box.

Rods on top of box. service pipe
15' or lower.

See FB 2056

'71

63

AGATE St.

From Ely line Clairmor to Wly. line Pacific
Beach Vista Tracts

Sommermejer
Begg
RBissen
Altman.

10-July-1951
W.O. 31602

See P. 36 for continuation easterly.

(W) = Ctr. water meter box

(W) rods taken on box 0.9'± above service pipe

■ = Fd. conc. Mon. & tack.

Note { No tie sheet or map. used
Ely. line Clairmor pavement as 0+00

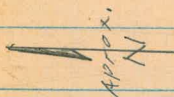
INDEXED

JUL 19 1951

64

Wly. La Jolla
Mesa Drive

A+80



40' X 40'

Clairmor Pavement
Ely. Edge

0+00

± AC, PAVE.

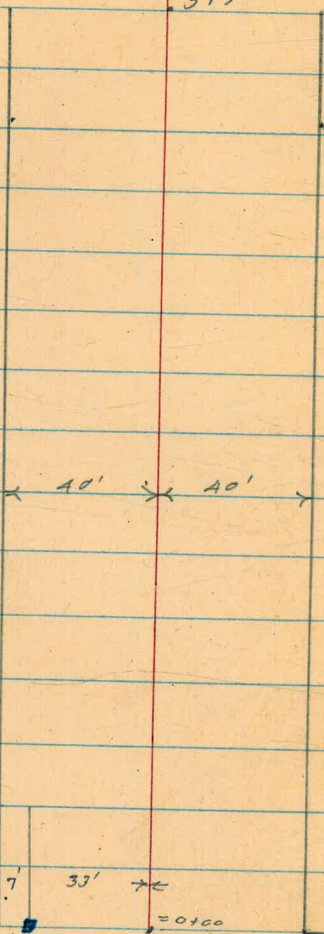
0-10

Sox Pk. Nail
on map distance
from east.
10-9-52

Agate St.

⊕

3+50



Elyline La Jolla
Mesa Drive

⊕ 33'

3+50
5+10
5+23

⊕ La Jolla Mesa Drive

A.C. Pavement

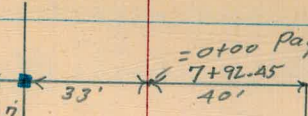
Wly La Jolla Mesa
Dr.

4+95
4+80

⊕

65

Wly line
Pacific Beach
Vista tract.
(See P. 36)



= 0100 Page 36. This book.

33'

7+92.45
40'



3+50

Agate St
Levels

10 July '51

0+41 40³ Lt. = start Conc. drive

0+28- 40' Lt. = 4' wide conc. walk

0+22

0+19- 23' Lt. = (W)

0+02

0+00 = Ely. edge existing pave.

0-00.5 = Ctr. sewer M.H.

0-10 = 4' Existing pave.

T.P. 1.42 105.96 12.14 104.54

Set B.M. 1.85 116.68 9.10 114.83

0.65 123.93 - 123.28

±

66

102.53 101.61
3.43 4.35
62 40
on drive

101.50 101.21
4.40 4.75
50 40

100.6 100.3 99.9 100.1 100.0 98.8
5.4 5.7 6.1 5.9 6.0 7.2
40 16 14 16 40

5.9
101.3 100.4 (W) 99.7 98.3 98.2 98.0 97.7 97.7
4.7 5.6 6.3 7.7 7.8 8.0 8.3 8.3
60 40 20 14 20 40 60

100.66 98.74 97.62 97.30 96.33
5.30 7.22 8.34 8.66 9.63
90 40 M.H. 40 90

100.43 98.63 97.50 97.00 96.13
5.53 7.33 8.46 8.96 9.83
90 40 105.96 40 90

Non. N. 7' line Agate
E. line La Jolla Mesa Drive

Archer + La Jolla Mesa Dr. Conc. Men, S. 7' line Archer

T.P. 9.30 113.85 1.41 104.55

1+19. 40' Lt. = ± 5' wide Conc. walk

1+13

1+00

0+79

0+50

0+49⁵ 40³ Lt. = end conc. drive

104.82 104.37
1.14 1.59
60 40

3.1
2.1
(W)

104.0	103.8	103.6	102.3	102.2	102.2	100.9	100.7
2.0	2.2	2.4	3.7	3.8	3.8	5.1	5.3
60	40	30	20		18	40	75

101.0
5.0
2.1
(W)

101.7	101.0	101.0	100.7	99.5
4.3	5.0	5.0	5.3	6.5
40	20		15	40

102.52 101.70
3.44 4.26
62 403
on drive

105.96

Agate St.

2+00

1+95 39⁹ Lt. = \pm 3' wide conc. walk

1+76

1+58 40' Lt. = \pm 3' wide conc. walk.

1+50

1+38 39⁹ Lt. = end conc. drive.

1+28 39⁹ Lt. = start conc. drive

\pm

68

106.9	106.4	105.9	104.9	106.1	104.7	104.6	104.3
7.0	7.5	8.0	7.0	7.8	9.2	9.3	9.6
60	40	20	16		20	40	60

106.67	106.37
7.18	7.48
50	40

105.1
8.8
26
(W)

105.79	105.49
8.00	8.36
50	40
on walk	

105.2	104.4	103.1	103.6	103.5	102.7
8.7	9.5	10.8	10.3	10.4	11.2
40	19	16		18	40

104.93	104.44
8.92	7.41
60	39 ⁹
on drive	

104.91	104.39
8.94	9.46
60	39 ⁹
on drive	

113.85

Agate st

69

2+70⁵ 40' Lt. = end Conc. drive.

109.90	109.64
3.75	4.21
53	40

2+62 - 40' Lt. = start Conc. drive

109.79	109.45
4.06	4.40
53	40

2+52 39² Lt. = \pm 2⁵' wide Conc. walk

107.60	107.47
6.25	6.38
50	39 ²

2+50

107.4	106.9	106.3	106.5	106.3	105.8
6.5	7.0	7.6	7.4	7.6	8.1
40	20	16		20	40

2+28

106.8	105.4
7.1	8.5
22	21
(W)	(W)

2+14 40' Lt. = \pm 3' wide Conc. walk

107.10	106.92
6.75	6.93
50	40

113.85

Agate

70

Cont.

111.70	111.14
2.15	2.71
49 $\frac{1}{2}$	40
walk	walk
+ Grd.	+ Grd.

3+33 24 $\frac{1}{2}$ Lt. = end conc. walk

110.42	110.2	109.4	108.9	109.0	109.0	108.3
3.43	3.7	4.5	5.0	4.9	4.9	5.6
24 $\frac{1}{2}$	20	19	15		20	40
walk						

3+25 24 $\frac{1}{2}$ Lt. = start conc. walk

111.65	111.03	110.16
2.20	2.82	3.69
49 $\frac{1}{2}$	40	24 $\frac{1}{2}$

3+09

109.5
4.4
23
(W)

3+01

108.7
5.2
21
(W)

3+00

110.2	109.5	108.8	107.9	107.9	107.9	107.4	106.9
3.7	4.4	5.1	6.0	6.0	6.0	6.5	7.0
40	30	20	15		20	40	60

113.85

Agate

5+10 = La Jolla Mesa Drive

115.33	113.74	113.15	112.60	112.06	111.55	110.41
2.72	4.31	4.90	5.45	5.99	6.50	7.64
90	40	20		20	40	90

71

4+95 start A.C. Pavement

112.64	112.20	111.45	111.07	110.55
5.43	5.85	6.60	6.98	7.50
40	20		20	40

4+80 wly line La Jolla Mesa Dr.

114.1	113.9	112.6	112.3	112.2	112.1
4.0	4.2	5.3	5.8	5.9	6.0
40	20	14		20	40

4+60

114.3	113.9	112.8	112.7	112.2
3.8	4.2	5.3	5.4	5.9
40	16		18	40

T.P. 6.20 118.05 2.00 111.85

118.05

4+08

110.9
3.0
22
11

4+00

112.8	112.6	112.3	111.1	111.0	111.0	110.7	110.5
1.1	1.3	1.6	2.8	2.9	2.9	3.2	3.4
60	40	25	15		20	40	50

3+80 43² Rt.: start board fence.

3+70

111.7	111.2	110.0	110.1	110.3	109.4
2.2	2.7	3.9	3.8	3.6	4.5
40	25	14		20	40

113.85

T.P. 11.65 127.51 2.19 115.86

0414⁵ 21' RT. = CTR. Fire plug

0411⁵ 33⁴ RT. = S.E. Cor. } Water
25⁴ RT. = N.E. Cor. } Value
box

114.13 114.27
3.92 3.78
254 334

0408 38² RT. = 3' wide Conc. walk

117.4 117.6 113.9 113.6 113.5 114.3 115.25 115.64 116.58
0.5 0.5 4.2 4.5 16.9 3.8 2.80 2.41 1.47
40 33 19 46 34 382 40 50

0401⁵ 33⁵ RT. = S.W. Cor. value box
25⁵ RT. = N.W. Cor. water value

114.03 114.20
4.02 3.85
255 335

0400 } - Ely line La Jolla Mesa Drive
5420 }

115.2 114.83 113.5 113.1 112.9 113.9 115.1
2.9 3.22 4.6 5.0 5.2 4.2 3.0
40 33 Mon 18 18 27 40

5437

114.0 113.3 113.0 112.7 112.2
4.1 4.8 5.1 5.4 5.9
40 20 20 40

5423 = ~~leave~~ cmd A.C. Pave.

113.40 112.95 112.42 111.95 111.37
4.65 5.10 5.63 6.10 6.68
40 20 20 40

118.05

Agate St.

±

73

2+00

121.5	121.3	121.2	121.6	121.6	121.4	121.3
5.0	5.2	5.3	5.9	5.9	6.1	6.2
50	40	14		20	40	50

1+82 { 40 Lt. = end lath fence
 34' Lt. = start board fence
 32' Lt. = start 7' high hedge
 1+50 40 Lt. = start lath fence.

121.0	119.8	119.6	119.6	119.3
6.5	7.7	7.9	7.9	8.2
40	13		20	40

1+45 - 40⁸ Rt. = ± 8' wide Conc. walk

119.38	119.30
8.13	8.21
40 ⁸	50 ⁸

1+25

118.2

9.3

23

(W)

1+01

118.8

8.7

21.5

(W)

1+00

120.5	119.4	118.8	118.2	117.9	117.9	117.6	117.4
7.0	8.1	8.7	9.3	9.6	9.6	9.9	9.9
50	40	18	12		20	40	50

0+57

117.5

10.0

22

(W)

0+45 39⁸ Lt. = ± 3' wide Conc. walk

118.5	117.4	116.5	116.2	116.1	116.1	116.60
9.0	10.1	11.0	11.3	11.4	10.90	10.91
40	20	14		17	39 ⁸	50

walk 4
 End.

127.51

Agate

3+39 40^z Rt. = \pm 8' wide Conc. drive

3+33

3+16

2+96 33⁴ Lt. = \pm 13' wide conc. drive

2+90 40' Rt. = \pm 8' wide Conc. drive

2+75

2+65

2+37 34⁷ Lt. = \pm 10' wide Conc. drive

T.P. 7.19 134.47 0.23 127.28
Top of wall

2+30 34' Lt. = \pm 1 1/2' x 2' Post on ~~end~~ end
N.Y.S. Conc. block wall

2+28 34' Lt. = \pm 3' wide Conc. walk.

2+21 32^E Lt. = end board fence

2+19

127.5 128.5 127.9 126.9 126.9 126.62 126.60
6.0 6.6 7.6 7.6 7.85 7.97
40 20 20 20 40^z 56
7.0
22
125.9
8.6
22
Car. floor

128.84 127.75 126.97 126.9 126.1 125.3 125.2 125.2
5.63 6.72 7.50 7.6 8.4 9.2 9.3 9.3
53 40 33⁴ 33 20 20 40
on drive
124.93 124.95
9.54 9.52
40^z 55
Car. floor

126.72 126.21 125.87 124.1 123.0 123.0 123.0
7.75 8.26 8.60 10.4 11.5 11.5 11.5
55 40 34⁷ 20 20 40
Car. floor drive Pring Pond
134.47

124.4 124.3 123.9 124.2 123.7 122.7 122.8 122.5 122.4
3.1 0.2 3.6 3.3 3.8 4.8 4.7 5.0 5.1
40 34 34 34 20 20 40 50
End west of wall
124.4 124.35 124.23
3.10 3.16 3.28
50 40 34

123.2
4.3
2.1
127.51

74

A gate

for details
see water const.

4+88 - 25' RT. = 18" or 20" water 1172

4+48 65 RT. = ± N.Ely. - s. city. wash
Lt. = ± 2' wide Conc. walk

4+24 = 40' Lt. = ± 5' wide Conc. walk

4+21

4+02 - 40' Lt. = ± 2.5' wide Conc. walk

4+00 40' Lt. = end Conc. block wall.

3+96

3+81 - 38' Lt. = ± 4' wide walk thru wall
T.W. = top of wall
B.W. = base of wall

3+65^E 40' Lt. = start Conc. block wall.

3+59 34' Lt. = ± wide Conc. drive

133.3	132.5	132.5	127.9	128.2	128.3	123.5	75
1.2	2.0	2.0	6.6	6.3	6.2	10.8	123.1
40	<u>22</u>	17	11		28	40	11.4
							4.8
							± wash

131.87	131.67	132.0	131.4	129.8	129.5	129.7	131.0	122.1
2.60	2.80	2.5	3.1	4.7	5.0	4.8	3.5	12.4
50	40	40	24	10		20	40	6.5
walk		end						wash

131.72	131.53
2.75	2.94
50	40

130.4

4.1

22

131.71	131.29	131.1	130.4	129.3	129.4	130.5
2.76	3.18	3.4	4.1	5.2	5.1	4.0
50	40	40	20		20	40
walk						

132.2	129.4	130.2	130.2	129.2	129.2	130.5
2.3	5.1	4.3	4.3	5.3	5.3	4.0
40	40	40	20		20	40
T.W.	B.W.					

130.0

4.5

22

130.2	130.2
4.3	4.3
4.3	3.8
walk	walk

132.2	129.3	130.1
2.3	5.2	4.4
40	40	40
T.W.	B.W.	

130.74	130.07	129.57	129.6	126.7	127.7	127.5	127.1
3.73	4.40	4.90	4.9	5.8	6.8	7.0	7.4
55	40	34	34	20		20	40
cars	on drive				134.47		

T.P. 12.54 146.21 1.69 133.67
 6+61 25^E Lt. = ϕ 3' wide conc. walk.

6+54 39^E Lt. = ϕ 8" conc. wall

6+52 32^E Lt. = 5" diam palm

6+50 39^E Lt. = ϕ 8' wide conc. drive

6+28

6+00 23^N Lt. = Fire Hydr.

5+69

5+47 approx. \pm N.Ely. + S.Wly. wash

5+26 39^E Lt. = bottom 3' wide conc. steps

5+13

T.P. 7.40 135.36 6.51 129.96

135.9 135.71 133.70 133.7 133.0 133.4 133.6 134.8 135.1 134.3
 10.5 10.35 1.66 1.7 2.4 2.0 1.18 0.6 0.3 1.1
 40 32 25 25 20 7 8 20 40
 on walk

136.9 132.0 133.1 132.8 133.2 134.6 135.1 134.3
 11.5 3.4 2.3 2.6 2.2 0.8 0.3 1.1
 398 398 398 4 5 20 40
 T.W. B.W.

132.2 132.86 132.86 131.8 132.2 132.5 134.3 134.8 134.1
 1298 3.04 2.50 2.50 3.6 3.2 2.9 1.1 0.6 1.3
 58 40 398 20 3 5 26 40
 Cor.
 5.6
 29
 (W)

128.8 127.8 127.6 129.1 130.2 131.2 133.6
 6.6 7.6 7.8 6.3 5.2 2.2 1.8
 40 20 2 2 25 40

127.2 127.2 126.6 126.6 127.0 132.3 131.1
 8.2 8.2 8.8 8.8 8.4 3.1 4.3
 60 40 29 20 22 40
 (W)

135.4 128.9 127.1 127.6 127.6 132.0 131.9
 0.0 6.5 8.3 8.8 8.8 3.4 3.5
 60 40 36 1 24 40

134.54 128.36 128.36
 0.82 7.00 7.00
 545 40 392
 Top of steps

132.8 129.1 127.6 128.1 126.4 126.4 126.0 127.2 124.3 127.8
 11.6 5.3 6.8 6.3 8.0 8.0 8.4 10.2 10.1 6.6
 50 40 35 31 20 11 22 28 40
 (W)
 ϕ wash

135.36

142.96

3.22 142.99

= B.M. #1 - Page 37

T.P.

6+6

7+92.45 (= 0+00 Page 36)

142.8	142.2	142.2	141.7	141.7	141.4	141.8	141.5
3.4	4.0	4.0	4.5	4.5	4.8	4.4	4.7
40	23	22	13		20	25	40

6+5

7+89 40' Lt. = ± 7' wide conc. drive

142.96 142.76
3.25 3.45
60 40

6+5

7+85 38' Lt. = end conc. cobble wall

142.8	142.8	142.2	142.6	142.1	141.4	141.4	141.0	141.4	141.3
3.4	3.4	4.0	3.6	4.1	4.8	4.8	5.2	4.8	4.9
40	38	38	38	20	15		20	25	40
		7.4	8.0						

6+5

7+47 Lt. = start conc. cobble wall

141.3	139.2	139.9	139.5	140.0	139.0	139.6	139.6
4.9	7.0	6.3	6.7	6.2	7.2	6.6	6.6
38	38	38	22		20	23	40
7.4	8.4	end					

6+2

7+40 39' Lt. = ± 8' wide conc. drive

140.36	139.65	139.2	138.5	138.7	138.3	138.2	137.2
5.85	6.56	7.0	7.7	7.5	7.9	8.0	9.0
59	39	20	17		20	20	50
Cor. floor							

6+0

7+32

139.92 139.56
6.29 6.66
50 40

5+6

7+32 40' Lt. = ± 4' wide conc. walk

137.55 137.09
8.66 9.12
40 50

7+24 40' Lt. = ± 3' wide conc. walk

5+4

7+04

137.8	137.6	135.9	136.1	136.4	136.4	136.9
8.4	8.6	10.3	10.1	9.8	9.8	9.3
40	24	17		20	23	40

5+2

7+00

137.5 ← 136.1
10.1
22
137.5 137.0 135.9 134.4 134.8 135.4 135.4 134.8
8.7 9.2 10.3 11.8 11.4 10.8 10.8 11.4
40 28 23 18 13 28 40

5+1

6+82

14621

T.P.

180
62 09
112 52

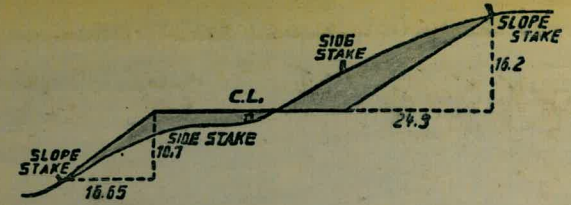
2958
87950

940808
3 24 01

122908

3340
5.0
2780

77
162 77
162 68
229 7
192 7
75 49
4.1
4
8.1
15
6.6



DISTANCES FROM SIDE STAKES FOR CROSS-SECTIONING.
SLOPE 1 1/2 TO 1. ROADWAY OF ANY WIDTH.

	0	.1	.2	.3	.4	.5	.6	.7	.8	.9	
0	0.00	0.15	0.30	0.45	0.60	0.75	0.90	1.05	1.20	1.35	0
1	1.50	1.65	1.80	1.95	2.10	2.25	2.40	2.55	2.70	2.85	1
2	3.00	3.15	3.30	3.45	3.60	3.75	3.90	4.05	4.20	4.35	2
3	4.50	4.65	4.80	4.95	5.10	5.25	5.40	5.55	5.70	5.85	3
4	6.00	6.15	6.30	6.45	6.60	6.75	6.90	7.05	7.20	7.35	4
5	7.50	7.65	7.80	7.95	8.10	8.25	8.40	8.55	8.70	8.85	5
6	9.00	9.15	9.30	9.45	9.60	9.75	9.90	10.05	10.20	10.35	6
7	10.50	10.65	10.80	10.95	11.10	11.25	11.40	11.55	11.70	11.85	7
8	12.00	12.15	12.30	12.45	12.60	12.75	12.90	13.05	13.20	13.35	8
9	13.50	13.65	13.80	13.95	14.10	14.25	14.40	14.55	14.70	14.85	9
10	15.00	15.15	15.30	15.45	15.60	15.75	15.90	16.05	16.20	16.35	10
11	16.50	16.65	16.80	16.95	17.10	17.25	17.40	17.55	17.70	17.85	11
12	18.00	18.15	18.30	18.45	18.60	18.75	18.90	19.05	19.20	19.35	12
13	19.50	19.65	19.80	19.95	20.10	20.25	20.40	20.55	20.70	20.85	13
14	21.00	21.15	21.30	21.45	21.60	21.75	21.90	22.05	22.20	22.35	14
15	22.50	22.65	22.80	22.95	23.10	23.25	23.40	23.55	23.70	23.85	15
16	24.00	24.15	24.30	24.45	24.60	24.75	24.90	25.05	25.20	25.35	16
17	25.50	25.65	25.80	25.95	26.10	26.25	26.40	26.55	26.70	26.85	17
18	27.00	27.15	27.30	27.45	27.60	27.75	27.90	28.05	28.20	28.35	18
19	28.50	28.65	28.80	28.95	29.10	29.25	29.40	29.55	29.70	29.85	19
20	30.00	30.15	30.30	30.45	30.60	30.75	30.90	31.05	31.20	31.35	20
21	31.50	31.65	31.80	31.95	32.10	32.25	32.40	32.55	32.70	32.85	21
22	33.00	33.15	33.30	33.45	33.60	33.75	33.90	34.05	34.20	34.35	22
23	34.50	34.65	34.80	34.95	35.10	35.25	35.40	35.55	35.70	35.85	23
24	36.00	36.15	36.30	36.45	36.60	36.75	36.90	37.05	37.20	37.35	24
25	37.50	37.65	37.80	37.95	38.10	38.25	38.40	38.55	38.70	38.85	25
26	39.00	39.15	39.30	39.45	39.60	39.75	39.90	40.05	40.20	40.35	26
27	40.50	40.65	40.80	40.95	41.10	41.25	41.40	41.55	41.70	41.85	27
28	42.00	42.15	42.30	42.45	42.60	42.75	42.90	43.05	43.20	43.35	28
29	43.50	43.65	43.80	43.95	44.10	44.25	44.40	44.55	44.70	44.85	29
30	45.00	45.15	45.30	45.45	45.60	45.75	45.90	46.05	46.20	46.35	30
31	46.50	46.65	46.80	46.95	47.10	47.25	47.40	47.55	47.70	47.85	31
32	48.00	48.15	48.30	48.45	48.60	48.75	48.90	49.05	49.20	49.35	32
33	49.50	49.65	49.80	49.95	50.10	50.25	50.40	50.55	50.70	50.85	33
34	51.00	51.15	51.30	51.45	51.60	51.75	51.90	52.05	52.20	52.35	34
35	52.50	52.65	52.80	52.95	53.10	53.25	53.40	53.55	53.70	53.85	35
36	54.00	54.15	54.30	54.45	54.60	54.75	54.90	55.05	55.20	55.35	36
37	55.50	55.65	55.80	55.95	56.10	56.25	56.40	56.55	56.70	56.85	37
38	57.00	57.15	57.30	57.45	57.60	57.75	57.90	58.05	58.20	58.35	38
39	58.50	58.65	58.80	58.95	59.10	59.25	59.40	59.55	59.70	59.85	39
40	60.00	60.15	60.30	60.45	60.60	60.75	60.90	61.05	61.20	61.35	40
41	61.50	61.65	61.80	61.95	62.10	62.25	62.40	62.55	62.70	62.85	41
42	63.00	63.15	63.30	63.45	63.60	63.75	63.90	64.05	64.20	64.35	42
43	64.50	64.65	64.80	64.95	65.10	65.25	65.40	65.55	65.70	65.85	43
44	66.00	66.15	66.30	66.45	66.60	66.75	66.90	67.05	67.20	67.35	44
45	67.50	67.65	67.80	67.95	68.10	68.25	68.40	68.55	68.70	68.85	45
46	69.00	69.15	69.30	69.45	69.60	69.75	69.90	70.05	70.20	70.35	46
47	70.50	70.65	70.80	70.95	71.10	71.25	71.40	71.55	71.70	71.85	47
48	72.00	72.15	72.30	72.45	72.60	72.75	72.90	73.05	73.20	73.35	48
49	73.50	73.65	73.80	73.95	74.10	74.25	74.40	74.55	74.70	74.85	49
50	75.00	75.15	75.30	75.45	75.60	75.75	75.90	76.05	76.20	76.35	50

THE NATIONAL BLANK BOOK COMPANY
HOLYOKE MASSACHUSETTS
NEW YORK CHICAGO BOSTON SAN FRANCISCO