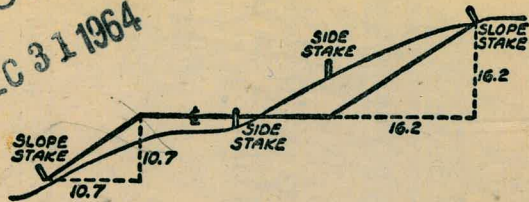


2074

MAPS BOOK

MICROFILMED
DEC 31 1964



DISTANCES FROM SIDE STAKES FOR CROSS-SECTIONING
SLOPE 1 TO 1. ROADWAY OF ANY WIDTH

	0	.1	.2	.3	.4	.5	.6	.7	.8	.9	
0	0.00	0.10	0.20	0.30	0.40	0.50	0.60	0.70	0.80	0.90	0
1	1.00	1.10	1.20	1.30	1.40	1.50	1.60	1.70	1.80	1.90	1
2	2.00	2.10	2.20	2.30	2.40	2.50	2.60	2.70	2.80	2.90	2
3	3.00	3.10	3.20	3.30	3.40	3.50	3.60	3.70	3.80	3.90	3
4	4.00	4.10	4.20	4.30	4.40	4.50	4.60	4.70	4.80	4.90	4
5	5.00	5.10	5.20	5.30	5.40	5.50	5.60	5.70	5.80	5.90	5
6	6.00	6.10	6.20	6.30	6.40	6.50	6.60	6.70	6.80	6.90	6
7	7.00	7.10	7.20	7.30	7.40	7.50	7.60	7.70	7.80	7.90	7
8	8.00	8.10	8.20	8.30	8.40	8.50	8.60	8.70	8.80	8.90	8
9	9.00	9.10	9.20	9.30	9.40	9.50	9.60	9.70	9.80	9.90	9
10	10.00	10.10	10.20	10.30	10.40	10.50	10.60	10.70	10.80	10.90	10
11	11.00	11.10	11.20	11.30	11.40	11.50	11.60	11.70	11.80	11.90	11
12	12.00	12.10	12.20	12.30	12.40	12.50	12.60	12.70	12.80	12.90	12
13	13.00	13.10	13.20	13.30	13.40	13.50	13.60	13.70	13.80	13.90	13
14	14.00	14.10	14.20	14.30	14.40	14.50	14.60	14.70	14.80	14.90	14
15	15.00	15.10	15.20	15.30	15.40	15.50	15.60	15.70	15.80	15.90	15
16	16.00	16.10	16.20	16.30	16.40	16.50	16.60	16.70	16.80	16.90	16
17	17.00	17.10	17.20	17.30	17.40	17.50	17.60	17.70	17.80	17.90	17
18	18.00	18.10	18.20	18.30	18.40	18.50	18.60	18.70	18.80	18.90	18
19	19.00	19.10	19.20	19.30	19.40	19.50	19.60	19.70	19.80	19.90	19
20	20.00	20.10	20.20	20.30	20.40	20.50	20.60	20.70	20.80	20.90	20
21	21.00	21.10	21.20	21.30	21.40	21.50	21.60	21.70	21.80	21.90	21
22	22.00	22.10	22.20	22.30	22.40	22.50	22.60	22.70	22.80	22.90	22
23	23.00	23.10	23.20	23.30	23.40	23.50	23.60	23.70	23.80	23.90	23
24	24.00	24.10	24.20	24.30	24.40	24.50	24.60	24.70	24.80	24.90	24
25	25.00	25.10	25.20	25.30	25.40	25.50	25.60	25.70	25.80	25.90	25
26	26.00	26.10	26.20	26.30	26.40	26.50	26.60	26.70	26.80	26.90	26
27	27.00	27.10	27.20	27.30	27.40	27.50	27.60	27.70	27.80	27.90	27
28	28.00	28.10	28.20	28.30	28.40	28.50	28.60	28.70	28.80	28.90	28
29	29.00	29.10	29.20	29.30	29.40	29.50	29.60	29.70	29.80	29.90	29
30	30.00	30.10	30.20	30.30	30.40	30.50	30.60	30.70	30.80	30.90	30
31	31.00	31.10	31.20	31.30	31.40	31.50	31.60	31.70	31.80	31.90	31
32	32.00	32.10	32.20	32.30	32.40	32.50	32.60	32.70	32.80	32.90	32
33	33.00	33.10	33.20	33.30	33.40	33.50	33.60	33.70	33.80	33.90	33
34	34.00	34.10	34.20	34.30	34.40	34.50	34.60	34.70	34.80	34.90	34
35	35.00	35.10	35.20	35.30	35.40	35.50	35.60	35.70	35.80	35.90	35
36	36.00	36.10	36.20	36.30	36.40	36.50	36.60	36.70	36.80	36.90	36
37	37.00	37.10	37.20	37.30	37.40	37.50	37.60	37.70	37.80	37.90	37
38	38.00	38.10	38.20	38.30	38.40	38.50	38.60	38.70	38.80	38.90	38
39	39.00	39.10	39.20	39.30	39.40	39.50	39.60	39.70	39.80	39.90	39
40	40.00	40.10	40.20	40.30	40.40	40.50	40.60	40.70	40.80	40.90	40
41	41.00	41.10	41.20	41.30	41.40	41.50	41.60	41.70	41.80	41.90	41
42	42.00	42.10	42.20	42.30	42.40	42.50	42.60	42.70	42.80	42.90	42
43	43.00	43.10	43.20	43.30	43.40	43.50	43.60	43.70	43.80	43.90	43
44	44.00	44.10	44.20	44.30	44.40	44.50	44.60	44.70	44.80	44.90	44
45	45.00	45.10	45.20	45.30	45.40	45.50	45.60	45.70	45.80	45.90	45
46	46.00	46.10	46.20	46.30	46.40	46.50	46.60	46.70	46.80	46.90	46
47	47.00	47.10	47.20	47.30	47.40	47.50	47.60	47.70	47.80	47.90	47
48	48.00	48.10	48.20	48.30	48.40	48.50	48.60	48.70	48.80	48.90	48
49	49.00	49.10	49.20	49.30	49.40	49.50	49.60	49.70	49.80	49.90	49
50	50.00	50.10	50.20	50.30	50.40	50.50	50.60	50.70	50.80	50.90	50

INDEXED

through p. 72

Distance of slope stake from side or shoulder stake for any width roadway, slope 1 to 1. If ground is nearly level, the cut or fill at side stake is located by the double entry method in left column and top row. The number in body of table in same row and column gives distance from side stake to slope stake. If ground is not level estimate the difference in elevation between the side stake and slope stake, lower target by this amount if cut, elevate if fill. Add this amount to cut or fill and find distance in table. Set up rod at this point, and line of sight should cut target. If it does not make the slight adjustment necessary.

TABLE XIII—CORRECTIONS FOR TANGENTS AND EXTERNALS

These corrections are to be added to the approximate values, found by dividing the tangent, or external, for a 1° curve (Table VIII) by the degree of curve, in order to obtain the true tangents, or externals. Intermediate values may be obtained by interpolation.

FOR TANGENTS ADD

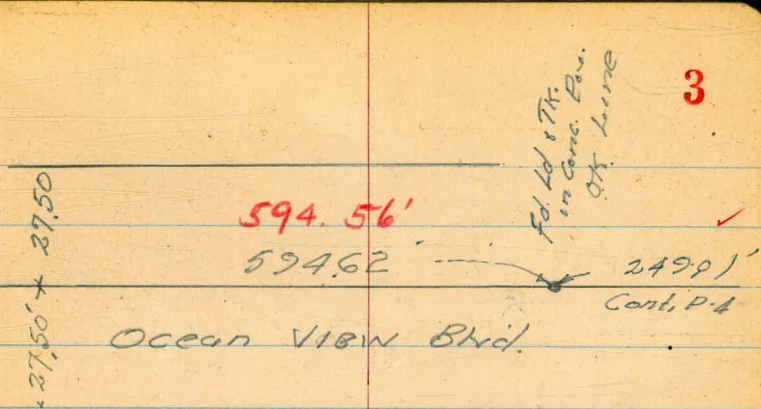
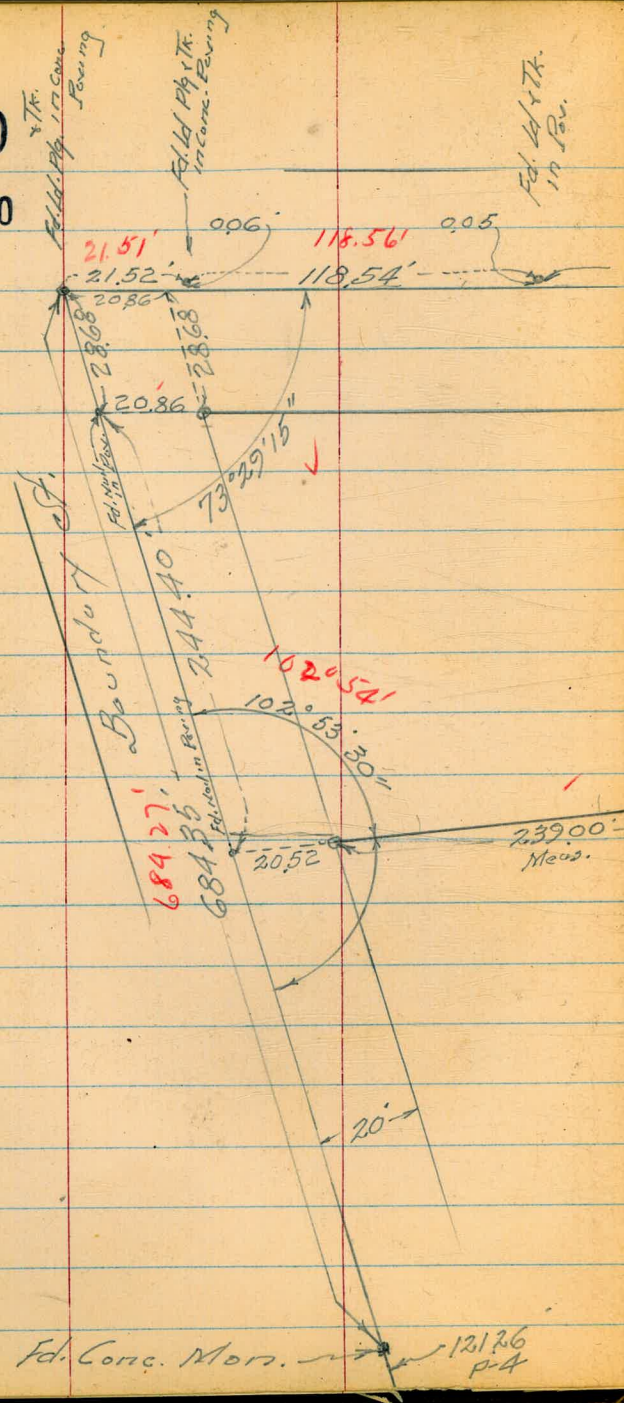
Central Angle	DEGREE OF CURVE													
	5°	10°	15°	20°	25°	30°	35°	40°	45°	50°	55°	60°	65°	70°
10°	.03	.06	.09	.13	.16	.19	.22	.25	.28	.31	.34	.38	.42	.46
15°	.04	.10	.14	.19	.24	.29	.34	.39	.45	.51	.53	.58	.63	.68
20°	.06	.13	.19	.26	.32	.39	.45	.51	.58	.65	.72	.79	.84	.90
25°	.08	.16	.24	.33	.40	.49	.58	.67	.75	.83	.90	.99	1.06	1.14
30°	.10	.19	.29	.39	.49	.59	.69	.79	.89	.99	1.09	1.20	1.29	1.39
35°	.11	.22	.34	.47	.58	.69	.79	.81	.92	1.04	1.29	1.42	1.54	1.66
40°	.13	.26	.40	.53	.67	.80	.93	1.06	1.20	1.34	1.49	1.64	1.79	1.94
45°	.15	.30	.44	.60	.76	.91	1.06	1.21	1.37	1.52	1.70	1.87	2.04	2.21
50°	.17	.34	.51	.68	.85	1.02	1.19	1.36	1.54	1.72	1.91	2.10	2.29	2.48
55°	.19	.38	.57	.76	.95	1.14	1.32	1.52	1.72	1.92	2.14	2.35	2.56	2.77
60°	.21	.42	.63	.84	1.05	1.27	1.49	1.71	1.94	2.17	2.38	2.60	2.83	3.07
65°	.23	.46	.69	.93	1.16	1.40	1.64	1.88	2.13	2.38	2.63	2.88	3.13	3.39
70°	.25	.51	.76	1.02	1.28	1.54	1.80	2.06	2.33	2.60	2.88	3.16	3.44	3.72
75°	.27	.56	.83	1.12	1.40	1.69	1.98	2.27	2.57	2.87	3.16	3.47	3.78	4.09
80°	.30	.61	.91	1.22	1.53	1.84	2.15	2.46	2.78	3.10	3.44	3.78	4.12	4.46
85°	.33	.66	1.00	1.33	1.68	2.02	2.36	2.70	3.05	3.40	3.77	4.14	4.55	4.89
90°	.36	.72	1.09	1.45	1.83	2.20	2.57	2.94	3.32	3.70	4.10	4.50	4.91	5.32
95°	.39	.79	1.19	1.55	2.00	2.40	2.80	3.20	3.61	4.02	4.40	4.98	5.38	5.83
100°	.43	.86	1.30	1.74	2.18	2.62	3.06	3.50	3.95	4.40	4.88	5.37	5.85	6.34
110°	.51	1.03	1.56	2.08	2.61	3.14	3.67	4.21	4.76	5.31	5.86	6.43	7.01	7.60
120°	.62	1.25	1.93	2.52	3.16	3.81	4.45	5.11	5.77	6.44	7.12	7.80	8.50	9.22

FOR EXTERNALS ADD

Central Angle	DEGREE OF CURVE													
	5°	10°	15°	20°	25°	30°	35°	40°	45°	50°	55°	60°	65°	70°
10°	.001	.003	.004	.006	.007	.008	.009	.011	.012	.014	.015	.017	.018	.020
15°	.003	.007	.010	.014	.018	.023	.027	.032	.035	.039	.043	.047	.051	.055
20°	.006	.011	.017	.022	.028	.034	.038	.045	.051	.057	.063	.070	.076	.083
25°	.009	.018	.027	.036	.046	.056	.065	.074	.083	.093	.106	.120	.127	.135
30°	.013	.025	.038	.051	.065	.078	.090	.103	.116	.129	.149	.170	.179	.188
35°	.018	.035	.054	.072	.086	.109	.131	.153	.175	.197	.213	.230	.247	.264
40°	.023	.046	.070	.093	.117	.141	.172	.203	.234	.265	.277	.290	.315	.341
45°	.030	.060	.093	.119	.153	.184	.216	.254	.289	.325	.351	.378	.411	.445
50°	.037	.075	.116	.151	.189	.227	.266	.305	.345	.384	.425	.467	.508	.550
55°	.046	.093	.142	.189	.236	.283	.332	.381	.420	.479	.530	.582	.641	.700
60°	.056	.112	.168	.225	.283	.340	.398	.457	.516	.575	.636	.697	.774	.851
65°	.067	.135	.204	.273	.343	.412	.483	.554	.625	.697	.711	.845	.922	1.01
70°	.080	.159	.240	.321	.403	.485	.568	.652	.735	.819	.906	.994	1.08	1.17
75°	.095	.182	.286	.383	.480	.578	.678	.777	.877	.977	1.07	1.18	1.29	1.39
80°	.110	.220	.332	.445	.558	.671	.787	.903	1.02	1.13	1.25	1.38	1.50	1.62
85°	.128	.259	.391	.524	.657	.790	.926	1.06	1.20	1.34	1.47	1.62	1.76	1.91
90°	.149	.299	.450	.603	.756	.910	1.07	1.22	1.38	1.54	1.70	1.87	2.03	2.20
95°	.174	.350	.522	.706	.885	1.06	1.25	1.43	1.62	1.80	1.99	2.18	2.38	2.58
100°	.200	.401	.604	.809	1.01	1.22	1.43	1.64	1.85	2.06	2.28	2.50	2.73	2.96
110°	.268	.536	.806	1.08	1.35	1.63	1.91	2.20	2.48	2.76	3.05	3.35	3.66	3.96
120°	.360	.721	1.08	1.45	1.82	2.19	2.57	2.95	3.33	3.72	4.11	4.50	4.91	5.32

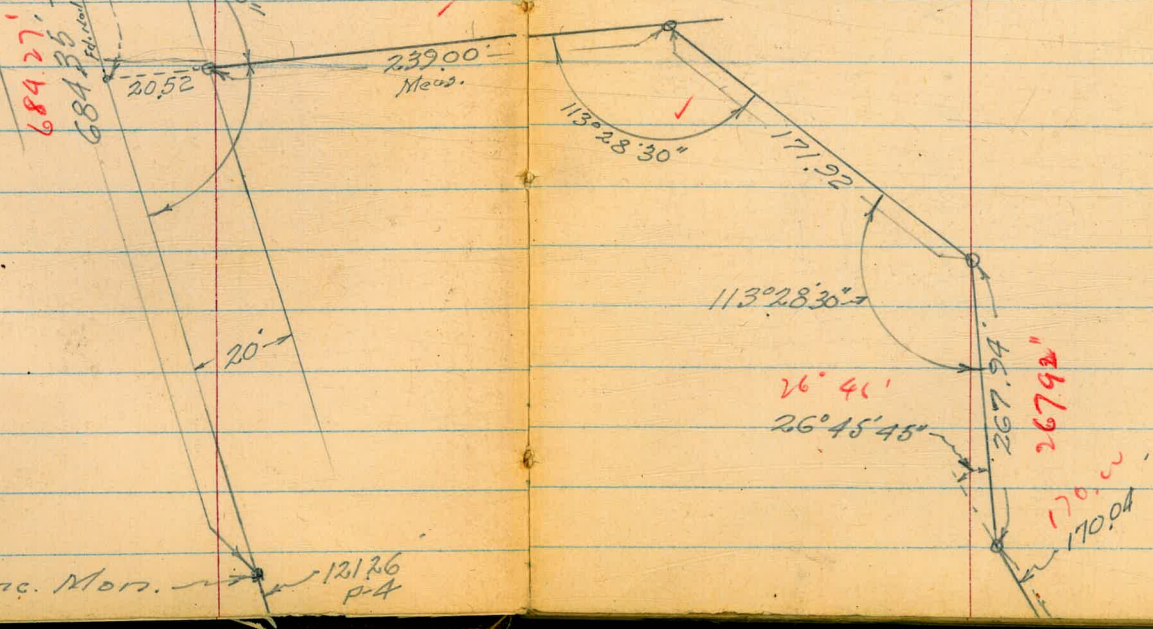
Ocean View Terrace 3#4
 La Jolla Lomas 5#6
 RICHMOND HILLS (Exterior Bdry) 7
 X- Sec. Congress St. 9-33
 OLIVER AVE - HAINES TO INGRAHAM 50
 Falcon - Arbor Dr 55
 X- Sec. Wallace - Congress to San Diego 59
 X- Sec. Full length Fulmar St. - 60th to Torrey 65
 PROPOSED DRAIN: Congress & WALLACE N'WLY } 76
 Also X- Sect. INT. Cong. & WALLACE }

INDEXED
W.K.
MAR 20 1950

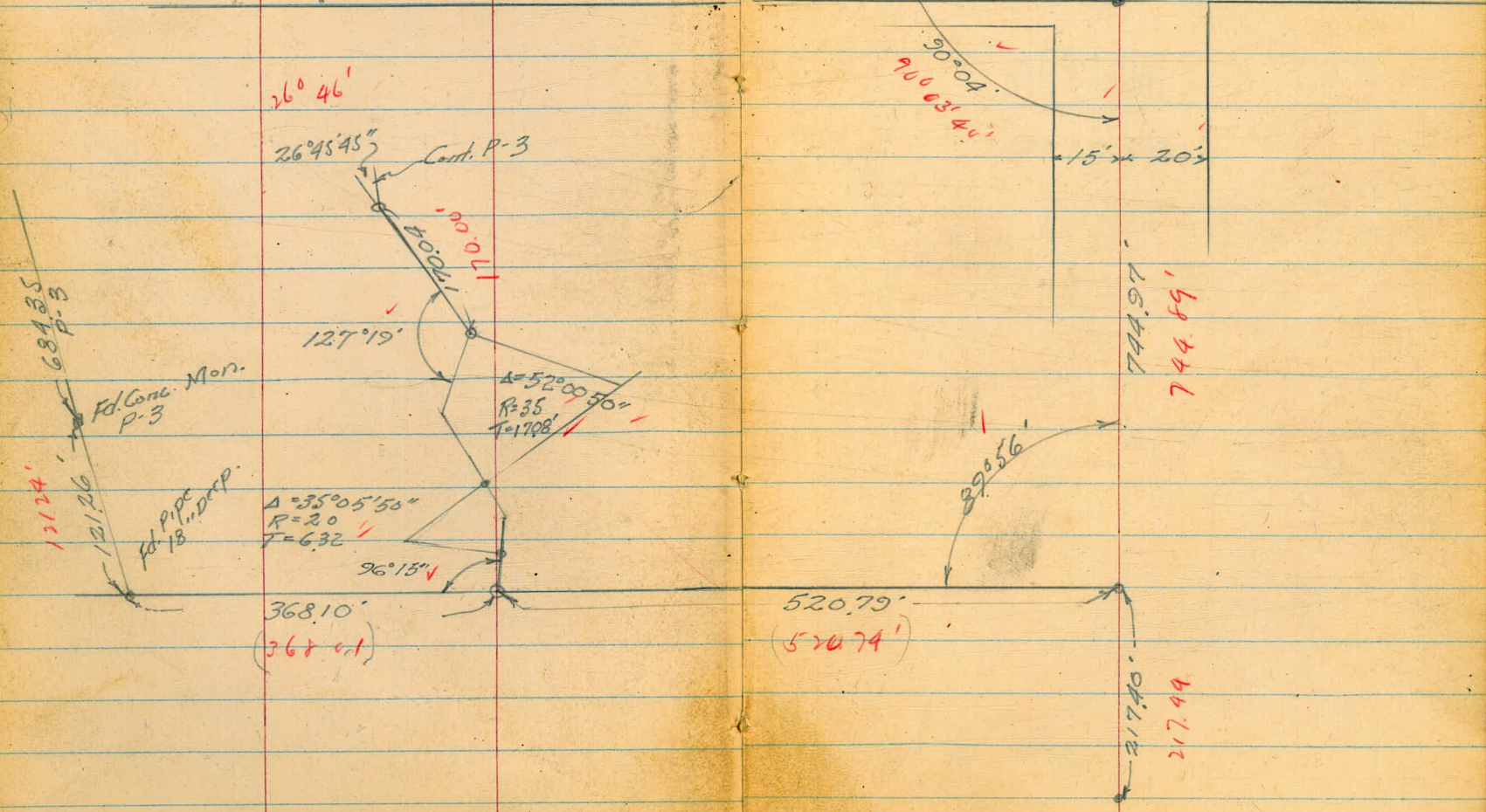
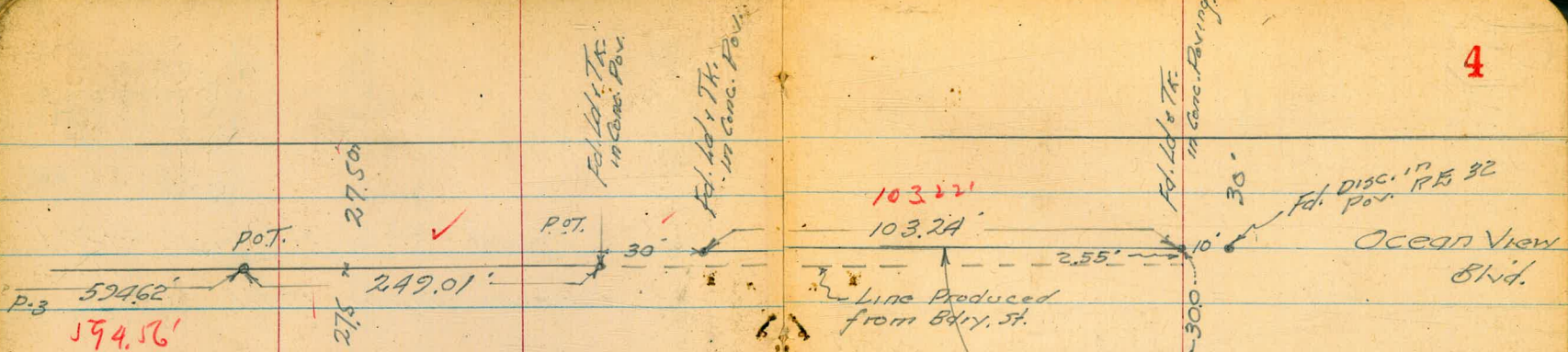


Field check outer
Bdry. line. -
Ocean View Terrace

Walker
110 23063 F. Gregory
P.C.P.C.
R-Session
3-17-50



F.d. Conc. Mass. 131.26
P-4



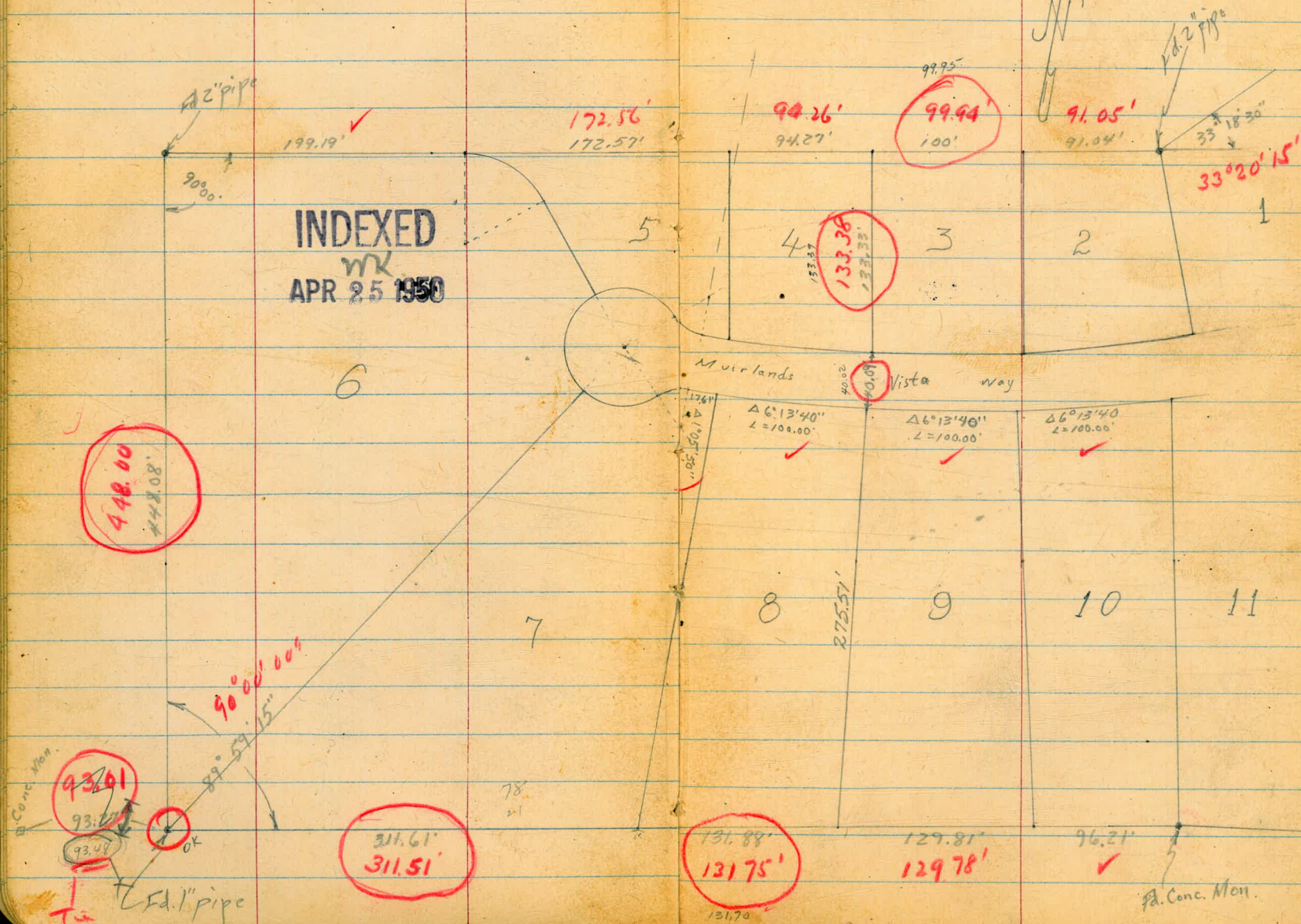
Roberts
Garber
Moore
Clark
4-17-50
W.O. 23104

LA JOLLA LOMAS

F9800C

5

External and Interior Field Check



INDEXED
APR 25 1950

448.00
442.08

99.94
100'

133.38

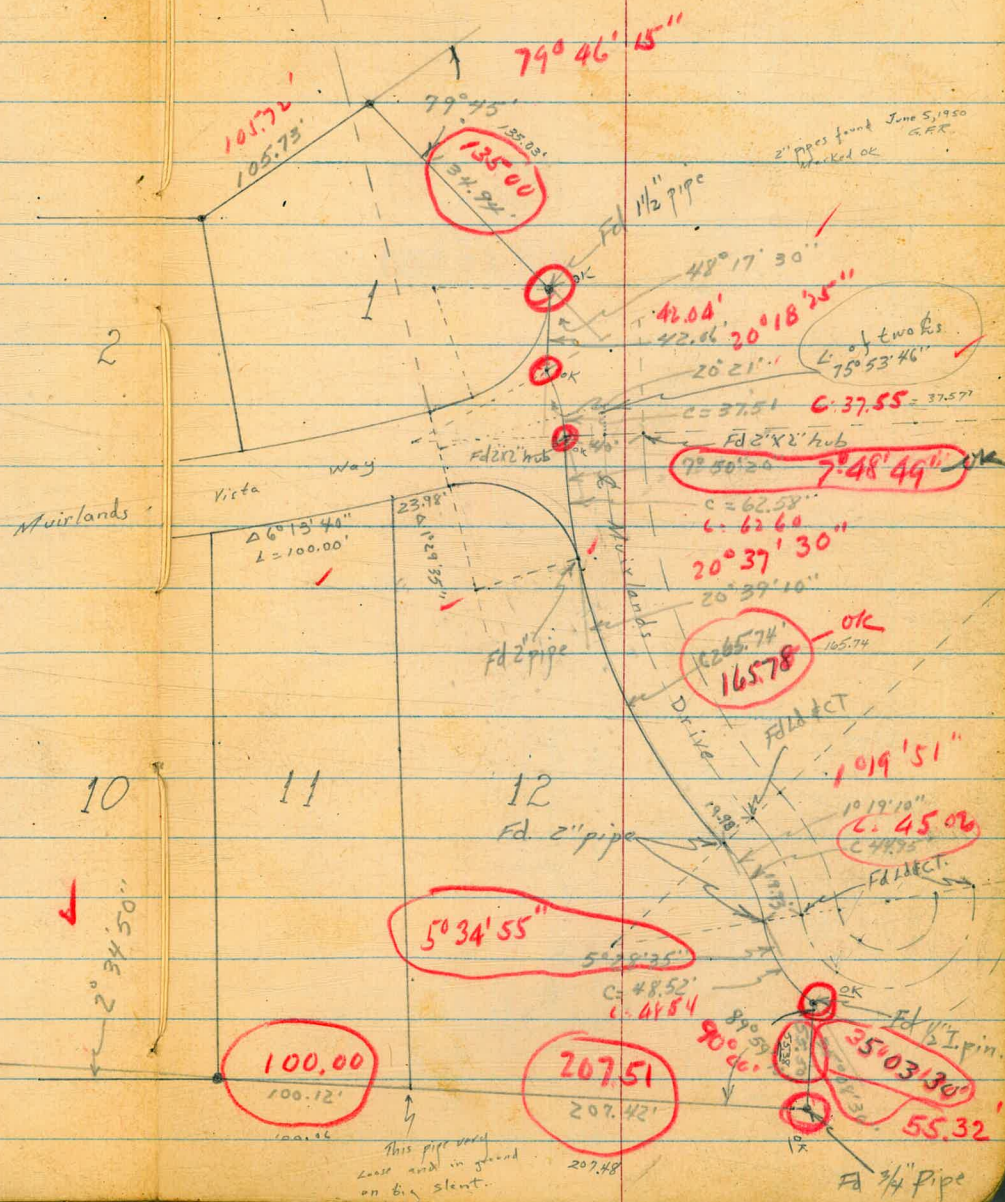
311.61
311.51

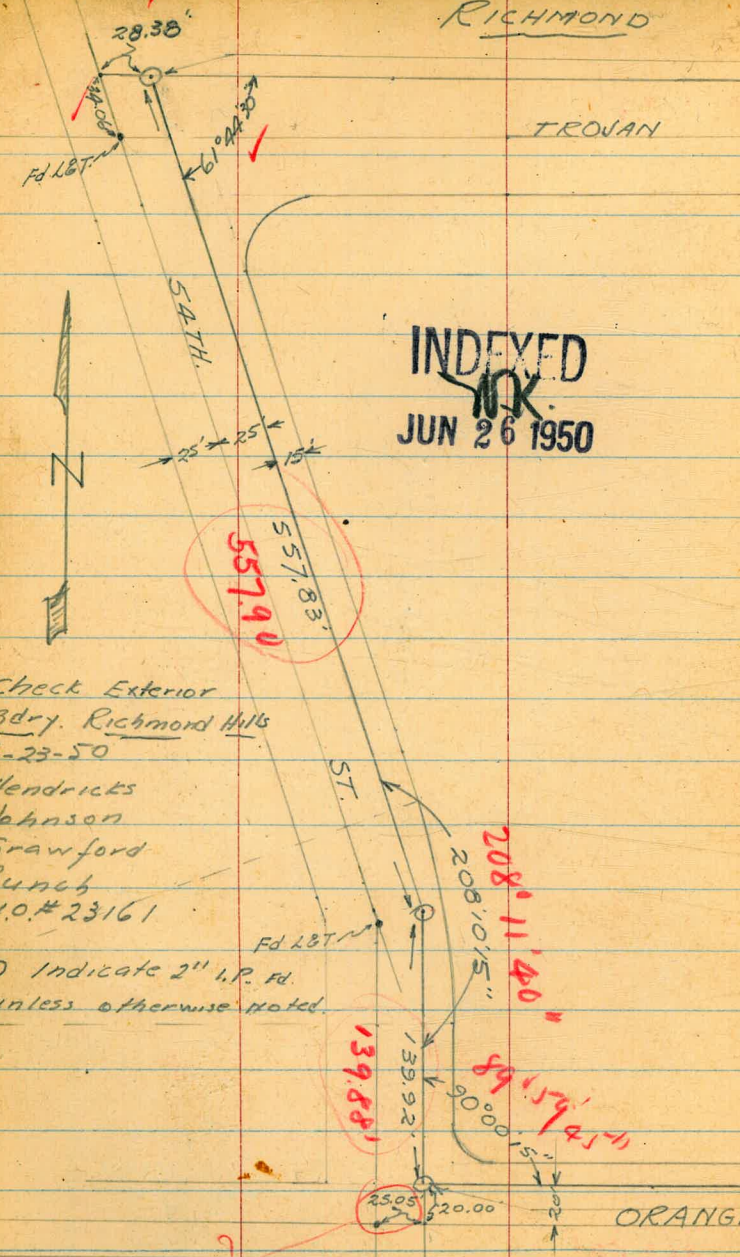
131.88
131.75

129.81
129.78

96.21

Pa. Conc. Mon.





INDEXED
 JUN 26 1950

Check Exterior
 Bdry. Richmond Hills
 6-23-50
 Hendricks
 Johnson
 Crawford
 Bunch
 W.O.# 23161

⊙ Indicate 2" I.P. Pd.
 Unless otherwise noted

RICHMOND

TROJAN

ORANGE

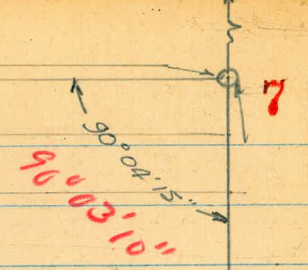
HILLS
 727.23'
 727.30'

AVE.

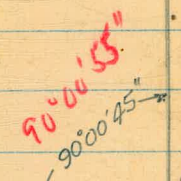
463.63'

463.59'

AVE.



630.74
 630.60



D. Smith
E. Sherman
G. Co. ta.

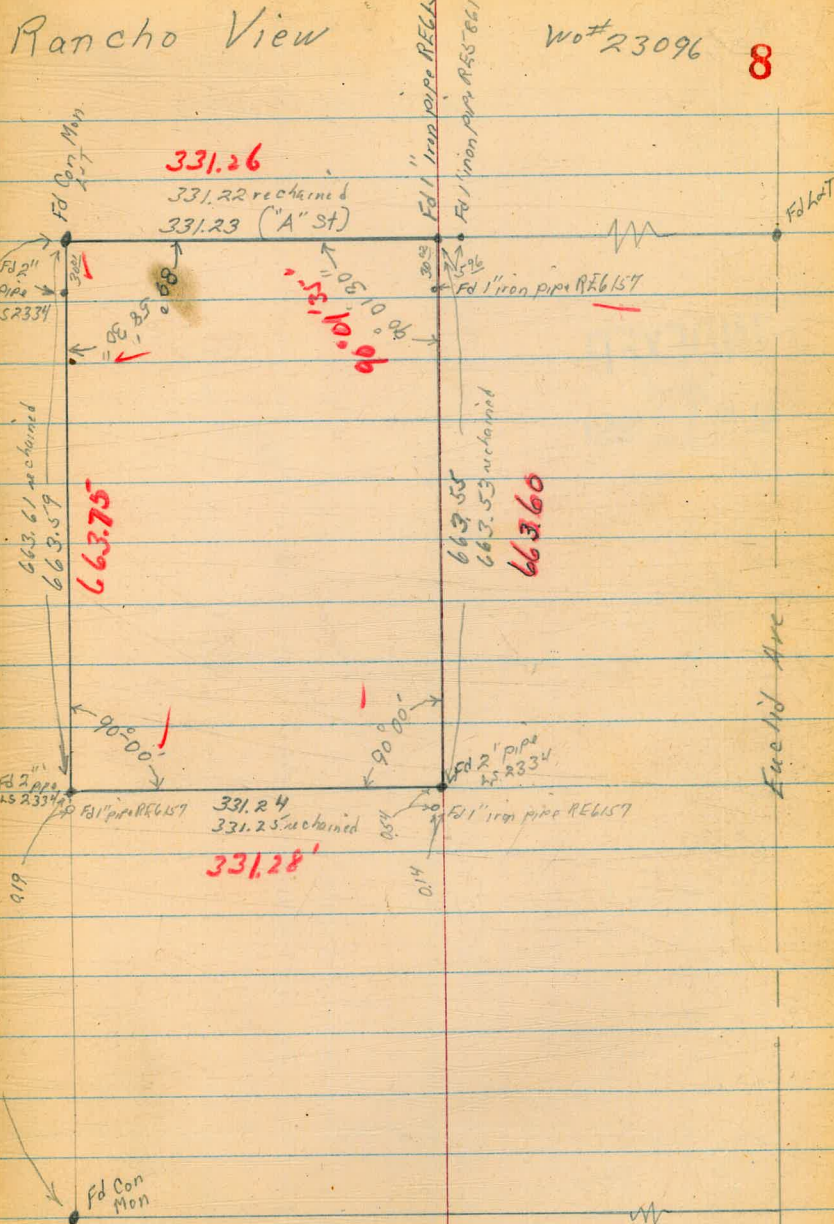
Field Check Exterior

INDEXED
WR
JUL 10 1950



1327.49'
R.O.S. 817
1327.54'
1327.56' re chained

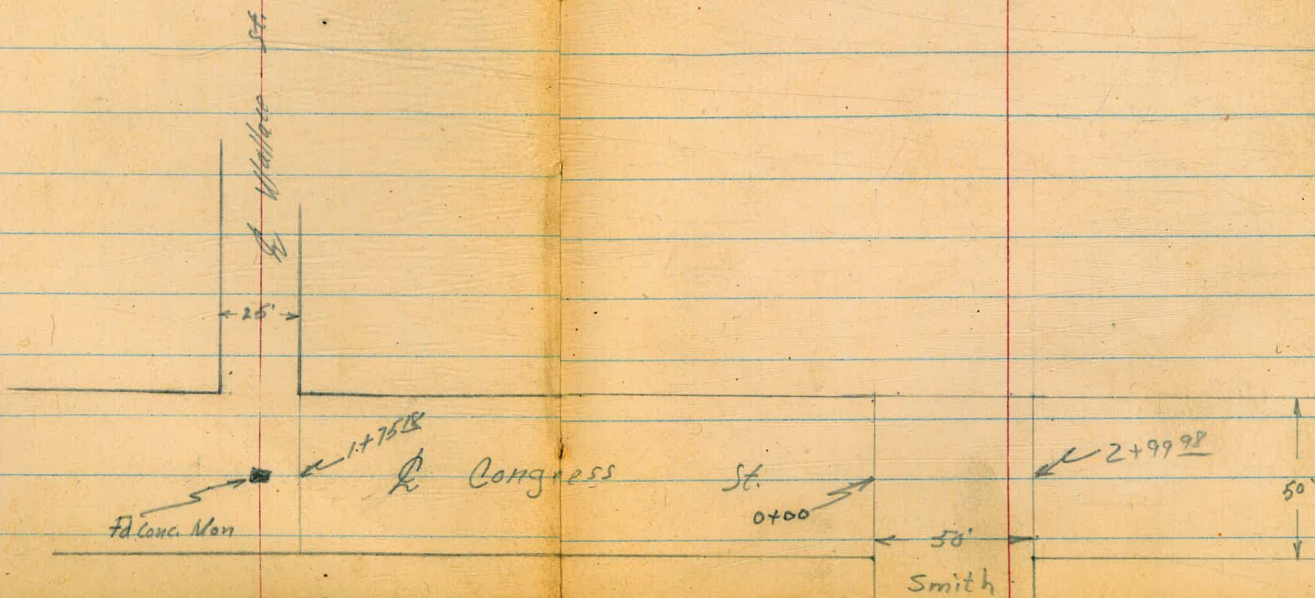
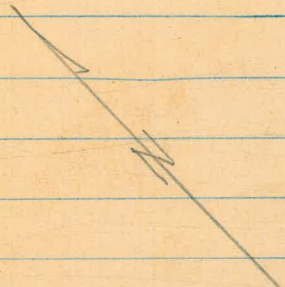
Note: 1" pipe
REGIST checks
R.O.S. 817.



Roberts
Moore
Clark
Aug. 9, 1950
WG 31709

X-Section Congress
(Ampudia to Wallace)
X-Section Mason, Twiggs, Harney & Conde
(San Diego to Congress)

INDEXED
AUG 18 1950
MK



San Diego

Ave

7' 7' 7'

21992

50'

St.

Mason

0700

7'

0722 hbs

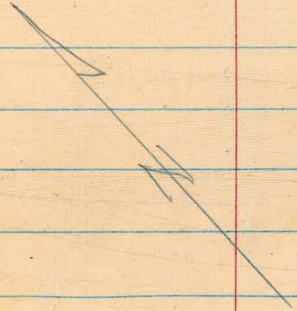
2199

18

0700

7'

7'



Triggs

Congress

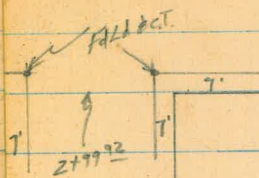
St

50'

0700

San Diego

Ave.

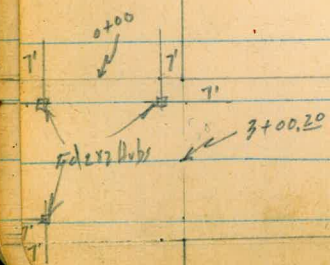


St

St

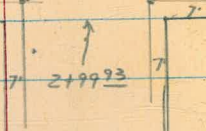
Twiggs

Harney



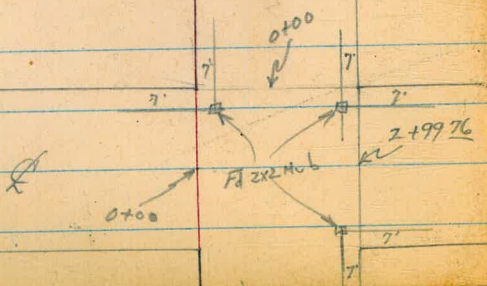
Congress

San Diego Ave.



50'

Comde



Congress St

50'

50'



← 50' →

St

Arista

Sketch set by D. Smith
see his X-Section
for Plat. Ed.

3700.14

Congress St

50'

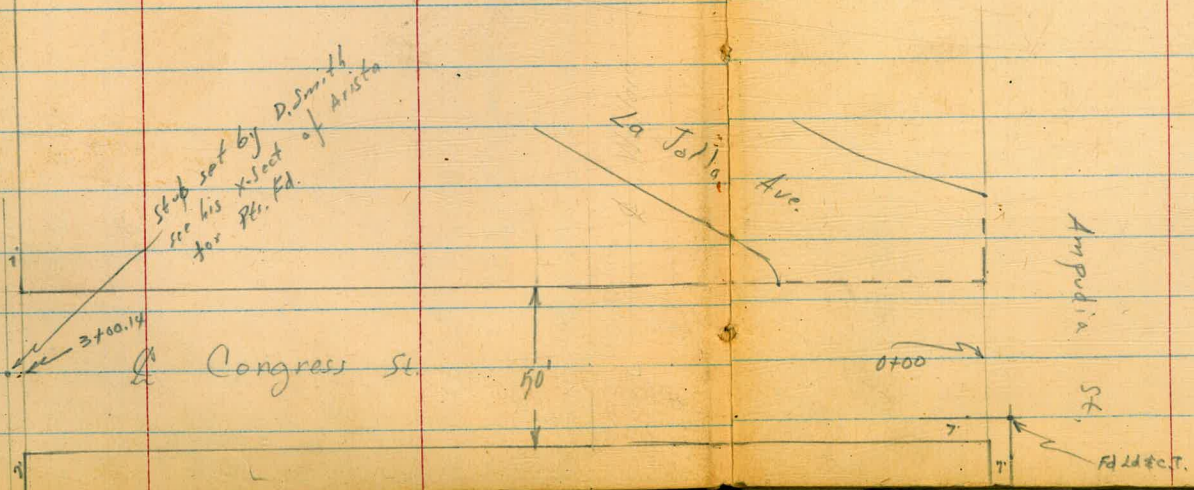
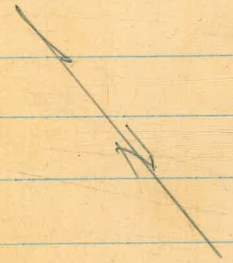
La Jolla Ave

Ampudia

St

0+00

Alignm^t



Levels on Congress
(Ampudia to Walker)

0+50

0+30 Edge A.C. in Center

0+11

End A.C. Pav. on Left
Curb End on Left

0+0

West Line Ampudia

Midpoint Curb Return (Ampudia & Congress)

0+10 Curb Line Ampudia

T.P.

454 45.65 ✓ 468

41.11

BM

10.31 45.79 ✓

35.48 ✓

27

Q

R

14

39.92
5.73
20
Edge
walk

40.7
5.6
15

38.5
6.2
14

40.0
5.7

40.90
4.75
17
Edge
AR

41.52
4.13
16

40.94
4.71
20
Edge
walk

41.0
4.7
16

40.4
5.3
15

41.05
4.60

41.95
3.72
36

41.73
3.92
15
cb

41.16
4.49
13
Gutt

41.85
3.82

41.32
3.33
27

42.05
3.00
25
Walk

42.25
3.40
15
cb

41.62
4.03
15
Gutt

42.00
3.45

42.59
3.06
19

42.23
3.42
12
Gutt

42.90
2.70
12
cb

42.25
3.37
cb

41.79
3.80
Gutt

41.11
4.54
65
cb

40.85
5.20
65
Gutt

42.23
3.42
25
cb

41.65
4.00
25
Gutt

42.11
3.54
11

42.05
3.00

42.82
2.83
12

42.29
3.16
59

sw cur. cb
2376 La Jolla Ave & Congress 45.65 ✓
S.P.P. La Jolla Ave & Arista

Congress Cont'd

140

0+84

18' RT Begin Cb. in Park Lot

0+84

148' Lt to 6" Drain from School

0+82

165' RT to Center Fire hydrant

0+78

17' RT. to Center P. Pole # D 5818LT

0+75

EC on Congress End Curb on Right

0+70

BC on La Jolla Ave.

Midpoint Curb Return La Jolla Ave & Congress

45.657

26

37.44
8.2
20
Edge
walk

37.5
8.2
15

36.6
9.1
13

37.2
8.5
13

37.1
8.6
13

39.0
6.7
18
Foot

40.35
5.30
18
cb

15
39.5
18
AC

39.76
5.89
25

37.97
7.6
20
Edge
walk

38.1
8.3
13

37.8
7.9
13

37.8
7.9
13

39.4
6.3
18
Foot

40.76
4.89
18
cb

39.5
5.77
18
AC
Park

39.5
5.50
25

39.76
5.89
25

37.33
8.32
148'
Invert

38.64
7.0
20
Edge
walk

38.8
6.9
17

38.2
7.3
14

38.5
7.2
14

38.7
7.0
15
cb
End

38.23
5.92
25
on
AC
Park Lot

40.08
4.77
25
cb

41.08
4.57
31
Edge
walk
at 31

40.74
4.91
34
Gutt

41.10
4.55
34
cb

44.85
4.80
cb

Cont. of AC
Fill for Drive way
Gutt

45.657

1775

33.71	33.1	32.6	30.0	32.8	34.7	34.8	33.6
5.7	5.8	6.9	6.5	6.7	4.8	4.7	5.7
20	17	13		13	17	23	23
Exp						on	Foot
Walk							

1762

18' Lt Center 24" Popper

1751

17' Lt Center P.Pole #2371

1746

Begin Bldg on Rt 25' Rt

35.13	34.4	34.8	34.6	31.1	35.4	31.4
4.34	5.1	4.7	4.9	2.4	4.1	2.1
20	12		12	19	25	25
Exp					Foot	Grf
Walk						

1739

19' Rt End Conv. Eb Park. Lot

35.50	35.3	34.7	35.2	35.0	38.1	35.4	38.51	37.76	39.20
3.97	4.2	4.8	4.3	4.3	1.4	0.87	0.96	0.71	0.27
20	15	12		11	17	19.7	19.3	25	35
Exp					Foot				
Walk									

1730

15' Lt 6" Drain from School

35.35
4.12
13
Invert

1713

18' Lt Center 18" Popper

T.P.

3.44 39.47X . 9.62 36.03

37.47X

45.65X

Congress Contd

2+98 17' Lt Center 14" Pepper

2+71 18' Lt Center 14" Pepper

2+50

2+45 18' Lt Center 18" Pepper

2+28 25' Rt End Bldg

T.P. 2.04 31.96T 955 29.92

2+17 17' Rt Center T.Pole #493521H

2+03 6' Doorway

2+0 17' Lt Center 10" Pepper

1+83 149' Lt 6" Drain from school

39.47A

Lt

C

Rt

17

29.75 29.4 28.6 28.4 28.7 29.9 30.4
 2.21 2.6 3.4 3.2 3.3 2.1 1.6
 20 16 13 15 25 35
 E.H.
 Walk

31.7 30.6 31.72
 0.3 1.4 0.24
 25 25 35
 0.1 Foot E
 Door
 on
 End
 Floor

31.96T

32.5 30.9 31.3 31.0 30.2 31.7 31.2
 7.0 8.6 8.2 8.5 7.3 4.82 8.2
 20 13 14 25 25 25
 Walk Grd Floor Foot

32.78
 6.69
 143
 Invert

39.47A

Congress Cont'd

170 { 174 Center P. Pole # 2419
175 Rt Center T. Pole # 4933 23 H

0+50

0+20 253 Rt & 2nd Conc. Walk

0+16 17R Center T. Pole # 4933 22 H

0+02 17L Center P. Pole # 2401

0+0 North or Wat Line Arista

Q Arista

3+00.14 South or East Line Arista End Walk on Left.

3196 T

17.

Q

R.

18

23.4	23.3	23.4	23.1	23.2	23.2	23.8	24.0	23.3
8.6	8.7	8.6	9.9	9.8	9.8	12	8.0	8.7
35	25	16	13		12	16	25	35

25.0	25.0	25.0	23.2	23.4	23.2	23.8	25.2	25.6
7.0	7.0	7.0	8.8	8.6	8.8	7.2	6.8	6.5
35	25	15	13		12	15	25	35

8.58
6.09
25th
walk

6.02
35th
walk

26.0	26.0	24.7	25.2	25.0	26.1	26.2
6.0	6.0	7.3	6.8	7.0	5.9	5.8
25	16	13		11	17	25

26.2	25.8	25.9	26.9	26.0	26.1	26.7
5.8	6.2	6.1	5.7	6.0	5.9	5.3
50	25	15	14	19	25	50

27.55	27.40	27.6	26.6	27.1	26.8	28.2	28.3
4.4	4.6	4.1	5.4	4.9	5.2	3.1	3.7
25	20	14	12	13	13	20	25

3196 T

2+17 34' Lt & Outlet Culvert

13.4
11.60
34
Invert

16.35
8.62
34'
Head Wall

2+0

14.1 14.5 20.5 20.6 20.0 20.2 20.4 21.2 21.5 22.0

10.9 10.5 4.5 4.4 5.0 4.8 4.6 3.8 3.5 3.0

50 39 25 15 13 12 15 25 35

1+84 175' Rt Center T. Pole #493324H

1+76 38' Rt & Inlet Bay Storm Drain

20.73 21.25 21.75

4.27 9.75 3.25

38 Inlet Flow Line 38 Invert 24" Pipe 34 Top Box

1+50

16.6 17.3 21.1 21.7 21.0 21.3 21.1 22.6 22.3 22.5

8.2 7.7 3.7 3.3 4.0 3.7 3.9 2.4 2.7 2.5

50 36 25 15 13 12 16 25 35

T.P. 3.66 25.00 X 10.62 21.34

25.00 X

1+40

23.7 22.3 22.3 21.7 21.4 21.3 22.9 22.0 22.5

8.8 9.7 9.7 10.9 10.6 10.7 9.1 9.0 9.5

50 25 15 13 16 13 17 25 35

1+12 158' Rt & 3' Conc Walk

23.25 23.46

8.91 8.50

15' Walk 25' Walk

31.96 X

31.96 X

0+05 17⁵' Lt center P.Pole #2451

0+0 North or west Line Conde

Q Conde

T.P. 2.29 2406K 3.23 21.77

2+99⁷⁶ South or East Line Conde

2+95 17⁵' Rt Center Fire Hydrant

2+88 17⁵' Rt Center T.Pole #493325H

2+50 26³' Rt L⁴ Cone. Walk

2+24 17⁵' Lt Center P.Pole #2439

17.8	15.3	18.7	15.1	18.6	19.0	19.7	20.1
6.3	5.8	5.4	6.0	5.5	5.1	4.4	4.0
35	25	15	19		15	25	35

14.1	16.1	17.6	18.4	20.0	20.6
10.0	8.8	6.5	5.22	4.1	3.5
100	50	25	15	25	50

Fire hydrant 2406

16.30	15.40	19.1	18.5	19.1	19.3	19.9	21.5
8.7	6.6	5.9	6.5	5.9	5.7	5.1	3.5
50	25	14	12		13	25	50

14.0	14.8	18.6	19.3	19.8	19.2	19.5	19.7	20.4	21.0	21.3	21.5
11.0	10.2	6.4	5.7	5.2	5.8	5.5	5.3	4.1	4.0	3.87	3.32
50	40	25	23	14	12		13	16	25	26.2	35

walk

1436 253 L₆₁₄ TO L_{INDE} CONC. MARK

19.75
4.31 4.26
35 253
CONC. CONC.

1408 37² L₁ TO SINGLE GARAGE - DIRTY FLOOR

5.1 19.0
37
DIRTY FLOOR

1400 { 17² L₁ TO L₁ # 088069H PHONE POLE
17² L₁ TO L₁ NO # POWER POLE
24² L₁ TO STARTS PENETRANCE

18.9 19.3 19.4 19.6 19.6 19.3 19.5
5.2 4.8 4.7 4.5 4.5 4.8 4.6
35 25 12 13 25 35

0492

18.5 19.7 19.2 19.5 19.6 20.3 20.5
5.6 4.9 4.9 4.6 4.6 3.8 3.8
40 25 12 13 25 35

0487

16.5 19.9 19.2 19.4 19.4 20.3 20.5
7.6 4.7 4.9 4.7 4.7 3.8 3.6
43 25 13 13 25 35

0468 39.5 L₁ TO HOUSE

19.60
4.26
39.5
HOUSE

0457 25² # ⊕ - 12' CONC. DRIVE

16.6 16.8 19.0 18.7 19.1 19.3 20.1 20.0 20.50
7.5 5.3 5.1 5.1 5.0 4.8 4.0 4.06 3.56
38 31 25 13 13 25 25.9 35.0
CONC.

2406T

2406T

1470 784 2864 3.26 20.80

2407 752 Lt. to 15 Wide Conc. Road - 6' over all.

2400 17th Lt. to #2479 POWER POLE

1499 17th Lt. to #4880704 PHONE POLE

1492 25th Lt. to 9 wide Conc. Drive

1475 257 Lt. to 2 wide Conc. Walk

1455 17th Lt. to DEADWOOD (POLE ANCHOR)

1450 752 ^{LEFT} AND ANCHOR FENCE

24.06 π

2864 ✓

21.8
2.30 2.60
35 25

21.6 21.1 20.5 20.8 20.6 21.6 21.8
2.5 3.0 3.6 3.3 3.5 2.5 2.3
35 25 13 13 25 25 35

20.44 20.56
3.62 3.50
35 25

21.6 21.68
2.50 2.38
25 25

20.0 20.2 20.0 20.7 20.0 20.5 21.1 21.0
4.1 3.9 4.1 3.9 4.1 3.6 3.0 3.1
35 25 12 13 16 25 35

24.06 π

0408 17-Rt. to E 4185794 Phone Pole

04045 16⁸ Lt. to E #2501 Phone Pole

0400 W.L. HARNEY ST. 21⁹ Street Wire Pole

24.4	24.3	22.7	24.4	23.8	24.1	24.34
42	43	49	47	48	45	43
35	25	14		12	25	35

E HARNEY ST. INTERSECTION COVERED WITH TOWER CORDON

24.20	24.1	24.2	24.2	24.3
4.4	4.5	4.4	4.4	4.3
50	25	M.H.Rim	25	50

249948 E.L. HARNEY ST.

23.7	23.2	22.9	23.4	22.8	23.5	23.0	24.04
5.4	5.4	5.7	5.2	5.8	5.1	5.0	4.6
35	25	14		14	20	25	35

2486 17-Rt. to #4088074 Phone Pole

2450

22.5	22.1	21.9	21.5	21.5	21.2	22.0	22.2	22.4
6.1	6.5	6.7	7.1	7.1	7.4	6.6	6.4	6.2
35	25	16	14		14	18	25	35

28.64 π

28.64

1428 17th Ln. to h #2531 POWER POLE

1431 253 R. to h 25 WIDE CONC. WALK

1407 15th Lt. to Dev. way SPANNING 9.5 WIDE
IN CURB & WALK

1401 248 Rt. Lind's High Picket FENCE

1400 15th ST. to h CONC. CURB & WALK - 7.5' FROM
CURB FACE TO BACK EDGE OF WALK.
17th Lt. to h #5059694 PAVEMENT

0150

0146 248 Rt. Lind Wire FENCE - Spans 6' High 2
PICKET FENCE.

0133 16th Lt. to 2 DEADMEN (POLE ANCHORS)

28.64 T

23.45
5.19 5.23 5.85
225 20 15
CONC. WALK OR. H.P.

24.53 24.64
4.11 4.00
25.3 35
CONC. WALK CONC. WALK

23.45 23.37 23.35 23.0 23.2 23.9 23.5 24.3 24.6
5.19 5.27 5.29 5.6 5.4 5.6 5.1 4.3 4.0
225 175 15 15 13 25 28 35
WALK WALK CURB DIRT COFFER
24.5 24.5 23.6 23.2 23.4 23.2 24.0 24.0
4.1 4.1 5.0 5.4 5.2 5.4 4.6 4.6
35 28 25 13 13 25 35

28.64 T

CONCRETE CONT.

2450

24265 25' Lt. to 4' Wide Walk & 2 Steps

2402 16' Lt. to 4' No. Power Pole

2400 15' Lt. to 3' Wide Walk - 5' Walk - 75' from
Curb & Comb. 5' 1/2 R. 1.5' wide

TD 4.70 26.67 6.17 22.17

1478 22' Lt. to 4' 3" Wide CONC. Walk.

1458 25' Lt. to 4' CONC. DRIVEWAY

1450 15' Lt. END CONC. CURB & WALK - 75' DRIVEWAY

28.64 π

Lt. \$ Rt.

24

24.1	23.6	22.6	22.1	22.0	21.65	21.56	22.22
26	31	4.1	4.6	47.50	5.11	4.45	
35	26	25	14	135	15	CURB	
2404	24.00	23.86	22.72	CONC. CURB	CONC.	15	
2.63	2.67	3.31	3.95				6.9
35	27.7	26.5	25.1				
WALK	STEP	STEP	WALK				

4.0	2.9	2.8	2.4	2.4	2.106	2.197	2.161	2.71	2.719
27	38	39	4.3	43.46	4.70	4.06	3.96	3.89	
35	25	15	13	135	15	15	175	22.5	
				CONC. CURB	CONC.	CONC.	CONC.		
									6.9
				26.67					

23.20	23.23	23.25	24.54
5.34	5.31	4.89	4.10
22.8	25	25	35

23.72	24.47
4.92	4.22
25	35

23.13	23.08	23.04	22.6	22.8	22.9	23.5	24.6	24.6
5.51	5.56	5.60	6.0	5.8	5.7	5.1	4.0	4.0
22.5	17.5	15	15	15	25	29	35	

28.64 π

CONGRESS CORN.

L1.

R.

R1.

25

E of Triggs St.

22.0	21.6	21.7	22.00	21.1	21.3	22.1
47	5.1	5.0	467	5.6	5.4	46
50	25	15	N.Y. RIM	14	25	50

East of 1/2 Conc Corner

21.15	21.75
5.52	4.92
15	50

East Curbing of Triggs St.

22.4	21.91	21.67	22.0	21.2	21.12	21.71	21.67	22.32
43	48	51	47	55	5.55	4.96	500	225
50	25	15		15	25	25	50	50
				R.C. CONC.	S.C. CONC.	CONC.	CONC.	CONC.

Midpoint Conc Return

21.17	21.11	21.71
5.50	5.56	4.96
CONC. BUY	CONC.	CONC.
2256	607	

340020 E.H. Triggs St. + B.C. of Conc Return on CONGRESS on Right.

22.7	21.2	21.7	22.0	21.26	21.21	21.82
40	45	50	47	5.21	5.46	4.85
35	25	14		13.5	15	15
				CONC. CONC.	CONC.	CONC.

2459 25' L. to E 3' Wide Conc Walk.

22.54	22.82
4.15	2.85
251	35

2452 17 1/2' L. to R #2581 POWER PAUL

26.67

26.67

ASPH 280 25.35 412 22.55
 CORNER of Paved
 261 Concrete

25.35

1400 182 Lt. to R. GUY POLE No. 4
 173 Lt. to R. #2631 POWER POLE

21.5	21.3	21.2	20.4	20.5	20.2	21.1	21.3	20.8
52	5.4	5.5	6.3	6.2	6.5	5.6	5.2	5.9
35	25	16	13	13	15	25	35	

0477 248 Lt. to R. of 2.5" WIDE CONC. WALLS.

21.79	21.56
4.88	5.11
35	24.8
22.21	21.80

0459 248 Lt. to R. of 2.5" WIDE CONC. WALLS.

4.46	4.87
35	24.8

0450

22.1	21.5	21.2	20.7	21.0	20.5	21.5	21.4	21.2
46	5.2	5.5	6.0	5.7	6.2	5.2	5.3	5.5
35	25	17	13	13	15	25	35	

0433 172 Lt. to 30" WIDE SWORD PAVEMENT.

0400 W.H. TWIGGS ST.

22.4	21.9	21.2	21.6	20.7	21.6	22.4	22.7
43	4.8	5.5	5.1	5.8	5.1	4.3	4.0
35	25	13	13	15	25	35	

26.67 π

26.67 π

Aug. 11, 50
Recess - Camp
H. Moore to
Clark &
Lynchard?

Congress St. Camp.

2423 16³ Lt. to DEADMAN (Pine ANCHOR)

2421 17² Lt. to 18" Fan Palm

2406 24⁸ Lt. to 1/2 of 2" Wide DENNEY Ribbix -
OVERALL WIDTH 62

2400 17² Lt. to #P2671 POWAR Palm

1495 16⁵ Lt. to 30" Fan Palm TREE

1468 16⁵ Lt. to 30" Fan Palm TREE

1450

1419 25²⁴ Lt. to 1/2 of 3⁵ WIDE FRAGSUNG WALK

2535 ∇

Lt.

Lt.

R.

27

20.4
4.91 4.80
24.8 35

20.7 20.5 20.7 19.6 19.8 19.4 20.1 20.3 20.5
4.7 4.9 5.2 5.8 5.6 6.0 5.3 5.1 4.9
35 25 15 12 13 18 23 35

20.9 20.9 20.5 19.9 20.7 19.8 20.8 20.7 20.3
4.5 4.5 4.9 5.5 5.2 5.6 4.6 4.7 5.1
35 25 15 13 13 15 25 35

21.25
4.10
25

2535 ∇

CONGRASS ST. CAMP

1400 End Wire Fence - 25th Rt.

04815 25th Rt. to E of 2' Wire Conc. Walk

0450 18th Rt. to E of JP2711 Power Pole

0400 W. of Mason St. 24th Rt. Begin Wire Fence

E of Mason St.

TP 4.44 23.36 6.43 18.92

2499.58 E. of Mason St. 24th Rt. End of High
Kath Fence.

25.35 ↑

Lt.

L

Rt.

29

19.0	15.8	17.9	17.5	16.3	16.8	16.6	17.6	18.3	18.9
4.4	4.6	5.5	5.9	7.1	6.6	6.8	5.8	5.1	4.5
35	26	25	17	14		13	19	25	35

18.96	19.72
4.40	4.64
35	25.5

19.2	18.5	18.3	16.7	17.5	17.0	18.0	18.3	19.0
4.2	4.9	5.1	6.5	5.9	6.4	5.4	5.1	4.1
35	25	17	14		13	17	25	35

19.7	19.2	18.5	17.7	18.2	17.7	18.5	18.9	19.3
3.7	4.2	4.9	5.7	5.2	5.7	4.9	4.5	4.1
35	25	15	13		14	13	25	35

19.0	18.6	18.82	18.3	18.5	18.9
4.4	4.8	4.54	5.1	4.9	4.5
50	25	M.H.R.M	14	25	50

20.0	20.0	19.5	18.8	19.0	18.5	19.4	19.9	20.2
5.4	5.4	5.9	6.6	6.4	6.9	6.0	5.5	5.2
35	25	17	13		12	17	25	35

25.35 ↑

CONGRESS ST. - CONT.

Lt.

£

Rt.

30

2162 248 Rt. POWER POLE - BEGIN.

2130

	11.9	19.9	16.3	16.1	14.8	15.1	14.8	16.0	16.6	17.1
	11.5	10.1	7.1	7.3	8.6	8.3	8.6	7.4	6.8	6.3
	50	35	25	17	13		11	16	25	35

2113 1926 70R #P2781 POWER POLE

2100

	16.6	16.9	16.5	15.2	15.5	15.1	16.2	17.0	17.7
	6.8	6.5	6.9	8.2	7.9	8.3	7.2	6.4	5.7
	50	25	17	13		11	16	25	35

1455 156 1/2 70 R of 15 WIDE BRICK & CONC. WALK

	19.15	16.89
	6.21	6.49
	25	15.6

1450

	17.5	17.1	16.8	15.8	16.1	16.1	17.0	17.8	18.8	17.9
	5.9	6.3	6.6	7.6	7.3	7.3	6.4	5.6	4.6	5.5
	30	25	18	13		12	17	25	30	35

1424 162 1/2 70 R #2741 POWER POLE

23.36 T

23.36 T

CONCRETE IN - CONT.

0400 W.H. of Smith St. FROM LEFT ONLY

3439 18¹/₂ in. dia. of 4 P2801 PIONEER PILE

E. St. E. of Seward St. - LEFT ONLY

3408 20¹/₂ R. END PIONEER PILE

34025 16¹/₂ in. dia. #P2799 PIONEER PILE

249925 E.H. of Seward St. - FROM LEFT ONLY

2482 16¹/₂ R. dia. of 35 WIDE CONC. WALK

TP 401 17.98 9.39 13.97

2465

23.36 *

LT.	E.	R.
6.5	12.9	13.5
9.2	12.6	14.0
10.0	5.2	14.0
11.8	5.4	14.0
12.5	14	25
11.5	14	35
9.8	14	35
8.0	14	35
5.2	14	35
5.5	14	35
5.2	14	35
5.4	14	35
14	25	35
25	13	10

31

5.4	9.3	12.7	13.9	13.0	13.49	13.1	14.5	15.1	15.2
12.1	8.7	5.1	4.1	5.0	4.19	4.9	3.5	2.9	2.8
7.5	5.0	2.5	1.8	1.4	M.H.R.M.	11	18	25	35

9.3	10.2	15.3	15.3	13.5	13.8	14.1	15.6	16.0
8.7	7.8	2.7	2.7	4.5	12	3.9	2.4	2.0
5.0	4.0	2.5	1.9	1.3	11	15	35	35
						15.76	15.99	16.66
						2.22	1.99	1.32
						16.9	21	21
						BASE OF CONC.	TOP OF CONC.	TOP OF SHAP

17.98

10.0	11.6	15.8	15.7	14.3	14.5	14.6	15.8	16.2	16.9
13.4	11.8	7.6	7.7	9.1	8.9	8.8	7.6	7.2	6.5
5.0	3.7	2.5	1.7	1.4	12	16	25	35	35

23.36 *

1435

3.1	3.2	3.8	4.0	3.2	3.2
55	54	48	46	54	54
35	25		17	25	25

1400

2.7	3.2	4.5	4.5	4.9	3.9
59	54	41	41	37	47
35	25	12		25	35

TP 361 8.61 12.98 5.00

8.61

0480 16^{1/2} hr. to Dead Man (Pine grove)

2.9	4.2	5.0	5.0	5.7	6.0	7.1	6.8
151	138	130	124	123	114	109	119
30	25	16		13	15	25	35

04565 16^{1/2} hr. to #2811 Pine Park

0442

3.0	4.89	7.3	7.8	8.9	9.3	10.4	11.3	11.9	13.7	14.3
150	139	107	102	91	87	76	67	61	43	47
65	15	25	22		12	12	25	26	35	

13.82 13.79

416 419

248 298

0423 24^{1/2} hr. to 8th Wick Conc. Park

17.98 A

17.98

SIDE SHOT
SNBP Condor &
San Diego Ave.

CONCORD ST CORR.

4.80 32.07

W. \$ L.

33

SN 7 HARNET +
LADY M. San Diego Ave.

6.06 36.87 5.78 30.81

TP-SH
7 LEAD TACK
San Diego Ave.

7.64 36.59 3.65 28.95

MASONRY +
7 SNBP San Diego Ave.

10.11 32.60 3.57 22.19

TP 9.55 26.06 2.84 16.51

TP 11.20 19.35 0.46 8.15

W.h. of WALLACE ST.

	3.6	2.8	3.1	3.1	2.9
50	58	55	55	57	
50	25		25	50	

1475^{1/2} E.h. WALLACE ST. + 16^{1/2} Lts. to DEADMAN.

	2.7	3.0	3.3	3.1	3.5	3.4	3.9
59	56	53	55	51	52	47	
50	25		17	25	25	50	

1459 16^{1/2} Lts. to #2823 POWER POLE.

8.61 π

8.61 π

SE. 30-ARISTAT
LA TOMA AVE

3.15 35.45 = 35.48

TP

6.11

38.60

4.38

37.49

36.87 \times

Roberts
Aug 16, 1950
W.O. 31709

X- Sect. Mason St.
(Congress to San Diego)

INDEXED
W.K.
AUG 18 1950

24

2

RT

35

0+82 248' RT to & 75' Conc. Drive

20.35
436
244
conc.
431
33
conc.

0+75 24' End Fence on Lt.
Begin curb & walk on Lt.

19.35 19.32 19.25 19.7 19.2 19.0 19.4 20.1 20.4
5.36 5.39 5.46 6.0 5.5 5.7 5.3 4.6 4.3
22.2 17.2 13 15 13 13 15 25 35
Edge walk Edge walk C.C. 6 ft. dirt

0+73 15' RT to Deadman

0+64 16' RT to Deadman

0+51 16' RT to Center P.Pole # P3959

0+50

19.4 19.3 19.2 19.4 19.1 18.8 19.6 20.3 20.5
5.3 5.4 5.5 6.3 5.6 5.9 5.1 4.4 4.2
35 25 18 14 13 13 18 25 35

0+0 { 24.6 Lt. Begin Wire Fence
24.5 RT Begin Lattice Fence
North line Congress

17.9 17.6 17.8 18.4 18.4 19.5 20.0
5.8 6.1 6.9 6.3 6.3 5.2 4.7
25 18 16 13 13 15 25

BM 2.22 24.71 X 22.49 S.W. B.P. Mason & San Diego See pg. 33 this F.B. 24.71 X

22.06
2.65
22.8
cnc.

2.01
2.6
Floor

2+33 22' Rt. Begin Conc. Apron 2 Car Garage

2+0

20.0 20.0 20.3 20.3 19.9 20.4

4.7 4.7 4.4 4.4 4.8 4.3

35 25 22.5 17.5 14 13

20.4 21.0 21.1 21.7

4.3 3.7 3.6 3.0 2.8

13 16 25 25 35

1775 25' Rt End House

1735 23' Rt to Eugenia Tree

1752 24' Rt Begin Calif. type House

20.1 20.1 20.1 19.6 20.1

4.6 4.6 4.6 5.1 4.6

35 25 16 13 16

19.9 20.7 21.0 21.6

4.8 4.0 3.7 3.7

13 16 25 35

1751 14' Rt to Center P. Pole # JP 3967

Begin AC. Walk 2"

End of Curb & Walk on Lt.

1750

19.3 19.8 19.8 19.78 19.4

5.4 4.87 4.91 4.93 5.3

35 22.5 17.5 15 15

Edge Walk Edge Walk Gutt. Ditch

19.8 19.6 20.2 21.7 20.5

4.9 5.1 4.5 4.4 4.2

13 16 25 35

1729 23' Rt to 4' Conc. Walk

20.23 20.35

4.41 4.36

23.6 32.5

Coat. Conc.

170

24' Rt End Fence

19.5 19.47 19.42 19.9 19.3

5.20 5.24 5.29 5.8 5.4

22.2 17.5 15 15 13

Edge Walk Edge Walk Gutt. Ditch

19.2 19.5 20.0 20.2

5.5 5.2 4.7 4.5

13 15 25 35

24.71X

24.71X

Mid Point Curb Return 10' Radius

2+99⁸⁸

Pav. Edge. End A.C. Walk Begin Conc. Walk
South line San Diego Ave.

2+93 23' Rt to Flagstone Wall # Begin Flagstone Walk

2+77² 17' Rt. to Deadman

2+55 17⁵ Rt to Center P.Pole # 5P3987

T.P. 6.43 27.35^X 3.79 20.92

2+50 22⁵ Rt End Apron

2471^X

22.57
4.13
Cb. 5.44
G+6

22.65
4.70
G+6 4.17
Cb

22.60 22.63 22.53 22.42 21.83 22.38 22.56 23.16 23.19 23.49 23.53
4.75 4.72 4.82 4.93 5.52 4.97 4.77 4.19 4.6 3.91 3.92
25 22 17 15 15 13 15 17 22 23
Walk Walk Edge Cb G+6 G+6 Cb Solid walk to P.L.

23.44 23.21 23.2
3.91 2.14 4.2
23.1 Walk 23.1 Top wall 23.1 Foot

21.9 21.7 21.9 21.7 21.1 21.9 21.7 22.7 22.9 23.0
5.5 5.7 5.5 5.7 6.3 5.5 5.7 4.7 4.5 4.4
30 25 22 17 14 14 18 25 32

20.7 20.8 21.0 21.0 20.5 21.2 21.0 21.8 22.49 22.76
4.0 3.9 3.7 3.7 4.2 3.5 3.7 2.9 2.27 1.95
35 25 22 17 14 13 16 22 conc 26 floor

2471^X

$\frac{\$}{50} \times 48 = .07$

$\frac{\$}{50} \times 39 = .16$

check

4.87

22.48 = 22.49

San Diego Ave Roadway.

37E From P.L.

6.30	4.90	4.30	3.80	2.83
75	25		25	75
21.05	22.95	23.05	23.55	24.52

South Corb Line San Diego

12' from P.L.

6.29	6.83	4.84	5.51	5.33	5.08	4.77	4.61	4.16	3.61	3.17
75	75	25	25	15		15	25	25	75	75
cb	Gutt	cb	Gutt				Gutt	cb	Gutt	cb
21.06	20.52	22.51	21.84	22.02	22.27	22.58	22.74	23.19	22.74	24.18

27.35 T

27.35 T

45

Roberts
Aug. 16, 1950
W.S. 31707

X-Sect. Twiggs
(Congress to San Diego)

INDEXED
W.K.
AUG 18 1950

1711 23^E Lt to E T Conc. Drive

1701 24^W Lt Begin Picket Fence

170 End of Curb & Walk on Rt.

0+50

0+25

0+0 North Line Congress

BM

1.69

30.64 X

28.95 SW 7' C.T.

San Diego & Twiggs Sepp 33 This F.B.

Lt.

♀

R.

39

	23.96	4.18	23.85
6.68	6.46	6.79	
40	242	232	
	ERR	CONC	

	23.5	23.7	24.0	23.3	23.9	23.60	23.48	24.15	24.18	24.23	25.0
7.1	6.9	6.6	7.3	6.7	7.04	7.6	6.49	6.46	6.41	5.6	
35	25	15	11		132	15	15	172	222	25	
					Gut	Gut	cb	Walk	Walk	Walk	

	22.34	22.64	22.74	22.24	22.69	22.35	22.27	22.90	22.96	23.02
8.3	8.0	7.9	8.4	8.0	8.29	8.37	7.74	7.68	7.62	
35	25	13	12		132	15	15	172	222	
					Gut	Gut	cb	Walk	Walk	

	21.2	21.4	21.5	21.6	21.0	21.23	21.64	21.29	21.28	21.89
8.4	8.2	8.1	9.0	8.6	8.91	9.00	8.35	8.36	8.25	
35	25	13	12		132	15	15	172	222	
					Gut	Gut	cb	Walk	Walk	

	21.3	21.7	21.2	21.2	21.14	21.09	21.69	21.75	21.95
8.3	8.9	9.4	9.4	9.50	9.55	8.95	8.89	8.69	8.69
25	15	13		132	15	15	172	222	222
				Gut	Gut	cb	Walk	Walk	Walk

30.64 X

2750

27.8	27.3	26.8	27.54	27.34	27.90	27.95	26.07
2.8	3.3	3.8	3.1	3.3	2.74	2.69	2.57
25	14	12		15 Gutt Dirt	15 CB	17.5 Walk	22.5 Walk

2720

Rt & 10' Driveway Opening

26.77
3.87
15
opening

2713

Begin Curb & Walk on Rt

27.0	26.0	25.9	26.4	26.5	27.01	27.11	27.24
3.6	4.0	4.7	4.2	4.1	3.63	3.53	3.40
25	14	12		15 Gutt Dirt	15 CB	17.5 Walk	22.5 Walk

270

26.6	26.3	25.6	26.1	26.1	26.8	27.2	27.3
4.0	4.3	5.0	4.5	4.5	3.8	3.4	3.3
25	13	11		13	18	25	35

1750

235' Lt End Fence
165' Lt to Center P. Pole #3986
165' Rt to Center T. Pole #4641604

24.9	25.1	25.2	24.4	24.9	25.1	26.3	26.1	26.4
5.7	5.5	5.4	6.2	5.7	5.5	4.3	4.5	4.2
35	25	13	12		13	16	25	35

1728

25' Lt to & 3' Conc. Walk

24.34
24.39
6.30
35
25
conc.

30.647

30.647

Twiggs Cont'd.

check 499 28.94 = 28.95

San Diego Roadway 375' ahead P.L.

South Curb Line San Diego 12' ahead P.L.

Midpoint Curb Return 10' Radius

2+99.92 Pav. Edge South Line San Diego Ave

2+98 175' Lt to Center P. Pole = 3998

2+97 Curb Out to Prop Line

2+64 15' Rt 4" Drain in Curb

T.P. 6.04 33.93 π 2.75 27.89
30.64 π

Lt

Q

Rt

41

28.49
29.32
29.68
29.99
30.30

5.44 4.61 4.25 3.94 3.63
75 25 25 25 75

27.93 27.50 28.82 28.49 28.56 28.70 28.84 28.98 29.14 29.15 29.56

6.00 6.43 5.11 5.44 5.37 5.23 5.09 4.95 4.51 4.78 4.37
75 75 25 25 15 15 15 25 25 75 75
cb Gutt cb Gutt Gutt cb Gutt cb

28.93 28.57

5.00 5.36 5.13 4.68
cb Gutt Gutt cb

29.1 28.96 28.16 28.74 28.30 28.54 28.60 29.16 29.30

4.8 4.97 5.07 5.19 5.63 5.39 5.33 4.77 4.63
25 225 175 15 15 15 15 15 225
Mark Edge cb Gutt Gutt cb Mark
Solid walk to PL

6.28
15
Invert

33.93 π

Roberts
Aug. 16, 1950
no. 31709

X-Sect. Harnes
(Congress to San Diego)
Token A.C. Paving

0+83

24.8 Pt. 4' Con. WALK

0+75

25.5 L. 3' Con. WALK

0+69

17.4' L. D. MAN

0+50

INDEXED
WJK.
AUG 18 1950

0+49

17.3' Left P3758 Pole

0+07

16.2 R' TEL. Pole

0+0

{ North Line Congress
24.5 R' Begin 5' wire Fence

BVI

122 32.03 X

30.81 SW 7' cr

Harnes & San Diego Scopy 33 this FB.

24

24

24.74

24.74

7.29
24.8

7.26
30

24.94

24.77

7.09
36

7.26
25.5

24.2

24.7

24.9

24.4

24.6

24.2

24.4

24.2

23.8

7.8
35

7.3
25

7.1
16

7.6
10

7.4
2

7.8
12

7.6
14

7.8
25

8.2
35

24.1

24.2

23.9

24.2

23.2

23.7

23.7

7.9
25

7.8
16

8.1
13

7.8
2

8.8
14

8.3
18

8.3
25

32.03 X

Roberts
Aug 16 1950

X-SECTION HARNEY cont'd

(Congress to SANDIEGO)

TOKEN A.C., PAV.

T.P. 5.14 35.95 1.22 30.81

1+99

	28.08	27.92	27.81	27.3	27.7	27.2	27.81	27.89	27.95
	3.95	4.11	4.22	4.7	4.3	4.8	4.22	4.14	4.08
	22.5	17.5	15	15	2	15	15	17.9	22.9
	WALK	WALK	curb	d.gutt		d.gutt	WALK	WALK	

1+50

	26.58	26.45	26.37	25.9	26.3	25.8	26.37	26.43	26.55
	5.45	5.58	5.66	6.1	5.7	6.2	5.66	5.60	5.48
	22.5	17.5	15	15	2	15	15	17.8	22.8
	WALK	WALK	curb	d.gutt		d.gutt	curb	WALK	WALK

1+75

15' LT. & Lip Conc. drive, 7'

25.74
6.29
15

1+44

15' RT. & Lip of 10' drive, Conc.

25.65
6.38
15

1+25

Begin Conc. CB + WALK 15' RT.
24.68 End 5' WIRE FENCE

	26.05	25.89	25.83	25.3	25.9	25.3	25.3	25.75	25.83	25.93
	5.78	6.14	6.20	6.7	6.1	6.7	6.7	6.28	6.20	6.10
	22.5	17.5	15	15	2	12	15	15	17.8	22.8
	WALK	WALK	curb	d.gutt			d.gutt.	curb	WALK	WALK

1+00

Begin Conc. CURB + WALK 15' LEFT

	25.46	25.3	25.3	25.0	25.4	24.9	25.3	25.2	24.8
	6.57	6.7	6.7	7.0	6.6	7.1	6.7	6.8	7.2
	22.4	17.4	15	15	2	11	16	25	35
	WALK	WALK	curb	d.gutt					

32.03 X

32.03 X

Roberts
Aug 16, 1950

X-SECTION HARNEY Cont'd
(Congress to San Diego)
TAKEN A.G. PAV.

check 5.14 30.81 = 30.81

S. CURB LINE. SAN DIEGO AVE.

30.52	30.11	30.76	30.37	30.53	30.82	30.69	30.54	30.91	30.73	31.10
5.93	5.84	5.19	5.58	5.42	5.13	5.26	5.41	5.04	5.22	4.85
15	15	25	25	15	2	15	25	25	75	75
CB	G	CB	G.				GUTT	CB.	G.	CB.

MID. PT. CURB RETURN

30.34	30.78	30.50	30.91
5.61	5.17	5.45	5.04
GUTTER	CB.	GUTTER	CB.

3+00

S. LINE SAN DIEGO AVE.

30.73	30.20	30.58	30.38	30.96
5.22	5.75	5.37	5.57	4.99
15	15	2	15	15
CB.	GUTT. PAV.		GUTT. PAV.	CB.

2+50

29.28	28.85	29.35	29.9	29.42
6.67	7.1	6.6	6.7	6.53
15	15	2	15	15
CB.	d.gutt.		d.gutt.	CB.

2+23

15' LT. 4" drain in CB.

27.81
8.14
invert 15

2+06

15' LT. & 10.5' conc. drive

35.95 K

27.52
8.43
15
35.95
K

Roberts
Aug 16-50

INDEXED
W.K.

AUG 18 1950

X-SECTION CONDE
(Congress to SAN Diego)
TOKEN A.C. Pav.

45

0+75

18' RT. A.C. WALK

L						R		
22.2	21.6	21.8	21.5	21.1	22.2	22.6	22.7	22.5
10.1	10.7	10.5	10.8	10.2	10.1	9.7	9.6	8.8
35	25	14	12	8	13	18	25	35
						A.C. Edge	A.C. Edge	

0+72

24.8' RT. N. edge con. drive

22.94	23.21
9.40	9.13
24.8	35

0+59

24.9 RT to S. edge CONC. ^{drive} APRON.

22.63	23.02
9.71	9.32
24.9	35

0+55

24.9 RT & 2' CON. WALK

22.49	22.86
9.85	9.48
24.9	35

0+50

0+43

24.9 L. END 4" CONC. CB

21.4	21.1	21.1	20.8	21.1	21.2	22.4
10.9	11.2	11.2	11.5	11.2	10.1	9.9
35	25	14	12	8	25	35

0+00

N. LINE Congress
24.9 L to 4" CONC. CB.

11.5	11.5	11.3	11.8	11.7	11.9
12.8	12.8	13.0	12.5	12.6	12.4
25	15	14	8	15	25

B.M.

0.27

32.347 32.07

*S.W.B.P CONDE + SAN Diego

*See Pp 33

32.347

Roberts
Aug. 16-50

X SECTION CONDE CONT. D
(Congress to SAN DIEGO)
TOKEN A.C.

2+00

	30.4	29.9	26.9	25.1	25.7	26.8	27.3	27.6
	19	2.4	5.4	7.2	6.6	5.5	5.0	4.7
	50	25	19	11	2	15	25	35

1+63

	29.3	29.3	27.7	26.6	24.5	25.1	25.5	26.1	26.4
	3.0	3.0	4.6	5.7	7.8	7.2	6.8	6.2	5.9
	50	28	25	21	11	2	12	25	35

1+50

18 R. END A.C. WALK

	25.4	25.1	24.6	24.1	24.8	25.0	25.6	25.7	26.3
	6.9	7.2	7.7	8.2	7.5	7.3	6.7	6.6	6.0
	50	25	17	11	2	14	18	25	35

A.C.

1+36

26.8 L to E 2 1/2' CONC. WALK

	24.71	24.73
	7.63	7.61
	35	26.8

1+07

24.8 R to E 5' CONC. WALK

	24.28	24.65
	8.06	7.69
	24.8	35

1+01

17.1 L E Pole P 3984

1+00

	23.1	22.6	22.7	22.5	22.2	23.2	23.5	22.8	24.5
	9.2	9.7	9.6	9.2	9.1	9.1	8.8	8.5	7.8
	35	25	14	13	2	13	18	25	35

Roberts
Aug 16-50

X-SECTION CONDE - CONT'D.

(Congress to SAN DIEGO)

TOLKON A.C.

47

2+90

19.6 R to 2 1/2 CONC. WALK (4 RISING STEPS)

29.70
2.64
19.6

2+80

31.7	31.3	30.0	29.8	29.6	28.9	28.7
0.6	1.0	2.3	2.5	2.7	3.4	3.6
35	25	6	8	12	20	25

2+77

23.9 R to edge of Porch steps

31.6	30.9	29.0	28.9	28.5	28.8	28.3
0.7	1.4	3.3	3.4	3.8	3.5	4.0
35	25	9	8	12	14	25

2+68

12.7 L END BARRICADE, GAS STATION

2+64

23.9 R. to Porch

2+63

14.4 L to R 15" CONC. PIPE

31.6	31.0	30.8	29.54	28.2	27.7	28.0	27.8	28.0
0.7	1.3	1.5	4.80	4.1	4.6	4.3	4.5	4.3
35	25	22.7	14.4 INVERT	8	14	15	25	35

2+60

12.5 L. to BARRICADE, GAS STATION
22.7 L to A.C. STATION LOT

2+40

27 L to Edge AC STATION Lot.

31.8	31.4	30.6	27.1	26.4	26.7	27.0	27.0	27.4	27.4	27.6
0.5	1.0	1.7	5.2	5.9	5.6	5.3	5.3	4.9	4.9	4.7
50	27	25	17	12	9	8	13	16	25	35

2+25

25.5 RT R garage

21.0
5.3
25.5
21.0

32.34 X

32.34 X

Roberts
Aug 16-50

X-SECTION CONDE Cont'd
(Congress to SAN Diego)
TOKEN A.C.

Check

32.07 = 32.07

REDUCED BY RETURN

S. CB. Line SAN Diego AVE.

31.86	31.55	32.10	31.73	31.76	31.93	31.74	31.15	32.34	31.81	32.40
5.20	5.51	4.76	5.33	5.30	5.13	5.32	5.31	4.72	5.25	4.66
75	75	25	25	15	Σ	15	25	25	55	55
CB	G.	CB.	GUTT				GUTT	CB.	G.	CB.

MID. PT. CB. RETURN

31.93	31.51	31.53	32.13
5.13	5.55	5.53	4.93
CB.	GUTT	GUTT	CB.

T.P.

5.33 37.06X 0.61 31.73

37.06X

2+99.93

SOUTH LINE SAN Diego AVE.

19.2 R. END STEP WALK

31.73	31.63	31.53	31.17	31.42	31.24	31.83	31.98	31.93
0.61	0.71	0.81	1.17	0.92	1.10	0.51	0.45	0.41
22.4	17.4	14.9	14.9		15	15	17.5	22.5
WALK	WALK	CB.	GUTT		GUTT	CB.	WALK	

2+98.4

13.8 L. to 2 1/2' x 2' inlet Box

13.2 R. to E

31.18
1.16
13.8
11.42

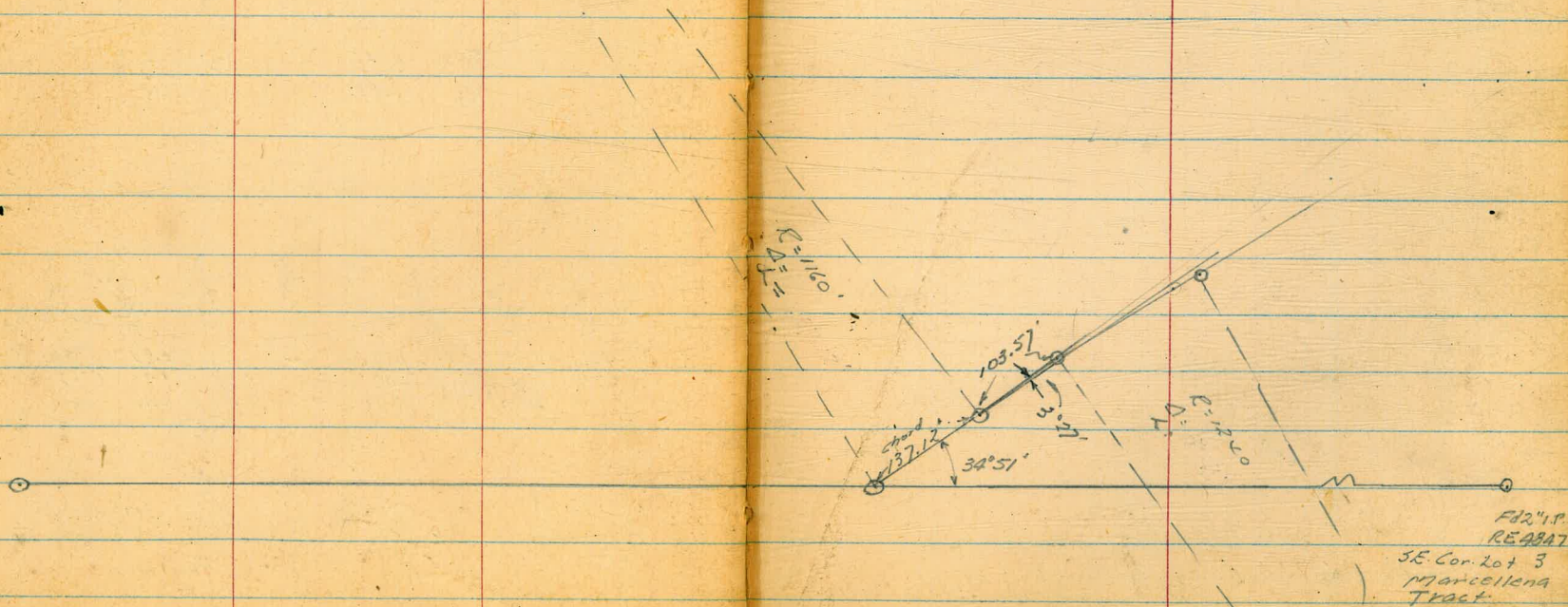
31.28
1.06
13.2
11.42

32.34X

32.34X

Sec F.B. 2101

49



CROSS SECTION - OLIVER

from Haines
To Ingraham

50

Walker
R. Sission
Finney
9-14-50

140 31601

Original Cross Sections
in FB 1692-37-40

INDEXED
WK.
SEP 19 1950

Reduced
10/30/50
B.L.C.

Elev.
B.M. 4736
FB. 1692
38

4799.16

Fed. Conc. Mon.

REED AVE.

Fed. Conc. Mon.

Fed. Conc. Mon.

0400



Oliver St.

1+15 = 2' Conc. Walk on Rt.

1+00

0+95 = E edge Conc. Drive

0+87.4 = W edge ^{Conc.} Drive

0+50

0+00 = E. Hines

0-10 = Hines

6.33

53.69

47.36

Lt.

Rt.

Rt.

51

7.61 7.12
41 50

~~44.4~~ 44.5 44.3 44.6 45.5 44.1
9.3 9.3 9.4 9.1 7.9 7.6
50 40 26 40 50
Lawn Lawn

45.46 45.76 45.99
8.23 7.93 7.70
20 42 50

45.49 45.75 45.88
8.20 7.94 7.71
41 42 50
Bk Drive

44.0 44.1 44.1 44.8 45.6 45.8
9.7 9.6 9.6 8.9 8.1 7.9
50 40 40 45 50

43.9 43.9 43.9 44.4 44.7
9.8 9.8 9.9 9.3 9.0
50 40 40 50

43.7 43.7 43.3 43.4 43.4
10.0 10.0 10.4 10.3 10.3
50 40 40 50

→ B.M. P-50

53.69

Oliver St. - Cross Sections

2+50
 2+70 to 3+50 Eugenia Hedge 41' Lt.
 on Mon = starting 8M
 TP 295 57.31 6.33 47.36

2+30 = E edge Conc. Ribbon Drive on Lt.

2+22 = W edge Conc. Ribbon Drive on Lt.

2+00 = 2 Conc. Walk

1+75 = E edge Conc Drive

1+66 = W edge Conc

1+50 = 3 Conc. Walk on Rt.

Lt.		Rt.	
47.5	47.5	44.3	48.6
98	98	90	89
50	40	15	26
Lowr	Lowr		

57.31

46.71	46.94
672	675
50	40.5
Drive	Drive

46.74	46.92
695	677
50	40.5
Drive	Drive

46.3	46.1	45.5	45.6	46.4	46.4	41.5	41.06	49.55
74	76	79	79	73	73	62	563	514
50	41	39	20	13	30	38.5	50	50
Lowr	Lowr					Walk	Walk	Walk

45.35	45.46
831	823
50	40
Drive	Drive

45.41	45.48
828	821
50	40
Drive	Drive

45.3	45.4	44.5	44.7	44.0	45.4	46.5	46.62	47.07
84	83	89	90	87	83	72	70.7	662
50	40	39	21	53.69	26	40	Walk	50
Lowr	Lowr						Walk	Walk

Oliver St. - Cross Section

Lt.

Rt.

Rt.

53

3+73 = 2 3' Brick Walk

53.51
380 53.57
401 50
Walk Walk

3+50 to 4+00 = 3' Picket Fence 40 3' RT.

3+50

50.0 50.2 51.6 52.0 52.7 52.9 53.5
7.3 7.1 5.7 5.3 4.6 4.4 4.0
50 40 20 25 40 50
Low 17 Low 17

3+45

= E edge Conc. Drive

49.95 50.35
7.33 6.73
50 41.6
Drive Drive

3+37

= W edge Conc. Drive

49.91 50.36
7.40 6.75
50 41.6
Drive Drive

3+00

48.9 49.1 50.2 50.9 51.7 51.9 52.3
8.4 8.2 7.1 6.4 5.6 5.4 5.0
50 40 23 27 40 50
Low 17 Low 17

2+94 = E edge Conc. Dr.

48.52 49.05
8.49 8.26
50 40.8
Drive Drive

2+86

= W edge Conc. Drive

48.56 48.92
8.73 8.39
50 40.8
Drive Drive 57.31

Oliver St. Sections

Additional Section FB 1592-40

chk B.M. Mon 9.95 47.36

5+38.9 = L. Peering

5+18.9 = W edge Conc. Peering

5+0.6

4+99.16 = White Ingraham

4+98 = Gwy Pole 21' Lt

Gwy Pole Anchor 21' Lt

4+95

4+50

4+00

57.31

Lt Ft Rt

54

47.30	47.90	47.92	47.86	47.61
1001	941	939	945	970
90	40		40	90

46.74	47.31	47.32	47.24	47.04
1057	1000	999	1007	1027
90	40		40	90
Per.	Per.	Per.	Per.	Per.

47.3	47.3	47.5	47.8	47.4
100	100	95	94.5	95
50	40		40	50

48.1	48.9	48.9	47.9	47.2	47.3	50.5	49.5	49.4
86	84	84	94	91	90	68	78	79
50	40	33	18		15	30	40	50

51.1	51.6	51.4	48.0	48.5	48.9	51.5	51.4	51.5
62	57	59	23	8.8	84	55	59	58
50	40	29	14		16	28	40	50

51.1	51.7	52.5	51.5	51.4	51.7	52.4	53.1	52.4	52.1
62	56	48	58	59	56	49	42	49	48
50	40	12	5		17	20	30	33	20

51.1	51.3	51.2	52.6	53.4	53.6	53.5
62	60	51	47	39	37	38
50	40		20	25	40	50
		57.31				

INDEXED

M.K.

OCT 10 1950

55

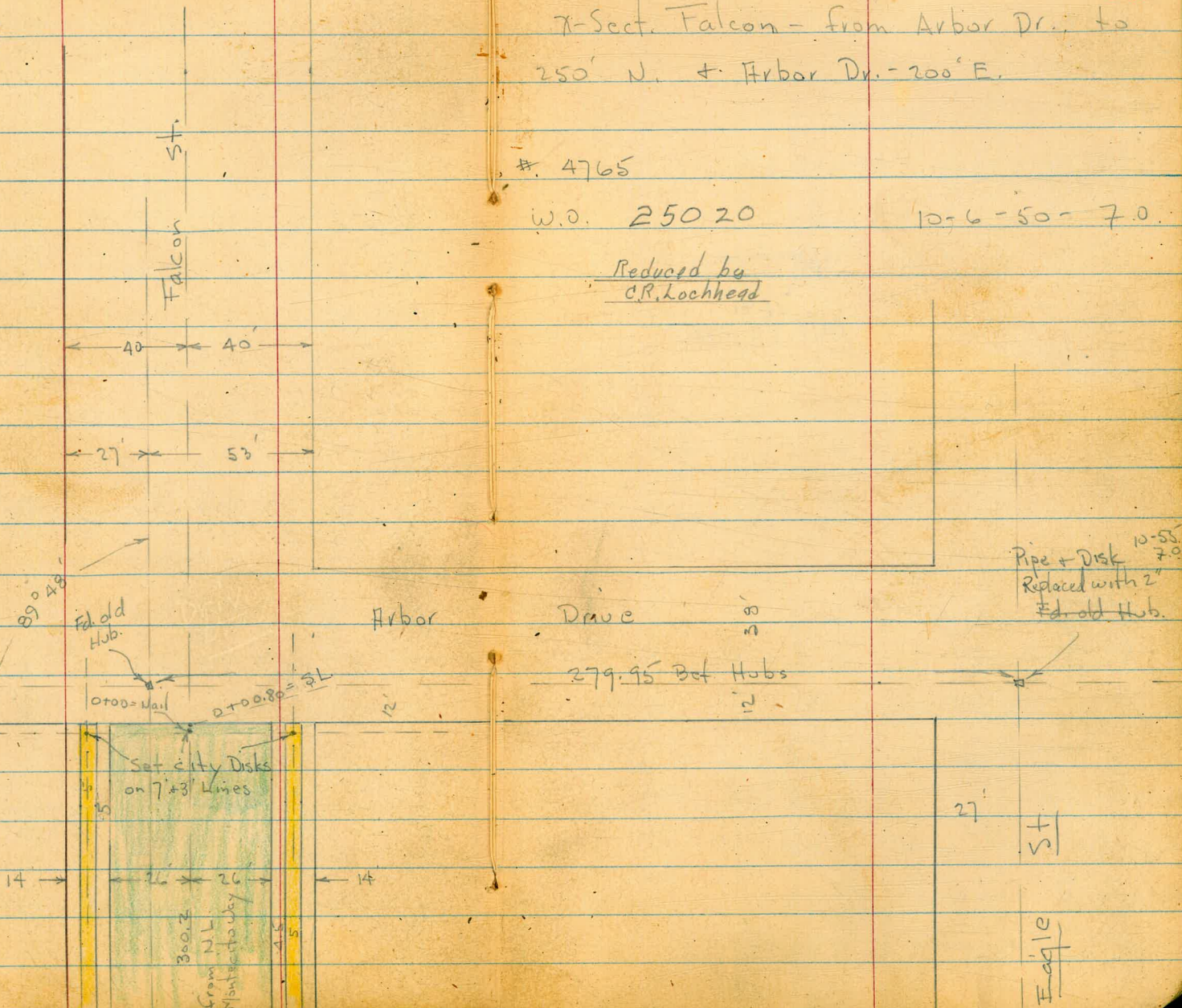
7-Sect. Falcon - from Arbor Dr. to
250' N. + Arbor Dr. - 200' E.

4765

W.O. 250 20

10-6-50-7.0

Reduced by
C.R. Lockheed



3+00 = end

2+50

2+00

1+50

1+00 - \neq shown as true elev. \neq outs as top -

T.P.

11.73 255.14

0+90

Lt.

Rt.

Rt.

57

178.5	185.4	206.4	213.6
-18.2 40	-11.6 26	+9.4 26	+16.9 40
192.5	201.2	229.2	235.2
-24.6 40	-16.0 26	+11.9 26	+18.1 40
208.5	214.4	234.4	244.4
-17.4 40	-8.8 26	+11.7 30	+20.1 40
230.2	233.4	243.4	244.4
-8.2 40	-5.1 26	+5.2 20	+12.8 30
244.2	248.4	257.4	258.4
-10.1 40	-6.3 26	+2.3 26	+3.1 30
		261.4	261.4
			+6.8+6.8 40

Wow!
This Really
goes down

Toe
Top
edge
ave
old
site
at end

196.7
217.1
222.9
238.2
254.9
256.1
10.8
266.87

Req. X-Sections of Arbor Dr. 200'
E. of Falcon

2+20 = New Sect - Not enough Room on P. 79

See P. 79 for New Sections + Topo.

Falls into Canyon fast from Here

2+00 = W.L. Eagle = end - of grading

1+50

~~1+48 - 18.3' Rt. - 6" Acacia~~ ~~Crone~~

1+34 - 23' Rt. = 3" Avocado

1+06 - 21.9 Rt. = end fence

1+00 - Rt. = 23.5' Rt. = 5" Acacia

0+92 - 22.5' Rt. = 4" Pine Tree ~~Crone~~ 10-55 70.

0+50

0+30 - 21' Rt. = end Hedge + Req. Picket fence

4' High

0+00 = E.L. Falcon - 21.5' Rt. = Nly. of 3' Hedge

B.M.

333 266.04

262.71 = Nail in Pole - P. 56

266.04

Lt.

Rt.

Rt.

58

43.0	46.3	48.5	49.7	50.2	48.5	47.3	44.9
40	25	17	15.1	13	16	25	40
	245.5	250.5	250.9	251.3	250.8	248.1	247.3
	20.5	15.1	15.1	15.1	15.1	17.3	17.3
	40	25	15	15	25	40	40
254	254	255.0	255.0	257.0	255.5	254.0	254.0
14.9	11.3	11.0	11.0	11.2	10.5	12.0	12.0
40	32	25	14	25	40	40	40
259.8	261.5	261.8	261.8	261.8	259.1	258.0	258.0
6.6	4.5	4.1	4.1	4.5	5.3	8.0	8.0
43	37	25	18	26	40	40	40
Toe	Top						
		262.6	262.6	263.5	263.5	263.5	263.5
		3.4	3.4	2.4	2.50	2.4	2.4
		25	21	26	36	36	36
		262.4	262.0	262.0	262.0	262.0	262.0
		3.4	3.2	3.2	3.2	3.2	3.2
		25	25	25	25	25	25

Note: this area
has been graded
flat.

edge 15
brick walk
along
House

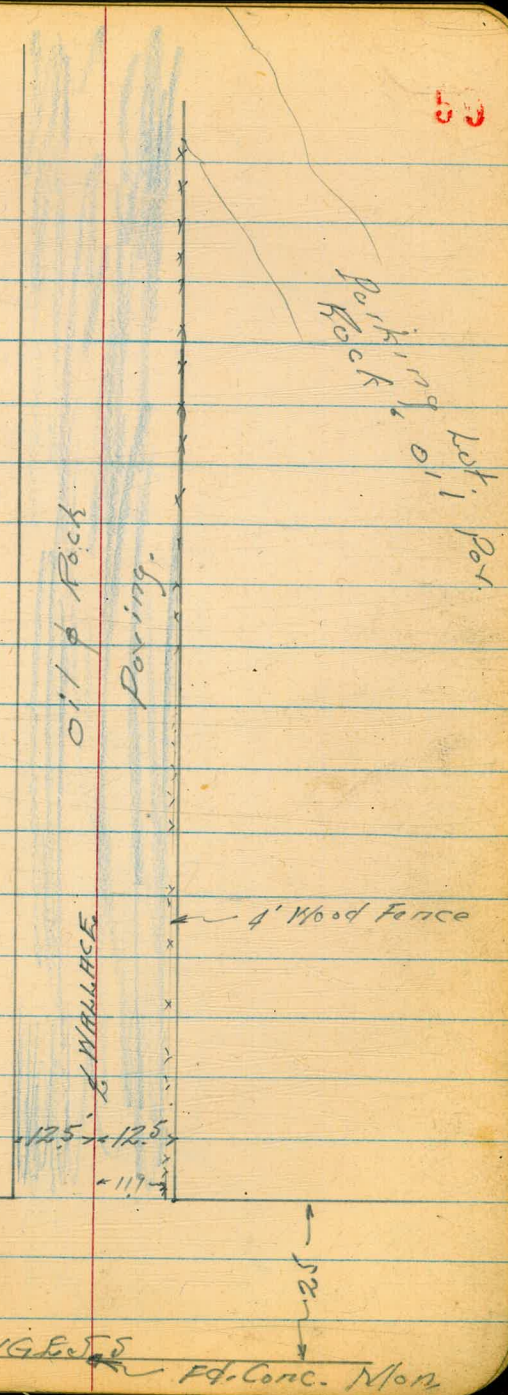
CROSS SECTION - WALLACE
 FROM CONGRESS
 TO SAN DIEGO AVE.

Walker
 Pope
 R. Sisson
 11-3-50

W.O. 31709
 Soil Sample 1400 S'RT

INDEXED
 NOV 6 1950

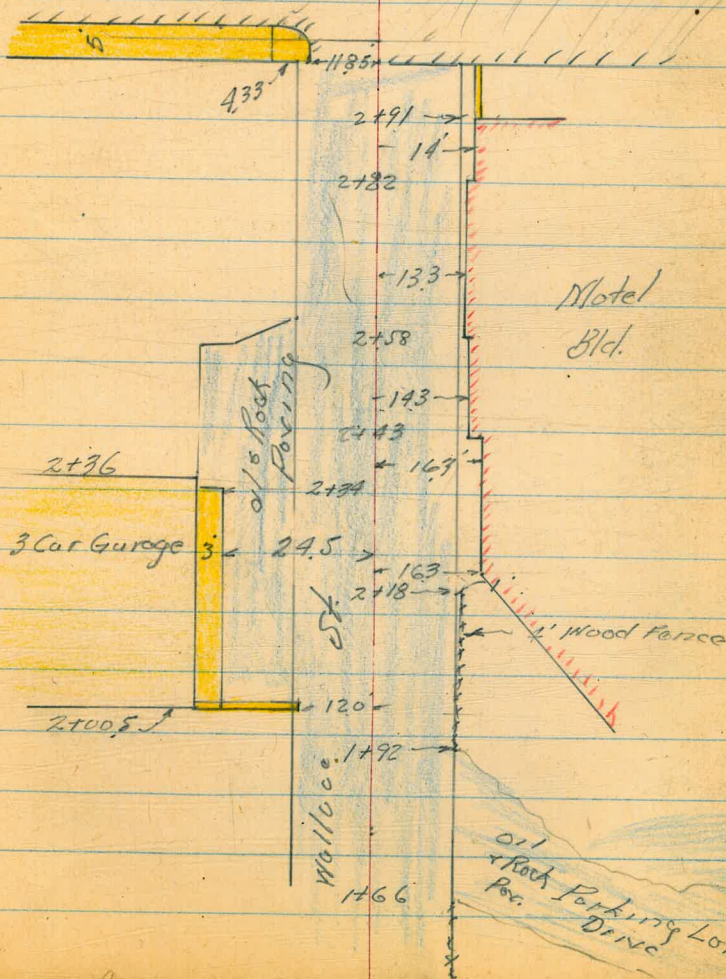
Wallace				
E. Mon. Congress		1028		246
T.P.	0.88	12.74	11.30	11.86
	0.67	23.16		22.49



CONGRESS
 Fd. Conc. Mon

SAN DIEGO AVE.

A.C. Paving



Cross Section - Wallace St.
from Congress
to San Diego Ave.

11/11/51
1 A.V. 1 '951
H. 2 RT. 61

1+67 = 4 Conc. Walk

4.62
8.12
17.5
Walk

4.52
8.22
9.5
Walk

1+50

4.2
8.5
25

3.4
8.3
12.5

4.2
8.5

4.4
8.3
12.5

5.1
7.6
25

1+00

3.1
9.6
25

3.7
9.0
12.5

3.7
9.0

3.7
9.0
12.5

4.1
8.6
22

0+88

3.91
8.83
6
to Sewer MH

0+50

2.8
9.9
22.5

3.0
9.7
12.5

3.5
9.2

3.5
9.2
12.5

4.3
8.4
22.5

0+00 = N.E. of line Congress

2.6
10.1
22.5

3.1
9.6
12.5

3.1
9.6

3.1
9.8
12.5

4
9.3
22.5

12.74
T P-59

12.74

on Dis. 3+03⁰⁰

T.P. 514 1700 088 1186

2+34

2+00.5

2+00

1+99 2. Blk Pole # P3984 12' L

1+96.2

1+89.5 N.E. Edge Ribbon Dr.

1+82.5 = SWAY Edge Conc. Ribbon Drive
12.74

Wallace St.
X-Sections

Lt.

R

Rt.

62

8.36	8.05	7.6	7.4	7.5	7.4	7.6
438	469	5.1	53	52	53	5.1
	24.5	12.5	7		12.5	16.2
						at Blvd.

8.29	8.22	8.22	6.94	5.4	5.6
445	452	442	580	73	7.1
275	245	225	12	4	
Garage Floor	Top	Blk Wall on Ramp	on Wall	on Ramp	

5.2	5.6	5.5	5.6	6.3
7.5	7.1	7.2	7.1	6.4
22.5	12.5		12.5	20

5.44
730
Rt
144.

5.28	5.08	4.96
746	766	778
225	185	105
Floor	Blk	on Drive

5.28	5.02	4.86
746	771	788
225	185	105
Floor Garage	Blk	on Dr.
		12.74

Wallace St
X-Sections

3+07.5 = Valley Gut. on Pt.

3+05 = SWLY Cb. line on Lt. San Diego Ave

3+01.2 = Fire Hyd. 18.9' Lt.

3+01 = Elec Pole # P-2841 15' Lt.

3+00 = SWLY line San Diego Ave.

2+86

2+72

2+50

	Lt.	Rt.
	11.54	11.96
	10.91	12.05
	12.12	12.08
	11.46	12.57
	11.55	63
	504	495
		125
	510	492
		25
	516	449
	35	58
	11.84	12.63
	12.16	
	11.97	
	11.48	
	11.93	
	516	509
	35	125
	Walk	
	16.9	4.59
	Walk	35
	8k.	
	11.7	12.41
	5.3	5.1
	22	19.0
	Low 11	Bld.
	11.25	11.74
	5.75	5.63
	12.5	12.5
	11.27	11.74
	10.51	10.95
	10.57	10.95
	6.49	6.05
	12.5	12.5
	11.3	10.95
	5.7	6.05
	22	12.5
	Low 11	at Bld.
	11.4	8.77
	8.83	8.98
	8.73	
	8.64	
	8.85	
	8.15	8.35
	7	10
	8.36	8.23
		12.5
	7.86	8.02
	25	14.5
		at Bld.
	17.00	

Wallace St. X-Sections

64

Lt.

L

Rt.

				0.02
			22.49	
Chk. Starting BM P-59	4.26		22.47	
T.P.	5.85	26.73	2.39	20.88
T.P.	11.41	23.27	5.14	11.86

B+25

17.00

29.11	12.07	12.29	12.51	12.71	12.85	12.08
5.33	4.93	4.71	4.49	4.29	4.15	3.92
50	25	125		125	25	50

17.00

Roberts
Moore
Pollen
5-10-51
1025020

X-Section Full Length, Fulmar St.
60th to Tooley
See TP24 Pages 32 1/2 & 35

Redwood
F. Adams
5-17-51

4
Weaver X-section in F.B. 2066

RB

65

A wash goes N-S through intersection.

0-30 No Points were fd. at 60th Ended Line in.

268	259.7	260.3	260.9	261.2	264.1	265.2	268.79
13.6	13.0	12.4	12.1	9.2	8.1	7.5	
100	50	20	12	20	50		

S. Edge of Railway - Leaves R.O.W.

T.P.	0.13	273.29 X	12.65	273.16	SA Pg. 2064
T.P.	0.15	285.81	12.74	285.36	
T.P.	0.20	298.10	11.69	297.90	
T.P.	0.18	309.59	13.04	309.41	
T.P.	0.02	322.45	12.68	322.43	
T.P.	0.20	335.11	12.92	334.91	
T.P.	0.06	347.83	13.14	347.77	
T.P.	0.49	360.91	13.16	360.42	
T.P.	0.26	373.58	13.14	373.32	
T.P.	0.09	386.46	12.80	386.37	
Set BM			6.69	392.48	
T.P.	0.14	399.17	12.80	399.03	
T.P.	0.00	411.83	13.04	411.83	
T.P.	0.17	424.87	12.96	424.70	
T.P.	0.12	437.66	12.53	437.54	
BM	1.03	450.07		449.04	

273.29~~X~~

Conc. Mon. N.W. Corner Fulmar & Weaver

Conc. Mon. & Fulmar & Tooley See FB204179-38

Cont'd From Page 65

T.P. 12.84 31.074K 0.17 297.90

2+00

T.P. 12.70 298.07K 0.18 (285.37)

1+50

1+00

T.P. 12.39 285.55K 0.13 273.16

0+65

0+30

0+00 East Line 60th Street (Set No Points)

273.29K

Lt.

Rt.

299.1	295.3	296.9	296.7	296.7	295.3	66
+1.6	+0.2	1.2	1.4	1.4	2.8	293.3
40	22	20	s. Edge	s. Edge	20	40

286.8	286.7	285.3	285.95	285.45	(298.07K)	285.5	284.3
+1.2	+0.8	0.3	0.1	0.1	0.0	0.5	1.3
40	29	27	20	8	20	20	20
		N. Edge		S. Edge			

276.4	277.2	278.2	278.2	278.1	277.4
2.2	7.9	7.4	7.4	7.6	8.2
44	23	20	20	20	40
N. Edge	S. Edge				

273.4	273.9	274.1	(285.55K)	273.3	271.9
+0.1	+0.6	+0.8	+1.4	0.0	1.4
55	35	20	20	20	40
N. Edge	S. Edge				
Roadway	Roadway				

270.2	269.3	269.3	268.8	268.1
3.1	4.0	4.0	4.5	5.2
40	20	40	20	30
				Edge of Top Bank on work

263.3	264.5	264.5	265.1	264.2	262.2	262.8	267.3
10.0	9.2	8.8	8.3	8.6	11.1	10.5	6.0
70	50	20	10	20	40	50	
Edge of Roadway							
Soil Mix Surface							

(273.29K)

T.P. 12.85 373.56 X 0.18 360.71

5+12.71 E.C. Found Cone. Mort. on South Line

4+65.35 Midpoint

T.P. 12.52 360.89 X 0.17 348.37

4+18 BC. Found 4th p.c.t. on So. Line

T.P. 12.83 348.54 X 0.11 335.71

T.P. 12.86 335.82 X 0.20 322.96

3+50

3+00

T.P. 12.64 323.16 X 0.22 310.52

2+50

310.74 X

358.7
2.2
40
358.3
2.6
20
358.1
2.8
13
358.8
4.1
N. Edge
356.9
4.0
356.4
4.5
S. Edge
356.8
4.1
12
356.1
4.8
20
355.1
5.9
40

353.8
7.1
40
352.7
8.2
20
352.1
8.8
11
350.4
10.5
N. Edge
350.2
10.7
349.3
11.6
S. Edge
348.5
12.3
15
347.3
13.6
20
345.7
15.2
40

360.89 X

347.1
1.5
40
344.1
3.8
20
343.4
5.1
14
341.1
7.4
12
N. Edge
340.1
7.9
340.5
8.0
S. Edge
340.5
8.0
10
338.2
10.3
14
335.9
11.6
20
333.2
15.3
40

348.54 X

327.2
+14.0
40
331.9
+8.7
20
330.9
+7.7
14
327.2
+4.0
13
N. Edge
326.9
+3.7
6
326.15
+3.3+1.0
11
S. Edge
324.1
+1.1
20
322.1
4.9
40
318.3

326.4
+3.2
40
322.2
1.0
20
321.5
1.7
17
318.1
5.2
12
N. Edge
317.4
5.8
10
317.2
6.0
S. Edge
316.7
6.5
10
313.6
9.6
20
310.1
13.1
40

323.16 X

312.6
+1.9
40
309.6
1.1
20
309.6
1.1
19
307.6
3.1
17
N. Edge
307.1
3.7
3
306.1
3.8
S. Edge
304.9
5.8
20
301.4
9.3
40

310.74 X

T.P. 1298 39922X 0.11 386.24

7+12 16.3 Lt to Center 12" Pine

6+98 16⁵ Lt Break in Ret. Wall

6+85 19⁵ Lt. Begin Conc. Ret. Wall

6+60 40⁴ Lt. Single Garage (dit Floor)

6+50

T.P. 13.01 386.35X 0.22 373.34

6+00

5+50

373.56X

lt \$ Rt

382-	382-	382-2	383 ²	383 ²	382 ⁴	385-	386-	383 ¹ 384¹
4.4	4.4	4.30	3.2	3.2	4.0	1.3	0.4	1.7
40	60	163 TOP Wall	1.1 Edge		13 S.Edge	15	20	40

381 ²⁰	379 ⁸
4.45	6.6
192	190
Wall	980

375²
11.2
Floor

375-	374 ⁹	374 ⁸	374 ⁸	374 ³	375 ⁸	376 ²	376 ⁶
11.3	11.5	11.6	11.6	12.1	10.6	10.2	9.8
40	20	12 Edge		13 S.Edge	13	20	40

366 ⁸	367 ³	367 ⁴	367 ⁴	366 ⁶	368-	368-	368 ²
6.4	6.3	6.2	6.2	7.0	5.6	5.6	5.4
40	20	14 Edge		10 S.Edge	12	20	40

362 ⁹	362 ⁸	362 ⁴	361 ³	361 ²	360 ⁹	361 ⁷	361 ⁴	360 ⁹
10.7	10.8	11.2	12.3	12.4	12.7	11.9	12.2	12.7
40	20	12	11 Edge		9 Edge	11	20	40

373.56X

T.P. 12.56 42440 X 0.07 411.84

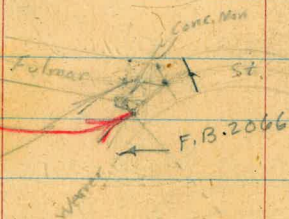
8+41.85 EC. Found Conc. Mon. on S. Line
(8+35.8) NEW STA. TO EC. USING THROUGH R.

8+00

T.P. 12.86 411.91 X 0.17 399.05

7+50

7+32.31



STA 7+32.31 TO STA 8+41.85 WERE NOT
PLOTTED AS SHOWN. STA FROM HERE
END MUST BE CHANGED.

7+32.31 Opposite Conc. Mon. N.W. Cor. Fulmer & Weaver

OK

7+22 10' Lt End Ret. Wall to Lt.

39922 X

395.4	400.6	407.8	407.8	407.9	407.4	411.4	413.3	418.9
16.5	11.3	4.1	4.1	4.0	7.5	4.5	4.4	17.0
40	20	7	3	40	13	15	20	40
			n. Edge		s. Edge			
399.8	398.1	402.3	402.4	402.5	402.1	407.5	408.4	415.3
-22.1	15.8	9.6	9.5	9.3	7.7	4.4	3.5	+3.4
70	20	9	6	6	11	16	20	40
			n. Edge		s. Edge			

392.2	393.5	399.4	400.1	405.9	406.1	412.7
7.0	5.6	40.2	10.9	16.7	13.5	
20	6	8	8	20	40	
	s. Edge					
392.5	399.8	400.4	403.1	405.4	406.2	411.3
6.7	10.6	11.2	13.9	16.2	12.1	
20	8	12	20	40	40	

381.4	381.4	386.3	387.7	387.8	388.2	389.2	389.5	392.3	392.49	392.2	392.2
17.8	17.8	22.9	11.52	11.4	11.0	9.5	9.6	6.7	12.47	3.0	3.0
40	34	24	24	20	10	10	16	17	20	40	40
		GRD	Ret. Wall			n. Edge	s. Edge		Mon.		
386.2	387.5	387.4									
13.0	15.7	11.8									
11	10.2	10.2									
GRD	Ret. Wall	GRD									

39922 X

11450
(11 + 43.95)

11400
(10 + 93.95)

10450
(10 + 43.95)

10710.48 E.C. Found Conc. Man. Sly. Line
107 4.43

T.P. 12.80 ✓ 43715A 0.05 ✓ 42435

9450
(9 + 43.95)

9415
(9 + 8.95)

8781.85 B.C. Found Conc. Man. on So. Line
(8 + 75.80)

42440A

4277	4324	4365	4365	4365	4368	4389	4405	4425
75	48	0.7	0.6	0.6	0.4	+1.7	+3.4	+5.2
40	20	12	12	12	10	12	20	40
			s. edge		s. edge			
4241	4287	4302	4325	4326	4331	4356	4365	4405
13.1	85	7.0	4.7	4.6	4.0	1.6	0.6	+3.4
40	20	15	11	11	9	12	20	40
				s. edge	s. edge			
4208	4253	4294	4298	4301	4333	4372		
16.4	11.4	7.8	7.4	7.2	3.9	4.0		
40	20	18	14	12	20	40		
			s. edge		s. edge			
4196	4231	4251	4272	4273	4268	4296	4305	4325
17.5	4.1	2.1	1.0	1.2	10.4	7.6	6.6	4.6
40	20	12	9	7	11	13	20	40
				s. edge	s. edge			
4132	4186	4206	4223	4224	4223	4216	4251	4256
11.2	5.8	3.8	2.1	2.0	2.1	2.4	+0.7	1.2
40	20	10	7	4	4	13	15	20
				s. edge		s. edge		
4079	4121	4181	4178	4175	4172	4209	4218	4261
10.5	12.4	6.4	6.6	6.9	7.2	3.5	2.6	+1.7
40	20	8	8	6	13	15	20	40
			s. edge		s. edge			
4018	4058	4087	4126	4128	4128	4124	4162	4175
22.6	16.6	15.7	11.8	11.6	11.6	12.0	8.2	6.9
40	20	11	6	6	13	15	20	40
				s. edge		s. edge		

70

14+01 10⁰ Lt. to Center P. Pole # P272216
13+ 94.95

14+00
(13+ 93.95)

13+50
(13+ 43.95)

13+00
(12+ 93.95)

12+50
(12+ 43.95)

12+00
(11+ 93.95)

T.P. 12.32 449.18 π 0.29 736.96

11+60 11⁰ Lt. to Center P. Pole # P272217
11+ 53.95

437.15 π

442.7	445.1	446.4	446.3	446.4	446.2	446.5	447.5	448.5	
65	41	28	29	2.8	2.7	1.7	0.7		
40	20	9	7	20	12	20	40		
			E.Edge		W.Edge				
438.7	441.6	443.7	444.1	444.1	444.1	445.1	446.1		
105	76	55	51	51	51	41	26		
40	20	10	7	10	20	40			
			E.Edge		W.Edge				
434.2	438.7	440.1	442.1	442.1	442.4	442.4	444.1	445.7	
150	105	91	71	71	68	68	51	37	
40	20	14	11	8	9	20	40		
			E.Edge		W.Edge				
431.9	437.1	437.9	439.6	439.8	440	440	442.2	442.8	443.7
173	122	113	96	94	72	92	70	64	55
40	20	16	13	9	7	13	20	40	
			W.Edge		W.Edge				

check

5.41 .449.06 = 449.04 Starting BN

14 + 65.83 Q Tooley
(14 + 59.78)

14 + 35.81 North Line Tooley
(14 + 29.76)

J.P. 5.87 454.47 K 0.58 448.60

449.18 K

448.1	448.2	449.9	449.1	449.1	449.5	450.3
6.4	5.7	4.6	5.4	5.3	5.5	4.3
40	20	8	20	13	20	40
		e. edge		W edge		

454.47 K

Jefferson

St.

Closing

Rail fence

House

5'

2+78

Fd. pipe
Jaeger

25 25

Twiggs St

0+00

18' 18'
Fnd Hub

Congress Ave

X- Sect. Twiggs - Grade Estab. **73**
Congress St. 5th. to end

11-21-51
F.O.

5811

W.O. 25020

INDEXED
Law
NOV 23 1951

See P. 25 for Int

X-Sect. Twiggs

Lt.

E

Rt.

74

2+35

24.4
25

23.8

23.4
25

2+00

24.3
25

23.6

23.1
25

1+50

23.9
25

23.4

23.4
25

1+44 - 25.0 Lt = E-S' Concrete walk

24.17 24.01
44 ft porch 25 = walk

1+00

23.6
25

22.8
12

22.8

22.8
25

0+92 - 26.5 Rt = E Sing Gar - dirt floor

22.8
26.5 floor

0+70 - 31.0 Lt = E Sing. Gar - dirt floor

23.7
31.0 floor

0+58 - 30.8 Lt = E Sing. Gar - dirt floor

23.7
30.8 floor

0+50

23.0
25

22.0
13

22.2

21.7
11

22.6
25

0+00 = S.L. Congress

22.0
25

21.6
13

21.6

21.2
13

21.9
25

Set B.M. S.W. ALE Congress & Twiggs 22.53

B.M. = S.W. L. & T. Twiggs & San Diego 28.95

See page 33

Actual Elevations Shown

Lt

E

Rt

75

2+78 - E old house

24.0
25

238

240
25

2+64 - E 18" Euc. tree

2+63 - Rail fence

Clark
Shepard
Oneil
12-31-53
W.O. 21212

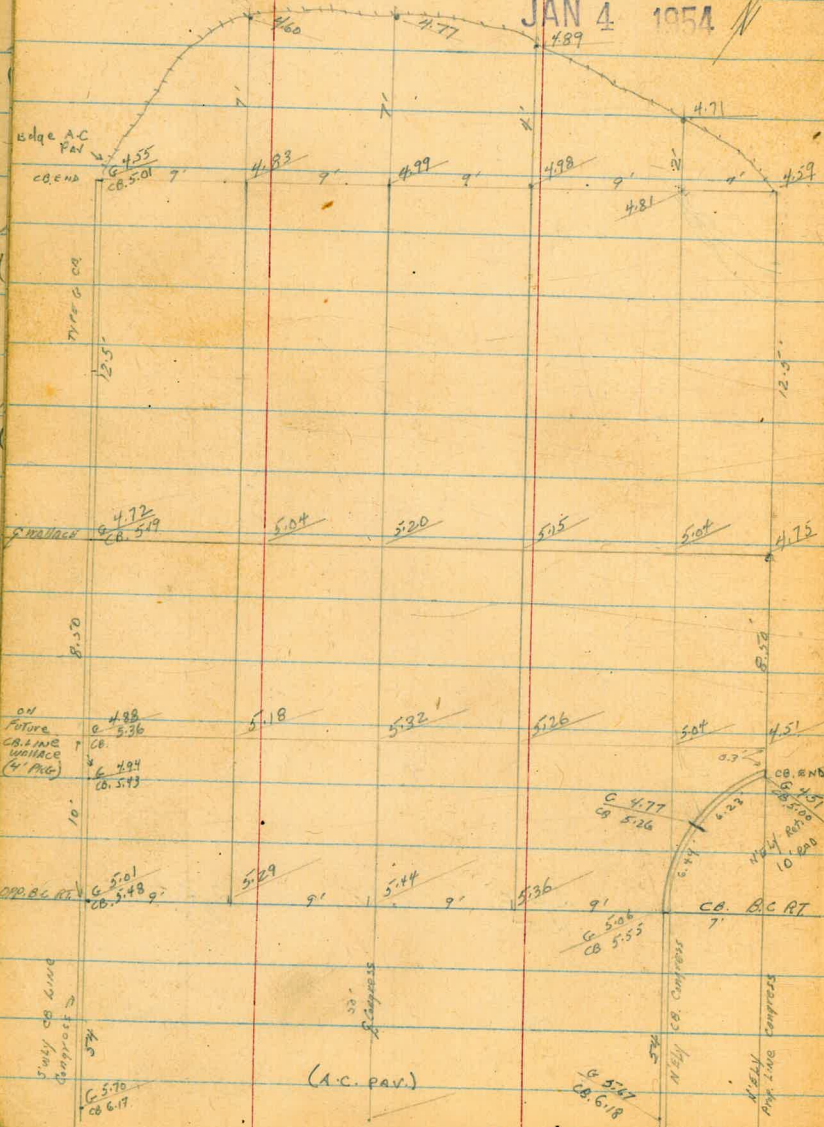
SURVEY FOR DRAIN: Congress &
WALLACE N.WLY TO EXIST INLET AT R.R.
FOR X-SECT. INT. CONGRESS & WALLACE See below

REF. F.B. #20747
DWG: 9127-L

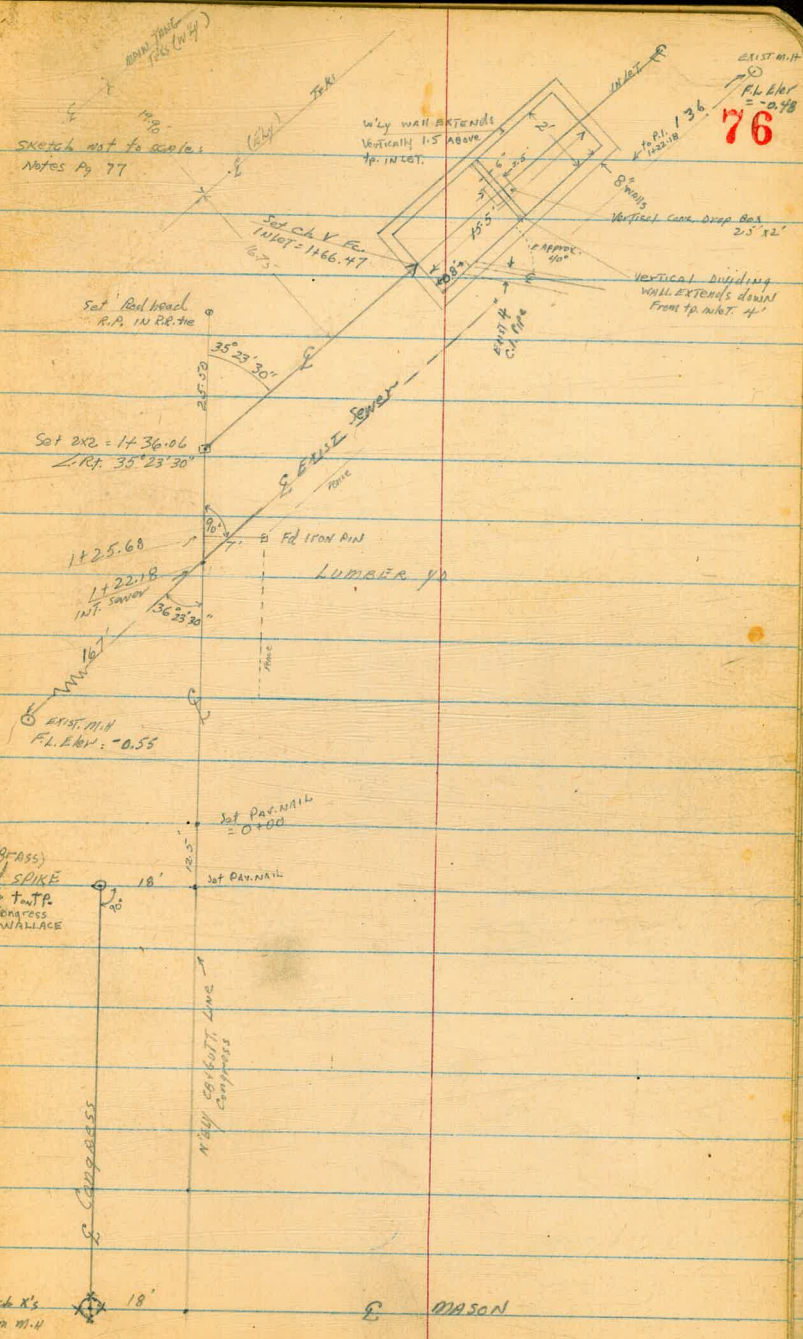
INDEXED
NEW

JAN 4 1954

NOTE: All Elev's shown
below are ACTUAL
Elev's, NOT BASS



B.M. NW. COR. A.O.O. 28.95 SW. 7' HT TWIGGS SAN Diego



EXIST M.H.
FL Elev
= 25.98
76



(BRASS)
FD SPIKE
8 ch T. TP
E Congress
& WALLACE

FD 2 ch X's
Rim M.H.

E. MASON

SURVEY - DRAIN - Congress N.W. - WALLACE

1+00

0+50

0+20 = B.M.

0+02 = END EXIST. PAV

7.8 RT Bog. 5' Board Fence

0+00 = { N. Line Wallace +
N.Ely CB. Line Congress

(Note: For Levels Intersection
Congress + Wallace see pg 76)

0-12.5 = E WALLACE

0-25 = S Ely Line WALLACE

T.P. 5.06 10.26 7.90 5.20

T.P. 0.33 10.10 12.93 9.77

T.P. 2.73 22.70 9.40 19.97

B.M. 0.42 29.37

28.95 S.W. LOT TWIGGS
+ SAN DIEGO

(N.W.ely) LT.

±

RT. (N.Ely)

77

1.7	1.7	2.0	2.2
8.6 10	8.6	8.3 7	8.1 20
2.5	2.2	2.4	2.3
7.8 10	8.1	7.9 7	8.0 25
3.6	2.6	3.0	2.8
6.7 10	7.7	7.3 7	7.5 25
	4.7	4.5	
	5.55 PAV	5.8 PAV	
4.99	4.81	4.59	2.9
5.27 18	5.45 PAV	3.67 7 PAV	7.4 25
5.10	5.04	4.75	4.0
5.06 18	5.22 PAV	5.51 7 PAV	6.3 25
5.38	5.01	5.3	4.0
4.88 13 E PAV	5.25 on PAV	5.0 7	6.3 23 2nd
	10.26		

CHK:

466

5.59

(5.55) See Pg 76

= 5.56 - NELY
ca. D.C. Congr
& Wallace

1+81.97

E NLY Fe. INLET

1+73.72

E Conc Drop Box E INLET

1+67.27

11' RT E EXIST 4" C.I. Pipe

1+66.47

{ E INLET AT Pa (S.L.)
12.2 RT to Fence, this pt.
9' RT TA exposed 4" C.I. Pipe (sewer?)

1+50

1+43.5

8.5 LT E (1' x 1') conc. Control Box - Signal

1+41.5

8.5 LT E (1' x 1') Flat Sq. Light STD.
(conc.)

1+36.06

L RT

{ 12.7 RT. to Fence
Set. \perp to For ward tang.

1+36.06 - L RT
35° 23' 30"

Set \perp to BK Tang

1+25.7

7.2 RT - L Fence { Fence as Ely // to RR

1+22.18

INT. 14" C.I. Pipe \vee E Prop. Drain

1+20

BRK

T.P.

7.00

10.25

7.01

3.25

78

LT. 4.3 3.3 1.48 0.16 1.8 RT 1.2 1.4

6.0 7.0 8.77 10.19 8.5 9.1 8.9
Shoulder RR.F.H. 1.5 9.4 1.2 3.0
TO MAN 23.23 13.02 1.5 9.4 1.2 3.0

F.L.M.C
2 Drop Box

4.6 1.48 0 5.22 0.9 0.70 1.1

5.7 8.77 10.25 15.47 9.4 9.55-9.2 5 9 1.2

Shoulder RR.F.H. TR. INLET BOT. INLET 9.4 TR. C.I. 4" Pipe

(check)

5.2 5.50 3.7 1.3 8.4 1.9 4.0

10 5.3 4 6.6 9.0 10 10

Shoulder RR.F.H.

4.0 4.9 3.3 1.4 1.8

5.3 5.4 7.0 8.9 8.5

10 5 10 10 12

Shoulder RR.F.H.

4.9 4.8 3.3 2.3 1.7

5.5 5.5 7.0 8.0 8.6

10 6 7 13

Shoulder RR.F.H.

3.3 2.2 2.0 1.8 1.8 1.9

6.0 7.1 8.3 8.5 8.5 8.4

22 10 3 RR.F.H. 30

Shoulder RR.F.H.

10.25

Add. Notes on Arbor Drive

See P. 58 for Original - Used Same B.M.

= Nail in pole = 262.71 3+00 = Profile

2+80 = E. Line

2+60

2+40 = ± of Eagle

2+08.5 = Cross 32' Wood Guard rail

1+78.5 - 20' Rt. = ± 10' Conc. Dr.

Set. B.M. on Pipe - 2+76.5 Rt. 46.92

1+60.5 - 19.8' Rt. = ± 4.5' Conc. walk to Conc. Steps - to upper floor.

1+48.8 - 20' Rt. = Ely. of 10' Conc. Dr.

1+30

E. face of 5" Conc. Wall along Dr.

1+38.8 - 20' Rt. = Wly. of Conc. Dr. + 21.2 Rt. =

1+37 - 25.5' Rt. = ± of 4" C.I. at 90° Bend to House

1+32.2 - 17.5' Rt. = ± Dead man

1+22.8 - 16.8' Rt. = ± P. pole # B.M. = 258.04 = spike # 731

1+00 - 26' Rt. = Beg 4" C.I. Sewer pipe out of ground

79

18.4			22.5		22.2
25					25
24.2	28.2	29.9	31.7	30.0	28.2
40	25	15		25	40
32.3	35.5	37.7	39.2	39.6	36.0
40	25	15		25	40
37.3	41.2	43.6	45.0	43.1	40.8
40	25	15		25	40

52.89 52.47
20 Dr. - 40 Brk at Bldg

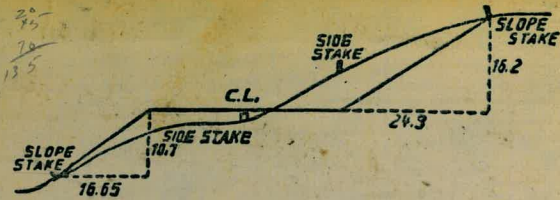
54.29 54.34
19.8 walk 25.1 Bottom at steps

55.07 53.30
20 Cor. Dr. - 40

56.0	57.5	57.1	57.2	56.8	57.5	56.6
35	25	15		15	25	35

55.71 56.98 53.36
20 Cor. of Dr. Top of Dr. at wall Bldg
60.28
25.5 Top of pipe

59.95
26 = Top of Pipe



DISTANCES FROM SIDE STAKES FOR CROSS-SECTIONING.

SLOPE 1 1/2 TO 1. ROADWAY OF ANY WIDTH.

	0	.1	.2	.3	.4	.5	.6	.7	.8	.9	
0	0.00	0.15	0.30	0.45	0.60	0.75	0.90	1.05	1.20	1.35	0
1	1.50	1.65	1.80	1.95	2.10	2.25	2.40	2.55	2.70	2.85	1
2	3.00	3.15	3.30	3.45	3.60	3.75	3.90	4.05	4.20	4.35	2
3	4.50	4.65	4.80	4.95	5.10	5.25	5.40	5.55	5.70	5.85	3
4	6.00	6.15	6.30	6.45	6.60	6.75	6.90	7.05	7.20	7.35	4
5	7.50	7.65	7.80	7.95	8.10	8.25	8.40	8.55	8.70	8.85	5
6	9.00	9.15	9.30	9.45	9.60	9.75	9.90	10.05	10.20	10.35	6
7	10.50	10.65	10.80	10.95	11.10	11.25	11.40	11.55	11.70	11.85	7
8	12.00	12.15	12.30	12.45	12.60	12.75	12.90	13.05	13.20	13.35	8
9	13.50	13.65	13.80	13.95	14.10	14.25	14.40	14.55	14.70	14.85	9
10	15.00	15.15	15.30	15.45	15.60	15.75	15.90	16.05	16.20	16.35	10
11	16.50	16.65	16.80	16.95	17.10	17.25	17.40	17.55	17.70	17.85	11
12	18.00	18.15	18.30	18.45	18.60	18.75	18.90	19.05	19.20	19.35	12
13	19.50	19.65	19.80	19.95	20.10	20.25	20.40	20.55	20.70	20.85	13
14	21.00	21.15	21.30	21.45	21.60	21.75	21.90	22.05	22.20	22.35	14
15	22.50	22.65	22.80	22.95	23.10	23.25	23.40	23.55	23.70	23.85	15
16	24.00	24.15	24.30	24.45	24.60	24.75	24.90	25.05	25.20	25.35	16
17	25.50	25.65	25.80	25.95	26.10	26.25	26.40	26.55	26.70	26.85	17
18	27.00	27.15	27.30	27.45	27.60	27.75	27.90	28.05	28.20	28.35	18
19	28.50	28.65	28.80	28.95	29.10	29.25	29.40	29.55	29.70	29.85	19
20	30.00	30.15	30.30	30.45	30.60	30.75	30.90	31.05	31.20	31.35	20
21	31.50	31.65	31.80	31.95	32.10	32.25	32.40	32.55	32.70	32.85	21
22	33.00	33.15	33.30	33.45	33.60	33.75	33.90	34.05	34.20	34.35	22
23	34.50	34.65	34.80	34.95	35.10	35.25	35.40	35.55	35.70	35.85	23
24	36.00	36.15	36.30	36.45	36.60	36.75	36.90	37.05	37.20	37.35	24
25	37.50	37.65	37.80	37.95	38.10	38.25	38.40	38.55	38.70	38.85	25
26	39.00	39.15	39.30	39.45	39.60	39.75	39.90	40.05	40.20	40.35	26
27	40.50	40.65	40.80	40.95	41.10	41.25	41.40	41.55	41.70	41.85	27
28	42.00	42.15	42.30	42.45	42.60	42.75	42.90	43.05	43.20	43.35	28
29	43.50	43.65	43.80	43.95	44.10	44.25	44.40	44.55	44.70	44.85	29
30	45.00	45.15	45.30	45.45	45.60	45.75	45.90	46.05	46.20	46.35	30
31	46.50	46.65	46.80	46.95	47.10	47.25	47.40	47.55	47.70	47.85	31
32	48.00	48.15	48.30	48.45	48.60	48.75	48.90	49.05	49.20	49.35	32
33	49.50	49.65	49.80	49.95	50.10	50.25	50.40	50.55	50.70	50.85	33
34	51.00	51.15	51.30	51.45	51.60	51.75	51.90	52.05	52.20	52.35	34
35	52.50	52.65	52.80	52.95	53.10	53.25	53.40	53.55	53.70	53.85	35
36	54.00	54.15	54.30	54.45	54.60	54.75	54.90	55.05	55.20	55.35	36
37	55.50	55.65	55.80	55.95	56.10	56.25	56.40	56.55	56.70	56.85	37
38	57.00	57.15	57.30	57.45	57.60	57.75	57.90	58.05	58.20	58.35	38
39	58.50	58.65	58.80	58.95	59.10	59.25	59.40	59.55	59.70	59.85	39
40	60.00	60.15	60.30	60.45	60.60	60.75	60.90	61.05	61.20	61.35	40
41	61.50	61.65	61.80	61.95	62.10	62.25	62.40	62.55	62.70	62.85	41
42	63.00	63.15	63.30	63.45	63.60	63.75	63.90	64.05	64.20	64.35	42
43	64.50	64.65	64.80	64.95	65.10	65.25	65.40	65.55	65.70	65.85	43
44	66.00	66.15	66.30	66.45	66.60	66.75	66.90	67.05	67.20	67.35	44
45	67.50	67.65	67.80	67.95	68.10	68.25	68.40	68.55	68.70	68.85	45
46	69.00	69.15	69.30	69.45	69.60	69.75	69.90	70.05	70.20	70.35	46
47	70.50	70.65	70.80	70.95	71.10	71.25	71.40	71.55	71.70	71.85	47
48	72.00	72.15	72.30	72.45	72.60	72.75	72.90	73.05	73.20	73.35	48
49	73.50	73.65	73.80	73.95	74.10	74.25	74.40	74.55	74.70	74.85	49
50	75.00	75.15	75.30	75.45	75.60	75.75	75.90	76.05	76.20	76.35	50

THE NATIONAL BLANK BOOK COMPANY
 HOLYOKE MASSACHUSETTS
 NEW YORK CHICAGO BOSTON SAN FRANCISCO

325
 65
 975

5122
 928
 9971
 4726
 414
 468284