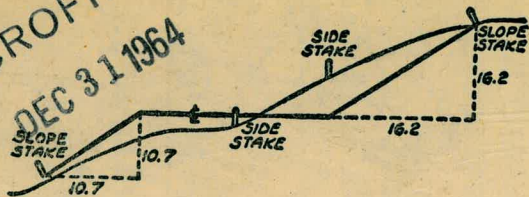


2075

THE END

MICROFILMED
DEC 31 1964



DISTANCES FROM SIDE STAKES FOR CROSS-SECTIONING
SLOPE 1 TO 1. ROADWAY OF ANY WIDTH

| | 0 | .1 | .2 | .3 | .4 | .5 | .6 | .7 | .8 | .9 | |
|----|-------|-------|-------|-------|-------|-------|-------|-------|-------|-------|----|
| 0 | 0.00 | 0.10 | 0.20 | 0.30 | 0.40 | 0.50 | 0.60 | 0.70 | 0.80 | 0.90 | 0 |
| 1 | 1.00 | 1.10 | 1.20 | 1.30 | 1.40 | 1.50 | 1.60 | 1.70 | 1.80 | 1.90 | 1 |
| 2 | 2.00 | 2.10 | 2.20 | 2.30 | 2.40 | 2.50 | 2.60 | 2.70 | 2.80 | 2.90 | 2 |
| 3 | 3.00 | 3.10 | 3.20 | 3.30 | 3.40 | 3.50 | 3.60 | 3.70 | 3.80 | 3.90 | 3 |
| 4 | 4.00 | 4.10 | 4.20 | 4.30 | 4.40 | 4.50 | 4.60 | 4.70 | 4.80 | 4.90 | 4 |
| 5 | 5.00 | 5.10 | 5.20 | 5.30 | 5.40 | 5.50 | 5.60 | 5.70 | 5.80 | 5.90 | 5 |
| 6 | 6.00 | 6.10 | 6.20 | 6.30 | 6.40 | 6.50 | 6.60 | 6.70 | 6.80 | 6.90 | 6 |
| 7 | 7.00 | 7.10 | 7.20 | 7.30 | 7.40 | 7.50 | 7.60 | 7.70 | 7.80 | 7.90 | 7 |
| 8 | 8.00 | 8.10 | 8.20 | 8.30 | 8.40 | 8.50 | 8.60 | 8.70 | 8.80 | 8.90 | 8 |
| 9 | 9.00 | 9.10 | 9.20 | 9.30 | 9.40 | 9.50 | 9.60 | 9.70 | 9.80 | 9.90 | 9 |
| 10 | 10.00 | 10.10 | 10.20 | 10.30 | 10.40 | 10.50 | 10.60 | 10.70 | 10.80 | 10.90 | 10 |
| 11 | 11.00 | 11.10 | 11.20 | 11.30 | 11.40 | 11.50 | 11.60 | 11.70 | 11.80 | 11.90 | 11 |
| 12 | 12.00 | 12.10 | 12.20 | 12.30 | 12.40 | 12.50 | 12.60 | 12.70 | 12.80 | 12.90 | 12 |
| 13 | 13.00 | 13.10 | 13.20 | 13.30 | 13.40 | 13.50 | 13.60 | 13.70 | 13.80 | 13.90 | 13 |
| 14 | 14.00 | 14.10 | 14.20 | 14.30 | 14.40 | 14.50 | 14.60 | 14.70 | 14.80 | 14.90 | 14 |
| 15 | 15.00 | 15.10 | 15.20 | 15.30 | 15.40 | 15.50 | 15.60 | 15.70 | 15.80 | 15.90 | 15 |
| 16 | 16.00 | 16.10 | 16.20 | 16.30 | 16.40 | 16.50 | 16.60 | 16.70 | 16.80 | 16.90 | 16 |
| 17 | 17.00 | 17.10 | 17.20 | 17.30 | 17.40 | 17.50 | 17.60 | 17.70 | 17.80 | 17.90 | 17 |
| 18 | 18.00 | 18.10 | 18.20 | 18.30 | 18.40 | 18.50 | 18.60 | 18.70 | 18.80 | 18.90 | 18 |
| 19 | 19.00 | 19.10 | 19.20 | 19.30 | 19.40 | 19.50 | 19.60 | 19.70 | 19.80 | 19.90 | 19 |
| 20 | 20.00 | 20.10 | 20.20 | 20.30 | 20.40 | 20.50 | 20.60 | 20.70 | 20.80 | 20.90 | 20 |
| 21 | 21.00 | 21.10 | 21.20 | 21.30 | 21.40 | 21.50 | 21.60 | 21.70 | 21.80 | 21.90 | 21 |
| 22 | 22.00 | 22.10 | 22.20 | 22.30 | 22.40 | 22.50 | 22.60 | 22.70 | 22.80 | 22.90 | 22 |
| 23 | 23.00 | 23.10 | 23.20 | 23.30 | 23.40 | 23.50 | 23.60 | 23.70 | 23.80 | 23.90 | 23 |
| 24 | 24.00 | 24.10 | 24.20 | 24.30 | 24.40 | 24.50 | 24.60 | 24.70 | 24.80 | 24.90 | 24 |
| 25 | 25.00 | 25.10 | 25.20 | 25.30 | 25.40 | 25.50 | 25.60 | 25.70 | 25.80 | 25.90 | 25 |
| 26 | 26.00 | 26.10 | 26.20 | 26.30 | 26.40 | 26.50 | 26.60 | 26.70 | 26.80 | 26.90 | 26 |
| 27 | 27.00 | 27.10 | 27.20 | 27.30 | 27.40 | 27.50 | 27.60 | 27.70 | 27.80 | 27.90 | 27 |
| 28 | 28.00 | 28.10 | 28.20 | 28.30 | 28.40 | 28.50 | 28.60 | 28.70 | 28.80 | 28.90 | 28 |
| 29 | 29.00 | 29.10 | 29.20 | 29.30 | 29.40 | 29.50 | 29.60 | 29.70 | 29.80 | 29.90 | 29 |
| 30 | 30.00 | 30.10 | 30.20 | 30.30 | 30.40 | 30.50 | 30.60 | 30.70 | 30.80 | 30.90 | 30 |
| 31 | 31.00 | 31.10 | 31.20 | 31.30 | 31.40 | 31.50 | 31.60 | 31.70 | 31.80 | 31.90 | 31 |
| 32 | 32.00 | 32.10 | 32.20 | 32.30 | 32.40 | 32.50 | 32.60 | 32.70 | 32.80 | 32.90 | 32 |
| 33 | 33.00 | 33.10 | 33.20 | 33.30 | 33.40 | 33.50 | 33.60 | 33.70 | 33.80 | 33.90 | 33 |
| 34 | 34.00 | 34.10 | 34.20 | 34.30 | 34.40 | 34.50 | 34.60 | 34.70 | 34.80 | 34.90 | 34 |
| 35 | 35.00 | 35.10 | 35.20 | 35.30 | 35.40 | 35.50 | 35.60 | 35.70 | 35.80 | 35.90 | 35 |
| 36 | 36.00 | 36.10 | 36.20 | 36.30 | 36.40 | 36.50 | 36.60 | 36.70 | 36.80 | 36.90 | 36 |
| 37 | 37.00 | 37.10 | 37.20 | 37.30 | 37.40 | 37.50 | 37.60 | 37.70 | 37.80 | 37.90 | 37 |
| 38 | 38.00 | 38.10 | 38.20 | 38.30 | 38.40 | 38.50 | 38.60 | 38.70 | 38.80 | 38.90 | 38 |
| 39 | 39.00 | 39.10 | 39.20 | 39.30 | 39.40 | 39.50 | 39.60 | 39.70 | 39.80 | 39.90 | 39 |
| 40 | 40.00 | 40.10 | 40.20 | 40.30 | 40.40 | 40.50 | 40.60 | 40.70 | 40.80 | 40.90 | 40 |
| 41 | 41.00 | 41.10 | 41.20 | 41.30 | 41.40 | 41.50 | 41.60 | 41.70 | 41.80 | 41.90 | 41 |
| 42 | 42.00 | 42.10 | 42.20 | 42.30 | 42.40 | 42.50 | 42.60 | 42.70 | 42.80 | 42.90 | 42 |
| 43 | 43.00 | 43.10 | 43.20 | 43.30 | 43.40 | 43.50 | 43.60 | 43.70 | 43.80 | 43.90 | 43 |
| 44 | 44.00 | 44.10 | 44.20 | 44.30 | 44.40 | 44.50 | 44.60 | 44.70 | 44.80 | 44.90 | 44 |
| 45 | 45.00 | 45.10 | 45.20 | 45.30 | 45.40 | 45.50 | 45.60 | 45.70 | 45.80 | 45.90 | 45 |
| 46 | 46.00 | 46.10 | 46.20 | 46.30 | 46.40 | 46.50 | 46.60 | 46.70 | 46.80 | 46.90 | 46 |
| 47 | 47.00 | 47.10 | 47.20 | 47.30 | 47.40 | 47.50 | 47.60 | 47.70 | 47.80 | 47.90 | 47 |
| 48 | 48.00 | 48.10 | 48.20 | 48.30 | 48.40 | 48.50 | 48.60 | 48.70 | 48.80 | 48.90 | 48 |
| 49 | 49.00 | 49.10 | 49.20 | 49.30 | 49.40 | 49.50 | 49.60 | 49.70 | 49.80 | 49.90 | 49 |
| 50 | 50.00 | 50.10 | 50.20 | 50.30 | 50.40 | 50.50 | 50.60 | 50.70 | 50.80 | 50.90 | 50 |

Distance of slope stake from side or shoulder stake for any width roadway, slope 1 to 1. If ground is nearly level, the out or fill at side stake is located by the double entry method in left column and top row. The number in body of table in same row and column gives distance from side stake to slope stake. If ground is not level estimate the difference in elevation between the side stake and slope stake, lower target by this amount if cut, elevate if fill. Add this amount to cut or fill and find distance in table. Set up rod at this point, and line of sight should cut target. If it does not make the slight adjustment necessary.

37 @ 9A
74 @

INDEXED

through page # 43

INDEX

Pg

TABLE VIII - CORRECTIONS FOR TANGENTS AND

Corrections are to be added to the approximate value
of external for a 1° curve (Table VIII), by the degree
of external or internal angle.

X- Sec ~~at~~ ~~the~~ ~~end~~ ~~of~~ ~~S. Ly of~~ 62
For TANGENTS ~~generally~~

Profile sewer @ ~~Ames~~ ~~Stewart~~ 76

X-SECT College Ave
S'ly of UNIV 61

FOR EXTERNALS ADD

| Central Angle | Degree of Curve | | | | | | | | | | | ° | | | | |
|------------------|-----------------|------|------|------|------|------|------|------|------|------|------|------|------|------|------|------|
| | 1° | 2° | 3° | 4° | 5° | 6° | 7° | 8° | 9° | 10° | 11° | | | | | |
| 15° | .001 | .002 | .003 | .004 | .005 | .006 | .007 | .008 | .009 | .010 | .011 | .012 | .013 | .014 | .015 | .020 |
| 20° | .001 | .002 | .003 | .004 | .005 | .006 | .007 | .008 | .009 | .010 | .011 | .012 | .013 | .014 | .015 | .051 |
| 25° | .001 | .002 | .003 | .004 | .005 | .006 | .007 | .008 | .009 | .010 | .011 | .012 | .013 | .014 | .015 | .083 |
| 30° | .001 | .002 | .003 | .004 | .005 | .006 | .007 | .008 | .009 | .010 | .011 | .012 | .013 | .014 | .015 | .135 |
| 35° | .001 | .002 | .003 | .004 | .005 | .006 | .007 | .008 | .009 | .010 | .011 | .012 | .013 | .014 | .015 | .188 |
| 40° | .001 | .002 | .003 | .004 | .005 | .006 | .007 | .008 | .009 | .010 | .011 | .012 | .013 | .014 | .015 | .264 |
| 45° | .001 | .002 | .003 | .004 | .005 | .006 | .007 | .008 | .009 | .010 | .011 | .012 | .013 | .014 | .015 | .341 |
| 50° | .001 | .002 | .003 | .004 | .005 | .006 | .007 | .008 | .009 | .010 | .011 | .012 | .013 | .014 | .015 | .445 |
| 55° | .001 | .002 | .003 | .004 | .005 | .006 | .007 | .008 | .009 | .010 | .011 | .012 | .013 | .014 | .015 | .550 |
| 60° | .001 | .002 | .003 | .004 | .005 | .006 | .007 | .008 | .009 | .010 | .011 | .012 | .013 | .014 | .015 | .700 |
| 65° | .001 | .002 | .003 | .004 | .005 | .006 | .007 | .008 | .009 | .010 | .011 | .012 | .013 | .014 | .015 | .851 |
| 70° | .001 | .002 | .003 | .004 | .005 | .006 | .007 | .008 | .009 | .010 | .011 | .012 | .013 | .014 | .015 | 1.01 |
| 75° | .001 | .002 | .003 | .004 | .005 | .006 | .007 | .008 | .009 | .010 | .011 | .012 | .013 | .014 | .015 | 1.17 |
| 80° | .001 | .002 | .003 | .004 | .005 | .006 | .007 | .008 | .009 | .010 | .011 | .012 | .013 | .014 | .015 | 1.39 |
| 85° | .001 | .002 | .003 | .004 | .005 | .006 | .007 | .008 | .009 | .010 | .011 | .012 | .013 | .014 | .015 | 1.62 |
| 90° | .001 | .002 | .003 | .004 | .005 | .006 | .007 | .008 | .009 | .010 | .011 | .012 | .013 | .014 | .015 | 1.91 |
| 95° | .001 | .002 | .003 | .004 | .005 | .006 | .007 | .008 | .009 | .010 | .011 | .012 | .013 | .014 | .015 | 2.20 |
| 100° | .001 | .002 | .003 | .004 | .005 | .006 | .007 | .008 | .009 | .010 | .011 | .012 | .013 | .014 | .015 | 2.58 |
| 105° | .001 | .002 | .003 | .004 | .005 | .006 | .007 | .008 | .009 | .010 | .011 | .012 | .013 | .014 | .015 | 2.96 |
| 110° | .001 | .002 | .003 | .004 | .005 | .006 | .007 | .008 | .009 | .010 | .011 | .012 | .013 | .014 | .015 | 3.96 |
| 115° | .001 | .002 | .003 | .004 | .005 | .006 | .007 | .008 | .009 | .010 | .011 | .012 | .013 | .014 | .015 | 5.32 |

Index

1

Page

2 - Exterior - Loma lands Park.

3 - Exterior Bdry Bellevue Hts #5

4 - " " Westwood Hills #4

5-9 X Sec Alcott St Warrington to Ely
Western Addn

10-18 X-Sec Alley Bk. I, Turner's Sea
Shell Park

19-24 X-Sec Sutherland, Kurty to Pacific Hwy

25-26 Utility + Toilet Bldg. Muni-golf
course, off Pershing Drive

27-29 X-Sec. Barrow Pit # 2,
Laurel Canyon

30 - X-Sec. Barrow Pit # 1
Laurel Canyon

32 - Sewer prelim survey 42nd + Broadway

38 - Prop. sewer alignment N. Washington
bet. Dove + Brant

44 College Avenue, Univ. - 1600' S'ly, X-Sec

49 Sycamore Dr. - Violet to Tuberosa

52 Proposed sewer location under N. Approach
Morena Boulevard Bridge

SKETCH ON FIELD CHK OF
BELLVIEW HTS UNIT 5.

OSBORNE &
HARDIN
& SHEPARD
HATCH,

BELVIEW HTS. A.
MAP 2538

~~INDEXED~~
JUN 20 1950

LOT 12, BLK II
MAP 2598

LOT 4, BLK II
MAP 2598

LOT 1, BLK 8, MAP 2466

MAP 748

OB

98.91

112.20

22.2

119.20

118.31

47

356.38

853.42

554.08

312.94

151.35

367.01

WEST OVERLOOK DRIVE

373.69

540.74

70.53

70.53

70.53

70.53

70.53

70.53

70.53

70.53

70.53

70.53

70.53

70.53

N 30° 00' W

N 30° 56' 05"

BLOCK 8

BELVIEW HTS UNIT 2

MAP 2466

BELVIEW HTS UNIT 1

EAST OVERLOOK DR.

MAP 2374

100

61.37

110.2

88.35

96.65

52.77

118.85

145.47

145.47

145.47

145.47

145.47

145.47

145.47

145.47

145.47

145.47

145.47

145.47

145.47

145.47

145.47

145.47

145.47

145.47

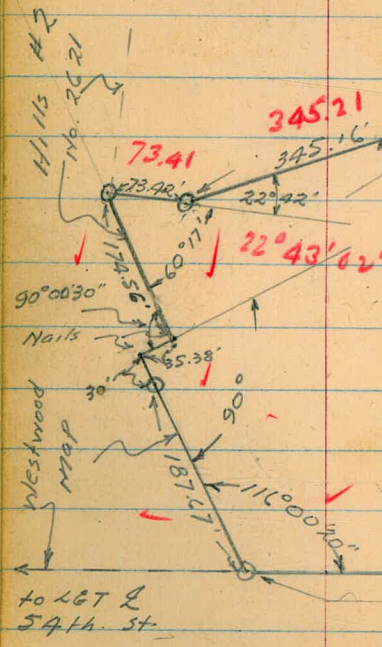
3

6-23-50
 Hendricks
 Johnson
 Crawford
 Bunch
 W.C. 23149

Exterior Boundary
 Westwood Hills #4

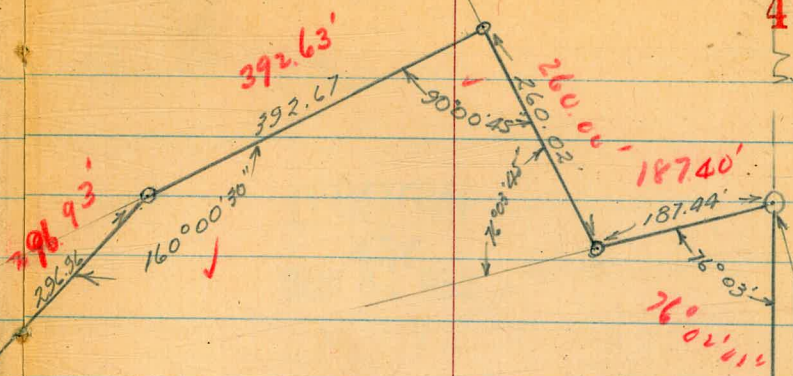
⊙ Indicates 3" I.P. Found

INDEXED
 JUN 26 1950



to LGT &
 54th St

356.21
 356.18
 16°25'15"
 16°15'42"



4
 to N.E. Cor
 Lot 17

892.00
 891.90'

East line Lot 17 Bunch & Mission

1417.76
 1417.64'

5/4 line of N/4 100 AC. of Lot 17 RHO Mission

Ed. 2nd AP.
 L.S. 2286

D. Smith
 Wm. Fay.
 E. Sherman
 R. Lochhead.

X Sec Alcott St

Warrington St to Ely Line
 Western Addn.
 Lt. North

W0#25020

8-14-50

Rt. South

6

Reduced by P. Horn
 10-2-50

0-50 West Prop line Warrington

| | | | | | | | |
|------|------|------|------|------|------|------|------|
| A1.2 | A2.1 | A1.1 | A3.9 | A1.4 | 54.0 | 50.0 | 48.9 |
| 146 | 132 | 147 | 112 | 84 | 58 | 58 | 62 |
| 65 | 35 | 17 | 20 | 35 | 45 | 65 | |

5576 ✓

TP₁₂ 0⁰⁶ 55⁷⁶ ✓ 114¹ 55⁷⁰

BM₂ 6⁰⁸ 61⁰³ ✓ NE Prop Hub Alcott Warrington

TP₁₁ 0⁰³ 67¹¹ 11⁵⁸ 67⁰⁸

TP₁₀ 0⁰² 78⁶⁶ 11⁹³ 78⁵⁹

TP₉ 0⁰⁵ 90⁵² 11⁸⁵ 90⁴⁷

TP₈ 0⁰¹ 102³² 12²⁷ 102³¹

TP₇ 0⁰⁵ 114⁵⁸ ✓ 116³ 114⁵³

TP₆ 0¹³ 126¹⁶ 12³⁰ 126⁰³

TP₅ 0²⁶ 138³³ 138⁰⁷

TP (BM) 1⁰⁰ 148⁰⁷ 10⁰⁰ 138⁰⁷ ↑ NE Prop Pipe Alcott Ely Western Addition

TP₄ 1¹⁵ 159⁰⁸ 12⁰¹ 147⁰⁷

TP₃ 0⁵³ 168⁴⁰ 10⁴⁷ 157⁹³

TP₂ 11.78 180¹⁸ 12³¹ 167⁸⁷

TP₁ 9.21 168⁵¹ 0¹¹ 168⁴⁰

✓ BM 159³⁰ SW. BP Alcott + Chatsworth

TP₁₇ 11⁷² 113⁶⁸ ✓ 0³¹ 101⁸⁹

TP₁₆ 11⁵⁴ 102²⁰ 0⁰⁶ 90⁶⁶

O+75 -

O+50

TP₁₅ 11⁸⁰ 90⁷² ✓ 0²⁸ 78⁹²

O+25

TP₁₄ 12²³ 79²⁰ ✓ 0³⁹ 66⁹⁷

O+00 East Prep Warrington

TP₁₃ 11⁹³ 67³⁶ ✓ 0³³ 55⁴³

O-25 E Warrington

Lt F Rt

7

| | | | | | | | |
|------|------|------|------|------|------|------|------|
| 87.5 | 87.5 | 87.4 | 86.4 | 89.0 | 89.6 | 89.8 | 87.8 |
| 32 | 24 | 33 | 23 | 12 | 14 | 02 | 22 |
| 65 | 35 | 15 | 15 | 35 | 35 | 65 | |

| | | | | | | | | | |
|-----------------|-----------------|-----------------|-----------------|-----------------|-----------------|-----------------|-----------------|-----------------|-----------------|
| 71.9 | 71.6 | 70.3 | 71.2 | 70.8 | 80.1 | 80.4 | 79.9 | 79.2 | 76.5 |
| 12 ⁸ | 13 ⁴ | 12 ⁴ | 12 ⁵ | 11 ² | 10 ⁶ | 10 ³ | 10 ⁸ | 11 ⁵ | 14 ² |
| 65 | 55 | 35 | 25 | 15 | 15 | 35 | 50 | 65 | |

90⁷² ✓

| | | | | | | | |
|-----------------|----------------|----------------|----------------|----------------|----------------|----------------|-----------------|
| 69.1 | 69.4 | 70.4 | 70.2 | 70.9 | 72.3 | 74.4 | 69.2 |
| 10 ¹ | 9 ⁸ | 8 ⁸ | 9 ⁰ | 8 ³ | 6 ² | 4 ⁸ | 10 ⁰ |
| 65 | 35 | 25 | 10 | 15 | 35 | 65 | |

79²⁰

| | | | | | | | |
|----------------|----------------|----------------|----------------|----------------|----------------|----------------|----------------|
| 59.7 | 61.06 | 60.9 | 61.6 | 63.1 | 65.3 | 66.0 | 63.0 |
| 7 ² | 6 ³ | 6 ⁵ | 5 ⁸ | 4 ³ | 2 ¹ | 1 ⁴ | 4 ⁴ |
| 65 | 35 | 15 | 15 | 35 | 35 | 45 | 65 |

67³⁶ ✓

| | | | | | | | |
|----------------|----------------|----------------|----------------|----------------|----------------|----------------|----------------|
| 49.5 | 50.4 | 50.4 | 52.3 | 54.3 | 57.1 | 58.9 | 57.7 |
| 6 ³ | 5 ⁴ | 5 ⁴ | 3 ⁵ | 1 ⁵ | 1 ² | 1 ³ | 1 ² |
| 65 | 35 | 15 | 15 | 35 | 35 | 50 | 65 |

55⁷⁶

TP₂₀ 12¹⁶ 149⁰⁶ 003 136⁹⁰

2125

2100

TP₁₉ 11²⁰ 136²³ 009 125²³

1475

1450

TP₁₈ 12¹² 125³² 048 113²⁰

1725

1700

Lt. North ♀ Rt = South 8
127.3 129.1 130.7 130.9 131.6 133.5 134.2 135.0
9⁶ 7⁸ 6² 6⁸ 5² 3² 2² 1²
65 35 15 15 35 45 65

122.7 124.5 125.1 126.3 128.0 128.4 129.1 130.0
14² 12⁴ 11⁸ 10⁶ 8² 8⁵ 7⁸ 6²
65 45 35 15 15 35 65

136²³ ✓
117.9 120.4 121.8 121.8 122.6 123.6 124.6
7⁴ 4² 3⁵ 3⁵ 2² 1² 0²
65 35 15 15 35 65

113.5 114.6 114.8 114.9 115.7 115.6 116.5 116.2
11⁸ 10² 10⁵ 10⁴ 9⁶ 9² 8⁸ 7²
65 45 35 15 15 35 65

125³² ✓
106.7 107.7 108.2 108.5 109.1 109.7 109.5
7² 6⁰ 5² 5² 4⁶ 4² 4²
65 35 15 15 35 65

99.8 101.0 99.7 100.4 99.4 99.2 99.2 98.1
13² 12² 14² 13³ 14³ 14⁵ 14⁵ 15⁶
65 55 35 15 15 35 65

113⁶⁸ ✓

BM starting

70⁵⁴

159²⁹

159³⁰ SWBP
Alcotta
Chatsworth

Lt = North

♀

Rt = South

9

TP₂₄

0⁰⁶

169⁸³

7⁶⁸

169²⁷

TP₂₃

12²⁸

177⁴⁵

0⁴⁰

165¹⁷

TP₂₂

11²¹

165⁵⁷

6⁴⁶

153⁶⁶

3+30

149.0
12¹ 6²
65' 35'

143.2
5⁴
20'

155.1
5²
15'

155.1
5⁰
15'

155.0
5¹
35'

3400

145.9
142
65'

151.2
8²
35'

153.3
6⁸
20'

155.0
5¹
20'

155.2
4²
20'

155.6
4⁵
35'

155.9
4²
65'

2+90 12' Lt & Sewer MH

7³⁷

157.7
22¹
65'

159.8
20³
35'

148.9
16²
35'

143.1
17⁰
25'

153.3
6⁸
8'

154.8
5³
15'

155.0
5¹
15'

155.8
4³
35'

156.0
4¹
65'

2+85

TP₂₁

11²⁹

160¹²

0²³

148⁸³

160¹²

TP BM,

11⁰¹

138⁰⁵

138⁰⁵
page 6

2+69⁸²

Ely line Western Addition

135.5
13⁶
65'

137.6
11⁵
35'

129.1
10⁰
20'

120.8
8³
10'

144.0
5¹
10'

146.9
2³
10'

145.2
3²
25'

147.1
1²
35'

149.0
0¹
42'

154.1
15⁰
65'

2+50

131.8
17³
65'

133.6
15⁵
35'

135.6
13⁵
15'

136.2
12²
15'

137.6
11⁵
15'

139.5
9⁶
35'

141.5
7⁶
65'

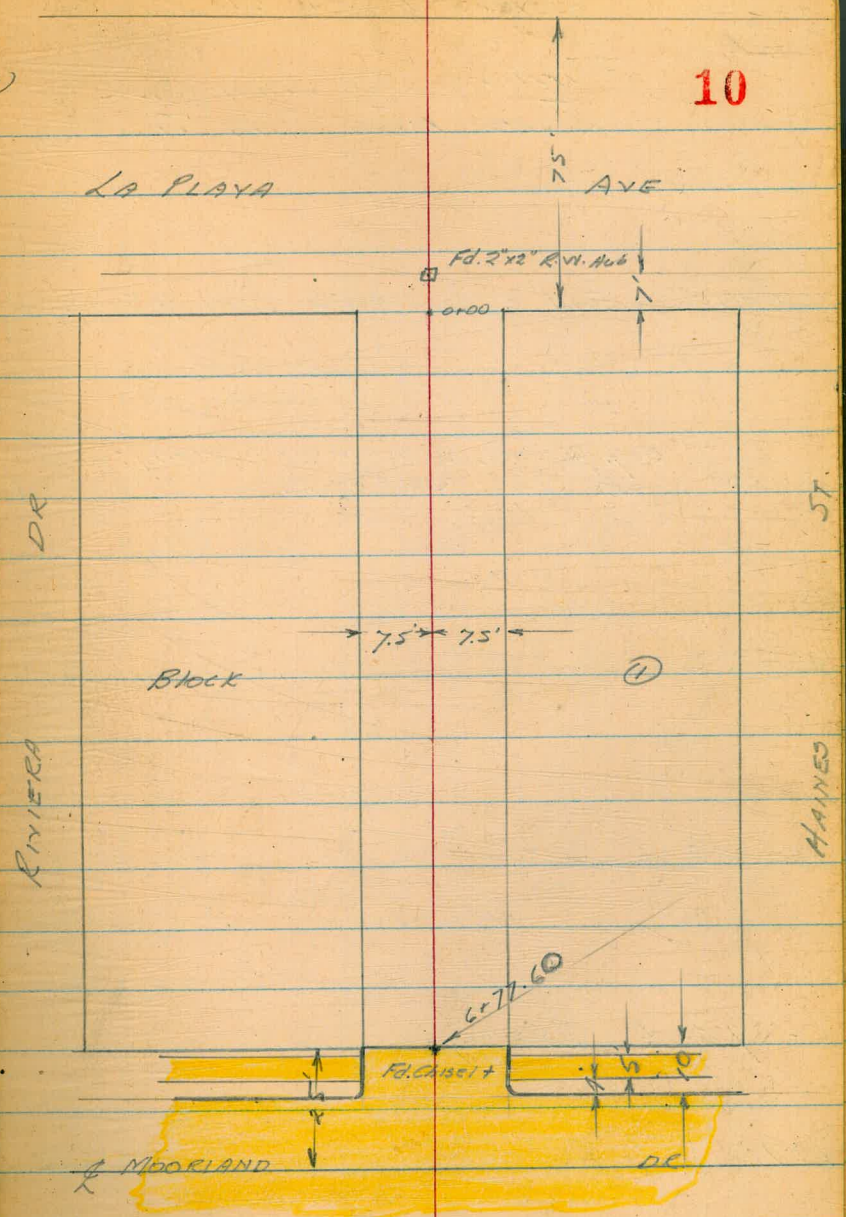
149⁰⁶

12-1-50
Hendricks
Sherman
Crawford
Shepard
MO# 25020

X 3 x 15' Alley
Block I Turner's Sea Shell Park
See Also E.B. 1756 P-7

INDEXED
DEC 4 1950

10



Levels Alley Block 1

Turner's Sea Shell Park

Levels taken with self-Reading level

11

0+14.6 End 8" Conc. Block Wall 7.5 onst

23³⁵ - 22⁶

7.3 7.3

(Top Blm.)
footing

Beq. 8" Conc. Block Wall 8' High 7.5 onst

0+00 Sea Line La Playa

24²⁸ 23⁴⁸ 22⁶ 22¹ 22⁷ 22⁵ 21⁷

30 7.5 7.2 7.2 5 7.5 30

(Top Blm.)
+19.

0-20

24⁶ 23⁶ 22⁶ 22⁵ 23¹ 21⁴

50 25 9 11 50

0-25

23⁹ 23² 22² 21⁴ 20⁶

50 25 25 50

0-37.5 R La Playa

24⁵ 22⁸ 21³

50 50

BM.

1945

N.E.B.P. Riviera Dr. to La Playa

Alley Block 1
Turner's Sea Shell Park
Contd.

£

12

1+25.2 Beg 8" Conc. Block Wall 7.5' Lt

23²⁸ 22⁶
(7.3 7.3)
Top Btm)
+19.

1+10.8 £ 15' Double Garage & Conc Ramp

23⁸⁶ 23²⁷
17.5 7.5
Ramp

1+00

23⁶ 23³ 22⁷ 22⁴ 22³
15 7.5 7.5 15

0+92.3 End Board fence 7.5' Lt

0+80

23⁵ 23¹ 22⁷ 22⁷ 22⁰
15 7.5 7.5 15

Beg. Board fence 7.7' Lt.
0+49.7 End 8" Conc. Block wall 7.7' Lt

22⁴⁵ 22⁷
7.5 7.5
(Top Btm.)
+19.

0+35.2 Beg 8" Conc. Block Wall 7.6' Lt

22³⁶ 22⁷
(7.4 7.4)
Top Btm)
+19.

Alley Block X
Turner's Sea Shell Park
Contd

13

1+56 Beg Conc Ramp 7.5 Rt.

23⁵⁴ 23²³
15 7.5
Ramp

1+55 & 3' Conc Walk 7.6 Rt.

22²⁴ 22⁰²
76 15

1+53.5 End 8" Conc Block Wall 7.5 Lt.

23¹¹ 22⁶
71 71
top Blm
f19.

TP.

22.87

1+50

23⁶ 23³ 22⁸ 22⁵ 22³
15 7.5 7.5 15

1+49.7 Beg 8" Conc Block Wall 7.6 Rt.

21⁶ 22²⁹
7.4 7.4
(Blm top)
f19.

1+49 Power Pole # JPA 3783 5.9 Rt.

Alley Block 1
Turners Sea Shell Park
Cont'd.

£

14

2+50 End 8" Conc. Block Wall 7.3 R⁴

22⁶ 22² 22² 21¹ 21³⁷ 21⁸ 21⁴
10 7.5 7.2 7.2 7.5 15
(Btm top)
(ftg)

Beg. 4" Conc. Ret Wall 7.8 L⁴
2+27 End 8" Conc. Block Wall 7.8 L⁴

22⁸¹ 22² 22⁴⁴ 21⁵
7.8 7.8 7.4 7.4
(top Btm) (top Btm)
(Wall) (ftg)

2+25 Beg. 8" Conc. Block Wall 7.4 R⁴

21² 21⁷⁷
7.2 7.2
(Btm top)
(ftg)

2+13 £ Double Garage Conc. Ramp & Fl.

22⁰⁸ 22³⁴
7.6 10.7
Ramp Floor

2+00 End 8" Conc. Block Wall 7.6 R⁴

23¹ 22⁶ 22[±] 21[±] 22⁰³ 22⁰ 21⁸
18 7.8 7.4 7.4 7.5 15
Btm

Beg. 8" Conc. Wall 7.5 L⁴
1+75.3 End Conc. Ramp 7.5 L⁴

23⁴⁰ 22²⁵ 22⁵⁵ 21⁵
15 7.5 7.1 7.1
Ramp (top Btm)
(ftg)

Alley Block 1
Turner's Sea Shell Park

15

3+50 End Board fence 7.1 Lt.

22⁹ 23⁰ 22³ 21⁴ 21³ 20⁹
22 15 7.5 7.5 15

3+42 & Single Garage (under Carst)
22.5' Lt.

24³⁰ 23¹ 22¹
22.6 22.8 22.3
top of top
(Foundation) 119. 119.

T.P. 22.73

3+24

22⁰ 21⁸ 21³ 21³ 21³
15 7.5 7.5 15

Req Board Fence & Lath House 7.1' Lt.
Power Pole #JPA 3769 5.9 Lt.

3+00 End 8" Conc Block Wall 7.8 Lt.

23⁰ 22² 21^{3/4} 20⁸ 21⁸ 21⁶ 20⁹
15 7.5 7.4 Btm
(top 119.) 7.5 15

2+75

22⁸ 22⁷ 22⁶ 22⁰ 21⁴
15 7.5 7.5 15

Req 8" Conc Block Wall }
2+66 End 4" Conc Ret Wall } 7.8 Lt.

22⁷ 22⁴ 22⁴⁰ 21²
7.8 7.8 7.7 7.7
top Btm (top Btm)
119. Wall

Alley Block 1
Turner's Sea Shell Park

16

4+50 Beg. Board fence 74' Lt.

23⁸ 23⁷ 22⁸ 22⁶ 22⁴ 21⁶ 21⁵
15 10 7.5 6 7.5 15

4+49 Power Pole # SPA 3735 5.9 Rt.

4+22.5 End Conc. Ramp & Gar. on Rt.

21^{4.5} 21^{4.5}
7.3 11.5
Ramp Fl.

4+12 L Conc. Ramp & Gar. Lt.

23^{4.5} 22^{5.3}
12.8 7.9
Fl. Ramp

4+03 Beg. Conc. Ramp & Garage 74' Rt.

21⁴ 21^{4.5}
17.4 11.8
Ramp fl.

4+00

22⁷ 22⁴ 21⁷ 21³ 21¹
15 7.5 7.5 15

Alley Block 1
Turner's Sea Shell Park

17

5+95 R Double Garage & Ramp

29¹¹ 28⁸
12.7 7.7
Fl. Ramp

5+76 End 12" Conc Ret. Wall 7.8' Lt.

29³ 29⁰ 28⁸ 27¹ 28¹ 26⁹ 27¹ 26⁶ 26³
15 9 7.7 7.7 7.5 5 7.5 15
TOP Wall Jtg

5+64 End Board fence 7.9' Lt.

5+63 Beg 12" Conc Ret. Wall 7.8' Lt.

28⁶³ 26³
7.9 7.8
top Btm
Wall Jtg.

TP.

26.13

5+50

26³ 25⁸ 25⁷ 25³ 25¹
15 15 7.5 15

5+00

24⁷ 24³ 23⁵ 23⁴ 23⁰
15 7.5 7.5 15

4+82 R Double Garage & Conc Ramp

24² 23⁴ 23⁰ 22⁷ 22⁶ 22^{7.5}
15 7.5 7.5 15.5 20.5
Ramp Fl.

Riley Block 1

Turners Seg Shell Part

18

B.17

(21.44) (21.4) 24.05

NEBP Moorland & Riviera Dr

7+02.60 to Moorland

31⁵⁶ 30²⁴ 28⁷⁷ 27⁵⁵ 25⁶⁰
50 25 21 50

6+87.60 North, Ch. Line Moorland Dr

31²⁸ 30⁸⁰ 29²¹ 28⁷⁷ 28⁶⁴ 28¹⁶ 27⁷⁰ 27⁵⁴ 28⁰⁵ 25²⁵
45 45 95 95 75 7.5 9.5 9.5 45 45
Ch G Ch G G Ch G Ch

*Note: (Obs. from 6+77.60 to 6+85.60) are warped & broken

End 9" Conc. Wall 89' RL
Edge Conc. Paving & Beg Obs.

6+77.60 No Line Moorland Dr

29⁴⁷ 29³² 28⁹⁵ 28¹⁷ 27⁷⁷ 28⁰⁹ 28²¹
8.2 7.7 7.7 7.3 7.3 7.8
SW Ch Ch SW

6+54 Beg 8" Conc Ret Wall 89' RL

26⁹ 27⁵⁰
85 85
(Btm top)
119.

6+50

29⁸ 29⁵ 28⁶ 28² 28⁰ 27⁸
15 7.5 6 7.5 15

6+12 Power Pole # JPA #3711 6.3' RL

6+00

29¹ 28⁷ 28⁰ 27² 26⁷
18 7.5 7.5 15

Roberts
Cota
Clark
12-14-50
W.O. 25020

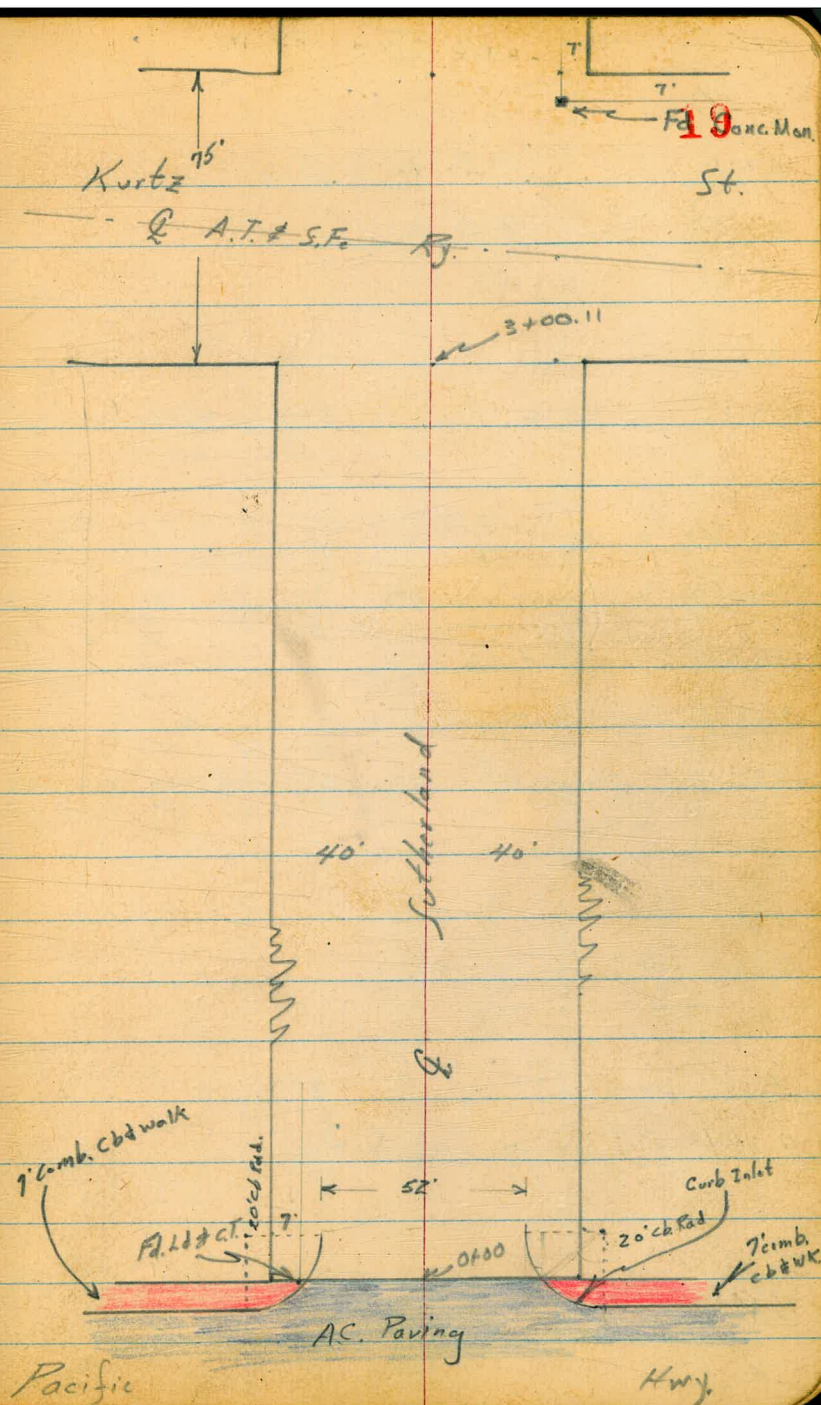
INDEXED

MAR 13 1951

X-Section Sutherland St.
(Kurtz to Pacific Hwy)

T.P. #96

Note: For additional Levels see
Page 74.



0+26 28' Rt to Deadman

0+16E 11E Rt to center MH

A.18
5.26
11E
Rim
MH

0+16 40' Lt Begin Conc. Slab Around Gasoline Pumps

A.80
A.84
4.64
20
conc
4.60
40
conc

0+13 { 30' Lt to Approx. Edge AC Gasoline Sta.
42' Rt to Safeway Park Lot
Curb Ends
Safeway has a 6" bumping curb on edge of Parking Lot 8" high.

A.74 A.76 A.51 A.18 A.3 A.2 A.1 A.3.99 A.8 A.90
4.70 4.18 4.93 5.26 5.1 5.2 5.1 5.0 5.45 4.6 4.54 4.32
60 40 30 26 26 22 22 26 26 40 42 60
AC AC AC cb Grd Grd cb AC AC

0+00 N. Line Pac. Hwy. Edge Paving

A.34 A.19 3.84 3.89 4.08 A.16 A.14 3.81 A.09 A.51 A.12
5.10 5.25 5.60 5.55 5.36 5.28 5.30 5.63 5.25 4.75 4.72
40 30.6 30.6 26 13 13 26 30.6 30.6 40 40
walk cb Gutt cb walk

Curb Inlet 10' inlet

3.70 4.69 3.73 4.68
5.74 4.75 5.71 4.76
13 BR BC Gutt 13 11.3 11.3
cb cb Gutt cb

0-07 Gutter Line Pac. Hwy.

4.25 3.68 4.35 3.79 3.81 3.90 4.00 4.08 3.65 3.80 4.68 4.28 4.88
5.21 5.86 5.09 5.65 5.61 5.54 5.44 5.36 5.79 5.14 4.76 5.16 4.52
100 100 46 46 40 26 26 26 40 46 46 100 100
cb Gutt cb Gutt Gutt cb Gutt cb

Set BM
BM

5.13 4.31 3.36 9.44
Chisel Square NW Curb Sutherland & Pac. Hwy.
Chisel Square NE Curb Noell & Pac. Hwy.
9.44

1453 43' Lt & 5' Conc. Steps

10.80
4.77
43
1st Step

1450 40' Rt End Driveway & Park Lot

10.2 9.5 9.1 8.3 7.8 7.1 7.21 7.31
5.5 6.1 6.4 7.3 7.8 7.5 8.36 8.26
40 26 20 20 20 26 40 55
AC AC AC AC AC AC AC AC

1412 42' Rt End Bump curb Begin Drive Entrance

40' Rt

6.66 6.53
8.91 7.04
40 60
AC AC

1400 { Approx 30' Lt End AC. Gasoline Sta.
33' Lt to P. Pole # P3714

6.83 6.95 6.58 6.1 5.9 6.8 6.3 6.7 6.45 6.36
8.74 8.62 8.77 9.5 9.7 9.8 9.3 9.0 9.12 9.21
60 40 30 26 20 26 40 42.5 60
AC AC AC AC AC AC AC AC AC AC

0450

5.14 5.18 4.72 4.5 4.6 5.2 5.6 5.46 5.48
10.43 10.39 10.85 11.1 11.0 11.0 10.4 10.0 10.11 10.09
60 40 30 26 20 26 40 42.5 60
AC AC AC AC AC AC AC AC AC AC

T.P. 11.26 15.57 5.13 4.31

15.57

0444 28' Rt to Center P. Pole # JP 3709

0437 40' Lt End Conc. Slab Gas. Pumps

9.44

4.58 4.92
4.56 4.50
60 40
conc conc

9.44

Cont'd From Pg. 21

2+10 40ft & Entrance

2+00 40' Lt Begin Conc. Parking (Entrance)

1+95 40' Rt Begin Truck Entrance

1+87 38' Lt Center 12' Acacia
40' Rt & 4' Doorway

1+65 29' Rt to Center P. Pole JP3729

1+63 40' Rt Begin Uncompleted Bldg.

1+61 29' Lt to Center P. Pole # 3730

15.57X

2t.

&

R

26

| | | | | | | |
|-------|-------|-------|------|------|-----|-------------------|
| 11.01 | 10.94 | 10.16 | 10.3 | 10.2 | 9.6 | 8.7 |
| 4.56 | 4.63 | 5.0 | 5.3 | 5.4 | 6.1 | 6.9 |
| 60 | 40 | 26 | | 26 | 38 | 40 |
| conc. | conc. | | | | | Sub. Grade Floor. |

| | |
|-------|-------|
| 11.51 | 11.48 |
| 4.06 | 4.09 |
| 60 | 40 |
| conc. | conc. |

8.67
Also Approx. Sub.
for Floor
6.90
40' Top Footing

| | | | | |
|-------|-----|-----|-----|-------|
| 10.16 | 9.9 | 9.5 | 9.0 | 8.67 |
| 5.1 | 5.7 | 6.1 | 6.6 | 6.90 |
| 40 | 26 | | 26 | 40 |
| | | | | conc. |

15.57X

12.99

2+80 40' Lt End Conc. Wall ^{2.5' High} Park Lot

8.18
40
conc
Lot

2+63 40' Rt End Uncompleted Bldg

T.P. 7.68 2.17 2.08 13.49

21.17

| | | | | | |
|------|------|------|------|-------|----------------|
| 12.6 | 12.5 | 11.8 | 11.2 | 11.05 | 10.32 |
| 3.0 | 3.1 | 3.8 | 4.5 | 4.52 | 5.252 |
| 40 | 26 | | 26 | 38 | 40 |
| | | | | | Top Foot |
| | | | | | Sub Grd. Floor |

2+55 40' Rt End Entrance

2+35 40' Rt to Column

9.77
5.80
40
Top Foot

2+20 40' Lt End Entrance & Begin 6" Wall 1.7' High

| | |
|-------|-------|
| 11.47 | 11.50 |
| 4.10 | 4.07 |
| 60 | 40 |
| conc | conc |

2+15 40' Rt to Column

9.13
6.47
40
Top Foot

15.57A

15.57A

check 6.32 3.36 = 3.36 Starting BM
 T.P. 1.01 9.68 12.50 8.67

3+ 12.8 To First Rail

18.24
 2.93
 Top
 Rail

3+00.11 303 Rt to Center P. Pole # 3749
 S. Line Kurtz

| | | | | | | |
|-----|------|------|------|------|------|-----|
| | 16.3 | 16.4 | 16.7 | 17.1 | 17.2 | |
| 4.8 | 4.9 | 4.8 | 4.5 | 3.5 | 4.0 | 4.3 |
| 60 | 40 | 26 | | 26 | 40 | 60 |

2+94

| | | | | | | |
|-----|------|------|------|------|------|-----|
| | 14.3 | 13.8 | 13.6 | 17.3 | 17.1 | |
| 6.7 | 6.9 | 7.4 | 7.6 | 6.9 | 4.3 | 3.9 |
| 60 | 40 | 26 | 8 | 15 | 26 | 40 |
| | | | | | | 60 |

2+85

| | | | | | | |
|-----|------|------|------|------|------|-----|
| | 13.6 | 13.4 | 12.9 | 12.1 | 11.8 | |
| 7.2 | 7.6 | 7.8 | 8.3 | 9.1 | 9.4 | 8.7 |
| 60 | 40 | 26 | | 26 | 40 | 60 |

21.17A

21.17A

3-9-51
Hardin
Hatch
Pullett

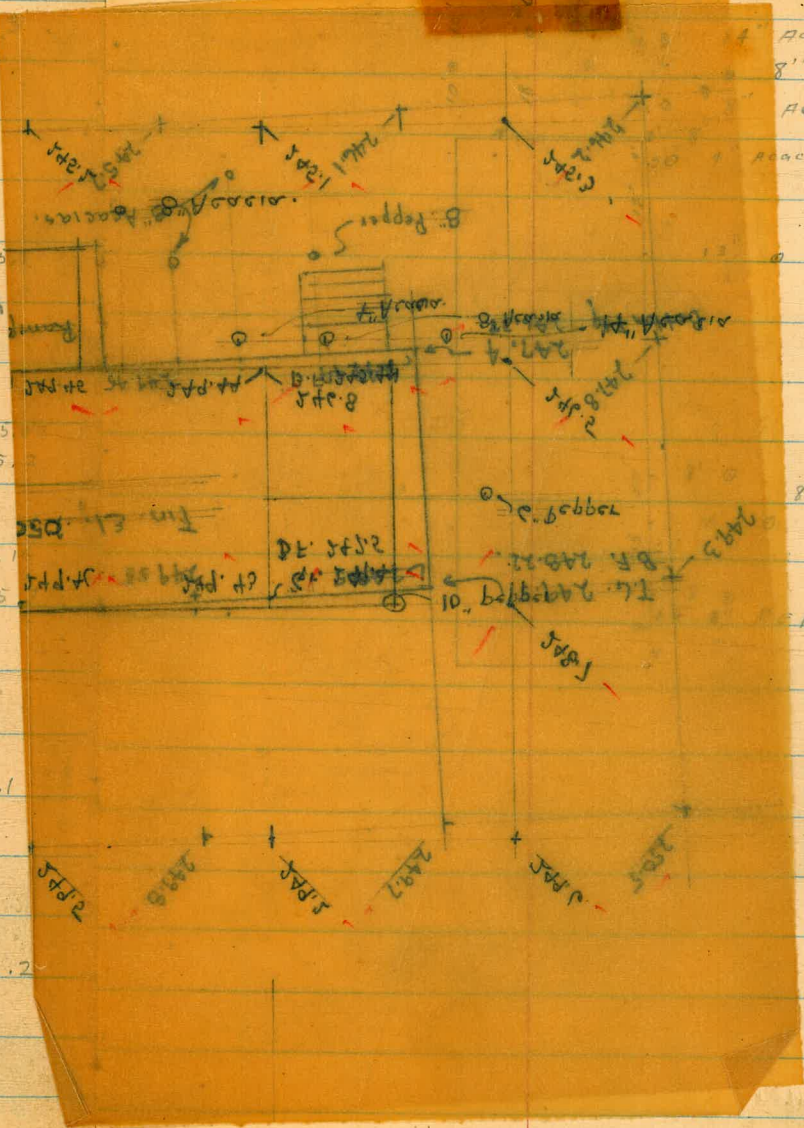
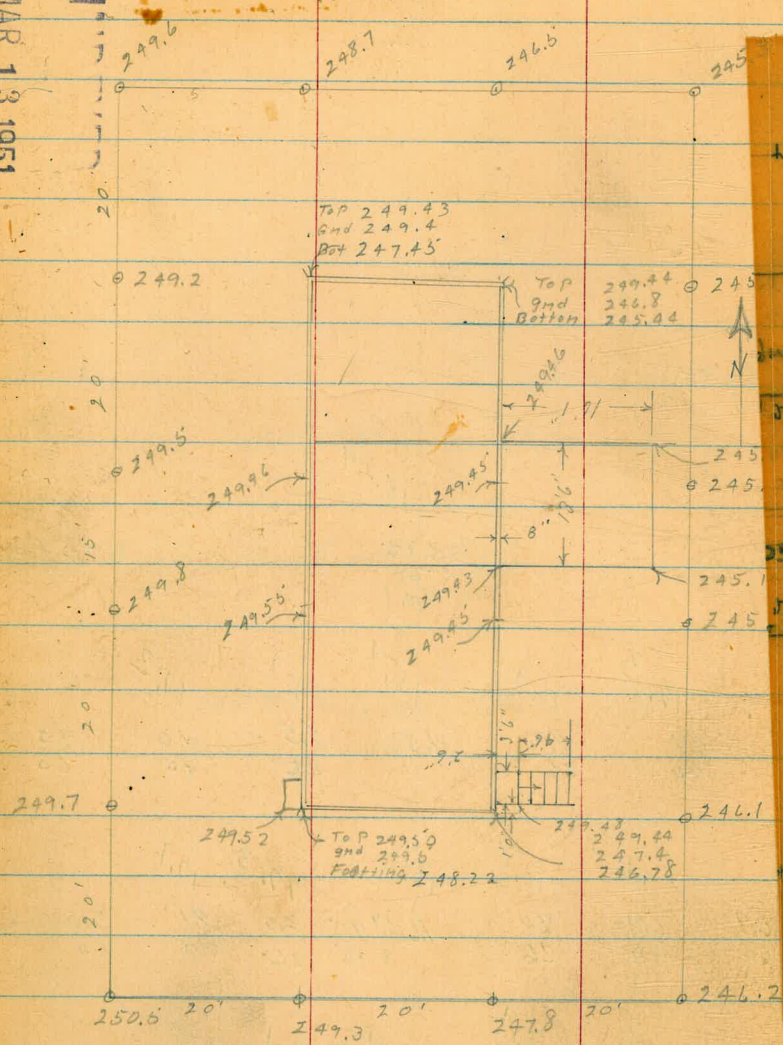
UTILITY & TOILET BLDG. MUNI. GOLF COURSE OFF of Pershing Dr.
Elevation of Foundation of Park
Building - 600' N. of Laurel
300' E. of Pershing

W.O. 20775

Location of Trees

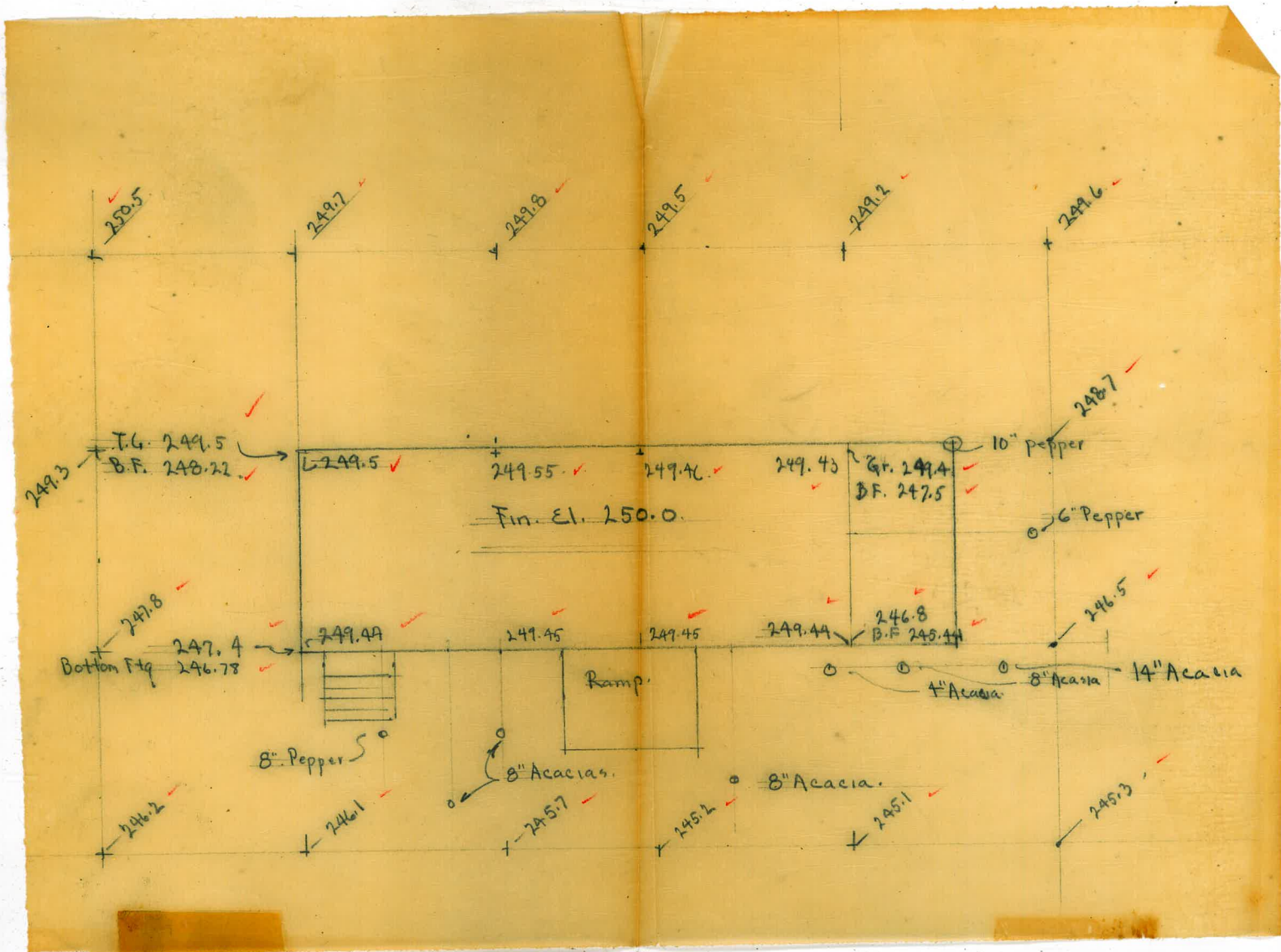
25

MAR 13 1951



Acacia
8" Acacia
Acacia
Acacia
8" Acacia
8" acacias
pepper

(see Dwg. 1675D)



3-9-51
 Hardin
 Hatch
 Pullen

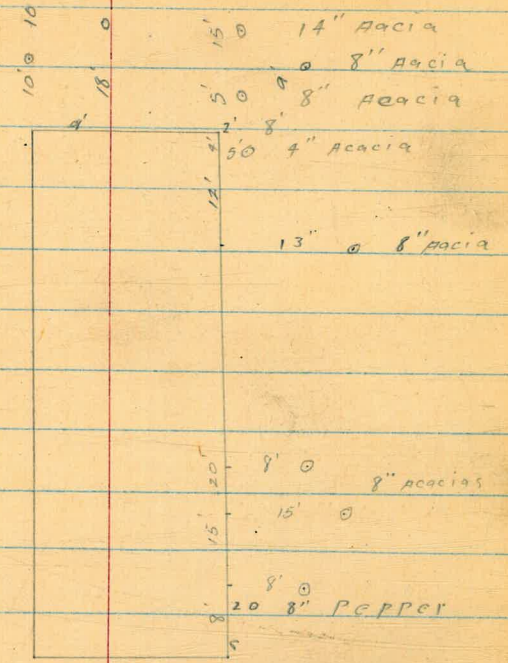
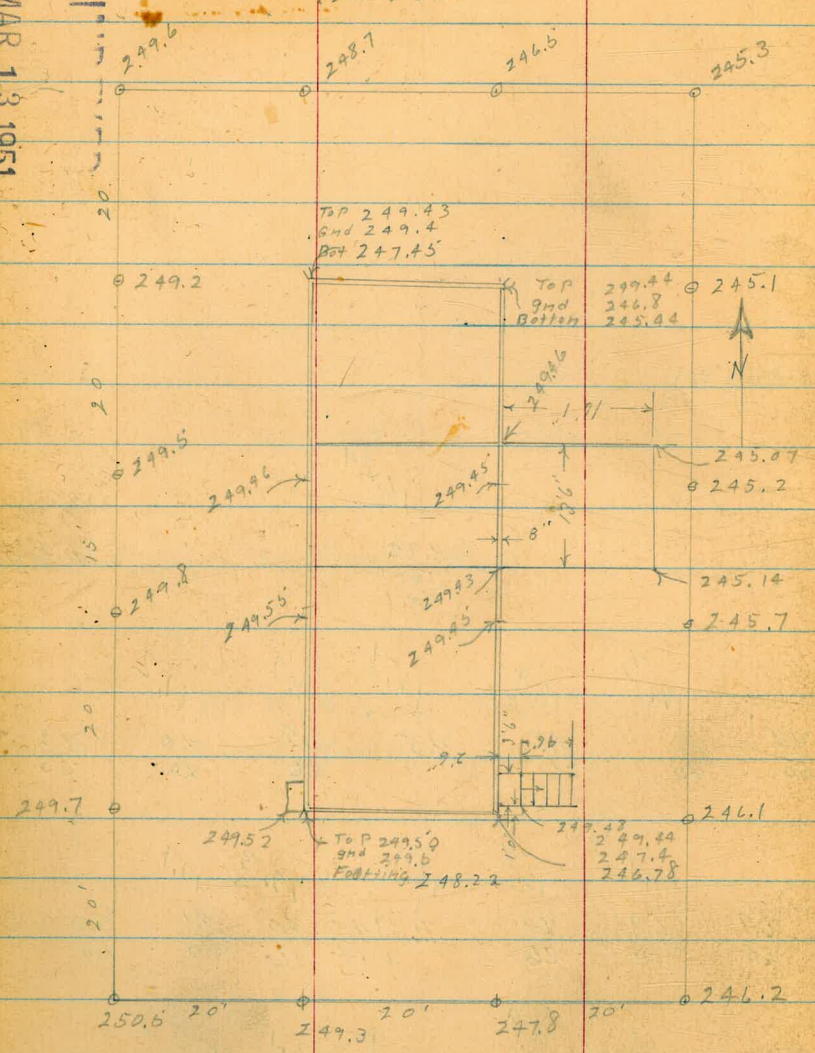
UTILITY & TOILET BLDG. MUNI-GOLF COURSE OFF of Pershing Dr.
 Elevation of Foundation of Park
 Buildings 600' N. of Laurel
 300' E. of Pershing

W.O. 20775

MAR 13 1951

Location of Trees

25



(see Dwg. 16750)

Set B.M. S.E. cor.

Top of steps.

3.61

249.48

N.E. B.P.

0.44

253.09

12.84

252.65

B.M. Maple - 28"

0.35

265.49

265.14

R. Smith
R. Sisson
R. Shepard

Cross Sections Barr ow Pit #2
Laurel Canyon

INDEXED -51

APR 6 1951

27

| | | | | | | | | | |
|------|------------------------|-----------------------|------------------------|-----------------------|-----------------------|-----------------------|-----------------------|-------------------------------|-----|
| 1+25 | 12 ³ elv | 11 ⁸⁶ 2 | 10 ⁶⁰ 31 | 13 ³ 45 | 13 ² 51 | 15 ² 69 | 17 ⁸ 80 | 55 ³ 100 Top | 101 |
|------|------------------------|-----------------------|------------------------|-----------------------|-----------------------|-----------------------|-----------------------|-------------------------------|-----|

| | | | | | | | | | |
|------|------------------------|-----------------------|-----------------------|-----------------------|-----------------------|-----------------------|-----------------------|------------------------------|--|
| 1+00 | 11 ³ elv | 10 ¹⁵ 6 | 8 ²⁰ 30 | 12 ⁰ 45 | 12 ⁶ 52 | 13 ⁶ 67 | 18 ⁶ 78 | 50 ⁸ 99 Top | |
|------|------------------------|-----------------------|-----------------------|-----------------------|-----------------------|-----------------------|-----------------------|------------------------------|--|

| | | | | | | | | | |
|------|------------------------|----------------------|-----------------------|----------------------|-----------------------|------------------------------|------------------------------|--|--|
| 0+75 | 9 ⁷⁷ elv | 8 ⁶⁶ 6 | 6 ⁷² 35 | 9 ² 51 | 11 ³ 66 | 14 ⁶ 77 Top | 40 ⁹ 90 Top | | |
|------|------------------------|----------------------|-----------------------|----------------------|-----------------------|------------------------------|------------------------------|--|--|

| | | | | | | | | | |
|------|------------------------|----------------------|-----------------------|----------------------|------------------------------|------------------------------|-----|--|--|
| 0+50 | 8 ²³ elv | 6 ⁹⁵ 9 | 5 ⁰⁸ 38 | 8 ¹ 50 | 10 ² 70 Top | 25 ⁷ 83 Top | 115 | | |
|------|------------------------|----------------------|-----------------------|----------------------|------------------------------|------------------------------|-----|--|--|

| | | | | | | | | | | |
|------|------------------------|---------------------|-----------------------|-----------------------|----------------------|----------------------|----------------------|----------------------|----------------------|------------------------------|
| 0+25 | 4 ⁶⁰ elv | 6 ³ 7 | 4 ⁹⁶ 12 | 3 ⁴⁸ 40 | 5 ¹ 48 | 6 ² 56 | 6 ² 64 | 8 ² 67 | 9 ¹ 74 | 14 ⁷ 75 Top |
|------|------------------------|---------------------|-----------------------|-----------------------|----------------------|----------------------|----------------------|----------------------|----------------------|------------------------------|

| | | | | | | | | | | |
|------|-------------|----------------------|-----------------------------|-----------------------------|----------------------|----------------------|----------------------|--|--|--|
| 0+00 | 0.00 Elv | 4 ⁴ 11 | 3 ¹⁸ 16 rd | 15 ⁷ 45 rd | 2 ⁸ 48 | 2 ⁸ 64 | 3 ⁷ 76 | | | |
|------|-------------|----------------------|-----------------------------|-----------------------------|----------------------|----------------------|----------------------|--|--|--|

Elv. Relative 0.00 elv. on Stake 0+00

| | | | | | | | | |
|------|-------------------------|-----------------------------|------------------------------|-----------------------|-----------------------|-----------------------|------------------------------|------------------------------|
| 2+75 | 22 ⁴ elv. | 21 ⁷⁹ 3 rd | 21 ⁰⁰ 27 rd | 22 ⁴ 39 | 22 ⁸ 52 | 23 ³ 59 | 25 ⁴ 77 Top | 64 ⁹ 97 Top |
|------|-------------------------|-----------------------------|------------------------------|-----------------------|-----------------------|-----------------------|------------------------------|------------------------------|

| | | | | | | | | |
|------|------------------------|-----------------------------|------------------------------|-----------------------|-----------------------|-----------------------|------------------------------|-------------------------------|
| 2+50 | 20 ⁵ elv | 20 ²⁸ 2 rd | 19 ³⁷ 26 rd | 21 ⁴ 42 | 21 ⁶ 59 | 21 ⁸ 70 | 23 ⁴ 80 Top | 67 ² 101 Top |
|------|------------------------|-----------------------------|------------------------------|-----------------------|-----------------------|-----------------------|------------------------------|-------------------------------|

| | | | | | | | |
|------|-------------------------|------------------------------|-----------------------|-----------------------|-----------------------|------------------------------|-------------------------------|
| 2+25 | 18 ⁵² elv | 17 ³¹ 28 rd | 19 ⁶ 47 | 20 ¹ 63 | 20 ⁴ 74 | 22 ⁵ 84 Top | 68 ⁴ 105 Top |
|------|-------------------------|------------------------------|-----------------------|-----------------------|-----------------------|------------------------------|-------------------------------|

| | | | | | | | |
|------|----------------------------|------------------------------|-----------------------|-----------------------|-----------------------|------------------------------|-------------------------------|
| 2+00 | 16 ⁹⁵ elv rd | 15 ⁶⁹ 28 rd | 18 ⁰ 45 | 18 ⁸ 66 | 19 ⁴ 75 | 23 ⁴ 88 Top | 67 ⁵ 106 Top |
|------|----------------------------|------------------------------|-----------------------|-----------------------|-----------------------|------------------------------|-------------------------------|

| | | | | | | | | |
|------|-----------------------------|------------------------------|-----------------------|-----------------------|-----------------------|-----------------------|------------------------------|-------------------------------|
| 1+75 | 15 ¹³ elv. rd | 13 ⁷⁸ 26 rd | 15 ² 40 | 16 ⁷ 48 | 17 ³ 60 | 18 ² 75 | 23 ⁶ 85 Top | 66 ⁹ 106 Top |
|------|-----------------------------|------------------------------|-----------------------|-----------------------|-----------------------|-----------------------|------------------------------|-------------------------------|

| | | | | | | | | |
|------|------------------------|-----------------------------|------------------------------|-----------------------|-----------------------|-----------------------|-----------------------|-------------------------------|
| 1+50 | 12 ² elv | 13 ⁵⁰ 1 rd | 12 ³⁰ 28 rd | 14 ⁹ 43 | 15 ⁴ 50 | 17 ⁴ 70 | 21 ² 80 | 60 ⁶ 101 Top |
|------|------------------------|-----------------------------|------------------------------|-----------------------|-----------------------|-----------------------|-----------------------|-------------------------------|

| | | | | | | | | |
|------|-------------------------|------------------------------|------------------------|-----------------------|-----------------------|-----------------------|-------------------------------|-------------------------------|
| 3+50 | 27 ¹ elv. | 26 ²⁶ 7 rd. | 26 ⁰⁸ 36 | 26 ⁸ 42 | 27 ² 64 | 30 ² 89 | 32 ⁶ 105 Toe | 38 ³ 114 Top |
|------|-------------------------|------------------------------|------------------------|-----------------------|-----------------------|-----------------------|-------------------------------|-------------------------------|

| | | | | | | | | |
|------|-------------------------|------------------------------|-------------------------------|-----------------------|-----------------------|------------------------------|-----------------------|-------------------------------|
| 3+25 | 25 ⁶ elv. | 24 ⁸⁰ 7 rd. | 24 ⁷⁷ 33 rd. | 25 ⁶ 39 | 26 ⁰ 65 | 30 ⁶ 81 Toe | 36 ⁶ 95 | 45 ⁰ 104 Top |
|------|-------------------------|------------------------------|-------------------------------|-----------------------|-----------------------|------------------------------|-----------------------|-------------------------------|

| | | | | | | | |
|------|-------------------------|------------------------------|-------------------------------|-----------------------|-----------------------|-----------------------|----------------------------------|
| 3+00 | 24 ³ elv. | 23 ²⁵ 4 rd. | 22 ⁸¹ 30 rd. | 24 ⁰ 41 | 24 ⁵ 68 | 27 ³ 77 | 57 ² 92 Toe Top |
|------|-------------------------|------------------------------|-------------------------------|-----------------------|-----------------------|-----------------------|----------------------------------|

D. Smith
R. Sisson
R. Shepard

Cross Section Barrow Pit #1
Laurel Canyon Rd.

4-5-51

30

INDEXED

APR 6 1951

1+00 same to 106^L 103² 95⁵ 88³ 85² 85²
75 92 100 117 132 141

0+75 same to 105^S 103^L 92² 88⁸ 87⁰
58 68 87 104 134

0+50 same to 104^L 103⁰ 96⁰ 92² 90³ 89³
40 47 59 75 87 117

0+25 99^L 101^L 100⁸ 96⁰ 92² 91² 90⁶
9 17 28 40 59 75 101

0+12 97² 93² 92² 92³
23 56 75 92

0+00 same

Elevations Relative using 100⁰ elev. at 0+00

1750 same as before

| | | | | | | |
|------|---------|------------------|-----------------|-----------------|-----------------|-----------------|
| 1725 | same to | 107 ¹ | 99 ⁴ | 96 ³ | 84 ⁴ | 84 ² |
| | | 75 | 112 | 123 | 140 | 143 |

2+18

153.2

9.7

2+00¹⁷ L Rt in 42nd St.

152.8

10.1

1+50

153.0

9.9

1+00

153.0

9.9

157.2

5.7

100

0+50

153.4

9.5

0+00

Q Tayne E Hilltop

154.2

8.7

156.2

6.7

50

J BM

9.93

162.87 π

152.94 SWBP

Hilltop & 42nd St162.87 π

4497⁸³ L. Lt. Q Broadway

165.0

165.4

16.4

10.0

100

22.45 + 400

T.P. 12.78 175.42K 0.23 162.64

175.42K

4+50

162.8

0.2

5

4+00

159.9

160.3

158.7

3.0

2.6

1.2

100

100

3+50

158.5

4.4

3+00

157.3

157.1

156.9

5.6

5.8

6.0

70

100

2+50

155.4

7.5

162.87K

162.87K

Cont'd From Page 34

Lt

Q

RE

35

8+50

175.6
+0.2

8+00

166.7 171.5 172.4
8.7 3.9 3.0
100 100

7+50

167.9 167.0
7.5 8.4
6.0
Floor
Front of House

7+00

161.1 164.8 169.8
14.3 10.6 6.1
100 50

6+50

164.2
112

6+00

159.8 164.2 167.4
15.6 11.2 8.0
100 50

5+50

164.3
111

175.42 A

175.42 A

Cont'd. from Page 35

Lt

R

Rt

36

11+00

166.7
13.5
100

173.1
71

10+50

174.2
6.0

10+14

169.2
11.0
101
Floor
Front of House

175.6
4.6

180.2
0.0
5.0

10+00

173.7
4.5

9+50

173.0
7.2
582
Floor
Front New House

176.6
3.6

9+00

168.2
12.0
100

176.9
3.3

180.2
0.0
5.0

TP

4.85

180.15 X

0.12

175.30

180.15 X

175.42 X

Cont'd From Page 36

37

check

16.00 151.63 = 151.66

SWBP 41st & Hilltop

T.P.

0.53 167.63 13.05 167.10

11730.93

E. Prop. Line 41st

1125
77

180.15 π

180.15 π

Proposed Alignment Sewer

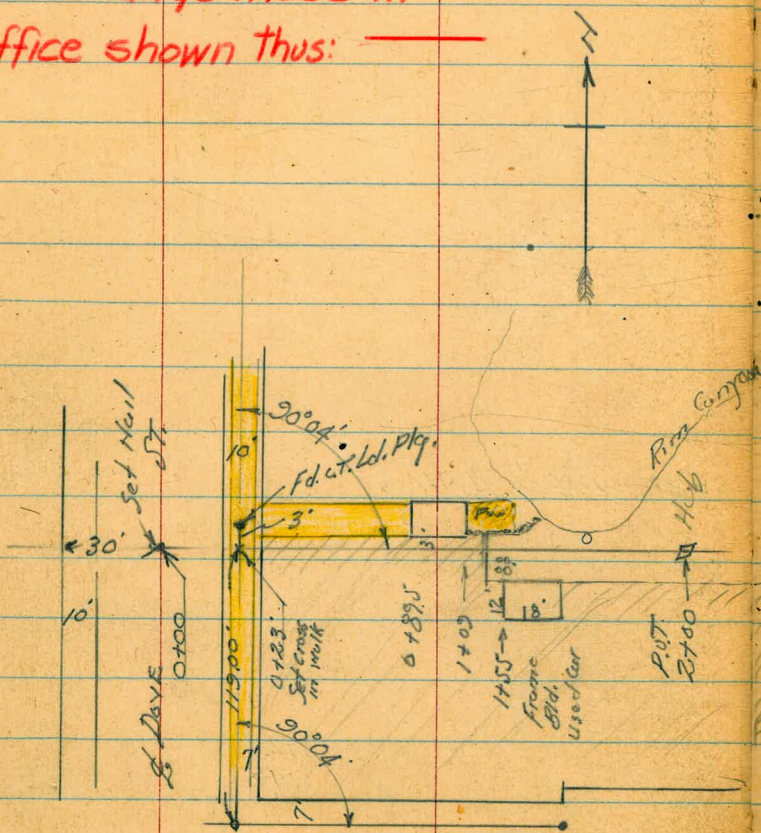
North of Washington
Between Dove & Brant St.

Walker
Pope 5-9-51
Clark
Huffman

NO 62223

Levels - p. 39

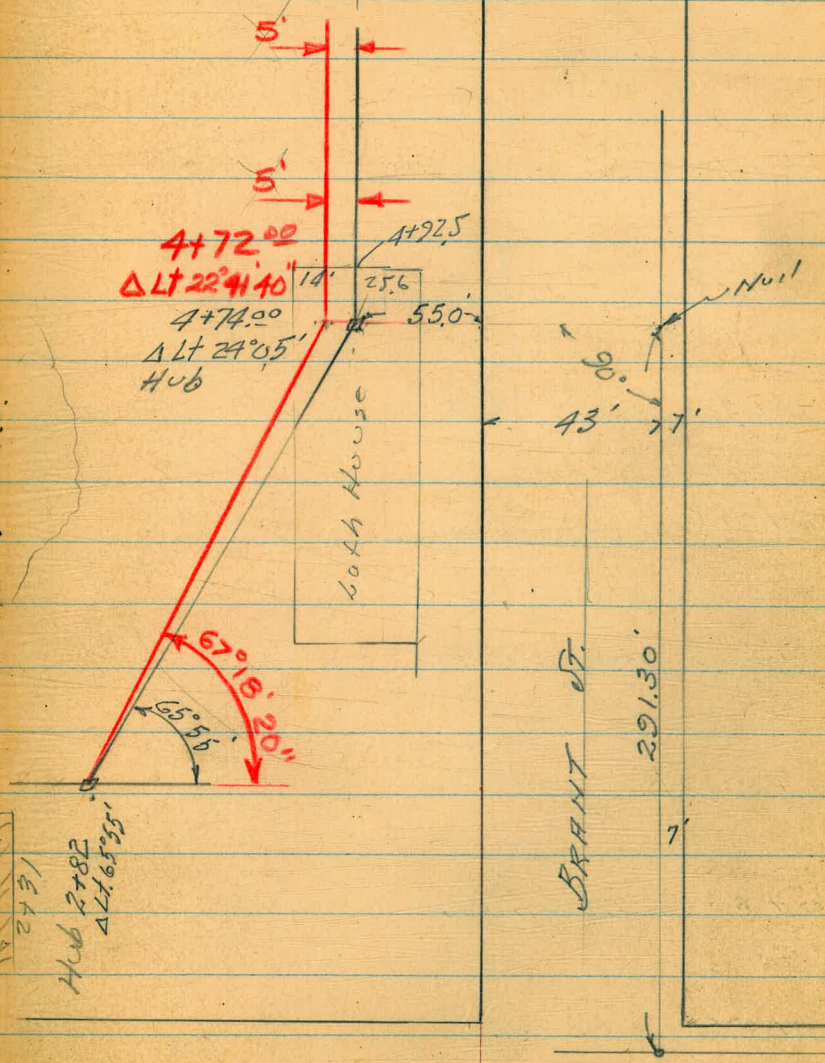
Line change made in
Office shown thus: ———



WASHINGTON ST.

INDEXED Run Canyon
MAY 10 1951 6+50 Hub

38



ST.

LEVELS - PROPOSED SEWER

North of Washington
Between Dove ^{And} Brant.

Location on P. 38

0+70

0+45

0+30 on Pav

0+27.5 = East edge Walk

0+22.5 = West edge Walk

0+20 cb.

0+20 Gut. on Pav

0+00 on Pav.

6.45 266.54

260.09

INDEXED

JUL 3 1954

Lt.

L

Rt

39

325
3

369

369
10

222
3

345

345
10

Conc. Pt

462.19
435

457
261.97

474
261.80

480
261.74

522
261.32

261.92

462

266.54

B.M. S.F. 7' Tack Washington & Brant.
FB. 179
64.

Proposed Sewer

1+54 14' Lt. Tel. Pole # 505889
 Conc. Tile 4.5' E+W
 1+48.2 = West Side Encasement 3.2' N+S

1+35 7.3' Lt. = End Cobble Wall

1+31 = End Asphalt Pav

1+27

1+10.5 3.5' Rts = 4 1/2" Light Std.

1+09 = opp end Garage = Req. Cobble Wall

1+00

0+89.5 = Req. Garage 3' Lt.

Lt.

Rt

Rt

40

7.4 3.50 4.07 4.12
 4.3 2.5 2
 Bottom Top
 Wall

10.72 3.62
 4.5 3.0
 Bottom Top
 Wall Wall

10.37 3.86 3.53 3.95
 4 2.5 2.5
 Top Wall Top Wall

3.77 3.84 3.86
 2.5' at Garage 10

4.70 3.69 3.76 3.76
 3 2.5 10
 Conc. Block
 Pav. 266.54

262.42

262.59

262.70

262.79

Proposed Sewer

3+00

2+82 = A Lt. 65°55'

2+56 = Int. Lath House 12' Lt. = N end.

2+55 8' Lt. = Pole 505°890-H

2+53 = End Pole on Rt.

2+25

2+00

1+70

T.P. 432 267.51 335 263.19

266.54

41

56 261.9

6 15
on Hub.
261.36

5.1 4.9 4.9
32.0 9
Rim Canyon 262.6

5.1 4.9 9
17
Rim Canyon 262.6

4.5 4.8 262.7
11
Rim Canyon

5.0 4.8
4.0
Rim 267.51 ✓
262.7

Proposed Sewer

5+150

128 11.8 5.6 5.3 267.4
 85 2.2 12
 Proposed Top
 Basement Terrace

5+10

131 11.8 6.0 5.3 267.4
 75 4.5 2.5
 Rim Canyon Proposed Terrace
 Floor of Basement

4+74.00 Δ H. 24°05'

T.P. 6.07 272.73 ✓ 0.85 266.66

267.61
 5.12

272.73 ✓

4+36 = Int. Lath House

4+33.5 Int. Rubble Wall

1.1 2.1 264.5
 0 Gravel
 Top Wall

4+23 1.5' L x 2" 4" Plum Tree

269.8

4+00

3.0 2.7 267.7
 2.6
 Rim Canyon

3+50

4.9 4.2 3.7
 3.0 1.5
 Rim Canyon 267.51

267.51

Proposed Sewer

Lt.

\$

Rt

43

| | | | | |
|-------------------|--------|------|--|--------|
| | | | | 0.01 |
| | | | | 260.09 |
| Chk. Starting BM. | 11.19 | | | 260.10 |
| T.P. 139 | 271.29 | 2.83 | | 269.90 |

6+60 = Rim Canyon

| | |
|------------|------------|
| 13.1 | 9.4 |
| 100 | Rim Canyon |
| Rim Canyon | |

263.3

263.46

6+50 P.O.T. on Hub

9.27
Hub

6+38

9.3

263.4

6+33

7.4

263.3

6+00

272.73

| | | | |
|------------|-----------|-----|--------|
| 15.3 | 11.0 | 6.3 | 6.1 |
| 112 | 16 | 7 | |
| Rim Canyon | Proposed | | 272.73 |
| | Basement. | | |

266.6

5+00

| | | |
|-------|-------|-------|
| 327.4 | 330.0 | 329.0 |
| 13.0 | 10.4 | 11.4 |
| 50 | 37 | 22 |

| | |
|-------|-------|
| 329.2 | 333.5 |
| 11.2 | 6.9 |
| 25 | 28 |

TP

11.33

340.43A

2.50

329.10

340.43A

4+50

| | | |
|-------|-------|-------|
| 326.0 | 327.7 | 326.6 |
| 5.6 | 3.9 | 5.0 |
| 50 | 39 | 22 |

| | |
|-------|-------|
| 327.3 | 331.6 |
| 4.3 | 0.0 |
| 22 | 27 |

4+00

| |
|-------|
| 324.4 |
| 7.2 |
| 50 |

| | |
|-------|-------|
| 326.2 | 330.5 |
| 5.4 | 1.1 |
| 23 | 27 |

3+50

| |
|-------|
| 322.8 |
| 8.8 |
| 50 |

| |
|-------|
| 326.5 |
| 5.1 |
| 50 |

TP

7.74

331.60A

2.47

323.86

~~331.60~~
~~331.60A~~

3+00

| |
|-------|
| 320.8 |
| 5.5 |
| 50 |

| | |
|-------|-------|
| 323.9 | 317.6 |
| 2.4 | 8.7 |
| 37 | 50 |

326.33A

326.33A

7+68 38' RT & 4' corr. Steel Culvert

15.86
58
INVERT

7+50

| | | | | | | |
|-------|-------|--------|--------|--------|-------|-------|
| 339.8 | 344.9 | 343.48 | 342.77 | 341.67 | 341.8 | 335.3 |
| 9.2 | 4.1 | 5.49 | 6.20 | 7.50 | 7.2 | 18.7 |
| 50 | 38 | 20 | | 20 | 33 | 50 |

7+00

| | | | | | | |
|-------|-------|--------|--------|--------|-------|-------|
| 336.6 | 341.5 | 340.22 | 340.04 | 339.27 | 339.1 | 344.0 |
| 12.4 | 7.5 | 8.75 | 8.93 | 9.70 | 9.9 | 5.0 |
| 50 | 40 | 20 | | 20 | 22 | 27 |

T.P.

9.42

348.97A 0.88 339.55

348.97A

6+50

| | | | | | | |
|-------|-------|--------|--------|--------|-------|-------|
| 333.8 | 338.2 | 337.19 | 337.32 | 334.80 | 336.3 | 340.0 |
| 6.6 | 2.2 | 3.24 | 3.11 | 3.63 | 4.0 | 0.4 |
| 50 | 39 | 20 | | 20 | 22 | 27 |

6+00

| | | | | | | |
|-------|-------|--------|--------|--------|-------|-------|
| 331.7 | 334.7 | 334.27 | 334.60 | 334.10 | 333.7 | 338.0 |
| 8.7 | 5.7 | 6.6 | 5.83 | 6.33 | 6.7 | 2.4 |
| 50 | 38 | 20 | | 20 | 22 | 26 |

5+50

| | | | | | | |
|-------|-------|--------|--------|--------|-------|-------|
| 328.9 | 331.9 | 331.57 | 332.05 | 331.76 | 331.5 | 335.4 |
| 11.5 | 8.5 | 8.86 | 8.88 | 8.61 | 8.9 | 5.0 |
| 50 | 35 | 21 | | 20 | 22 | 27 |

340.43A

340.43A

Cont'd From Page 46

16

18

17

47

| | | | |
|-------|------|--------|-----------------|
| check | | 326 | 322.16 = 322.14 |
| T.P. | 3.41 | 327.42 | 11.93 323.95 |
| T.P. | 0.54 | 335.98 | 12.04 335.34 |
| T.P. | 0.42 | 347.38 | 12.27 346.96 |

10+00

| | | | | | | |
|-------|-------|--------|--------|--------|-------|-------|
| 355.9 | 359.8 | 358.45 | 356.40 | 354.12 | 353.8 | 357.5 |
| 9.3 | 10.6 | 0.78 | 2.83 | 5.11 | 5.4 | 1.7 |
| 50 | 37 | 19 | | 22 | 23 | 27 |

9+50

| | | | | | |
|-------|-------|--------|--------|--------|-------|
| 354.0 | 358.0 | 355.70 | 353.73 | 351.16 | 355.0 |
| 5.2 | 1.2 | 3.53 | 5.50 | 8.07 | 4.2 |
| 50 | 40 | 20 | | 28 | 27 |

9+00

| | | | | | |
|-------|-------|--------|--------|--------|-------|
| 350.0 | 355.2 | 353.13 | 350.92 | 348.43 | 350.9 |
| 9.2 | 7.0 | 6.10 | 8.31 | 10.80 | 10.9 |
| 50 | 40 | 20 | | 20 | 21 |

8+50

| | | | | | | | |
|-------|-------|--------|--------|--------|-------|-------|-------|
| 346.4 | 351.9 | 350.07 | 348.08 | 346.26 | 346.4 | 341.8 | 342.8 |
| 12.8 | 7.3 | 9.16 | 11.15 | 12.97 | 12.8 | 17.4 | 16.4 |
| 50 | 40 | 20 | | 18 | 23 | 30 | 50 |

| | | | | |
|------|-------|--------|------|--------|
| T.P. | 11.59 | 359.23 | 1.33 | 347.64 |
|------|-------|--------|------|--------|

359.23

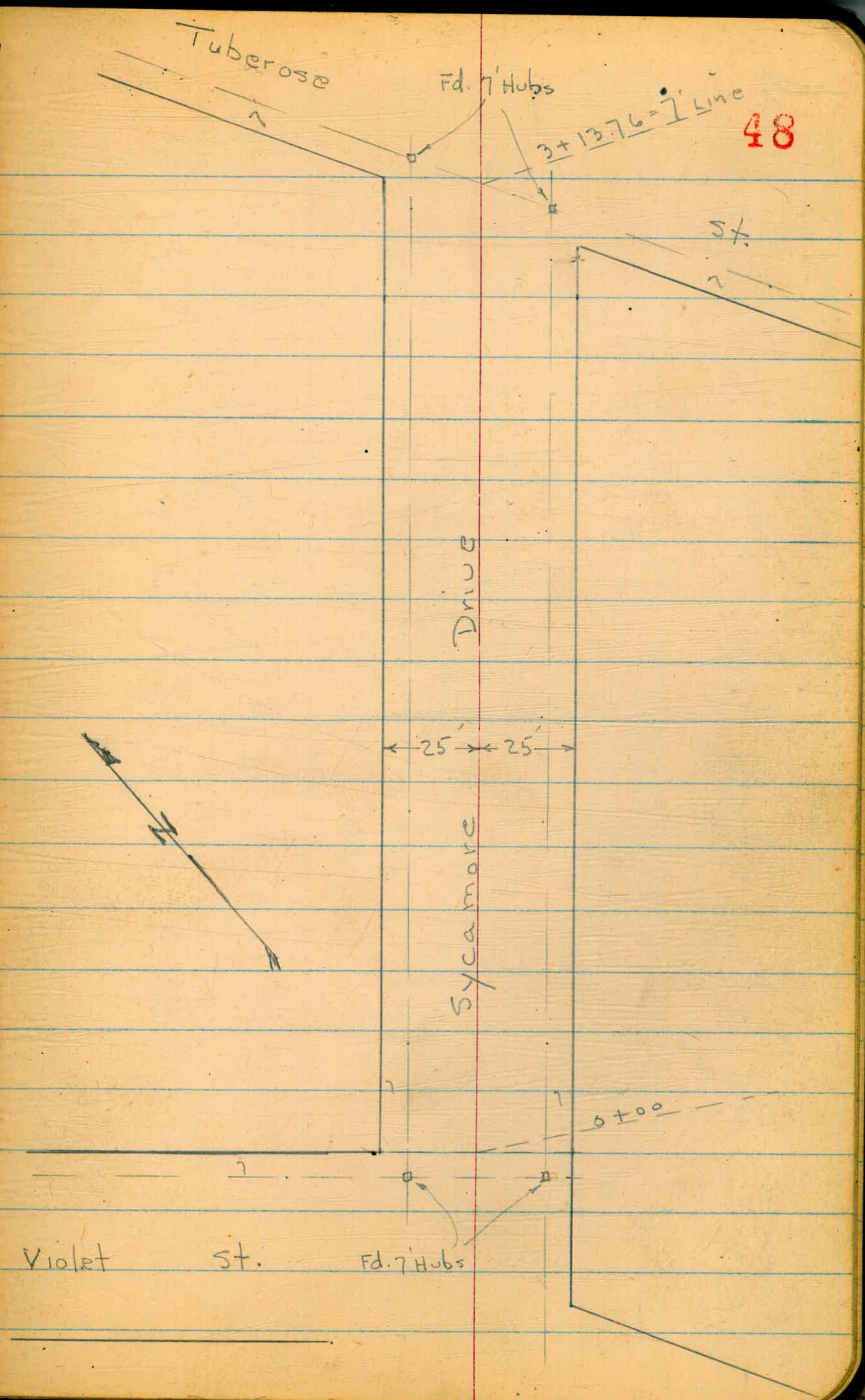
8+00

| | | | | | | | |
|-------|-------|--------|--------|--------|-------|-------|-------|
| 343.0 | 348.0 | 346.88 | 345.41 | 343.97 | 344.6 | 335.6 | 335.4 |
| 6.0 | 1.0 | 2.09 | 3.56 | 5.00 | 4.4 | 13.4 | 13.6 |
| 50 | 40 | 20 | | 20 | 27 | 43 | 50 |

348.97

348.97

REDUCED 6-22-51, KISTINA



INDEXED

JUL 20 1951 Lt

±

Rt 49

X-Section Sycamore Drive - from Violet to Tuberosa - for grade est. only.

50' st. - Graded - Rough oil pave in Rd.

5506

7-11-51 - 7.0.

w.O. 25020

✓ 0+35 - 22.4' Rt. = ± 7' Conc. Dr.

✓ 0+28 - 16.3' Rt. = ± R pole # P. 4031

✓ 0+27 - 22.8 Rt. = end wall

✓ 0+21 - 25.2 Lt. = ± 3' Conc. walk

✓ 0+00 = N.E. Line Violet to N.W.

checked - 9-15-53 - 7.0.

0-01.5 - 22.5' Rt. = Beg 8" Conc. wall

0-03 - 22.3' Rt. = ± 2.5' Conc. walk

0-40

Used Elev. Rod. - actual Elev. shown

Violet + Sycamore

Set B.M. = spike in SW Pole 1.90 278.67

B.M. 8.43 277.57

~~269.14~~ = spike in Pole - N.E. Sycamore + Shamrock - B. 1748 - P. 57
out

PLOTTED BY R.W.D.
7-20-51

78.81 78.82
37.6 25.2 = walk
at porch

78.0 77.3 77.3 77.0 77.5 76.9 76.9
25 4 15 Top 25 40
wall

76.8 77.48
22.5 ground Top wall

76.83 76.97
22.3 40.4 = at porch

76.9 77.1 77.1 76.6 76.2 75.8
50 25 13 25 40

200' figure
Not shown

77.71 76.80
22.4 50
Dr. Dr. 78.13
22.8 ground Top

Lt. ± Rt.

50

✓ 1+70 - 23.8 Rt. = ± 3' Conc. Walk - from cb.

80.06
23.8 = walk + cb
79.52
43 = at Porch

✓ 1+55 - 23.7 Rt. = ± 7' Conc. Dr. from cb.

79.64
23.7 = Dr. + cb.
79.00
50 = Dr.

✓ 1+50 - See new rods.

81.2 81.29 80.3 80.1 80.2 79.8
35 25 25 13 12 23.6 23.6 25 35
Top Conc. wall
Top cb.

✓ 1+30 - 23.4' Rt. = ± 3' Conc. walk from cb.

78.85
23.4
Top walk + cb.
79.42
44.1 = porch at

✓ 1+19 - 24.2 Lt. = ± 9' Conc. Dr.

81.18 80.42
50 24.2
Dr. Dr.

✓ 1+15 - 23.4' Rt. = ± 7' Conc. Dr.

79.77
23.4
Dr.
78.90
50 = Dr.

✓ 1+00

80.3 80.0 79.4 79.5 79.1 78.6 79.02 79.1
35 25 12 15 23.3 23.3 25
Top cb.

✓ 0+90 - 23.1 Rt. = ± 3' Conc. walk from curb.

78.54
23.1
walk + Top curb.
78.13
42.3 at porch

✓ 0+75 - 23.1' Rt. = ± 7' Dr. - 2 x 2' Conc. strips

78.27
23.1
Dr.
77.63
50
Dr.

✓ 0+68 - 23.1 Rt. = Beg 4" Conc. curb

78.15
23.1 = Top + ground.

✓ 0+68.5 - 24.9 Lt. = ± 3' Conc. walk

79.62
26.5 = at Porch
79.49
24.9 = walk

✓ 0+50 - 21.7 Lt. = ± Nly. 2' Conc. strip for Dr.

79.43 79.05 78.70 78.1 78.3 78.1 77.8 77.8
40 25 21.7 12 14 25 35
Dr. Dr. Dr.

3+32.9 = approx \pm - Sect. along \pm

3+06.36 = S.W. line of Tuberosa (Diag) - Sect. on line

2+80

2+40

2+34-26 Lt. = \pm 8' Conc. Dr.

2+24-25.9 Lt. = \pm 2.5' Conc. walk

2+00

(New)

1+89-18.7 Rt. = \pm P. pole # 4081

1+93-24.8 Lt. = \pm 8' Conc. Dr.

1+88-23.7 Rt. = end Conc. curb

1+77-24.8 Lt. = \pm 3' Conc. walk

| | | | | |
|------|------|------------------------|------|------|
| 80.4 | 80.0 | 79.77 | 79.0 | 78.4 |
| 50 | 26.5 | on Rim of Sewer MH. | 26.5 | 50 |

| | | | | | | |
|------|------|------|------|------|------|------|
| 81.6 | 81.2 | 80.1 | 80.0 | 80.1 | 79.7 | 79.3 |
| 50 | 26.5 | 12 | | 13 | 26.5 | 50 |

| | | | | | | |
|---------------|------|------|------|------|------|------|
| 82.0 | 81.2 | 80.5 | 80.5 | 80.4 | 80.0 | 79.7 |
| 50 | 25 | 12 | | 12 | 25 | 35 |
| in Ground Dr. | | | | | | |

| | | | | | | |
|------|------|------|------|------|------|------|
| 81.7 | 81.4 | 80.7 | 80.6 | 80.6 | 80.7 | 80.6 |
| 35 | 25 | 12 | | 12 | 25 | 35 |

| | |
|----------|----------|
| 82.60 | 81.76 |
| 50 = Dr. | 26 = Dr. |

| | |
|-------|-------------|
| 82.45 | 81.75 |
| 45 | 25.9 = walk |
| walk | |

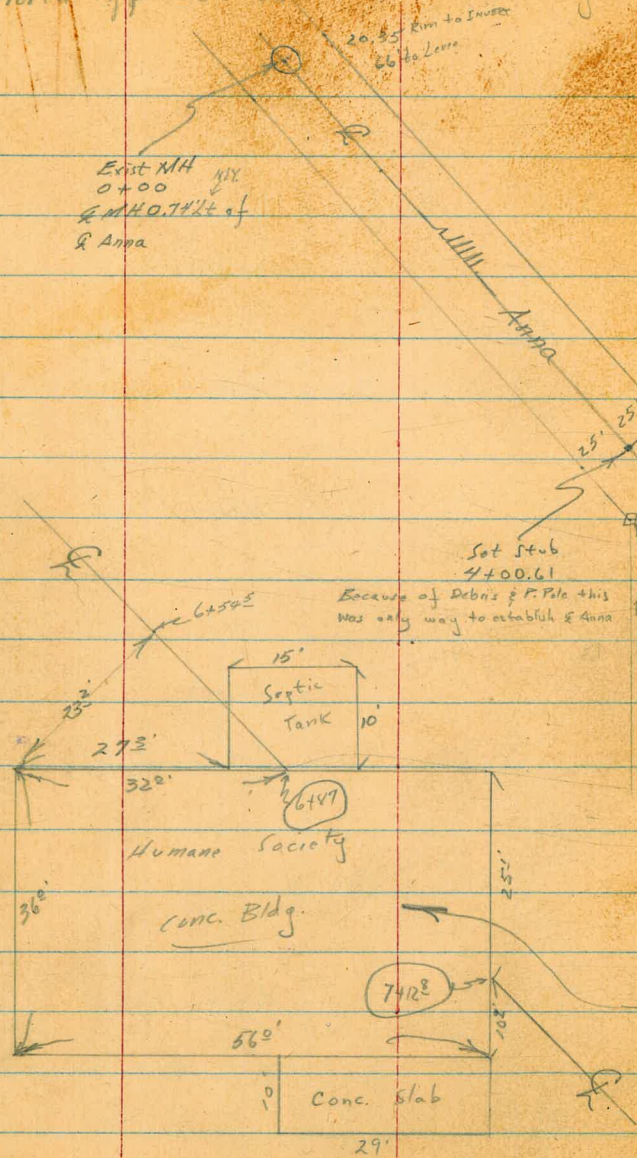
| | | | | | | |
|------|------|------|------|------|------|------|
| 81.9 | 81.3 | 80.4 | 80.4 | 80.3 | 79.9 | 79.6 |
| 35 | 25 | 12 | | 12 | 25 | 35 |

| | |
|----------|------------|
| 82.03 | 81.31 |
| 50 = Dr. | 24.8 = Dr. |

| | | | |
|----------|-------------|---------|-------|
| 82.00 | 81.37 | 79.9 | 80.15 |
| 44 | 24.8 = walk | 13.7 | Top |
| at porch | | ground. | cb. |

Robert
Cota
Moore
P. 1160
Aug 7, 1951
WB 20850

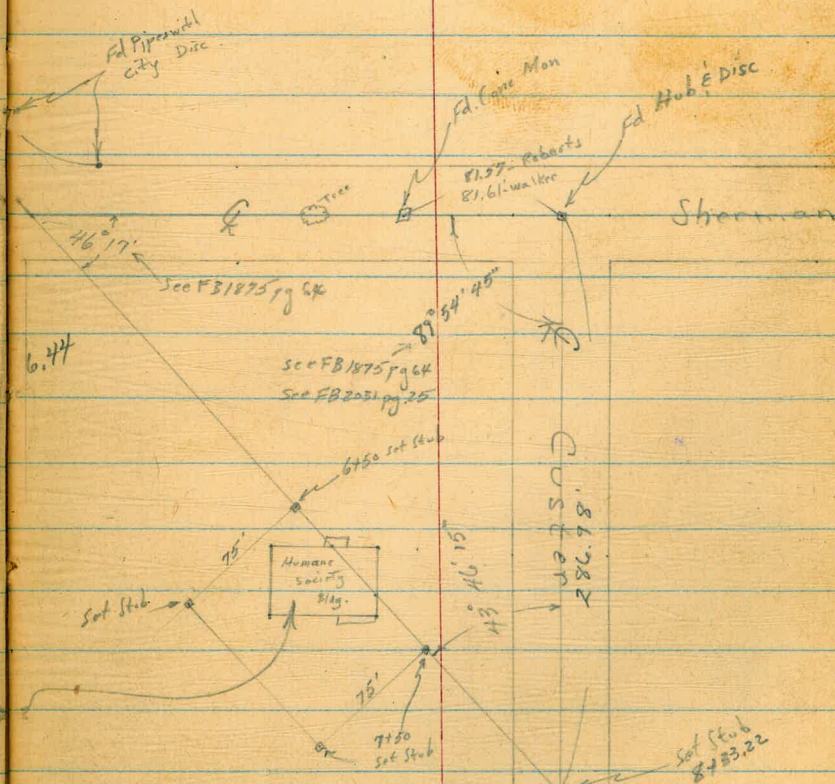
Proposed Sewer Location
North Approach to Masonry Blvd. Bridge



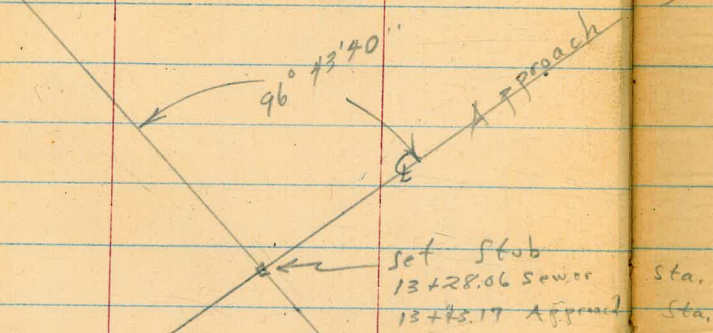
INDEXED

AUG 9 1951

52



Cont'd From Page 52.



see Fd. Hub
10+88.59
see Mission Bay F.B. 56 pg 5 FC

53

Cont'd From Page 53

2+50

6.0

10.6

2+00

5.7

10.9

1+50

5.1

11.5

1+00

4.8

11.8

0+50

4.7

11.9

0+00 Exist MH in Anna { & Anna 0.74' So. of & MH
66' Rt to Approx. Near Edge of
then Top of level.

5.7 11.6 - 4.88
1.13 5.0 21.48
Rim GRP. INVERT

BM

10.16 16.10 π

6.44 Conc.
Mon.

16.60 π

Intersection Sly. Line Anna & production of & Sherman

54

Cont'd From Page 54

5750

5700

TP

5.41

11.75 π

10.26

6.34

4750

4737

Pile of Stumps

4712

20 ft to Center P. Pole #P1601

4700

3750

3700

16.60 π

22.

E

π

6.8
5.0

55

1.0
4.8

11.75 π

8.0
8.6

9.2
7.4

9.1
6.9

10.5
6.1

16.60 π

7+12.8 Leave Bldg.

9.8
3.1
GRD

TP 2.64 12.90 π 1.49 10.26

12.90 π

6+78 Hit Bldg.

10.61
1.14
Floor

6+71³ Hit Septic Tank

9.6
2.2
GRD
10.46
1.29
Top
Septic
Tank

6+30 67' Rt to Approx. Near Edge of Top of Level

6+34

9.6
2.2

6+22

6.5
5.3

6+00

6.2
5.6

8+50

6.0
6.9

8+33.22 E Custer

5.9
7.0

8+12

5.5
7.4

8+03

3.6
9.3

7+97 Hit Fence (6' Chain Link)

9.2

7+50 15' Lt to Center 36" Euc. Tree

3.7

7+38 14' Lt to Center 26" Euc. Tree

7+28 Hit Fence (6' Chain Link)

12.90x

12.90x ✓

Contd From Page 57.

Lt

R

R

58

11+00

5.1
7.8

10+50

5.1
7.8

10+00

5.6
7.3

9+80.5

55' Lt to Center 36" Euc. Tree

9+74

13' Lt to Center 30" Euc. Tree

9+50

6.3
6.6

9+00

6.9
6.0

8+59

95' Lt to Fence Corner 3' chain link 6 Str. and barbed wire

12.90x ✓

12.90x ✓

Contd From Page 58

13+28.06 } 80' Rt to Approx Near Edge of Top of Levee
& Approach to Morena Bridge

12+84

T.P. 10.25 21.35π 2.40 10.50

12+70

12+50

12+00

11+50

12.90π

26

2

12

59

16.8
4.6

16.1
5.3

21.35π

7.8
5.1

7.6
5.3

6.2
6.7

5.4
7.5

12.90π

| | | | | |
|-------|------|-------|------|-------------|
| Check | | | 7.49 | 6.41 = 6.44 |
| TP | 3.80 | 13.90 | 9.96 | 10.10 |
| J.P. | 4.71 | 20.06 | 6.00 | 15.35 |

14+80 Top of shoulder Morena Blvd.

14+65

7.1 14.3

8.8 12.6

9.2 12.2

14+30

13+88

| | | | |
|------|------|------|------|
| 9.8 | 14.9 | 11.9 | 9.7 |
| 11.6 | 6.5 | 8.1 | 11.7 |
| 32 | 24 | | 14 |

8.6 16.8

13+76

21.35 X

21.35 X

Cont'd From Page 62

88

63

0+02 40' Rt to center fire hydrant

0+00 South Line University Avenue

0-14 31¹/₂' Lt to center P. Pole # 371011
78' Rt to center P. Pole # 277453

0-33 South Edge 30' Pav. Strip

0-48 Q 30' Pav. Strip

0-50 Q University Avenue

0-63 North Edge 30' Conc. Pav. in Univ.

0-83.2 32³/₄ Lt & 10' cb Inlet (E of College Ave from South)

0-84.3 37⁵/₈ Rt & 10' cb Inlet (E of College Ave from So.)

BM 409 326.23 A

city Disc
322.14 Q University & College Ave.

326.23 A

| | | | | | | | |
|------|------|-------|-------|-------|------|------|------|
| 22.5 | 22.0 | 21.52 | 21.35 | 21.92 | 21.3 | 21.1 | 20.6 |
| 37 | 42 | 471 | 488 | 531 | 49 | 51 | 5.6 |
| 70 | 50 | 20 | | 20 | 30 | 50 | 70 |

| | | | | |
|-------|-------|-------|-------|-------|
| 23.72 | 22.83 | 21.99 | 21.23 | 20.52 |
| 251 | 340 | 424 | 500 | 571 |
| 100 | 50 | | 50 | 100 |

| | | | | |
|-------|-------|-------|-------|-------|
| 23.85 | 23.05 | 22.14 | 21.44 | 20.65 |
| 238 | 318 | 409 | 479 | 558 |
| 100 | 50 | | 50 | 100 |

| | | | | |
|-------|-------|--------|-------|--------|
| 23.82 | 22.82 | 322.00 | 21.33 | 320.53 |
| 241 | 341 | 423 | 490 | 570 |
| 100 | 50 | | 50 | 100 |

| | | |
|--------------------------------|--------------------------------|--------------------------------|
| 18.17 | 21.47 | 22.48 |
| 806 | 476 | 375 |
| 32 ³ / ₄ | 32 ³ / ₄ | 32 ³ / ₄ |
| Invert | Grth. | cb |

| | | |
|--------------------------------|--------------------------------|--------------------------------|
| 22.12 | 21.15 | 16.66 |
| 411 | 508 | 957 |
| 39 ⁵ / ₈ | 39 ⁵ / ₈ | 39 ⁵ / ₈ |
| cb | Grth. | Invert |

Cont'd From Page 63

2405 13² Lt to center 2'x1' Inlet (to box culvert)

2401E 32² Rt & big box culvert *Location pg. 62

1779 53^E Rt End 30" RCP outlet

1768

1750

1700

0749.50 BC

326.23A

Lt

Rt

Rt

64

20.07
6.16
13²
GRATE

15.63 22.28
10.60 3.95
INVERT 70²
INLET culvert
Inlet

19.89 12.03
6.34 14.20
32²
7² P
Hd. W.L. Invert

23.3 21.6 20.9 19.84 20.62 21.35 outlet
2.9 4.6 5.3 6.39 5.61 4.88 4.3 4.5 4.7 4.32 4.7
70 50 20 15 20 21 20 41 53E 90
INVERT

23.0 21.7 21.0 20.19 20.63 21.21 21.8 21.7 21.3
3.2 4.5 5.2 6.04 5.60 5.02 4.4 4.5 4.9
70 50 20 20 20 21 50 70

22.8 21.8 21.3 20.95 20.62 21.27 21.8 21.7 21.2
3.4 4.4 4.9 5.28 5.61 4.96 4.4 4.5 5.0
70 50 20 20 20 20 22 50 70

22.8 21.7 21.1 20.30 20.90 21.03 21.6 20.9 20.6
3.4 4.5 5.1 5.28 5.33 5.20 4.6 5.5 5.6
70 50 22 20 20 20 22 50 70

22.2 21.8 21.4 20.75 21.12 20.70 21.2 21.0 20.5
4.0 4.4 4.8 5.48 5.11 5.53 5.0 5.2 5.7
70 50 23 20 20 20 35 50 70

326.23A

Contd From Page 64

2+50

| | | | | | | | | | | | | |
|------|------|-------|-------|------|------|-------|-------|-------|------|-------|-------|------|
| 25.1 | 24.9 | 21.49 | 20.93 | 21.0 | 21.3 | 20.59 | 21.50 | 22.04 | 22.9 | 23.43 | 23.95 | 24.8 |
| 5.0 | 5.8 | 8.64 | 9.20 | 9.1 | 8.8 | 9.54 | 8.63 | 8.09 | 7.2 | 6.70 | 6.18 | 5.9 |
| 110 | 90 | 75 | 75 | 40 | 21 | 16 | | 14 | 33 | 76 | 76 | 90 |
| | cb | Gutt | | | | | | Gutt | Gutt | cb | | 110 |

2+46

61⁴ Lt to center 15' Cb Inlet *Location pg. 62

| | | |
|-----------------|-----------------|-----------------|
| 16.36 | 20.57 | 21.35 |
| 13.77 | 9.56 | 8.78 |
| 61 ⁴ | 61 ⁴ | 61 ⁴ |
| INVERT | Gutt | cb |

2+37

58¹ Rt to center 10' Cb Inlet *Location pg. 61

| | | |
|-----------------|-----------------|-----------------|
| 23.75 | 22.92 | 17.20 |
| 6.38 | 7.21 | 12.93 |
| 58 ¹ | 58 ¹ | 58 ¹ |
| cb | Gutt | INVERT |

2+33

41^E Lt to center T. Pole # 375927

T.P.

8.61 330.13 T #71 321.52

330.13 T

2+30

| | | |
|-------|------|------|
| 25.13 | 24.6 | 21.2 |
| 2.9 | 1.6 | 5.0 |
| 90 | 85 | 57 |

| | | | | | | | | | |
|-----------------|-----------------|------|------|-------|-------|-------|------|------|------|
| 21.18 | 20.13 | 21.6 | 21.0 | 20.23 | 21.10 | 21.83 | 23.6 | 24.2 | 24.7 |
| 5.05 | 5.30 | 4.6 | 5.2 | 6.00 | 5.13 | 4.40 | 2.6 | 2.0 | 1.5 |
| 36 ⁸ | 36 ⁸ | 24 | 18 | 16 | | 19 | 40 | 50 | 90 |
| cb | Gutt | | | | | | | | |

2+21

33⁸ Lt to Curb End *Location pg. 62
37 Rt to center Guy pole # 5770198

| | |
|-----------------|-----------------|
| 20.33 | 20.81 |
| 5.90 | 5.42 |
| 33 ⁸ | 33 ⁸ |
| Gutt | cb |

2+17

40^E Rt to & 42" RCP/Wall *Location pg. 62

| | | | | | | | | | |
|------|------|------|-------|-------|-------|------|-------|-----------------|-----------------|
| 24.0 | 21.2 | 21.1 | 20.03 | 20.86 | 21.15 | 21.0 | 18.75 | 13.47 | 11.4 |
| 2.2 | 5.0 | 5.1 | 6.20 | 5.37 | 4.48 | 4.1 | 4.2 | 7.48 | 12.76 |
| 70 | 50 | 20 | 14 | | 19 | 28 | 37 | 40 ⁸ | 48 ⁸ |
| | | | | | | | | T.P. | INVERT |

326.23 T

326.23 T

26.74 27.53 28.64
 8.57 7.78 6.67
 80 90 105
 2p none Floor

3+72 80' Rt & S Drive

3+71 48' Lt to center P.Pole # 373926

3+70.57 B.C.

25.1 24.61 24.11 24.47 25.05 24.54 25.9 24.40 25.47 26.13 27.31 27.03 27.53 26.67 27.57
 10.2 10.70 11.20 10.54 10.26 10.77 9.4 10.91 9.84 7.8 8.0 8.28 7.78 8.64 7.81
 90 80 80 65 50 50 33 20 20 36 60 60 50 90
 cb curb cb curb cb curb cb curb cb curb cb

T.P. 5.81 335.31π 0.63 329.50

335.31π

3+47 70' Lt & 14' opening Quanset Bldg

23.5
 6.6
 80
 Dirt Floor

3+11

Quansets have no curb opening!

24.68 25.09 24.30 24.77
 5.55 5.04 5.83 5.36
 34 34 60 60
 curb cb curb cb

3+04 81' Lt & 14' opening to Quanset Bldg. Dirt Floor

23.5
 6.6
 89
 Dirt Floor

3+00

22.46 21.98 22.43 23.07 22.56 22.64 22.07 22.1 21.82 22.93 23.75 24.15 24.13 23.92 24.39 23.9 23.17 22.6
 7.65 8.15 7.70 7.84 7.57 7.79 8.06 8.0 8.31 7.20 6.38 5.74 6.21 5.74 6.21 5.74 6.21 6.65 6.65
 80 80 65 50 50 34 34 22 21 18 44 44 53 53 75 80 110
 cb curb cb curb cb cb 21 21 6.4 6.4 curb cb curb 75 80 110

330.13π

330.13π

Subgrade

Cont'd. From Page 66

Lt Et 67

5400

| | | | | | | | | | | | | |
|-------|-------|-------|-------|-------|------|-------|-------|-------|-------|-------|-------|------|
| 28.9 | 29.7 | 28.56 | 29.60 | 29.09 | 31.3 | 30.73 | 31.21 | 31.11 | 32.11 | 33.19 | 33.00 | 34.7 |
| 64 | 51 | 67 | 67 | 62 | 40 | 45 | 40 | 42 | 26 | 18 | 22 | 34 |
| 90 | 110 | 65 | 50 | 50 | 36 | 20 | 21 | 32 | 60 | 60 | 80 | 105 |
| 28.64 | 28.18 | 28.56 | 29.60 | 29.09 | 31.3 | 30.73 | 31.21 | 31.11 | 32.11 | 33.19 | 33.00 | 34.7 |
| CB | GUT | CB | GUT | CB | CB | CB | CB | CB | CB | CB | CB | CB |

4499 8° RT & 8° DRIVE

| | | |
|-------|-------|-------|
| 32.64 | 33.45 | 34.71 |
| 267 | 186 | 060 |
| 80 | 90 | 105 |
| 21P | | FLOOR |

4470 80° RT CENTER 80 DRIVE

| | | |
|-------|-------|-------|
| 27.91 | 27.77 | 27.23 |
| 740 | 754 | 808 |
| 105 | 90 | 80 |
| FLOOR | | 21P |

4450

| | | | | | | | | | | | | | | |
|------|-------|-------|-------|-------|-------|------|-------|------|-------|------|------|-------|-------|-----|
| 27.7 | 27.01 | 26.57 | 26.91 | 26.96 | 27.44 | 29.1 | 28.31 | 28.7 | 28.73 | 30.5 | 31.1 | 31.21 | 31.61 | |
| 76 | 82 | 84 | 84 | 85 | 787 | 62 | 702 | 654 | 658 | 48 | 414 | 442 | 505 | 417 |
| 110 | 90 | 80 | 65 | 50 | 50 | 36 | 20 | 21 | 42 | 60 | 60 | 80 | 80 | |
| 27.7 | 27.01 | 26.57 | 26.91 | 26.96 | 27.44 | 29.1 | 28.31 | 28.7 | 28.73 | 30.5 | 31.1 | 31.21 | 31.61 | |
| CB | GUT | CB | GUT | CB | CB | CB | CB | CB | CB | CB | GUT | GUT | CB | |

44335 80° RT CENTER 8° DRIVE

| | | |
|-------|-------|-------|
| 29.61 | 30.46 | 31.39 |
| 570 | 485 | 522 |
| 80 RT | 90 | 105.3 |
| DRIVE | | FLOOR |
| 21P | | |

4400

| | | | | | | | | | | | | | | |
|------|-------|-------|-------|-------|-------|------|-------|-------|-------|------|-------|------|------|-----|
| 26.4 | 24.76 | 25.02 | 25.31 | 25.49 | 25.95 | 27.1 | 25.76 | 26.62 | 27.01 | 28.1 | 28.84 | 30.7 | 29.2 | |
| 89 | 1085 | 1029 | 1000 | 982 | 936 | 82 | 755 | 849 | 830 | 69 | 647 | 685 | 748 | 675 |
| 90 | 80 | 80 | 65 | 50 | 50 | 38 | 19 | 26.5 | 20 | 40 | 68 | 80 | 80 | 80 |
| CB | GUT | GUT | CB | CB | CB | CB | CB | CB | CB | CB | GUT | GUT | CB | CB |

3496 90° RT 14° OPENING, QUONSET BLDG.

335.31A

335.31A

Cont'd From Page 67

6400

5487 85° LT. FIRE HYD.

5473 80° LT. CENTER 8° DRIVE

5460 CENTER 8° DRIVE 80° RT.

5450

5434 48.5 LT. RP # 375925

T.P

1244 342.44 T

531 330.00

5422 80° LT. CENTER 8° DRIVE

335.31 T

LT

E

RT

35.1

78
 33.9 110 32.91 32.43 32.85 32.83 33.34 36.9 36.24 36.42 35.89 36.7 38.05 29 22
 85 253 100 859 961 910 55 220 6.12 6.55 57 489 4.88 522 4.75
 70 80 80 65 50 50 36 20 20 31 60 60 80 80
 CB GUT GUT CR CR CR CR CB CB GUT GUT CB

68
29.5
38.2

31.96 31.83 31.17
 1048 1061 1127
 105 90 80
 FLOOR LIP

35.42 36.18 37.35
 702 626 509
 80 90 105
 LIP FLOOR

113 10.7 30.50 30.52 31.00 36.0 43.25 43.73 433.29 34.7 35.44 56 68
 90 30.56 110 30.10 30.80 30.82 31.00 36.0 43.25 43.73 433.29 34.7 35.44 56 68
 1189 1234 1194 1192 1144 84 919 8.71 215 77 660 707 757 712
 80 80 65 50 50 36 20 21 38 60 60 80 80
 CB GUT GUT CB CB CB CB CB CB

342.44 T

29.79 29.48 29.01
 552 588 630
 105 90 80
 FLOOR GUT

335.31 T

6+91 48⁵ LT PP# 375924

T.P. 12.45 350.42 T AM 337.97

6+768 85⁵ LT CENTER 8⁰ DRIVE

6+50

6+48⁵ 80⁰ ET CENTER 8⁰ DRIVE

6+24⁰ 80⁰ LT CENTER 8⁰ DRIVE

6+17 80⁰ ET CENTER 8⁰ DRIVE

342.44 T

78.1A 37.52 36.90
4.30 4.92 5.54
105 90 80
FLOOR LIP

37.9
45
110
36.9 35.71 35.24 35.72 35.70 36.19 40.34 39.29 39.19 38.40 39.44 40.16 39.67 48
35 678 720 6.72 6.74 6.28 21 315 3.25 404 3.5 228 277 2.90 2.0
90 80 80 65 50 50 32 20 21 35 60 60 80 90
CS. GUT GUT CS CS

39.57 40.41 41.63
2.87 2.03 2.81
80⁰ 90 105
LIP FLOOR

35.09 34.59 33.49
7.85 7.85 8.60
105 90 80
FLOOR LIP

38.11 37.84 39.90
1.33 3.60 2.54
80 90 105
LIP FLOOR

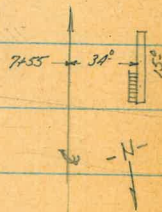
342.44 T

8+00

7+79.5 80° LT CENTER 8° WIDE DRIVE

7+65.45 B.C.

7+55 34° RT CENTER 15° WIDE CB. INLET



*7+48.5 SOUTH PROP LINE HEGG ST

7+35.5 SOUTH CB. LINE HEGG ST

350.54 M

LT

¢

RT

71

$\begin{matrix} 45.2 \\ 46.1 \\ 47.7 \end{matrix}$
 $\begin{matrix} 521 & 43 & 2.8 \\ 80 & 105 & 45.81 & 50.3 & 49.24 & 47.34 & 45.42 & 44.04 & 47.7 & 44.6 & 44.0 \end{matrix}$
 $\begin{matrix} 49.72 & 46.34 & 45.30 & 45.81 & 50.3 & 49.24 & 47.34 & 45.42 & 44.04 & 47.7 & 44.6 & 44.0 \end{matrix}$
 $\begin{matrix} 572 & 520 & 524 & 473 & 0.2 & 130 & 3.20 & 512 & 6.5 & 2.8 & 59 & 6.5 \\ 80 & 65 & 50 & 50 & 37 & 19 & & 19 & 34 & 35 & 50 & 63 \\ CB & GUT & CB & & & & & & & & & \end{matrix}$
 $\begin{matrix} 344.90 & 41.38 & 43.64 \\ 5.64 & 6.16 & 6.90 \\ 105 & 90 & 80 \\ & & 210 \end{matrix}$

$\begin{matrix} 43.9 \\ 44.8 \end{matrix}$
 $\begin{matrix} 66 & 57 \\ 90 & 105 \end{matrix}$
 $\begin{matrix} 43.15 & 42.70 & 43.16 & 43.03 & 43.53 & 48.0 & 46.90 & 45.43 & 43.81 & 43.9 & 44.2 \end{matrix}$
 $\begin{matrix} 789 & 784 & 738 & 751 & 701 & 2.5 & 364 & 511 & 628 & 6.6 & 6.3 \\ 80 & 80 & 65 & 50 & 50 & 37 & 19 & & 19 & 50 & 70 \\ CB & GUT & GUT & CB & & & & & & & \end{matrix}$

$\begin{matrix} 43.07 \\ 43.86 \\ 37.44 \end{matrix}$
 $\begin{matrix} 747 & 660 & 1310 \\ 34 & 31 & 34 \\ GUT & CB & BOTTOM \\ & & OF BOX \end{matrix}$

$\begin{matrix} 43.0 \\ 44.4 \end{matrix}$
 $\begin{matrix} 75 & 61 \\ 90 & 105 \end{matrix}$
 $\begin{matrix} 41.00 & 41.53 & 42.04 & 41.90 & 42.40 & 46.9 & 45.82 & 44.38 & 43.03 & 45.6 & 43.2 \end{matrix}$
 $\begin{matrix} 854 & 90 & 850 & 84 & 84 & 36 & 472 & 6.16 & 7.51 & 6.9 & 7.3 \\ 80 & 80 & 65 & 50 & 50 & 36 & 20 & & 19 & 50 & 70 \\ CB & GUT & GUT & CB & & & & & & PROP. & \end{matrix}$

$\begin{matrix} 41.2 \\ 41.3 \end{matrix}$
 $\begin{matrix} 83 & 72 \\ 90 & 105 \end{matrix}$
 $\begin{matrix} 41.12 & 40.62 & 41.02 & 40.95 & 41.43 & 46.0 & 44.93 & 43.82 & 42.48 & 43.5 & 42.63 & 43.08 \end{matrix}$
 $\begin{matrix} 742 & 922 & 952 & 959 & 911 & 45 & 5.61 & 6.72 & 8.06 & 7.0 & 7.91 & 7.46 \\ 80 & 80 & 65 & 50 & 50 & 36 & 19 & & 18.5 & 38 & 10.5 & 10.5 \\ CB & GUT & GUT & CB & & & & & & & GUT & CB. \end{matrix}$

± EC. HEGG ST

350.54 M

9+50

9+00

8+75 80° LT CENTER 8° WIDE DRIVE

8+50

T.P.

1028 360.42A

020 350.34

8+47 48° LT & PP # 375923 & 82° LT & GUY POLE

8+28.5 80° LT CENTER 8° WIDE DRIVE

350.54A

LT

E

RT

72

54.65

5.97
 105 41 55.1 52.0 3 55.5 58.7 57.73 55.5 53 53.16 62.6 62.4 66.4 72.6
 5.85 5.47 5.59 5.08 1.9 2.89 5.49 7.06 8.0 +1.8 +5.8 +12.0
 90 65 50 50 39 20 21 22 32 50 70
 114 JETT. STREET TOP BANK

52.3 5 52.6 55.0
 827 80 56
 800 90 105
 51.91 52.32 52.25 52.73 66.6 54.99 52.92 50.32 49.9 54.7 59.0 63.0
 871 820 841 789 40 5.63 7.70 10.80 10.7 5.9 1.6 +2.4
 80 65 50 50 38 20 21 22 28 50 70
 GUT GUT CB

51.44 51.3 50.35
 918 959 10.27
 105 90 80
 FLOOR LIP

49.6 51.3
 110 93
 90 105
 18.92 18.45 18.86 18.80 49.28 53.7 52.20 50.17 47.82 45.7 48.9 49.82 50.6
 1120 1207 1172 1182 1134 69 842 10.45 12.80 14.9 11.7 10.8 10.0
 80 80 65 50 50 37 19 21 29 32 50 70
 CB. GUT. GUT. CB.

360.42A

48.31 47.69 46.46
 223 285 3.58
 105 90 80
 FLOOR LIP

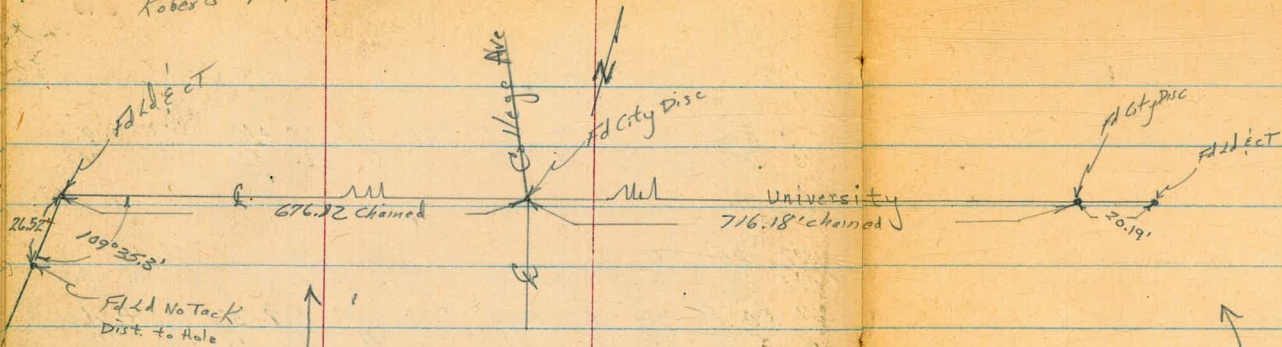
350.54A

Roberts 9-19-52

LT.

Q

RT.



This part of Q of University Avenue is a straight line.

511 322.13 = 322.14 CITY DISC Q UNIV. AVE Q COLLEGE AVE

289 327.24 12.35 324.35

T.P. +0.70 336.70 12.50 336.00

T.P. +0.49 348.50 12.41 348.01

10+00

56.70 56.7 58.1
 3.22 3.9 2.5
 82.8 CB 55.80 20 56.75 45.37.24
 4.82 3.87 3.38 4.0 0.16 2.52 4.70 5.3 +8.4 +12.5 +18.3
 82.8 54.1 54.1 40 20 20 21 37 TOP BANK
 58.10 55.92 55.32 69.0 73.1 78.9

9463 49° LT Q PP# 375922

36062 π

36062 π

Clark
Shepard 7-21-52
Bryner W.O. 20006
Bryson

74

ADD. X-Section Notes For SUTHERLAND;

PAC. Highway to KURTZ. (See pages 19-24)

(Cont. Next P.)

| | | | |
|------|------------------------|------|-------|
| 2154 | 28' RT BRK CONC. DRIVE | 9.99 | 10.67 |
| | | 28 | 40 |
| | | Lip | Floor |

| | | | |
|------|--------------------|------|-------|
| 2125 | 28' RT CONC. DRIVE | 9.16 | 9.92 |
| | | 28 | 40 |
| | | Lip | Floor |

| | | | |
|------|------------------------|------|-------|
| 1496 | 28' RT BRK CONC. DRIVE | 8.44 | 9.71 |
| | | 28 | 40 |
| | | Lip | Floor |

| | | | |
|------|------------------------|------|-------|
| 1493 | 28' RT BRK CONC. DRIVE | 8.73 | 9.54 |
| | | 28 | 40 |
| | | Lip | Floor |

| | | | |
|------|--------------------------|------|-------|
| 1485 | 28' RT. Req. CONC. DRIVE | 8.63 | 9.34 |
| | | 28 | 40 |
| | | Lip | Floor |

| | | | |
|------|--|--|--|
| 1463 | 70' RT. Req. Sunshine Biscuit Co Bldg | | |
|------|--|--|--|

0100 = P.L. Pac. Highway

B.M. 4.31 Direct Elev. Rod 4.31 Ch \square NW CB. SUTHERLAND + PAC. H'WAY (Pg 19)

CHK 4.31 4.31 = CH □ N/W CB. Sutterland & Pac. H'way

2+63

40' RT. END Bldg
28 RT END CONC DRIVE

10.95
28
LIP

11.11
40
Floor

2+57

28 RT Bldg CONC DRIVE

10.48
28
LIP

10.84
40
Floor

| | Lt | C | Rt |
|-------------------|----------|------------------|------------------|
| 2700 | 5 10 | 15.2 14.5 | 52 14.5 |
| 1750 | 52 10 | 14.5 14.5 | 52 14.7 |
| 1400 | 52 10 | 14.8 14.7 | 52 14.7 |
| 0750 | 42 10 | 15.3 15.5 | 42 15.5 |
| 0725 | 49 10 | 15.3 15.4 | 50 15.2 |
| 0700 existing SMH | 25 10 | 5.34 15.41 | 47 15.41 |
| B.M. | 860 | 20 ¹⁸ | 11 ⁵⁸ |

Hub S Anna +
Int Fly RR.
FEB 14 19

| | Lt | C | Rt |
|-----------------|----------|----------------|----------|
| 4110 | 44 10 | 11.2 | 46 10 |
| TP ₁ | 4.59 | 15.51 | 9.26 |
| L = 47° 55' 45" | 3+66 | 9.26 | 14.8 |
| 3+50 | 82 10 | 9.26 ON Hub | 92 10 |
| 3+00 | 85 10 | 84 | 82 10 |
| 2+50 | 78 10 | 79 | 79 10 |
| 2+30 | 60 10 | 58 | 57 10 |

77

20¹⁸

LT RT

CON. MON.
£ 560000 ext.
+ 514 ANNA + Mirren

IBM

9.08 6.43

| | | | |
|---------|-----|---------|-----|
| 2. | 8.1 | 8.08 | 8.1 |
| 6+70 3. | 7.4 | 7.43 | 7.4 |
| - | 10 | on stub | 10 |

| | | | |
|------|-----|-----|-----|
| 6+50 | 8.4 | 8.3 | 8.1 |
| | 7.1 | 7.2 | 7.4 |
| | 10 | | 10 |

| | | | |
|------|-----|-----|-----|
| 6+00 | 8.8 | 8.8 | 8.0 |
| | 6.7 | 6.7 | 6.5 |
| | 10 | | 10 |

| | | | |
|------|-------|------|------|
| 5+50 | 9.7 | 9.9 | 10.1 |
| | 5.100 | 5.16 | 5.4 |
| | 10 | | 10 |

| | | | |
|------|-----|-----|------|
| 5+00 | 7.7 | 7.8 | 10.1 |
| | 5.8 | 5.7 | 5.4 |
| | 10 | | 10 |

| | | | |
|------|------|------|------|
| 4+50 | 12.2 | 12.2 | 12.4 |
| | 5.3 | 5.3 | 5.1 |
| | 10 | | 10 |

15 51 T

CLARK
GARBER
O'NEIL
ABRENILLA
5-10-57
W.O. 21444

X-SECT. College Ave
UNIV, SLY

(See Pg 61 & See T.P.B. = 35)

(Notes on Loose Leaf)

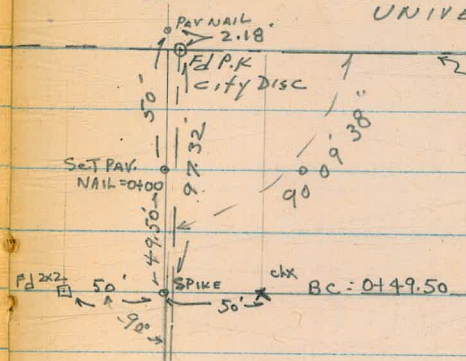
WALK
BIKE
RED WOOD VILLAGE

FD P.K. city Disc

UNIVERSITY

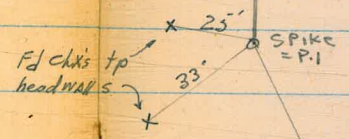
FLYK
CARTER
city Disc
20.19'

Note: this line not same
as shown Pg. 61 & 73
(called "A" line
T.P.B. = 35 - 2-3-4)



FD PT'S AS SHOWN (See Pg 61)
A = 18° 15.3'
E R = 1007.73'
E T = 161.91'

Note: Δ to EXIST P.K. DISC
IN UNIV = 18° 17' 30"

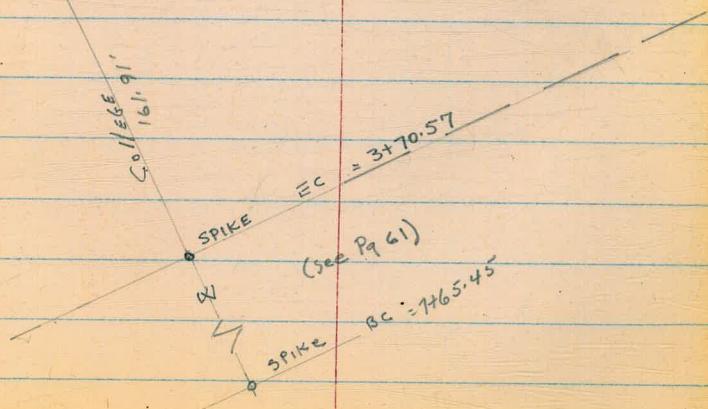


COLLEGE
161.91'

EC = 3770.57

(See Pg 61)

BC = 7765.45



80

21144
HEBB

Sewer - W.O. 62217

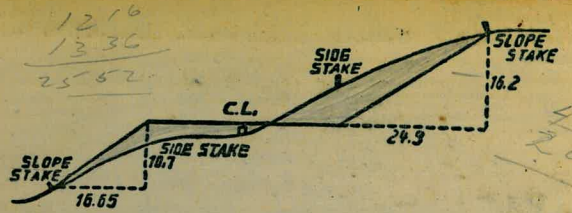
20.33
113
248

688
639
1320

461
971
1432

845
532
1377

644
Con. Mon.
E. Sherman extended
1/4 Ann. W. Morgan St.



DISTANCES FROM SIDE STAKES FOR CROSS-SECTIONING.
SLOPE 1 1/2 TO 1. ROADWAY OF ANY WIDTH.

| | 0 | .1 | .2 | .3 | .4 | .5 | .6 | .7 | .8 | .9 | |
|----|-------|-------|-------|-------|-------|-------|-------|-------|-------|-------|----|
| 0 | 0.00 | 0.15 | 0.30 | 0.45 | 0.60 | 0.75 | 0.90 | 1.05 | 1.20 | 1.35 | 0 |
| 1 | 1.50 | 1.65 | 1.80 | 1.95 | 2.10 | 2.25 | 2.40 | 2.55 | 2.70 | 2.85 | 1 |
| 2 | 3.00 | 3.15 | 3.30 | 3.45 | 3.60 | 3.75 | 3.90 | 4.05 | 4.20 | 4.35 | 2 |
| 3 | 4.50 | 4.65 | 4.80 | 4.95 | 5.10 | 5.25 | 5.40 | 5.55 | 5.70 | 5.85 | 3 |
| 4 | 6.00 | 6.15 | 6.30 | 6.45 | 6.60 | 6.75 | 6.90 | 7.05 | 7.20 | 7.35 | 4 |
| 5 | 7.50 | 7.65 | 7.80 | 7.95 | 8.10 | 8.25 | 8.40 | 8.55 | 8.70 | 8.85 | 5 |
| 6 | 9.00 | 9.15 | 9.30 | 9.45 | 9.60 | 9.75 | 9.90 | 10.05 | 10.20 | 10.35 | 6 |
| 7 | 10.50 | 10.65 | 10.80 | 10.95 | 11.10 | 11.25 | 11.40 | 11.55 | 11.70 | 11.85 | 7 |
| 8 | 12.00 | 12.15 | 12.30 | 12.45 | 12.60 | 12.75 | 12.90 | 13.05 | 13.20 | 13.35 | 8 |
| 9 | 13.50 | 13.65 | 13.80 | 13.95 | 14.10 | 14.25 | 14.40 | 14.55 | 14.70 | 14.85 | 9 |
| 10 | 15.00 | 15.15 | 15.30 | 15.45 | 15.60 | 15.75 | 15.90 | 16.05 | 16.20 | 16.35 | 10 |
| 11 | 16.50 | 16.65 | 16.80 | 16.95 | 17.10 | 17.25 | 17.40 | 17.55 | 17.70 | 17.85 | 11 |
| 12 | 18.00 | 18.15 | 18.30 | 18.45 | 18.60 | 18.75 | 18.90 | 19.05 | 19.20 | 19.35 | 12 |
| 13 | 19.50 | 19.65 | 19.80 | 19.95 | 20.10 | 20.25 | 20.40 | 20.55 | 20.70 | 20.85 | 13 |
| 14 | 21.00 | 21.15 | 21.30 | 21.45 | 21.60 | 21.75 | 21.90 | 22.05 | 22.20 | 22.35 | 14 |
| 15 | 22.50 | 22.65 | 22.80 | 22.95 | 23.10 | 23.25 | 23.40 | 23.55 | 23.70 | 23.85 | 15 |
| 16 | 24.00 | 24.15 | 24.30 | 24.45 | 24.60 | 24.75 | 24.90 | 25.05 | 25.20 | 25.35 | 16 |
| 17 | 25.50 | 25.65 | 25.80 | 25.95 | 26.10 | 26.25 | 26.40 | 26.55 | 26.70 | 26.85 | 17 |
| 18 | 27.00 | 27.15 | 27.30 | 27.45 | 27.60 | 27.75 | 27.90 | 28.05 | 28.20 | 28.35 | 18 |
| 19 | 28.50 | 28.65 | 28.80 | 28.95 | 29.10 | 29.25 | 29.40 | 29.55 | 29.70 | 29.85 | 19 |
| 20 | 30.00 | 30.15 | 30.30 | 30.45 | 30.60 | 30.75 | 30.90 | 31.05 | 31.20 | 31.35 | 20 |
| 21 | 31.50 | 31.65 | 31.80 | 31.95 | 32.10 | 32.25 | 32.40 | 32.55 | 32.70 | 32.85 | 21 |
| 22 | 33.00 | 33.15 | 33.30 | 33.45 | 33.60 | 33.75 | 33.90 | 34.05 | 34.20 | 34.35 | 22 |
| 23 | 34.50 | 34.65 | 34.80 | 34.95 | 35.10 | 35.25 | 35.40 | 35.55 | 35.70 | 35.85 | 23 |
| 24 | 36.00 | 36.15 | 36.30 | 36.45 | 36.60 | 36.75 | 36.90 | 37.05 | 37.20 | 37.35 | 24 |
| 25 | 37.50 | 37.65 | 37.80 | 37.95 | 38.10 | 38.25 | 38.40 | 38.55 | 38.70 | 38.85 | 25 |
| 26 | 39.00 | 39.15 | 39.30 | 39.45 | 39.60 | 39.75 | 39.90 | 40.05 | 40.20 | 40.35 | 26 |
| 27 | 40.50 | 40.65 | 40.80 | 40.95 | 41.10 | 41.25 | 41.40 | 41.55 | 41.70 | 41.85 | 27 |
| 28 | 42.00 | 42.15 | 42.30 | 42.45 | 42.60 | 42.75 | 42.90 | 43.05 | 43.20 | 43.35 | 28 |
| 29 | 43.50 | 43.65 | 43.80 | 43.95 | 44.10 | 44.25 | 44.40 | 44.55 | 44.70 | 44.85 | 29 |
| 30 | 45.00 | 45.15 | 45.30 | 45.45 | 45.60 | 45.75 | 45.90 | 46.05 | 46.20 | 46.35 | 30 |
| 31 | 46.50 | 46.65 | 46.80 | 46.95 | 47.10 | 47.25 | 47.40 | 47.55 | 47.70 | 47.85 | 31 |
| 32 | 48.00 | 48.15 | 48.30 | 48.45 | 48.60 | 48.75 | 48.90 | 49.05 | 49.20 | 49.35 | 32 |
| 33 | 49.50 | 49.65 | 49.80 | 49.95 | 50.10 | 50.25 | 50.40 | 50.55 | 50.70 | 50.85 | 33 |
| 34 | 51.00 | 51.15 | 51.30 | 51.45 | 51.60 | 51.75 | 51.90 | 52.05 | 52.20 | 52.35 | 34 |
| 35 | 52.50 | 52.65 | 52.80 | 52.95 | 53.10 | 53.25 | 53.40 | 53.55 | 53.70 | 53.85 | 35 |
| 36 | 54.00 | 54.15 | 54.30 | 54.45 | 54.60 | 54.75 | 54.90 | 55.05 | 55.20 | 55.35 | 36 |
| 37 | 55.50 | 55.65 | 55.80 | 55.95 | 56.10 | 56.25 | 56.40 | 56.55 | 56.70 | 56.85 | 37 |
| 38 | 57.00 | 57.15 | 57.30 | 57.45 | 57.60 | 57.75 | 57.90 | 58.05 | 58.20 | 58.35 | 38 |
| 39 | 58.50 | 58.65 | 58.80 | 58.95 | 59.10 | 59.25 | 59.40 | 59.55 | 59.70 | 59.85 | 39 |
| 40 | 60.00 | 60.15 | 60.30 | 60.45 | 60.60 | 60.75 | 60.90 | 61.05 | 61.20 | 61.35 | 40 |
| 41 | 61.50 | 61.65 | 61.80 | 61.95 | 62.10 | 62.25 | 62.40 | 62.55 | 62.70 | 62.85 | 41 |
| 42 | 63.00 | 63.15 | 63.30 | 63.45 | 63.60 | 63.75 | 63.90 | 64.05 | 64.20 | 64.35 | 42 |
| 43 | 64.50 | 64.65 | 64.80 | 64.95 | 65.10 | 65.25 | 65.40 | 65.55 | 65.70 | 65.85 | 43 |
| 44 | 66.00 | 66.15 | 66.30 | 66.45 | 66.60 | 66.75 | 66.90 | 67.05 | 67.20 | 67.35 | 44 |
| 45 | 67.50 | 67.65 | 67.80 | 67.95 | 68.10 | 68.25 | 68.40 | 68.55 | 68.70 | 68.85 | 45 |
| 46 | 69.00 | 69.15 | 69.30 | 69.45 | 69.60 | 69.75 | 69.90 | 70.05 | 70.20 | 70.35 | 46 |
| 47 | 70.50 | 70.65 | 70.80 | 70.95 | 71.10 | 71.25 | 71.40 | 71.55 | 71.70 | 71.85 | 47 |
| 48 | 72.00 | 72.15 | 72.30 | 72.45 | 72.60 | 72.75 | 72.90 | 73.05 | 73.20 | 73.35 | 48 |
| 49 | 73.50 | 73.65 | 73.80 | 73.95 | 74.10 | 74.25 | 74.40 | 74.55 | 74.70 | 74.85 | 49 |
| 50 | 75.00 | 75.15 | 75.30 | 75.45 | 75.60 | 75.75 | 75.90 | 76.05 | 76.20 | 76.35 | 50 |

THE NATIONAL BLANK BOOK COMPANY
HOLYOKE MASSACHUSETTS
NEW YORK CHICAGO BOSTON SAN FRANCISCO