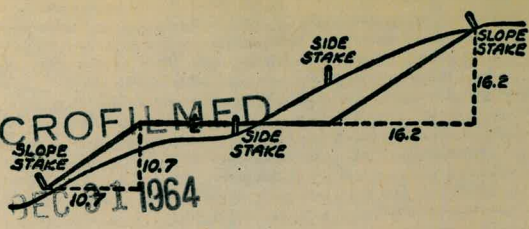


2083

MARKET BOOK

MICROFILMED
 DEC 10 1964



DISTANCES FROM SIDE STAKES FOR CROSS-SECTIONING
 SLOPE 1 TO 1. ROADWAY OF ANY WIDTH

	0	.1	.2	.3	.4	.5	.6	.7	.8	.9	
0	0.00	0.10	0.20	0.30	0.40	0.50	0.60	0.70	0.80	0.90	0
1	1.00	1.10	1.20	1.30	1.40	1.50	1.60	1.70	1.80	1.90	1
2	2.00	2.10	2.20	2.30	2.40	2.50	2.60	2.70	2.80	2.90	2
3	3.00	3.10	3.20	3.30	3.40	3.50	3.60	3.70	3.80	3.90	3
4	4.00	4.10	4.20	4.30	4.40	4.50	4.60	4.70	4.80	4.90	4
5	5.00	5.10	5.20	5.30	5.40	5.50	5.60	5.70	5.80	5.90	5
6	6.00	6.10	6.20	6.30	6.40	6.50	6.60	6.70	6.80	6.90	6
7	7.00	7.10	7.20	7.30	7.40	7.50	7.60	7.70	7.80	7.90	7
8	8.00	8.10	8.20	8.30	8.40	8.50	8.60	8.70	8.80	8.90	8
9	9.00	9.10	9.20	9.30	9.40	9.50	9.60	9.70	9.80	9.90	9
10	10.00	10.10	10.20	10.30	10.40	10.50	10.60	10.70	10.80	10.90	10
11	11.00	11.10	11.20	11.30	11.40	11.50	11.60	11.70	11.80	11.90	11
12	12.00	12.10	12.20	12.30	12.40	12.50	12.60	12.70	12.80	12.90	12
13	13.00	13.10	13.20	13.30	13.40	13.50	13.60	13.70	13.80	13.90	13
14	14.00	14.10	14.20	14.30	14.40	14.50	14.60	14.70	14.80	14.90	14
15	15.00	15.10	15.20	15.30	15.40	15.50	15.60	15.70	15.80	15.90	15
16	16.00	16.10	16.20	16.30	16.40	16.50	16.60	16.70	16.80	16.90	16
17	17.00	17.10	17.20	17.30	17.40	17.50	17.60	17.70	17.80	17.90	17
18	18.00	18.10	18.20	18.30	18.40	18.50	18.60	18.70	18.80	18.90	18
19	19.00	19.10	19.20	19.30	19.40	19.50	19.60	19.70	19.80	19.90	19
20	20.00	20.10	20.20	20.30	20.40	20.50	20.60	20.70	20.80	20.90	20
21	21.00	21.10	21.20	21.30	21.40	21.50	21.60	21.70	21.80	21.90	21
22	22.00	22.10	22.20	22.30	22.40	22.50	22.60	22.70	22.80	22.90	22
23	23.00	23.10	23.20	23.30	23.40	23.50	23.60	23.70	23.80	23.90	23
24	24.00	24.10	24.20	24.30	24.40	24.50	24.60	24.70	24.80	24.90	24
25	25.00	25.10	25.20	25.30	25.40	25.50	25.60	25.70	25.80	25.90	25
26	26.00	26.10	26.20	26.30	26.40	26.50	26.60	26.70	26.80	26.90	26
27	27.00	27.10	27.20	27.30	27.40	27.50	27.60	27.70	27.80	27.90	27
28	28.00	28.10	28.20	28.30	28.40	28.50	28.60	28.70	28.80	28.90	28
29	29.00	29.10	29.20	29.30	29.40	29.50	29.60	29.70	29.80	29.90	29
30	30.00	30.10	30.20	30.30	30.40	30.50	30.60	30.70	30.80	30.90	30
31	31.00	31.10	31.20	31.30	31.40	31.50	31.60	31.70	31.80	31.90	31
32	32.00	32.10	32.20	32.30	32.40	32.50	32.60	32.70	32.80	32.90	32
33	33.00	33.10	33.20	33.30	33.40	33.50	33.60	33.70	33.80	33.90	33
34	34.00	34.10	34.20	34.30	34.40	34.50	34.60	34.70	34.80	34.90	34
35	35.00	35.10	35.20	35.30	35.40	35.50	35.60	35.70	35.80	35.90	35
36	36.00	36.10	36.20	36.30	36.40	36.50	36.60	36.70	36.80	36.90	36
37	37.00	37.10	37.20	37.30	37.40	37.50	37.60	37.70	37.80	37.90	37
38	38.00	38.10	38.20	38.30	38.40	38.50	38.60	38.70	38.80	38.90	38
39	39.00	39.10	39.20	39.30	39.40	39.50	39.60	39.70	39.80	39.90	39
40	40.00	40.10	40.20	40.30	40.40	40.50	40.60	40.70	40.80	40.90	40
41	41.00	41.10	41.20	41.30	41.40	41.50	41.60	41.70	41.80	41.90	41
42	42.00	42.10	42.20	42.30	42.40	42.50	42.60	42.70	42.80	42.90	42
43	43.00	43.10	43.20	43.30	43.40	43.50	43.60	43.70	43.80	43.90	43
44	44.00	44.10	44.20	44.30	44.40	44.50	44.60	44.70	44.80	44.90	44
45	45.00	45.10	45.20	45.30	45.40	45.50	45.60	45.70	45.80	45.90	45
46	46.00	46.10	46.20	46.30	46.40	46.50	46.60	46.70	46.80	46.90	46
47	47.00	47.10	47.20	47.30	47.40	47.50	47.60	47.70	47.80	47.90	47
48	48.00	48.10	48.20	48.30	48.40	48.50	48.60	48.70	48.80	48.90	48
49	49.00	49.10	49.20	49.30	49.40	49.50	49.60	49.70	49.80	49.90	49
50	50.00	50.10	50.20	50.30	50.40	50.50	50.60	50.70	50.80	50.90	50

Distance of slope stake from side or shoulder stake for any width roadway, slope 1 to 1. If ground is nearly level, the cut or fill at side stake is located by the double entry method in left column and top row. The number in body of table in same row and column gives distance from side stake to slope stake. If ground is not level estimate the difference in elevation between the side stake and slope stake, lower target by this amount if cut, elevate if fill. Add this amount to cut or fill and find distance in table. Set up rod at this point, and line of sight should cut target. If it does not make the slight adjustment necessary.

INDEXED
 to page #57

TABLE XIII—CORRECTIONS FOR TANGENTS AND EXTERNALS

These corrections are to be added to the approximate values, found by dividing the tangent, or external, for a 1° curve (Table VIII) by the degree of curve, in order to obtain the true tangents, or externals. Intermediate values may be obtained by interpolation.

FOR TANGENTS ADD

Central Angle	DEGREE OF CURVE													
	5°	10°	15°	20°	25°	30°	35°	40°	45°	50°	55°	60°	65°	70°
10°	.03	.06	.09	.13	.16	.19	.22	.25	.28	.31	.34	.38	.42	.46
15°	.04	.10	.14	.19	.24	.29	.34	.39	.45	.51	.53	.58	.63	.68
20°	.06	.13	.19	.26	.32	.39	.45	.51	.58	.65	.72	.79	.84	.90
25°	.08	.16	.24	.33	.40	.49	.58	.67	.75	.83	.90	.99	1.06	1.14
30°	.10	.19	.29	.39	.49	.59	.69	.79	.89	.99	1.09	1.20	1.29	1.39
35°	.11	.22	.34	.47	.58	.69	.79	.81	.92	1.04	1.29	1.42	1.54	1.66
40°	.13	.26	.40	.53	.67	.80	.93	1.06	1.20	1.34	1.49	1.64	1.79	1.94
45°	.15	.30	.44	.60	.76	.91	1.06	1.21	1.37	1.52	1.70	1.87	2.04	2.21
50°	.17	.34	.51	.68	.85	1.02	1.19	1.36	1.54	1.72	1.91	2.10	2.29	2.48
55°	.19	.38	.57	.76	.95	1.14	1.32	1.52	1.72	1.92	2.14	2.35	2.56	2.77
60°	.21	.42	.63	.84	1.05	1.27	1.49	1.71	1.94	2.17	2.38	2.60	2.83	3.07
65°	.23	.46	.69	.93	1.16	1.40	1.64	1.88	2.13	2.38	2.63	2.88	3.13	3.39
70°	.25	.51	.76	1.02	1.28	1.54	1.80	2.06	2.33	2.60	2.88	3.16	3.44	3.72
75°	.27	.56	.83	1.12	1.40	1.69	1.98	2.27	2.57	2.87	3.16	3.47	3.78	4.09
80°	.30	.61	.91	1.22	1.53	1.84	2.15	2.46	2.78	3.10	3.44	3.78	4.12	4.46
85°	.33	.66	1.00	1.33	1.68	2.02	2.36	2.70	3.05	3.40	3.77	4.14	4.55	4.89
90°	.36	.72	1.09	1.45	1.83	2.20	2.57	2.94	3.32	3.70	4.10	4.50	4.91	5.32
95°	.39	.79	1.19	1.55	2.00	2.40	2.80	3.20	3.61	4.02	4.40	4.98	5.38	5.83
100°	.43	.86	1.30	1.74	2.18	2.62	3.06	3.50	3.95	4.40	4.88	5.37	5.85	6.34
110°	.51	1.03	1.56	2.08	2.61	3.14	3.67	4.21	4.76	5.31	5.86	6.43	7.01	7.60
120°	.62	1.25	1.93	2.52	3.16	3.81	4.45	5.11	5.77	6.44	7.12	7.80	8.50	9.22

FOR EXTERNALS ADD

Central Angle	DEGREE OF CURVE													
	5°	10°	15°	20°	25°	30°	35°	40°	45°	50°	55°	60°	65°	70°
10°	.001	.003	.004	.006	.007	.008	.009	.011	.012	.014	.015	.017	.018	.020
15°	.003	.007	.010	.014	.018	.023	.027	.029	.032	.035	.039	.043	.047	.051
20°	.006	.011	.017	.022	.028	.034	.038	.045	.051	.057	.063	.070	.076	.083
25°	.009	.018	.027	.036	.046	.056	.065	.074	.083	.093	.106	120	127	135
30°	.013	.025	.038	.051	.065	.078	.090	.103	.116	.129	.149	.170	.179	.188
35°	.018	.035	.054	.072	.086	.109	.131	.153	.175	.197	.213	.230	.247	.264
40°	.023	.046	.070	.093	.117	.141	.172	.203	.234	.265	.277	.290	.315	.341
45°	.030	.060	.093	.119	.153	.184	.216	.254	.289	.325	.351	.378	.411	.445
50°	.037	.075	.116	.151	.189	.227	.266	.305	.345	.384	.425	.467	.508	.550
55°	.046	.093	.142	.188	.236	.283	.332	.381	.420	.479	.530	.582	.641	.700
60°	.056	.112	.168	.225	.283	.340	.398	.457	.516	.575	.636	.697	.774	.851
65°	.067	.135	.204	.273	.343	.412	.483	.554	.625	.697	.771	.845	.922	1.01
70°	.080	.159	.240	.321	.403	.485	.568	.652	.735	.819	.906	.994	1.08	1.17
75°	.095	.182	.266	.353	.440	.528	.617	.707	.797	.877	.977	1.07	1.18	1.29
80°	.110	.220	.332	.445	.558	.671	.787	.903	1.02	1.13	1.25	1.38	1.50	1.62
85°	.128	.259	.391	.524	.657	.790	.926	1.06	1.20	1.34	1.47	1.62	1.76	1.91
90°	.149	.299	.450	.603	.756	.910	1.07	1.22	1.38	1.54	1.70	1.87	2.03	2.20
95°	.174	.350	.522	.706	.885	1.06	1.25	1.43	1.62	1.80	1.99	2.18	2.38	2.58
100°	.200	.401	.604	.809	1.01	1.22	1.43	1.64	1.85	2.06	2.28	2.50	2.73	2.96
110°	.268	.536	.806	1.08	1.35	1.63	1.91	2.20	2.48	2.76	3.05	3.35	3.66	3.96
120°	.360	.721	1.08	1.45	1.82	2.19	2.57	2.95	3.33	3.72	4.11	4.50	4.91	5.32

X-Sec., Gresham, Pac. Beach to ^{GRAHAM} Gresham 1

X-Sec., Gresham, Riviera to Bay 1

Proposed storm drain Grand to 15

Fanuel & La Palma St.

Proposed sewer Midway Drive 39

from West Point Loma to N.W.

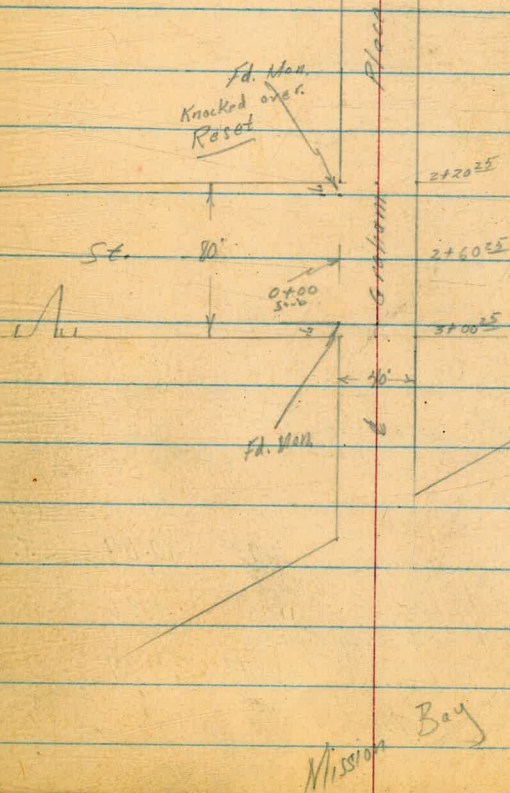
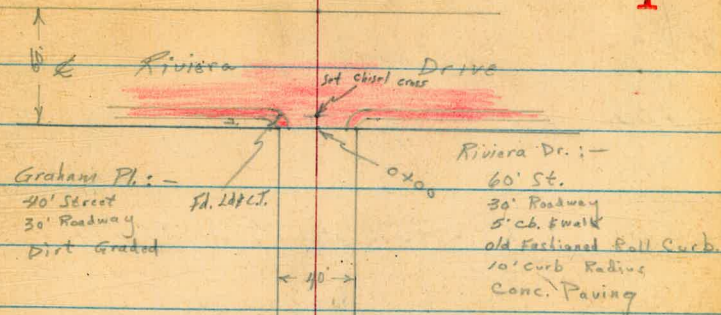
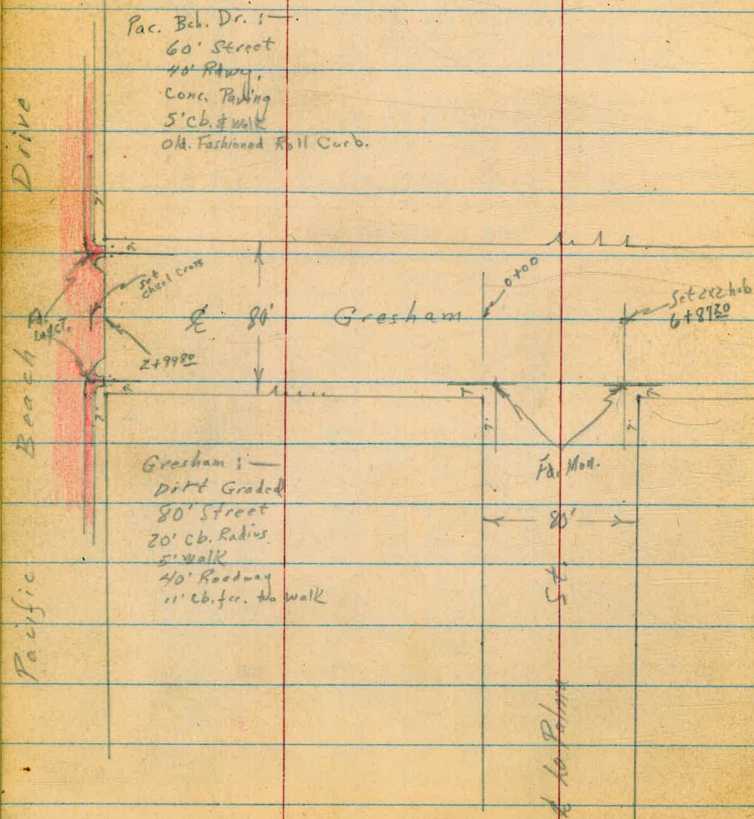
Pave on Ingraham from S.L. of Thomas 54
to N.L. Grand

52 Storm Drain Arnold Park

Roberts
Garber
Moore
Clark
3-17-50
W.O. #31140

X-Section Gresham
Pac. Beach Dr. to Graham
X-Section Graham
Riviera to Bay
Map 1864 TP 12 95

INDEXED
W.K.
MAR 23 1950



Cont'd From Page 1
X-Section Graham Pl.

0+05

Lt.	¢	Rt.
9.7	9.1	10.3
3.1	3.7	10.5
10	11	20
20	16	12
2.6	3.6	2.5
4.3	3.2	2.3
12	11	12

0+01 168' Lt to Center P. Pole #P1449

0+00 West Line Riviera Drive (0-00.4 Pav. Edge)

3.29	2.35	3.17	3.6	3.44	5.35	3.44	2.86	2.82
20.2	15.5	14.5	72	72	1.5	14.5	15.5	20.2
W&K	cb	Gutt.				Gutt.	cb	W&K

0-10 Curb Riviera

4.24	3.70	3.46	3.50	2.60	1.91	1.21
100	50	25	25	25	50	75
8.57	9.11	9.55	9.31	10.31	10.90	11.40

0-11 Gutter Riviera

4.97	4.36	4.07	3.50	3.23	2.57	1.52
100	50	25	25	25	50	75
7.84	8.45	8.74	9.31	9.58	10.24	10.99

0-30 E Riviera Dr.

4.23	3.55	3.10	2.75	2.44	1.62	0.85
100	50	20	20	20	50	75
8.58	9.26	9.71	10.06	10.37	11.19	11.96

Set BM

2.73 10.08 Lt # C.T.

W. 7' Riviera
N. Pt. Graham

T.P. 1.45 12.81 11.88 11.36

T.P. 1.87 23.24 4.47 21.39

BM 4.65 25.84 21.19

NWBP
Pac. Beach Dr. & Graham

12.81

Cont'd From Page 2

3

2+73

Lt				¢	Rt	
1.5	5.5	6.5	5.7	6.2	6.9	
11.3	7.3	6.3	7.1	6.6	6.4	
45	35	20	14		20	

2+63 16' Lt. to Deadman

2+60²⁵ & Gresham

2+53 95' Lt. to water Gate Valve

2+31 17' Lt. to Center P. Pole # P. 1401

2+20²⁵ E. L. Gresham

9.309	6.4	6.5	6.2	6.5	
9.72	6.6	6.3	6.0	6.3	
9.2	40	20	23	20	
7.0					

2+00

5.6	6.7	6.4	6.2	5.8	6.7	6.9
7.2	6.1	6.4	6.6	7.0	6.1	5.9
40	20	12		15	17	20

1+50

5.6	6.2	5.9	5.8	5.7	6.5	6.7	7.3
7.2	6.6	6.9	7.0	7.1	6.3	6.1	5.5
40	20	16		8	11	20	40

1+00

5.6	6.4	6.7	6.1	6.1	6.0	7.0	6.9	7.3
7.2	6.4	6.1	6.7	6.7	6.8	5.8	5.9	5.5
40	20	19	17		5	7	20	40

0+50

7.5	7.3	7.1	6.6	6.8	6.6	7.7	8.1	8.4
5.5	5.5	5.7	6.2	6.0	6.2	5.7	4.7	4.4
40	20	15	13		7	9	20	40

8.6	8.2	8.3	7.6	8.1	7.9	9.4	9.9	10.6
4.2	4.6	4.5	5.2	4.7	4.9	3.4	2.9	2.2
40	20	14	12		9	11	20	40

12.81

12.81

Cont'd From Page 3

4440

4400

3467

3444

3424

3413

11' Rt to 6" Tree

3403

11.2' Rt to 12" Acacia

3400²⁵

W.L. Gresham

2480

12.81

Lt

-27.
20.5
20

-4.7
19.5

-6.5
19.3
20

-5.8
18.6
40

4

-5.9
18.7
40

-5.7
18.5
20

-5.3
18.1

-4.7
17.5
20

-4.3
17.1
40

-4.2
17.0
40

-3.7
16.5
20

-3.0
15.8

-1.7
14.5
20

-1.2
11.6
40

-2.8
15.6
40

-2.4
15.2
20

-1.2
14.0

8.0
48
20

8.3
45
30

-2.8
15.6
50

-1.4
14.2
20

-1.7
13.5
10

6.0
6.8

7.4
54
20

8.1
47
35

12.2
12.6
42

2.6
10.2
20

6.1
6.7
6

6.4
6.4

7.5
55
20

1.0
11.8
50

1.9
10.9
27

3.5
9.3
20

5.2
7.6
15

6.2
6.6

6.5
6.3
20

12.81

Contd From Page 4

X-Sect Gresham

Lt

Rt

Rt

5

0+60 28[±] Rt to Center P. Pole *JP3942

0+59 30[±] Lt to 12" Acacia

0+50

8.2	8.1	7.2	7.3	7.3	8.5	8.5
4.6	4.7	5.6	5.5	5.5	4.5	4.5
50	40	20		10	40	30

0+40 28' Rt to Deadman

0+36 28[±] Rt Deadman

0+31 30[±] Lt to 12" Acacia

0+14 215' Rt to Center Fire Hydrant

0+06 30[±] Lt to 12" Acacia

0+00 N.L. Graham

7.3	6.6	6.5	5.8	6.9	6.9
5.5	6.2	6.3	7.0	5.9	5.9
40	25		33	36	40

12.81

12.81

Contd From Page 5

Lt

¢

Rt

6

2+11 296' Lt. to 8" Logquat Tree

2+00 40' Rt & 8' Conc. Drive

120	11.6	11.3	11.2	11.5	11.3	11.6	11.86	12.08
9.3	9.7	10.0	10.1	9.8	10.0	9.7	9.40	9.18
60	40	21	18		14	20	40 Conc.	63 ¹ / ₂ Per

O.N.T.P. 4.79 21.26 3.44 16.77 Nail on T.Pole #P3951

T.P. 8.84 19.91 1.74 11.07

21.26

1+61 375' Rt. 6" Acacia
273' Rt to Center P.Pole # P3959

1+50

10.9	10.7	10.1	9.6	10.1	10.2	10.5	10.5
1.9	2.1	2.7	3.2	2.7	2.6	2.5	2.5
50	40	19	16		20	40	50

1+39 375' Rt to 24" Pine

1+13 375' Rt to 24" Pine

1+00

9.4	9.3	9.5	8.8	8.4	8.8	8.7	9.7	9.2	9.1
3.4	3.5	3.5	4.0	4.4	4.0	4.1	3.1	3.6	3.7
50	40	30	20	18		6	14	40	50

0+87

363' Rt to 16" Pine
308' Lt to 12" Acacia

12.81

12.81

Cont'd From Page 6

3719 40' Rt & 75' Drive

377 28' Lt 7" Acacia

3700 28' Lt 10" Acacia

2780 27' Lt 6" Acacia

2771 40' Rt Drive 7' gravel 2' Strips

2762 32' Rt to Big Bush

2757 27' Rt to Center P.P. # J.P. 3977

2756 30' Lt to 6" Avocado

2750 30' Lt to 6" Avocado

2740 40' Rt & 2' conc. Walk
29' Lt 14" Avocado

2722 40' Rt & Drive (7' gravel 2' Strips)

2720 40' Lt & Double Garage

21.26

Lt

&

Rt

14.94
6.32
40' conc
6.09
62

7

14.6 14.3 14.2 14.0 14.0
6.7 7.0 7.1 7.3 7.3
50 40 20 16 73
13.7 14.2 14.5
7.6 6.9 6.8
16 40 50

13.44
7.82
40 conc
7.62
64

13.3 13.1 13.0 12.7 12.8
8.0 8.2 8.3 8.6 8.5
50 40 26 18 72
12.5 13.0 12.9 13.1
8.8 8.3 8.4 8.2
12 21 40 50

12.85
8.71
40' conc
12.54
8.72
639
Floor

12.4
8.9
40' Floor

21.26

Contd From Page 7

Lt

R

R

8

4469 40¹/₂ R Drive Overall 2' strips

4467 27' Lt 12" Pepper

4461 27¹/₂ R to Center P. Pole # 5P4007

4456 27¹/₂ Lt 18" Eucalyptus

4450

4442 27' Lt 14" Pepper

4419 40¹/₂ R & Drive (Overall 2' strips)

4418 27' Lt 16" Pepper

4405 27¹/₂ Lt 6" Eucalyptus

4400

3493 27' Lt 14" Pepper

3480 39¹/₂ Lt to Center P. Pole # JPC1399

3470 27¹/₂ Lt 6" Acacia

3457 27¹/₂ R to Center P. Pole # P3991

3450

3432 28' Lt 5" Acacia

18.1	18.0	18.1	17.9	18.1	17.9	18.1	18.1	18.1	18.2
3.2	3.3	3.2	3.4	3.2	3.4	3.2	3.2	3.2	3.1
50	40	20	17	50	15	20	40	50	50

17.0	17.0	17.0	16.6	16.8	16.5	16.8	16.8	16.8	16.8
4.3	4.3	4.3	4.7	4.5	4.8	4.5	4.5	4.5	4.5
50	40	26	20	13	15	40	50	50	50

15.6	15.6	15.5	15.2	15.4	15.4	15.5	15.8	15.8	15.8
5.7	5.7	5.8	6.1	5.9	5.9	5.8	5.5	5.5	5.5
50	40	20	16	12	22	40	50	50	50

21.26
11

21.26
11

Cont'd From Page 8

6700

Lt				Rt	
6.0	5.8	5.8	6.3	5.7	5.3
50	40	20	17	16	40

5788

39' Rt & 2' Conc Walk

5.64	5.40
39' Conc	5'2" Floor

5768

39' Rt & Drive 7' overall 2' Strips

5.96	5.48
39' Conc	6'5" Floor

5760

27' Rt to Center P.P. # P4017
21' Rt End Hedge

5750

6.8	6.7	6.5	7.2	6.8	6.8	6.4	6.2	6.1
50	40	22	18	15	18	40	40	50

5729

27' Rt Begin Small Boxwood Hedge

6.78	6.30
40' Conc	7'5" Floor

5722

40' Rt & Drive 7' overall 2' Strips

T.P.

7.71 26.49 2.48 18.78

26.49

5700

2.4	2.3	2.3	2.7	2.5	2.5	2.1	2.0	1.9
50	40	22	15	15	17	40	40	50

21.26

21.26

9

21.3

Cont'd From Page 9

Lt.

\$

Rt 10

7+19 40' Rt & Drive 7'0. 2's.

22.55
3.94
40'
conc

23.26
3.23
64
conc

7+11.4 27 1/2' Rt to Center P. Pole

22.54

22.54

6+84 40' Rt to 22' Conc Walk

4.15
40
conc

22.63

3.75
55
Pole

7+02 40' Rt & Drive 7'0. 2's.

3.86
40
conc

22.63

23.14
33.5
734
Floor

6+80²⁰ So. Line La Palma Dr.

20.9
5.6
50
21.2
5.3
40
21.4
5.1
20
20.9
5.6
16
21.4
5.1
17

21.7
4.8
17

22.0
4.5
20

22.3
4.2
40

22.4
4.1
50

6+76 21 1/2' Lt to center Fire Hydrant

22.18

22.28

6+66 40' Rt & 2' Conc Walk

4.31
40
conc

4.2
50
conc

6+60 28 1/2' Rt to Center P. Pole # D29016T # JP4033

6+50

50.7
5.8
50
20.9
5.6
40
21.3
5.2
20
20.8
5.7
15
21.3
5.2
16

21.7
4.8
16

22.0
4.5
20

21.8
4.7
30

21.6
4.9
40

21.8
4.7
50

6+21 40' Rt & Drive 7'0 2's

21.55
5.24
40
conc

21.66
4.83
70

26.49

26.49

Contd From Page 10

Lt

£

Rt 11

1+12 ^{40 1/2 Lt} / ^{38 1/2 Rt} Drives 7'0. 2'S

16.89
9.60
89
conc.

19.02
7.47
403
conc.

22.95
3.54
38 1/2
conc.

28.65
2.74
60
conc.

1+00 33 1/2 Rt End Fence
28' Rt to Center P. Pole # JP 4067

17.9
8.6
50

18.9
7.6
40

19.7
6.8
20

20.4
6.1
15

20.2
6.3
14

20.6
5.9

21.2
5.3

22.0
4.5

22.7
3.8

23.1
3.4

0+70 39 1/2 Lt. £ Drive 7'0. 2'S.

18.39
8.10
55
Floor

19.15
7.36
39 1/2
conc

0+50

18.9
7.6
50

19.2
7.3
40

20.2
6.3
25

20.9
5.6
15

20.6
5.9
13

21.2
5.3

21.7
4.8

22.1
4.4

22.8
3.7

22.9
3.6

0+00 33' Rt Begin Wood Rail Fence
No. Line La Palma Dr.

19.4
7.1
50

20.1
6.4
40

21.5
5.2
23

21.4
5.1
15

21.2
5.3
13

21.4
5.1

21.6
4.9

22.1
4.4

22.7
3.8

22.8
3.7

7+20 ²⁰ £ La Palma Dr.

19.6
6.9
50

20.1
6.4
40

20.7
5.8
20

21.4
5.1

21.7
4.8

22.0
4.5

22.5
4.0

22.8
3.7

26.49
11

26.49
11

Cont'd From Page 11

Lt

Rt

Rt 12

2+00	39 ³ Lt Begin Lath Fence	19.6	19.7	20.5	20.3	20.8	21.4	21.9	22.8	23.0
	38 ⁵ → End Fence	6.9	6.8	6.0	6.2	5.7	5.1	4.6	3.7	3.5
	28 ⁵ Rt to Center P. Pole #	50	40	12	17		16	18	40	50

1+89	39 ³ Lt. & Drive T.O. 2'S.	19.06	19.48							
		7.47	7.05							
		76 Floor	39.2 Conc							
							25.10		23.16	

1+82	40 ⁶ Rt & 3' Conc. Walk									
							3.43		3.37	
							40 ⁶ Conc		49 Conc	

T.P.	6.34	<u>26.53</u>	6.34	20.15			<u>26.53</u>			
		1					1			

1+71	40 Lt & 2 ⁵ Conc Walk	18.94	19.51							
		7.55	6.98							
		64 Conc	40 Conc							

1+63	40 ⁶ Rt & T Drive									
							23.15		24.15	
							3.34		2.34	
							40 ⁶ Conc		60 Floor	

1+50	39 ⁶ Rt Begin Pickett fence	18.7	18.9	19.7	20.0	20.5	21.1	21.1	21.9	23.1
		7.8	7.6	6.8	6.5	6.0	5.4	4.4	3.6	3.4
		50	40	20	15		16	20	40	50

	<u>26.49</u>						<u>26.49</u>			
	1						1			

Cont'd From Page 12

Lt

E

Rt

13

2+99.80 So. Line Pac. Bch Drive

2+98.65 Pav. Edge

2+89 30^s Rt 12" Pine
213 Rt to Center Fire Hydrant

2+75

2+68 30^s Rt to 16" Pine

2+60 40' Rt & 25' Conc. Walk

2+55 38^s Lt End Fence

2+50

2+36 39^s Lt. & Drive 70' 2's.

6.14	6.19	6.33	6.87	6.35	5.99	5.75	5.80	5.13	5.15
36	31	22.3	21.2	10	22.3	10	21.3	22.8	22.8
walk	walk	cb	Gutt				Gutt	cb	
20.39	20.39	20.20	19.66	20.18	20.54	20.78	20.73	21.40	21.65
									71m 18.5'
									71m 9.5'
									21.80

3.51
40
conc

2.87
71
conc

5.2	5.5	5.7	5.2	5.0	4.5	3.7	3.5
56	40	21	21	16	20	40	50
21.16	20.95						
5.37	5.58						
60	39						
Floor	conc.						

26.53

26.53

Cont'd From Page 13

28

R

R+

14

check

5.34 21.19 = 21.19

Starting BM

3+29.80

R Pacific Beach Drive

	20.03	20.47	21.14	21.98	23.11
	6.50	6.06	5.39	4.55	3.42
	100	50		50	100

3+10.3

So. Gutter Line

	19.11	19.56	19.97	20.35	20.77	21.11	21.22
	7.42	6.97	6.56	6.18	5.76	5.42	4.31
	90	40	20		20	40	90

3+09.30

So. Curb Line

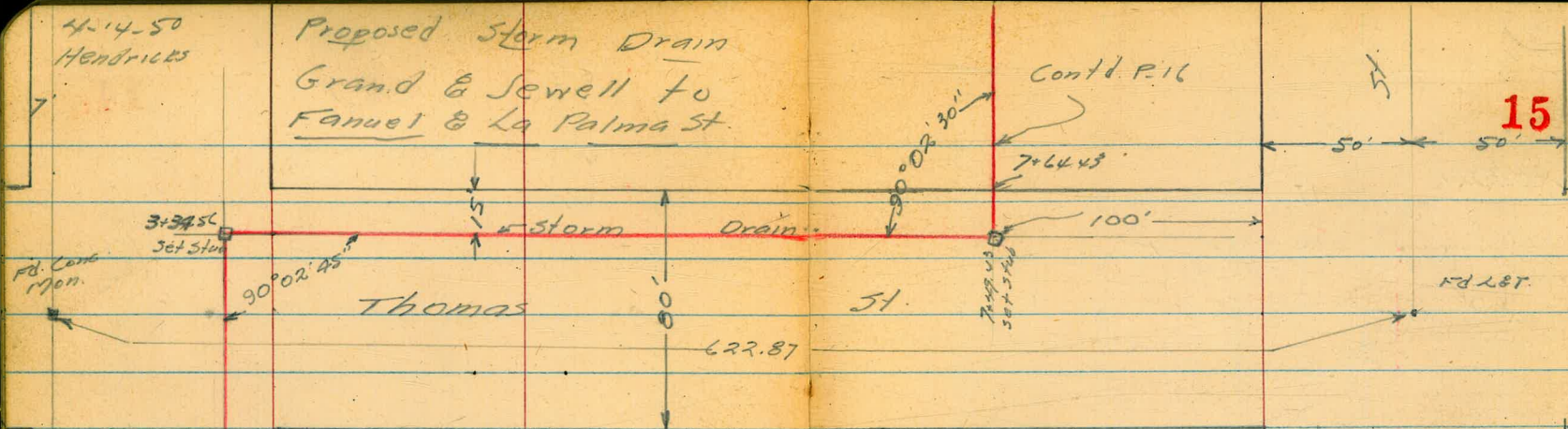
	19.76	20.20	19.73	20.35	20.76	21.72	22.89
	6.77	6.33	6.60	6.18	5.77	4.81	3.64
	90	40	20		20	40	90

26.53

26.53

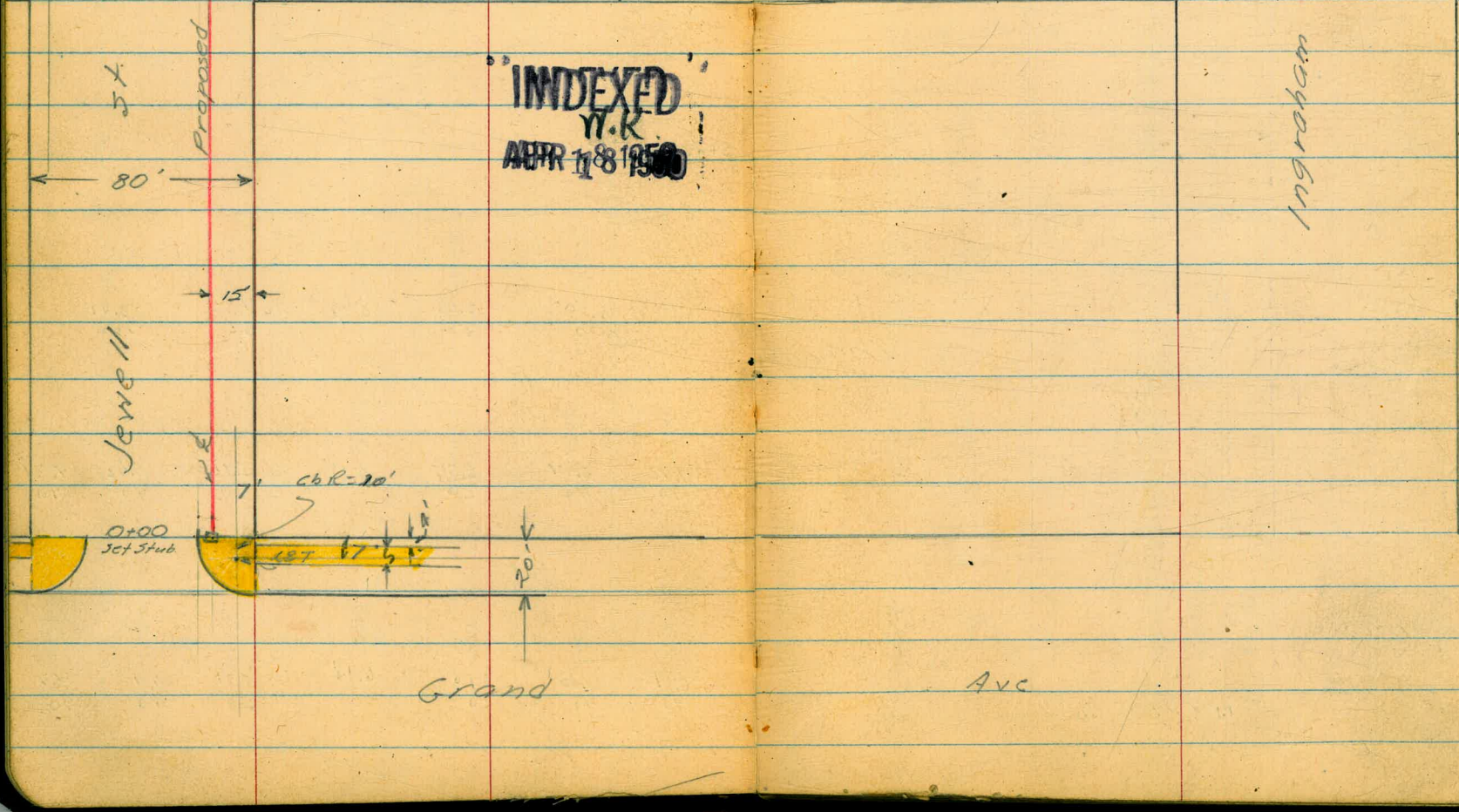
4-14-50
Hendricks

Proposed Storm Drain
Grand & Jewell to
Fanuel & La Palma St.



15

INDEXED
N.Y.C.
APR 11 8 1950



Ingraham

Grand Ave

Gresham

Cont'd. P. 17

23493.01
Set Stub



Proposed Storm

54'

80'

15'

Proposed Storm

Reed

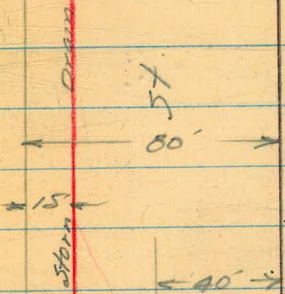
Haines

18105.60

Haines

18105.60
Set Stub

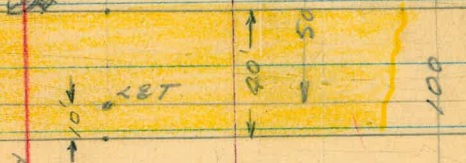
80' 54'



8x24" Conc. Pipe
12" cb Inlet

R=10'

Ingraham



10'

15'

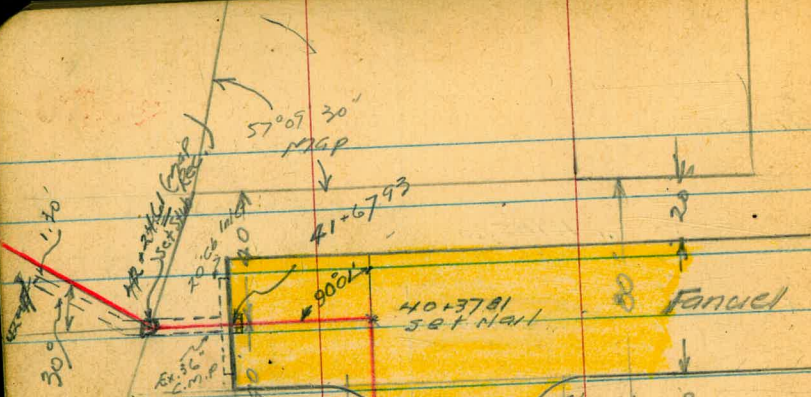
Proposed
Reed

10199.03
Set Stub

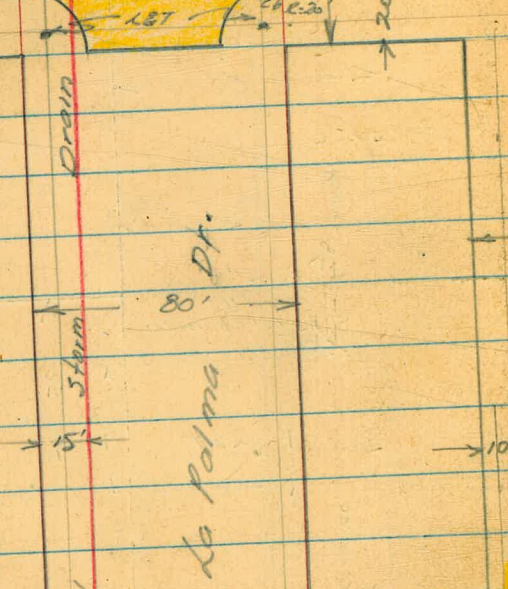


Cont'd. from P. 15

Thomas



57.



Gresham

34+32.64
301 516.8

cb R₂
20'

Roll Type Co
Pacific Beach Dr

80'

27+51.00
301 516.8

Oliver

57.

15

23+93.01

Reed Ave

80'

Ave

Levels Proposed Storm Drain

0+09

0+01 Power Pole #4398 4' Lt.

0+00 So. Line Grand Ave

50.5
57
50.1
49.6
50.68
50.0
50.71
56.2
64
55.5
62
55
45 45 5 5 SW
Cb. & Cb. G

SE Cb Ret. Grand & Jewell L=16' 2 parts
(BC on Grand)

49.8 50.95 50.2 50.97 50.2 50.97
64 528 60 526 60 531
G Cb G Cb G Cb
BC 0 EC
Grand Jewell

SW Cb Ret. Grand & Jewell L=16' 2
BC on Grand

49.9 50.79 49.8 50.67 49.9 50.79
63 544 64 541 63 546
G Cb G Cb G Cb
BC 0 EC
Grand Jewell

0-20 So. Cb Line Grand Ave.

50.59 49.8 50.85 49.6 49.8 49.9 50.79 50.6 51.23
545 64 528 64 64 63 545 54 500
105 105 55 55 5 5 105 105
Cb G Cb G G Cb G Cb

B17 4.39 56.23 ✓
51.84 ✓

NWBP Jewell & Grand

Cont'd from P18

2+69.56 Ho. Line Thomas

2+00

1+50

1+45 Power Pole #4348 3.4' Lt.

1+00

0+50

0+19

$\frac{56.23}{\uparrow}$

7

19

9
108
46.4

10
120
46.0

10
120
46.2

9
108
47.1

8
96
47.6

7
84
48.3

$\frac{56.23}{\uparrow}$

Levels Storm Drain
Cont'd

4+00

46.5
44

3+50

46.5
44

TP 2.37 $\frac{50.56}{\uparrow}$ 8.04 48.19

on stub

50.56 ✓
↑

3+34.56 4 14

80x 48.19
stub

3+26

48.0
8 2

3+21

47.2
9 0

3+00 56 4 14

46.9
9 2

$\frac{56.23}{\uparrow}$

56.23 ✓
↑

Levels

Storm Drain Contd.

7+00

431
75

6+50

436
70

6+00

417 427 435
89 77 76
85 37

5+50

443
73

5+00

410
56

4+50

457
49

50.56
1

50.56 ✓
1

Levels Storm Drain Cont'd

10+17.5 End Frame House 27 Lt.

10+00

9+96.3 Beg. Frame House 2.5' Lt.

9+50

9+00

8+50

8+00

7+49.43 A Lt.

50.52
x

42.8
78
175
Fl. 10.2
40.4

40.3 40.1 40.5
10.3 10.5 10.2
50 25

40.36 40.6 41.2
10.2 10.0 9.4
50 25

41.2
82

42.3 42.9
8.3 7.7
25

43.68
6.88
Stub.

50.52 ✓

Levels Storm Drain Cont'd

£

22A

BM. 8.82 52.97 6.43 44.13 44.15 & L&T. Ingraham & Reed

12+39.03 East Edge Cox Pav. Ingraham

44.27
6.29
25
43.84
6.72
25
44.09
6.47
25

11+99.03 East line Ingraham

44.2
7.2

11+50

43.4
7.2

10+99.03 A RT.

42.62
7.94
24.6

10+69

42.0
7.5

10+34.03 No line Reed St.

41.1
9.5

50.56

✓
7

Levels Storm Drain Contd.

14+00

5' - 47.9

13+50

6' - 46.9

13+00

8' - 44.9

L = 15.8 2 parts

SW Ch Ret Ingraham & Reed

43.22	43.97	40.31	43.22	43.99	45.22	43.96
975	900	1260	975	898	975	901
G	Cb	F1	G _{gate}	Cb	G	Cb
	BC		(1)			EC
Ingraham				Reed		

12+79.03 West Edge

43.73	43.97	43.22	43.76
924	900	975	972
39	5	5	
Cb	G	Cb	G

12+59.03 R Conc Pav. Ingraham &

9' 33" - 43.64

52.97
/

52.97 ✓
/

Levels Storm Drain Cont'd

17+00

47.4
55

16+50

47.0
60

16+00

47.1
59

15+50

47.6
54

15+00

48.1
49

14+50

48.3
42

52.97
x

52.97 ✓
x

Levels Storm Drain Contd

19+50

46.2
55

19+00

47.2
55

18+78.60 W Line Haines

48.0
27

18+38.60 & Haines

48.2
25

T.P. 267 50.65
4.99 47.98

50.65 ✓
H.E. J. Mon Haines & Reed

17+98.60 East Line Haines

51.47.9

17+50

52.47.1

52.97

52.97 ✓

Levels Storm Drain Cont'd

22+00

33.0
49

21+50

33.8
42

21+03 24" Conc. Pipe 45' RT.

33.49
42
4.5
FL

21+00

36.1
8

T.P. 0.47 37.91 13.21 37.44
 $\frac{37.91}{\pi}$

37.91
x

20+50

12 - 38.6

20+00

89 - 41.8

50.65
x

50.65 ✓
x

Levels Storm Drain Cont'd.

♀

27

31.81

23+92.01 A Lt.

6.10

31.81

23+92.5 12" pepper tree 2' Lt.

23+73 6" Peppertree 2.5' Lt.

23+68 Fire hydr. 2' Rt.

23+52 12" Acacia 2.5' Rt.

23+50

32.5

54

23+00

32.9

50

22+50

33.5

44

37.91
 $\frac{1}{1}$

37.91 ✓
 $\frac{1}{1}$

Levels Storm Drain Cont'd

26+00

25+60 Power Pole #1P4225 3.6' Lt.

25+50

25+00

24+50

24+23 15" Pepper Tree on Line

24+05 Power Pole #4249 4' Lt.

24+00

37.91
/

28
9.9 28.0
-

28.7
9.2
-

29.6
8.3
-

30.9
7.0
-

31.7
C 2
-

37.91
/

Levels Storm Drain Contd

£

29

27+64 Power Pole SP#4199 N. Lt.

27+63 Fire Hydt. 3.0' Rt.

27+58 So. Line Oliver

20^{25.5}

T.P. 2.91 $\frac{28.52}{1}$ 12.30 25.61

28.52 ✓
1

27+18 £ Oliver

12^{25.7}

27+00

11^{26.3}

26+78 No Line Oliver

10^{27.0}

26+50

10^{27.4}

$\frac{37.91}{1}$

$\frac{37.91}{1}$

Levels Storm Drain Cont'd

30+07.65 Ho Line Pacific Beach Dr
(Edge Conc. Pav)

22.1
21.79
21.24
21.24
30
20.6
21.24
6.73
7.28
7.28
7.90
7.28
2.5
6.6
2.5
45.5
4.7
6.6

30+00

6.225

29+50

23.9
X 5

29+00

24.0
X 5

28+95 Power Pole # JP4149 3.5' Lt.

28+72 Power Pole # JP4151 3.4' Lt.

28+50

24.3
X 2

28+00

28.52

24.9
3.7

28.52 ✓

Levels Storm Drain Cont'd

31

30+63.5

20.66
78.6
G

30+57.65 50 Cb Line B.P. Dr.

22.35	21.71	21.58	20.97	20.77	20.19	19.4	20.03
617	681	694	755	775	823	911	849
50	50	15	15		25	65	65
Cb	G	Cb	G		G	G	Cb

30+37.65 R P.B. Dr.

21.30
72.2

30+11

21.25
70.7
G

30+09

21.78
67.4
Cb

30+17.65 110 Cb Line Pacific Beach Dr

22.77	22.12	22.04	21.43	21.19	21.81	20.42	21.04
575	640	648	709	733	755	810	748
50	50	15	15		25	65	65
Cb	G	Cb	G		G	G	Cb

28.52
1

28.52
1

31+00

31 22.3

30+98 16" Pine 5.5' Lt.

Fire hydr. 5.6 Rt.

30+77 12" Pine Tree 5.5' Lt.

28.41 ✓
A

BM. 4.37 28.41 ✓ 7.48 21.04 21.19 NW BP Pacific Beach Dr. & Gresham

30+69.4 End Cbs. & Conc Paving

22.3	21.25	20.19	20.42	19.50	21.03
7.27	7.93	8.10	9.02	8.15	8.25
7.3	3.5	2.5	4.6	4.25	
6.	6	2			

30+68 Power Pole # JP 4099 2.5' Lt.

30+67.65

22.02
65

30+65.6

21.25
723
66

28.52
A

28.52 ✓
A

Levels Storm Drain Contd.

33+50

20 22.4

33+00

23 22.2

32+68 Pole # JP 4067 2' Lt.

32+50

25 21.9

32+00

25 22.4

31+68 Pole # P4083 3' Lt.

31+50

34 22.0

25.41
/

25.41 ✓
/

Levels Storm Drain

38+50

68
18.6

34+97.64 West Line Gresham

20.9
41

34+57.64 of Gresham
40

41
21.3

34+32.64 of Rt.

22.24
317
5746

34+16 Pole P 4051 2'4"

23
22.1

34+00

33+67.64 No. Line La Palma St.
40

25.41

31
22.3
25.41

Levels Storm Drain Contd.

39+00 18" pine Tree 2' Lt.

6.6
60

37+98 Power Pole # 3' Rt.

37+50

6.6
60

37+00

7.9
47

T.P. 0.12 $\frac{12.59}{1}$ 12.94 12.47

$\frac{12.59}{1}$

36+50

10.8
146

36+36 Pole 1379 1' Rt.

36+00

13.8
115

2541

2541

Levels Storm Drain Contd.

979)

39+97.81 (Beg Cb @ Conc. on Rt) East Line Fanuel

39+95 30" Tree 8' Lt

39+84 12" Pepper tree 8' Lt

39+68 12" Pepper Tree 8' Lt

39+50 24" Pepper 8' Lt

T.P. 4.26 11.23 562 697

39+00

38+50

12.59
^

Levels Storm Drain

36

60	572	504	572	602	610
572	551	619	551	521	453
5	5	25	45	45	
Cb	G		G	Cb	

64

8

NE 7' K&T La Palma Dr. @ Fanuel

11.23
^

65.50

62.64

12.59
^

Levels Storm Drain Cont'd

37

42+00

41+67.93 End Cbs.

41+00

40+52.81 So. line La Palma

40+37.81 & Fanuel

40+17.81 East Cb. line Fanuel

11.23
/

10⁶ 06

2.52	1.83	2.49		
8 ⁷¹	9 ⁴⁰	8 ⁷³	9 ³⁰	8 ⁶³
20	20	10 ⁰⁵	20	20
Cb.	G	G	G	Cb.

11.11

8¹⁶ 3.07

5 ¹⁰	4 ¹⁴	4 ¹²
6 ¹³	6 ⁶⁹	6 ⁷¹
20	20	
Cb.	G	

6²³

5 ¹⁰	4 ¹⁴	4 ¹²	5 ¹⁹	6 ¹⁵	7 ⁰⁷
6 ¹³	6 ⁶⁹	6 ⁴¹	5 ⁷⁴	4 ⁷⁸	4 ¹⁵
15	15		25	65	65
				G	Cb.

11.23
/

BM		3.78	21.04	21.19	N.W.B.P. Gresham & Pacific Beach Dr.
T.P.	6.10	24.82	1.30	18.72	
TP	13.05	20.02	4.26	6.97	N.E. 7' L&T LaPalma & Fanciel

43+15

17^{9.67}

42+72

16^{.54}

vs

42+47.8 End Ex. 36" Pipe 1.3 H.

5¹
16⁷
1.3

42+24.61 A 30° Rt.

1020.5

11.23
A

11.23
A

Proposed Sewer
Midway Drive

from West Pt Loma Blvd to N.V.

July 20 & 21 1950

Hendricks

Johnson

Greer

Crawford

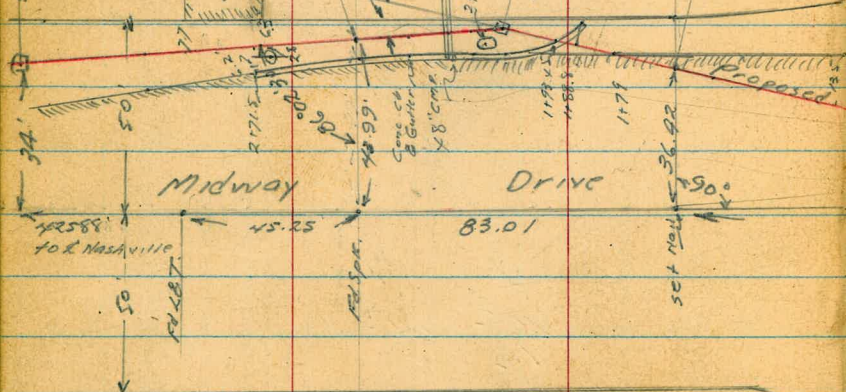
N.O. # 20678

INDEXED

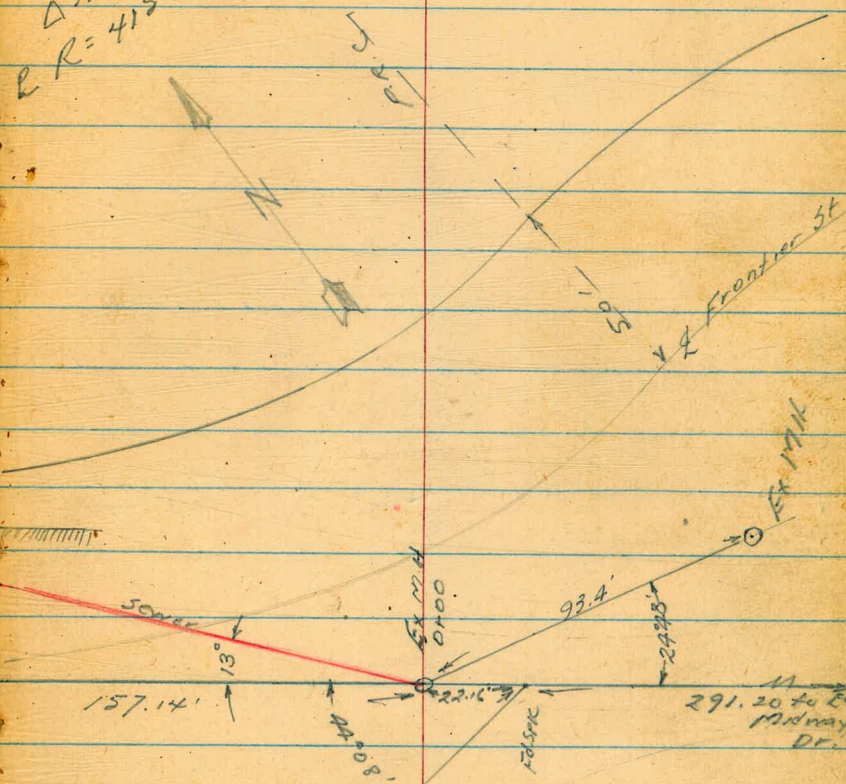
JUL 27 1950

(Cont. of P. 10)

2489.79
set Stake



$\Delta 39^{\circ} 02' 30''$
 $R = 415.12$



Point Loma
to B.C.N. 291.20'
W Point Loma Blvd
Blvd. FB 1675 P. 42

Sewer Midway Dr. Contd

(Contd. P. 41)
11400 BC
50' Hub

E 900.

8+73.13
50' stub

8+28.75 Head
9+21.71 =
FELLT

MIDWAY
190.04'

NASAVILLE ST.

5+00.70
50' stub

5+00.70
50' stub
Contd. from P. 39

Bridge Produced

Line Proposed

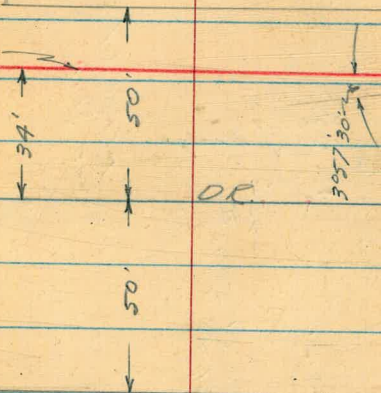
Sewer

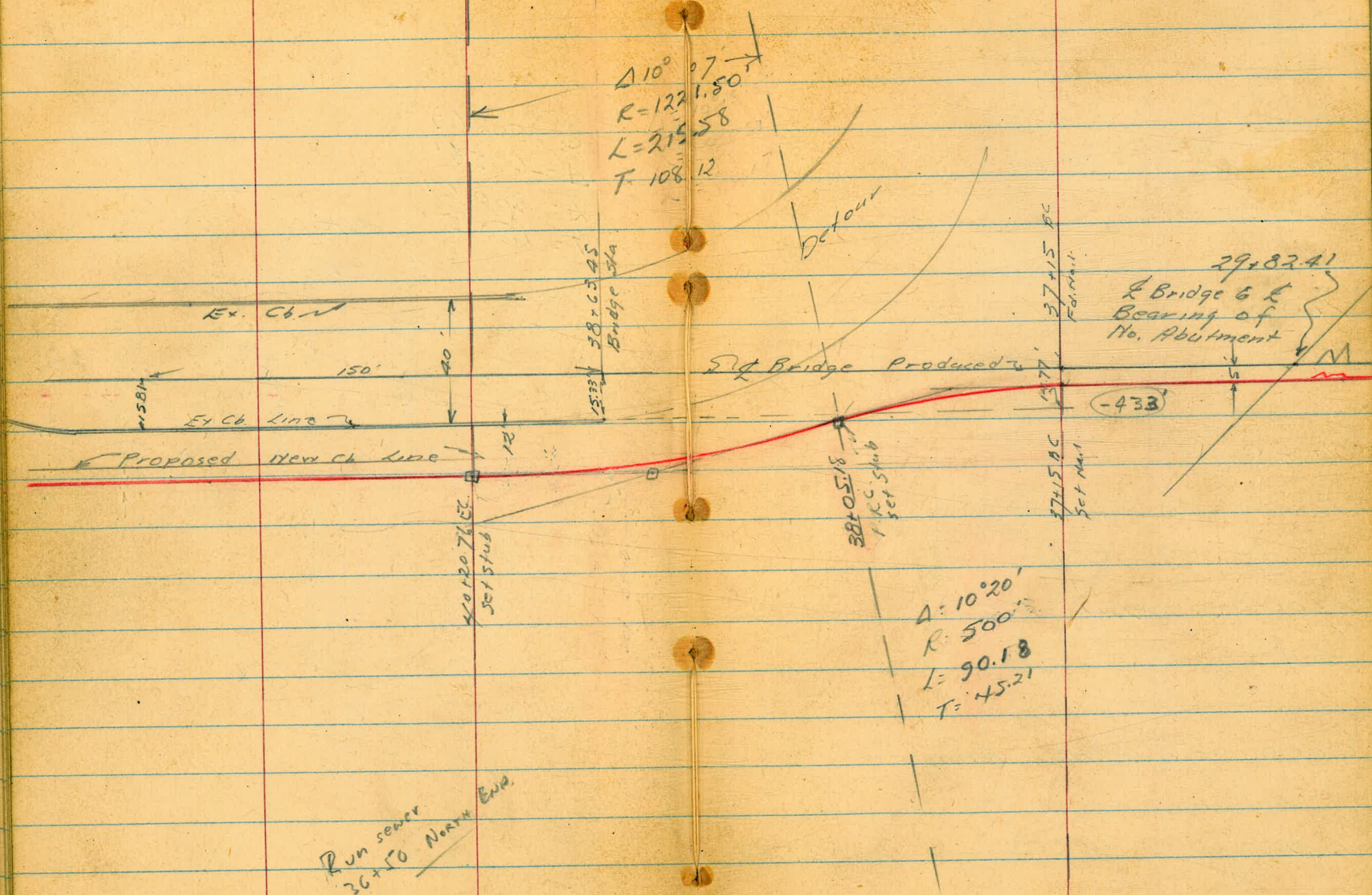
OR

OLLIE ST.

OLLIE ST.

FELLT





$\Delta 10^{\circ} 07'$
 $R=1221.50'$
 $L=215.58'$
 $T=108.12'$

$29+82.41$
 Bridge 6
 Bearing of
 No. Abutment

$\Delta: 10^{\circ} 20'$
 $R: 500'$
 $L: 90.18'$
 $T: 45.21'$

Run sewer
 36+50 NORTH END

Levels Proposed Sewer
Midway Dr.

1+50

4⁴³4³⁶

7.4

Pav.

1+00

5¹³

0+50

6²⁵

0+00. Ex. M.H. F.L.

-8⁶⁰

-8.36

0+00 Ex. M.H. Rim

6⁵⁵

Rim

B.M.

276

3.00

BP Top of H.W. N.W. Cor Midway Dr. &
 W. Pt Loma Blvd.

Cont'd. from p. 43

44

2+15.5 PRC CB

5.56 4.09 ↓
6 6
G CB

Light standard setting on
2+15.5 2.5' x 3.5' Conc. Base

5.45 5.45
4.7 2.2
Top Conc. Base

2+07.15 L. Rt. Ls to forward tangent

4.13 3.90 -2.1 -2.2
CB 11 20
6.3

1+93.45 Intersection Ch. Line

4.15 3.63
CB G

1+88.8 Beg. CB on Rt.

3.7 3.64 4.15
5.5 5.5
G CB

1+79 Edge Asph. Paving

3.95

Contd. from P. 44

45

3+69 Beg. Conc. Stab 3' wide

300 297 296
2.2 0.7

3+50

29

3+00

337 36
94
Pay

2+71.5 End. Ch on Lt

402 41
6.2
Cb

2+69 Power Pole # JP. 4564 2.8' Lt.

2+45.57

389 39 39 -02
5 2 11
Cb

2+21.5 Inter. 48" Conc. Pipe

40 -3.7
12.7
F.L.

Cont'd from P. 45

46

5+50

23

5+30 Power Pole # 537353H 4.3Rt

5+00

25

4+50

24

4+11 Power Pole # 537352H 4.7 Rt

3+89.70 L. 3° 57' 30" Rt.

295

T.P.

295

on stub

3+89.70

3+79 End Conc. Slab

311

307

305

2.2

0.8

Cont'd from P. 46

47

7+32 Edge Asph Paving

0⁵³₋

7+15

0⁹³₋

6+91 Beg Asph. Paving Nashville St.

0⁶⁷₋

6+75

1⁸₋

6+50

1⁶₋

6+41 Power Pole # 537354 H. 4.310.

6+00

2⁰₋

Cont'd from p. 47

48

8+28.75

8+21.21 = Equation

137

8+92.81 Intersection Ch. line

110 174
6 6

TP.

0.95

on St.
8+73.13

8+73.13 L. 45°

on St.

0.95
546.

8+66 Anchor Pole 4.7' RT

8+05 Power Pole ~~53735~~ 3.5' RT

8+00

11

7+50

06

Cont'd. from p. 48

} For Levels / Head use }
} Bridge Plans }
2.15 2.15 }

11+00 AC

10+50

10+00

9+50

9+00

8+50

49

□ Chisel West of Midway
& Nashville
Hub.

145

Hub.

149

139

144

140

140

38+59.07

5³

38+15.1 Edge Asp. Pav.

5⁴⁸

38+05.18

5⁴⁵

37+60.09

5³⁵

37+15 BC &

Boy Bridge Approach

5³⁴Use Bridge Profile for grade
in Back6.66
/

RM. 4.91

6.66
/

1.75

Nail in SW Cor. of Conc. Valve Box
35' Rt. of Bridge Sta. 36+64

BM.

4.91 1.75 1.75

starting BM.

41+00

$$\begin{array}{r} 8^{\circ} 7' 4'' \\ 20 \quad 5 \quad 17 \\ \text{cb} \end{array}$$

40+20.76 EC

$$\begin{array}{r} 9^{\circ} 9' 7'' \\ 20 \quad 5 \quad \text{Stub} \quad 5 \quad 17 \\ \text{cb} \end{array}$$

39+66.86

$$\begin{array}{r} 10^{\circ} 9' 6'' \\ 20 \quad 5 \quad 2 \quad 15 \\ \text{cb} \end{array}$$

39+12.97

$$\begin{array}{r} 10^{\circ} 9' 4'' \\ 20 \quad 7 \quad 14 \\ \text{cb} \end{array}$$

38+65.14 End Ex. Ch Midway

$$\begin{array}{r} 9^{\circ} 5' 5'' \\ 17 \quad 9 \quad 8 \\ \text{cb} \end{array}$$

6.66

7

6.66

7

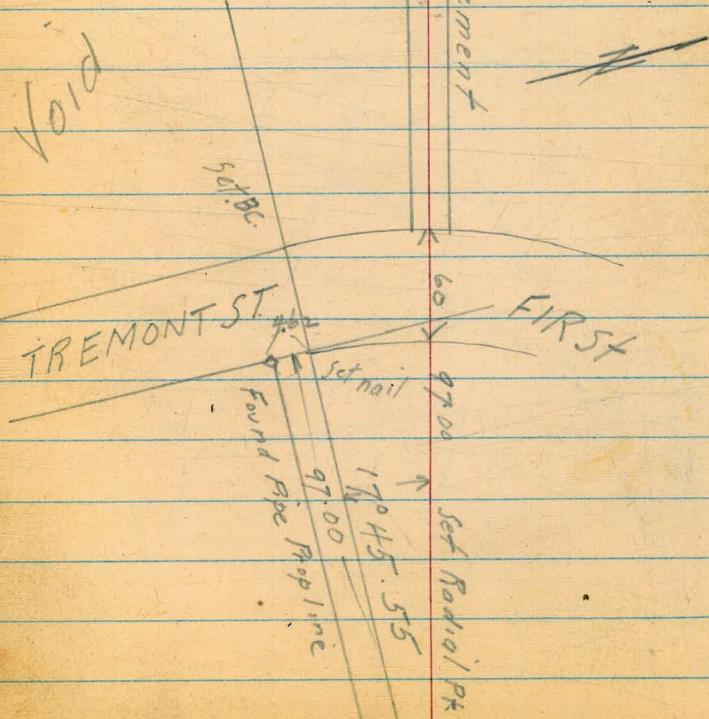
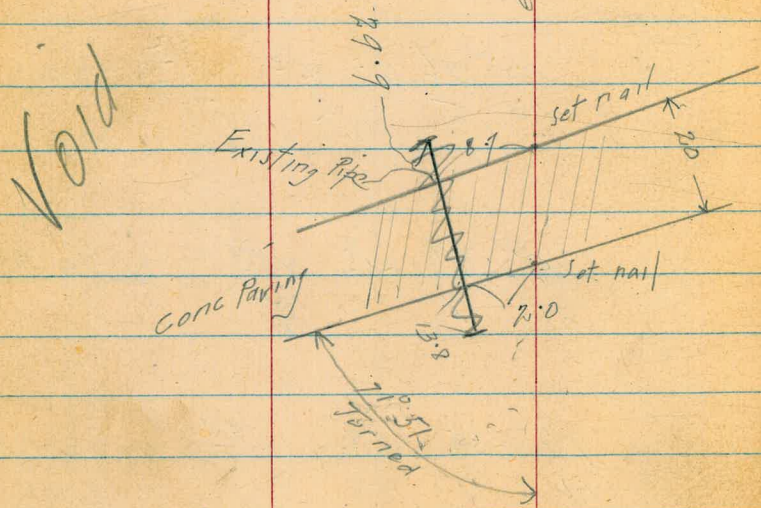
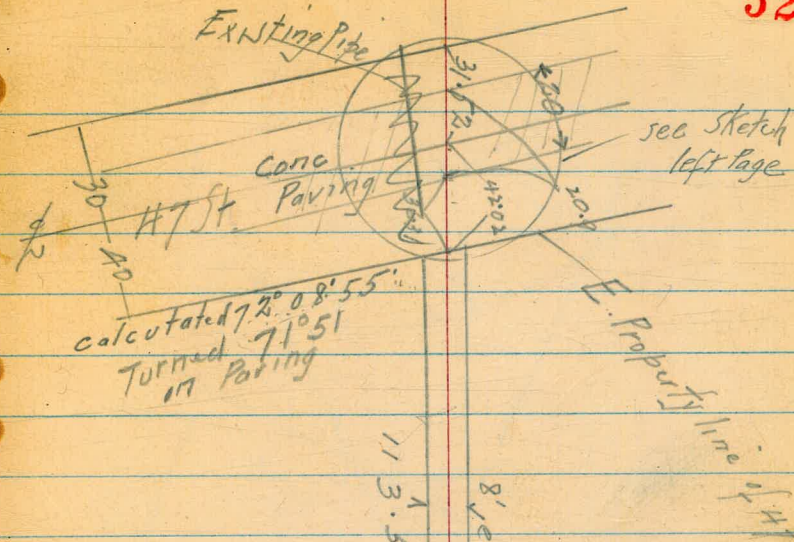
Storm Drain Arnold Park

Begg Aug 28/50 WD 20712

Johnson

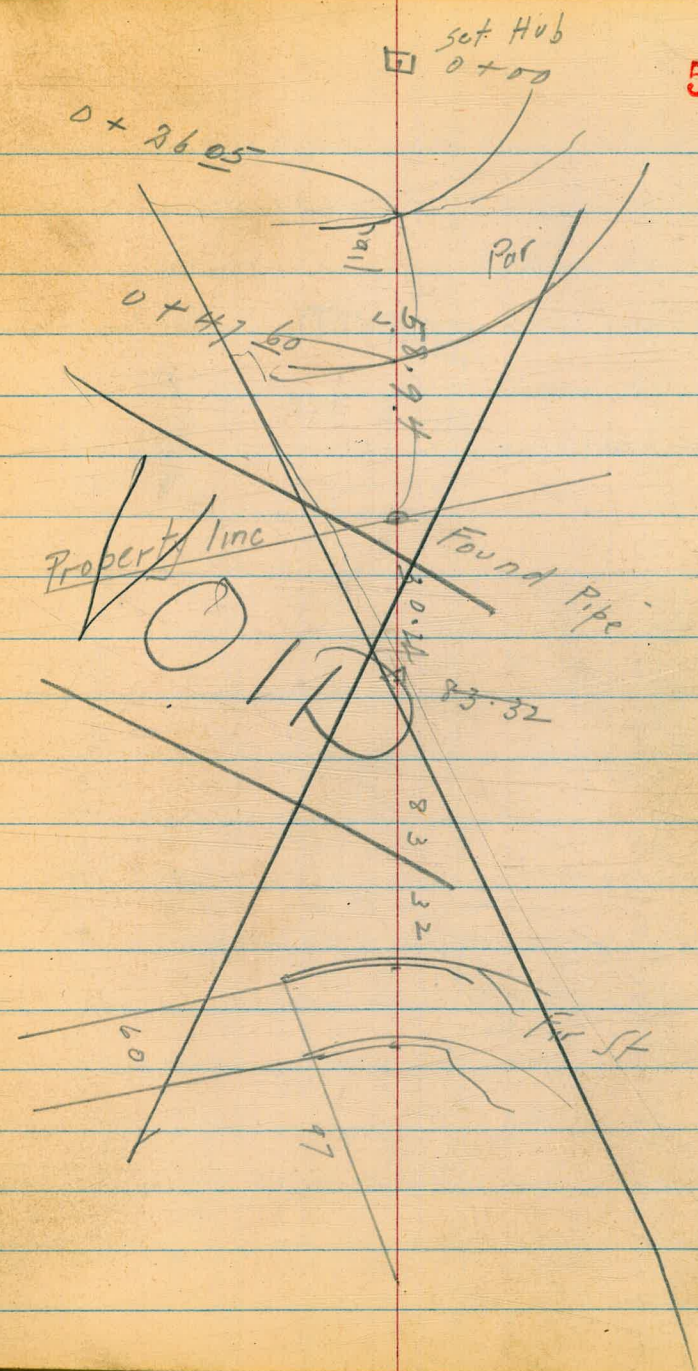
Allan

113	54
87	17 POT
26	37
62	68
36	31



9363

113 54
83 32
30 22



X-Sect. Pavc on Ingranam
from S.L. of Thomas to N.L.
of Grand

4722

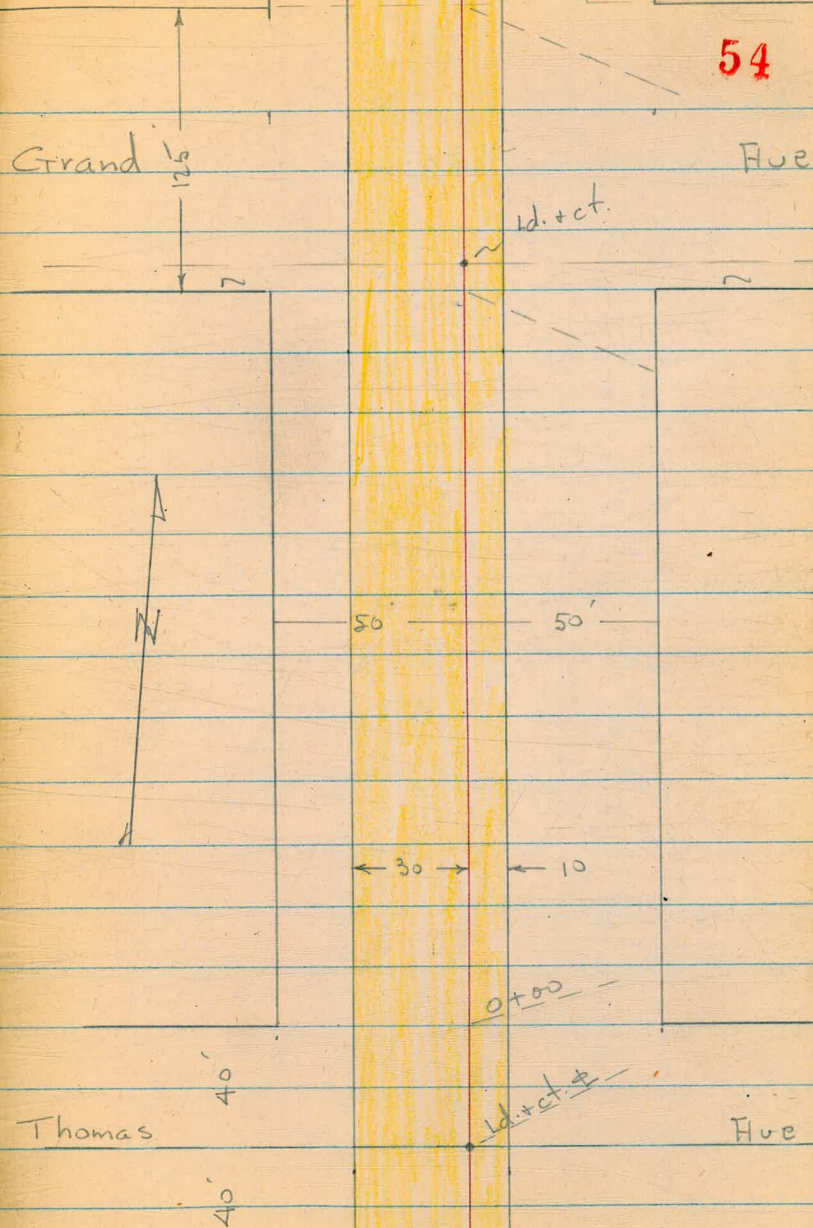
W.O. 25020

INDEXED

AUG 2 1951

9-11-50

Osborne
Hardin
shepard
Febma



Pave Levels - Ingraham - Thomas
to Grand - Sketch - P. 54

0+34 - 30' H. = Φ 3' Conc walk

0+15 - 30' H. = Φ 7' Conc. Dr. (not used.)

0+00 = N.L. of Thomas

0-40 = Φ

0-80 = S.L. Thomas

B.M. 1.09 56.94 55.85

LT. Φ Rt. 55

50.94
6.00 50.64 49.70
50 6.30 7.24
walk at wall 40 walk 30 - + Pave

50.97 50.27 49.35
5.97 6.67 7.59
50 35 30 = Pave + Dr.
Dr. at wall Dr.

49.13 49.45 49.61 49.55 49.29
7.81 7.49 7.33 7.39 7.65
30 20 10 10 10

48.48 48.85 49.04 49.02 49.17
8.46 8.09 7.90 7.92 8.17
30 20 10 10 10

47.93 48.34 48.54 48.49 48.24
9.01 8.60 8.40 8.45 8.70
30 20 10 10 10
edge Φ of Pave 56.94 edge

N.E. B.P. Grand + Ingraham

Ingraham

2+90.2 = S. cb

2+70.2 = S.L. Grand

2+35

2+00

1+50

1+45.2' = Beg. Cold Lay Pave for Ser. Sta. on Rt.

1+00

0+50

Lt.

±

Rt.

56

54.85	54.77	54.91	54.85	54.58	53.2	54.02
2.49	2.17	2.03	2.09	2.36	3.7	2.92
29.8	20	10		10	50	55
					9.4	Top

53.2A	54.12	54.48	54.60	54.57	54.30	53.9	53.95
1.70	2.82	2.49	2.34	2.37	2.64	3.0	2.99
50	29.9	20	10		10	30	30
on CL						9.4	Top
							cb

53.44	53.78	53.93	53.87	53.62
3.50	3.16	3.01	3.07	3.32
29.8	20	10		10
edge				

52.70	53.08	53.22	53.21	52.96
4.24	3.86	3.72	3.73	3.98
29.8	20	10		10

53.12	51.79	52.14	52.33	52.32	52.03
3.82	5.15	4.80	4.61	4.62	4.91
50	29.9	20	10		10
on CL					

50.93	51.25	51.41	51.39	51.14
6.01	5.69	5.53	5.55	5.80
30	20	10		10

50.01	50.32	50.50	50.44	50.19
6.93	6.62	6.44	6.50	6.75
30	20	10	56.94	10

Ingraham

Lt.

#

Rt.

57

3+95.2 = N.L. Grand = end.

3+75.2 = N. cb.

3+32.7 = #

55.94	56.32	56.54	56.65	56.21	55.12	55.84
1.00	0.62	0.40	0.39	0.63	1.7	1.10
29.9	20	10		10	30	30
				edge	gut.	Top
55.64	56.01	56.25	56.23	55.99	55.1	55.64
1.30	0.93	0.69	0.71	0.95	2.2	1.10
29.8	20	10		10	50	50
					gut.	Top
55.02	55.39	55.65	56.51	55.38		
1.92	1.55	1.39	1.43	1.62		
29.7	20	10		10		

56.94

Levels for Branch Line
Senior Midway Dr
(see p 41)

4

58

0+89 Top Berm

2⁹ 3⁰ 3⁰
8

0+32 Top Berm

5⁰ 5¹ 3² 3³
10 1 6

0+29 Btm Berm

5¹

0+25

5¹ 5² 3²
6 8
Berm

0+00

5⁰
6⁴

BM 5.10 664
x

1.54

on stub 6' Pt. M.H.W. (GB 272 P. 62)

Cont'd from p 58

59

2+50

57

2+00

57

1+50

55

1+00 toe Berm

30 52 53
3 6

664

Levels for Alternate
Branch Line
Sketch P-41

Taken with self-reading Rod.

60

1+25

1.1

1+00

1.2

0+75

1.8

0+50

1.2

0+37

1.8

0

0+00

Sta 174

-3.2

1.2

B.17

1.54

(on stab see p-58)

Cont'd from P. 60

4

61

2+76.41 DE

0.9

2+50

0.8

2+25

1.0

2+00

1.2

1+75

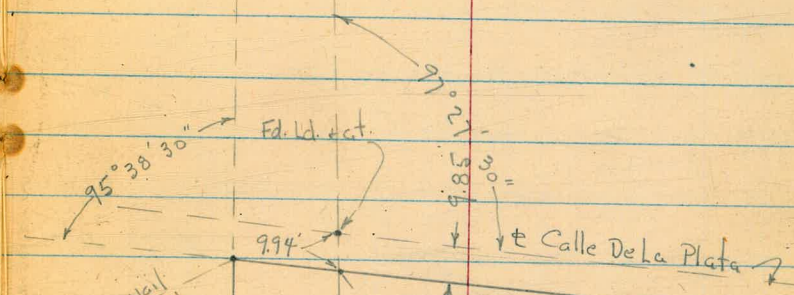
1.2

1+50

1.1

3+35 = Hub.
 Ang. $13^{\circ}10'45''$ Lt.

Mon



7+83.04 = Nail
 Ang. $95^{\circ}38'30''$ Rt.

1+00.92 = P.O.I.
 stub.

8+10.94 = Nail Tie to N.Y. Line Torrey Pines Rd.

"L" Line

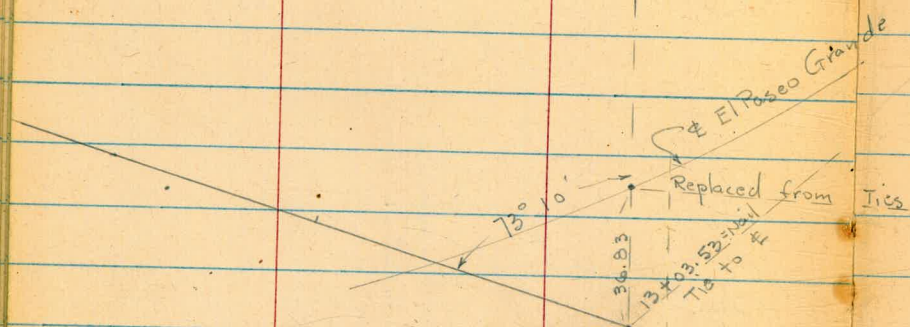
$68^{\circ}04'30''$

45+52.46-L

47

0+100 = Hub.

$63^{\circ}09'15''$



12 + 93.24 = Nail
 Ang. 73° 10' Lt.

9.85

Calle De La Plata

16 + 62.37 = Hub. 0 + 00 To Lake
 Ang. 58° 43' 30" Rt.

3 + 98.98 = Hub.
 By Lake

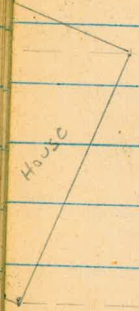
15

7

16

15

W



77.8 +10

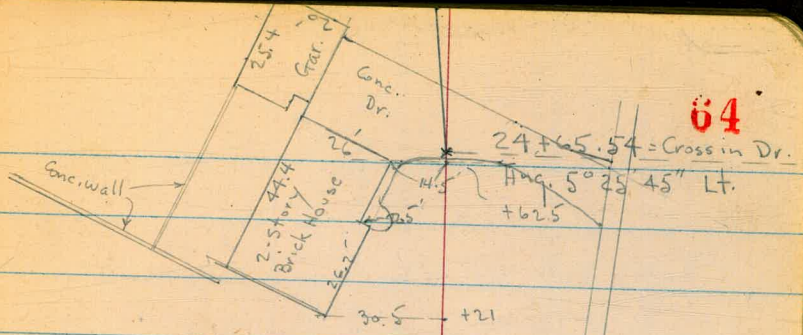
+21

105.5 +44

+20

+19

64



24 + 65.54 = Cross in Dr.

Ang. 5° 25' 45" Lt.

+62.5

+21

+24

+23

+22

28 + 25.05 = Cross in Wall
End.

28

ld + ct = PC - Back 1285 - 7.76

27 + 57.88 = P.O.T.
Nail in pave

Disk - RE. 1534

197.08

36

75.49

58.04

ld + ct

Iron Pin
S.L. st.

27 + 01.33

26 + 62.70 = Cross

+49

134.3

48

26

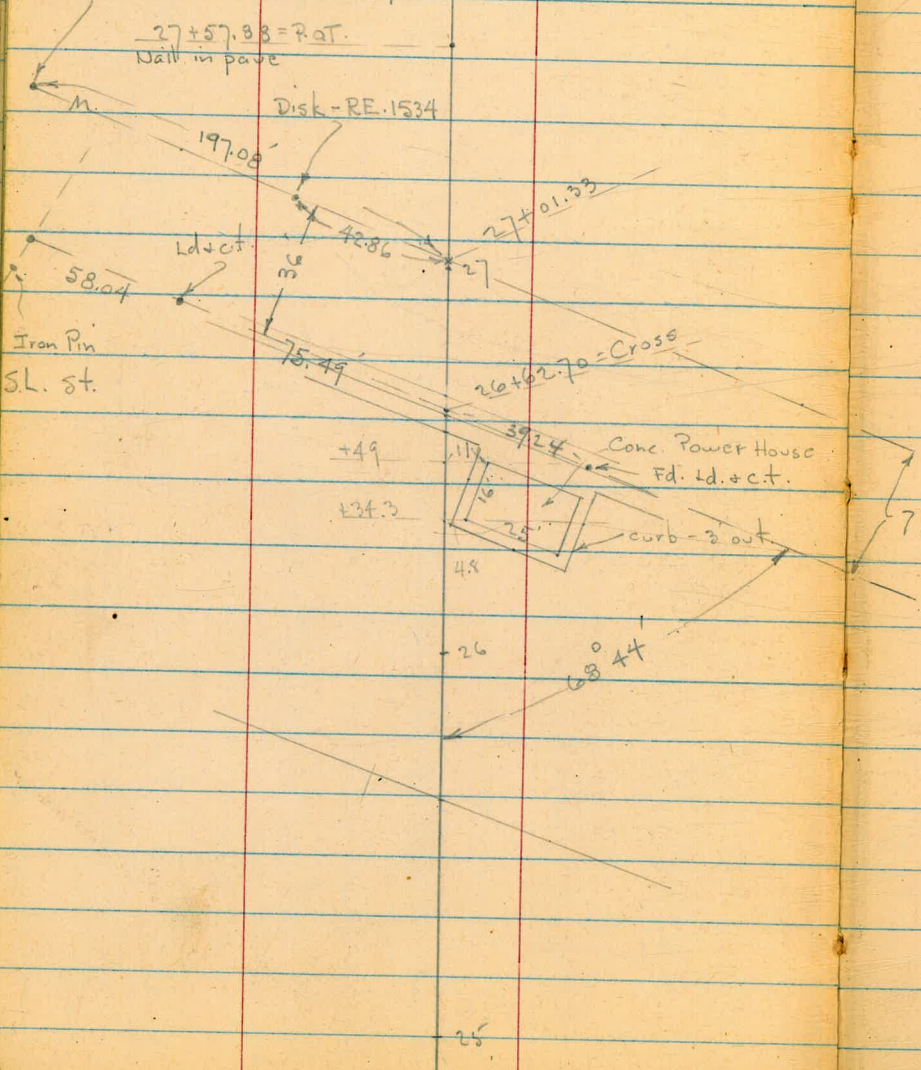
68 44

25

39.24
Cone. Power House
Fd. ld. + c.t.

curb - 2 out

7 Lines Spindrift.



Begin levels along \pm of Prop. Drain
in La Tolla Shores - Sketch - P. 62-65

W.O. 22041

12-28-50
7.0.

INDEXED

AUG 2 1951

2+00

1+50

1+00

0+87 - 2.2 Rt = \pm Guy Pole

0+50

0+20

0+05

0+00 - Begin line

B.M.

2.47 54.54

52.07 = Top

F.H. - Rt. - 42+23

B. 2094 - P. 31

LT.

\pm

RT.

3.84	3.7	4.4
5 edge conc.	3.7	10
	3.7	
	3.5	3.7
3.46	3.5	8.0
8.2	4	10
edge conc.		Top
	4.1	
	4.3	
	4.0	
	9.54	
8.88 = I.E. 36" 4.15 - S. Pipe	on Hub.	
	54.54	

8.88 = I.E. 36"
4.15 - S. Pipe
on Hub.

6+50

6+00

5+60 = edge Pave

5+25 = Ion Pave

4+75.5 = Edge Pave

4+50

4+00

3+35 = Ang. 13° 10' 45" Lt.

3+00

2+78 - 11' Rt. = Near Cor. of Real Estate off.

2+50

2+30 - 5.5' Rt. = P. pole - # P 60926

Lt.

Rt.

4.27
11.3
edge
Pave

3.95
20.3
edge Conc.

4.16
14
edge Conc.

50.9
5 6
5 49.5
5 0
5 48.22
5 62
5 48.20
5 75
5 48.32
5 17
5 48.5
5 9
5 48.2
5 3
5 48.21
5 07
5 48.1
5 0
5 48.5
5 4.8
5 10
5 4.1

54.54

for High loc.

9+85 - Thru Vacant lot on Lt. +0.8
140
Top
goes down
from Here

1.3 9.6 10.3 210.42 11.00 10.59
100 50 34 Top 25
Back ch. gut.
wall

10.338
36.8
7.75
2.94

9+50

9+00

T.P. 0.44 44.61 12.87 44.17

44.61

8+50

8.60
10

8.95

9.20 8.72
5.2
gut. Top

8+00

2.47

7+83.04 = Ang 95° 38' 30" Rt

11.4
on nail

T.P. 2.57 57.04 0.07 54.47

NE B.P. Calle De la Plata

57.04

7+38.5 = edge Pavc

0.09

7+00

0.35
25.2
edge Pavc

2.1
54.54

2.5 1.47
10.1
gut. Top

Lt.

Rt.

13+20 = Cross gutter.

13+05

12+93.24 = Ang. 73° 10' Lt.

12+50

12+00

T.P. 1.23 20.13 13.28 18.90

11+50

9.89
10

10.14

10.31
5.1
gut.

9.68
Top

11+00

6.14

10+50

3.35

T.P. 0.23 32.18 12.66 31.95

32.18

10+00

11.89
10

12.12

12.29
5.1
gut.

11.66
Top

12.35
1.19
1.12
1.02
1.06
5.07
2.18
20.13
26.04
26.04
26.88
32.18

90

12

02

Nail

07

18

13

14

14

35

18

12

61

7.10

5.2

gut.

4.72

Top

10.31

5.1

gut.

9.68

Top

12.29

5.1

gut.

11.66

Top

15+50

15+00

14+65

14+34 = end of walk on Sub. Line -
Sub. Line
outs are along

14+24.2 = edge walk

14+22 - 40.4 Lt = end of Sly. cb.

14+10.8 = edge of Conc. Dr.

13+98.5 = Nly. cb. (in Conc. Dr.)

13+60

13+40

Lt

+

Rt.

19.8	14.5	09.8	09.3	1207.8	
0.7	6.0	10.7	10.8	1207.8	13.2
250	200	100	50		50

in Draw

10.25	9.5	10.25	9.1		
9.70	9.18	9.15	9.10	9.07	
gut.	11.9	29		2.1 = Cor.	walk
	Top =	Gr. walk			
	end cb.				
			9.01		

8.37	9.51	9.48	
9 back =	Top	40.4	
Nly. of 5' walk	gut.		

7.14	8.83	9.45	8.95
33.2	15		10 = walk
gut in Dr.			

8.02	8.68	9.45	9.08	8.71
Top	13.9		20.1	TOP
	gut.		gut.	

7.73	8.34	8.21	8.26
Top of	6.4 =		10
Nearest cb.	gut.	20.13	

Lt.

#

Rt.

19+50

19+00

18+50

18+00

17+50

17+00

16+62.37 = Hub = 0+00 for Line to Lake

16+50

T.P.:

5.55

13.15

12.51

7.62

on Hub: 16+62.37

13.15

16+00

4.3
200

7.6
150

13.2
100

13.2
50

14.4
20.13

15.0
50

15.6
100

11.1
+4.6
200

10.9
2.2
100

06.1
6.4
50

14.9
+1.8
100

10.2
2.9
50

26.8
+13.7
200

23.2
+10.1
150
Top of Ridge

18.8
+5.7
100

14.8
+1.3
50

032

9.9

9.03

9.8

8.045

8.6

7.061

7.0

5.072

5.2

3.092

3.9

5.0762

5.53

Hub

2.2

2.2

2.2

062

10.26
29.5
edge cb.

10.56
+1.5
gut.

9.0
35

9.34
65.3
Back of
roll cb.

9.57
67.3
gut.

8.8
50

8.7
100

Station	Notes	Time	Dist	Time	Dist	Time	Dist	Time	Dist
24+00									
23+50									
23+00									
T.P.	10.00	12.52	10.63	2.52					
22+50									
22+00									
21+52.8	7' Rt = Beg. Sly. of 5 Comb walk +								
21+10	77.8' Lt = Cor. House								
21+00									
20+51	= edge of Dr.								
20+44	105.5' Lt = Cor. House								
20+00	= on Dr.								
19+72	= edge of Cold Bay Drive								

Lt. Rt.

17.5 10.7

+5.0 1.8

100 50

8 2

10.82 10.94 11.47

34.3 39.3 9.4

walk cb.

17.8 09.8

+5.3 3.1

100 50

9 7

11.05 11.20 11.66

23.3 28 9.4

walk Top cb.

24.8 17.0 09.8 09.4

+11.3 +3.8 5.3 9.0

150 100 50 25

11 0

11.73 11.84 12.32

17.4 22.8 9.4

walk cb. Top

11.8 10.2 09.8 09.2

2.9 7.5 10.2

75 50 25

11 6

11.65 11.81 12.30

7 walk 12 Top 9.4

11.8 10.2 09.8 09.2

1.3 4.20 10.7

78 4.3 10

along Nly. of 12 Dr.

11 3

11.66 11.89

7.5 9.3

edge 9.4

cb.

10.97

10.33 10.93 11.23

edge Dr. 15.8 17.6

edge cb. 9.4

10.00

13.15

26+00

25+62 = edge A.C. Parking lot.

25+50

25+00

24+80.1 = edge Conc. Dr. - See sketch. - P. 64
Dr. - Dots along edge of

24+65.54 = Ang. 5° 25' 45" Lt.

24+63.6 = edge Conc. Dr.

T.P. 7.56 12.82 7.26 5.26 - Cross 24+65.54

24+62.5 - 14.5 Lt. = Cor.

24+50

24+21 - 30.5 Lt. = Cor. House

Lt. Rt. 13
12.3
0.52 39.3 6.74 10.05
96.5 50 69.6
edge A.C. edge walk

12.0
+ 0.8 3.5 7.7
100 50

0.9
4.9 10.72
30.3 49.2
along Gar. walk

6.42 7.40 10.96 11.33
30 - 46.6 51.6
floor walk fut. in
Gar. Dr.

7.56
Cross.
7.54

12.82

5.7

2.8
11.8
along
Round Porch

12.52

Lt.

Q

Rt.

74

27+68 = 25.9 Rt = Near Cor. of Marine Room.

7.54
25.9 = A.C.

27+50

10 2/3	0 9/16	0 1/2	0 8/16	0 1/32
1.88	3.21	2.75	4.29	5.50
26.5	26.5	21.5	21.5	18
Top	walk	Top	edge A.C.	walk
Conc. wall		Conc. wall		

6.31 5.40
47.3 along
Porch

27+03 = edge of walk + Beg. H.C. Parking

27+02 - 27 Rt = Fly. of 8" Conc. wall

3.64 1.68
2.7 Top wall
A.C.

26+98 = wly. cb.

10 9/16	9/16	0 8/16
1.95	1.48	4.31
gut.	50	gut. in Dr.
	Top	

4.73 5.25
20 gut
Top

26+80

26+66 = face cb. Spindrift Dr. - outs along cb.

1 1/8	1 1/16	0 8/16
1.42	0.96	4.79
gut.	70	Top
	Top cb.	

5.18 6.08 5.70
gut 18
Top

26+60.7 = edge S Walk - Comb.

0 8/16
4.74

26+57.7 = 6" Conc. cb.
from Power House

0 1/8
A 88 4.17
on A.C. Top cb.

26+52.3 - 1.2 Rt. = Cor. of 6" Conc. cb. - 3' out.

5.75 5.10
12 1.2
12.82 A.C. Top cb.

28+27 = Beach

7' Rt. = Beg. Conc. Sea wall

28+25.05 = Cross in Conc. wall = end walk +

28+19 = edge Conc. walk

28+11 = 2.8' ± = end 8" Conc. Ret. wall along walk

28+07.6 = walk along wall

28+05.2 = edge H.C. at Conc. wall

28+00

100.9

13.7 - on Beach

01.00

11.82	11.35	11.35	10.20
	2.3	6.4	7 = Top
	Cor. walk	Cor. walk	Sea wall

11.19

11.08

1.74
2.8
Top wall

00.01

9.95
2.8 =
walk

03.21

9.53 = walk

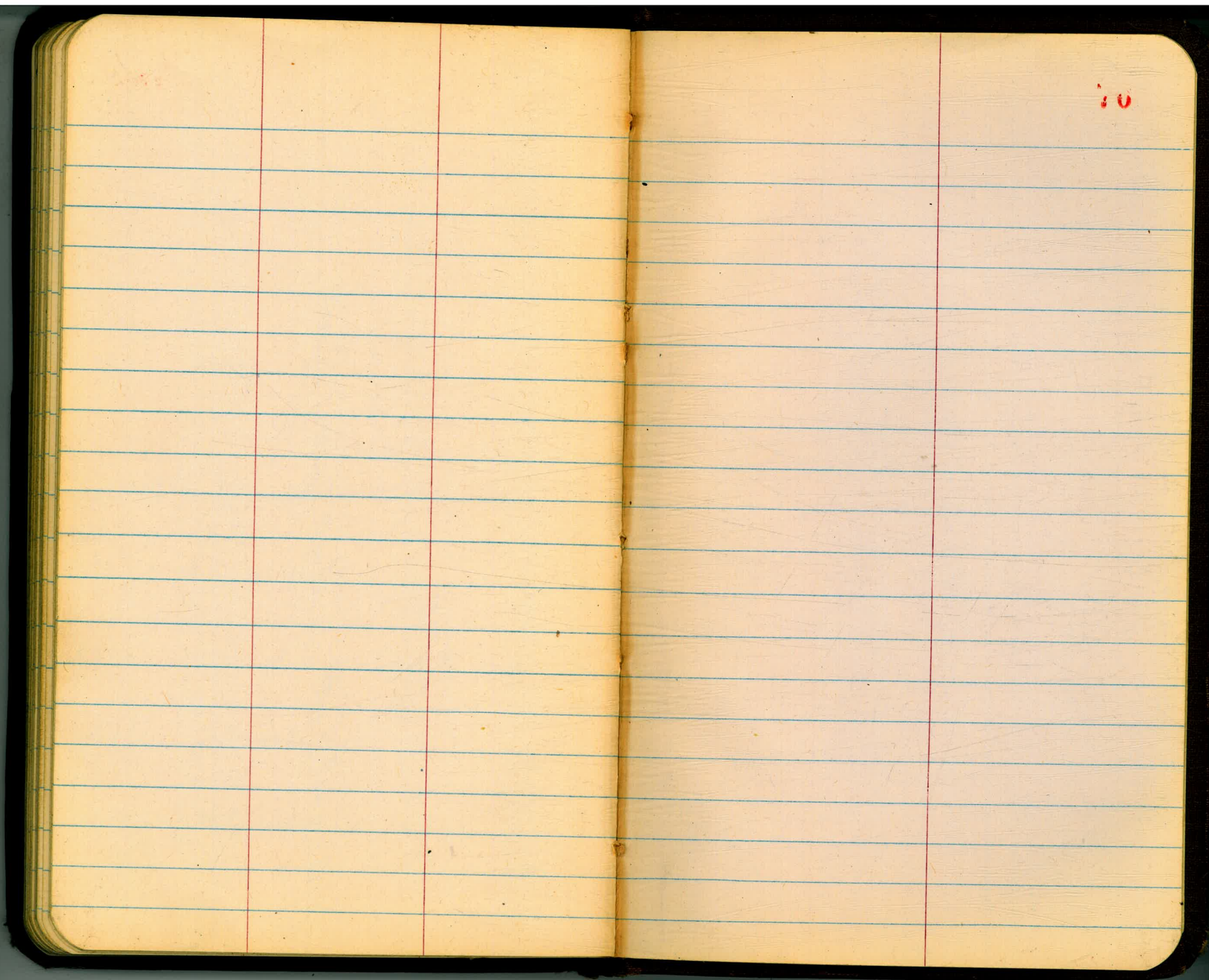
04.53

8.69
A.C.
5.58
Top wall

04.18

8.39

12.82



207.15 3177
 137 17

 149325 1477

42588 2677
 12826

 554.14

15714
 2216

 179.30

3432.60
 85

 3287.44

125
 +0

 85
 +4.50

 290.2
 3132.7
 +2.5

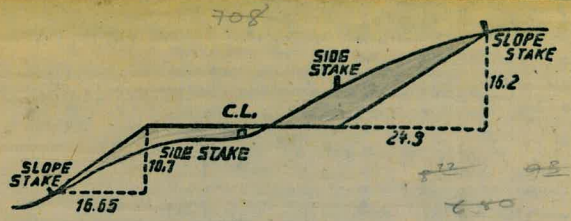
 3175.2
 3175.2

4525
 8301

 128.26

70.2
 125

 95.2



DISTANCES FROM SIDE STAKES FOR CROSS-SECTIONING.
 SLOPE 1 1/2 TO 1. ROADWAY OF ANY WIDTH.

	0	.1	.2	.3	.4	.5	.6	.7	.8	.9	
0	0.00	0.15	0.30	0.45	0.60	0.75	0.90	1.05	1.20	1.35	0
1	1.50	1.65	1.80	1.95	2.10	2.25	2.40	2.55	2.70	2.85	1
2	3.00	3.15	3.30	3.45	3.60	3.75	3.90	4.05	4.20	4.35	2
3	4.50	4.65	4.80	4.95	5.10	5.25	5.40	5.55	5.70	5.85	3
4	6.00	6.15	6.30	6.45	6.60	6.75	6.90	7.05	7.20	7.35	4
5	7.50	7.65	7.80	7.95	8.10	8.25	8.40	8.55	8.70	8.85	5
6	9.00	9.15	9.30	9.45	9.60	9.75	9.90	10.05	10.20	10.35	6
7	10.50	10.65	10.80	10.95	11.10	11.25	11.40	11.55	11.70	11.85	7
8	12.00	12.15	12.30	12.45	12.60	12.75	12.90	13.05	13.20	13.35	8
9	13.50	13.65	13.80	13.95	14.10	14.25	14.40	14.55	14.70	14.85	9
10	15.00	15.15	15.30	15.45	15.60	15.75	15.90	16.05	16.20	16.35	10
11	16.50	16.65	16.80	16.95	17.10	17.25	17.40	17.55	17.70	17.85	11
12	18.00	18.15	18.30	18.45	18.60	18.75	18.90	19.05	19.20	19.35	12
13	19.50	19.65	19.80	19.95	20.10	20.25	20.40	20.55	20.70	20.85	13
14	21.00	21.15	21.30	21.45	21.60	21.75	21.90	22.05	22.20	22.35	14
15	22.50	22.65	22.80	22.95	23.10	23.25	23.40	23.55	23.70	23.85	15
16	24.00	24.15	24.30	24.45	24.60	24.75	24.90	25.05	25.20	25.35	16
17	25.50	25.65	25.80	25.95	26.10	26.25	26.40	26.55	26.70	26.85	17
18	27.00	27.15	27.30	27.45	27.60	27.75	27.90	28.05	28.20	28.35	18
19	28.50	28.65	28.80	28.95	29.10	29.25	29.40	29.55	29.70	29.85	19
20	30.00	30.15	30.30	30.45	30.60	30.75	30.90	31.05	31.20	31.35	20
21	31.50	31.65	31.80	31.95	32.10	32.25	32.40	32.55	32.70	32.85	21
22	33.00	33.15	33.30	33.45	33.60	33.75	33.90	34.05	34.20	34.35	22
23	34.50	34.65	34.80	34.95	35.10	35.25	35.40	35.55	35.70	35.85	23
24	36.00	36.15	36.30	36.45	36.60	36.75	36.90	37.05	37.20	37.35	24
25	37.50	37.65	37.80	37.95	38.10	38.25	38.40	38.55	38.70	38.85	25
26	39.00	39.15	39.30	39.45	39.60	39.75	39.90	40.05	40.20	40.35	26
27	40.50	40.65	40.80	40.95	41.10	41.25	41.40	41.55	41.70	41.85	27
28	42.00	42.15	42.30	42.45	42.60	42.75	42.90	43.05	43.20	43.35	28
29	43.50	43.65	43.80	43.95	44.10	44.25	44.40	44.55	44.70	44.85	29
30	45.00	45.15	45.30	45.45	45.60	45.75	45.90	46.05	46.20	46.35	30
31	46.50	46.65	46.80	46.95	47.10	47.25	47.40	47.55	47.70	47.85	31
32	48.00	48.15	48.30	48.45	48.60	48.75	48.90	49.05	49.20	49.35	32
33	49.50	49.65	49.80	49.95	50.10	50.25	50.40	50.55	50.70	50.85	33
34	51.00	51.15	51.30	51.45	51.60	51.75	51.90	52.05	52.20	52.35	34
35	52.50	52.65	52.80	52.95	53.10	53.25	53.40	53.55	53.70	53.85	35
36	54.00	54.15	54.30	54.45	54.60	54.75	54.90	55.05	55.20	55.35	36
37	55.50	55.65	55.80	55.95	56.10	56.25	56.40	56.55	56.70	56.85	37
38	57.00	57.15	57.30	57.45	57.60	57.75	57.90	58.05	58.20	58.35	38
39	58.50	58.65	58.80	58.95	59.10	59.25	59.40	59.55	59.70	59.85	39
40	60.00	60.15	60.30	60.45	60.60	60.75	60.90	61.05	61.20	61.35	40
41	61.50	61.65	61.80	61.95	62.10	62.25	62.40	62.55	62.70	62.85	41
42	63.00	63.15	63.30	63.45	63.60	63.75	63.90	64.05	64.20	64.35	42
43	64.50	64.65	64.80	64.95	65.10	65.25	65.40	65.55	65.70	65.85	43
44	66.00	66.15	66.30	66.45	66.60	66.75	66.90	67.05	67.20	67.35	44
45	67.50	67.65	67.80	67.95	68.10	68.25	68.40	68.55	68.70	68.85	45
46	69.00	69.15	69.30	69.45	69.60	69.75	69.90	70.05	70.20	70.35	46
47	70.50	70.65	70.80	70.95	71.10	71.25	71.40	71.55	71.70	71.85	47
48	72.00	72.15	72.30	72.45	72.60	72.75	72.90	73.05	73.20	73.35	48
49	73.50	73.65	73.80	73.95	74.10	74.25	74.40	74.55	74.70	74.85	49
50	75.00	75.15	75.30	75.45	75.60	75.75	75.90	76.05	76.20	76.35	50

THE NATIONAL BLANK BOOK COMPANY
 HOLYOKE MASSACHUSETTS
 NEW YORK CHICAGO BOSTON SAN FRANCISCO