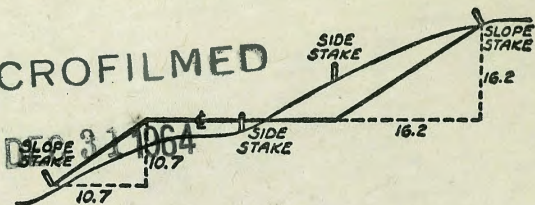


2084

TRANSIT BOOK

MICROFILMED



DISTANCES FROM SIDE STAKES FOR CROSS-SECTIONING

SLOPE 1 TO 1. ROADWAY OF ANY WIDTH

	0	.1	.2	.3	.4	.5	.6	.7	.8	.9	
0	0.00	0.10	0.20	0.30	0.40	0.50	0.60	0.70	0.80	0.90	0
1	1.00	1.10	1.20	1.30	1.40	1.50	1.60	1.70	1.80	1.90	1
2	2.00	2.10	2.20	2.30	2.40	2.50	2.60	2.70	2.80	2.90	2
3	3.00	3.10	3.20	3.30	3.40	3.50	3.60	3.70	3.80	3.90	3
4	4.00	4.10	4.20	4.30	4.40	4.50	4.60	4.70	4.80	4.90	4
5	5.00	5.10	5.20	5.30	5.40	5.50	5.60	5.70	5.80	5.90	5
6	6.00	6.10	6.20	6.30	6.40	6.50	6.60	6.70	6.80	6.90	6
7	7.00	7.10	7.20	7.30	7.40	7.50	7.60	7.70	7.80	7.90	7
8	8.00	8.10	8.20	8.30	8.40	8.50	8.60	8.70	8.80	8.90	8
9	9.00	9.10	9.20	9.30	9.40	9.50	9.60	9.70	9.80	9.90	9
10	10.00	10.10	10.20	10.30	10.40	10.50	10.60	10.70	10.80	10.90	10
11	11.00	11.10	11.20	11.30	11.40	11.50	11.60	11.70	11.80	11.90	11
12	12.00	12.10	12.20	12.30	12.40	12.50	12.60	12.70	12.80	12.90	12
13	13.00	13.10	13.20	13.30	13.40	13.50	13.60	13.70	13.80	13.90	13
14	14.00	14.10	14.20	14.30	14.40	14.50	14.60	14.70	14.80	14.90	14
15	15.00	15.10	15.20	15.30	15.40	15.50	15.60	15.70	15.80	15.90	15
16	16.00	16.10	16.20	16.30	16.40	16.50	16.60	16.70	16.80	16.90	16
17	17.00	17.10	17.20	17.30	17.40	17.50	17.60	17.70	17.80	17.90	17
18	18.00	18.10	18.20	18.30	18.40	18.50	18.60	18.70	18.80	18.90	18
19	19.00	19.10	19.20	19.30	19.40	19.50	19.60	19.70	19.80	19.90	19
20	20.00	20.10	20.20	20.30	20.40	20.50	20.60	20.70	20.80	20.90	20
21	21.00	21.10	21.20	21.30	21.40	21.50	21.60	21.70	21.80	21.90	21
22	22.00	22.10	22.20	22.30	22.40	22.50	22.60	22.70	22.80	22.90	22
23	23.00	23.10	23.20	23.30	23.40	23.50	23.60	23.70	23.80	23.90	23
24	24.00	24.10	24.20	24.30	24.40	24.50	24.60	24.70	24.80	24.90	24
25	25.00	25.10	25.20	25.30	25.40	25.50	25.60	25.70	25.80	25.90	25
26	26.00	26.10	26.20	26.30	26.40	26.50	26.60	26.70	26.80	26.90	26
27	27.00	27.10	27.20	27.30	27.40	27.50	27.60	27.70	27.80	27.90	27
28	28.00	28.10	28.20	28.30	28.40	28.50	28.60	28.70	28.80	28.90	28
29	29.00	29.10	29.20	29.30	29.40	29.50	29.60	29.70	29.80	29.90	29
30	30.00	30.10	30.20	30.30	30.40	30.50	30.60	30.70	30.80	30.90	30
31	31.00	31.10	31.20	31.30	31.40	31.50	31.60	31.70	31.80	31.90	31
32	32.00	32.10	32.20	32.30	32.40	32.50	32.60	32.70	32.80	32.90	32
33	33.00	33.10	33.20	33.30	33.40	33.50	33.60	33.70	33.80	33.90	33
34	34.00	34.10	34.20	34.30	34.40	34.50	34.60	34.70	34.80	34.90	34
35	35.00	35.10	35.20	35.30	35.40	35.50	35.60	35.70	35.80	35.90	35
36	36.00	36.10	36.20	36.30	36.40	36.50	36.60	36.70	36.80	36.90	36
37	37.00	37.10	37.20	37.30	37.40	37.50	37.60	37.70	37.80	37.90	37
38	38.00	38.10	38.20	38.30	38.40	38.50	38.60	38.70	38.80	38.90	38
39	39.00	39.10	39.20	39.30	39.40	39.50	39.60	39.70	39.80	39.90	39
40	40.00	40.10	40.20	40.30	40.40	40.50	40.60	40.70	40.80	40.90	40
41	41.00	41.10	41.20	41.30	41.40	41.50	41.60	41.70	41.80	41.90	41
42	42.00	42.10	42.20	42.30	42.40	42.50	42.60	42.70	42.80	42.90	42
43	43.00	43.10	43.20	43.30	43.40	43.50	43.60	43.70	43.80	43.90	43
44	44.00	44.10	44.20	44.30	44.40	44.50	44.60	44.70	44.80	44.90	44
45	45.00	45.10	45.20	45.30	45.40	45.50	45.60	45.70	45.80	45.90	45
46	46.00	46.10	46.20	46.30	46.40	46.50	46.60	46.70	46.80	46.90	46
47	47.00	47.10	47.20	47.30	47.40	47.50	47.60	47.70	47.80	47.90	47
48	48.00	48.10	48.20	48.30	48.40	48.50	48.60	48.70	48.80	48.90	48
49	49.00	49.10	49.20	49.30	49.40	49.50	49.60	49.70	49.80	49.90	49
50	50.00	50.10	50.20	50.30	50.40	50.50	50.60	50.70	50.80	50.90	50

Distance of slope stake from side or shoulder stake for any width roadway, slope 1 to 1. If ground is nearly level, the cut or fill at side stake is located by the double entry method in left column and top row. The number in body of table in same row and column gives distance from side stake to slope stake. If ground is not level estimate the difference in elevation between the side stake and slope stake, lower target by this amount if cut, elevate if fill. Add this amount to cut or fill and find distance in table. Set up rod at this point, and line of sight should cut target. If it does not make the slight adjustment necessary.

INDEXED

through page #42

TABLE XIII—CORRECTIONS FOR TANGENTS AND EXTERNALS

These corrections are to be added to the approximate values, found by dividing the tangent, or external, for a 1° curve (Table VIII) by the degree of curve, in order to obtain the true tangents, or externals. Intermediate values may be obtained by interpolation.

FOR TANGENTS ADD

Central Angle	DEGREE OF CURVE													
	5°	10°	15°	20°	25°	30°	35°	40°	45°	50°	55°	60°	65°	70°
10°	.03	.06	.09	.13	.16	.19	.22	.25	.28	.31	.34	.38	.42	.46
15°	.04	.10	.14	.19	.24	.29	.34	.39	.45	.51	.53	.58	.63	.68
20°	.06	.13	.19	.26	.32	.39	.45	.51	.58	.65	.72	.79	.84	.90
25°	.08	.16	.24	.33	.40	.49	.58	.67	.75	.83	.90	.99	1.06	1.14
30°	.10	.19	.29	.39	.49	.59	.69	.79	.89	.99	1.09	1.20	1.29	1.39
35°	.11	.22	.34	.47	.58	.69	.79	.81	.92	1.04	1.29	1.42	1.54	1.66
40°	.13	.26	.40	.53	.67	.80	.93	1.06	1.20	1.34	1.49	1.64	1.79	1.94
45°	.15	.30	.44	.60	.76	.91	1.06	1.21	1.37	1.52	1.70	1.87	2.04	2.21
50°	.17	.34	.51	.68	.85	1.02	1.19	1.36	1.54	1.72	1.91	2.10	2.29	2.48
55°	.19	.38	.57	.76	.95	1.14	1.32	1.52	1.72	1.92	2.12	2.32	2.52	2.77
60°	.21	.42	.63	.84	1.05	1.27	1.49	1.71	1.94	2.17	2.38	2.60	2.83	3.07
65°	.23	.46	.69	.93	1.16	1.40	1.64	1.88	2.13	2.38	2.63	2.88	3.13	3.39
70°	.25	.51	.76	1.02	1.28	1.54	1.80	2.06	2.33	2.60	2.88	3.16	3.44	3.72
75°	.27	.56	.83	1.12	1.40	1.69	1.98	2.27	2.57	2.87	3.16	3.47	3.78	4.09
80°	.30	.61	.91	1.22	1.53	1.84	2.15	2.46	2.78	3.10	3.44	3.78	4.12	4.46
85°	.33	.66	1.00	1.33	1.68	2.02	2.36	2.70	3.05	3.40	3.77	4.14	4.55	4.89
90°	.36	.72	1.09	1.45	1.83	2.20	2.57	2.94	3.32	3.70	4.10	4.50	4.91	5.32
95°	.39	.79	1.19	1.55	2.00	2.40	2.80	3.20	3.61	4.02	4.40	4.98	5.38	5.83
100°	.43	.86	1.30	1.74	2.18	2.62	3.06	3.50	3.95	4.40	4.88	5.37	5.85	6.34
110°	.51	1.03	1.56	2.08	2.61	3.14	3.67	4.21	4.76	5.31	5.86	6.43	7.01	7.60
120°	.62	1.25	1.93	2.52	3.16	3.81	4.45	5.11	5.77	6.44	7.12	7.80	8.50	9.22

FOR EXTERNALS ADD

Central Angle	DEGREE OF CURVE													
	5°	10°	15°	20°	25°	30°	35°	40°	45°	50°	55°	60°	65°	70°
10°	.001	.003	.004	.006	.007	.008	.009	.011	.012	.014	.015	.017	.018	.020
15°	.003	.007	.010	.014	.018	.023	.027	.032	.035	.039	.043	.047	.051	.055
20°	.006	.011	.017	.022	.028	.034	.038	.045	.051	.057	.063	.070	.076	.083
25°	.009	.018	.027	.036	.046	.056	.065	.074	.083	.093	.106	.120	.127	.135
30°	.013	.025	.038	.051	.065	.078	.090	.103	.116	.129	.149	.170	.179	.188
35°	.018	.035	.054	.072	.086	.109	.131	.153	.175	.197	.213	.230	.247	.264
40°	.023	.046	.070	.093	.117	.141	.172	.203	.234	.265	.277	.290	.315	.341
45°	.030	.060	.093	.119	.153	.184	.216	.254	.289	.325	.351	.378	.411	.445
50°	.037	.075	.116	.151	.189	.227	.266	.305	.345	.384	.425	.467	.508	.550
55°	.046	.093	.142	.188	.236	.283	.332	.381	.420	.479	.530	.582	.641	.700
60°	.056	.112	.168	.225	.283	.340	.398	.457	.516	.575	.636	.697	.774	.851
65°	.067	.135	.204	.273	.343	.412	.483	.554	.625	.697	.771	.845	.922	1.01
70°	.080	.159	.240	.321	.403	.485	.568	.652	.735	.819	.906	.994	1.08	1.17
75°	.095	.182	.266	.353	.440	.528	.617	.707	.797	.887	.977	1.07	1.18	1.29
80°	.110	.220	.332	.445	.558	.671	.787	.903	1.02	1.13	1.25	1.38	1.50	1.62
85°	.128	.259	.391	.524	.657	.790	.926	1.06	1.20	1.34	1.47	1.62	1.76	1.91
90°	.149	.299	.450	.603	.756	.910	1.07	1.22	1.38	1.54	1.70	1.87	2.03	2.20
95°	.174	.350	.522	.706	.885	1.06	1.25	1.43	1.62	1.80	1.99	2.18	2.38	2.58
100°	.200	.401	.604	.809	1.01	1.22	1.43	1.64	1.85	2.06	2.28	2.50	2.73	2.96
110°	.268	.536	.806	1.08	1.35	1.63	1.91	2.20	2.48	2.76	3.05	3.33	3.66	3.96
120°	.360	.721	1.08	1.45	1.82	2.19	2.57	2.95	3.33	3.72	4.11	4.50	4.91	5.32

Index

X-sec Fortuna, Ingraham to Riviera 1

X-Sec. Alley BIK 52, Park Villas 17

X-Sec. Alley BIK 1 Ocean View
" " 1 Sunset Grove 23-36

X-Sec., Fortuna (for dirt removed only) 37

Ingraham to Riviera

Survey for proposed ext. of 30" C.I.P. Lot 19, 39

Horton's Purchase

Alley BIK 67 Pt. Loma Hqts, 52

X-Sec. Harbor Drive both sides Laurel intersection 43

X-Sec. Laurel St., Harbor Drive to Pacific Highway 63

~~Blk. 231 Union Hqts~~ to 67

X-Sec BIK 231 Union Hqts 68-72

X-Sec SE 1/4 Intersect Laurel & Harbor Drive 73

Replace corners Lots 9+10 } 75

Pt. Loma Hqts }

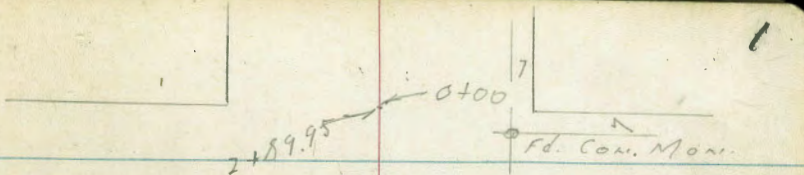
3-15-50.

Map of X sec Fontana Ave
Begg
Shannon Ingraham to Riviera Dr
Crawford

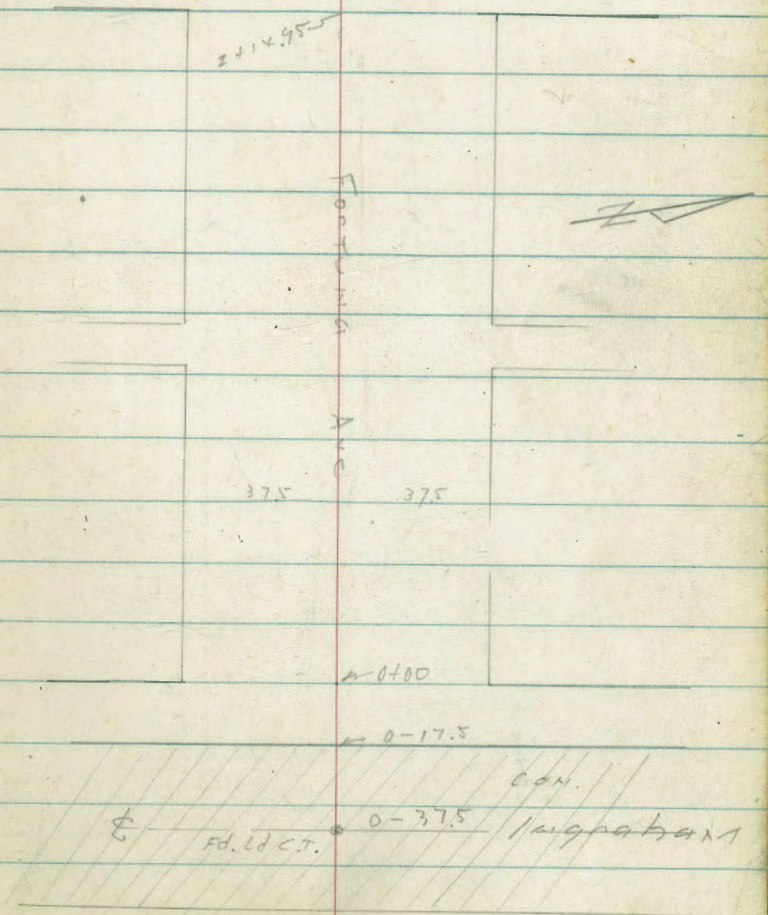
no 31641

INDEXED

W.K.
MAR 16 1950



Promontory



Haines St

2+87.95 → 0+100

MH of Interceptor Lower
0+5-9

rec. co.
M.H.
35

Call of Co. for
Cond. depth

believed to be a
16" Water
Main
See Plan

Ed. 1" Pipe RE 5212

2+14.95

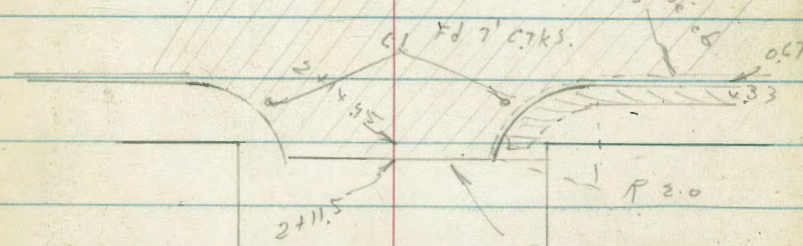
375

Fontana Ave

0+100

PROMONTORY

Riviera Drive
con. Pan.



MATTSON APT

TRAPMITS

OUT OF TRUE
POSITION

?

Fortuna Ave

Xsec Fontuna

6-

Q

R

*

0+00 W Line Ingraham

47.88
1.58 Tol.
Cone Blackwell
corner

44.8	45.0	44.4	44.6	44.7	45.9	46.0
4.7	4.5	5.1	4.9	4.8	3.6	3.5
37.5	20	11		19	29	37.5

- 0-5

44.1	44.3	44.5	44.5	44.5	44.7
5.4	5.2	5.0	5.0	4.8	
37.5	20		20	37.5	

0-17.5 edge par

42.66	43.36	44.32	44.15	44.48	44.69	44.76	44.88	44.97
6.80	6.10	5.14	5.31	4.98	4.77	4.70	4.58	4.49
150	100	50	37.5		37.5	50	100	150

40-37.5 Ingraham

42.99	43.69	44.40	44.58	44.84	45.06	45.11	45.20
6.17	5.77	5.06	4.88	4.62	4.40	4.35	4.36
150	100	50	37.5		37.5	50	100

conclude

45.28
4.18
150e

B17. 462 49.46
E Ld. C.T.
Ingraham
and
Fontuna G.B. 226-23

214.84

49.46

TP 5.18 52.49 2.15 47.31

0.47 4x4 slab 36.7 ft

47.61
1.85
36.7

0 + 40

47.7 47.9 46.5 46.7 46.7 47.3 48.1 48.2
1.8 2.1 3.0 2.8 2.8 2.2 1.4 1.3
37.5 30 17 28 12 14 22 37.5

0 + 19

36.7 Wedge 4" conc slab

47.67
1.79
36.7

P. Pole 0 + 15 27.3 ft # ~~IP~~ 5236364

0 + 6

47.7 45.4 45.5 44.7 44.8 45.00 47.5 47.8
1.8 4.1 4.0 4.8 4.7 4.5 2.0 1.7
37.5 27 20 17 17 28 37.5

49 46

49 46

1+30 $\frac{1}{2}$ DOL gar 36.8 Rt. 18.6 wide

4.76

~~4773~~
4.76
36.8

1+16 PPole 36.0// SP 1575

1+15 ~~PPole~~

~~48.4~~
4.1 4.3 4.7 4.1 4.4
37.5 23 20 37.5

1+00

~~48.4~~
5.1 4.5 4.4 4.8 4.8 4.8
37.5 20 7 10 37.5

0+89 36.6 L Nedge

~~47.65~~
4.84
36.6

0+63

~~47.61~~
4.88 4.9 5.3 5.2 5.3 4.2 4.7
36.6 37.5 18 10 20 37.5
4.4
5.46

52.49

52.49

B+1495 E Line Promontory

48	46	55	61	61	61	60
37.5	21	16		16	20	37.5

1+97 3/4 33 cone walk 37.5 Rt

5.37
37.5

1+98 1/2 Con Cone Drive 7' wide

4.51	4.55
37.5 end drive	30.2 edge of Drive

1+80

4.39	4.40	4.3	4.9	5.2	5.2	5.0
37.5	30 E 2.5' cone walk	24	17		20	37.5

1+49

4.02	4.05	4.0	4.6	4.8	4.7	4.7
37.5	29.2	27	18	11.8	20	37.5

end Cones
Walk
2.5 wide

52.49

52.49

0+00 W. Line Promontory
2+89.95 beg picket fence
37.3 Rt

46.5
3.5 4.2 4.7 5.0 5.5 6.0
37.5 16 14 20 37.5

2+84.6 1/2 conc 3" walk
28.2 Lt

46.35
3.63 3.93
37.5 28.2

2+70

46.5
3.5 4.1 4.5 5.0 5.6
37.5 20 20 37.5

2+52 W of Promontory

47.5
2.5 3.7 4.0 4.6 5.2
37.5 18 20 37.5

2+35

47.6
2.4 2.4 3.2 3.6 4.5 4.9
37.5 20 16 20 37.5

TP 6.00 49.98 8.51 43.98
52.49

49.98

0 + 93 35.8 Lt 5" evc
 0 + 82 37.5 Lt 5" evc
 0 + 74 37 Lt 5" evc
 0 + 69 35 Lt 5" evc

0 + 56.7 Bag Wire fence 37.3 Rt.

0 + 54.7 38.8 Rt^e Conc walk 4 wide

0 + 49 of Sing. gar.

0 + 43 end Picket fence 37.3 Rt

0 + 01 36.6 Lt PPole P1549
49.98

66.5

44.5	44.8	44.2	43.7	43.4	43.34	43.59
5.5	5.2	5.8	6.3	6.6	6.64	6.39
37.5	17	15		20	38.0	1143
					coll from	gar
					87 wide	

48.35
 6.65
 38.2

49.98

1 + 59 beg conc tile wall 37.7 R

1 + 53 of garage no used as a dog house 53 R

1 + 40 of 35.4 R to 38.3 R
5206 12.5

1 + 16.5 P Pole 26.8 ft P 1543

1 + 15

1 + 00 end of fence 37.7 R

49.98

43.3	43.4	42.8	42.8
6.7	6.6	7.2	7.2
37.5	20	16	

43.4	44.0	44.16	50.2	44.95
6.6	6.0	5.82	5.5	5.5
37.7	37.5	29.7	25	
base of wall		conc		
20		9507		

43.86	44.33
6.12	5.65
35.4	38.3

43.4	43.3	42.9	43.0	43.1	43.3
6.6	6.7	7.1	7.0	6.9	6.7
37.5	22	15		20	37.5

43.5	43.1	43.0	43.3	43.4
6.5	6.9	7.0	6.7	6.6
37.5	20		20	37.5

49.98

Rt 68

Rt 59 Rim of Main Sewer line H

Rt 52.45 Haines

Rt 26 95

T.P. 0 92 44.42 6.48

43.50 on survey pipe

Rt 14.95 E Line Haines end of wall 37.5

17 84 of 3 1/2' conc walk

49.98

4.7	4.3	4.0	3.8	3.4
37.5	20	3.58	2.3	37.5

4.4	4.0	3.7	3.0	2.7
37.5	20	20	20	37.5

17.37	3.20	3.5	3.0	2.5	1.6
35	35	22	21	21	37.5
MH	Rim				
bottom	of MH				

44.42

8.7	8.5	8.2	7.7	6.9	7.0
37.5	20	37.5	20	37.5	bottom of wall

7.4	7.4	7.6	7.1	6.54	6.18	5.96
37.5	13	37.5	20	30.5	31.8	37.5
				step	con wlk	

49.98

1 + 075 MH rim

1 + 00

0 + 93

TP. 1.73 34.52 11.63 32.79

0 + 50

±0+00 } W line Haines
2+8945 }
2.80 P. Pole 27.0 Lt 43.2 48.4

44.42

H17

4.9 4.9 4.4 4.3 2.9
37.5 30 30.1 30.2 31.6
30.5 30.1 30.3 30.6 33.4

4.0 4.4 4.2 3.9 1.1
37.5 30 38 37.5

34.52

10.3 11.3 11.0 10.7 11.3 7.8
37.5 27 20 27 37.5

5.3 5.2 5.7 5.6 5.2 3.7 3.4
37.5 20 15 23 33 37.5

44.42

2+11.5 edge of conc

11.2
37.5

23.02
11.50
28.4
Top of
Curb

22.20
12.12
27

22.79
11.79
14.2
13.0

23.08
11.44

23.21
11.31
13

23.20
11.22
26

23.74
10.78
27.5
Top of curb

note these curbs & rolled

1+90

9.255
9.0
37.5

22.13
10.2
32.0

34.1
10.4
22

10.34
10.4

10.245
10.0
24

26.0
8.5
33

27.8
6.7
37.5
40

1+47

38R
1+47

27.0
7.5
37.5

27.0
7.5
20

27.1
7.4

27.5
7.0
24

34.1
4.4
37.5

30.40
4.12
38

1+36

1+36
30.95
35.7
38R

27.5
7.0
37.5

27.6
6.9
20

27.8
6.7

28.0
6.5
23

30.5
4.0
37.5

30.95
3.57
38

2+15

39 ft beg conc walk

2+11

27 ft JP 14.75

34.50

28.9
5.6
37.5

28.9
5.8
30

29.1
5.4

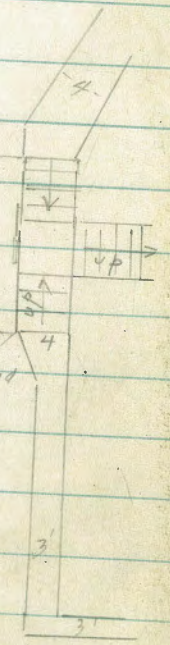
29.6
4.9
30

31.6
2.9
37.5

31.90
2.62
39

5 Line of conc walk
E & W

34.50



2 + 433 d of Paving as built Riviera

19.86	21.37	21.60	21.88	22.35	22.75	23.08	23.23	24.26
6.10	4.59	4.36	4.08	3.61	3.21	2.88	2.73	1.70
96	46	37.5	20		20	37.5	45	95
					24.96	24.36	23.96	
					1.00	1.60	2.00	
					95	95	45	
					66	9	704 66	

2 + 23 gutter line

19.89	20.54	22.14	21.52	21.69	22.15	22.28	22.87	23.18	23.32	23.44
6.07	5.42	3.82	4.44	4.27	3.83	3.46	3.09	2.78	2.64	2.64
96	96	46	46	37.5	20	17.02	20	37.5	45	45
9	66	66	BC of						BC of gutter curb	
									23.93	10.69
										37.5

TP 203 25.96 12.59 23.93 LS Disc

2 + 14 25 East Line of Riviera

22.58	22.78	22.18	22.62	22.92	23.09	23.13	23.70
11.94	11.74	12.34	11.90	11.60	11.43	11.39	10.82
37.5	30.8	29.1	15	15	15	29	29.4
on curb	Top of cb						Top of cb
walk							

34.52

34.52

AS 23.44
COPPER-DIX

2152

Riviera

23.83
23.53
23.22
23.14

23.96
23.82
23.72

23.12
23.12

23.12
23.12

23.19
23.17

23.74
23.82

Fortuna

600 C

22.90
22.90

23.01
23.11.5

dir

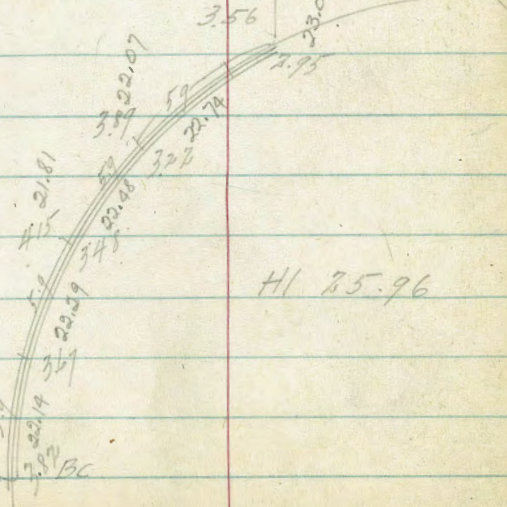
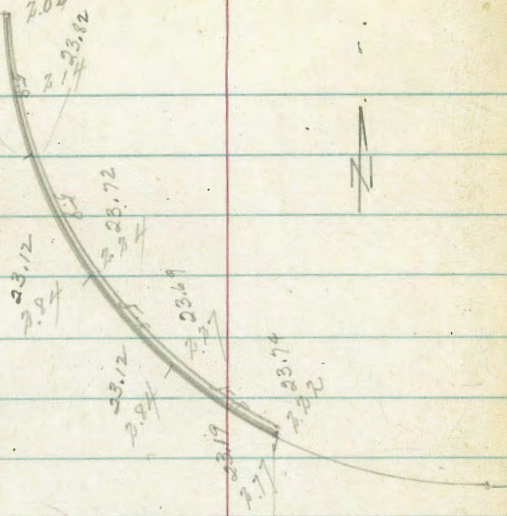
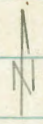
2161

22.14
22.14
22.19
22.27
22.27
22.27

22.07
22.17
22.17

23.56
23.93

H1 25.96



		6.99	10.49	10.19
TP	2.99	17.18	11.71	14.25
		25.96		
		<u> </u>		

0000

BP N.W. curb Riviera & Gresham

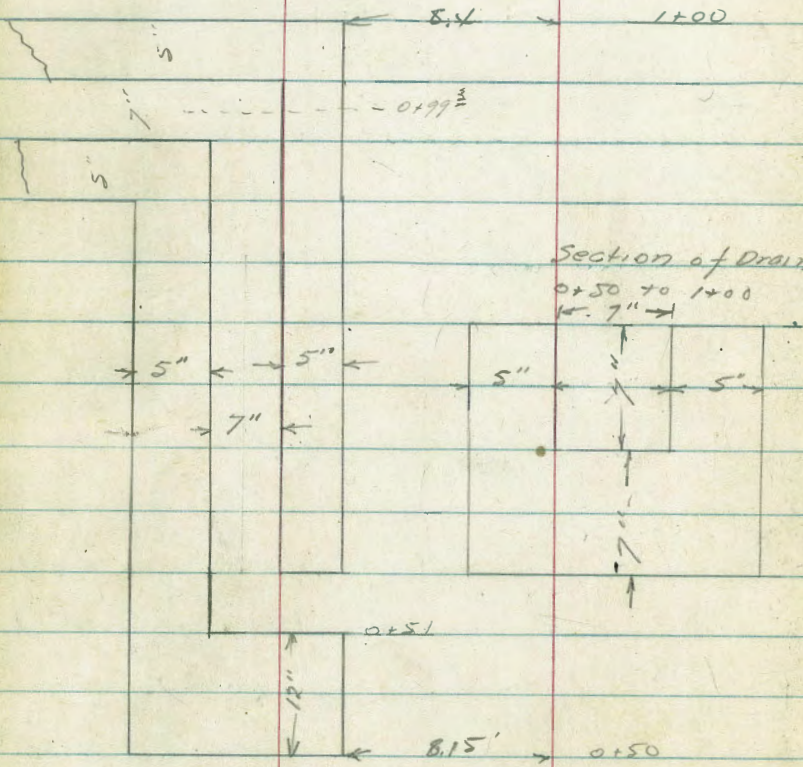
(Gresham used to be Estrella)

9-1-50
 Hendricks
 Cota
 Greer
 Crawford
 W O # 25020

X SECTION ALLEY BLOCK 52
 PARK VILLAS

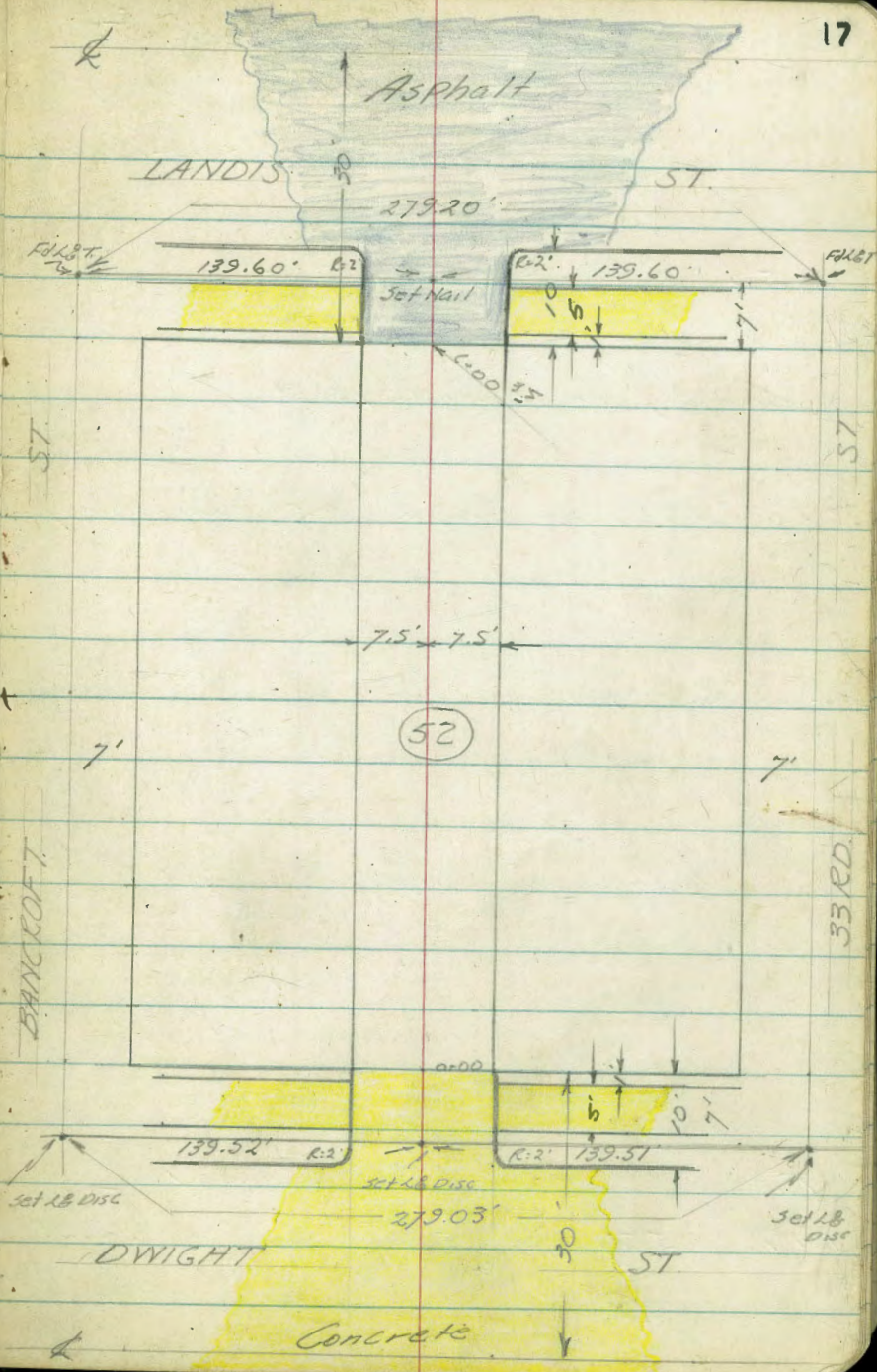
INDEXED
 SEP 6 1950

Plan of Drain
 Lt. 0+50 to 1+00



Section of Drain
 0+50 to 1+00
 W. 7" →

BANKCROFT



Levels Alley Block 52
Park Villas

Levels taken with self-reading rod

(see detail (P. 18))

0+50 Reg. Conc Drain 8.15 ft.

329⁷ 329⁷ 329⁷ 329⁷ 329⁷ 329⁷
17 8.15 7.5 7.5 15

0+40 Reg. Pickett fence 7.5 ft.

0+00 North Line Drought & Edge Conc. Paving

329³ 329⁰⁷ 328⁸⁸ 328⁷⁸ 329⁰² 329²
20 7.3 7.3 7.55 7.55 20
Cb G G Cb

0-08 EC Alley Ret.

328⁹¹ 328⁵¹ 328⁸³ 328⁷⁴ 328⁸⁷
7.3 7.3 7.55 7.55
Cb G G Cb

0-10 North Ch Line Drought

329³⁶ 328⁰⁵ 328⁹⁴ 328⁴⁸ 328⁴⁵ 328³¹ 328³³ 328³⁵ 328⁴⁸ 327⁸⁴ 328⁴²
60 60 9.5 9.5 7.5 7.5 9.5 9.5 70 70
Cb G Cb G G G Cb G Cb

0-30 E Drought St.

329⁴¹ 329⁰⁹ 328⁸⁰ 328⁶⁴ 328³⁰ 328⁰³
70 35 7.5 7.5 35 70

T.P. 4.05 328.47 ✓
B.M. 5.57 332.52 ✓ 326.95

L & Disc. E Alley & North 7' Line Drought St. (Block 52 Park Villas)
SEBP Drought & Felton

Block 52 Cont'd.

2+07 & Single Garage 8.4 Lt

333²⁸ - 333²⁰
12.3 8.3
Fl. Ramp

2+01 Power Pole # PA 3633 5.0 Lt

2+00 Beg Board fence 7.4 Rt
End Woven Wire fence 7.6 Rt

333⁰ - 333¹ - 332⁹ - 333⁴ - 333⁰
15 7.5 7.5 20

1+50 Beg Woven Wire fence 7.6 Rt
End Rath fence 7.4 Rt

331⁵ - 331⁸ - 331⁶ - 332⁰ - 331⁵
22 7.5 7.5 20

TP.

331.92

Nail in Power Pole # PA3615 4.6 Lt 1+01.5

1+01.5 Power Pole # PA3615 4.6 Lt

1+00 End Conc Drain on Lt 7.5 Rt
End Pickett fence 7.5 Rt Beg Rath fence

329⁹⁴ - 330⁴⁴ - 330⁸ - 331⁰ - 330⁸ - 331¹ - 330[?]
20 8.4 7.5 5 7.5 20

0+99³ & 7" Drain on Lt.

329⁵⁰ - 330⁴⁴
8.4 8.4
Fl. Top
330⁴⁵ - 330¹⁰
7.5 17

0+68 & 3' Conc Walk 7.5 Rt.

329⁰² - 329⁶⁴
8.5 8.5
Fl.

0+51 Drain on Lt.

4+40

336 ⁹	336 ⁹	337 ⁰	336 ⁸	336 ⁹
20	7.5	7.5	20	

4+00 Power pole # PA3665 6.3' LT

336 ²	336 ²	336 ²	336 ⁰	336 ¹
20	7.5	7.5	20	

3+50

334 ⁸	334 ⁸	335 ²	335 ³	335 ⁰	334 ⁸	335 ⁰	335 ¹
20	9	7.5	6	4	7.5	20	

3+00 End Lath fence 7.5 RT
Power Pole # PA3651 5.7' LT

333 ⁷	334 ⁰	334 ⁴	334 ⁹	335 ¹
20	7.5	7.5	20	

2+50 Beg Lath & Wire fence 7.5 RT
End Board fence 7.2 RT

332 ⁴	333 ⁹	333 ⁶	333 ⁷	333 ⁸
20	7.5	7.5	20	

2+15
2' Conc. Walk 7.8' LT

333 ³⁵	333 ³¹
13	7.8

5+60 Beg Conc Ret Wall 7.7' Rt
& Double Garage 16.8' Lt Dirt ft

338²

16.8

ft

337⁵

338¹²

337⁸

338¹⁶

7.7

Wall 17.4

17.4

Ramp

Wall

5+55 & Single Garage on Rt.

337³⁹

337⁷⁷

8.9

13.9

Ramp

ft.

5+50

338⁵

338⁷

338²

338⁰

338⁰

20

7.5

7.5

20

5+41 Power Pole # 7 6.6' Lt

5+00

337⁷

338¹

338⁰

338⁰

337²

20

7.5

7.5

20

4+77 & 3' Conc Wall 8.3' Rt

337⁶⁵

337⁴³

8.3

20

4+60

337¹

337²

337⁹

337⁸

337³⁶

336⁸

20

7.5

7.5

8°

20

B.17.

329.12

329.04

~~NW1/4 32nd E Lands~~

NEBP Lands & Boundary

~~33847~~

6+30.35 E Lands

336⁵⁰
50

336⁰⁷

335⁹²
50

6+10.35 so. cb line Lands

336²²
50
cb

335⁸²
50
G

336¹⁷
9.5
cb

335⁷⁷
9.5
G

335²⁰
7.5
G

338⁶⁵

335⁶²
7.35

335⁵⁴
9.25

336¹⁵
9.25

335²¹
50

335³¹
50

6+08.35 B.C. 3 cb. Kets.

336²⁴
7.5
cb

335⁸⁹
7.5
G

338⁷⁶

335⁸⁴
7.35
G

336¹⁷
7.35
cb

6+00.35 Edge Asphalt Paving
50 line Lands (End Ret wall)

336⁶
7.5
Pav

336⁴⁶
7.5
Pav

336¹⁷

336³⁸
7.35
cb & Pav.

338¹⁰
7.35
W

338⁰⁶
20

5+75

339¹
20

339⁰
11

338¹
7.5

337⁶
6

337⁴
7.5
Gr.

338³⁹
7.5
Wall

338⁵
20

Alley BIK¹ Sunset Grove +
 X-Sec. for Pavement
 BIK¹ Ocean View 10-20-50
 W.O. # 31921

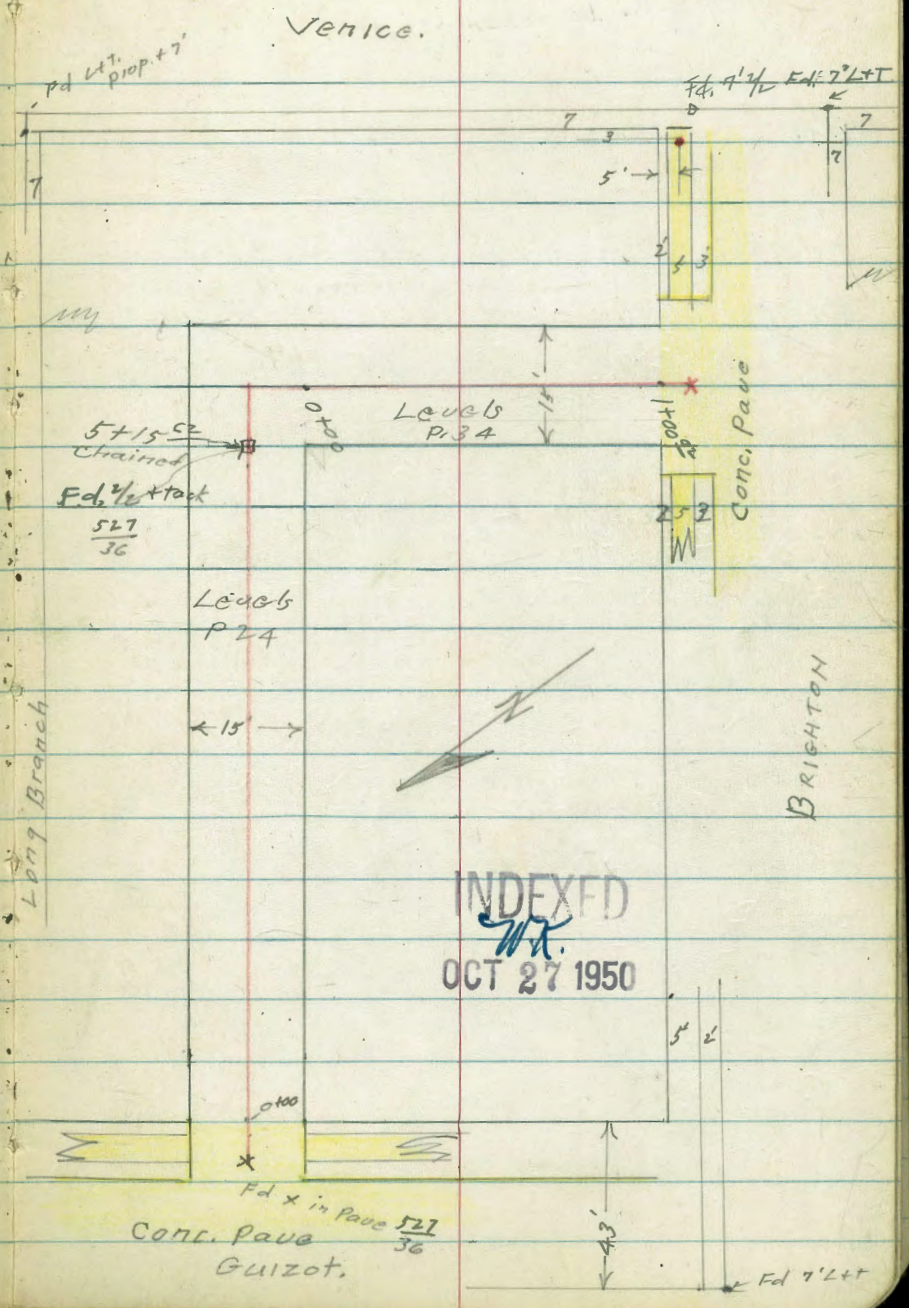
Sommermayr
 Allen
 Bunch
 Shop

INDEXED
 W.K.
 OCT 27 1950

Ref.
 T.R. sheet # 760
 Map # 1842
 Field book $\frac{527}{36}$

outs to poles taken to property side.

Staked by Roberts Sept. 10, 1951 8636L



INDEXED
 W.K.
 OCT 27 1950

Alley BIK. 1

E+W. Alley
Sunset Grove
Ocean View

24

T.P. 13.09 126.24 0.51 103.15

0+03 - 7⁵Lt = end Conc. wall
(Conc. chunks - 1' to 2' High)
0+01 - 7⁵Rt. = start loose rock wall

7⁵Lt. = start Conc. wall. (2' High)

0+00 { 7⁵Rt.
7⁵Lt. } = end of curbs
= end Conc Pavement.

0-02 } walk & broken
to } 7⁵Lt. = curb pushed up by
0-08⁵ }

Cont.

9⁵Rt. } = B.C. 2' Rad. alley cl. Ret.
9⁵Lt. }

0-10 = Ely. cl. line Guizot

0-25 = & Guizot

12.23 103.66 —

91.43

~~107.40~~ Gone

98.2
98.9
4.8
7⁵
Base of wall End

99.3 98.39 98.34 98.40 98.91 99.12
5.5 5.27 5.32 5.26 4.75 4.24
7⁵ 7⁵ 7⁵ 7⁵ 7⁵ 7⁵
Base of wall cl. G G cl.

98.66
9.00
5.95
cl.
102.09
1.57
5.95
G
102.75
0.93
5.95
cl.

98.03 98.03 97.45 97.62 98.13 98.60 98.76 99.32
9.63 5.69 6.21 6.04 5.53 5.06 4.90 4.34
5.95 9⁵ 9⁵ 7⁵ 7⁵ 7⁵ 9⁵ 9⁵
G cl. G cl. G cl.

98.79 97.96 97.88 98.38 101.90
9.87 6.30 5.78 5.28 1.76
5.95 7⁵ 7⁵ 7⁵ 5.95
103.66

S.E. 7' Lt Long Branch & Guizot

~~S.E. B.P. Brighton & Guizot~~

B.F. = base of foundation

0+70- 9' Lt. - end stucco Bldg.

107.0
 $\frac{9.2}{9.1}$ 106.4 = EL.
 End B.F.

13' Lt. = west front door. dirt floor.
 0+61 7' Lt. = s.w. cor. frame Gar.

105.1 104.8 105.2
 $\frac{11.1}{13.2}$ $\frac{11.4}{7.7}$ $\frac{11.1}{7.7}$
 dirt Base End
 floor foundation

B.F. = base of foundation

0+46th 9' Lt. = start stucco Bldg.

105.8
 $\frac{10.4}{9.2}$ 104.7 = EL.
 End at Bldg B.F.

9' Lt. = start stucco Bldg
 0+46- 8' Lt. = end loose rock wall

103.9 103.7 104.0 104.9 105.3 105.4 106.2 106.8
 $\frac{12.3}{15}$ $\frac{12.5}{9.5}$ 12.2 $\frac{11.9}{4}$ $\frac{10.9}{7.5}$ $\frac{10.8}{8}$ $\frac{9.4}{8}$ $\frac{9.4}{12}$
 Tab of wall

0+30

102.0 102.2 102.4 102.3 103.8 105.8 105.8
 $\frac{14.2}{12}$ $\frac{14.0}{7.5}$ 13.8 $\frac{13.3}{5}$ $\frac{12.4}{7.5}$ $\frac{10.4}{8}$ $\frac{10.4}{12}$

0+05

100.8 100.2 99.1 99.3 99.7 100.7 101.9 102.0
 $\frac{16.0}{12}$ $\frac{16.0}{7.5}$ $\frac{17.1}{5}$ 16.9 $\frac{16.5}{6}$ $\frac{15.5}{7.5}$ $\frac{14.3}{8}$ $\frac{14.2}{10}$

116.24

1+21 7⁵ Lt. = start conc. apron to double gar.

112.54
3.66
134
Gar. Floor

4.18
95
Apron

1+20 - 8⁷ Rt. = end 7' high brick wall

111.6
4.6
15

111.6
4.6
9

111.5
4.7
75

110.8
5.4
4

110.6
5.6

110.5
5.6
5

111.0
5.2
75

111.1
5.1
82

110.7
5.5
82
B.W.

0+95 8⁵ Rt. = ± 3' walk thru. wall.

109.9
6.3
12

108.9
7.3
75

108.0
8.2
5

107.2
8.3

108.7
7.5
75

109.1
7.1
85
Gnd

109.57
6.67
85
walk

(B.F. = base of footing)

0+80 - 8⁸ Rt. = start 7' high brick wall

107.6
8.6
88
Gnd

106.9
9.3
88
B.F.

0+79 - 7⁸ Lt. = S.E. Cor. Frame Gar.

105.0
11.2
78
Base of Foundation

106.5
9.8
78
Gnd.

0+75 7' Rt. = Pole # P.A. 4448

0+72 9¹ Rt. = ± wide conc. walk

105.2
10.4
78
at Gar.

105.2
10.4
75

106.0
10.2
6

106.1
10.1

106.2
10.0
4

107.2
9.0
75

107.2
8.9
92

107.97
8.27
92
walk

116.24

1+78 7²Lt = start picket fence1+76 7⁵Lt = end Conc. Apron

117.99

117.95

9.18

9.22

12

75

Apron

1+61 7⁵Lt = start Conc. Apron to double

Bar.

117.89

117.31

9.28

9.86

12

75

Floor

Apron

1+53 10' Rt = end Conc. Apron

114.92

115.67

12.25

11.50

10

24

Floor

1+42 10' Rt = start Conc. apron to Sing. Bar.

113.98

115.70

13.29

11.47

10

24

Apron

Floor

T.P. top of 1/2" pin
in wall9⁴Lt. 1141.25 1139 127.17 0.46 115.78

127.17

1+41²⁵ 8²Lt. = 2 N.T.S. 6" conc. wall

115.60

112.4

113.0

112.9

113.4

113.6

0.64

3.8

3.2

3.3

2.8

2.6

8²8²

8

75

15

Top
wall

B.W.

Ond

112.99

112.82

3.25

3.42

13.4

9.2

Floor

Apron

1+41 9³Lt. = end Conc. apron

116.24

E+W. Alley
 Bk. 1 Sunset Grove

28

T.P. 1236 138.72 0.81 126.36

2+50 7³ Lt = line of brick wall
 7² Rt = line of fence

2+41 7⁵ Lt = start 6' high brick wall.
 6³ Rt = end lath fence + start 4' picket fence

2+35 11² Lt = end conc. drive.

2+21 10⁶ Lt = start conc. drive to double Gar. drive to

2+16 7³ Lt = end picket fence

2+12 8² Rt = end Frame Gar.
 7¹ Rt = start 4' lath fence

2+02 8⁷ Rt = start Frame Gar. South Front.

2+01 7⁶ Rt = pole # P.A. 4476

2+00

	126.4	125.9	126.0	126.0
	0.8	1.3	1.2	1.2
	73		75	15
125.1	125.8			
2.1	2.0			
75	75			
base of wall	End			
125.26	125.02			
1.91	2.15			
13E	11L			
Floor	drive			
125.27	124.49	124.2	123.7	122.8
1.90	2.68	3.0	3.5	4.4
13E	10E	10E	7E	
Gar. floor	drive			
				4.1
				75
				3.8
				15
				12.1
				5.5
				83
				12.1
				5.8
				82
				12.1
				6.4
				7E
				6.6
				15
				127.17

E+W Alley

3+00 7^E Rt. = start lath fence
= end stucco Gar. south front

1316	1307	1310	1312
7.1	8.0	7.7	7.5
<u>75</u>		<u>75</u>	<u>15</u>

2+92 - 13' Lt. = start double Gar.
Conc. floor. No apron

13192	1312	1304	1299	1303
6.80	6.8	8.3	8.8	8.4
13	13	75		75
Floor	End			

2+91 7^E Rt. = end picket fence
7^E Rt. = pole # A 4470
Also = start stucco Gar. south front

1302
8.5
<u>75</u>

2+90 7^E Lt. = end of apron to double Gar.

13407	13039
7.65	8.33
135	72
Floor	Apron

2+85 7^E Lt. = break in apron grade

12997
8.75
<u>72</u>

2+68 7^E Lt. = start conc. drive to double Gar.

12997	12857
8.75	10.15
135	72
Floor	Apron

2+66 7^E Lt. = end 6' high brick wall

1272	1282
11.5	10.5
72	72
base of wall	

138.72

T.P. 12.63 150.12 1.23 137.493+61 7⁵ Lt = end conc. apron

137.94	137.49
0.78	1.24
175	75
Gar. Floor	Apron

3+50 7³ Rt = start stucco wall 4' high
= end stucco Gar. south front

136.6	135.1	135.7	135.3	136.2	135.3
2.1	3.0	3.0	3.4	2.3	3.4
75	4		4	73	73
					Base of wall

3+45 7⁵ Lt = start conc. apron
to double Gar.

137.82	136.19
0.90	2.53
175	75
Floor	apron

3+40 7⁶ Lt = end Conc block wall.

134.0	135.5
4.7	3.2
76	75
Base of wall.	

3+39 7⁵ Rt = start stucco Gar. south front

134.6
4.1
75
end

3+38 7³ Rt = end lath fence3+15 7⁵ Lt = start 7' high Conc. block wall

132.3	132.6
6.4	6.1
75	75
Base wall	end

3+09 13' Lt = end double Gar

131.87	131.9
6.85	6.8
13	13
Floor	end

138.72

4+39 6^E Rt = end chicken wire fence.
North front.
also: start Conc. block wall.

4+19 7^E Lt = end Conc. block wall
4^E high

142 ¹	142 ²
$\frac{8.0}{72}$	$\frac{7.7}{72}$
base of wall	end

4+02 7^E Rt = end stucco @ar.
= start chicken wire fence

140 ¹
$\frac{9.3}{75}$

4+00 7^E Lt = line of wall

140 ¹	140 ¹	140 ¹	140 ²
$\frac{9.4}{75}$	10.0	$\frac{10.0}{4}$	$\frac{9.2}{75}$

3+92 7^E Rt = start stucco @ar. South front

both 4^E high
7^E Lt = start conc. block wall
7^E Lt = end Conc. block wall
7^E Rt = end stucco wall

3+90 7^E Lt = pole # A 445~~4~~

139 ³	139 ³	139 ²	139 ⁶	140 ⁰
10.8	10.8	10.3	$\frac{10.5}{75}$	$\frac{10.1}{75}$
base of wall	base of wall	end	end.	base of wall

3+68 7^E Lt = start Conc. block wall
5' high

139 ¹	138 ³
12.0	11.8
74	74
Base of wall	end
150.12	

also = start stucco Gar. North front
 4+93 7³ Lt. = end stucco wall

147.2
 2.4
 72
 Base of wall

148.4
 1.7
 72
 End

4+91 6' Rt. = Pole # P.A. 4436

4+90 7⁵ Lt. = start 6' high Conc. wall
 stucco

147.2
 2.4
 75
 Base of wall

147.9
 2.2
 75
 End

4+72 7³ Lt. = end conc. apron

148.18
 1.94
 20
 Floor

147.85
 2.27
 14
 apron

147.17
 2.95
 72
 Apron

4+57 7⁹ Lt. = start Conc. Apron to double Gar.
 = end Conc. block wall

148.12
 2.00
 20
 Floor

146.66
 3.46
 14
 apron

146.34
 3.78
 77
 apron

145.2
 4.9
 77
 base of wall

146.0
 4.1
 79
 End

4+50

145.6
 4.5
 75

145.1
 5.0

144.9
 5.2
 75

144.9
 5.2
 15

4+40 8⁰ Lt. = start 4' High Conc. block wall.
 = end Conc. block Gar.

144.4
 5.7
 8
 base of wall

143.3
 6.8
 8
 Gar. Footing

144.5
 5.6
 8
 End

150.12

5
 4+30⁶² = { Ely, line Alley to south
 Ely and E+W alley

5
 4+29² = wly. face board shed.

5+23³ 7⁶ Lt. = ± 6⁶ wide board shed

5+23 7⁵ Lt. = end sing Gar. Conc. floor

5+15⁶² () wly line Alley to south
 Chair

5+14 7⁵ Lt. = start sing. Gar. Conc. Floor.
 No Apron.

5+09 7⁴ Lt. = end stucco Gar. North Front
 on ± 1/2
 T.P. 2.30 151.48 0.94 149.18 5+15.62

5+00

151.0
 0.5
 75
 149.8
 1.7
 75
 149.3
 2.2
 75

149.90
 1.58
 75
 Floor
 150.2
 1.3
 75
 End

149.7
 1.8
 75
 149.6
 1.9
 End
 149.1
 2.4
 75

149.87
 1.61
 75
 End + Floor

149.5
 2.0
 75
 End 151.48

149.2
 1.4
 75
 148.1
 2.0
 75
 149.1
 2.0
 75
 147.2
 2.2
 75
 147.4
 2.7
 15

150.12

N. S. Alley BIK.1
Sunset Grove

sketch P23

0+33 7⁷ Rt. = end Conc. apron to double Bar.

147.45
3.83
72
Apron

148.32
3.16
174
Bar Floor

T.W. = top of wall
B.W. = Base of wall

0+22 7³ Lt. = Δ in 6" wall

148.92
2.56
7.4
T.W.

148.9
3.5
7.3
B.W.

149.4
3.1
7.3
End

also start 6" Conc. wall.
0+19 11⁵ Lt. = end Conc. apron

149.12
2.36
1.45
Floor

149.5
3.0
11.5
Base wall

149.03
2.45
11.5
Apron wall

148.9
2.6
11.5
End

0+09 7⁷ Rt. = start Conc. apron to double Bar.

148.76
2.72
72
Apron

148.31
3.17
174
Bar Floor

0+02 12⁰ Lt. = start Conc. apron to double Bar.

149.23
2.25
1.45
Bar Floor

149.06
2.42
12
Apron

6⁵ Lt. = s.wly. Cor. board shed.
0+00 = sly. line Alley to west.

149.3
2.2
7.5

149.3
2.2
6.8

149.4
2.1

149.1
2.4
7.5

151.48

0+99² 118⁵ RT = start standard curb

142.24
9.24
1185
top of cl.

0+98⁵ 8³ LT = start standard curb

	143.2		143.58						
	7.8		7.90						
	8 ²		9 ²						
	T.W.		Top of cl. +						
			Base of wall						
	146.55	144.2	144.2	143.8	143.5	143.4	144.1	144.4	144.5
	4.93	7.3	7.3	7.7	8.0	8.1	7.4	7.1	7.0
	8	8	7.5	4		4	7.5	10	15
	T.W.	B.W.							

0+90

0+75

	147.5	145.2	145.7	144.2	144.9	145.3	145.5
	4.0	6.3	5.8	6.6	6.6	6.2	6.0
	8	8	7.5	4		7.5	15
	T.W.	B.W.					

0+50 7⁵ Lt. = face of wall

	148.23	146.8	147.1
	3.25	4.7	4.4
	7.5	7.5	7.5
	T.W.	B.W.	End

0+40 - 7³ Lt. = face of 6" wall

	148.55	147.2	147.6	147.0	147.2	147.9
	2.93	4.3	3.9	4.5	4.3	4.5
	7.5	7.3	7.3		7.5	15
	T.W.	B.W.	End			

1311.48

N+S Alley

3.57 151.30 (151.35)

S.W. B.P. Venice + Brighton

T.P. 9.43 154.87 6.04 145.44

Cont:

1+10 = Nly. cl. line Brighton

1+07

1+02 } = Face of cl.
11.85 RA }
8.25 Lt }

1+00^{oz} = Start, Conc. Pav.
= Nly. line Brighton

	143.67	144.38		139.68	140.39
	7.81	7.10		11.80	11.10
	25	25		35	35
	cc	G		G	cc
	143.33	142.67	142.46	141.99	141.50
	8.15	8.81	9.02	9.49	9.98
	10	10	75	75	10.31
	E.C.	G			11.38
	2' cl.				G
	Rad. cl. ret.				E.C. 2' Rad
					cl. ret.
	143.38			141.99	
	8.10			9.50	
	8.25			11.85	
	cl. at S. edge			cl. at south	
	of walk			edge of walk	
	143.51			142.14	
	7.97			9.34	
	8.25 Lt.			11.85	
	cl. at N. edge walk			cl. at N. edge walk	
	143.57	142.85	142.85	142.25	141.94
	7.91	8.43	8.63	9.23	9.57
	8.25	8.25	75	75	11.85
	Top cl. G				G
					141.85
					142.18
					9.30
					11.85
					cc

151.48

Roberts
Cota
Moore
Clark
1-2-51
NO. 31642

X- Sect Fortuna Ave.
For Dirt removed. (ONLY)
(Ingraham to Riviera)
See Page ONE This F.B.

46:

Q

Rt. 37

2+52.45 & Promontory

46.9	46.8	42.0	42.0	42.0	42.2
3.2	3.3	8.1	8.1	8.1	7.9
375	21	19	20	375	

2+32

INDEXED
JAN 3 1951

47.7	49.7	42.6	42.6	42.2	42.9	42.0
2.4	2.4	7.5	7.5	7.9	7.2	8.1
375	20	18	18	18	24	375

2+14.95 EL. Promontory

47.7	47.9	43.7	43.0	46.2	45.3	46.5
2.2	2.2	6.4	6.1	6.1	4.8	3.6
375	21	19	15	18	375	

1+80

48.1	47.7	47.2	47.1	47.4
2.0	2.4	2.9	3.0	2.7
375	15	17	375	

0+00 W.P.L. Ingraham

No Earth Removed

BM 5.25 50.09
↑

4484 & Locat Ingraham & Fortuna

50.09
↑

2+14.95 E.L. Haines

No Dirt Moved
From Haines to
Riviera.

41.3	41.4	40.1	40.2	39.2	39.7	39.7	42.7	43.5
8.8	8.7	10.0	9.9	10.9	10.4	10.4	7.4	6.6
37.5	31	30	21	28		20	25	37.5

1+75 Haines

42.8	42.2	41.0	41.1	40.9	43.1	43.7
7.3	7.9	9.1	9.0	9.2	7.0	6.4
37.5	21	20		20	21	37.5

1+50

Not showing small amount
Dirt Removed in Alleys.

43.5	43.3	40.9	41.3	41.1	43.2	43.9
6.6	6.8	9.2	8.8	7.0	6.9	6.2
37.5	21	20		20	21	37.5

1+00

43.8	43.6	41.1	41.5	41.3	43.4	43.4
6.3	6.5	9.0	8.6	8.8	6.7	6.7
37.5	21	19		20	21	37.5

0+50

44.7	44.6	41.5	41.6	41.3	42.9	43.3
5.4	5.5	8.6	8.5	8.8	7.2	6.8
37.5	21	20		20	21	37.5

2+89.95 = 0+00

w.l. Promontory

46.0	45.8	41.7	42.0	41.7	43.4	43.9
4.1	4.3	8.4	8.1	8.4	6.7	6.2
37.5	21	19		20	21	37.5

2+72

50.09
↑

46.6	46.1	41.8	42.1	41.6	41.9
3.5	4.0	8.3	8.0	8.5	8.2
37.5	21	19		20	37.5

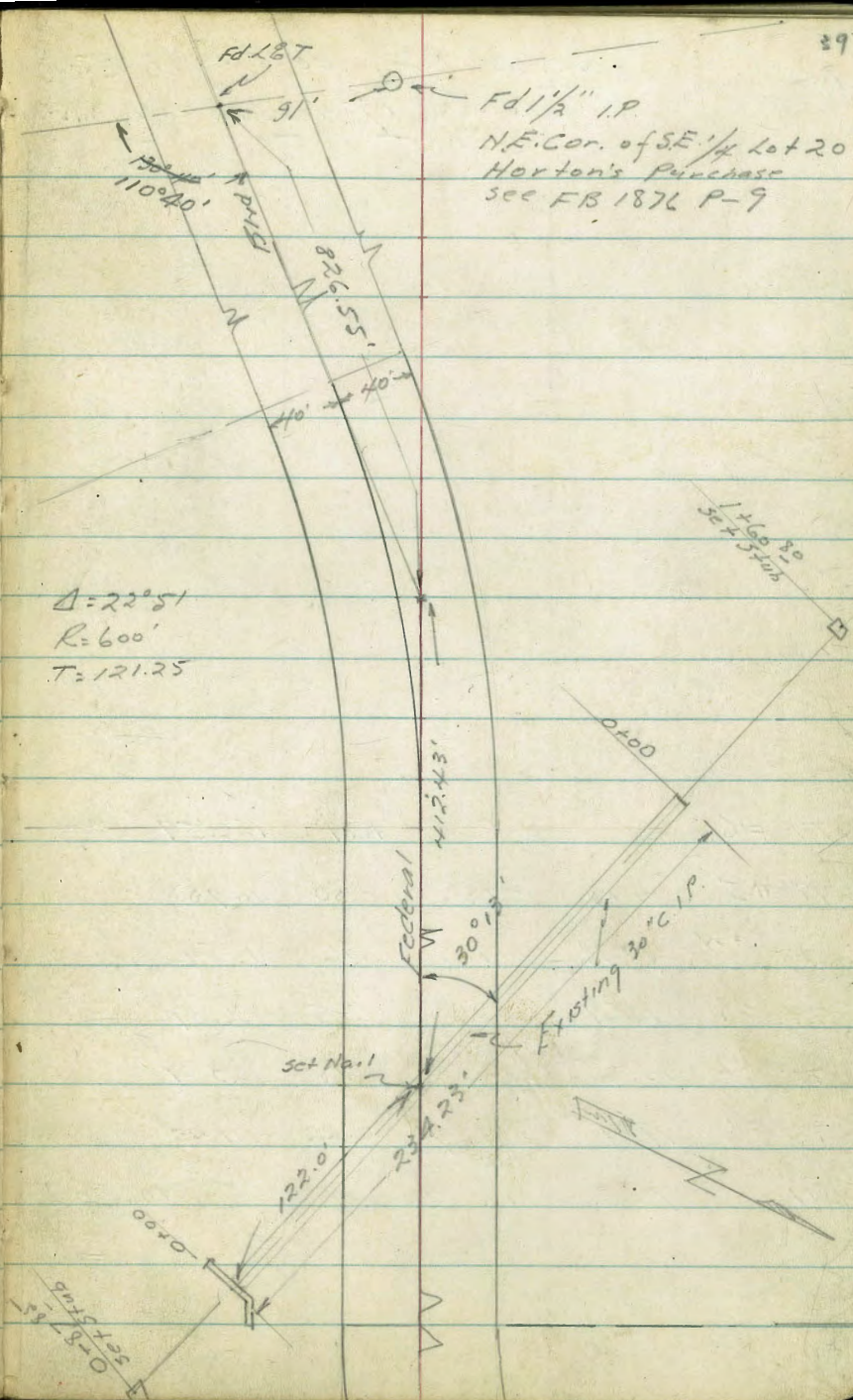
50.09
↑

2-23-51

Hendricks
Allen
Shepard
Bruner
NO# 20808

Survey for Proposed
Extension of 30" C.I.P.
Lot 19 Hortons Purchase
Ref: Roll Map # 4420 Sheet 6
& FB 1876 P-9

INDEXED
MAR 2 1951



Levels Proposed Culvert Ext.
 Block 19 Horton's Purchase

TP #6		1.29	156.57'	On Nail & 30" C.I.P. & Federal Blvd.
TP #5	9.99	157.86'	0.80	147.88'
TP #4	12.76	148.68'	12.76	135.92'
TP #3	12.59	148.68'	0.25	136.09'
TP #2	13.25	136.34'	0.18	123.09'
TP #1	11.87	123.27'	0.62	111.40'
BM	9.62	112.02'		102.40

Chisel X & Federal Blvd 519 135+61.40 EG
 (FB 1876 P 9-16)

Levels Proposed Ext Culvert

Hwy.

1+60 80

1+00

0+81

0+50

0+28

0+00

0+00 going North Westerly

TP #4 0.90 $\frac{13682}{\lambda}$

135.92 (P. 40)

	129.2	129.4	129.5	126.8	126.4	126.2
	10°	10°	10°			
	15	15	15			
	76	74	73	80	80	80
	23	12	9	20		
	130.2	128.8	130.4	133.5	133.5	135.5
	66	70	64	15		
	32	19				
	131.9	131.4	131.9	136.2	142.6	
	49	54	49	0	5	
	31	15	8		15	
	133.2	132.8	133.1	133.0		
	35	40	37	3	10	
	22	6		15		
				132.9		
				3		
				ground		
				146.7		
				8		
				15		
				12		
				17		
				F.L. outlet 30" C.I.P.		
				30"		
				136.82		

Levels Proposed Exst. Culy.
J.E.H.

0+87.85

147.4
7⁸ 18
146.3
8⁹ 6
146.9
8³ 2
147.8
7⁴ 14
153.7

0+56

145.5
9⁷ 14
144.6
10⁶ 3
145.5
9⁷ 2
146.5
9⁷ 15
150.9

0+21

Reduced by
C.P.L.
3-28-51

146.1
8⁵ 15
142.3
12⁹ 2
142.3
9⁷ 11
143.6
11⁶

0+00

138.78
139.7
139.5
Ground

0+00 going North Easterly

(South) cal.

FL. inlet 36" C.I.P.
30"

T.P. 6.91 155.23^f 12.27 148.32^f

152.22^f

T.P. #6 4.02 160.59^f 156.51

on Nail & Federal Blvd P. 40

7-Sect. Harbor Drive Both Sides
of Laurel St. intersection

LT. R. RT
INDEXED

APR 19 1951

5261 4-16-51 7.0

W.O. 20815

See state plan - Roll # 6159 + H-8 Harbor
Sheet 7 Dept. Plan.
Sketch - p. 44

0.7 7.2 0.9 0.4 2.7
6.2 57 6.0 6.5 4.2
83.3 50 65 75 100

329+00

1.35 1.58 1.66 1.74 1.70 1.02 1.97 2.12 2.22 2.31 2.26
5.57 5.74 6.26 5.18 5.22 5.9 4.95 4.80 4.70 4.61 4.66
43 36.8 25.9 14.8 12.7 13 15.3 26.2 37.1 45
C.L. Conc. C.L. C.L. Conc. C.L.

328+56 = ± of 3x2 Box inlet - wood grate

40 0.14
6.52 6.78 = Top of same
Top grate 82 along E of
Culvert.
See plan.

Cont.

1.0 1.3 1.4 0.7 2.7
5.9 5.6 5.5 6.2 4.2
83.8 50 60 80 100
fence

328+50 = Begin. (used state plan sta.)

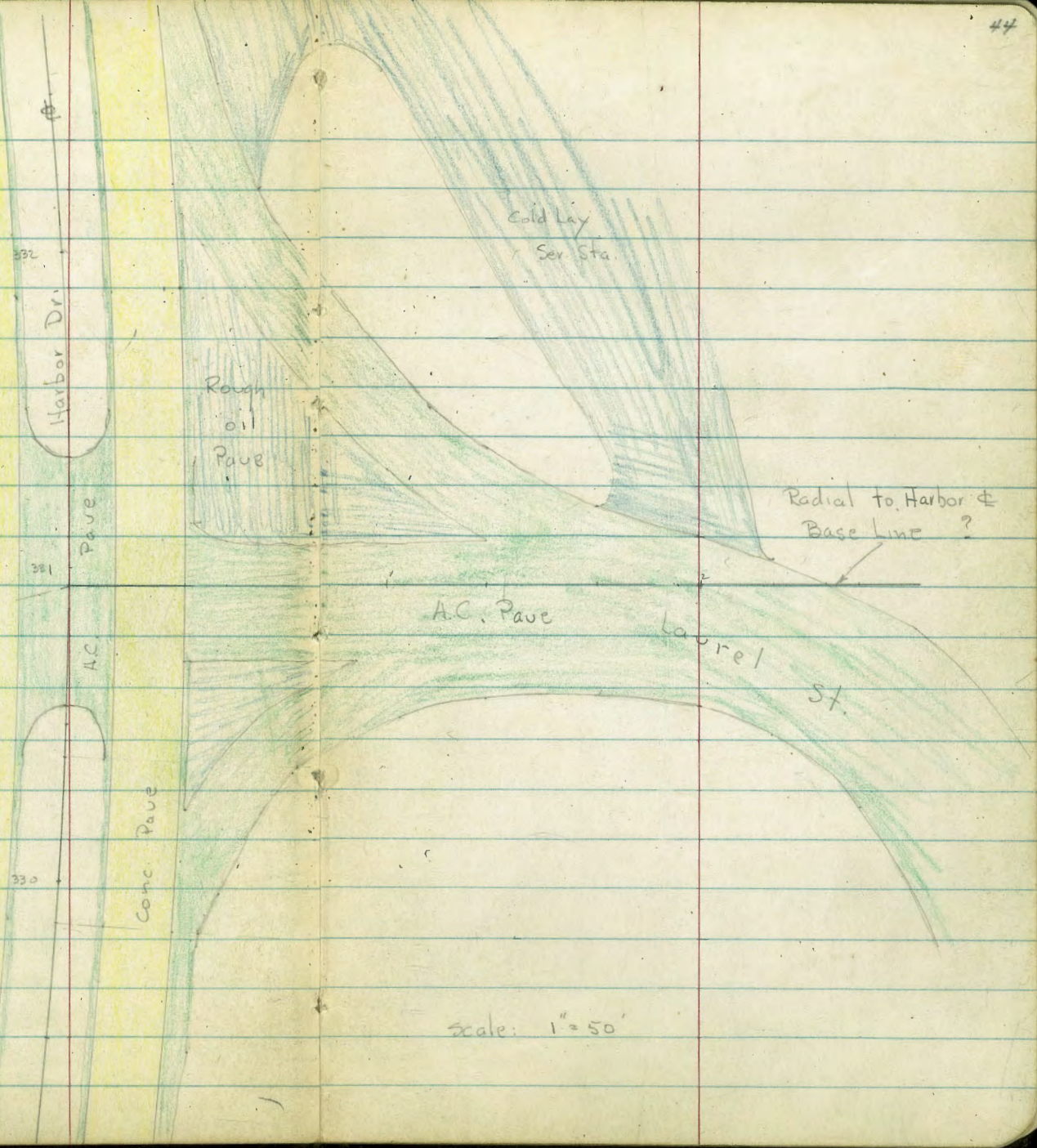
1.46 1.61 1.72 1.80 1.76 0.6 2.11 2.19 2.27 2.35 2.16
5.46 5.31 5.20 5.12 5.16 6.3 4.81 4.73 4.65 4.57 4.76
41 36.6 25.7 14.8 12.9 13.1 15.3 26.1 37.2 45.5
edge C.L. Conc. Conc. Conc. Conc. Conc. Conc. Conc. Conc. Conc.
C.L. Pav. shoulder. CL. shoulder. Pav. edge

533 6.92 7.21 (1.59) spike
486 8.80 6.84 3.94

± 330+94.36 6.92

B.M. 2.84 10.78 7.94 N.W. Cor. Laurel + Pacific

actually from 331+00 as Ran
 $\frac{330+94.36}{2} = \# \text{ TORT}$
 gal. spike in pave = 0+00



Scale: 1" = 50'

LT.

±

RT.

45

0.7
6.3
81
gwt.
1.7
5.3
100

330+40

1.0	1.26	1.35	1.43	1.54	1.41	1.0	1.91	1.96	2.06	2.16	2.01	0.97
6.0	5.71	5.62	5.54	5.43	5.56	6.0	5.06	5.01	4.91	4.81	4.96	6.00
60	43	37.3	26.3	15.5	13.5	60	13	14.7	25.5	36.5	47	74.2
	c.l.		Conc.		c.l.		c.l.	Conc.		Conc.		c.l.

Cont.

2.1
4.9
100

330+00

1.1	1.28	1.42	1.53	1.67	1.65	0.9	1.92	2.01	2.15	2.25	1.95	0.8
5.9	5.69	5.55	5.44	5.30	5.32	6.1	5.05	4.96	4.82	4.72	5.02	6.2
60	43	36.7	25.8	14.9	13	60	13.2	15.3	26.1	37.1	51.2	73
	c.l.		Conc.		c.l.		c.l.	Conc.		Conc.		c.l. gwt.

329+50

1.1	1.36	1.53	1.62	1.69	1.64	1.0	2.01	2.09	2.16	2.26	2.05	1.5
5.9	5.61	5.44	5.35	5.28	5.33	6.0	4.96	4.88	4.81	4.71	4.92	5.5
60	42	36.6	25.6	14.8	13	60	13.3	15.3	26.2	37.1	45.3	60
	c.l.		Conc.		c.l.		c.l.	Conc.		Conc.		c.l.

T.P.

5.38

6.97

5.33

1.59

6.97

329+31 - 66.8 RT. = Gas. Co. MH.

1.44
5.53
66.8 = on Rim

6.92

T.P. 4.16 5.75 5.38 159

cont. -

0.53 0.4
6.44 6.6
72.5 80
edge

332 + 00

0.9 1.03 1.09 1.17 1.26 1.16 0.6 1.45 1.57 1.67 1.73 1.77 1.48
6.1 5.94 5.88 5.80 5.71 5.81 6.4 5.52 5.40 5.30 5.24 5.20 5.49
6.0 39 36.9 25.9 15 13 13.2 15.2 26 37 39.5 45
C.L. Conc. C.L. Conc. C.L. edge AC

Cont.

1.1 0.88 0.57
5.9 6.09 6.40
75 80 113.5
edge edge AC AC

331 + 50

0.9 1.15 1.24 1.31 1.38 1.25 0.8 1.48 1.57 1.64 1.71 1.81 1.7
6.1 5.82 5.73 5.66 5.59 5.72 6.2 5.49 5.40 5.33 5.26 5.16 5.3
6.0 39 36.7 25.7 14.8 12.8 13.2 15.1 26 37 39.5 50
C.L. Conc. C.L.

331 + 35 = edge of A.C. Crossover

1.0 1.17 1.25 1.35 1.42 1.48 1.64 1.72 1.83 1.90 1.7 1.0 0.81
6.0 5.80 5.72 5.62 5.55 5.49 5.33 5.25 5.14 5.07 5.3 6.0 6.16
6.0 40 36.5 25.5 14.7 15.3 26.3 37.2 40 50 75 97.3
C.L. Conc. Conc. C.L. edge AC

331 + 00

1.0 1.21 1.28 1.39 1.45 1.59 1.77 1.88 1.93 1.92 1.24 0.91
6.0 5.76 5.69 5.58 5.52 5.38 5.20 5.09 5.04 5.05 5.73 6.00
6.0 42 36.8 25.9 15 15.2 26.0 37 45 75 100
C.L. Conc. Conc.

330 + 55.5 = edge of A.C. Crossover

1.0 1.25 1.32 1.42 1.49 1.60 1.89 2.01 2.11 2.13 1.40 0.72
6.0 5.72 5.65 5.55 5.48 5.37 5.08 4.96 4.96 4.84 5.57 6.25
6.0 42 36.9 25.8 15 15.3 26 37 45 65 104
C.L. Conc. Conc. C.L. edge AC

Lt. Rt.

334+00

1.0	1.25	1.31	1.35	1.46	1.36	0.8	1.61	1.74	1.89	2.03	2.02	0.97	1.1
4.8	4.50	4.44	4.40	4.29	4.39	4.9	4.14	4.01	3.86	3.72	3.73	4.78	4.04
60	40	36.9	25.9	15	13.1		13	15.1	26	36.9	45	63	90
	CL		Conc.		CL		CL		Conc.			CL Dr.	

333+78 = edge of C.L. Drive to Sev. Sta

1.92	1.88	0.81	1.22
3.83	3.87	4.94	4.53
36.9	45	65	80-on
Conc.		edge CL	CL

333+50

1.0	1.14	1.20	1.20	1.29	1.22	0.6	1.57	1.66	1.74	1.83	1.70	1.0
4.8	4.61	4.55	4.55	4.46	4.53	5.1	4.18	4.09	4.01	3.92	4.05	4.8
60	39	36.9	25.9	15.1	13.1		13.1	15.1	26	36.9	47	70
	CL		Conc.		CL		CL		Conc.		CL	

Cont.

0.4	0.55
54	5.20
75	78 = edge
	CL Parking
	Sev. Sta.

333+00

0.8	1.15	1.20	1.28	1.39	1.33	0.6	1.67	1.77	1.82	1.91	2.01	1.75
4.9	4.60	4.55	4.47	4.36	4.42	5.2	4.08	3.98	3.93	3.84	3.74	4.00
60	40	36.9	25.9	15	13.3		13.2	15.1	26	36.9	39.5	47
	CL		Conc.		CL		CL		Conc.		CL	

Cont.

3.58 F.L. of Sewer

0.05	1.09	1.48	0.50
3.63	4.66	4.27	6.25
	58	77	90
	± Box	CL	± Box - Topgrate
	Topgrate		

2 more Boxes on Rt. See plan.
332+50 = ± 3' x 2' Box Inlet - wood grate

0.8	1.16	1.20	1.27	1.39	1.31	0.05	1.61	1.69	1.70	1.69	1.73	1.30
4.9	4.59	4.55	4.48	4.36	4.44	5.80	4.14	4.06	4.05	4.06	4.02	4.45
60	39	37	26	15.1	13.3	Topgrate	13.1	15.1	26	37	43	53.5
	CL		Conc.		CL	5.75	CL		Conc.		CL	

337+00

L					R				
1.1	1.37	1.53	1.72	1.78	1.0	1.65	1.76	1.64	1.52
4.9	4.61	4.45	4.26	4.20	5.0	4.33	4.22	4.34	4.46
6.0	4.1	36.9	25.9	15	12.9	15.1	26	37	40
	CL		Conc.	CL		CL	Conc.		CL

336+50

0.8	1.37	1.44	1.64	1.69	0.9	1.58	1.65	1.54	1.44
5.2	4.61	4.54	4.39	4.29	5.1	4.40	4.33	4.44	4.54
6.0	3.9	36.9	25.9	15	13.1	15.1	26	36.9	39
	CL		Conc.	CL		CL	Conc.		CL

336+00

0.7	1.40	1.46	1.60	1.64	0.8	1.56	1.62	1.51	1.39
5.3	4.58	4.52	4.38	4.34	5.2	4.42	4.36	4.47	4.59
6.0	3.9	36.9	25.9	15.1	13	15.1	25.9	36.9	39
	CL		Conc.	CL		CL	Conc.		CL

335+50

1.0	1.36	1.45	1.51	1.56	0.8	1.61	1.66	1.56	1.51
5.0	4.62	4.53	4.47	4.42	5.2	4.37	4.32	4.42	4.47
6.0	39.5	36.9	25.9	15.1	13	15	26	36.9	39.3
	CL		Conc.	CL		CL	Conc.		CL

335+00

1.2	1.38	1.44	1.51	1.54	0.8	1.66	1.69	1.72	1.72
4.8	4.60	4.54	4.47	4.44	5.2	4.32	4.29	4.26	4.26
6.0	3.9	36.9	25.9	15.1	13	15	25.9	36.9	39
	CL		Conc.	CL		CL	Conc.		CL

T.P. 4.25 5.98 4.02 1.73

5.98

334+68.56 = E.C

1.0	1.37	1.40	1.50	1.57	0.8	1.72	1.79	1.77	1.82
4.7	4.38	4.35	4.25	4.18	5.0	4.03	4.00	3.98	3.93
6.0	4.5	36.9	26	15	13.2	15	26	36.9	39
			Conc.	CL		CL	Conc.		CL

334+16 = edge of CL Dr. to Ser. Sta.

1.97	2.03	1.11	1.42	1.97
3.78	3.72	4.64	4.33	3.78
36.9	45	62	73	90
	Conc.	gut	edge CL	

5.75

Lt.

±

Rt.

337+92.82 = P.C. = end.

1.4
4.6
60

1.86	2.03	2.13	2.07	1.94	1.6	1.89	1.96	1.86	1.76	1.68	1.8
4.12	3.95	3.85	3.91	4.04	4.4	4.09	4.02	4.12	4.22	4.30	4.2
44	37	26	15.2	13.1		13.1	15.1	26	36.9	40	60
CL		Conc.		CL		CL		Conc.			

337+67-7.5' Lt. = ± Signal

1.2
4.8
60

1.56	1.78	1.90	1.94	1.85	1.2	1.77	1.88	1.70	1.61	1.60	1.7
4.42	4.20	4.08	4.04	4.13	4.8	4.21	4.10	4.28	4.37	4.38	4.3
43	37	26	15.1	13.2		13.2	15.1	25.9	36.9	40	60
		Conc.			5.98	CL		Conc.			

337+50

337+29-50' Rt. = ± Signal - 2x3 Base

Req. Sections along Base Line Thru
 Laurel St - Radial Line from Sta. 330+94.36
 sketch - P. 44

2+00

1+67 - 24.5 ft. = edge of C.L. Drive to Sec. Sta.

1+50

1+32

1+00

0+50

0+00 = \pm Harbor Dr. Sta. 330+94.36 - Radial to Har

B.M. 4.99 6.58 15.9 = \pm spike -

50

Lt.

\pm = Base Line

Rt.

2.30	2.31	2.19	2.27	2.18	1.92	1.7	3.1
4.28	4.27	4.39	4.31	4.40	4.66	4.9	3.5
50	35	15		20	39.3	45	60
	Dr.	edge AC.			edge		

1.68
 4.90
 24.5 = edge AC. + CL.

1.2	1.28	1.53	1.75	1.81	1.62	1.34	2.2
5.4	5.30	5.05	4.83	4.77	4.96	5.24	4.4
50	35.3	20	10		15	35	50
	edge					edge	

0.96	1.13	1.40	1.40	1.20	1.04
5.62	5.45	5.18	5.18	5.38	5.54
44	30	14.3		20	36
w. edge		Both = Cor. edges			edge

0.78	0.7	0.87	0.48	0.91	0.73
5.80	5.9	5.71	5.60	5.67	5.85
36.9	25	14		20	45.5
edge AC.		edge AC.			edge AC.

1.81	1.88	1.88	1.85
4.77	4.70	4.70	4.73
14.1		12	24.3
edge AC.			edge AC.

Harbor Dr.

P. 43

6.58

Lt.

Base Line

Rt. 51

2+50

3.1	2.6	2.76	2.66	2.48	2.28	2.1
3.5	3.9	3.82	3.92	4.10	4.30	4.5
25		8	30	50	68.5	75
		edge			edge	
		A.L.				

2+23- 8 Lt. = edge C.L. Dr + edge A.C.

2.3 9
 4.19
 8 - A.C.
 + CL.

6.58

Cross Section

Alloy BIK 67 POINT LOMA Hgts.

29 June 1951

W.O. # 31755

Sammermeyer
Be99

R. Sisson
Oltman.

T.P. Book 26
37

Map 110C

T.P. sheet # 753

Sail sample 4' L x 2' W

outs to poles taken to property
side of poles.

T.W. = Top of wall

B.W. = base of wall footing.

X = Fd cross in Conc.

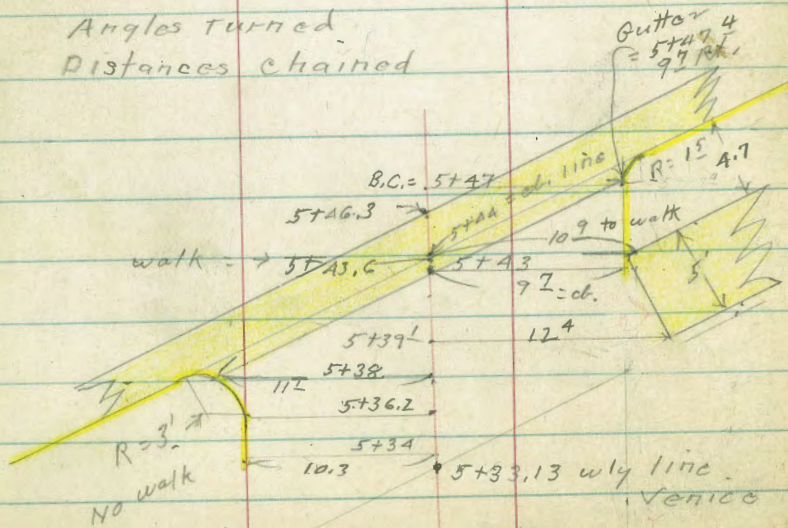
• = Fd L+T.

X = cut cross in curb or walk

• = set nail in Pav

Angles turned

Distances chained

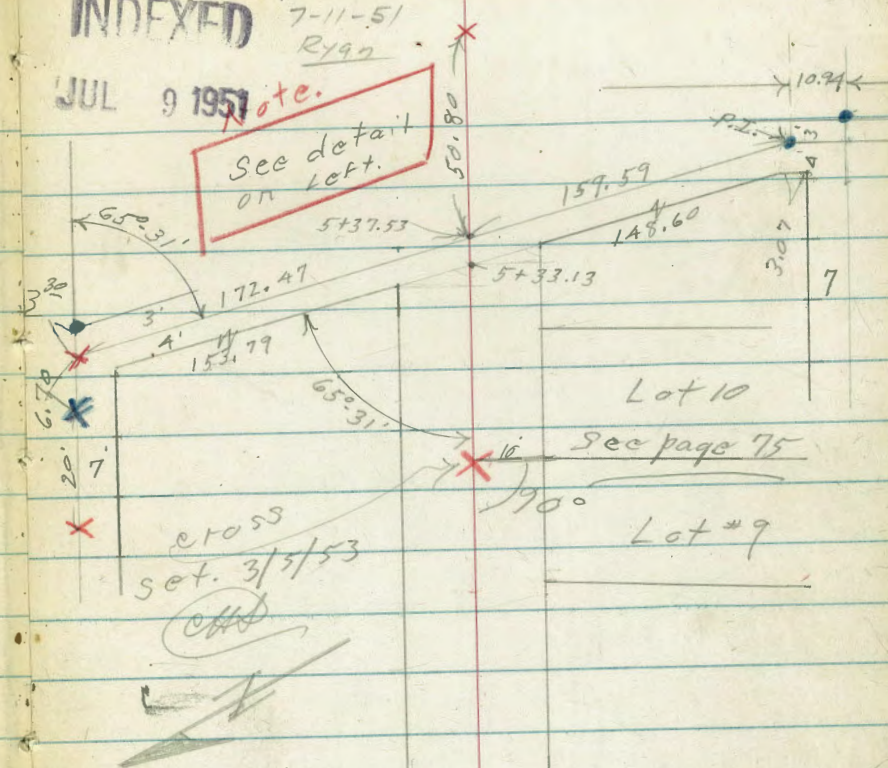


INDEXED

Reduced
7-11-51
R199

JUL 9 1951

note.
See detail
on left.



Santa Barbara
A.C. Pav. 0-53

0+30

200.4	199.9	199.9	198.0	197.8	198.0	199.3	200.3
4.0	4.5	4.5	6.4	5.6	6.4	5.1	4.1
15	10	7	4		8	10	15

T.W. = Top of wall

B.W. = base of wall

2+07.5 12.9 RT. = 9" wide N.Y.S. Conc. wall

T.P. 8.62 204.36 1.10 195.74

204.36

199.6	199.6	200.1
4.8	5.8	4.3
12.9	12.9	12.9
Int.	B.W.	T.W.

0+05

199.4	199.4	193.8	193.5	192.0	199.4	199.4
+2.6	+2.6	3.0	3.3	2.8	+2.6	+2.6
10	7	6		7	10	15

10⁵ Lt } = end alley curbs.

10⁵ Rt }

0+00 = end A.C. pave.

193.84	193.41	193.23	192.95	192.94	193.17	193.24
3.0	3.43	3.61	3.87	3.90	3.67	3.6
15	10.5	10.5		10.5	10.5	15
	6	6		6	6	

0-08⁵ } = E.C. cl. Ret.

10⁵ Rt }

10⁴ Lt }

193.23	192.75	192.52	193.04
3.61	4.11	4.52	3.80
10.4	6	10.5	10.5
6	10.9	6	6

11.5 Rt } = B.C. 1 1/2 Rad. Cl. Ret.

11.5 Lt }

0-10 = Ely. Cl. Line Santa Barbara

2.63 196.84 194.21

193.76	193.08	193.18	192.53	192.48	192.80	193.02	191.75	192.39
3.08	3.76	3.65	4.31	4.36	4.51	3.82	5.09	4.45
50	50	11.5	11.5				50	50
6	6	6	6	196.84	11.5	11.5	5	6
N.W.B.P.	Santa Barbara	Santa Barbara	Santa Barbara	Santa Barbara	Santa Barbara	Santa Barbara	Santa Monica	Santa Monica

Alley BIK. 67. Pt. Loma Hqts.

T.P. Nail in Pole # P.A. 4376

T.P. 5.57 209.07 0.86 203.50

0+85

202.0
2.4
20
202.4
2.0
10
202.2
2.2
8
202.4
2.0
8
202.9
1.5
10
203.1
1.3
15

0+55

201.2
3.2
10
201.2
3.2
8
200.2
4.2
5
199.7
4.7
8
199.7
4.7
8
201.0
3.4
10
201.4
2.6
12
201.6
2.8
20

0+51 11' RT = Φ N. + S. 8" wide rubble

Conc. wall.

200.8
3.6
13
200.5
3.9
10
199.5
4.9
8
200.1
4.3
10
200.1
4.3
112
200.1
4.3
112
202.1
2.3
112
Crd B.W T.W.

0+49⁵ 13' Lt = start frame shed on wooden blocks

3.6
13
Crd

0+49 17' Lt = end Conc apron

201.04
3.28
27
Crd floor
200.8
3.61
17
Apron
200.75

0+48 9³ RT = end conc. apron

199.46
4.90
93
Apron
199.56
4.80
10
Apron
201.16
3.20
192
Crd floor

0+32 170 Lt = start Conc. Apron
9³ RT = start Conc. apron

201.06
3.30
27
Crd floor
200.30
4.06
17
Apron
198.54
5.82
93
Apron
198.74
5.62
10
Apron
201.05
3.31
192
Crd floor

204.30

Alley Bk. 67 Pt. Loma Hqts

T.P. 8.34 217.03 0.38 208.69

1+85

207.7
1.4
15
207.5
1.6
10
207.6
1.5
208.1
1.0
10
208.3
0.8
15

1+60 14' RT = 1/2 3' wide conc walk

1+50 10' Lt. = end board fence.

205.5
3.6
15
205.3
3.8
10
205.3
3.8
10
206.5
2.6
14
206.7
2.35
14
206.95
2.12
20
205.9
3.2
10
206.3
2.8
15

1+35 25' RT = 1/2 double Gar. Conc floor

206.30
2.77
25
Floor

1+25

1+17 8' RT = Ctr. dead man.

1+00 { 9' RT = pole # P.A. A376
9' Lt. = start board fence.

204.2
4.9
15
204.2
4.9
10
204.1
5.0
204.9
4.2
10
205.4
3.7
15

+95 8' RT = end conc. apron

0+86 - 8' RT = start conc. apron to Sing. Gar.

202.89
6.18
85
203.11
5.96
10
203.31
5.76
11
203.71
5.36
24
Gar. Floor
202.48
6.59
85
202.80
6.27
10
203.08
6.03
11
203.65
5.42
24
Gar. Floor

209.07

10⁷ Rt. = step up in wall (wall)
0+36- 10⁷ Rt. = face of conc. block

210.0	210.6	216.0	216.0
7.0	6.4	1.0	1.0
10 ⁷	10 ⁷	10 ⁷	10 ⁷
B.W.	B.W.	T.W.	T.W.
to west	to east	to west	to east

2+35 10⁴ Lt. = start conc. block wall.

216.1	209.6	210.4
0.9	7.4	6.6
10	10	10
T.W.	B.W.	

2+30 - 10⁴ Lt. = end conc. block wall

215.6	209.2	210.2
1.4	7.8	6.8
10	10	10
T.W.	B.W.	

2+23 - 11' Rt. = step up in wall. →

210.0	215.4	209.5	214.9
7.0	1.6	7.5	2.1
B.W.	11	11	11
to west	B.W.	T.W.	T.W.
11	to east	to west	to east.

11' Rt. = Conc. block wall.
2+15 - 10⁵ Rt. = end Conc. slab

209.67	209.5	214.9
7.36	7.5	2.1
10 ⁵	11	11
slab	B.W.	T.W.

2+04 - 11' Rt. = end of wall
10⁵ Rt. = start 2' wide 6" thick E+W. Conc. Slab.

209.37	207.8	214.3
7.66	9.2	2.7
10 ⁵	11	11
top of slab	B.W.	T.W.

10⁶ Lt. } = start conc. block walls.
2+00 11² Rt. }

214.8	208.0	208.9	209.5	208.7	208.7	207.8	214.3
2.2	9.0	8.1	8.5	8.3	8.3	9.2	2.7
10	10	10		10	11	11	11
T.W.	B.W.					B.W.	T.W.

217.03

2+91 12' Lt. = 4 Sing Gar. ^{No apron.} Conc. floor

213.59
3.44
12
Floor

2+85 11' Rt. = start conc. apron to Sing ^{Gar.}

218.2
3.8
10
4.3
212.7
3.4
10
213.6
214.18
2.85
11
Apron
2.60
16
Gar.
Floor

2+83 - 10' Lt. = end brick wall

218.4
+1.4
10
T.W.
4.9
10
B.W.
3.9
10

2+73 - 10' Lt. = 4' wide walk thru wall

211.2
5.8
10
B.W.
212.72
4.31
10
or walk

2+64 11 1/2' Rt. = end board fence.

10' Lt. Also = start brick wall.
10' Lt. = end conc. block wall.

11 3/4' Rt. = end conc. block wall.
11' Rt. = start board fence.

2+50 8 1/2' Rt. = pole # P.A. 4350

217.5
7.5
10
T.W.
east.
216.8
0.2
10
T.W.
west
209.3
7.7
10
B.W.
both walls
211.5
5.5
10
211.1
5.9
11
211.5
5.5
113
B.W.
210.5
6.5
113
216.5
0.5
113
T.W.

2+40 = Ctr. Sewer M.H.

210.9
6.1
10
210.84
6.19
R177
211.23
5.8
10

217.03

4+00

T.P. 8.10 223.87 1.26 215.77

3+52 10² Rt. = start post & wire fence

3+50 10 Rt. = end 6' high lath fence

3+40 - 9⁶ Rt. = start 6' high lath fence

3+24 9² Rt. = end conc. apron

3+06 9⁸ Rt. = start conc. apron to double ^{Bar.}

3+00

2+93 11 Rt. = end conc. apron.

	217.4	217.6	217.5	217.7	219.2	219.2
	6.5	6.3	6.4	6.2	4.7	4.7
	15	10		6	10	15
			<u>223.87</u>			

	215.8	215.9	215.6	216.2	216.5
	1.2	1.1	1.4	0.8	0.5
	15	10		10	15

	215.0	215.0	214.5	215.2	215.35	215.35	215.65
	2.0	2.0	2.5	1.8	1.68	1.68	1.38
	15	10		7.2	9.9	10	20
				Bar.	Apron		Bar. floor

	214.85	214.87	215.60
	2.18	2.16	1.43
	9.8	10	20
	Apron		Bar. floor

	214.0	214.0	213.5	214.0	214.2
	3.0	3.0	3.5	3.0	2.8
	15	10		10	15

	213.9	214.16	214.43
	3.1	2.87	2.60
	11	11	16
		apron	Bar. floor

217.03

4+79- 7⁶ Rt. = double deadman

4+75 9² Lt. = ctr. 14" diam cypress

4+73^E 9² Lt. = ctr. 14" diam cypress

4+72 9² Lt. = ctr. 16" diam cypress

4+71 - 7⁶ Rt. = deadman

4+70- 10' Rt. = start conc. wall

4+69- 9² Lt. = ctr. 28" diam cypress

16' Lt. = ctr. door way
Ely. Front.

4+68 10² = S. Ely. Cor. stucco Gar.

Conc. floor. - East Front.

4+50 10¹ Lt. = S. Wly. Cor. stucco Gar.

4+48 - 8¹ Rt. = pole # P.A. 4316

4+45

11⁸ Rt. = 5' wide brick walk

4+25 9⁸ Rt. = 5' wide brick steps

220.2
219.3
222.9
3.7 4.6 1.0
10 10¹ 10¹
B.W. T.W.

220.3 220.1 219.6 219.4 220.1
3.6 3.8 4.3 4.5 3.8
16 10 6 10
Bar Floor

220.3 219.5
3.6 4.4
10¹ 10¹
Floor Grd.
18081

218.9 219.3 219.2 219.4 220.2 220.2
5.0 4.6 4.7 4.5 3.7 3.7
15 10 5 10 15

219.0 220.2
4.90 3.70
9⁸ 11⁸
bottom walk
stop

223.87

5+34 - 10' Lt = start alley curb.

5+33¹³ = wly line Venice

5+28 16' Rt = ± 2nd double door

5+19 16' Rt = ± Bldg.

5+10 16' Rt = ± 12th double Car. door

5+01 - 10' Rt = end conc. wall
Also = start conc. apron to 4 Car. Gar.

T.P. 406 222.02 5.91 217.96
Pole # P. 1924

4+85 10' Rt = ± 5' wide steps thru wall
12th Rt = top of steps

215.10 216.40
 6.92 5.6
 10.3 10
 216.4 216.4
 5.6 5.6 4.7
 10 10
 216.6 216.5 216.4 217.3
 5.4 5.5 5.6 4.60 4.03
 10 4 10
 Apron 16
 + Curb. Car. floor

219.3 219.3 217.6 217.2 217.74 217.97
 2.7 2.7 4.4 4.8 4.28 4.05
 10 7 4 10
 Apron 16
 + Curb. at Bldg

218.02 218.04
 4.00 3.98
 10 16
 Apron Floor

219.0 219.5 219.0 217.7 222.7 218.27 219.09
 3.0 3.5 3.0 4.3 4.7 3.75 3.93
 10 10 10 10 10 10
 Curb. B.W. T.W. Apron Car. Floor

222.02

219.8 219.6 219.4 219.6 219.7 218.9 222.5
 4.1 4.3 4.5 4.3 4.2 5.0 1.4
 20 10 10 10 10 10 1.5
 step. B.W. top of step.

223.87

along cb. line Venice.
this section on diagonal

5+44 = wly cb. line Venice

214.87	214.25	215.42	216.60	217.24
7.15	7.77	6.60	5.42	4.78
14.	14		G.	12 ⁵
cb	G.		12 ⁵	cb. f.c.

5+43^E - 10² Rt = end walk (Ely. edge.)

217.06
4.96
10²
walk

9¹ Rt = start curb.

5+43 = start Conc. gutter

215.8	215.48	216.98
6.2	6.54	5.14
±	gutter	cb.
Grid		9 ¹

5+39^L 12⁴ Rt. = start Con walk (wly edge.)

217.28
4.74
12⁴
walk + Gnd.

5+38 11' Lt = wly edge Conc. gutter

214.96	214.47
7.06	7.55
11 ^L	11 ^L
cb	G

5+37 10' Rt = end Conc. apron.

217.12	217.94
4.90	4.08
10	16
Apron	Con. floor

5+36^E 10² Lt. = B.C. 3' Rad alley Ch. Rt.

214.99
7.03
10³
cb.

222.02

Alley Blk 67 Pt. Lom + Hgts.

62

9.98 217.64 (217.72)

S.W.B.P. Venice + Niagra

T.P. 1.41 227.62 7.74 226.21

4.26 229.69

Venice + Newport.
Set Blk U.S.G.S Marker (Venice #2) S.Wly. cl.

T.P. 12.42 233.95 0149 221.53

Improvements now under Const.

See Venice St. plans for grade

This section Along edge of gutter

5+46³ = Ely edge. Conc gutter.

5+47⁴ 9² Rt. = wly edge conc gutter

5+47 - 9² Ax. = B.C. 15' Radi. Cl. Rot.

216.27
217.12
5.55 490
92 92
6.09 cl.
217.09

4.93
92
cl. B.C.

222.02

X-Sect. Laurel St. from Harbor Dr.
to Pacific Hwy. - See Print of
Harbor Dept plan - 190-D - for sketch.

5584

8-1-51 - 7.0.

W.O. 25020

INDEXED

AUG 2 1951

2+46.90

3.25	2.90	2.70	2.52	2.43	2.14	1.9	3.70
40	25	10.7 edge		13	26.6 edge	40.2	Top

2+18.95

2.97	2.46	2.42	2.32	2.25	1.92	1.9	3.64
40	23.5 edge	11		14	27.7 edge	40.2	Top wall

Req. 6" Conc. Wall. on Prop.

1+91 = P.C. - Sect Radial around Curve

2.33	2.21	2.22	2.20	2.01	1.71	1.2	3.47
40 on CL.	25 edge AC.	7		15	28.1 edge	40.1	Top wall

1+50

1.53	1.67	1.83	1.75	1.52	1.41	1.4	3.39
35.4 edge AC.	26	14.5		15	26 edge	37.9 = ground.	Top wall

1+00

0.82	0.95	0.92	0.88	0.69	1.7
42.3 edge AC.	16.7 edge AC.		20	39 edge AC.	50

0+50

1.7	1.87	1.86	1.86	1.71
40	20.7 edge AC.		18 edge AC.	45 edge

Note: Used Elev. Rod. - Actual Elev. Shown.

BM

159 - 0100 spike
P. 43

Laurel

Lt.

E

Rt.

64

6+00

3.8	4.35	3.4	2.99	2.74	2.76	3.3	3.6
40	31.1	25	16		12	25	40
	S. Rail		edge		edge		

5+50

3.7	4.22	3.4	3.25	3.24	3.14	3.7	3.9
40	31.1	25	13.5		10	25	40
	S. Rail		edge		edge		

5+00

3.6	3.99	3.3	3.18	3.13	2.96	3.4	3.9
40	31	25	15		9.5	25	40
	S. Rail		edge		edge		

4+50

3.6	3.80	3.2	3.05	3.02	2.83	3.7	3.6
40	31	25	17		10.5	25	40
	S. Rail		edge		edge		

4+299 - 40' Rt. = end Conc. wall

2.8	3.87
40	40 = Top wall

4+00

3.4	3.64	3.1	3.03	2.91	2.75	3.6	2.8	3.82
40	30.8	25	13.9		10	25	40.1	
	S. Rail		edge		edge			

3+65

3.3	3.58	3.1	2.96	2.84	2.57	3.5	2.6	3.73
40	30.8	25	12		12	25	40.1	Top wall
	S. Rail		edge		edge			

3+307.5 = E.C. - Sect. at 90°

3.3	3.48	3.0	2.92	2.76	2.56	2.43	2.0	3.73
40	31	25	11.9		12	20.3	40.2	Top
	S. Rail		edge		edge			

Note:

3+02.80 - E is not Tang at Both ends of Curve

3.5	3.45	3.02	2.85	2.73	2.46	2.28	1.9	3.74
40	34.7	25	11.5		15	24.5	40.2	Top
	S. Rail		edge		edge			

only about .2 off at E.C. so didn't

2+74.85

change

3.47	3.0	3.05	2.80	2.63	2.47	2.24	1.9	3.74
43.6	40	25	9		13	26.3	40.2	Top
S. Rail		oil	edge			edge		

Laurel

65

Lt. # Rt.

9+50

5.13	5.43	5.29	5.32	5.05	4.85	4.75
40	31.1	18.8	16.9		17.5	40
Conc.	S. Rail	edge AC	S. Rail-spur		edge AC.	Conc.

9+00

with A.C.

5.08	5.12	5.11	4.92	4.93	4.74	4.90
40	31.1	25.8	19.2		16.3	40
Conc.	S. Rail	S. Rail-spur	edge AC.		edge AC	Conc.

8+75 = Joint in Conc. pave - Beg. Center strip Covered

4.83	5.04	5.06	4.81	4.85	5.05	5.36
40	31.2	28.9	19.8		15.3	40 = Conc
Conc.	S. Rail	S. Rail-spur	edge AC.		edge AC.	

8+50

4.66	4.69	5.00	4.62	4.60	4.65	4.99	5.31
50	40	31.2	27.5	15		20	40
Conc.	Conc.	S. Rail	edge Conc.				

8+00 - Conc. slab N. of Tracks

4.13	4.86	4.02	3.97	3.99	4.55	5.08
40	31	28	15		20	40
Conc	S. Rail	edge Conc.				

7+50

4.3	4.73	3.87	3.37	3.41	3.44
40	31.1	25		20	40
	S. Rail	edge Conc.			

with Coldlay

7+00 Conc. pave in poor Cond. - patched.

4.2	4.54	3.05	2.65	2.92	3.16
40	31.1	20 = Conc.		20	40
	S. Rail	Beg. Dirt Cover			

6+73.5 = 17' Lt. = # Box Inlet - 17' x 17' - steel grate

2.11
1.7 = Top grate

6+72.2 = Beg. Conc. Pave - extends to S. - Behind wire fence

4.2	4.48	3.8	2.64	2.05	2.65	2.83	3.21
40	31.1	25	17.6		17	25	40 = Conc.
	S. Rail	on Dirt over Conc.	C.L. over edge of Dirt Cover		Conc. + AC. To w.	Conc.	

6+50

4.0	4.45	3.5	2.48	2.46	2.50	2.6	3.0
40	31.1	25	14		17.7	25	40
	S. Rail		edge		edge		

Laurel

Lt.

±

Rt.

66

12+00
 6.5 6.77 6.92 6.32 6.38 6.39 6.35 6.32 6.54 7.11
 40 31.1 Top 23.5 15 15 32 cb.in 41.3=
 S.Rail gut. gut. Dr. edge
 wall

11+50
 6.41 6.53 6.64 6.07 6.38 6.28 6.10 5.98 6.69
 40 31.1 Top 23.5 20 15 32 Top
 A.C. S.Rail gut. gut.

11+05
 6.01 6.19 6.28 5.80 6.14 5.91 5.91 5.64 6.39
 40 31.1 Top 23.5 21 18 32 Top
 A.C. S.Rail gut. gut.

10+86.5 = ± Inlet
 opening Inlet.
 6.22 5.75 6.10 5.87 5.79 5.42 6.38 6.42
 Top 23.5 21.5 15 32 Top 41.3=
 gut. grate cb. edge walk

10+80 = Beg Comb 8' cb+walk on Rt. = ally. of 10'
 5.56 6.38
 32 32=Top
 gut. - PC. of Rt.
 end cb.

10+50
 5.74 5.92 5.96 5.56 6.01 5.94 5.89 5.75 5.78 5.75
 40 31.1 Top 23.5 21.5 15 14 30.7 40=A.C.
 Conc. S.Rail gut. S.Rail Drive to
 Solar

10+29 = end Conc. Pave on Rt.
 5.92 5.44 5.64 5.65 5.60 5.50 5.56
 Top 23.6 10.6 19 30 40
 gut. S.Rail edge AC. Conc. Conc.

10+00
 5.4 5.68 5.88 5.39 5.56 5.56 5.53 5.16 5.22
 40 31.1 Top 23.5 14 15 18.3 40
 S.Rail S.Rail edge AC. Conc.

9+97.3 = ± + S. Rail-spur
 9+76.5 = ± Inlet.
 5.4 5.56 5.88 4.87 4.85 5.42 5.28 4.98 4.95
 40 31.1 Top 23.6 21.1 5 8.4 17.7 40
 S.Rail cb. gut. edge grate S.Rail-Spur edge AC. Conc.

9+71.2 = Beg. Curb on Lt. - w. end of 10' opening
 Inlet.
 5.91 4.91
 Top-end 23.6-gut.
 cb.

check B.M. - NW 3P

7.95 ✓ 7.94-R43

13+74.44 - Cont.

8.74	8.20	8.22	7.66	gate	6.37	7.01
Top	120	Top	685 =		102	102
	gut	cb.	± 10' opening	Inlet	gut	Top

13+74.44 = w. cb. line

7.98	7.91	8.04	7.89	7.84	7.66	7.40	7.23	7.08	6.77	7.33
Top	43.5	31.1	23.5	15		15	32	40	52	52
=PC	gut	S. Rail							gut	Top
										PC

- 2' Rad.

13+66.44 = w.l. Pac. Hwy. - 4' Rt. Ely. of Island. - E

7.98	7.94	7.95	7.60	7.59	7.66	8.10	7.48	7.22	7.67	7.63
40	30.9	27.6	15		4	Top	15	36.2	Top	40
edge	S. Rail	gut	Top		gut	end		gut	Ret	walk
walk										

13+54.4 = P.C. of curb, Returns - 20' Rad.

7.80	7.33	7.34	7.48	7.49	8.00	7.50	7.40	7.24	7.73
Top	23.4	15			2.3	Top	6.3	15	32
PC	gut.				gut.	island	gut.	gut.	Top
									PC

13+35

7.73	7.18	7.36	7.39	7.40	7.91	7.47	7.33	7.17	7.68
Top	23.5	15		26	Top	5.6	15	32	Top
	gut.			gut.		gut.		gut.	

13+06.2 = 4' Rt. = ± wly. of Conc. Islands - 1' Rad.

7.40	7.87
4	Top
gut.	

13+00

8.01	7.44	7.45	6.95	7.15	7.26	7.13	6.90	7.44	7.61
40	31.1	Top	23.5	15		15	32	Top	40 = walk
AC	S. Rail		gut.				gut.		at Bldg.

12+59.6 = end Conc. sect.

7.23	6.64	6.86	6.97	6.85	6.85	6.56	7.18
Top	23.4	15		15	26.3	32	Top
	gut				edge Conc.	gut	

12+37 = Beg. Conc. Sect. of Pave

7.09	6.52	6.60	6.71	6.60	6.63	6.43	7.14
Top	23.3			15	26.5	32	Top
	gut				edge Conc.	gut.	

Alley BIK. 231. Union Hqts

32077

INDEXED
Reed
NOV 28 1951

68

11-27-51
W.O. 25020

C.H.S.
Boggs
R. Sisson
W.oltman

Albert st.

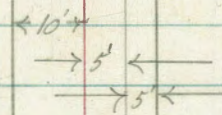
- = Fd. Pipe R.E. 469
- = Fd Nail F.B. 1616 - P53
- = Set Nail

Data from F.B. 1616
53

outs to poles = Ctr. of pole

Notes Reduced by Rex A. Garrett 6/3/52

Cypress st.



Brooks st.

0+00 = 2+49.45 per F.B. 1616-53
Revised

Richmond st.



1+00

283.77	284.07	284.17	284.27
4.2	3.9	3.8	3.7
20	10		10
Rim.			

0+96 10³ Nt = end house

284.17
3.8
102
End.

0+83 10³ Rt = start frame house on piers

280.47	282.07	283.27	283.27	283.27
7.5	5.9	4.7	4.7	4.7
20	10		10	103
Rim				at Bldg.

0+50 7⁵ Lt = Pole # 472 423.H

270.87	278.87	279.87	280.97
17.1	9.1	8.1	7.0
35	10		10
Rim			

T.P. 11.06 287.97 131 276.91

287.97

Rim = denotes rim of canyon

0+00

267.62	271.42	271.62	272.12	276.92
10.6	6.8	6.6	6.1	1.3
29	10		10	30
Rim				

0-21 = Existing gutter (cold lay) E

264.17	268.02	268.86	270.62	273.95
71.05	10.20	9.36	8.20	4.27
50	10	278.22	10	50

T.P. 8.55 278.22 13.21 269.67

Nail in Pavc. 5' N. of 0-20

T.P. 10.18 282.88 7.38 272.70

0.04 280.08 - 280.04

S.E.B.P. Myrtle & Richmond

to second 2 garages

1+57¹ 13^E Rt. = start conc. apron

287.48	287.50
4.78	4.76
13 ^E	17 ^L
Apron	Gar. floor

1+57 13^E Rt. = end apron to 1st 2 garages

286.76	286.78
5.50	5.48
13 ^E	17
Apron	Gar. floor

1+51 10^L Lt. = start ^{double Gar} conc. apron to

287.92 286.98

4.34 5.28

1+50 8^E Lt. = Pole # J.P.A. 143115 10^L
Gar. Floor Apron1+35- 13^E Rt. = start 5 car. Gar. with
conc. apron. also

284.26	285.36	285.54	286.66	286.78	286.80
7.9	6.9	6.7	5.6	5.48	5.46
30	10		10	13 ^E	17 ^L
Rim				Apron	Gar. floor

6.07 292.26 1.78 286.19

292.26C 1+30 13^E Rt. = \neq Sing Gar. Conc. floor

286.28

1.69

134

Floor

T 1+24 9^L Rt. = Pole # A 1424

284.87

3.1

12^E

floor

T 1+06 12^E Rt. = \neq Sing Gar. dirt floor287.77

1+95 12¹ Lt. = start 3' wide E+W. Conc. walk.

287.96
4.30
12¹

1+94 - 11² Rt. = N.W. Cor. Frame House

288.16
4.1
11² End. at house

1+90 13⁸ Rt. = 3' wide Conc. walk.

288.39 288.62
3.87 3.64
13⁸ walk 22

1+88 13⁸ Rt. = end apron to 5 car Gar.

287.98 287.99
4.28 4.27
13⁸ 17²
Apron Gar. floor

1+77¹ 13⁵ Rt. = start apron to 5th Gar.

287.97 288.01
4.29 4.25
13⁵ 17²
Apron Gar. floor

second 2 garages

1+77 13⁵ Rt. = end conc. apron to

287.51 287.50
4.75 4.76
13⁵ 17²
Apron Gar. floor

1+71 10⁵ Lt. = end apron to Gar.

287.88 287.41 287.16 287.46
4.38 4.85 5.1 4.8
16 10⁵ 10
Gar. floor apron

292.26

Alley BIK. 21 no. Hqts
 Check N.E.B.P. Cypress - Albert 5.71 280.27 (280.31)
 5.69 285.98 11.20 280.29

2+69E } 12' Rt.
 11 1/2 Lt. } = E.C. 2' Rad. cl. Ret

2+67E } 10' Rt.
 9 1/2 Lt. } = B.C. 2' Rad. cl. Ret.

T.P. 5.33 291.49 6.10 286.16

9.85 Lt = start alley cl.
 9.95 Rt. = " " "
 10' Rt. = end Conc. Ret. wall.
 2+59E } = wly line Albert.

2+56 9' Lt. = pole # 30834AH

2+54 10' Rt. = start 6" wide Conc. Ret. wall

2+40 12 Lt. = end 3' wide E.t.w. Conc. walk.

2+30

2+07 7 1/2 Rt. = start 4' wide 6' high hedge.

2+00

282.86 283.28 285.81 285.19 285.39 285.54 286.23 285.87 286.53
 7.63 8.21 5.68 6.30 6.10 5.95 5.26 5.62 4.96
 62 62 11 1/2 11 1/2 12 12 62 62
 cl G cl G cl G cl G

285.96 285.51 285.47 285.69 286.24
 5.53 5.98 6.02 5.89 5.25
 9 9 10 10
 cl G G cl

291.49

286.14 286.06 285.96 286.06 286.46 285.96
 6.12 6.2 6.3 6.2 5.80 6.3
 9 9 9 9 10 10
 cl cl B. wall. Approx

287.66 287.51
 4.6 4.7
 10 10
 Gnd. B.W. Approx.

288.10
 4.16
 12
 walk

288.06 288.36 288.56
 4.2 3.9 3.7
 10 10

288.06 287.96 288.46
 4.2 4.3 3.8
 10 10

292.26

D. Smith
C. Allen
R Taylor
Furgessen

Cross Sec Laurel St. and Harbor Dr SE 1/4 Intersection

73

Rt = East

1-23-52

WB # 20815

Sketch p. 44

330+00

224	202	101	180	2°	372
37	50	77	93	100	100
Ely par					Top wall

329+60 47' Rt end 15' wide con curb

306
47
Top curb

INDEXED
FEB 28 1952

329+50

225	22	310	247	116	106	2°	325
37	47	47	485	77	93	100	100
Ely par	94	Top	94		edge cold lay		Top wall

329

222	23	321	258	115	208	2°	372
37	47	47	485	79	94	100	100
Ely par	94	Top 12' wide	94		edge cold lay		Top wall

328+60 82' Rt & 3' x 4 1/2' wooden grate over inlet

122
82
top inlet

328+56 & 3' by 2 1/2' wooden grate over inlet

0°	238	335	259	115	219	23	320
top inlet	37	47	42	465	82	94	100
	Ely par	94	Top of 1' wide	94	edge cold lay	100	Top curb

Sta. are states according to plan

BM

159 Spike E of Laurel Harbor Dr. p. 43

Note all elev. are direct used tape rod

Rt = East

S

331+00 E Int Laurel + Harbor Dr.

192	187	102	096	101	180
37	50	90	100	110	150

330+75

206	181	026	086	026	144	180
37	50	86	100	116	150	187
54						
87						

330+50

211	177	024	020	141	12	372
37	50	82	88	105	113	113
54				edge		Top
87				cell lay		wall

330+25

212	120	101	076	102	164	20	374
37	50	72	78	85	95	102	102
54					edge		Top wall
87					cell lay		

Lots 9+10 Blk 67

Pt. Loma Hqts.

Replace Nly lot corners

C.H.S

3-5-53

Begg

Altman

W.O. # 20006

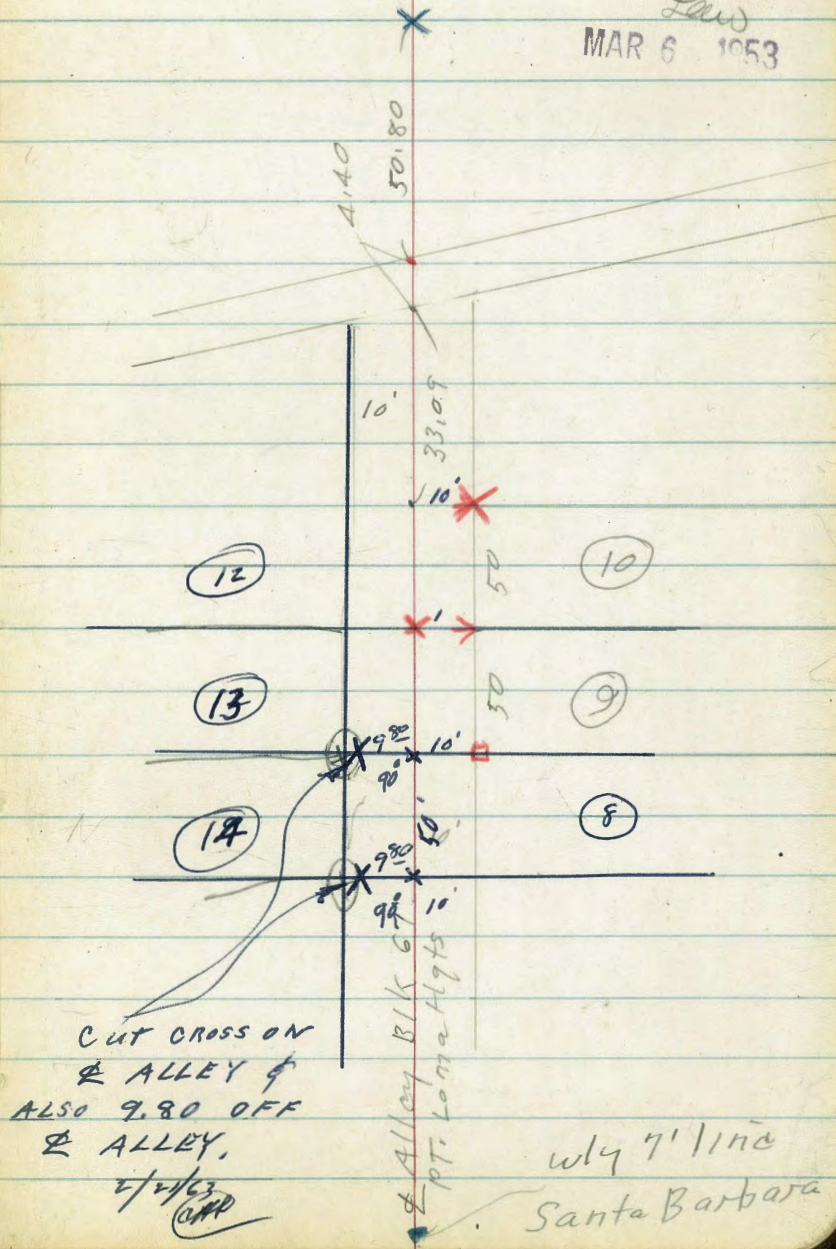
INDEXED

Law

MAR 6 1953

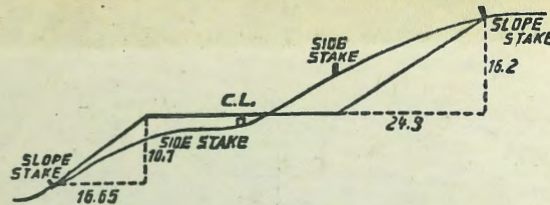
- X denotes Fd. cross
- " " Nail
- X " cut cross in conc.
- " " Arrow " "
- " set 1/2 t. disk.

Points shown in red were set from data on page 52




230.05

331.92
198
3 994



DISTANCES FROM SIDE STAKES FOR CROSS-SECTIONING.
SLOPE 1 1/2 TO 1. ROADWAY OF ANY WIDTH.

	0	.1	.2	.3	.4	.5	.6	.7	.8	.9	
0	0.00	0.15	0.30	0.45	0.60	0.75	0.90	1.05	1.20	1.35	0
1	1.50	1.65	1.80	1.95	2.10	2.25	2.40	2.55	2.70	2.85	1
2	3.00	3.15	3.30	3.45	3.60	3.75	3.90	4.05	4.20	4.35	2
3	4.50	4.65	4.80	4.95	5.10	5.25	5.40	5.55	5.70	5.85	3
4	6.00	6.15	6.30	6.45	6.60	6.75	6.90	7.05	7.20	7.35	4
5	7.50	7.65	7.80	7.95	8.10	8.25	8.40	8.55	8.70	8.85	5
6	9.00	9.15	9.30	9.45	9.60	9.75	9.90	10.05	10.20	10.35	6
7	10.50	10.65	10.80	10.95	11.10	11.25	11.40	11.55	11.70	11.85	7
8	12.00	12.15	12.30	12.45	12.60	12.75	12.90	13.05	13.20	13.35	8
9	13.50	13.65	13.80	13.95	14.10	14.25	14.40	14.55	14.70	14.85	9
10	15.00	15.15	15.30	15.45	15.60	15.75	15.90	16.05	16.20	16.35	10
11	16.50	16.65	16.80	16.95	17.10	17.25	17.40	17.55	17.70	17.85	11
12	18.00	18.15	18.30	18.45	18.60	18.75	18.90	19.05	19.20	19.35	12
13	19.50	19.65	19.80	19.95	20.10	20.25	20.40	20.55	20.70	20.85	13
14	21.00	21.15	21.30	21.45	21.60	21.75	21.90	22.05	22.20	22.35	14
15	22.50	22.65	22.80	22.95	23.10	23.25	23.40	23.55	23.70	23.85	15
16	24.00	24.15	24.30	24.45	24.60	24.75	24.90	25.05	25.20	25.35	16
17	25.50	25.65	25.80	25.95	26.10	26.25	26.40	26.55	26.70	26.85	17
18	27.00	27.15	27.30	27.45	27.60	27.75	27.90	28.05	28.20	28.35	18
19	28.50	28.65	28.80	28.95	29.10	29.25	29.40	29.55	29.70	29.85	19
20	30.00	30.15	30.30	30.45	30.60	30.75	30.90	31.05	31.20	31.35	20
21	31.50	31.65	31.80	31.95	32.10	32.25	32.40	32.55	32.70	32.85	21
22	33.00	33.15	33.30	33.45	33.60	33.75	33.90	34.05	34.20	34.35	22
23	34.50	34.65	34.80	34.95	35.10	35.25	35.40	35.55	35.70	35.85	23
24	36.00	36.15	36.30	36.45	36.60	36.75	36.90	37.05	37.20	37.35	24
25	37.50	37.65	37.80	37.95	38.10	38.25	38.40	38.55	38.70	38.85	25
26	39.00	39.15	39.30	39.45	39.60	39.75	39.90	40.05	40.20	40.35	26
27	40.50	40.65	40.80	40.95	41.10	41.25	41.40	41.55	41.70	41.85	27
28	42.00	42.15	42.30	42.45	42.60	42.75	42.90	43.05	43.20	43.35	28
29	43.50	43.65	43.80	43.95	44.10	44.25	44.40	44.55	44.70	44.85	29
30	45.00	45.15	45.30	45.45	45.60	45.75	45.90	46.05	46.20	46.35	30
31	46.50	46.65	46.80	46.95	47.10	47.25	47.40	47.55	47.70	47.85	31
32	48.00	48.15	48.30	48.45	48.60	48.75	48.90	49.05	49.20	49.35	32
33	49.50	49.65	49.80	49.95	50.10	50.25	50.40	50.55	50.70	50.85	33
34	51.00	51.15	51.30	51.45	51.60	51.75	51.90	52.05	52.20	52.35	34
35	52.50	52.65	52.80	52.95	53.10	53.25	53.40	53.55	53.70	53.85	35
36	54.00	54.15	54.30	54.45	54.60	54.75	54.90	55.05	55.20	55.35	36
37	55.50	55.65	55.80	55.95	56.10	56.25	56.40	56.55	56.70	56.85	37
38	57.00	57.15	57.30	57.45	57.60	57.75	57.90	58.05	58.20	58.35	38
39	58.50	58.65	58.80	58.95	59.10	59.25	59.40	59.55	59.70	59.85	39
40	60.00	60.15	60.30	60.45	60.60	60.75	60.90	61.05	61.20	61.35	40
41	61.50	61.65	61.80	61.95	62.10	62.25	62.40	62.55	62.70	62.85	41
42	63.00	63.15	63.30	63.45	63.60	63.75	63.90	64.05	64.20	64.35	42
43	64.50	64.65	64.80	64.95	65.10	65.25	65.40	65.55	65.70	65.85	43
44	66.00	66.15	66.30	66.45	66.60	66.75	66.90	67.05	67.20	67.35	44
45	67.50	67.65	67.80	67.95	68.10	68.25	68.40	68.55	68.70	68.85	45
46	69.00	69.15	69.30	69.45	69.60	69.75	69.90	70.05	70.20	70.35	46
47	70.50	70.65	70.80	70.95	71.10	71.25	71.40	71.55	71.70	71.85	47
48	72.00	72.15	72.30	72.45	72.60	72.75	72.90	73.05	73.20	73.35	48
49	73.50	73.65	73.80	73.95	74.10	74.25	74.40	74.55	74.70	74.85	49
50	75.00	75.15	75.30	75.45	75.60	75.75	75.90	76.05	76.20	76.35	50

THE NATIONAL BLANK BOOK COMPANY
 HOLYOKE  MASSACHUSETTS
 NEW YORK CHICAGO BOSTON SAN FRANCISCO